

Serving: Carvel, Darwell, Duffield, Wabamun, Seba Beach, Gainford, Entwistle, Evansburg, Wildwood, Tomahawk, Spruce Grove, Stony Plain & Drayton Valley

September 6, 2016

# EQUS WELCOMES REMOVAL OF MARKET RESTRICTIONS AND NEW INTEGRATED OPERATION AGREEMENT

Submitted by Patricia Bourne

EQUS REA LTD., the largest member-owned utility in Canada, is pleased with the 2016 Arbitration decision that confirms EQUS' right to provide electric distribution services to anyone within EQUS' designated Service Area in rural Alberta. This decision paved the way for a new Integrated Operation Agreement (IOA) between EQUS and FortisAlberta, which guides the operation of both entities integrated electrical distribution systems. The new IOA takes effect today

September 1, 2016.

The Arbitrator's decision reflects the changing times and the final determination states that while EQUS' Service Area is defined by a geographic boundary, that membership in EQUS will contain no eligibility provisions other than those determined by their by-laws.

EQUS Chairman Glen Fox states, "EQUS has long-held the opinion that interpretations in the previous IOA regarding the eligibility of a consumer living and operating in the EQUS Service Area and wishing to be an EQUS member was restrictive

and not in the interests of rural Alberta or EQUS' members. EQUS has consistently defended the rural consumers' right to choose EQUS."

Pat Bourne, Chief Executive Officer, confirms, "EQUS operates under co-operative business principles and becoming a member is simple. Over the years, we have responded to an increased demand for services from consumers who want the advantages a co-operative, and in particular EQUS, offers."

For more information on EQUS and how to become a member, please visit [www.equs.ca](http://www.equs.ca).

## FALL AT THE DDRA

Submitted by Lorne Ross, Darwell District Recreation Association

Fall is here and activities at Darwell's Centennial Hall are in full swing. Zumba has started and goes Tuesday and Thursday mornings from 9:30 to 10:30. All ladies are invited to participate in this healthful and fun way to keep in shape through the winter's months. Go at your own pace and enjoy the company of others.

Pickleball continues Monday and Saturday mornings from 9:00 - 12:00 and on Thursday

evening 7:00 - 9:00 PM. The Pickleballers will once again have an introduction to Pickleball session for those wishing to try this fun sport. The date for this session has yet to be set. Pickleball fees are \$25.00 for each four month season. There is a \$5.00 drop in fee for those who only want to play on occasional bases. Planning for the Fall Classic Tournament is now underway. The outdoor court was finished at the beginning of the summer and will continue to be used as long as the weather cooperates.

The DDRA executive will

once again be planning a Fall Business Expo to be held later in the fall. The purpose of the Expo is to provide area businesses an opportunity to showcase their products and services to area residents. Those persons and businesses interested in participating in the expo should contact Maria Smith at 780 892-3099 or Theresa Utri at 780 721 2690.

The DDRA's Information and registration night is September 6th at the Centennial Hall starting at 6:30 for more information on what is happening this fall and winter in the area.

**All Precious JEWELLERS**  
*"Your Spruce Grove Jewellery Store"*  
**Goldsmith on Premises**  
 • Engraving • Clock & Watch Repairs  
 • Jewellery Repairs • Custom Make-ups  
 Jewellery Repairs Done On Site.  
 Laser Welder Services Available.  
 Toll Free: 1-877-962-4367  
 PH: 780-960-4200 Fax: 780-960-4201  
 Suite 102, 215 McLeod Avenue  
 Spruce Grove, AB. T7X 0G2

**WEIGHTLOSS NEVER TASTED SO GOOD!**  
  
**NEW! NEW! NEW! NEW!**  
 (780) 907-8642 **VALENTUS**  
[www.ValentusTour.com/Ladybug](http://www.ValentusTour.com/Ladybug)

**KEVIN DAVIS CONCRETE CONSTRUCTION**  
 Commercial - Residential | 25 Years Experience

- Sidewalks
- Garage Pads
- Shop Floors
- Driveways
- Exposed Aggregate
- Basements
- Patios
- Steps
- Curbs
- Stamps

Phone: (780) 924-2031  
 Cell (780) 868-2228

Check it out for all your home Renovation Needs!

**Home Reno**



PUBLISHED WEEKLY (Zone 1 & 2)  
AND BIWEEKLY (Zone 3)

**E.J. Lewchuck & Associates Ltd.**

45C South Avenue  
Box 3595  
Spruce Grove, AB T7X 3A8

**SALES**

Elaine Lewchuck  
Ashley Cazac

**TELEPHONE:**

Classifieds 962-9229  
Advertising 962-9228  
Fax 962-1021

**E-MAIL:**

sales@com-voice.com  
news@com-voice.com

# HEALTHY AFTER SCHOOL SNACKING

Submitted by Alberta Health Services – Nutrition and Food Services

Whether your kids spend their after school time at home or on the way to an extra-curricular activity, they may be hungry for a snack. Planned healthy snacks will help children get the extra energy they need to grow and be active.

- Try to offer snacks at least 2 hours before a meal to prevent your child from being too full at meal

time.

- Aim to choose foods from 2 of the 4 food groups from Canada's Food Guide at snack time.

- Wash and slice vegetables and fruits; store them in a container in the fridge so they are easy to grab on the go.

- Keep a small supply of non-perishable snacks such as un-salted nuts, pretzels, or whole grain crackers in a sports bag so your child can have a quick snack before activities or sporting events.

Plan ahead by stocking your fridge and cupboard with items that can be used to make these quick and healthy snacks:

- Low-fat cheese to eat with whole grain crackers, mini whole grain pitas, or apple slices.

- Peanut butter spread on a whole wheat tortilla and rolled around a banana.

- Low-fat yogurt with fresh, frozen, or canned fruit.

- Pair snacks with water, milk, fortified soy beverage, or 100% fruit juice. Limit juice to ½ cup (125 mL) per day.

For more snack ideas for children, please visit: <http://www.alberta-healthservices.ca/assets/info/nutrition/if-nfs-snacks-for-children.pdf>

For more information about healthy snacking, please visit:

<http://www.albertahealthservices.ca/assets/info/nutrition/if-nfs-healthy-snacking.pdf> or

For more information on Healthy Eating, visit: <http://www.alberta-healthservices.ca/2914.asp>



**Town & Country Funeral Services**



Wabamun  
780-983-2749  
Evansburg  
780-727-2791



- † Cemetery Monument Sales & Installation
- † Traditional Burial & Funeral Services
- † Pre-need Funeral Packages
- † Crematorium & Memorial Services

## LAWYER

**PATRICK DOLPHIN**

Evansburg  
Office open Mondays  
9:30a.m. to 4:00p.m. (except holidays)



Office located near Drug Store

**Phone: 780-727-2270**

Serving Evansburg, Entwistle and area since 1994

## WHY GOD! WHY ME!!!



**Happy 40<sup>th</sup> Birthday Stuart Chechotko**

**Don't Worry!!! It Happens to the Best of Us! THE BEST IS YET TO COME!!**

**HAPPY BIRTHDAY**



# LOSE WEIGHT WITH THE HEALTHIEST COFFEE ON THE PLANET!



**HELPS CONTROL APPETITE TO LOSE WEIGHT**



**HELPS PROMOTE HEALTHY BRAIN FUNCTION**



**TASTES AMAZING!**

## PREVAIL SLIMROAST

Formulated with natural appetite suppressants, feel good ingredients and detox components SlimROAST is a great addition to your weight SlimROAST will produce exciting results, but you will love the taste of this delicious Italian dark roast coffee.

### GREAT FOR:

- › Controls appetite
- › Regulates sugar absorption
- › Regulates fat absorption
- › Promotes brain health and focus
- › Elevates mood
- › Antioxidant



# MANAGING YOUR WEIGHT NEVER TASTED SO GOOD!



**ALL NATURAL**



**PROPRIETARY FORMULA**



**HEALTHY WEIGHT MANAGEMENT**

## PREVAIL TRIM

Formulated with natural appetite suppressants and ingredients to help detoxify your body, Prevail Trim is a great addition to any weight management program.

And as if helping to manage your weight in a healthy way were not exciting enough, just wait until you taste this delicious drink!

**You will LOVE it!**



CALL (780) 907-8642 FOR FREE SAMPLE



## BE HEALTHY! FEEL ALIVE!



### PREVAIL IMMUNE BOOST

- › PACKED WITH ANTIOXIDANTS
- › SUPPORT IMMUNE HEALTH
- › VITAMINS AND MINERALS



### PREVAIL ENERGY

- › WORKS IN MINUTES
- › BOOSTS ENERGY
- › LASTS FOR HOURS

[www.ValentusTour.com/Ladybug](http://www.ValentusTour.com/Ladybug)

**(780) 907-8642**

# ROAD-TRIPPING? DRUGS AND DRIVING MAKE A DEADLY COMBINATION

Submitted by Alberta Motor Association

After checking off the endless months of winter, many Albertans count the summer months one holiday Monday at a time. For your typical road-tripper, summer kicks off with the Canada Day long weekend and wraps up with Labour Day. And while long weekends seem designed for lazy days at the lake or a quick dash to the Rockies, for police officers, EMTs and AMA tow truck operators who work the highways, the days can be long for

much less pleasant reasons. Fatal automobile collisions tend to spike on holiday long weekends. According to the Alberta Traffic Collision Statistics, from Victoria Day to Labour Day in 2014 there were 3,752 long weekend collisions resulting in 14 fatalities on Alberta roads. Drivers involved in fatality collisions were nearly five times as likely to have consumed alcohol (15.9%) than drivers involved in injury collisions (3.3%). But what about other kinds of impairment, like fatigue, prescription drugs or marijuana? That's where the

statistics get a little fuzzy... "Unlike alcohol - where a tried and tested approach to measuring blood alcohol concentration offers a very accurate read on impairment - the effects of other drugs or physical conditions can be difficult to quantify," explains Jeff Kasbrick, VP of Government and Stakeholder Relations with the Alberta Motor Association. Recent research from our American cousins at AAA studied the "per se limits" of THC (the main psychoactive compound in Cannabis) and found that "there is no science showing that driv-

ers reliably become impaired at a specific level of marijuana in the blood." The same research showed that THC levels can drop rapidly during the time it takes to perform a blood test and that frequent users can exhibit persistent THC levels long after use, making it complex to correlate marijuana use with driver performance.

But before you roll one up to celebrate the news, the numbers coming out of Washington (where recreational marijuana was legalized in December 2012) give pause for some sober second thoughts. Collision data showed the percentage of drivers involved in fatal crashes after recently using marijuana more than doubled from eight to 17 percent between 2013 and 2014. That's very close to the 15.9% of Alberta drivers involved in fatal collisions who consumed alcohol prior to the crash.

And that brings us full circle back to the Labour Day weekend and staying safe on Alberta's roads. While marijuana and other drugs, which are still illegal in Canada, may fall into a grey area in terms of testable limits, we know it takes all your grey matter focused on the task of driving to avoid becoming a statistic in a collision report.

According to the Traffic Injury Research Foundation (TIRF) "cannabis significantly affects the skills necessary for driving." Research points to slower cognitive functioning, which can delay reaction times, distort time and the perception of distance, and make it more difficult to scan ahead for hazards or navigate turns across oncoming traffic. TIRF's analysis indicates that crash rates for cannabis users can be from two to six times higher than sober drivers.

"Whether it's the excitement of a fully loaded RV with the wind at your back, or the fatigue of too many late nights around the campfire catching up with you on the way home, long weekends are prime time for traffic collisions," Kasbrick warns. "This isn't an issue of knowing your limits; when we drink, smoke or drive exhausted it isn't just your friends or family at danger. When you drive impaired everyone you share the road with has to live with that risk."

Law enforcement will be out in full force watching for speeders, distracted drivers and impaired drivers over the long weekend. And with the cost of an impaired driving conviction running up to \$13,950, you're better off spending your road trip budget on ice cream than gambling with innocent lives.

**WINTER IS JUST AROUND THE CORNER**

Applications for new natural gas services will be accepted until September 15, 2016. Any requests for service after this deadline will be subject to the date received and weather conditions.

West Parkland Gas Co-op Ltd. reserves the right to decline requests for service that are received after the deadline.

FOR MORE INFORMATION PLEASE CONTACT:

**WESTParkland GAS CO-OP LTD**

Box 2187, Stony Plain, Alberta T7Z 1X7  
 Phone (780) 963-3311 Fax (780) 963-3332  
 E-mail: [admin@westparklandgas.com](mailto:admin@westparklandgas.com)

## **Job Posting: Whitecourt – Ste. Anne Constituency office Constituency Assistant – Full time**

Hon. Oneil Carlier, MLA is seeking to fill the full-time (37.5 hours) position of Constituency Assistant

**General Description:** Reporting to the MLA, the Constituency Assistant will be the primary liaison between the MLA and their Constituency, community groups, stakeholders and individuals. Working in a challenging, variable environment the Constituency Assistant will be responsible for office administration, community outreach and organizing, event planning, coordinating communications, casework and the day-to-day operations of the MLA Constituency Office.

### **Job Duties:**

- Ensuring that the office is accessible to constituents through regular and consistent hours of operation
- Phone, email and other correspondence
- Administrative duties, including budgeting and file management
- Monitoring community activities and reporting to the MLA
- Engaging in casework on behalf of constituents
- Performing outreach to community organizations and individual constituents as directed
- Representing the Member at public and community functions when required
- Coordinating advertising and constituency mailings and online communications
- Coordinating part-time and temporary staff and interns
- Liaising with caucus staff on scheduling and outreach activities
- Liaising with Legislative Assembly of Alberta administrative staff regarding constituency office administration
- Assist with other duties as assigned

### **Qualifications and Skills:**

- Degree in a relevant field or equivalent work experience
- Excellent written and verbal communications skills
- Ability to work independently and as part of a team
- Familiarity with MS Windows, Office, databases and CMS web updates
- Willingness to work flexible hours, including evenings and weekends
- Experience with community organizing
- A demonstrated commitment to community volunteerism
- Knowledge of government bodies and non-governmental agencies, including Alberta Works, AISH, MEP, WCB, etc.
- A strong understanding of the political history of the Constituency and of Alberta politics

**Compensation:** \$53,628 - \$66,048 per annum depending on education and experience. An excellent benefits package is also provided. The Whitecourt – Ste. Anne Constituency Office is an employment equity employer.

**Please send resume and cover letter to:**

[Whitecourt.steanne@assembly.ab.ca](mailto:Whitecourt.steanne@assembly.ab.ca)

*Please note that the position will remain open until a suitable candidate is found. All applicants are thanked for their interest. Only applicants selected for an interview will be contacted.*

# APPLY TO SIT ON THE PRIME MINISTER'S YOUTH COUNCIL

Submitted by Jim Eglinski, MP - Yellowhead

OTTAWA – Jim Eglinski, Member of Parliament for Yellowhead,

is pleased to extend an invitation to young residents of the riding to apply to sit on the Prime Minister's Youth Council. The Council will advise the

Prime Minister on national issues such as employment, access to education, building stronger communities, climate change and clean growth. The Council

will meet multiple times a year. If you are aged 16 to 24, you are eligible to apply to become one of the Youth Council members.

You have until October 7 to submit an application to join the second wave of members who will meet with the inaugural members and the Prime Minister in 2017.

"This is a unique opportunity for youth in our Yellowhead riding to directly voice the concerns of young people to the government and advocate on behalf of residents in the area," stated MP Eglinski. "I urge any youth in my riding with a passion for public service to apply," concluded MP Eglinski.

For more information on this process, please visit <https://www.canada.ca/en/campaign/prime-ministers-youth-council.html>

**TAKING BACK SUMMER**  
**20-40% OFF ACOUSTIC GUITARS**  
**JULY 1 - AUGUST 30**

*Guitars Gone Wild*

**962 MCC 0333**  
**music centre canada**  
**WWW.MCCSPRUCEGROVE.COM**  
**BAY 21 100 KING STREET SPRUCE GROVE**

# GROVE HEARING CLINIC

**960-2960**  
**1-866-960-2960**

Hear what you've been missing...

Senior Discounts

Full Service & Repair

Full Hearing Assessments

**HOURS OF OPERATION: 9am – 5pm Weekdays**  
 3rd party billing (AADL, WCB, DVA, FCH) • Personal 0% Financing if Needed  
 For The Latest Technology In Hearing Aids & Assisted Living Device Stop By & See Dawn  
**#220-70 McLeod Ave - Westland Market Mall, Spruce Grove**

# RIDING UPDATE – MONTH OF AUGUST, 2016

**Submitted by Jim Eglinski, MP – Yellowhead**

This summer has been busy meeting with constituents, attending events and holding town hall meetings.

I spent the beginning of August meeting with local mayors and constituents. I visited the Drayton Valley & Rocky Mountain House farmers markets, the Pembina Pipeline barbeque, and spent an afternoon in Jasper meeting with locals. Later, I took part in the Pembina Daze Parade in Evansburg. It was great to see everyone out and celebrating in their community.

In the second week of August,

I flew to Victoria, B.C. to meet with provincial government officials. After I returned, I met with representatives of the oil and gas industry. That weekend, I attended the Northern Alberta Conservative Association summer barbeque.

The following week, I had a meeting regarding agri-business in our riding, and held several town hall meetings to discuss with constituents the federal Liberal government's defence policy. These community meetings were held in Grande Cache, Jasper, Hinton, Warburg, Rocky Mountain House, and Drayton Valley.

I also enjoyed an informative

tour of the Blue Ridge Lumber facilities, and attended the Cloverleaf Manor's annual barbeque in Warburg. On the weekend, I stopped in at the Darwell Summer Fair, and had the opportunity to join in the dancing at the Paul Band Pow-Wow.

During the last week of August, I held the final town hall meetings on the defence policy in Edson and Wildwood and attended the Grand Opening of Garva Petroleum, Husky's new convenience store in Edson. I also met with Thorsby Town Council & Seniors' group, as well as the Grand Opening of the new Main Street in Rocky Mountain House.

I spent last Saturday on my mo-

torcycle participating in Edson's Annual Toy Run. It was great to see riders from around central Alberta attend. Oneil Carlier, Alberta's Minister of Agriculture & Forestry, rode his Harley in from Alberta Beach. We had rainy weather but there was a good turnout. Thank you to all the participants for showing up and to the die-hards that took in the poker run.

August was an eventful month meeting constituents across our beautiful riding. In total, I had 18 meetings and participated in 15 events. As your voice in Ottawa, I will bring your input to Parliament when it resumes mid-September.

## CAPITAL WEST ITU CATCHES EXCESSIVE SPEEDER ON MOTORCYCLE ON HIGHWAY 16A

**Submitted by RCMP and Sheriffs**

On August 29th, 2016, at 11:22

PM, Capital West ITU intercepted an excessively speeding motorcycle travelling on Highway 16A east of Spruce Grove. It was

caught on radar at 115 km/h over the posted speed limit of 100 km/h. As a result, the driver was charged with speeding and issued a sum-

mons for his appearance in court in Stony Plain, Alberta on November 24, 2016. The driver was also from Spruce Grove, Alberta.

# Now Recruiting!

Parkland County Fire Services has openings for part-time paid-on-call firefighters at several stations. They will be recruiting throughout September with plans to hire in October.

GO TO [www.parklandcounty.com/firefighter\\_application](http://www.parklandcounty.com/firefighter_application) TO APPLY ONLINE

You can also contact Fire Services at 780-968-8338 or email at [FireServices@parklandcounty.com](mailto:FireServices@parklandcounty.com)



*Fallis. Fall Fun Day\* and...*  
**FALLIS 10TH ANNUAL CAR**  
*Show & Shine*

**SATURDAY, SEPTEMBER 10TH, 2016**

THE FALLIS COMMUNITY ASSOCIATION WELCOMES CAR ENTHUSIASTS AND THOSE WITH A VINTAGE, CUSTOM, STREET-ROD OR CLASSIC VEHICLE WILL COME TO DISPLAY THEIR "PRIDE AND JOY". THE DAY'S EVENTS ARE FREE OF CHARGE, HOWEVER A DONATION BOX WILL BE AVAILABLE FOR THOSE WHO WISH TO SUPPORT AND CONTRIBUTE TO THE ONGOING OPERATION OF THE FALLIS COMMUNITY HALL. CONTACT YVONNE AT 780-797-3088 FOR MORE INFORMATION.

*Schedule of Day's Events*

|            |                                      |                                                                                                                                                                                                                                                                                                         |                      |
|------------|--------------------------------------|---------------------------------------------------------------------------------------------------------------------------------------------------------------------------------------------------------------------------------------------------------------------------------------------------------|----------------------|
| 10:00 AM   | FREE REGISTRATION                    | 4:00 PM                                                                                                                                                                                                                                                                                                 | CAR SHOW             |
| 11:30 AM   | CONCESSION OPENS                     |                                                                                                                                                                                                                                                                                                         | WINNERS ANNOUNCED    |
| 12:00 NOON | SHOW OPENS                           |                                                                                                                                                                                                                                                                                                         | 50/50 AND MEAT DRAWS |
| 12:00 PM   | KIDS ACTIVITIES                      | 4:00 PM                                                                                                                                                                                                                                                                                                 | CONCESSION ENDS      |
| 1:45 PM    | CAR SHOW KING & QUEEN CONTEST BEGINS | 4:30 PM                                                                                                                                                                                                                                                                                                 | SHOW CLOSES          |
|            | NOMINATIONS AT THE REGISTRATION DESK | ENJOY A FAMILY FUN DAY AT THIS KID FRIENDLY EVENT. FROM 12:00 TO 3:00 PM KIDS ACTIVITIES INCLUDE: DIGGING FOR SILVER AT THE FALLIS SILVER MINE AND SUNDAE BAR FOR THE KIDS (ADULTS CAN ENJOY THE SUNDAE BAR FOR \$1). NEW THIS YEAR WILL BE AN OPPORTUNITY TO CUSTOMIZE A WOODEN MODEL CAR AND RACE IT. |                      |
| 2:00 PM    | CAR SHOW KING & QUEEN CROWNED        |                                                                                                                                                                                                                                                                                                         |                      |
| 2:00 PM    | BAR OPENS (HALL)                     |                                                                                                                                                                                                                                                                                                         |                      |

**CAR SHOW KING & QUEEN**      **OVERNIGHT CAMPING**  
**SUNDAE BAR**                      **(NO HOOKUPS) IS AVAILABLE**  
**50/50 • MEAT DRAW**              **ON A FIRST COME BASIS.**

COME ON OUT FOR A GREAT FAMILY EVENT. ENJOY THE CARS, MUSIC, FOOD AND THE ACTIVITIES FOR THE CHILDREN. ENTER TO WIN ANY OF THE GREAT PRIZES. FALLIS IS LOCATED ON THE NORTH SIDE OF WABAMUM LAKE ON HIGHWAY 16 AND RANGE ROAD 52 APPROXIMATELY 80 KM WEST OF EDMONTON BETWEEN THE VILLAGES OF WABAMUM AND SEBA BEACH. THERE ARE NO GRAVEL ROADS ENROUTE TO FALLIS FOR THOSE BRINGING THEIR CLASSIC VEHICLES.





# FALLIS 10TH ANNUAL CAR *Show & Shine*

## SATURDAY, SEPTEMBER 10TH, 2016

THESE PAGES ARE SPONSORED BY THE FOLLOWING BUSINESSES

Wabamun  
Lakeside  
Liquor  
892-3463

Shoreside  
Inn & Suites  
892-4773

A.T.B.  
Financial  
-Wabamun Br.  
892-7927

Ray's  
Market  
892-2230

Joanne Hay  
-Countryside  
Realty  
908-1292

Wabamun  
Hotel  
Restaurant  
892-3577

Wabamun  
Lake Inn  
892-2424

Wabamun  
IDA  
Pharmacy  
892-2278

Wabamun  
Hotel  
892-2224

Behind  
The Scenes  
Hair & More  
892-4546

Kokanee  
Springs  
RV Park &  
Driving Range  
797-3058

GMP  
Ontrack  
-Excavation,  
Brushing  
719-2687

EGT Sand  
& Gravel  
727-9669

Derby's  
Lakeview  
General Store  
797-3838

Tomahawk  
Race Trac Gas  
339-2575

Tri-Lakes  
Services Ltd.  
797-3939

Pineridge  
Golf Resort  
1-877-  
321-SEBA

Gossamer  
Treasures  
Gallery &  
Gift Shop  
964-1057

Trades  
Automotive &  
Welding Ltd.  
892-4500

Kokanee  
Grill  
797-3100



Fallis  
Country Store  
892-3150



# Lose up to 5 lbs or more in just 3 days!! Yes It Really Works!!

"I've lost 30 Pounds in 45 days  
- I've tried all kinds of products  
and so happy to find one  
that actually works!"  
**- Elaine Spruce Grove**

"Down 36 lbs. in just 2 months.  
Even Dr. B's diet where I had to  
starve myself on 800 calories  
couldn't do this. This product is  
just totally awesome – Just the  
total overall feeling good"  
**- Toni Spruce Grove**

"I've lost 21 pounds in 7 weeks! I  
tried everything over the last 10  
years and nothing worked - I kept  
gaining and got very depressed.  
Who'd of known that taking one little  
Miracle 100% Natural Pill a day  
would allow me to succeed!!"  
**- Penny M. Stony Plain**

"Have heard as much as 15lbs loss  
from the 3 day sample – it works  
that good! Have nothing to lose but  
the weight which I am doing"  
**- Donna Edmonton**

"I totally love this product for not  
only the weight loss but also the  
physical & mental well-being. I just  
feel much better!"  
**- P from Onoway**



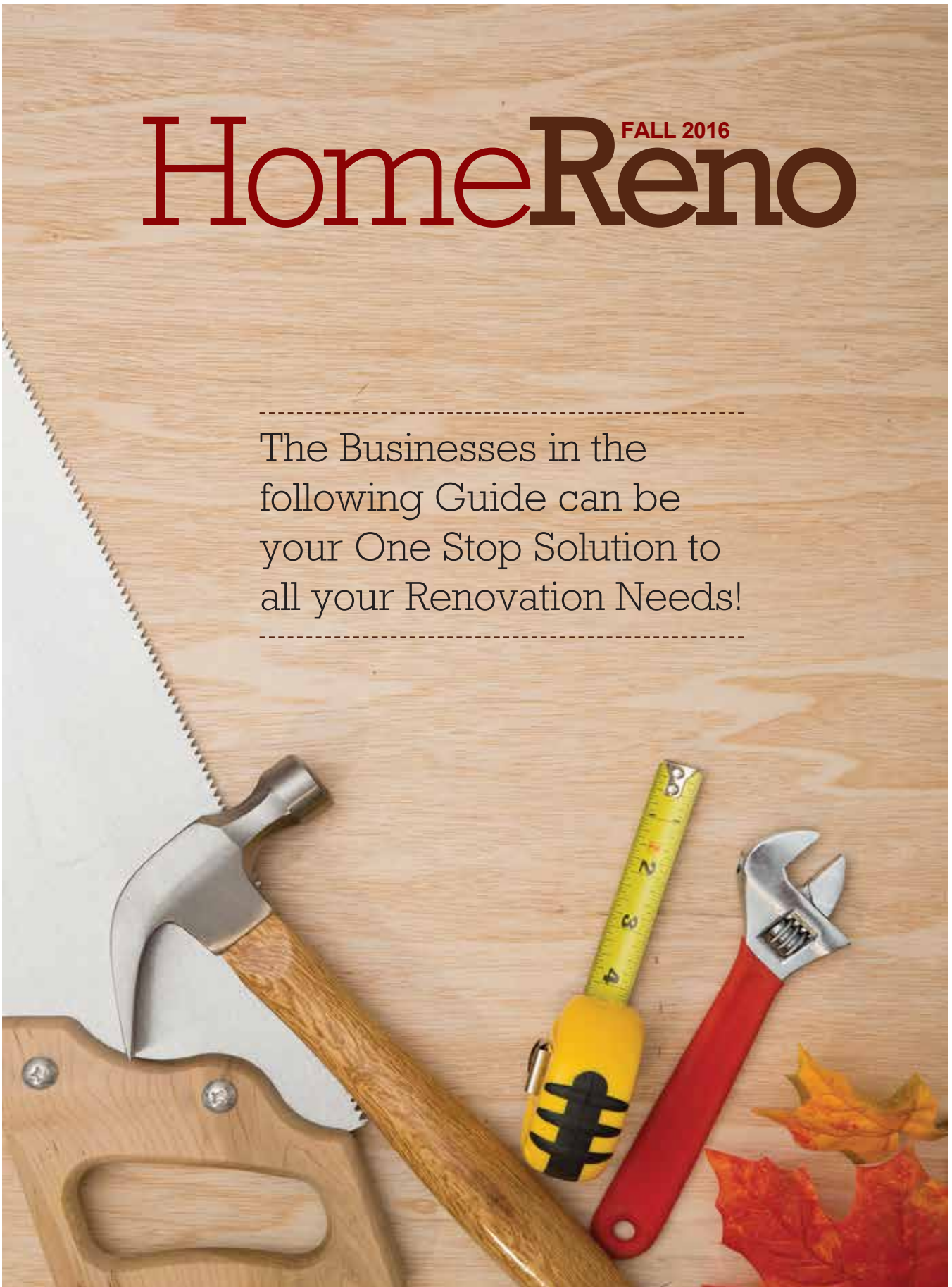
## Miracle Weight Loss Capsule and Business Opportunity New to Canada

### 100% Natural Call now for a sample!

# Call 780-907-8642

# HomeReno FALL 2016

-----  
The Businesses in the  
following Guide can be  
your One Stop Solution to  
all your Renovation Needs!  
-----



# HomeReno

## SUSTAINABLE FLOORING OPTIONS ABOUND

Kitchen and bathroom remodeling projects tend to make great investments, earning homeowners significant returns when they sell their homes down the road. But flooring upgrades are another home renovation project that can attract attention and help sellers when they put their homes on the market.

Home flooring options abound, and it is easy to get excited and overwhelmed about flooring renovation projects. When choosing new flooring materials, homeowners should keep in mind the latest consumer trends, as those trends might help them recoup more of their flooring investment down the road.

One popular flooring trend is the use of sustainable materials. In addition to the more widely known benefits of choosing sustainable flooring, such as protecting natural resources and reducing a home's carbon footprint, sustainable flooring can help

reduce indoor air pollution. Various studies from the U.S. Environmental Protection Agency have shown that indoor air pollutant levels may be higher indoors than outdoors. A major contributor to indoor air pollution are the volatile organic compounds, or VOCs, being off-gassed by carpeting and other flooring in a home.

Flooring manufacturers and designers are embracing the green design and remodeling movement. Today there are many beautiful and sustainable eco-flooring options. Here are some of the more popular materials.

- **Bamboo:** Contrary to popular belief, bamboo is not a wood, but a grass. It is a fast-growing grass, and that makes it a smart choice in many design applications. Also, unlike wood, which will absorb moisture and can warp, bamboo repels water and can be used for flooring

in areas where one wouldn't think to put wood, such as in bathrooms, entryways or mudrooms. Bamboo is naturally very light in color, but can be stained in many different hues to give homeowners more options.

- **Green carpeting:** Consumers can now find a wide range of sustainable carpets and rugs that are available at competitive prices. Wool carpets made with undyed or vegetable-dyed yarns and minimal glues are some options. Some carpets are even made from recycled content, such as rubber and plastics. Water-based, low-VOC adhesives paired with recycled cotton padding can reduce the toxicity and impact of carpeting even further.

- **Cork:** Growing in popularity, cork is a material harvested from the bark of cork trees found in the forests of the Mediterranean. The bark grows back every three years, so it is a handy renewable resource. Cork

boasts fire-retardant properties and may naturally repel insects. It can usually be stained to suit various color schemes.

- **Rubber:** Rubber flooring may call to mind fitness gyms and playground safety substrate, but it's also slowly finding its way into homes. Made from recycled tires, rubber flooring is flexible underfoot and can be long-lasting and colorful.

- **Reclaimed wood:** Rather than purchasing brand new hardwood planks for flooring, homeowners can opt for reclaimed wood reused from other building applications. After some sanding, staining and finishing, reclaimed wood provides homeowners with the opportunity to choose traditional hardwood flooring without any concerns about deforestation.

Eco-friendly flooring materials continue to evolve and can be smart choices in today's homes.

**Entwistle**  
**CONCRETE**  
PRODUCTS LTD.  
SAND & GRAVEL SALES



**Dan McCracken**  
**Ph: 727-3525**

**HULL**  
**Contracting Ltd.**

FRAMING TO FINISHING  
DRYWALL AND MUDDING

**Kevin Hull**  
Cell: 780.904.1042 Fax: 780.727-2279  
Email: hullcontracting@xplornet.com

All Your Construction Needs



**TRI-LAKES**  
**SERVICES LTD.**



**Economically Servicing:**  
• Lac Ste. Anne County • Parkland County • Yellowhead County East

**SERVICES NOW OFFERED:**

|                           |                            |                               |
|---------------------------|----------------------------|-------------------------------|
| • Septic Tanks            | • Holding Tanks            | • Hydro Vacuum -              |
| • Cistern Cleaning        | (residential & commercial) | including but not limited to: |
| • Fresh Water Hauling     | • Porta Potties            | Exposing Lines,               |
| • Well Shock Chlorinating | (rental & servicing)       | Trenching, Piling, Oilfield   |

**1-844-967-9176 PH: 1-877-727-3939**  
**www.tri-lakesservices.com**

**LIMB WALKERS TREE CARE LTD.**

**Specializing In:**

- Professional Climber • Pruning & Proper Pruning Techniques
- Hazardous Tree Assessment & Removal • Rigging
- Storm Damage • Land Clearing & Chipping
- Hedge & Shrub Trimming • Cabling & Bracing



**Joseph Groshok**  
Owner/Operator  
**780-203-4705**  
**limb.walkers@hotmail.com**

**Professional Arborist**  
I.V.M.A.A.  
Residential & Commercial  
Fully Insured

# HomeReno

## TOP 5 RENOVATION TIPS TO CREATE MORE SPACE IN YOUR HOME

(MS) - As real estate prices continue to climb, the cost to trade up to a larger home is on the upswing across the country, especially as markets remain hampered by tight inventory levels. As a result, more and more Americans are choosing to renovate their current homes instead of relocating. In fact, some forecasts predict that 2015 renovation spending could exceed the record of \$324 billion set during the peak of last decade's housing boom. While the hunt for more square footage can be challenging, homeowners shouldn't feel like a costly second story or complete addition are the only options.

Here are five great ways to create or optimize space in your existing home.

1. Finish an unfinished basement. A basement renovation can hold limitless potential and increase the

resale value or income potential of your home. Think about the possibilities: a home theater, office, spare bedroom, basement apartment or recreation room. The key to doing it successfully is to focus on what's behind the walls, especially since moisture is a common issue in basements. Choosing the right insulation is critical. Look for products that are vapor permeable, dimensionally stable and mold and moisture resistant. Many contractors use Roxul Comfortboard IS semi-rigid sheathing board paired with Comfortbatt batt insulation to combat thermal bridging and protect against mold and mildew growth. An added benefit of this type of mineral wool insulation is that it's also fire-resistant to 2,150 F. For interior walls and ceilings, Safe 'n' Sound insulation is ideal because of its ability to absorb noise and indoor traf-

fic sounds, ensuring your newfound space is a peaceful one.

2. Create a more open-concept feel with light and color. If your home wasn't blessed with towering windows, installing French doors and pot lights can encourage light to travel more freely, creating the illusion of space. Likewise, choosing a paint color for walls, trim and moldings that is lighter and cooler in tone (think soft grays or blues) will help to reflect light and give the room a more open feel.

3. Remove non-load-bearing walls. Homeowners have the opportunity to rethink the layout of their home by removing non-load-bearing walls. Removing structurally unnecessary walls can make your whole home feel larger, improve flow, lighting and the function of your home.

4. Convert your garage into us-

able living or work space. For many homeowners, the garage becomes an overflow room for storage -- and is often a walk-in headache. Convert your garage (or a portion of it) into another living space, guest bedroom or home office. Install carpet and quality thermal insulation such as Roxul Comfortbatt to block outdoor noise and keep in warmth.

5. Choose furniture and accessories carefully. Adopt a minimalist's eye. Begin looking around your home for furniture or accessories that overwhelm the space. Interior designers recommend choosing low-profile or small-scale furniture for rooms with less square footage. Dual-purpose items, such as ottomans with storage chests inside, are a budget-friendly way to save on space while staying organized.



**GMP ONTRACK INC.**  
George Ferras  
Phone 780-892-4488  
Cell. 780-719-2687

Commercial • Farms • Acreages  
Brushing  
Fence Lines • Right of Ways • Fire Guards • Walkways  
Don't Dig & Burn, Mulch & Preserve  
General Excavation  
Landscape • Site Prep • Clean Up  
Snow Clearing/Removal  
Light Equipment & General Hauling



**Home Hardware Building Centre**  
Drayton Valley  
542-4044  
ON US: 1-888-542-9663  
4221 - 50 Street,  
Drayton Valley

For ALL your renovation and material needs,  
**SHOP LOCALLY!**



**Norm Blakeman's Drilling Ltd.**  
Waterwell Drilling & Servicing  
Pumps & Pressure Systems  
**Petwa Water Conditioning**  
(780) 918-1916  
joe@blakemandrilling.com  
Family Owned & Operated



**WESLAND MODULAR HOMES**  
Locally Owned and Operated since 1997  
Proudly Serving Central and Northern Alberta!  
Prices Starting at \$120 per square foot!!  
We are now doing ICF Foundations, Decks and Garages!!

www.weslandmodular.com  
Office: 780.727.3735  
Toll Free: 1.877.727.3224  
lucas@weslandmodular.com

Redeem this Coupon for \$500 off the Price of Your Next Home!!  
(Some restrictions apply, ask for details)

"Quality Custom Modular Homes at an Affordable Price!"

# HomeReno

## TIPS ON SHOPPING FOR NEW APPLIANCES

Now may be the right time to make large appliance purchases. Know the product before visiting the store.

As the weather turns cooler, outdoor improvements become less practical. Homeowners' thoughts may turn to projects they can tackle inside of the home. Now may be the time to consider the purchase of new appliances that can be the finishing touches to renovated spaces.

Fall is prime time to purchase new large appliances. Manufacturers typically unveil their latest models during September and October. At this point, prices on older models will be reduced to make room for new ones. By the end of the year, any older models that have not yet been cleared out will be discounted further. Even though the end-of-the-year deals will be better,

the selection may be limited the longer you wait.

It is best never to wait until an appliance is on its last leg for repair or replacement. Then consumers do not have the luxury to price shop nor find items that include the features they desire most. Here are some other buying tips.

### Research

Shoppers should begin their research at home before they even enter a store. Make a list of features you want in the appliance, which helps narrow down the playing field and better focus your purchasing decisions.

Once you have a list handy, speak with friends or family members about their experiences with brands and/or retailers. Ask about which features they like the most and how often they have had to call for repairs. If

they could do things differently, what would those things be?

### Know your space

Perhaps you are familiar with the adage to measure twice and cut once. The same can be said for measuring prior to purchasing an appliance. Be sure you know the exact measurements of the space that will house the new appliance. Take into consideration the clearance needed to open doors, such as with a refrigerator or front-loading washing machine. It can be a waste of time and money to have an appliance delivered only to find it doesn't fit at the time of installation.

### Energy savings

Consider appliances that reduce energy usage. Energy Star® appliances are produced in adherence to international standards for energy efficiency.

The program was started more than 20 years ago by the EPA and the Department of Energy. Since then, other countries have adopted the program. Appliances that feature the Energy Star® logo use 20 to 30 percent less energy than required by typical federal standards. Homeowners who purchase qualifying appliances may be eligible for tax breaks and other incentives.

### Consider your lifestyle

It is easy to be overwhelmed and awestruck by the number of appliances available. You may desire the biggest and best there is, but if you are not a superstar in the kitchen, you may not need the commercial stove. A bachelor may not require an oversized washing machine.

Do your research and comparison shop so you won't have any regrets later on.

**RENOVATE YOUR HOUSE WINDOWS!**



Change those Old, Leaky, Inefficient Windows To High Performance, Maintenance Free PVC Vinyl Windows!

**PROGRESS GLASS**

Spruce Grove 962-5353      Edmonton 481-4224

Family run, local business, we care!

**BEST CISTERN SEPTIC SOLUTIONS**

**Cistern and Septic Inspection, Cleaning and Repair!**

Septic planning, design, installation by government certified installer(s)

New Installs Available. Reasonable Rates.

**Let Us Handle the Dirty Work**

**780-668-4306**

[best-cistern-septic-solutions.com](http://best-cistern-septic-solutions.com)



**B.W. EAVESTROUGHING**

*Specializing in:*

- ⇒ Residential 5"
- ⇒ Commercial 6"
- ⇒ Soffit
- ⇒ Gutter Clean System
- ⇒ Free Estimates
- ⇒ Fascia

**BRAD (780) 699-1880**



**MARK MARTIN PFEIFFER**  
MASTER BRICKLAYER/MASON

Cell: 780-242-3308  
Email: [pfeiffer.mark@hotmail.com](mailto:pfeiffer.mark@hotmail.com)

- Brickwork • Stonework
- Rockwork • Parging
- Concrete Block Work
- Tile Work (all kinds)



# HomeReno

## FINISHED BASEMENTS SAVE ENERGY AND DELIVER MORE LIVING SPACE

By finishing your basement, you can gain more living space while reducing the amount of energy loss from downstairs. Basements that are not fully finished typically do not have insulated walls or covered flooring. This can result in heat loss and cause your furnace to work overtime.

A remodeled basement offers more than additional storage space. It can provide a lot of extra room for a growing family, such as space for a gym, home theatre, office, guest suite, or a playroom for the kids.

To ensure a comfortable and inviting basement, there are a few project components to consider:

- Insulation will make sure your space warm and comfortable. For the best results, install a stone wool insulation product, a measure that can be done easily with the ROXUL ComfortBoard IS. This product is mechanically fastened or adhered to the concrete foundation wall, offering you a higher R-value and better acoustics.

- Drywall will help define the space and make it feel like a part of your home. If you haven't tackled drywall before, consider hiring a pro to ensure your walls are seamless.

- Flooring should be water sealed and covered with an insulated material. There are many products on the market,

but consider laying padding before carpet or in-floor heating before tiles.

- Personalize it with finishing touches. Select furni-

ture that can fit down a typically steep staircase and choose items that complement the rest of your home's décor.

**Ashly-Lane Interiors Ltd.**  
INTERIOR FASHIONS

*\*Fall Sale\**  
**40% Off Blinds**

Valances • Sheers • Drapes  
Blinds • Fabric • Hardware

Residential • Commercial  
36 Years Experience • BBB Member

4900 - 51 Avenue, Stony Plain, AB  
780-963-5563

**CCAS**  
Canadian Clean Air Services Ltd.  
**Heating & Air Conditioning**

High efficiency Furnace or Air Conditioner from 49.99/month.  
Instant Approval. No Credit Required

**24 Hour Emergency Service**  
Licensed & Insured with over 14 years' experience.  
We accept Visa, master card, Amex and intercard.

Office Line 780-569-5201  
42 Singing Hill Estates, Seba Beach T0E 2B0

**ECONOMY ASPHALT DRIVEWAYS**

- Paving • Asphalt or Concrete • Repairs
- Pararamps • Seal Coating • Crack Filling
- Snow Removal • Sanding • Rock Chip Sales

**CHARLES MACDONALD**  
PH: 780-962-5581 CELL: 780-777-0914  
FAX: 780-962-9146

**MCLEOD Home building centre**

Let us load you at the largest Lumber Yard in Parkland County  
**962-2575**  
Call Toll Free: 1-800-343-2988  
35 South Ave, Spruce Grove

- Renovation & new build experts • Superior quality lumber
- Complete home packages • 3D Estimating Program
- Engineered roofs & floors • Farm Buildings • Garage packages
- Windows & doors • Custom decks & fence packages
- Flooring & kitchens • Bathrooms • Ceramic Tiles
- Concrete & landscaping • Electrical supplies
- Fasteners • Woodstoves

Service • Selection • Advice • Special Orders • Delivery

**Apollo Concrete**  
*"Our business is your foundation"*

Ready Mix Concrete  
Commercial, Residential, Agricultural

**Phone: (780) 848-7766**  
Toll Free: (866) 948-7766 Fax: (780) 848-7795  
Todd@Warcon.ca

# HULL

## Contracting Ltd.



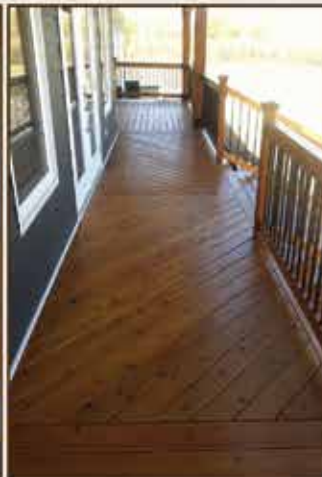
### FREE ESTIMATES

We have EXCELLENT references and have been in the community for 12 years. Our area includes: Edson, Drayton Valley, Mayerthorpe, Whitecourt, Sangudo, Wabamun, Stony Plain, Spruce Grove, Onoway, Evansburg, Seba Beach.



**Hull Contracting Ltd.** is known for its commitment to CUSTOMER SATISFACTION, QUALITY craftsmanship, getting the job done QUICKLY and EFFICIENTLY, and ATTENTION to detail! Framing to finishing, this crew has over **20 YEARS EXPERIENCE** and will leave you feeling like you are glad you called them for the job!

Kevin Hull started his career finishing Piano's as a JOURNEYMAN finisher, and has moved into the Alberta Market with his amazing attention to detail. His loyal Crew is a FAMILY run business and this team has been working together for 10 years!



### FRAMING TO FINISHING:

- DECKS/ PERGOLAS
- DRYWALL AND MUDDING
- FRAMING: Houses, garages, playhouse, greenhouse, barn, CABIN, etc.
- RENOVATIONS
- PAINTING/ STAINING
- DESIGN
- KITCHENS/ BATHROOMS
- TRIM/ DOORS
- WINDOW FINISHING AND INSTALLATION
- DURADECK INSTALLATION

CALL for any QUESTIONS & ESTIMATES !

**Hull Contracting Ltd.:**

[hullcontracting@xplornet.com](mailto:hullcontracting@xplornet.com)

**Kevin Hull:**

780.904.1042



# KEY MESSAGES FROM GYPSD BOARD MEETING

Submitted by Nikki Gilks

## Capital Projects Update

Facility Services updated the Board on three current capital projects in the division: the modernization project for Grande Cache Community High School (GCCHS), the replacement school in Edson, and the renovation project at Grand Trunk High School in Evansburg.

### Grande Cache:

Phase 3 was completed over the summer. Phase 2 and Phase 4 (library and classrooms) will be completed and handed over on August 26th, 2016. Classrooms 119 and 120 will be completed by September 2nd, 2016. The library is scheduled to move at the end of August. Phase 5 (gymnasium and administrative areas) footings and foundation work and masonry work has started. The majority of the site work including curbs, walks and paving will be completed by September 1st, 2016.

### Edson:

The Edson Replacement School Project will be an Alberta Infrastructure managed project under the Design – Bid – Build approach. Tenders closed on July 5th, 2016 with the contract awarded to the lowest tender submitted by United Construction Company in the amount of \$12,117,369. A construction trailer and temporary fencing are being placed onsite during the week of August 22nd, 2016.

### Evansburg:

The construction of the new student gathering area and new staff lounge started at the beginning of July 2016 and is nearing completion. Demolition was completed the 3rd week of July. The project is scheduled for completion in late August.

### Other News in Brief

The Annual Communications Plan was approved by the Board which highlights the division's communications strategies for the 2016-17 school year.

- Trustees ratified the Division Bus Driver Agreement for a three year period beginning retroactively from July 1st, 2015 and ending on July 31st, 2018.

- The 2016-17 Schedule of Superintendent and Monitoring Reports was provided to trustees which sets out a guide on providing information to the Board on the division's various initiatives and results throughout the year.

- As per Policy 19 - Staff Rec-

ognition, the Board was very pleased to learn that a total of 77 staff will be receiving continuous long service awards this year at the annual welcome back events celebrated throughout the division in the communities of Wildwood, Edson, Hinton, Grande Cache and Jasper. Service awards are being recognized from 5 years up to 40 years at this year's events. Congratulations to all recipients!



# Rochfort Colony Veggie Stand

780.893.1244

Monday - Saturday 9:30 a.m - 7:00 p.m.

780.785.3208

|                                                                                                                                                             |                                                                                                                                                                  |                                                                                                                                                         |                                                                                                                                                         |
|-------------------------------------------------------------------------------------------------------------------------------------------------------------|------------------------------------------------------------------------------------------------------------------------------------------------------------------|---------------------------------------------------------------------------------------------------------------------------------------------------------|---------------------------------------------------------------------------------------------------------------------------------------------------------|
| <p style="font-weight: bold; color: white;">Bread &amp; Buns</p>         | <p style="font-weight: bold; color: white;">Sunday Noon - 7:00 p.m.</p>      | <p style="font-weight: bold; color: white;">Pies &amp; Baking</p>  | <p style="font-weight: bold; color: white;">Pickles &amp; Jam</p>  |
| <p style="font-weight: bold; color: white;">Fresh Honey</p>              | <p style="font-weight: bold; color: white;">Fresh Vegetables (in season)</p>  | <p style="font-weight: bold; color: white;">Frozen Chicken</p>     | <p style="font-weight: bold; color: white;">Chicken Steaks</p>     |
| <p style="font-weight: bold; color: white;">Farm Fresh Eggs</p>          | <p style="font-weight: bold; color: white;">Pepperoni</p>                     | <p style="font-weight: bold; color: white;">Jerky</p>               | <p style="font-weight: bold; color: white;">Potatoes</p>            |
| <p style="font-weight: bold; color: white;">Fresh &amp; Frozen Meat</p>  |                                                                                                                                                                  | <p style="font-weight: bold; color: white;">Local made Handicrafts</p>                                                                                  |                                                                                                                                                         |

Order FRESH Chicken and Turkey anytime




# EXTREME WEATHER DAMAGES YELLOWHEAD COUNTY ROADS & CULVERTS



Submitted by Stefan Felsing

access only, with resident having to leave their vehicles to cross.

Both a culvert on Township Road 545 and a significant amount of a road nearby on Range Road 71, both north of Evansburg, took significant damage caused by the extreme weather last week.

Approximately 5-7 meter of fill will be needed to replace and upsize the culvert.

A temporary bridge has been placed over the culvert wash out. The road was closed to foot

Yellowhead County is currently evaluating the damage and is looking at options for funding from the Alberta Emergency Management Agency (AEMA) to help alleviate repair costs for damage caused by the extreme rain conditions.



Dr. Kris Kalhs



Dr. Evlyn Romanowski



Dr. Catheryn Shea



Dr. Zachary Wong

*Dedicated*  
**COMMITMENT**  
*to Care*

- IV Sedation
- Wisdom Teeth Removal
- Implants
- Oral Cancer Screening
- Surgery
- Inlays and Onlays
- Veneers
- Teeth Whitening
- Crowns
- Orthodontics
- Bridges
- Invisalign



# KARO

**DENTAL CARE**  
General Dentists

Suite 202 - 8 McLeod Ave., Spruce Grove

[www.karodental.ca](http://www.karodental.ca) • 780-962-6670

# SCREEPY, CRAWLY HALLOWEEN COLORING CONTEST



**AGE GROUPS: 3-4 YRS | 5-7 YRS | 8-10 YRS | 11+ YRS**

**NAME: \_\_\_\_\_ AGE: \_\_\_\_\_**

**PHONE: \_\_\_\_\_ TOWN: \_\_\_\_\_**

*Entries must be recieved by October 25, 2016.*

**Mail to: Jack O'Lanterns, c/o Community Voice  
Box 3595 Spruce Grove, AB T7X 3A8**

# GYPSED SEPTEMBER SCHOOL NEWS

Submitted by Nikki Gilks

Grand Trunk High School, Evansburg

Grand Trunk High School is looking forward to welcoming new and returning students for another exciting year of engaging students in a variety of learning activities during the 2016-2017 school year. This next school year will see some changes in the appearance of Grand Trunk High School. These changes include opening up the current staffroom and it will now become the student gathering area. The old stu-

dent lounge will now become the staff workroom and the current work area and rooms will be opened up to make the new staff lounge. At the same time, a separate entrance will be made for the public library and one of the offices in the gym will be converted into a gender neutral washroom with access from outside of the gym.

Our High School Redesign Project will continue in the 2016-2017 school year with our continued focus on mentorship and advisory groups. These areas will hopefully help improve student

success and a regular meeting schedule will be established for these groups.

The school will continue to expand on its Career and Technology Foundations options for the junior high and everyone is excited about the number of choices and opportunities that our Junior High students will be able to receive.

The experiences and friendships that students will have by being a part of any number of different opportunities that are offered at Grand Trunk High School can be cherished forever.

The student's union, music program and extra-curricular activities such as the sports program, Bee-Aware, It's Cool, and the PARTY Program are just a few of the chances for students to be involved in next year at the school.

Evansview School, Evansburg  
Welcome to the 2016-17 school year. At Evansview we do all in our power to help our students develop a love of reading. A few of the things we do to promote and encourage reading in our students are volunteer readers from the community, our read across Canada program and regular library time.

For the last seven years we have invited parents and community members to come to our school to read with students who the teachers felt would benefit from having some one on one reading time. The program has been quite successful. The students involved have shown improvement in their reading skills. We will be once again having community volunteers coming in to the school to read with students to help further improve their reading skills and in the process hopefully begin to develop a love of reading.

This month is also the kick off for our Read Across Canada Program. This program encourages our students and parents to read at home during evenings and weekends. The students with their parents help keep track of what books they read and the date. The students are rewarded for every province they cross. These are just a few examples of some of the things that we use at Evansview to help develop our students literacy skills.

EVW Events for September  
• September 6 - First Day of Classes  
• September 23 - No School for Students  
Niton Central School, Niton Junction

It's time to get ready for the start of the 2016-2017 school year. Our small school is looking forward to some exciting big events. With Literacy Day quickly approaching, we are eagerly anticipating a great year of literacy.

**BETTER QUALITY OF LIFE**  
*and a money saver, too!*

You can immediately see and feel the difference Elite makes to the quality of your water and the quality of your life. With Elite conditioned water, you and your family will look and feel better - with noticeable glowing complexions and soft, shiny hair.

Beautifully soft, dazzling whites and brilliant colors will replace the rough, matted clothing and towels your hard water previously produced.

Even housework is less of a chore as conditioned water leaves no bathtub ring, scummy film on shower stalls or unsightly spots on glassware, dishes and fixtures.

Your Elite water conditioner will save you time and money, too. You'll spend significantly less on detergents, cleaning products, conditioners, creams and personal grooming products. In addition, your plumbing fixtures and appliances will be protected against costly repairs or premature replacements.



**QUALITY SALES & SERVICE OF:**

- DISTILLERS
- SUBMERSIBLE PUMPS
- SEPTIC & JET PUMPS
- PIPE, WIRE & FITTINGS
- BOTTLE BUSTER (R.O. WATER COOLER)
- CHLORINE BLEACH, CHEMICALS & SALT
- 3 MOBILE SERVICE VEHICLES
- CHEMICAL-FREE IRON FILTERS
- SOFTENERS
- CHLORINATION SYSTEMS
- MOBILE SHOCK CHLORINATION
- SEDIMENT, TASTE & ODOR FILTERS
- REVERSE OSMOSIS FILTERS (R.O.'s)
- HOT TUBS & JETTED TUBS
- POOL & SPA FILTERS & CHEMICALS
- FREE WATER ANALYSIS

**OUR WORKMANSHIP IS GUARANTEED!**

The benefits and savings provided by Elite conditioned water will make a wonderful difference in your life.

**QUALITY WATER SERVICES LTD.**

20 South Ave., SPRUCE GROVE  
962-6040 425-2934 (Edm. Direct)



"We're recommended the MOST as the company that knows the MOST"

Continued on Page 21

# GYPSD September School News

Continued From Page 20

Last year Karyn Petty successfully applied for a literacy grant that would have Trickster Theater, a group out of Edmonton, come out to our school to create a school wide original performance. They will be joining us early on in the year, so that we are ready for our big debut at the Christmas concert. Our Theme for the presentation, Gifts from Around the World, will also tie into our UNESCO work for the year. After transforming our computer room into the ideal space last year, we were very happy to receive a small grant for a variety of new technology. We look forward to learning, using, and teaching our students to use all of the new equipment.

We also have many fresh faces around the school. This year we have 3 wonderful new people on our team. First we were lucky to have Jenna Otway transfer over from Fulham. She will be teaching our grade 5 class. As well, we have Thomas Meier, who taught at Evergreen last year. We were fortunate enough to bring him on board to teach our grade 6 class. Last but not least, Spencer Hayes, a new teacher out of Edmonton, has joined our team to teach junior high science, physical education and a variety of other things. He has already proven to be very ambitious, so we know our kids will benefit from having him as a teacher, coach, mentor. In addition to all the new teachers at our school, there has also been a lot of shuffling within the school. Maryann Varty has moved from VP into the principal position, Amanda Nixon has taken on the role of VP, and Bailey King has switched from teaching grade 2 into the grade 4 position. Everyone is very excited to embark on this new journey.

What's happening!

This September we will hit the ground running...literally! Our grade 2/3 class will be leading the school and community members in our annual Terry Fox Run mid-month. Then on October 30th, we will be having 'Orange T-Shirt Day' to commemorate, honour and bring awareness to the experiences of residential

students.

Wildwood School, Wildwood The new school year is upon us! And Wildwood School is actively engaged and focused on developing learner-centered opportunities to support students in developing the competencies required to be Engaged Thinkers and Ethical Citizens with an Entrepreneurial Spirit. This year we are focused on transforming our challenges into opportunities for growth of students, staff and school.

Opportunity One: Create a School Council to consult with

the Principal about matters related to the school and about the opportunities students have to meet the educational standards. A meeting to form next year's School Council was held on June 15th. We will schedule another opportunity to create a School Council in the fall to increase the number of attending parents for the current school year.

Opportunity Two: Create a School Technology Plan to maximize new technology resources on behalf of student learning. Now, with ever increasing 'Web based' applications, schools can

equip students with streaming devices that allow dedicated, continuous student use.

Opportunity Three – Maintain the Wildwood Advantage. Wildwood School students meet and exceed Provincial standards. We are proud of our students' success. Wildwood School's educational practices are carefully considered and reviewed on an ongoing basis and considering challenges to be opportunities is just another part of The Wildwood Advantage: Small School, BIG Ideas!

**UNRESERVED FABRICATION AND MACHINING**

# AUCTION

**DATE: THURSDAY, SEPTEMBER 15, 10 A.M.**  
**SITE: #102, 7105 - 39th STREET, LEDUC**  
**PREVIEW: WEDNESDAY, SEPTEMBER 14, 11 A.M. - 5 P.M.**  
**REMOVAL: WEDNESDAY, SEPTEMBER 21, NO EXCEPTIONS**

**FURTHER TO INSTRUCTIONS FROM A CIVIL ENFORCEMENT COMPANY**

## RAPTOR MANUFACTURING

FEATURING

SPECIAL MENTION: Modern TNC-1060 x 2000 CNC Lathe, S/N 05006 SEE VIDEO ON WEB PAGE \* 4- 2014 TEKO 10 TON WIRELESS OVERHEAD CRANES \* Shop exhaust system with 4- Model BAV365 Twin City Exhaust Fans with 7.5 HP. \* **MACHINE SHOP:** 2014 Modern C6266A X 3000 Gap Bed Engine lathe \* Modern EU4605AM1 Mitering band saw \* Hyd-Mech Series III Band Saw \* Modern DP-925-s Drill Press \* Vices \* Bits and Tooling \* Digital and Manual Micrometers to 36" \* **LOADER, VEHICLES MATERIAL HANDLING:** JCB 456B Wheel Loader S/N 053-9069 with Quick Detach Bucket \* 10' Quick Detach Snow Blade \* Quick Detach Forks \* Quick Detach Trailer Mover \* 2- Pallet Fork Assemblies for Crane Hoisting \* Pallet Jacks \* 4 Step Parts Picker Cart \* 20' Spreader Bar for Forklift or Crane \* 20- Ladders \* Diamond T/A Car Hauler Trailer \* 20 Skidded building \* 2012 Mobile Industries (UNUSED) 3300# capacity power stacker, Model HLS-33-177 \* **2006 Hyster 4500#** electric forklift, 36V battery and charger, model N45XMR3 \* **WELDING AND FABRICATION:** 8- MILLER XMT 350 CC/CV MULTI VOLTAGE MIG POWER SOURCE with 22A Wire Feeder \* 7- MILLER DIMENSION 452 weld power source with 22A Wire feeder \* 4- MILLER MILLERMATIC 252 Mig Welders, S.Ph. \* 2- HYPERTHERM POWERMAX Plasma Cutter \* WELD WIRE 3 ton tank rolls with idler and power end \* 2- Dodge 3500 Welding Trucks with Custom Decks and Lincoln Vantage 300 Welders, welders have approx. 1500 hours \* OVER 200 Angle Grinders, Drills, Die Grinders, and other power tools \* 100 lots chain lifting slings, nylon slings, plate clamps, shackles and other hardware \* 10- H.D. Conveyor Sections \* 10' X 2' x 3' deep dip tank \* Weld Screens \* Numerous H.D. Steel Saw Horses from 10' - 3' \* Rigid 700 Power Threader \* Rigid Tri-stands \* Pipe Wrenches \* Bessy Clamps \* 10,000 lb. Pressure tester \* Mag Drill and Mill \* Numerous Heavy Benches \* Numerous Welder Remotes \* Red-I-Arc Suitcase welders \* **INVENTORY & MISC.:** Numerous Heavy Steel Racks \* Quantity of Structural, Plates and Tubing \* 20- 2" x 2" x 20' Square Mild Steel \* Hundreds of Test Flanges \*

\* THIS IS A PRELIMINARY LISTING ONLY \* CHECK WEB SITE FOR UPDATES \*  
**THIS IS A BID SPOTTER INTERNET AND LIVE AUCTION \* FOR COMPLETE DETAILS GO TO [www.foothillsauctions.com](http://www.foothillsauctions.com)**

SUBJECT TO ADDITIONS AND DELETIONS \* EVERYTHING SOLD AS IS, WHERE IS WITH NO WARRANTIES OR GUARANTEES OFFERED OR IMPLIED. \* CASH \* VISA & MASTERCARD TO \$3,000 WITH NO NO CREDIT CARD FEES, 3% OVER \$3,000 \* BANK DEBIT CARD \* CERTIFIED CHEQUES WITH CASH DEPOSIT SALE DAY \* CHEQUES WITH LETTER FROM BANK GUARANTEEING PAYMENT \* SETTLEMENT ON SALE DAY, NO EXCEPTIONS!!! \* 13% BUYERS PREMIUM ON ALL PURCHASES \*

# FOOTHILLS

**EQUIPMENT LIQUIDATION CO. LTD.**

22355C WYE ROAD, SHERWOOD PARK, AB, T8C 1H7

PHONE (780) 922-6090 FAX: (780) 922-6248 WEB: [www.foothillsauctions.com](http://www.foothillsauctions.com)

AUCTIONS    APPRAISALS    LIQUIDATIONS

**ANOTHER RAINBOW SALE**

# RAINBOW'S 2016 ANNUAL END-OF-SUMMER CONSIGNMENT AUCTION SALE

**Saturday, Sept 10, 2016 at 10:00 A.M.**  
 52529 Range Road 11 (Glory Hills Road)  
 Or Intersection of Hwy 16A West and Range Road 11  
 Or 1 Km west of Stony Plain Overpass on Hwy 16A to Range Road 11

**Dispersals:** • Restaurant Dispersal • Estate Dispersals  
 • Several Light Industrial Company Dispersals  
**Vehicles/Trailers:** • 1999 Ford F150 XLT, 4dr • 1998 Ford F150, 4wd, 3 door • 2004 Dodge Quadcab, 4x4  
 • 2004 Dodge Durango SLT, SUV, 4dr • 1999 Chev Silverado 1500, 4wd, 3dr ext cab • 2004 IH tilt-deck tow truck, c/w 466 diesel motor & auto trans, in excellent condition  
 • Assortment of various size tires, car and truck parts and accessories • 2001 Pontiac Montana 7passenger 4dr, Extended Mini Van • 2003 Ford Focus SE 4Dr. • 1998 Buick Century Custom 4Dr. Sedan • Plus more **RV's and Recreational:** • 1997 Coachmen Lite, 5th wheel, 25.5 ft, c/w one slide • 1988 Rustler Holiday Trailer, t/a, 24ft • 10ft x10ft yard Gazebos • 10 hp Outboard Motor c/w tank • 20ft Canoe • 16ft Canoe • Assorted Hot-Tub covers • Assortment of fishing equipment • 2014 side x side 4x4 ATV • 2014 12 ft. Utility Trailer • Hunting Trailer for Quad • Plus lots more **Estate Dispersal:** • Dispersal includes restaurant/office and home furnishings **Farm/Acreage:** • Complete dispersal for a smaller farm operation • Water Troughs • Gate Panels • Tote Bag Crates • Round Bale Feeders (tombstone and angled) • Various type of heaters • Asst. Rubber Feed Dishes • Electric fencing material • Chicken plucker • Plus more **Horse Drawn Equipment:** • Stone Boat • Sled Runners • Bobsled Runners w/pole • Pony-size shafts w/evener • Metal Logging Eveners **Lawn and Garden Equipment:** • Assortment of Garden Implements • Assorted riding and push mowers & accessories • Plus more **Dispersals for Several Light Industrial Companies:** • Light and heavy truck tires • 2-Room Industrial office trailer, 30ft, on rubber • (30) 250 gal. totewater tanks • 2000 gal water tank, c/w 4" drain valve • 16ft T/A car trailer • Blue Chip Articulating H.D. Industrial forklift, 4WD • Plus much more **Shop tools, Hand Tools, Supplies:** • A large selection of welding equipment and mechanical tool dispersals • Industrial welding machines • Plasma Cutters • Acetylene outfits, including tanks • Air compressors and accessories • Large selection of hand and power tools • Car Ramps • Presser Washers • Industrial shop lights • HD gas/propane Herman Nelson heater • Industrial metal warehouse racking • Chains, boomers & industrial tie straps • Mechanical tool boxes • 500 Gal fuel tank • (6) Industrial forklift tires • 100 gal Tidy Tank • Selection of Chilton labour manuals for some collector tractors and autos • Industrial Warehouse Racking • Plus more **Building Materials and Tools:** • Band saw • Table saw • Tele Posts • T posts • Selection of doors • Covered Shelter (frame only) • A/C Unit • Assortment of new windows and doors from a builder • Plus more **Antiques and Collectibles:** • Assorted antiques and collectables • Coin collections • Acoustic guitar • 6.5 MM Rifle • 30-30 pump rifle • Double Hammer 12 gauge rifle • Clip-loading 12 gauge shotgun • Assortment of Western Art prints from Robert Bateman and others • Plus more **Miscellaneous:** • Several Storage Units to be sold the Storage Wars way • Many more items  
**Auctioneer's Note:** We have several dispersals for various businesses, estate sales, plus many other consigners. Much more coming in. Don't miss this sale - there will be something for everyone! \*\*More listings coming in everyday. Towing and trucking available on site

New additions arriving daily as sale day approaches. Please check website regularly for updates. Consign now for any of these upcoming sales!

## UPCOMING SALES

**Sunday September 25, 2016 @ 12:00 Noon - Estate Auction for Robert Wainwright and Dispersal for Ren Bow Enterprises:** Leduc, Alta **HIGHLIGHTS:** Case 685 4wd tractor, Cockshutt 50 tractors, older cars and trucks, horse items, lawn and garden, shop supplies and tools, lots of antiques, RCMP and other collectibles, health-care items, building supplies, household, complete setup for leather sewing business, and more.

**Saturday, October 8, 2016 @ 10:00 a.m. - Annual Harvest & Thanksgiving Day and Storage War Auction Sale:** Rainbow Auctions and Consignment Centre. **HIGHLIGHTS:** Vehicles, farm equipment, rv's, boats, quads, snowmobiles, shop equip, tools, antiques, collectibles, business closeout dispersals, storage wars units, misc consignments and more.

**Saturday, November 12, 2016 @ 10:00 a.m. - Rainbow Auctions - Remembrance Day / Pre-Christmas Auction Sale:** Rainbow Auctions and Consignment Centre, Stony Plain, Alberta **HIGHLIGHTS:** Coming.

**Terms and Conditions:** Cash, Visa, Mastercard, Debit. Nothing to be removed till paid for. Subject to additions and deletions. A 5% handling fee plus GST will be charged. Please be conscious of the handling fees and factor them into your bidding. Owner Rainbow Liquidators and Auctions or its employees shall not be responsible for any accidents.

**Sale Conducted By:**  
**RAINBOW LIQUIDATORS AND AUCTIONS**  
 Stony Plain, AB. 780-968-1000 or TOLL FREE 1-866-968-1001  
 Complete Liquidation and Auction Services Since 1978  
[www.rainbowauctions.ca](http://www.rainbowauctions.ca)

# RCMP BEATS

Submitted by Stony Plain/  
 Spruce Grove RCMP

Occurrences for the week of 22 August to 28 August, 2016.

Total Calls for Service Spruce Grove/Stony Plain/Enoch Detachment: 487

Total Calls for Service for the Victim Service Unit: 32

Persons Crimes: 41  
 Property Crimes: 57

Impaired Driving Complaints reported: 11

Impaired Driving Charges Laid: 3  
 Roadside Suspensions: 1

Motor Vehicle Collisions Attended: 28

Property Crimes: Spruce Grove

1. August 24 – Area of McLeod Avenue and McLaughlin Avenue – Theft of Vehicle, 1990 red GMC GMT400

2. August 25 – Area of Weston Drive – Theft from Vehicle, debit and credit cards stolen

3. August 25 – Area of West Terrace Place – Theft from Vehicle, leaf blowers, nail guns and radio stolen

4. August 26 – Area of Arlington Place – Theft of Vehicle, 2007 black Ford F350 stolen

5. August 28 – Area of Greenwood Close – Break and Enter to Garage, generator and jerry can stolen  
 Stony Plain

6. August 22 – Area of Genesis Lake Boulevard – Theft from Utility Trailer, tools stolen

7. August 26 – Area of 43 Avenue and 47 Street – Theft of Bicycle

Stony Plain/Spruce Grove RCMP remind you not to make it easy for thieves. Always lock home windows, doors, garage doors, sheds and fence gates.

The Spruce Grove / Stony Plain Drug Section Information Tip Line is 780-968-7212. Anyone with drug information is asked to call and leave a message.

If you have information regarding any of these crimes, or any other crime, please call the RCMP At 780-962-2222 or 780-968-7267. You can also call Crime Stoppers at 1-800-222-8477 or text the keyword TIP205 (TIP250 for Edmonton Metro) & your Tip to CRIMES (274637)

# SUICIDE PREVENTION DAY

**Submitted by Alberta Health Services**

September 10 marks World Suicide Prevention Day, an internationally recognized event designed to raise awareness and dispel some of the myths related to suicide.

Suicide affects people of all ages and genders. Each year more Albertans die by suicide than motor vehicle collisions. As a result, many Albertans have been impacted by losing someone to suicide.

Suicide is a preventable tragedy that starts with learning how to recognize the signs that someone may

be suicidal. Although not all people show warning signs, most suicidal people show signs of their distress. Being aware of these signs can help someone identify and talk to a person at risk.

There are many different warning signs and being aware of them is an important step in helping to prevent suicide. Talking to someone who may be suicidal does not put the idea in their head. In fact, being able to openly discuss suicide lets the person know you care and can make a difference.

Some of the suicide warning signs include:

- Talking about suicide or a plan
- Making statements about hopelessness, helplessness or worthlessness
- Showing a loss of interest in pleasurable activities
- Personality changes
- Becoming cheerful after a period of depression, which may mean the individual has already made the decision to escape their problems through suicide.

Suicidal people are in pain and want their pain to end, but do not necessarily want to die. Talking about suicide provides a clearer picture of how the person feels so they

can get the help they need.

If you or someone you know needs help, please call: Health Link at 811, or one of the following help lines:

- Addiction Help Line: 1-866-332-2322
- Child Abuse Hotline: 1-800-387-5437
- Family Violence: 310-1818
- Kids Help Phone: 1-800-668-6868
- Mental Health Help Line: 1-877-303-2642
- Suicide Prevention: 1-800-784-2433

# TRAMPOLINES: BOUNCE, BOUNCE, OUCH!

**Submitted by Alberta Health Services**

As the summer winds down, sales on backyard toys may have you considering a trampoline for your home.

Though you may think of trampolines as a means of getting your kids outdoors and exercising, they aren't without potentially significant risks.

In 2015, Albertan children visited emergency departments (EDs) more

than 1,620 times for injuries they got using trampolines. On average, that's more than four kids, every day, who ended up in Alberta's EDs, due to trampoline use.

And unfortunately, we're not just talking a wee scratch or two:

- Almost 20 per cent of these kids had dislocated ankles or feet, 18 per cent had fractures in their legs, 21 per cent had fractures in their shoulders, elbow or arms, and 140 sus-

tained injuries to the head or neck.

In fact, from April to September 2015 alone, every second day, an Albertan child was injured so severely on a trampoline as to require admission to a hospital. That's a lot of ouch for the bounce.

If you're thinking that safety nets, most often sold with trampolines to prevent people from falling off, will reduce this risk, consider this: fewer than 30 per cent of trampoline

injuries are caused by falling off the tramp. Simply, the risk of the trampoline is the use of the trampoline at all.

Alberta Health Services wants you and your kids to stay safe. Keep the trampolines out of your backyard, and keep your family out of the hospital. For more information on injury prevention at play and at home, visit [www.ahs.ca/injuryprevention.asp](http://www.ahs.ca/injuryprevention.asp)

## STORY TO TELL?

Submit your story to the Community Voice!

Fax your story to 962-1021 or e-mail it to [news@com-voice.com](mailto:news@com-voice.com)

Phone 962-9228 for more information.

Stories may be edited for length due to possible space restrictions.



## SEPT 16<sup>TH</sup> AUCTION FOR: HENRY & OLGA LEMKE (954-3942)

Located: In the Hamlet of DAPP From the Westlock Inn 13 mi N on Hwy 44 to Hwy 661 then 2 1/2 W

**Fri Evening, Sept 16<sup>th</sup> at 5:00P.M.**

**HORSEMANS TREASURES:** \* 1 yr old Western Saddle \* Good Quality Older Western Saddle \* Set of leather Britching Harness \* 2 A 21" Collars \* Bridles, Halters Martin Gales, lots of bits, lots of tack, Neck Yukes \* Riding Chaps \* New Packing Saddle w plywood boxes \* Horse Buggy, Shafts, Poles \* H/M Sleigh Cutter Frame \* 10 of 10' Panels

**MACHINERY:** \* NH 855 Rnd Baler \* 41 x 8 WF pto Auger \* RT Wagon \* Fuel Tanks

**QUAD AND TRAILER/YARD EQ/WELDER/TOOLS:**

\* YAMAHA Big Bear Quad w Winch \* Tilt Deck for Quad \* 14' H/Made SA Trailer \* 24' H/Made GN Trailer w 2 @ 7k axles, FD Ramps \* JD FM 525 Mower w bagger \* Red Garden Trailer \* Honda 19" Push Mower \* 4 Cyl Wisconsin 250 Amp Welder w new starter \* 14" C/O Saw \* Drill Press, Vise, lots of tools \* Lots of Misc

**ANTIQUES AND HOUSEHOLD:** \* 50's Chrome Table \* C of Drawers \* Victor Adding Machine \* Cabinet Stereo \* 70's Brown Chesterfield & Chair \* Eight Track Player \* TV \* Desk \* Step Stool \* Lamps, Kitchenware, Dining, Air Purifier, Etc Dryer, Glassware, Collectables, Much More

## PARSONS AUCTIONS LTD.

Charles 674-7704 (780-674-3929) Jeff 305-4328  
Pictures Available on: [parsons-auctions.com](http://parsons-auctions.com)

# Classified Ads - Call 962-9228

## Classified Policy

CLASSIFIED RATES INCLUDE GST. 1st 20 Words: First Insertion = \$6.00; Subsequent insertion = \$3.00 each. (Eg: 2 insertions = \$9.00; 3 insertions = \$12.00; 4 insertions = \$15.00; etc) Each additional word is 20 cents per word, per insertion. BOLD/CAPITAL text available for an additional \$1/line. Lost & Found

and To Give Away (up to a max. of 25 words) are free of charge. Ads must be paid in advance either by cheque, cash, Visa or Mastercard. No Refunds Allowed on Classified Ads. DEADLINE: is Thurs. 4:00 pm (Wed. 4:00 pm on long weekends). Classified ads may be called in to the COMMUNITY VOICE office at (780) 962-9228, emailed to: classifieds@com-voice.com, dropped off at Onoway Registries,

or mailed with your ad and payment to: COMMUNITY VOICE, BAG 3595, SPRUCE GROVE, AB T7X 3A8. Ads may also be placed on the web at [www.com-voice.com/classified.htm](http://www.com-voice.com/classified.htm)

## Hall Rentals

Bright Bank Hall, 963-6835  
Camp Encounter, Vincent Mireau

- Camp Director. [director@campencounter.com](mailto:director@campencounter.com). C: 780-504-2012 W: 780-967-2548

Darwell Hall, 780-721-2690

Darwell Seniors, 892-2457

Duffield Hall, 892-2425 or 963-6887

Entwistle Community League Hall, Contact Cheryl at 780-727-6671 or Verna at 780-716-2304.

Entwistle Senior's Drop In Centre, Barb 727-2108 or Glennis 727-4367 Mon-Fri

Evansburg Senior's Heritage House, Flo 727-2496 or Marcel 727-4269

Evansburg Legion, upper hall 250 people, lower hall 80-100 people, 727-3879

Fallis Community Hall, 892-3150

Gunn Hall (G.A.R.S.) 780-967-2215

Keephills Hall, 731-3761

Lake Isle Hall, 892-2481

Lake Romeo PeaVine Hall, 785-2700

Magnolia Hall, 727-2015

Manley Goodwill Community Hall, 963-9165 or 916-0146

Mayerthorpe Diamond Centre, 786-4044

Moon Lake Community Hall, Nikki Berg 780-898-1390

Park Court Community Hall, 727-4476

Parkland Village, 960-3673 or 960-5556

Rich Valley Community Hall, 967-3696 or 967-5710

Rosenthal Community Hall, 963-7984

Seba Beach Heritage Pavilion, 797-3863

Smithfield Community Hall, 892-2390

Tomahawk & Dist Agra Center, 898-3443

Wabamun Jubilee Hall, 892-2699.

Wildwood Community Hall, 325-2692 or 325-3749

Wildwood Rec Complex 325-2077 or 514-8944

Wildwood Senior's Hall, 325-2030

**PROBITA**  
Hydrolyzed Collagen Protein Chew

- ✓ Reduces Wrinkles & Age Spots
- ✓ Tightens & Tones Skin
- ✓ Promotes Hair Regrowth
- ✓ Strengthens Bones, Cartilage & Organs
- ✓ Reduces Pain, Anti-Inflammatory
- ✓ Builds Lean Muscle & Enhances Weight loss
- ✓ Boosts Metabolism, Energy & Stamina
- ✓ Chocolate and Berry flavored

Everything your body craves!

100% Bio-Identical and Absorbable

Doris after 6 weeks!

Hair Regrowth

Clare after 2 weeks!

Skin Tightening

Call for a free sample!  
**780-907-8642**

**WE NEED VÍSI PARTNERS WORLDWIDE!**

- ✓ Incredible Opportunity!
- ✓ No Competition!
- ✓ Breakthrough Products!
- ✓ Up to \$25K per week
- ✓ Car Bonus \$600/month



# Classified Ads - Call 962-9228

## Obituaries

**BRUCE, John Melvin**  
Mr. John Melvin Bruce of Stony Plain, Alberta passed away on August 28, 2016 at the age of 94 years.

John will forever be loved and remembered by his wife of 65 years, Bunny; his sons: Reg (Sheila), Allen (Jo-Ann), Dale (Linda) and Ward (Lil); his daughter Tracey (Jim); 12 grandchildren and numerous great-grandchildren. He is also survived by his brothers: Harold, Donnie and Alvin (Kathy) as well as numerous nieces, nephews and friends. John was predeceased by his sister Jean and also by his brothers Paul and Larry.

A Funeral Service will be held at 1:00 p.m. on Thursday, September 8, 2016 at the Entwistle Community Church 5237 - 50 Street, Entwistle, Alberta. Interment to follow at Darwell Cemetery as well as a luncheon at the Darwell Hall. If friends desire, Memorial Donations may be made in John's memory to either the Entwistle Community Church, 5237-50 Street, Entwistle, AB. T0E 0S0 or to the Parkland Bible Church, 4704-79 Avenue, Stony Plain, AB. T7Z 3A1.

Floral or written Tributes may be made to [www.parklandfuneralservices.com](http://www.parklandfuneralservices.com)



Parkland Funeral Services, Stony Plain, 780.963.2520.

## Events

Shop Spokane, October 9th - 12th. Pick up in Edmonton, Leduc, Red Deer, Calgary. \$460 per person twin. Includes Hotel, bus, four breakfasts,

snacks, water, goodie bags. Donna 780-475-4683, Email [shophoppers222@hotmail.com](mailto:shophoppers222@hotmail.com)

## Garage Sales

Vendors Wanted for Garage Sale at Entwistle Senior Center. Table rentals inside or out \$10.00, 10:00am - 4:00pm.

Saturday September 24th. Call Dan 780-982-0353

## Auctions

ESTATE AUCTION. Sunday September 11th @ 11:00pm. 5112 50ST. Evansburg, AB. (Main Street, next to Evansburg Inn). Sale conducted by Alberta Surplus Auction. 780-727-2724

for more information

## Business Opportunities

LOOKING TO HOST A CANDLE PARTY? OR WANT TO DO A FUNDRAISER? EXCELLENT REWARDS!! Call Jodi for more information 780-995-6951 [www.mylgc.com/jcazac](http://www.mylgc.com/jcazac)

### Instantly Ageless™

Instantly Ageless™ is a powerful anti-wrinkle microcream that works quickly and effectively to diminish the visible signs of aging. Instantly Ageless™ revives the skin and minimizes the appearance of fine lines and pores for a flawless finish.

#### A perfect day starts with perfect skin.

Meticulously developed, our formula is lightweight and contains a skin-conditioning complex of minerals that evens skin tone. Instantly Ageless™ immediately dissolves into the skin, reducing the appearance of wrinkles. It's specifically designed to target areas which have lost elasticity—revealing visibly toned, lifted skin. Users have seen dramatic results in seconds.

A compact, yet powerful alternative to fortify skin affected by free radicals and environmental damage, Instantly Ageless™ is at the forefront of anti-aging technology.

### BENEFITS

- VISIBLY DIMINISHES THE APPEARANCE OF FINE LINES AND WRINKLES
- ERASES THE APPEARANCE OF DARK CIRCLES AND PUFFINESS UNDER THE EYES
- MINIMIZES THE APPEARANCE OF PORES
- HELPS TO EVEN SKIN TEXTURE
- MATTES SKIN FOR A FLAWLESS FINISH
- RESTORES SKIN TO OPTIMUM APPEARANCE

YouTube [youtube.com/watch?v=9g1As1cBjGY](http://youtube.com/watch?v=9g1As1cBjGY)



BE YOU. BE FLAWLESS.  
Phone (780) 907-8642 [www.elaine1.jeunesseglobal.com](http://www.elaine1.jeunesseglobal.com)



*Noreen Hutt* [www.noreenhuttorealestate.ca](http://www.noreenhuttorealestate.ca)



4922-50<sup>TH</sup> Ave. Evansburg, AB

**780-727-2887** 

**LEADING** 780-962-9696 

*Serving the  
Evansburg, Entwistle,  
Wildwood, Seba Beach,  
Yellowhead County &  
Parkland County Areas.*

*"Your Local Realtor"*



**NEW**  
This Great 3 Bedroom Family Home on 13 Acres Has a Large Country Kitchen, a Bright & Open Living Room With a Fireplace, 3 Bedrooms, 2-4 pce Baths & a Huge Deck. Also There is a Gorgeous Yard and a Storage Shed! **\$229,900**



Scenic 157 Acres That is Treed, Has Open Hay Land, is Fenced, and Has Great Building Sites! **\$187,500**



Country Charm at its Best! This Attractive 1517 sq ft Home Has 4 Bedrooms, Bright & Updated Kitchen, Dining Area With a Bay Window, Spacious Living Room, Huge Rec Room, 2 Baths, Cold Room & a Workshop. Extras are Double Car Garage With Power & Cement Pad, Rv Parking, and Parklike Setting. **\$339,900**



Great 1270 Sq Ft Family Home! This Home Has a Bright & Attractive Country Kitchen, Huge Living Room, 3 Spacious Bedrooms, 2 Baths, Large Rec Room, & a Covered Sun Deck With Built in Seating. Included is a Double Car Garage & Nicely Landscaped Yard. **\$209,900**



Great Find! This 3 Bedroom Home Located Downtown Has an Updated Kitchen & Bathroom, a Sunroom, & a Full Basement! **\$119,900**



Fantastic 4 Bedroom Family Home With a Finished Basement on a Double Lot! Features Include a Large Country Kitchen, a Bright Living Room, 2 Baths, a Huge Rec Room, a Covered Patio & a Double Garage With Power! **\$219,900**



Terrific Family Home With a Finished Basement on 4 Lots! This Home Has 3 Bedrooms, a Country Kitchen, a Huge & Bright Living Room, 2 Baths, a Large Rec Room & a Covered Deck. Extras Are a Double Car Garage, Fenced Yard, Rv Parking, Paved Driveway, & a Greenhouse. **\$199,900**



Newly Updated 3 Bedroom Home With a Full Basement Nestled in the Trees on 11 Acres Shows a "10". Extras Include an Attached Garage, Huge deck, Firepit Area, Small Barn, and Some Game Fencing! **\$358,900**

**REDUCED**



Located in Entwistle at the Gateway to the Pembina Provincial Park and Right Off Hwy16 enroute to the Jasper National Park is the Perfect Spot For Your Own Antique Store or Other Retail Business. On a Double Lot on the Corner of Main Street is The Perfect Location For Starting Your Own Business! **\$279,900**



Gorgeous Family Home With a Finished Basement on a Large Fenced Lot! Features are a Stunning Kitchen With Rich Cherry Cabinets and Large Dining Area, a Bright and Open Living Room, 5 Attractive Bedrooms, 2 Full Baths-1 With a Large Soaker Tub & 1 With a Double Shower, a Second Kitchen, a Double Attached Garage and More! **\$339,000**



Great 5 Bedroom Family Home With a Finished Basement Features an Open Kitchen, a Bright Living Room, Two 4 Piece Baths, a Family Room, a Front and Back Deck, Fenced, a Garage, and Close to Schools! **\$235,500**



a Huge Country Kitchen, a Bright Living Room, 3 Bedrooms, & 2 Baths. Extras Include a Newer Deck, Great Landscaping, a Garden Spot, 2 Sheds & Fenced Yard **\$169,900**



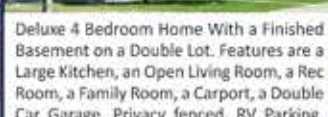
Incredibly Priced Updated Home on a Fenced Lot Features a Large Country Kitchen, an Attractive Living Room, 3 Bedrooms, a 4 Piece Bath, 2 Decks, a Storage Shed & Close to Schools! **\$93,500**



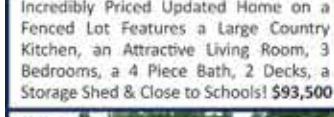
Incredible! This Attractive Home Features a Huge Kitchen, an Inviting Living Room, 5 Bedrooms, a Rec Room, 2 Baths, Finished Basement, a Large Deck and a Garage! **\$229,900**



Located in The New Subdivision in Evansburg Complete With Walking/ Bike Trails is This Perfect Residential Lot To Build Your New Home On. **\$29,900**



Deluxe 4 Bedroom Home With a Finished Basement on a Double Lot. Features are a Large Kitchen, an Open Living Room, a Rec Room, a Family Room, a Carport, a Double Car Garage, Privacy fenced, Rv Parking, and Has a Paved Driveway! **\$289,500**



This 3.53 Acres is Close to The Lake In Singing Hills Estates. This is a Great Weekend Getaway or Perfect Building Spot! **\$85,000**



5 Bedroom Home With a Full Basement on .49 acres Has a Large Kitchen, a Spacious Living Room, and a 4 pce Bath! **\$73,000**



What a Deal! 3 Bedroom Home With Addition, Carport, and Double Car Garage. **Only \$56,500**



This Amazing 153 Acres of Lakefront Property is Great For Fishing, Boating, Swimming, Watching Wildlife, & Going on Nature Walks! **\$148,500**



This Completely Updated Home With a Finished Basement Features a Huge Kitchen With New Countertops & Backsplash, an Attractive Living Room, 4 Spacious Bdrms, Rec Room, & 2 New 4 Pc Baths. Extras Include Custom Tile Work, New Windows, Flooring, Fixtures, Stucco, Etc., & a Double Car Garage With Power & a Cement Floor! **\$215,000**



This Newly Updated Victorian Home Has a Bright and Open Living Room, 2 Bedrooms, an Updated Kitchen, a New Bathroom, and a Loft. Extras Are New Shingles, Stucco, Paint, Windows, Fixtures, and Flooring! **\$139,900**



Newly Built Home With a Full Walk Out Basement on 9+ Acres. Features are a Bright and Open Floor Plan, Vaulted Ceilings, Maple Flooring, A Beautiful Kitchen With a Large Island, a Bright and Spacious Living Room, 4 Bedrooms, a 4 pc Bath, a Huge Rec Room, 2 Decks, a Double Garage, Fenced For Horses and Right off Pavement! **\$359,900**



Beautiful Home on 1.44 Acres Right in Town Has 5 Spacious Bedrooms, 4 Bathrooms, a Huge Oak Kitchen, a Separate Dining Area, a Den/Office, a Living Room Complete With a Fireplace, a Rec Room an Attached Garage, 2 Covered Decks, and a Paved Driveway. Also Included is an Older 2 Storey Home and a Garage! **\$399,900**

# Classified Ads - Call 962-9228

**JOIN THE GOLD CANYON TEAM!**  
Your Gold Canyon Business puts you on the path to success on your own terms! Call Independent Demonstrator Jodi Cazac at 780-995-6951 for more info, or go to [www.mycg.com/jcazac](http://www.mycg.com/jcazac)

## Employment Opportunities

Evansburg Legion is Looking for Part Time Bar Staff, Also Janitorial Staff (preferably retired or semi retired couple). Leave resume at bar or see Murray at the Legion.

## Services

Best-Cistern-Septic-Solutions. Cistern and Septic Inspection, Cleaning and Repair! New Installs Available. Plastic, metal, fiberglass or concrete. We clean them all! Your cistern will be vacuumed, cleaned and sanitized with our high pressure, hot wash, sanitizing system. Reasonable Rates, Call 780-668-4306

## Computers

Computer Repairs Only \$50. Trade yours Bad or get good working Laptops or Desktops for Only \$135. FREE repairs for single parents. Computer Donations Welcome! 780-892-4993

## Miscellaneous

Bale net wrap, 64" x 7000ft, \$195.00 (discount for quantity.), Onoway 780-940-5252

Will Pull Away for Free, unwanted travel trailers to my farm use, also good burning barrels and rain barrels \$15 each. Call Steven 780-967-2779

Lil' Mule Logging Inc. Now buying Poplar/Black Poplar, Minimum 20 Acres. Call Shawn 403-318-4346

## For Rent

Furnished House for rent in Seba Beach, Lease from Oct 1/16 - April 30/17, \$850/month + utilities & Satellite TV. 780-686-9915

Onoway 1 & 2 Bedroom. Reasonable Rent \$795/month & \$895/month. Call 780-721-4132 or 780-423-3664.

Fallis Duplex 1 Bedroom, nice

new reno, cabin style, one block to Lake Wabamun Boat Launch, 25 min West of Stony Plain. Shared laundry, pets negotiable. \$795.00 per month, DD same, One year lease. Call 780-325-0005

**Great for a Small Family or Seniors.** Newly renovated townhome, 2 bedrooms, den & 1.5 bathrooms in Winfield, AB. Washer & Dryer in-suite. \$850/month. Call 403-606-6977

2 Bedroom House in Evansburg. Some new floor, Fenced yard, Fresh paint, Firdge, Stove, W/D, Backs onto park, Pets Negotiable. \$925/month + Utilities, DD Same. 1 year lease, working adults No Partiers. Call 780-325-0005

## Real Estate

NEED CASH?! We Buy: Estates & Complete Households, We Pay Cash!! 780-727-2724

**Church Directory**

|                                                                                                                                                                                                                                          |                                                                                                                                                                                                          |                                                                                                                                                                   |                                                                                                                                                                                                                                                        |                                                                                                                                                                                                                                           |
|------------------------------------------------------------------------------------------------------------------------------------------------------------------------------------------------------------------------------------------|----------------------------------------------------------------------------------------------------------------------------------------------------------------------------------------------------------|-------------------------------------------------------------------------------------------------------------------------------------------------------------------|--------------------------------------------------------------------------------------------------------------------------------------------------------------------------------------------------------------------------------------------------------|-------------------------------------------------------------------------------------------------------------------------------------------------------------------------------------------------------------------------------------------|
| <b>All Saints' Anglican Church</b><br>Sunday Morning Worship 9 BCP<br>10:30 BAS with Sunday School & Nursery<br>5212-47 Ave, Drayton Valley<br>(780) 542-5048                                                                            | <b>Seba Beach Christian Fellowship</b><br>Sunday School 10:00 a.m.<br>Worship Service 11:00 a.m.<br>Weekdays Bible Study & Prayer<br>(780) 305-3594                                                      | <b>Roman Catholic Church</b><br>St. Agnes' Parish, Macerthorpe<br>Sunday 9:00 a.m.<br>St. Elizabeth Parish, Evansburg<br>Saturday 7:00 p.m.<br>(780) 786-2022     | <b>Advent Lutheran Church</b><br>Sunday Worship & Sunday School 11:00 a.m.<br>Evansburg<br>(780) 727-5394                                                                                                                                              | <b>St. Saviour Mission (Anglican Diocese of Edmonton)</b><br>Service every Sunday at 10:00 a.m.<br>Rev. Coleen Lynch<br>51751 Avenue<br>Wabamun Seniors Center<br>Ph: 780-940-4733<br>www.stsa.org                                        |
| <b>St. Augustine's - Parkland Anglican Church</b><br>121 Church Rd, Spruce Grove<br>Sunday Service 10:00 a.m.<br>Eucharist with Sunday School & Nursery<br>All are Welcome<br>Office 780-962-5133<br>www.staugustineparkland.org         | <b>Parkland Baptist Church</b><br>Sunday Worship Service 10:30 a.m.<br>All Welcome<br>Pastor Norm Bleick<br>Youth Pastor Steve Gauson<br>121 Brookwood Drive<br>(780) 962-4101<br>www.parklandbaptist.ca |                                                                                                                                                                   | <b>Immanuel Lutheran Church of Rosenthal</b><br>Traditional Service 9:00 a.m.<br>Contemporary Service 10:15 a.m.<br>Christian Counseling Services<br>Pastor Bill Flath<br>Rg Rd 13, Top Rd 524<br>Ph: 780-963-4048<br>www.lhc.ca; email: office@lhc.ca | <b>Stony Plain United Church</b><br>Sunday Service 10:30 a.m.<br>5012-51 Ave, Stony Plain<br><b>Mewassin United Church</b><br>Sunday Service 9:00 a.m.<br>Rev. Sally Boyle<br>Hwy 627 - Rg Rd 30<br>Ph: 780-963-4745                      |
| <b>Emmaus Lutheran Church</b><br>Sunday Worship Service 10:30 a.m.<br>Bible Study 9:30 a.m.<br>Sunday School 9:30 a.m.<br>Rev. Steven Brummitt<br>4604-29 <sup>th</sup> Ave, Drayton Valley<br>Ph: 780-542-5101<br>www.emmauslutheran.ca |                                                                                                                                                                                                          | <b>St. Anthony Catholic Church</b><br>WEEKEND MASS SCHEDULE:<br>Saturday 5:00 p.m.<br>Sunday 12:00 p.m.<br>4708-99 Ave, Drayton Valley<br>Parish Office: 542-5234 |                                                                                                                                                                                                                                                        | <b>Church of God</b><br>Pastor Evan Baum<br>Sunday School 10:00 a.m. (9:00 a.m. - 9:00 a.m.)<br>Worship Service Sun. 11:00 a.m.<br>Youth Fri. 7:00 p.m.<br>(during the school year)<br>5004-42 Street, Drayton Valley<br>Ph: 780-542-5001 |
| <b>Ignited Church &amp; Ministries</b><br>Pastors: Mark & Leanne Eshleman<br>Sunday Service 10:30 a.m.<br>4651-41 Ave, Drayton Valley<br>(Dustin Molnar - Medical Clinic)<br>Ph: 542-5843<br>ignitedchurch@telus.net                     | <b>The United Church of Canada</b><br>Sunday Worship 10:30 a.m.<br>Sunday School 10:30 a.m.<br>3004-48 St, Drayton Valley<br>Church Office 780-542-5243<br>church@telus.net; www.ubc.ca                  | <b>St. Joseph's Catholic Church</b><br>Sunday Mass 11:30 a.m.<br>Wabamun, AB                                                                                      | <b>Drayton Valley Alliance Church</b><br>Pastor John Haazen<br>Join us for Sunday Service at 10:30 a.m.<br>Aurora School, 3901-55 Ave.<br>Programs for all ages<br>Office at<br>4901-55 St, Drayton Valley<br>Ph: 542-4501; dvalliance.ca              | <b>Calvary Baptist Church</b><br>Pastoral Team: Lorne Trudgian & Kenton Penner<br>Sunday Worship 10:30 a.m.<br>Youth & Ministries Info - calbapt@telus.net<br>5004-42 Street, Drayton Valley<br>780-542-4774<br>www.calvarybaptist.ca     |



# SUDOKU OF THE WEEK

## Fun By The Numbers

**Here's How It Works:** Sudoku puzzles are formatted as a 9x9 grid, broken down into nine 3x3 boxes. To solve a sudoku, the numbers 1 through 9 must fill each row, column and box. Each number can appear only once in each row, column and box. You can figure out the order in which the numbers will appear by using the numeric clues already provided in the boxes. The more numbers you name, the easier it gets to solve the puzzle!

|   |   |   |   |   |   |   |   |   |
|---|---|---|---|---|---|---|---|---|
| 3 |   |   | 4 |   |   | 1 | 5 | 8 |
|   |   |   |   | 7 |   | 6 | 3 |   |
| 4 |   |   |   |   | 5 |   |   | 2 |
|   |   |   | 7 | 4 | 8 |   |   |   |
|   |   |   |   |   |   | 8 |   |   |
| 1 |   | 8 | 5 | 2 | 9 |   | 4 |   |
|   | 9 | 4 |   | 8 |   |   |   |   |
|   | 6 | 5 |   | 1 | 4 |   |   | 9 |
|   |   |   | 9 |   | 2 |   | 6 | 7 |

**ANSWER:**

|   |   |   |   |   |   |   |   |   |
|---|---|---|---|---|---|---|---|---|
| 3 | 2 | 7 | 4 | 9 | 6 | 1 | 5 | 8 |
| 5 | 8 | 9 | 2 | 7 | 1 | 6 | 3 | 4 |
| 4 | 1 | 6 | 8 | 3 | 5 | 7 | 9 | 2 |
| 6 | 5 | 3 | 7 | 4 | 8 | 9 | 2 | 1 |
| 9 | 4 | 2 | 1 | 6 | 3 | 8 | 7 | 5 |
| 1 | 7 | 8 | 5 | 2 | 9 | 3 | 4 | 6 |
| 2 | 9 | 4 | 6 | 8 | 7 | 5 | 1 | 3 |
| 7 | 6 | 5 | 3 | 1 | 4 | 2 | 8 | 9 |
| 8 | 3 | 1 | 9 | 5 | 2 | 4 | 6 | 7 |

**Like puzzles?** Then you'll love sudoku. This mind-bending puzzle will have you hooked from the moment you square off, so sharpen your pencil and put your sudoku savvy to the test!



Like Us On facebook FACEBOOK.COM/COMMUNITYVOICENEWS PAPER

follow us on twitter @communityvoice8

# SERVICE DIRECTORY

**Complete Drywall Service**

All types of Texture  
Insulation and T-Bar ceilings  
Minor Renovations

RAL Drywall and Plastering Ltd.  
780-691-5248

**Entwistle CONCRETE PRODUCTS LTD.**  
SAND & GRAVEL SALES

Dan McCracken  
Ph: 727-3525

**Norm Blakeman's Drilling Ltd.**

Waterwell Drilling & Servicing  
Pumps & Pressure Systems

SERVING LAC STE. ANNE & WEST PARKLAND FOR OVER 25 YEARS!

Joe (780) 924-3024

**LAC L. A. Contracting**  
5" Continuous Eavestroughing & C-Can Rentals

LES 910-5472

**THIS SPACE RESERVED FOR YOU!**

**JACK'S AUTO BODY & TOWING**

\*Specializing In Collision Repair  
\*Guaranteed Work  
\*Insurance Claims

Onoway 967-5850

Located between Alberta Beach & Onoway on Hwy 633

OUR PLEDGE IS QUALITY

# SERVICE DIRECTORY

**DUNN'S**  
HEAVY DUTY REPAIR LTD.

Fully equipped mobile service truck, including welder, oil evac & 5000 lb crane.

We repair all types of heavy equipment.

- construction / mining / rock crushing equipment
- tractor trailer units • skid steers

**Stephen Dunn 780-278-8525**

**RamRod Inc.**

Available Services for Mobile Steaming:

- Culverts & Frozen Waterlines
- Backhoe (Tree Removal)
- Aerial Truck for Washing Buildings, Signs, etc.

**Contact: 1.780.915.9199**

ROY SHERWOOD  
Master Electrician

Ph: 780-968-1425  
Cell: 780-908-2287  
Fax: 780-968-2211

Email:  
suntech@explornet.ca

Box 5, Site 6, RR1  
Carvel, Alberta  
T0E 0H0

**SURETECH**  
ELECTRIC LTD.

Control & Automation • Commissioning  
Industrial • Commercial • Residential  
Solar Sales & Service

*Western Sheet Metal Ltd.*  
&  
*Mechanical Services*

- Forced Air Heating • Furnace Replacements
- Gas Fitting • High Efficiency Furnaces
- Air Conditioning • New Construction

COMMERCIAL & RESIDENTIAL  
**(780) 514-0839**

www.westernsheetmetalhvac.ca  
service@westernsheetmetalhvac.ca

**WABAMUN PHARMACY**

**I.D.A.**

Box 90, 5120 - 51 Avenue  
Wabamun, AB T0E 2K0  
Ph: (780) 892-2278 Fax: (780) 892-2488

**2Bros**  
Custom Contracting Ltd.

Custom Framing • Concrete Floors • Shingling  
Siding Soffit Fascia • Styrofoam Block System

**Jeff 780-717-0520**

**Ernie's Repair & Service**

  
SMALL ENGINES

4820 - 47 Avenue, EVANSBURG  
**727-4433**

*THIS SPACE  
RESERVED  
FOR YOU!*

**JIM HAY TRUCKING**

- Screened Black Dirt
- Beach Sand
- Road Gravel • Fill Dirt

**(780) 220-5849**

**P&E VENTURES INC.**  
SKID STEER SERVICES

GENERAL LANDSCAPING POST & PILING HOLE  
SNOW REMOVAL SAND AND GRAVEL

**PAUL VAN HECKE & CURTIS MIKO**  
OWNER / OPERATORS

BUS: (780) 727-2721 CELL: (780)621-6148  
Box 498, EVANSBURG, AB T0E 0T0

**PEMBINA CONCRETE PRODUCTS LTD.**

Manufacturers of  
**ONE PIECE SEPTIC & HOLDING TANKS**

**MARK MARTIN PFEIFFER**  
MASTER BRICKLAYER/MASON

Cell: 780-242-3308  
Email: pfeiffer.mark@hotmail.com

- Brickwork • Stonework
- Rockwork • Parging
- Concrete Block Work
- Tile Work (all kinds)



**DONALD N. GREENWAY**  
Chartered Accountant

Suite 205 Sunrise Professional Building  
215 McLeod Avenue  
Spruce Grove, AB

**(Bus.) 962-6366**  
**(Fax) 962-3990**

\* Water Cisterns \* Field Systems \*  
Pumps and Accessories \* Sumps



**DELIVERED TO YOUR SITE**  
1-800-661-3047  
780-727-2702  
PembinaConcrete.com

**BOX 123, Entwistle, T0E 0S0**

**BREWSTER BOBCAT SERVICE LTD.**  
P.O. Box 454, Wildwood, AB T0E 2M0

- \* Site Preparation
- \* Pile Drilling
- \* Concrete Work
- \* Landscaping
- \* Demolition
- \* Sand & Gravel Delivery
- \* General Contracting



brwcat@gmail.com  
Telephone: (780) 325-3743  
**Bruce Balascak Cell: (780) 621-6960**

# SERVICE DIRECTORY



"We are a family orientated company that pride ourselves on SAFETY and EFFICIENCY"

**CHRIS & LISA VANHILL**  
OWNER/OPERATOR

Site Clearing, Grading, Road Building,  
Brushing, Acreage Development, Dugouts, etc.

780-619-3236  
vanhillcontracting@gmail.com Onoway, AB



**AVOID THE RUSH**  
**BOOK NOW FOR YOUR 2016**  
**VINYL DECK INSTALLATION**

*We can help you no matter what your construction needs:*

- Custom Exteriors - Doors, Windows, Siding, Soffit, Fascia
- Renovations - Kitchen, Bath, Basement, Additions
- Custom Decks and Railings
- Manufacturer Trained Vinyl Deck Membrane Installer
- Water Feature Design and Creation
- Garage, Workshop, Gazebo, Pergola Construction
- Final Grade
- Commercial Fit-Up and Renovations

**Phone: (587) 990-8838**  
www.kingbrosqualityconstruction.ca



**Lakeview Small Power**

Small Engine and Golf Car Specialist:  
Repair | Buy | Sale

780.785.3270

12 KM South of Sangudo, on Hwy 757  
www.lakeviewsmallpower.com



- Construction & Septic Installation
- Environmental Wastewater Disposal
- Site Design & Evaluation
- Power, Water & Basement Excavation
- Trackhoe, Backhoe, Bobcat & Dump Truck

**For All Your Excavation Needs**  
Call Dan 780-991-4484 Reid 780-909-0173

**Real Property Appraisals**

Residences, Rental Properties up to a 4-Plex, Acreages, Vacant Land up to 160 Acres

Financing, Divorce, Estate Settlement, Subdivision, Insurance Claims

**Don George BA, DAR / CNAREA**  
Real Property Appraiser & Certified Appraisal Reviewer  
Coldstream Property Appraisals Inc.

CELL/WK: 780.237.1646 FAX: 780.665.7177  
email: appraisals.dgeorge@gmail.com

**SANGUDO VETERINARY CLINIC**

Box 581, 4916 - 52 Ave. Sangudo, AB. T0E 2A0

**Dr. Ralf Sanders DVM**

Ph: 780-785-2200  
Fax: 780-785-2228  
sangudovet@gmail.com

**24 HOUR EMERGENCY SERVICE**

**THIS SPACE RESERVED FOR YOU!**



**Countryside REALTY LTD.**

**JOANNE HAY**  
Broker/Owner

Buying, Selling, Just Thinking About It?  
Call me, I'm at Home in your neighbourhood!

(780) 892-4440 joanne.countryside@gmail.com



**Canadian Clean Air Services Ltd.**

**Heating & Air Conditioning**

High efficiency Furnace or Air Conditioner from 49.99/month.  
Instant Approval. No Credit Required

**24 Hour Emergency Service**

Licensed and Insured with over 14 years' experience.  
We accept Visa, master card, Amex and interact.

**42 Singing Hill Estates, Seba Beach T0E 2B0**  
Office line 780-569-5201



Harvey cell. 780-445-9010 ph. 780-892-3532

Box 145, Darwell, AB T0E 0L0

No Job Too Small... We do them all!

• Road Building • Black Dirt • Sand • Gravel • Clearing • Dugouts

**DANI'S CLEANING SERVICES**

10% OFF Commercial / Office Buildings

- Competitive Pricing
- No Job Too Small

Call Today for your FREE Quote!  
**(780) 264-7740**

SERVING SPRUCE GROVE, STONY PLAIN AND EDMONTON SINCE 1995



**SUMMERS DRILLING LTD.**

Water well drilling and service  
Family owned Business Serving Alberta since 1917

Tired of hauling water?  
We can install a water well with a permanent water supply for as little as \$150/month OAC

Never run out of water again!

5 year workmanship warranty

3 Convenient ways to pay

- Visa
- Mastercard
- We now offer full financing

Stop in at our office 4405 - 50 Street, Stony Plain  
780-963-1282  
admin@summersdrilling.com



**LEE SMITHSON**  
ASSOCIATE BROKER

**780-991-9935**



**RESIDENTIAL PROPERTIES**



**ALBERTA BEACH**  
• 2002 1569 sq/ft. Neat as a PIN!  
• Massive Master Bedroom  
• Double attached Oversize Garage  
• 3 decks - Beautiful Yard  
• **MLS E4027715**  
**\$298,500**



**STONY PLAIN**  
• Corner Lot, 4 Level Split  
• 5 Bedrooms / 3 Bathrooms  
• Hardwood / Stainless Appliances  
• 1243 Sq/ft  
• **MLS E4028853**  
**\$359,500**



**NEW 2015**  
• 5 acres 1856 sq/ft bungalow  
• Triple Oversized Garage  
• Executive Kitchen, Out of subdv  
• Shop foundation there  
• **MLS E4031130**  
**\$795,000**



**BEST BUY IN STONY PLAIN**  
• Exclusive Listing  
• Large Unit  
• Station 33 Phase 11  
• 2 Bedrooms, 2 Bathrooms  
**\$159,000**



**STONY PLAIN**  
• 1316 sq/ft  
• 3 Bedrooms  
• 2 1/2 Baths  
• Open Floor Plan  
• **MLS E4034745**  
**\$273,900**



**OUT OF SUBDIVISION**  
• 35+/- Acres off 627  
• Walkout Bungalow  
• Recent upgrades  
• Horse set up with pens & water  
• **MLS E3435114**  
**\$499,000**



**DREAM LOCATION**  
• 2,256 sq.ft 2-Story with 4 Massive Bedrooms! 2 bedrooms have ensuites.  
• Double access to the undeveloped basement. Main floor laundry.  
• HUGE mudrooms off the garage.  
• **MLS E4030247**  
**\$629,500**



**2.09 ACRES**  
• D2120 sq/ft log home  
• 4 Bedrooms / 3 Bathrooms  
• Very close to Spruce & Stony!  
• **MLS E4020672**  
**\$629,000**



**OUT OF SUBDIVISION**  
• 3898 sq.ft. bungalow  
• 4.92 Acres  
• 5 Bedrooms + Den  
• Fully Finished  
• **MLS E3373932**  
**\$699,500**



**STONY PLAIN**  
• Lot is just shy of a full acre  
• Located in the heart of Stony  
• Develop that duplex or apartment  
• Fix up the livable home  
• **MLS E4033445**  
**\$300,000**

**COMMERCIAL SALES/LEASES**



**BOULDER BLVD**  
• 1625 Sq. Ft.  
• Excellent exposure  
**\$349,000**



**BOULDER BLVD**  
• 2 Shops, 1.53 Acres  
• **MLS E4000827 W**  
**\$1,090,000**



**GROVE VALLEY GARDENS**  
• Home, land & business  
• **MLS E3437223**  
**\$1,490,000**



**BOULDER BLVD**  
• 8 Separate titled bays  
• Leases in place  
**\$1,750,000**



**RARE OPPORTUNITY!**  
• Commercial lot in Downtown Stony Plain!  
• Zoned Multi Residential OR Commercial  
• 15,682 Sq/Ft of LAND. Town has parking lot on the South that will help with parking allowances for this property!  
**\$565,000**

**LAND FOR SALE**



**LAKEFRONT**  
• 73+ Acres  
• **MLS E3430259**  
**\$799,900**



**108+ ACRES**  
• **MLS E4003056**  
**\$825,000**



**160 ACRES ON RR10 BY THE RIVER!**  
• Seller is Angel Houghts  
• **MLS 4030936**  
**\$629,000**



**TWP 533 & RGE RD 13**  
• 65+ Acres  
• **MLS E4015465**  
**\$499,500**



**RIVER FRONTAGE**  
• 26.9 Acres  
• **MLS E3398469**  
**\$875,000**



**COUNTRY RESIDENTIAL LOTS**

**IN SUBDIVISION**  
MANY LOTS TO CHOOSE FROM  
STARTING AT \$49,000.00

**OUT OF SUBDIVISION**



- 4.99 Acres ..... **\$115,000**
- 60 Acres ..... **\$199,000**
- 4.92 Acres by the new County Airport ..... **\$299,500**
- 65 Acres on RR 13 .. **\$499,500**
- 73 Acres of Lakefront **\$799,900**
- 108 Acres on SH779 **\$825,000**
- 26 Acres of Riverfront **\$875,000**



**MARYANN BIBAUD**  
Licensed Assistant to Lee Smithson  
**780-996-6086**

**RE/MAX**  
REAL ESTATE STONY PLAIN

**780-991-9935**  
[www.remastonyplain.com](http://www.remastonyplain.com)