



Serving: Carvel, Darwell, Duffield, Wabamun, Seba Beach, Gainford, Entwistle, Evansburg, Wildwood, Tomahawk, Spruce Grove, Stony Plain & Drayton Valley

May 23, 2017

SENIORS TEA AT THE TIPPLE PARK MUSEUM

Submitted by Shayna Powell | Museum and Farmers' Market Manager

The British are well known for their tea and their cultural habits rules concerning tea. Typically, a mid-afternoon break is accompanied with tea, cakes and/or scones. The British have tea in the afternoon as they usually do not eat their dinner until around 8:00 at night, so tea becomes a welcome afternoon break. I often enjoy an afternoon brew to give myself a boost. For some

people in Canada the habit of having tea is a tradition and the etiquette concerning tea is well known. However, for those of you who enjoy your coffee, maybe you have been missing out on this wonderful tradition.

There are certain etiquette rules that one must follow if you are to be considered a gentleman or a lady. It is considered bad form to drink more than three cups of tea, but one cup is not enough. Therefore, two cups of tea are the ideal amount to enjoy when in the presence of royalty

or someone whose opinion you care about! Always take your napkin and place it on your lap, never under your chin or left on the table. When you are done with your napkin, place it casually to the left of your plate. Never slice your cake or scone in half with your knife, always break it with your fingers. Avoid spreading both sides of your scone then sandwiching it together, it is considered crass.

Continued on Page 2

RCMP INVESTIGATE YOUTH FIGHT(S) IN SPRUCE GROVE

Submitted by Stony Plain/Spruce Grove/Enoch RCMP

The Stony Plain/Spruce Grove/Enoch RCMP have responded to and are investigating complaints in relation to a so called youth "fight club" in the City of Spruce Grove. It is alleged that youth are using social media to announce locations throughout the City where they plan to fight. These posts/meeting(s) are also drawing spectators.

The RCMP are working in partnership with the Spruce Grove Enforcement Officers to monitor social media, and creating dialogue within our local high schools to deter students from participating/supporting

these types of activities.

At this time the Stony Plain/Spruce Grove/Enoch RCMP would like to remind our young people and their families that participating in these types of activities could lead to criminal charges.

Having a youth criminal record may limit a person's travel and job options. Any criminal record may prevent a person from getting into another country, no matter how minor the offence. Although the police will not give any employer information about a youth record, employers can ask that a young person complete a criminal record check in order to prove that they do not have a record.

If you have any information about this matter, please contact the Stony Plain RCMP at 780-968-7267. If you want to remain anonymous, you can contact crime stoppers by phone at 1-800-222-8477 (TIPS), by internet at www.tipssubmit.com, or by SMS (www.crimestoppers.ab.ca for instructions). You do not have to reveal your identity to Crime Stoppers, and if you provide information to Crime Stoppers that leads to an arrest, the recovery of stolen property, and/or the seizure of illicit drugs, you may be eligible for a cash reward. Crime Stoppers does not subscribe to call display and the identity of the caller will remain anonymous.

All Precious JEWELLERS
"Your Spruce Grove Jewellery Store"
Goldsmith on Premises
 • Engraving • Clock & Watch Repairs
 • Jewellery Repairs • Custom Make-ups
 Jewellery Repairs Done On Site.
 Laser Welder Services Available.
 Toll Free: 1-877-962-4367
 PH: 780-960-4200 Fax: 780-960-4201
 Suite 102, 215 McLeod Avenue
 Spruce Grove, AB. T7X 0G2

L&B Tradition of Quality Service
 Water Services Ltd.
 Well & Pump Repairs
 Complete Pressure Systems
 Farm - Residential - Commercial
 Potable Water Cisterns
 BILL RIEDLINGER ERNIE BLEKER
 PH. 780-963-8134 OR 780-963-7749
 LBWATER@XPLORNET.COM

gold canyon
 Spring/Summer 2017
 Candles, Décor, Jewellery. Everything you need to sparkle!
 CALL ME TODAY TO BOOK YOUR PARTY
 JODI CAZAC • 780.995.6951

Miracle Weight Loss Capsule and Business Opportunity New to Canada
visi
100% Natural
Call now for a FREE sample!
780-907-8642

Community VOICE
Keeping You and Your Community Informed

PUBLISHED WEEKLY (Zone 1 & 2)
AND BIWEEKLY (Zone 3)

E.J. Lewchuck & Associates Ltd.

45C South Avenue
Box 3595
Spruce Grove, AB T7X 3A8

SALES
Elaine Lewchuck
Ashley Cazac

TELEPHONE:

Classifieds	962-9229
Advertising	962-9228
Fax	962-1021

E-MAIL:
sales@com-voice.com
news@com-voice.com

Seniors Tea at the Tipple Park Museum

Continued from Page 1

Never slurp or blow on your tea, delicately sip your tea holding it by the handle with your pinky finger down. Your milk goes in first, followed by the sugar- never put your sugar in first. Do not stir your tea, gently dip your spoon up and down in your tea. You may enjoy a mug of coffee, but tea is always properly served in a teacup. The process of enjoying your tea is

suppose to be as enjoyable as the tea itself. Perhaps that is why our country has so many coffee drinkers, we are too burdened with multi-tasking and getting things done.

In the spirit of the British and their penchant for tea, Tipple Park Museum is holding a tea for our Seniors on May 31st at 2:00 p.m. Any seniors wishing to attend this event are encouraged to sign up at the Lodge, Manor or at the museum. This is free

to attend and you will be served tea or coffee (for the hold-outs!) sandwiches and snacks. Come visit with our staff and each other and enjoy the afternoon. We want all of our neighbours to know we don't care if you don't place your napkin or pinky finger correctly, we just want you to come out and visit with us! Call Shayna Powell/ Museum Manager of Tipple Park Museum @ 780-727-2240 for details

LAWYER

PATRICK DOLPHIN

Evansburg
Office open Mondays
from 9:30A.M. to 4:00P.M. (except holidays)
4910 - 50 Avenue Evansburg
Phone: 780-727-2270
Serving Evansburg, Entwistle and area since 1994

Got Junk??

Our classified section makes it easy to sell without lifting a finger!

Call the Community Voice at 780-962-9229 To place your ad today!

ECO CONTRACTING SERVICES

ecofirst.ca

LANDSCAPING
EARTHWORKS
EROSION CONTROL
SHORELINE RESTORATION

Call or Text
RICHARD DEIB
780.217.3534
richard@ecofirst.ca

Serving The Community Since 1995

JOKE OF THE WEEK

A man walks into a bar and says, "Give me a beer before the problems start!" He drinks the beer and then orders another saying, "Give me a beer before the problems start!"

The bartender looks confused. This goes on for a while, and after the fifth beer the bartender is totally confused and asks the man "When are you going to pay for these beers?"

The man answers, "Now the problems start!"

Stony Plain Lions Club is hosting its 2ND Annual

pet valu WALK FOR DOG GUIDES

sponsored by PetValu

SUNDAY, May 28
at Lions Hidden Park in Stony Plain.
Enter through lane on 50 St. South of the Post Office or on 55 Ave.

Registration at 11:00AM, walk at 12:00PM.
Registration forms can be picked up at PetValu, Stony Plain.

Contact Tina 780-619-2691.

EVANSBURG RCMP INVESTIGATE DAMAGED COMMUNITY MAILBOXES

Submitted by Evansburg RCMP

Evansburg RCMP are currently investigating separate reports of mischief to rural community mailboxes.

On May 12, 2017 Evansburg RCMP were dispatched to a ru-

ral area in Yellowhead County where a community mailbox was vandalized on Township Road 552. On May 14, 2017 Evansburg RCMP investigated another report of a damaged community mailbox on Township Road 553. Residents' personal mail was missing and the mailboxes will

need to be replaced.

The investigation is ongoing and Evansburg RCMP would like to encourage residents to report suspicious persons and vehicles in their area.

Evansburg RCMP are requesting anyone with information regarding this incident to contact

them at 780-727-3654 or call your local police. If you want to remain anonymous, you can contact Crime Stoppers by phone at 1-800-222-8477 (TIPS), by internet at www.tipsubmit.com, or by SMS (check your local Crime Stoppers www.crimestoppers.ab.ca for instructions).

DRAYTON VALLEY RCMP WARN RESIDENTS TO LOCK VEHICLES

Submitted by Drayton Valley RCMP

Drayton Valley, Alberta - Drayton Valley RCMP received several complaints of Thefts of Motor Vehicles and Thefts from Motor Vehicles over the past month. They would like to remind residents to be vigilant in order to prevent vehicle thefts. Thieves are known as opportunistic offenders and tend to look for easy targets like unlocked and unattended vehicles. Leaving your unlocked vehicle running, leaving a spare key inside the vehicle and having valuables visible are all risks and could result in vehicle thefts and thefts from vehicles.

Thieves are searching residential neighbourhoods and parking lots looking for unlocked vehicles, vehicles left running and visible valuables. "Don't make yourself a victim" says Sgt. Erin Matthews of the Drayton Valley RCMP. "If you leave your vehicle unlocked and running, your chances of becoming a victim are increased as it only takes a few seconds for an opportunistic thief to jump in and drive away"

Drayton Valley RCMP would also like to remind the public to report any suspicious activities to the police.

If you have information pertaining to these crimes or any others, please call the Drayton Valley RCMP at 780-542-4457. If you wish to remain anonymous, you can contact Crime Stoppers by phone at 1-800-222-8477 (TIPS), or by internet at www.tipsubmit.com. You do not have to reveal your identity

to Crime Stoppers, and if you provide information to Crime Stoppers that leads to an arrest)

s), you may be eligible for a cash reward. Crime Stoppers does not subscribe to call display and

the identity of the caller will remain anonymous if requested.

**Lose up to 5 lbs or more in just 3 days!!
Yes It Really Works!!**

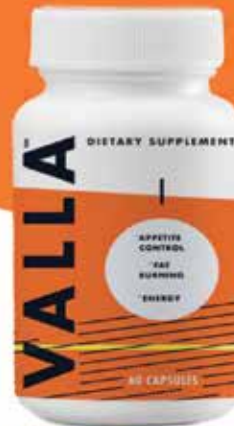
"I've lost 30 Pounds in 45 days - I've tried all kinds of products and so happy to find one that actually works!" - **Elaine Spruce Grove**

"I've lost 21 pounds in 7 weeks! I tried everything over the last 10 years and nothing worked - I kept gaining and got very depressed. Who'd of known that taking one little Miracle 100% Natural Pill a day would allow me to succeed!!" - **Penny M. Stony Plain**

"Down 36 lbs. in just 2 months. Even Dr. B's diet where I had to starve myself on 800 calories couldn't do this. This product is just totally awesome - just the total overall feeling good" - **Toni Spruce Grove**

"Have heard as much as 15lbs loss from the 3 day sample - it works that good! Have nothing to lose but the weight which I am doing" - **Donna Edmonton**

"I totally love this product for not only the weight loss but also the physical & mental well-being. I just feel much better!" - **P from Onoway**



**Miracle Weight Loss Capsule and
Business Opportunity New to Canada**

**100% Natural
Call now for a sample!
Call 780-907-8642
www.elaine-govisi.com**



RV PUB & GRILL
"WHERE FRIENDS MEET"

Hwy 31, Seba Beach, AB

**NEW MANAGEMENT
GREAT NEW MENU**

**COME JOIN
US ON THE
PATIO!** Ice Cold Drinks
always available

HAPPY HOUR
Daily from 3:00PM-6:00PM

OUR GRILL

Hours of Operation:		Thursday	8:00AM-8:00PM
Monday	8:00AM-8:00PM	Friday	8:00AM-10:00PM
Tuesday	closed	Saturday	8:00AM-10:00PM
Wednesday	8:00AM-8:00PM	Sunday	8:00AM-8:00PM

Open May 1 - September 30, 2017
Come enjoy great food & refreshing beverages



780-797-3100 **Kokanee SPRINGS** RV PARK

www.kokaneespringsrv.com
www.rvpubandgrill.com

RCMP BEATS

Submitted by Stony Plain/ Spruce Grove RCMP

Occurrences for the week of 8 May to 14 May, 2017.

Total Calls for Service Spruce Grove/Stony Plain/Enoch Detachment: 502

Total Calls for Service for the Victim Service Unit: 21

Individuals Charged: 31

Person Crimes: 59

Property Crimes: 76

Impaired Driving Complaints reported: 11

Impaired Driving Charges Laid: 1

Roadside Suspensions: 3

Motor Vehicle Collisions Attended: 30

Property Crimes:

Spruce Grove

1. May 12 - Area of Brantford Street - Theft from Vehicle, tools stolen

2. May 12 - Area of Aspenglen Drive - Theft from Vehicle, sunglasses stolen

Stony Plain

3. May 9 - Area of 43 Avenue and 33 Street - Theft from Vehicles, wallet stolen

4. May 9 - Area of Glenwood

Crescent - Theft of Vehicle, 1996 red Dodge Ram Rural

5. May 9 - Area of Sundance Road - Theft of Vehicle, 2002 grey Ford F350

6. May 10 - Area of Industrial Avenue, Onoway - Theft of Vehicle, 2002 grey Ford F250

7. May 12 - Area of Highway 16 and Highway 44 - Theft of RV, 1999 white Jayco 2730 fifth wheel

8. May 14 - Area of 2 Street, Yellowstone - Break and Enter to Garage, tools and saddle stolen

Stony Plain/Spruce Grove RCMP remind you not to make it easy for thieves. Remember to chain or lock your RV propane tanks and batteries to your RV.

The Spruce Grove / Stony Plain Drug Section Information Tip Line is 780-968-7212. Anyone with drug information is asked to call and leave a message. If you have information regarding any of these crimes, or any other crime, please call the RCMP At 780-962-2222 or 780-968-7267. You can also call Crime Stoppers at 1-800-222-8477 or text the keyword TIP205 & your Tip to CRIMES (274637)



Stylist, hair

6341 - Hairstylists and barbers

Hair A Risen Beauty Salon Stony Plain, AB

Job Posting Date: 2017-04-03
Advertised until: 2017-05-28

Job Details

- Vacancies: 2
- Job Start Date: as soon as possible
- Wage: \$17/Hour Piece work, Commission
- Hours: 40 to 44 Hours / Week
- Terms of Employment: Permanent, Full Time, Morning, Day, Evening, Weekend, Flexible hours

Skills

- Ability to Supervise 1 to 2 people
- Security & Safety: Bondable, Criminal record check
- Transportation/Travel Information: Own transportation
- Work Location Information: Urban area
- Work Site Environment: Odours, Non-smoking
- Marketed to: Veterans of the Canadian Armed Forces, Persons with disabilities, Indigenous Peoples

Work Conditions and Physical Capabilities: Fast-paced environment, Repetitive tasks, Manual dexterity, Attention to detail, Hand-eye co-ordination, Standing for extended periods

Person Sustainability: Excellent oral communication, Reliability, Flexibility, Team Player, Effective interpersonal skills, Client focus, Judgement, Dependability

Additional Skills: Book appointments, Shampoo customers' hair, Supervise other hair stylists & other staff, supervise apprentices/students in training, perform receptionist duties, maintain & order supplies

Barber Specific Skills: Cut and trim hair according to client's instructions or preferences, shave and trim beards and mustaches, provide other hair treatment, such as waving, straightening and tinting and also provide scalp conditioning massages

Hair Colouring Techniques: Bleach, Dye/tints, Frosting, Streaking/highlights

Hair Styling Techniques: Blow drying, Hair braiding, Iron waving/curling, Permanents, Relaxing, Spiking, Pin Curls, Roller setting

Hairstylist Specific Skills: Cut, trim, taper, curl, wave, perm and style hair. Suggest hair style compatible with client's physical features or determine style from clients instructions and preferences. Analyze hair and scalp condition and provide basic treatment or advice on beauty care treatments for scalp and hair, clean and style wigs and hair pieces, apply bleach, tints, dyes or rinses to colour, frost or streak hair

Education: Other trades certificate or diploma, or equivalent experience

Experience: 5 years or more **Languages:** English

Job Location: 4301 South Park Drive, Stony Plain, Alberta T7Z 1L1
Work Setting: Barbershop or hairstyling salon/studio

How to apply

In person: 4301 South Park Drive
Stony Plain, Alberta T7Z 1L1
from 09:00 to 17:00

By telephone: 780-963-6246
from 09:00 to 17:00

By email: dwobrigewitch@live.com



Smarter mortgages to help move you ahead.

Whether you're a first-time home buyer, upgrading your home or reinvesting your home equity for retirement, talk to us for expert mortgage advice to help get you ahead.

Learn more at:
servus.ca/mortgages



Save | Spend | Borrow | Plan

Feel good about your ^{home} money.

The Servus logo and the Servus Circle device are trademarked properties of Servus Credit Union Ltd.

SPONSORED BY SERVUS CREDIT UNION

BE MORTGAGE-FREE FASTER

Is one of your primary financial goals to own your home free and clear? If so, we have strategies to help you become mortgage-free faster.

Shorten your mortgage with these Servus payment options:

PROFIT SHARE

Use the Profit Share you receive each year and apply it to your mortgage.

MAKE A LARGER DOWN PAYMENT

Don't borrow as much money in the first place and you'll have that mortgage paid off sooner.

INCREASE YOUR PAYMENT FREQUENCY

By making weekly or bi-weekly mortgage payments and paying more towards your principal,

you will save thousands of dollars in interest and shorten the amount of time it takes to pay off your mortgage.

INCREASE YOUR PAYMENT AMOUNT

If your mortgage has an option to increase your payment amount, and you can afford it, boost your payments a little.

MAKE LUMP SUM PAYMENTS

If you have an open mortgage you can pay money towards your principal any time. If you have a closed mortgage you may have the option to make annual lump sum payments. You can also make a lump sum payment when your mortgage term comes up for renewal, before your new term comes into effect.

SELECT A SHORTER AMORTIZATION PERIOD

Decide how much you can afford each month. If you can afford higher mortgage payments then select a shorter amortization and save thousands of dollars in interest.

You don't need to make these decisions alone. Our financial advisors can help you decide how best to meet your financial goals.

Contact us by email at contact_us@servus.ca, by phone at 1.877.378.8728 or by visiting your local Servus Credit Union branch.



Drayton Valley 4-H Beef Show & Sale

MAY 29, 2017 Show @ 9:00AM
 Drayton Valley Omniplex Supper @ 5:00PM

Parade of Champions @ 6:30PM
 Sale @ 7:00PM



For more information, call:

Interclub President

Ken Rogers 780-621-8445

Lin-Berry-Buck 4-H Beef Club

Chantelle Holmgren 780-514-0556 or
 Jeff Bundt 780-202-0315

Two Rivers 4-H Beef Club

Melanie Calvert 780-514-4026

Lobstick 4-H Beef & Multi Club

Jackie Blahun 780-727-2541

Want to Join 4-H?

You Don't have to live on a farm to join!!



CANADA
4-H Alberta

In 4-H, youth run the show. 4-H clubs typically meet once a month as a large group, where youth of all ages take on different leadership roles to make decisions and plan events. Clubs organize fun outings, achievement days and fundraisers, and participate in various activities within their communities. Just give us a call.

The Following Businesses Celebrate

Drayton Valley 4-H Beef Show & Sale

Tipple Park Super A Foods 727-3740	Entwistle Concrete 727-3525	Evansburg Inn 727-3621	Carlson Roberts Seely -Chartered Accountants 727-4469	Kokanee Springs RV Park & Driving Range 797-3058
Bloom & Bliss -Flower / Coffee Shop 727-3996	Tri-Lakes Services Ltd. 727-3939	Evansburg Family Clothing 727-3526	Hull Contracting Ltd. 904-1042	The Dog Ranch 727-2652
Entwistle Food Market 727-3686	Pineridge Golf Resort 1-877-321-SEBA	Buckskin Construction Ltd. 797-3980	Roxanne MacDonald -CGA 727-2017	Derby's Lakeview General Store 797-3838
Evansburg Legion Br# 196 727-3879	Tomahawk Race Trac Gas 339-2575	Roszkowski Farm Equipment Ltd. www.roszko.com 786-2105	Evansburg Family Foods 727-4118	Har-de Agri Services Inc. 727-2806
Rustic Ridge Ranch 727-2042	Royal Bank -Evansburg 727-3566	Wild Ventures Contracting 728-5702	Lobstick River Foods 2014 Ltd. 325-3834	Murd's Plumbing & Heating Ltd. 712-3630



The Following Businesses Celebrate

Drayton Valley 4-H Beef Show & Sale

D & L Rehn
Contracting
Ltd.

325-2013

U.F.A.
-Wildwood

325-3866

A Special
Touch
/ Sears

325-2523

P & E
Ventures Inc.
(Skidster
Services)

727-2721

Village
of Breton

696-3636

Merrick's
Mobile Meats

587-773-5692
721-9049

Breton
Dental Clinic
-Dr. Hambleton

696-3434

Breton
IDA
Pharmacy

696-3594

Alsike
Corner Gas

696-2399

Big Tee
Golf Resort

www.bigteegolfresort.com
696-3883

Apex
Monarch Inc.


696-2000

Hill 'n' Dale
Insurance Ltd.

696-3575

Darren
Scott
Accounting

696-3800

Breton
Esso

696-2275

Town of
Drayton Valley


DRAYTON VALLEY
514-2200

Lubers
Express Oil
Change Ltd.

542-6880

DV Home
Hardware
& Building
Center

542-9663

Country
Haven
Kennels

621-1631

Valley
Concrete
(2003) Inc.

542-5488

Big West
Dodge

542-4488

Carol
Lapointe
Professional
Services Ltd.

542-1571

TEAM
AUCTIONS

Secure Auctions Since 1966
www.teamauctions.com
542-4337

River
Valley
Contractors
(Sand & Gravel)

898-8085

Drayton
Valley Auto
Parts / NAPA

542-6881

Rocky Auto
& Diesel
Repair Ltd.

www.rockyautoelectric.com
542-4951

SASQUATCH SIGHTINGS INCREASE ON YELLOWHEAD COUNTY RIVERS!

Submitted by **Stefan Felsing, Communications Coordinator | Yellowhead County**

(May 16, 2017) – Just in time for the May long-weekend, and in anticipation of all the summer outdoor activities that people are planning for this year, several new Sasquatch “Welcome to our Backyard” river signs were installed at key locations along popular river launches in Yellowhead County. The signs list tips aimed to help keep anyone venturing onto the rivers safer and better informed.

Over the past several years Yellowhead County Fire Department has rescued tubers on both these and other rivers in Yellowhead County. While a route on a map may be misleading as to the actual distance and time needed to travel a planned

course, having a reminder that geographic distances are often longer than expected is important before starting off. The time needed to get from a drop-off spot along the river to the intended final destination may take much longer than people anticipate.

The signs, located on the Pembina River and the McLeod River, alert explorers to the potential consequences when using these rivers for activities such as canoeing and tubing. It also reminds people to respect the area they’re travelling

through regarding private property and the environment. While most of the signs are located in the County, the Town of Edson has allowed for the placement of a Sasquatch sign in Wilmore Park – a very popular put-in spot on the McLeod River.

The signs also act as a rescue assistance tool. Each sign is numbered, and anyone needing help on the river can reference the last numerical sign they saw if they need to call 9-1-1 for help. That number will give first responders a better idea of where they are stranded on the river

and help to reduce the time for first responders to locate the source of the distress call.

The Sasquatch campaign is part of a partnership with several other Eastern Slopes counties in Alberta that are working together to remind people to reduce their environmental footprint when participating in recreational activities in our natural areas and is aimed at all outdoor recreational users. The Sasquatch river signage campaign is a Yellowhead County Protective Services specific initiative.



FREE LOCAL CLASSIFIED ADS

Real Estate, Rentals, Vehicles, Pets, Jobs, Service Directory, Buy/Sell/Trade, Lawn & Garden, Garage Sales, Events, Local Places & Much More... Advertise for **FREE** Today!



Follow Us



WILDWOOD AG SOCIETY ACTIVITIES

Submitted by Carol Riehl

Mary, Mary quite contrary, how is your garden growing?? I do hope you have some seeds planted – I don't. That's Okay; this crazy weather hasn't put a damper on the planning of the Wildwood Annual Fair. There are a lot of attractions already booked and many more pending confirmations. There will be many things to see and do.

Other activities have been

keeping our enthusiastic volunteers busy as well. The ATV Safety Course that was hosted by the Agricultural Society was a great success. A design was chosen for the memorial plaque honoring Jodi Anderson. Watch for it's posting on the Quonset building.

Some of our members attended the Volunteer Appreciation Gala in Edson hosted by the Yellowhead County. What a great meal, great gifts, great

Emcee, great entertainment – I guess the whole event was great. Thank you Yellowhead County for showing appreciation to our community volunteers.

Also, the society has made some plans for our Annual Awards night which will be held on October 18th, 2017 at the Wildwood Community Hall. The evening will start off with a supper, followed by the awards which will be followed by some entertainment. Pre-registration if required for supper, so please consider your attendance.

There were 14 design submissions for the Fair Book cover and the design by Emma Giezen was chosen. The planning of a June Gymkhana has been postponed until the fall. Well, somewhere someone as predicted the long range forecast is for a beautiful summer, so look at the fair book and start planning what you will have to enter in the Annual Fair. Until the next news update, happy gardening and have a lot of fun playing in the mud—oh sorry, I mean dirt.

Family run, local business, we care!

BEST CISTERN

SEPTIC SOLUTIONS

Cistern and Septic Inspection, Cleaning and Repair!

Septic planning, design, installation by government certified installer(s)

New Installs Available. Reasonable Rates.

Let Us Handle the Dirty Work

780-668-4306

best-cistern-septic-solutions.com



A BRIEF HISTORY OF THE DARWELL CEMETERY

Submitted by E. Richardson

In late 1939 or early 1940, a son was born to Mr. and Mrs. Lysle McDonald of Darwell. Unfortunately, the baby did not

live. As there was no cemetery in Darwell, the child had to be buried in the Rexboro cemetery. That is when Mr. McDonald decided that should be remedied.

Continued on Page 11

GROVE HEARING CLINIC

960-2960

1-866-960-2960

Hear what
you've been
missing...

Senior
Discounts



Full
Service &
Repair

Full
Hearing
Assessments

HOURS OF OPERATION: 9am – 5pm Weekdays

3rd party billing (AADL, WCB, DVA, FCH) • Personal 0% Financing if Needed

For The Latest Technology In Hearing Aids & Assisted Living Device Stop By & See Dawn

#220-70 McLeod Ave - Westland Market Mall, Spruce Grove

RCMP INVESTIGATE THREATS AT SPRUCE GROVE COMPOSITE HIGH SCHOOL

Submitted by Spruce Grove / Stony Plain / Enoch RCMP

For Immediate Release

Spruce Grove / Stony Plain / Enoch RCMP investigate threats at Spruce Grove Composite High School

Spruce Grove, Alberta – At 8:56 a.m. on May 10, 2017 the

RCMP responded to a complaint that a student at the high school had sent a Snap Chat photo / message relaying threats to carry out an act of violence at the school.

The school staff took immediate action and safely secured the student prior to the arrival of the RCMP. The student was arrested without incident and

taken into police custody. From the onset of the receipt of the threats and the prompt follow up, no students or staff were in any danger.

The RCMP can confirm that the threats involved the presentation of an air soft gun in the photo.

The student involved is facing criminal code charges in relation

to these threats.

No further information will be provided in relation to the student's identity as per the Youth Criminal Justice Act.

The RCMP continue to have a strong relationship with the staff and administration of the Spruce Grove Composite High School.

A Brief History of the Darwell Cemetery

Continued From Page 10

He donated an acre of land for this purpose. It was fenced and kept as best it could with little available for that job.

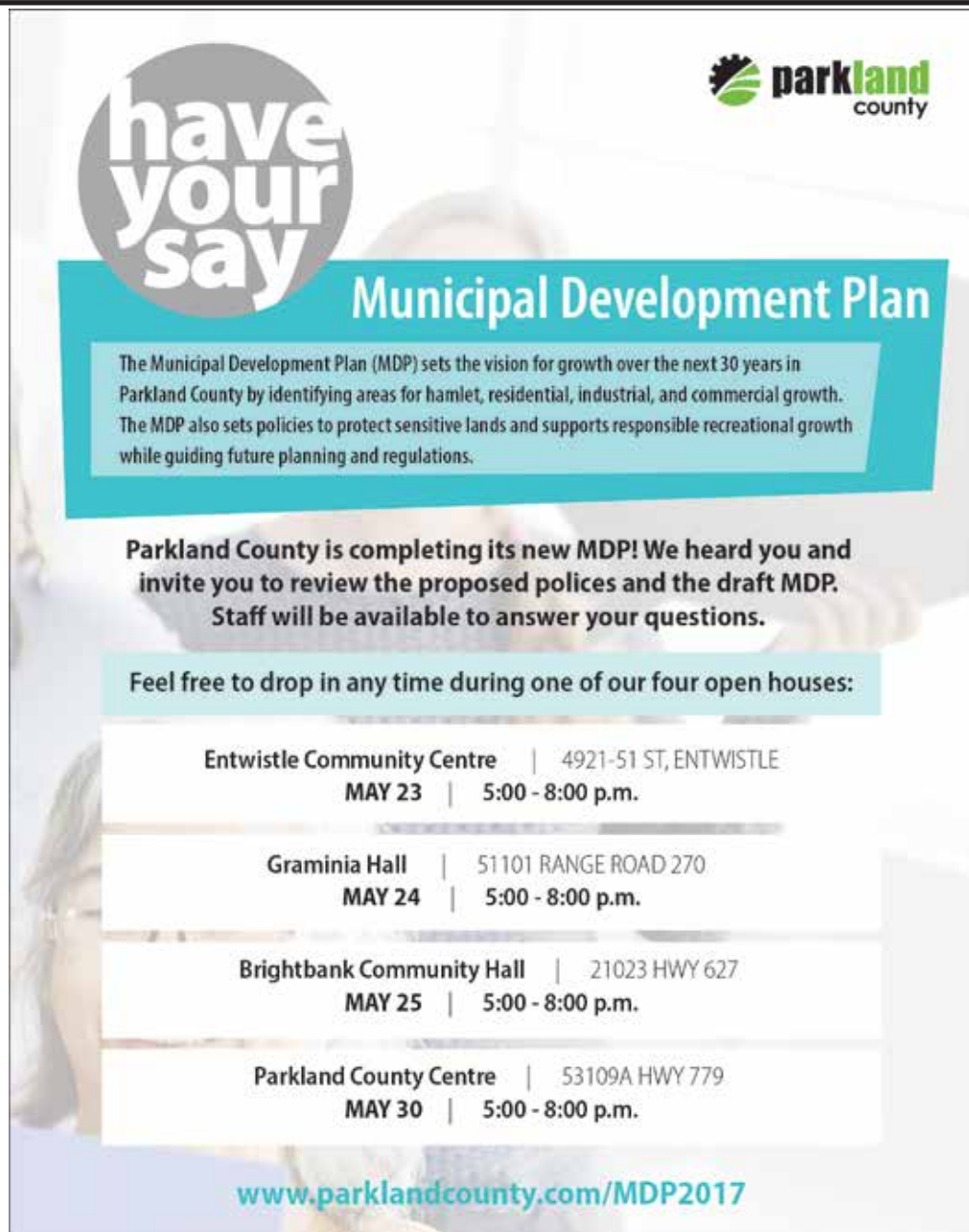
When the Darwell Women's Institute was formed in 1945, they took on the job of seeing that the cemetery was cleaned up once a year. They advertised the day when it was to be done. People came and helped by raking and trimming to make it look cared for.

The job of advertising clean up day is still done by the Women's Institute, and many people come and help. We are very fortunate that Kathy Yeoman looks after the cemetery all summer, and it always looks trim and neat. We have been told many times that our cemetery is the best kept cemetery around.

There have been many people who have done more than their share of keeping all aspects of the in order.

There used to be no charge for plots, but now it has become necessary to charge for them. The Lac Ste. Anne County purchased an acre of land next to the original cemetery, as it was getting crowded. In the original place there was no restriction on headstones etc. but in the new part headstones must be flat.

The Cemetery Clean up this year will be May 27, 2017 from 10 to 12 am if it rains we will try again on June 3/2017.



have your say

parkland county

Municipal Development Plan

The Municipal Development Plan (MDP) sets the vision for growth over the next 30 years in Parkland County by identifying areas for hamlet, residential, industrial, and commercial growth. The MDP also sets policies to protect sensitive lands and supports responsible recreational growth while guiding future planning and regulations.

Parkland County is completing its new MDP! We heard you and invite you to review the proposed policies and the draft MDP. Staff will be available to answer your questions.

Feel free to drop in any time during one of our four open houses:

Entwistle Community Centre	4921-51 ST, ENTWISTLE
MAY 23	5:00 - 8:00 p.m.
Graminia Hall	51101 RANGE ROAD 270
MAY 24	5:00 - 8:00 p.m.
Brightbank Community Hall	21023 HWY 627
MAY 25	5:00 - 8:00 p.m.
Parkland County Centre	53109A HWY 779
MAY 30	5:00 - 8:00 p.m.

www.parklandcounty.com/MDP2017

GOLFER'S GUIDE

HELP KIDS LEARN THE GAME OF GOLF

Adults who play golf know just how fun and frustrating the game can be. Whether you're a veteran golfer or someone just learning the links, golf can be challenging.

But as exacting as the game can be, it also can be just as rewarding, even for kids. Children who embrace the game of golf will learn a host of lessons they can apply in all facets of life. A humbling game even for professional golfers, golf can teach kids lessons in humility and the value of persistence even when things aren't going your way.

Golf is also a great way for parents to get kids off the couch and outdoors for some fun in the sun. Instead of spending summer afternoons in front of the television, kids who play golf are out patrolling pristine golf courses while getting some cardiovascular exercise along the way. Golf can also strengthen a child's hand-eye coordination, which can help them in other activities, including many different sports.

Though many people do not begin playing golf until they've reached adulthood, it's never too early for boys and girls to

start learning the game of golf. Parents of preschoolers can start their kids off with a toddler play set. Though it's just a toy, a play set can help lay a solid foundation for future golfers. Kids who have watched Mom and Dad play golf or practice their swing can develop their own swings on their play set.

As kids approach school age, don't overlook the nearby putt-putt or miniature golf range as a valuable teaching tool. Miniature golf clubs are small enough for many children to use comfortably, and kids can use miniature golf courses as a place to put any lessons or advice on putting to good use. What's more, a miniature golf course is more than just golf, with creative courses and other fun activities, so kids won't feel overwhelmed with golf.

When kids move on from preschool to elementary school, some might want to tag along with Mom or Dad to the driving range. You should try to avoid overwhelming kids with too much instruction or information. Instead, keep things as simple as

possible, teaching them the basic swing and encouraging them no matter how quickly they adapt.

As kids enter middle school and approach high school, those who are enjoying the game of golf can take advantage of the driving range if they haven't already begun to. A driving range typically has markers that indicate the distance of a regular hole, regardless of which tee you will play from on an actual golf course. Kids can aim for holes at shorter distances to learn how far their drives are going. You can then adjust the lessons you teach your children based on how far youngsters can drive the ball.

As a child gets closer to high school, you might want to buy the child his or her own set of clubs. Look for inexpensive clubs (oftentimes, thrift stores or other secondhand retailers have clubs for sale) because growing children will eventually grow out of their first set of clubs. When your child finds a set of clubs that suits him or her, teach the proper way to swing and consider signing up your son or daughter for lessons. Those first few lessons can prove invaluable, turning a pastime into a passion kids will carry with them throughout their lives.

Calahoo Hills Golf Course

- 9 Holes
- Grass Greens
- BBQ Facilities
- Licensed Clubhouse

459-9081

Map showing location relative to Hwy 16, Hwy 779, Hwy 544, Hwy 127, and Hwy 280. Distances: 13.8KM, 5.0KM, 1.6KM, 4.8KM.

SILVER SANDS GOLF RESORT

18 Hole Golf Course

Parkland's hidden gem of a golf course; located 45 minutes west of Edmonton on highway 16. Book your company tournament today - we have special rates for weekdays. Call 780-797-2683. Check silversandsgolfresort.com for weekly specials. Join us for Men's night on Wednesday's and Ladies night on Thursday's both 6:00 pm shogun start

SILVER SANDS GOLF RESORT

Silver Sands Village, Lake Isle | silversandsgolfresort.com | 1-877-797-2683

KEEPING YOU AND YOUR COMMUNITY INFORMED!

GOLFER'S GUIDE

DRIVE HOME A WINNING GOLF TOURNAMENT

(NC) The arrival of warmer weather has many Canadians dreaming of the hitting the local golf course. It is also the time that many companies, organizations, charities and other groups start planning their golf tournaments.

Hosting a golf tournament is a great way to entertain customers, thank employees or raise funds for your group. While there are many details to arrange, organizing such an event doesn't have to be distressing.

Experts recommend that you cover the basics first. Picking the right date and a course that is suitable for your group is the first priority. The earlier you do this the better as you will get a wider selection of dates and courses.

Ensuring your guests are well

fed and hydrated out on the course should be another priority. In the heat of summer, a good supply food and non-alcoholic beverages will ensure your participants enjoy a healthy and safe round.

What about prizes? The excitement of winning something is always a big draw, so hit up local businesses, suppliers, business partners and friends for prize donations.

To take your tournament to the next level, you could offer hole-in-one prizes such as a car, boat, trips or cash. "Adding big prizes to your golf tournament doesn't have to be an expensive or worrisome endeavour," says Andrea Martin, Senior Underwriting Manager, Wayfarer Insurance. "You can get insurance coverage that will pay for the prize in the event that a golfer hits an

ace."

One of the biggest tips is speak to the professionals at the golf course where you book your tournament. Often courses will have staff to as-

sist you, or at least literature that will help you plan a successful event.

www.newscanada.com


Alberta Beach
 GOLF RESORT

WEEKDAY SPECIAL

4 Golfers + 2 Carts Great for Weekday Tournaments			
\$140.00 (\$35 each) Monday thru Thursday (excluding holiday Mondays)			
18 Holes	\$33.00 Weekdays	\$48.00 Weekends	
9 Holes	\$20.00 Weekdays	\$37.00 Weekends	
Cart Rental	\$18.00 9 Holes	\$28.00 18 Holes	

To Book your Tee Times or Tournaments
Call: (780) 924-GOLF (4653)





Seba Beach, AB
DRIVING RANGE

- 15 bay driving range
- Baskets & crates
- Public washrooms
- Club rentals
- Open 10am -8pm daily

780-797-3058




STAY AFTER YOUR GAME TO ENJOY

RV PUB & GRILL
 "WHERE FRIENDS MEET"

www.kokaneespringsrv.com
 Hwy 31, Seba Beach, AB | 780-797-3100





Golf Special

GOLF & CART
 Per Golfer & Senior Price 60+

27 Monday-Thursday **23**
 Excludes holiday Mondays

Book online pineridgegolfresort.com
 or call 780-797-GOLF





Lawn & Garden

DESIGN A GARDEN FOR ALL SENSES

Gardens add visual appeal to a yard, but gardens also can appeal to individuals' senses of smell, taste, touch, and sound. Gardeners who want to create gardens that appeal to various senses can do so in the following ways.

Sight

Aesthetic appeal is one of the most sought-after benefits of gardening. However, many homeowners put in so much effort planting for one particular season that they may not give thought to ensuring the garden looks vibrant no matter the time of year.

Gardeners can research planting zones to find plants that will blossom at different times of the year so they can enjoy impressive, aesthetically appealing gardens year-round. Spring bulbs

can bloom early on, while annual and perennial summer favorites will thrive under the summer sun. Beautyberry and caryopteris will fill out in the autumn, while holly or mahonia can look lovely in the winter.

Smell

Gardeners can dot their landscapes with aromatic trees, shrubs and flowers that will make stepping out into the garden that much more special. Some of the more fragrant plants include gardenia, dianthus, calendula, lavender, and jasmine. Shrubs such as fragrant pineapple broom, Anne Russell viburnum and Christmas box can add fragrance as well.

Sound

The lively sounds of the garden are created by the wildlife

that come to pollinate and enjoy the environment gardeners have created. By choosing indigenous plants, gardeners can be sure that insects and small critters will seek refuge within the foliage.

Songbirds also will add character to a yard. The Audubon Society suggests including a water source and a songbird border of shrubs along your property's edge. Provide food sources and make sure they are located a fair distance from the main action of the yard so as not to scare off birds. Wait for musical chickadees, goldfinches, orioles, and cardinals to arrive and enjoy the accommodations.

Taste

Gardeners can expand their gardens to include fruit-bearing trees and rows of vegetables.

Produce can be harvested from early spring through late fall depending on the crops planted.

Touch

Apart from including trees and shrubs of various textures in the garden, look for other ways to stimulate a tactile response. Water features add relaxing sound and beauty. Stones, moss, mulch, and other accents have varied textures that can stimulate the sense of touch in various ways. Don't forget to include a sitting area so that you can immerse yourself fully in the garden.

Go beyond visual appeal when designing a garden. When gardeners tap into all five senses, they can enjoy their landscapes even more than they already do.

STONY PLAIN NURSERY & GARDEN CENTRE

Hanging Baskets lower cost!

Bedding Plants • Fruit Trees

AVAILABLE NOW:

Strawberries, Raspberries, Cherries, Blueberries, Haskaps.

Hope to See you Soon!

Specializing in Northern Hardy Plants

968-0542
1020 Hwy 16
www.stonyplainnursery.ca

Hours:
Mon. to Fri.: 10am - 7pm
Sat.: 10am - 6pm
Sun.: 12pm - 5pm

now open!

Greenthumb Greenhouse

Hanging Baskets, Bedding Plants, Tomatoes, Annuals, Perennials, Trees, Vegetable Plants, Vegetable Seeds

Mother's Day Draw for a Hanging Basket

10:00am-6:00pm - 7 days a week
Evansburg, Alta 727-2824

MCLEOD Home building centre

Let us load you at the largest Lumber Yard in Parkland County

962-2575
Call Toll Free: 1-800-343-2988
35 South Ave, Spruce Grove

- Renovation & new build experts • Superior quality lumber
- Complete home packages • 3D Estimating Program
- Engineered roofs & floors • Farm Buildings • Garage packages
- Windows & doors • Custom decks & fence packages
- Flooring & kitchens • Bathrooms • Ceramic Tiles
- Concrete & landscaping • Electrical supplies
- Fasteners • Woodstoves

Service • Selection • Advice • Special Orders • Delivery

Lawn & Garden

HOW TO KEEP ANIMALS OUT OF YOUR GARDEN

Many gardeners understand the frustration that stems from seeing a garden destroyed by wildlife. While protecting wildlife is a cause that's near and dear to many gardening enthusiasts, even the most ardent wildlife supporter does not want to see his or her garden trampled, eaten or adversely affected by animals.

Safeguarding gardens from local wildlife can require some trial and error. Animals may find ways to circumvent gardeners' initial efforts to protect their gardens, but the following methods might just do the trick the first time around.

- Erect physical barriers around gardens. Barriers may not be gardeners' first choices, as some people feel barriers such

as wire cages or mesh coverings make it more difficult to tend to gardens and rob gardens of some of their aesthetic appeal. But coverings and wire cages can effectively prevent wildlife from trampling or eating plants while still allowing the gardens to get adequate sunlight. Make sure barriers extend to the ground so animals cannot access gardens by entering beneath the barricades.

- Fight intruders with odor. Stray cats may mistake gardens for litter boxes and enter them to relieve themselves. Preventing such intrusions can be as simple as placing items around the garden to reduce the likelihood that gardens will be mistaken for litter boxes. Peels from oranges and lemons or

coffee grounds can be placed in the garden and can emit odors strong enough to deter cats.

- Install motion detecting lights around gardens. Motion detection technology might be enough to deter nocturnal wildlife from trampling or eating gardens. Animals might be spooked and run away when lights suddenly turn on. A similar approach can be taken using noise instead of lights. Gardeners who hope to avoid erecting barriers around their gardens can put up posts instead, attaching aluminum cans or wind chimes to the posts that will make noise when animals come near. Much like light, noise can be enough to deter animals.

- Consider raised garden beds. When small critters,

such as moles, are the main problem, then raised garden beds with wood or plastic bottoms and sides can be enough to safeguard gardens. Raised garden beds might not be accessible to small critters, though such beds likely won't deter larger animals from getting into gardens that are not barricaded.

- Erect fencing around the yard. Though fencing is expensive, fencing in a backyard or side yard where gardens are located can deter wildlife big and small from trampling or eating gardens.

Wildlife is worth protecting, but gardeners must also take steps to protect their gardens from animals looking for something to eat.

LIMB WALKERS TREE CARE LTD.

Joseph Groshok
Owner/Operator
780-203-4705
limb.walkers@hotmail.com

PROFESSIONAL ARBORIST • I.V.M.A.A.
RESIDENTIAL & COMMERCIAL • FULLY INSURED

Specializing In:

- Professional Climber
- Pruning & Proper Pruning Techniques
- Hazardous Tree Assessment & Removal
- Rigging
- Storm Damage
- Land Clearing
- Chipping
- Hedge & Shrub Trimming
- Cabling & Bracing

RYLEX

CONTRACTING

For all the hard to reach places!



Conveyer Trucks, Sand, Gravel & Top Soil

CALL 780-818-9669



E.A. LANDSCAPE SUPPLY

- Black Dirt • Garden Mix
- Gravel • Rocks

OPEN 6 DAYS/WEEK - CLOSED SUNDAYS

780-267-0914
Corner of Century Road
& Diamond Avenue, Spruce Grove



Home hardware

building centre

Drayton Valley
542-4044
ON US: 1-888-542-9663

Check us out for all your Gardening Supplies



4221 - 50 Street Drayton Valley

JOINT COMMUNITY SERVICES STRATEGIC PLANS REACHES HALF WAY POINT

Submitted by Stefan Felsing, Communications Coordinator | Yellowhead County

The Community Services Strategic Plan project undertaken by the Town of Edson and Yellowhead County has reached its mid-point.

Project sponsors Christopher Read and Jim Desautels report that the response to the public engagement process has been strong. 789 households responded to the survey, available online from both municipi-

pal websites and paper-based copies completed at Open Houses and the Edson Trade show. Early analysis shows that respondents represented a broad geographic spectrum. This represents 554 households from Edson, 226 from the County, and 9 from outside the two municipalities or unidentifiable.

In addition, a number of focus group meetings were held with participants including key stakeholders (e.g. library, arts and culture, recreation, and museum/archives),

and staff members. Telephone interviews were conducted with 15 representatives of community services partners, such as schools, industry, social services, and business.

Written submissions were received from six organizations.

The consultant team from WMC, Edmonton is currently analyzing the data gathered to determine outcomes in a number of key areas. These include reported usage rates for facilities and programs; the number of households that use

each facility; patterns of usage; demographics of participants etc.; and suggested areas for investment.

An Open House has been scheduled for May 31st, 6 p.m. – 8 p.m. in the Galloway Station Museum to gather final input for the project, as well as share the early results of the analysis.

The final report containing recommendations will be presented to the two municipal councils in September 2017.

LAKEWELL 4H CLUB UPDATE

Submitted by Terri Stark

Many Thanks! Our 4H year is coming to an end in the next few weeks and we are busy getting our animals ready for achievement days and our record book completed to hand in. We have purchased shirts for our members for upcoming achievement days and for Focus in July. Thank you to the Darwell Ag Society and to the DDRA for

your donations towards this large purchase. We appreciate your generosity.

Upcoming Events

May 27 -Tire Recycling - if you have tires without rims you would like us to pick up, please contact Jean Henderson. 780 242 2486

June 5 - Beef Show and Sale

June 17 - Achievement Day

Past Events

Lac St Anne Banquet - April 5 - we hosted the silent auction at this

event and it went very well. We would like to Thank the following people and businesses for their generous donations:

- Aren Skogstad, County Lac Ste Anne
- Blakeman Drilling
- Shop 76, Dale Peck
- Fortis
- Ken Crozier
- Onoway Feed and Seed
- Robyn Richardson
- Sandra Scherger

- SANG
- Sherry Seymour
- Smithfield Feed and Tack
- Wild Willow Enterprises
- and our Lakewell 4H Families

Thank you to the Darwell Ag Society for allowing us to help out at your Volunteer Appreciation night on April 29th. It was a great event.

Check us out on facebook - Lakewell Multi 4-h Club. Check out our 4H link on www.darwellag.com

80 ACRE OASIS



Complete with 1 acre trout filled pond



-Well loved, beautiful upgrades

- Deck, fire pit area, oversize garage, 38x55 quonset

-Come & see this lovely property, 10 minutes SW of Evansburg near the Pembina River, 45 minutes from Stony Plain/Spruce Grove area.

-For more information check out

"For Sale by Owner" or "Kijiji Ad" #1175643031

Or call Rob @ 780-621-6768, "You Can't LOSE On This PROPERTY!"

LA LAW

BUYING OR SELLING A HOME?

For a Timely, Effective
Closing at
Competitive Prices

Call for your
personalized quote.

Larry D. Ayers, B. Sc., LL. B.

962-9500

Suite 200 A (upstairs) 215 McLeod Avenue, Spruce Grove AB



WESLAND MODULAR HOMES

Locally Owned and Operated since 1997

Proudly Serving Central and Northern Alberta!

Prices Starting at \$120 per square foot!!

We are now doing ICF Foundations, Decks and Garages!!

www.weslandmodular.com

Office: 780.727.3735

Toll Free: 1.877.727.3224

lucas@weslandmodular.com

Redeem this Coupon
for \$500 off the Price
of Your Next Home!!

(Some restrictions apply; ask for details)

"Quality Custom Modular Homes at an Affordable Price!"

Classified Ads - Call 962-9228

Classified Policy

CLASSIFIED RATES INCLUDE GST. 1st 20 Words: First Insertion = \$6.00; Subsequent insertion = \$3.00 each. Each additional word is 20 cents per word, per insertion. Ads must be paid in advance either by cheque, cash, Visa or Mastercard. No Refunds Allowed on Classified Ads. DEADLINE: is Thurs. 4:00 pm (Wed. 4:00 pm on long weekends). Classified ads may be called in to the COMMUNITY VOICE office at (780) 962-9228, emailed to: classifieds@com-voice.com, dropped off at Onoway Registries, or mailed with your ad and payment to: COMMUNITY VOICE, BAG 3595, SPRUCE GROVE, AB T7X 3A8. Ads may also be placed on the web at www.com-voice.com/classified.htm

Hall Rentals

Bright Bank Hall, 780-968-6813

Camp Encounter, Vincent Mireau - Camp Director. director@campencounter.com. C: 780-504-2012 W: 780-967-2548

Darwell Hall, 780-721-2690

Darwell Seniors, 892-2457

Duffield Hall, 892-2425 or 963-6887

Entwistle Community Hall, Contact Cheryl: 780-515-1755 or Verna: 780-716-2304.

Entwistle Senior's Drop In Centre, Barb 727-2108 or Glennis 727-4367 Mon-Fri

Evansburg Senior's Heritage House, Dennis 727-4186

Evansburg Legion, upper hall 250 people, lower hall 80-100 people, 727-3879

Fallis Community Hall, 892-3150

Gunn Hall (G.A.R.S.) 780-967-2215

Keephills Hall, 731-3761

Lake Isle Hall, 892-2481

Lake Romeo PeaVine Hall, 785-2700

Magnolia Hall, 727-2015

Manley Goodwill Community Hall, 963-9165 or 916-0146

Mayerthorpe Diamond Centre, 786-4044

Moon Lake Community Hall, Nikki Berg 780-898-1390

Park Court Hall, call or text Karyn 780-712-3918

Parkland Village Community Centre, 780-298-9155 @PVCCentre

Rich Valley Community Hall, 967-3696 or 967-5710

Rosenthal Community Hall, 963-7984

Seba Beach Heritage Pavilion, 797-3863

Smithfield Community Hall, 892-2390

Tomahawk & Dist Agra Center, 898-3443

Wabamun Jubilee Hall, 892-2699.

Wildwood Community Hall, 325-2692 or 325-3749

Wildwood Rec Complex 325-2077 or 514-8944

Wildwood Senior's Hall, 325-2030

Garage Sales

2 DAY GARAGE SALE for Senior Center in Entwistle. June 3rd & 4th.

Table Rentals \$20, Table setup the night before. Tailgate parking. Call Dan for more info 780-982-0353 (3) 16-05

Business Opportunities

JOIN THE GOLD CANYON TEAM! Your Gold Canyon Business puts you on the path to success on your own terms! LOOKING TO HOST A CANDLE PARTY? EXCELLENT REWARDS!! Call Independent

Demonstrator Jodi Cazac at 780-995-6951 for more info, or go to www.mycg.com/jcazac (S) OG

Cleaning

Ceiling & Wall Cleaning. Stipple, wood, all types. Ceramic Tile Cleaning. Cig. smoke removal. Biodegradable non toxic cleaner. We travel to acreages & farms! **Seniors discount.** Call Ceiltech today! 780-914-0323 (5) 02-05

Shirley Mazeppa

PEMF Therapist

(780) 621-8055
(780) 727-2845

smazeppa@xplornet.com
Evansburg, Alberta



Healing Fields
Pulsed Magnetic Therapy Ltd.

PEMF is Pulsed Electro-Magnetic Field Therapy

- Detects Where a Horse is Sore
- Relieves Pain & Body Soreness
- Accelerates Healing & Reduces Inflammation
- Improves Performance, Speed & Suppleness by stimulating cellular metabolism

No Drugs. No Side Effects... It Works!
PEMF is good for people, horses & dogs.



REDUCE YOUR PAIN IN JUST MINUTES

The next step in the evolution of health support is here...

Testimonials

"Thank you for working on my horses at the CBHI 2016. They all benefited and were feeling great. The treatment I had myself was so amazing and beneficial. I was experiencing vertigo and feeling nauseous within a half an hour I was feeling so much better and my weekend was great. I did not feel tired and felt very energized. I did have a headache for a short time, a little ache in my shoulder area but that all was very short lived and did not interfere with my day. I really liked my treatment and as a massage therapist would highly recommend this treatment. Thank you Shirley." -Tanya Likes

"I have had BRUTAL sciatica and neck pain for years...chiropractic manages it for brief periods of time...I had one hour long treatment by Shirley Mazeppa and can honestly say I had no pain for weeks after!!!! Improved my mood and allowed me to have day to day tasks not be painful let alone ride!!!! SOOOOOOOOOOOOOOOOOOOOOOOO looking forward to my next treatment!!!!!!" -Jody Poulin

"I am in disbelief, Shirley Mazeppa brought her PEMF machine to Thorsby where I was competing in a horse event. I have arthritis in both my knees and I was really feeling the hurting today. Shirley hooked me up for 40 minutes on Saturday afternoon, it's now Monday evening and I am still PAIN FREE, my knees feel great. I'll be making a trip to Shirley's next time I start feeling that pain, I won't try to handle it again. Thanks so much Shirley" -Debra Rowney



"I feel Pulsed Electromagnetic Therapy may be one of the Greatest Discoveries in the History of Medicine."

- Dr. David Williams, Alternatives for the Health Conscious Individual (March 2004)



PULSE CENTERS

- Alleviate pain and reduce inflammation
- Stimulate healing & strengthen bones
- Relieve injury and fatigue
- Support neurotransmitter balance
- Reduce stress & increase relaxation
- Achieve a deeper, more restorative sleep

energize your life

MAY 31ST AUCTION

FOR: WALTER AND JOAN BERNDT (780-924-2465)

Located: (From Alberta Beach—2 ¼ mi S on RR 32 to 54009 RR 32) (From Onoway
– 3 mi S on Hwy 43 to Hwy 633 then 5 mi W to RR32 then 1 ¾ S to 54009 RR 32)

Wednesday Evening, May 31st at 6:00P.M.

TRACTORS & FIELD EQ: * JD 4640 Tractor w/ (10,320 hr), 20.8 x 38 RI, duals * CASE 1370 w/ (10,900 hr), P/Shift, Weaker Clutch but good power unit for auger or Mix mill * 12' KELLO 210 Off Set Breaking Disc w/ new 26" Knotched Front Blades * IHC 620 218 DD Press Drill w/ ft * 11 D Harrows * 14' x 22" Land Roller * 16' IHC Dt Cult w/ hyd wing * 22' Leon VS Cult w/ hyd winds, mulchers * 64' Vertec Sprayer w/ 2 axles, plastic tank * Tractor Extras, (Hyd Rams)(Air Fan for Case 90's Series) (New Grapple Fork att)(18.4 x 38 Tires)

HAY & LIVESTOCK EQ: * 13' CIH DC X 131 Disc Bine w/ hy-swing * 12 W Jiffy 912 Scissor Rake * JD535 Rnd Baler * Haybuster 1800 Hay Stack Maker * AJAX Astro 2800 Stack Mover w/ 2 of 11L Axles * 12V Grass Seeder * Belt Dr Hammermill * Appx 60 Fence Posts * Bale Elevator on trans * Haybuster 256 Plus II Processor * MORAND Maternity Pen * Plains Cattle Squeeze * Pipe Frame Cattle Chute * Bale Feeders * H/M Grain/Chop Distributor * 2 of 11 L 15 Tires * 60 x 100 Tarp * 5hp/2" Honda Pump

HARVEST EQ: * IHC 1480 COMBINE for Smaller Farmer * 18' VERS 4400 Swather w/ AC Cab, PU Reels, 200 Ford 6 cyl * 60' x 10' Sakundiak HD 10-1800 pto * 36' x 7" WF Auger w/ 9 hp * 12' x 4" Augers * 77 IHC Loadstar 1600 Truck w/ (66 k mi), hoist, needs box * 300 Fuel Tank w/ stand

INTERESTING SALVAGE: * GOOD (10 of 2 3/8 Drill Stem)(50 Sucker Rod) (6 of 5 gl Pails New Bolts)(Reddy Rod)(F/A Furnace)(6 hp Gas Motor) * Dump Rake, Steel Wheels, Buzz Saw, Horse Machinery * 50's IHC R190 Tandem Axle Truck * 08 Ford F-150 w/ rare 6 cyl * Salvage (62 Ford Fairlane 4 dr)(68 Olds 4 dr HT) * 90 Honda Bike, Ski-roule * More * 01 Chev Cavalier Car/Trans Slips * Road Drag

JUNE 7TH AUCTION

FOR: ROBERT AND DOREEN BATTENFELDER

Located: From Barrhead Ford – 2 mi N Then W on Hwy 33
for 11 ½ mi to RR 50.Go ¼ mi N, Turn Right . 61123 RR 50

Wednesday Evening, June 7th at 6:00P.M.

GOOD YARD and GARDEN EQ: * 1987 Ford 1210 Diesel Yard Tractor w/ 16 hp diesel, 3 pt, Ford 768 B Loader, FWA, Ford 105A Rototiller, 4' FR Cult * Buhler 48" 3 pt Mower * Smaller 3 pt Grass Spreader * Stihl and Ryobi Grass Trimmers * JD 38 LS Lawn Sweep * Yard Tools * Working – Husq Chain Saw, Walk Behind Rototiller, 2" Water Pump, Eltc Chain Saw & Hedge Trimmer, Garden Hose * Wood Window Shutters, Used plywood Lumber * Ford LS45 Ride Mower, As Is * Large Metal Garbage Burner * Hoof Nippers * Calif Puller

QUAD and RECREATION: * HONDA FOUR TRAX ES TRX250 QUAD w/ Winch * 2W Trailer * Good Round Picnic Table w/ 4 Nice Wood Chairs * Bow Flex Exerciser * 5th Wheel Hitch * 17" Tires * 2 Fish Box * Air Mattress * 2 Bikes * Nice 65 gl Tidy Tank w/ 12 V Pump * Belt Drive Knife Sharener *

WOOD HOBBY TOOLS / SHOP TOOLS: * Wood Work Encyclopedia Dust Collector * Oscillating Spindle Sander * Hand & Power Wood Work Tools * Mechanic Box & Tools * 11 gl Air Comp * Lincoln AC225C Arc Welder * Oxy Pro Oxygen Tank, Torch, Propane Bottles

HOUSEHOLD: * Plate and Bell Collection * LP Records & Player * Health – Juicer, Dehydrator, Meat Slicer, Rotisserie, Pasta Maker * 6 Wood Kitchen Chairs * Recline & Swivel F/R Chairs * Computer Desk * Cabinets * Dble Bed w Dresser * ½ Bed * Toys, Wool Craft, Dishes, Wine Glasses

GOOD/CLEAN/CARED FOR TRUCK and HOLIDAY TRAILER: * 2008 Dodge Ram 1500 Truck w (160km), quad cab, 5x7 Hemi, 4x4, loaded, 5th wheel sliders, dark red * 1998 CARDINAL F28 5th W Holiday Trailer w 2 slides, solar panels, rear kitchen

JUNE 8TH AUCTION

FOR: PHILIPPE AND SHARON NADEAU (349-0908)

Located: From Westlock Inn - 2 mi N on Hwy 44 to TWP 602 then 1 W to Stop Sign.

Thursday Evening, June 8th at 6:00P.M.

TRACTORS: * Steiger Bearcat PT 225 4WD w(64440hr), Cat 225, Standard Trans, 18.4 x 38 duals * CASE 2090 w (5665 hr) P/Shift, 18.4 x 38 duals, Leon 707 Loader * CASE 930 w (New Pistons, Sleeves, Heads, Starter) 23.1 x 30 Rears * Skidder Chains that fit 23.1 x 30 Tires * CASE 730 diesel Dual Range that was restored * CASE D Tractor w 3pt (602453D) * International 350 Tractor w fenders, pto pully

HOMEMADE LUMBER BAND SAW / TRUCK / YARD ITEMS: * Doug Smith Lumber Band Saw on transports w 16' Table, Adj Big Log Mouth, Auto Sharpener Grinder, Saw Set Tool, Sample Cut Display * 500 Fuel Tank w 12 V Pump, On Dual Wheel Axle Chassis * 86 Chev Silverado 10 w flat deck * 2013 Chev Alum Grill Guard * Grierson Hyd Value for Hyd Scraper * 10 New 36" W Doors * OLDER EQ (10' One Way Tiller) (27 x 6 & 31 x 6 SAS Auger) Vers 40x8 Auger) (7 Btm Melroe 900 Plow w Auto Trip for Parts)

HAY EQUIP: * Good 5W JD 567 Rake * Good Vermeer 605 G Baler * HESTON 6450 Swather w cab, 14' Hay Header and Conditioner, 16' Grain Header and PU Reels, HM rt Header Transport * 48 ft HiBoy w Farm Tractor Dolly, Bale Racks, 30 to 36 Bale Capacity

PARSONS AUCTIONS LTD.

Charles 674-7704 (780-674-3929) Jeff 305-4328

Pictures Available on: parsons-auctions.com

Classified Ads - Call 962-9228

Services

Best-Cistern-Septic-Solutions.
Cistern and Septic Inspection, Cleaning and Repair! New Installs Available. Plastic, metal, fiberglass or concrete. We clean them all! Your cistern will be vacuumed, cleaned and sanitized with our high pressure, hot wash, sanitizing system. Reasonable Rates, Call 780-668-4306 (4) 02-05 OG

Computers

FREE COMPUTER CHECKUP - Repairs not over \$50. Get GOOD LAPTOP or DESKTOP computer for ONLY \$150, with Games, Music, Pictures, Videos & more. "Hands on" Lesson how to use for Seniors and Beginners. FREE Computer Repairs for Single Parents. 780-892-4993. (16) 16-05

Feed & Seed

Seed & Feed: Oats & Barley, Fursarium tested. 99% & 91% germ, no wild oats, can deliver. james@woodlandlumber.com Evansburg 780-621-2229 (13) 28-02

Seed Oats for sale, 96% germination. Call 780-727-4309 (6) 09-05

Seed Oats For Sale, 93% germination, Double Gear Ranch, Call 780-727-2389 Evansburg (8) 09-05

Livestock

RED POLL BULLS, reg. Yearlings; 2 yr olds; easy calving; naturally polled calves. 780-892-3447 (19) 21-02

Firewood

For Sale, Birch, Spruce/Pine Mix, Poplar, Tamarack. Split seasoned clean cords, 1/2 cords, Pickup loads. Pick-up or delivery. 2 year old Spruce & Pine. 780-288-7247 Woodchuck Firewood. (18) 02-05

Classified Ads - Call 962-9228

Antiques

EVER AFTER ANTIQUES & COLLECTIBLES. 4823 - 50TH Avenue, Alberta Beach. We buy and sell. Call Pat 780-237-3528 to arrange a free consultation. OPEN Wednesday through Saturday, 11 to 5 and some Sundays and holiday Mondays, noon to 5. (12) 09-05

Vehicles

1998 Ford F250 Super Cab. 4x4, 3/4 Ton, \$3500 or trade for a Chevy 1/2 Ton 4x4 Extended Cab. Call or text 780-600-0275 (3) 09-05

Miscellaneous

Ezee-on Loader with Spear, Blade and Bucket, 10ft Ezee-on Tandem Disc, 8-10ft Seed Drill, 8ft Kello Bilt Offset Disc Series 176, 10ft Krauss Tandem Disc, 2 yr old hay, large round bales. 780-892-2815 (6) 09-05

Pasture For Rent

Pasture For Rent, 30 acres near Gainford, Call Kay 780-797-2171 or 780-717-6491 (2) 23-05

For Sale

BRAND NEW Genuine Leather Cowboy Boots, Made in USA - Brown, Size 8 1/2 D. Asking \$80. 780-907-8642 (S) OG

For Rent

Nice 3 bedroom condo in Evansburg all laminate floors With 1 and a half baths, washer, dryer, single car garage private patio. \$995/month, Call or text 780-608-5317 (6) 25-04

Completely renovated 2 bedroom suite with attached single car garage in Evansburg Has washer dryer dishwasher over range microwave private covered patio. \$795/month, Call or text 780-608-5317 (6) 25-04

2 Bedroom House in Evansburg. Some new floor, Fenced yard, Fresh paint, Fridge, Stove, W/D, Backs onto park, Pets Negotiable. Close to 1 block from downtown. PRICE REDUCED: \$850/month + Utilities, DD Same. 1 year lease, working adults No Partiers. Text or Call 780-621-7421 (5) 02-05 OG

Live at the Lake Wabamun.

Available June 1st, 3 Bedroom 1 Bathroom, Detached Garage, Recently Renovated, N/S, N/P, References Required. Call or text 780-305-7077 (4) 16-05

Great for a Small Family or Seniors. Newly renovated townhome, 2 bedrooms, den & 1.5 bathrooms in Winfield, AB. Washer & Dryer in-suite. \$850/month. Call

403-606-6977 (4) 23-05 OG

1 Bedroom Loft House in the Country, Available June 1. Stove/fridge/washer/dryer included, Electric & Propane extra, \$500. month + DD Same, Reference required, Parking available. Call 780-325-2517 (2) 23-05

Church Directory

All Saints' Anglican Church Sunday Morning Worship 9 BCP 10:30 BAS with Sunday School & Nursery 5212-47 Ave. Drayton Valley (780) 542-5048	Seba Beach Christian Fellowship Sunday School 10:00a.m. Worship Service 11:00a.m. Weekdays Bible Study & Prayer (780) 305-1594	Roman Catholic Church St. Agnes' Parish, Mayville Sunday 9:00a.m. St. Elizabeth Parish, Evansburg Saturday 7:00p.m. (780) 780-2032	Advent Lutheran Church Sunday Worship & Sunday School 11:00a.m. Evansburg O: 727-3594	St. Saviour Mission (Anglican Diocese of Edmonton) Service every Sunday at 10:00a.m. Rev. Colleen Lynch 5117-51 Avenue Wabamun Seniors Center) Ph: 780-940-4733 www.stsaumurmission.ca
St. Augustine's - Parkland Anglican Church 131 Church Rd. Spruce Grove Sunday Service 10:00a.m. Eucharist with Sunday School & Nursery All are Welcome Office 780-962-5131 www.staugustineparkland.org	Parkland Baptist Church Sunday Worship Service 10:30a.m. All Welcome 121 Brookwood Drive (780) 962-4101 www.parklandbaptist.ca		Immanuel Lutheran Church of Rosenthal Traditional Service 9:00a.m. Contemporary Service 10:15a.m. Christian Counselling Services Pastor Bill Fleth Rg Rd 13, Twp Rd 384 Ph: 780-963-4048 www.lutheran.ca	Stony Plain United Church Sunday Service 10:30a.m. 5012-51 Ave. Stony Plain Mewassin United Church Sunday Service 9:00a.m. Rev. Sally Boyle Hwy 627 - Rg Rd 30 Ph: 780-963-4745
Emmaus Lutheran Church Sunday Worship Service 10:30a.m. Bible Study 9:30a.m. Sunday School 9:30a.m. Rev. Steven Brummett 6904-39th Ave. Drayton Valley Ph: 780-542-5101 www.emmauslutheran.ca		St. Anthony Catholic Church WEEKEND MASS SCHEDULE: Saturday 5:00p.m. Sunday 12:00p.m. 4708-59 Ave. Drayton Valley Parish Office: 542-5454		Church of God Pastor Evan Baum Sunday School 10:00a.m. (Sept-June) Worship Service Sun. 11:00a.m. Youth Fri. 7:00p.m. (during the school year) 5904-42 Street Drayton Valley Ph: 780-542-5691
Ignited Church & Ministries Pastors: Mark & Leanne Eshleman Sunday Service 10:30a.m. 4923-41 Ave. Drayton Valley (Inside Malone Medical Clinic) Ph: 542-5843 ignitedchurch@telus.net	The United Church of Canada Sunday Worship 10:30a.m. Sunday School 10:30a.m. 5029-48 St. Drayton Valley Church Office 780-542-5743 clou@telus.net www.clou.ca	St. Joseph's Catholic Church Sunday Mass 11:30a.m. Wabamun, AB	Drayton Valley Alliance Church Pastor John Haazen Join us for Sunday Service at 10:30a.m. Aaron School 3901-55 Ave. Program for all ages Office at 4901-55 St. Drayton Valley Ph: 542-6501 dvaliance.ca	Calvary Baptist Church Pastoral Team: Lorne Trudgian & Kenton Penner Sunday Worship 10:30a.m. Youth & Ministries Info - calvbapt@telus.net 4201-50th Ave. Drayton Valley 780-542-1774 www.calvarybaptist.ca

COMMUNITY EVENTS 2017

SUNDAY	MONDAY	TUESDAY	WEDNESDAY	THURSDAY	FRIDAY	SATURDAY
	1	2	3	4	5	6
7	8	9	10	11	12	13
14	15	16	17	18	19	20
21	22	23	24	25	26	27
28	29	30	31			

If you are a **LICENSED, NON-PROFIT ORGANIZATION**, you are welcome to submit your announcement **FREE of charge**, space permitting. You are required to submit your non-profit number. Call (780) 962-9229. Please note that all submitted announcements will be edited to fit the 2 line limit. Deadline 12 noon Friday prior to publication (Thursdays on long weekends).

MAY 27 - 4TH ANNUAL COMMUNITY GARAGE SALE & 150TH CANADA CELEBRATION at Golden Spike Hall, 10am-4pm. Over 40 sellers. FREE Hotdogs, pop & cake, Bouncy castle & course, face painting, door prizes, Crafts & More!!! Brian: 780-968-9201.

JUNE 3 - HORSEBACK RIDE-A-THON at Brightwood Ranch near Entwistle, AB. Ride your horse or ours. Help send underprivileged kids to camp. To donate or for info on riding, contact the ranch at 1-780-727-3840.

JUNE 5 - SCOTT WOOD CONCERT at the Stony Plain Community Centre, 7pm. Tickets can be purchased at www.scottwoods.ca, Phone Corrine 780-962-2089

JUNE 6 - FREE COMMUNITY BBQ at Keephills Library, 4:00-6:30 pm. Bring the whole family for a free hot dog & pop. Kick off the summer with your local library! Plus, fun activities for kids.

JUNE 10 - BLOCK PARTY PIG ROAST DINNER & DANCE at Moon Lake Community Hall. Doors: 4pm, Dinner: 6pm, Dance to follow. Ages 16+: \$20 - Just Dance \$10, Ages 6-15 & Seniors: \$15 - Just Dance \$5. Advance tickets: Please contact: Nikki @ 780-898-1390 or Cris @ 780-953-0172

JUNE 10 - CAR BOOT / TAILGATE SALE by Spruce Grove Ag Society, 9:30-1:30pm. To book a table call the office at 780-960-4600.

JUNE 10 - ANNUAL PIG ROAST AND DANCE at Duffield Hall. \$20/person. Cocktails at 6, Supper at 6:30. Music by The Singing Sawyer and The Comrades Band. Order Your tickets soon at 780-963-9664 or 780892-2425 or 780-963-6887

FARMERS MARKETS

CARVEL STATION FARMERS' MARKET: Thursdays evenings, 5-8pm at the Carvel Hall, www.carvelstationmarket.ca or 780-499-1112 **May 11 - August 31*

DRAYTON VALLEY: Every Wed, 10:30-1:30pm at the Well-house Bldg (5416 Industrial Rd, Drayton Valley)

EVANSBURG: Sat, 10am-2 pm, Tipple Park Museum. Call 727-2240 for tables. **OPEN Saturday May 6**

SPRUCE GROVE: at the Elevator, Sat 9:30-1:30, tables (780)240-5821

STONY PLAIN: Sat, 9am-1pm, Downtown, Stony Plain. Phone Nancy 780-962-3993.

BINGO

ENTWISTLE COMM. LEAGUE BINGO: Every Wednesday, Doors Open 6pm,

STONY PLAIN SENIOR'S DROP-IN CENTRE: public bingo every Tues, 7pm. All ages welcome. Phone (780) 963-6685

TOMAHAWK: every Mon at Agra Centre, doors 6pm, Bingo 7:30pm. Info 339-2423 or 339-3747

WABAMUN LIONS CLUB: Satellite Bingo - Jubilee Hall Thurs, 6pm, 2 Early Birds,

WILDWOOD: Mon night. 6:30pm, bingo starts 7:30pm, Early Birds & Lucky 7.

MEAT DRAWS

Darwell: Put on by Alberta Beach & District Lions Club, 4:00pm, bi-weekly, Darwell Lounge & Restaurant

Evansburg: Evansburg Legion, Friday 8-10pm & Saturday 3-5pm

JAMBOREE

CALMAR: Wilton Park Community Hall, Every 4th Sat of Every Month. Starts at 7:30pm. Phone 780-985-2478 or 780-985-3200.

CHIP LAKE: Ravine Comm Hall, 1st Sat 325-2119 or 325-2391.

DUFFIELD: 4th Sat, Sept to May, Duffield Community Hall. 6:30 Supper.

ENTWISTLE: at Entwistle Community Hall, 3rd Saturday. For more info call John at 587-277-0521. **Starting Oct through May.*

MAGNOLIA: at Magnolia Hall, 7pm. Every 2nd Saturday, Hot Food. 727-2015 or www.magnoliacomunityclub.ca

**October - May.*

SEBA BEACH: 2nd Friday, 7pm, Seba Senior's Centre, Toni 797-4233

SPRUCE GROVE: at Sandhills Community Hall, 3rd Sunday, 1-5pm. Info Florence 780-962-3104 Margaret 780-962-3051

**Sept - June.*

STONY PLAIN: Stony Plain Seniors Drop In Center, 5018-15 Ave. Every 2nd & 4th Thurs of the month @ 7pm, Cost \$2. Everybody Welcome. Contact 587-989-7210 or 963-7920.

TOMAHAWK: Tomahawk Agriplex, 3rd Friday of month. 7:00pm. Call 780-339-3755. **Starts Oct 21**

WILDWOOD: Wildwood Community Hall, 3rd Wed Each Month, 7pm. 325-3749 **Oct - June.*

THE ABBOTSFIELD VARIETY MUSIC JAM: at Abbotsfield Rec Centre (3006 119 Ave. Edmonton) 3rd Friday of each month @ 7pm. PH: 780-918-8545, Admission is Donations Only.

TOPS Meetings (Take Off Pounds Sensibly)

Alberta Beach: Tues, 6pm at St John's Lutheran Church on Hwy 633. 967-5009

Entwistle: Wed 5:15 weigh-in, 5:30-6:30 meeting, upper level Lions Hall (next to swimming pool) 780-932-2695.

Evansburg: Thursday Mornings 9:30am at Evansburg Legion Hall (Back door). 727-2155

Stony Plain: Thurs evening, Stony Plain United Church. Susan (780) 968-0869

Spruce Grove: Wed Mornings, 8:45 a.m. at Anglican Church, 131 Church Road. 960-1109, Christiane.

Wildwood: Thurs at Wildwood School, 5pm. Connie (780) 325-2420

YOUR COMMUNITY

FREE HOME DELIVERY PROGRAM, Wabamun Seniors & Wabamun Lions for individuals who would like to arrange for meal preparation through a local restaurant but have difficulty getting out to pick it up. Call Darlene, 892-2551.

HEALTHY AGING NURSE & FOOT CARE PERSON, Wabamun Seniors Centre, 2nd Thurs of month 9am

INC. WEATHER: Call Cheryl 780.695.7032

SPIRITUAL LIVING STONY PLAIN INSPIRATIONAL CINEMA & DISCUSSIONS at PERC Building (5413-51 St. Stony Plain). 2nd Fri of month at 7pm. Popcorn provided, donations appreciated. Contact 780-940-3032

SPIRITUAL LIVING STONY PLAIN GATHERING at PERC Building (5413-51 St. Stony Plain). Every 2nd & 4th Sunday of the month. Meditation at 10am, inspirational sharing at 10:30am, Children's activities. Contact 780-940-3032

SPRUCE GROVE ELEVATOR TOURS: Tues-Sat, 9-3pm. 960-4600.

SQUARE DANCE LESSONS: Thursdays 7-9pm. Starts Sept 29th to Dec 15th, 2016. Broxton Park School, Spruce Grove. 10 Weeks - \$80/adult. 780-999-9482 or i.squardance2016@gmail.com

SQUARE DANCING: Evansburg Legion, Thurs 7-10pm. Beginners & midstream welcome. Info (780) 727-4099. **Starting Oct 6.*

STONY PLAIN'S 5TH MERIDIAN GOOD SAM'S RV CHAPTER: Ecole Meridian Heights School (4119-43 Street). Meets Every 3rd Tues of Month at 7pm. Call Pat at 780-963-6976 or Ruth at 780-288-9829.

STONY PLAIN BOMBER FOOTBALL CLUB is looking for football players ages 8-14, atom, peeewe, bantam, contact smiddlewood@hotmail.com

WRITERS PROGRAM: Mayerthorpe Library, 1st & 3rd Wed, 1pm.

ZUMBA with Sholean, Wed evenings 6:30-7:30. For info, Stephanie 780-963-1541.

MEETINGS

2ND TIMERS: A support & confidential group for Grandparents Parenting. 1st Thurs of month, 6:30pm. Grand Trunk High School (meet in Lobstick Literacy & Learning room). Child care provided at the Evansburg Public Library. **Starts October*

AA: Friday at 8pm, Evansburg. Call 325-2204, 727-2466 or 727-6652.

AHS: Addiction Services provides assessment and counseling for alcohol, other drugs, tobacco and gambling in Berton on court day Wednesdays. To make an appointment, please call 780-542-3140.

ALCOHOLICS ANONYMOUS IF Drinking is a Problem! 780-236-1043

AL-ANON: Wed Spruce Grove United Church, 1A Fieldstone Drive. 8pm. 962-5205

ALBERTA PARENTING FOR THE FUTURE ASSOC: Call 963-0549 or visit www.apfa.ca to register. All programs are confidential & free.

CHAMBER OF COMMERCE (Evans/Ent): 7:30pm 3rd Thurs, Heritage House.

CHERISHED MEMORIES, PARENTS & TOTS Wed & Fri, 10-12pm, Alberta Beach Agriplex. Sept-June. Info call Melissa 780-297-1892.

C.I.I.L.D. (Citizens Helping In Life's Defence) Please join our Pro-Life meetings once a month in Stony Plain. For info call Chris 963-6997.

CITIZENS ON PATROL: The Pembina Community Watch Patrol Meets 2nd Thurs of each month at 7:30 pm, at the West Central Forage Association Office 5009 45th Ave, Entwistle. Contact 780-727-2000

COMMUNITY QUILTERS & CRAFTERS: 3rd Tues. Evansburg, Liz 727-3872 Brenda 727-4476

DARWELL & DISTRICT AG SOCIETY: 8pm, 1st Mon, Community Hall.

DDRA MEETING: 7pm, 2nd Mon, Darwell Community Hall 892-3099. **Except Jul/Aug/Dic*

DRAYTON VALLEY/CALMAR PC MONTHLY CONSTITUENCY MEETING, Berton Senior Center, 7pm. Everyone welcome. *No meetings July & Aug.*

EVANSBURG SENIOR'S HERITAGE HOUSE: Floor Curling Mon & Thurs, 1pm. Court Whist Thurs, 7pm.

EVANSBURG TITTLE PARK HISTORICAL BUILDING TOURS: Wed - Sat, 10:00-5:00pm.

EVERGREEN SPINNERS & WEAVERS GUILD: (780) 786-4754.

LAC STE ANNE COMMUNITY CHOIR, choir accepting all voice ranges. Meets every Wed, 7:30pm. Info (780) 924-3662.

MAYERTHORPE WOMEN'S LEAGUE PRAYER CHAIN: Everyone with the 786, 785 or 674 Prayers and Prayers are needed. Doreen 786-2434.

PARENT & TOT PLAYTIME: PERC Building Stony Plain Wed, 10-11am, Holborn Community Hall Thurs 9:30-11am, Parkland Village Thurs 9:30-11:30am.

PENBINA SKATING CLUB (Evansburg Arena), offers Learn-to-Skate, CanSkate & STARSKATE for all ages. Skating year runs from Sept-Mar. Call Lisa 727-2729.

POT LUCK every Tues, noon, Wabamun Seniors Centre. Come on down!

SEA CADETS: 299 Mackenzie, Stony Plain Comm Center, Wed 6:30 youths 12-18, 963-0843

SEBA BEACH SENIORS CENTRE: Yoga, mon, 9:30am, \$10/session. Bridge Thurs, 1pm. Jams every Wed night, 7pm. Thrift Shop every Wed & Sat at 10-3.

SEBA BEACH QUILTERS & FIBER ARTS: 1st, 2nd, 4th Wed, 9:30am, Seniors Center. Quilters - 3rd Wed, 9am, Seba Pavilion.

SENIORS 50+ LUNCHEON: 3rd Wed, 12 noon at Stony Plain United Church basement hall. Call Audrey (780) 963-7582

SENIORS WEDNESDAY* AFTERNOON 1-4pm at Parkland Village Community Centre - Parkland Village Senior Community Connections - Games, Crafts & more! *exceptions

incl. Weather. Call Cheryl 780.695.7032

SPIRITUAL LIVING STONY PLAIN INSPIRATIONAL CINEMA & DISCUSSIONS at PERC Building (5413-51 St. Stony Plain). 2nd Fri of month at 7pm. Popcorn provided, donations appreciated. Contact 780-940-3032

SPIRITUAL LIVING STONY PLAIN GATHERING at PERC Building (5413-51 St. Stony Plain). Every 2nd & 4th Sunday of the month. Meditation at 10am, inspirational sharing at 10:30am, Children's activities. Contact 780-940-3032

SPRUCE GROVE ELEVATOR TOURS: Tues-Sat, 9-3pm. 960-4600.

SQUARE DANCE LESSONS: Thursdays 7-9pm. Starts Sept 29th to Dec 15th, 2016. Broxton Park School, Spruce Grove. 10 Weeks - \$80/adult. 780-999-9482 or i.squardance2016@gmail.com

SQUARE DANCING: Evansburg Legion, Thurs 7-10pm. Beginners & midstream welcome. Info (780) 727-4099. **Starting Oct 6.*

STONY PLAIN'S 5TH MERIDIAN GOOD SAM'S RV CHAPTER: Ecole Meridian Heights School (4119-43 Street). Meets Every 3rd Tues of Month at 7pm. Call Pat at 780-963-6976 or Ruth at 780-288-9829.

STONY PLAIN BOMBER FOOTBALL CLUB is looking for football players ages 8-14, atom, peeewe, bantam, contact smiddlewood@hotmail.com

WRITERS PROGRAM: Mayerthorpe Library, 1st & 3rd Wed, 1pm.

ZUMBA with Sholean, Wed evenings 6:30-7:30. For info, Stephanie 780-963-1541.

DRAYTON VALLEY BRANCH OF ALBERTA GENEALOGICAL SOCIETY: meets 7pm at The Wishing Well every 3rd Wed of the month. For more information call (780) 542-2787

ENTWISTLE COMMUNITY LEAGUE GENERAL MEETINGS: 2nd Thursday monthly 7:30 PM. **Except June, July, August*

ENTWISTLE LIONS CLUB: 2nd & 4th Tues, 8pm, Entwistle curling rink. Jim 727-3573

ENTWISTLE SENIORS: Ladies: 10am 2nd & 3rd Wed, Floor Curling: Tue & Fri, 2pm

ENTWISTLE SENIORS 55+ CLUB: Tue & Fri, 2-4pm at Entwistle Hall

EVANSBURG PUBLIC LIBRARY BOOK CLUB: 4th Thurs, 7pm Grand Trunk High 727-2030.

EVANSBURG SENIOR'S HERITAGE HOUSE: 2nd Thurs of Month, 1:30pm. New Members Always Welcome. Dennis, 727-4186.

FALLIS COMMUNITY ASSOCIATION: 3rd Tues, 7pm.

GIRL GUIDES OF CANADA: Poplar Hollow District Guides-Pathfinders, Mon 6-8pm. Sparks-Brownies Tues 4-5:30pm. Meet at Camp Evansburg. Brenda 780-727-4476

KINETTE CLUB OF MAYERTHORPE: 7:30pm, Kinsmen Hall, 2nd Tues. Want to volunteer? Wanda 305-9832 or mayerthorpekinettes@gmail.com

LAC STE. ANNE & LAKE ISLE WATER QUALITY MANAGEMENT SOCIETY: 3rd Fri, 7pm, Alberta Beach Council Chambers.

LAKE ISLE HALL BOARD: 3rd Tues, 7:30 pm, Lake Isle Hall.

LOBSTICK 4-H BEEF & MULTI CLUB: 1st Mon, Evansburg Arena, 7pm, Jackie 780-727-2541

LOBSTICK GARDEN CLUB: 1st Mon, Evansburg Baptist Church, Charlotte (780) 325-3787

MAYERTHORPE HOSPITAL AUXILIARY ASSOC, every 4th Mon, 5pm in Hospital Basement Education Room.

MS SOCIETY DRAYTON VALLEY COMMUNITY GROUP meets 1st Tues of month, Sept-June, 6-8pm at Norquest College, Terra Leslie, 1-403-346-0290.

MS SOCIETY PARKLAND COMMUNITY SUPPORT GROUP: Are you diagnosed with MS and have questions? This group is for you! Last Tues of month, 7-9pm, Westview Health Centre (4405 South Park Dr.) Contact Cassy 780-471-3034

NA MEETING: Tues, 7pm. 514-6011

PENBINA AL-ANON FAMILY GROUP: meets Tuesdays @ 7:30pm at Evanburg Catholic Church Hall. Call Patty H. (780) 727-4516 or Cheryl (780) 727-6671

PENBINA PORCUPINES - JUNIOR FOREST WARDENS: Entwistle Porcupine gathering: 7pm, 1st Tue. Len & Tineke at 727-2020.

PROBLEMS WITH DRUG OR ALCOHOL ADDICTION in a loved one? Contact Drug Rehab Resource for a free confidential consultation. 1-866-649-1594 or www.drugrehab-resource.net.

SOBRIETY Meetings: Men's group, Sun, 5413-51st, Stony Plain, 7:30pm. Mike 983-1951.

SOLVE: Community Enviro issues discussed at Smithfield Hall (N of Hwy 16 on RR34). 2nd Thurs. Free. Jana 892-0006

STONY PLAIN FISH & GAME ASSOCIATION & WABAMUN GUN CLUB: 2nd Mon, Stony Plain Comm Center, 7:30pm.

SUNDOWNERS TOASTMASTER CLUB: Mon (excl. Holidays) 7:30-9:30pm. St. Matthew's Church, Spruce Grove. Judy 960-5258

W&E COMMUNITY FOOD BANK: Call (780) 727-4043 for emergency food needs, volunteer opportunities & donations. Monthly Meeting: LAST Monday of each month at 7:30pm at the Food Bank. (Old fire hall in Entwistle) ALL WELCOME. **Except December*

WILDWOOD & DIST AG SOCIETY: 2nd Wed 7pm. Wilma 325-2424

WILDWOOD & DIST. ROD & GUN CLUB: 1st Thurs, 7:30pm

WILDWOOD SENIORS: 4th Wed. at 2:00pm. Opal 325-2030. **No meeting July/Aug/Dic.*

SUDOKU OF THE WEEK

Fun By The Numbers

Here's How It Works: Sudoku puzzles are formatted as a 9x9 grid, broken down into nine 3x3 boxes. To solve a sudoku, the numbers 1 through 9 must fill each row, column and box. Each number can appear only once in each row, column and box. You can figure out the order in which the numbers will appear by using the numeric clues already provided in the boxes. The more numbers you name, the easier it gets to solve the puzzle!

ANSWER:

4	2	1	9	5	6	3	8	7
7	9	3	4	8	1	6	2	5
5	6	8	2	3	7	9	1	4
6	8	5	3	1	2	7	4	9
2	4	7	6	9	5	8	3	1
1	3	9	8	7	4	5	6	2
9	7	6	1	2	3	4	5	8
3	5	2	7	4	8	1	9	6
8	1	4	5	6	9	2	7	3

Like puzzles? Then you'll love sudoku.

This mind-bending puzzle will have you hooked from the moment you square off, so sharpen your pencil and put your sudoku savvy to the test!

4	2			5		3		
	9				1			5
5				3			1	
			3	1	2			9
		7	6					
1			8			5	6	
9	7			2	3	4		
		2					9	
8	1			6		2	7	



Like Us On facebook

FACEBOOK.COM/COMMUNITYVOICENEWS



follow us on twitter
@communityvoice8

SERVICE DIRECTORY

SERVING ENTWISTLE AND AREA FOR OVER 30 YEARS

**Entwistle
CONCRETE**

PRODUCTS LTD.

SAND & GRAVEL SALES

PH: (780) 727-3525

Dan McCracken Entwistle, AB
www.entwistleconcrete.ca

H & E UPHOLSTERY

For all your upholstery needs

Convertible tops for cars and boats, custom car and boat interiors, 5th wheel trailer skirts, boat tarps, ATV seats, furniture, kitchen chairs, heavy equipment seats.



www.h-and-e.ca 4-485 South Ave.
For more information contact: Spruce Grove
info@h-and-e.ca (780) 962-3048



Norm Blakeman's Drilling Ltd.

Waterwell Drilling & Servicing
Pumps & Pressure Systems

SERVING
LAC STE. ANNE &
WEST PARKLAND
FOR OVER 25 YEARS!

Joe (780) 924-3024

LAC

L. A. Contracting

5" Continuous Eavestroughing
& C-Can Rentals

LES 910-5472

STONEBEAR CONCRETE FINISHERS

Garage Pads, Piles, Grade Beams
Bobcat Service, Garages Built,
Foundation to Roof Construction,
Decorative Entrance ways & Fencing

Call Dave (780) 913-5663

JACK'S AUTO BODY & TOWING



*Specializing In
Collision Repair

*Guaranteed Work

*Insurance Claims

Oneway 967-5850



Located between Alberta Beach & Oneway on Hwy 633

OUR PLEDGE IS QUALITY

SERVICE DIRECTORY

Ernie's Repair & Service



**4820 - 47 Avenue, EVANSBURG
727-4433**

**DUNN'S
HEAVY DUTY REPAIR LTD.**

Fully equipped mobile service truck, including welder, oil evac & 5000 lb crane.

We repair all types of heavy equipment.

- construction / mining / rock crushing equipment
- tractor trailer units • skid steers

Stephen Dunn 780-278-8525

ROY SHERWOOD
Master Electrician

Ph: 780-968-1425
Cell: 780-908-2287
Fax: 780-968-2211

Email: suretech@xplornet.ca

2-53220 Rge Rd 21
Parkland County, AB
T7Y 0C5

**SURETECH
ELECTRIC LTD.**

**Control & Automation
Commissioning
Solar Sales & Service**

Industrial . Commercial . Residential

vanhill Contracting

"We are a family orientated company that pride ourselves on SAFETY and EFFICIENCY"

**CHRIS & LISA VANHILL
OWNER/OPERATOR**

Site Clearing, Grading, Road Building,
Brushing, Acreage Development, Dugouts, etc.

780-619-3236
vanhillcontracting@gmail.com Onoway, AB

Community VOICE
Keeping You and Your Community Informed

**THIS SPACE IS
RESERVED
FOR YOU!**

P&E VENTURES INC.
SKID STEER SERVICES

GENERAL LANDSCAPING
SNOW REMOVAL

POST & PILING HOLE
SAND AND GRAVEL

**PAUL VAN HECKE & CURTIS MIKO
OWNER / OPERATORS**

Bus: (780) 727-2721 Cell: (780) 621-6148
Box 498, EVANSBURG, AB T0E 6T0

**WABAMUN
PHARMACY**

I.D.A.

Box 90, 5120 - 51 Avenue
Wabamun, AB T0E 2K0

Ph: (780) 892-2278 Fax: (780) 892-2488

POSTINGFIRST.com

FREE LOCAL CLASSIFIED ADS

Real Estate, Rentals, Vehicles, Pets, Jobs, Service Directory,
Buy/Sell/Trade, Lawn & Garden, Garage Sales, Events,
Local Places & Much More... Advertise for **FREE** Today!

Follow Us

Instagram, Google+, Facebook, Pinterest, YouTube, Twitter

Western Sheet Metal Ltd.
& Mechanical Services

- Forced Air Heating • Furnace Replacements
- Gas Fitting • High Efficiency Furnaces
- Air Conditioning • New Construction

COMMERCIAL & RESIDENTIAL

(780) 514-0839

www.westernsheetmetalhvac.ca
service@westernsheetmetalhvac.ca

**PEMBINA
CONCRETE
PRODUCTS LTD.**

**Manufacturers of
ONE PIECE SEPTIC
& HOLDING TANKS**

* Water Cisterns * Field Systems *
Pumps and Accessories * Sumps

Community VOICE
Keeping You and Your Community Informed

**THIS SPACE IS
RESERVED
FOR YOU!**

MARK MARTIN PFEIFFER
MASTER BRICKLAYER/MASON

Cell: 780-242-3308
Email: pfeiffer.mark@hotmail.com

- Brickwork • Stonework
- Rockwork • Parging
- Concrete Block Work
- Tile Work (all kinds)

**MASTER MASON
HAMBURG**

**DELIVERED
TO YOUR SITE**

**1-800-661-3047
780-727-2702**

PembinaConcrete.com

**New Line of Concrete
Statues, Fountains and
Garden Ornaments.**

BOX 123, Entwistle, T0E 0S0

DONALD N. GREENWAY
Chartered Accountant

Suite 205 Sunrise Professional Building
215 McLeod Avenue
Spruce Grove, AB

**(Bus.) 962-6366
(Fax) 962-3990**

BREWSTER BOBCAT SERVICE LTD.

P.O. Box 454, Wildwood, AB T0E 2M0

- Site Preparation
- Pile Drilling
- Concrete Work
- Landscaping
- Demolition
- Sand & Gravel Delivery
- General Contracting

brwcat@gmail.com
Telephone: (780) 325-3743
Bruce Balascak Cell: (780) 621-6960



SERVICE DIRECTORY

DANI'S CLEANING SERVICES



10% OFF Commercial / Office Buildings

- Competitive Pricing
- No Job Too Small

Call Today for your FREE Quote!
(780) 264-7740

SERVING SPRUCE GROVE, STONY PLAIN AND EDMONTON SINCE 1995

Complete Drywall Service

DRYWALL, TAPING, RENOVATIONS, DRYWALL ART, STEEL STUDS, INSULATION, T-BAR, TEXTURE



RAL Drywall and Plastering Ltd.
Randy: 780-691-5248

X-TREME DRYWALL

Framing, Insulation and Vapor Barrier, Boarding, Taping, Painting, Texturing, Finishing.

Fast Professional Service. For free estimates call 780-706-4840


INNERFAITH BODYWORK

Working to enhance mobility of body, mind and spirit

Maivis Engelhardt - RMT
Rosen Method Bodywork RI Intern
Certification Level III

Lac St Anne County, AB

By appointment - please call
(780) 915-0747
www.innerfaithbodywork.ca
www.rosenmethod.ca



CONCRETE WORK

- Sidewalks ▪ Steps
- Small Retaining Walls
- Concrete Repairs

Contact Ray
(780) 975-8476



SMOOLE

- Construction & Septic Installation
- Environmental Wastewater Disposal
- Site Design & Evaluation
- Power, Water & Basement Excavation
- Trackhoe, Backhoe, Bobcat & Dump Truck

For All Your Excavation Needs
Call Dan 780-991-4484 Reid 780-909-0173



H&P Kosik CONSTRUCTION Ltd.

Harvey
cell. 780-445-9010
ph. 780-892-3532

Box 145,
Darwell, AB
T0E 0L0

No Job too small... We do them all!

• Road Building • Black Dirt • Sand • Gravel • Clearing • Dugouts



JIM HAY TRUCKING

- Screened Black Dirt
- Beach Sand
- Road Gravel • Fill Dirt
- Bobcat & Backhoe Available

(780) 220-5849

SANGUDO VETERINARY CLINIC

Box 581, 4916 - 52 Ave. Sangudo, AB. T0E 2A0

Dr. Ralf Sanders DVM

Ph: 780-785-2200
Fax: 780-785-2228
sangudovet@gmail.com

24 HOUR EMERGENCY SERVICE



CCAS

Canadian Clean Air Services Ltd.

Heating & Air Conditioning

High efficiency Furnace or Air Conditioner from 49.99/month.
Instant Approval. No Credit Required

24 Hour Emergency Service

Licensed and Insured with over 14 years' experience.
We accept Visa, master card, Amex and interact.

42 Singing Hill Estates, Seba Beach T0E 2B0
Office line 780-569-5201



Countryside REALTY LTD.

JOANNE HAY
Broker/Owner

Buying, Selling, Just Thinking About It?
Call me, I'm at Home in your neighbourhood!

(780) 892-4440 joanne.countryside@gmail.com



Certified SEED

A.C Mustang Oats
A.C Morgan Oats
CDC Austenson Barley
AAC Penhold Wheat
CDC Meadow Peas

Don Gibson Seeds
(780) 785-2214 (780) 674-1507



SUMMERS DRILLING LTD.

Water well drilling and service
Family owned Business Serving Alberta since 1917

Never run out of water again!


5 year workmanship warranty

3 Convenient ways to pay

- Visa
- Mastercard
- We now offer full financing

Tired of hauling water?
We can install a water well with a permanent water supply for as little as \$150/month OAC

Stop in at our office 4405 - 50 Street, Stony Plain
780-963-1282
admin@summersdrilling.com





EdmontonLakeProperty.com

• Find Every Property For Sale! • Free Property Evaluations!



Seba Beach Acreage

Your Own RV Park

Have friends and relatives come out and enjoy the lake as we have plenty of parking to go with this 1525 sq ft bung with full basement. Property has single garage, workshop and a ATCO trailer that would make a great guesthouse.

\$389,900



Retired?

Retirees Selfish Paradise

With plenty of main floor footage with accommodating decks with main floor master with Jacuzzi ensuite, open plan with vaulted ceiling. Grandkids? Don't worry we have plenty of room in our large loft area with private bathroom.

\$469,900



New Lakefront

Executive Lakefront

One word WOWWWW, says it all about this 2700 sq ft vaulted ceiling 2 story home with in floor heating, sub zero fridge, inside parking for 5 cars, ensuite on the master and guest suite, 4 bedrooms plus loft. Call today.

\$1,295,000



SOLD!

Best Beach

This picturesque 95 feet of lakefront is about as good as lake living gets in Alberta. Betula Beach has been considered the Best Beach at Lake Wabamun with it's hard packed sand and gradual walkout makes it ideal for boating and swimming off shore. Oh - plus a 4 bedroom Bungalow!

\$749,900



SOLD!

Sold Over List

This great access lot at Lake Wabamun sold in 2 days over list. Have active buyers ready to go if you have some land with access you would like to sell.

\$159,900



Wabamun Lakefront

100 Ft Beach

100 ft of Awesome South Lake Wabamun Lakefront to start, add 3000 plus sq ft of 2 story walkout home, triple garage with 30amp RV parking, plenty of yard front and back with nearly 200 ft of depth.

\$959,900



Lake Access Property

Park Like Setting

This property has it all, great access less than a block away, south exposure, 1100 sq ft bungalow with double garage. Totally refinished with newer kitchen, family room overlooking a half acre of manicured property.

\$309,900



New Hobby Farm

Less Than 1 Block to Seba Beach

Where do you get 20 acres of fenced flat land with a 1350 sq ft bung, garage, livestock buildings and even a 2000 sq ft church which could be many things. This hobby land playground is across the street from Seba Beach, has subdivision potential and many other potential uses. View with Wayne today.

\$360,900



HAVE HOT BUYERS!

Need lakefronts - all price ranges

We offer Free Evaluations and Buyer Consultations!

Call Wayne Today!

RE/MAX Excellence

780-991-5107

