

*Serving: Carvel, Darwell, Duffield, Wabamun, Seba Beach, Gainford, Entwistle, Evansburg, Wildwood, Tomahawk, Spruce Grove, Stony Plain & Drayton Valley*

**August 15, 2017**

## PIONEER SCHOOLS HONoured WITH COUNTRY SCHOOL COMMEMORATIVE SIGNS

**Submitted by Stefan Felsing, Communications Coordinator | Yellowhead County**

Yellowhead County and Grande Yellowhead Public School Division are providing signage to preserve the memory of the locations of former and still standing historical one-room County schoolhouses.

County residents are encouraged to honour these sites by applying for a country school commemorative sign.

Over two dozen successful applications have been received and include stories, historical dates, and anecdotes about the schools. Many of the schools were built over 100 years ago and are no longer standing, though they once played a cru-

cial role in educating the many residents that contributed to the development and growth of our region.

Applications for 2017 are available and can be picked up from Yellowhead County. Please contact the County office at 1-800-665-6030 for more information.

## EXPLORE YOUR RURAL ROUTES DURING ALBERTA OPEN FARM DAYS

**Submitted by Audrey Treit**

Follow a country road and discover Open Farm Days 2017 - a once a year backstage pass to a variety of farm life experiences and local culinary delights, being held this year on August 19 and 20.

Alberta Open Farm Days is a province wide open house that's all about farmers and ranchers inviting their urban and rural neighbours to stop in for a visit. This is a weekend event that brings Albertans together and we as farmers, ranchers and agri-tourism operators are opening our gates and inviting you

to be our guest. Come share in local stories and see on farm demonstrations.

Did you know that Alberta is home to 21 per cent of all farming operations in Canada? Open Farm Days offers people an opportunity to explore Alberta's diverse agriculture industry while helping grow ag-tourism in rural communities. The event builds connections between rural and urban Albertans and helps people reconnect to their food during a jam-packed weekend of family fun.

On August 19 and 20, more than 100 farms and ranches across Alberta will open their

gates to the public featuring a bumper crop of family fun events and activities. You can plan your customized trip online at [www.albertafarmdays.com](http://www.albertafarmdays.com), choose from a number of experiences: tour a winery or honey farm, pick your own produce at a u-pick farm, feed horses, learn about dairy farm operations, explore a corn maze, or discover tips on growing your own vegetables. Admission for tours is FREE, but there may be a fee for additional activities.

Just a few of the Farms and Ranches opening their gates to guests in the area are;

**Continued on Page 2**

**All Precious JEWELLERS**  
*"Your Spruce Grove Jewellery Store"*  
**Goldsmith on Premises**  
 • Engraving • Clock & Watch Repairs  
 • Jewellery Repairs • Custom Make-ups  
 Jewellery Repairs Done On Site.  
 Laser Welder Services Available.  
 Toll Free: 1-877-962-4367  
 PH: 780-960-4200 Fax: 780-960-4201  
 Suite 102, 215 McLeod Avenue  
 Spruce Grove, AB. T7X 0G2

**L&B Water Services Ltd.** Tradition of Quality & Service  
 Well & Pump Repairs  
 Complete Pressure Systems  
 Farm - Residential - Commercial  
 Potable Water Cisterns  
 BILL RIEDLINGER ERNIE BLEKER  
 PH. 780-963-8134 OR 780-963-7749  
 LBWATER@XPLORNET.COM

**gold canyon**  
 Spring/Summer 2017  
 Candles, Décor, Jewellery. Everything you need to sparkle!  
 CALL ME TODAY TO BOOK YOUR PARTY  
 JODI CAZAC • 780.995.6951

GET A FREE SAMPLE  
**LOSE Weight**  
 BY DRINKING COFFEE  
 (780) 907-8642



PUBLISHED WEEKLY (Zone 1 & 2)  
AND BIWEEKLY (Zone 3)

**E.J. Lewchuck &  
Associates Ltd.**

45C South Avenue  
Box 3595  
Spruce Grove, AB T7X 3A8

## SALES

Elaine Lewchuck  
Ashley Cazac

## TELEPHONE:

Classifieds 962-9229  
Advertising 962-9228  
Fax 962-1021

## E-MAIL:

sales@com-voice.com  
news@com-voice.com

# Explore Your Rural Routes During Alberta Open Farm Days

## Continued From Page 1

- Violet Gardens & Greenhouse - Hosts: Barbie & Jessie St-Amant
- Wooden Shoes Dairy Ltd. - Hosts: The Bangma Family
- Wild Country Gardens - Hosts: William & Paulette Sparks

• Riverbend Cattle Company./ Riverbend Hideaway Campground & Farm Tours. - Hosts: Audrey & Gerry Treit

So explore your own rural roots and share in the farm life experience. Enjoy a taste of Alberta as you sample locally produced foods and gather knowledge about where your food comes from. Check out [www.albertafarmdays.com](http://www.albertafarmdays.com) for more farms and ranches in the area and plan your trip.

Did you know?

- There are more than 43,230 farms in Alberta.
- Alberta accounts for 22.4% of Canadian farm cash receipts with sales in excess of \$12.3 billion.
- 60,600 Albertans were employed in primary agriculture and 25,500 in food and beverage manufacturing.
- Alberta producers raised more than 5.5 million beef and dairy cattle, 1.4 million pigs, nearly 12 million chickens and 200,000 sheep.
- Nearly 10.4million acres of grains (wheat, oats, barley, rye, corn)
- More than 6.5million acres of oilseeds (canola, flaxseed)
- Nearly 9,000 acres of vegetables, fruit and berry trees.

# SENIORS BENEFITS INFORMATION SESSIONS IN FOUR COUNTY COMMUNITIES

**Submitted by Stefan Felsing, Communications Coordinator, Yellowhead County**

There are a number of programs available to support seniors, financially, through the federal and provincial government. For Seniors on a low income there are financial benefits to ease some of the cost of aging, and providing an opportunity for people to become aware of them is important. Learning about the various programs available can help people to plan their major expenses for the year and maximize the benefits available to them.

Information workshops are being offered in Marlboro, Peers, Carrot Creek and Evansburg for individuals to come out and learn about the various programs available to them. This is valuable information for everyone nearing retirement, as well as

those currently benefiting from the various benefit programs available for seniors.

Information Sessions with Provincial Representatives will be occurring on the following dates:

September 26, 2017: Carrot Creek Hall. 10 am – 12 pm

September 26, 2017: Evansburg Heritage House. 1:30 pm – 3:30 pm

September 27, 2017: Marlboro Hall. 10 am – 12 pm

September 27, 2017: Peers Multiplex. 1:30 pm – 3:30 pm

Registration is free, but it is requested that people pre-register so enough handouts and seating is available for everyone, in addition to coffee and snacks! You can register for these workshops at 1-800-814-3935 or 780-325-3782.

FCSS is a preventive social services program available in 99% of the communities in Alberta. It is based on the premise of local solutions to local needs and building community and individual capacity to solve challenges. FCSS is an 80/20 funding partnership between the Province of Alberta and individual municipalities.

## LILSA PLANS FOR AGM

**Submitted by Angela Duncan, Vice Chair | LILSA**

LILSA (Lake Isle and Lac Ste Anne Water Quality Society) will be holding their AGM on Sat Aug 19 at 9:30am at the Alberta Beach Seniors Heritage Center.

They will be discussing the State of the Watershed Report, its implications, and where we go from here. Anyone who is interested in or affected by the water quality in our lakes is encouraged to attend.

They will also be holding elections for their board of directors. There are Board positions that will be available. If you are interested in making a difference to our lakes, you are encouraged to let your name stand for a board position.

## Lose up to 5 lbs or more in just 3 days!! Yes It Really Works!!

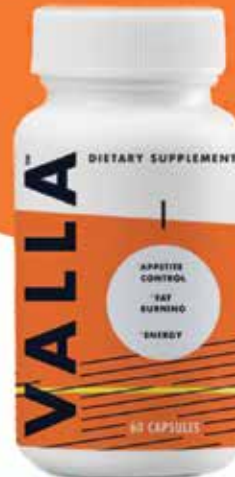
"I've lost 30 Pounds in 45 days - I've tried all kinds of products and so happy to find one that actually works!" - **Elaine Spruce Grove**

"I've lost 21 pounds in 7 weeks! I tried everything over the last 10 years and nothing worked - I kept gaining and got very depressed. Who'd of known that taking one little Miracle 100% Natural Pill a day would allow me to succeed!!" - **Penny M. Stony Plain**

"Down 36 lbs. in just 2 months. Even Dr. B's diet where I had to starve myself on 800 calories couldn't do this. This product is just totally awesome - Just the total overall feeling good" - **Toni Spruce Grove**

"Have heard as much as 15lbs loss from the 3 day sample - it works that good! Have nothing to lose but the weight which I am doing" - **Donna Edmonton**

"I totally love this product for not only the weight loss but also the physical & mental well-being. I just feel much better!" - **P from Onoway**



**Miracle Weight Loss Capsule and Business Opportunity New to Canada**

**100% Natural**  
**Call now for a sample!**  
**Call 780-907-8642**  
**www.elaine-govisi.com**





**RV PUB & GRILL**  
"WHERE FRIENDS MEET"  
Hwy 31, Seba Beach, AB

**SUMMER IS HERE!**

SO COME OUT & ENJOY THE **PATIO!**

Ice Cold Drinks always available

**at the RV Pub & Grill**

**OUR GRILL**

**Hours of Operation:**

Monday	8:00AM-8:00PM	Thursday	8:00AM-8:00PM
Tuesday	closed	Friday	8:00AM-10:00PM
Wednesday	8:00AM-8:00PM	Saturday	8:00AM-10:00PM
		Sunday	8:00AM-8:00PM

**Open May 1 - September 30, 2017**  
Come enjoy great food & refreshing beverages

**780-797-3100**  
[www.kokaneespringsrv.com](http://www.kokaneespringsrv.com)  
[www.rvpubandgrill.com](http://www.rvpubandgrill.com)

**Kokanee SPRINGS RV PARK**

## RCMP BEATS

### Submitted by Stony Plain/ Spruce Grove RCMP

Occurrences for the week of 31 July to 6 August, 2017.

Total Calls for Service Spruce Grove/Stony Plain/Enoch Detachment: 555

Total Calls for Service for the Victim Service Unit: 18

Individuals Charged: 26

Person Crimes: 39

Property Crimes: 87

Impaired Driving Complaints reported: 7

Impaired Driving Charges Laid: 0

Roadside Suspensions: 2

Motor Vehicle Collisions Attended: 31

Property Crimes:

Spruce Grove

1. August 1 – Area of Blairmore Street – Theft from Vehicle, cash stolen

2. August 4 – Area of McLeod Avenue and Nelson Drive – Theft from Vehicle

Rural

3. August 1 – Area of Township Road 530 and Highway 60 – Theft of Vehicle, 2001 red Dodge Ram

4. August 1 – Area of 51 Avenue and 55 Street, Alberta Beach – Theft from Vehicle, cash and keys stolen

5. August 2 – Area of Township Road 531 and Range Road 14 – Theft of Vehicle, 2006 red Ford F250

6. August 2 – Area of Township Road 530 and Highway 60 – Theft of RV, 2015 brown Forest River Grey Wolf

7. August 4 – Area of Buccaneer Drive, Alberta Beach – Theft of ATV's, 2002 green Yamaha YFM40 and 2004 green Honda TE25

Stony Plain/Spruce Grove RCMP remind you not to make it easy for thieves. Leave outside lights on at night, or install motion activated lights around your home. Also ensure shrubbery that obscures windows from the street are kept trimmed short.

The Spruce Grove / Stony Plain Drug Section Information Tip Line is 780-968-7212. Anyone with drug information is asked to call and leave a message.

If you have information regarding any of these crimes, or any other crime, please call the RCMP At 780-962-2222 or 780-968-7267. You can also call Crime Stoppers at 1-800-222-8477 or text the keyword TIP205 (TIP250 for Edmonton Metro) & your Tip to CRIMES (274637)



**HAIR A RISEN**

**Stylist, hair**

6341 - Hairstylists and barbers

**Job Details**

- Vacancies: 2
- Job Start Date: as soon as possible
- Wage: \$17/Hour Piece work, Commission
- Hours: 40 to 44 Hours / Week
- Terms of Employment: Permanent, Full Time, Morning, Day, Evening, Weekend, Flexible hours

**Skills**

- Ability to Supervise 1 to 2 people
- Security & Safety: Bondable, Criminal record check
- Transportation/Travel Information: Own transportation
- Work Location Information: Urban area
- Work Site Environment: Odours, Non-smoking
- Marketed to: Veterans of the Canadian Armed Forces, Persons with disabilities, Indigenous Peoples

**Work Conditions and Physical Capabilities:** Fast-paced environment, Repetitive tasks, Manual dexterity, Attention to detail, Hand-eye co-ordination, Standing for extended periods

**Person Sustainably:** Excellent oral communication, Reliability, Flexibility, Team Player, Effective Interpersonal skills, Client focus, Judgement, Dependability

**Additional Skills:** Book appointments, Shampoo customers' hair, Supervise other hair stylists & other staff, supervise apprentices/students in training, perform receptionist duties, maintain & order supplies

**Barber Specific Skills:** Cut and trim hair according to client's instructions or preferences, shave and trim beards and mustaches, provide other hair treatment, such as waving, straightening and tinting and also provide scalp conditioning massages

**Hair Colouring Techniques:** Bleach, Dye/tints, Frosting, Streaking/highlights

**Hair Styling Techniques:** Blow drying, Hair braiding, Iron waving/curling, Permanents, Relaxing, Spiking, Pin Curls, Roller setting

**Hairstylist Specific Skills:** Cut, trim, taper, curl, wave, perm and style hair. Suggest hair style compatible with client's physical features or determine style from clients instructions and preferences. Analyze hair and scalp condition and provide basic treatment or advice on beauty care treatments for scalp and hair, clean and style wigs and hair pieces, apply bleach, tints, dyes or rinses to colour, frost or streak hair

**Education:** Other trades certificate or diploma, or equivalent experience

**Experience:** 5 years or more

**Languages:** English

**Job Location:** 4301 South Park Drive, Stony Plain, Alberta T7Z 1L1

**Work Setting:** Barbershop or hairstyling salon/studio

**How to apply**

**In person:** 4301 South Park Drive Stony Plain, Alberta T7Z 1L1 from 09:00 to 17:00

**By telephone:** 780-963-6246 from 09:00 to 17:00

**By email:** dwobrigewitch@live.com

# PRO-ACTIVE FOOT PATROL LEADS TO ARREST OF 4 YOUTH

**Submitted by Stony Plain/  
Spruce Grove/Enoch RCMP**

Spruce Grove, AB - During the early morning hours of July

26th, 2017 Stony Plain/Spruce Grove RCMP arrested four youth for breaking and entering into a school. While on foot patrol around Woodhaven School,

an RCMP member observed an open window to one of the classrooms; four youths were located inside.

The four youths were arrest-

ed and have been charged with Breaking and Entering. Court has been set for August 18th, 2017.

# MOUNTAIN PINE BEETLE NEEDS TO BE ERADICATED BEFORE IT IS TOO LATE

**Submitted by Jim Eglinski, MP – Yellowhead**

I have, on numerous occasions, brought forward in Parliament the devastation happening in Jasper National Park by the mountain pine beetle infestation. From the west along Mount Robinson to the east park gates, the park has been overtaken by this endemic. The dead trees are a tremendous fuel load for possible fires, not only risking the safety of visitors and residential/commercial property, but also the livelihood of wildlife found in Jasper National Park.

As the Member of Parliament for Yellowhead, I am aware of the devastation caused by the mountain pine beetle in Alberta. I have toured Jasper Park from entrance to entrance, and brought my concerns to the attention of officials at all levels -- from local park officials up to Minister McKenna's office in Ottawa. I have been told they have a plan.

After reading Multi-species Action Plan for Jasper National Park of Canada (Proposed), published by Parks Canada to protect seven species identified as threatened or endangered under the Species at Risk Act (SARA),

I dare to ask, what will happen to Whitebark Pine trees and the Woodland Caribou and other wildlife and foliage if the pine beetle infestation is not dealt with?

The Minister of the Environment and Climate Change, the Honourable Catherine McKenna is responsible under Section 47 of SARA for species found in Jasper Park. The above-mentioned proposed report states "... the Species at Risk Act (SARA) prohibitions protecting individuals and residences apply automatically when a species is listed, and all critical habitat in

national parks and national historic sites must be legally protected within 180 days of being identified." It goes on to say: "These documents provide guidance for the recovery of individual species, including strategy direction, recovery objectives, critical habitat, and threats."

The mountain pine beetle is a threat. It is a threat to the survival of the Whitebark Pine trees, the caribou and all wildlife in Jasper Park.

The report can be found at: <https://www.register-lep-sararegistry.gc.ca/default.asp?lang=En&n=80995453-1>

## GROVE HEARING CLINIC

**960-2960**

**1-866-960-2960**

**Hear what  
you've been  
missing...**

**Senior  
Discounts**



**Full  
Service &  
Repair**

**Full  
Hearing  
Assessments**

**HOURS OF OPERATION: 9am – 5pm Weekdays**

**3rd party billing (AADL, WCB, DVA, FCH) • Personal 0% Financing if Needed**

**For The Latest Technology In Hearing Aids & Assisted Living Device Stop By & See Dawn**

**#220-70 McLeod Ave - Westland Market Mall, Spruce Grove**

# DRUG TRAFFICKING CHARGES LAID IN STONY PLAIN

**Submitted by Stony Plain/Spruce Grove/Enoch**

On July 25th, 2017, a male known to be wanted on warrants was arrested by the members of the Stony Plain/Spruce Grove

Drug Section as the result of an ongoing investigation. At the time of his arrest, methamphetamine, an extendable baton and drug trafficking paraphernalia were found to be in his possession.

Andrew WEITZEL of Stony Plain is being charged with possession of methamphetamine for the purpose of trafficking, possession of a weapon dangerous to the public peace, possession of property obtained by crime under

\$5000, possession of marihuana and multiple counts of failure to comply with a recognizance. WEITZEL has been remanded in custody, and is scheduled to appear at the Stony Plain Provincial Court House on August 2nd.

# EXTENSIVE DAMAGE TO OILFIELD LEASE SITE

**Submitted by Drayton Valley RCMP**

Drayton Valley, Alberta - On July 17, 2017 at approximately 3:30 in the morning, two suspects were observed on video, breaking into the Obsidian Energy site (formally Penn West), located Northeast of Cynthia, in Brazeau County, Alberta. Once there, they proceeded to break into several buildings stealing approximately \$200,000 dollars in Copper Wire and causing damage estimated at over one million dollars.

The truck used is a two tone dark colour older model Dodge Dakota or Chevrolet.

Sgt Matthews of the Drayton Valley RCMP says the theft and resulting damage caused has resulted in Obsidian Energy closing the site, which in turn has affected the people who worked there. Sgt Matthew says "thefts in the oil field are a serious problem which creates a financial burden to companies who are already struggling in these financial times"

Investigators are asking anyone who may have information



regarding this occurrence to contact Drayton Valley RCMP at 780-542-4457. If you wish to remain anonymous, you can contact Crime Stoppers by phone at 1-800-222-8477 (TIPS), or by internet at [www.tipsubmit.com](http://www.tipsubmit.com).

You do not have to reveal your identity to Crime Stoppers, and if you provide information to Crime Stoppers that leads to an arrest(s), you may be eligible for a cash reward.

Family run, local business, we care!

## BEST CISTERN SEPTIC SOLUTIONS

**Cistern and Septic Inspection, Cleaning and Repair!**

Septic planning, design, installation by government certified installer(s)

New Installs Available. Reasonable Rates.

**Let Us Handle the Dirty Work**

**780-668-4306**

[best-cistern-septic-solutions.com](http://best-cistern-septic-solutions.com)

## Town & Country Funeral Services

Wabamun  
780-983-2749

Evansburg  
780-727-2791

- † Cemetery Monument Sales & Installation
- † Traditional Burial & Funeral Services
- † Pre-need Funeral Packages
- † Crematorium & Memorial Services

# STORY TO TELL?

Know of a good event going on in the community? Ever wanted to write up a local event for the Community Voice?

If you have any good ideas for articles or would like to submit a story for the paper

Email it to [news@com-voice.com](mailto:news@com-voice.com) or just fax it in at (780) 962-1021.

**Please call us at (780) 962-9228 for more information.**

*Stories may be edited for length due to possible space restrictions.*

**Community VOICE**

Keeping You and Your Community Informed

# LEAN JAVA BEAN...

## *Where Have You Bean?*



- **Helps Burn Fat**
- **Aids In Appetite Control**
- **Enhances Focus and Mental Clarity**
- **Promotes Healthy Energy**

*Weight Management Coffee  
With Clinically Proven Ingredients*

**LEARN MORE**

GET A **FREE** SAMPLE!  
**CALL (780) 907-8642**

# FRIDAY, AUGUST 18

AT WILDWOOD AG GROUNDS

## Wildwood 20<sup>th</sup> ANNUAL FAIR 17<sup>th</sup>

REDNECKS, ROOSTERS & RAINBOWS

**8:00 AM** **PANCAKE BREAKFAST**  
WILDWOOD COMMUNITY HALL, LADIES AID  
AG GROUNDS, EVANSBURG CADETS

**10:00 AM** **HORSE SHOW**

**11:00 AM** **PARADE**

**12 NOON** **LIVESTOCK SHOWS**

**1:00 PM** **BENCH EXHIBITS OPEN**

**1:30 PM** **WATERMELON & JELLO EATING  
CONTEST**

**2:00 PM** **MOUNTED ARCHERY DEMO**

**3:00 PM** **LOG SAWING, NAIL POUNDING**

**4:00 PM** **CATCH THE GREASED PIG  
WATERFIGHT**

**6:00 PM** **STEAK SUPPER**  
WILDWOOD LEGION

**BOUNCY HOUSE** **CHICKEN  
DROP**

**CHOO CHOO  
THE CLOWN**

**FACE PAINTING** **PONY**

**WOOD CRAFT** **RIDES**

**LIVE ENTERTAINMENT**

**ELMER AND FRIENDS**

**KID** **PETTING** **LAWN**  
**GAMES** **ZOO** **BOWLING**

**WHEEL OF FORTUNE  
JR EDITION**

**CLIMBING WALL**

→ **FUN FOR THE WHOLE FAMILY** →


# Wildwood

## 20<sup>th</sup> ANNUAL FAIR 17

THESE PAGES ARE SPONSORED BY THE FOLLOWING BUSINESSES



Lobstick  
River Foods  
2014 Ltd.  
325-3834



Wildwood  
Legion Br # 149  
325-2015



Wildwood  
Public Library  
325-3882



Wildwood  
Bigway  
325-3870



Jane's  
Hair Care  
325-3749



Wildrose  
Embroidery  
325-2424



Jennie's Ice  
Cream Shoppe  
325-4491



Murd's  
Plumbing &  
Heating Ltd.  
712-3630



U.F.A.  
- Wildwood  
325-3866



Wildwood  
Hotel  
325-2000



A Special  
Touch / Sears  
325-2523



D & L Rehn  
Contracting Ltd.  
325-2013



Wildwood  
Ag Society  
325-2424



Forestland  
Construction  
325-2634



Wildwood  
Community  
Association  
325-2194



Wild Ventures  
Contracting  
728-5702



Yellowhead  
County Library  
Board



D & G  
MacDonald  
General  
Contracting  
325-2120

# Wildwood

## 20<sup>th</sup> ANNUAL FAIR 17

THESE PAGES ARE SPONSORED BY THE FOLLOWING BUSINESSES

Wildwood  
Ladie's Aid

325-2180

Roszko Farm  
Equipment Ltd.

[www.roszko.com](http://www.roszko.com)  
786-2105

Hull  
Contracting Ltd.

904-1042

Entwistle  
Concrete

727-3525

Wildwood  
TOPS

325-3873

Carlson  
Roberts Seely  
-Chartered  
Accountants  
727-4469

Bloom & Bliss  
-Flower/Coffee  
Shop  
727-3996

Evansburg  
Family Clothing

727-3526

Tipple Park  
Super A Foods

727-3740

Kokanee  
Springs RV Park  
& Driving Range  
797-3058

Claire's  
V & S

727-3868

Evansburg  
Inn

727-3621

Roxanne  
MacDonald  
- CGA  
727-2017

The Dog  
Ranch

727-2652

Tri-Lakes  
Services Ltd.

727-3939

Pineridge  
Golf Resort  
1-877-  
321-SEBA

Buckskin  
Construction  
Ltd.  
797-3980

# NEW GRAIN TESTING PROGRAM AVAILABLE

**Submitted by Jim Eglinski, MP – Yellowhead**

Jim Eglinski, Member of Parliament for Yellowhead, is pleased to inform local farmers of an alternative service delivery program from the Canadian Food Inspection Agency (CFIA) for grain testing.

The REGAL (Recognition of Ex-

port Grain Analysis by Authorized Laboratories) program will provide exporters the option of having their grain shipments to certain countries tested for phytosanitary purposes by authorized private laboratories.

The new program will initially be focused primarily on grain exports to India and China because these countries represent the highest export volumes from Canada. Strong

oversight mechanisms will provide assurance to importing countries that Canada remains committed to the highest standards for grain exports.

The CFIA will remain solely responsible for issuing phytosanitary certificates for export shipments of grain.

"Canadian grain is in demand and trusted around the world. This new

testing program will provide farmers with more options to ensure the integrity, health and safety of our food system," conclude MP Eglinski.

For more information, visit: <http://inspection.gc.ca/plants/grains-and-field-crops/exports/notice-to-industry-2017-08-03/eng/150160069903/1501601099891>

# PROPOSED ACTION PLAN FOR CARIBOU

**Submitted by Jim Eglinski, MP – Yellowhead**

OTTAWA: Jim Eglinski, Member of Parliament for Yellowhead, is pleased to invite residents and local stakeholders to participate in the public consultation process for an action plan on the protection of boreal caribou.

The boreal population of the woodland caribou (boreal caribou) has been listed as threatened under Canada's Species at Risk Act since 2003 and has been in decline.

"This is an important issue for our riding as the range of the caribou overlaps with local natural resource extraction and timber harvesting, which is important economic sectors within Yellowhead and Alberta as a whole," stated MP Eglinski.

Indigenous peoples, stakeholders, and other parties are invited to take part in a series of webinars on this proposed action plan and to submit written feedback on the document by September 27, 2017.

The proposed action plan encourages provinces and territories to complete their range planning work as soon as possible. Provinces and territories are now working to develop range specific plans or other similar documents for boreal caribou by October 2017.

Effective recovery of the boreal caribou will require innovation, cooperation, and collaboration amongst the federal government, provinces, territories, Indigenous peoples, industry, environmental organizations, and local communities. It will need to involve creative measures to protect and enhance habitat while also working to ensure continued economic development and job creation.

"I want to encourage all stake-

holders and interested parties to participate in this consultation as it will have local impacts on our

riding," concluded MP Eglinski.

To read the proposed action plan and participate in the process,

visit: [http://registrelep-sararegistry.gc.ca/document/default\\_e.cfm?documentID=407](http://registrelep-sararegistry.gc.ca/document/default_e.cfm?documentID=407)

## BETTER QUALITY OF LIFE and a money saver, too!

You can immediately see and feel the difference Elite makes to the quality of your water and the quality of your life. With Elite conditioned water, you and your family will look and feel better - with noticeable glowing complexions and soft, shiny hair.

Beautifully soft, dazzling whites and brilliant colors will replace the rough, matted clothing and towels your hard water previously produced.

Even housework is less of a chore as conditioned water leaves no bathtub ring, scummy film on shower stalls or unsightly spots on glassware, dishes and fixtures.

Your Elite water conditioner will save you time and money, too. You'll spend significantly less on detergents, cleaning products, conditioners, creams and personal grooming products. In addition, your plumbing fixtures and appliances will be protected against costly repairs or premature replacements.



### QUALITY SALES & SERVICE OF:

- DISTILLERS
- SUBMERSIBLE PUMPS
- SEPTIC & JET PUMPS
- PIPE, WIRE & FITTINGS
- BOTTLE BUSTER (R.O. WATER COOLER)
- CHLORINE BLEACH, CHEMICALS & SALT
- 3 MOBILE SERVICE VEHICLES
- CHEMICAL-FREE IRON FILTERS
- SOFTENERS
- CHLORINATION SYSTEMS
- MOBILE SHOCK CHLORINATION
- SEDIMENT, TASTE & ODOR FILTERS
- REVERSE OSMOSIS FILTERS (R.O.'s)
- HOT TUBS & JETTED TUBS
- POOL & SPA FILTERS & CHEMICALS
- FREE WATER ANALYSIS

**OUR WORKMANSHIP IS GUARANTEED!**

**The benefits and savings provided by Elite conditioned water will make a wonderful difference in your life.**

## QUALITY WATER SERVICES LTD.

20 South Ave., SPRUCE GROVE

962-6040 425-2934 (Edm. Direct)



**"We're recommended the MOST as the company that knows the MOST"**

# GOLFER'S GUIDE

## FIVE TOP GOLF TIPS TO HELP BOOST YOUR GAME

(NC) When it comes to golf, it's the little things that can have the biggest impact on your game. Whether it's your first attempt, or 10th season, golf expert Bob Weeks has got you covered at the links this summer with these five tips:

**Choose the right clubs:** Regardless of your experience or skill level, choosing the right equipment can be the difference between duffing it and striking the ball straight down the fairway. It's important to work with a professional to get the clubs best-suited

to your game and then, to have them custom fit. You should be fit for the length, loft, lie angle, shaft flex and even the grip size. If your clubs aren't custom fit, it will be like walking around in shoes that are the wrong size.

**Get on the ball:** Choose the right kind of golf ball for your game. While golf balls all look the same, it's what's inside that determines if it's right for you. Golf balls fall into two categories: distance or control. Distance balls are generally two-piece balls with a large core and a cover. They are

harder and better suited for higher handicappers or beginners. Control balls, usually three- or four-piece balls, are softer and spin more meaning they will land on the green and stop. More skillful players should use these.

**Consider the elements:** Weather is always a factor in golf and dealing with it must always be considered. For instance, in cold temperatures, the ball will travel shorter distances, so take more club. The opposite is true for warmer temperatures. If you're playing into the wind, swing easy

as that will keep the ball from spinning too much and rising up into the breezes. And downwind, make sure to judge the intensity of the breezes so you can choose the proper club. Your ball will roll further than normal on a downwind shot so take that into account.

**Putting and chipping is priority:** Lots of players like to boom their drives and will spend a lot of time on the range hitting their drivers. But if you want to improve your scores, you should spend more time working on your putting and chipping. Since most average players miss a lot of greens, the best way to save strokes is by chipping it close and making more putts. Focus more on your short game than your drive and you will improve.

**Play the 19th hole:** Win or lose, there's no better way to celebrate than hitting the 19th hole. Less is often more in golf and the same applies when considering what to eat and drink after a round. Molson Canadian 67 for example is specially brewed with 67 calories and an ABV of 3% per 341ml, offering a light, refreshing alternative for active players.

[www.newscanada.com](http://www.newscanada.com)



**SILVER SANDS GOLF RESORT**

**18 Hole Golf Course**

Parkland's hidden gem of a golf course; located 45 minutes west of Edmonton on highway 16. Book your company tournament today - we have special rates for weekdays. Call 780-797-2683. Check [silversandsgolfresort.com](http://silversandsgolfresort.com) for weekly specials. Join us for Men's night on Wednesday's and Ladies night on Thursday's both 6:00 pm shogun start

**SILVER SANDS GOLF RESORT**

Silver Sands Village, Lake Isle [silversandsgolfresort.com](http://silversandsgolfresort.com) 1-877-797-2683



**Alberta Beach GOLF RESORT**

**WEEKDAY SPECIAL**

4 Golfers + 2 Carts Great for Weekday Tournaments  
**\$140.00 (\$35 each)** Monday thru Thursday (excluding holiday Mondays)

18 Holes	\$33.00 Weekdays	\$48.00 Weekends
9 Holes	\$20.00 Weekdays	\$37.00 Weekends
Cart Rental	\$18.00 9 Holes	\$28.00 18 Holes

To Book your Tee Times or Tournaments  
 Call: (780) 924-GOLF (4653)



**Calahoo Hills Golf Course**

- 9 Holes
- Grass Greens
- BBQ Facilities
- Licensed Clubhouse

459-9081

Map showing location: STONY PLAIN 12.8KM HWY 779, WESTONWAY 3.5KM HWY 779, HWY 16, HWY 27, 1.6KM, 8.5KM, 2.80

# GOLFER'S GUIDE

## TIPS FOR NEWCOMERS TO THE GAME OF GOLF

Few hobbies can be as enjoyable one moment and as frustrating the next as golf. Golfers know a great putt can be quickly followed by a bad tee shot, and maintaining their composure through the highs and lows of the game is a key to success on the links.

Maintaining that composure isn't always easy, even for the professionals. It's even more difficult for beginners, who quickly learn the game of golf involves more than just spending sunny weekend afternoons on pristine golf courses. In fact, golf can be quite demanding, and beginners would be wise to heed a few tips before hitting the course.

\* Don't commit to an expensive set of clubs right off the bat. Golf clubs can be very expen-

sive, so beginners should buy an affordable secondhand set of clubs so they can get the hang of what they like before spending a lot of money. Visit a pro shop and explain that you are just a beginner. The shop will likely make some valuable suggestions and might even let you try out a pair of clubs. In addition, many driving ranges allow customers to rent clubs, and this can be a great and inexpensive way to find the right clubs for you.

\* Take lessons. Even the very best at self-teaching might find it extremely difficult to become a self-taught golfer. When first trying your hand at golf, take some lessons and don't expect to be playing 18 holes any time soon. Before hitting the course, where you might be discouraged and

you might frustrate those golfing behind you, learn the fundamentals by taking a few lessons at the driving range. Learn from a professional, who won't offer you any hidden secrets to golfing glory (there aren't any) but will offer sound advice on the game's fundamentals.

\* Take the game home with you. Beginners can even take advantage of golf's vast popularity by taking the game home with them. This doesn't mean building a putting green in your backyard. Rather, purchase some instructional DVDs to learn the game during your down time throughout the week. Many golfers don't have time to hit the links during the week, but they do have time to watch some DVDs when they get home from

work. Such instructional DVDs can help you master your grip and stance, which you can then take with you to the course over the weekend.

\* Have fun. Golf is a fun game; it just takes time to hone your skills. But even if you aren't ready for the professional tour after your first few rounds, you can still have fun. Don't let some beginner's frustration, which every golfer experiences, ruin the fun of the game. Take note of your surroundings when you hit the links, and appreciate the time you're spending with your group. If the game becomes more a source of frustration than fun, then take a break and put in some more work away from the course, be it at the driving range or studying at home.



*Senior Golf Special*  
60+

**GOLF & CART**

**17** *Monday-Thursday* **6**  
*Excludes holiday Mondays*  
*Play this gorgeous 18 hole course today!*

Book online [pineridgegolfresort.com](http://pineridgegolfresort.com)  
or call 780-797-GOLF






**Kokanee SPRINGS**  
RV PARK  
Seba Beach, AB  
**DRIVING RANGE**

- 15 bay driving range
- Baskets & crates
- Public washrooms
- Club rentals
- Open 10am -8pm daily

780-797-3058

**STAY AFTER YOUR GAME TO ENJOY**




**RV PUB & GRILL**  
"WHERE FRIENDS MEET"

[www.kokaneespringsrv.com](http://www.kokaneespringsrv.com)  
Hwy 31, Seba Beach, AB | 780-797-3100



# Reliable power for our rural lifestyle

The McLauchlin Family,  
Bluffton, Alberta



WHY WE choose EQUS

[EQUS.CA](http://EQUS.CA)

# ALBERTA RCMP WARNS AGAINST BINARY OPTION SCAMS

## Submitted by Alberta RCMP

Edmonton, Alta. – Every year, thousands of Albertans fall victims to fraud, losing millions of dollars. Most people don't believe it could happen to them, but fraudsters use sophisticated ways to target people of all ages. Last year, there were a total of 8,317 cases of fraud reported in Alberta RCMP jurisdictions from January to October.

Some of the most common scams in Canada in 2016 included:

- Romance scams: Fraudsters steal photos and use dating sites and social media to lure potential victims into sending money for various reasons.

- Wire Fraud scams: Financial industry wire fraud occurs when Canadian financial institutions and investment brokers receive fraudulent email requests from who they believe to be an existing client.

- Investments scams: An investment scam is any solicitation (telephone, mail, email, etc.) for investments into false, deceptive or misleading investment opportunities, often referring to higher than normal or true monetary returns which consumers lose most or all of their money.

- Merchandise scams: Involves deceptive websites selling counterfeit goods from existing retailers at discounted prices. They use the concept of a limited, one-time-only sale to attract online buyers.

"Fraud has a devastating impact on individuals, families, businesses and to our economy. The RCMP believes that the best way to fight these types of crime is through awareness because the more you know about a scam, the less likely you are to be victimized. Albertans should immediately report any incident to the appropriate authorities," said Inspector K.C.A. (Allan) Lai, Acting Officer-in-Charge of RCMP "K" Division Federal Policing for Southern Alberta.

Recently, scammers have also been targeting Canadians and Albertans using binary option scams. According to the Alberta Securities Commission (ASC), Albertans who fall victim to binary options scams lose, on average, more than \$20,000. Similar to gambling, binary options work much like a wager. All or nothing "bets" are invested based on how

an asset will perform within a certain timeframe. The asset could be a stock, a currency or a commodity. This type of scam is typically offered online. Binary options websites are designed to look legitimate, enticing users with promises of high rates of return and very low-risk.

Albertans should know that companies offering securities to Canadians must be registered in the province they do business. Currently, there are no registered binary options dealers in Alberta.

The following tips from the ASC

will help protect you from binary scams.

- Be cautious when asked to provide personal information and credit card details over the phone and internet.

- Do your due diligence, research an investment opportunity and seek the council of an independent third party.

- Prior to investing, ask for information on the investment. Check the registration and

- enforcement history.

- The Canadian Securities Admin-

istrator (CSA) encourages all investors to visit [www.aretheyregistered.ca](http://www.aretheyregistered.ca)

If you or someone you know has been approached by a binary options company or believe you have been the target of a securities scam, you can

- Contact the Alberta Securities Commission at (877) 355-4488 (toll-free) or [inquiries@asc.ca](mailto:inquiries@asc.ca).

- Contact the Canadian Anti-Fraud Centre 1-888-495-8501 or report online at <http://www.antifraudcentre.ca>.



This year there are 6 stops in Parkland County for Alberta Open Farm Days!

For more details, be sure to check out the Parkland County website.

- 1 Bent River Ranch**  
SATURDAY: 10 a.m. - 9 p.m. SUNDAY: 10 a.m. - 4 p.m.
- 2 Riverbend Cattle Co.**  
SUNDAY: 9 a.m. - 4 p.m.
- 3 Newman Country Farm Retreat**  
SATURDAY: 11 a.m. - 4 p.m.
- 4 Multicultural Heritage Centre**  
SATURDAY: 1 p.m. - 4 p.m.
- 5 Happy Acres U-Pick**  
SUNDAY: 5 p.m. - 9 p.m.
- 6 Kiwi Nurseries Ltd**  
SATURDAY: 10 a.m. - 4 p.m. SUNDAY: 10 a.m. - 4 p.m.

*Alberta Open Farm Days is a province wide open house that's all about farmers and ranchers inviting their urban and rural neighbours to stop in for a visit. [www.albertafarmdays.com](http://www.albertafarmdays.com)*

[www.parklandcounty.com/openfarmdays](http://www.parklandcounty.com/openfarmdays)

# DARWELL AND DISTRICT AGRICULTURAL SOCIETY'S Darwell Quad Wars & 74<sup>th</sup> Annual Summer Fair



## ATV & SSV Mud bog races

Registration  
9:00-10:30am  
Event Starts at Noon



[www.quadwars.com](http://www.quadwars.com)

Sponsored by



Darwell and District Ag Society

## SATURDAY, AUGUST 19, 2017

8:00AM - 10:00AM

Morand's Free Pancake Breakfast

*Prepared by Darwell Volunteer Fire Department*

11:30AM - 5:00PM

Concession at the Mac Shack

8:00AM (STARTS)

Bench Show in the hall.

Entries from 8:00AM - 10:15AM. Judging starts at 10:30AM. Opening for viewing at 1:00PM

SATURDAY: ADULTS \$5.00 | SENIORS & CHILDREN 6 TO 12 YEARS \$3.00 | SUNDAY: FREE

FOR MORE INFORMATION VISIT [DARWELLAG.COM](http://DARWELLAG.COM)

DARWELL AND DISTRICT AGRICULTURAL SOCIETY'S

# Darwell Quad Wars & 74<sup>th</sup> Annual Summer Fair

## SATURDAY, AUGUST 19, 2017

1:00PM - 3:30PM	Women's Institute Tea
10:00AM	Parade Judging
10:45AM	Parade
10:00AM - 4:00PM	Market at the Tri-Lakes Golden Age Club
All Weekend	Kosik Money Mine
10:00AM-3:00PM	Choo Choo the clown (balloon artist)
11:00AM-4:00PM	Face Painting & Sparkle Tattoos by Lisa Fearnley
11:00AM-4:00PM	Bob Derouin's Inflatable Slide & Bouncy House
11:00AM-3:00PM	Crafts at the Gazebo
11:00AM-3:00PM	Funny Farm Large Petting Zoo
11:00AM-4:00PM	ZipLine
11:00AM-4:00PM	Mini Golf
11:00AM-4:00PM	Dunk Tank
11:00AM	Central Alberta Draft Horse Pull
12:00 NOON	Quad Wars
1:00PM	Farmers Olymp-hicks at the outdoor riding arena

## SUNDAY, AUGUST 20, 2017

7:00AM - 5:00PM	Concession
7:00AM - 11:00AM	Toonie Pancake Breakfast
9:00AM	Horse Show
10:00AM - 3:00 PM	Market at the Tri-Lakes Golden Age Club
10:00AM-4:00PM	Bob Derouin's Inflatable Slide & Bouncy House
11:00AM	Cattle Show

SATURDAY: ADULTS \$5.00 | SENIORS & CHILDREN 6 TO 12 YEARS \$3.00 | SUNDAY: FREE

FOR MORE INFORMATION VISIT [DARWELLAG.COM](http://DARWELLAG.COM)

# DARWELL AND DISTRICT AGRICULTURAL SOCIETY'S Darwell Quad Wars & 74<sup>th</sup> Annual Summer Fair

THESE PAGES ARE SPONSORED  
BY THE FOLLOWING BUSINESSES

Oneil  
Carlier  
-MLA  
786-1997  
TICKET

Darwell  
Restaurant  
& Bar  
892-2233  
TICKET

Rocko's  
Rentals &  
Services Ltd.  
718-3850  
TICKET

Beyond  
The Blue Sky  
721-2690  
TICKET

Whispering  
Hills Stables  
892-4645  
TICKET

C & D Tank  
Truck Service  
-Cherhill  
785-3383  
TICKET

Guardian  
Beach  
Pharmacy  
924-3647  
TICKET

Tim Hay  
Trucking &  
Construction  
818-5849  
TICKET

Wendy's  
Cafe at Gunn  
General Store  
967-0182  
TICKET

Estates at  
Water's Edge  
1-877-  
405-1105  
TICKET

Gunn  
General Store  
967-5550  
TICKET

Gunn  
Liquor Outlet  
967-5550  
TICKET

Jay Day  
Water Hauling  
Services  
674-0104  
TICKET

Bouius  
Custom Work  
967-5298  
TICKET

Sangudo  
Veterinary  
Clinic  
785-2200  
TICKET

John Eden  
-Sunnyside  
Realty Ltd.  
785-2561  
TICKET

Redneck  
Liquor  
-Sangudo  
785-2229  
TICKET

Community  
Health  
Pharmacy  
785-3784  
TICKET

Ray's Auto  
Repair &  
Towing  
785-2251  
TICKET

C-5 Chadd  
Contractors  
Ltd.  
785-2548  
TICKET

Pit Stop  
Gas &  
Convenience  
785-2432  
TICKET

Stuber's  
Cat Service  
Ltd.  
785-2173  
TICKET

W.V.  
Repair  
Service  
-HD & AG  
305-1315  
TICKET

Martin  
Deerline  
-Mayerthorpe  
786-2253  
TICKET

Paddle  
Plastics Ltd.  
786-4408  
TICKET

The  
Co-operators  
-Mayerthorpe  
786-2750  
TICKET

Paddle  
River  
Concrete  
786-2666  
TICKET

Park  
Memorial Ltd.  
-Funeral Home &  
Crematorium  
786-2533  
TICKET

Roszko  
Farm  
Equipment Ltd.  
www.roszko.com  
786-2105  
TICKET

Pembina  
West Co-op  
786-2093  
TICKET

Joanne Hay  
-Countryside  
Realty  
908-1292  
TICKET

**DARWELL AND DISTRICT AGRICULTURAL SOCIETY'S**  
**Darwell Quad Wars &**  
**74<sup>th</sup> Annual Summer Fair**

**THESE PAGES ARE SPONSORED  
BY THE FOLLOWING BUSINESSES**

GMP Ontrack -Excavation, Brushing 719-2687 <small>TICKET</small>				Gossamer Treasures Gallery & Gift Shop 964-1057 <small>TICKET</small>
Wabamun Lake Inn 892-2424 <small>TICKET</small>	A.T.B. Financial -Wabamun Br. 892-7927 <small>TICKET</small>	Ray's Market 892-2230 <small>TICKET</small>	Wabamun IDA Pharmacy 892-2278 <small>TICKET</small>	Wabamun Hotel 892-2224 <small>TICKET</small>
Trades Automotive & Welding Ltd. 892-4500 <small>TICKET</small>	Wabamun Lakeside Liquor 892-3463 <small>TICKET</small>	Shoreside Inn & Suites 892-4773 <small>TICKET</small>	SunHills Mining LP -Highvale Mine 731-5300 <small>TICKET</small>	Fallis Country Store & Liquor Outlet 892-3150 <small>TICKET</small>
Kokanee Springs RV Park & Driving Range 797-3058 <small>TICKET</small>	Derby's Lakeview General Store 797-3838 <small>TICKET</small>	Pineridge Golf Resort 1-877-321-SEBA <small>TICKET</small>	Tomahawk Race Trac Gas 339-2575 <small>TICKET</small>	Entwistle Concrete 727-3525 <small>TICKET</small>
Buckskin Construction Ltd. 797-3980 <small>TICKET</small>	Bloom & Bliss -Flower/ Gift Shop 727-3996 <small>TICKET</small>	Evansburg Inn 727-3621 <small>TICKET</small>	Hull Contracting Ltd. 904-1042 <small>TICKET</small>	P & E Ventures Inc. (Skidsteer Services) 727-2721 <small>TICKET</small>
Noreen Hutt -Realty Executives Leading 727-2887 <small>TICKET</small>	Roxanne MacDonald -CGA 727-2017 <small>TICKET</small>	The Dog Ranch 727-2652 <small>TICKET</small>	Morand Industries Ltd. 967-2500 <small>TICKET</small>	<small>NAPA AUTO PARTS</small> Country Automotive Specialists 967-2218 <small>TICKET</small>
Onoway Timber Mart 967-2274 <small>TICKET</small>	Tri-Lakes Services Ltd. 1-844-967-9176 <small>TICKET</small>	Assertive Electric Ltd. 967-3827 <small>TICKET</small>	R & S Towing 967-2492 <small>TICKET</small>	Limb Walkers Tree Care Ltd. 203-4705 <small>TICKET</small>

# DARWELL AND DISTRICT AGRICULTURAL SOCIETY'S Darwell Quad Wars & 74<sup>th</sup> Annual Summer Fair

THESE PAGES ARE SPONSORED  
BY THE FOLLOWING BUSINESSES

Grande Tire  
-Onoway

967-3432

TICKET

AC  
Purewater  
Hauling  
Services Ltd.  
914-9002

TICKET

Suds Up  
Car Wash

967-0022

TICKET

Onoway  
Bigway Foods

967-4291

TICKET

Trius  
Insurance

967-5270

TICKET

Onoway  
Veterinary  
Clinic  
967-2967

TICKET

O' How  
Sweet It Is  
Sweet House  
& Bakery  
587-416-7384

TICKET

Mo Jo  
Garden  
Centre &  
Diner  
967-4319

TICKET

The Water  
Lilly Boutique

686-5977

TICKET

Academy  
Fabricators  
-Onoway  
967-3111

TICKET

O & J  
Consulting  
Services  
967-4254

TICKET

Border  
Paving

967-3330

TICKET

Treeline  
Well Service  
Inc.  
967-1080

TICKET

Village of  
Alberta Beach

924-3181

TICKET

A.T.B.  
Financial  
-Alberta Beach Agency

924-2211

TICKET

Mama's In  
The Kitchen  
Restaurant &  
Catering  
924-2468

TICKET

Zena's  
Extermination

913-1996

TICKET

Alberta  
Beach Hotel

924-3005

TICKET

Summer's  
Drilling

963-1282

TICKET

Diannes  
Tri Village  
Pizza  
924-3132

TICKET

Leann  
Knysh  
-Century 21  
Vantage Realty  
963-2285

TICKET

Chico's  
Vacuum  
Services Ltd.  
924-2435

TICKET

The  
Hey Loft

924-3133

TICKET

Norm  
Blakeman's  
Drilling  
924-3024

TICKET

Homer's  
Hut Coffee  
& Gift Shop  
924-2244

TICKET

Jack's Auto  
Body Ltd.

967-5850

TICKET

Alberta  
Beach &  
District Ag  
Society  
913-5595

TICKET

Liquor  
Cottage

924-3385

TICKET

BeachComber  
Beauty &  
Barber Salon  
924-3242

TICKET

Lanman  
Landscapes

977-6586

TICKET

Ecko  
Marine

428-1464

TICKET

Dirty Deeds  
Car Wash

924-3090

TICKET

# LAKE ISLE AND LAC STE ANNE STATE OF THE WATERSHED REPORT - EXECUTIVE SUMMARY

**Submitted by Angela Duncan, Vice Chair | LILSA**

Isle Lake and Lac Ste Anne are important recreational lakes in central Alberta. Due to their proximity to Edmonton the lakes are popular recreational destinations for activities including swimming, fishing, boating and camping. Lakeshore development is significant and continues to increase as demand for lakefront properties rises across Alberta. Lac Ste Anne is also the site of one of the largest religious pilgrimages in Canada due to a belief in its healing and sacred waters. The pilgrimage site was named a National Historic Site of Canada in 2004 because of its social and cultural importance.

The Lake Isle and Lac Ste Anne Water Quality Management Society (LILSA) was formed in 2013 to address concerns related to lake health. Residents at the lakes are concerned about deteriorating water quality, blue-green algal blooms, invasive species, proliferation of aquatic vegetation and lake levels. In 2014, LILSA approached the North Saskatchewan Watershed Alliance (NSWA) to prepare a State of the Watershed Report for Isle Lake and Lac Ste Anne. The purpose of this report is to characterize the environmental state of both lakes and their watersheds through the evaluation of key issues, biophysical information and watershed stressors.

The Isle Lake and Lac Ste Anne watersheds cover a combined area of approximately 865 km<sup>2</sup> and are located within the Sturgeon River watershed, which is a subwatershed of the North Saskatchewan River Basin. Climate in the region is typical of the Dry Mixedwood Subregion, but an analysis of temperature and precipitation data in the region indicates a warming and drying trend in recent decades (NSWA, 2016a). Currently, 36% of the land cover within the watersheds of Isle Lake and Lac Ste Anne are agriculture and "developed" land, whereas the remaining cover consists of forested areas, scrubland, grassland, bare earth, water and wetlands (AAFC, 2015). From 1966 to 2015, agricultural land cover transitioned from predominantly cropland to pasture

land. The primary land uses in the watersheds are agricultural production and urban development which cover 76% and 8% of the disturbed land, respectively (ABMI, 2016). Aggregate extraction is the primary industrial activity in the watersheds (ABMI, 2016).

Isle Lake and Lac Ste Anne are relatively shallow lakes that are well mixed throughout the year resulting in uniform temperature and oxygen levels through the water column.

However, on hot calm days both lakes may stratify, resulting in depleted oxygen levels near lake bottom. Blue-green algal blooms occurred in the lakes prior to European settlement. However, ongoing watershed development has increased eutrophication in these lakes (Blais et al., 2000). Currently, Isle Lake is rated as hypereutrophic whereas Lac Ste Anne is rated as eutrophic in the east basin and hypereutrophic in the west basin.

The collective findings of this report indicate that regional hydrology and water quality in the watersheds may be changing. An analysis of stream flow data from the Sturgeon River at Magnolia Bridge (WSC Gauging Station #05EA010) revealed a significant decline in stream flows during the past twenty years (NSWA, 2016a).

**Continued on Page 22**

## PROBÍTA

### Hydrolyzed Collagen Protein Chew

- ✓ Reduces Wrinkles & Age Spots
- ✓ Tightens & Tones Skin
- ✓ Promotes Hair Regrowth
- ✓ Strengthens Bones, Cartilage & Organs
- ✓ Reduces Pain, Anti-Inflammatory
- ✓ Builds Lean Muscle & Enhances Weight loss
- ✓ Boosts Metabolism, Energy & Stamina
- ✓ Chocolate and Berry flavored

**Everything your body craves!**

**100% Bio-Identical and Absorbable**

**Doris after 6 weeks!**

**Hair Regrowth**

**Clare after 2 weeks!**

**Skin Tightening**

<b>POCKET PROTEIN</b>	<b>HYDROLYZED COLLAGEN PROTEIN</b>	Promotes lean muscle mass and superior joint flexibility.
<b>MUSCLE RECOVERY</b>	<b>ARCTIC CLOUDBERRY</b>	Support body health and nourishment with essential vitamins and minerals.
<b>JOINT HEALTH</b>	<b>BEETROOT JUICE</b>	Improves blood flow to bring oxygen and nutrients where your body needs them most.
	<b>LOW CALORIE CONTENT</b>	Contains just 30 calories per chew for a small and satisfying snack.

**Call for a free sample! (780) 907-8642**

**WE NEED PARTNERS**

- ✓ Incredible Opportunity!
- ✓ No Competition!
- ✓ Breakthrough Products!

- ✓ Up to \$25K per week
- ✓ Car Bonus \$600/month

# Lake Isle and Lac Ste Anne State of the Watershed Report - Executive Summary

## Continued From Page 21

Lake levels at Isle Lake and Lac Ste Anne have also been on the decline since the 1990s. Nutrient and ion concentrations at Isle Lake appear to be increasing. A similar upward trend in ion concentrations is also evident at Lac Ste Anne.

Blue-green algal blooms are common at both lakes and Alberta Health commonly issues advisories, warning residents to use caution when recreating during bloom events. Fish kills are common at both lakes; winter and summer kills occur frequently at Isle Lake and winter kills occur intermittently at Lac Ste Anne. Declining lake levels and increasing nutrient concentrations have the potential to increase the frequency and severity of blue-green algae blooms and fish kills on both lakes.

Flowering rush (*Butomus umbellatus*) has also infested Isle Lake and could further exacerbate water quantity and water quality concerns

by reducing lake inflow and outflow, choking out native plant species and reducing lake oxygen levels.

Several data gaps are identified in this report; these include riparian health, groundwater hydrology, water quality in the individual basins of Lac Ste Anne, and recreational pressures on the lakes. A Riparian Health Assessment has been initiated for Isle Lake but not yet for Lac Ste Anne. Riparian Health Assessments are useful to help direct management efforts for restoring lost riparian habitat. Recent information is not available to fully evaluate groundwater trends in the watershed. Further investigation is warranted to characterize the relationships between groundwater and surface water for both lakes. Recent water quality data for Lac Ste Anne have been generated from whole-lake composite samples. Because of the very different morphometries of the east and west basins they should be sampled separately; this would also allow comparisons with historical data. Lastly, it would be useful

to evaluate recreational pressure on both lakes, considering increased urban development around both lakeshores in the last fifty years.

The overall health of the Isle Lake and Lac Ste Anne watersheds was assessed using a coarse-scale lake screening and assessment tool developed by the NSWA. The potential to influence or impact lake water quality is used as the end point for the screening criteria. The condition of the two lakes and their watersheds with respect to each factor is screened as low, medium or high concern, and then an overall interpretation is presented. Based on this assessment, the condition of Isle Lake and Lac Ste Anne (and their watersheds) were considered moderately to highly sensitive to human encroachment.

Action is necessary to prevent further degradation of these watersheds, especially in light of declining water levels and changing water quality. Future recommendations for Isle Lake and Lac Ste Anne include continued water quality,

quantity and invasive species monitoring, enhancement of stewardship activities around the lakes and in their watersheds, and development of best management practices to reduce land use impacts.

It is recommended that a watershed management planning process be initiated to prevent further degradation of Isle Lake and Lac Ste Anne, and to promote restoration and conservation activities for key watershed features. The management plan would ideally align with the goals and directions of the larger Integrated Watershed Management Plan for the North Saskatchewan River in Alberta (NSWA, 2012). The plan should address impacts from agricultural and industrial activities, urban, recreational and rural developments. The plan would be developed through engagement of key stakeholders, who should work collaboratively to address the range of issues at Isle Lake and Lac Ste Anne. For the full watershed report, visit [www.nswa.ab.ca](http://www.nswa.ab.ca).

## AUGUST 26<sup>TH</sup> AUCTION FOR: LES AND JOYCE WHITE

Located: From Mayerthorpe on Hwy 43 – Go 1 mi E on Hwy 43, then ¾ N on RR 83. Take Twp 574 E for 1 ½ mi.

**Saturday, August 26<sup>th</sup> at 1:00P.M.**

**RECREATION:** \* 2002 Ford F250 XL Super Duty Truck c/w/ New Triton V8, Ext Cab, 4x4, 8' Box, White \* 1994 Okanagan 5th Wheel 22' Holiday Trailer w/ 2 axles, Rear Living Room \* 2004 Yamaha Grizzly 660 Quad \* 84 Ski doo 447 \* Stand Behind Sleigh \* Nice 17' sylvan Alum boat w/ Open Bow, 4 Seats, Johnson 60 O/B \* 14' Starcraft Alum Boat w/ 35 hp Evinrude \* McCulloch 7 ½ hp \* 14' FG Boat w/ 65 Johnson \* 2 W Ski doo Trailer

**SHOP TOOLS and EQ:** \* GL 300 CX 9/4 Metal Lathe \* Metal Band Saw \* Decastar 100E Welder \* HD Rolling Engine Hoist \* Mount \* Hyd Floor Jacks \* Drill Press \* C/O Saw \* Air/Hyd Bumper Jack \* Red Tool Box \* Farm Tools, Parts, Misc \* Radial Arm Saw \* Wood Lathe \* Table Saw \* Wood Tools \* HD Thickness Planer \* Jointer \* Reddi Heater

**TRACTORS / FIELD EQ / HARVEST EQ:** \* IHC 4156 4WD Tractor w/ Tires \* ACD 21 Tractor w/ cab, 24.5/32 Tires \* Cockshutt 560 Tractor \* Good 12' JD Break Disc w/ 24" blades \* 20' White 253 Disc w/ 20" Disks \* 20' Morris DT Cult \* 20' Case VS Cult \* 20' Coil Packers \* JD 5 Btm Plow \* 24' Morris Rod Weeder \* 26' IHC Wing Cult Frame w/ Tine Harrows \* 72' Vers D Harrows \* 60' Vers Sprayer w/ 3000 Tank \* 3 of 8' Melroe DD Press Drills w/ fert \* Ingate Drill Fill Auger \* 14' Vers 400 Swather w/ cab, PU Reels \* NHTR 70 Combine \* NH 1400 Combine \* WF 41 x 7 pto Auger \* 69 CHEV C60 Truck w/ 16' Metal Box, Hoist \* 4 Roll Fanning Mill \* 1500 P/Water Tank \* IHC 1600 w/ gravel box \* CASE 930 Tractor w/ new starter \* 1984 Ford F250 Truck w/ Industrial Mechanical Tool Box System \* Industrial Air Compressor w/ New 14hp Motor and Clutch \* Good Case 930 Tractor

**SMALLER EQ / YARD EQ / SALVAGE:** \* IHC McCormick (W4)+(W6) Tractors \* 14' Dt Cult \* 12' JD Disc on trans \* 10 D Harrows \* 1952 IHC 110 ½ Ton \* 6' FK 3 pt Mower \* 8 x 10 Yard Shed \* 7 Bags Insulation \* 1978 Ford F250 w/ 4 WD, 4 spd, Good 8' Snow Blade \* 300 Fuel Tank \* Chain Saws \* 4 Push Mowers \* Mini Rototiller \* CASE (444)(446)(448) Tractors w/ Mower, Snow Blower, Rototiller, Blade \* PTO Trail Grass Sp

**FOR PARTS:** \* Vers 145 Tractor, IHC W6, IHC S 1700 Truck, MF 36 Swather, 5 W Rake

**PARSONS AUCTIONS LTD.**  
Charles 674-7704 (780-674-3929) Jeff 305-4328  
Pictures Available on: [parsons-auctions.com](http://parsons-auctions.com)

## ESTATE SALE

**Complete Estate of Marion Fennell**  
**Sunday, August 27<sup>th</sup>, 2017 at 12:00PM**  
**Directions: Spring Lake, County of Parkland, AB | 52417 - RR15**

**Cars, Trucks, Trailers, & RV's:** \* 2006 Buick Allure CX, 4dr \* 1988 GMC GMT 400 \* 1974 Grainman Utility trailer \* 1978 Calkins Boat Trailer \* Large Utility Trailer (S/A) \* Small Utility Trailer with sides (S/A) \* Set of Tires \* Truck Canopy **Recreational Vehicles & Related Items:** \* 1984 Honda ATV \* 1999 Bombardier Traxter 4x4 **Building Equipment & Tools:** \* Beaver Table Saw \* Wrenches (Assort Sizes) \* Bricks \* Assorted Sizes of Wood \* Assorted Tarps **Garden Equipment & Supplies:** \* John Deer Riding Lawn Mower (LA 14.5) \* Greenhouse (small) \* Honda Lawn Mower (Gas) \* Weed Sprayer (12 volt) \* Weed Eater (Gas) \* Hedge Trimmer \* Pull behind Cart (Tractor or Quad) \* Self Propelled Weed Eater \* Wheel Barrows \* Assortment of Garden Tools \* Seeder or Fertilizer Spreader \* Leaf Blower (Electric) \* Pull behind Garden Harrow \* Assorted Rain Barrels \* Assortment of Snow Shovels \* Garden Hoses \* Lawn Furniture (Assortment) **Shop Equipment & Tools:** \* Chain Hoist \* Husqvarna Chain Saw \* Cement Mixer \* Tool Boxes (5 Drawer) \* Storage Locker \* Furniture Dolly \* Assorted sizes of Furniture Dollies \* Assorted Work Benches \* Assorted Garden Equipment Wheels \* Wiring Cable (Assorted sizes) \* Snow Blade \* Wood Pallets \* Nuts and Bolts (Assorted Sizes) \* Nut and Bolt Dispenser \* Construction Tape (assorted kinds) **Household Furnishings & Appliances:** \* 3 Piece Sectional \* Couch & Chairs \* Coffee & End Tables \* Complete bedroom sets \* Kitchen Table & Chairs \* dining room set \* Several Office Desks \* Sewing Machine \* Pool Table \* Arts & Craft Supplies **Other:** \* Fire Wood

## UPCOMING SALES:

**CONSIGN NOW!**

Sept 24, 2017: Estate of Ken Richey - County of Parkland

Sept 28 & 29, 2017: Estate Liquidation for Edward Donald - St. Albert Inn, St. Albert

Sept 30, 2017: Estate Auction for Edward Donald - St. Albert Inn, St. Albert

Oct 7, 2017: Rainbow's Annual Harvest Consignment Sale - Stony Plain

**\*\*Watch website daily for new additions to auction lists\*\***

**Terms and Conditions:** Cash, Visa, Mastercard, Debit, Interac. Nothing to be removed until paid for. Subject to additions and deletions. A 7% handling fee plus GST will be charged where applicable. Please be conscious of the handling fees and factor them into your bidding. Owner Rainbow Auctions & Liquidators or its employees shall not be responsible for accidents

**Sale Conducted By:**  
**RAINBOW LIQUIDATORS AND AUCTIONS**  
Stony Plain, AB. 780-968-1000 or TOLL FREE 1-866-968-1001  
**Complete Liquidation and Auction Services Since 1978**  
[www.rainbowauctions.ca](http://www.rainbowauctions.ca)



## FREE LOCAL CLASSIFIED ADS

Real Estate, Rentals, Vehicles, Pets, Jobs, Service Directory,  
Buy/Sell/Trade, Lawn & Garden, Garage Sales, Events,  
Local Places & Much More... Advertise for **FREE** Today!



*Follow Us*





Your DREAM home awaits, a secluded and very private retreat, located on 120 acres of mature forest and bordering 100's of acres of public wilderness land. This beautiful home was built in 2005 and is 4000 sq' with an open concept vaulted ceiling living room, dining room, and kitchen, the remainder of the home has 9' ceilings. 4 large bedrooms plus a sleeping loft, 3 full bathrooms with in floor heating, large kitchen, boasting a commercial size stove with 6 burners, double oven and indoor bbq grille, a chefs delight. It has a large 10' foot granite top island and loads of custom cabinets. Hardwood, carpet and tile throughout, with in-floor heating and some baseboard heating. There are 3 fireplaces and one wood burning stove. Lots of storage throughout. All of this nestled in the middle of the property with trees and views all around.

It has extensive landscaping, many decks and patios. This property is an outdoor enthusiast's paradise with lots of walking trails throughout, or just imagine yourself cross country skiing or ski-dooing right out your back door and then coming home to your hot tub. Abundant wildlife including deer, elk, moose, owls and lynx can be seen out your front windows and occasionally you will even see a bear or cougar meander by which is an added bonus to the already perfect view. What more of an ideal place could a hunter wish for than big game right on your door step.

Located in central Alberta, Canada, approximately 1 hour from the city of Edmonton, which boasts the world famous West Edmonton Mall and also an International Airport. Just a few hours drive to the west is Jasper National Park and the Columbia Ice Fields, and south is the beautiful Brazeau Dam and recreation area. This home is minutes from the town of Drayton Valley with all amenities.

Outside you will find 2 large heated shops, plenty of storage sheds, and a fenced in garden with fruit trees. Security gate to property, lots of paved parking, and extensive outdoor lighting. There is a double pond with power for a fountain or you could stock it with fish, also there is a creek running through the property. This spectacular home has something for everybody all for the great asking price of \$1,200,000.00



**Danelle Bolinski, Broker**  
Direct Line: (780) 242-4662

# Classified Ads - Call 962-9228

## Classified Policy

CLASSIFIED RATES INCLUDE GST. 1st 20 Words: First Insertion = \$6.00; Subsequent insertion = \$3.00 each. (Eg: 2 insertions = \$9.00; 3 insertions = \$12.00; 4 insertions = \$15.00; etc) Each additional word is 20 cents per word, per insertion. BOLD/CAPITAL text available for an additional \$1/line. Lost & Found and To Give Away (up to a max. of 25 words) are free of charge. Ads must be paid in advance either by cheque, cash, Visa or Mastercard. No Refunds Allowed on Classified Ads. DEADLINE: is Thurs. 4:00 pm (Wed. 4:00 pm on long weekends). Classified ads may be called in to the COMMUNITY VOICE office at (780) 962-9228, emailed to: classifieds@communityvoice.com, dropped off at Onway Registries, or mailed with your ad and payment to: COMMUNITY VOICE, BAG 3595,

SPRUCE GROVE, AB T7X 3A8. Ads may also be placed on the web at [www.com-voice.com/classified.htm](http://www.com-voice.com/classified.htm)

## Hall Rentals

Bright Bank Hall, 780-968-6813

Camp Encounter, Vincent Mireau - Camp Director. [director@campencounter.com](mailto:director@campencounter.com). C: 780-504-2012 W: 780-967-2548

Darwell Hall, 780-721-2690

Darwell Seniors, 892-2457

Duffield Hall, 892-2425 or 963-6887

Entwistle Hall, Contact Tracey at 780-898-2317 or Cheryl at 780-515-1755

Entwistle Senior's Drop In Centre, Barb 727-2108 or Glennis 727-4367 Mon-Fri

Evansburg Senior's Heritage

House, Dennis 727-4186

Evansburg Legion, upper hall 250 people, lower hall 80-100 people, 727-3879

Fallis Community Hall, 892-3150

Gunn Hall (G.A.R.S.) 780-967-2215

Keephills Hall, 731-3761

Lake Isle Hall, 892-2481

Lake Romeo PeaVine Hall, 785-2700

Magnolia Hall, 727-2015

Manley Goodwill Community Hall, 963-9165 or 916-0146

Mayerthorpe Diamond Centre, 786-4044

Moon Lake Community Hall, Nikki Berg 780-898-1390

Park Court Hall, call or text Karyn 780-712-3918

Parkland Village Community Centre, 780-298-9155 @ PVCCentre

Rich Valley Community Hall, 967-3696 or 967-5710

Rosenthal Community Hall, 963-7984

Seba Beach Heritage Pavilion, 797-3863

Smithfield Community Hall, 892-2390

Tomahawk & Dist Agra Center, 898-3443

Wabamun Jubilee Hall, 892-2699.

Wildwood Community Hall, 325-2180 or 325-2194

Wildwood Rec Complex 325-2077 or 514-8944

Wildwood Senior's Hall, 325-2030

MLS# E4055231

4608 47A Avenue, Onoway, AB, T0E 1V0

**\$294,900**



Spectacular 1399 Sq ft 4 level split on a Massive corner lot, fully landscaped, fenced, RV Pad, 2 store sheds and a two tiered covered deck. This home has undergone numerous renovations which include new paint, roof shingles, ceramic tile, plus more. Large living room & dining area that is accompanied with the inviting kitchen which comes with appliances. Main floor laundry & a 2 pce bath lead you to the serene backyard. The Master suite is comes with a 3 pce ensuite, A 4 pce bath and two additional bedrooms round out the upper level. The basement is complete with a Massive feature stone gas fire place and large rec room. The bottom lower level has two furnaces and an additional finished room great for a media centre or den. Oversized 24x26 heated double attached garage with Hot & Cold water. Extremely quiet crescent location. This is truly a must see and for this price you can't go wrong.



**Ron Manson REALTOR®**

**RE/MAX PROFESSIONALS** (780) 446-9272  
12 Hebert Road  
St Albert, AB, T8N 5T8

## BUYING OR SELLING A HOME?

**LA  
LAW**

For a Timely, Effective  
Closing at  
Competitive Prices

Call for your  
personalized quote.

**Larry D. Ayers, B. Sc., LL. B.**  
**962-9500**

Suite 200 A(upstairs) 215 McLeod Avenue, Spruce Grove AB



**PATRICIA HALDER**

**REALTY EXECUTIVES**

**REALTY EXECUTIVES LEADING**

#1, 14 McLeod Drive Spruce Grove, AB T7X 3X3  
Tel: (780) 962-9696 Cell: (780) 915-4292  
[Patricia@PatriciaHalder.com](mailto:Patricia@PatriciaHalder.com)

### 4925-52 St, Entwistle



**MLS#: E4076124**

1100 sqft Bungalow on double lot! 3 BRs plus den, 1.5 baths, fully developed basement with large family room. Insulated and heated double garage! Recent Renovations.

### 5012-51 St, Entwistle



**MLS#: E4074452**

3BR and 2 full bath mobile home on double lot, huge family room addition with gas stove. Oversized, insulated and heated double car garage. Fully fenced yard!

### #5 6025 Twp Rd 522



**MLS#: E4060714**

4 Level split on 10 acres just minutes from Seba Beach and the lake! 3 BRs and 2.5 baths, fully renovated, insulated and heated triple garage. Very Private Setting!

# Classified Ads - Call 962-9228

## Business Opportunities

JOIN THE GOLD CANYON TEAM! Have the extra money you need or own the business you've always wanted! - Your Gold Canyon Business puts you on

the path to success on your own terms! Call Independent Demonstrator Jodi Cazac at 780-995-6951 for more info, or go to [www.mygc.com/jcazac](http://www.mygc.com/jcazac) (S) OG

LOOKING TO HOST A CANDLE PARTY? OR WANT TO DO A

FUNDRAISER? EXCELLENT REWARDS!! Call Jodi for more information 780-995-6951 [www.mygc.com/jcazac](http://www.mygc.com/jcazac) (S) OG

## Services

STUMP GRINDING FOR HIRE

- Alberta Beach & Surrounding Areas. Call 780-779-3589 (12) 11-07

**Ceiling & Wall Cleaning.** Stipple, Wood, all types. Ceramic Tile Cleaning. Cig. Smoke removal. Biodegradable Non Toxic Cleaner. We travel to acreages & farms! **Seniors Discount.** Call Ceiltech today! 780-914-0323 (7) 18-07

Best-Cistern-Septic-Solutions. Cistern and Septic Inspection, Cleaning and Repair! New Installs Available. Plastic, metal, fiberglass or concrete. We clean them all! Your cistern will be vacuumed, cleaned and sanitized with our high pressure, hot wash, sanitizing system. Reasonable Rates, Call 780-668-4306 (4) 25-07 OG

## Computers

FREE COMPUTER CHECKUP - Repairs not over \$50. Get GOOD LAPTOP or DESKTOP computer for ONLY \$150, with Games, Music, Pictures, Videos & more. "Hands on" Lesson how to use for Seniors and Beginners. FREE Computer Repairs for Single Parents. 780-892-4993. (16) 16-05

## Feed & Seed

Good Hay for Sale - 12lbs/\$40. NW of Evansburg, Hwy 22. Call 780-239-0553 (4) 25-07

## Firewood

For Sale, Birch, Spruce/Pine Mix, Poplar, Tamarack. Split seasoned clean cords, 1/2 cords, Pickup loads. Pick-up or delivery. 2 year old Spruce & Pine. 780-288-7247 Woodchuck Firewood. (18) 02-05

## Trailers

Sportsman Camper, 10ft, Bathroom, Oven, Very Good Condition, \$3500 OBO. Call 780-892-2062 (3) 15-08

# Church Directory

<b>All Saints' Anglican Church</b> Sunday Morning Worship 9 BCP 10:30 BAS with Sunday School & Nursery 5212-47 Ave. Drayton Valley (780) 542-5048	<b>Seba Beach Christian Fellowship</b> Sunday School 10:00a.m. Worship Service 11:00a.m. Weekdays Bible Study & Prayer (780) 305-3594	<b>Roman Catholic Church</b> St. Agnes' Parish, Meyerthorpe Sunday 9:00a.m. St. Elizabeth Parish, Evansburg Saturday 7:00p.m. (780) 786-2032	<b>Advent Lutheran Church</b> Sunday Worship & Sunday School 11:00a.m. Evansburg 0: 727-3594
<b>St. Augustine's - Parkland Anglican Church</b> 131 Church Rd. Spruce Grove Sunday Service 10:00a.m. Eucharist with Sunday School & Nursery All are Welcome Office 780-962-5131 <a href="http://www.staugustinesparkland.org">www.staugustinesparkland.org</a>	<b>Parkland Baptist Church</b> Sunday Worship Service 10:30a.m. All Welcome 121 Brookwood Drive (780) 962-4101 <a href="http://www.parklandbaptist.ca">www.parklandbaptist.ca</a>	<b>St. Saviour Mission (Anglican Diocese of Edmonton)</b> Service every Sunday at 10:00a.m. Rev. Colleen Lynch 5417-51 Avenue (Wabamun Seniors Center) Ph: 780-940-4733 <a href="http://www.stsaviourmission.ca">www.stsaviourmission.ca</a>	<b>Immanuel Lutheran Church of Rosenthal</b> Traditional Service 9:00a.m. Contemporary Service 10:15a.m. Christian Counselling Services Pastor Bill Flath Rg Rd 13, Twp Rd 524 Ph: 780-963-4048 <a href="mailto:office@iller.ca">office@iller.ca</a>
<b>Emmaus Lutheran Church</b> Sunday Worship Service 10:30a.m. Bible Study 9:30a.m. Sunday School 9:30a.m. Rev. Steven Brummett 4004-52 <sup>nd</sup> Ave. Drayton Valley Ph: 780-542-5101 <a href="mailto:emmauslutheranchurch.ayr@gmail.com">emmauslutheranchurch.ayr@gmail.com</a>	<b>Stony Plain United Church</b> Sunday Service 10:30a.m. 5012-51 Ave. Stony Plain <b>Mewassin United Church</b> Sunday Service 9:00a.m. Rev. Sally Boyle Hwy 627 - Rg Rd 30 Ph: 780-963-4745	<b>St. Anthony Catholic Church</b> WEEKEND MASS SCHEDULE: Saturday 5:00p.m. Sunday 12:00p.m. 4708-50 Ave. Drayton Valley Parish Office: 542-5254	<b>Church of God</b> Worship Service Sun. 11:00a.m. Please contact for activities 5004-49 Street. Drayton Valley Ph: 780-542-5091
<b>Calvary Baptist Church</b> Pastoral Team: Lorne Trudgian & Kenton Penner Sunday Worship 10:30a.m. Youth & Ministries Info - calvbapt@telus.net 4401-50 <sup>th</sup> Ave. Drayton Valley 780-542-4774 <a href="http://www.calvarybaptistdo.ca">www.calvarybaptistdo.ca</a>	<b>The United Church of Canada</b> Sunday Worship 10:30a.m. Sunday School 10:30a.m. 5029-48 St. Drayton Valley Church Office 780-542-5743 <a href="mailto:ducc@telus.net">ducc@telus.net</a> <a href="http://www.ducc.ca">www.ducc.ca</a>	<b>St. Joseph's Catholic Church</b> Sunday Mass 11:30a.m. Wabamun, AB	<b>Drayton Valley Alliance Church</b> Pastor John Haazen Join us for Sunday Service at 10:30a.m. Aurora School 3901-55 Ave. Programs for all ages Office at 4901-55 St. Drayton Valley Ph: 542-6501 <a href="http://dvalliance.ca">dvalliance.ca</a>

# Classified Ads - Call 962-9228

## Antiques

EVER AFTER ANTIQUES & COLLECTIBLES. 4823 - 50TH Avenue, Alberta Beach. We buy and sell. Call Pat 780-237-3528 to arrange a free consultation. OPEN: Wednesday through Saturday and some Sundays & Holiday Mondays, Noon -5pm. (6) 01-08

## Recreational Vehicles

FOR SALE: Older Ford Elite Motorhome. Low milage & in great shape! Asking \$6600 OBO. Call 780-693-2495 (6) 25-07

## Miscellaneous

Looking for new tee-pee poles 16' long 16pcs, 16 bracing pins and 16 sewing pins. Delivered 10m NW of Darwell. \$200.00. Call 780-868-9746 (4) 25-07

FOR SALE: 4 Camper jacks, air mattresses, medalta crocks, yard light, single driving harness, 3 hackamores with rawhide bosal, water cooler, horse shoeing chaps, twin neck yokes, electric hydraulic wood splitter, 2 - 50' 60" green chain link fence, 8' chainsaw carved bear, wishing well, patio set with 6 chairs & umbrella, 2 door fridge with icemaker & freezer, 2 microwaves, foot bath (never used), electric blanket (never used), rice cooker (never used), made in Japan old bird collection, books, screened tent app 12x16, 10x20 car canopy, 2 self watering hanging planters (never used), black couch & chairs, xmas silhouettes, country cassettes, water fountain, large dog crate, small dog crate, oak buffet, pictures, LOTS OF OTHER STUFF. 780-514-6572 (3) 15-08

## For Sale

2,600 sq. ft. Commercial Space, shopping mall in Evansburg. \$1600/month & common area cost. Reasonable Rent. Phone (780) 691-1909 or (780) 621-7887 (8) 25-07

13" De Walt, thickness planer, new in box - Asking \$400.00 OBO. 20" Pioneer Chainsaw, in case, used 50 hr - \$120.00 OBO. Call 780-691-1909 (4) 25-07

## For Rent

2 Bedroom House in Evansburg. Some new floor, Fenced yard, Fresh paint, Fridge, Stove, W/D, Covered Patio, Backs onto park, Pets Negotiable. Close to 1 block from downtown. 50 min W on Hwy 16 from Edmonton. PRICE REDUCED: \$795 undercost/month + Utilities, DD Same. 1 year lease, working

adults No Partiers. Text or Call 780-621-7421 (4) 01-08 OG

For Rent - 2 Bedroom 1 Bathroom Apartment at New Motel in downtown Alberta Beach. Utilities, wifi, cables & great lake views, \$1250/month. Call 780-995-2231 (4) 01-08

For Rent in Alberta Beach, 2 bedroom, 2 bathroom Apartment, 6 appliances, balcony & lake views, \$1250/month/DD + Utilities. Available September 1st, Call 780-995-2231 (4) 01-08

**Great for a Small Family or Seniors.** Newly renovated townhome, 2 bedrooms, den & 1.5 bathrooms in Winfield, AB. Washer & Dryer in-suite. \$850/month. Call 403-606-6977 (4) 15-08 OG

Onway 2 Bedroom Suite for rent, clean, quite, secure building. Call 780-721-4132 or 780-423-3664 (4) 15-08

# SUDOKU OF THE WEEK

## Fun By The Numbers

**Here's How It Works:** Sudoku puzzles are formatted as a 9x9 grid, broken down into nine 3x3 boxes. To solve a sudoku, the numbers 1 through 9 must fill each row, column and box. Each number can appear only once in each row, column and box. You can figure out the order in which the numbers will appear by using the numeric clues already provided in the boxes. The more numbers you name, the easier it gets to solve the puzzle!

### ANSWER:

3	8	2	1	7	5	6	9	4
6	5	7	2	9	4	3	1	8
4	1	9	6	8	3	2	5	7
5	6	1	9	3	7	4	8	2
7	2	8	4	1	6	5	3	9
9	4	3	8	5	2	7	6	1
2	9	4	5	6	1	8	7	3
8	7	5	3	2	9	1	4	6
1	3	6	7	4	8	9	2	5

**Like puzzles?** Then you'll love sudoku.

This mind-bending puzzle will have you hooked from the moment you square off, so sharpen your pencil and put your sudoku savvy to the test!

				7		6		4
6		7	2			3		8
	1	9		8			5	
	6	1	9	3				
		8	4					9
9	4			5	2		6	
2			5		1	8		
8	7	5		2		1		
		6					2	



# COMMUNITY EVENTS 2017

SUNDAY	MONDAY	TUESDAY	WEDNESDAY	THURSDAY	FRIDAY	SATURDAY
		1	2	3	4	5
6	7	8	9	10	11	12
13	14	15	16	17	18	19
20	21	22	23	24	25	26
27	28	29	30	31		

If you are a **LICENSED, NON-PROFIT ORGANIZATION**, you are welcome to submit your announcement **FREE** of charge, space permitting. You are required to submit your non-profit number. Call (780) 962-9229. Please note that all submitted announcements will be edited to fit the 2 line limit. Deadline 12 noon Friday prior to publication (Thursdays on long weekends).

**AUG 19 - FARM & HERITAGE CARNIVAL** by Spruce Grove Ag Society, 12:00 to 4:00pm.  
**AUG 28 TO 31 - DAY CAMPS** at Brightwood Ranch, 9-4pm. No cost, Lunch Needed.

(Ages 6-13). Horseback riding, archery, riflery, climbing wall, zipline, hikes, water activities, a short God talk & MUCH MORE. For info, call the camp at 780-727-3840. To register online: [www.hopemission.com/summercamp/brightwood-ranch](http://www.hopemission.com/summercamp/brightwood-ranch)

**SEPT 16 - LARGE GARAGE SALE** at Senior Center in Entwistle, 10-4pm. All vendors welcome! Tables \$10. Call Dan 780-982-0353

**SEPT 19 - HARVEST FAIR** by Spruce Grove Ag Society, 9:30am-1:00pm.

## FARMERS MARKETS

**CARVEL STATION FARMERS' MARKET:** Thursday evenings, 5-8pm at the Carvel Hall. [www.carvelstationmarket.ca](http://www.carvelstationmarket.ca) or 780-499-1112 \*May 11 - August 31

**DRAYTON VALLEY:** Every Wed, 10:30-1:30pm at the Wellhouse Bldg (5416 Industrial Rd, Drayton Valley)

**EVANSBURG:** Sat., 10am-2 pm, Tipple Park Museum. Call 727-2240 for tables. \*OPEN Saturday May 6th

**SPRUCE GROVE:** at the Elevator, Sat 9:30-1:30, tables (780)240-5821

**STONY PLAIN:** Sat, 9am-1pm, Downtown, Stony Plain. Phone Nancy 780-962-3993.

## BINGO

**ENTWISTLE COMM. LEAGUE BINGO:** Every Wednesday, Doors Open 6pm,  
**STONY PLAIN SENIOR'S DROP-IN CENTRE:** public bingo every Tues, 7pm. All ages welcome. Phone (780) 963-6685

**TOMAHAWK:** every Mon at Agra Centre, doors 6pm, Bingo 7:30pm. Info 339-2423 or 339-3747

**WABAMUN LIONS CLUB:** Satellite Bingo - Jubilee Hall Thurs. 6pm, 2 Early Birds,

**WILDWOOD:** Mon night. 6:30pm, bingo starts 7:30pm, Early Birds & Lucky 7.

## MEAT DRAWS

**Darwell:** Put on by Alberta Beach & District Lions Club, 4:00pm, bi-weekly, Darwell Lounge & Restaurant

**Evansburg:** Evansburg Legion, Friday 8-10pm & Saturday 3-5pm

## JAMBOREE

**CALMAR:** Wilton Park Community Hall, Every 4th Sat of Every Month. Starts at 7:30pm. Phone 780-985-2478 or 780-985-3200.

**CHIP LAKE:** Ravine Comm Hall, 1st Sat 325-2119 or 325-2391

**DUFFIELD:** 4th Sat, Sept to May, Duffield Community Hall. 6:30 Supper.

**ENTWISTLE:** at Entwistle Community Hall, 3rd Saturday. For more info call Diann at 780-514-0045. \*Starting Oct through May.

**MAGNOLIA:** at Magnolia Hall, 7pm. Every 2nd Saturday, Hot Food. 727-2015 or [www.magnolia-communityclub.ca](http://www.magnolia-communityclub.ca) \*October - May.

**SEBA BEACH:** 2nd Friday, 7pm, Seba Senior's Centre, Toni 797-4233

**SPRUCE GROVE:** at Sandhills Community Hall, 3rd Sunday, 1-5pm. Info Florence 780-962-3104 Margaret 780-962-3051 \*Sept - June.

**STONY PLAIN:** Stony Plain Seniors Drop In Center, 5018 - 51 Ave. Every 2nd & 4th Thurs of the month @ 7pm, Cost \$2. Everybody Welcome. Contact 587-989-7214 or 963-7920.

**TOMAHAWK:** Tomahawk Agriplex, 3rd Friday of month. 7:00pm. Call 780-339-3755. \*Starts Oct 21st.

**WILDWOOD:** Wildwood Community Hall, 3rd Wed Each Month, 7pm. 325-3749 \*Oct - June.

**THE ABBOTSFIELD VARIETY MUSIC JAM:** at Abbottsfield Rec Centre (3006 119 Ave. Edmonton) 3rd Friday of each month @ 7pm. PH: 780-918-8545, Admission is Donations Only.

## TOPS Meetings (Take Off Pounds Sensibly)

**Alberta Beach:** Tues, 6pm at St John's Lutheran Church on Hwy 633. 967-5009

**Edmonton:** Thurs 8:30-10am at Annex of Grace

United Church (6215-104 Ave). \$7/month  
**Entwistle:** Wed 5:15 weigh-in, 5:30-6:30 meeting, upper level Lions Hall (next to swimming pool) 780-932-2695.

**Evansburg:** Thursday Mornings 9:30am at Evansburg Legion Hall (Back door). 727-2155

**Stony Plain:** Thurs evening, Stony Plain United Church. Susan (780) 968-0869

**Spruce Grove:** Wed Mornings, 8:45 a.m. at Anglican Church, 131 Church Road. 960-1109, Christiane.

**Wildwood:** Thurs at Wildwood School, 5pm. Connie (780) 325-2420

## YOUR COMMUNITY

**FREE HOME DELIVERY PROGRAM,** Wabamun Seniors & Wabamun Lions for individuals who would like to arrange for meal preparation through a local restaurant but have difficulty getting out to pick it up. Call Darlene, 892-2551.

**HEALTHY AGING NURSE & FOOT CARE PERSON,** Wabamun Seniors Centre, 2nd Thurs of month 9am

## SOCIAL EVENTS

**50+ YOUNG AT HEART LUNCHEON** for Parkland County Seniors. 12 Noon at Stony Plain United Church Basement, \$8/plate. 3rd Wed of Month, Sept - June. For reservations call Audrey 780-963-1782.

**AEROBICS:** Low impact, Mon/Wed, 11am-Noon, Wildwood Senior's Centre, \$1/session.

**BREAKFAST SOCIAL:** 9-11:30am, Parkland Village Community Centre - 3rd Sunday (except June-August) PH: 780.298.9155 Social Media: PWCentre.

**COUNTRY QUILTERS,** Stony Plain "Sew in Tuesday", 2nd Tues of month, 10-3pm. \$5/member, \$6/non-members. Bring your own projects to work on, coffee, cutting mats, rulers & irons supplied. Contact Cindy 780-963-7170.

**EVANSBURG ART CLUB:** meet & paint Thurs 1-4pm Rec Plex. 727-4340 or 727-4098

**EVANSBURG PUBLIC LIBRARY CLUB:** 4th Thurs, 7-9pm, Grand Trunk High. 727-3925

**EVANSBURG GUIDES & PATHFINDERS:** Mon 6pm, Camp Evansburg.

**EVANSBURG SENIOR'S HERITAGE HOUSE:** Floor Curling Mon & Thurs, 1pm. Court Whist Thurs, 7pm.

**EVANSBURG TIPPLE PARK HISTORICAL BUILDING TOURS:** Wed - Sat, 10:00-5:00pm.

**EVERGREEN SPINNERS & WEAVERS GUILD:** (780) 786-4754.

**LAC STE ANNE COMMUNITY CHOIR,** choir accepting all voice ranges. Meets every Wed, 7:30pm. Info (780) 924-3662.

**MAYERTHORPE WOMEN'S LEAGUE PRAYER CHAIN:** Everyone with the 786, 785 or 674 Prayers and Prayers are needed. Doreen 786-2434.

**PARENT & TOT PLAYTIME:** PERC Building Stony Plain Wed. 10-11am, Holborn Community Hall Thurs 9:30-11am, Parkland Village Thurs 9:30-11:30am.

**PEMBINA SKATING CLUB** (Evansburg Arena), offers Learn-to-Skate, CanSkate & STARSkate for all ages. Skating year runs from Sept-Mar. Call Lisa 727-2729.

**POT LUCK** every Tues, noon, Wabamun Seniors Centre. Come on down!

**SEA CADETS:** 299 Mackenzie, Stony Plain Comm Centre, Wed 6:30 youths 12-18, 963-0843

**SEBA BEACH SENIORS CENTRE:** Yoga, mon, 9:30am, \$10/session. Bridge thurs, 1pm. Jams

every Wed night, 7pm. Thrift Shop every Wed & Sat at 10-3.

**SEBA BEACH QUILTERS & FIBER ARTS:** 1st, 2nd, 4th Wed, 9:30am, Seniors Center. Quilters - 3rd Wed, 9am, Seba Pavilion.

**SENIORS 50+ LUNCHEON:** 3rd Wed, 12 noon at Stony Plain United Church basement hall. Call Audrey (780) 963-7582

**SENIORS WEDNESDAY\* AFTERNOON** 1-4pm at Parkland Village Community Centre - Parkland Village Senior Community Connections - Games, Crafts & more! \*exceptions incl. Weather. Call Sheryl 780.695.7032

**SPIRITUAL LIVING STONY PLAIN INSPIRATIONAL CINEMA & DISCUSSIONS** at PERC Building (5413-51 St. Stony Plain). 2nd Fri of month at 7pm. Popcorn provided, donations appreciated. Contact 780-940-3032

**SPIRITUAL LIVING STONY PLAIN GATHERING** at PERC Building (5413-51 St. Stony Plain). Every 2nd & 4th Sunday of the month. Meditation at 10am, inspirational sharing at 10:30am, Children's activities. Contact 780-940-3032

**SPRUCE GROVE ELEVATOR TOURS:** Tues-Sat, 9-3pm. 960-4600.

**SQUARE DANCE LESSONS:** Thursdays 7-9pm. Starts Sept 29th to Dec 15th, 2016. Broxton Park School, Spruce Grove. 10 Weeks - \$80/adult. 780-999-9482 or [i.squardance2016@gmail.com](mailto:i.squardance2016@gmail.com)

**SQUARE DANCING:** Evansburg Legion, Thurs 7-10pm. Beginners & midstream welcome. Info (780) 727-4099. \*Starting Oct 6.

**STONY PLAIN'S 5TH MERIDIAN GOOD SAM'S RV CHAPTER:** Ecole Meridian Heights School (4119-43 Street). Meets Every 3rd Tues of Month at 7pm. Call Pat at 780-963-6976 or Ruth at 780-288-9829.

**STONY PLAIN BOMBER FOOTBALL CLUB** is looking for football players ages 8-14, atom, pee wee, bantam, contact [jmiddlewood@hotmail.com](mailto:jmiddlewood@hotmail.com).

**WRITERS PROGRAM:** Mayerthorpe Library, 1st & 3rd Wed, 1pm.

**ZUMBA** with Sholean, Wed evenings 6:30-7:30. For info, Stephanie 780-963-1541.

## MEETINGS

**2nd TIMERS:** A support & confidential group for Grandparents Parenting. 1st Thurs of month, 6:30pm. Grand Trunk High School (meet in Lobstick Literacy & Learning room). Child care provided at the Evansburg Public Library. \*Starts October

**AA:** Friday at 8pm, Evansburg. Call 325-2204, 727-2466 or 727-6652.

**AHS:** Addiction Services provides assessment and counseling for alcohol, other drugs, tobacco and gambling in Breton on court day Wednesdays. To make an appointment, please call 780-542-3140.

**ALCOHOLICS ANONYMOUS** IF Drinking is a Problem! 780-236-1043

**AL-ANON:** Wed Spruce Grove United Church, 1A Fieldstone Drive. 8pm. 962-5205

**ALBERTA PARENTING FOR THE FUTURE ASSOC:** Call 963-0549 or visit [www.apfa.ca](http://www.apfa.ca) to register. All programs are confidential & free.

**CHAMBER OF COMMERCE** (Evans/Ent): 7:30pm 3rd Thurs, Heritage House.

**CHERISHED MEMORIES, PARENTS & TOTS** Wed & Fri, 10-12pm, Alberta Beach Agriplex. Sept-June. Info call Melissa 780-297-1892.

**C.H.I.L.D. (Citizens Helping in Life's Defence)** Please join our Pro-Life meetings once a month in Stony Plain. For info call Chris 963-6997.

**CITIZENS ON PATROL:** The Pembina Community Watch Patrol Meets 2nd Thurs of each month at 7:30 pm, at the West Central Forage Association Office 5009 45th Ave, Entwistle. Contact 780-727-2000

**COMMUNITY QUILTERS & CRAFTERS:** 3rd Tues. Evansburg, Liz 727-3872 Brenda 727-4476

**DARWELL & DISTRICT AG SOCIETY:** 8pm, 1st Mon, Community Hall.

**DDRA MEETING:** 7pm, 2nd Mon, Darwell Community Hall 892-3099. \*Except Jul/Aug/Dec

**DRAYTON VALLEY/CALMAR PC MONTHLY CONSTITUENCY MEETING,** Breton Senior Center, 7pm. Everyone welcome. \*No meetings July &

Aug.

**DRAYTON VALLEY BRANCH OF ALBERTA GEOLOGICAL SOCIETY:** meets 7pm at The Wishing Well every 3rd Wed of the month. For more information call (780) 542-2787

**ENTWISTLE COMMUNITY LEAGUE GENERAL MEETINGS:** 2nd Thursday monthly 7:30 PM. \*Except June, July, August

**ENTWISTLE LIONS CLUB:** 2nd & 4th Tues, 8pm, Entwistle curling rink. Jim 727-3573

**ENTWISTLE SENIORS:** Ladies: 10am 2nd & 3rd Wed, Floor Curling: Tue & Fri, 2pm

**ENTWISTLE SENIORS 55+ CLUB:** Tue & Fri, 2-4pm at Entwistle Hall

**EVANSBURG PUBLIC LIBRARY BOOK CLUB:** 4th Thurs, 7pm Grand Trunk High 727-2030.

**EVANSBURG SENIOR'S HERITAGE HOUSE:** 2nd Tues of Month, 1:30pm. New Members Always Welcome. Dennis, 727-4186.

**FALLIS COMMUNITY ASSOCIATION:** 3rd Tues, 7pm.

**GIRL GUIDES OF CANADA:** Poplar Hollow District Guides-Pathfinders, Mon 6-8pm. Sparks-Brownies Tues 4-5:30pm. Meet at Camp Evansburg. Brenda 780-727-4476

**KINETTE CLUB OF MAYERTHORPE:** 7:30pm, Kinsmen Hall, 2nd Tues. Want to volunteer? Wanda 305-9832 or [mayerthorpekinettes@gmail.com](mailto:mayerthorpekinettes@gmail.com)

**LAC STE. ANNE & LAKE ISLE WATER QUALITY MANAGEMENT SOCIETY:** 3rd Fri, 7pm, Alberta Beach Council Chambers.

**LAKE ISLE HALL BOARD:** 3rd Tues, 7:30 pm, Lake Isle Hall.

**LOBSTICK 4-H BEEF & MULTI CLUB:** 1st Mon, Evansburg Arena, 7 pm, Jackie 780-727-2541

**LOBSTICK GARDEN CLUB:** 1st Mon, Evansburg Baptist Church, Charlotte (780) 325-3787

**MAYERTHORPE HOSPITAL AUXILIARY ASSOC,** every 4th Mon, 5pm in Hospital Basement Education Room.

**MEN FOR SOBRIETY:** Wednesdays at 7:30pm, FCCS Building (#105, 505 Queen Street, Spruce Grove). Mike (780) 965-9991.

**MS SOCIETY DRAYTON VALLEY COMMUNITY GROUP** meets 1st Tues of month, Sept-June, 8-6pm at Norquest College. Terra Leslie, 1-403-346-0290.

**MS SOCIETY PARKLAND COMMUNITY SUPPORT GROUP:** Are you diagnosed with MS and have questions? This group is for you! Last Tues of month, 7-9pm, Westview Health Centre (4405 South Park Dr.) Contact Cassy 780-471-3034

**NA MEETING:** Tues, 7pm. 514-6011

**PEMBINA AL-ANON FAMILY GROUP:** meets Tuesdays @ 7:30pm, at Evansburg Catholic Church Hall. Call Patty H. (780) 727-4516 or Cheryl (780) 727-6671

**PEMBINA PORCUPINES - JUNIOR FOREST WARDENS:** Entwistle Porcupine gathering: 7pm, 1st Tue. Len & Tineke at 727-2020.

**PROBLEMS WITH DRUG OR ALCOHOL ADDICTION** in a loved one? Contact Drug Rehab Resource for a free confidential consultation. 1-866-649-1594 or [www.drugrehabresource.net](http://www.drugrehabresource.net).

**SOLVE:** Community Enviro issues discussed at Smithfield Hall (N of Hwy 16 on RR34). 2nd Thurs. Free. Jana 892-0006

**STONY PLAIN FISH & GAME ASSOCIATION & WABAMUN GUN CLUB:** 2nd Mon, Stony Plain Comm Centre, 7:30pm.

**SUNDOWNERS TOASTMASTER CLUB:** Mon (excl. Holidays) 7:30-9:30pm. St. Matthew's Church, Spruce Grove. Judy 960-5258

**W.E.E COMMUNITY FOOD BANK:** Call (780) 727-4043 for emergency food needs, volunteer opportunities & donations. Monthly Meeting: LAST Monday of each month at 7:30pm at the Food Bank. (Old fire hall in Entwistle) ALL WELCOME. \*Except December

**WILDWOOD & DIST AG SOCIETY:** 2nd Wed 7pm. Wilma 325-2424

**WILDWOOD & DIST. ROD & GUN CLUB:** 1st Thurs, 7:30pm

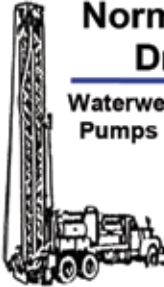
**WILDWOOD SENIORS:** 4th Wed. at 2:00pm. Opal 325-2030. \*No meeting July/Aug/Dec.

# SERVICE DIRECTORY

**Norm Blakeman's Drilling Ltd.**  
**Waterwell Drilling & Servicing**  
**Pumps & Pressure Systems**

SERVING  
 LAC STE. ANNE &  
 WEST PARKLAND  
 FOR OVER 25 YEARS!

**Joe (780) 924-3024**



**From Jiggles to Wiggles**

**10 Minutes To Increase:**  
 \* Muscle Tone \* Strength  
 \* Circulation \* Flexibility

Open From 9:00 A.M. - 4:00 P.M.  
**(780) 907-8642**  
 45 C South Ave. Spruce Grove



**BREWSTER BOBCAT SERVICE LTD.**  
 P.O. Box 454, Wildwood, AB T0E 2M0

- \* Site Preparation
- \* Pile Drilling
- \* Concrete Work
- \* Landscaping
- \* Demolition
- \* Sand & Gravel Delivery
- \* General Contracting

brwcat@gmail.com  
 Telephone: (780) 325-3743  
**Bruce Balascak Cell: (780) 621-6960**



**H & E UPHOLSTERY**  
**For all your upholstery needs**

Convertible tops for cars and boats, custom car and boat interiors, 5th wheel trailer skirts, boat tarps, ATV seats, furniture, kitchen chairs, heavy equipment seats.

**www.h-and-e.ca**  
 For more information contact:  
 info@h-and-e.ca

4-485 South Ave.  
 Spruce Grove  
**(780) 962-3048**



**Community VOICE**  
 Keeping You and Your Community Informed

**THIS SPACE IS RESERVED FOR YOU!**

**JACK'S AUTO BODY & TOWING**

- \*Specializing In Collision Repair
- \*Guaranteed Work
- \*Insurance Claims

**Onway 967-5850**

Located between Alberta Beach & Onway on Hwy 633

**OUR PLEDGE IS QUALITY**





**Community VOICE**  
 Keeping You and Your Community Informed

**THIS SPACE IS RESERVED FOR YOU!**

**WEIGHTLOSS NEVER TASTED SO GOOD!**

**NEW! NEW! NEW! NEW!**

**(780) 907-8642 VALENTUS**  
**www.ValentusTour.com/Ladybug**



**Community VOICE**  
 Keeping You and Your Community Informed

**THIS SPACE IS RESERVED FOR YOU!**

**gold canyon**

Candles, Décor, Jewellery. Everything you need to sparkle!

**CALL ME TODAY TO BOOK YOUR PARTY**  
**JODI CAZAC • 780.995.6951**



**Community VOICE**  
 Keeping You and Your Community Informed

**THIS SPACE IS RESERVED FOR YOU!**

**Complete Drywall Service**

DRYWALL, TAPING, RENOVATIONS, DRYWALL ART, STEEL STUDS, INSULATION, T-BAR, TEXTURE

**RAL Drywall and Plastering Ltd.**  
**Randy: 780-691-5248**



**LAC**

**L. A. Contracting**  
**5" Continuous Eavestroughing & C-Can Rentals**

**LES 910-5472**

**JIM HAY TRUCKING**

- Screened Black Dirt
- Beach Sand
- Road Gravel • Fill Dirt
- Bobcat & Backhoe Available

**(780) 220-5849**

**2Bros**  
**Custom Contracting Ltd.**

Custom Framing • Concrete Floors • Shingling  
 Siding Soffit Fascia • Styrofoam Block System

**Jeff 780-717-0520**

# SERVICE DIRECTORY

**Ernie's Repair & Service**



**4820 - 47 Avenue, EVANSBURG**  
**727-4433**

**DUNN'S**  
**HEAVY DUTY REPAIR LTD.**

Fully equipped mobile service truck, including welder, oil evac & 5000 lb crane.

We repair all types of heavy equipment.  
• construction / mining / rock crushing equipment  
• tractor trailer units • skid steers

**Stephen Dunn 780-278-8525**

**ROY SHERWOOD**  
Master Electrician

Ph: 780-968-1425  
Cell: 780-908-2287  
Fax: 780-968-2211

Email: suretech@xplornet.ca

2-53220 Rge Rd 21  
Parkland County, AB  
T7Y 0C5

**SURETECH**  
ELECTRIC LTD.

**Control & Automation  
Commissioning  
Solar Sales & Service**

**Industrial . Commercial . Residential**

**vanhill Contracting**

"We are a family orientated company that pride ourselves on SAFETY and EFFICIENCY"

**CHRIS & LISA VANHILL**  
OWNER/OPERATOR

Site Clearing, Grading, Road Building,  
Brushing, Acreage Development, Dugouts, etc.

**780-619-3236**  
vanhillcontracting@gmail.com Onoway, AB

**Community VOICE**  
Keeping You and Your Community Informed

**THIS SPACE IS  
RESERVED  
FOR YOU!**

**P&E VENTURES INC.**  
SKID STEER SERVICES

GENERAL LANDSCAPING  
SNOW REMOVAL

POST & PILING HOLE  
SAND AND GRAVEL

**PAUL VAN HECKE & CURTIS MIKO**  
OWNER / OPERATORS

Bus: (780) 727-2721 Cell: (780) 621-6148  
Box 498, EVANSBURG, AB T0E 6T0

**MARK MARTIN PFEIFFER**  
MASTER BRICKLAYER/MASON

Cell: 780-242-3308  
Email: pfeiffer.mark@hotmail.com

- Brickwork • Stonework
- Rockwork • Parging
- Concrete Block Work
- Tile Work (all kinds)



**WABAMUN PHARMACY**  
**I.D.A.**

Box 90, 5120 - 51 Avenue  
Wabamun, AB T0E 2K0  
Ph: (780) 892-2278 Fax: (780) 892-2488

GET A **FREE SAMPLE**

**LOSE Weight**  
BY DRINKING COFFEE

Weight management coffee with specially chosen ingredients

**Lean Loss Bean**

**(780) 907-8642**

**PEMBINA CONCRETE PRODUCTS LTD.**

**Manufacturers of  
ONE PIECE SEPTIC  
& HOLDING TANKS**

\* Water Cisterns \* Field Systems \*  
Pumps and Accessories \* Sumps



**DELIVERED  
TO YOUR SITE**  
**1-800-661-3047**  
**780-727-2702**  
PembinaConcrete.com

**New Line of Concrete  
Statues, Fountains and  
Garden Ornaments.**  
**BOX 123, Entwistle, T0E 0S0**

**Community VOICE**  
Keeping You and Your Community Informed

**THIS SPACE IS  
RESERVED  
FOR YOU!**

**DONALD N. GREENWAY**  
Chartered Accountant

Suite 205 Sunrise Professional Building  
215 McLeod Avenue  
Spruce Grove, AB

**(Bus.) 962-6366**  
**(Fax) 962-3990**

**POSTINGFIRST.com**

**BUY and SELL  
just about ANYTHING!**

**FREE LOCAL CLASSIFIED ADS**  
Real Estate, Rentals, Vehicles, Pets, Jobs, Service Directory,  
Buy/Sell/Trade, Lawn & Garden, Garage Sales, Events,  
Local Places & Much More... Advertise for **FREE** Today!



*Follow Us*

Instagram, Facebook, Pinterest, Twitter, YouTube, Tumblr

# SERVICE DIRECTORY

**SERVING ENTWISTLE AND AREA FOR OVER 30 YEARS**

**Entwistle  
CONCRETE**  
PRODUCTS LTD.

**SAND & GRAVEL SALES**

**PH: (780) 727-3525**  
Dan McCracken Entwistle, AB  
[www.entwistleconcrete.ca](http://www.entwistleconcrete.ca)

**CONCRETE WORK**

- Sidewalks ▪ Steps
- Small Retaining Walls
- Concrete Repairs

**Contact Ray**  
**(780) 975-8476**

**RESIDENTIAL  
CLEANING  
SERVICES**

**Call Today for your  
FREE Quote!**  
**(780) 264-7740**

**SERVING SPRUCE GROVE  
AND STONY PLAIN ONLY**

**SANGUDO  
VETERINARY CLINIC**

Box 581, 4916 - 52 Ave. Sangudo, AB. T0E 2A0

**Dr. Ralf Sanders DVM**

Ph: 780-785-2200  
Fax: 780-785-2228  
[sangudovet@gmail.com](mailto:sangudovet@gmail.com)

**24 HOUR EMERGENCY SERVICE**

**Community VOICE**  
Keeping You and Your Community Informed

**THIS SPACE IS  
RESERVED  
FOR YOU!**

**H&P  
Kosik  
CONSTRUCTION  
Ltd.**

Harvey  
cell. 780-445-9010  
ph. 780-892-3532

Box 145,  
Darwell, AB  
T0E 0L0

No Job Too Small... We do them all!

• Road Building • Black Dirt • Sand • Gravel • Clearing • Dugouts

**Allspec**  
PAVING A  
BETTER WAY.

**Allspec**  
PROJECTS  
START HERE.

**TERRATEAM**  
EQUIPMENT SALES & REPAIRS

**EQUIPMENT TO GET  
YOUR PROJECT DONE.**

RDE Group is dedicated to providing the best  
people, products, and equipment for every job.

P 780.962.9598  
W [rdegroupp.ca](http://rdegroupp.ca)

PART OF **RDE**  
GROUP

**MAXIMUM POTENTIAL  
MANAGEMENT**

**SMOOLE**

- Construction & Septic Installation
- Environmental Wastewater Disposal
- Site Design & Evaluation
- Power, Water & Basement  
Excavation
- Trackhoe, Backhoe, Bobcat  
& Dump Truck

**For All Your Excavation Needs**  
Call Dan 780-991-4484 Reid 780-909-0173

**CCAS**  
Canadian Clean Air Services Ltd.

**Heating & Air Conditioning**

High efficiency Furnace or  
Air Conditioner from 49.99/month.  
Instant Approval. No Credit Required

**24 Hour  
Emergency  
Service**

Licensed and Insured  
with over 14 years' experience.  
We accept Visa, master card, Amex and interact.

**42 Singing Hill Estates,  
Seba Beach T0E 2B0**  
Office line 780-569-5201

**Community VOICE**  
Keeping You and Your Community Informed

**THIS SPACE IS  
RESERVED  
FOR YOU!**

**Countryside  
REALTY LTD.**

**JOANNE HAY**  
Broker/Owner

Buying, Selling, Just Thinking About It?  
Call me, I'm at Home in your neighbourhood!

(780) 892-4440 [joanne.countryside@gmail.com](mailto:joanne.countryside@gmail.com)

**SUMMERS  
DRILLING LTD.**

Water well drilling and service  
Family owned Business Serving Alberta since 1917

**Never run out  
of water again!**

**5 year workmanship  
warranty**

**3 Convenient  
ways to pay**

- Visa
- Mastercard
- We now offer full financing

Tired of hauling water?  
We can install  
a water well with  
a permanent water  
supply for as little as  
\$150/month OAC

Stop in at our office 4405 - 50 Street, Stony Plain  
780-963-1282  
[admin@summersdrilling.com](mailto:admin@summersdrilling.com)



# EdmontonLakeProperty.com

• Find Every Property For Sale! • Free Property Evaluations!



## Can not beat this!

Country living dream - welcome to Pineridge Golf Resort. This lot is ideal for the recreational enthusiast who wants to set up for summers packed with sun, golf, lake activities and nights out. The gated community has a full clubhouse, park, restaurant, access to golf, paved roads, and much more. You are moments from Seba Beach.

**\$69,000**



## Look no further

Pineridge Golf Resort. This lot is private and already equipped with a gorgeous patio to compliment your entertainment space. Ready to pull in your RV to enjoy the rest of summer. Gated community complete with a clubhouse, restaurant, golf, and much more. Quick access to the beaches at Seba Beach to enjoy all water activities.

**\$119,900**



## Wabamun Home

Excellent opportunity right in the Village of Wabamun! Gorgeous fenced yard, full finished basement; with all the opportunity for future development to expand. This house is in the perfect location, quiet street, close to all amenities and extremely easy access to the beaches! The lake recreational enthusiast will love this property, as there is ample parking for all your toys.

**\$129,900**



## Private Setting on 3 Acres

Within minutes to lake Wabamun - you will find this hidden gem. With a gorgeous treed lot, guest cabin and lots of room to park. The home offers one bedroom and den. Open concept kitchen and living room. Do not miss the chance to enjoy the south facing views on the warm summer nights.

**\$249,900**



## Enjoy the Sunsets on Sunset Beach!

This is the premiere home on Lake Isle. Waterfront, storage, guest house and bonus auxiliary building to compliment the recreational enthusiast lifestyle. This property is a must see - come at sunset and you will never leave.

**\$499,999**



## Lake Front

Another Lake Country home SOLD by the Edmonton Lake Property Team!

**\$759,000**



## Lake Front

Lakefront on Lake Wabamun at its finest. This is possibly one of the nicest lakefront properties to come onto market this season. Flat site to water, gorgeous house with oversized windows to enjoy views, and bonus loft area. Do not miss this opportunity.

**\$889,900**



## Lake Front

Welcome to the exclusive Harbour Terrace! Over 1000 feet of lakefront right outside your doors, private community marina, and a gorgeous home. This property on Wabamun will not last long - call your team at Edmonton Lake Property today!

**\$979,000**



# THE MARKET IS HOT!!!

CALL FOR A FREE HOME EVALUATION TODAY!

We offer Free Evaluations and Buyer Consultations!

**Call Wayne Today!**

RE/MAX Excellence

**780-991-5107**

