



Serving: Carvel, Darwell, Duffield, Wabamun, Seba Beach, Gainford, Entwistle, Evansburg, Wildwood, Tomahawk, Spruce Grove, Stony Plain & Drayton Valley

March 13, 2018

## FCC OFFERS ASSISTANCE TO CUSTOMERS IMPACTED BY GRAIN MOVEMENT DELAYS

Submitted by Trevor Suter, Corporate Communication | Farm Credit Canada

Regina, Saskatchewan, March 7, 2018 – Farm Credit Canada (FCC) is offering support to customers across western Canada facing potential cash flow problems due to delays in grain movement to international markets.

“We have been monitoring the grain movement situation for the past number of weeks and are aware it could have an impact on our customers’ short-term cash

flow through the busy spring season,” said Michael Hoffort, FCC president and CEO. “We feel it is important that we be proactive and ensure our customers know that we are here to support them and have tools available to reduce the impact on their business from these unforeseen challenges that are beyond their control.”

FCC is available to support all its grain and oilseed customers potentially impacted by delays in grain delivery in the three Prairie provinces and British Columbia’s Peace region, and to

explore options to address their individual needs.

“We will support customers as needed, and continue to ensure they have the financial means to get their crops in the ground this spring,” Hoffort said, noting FCC rolled out a similar program in 2014.

Lawrence MacAulay, Minister of Agriculture and Agri-Food Canada, said FCC is a strong and stable partner in the agriculture sector which is there to provide support for farmers.

Continued on Page 2

## LAKEWELL 4H MULTI CLUB HOLDS FOOD DRIVE

Submitted by Aynsley Shupack, Club Reporter | Lakewell 4H Multi Club

In the last month the Lakewell 4H Multi Club has had a lot going on. We had our Club Communications on February 10th and everyone did very well. The competition was very tough and although everyone did well only a few could go to the next level – Districts.

Halle Gamblin, Aynsley Shupack and Jorja Fernley competed at Districts in Sangudo on

February 17th. Halle Gamblin was the only one in the club who made it to Regional’s but everyone tried their best. The Regional competition was on March 10th and Halle Gamblin placed first again. Yay Halle!

The club is doing an Easter food drive so more people could have an Easter supper. We are in Great need of food for the food drive so please look for the boxes and donate some food. The Food Drive will end on March 18 but late donations will be accepted until the 23rd at Darwell School.

On February 11, the Cleaver’s (ages 6-8 who cannot yet be members) had an exciting day with the woods leader Jeff Bruner who helped them make birdhouses. On March 10th the Cleaver’s are having a “Chick Day.” A Chick Day is teaching the Cleavers how to look after chicks and chickens.

March 10th is also District Fun Day. All the clubs in the Lac Ste. Anne District get to go to Whitecourt to go tubing. That’s all for now but I will be back with next month’s report.

**All Precious JEWELLERS**  
*“Your Spruce Grove Jewellery Store”*  
**Goldsmith on Premises**  
 • Engraving • Clock & Watch Repairs  
 • Jewellery Repairs • Custom Make-ups  
 Jewellery Repairs Done On Site.  
 Laser Welder Services Available.  
 Toll Free: 1-877-962-4367  
 PH: 780-960-4200 Fax: 780-960-4201  
 Suite 102, 215 McLeod Avenue  
 Spruce Grove, AB. T7X 0G2

**L&B Water Services Ltd.** Tradition of Quality & Service  
 Well & Pump Repairs  
 Complete Pressure Systems  
 Farm - Residential - Commercial  
 Potable Water Cisterns  
**BILL RIEDLINGER ERNIE BLEKER**  
 PH. 780-963-8134 OR 780-963-7749  
 LBWATER@XPLORNET.COM

**gold canyon**  
 Spring/Summer 2018  
 Candles, Décor, Jewellery. Everything you need to sparkle!  
 CALL ME TODAY TO BOOK YOUR PARTY  
 JODI CAZAC • 780.995.6951

**THE MOST POTENT & POWERFUL HEMP PRODUCTS ON THE PLANET!**  
**Benefits of CBD herbal drops**  
 • Relieves Pain  
 • Promotes Health  
 • Relieves Anxiety  
 • Neuroprotective  
**HEMPWORX**  
 (780) 907-8642  
 www.mydailychoice.com / Elaine1

**Community VOICE**  
Keeping You and Your Community Informed

PUBLISHED WEEKLY (Zone 1 & 2)  
AND BIWEEKLY (Zone 3)

**E.J. Lewchuck & Associates Ltd.**

45C South Ave. | Box 3595  
Spruce Grove, AB T7X 3A8

**SALES TEAM**  
Elaine  
Ashley  
Dani

**TELEPHONE:**  
Classifieds 962-9229  
Advertising 962-9228  
Fax 962-1021

**E-MAIL:**  
comvoice@telusplanet.net  
sales@com-voice.com  
news@com-voice.com

**Need Staff or Work?  
We Can Help!**

## Work Source

**Government Funded Program  
No-Cost Services**

We can assist and support with:

- Workshops: Resume & Cover Letter Writing, Interview, Computer & Job Searching Skills
- Connections between employees & employers
- Assist employers in meeting staffing needs
- Friendly, supportive and knowledgeable staff
- Resource Center equipped with fax, phone, photocopier, computers and internet

**Canada**   
The province of Alberta is working in partnership with the Government of Canada in providing employment support programs and services.

**Bredin Centre for Learning**  
101, 131 1<sup>st</sup> Avenue • Spruce Grove  
780.960.4861 • worksource@bredin.ca  
Developing Careers in Alberta Since 1976

# FCC Offers Assistance To Customers Impacted By Grain Movement Delays

Continued From Page 1

"I am pleased that Farm Credit Canada will help producers deal with the unfortunate financial challenges caused by the delay in grain transportation," MacAulay said. "Working with FCC, we will closely monitor cash flow concerns and ensure producers potentially impacted by delays in grain delivery have the flexibility they need. I also encourage all affected producers to consider applying to the federal Advance Payments Program (APP), a financial loan guarantee program that gives producers easier access to credit through repayable cash advances."

The APP offers cash advances for stored or planted crop of up to \$400,000, the first \$100,000 interest-free. Under the APP, the federal government guarantees repayment of cash advances issued to farmers by producer or-

ganizations.

Customers are also encouraged to contact their FCC relationship manager or the FCC Customer Service Centre at 1-888-332-3301 as soon as possible to discuss their individual situation and options.

FCC is Canada's leading agriculture lender, with a healthy loan portfolio of more than \$33 billion. Our employees are dedicated to the future of Canadian agriculture and its role in feeding an ever-growing world. We provide flexible, competitively priced financing, management software, information and knowledge specifically designed for the agriculture and agri-food industry. Our profits are reinvested back into agriculture and the communities where our customers and employees live and work. Visit [fcc.ca](http://fcc.ca) or follow us on Facebook, LinkedIn, and on Twitter @FCCagriculture.

**ST. PATRICK'S day**

**THE NOTTY BUSHMAN** **SAT MAR 17 9PM**

COME RELEASE THE LEPRECHAUN IN YOU

**ALBERTA BEACH HOTEL**

**780-924-3005**

**ECO CONTRACTING SERVICES**

**ecofirst.ca**

**LANDSCAPING  
EARTHWORKS  
EROSION CONTROL  
SHORELINE RESTORATION**

**Call or Text  
RICHARD DEIB  
780.217.3534  
richard@ecofirst.ca**

**Serving The Community Since 1995**



## PUBLIC NOTICE

Office national  
de l'énergieNational Energy  
Board

**Trans Mountain Pipeline ULC, as General Partner of Trans Mountain Pipeline L.P.  
Trans Mountain Expansion Project  
Notice of Proposed Detailed Route  
Pursuant to Paragraph 34(1)(b) of the National Energy Board Act**

**IN THE MATTER OF** the *National Energy Board Act* and the Regulations made thereunder.

**AND IN THE MATTER OF** the Certificate of Public Convenience and Necessity [OC-064] approving the general route of the Trans Mountain Expansion Project.

**AND IN THE MATTER OF** an application by Trans Mountain Pipeline ULC, on behalf of Trans Mountain Pipeline L.P., ("Trans Mountain"), respecting the determination and approval of the detailed route for the construction of the Trans Mountain Expansion Project, approximately 1179.9 kilometres in length, commencing at Trans Mountain's Terminal located in Sherwood Park, Alberta to Westridge Marine Terminal located in Burnaby, British Columbia as shown on the adjacent Route Map (Figure 1).

**TO:** ALICE KALINOWSKI ("Landowner")  
ALEXANDRA KALINOWSKI ("Landowner")

Being the registered owner(s), in so far as they can be ascertained, of the lands required for the detailed route of the Trans Mountain Expansion Project, located at

**MERIDIAN 5 RANGE 9 TOWNSHIP 53  
SECTION 21  
QUARTER NORTH EAST  
CONTAINING 64.7 HECTARES (160 ACRES)  
MORE OR LESS EXCEPTING THEREOUT ALL  
MINES AND MINERALS  
Title Number: 072 522 328 +2**

**MERIDIAN 5 RANGE 9 TOWNSHIP 53  
SECTION 21  
QUARTER NORTH WEST  
CONTAINING 64.7 HECTARES (160 ACRES)  
MORE OR LESS EXCEPTING THEREOUT ALL  
MINES AND MINERALS  
Title Number: 072 522 328**

(the "Lands")

Trans Mountain is seeking to locate the Landowner, or heirs of the Landowner, described above in order to provide them with information and this notice concerning the detailed route of the Trans Mountain Expansion Project.

The Individual Ownership Sketch details the route of the Trans Mountain Expansion Project, specific to the portion of the above Lands included within the permanent easement agreement with Trans Mountain (Figure 2).

If you have a legal right to the Lands described above and wish to oppose the proposed detailed route of the Trans Mountain Expansion Project, including the method and timing of construction of the pipeline, you may file a written

statement of opposition with the National Energy Board ("Board") within thirty (30) days of the publication of this notice. The written statement of opposition must set out the nature of your interest in the proposed detailed route and the grounds for your opposition to that route.

A copy of any written statement of opposition to this detailed route must be sent to the following addresses:

**National Energy Board  
Suite 210, 517 Tenth Avenue SW  
Calgary, Alberta T2R 0A8  
Attention: Sheri Young,  
Secretary of the Board  
Phone: 403-292-4800  
Toll Free Fax: 1-877-288-8803  
Email: [TMX.ProcessHelp@neb-one.gc.ca](mailto:TMX.ProcessHelp@neb-one.gc.ca)  
Website: [neb-one.gc.ca](http://neb-one.gc.ca)**

**And to: Trans Mountain  
12831 – 163 Street NW,  
Edmonton, Alberta T5V 1M5  
Attention: Elliott Friedrich,  
Project Land Manager  
Phone: 1-866-454-4717  
Fax: 780-454-6172  
Email: [tmep@progressland.com](mailto:tmep@progressland.com)**

Where a written statement that meets the requirements of the National Energy Board Act (NEB Act) is filed with the Board within thirty (30) days of being served this notice, the Board shall forthwith order, subject to certain exceptions as noted below, that a public hearing be conducted with respect to any grounds of opposition set out in the statement. The public hearing will be held near to where the lands to which the statement relates are situated.

The Board is not required to give any notice, hold any hearing or take any other action with respect to any written statement of opposition filed with the Board and may at any time disregard any such written statement if the person who filed the statement files a notice of withdrawal, or it appears to the Board that the statement is frivolous, vexatious or is not made in good faith.

If the Board determines it appropriate to hold a public hearing, the Board will fix a suitable time and place for the hearing and will publish a notice of the hearing in at least one issue of a publication in general circulation within the area in which the lands acquired or proposed to be acquired are situated. The Board will also send a notice of the public hearing to each person who has filed a written statement of opposition with the Board.

The Board, or a person authorized by the Board, may make such inspection of the lands acquired or proposed to be acquired for, or affected by, construction of the Trans Mountain Expansion Project, as the deemed necessary by the Board.

At the public hearing, the Board will permit each person who filed a written statement of opposition that met the requirements of the NEB Act, to make representations and may allow any other interested person to make representations before it as the Board deems proper. The Board will take into account all written statements of opposition that have met the requirements of the NEB Act and all representations made at the public hearing in determining the best possible detailed route of the pipeline, and the most appropriate methods and timing of construction for the Trans Mountain Expansion Project. The Board may impose in any approval such terms and conditions as it considers proper. Where the Board has held a hearing in respect of any section or part of the Trans Mountain Expansion Project and has approved or refused to approve the plan, profile and book of reference respecting that section or part, it will forward a copy of its decision and reasons to the Minister and to each person who made representation to the Board at the public hearing.

The Board may fix such amount as it deems reasonable in respect of the actual costs reasonably incurred by any person who makes representations to the Board at such a hearing, and the amount so fixed will be paid forthwith to the person by Trans Mountain. The Board's Appropriate Dispute Resolution ("ADR") process is also available to you. An ADR process could take the form of a meeting between you and Trans Mountain, which may be facilitated by trained Board staff or by another neutral third party. The facilitator would assist you and Trans Mountain to develop a process that may help to resolve outstanding issues.

For more information on the Board's ADR process or for any other questions, you can contact a National Energy Board Process Advisor at 1-800-899-1265 or TMX. [ProcessHelp@neb-one.gc.ca](mailto:ProcessHelp@neb-one.gc.ca). Information and templates, including a Statement of Opposition form, are also available at [www.neb-one.gc.ca/TransMountainExpansion](http://www.neb-one.gc.ca/TransMountainExpansion).

Copies of the plan, profile and book of reference for the detailed route of the Trans Mountain Expansion Project is available for inspection by you online at [www.transmountain.com](http://www.transmountain.com), and at the National Energy Board Library, 2nd Floor, 517 Tenth Avenue SW, Calgary, Alberta T2R 0A8, Toll Free Telephone: 1-800-899-1265. You may also call 1-866-454-4717 or email [tmep@progressland.com](mailto:tmep@progressland.com) to request a copy of the PPBoR.

## PUBLIC NOTICE

Figure 1 – Route Map

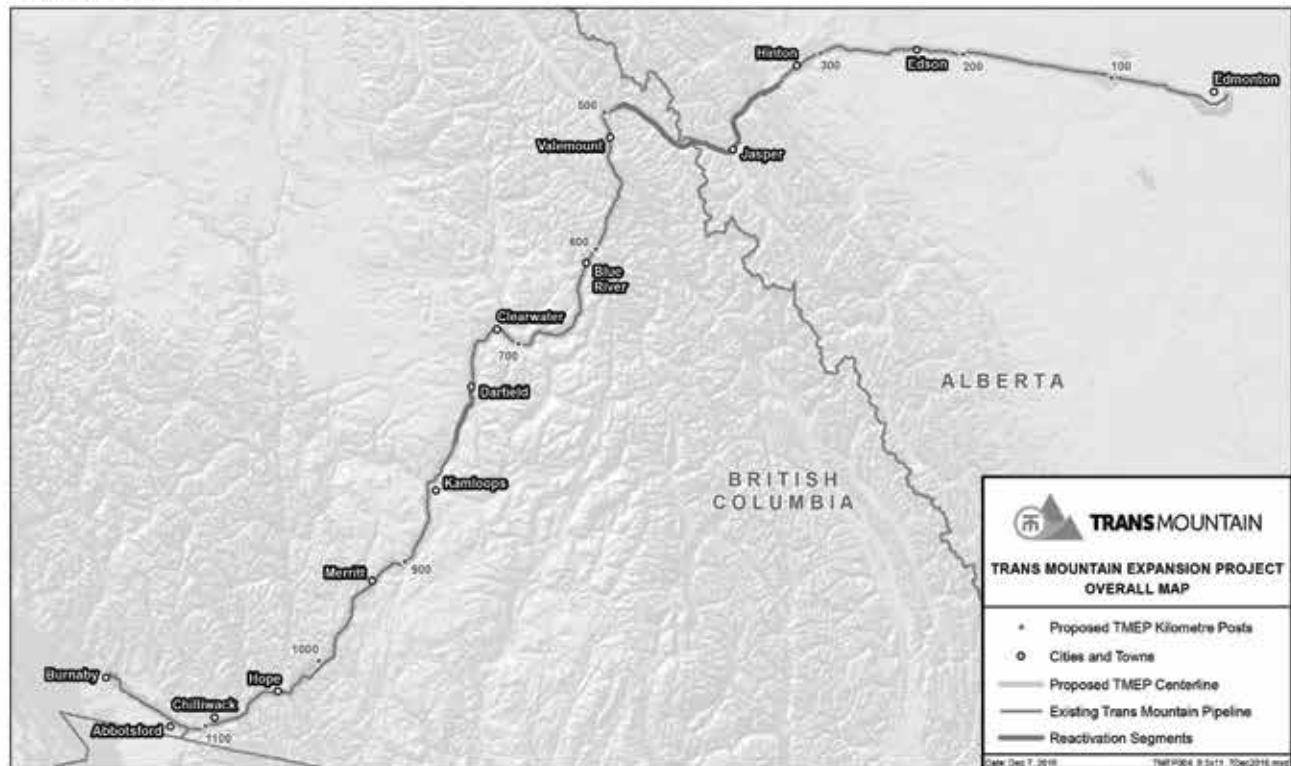
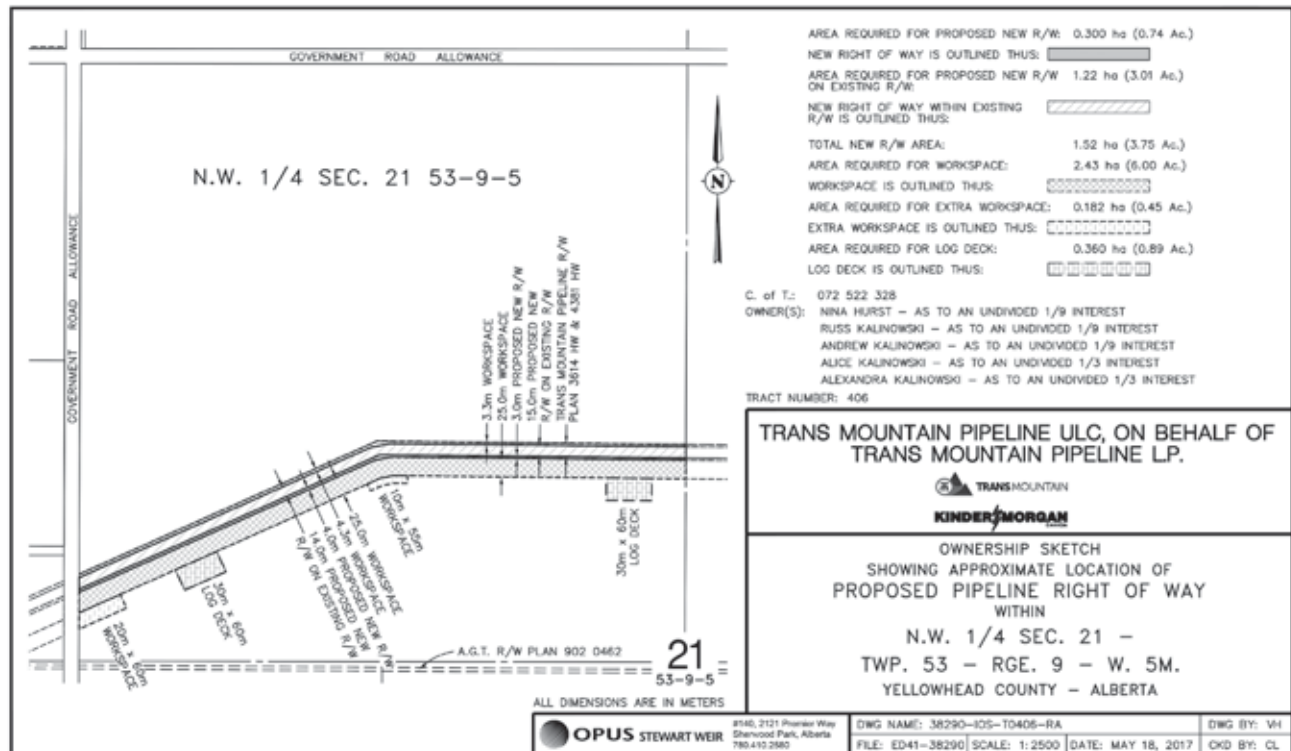


Figure 2 – Individual Ownership Sketch



## PUBLIC NOTICE

**Figure 2 – Individual Ownership Sketch**



**Canada**

# VARIOUS FUNDING OPPORTUNITIES OPEN

**Submitted by Jim Eglinski, MP – Yellowhead**

OTTAWA: Jim Eglinski, Member of Parliament for Yellowhead, is pleased to make constituents aware of multiple funding opportunities for projects related to the environment.

On February 1, 2018, the Government of Canada announced an annual call for proposals for seven existing environmental funding programs that will address conservation and water protection. The seven funding programs are:

1. Habitat Stewardship Program for Species at Risk
2. Aboriginal Fund for Species at Risk
3. EcoAction Community

Funding Program

4. Environmental Damages Fund
5. Atlantic Ecosystems Fund
6. Great Lakes Protection Initiative
7. Lake Winnipeg Basin Program

Relevant to the Yellowhead riding, the Habitat for Stewardship Program (HSP) for Species at Risk aims to contribute to the recovery of endangered, threatened, and other species at risk, and to prevent other species from becoming a conservation concern, by engaging Canadians in conservation. The optional Expressions of Interest are due February 23, and the deadline to apply for funding is March 19, 2018.

The Aboriginal Fund for Species at Risk supports the development of Indigenous capacity to participate actively in the implementation of the Species at Risk Act (SARA). The deadlines are the same as the HSP for Species at Risk, above.

The EcoAction Community Funding Program is available for new projects that engage Canadians and clearly demonstrate measurable, positive environmental results related to clean water or climate change. The deadline to apply is March 21, 2018.

The Environmental Damages Fund has two streams in Alberta. The first has \$170,000 available for the conservation and protection of fish and fish hab-

itat. The second has \$200,000 available for projects that protect, conserve, or restore the environment. Preference for both streams will be given to projects in our North Saskatchewan River watershed. The deadline was February 23, 2018.

"I encourage all those interested in these programs, especially those along the North Saskatchewan River, to apply. Let's ensure that our riding of Yellowhead continues to represent the best of Alberta's beauty," concluded MP Eglinski.

For more information and links to each funding program, visit the department's website at [www.canada.ca/en/environment-climate-change.html](http://www.canada.ca/en/environment-climate-change.html).





## LAC STE. ANNE MINOR SOFTBALL LEAGUE REGISTRATION NIGHTS

### Alberta Beach

Feb. 26<sup>th</sup>, 27<sup>th</sup> & March 8<sup>th</sup> 5:00 PM – 8:00 PM at Alberta Beach Agliplex  
Contact: Amy Warren 780-940-9716

### Alexis

To register, call the Alexis Nakota Sioux Nation Administration Office  
Contact: Felix Kootenay 780-967-2225

### Anselmo

Feb. 27<sup>th</sup> & 28<sup>th</sup> 5:30 – 7:30 PM at Anselmo Hall  
or Mar. 7<sup>th</sup> 5:00 – 7:00 PM at Elmer Elson Elementary School  
Contact: Rennae Swartzenberger 780-706-5379 [rrswart@telus.net](mailto:rrswart@telus.net)

### Darwell

Mar. 20<sup>th</sup> 4:00 PM – 6:30 PM or Mar. 22<sup>nd</sup> 5:30 PM – 8:00 PM at Darwell School  
Contact: Jillene McDonald 780-903-3805

### Onoway

Online registration only from Feb. 20 – Mar. 31 by visiting  
<http://www.onowayballandsoccer.com> and following the link to RAMP.  
General information night Feb. 27<sup>th</sup> 6:00 PM – 8:00 PM at the Onoway Heritage Centre, Rm. 3.  
Contact: Monty Doig 780-405-4617

### Rich Valley

Mar. 9<sup>th</sup> 6:30 PM – 7:30 PM or Mar. 14<sup>th</sup> 5:30 PM – 7:00 PM at Rich Valley Arena  
Contacts: Steven Borle 780-721-4462 [fireblaze47@hotmail.com](mailto:fireblaze47@hotmail.com)

### Sangudo

Mar. 20<sup>th</sup> 4:30 PM - 6:00 PM at Sangudo Community School  
or pre-register by dropping off forms with Rene at the school or Shelly at ATB Agency.  
You can also register online (and receive a discount) at:  
<http://sangudominorsports.ramp190.com/default.aspx?p=registrations>  
Contact: Rene Werenka 780-785-2722 or 780-305-8200

### Wabamun

Feb. 20<sup>th</sup>, 27<sup>th</sup> or Mar. 6<sup>th</sup> 6:30 PM – 8:30 PM or Mar. 4<sup>th</sup> 11:00 AM – 3:00 PM at the Wabamun Union Hall  
Contact: Rhonda Neron 780-718-1323

This **co-ed** league's 2018 regular season will run April 30 – June 14, with a playoff tournament to follow.

The league involves all the above noted communities, and players must register in the community where they reside, based on local elementary school boundaries. If you aren't sure which community you should register with, call your closest contact listed above to discuss.  
Physical addresses will be required to complete the registration process.

It is important to note, that this is a FUN league. Fair play and sportsmanship are encouraged.

The Lac Ste. Anne Minor Softball League offer a program for all ages including:

- U6 for players born in 2011\*, 2012, 2013 (some communities accept younger participants)
- U8 for players born in 2010\*, 2011\*
- U10 for players born in 2008, 2009, 2010\* (Tues/Thurs games)
- U12 for players born in 2006, 2007 (Mon/Wed games)
- U14 for players born in 2004, 2005 (Tues/Thurs games)
- U16 for players born in 2002, 2003 (Mon/Wed games)
- U19 for players born in 2000, 2001 (No overage players) (Tues/Thurs games)

\*Age overlap within the U6/U8/U10 categories allows for flexibility based on each player's previous experience. Category placement for overlap is at the discretion of each community.

***(To participate, waiver forms MUST be completed for all players.)***

For further information on the Lac Ste. Anne Minor Softball League, please contact the  
Lac Ste. Anne County Administration Office: 1-866-880-5722

# RCMP BEATS

## Submitted by Stony Plain/ Spruce Grove RCMP

Occurrences for the week of 26 February to 4 March 2018.

Total Calls for Service Spruce Grove/Stony Plain/Enoch Detachment: 554

Total Calls for Service for the Victim Service Unit: 22

Individuals Charged: 104

Person Crimes reported: 64

Property Crimes reported: 65

Impaired Driving Complaints reported: 8

Impaired Driving Charges Laid: 2

Roadside Suspensions: 2

Motor Vehicle Collisions Attended: 45

Property Crimes:

Spruce Grove

1. February 26 – Area of Diamond Avenue – Theft of Trailer, 2017 light brown 316BHWS

2. February 27 – Area of King Street and Grove Drive – Theft of Vehicle, 1998 red Ford Mustang

3. March 3 – Area of Century Crossing – Theft from Vehicles,

numerous vehicles entered

4. March 3 – Area of Brookwood Drive – Theft from Vehicle, tools stolen

5. March 3 – Area of Westgrove Drive – Theft of Vehicle, 2002 blue Ford Focus

Stony Plain

6. February 27 – Area of Graywood Terrace – Theft from Vehicle, wallet and sunglasses stolen

7. March 4 – Area of Lundy Park Road – Theft of Vehicle, 2006 black Ford F350

Rural

8. March 2 – Area of Township Road 534 and Range Road 41 – Theft of ATV, 2007 yellow Can

Am Renegade

9. March 3 – Area of Township Road 530 and Range Road 33 – Break and Enter to Residence, welder, frozen meat, cheques and clothing stolen

Stony Plain/Spruce Grove RCMP remind you not to make it easy for thieves. If you are away from your home for extended periods, ensure some clears your driveway and walks, and have lights come on in your home via timers.

The Spruce Grove / Stony Plain Drug Section Information Tip Line is 780-968-7212. Anyone with drug information is asked to call and leave a message.

If you have information regarding any of these crimes, or any other crime, please call the RCMP At 780-962-2222 or 780-968-7267. You can also call Crime Stoppers at 1-800-222-8477 or text the keyword TIP205 (TIP250 for Edmonton Metro) & your Tip to CRIMES (274637)



**LAWYER**

**PATRICK DOLPHIN**

**Evansburg**

Office open Mondays  
from 9:30A.M. to 4:00P.M. (except holidays)

**4910 - 50 Avenue Evansburg**

**Phone: 780-727-2270**

**Serving Evansburg, Entwistle and area since 1994**

# Easter Egg Coloring

**Tipple  
Park  
Museum**



**Saturday  
March 17<sup>th</sup>, 2018  
2:00PM - 4:00PM**

**Open to all ages!!  
No Fee**







# The quality service my family depends on.

Chad O'Neill, EQUS Member &  
Construction Work Leader



WHY I *am* EQUS

[EQUS.CA](http://EQUS.CA)



# April 28 Real Estate & Consignment Auction – Drayton Valley AB

## Unreserved Real Estate Auction for The Govenlocks - Nojack, AB



633 acres along Hwy 751 north of Nojack on  
Hwy 16 in Yellowhead County

**G1:** NW31-54-11-W5 (160± acres)

Moore's Agri-Trade  
780-388-3759

**G2:** NE31-54-11-W5 (153.13± acres)



**G3:** SW31-54-11-W5 (160± acres)

**G4:** SE31-54-11-W5 (159.88± acres)

Full details at [teamauctions.com](http://teamauctions.com)

## Unreserved Real Estate Auction for Kim & Theresa Holbein - Wildwood, AB



615± Acres Wildwood, AB

**H1:** SE16-55-9-W5 (156.26± acres)

Moore's Agri-Trade  
780-388-3759

**H2:** NE9-55-9-W5 (159± acres)



**H3:** NW10-55-9-W5 (158± acres)

**H4:** NE10-55-9-W5 (143.97± acres)

Full details at [teamauctions.com](http://teamauctions.com)

**All Real Estate sells at 12 PM in Conjunction with Drayton Valley Consignment Auction at the Team Auction Yard.** **internet 12 PM BIDDING**

## Consignment Items Featuring Sunridge Contracting Dispersal

Tractors & Attachments, Construction / Industrial Equipment, Haying, Tillage & Seeding, Heavy Trucks, Vehicles, Trailers, 3 PT, Lawn & Garden, Recreational, Bins, Buildings & Material, Shop & Tools and much, much more!

**CONSIGN  
NOW!**



2007 Peterbilt 357 Tandem  
Steer Tri Drive 40T Picker



2011 Case IH 535 Quad Trac  
Tractor w/PTO



1997 JD 9300 4WD Tractor



2012 Cat D3K2 LGP Crawler

**TEAM  
AUCTIONS**  
Sekura Auctions Since 1966

Clayton Dubnyk 780-910-6221  
**[www.teamauctions.com](http://www.teamauctions.com)**  
Drayton Valley AB 780-542-4337





**SERENITY**  
FUNERAL SERVICE

**NEW FACILITY**  
Chapel & Reception Centre

600 Calahoo Road Spruce Grove, AB  
**780-962-2749** [www.serenity.ca](http://www.serenity.ca)

SERENITY FAMILY SERVICE SOCIETY - YOUR NOT-FOR-PROFIT SOCIETY



**SERENITY**  
FUNERAL SERVICE



[www.serenity.ca](http://www.serenity.ca)

**780-542-3338** (24 hours) 5137-50 Avenue  
Drayton Valley, AB

SERENITY FAMILY SERVICE SOCIETY - YOUR NOT-FOR-PROFIT SOCIETY

## COUNTY FIREFIGHTERS RESPOND TO RURAL RESIDENTIAL FIRE

Submitted by Dan Ivanov,  
Communications Department | Yellowhead County

On March 6, 2018, Yellowhead County Protective Services responded to a fire north of Edson located on a residential property. Yellowhead County firefighters worked to bring the fire under control and assist the resident who suffered minor injuries. No other occupants were involved in the incident.

Firefighters were able to restrict the fire, but not completely extinguish it due to access issues and health and safety concerns for the first responders. The building and its contents were not able to be saved and were destroyed due to the initial fire. None of the adjacent buildings

or contents near the structure fire were damaged.

The fire was not deemed suspicious and is not under investigation.

Yellowhead County Fire Department would like to remind property owners to take preventative measures that help to protect your home from external brush and forest fires and assist firefighters in quicker access to your property.

FireSmart booklets are available from Yellowhead County and have tips on how to fire smart your home and property. Residents are reminded to keep access to your property and home clear and to have your rural property address sign clear of snow and debris.

# GROVE HEARING CLINIC

**960-2960**  
**1-866-960-2960**

Hear what  
you've been  
missing...

Senior  
Discounts



Full  
Service &  
Repair

Full  
Hearing  
Assessments

**HOURS OF OPERATION: 9am – 5pm Weekdays**

3rd party billing (AADL, WCB, DVA, FCH) • Personal 0% Financing if Needed

For The Latest Technology In Hearing Aids & Assisted Living Device Stop By & See Dawn

**#220-70 McLeod Ave - Westland Market Mall, Spruce Grove**



## AVIS PUBLIC

Office national  
de l'énergie



National Energy  
Board

### Trans Mountain Pipeline ULC, à titre de partenaire général de Trans Mountain Pipeline L.P. Projet d'expansion de Trans Mountain Avis relatif au tracé détaillé proposé en vertu de l'alinéa 34(1)(b) de la Loi sur l'Office national de l'énergie

**EN CE QUI CONCERNE** la Loi sur l'Office national de l'énergie et les règlements afférents.

**ET EN CE QUI CONCERNE** le Certificat de commodité et de nécessité publiques OC-064 autorisant le tracé général du Projet d'expansion de Trans Mountain.

**ET EN CE QUI CONCERNE** une demande faite par Trans Mountain Pipeline ULC, au nom de Trans Mountain Pipeline L.P., (« Trans Mountain »), à l'égard de la détermination et de l'approbation du tracé détaillé prévu pour la construction du Projet d'expansion de Trans Mountain, dont la longueur est d'environ 1 179,9 km, et ce à partir du terminal de Trans Mountain situé à Sherwood Park, en Alberta, jusqu'au terminal maritime Westbridge situé à Burnaby, en Colombie-Britannique, comme le montre la Carte du tracé (Figure 1).

À : ALICE KALINOWSKI (« Propriétaire »)  
ALEXANDRA KALINOWSKI (« Propriétaire »)

Étant le(s) propriétaire(s) inscrit(s), dans la mesure où ils peuvent être déterminés, des terrains requis pour l'itinéraire détaillé du projet d'expansion de Trans Mountain, situés à

MÉRIDIEN 5 RANG 9 CANTON 53  
SECTION 21  
QUART NORD-EST  
CONTENANT ENVIRON 64,7 HECTARES (160 ACRES)  
À L'EXCEPTION DE TOUTES LES MINES ET MINÉRAUX  
Numéro de titre: 072 522 328 +2

MÉRIDIEN 5 RANG 9 CANTON 53  
SECTION 21  
QUART NORD-OUEST  
CONTENANT ENVIRON 64,7 HECTARES (160 ACRES)  
À L'EXCEPTION DE TOUTES LES MINES ET MINÉRAUX  
Numéro de titre: 072 522 328

(les «Terrains»)

Trans Mountain recherche le Propriétaire foncier, ou encore les héritiers du Propriétaire foncier, décrit ci-dessus afin de leur faire part de renseignements et du présent avis concernant le tracé détaillé du Projet d'expansion de Trans Mountain.

L'ébauche de propriété individuelle présente en détail le tracé du Projet d'expansion de Trans Mountain, propre à la partie des Terrains référés ci-dessus et inclus dans l'entente de servitude permanente conclue avec Trans Mountain (Figure 2).

Si vous avez des droits légaux envers les Terrains décrits ci-haut et désirez vous opposer au tracé détaillé prévu pour le Projet d'expansion de Trans Mountain, notamment la méthode et le calendrier relatifs à la construction de l'oléoduc, vous pouvez déposer une déclaration d'opposition écrite auprès de l'Office national de l'énergie (« Office ») dans les trente (30) jours suivant

la publication du présent avis. Dans la déclaration d'opposition écrite, vous devez préciser la nature de votre intérêt dans le tracé détaillé proposé et les motifs de votre opposition au tracé en question.

Une copie de toute déclaration écrite s'opposant à ce tracé détaillé doit être envoyée aux adresses suivantes :

Office national de l'énergie  
517, Dixième Avenue S.-O.,  
bureau 210  
Calgary (Alberta) T2R 0A8  
À l'attention de : Sheri Young,  
secrétaire de l'Office  
Téléphone : 403-292-4800  
Télécopieur sans frais : 1-877-288-8803  
Courriel : [TMX.ProcessHelp@neb-one.gc.ca](mailto:TMX.ProcessHelp@neb-one.gc.ca)  
Site Web : [www.neb-one.gc.ca](http://www.neb-one.gc.ca)

et : Trans Mountain  
12831, rue 163 N.-O.  
Edmonton (Alberta) T5V 1M5  
À l'attention de : Elliott Friedrich  
Gestionnaire des projets fonciers  
Téléphone : 1-866-454-4717  
Télécopieur : 780-454-6172  
Courriel : [TMEP@progressland.com](mailto:TMEP@progressland.com)

En cas de dépôt d'une déclaration d'opposition écrite qui satisfait aux exigences de la Loi sur l'Office national de l'énergie (Loi sur l'ONE) auprès de l'Office dans les trente (30) jours suivant la réception du présent avis, l'Office ordonnera sans délai, sous réserve de certaines exceptions indiquées ci-dessous, la tenue d'une audience publique concernant les motifs d'opposition énoncés dans la déclaration. L'audience publique se tiendra dans un lieu situé près des terrains auxquels se rapporte la déclaration.

L'Office n'est pas tenu de donner d'avis, ni de tenir d'audience, ni d'entreprendre de démarches à l'égard de toute déclaration d'opposition écrite déposée auprès de l'Office et se réserve le droit, à tout moment, de rejeter ladite déclaration écrite si la personne ayant déposé la déclaration dépose un avis de retrait ou que l'Office juge la déclaration frivole, vexatoire ou présentée de mauvaise foi.

Si l'Office estime qu'il convient de tenir une audience publique, il fixera une date et un lieu convenables pour l'audience et publiera par la suite un avis d'audience dans au moins un numéro d'une publication à grand tirage dans la région où se trouvent les terrains acquis ou que l'on se propose d'acquérir. L'Office fera également parvenir un avis d'audience publique à chacune des personnes qui aura déposé une déclaration d'opposition écrite auprès de l'Office.

L'Office, ou une personne autorisée par l'Office, se réserve le droit d'effectuer une inspection, comme l'Office le juge nécessaire, des terrains acquis ou que l'on se propose d'acquérir ou encore touchés par la construction du Projet d'expansion de Trans Mountain.

À l'audience publique, l'Office permettra à chacune des personnes qui auront déposé une déclaration d'opposition écrite qui satisfait aux exigences de la Loi sur l'ONE de présenter des observations; l'Office se réserve par ailleurs le droit de permettre à toute autre personne intéressée de présenter des observations devant lui, comme l'Office le juge indiqué. L'Office tiendra compte de l'ensemble des déclarations d'opposition écrites qui satisfont aux exigences de la Loi sur l'ONE et des observations présentées au cours de l'audience publique afin de déterminer le meilleur tracé détaillé possible pour l'oléoduc et les méthodes et le calendrier les plus propices à la construction du Projet d'expansion de Trans Mountain. L'Office peut assortir toute approbation des conditions qu'il juge indiquées. L'Office transmettra, motifs à l'appui, une copie de toute décision d'approbation ou de refus d'approbation des plan, profil et livre de renvoi relatifs à une section ou partie du Projet d'expansion de Trans Mountain rendue après l'audience publique, au ministre et à chacune des personnes qui lui y aura présenté des observations.

L'Office peut fixer à la somme qu'il juge raisonnable les frais entraînés par la présentation d'observations au cours d'une pareille audience publique; ce montant sera versé sans délai à la personne par Trans Mountain. Vous pouvez vous prévaloir du mécanisme approprié de règlement des différends (MRD) proposé par l'Office. Le MRD peut prendre la forme d'une réunion entre vous et Trans Mountain, qui pourrait être animée par les membres du personnel de l'Office formés en la matière ou encore par une tierce partie impartiale. L'animateur vous aiderait, vous et Trans Mountain, à élaborer un processus qui pourrait permettre de régler les différends en suspens.

Pour obtenir plus de renseignements sur le mécanisme approprié de règlement des différends (MRD) mis en place par l'Office ou pour toutes autres questions, vous pouvez communiquer avec l'un des conseillers chargés du MRD de l'Office national de l'énergie par téléphone au 1-800-899-1265 ou par courriel à l'adresse [TMX.ProcessHelp@neb-one.gc.ca](mailto:TMX.ProcessHelp@neb-one.gc.ca). Vous pouvez aussi obtenir des renseignements et des formulaires, y compris un formulaire de déclaration d'opposition, en vous rendant sur le site [www.neb-one.gc.ca/TransMountainExpansion](http://www.neb-one.gc.ca/TransMountainExpansion).

Il vous est possible de consulter des copies des plan, profil et livre de renvoi relatifs au tracé détaillé du Projet d'expansion de Trans Mountain en ligne à l'adresse [www.transmountain.com](http://www.transmountain.com), et auprès de la Bibliothèque de l'Office national de l'énergie, 2<sup>e</sup> étage, suite 210, 517 Tenth Avenue SW, Calgary (Alberta) T2R 0A8. Numéro sans frais : 1-800-899-1265. Vous pouvez aussi composer le 1-866-454-4717 ou envoyer un courriel à [tmeop@progressland.com](mailto:tmeop@progressland.com) afin de demander une copie des plan, profil et livre de renvoi.

## AVIS PUBLIC

Figure 1 – Carte du tracé

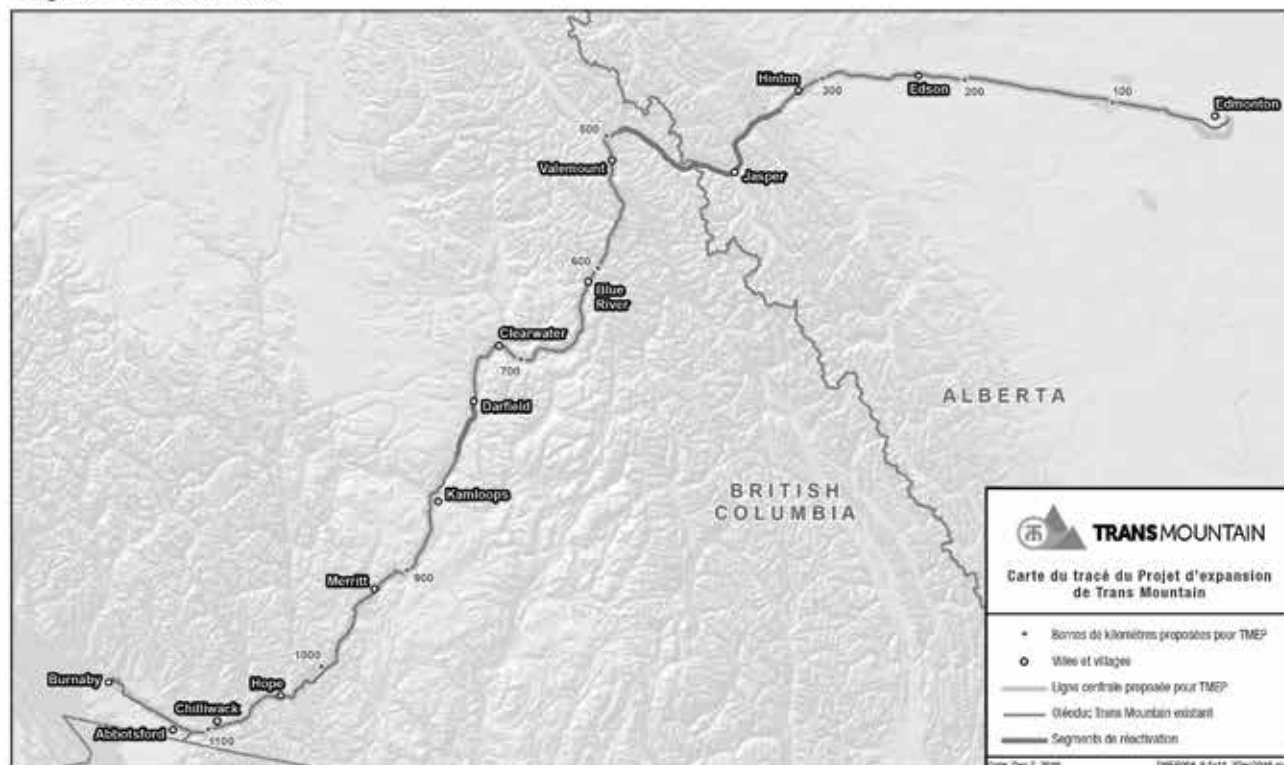


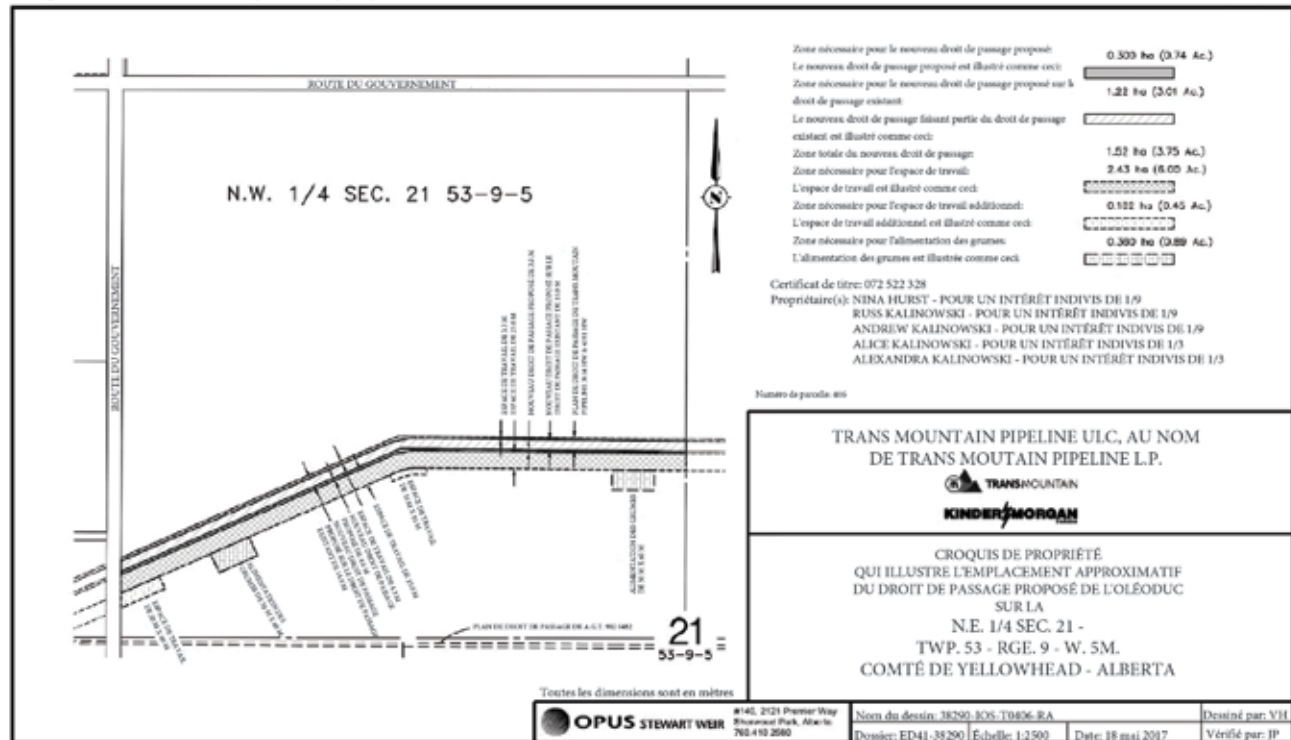
Figure 2 – Ébauche du plan de propriété individuelle





## AVIS PUBLIC

Figure 2 – Ébauche du plan de propriété individuelle



Canada

# PRINCIPAL'S MESSAGE FROM WABAMUN SCHOOL

## Submitted by Les Worthington, Principal | Wabamun School

February had a couple of shortened weeks, but there was still plenty going on. Please note that report cards will be coming home on Friday, March 16th. Also, parents can book Student Led Conferences for the evenings from 4:00-7:00 on the 21st and 22nd. Lots happened, and lots to look forward to. Let's take a look!

Winter Walk – Thanks to everyone who helped out on the 7th! It was a beautiful day and the hot chocolate at the Wabamun Village Office was a nice treat.

Basketball – Congratulations to the players and coaches on

a successful inaugural season with the WCJHAA! There were several successes throughout the season and the growing interest in basketball at Wabamun School means the future looks bright.

Archery – 12 students participated in the St. Anthony Invitational tournament in Drayton Valley. This was every student's first tournament and first experience shooting from 15 yards! We will be practicing for the upcoming NASP provincials in Edmonton on March 17th.

Breakfast Program – The Breakfast Program continues to run every morning. If you are interested in volunteering, please let us know.

School Council & WSFA – Our next meeting is Thursday

March 15th in the breakfast room. WSFA will meet at 4:00 followed by School Council at 5:00. Childcare will be provided.

Coffee with the Principal – Our next coffee time will be on Tuesday, March 20th at 9:00 in the breakfast room. Please come and join the conversation!

Hockey Hooky – On Tuesday, February 27th students from Wabamun School went to Rogers Place to watch and participate in Hockey Hooky. Thanks to all of the volunteers for their time in ensuring that everything went smoothly. Also, thanks to Wabamun School Fundraising Association who donated \$2500 to make this happen. We will look to be participating in this event every three years.

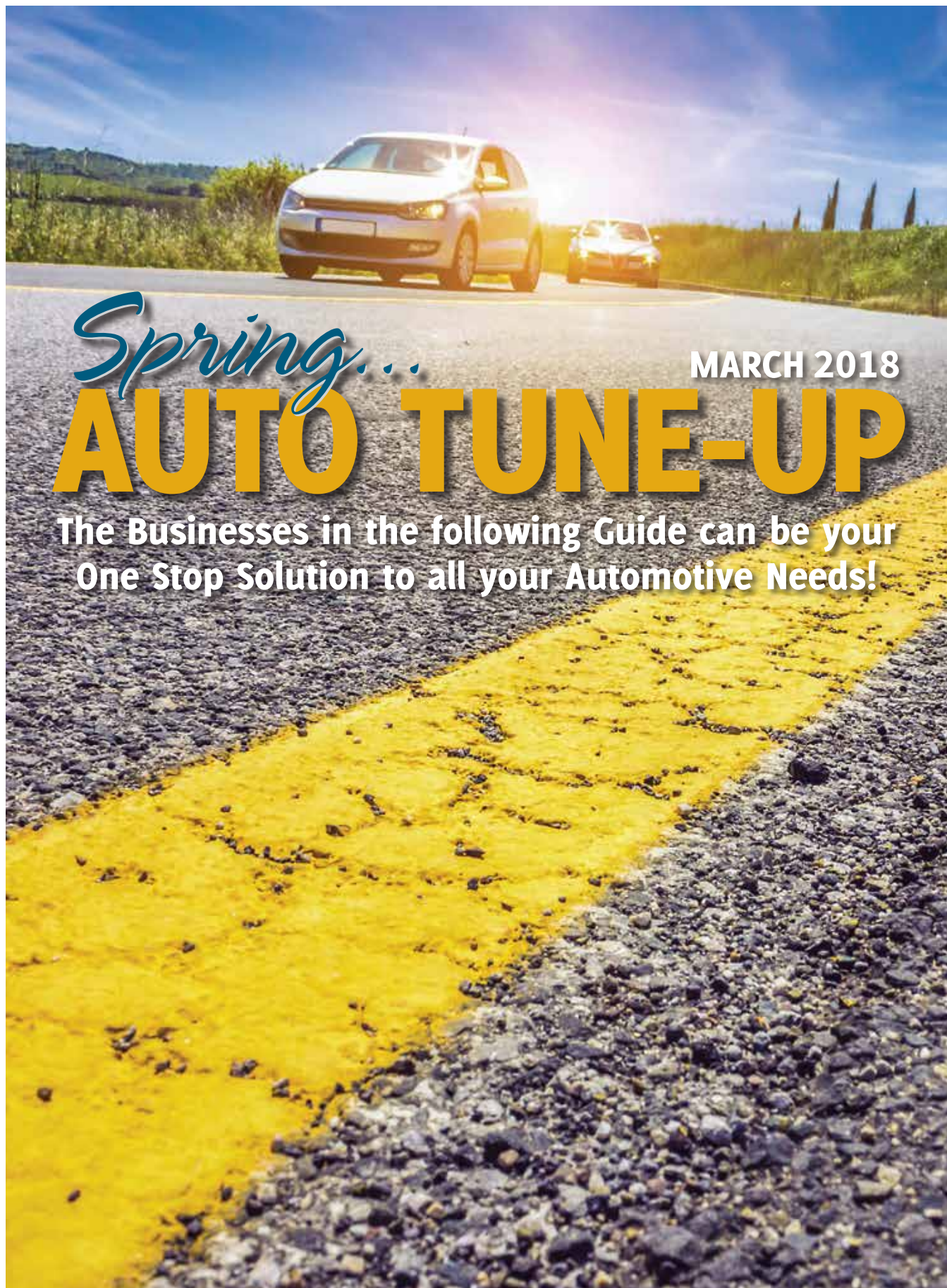
Scholastic Book Fair – The book fair will be open in the library starting Tuesday, March 13th from 12:15-12:55 & 3:00-4:00 pm daily. In addition, the book fair will be open on the evenings of the 20th & 21st from 4:00-7:00 during Student Led Conferences.

Spring Break – Just a reminder that Spring Break begins on Friday, March 23rd. This means the last day of classes is Thursday, March 22nd. School resumes for students on Wednesday, April 4th.

Should you have any questions, comments or concerns please do not hesitate to contact me.

Les Worthington,  
 Principal, Wabamun School  
 lworthington@psd70.ab.ca  
 780-892-2271





# *Spring...* **AUTO TUNE-UP**

**MARCH 2018**

**The Businesses in the following Guide can be your  
One Stop Solution to all your Automotive Needs!**





# AutoTUNE-UP

## MAINTAIN TIRE BALANCE AND ALIGNMENT FOR A SMOOTH RIDE

It is easy for motorists to take their tires for granted when everything is working correctly. Wheels and suspension systems bear the weight of cars and trucks and must bear the brunt of rough roads, pot holes and any additional obstacles, so some wear and tear is to be expected.

Many drivers know to monitor their tire pressure, but it's also important to check for worn treads and inspect tires for punctures or damage. Proper tire alignment and balance also is essential for a comfortable and smooth ride.

### Balance

Balancing tires involves equalizing the weight of the combined tire and wheel assembly so that each tire spins smoothly on the

road. Tires are mounted on the wheel assembly, and the chances of this assembly having precise weight distribution is nearly impossible without a little help. According to Discount Tire, the slightest imbalance in the tires, even as little as half an ounce, can be felt by drivers. Unequal mass can make tires wobble, causing noticeable vibrations.

Mechanics will test tire balance by putting it on a balancing machine. The machine will spin the tire and determine the tire's heaviest point. Counteracting weights will be placed on the tire hubs to create a more uniform balance of weight. Lead weights are often used, but some are being phased out for other metals, such

as zinc, because of the medical and environmental implications of lead.

Tires that are not balanced will not only cause vibration, they also can lead to uneven wear.

### Alignment

Tire alignment is another way to reduce wear on tires and help avoid steering and "pulling" problems. Bridgestone Tires defines tire alignment as an adjustment of the vehicle's suspension, or the system that connects a vehicle to its wheels.

When tires are not properly aligned, drivers may notice uneven tread wear. Misaligned tires also may cause the vehicle to pull to the left or right. Drivers who notice their steering wheel is

off-center or vibrating when they are driving may need to adjust their tires' alignment.

Camber, or the inward or outward angle of the tire when viewed from the front of the vehicle, will be adjusted. In addition, "toe," or the extent to which the tires turn inward or outward when viewed from above, will be adjusted. Caster angle also helps balance steering, stability and cornering. Caster is the angle of your steering axis when viewed from the side of your vehicle.

When tires are balanced correctly and aligned, vehicles will offer a smooth ride with little to no vibrations. Having tires serviced can maximize their performance and lifespan.



## W.V. REPAIR SERVICES LTD.

**Agriculture & Heavy Duty Repairs**  
(NO AUTOMOTIVE REPAIRS)

Air Conditioning - in Shop & Mobile Service  
CVIP Inspections, Hydraulic Repair, Hoses Made

 **EXPERIENCED MECHANIC 30+ YEARS**

**WALLY 780-305-1315**

SHOP IS LOCATED JUST 10 MIN SOUTH OF SANGUDO



## Ray's AUTO REPAIR



**24 HR. TOWING SERVICE**  
**COMPLETE AUTO REPAIR**  
**STIHL CHAIN SAWS**

**DANNY FRIEND 780-785-2251**  
(OWNER • MANAGER) BOX 332 SANGUDO, AB. T0E 2A0



## JACK'S AUTO BODY

& Towing & Mechanical




**SPECIALIZING IN COLLISION REPAIR**  
**WHEEL ALIGNMENTS • AIR CONDITIONING**  
**GUARANTEED WORK • INSURANCE CLAIMS**

Box 9 Site 306 RR3, ONOWAY, AB T0E 1V0  
E-mail: estimate@jacksautobody.ca

 **"OUR PLEDGE IS QUALITY"** 

**Ph: 780-967-5850 Fax: 780-967-5350**

## VANDENBERG COLLISION LTD.



**Joe**

**Ph: (780) 786-2614**  
**Fax: (780) 786-2736**

**5014 - 51 St.**  
**Mayerthorpe, AB**



# AutoTUNE-UP

## 4 SIMPLE WAYS TO EXTEND THE LIFE OF YOUR VEHICLE

Automobiles are significant investments. According to Kelley Blue Book, the average transaction price for light vehicles was \$34,968 in January 2017, marking a 3 percent increase from just a year earlier.

The decision to spend tens of thousands of dollars on a new vehicle is not one consumers should take lightly. Once drivers purchase their new vehicles, they can protect their investments and get greater returns on those investments by prioritizing maintenance and taking simple yet effective steps to extend the lives of their cars and trucks.

### 1. Drive defensively.

Aggressive driving is dangerous and can have adverse effects on a vehicle. When driving, always obey posted speed limits and avoid accelerating and decelerating quickly. Such a style of

driving can strain vehicle engines and drive trains while negatively affecting fuel efficiency and wearing down brakes, states the National Institute of Automotive Service Excellence.

### 2. Maintain a clean vehicle.

Car washes do more than just clean a vehicle. Routine washing and waxing can remove dirt that, if left on a vehicle, can gradually scratch paint and contribute to chips and rust. Over time, rust can affect vehicle performance and may even compromise the safety of drivers and their passengers if bad enough frame rust affects structural integrity. Routine washing also can remove road salt from vehicles. Salt can build up during winter when roads are routinely treated during and after snowstorms. Road salt can be extremely corrosive and, if left unremoved from a vehicle, can

contribute to rust that ultimately can cause extensive damage to a vehicle.

### 3. Routinely check tire pressure.

Many of today's new vehicles alert drivers when tire pressure is low. Drivers should not ignore such warnings, as low tire pressure can affect engine performance by forcing it to work harder than should be necessary. Engines that are forced to work harder than they need to likely won't last as long as those that run efficiently. Low tire pressure also negatively affects fuel efficiency, potentially costing drivers substantial amounts of money over time. Drivers of older vehicles without tire pressure alerts should routinely check tire pressure and keep tires adequately inflated. Vehicles that are slow to accelerate from resting positions may not have enough air in their tires.

### 4. Adhere to maintenance guidelines.

Drivers may have heard that today's vehicles were built to go longer periods of time between oil changes and tuneups than the vehicles of yesteryear. But drivers should still adhere to manufacturer-recommended maintenance guidelines. Upon buying new vehicles, drivers should read their owners' manuals to determine recommended maintenance intervals, and stick to those intervals for as long as they have their vehicles.

Cognizant of the sizable investments they're making when buying new vehicles, many drivers want to get as many miles out of their vehicles as possible. Simple maintenance and safe driving habits can go a long way toward keeping vehicles on the road for years to come.



**COLLISION REPAIRS LTD.**

*Specialists in Unibody Repairs*

**GENESIS COMPUTERIZED  
DAMAGE ANALYSIS**

The Latest in "Hi Tech" Collision Repair

ACCREDITED REPAIR FACILITY FOR



Peace Hills  
GENERAL Insurance Company





the co-operators  
Insurance/Financial Services



The Economical  
Insurance Group



ZURICH CANADA



WESTERN UNION INSURANCE  
INC. CANADA

**Insurance Claims Welcome**

**120 South Ave. SPRUCE GROVE  
(780) 962-3755**



**AUTO PARTS**

- \* Auto Parts & Accessories
- \* Body Shop Supplies
- \* Agricultural & Industrial Parts
- \* Shop Equipment



120 St. Matthews Ave, Spruce Grove  
962-4421 Fax: 962-3464







**Sales and Service**

Car, Truck & Agriculture

4808-53rd Avenue, Barrhead



780-674-2551





## SOME TELLTALE SIGNS OF ENGINE TROUBLES

Engine troubles are many drivers' worst nightmares. Whether they occur out on the road or they prevent drivers from leaving their driveways in the morning, engine troubles can quickly derail plans and cost drivers substantial amounts of money.

Thankfully, engine troubles are often noticeable long before cars break down. Drivers who learn to recognize the signs that suggest engines might be in need of work can avoid being stranded on the road or at home.

- **Vehicle shaking:** One telltale sign of engine trouble is when a vehicle shakes while it's moving. Drivers of old cars and trucks may not expect the smoothest of rides, but cars that shake, sometimes violently, could be experiencing problems. Sometimes a car might shake if its spark plugs need replacing. That's an easy, inexpensive fix that drivers can do on their own in a matter of minutes. A more serious cause of the vehicle shaking could be

problems with its timing belt or fuel intake system. Drivers who inspect and/or replace their spark plugs but notice their vehicles are still shaking should take their cars into their mechanics immediately.

- **Sudden gas mileage reduction:** Drivers who notice they're not getting as much bang for their gas bucks as they used to might have engine troubles to blame. According to Pep Boys, a dropoff in gas mileage might be indicative of an issue in the compression stroke of the engine. Such an issue can typically be fixed by having the fuel system serviced, which will clean the fuel system and can help restore the vehicle's performance and reduce emissions.

- **Noises:** If driving has become as noisy as a rock concert, drivers should take heed that this could be indicative of engine trouble. Pep Boys notes that noises typically indicate abnormalities in the combustion flow.

Such noises may include knocking, hissing and popping. Vehicles making these noises should be taken to a mechanic immediately.

- **Stalling:** Vehicles that jerk or stall also may be experiencing engine troubles. While old spark plugs might be the culprit, stalling or jerk-

ing may indicate clogged fuel lines or fuel filters. Such issues may also be traced to issues with the vehicle's computer system. Bring such issues to the attention of a mechanic, and reduce their frequency with regular oil changes.



# Merv's Truck Parts Ltd.

WARBURG, AB

THERE IS A DIFFERENCE

**Tel: 780-848-7667**

**Toll free: 1-800-806-3707**

## RADIATOR REPAIR AND RECORE

MANY UNITS IN STOCK FOR LARGE TRUCKS SAME DAY SERVICE ON MOST RADIATORS. CALL FOR DETAILS AND PRICING.

### We offer services

- CVIP Inspections
- Hydraulic hose crimping and thousands of adapters in stock.
- A/C Repair
- Espar and Webasto Repair, Installation.
- Engine Repair and Rebuilding.
- Power train/Driveline repair and service.
- Suspension and frame repair.
- Two Fully equipped service trucks for mobile needs.
- Gates Hydraulics, hoses and belts

**WE HAVE FACTORY TRAINED  
TECHNICIANS FOR T & E PUMPS,  
CATERPILLAR AND CUMMINS ENGINES,  
AND SPICER AND MERITOR DRIVELINES.**

**WE STOCK PARTS FOR  
ALL MAKES AND  
MODELS OF TRUCKS,  
DRIVELINE & ENGINES.**

### We repair

- Truck Transport
- Heavy Equipment
- Automotive
- Industrial



**Nitro Nut Mechanical LTD.**

Shop 780.789.3322 • Fax 780.789.3331

Toll Free 1.855.789.3322 • [www.nitronut.com](http://www.nitronut.com)

email: [nitronutmech@hotmail.com](mailto:nitronutmech@hotmail.com)



## PUBLIC NOTICE

Office national  
de l'énergieNational Energy  
Board

**Trans Mountain Pipeline ULC, as General Partner of Trans Mountain Pipeline L.P.  
Trans Mountain Expansion Project  
Notice of Proposed Detailed Route  
Pursuant to Paragraph 34(1)(b) of the National Energy Board Act**

**IN THE MATTER OF** the *National Energy Board Act* and the Regulations made thereunder.

**AND IN THE MATTER OF** the Certificate of Public Convenience and Necessity [OC-064] approving the general route of the Trans Mountain Expansion Project.

**AND IN THE MATTER OF** an application by Trans Mountain Pipeline ULC, on behalf of Trans Mountain Pipeline L.P., ("Trans Mountain"), respecting the determination and approval of the detailed route for the construction of the Trans Mountain Expansion Project, approximately 1179.9 kilometres in length, commencing at Trans Mountain's Terminal located in Sherwood Park, Alberta to Westridge Marine Terminal located in Burnaby, British Columbia as shown on the adjacent Route Map (Figure 1).

**TO:** JULIA EWASHKO ("Landowner")

Being the registered owner(s), in so far as they can be ascertained, of the lands required for the detailed route of the Trans Mountain Expansion Project, located at

**MERIDIAN 5 RANGE 5 TOWNSHIP 53  
SECTION 14  
THE EAST HALF OF THE NORTH WEST QUARTER  
CONTAINING 32.4 HECTARES (80 ACRES)  
MORE OR LESS EXCEPTING THEREOUT:  
4.17 HECTARES (10.31 ACRES) MORE OR LESS  
AS SHOWN ON ROAD PLAN 8222092  
B) MICROWAVE SITE COMPRISING AREA A  
CONTAINING 4.17 HECTARES (10.31 ACRES) AREA B,  
CONTAINING 0.272 HECTARES (0.67 ACRES) MORE  
OR LESS BOTH AS SHOWN ON PLAN 8820443  
EXCEPTING THEREOUT ALL MINES AND MINERALS  
Title Number: 052 048 712 (the "Lands")**

Trans Mountain is seeking to locate the Landowner, or heirs of the Landowner, described above in order to provide them with information and this notice concerning the detailed route of the Trans Mountain Expansion Project.

The Individual Ownership Sketch details the route of the Trans Mountain Expansion Project, specific to the portion of the above Lands included within the permanent easement agreement with Trans Mountain (Figure 2).

If you have a legal right to the Lands described above and wish to oppose the proposed detailed route of the Trans Mountain Expansion Project, including the method and timing of construction of the pipeline, you may file a written statement of opposition with the National Energy Board ("Board") within thirty (30) days of the publication of this notice. The written statement of opposition must set out the nature of your interest in the proposed detailed route and the grounds for your opposition to that route.

A copy of any written statement of opposition to this detailed route must be sent to the following addresses:

**National Energy Board  
Suite 210, 517 Tenth Avenue SW  
Calgary, Alberta T2R 0A8  
Attention: Sheri Young,  
Secretary of the Board  
Phone: 403-292-4800  
Toll Free Fax: 1-877-288-8803  
Email: [TMX.ProcessHelp@neb-one.gc.ca](mailto:TMX.ProcessHelp@neb-one.gc.ca)  
Website: [neb-one.gc.ca](http://neb-one.gc.ca)**

**And to: Trans Mountain  
12831 – 163 Street NW,  
Edmonton, Alberta T5V 1M5  
Attention: Elliott Friedrich,  
Project Land Manager  
Phone: 1-866-454-4717  
Fax: 780-454-6172  
Email: [tmep@progressland.com](mailto:tmep@progressland.com)**

Where a written statement that meets the requirements of the National Energy Board Act (NEB Act) is filed with the Board within thirty (30) days of being served this notice, the Board shall forthwith order, subject to certain exceptions as noted below, that a public hearing be conducted with respect to any grounds of opposition set out in the statement. The public hearing will be held near to where the lands to which the statement relates are situated.

The Board is not required to give any notice, hold any hearing or take any other action with respect to any written statement of opposition filed with the Board and may at any time disregard any such written statement if the person who filed the statement files a notice of withdrawal, or it appears to the Board that the statement is frivolous, vexatious or is not made in good faith.

If the Board determines it appropriate to hold a public hearing, the Board will fix a suitable time and place for the hearing and will publish a notice of the hearing in at least one issue of a publication in general circulation within the area in which the lands acquired or proposed to be acquired are situated. The Board will also send a notice of the public hearing to each person who has filed a written statement of opposition with the Board.

The Board, or a person authorized by the Board, may make such inspection of the lands acquired or proposed to be acquired for, or affected by, construction of the Trans Mountain Expansion Project, as the deemed necessary by the Board.

At the public hearing, the Board will permit each person who filed a written statement of opposition that met the requirements of the NEB Act, to make representations and may allow any other interested person to make representations before it as the Board deems proper.

The Board will take into account all written statements of opposition that have met the requirements of the NEB Act and all representations made at the public hearing in determining the best possible detailed route of the pipeline, and the most appropriate methods and timing of construction for the Trans Mountain Expansion Project. The Board may impose in any approval such terms and conditions as it considers proper. Where the Board has held a hearing in respect of any section or part of the Trans Mountain Expansion Project and has approved or refused to approve the plan, profile and book of reference respecting that section or part, it will forward a copy of its decision and reasons to the Minister and to each person who made representation to the Board at the public hearing.

The Board may fix such amount as it deems reasonable in respect of the actual costs reasonably incurred by any person who makes representations to the Board at such a hearing, and the amount so fixed will be paid forthwith to the person by Trans Mountain. The Board's Appropriate Dispute Resolution ("ADR") process is also available to you. An ADR process could take the form of a meeting between you and Trans Mountain, which may be facilitated by trained Board staff or by another neutral third party. The facilitator would assist you and Trans Mountain to develop a process that may help to resolve outstanding issues.

For more information on the Board's ADR process or for any other questions, you can contact a National Energy Board Process Advisor at 1-800-899-1265 or TMX, [ProcessHelp@neb-one.gc.ca](mailto:ProcessHelp@neb-one.gc.ca). Information and templates, including a Statement of Opposition form, are also available at [www.neb-one.gc.ca/TransMountainExpansion](http://www.neb-one.gc.ca/TransMountainExpansion).

Copies of the plan, profile and book of reference for the detailed route of the Trans Mountain Expansion Project is available for inspection by you online at [www.transmountain.com](http://www.transmountain.com), and at the National Energy Board Library, 2nd Floor, 517 Tenth Avenue SW, Calgary, Alberta T2R 0A8, Toll Free Telephone: 1-800-899-1265. You may also call 1-866-454-4717 or email [tmep@progressland.com](mailto:tmep@progressland.com) to request a copy of the PPBoR.



# PUBLIC NOTICE

Figure 1 – Route Map

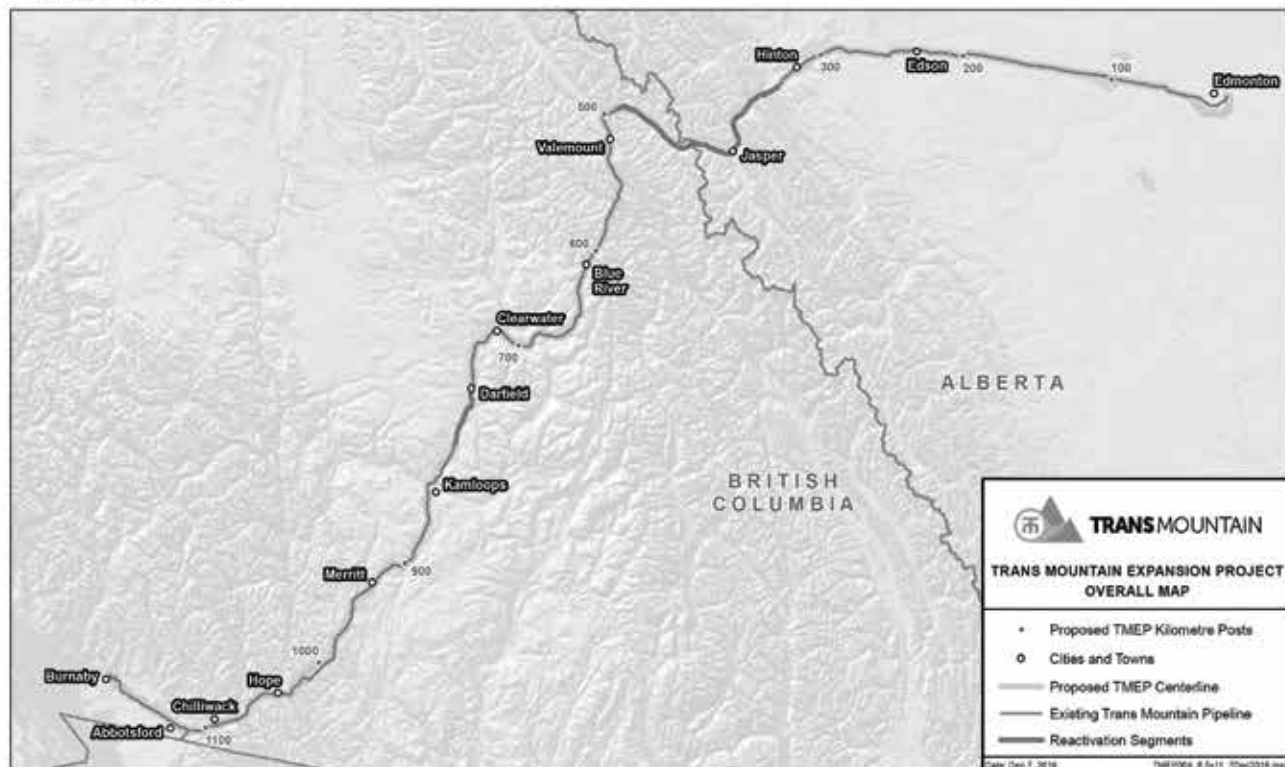
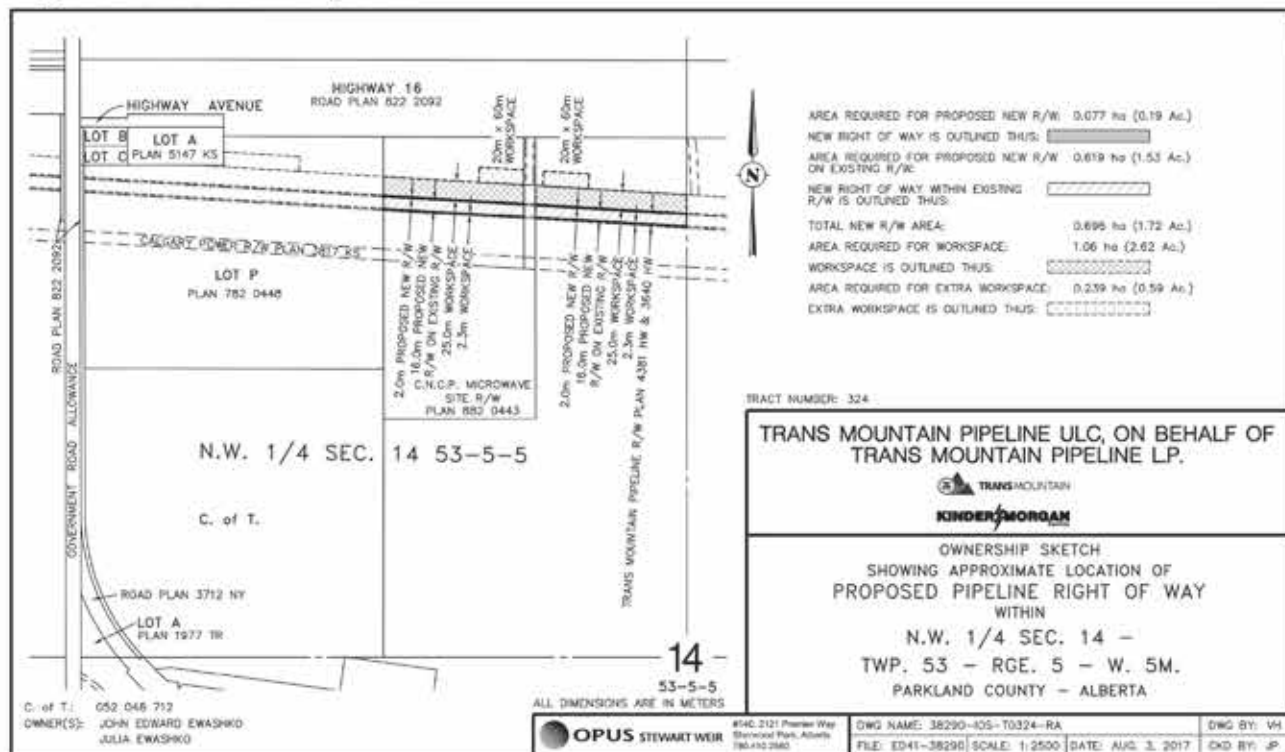


Figure 2 – Individual Ownership Sketch



## AVIS PUBLIC

Office national  
de l'énergieNational Energy  
Board

**Trans Mountain Pipeline ULC, à titre de partenaire général de Trans Mountain Pipeline L.P.  
Projet d'expansion de Trans Mountain  
Avis relatif au tracé détaillé proposé en vertu  
de l'alinéa 34(1)(b) de la Loi sur l'Office national de l'énergie**

**EN CE QUI CONCERNE** la Loi sur l'Office national de l'énergie et les règlements afférents.

**ET EN CE QUI CONCERNE** le Certificat de commodité et de nécessité publiques OC-064 autorisant le tracé général du Projet d'expansion de Trans Mountain.

**ET EN CE QUI CONCERNE** une demande faite par Trans Mountain Pipeline ULC, au nom de Trans Mountain Pipeline L.P., (« Trans Mountain »), à l'égard de la détermination et de l'approbation du tracé détaillé prévu pour la construction du Projet d'expansion de Trans Mountain, dont la longueur est d'environ 1 179,9 km, et ce à partir du terminal de Trans Mountain situé à Sherwood Park, en Alberta, jusqu'au terminal maritime Westridge situé à Burnaby, en Colombie-Britannique, comme le montre la Carte du tracé (Figure 1).

À : **JULIA EWASHKO** (« Propriétaire »)

Étant le(s) propriétaire(s) inscrit(s), dans la mesure où ils peuvent être déterminés, des terrains requis pour l'itinéraire détaillé du projet d'expansion de Trans Mountain Expansion Project, situés à

**MÉRIDIEN 5 RANG 5 CANTON 53**

**SECTION 14**

**LA MOITIÉ EST DU QUARTIER NORD-OUEST  
CONTENANT 32,4 HECTARES (80 ACRES) PLUS  
OU MOINS À L'EXCEPTION DE : 4,17 HECTARES  
(10,31 ACRES) PLUS OU MOINS FIGURANT SUR  
LE PLAN DE ROUTE 8222092 B) SITE DE  
MICRO-ONDES COMPRENANT UNE ZONE A  
CONTENANT 4,17 HECTARES (10,31 ACRES)  
ZONE B, COMPRENANT 0.272 HECTARES  
(0.67 ACRES) PLUS OU MOINS TOUTS LES DEUX  
FIGURANT SUR LE PLAN 8820443**

**À L'EXCEPTION DE TOUTES LES MINES**

**ET MINÉRAUX**

**Numéro de titre: 052 048 712 (les "Terrains")**

Trans Mountain recherche le Propriétaire foncier, ou encore les héritiers du Propriétaire foncier, décrit ci-dessus afin de leur faire part de renseignements et du présent avis concernant le tracé détaillé du Projet d'expansion de Trans Mountain.

L'ébauche de propriété individuelle présente en détail le tracé du Projet d'expansion de Trans Mountain, propre à la partie des Terrains répertoriés ci-dessus et inclus dans l'entente de servitude permanente conclue avec Trans Mountain (Figure 2).

Si vous avez des droits légaux envers les Terrains décrits ci-haut et désirez vous opposer au tracé détaillé prévu pour le Projet d'expansion de Trans Mountain, notamment la méthode et le calendrier relatifs à la construction de l'oléoduc, vous pouvez déposer une déclaration d'opposition écrite auprès de l'Office national de l'énergie (« Office ») dans les trente (30) jours suivant la publication du présent avis. Dans la déclaration d'opposition écrite, vous devez préciser la nature de

vos intérêts dans le tracé détaillé proposé et les motifs de votre opposition au tracé en question.

Une copie de toute déclaration écrite s'opposant à ce tracé détaillé doit être envoyée aux adresses suivantes :

**Office national de l'énergie**  
517, Dixième Avenue S.-O.,  
bureau 210  
Calgary (Alberta) T2R 0A8  
À l'attention de : Sheri Young,  
secrétaire de l'Office  
Téléphone : 403-292-4800  
Télécopieur sans frais : 1-877-288-8803  
Courriel : [TMX.ProcessHelp@neb-one.gc.ca](mailto:TMX.ProcessHelp@neb-one.gc.ca)  
Site Web : [www.neb-one.gc.ca](http://www.neb-one.gc.ca)

et : **Trans Mountain**  
12831, rue 163 N.-O.  
Edmonton (Alberta) T5V 1M5  
À l'attention de : Elliott Friedrich  
Gestionnaire des projets fonciers  
Téléphone : 1-866-454-4717  
Télécopieur : 780-454-6172  
Courriel : [TMEP@progressland.com](mailto:TMEP@progressland.com)

En cas de dépôt d'une déclaration d'opposition écrite qui satisfait aux exigences de la Loi sur l'Office national de l'énergie (Loi sur l'ONE) auprès de l'Office dans les trente (30) jours suivant la réception du présent avis, l'Office ordonnera sans délai, sous réserve de certaines exceptions indiquées ci-dessous, la tenue d'une audience publique concernant les motifs d'opposition énoncés dans la déclaration. L'audience publique se tiendra dans un lieu situé près des terrains auxquels se rapporte la déclaration.

L'Office n'est pas tenu de donner d'avis, ni de tenir d'audience, ni d'entreprendre de démarches à l'égard de toute déclaration d'opposition écrite déposée auprès de l'Office et se réserve le droit, à tout moment, de rejeter ladite déclaration écrite si la personne ayant déposé la déclaration dépose un avis de retrait ou que l'Office juge la déclaration frivole, vexatoire ou présentée de mauvaise foi.

Si l'Office estime qu'il convient de tenir une audience publique, il fixera une date et un lieu convenables pour l'audience et publiera par la suite un avis d'audience dans au moins un numéro d'une publication à grand tirage dans la région où se trouvent les terrains acquis ou que l'on se propose d'acquérir. L'Office fera également parvenir un avis d'audience publique à chacune des personnes qui aura déposé une déclaration d'opposition écrite auprès de l'Office.

L'Office, ou une personne autorisée par l'Office, se réserve le droit d'effectuer une inspection, comme l'Office le juge nécessaire, des terrains acquis ou que l'on se propose d'acquérir ou encore touchés par la construction du Projet d'expansion de Trans Mountain.

À l'audience publique, l'Office permettra à chacune des personnes qui auront déposé une déclaration d'opposition écrite qui satisfait aux exigences de la Loi sur l'ONE de présenter des observations; l'Office se réserve par ailleurs le droit de permettre à toute autre personne intéressée de présenter des observations devant lui, comme l'Office le juge indiqué. L'Office tiendra compte de l'ensemble des déclarations d'opposition écrites qui satisfont aux exigences de la Loi sur l'ONE et des observations présentées au cours de l'audience publique afin de déterminer le meilleur tracé détaillé possible pour l'oléoduc et les méthodes et le calendrier les plus propices à la construction du Projet d'expansion de Trans Mountain. L'Office peut assortir toute approbation des conditions qu'il juge indiquées. L'Office transmettra, motifs à l'appui, une copie de toute décision d'approbation ou de refus d'approbation des plan, profil et livre de renvoi relatifs à une section ou partie du Projet d'expansion de Trans Mountain rendue après l'audience publique, au ministre et à chacune des personnes qui lui y aura présenté des observations.

L'Office peut fixer à la somme qu'il juge raisonnable les frais entraînés par la présentation d'observations au cours d'une pareille audience publique; ce montant sera versé sans délai à la personne par Trans Mountain. Vous pouvez vous prévaloir du mécanisme approprié de règlement des différends (MRD) proposé par l'Office. Le MRD peut prendre la forme d'une réunion entre vous et Trans Mountain, qui pourrait être animée par les membres du personnel de l'Office formés en la matière ou encore par une tierce partie impartiale. L'animateur vous aiderait, vous et Trans Mountain, à élaborer un processus qui pourrait permettre de régler les différends en suspens.

Pour obtenir plus de renseignements sur le mécanisme approprié de règlement des différends (MRD) mis en place par l'Office ou pour toutes autres questions, vous pouvez communiquer avec l'un des conseillers chargés du MRD de l'Office national de l'énergie par téléphone au 1-800-899-1265 ou par courriel à l'adresse [TMX.ProcessHelp@neb-one.gc.ca](mailto:TMX.ProcessHelp@neb-one.gc.ca). Vous pouvez aussi obtenir des renseignements et des formulaires, y compris un formulaire de déclaration d'opposition, en vous rendant sur le site [www.neb-one.gc.ca/TransMountainExpansion](http://www.neb-one.gc.ca/TransMountainExpansion).

Il vous est possible de consulter des copies des plan, profil et livre de renvoi relatifs au tracé détaillé du Projet d'expansion de Trans Mountain en ligne à l'adresse [www.transmountain.com](http://www.transmountain.com), et auprès de la Bibliothèque de l'Office national de l'énergie, 2e étage, suite 210, 517 Tenth Avenue SW, Calgary (Alberta) T2R 0A8. Numéro sans frais : 1-800-899-1265. Vous pouvez aussi composer le 1-866-454-4717 ou envoyer un courriel à [tmap@progressland.com](mailto:tmap@progressland.com) afin de demander une copie des plan, profil et livre de renvoi.



## AVIS PUBLIC

Figure 1 – Carte du tracé

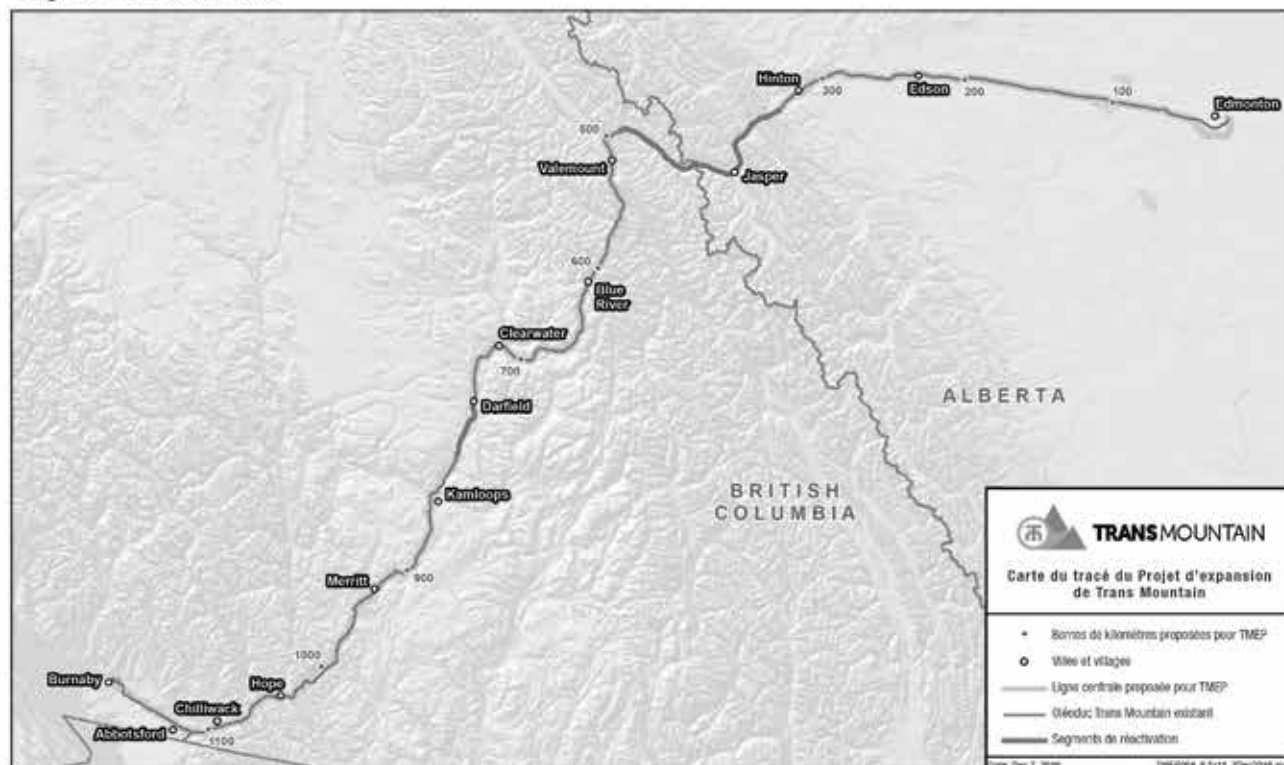
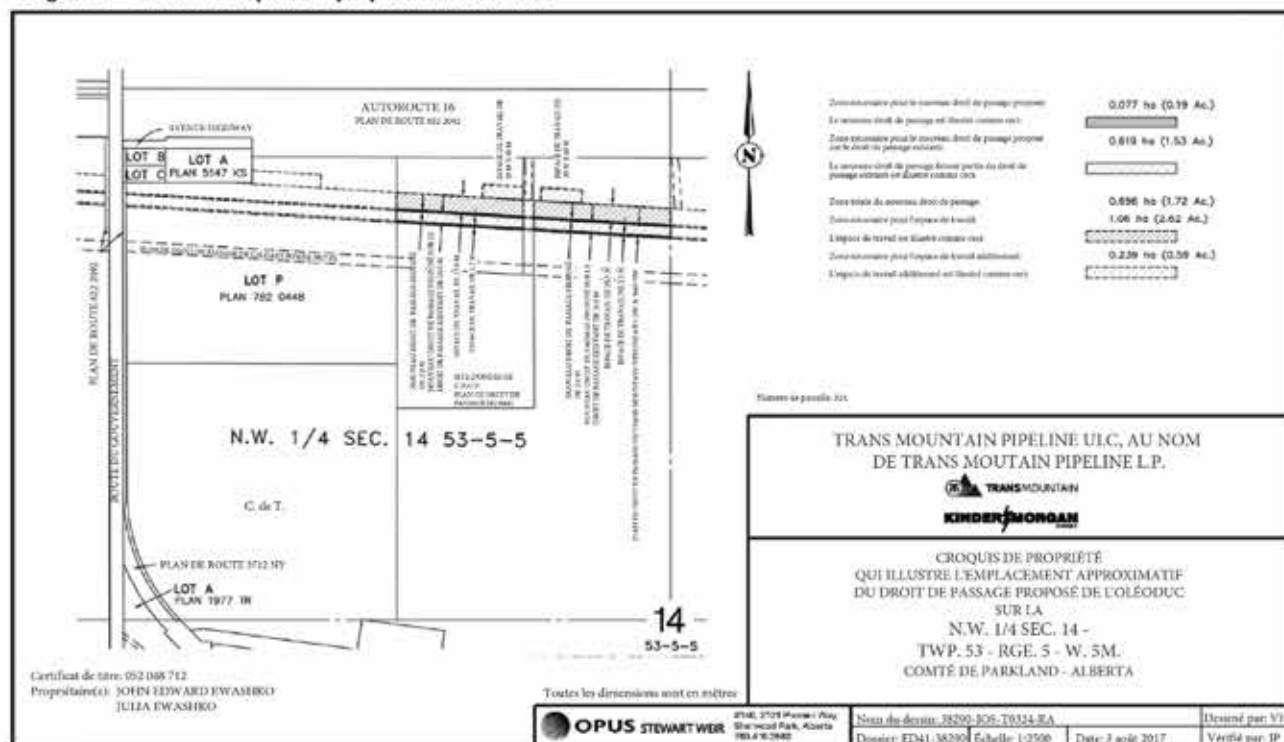


Figure 2 – Ébauche du plan de propriété individuelle



## PUBLIC NOTICE

Office national  
de l'énergieNational Energy  
Board

**Trans Mountain Pipeline ULC, as General Partner of Trans Mountain Pipeline L.P.  
Trans Mountain Expansion Project  
Notice of Proposed Detailed Route  
Pursuant to Paragraph 34(1)(b) of the National Energy Board Act**

**IN THE MATTER OF** the *National Energy Board Act* and the Regulations made thereunder.

**AND IN THE MATTER OF** the Certificate of Public Convenience and Necessity [OC-064] approving the general route of the Trans Mountain Expansion Project.

**AND IN THE MATTER OF** an application by Trans Mountain Pipeline ULC, on behalf of Trans Mountain Pipeline L.P., ("Trans Mountain"), respecting the determination and approval of the detailed route for the construction of the Trans Mountain Expansion Project, approximately 1179.9 kilometres in length, commencing at Trans Mountain's Terminal located in Sherwood Park, Alberta to Westridge Marine Terminal located in Burnaby, British Columbia as shown on the adjacent Route Map (Figure 1).

**TO:** JOYCE ELEANOR VAN VEELAN ("Landowner")

Being the registered owner(s), in so far as they can be ascertained, of the lands required for the detailed route of the Trans Mountain Expansion Project, located at

**MERIDIAN 5 RANGE 3 TOWNSHIP 53  
SECTION 9**

**ALL THAT PORTION OF THE NORTH EAST QUARTER  
LYING SOUTH OF THE NORTH LIMIT OF RIGHT OF  
WAY PLAN 3626HW. CONTAINING 32.9 HECTARES  
(81.22 ACRES) MORE OR LESS.**

**EXCEPTING THEREOUT ALL MINES AND MINERALS  
Title Number: 802 059 547 (the "Lands")**

Trans Mountain is seeking to locate the Landowner, or heirs of the Landowner, described above in order to provide them with information and this notice concerning the detailed route of the Trans Mountain Expansion Project.

The Individual Ownership Sketch details the route of the Trans Mountain Expansion Project, specific to the portion of the above Lands included within the permanent easement agreement with Trans Mountain (Figure 2).

If you have a legal right to the Lands described above and wish to oppose the proposed detailed route of the Trans Mountain Expansion Project, including the method and timing of construction of the pipeline, you may file a written statement of opposition with the National Energy Board ("Board") within thirty (30) days of the publication of this notice. The written statement of opposition must set out the nature of your interest in the proposed detailed route and the grounds for your opposition to that route.

A copy of any written statement of opposition to this detailed route must be sent to the following addresses:

**National Energy Board  
Suite 210, 517 Tenth Avenue SW  
Calgary, Alberta T2R 0A8  
Attention: Sheri Young,  
Secretary of the Board  
Phone: 403-292-4800  
Toll Free Fax: 1-877-288-8803  
Email: [TMX.ProcessHelp@neb-one.gc.ca](mailto:TMX.ProcessHelp@neb-one.gc.ca)  
Website: [neb-one.gc.ca](http://neb-one.gc.ca)**

**And to: Trans Mountain  
12831 - 163 Street NW,  
Edmonton, Alberta T5V 1M5  
Attention: Elliott Friedrich,  
Project Land Manager  
Phone: 1-866-454-4717  
Fax: 780-454-6172  
Email: [tmep@progressland.com](mailto:tmep@progressland.com)**

Where a written statement that meets the requirements of the National Energy Board Act (NEB Act) is filed with the Board within thirty (30) days of being served this notice, the Board shall forthwith order, subject to certain exceptions as noted below, that a public hearing be conducted with respect to any grounds of opposition set out in the statement. The public hearing will be held near to where the lands to which the statement relates are situated.

The Board is not required to give any notice, hold any hearing or take any other action with respect to any written statement of opposition filed with the Board and may at any time disregard any such written statement if the person who filed the statement files a notice of withdrawal, or it appears to the Board that the statement is frivolous, vexatious or is not made in good faith.

If the Board determines it appropriate to hold a public hearing, the Board will fix a suitable time and place for the hearing and will publish a notice of the hearing in at least one issue of a publication in general circulation within the area in which the lands acquired or proposed to be acquired are situated. The Board will also send a notice of the public hearing to each person who has filed a written statement of opposition with the Board.

The Board, or a person authorized by the Board, may make such inspection of the lands acquired or proposed to be acquired for, or affected by, construction of the Trans Mountain Expansion Project, as the deemed necessary by the Board.

At the public hearing, the Board will permit each person who filed a written statement of opposition that met the requirements of the NEB Act, to make representations and may allow any other interested person to make representations before it as the Board deems proper.

The Board will take into account all written statements of opposition that have met the requirements of the NEB Act and all representations made at the public hearing in determining the best possible detailed route of the pipeline, and the most appropriate methods and timing of construction for the Trans Mountain Expansion Project. The Board may impose in any approval such terms and conditions as it considers proper. Where the Board has held a hearing in respect of any section or part of the Trans Mountain Expansion Project and has approved or refused to approve the plan, profile and book of reference respecting that section or part, it will forward a copy of its decision and reasons to the Minister and to each person who made representation to the Board at the public hearing.

The Board may fix such amount as it deems reasonable in respect of the actual costs reasonably incurred by any person who makes representations to the Board at such a hearing, and the amount so fixed will be paid forthwith to the person by Trans Mountain. The Board's Appropriate Dispute Resolution ("ADR") process is also available to you. An ADR process could take the form of a meeting between you and Trans Mountain, which may be facilitated by trained Board staff or by another neutral third party. The facilitator would assist you and Trans Mountain to develop a process that may help to resolve outstanding issues.

For more information on the Board's ADR process or for any other questions, you can contact a National Energy Board Process Advisor at 1-800-899-1265 or TMX. [ProcessHelp@neb-one.gc.ca](mailto:ProcessHelp@neb-one.gc.ca). Information and templates, including a Statement of Opposition form, are also available at [www.neb-one.gc.ca/TransMountainExpansion](http://www.neb-one.gc.ca/TransMountainExpansion).

Copies of the plan, profile and book of reference for the detailed route of the Trans Mountain Expansion Project is available for inspection by you online at [www.transmountain.com](http://www.transmountain.com), and at the National Energy Board Library, 2nd Floor, 517 Tenth Avenue SW, Calgary, Alberta T2R 0A8, Toll Free Telephone: 1-800-899-1265. You may also call 1-866-454-4717 or email [tmep@progressland.com](mailto:tmep@progressland.com) to request a copy of the PPBoR.



## PUBLIC NOTICE

Figure 1 – Route Map

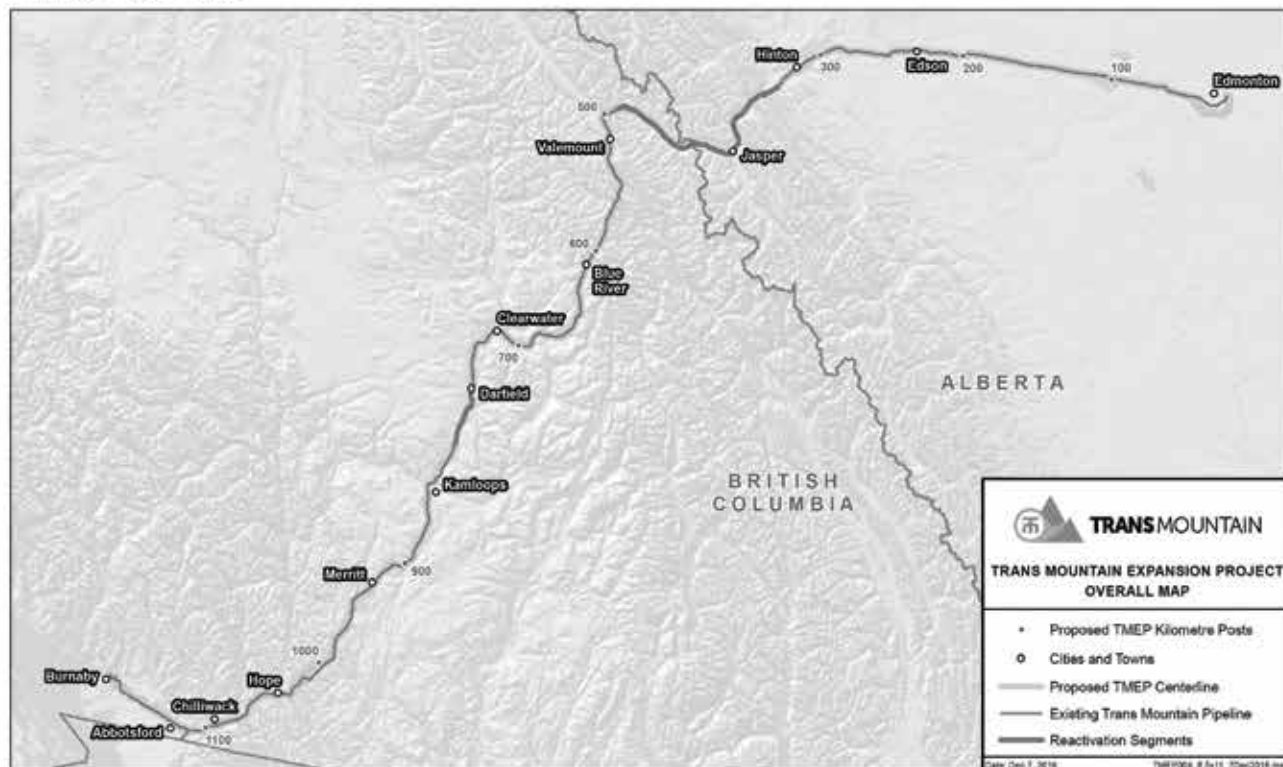
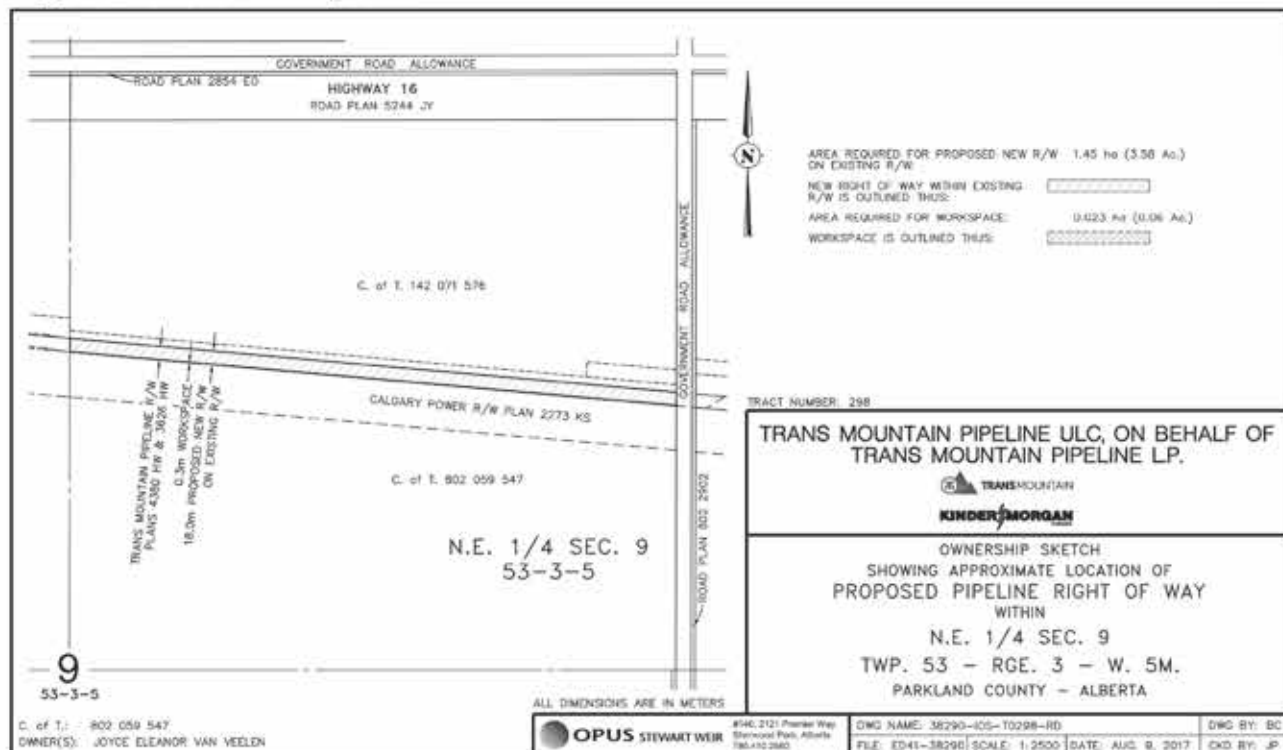


Figure 2 – Individual Ownership Sketch



## AVIS PUBLIC

Office national  
de l'énergieNational Energy  
Board

**Trans Mountain Pipeline ULC, à titre de partenaire général de Trans Mountain Pipeline L.P.  
Projet d'expansion de Trans Mountain  
Avis relatif au tracé détaillé proposé en vertu  
de l'alinéa 34(1)(b) de la Loi sur l'Office national de l'énergie**

**EN CE QUI CONCERNE** la Loi sur l'Office national de l'énergie et les règlements afférents.

**ET EN CE QUI CONCERNE** le Certificat de commodité et de nécessité publiques OC-064 autorisant le tracé général du Projet d'expansion de Trans Mountain.

**ET EN CE QUI CONCERNE** une demande faite par Trans Mountain Pipeline ULC, au nom de Trans Mountain Pipeline L.P., (« Trans Mountain »), à l'égard de la détermination et de l'approbation du tracé détaillé prévu pour la construction du Projet d'expansion de Trans Mountain, dont la longueur est d'environ 1 179,9 km, et ce à partir du terminal de Trans Mountain situé à Sherwood Park, en Alberta, jusqu'au terminal maritime Westbridge situé à Burnaby, en Colombie-Britannique, comme le montre la Carte du tracé (Figure 1).

À : **JOYCE ELEANOR VAN VEELAN** (« Propriétaire »)

Étant le(s) propriétaire(s) inscrit(s), dans la mesure où ils peuvent être déterminés, des terrains requis pour l'itinéraire détaillé du projet d'expansion de Trans Mountain, situés à

**MÉRIDIEN 5 RANG 3 CANTON 53**

**SECTION 9**

**TOUTE LA PARTIE DU QUARTIER NORD-EST  
SITUÉE AU SUD DE LA LIMITE NORD DU DROIT DE  
PASSAGE PLAN 3626HW. CONTENANT ENVIRON  
32,9 HECTARES (81,22 ACRES). À L'EXCEPTION  
DE TOUTES LES MINES ET MINÉRAUX  
Numéro de titre: 802 059 547 (les « Terrains »)**

Trans Mountain recherche le Propriétaire foncier, ou encore les héritiers du Propriétaire foncier, décrit ci-dessus afin de leur faire part de renseignements et du présent avis concernant le tracé détaillé du Projet d'expansion de Trans Mountain.

L'ébauche de propriété individuelle présente en détail le tracé du Projet d'expansion de Trans Mountain, propre à la partie des Terrains référés ci-dessus et inclus dans l'entente de servitude permanente conclue avec Trans Mountain (Figure 2).

Si vous avez des droits légaux envers les Terrains décrits ci-haut et désirez vous opposer au tracé détaillé prévu pour le Projet d'expansion de Trans Mountain, notamment la méthode et le calendrier relatifs à la construction de l'oléoduc, vous pouvez déposer une déclaration d'opposition écrite auprès de l'Office national de l'énergie (« Office ») dans les trente (30) jours suivant la publication du présent avis. Dans la déclaration d'opposition écrite, vous devez préciser la nature de votre intérêt dans le tracé détaillé proposé et les motifs de votre opposition au tracé en question.

Une copie de toute déclaration écrite s'opposant à ce tracé détaillé doit être envoyée aux adresses suivantes :

**Office national de l'énergie  
517, Dixième Avenue S.-O.,  
bureau 210  
Calgary (Alberta) T2R 0A8  
À l'attention de : Sheri Young,  
secrétaire de l'Office  
Téléphone : 403-292-4800  
Télécopieur sans frais : 1-877-288-8803  
Courriel : [TMX.ProcessHelp@neb-one.gc.ca](mailto:TMX.ProcessHelp@neb-one.gc.ca)  
Site Web : [www.neb-one.gc.ca](http://www.neb-one.gc.ca)**

**et : Trans Mountain  
12831, rue 163 N.-O.  
Edmonton (Alberta) T5V 1M5  
À l'attention de : Elliott Friedrich  
Gestionnaire des projets fonciers  
Téléphone : 1-866-454-4717  
Télécopieur : 780-454-6172  
Courriel : [TMEP@progressland.com](mailto:TMEP@progressland.com)**

En cas de dépôt d'une déclaration d'opposition écrite qui satisfait aux exigences de la Loi sur l'Office national de l'énergie (Loi sur l'ONE) auprès de l'Office dans les trente (30) jours suivant la réception du présent avis, l'Office ordonnera sans délai, sous réserve de certaines exceptions indiquées ci-dessous, la tenue d'une audience publique concernant les motifs d'opposition énoncés dans la déclaration. L'audience publique se tiendra dans un lieu situé près des terrains auxquels se rapporte la déclaration.

L'Office n'est pas tenu de donner d'avis, ni de tenir d'audience, ni d'entreprendre de démarches à l'égard de toute déclaration d'opposition écrite déposée auprès de l'Office et se réserve le droit, à tout moment, de rejeter ladite déclaration écrite si la personne ayant déposé la déclaration dépose un avis de retrait ou que l'Office juge la déclaration frivole, vexatoire ou présentée de mauvaise foi.

Si l'Office estime qu'il convient de tenir une audience publique, il fixera une date et un lieu convenables pour l'audience et publiera par la suite un avis d'audience dans au moins un numéro d'une publication à grand tirage dans la région où se trouvent les terrains acquis ou que l'on se propose d'acquérir. L'Office fera également parvenir un avis d'audience publique à chacune des personnes qui aura déposé une déclaration d'opposition écrite auprès de l'Office.

L'Office, ou une personne autorisée par l'Office, se réserve le droit d'effectuer une inspection, comme l'Office le juge nécessaire, des terrains acquis ou que l'on se propose d'acquérir ou encore touchés par la construction du Projet d'expansion de Trans Mountain.

À l'audience publique, l'Office permettra à chacune des personnes qui auront déposé une déclaration d'opposition écrite qui satisfait aux exigences de la Loi sur l'ONE de présenter des observations; l'Office se réserve par ailleurs le droit de permettre à toute autre personne intéressée de présenter des observations devant lui, comme l'Office le juge indiqué. L'Office tiendra compte de l'ensemble des déclarations d'opposition écrites qui satisfont aux exigences de la Loi sur l'ONE et des observations présentées au cours de l'audience publique afin de déterminer le meilleur tracé détaillé possible pour l'oléoduc et les méthodes et le calendrier les plus propices à la construction du Projet d'expansion de Trans Mountain. L'Office peut assortir toute approbation des conditions qu'il juge indiquées. L'Office transmettra, motifs à l'appui, une copie de toute décision d'approbation ou de refus d'approbation des plan, profil et livre de renvoi relatifs à une section ou partie du Projet d'expansion de Trans Mountain rendue après l'audience publique, au ministre et à chacune des personnes qui lui y aura présenté des observations.

L'Office peut fixer à la somme qu'il juge raisonnable les frais entraînés par la présentation d'observations au cours d'une pareille audience publique; ce montant sera versé sans délai à la personne par Trans Mountain. Vous pouvez vous prévaloir du mécanisme approprié de règlement des différends (MRD) proposé par l'Office. Le MRD peut prendre la forme d'une réunion entre vous et Trans Mountain, qui pourrait être animée par les membres du personnel de l'Office formés en la matière ou encore par une tierce partie impartiale. L'animateur vous aiderait, vous et Trans Mountain, à élaborer un processus qui pourrait permettre de régler les différends en suspens.

Pour obtenir plus de renseignements sur le mécanisme approprié de règlement des différends (MRD) mis en place par l'Office ou pour toutes autres questions, vous pouvez communiquer avec l'un des conseillers chargés du MRD de l'Office national de l'énergie par téléphone au 1-800-899-1265 ou par courriel à l'adresse [ProcessHelp@neb-one.gc.ca](mailto:ProcessHelp@neb-one.gc.ca). Vous pouvez aussi obtenir des renseignements et des formulaires, y compris un formulaire de déclaration d'opposition, en vous rendant sur le site [www.neb-one.gc.ca/TransMountainExpansion](http://www.neb-one.gc.ca/TransMountainExpansion).

Il vous est possible de consulter des copies des plan, profil et livre de renvoi relatifs au tracé détaillé du Projet d'expansion de Trans Mountain en ligne à l'adresse [www.transmountain.com](http://www.transmountain.com), et auprès de la Bibliothèque de l'Office national de l'énergie, 2e étage, suite 210, 517 Tenth Avenue SW, Calgary (Alberta) T2R 0A8. Numéro sans frais : 1-800-899-1265. Vous pouvez aussi composer le 1-866-454-4717 ou envoyer un courriel à [tmepp@progressland.com](mailto:tmepp@progressland.com) afin de demander une copie des plan, profil et livre de renvoi.



## AVIS PUBLIC

Figure 1 – Carte du tracé

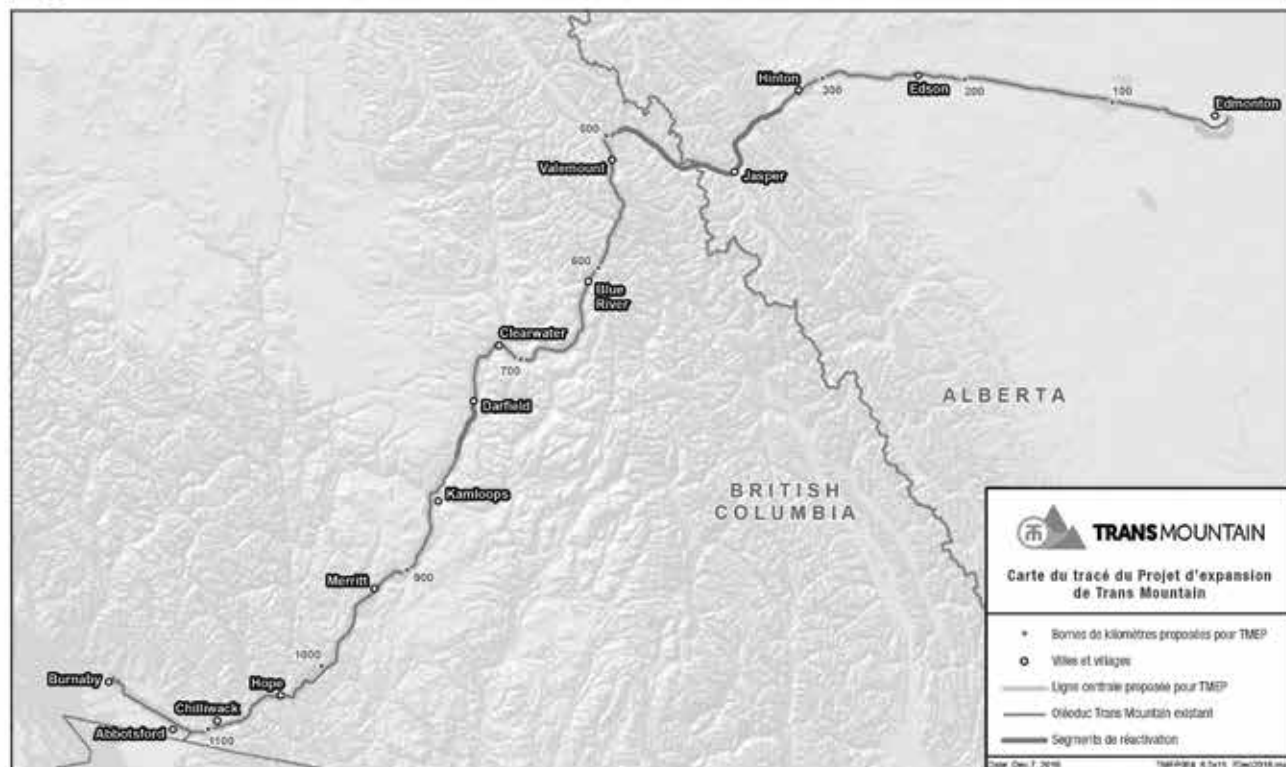
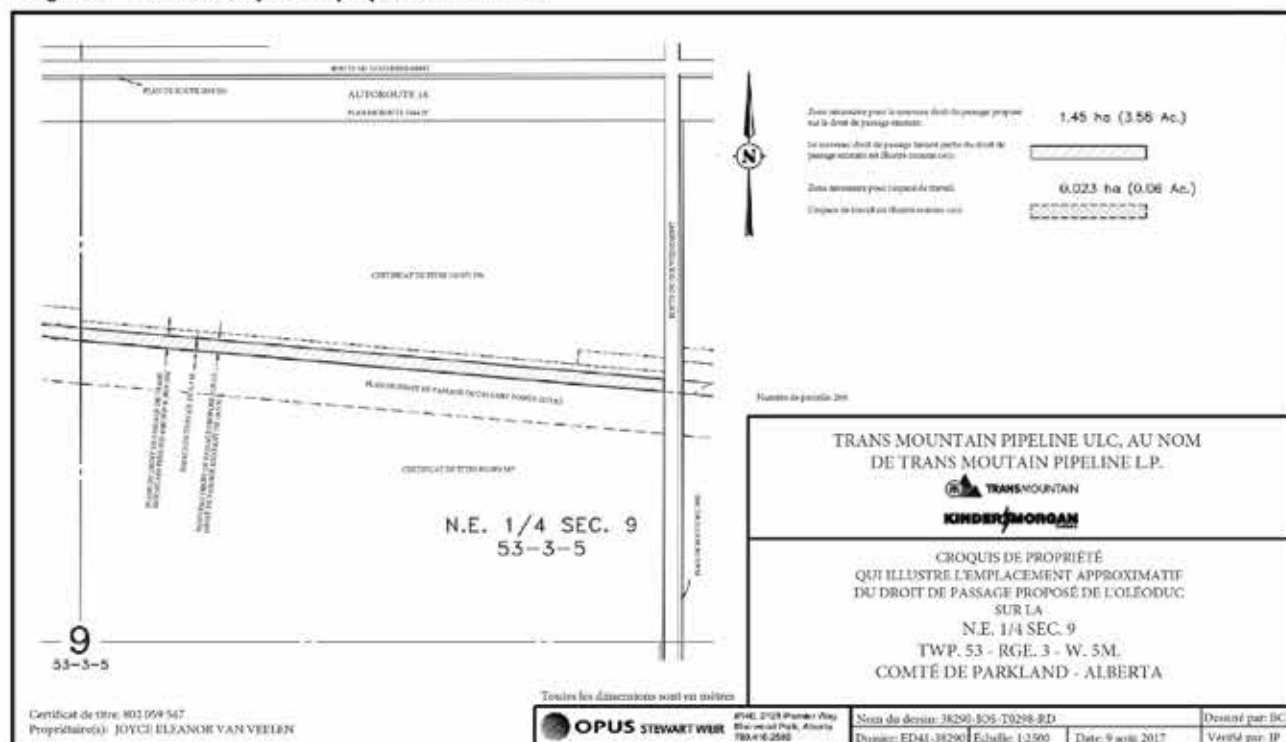


Figure 2 – Ébauche du plan de propriété individuelle





We're on the hunt for EGG  CELLENT artists

**AGE GROUPS: 3-4 YRS | 5-6 YRS | 7-9 YRS | 10+ YRS**

**NAME:** \_\_\_\_\_ **AGE:** \_\_\_\_\_

**PHONE:** \_\_\_\_\_ **TOWN:** \_\_\_\_\_

*Entries must be recieved by March 25, 2018.*

**Mail to: Easter Bunny c/o Community Voice  
Box 3595 Spruce Grove, AB T7X 3A8**



*You Could Win*

*a Gift Bag*



# FUNDING OPPORTUNITY FOR FARMS HIRING YOUTH

**Submitted by Jim Eglinski, MP – Yellowhead**

OTTAWA: Jim Eglinski, Member of Parliament for Yellowhead, is pleased to inform local farm operators and employers in the agricultural sector that the Agricultural Youth Green Jobs Initiative application period is now open.

Projects can start on April 1, 2018 with the possibility of starting earlier based on available funding. Projects must also be completed by March 31, 2019.

The Agricultural Youth Green Jobs Initiative helps fund internships for post-secondary graduates and high school students working in the agriculture industry. These internships include activities or projects that benefit the environment.

Funding is available through the following two streams:

1. Green Farms Stream: Farm operators could receive up to a maximum of \$10,000 per youth intern, 30 years old or younger, including high school students to implement projects that are environmentally benefi-

cial.

2. Green Internships Stream: Employers in the agricultural sector but not directly on a farm could receive up to a maximum of \$16,000 per post-secondary graduate intern to undertake environmental activities, services or research that will benefit the agriculture sector.

Interested applicants can apply by email to: AAFC.Green.jobsStage.en.agroenvironnement.AAC@agr.gc.ca, mail or fax by submitting the completed Project Application Form

and required attachments to the Alberta regional office. These forms, and more information, can be found on the Agriculture and Agri-Food Canada website at: [www.agr.gc.ca/eng/programs-and-services/list-of-programs-and-services/agricultural-youth-green-jobs-initiative/?id=1459879253586](http://www.agr.gc.ca/eng/programs-and-services/list-of-programs-and-services/agricultural-youth-green-jobs-initiative/?id=1459879253586)

"I encourage any local farms operators or employers in the agricultural sector to consider applying for this opportunity to invest into our youth and familiarize them with local agriculture," concluded MP Eglinski.

## KEY MESSAGES FROM GYPSD'S PUBLIC BOARD MEETING

**Submitted by Nikki Gilks, Manager, Communications Services | Grande Yellowhead Public School Division**

March 7, 2018

2018-2019 Pilot Calendar  
#TrySomethingNew

GYPSD's board is always looking for innovative and reflective strategies that assist our students' in meeting their academic goals, pursue opportunities that support our students', our staff's, and our families' health and well-being, and ultimately align with our core value of 'one vision, one team'. At today's meeting, trustees voted to move forward with a pilot calendar for the 2018-2019 school year that is the same schedule for all schools, and includes both a one-week spring break and a one week fall break. Board Chair Brenda Rosadiuk shared her appreciation with both the board and ad-

ministration for their work and support to #TrySomethingNew. The intent of the pilot is to assist the division with improving student results and supporting our staff's, students' and families' health and wellness. She also emphasized the purpose of a pilot is to #TrySomethingNew. The board will be seeking stakeholder voice throughout the year on what are the pilot's successes and challenges which will greatly assist the board in developing the next calendars, moving forward. Please see the accompanying press release to learn more, and go to <http://bit.ly/2Hhzo7H> to view the pilot calendar on our website.

Other News in Brief

- March 12th to 16th is Substitute Teacher Appreciation Week and the board wishes to extend their sincere appreciation to these hard working and dedicated staff members who are such

an important part of our GYPSD team.

- Trustees approved an amendment to Policy 19 – Recognition of Staff, to change the number of annual welcome back celebrations to one event held prior to the first instructional day of a school year. A new committee with representatives from various employee groups in the division will be established to design an agenda for the day.

- The board reviewed their monthly schedule that serves as a guide for activities for trustees to attend as representatives of GYPSD. They also each shared their individual highlights from these events including their recent attendance at the Rural Education Symposium in Edmonton.

- The monthly financial update ending January 31, 2018, noted that revenues and expenditures for the division are currently

within expected projections.

- The division's annual Class Size Initiative Report was also presented by Financial Services as GYPSD receives specific funding to reduce the average class size across the division in kindergarten to Grade Three, as well as to enhance funding to address safety and teacher/student ratios for specific Career and Technology Studies (CTS) courses.

- Karen Shipka, Assistant Superintendent of Learning Services, updated trustees on the inclusive learning supports and services implemented over the current year-to-date. She also included information on mental health programs, the development of specific school action plans around quality inclusive learning environments, and the resources provided from this year's Classroom Improvement Fund grant.



# Classified Ads - Call 962-9228

## Classified Policy

CLASSIFIED RATES INCLUDE GST. 1st 20 Words: First Insertion = \$6.00; Subsequent insertion = \$3.00 each. Each additional word is 20 cents per word, per insertion. BOLD/CAPITAL text available for an additional \$1/line. Lost & Found and To Give Away (up to a max. of 25 words) are free of charge. Ads must be paid in advance either by cheque, cash, Visa or Mastercard. No Refunds Allowed on Classified Ads. DEADLINE: is Thurs. 4:00 pm (Wed. 4:00 pm on long weekends). Classified ads may be called in to the COMMUNITY VOICE office at (780) 962-9228, emailed to: [classifieds@com-voice.com](mailto:classifieds@com-voice.com), dropped off at Onoway Registries, or mailed with your ad and payment to: COMMUNITY VOICE, BAG 3595, SPRUCE GROVE, AB T7X 3A8. Ads may also be placed on the web at [www.com-voice.com/classified.htm](http://www.com-voice.com/classified.htm)

## Hall Rentals

Bright Bank Hall, 780-968-6813

Camp Encounter, Vincent Mireau - Camp Director. [director@campencounter.com](mailto:director@campencounter.com). C: 780-504-2012 W: 780-967-2548

Cherhill Community Assoc. Hall, Debra 780-785-2907

Darwell Hall, 780-721-2690

Darwell Seniors, Phone Debra 780-785-2907

Duffield Hall, 892-2425 or 963-6887

Entwistle Hall, Contact Tracey at 780-898-2317 or Cheryl at 780-515-1755

Entwistle Senior's Drop In Centre, Barb 727-2108 or Glennis 727-4367 Mon-Fri

Evansburg Senior's Heritage House, Dennis 727-4186

Evansburg Legion, upper hall 250 people, lower hall 80-100 people, 727-3879

Fallis Community Hall, 892-3150

Gunn Hall (G.A.R.S.) 780-967-2215

Keephills Hall, 731-3761

Lake Isle Community Hall, PH: 780-892-3121 or Email: [lakeislehall@mail.com](mailto:lakeislehall@mail.com)

Lake Romeo PeaVine Hall, 785-2700

Magnolia Hall, 727-2015

Manley Goodwill Community Hall, 963-9165 or 916-0146

Mayerthorpe Diamond Centre, 786-4044

Moon Lake Community Hall, Nikki Berg 780-898-1390

Park Court Hall, call or text Karyn 780-712-3918

Parkland Village Community Centre, 780-298-9155 @PVCCentre

Ravine Community Hall, 325-2391

Rich Valley Community Hall, 967-3696 or 967-5710

Rosenthal Community Hall, 963-7984

Seba Beach Heritage Pavilion, 797-3863

Smithfield Community Hall, 892-2390

Tomahawk & Dist Agra Center, 898-3443

Wabamun Jubilee Hall, 892-2699.

Wildwood Community Hall, 325-2180 or 780-514-6105

Wildwood Rec Complex 325-2077 or 514-8944

Wildwood Senior's Hall, 325-3787 or 325-2391

## Computers

Computer Repairs NOT over \$50. Welcome: Seniors, low income, single parents. Available: Good Laptop or Desktop. Refurbished, Clean, good, Upgraded 7, Net, Games, Music, Pictures, Videos. ONLY \$100. Call or leave message 10am - 4pm, 780-892-4993 (10) 13-03

## Services

WANTED: Standing Timber. Are you looking to cut your woodlot before pine beetles or forest fires destroy it? Top dollar paid. Call now. Paul 780-706-1470 (12) 03-01

Best-Cistern-Septic-Solutions. Cistern and Septic Inspection, Cleaning and Repair! New Installs Available. Plastic, metal, fiberglass or concrete. We clean them all! Your cistern will be vacuumed, cleaned and sanitized with our high pressure, hot wash, sanitizing system. Reasonable Rates, Call 780-668-4306 (4) 13-03 OG

## Feed & Seed

Horse Quality Small Square Bales, 2nd cut, good for calving, located at Warburg, Delivery Available. Call for price 780-904-2414 (10) 06-02

Excellent Quality Square Bales - good for horses or cows, Round Bales also available. Call Bud 780-991-4073 (2) 13-03

## Livestock

RED POLL BULLS - Thank you to all our buyers - recent and former. Due to health issues, 2018 will be our last year offering bulls. A limited number of yearling and 2 yr olds are available. Larry and Linda Fleming 780 892 3447 (4) 06-03

## Firewood

SEASONED FIREWOOD - Birch, Spruce/Pine, Tamarack and Poplar. 4x4x8 cord. Delivery or Pickup at wood yard, Call 780-967-5835 (23) 03-10-17

Firewood for Sale - Birch, Tamarack, & Spruce Pine mix. 4X4X8 cords and 1/2 cords. Quality seasoned wood, Delivery or Pick up. Woodchuck Firewood 780-288-7247 (1) 13-03

## Miscellaneous

2011 - 2014 Chev LTZ \$250 OBO Chrome Grill, as new. 2016 - 2017 Chev Black Grill, brand new asking \$350 OBO. 2011 - 2014 Chev Suburban 3rd Row Seats - removable, charcoal leather, \$350 OBO. Call 780-691-1909 (7) 06-02

## Wanted

I Buy Gun Collections. If you would like to sell your gun collection, Call Jay at 780-686-1350 (24) 12-12-17

## For Sale

Storage Containers - 20ft, 40ft & 53ft, new & used, Premium Container Sales -

Jason Robinson 780-604-2276 Entwistle (1) 13-03 OG

## For Rent

**BACK END OF BAY FOR RENT.** Front end is occupied. Has a large overhead door plus side door. Solid wall separates the two. Located in Spruce Grove. Call 780-907-8642 (S) OG

1 Bedroom Apartment, Fully Furnished, Full Kitchen, WIFI, Cable, Phone, 2 TV's, Power/Gas Included. New Motel looking over the lake, Downtown Alberta Beach. \$950/month. Cheryl 780-906-1675 (23) 16-01

Evansburg Seniors Lodge, has an apartment for rent - reasonable. Must be self sufficient. For more information and to apply for personal interview call Lois, 780-727-3839. (3) 27-02

**Great for a Small Family or Seniors.** Newly renovated townhome, 2 bedrooms, den & 1.5 bathrooms in Winfield, AB. Washer & Dryer in-suite. \$850/month. Call 403-606-6977 (4) 06-03 OG

House For Rent in Ross Haven, 2 bedroom, hardwood floors, Available Immediately, \$1000 + Utilities, 6 appliances, detached garage, jacuzzi tub, 780-237-2969 (4) 13-03 OG

## For Lease

Retail Space For Lease, upper floor 460sqft, lots of windows, new floors & paint. \$300/month, utilities included. Located in Evansburg Mall. Also, Restaurant Space Available, main floor, 4000sqft, equipment available, reasonable rates, plus common area cost & utilities. Evansburg, Call 780-691-1909 (8) 23-01



# SUDOKU OF THE WEEK

## Fun By The Numbers

**Here's How It Works:** Sudoku puzzles are formatted as a 9x9 grid, broken down into nine 3x3 boxes. To solve a sudoku, the numbers 1 through 9 must fill each row, column and box. Each number can appear only once in each row, column and box. You can figure out the order in which the numbers will appear by using the numeric clues already provided in the boxes. The more numbers you name, the easier it gets to solve the puzzle!

### ANSWER:

5	8	4	6	1	2	3	9	7
7	6	2	9	5	3	4	8	1
3	9	1	4	7	8	6	5	2
2	5	8	3	6	7	9	1	4
4	3	7	1	9	5	8	2	6
6	1	9	2	8	4	7	3	5
9	4	5	8	2	6	1	7	3
8	2	6	7	3	1	5	4	9
1	7	3	5	4	9	2	6	8

**Like puzzles?** Then you'll love sudoku. This mind-bending puzzle will have you hooked from the moment you square off, so sharpen your pencil and put your sudoku savvy to the test!

		4			2			7
	6		9					
	9		4		8			2
			3			9		
4					5	8		6
	1	9	2		4		3	
	4	5			6	1		3
	2	6	7		1			
1	7				9			8



# SERVICE DIRECTORY

**2Bros**  
Custom Contracting Ltd.

Custom Framing • Concrete Floors • Shingling  
Siding Soffit Fascia • Styrofoam Block System

Jeff 780-717-0520

**BREWSTER BOBCAT SERVICE LTD.**  
P.O. Box 454, Wildwood, AB T0E 2M0

- \* Site Preparation
- \* Pile Drilling
- \* Concrete Work
- \* Landscaping
- \* Demolition
- \* Sand & Gravel Delivery
- \* General Contracting

brwcat@gmail.com  
Telephone: (780) 325-3743  
Bruce Balascak Cell: (780) 621-6960

**POSTINGFIRST.com**

**FREE LOCAL CLASSIFIED ADS**  
Real Estate, Rentals, Vehicles, Pets, Jobs, Service Directory, Buy/Sell/Trade, Lawn & Garden, Garage Sales, Events, Local Places & Much More... Advertise for **FREE** Today!

Follow Us

Instagram, Google+, Facebook, Pinterest, YouTube, Twitter

**WABAMUN PHARMACY**  
**I.D.A.**

Box 90, 5120 - 51 Avenue  
Wabamun, AB T0E 2K0  
Ph: (780) 892-2278 Fax: (780) 892-2488

Community VOICE  
Helping You and Your Community Thrive

**THIS SPACE IS RESERVED FOR YOU!**

**H & E UPHOLSTERY**  
For all your upholstery needs

Convertible tops for cars and boats, custom car and boat interiors, 5th wheel trailer skirts, boat tarps, ATV seats, furniture, kitchen chairs, heavy equipment seats.

**www.h-and-e.ca**  
For more information contact: info@h-and-e.ca

4-485 South Ave.  
Spruce Grove  
(780) 962-3048



# SERVICE DIRECTORY

**Blakeman Drilling Ltd.**  
Waterwell Drilling & Servicing  
Pumps & Pressure Systems  
SERVING LAC STE. ANNE  
& WEST PARKLAND  
FOR OVER 25 YEARS  
Joe (780) 924-3024

**DONALD N. GREENWAY**  
Chartered Accountant  
Suite 205 Sunrise Professional Building  
215 McLeod Avenue  
Spruce Grove, AB  
(Bus.) 962-6366  
(Fax) 962-3990

**P&E VENTURES INC.**  
SKID STEER SERVICES  
GENERAL LANDSCAPING  
SNOW REMOVAL  
POST & PILING HOLE  
SAND AND GRAVEL  
PAUL VAN HECKE & CURTIS MIKO  
OWNER / OPERATORS  
Bus: (780) 727-2721 Cell: (780) 621-6148  
Box 498, EVANSBURG, AB T0E 0T0

**Ernie's Repair & Service**  
SMALL ENGINES  
4820 - 47 Avenue, EVANSBURG  
727-4433

Community VOICE  
Keeping You and Your Community Informed  
**THIS SPACE IS RESERVED FOR YOU!**

**MARK MARTIN PFEIFFER**  
MASTER BRICKLAYER/MASON  
Cell: 780-242-3308  
Email: pfeiffer.mark@hotmail.com  
• Brickwork • Stonework  
• Rockwork • Parging  
• Concrete Block Work  
• Tile Work (all kinds)

**PURE HEMP HERBAL DROPS**  
The World's Purest CBD Oil  
HEMP OIL BENEFITS:  
• High Absorption Sublingual  
• Improves Overall Health  
• Helps Relieve Pain  
• Delivery System  
• Zero THC  
(780) 907-8642  
www.mydailychoice.com/Elaine1

**ROY SHERWOOD**  
Master Electrician  
Ph: 780-968-1425  
Cell: 780-908-2287  
Fax: 780-968-2211  
Email: suretech@xplornet.ca  
2-53220 Rge Rd 21  
Parkland County, AB  
T7Y 0C5  
**SURETECH ELECTRIC LTD.**  
Control & Automation  
Commissioning  
Solar Sales & Service  
Industrial . Commercial . Residential

**PREVAIL MAX**  
CELLULAR HOMEOSTASIS FORMULA  
A NUTRITIONAL BREAKTHROUGH  
THAT SUPPORTS YOU...  
RIGHT DOWN TO THE LAST CELL!  
LIVIN TRIM WITH  
**VALENTUS (780) 907-8642**  
www.ValentusTour.com/Ladybug

**PEMBINA CONCRETE PRODUCTS LTD.**  
Manufacturers of  
**ONE PIECE SEPTIC & HOLDING TANKS**  
\* Water Cisterns \* Field Systems \*  
Pumps and Accessories \* Sumps  
DELIVERED TO YOUR SITE  
1-800-661-3047  
780-727-2702  
PembinaConcrete.com  
New Line of Concrete  
Statues, Fountains and  
Garden Ornaments.  
BOX 123, Entwistle, T0E 0S0

Community VOICE  
Keeping You and Your Community Informed  
**THIS SPACE IS RESERVED FOR YOU!**

**Complete Drywall Service**  
DRYWALL, TAPING,  
RENOVATIONS,  
DRYWALL ART,  
STEEL STUDS,  
INSULATION, T-BAR,  
TEXTURE  
RAL Drywall and Plastering Ltd.  
Randy: 780-691-5248

**RESIDENTIAL CLEANING SERVICES**  
Call Today for your  
**FREE Quote!**  
**(780) 264-7740**  
SERVING SPRUCE GROVE  
AND STONY PLAIN ONLY



# SERVICE DIRECTORY



**Harvey**  
cell. 780-445-8010  
ph. 780-892-3532

**Box 145,  
Darwell, AB  
T0E 0L0**

*No Job too small... We do them all!*

• Road Building • Black Dirt • Sand • Gravel • Clearing • Dugouts

**JACK'S AUTO BODY & TOWING**

 \*Specializing In Collision Repair  
\*Guaranteed Work  
\*Insurance Claims  
**Onoway 967-5850**



Located between Alberta Beach & Onoway on Hwy 633

**OUR PLEDGE IS QUALITY**



"We are a family orientated company that pride ourselves on SAFETY and EFFICIENCY"

**CHRIS & LISA VANHILL  
OWNER/OPERATOR**

Site Clearing, Grading, Road Building,  
Brushing, Acreage Development, Dugouts, etc.

**780-619-3236**  
vanhillcontracting@gmail.com Onoway, AB

**SERVING ENTWISTLE AND AREA FOR OVER 30 YEARS**

**Entwistle  
CONCRETE**

PRODUCTS LTD.

**SAND & GRAVEL SALES**

**PH: (780) 727-3525**

**Dan McCracken Entwistle, AB**  
www.entwistleconcrete.ca

**Community VOICE**  
Keeping You and Your Community Informed

**THIS SPACE IS  
RESERVED  
FOR YOU!**

**SMOOLE**

- Construction & Septic Installation
- Environmental Wastewater Disposal
- Site Design & Evaluation
- Power, Water & Basement Excavation
- Trackhoe, Backhoe, Bobcat & Dump Truck

**For All Your Excavation Needs**

Call Dan 780-991-4484 Reid 780-909-0173

**Xtreme LEAN NRG**

Advanced Formula helps you:

- Regulates Your Appetite
- Regulates Blood Sugar
- Regulates Fat Absorption
- Improve Energy Levels
- Improve Your Mood
- Increase Mental Focus

"We've unlocked the science of slim!"

**(780) 907-8642**

**SANGUDO  
VETERINARY CLINIC**

Box 581, 4916 - 52 Ave. Sangudo, AB. T0E 2A0

**Dr. Ralf Sanders DVM**

Ph: 780-785-2200  
Fax: 780-785-2228  
sangudovet@gmail.com

**24 HOUR EMERGENCY SERVICE**

GET A **FREE SAMPLE**

**LOSE  
Weight**  
BY DRINKING COFFEE

**(780) 907-8642**

**CCAS**

**Canadian Clean Air Services Ltd.**

**Heating & Air Conditioning**

High efficiency Furnace or  
Air Conditioner from 49.99/month.  
Instant Approval. No Credit Required

**24 Hour  
Emergency  
Service**

Licensed and Insured  
with over 14 years' experience.  
We accept Visa, master card, Amex and interact.

**42 Singing Hill Estates,  
Seba Beach T0E 2B0**  
Office line 780-569-5201

**Community VOICE**  
Keeping You and Your Community Informed

**THIS SPACE IS  
RESERVED  
FOR YOU!**

**Countryside  
REALTY LTD.**

**JOANNE HAY**  
Broker/Owner

Buying, Selling, Just Thinking About It?  
Call me, I'm at Home in your neighbourhood!

(780) 892-4440 joanne.countryside@gmail.com

**SUMMERS  
DRILLING LTD.**

Water well drilling and service  
Family owned Business Serving Alberta since 1917

**Never run out  
of water again!**

**5 year workmanship  
warranty**

**3 Convenient  
ways to pay**

- Visa
- Mastercard
- We now offer full financing

Tired of hauling water?  
We can install  
a water well with  
a permanent water  
supply for as little as  
\$150/month OAC

Stop in at our office 4405 - 50 Street, Stony Plain  
780-963-1282  
admin@summersdrilling.com





www.ceratechlab.com

## CAD/CAM TECHNOLOGY *with the Artist's Touch*

- CERAMIC CROWNS & BRIDGES • DENTURE REPAIRS • CUSTOM SPORTS GUARDS • CUSTOM NIGHT GUARDS
- DIGITAL WORKFLOW & EXPERTISE • CUSTOM IMPLANT PROSTHETIC SPECIALIST • IMPLANT RESTORATIONS
- NOBELPROCERA® • OUTSTANDING METAL-FREE AESTHETIC OPTIONS • CERTIFIED SIRONA CONNECT PARTNER
- FULL CONTOUR ZIRCONIA INCLUDING ALL-ON-4 • TEETH WHITENING • COMMITTED TO EXCELLENCE & SERVICE

YOUR DIGITAL AND ALL-CERAMIC SPECIALISTS

Cera-Tech 3D Dental Lab is the only dental laboratory in the Spruce Grove/Stony Plain Area. We offer services to dentists and denturists right across Alberta. We specialize in the fabrication of crowns, bridges, veneers and implant cases. These services are provided directly to your dentist or denturist by prescription. We also offer denture repairs, custom sport guards, night guards, bleaching trays and teeth whitening. Most of these services will be provided directly to the public by our provincially licensed staff.

Did you know that you are able to request which lab you would like your crowns, bridges and other dental prostheses to be made at? If you know a laboratory that does great quality craftsmanship, uses approved materials and cares about the fine details like Cera-Tech, you are welcome to request us to your dentist.

The advantages to this local lab include custom shade matching to your existing teeth, faster completion times, the latest digital technology and high quality materials ensuring the best results for your oral health and individual smile. We are able to digitally analyze your case on



a specialized computer to make sure you get the best fit and most natural look for your crowns. Your case is completed and customized by hand using specific porcelains and characteristics for your individual mouth.

Our owner has more than 20 years of experience including instructing at Nait as well as serving on the provincial College of Dental Technologists. We have two other team members which gives us over 35 years of combined

experience. Our goal is to provide you with quality prosthetics- using skilled registered technologists, state of the art equipment and the most advanced technologies and materials in order to provide the best quality products and care.

The next time you need a crown or other dental services please recommend us to your dentist or give us a call.

Cera-Tech 3D Dental Lab.



*Call Us Today! 780.948.0771*

#206 - 314 McLeod Ave | Spruce Grove, AB • 780.948.0771 • www.ceratechlab.com