



*Serving: Carvel, Darwell, Duffield, Wabamun, Seba Beach, Gainford, Entwistle, Evansburg, Wildwood, Tomahawk, Spruce Grove, Stony Plain & Drayton Valley*

**May 1, 2018**

## YELLOWHEAD COUNTY COUNCIL HIGHLIGHTS

**Submitted by Stefan Felsing, Communications Coordinator | Yellowhead County**

April 24, 2018

Community Engagement Action Team Presentation – Three student members of the Community Engagement Action Team (CEAT) presented to council on the topic of drug use, including marijuana laced with hard drugs, physical safety on local trails, and self-proclaimed “gangs”

intimidating people. The CEAT representatives also discussed a volunteer event which will see community members helping to clean up needles in local playgrounds and the spray park.

TransCanada Presentation – TransCanada representatives Kristen Monzingo and Cole Thomson gave council an overview of the TransCanada Capital Project. TransCanada Corporation is one of North America’s largest natural gas pipeline net-

works operating 91,900 kilometers of pipelines, transporting more than 25% of continental demand, and maintaining a storage capacity of 650 billion cubic feet of gas. The presenters also discussed planned expansion projects in Yellowhead County, including several additions of compressor stations south of Edson.

**Continued on Page 2**

## DRAYTON VALLEY HOSTS ALBERTA’S FIRST TRIATHLON OF THE YEAR!

**Submitted by Thomas (Tom) Hinderks, Executive Director | DVHTA**

The Drayton Valley Triathlon, scheduled for May 12th, is the first race of the year on the Alberta Triathlon Associations 2018 calendar.

“We are proud to be presenter of Alberta’s first triathlon of the year!” beamed Drayton Valley Hospitality & Tourism Authority (DVHTA) Executive Director, Tom Hinderks.

“Committed to building the tourism industry in Drayton Valley/Brazeau County,” says Hinderks, we take our mission seriously and this great family friendly event offers the best reasons yet to re-discover “The

Valley”.

**SEASON OPENER IN DRAYTON VALLEY**

The Drayton Valley Triathlon is a community-driven “closed course” event, scheduled for May 12th - the season opener for those committed competitors in the Alberta Triathlon Association annual calendar.

**FAMILIES WELCOME**

“The DV Triathlon welcomes the whole family,” says Hinderks, “featuring special triathlon events for children, including Kids of Steel and Kids Tri It.

**DRAYTON VALLEY EXTRAS**

Triathlons are not generally thought of as a spectator event, but this year the DV Triathlon includes Youth/Junior Draft Le-

gal Super Sprint bicycle competition - lapping the Drayton Valley area on a closed course ... a chance to not just watch the intense competition but also to cheer them on!

So much to see and do in the Valley.

Arrive early or stay late and experience ALL the Valley has to offer from the beauty of the Eagle Point Blue Rapids recreation area to the spring wonders of the Brazeau reservoir.

To learn more about the Drayton Valley Triathlon and its exceptional programs please visit: [www.draytonvalley.ca/triathlon/](http://www.draytonvalley.ca/triathlon/) or [www.facebook.com/DraytonValleyTriathlon/](http://www.facebook.com/DraytonValleyTriathlon/)

For more about all that the Valley has to offer: [www.dvhta.ca](http://www.dvhta.ca)

**All Precious JEWELLERS**  
*“Your Spruce Grove Jewellery Store”*  
**Goldsmith on Premises**  
 • Engraving • Clock & Watch Repairs  
 • Jewellery Repairs • Custom Make-ups  
 Jewellery Repairs Done On Site.  
 Laser Welder Services Available.  
 Toll Free: 1-877-962-4367  
 PH: 780-960-4200 Fax: 780-960-4201  
 Suite 102, 215 McLeod Avenue  
 Spruce Grove, AB. T7X 0G2

**L&B Tradition of Quality Service**  
 Water Services Ltd.  
 Well & Pump Repairs  
 Complete Pressure Systems  
 Farm - Residential - Commercial  
 Potable Water Cisterns  
 Financing Available  
 BILL RIEDLINGER ERNIE BLEKER  
 PH. 780-963-8134 OR 780-963-7749  
 LBWATER@XPLORNET.COM

**WEIGHTLOSS NEVER TASTED SO GOOD!**  
  
**NEW! NEW! NEW! NEW!**  
 (780) 907-8642 **VALENTUS**  
[www.ValentusTour.com/Ladybug](http://www.ValentusTour.com/Ladybug)

**MOST POWERFUL CBD OIL ON THE PLANET!**  
 Benefits of CBD Oil  
 • Inhibits Cell Growth in Tumors  
 • Relieves Pain  
 • Promotes Health  
 • Relieves Anxiety  
 • Neuroprotective  
  
**(780) 907-8642**

**Community VOICE**  
  
 Keeping You and Your Community Informed

PUBLISHED WEEKLY (Zone 1 & 2)  
 AND BIWEEKLY (Zone 3)

**E.J. Lewchuck & Associates Ltd.**

45C South Ave. | Box 3595  
 Spruce Grove, AB T7X 3A8


**SALES TEAM**  
 Elaine  
 Ashley  
 Dani

**TELEPHONE:**  
 Classifieds 962-9229  
 Advertising 962-9228  
 Fax 962-1021

**E-MAIL:**  
 comvoice@telusplanet.net  
 sales@com-voice.com  
 news@com-voice.com

**LAWYER**  
**PATRICK DOLPHIN**



**Evansburg**  
 Office open Mondays  
 from 9:30A.M. to 4:00P.M. (except holidays)  
**4910 - 50 Avenue Evansburg**  
**Phone: 780-727-2270**  
*Serving Evansburg, Entwistle and area since 1994*



**CRIME PREVENTION WEEK**  
 LET'S KEEP OUR COMMUNITIES SAFE!

**Oneil Carlier**  
 MLA, Whitecourt-St. Anne

PH: (780) 786-1997  
 whitecourt.steanne@assembly.ab.ca  
 4811 Crockett Street, Mayerthorpe, AB, T0E 1N0

## Yellowhead County Council Highlights


Continued From Page 1

Niton to Seabolt Street Improvement and Other Works Tender – Council moved to award the contract with a tendered price of \$2,831,609.27 to the lowest bidder, E Construction Ltd. The scope of work covers the rehabilitation of roads in multiple County locations (Niton Junction, Carrot Creek Loop, Wolf Lake Old Hwy, Maskuta and Seabolt subdivisions), the paving of surfaces at the Peers Sani-dump and Pinedale Transfer Station, and culvert settlement pavement repairs at various locations in the county.

Tributary to Lobstick River Culvert Replacement Tender – Council awarded the tender to the low bidder, Unsurpassable Construction Ltd., at bid of \$373,950.00. The tendered work includes 2-2700mm culvert replacements, rip rap aprons, and road work.

Continued on Page 4

**CRIME PREVENTION**  
 helps keep our communities a safe and comfortable place to live.



**Jim Eglinski<sup>MP</sup>**  
 Yellowhead

Jim.Eglinski.C1@parl.gc.ca  
 www.jimeglinski.ca • 1-800-268-7117

**Jim & Edith Ferrier**  
**Heaven Sent Birthday Wishes**

Thinking of you, on what would have been your 95<sup>th</sup> Birthday Dad and 90<sup>th</sup> Birthday Mum.


Oh how we miss you and wish we were celebrating these very special dates in person, with the both of you.

There's not a day that goes by, that we don't think about you. We are happy however, you are together. Until we meet again.

**All our love,  
 lots of hugs & kisses.  
 Forever and always,  
 Your Family.**







# PURE POTENT CBD DROPS

## The World's Purest CBD Oil

- 500mg • 750mg

### Organic Non GMO

CBD is in a class of its own - affordable, high quality, and convenient!

## WHAT IS CBD?

**Cannabidiol (CBD)** is just one of over 85 cannabinoids that is identified in the cannabis plant. CBD is becoming increasingly popular amongst the masses for having a wide scope of medicinal benefits - due to clinical reports and mounds of test data showing little to no side effects and a lack of psychoactivity (typically associated with marijuana products and high THC).



Our CBD products are made with certified organic hemp grown in Colorado & Kentucky and we are 100% free of any synthetic or artificial ingredients. We have a very potent and high purity level in our products. Everything is tested in an FDA Approved facility and our products contain 0.3% THC.

## Benefits of CBD Oil

- Reduce Nausea & Vomiting
- Suppress Muscle Spasms
- Reduce Seizures & Convulsions
- Promotes Health
- Promotes Brain Tissue & Bone Growth
- Fibromyalgia Pain
- Reduces Blood Sugar Levels
- Antibacterial
- Anxiety & Depression
- Reduces Nicotine Cravings
- Digestive Aid
- Anti-Psychotic
- Ringing Ears - Tinnitus
- Inhibits Cell Growth in Tumors

## CBD HEALTH BENEFITS



### Mental & Brain Health

CBD affects principal cannabinoid receptor in the brain promoting a healthy state of mind.



### General Health

Cannabidiol has incredible medicinal benefits and will improve overall wellness.



### Healthy Balance

Cannabidiol helps restore healthy balance to the endocannabinoid system.

## DISTRIBUTORS NEEDED! Home Based Business MLM



# FOR PETS

## CBD Dog Treats and 250mg CBD Oil for Pets

- Highest Quality Ingredients
- Natural

For more information, Call (780) 907-8642  
[www.Elaine1.com](http://www.Elaine1.com)





**RV PUB & GRILL**  
"WHERE FRIENDS MEET"

Hwy 31, Seba Beach, AB

# NOW HIRING! ...

Servers and Kitchen help wanted for restaurant at Kokanee Springs RV Resort, Seba Beach/Parkland County

- Weekend availability required
- Food & Beverage
- Opens May 1<sup>st</sup>, 2018

Send your resume to: Dan & Shelley Yuzwa at, [souprsan@gmail.com](mailto:souprsan@gmail.com) or contact Shelley at (780) 222-6268



**780-797-3100**  
[www.kokaneespringsrv.com](http://www.kokaneespringsrv.com)  
[www.rvpubandgrill.com](http://www.rvpubandgrill.com)

Kokanee SPRINGS RV PARK

## Yellowhead County Council Highlights

Continued from Page 2

Emerson Creek and the Peers Communications Towers Tenders – Council moved to award the tender for the Emerson Creek and Peers communications towers design and build to 3C Information Solution Inc. at a cost of \$880,848.00. The aim of this construction is to increase the ability of citizens living within the

county to have greater access to internet, cell coverage, and public safety radio coverage. The vision is for service providers to co-locate on county owned and constructed towers to provide these services.

The next Council Meetings is May 8, 2018. The next Governance & Priorities Committee Meeting is May 15, 2018. All meetings start at 9:30 a.m. in the Council Chambers.

### Town & Country Funeral Services



Wabamun  
780-983-2749

Evansburg  
780-727-2791



† Cemetery Monument  
Sales & Installation

† Traditional Burial &  
Funeral Services

† Pre-need Funeral  
Packages

† Crematorium &  
Memorial Services

## STONY PLAIN NURSERY & GARDEN CENTRE

### Now Open!

You are welcome any time to order trees!

• **Bare Root Trees** - available NOW!

• **Hanging Baskets & Bedding Plants Ready!**

We have over 10,000 trees & shrubs growing at the nursery. Tree Spade Trees & Bare Root Trees available for years and years! Buy Local!

**UPDATE: Mona has improved dramatically and is working with me at the Nursery again. Thank God!**

Specializing in Northern Hardy Plants

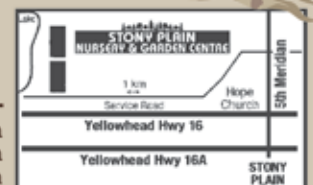
**968-0542**

1020 Hwy 16  
[www.stonyplainnursery.net](http://www.stonyplainnursery.net)



#### Hours:

Mon. to Fri.: 10am - 7pm  
Sat.: 10am - 6pm  
Sun.: 12pm - 5pm



# RCMP BEATS

## Submitted by Stony Plain/ Spruce Grove RCMP

Occurrences for the week of 16 April to 22 April 2018.

Total Calls for Service Spruce Grove/Stony Plain/Enoch Detachment: 568

Total Calls for Service for the Victim Service Unit: 31

Individuals Charged: 86

Person Crimes reported: 58

Property Crimes reported: 76

Impaired Driving Complaints reported: 9

Impaired Driving Charges Laid: 1

Roadside Suspensions: 1

Motor Vehicle Collisions Attended: 41

Property Crimes:

Spruce Grove

1. April 18 – Area of Collingwood Avenue – Theft of Vehicle, 2005 white Ford F350

2. April 18 – Area of King Street and Grove Drive – Theft from Vehicle, catalytic convertor stolen

3. April 18 – Area of Calahoo

Road and Marlboro Drive – Theft from Vehicle, catalytic convertor stolen

4. April 22 – Area of Greystone Drive and Grove Drive – Theft of Vehicle, 2004 brown Pontiac Sunfire

Stony Plain

5. April 20 – Area of 44 Avenue and 45 Street – Theft from Vehicle, cash and sunglasses stolen

Rural

6. April 19 – Area of 55 Avenue and 52 Street, Wabamun – Theft of Vehicle, 2000 purple Dodge Neon

7. April 21 – Area of Township

Road 514 and Range Road 270 – Break and Enter to Garage, tools stolen

8. April 22 – Area of Highway 37 and Range Road 14 – Theft of Vehicle, 2013 white Dodge Ram

Continued on Page 7

**We turn your ideas into reality.**



**As a Coordinating Design Professional, we can assist with all stages of your construction project from Concept to Completion!**

Keystone provides full building construction design services on all your projects from concept to completion.

Services include:

- Commercial & Industrial Building Design
- Shop & Garage Design
- Engineered Foundations
- Structural Engineering

**KEYSTONE FIELD ENGINEERING INC.**  
"Practical Engineering Solutions"

Tel: (780) 542-3096 Email: admin@keystonefieldeng.com  
Web: www.keystonefieldeng.com



# CHIPPS

## TREE CARE Inc.

**Expert, ISA Certified, fully insured, tree care providers.  
Servicing home and business locations.**

Tree Removal	Stump Grinding	Tree & Shrub Pruning
Tree Planting	Deep Root Fertilizing	Deep Root Watering
Annual Maintenance	Arborist Consultations.	

**Free Estimates Provided**

**Phone: 780-922-7610 Email: chippstreecareinc@gmail.com**

**Website: www.chippstree.com**





# DARWELL PUBLIC LIBRARY MAY NEWS

**Submitted by Sandra Stepaniuk, Library Manager | Darwell Public Library**

Here is what's happening at the library in May

Preschool Story Time for children 0 to 5 years of age continues every Monday morning, except holidays, from 10 – 11 AM. This program will run until May 28, 2018. This is a free drop in program so come join us for stories, activities, crafts and a snack. All children must be accompanied by an adult as this is a program designed for parents/caregivers and

children together.

The colouring club, LEGO and Family Games continue daily, during regular library hours, until May 31, 2018. We encourage you to ask about our passive programming and provide ideas for what you would like to see in the library.

Tai Chi continues every Wednesday and Friday morning, except holidays, from 10–11 AM until May 30, 2018. All you need are loose comfortable clothes and flat shoes. This year we are offering a \$ 5.00 drop in fee for those who have already learned the 108 moves or for those who are curious

and would like to see what it is all about.

Lac Ste Anne County Horticulturalist Lorraine Taylor will be at the library on Tuesday, May 1, 2018 for the third session, Container Gardening or Pots with Pizzazz starting at 7PM. In this session Lorraine will give tips on containers, potting soil, watering, great new plants and planting combinations. This session is free to attend but we ask you to pre-register by contacting the library @ 780-892-3746.

We are offering a Mother's Day Craft for children 6 year of age and

up on Wednesday, May 9, 2018 from 3:30 to 5:00PM. This year we will be making a sweet treat for Mom and a card. Space is limited to 10 spots, so we encourage you to register early to avoid disappointment. This program is funded by FCSS.

Join us for Family Movie Night, at the Lake Isle Community Hall on Friday, May 25, 2018. We will be showing the "PG" rated title "Peter Rabbit". The doors will open at 6:30pm and the movie starts at 7:00 pm. Admission is \$ 2.50, and a concession will be available. This will be the last event until September, see you there!

We are currently doing a Value Village donation drive and are looking for your used clothing, shoes, accessories, books, linens and small household items (small items only no furniture). You can pick up a list of acceptable items at the library or find the complete list on our website or Facebook page. You can drop off your donations at the library expansion during regular library hours until May 30, 2018. Should these times not work for you please contact the library to make alternate arrangements.

The next Book Club will be meeting on Monday, May 7, 2018 at 7:00 p.m. to discuss "Winter Garden" by Kristin Hannah. Do you love to read? Do you like to discuss what you have read with others? We are always interested in a new perspective to add to our conversation. If you are interested in participating, you can register and arrange for loan of the current title by calling the library @ 780-892-3746.

The Darwell Public Library Society will be holding their next regular meeting on Monday, May 28, 2018 starting at 7 pm. All meetings are open to the public and everyone is welcome to attend. The Library is open 11:00 am to 4:00 pm on Monday, Tuesday and Thursday and from 5:00 pm to 8:00 pm Wednesday and Friday, closed Saturdays, Sundays and Holidays. You can also find out what is happening at the library by checking our Website [www.darwellpubliclibrary.ab.ca](http://www.darwellpubliclibrary.ab.ca) or like us on Facebook at [www.facebook.com/DarwellPublicLibrary](http://www.facebook.com/DarwellPublicLibrary)

## All Precious



## JEWELLERS

Phone: 780-960-4200 Fax: 780-960-4201 Toll Free: 1-877-962-4367  
Suite 102, 215 McLeod Avenue, Spruce Grove, AB. T7X 0G2

Come in this Mother's Day  
and get her a gift she'll never forget!



THOMAS KINKADEE  
*Painter of Light*



Always in Bloom

"Your Spruce Grove Jewellery Store"

Goldsmith on Premises Jewellery repairs done on site.

• Engraving • Custom Make-ups • Jewellery Repairs • Clock & Watch Repairs

# WEED INSPECTIONS BEGIN IN YELLOWHEAD COUNTY

**Submitted by Stefan Felsing, Communications Coordinator | Yellowhead County**

As summer is in full swing, please be advised that Yellowhead County Weed Inspectors will be out in full force documenting various invasive plants on both county and private lands. You may see a white county vehicle near your property and an inspector in a high visibility vest performing weed inspections so please be considerate of their safety.

Please keep in mind that The Weed Control Act grants an Inspector right of entry onto private land during reasonable hours (The Weed Control Act, Part 3, and Section 12). The Agricultural Services Department of Yellowhead County believes that a courtesy should be ex-

tended to land owners to inform them of what is taking place on their property.

The County continues to promote a "Door Knocking" Program to make contact with land owners before a weed inspection takes place. We inform the property owners of the approximate date and time of when an inspection will take place, and the Weed Inspectors can then address any questions or concerns the landowner may have

at that time. If land owners are not home during the time of the "Door Knocking" Program they will find a placard on their door or gate letting them know that an inspector was there and that they can call the inspector for more information.

The results of the inspection(s) and weed information sheets will then be mailed out to the land owners within a couple weeks of the inspection(s) taking place.

If you would like more information regarding the Weed Inspection program, please visit the Yellowhead County Website at [www.yellowheadcounty.ab.ca](http://www.yellowheadcounty.ab.ca) or phone the Agricultural Services Department at the Wildwood County Office at 1 800 814-3935.

For more information about The Weed Control Act, it can be found at the Queens Printer website at [www.qp.alberta.ca/](http://www.qp.alberta.ca/)

## RCMP Beats

**Continued From Page 5**

9. April 22 – Area of Lapotac Boulevard – Theft from Vehicle, box cover stolen

Stony Plain/Spruce Grove RCMP remind you not to make it easy for thieves. If you are away from your home for an extended period of time, turn the ringer off on any home phones. Unanswered calls can indicate an unoccupied home.

The Spruce Grove / Stony Plain Drug Section Information Tip Line is 780-968-7212. Anyone with drug information is asked to call and leave a message.

If you have information regarding any of these crimes, or any other crime, please call the RCMP at 780-962-2222 or 780-968-7267. You can also call Crime Stoppers at 1-800-222-8477 or text the keyword TIP205 (TIP250 for Edmonton Metro) & your Tip to CRIMES (274637)



## Mother's Day Brunch

May 13, 2018 9 AM - 3PM

Adults \$32.95

Seniors (55+) \$26.95

18 and under \$1 per year

Kids under 5 free

Reservations required



[trestlecreek.ca](http://trestlecreek.ca) ~ 7011 TWP RD 532, Entwistle, AB

780-727-4575 ~ [info@trestlecreek.ca](mailto:info@trestlecreek.ca)



# It's time!

The electronics, paint and household hazardous waste roundup is on!



Are unwanted computers, printers, TVs, leftover paint and containers, and household hazardous waste taking up room in your house?

Bring them to:

## Evansburg Recycling Centre

### May 12, 2018 from 10:00AM to 2:00PM

**Alberta**  
**recycling**  
MANAGEMENT AUTHORITY  
[www.albertarecycling.ca](http://www.albertarecycling.ca)



electronics



paint



tires

Evansburg Recycling Centre  
(Pembina Arena)  
4712 – 52 Avenue Evansburg, AB



## Seba Beach School Early Education Program

Seba Beach School is excited to announce that we will be continuing to offer an Early Education program at our school for the 2018/2019 season. For more information please contact Shawna Stewart at 780-797-3733.

### WHO:

- Children requiring supports with severe or mild/moderate developmental delays, ages 2 years 8 months to 5 years of age. (They must be 3 years by December 31st). Attendance days are 4 days a week (Monday, Tuesday, Thursday, Friday).
- Play Partners join Early Education classrooms for their playschool experience. Play Partners must be 3 years by September 1st who attend 3 days a week or 4 years by September 1st and attend 4 days a week.

### Early Education Classrooms Features:

- Rich play based programming.
- Specialized supports embedded through play for children with mild-moderate or severe special needs three mornings a week.
- Teams work collaboratively to meet the individual needs of each child within an inclusive environment.
- Each classroom includes a mix of children from the community as Play Partners.
- Family oriented program sessions are provided regularly at the schools, communities or in homes to further support families in meeting their children's needs.

For more information, contact Shawna Stewart at Seba Beach School at 780-797-3733.



## EARLY CHILDHOOD SERVICES INDIVIDUALIZED SUPPORTS

Each Early Childhood Services (ECS) Program has a multi-disciplinary team of professionals dedicated to meet the individual needs of all children. Embedded specialized programming is provided within the ECS day as required.

The multidisciplinary team consists of:

- |                               |                               |
|-------------------------------|-------------------------------|
| • Teacher                     | • Occupational Therapist      |
| • Educational Assistant(s)    | • Physical Therapist          |
| • Speech Language Pathologist | • Education Psychologist      |
| • Speech Language Assistant   | • Other specialists as needed |



## PLAY PARTNERS

Parkland School Division believes in having the best start possible for our young children. We provide activities that support the whole child including social/emotional development, communication and motor skills. Play partners are typically developing young children that participate alongside their peers in order that they all become the mightiest little learners! Play Partners are welcome in all Early Learning classrooms and priority is given to the program closest to the child's home.

Please register at your community school or by calling Early Childhood Services 780-962-0212 or email us at [earlychildhoodservices@psd70.ab.ca](mailto:earlychildhoodservices@psd70.ab.ca)

More information can be found on our website <http://www.psd70.ab.ca/ECS.php>

4 afternoons per week - \$120/month (3 and 4 year olds).



# BULLYING

## Tips for Dealing With Bullying

- 1) Take complaints of bullying seriously. Do not dismiss your child or expect your child to work through the situation alone.
- 2) Praise your child for reporting bullying situations to you and assure your child you will take action.
- 3) Talk to your child's teacher, counselor, or other caregiver about reports of bullying.
- 4) Work together to address the bullying situation. Don't confront the parents of the bully directly.
- 5) Ask your child specific questions about how your child is treated by peers, who he or she eats lunch with, and how other children are treated.
- 6) Teach your child to be assertive. Your child should be able to express feelings and needs clearly, without shouting or other aggressive behavior.



- 7) Provide opportunities for your child to make friends. Identify some of your child's interests and encourage your child to pursue them through sports, clubs, or other group activities.
- 8) Teach your child to identify bullying behaviors. These include hitting, damaging possessions, threatening, name calling, & excluding someone.

	<b>Metrix Group LLP</b> -Chartered Professional Accountants 727-2017	<b>Entwistle Food Market</b> 727-3686	<b>Tri-Lakes Services Ltd.</b> 727-3939	<b>Grand Trunk High School</b> 727-3925
<b>Evansburg Inn</b> 727-3621	<b>Tipple Park AG Foods</b> 727-3740	<b>Entwistle Concrete</b> 727-3525	<b>Hull Contracting Ltd.</b> -General Contracting 904-1042	<b>The Dog Ranch</b> 727-2652
<b>Evansburg Public Library</b> 727-2030	<b>Royal Bank -Evansburg</b> 727-3566	<b>Pinnacle Renewable Energy Inc.</b> 1-877-737-4344	<b>Evansburg Family Clothing</b> 727-3526	



# DRUNK & DRUGGED

# IT'S YOUR DUTY TO REPORT AN IMPAIRED DRIVER

## TIPS TO SPOT AN IMPAIRED DRIVER

Drivers who are impaired by fatigue, drugs, alcohol or other distractions such as cell phones, are a danger not only to themselves, but also to the innocent drivers around them. If you witness any of the behaviors below, call 911 and tell the operator that you are calling to report an impaired driver. Be prepared to describe the make, model, color and license plate number of the vehicle, and provide its exact location.

### Signs of impaired driving include:

- Failure to turn on headlights at night.
- Illegal or sudden turning.
- Turning within an unusually wide radius.
- Nearly striking other cars or objects.
- Sudden or erratic braking.
- Drifting, swerving or weaving.
- Driving with the face close to the windshield.
- Drinking alcohol in the vehicle.
- Driving much slower than the posted speed limit.
- Rapidly accelerating.
- Tailgating.
- Driving in the middle of the road, or with the left tires on the center line.
- Responding slowly to traffic signals

## DRUGS DRUGS DRUGS DRUGS

**Evansburg  
Legion  
Br #196**

**727-3879**

**Evansburg  
Family  
Foods**

**727-4118**

**Pembina  
River  
Tubing**

**515-1754**

**Entwistle  
School**

**727-3811**

## DRUGS DRUGS DRUGS DRUGS DRUGS

**Joe's  
Auto  
Repair**

**727-3642**

**Kokanee  
Springs  
RV Park  
& Driving  
Range**

**797-3058**

**Derby's  
Lakeview  
General  
Store**

**797-3838**

**Sun Gro  
Horticulture**

**797-3019**

**Pineridge  
Golf Resort**

**1-877-  
321-SEBA**

## DRUGS DRUGS DRUGS DRUGS

**Tomahawk  
Liquor**

**898-0756**

**Tomahawk  
Rural  
Crime  
Watch**

**Tomahawk  
General  
Store**

**339-3930**

**Tomahawk  
Race Trac  
Gas**

**339-2575**

# STONY PLAIN REPLACEMENT SCHOOL ON THE WAY

**MARK SMITH, MLA**  
DRAYTON VALLEY / DEVON

**DRAYTON VALLEY PRO**  
**RODEO**

TEL: (780) 542-3355  
FAX: (780) 542-3331  
TOLL FREE: 1-800-542-7307



**MLA Babcock takes questions from a Grade 6 class at Stony Plain Central School about the replacement project.**

Submitted by Lindsay Harvey,  
Press Secretary, Alberta Education | Government of Alberta

As part of Budget 2018, the gov-

ernment will replace Stony Plain Central School to meet growing student enrolment in the community.

The existing kindergarten to Grade 9 school, built in 1971, has numerous structural issues and outdated mechanical systems, and is currently over capacity. The replacement is expected to be complete in 2022-23.

"Crumbling infrastructure has been one of the biggest problems facing Albertans, and we are committed to ensuring future generations have high-quality schools to learn in. This new school will help the people of Stony Plain for years to come." - Erin Babcock, MLA, Stony Plain

In addition to the condition of the building itself, the growth in enrolment is putting pressure on the instructional areas. Nearly 700 students attend the school, which was designed to accommodate 633, meaning non-classroom spaces like gyms and learning commons are being used for core instruction.

"This is such welcome news with the announcement of the approval for a replacement school for Stony Plain Central School. We are appreciative of our government's commitment to school capital projects in the province. Our Stony Plain public has been very patient in anticipation of the replacement of the aging Stony Plain Central School. We are most eager to begin design plans and hope to work closely with the Town of Stony Plain in their area structure plans." - Eric Cameron, board chair, Parkland School Division

The new school reflects Alberta's continued investment in the infrastructure and services needed by families. Investing in 20 new school projects, as well as hospitals and roads, will help the province move forward with economic recovery.

The new Stony Plain Central will have capacity for 900 students and will be eligible for solar panel funding, which will reduce the school's energy costs and contribute to Alberta's commitment to help the environment.

## BETTER QUALITY OF LIFE

*and a money saver, too!*

You can immediately see and feel the difference Elite makes to the quality of your water and the quality of your life. With Elite conditioned water, you and your family will look and feel better - with noticeable glowing complexions and soft, shiny hair.

Beautifully soft, dazzling whites and brilliant colors will replace the rough, matted clothing and towels your hard water previously produced.

Even housework is less of a chore as conditioned water leaves no bathtub ring, scummy film on shower stalls or unsightly spots on glassware, dishes and fixtures.

Your Elite water conditioner will save you time and money, too. You'll spend significantly less on detergents, cleaning products, conditioners, creams and personal grooming products. In addition, your plumbing fixtures and appliances will be protected against costly repairs or premature replacements.



### QUALITY SALES & SERVICE OF:

- DISTILLERS
- SUBMERSIBLE PUMPS
- SEPTIC & JET PUMPS
- PIPE, WIRE & FITTINGS
- BOTTLE BUSTER (R.O. WATER COOLER)
- CHLORINE BLEACH, CHEMICALS & SALT
- 3 MOBILE SERVICE VEHICLES
- CHEMICAL-FREE IRON FILTERS
- SOFTENERS
- CHLORINATION SYSTEMS
- MOBILE SHOCK CHLORINATION
- SEDIMENT, TASTE & ODOR FILTERS
- REVERSE OSMOSIS FILTERS (R.O.'s)
- HOT TUBS & JETTED TUBS
- POOL & SPA FILTERS & CHEMICALS

• FREE WATER ANALYSIS •

**OUR WORKMANSHIP IS GUARANTEED!**

**The benefits and savings provided by Elite conditioned water will make a wonderful difference in your life.**

## QUALITY WATER SERVICES LTD.

20 South Ave., SPRUCE GROVE

962-6040 425-2934 (Edm. Direct)



**"We're recommended the MOST as the company that knows the MOST"**





## LAC STE. ANNE COUNTY

Lac Ste. Anne County | P.O Box 219 | Sangudo, Alberta | T0E 2A0 | 1.866.880.5722 | www.LSAC.ca

### Handyman

## Summer Temporary Employment - Public Works Department

Duties will consist of, **but are not limited to**, organizing and assisting centerline and approach culvert installations, sign installation, ditching, and brush cutting. Applicant must be proficient in all manner of communication including completion of all necessary reports, work orders, time sheets, gravel cards, requisitions, etc. as required. Please note that candidates must be willing and able to travel to various locations throughout the County to perform duties as directed by the GM of Infrastructure & Planning, however the position will be based out of the Division 4 (Lisburn) yard. Other duties will be required that are related or a logical assignment to the position.

**Candidates must have Valid Class 5 Drivers License with clean abstract, own Transportation and CSA Approved Steel Toe Boots**

**Salary Range:** commensurate with experience

**Term:** May 21<sup>st</sup>, 2018 – fall (*approximately October 26<sup>th</sup>, 2018*)

**Closing Date:** May 11<sup>th</sup>, 2018

Interested Candidates should submit their resume and cover letter to:

Joe Duplessie | GM of Infrastructure & Planning  
Box 219 Sangudo, Alberta T0E 2A0  
(780)785-3411 1-866-880-5722 Email: [jduplessie@lsac.ca](mailto:jduplessie@lsac.ca)

*We thank all applicants in advance for their interest, however only those selected for an interview will be contacted.*



## LAC STE. ANNE COUNTY

Lac Ste. Anne County | P.O Box 219 | Sangudo, Alberta | T0E 2A0 | 1.866.880.5722 | www.LSAC.ca

## REQUEST FOR QUOTATIONS WATER TANK TRUCK CONTRACT

Lac Ste. Anne County is requesting quotations for the supply and operation of water tank trucks for a three (3) year term from May 15<sup>th</sup>, 2018 to October 31<sup>st</sup>, 2020. The water tank trucks are required specifically, but not limited to, water application on County construction, gravelling, shoulder pull and dust control projects.

Quotations submitted are to be an **hourly** rate for the supply and operation of suitably equipped water tank trucks. Specifications on the requirements of the water tank trucks and contractor will be available at the County office for pickup for any interested parties.

All quotations to be submitted to the undersigned in a sealed envelope marked "Water Tank Trucks Quotation" no later than 4:00 p.m. on May 9<sup>th</sup>, 2018.

Lac Ste. Anne County reserves the right to accept or reject any or all quotations and to waive irregularities and informalities at its discretion. Lac Ste. Anne County reserves the right to accept a quotation other than the lowest quotation without stating reasons. By the act of submitting its quotation, the Bidder waives any right to contest in any legal proceeding or action the right of the Municipality to award the work to whomever it chooses, in its sole and unfettered discretion and/or whatever reasons the Municipality deems appropriate. Without limiting the generality of the foregoing, the County may consider any other factors besides price and capability to perform the work that it deems in its sole discretion to be relevant to its decision.

The successful party shall be required to enter into a formal contract with Lac Ste. Anne County.

Should you be interested in submitted a quotation for this, please contact the Public Works Department for a copy of the Request for Quotation (780)785-3411, or 1-866-880-5722. Thank you.

Joe Duplessie  
GM Infrastructure & Planning

# SPRUCE GROVE GETS MORE AFFORDABLE CHILD CARE SPACES

Submitted by Doug Neuman, Communications Officer | Alberta NDP Caucus

SPRUCE GROVE - More families in Spruce Grove will have

access to affordable child care, thanks to a provincial funding announcement for 64 newly affordable spaces.

The YMCA Beaverbrook Child Care Centre will be able to provide

64 newly affordable high-quality child care spaces. These licensed spaces currently exist, but will now be available to parents for no more than \$25 per day.

Spruce Grove-St. Albert MLA

Trevor Horne has advocated for more of these affordable spaces in this community, and is happy with the results.

"I have heard from many of my constituents in Spruce Grove how tough it can be to find quality child care that doesn't break the bank. The newly affordable spaces are going to give many families more options and make life better for them." - Trevor Horne, MLA for Spruce Grove-St. Albert

This week Premier Rachel Notley and Children's Services Minister Danielle Larivee announced that 100 new Early Learning and Child Care Centres across the province would be added to the existing 22 centres that opened last year as part of a province-wide pilot project.

With a total of 7,300 spaces now across the province, this program is expected to create 450 child-care jobs, empower more than 1,400 parents to enter or re-enter the workforce, and put big smiles on thousands of little faces.



**PREVENT CRIME IN YOUR COMMUNITY**

**CRIME PREVENTION WEEK MAY 14-20, 2018**

**Erin Babcock, MLA**  
Stony Plain

5004-50<sup>th</sup> Avenue, Stony Plain, AB T7Z 1T2  
PH: (780) 963-1444 Fax: (780) 963-1730  
stony.plain@assembly.ab.ca



**ENJOY BREAKFAST WITH COUNCIL**

**Join Parkland County Council in Entwistle**  
**Tuesday, May 8, 2018**

Breakfast Starts at 8:00 a.m. | Council Meeting at 9:00 a.m.

Entwistle Community Hall | 4921 51 Street, Entwistle, Ab. T0E 0S0

**parkland county**



# TIPS TO STOP SCHOOLYARD BULLYING

- Take it seriously. It's easy to say, "Kids will be kids" and assume it will pass. But if your child is coming home upset and is suddenly anxious about school because of the way a kid (or kids) are treating him, you should pay attention.
- Drop your kid off at school or stand on the sidelines during recess. Bullying tends to occur when adult supervision is lacking, so before school or on the playground at recess.
- Talk to other parents. Young kids are talkers. If you're friendly with a parent in your kid's class, ask them if their child has mentioned anything about kids being picked on at school.
- Tell the teacher. It's really important to let your child's teacher know what your kid is telling you -- especially if someone is getting hit.
- Empower your children. Let your kids know that it's not their fault that they are being bullied. Teach your kids to focus on their own behavior.

Village of  
Wabamun

892-2699

Wabamun  
Lake Inn

892-2424

A.T.B.  
Financial  
-Wabamun Br.

892-7927

Ray's  
Market

892-2230

Wabamun  
School

892-2271

Trades  
Automotive &  
Welding Ltd.

892-4500

Wabamun  
Hotel

892-2224

Wabamun  
IDA Pharmacy

892-2278

Wabamun  
Lakeside  
Liquor

892-3463

Gossamer  
Treasures  
Gallery &  
Gift Shop  
964-1057

Shoreside  
Inn & Suites

892-4773

GMP  
Ontrack  
-Excavation,  
Brushing  
719-2687

SunHills  
Mining  
-Highvale Mine

731-5300



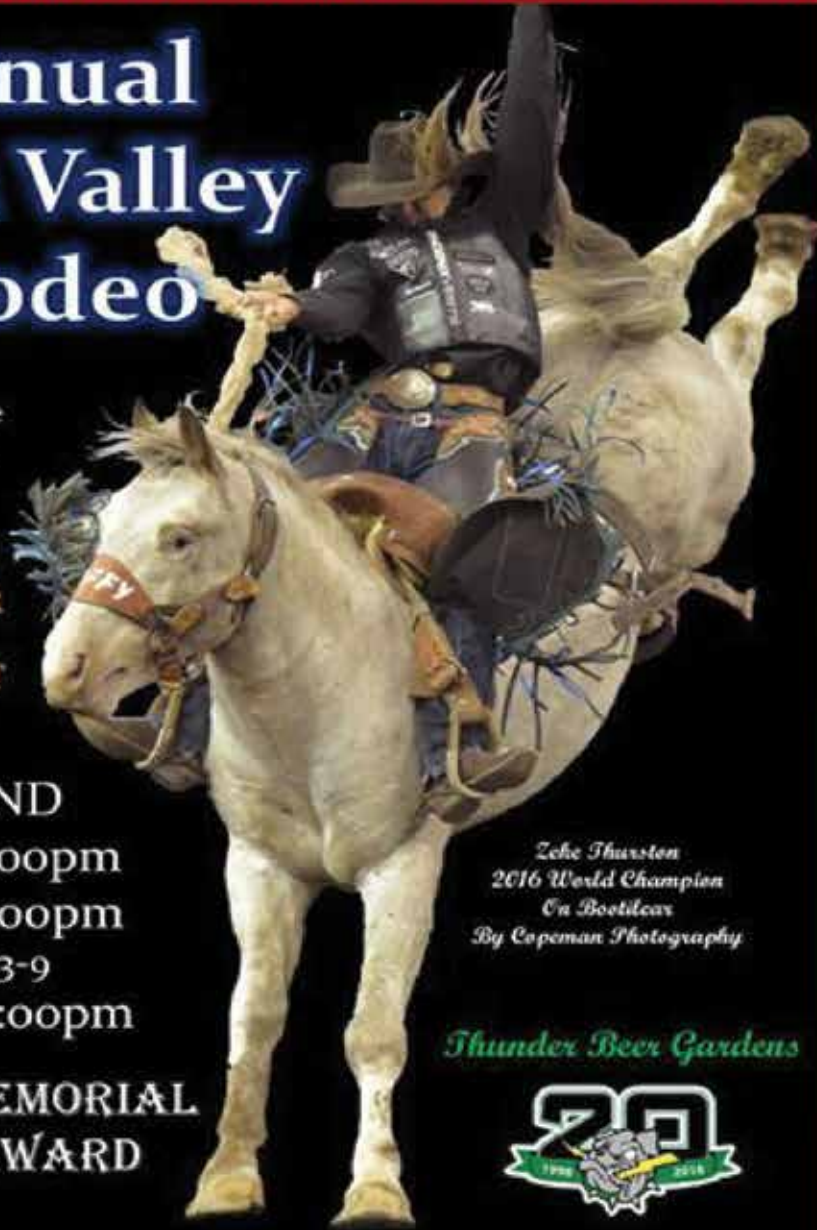
# 4<sup>th</sup> Annual Drayton Valley Pro Rodeo

Collecting Donations for the  
Drayton Valley Food Bank  
Each Performance

TICKETS AT THE DOOR  
& PRESOLD AT  
DV VALUE DRUG MART

ALL WEEKEND  
Fri May 4<sup>th</sup> @ 7:00pm  
Sat May 5<sup>th</sup> @ 7:00pm  
Tack Swap - Sat 3-9  
Sun May 6<sup>th</sup> @ 2:00pm

RON HARDEN MEMORIAL  
HIGH POINT AWARD



*Zeke Thurston  
2016 World Champion  
On Bortlecar  
By Copeman Photography*

*Thunder Beer Gardens*



*[www.draytonvalleyprorodeo.com](http://www.draytonvalleyprorodeo.com)*

**WILLOWS**  
CONSTRUCTION (2001) LTD.





**These pages are  
proudly sponsored  
by the following  
local businesses**

Drayton  
Valley  
Auto Parts  
/ NAPA  
542-6881

Brazeau  
County  
  
www.brazeau.ab.ca  
542-7777

Mark  
Smith  
- MLA  
542-3355

Country  
Haven  
Kennels  
621-1631

Value  
Drug Mart  
-Drayton Valley  
542-5366

Big West  
Dodge  
542-4488

Valley  
Concrete  
(2003) Inc.  
542-5488

D.V. Home  
Hardware  
& Building  
Center  
542-9663

Apex  
Monarch  
Inc.  
-Drayton Valley  
542-7135  


Carol  
Lapointe  
Professional  
Services Ltd.  
542-1571

Tarpon  
Energy  
Services Ltd.  
514-7659

Lubers  
Express  
Oil Change  
Ltd.  
542-6880

Serenity  
Funeral  
Service  
-Drayton Valley  
542-3338

Drayton's  
Shop  
Automotive  
Services &  
Tires  
514-5795

Thorsby  
Stockyards  
Inc.  
789-3915

Dunn-Right  
Communications  
Inc.  
542-5200

Techmation  
Electric &  
Controls Ltd.  
542-2723

Foothills  
Door Ltd.  
388-3321

Team  
Auctions  
**TEAM**  
AUCTIONS  
www.teamauctions.com  
542-4337

D.V.  
Rentals  
  
542-5845

Khal's  
Steak  
House &  
Lounge  
542-5451

Drayton  
Valley  
Golf Club  
542-3602



# HomeRENO



## POTENTIAL INDICATORS OF ROOF TROUBLE

With regard to home repairs, homeowners may be able to delay some projects until the weather permits or they find room in their budgets. But other areas, including the roof, may demand immediate action.

Few homeowners give the roofs

of their homes much thought until a problem arises. But learning to recognize potential indicators of roof trouble can help homeowners prevent potentially drastic situations down the road.

• **Light:** Homeowners with attics in their homes can inspect the

ceilings inside the attic for signs of holes or leaks. Light peering through the top of the house indicates a hole or leak, as does stains or streaks on the ceiling.

• **Worn shingles:** Shingles should lie flat against the roof, so any that appear to be buckling or turning up are damaged and in need of repair. A single damaged shingle does not require a full roof replacement, but inspect all the shingles nonetheless. Another indicator of shingle problems can be found when cleaning downspouts or gutters. If the gutters and downspouts contain lots of shingle granules, the roof may soon need to be replaced.

• **Moss:** Moss on a rooftop may give a home character, but that added character is costly. Shady areas of a roof can be susceptible to the growth of moss and fungi because moisture can be trapped in such areas. If possible, remove moss or fungi from a roof with a

stiff brush or hire a professional to do the job instead. Moss may come back even after brushing it off, so homeowners should keep an eye on areas of their roofs that get little sunlight. In addition, trapped moisture can be very harmful to a roof, so it may be wise to exercise caution and have roofs with mold or fungi growths inspected.

• **Age:** Another indicator of roof trouble may be the age of the roof. Even if there are no visible signs of damage, homeowners whose roofs have some years under their belt may want to consider replacing them. Asphalt shingle roofs typically have life expectancies of 20 to 25 years, while roofs installed over existing layers of shingles may need to be replaced after 20 years.

Recognizing minor roof damage before it escalates into a larger problem can save homeowners substantial amounts of money.

**Ashly-Lane Interiors Ltd.**  
INTERIOR FASHIONS

**\*Spring Sale\* up to**  
**40% Off Selected Items**

Valances • Sheers • Drapes  
Blinds • Fabric • Hardware

Residential • Commercial  
39 Years Experience • BBB Member

4900 - 51 Avenue, Stony Plain, AB  
780-963-5563

**MCLEOD Home building centre**

Let us load you at the largest Lumber Yard in Parkland County  
**962-2575**  
Call Toll Free: 1-800-343-2988  
35 South Ave, Spruce Grove

- Renovation & new build experts
- Superior quality lumber
- Complete home packages
- 3D Estimating Program
- Engineered roofs & floors
- Farm Buildings
- Garage packages
- Windows & doors
- Custom decks & fence packages
- Flooring & kitchens
- Bathrooms
- Ceramic Tiles
- Concrete & landscaping
- Electrical supplies
- Fasteners
- Woodstoves

Service • Selection • Advice • Special Orders • Delivery

**TRI-LAKES SERVICES LTD.**

Serving: • Lac Ste. Anne County • Parkland County • Yellowhead County East

- **Septic Hauling**
  - Holding Tanks (residential, commercial, industrial)
  - Septic Fields
- **Drinking Water Delivery**
  - Cisterns
  - Pools/Hot-Tubs
- **Fresh Water Delivery**
  - Dust Control
- **Portable Washrooms** (rental & servicing)
  - Plastic
  - Trailer mount Extremes (wash sink, toilet, lights heat)
  - Extremes (wash sink, toilet, lights, heat)
- **Steam Truck**
  - In cooperation with your plumber

**PH: 1-877-727-3939**  
**www.tri-lakeservices.com**  
**office@trilakes.services**

**LIMB WALKERS TREE CARE LTD.**

**Specializing In:**

- Professional Climber
- Pruning & Proper Pruning Techniques
- Hazardous Tree Assessment & Removal
- Rigging
- Storm Damage
- Land Clearing & Chipping
- Hedge & Shrub Trimming
- Cabling & Bracing

**Joseph Groshok**  
Owner/Operator  
**780-203-4705**  
limb.walkers@hotmail.com

**PROFESSIONAL ARBORIST • I.V.M.A.A.**  
**RESIDENTIAL & COMMERCIAL • FULLY INSURED**

**SERVING ENTWISTLE AND AREA FOR OVER 30 YEARS**

**Entwistle CONCRETE**

PRODUCTS LTD.

**SAND & GRAVEL SALES**

**PH: (780) 727-3525**

**Dan McCracken Entwistle, AB**  
**www.entwistleconcrete.ca**



# HomeRENO



## PAINT YOUR HOME'S EXTERIOR LIKE A PRO

Painting is an inexpensive way to transform just about any space. Many people paint the interiors of their homes, but home exteriors also can undergo dramatic makeovers with fresh coats of paint. Timing the job right and heeding some tips from professionals and do-it-yourselfers who have tread the painting path before you can make the job go smoothly.

Consider the time of year

Consider local weather patterns and forecasts when planning an exterior painting project. Choose a time of year when there is little rain and low humidity, such as autumn. Keep in mind that the paint will require a couple of days to dry completely and cure, and that can be difficult in damp weather. Don't hamper the final outcome with poor timing.

Prepare the painting surfaces

Resist the temptation to start

painting straight away. Paint may not adhere to unprepared surfaces, and dirt and other debris may show through and mar the finished product. Repainting a home's exterior will likely involve removing peeling or chipping paint prior to making your first strokes. Wear protective gear when scraping, sanding or brushing old paint, as such tasks can generate dust that can be dangerous to inhale, particularly if the old paint contains lead.

Employ a chlorine bleach solution to kill any mildew and to scrub any dirt from the house. In addition, repair any cracks or imperfections. For example, if you're painting stucco, you may have to fill in any pitting or holes. Use this opportunity to inspect caulking around windows and doors. Recaulk as needed to seal up drafty areas or those that may cause water infiltration prior to painting.

Prime and cover stains

It may be a little extra work, but apply a quality primer as the first coat to hide any imperfections, such as wood knots or discoloration from weathering. Primer provides a smooth, even surface upon which to put your paint color. Once you have applied the primer, test your paint color in a small, inconspicuous spot to see how the color looks in the daylight. You do not want to paint the entire home only to find out you dislike the color.

Try these painting techniques

Rent a paint sprayer for large surface areas. The sprayer will produce a more uniform application and is less time-consuming than painting everything with a brush or roller. Make sure you've chosen a high-quality paint, as the added expense is worth it if the paint lasts longer and coats more

evenly. Also, if you have purchased multiple cans of paint, mix them all in one large bucket to ensure the same color; otherwise, the colors may not match perfectly.

The experts at HGTV recommend working your way from top to bottom in a smooth, controlled manner, overlapping each stroke by eight inches. Trim and hard-to-reach areas should be left for brush work so you can maintain control over your tools.

If you are painting areas like steps or staircases, consider adding a little fine-grain sand to the paint to improve traction, as paint can be slippery when wet.

If painting your home's exterior is beyond your capabilities, hire a professional. He or she will get the work done in a timely manner, and you can rest assured that the job will be done correctly.

**Home hardware building centre** Drayton Valley  
**542-4044**  
 ON US: 1-888-542-9663

**For ALL your renovation and material needs, SHOP LOCALLY!**

4221 - 50 Street Drayton Valley

**HAMMUR Construction**

**For ALL Your Carpentry Needs**  
 ~ Residential or Commercial ~

**Elvis Murray** (780) 542-1693  
 Owner/Operator fax: (780) 542-7651  
 Drayton Valley, Alberta email: eb4321@telusplanet.net

**"You can COUNT ON US!"**

**Blakeman Drilling Ltd.**

Waterwell Drilling & Servicing  
 Pumps & Pressure Systems  
 Petwa Water Conditioning

**(780) 918-1916**  
 joe@blakemandrilling.com  
 Family Owned & Operated

**JADE**  
 Plumbing & Heating Ltd.

◆ Gasfitting ◆ Plumbing  
 ◆ Hot Water Heating  
 ◆ Furnace Repairs ◆ Maintenance  
 ◆ Residential ◆ Commercial  
**24-Hour Emergency Service**

**Box 5050** **Call DAVE**  
**Devon, AB T9G 1X8** **987-4950**

## M.T. CONCRETE SERVICES

*Honest & Reliable*

### FOR ALL YOUR RESIDENTIAL PROJECTS

Sidewalks, Patios, Garage Pads, Driveways,  
Gradebeams, Exposed Concrete,  
Coloured & Stamped Concrete,  
Bobcat & Dump Trailer Services



### SPRING SPECIALS

Large Yard Clean-ups  
Lawn Replacements  
Small Maintenance Jobs

**780.499.3172**  
**Free Estimates**  
**Call Mike Swityk**

**SERVING DEVON & SURROUNDING AREA SINCE 1998**



## ECONOMY

## ASPHALT DRIVEWAYS

- Paving • Asphalt or Concrete • Repairs
- Pararamps • Seal Coating • Crack Filling
- Snow Removal • Sanding • Rock Chip Sales

**CHARLES MACDONALD**

**PH: 780-962-5581 CELL: 780-777-0914**

**FAX: 780-962-9146**



## B.W. EAVESTROUGHING

### Specializing in:

- ⇒ Residential 5"
- ⇒ Commercial 6"
- ⇒ Soffit
- ⇒ Gutter Clean System
- ⇒ Free Estimates
- ⇒ Fascia

**BRAD (780) 699-1880**

## BEST CISTERN SEPTIC SOLUTIONS

### Cistern and Septic Inspection, Cleaning and Repair!

Septic planning, design, installation  
by government certified installer(s)

New Installs Available. Reasonable Rates.

**Let Us Handle the Dirty Work**

**780-668-4306**

**best-cistern-septic-solutions.com**



# HomeRENO

## HOW TO SOUND PROOF YOUR HOME

(MS) - What's the first step in sound proofing your home? Finding which rooms have the least amount of sound resistance.

To do this, make sure everyone is out of the house, unplug all electronics and close all doors and windows. Take a quick walk through your house and pause for a few moments in each room to evaluate which ones are the noisiest. Now consider if you're installing a media room or teenage recreational room where volumes will be blasting on TV's and stereos.

With this information, you should have a good idea of where you need to soundproof and create barriers against noise. Here are some tips to help you achieve the optimal result of peace and quiet:

- Plant trees and hedges along the exterior of your home, perhaps along a fence. Not only do trees and

hedges help with the environment and provide a good amount of privacy, they also slow down the travel of noise from the neighborhood into your home.

- Insulate your walls and ceilings. Better insulation in your interiors and exteriors won't just drive away excess noise, it will also reduce your heating and cooling bills during the hot and cold months. For the best sound proofing and easy installation quality, a professional-grade product by ROXUL called Safe'n'Sound is very popular.

- Seal up all cracks and holes around windows and doors, and add double glazed windows to your current glass panes.

Once you've selected the best soundproofing method, implement it and enjoy the bliss of silence throughout your home.

We're here for your next  
home & building project.

**NorthCentralCoop.ca**

We Feed. We Fuel. We Build.

LOCALLY  
INVESTED

COMMUNITY  
MINDED

LIFETIME  
MEMBERSHIP  
BENEFITS





# HomeRENO

## MUST-HAVE KITCHEN REMODEL FEATURES

Homeowners looking to renovate often see room for improvement in their kitchens and bathrooms. The National Association of Home Builder's Remodeling Market Index Survey, which measures conditions in the remodeling market, indicates that, in 2015, the two most common remodeling jobs were bathroom remodels (81 percent) and kitchen remodels (79 percent). According to HGTV and Statistics Brain, a new kitchen remodel for a kitchen measuring 12 by 12 feet may cost homeowners anywhere from \$17,000 to \$37,000.

Before investing so much into their remodeling projects, homeowners should think carefully about the features that will improve their time spent at home. When planning a kitchen renovation, homeowners may want to consider the following upgrades to make the room more enjoyable while improving its functionality.

### Oversized sink

Although high-efficiency dishwashers are popular, deep sinks to soak soup pots or woks are still useful. Deep sinks may be preferable to double sinks, especially for homeowners who use lots of kitchen tools when preparing meals.

### Soft-closing hinges

When replacing cabinets (or just the hardware), consider installing soft-closing hinges and slides on doors and drawers. These devices eliminate slamming and caught fingers, reducing noise and injuries in the kitchen.

### Foot-pedal water operation

When outfitting a sink, think about foot controls, which are popular in doctors' offices and hospitals. Turning on the water with the tap of a foot can reduce the transfer of pathogens to faucets from hands during food preparation. These pedals also free up hands for other tasks.

### Bottom's up

People likely spend more time raiding the refrigerator than the freezer on any given day. Rather than having to bend down to seek out that favorite flavor of Greek yogurt, choose a model with the

fridge on top and freezer on the bottom, especially if anyone in the household has mobility issues. When shopping for refrigerators, French-door style units may offer even more access, making it easy for homeowners to slide fruit trays, sheet cakes and other large items into the fridge.

### Extra lighting

A kitchen should be a balance of form and function. A combination of overhead lighting, decorative lighting and task lighting can illuminate all areas of the space effectively.

### Appliance garages

Architectural and design resource Houzz says that appliance garages are popular kitchen additions, too.

Set at countertop level, these cabinets allow people to keep small appliances plugged in but tucked neatly behind closed doors.

Kitchen remodels are a sizable investment, and renovations can be customized to make the kitchen more hospitable for all in residence.

**The Flooring Store & DIY Center**

**FREE ESTIMATES**

**LARGE SELECTION OF CARPET**  
Luxury Vinyl, Hardwood, Laminate, Tiles

**SPECIAL PRICES FOR SENIORS**

We Carry Kraus, Beaulieu, Euro Tile, Julian Tile, Steven Omni, Lauzon, Appalachian, Wood Pecker, Gold Leaf, Flexi Felt Products.

**Hours:**  
Monday to Friday 9:00AM to 5:30PM  
Saturday 9:30AM to 4:00PM  
Closed Sunday

**226 McLeod Ave**  
**Spruce Grove**  
**(780) 960-9212**  
[www.theflooringstore.ca](http://www.theflooringstore.ca)



# CRIME PREVENTION

- Keep an eye out for strange vehicles parked in your area at odd hours or for long periods of time
- Make sure all young children know how to handle possible confrontations with strangers.

Use these helpful tips to help keep our community a safe, enjoyable place. Look around your home, school or office and see where you can make a difference.

- Start teaching children at an early age how to avoid drugs and alcohol.
- Get children involved in organized after-school programs.
- Start, join or reactivate a neighborhood watch program.
- Be aware of your surroundings, especially when walking alone at night.
- Participate in forums which involve local officials, such as city council meetings.
- Reach out to crime victims, their families or others in the community who need support.
- Get to know your neighbors - you may find others with an interest in safety, too.
- Be familiar with members of your local police and fire departments.
- Make sure all street lights in your area are in working order. Alert local officials if they are not.
- Set up buddy systems for teens going out after dark.



## LOCK OUT CRIME!



**Lobstick  
River Foods  
(2014) Ltd.**

**325-3834**

**Wildwood  
Legion  
Br #149**

**325-2015**

**D & L  
Rehn  
Contracting  
Ltd.**

**325-2013**

**Yellowhead  
County**

**1-800-  
665-6030**

**U.F.A.  
-Wildwood**

**325-3866**

**Jane's  
Hair Care**

**325-3749**

**Wildwood  
Public  
Library**

**325-3882**

**Wild  
Ventures  
Contracting**

**728-5702**

**Murd's  
Plumbing  
& Heating**

**712-3630**

**Forestland  
Construction**

**325-2634**

**Wildwood  
School**

**325-3858**

**Roszk  
Farm  
Equipment  
Ltd.**

**www.roszko.com  
786-2105**



# COUNTY HOSTS LIVING WITH WILDLIFE WORKSHOP



**Submitted by Stefan Felsing, Communications Coordinator | Yellowhead County**

Thirty people attended and received practical, real-world advice from the officers and wildlife biologists who were there to answer attendees' questions. They covered bears, cougars and other problem wildlife and the things you can do to mitigate wildlife conflict.

Provincial Fish and Wildlife officers and wildlife biologists were on hand to answer questions, share stories, and give tips on how to prevent human-wildlife conflict at Yellowhead County's Living

with Wildlife workshop that took place on April 22, 2018, in Peers. Topics included understanding bears, cougars and other wildlife; techniques and tools to reduce risks; what to do in an encounter; bear-proof bins, electric fences and other deterrents, and more.

Following the presentation, everyone went outside where attendees could practice using inert bear spray during a hands-on bear spray demonstration.

"Having this training will help bring more confidence and give a better awareness to all the wildlife in our area when we're out working on our acreages and farms, or out in the in green zones hunt-

ing or hiking," says Yellowhead County agricultural services coordinator, Melissa Marquis.

The Living with Wildlife workshop, hosted by Yellowhead County, was for acreage owners, agricultural operators, hobby farmers, honey producers, hunters, fishers, campers, hikers and other recreationists to learn how to prevent human-wildlife conflict.



## GROVE HEARING CLINIC

**960-2960**

**1-866-960-2960**

**Hear what  
you've been  
missing...**

**Senior  
Discounts**



**Full  
Service &  
Repair**

**Full  
Hearing  
Assessments**

**HOURS OF OPERATION: 9am – 5pm Weekdays**

**3rd party billing (AADL, WCB, DVA, FCH) • Personal 0% Financing if Needed**

**For The Latest Technology In Hearing Aids & Assisted Living Device Stop By & See Dawn**

**#220-70 McLeod Ave - Westland Market Mall, Spruce Grove**

# BLOCK WATCH

THE ANTI-CRIME TEAM

## NEIGHBOURS HELPING NEIGHBOURS

Start, join or reactivate a neighborhood watch program today!

Remember if you see a situation that doesn't feel right, it's suspicious. Write down the description of any suspicious persons. Get the model, color and license numbers of strange vehicles. Call the police immediately. Don't assume someone else has called. If criminal activity has occurred let your Block Watch Captain and neighbors know but **CALL THE POLICE FIRST**

### SUSPICIOUS ACTIVITY THAT YOU SHOULD LOOK FOR:

- Someone screaming or shouting for help
- Unusual noises, sounds of breaking glass or shattering wood
- Beam from flashlight or light in neighbor's home
- Persons going door to door
- Someone looking into windows of parked cars
- Persons waiting in front of a home or loitering around the neighborhood
- A stranger in the back yard
- Property being taken out of houses where no one is at home or a business after it has closed
- Property being carried by persons on foot
- Property being loaded into a vehicle or being removed from a vehicle
- An opened or forced door or window
- Strange vehicles parked at your neighbor's house
- Slow moving vehicles cruising the block
- Someone being forced into a vehicle
- A stranger sitting in a car or stopping to talk to a child
- Abandoned cars

<i>Neighborhood Watch</i> <b>All Precious Jewellers</b> 960-4200	<i>Neighborhood Watch</i> <b>Sobeys</b> -Spruce Grove 962-4121	<i>Neighborhood Watch</i> <b>H &amp; R Block</b> -Spruce Grove 962-8884	<i>Neighborhood Watch</i> <b>TD Canada Trust</b> -Spruce Grove 962-0404	<i>Neighborhood Watch</i> <b>Grove Collision Repair Ltd.</b> 962-3755
<i>Neighborhood Watch</i> <b>McLeod Home Building Centre</b> 962-2575	<i>Neighborhood Watch</i> <b>Royal LePage</b> -Noralta 962-4950	<i>Neighborhood Watch</i> <b>Parkland Veterinary Clinic</b> 962-6300	<i>Neighborhood Watch</i> <b>Karo Dental Care</b>  962-6670	<i>Neighborhood Watch</i> <b>Urban Sole Shoes</b> 960-2010
<i>Neighborhood Watch</i> <b>Serenity Funeral Service</b> 962-2749	<i>Neighborhood Watch</i> <b>NAPA Auto Parts</b> -Spruce Grove  962-4421	<i>Neighborhood Watch</i> <b>B.W. Eaves-troughing</b> 699-1880	<i>Neighborhood Watch</i> <b>H &amp; E Upholstery</b> 962-3048	<i>Neighborhood Watch</i> <b>MADD Parkland County</b> 999-7924



# ABDUCTION IS NOT A GAME



**DON'T  
TALK TO  
STRANGERS!**

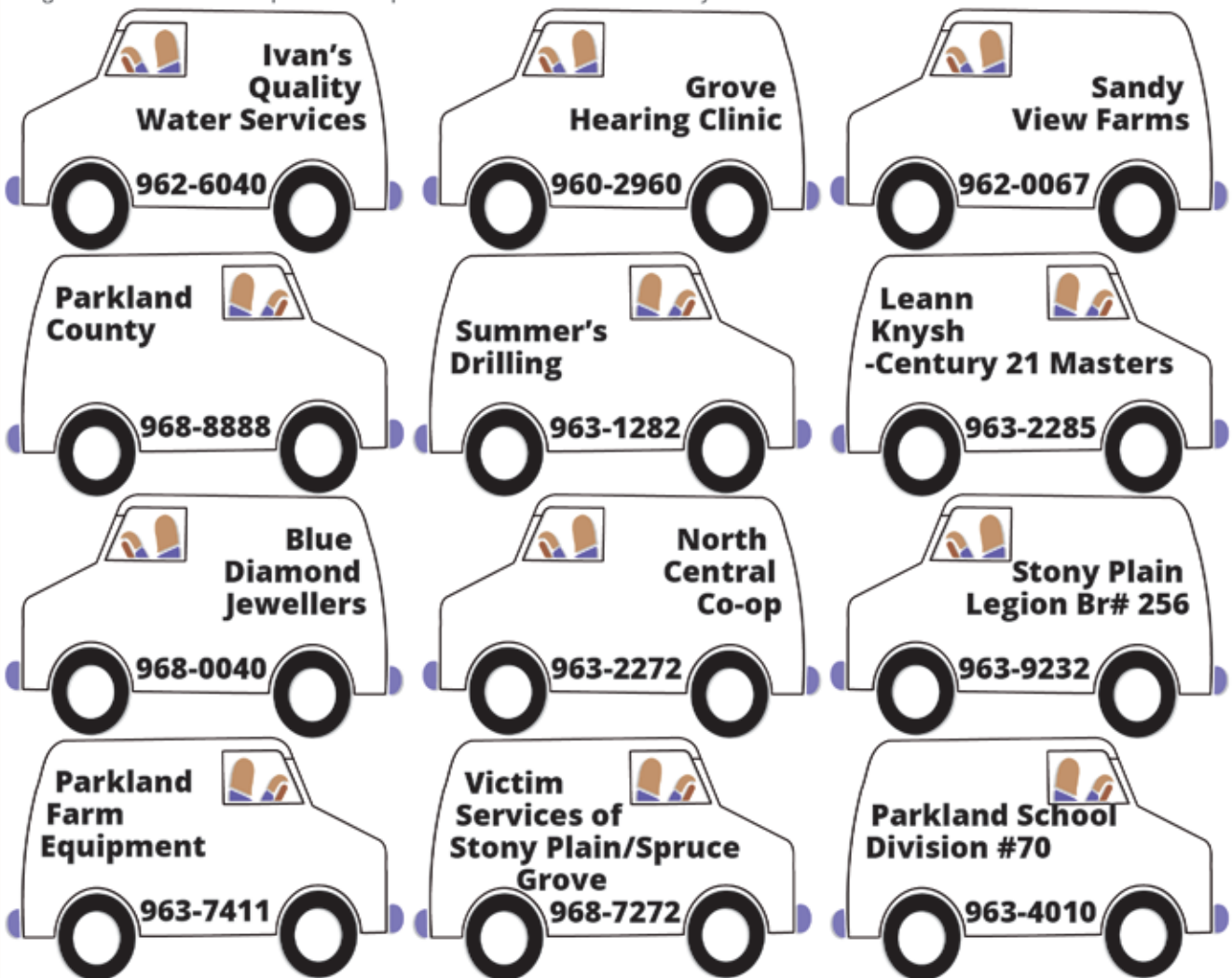
## Tips about Strangers

A stranger is anyone you don't know. There is no way to tell by the way a person looks if they are dangerous or not. A dangerous person does not always look mean or scary, so judging by the way people look is a mistake. It's not so easy to tell who is okay and who is not. Just because someone looks nasty doesn't mean that they would hurt you and just because someone looks nice, doesn't mean that they are a nice person.

There is only one person that is with you all the time and can be responsible for keeping you safe at all times. **THAT PERSON IS YOU!** Safety rules need to apply ALL THE TIME, not just when someone who looks bad or scary is around. One of the most common ways that kids get hurt by strangers is when being friendly and helpful to adults who pretend to need help. When you are without your parents or other adult you know, it is your job to protect yourself. It is not your job to offer help to any adults, even if they ask! A grown-up who needs help should get help from another adult, not a child. So remember, looking out for yourself is your biggest job when you are not with your parents or another adult, so you have permission to ignore or refuse adult requests for help.

## Stranger Tips:

- Walk and play with others and use the buddy system. If you walk somewhere, walk with other children.
- Adults do not usually ask children for directions or help, they should be asking other adults. If someone in a car should stop to ask for directions, you should not go near the car.
- Stay an arms reach or more away from strangers. Stand up, back up and run to someone who can help you if you feel afraid.
- If someone is following you on foot or in a car, go to a place where there are other people--to a neighbor's home or into a store, a police station or even a library for instance--and ask for help.
- No one should ask you to look for lost items such as a "lost puppy" or tell you that either of your parents is in trouble and that he or she will take you to mom or dad. If someone tells you this, run the other way immediately and find help with an adult you know or run into a safe place you know.
- Never go near a car with someone in it or get into a car without your parents' permission. You should learn whose cars you are allowed to ride in.





**SERENITY**  
FUNERAL SERVICE

**NEW FACILITY**  
Chapel & Reception Centre

600 Calahoo Road Spruce Grove, AB  
**780-962-2749** [www.serenity.ca](http://www.serenity.ca)

SERENITY FAMILY SERVICE SOCIETY - YOUR NOT-FOR-PROFIT SOCIETY



**SERENITY**  
FUNERAL SERVICE

[www.serenity.ca](http://www.serenity.ca)

**780-542-3338** (24 hours) 5137-50 Avenue  
Drayton Valley, AB

SERENITY FAMILY SERVICE SOCIETY - YOUR NOT-FOR-PROFIT SOCIETY

**ANOTHER RAINBOW SALE**

**RAINBOW'S ANNUAL SPRING CONSIGNMENT SALE:**

**Saturday, May 12, 2018 at 10:00AM**

**Directions:** Rainbow's Stony Plain Consignment Centre  
HWY 16A West RR 11. Stony Plain.

**HIGHLIGHTS:** Cars, Trucks, RV's & Holiday Trailers,  
Flat bed trailers. Riding mowers. Power and hand tools.  
Utility sheds. Please view website for full details.

**UPCOMING SALES:**

May 20 @ 10:00AM For Mr Les Shanks of Carvel AB. One of the largest collection of wagons, buggies, carriages. Detail listing to follow. Please view website for details and pictures. Real Estate: Approx 3+ acres c/w R2,000 4 level split - 4 bed. Shop - 26'x40'. Quad garage. Full listing to follow.

May 26 @ 10:00AM Complete Acreage Sale for Harry Dorn of Villeneuve. AB

June 16 @ 10:00AM Rainbow's 2nd Spring Consignment Sale/Father's Day Sale

September 15 @ 10:00AM Wheels That Won the West Auction Sale - Semi Retirement & Dispersal for Walter & June Volsky. Collection of Horse Drawn Wagons & Horse memorabilia

October 13 @ 10:00AM Rainbow's Annual Harvest Auction

**\*\*Watch website daily for new additions to auction lists\*\***

Terms and conditions: Cash, Visa, MasterCard, Debit, Interac. Nothing to be removed until paid for. Subject to additions and deletions. A 10% handling fee, plus GST will be charged where applicable. Please be conscious of the handling fees and factor them into your bidding. Owner Rainbow Auctions & Liquidators or it's employees shall not be responsible for accidents.

Sale Conducted By:  
**RAINBOW LIQUIDATORS AND AUCTIONS**  
Stony Plain, AB. 780-968-1000 or TOLL FREE 1-866-968-1001  
Complete Liquidation and Auction Services Since 1978  
[www.rainbowauctions.ca](http://www.rainbowauctions.ca)

# Classified Ads

## Classified Policy

CLASSIFIED RATES INCLUDE GST. 1st 20 Words: First Insertion = \$6.00; Subsequent insertion = \$3.00 each. (Eg: 2 insertions = \$9.00; 3 insertions = \$12.00; 4 insertions = \$15.00; etc) Each additional word is 20 cents per word, per insertion. BOLD/CAPITAL text available for an additional \$1/line. Lost & Found and To Give Away (up to a max. of 25 words) are free of charge. Ads must be paid in advance either by cheque, cash, Visa or Mastercard. No Refunds Allowed on Classified Ads. DEADLINE: is Thurs. 4:00 pm (Wed. 4:00 pm on long weekends). Classified ads may be called in to the COMMUNITY VOICE office at (780) 962-9228, emailed to: [classifieds@com-voice.com](mailto:classifieds@com-voice.com), dropped off at Onway Registries, or mailed with your ad and payment to: COMMUNITY VOICE, BAG 3595, SPRUCE GROVE, AB T7X 3A8. Ads may also be placed on the web at [www.com-voice.com/classified.htm](http://www.com-voice.com/classified.htm)

## Hall Rentals

Bright Bank Hall, 780-968-6813

Camp Encounter, Vincent Mireau - Camp Director. [director@campencounter.com](mailto:director@campencounter.com). C: 780-504-2012 W: 780-967-2548

Cherhill Community Assoc. Hall, Debra 780-785-2907

Darwell Hall, 780-721-2690

Darwell Seniors, Phone Debra 780-785-2907

Duffield Hall, 892-2425 or 963-6887

Entwistle Hall, Contact Tracey at 780-898-2317 or Cheryl at 780-515-1755

Entwistle Senior's Drop In Centre, Barb 727-2108 or Glennis 727-4367 Mon-Fri

Evansburg Senior's Heritage House, Dennis 727-4186

Evansburg Legion, upper hall 250 people, lower hall 80-100 people, 727-3879

## MAY 12 AUCTION FOR: 2 ESTATES

Located: BARRHEAD RODEO GROUNDS

**Saturday, May 12<sup>th</sup> at 1:00P.M.**

**MACHINERY:** \* Ford 4000 diesel Tractor w 3pt, Runs Good \* MF 255 diesel Tractor w 3pt, 50 hp, (3828 hr) \* Good 7x16 IHC 700 Auto Trip Plow \* 30' CIH 645 Cult w walking beams

**RECREATION:** \* 1979 Dodge Empress Sport 23' Motor Home w (95 k km), 440 V8, A/C \* 1984 Tri Hull 16' F/G Boat w open bow, trailer, 90 hp O/B \* Bombardier CanAm 500 Quad 4x4 \* Club Car gas Golf Cart and RH Clubs

**SPECIAL:** \* 1978 GMC 6500 Truck w (60k km), hoist, wood grain box, stored and shedded for 30 years

**ANTIQUES:** \* Beach Scale \* Jewelry Boxes \* Globes \* Glassware, Ornaments and lots more

**TOOLS:** \* Acetylene Cutting Torch \* Chains & Come Alongs \* Hand Tools

## PARSONS AUCTIONS LTD.

Charles 674-7704 (780-674-3929) Jeff 305-4328  
Pictures Available on: [parsons-auctions.com](http://parsons-auctions.com)



# Classified Ads - Call 962-9228

Fallis Community Hall, 892-3150

Gunn Hall (G.A.R.S.) 780-967-2215

Keephills Hall, 731-3761

Lake Isle Community Hall, PH: 780-892-3121 or Email: lakeislehall@mail.com

Lake Romeo PeaVine Hall, 785-2700

Magnolia Hall, 727-2015

Manley Goodwill Community Hall, 963-9165 or 916-0146

Mayerthorpe Diamond Centre, 786-4044

Moon Lake Community Hall, Nikki Berg 780-898-1390

Park Court Hall, call or text Karyn 780-712-3918

Parkland Village Community Centre, 780-298-9155 @PVCentre

Ravine Community Hall, 325-2391

Rich Valley Community Hall, 967-3696 or 967-5710

Rosenthal Community Hall, 963-7984

Seba Beach Heritage Pavilion, 797-3863

Smithfield Community Hall, 892-2390

Tomahawk & Dist Agra Center, 898-3443

Wabamun Jubilee Hall, 892-2699.

Wildwood Community Hall, 325-2180 or 780-514-6105

Wildwood Rec Complex 325-2077 or 514-8944

Wildwood Senior's Hall, 325-3787 or 325-2391

## Garage Sales

Annual Spring Garage Sale, May 5th, 2018 from 10:00am-4:00pm, at Entwistle Senior Center. Tables \$10. Info call 780-982-0353 (1) 01-05

Garage Sale - 3.5 miles South of Hwy 16 on Range Road 84. May 5th from 10:00am-6:00pm. Oil lamps, China Cups/Saucers, Blown Glass, Oak Office Chairs, Mr. Peanut Jar, Old Beatty &

Maytag Washing Machines, Ingraham Mantle Clock, Avon Bottles, BMP and Much More Miscellaneous Stuff! Call 780-325-3787 (1) 01-05

## Services

Best-Cistern-Septic-Solutions. Cistern and Septic Inspection, Cleaning and Repair! New Installs Available. Plastic, metal, fiberglass or concrete. We clean them all! Your cistern will be vacuumed, cleaned and sanitized with our high pressure, hot wash, sanitizing system. Reasonable Rates, Call 780-668-4306 (4) 10-04 OG

WANTED: Standing Timber. Are you looking to cut your woodlot before pine beetles or forest fires destroy it? Top dollar paid. Call now! Paul 780-706-1470 (12) 17-04

**Stump Grinding For Hire** - Alberta Beach & surrounding areas, Call 780-779-3589 (22) 01-05

## Cleaning

Ceiling & Wall Cleaning - Stipple, Wood, All Types. Ceramic Tile Cleaning, Cig. Smoke Removal, Biodegradable non toxic cleaner. We travel to acreages and farms! Seniors Discount, Call Ceiltech Today! 780-914-0323 (5) 03-04 OG

## Computers

Free Computer Check-ups, Computer repairs NOT over \$50. Discount for Seniors, low income, single parents. Available: Good Laptop or Desktop - refurbished, clean, good, upgraded, net, games, music, pictures, videos. ONLY

\$100. Call or leave message, 10:00am-4:00pm, 780-892-4993 (14) 22-05

## Feed & Seed

Red Clover Seed for sale, Call 780-727-4275 (2) 01-05

Seed Oats For Sale, 90% germination. Double Gear Ranch, Evansburg. PH: 780-727-2389 (9) 01-05

Small Square Hay Bales for sale, \$2.75 per bale. Cleaned & bagged. Call 780-727-4275 (2) 01-05

## Vehicles

2007 Dodge Grand Caravan, Stow & Go Seats, Teal Blue, Good Mechanical Shape, All Season Tires. Call 780-892-2707 (3) 01-05

## Wanted

I Buy Gun Collections. If you would like to sell your gun collection, Call Jay at 780-686-1350 (24) 12-12-17

## For Sale



**Spring Seacan Storage Container Sale.** Get your shop, garage, basement back with safe and secure container storage. New 20' standard \$3850.00, 4 door \$4250.00. New 20' high cube \$4750.00. We also sell container doors with or without frames. **Jason Robinson 780-604-2276 Premium Container Sales. Special pricing available**

**only while supplies last.** (7) 10-04

**Storage Containers** - 20ft, 40ft & 53ft, new & used, Premium Container Sales - Jason Robinson 780-604-2276 Entwistle (1) 01-05 BW OG

## For Rent

1 Bedroom Apartment, Fully Furnished, Full Kitchen, WIFI, Cable, Phone, 2 TV's, Power/Gas Included. New Motel looking over the lake, Downtown Alberta Beach. \$950/month. Cheryl 780-906-1675 (23) 16-01

House For Rent in Ross Haven, 2 bedroom, hardwood floors, Available Immediately, \$1000 + Utilities, 6 appliances, detached garage, jacuzzi tub, 780-237-2969 (4) 10-04 OG

**Great for a Small Family or Seniors.** Newly renovated townhome, 2 bedrooms, den & 1.5 bathrooms in Winfield, AB. Washer & Dryer in-suite. \$850/month. Call 403-606-6977 (4) 01-05 OG

## For Lease

Fully Equipped Restaurant For Lease. 1300 sqft with seating capacity of 42 seats, located 1 hour outside of Edmonton, ideal for family run Chinese or Homestyle restaurant. Living accommodations included with lease. For inquiries, call Dan 587-991-4455 (4) 17-04

## Land For Rent

25 Acres For Rent (pasture or other uses), fenced & crossed fenced, half bush/half pasture, with dug out, on Hwy 765, on South Side of Darwell Cemetery. Call 780-892-2413 (1) 01-05

# COMMUNITY EVENTS 2018

SUNDAY	MONDAY	TUESDAY	WEDNESDAY	THURSDAY	FRIDAY	SATURDAY
		1	2	3	4	5
6	7	8	9	10	11	12
13	14	15	16	17	18	19
20	21	22	23	24	25	26
27	28	29	30	31		

If you are a LICENSED, NON-PROFIT ORGANIZATION, you are welcome to submit your announcement FREE of charge, space permitting. You are required to submit your non-profit number. Call (780) 962-9229. Please note that all submitted event listings must be limited to 200 characters or less (including spaces). DEADLINE: 12 noon Friday prior to publication (Thursdays on long weekends).

**MAY 3, 4 & 5 - HORIZON PLAYERS PRESENTS "LEAVING IOWA"** @ 7:30pm at the Horizon Stage - Spruce Grove. Tickets \$22.50, horizonstage.ticketpro.ca. More info - Horizonplayers.org

**MAY 11 - "TREASURES SALE"** at Peace Evangelical Lutheran Church (303 Church Rd, Spruce Grove), 9:00 a.m. - 8:00 p.m. Come and find your treasure! Includes hot dog & drink: \$3.00

**MAY 12 - MEXICAN FIESTA** at WOODBEND HALL. Mexican Food, Dancers, Mariachi, Pinata. Margaritas 6pm Dinner 6:30pm. Tickets \$25. 12 yrs & under \$10. Call 780-470-0574

**MAY 12 - SPRING TEA & PLANT SALE**, 10am-1pm at St Augustines Parkland Anglican Church. Pie, Ice cream & beverage \$5; Children under 4, free. Hanging baskets, planters, bedding plants, house plants, bake table, crafts, used books.

**MAY 16 - WATOTO AFRICAN CHILDREN'S CHOIR: "A Concert Like No Other"** 7:00pm at Brightwood Ranch. Cost: By donation. All proceeds to Watoto Orphanage. Coffee & Dessert to follow. Info, contact 780-727-3840.

**MAY 23 - OPEN HOUSE** at Brightwood Ranch. Community Supper at 5pm. Activities: 6-8:30pm. FREE for all ages! Horseback Riding, Archery, Crafts, Climbing Wall, Petting Zoo, Zipline, Wagon Rides. For info, Call 780-727-3840.

**JUN 2 - HORSEBACK RIDE-A-THON** at Brightwood Ranch near Entwistle, AB. Ride your horse or ours. Help send underprivileged kids to camp. To donate or for info on riding, contact the ranch at 1-780-727-3840.

**JUN 4 - SCOTT WOODS & BAND: FIDDLING UP A STORM**, 7pm at Stony Plain Community Centre. Adult \$25/Child \$10. Tickets available at Maridion Music or at Scottwood Band's office at 1-855-726-8896. www.scottwoods.ca

## FARMERS MARKETS

**DRAYTON VALLEY: Evergreen Farmers' Market**, Wednesdays at the Mackenzie Center of the Omniplex from 10:30AM-1:30PM. www.evergreenfarmersmarket.ca \*Ends Dec. 19

**EVANSBURG:** Sat, 10AM-2PM, Tipple Park Museum. Call 727-2240 for tables. \*OPEN Saturday May 6th

**SPRUCE GROVE:** at the Elevator, Sat 9:30-1:30PM, tables (780)240-5821

**STONY PLAIN:** Sat, 9AM-1PM, Downtown, Stony Plain. Phone Nancy 780-962-3993.

## BINGO

**ENTWISTLE COMM. LEAGUE BINGO:** Every Wednesday, Doors Open 6PM.

**STONY PLAIN SENIOR'S DROP-IN CENTRE:** public bingo every Tues, 7PM. All ages welcome. Phone (780) 963-6685

**TOMAHAWK:** every Mon at Agra Centre, doors 6pm, Bingo 7:30pm. Info 339-2423 or 339-3747

**WILDWOOD:** Mon night. 6:30PM, bingo starts 7:30PM, Early Birds & Lucky 7

## MEAT DRAMS

**Darwell:** Put on by Alberta Beach & District Lions Club, 4:00PM, bi-weekly, Darwell Lounge & Restaurant

**Evansburg:** Evansburg Legion, Friday 8-10PM & Saturday 3-5PM

## JAMBOREE

**CHIP LAKE:** Ravine Comm Hall, 1st Sat 325-2119 or 325-2391

**DUFFIELD:** 4th Sat, Duffield Community Hall. 6:00PM Supper. \*Sept - May

**DRAYTON VALLEY:** Last Sunday of month. Upstairs @ the "55 Rec. Center" Doors at 12PM, Starts at 1PM. 780-542-3768

**ENTWISTLE:** at Entwistle Community Hall, 3rd Saturday. For more info call Diann at 780-514-0045. \*Starting Oct - May

**MAGNOLIA:** at Magnolia Hall, 7PM. Every 2nd Saturday, Hot Food. 727-2015 or www.magnoliacomunityclub.ca \*October - May

**RAVINE COMMUNITY ASSOCIATION:** 1st Sat of each month. Info 780-325-2391 \*Sept - May

**SEBA BEACH:** 2nd Friday 7PM, Seba Senior's Centre, T01 797-4233

**SPRUCE GROVE:** at Sandhills Community Hall, 3rd Sunday, 1-5PM. Info Florence 780-962-3104 Margaret 780-962-3051 \*Sept - June

**STONY PLAIN:** Stony Plain Seniors Drop In Center, 5018 - 51 Ave. Every 2nd & 4th Thurs of month, 7PM, \$2. PH: 587-989-7214 or 963-7920

**TOMAHAWK:** Tomahawk Agriplex, 3rd Friday of month. 7PM. PH: 780-339-3755. \*Starts Oct 21st

**WILDWOOD:** Wildwood Community Hall, 3rd Wed Each Month, 7PM. 325-3749 \*Oct - June

## TOPS (Take Off Pounds Sensibly)

**ENTWISTLE:** Wed 5:15PM weigh-in, 5:30-6:30PM meeting, upper level Lions Hall. 780-932-2655.

**EVANSBURG:** Thursday Mornings 9:30AM at Evansburg Legion Lodge. 241-0864.

**STONY PLAIN:** Thurs evening, Stony Plain United Church. Susan (780) 968-0869

**SPRUCE GROVE:** Wed 8:45am at Anglican Church, 131

Church Rd. Christiane 960-1109  
**WILDWOOD:** Thurs at Wildwood School, 5PM. Connie (780) 325-2420

## YOUR COMMUNITY

**ALBERTA PARENTING FOR THE FUTURE ASSOC:** Call 963-0549 or visit www.apfa.ca to register. All programs are confidential & free.

**ALCOHOLICS ANONYMOUS** IF Drinking is a Problem! 780-236-1043

**FREE HOME MEAL DELIVERY PROGRAM**, for Wabamun Seniors & Wabamun Lions. Arrange for meal preparation through a local restaurant. Call Darlene, 892-2551.

**PEMBINA SKATING CLUB** (Evansburg Arena), offers Learn-to-Skate, CanSkate & STARSkate. All ages. Call Lisa 727-2729. \*RUNS Sept-March

**PROBLEMS WITH DRUG OR ALCOHOL ADDICTION** in a loved one? Contact Drug Rehab Resource for a free confidential consultation. 1-866-649-1594 or www.drughabresource.net

## LIBRARY EVENTS

**AFTERNOON BOOK CLUB** at Keephills Library. 2nd Tues of every month, 1:30-3:00PM. Visit www.pclibraries.ca for info.

**FAMILY GAMES NIGHT:** 3rd Wed of every month, 6-8PM. Located at Entwistle Library, Duffield Library and Tomahawk Library. In partnership with Parkland School Division. Visit www.pclibraries.ca for more info.

**HATCHET CITY READERS** at Tomahawk Library. 3rd Tues of every month, 10-11AM. For what we're reading next, visit our website, www.pclibraries.ca.

**INVENTORS CLUB:** 2nd Thurs of every month, 3:30-5:00PM at Entwistle Library. 4th Thurs of every month, 3:30-5:00PM at Tomahawk Library. Ages 8-13. To register: Call the library at 780-339-3935.

**SEBA BEACH PUBLIC LIBRARY BOOK CLUB** - meets the 4th Tuesday of the month in the library at 10:30AM. For info call 780-797-3940 or E-mail us at seba@seba-beach-library@yrl.ab.ca.

**EVANSBURG PUBLIC LIBRARY BOOK CLUB:** 4th Thurs, 7:00PM Grand Trunk High 727-2030.

## SOCIAL EVENTS

**50+ YOUNG AT HEART LUNCHEON** for Parkland County Seniors. 12PM at Stony Plain United Church Basement, \$5/plate. 3rd Wed of Month. Call Audrey 780-963-1782. \*Sept-June

**AEROBICS:** Low impact, Mon/Wed, 11AM-12PM, Wildwood Senior's Centre, \$1/session.

**BREAKFAST SOCIAL:** 9-11:30AM, Parkland Village Community Centre - 3rd Sunday. PH: 780.298.9155 Social Media: PVCCentre. \*except June-August

**COUNTRY QUILTERS** in Stony Plain house a "Sew in Tuesday", 2nd Tuesday of every month, from 10-3PM. Drop in \$5/member, \$6/non-members. Contact Cindy 780-963-7170.

**EVANSBURG ART CLUB:** meet & paint Thurs 1-4PM Rec Plex. 727-4340 or 727-4098

**EVANSBURG GUIDES & PATHFINDERS:** Mon 6PM, Camp Evansburg.

**EVANSBURG SENIOR'S HERITAGE HOUSE:** Floor Curling Mon & Thurs, 1pm. Court Whist Thurs, 7pm.

**EVANSBURG TIPPAL PARK HISTORICAL BUILDING TOURS:** Wed - Sat, 10:00-5:00PM.

**HEALTHY AGING NURSE & FOOT CARE PERSON**, Wabamun Seniors Centre, 2nd Thurs of month, 9AM.

**OPEN HOUSE** for socializing & card playing at Entwistle Senior Center, Every Sunday from 1-4pm.

**PARENT & TOT PLAYTIME:** PERC Building Stony Plain Wed. 10-11AM, Holborn Community Hall. Thurs 9:30-11AM, Parkland Village Thurs 9:30-11:30AM.

**POT LUCK** every Tues 12:00PM, Wabamun Seniors Centre. Come on down!

**SEBA BEACH SENIORS CENTER:** Yoga, mon, 9:30AM, \$10/session. Bridge thurs, 1PM. Jams every Wed night, 7PM. Thrift Shop every Wed & Sat at 10-3PM.

**SEBA BEACH QUILTERS & FIBER ARTS:** Wednesdays 9:30AM, Seniors Center.

**SENIORS 50+ LUNCHEON:** 3rd Wed, 12PM at Stony Plain United Church basement hall. Call Audrey (780) 963-7582.

**SENIORS WEDNESDAY\* AFTERNOON** 1-4PM at Parkland Village Community Centre. Games, Crafts & more! Call Sheryl 780.695.7032 \*exceptions incl. Weather.

**SPIRITUAL LIVING STONY PLAIN INSPIRATIONAL CINEMA & DISCUSSIONS** at PERC Building (5413-51 St). 2nd Friday of month at 7PM. Popcorn provided, donations appreciated. Contact 780-940-3032

**SPIRITUAL LIVING STONY PLAIN GATHERING** at PERC Building (5413-51 St). Every 2nd & 4th Sunday of month. Meditation 10AM, inspirational sharing 10:30AM. PH 780-940-3032

**SPRUCE GROVE ELEVATOR TOURS:** Tues-Sat, 9-3PM. 960-4600.

**STONY PLAIN'S 5TH MERIDIAN GOOD SAMS RV CHAPTER:** Ecole Meridian Heights School. 3rd Tues of month, 7PM. Call Pat at 780-963-6976 or Ruth at 780-288-9829.

## MEETINGS

**2nd TIMERS:** A support & confidential group for Grandparents Parenting. 1st Thurs of month, 6:30PM. Grand Trunk High School (meet in Lobstick Literacy & Learning room). Child care provided at the Evansburg Public Library. \*Starts October

**299 ROYAL CANADIAN SEA CADETS CORPS MACKENZIE:** Stony Plain Comm Center, Wed 6:30PM. Youths 12-18, 963-0843

**755 PARKLAND AIR CADETS** Thurs, 6:30-9:30PM Muir Lake School, ages 12-18. Info call 405-6585 or www.aircadet.com/755.

**AA:** Friday at 8PM, Evansburg. Call 325-2204, 727-2466 or 727-6652.

**AHS:** Addiction Services provides assessment and counseling for alcohol, other drugs, tobacco and gambling in Breton on court day Wednesdays. To make an appointment, please call 780-542-3140.

**AL-ANON:** Wed 8PM, Spruce Grove United Church, 1A Fieldstone Drive. 962-5205

**CHAMBER OF COMMERCE** (Evans/Ent): 7:30PM 3rd Thurs, Heritage House.

**C.H.I.L.D. (Citizens Helping In Life's Defence)** Please join our Pro-Life meetings once a month in Stony Plain. For info call Chris 963-6997.

**CITIZENS ON PATROL:** The Pembina Community Watch Patrol Meets 2nd Thurs of each month at 7:30PM, at the West Central Forage Association Office 5009 45th Avenue, Entwistle. Contact 780-727-2000

**COMMUNITY QUILTERS & CRAFTERS:** 3rd Tues. Evansburg, Liz 727-3872. Brenda 727-4476

**DARWELL & DISTRICT AG SOCIETY:** 8PM, 1st Mon, Community Hall.

**DDRA MEETING:** 7PM, 2nd Mon, Darwell Community Hall 892-3099. \*Except Jul/Aug/Dec

**DRAYTON VALLEY BRANCH OF ALBERTA GENEALOGY**

**ICAL SOCIETY:** meets 7PM at Municipal Library (5120-52 St.) every 3rd Wed of month. Call (780) 542-2787

**ENTWISTLE COMMUNITY LEAGUE GENERAL MEETINGS:** 2nd Thursday monthly 7:30PM. \*Except June, July, August

**ENTWISTLE LIONS CLUB:** 2nd & 4th Tues, 8PM, Entwistle curling rink. Jim 727-3573

**ENTWISTLE SENIORS:** Ladies: 10AM 2nd & 3rd Wed, Floor Curling: Tue & Fri, 2PM

**ENTWISTLE SENIORS 55+ CLUB:** Tue & Fri, 1:30-4:00PM at Entwistle Hall

**EVANSBURG SENIOR'S HERITAGE HOUSE:** 2nd Tues of month, 1:30PM. Dennis, 727-4186.

**FALLS COMMUNITY ASSOCIATION:** 3rd Tuesday, 7:00PM.

**GIRL GUIDES OF CANADA:** Poplar Hollow District Guides-Pathfinders, Mon 6-8PM. Sparks-Brownies Tues 4-5:30PM. Meet at Camp Evansburg. Brenda 780-727-4476

**LAC STE. ANNE & LAKE ISLE WATER QUALITY MANAGEMENT SOCIETY:** 3rd Fri, 7PM, Alberta Beach Council Chambers.

**LAKE ISLE HALL COMMUNITY HALL BOARD:** 3rd Thurs of each month @ 7:30PM at the Lake Isle Hall (Hwy 633 and RR55) Ph # 780-892-3121

**LOBSTOCK 4-H BEEF & MULTI CLUB:** 1st Mon, Evansburg Arena, 7PM, Jackie 780-727-2541

**LOBSTOCK GARDEN CLUB:** 1st Mon, Evansburg Baptist Church, Charlotte (780) 325-3787

**MEN FOR SOBRIETY:** Wednesdays at 7:30PM, FCCS Building (#105, 505 Queen Street, Spruce Grove). Mike (780) 965-9991.

**MS SOCIETY DRAYTON VALLEY COMMUNITY GROUP** meets 1st Tues of month, 6-8PM at Norquest College. Terra Leslie, 1-403-346-0250. \*Sept-June

**MS SOCIETY PARKLAND COMMUNITY SUPPORT GROUP:** Are you diagnosed with MS and have questions? Last Tues of month, 7-9PM, Westview Health Centre. Contact Cassy 780-471-3034

**NA MEETING:** Tuesdays, 7:00PM. 514-6011

**PEMBINA AL-ANON FAMILY GROUP:** meets Tuesdays @ 7:30PM, at Evanburg Catholic Church Hall. Call Patty H. (780) 727-4516 or Cheryl (780) 727-6671

**PEMBINA PORCUPINES - JUNIOR FOREST WARDENS:** Entwistle Porcupine gathering: 7PM, 1st Tue. Len & Tineke at 727-2020. Porcupines@yellowheadfw.ca

**SOLVE:** Community Enviro issues discussed at Smithfield Hall (N of Hwy 16 on R34). 2nd Thursdays. Jana 892-0006

**STONY PLAIN FISH & GAME ASSOCIATION & WABAMUN GUN CLUB:** 2nd Mon, Stony Plain Comm Center, 7:30PM.

**SUNDOWNERS TOASTMASTER CLUB:** Mon (excl. Holidays) 7:30-9:30PM. St. Matthew's Church, Spruce Grove. Judy 960-5258

**TOMAHAWK SENIORS (50+)** meets every Thursday from 1-4pm at the Tomahawk Agra.

**W.E.E COMMUNITY FOOD BANK:** Call (780) 727-4043 for emergency food needs. Monthly Meeting: LAST Monday of month at 7:00PM at the Food Bank (Old fire hall in Entwistle). \*Except December

**WILDWOOD & DIST AG SOCIETY:** 2nd Wed of each month 7:00PM at the Wildwood Complex. Wilma 325-2424

**WILDWOOD & DIST ROD & GUN CLUB:** 2nd Thursdays, 7:30PM at the range clubhouse, wildwoodrodandgun@gmail.com

**WILDWOOD SENIORS:** 4th Wednesday at 2:00PM. PH: 325-3787 or 325-2391. \*No meeting July/Aug/Dec.



# SUDOKU OF THE WEEK

## Fun By The Numbers

**Here's How It Works:** Sudoku puzzles are formatted as a 9x9 grid, broken down into nine 3x3 boxes. To solve a sudoku, the numbers 1 through 9 must fill each row, column and box. Each number can appear only once in each row, column and box. You can figure out the order in which the numbers will appear by using the numeric clues already provided in the boxes. The more numbers you name, the easier it gets to solve the puzzle!

### ANSWER:

8	9	1	5	6	4	7	3	2
4	2	6	8	3	7	5	1	9
5	3	7	1	9	2	4	8	6
7	6	3	2	8	1	9	5	4
1	8	2	4	5	9	3	6	7
9	5	4	3	7	6	1	2	8
6	7	5	9	2	3	8	4	1
3	1	9	6	4	8	2	7	5
2	4	8	7	1	5	6	9	3

**Like puzzles?** Then you'll love sudoku.

This mind-bending puzzle will have you hooked from the moment you square off, so sharpen your pencil and put your sudoku savvy to the test!

		1	5					
		6		3		5		9
	3		1		2	4		
		3		8			5	
1			4	5	9	3	6	
9	5	4	3				2	
	7					8		
				4				5
2		8		1				3



Like Us On facebook

FACEBOOK.COM/COMMUNITYVOICENEWS PAPER



follow us on twitter  
@communityvoice8

# SERVICE DIRECTORY

## 2Bros

Custom Contracting Ltd.

Custom Framing • Concrete Floors • Shingling  
Siding Soffit Fascia • Styrofoam Block System

Jeff

780-717-0520

## BREWSTER BOBCAT SERVICE LTD.

P.O. Box 454, Wildwood, AB T0E 2M0

- \* Site Preparation
- \* Pile Drilling
- \* Concrete Work
- \* Landscaping
- \* Demolition
- \* Sand & Gravel Delivery
- \* General Contracting



brwcat@gmail.com

Telephone: (780) 325-3743

Bruce Balascak Cell: (780) 621-6960



POSTINGFIRST.com

**FREE LOCAL CLASSIFIED ADS**

Real Estate, Rentals, Vehicles, Pets, Jobs, Service Directory,  
Buy/Sell/Trade, Lawn & Garden, Garage Sales, Events,  
Local Places & Much More... Advertise for **FREE** Today!



Follow Us



## WABAMUN PHARMACY

**I.D.A.**

Box 90, 5120 - 51 Avenue

Wabamun, AB T0E 2K0

Ph: (780) 892-2278 Fax: (780) 892-2488



**THIS SPACE IS  
RESERVED  
FOR YOU!**

## H & E UPHOLSTERY

For all your upholstery needs

Convertible tops for cars and boats, custom car  
and boat interiors, 5th wheel trailer skirts, boat  
tarps, ATV seats, furniture, kitchen chairs,  
heavy equipment seats.



www.h-and-e.ca

For more information contact:  
info@h-and-e.ca

4-485 South Ave.

Spruce Grove  
(780) 962-3048



# SERVICE DIRECTORY

**Blakeman Drilling Ltd.**  
Waterwell Drilling & Servicing  
Pumps & Pressure Systems  
SERVING LAC STE. ANNE  
& WEST PARKLAND  
FOR OVER 25 YEARS  
Joe (780) 924-3024

**DONALD N. GREENWAY**  
Chartered Accountant  
Suite 205 Sunrise Professional Building  
215 McLeod Avenue  
Spruce Grove, AB  
(Bus.) 962-6366  
(Fax) 962-3990

**P&E VENTURES INC.**  
SKID STEER SERVICES  
GENERAL LANDSCAPING  
SNOW REMOVAL  
POST & PILING HOLE  
SAND AND GRAVEL  
PAUL VAN HECKE & CURTIS MIKO  
OWNER / OPERATORS  
BUS: (780) 727-2721 CELL: (780) 621-6148  
BOX 498, EVANSBURG, AB T0E 0T0

**Ernie's Repair & Service**  
SMALL ENGINES  
4820 - 47 Avenue, EVANSBURG  
727-4433

**Community VOICE**  
Keeping You and Your Community Informed  
**THIS SPACE IS RESERVED FOR YOU!**

**MARK MARTIN PFEIFFER**  
MASTER BRICKLAYER/MASON  
Cell: 780-242-3308  
Email: pfeiffer.mark@hotmail.com  
• Brickwork • Stonework  
• Rockwork • Parging  
• Concrete Block Work  
• Tile Work (all kinds)

**PURE POTENT CBD DROPS**  
The World's Purest CBD Oil  
CBD OIL BENEFITS:  
• High Absorption Sublingual  
• Improves Overall Health  
• Helps Relieve Pain  
• Delivery System  
• Inhibits Cell Growth in Tumors  
(780) 907-8642

**ROY SHERWOOD**  
Master Electrician  
Ph: 780-968-1425  
Cell: 780-908-2287  
Fax: 780-968-2211  
Email: suretech@xplornet.ca  
2-53220 Rge Rd 21  
Parkland County, AB  
T7Y 0C5  
**SURETECH ELECTRIC LTD.**  
Control & Automation  
Commissioning  
Solar Sales & Service  
Industrial . Commercial . Residential

**PREVAIL MAX**  
CELLULAR HOMEOSTASIS FORMULA  
A NUTRITIONAL BREAKTHROUGH  
THAT SUPPORTS YOU...  
RIGHT DOWN TO THE LAST CELL!  
LIVIN TRIM WITH  
**VALENTUS (780) 907-8642**  
www.ValentusTour.com/Ladybug

**PEMBINA CONCRETE PRODUCTS LTD.**  
Manufacturers of  
**ONE PIECE SEPTIC & HOLDING TANKS**  
\* Water Cisterns \* Field Systems \*  
Pumps and Accessories \* Sumps  
DELIVERED TO YOUR SITE  
1-800-661-3047  
780-727-2702  
PembinaConcrete.com  
**New Line of Concrete Statues, Fountains and Garden Ornaments.**  
BOX 123, Entwistle, T0E 0S0

**Community VOICE**  
Keeping You and Your Community Informed  
**THIS SPACE IS RESERVED FOR YOU!**

**Complete Drywall Service**  
DRYWALL, TAPING, RENOVATIONS, DRYWALL ART, STEEL STUDS, INSULATION, T-BAR, TEXTURE  
RAL Drywall and Plastering Ltd.  
Randy: 780-691-5248

**RESIDENTIAL CLEANING SERVICES**  
Call Today for your **FREE Quote!**  
**(780) 264-7740**  
SERVING SPRUCE GROVE AND STONY PLAIN ONLY



# SERVICE DIRECTORY



**Harvey**  
cell. 780-445-8010  
ph. 780-892-3532

**Box 145,  
Darwell, AB  
T0E 0L0**

*No Job too small... We do them all!*

• Road Building • Black Dirt • Sand • Gravel • Clearing • Dugouts

**JACK'S AUTO BODY & TOWING**

 \*Specializing In Collision Repair  
\*Guaranteed Work  
\*Insurance Claims  
**Onoway 967-5850**



Located between Alberta Beach & Onoway on Hwy 633

**OUR PLEDGE IS QUALITY**



"We are a family orientated company that pride ourselves on SAFETY and EFFICIENCY"

**CHRIS & LISA VANHILL  
OWNER/OPERATOR**

Site Clearing, Grading, Road Building,  
Brushing, Acreage Development, Dugouts, etc.

**780-619-3236**  
vanhillcontracting@gmail.com Onoway, AB

**SERVING ENTWISTLE AND AREA FOR OVER 30 YEARS**

**Entwistle  
CONCRETE**

PRODUCTS LTD.

**SAND & GRAVEL SALES**

**PH: (780) 727-3525**  
**Dan McCracken Entwistle, AB**  
[www.entwistleconcrete.ca](http://www.entwistleconcrete.ca)



**THIS SPACE IS  
RESERVED  
FOR YOU!**

**SMOOLE**

- Construction & Septic Installation
- Environmental Wastewater Disposal
- Site Design & Evaluation
- Power, Water & Basement Excavation
- Trackhoe, Backhoe, Bobcat & Dump Truck

**For All Your Excavation Needs**

Call Dan 780-991-4484 Reid 780-909-0173

**JIM HAY TRUCKING**

- Screened Black Dirt
- Beach Sand
- Road Gravel • Fill Dirt
- Bobcat & Backhoe Available

**(780) 220-5849**

**SANGUDO  
VETERINARY CLINIC**

Box 581, 4916 - 52 Ave. Sangudo, AB. T0E 2A0

**Dr. Ralf Sanders DVM**

Ph: 780-785-2200  
Fax: 780-785-2228  
[sangudovet@gmail.com](mailto:sangudovet@gmail.com)

**24 HOUR EMERGENCY SERVICE**

GET A **FREE SAMPLE**

**LOSE  
Weight**

BY DRINKING COFFEE

**(780) 907-8642**

**CCAS**

**Canadian Clean Air Services Ltd.**

**Heating & Air Conditioning**

High efficiency Furnace or  
Air Conditioner from 49.99/month.  
Instant Approval. No Credit Required



Licensed and Insured  
with over 14 years' experience.  
We accept Visa, master card, Amex and interact.

**42 Singing Hill Estates,  
Seba Beach T0E 2B0**  
**Office line 780-569-5201**



**THIS SPACE IS  
RESERVED  
FOR YOU!**

**Xtreme LEAN NRG**

Advanced Formula helps you:


- Regulates Your Appetite
- Regulates Blood Sugar
- Regulates Fat Absorption
- Improve Energy Levels
- Improve Your Mood
- Increase Mental Focus

"We've unlocked the science of slim!"

**(780) 907-8642**

**SUMMERS  
DRILLING LTD.**

Water well drilling and service  
Family owned Business Serving Alberta since 1917



Tired of hauling water?  
We can install  
a water well with  
a permanent water  
supply for as little as  
\$150/month OAC

Never run out  
of water again!

5 year workmanship  
warranty

3 Convenient  
ways to pay  
• Visa  
• Mastercard  
• We now offer full financing

Stop in at our office 4405 - 50 Street, Stony Plain  
780-963-1282  
[admin@summersdrilling.com](mailto:admin@summersdrilling.com)





# EdmontonLakeProperty.com

• Find Every Property For Sale! • Free Property Evaluations!



## Lake Access and View Without the Lakefront Cost

Splendid original owner home with too many exciting benefits to list here. But to mention a few this 1200 sq ft bung with fully finished walkout offers a large kitchen, view living room and family room, boat hoist access, air conditioned just to mention a few. Call for private viewing today.

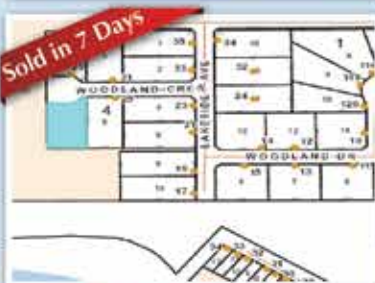
**\$439,900**



## Luxury Lakefront

This 2 Story 2300 sq ft Home with another 630 sq ft Carriage home with 3 car garage is everybody's dream lake property. Located in wonderful Seba Beach with over 200 ft lot with over 70 ft of lakefront. Home has 4 bedrooms, dream kitchen and make sure you find our secret loft. Call for private viewing today.

**\$1,095,000**



## Get Ready For Summer

A hard to find lake access lot on Wabamun on 1 acre of treed land with a clearing. This lot has park reserve on the back and westside ensuring privacy. Easy to set up a RV and the seller has a 29 foot 5th Wheel negotiable with lot.

**\$119,900**



## Opportunity For Beach Lovers

It is rare day when you can buy a Seba Beach view property less than 300 feet to the beach. This unique double lot creek property has a 1800 sq ft newer home with walkout basement.

**\$409,000**



## Best lake Location

Undeniably the best location on lake Isle, this North West location maximizes THE BIG THREE, lakeview, lake access, sunshine. Now location is great but this 9 yr old house is awesome with over 3000 sq ft of air conditioned, heated floor home has every available option including hardwood floors, granite counter tops, for the rest you must call.

**\$429,900**



## Everything You'll Need

Yes, everything you'll need to start the golf course life. Checklist: Private Lot CHECK, Golf Course access CHECK, Golf Cart CHECK, Summer Deck, CHECK, NEW Foot Home that sleeps 10 CHECK, Barbecue CHECK, 3 TVs For Sports and Movies CHECK, Fire pit CHECK, Call Wayne 780-991-5107 Check

**\$199,900**



## \$700 For Seba Lakefront

Seba Beach lakefront is turning into millionaires row. This much sought after lakefront offers a completely remodelled 1000 sq ft bung with awesome deck to take advantage of this wonderful location. In this home will find 3 bedrooms, updated kitchen and bathroom new washer and dryer, oops out of room, call today.

**\$709,900**



## Ready For The Beach

Want a Lakefront Wabamun home where you can experience spectacular sunrises and sunsets all summer long on this sought after prime building site that gives you 240 x 70 feet of building and development possibilities. The lot has a 40-foot grade that can be in Half with a walkout basement.

**\$595,000**

**Wayne Is Getting It Done**  
**Call For A Free Evaluation Today**



We offer Free Evaluations and Buyer Consultations!

**Call Wayne Today!**

**780-991-5107**



**RE/MAX**  
REAL ESTATE