

*Serving: Onoway, Alberta Beach, Calahoo, Gunn, Glenevis, Darwell, Cherhill, Sangudo, Mayerthorpe, Rich Valley, Barrhead, Whitecourt, Stony Plain and Spruce Grove*

**September 11, 2018**

## SHERWOOD PARK MAN CHARGED WITH CHILD PORNOGRAPHY OFFENCES

**Submitted by RCMP Alberta**

A former summer camp vol-

unteer programmer has been arrested for child pornography offences following an investigation by Strathcona County

RCMP and ALERT's Internet Child Exploitation unit.

**Continued on Page 3**

**All Precious JEWELLERS**  
*"Your Spruce Grove Jewellery Store"*  
**Goldsmith on Premises**  
 • Engraving • Clock & Watch Repairs  
 • Jewellery Repairs • Custom Make-ups  
 Jewellery Repairs Done On Site.  
 Laser Welder Services Available.  
 Toll Free: 1-877-962-4367  
 PH: 780-960-4200 Fax: 780-960-4201  
 Suite 102, 215 McLeod Avenue  
 Spruce Grove, AB. T7X 0G2

## BARRHEAD RCMP CHARGE FORMER SCHOOL EMPLOYEE

**Submitted by Barrhead RCMP**

On Sept. 9, 2017 Barrhead RCMP received a complaint regarding a former Pembina Hills School Board employee.

It is alleged the employee submitted fraudulent claims to the school board between November 2014 and January 2017 in excess of \$18,000.

Colleen Symyrozum-Watt (55) of Busby, Alberta was arrested

on June 25, 2018 and charged with fraud over \$5000 (X2), fraud under \$5000 (X2) and criminal breach of trust. She was released and is scheduled to appear in Barrhead Provincial Court on Sept. 11, 2018.

**L & B** Tradition of Quality & Service  
 Water Services Ltd.  
 Well & Pump Repairs  
 Complete Pressure Systems  
 Farm - Residential - Commercial  
 Potable Water Cisterns  
 Financing Available  
 BILL RIEDLINGER ERNIE BLEKER  
 PH. 780-963-8134 OR 780-963-7749  
 LBWATER@XPLORNET.COM

## MALE CHARGED WITH THEFT AND FRAUD CHARGES

**Submitted by Whitecourt RCMP**

Whitecourt RCMP have laid theft over \$5000 and fraud over \$5000 charges against a Whitecourt resident. Joel Brian Gun-

derson (48) has been charged for the misappropriation of over 2 million dollars from a local business. Suspicious financial activity was reported to the police in March, 2017 and the ensuing investigation encompassed a time

period of 11 years, searching records as far back as 2006.

Gunderson has been released from custody and is due to appear in Whitecourt Provincial Court on September 25, 2018.

**GLASS SHOP ON WHEELS**  
**780-305-3974**  
**Wes Werkman**  
 • Windshield Replacement & Repair  
 • Sealed Unit Replacement  
 • Small Window & Screen Repair  
 • Excavator Glass  
**We Come to You!**

## TWO VEHICLE COLLISION

**Submitted by Mayerthorpe RCMP**

Preliminary investigation has shown a car was heading westbound on Highway 43 when a truck heading south on Highway 18 was turning and a collision occurred.

The truck with one lone adult

male occupant suffered serious but non-life threatening injuries. The car had three occupants. Tragically, a 43-year-old female passenger from Calgary was pronounced deceased at the scene. The adult male driver of the car was transported to hospital and the adult male passenger was transported via STARS to

Edmonton. Both suffered serious but non-life threatening injuries.

Mayerthorpe RCMP and a RCMP Collision Analyst continue to investigate the collision.

Our thoughts are with family of the deceased at this time. The name of deceased will not be released.

**SLIMROAST Optimum**  
**DARK ROAST COFFEE**  
 YOUR LOGICAL SOLUTION TO WEIGHT MANAGEMENT  
**(780) 907-8642**  
[www.ValentusTour.com/Ladybug](http://www.ValentusTour.com/Ladybug)

# STOLEN CAMAROS RECOVERED

**Submitted by Central Alberta District Crime Reduction Unit**

The Central Alberta District Crime Reduction Unit (CRU) were successfully deployed by Leduc RCMP to effect the arrest of two wanted individuals. A male and female were identified as being wanted by police on several outstanding warrants. The CRU made it a priority to locate these subjects who were known to the police in Central Alberta District.

Information led the CRU to Hinton, where a stolen 30-foot recreational vehicle being used by the two was located and recovered. It was determined that two Camaros were stolen from a residence in Hinton, allegedly by the targeted individuals. The CRU determined that

the individuals fled to Westlock in the Camaros.

On August 31, the Westlock RCMP received a complaint that a local Ford dealership was the victim of the theft of a Dodge pickup truck. Information was obtained that the male suspect responsible was dropped off by a female accomplice driving a yellow Camaro.

On September 1, the Westlock RCMP received information that both the stolen truck and suspect Camaro were at a gas station. The truck and the Camaro both fled from the gas station after purposefully ramming two responding police vehicles. A brief pursuit was initiated by responding Westlock RCMP and then terminated.

The Central Alberta District CRU were positioned in Westlock already as a result of determining that their

targeted subjects had travelled to Westlock. With the timely CRU response, a tire deflation device was deployed and the Camaro went into the ditch to avoid the device. Police Dog Services attended and successfully tracked the female driver. She was arrested and transported to the hospital with minor injuries. It was determined that this was the same Camaro which had been stolen earlier out of Hinton.

At 7:30 p.m. that evening, Central Alberta District CRU located the male suspect. He was in proximity of a stolen Ford F350. With the assistance of RCMP Air Services, and Police Dog Services, the CRU effected his arrest and seized the stolen Ford F350 along with multiple other stolen items, including a large quantity of tools from an earlier break and enter.

On September 2, the CRU, in conjunction with Leduc RCMP GIS located and seized the second yellow Camaro in Wabamun. In total, two Camaros, one Ford F350 and one recreational vehicle were all recovered by the CRU.

The Westlock RCMP later recovered the stolen Dodge Truck.

At the time of their arrests, 21-year-old Annette Brown and

28-year-old Eric Michael Unger, both of Red Deer, were wanted on a combined total of six warrants out of a combination of different detachments, including Leduc, Red Deer and Blackfalds. Investigation into several other unrelated incidents remains ongoing.

In relation to the Westlock incident, Eric Unger is facing the following 20 charges: Break and enter with intent, Fail to comply with a condition of an undertaking or recognizance (x8), Operation of a motor vehicle while being pursued by police, Dangerous operation of a motor vehicle, Resist police officer, Possession of property obtained by crime over \$5,000 (x2), Possession of property obtained by crime under \$5,000 (3), 3 charges under the Traffic Safety Act

Annette Brown is facing 17 new criminal charges as a result of this incident including break and enter and commit theft, fail to comply with a condition of a Recognizance (x7), dangerous operation of a motor vehicle, et al.

Both Unger and Brown were remanded in custody and were scheduled to appear in court in Westlock on September 4, 2018.



# Urban Sole Shoes

## Summer Clearance

SEPTEMBER 15<sup>TH</sup>, 2018 | 10-5PM

### SUMMER INVENTORY!

### 50% OFF

Ecco • Taos • Aetrex • Romika • Rieker • Merrell  
Keen • Mjus • Bernie Mev • Clarks

#56, 96 Campsite Road Spruce Grove (Next to Penningtons, Walmart)  
**780-960-2010**

# LETTER TO THE EDITOR:

## AN OPEN LETTER TO U.C.P. LEADER JASON KENNEY

Submitted by David Chawner

Parties and the professional politicians but about the people that support them and pay the bills.

You made a promise that the new Party would be 'grassroots' driven and you got elected on that promise. We do NOT want people who live elsewhere 'represent' us, we want people who live here, live the problems we have, understand what we need,

because they experience it every day like the rest of us.

To allow people, who live outside of constituency, to run as candidates goes against all of the values that we believe in and were hoping for from a new Conservative Party... it smacks of, once again, a Party who's more interested in pushing its' own agenda than one which tru-

ly wants to represent US – the taxpayers and members.

If we take it to the ultimate... why not just pick enough people, who live in Edmonton, to represent every constituency??? We'd save a ton of money on living expenses, second accommodations and polling stations.

Oh yes Mr. Kenney... I AM A U.C.P. member.

## Sherwood Park Man Charged With Child Pornography Offences

Continued From Page 1

In January, 2018 the National Center for Missing and Exploited Children provided information about a Sherwood Park suspect accessing child pornography. The Strathcona County RCMP launched an investigation following the above referral.

Tanner Porteous was arrested on September 6, 2018 after a

search warrant was executed at his home in Sherwood Park. The 19-year-old has been charged with distribution and possession of child pornography. Porteous has been released with conditions and is scheduled to appear in court in Sherwood Park on September 19, 2018.

Porteous previously worked as a camp counsellor and then summer camp volunteer programmer with Camp Encounter, which

is located near Lac la Nonne in Barrhead County northwest of Edmonton.

Camp Encounter is owned and operated by the Catholic Archdiocese of Edmonton. There is no indication that the alleged offences were connected to his service at Camp Encounter, and he had no access to any camp computers. However, given the seriousness of this charge, the accused will no longer be considered for

any volunteer or employment role in the Archdiocese.

While the investigation and charges are related strictly to online offences, ICE is encouraging anyone with information about this case to come forward and contact the Strathcona County RCMP or cybertip.ca. Currently, investigators have no evidence to suggest any offences were committed against any children who attended the camp.

**Mayerthorpe Golf & Country Club**  
**Annual General Meeting**  
**Wednesday, September 12, 2018 - 7:00 PM**  
 Public encouraged to attend to help promote and improve our Course!  
 Thank-you to all volunteers, sponsors, golfers and participants in our 2018 Season.  
**Night Golf planned (Weather permitting)**  
 Check with the golf course for date!



**JW QUARTER HORSES INC**  
 Guest Consigners  
 Selling approx. 20 Head of Started Registered Quarter Horses at Rich Valley Agriplex  
**Preview September 28<sup>th</sup> 12:00PM**  
**Sold by Auction on September 29<sup>th</sup> 12:00PM**  
 Call John Isley @ 780-674-3446 or 780-305-1817  
 Or Rod @ 780-282-0233 for more information.

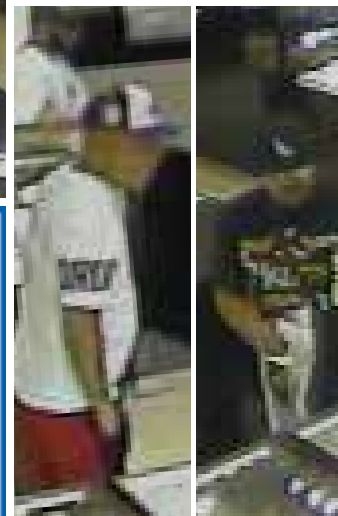
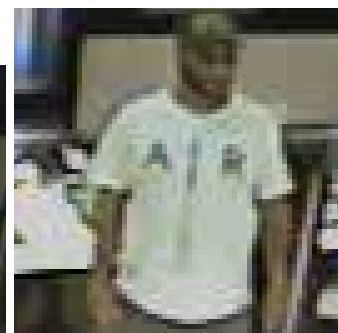
**JOKE OF THE WEEK**  
 Miss Hewitt, was one of the teachers at Northern Infants, Normanton, (kindergarten) when Philip came up to her and say that he had found a frog. Miss Hewitt asked if the frog was alive or dead. Philip, aged 6, declared that it was dead. Miss Hewitt enquired as to how he could be so sure that it was dead. Philip replied, 'I pissed in its ear.' Flabbergasted, Miss Hewitt demanded, 'You what, Philip Brown?' Philip added, 'You know, I went to his ear and said, 'PSST!' and it didn't move. So it must be dead.'

**Town & Country Funeral Services**  
 Wabamun  
 780-983-2749  
 Evansburg  
 780-727-2791

- † Cemetery Monument Sales & Installation
- † Traditional Burial & Funeral Services
- † Pre-need Funeral Packages
- † Crematorium & Memorial Services



# THEFT OF JEWELLERY



Submitted by St. Albert RCMP

File: 2018-1169507

St. Albert, AB - On August 8, 2018 at approximately 1:10 p.m., three unknown males entered Paris Jewellers in St. Albert Centre, two males distracted the employee while the third stole 46 necklaces. Video surveillance captured the event but St. Albert RCMP has not been able to identify the individuals involved.

If you have information about this or any crime and would like to remain anonymous, contact Crime Stoppers by phone at 1-800-222-TIPS (8477), online at p3tips.com, or with the P3 Tips app. Crime Stoppers does not collect information about your identity. A tip leading to an arrest may be eligible for a reward of up to \$2,000.

## BETTER QUALITY OF LIFE

*and a money saver, too!*

You can immediately see and feel the difference Elite makes to the quality of your water and the quality of your life. With Elite conditioned water, you and your family will look and feel better - with noticeable glowing complexions and soft, shiny hair.

Beautifully soft, dazzling whites and brilliant colors will replace the rough, matted clothing and towels your hard water previously produced.

Even housework is less of a chore as conditioned water leaves no bathtub ring, scummy film on shower stalls or unsightly spots on glassware, dishes and fixtures.

Your Elite water conditioner will save you time and money, too. You'll spend significantly less on detergents, cleaning products, conditioners, creams and personal grooming products. In addition, your plumbing fixtures and appliances will be protected against costly repairs or premature replacements.



### QUALITY SALES & SERVICE OF:

- DISTILLERS
- SUBMERSIBLE PUMPS
- SEPTIC & JET PUMPS
- PIPE, WIRE & FITTINGS
- BOTTLE BUSTER (R.O. WATER COOLER)
- CHLORINE BLEACH, CHEMICALS & SALT
- 3 MOBILE SERVICE VEHICLES
- CHEMICAL-FREE IRON FILTERS
- SOFTENERS
- CHLORINATION SYSTEMS
- MOBILE SHOCK CHLORINATION
- SEDIMENT, TASTE & ODOR FILTERS
- REVERSE OSMOSIS FILTERS (R.O.'s)
- HOT TUBS & JETTED TUBS
- POOL & SPA FILTERS & CHEMICALS
- FREE WATER ANALYSIS

**OUR WORKMANSHIP IS GUARANTEED!**

The benefits and savings provided by Elite conditioned water will make a wonderful difference in your life.

## QUALITY WATER SERVICES LTD.

20 South Ave., SPRUCE GROVE  
962-6040 425-2934 (Edm. Direct)



"We're recommended the MOST as the company that knows the MOST"

**Cash for Cars**  
**967-2492**  
**R & S TOWING**

# SANGUDO OL' PEMBINA TRACTOR PULL SOCIETY 2018 SEASON

Submitted by Carol Saunders

Well folks, another tractor pull season has come to a close for the Ol' Pembina Tractor Pull Society in 2018. We had a fairly good year for the pulls except for the rain on both weekends. That didn't stop our guys, they got out on the tractors and started to blade off the mud, they went up and down the tract many times. With them, the sun and wind, the tract dried up enough for them to pull.

The 9th and 10th June pull on Saturday, they could not have had better weather and the drivers all got in pulls. Sunday was to be the second pull, but we were totally rained out.

Our feature tractor for the June Pull is Earl Mills with his 1949 McCormick Deering W9. This is Earl's history with the club and obtaining the tractor:

"I started volunteering with the Tractor Club when it was still at "The Suntjens". At that time my

job was hooking and unhooking the sled. My official title was "The Happy Hooker". When we moved across the river to our present location we started weighing the tractors, renting portable scales until purchasing the drive on scale from Howard Fleming. My brother-in-law Pat Lamoureux and myself have been the scale operators ever since. Last year when I turned 65, I decided to purchase my own tractor. My good friend and neighbor Mike Harapchuk Jr. said anyone who comes by with \$1000 can purchase his 1949 McCormick Deering W9. So I purchased the tractor."

The girls in our club say Earl is both mentor and tormentor to them.

For the June Pull we had 62 tractors come to pull. The June Pull was finished on the August Tractor Pull Weekend and here are the results:

- BANTAM:
  - 1st - Dale Miller - 327.07 FT.
  - 2nd - Russ Langston - 163.11 FT.
  - 3rd - Boris Heshka - 130.06 FT.
- CLASS 1:

- 1st - Bob McKell - 425.07 FT.
- 2nd - Boris Heshka - 236.04 FT.
- 3rd - Jim Carter - 224.01 FT.
- CLASS 2:
  - 1st - Dale Miller 418.11 FT.
  - 2nd - Clarence Liss - 412.02 FT.
  - 3rd - Taylor Hamoen - 388.11 FT.
- CLASS 3:
  - 1st - Bob McKell - 363.06 FT.
  - 2nd - Dale Miller - 330 FT.
  - 3rd - Gary Young - 329.07 FT.
- CLASS 4:
  - 1st - Bob McKell - 473.02 FT.
  - 2nd - Earl Mills - 453.01 FT.
  - 3rd - George Suntjens - 450.02 FT.

- DEMO:
  - 1st - George Suntjens - 437.05 FT.
  - 2nd - Clarence Liss - 381.01 FT.
  - 3rd - George Suntjens - 328.09 FT.
- CLASS 5:
  - 1st - Mike Harapchuk - 450-03 FT.
- CLASS 6:
  - 1st - George Hnatiuk - 475.03 FT.
  - 2nd - Ron Prokipchuk - 432.06 FT.
  - 3rd - Russ Langston - 216 FT.

Continued on Page 6



# GROVE HEARING CLINIC

## 960-2960

### 1-866-960-2960

Hear what you've been missing...

Senior Discounts



Full Service & Repair

Full Hearing Assessments

HOURS OF OPERATION: 9am - 5pm Weekdays

3rd party billing (AADL, WCB, DVA, FCH) • Personal 0% Financing if Needed

For The Latest Technology In Hearing Aids & Assisted Living Device Stop By & See Dawn

#220-70 McLeod Ave - Westland Market Mall, Spruce Grove

# Sangudo Ol' Pembina Tractor Pull Society 2018 Season



Continued From Page 5

Our August Pull was on the 25th and 26th. The pull on August 25th was the second pull for June. We had a couple of new drivers and drivers that haven't been for a few pulls. Good to see you guys back again!

On Sunday August 26th was a 2 pull in one day. The pull was to start at about 11 o'clock, but due to the rain we didn't get started until about 1:30pm. Once the pull got started the weather cooperated and everyone got the 2 pulls in. We had 49 tractors for the Sunday pull. The results of the pull are:

- BANTAM:**  
 1st – Robert Domke – 322.05 FT.  
 2nd – Russ Langston – 309.02 FT.  
 3rd – Dale Miller – 306.11 FT.

- CLASS 1:**  
 1st – Jim Carter – 376.11 FT.
- CLASS 2:**  
 1st – Dale Miller – 449.01 FT.  
 2nd – Clarence Liss – 419.09 FT.  
 3rd – Daniel McGinn – 410.01 FT.
- CLASS 3:**  
 1st – Don Saunders – 357.04 FT.  
 2nd – Dale Miller – 320.07 FT.  
 3rd – Gary Young – 296.03 FT.
- DEMO:**  
 1st – Don Saunders - 207 FT.  
 2nd – George Suintjens – 192.06 FT.
- CLASS 4:**  
 1st – Earl Mills – 357.01 FT.  
 2nd – Darcy Harapchuk – 355.07 FT.
- CLASS 5:**  
 3rd – George Suintjens – 339.06 FT.

- 1st – George Hnatiuk – 354.01 FT.  
 2nd – Daniel McGinn – 345.03 FT.  
 3rd – Tony Hnatiuk – 318.00 FT.
- CLASS 6:**  
 1st – Anna Harapchuk – 437.02 FT.  
 2nd – Ron Prokipchuk – 379.05 FT.  
 3rd – George Hnatiuk – 370.06 FT.

Our feature for the August Pull was a 1960 Fordson Power Major, by the proud owner of John Hansen. Some information on the tractor: Built by Ford in Dagenham, England from 1948 – 1964. 4 cylinder diesel engine –(220 CU. IN.) 6 speed transmission with 6 forward & 2 reverse gears, 2 – 14mph, weight 5200 lbs, length 130.5 inches, width 65 inches, height 64.5 inches, wheelbase 80 inches, can pull 78% of its own weight (draw bar test).

John's story as told to us "I saw it on the Brian Preus Farm when I was graveling the yard and driveway. I have always liked Ford Tractors, ever since I was a teenager when I worked for Jerry Scheidel in Royal Valley. I asked Brian what he was going to do with the tractor because it was sitting there with no motor or clutch in it. Brian sad he was working on it; going to fix it up and use it on the farm. He had taken a mechanic course. I asked him if he would sell it. Brian said he might as well, because he didn't have any time to work on it because of all the farm work. So we talked a deal... I would hall the gravel for the yard and driveway for the tractor. No money involved. We loaded up the tractor and I brought it home. When I got around to working on it; it looked impossible... the engine needed major motor work and a new clutch. When I priced it out the parts that I needed, it seemed quite expensive! I was graveling Cecil Hanna's driveway, when I spotted another Fordson Major in the yard. I asked Cecil if he was doing anything with it. Cecil said the engine

is shot in it, but he had another engine lying beside it. Cecil said he didn't have much time to fix it up. He said "I'll sell it, if you want it." I told him I only want the engine, for one that I was over-hauling. So I bought the engine. I didn't know much about putting it all together, so I phone Bob Holt and asked what to do. He said, "I will have to find some time to give you a hand to work on i." We tore the engine down and found the pistons were rusted and seized up, I ordered new rings and honed the sleeves. Then with the purchase of a new clutch... Bob and I put it back together. My Fordson Major runs just fine, I use it for snow plowing and raking hay. One day Jamie Johnson said to me, "Why don't you enter it in the Sangudo Ol' Pembina Tractor Pull?" I did, and on the first day of Pulling in Class 3, I won 3rd Place!! I love this tractor!"

We held a Silent Auction on June 9th and had a excellent selection of items. The top item was an international Farmall, donated to the club by Aurele Duperron. The auction turned out to be very good for the club.

Tamara Hall sold lunch again in June. She had a very good selection of goodies. The hamburgers and hot dogs were very tasty. Very good job Tamara, everyone liked your lunch.

The Shura Family provided lunch for the August Tractor Pull. They served hamburgers, hotdogs, pies with a selection of other goodies. The lunch was very good.

Mary Jane Suintjens served supper for our June and August Pulls. For the June supper she served pork with everything that went with it. For the August supper she served roast beef and all the goodies that went with that. Mary Jane we have to commend you for all the hard work you put into making such excellent meals.

Our next tractor pull will be held on June 8th and 9th, 2019. Hope to see you all at the pulls and have nice fall & winter.



**Specializing in Trailer Repairs**  
**Aluminum, Tig, Mig & SMAW Welding**  
**Mobile Welding Units Available**  
**Mechanical Inspections & Repairs**  
**Fabrication & Plasma Table**  
**Skid Steer Services**

**Sideline Mechanical & Welding Ltd.**  
 55109 Range Road 20  
 Phone: 780-967-5658  
 eMail: smw ltd@gmail.com



**YOUR LOGICAL SOLUTION TO WEIGHT MANAGEMENT**



CALL (780) 907-8642 FOR **FREE** SAMPLE

**DARK ROAST COFFEE**

# **SLIMROAST Optimum**

**Exclusive functional coffee formulated to:**

- Crush Cravings
- Increase Energy
- Metabolize fat to Energy
- Help Regulate Blood Sugar
- Improve Mood & Focus
- Boosts Circulation & Oxygen delivery

**TO UNLOCK THE SECRET OF WEIGHT MANAGEMENT! PUT THE POWER OF SLIMROAST OPTIMUM IN YOUR CUP!**



Thrilled with my results! I lost 9 lbs and an amazing 11 inches off my abdomen! Works wonderfully!

Managed to lose 7 lbs very fast & much more in inches the way my clothes are fitting now! 1 cup a day is all for me!

Down 17 lbs and fitting into clothes that were way to tight before!

No dieting, first month finished. Down 7 1/2 lbs 8.5 inches. Awesome product!

[www.ValentusTour.com/Ladybug](http://www.ValentusTour.com/Ladybug)

**(780) 907-8642**

# WILDROSE RODEO FINALS

## THURSDAY, SEPTEMBER 13, 2018 - SUNDAY, SEPTEMBER 16, 2018

All Performances are indoors. Barrhead Agrena located at 5607-47<sup>th</sup> St. Barrhead, AB

### THURSDAY @ 7:00PM

- Mini Buckers

### SATURDAY afternoon @ 12:45PM

- **KIDS DAY** Kids receive a free ticket at school for Saturday afternoon performance

- **FREE** Cowboy Hats for the first 100 kids
- Boot Race
- Kids Singing in arena with Kim Horricks
- Roman Riding
- Mini Buckers

### FRIDAY @ 7:00PM

- Mini Buckers

### SATURDAY evening @ 7:00PM

- Mini Buckers

### SUNDAY afternoon @ 1:00PM

- Cowboy Church
- Mini Buckers
- Trick Riders
- Crowning of the Champions

## TICKETS

	Adults	Youth (6-17)	5 & Under
Single	\$15	\$10	Free
5-Pack	\$65	\$40	Free

Purchase tickets at Back Forty Western Wear, Sandman's Home Hardware or call 780.674.5407 for more information

- Full concession

- Running Track Bar to quench your thirst

- Handicapped Accessible



Sanctioned by Wildrose Rodeo Association  
[www.wrarodeo.com](http://www.wrarodeo.com)



# THESE PAGES ARE PROUDLY SPONSORED BY THE FOLLOWING BUSINESSES

Glenn van Dijken  
-MLA  
674-3225

QMS Limited  
  
674-9494

Mahar Drilling Ltd.  
674-9550

Barrhead Chiropractic  
-Dr. Peter See  
674-2861

McEwen's Fuel & Fertilizers  
  
674-2146

Barrhead Auto Parts & Salvage Ltd.  
674-3443

KNM Sales & Service  
  
674-2888

Sunnyside Realty - John Eden  
785-2561

Pembina West Co-Op Ltd.  
674-2201

All Around Manufacturing & Mechanical Ltd.  
674-5115

A & W -Barrhead  
674-7666

OK Tire - Barrhead  
674-2551

Limb Walkers Tree Care Ltd.  
203-4705

Barrhead Ford Inc.  
674-2227

Stuber's Cat Service Ltd.  
785-2173

Comfort Corner  
674-4933

Barrhead Home Building Centre  
674-4710

Perry Law LLP  
(www.perrylawoffice.com)  
674-2002

Barrhead Glass & Mirror Ltd.  
674-3398

A.T.B. Financial -Barrhead  
674-2241

Barrhead Machine & Welding Ltd.  
674-2924

Thomas Trenching Services Ltd.  
674-2095

Stephani Motors  
674-2211

J's Jewellery  
674-5055

NAPA Auto Parts - McLean's Distributors  
674-3381

Sanderman's Home Hardware  
674-2427



# IT'S THRESHING TIME AGAIN!



Watch the straw blow through air and see the strawpile grow.



Farmhands pitch bundles on to the threshing machine feeder.



You won't get there quickly! The horses pull the wagon slowly across the field. Listen to the wheels as they creak along.

Submitted by Yvonne Slemko | Onoway and District Historical Guild

Onoway and District Historical Guild is gearing up for the 12th annual Threshing Bee on Gordon Adam's farm south of Onoway. Young and old are invited to leave behind the digital world of texting and join in the re-enactment of what was part of everyday life on the prairies. On Saturday September 22, attendees can ride the hayrack, pitch bundles on to the threshing machine feeder, then watch the straw fly as the strawpile slowly grows. They can also come away with a freshly threshed bag of wheat.

Threshing is only one part of the day's activities. Rides on horse-drawn wagons, and demonstrations of traditional skills like blacksmithing, ropemaking and sawing firewood will run throughout the day. In addition, a display of antique tractors and farm equipment, cars and trucks will round out the show. For children, a variety of events will keep them hopping. Connie Lefebvre is bringing her special brand of music and divers from Eden North Parachute School will drop in for a visit.

Lunch out on the field is an integral part of the threshing season so visitors will be able to indulge in home-made pies as well as hot dogs and hamburgers.

The bee will be held at the NW junction of Highways 43 and 633 – watch for signs. The fun begins at 11:00 a.m. and activities end at 4:00 p.m. This is an ideal opportunity to give youngsters an idea of where bread comes from and, at the other end of the age spectrum, it gives older folk a chance to turn back the clock and reminisce about what life was like in the days before modern inventions like television or electric washing machines.

Visit the Historical Guild website [www.onowaymuseum.ca](http://www.onowaymuseum.ca) or phone 780.967.1015 for more information.



Get our new, faster Internet service with speeds up to 25 Mbps!<sup>1</sup>

Plans starting at \$69<sup>99</sup> month<sup>2</sup>

FREE installation on a 2 year term<sup>2</sup>  
WORRY FREE Customer Satisfaction Guarantee<sup>3</sup>

Get High-Speed LTE Internet, lots of data, FREE installation and SAVE up to \$290 in your first year!<sup>1</sup>

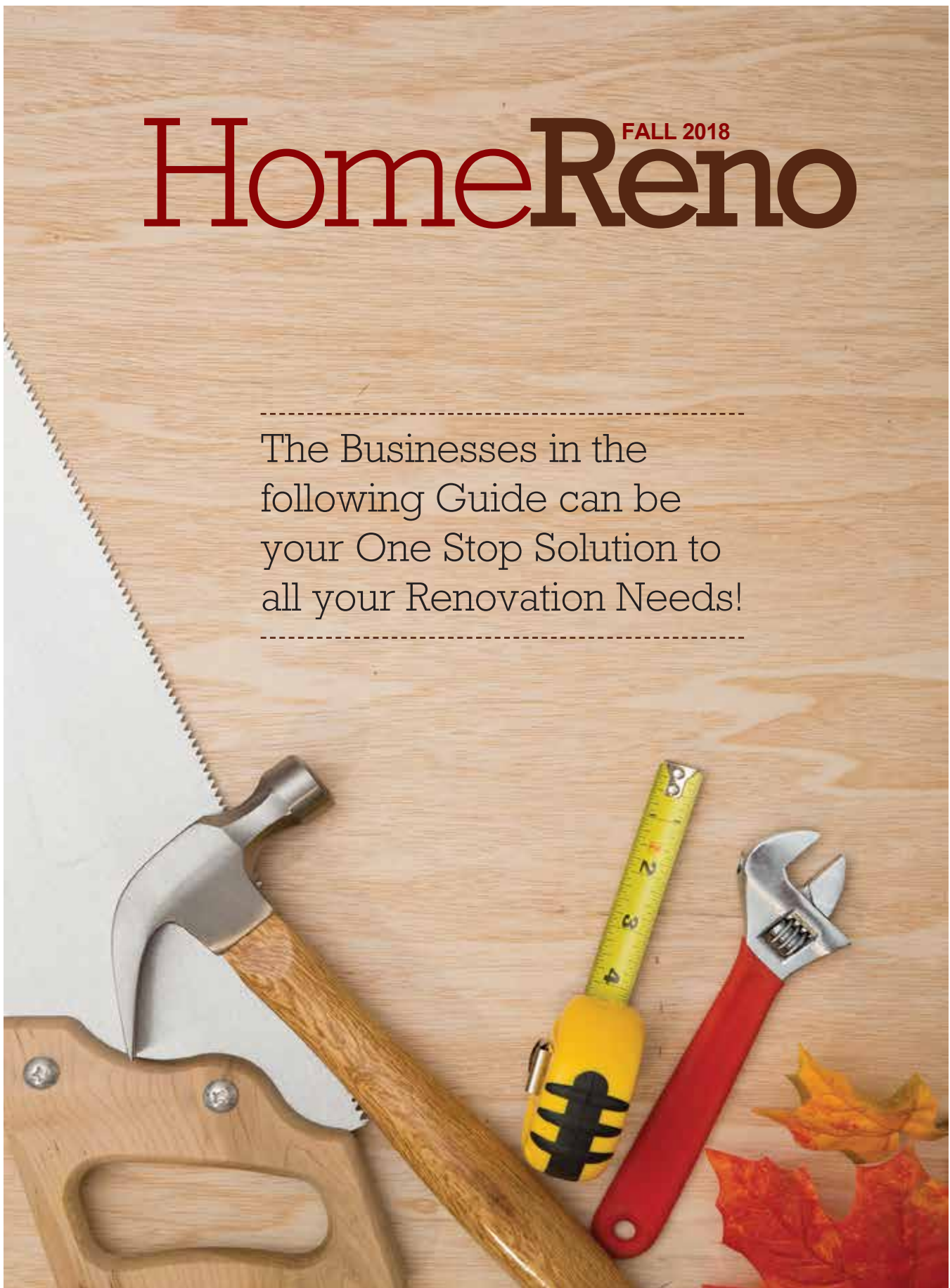
1-855-867-4047



<sup>1</sup>Actual speed online may vary with your technical configuration, Internet traffic, server and other factors. Traffic Management Policy applies, see [xplornet.com/legal](http://xplornet.com/legal). Two year term required. \$69.99 pricing reflects a \$10 discount off current regular price for the first 12 months. Discounted prices no longer apply in month 13 for remainder of 2 year term. Monthly service fee includes rental cost of equipment, except Xplornet Wireless router. Taxes apply. Offer valid until October 31, 2018 for new customers and is subject to change at any time. <sup>2</sup>If installation requirements go beyond the scope of a basic installation, additional fees apply. Subject to site check, site check fee may apply. See dealer for details. <sup>3</sup>If you are dissatisfied with your service for any reason, you will receive a refund of all amounts paid to Xplornet if you cancel your subscription within 30 days of activation. Packages subject to availability. A router is required for multiple users. Xplornet is a trademark of Xplornet Communications Inc. © 2018 Xplornet Communications Inc.

# HomeReno FALL 2018

-----  
The Businesses in the  
following Guide can be  
your One Stop Solution to  
all your Renovation Needs!  
-----



# HomeReno

## ITEMS TO CONSIDER WHEN OUTFITTING A HOME GYM

Home gyms can make working out more efficient, saving time driving to a fitness facility and enabling people to stick to a work-

out regimen during inclement weather. Having a gym at home also may motivate people to work out more frequently and more eff-

ectively, as they can exercise at any time of day they choose and won't need to share equipment with fellow fitness enthusiasts.

home gyms, homeowners should keep CDC recommendations in mind so they can enjoy as complete a workout as possible.

The following are some items homeowners can consider when outfitting their home gyms.

- **Barbells:** Barbells aren't just for biceps. Barbells can be used to work all the major muscle groups, including arms, chest, shoulders, legs, and back. Purchase a set of barbells of various weights so workouts can be varied depending on the muscle group being targeted.
- **Bench, bar and plates:** A bench, bar and plates also can be invaluable to people who want a fitness facility-quality workout at home. Purchase plates of various weights but remember to

While workouts will vary from individual to individual, the Centers for Disease Control and Prevention recommend adults should combine both aerobic and strength training to achieve optimal health. The CDC recommends adults do at least 150 minutes a week of moderate-intensity aerobic activity, or 75 minutes of vigorous-intensity aerobic activity. In addition, the CDC advises adults to include moderate- or high-intensity muscle-strengthening activities, involving all major muscle groups, in their workout regimens two or more days per week. When constructing their

**Carpetown Interiors Ltd.**

- Carpet • Lino • Hardwood Flooring & Tile
- Wallpaper • Window Blinds & Installation

**780-778-4144**  
5033 - 52 Ave. Whitecourt

**PADDLE RIVER CONCRETE**

Providing you with concrete needs!



Brent • 786-2666 • Mayerthorpe, Alta

**BEDARD EXCAVATING**

DESIGN, BUILD, PUMP

General Excavating  
Foundations 4-9' walls  
Septic Systems



**780-967-5116**

**Lanman Landscapes**

YOUR ONE STOP FOR ALL TYPES OF LANDSCAPING

- Dangerous Tree Removal
- Yard Cleanup
- Full Landscaping Service
- Experienced Bobcat Work
- Fully Insured
- Fall & Winter



**(780) 977-6586**  
levertonneil13@gmail.com

- Decks
- Fences
- Treated Lumber
- Probuilt Railing
- Spruce Lumber
- Sheds
- House Packages
- PPG Paint & Stain
- Garage Packages

**ONOWAY TIMBER MART**

Husqvarna  
Horse Supplies

**"WHERE SERVICE MAKES THE DIFFERENCE"**

#2 2104 Hwy 37  
Lac Ste Anne, AB **PH: 780-967-2274**

# HomeReno

## Items To Consider When Outfitting A Home Gym

be cautious with the amount of weight you lift when no partner or spotter is present. When shopping for a bench, look for one that can incline and decline, which increases the range of exercises you can perform at home.

- Land line: If the gym will be in a basement or another area of the home where access to a mobile network is unreliable, the presence of a land line in the room can help in the case of emergencies. Those who work out at home will be doing so without gym staff or other fitness enthusiasts nearby, so the land line can be invaluable should someone suffer an injury when exercising alone. If possible, place the land line in the middle of the room so it's not too far away from any particular area.

- Flooring: Homeowners have various flooring options

when outfitting their home gyms. Carpet tiles, rubber flooring, foam flooring, and vinyl tiles are popular options. Each has its advantages and disadvantages, and the right choice may depend on how the gym will be used. For example, foam flooring may be compressed under heavy equipment, which may be problematic for homeowners who want to include lots of equipment in their home gyms. Before considering which flooring material to lay down, write down your likely workout routine before taking that write-up with you to a flooring contractor who can recommend the best material for you.

- Cardiovascular equipment: Homeowners don't have to reinvent the wheel when purchasing cardiovascular equipment for their home gyms. If a treadmill worked for you at the gym,

purchase one for your home gym as well. Cardio equipment can be expensive, but savvy homeowners may be able to find fully functional secondhand equipment online. If you currently have a gym membership, speak with the

owner about purchasing a used item directly from the facility.

Outfitting a home gym requires homeowners to give careful consideration to their workout preferences so they can tailor their gyms to their specific needs.

**Ashly-Lane Interiors Ltd.**  
WINDOW COVERINGS

*\*Fall Sale\* up to*  
**40% Off Selected Items.**

Valances • Sheers • Drapes  
Blinds • Fabric • Hardware

Residential • Commercial  
39 Years Experience

4900 - 51 Avenue, Stony Plain, AB  
780-963-5563

**MCLEOD Home building centre**

Let us load you at the largest Lumber Yard in Parkland County  
**962-2575**  
Call Toll Free: 1-800-343-2988  
35 South Ave, Spruce Grove

- Renovation & new build experts
- Superior quality lumber
- Complete home packages
- 3D Estimating Program
- Engineered roofs & floors
- Farm Buildings
- Garage packages
- Windows & doors
- Custom decks & fence packages
- Flooring & kitchens
- Bathrooms
- Ceramic Tiles
- Concrete & landscaping
- Electrical supplies
- Fasteners
- Woodstoves

Service • Selection • Advice • Special Orders • Delivery

**ECONOMY ASPHALT DRIVEWAYS**

- Paving • Asphalt or Concrete • Repairs
- Pararamps • Seal Coating • Crack Filling
- Snow Removal • Sanding • Rock Chip Sales

**CHARLES MACDONALD**  
PH: 780-962-5581 CELL: 780-777-0914  
FAX: 780-962-9146

Family run, local business, we care!

**BEST CISTERN SEPTIC SOLUTIONS**

**Cistern and Septic Inspection, Cleaning and Repair!**

Septic planning, design, installation by government certified installer(s)

New Installs Available. Reasonable Rates.

**Let Us Handle the Dirty Work**  
**780-668-4306**  
best-cistern-septic-solutions.com



**B.W. EAVESTROUGHING**

Specializing in:

- ⇒ Residential 5"
- ⇒ Commercial 6"
- ⇒ Soffit
- ⇒ Gutter Clean System
- ⇒ Free Estimates
- ⇒ Fascia

**BRAD (780) 699-1880**

# HomeReno

## A GUIDE TO SAFELY REMOVING FALLEN LEAVES

The University of Pittsburgh Medical Center advises that pain from outdoor leaf chores can range from strained back muscles to twisted knees. Blisters on the hands and sunburn are other potential side effects. Many people do not realize that raking is a thorough cardiovas-

cular workout. Individuals at risk for cardiovascular disease or those who have recovered from surgery may not be well enough to rake leaves.

Here's how to make autumn leaf removal more of a breeze when the job is done safely.

- Pay attention when us-

ing a leaf blower. Be cautious not to point an operational blower in the direction of people or pets, as debris can be blown about and cause injury.

- Stretch out before raking leaves. Warm up muscles beforehand so they are less likely to

cramp. UPMC experts suggest taking a short walk prior to raking to stimulate circulation.

- Use proper raking form. Much like snow shoveling, one should emphasize proper posture when raking, with legs slightly bent and weight distributed evenly. Hold the rake handle close to the body and keep one hand near the top of the rake for better leverage.

- Use the proper gear. A leaf rake fans out like a triangle and comes in various widths. Choose a lightweight material that can be easily maneuvered. A metal rake is for stones and dirt and shouldn't be used for leaves. To get between bushes, a smaller version of a leaf rake, called a shrub rake, should be used.

- Wear protective gear. When raking or leaf blowing, protect your eyes against debris. You also may want to use a mask to prevent inhalation of leaf mold and other particulates. Gloves can protect hands from blisters.

- Follow manufacturers' directions. Read the instructions for powered leaf blowers, and never modify the device in an unauthorized way.

- Use a tarp and lift wisely. Rake leaves onto a tarp that can be dragged to a garbage pail or to the curb for municipal pick up. For those who must lift bags of leaves, do so by bending at the knees, not from the waist.

- Wear sunscreen. Protect skin from the sun. Even though temperatures are cooler in the fall, this does not mean the sun's rays are any less harmful. Also, take breaks to rehydrate frequently.

- Use a secure ladder. When removing leaves from gutters, be sure the ladder is sturdy and secure. Consider having a friend serve as a spotter, holding on to the ladder to offer greater security. Do not overextend to stretch for leaves.

If at any time during leaf clean-up you feel sharp or dull, incessant pains, stop working. Listen to your body's signals and start the task anew the next day or when you feel better.

**The Flooring Store & DIY Center**

**FREE ESTIMATES  
SPECIAL PRICES FOR SENIORS**

Vinyl Flooring *from* **99¢ Sq Ft.**  
 Laminate *from* **\$1.19 Sq Ft.**  
 Hardwood *from* **\$2.99 Sq Ft.**  
 Carpet *from* **\$2.99 Sq Ft. INSTALLED**

Double Stainless Steel Kitchen Sink *from* **\$199.00**

**Hours:**  
 Monday to Friday 9:00AM to 5:30PM  
 Saturday 9:30AM to 4:00PM  
 Closed Sunday

**226 McLeod Ave  
 Spruce Grove  
 (780) 960-9212  
 www.theflooringstore.ca**

# HomeReno

## LET LOCATIONS INSPIRE DESIGN

Homeowners looking to add flair to their homes can find inspiration anywhere. Style can even be tailored to reflect places homeowners have visited.

Whether they call to mind the narrow streets of London, the sand-bleached beaches of a Caribbean island or the urban buzz of New York City, designs can reflect one's travels and evoke some of the same feelings homeowners got when visiting their favorite places. Professional interior designers often pull inspiration from unique places, and so can homeowners who love to travel.

Those who want to illustrate their wanderlust through their home's decor can consider these tips.

Work with colors

Think about the colors that signify a particular locale and bring those hues into the space. The

color palettes of the beach, for example, include grays, beiges, blues, and greens. The popularity of gray-tone neutrals allows homeowners to bring in these colors as a neutral backdrop, and then add a splash of whimsy with a few decorative accents.

Try natural materials

Vacation hotspots like Hawaii, Southern California and other areas of the Pacific tend to put heavy emphasis on natural materials. Items like bamboo, sea grass, stones, and woven baskets can invite the outdoors into a home.

Embrace the vibe

Urban centers are awash in energy and color. This spirit can be reflected with modern architecture, bold prints, metallic accents, and innovative lighting.

Pick an inspiration piece

Homeowners can direct their

focus to one particular memento from a vacation or excursion. A vivid piece of artwork, a piece of furniture, a sculpture, or even a wardrobe element can serve as a catalyst for an entire room. Use this piece to match colors and

textures.

Remember, to evoke the spirit of an area when decorating, keep it subtle. Too many details or over-the-top replication might seem like one is dressing a stage set rather than his or her home.

**LIMB WALKERS TREE CARE LTD.**  
**FULLY INSURED, EXPERT TREE CARE PROVIDERS**  
 SERVICING BARRHEAD, WESTLOCK, ONOWAY & ALL SURROUNDING AREAS

- Residential & Commercial
- Tree Removal
- Tree & Shrub Pruning
- Stump Grinding
- Annual Maintenance
- Hedge Trimmers
- Arborist Consultations & Assessments
- Bucket Truck & Chipper Services
- Professional Climbers

780-203-4705 [lmb.walkers@hotmail.com](mailto:lmb.walkers@hotmail.com)  
**FREE ESTIMATES PROVIDED**

**TRI-LAKES SERVICES LTD.**  
 Serving: • Lac Ste. Anne County • Parkland County • Yellowhead County East

- Septic Hauling  
 • Holding Tanks  
 (residential, commercial, industrial)
- Septic Fields
- Drinking Water Delivery  
 • Cisterns  
 • Pools/Hot-Tubs
- Fresh Water Delivery  
 • Dust Control
- Portable Washrooms  
 (rental & servicing)
- Plastic
- Trailer mount Extremes  
 (wash sink, toilet, lights heat)
- Extremes  
 (wash sink, toilet, lights, heat)
- Steam Truck  
 • In cooperation with your plumber

PH: 1-877-727-3939  
[www.tri-lakesservices.com](http://www.tri-lakesservices.com)  
[office@trilakes.services](mailto:office@trilakes.services)

**Blakeman Drilling Ltd.**  
 Waterwell Drilling & Servicing  
 Pumps & Pressure Systems  
 Petwa Water Conditioning

(780) 918-1916  
[joe@blakemandrilling.com](mailto:joe@blakemandrilling.com)  
 Family Owned & Operated

**ZEE BEST RENOVATIONS**  
 Your Complete Line of Renovation Needs:

- Bathroom
- Tileworks
- Roofing
- Basements
- Drywall & Taping
- Siding
- Plumbing
- Decks & Fencing

**FREE ESTIMATES | 26 YEARS EXPERIENCE**  
**INSURED | GREAT RATES**

JOE LAWRENCE MANAGER    BUS: 780-967-3898 | CELL: 780-915-3348  
 FAX: 780-967-3798

**ASSERTIVE ELECTRIC LTD.**

Toll Free 1-855-967-3827 Fax 1-780-967-3847  
 email: [ricker@assertive-electric-ltd.ca](mailto:ricker@assertive-electric-ltd.ca)

**Insured & Certified Professional Electrical Services**

# HomeReno

## REFRESH YOUR HOME'S APPEAL WITH FURNITURE PAINT

(MS) - Furniture, bookcases, cabinets, and doors present opportunities to add or change color throughout a home. Woodcraft offers an extensive line of furniture paint, tools and supplies necessary for successful painting projects. In addition, Woodcraft retail store as-

sociates are always ready to help customers, and extensive how-to material is a click away at woodcraft.com.

Lori Harper, Woodcraft public relations manager and blogger, offers some advice about updating a kitchen: "Painting kitchen

cabinets is a big job, but it can transform the look of your kitchen at a fraction of the cost of new cabinets. It may sound daunting, but breaking it down into bite-size steps can take away the fear factor."

To read her project blog, vis-

it Woodworking Adventures on Woodcraft.com and search for "Kitchen Cabinet Conundrum."

### Paint & Color Selection

Three easy-to-use and easy-to-mix paints are:

- Black Dog Salvage Furniture Paint is a water-based, low-VOC, matte finish paint for indoor use that requires only cleanup before painting, except in the case of chips and scratches, and adheres to wood, metal, glass, ceramics, and plastic.

- General Finishes Milk Paints are premixed water-based acrylic paints suitable for a variety of interior or exterior applications from furniture to crafts.

- General Finishes Gel Stains are heavy-bodied gels formulated to flow evenly for consistent color control.

Before you pick up a paint brush, consider which colors are best for the area you plan to refresh. Choices will need to complement wall color and colors of other pieces or accents in a room. Two handy color guides are the 36-page General Finishes Milk Paint Fan Deck and the Black Dog Salvage Furniture Paint Color Recipes (available for download as a free PDF on Woodcraft.com).

For more than just a change of color, consider creating decorative effects, such as distressing, antiquing, faux marble, or rag rolling. Choose General Finishes Pearl Effects to make it easier to create specialty finishes.

### Repair

If furniture, cabinets and other surfaces need repair prior to painting, the Mohawk PermaFill Wood Touch-Up and Repair System is an easy answer. Just pop in a color cartridge (six color families available), power on the battery-operated dispenser, aim, fill and level this durable repair. Briwax ChairRX is perfect to fix loose parts in chairs. Drill a small hole, inject ChairRX, and in 12 hours the thin unique formulation

**\$259<sup>95</sup>** MSRP \$299<sup>95</sup> with 16" bar

**STIHL**

**MS 170 Gas Chain Saw**

Displacement 30.1 cc  
Power Output 1.3 kW  
Weight 3.9 kg (8.6 lb)\*

**Fall SAVINGS 2018**

**RECEIVE A FREE WOOD-PRO KIT** with the purchase of any eligible STIHL Chain Saw.

- Woodsman® Carrying Case
- STIHL Hat
- OILOMATIC® Chain

**MS 180 C-BE Gas Chain Saw**

31.8 cc / 1.5 kW / 4.2 kg (9.2 lb)\*

**\$379<sup>95</sup>** MSRP with 16" bar

**MS 250 Gas Chain Saw**

45.4 cc / 2.3 kW / 4.8 kg (10.1 lb)\*

**\$449<sup>95</sup>** MSRP \$499<sup>95</sup> with 16" bar

**MS 271 Gas Chain Saw**

50.2 cc / 2.6 kW / 5.6 kg (12.3 lb)\*

**\$549<sup>95</sup>** MSRP \$599<sup>95</sup> with 16" bar

**MS 362 C-M Gas Chain Saw**

59.0 cc / 3.5 kW / 5.6 kg (12.3 lb)\*

**\$899<sup>95</sup>** MSRP \$999<sup>95</sup> with 16" bar

\*Weight with powerhead only.

**STIHL**

**SMALL POWER BARRHEAD LTD.**

6105-49<sup>th</sup> Street, Barrhead Industrial Park  
**780-674-4778**  
www.smallpowerbarrhead.ca  
HOURS: Mon to Fri 8:00A.M. - 5:30P.M.,  
Saturday 8:00A.M. - 4:00P.M.



# HomeReno

## Refresh Your Home's Appeal With Furniture Paint

will penetrate the wood cells and permanently swell the joints and bond them together. Visit <https://youtu.be/iWMu6OKyOUE> to watch a video that demonstrates these products.

For more extensive repairs, use the Kreg Jig R3 Kit to reinforce weak parts with pocket holes and avoid complete disassembly of your project.

### Clean and Prep

Use Krud Kutter TSP Substitute to remove dirt, grease, smoke, mildew, food stains, crayon, wax, and more from surfaces to be painted so paint will adhere better. For sanding chores associated with painting, consider the Porter-Cable Restorer Handheld Drum Sander with attachments, which is designed to remove paint and finish from wood, brick and fiberglass, as well as remove rust

and polish metal. The Porter-Cable 382 5" Random Orbital Sander and the Norton 5" Random Orbital Sander are other good choices. For sanding with hand power, the Preppin' Weapon Sanding Block Kit and Norton 41/2" x 51/2" SoftTouch Sanding Sponges are handy helpers.

### Application & Topcoat

If spraying is your preference, HOMERIGHT Finish Max Fine Finish and HOMERIGHT Super Finish Max HVLP Sprayers are easy to use on everything from furniture to fences with oil- and water-based products such as chalk-style paint, latex paint, milk paint, enamels, primers, polyurethanes, stains, and varnishes. Large and Small Spray Shelters make painting furniture easier.

For painting by hand, Black Dog Salvage Furniture Paint Round

Brushes, made from both natural and synthetic bristles, and Redtree Matey Synthetic Bristle Brushes work well.

Give paint extra protection with Black Dog Salvage Guard Dog and Show Dog Topcoats and Gen-

eral Finishes Gel and High Performance Polyurethane Topcoats.

To learn more about these and other products, visit your local Woodcraft store, call (800) 535-4482 or visit [www.Woodcraft.com](http://www.Woodcraft.com).

**ADELMAN**  
Cabinets and Millwork Ltd

**Custom Cabinets and Vanities**

Phone / Fax: 674-2522  
4710 - 62 Ave., Industrial Park  
Barrhead, Alberta

**Bert's TV & Appliances**  
780-674-3001 [bertstv.com](http://bertstv.com)  
Barrhead Industrial Park, 6121-47 St.

**Whirlpool**  
SAVE UP TO 25%  
On Qualifying Whirlpool  
Major Appliances  
August 30 to September 26, 2018

**MAKE IT A SUITE!**

<p><b>\$1799</b> REGULAR PRICE \$1799</p> <p>WHIRLPOOL® 36" FRENCH DOOR REFRIGERATOR, 23 CU. FT. W/ICE MAKER</p>	<p><b>\$1299</b> REGULAR PRICE \$1299</p> <p>WHIRLPOOL® ELECTRIC RANGE WITH 6 ELEMENTS 30 IN. ST. TWEEZER</p>	<p><b>\$849</b> REGULAR PRICE \$1099</p> <p>WHIRLPOOL® 41" 36" STAINLESS STEEL TUB DISHWASHER</p>	<p><b>\$599</b> REGULAR PRICE \$799</p> <p>WHIRLPOOL® 41" LOW PROFILE MICROWAVE WOOD GRAIN FINISH, 1.1 CU. FT. TWEEZER</p>
--	---	---	--

**CO-OP**

**PEMBINA WEST CO-OP**  
*Total Building Solutions*  
Serving Barrhead, Mayerthorpe, Whitecourt, Westlock & Surrounding Areas

**For All Your Building Supplies**  
**(780) 674-2201**

**B&S** Stucco, Rockwork & Masonry

Interior, exterior, residential, commercial, conventional & acrylic stucco  
Plus Concrete and Styrofoam Pargings, All Stone & Brickwork

**Fred & Gerry Breukelman**  
Phone (780) 674-4502 • Fax (780) 674-4534  
Cell (780) 674-7307

**MAHAR DRILLING LTD**

Water Wells  
Precision Drilled with Compressed Air  
• Pumps • Servicing

**MATT MAHAR**  
Office: (780) 674-9550

Cell: (780) 674-7871  
Fax: (780) 674-9571

# HomeReno

## MAINTAIN INDOOR AIR QUALITY ALL YEAR

Millions of people anxiously anticipate the arrival of spring. Months spent cooped up indoors as temperatures outside dip below freezing can take their toll, and those first warm, sunny days of spring can be just what people need to kick the winter blues.

Winter can be dreary for people confined to indoors as temperatures drop, and poor air quality in a home

can add to that dreariness while adversely affecting individuals' health. Air quality tends to suffer most in winter, but there are ways to ensure the air inside a home stays healthy all year long.

• Inspect and address any sources of carbon monoxide. Carbon monoxide, or CO, is an invisible, odorless gas that can contribute to poor indoor air quality and a host of

health problems if it goes undetected in a home. According to the U.S. Centers for Disease Control and Prevention, potential sources of CO in a home include improperly vented natural gas appliances, such as stoves and water heaters, gas-powered tools that are used indoors, clogged chimneys, or blocked heating exhaust vents. Men and women can periodically inspect potential

sources of CO and address any issues they find while also making sure all CO detectors are properly installed and functioning optimally.

• Inspect HVAC ducts. Ductwork is used to deliver warm or cool air in homes with heating and air conditioning systems. The U.S. Environmental Protection Agency notes that much of the dirt in air ducts adheres to the duct surfaces without ever entering living spaces. However, the EPA notes that homeowners should consider having their ducts cleaned if an inspection uncovers substantial visible mold growth. In addition, the EPA recommends homeowners consider cleaning if ducts are infested with vermin or clogged with excessive amounts of dust or debris.

• Avoid chemical cleaning products. Chemical cleaning products may be great at disinfecting dishes, countertops and other areas in the home, but such items may be toxic and adversely affect indoor air quality. For example, chemicals such as bleach and ammonia, which are used in many commercial cleaning products, can linger in the air, irritating the eyes, nose, throat, and lungs. Homeowners concerned about the quality of air in their homes also can avoid scented products, such as air fresheners and scented detergents, which the National Institute for Occupational Safety and Health notes may release volatile organic compounds into the air.

• Inspect bathrooms for mold growth. Mold can grow on surfaces that are routinely wet, and that makes poorly ventilated bathrooms common sources for home mold infestations. Mold can adversely affect indoor air quality when mold spores are released, potentially triggering allergic reactions, asthma attacks and respiratory conditions. After bathing in bathrooms without vents, men and women can open windows so the room dries before mold can grow. In bathrooms with vents, make sure vents are running during baths and showers and afterward until ceilings, walls and floors appear dry.

Poor indoor air quality can be easily addressed to ensure individuals stay healthy throughout the year.

**homes by northplex Ltd**

**SOLID MODULAR HOUSING SOLUTIONS**

**BUY FACTORY DIRECT**  
150,000 Sq.Ft. Climate Controlled Factory

Sales: (780) 305-2213 [www.northplex.ca](http://www.northplex.ca)

f Homes by Northplex

PROUD MEMBER **MHAPP**  
MODULAR HOUSING ASSOCIATION PRAIRIE PROVINCES

Progressive HOME WARRANTY

**homes by northplex Ltd**

# GOLFER'S GUIDE

## INTERESTING FACTS ABOUT GOLF

Golf is played all over the globe. Golf is one of the world's oldest sports, boasting a rich history. Golf is a sport of skill, that can involve not only athletic prowess, but also brain power. Here are some interesting facts about the game.

- To this date, golf is only one of two games to be played on the moon. The other is a javelin throw.

- Long before the advent of tees, golfers played off of hand-built sand piles.

- In 1889, Ab Smith inadvertently coined the phrase "birdie," when he hit a shot he defined as a "bird of a shot."

- Making a hole-in-one during a round of golf is quite a challenge. However, the odds of making two are incredibly low, at one in 64 million.

- Only around 20 percent of golfers have a handicap below 18. The United States Golf Teachers Federation defines handicap as "a

measure of a player's current ability over an entire round of golf, signified by a number. The lower the

number, the better the golfer is."

- The word "caddy" comes from "cadet," the French word for "stu-

dent."

- A regulation golf ball contains 336 dimples.



### SILVER SANDS GOLF RESORT

Parkland's hidden gem of a golf course; located 45 minutes west of Edmonton on highway 16.  
 Book your company tournament today - we have special rates for weekdays. Call 780-797-2683.  
 Check [silversandsgolfresort.com](http://silversandsgolfresort.com) for weekly specials  
 Join us for Men's night on Wednesday's and Ladies night on Thursday's both 6:00 pm shogun start

## RV LOT PRE SALES CALL 780-222-1535

Silver Sands Village, Lake Isle [silversandsgolfresort.com](http://silversandsgolfresort.com) 1-877-797-2683



### Calahoo Hills Golf Course

- 9 Holes
- Grass Greens
- BBQ Facilities
- Licensed Clubhouse

**459-9081**

Map showing location: STONY PLAIN (12.8KM HWY 779), WESTONOWAT (5 KM HWY 779), HWY 16, TWP 544 (1.8KM), HWY 27, RGE 250 (280), 4KM.



### Alberta Beach GOLF RESORT

#### WEEKDAY SPECIAL

4 Golfers + 2 Carts Great for Weekday Tournaments  
**\$140.00 (\$35 each) Monday, Wednesday and Thursday Only.**

18 Holes	\$33.00 Weekdays	\$48.00 Weekends
9 Holes	\$20.00 Weekdays	\$37.00 Weekends
Cart Rental	\$18.00 9 Holes	\$28.00 18 Holes

To Book your Tee Times or Tournaments  
 Call: (780) 924-GOLF (4653)



# FORE!



### Kokanee SPRINGS RV PARK

Seba Beach, AB  
**DRIVING RANGE**

- 15 bay driving range
- Baskets & crates
- Public washrooms
- Club rentals
- Open 10am -8pm daily

**780-797-3058**

STAY AFTER YOUR GAME TO ENJOY



### RV PUB & GRILL

"WHERE FRIENDS MEET"

[www.kokaneespringsrv.com](http://www.kokaneespringsrv.com)  
 Hwy 31, Seba Beach, AB | 780-797-3100



# FREE LOCAL CLASSIFIED ADS

Real Estate, Rentals, Vehicles, Pets, Jobs, Service Directory, Buy/Sell/Trade, Lawn & Garden, Garage Sales, Events, Local Places & Much More... Advertise for **FREE** Today!



*Follow Us*



# SCREEPY, CRAWLY HALLOWEEN COLORING CONTEST



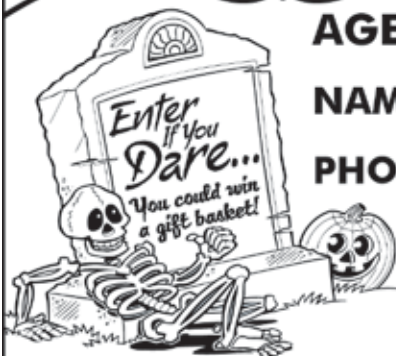
**AGE GROUPS: 3-4 YRS | 5-6 YRS | 7-9 YRS | 10+ YRS**

**NAME: \_\_\_\_\_ AGE: \_\_\_\_\_**

**PHONE: \_\_\_\_\_ TOWN: \_\_\_\_\_**

**Entries must be recieved by October 26, 2018.**

**Mail to: Jack O'Lanterns, c/o Community Voice  
Box 3595 Spruce Grove, AB T7X 3A8**



ANOTHER RAINBOW SALE
ANOTHER RAINBOW SALE

# UNRESERVED AUCTION SALE

## FOR WALTER & JUNE VOLSKY

**Sunday, September 16, 2018 at 10:00AM**

**VIEWING: Saturday, September 15 from 10:00AM-3:00PM**

**Directions: 52522. Range Road 14**  
 From Hwy 16a West of Stony Plain, AB turn West on Parkland Drive to range road 14 and go south 1 km to location!

**HIGHLIGHTS** *Horse-Drawn Collector Wagons & Memorabilia:* • John Deere Mini Wagon - an exact replica of larger JD wagons, only one known to exist in Canada today • Quebec Dump Cart - built in Drummondville, Quebec in 1908, a great collector's item and yard décor • Mountain Wagon - built by Anderson Carriage Works, Wooler Ont. in 1922, made for rough terrain • Petrolia Heavy Wagon - built in 1904 in Petrolia, Ontario, decals and names are still visible • Restored Farrier's Wagon - superbly restored, the 100-year old farrier and smithy tools are still in back of wagon • Light Express Wagon - built by R Ringer, Picton Ontario in 1915, this is a one-seater with a drop tailgate • Ezeze Roll Mini Horse Wagon - this wagon with pneumatic tires made mini horses earn their oats in old days • Grain Wagon - this wagon is another fine survivor of life years ago on Alberta farms • Original Milk Wagon - a rare commercial vehicle, original sign reads "Moser Bros. Milk & Cream 1900-1958" • Grain Wagon - this wagon is another fine survivor of life years ago on Alberta farms • Hay Rack Wagon - by Massey Harris, built in 1906, original name and stencils are on rear axle • Cariole Sleigh - built by PT Legare, Quebec, this sleigh is low enough to escape the wind • Massey Harris Grain Wagon - built by Massey Harris Co. in Hamilton, Ont, 1919, is still in excellent shape • Original Early Runabout Wagon - built in 1895, this is one of the oldest runabouts around today • Advocate's Buggy - built by Thomas Crow, Toronto in 1906, meant to be light and fast, was used by early lawyers • Delivery Express Wagon - estimated at over 100 years old, the delivery wagon was a common sight during the horse era • Original Adams Grain Wagon - never painted or altered, comes from Sask with a 3-section box and spring seat • Heavy Farm Wagon - built by famous Normandeau Co. in Quebec, this wagon has a Grain Tank Box • Maritime Jumper Sleigh - built by FJ Clark & Son, Fredericton, NB, in 1905, this is a fine rare sleigh • Black horse and harness - a life-size model like this is great for displaying tack or as a driveway decoration • Brown horse - exceptionally nice life-size model horse makes a superb yard decoration • Harness on brown horse - A beautiful and intricate harness • Garden Cart - a sturdy little cart ideal for a charming garden decoration • Original Platform Scale - a Beam scale built by Fairbanks, still weighs accurately, a rare original • John Deere cast bill hanger - printed with Moline, Illinois 1847, the site of John Deere's world headquarters • 5 giant Scottish harness hangers - by each - heavy duty hangers are ideal for hanging harnesses or other heavy items • One-horse Cultivator - this vintage cultivator makes a charming garden or yard decoration • Framed Limited Edition print - 28"x42" picture entitled "Wagons that Won the West" showcases vintage wagons • 2 No. Antique wagon light fixtures • Antique Coca Cola hanging bell • Antique Nat. Advert. Box c/w misc horse items • Antique Canadian bell; Antique accordion • Old-time children's dump sleigh • Antique wood crate • Mini bob sleigh; Sleigh bells • Mirror decorated with 7 horse figurine • Collar with harness for cart horse • 3-hook hanger with horses decoration • Antique wagon seat • Antique cultivator • 100 year old anvil • Antique plow • 2 No. of 54" wagon wheels • Horse-related parts and accessories • 2 No. of 44" wagon wheels • Homesteader's cupboard. **Lawn & Garden Equipment & Tools:** • Montana Tractor 3-Point Hitch c/w loader • 10"x10" Plate tamper • JD X739 tractor with heated cab - used only 18hrs - new • 2 No. of John Deere turf tires c/w rims - like new • Yardworks electric log splitter • Flat collapsible wheelbarrow • Troy-bill Pony tiller • Stihl FP-40C trimmer-new • 24" self-propelled Swisher • Stihl FP-38 trimmer-new • Ariens model 911183 mower - needs travel cable • 2 No. Landscape leveling rakes - new - by each • 30" lawn roller • Little Giant ladder c/w step plate - like new • Contractors' wheelbarrow • Manual garden tiller - new • Post-hole auger • 20" skidding logs - new • 2 No full-length sickles • BCS Cultivator • Bundle of lawn tools • Yardworks 24" snow thrower • Bundle of solid metal tree/snow fence supports • Yardworks 24" snow thrower • 4'x3" harrow - new • John Deere 1028E 30" snow thrower • John Deere pull-behind till trailer • Spray-tech model ES260 with 25 gal tank • 60" snow blade for John Deere tractor • 44" Rough-cut Swisher trail cutter • Stihl MS-362 chain saw c/w case - like new • Agrimetral mechanical rake model MR 380 • Stihl HT101 pole saw - 16' reach from ground - like new • Triton 2010 Utility trailer - like new • Stihl MS-192 chain saw c/w 2 extra new chains. **Large Selection of Antiques Plus High End Products, Shop Equipment and Tools, Yard Decor, Large Selection of Miscellaneous & Variety of Items too big to list!**

## UPCOMING SALES

CONSIGN NOW!

Thursday, September 20, 2018 @ 5:00 p.m.

**Unreserved Auction Sale for DNI Bolting Solutions**  
5328-68 Ave. Edmonton, AB

Sunday, September 23, 2018 @ 12:00 noon

**Unreserved Auction for Larry and Francis Boyer**  
County of Yellowhead - Entwistle, AB

**\*\*WATCH FOR UPCOMING ESTATE & ON SITE SALES\*\***

Terms and conditions: Cash, Visa, MasterCard, Debit, Interac. Nothing to be removed until paid for. Subject to additions and deletions. A 10% handling fee, plus GST will be charged where applicable. Please be conscious of the handling fees and factor them into your bidding. Owner Rainbow Auctions & Liquidators or it's employees shall not be responsible for accidents.

Sale Conducted By:  
**RAINBOW LIQUIDATORS AND AUCTIONS**  
Stony Plain, AB. 780-968-1000 or TOLL FREE 1-866-968-1001  
Complete Liquidation and Auction Services Since 1978  
[www.rainbowauctions.ca](http://www.rainbowauctions.ca)

# RCMP BEATS

**Submitted by Stony Plain/  
Spruce Grove RCMP**

Occurrences for the week of 27 August to 2 September, 2018.

Total Calls for Service Spruce Grove/Stony Plain/Enoch Detachment: 649

Total Calls for Service for the Victim Service Unit: 25

Individuals Charged: 103

Person Crimes reported: 58

Property Crimes reported: 78

Impaired Driving Complaints reported: 6

Impaired Driving Charges Laid: 1

Roadside Suspensions: 1

Motor Vehicle Collisions Attended: 41

Property Crimes:

Spruce Grove

1. August 28 – Area of McLeod Avenue and Belmont Crescent – Theft from Vehicle, tools stolen

Stony Plain

2. August 27 – Area of South Creek Wynd – Theft from Vehicles, wallets and keys stolen

3. August 27 – Area of Grayridge Bay – Theft from Vehicle, wallet stolen

4. August 29 – Area of South

Creek Link – Theft from Vehicle, wallet stolen

Rural

5. August 28 – Area of 47 Avenue and 44 Street, Alberta Beach – Theft of Vehicle, 2006 blue Volvo S40

6. August 28 – Area of Township Road 524 and Range Road 20 – Theft from Vehicle

7. August 31 – Area of Township Road 532 and Range Road 272 – Theft of Vehicle, 2007 black Ford F350

8. September 1 – Area of Township Road 532 and Range Road 272 – Theft of Trailer, 2012 20' white Atlas

Stony Plain/Spruce Grove RCMP remind you not to make it easy for thieves. Ensure all doors and windows and the sunroof to your vehicle are closed and locked whenever you are not occupying it.

The Spruce Grove / Stony Plain Drug Section Information Tip Line is 780-968-7212. Anyone with drug information is asked to call and leave a message. If you have information regarding any of these crimes, or any other crime, please call the RCMP at 780-962-2222 or 780-968-7267.

## SEPT 22 AUCTION

### FOR: ALBERT GOLDNICK

Located: From Westlock Inn – 1 1/4 mi N on Hwy 44

**Saturday Afternoon, September 22<sup>nd</sup> at 1:00P.M.**

**ACREAGE EQ:** \* IHC 674 Tractor w 3pt, IHC 1850 FE Loader \* MF 35 gas Tractor w 3pt, Tire Chains \* JD 506 / 3 pt Mower \* 7' Leon HD Rear 3pt Blade \* 6' HD/HM/3pt Cult \* 3pt/2 Btm Plow \* 3 pt / 4' Maschio Rototiller \* 8 hp Gas Motor \* Truck Box Trailer

**STORAGE AND RECREATION:** \* 40 Green SeaCan \* 8' x 6' Shed on Skids w metal exterior \* 1998 Yamaha Triple 700 RV/ w (6596km), red, ES, reverse \* 8' SkiDoo Trailer \* Evinrude 4hp and 6hp O/B Motors \* Commercial Trampoline \* ATV Lift, Portable

**YARD EQ:** \* JD F525 FM Mower \* 25 gl PF Trail Yard Sprayer \* Trailing Aerator \* YM 6hp/21" Push Mower \* 5hp Rototiller \* Grass Catcher \* 2W 4x8 Yard Trailer \* Poulan Chain Saw \* 4 Alum Ladders

**RECREATION:** \* Yamaha 250/2W Timber Wolf Quad \* 12 Alum Boat \* 5 hp Evinrude O/B \* Saddle \* Boat Trailer \* Hoof Trim Kit \* Husq 270 Mag Weather by Win Model (60 30-30) \* Rem 1870 Pump w 3" \* Fish Gear \* Bike

**COLLECTABLES:** \* Anvil \* World Book Encyclopedia \* Pedestal Wood Table w 2 Leaves \* Side Board \* Light Oak China Cabinet \* C/Oil Lamps \* Guitar \* Singer Sew Machine \* H/C Cream Separator \* Baby Crib

## PARSONS AUCTIONS LTD.

Charles 674-7704 (780-674-3929) Jeff 305-4328  
Pictures Available on: [parsons-auctions.com](http://parsons-auctions.com)

# ARMY CADETS BEGAN SEPTEMBER 5TH

Submitted by Captain R. Heinz, CD | 3053 (Lac Ste Anne) Royal Canadian Army Cadets Corps

After what seemed like a very short summer, the cadets, staff and parents of 3053 (Lac Ste Anne) Royal Canadian Army Cadets Corps began the 2018-2019 training year on Wednesday night September 5th at 1900hrs (7pm)!

The Royal Canadian Army Cadets (RCAC) is a national Canadian youth program sponsored by the Canadian Armed Forces (CAF) and the civilian Army Cadet League of Canada. Under the authority of the National Defence Act, the program is administered by reserve force personnel of the CAF and funded through the Department of National Defence. The civilian partner of the RCAC, the Army Cadet League supports corps at a more local level in ways which the CAF do not. Others supporters of the Canadian Cadet Organization can be local community groups such as the Royal Canadian Legion (Branch #132 in Onoway is the official sponsor of 3053 RCACC).

The RCAC is recognized as Canada's oldest youth program. As of 2016, there are approximately 18,920 army cadets in about 429 corps which are spread across this vast nation. Youths of any country of origin, nationality and citizenship can join cadets, provided that they are between the ages of 12-18.

The membership in cadets is always FREE of charge! Uniforms, training equipment and instruction are provided for free and all items are returned at the end of their involvement with the unit.

The aim of the Royal Canadian Army Cadets is "to develop in youth the attributes of good citizenship and leadership; promote physical

fitness; and stimulate the interest of youth in the sea, land and air activities of the Canadian Armed Forces.

The "army side" of cadets focuses on training in the field of activities such as map and compass, GPS, bushcraft skills, wilderness survival

and teamwork. 3053 RCACC also has a very successful marksmanship program with both the Daisy air rifle and the small bore .22 cal Enfield rifles! Our affiliated unit is the South Alberta Light Horse Regiment, who also assist our cadets with advanced

military training.

If any of these activities interest you, please don't hesitate to contact us and we will answer your questions. Hope to see you any Wednesday evening in the old gym behind the Onoway museum. Cheers



**The Canals**  
AT WINDMILL HARBOUR

LAC STE. ANNE  
WATERFRONT

EXTRAORDINARY CANAL LIVING  
HOME & LOT STARTING IN THE \$400s

OPEN HOUSE SUNDAYS NOON - 4:00PM

WWW.WINDMILLHARBOUR.CA



Badge of the Royal Canadian Army Cadets

THE ESTATE OF ALLEN KIRBYSON AND CAROL KIRBYSON

# AUCTION

11 AM Saturday, October 20, 2018 Rochfort Bridge, AB

**K1:** 57132 RR80 Rochfort Bridge (15 ± acres)

Pt NE12 & Pt SE13-57-8-W5

1700± sq ft 3 bedroom 2 bath home, heated workshop, large storage building. U-Pick Berry Farm (Saskatoon & Raspberries)

**K2:** Pt SE13-57-8-W5 (133± acres)

Productive farm land with cultivated land and also with U-Pick Saskatoon operation

**K1 & K2 are both subject to final registration of property boundary realignment.**

**Real Estate sells at 12 PM**

**Directions to Property & Sale Site:**

57132 RR 80, Rochfort Bridge, AB (Lac Ste Anne County)  
From Junction of Hwy 43/Hwy 22 (Mayerthorpe) - southeast 7.5 km on Hwy 43 to RR80 - (Rochfort Bridge turnoff), then north .9 km to property on left.

Moore's Agri-Trade Ltd  
780-388-3759



**Partial Listing**

**Tractors & Attachments:** JD 4430 2WD Tractor • Ford 4000 2WD Loader Tractor  
**Construction / Industrial Equipment:** 2005 McCloskey Bros 512R Trommel Drum Screener • 2011 JD 332D Skid Steer • JD 644D Wheel Loader • Lemar HD Skid Steer Tree Spade • HLA 96" Skid Steer Snow Bucket  
**Harvest Equipment:** JD 6601 Pull Type Combine  
**Tillage & Seeding Equipment:** Rem 24 ft Harrow bar Cart • Versatile 20 ft Field Cultivator • Allis Chalmers 1200 13 ft Field Cultivator • Golden Arrow 40 ft Field Sprayer • Older 12 ft Deep Tillage Cultivator  
**Trailers:** 2012 PJ 22 ft Tri/A Deck Trailer  
**3 PT, Lawn & Garden:** JD 673 3 Pt Rototiller • JD LA145 Lawn Tractor • Farm King Y750R 3 Pt Finishing Mower • Cosmo P500 3 Pt Broadcaster • Shop Built Watering Trailer • Demco 3 Pt Weed Sprayer • Rem 10 ft 3 Pt Chain Harrows • Muratori MB105 72" 3 Pt Tiller • Saskatoon Berry Picker • Shop Built 2 Prong 3 Pt Bale Fork  
**Recreational:** Honda Foreman 500 4X4 Quad • 1997 Ski-Doo Touring LE 440 Snowmobile • Shop Built Arctic Snowmobile Sled and much more!



John Deere 644D Wheel Loader



2011 John Deere 332D Skid Steer



Ford 4000 2WD Loader Tractor



2012 PJ 22 ft Tri/A Deck Trailer



2005 McCloskey Bros 512R Trommel Drum Screener



John Deere 4430 2WD Tractor

**internet BIDDING 12 PM**

**TEAM AUCTIONS**

Sekura Auctions Since 1966

[www.teamauctions.com](http://www.teamauctions.com)

Head Office - Drayton Valley AB 780-542-4337



# Classified Ads - Call 962-9228

## Classified Policy

CLASSIFIED RATES INCLUDE GST. 1st 20 Words: First Insertion = \$6.00; Subsequent insertion = \$3.00 each. Each additional word is 20 cents per word, per insertion. Ads must be paid in advance either by cheque, cash, Visa or Mastercard. No Refunds Allowed on Classified Ads. DEADLINE: is Thurs. 4:00 pm. Classified ads may be called in to the COMMUNITY VOICE office at (780) 962-9228, emailed to: classifieds@com-voice.com, dropped off at Oneway Registries, or mailed with your ad and payment to: COMMUNITY VOICE, BAG 3595, SPRUCE GROVE, AB T7X 3A8. Ads may also be placed on the web at www.com-voice.com/classified.htm

## Hall Rentals

Alberta Beach Agliplex, Susan 780-996-2960.

Alberta Beach & District Seniors 55+ Club. We now have air conditioning! Space Available! Call Jeanne (780) 913 4494.

Anselmo Community Hall, Phone 780-786-4280

Bright Bank Hall, 780-968-6813

Cherhill Legion, Mary 780-785-3578.

Cherhill Community Assoc. Hall, Debra 780-785-2907

Darwell Hall, 780-721-2690

Darwell Seniors, Phone Debra 780-785-2907

Goose Lake Hall, Contact Deanna (780) 584-3738

Gunn Hall (G.A.R.S.) 780-951-9452

Hathersage Community Centre, Noreen at 786-2946

Lake Isle Community Hall, PH: 780-892-3121 or Email: lakeislehall@mail.com

Magnolia Hall, 727-2015

Manley Goodwill Community Hall, 963-9165 or 916-0146

Mayerthorpe Diamond Centre, Charlotte at 786-4659

Mayerthorpe Legion, 786-2470.

Oneway Community Hall, 967-4749.

Oneway Heritage Center - Gym/Classrooms, 967-1015

Oneway Legion, 967-4980

Park Court Community Hall, 727-4476

Parkland Village Community Centre, 780-298-9155 @PVCcentre

Ravine Community Hall, 325-2240

Rich Valley Community Hall, 967-5710 or 967-3696

Rosenthal Community Hall, 963-7984

Sandy Beach Rec Hall, 967-2873

Sangudo Community Hall, 780-204-1652 or 780-785-2904

Stettin Nakumun Comm. Hall, 967-9198

## Employment Opportunities

Gunn Esso, Now hiring Part time. Experienced workers preferred. Please bring resume to store. (6) 04-09

## Wanted

Oneway Caretaker Required for 17ft Suite Apartment Building, 780-423-3664 & 780-920-3652 (4) 11-09

## Services

**Stump Grinding For Hire** - Alberta Beach & surrounding areas, Call 780-779-3589 (22) 01-05

**WANTED:** Standing Timber. Are you looking to cut your woodlot before pine beetles or forest fires destroy it? Top dollar paid. Call now! Paul 780-706-1470 (12) 31-07

Nasty's Tree Removal. Stump Grinding, Pruning & Firewood for sale. Licensed & insured. Roger @ 780-720-2207 (13) 07-08 OG

Best-Cistern-Septic-Solutions. Cistern and Septic Inspection, Installation and Repair! New Installs Available. Plastic, metal, fiberglass or concrete. We clean them all! Your cistern will be vacuumed, cleaned and sanitized with our high pressure, hot wash, sanitizing system. Reasonable Rates, Call 780-668-4306 (5) 11-09 OG



**NEW FACILITY**  
Chapel & Reception Centre



600 Calahoo Road Spruce Grove, AB  
**780-962-2749** [www.serenity.ca](http://www.serenity.ca)

SERENITY FAMILY SERVICE SOCIETY - YOUR NOT-FOR-PROFIT SOCIETY




[www.serenity.ca](http://www.serenity.ca)

**780-542-3338** (24 hours) 5137-50 Avenue Drayton Valley, AB

SERENITY FAMILY SERVICE SOCIETY - YOUR NOT-FOR-PROFIT SOCIETY



**SHORELINE RESTORATION**



[ecofirst.ca](http://ecofirst.ca)

**LANDSCAPING  
EARTHWORKS  
EROSION CONTROL**

Call or Text  
**RICHARD DEIB**  
780.217.3534  
[richard@ecofirst.ca](mailto:richard@ecofirst.ca)

**Serving The Community Since 1995**

# Classified Ads - Call 962-9228

## Dog Caretaker

**Alberta Beach & Surrounding Areas, thinking of a Summer Getaway? Worried about leaving your dog in a kennel?** Don't worry anymore, you can leave your pet with me! There is a wrap around deck in court yard! I will provide tender loving care, with walks every day. Best of all, I'm cheaper than a kennel!

Daily drop in's or overnight stays welcome. If interested call 780-920-4166 (4) 04-09 OG

## Music

Piano, Harp, Theory, Dance Lessons available Thursdays in Wabamun. All ages and levels welcome, 780-916-1317. www.youvegotrhythm.webs.com (2) 11-09

## Cleaning

Ceiling & Wall Cleaning - Stipple, Wood, All Types. Ceramic Tile Cleaning, Cig. Smoke Removal, Biodegradable non toxic cleaner. We travel to acreages and farms! Seniors Discount, Call Nano Cleaning Today! 780-914-0323 (5) 28-08 OG

## Computers

Free Computer Check-ups, repairs NOT over \$50. Available: LIKE NEW Laptop or Desktop. your world or family access, clean, refurbished, upgraded, net, games, music, pictures and introduction lesson. ONLY \$100. Free repairs for single parents. Call or leave message, 780-892-4993 (15) 28-08

## Firewood

**FIREWOOD FOR SALE** - Birch, Tamarack & Spruce Pine mix. 4x4x8 cords and 1/2 cords. Quality seasoned wood, Delivery or Pick up. Woodchuck Firewood, 780-288-7247 (28) 24-04 OG

His Helping Hands Firewood - Poplar, Tamarack & Birch for sale. All profits go to charity. 780-218-4177 (4) 28-08 OG

## Recreational Vehicles

1979 Chev Glendale Motorhome '22', 350 V8, sleeps 6, good condition - \$3900 OBO. Call 780-785-2454 (S) OG

## Miscellaneous

Top Soil, Peat Moss, and Utility Trailers for sale - some have VIN#'s. 780-967-2279 (7) 14-08

## For Rent

1 Bedroom Apartment, fully furnished with full kitchen, WIFI, cable, phone, A/C, power, gas all included. New Motel looking over lake, downtown Alberta Beach, \$950/month. Cheryl 780-906-1675 (10) 24-07

Beautiful 3 Bedroom House on acreage near Alberta Beach. \$1500/month includes utilities. Call Dave 780-886-0736 (6) 28-08

Available Immediately, Large 2 Bedroom in Adults ONLY building in Entwistle. Includes Heat, Water & Parking. Rent \$765/month + DD \$300. Cats allowed, Must have good credit. Call Ivka 780-554-5493, jakovljevicvka@yahoo.ca or 780-807-1300 (2) 04-09 OG

**Church Directory**

<p><b>Rich Valley Community Church</b></p> <p>Sunday School 10:00a.m.</p> <p>Worship Service 11:00a.m.</p>	<p><b>Catholic Parish of Lac Ste. Anne</b></p> <p>Sunday 10:00a.m.</p>	<p><b>St. John's Anglican Church</b></p> <p>Onoway</p> <p>Sunday Service 10:00a.m.</p> <p><i>Everyone Welcome</i></p>	<p><b>Mayerthorpe Baptist Church</b></p> <p>Worship Service Sunday 10:30a.m.</p> <p>Children's Church 10:30a.m.</p> <p>4606-54 St. Mayerthorpe (780) 786-2677</p>
<p><b>St. John's Lutheran Church</b></p> <p>Alberta Beach</p> <p>Sunday Service 11:00a.m.</p> <p>Sunday School</p>	<p><b>Zion United Church</b></p> <p>Sunday Service 10:00a.m.</p> <p>Sunday School</p> <p><i>Serving Alberta Beach, Wabamun, Darwell &amp; Lake Isle, Onoway &amp; Area</i> (780) 924-3351</p>	<p><b>Sangudo United Church</b></p> <p>Worship Service 3<sup>rd</sup> Sunday 11:00a.m.</p> <p><i>All Services Begin at 1:30p.m.</i> <i>Reverend Barry Rose Officiating</i> 4907-50 Ave. Sangudo, AB</p>	<p><b>Infuzed Ministries</b></p> <p>Worship Service Sunday 3:30p.m.</p> <p><i>in Alexis Community Hall</i></p> <p>Pastor Daniel Jackson (780) 719-0240</p>
<p><b>Trinity Lutheran Church (LC-C)</b></p> <p><i>The Church of the Lutheran Hour - Rochfort Bridge</i> Pastor Dan Hansard Church (780) 778-2055</p> <p>Sunday Worship 9:00a.m.</p> <p><i>Senior's Service &amp; Cottage Bible Study - Phone for locations</i></p>	<p><b>Mayerthorpe Pentecostal Assembly</b></p> <p>P.A.O.C. Rev. Arnold Lothoiz</p> <p>Sunday 10:30a.m.</p> <p>Morning Service Tuesday 7:30p.m.</p> <p>Ministry Training (780) 786-2141</p>	<p><b>St. Michael Lutheran Church</b></p> <p>Sunday Services 1<sup>st</sup> &amp; 3<sup>rd</sup> Sunday at 2:00p.m.</p> <p>Pastor Rick Chappell (780) 674-2618</p> <p>Mystery Lake</p>	<p><b>Onoway Baptist Church</b></p> <p>Sunday Service 10:00a.m.</p> <p>Youth Group Friday 7:00p.m.</p> <p>(780) 967-2266</p>
<p><b>Alberta Beach Alliance Church</b></p> <p>Sunday Worship Service &amp; Kid's Church 11:00a.m.</p> <p>Sunday School 10:00a.m.</p> <p>(780) 924-3282</p>	<p><b>Cherhill Community Church</b></p> <p>Sunday School 10:00a.m. - 11:00a.m.</p> <p>Worship Service Sunday 11:00a.m.</p>	<p><b>Roman Catholic Church</b></p> <p>St. Agnes' Parish, Mayerthorpe</p> <p>Sunday 9:00a.m.</p> <p>St. Elizabeth Parish, Evansburg</p> <p>Saturday 7:00p.m. (780) 786-2032</p>	<p><b>Calahoo Alliance Church</b></p> <p>Family Worship Service Sunday 10:00a.m.</p> <p>For Info Call Jerry (780) 974-7734</p>



# SUDOKU OF THE WEEK

## Fun By The Numbers

**Here's How It Works:** Sudoku puzzles are formatted as a 9x9 grid, broken down into nine 3x3 boxes. To solve a sudoku, the numbers 1 through 9 must fill each row, column and box. Each number can appear only once in each row, column and box. You can figure out the order in which the numbers will appear by using the numeric clues already provided in the boxes. The more numbers you name, the easier it gets to solve the puzzle!

3	5	7	6	9				2
		9	8				3	
8			5	2				9
9							5	
	2						6	
4	1		9		6			3
	7		3	5	2		9	
				1	9	5		
				6				4

**ANSWER:**

3	5	7	6	9	4	1	8	2
2	4	9	8	7	1	6	3	5
8	6	1	5	2	3	7	4	9
9	8	6	2	3	7	4	5	1
7	2	3	1	4	5	9	6	8
4	1	5	9	8	6	2	7	3
1	7	4	3	5	2	8	9	6
6	3	8	4	1	9	5	2	7
5	9	2	7	6	8	3	1	4

**Like puzzles?** Then you'll love sudoku. This mind-bending puzzle will have you hooked from the moment you square off, so sharpen your pencil and put your sudoku savvy to the test!



 Like Us On facebook    
FACEBOOK.COM/COMMUNITYVOICENEWS PAPER

 follow us on twitter  
@communityvoice8

# SERVICE DIRECTORY

**Lanman Landscapes**  
YOUR ONE STOP FOR ALL TYPES OF LANDSCAPING

Dangerous Tree Removal    Yard Cleanup    Full Landscaping Service

Experienced Bobcat Work

(780) 977-6586

**2Bros**  
Custom Contracting Ltd.

Custom Framing • Concrete Floors • Shingling  
Siding Soffit Fascia • Styrofoam Block System

Jeff    780-717-0520

 **Cell Phone Repair**    **CPR St. Albert**  
Saving Your Mobile Life™

**We Can Fix That In 90 Minutes**

iPhones, iPods, iPads, Tablets, Computers - Apple, Samsung, Blackberry, LG, Sony and MORE  
Lifetime Warranty Against Defects In Our Screens  
Now over 480 Locations

#13 - 11 Bellerose Drive (Next to Grandis Bakery) 780-460-0277

**AC Purewater**  
Hauling Services LTD

Cell # (780) 914-9002

We fill ... HOT TUBS  
POOLS CISTERNS

Health Board Approved (city water)  
Serving the counties  
West of Edmonton

 **THIS SPACE IS RESERVED FOR YOU!**

 **BRO-BUILT**  
Homes & Contracting Ltd

"We Pride Ourselves In Turning Handshakes Into Hugs"

www.brobuilthomes.com  
Testimonials  
Phone 780-940-6415

# SERVICE DIRECTORY

**Jack's Auto Body**  
  
 & 24 HR Towing

**SPECIALIZING IN COLLISION REPAIR  
 GUARANTEED WORK • INSURANCE CLAIMS**

CAA BOX 9 SITE 306 RR3, ONOWAY, AB T0E 1V0  
**(780) 967-5850**

OUR PLEDGE IS QUALITY

 **MARK MARTIN PFEIFFER**  
 MASTER BRICKLAYER/MASON

Cell: 780-242-3308  
 Email: pfeiffer.mark@hotmail.com

- Brickwork • Stonework
- Rockwork • Parging
- Concrete Block Work
- Tile Work (all kinds)



**ALL AROUND  
 FENCING RENTALS**

Fence Panels • Barricades  
 Installation by Collin Toilet Rentals

Whitcourt, AB  
**780.706.7978**



**Super Sucker Vacuum Services**  
 Residential & Commercial

**Trevor Gardner**  
 Owner/Operator  
 Septic Pumping Service

RR 1, Site 1, Comp 261 Onoway, AB T0E 1V0  
 Office: (780) 967-5552 [supersucker@telus.net](http://supersucker@telus.net)

780-660-3521

**Karl's Bobcat Service**

Gunn Alberta



**R & S  
 TOWING**

FREE REMOVAL OF  
 UNWANTED VEHICLES

MasterCard **967-2492** VISA

**H & E UPHOLSTERY**  
 For all your upholstery needs

Convertible tops for cars and boats, custom car and boat interiors, 5th wheel trailer skirts, boat tarps, ATV seats, furniture, kitchen chairs, heavy equipment seats.



[www.h-and-e.ca](http://www.h-and-e.ca) 4-485 South Ave.  
 For more information contact: Spruce Grove  
[info@h-and-e.ca](mailto:info@h-and-e.ca) (780) 962-3048

**THE HAY** TRUCKING & CONSTRUCTION ONOWAY AB

COR Certified

- Oilfield
- Road Building
- Basements
- Dugouts
- Sand & Gravel

[haytrucking@xplornet.ca](mailto:haytrucking@xplornet.ca)  
[www.haytandc.com](http://www.haytandc.com)  
 Office: 967-5849 Cell: 818-5849

**DONALD N. GREENWAY**  
 Chartered Accountant

Suite 205 Sunrise Professional Building  
 215 McLeod Avenue  
 Spruce Grove, AB  
 (Bus.) **962-6366**  
 (Fax) **962-3990**

**ZEE BEST RENOVATIONS**  
 Your Complete Line of Renovation Needs:

- Bathroom
- Basements
- Plumbing
- Tileworks
- Drywall & Taping
- Decks & Fencing
- Roofing
- Siding

**THE MOST COMPLETE**  
 NUTRITIONAL SPRAYS ON THE PLANET



ORDER TODAY!  
**(780) 907-8642**  
[www.Elaine1.com](http://www.Elaine1.com)

**PEMBINA CONCRETE PRODUCTS LTD.**

Manufacturers of  
**ONE PIECE SEPTIC & HOLDING TANKS**

\* Water Cisterns \* Field Systems \* Pumps and Accessories \* Sumps

 **DELIVERED TO YOUR SITE**

1-800-661-3047  
 780-727-2702  
[PembinaConcrete.com](http://PembinaConcrete.com)

**FREE ESTIMATES  
 26 YEARS EXPERIENCE  
 INSURED | GREAT RATES**

JOE LAWRENCE  
 MANAGER

BUS: 780-967-3898  
 CELL: 780-915-3348  
 FAX: 780-967-3798

**POSTINGFIRST.com**

**FREE LOCAL CLASSIFIED ADS**  
 Real Estate, Rentals, Vehicles, Pets, Jobs, Service Directory, Buy/Sell/Trade, Lawn & Garden, Garage Sales, Events, Local Places & Much More... Advertise for FREE Today!

*Follow Us*



**New Line of Concrete Statues, Fountains and Garden Ornaments.**

BOX 123, Entwistle, T0E 0S0

# SERVICE DIRECTORY



**PaddlePlastics Ltd.**  
Mayerthorpe, AB

Box 67  
Mayerthorpe, AB T0E 1N0

Ph: (780) **786-4408**  
Fax: (780) 786-4466



**Mo-Bil WASH SERVICES Ltd.**

- Steam • Hot & Cold High Pressure Wash • Sewer Thaw & Flush
- Residential • Commercial - Oilfield

24 HOUR SERVICE  
Onway Call (780) 991-9466

**RESIDENTIAL CLEANING SERVICES**



**Call Today for your FREE Quote!**  
**(780) 264-7740**

SERVING SPRUCE GROVE AND STONY PLAIN ONLY



**Blakeman Drilling Ltd.**

Waterwell Drilling & Servicing  
Pumps & Pressure Systems

SERVING LAC STE. ANNE & WEST PARKLAND FOR OVER 25 YEARS

Joe (780) 924-3024



"We are a family orientated company that pride ourselves on SAFETY and EFFICIENCY"

**CHRIS & LISA VANHILL**  
OWNER/OPERATOR

Site Clearing, Grading, Road Building, Brushing, Acreage Development, Dugouts, etc.

780-619-3236  
vanhillcontracting@gmail.com Onway, AB

**SANGUDO VETERINARY CLINIC**

Box 581, 4916 - 52 Ave. Sangudo, AB. T0E 2A0

**Dr. Ralf Sanders DVM**

Ph: 780-785-2200  
Fax: 780-785-2228  
sangudovet@gmail.com

**24 HOUR EMERGENCY SERVICE**

**GROVE MACHINE & WELDING**

Office: (780) 962-1772 Call: (780) 231-5405

You have an idea, we'll design it, build it and test it

- Fasteners • Welding • Fabrication • Repairs
- Mobile Welding • Plasma Cutting • Machining

35 South Avenue Spruce Grove, AB T7X 1B3  
E-Mail: jim.reynar@grovemachinewelding.com  
sales@grovemachinewelding.com



**H&P Kosik CONSTRUCTION Ltd.**

- Road Building • Gravel • Sand • Dugouts
- Black Dirt • Clearing

No Job too small We do them all!

Harvey cell. 780-445-9010 ph. 780-892-3532  
Box 145, Darwell, AB. T0E 0L0

**Collin Toilet Rentals & Service**

Your Portable Toilet Supplier for:

- Construction
- Commercial
- Oilfield
- Special Events



**Whitecourt Dispatch 780.778.2448**



**JAVORSKY DITCHING**  
Onway, AB

Phone: (780) 967-5486  
Cell: (780) 906-7469  
Fax: (780) 967-4961

Dennis Javorsky - Owner / Operator

For All Your Excavating Needs  
Sand & Gravel Hauling • General Excavating  
Septic Tanks & Cisterns • Site Prep & Clean Up  
• Install & Repair of Water, Sewer, Power & Telephone Lines



**ROY SHERWOOD**  
Master Electrician

**SURETECH ELECTRIC LTD.**

Ph: 780-968-1425  
Call: 780-908-2287  
Fax: 780-968-2211

Email: suretechroy@gmail.com

2-53220 Rge Rd 21  
Parkland County, AB  
T7Y 0C5

Control & Automation  
Commissioning  
Solar Sales & Service

Industrial . Commercial . Residential



**VILLAGE GLASS & MIRROR LTD.**

- AUTO
- RESIDENTIAL
- COMMERCIAL GLASS & MIRROR PRODUCTS



5027 - 50 Avenue • Phone: 967-2127  
PO Box 609, Onway, AB T0E 1V0



**JIM HAY TRUCKING**

- Screened Black Dirt
- Beach Sand
- Road Gravel • Fill Dirt
- Bobcat & Backhoe Available

**(780) 220-5849**

**RAINBOW LIQUIDATORS & AUCTIONS**

Farm Sales, Equipment Sales, Estate Sales, Storage War Auctions

**BOOK YOUR SALE WITH US TODAY!**  
Serving the Community for 30 years

Ph: (780) 968-1000  
Stony Plain, AB 1-866-968-1001  
www.rainbowauctions.ca

# SERVICE DIRECTORY

**Chico's**  
Vacuum Service Ltd. 

**SEPTIC SERVICES  
RESIDENTIAL & COMMERCIAL**  
Dave Dornbusch - Kathleen Fedorek

Box 130 PH: 780-924-2435  
Alberta Beach, AB T0E 0A0 1-877-226-5008

**Friendly Reliable Service**

**SMOOLE**

- Construction & Septic Installation
- Environmental Wastewater Disposal
- Site Design & Evaluation
- Power, Water & Basement Excavation
- Trackhoe, Backhoe, Bobcat & Dump Truck

**For All Your Excavation Needs** 

Call Dan 780-991-4484 Reid 780-909-0173

**SEPTIC FIELD DESIGN  
AND INSTALLATION**  
**CERTIFIED INSTALLER**

Installation of Water Cisterns & Sewage Tanks  
Trenching Water Gas and Power  
Mini Hoe and Full Size Hoers  
Basement Excavation 

**Call Gene at (780) 405-2355**

**ATB Financial**<sup>™</sup>

**ALBERTA BEACH AGENCY**  
4824 - 50 Ave, Alberta Beach  
Ph/Fax: (780) 924-2211

Mon to Thurs 10:00AM - 4:00PM  
Friday 10:00AM - 5:00PM

**Heidi Letendre**

Tel: (780) 738-1234 Cell: (780) 999-5733

**CUNNINGHAM  
CISTERN CLEANING**

*And Pressure Washing*

- Cleaning • Power Wash • Vacuuming • Sanitizing
- Repairs • Installations Water Testing if Requested.

FREE QUOTES - FREE INSPECTIONS

Box 5494 Email: joecunningham@live.com  
Devon, AB www.cunningham-cistern-cleaning.ca

**CUSTOM CORRAL  
CLEANING &  
SUPPLIES**  
Onoway, AB

Call Gene 780-405-2355  
or Dale 780-717-9004  
email: grasslandcorral@live.ca

**gogutters.ca**  
587-269-4020

soffit, siding, eavestrough upgrades



180% Satisfaction Guarantee

**Whole Heart  
Massage Therapy**

- Swedish Massage
- Relaxation Massage
- Deep Tissue Massage
- Kinesio Taping

(780) 699-4667  
Jennilee Reber  
REGISTERED MASSAGE THERAPIST  
DIRECT BILLING TO INSURANCE

wholeheartmassage@hotmail.com  
54013 Range Road 30 #10  
Diamond Country Estates  
Lac Ste. Anne County

**MASTER  
PLUMBER** 

36 YEARS EXPERIENCE  
**780-655-8402**


**PLUMBING & HEATING SERVICES**  
**PRICE BY THE JOB NOT THE HOUR!**

Furnace and Air Conditioning Rebate Special



**SUMMERS  
DRILLING** <sup>ltd.</sup>

Water well drilling and service  
Family owned Business Serving Alberta since 1917



Tired of hauling water?  
We can install a water well with a permanent water supply for as little as \$150/month OAC

Never run out of water again!

5 year workmanship warranty

3 Convenient ways to pay

- Visa
- Mastercard
- We now offer full financing

Stop in at our office 4405 - 50 Street, Stony Plain  
780-963-1282  
admin@summersdrilling.com

**GRANDE TIRE**

5115 LAC STE. ANNE TRAIL N. ONOWAY, AB T0E 1V0

**Full Mechanical Services  
Tire Sales & Repairs**

**BUS: (780) 967-3432**  
**FAX: (780) 967-4816**  
contectire@xplomet.com



**Pm** Park Memorial <sup>ltd.</sup>  
Funeral Home & Crematorium

**Fran Marion**  
Licensed Funeral Director

Mayerthorpe: 780-786-2533  
Whitcourt: 780-779-2533

Serving Mayerthorpe, Whitcourt and area

Edmonton | Lamont | Mayerthorpe | Smoky Lake | Vegreville





Box 390, Onoway, Alberta T0E 1V0  
Tel: 967-5270 Fax: 967-4303

**OPEN 9-5 MONDAY - FRIDAY**  
**FIRST & LAST SATURDAY OF EACH MONTH** 9-12\* \*excluding long weekends  
Registries Closed from 12:00 pm - 1:00 pm

**ALL GENERAL REGISTRY SERVICES**

Home - Auto - Farm  
- Life and Business

Very Competitive Rates & Convenient Payment Plans.



**Clients first...Service Always!**

# PREVAIL

# MAX

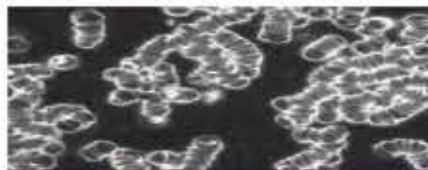
CELLULAR HOMEOSTASIS FORMULA

A NUTRITIONAL BREAKTHROUGH THAT SUPPORTS YOU  
...RIGHT DOWN TO THE LAST CELL!

How do you want your  
**BLOOD** to look?



**Before PrevailMAX:**



- poor circulation
- low energy
- brain fog
- dehydration
- decreased nutrients
- pH imbalance
- poor endurance

**After PrevailMAX:**



- better circulation
- more vitality
- mental clarity
- cellular movement
- nutrient assimilation
- balanced pH
- optimal endurance

**PrevailMAX™** is a nutritional breakthrough that delivers a rapid increase of internal blood cell pressure to speed absorption, enabling the body to take maximum advantage of the nutrients in foods and supplements. The electrolytes are small enough to penetrate your cell membranes, to bind with your cells, and to be carried wherever they are needed in the body.

At the microscopic level of human cells, **PrevailMAX™** supports healthy cell performance – a nutritional breakthrough for your cells.

When you use **PrevailMAX™**, you will feel more energy and an ability to focus like never before. Take a few sprays today and see just how good you can feel!

LIVIN TRIM WITH  
**VALENTUS**

[www.ValentusTour.com/Ladybug](http://www.ValentusTour.com/Ladybug)

**(780) 907-8642**