



Serving: Carvel, Darwell, Duffield, Wabamun, Seba Beach, Gainford, Entwistle, Evansburg, Wildwood, Tomahawk, Spruce Grove, Stony Plain & Drayton Valley

September 11, 2018

CENTRAL ALBERTA DISTRICT CRIME REDUCTION UNIT RECOVER STOLEN CAMAROS



Submitted by Central Alberta District Crime Reduction Unit

Central Alberta District, Alberta – The Central Alberta District

Crime Reduction Unit (CRU) were successfully deployed by Leduc RCMP to effect the arrest of two wanted individuals. A male and female were identified as being wanted by police on

several outstanding warrants. The CRU made it a priority to locate these subjects who were known to the police in Central Alberta District.

Continued on Page 8

All Precious JEWELLERS
"Your Spruce Grove Jewellery Store"
Goldsmith on Premises
 • Engraving • Clock & Watch Repairs
 • Jewellery Repairs • Custom Make-ups
 Jewellery Repairs Done On Site.
 Laser Welder Services Available.
 Toll Free: 1-877-962-4367
 PH: 780-960-4200 Fax: 780-960-4201
 Suite 102, 215 McLeod Avenue
 Spruce Grove, AB. T7X 0G2

L&B Tradition of Quality & Service
 Water Services Ltd.
 Well & Pump Repairs
 Complete Pressure Systems
 Farm - Residential - Commercial
 Potable Water Cisterns
 Financing Available
 BILL RIEDLINGER ERNIE BLEKER
 PH. 780-963-8134 OR 780-963-7749
 LBWATER@XPLORNET.COM

ONLY TWO FARMERS' MARKETS LEFT! WE HAD A GREAT SEASON!

Submitted by Melissa Killion, Farmers Market Manger | Evansburg Farmers' Market

What a great year for the Evansburg Farmers' Market! We

had visitors come from far and wide to visit our friendly and positive market. A huge thank you to our amazing Farmers' Market family for making this year a great one.

We have come a long way in the last three years. Our visitation numbers have tripled, and many different new vendors have joined!

Continued on Page 25

WABAMUN CAR WASH & LAUNDROMAT
 Laundromat 8:00AM - 9:00PM
 Car Wash 6:00AM - 9:00PM
 7 DAYS/WEEK

LOCAL ART WANTED: TIPPLE PARK MUSEUM ART SHOW 2018

Submitted by Melissa Killion | Tipple Park Museum

We are looking for all types of art for our October Art Show.

Evansburg and the surrounding area is filled with local artists – we see them every day! As a community, it is always nice to share tal-

ents and give locals the chance to see what amazing gifts we have.

Along with showcasing your art, you have the option to sell your pieces. All profit will go to the artist. The museum only wants to give the opportunity to show everyone your talent.

All art will be showcased in

our exhibit room until the end of October. All ages are welcome to participate. If you are interested please contact the museum at 780-727-2240 or email tippelparkmuseum@gmail.com to fill out an application.

Create away my friends! See you soon!

SLIMROAST Optimum
 DARK ROAST COFFEE
 YOUR LOGICAL SOLUTION TO WEIGHT MANAGEMENT
 (780) 907-8642
www.ValentusTea.com/Ladybug

YELLOWHEAD COUNTY COUNCIL HIGHLIGHTS

Submitted by Dan Ivanov, Communications Department | Yellowhead County

August 28, 2018

Coal Valley Mine Presentation – The Westmoreland Coal Company presented to council regarding the 40th Anniversary of the Coal Valley Mine. The mine was opened in 1978 to supply coal to Ontario Hydro and for overseas export. Council was presented with a plaque to commemorate the 40th anniversary of the mine.

County Administration Building Construction – Council voted against a contract extension to E-Construction for the paving and construction of an access road to connect the county's administration building and shop. The project cost was quoted at \$457,704.

Township Road 562/562A Alignment Study – Wood Environmental & Infrastructure Solutions was the successful consultant selected to undertake the alignment study, and provided 6 alignment options for council's consideration. Council ap-

proved Wood's Twp Rd 562/562A Alignment Study, choosing the option which offers the safest travel for commercial, industrial, and residential traffic at higher speeds. This option allows the county to move forward with land, utility and environmental issues on the alignment in the future.

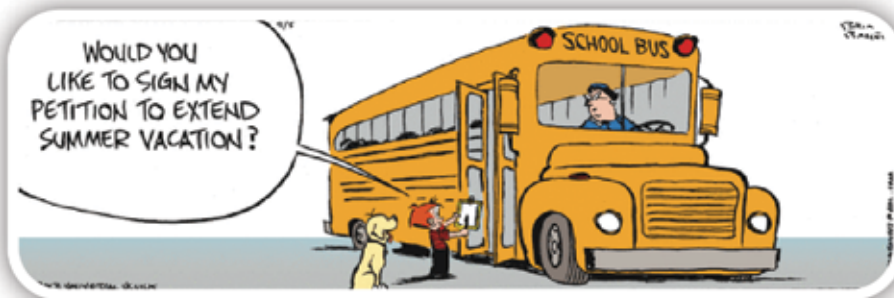
Yellowhead Regional Response to Elder Abuse Funding – Council decided to provide a Letter to the Minister of Seniors and Housing requesting the continuation of funding for the coordinated community

response to elder abuse. Council has also directed administration to allocate funding in the 2019 budget consideration for the continuation of the coordinated response to elder abuse should the province discontinue funding this program.

Proposed Secure Landfill Re-district – Council defeated second reading of Bylaw 14.18, amending Land Use Bylaw 16.13 from Rural District (RD) and Forestry District (FD) to Landfill/ Composting District (LC). This means that Secure Energy will not receive zoning for its proposed landfill.

2018 Property Tax Recovery Auction – Council accepted the date, time, and location for the 2018 tax recovery sale public auction, to be Wednesday, October 24, 2018 at 10:00 AM local time at the Yellowhead County Edson Administration Building.

The next Council Meeting is on September 11, 2018. The next Governance & Priorities Committee Meeting is on September 18, 2018. All meetings start at 9:30 a.m. in the Council Chambers.



With the new school year approaching

Motorists are asked to remember:

- When red lights are flashing it is illegal to pass a school bus
- School buses have a maximum speed of 90 km/hour
- Watch for school buses loading and unloading children, even if the lights aren't flashing
- School zones have a speed limit of 30 km/h in both urban and rural areas

Please be courteous of school bus drivers



Community VOICE

Keeping You and Your Community Informed

PUBLISHED WEEKLY (Zone 1 & 2)
AND BIWEEKLY (Zone 3)

E.J. Lewchuck & Associates Ltd.

45C South Ave. | Box 3595
Spruce Grove, AB T7X 3A8

SALES TEAM

Elaine
Ashley
Dani

TELEPHONE:

Classifieds	962-9229
Advertising	962-9228
Fax	962-1021

E-MAIL:

comvoice@telusplanet.net
sales@com-voice.com
news@com-voice.com

LETTER TO THE EDITOR: WILDWOOD SCHOOL FUTURE

Submitted by Judy (Erickson) Robinson

Thank you for publishing this letter.

I was raised on a farm west of Wildwood where my ancestors settled. I attended a one room school (Donahue) grade 1 and grade 2, then Wildwood school from grade 3 to grade 9. Then was bussed to Evansburg for high school. Wildwood school has been in existence for over 65 years and has been a focal point of the community. Many events take place there besides school. One being the annual Terry Fox Run which has been held there since it first started (30 years), weekly TOPS meetings (for the past 35 years, grandparent pro-

gram for grade 4's. These programs are all headed by dedicated volunteers.

I feel that keeping a kindergarten to grade 6 program in Wildwood and grade 7-12 in Evansburg makes sense, and is fair to both communities. I would even like to suggest that Wildwood go to grade 8 so that the school can continue with their awesome sports program. Having grade 9-12 in Evansburg makes good sense. Please consider the long bus rides these Wildwood pupils already have, some getting on buses as early as 6:50 am. 40 plus kilometres each way with stops for some kids and now possibly be bussed to Evansburg?

I think it makes sense to have all elementary students includ-

ing Evansburg attend a centralized school in Wildwood, and Evansburg have the junior and senior high schools. Making viable schools for both communities. It's going to be costly no matter which decision is made. I think by modernizing Wildwood school to accommodate all elementary students, and GTHS for all junior/senior students this would be a fair solution for the

eastern end of Grande Yellowhead. I am asking that GYPSD make the right and fair decision thinking of our students first and keep Wildwood school open. The removal of a school from a small community where it is the hub of the community would be a grievous blow to growth potential and the community.

Respectfully,
Judy (Erickson) Robinson



Nail Down More Jobs
Present your business to homeowners in more than 15,000 local households, as they look for ways to enhance their living spaces in our upcoming Fall Home Renovation guide!
Look for our highly anticipated Home Reno Guide, arriving in paper Tuesday, August 28, 2018.



Creating Beautiful Smiles
Cera Tech
3D DENTAL LAB INC.
www.ceratechlab.com
Call Us Today! 780.948.0771
#206 - 314 McLeod Ave | Spruce Grove, AB
✓ Denture Repairs ✓ Custom Sports Guards
✓ Ceramic Crowns ✓ Ceramic Bridges ✓ Implant Restorations
✓ Porcelain Veneers ✓ Full Mouth Restoration ✓ Teeth Whitening

We understand hearing loss. First hand.

Clarico Hearing in Stony Plain is locally owned by **Jennifer Panteluk**, a Registered Hearing Aid Practitioner, who suffers from hearing loss and wears hearing aids. She knows each hearing problem is unique, and she will find the best solution for you.

Clarico Hearing
World Class Audiology

- Full Hearing Assessments
- Digital Hearing Aids
- WCB, VAC, NIHB, RCMP and AADL
- 90-Day Full Money Back Guarantee



Premium Hearing Aid
Buy One, **Get One 50% Off***

*Limited time offer

110, 4300 South Park Dr, Stony Plain
Call 780-968-1011 | claricohearing.com

JOKE OF THE WEEK

Miss Hewitt, was one of the teachers at Northern Infants, Normanton, (kindergarten) when Philip came up to her and say that he had found a frog. Miss Hewitt asked if the frog was alive or dead. Philip, aged 6, declared that it was dead. Miss Hewitt enquired as to how he could be so sure that it was dead. Philip replied, 'I pissed in its ear.' Flabbergasted, Miss Hewitt demanded, 'You what, Philip Brown?' Philip added, 'You know, I went to his ear and said, 'PSST!' and it didn't move. So it must be dead.'



LAWYER

PATRICK DOLPHIN

Evansburg

Office open Mondays

from 9:30A.M. to 4:00P.M. (except holidays)

4910 - 50 Avenue Evansburg

Phone: 780-727-2270

Serving Evansburg, Entwistle and area since 1994



RCMP BEATS

**Submitted by Stony Plain/
Spruce Grove RCMP**

Occurrences for the week of 27 August to 2 September, 2018.

Total Calls for Service Spruce Grove/Stony Plain/Enoch Detachment: 649

Total Calls for Service for the Victim Service Unit: 25

Individuals Charged: 103

Person Crimes reported: 58

Property Crimes reported: 78

Impaired Driving Complaints reported: 6

Impaired Driving Charges Laid: 1

Roadside Suspensions: 1

Motor Vehicle Collisions Attended: 41

Property Crimes:

Spruce Grove

1. August 28 – Area of McLeod Avenue and Belmont Crescent – Theft from Vehicle, tools stolen Stony Plain

2. August 27 – Area of South Creek Wynd – Theft from Vehicles, wallets and keys stolen

3. August 27 – Area of Grayridge Bay – Theft from Vehicle, wallet

stolen

4. August 29 – Area of South Creek Link – Theft from Vehicle, wallet stolen

Rural

5. August 28 – Area of 47 Avenue and 44 Street, Alberta Beach – Theft of Vehicle, 2006 blue Volvo S40

6. August 28 – Area of Township Road 524 and Range Road 20 – Theft from Vehicle

7. August 31 – Area of Township Road 532 and Range Road 272 – Theft of Vehicle, 2007 black Ford F350

8. September 1 – Area of Township Road 532 and Range Road 272 – Theft of Trailer, 2012 20' white Atlas

Stony Plain/Spruce Grove RCMP remind you not to make it easy for thieves. Ensure all doors and windows and the sunroof to your vehicle are closed and locked whenever you are not occupying it.

The Spruce Grove / Stony Plain Drug Section Information Tip Line is 780-968-7212. Anyone with drug information is asked to call and leave a message.

GROVE HEARING CLINIC

960-2960

1-866-960-2960

**Hear what
you've been
missing...**

**Senior
Discounts**



**Full
Service &
Repair**

**Full
Hearing
Assessments**

HOURS OF OPERATION: 9am – 5pm Weekdays

3rd party billing (AADL, WCB, DVA, FCH) • Personal 0% Financing if Needed

For The Latest Technology In Hearing Aids & Assisted Living Device Stop By & See Dawn

#220-70 McLeod Ave - Westland Market Mall, Spruce Grove

SUMMER 2018 EVENT PICTURES



TIPPLE PARK MUSEUM SUMMER 2018 RECAP

Submitted by Melissa Killion | Tipple Park Museum

The colours are changing around the river bend, a crisp breeze is making its way through town – once again another summer has passed, bringing along the beautiful season we call autumn.

Autumn reminds us of the wonderful memories that were shared at Tipple Park Museum this summer season. A huge thank you to all the locals that made each event

a success. We are truly appreciative, and your participation never goes unnoticed.

Residents got to enjoy the vibrant colours of tie dying this August, while hippie music played in the background. We had some new dyers along with experienced, groovy tie dye artists that made amazing t-shirts.

Stacey Nash from Magnolia led children into a tranquil state of mind with Yoga in the park. They got to experience a thirty minute

yoga session along with a themed activity.

Tasey Robertson from Gainford danced the day away with her students at our first ever Under the Sea Dance Camp in August. Students had the opportunity to learn professional dance moves while grooving to the “Under the Sea” song from The Little Mermaid.

Jakob took us back in time with multiple Medieval re-enactment groups from across Alberta. Locals got to spend the evening

watching live sword fights, medieval dancers, participate in arrow tag and eat a grand meal. Our first ever Medieval Festival was a great success.

Folks had the privilege to listen to local artists, poets and musicians at our first ever Open Mic event held in the Gazebo of Tipple Park. It was a true privilege listening to such great talent we have around the Evansburg area.

Baby Boomers had the chance to experience a “blast from the past” partaking in our Time Warp Exhibit, showcasing old yearbooks, class pictures, old style main street and classic rock and roll!

Floral scents filled the air when our Wildflowers of Evansburg exhibit opened in August. It is currently running until the end of September. Experience what grows around our beautiful area with information panel boards and local pictures. At the end of your visit, feel free to plant a flower of your own.

We had visitors from all over the world stop by Tipple Park Museum including Korea, Germany, UK, and Japan. It was a great year for visitation, and fun to meet every guest that walked through the door.

Thank you everyone for supporting the museum. Please stay tuned for our autumn and winter events and programming!

If you would like to visit, our hours are Wednesday to Saturday, 10:00am-5:00pm.

BETTER QUALITY OF LIFE

and a money saver, too!

You can immediately see and feel the difference Elite makes to the quality of your water and the quality of your life. With Elite conditioned water, you and your family will look and feel better - with noticeable glowing complexions and soft, shiny hair.

Beautifully soft, dazzling whites and brilliant colors will replace the rough, matted clothing and towels your hard water previously produced.

Even housework is less of a chore as conditioned water leaves no bathtub ring, scummy film on shower stalls or unsightly spots on glassware, dishes and fixtures.

Your Elite water conditioner will save you time and money, too. You'll spend significantly less on detergents, cleaning products, conditioners, creams and personal grooming products. In addition, your plumbing fixtures and appliances will be protected against costly repairs or premature replacements.



QUALITY SALES & SERVICE OF:

- DISTILLERS
- SUBMERSIBLE PUMPS
- SEPTIC & JET PUMPS
- PIPE, WIRE & FITTINGS
- BOTTLE BUSTER (R.O. WATER COOLER)
- CHLORINE BLEACH, CHEMICALS & SALT
- 3 MOBILE SERVICE VEHICLES
- CHEMICAL-FREE IRON FILTERS
- SOFTENERS
- CHLORINATION SYSTEMS
- MOBILE SHOCK CHLORINATION
- SEDIMENT, TASTE & ODOR FILTERS
- REVERSE OSMOSIS FILTERS (R.O.'s)
- HOT TUBS & JETTED TUBS
- POOL & SPA FILTERS & CHEMICALS
- FREE WATER ANALYSIS

OUR WORKMANSHIP IS GUARANTEED!

The benefits and savings provided by Elite conditioned water will make a wonderful difference in your life.

QUALITY WATER SERVICES LTD.

20 South Ave., SPRUCE GROVE

962-6040 425-2934 (Edm. Direct)



"We're recommended the MOST as the company that knows the MOST"

**fall HOME
RENOGUIDE**

**September 25 is your last
chance to Advertise in
our Home Reno Guide!**

**To reserve your space,
call Community Voice
at 780-962-9228 today!**



VALENTUS

YOUR LOGICAL SOLUTION TO WEIGHT MANAGEMENT

CALL (780) 907-8642 FOR **FREE** SAMPLE

SLIMROAST Optimum

DARK ROAST COFFEE

Exclusive functional coffee formulated to:

- Crush Cravings
- Increase Energy
- Metabolize fat to Energy
- Help Regulate Blood Sugar
- Improve Mood & Focus
- Boosts Circulation & Oxygen delivery

TO UNLOCK THE SECRET OF WEIGHT MANAGEMENT! PUT THE POWER OF SLIMROAST OPTIMUM IN YOUR CUP!

Thrilled with my results! I lost 9 lbs and an amazing 11 inches off my abdomen! Works wonderfully!

Managed to lose 7 lbs very fast & much more in inches the way my clothes are fitting now! 1 cup a day is all for me!

Down 17 lbs and fitting into clothes that were way to tight before!

No dieting, first month finished. Down 7 ½ lbs 8.5 inches. Awesome product!

www.ValentusTour.com/Ladybug (780) 907-8642

Central Alberta District Crime Reduction Unit Recover Stolen Camaros

Continued From Page 1

Information led the CRU to Hinton, where a stolen 30-foot recreational vehicle being used by the two was located and recovered. It was determined that two Camaros were stolen from a residence in Hinton, allegedly by the targeted individuals. The CRU determined that the individuals fled to Westlock in the Camaros.

On August 31, the Westlock RCMP received a complaint that a local Ford dealership was the victim of the theft of a Dodge pickup truck. Information was obtained that the male suspect responsible was dropped off by a female accomplice driving a yellow Camaro.

On September 1, the Westlock RCMP received information that both the stolen truck and suspect Camaro were at a gas station. The truck and the Camaro both fled from the gas station after purposefully ramming two responding police vehicles. A brief pursuit was initiated by responding Westlock

RCMP and then terminated.

The Central Alberta District CRU were positioned in Westlock already as a result of determining that their targeted subjects had travelled to Westlock. With the timely CRU response, a tire deflation device was deployed and the Camaro went into the ditch to avoid the device. Police Dog Services attended and successfully tracked the female driver. She was arrested and transported to the hospital with minor injuries. It was determined that this was the same Camaro which had been stolen earlier out of Hinton.

At 7:30 p.m. that evening, Central Alberta District CRU located the male suspect. He was in proximity of a stolen Ford F350. With the assistance of RCMP Air Services, and Police Dog Services, the CRU effected his arrest and seized the stolen Ford F350 along with multiple other stolen items, including a large quantity of tools from an earlier break and enter.

On September 2, the CRU, in conjunction with Leduc RCMP

GIS located and seized the second yellow Camaro in Wabamun. In total, two Camaros, one Ford F350 and one recreational vehicle were all recovered by the CRU.

The Westlock RCMP later recovered the stolen Dodge Truck.

At the time of their arrests, 21-year-old Annette Brown and 28-year-old Eric Michael Unger, both of Red Deer, were wanted on a combined total of six warrants out of a combination of different detachments, including Leduc, Red Deer and Blackfalds. Investigation into several other unrelated incidents remains ongoing.

In relation to the Westlock incident, Eric Unger is facing the following 20 charges:

- Break and enter with intent
- Fail to comply with a condition of an undertaking or recognizance (x8)
- Operation of a motor vehicle while being pursued by police
- Dangerous operation of a motor vehicle

- Resist police officer
- Possession of property obtained by crime over \$5,000 (x2)
- Possession of property obtained by crime under \$5,000 (3)
- 3 charges under the Traffic Safety Act

Annette Brown is facing 17 new criminal charges as a result of this incident including break and enter and commit theft, fail to comply with a condition of a Recognizance (x7), dangerous operation of a motor vehicle, et al.

Both Unger and Brown were remanded in custody and were scheduled to appear in court in Westlock on September 4, 2018.

"The Central Alberta District CRU is a mobile unit which means that offenders who wreak havoc in one jurisdiction can't hide in a different jurisdiction. We will effectively utilize intelligence to track offenders" says Corporal Will Hiscock of the Crime Reduction Unit. "It takes a unified response amongst different units and detachments to effect arrests like these."

Urban Sole Shoes

Summer
Clearance

SEPTEMBER 15TH, 2018 | 10-5PM

SUMMER INVENTORY!

50% OFF



Ecco • Taos • Aetrex • Romika • Rieker • Merrell
 Keen • Mjus • Bernie Mev • Clarks

#56, 96 Campsite Road Spruce Grove (Next to Penningtons, Walmart)

780-960-2010

GRANTS FOR CRIME REDUCTION PROGRAMS AVAILABLE

Submitted by Annalise Klingbeil, Press Secretary, Justice and Solicitor General | Government of Alberta

Organizations can now apply for Government of Alberta grants that support local crime-prevention initiatives.

The Victims Restitution and Compensation Payment Act allows authorities to seize cash and property used in or obtained through criminal activity. This process of civil forfeiture makes crime unprofitable and deprives offenders of the money and tools necessary to commit further illegal acts. The Civil Forfeiture Grant program then redirects the forfeited cash and the proceeds from the sale of forfeited property towards programs that reduce crime and assist victims of crime.

"The Civil Forfeiture Grants are an effective way to deter criminal activity while making communities across Alberta safer. These funds help organizations main-

tain their existing programs and extend their reach to improve the lives of even more Albertans." - Kathleen Ganley, Minister of Justice and Solicitor General

Funding this year will go to proposals with innovative, promising or proven practices, with a focus on:

- services that directly prevent at-risk youth from becoming involved in criminal activity, and/or
- crime-prevention planning initiatives, such as coordi-

nation plans to deter rural crime

A total of \$2.5 million in Civil Forfeiture Grants is available this year. Eligible organizations include non-profit agencies, schools, municipal governments, Metis Settlements and First Nations communities. Grants between \$50,000 and \$200,000 are available, with projects spanning up to two years.

The list of 2017 grant recipients includes Boyle Street Community Services in Edmonton, the Grande Prairie and Area Big

Brothers Big Sisters Association, the Miywasin Friendship Centre in Medicine Hat and Alcove Addiction Recovery for Women in Calgary.

More than \$9 million in Civil Forfeiture Grants have been awarded since 2008.

Potential candidates for Civil Forfeiture Grants are encouraged to download the online application form.

The deadline for submissions is noon Oct. 12, 2018.

Got Junk??

Our classified section makes it easy to sell without lifting a finger!

Call the Community Voice at 780-962-9229 To place your ad today!





Get our **new, faster Internet service** with speeds up to **25 Mbps!**

Plans starting at **\$69⁹⁹** month!

FREE installation on a 2 year term²
WORRY FREE Customer Satisfaction Guarantee³

**Get High-Speed LTE Internet,
lots of data, FREE installation and
SAVE up to \$290 in your first year!¹**

1-855-867-4047

 **XPLORNET**
Connect to what matters

¹Actual speed online may vary with your technical configuration, Internet traffic, server and other factors. Traffic Management Policy applies, see xplornet.com/legal. Two year term required. \$69.99 pricing reflects a \$10 discount off current regular price for the first 12 months. Discounted prices no longer apply in month 13 for remainder of 2 year term. Monthly service fee includes rental cost of equipment, except Xplornet Wireless router. Taxes apply. Offer valid until October 31, 2018 for new customers and is subject to change at any time. ²If installation requirements go beyond the scope of a basic installation, additional fees apply. Subject to site check, site check fee may apply. See dealer for details. ³If you are dissatisfied with your service for any reason, you will receive a refund of all amounts paid to Xplornet if you cancel your subscription within 30 days of activation. Packages subject to availability. A router is required for multiple users. Xplornet is a trademark of Xplornet Communications Inc. © 2018 Xplornet Communications Inc.

THANK YOU!

Submitted by Al Hagman | Pembina Valley Daze Committee

The Pembina Valley Daze Committee would like to thank everyone who made this edition of the festival a success. Thank you to the sponsors that made monetary contributions.

MAJOR CONTRIBUTIONS WERE MADE BY: YELLOWHEAD COUNTY, PEMBINA AGRICULTURE AND REC-

REATION SOCIETY, SERVUS CREDIT UNION (fireworks), P & E VENTURES (petting zoo), JENSEN DIESEL (radio ads), WOODLAND and FOLEY TRAIL (Main Stage), THE METRIX GROUP LLP (Beatles Tribute), and CANSOURCE (swag hats)

Thanks to all the businesses that bought ads in the paper to cover advertising costs and to all the people that bought Duck Race tickets and/or donated in the Grouch cans.

Thanks as well to the businesses, organizations and people that donated in other ways:

Thanks to the Evansburg Legion and Ladies Auxillary for the use of their hall and their cooperation. Grande Yellowhead for allowing the fireworks to be lit on the soccer pitch, the Fire Dept. for watching over the fireworks and helping to erect the tent. Thanks to Nute for directing the tent set up and to the crew who took it down. Thanks to Larry Greenstein and Leigh Manzur for erecting the stage and seating. Thanks to Yel-

lowhead County for setting out the barricades, for the Bouncy Houses, and the movie in the park and for cleaning the streets. Thanks to those who helped dismantle the stage and tent.

Thanks to all the helpers from the local churches at the pancake breakfast, Randy Trydal and Denys Ambrose for running the Grouch Campaign, the candidates that ran for Grouch, the Color Party for the parade, for all those who entered in the parade, and Denys again, for marshalling the parade. Thanks to all of you who helped sell the Duck Race tickets. Thanks to Ryan for setting up the garbage and recycling bins and running the movie in Tipple Park.

Thanks to those who controlled traffic and help with the parking of cars. Thanks to Bill and Lisa and all the Lone Wolves for hosting entrants and all they do; to Lynette Nienaber and her crew for organizing the car awards and the Poker Walk. Thanks to Cansource, Casey Szauner and Family Clothing for donating gifts for the entrants.

Thanks to Jennifer Yakimchuk for organizing and donating supplies for the Chili Cook-off, for all the volunteers who helped her; to those who entered a chili and to Bloom and Bliss for donating the food containers. Thanks to Gisele for donating her winnings back to PV Daze

Thanks to everyone at Family Foods for donating food to the car entrants, for allowing us to hear Yoon. Thanks to Kim Manary and her crew for the Fun Runs. Thanks to the staff of V & S for selling the Beatles tickets.

Thanks to the committee members: Chuck Tierney, Ryan Wildeboer, Paul and Liz Van Hecke, Janice McKinnon, Gisele Hagman, Lynette Nienaber and Jennifer Yakimchuk. If you would like to join our team, call Al @ 780-727-3526. We would welcome new members and new ideas.

I am sure that I have forgotten someone, and that is the risk of going this way, but we want to say thanks to everyone—even if I missed it here.



If you live within 800 meters of Yellowhead or Lac Ste. Anne County, be sure to drop in and have your say on our Intermunicipal Development Plan and Intermunicipal Collaboration Frameworks.

These important documents guide how neighbouring municipalities work together and grow!

- i** Intermunicipal Development Plans (IDP) help ensure future infrastructure and land use is coordinated between municipalities.
- i** Intermunicipal Collaboration Frameworks (ICF) are an agreement on municipal services between neighbouring municipalities that coordinates how services may be provided for all residents.

Yellowhead County IDP/ICF Open House

**September 18, 2018
6:00 p.m. - 8:00 p.m.**

Tipple Park Museum
4924-48 Street, Evansburg
Drop in anytime



Lac Ste. Anne County IDP/ICF Open House

**September 25, 2018 5:00
p.m. - 7:00 p.m.**

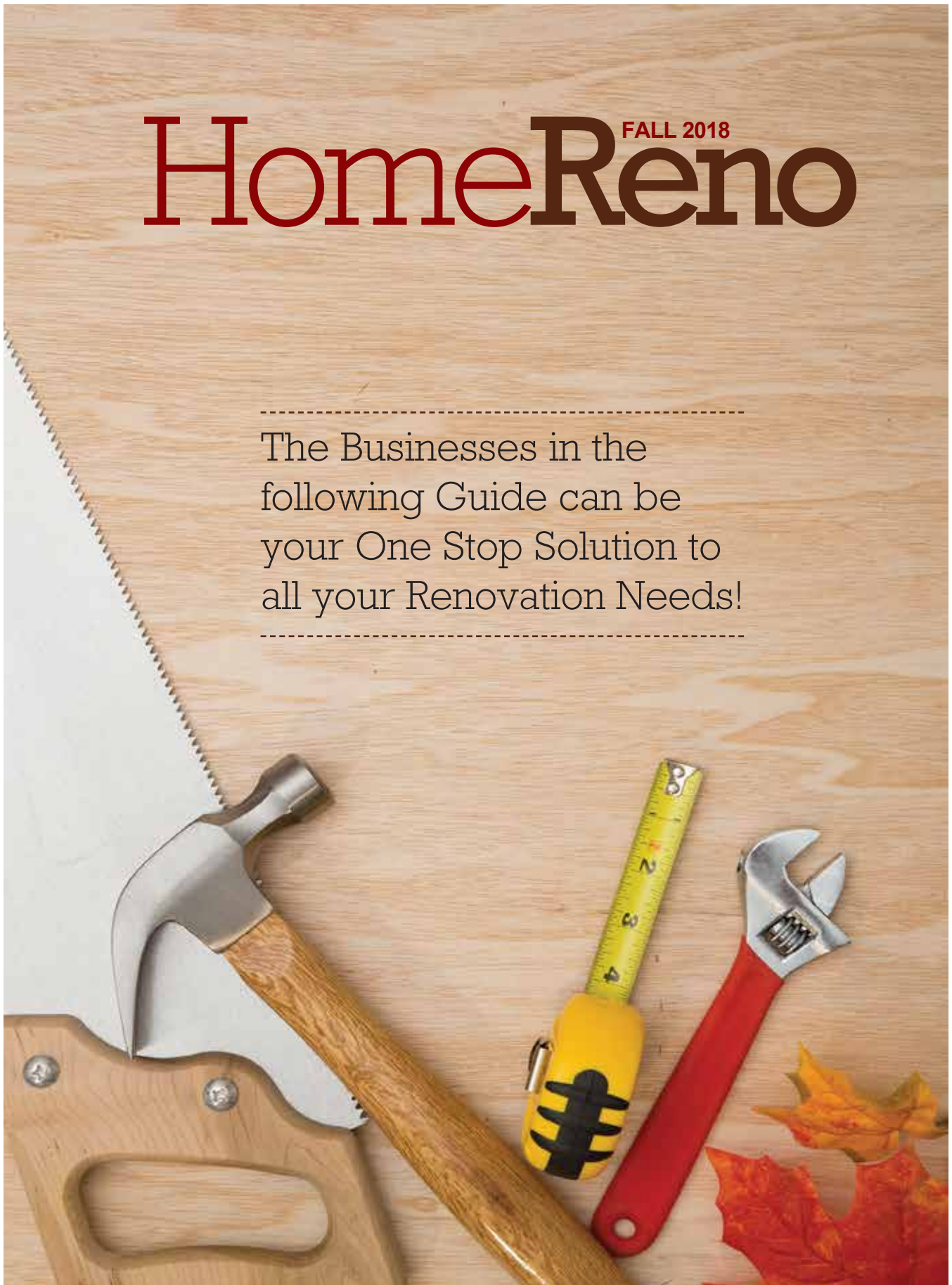
Manly Hall 2320 HWY 16,
Parkland County
Drop in anytime



For more information, please visit www.parklandcounty.com/idp or contact Martin Frigo, Parkland County's Long Range Policy Planning Manager, either by phone 780-968-8888 ext. 8393 or email Martin.Frigo@parklandcounty.com

HomeReno FALL 2018

The Businesses in the
following Guide can be
your One Stop Solution to
all your Renovation Needs!



HomeReno

PROTECT YOUR HOME (AND MORE) FROM WINTER'S FREEZE

Cold weather often leaves people scurrying to do whatever is necessary to safeguard themselves from the big chill. But it's important homeowners also protect their homes in cold weather.

Plumbing

Plumbing and pipes may be vul-

nerable to cold weather. Frozen pipes may burst and cause substantial damage to a home, potentially causing flooding and structural damage.

Homeowners should disconnect and drain garden hoses before winter arrives. Water to outdoor hose

bibs should be turned off, though the valves on these outdoor faucets should be left open to drain. Also, outdoor faucets can be covered with insulating foam covers.

The Red Cross says pipes that freeze most frequently include pipes in unheated areas, such as base-

ments, attics, garages, and crawl spaces. Close vents to the outside in areas like attics and basements to limit the amount of cold air that gets indoors. Think about insulating unheated areas, as well as using pipe sleeves, heat tape or wraps on exposed pipes.

By opening kitchen and bathroom cabinet doors, homeowners can allow warm air from a home to reach pipes under the sink. During extreme freezes, keep cold water dripping from a sink to prevent pipes from freezing.

Service HVAC systems

It's important to ensure that heating systems are working properly prior to the cold-weather season. It may only take hours for the interior of a home to reach dangerously low temperatures without adequate heat. Homeowners should schedule annual checkups of furnaces and hot water heaters. Inspect the heat exchanger for cracks, install a clean air filter and make sure all thermostats are working properly.

Have fuel ready

Homeowners who heat their homes with oil, wood or coal should make sure they have plenty of fuel on hand in advance of winter. Shortages can occur, and it may take some time for new fuel to arrive in the midst of a cold snap.

As a precaution, homeowners can rely on portable space heaters to fill in the heating gaps during freezing temperatures. Exercise extreme caution with these devices, turning them off when leaving the room and remembering to avoid overloading outlets.

Protect outside

Drain birdbaths, clean out downspouts and remove water from other items where water can freeze and cause damage. Inspect roofing prior to the snowy season, but stay off roofs during freezing weather.

Remove snow shovels and other winter gear from storage and make sure the items are easily accessible during snowstorms.

Winter's bite can be severe. Homeowners can protect themselves and their properties when the freeze sets in.

**The Flooring Store
& DIY Center**

**FREE ESTIMATES
SPECIAL PRICES FOR SENIORS**

Vinyl Flooring *from* **99¢ Sq Ft.**
 Laminate *from* **\$1.19 Sq Ft.**
 Hardwood *from* **\$2.99 Sq Ft.**
 Carpet *from* **\$2.99 Sq Ft. INSTALLED**
 Double Stainless Steel Kitchen Sink *from* **\$199.00**

Hours:
 Monday to Friday 9:00AM to 5:30PM
 Saturday 9:30AM to 4:00PM
 Closed Sunday

**226 McLeod Ave
 Spruce Grove
 (780) 960-9212
 www.theflooringstore.ca**

HomeReno

SIGNS IT IS TIME FOR NEW WINDOWS

Windows help regulate the temperature in a home, let in natural light and keep insects, weather and outdoor elements outside where they belong. The right windows also can add value to a property by providing aesthetic appeal and increasing curb appeal.

Although homeowners can typically get many years out of their homes' windows, ultimately windows will need to be replaced. Homes that are more than 20 years old and still have their original windows could be due for an upgrade. Aluminum- or wood-framed windows also may be ripe for changing. Here are some signs that it's time to replace windows, courtesy of Good Housekeeping, Centra® and the real estate website Redfin.

- Drafty feel in the

home: Window frames can begin to shrink as they age, allowing air to flow from the outdoors in and vice versa. Homeowners may notice drafts when standing near windows or hear whistling on notably windy days.

- Rising energy bills: If energy bills are inexplicably on the rise, then old windows could be to blame. Aging, drafty windows can make it necessary to run HVAC systems more often and at higher or lower temperatures in order to keep homes comfortable.

- Windows are difficult to open or close: Homeowners may get used to the quirks of their windows, but those that are difficult to open or close may require replacement. In addition, if windows need to be propped open, it's time to replace them.

- Water infiltration:

Warping or decaying window frames can make it easy for rain or snow to get into the home. Wood frames are particularly prone to moisture decay. If frames are warping or allowing water into the home, it's time for

an upgrade.

- Condensation on windows: Fog or condensation buildup on windows can occur if the seal between panes is broken. In this instance, replacement windows are necessary.



GMP ONTRACK INC.

George Perras
Phone 780-892-4488
Cell. 780-719-2687

Commercial • Farms • Acreages
Brushing
Fence Lines • Right of Ways • Fire Guards • Walkways
Don't Dig & Burn, Mulch & Preserve
General Excavation
Landscape • Site Prep • Clean Up
Snow Clearing/Removal
Light Equipment & General Hauling

SERVING ENTWISTLE AND AREA FOR OVER 30 YEARS

Entwistle CONCRETE

PRODUCTS LTD.

SAND & GRAVEL SALES

PH: (780) 727-3525

Dan McCracken Entwistle, AB
www.entwistleconcrete.ca



BALD EAGLE

Plumbing & Heating

Edson
780-725-2500
4629 3rd Ave.

Drayton Valley
780-621-2500
5031 Industrial Road

beph@telus.net

TRI-LAKES SERVICES LTD.

Serving: • Lac Ste. Anne County • Parkland County • Yellowhead County East

- **Septic Hauling**
 - Holding Tanks (residential, commercial, industrial)
 - Septic Fields
- **Drinking Water Delivery**
 - Cisterns
 - Pools/Hot-Tubs
- **Fresh Water Delivery**
 - Dust Control

- **Portable Washrooms** (rental & servicing)
 - Plastic
 - Trailer mount Extremes (wash sink, toilet, lights, heat)
 - Extremes (wash sink, toilet, lights, heat)
- **Steam Truck**
 - In cooperation with your plumber

PH: 1-877-727-3939
www.tri-lakeservices.com
office@trilakes.services

HomeReno

REFRESH YOUR HOME'S APPEAL WITH FURNITURE PAINT

(MS) - Furniture, bookcases, cabinets, and doors present opportunities to add or change color throughout a home. Woodcraft offers an extensive line of furniture paint, tools and supplies necessary for successful painting projects. In addition, Woodcraft retail store associates are always ready to help customers, and extensive help-to material is a click away at woodcraft.com.

Lori Harper, Woodcraft public relations manager and blogger, offers some advice about updating a kitchen: "Painting kitchen cabinets is a big job, but it can transform the look of your kitchen at a fraction of the cost of new cabinets. It may sound daunting, but breaking it down into bite-

size steps can take away the fear factor."

To read her project blog, visit Woodworking Adventures on Woodcraft.com and search for "Kitchen Cabinet Conundrum."

Paint & Color Selection

Three easy-to-use and easy-to-mix paints are:

- **Black Dog Salvage Furniture Paint** is a water-based, low-VOC, matte finish paint for indoor use that requires only cleanup before painting, except in the case of chips and scratches, and adheres to wood, metal, glass, ceramics, and plastic.

- **General Finishes Milk Paints** are premixed water-based acrylic paints suitable for a variety of interior or exterior applica-

tions from furniture to crafts.

- **General Finishes Gel Stains** are heavy-bodied gels formulated to flow evenly for consistent color control.

Before you pick up a paint brush, consider which colors are best for the area you plan to refresh. Choices will need to complement wall color and colors of other pieces or accents in a room. Two handy color guides are the 36-page General Finishes Milk Paint Fan Deck and the Black Dog Salvage Furniture Paint Color Recipes (available for download as a free PDF on Woodcraft.com).

For more than just a change of color, consider creating decorative effects, such as distressing,

antiquing, faux marble, or rag rolling. Choose General Finishes Pearl Effects to make it easier to create specialty finishes.

Repair

If furniture, cabinets and other surfaces need repair prior to painting, the Mohawk Perma-Fill Wood Touch-Up and Repair System is an easy answer. Just pop in a color cartridge (six color families available), power on the battery-operated dispenser, aim, fill and level this durable repair. Briwax ChairRX is perfect to fix loose parts in chairs. Drill a small hole, inject ChairRX, and in 12 hours the thin unique formulation will penetrate the wood cells and permanently swell the joints and bond them together. Visit <https://>

Family run, local business, we care!

BEST CISTERN SEPTIC SOLUTIONS

Cistern and Septic Inspection, Cleaning and Repair!

Septic planning, design, installation by government certified installer(s)

New Installs Available. Reasonable Rates.

Let Us Handle the Dirty Work

780-668-4306  best-cistern-septic-solutions.com



B.W. EAVESTROUGHING

Specializing in:

- ⇒ Residential 5"
- ⇒ Commercial 6"
- ⇒ Soffit
- ⇒ Gutter Clean System
- ⇒ Free Estimates
- ⇒ Fascia

BRAD (780) 699-1880

MCLEOD Home building centre

Let us load you at the largest Lumber Yard in Parkland County

962-2575

Call Toll Free: 1-800-343-2988
35 South Ave, Spruce Grove

- Renovation & new build experts • Superior quality lumber
- Complete home packages • 3D Estimating Program
- Engineered roofs & floors • Farm Buildings • Garage packages
- Windows & doors • Custom decks & fence packages
- Flooring & kitchens • Bathrooms • Ceramic Tiles
- Concrete & landscaping • Electrical supplies
- Fasteners • Woodstoves

Service • Selection • Advice • Special Orders • Delivery


ECONOMY ASPHALT DRIVEWAYS



- Paving • Asphalt or Concrete • Repairs
- Pararamps • Seal Coating • Crack Filling
- Snow Removal • Sanding • Rock Chip Sales

CHARLES MACDONALD

PH: 780-962-5581 CELL: 780-777-0914

FAX: 780-962-9146 

HomeReno

Refresh Your Home's Appeal With Furniture Paint

youtu.be/iWMu6OKyOUE to watch a video that demonstrates these products.

For more extensive repairs, use the Kreg Jig R3 Kit to reinforce weak parts with pocket holes and avoid complete disassembly of your project.

Clean and Prep

Use Krud Kutter TSP Substitute to remove dirt, grease, smoke, mildew, food stains, crayon, wax, and more from surfaces to be painted so paint will adhere better. For sanding chores associated with painting, consider the Porter-Cable Restorer Handheld Drum Sander with attachments, which is designed to remove paint and finish from wood, brick and fiberglass, as well as remove rust and polish metal. The Porter-Cable 382 5" Random Or-

bital Sander and the Norton 5" Random Orbital Sander are other good choices. For sanding with hand power, the Preppin' Weapon Sanding Block Kit and Norton 41/2" x 51/2" SoftTouch Sanding Sponges are handy helpers.

Application & Topcoat

If spraying is your preference, HOMERIGHT Finish Max Fine Finish and HOMERIGHT Super Finish Max HVLP Sprayers are easy to use on everything from furniture to fences with oil- and water-based products such as chalk-style paint, latex paint, milk paint, enamels, primers, polyurethanes, stains, and varnishes. Large and Small Spray Shelters make painting furniture easier.

For painting by hand, Black Dog Salvage Furniture Paint Round Brushes, made from both

natural and synthetic bristles, and Redtree Matey Synthetic Bristle Brushes work well.

Give paint extra protection with Black Dog Salvage Guard Dog and Show Dog Topcoats and General Finishes Gel and High Per-

formance Polyurethane Topcoats.

To learn more about these and other products, visit your local Woodcraft store, call (800) 535-4482 or visit www.Woodcraft.com.



DARREN RAYMOND PH: 780-241-2711
JOURNEYMAN CARPENTER bangoncarpentry@hotmail.com



WOODLAND LUMBER

WOODLAND HOME CENTRE

T: 780-727-2964 F: 780-727-2220
53314 Range Road 75A, Evansburg, AB
admin@woodlandlumber.com



Blakeman Drilling Ltd.

Waterwell Drilling & Servicing
Pumps & Pressure Systems
Petwa Water Conditioning

(780) 918-1916
joe@blakemandrilling.com
Family Owned & Operated



LIMB WALKERS TREE CARE LTD.

FULLY INSURED, EXPERT TREE CARE PROVIDERS
SERVICING BARRHEAD, WESTLOCK, ONOWAY & ALL SURROUNDING AREAS

- Residential & Commercial
- Tree & Shrub Pruning
- Annual Maintenance
- Arborist Consultations & Assessments
- Bucket Truck & Chipper Services
- Professional Climbers
- Tree Removal
- Stump Grinding
- Hedge Trimmers

780-203-4705 limb.walkers@hotmail.com
FREE ESTIMATES PROVIDED



Home Hardware Drayton Valley
building centre **542-4044**
ON US: 1-888-542-9663

For ALL your renovation and material needs, SHOP LOCALLY!

4221 - 50 Street Drayton Valley

HomeReno

MAINTAIN INDOOR AIR QUALITY ALL YEAR

Winter can be dreary for people confined to indoors as temperatures drop, and poor air quality in a home can add to that dreariness while adversely affecting individuals' health. Air quality tends to suffer most in winter, but there are ways to ensure the air inside a home stays healthy all year long.

- Inspect and address

any sources of carbon monoxide. Carbon monoxide, or CO, is an invisible, odorless gas that can contribute to poor indoor air quality and a host of health problems if it goes undetected in a home. According to the U.S. Centers for Disease Control and Prevention, potential sources of CO in a home include improperly vented natural gas ap-

pliances, such as stoves and water heaters, gas-powered tools that are used indoors, clogged chimneys, or blocked heating exhaust vents. Men and women can periodically inspect potential sources of CO and address any issues they find while also making sure all CO detectors are properly installed and functioning optimally.

- Inspect HVAC ducts. Ductwork is used to deliver warm or cool air in homes with heating and air conditioning systems. The U.S. Environmental Protection Agency notes that much of the dirt in air ducts adheres to the duct surfaces without ever entering living spaces. However, the EPA notes that homeowners should consider having their ducts cleaned if an inspection uncovers substantial visible mold growth. In addition, the EPA recommends homeowners consider cleaning if ducts are infested with vermin or clogged with excessive amounts of dust or debris.

- Avoid chemical cleaning products. Chemical cleaning products may be great at disinfecting dishes, countertops and other areas in the home, but such items may be toxic and adversely affect indoor air quality. For example, chemicals such as bleach and ammonia, which are used in many commercial cleaning products, can linger in the air, irritating the eyes, nose, throat, and lungs. Homeowners concerned about the quality of air in their homes also can avoid scented products, such as air fresheners and scented detergents, which the National Institute for Occupational Safety and Health notes may release volatile organic compounds into the air.

- Inspect bathrooms for mold growth. Mold can grow on surfaces that are routinely wet, and that makes poorly ventilated bathrooms common sources for home mold infestations. Mold can adversely affect indoor air quality when mold spores are released, potentially triggering allergic reactions, asthma attacks and respiratory conditions. After bathing in bathrooms without vents, men and women can open windows so the room dries before mold can grow. In bathrooms with vents, make sure vents are running during baths and showers and afterward until ceilings, walls and floors appear dry.

Poor indoor air quality can be easily addressed to ensure individuals stay healthy throughout the year.



SOLID MODULAR HOUSING SOLUTIONS







BUY FACTORY DIRECT

150,000 Sq.Ft. Climate Controlled Factory

Sales: (780) 305-2213 www.northplex.ca

f Homes by Northplex 

PROUD MEMBER







PREVAIL

CELLULAR HOMEOSTASIS FORMULA

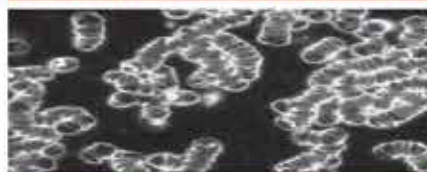
MAX

A NUTRITIONAL BREAKTHROUGH THAT SUPPORTS YOU
...RIGHT DOWN TO THE LAST CELL!

How do you want your
BLOOD to look?



Before PrevailMAX:



poor circulation

low energy

brain fog

dehydration

decreased nutrients

pH imbalance

poor endurance

After PrevailMAX:



better circulation

more vitality

mental clarity

cellular movement

nutrient assimilation

balanced pH

optimal endurance

PrevailMAX™ is a nutritional breakthrough that delivers a rapid increase of internal blood cell pressure to speed absorption, enabling the body to take maximum advantage of the nutrients in foods and supplements. The electrolytes are small enough to penetrate your cell membranes, to bind with your cells, and to be carried wherever they are needed in the body.

At the microscopic level of human cells, **PrevailMAX™** supports healthy cell performance – a nutritional breakthrough for your cells.

When you use **PrevailMAX™**, you will feel more energy and an ability to focus like never before. Take a few sprays today and see just how good you can feel!

LIVIN TRIM WITH
VALENTUS

www.ValentusTour.com/Ladybug

(780) 907-8642



HENDAY
HEATED STORAGE
780-995-5584

20% OFF 1ST MONTH
ADDITIONAL DISCOUNTS
6 Month Lease - 5% OFF Each Month
1 Year Lease - 1 Month Free
Senior Discount - 10% OFF
Military Discount - 10% OFF
Student discount - 10% OFF
First responders - 10% OFF

Guaranteed lowest rates (match or beat).
Over 130 high def cameras,
motion sensed, and security.
SAFE, SECURE, CLEAN, NEW
500 indoor units for rent
18 different sizes to choose from.
Rent seacans, RV space,
Outdoor car/truck space
FENCED and GATED
Individual access control

**PROUD TO BE PART
OF THE COMMUNITY**

CONVENIENTLY LOCATED AT THE
CORNER OF YELLOWHEAD TRAIL AND
ANTHONY HENDAY | 20210 - 118A AVE.

20210 - 118a Avenue Edmonton
(southwest corner of Anthony Henday & Yellowhead)
780-995-5584 Manager Vesna Pajic
email: manager@hendayselfstorage.ca
www.hendayheatedstorage.com

 Henday Self Storage  @hendayselfstorage

MP JIM EGLINSKI ANNOUNCES 3RD ANNUAL CHRISTMAS CARD ART CONTEST

Submitted by Jim Eglinski,
MP – Yellowhead

MP Eglinski is pleased to announce a call for submissions to his 3rd annual Christmas Card Contest. Each December, Members of Parliament have the opportunity to send out Christmas cards to constituents. Usually, these cards display the family of the parliamentarian and/or an Ottawa scene. However, given that there are many talented young individuals within the Yellowhead riding, MP Eglinski wants to recognize one of these artists and showcase their artwork.

Guidelines, Rules and Conditions:

1. This contest is open to all students in the Yellowhead Riding who are in Kindergarten through Grade 8.

2. Each entry must be accom-

panied by a signed entry form, which can be obtained from www.jimeglinski.ca.

3. All formats welcome...water colour, pastel, crayon, painting, pen and ink drawing, photograph, etc.

Completed artwork must be submitted with the entry form, postage free, to my Ottawa Office at:

MP Jim Eglinski
Room 304, Justice Building
House of Commons
OTTAWA ON K1A 0A6

The winning entry will be displayed on the cover of MP Eglinski's 2018 Christmas card, and the name of the artist will be printed (with parental permission) on the back of the cards.

Submission Deadline: October 9, 2018

Good luck! Use your imagination, and most of all, have fun!



Specializing in Trailer Repairs
Aluminum, Tig, Mig & SMAW Welding
Mobile Welding Units Available
Mechanical Inspections & Repairs
Fabrication & Plasma Table
Skid Steer Services

Sideline Mechanical & Welding Ltd.
55109 Range Road 20
Phone: 780-967-5658
eMail: smw ltd@gmail.com

GOLFER'S GUIDE

DON'T LET GOLFING PAIN BE PAR FOR THE COURSE

(NC) A little know-how can help golfers avoid unnecessary injury. Considering the number of times a swing is repeated during a game, it's not surprising that the season often ends early for those who are not physically prepared.

Below are a few simple stretching techniques that can help prevent or reduce the impact of injuries:

Side bending stretch

1. Stand with feet shoulder-width apart.

2. Hold the golf club above your head with your arms straight.

3. Slowly bend to one side, without rotating, until you feel a stretch in the side of your back.

4. Hold for 15 seconds and repeat twice for each side.

Shoulder stretch

1. Hold the shaft of a golf club vertically behind your back.

2. Gently pull the club up with your top hand until you feel a slight stretch in the shoulder of your low-

er arm. Hold for 15 seconds.

3. Gently pull the club down with your bottom hand until you feel a

stretch in the top shoulder and arm.

4. Hold for 15 seconds.

5. Reverse hand positions and

repeat.

www.newscanada.com



SILVER SANDS GOLF RESORT

Parkland's hidden gem of a golf course; located 45 minutes west of Edmonton on highway 16.

Book your company tournament today - we have special rates for weekdays. Call 780-797-2683.


Check silversandsgolfresort.com for weekly specials

Join us for Men's night on Wednesday's and Ladies night on Thursday's both 6:00 pm shogun start

RV LOT PRE SALES CALL 780-222-1535


 SILVER SANDS GOLF RESORT

 Silver Sands Village, Lake Isle  silversandsgolfresort.com  1-877-797-2683



Calahoo Hills
Golf Course

- 9 Holes
- Grass Greens
- BBQ Facilities
- Licensed Clubhouse



STONY PLAIN	12.8KM HWY 779	WESTON/OWAY
	5 KM HWY 779	
HWY 16	TRP 544 1.8KM	HWY 37
	BOE RD 280	
	4KM	

459-9081



Alberta Beach

GOLF RESORT

WEEKDAY SPECIAL

4 Golfers + 2 Carts *Great for Weekday Tournaments*
\$140.00 (\$35 each) *Monday, Wednesday and Thursday Only.*

18 Holes	\$33.00 Weekdays	\$48.00 Weekends
9 Holes	\$20.00 Weekdays	\$37.00 Weekends
Cart Rental	\$18.00 9 Holes	\$28.00 18 Holes

To Book your Tee Times or Tournaments
Call: (780) 924-GOLF (4653)

FORE!

Kokanee SPRINGS

RV PARK

Seba Beach, AB

DRIVING RANGE

- 15 bay driving range
- Baskets & crates
- Public washrooms
- Club rentals
- Open 10am -8pm daily

780-797-3058

STAY AFTER YOUR GAME TO ENJOY

RV PUB & GRILL

“WHERE FRIENDS MEET”

www.kokaneespringsrv.com

Hwy 31, Seba Beach, AB | 780-797-3100

TRANS MOUNTAIN PIPELINE: PREMIER NOTLEY

Submitted by Cheryl Oates, Media Relations, Office of the Premier | Government of Alberta

Premier Rachel Notley delivered the following remarks on August 30, 2018 in a live address about the Federal Court of Appeal's ruling on the Trans Mountain Pipeline expansion project:

"My fellow Albertans, we face a serious situation.

I'm here before you to tell you how we are defending you, your resources, your jobs and the future of our province and country.

"For generations, Alberta has been forced to sell our resources to one customer – the United States – and to sell those resources at a major discount. The oil and gas in our ground is owned by each and every Albertan. When we are forced to sell those resources for less than they are worth, the whole country pays a price.

"Fewer jobs. Overstressed hospitals. Crowded classrooms. And for almost as long, successive governments in Ottawa and Edmonton failed to change this.

"Despite having more coastline than any country on the planet, Canada as a whole remains landlocked. Three years ago, we set out to fix this. Working together, we have made progress.

Today, Canadians in every part of the country support our efforts to build the Trans Mountain Pipeline.

"In coffee shops, on shop floors and in boardrooms around the country, I have heard directly from thousands upon thousands of our fellow citizens who understand that a strong Alberta equals a strong Canada and a pipeline to the coast is critical to that. I want to thank Canadians for their support.

"Now, more than ever, we need to come together and prove to ourselves and the world that our country works. Why? Because this morning, the Federal Court of Appeal ruled against the Trans Mountain Pipeline, quashing the decision to approve the pipeline. This ruling is bad for working families. And it is bad for the economic security of our country.

"Albertans are angry. I'm angry. Alberta has done everything right and we have been let down.

The combined result of the actions taken by the Harper government, the current federal government, the National Energy Board and the Federal Court of Appeal means that the current state of affairs in Canada is such that building a pipeline to tidewater is practically impossible.

"As a result, our ability to transport our most profitable commodity is subject to the whims of the White House and the U.S. government.

"Let's not kid ourselves. This is a threat to Canadian sovereignty and Canadian economic security.

It is a crisis. Today, Alberta needs action.

"I have always said that protecting our environment and growing our economy can and must go hand in hand. That's why we established a made-in-Alberta climate plan that creates jobs, lowers emissions and sets our economy on a stronger, more diversified foundation.

"Yet, as important as climate action is to Alberta's future, I have always said that taking the next step and signing on to the federal climate plan can't happen without

the Trans Mountain Pipeline.

And so, today, I am announcing that with Trans Mountain halted until the federal government gets its act together, Alberta is pulling out of the federal climate plan.

"And let's be clear – without Alberta, that plan isn't worth the paper it's written on.

I don't take this decision lightly. Every Canadian has a stake in climate action – no one more so than my kids, your kids and the generations who will follow us.

"But Alberta, and indeed Canada, can't transition to a lower carbon economy, we can't build a more just, equal and prosperous society – we can't do these things if we can't provide the jobs and prosperity that comes from getting fair value for our resources.

"So to Ottawa, tonight, I also say this:

Successive federal governments created the mess we find ourselves in. It was broken in Ottawa and now Ottawa needs to fix it. When Alberta's economy is held hostage, Canada is not working.

Continued on Page 25

**SEPT 22 AUCTION
FOR: ALBERT GOLDNICK**
Located: From Westlock Inn – 1 1/4 mi N on Hwy 44

Saturday Afternoon, September 22nd at 1:00P.M.

ACREAGE EQ: * IHC 674 Tractor w 3pt, IHC 1850 FE Loader
* MF 35 gas Tractor w 3pt, Tire Chains * JD 506 / 3 pt Mower *
7' Leon HD Rear 3pt Blade * 6' HD/HM/3pt Cult * 3pt/2 Btm
Plow * 3 pt / 4' Maschio Rototiller * 8 hp Gas Motor * Truck Box
Trailer

STORAGE AND RECREATION: * 40 Green SeaCan * 8' x 6'
Shed on Skids w metal exterior * 1998 Yamaha Triple 700 RV/
w (6596km), red, ES, reverse * 8' SkiDoo Trailer * Evinrude 4hp
and 6hp O/B Motors * Commercial Trampoline * ATV Lift,
Portable

YARD EQ: * JD F525 FM Mower * 25 gl PF Trail Yard Sprayer
* Trailing Aerator * YM 6hp/21" Push Mower * 5hp Rototiller *
Grass Catcher * 2W 4x8 Yard Trailer * Poulan Chain Saw * 4
Alum Ladders

RECREATION: * Yamaha 250/2W Timber Wolf Quad * 12
Alum Boat * 5 hp Evinrude O/B * Saddle * Boat Trailer * Hoof
Trim Kit * Husq 270 Mag Weather by Win Model (60 30-30) *
Rem 1870 Pump w 3" * Fish Gear * Bike

COLLECTABLES: * Anvil * World Book Encyclopedia *
Pedestal Wood Table w 2 Leaves * Side Board * Light Oak
China Cabinet * C/Oil Lamps * Guitar * Singer Sew Machine *
H/C Cream Separator * Baby Crib

PARSONS AUCTIONS LTD.
Charles 674-7704 (780-674-3929) Jeff 305-4328
Pictures Available on: parsons-auctions.com

**STORY
TO TELL?**

Know of a good event going on in the community? Ever wanted to write up a local event for the Community Voice?

If you have any good ideas for articles or would like to submit a story for the paper

Email it to news@com-voice.com or just fax it in at (780) 962-1021.

Please call us at
(780) 962-9228 for
more information.

*Stories may be edited for length
due to possible space restrictions.*

Community VOICE
Keeping You and Your
Community Informed

CREEPY, CRAWLY HALLOWEEN COLORING CONTEST

HAPPY HALLOWEEN

RIP

AGE GROUPS: 3-4 YRS | 5-6 YRS | 7-9 YRS | 10+ YRS

NAME: _____ **AGE:** _____

PHONE: _____ **TOWN:** _____

Entries must be recieved by October 26, 2018.

**Mail to: Jack O'Lanterns, c/o Community Voice
Box 3595 Spruce Grove, AB T7X 3A8**

ANOTHER RAINBOW SALE

UNRESERVED AUCTION SALE

FOR WALTER & JUNE VOLSKY

Sunday, September 16, 2018 at 10:00AM

VIEWING: Saturday, September 15 from 10:00AM-3:00PM

Directions: 52522. Range Road 14
From Hwy 16a West of Stony Plain, AB turn West on
Parkland Drive to range road 14 and go south 1 km to location!

HIGHLIGHTS Horse-Drawn Collector Wagons & Memorabilia: • John Deere Mini Wagon - an exact replica of larger JD wagons, only one known to exist in Canada today • Quebec Dump Cart - built in Drummondville, Quebec in 1908, a great collector's item and yard décor • Mountain Wagon - built by Anderson Carriage Works, Wooler Ont. in 1922, made for rough terrain • Petrolia Heavy Wagon - built in 1904 in Petrolia, Ontario, decals and names are still visible • Restored Farrier's Wagon - superbly restored, the 100-year old farrier and smithy tools are still in back of wagon • Light Express Wagon - built by R Ringer, Picton Ontario in 1915, this is a one-seater with a drop tailgate • Ezeze Roll Mini Horse Wagon - this wagon with pneumatic tires made mini horses earn their oats in old days • Grain Wagon - this wagon is another fine survivor of life years ago on Alberta farms • Original Milk Wagon - a rare commercial vehicle, original sign reads "Moser Bros. Milk & Cream 1900-1958" • Grain Wagon - this wagon is another fine survivor of life years ago on Alberta farms • Hay Rack Wagon - by Massey Harris, built in 1906, original name and stencils are on rear axle • Cariole Sleigh - built by PT Legare, Quebec, this sleigh is low enough to escape the wind • Massey Harris Grain Wagon - built by Massey Harris Co. in Hamilton, Ont. 1919, is still in excellent shape • Original Early Runabout Wagon - built in 1895, this is one of the oldest runabouts around today • Advocate's Buggy - built by Thomas Crow, Toronto in 1906, meant to be light and fast, was used by early lawyers • Delivery Express Wagon - estimated at over 100 years old, the delivery wagon was a common sight during the horse era • Original Adams Grain Wagon - never painted or altered, comes from Sask with a 3-section box and spring seat • Heavy Farm Wagon - built by famous Normandeau Co. in Quebec, this wagon has a Grain Tank Box • Maritime Jumper Sleigh - built by FJ Clark & Son, Fredericton, NB, in 1905, this is a fine rare sleigh • Black horse and harness - a life-size model like this is great for displaying tack or as a driveway decoration • Brown horse - exceptionally nice life-size model horse makes a superb yard decoration • Harness on brown horse - A beautiful and intricate harness • Garden Cart - a sturdy little cart ideal for a charming garden decoration • Original Platform Scale - a Beam scale built by Fairbanks, still weighs accurately, a rare original • John Deere cast bill hanger - printed with Moline, Illinois 1847, the site of John Deere's world headquarters • 5 giant Scottish harness hangers - by each - heavy duty hangers are ideal for hanging harnesses or other heavy items • One-horse Cultivator - this vintage cultivator makes a charming garden or yard decoration • Framed Limited Edition print - 28"x42" picture entitled "Wagons that Won the West" showcases vintage wagons • 2 No. Antique wagon light fixtures • Antique Coca Cola hanging bell • Antique Nat. Advert. Box c/w misc horse items • Antique Canadian bell; Antique accordion • Old-time children's dump sleigh • Antique wood crate • Mini bob sleigh; Sleigh bells • Mirror decorated with 7 horse figurine • Collar with harness for cart horse • 3-hook hanger with horses decoration • Antique wagon seat • Antique cultivator • 100 year old anvil • Antique plow • 2 No. of 54" wagon wheels • Horse-related parts and accessories • 2 No. of 44" wagon wheels • Homesteader's cupboard • **Lawn & Garden Equipment & Tools:** • Montana Tractor 3-Point Hitch c/w loader • 10"x10" Plate tamper • JD X739 tractor with heated cab - used only 18hrs - new • 2 No. of John Deere turf tires c/w rims - like new • Yardworks electric log splitter • Flat collapsible wheelbarrow • Troy-bilt Pony tiller • Stihl FP-40C trimmer-new • 24" self-propelled Swisher • Stihl FP-38 trimmer-new • Ariens model 911183 mower - needs travel cable • 2 No. Landscape leveling rakes - new - by each • 30" lawn roller • Little Giant ladder c/w step plate - like new • Contractors' wheelbarrow • Manual garden tiller - new • Post-hole auger • 20" skidding tongs - new • 2 No full-length sickles • BCS Cultivator • Bundle of lawn tools • Yardworks 24" snow thrower • Bundle of solid metal tree/snow fence supports • Yardworks 24" snow thrower • 4'x3' harrow - new • John Deere 1028E 30" snow thrower • John Deere pull-behind till trailer • Spray-tech model ES260 with 25 gal tank • 60" snow blade for John Deere tractor • 44" Rough-cut Swisher trail cutter • Stihl MS-362 chain saw c/w case - like new • Agrimet mechanical rake model MR 380 • Stihl HT101 pole saw - 16' reach from ground - like new • Triton 2010 Utility trailer - like new • Stihl MS-192 chain saw c/w 2 extra new chains. **Large Selection of Antiques Plus High End Products, Shop Equipment and Tools, Yard Decor, Large Selection of Miscellaneous & Variety of Items too big to list!**

UPCOMING SALES **CONSIGN NOW!**

Thursday, September 20, 2018 @ 5:00 p.m.
Unreserved Auction Sale for DNI Bolting Solutions
 5328-68 Ave. Edmonton, AB

Sunday, September 23, 2018 @ 12:00 noon
Unreserved Auction for Larry and Francis Boyer
 County of Yellowhead - Entwistle, AB

****WATCH FOR UPCOMING ESTATE & ON SITE SALES****

Terms and conditions: Cash, Visa, MasterCard, Debit, Interac. Nothing to be removed until paid for. Subject to additions and deletions. A 10% handling fee, plus GST will be charged where applicable. Please be conscious of the handling fees and factor them into your bidding. Owner Rainbow Auctions & Liquidators or it's employees shall not be responsible for accidents.

Sale Conducted By:
RAINBOW LIQUIDATORS AND AUCTIONS
 Stony Plain, AB. 780-968-1000 or TOLL FREE 1-866-968-1001
Complete Liquidation and Auction Services Since 1978
www.rainbowauctions.ca

CONSULTATION – PROPOSED BAN OF STRYCHNINE

Submitted by Jim Eglinski, MP – Yellowhead

Jim Eglinski, Member of Parliament for Yellowhead, is informing residents that Health Canada has quietly launched a public consultation on a proposed ban of strychnine. Strychnine is a registered pesticide used by growers to control ground squirrels, which are more commonly known as gophers.

The Pest Management Regulatory Association (PMRA), under Health Canada, is proposing to "cancel the registration of Maxim 2% Liquid Strychnine Concentrate, and to require removal of ground squirrel use from the label of S.A.R.M Gopher Poison R.T.U." The agency cites the effects on non-target animals as the reason for the review.

A previous review was conducted in the early 2000s, but found little-to-no evidence that strychnine harmed non-target animals.

"In the last review, the Conservative Party worked hard for several years to

fight for farmers and ranchers, due to the plague of gophers in Western Canada. In the end, the decision was made to allow access to strychnine on an emergency basis," stated MP Eglinski.

The consultation period, which is taking place over the summer, and during harvest season, closes on September 27, 2018.

Conservative MPs are requesting an extension of the consultation period in order to give farmers and ranchers an opportunity to comment following their very busy harvest season.

"Gophers do an incredible amount of destruction to crops and their ground tunnels pose a risk to livestock. Preventing the use of strychnine to address the issue, without indication of secondary harm, is unacceptable," concluded MP Eglinski.

For more information and to participate, visit: www.canada.ca/en/health-canada/services/consumer-product-safety/pesticides-pest-management/public-consultations/proposed-re-evaluation-decisions/2018/strychnine.html

SERENITY FUNERAL SERVICE

NEW FACILITY
 Chapel & Reception Centre

600 Calahoo Road Spruce Grove, AB
780-962-2749 www.serenity.ca

SERENITY FAMILY SERVICE SOCIETY - YOUR NOT-FOR-PROFIT SOCIETY

SERENITY FUNERAL SERVICE

www.serenity.ca

780-542-3338 (24 hours) 5137-50 Avenue Drayton Valley, AB

SERENITY FAMILY SERVICE SOCIETY - YOUR NOT-FOR-PROFIT SOCIETY

WHAT POWERS YOUR FAMILY?

1.888.627.4011




EQUS
www.equs.ca

DELIVERING
MORE THAN **POWER**

Unreserved Farm Equipment Auction for Kim & Theresa Holbein and Unreserved Real Estate Auction for Shane & Rose Taylor 11 AM - WEDNESDAY, SEPTEMBER 19 - WILDWOOD, AB

Tractors & Attachments: 4 ft Pallet Forks **Construction / Industrial Equipment:** 1985 Pisten Bully P8200D Track Machine • FWS 11 ft Brush Rake **Haying Equipment:** CaseIH 8312 Hydro Swing Discbine • 2016 Frontier 12 Wheel V Rake • CaseIH 8465A Round Baler • NH 1030 Bale Wagon • NH 490 12 ft Haybine • NH 55 Side Delivery Rake **Tillage & Seeding Equipment:** Kello-Built 250 14 ft Heavy Offset Disc • JD 3600 5 Bottom Plow • Shop Built 16 ft Land Roller • Alteen 12 ft Disc • 20 ft Chain Harrows • MF 20 ft Deep Tillage Cultivator • Case 12 ft Field Disc • 2013 Lemkin Rubin 9 3 Pt 14 ft High Speed Disc **Vehicles:** 2003 Dodge 3500 4X4 Dually • 1992 Toyota Ext Cab 4X4 • 1995 Ford F150 Supercab 4X4 **Trailers:** 2006 Rainbow 16 ft T/A Car Hauler **3 PT, Lawn & Garden:** JD D140 Lawn Tractor • Swisher 44" Rugged Mower • Mastercraft Lawn Tractor • 3 Pt Broadcast Seeder • Quad Mount Weed Sprayer **Recreational:** 2009 Hammerhead 500 4X4 Side X Side ATV • 2002 & 2003 Ski-Doo Tundra 300R Snowmobiles • 1993 Yamaha 100 Dirt Bike **Bins, Buildings & Material:** Twister 4 Ring 14 ft Flat Bottom Bin • Westeel Feed Store Hopper Bin • 400 Barrel Oilfield Tank • 200 Barrel Oilfield Fiberglass Lined Tank **Livestock, Feed & Equipment:** Wheatheart Heavy Hitter Post Pounder • Highline Bale Pro 7000HD Bale Processor • Tuff 250 Creep Feeder • NH 358 Mix Mill • 1227 Litre Poly Water Tank **Shop & Tools:** First LC-15A Drilling & Milling Machine • Power Tech 7KW Generator • Log splitter • Shop Air Compressor • 3800W Generator • Digital 3000W Inverter • Wash Unit • 100 & 200 Gal Tidy Tanks • 340 Litre Fuel tank • Ka-No Boring Machine • 295 Amp Welder **Other:** 1997 Reefer Van and much more!

T1: SE33-55-9-W5 (sells @ 12 PM)

Shane & Rose Taylor

158 ACRES - add to your farming land base - most of the open land has been hayed this 2018 season... or perhaps this could be Nature's Recreational playground that you have been looking for! This is a natural habitat for the abundant wildlife that call this area home - deer, elk, moose, bear have all been seen on this property. The quarter to the southwest is crown land providing easy access to large area of crown land. Older 2 bedroom home with addition, and the older outbuildings include shop, workshop, barn, lean to shelter, hay shed, chicken coop, & wood shed.

Directions to Property: From the Junction of Hwy 22 and Hwy 16 west of Entwistle, go north 13.3 km on Hwy 22 to Twp Rd 550, then west 7.8± km to curve in road. Turn off paved road onto gravel road Twp Rd 550. Road angles to north and west. Continue to RR 91A, turn right onto RR91A. RR91A turns slightly right and becomes RR92. Go north 2.6 kms on RR92 to Twp Rd 552. Continue west 1.8 km on Twp Rd 552 to RR93. Continue north 4.9 kms. Property is on the left.

Directions to Auction Site: From Wildwood go 11.5 kms north on RR92 to Twp 550 and turn left for .5 km to RR91A. Turn right go 3.2 kms to Twp 552 turn left for 2.5 kms to sale site on west side.



Cathy Hatt

780-898-0729



2005 John Deere 7520 MFWD
Loader Tractor



Caterpillar D6M LGP Crawler Dozer



2015 John Deere 569 Round Baler



2015 Massey Ferguson SP3728
T/A Manure Spreader



2014 John Deere 5055E MFWD
Loader Tractor



2015 John Deere 835 3.5 M Discbine



TEAM
AUCTIONS
Sekura Auctions Since 1966

Clayton Dubnyk 780-910-6221
www.teamauctions.com
Drayton Valley AB 780-542-4337

internet
BIDDING
12 PM

Trans Mountain Pipeline: Premier Notley

Continued From Page 20

"So the time for Canadian niceties is over. Earlier today, I spoke to the Prime Minister and told him that Ottawa must take the following actions. First, the federal government must immediately launch an appeal to the Supreme Court of Canada.

"Even more importantly, Ottawa must immediately recall an emergency session of Parliament to assert its authority and fix the NEB process as it relates to this project to make it clear that marine matters have been and will be dealt in a different forum.

"Then Ottawa needs to roll up its sleeves and continue its work to protect our coast and improve consultation and accommodation relating to Indigenous peoples in the way they deserve.

"Our sovereignty and our economic security depend on it.

If the federal government acts boldly and gives this crisis the attention it deserves, construction can restart early in the new year.

"This needs to happen. Because today's decision by the courts should put fear in the heart of any government or investor who wants to export non-renewable resources directly from Canada – in-

cluding, I might say, LNG on the west coast.

"We cannot accept – no one in Canada should accept – that the only way to sell Canada's resources is through the U.S. No other country on earth would accept this and Canada shouldn't either, especially when we are doing it to ourselves. It is ridiculous.

"Money that should be going to Canadian schools and hospitals is going to American yachts and private jets. We're exporting jobs, we're exporting opportunity, and we are letting other countries control our economic destiny. We can't stand for it.

"That's why I have pulled out of the national climate plan and called on the federal government to take this to the Supreme Court, call an emergency session of Parliament, fix this mess and get construction restarted.

"Alberta, we are the economic engine of this country. We have built one of the greatest societies on earth, through hard work, ingenuity, and by aggressively defending our interests when those interests have been challenged.

"History calls on us to do so again today. And we will not back down.

Thank you."

Only Two Farmers' Markets Left! We Had A Great Season!

Continued From Page 1

Our brand is expanding. It is truly amazing to witness our little market growing so rapidly. I can see an amazing future for Evansburg Farmers' Market

Thank you to Jerry and Verna for bringing new vendors to the

Market. Its truly appreciated.

If you haven't done so, stop by our positive and friendly Farmers' Market! There are only three Saturdays left for our regular season. We also have two Christmas Markets: Saturday, November 24, and Saturday December 1 from 10-2pm. Be prepared to meet jolly old Saint Nick and

take part in Christmas festivities.

We have tons of variety including fresh fruit, fresh vegetables, homemade jewelry, amazing baking, farm eggs, specialty meats, Watkins, bannock, soaps, woodworking, pet treats and so much more!

Once again thank you to everyone who has made Evansburg

Farmers' Market a HUGE success. Each and every one of you is truly a GEM to this friendly operation.

"We need more kindness, more compassion, more joy, more laughter. I definitely want to contribute to that." -Ellen De-Generes

REAL ESTATE & CONSIGNMENT

AUCTION

**10 am Sat, Oct 27 2018
Drayton Valley, AB**

John McRae - Lac St Anne County, AB

2 parcels on choice - House & Yard / Quarter of farm land

M1: Plan 1525356 Block 1 Lot 1: (18.68± acres)

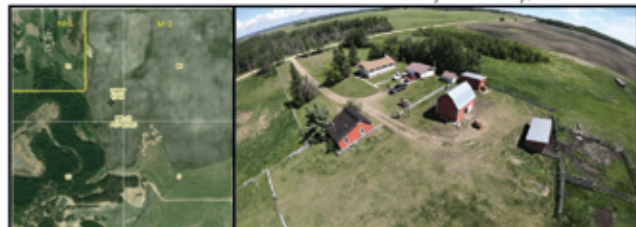
M2: NE19-57-6-W5 (142.32± acres)

Directions to Property: From Junction of Hwy 43 & SH 757 just west of Sangudo, go north on SH 757 to Twp Rd 574, turn east 0.8 km. Properties located on the south side of the road. West on Hwy 18 property on west side and marked with signs. OR From Barrhead go on Hwy 18 to SH 757, turn south and go to Twp Rd 574, turn east 0.8 km. Properties located on the south side of the road and marked with signs.

Directions to Auction Site: 3351- 50th Street Drayton Valley, AB



Cathy Hall
780-898-0729



Kim & Theresa Holbein - Wildwood, AB

Home, Barn, Shop, Corrals, Pasture

H1: NE16-55-9-W5 (158± acres) 55220 RR 93 Wildwood, AB

H2: NW15-55-9-W5 (144± acres) Subject to final registration

Directions to Property: 55220 RR93 From the Junction of Hwy 22/ Hwy 16 west of Entwistle, go north 13.3 km on Hwy 22 to Twp Rd 550, then west 7.8± km to curve in road. Turn off paved road onto gravel road TWP Rd 550. Road angles to north & west. Continue to RR 92, then north 2.6 kms on RR92 to Twp Rd 552. Then west 1.8 km on Twp Rd 552 to RR93. North 1 km to Property

Directions to Auction Site: 3351- 50th Street Drayton Valley, AB



Town & Country Realty
Brandi Wolff
780-349-0764



Properties sell @ 12 PM in conjunction with Consignment Auction [see teamauctions.com](http://see.teamauctions.com)

CALL CLAYTON DUBNYK @ 780-910-6221 FOR MORE INFO!

**Consign
Now!**

**TEAM
AUCTIONS**
Sekura Auctions Since 1966

www.teamauctions.com
Head Office - Drayton Valley AB 780-542-4337

**internet
BIDDING**

Classified Ads - Call 962-9228

Classified Policy

CLASSIFIED RATES INCLUDE GST. 1st 20 Words: First Insertion = \$6.00; Subsequent insertion = \$3.00 each. Each additional word is 20 cents per word, per insertion. Ads must be paid in advance either by cheque, cash, Visa or Mastercard. No Refunds Allowed on Classified Ads. DEADLINE: is Thurs. 4:00 pm. Classified ads may be called in to the COMMUNITY VOICE office at (780) 962-9228, emailed to: classifieds@com-voice.com, dropped off at Onoway Registries, or mailed with your ad and payment to: COMMUNITY VOICE, BAG 3595, SPRUCE GROVE, AB T7X 3A8. Ads may also be placed on the web at www.com-voice.com/classified.htm

Hall Rentals

Bright Bank Hall, 780-968-6813

Camp Encounter, Vincent Mireau - Camp Director. director@campencounter.com. C: 780-504-2012 W: 780-967-2548

Cherhill Community Assoc. Hall, Debra 780-785-2907

Darwell Hall, 780-721-2690

Darwell Seniors, Phone Debra 780-785-2907

Duffield Hall, 892-2425 or 963-6887

Entwistle Hall, Contact Tracey at 780-898-2317 or Cheryl at 780-515-1755

Entwistle Senior's Drop In Centre, Barb 727-2108 or Glennis 727-4367 Mon-Fri

Evansburg Senior's Heritage House, Dennis 727-4186

Evansburg Legion, upper hall 250 people, lower hall 80-100 people, 727-3879

Fallis Community Hall, 892-3150

Gunn Hall (G.A.R.S.) 780-951-9452

Keephills Hall, 731-3761

Lake Isle Community Hall, PH: 780-892-3121 or Email: lakeislehall@mail.com

Lake Romeo PeaVine Hall, 785-2700

Magnolia Hall, 727-2015

Manley Goodwill Community Hall, 963-

9165 or 916-0146

Mayerthorpe Diamond Centre, 786-4044

Moon Lake Community Hall, Nikki Berg 780-898-1390

Park Court Hall, call or text Karyn 780-712-3918

Parkland Village Community Centre, 780-298-9155 @PVCCentre

Ravine Community Hall, 325-2391

Rich Valley Community Hall, 967-3696 or 967-5710

Rosenthal Community Hall, 963-7984

Seba Beach Heritage Pavilion, 797-3863

Smithfield Community Hall, 892-2390

Tomahawk & Dist Agra Center, 898-3443

Wabamun Jubilee Hall, 892-2699.

Wildwood Community Hall, 325-2180 or 780-514-6105

Wildwood Rec Complex 325-2077 or 514-8944

Wildwood Senior's Hall, 325-3787 or 325-2391

Wanted

Onoway Caretaker Required for 17ft Suite Apartment Building, 780-423-3664 & 780-920-3652 (4) 11-09

Lessons

High School Math Tutor, sessions at your home. Call 780-887-6212 for more info. (3) 28-08

Services

WANTED: Standing Timber. Are you looking to cut your woodlot before pine beetles or forest fires destroy it? Top dollar paid. Call now! Paul 780-706-1470 (12) 31-07

FURNITURE RESTORATION - Chair tightening, repairs, finishing, re-finishing, milk/chalk paint, glazing, shading, antiquing, burn through, hand rubbed lacquer, painted finishes. 40 Years Experience, (there is a difference) for FREE Estimate call/text John at 780-337-4046 (9) 14-08



PURE POTENT CBD DROPS

The World's Purest CBD Oil

• 500mg • 750mg

Organic Non GMO

CBD is in a class of its own - affordable, high quality, and convenient!

WHAT IS CBD?

Cannabidiol (CBD) is just one of over 85 cannabinoids that is identified in the cannabis plant. CBD is becoming increasingly popular amongst the masses for having a wide scope of medicinal benefits - due to clinical reports and mounds of test data showing little to no side effects and a lack of psychoactivity typically associated with marijuana products and high THC.

Our CBD products are made with certified organic hemp grown in Colorado & Kentucky and we are 100% free of any synthetic or artificial ingredients. We have a very potent and high purity level in our products. Everything is tested in an FDA Approved facility and our products contain 0.3% THC.

Benefits of CBD Oil

- Reduce Nausea & Vomiting
- Suppress Muscle Spasms
- Reduce Seizures & Convulsions
- Promotes Health
- Promotes Brain Tissue & Bone Growth
- Fibromyalgia Pain
- Reduces Blood Sugar Levels
- Antibacterial
- Anxiety & Depression
- Reduces Nicotine Cravings
- Digestive Aid
- Anti-Psychotic
- Ringing Ears - Tinnitus
- Inhibits Cell Growth in Tumors

CBD HEALTH BENEFITS



Mental & Brain Health

CBD affects principal cannabinoid receptor in the brain promoting a healthy state of mind.



General Health

Cannabidiol has incredible medicinal benefits and will improve overall wellness.



Healthy Balance

Cannabidiol helps restore healthy balance to the endocannabinoid system.

DISTRIBUTORS NEEDED! Home Based Business MLM

FOR PETS

CBD Dog Treats and 250mg CBD Oil for Pets

- Highest Quality Ingredients
- Natural



For more information, Call (780) 907-8642
www.Elaine1.com

Classified Ads - Call 962-9228

Stump Grinding For Hire - Alberta Beach & surrounding areas, Call 780-779-3589 (22) 01-05

Best-Cistern-Septic-Solutions. Cistern and Septic Inspection, Installation and Repair! New Installs Available. Plastic, metal, fiberglass or concrete. We clean them all! Your cistern will be vacuumed, cleaned and sanitized with our high pressure, hot wash, sanitizing system. Reasonable Rates, Call 780-668-4306 (5) 11-09 OG

Cleaning

Ceiling & Wall Cleaning - Stipple, Wood, All Types. Ceramic Tile Cleaning, Cig. Smoke Removal, Biodegradable non toxic cleaner. We travel to acreages and farms! Seniors Discount, Call Nano Cleaning Today! 780-914-0323 (5) 28-08 OG

Computers

Free Computer Check-ups, repairs NOT over \$50. Available: LIKE NEW Laptop or Desktop. your world or family access, clean, refurbished, upgraded, net, games, music, pictures and introduction lesson. ONLY \$100. Free repairs for single parents. Call or leave message, 780-892-4993 (15) 28-08

Landscaping & Maintenance

FALL CLEANUP - Tree Trimming/Removal, Power Raking, Aeration, Clean & Repair Eavestroughs, Junk Removal, Roofing/Roof Repair and More! Call 780-278-5296 (6) 21-08

Firewood

FIREWOOD FOR SALE - Birch, Tamarack & Spruce Pine mix. 4x4x8 cords and 1/2 cords. Quality seasoned wood, Delivery or Pick up. Woodchuck Firewood, 780-288-7247 (1) 11-09 BW

Recreational Vehicles

1979 Chev Glendale Motorhome '22', 350 V8, sleeps 6, good condition - \$3900 OBO. Call 780-785-2454 (S) OG

For Rent

1 Bedroom Apartment, fully furnished with full kitchen, WIFI, cable, phone, A/C, power, gas all included. New Motel looking over lake, downtown Alberta Beach, \$950/month. Cheryl 780-906-1675 (10) 24-07

Available Immediately, Large 2 Bedroom in Adults ONLY building in Entwistle. Includes

Heat, Water & Parking. Rent \$765/month + DD \$300. Cats allowed, Must have good credit. Call Ivka 780-554-5493, jakovljevicivka@yahoo.ca or 780-807-1300 (2) 04-09 OG

Cabin for Rent, \$900/month + utilities included. North of Evansburg on Hwy 22. 12 kms. Call 780-239-0553 (3) 11-09

Church Directory

Seba Beach Christian Fellowship Sunday School 10:00a.m. Worship Service 11:00a.m. Weekdays Bible Study & Prayer (780) 305-3594	Advent Lutheran Church Sunday Worship & Sunday School 11:00a.m. Evansburg O: 727-3594	Roman Catholic Church St. Agnes' Parish, Mayerthorpe Sunday 9:00a.m. St. Elizabeth Parish, Evansburg Saturday 7:00p.m. (780) 786-2032	St. Joseph's Catholic Church Sunday Mass 11:30a.m. Tuesday Mass 7:00p.m. Wabamun, AB
St. Augustine's - Parkland Anglican Church 131 Church Rd. Spruce Grove Sunday Service 10:00a.m. Eucharist with Sunday School & Nursery All are Welcome Office 780-962-5131 www.staugustinesparkland.org	Parkland Baptist Church Sunday Worship Service 10:30a.m. All Welcome 121 Brookwood Drive (780) 962-4101 www.parklandbaptist.ca	Word Church Apocalyptic Era Border Paving Athletic Centre, 9 Tri Leisure Way, Spruce Grove upstairs in the Wild Rose room. Ph: 780-962-7579 Service starts at 10:00 a.m. every Sunday morning, come all & be bless.	St. Saviour Mission (Anglican Diocese of Edmonton) Service every Sunday at 10:00a.m. Rev Coleen Lynch 5117-51 Avenue (Wabamun Seniors Center) Ph: 780-940-4733 www.stsavioursmission.ca
Stony Plain United Church Sunday Service 10:30a.m. 5012-51 Ave, Stony Plain Mewassin United Church Sunday Service 9:00a.m. Rev. Sally Boyle Hwy 627 - Rg Rd 30 Ph: 780-963-4745	Immanuel Lutheran Church of Rosenthal Traditional Service Sunday 9:30a.m. Contemporary Service 10:15a.m. Christian Counselling Services Rg Rd 13, Twp Rd 524 Ph: 780-963-4048 www.iler.ca email: office@iler.ca	Emmaus Lutheran Church Sunday Worship Service 10:30a.m. Bible Study 9:30a.m. Sunday School 9:30a.m. Rev. Steven Brummett 4604-50th Ave, Drayton Valley Ph: 780-542-5101 emmauslutheranchurch.wordpress.com	Church of God Worship Service Sun. 11:00a.m. Please contact for activities: 5004-49 Street, Drayton Valley Ph: 780-542-5091
Calvary Baptist Church Pastoral Team: Kenton Penner Sunday Worship 10:30a.m. Youth & Ministries Info - calvbapt@telus.net 4401-50th Ave. Drayton Valley 780-542-4774 www.calvarybaptist.ca	All Saints' Anglican Church Sunday Morning Worship 9 BCP 10:30 BAS with Sunday School & Nursery 5212-17 Ave. Drayton Valley (780) 542-5048	St. Anthony Catholic Church WEEKEND MASS SCHEDULE: Saturday 5:00p.m. Sunday 12:00p.m. 4708-52 Ave. Drayton Valley Parish Office: 542-5254	Drayton Valley Alliance Church Pastor John Haazen Join us for Sunday Service at 10:30a.m. Aurora School 3901-55 Ave. Programs for all ages Office at 4901-55 St. Drayton Valley Ph: 542-6501 dvalliance.ca

COMMUNITY EVENTS 2018

SUNDAY	MONDAY	TUESDAY	WEDNESDAY	THURSDAY	FRIDAY	SATURDAY
						1
2	3 <small>Labor Day</small>	4	5	6	7	8
9	10	11	12	13	14	15
16	17	18	19	20	21	22 <small>Fall Begins</small>
23 <small>30</small>	24	25	26	27	28	29

If you are a LICENSED, NON-PROFIT ORGANIZATION, you are welcome to submit your announcement FREE of charge, space permitting. You are required to submit your non-profit number. Call (780) 962-9229. Please note that all submitted event listings must be limited to 200 characters or less (including spaces). DEADLINE: 12 noon Friday prior to publication (Thursdays on long weekends).

SEPT 15 - THE HARVEST FAIR, 9:30am - 1:30pm at SG Grain Elevator Museum Site. Hosted by Spruce Grove & District Agricultural Society.

FARMERS MARKETS

CARVEL: FARMERS' MARKET at Carvel Hall every Thursday from 5-8 pm, May to August. Info (780) 554-0240

DRAYTON VALLEY: Evergreen Farmers' Market, Wednesdays at the Mackenzie Center of the Omplex from 10:30AM-1:30PM. *Ends Dec. 19

EVANSBURG: Sat, 10AM-2PM, Tipple Park Museum. Call 727-2240 for tables. *OPEN Saturday May 6th

SPRUCE GROVE: at the Elevator, Sat 9:30-1:30PM, tables (780)240-5821

STONY PLAIN: Sat, 9AM-1PM, Downtown, Stony Plain. Phone Nancy 780-962-3993.

BINGO

ENTWISTLE COMM. LEAGUE BINGO: Every Wednesday, Doors Open 6PM.

STONY PLAIN SENIOR'S DROP-IN CENTRE: public bingo every Tues, 7PM. All ages welcome. Phone (780) 963-6685

TOMAHAWK: every Mon at Agra Centre, doors 6pm, Bingo 7:30pm. Info 339-2423 or 339-3747

WILDWOOD: Mon night. 6:30PM, bingo starts 7:30PM, Early Birds & Lucky 7.

MEAT DRAWS

Darwell: Put on by Alberta Beach & District Lions Club, 4:00PM, bi-weekly, Darwell Lounge & Restaurant

Evansburg: Evansburg Legion, Friday 8-10PM & Saturday 3-5PM

JAMBOREE

CHIP LAKE: Ravine Comm Hall, 1st Sat 325-2119 or 325-2391

DUFFIELD: 4th Sat, Duffield Community Hall. 6:00PM Supper. *Sept - May.

DRAYTON VALLEY: Last Sunday of month. Upstairs @ the "55 Rec. Center" Doors at 12PM, Starts at 1PM. 780-542-3768

ENTWISTLE: at Entwistle Community Hall, 3rd Saturday. For more info call Diann at 780-514-0045. *Starting Oct - May.

MAGNOLIA: at Magnolia Hall. Every 2nd Saturday, Supper at 6PM. 727-2015 or www.magnolia-communityclub.ca *October - May.

RAVINE COMMUNITY ASSOCIATION: 1st Sat of each month. Info 780-325-2391 *Sept - May.

SEBA BEACH: 2nd Friday 7PM, Seba Senior's Centre, Toni 797-4233

SPRUCE GROVE: at Sandhills Community Hall, 3rd Sunday, 1-5PM. Info Florence 780-962-3104 Margaret 780-962-3051 *Sept - June.

STONY PLAIN: Stony Plain Seniors Drop In Center, 5018 - 51 Ave. Every 2nd & 4th Thurs of month, 7PM, \$2. PH: 587-989-7214 or 963-7920.

TOMAHAWK: Tomahawk Agripex, 3rd Friday of month. 7PM. PH: 780-339-3755. *Starts Oct 21st.

WILDWOOD: Wildwood Community Hall, 3rd Wed Each Month, 7PM. 325-3749 *Oct - June.

TOPS (Take Off Pounds Sensibly)

ENTWISTLE: Wed 5:15PM weigh-in, 5:30-6:30PM meeting, upper level Lions Hall. 780-932-2695.

EVANSBURG: Thursday Mornings 9:30AM at Evansburg Legion Lodge. 241-0864.

STONY PLAIN: Thurs evening, Stony Plain United Church. Susan (780) 968-0869

SPRUCE GROVE: Wed 8:45am at Anglican

Church, 131 Church Rd. Christiane 960-1109.

WILDWOOD: Thurs at Wildwood School, 5PM. Connie (780) 325-2420

YOUR COMMUNITY

ALBERTA PARENTING FOR THE FUTURE ASSOC: Call 963-0549 or visit www.apfa.ca to register. All programs are confidential & free.

ALCOHOLICS ANONYMOUS IF Drinking is a Problem! 780-236-1043

FREE HOME MEAL DELIVERY PROGRAM, for Wabamun Seniors & Wabamun Lions. Arrange for meal preparation through a local restaurant. Call Darlene, 892-2551.

PEMBINA SKATING CLUB (Evansburg Arena), offers Learn-to-Skate, CanSkate & STARSkate. All ages. Call Lisa 727-2729. *RUNS Sept-March

PROBLEMS WITH DRUG OR ALCOHOL ADDICTION in a loved one? Contact Drug Rehab Resource for a free confidential consultation. 1-866-649-1594 or www.drugrehabresource.net.

LIBRARY EVENTS

AFTERNOON BOOK CLUB at Keephills Library. 2nd Tues of every month, 1:30-3:00PM. Visit www.pclibraries.ca for info.

FAMILY GAMES NIGHT: 3rd Wed of every month, 6-8PM. Located at Entwistle Library, Duffield Library and Tomahawk Library. In partnership with Parkland School Division. Visit www.pclibraries.ca for more info.

HATCHET CITY READERS at Tomahawk Library. 3rd Tues of every month, 10-11AM. For what we're reading next, visit our website, www.pclibraries.ca.

INVENTORS CLUB: 2nd Thurs of every month, 3:30-5:00PM at Entwistle Library. 4th Thurs of every month, 3:30-5:00PM at Tomahawk Library. Ages 8-13. To register: Call the library at 780-339-3935.

SEBA BEACH PUBLIC LIBRARY BOOK CLUB - meets the 4th Tuesday of the month in the library at 10:30AM. For info call 780-797-3940 or E-mail us at sebaeachlibrary@yrlab.ca.

EVANSBURG PUBLIC LIBRARY BOOK CLUB: 4th Thurs, 7:00PM Grand Trunk High 727-2030.

SOCIAL EVENTS

50+ YOUNG AT HEART LUNCHEON for Parkland County Seniors. 12PM at Stony Plain United Church Basement, \$8/plate. 3rd Wed of Month. Call Audrey 780-963-1782. *Sept-June

AEROBICS: Low impact, Mon/Wed, 11AM-12PM, Wildwood Senior's Centre, \$1/session.

BREAKFAST SOCIAL: 9-11:30AM, Parkland Village Community Centre - 3rd Sunday. PH: 780-298-9155 Social Media: PVCCentre. *except June-August

COME PLAY CRIB: Fridays, 7:30PM at Darwell Seniors Hall; lite lunch is served. All ages!

COUNTRY QUILTERS in Stony Plain house a "Sew in Tuesday", 2nd Tuesday of every month, from 10-3PM. Drop in \$5/member, \$6/non-members. Contact Cindy 780-963-7170.

EVANSBURG ART CLUB: meet & paint Thurs 1-4PM Rec Plex. 727-4340 or 727-4098

EVANSBURG GUIDES & PATHFINDERS: Mon 6PM, Camp Evansburg.

EVANSBURG SENIOR'S HERITAGE HOUSE: Floor Curling Mon & Thurs, 1pm. Court Whist Thurs, 7PM.

EVANSBURG TIPPLE PARK HISTORICAL BUILDING TOURS: Wed - Sat, 10:00-5:00PM.

HEALTHY AGING NURSE & FOOT CARE PERSON, Wabamun Seniors Centre, 2nd Thurs of month, 9AM.

OPEN HOUSE for socializing & card playing at Entwistle Senior Center, Every Sunday from 1-4pm.

PARENT & TOT PLAYTIME: PERC Building Stony Plain Wed. 10-11AM, Holborn Community Hall. Thurs 9:30-11AM, Parkland Village Thurs 9:30-11:30AM.

POT LUCK every Tues 12:00PM, Wabamun Seniors Centre. Come on down!

SEBA BEACH SENIORS CENTER: Yoga, mon, 9:30AM, \$10/session. Bridge thurs, 1PM. Jams every Wed night, 7PM. Thrift Shop every Wed & Sat at 10-3PM.

SEBA BEACH QUILTERS & FIBER ARTS: Wednesdays 9:30AM, Seniors Center.

SENIORS 50+ LUNCHEON: 3rd Wed, 12PM at Stony Plain United Church basement hall. Call Audrey (780) 963-7582

SENIORS WEDNESDAY* AFTERNOON 1-4PM at Parkland Village Community Centre. Games, Crafts & more! Call Sheryl 780.695.7032 *exceptions incl. Weather.

SPIRITUAL LIVING STONY PLAIN INSPIRATIONAL CINEMA & DISCUSSIONS at PERC Building (5413-51 St). 2nd Friday of month at 7PM. Popcorn provided, donations appreciated. Contact 780-940-3032

SPIRITUAL LIVING STONY PLAIN GATHERING at PERC Building (5413-51 St). Every 2nd & 4th Sunday of month. Meditation 10AM, inspirational sharing 10:30AM. PH 780-940-3032

SPRUCE GROVE ELEVATOR TOURS: Tues-Sat, 9-3PM. 960-4600.

STONY PLAIN'S 5TH MERIDIAN GOOD SAMS RV CHAPTER: Ecole Meridian Heights School. 3rd Tues of Month, 7PM. Call Pat at 780-963-6976 or Ruth at 780-288-9829.

MEETINGS

2nd TIMERS: A support & confidential group for Grandparents Parenting. 1st Thurs of month, 6:30PM. Grand Trunk High School (meet in Lobstick Literacy & Learning room). Child care provided at the Evansburg Public Library. *Starts October

299 ROYAL CANADIAN SEA CADETS CORPS MACKENZIE: Stony Plain Comm Center, Wed 6:30PM. Youths 12-18, 963-0843

755 PARKLAND AIR CADETS Thurs, 6:30-9:30PM Muir Lake School, ages 12-18. Info call 405-6585 or www.aircadet.com/755.

AA: Friday at 8PM, Evansburg. Call 325-2204, 727-2466 or 727-6652.

AHS: Addiction Services provides assessment and counseling for alcohol, other drugs, tobacco and gambling in Breton on court day Wednesdays. To make an appointment, please call 780-542-3140.

AL-ANON: Wed 8PM. Spruce Grove United Church, 1A Fieldstone Drive. 962-5205

CHAMBER OF COMMERCE (Evans/Ent): 7:30PM 3rd Thurs, Heritage House.

C.H.I.L.D. (Citizens Helping In Life's Defence) Please join our Pro-Life meetings once a month in Stony Plain. For info call Chris 963-6997.

CITIZENS ON PATROL: The Pembina Community Watch Patrol Meets 2nd Thurs of each month at 7:30PM, at the West Central Forage Association Office 5009 45th Avenue, Entwistle.

COMMUNITY QUILTERS & CRAFTERS: 3rd Tues. Evansburg, Liz 727-3872 Brenda 727-4476

DARWELL & DISTRICT AG SOCIETY: 8PM, 1st Mon, Community Hall.

DDRA MEETING: 7PM, 2nd Mon, Darwell Community Hall 892-3099. *Except Jul/Aug/Dec

DRAYTON VALLEY BRANCH OF ALBERTA GENEALOGICAL SOCIETY: meets 7PM at Municipal Library (5120-52 St.) every 3rd Wed of month. Call (780) 542-2787

ENTWISTLE COMMUNITY LEAGUE GENERAL MEETINGS: 2nd Thursday monthly 7:30PM. *Except June, July, August

ENTWISTLE LIONS CLUB: 2nd & 4th Tues, 8PM, Entwistle curling Rink. Jim 727-3573

ENTWISTLE SENIORS: Ladies: 10AM 2nd & 3rd Wed, Floor Curling: Tue & Fri, 2PM

ENTWISTLE SENIORS 55+ CLUB: Tue & Fri, 1:30-4:00PM at Entwistle Hall

EVANSBURG SENIOR'S HERITAGE HOUSE: 2nd Tues of Month, 1:30PM. Dennis, 727-4186.

FALLIS COMMUNITY ASSOCIATION: 3rd Tuesday, 7:00PM.

GIRL GUIDES OF CANADA: Poplar Hollow District Guides-Pathfinders, Mon 6-8PM. Sparks-Brownies Tues 4-5:30PM. Meet at Camp Evansburg. Brenda 780-727-4476

LAC STE. ANNE & LAKE ISLE WATER QUALITY MANAGEMENT SOCIETY: 3rd Fri, 7PM, Alberta Beach Council Chambers.

LAKE ISLE HALL COMMUNITY HALL BOARD MEETINGS: 3rd Wed of each month @ 7:30PM at the Lake Isle Hall (Hwy 633 and RR55) Ph # 780-892-3121

LOBSTICK 4-H BEEF & MULTI CLUB: 1st Mon, Evansburg Arena, 7PM, Jackie 780-727-2541

LOBSTICK GARDEN CLUB: 1st Mon, Evansburg Baptist Church, Charlotte (780) 325-3787

MEN FOR SOBRIETY: Wednesdays at 7:30PM, FCSS Building (#105, 505 Queen Street, Spruce Grove). Mike (780) 965-9991.

MS SOCIETY DRAYTON VALLEY COMMUNITY GROUP meets 1st Tues of month, 6-8PM at Norquest College. Terra Leslie, 1-403-346-0290. *Sept-June

MS SOCIETY PARKLAND COMMUNITY SUPPORT GROUP: Are you diagnosed with MS and have questions? Last Tues of month, 7-9PM, Westview Health Centre. Contact Cassy 780-471-3034

NA MEETING: Tuesdays, 7:00PM. 514-6011

PEMBINA AL-ANON FAMILY GROUP: meets Tuesdays @ 7:30PM. at Evansburg Catholic Church Hall. Call Patty H. (780) 727-4516 or Cheryl (780) 727-6671

PEMBINA PORCUPINES - JUNIOR FOREST WARDENS: Entwistle Porcupine gathering: 7PM, 1st Tue. Len & Tineke at 727-2020. Porcupines@yellowheadjfw.ca

SOLVE: Community Enviro issues discussed at Smithfield Hall (N of Hwy 16 on RR34). 2nd Thursday. Jana 892-0006

STONY PLAIN FISH & GAME ASSOCIATION & WABAMUN GUN CLUB: 2nd Mon, Stony Plain Comm Center, 7:30PM.

SUNDOWNERS TOASTMASTER CLUB: Mon (excl. Holidays) 7:30-9:30PM. St. Matthew's Church, Spruce Grove. Judy 960-5258

TOMAHAWK SENIORS (50+) meets every Thursday from 1-4pm at the Tomahawk Agra.

W.E.E COMMUNITY FOOD BANK: Call (780) 727-4043 for emergency food needs. Monthly Meeting: LAST Monday of month at 7:00PM at the Food Bank (Old fire hall in Entwistle). *Except December

WILDWOOD & DIST AG SOCIETY: 2nd Wed of each month 7:00PM at the Wildwood Complex. Wilma 325-2424

WILDWOOD & DIST ROD & GUN CLUB: 2nd Thursday, 7:30PM at the range clubhouse, wildwoodrodandgun@gmail.com

WILDWOOD SENIORS: 4th Wednesday at 2:00PM. PH: 325-3787 or 325-2391. *No meeting July/Aug/Dec.

SUDOKU OF THE WEEK

Fun By The Numbers

Here's How It Works: Sudoku puzzles are formatted as a 9x9 grid, broken down into nine 3x3 boxes. To solve a sudoku, the numbers 1 through 9 must fill each row, column and box. Each number can appear only once in each row, column and box. You can figure out the order in which the numbers will appear by using the numeric clues already provided in the boxes. The more numbers you name, the easier it gets to solve the puzzle!

ANSWER:

3	5	7	6	9				2
		9	8				3	
8			5	2				9
9							5	
	2						6	
4	1		9		6			3
	7		3	5	2		9	
				1	9	5		
				6				4

Like puzzles? Then you'll love sudoku. This mind-bending puzzle will have you hooked from the moment you square off, so sharpen your pencil and put your sudoku savvy to the test!

3	5	7	6	9				2
		9	8				3	
8			5	2				9
9							5	
	2						6	
4	1		9		6			3
	7		3	5	2		9	
				1	9	5		
				6				4



Like Us On facebook

FACEBOOK.COM/COMMUNITYVOICENEWS



follow us on twitter
@communityvoice8

SERVICE DIRECTORY

2Bros

Custom Contracting Ltd.

Custom Framing • Concrete Floors • Shingling
Siding Soffit Fascia • Styrofoam Block System

Jeff

780-717-0520

BREWSTER BOBCAT SERVICE LTD.

P.O. Box 454, Wildwood, AB T0E 2M0

- * Site Preparation
- * Pile Drilling
- * Concrete Work
- * Landscaping
- * Demolition
- * Sand & Gravel Delivery
- * General Contracting



brwcat@gmail.com

Telephone: (780) 325-3743

Bruce Balascak Cell: (780) 621-6960



POSTINGFIRST.com

FREE LOCAL CLASSIFIED ADS

Real Estate, Rentals, Vehicles, Pets, Jobs, Service Directory,
Buy/Sell/Trade, Lawn & Garden, Garage Sales, Events,
Local Places & Much More... Advertise for **FREE** Today!



WABAMUN PHARMACY

I.D.A.

Box 90, 5120 - 51 Avenue

Wabamun, AB T0E 2K0

Ph: (780) 892-2278 Fax: (780) 892-2488



Community VOICE

Keeping You and Your Community Informed

THIS SPACE IS RESERVED FOR YOU!

H & E UPHOLSTERY

For all your upholstery needs

Convertible tops for cars and boats, custom car
and boat interiors, 5th wheel trailer skirts, boat
tarps, ATV seats, furniture, kitchen chairs,
heavy equipment seats.



www.h-and-e.ca

For more information contact:
info@h-and-e.ca

4-485 South Ave.

Spruce Grove
(780) 962-3048

SERVICE DIRECTORY

Blakeman Drilling Ltd.
Waterwell Drilling & Servicing
Pumps & Pressure Systems
SERVING LAC STE. ANNE
& WEST PARKLAND
FOR OVER 25 YEARS
Joe (780) 924-3024

DONALD N. GREENWAY
Chartered Accountant
Suite 205 Sunrise Professional Building
215 McLeod Avenue
Spruce Grove, AB
(Bus.) 962-6366
(Fax) 962-3990

THE MOST COMPLETE
NUTRITIONAL SPRAYS ON THE
PLANET
ORDER TODAY!
(780) 907-8642
www.Elaine1.com

Ernie's Repair & Service
SMALL ENGINES
4820 - 47 Avenue, EVANSBURG
727-4433

Community VOICE
Keeping You and Your Community Informed
THIS SPACE IS RESERVED FOR YOU!

MARK MARTIN PFEIFFER
MASTER BRICKLAYER/MASON
Cell: 780-242-3308
Email: pfeiffer.mark@hotmail.com
• Brickwork • Stonework
• Rockwork • Parging
• Concrete Block Work
• Tile Work (all kinds)

PURE POTENT CBD DROPS
The World's Purest CBD Oil
CBD OIL BENEFITS:
• High Absorption Sublingual
• Improves Overall Health
• Helps Relieve Pain
• Delivery System
• Inhibits Cell Growth in Tumors
(780) 907-8642

ROY SHERWOOD
Master Electrician
Ph: 780-968-1425
Cell: 780-908-2287
Fax: 780-968-2211
Email: suretechroy@gmail.com
2-53220 Rge Rd 21
Parkland County, AB
T7Y 0C5
SURETECH ELECTRIC LTD.
Control & Automation
Commissioning
Solar Sales & Service
Industrial . Commercial . Residential

PREVAIL MAX
CELLULAR HOMEOSTASIS FORMULA
A NUTRITIONAL BREAKTHROUGH
THAT SUPPORTS YOU...
RIGHT DOWN TO THE LAST CELL!
LIVIN TRIM WITH
VALENTUS (780) 907-8642
www.ValentusTour.com/Ladybug

PEMBINA CONCRETE PRODUCTS LTD.
Manufacturers of
ONE PIECE SEPTIC & HOLDING TANKS
* Water Cisterns * Field Systems *
Pumps and Accessories * Sumps
DELIVERED TO YOUR SITE
1-800-661-3047
780-727-2702
PembinaConcrete.com
New Line of Concrete Statues, Fountains and Garden Ornaments.
BOX 123, Entwistle, T0E 0S0

Community VOICE
Keeping You and Your Community Informed
THIS SPACE IS RESERVED FOR YOU!

Complete Drywall Service
DRYWALL, TAPING, RENOVATIONS, DRYWALL ART, STEEL STUDS, INSULATION, T-BAR, TEXTURE
RAL Drywall and Plastering Ltd.
Randy: 780-691-5248

RESIDENTIAL CLEANING SERVICES
Call Today for your **FREE Quote!**
(780) 264-7740
SERVING SPRUCE GROVE AND STONY PLAIN ONLY

SERVICE DIRECTORY



H&P Kosik Construction Ltd.

- Road Building • Gravel • Sand • Dugouts
- Black Dirt • Clearing

No Job too small... We do them all!

Harvey cell. 780-445-9010 ph. 780-892-3532
Box 145, Darwell, AB. T0E 0L0



Jack's Auto Body
& 24 HR Towing

**SPECIALIZING IN COLLISION REPAIR
GUARANTEED WORK • INSURANCE CLAIMS**

CAA BOX 9 SITE 306 RR3, ONOWAY, AB T0E 1V0
(780) 967-5850

OUR PLEDGE IS QUALITY



Vanhill Contracting

"We are a family orientated company that pride ourselves on SAFETY and EFFICIENCY"

**CHRIS & LISA VANHILL
OWNER/OPERATOR**

Site Clearing, Grading, Road Building,
Brushing, Acreage Development, Dugouts, etc.

780-619-3236
vanhillcontracting@gmail.com Onoway, AB

SERVING ENTWISTLE AND AREA FOR OVER 30 YEARS



Entwistle CONCRETE
PRODUCTS LTD.

SAND & GRAVEL SALES

PH: (780) 727-3525
Dan McCracken Entwistle, AB
www.entwistleconcrete.ca



PROFORM GUTTERS

Tyler Kroes

5" & 6" Seamless Eavestrough
Residential & Commercial

780 265 1878
Box 244 Entwistle, AB T0E 0S0
proformgutters@hotmail.com



SMOOLE

- Construction & Septic Installation
- Environmental Wastewater Disposal
- Site Design & Evaluation
- Power, Water & Basement Excavation
- Trackhoe, Backhoe, Bobcat & Dump Truck

For All Your Excavation Needs

Call Dan 780-991-4484 Reid 780-909-0173



JIM HAY TRUCKING

- Screened Black Dirt
- Beach Sand
- Road Gravel • Fill Dirt
- Bobcat & Backhoe Available

(780) 220-5849



Community VOICE
Keeping You and Your Community Informed

**THIS SPACE IS
RESERVED
FOR YOU!**



SLIMROAST Optimum
DARK ROAST COFFEE

YOUR LOGICAL SOLUTION TO WEIGHT MANAGEMENT

(780) 907-8642
www.ValentusTour.com/Ladybug



CCAS

Canadian Clean Air Services Ltd.

Heating & Air Conditioning

High efficiency Furnace or
Air Conditioner from 49.99/month.
Instant Approval. No Credit Required



**24 Hour
Emergency
Service**

Licensed and Insured
with over 14 years' experience.
We accept Visa, master card, Amex and interact.

**42 Singing Hill Estates,
Seba Beach T0E 2B0
Office line 780-569-5201**



SANGUDO VETERINARY CLINIC

Box 581, 4916 - 52 Ave. Sangudo, AB. T0E 2A0

Dr. Ralf Sanders DVM

Ph: 780-785-2200
Fax: 780-785-2228
sangudovet@gmail.com

24 HOUR EMERGENCY SERVICE




Xtreme LEAN NRG

Advanced Formula helps you:

- Regulates Your Appetite
- Regulates Blood Sugar
- Regulates Fat Absorption
- Improve Energy Levels
- Improve Your Mood
- Increase Mental Focus

"We've unlocked the science of slim!"

(780) 907-8642



SUMMERS DRILLING LTD.

Water well drilling and service
Family owned Business Serving Alberta since 1917

Tired of hauling water?
We can install a water well with a permanent water supply for as little as \$150/month OAC

Never run out of water again!

5 year workmanship warranty

3 Convenient ways to pay

- Visa
- Mastercard
- We now offer full financing

Stop in at our office 4405 - 50 Street, Stony Plain
780-963-1282
admin@summersdrilling.com



EdmontonLakeProperty.com

• Find Every Property For Sale! • Free Property Evaluations!



Get Ready For Summer!

Incredible turnkey opportunity on this 3 bedroom, 960 sq ft bung with vaulted ceilings, overlooking the lake. It comes with a great shape 19.5 foot By-liner boat with 190 hp merc engine, 2 ski-doo's and all the furniture. This summer HOT BUY!

\$299,900



Move In Ready

This year round home has been completely remodeled and is ready for either part time or full time enjoyment. It also offers outside fun with a covered patio, deck, gazebo fireplace. It has been also mechanically upgraded. Best priced listing on Lake Isle.

\$129,900



Renovated

This Golf Course community three bedroom renovated home is the ultimate starter. Well located in a private cul de sac where the school bus stops if required. The basement is usable as a workshop, lots of parking. This home won't last.

\$159,000



2 Homes with View

This 4 yr old home is 960 Sq Ft and has 2 bedrooms a wonderful dream kitchen on a lot that has great deck facing the lake. The original guest house has been preserved and is still on the lot a makes wonderful guest house.

\$199,900



2 Homes In One

7 bedroom Lake Side home with over 3700 sq ft of development. This spacious homes offers easy flow with a walkout basement fully finished. Gleaming hardwood floors throughout. Kitchen offers up a gourmet's delight with gas stove and top appliances. Large master with a steam shower. Bottom Incredible access with space for your boat today!

\$559,900



Modern Lakefront

This wonderful 1.5 Storey Seba Beach lakefront home offers some of the best picture ready views of Lake Wabamun. 3 Bedrooms, 2 Full Baths, upgraded kitchen, large garage, deck, double patios, yes this home offers all the lakefront check boxes.

\$795,000



Steps To Seba Beach

This Seba Beach view property is less than 300 feet to the beach and has been reduced \$100,000. This renovated home has seen many upgrades. It was built in 2005 and offers 1800 sq ft plus a 1200 sq ft walk out basement. Creek runs along the edges of this Seba Beach double lot opportunity.

\$329,000



Complete Lakefront

Owner Says Sell -- This lakefront is the full deal, 76 feet of lakefront, 4 season home, large bedrooms, south exposure, large double door garage with potential for a carriage suite. South facing deck, dock plus much more

\$709,900



Lowest Priced Lakefront

This 650 sq ft bungalow comes with a fully height basement mostly finished giving you 1300 sq ft of home. Large deck, unlimited views facing south, double garage, call for viewing today.

\$179,900

We offer Free Evaluations and Buyer Consultations!

Call Wayne Today!

780-991-5107



RE/MAX
REAL ESTATE