

Serving: Onoway, Alberta Beach, Calahoo, Gunn, Glenevis, Darwell, Cherhill, Sangudo, Mayerthorpe, Rich Valley, Barrhead, Whitecourt, Stony Plain and Spruce Grove

October 30, 2018

MAYERTHORPE FIRE DEPARTMENT NOW RECRUITING

Submitted by Town of Mayerthorpe

Mayerthorpe Fire Department is recruiting. Our Station is a proud Station serving your community and surrounding area since 1940. Paid-on-call \$25.44/hr.

Who is eligible to become a firefighter?

Adult firefighters must be over eighteen (18) and be in reasonable physical condition in order to perform firefighting duties. Applicants for the Cadet firefighting program must be between the

ages of fifteen (15) and eighteen (18) years old and eligible to attend or be attending school, a minimum of 152 cm (5 ft.) in height and be in reasonable physical condition in order to perform firefighting duties.

Continued on Page 13

WICKED WELDING COMPETITION

Submitted by Wanda Pederson | Onoway Junior Senior High School

On Saturday, October 20th, OJSH Fabrication teacher Mr. Van Camp took four senior high students to the third annual Wicked Welding event at the CLAC Welding Training Centre

in Edmonton. Wicked Welding, as the name suggests, is a Halloween-themed welding competition at the CLAC welding training facility. The competition is a joint partnership between CLAC, the CWA Foundation, and high schools.

Continued on Page 4



MAYERTHORPE KINETTE CLUB SPONSORSHIP—CULTURE DAY



Submitted by Town of Mayerthorpe

Mayerthorpe Kinetite Club Tracy Christman presents a cheque to Mayor Patrick in the amount of \$700.00 for Mayerthorpe's 2018 Culture Day that was held on September 29, 2018!



All Precious JEWELLERS
"Your Spruce Grove Jewellery Store"
Goldsmith on Premises
 • Engraving • Clock & Watch Repairs
 • Jewellery Repairs • Custom Make-ups
 Jewellery Repairs Done On Site.
 Laser Welder Services Available.
 Toll Free: 1-877-962-4367
 PH: 780-960-4200 Fax: 780-960-4201
 Suite 102, 215 McLeod Avenue
 Spruce Grove, AB. T7X 0G2

L & B Tradition of Quality & Service
 Water Services Ltd.
 Well & Pump Repairs
 Complete Pressure Systems
 Farm - Residential - Commercial
 Potable Water Cisterns
 Financing Available
 BILL RIEDLINGER ERNIE BLEKER
 PH. 780-963-8134 OR 780-963-7749
 LBWATER@XPLORNET.COM

SHUTTLE 9AM
 Alberta Beach Mondays
 Onoway Tuesdays
 Wabamun Wednesdays
 to West Edmonton Mall
1(833)545-6262

SLIMROAST Optimum
 DARK ROAST COFFEE
 YOUR LOGICAL SOLUTION TO WEIGHT MANAGEMENT
 (780) 907-8642
 www.ValentusTour.com/Ladybug

Community VOICE

Keeping You and Your Community Informed

PUBLISHED WEEKLY (Zone 1 & 2)
AND BIWEEKLY (Zone 3)

E.J. Lewchuck & Associates Ltd.

45C South Ave. | Box 3595
Spruce Grove, AB T7X 3A8

SALES TEAM

Elaine
Ashley
Dani

TELEPHONE:

Classifieds 962-9229
Advertising 962-9228
Fax 962-1021

E-MAIL:

comvoice@telusplanet.net
sales@com-voice.com
news@com-voice.com

WHITECOURT TOWN COUNCIL UPDATE

Submitted by Tara Galant, Legislative Manager | Town of Whitecourt

October 24, 2018
Council held its annual Organizational Meeting, and has appointed Council representatives to internal and external Council Committees. To find out which Council Committee each member serves on, visit our website and search "Council Profiles."

Whitecourt received a \$286,000 grant from the Forest Resource Improvement Association of Alberta (FRIAA) to conduct FireSmart vegetation management activities on approximately 31 hectares of land. Council awarded the contract to complete this work to Wide Open Slashing Ltd. Work will be completed in the following areas:

- north of the Forest Interpretive Centre between Highway 43 and Ravine Drive; and,
- north of Eastlink Park between the CN railway and the

utility right of way.

Council awarded a 3-year contract for Curbside Collection of Residential Recycling Material to GFL Environmental Inc.

Council has rejected all tenders received for the West Whitecourt Industrial Road Project. The project was forecasted for construction at \$700,000; however, all submissions received were over budget. Administration for the Town of Whitecourt will be working on a plan to present to Council at a future meeting which would see the project completed in phases.

Council has authorized a change to the 2019 Power Franchise Fee. The franchise fee is paid to the municipality in exchange for giving FortisAlberta the exclusive right to supply power distribution in Whitecourt. The approved 2019 fee of 2.42% will result in the average residential customer experiencing an increase of \$0.02/month on their power bill.

The Town of Whitecourt has entered into a development agreement with Life Medical Clinic to allow the business to landscape within the Town boulevard.

The Town of Whitecourt has entered into a development agreement with Associate Medical Clinic to allow the business to landscape within the Town boulevard.

The Town of Whitecourt has completed its annual review of the Policy Manual. The Policy Manual serves as an operational guide for Council, staff and the public, and is available for viewing on the Town's website at www.whitecourt.ca.

Whitecourt will be hosting a delegation from our Twin Town of Yubetsu, Japan October 30 through November 7. This year marks the 20th anniversary of our Twin Town relationship, and events hosted throughout the week will commemorate this special milestone.

Darlene Lorraine Ross



ROSS, Darlene Lorraine Born October 2nd, 1941 in Edmonton Alberta passed away Monday October 22nd at the Westview Health Centre in Stony Plain. Darlene will be remembered forever by her husband of fifty one year's Lorne of Darwell, son David (Holly) of St. Albert, daughter Tracy of Kelowna, grandchildren Laurel and Erica Ross and Rylan Gamble, her sister Sharon (Dale) Irving of Edmonton, her brother Ken (Jeannette) Bowman of Onoway, sister-in-law Barb Bowman of Kelowna, brother-in-law Don Kallusky of Victoria, a large extended family including 3 aunts and one uncle, plus several nieces, nephews and cousins.

Darlene was predeceased by her parents Bernhard and Marjorie (Hoffer), her brother Don Bowman and her sister Betty Bowman.

Darlene grew up on the family farm and graduated from Beaupre High School in 1959. Upon graduation Darlene started her banking career prior to becoming a flight attendant for Air Canada. After her marriage Darlene returned to banking and enjoyed a long successful career.

She was an avid supporter of her family's activities. Over the years Darlene was a committed volunteer for a variety of organizations including her church. Darlene could often be seen Wednesdays and Saturdays working at the United Church Thrift Shop in Onoway. She will be dearly missed.

A Celebration of her life will be held Friday, November 2nd at the Darwell Centennial Hall, Darwell AB at 1:00. Memorial donations may be made in her memory to the Canadian Cancer Society.



Cherhill Community Association Presents

X-MAS IN NOVEMBER MARKET

Saturday, November 3, 2018
11:00am – 3:00pm

22+ Vendors – Lots of different items.
Shop Early!
Bring a friend – have a coffee.
Concession on Site.

TOWN OF MAYERTHORPE: OUR CONNECTION

Submitted by Town of Mayerthorpe

Compost Closing Date
 The last operational day for the Compost Facility will be October 30, 2018. In May, Council amended Compost Policy V-014 to allow for a day in early November to dispose of Halloween Pumpkins and a day in January to dispose of Christmas Trees. These dates will be advertised two consecutive weeks prior to the date.

Pumpkin Disposal - November 5, 2018 at the Compost Facility—10:00 a.m.—6:00 p.m. Pumpkins Only

2019 Business License Renewal shall be accepted beginning December 1, 2018

Business Licenses are due to be renewed by January 31, 2019. As per the Town of Mayerthorpe Bylaw 965 amending Bylaw 610 Business License Bylaw states: "Applications for renewal of an existing Business License shall be made no later than the 31st day of January each year, and shall be accompanied by the appropriate fee; and a penalty of TEN (\$10.00) DOLLARS shall be imposed monthly for any license renewed where the application for renewal is received after the 1st day of February

each year. There shall be no penalty charged upon renewal if the applicant has not operated a business within the Town of Mayerthorpe during the time period that the business license was expired."

2019 Dog License Renewals shall be accepted beginning December 14, 2018 at 10:00 am

Licenses are \$5.00 for a neutered or spayed dog and \$30.00

for an unneutered or non-spayed dog. Please note that the Town of Mayerthorpe Dog Control Bylaw #956, states that failure to obtain a Dog License may result in a \$200.00 fine.

Dog Licenses are due by January 31, 2019. Please contact the Town Office for a current copy of the bylaw or visit www.mayerthorpe.ca.

MISSING FEMALE LOCATED

Submitted by Stony Plain/Spruce Grove/Enoch RCMP

Enoch, Alberta - RCMP have located Megan CAWTHORPE,

she is safe and unharmed. The Police would like to thank the public and media for their assistance.

WICKED WELDING COMPETITION

Continued From Page 1



Teams from nine Edmonton and area high schools participated in this year's welding event. The OJSH team was composed of Grade 11 students Zakk Goertzen, Brennan Borle, Gavin Sandsbraaten, and Koryn Kormos.

This was OJSH's first time attending the welding competition. Each four-member school team had only 6 hours to create a metallic, Halloween-themed sculpture to compete for the top prize. Mr. Van Camp said: "Our students worked incredibly hard the entire day to produce a very vivid sculpture". The students and their teacher were very proud of their work, especially considering the students that were on the team are first-year fabricators and they only started learning to weld a week before the competition.

Mr. Van Camp said the compe-

tion was very well organized, and every participating student came away from the competition with some amazing gifts and souvenirs: each student received gloves and a welding cap and some students even came away with a high quality welding helmet and jacket. CLAC also donated several pallets of welding consumables to any school that wanted it. All materials used in the event were donated by local Edmonton and area businesses.

Global TV was in attendance at the event and their reporter got a quote from Zakk: "It teaches you a new skill, and it's a really good skill to have in life because you never know when you're going to need it, and there are a lot of things you're going to need it for."

The team's creation is being put on display in the school's main foyer once the sculpture has been cleaned up.



EAGLE RIVER

CASINO & TRAVEL PLAZA

WE ARE HIRING



Full & Part Time Positions Available!!

Casino Attendants Timber's Bussers
Gas Bar Cashiers RV Park Attendant

We Offer: Health, Vision,
Dental Benefits & Savings Plan.

JOIN OUR TEAM



Email to HR@eaglerivercasino.ca

Or Stop by to deliver Resume to HR.

Visit our Website at www.eaglerivercasino.ca



YOUR LOGICAL SOLUTION TO WEIGHT MANAGEMENT



CALL (780) 907-8642 FOR **FREE** SAMPLE

DARK ROAST COFFEE

SLIMROAST Optimum

Exclusive functional coffee formulated to:

- Crush Cravings
- Increase Energy
- Metabolize fat to Energy
- Help Regulate Blood Sugar
- Improve Mood & Focus
- Boosts Circulation & Oxygen delivery

TO **UNLOCK** THE SECRET OF **WEIGHT MANAGEMENT!** PUT THE **POWER** OF **SLIMROAST OPTIMUM** IN **YOUR CUP!**



Thrilled with my results! I lost 9 lbs and an amazing 11 inches off my abdomen! Works wonderfully!

Managed to lose 7 lbs very fast & much more in inches the way my clothes are fitting now! 1 cup a day is all for me!

Down 17 lbs and fitting into clothes that were way to tight before!

No dieting, first month finished. Down 7 1/2 lbs 8.5 inches. Awesome product!

www.ValentusTour.com/Ladybug

(780) 907-8642

HUSQVARNA 450

3.06 cu.inch / 50.2 cm³, 3.2 hp / 2.4 kW
13" - 20" / 33-50 cm, 10.8 lbs / 4.9 kg

\$464⁹⁵



\$259⁹⁵

MSRP \$285 with 16" bar



STIHL

MS 170

Gas Chain Saw

Displacement 30.1 cc
Power Output 1.3 kW
Weight 3.9 kg (8.6 lb)*

Fall SAVINGS 2018

RECEIVE A FREE WOOD-PRO KIT
with the purchase of any eligible STIHL Chain Saw.

- Woodsman® Carrying Case
- STIHL Hat
- OILOMATIC® Chain



THIS IS YOUR CHANCE TO SAVE BEFORE SNOWFALL

ST 227P DUAL STAGE 27" SNOWBLOWER

- Power Steering • Electric Start
- Heated Handles • Remote Chute Control
- Engine - 12.5 ft lb with 5 Year Warranty

Purchase Price
~~\$1399⁹⁹~~

LIMITED QUANTITIES AVAILABLE



PRICES SUBJECT TO CHANGE

Husqvarna
READY WHEN YOU ARE



CLICKnGO²
by KIMPEX

UTV, ATV SNOW PLOW BLADES

FUELED BY FUN! SEE IN STORE FOR DETAILS



WALLENSTEIN

LOG SPLITTER

WE230

\$2199⁰⁰

Splits horizontal or vertical Subaru engine

BATTERIES



CANADA PROOF™ BATTERIES cdnrg.com

EX. 31 SERIES price with core refund

\$119⁹⁵ \$99⁹⁵

OXYGEN & ACETYLENE SPECIALS

• 244 cu. ft. Oxygen Bottle Complete with Corflants

Special

\$494⁹⁵

122 cu. ft. Oxygen \$384⁹⁵

• 150cu. ft. Acetylene Bottle Complete with Contents

Special

\$499⁹⁵

75 cu. ft. Acetylene \$374⁹⁵

Kohler Auger Engines

V-Twin with Anti Icing Features

Anti-icing feature prevents Engine Carburetor icing. Engine is complete with Exhaust, Ignition Switch, Throttle and Choke Controls.

Splits horizontal or vertical Subaru engine.

20 HP CH 640-3005 \$2195⁰⁰	27 HP CH 750-0005 \$2849⁰⁰
23.5 HP CH 730-3202 \$2695⁰⁰	35 HP CH 980 \$3975⁰⁰

KOHLER ENGINES

SMALL POWER BARRHEAD LTD.

6105-49th Street
Barrhead Industrial Park

780-674-4778
www.smallpowerbarrhead.ca

HOURS: Mon to Fri 8:00A.M. - 5:30P.M.
Saturday 8:00A.M. - 4:00P.M.



KNM Sales & Service

6101-47 Street Barrhead, Alberta

1-844-674-2888

www.knmsales.com

Serving North of Edmonton With Parts and Service

For all you Parts and Service Needs

Call Our Service Team!

Martijn Terlouw
(780) 305-6408

Kevin Harkes
(780) 674-1445



*We are a Cummins Dealer & have Certified Cummins Technicians



MATERIAL SIZE MATTERS.

This workhorse Vermeer Bale Processor combines simplicity, durability and versatility. The BX9010 is an all-around processor that is ready to perform a variety of applications. It distributes a consistent, uniform windrow of crop along the bunk line or out in the pasture. Also, spread bedding with consistency and accuracy at ranges up to 50 ft (15.2 m). The BX9010 bale processor simplifies the process of processing bales.



FURY
DOMINATE YOUR RESIDUE

Fast and flexible: The Fury is designed to cut/chop/size and mix your residue at speeds of 8-12 mph, up to 70 acres per hour.

This is a one-pass residue management tool which excels over a wide range of field conditions and terrain. Narrow 12' transport width, choice of 4 blade sizes and 3 rear finishing attachments means the Fury will dominate your residue in any field conditions.

VERSATILE
VERSATILE-AG.COM

ASK US ABOUT OUR LOW FINANCING RATES



Supreme International 700T

Two Patented Free-standing Vertical Cutting Augers, Manual Restrictor Plates, 540 or 1000 RPM PTO, 4 pt DG 300 Scale System

Call



Versatile Viking

Quality and durability you've come to expect from Versatile

Call



Salford LE4100

2 rows of concave disc blades split by two rows of coulters

Call



Versatile S9071

1000 RPM CV PTO, dogleg, dual discharge, drop chute with magnets, 10' rubber tub extension

Call



Vermeer BX9010 Processor

This workhorse Vermeer Bale Processor combines simplicity, durability and versatility.

Call



Versatile FURY HS 250

1000 RPM CV PTO, dogleg, dual discharge, drop chute with magnets, 10' rubber tub extension

Call



*KNM claims no responsibility for inaccuracies of the information presented on the advertisement. Price and information presented in the advertisement are subject to change without notice.

KNM Sales & Service



Stay connected at home like never before.

TELUS High Speed Internet with Smart Hub, is an ideal at-home Internet solution



The Smart Hub uses the TELUS LTE Network to provide High Speed Internet Access in rural communities.

Features

- ✓ Powered by the TELUS LTE Network
- ✓ Download speeds up to 25 Mbps
- ✓ Large data allowances at competitive monthly rates, starting at \$60 per month
- ✓ High speed Wi-Fi that lets you connect multiple devices



Wireless Home Phone \$0

Stay connected with all the minutes you need:

Enjoy unlimited nationwide calling, and 5 included voice features (Voicemail 25, Call Display, Call Forwarding, Call Waiting, Conference Calling) for a low monthly price.

on 2 yr term

Monthly Plans Starting from

\$10

per month*



82 Boulder Blvd.,
Stony Plain, Alberta

Open

Monday - Friday
Thursday
Saturday

8:30am - 6:00pm
8:30am - 8:00pm
9:00am - 4:00pm

780-963-9463



fall...
AUTO TUNE-UP

OCTOBER 2018

**The Businesses in
the following Guide
can be your One Stop
Solution to all your
Automotive Needs!**

Auto TUNE-UP

HOW TO RECOGNIZE POTENTIAL BRAKE PROBLEMS

Maintaining a vehicle is more than just a way to protect one's financial investment. Vehicle maintenance can protect against accidents and make the road safer for drivers and their passengers as well as their fellow motorists.

Fully functioning brakes are an important component of automotive safety. In its 2015 Crash Stats report, the National Highway Traffic Safety Administration said that brake-related problems accounted for 22 percent of

crashes where vehicular failure was cited as the cause of the collision. Bad brakes are particularly notorious for rear-end collisions. Faulty, worn brake lines, antilock brake system malfunctions and worn brake pads and discs are some potential brake problems.

It is important that motorists learn to recognize the first symptoms of brake trouble so they can address issues before they put drivers, their passengers and other motorists at risk of accident or injury.

- Unusual noises: Screeching, grinding, rubbing, and high-pitched sounds are common indicators that brake pads, rotors and other parts of the braking system need atten-

tion. Worn pads can cause damage to other vehicle parts, resulting in more expensive repairs if they're not addressed promptly.

- Pulling: If the car pulls to one side when applying the brakes, this may indicate brake pad linings are wearing down unevenly. A brake adjustment may be necessary. Pulling also may be indicative of an object or debris caught in the brake fluid.

- Less responsive: If when pressing on the brake pedal the brakes just do not seem to be as effective as they once were, or it is necessary to press the pedal harder for the brakes to engage, there may be a brake fluid leak or an air leak. Check under the vehicle to see if any fluids are pooling.

- Pungent odors: Firestone Tire Company says a burning smell may be indicative of worn out brake pads and friction on the tires. Each of these issues require immediate attention.

- Vibrations: Certain vibrations may indicate brake issues. Rotors can become warped from metal-on-metal rubbing, potentially leading to a failure of the vehicle to brake properly. Vibrations also may indicate tires are misaligned. These problems can be properly assessed by a trained mechanic.

Do not let potential brake problems go unchecked. Keeping brakes in good working order helps drivers stop more readily and avoid collisions.

Cash for Cars
967-2492
R & S TOWING

TONY PLAIN AUTO
 17E Granite Drive, Stony Plain
Servicing All makes & Models
ALL WORK GUARANTEED!
 Tel: (780) 963-6297
 stonyplainautomotive@gmail.com

NAPA AUTO PARTS

- * Auto Parts & Accessories
- * Body Shop Supplies
- * Agricultural & Industrial Parts
- * Shop Equipment

We are real Auto Parts People

120 St. Matthews Ave, Spruce Grove
 962-4421 Fax: 962-3464

MasterCard VISA

GROVE
COLLISION REPAIRS LTD.
Specialists in Unibody Repairs
GENESIS COMPUTERIZED DAMAGE ANALYSIS
 The Latest in "Hi Tech" Collision Repair

ACCREDITED REPAIR FACILITY FOR

PEACE HILLS GENERAL INSURANCE COMPANY **Allstate**

the co-operators Insurance/Financial Services **The Economical Insurance Group**

ZURICH CANADA WESTERN UNION INSURANCE INC. CANADA

Insurance Claims Welcome

120 South Ave. SPRUCE GROVE
(780) 962-3755

Auto TUNE-UP

HOW TO NAVIGATE TRAFFIC JAMS

Many drivers have found themselves traveling down the highway at a good speed when, seemingly out of nowhere, vehicles begin to slow down. In such instances, drivers assume there must be an accident ahead, only to ultimately see nothing before traffic once again begins to move. What just happened?

If this situation sounds familiar, it may be comforting to know you are not alone. Traffic is a big problem in many cities, and is one of the leading causes of commuter anxiety. A 2012 study from researchers at Washington University in St. Louis noted that long commutes cut into exercise time, which has the trickle-down effect of high blood pressure, greater body weight and lower fitness levels. The study also stated that being exposed to the

daily hassle of traffic can lead to chronic stress. Furthermore, traffic can expose drivers to air pollution, which the World Health Organization says contributes to 3.2 million preventable deaths worldwide each year.

Traffic jams occur because of accidents, distractions on the side of the road, vehicle breakdowns, roads in disrepair, and other obstacles. But "phantom accidents" also contribute to their share of slow downs. According to Berthold Horn, an MIT computer scientist, all it takes is one driver to create a traffic jam. It is similar to the ripples of tossing a stone into a lake, and the science of nonlinear dynamics refers to this as "emergent phenomenon."

But Horn notes there may be a way to prevent phantom accidents. Horn says trying to main-

tain a distance halfway between the car ahead and the car behind you can ease traffic somewhat and produce improvements in commuting time, though everyone on the road needs to do his part for this to work.

Other ways to reduce traffic revolve around being a more observant and considerate driver.

- Avoid being a rubber-necker, looking at things on the side of the road for too long.
- Pay attention to cars entering the roadway and give them the space they need to flow into traffic effectively.
- If you're entering a roadway, get to highway speed as soon as possible.
- Be an observant driver to avoid collisions or near-misses.
- Do not cut off other

drivers, which can lead to road rage or tailgating.

- Maintain a safe speed while driving and avoid reckless maneuvers.
- Service your car on a schedule so it is less prone to breakdowns.
- Check a GPS or map app on your mobile phone to see which roads have the most congestion, and consider taking an alternate route.

Each of these suggestions can help reduce, but not always prevent, traffic. Accepting that traffic can occur, leaving extra time to reach destinations, having relaxing or your favorite music at the ready, and realizing that the traffic wave will end eventually can help motorists cope with traffic.

Jack's Auto Body & 24 HR Towing



SPECIALIZING IN COLLISION REPAIR
GUARANTEED WORK • INSURANCE CLAIMS

BOX 9 SITE 306 RR3, ONOWAY, AB TOE 1V0
(780) 967-5850




OUR PLEDGE IS QUALITY

W.V. REPAIR SERVICES LTD.



Agriculture & Heavy Duty Repairs
 (NO AUTOMOTIVE REPAIRS)

Air Conditioning - in Shop & Mobile Service
 CVIP Inspections, Hydraulic Repair, Hoses Made



EXPERIENCED MECHANIC 30+ YEARS
WALLY 780-305-1315
 SHOP IS LOCATED JUST 10 MIN SOUTH OF SANGUDO

Ray's AUTO REPAIR




24 HR. TOWING SERVICE
COMPLETE AUTO REPAIR
STIHL CHAIN SAWS



DANNY FRIEND 780-785-2251
 (OWNER • MANAGER) BOX 332 SANGUDO, AB. TOE 2A0

VANDENBERG COLLISION LTD.



Joe
 Ph: (780) 786-2614
 Fax: (780) 786-2736

5014 - 51 St.
 Mayerthorpe, AB

Auto TUNE-UP

HOW TO APPROACH BUYING A PREOWNED VEHICLE

Vehicles are considerable investments. According to Kelley Blue Book, the estimated average transaction price for

light vehicles in early 2018 was \$36,270.

Perhaps because of that price tag, many people in the market for cars and trucks shop for pre-owned vehicles, which statistics indicate are considerably less expensive than new automobiles. Edmunds.com notes that the average transaction price for a used vehicle purchased in the first quarter of 2018 was \$19,700.

Of course, preowned vehicles carry more risk than new cars. That said, car buyers in the market for preowned vehicles can take steps to protect themselves against the risks associated with buying used cars.

- Shop for certified preowned vehicles. Certified preowned vehicles, or CPOs, typically come with an inspection and extended warranty. That can ease the concerns of buyers worried about buying a lemon. Many CPOs are recently returned off-lease vehicles that tend to have low mileage. Lessees are obligated to return leased vehicles in good condition or suffer financial penalties, meaning most off-lease vehicles will be well-maintained.

- Recognize “certified”

and “CPO” are not the same thing. Edmunds.com notes that there’s sometimes a difference between vehicles that are characterized as “certified” and “certified preowned.” The CPO designation typically means the vehicle manufacturer stands behind the vehicle and its warranty. A vehicle described as “certified” may only be backed by the dealership itself. That’s an important distinction for buyers who may travel a lot or those who plan to move, as a manufacturer-backed warranty should allow them to take the vehicle to any of the manufacturer’s dealerships for repairs, regardless of where those dealerships are located. Drivers of vehicles that are only certified by a dealership may only be able to take their cars in for repairs at that particular dealership.

- Get a vehicle history report. Some sellers, whether it’s dealerships or private citizens, may provide vehicle history reports. But even if they don’t, the cost of such reports is negligible compared to the value of the information they provide. These reports indicate if a vehicle has been in any serious accidents and indicate mileage that can alert buyers to illegal odometer adjustments, and some may even indicate if maintenance was performed at manufacturer-recommended intervals. If sellers are reluctant to provide reports or the VIN numbers of a vehicle necessary to order them, then walk away.

- Take a long test drive. A long test drive through various conditions (hills, curvy roads, highways, etc.) can give buyers a feel of how a preowned vehicle handles. Don’t succumb to pressure to cut test drives short, and be wary of sellers who want to keep test drives to a minimum.

Preowned vehicles can be great investments, especially when buyers take steps to make the most informed decisions possible.

WINTER IS COMING

ARE YOU READY?

We have one of Drayton Valley's **BIGGEST SELECTION** of **WINTER TIRES!**

Winter rims available! Allow 2 business days for shipping

OUT OF PROVINCE Alberta Inspection Facility!

DRAYTON'S SHOP

TREADPRO 780-514-5795
TIRE • CAREERS

5001 63 St, Drayton Valley

Hours of operation: 8:00 am - 5:00 pm

RADIATOR REPAIR AND RECORE

MANY UNITS IN STOCK FOR LARGE TRUCKS SAME DAY SERVICE ON MOST RADIATORS. CALL FOR DETAILS AND PRICING.

We offer services

- CVIP Inspections
- Hydraulic hose crimping and thousands of adapters in stock.
- A/C Repair
- Espar and Webasto Repair, Installation.
- Engine Repair and Rebuilding.
- Power train/Driveline repair and service.
- Suspension and frame repair.
- Two Fully equipped service trucks for mobile needs.
- Gates Hydraulics, hoses and belts

WE HAVE FACTORY TRAINED TECHNICIANS FOR T & E PUMPS, CATERPILLAR AND CUMMINS ENGINES, AND SPICER AND MERITOR DRIVELINES.

WE STOCK PARTS FOR ALL MAKES AND MODELS OF TRUCKS, DRIVELINE & ENGINES.

We repair

- Truck Transport
- Heavy Equipment
- Automotive
- Industrial

Nitro Nut Mechanical LTD.

Shop 780.789.3322 • Fax 780.789.3331
Toll Free 1.855.789.3322 • www.nitronut.com
email: nitronutmech@hotmail.com

PARLIAMENT UPDATE – WEEK OF OCTOBER 22, 2018

Submitted by Jim Eglinski, MP – Yellowhead

The following was debated in the House:

- Bill C-76 – Elections Modernization Act (Report Stage)
- Bill C-83 – An Act to amend the Corrections and Conditional Release Act and another Act (Second Reading)
- Bill S-234 – An Act to amend the Parliament of Canada Act

(Parliamentary Visual Artist Laureate) (Second Reading)

- M-155 – Filipino Heritage Month
 - M-161 – Record Suspension Program
 - M-166 – Postal Banking System
 - M-170 – Officers of Parliament
 - Conservative Motion – Terrorism
- On Thursday, the Prime Min-

ister of the Netherlands gave an official address to the House of Commons. You can read speeches and questions from Debates on the House Publications page at www.ourcommons.ca/en.

In the Standing Committee on Public Safety and National Security (SECU), we continued the study on M-167, which deals with rural crime. A local constituent appeared as a witness on

Tuesday. For more information on these meetings, visit: www.ourcommons.ca/Committees/en/SECU.

This week, I attended six meetings and four events, as well as recorded a message. I will fly back to the riding over the weekend to attend local events. Look for my update next Friday on the happenings of Parliament as it will continue to sit for another week.

Mayerthorpe Fire Department Now Recruiting

Continued From Page 1

If I have no training or experience, can I still apply?

ABSOLUTELY!! All necessary training is provided to new members. New members are expected to attend and complete courses in First Aid/ CPR, and Entry Level Firefighting. Subsequently, members are encouraged to take more advanced courses for structure fires, vehicle extrication, liquid fuel fires, dangerous goods, pump operations, apparatus driving, wildland fires, urban interface fires. Most of the courses are held within the county and are free of charge to members.

How much time does it take to be a member?

Members are expected to attend weekly training sessions.

Members are expected to attend as many incidents as possible.

What benefits do “YOU” get out of this?

- * Training and Knowledge
- * Develop important skills
- * Confidence
- * Pride
- * Self Assurance
- * Sense of accomplishment
- * Being part of a bigger team
- * Learn to stay cool in situations
- **That GOOD FEELING of a job well done**

The training you receive is the same standard of training that is provided to firefighters across Canada and is internationally recognized. Please contact Mayerthorpe Town Office for inquiries 780-786-2416 or Fire Chief Schroeder at 780-608-3392 or firechief@mayerthorpe.ca



POSTINGFIRST.com

FREE LOCAL CLASSIFIED ADS

Real Estate, Rentals, Vehicles, Pets, Jobs, Service Directory, Buy/Sell/Trade, Lawn & Garden, Garage Sales, Events, Local Places & Much More... Advertise for FREE Today!



Buy and Sell just about ANYTHING!
FREE Local Classifieds

Follow Us



HALLOWEEN CONTEST WINNERS



Sawyer S. Age 4



Astrid K. Age 5



Bryanna Age 8



Myrah N. Age 10

Thank you for entering. All the colouring was **spooktacular!**

RCMP INVESTIGATE THREATS

Submitted by Morinville RCMP

On October 26, 2018 at 9:46 a.m., Morinville RCMP responded to a complaint of uttering threats, alleged to involve a firearm, towards Sturgeon Composite High School. This initial complaint involved two

males; one a student of the school and one not a student.

Administration at the school, in collaboration with the RCMP and the Sturgeon Public School Division initiated a hold and secure at 10:00 a.m. Students in the school remained in class. This procedure is a precautionary measure to ensure

the safety of students, and parents were notified.

The RCMP investigated, and while there was no initial threat directed towards the school, or students in the school, a subsequent threat was uttered. As a result of the ongoing investigation, one male youth from Sturgeon County has been arrested

and is facing charges.

The hold and secure was lifted at the school at 11:45 a.m with no further concern.

The investigation is continuing. RCMP are confident that there is no ongoing cause for alarm and no further information will be provided about this incident.

MALE ARRESTED FOR PUBLIC MISCHIEF

Submitted by Stony Plain/Spruce Grove/Enoch RCMP

Lac Ste. Anne, Alberta- On June 10, 2018 RCMP entered into a Robbery Investigation. A male reported that he had picked up two male hitchhikers who assaulted him and

stole his vehicle. After a thorough investigation involving General Duty members, Forensic Investigation Section (FIS) and a Composite sketch artist it was determined that the complainant had fabricated the occurrence in an attempt to mislead investigators in a collision investi-

gation.

A 25-year-old from the Alberta Beach area, was arrested and charged with:

- Section 140 (1) of the Criminal Code- Public Mischief
- Section 252 of the Criminal Code- Fail to Stop or Remain at the

Scene of an Accident

Public mischief charges are considered when evidence determines the story to be false.

He has been released from custody and will appear in Stony Plain Provincial Court November 21, 2018.

THREE ARRESTED WITH STOLEN VEHICLE

Submitted by Stony Plain/Spruce Grove/Enoch RCMP

On October 23, 2018 at approximately 2:00 a.m. Spruce Grove RCMP were called to assist Edmonton Police Service and Air One, with a stolen vehicle that had been involved in a criminal flight from

police. The stolen Ford F-150 was located by Air One parked behind a gas station in Spruce Grove. When RCMP attended, the three male occupants fled from police. All three were located and arrested.

Ronald PEEBLES, Cody LETENDRE, and Colton SALOPREE were all charged with:

- Sec. 354 Criminal Code- Possession of Property Obtained by Crime over \$5000
- Sec. 354 Criminal Code- Possession of Property Obtained by Crime Under \$5000
- Sec. 351 Criminal Code- Possession of Break in Instruments

LOPREE are to attend Stony Plain Provincial Court on November 7, 2018.

Criminals have no borders. By sharing resources with other jurisdictions and partner agencies, we are able to seamlessly locate and track criminals as they move throughout the province.

GROVE HEARING CLINIC

960-2960

1-866-960-2960

Hear what you've been missing...

Senior Discounts



Full Service & Repair

Full Hearing Assessments

HOURS OF OPERATION: 9am – 5pm Weekdays

3rd party billing (AADL, WCB, DVA, FCH) • Personal 0% Financing if Needed

For The Latest Technology In Hearing Aids & Assisted Living Device Stop By & See Dawn

#220-70 McLeod Ave - Westland Market Mall, Spruce Grove

Classified Ads - Call 962-9228

Classified Policy

CLASSIFIED RATES INCLUDE GST. 1st 20 Words: First Insertion = \$6.00; Subsequent insertion = \$3.00 each. (Eg: 2 insertions = \$9.00; 3 insertions = \$12.00; 4 insertions = \$15.00; etc) Each additional word is 20 cents per word, per insertion. BOLD/CAPITAL text available for an additional \$1/line. Lost & Found and To Give Away (up to a max. of 25 words) are free of charge. Ads must be paid in advance either by cheque, cash, Visa or Mastercard. No Refunds Allowed on Classified Ads. DEADLINE: is Thurs. 4:00 pm (Wed. 4:00 pm on long weekends). Classified ads may be called in to the COMMUNITY VOICE office at (780) 962-9228, emailed to: classifieds@com-voice.com, dropped off at Onoway Registries, or mailed with your ad and payment to: COMMUNITY VOICE, BAG 3595, SPRUCE GROVE, AB T7X 3A8. Ads may also be placed on the web at www.com-voice.com/classified.htm

Hall Rentals

Alberta Beach Agplex, Susan 780-996-2960.

Alberta Beach & District Seniors 50+ Club. Air conditioning! Space Available! Jeanne 780-913-4494. Chere Myers 780-924-3242 or cell 780-951-3242 call/text.

Anselmo Community Hall, Phone 780-786-4280

Bright Bank Hall, 780-968-6813

Cherhill Legion, Mary 780-785-3578.

Cherhill Community Assoc. Hall, Debra 780-785-2907

Darwell Hall, 780-721-2690

Darwell Seniors, Phone Debra 780-785-2907

Goose Lake Hall, Contact Deanna (780) 584-3738

Gunn Hall (G.A.R.S.) 780-951-9452

Hathersage Community Centre, Noreen at 786-2946

Lake Isle Community Hall, PH: 780-892-3121 or Email: lakeislehall@mail.com

Magnolia Hall, 727-2015

Manley Goodwill Community Hall, 963-9165 or 916-0146

Mayerthorpe Diamond Centre, Charlotte at 786-4659

Mayerthorpe Legion, 786-2470.

Onoway Community Hall, 967-4749.

Onoway Heritage Center - Gym/Classrooms, 967-1015

Onoway Legion , 967-4980

Park Court Community Hall, 727-4476

Parkland Village Community Centre, 780-298-9155 @PVCCentre

Ravine Community Hall, 325-2240

Rich Valley Community Hall, 967-5710 or 967-3696

Rosenthal Community Hall, 963-7984

Sandy Beach Rec Hall, 967-2873

Sangudo Community Hall, 780-204-1652 or 780-785-2904

Stettin Nakumun Comm. Hall, 967-9198

Dog Caretaker

Alberta Beach & Surrounding Areas, thinking of a Summer Getaway? Worried about leaving your dog in a kennel? Don't worry anymore, you can leave your pet with me! There is a wrap around deck in court yard! I will provide tender loving care, with walks every day. Best of all, I'm cheaper than a kennel! Daily drop in's or overnight stays welcome. If interested call 780-920-4166 (4) 30-10 OG

Services

Best-Cistern-Septic-Solutions. Cistern and Septic Inspection, Installation and Repair! New Installs Available. Plastic, metal, fiberglass or concrete. We clean them all! Your cistern will be vacuumed, cleaned and sanitized with our high pressure, hot wash, sanitizing system. Reasonable Rates, Call 780-668-4306 (7) 16-10 OG

ANOTHER RAINBOW SALE

PRE-CHRISTMAS GIFT & COLLECTABLE SALE AND REGULAR CONSIGNMENTS

Saturday, November 10, 2018 at 11:00AM
Directions: Rainbow's Stony Plain Consignment Centre
 52529 Range Road 11 Stony Plain, AB

Complete retirement sale for Joe & Inga Hiesinger of Stony Plain whom have moved. Everything will be sold!

HIGHLIGHTS Cars, Trucks, Trailers, ATV & RV's: • 1998 Winnebago Motorhome 26.5 ft • 1977 Itasca Motorhome (GMC) 22 ft • 4x4 Polaris Quad 440 • 2012 6'x12' Enclosed Trailer (as new) • 16' Enclosed Trailer - home built T/A

Welding Tools and Accessories: • Assortment of acetylene hoses & accessories • Assorted galvanized buckets, welding helmets, chipping hammers • Assortment of tools - electrode dryers, step ladders

Tools and Equipment: • Industrial heater • Large selection of industrial tarps and straps • DEF cases • Drill press • Industrial dust collector • Table saw • Engine hoist • Industrial air compressor • Shop and garage air compressor • Selection of rubber hose rolls

Yard and Garden: • Chain link fencing • Basketball hoop • **Collector Coins:** • Received from avid collector

Wall Hangings: • A large selection of Western art in frames • Carved Jade wall hangings • Red wood with "mother of pearl" inserts wall hangings

Christmas Decorations: • A variety of large & small Christmas ornaments (both indoors and outdoors) • Christmas trees in boxes - large and small • Lights of various kinds and colors • Tree decorations new and antiques • Christmas village (larger buildings) c/w lights • Selection of Christmas Angels • Animated Christmas Santa • Christmas tableware • Santa cookie jar

****WATCH FOR UPCOMING ESTATE & ON SITE SALES****

Terms and conditions: Cash, Visa, MasterCard, Debit, Interac. Nothing to be removed until paid for. Subject to additions and deletions. A 10% handling fee, plus GST will be charged where applicable. Please be conscious of the handling fees and factor them into your bidding. Owner Rainbow Auctions & Liquidators or it's employees shall not be responsible for accidents.

Sale Conducted By:
RAINBOW LIQUIDATORS AND AUCTIONS
 Stony Plain, AB. 780-968-1000 or TOLL FREE 1-866-968-1001
Complete Liquidation and Auction Services Since 1978
www.rainbowauctions.ca

Family run, local business, we care!

BEST CISTERN SEPTIC SOLUTIONS

Cistern and Septic Inspection, Installation and Repair!

Septic planning, design, installation by government certified installer(s)

New Installs Available. Reasonable Rates.

Let Us Handle the Dirty Work

780-668-4306
best-cistern-septic-solutions.com

SERENITY FUNERAL SERVICE

NEW FACILITY

Chapel & Reception Centre

600 Calahoo Road Spruce Grove, AB

780-962-2749 www.serenity.ca

SERENITY FAMILY SERVICE SOCIETY - YOUR NOT-FOR-PROFIT SOCIETY

Classified Ads - Call 962-9228

Nasty's Tree Removal. Stump Grinding, Pruning & Firewood for sale. Licensed & insured. Roger @ 780-720-2207 (13) 07-08 OG

Cleaning

Ceiling & Wall Cleaning - Stipple, Wood, All Types. Ceramic Tile Cleaning, Cig. Smoke Removal, Biodegradable non toxic cleaner. We travel to acreages and farms! Seniors Discount, Call Nano Cleaning Today! 780-914-0323 (5) 02-10 OG

Computers

Free Computer Check-ups, save, parts, screens, repairs NOT over \$50. Available: LIKE NEW Laptop or Desktop. your world or family access, clean, refurbished, upgraded, net, games, music, pictures and introduction lesson. ONLY \$100. Free repairs for single

parents. Call or leave message, 780-892-4993 (15) 28-08

Firewood

FIREWOOD FOR SALE - Birch, Tamarack & Spruce Pine mix. 4x4x8 cords and 1/2 cords. Quality seasoned wood, Delivery or Pick up. Woodchuck Firewood, 780-288-7247 (28) 30-10 OG

His Helping Hands Firewood - CLOSING OUT SALE. Birch \$375/cord, Tamarack \$300/cord. All profits go to charity. 780-218-4177 (4) 23-10 OG

Vehicles

2006 Dodge 2500. Reg Cab, Long Box. 185000kms, Call 780-778-6956 (2) 30-10

Miscellaneous

Top Soil, Peat Moss, and Utility Trailers for sale - some have VIN#'s. 780-967-2779 (7) 02-10

4 Winter Tires \$195, as new, 205-55-R16-94T, steel belted Toyo Tires, for Toyota, or most compact cars, Senior selling. Call 780-892-2110 Darwell (1) 30-10

FOR RENT


Two Suites in Alberta Beach



One faces east and one west. Comes with 6 appliances, AC, window coverings, garbage pickup, water and detached garage (640 sq. ft.). Two bedrooms and two bathrooms. In just like new condition. Definitely worth a look. A one year lease is required. To View, call Angie 780-863-5621

PURE POTENT CBD DROPS

The World's Purest CBD Oil



• 500mg • 750mg


Organic Non GMO

CBD is in a class of its own - affordable, high quality, and convenient!

WHAT IS CBD?

Cannabidiol (CBD) is just one of over 85 cannabinoids that is identified in the cannabis plant. CBD is becoming increasingly popular amongst the masses for having a wide scope of medicinal benefits - due to clinical reports and mounds of test data showing little to no side effects and a lack of psychactivity (typically associated with marijuana products and high THC).


Our CBD products are made with certified organic hemp grown in Colorado & Kentucky and we are 100% free of any synthetic or artificial ingredients. We have a very potent and high purity level in our products. Everything is tested in an FDA Approved facility and our products contain 0.3% THC.




Benefits of CBD Oil

<ul style="list-style-type: none"> • Reduce Nausea & Vomiting • Suppress Muscle Spasms • Reduce Seizures & Convulsions • Promotes Health • Promotes Brain Tissue & Bone Growth • Fibromyalgia Pain • Reduces Blood Sugar Levels 	<ul style="list-style-type: none"> • Antibacterial • Anxiety & Depression • Reduces Nicotine Cravings • Digestive Aid • Anti-Psychotic • Ringing Ears - Tinnitus • Inhibits Cell Growth in Tumors
--	--


CBD HEALTH BENEFITS



Mental & Brain Health
CBD affects principal cannabinoid receptor in the brain promoting a healthy state of mind.



General Health
Cannabidiol has incredible medicinal benefits and will improve overall wellness.



Healthy Balance
Cannabidiol helps restore healthy balance to the endocannabinoid system.

DISTRIBUTORS NEEDED! Home Based Business MLM



FOR PETS

CBD Dog Treats and 250mg CBD Oil for Pets

- Highest Quality Ingredients
- Natural




For more information, Call (780) 907-8642
www.Elaine1.com

Classified Ads - Call 962-9228

Microwave Tester \$700 OBO. It also can be used to test anything that emits radiation, as, computers, cell phones, some electrical equipment. It could also be used to detect ground radiation for building projects. The tester has been used as a lucrative money

maker. Years ago I paid \$1700 for it, it's in a handy carrying case. Senior selling 780-892-2110 (1) 30-10

For Sale

Rotational Plastic Hunting Blinds, with windows and

doors for \$450.00. Also selling 500 Gallon Propane Tank for \$600.00. Call 780-621-9166. (4) 16-10

Stacked Washer / Dryer Combo. Sears Model 970-C90802-00. Good condition, minimal wear. \$400 OBO, Call 780-860-5402

for details. (S) OG

For Rent

Suite for Rent, with shower & bed, All inclusive. \$900/month, North of Evansburg on Hwy 22. Call 780-239-0553 (5) 02-10


Available Immediately, Large 2 Bedroom in Adults ONLY building in Entwistle. Includes Heat, Water & Parking. Rent \$795/month + DD \$300. Cats allowed, Must have good credit. Call Ivka 780-554-5493, jakovljevicivka@yahoo.ca or 780-807-1300 (2) 30-10 OG

FOR RENT - 3 Bedroom, 1 bathroom, attached garage, double lot in quiet community, N/S, N/P, references required. \$1000/month + DD Same. Contact 780-305-7077, Available Immediately. (4) 30-10

Church Directory

<p>Rich Valley Community Church</p> <p>Sunday School 10:00 a.m.</p> <p>Worship Service 11:00 a.m.</p>	<p>Catholic Parish of Lac Ste. Anne</p> <p>Sunday 10:00 a.m.</p>	<p>St. John's Anglican Church <i>Onoway</i></p> <p>Sunday Service 10:00 a.m.</p> <p>Everyone Welcome</p>	<p>Mayerthorpe Baptist Church</p> <p>Worship Service Sunday 10:30 a.m.</p> <p>Children's Church 10:30 a.m.</p> <p>4606-54 St. Mayerthorpe (780) 786-2677</p>
<p>St. John's Lutheran Church <i>Alberta Beach</i></p> <p>Sunday Service 11:00 a.m.</p> <p>Sunday School</p>	<p>Zion United Church</p> <p>Sunday Service 10:00 a.m.</p> <p>Sunday School</p> <p><i>Serving Alberta Beach, Wabumun, Darwell & Lake Isle, Onoway & Area</i> (780) 924-3351</p>	<p>Sangudo United Church</p> <p>Worship Service 3rd Sunday 11:00 a.m.</p> <p>All Services Begin at 1:30 p.m. Reverend Barry Rose Officiating 4907-50 Ave. Sangudo, AB</p>	<p>Infuzed Ministries</p> <p>Worship Service Sunday 3:30 p.m. <i>in Alexis Community Hall</i></p> <p>Pastor Daniel Jackson (780) 719-0240</p>
<p>Trinity Lutheran Church (LC-C) <i>The Church of the Lutheran Hour - Rockyfort Bridge</i> Pastor Dan Hansard Church (780) 778-2055</p> <p>Sunday Worship 9:00 a.m.</p> <p>Senior's Service & Cottage Bible Study - Phone for locations</p>	<p>Mayerthorpe Pentecostal Assembly P.A.O.C. Rev. Arnold Lotoiz</p> <p>Sunday 10:30 a.m. Morning Service Tuesday 7:30 p.m. Ministry Training (780) 786-2141</p>	<p>St. Michael Lutheran Church</p> <p>Sunday Services 1st & 3rd Sunday at 2:00 p.m.</p> <p>Pastor Rick Chappell (780) 674-2618 Mystery Lake</p>	<p>Onoway Baptist Church</p> <p>Sunday Service 10:30 a.m.</p> <p>Pastor Greg Garbutt (780) 967-2266</p>
<p>Alberta Beach Alliance Church</p> <p>Sunday Worship Service & Kid's Church 11:00 a.m.</p> <p>Sunday School 10:00 a.m.</p> <p>(780) 924-3282</p>	<p>Cherhill Community Church</p> <p>Sunday School 10:00 a.m. - 11:00 a.m.</p> <p>Worship Service Sunday 11:00 a.m.</p>	<p>Roman Catholic Church St. Agnes' Parish, Mayerthorpe</p> <p>Sunday 9:00 a.m.</p> <p>St. Elizabeth Parish, Evansburg</p> <p>Saturday 7:00 p.m. (780) 786-2032</p>	<p>Calahoo Alliance Church</p> <p>Family Worship Service Sunday 10:00 a.m.</p> <p>For Info Call Jerry (780) 974-7734</p>

Honouring those who served



Our upcoming Remembrance Day issue honours the men and women whose military service and sacrifices have protected our nation for generations. Look for your copy in this newspaper and online to learn more about the efforts and achievements of our country's dedicated armed forces, and participate in local celebrations honouring those who served.

In Print & Online
Tuesday, November 6, 2018
www.com-voice.com

COMMUNITY EVENTS 2018

SUNDAY	MONDAY	TUESDAY	WEDNESDAY	THURSDAY	FRIDAY	SATURDAY
	1	2	3	4	5	6
7	8	9	10	11	12	13
14	15	16	17	18	19	20
21	22	23	24	25	26	27
28	29	30	31			

If you are a LICENSED, NON-PROFIT ORGANIZATION, you are welcome to break your announcement FREE of charge, space permitting. You are required to submit your non-profit number. Call (780) 962-9229. Please note that all submitted event listings must be limited to 200 characters or less (including spaces). DEADLINE: 12 noon Friday prior to publication (Thursdays on long weekends).

NOV 3 - COMMUNITY WIDE GARAGE SALE + BBQ, 9am-5pm @ Lake Isle Hall (Hwy 633 & RR55). \$10/table, Contact: 780-892-0115
NOV 3 - "X-MAS IN NOVEMBER" Cherhill Community association market of various vendors and items, concession, shop early. More info/tables call Dorothy 780-785-2506
NOV 3 - CHARITY VARIETY TALENT SHOW 7pm (Doors at 6:30pm) at Horizon Stage, Spruce Grove. Admission: By Donation. This is a fun, family show full of fabulous local entertainers.
NOV 3 - JAMBOREE at Sangudo Community Hall, 7pm. \$12/person (Entertainers free). Late lunch will be served. Everyone is welcome. Info call 785-4105 or 305-5088.
NOV 4 - SUNDAY CRIB TOURNAMENT at Gunn Community Hall. Registration 10am, Play 11am, \$40/team, lunch included, Info 780-951-9452

NOV 5 - "LIGHT UP YOUR LIFE LUNCHEON" 11am-2:30pm at Orient Family Restaurant (900 4305 Southpark Dr, Stony Plain). The cost is as per the current Buffet Meal price.
NOV 11 - FALL SUPPER at Zion United Church, Doors 4:30pm, Supper 5pm. Tickets: \$15/adult, \$5/children 6 & under. Silent Auction. For tickets call 780-924-3351.
NOV 11 - CHERHILL LEGION "REMEMBERS" Service at 11:00am, potluck lunch to follow.
NOV 14 - "LIGHT UP YOUR LIFE SILENT AUCTION" 12-7pm at WestView Health Centre, Stony Plain. Over 200 items including hand-crafted creations, quilts, gift baskets, gift certificates, original artwork, limited edition prints, wood-working and collectibles.

FARMERS MARKETS

ALBERTA BEACH: Open Every Sunday, May - Oct, 12-3PM. Contact Joanne 780-690-6392
BARRHEAD: Open Saturdays, May - Dec. 10AM - 1PM. Sherry 780-674-6802
ONOWAY FARMERS' MARKET: Thursdays, 5-8pm at Onoway Community Hall. Starts May 1st. 780-667-6327 or onowayfarmersmarket@gmail.com
SPRUCE GROVE: at the Elevator, Sat 9:30-1:30PM, tables (780)240-5821
STONY PLAIN: Sat, 9AM-1PM, Downtown, Stony Plain. Nancy 780-962-3993.
WESTLOCK: 11-3PM, Bargain Shop Mall, Dave 780-954-2437
WHITECOURT: Legion, Tuesdays from 11AM - 2PM, May - Oct. 779-7002.

BINGO

BARRHEAD ROYAL CANADIAN LEGION: Doors 5:30pm, games start 7PM. Games: #7, Jack Pot, Mini Jack Pot, Loonie #1 & #2.
CHERHILL BINGO: Tuesdays at Cherhill Community Association. Doors @ 6:30PM, Games @ 7:30PM.
CHERHILL LEGION: First Sunday of Month. Doors Open 12:00PM
MAYERTHORPE ROYAL CANADIAN LEGION: Tues, doors 6:30pm, bingo 7:30pm
RICH VALLEY COMMUNITY HALL BINGO: 7:30PM. Loonie Pots. Next bingos September 5 & 19, October 3, 17 & 31.
STONY PLAIN SENIOR'S DROP-IN CENTRE, public bingo every Tues, 7PM. All ages welcome. Phone (780) 963-6685

MEAT DRAWS

ALBERTA BEACH MUSEUM: Every Sat 4PM, Alberta Beach Hotel
ALBERTA BEACH: Lac Ste Anne Community Choir & Onoway Minor Hockey Meat Draw - Sundays, 4:00PM at Jungle's Bar & Grill.
BARRHEAD ROYAL CANADIAN LEGION: Fridays 6:00PM. Queen Of Hearts draw & 50/50.
DARWELL: by Alberta Beach & District Lions Club, 4:00PM bi-weekly, Darwell Lounge & Restaurant
ONOWAY ROYAL CANADIAN LEGION: Fridays, Ph. 780-967-5361
STONY PLAIN ROYAL CANADIAN LEGION BR# 256: Saturdays @ 3:00PM. Meat Draw & 50/50.
WHITECOURT LEGION: Saturdays 4:00PM. Located downtown behind the CIBC.

MEALS ON WHEELS

ALBERTA BEACH & AREA: Diane 780-924-2348.
DARWELL & AREA: Tracey, 780-915-2621.
ONOWAY & DIST: Call 967-2338.

JAMBOREES

MAGNOLIA: at Magnolia Hall. Every 2nd Saturday, Supper at 6PM. 727-2015 or www.magnoliacomunityclub.ca
October - May.
SANGUDO: Sangudo Community Hall, 1st Sat of month 7PM. 785-4105 or 305-5088. *October

- May:

SPRUCE GROVE: at Sandhills Community Hall, 3rd Sunday, 1-5PM. Info Florence 780-962-3104 Margaret 780-962-3051 *September - June
STONY PLAIN: Stony Plain Seniors Drop In Center, 5018 - 51 Ave. Every 2nd & 4th Thurs of month, 7PM, \$2. PH: 587-989-7214 or 963-7920.
THE ABBOTTSFIELD VARIETY MUSIC JAM: at Abbotsfield Rec Centre (3006 119 Ave. Edmonton) 3rd Friday of month, 7PM. PH: 780-918-8545, Adm: Donations Only.

TOPS (Take Off Pounds Sensibly)

ALBERTA BEACH: Tuesdays, Weigh-in 6:00-6:45PM. Meeting 7:00PM. Alberta Beach Lutheran Church, Hwy 633. 967-5009.
EDMONTON: Thurs 8:30-10AM at Annex of Grace United Church (6215-104 Ave). \$7/month
SANGUDO: Tues, United Church, 6:00PM. Sharon 785-2095 or Marlene 786-4646.
STONY PLAIN: Thurs evening, Stony Plain United Church. Susan (780) 968-0869
SPRUCE GROVE: Wed 8:45AM at Anglican Church, 131 Church Rd. Christiane 960-1109

YOUR COMMUNITY

ALCOHOLICS ANONYMOUS IF Drinking is a Problem, call 780-236-1043
ONOWAY ROYAL CANADIAN LEGION: Open Tuesdays 7:00PM to 10:00PM for "Games" (pool, shuffleboard, darts, cards, etc.) Fridays 3:00 PM-10:00PM. Friday's Family Friendly Dinner, 5:30PM (open to the public).
PROBLEMS WITH DRUG OR ALCOHOL ADDICTION in a loved one? Contact Drug Rehab Resource free confidential consultation. 1-866-649-1594 or www.drugrehabresource.net.
SPRUCE GROVE ELEVATOR TOURS, Tues-Sat, 9:00-3:00PM. Info 960-4600.
UNITED CHURCH THRIFT SHOP: North end Curling Rink, Onoway. Open Fri & Sat, 10AM-4PM.
VOLUNTEER TUTOR ADULT LITERACY PROGRAM: Need assistance with reading/writing, English language (ESL) or Basic Computer skills? Free 1-on-1 tutoring! Carla Burkell, 780-554-2940, email: literacy@slsac.ca
WATER SAMPLE DROP OFF: Tues Onoway Aspen Health Services. Drop off 1:00-2:30PM.

SOCIAL EVENTS

ALBERTA BEACH & DISTRICT ACTIVE 50+ CLUB ACTIVITIES: Tues 7:30PM Crib; Wed 1PM Bridge. Mon, Wed, Fri 10:15AM Aerobics/Fitness.
BADMINTON: Wed, 7-10PM, Barrhead High School Gym. Jamie (780)674-8974 or (780)674-6974.
COME PLAY CRIB: Fridays, 7:30PM at Darwell Seniors Hall; lite lunch is served. All ages!
COUNTRY QUILTERS in Stony Plain house a "Sew in Tuesday", 2nd Tuesday of every month, from 10-3PM. Drop in \$5/member, \$6/non-members. Contact Cindy 780-963-7170.
JR. SCRAPBOOKING Wed 4-6PM. Pre-register by Tues evg. Mayerthorpe Public Library www.mayerthorpepubliclibrary.ab.ca (780)786-2404
ONOWAY GOLDEN CLUB: Cards Tuesdays, 1PM. Exercise Fridays, 10AM. 1st Tuesday: Pot Luck

Supper, Last Friday: Soup & Sandwich. 5023 49 Ave. 780-967-3436.
ONOWAY HAVE FUN & GET FIT! Exercise Class with Video La Blast. Fridays 10:30AM at the Drop in Centre, 5023-49 Ave. PH: 780-967-2056.
PANCAKE/BREAKFAST SOCIAL: 3rd Sunday 9:00-11:30AM, Parkland Village Community Centre. *except June, July, August.
RIVER TALKERS TOAST MASTERS CLUB, Thursdays, 7-9PM. 32 Whitecourt Ave. Hilltop Community Church. Info Lorraine 286-5040.
SANGUDO ART GROUP: Wednesdays 9AM-12PM at Sangudo Community School. Info call 780-785-2112.
SPIRITUAL LIVING STONY PLAIN INSPIRATIONAL CINEMA & DISCUSSIONS at PERC Building (5413-51 St). 2nd Friday of month at 7PM. Popcorn provided, donations appreciated. Contact 780-940-3032
SPIRITUAL LIVING STONY PLAIN GATHERING at PERC Building (5413-51 St). Every 2nd & 4th Sunday of month. Meditation 10AM, inspirational sharing 10:30AM. PH 780-940-3032
WRITERS PROGRAM: Mayerthorpe Library, 1st & 3rd Wednesday at 1PM.

MEETINGS

1ST ONOWAY SCOUTS: Registration, Mondays 6:30-8PM. Beavers 5-7; Cubs 8-11; Scouts 12-14. Kim 967-4339.
299 ROYAL CANADIAN SEA CADETS CORPS MACKENZIE: Stony Plain Comm Center, Wed 6:30PM. Youths 12-18, 963-0843
3053 (LAC STE ANNE) ROYAL CANADIAN ARMY CADET CORPS, Onoway Historical Centre, Wed. 6:45-9:30PM. FREE program for youths 12+, Contact 3053army@cadets.gc.ca or 780-886-1586
526 BARRHEAD AIR CADETS, Wed 6:30-9:30PM, High School. Ages 12-18. 780-305-7233
755 PARKLAND AIR CADETS Thurs, 6:30-9:30PM Muir Lake School, ages 12-18. Info call 405-6585 or www.755aircadets.com.
AA - MAYERTHORPE, Kingsmen Hall, Thurs 8PM. (780) 786-2604 or (780) 786-1927
AA - SANGUDO GOLDEN CLUB, Tues 8PM call 786-4402/785-9214/785-3599
AL-ANON: Tues 7PM, Onoway Anglican Church (4809-50 St.) 780-967-3356 or 1-800-4AL-ANON.
AL-ANON Wednesdays, 8PM. Spruce Grove United Church, 1A Fieldstone Dr. 780-962-5205
ALBERTA 55 PLUS: Villeneuve Hall at 10AM. Meetings on 2nd Tues of month. Info: Donna 780-962-5933
ALBERTA BEACH & DIST LIONS CLUB meets every 4th Tues 7:00PM, Alberta Beach Agliplex.
ALBERTA BEACH AG SOCIETY meets on the 4th Thurs of month, 7:00PM, Alberta Beach Agliplex.
ALBERTA BEACH MUSEUM meets on the 2nd Wed, 7:00PM at Heritage House 924-3167.
BARRHEAD ROYAL CANADIAN LEGION, meeting every 2nd Thurs, 7PM at the Legion Hall.
CHERHILL COMMUNITY ASSOC. Monthly Meeting 1st Wednesday, 8PM at the Hall. 785-2825 *Except Jan, July, Aug, Sept.
CHERHILL SILVER & GOLD SENIORS CLUB Regular Meetings 1st Tuesday of month, Cherhill Seniors Hall. Call Rosamy 780-785-2625

CHERISHED MEMORIES, PARENTS & TOTS Wed & Fri, 10-12PM, Alberta Beach Agliplex. Info call 780-902-4879 or 780-999-7622. *Sept-June.
Citizens Helping In Life's Defence (C.H.I.L.D) Join our Pro-Life meetings for the Spruce Grove/ Stony Plain area once a month. Call Chris 780-963-6997.
DARWELL & DISTRICT AG SOCIETY MEETINGS, 8:00PM, 1st Monday, Darwell
DDRA MEETING, 7:00PM, 2nd Mon, Darwell 892-3099. *except Jul/Aug/Dec
GIRL GUIDES, BROWNIES & SPARKS Thurs, 6:30PM, Onoway Heritage Centre. Info Laura, 780-967-1004.
GREENCOURT COMMUNITY ASSOCIATION meet 2nd Tuesday, monthly at 7:30PM at the hall. Info W. Jager (780) 786-4648.
KINETTE CLUB OF MAYERTHORPE, 7:30PM at Kinsmen Hall, 1st Tues of month. Contact: mayerthorpekinettes@gmail.com, Tracy: 780-786-0161.
LAC STE ANNE ARMY CADETS, Thurs, 6:30-9:30PM at Onoway Museum (780) 967-0443
LAC STE ANNE & LAKE ISLE WATER QUALITY MANAGEMENT SOCIETY: 3rd Fri, 7PM, Alberta Beach Council Chambers.
LAKE ISLE HALL COMMUNITY HALL BOARD MEETINGS: 3rd Wed of each month @ 7:30PM at the Lake Isle Hall (Hwy 633 and RR55) Ph # 780-892-3121
MAYERTHORPE HOSPITAL AUXILIARY ASSOC, every 4th Mon, 5PM in Hospital Basement Education Room.
MEN FOR SOBRIETY: Wednesdays at 7:30PM, FCCS Building (#105, 505 Queen Street, Spruce Grove), Mike (780) 965-9991.
MS SOCIETY PARKLAND COMMUNITY SUPPORT GROUP Are you diagnosed with MS and have questions? Last Tues of month, 7-9PM, Westview Health Centre. Cassy 780-471-3034 *Sept-June
NA MEETING, Tuesdays 7:00PM Poplar Valley Church (780)514-6011
ONOWAY & DIST HERITAGE SOCIETY: 2nd Wed of each month, 7:30PM, Chateau Lac Ste Anne
ONOWAY & DISTRICT HISTORICAL CLUB: 3rd Wed 7PM, Onoway Museum. 967-5263 or 967-2452.
ONOWAY & DISTRICT QUILT GUILD: Every 2nd Thurs, 10AM-4PM, @ the Lac Ste. Anne Chateau Activity Room. Info, Ph Dixie @ 780 967 0528.
ONOWAY ROYAL CANADIAN LEGION General Meetings, 1st Mon, 7PM. *Sept-June
RICH VALLEY AG SOCIETY BOARD MEETINGS: at the Agriplex on the 2nd Wed of the month. 7:00PM.
RIVER TALKERS TOASTMASTERS CLUB Build confidence, speaking, leadership & listening skills. Thursdays 7-9PM at Eagle River Casino. Call Melinda Tarcan, (780)778-1180.
SANGUDO PAINTING GROUP: Every Wed, 9AM-12PM at Sangudo Community School. Info, call 780-785-2112.
SUNDOWNERS TOASTMASTER CLUB: Mon (excl. Holidays) 7:30-9:30PM. St. Matthew's Church, Spruce Grove. Judy 960-5258
WEIGHT WATCHERS Alberta Beach Agriplex - Mondays, weigh in 6:30PM. Meeting at 7PM.

SUDOKU OF THE WEEK

Fun By The Numbers

Here's How It Works: Sudoku puzzles are formatted as a 9x9 grid, broken down into nine 3x3 boxes. To solve a sudoku, the numbers 1 through 9 must fill each row, column and box. Each number can appear only once in each row, column and box. You can figure out the order in which the numbers will appear by using the numeric clues already provided in the boxes. The more numbers you name, the easier it gets to solve the puzzle!

	3	5			6	8		
	1		5		8	7	9	3
7				1				
			6				8	
	6			9	1	3		
	5	2		3	4			1
	2		1	4	9		6	
		9						7
				6				2

ANSWER:

2	3	5	9	7	6	8	1	4
4	1	6	5	2	8	7	9	3
7	9	8	4	1	3	2	5	6
1	7	3	6	5	2	4	8	9
8	6	4	7	9	1	3	2	5
9	5	2	8	3	4	6	7	1
3	2	7	1	4	9	5	6	8
6	4	9	2	8	5	1	3	7
5	8	1	3	6	7	9	4	2

Like puzzles? Then you'll love sudoku.

This mind-bending puzzle will have you hooked from the moment you square off, so sharpen your pencil and put your sudoku savvy to the test!



Like Us On facebook
FACEBOOK.COM/COMMUNITYVOICENEWS PAPER

follow us on twitter
@communityvoice8

SERVICE DIRECTORY

Lanman Landscapes
YOUR ONE STOP FOR ALL TYPES OF LANDSCAPING

Dangerous Tree Removal Yard Cleanup Full Landscaping Service

Experienced Bobcat Work

(780) 977-6586

2Bros
Custom Contracting Ltd.

Custom Framing • Concrete Floors • Shingling
Siding Soffit Fascia • Styrofoam Block System

Jeff 780-717-0520

CPR St. Albert
Saving Your Mobile Life™
We Can Fix That In 90 Minutes

iPhones, iPods, iPads, Tablets, Computers - Apple, Samsung, Blackberry, LG, Sony and MORE
Lifetime Warranty Against Defects In Our Screens
Now over 480 Locations

#13 - 11 Bellerose Drive (Next to Grandis Bakery) 780-460-0277

AC Purewater
Hauling Services LTD

Cell # (780) 914-9002

We fill ... HOT TUBS
POOLS CISTERNS

Health Board Approved (city water)
Serving the counties West of Edmonton

Community VOICE
Making You and Your Community Acheive!

THIS SPACE IS RESERVED FOR YOU!

BRO-BUILT
Homes & Contracting Ltd

"We Pride Ourselves In Turning Handshakes Into Hugs"

www.brobuilthomes.com
Testimonials
Phone 780-940-6415

SERVICE DIRECTORY

Jack's Auto Body

 & 24 HR Towing

SPECIALIZING IN COLLISION REPAIR
GUARANTEED WORK • INSURANCE CLAIMS

CAA  BOX 9 SITE 306 RR3, ONOWAY, AB T0E 1V0 
(780) 967-5850

OUR PLEDGE IS QUALITY

 **MARK MARTIN PFEIFFER**
 MASTER BRICKLAYER/MASON

Cell: 780-242-3308
 Email: pfeiffer.mark@hotmail.com

- Brickwork • Stonework
- Rockwork • Parging
- Concrete Block Work
- Tile Work (all kinds)



ALL AROUND FENCING RENTALS

Fence Panels • Barricades
 Installation by Collin Toilet Rentals

Whitcourt, AB
780.706.7978



Super Sucker Vacuum Services

 Residential & Commercial

Trevor Gardner
 Owner/Operator
 Septic Pumping Service

RR 1, Site 1, Comp 261 Onoway, AB T0E 1V0
 Office: (780) 967-5552 supersucker@telus.net

780-660-3521

Karl's Bobcat Service

Gunn Alberta



R & S TOWING

FREE REMOVAL OF UNWANTED VEHICLES

 **967-2492** 

H & E UPHOLSTERY
 For all your upholstery needs

Convertible tops for cars and boats, custom car and boat interiors, 5th wheel trailer skirts, boat tarps, ATV seats, furniture, kitchen chairs, heavy equipment seats.



www.h-and-e.ca 4-485 South Ave.
 For more information contact: Spruce Grove
info@h-and-e.ca (780) 962-3048

THE HAY 
 TRUCKING & CONSTRUCTION
 ONOWAY AB

COR Certified

- Oilfield
- Road Building
- Basements
- Dugouts
- Sand & Gravel

haytrucking@xplornet.ca
www.haytandc.com
 Office: 967-5849 Cell: 818-5849

DONALD N. GREENWAY
 Chartered Accountant

Suite 205 Sunrise Professional Building
 215 McLeod Avenue
 Spruce Grove, AB

(Bus.) **962-6366**
 (Fax) **962-3990**

ZEE BEST RENOVATIONS
 Your Complete Line of Renovation Needs:

- Bathroom
- Basements
- Plumbing
- Tileworks
- Drywall & Taping
- Decks & Fencing
- Roofing
- Siding

THE MOST COMPLETE NUTRITIONAL SPRAYS ON THE PLANET



ORDER TODAY!
(780) 907-8642

www.Elaine1.com

PEMBINA CONCRETE PRODUCTS LTD.

Manufacturers of **ONE PIECE SEPTIC & HOLDING TANKS**

* Water Cisterns * Field Systems * Pumps and Accessories * Sumps

DELIVERED TO YOUR SITE

1-800-661-3047
 780-727-2702

PembinaConcrete.com



FREE ESTIMATES
26 YEARS EXPERIENCE
INSURED | GREAT RATES

JOE LAWRENCE
 MANAGER

BUS: 780-967-3898
 CELL: 780-915-3348
 FAX: 780-967-3798

POSTINGFIRST.com

FREE LOCAL CLASSIFIED ADS

Real Estate, Rentals, Vehicles, Pets, Jobs, Service Directory, Buy/Sell/Trade, Lawn & Garden, Garage Sales, Events, Local Places & Much More... Advertise for **FREE** Today!

Follow Us





New Line of Concrete Statues, Fountains and Garden Ornaments.

BOX 123, Entwistle, T0E 0S0

SERVICE DIRECTORY



PaddlePlastics Ltd.
Mayerthorpe, AB

Box 67
Mayerthorpe, AB T0E 1N0

Ph: (780) **786-4408**
Fax: (780) 786-4466



Mo-Bil WASH SERVICES Ltd.

- Steam • Hot & Cold High Pressure Wash • Sewer Thaw & Flush
- Residential • Commercial - Oilfield

24 HOUR SERVICE
Onway Call (780) 991-9466

RESIDENTIAL CLEANING SERVICES



Call Today for your FREE Quote!
(780) 264-7740

SERVING SPRUCE GROVE AND STONY PLAIN ONLY



Blakeman Drilling Ltd.

Waterwell Drilling & Servicing
Pumps & Pressure Systems

SERVING LAC STE. ANNE & WEST PARKLAND FOR OVER 25 YEARS

Joe (780) 924-3024



"We are a family orientated company that pride ourselves on SAFETY and EFFICIENCY"

CHRIS & LISA VANHILL
OWNER/OPERATOR

Site Clearing, Grading, Road Building, Brushing, Acreage Development, Dugouts, etc.

780-619-3236
vanhillcontracting@gmail.com Onway, AB

SANGUDO VETERINARY CLINIC

Box 581, 4916 - 52 Ave. Sangudo, AB. T0E 2A0

Dr. Ralf Sanders DVM

Ph: 780-785-2200
Fax: 780-785-2228
sangudovet@gmail.com

24 HOUR EMERGENCY SERVICE



THIS SPACE IS RESERVED FOR YOU!



- Road Building • Gravel • Sand • Dugouts
- Black Dirt • Clearing

No Job too small. We do them all!

Harvey cell. 780-445-9010 ph. 780-892-3532
Box 145, Darwell, AB. T0E 0L0

Collin Toilet Rentals & Service

Your Portable Toilet Supplier for:

- Construction
- Commercial
- Oilfield
- Special Events



Whitecourt Dispatch 780.778.2448



JAVORSKY DITCHING
Onway, AB

Phone: (780) 967-5486
Cell: (780) 906-7469
Fax: (780) 967-4961

Dennis Javorsky - Owner / Operator

For All Your Excavating Needs
Sand & Gravel Hauling • General Excavating
Septic Tanks & Cisterns • Site Prep & Clean Up
• Install & Repair of Water, Sewer, Power & Telephone Lines

ROY SHERWOOD
Master Electrician

SURETECH ELECTRIC LTD.

Ph: 780-968-1425
Call: 780-908-2287
Fax: 780-968-2211

Email: suretechroy@gmail.com

2-53220 Rge Rd 21
Parkland County, AB
T7Y 0C5

Control & Automation
Commissioning
Solar Sales & Service

Industrial . Commercial . Residential



VILLAGE GLASS & MIRROR LTD.

- AUTO
- RESIDENTIAL
- COMMERCIAL GLASS & MIRROR PRODUCTS



5027 - 50 Avenue • Phone: 967-2127
PO Box 609, Onway, AB T0E 1V0

GROVE MACHINE & WELDING

Office: (780) 962-1772 Cell: (780) 231-5405

You have an idea, we'll design it, build it and test it

- Fasteners • Welding • Fabrication • Repairs
- Mobile Welding • Plasma Cutting • Machining

35 South Avenue Spruce Grove, AB T7X 1B3
E-Mail: jim.reynar@grovemachinewelding.com
sales@grovemachinewelding.com



RAINBOW LIQUIDATORS & AUCTIONS

Farm Sales, Equipment Sales, Estate Sales, Storage War Auctions
BOOK YOUR SALE WITH US TODAY!
Serving the Community for 40 years

Ph: (780) 968-1000
Stony Plain, AB 1-866-968-1001
www.rainbowauctions.ca

SERVICE DIRECTORY

Chico's
Vacuum Service Ltd. 

**SEPTIC SERVICES
RESIDENTIAL & COMMERCIAL**

Dave Dornbusch - Kathleen Fedorek

Box 130 PH: 780-924-2435
Alberta Beach, AB T0E 0A0 1-877-226-5008

Friendly Reliable Service

SMOOLE

- Construction & Septic Installation
- Environmental Wastewater Disposal
- Site Design & Evaluation
- Power, Water & Basement Excavation
- Trackhoe, Backhoe, Bobcat & Dump Truck

For All Your Excavation Needs 

Call Dan 780-991-4484 Reid 780-909-0173

**SEPTIC FIELD DESIGN
AND INSTALLATION**

CERTIFIED INSTALLER

Installation of Water Cisterns & Sewage Tanks
Trenching Water Gas and Power
Mini Hoe and Full Size Hoers
Basement Excavation 

Call Gene at (780) 405-2355

ATB Financial[™]

ALBERTA BEACH AGENCY

4824 - 50 Ave, Alberta Beach
Ph/Fax: (780) 924-2211

Mon to Thurs 10:00AM - 4:00PM
Friday 10:00AM - 5:00PM

Heidi Letendre

**Whole Heart
Massage Therapy**

- Swedish Massage
- Relaxation Massage
- Deep Tissue Massage
- Kinesio Taping

(780) 699-4667
Jennilee Reber
REGISTERED MASSAGE THERAPIST
DIRECT BILLING TO INSURANCE
wholeheartmassage@hotmail.com
54013 Range Road 30 #10
Diamond Country Estates
Lac Ste. Anne County

**CUSTOM CORRAL
CLEANING &
SUPPLIES**

Onoway, AB

Call Gene 780-405-2355
or Dale 780-717-9004
email: grasslandcorral@live.ca

gogutters.ca

587-269-4020

soffit, siding, eavestrough upgrades



VISA A+ Rating
WCB 100% Satisfaction Guarantee

Community VOICE
Finding You and Your Community's Voice!

**THIS SPACE IS
RESERVED
FOR YOU!**

**MASTER
PLUMBER**

36 YEARS EXPERIENCE
780-655-8402

PLUMBING & HEATING SERVICES
PRICE BY THE JOB NOT THE HOUR!

Furnace and Air Conditioning Rebate Special



WCB VISA MasterCard

**SUMMERS
DRILLING**[™]

Water well drilling and service
Family owned Business Serving Alberta since 1917



Tired of hauling water?
We can install a water well with a permanent water supply for as little as \$150/month OAC

Never run out of water again!

5 year workmanship warranty

3 Convenient ways to pay

- Visa
- Mastercard
- We now offer full financing

Stop in at our office 4405 - 50 Street, Stony Plain
780-963-1282
admin@summersdrilling.com

GRANDE TIRE

5115 LAC STE. ANNE TRAIL N. ONOWAY, AB T0E 1V0

**Full Mechanical Services
Tire Sales & Repairs**

**BUS: (780) 967-3432
FAX: (780) 967-4816
contectire@xplomet.com**

AMVIC LICENSED

Pm Park Memorial Ltd.
Funeral Home & Crematorium

Fran Marion
Licensed Funeral Director

Mayerthorpe: 780-786-2533
Whitcourt: 780-779-2533

Serving Mayerthorpe, Whitcourt and area

Edmonton | Lamont | Mayerthorpe | Smoky Lake | Vegreville



TRUIS & **ONOWAY**
INSURANCE REGISTRIES

Box 390, Onoway, Alberta T0E 1V0
Tel: 967-5270 Fax: 967-4303

OPEN 9-5 MONDAY - FRIDAY
FIRST & LAST SATURDAY OF EACH MONTH 9-12* *excluding long weekends
Registries Closed from 12:00 pm - 1:00 pm

ALL GENERAL REGISTRY SERVICES

Home - Auto - Farm
- Life and Business

Very Competitive Rates & Convenient Payment Plans.



Clients first...Service Always!

PREVAIL

MAX

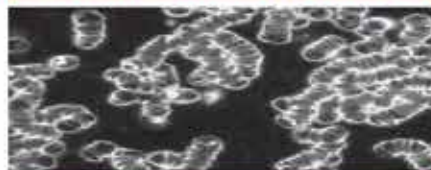
CELLULAR HOMEOSTASIS FORMULA

A NUTRITIONAL BREAKTHROUGH THAT SUPPORTS YOU
...RIGHT DOWN TO THE LAST CELL!

How do you want your
BLOOD to look?



Before PrevailMAX:



- poor circulation
- low energy
- brain fog
- dehydration
- decreased nutrients
- pH imbalance
- poor endurance

After PrevailMAX:



- better circulation
- more vitality
- mental clarity
- cellular movement
- nutrient assimilation
- balanced pH
- optimal endurance

PrevailMAX™ is a nutritional breakthrough that delivers a rapid increase of internal blood cell pressure to speed absorption, enabling the body to take maximum advantage of the nutrients in foods and supplements. The electrolytes are small enough to penetrate your cell membranes, to bind with your cells, and to be carried wherever they are needed in the body.

At the microscopic level of human cells, **PrevailMAX™** supports healthy cell performance – a nutritional breakthrough for your cells.

When you use **PrevailMAX™**, you will feel more energy and an ability to focus like never before. Take a few sprays today and see just how good you can feel!

LIVIN TRIM WITH
VALENTUS

www.ValentusTour.com/Ladybug

(780) 907-8642