

Serving: Carvel, Darwell, Duffield, Wabamun, Seba Beach, Gainford, Entwistle, Evansburg, Wildwood, Tomahawk, Spruce Grove, Stony Plain & Drayton Valley

October 30, 2018

PUMPKIN FESTIVAL OVERVIEW

Submitted by Melissa Killick | Tipple Park Museum

It was the day after the Pumpkin Festival and all through the town Everyone was exhausted, There was just too much fun last night in town!

The children put their jack o lanterns, Out on the step, They were proud of their creations, They did a great job. I bet!

All the volunteers are probably tired today, They gave up their time, To help the community, And play!

A huge thank you to all From the guest to the helper, It was a great turnout, Smiles by all, Can't wait for next year, It should be another Festive ball.

On Saturday October, 26 Tip-



ple Park Museum held their first ever Pumpkin Festival. It was a HUGE success.

Thank you to all the lovely volunteers that helped out: Servus Credit Union, Pembina Lobstick Historical Society, Tacey Robertson, Kynya Fosseli, and Tyana Lee. Thank you to Pinnacle Renewable Energy for helping sponsor the event. Also, thank you to Frank Maddock who supplied the straw bales

and Bill Lawton for suppling the logs.

It truly was a great evening of festivities. Families had fun carving pumpkins and getting their family portrait taken while the children had a blast playing pumpkin games.

I just want to say thank you to everyone that attended. You are what makes a community prosper.

Till next year!

All Precious JEWELLERS
"Your Spruce Grove Jewellery Store"
Goldsmith on Premises
 • Engraving • Clock & Watch Repairs
 • Jewellery Repairs • Custom Make-ups
 Jewellery Repairs Done On Site.
 Laser Welder Services Available.
 Toll Free: 1-877-962-4367
 PH: 780-960-4200 Fax: 780-960-4201
 Suite 102, 215 McLeod Avenue
 Spruce Grove, AB. T7X 0G2

L & B Tradition of Quality & Service
 Water Services Ltd.
 Well & Pump Repairs
 Complete Pressure Systems
 Farm - Residential - Commercial
 Potable Water Cisterns
 Financing Available
 BILL RIEDLINGER ERNIE BLEKER
 PH: 780-963-8134 OR 780-963-7749
 LBWATER@XPLORNET.COM

MISSING FEMALE LOCATED

Submitted by Stony Plain/Spruce Grove/Enoch RCMP

Enoch, Alberta - RCMP have located Megan CAWTHORPE, she is safe and unharmed. The

Police would like to thank the public and media for their assistance.

REMEMBRANCE DAY

Submitted by Melissa Killick | Tipple Park Museum

Remembrance Day holds a heavy place in our hearts. It's a day to remember those who fought for our freedom and also a day to remember our loved ones.

Tipple Park Museum will be displaying a small showcase in respect to Remembrance Day from November 3 to November 12. If you would like to stop by the Museum please do so. We

are open Wednesday to Saturday from 10-5pm.

Just a reminder, we do have Folley Trail books to view. In them you will find pictures of Veterans and their history.

In Flanders fields the poppies blow, Between the crosses, row on row,

That mark our place; and in the sky, The larks, still bravely singing, fly

Scarce heard amid the guns below. We are the Dead. Short days ago,

We lived, felt dawn, saw sunset glow, Loved and were loved, and now we lie,

In Flanders fields.

Take up our quarrel with the foe: To you from failing hands we throw

The torch; be yours to hold it high. If ye break faith with us who die

We shall not sleep, though poppies grow.

In Flanders fields.

- BY JOHN MCCRAE

SHUTTLE 9AM
 Alberta Beach Mondays
 Onoway Tuesdays
 Wabamun Wednesdays
 to West Edmonton Mall
1(833)545-6262

SLIMROAST Optimum
 DARK ROAST COFFEE
 YOUR LOGICAL SOLUTION TO WEIGHT MANAGEMENT
(780) 907-8642
 www.ValentusTour.com/Ladybug



Keeping You and Your Community Informed

PUBLISHED WEEKLY (Zone 1 & 2) AND BIWEEKLY (Zone 3)

E.J. Lewchuck & Associates Ltd.

45C South Ave. | Box 3595 Spruce Grove, AB T7X 3A8

SALES TEAM

Elaine
Ashley
Dani

TELEPHONE:

Classifieds 962-9229
Advertising 962-9228
Fax 962-1021

E-MAIL:

comvoice@telusplanet.net
sales@com-voice.com
news@com-voice.com

SHUTTLE SERVICE GRAND OPENING SET FOR OCTOBER 29TH-31ST

(ENJOY COUPONS FROM THE FOOD COURT AND PARTICIPATING MERCHANTS AT WEST EDMONTON MALL AND THE TRI LEISURE CENTER IN SPRUCE GROVE.)

Submitted by Keenas Shuttle

Keenas Shuttle was created with a fun and functional purpose to provide transportation from Rural areas into the city for appointments and shopping.

Koreena Van Lohuizen has been

a professional driver for eighteen years and has an impeccable driving record. Previously shuttling passengers from Nisku to the international airport. She specialized in shuttling employees to job sites.

Keena, wanted to provide her services to the area where she grew up after she learned the Greyhound bus

was stopping service in Alberta. "it just didn't seem fair to the elders who would like to retire in their homes but have no transportation" she said.

"I purchased a luxury van with all the bells and whistles, safety devices and commercial insurance to provide a great little once a week getaway allowing passengers some time to get to Doctors appointments, shopping or whatever they please to do in town for a few hours before we return home." She says.

The shuttle makes a stop at Tri-leisure center Spruce Grove for passengers who want to go swimming, work out or have a friend or cab pick them up from there to go wherever they want. It rolls on from there to West Edmonton Mall allowing a few hours for shopping or just an outing. It than returns home.

Some passengers may want to stay in town and use their return ticket at a later date. That is also an option.

LAWYER
PATRICK DOLPHIN

Evansburg
Office open Mondays
from 9:30A.M. to 4:00P.M. (except holidays)
4910 - 50 Avenue Evansburg
Phone: 780-727-2270
Serving Evansburg, Entwistle and area since 1994

Cherhill Community Association Presents
X-MAS IN NOVEMBER MARKET
Saturday, November 3, 2018
11:00am – 3:00pm

22+ Vendors – Lots of different items.
Shop Early!
Bring a friend – have a coffee.
Concession on Site.

Darlene Lorraine Ross

ROSS, Darlene Lorraine Born October 2nd, 1941 in Edmonton Alberta passed away Monday October 22nd at the Westview Health Centre in Stony Plain. Darlene will be remembered forever by her husband of fifty one year's Lorne of Darwell, son David (Holly) of St. Albert, daughter Tracy of Kelowna, grandchildren Laurel and Erica Ross and Rylan Gamble, her sister Sharon (Dale) Irving of Edmonton, her brother Ken (Jeannette) Bowman of Onoway, sister-in-law Barb Bowman of Kelowna, brother-in-law Don Kallusky of Victoria, a large extended family including 3 aunts and one uncle, plus several nieces, nephews and cousins.

Darlene was predeceased by her parents Bernhard and Marjorie (Hofferd), her brother Don Bowman and her sister Betty Bowman.

Darlene grew up on the family farm and graduated from Beaupre High School in 1959. Upon graduation Darlene started her banking career prior to becoming a flight attendant for Air Canada. After her marriage Darlene returned to banking and enjoyed a long successful career.

She was an avid supporter of her family's activities. Over the years Darlene was a committed volunteer for a variety of organizations including her church. Darlene could often be seen Wednesdays and Saturdays working at the United Church Thrift Shop in Onoway. She will be dearly missed.

A Celebration of her life will be held Friday, November 2nd at the Darwell Centennial Hall, Darwell AB at 1:00. Memorial donations may be made in her memory to the Canadian Cancer Society.

PARLIAMENT UPDATE – WEEK OF OCTOBER 22, 2018

Submitted by Jim Eglinski, MP – Yellowhead

The following was debated in the House:

- Bill C-76 – Elections Modernization Act (Report Stage)
- Bill C-83 – An Act to amend the Corrections and Conditional Release Act and another Act (Second Reading)
- Bill S-234 – An Act to amend the Parliament of Canada Act (Parliamentary Visual Artist

Laureate) (Second Reading)

- M-155 – Filipino Heritage Month
- M-161 – Record Suspension Program
- M-166 – Postal Banking System
- M-170 – Officers of Parliament
- Conservative Motion – Terrorism

On Thursday, the Prime Minister of the Netherlands gave an official address to the House

of Commons. You can read speeches and questions from Debates on the House Publications page at www.ourcommons.ca/en.

In the Standing Committee on Public Safety and National Security (SECU), we continued the study on M-167, which deals with rural crime. A local constituent appeared as a witness on Tuesday. For more information

on these meetings, visit: www.ourcommons.ca/Committees/en/SECU.

This week, I attended six meetings and four events, as well as recorded a message. I will fly back to the riding over the weekend to attend local events. Look for my update next Friday on the happenings of Parliament as it will continue to sit for another week.

JIMMY THE JANITOR

Submitted by Melissa Killion | Tipple Park Museum

A comedian is coming to town, Jimmy The Janitor! The Maritime's Best, good clean fun for the whole family ages 14 and up!

Enjoy an afternoon of laughter, food and good company Sunday, November 18 at Evansburg Le-

gion Hall. Doors open at 1pm show starts at 2pm. Tickets are \$30 each. You can purchase tickets at Claire's V&S or at Tipple Park Museum in Evansburg.

If you would like to attend, please hurry and buy tickets! We only have a limited number of tickets left.

See you there for a good laugh!



We understand hearing loss. First hand.

Every hearing problem is unique. Owner Jennifer Panteluk suffers from hearing loss and wears hearing aids herself. She understands your needs because she shares them.

Call us for a hearing test and demonstration of today's most advanced hearing solutions.

Jennifer, a Registered Hearing Aid Practitioner and Co-Owner Kevin Anderson, Doctor of Audiology & Registered Clinical Audiologist, invite you to hear what you've been missing.



Now Open!

- Full Hearing Assessments
- Digital Hearing Aids
- 90-Day Full Money Back Guarantee
- Best Price Guarantee
- WCB, VAC, NIHB, RCMP and AADL

Call 780-968-1011

110, 4300 South Park Dr, Stony Plain
claricohearing.com

KEY MESSAGES FROM GYPSD'S PUBLIC BOARD MEETING

Submitted by Nikki Gilks, Manager, Communications Services | Grande Yellowhead Public School Division

October 24, 2018
2017/2018 Student PATs & DIPs Results

Karen Shipka, Assistant Superintendent-Learning Services, provided a detailed report on the division's 2017/2018 Provincial Achievement Tests (PATs) and Diploma (DIPs) results. The Al-

berta Provincial Achievement Tests are administered yearly at Grade 6 and Grade 9 in June. The Alberta Education Diploma Exams are administered on a semester schedule, January and June, at the Grade 12 level in all academic core subjects. Results are analyzed by both the division and individual schools to identify areas of need to develop school improvement plans. The first of this analysis was completed on the first Professional Learning Day for all staff on

Friday, October 19, 2018. Check out our Facebook page to view some of the action in our schools this day.

Other Notes of Interest
• The board approved funding to support a RCMP School Resource Officer position in Edson for a three-year term as part of a Memorandum of Understanding between the Town of Edson, Yellowhead County and Living Waters Catholic Schools. The pilot program was initiated by the local RCMP detachment in

2016, and its subsequent success has led to its full-time implementation in the community.

• Trustee Karpluk has been nominated to serve as the Alberta School Boards Association (ASBA) representative on a new provincial High School Completion External Committee. The Committee is established to deepen understanding of Ministry work supporting students at risk of not completing high school; and connect Ministry work supporting students at risk of not completing high school to work underway in stakeholder organizations. Trustees also completed an online survey from ASBA about current class sizes in across the province.

• Superintendent Lewis has rescinded her request to attend and present at the Hawaii International Conference on Education in January of 2019.

• The quarterly Transportation Community Consultation Action Plan report was provided to the board with current information on the school bus registration process, student ridership, number of ineligible students transported, waiting lists, and average ride times per zone.

• GYPSD is proud to provide a mentorship program for beginning teachers that includes an identified district mentorship teacher who provides coaching and supports for new teachers, and those new to the district.

• The board discussed the possible financial impacts to dual credit and summer school programs created by the 45 credit cap per year for students in high school. Summer school and alternative learning opportunities such as dual credit allow students to have both flexibility in scheduling as well as enhanced learning opportunities..

BETTER QUALITY OF LIFE

and a money saver, too!

You can immediately see and feel the difference Elite makes to the quality of your water and the quality of your life. With Elite conditioned water, you and your family will look and feel better - with noticeable glowing complexions and soft, shiny hair.

Beautifully soft, dazzling whites and brilliant colors will replace the rough, matted clothing and towels your hard water previously produced.

Even housework is less of a chore as conditioned water leaves no bathtub ring, scummy film on shower stalls or unsightly spots on glassware, dishes and fixtures.

Your Elite water conditioner will save you time and money, too. You'll spend significantly less on detergents, cleaning products, conditioners, creams and personal grooming products. In addition, your plumbing fixtures and appliances will be protected against costly repairs or premature replacements.



QUALITY SALES & SERVICE OF:

- DISTILLERS
- SUBMERSIBLE PUMPS
- SEPTIC & JET PUMPS
- PIPE, WIRE & FITTINGS
- BOTTLE BUSTER (R.O. WATER COOLER)
- CHLORINE BLEACH, CHEMICALS & SALT
- 3 MOBILE SERVICE VEHICLES
- CHEMICAL-FREE IRON FILTERS
- SOFTENERS
- CHLORINATION SYSTEMS
- MOBILE SHOCK CHLORINATION
- SEDIMENT, TASTE & ODOR FILTERS
- REVERSE OSMOSIS FILTERS (R.O.'s)
- HOT TUBS & JETTED TUBS
- POOL & SPA FILTERS & CHEMICALS

• FREE WATER ANALYSIS •

OUR WORKMANSHIP IS GUARANTEED!

The benefits and savings provided by Elite conditioned water will make a wonderful difference in your life.

QUALITY WATER SERVICES LTD.

20 South Ave., SPRUCE GROVE
962-6040 425-2934 (Edm. Direct)



"We're recommended the MOST as the company that knows the MOST"

YELLOWHEAD COUNTY COUNCIL HIGHLIGHTS

Submitted by Stefan Felsing, Communications Department | Yellowhead County

October 23, 2018

Deputy Mayor Appointment – Council voted for Sandra Chernaiewsky to assume the role of Deputy Mayor.

Council Meeting Dates – Council moved to set regular meeting dates for 2019. Council meetings will be held on the second and fourth Tuesday of each month and Governance and Priorities Committees will be held on the third Tuesday of each month.

Declaration of Agricultural Disaster – Council moved to seek support from the provincial government for local agricultural producers. The letter declares that the county is in a state of agricultural disaster due to poor, weather-impaired harvest.

Council Considers Big Horn Trail Assistance– Council will tentatively support the Bighorn Trail Rehabilitation Project Phase One by including consideration of a \$30,000 grant for this project in the 2019 budget deliberations.

Edson Recreation Complex Architectural Services Awarded – Council approved awarding the tender for the Edson Multi-Use Recreation Complex Architectural and Professional Services to Stantec Architecture Ltd. in the amount of \$67,800.

Creek Staging Area – Council awarded the tender for the Solomon Creek Trailhead Staging Area near Brule in the amount of \$60,495.00 to Westridge Sand and Gravel of Hinton.

Bylaw for Wildwood ASP Amendment – Council passed Bylaw 16.18, to amend Bylaw 9.05, the Wildwood Area Structure Plan (ASP), in regards to a landowner’s request to amend the ASP to accommodate an Overhead Door Manufacturing Facility.

Land Use Bylaw Amendment

– Council passed Bylaw 17.18, to amend Land Use Bylaw 16.13 from Hamlet Commercial (HC) to Hamlet Industrial (HI) in support of an Overhead Door Manufacturing Facility (as referenced above).

Proposed Limestone Mine East of Jasper Park Gates – A letter will be sent to the Ministers of Energy and Alberta Environment & Parks opposing a proposed limestone mine within the proposed Overlander Tourism

Area Structure Plan (ASP) in Yellowhead County near Jasper Park. Yellowhead County has been working with the AB Environment & Parks on this tourism node since 2012 and Council feels that an industrial operation such as a limestone mine would not be compatible with the proposed recreation-based future land uses for this area.

Subdivision and Development Appeal Board (SDAB) Bylaw – To comply with recent changes

to province’s Municipal Government Act for SDAB requirements, Council passed a new by-law includes wording changes, training requirements, and the number of municipal councillors limited to one.

The next Council Meeting is on November 13, 2018. The next Governance & Priorities Committee Meeting is on November 14, 2018. All meetings start at 9:30 a.m. in the Council Chambers.

**THE ROYAL CANADIAN LEGION
STONY PLAIN BRANCH #256**

**REMEMBRANCE DAY
CEREMONIES**

Sunday, November 11, 2018

Service at 10:45 am

PAVILION at Heritage Park

Ceremony of Remembrance / Wreath Laying
All are invited to join us in the Pavilion for refreshments
from Freson Bros Fresh Market following the service.



Serving those who served
our great country,
Canada

Stay connected at home like never before.

TELUS High Speed Internet with Smart Hub, is an ideal at-home Internet solution



The Smart Hub uses the TELUS LTE Network to provide High Speed Internet Access in rural communities.

Features

- ✓ Powered by the TELUS LTE Network
- ✓ Download speeds up to 25 Mbps
- ✓ Large data allowances at competitive monthly rates, starting at \$60 per month
- ✓ High speed Wi-Fi that lets you connect multiple devices



Wireless Home Phone **\$0**

Stay connected with all the minutes you need:

on 2 yr term

Enjoy unlimited nationwide calling, and 5 included voice features (Voicemail 25, Call Display, Call Forwarding, Call Waiting, Conference Calling) for a low monthly price.

Monthly Plans Starting from

\$10

per month*



82 Boulder Blvd.,
Stony Plain, Alberta

Open

Monday - Friday
Thursday
Saturday

8:30am - 6:00pm
8:30am - 8:00pm
9:00am - 4:00pm

780-963-9463



YOUR LOGICAL SOLUTION TO WEIGHT MANAGEMENT



CALL (780) 907-8642 FOR **FREE** SAMPLE

DARK ROAST COFFEE

SLIMROAST Optimum

Exclusive functional coffee formulated to:

- Crush Cravings
- Increase Energy
- Metabolize fat to Energy
- Help Regulate Blood Sugar
- Improve Mood & Focus
- Boosts Circulation & Oxygen delivery

TO **UNLOCK** THE SECRET OF **WEIGHT MANAGEMENT!** PUT THE **POWER** OF **SLIMROAST OPTIMUM** IN **YOUR CUP!**



Thrilled with my results! I lost 9 lbs and an amazing 11 inches off my abdomen! Works wonderfully!

Managed to lose 7 lbs very fast & much more in inches the way my clothes are fitting now! 1 cup a day is all for me!

Down 17 lbs and fitting into clothes that were way to tight before!

No dieting, first month finished. Down 7 1/2 lbs 8.5 inches. Awesome product!

www.ValentusTour.com/Ladybug

(780) 907-8642



fall...
AUTO TUNE-UP
OCTOBER 2018

**The Businesses in
the following Guide
can be your One Stop
Solution to all your
Automotive Needs!**

Auto TUNE-UP

HOW TO NAVIGATE TRAFFIC JAMS

Many drivers have found themselves traveling down the highway at a good speed when, seemingly out of nowhere, vehicles begin to slow down. In such instances, drivers assume there must be an accident ahead, only to ultimately see nothing before traffic once again begins to move. What just happened?

If this situation sounds familiar, it may be comforting to know you are not alone. Traffic is a big problem in many cities, and is one of the leading causes of commuter anxiety. A 2012 study from researchers at Washington University in St. Louis noted that long commutes cut into exercise time, which has the trickle-down effect of high blood pressure, greater body weight and lower fitness levels. The study also stated that being exposed to the

daily hassle of traffic can lead to chronic stress. Furthermore, traffic can expose drivers to air pollution, which the World Health Organization says contributes to 3.2 million preventable deaths worldwide each year.

Traffic jams occur because of accidents, distractions on the side of the road, vehicle breakdowns, roads in disrepair, and other obstacles. But "phantom accidents" also contribute to their share of slow downs. According to Berthold Horn, an MIT computer scientist, all it takes is one driver to create a traffic jam. It is similar to the ripples of tossing a stone into a lake, and the science of nonlinear dynamics refers to this as "emergent phenomenon."

But Horn notes there may be a way to prevent phantom accidents. Horn says trying to main-

tain a distance halfway between the car ahead and the car behind you can ease traffic somewhat and produce improvements in commuting time, though everyone on the road needs to do his part for this to work.

Other ways to reduce traffic revolve around being a more observant and considerate driver.

- Avoid being a rubber-necker, looking at things on the side of the road for too long.
- Pay attention to cars entering the roadway and give them the space they need to flow into traffic effectively.
- If you're entering a roadway, get to highway speed as soon as possible.
- Be an observant driver to avoid collisions or near-misses.
- Do not cut off other

drivers, which can lead to road rage or tailgating.

- Maintain a safe speed while driving and avoid reckless maneuvers.
- Service your car on a schedule so it is less prone to breakdowns.
- Check a GPS or map app on your mobile phone to see which roads have the most congestion, and consider taking an alternate route.

Each of these suggestions can help reduce, but not always prevent, traffic. Accepting that traffic can occur, leaving extra time to reach destinations, having relaxing or your favorite music at the ready, and realizing that the traffic wave will end eventually can help motorists cope with traffic.



GROVE

COLLISION REPAIRS LTD.

Specialists in Unibody Repairs

GENESIS COMPUTERIZED DAMAGE ANALYSIS

The Latest in "Hi Tech" Collision Repair

ACCREDITED REPAIR FACILITY FOR



Peace Hills
GENERAL INSURANCE COMPANY



Allstate



the co-operators
Insurance/Financial Services



The Economical Insurance Group



ZURICH CANADA



WESTERN UNION INSURANCE
ING. CANADA

Insurance Claims Welcome

120 South Ave. SPRUCE GROVE
(780) 962-3755



TONY PLAIN AUTO

17E Granite Drive, Stony Plain

Servicing All makes & Models
ALL WORK GUARANTEED!

Tel: (780) 963-6297
stonyplainautomotive@gmail.com



NAPA AUTO PARTS

- * Auto Parts & Accessories
- * Body Shop Supplies
- * Agricultural & Industrial Parts
- * Shop Equipment

We are real Auto Parts People

120 St. Matthews Ave, Spruce Grove
962-4421 Fax: 962-3464




Auto TUNE-UP

HOW TO RECOGNIZE POTENTIAL BRAKE PROBLEMS

Maintaining a vehicle is more than just a way to protect one's financial investment. Vehicle maintenance can protect against accidents and make the road safer for drivers and their passengers as well as their fellow motorists.

Fully functioning brakes are an important component of automotive safety. In its 2015 Crash

Stats report, the National Highway Traffic Safety Administration said that brake-related problems accounted for 22 percent of crashes where vehicular failure was cited as the cause of the collision. Bad brakes are particularly notorious for rear-end collisions. Faulty, worn brake lines, antilock brake system malfunctions and worn brake pads and discs are some potential brake problems.

It is important that motorists learn to recognize the first symptoms of brake trouble so they can address issues before they put drivers, their passengers and other motorists at risk of accident or injury.

- Unusual noises: Screeching, grinding, rubbing, and high-pitched sounds are

common indicators that brake pads, rotors and other parts of the braking system need attention. Worn pads can cause damage to other vehicle parts, resulting in more expensive repairs if they're not addressed promptly.

- Pulling: If the car pulls to one side when applying the brakes, this may indicate brake pad linings are wearing down unevenly. A brake adjustment may be necessary. Pulling also may be indicative of an object or debris caught in the brake fluid.

- Less responsive: If when pressing on the brake pedal the brakes just do not seem to be as effective as they once were, or it is necessary to press the pedal harder for the brakes to engage, there may be a brake fluid leak or an air leak. Check

under the vehicle to see if any fluids are pooling.

- Pungent odors: Firestone Tire Company says a burning smell may be indicative of worn out brake pads and friction on the tires. Each of these issues require immediate attention.

- Vibrations: Certain vibrations may indicate brake issues. Rotors can become warped from metal-on-metal rubbing, potentially leading to a failure of the vehicle to brake properly. Vibrations also may indicate tires are misaligned. These problems can be properly assessed by a trained mechanic.

Do not let potential brake problems go unchecked. Keeping brakes in good working order helps drivers stop more readily and avoid collisions.



VANDENBERG COLLISION LTD.

Joe

Ph: (780) 786-2614 5014 - 51 St.
 Fax: (780)786-2736 Mayerthorpe, AB

Ray's AUTO REPAIR

24 HR. TOWING SERVICE
 COMPLETE AUTO REPAIR
 STIHL CHAIN SAWS

DANNY FRIEND 780-785-2251
 (OWNER • MANAGER) BOX 332 SANGUDO, AB. T0E 2A0

W.V. REPAIR SERVICES LTD.

Agriculture & Heavy Duty Repairs
 (NO AUTOMOTIVE REPAIRS)

Air Conditioning - in Shop & Mobile Service
 CVIP Inspections, Hydraulic Repair, Hoses Made

EXPERIENCED MECHANIC 30+ YEARS

WALLY 780-305-1315

SHOP IS LOCATED JUST 10 MIN SOUTH OF SANGUDO

Jack's Auto Body

& 24 HR Towing

SPECIALIZING IN COLLISION REPAIR
 GUARANTEED WORK • INSURANCE CLAIMS

BOX 9 SITE 306 RR3, ONOWAY, AB T0E 1V0

(780) 967-5850

OUR PLEDGE IS QUALITY

Auto TUNE-UP

HOW TO APPROACH BUYING A PREOWNED VEHICLE

Vehicles are considerable investments. According to Kelley Blue Book, the estimated average transaction price for light vehicles in early 2018 was \$36,270.

Perhaps because of that price tag, many people in the market for cars and trucks shop for pre-owned vehicles, which statistics indicate are considerably less expensive than new automobiles. Edmunds.com notes that the average transaction price for a used vehicle purchased in the first quarter of 2018 was \$19,700.

Of course, preowned vehicles carry more risk than new cars. That said, car buyers in the market for preowned vehicles can take steps to protect themselves against the risks associated with buying used cars.

- Shop for certified preowned vehicles. Certified preowned vehicles, or CPOs, typically come with an inspection and extended warranty. That can ease the concerns of buyers worried about buying a lemon. Many CPOs are recently returned off-lease vehicles that tend to have low mileage. Lessees are obligated to return leased vehicles in good condition or suffer financial penalties, meaning most off-lease vehicles will be well-maintained.

- Recognize “certified” and “CPO” are not the same thing. Edmunds.com notes that there’s sometimes a difference between vehicles that are characterized as “certified” and “certified preowned.” The CPO designation typically means the vehicle manufacturer stands behind the vehicle and its warranty. A vehicle described as “certified” many only be backed by the dealership itself. That’s an important distinction for buyers who may travel a lot or those who plan to move, as a manufacturer-backed warranty should allow them to take the vehicle to any of the manufacturer’s dealerships for repairs, regardless

of where those dealerships are located. Drivers of vehicles that are only certified by a dealership may only be able to take their cars in for repairs at that particular dealership.

- Get a vehicle history report. Some sellers, whether it’s dealerships or private citizens, may provide vehicle history reports. But even if they don’t, the cost of such reports is negligible compared to the value of the information they provide. These reports indicate if a vehicle has been in any serious accidents and indicate mileage that can alert buyers to illegal odometer adjustments, and some may even indicate if maintenance was performed at manufacturer-recommended intervals. If sellers are reluctant to provide reports or the VIN numbers of a vehicle necessary to order them, then walk away.

- Take a long test drive. A long test drive through various conditions (hills, curvy roads, highways, etc.) can give buyers a feel of how a preowned vehicle handles. Don’t succumb to pressure to cut test drives short, and be wary of sellers who want to keep test drives to a minimum.

Preowned vehicles can be

great investments, especially the most informed decisions when buyers take steps to make possible.

RADIATOR REPAIR AND RECORE

MANY UNITS IN STOCK FOR LARGE TRUCKS SAME DAY SERVICE ON MOST RADIATORS. CALL FOR DETAILS AND PRICING.

We offer services

- CVIP Inspections
- Hydraulic hose crimping and thousands of adapters in stock.
- A/C Repair
- Espar and Webasto Repair, Installation.
- Engine Repair and Rebuilding.
- Power train/Driveline repair and service.
- Suspension and frame repair.
- Two Fully equipped service trucks for mobile needs.
- Gates Hydraulics, hoses and belts

WE HAVE FACTORY TRAINED TECHNICIANS FOR T & E PUMPS, CATERPILLAR AND CUMMINS ENGINES, AND SPICER AND MERITOR DRIVELINES.

WE STOCK PARTS FOR ALL MAKES AND MODELS OF TRUCKS, DRIVELINE & ENGINES.

We repair

- Truck Transport
- Heavy Equipment
- Automotive
- Industrial



Nitro Nut Mechanical LTD.

Shop 780.789.3322 • Fax 780.789.3331
Toll Free 1.855.789.3322 • www.nitronut.com
email: nitronutmech@hotmail.com



HALLOWEEN CONTEST WINNERS



Sawyer S. Age 4



Astrid K. Age 5



Bryanna Age 8



Myrah N. Age 10

Thank you for entering. All the colouring was **spooktacular!**



Quick Lane®

TIRE & AUTO CENTRE

QUICK LANE TIRE & AUTO CENTRE HAS THE BEST SELECTION OF BRAND NAME WINTER TIRES AT THE BEST PRICES - GUARANTEED

ANY TIRES FOR ANY VEHICLE

Fits Ford and Ram 1500

Fits Ford Super Duty

Fits Chevy Silverado

Fits Ram 2500



\$160⁵²
each

\$260⁷⁶
each

\$296⁶⁶
each

\$281⁴⁰
each

GENERAL TIRE

Firestone

BRIDGESTONE

HANKOOK

Grabber Arctic
P265/70R17

Winterforce LT
LT275/65R18

Blizzak DM-V2
P275/55R20

Winter i-Pike
LT245/70R17

PLUS: 5% Cash Back with Owner Advantage Rewards

PLUS: Mail In Rebates on Select Tire Brands

PLUS: We'll Meet or Beat Any Written Quote!

* Plus GST & Tire Tax. Mount & Balance Extra.

Goodyear, Hankook, BFGoodrich, Yokohoma,
General, Toyo, Pirelli, Firestone, Michelin

WE'VE GOT 'EM ALL!



Quick Lane®

TIRE & AUTO CENTRE

TO SERVE YOU BETTER
MONDAY-FRIDAY
7:00AM - 7:00PM
SAT 8:00AM - 4:00PM

Phone : (780) 542-2025
CONVENIENTLY LOCATED NEXT
TO DRAYTON VALLEY FORD
5214 POWER CENTRE BLVD, DRAYTON VALLEY, AB.

THREE ARRESTED WITH STOLEN VEHICLE

Submitted by **Stony Plain/Spruce Grove/Enoch RCMP**

On October 23, 2018 at approximately 2:00 a.m. Spruce Grove RCMP were called to assist Edmonton Police Service and Air One, with a stolen vehicle that had been involved in a criminal flight from

police. The stolen Ford F-150 was located by Air One parked behind a gas station in Spruce Grove. When RCMP attended, the three male occupants fled from police. All three were located and arrested.

Ronald PEEBLES, Cody LETENDRE, and Colton SALOPREE were all charged with:

- Sec. 354 Criminal Code- Possession of Property Obtained by Crime over \$5000
 - Sec. 354 Criminal Code- Possession of Property Obtained by Crime Under \$5000
 - Sec. 351 Criminal Code- Possession of Break in Instruments
- PEEBLES, LETENDRE and SA-

LOPREE are to attend Stony Plain Provincial Court on November 7, 2018.

Criminals have no borders. By sharing resources with other jurisdictions and partner agencies, we are able to seamlessly locate and track criminals as they move throughout the province.

BUILD STRENGTH AND BALANCE TO PREVENT FALLS

Submitted by **Alberta Health Services**

Falls are the leading cause of injury among older adults. Our bodies naturally change with age which affects how we feel, move, and behave. The older we get, the greater the risk of falling. There's no doubt falls can have devastating consequences such as injury, chronic pain and a reduced quality of life, but by taking action you can prevent it from happening to you.

Most falls can be avoided by taking steps to reduce the risks. Seniors can prevent falls by identifying reasons related to their health

or environment that could cause them to fall. Having your medications reviewed yearly, visiting your eye doctor for an annual checkup, wearing supportive foot wear, and making your home safer by removing tripping hazards and improving lighting are all great things you can do. So is challenging your balance, building strength, and being active.

November is Falls Prevention month across Canada and this year's campaign focuses on the fact that you're never too old to start being active and no matter what your abilities are today, you can always improve your strength and balance to prevent a fall.

As an older adult, regular physical activity is one of the most important things you can do for your health. It can prevent many of the health problems that seem to come with age. It also helps your muscles grow stronger so you can keep doing your day-to-day activities without becoming dependent on others.

Older adults with muscle weakness are 4-5 times more likely to fall, so aim for 30 minutes or more of physical activity at least 5 days each week. Walking, dancing, swimming and gardening are great ways to be active. Work on your balance by controlling your movements. Try reaching while standing, toe

and heel raises, stepping in different directions, step ups or half squats. Yoga and tai chi are also great activities to try. Build strength by doing exercises for your leg muscles. Use bands, weights, or your own body weight to do things like hamstring curls and side leg lifts.

Choose something you like to do as you are more likely to stick to it.

Remember, it's never too late to start being active!

To find out more about keeping active and falls prevention for older adults visit the Finding Balance campaign and My Health Alberta.

GROVE HEARING CLINIC

960-2960

1-866-960-2960

Hear what you've been missing...

Full Service & Repair

Full Hearing Assessments



HOURS OF OPERATION: 9am – 5pm Weekdays

3rd party billing (AADL, WCB, DVA, FCH) • Personal 0% Financing if Needed

For The Latest Technology In Hearing Aids & Assisted Living Device Stop By & See Dawn

#220-70 McLeod Ave - Westland Market Mall, Spruce Grove



FREE LOCAL CLASSIFIED ADS

Real Estate, Rentals, Vehicles, Pets, Jobs, Service Directory, Buy/Sell/Trade, Lawn & Garden, Garage Sales, Events, Local Places & Much More... Advertise for **FREE** Today!



Follow Us



IMPROVING SUPPORT FOR VICTIMS OF CRIME

Submitted by Annalise Klingbeil, Press Secretary, Justice and Solicitor General | Government of Alberta

The Alberta government is ensuring victims of crime have the help they need with a five-point plan that will strengthen support for victims.

An additional \$4.5 million in available money from the Victims of Crime Fund will improve the scope and quality of programs for victims of crime in five key areas. The increase in available funding will go towards police-based victim services units, support for domestic violence survivors, help for victims in court, restorative justice initiatives and expanding outreach services for Indigenous victims.

“Albertans affected by crime deserve to feel supported and respected during an incredibly difficult time. These funds will ensure programs and services can continue to support victims of crime when and where they

need it. I commend the staff and volunteers who do this important work day in and day out.” - Kathleen Ganley, Minister of Justice and Solicitor General

Victim service units work across Alberta supporting victims of crime during police investigations and throughout the criminal justice process. Available funding will nearly double for police-based victim services units in seven municipalities – Edmonton, Calgary, the Regional Municipality of Wood Buffalo, Red Deer, Grande Prairie, Lethbridge and Medicine Hat.

“This new funding announcement will have a huge, positive impact on the lives of victims of crime in Alberta. The additional funding for victim service units across the province will afford them the ability to hire additional staff as well as enhance the already indispensable services they currently offer toward supporting victims, survivors and their families. We look forward to continuing to work with our government to grow, maintain

and enrich the services delivered to victims of crime in Alberta.” - Brian Turpin, past president, Alberta Police Based Victim Services Association

“People often have no idea where to go for support or what rights they have when they become victims of crime or tragedy. Victim assistance teams are a vital link that helps people navigate the criminal justice process and connect with the supports they need while they deal with very complex and emotional situations. The funding announced today will help ensure that police agencies across the province can offer this critical service to Albertans when they need it.” - Roger Chaffin, Chief Constable, Calgary Police Service

“Victim service units do invaluable work across Alberta. I learned this first-hand when my husband was murdered in 2009 in the Crowsnest Pass. After his death, volunteers were there for me. They listened to me through my grief, they picked up their phones day and night to answer my questions about court processes, and they sat beside me during the trial. I don’t know where I would be today, if it wasn’t for their help and guidance.” - Cindy English, wife of George Steve English

Highlights of the plan to strengthen support for crime victims:

Funding boost for police-based victim services units

Additional money will ensure high demand programs in Edmonton, Calgary, Red Deer, Grande Prairie, Lethbridge, Medicine Hat and the Regional

Municipality of Wood Buffalo can continue helping Albertans, and enable these assistance teams to provide support to surrounding areas.

Support for survivors of domestic violence

Preventing and addressing family violence is a high priority, and additional funds will be used to enhance province-wide services that address the complex needs of survivors of domestic violence. More information about these initiatives will be available in the coming months.

Aiding victims in court
Dedicated staff and the purchase and upgrade of testimonial aids, such as screens and closed-circuit television upgrades, in courtrooms across the province will help ensure vulnerable victims and witnesses are able to participate in court processes, provide testimony and navigate the justice system with more confidence.

Helping Indigenous communities

Expanding the existing Indigenous Victims Outreach Services program into more communities will increase access to support for Indigenous victims of crime in both urban and rural settings.

Creating opportunities for restorative justice

An increase in grant funding available will help support restorative justice initiatives in communities across the province.

Background
• Funding for police-based victim services units in Edmonton and Calgary will increase from

ANOTHER RAINBOW SALE **PRE-CHRISTMAS GIFT & COLLECTABLE SALE AND REGULAR CONSIGNMENTS** **ANOTHER RAINBOW SALE**

Saturday, November 10, 2018 at 11:00AM
Directions: Rainbow's Stony Plain Consignment Centre
 52529 Range Road 11 Stony Plain, AB

Complete retirement sale for Joe & Inga Hiesinger of Stony Plain whom have moved. Everything will be sold!

HIGHLIGHTS Cars, Trucks, Trailers, ATV & RV's: • 1998 Winnebago Motorhome 26.5 ft • 1977 Itasca Motorhome (GMC) 22 ft • 4x4 Polaris Quad 440 • 2012 6'x12' Enclosed Trailer (as new) • 16' Enclosed Trailer - home built T/A

Welding Tools and Accessories: • Assortment of acetylene hoses & accessories • Assorted galvanized buckets, welding helmets, chipping hammers • Assortment of tools – electrode dryers, step ladders

Tools and Equipment: • Industrial heater • Large selection of industrial tarps and straps • DEF cases • Drill press • Industrial dust collector • Table saw • Engine hoist • Industrial air compressor • Shop and garage air compressor • Selection of rubber hose rolls

Yard and Garden: • Chain link fencing • Basketball hoop • **Collector Coins:** • Received from avid collector

Wall Hangings: • A large selection of Western art in frames • Carved Jade wall hangings • Red wood with "mother of pearl" inserts wall hangings

Christmas Decorations: • A variety of large & small Christmas ornaments (both indoors and outdoors) • Christmas trees in boxes – large and small • Lights of various kinds and colors • Tree decorations new and antiques • Christmas village (larger buildings) c/w lights • Selection of Christmas Angels • Animated Christmas Santa • Christmas tableware • Santa cookie jar

****WATCH FOR UPCOMING ESTATE & ON SITE SALES****

Terms and conditions: Cash, Visa, MasterCard, Debit, Interac. Nothing to be removed until paid for. Subject to additions and deletions. A 10% handling fee, plus GST will be charged where applicable. Please be conscious of the handling fees and factor them into your bidding. Owner Rainbow Auctions & Liquidators or it's employees shall not be responsible for accidents.

Sale Conducted By:
RAINBOW LIQUIDATORS AND AUCTIONS
 Stony Plain, AB. 780-968-1000 or TOLL FREE 1-866-968-1001
 Complete Liquidation and Auction Services Since 1978
www.rainbowauctions.ca

Family run, local business, we care!

BEST CISTERN SEPTIC SOLUTIONS

Cistern and Septic Inspection, Installation and Repair!

Septic planning, design, installation by government certified installer(s)

New Installs Available. Reasonable Rates.

Let Us Handle the Dirty Work
780-668-4306
best-cistern-septic-solutions.com



MASTER OF POP, JAZZ, AND BLUE-EYED SOUL HAS NEW MOTOWN SHOW

LUKE MCMASTER BRINGS HIS ICONS OF SOUL PROJECT TO HORIZON STAGE ON NOVEMBER 17

Submitted by Kerri Gibson Loranger, Theatre Marketing Coordinator | Horizon Stage & City of Spruce Grove

Spruce Grove, AB - Luke McMaster has a silky smooth voice that's perfect for crooning, and he does a lot of that in his new show, Icons of Soul. Formerly one half of the gold-selling Canadian pop duo McMaster & James, Luke is taking the Motown and soul influences that have always filled his music to a new level. Icons of Soul uniquely marries contemporary songwriting with legendary hit songwriters. Audiences will be treated to brand new music co-written with iconic R & B songwriters, hear fresh covers of some of Motown's greatest hits, and enjoy favourites from Luke's own catalogue, including his smash hit "Good Morning Beautiful" (#3 US Billboard AC). Luke McMaster is bringing Icons of Soul to Alberta in November and his only Edmonton area date is at Horizon Stage, on Saturday, November 17 at 7:30 p.m.

Born and raised in Brandon, Manitoba, Luke and Rob James, aka McMaster & James, experienced success with the hits "Love Wins Every

time", "Thank You", I Understand", and "Sweet Sensation" in 2000 and 2001. Performing with McMaster & James, Luke cut his teeth on some of the biggest acts of the day; sharing stages with Randy Bachman, Justin Timberlake, Christina Aguilera and more.

Now an in-demand songwriter with multiple credits and collaborations with global superstars like Rhianna and Nick Lachey, Luke's first love has always been singing, performing, and connecting with his audience. He has spent time entertaining Canadian troops in Afghanistan, touring across North America, and serving as an artist ambassador for the Government of Ontario where he now calls Toronto home.

Luke is excited about his latest solo project, Icons of Soul, which includes the live stage show, a new CD, and a video documentary. In addition to covering immortal chart-toppers written by Rock 'N Roll and Songwriter Hall of Fame members Felix Cavaliere ("Good Lovin'", "Groovin'", "People Got to Be Free") and Lamont Dozier ("Love Is Like A) Heat Wave", "I Can't Help Myself (Sugar Pie, Honey Bunch)", "You Can't Hurry

Love"), Luke has co-written two songs apiece with these prodigies at their respective Nashville and Las Vegas homes. These new Motown inspired tunes are so catchy that when you hear them you'll be snapping and singing along with them like you've known them all your life.

Icons of Soul audience members will be treated to new renditions of "Stop in the Name of Love", "Ain't No Sunshine", and "How Sweet It Is (To Be Loved By You)." Segments from the Icons of Soul video documentary will be screened as part of this live concert presentation, helping to bring the entire experience



alive.

Don't miss Luke McMaster: Icons of Soul, at Horizon Stage on Saturday, November 17 at 7:30 p.m. Tickets are \$35 for Adults and \$30 for Students and Seniors and may be purchased at the City Hall Ticket Centre (315 Jespersen Ave), by phone at 780-962-8995 or 1-888-655-9090, and online by visiting www.horizonstage.com and clicking on the 'Tickets' link.



SERENITY FUNERAL SERVICE

NEW FACILITY

Chapel & Reception Centre



600 Calahoo Road Spruce Grove, AB
780-962-2749 www.serenity.ca

SERENITY FAMILY SERVICE SOCIETY - YOUR NOT-FOR-PROFIT SOCIETY

Improving Support For Victims of Crime

\$300,000 to \$500,000 each in 2018-19 and to \$600,000 for the next three fiscal years.

- Funding for police-based victim services units in Red Deer, Grande Prairie, Lethbridge and Medicine Hat will double from \$150,000 to \$300,000 each in 2018-19 and the next three fiscal years.

- Grant funding for the police-based victim services unit in the Regional Municipality of Wood Buffalo was quickly increased to help victims after the Wood Buffalo Region wildfire in 2016. Available funding for the area will increase from \$265,000 to \$300,000 in 2018-19 and the next three fiscal years.

FOR SALE BY TENDER

ROOM for FAMILY & PONIES



55219 Range Road 93
north of Wildwood

12 acres, three bedroom two bath SRI home nestled by evergreens. Large deck, storage shed with lean-to, well house, livestock shelter, waterer. Fenced paddock.

OPEN HOUSE
Saturday Nov 10
11 am to 2 pm

Can't make the open house call
Moore's Agri-Trade Ltd
for appt to view.

HIGHLIGHTS OF SALE BY TENDER TERMS

- Tenders must be accompanied by a bank draft for 10% of the amount tendered payable to Moore's Agri-Trade Ltd. Bank draft will be returned to bidder if their tender is not accepted
- Seller reserves the right to accept or reject any or all tenders regardless of the number of tenders received. All qualified tenders will be accepted or rejected by the Seller within 5 business days of tender closing date.
- Successful bidder pays balance to their lawyer on or before December 14, 2018
- Property sells as-is with no warranty or guarantee of any kind.

Call 780-202-0140 for Tender Bid Package or to schedule appt to view TENDER CLOSES NOVEMBER 25, 2018

Moore's Realty.ca

Moore's Agri-Trade Ltd - Alder Flats, AB - 780-388-3759



Classified Ads - Call 962-9228

Hall Rentals

Bright Bank Hall, 780-968-6813

Camp Encounter, Vincent Mireau - Camp Director. director@campencounter.com. C: 780-504-2012 W: 780-967-2548

Cherhill Community Assoc. Hall, Debra 780-785-2907

Darwell Hall, 780-721-2690

Darwell Seniors, Phone Debra 780-785-2907

Duffield Hall, 892-2425 or 963-6887

Entwistle Hall, Contact Tracey at 780-898-2317 or Cheryl at 780-515-1755

Entwistle Senior's Drop In Centre, Barb 727-2108 or Glennis 727-4367 Mon-Fri

Evansburg Senior's Heritage House, Dennis 727-4186

Evansburg Legion, upper hall 250 people, lower hall 80-100 people, 727-3879

Fallis Community Hall, 892-3150

Gunn Hall (G.A.R.S.) 780-951-9452

Keephills Hall, 731-3761

Lake Isle Community Hall, PH: 780-892-

3121 or Email: lakeislehall@mail.com

Lake Romeo PeaVine Hall, 785-2700

Magnolia Hall, 727-2015

Manley Goodwill Community Hall, 963-9165 or 916-0146

Mayerthorpe Diamond Centre, 786-4044

Moon Lake Community Hall, Nikki Berg 780-898-1390

Park Court Hall, call or text Karyn 780-712-3918

Parkland Village Community Centre, 780-298-9155 @PVCCentre

Ravine Community Hall, 325-2391

Rich Valley Community Hall, 967-3696 or 967-5710

Rosenthal Community Hall, 963-7984

Seba Beach Heritage Pavilion, 797-3863

Smithfield Community Hall, 892-2390

Tomahawk & Dist Agra Center, 898-3443

Wabamun Jubilee Hall, 892-2699.

Wildwood Community Hall, 325-2180 or 780-514-6105

Wildwood Rec Complex 325-2077 or 514-8944

Wildwood Senior's Hall, 325-3787 or 325-2391

Services

Best-Cistern-Septic-Solutions. Cistern and Septic Inspection, Installation and Repair! New Installs Available. Plastic, metal, fiberglass or concrete. We clean them all! Your cistern will be vacuumed, cleaned and sanitized with our high pressure, hot wash, sanitizing system. Reasonable Rates, Call 780-668-4306 (7) 16-10 OG

Cleaning

Ceiling & Wall Cleaning - Stipple, Wood, All Types. Ceramic Tile Cleaning, Cig. Smoke Removal, Biodegradable non toxic cleaner. We travel to acreages and farms! Seniors Discount, Call Nano Cleaning Today! 780-914-0323 (5) 02-10 OG

Computers

Free Computer Check-ups, save, parts, screens, repairs NOT over \$50. Available: LIKE NEW Laptop or Desktop. your world or family access, clean, refurbished, upgraded, net, games, music, pictures and introduction lesson. ONLY \$100. Free repairs for single parents. Call or leave message, 780-892-4993 (15) 28-08



PURE POTENT CBD DROPS

The World's Purest CBD Oil

• 500mg • 750mg

Organic Non GMO

CBD is in a class of its own - affordable, high quality, and convenient!

WHAT IS CBD?

Cannabidiol (CBD) is just one of over 85 cannabinoids that is identified in the cannabis plant. CBD is becoming increasingly popular amongst the masses for having a wide scope of medicinal benefits - due to clinical reports and mounds of test data showing little to no side effects and a lack of psychoactivity (typically associated with marijuana products and high THC).

Our CBD products are made with certified organic hemp grown in Colorado & Kentucky and we are 100% free of any synthetic or artificial ingredients. We have a very potent and high purity level in our products. Everything is tested in an FDA Approved facility and our products contain 0.3% THC.

Benefits of CBD Oil

- Reduce Nausea & Vomiting
- Suppress Muscle Spasms
- Reduce Seizures & Convulsions
- Promotes Health
- Promotes Brain Tissue & Bone Growth
- Fibromyalgia Pain
- Reduces Blood Sugar Levels
- Antibacterial
- Anxiety & Depression
- Reduces Nicotine Cravings
- Digestive Aid
- Anti-Psychotic
- Ringing Ears - Tinnitus
- Inhibits Cell Growth in Tumors

CBD HEALTH BENEFITS



Mental & Brain Health

CBD affects principal cannabinoid receptor in the brain promoting a healthy state of mind.



General Health

Cannabidiol has incredible medicinal benefits and will improve overall wellness.



Healthy Balance

Cannabidiol helps restore healthy balance to the endocannabinoid system.

DISTRIBUTORS NEEDED! Home Based Business MLM



FOR PETS

CBD Dog Treats and 250mg CBD Oil for Pets

- Highest Quality Ingredients
- Natural



For more information, Call (780) 907-8642

www.Elaine1.com

Classified Ads - Call 962-9228

Firewood

FIREWOOD FOR SALE - Birch, Tamarack & Spruce Pine mix. 4x4x8 cords and 1/2 cords. Quality seasoned wood, Delivery or Pick up. Woodchuck Firewood, 780-288-7247 (1) 30-10 BW

Vehicles

2006 Dodge 2500. Reg Cab, Long Box. 18500kms, Call 780-778-6956 (2) 30-10

For Sale

Rotational Plastic Hunting Blinds, with windows and doors for \$450.00. Also selling 500 Gallon Propane Tank for \$600.00. Call 780-621-9166. (4) 16-10

Stacked Washer / Dryer

Combo. Sears Model 970-C90802-00. Good condition, minimal wear. \$400 OBO, Call 780-860-5402 for details. (S) OG

For Rent

Suite for Rent, with shower & bed, All inclusive. \$900/month,

North of Evansburg on Hwy 22. Call 780-239-0553 (5) 02-10

Available Immediately, Large 2 Bedroom in Adults ONLY building in Entwistle. Includes Heat, Water & Parking. Rent \$795/month + DD \$300. Cats allowed, Must have good credit. Call Ivka 780-554-5493, jakovljevicivka@yahoo.ca or

780-807-1300 (2) 30-10 OG

FOR RENT - 3 Bedroom, 1 bathroom, attached garage, double lot in quiet community, N/S, N/P, references required. \$1000/month + DD Same. Contact 780-305-7077, Available Immediately. (4) 30-10

FOR RENT

Two Suites in Alberta Beach



One faces east and one west. Comes with 6 appliances, AC, window coverings, garbage pickup, water and detached garage (640 sq. ft.). Two bedrooms and two bathrooms. In just like new condition. Definitely worth a look.

A one year lease is required.

To View, call Angie 780-863-5621

Church Directory

<p>Seba Beach Christian Fellowship</p> <p>Sunday School 10:00a.m. Worship Service 11:00a.m.</p> <p>Weekdays Bible Study & Prayer</p> <p>(780) 305-3594</p>	<p>Advent Lutheran Church</p> <p>Sunday Worship & Sunday School 11:00a.m.</p> <p>Evansburg O: 727-3594</p>	<p>Roman Catholic Church</p> <p>St. Agnes' Parish, Mayerthorpe Sunday 9:00a.m. St. Elizabeth Parish, Evansburg Saturday 7:00p.m.</p> <p>(780) 786-2032</p>	<p>St. Joseph's Catholic Church</p> <p>Sunday Mass 11:30a.m. Tuesday Mass 7:00p.m.</p> <p>Wabamun, AB</p>
<p>St. Augustine's - Parkland Anglican Church</p> <p>131 Church Rd, Spruce Grove</p> <p>Sunday Service 10:00a.m. Eucharist with Sunday School & Nursery All are Welcome</p> <p>Office 780-962-5131 www.staugustinesparkland.org</p>	<p>Parkland Baptist Church</p> <p>Sunday Worship Service 10:30a.m. All Welcome</p> <p>121 Brookwood Drive (780) 962-4101 www.parklandbaptist.ca</p>	<p>Word Church Apocalyptic Era</p> <p>Border Paving Athletic Centre, 9 Tr Leisure Way, Spruce Grove upstairs in the Wild Rose room.</p> <p>Ph: 780-962-7579</p> <p>Service starts at 10:00 a.m. every Sunday morning, come all & be bless.</p>	<p>St. Saviour Mission (Anglican Diocese of Edmonton)</p> <p>Service every Sunday at 10:00a.m. Rev Coleen Lynch</p> <p>5117-51 Avenue (Wabamun Seniors Center) Ph: 780-910-7733 www.stsaviourmission.ca</p>
<p>Stony Plain United Church</p> <p>Sunday Service 10:30a.m. 5012-51 Ave. Stony Plain</p> <p>Mewassin United Church</p> <p>Sunday Service 9:00a.m. Rev. Sally Boyle Hwy 627 - Rg Rd 30 Ph: 780-963-4745</p>	<p>Immanuel Lutheran Church of Rosenthal</p> <p>Traditional Service Sunday 9:30a.m. Contemporary Service 10:15a.m. Christian Counselling Services Rg Rd 13, Twp Rd 524 Ph: 780-963-5048 www.lhc.ca email: office@lhc.ca</p>	<p>Emmaus Lutheran Church</p> <p>Sunday Worship Service 11:30a.m.</p> <p>Rev. Robert Marshall 4004-50th Ave, Drayton Valley Ph: 780-542-5101 emmauslutheranchurch.soo@pres.com</p>	<p>Church of God</p> <p>Worship Service Sun. 11:00a.m.</p> <p>Please contact for activities 5004-49 Street, Drayton Valley Ph: 780-542-5091</p>
<p>Calvary Baptist Church</p> <p>Pastoral Team: Kenton Penner</p> <p>Sunday Worship 10:30a.m. Youth & Ministries Info - calvbapt@telus.net</p> <p>4401-50th Ave, Drayton Valley 780-542-4774 www.calvarybaptistdo.ca</p>	<p>All Saints' Anglican Church</p> <p>Sunday Morning Worship 9 BCP 10:30 BAS with Sunday School & Nursery</p> <p>5212-17 Ave. Drayton Valley (780) 542-5048</p>	<p>St. Anthony Catholic Church</p> <p>WEEKEND MASS SCHEDULE: Saturday 5:00p.m. Sunday 12:00p.m.</p> <p>4708-50 Ave. Drayton Valley Parish Office: 542-5254</p>	<p>Drayton Valley Alliance Church</p> <p>Pastor John Haazen</p> <p>Join us for Sunday Service at 10:30a.m. Aurora School 3901-55 Ave. Programs for all ages</p> <p>Office at 4901-55 St. Drayton Valley Ph: 542-6501 dvalliance.ca</p>

COMMUNITY EVENTS 2018

SUNDAY	MONDAY	TUESDAY	WEDNESDAY	THURSDAY	FRIDAY	SATURDAY
	1	2	3	4	5	6
7	8	9	10	11	12	13
14	15	16	17	18	19	20
21	22	23	24	25	26	27
28	29	30	31			

If you are a LICENSED, NON-PROFIT ORGANIZATION, you are welcome to submit your announcement FREE of charge, space permitting. You are required to submit your non-profit number. Call (780) 962-9229. Please note that all submitted event listings must be limited to 200 characters or less (including spaces). DEADLINE: 12 noon Friday prior to publication (Thursdays on long weekends).

NOV 3 - CHARITY VARIETY TALENT SHOW 7pm (Doors at 6:30pm) at Horizon Stage, Spruce Grove. Admission: By Donation. This is a fun, family show full of fabulous local entertainers.

NOV 3 - COMMUNITY WIDE GARAGE SALE + BBQ, 9am-5pm @ Lake Isle Hall (Hwy 633 & RR55). \$10/table, Contact: 780-892-0115

NOV 4 - SUNDAY CRIB TOURNAMENT at Gunn Community Hall. Reg 10am, Play 11am, \$40/team, lunch included, Info 780-951-9452

NOV 5 - "LIGHT UP YOUR LIFE LUNCHEON" 11am-2:30pm at Orient Family Restaurant (900 4305 Southpark Dr, Stony Plain). The cost is as per the current Buffet Meal price.

NOV 14 - "LIGHT UP YOUR LIFE SILENT AUCTION" 12-7pm at WestView Health Centre, Stony Plain. Over 200 items including hand-crafted creations, gift baskets & certificates & much more!

NOV 16 - VILLAGE MARKET, 5-9pm at Parkland Village Community Centre. Vendor Tables available for \$15. Contact Betty Gamble at morningdove@shaw.ca

NOV 24 - MURDER MYSTERY NIGHT at Parkland Village Community Centre. Doors open: 6:30pm; Show starts: 7pm. Dinner is provided by State and Main. Tickets go on sale soon, \$45/ticket, \$40 /members

FARMERS MARKETS

DRAYTON VALLEY: Evergreen Farmers' Market, Wednesdays at the Mackenzie Center of the Omniplex from 10:30AM-1:30PM. *Ends Dec. 19

EVANSBURG: Sat, 10AM-2PM, Tipple Park Museum. Call 780-2240 for tables.

SPRUCE GROVE: at the Elevator, Sat 9:30-1:30PM, tables (780)240-5821

STONY PLAIN: Sat, 9AM-1PM, Downtown, Stony Plain. Phone Nancy 780-962-3993.

BINGO

ENTWISTLE COMM. LEAGUE BINGO: Every Wednesday, Doors Open 6PM.

STONY PLAIN SENIOR'S DROP-IN CENTRE: public bingo every Tues, 7PM. All ages welcome. Phone (780) 963-6685

TOMAHAWK: every Mon at Agra Centre, doors 6pm, Bingo 7:30PM. Info 339-2423 or 339-3747

WILDWOOD: Mon night. 6:30PM, bingo starts 7:30PM, Early Birds & Lucky 7.

MEAT DRAWS

Darwell: Put on by Alberta Beach & District Lions Club, 4:00PM, bi-weekly, Darwell Lounge & Restaurant

Evansburg: Evansburg Legion, Friday 8-10PM & Saturday 3-5PM

JAMBOREE

CHIP LAKE: Ravine Comm Hall, 1st Sat 325-2119 or 325-2391

DUFFIELD: 4th Sat, Duffield Community Hall. 6:00PM Supper. *Sept-May.

DRAYTON VALLEY: Last Sunday of month. Upstairs @ the "55 Rec. Center" Doors at 12PM, Starts at 1PM. 780-542-3768

ENTWISTLE: at Entwistle Community Hall, 3rd Saturday. For more info call Diann at 780-514-0045. *Starting Oct-May.

MAGNOLIA: at Magnolia Hall. Every 2nd Saturday, Supper at 6PM. 727-2015 or www.magnoliacomcommunity-club.ca *October-May.

RAVINE COMMUNITY ASSOCIATION: 1st Sat of each month. Info 780-325-2391 *Sept-May.

SEBA BEACH: 2nd Friday 7PM, Seba Senior's Centre, Toni 797-4233

SPRUCE GROVE: at Sandhills Community Hall, 3rd Sunday, 1-5PM. Info Florence 780-962-3104 Margaret 780-962-3051 *Sept-June.

STONY PLAIN: Stony Plain Seniors Drop in Center, 5018 - 51 Ave. Every 2nd & 4th Thurs of month, 7PM, \$2. PH: 587-989-7214 or 963-7920.

TOMAHAWK: Tomahawk Agriplex, 3rd Friday of month. 7PM. PH: 780-339-3755. *Starts Oct 21st.

WILDWOOD: Wildwood Community Hall, 3rd Wed Each month, 7PM. 325-3749 *Oct-June.

TOPS (Take Off Pounds Sensibly)

ENTWISTLE: Wed 5:15PM weigh-in, 5:30-6:30PM meeting, upper level Lions Hall. 780-932-2695.

STONY PLAIN: Thurs evening, Stony Plain United Church. Susan (780) 968-0869

SPRUCE GROVE: Wed 8:45am at Anglican Church, 131 Church Rd. Christiane 960-1109

WILDWOOD: Thurs at Wildwood School, 5PM. Connie (780) 325-2420

YOUR COMMUNITY

ALBERTA PARENTING FOR THE FUTURE ASSOC: Call 963-0549 or visit www.apfa.ca to register. All programs are confidential & free.

ALCOHOLICS ANONYMOUS IF Drinking is a Problem! 780-236-1043

FREE HOME MEAL DELIVERY PROGRAM, for Wabamun Seniors & Wabamun Lions. Arrange for meal preparation through a local restaurant. Call Darlene, 892-2551.

PEMBINA SKATING CLUB (Evansburg Arena), offers Learn-to-Skate, CanSkate & STARSkate. All ages. Call Lisa 727-2729. *RUNS Sept-March

PROBLEMS WITH DRUG OR ALCOHOL ADDICTION in a loved one? Contact Drug Rehab Resource for a free confidential consultation. 1-866-649-1594 or www.drugrehabresource.net.

LIBRARY EVENTS

AFTERNOON BOOK CLUB at Keephills Library. 2nd Tues of every month, 1:30-3:00PM. Visit www.pclibraries.ca for info.

FAMILY GAMES NIGHT: 3rd Wed of every month, 6-8PM. Located at Entwistle Library, Duffield Library and Tomahawk Library. In partnership with Parkland School Division. Visit www.pclibraries.ca for more info.

HATCHET CITY READERS at Tomahawk Library. 3rd Tues of every month, 10-11AM. For what we're reading next, visit our website, www.pclibraries.ca.

INVENTORS CLUB: 2nd Thurs of every month, 3:30-5:00PM at Entwistle Library. 4th Thurs of every month, 3:30-5:00PM at Tomahawk Library. Ages 8-13. To register: Call the library at 780-339-3935.

SEBA BEACH PUBLIC LIBRARY BOOK CLUB - meets the 4th Tuesday of the month in the library at 10:30AM. For info call 780-797-3940 or E-mail us at sebaeachlibrary@yrlab.ca.

EVANSBURG PUBLIC LIBRARY BOOK CLUB: 4th Thurs, 7:00PM Grand Trunk High 727-2030.

SOCIAL EVENTS

50+ YOUNG AT HEART LUNCHEON for Parkland County Seniors. 12PM at Stony Plain United Church Basement, \$8/plate. 3rd Wed of Month. Call Audrey 780-963-1782. *Sept-June

AEROBICS: Low impact, Mon/Wed, 11AM-12PM, Wildwood Senior's Centre, \$1/session.

BREAKFAST SOCIAL: 9:30AM-NOON, Parkland Village Community Centre - 3rd Sunday. PH: 780.298.9155 Social Media: PVCentre. *NEXT: October 21 & December 16

COME PLAY CRIB: Fridays, 7:30PM at Darwell Seniors Hall; lite lunch is served. All ages!

COUNTRY QUILTERS in Stony Plain house a "Sew in Tuesday", 2nd Tuesday of every month, from 10-3PM. Drop in \$5/member, \$6/non-members. Contact Cindy 780-963-7170.

EVANSBURG ART CLUB: meet & paint Thurs 1-4PM Rec Plex. 727-4340 or 727-4098

EVANSBURG GUIDES & PATHFINDERS: Mon 6PM, Camp Evansburg.

EVANSBURG SENIOR'S HERITAGE HOUSE: Floor Curling Mon & Thurs, 1pm. Court Whist Thurs, 7PM.

EVANSBURG TIPPLE PARK HISTORICAL BUILDING TOURS: Wed - Sat, 10:00-5:00PM.

HEALTHY AGING NURSE & FOOT CARE PERSON, Wabamun Seniors Centre, 2nd Thurs of month, 9AM.

OPEN HOUSE for socializing & card playing at Entwistle Senior Center, Every Sunday from 1-4pm.

PARENT & TOT PLAYTIME: PERC Building Stony Plain Wed 10-11AM; Holborn Community Hall Thurs 9:30-11AM; Parkland Village Tues 9:30-11:30AM.

POT LUCK every Tues 12:00PM, Wabamun Seniors Centre. Come on down!

SEBA BEACH SENIORS CENTER: Yoga, mon, 9:30AM, \$10/session. Bridge thurs, 1PM. Jams every Wed night, 7PM. Thrift Shop every Wed & Sat at 10-3PM.

SEBA BEACH QUILTERS & FIBER ARTS: Wednesdays 9:30AM, Seniors Center.

SENIORS 50+ LUNCHEON: 3rd Wed, 12PM at Stony Plain United Church basement hall. Call Audrey (780) 963-7582

SENIORS WEDNESDAY* AFTERNOON 1-4PM at Parkland Village Community Centre. Games, Crafts & more! Call Sheryl 780.695.7032 *exceptions incl. Weather.

SPIRITUAL LIVING STONY PLAIN INSPIRATIONAL CINEMA & DISCUSSIONS at PERC Building (5413-51 St), 2nd Friday of month at 7PM. Popcorn provided, donations appreciated. Contact 780-940-3032

SPIRITUAL LIVING STONY PLAIN GATHERING at PERC Building (5413-51 St). Every 2nd & 4th Sunday of month. Meditation 10AM, inspirational sharing 10:30AM. PH 780-940-3032

SPRUCE GROVE ELEVATOR TOURS: Tues-Sat, 9-3PM. 960-4600.

STONY PLAIN'S 5TH MERIDIAN GOOD SAMS RV CHAPTER: Ecole Meridian Heights School. 3rd Tues of Month, 7PM. Call Pat at 780-963-6976 or Ruth at 780-288-9829.

MEETINGS

2nd TIMERS: A support & confidential group for Grandparents Parenting. 1st Thurs of month, 6:30PM. Grand Trunk High School (meet in Lobstick Literacy & Learning room). Child care provided at the Evansburg Public Library. *Starts October

299 ROYAL CANADIAN SEA CADETS CORPS MACKENZIE: Stony Plain Comm Center, Wed 6:30PM. Youths 12-18. 963-0843

755 PARKLAND AIR CADETS Thurs, 6:30-9:30PM Muir Lake School, ages 12-18. Info call 405-6585 or www.aircadet.com/755.

AA: Friday at 8PM, Evansburg. Call 325-2204, 727-2466 or 727-6652.

AHS: Addiction Services provides assessment and counseling for alcohol, other drugs, tobacco and gambling in Breton on court day Wednesdays. To make an appointment, please call 780-542-3140.

AL-ANON: Wed 8PM. Spruce Grove United Church, 1A Fieldstone Drive. 962-5205

CHAMBER OF COMMERCE (Evans/Ent): 7:30PM 3rd Thurs, Heritage House.

C.H.I.L.D. (Citizens Helping In Life's Defence) Please join our Pro-Life meetings once a month in Stony Plain. For info call Chris 963-6997.

CITIZENS ON PATROL: The Pembina Community Watch Patrol Meets 2nd Thurs of each month at 7:30PM, at the West Central Forage Association Office 5009 45th Avenue, Entwistle. Contact 780-727-2000

COMMUNITY QUILTERS & CRAFTERS: 3rd Tues. Evansburg, Liz 727-3872 Brenda 727-4476

DARWELL & DISTRICT AG SOCIETY: 8PM, 1st Mon, Community Hall.

DDRA MEETING: 7PM, 2nd Mon, Darwell Community Hall 892-3099. *Except Jul/Aug/Dec

DRAYTON VALLEY BRANCH OF ALBERTA GENEALOGY:

CAL SOCIETY: meets 7PM at Municipal Library (5120-52 St.) every 3rd Wed of month. Call (780) 542-2787

ENTWISTLE COMMUNITY LEAGUE GENERAL MEETINGS: 2nd Thursday monthly 7:30PM. *Except June, July, August

ENTWISTLE LIONS CLUB: 2nd & 4th Tues, 8PM, Entwistle curling rink. Jim 727-3573

ENTWISTLE SENIORS: Ladies: 10AM 2nd & 3rd Wed, Floor Curling; Tue & Fri, 2PM

ENTWISTLE SENIORS 55+ CLUB: Tue & Fri, 1:30-4:00PM at Entwistle Hall

EVANSBURG SENIOR'S HERITAGE HOUSE: 2nd Tues of month, 1:30PM. Dennis, 727-4186.

FALLS COMMUNITY ASSOCIATION: 3rd Tuesday, 7:00PM.

GIRL GUIDES OF CANADA: Poplar Hollow District Guides-Pathfinders, Mon 6-8PM. Sparks-Brownies Tues 4-5:30PM. Meet at Camp Evansburg. Brenda 780-727-4476

LAC STE. ANNE & LAKE ISLE WATER QUALITY MANAGEMENT SOCIETY: 3rd Fri, 7PM, Alberta Beach Council Chambers.

LAKE ISLE HALL COMMUNITY HALL BOARD MEETINGS: 3rd Wed of each month @ 7:30PM at the Lake Isle Hall (Hwy 633 and RR55) Ph # 780-892-3121

LOBSTICK 4-H BEEF & MULTI CLUB: 1st Mon, Evansburg Arena, 7PM, Shannon 727-2358

LOBSTICK GARDEN CLUB: 1st Mon, Evansburg Baptist Church, Charlotte (780) 325-3787

MEN FOR SOBRIETY: Wednesdays at 7:30PM, FCSS Building (#105, 505 Queen Street, Spruce Grove). Mike (780) 965-9991.

MS SOCIETY DRAYTON VALLEY COMMUNITY GROUP meets 1st Tues of month, 6-8PM at Norquest College. Terra Leslie, 1-403-346-0290. *Sept-June

MS SOCIETY PARKLAND COMMUNITY SUPPORT GROUP: Are you diagnosed with MS and have questions? Last Tues of month, 7-9PM, Westview Health Centre. Contact Cassy 780-471-3034

NA MEETING: Tuesdays, 7:00PM, 514-6011

PEMBINA AL-ANON FAMILY GROUP: meets Tuesdays @ 7:30PM, at Evansburg Catholic Church Hall. Call Patty H. (780) 727-4516 or Cheryl (780) 727-6671

PEMBINA PORCUPINES - JUNIOR FOREST WARDENS: Entwistle Porcupine gathering: 7PM, 1st Tue. Len & Tineke at 727-2020. Porcupines@yellowheadfw.ca

SOLVE: Community Enviro issues discussed at Smithfield Hall (N of Hwy 16 on RR34). 2nd Thursdays. Jana 892-0006

STONY PLAIN FISH & GAME ASSOCIATION & WABAMUN GUN CLUB: 2nd Mon, Stony Plain Comm Center, 7:30PM.

SUNDOWNERS TOASTMASTER CLUB: Mon (excl. Holidays) 7:30-9:30PM. St. Matthew's Church, Spruce Grove. Judy 960-5258

TOMAHAWK SENIORS (50+) meets every Thursday from 1-4pm at the Tomahawk Agra.

W.E.E COMMUNITY FOOD BANK: Call (780) 727-4043 for emergency food needs. Monthly Meeting: LAST Monday of month at 7:00PM at the Food Bank (Old fire hall in Entwistle). *Except December

WILDWOOD & DIST AG SOCIETY: 2nd Wed of each month 7:00PM at the Wildwood Complex. Wilma 325-2424

WILDWOOD & DIST ROD & GUN CLUB: 2nd Thursday, 7:30PM at the range clubhouse, wildwoodrodandgun@gmail.com

WILDWOOD SENIORS: 4th Wednesday at 2:00PM. PH: 325-3787 or 325-2391. *No meeting July/Aug/Dec.

SUDOKU OF THE WEEK

Fun By The Numbers

Here's How It Works: Sudoku puzzles are formatted as a 9x9 grid, broken down into nine 3x3 boxes. To solve a sudoku, the numbers 1 through 9 must fill each row, column and box. Each number can appear only once in each row, column and box. You can figure out the order in which the numbers will appear by using the numeric clues already provided in the boxes. The more numbers you name, the easier it gets to solve the puzzle!

	3	5			6	8		
	1		5		8	7	9	3
7				1				
			6				8	
	6			9	1	3		
	5	2		3	4			1
	2		1	4	9		6	
		9						7
				6				2

ANSWER:

2	3	5	9	7	6	8	1	4
4	1	6	5	2	8	7	9	3
7	9	8	4	1	3	2	5	6
1	7	3	6	5	2	4	8	9
8	6	4	7	9	1	3	2	5
9	5	2	8	3	4	6	7	1
3	2	7	1	4	9	5	6	8
6	4	9	2	8	5	1	3	7
5	8	1	3	6	7	9	4	2

Like puzzles? Then you'll love sudoku.

This mind-bending puzzle will have you hooked from the moment you square off, so sharpen your pencil and put your sudoku savvy to the test!



Like Us On facebook
FACEBOOK.COM/COMMUNITYVOICENEWS PAPER

follow us on twitter
@communityvoice8

SERVICE DIRECTORY

2Bros
Custom Contracting Ltd.
Custom Framing • Concrete Floors • Shingling
Siding Soffit Fascia • Styrofoam Block System
Jeff 780-717-0520

BREWSTER BOBCAT SERVICE LTD.
P.O. Box 454, Wildwood, AB T0E 2M0
* Site Preparation
* Pile Drilling
* Concrete Work
* Landscaping
* Demolition
* Sand & Gravel Delivery
* General Contracting

brwcat@gmail.com
Telephone: (780) 325-3743
Bruce Balasck Cell: (780) 621-6960

POSTINGFIRST.com
FREE LOCAL CLASSIFIED ADS
Real Estate, Rentals, Vehicles, Pets, Jobs, Service Directory,
Buy/Sell/Trade, Lawn & Garden, Garage Sales, Events,
Local Places & Much More... Advertise for FREE Today!
Follow Us

WABAMUN PHARMACY
I.D.A.
Box 90, 5120 - 51 Avenue
Wabamun, AB T0E 2K0
Ph: (780) 892-2278 Fax: (780) 892-2488

Community VOICE
Connecting You and Your Community
THIS SPACE IS RESERVED FOR YOU!

H & E UPHOLSTERY
For all your upholstery needs
Convertible tops for cars and boats, custom car and boat interiors, 5th wheel trailer skirts, boat tarps, ATV seats, furniture, kitchen chairs, heavy equipment seats.

www.h-and-e.ca 4-485 South Ave.
For more information contact: Spruce Grove
info@h-and-e.ca (780) 962-3048

SERVICE DIRECTORY

Blakeman Drilling Ltd.
 Waterwell Drilling & Servicing
 Pumps & Pressure Systems
 SERVING LAC STE. ANNE & WEST PARKLAND FOR OVER 25 YEARS
 Joe (780) 924-3024



DONALD N. GREENWAY
 Chartered Accountant
 Suite 205 Sunrise Professional Building
 215 McLeod Avenue
 Spruce Grove, AB
 (Bus.) 962-6366
 (Fax) 962-3990

THE MOST COMPLETE
 NUTRITIONAL SPRAYS ON THE PLANET
 ORDER TODAY!
 (780) 907-8642
 www.Elaine1.com



Ernie's Repair & Service
 SMALL ENGINES
 4820 - 47 Avenue, EVANSBURG
 727-4433



Community VOICE
 THIS SPACE IS RESERVED FOR YOU!

MARK MARTIN PFEIFFER
 MASTER BRICKLAYER/MASON
 Cell: 780-242-3308
 Email: pfeiffer.mark@hotmail.com
 • Brickwork • Stonework
 • Rockwork • Parging
 • Concrete Block Work
 • Tile Work (all kinds)



PURE POTENT CBD DROPS
 The World's Purest CBD Oil
 CBD OIL BENEFITS:
 • High Absorption Sublingual
 • Improves Overall Health
 • Helps Relieve Pain
 • Delivery System
 • Inhibits Cell Growth in Tumors
 (780) 907-8642



ROY SHERWOOD
 Master Electrician
 Ph: 780-968-1425
 Cell: 780-908-2287
 Fax: 780-968-2211
 Email: suretechroy@gmail.com
 2-53220 Rge Rd 21
 Parkland County, AB
 T7Y 0C5
SURETECH ELECTRIC LTD.
 Control & Automation
 Commissioning
 Solar Sales & Service
 Industrial . Commercial . Residential

PREVAIL MAX
 CELLULAR HOMEOSTASIS FORMULA
 A NUTRITIONAL BREAKTHROUGH THAT SUPPORTS YOU... RIGHT DOWN TO THE LAST CELL!
 LIVIN TRIM WITH VALENTUS (780) 907-8642
 www.ValentusTour.com/Ladybug



PEMBINA CONCRETE PRODUCTS LTD.
 Manufacturers of ONE PIECE SEPTIC & HOLDING TANKS
 * Water Cisterns * Field Systems * Pumps and Accessories * Sumps
 DELIVERED TO YOUR SITE
 1-800-661-3047
 780-727-2702
 PembinaConcrete.com
 New Line of Concrete Statues, Fountains and Garden Ornaments.
 BOX 123, Entwistle, T0E 0S0



Community VOICE
 THIS SPACE IS RESERVED FOR YOU!
Complete Drywall Service
 DRYWALL, TAPING, RENOVATIONS, DRYWALL ART, STEEL STUDS, INSULATION, T-BAR, TEXTURE
 RAL Drywall and Plastering Ltd.
 Randy: 780-691-5248



RESIDENTIAL CLEANING SERVICES
 Call Today for your FREE Quote!
 (780) 264-7740
 SERVING SPRUCE GROVE AND STONY PLAIN ONLY



SERVICE DIRECTORY

Jack's Auto Body
 & 24 HR Towing

SPECIALIZING IN COLLISION REPAIR
GUARANTEED WORK • INSURANCE CLAIMS

CAA BOX 9 SITE 306 RR3, ONWAY, AB T0E 1V0
(780) 967-5850

OUR PLEDGE IS QUALITY

SANGUDO VETERINARY CLINIC

Box 581, 4916 - 52 Ave. Sangudo, AB. T0E 2A0

Dr. Ralf Sanders DVM

Ph: 780-785-2200
 Fax: 780-785-2228
 sangudovet@gmail.com

24 HOUR EMERGENCY SERVICE

Vanhill Contracting

"We are a family orientated company that pride ourselves on SAFETY and EFFICIENCY"

CHRIS & LISA VANHILL
 OWNER/OPERATOR

Site Clearing, Grading, Road Building,
 Brushing, Acreage Development, Dugouts, etc.

780-619-3236
 vanhillcontracting@gmail.com Onway, AB

SERVING ENTWISTLE AND AREA FOR OVER 30 YEARS

Entwistle CONCRETE
 PRODUCTS LTD.

SAND & GRAVEL SALES

PH: (780) 727-3525

Dan McCracken Entwistle, AB
 www.entwistleconcrete.ca

Community VOICE
 Serving You and Your Community Intuitively

THIS SPACE IS RESERVED FOR YOU!

SMOOLE

- Construction & Septic Installation
- Environmental Wastewater Disposal
- Site Design & Evaluation
- Power, Water & Basement Excavation
- Trackhoe, Backhoe, Bobcat & Dump Truck

For All Your Excavation Needs

Call Dan 780-991-4484 Reid 780-909-0173

H&P Kosik CONSTRUCTION Ltd.

- Road Building • Gravel • Sand • Dugouts
- Black Dirt • Clearing

No Job too small! We do them all!

Harvey cell. 780-445-9010 ph. 780-892-3532
 Box 145, Darwell, AB. T0E 0L0

gold canyon
 Elevate your everyday

CALL ME TODAY TO BOOK YOUR PARTY
JODI CAZAC • 780.995.6951

SLIMROAST Optimum

DARK ROAST COFFEE

YOUR LOGICAL SOLUTION TO WEIGHT MANAGEMENT

(780) 907-8642
 www.ValentusTour.com/Ladybug

CCAS
 Canadian Clean Air Services Ltd.

Heating & Air Conditioning

High efficiency Furnace or Air Conditioner from 49.99/month.
 Instant Approval. No Credit Required

24 Hour Emergency Service

Licensed and Insured with over 14 years' experience.
 We accept Visa, master card, Amex and interact.

42 Singing Hill Estates, Seba Beach T0E 2B0
 Office line 780-569-5201

Community VOICE
 Serving You and Your Community Intuitively

THIS SPACE IS RESERVED FOR YOU!

Xtreme LEAN NRG

Xtreme LEAN NRG
 Advanced Formula helps you:

- Regulates Your Appetite
- Regulates Blood Sugar
- Regulates Fat Absorption
- Improve Energy Levels
- Improve Your Mood
- Increase Mental Focus

"We've unlocked the science of slim!"
(780) 907-8642

SUMMERS DRILLING LTD.

Water well drilling and service
 Family owned Business Serving Alberta since 1917

Tired of hauling water?
 We can install a water well with a permanent water supply for as little as \$150/month OAC

Never run out of water again!

5 year workmanship warranty

3 Convenient ways to pay

- Visa
- Mastercard

• We now offer full financing

Stop in at our office 4405 - 50 Street, Stony Plain
 780-963-1282
 admin@summersdrilling.com

PREVAIL

CELLULAR HOMEOSTASIS FORMULA

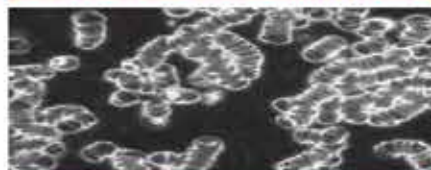
MAX

A NUTRITIONAL BREAKTHROUGH THAT SUPPORTS YOU
...RIGHT DOWN TO THE LAST CELL!

How do you want your
BLOOD to look?



Before PrevailMAX:



- poor circulation
- low energy
- brain fog
- dehydration
- decreased nutrients
- pH imbalance
- poor endurance

After PrevailMAX:



- better circulation
- more vitality
- mental clarity
- cellular movement
- nutrient assimilation
- balanced pH
- optimal endurance

PrevailMAX™ is a nutritional breakthrough that delivers a rapid increase of internal blood cell pressure to speed absorption, enabling the body to take maximum advantage of the nutrients in foods and supplements. The electrolytes are small enough to penetrate your cell membranes, to bind with your cells, and to be carried wherever they are needed in the body.

At the microscopic level of human cells, **PrevailMAX™** supports healthy cell performance – a nutritional breakthrough for your cells.

When you use **PrevailMAX™**, you will feel more energy and an ability to focus like never before. Take a few sprays today and see just how good you can feel!

LIVIN TRIM WITH
VALENTUS

www.ValentusTour.com/Ladybug

(780) 907-8642