

Serving: Onoway, Alberta Beach, Calahoo, Gunn, Glenevis, Darwell, Cherhill, Sangudo, Mayerthorpe, Rich Valley, Barrhead, Whitecourt, Stony Plain and Spruce Grove

November 27, 2018

THRILL TO THE SOUNDS OF CHRISTMAS

Submitted by Lac Ste. Anne Community Choir

Thrill to the sounds of Christmas 2018, with the Lac Ste. Anne Community Choir. You are invited to celebrate the season and enjoy one of the popular choir's performances over the next month. Director Debbie Rosen, with help from accompanist R.J. Chambers, leads over 60

members in a variety of Christmas musical pieces from classic holiday to rock Christmas.

The first performance for this popular community group will be 7 p.m. on Saturday, December 1 at St. Andrew's United Church (1A Fieldstone Drive) in Spruce Grove. Everyone is welcome, and admission is \$15, with 17 & under free. We encourage you to buy tickets in advance, but they

will also be available at the door. Don't know a member but want to ensure you have tickets? Call 780-951-6494 to make arrangements to get yours.

On Saturday, December 8, the choir will perform at St. John's Anglican Church (4801 - 50 St.) in Onoway. The concert begins at 7 pm, with admission by free-will donation.

Continued on Page 3

MOBILE MAMMOGRAPHY SERVICE TO VISIT ONOWAY

Submitted by Alberta Health Services

ONOWAY — Women ages 50-74 — the group most at risk of developing breast cancer — will have local access to mammog-

raphy services when the Alberta Health Services Screen Test program arrives in the community next month.

A mobile mammography trailer will be stationed at the Onoway Heritage Centre (4708 Lac

Ste Anne Trail North) on Dec. 5-7. Residents can book an appointment or learn more about the program by calling 1-800-667-0604.

Continued on Page 3

RCMP INVESTIGATE SINGLE VEHICLE FATAL COLLISION

Submitted by RCMP Mayerthorpe

RCMP file 2018-1747671 refers - On November 23, 2018 at approximately 8:50 p.m., Mayerthorpe RCMP, assisted by members of the Whitecourt Detachment and the RCMP's Collision Analyst were dispatched to a single vehicle rollover on highway 43 near Greencourt, AB.

A Kia sedan appears to have lost control while travelling

westbound on highway 43, crossing the median and rolling over, ejecting the lone male driver.

The preliminary investigation leads the investigators to believe that the male driver, after being ejected, was dragged by a large vehicle, and came to rest approximately one-half kilometre from the original collision scene.

Road conditions were icy at the time of the collision, and it was snowing heavily.

The cause of the initial collision

is still under investigation, in conjunction with the Mayerthorpe RCMP, the RCMP's Collision Analyst as well as the Edmonton Medical Examiners' Office.

The name of the deceased is not being released.

The Mayerthorpe RCMP are seeking the public's assistance in identifying the vehicle that struck the ejected driver. If you have any information, please call the Mayerthorpe RCMP Detachment at 780-786-2291.

All Precious JEWELLERS
"Your Spruce Grove Jewellery Store"
Goldsmith on Premises
 • Engraving • Clock & Watch Repairs
 • Jewellery Repairs • Custom Make-ups
 Jewellery Repairs Done On Site.
 Laser Welder Services Available.
 Toll Free: 1-877-962-4367
 PH: 780-960-4200 Fax: 780-960-4201
 Suite 102, 215 McLeod Avenue
 Spruce Grove, AB. T7X 0G2

L & B Tradition of Quality & Service
 Water Services Ltd.
 Well & Pump Repairs
 Complete Pressure Systems
 Farm - Residential - Commercial
 Potable Water Cisterns
 Financing Available
 BILL RIEDLINGER ERNIE BLEKER
 PH. 780-963-8134 OR 780-963-7749
 LBWATER@XPLORNET.COM

PREVAIL MAX
 CELLULAR HOMEOSTASIS FORMULA
 Nutritional Breakthrough For Your Cells
 LIVEN TRIM WITH VALENTUS
 (780) 907-8642
 www.ValentusTour.com/Ladybug

SLIMROAST Optimum
 DARK ROAST COFFEE
 YOUR LOGICAL SOLUTION TO WEIGHT MANAGEMENT
 (780) 907-8642
 www.ValentusTour.com/Ladybug

Community VOICE

Keeping You and Your Community Informed

PUBLISHED WEEKLY (Zone 1 & 2)
AND BIWEEKLY (Zone 3)

E.J. Lewchuck & Associates Ltd.

45C South Ave. | Box 3595
Spruce Grove, AB T7X 3A8

SALES TEAM
Elaine
Ashley
Dani

TELEPHONE:
Classifieds 962-9229
Advertising 962-9228
Fax 962-1021

E-MAIL:
comvoice@telusplanet.net
sales@com-voice.com
news@com-voice.com

WHITECOURT TOWN COUNCIL UPDATE

Submitted by Tara Galant, Legislative Manager | Town of Whitecourt

November 16, 2018
Woodlands County has provided notice to the Town of Whitecourt to terminate the Intermunicipal Cost Sharing Contribution Agreement. Whitecourt acknowledges receipt of notice, and in accordance with the agreement, effective January

1, 2020 the current cost sharing agreement will conclude.

The 2018 Project List, which includes 160 projects, has been updated and is available for viewing on www.whitecourt.ca. One of the projects included in the document is the Scott Safety Centre roof and ceiling replacement project for the Athabasca Rink. This project began in September, but was delayed due to inclement weather. In order

to ensure there are no interruptions to the 2018/2019 hockey season, completion of the project has been deferred to March 2019.

The Financial Report up to September 20, 2018 was presented to Council and is available for viewing on www.whitecourt.ca.

In response to a story published on Global Edmonton about property taxes throughout Alberta, Whitecourt prepared a report of how our community compares to municipalities featured in the news article. The comparison includes municipal taxes, franchise fees, and utility fees. To see the document, visit www.whitecourt.ca and search 'Reports'.

November is Family Violence Prevention Month in Alberta. The Whitecourt Family Violence Initiative hosted several events in the last few weeks in recognition of this special month, and community members should watch for purple lights and red silhouettes around town in support of Family Violence Prevention Month.

Christmas Carol Service

7:00pm on Sunday, December 2, 2018
Onway Community Hall

DONATION FOOD FOR THE LOCAL FOOD BANK WOULD BE GREATLY APPRECIATED



EDMONTON – Capital Region

GUN SHOW

December 1 & 2, 2018
Located at "The Pavilion at Heritage Park"
5100-41 Avenue, Stony Plain, AB

Public Welcome Admission: \$8.00
SATURDAY 10:00AM-5:00PM
SUNDAY 9:00AM-3:00PM



JOKE OF THE WEEK

The Santa Claus at the shopping mall was very surprised when Emily, a young lady aged about 20 years old walked up and sat on his lap. Now, we all know that Santa doesn't usually take requests from adults, but she smiled very nicely at him, so he asked her, 'What do you want for Christmas?' 'Something for my mother, please,' replied Emily sweetly. 'Something for your mother? Well, that's very loving and thoughtful of you,' smiled Santa. 'What do you like me to bring her?' Without turning a hair Emily answered quickly, 'A son-in-law.'

BARRHEAD AUTO PARTS
ESTABLISHED IN 1975

Located 2 miles West of Barrhead on Highway 18.
Site 13 Box 6 RR2
Email: rob@barrheadautoparts.com

780-674-3443
1-888-577-4377
WWW.BARRHEADAUTOPARTS.COM

Quality Used Parts

- Computerized Inventory
- Licensed Mechanics
- Quality Used & Rebuilt Parts For Cars & Trucks
- Competitive Labor Rates
- Buying Scrap Vehicles
- Used Pipe & Assortment of Metal
- Used Vehicles

Family run, local business, we care!

BEST CISTERN SEPTIC SOLUTIONS

Cistern and Septic Inspection, Installation and Repair!

Septic planning, design, installation by government certified installer(s)

New Installs Available. Reasonable Rates.

Let Us Handle the Dirty Work
780-668-4306
best-cistern-septic-solutions.com



Thrill to the Sounds of Christmas

Continued from Page 1

The choir will entertain residents at the McCullough Centre in Gunn on Wednesday, December 12. This performance is just for residents at the centre.

Our traditional Friends and Family performance (where everyone who likes music is a friend!) is the final one this winter. It's an afternoon performance on Sunday, December 16 at the Lac Ste. Anne Catholic Mission. The 2 p.m. start is in response to the many people who have difficulties attending an evening performance. Admission is by free will donation, and the entire audience is invited to stay after the performance to enjoy some goodies and visit with choir members

The Lac Ste. Anne Community Choir is open to anyone over 18. No auditions are required, and there's no need to read music or have choir experience. All that's needed is a love for singing, and a wish to meet other like-minded people. After a Christmas break, registration and the first practice for the next season will be Wednesday, January 9 at the Heritage Centre in Alberta Beach (5012 - 49 Avenue). Registration begins at 6:15.

Questions? Call Diane at 780-924-2348 or Deb at 780-497-0531.

Mobile Mammography Service To Visit Onoway

Continued from Page 1

Screen Test is improving access to cancer screening for hundreds of women in northern Alberta communities where mammography is not readily available.

A mammogram is an X-ray of the breast and has proven to be the most effective way to detect breast cancer. Early detection allows for a greater number of options for treatment and a better chance of survival.

Visit www.screeningforlife.ca/screenest for a complete listing of Screen Test mobile sites.

Lac Ste. Anne Foundation Internal/External Posting

Is seeking an individual to fill a full time position located in Onoway.

Maintenance – East Locations

Onoway, Gunn, Darwell

Description: The Lac Ste. Anne Foundation is actively searching for a qualified individual to perform a full range of maintenance responsibilities including preventable maintenance, corrective maintenance, grounds maintenance, inventory management, safety and security.

This position entails a high level of interaction with residents/tenants/staff as well as sub-contractors, frequent travel to multiple sites operated under the Lac Ste. Anne Foundation umbrella and requires physical endurance and availability to provide rotating on-call services.

Essential Functions / Responsibilities:

- Weekly, monthly site inspection of facilities.
- Perform interior and exterior repairs to facilities/suites as required
- Perform urgent/emergency maintenance
- Ensure sidewalks and grounds safety
- Maintain outdoor furnishings and outbuildings
- Develop and maintain inventory records
- Order and coordinate delivery of parts and materials
- Ensure a safe and secure environment while performing maintenance duties
- Monitor work performed by contractors and relay follow up requests
- Perform other duties as required.

Skills, Knowledge, Qualifications & Experience:

Proven success in the following job competencies:

- basic knowledge of preventative maintenance and operations of LSAF facilities
- understanding and follow relevant policies, procedures and legislation
- knowledge of LSAF Programs, services and related maintenance requirements
- basic knowledge of maintenance and repairs of plumbing, heating systems, boiler inspection and sewage systems
- understanding of emergency procedures, First Aid/WHMIS Certification
- must demonstrate analytical, problem solving and decision making skills
- effective verbal, listening and communication skills
- stress and time management skills
- Valid Driver's License is required

Lac Ste. Anne Foundation offers a very competitive salary and attractive benefit package. Closing date: Friday, November 30, 2018 at 4:00 p.m. or until a suitable applicant is hired.

Submit resume to:

Lac Ste. Anne Foundation

Attn: Dena Krysik, Chief Administrative Officer

PO Box 299 Mayerthorpe, AB T0E 1N0

Fax: 780-786-4810 Email: dkrysik@lsaf.ca

We thank all applicants but only those selected for an interview will be contacted.

BMO FARM FAMILY AWARD WINNERS ANNOUNCED

Submitted by Mackenzie Parish, Event and Communication Specialist | Northlands

At the 50th annual BMO Farm Family Awards on Saturday, November 10, Northlands and BMO were pleased to recognize 18 family-run farming operations throughout Alberta for their outstanding contributions to agriculture and their community.

“Northlands is proud to recognize these farm families who are work-

ing hard to make a difference in their community and the agriculture industry,” said Gordon Wilson, President, Northlands. “These families have all shown tremendous pride and commitment for their business and their community. Northlands salutes all 18 winning farming operations and thanks them for their continued dedication to the agriculture industry in Alberta.”

“BMO has a long standing commitment to the agriculture industry, and for many years, the BMO Farm Family Awards have recognized the

leading business and environmental practices of Alberta’s farmers and ranchers,” said Vanessa Laroque, Regional Vice President, Business Banking, Alberta North Community. “We’re proud to honour the leadership of these families in the agriculture sector and their unmatched support of the Alberta economy.”

The following families are recipients of the 2018 BMO Farm Family Awards and will receive a commemorative gate sign signifying their accomplishment:

- Athabasca County: Kel-

ly & Anna Olson

- Big Lakes County: Dwayne & Chris Pollack

- Brazeau County: Vant & Ethel Hayes

- County of Grande Prairie: Eugene & Ruth Slette

- County of Minburn: Larry & Tracy Rudolf

- County of Northern Lights: Ken & Lynne & Bryan & Dyla Kover

- Flagstaff County: Roger & Linda Johnson

- Lac Ste. Anne County: Donald & Joyce Drews

- Lamont County: Rudy & Theresa Warawa

- Leduc County: Johan & Riekje Ter Borgh

- Municipal District of Bonnyville: Murray & Linda Piko-wicz

- Municipal District of Fairview: John & Heather Kerschbaumer

- Municipal District of Wainwright: Ken & Doris Ford

- Parkland County: Tony & Sue Kirkland & Hazel Dandeneau

- Smoky Lake County: Barry, Frank & Emilee Feniak

- Sturgeon County: Phillip & Norma Soetaert

- Westlock County: Terry & Roseanna Sheehan

- Woodlands County: Robin & Charlene Hagman

About the BMO Farm Family Awards

Since its launch in 1969, farm families from northern and central Alberta communities have been recognized as the recipients of the BMO Farm Family Award. The Northern and Central Agricultural Service Boards select outstanding families who best represent values of the family farm within their rural community. The award honours both their farming business practices and community involvement. Winners receive a commemorative gate sign and are honoured at the BMO Farm Family Awards Gala.

Lac Ste. Anne County is holding a **PUBLIC HEARING** (and you're invited)

Bylaw 24-2018
Implementation of an **INTERMUNICIPAL DEVELOPMENT PLAN**

Lac Ste. Anne County and Parkland County are currently working to implement a new **Intermunicipal Development Plan**. This plan is aimed at guiding future growth for both municipalities, and provides a forum for intermunicipal dialogue and collaboration as development occurs in and around their shared border.

The plan boundary includes lands in both Parkland County and Lac Ste. Anne County. Find out more at LSAC.ca/Planning.

Come share your input.

WEDNESDAY, DECEMBER 5TH BEGINNING AT 10:00AM
LAC STE. ANNE COUNTY COUNCIL CHAMBERS
(56521 Rge Rd 65)

If you wish to comment on the proposed Bylaw, you'll have an opportunity to do so at the December 5 public hearing. If you are unable to attend the hearing, a written submission can be made to the County. You will, however, need to ensure that your comments are received by the County prior to the date of the hearing.

Comments can be sent by email to devassistant@lsac.ca, by fax to 780.785.2985, or by mail to Box 219, Sangudo AB, T0E 2A0. All submissions will be public information. For more information, please contact the Planning and Development department at 780.785.3411 or visit LSAC.ca/Planning.

To review the draft plan, download IDP maps and learn more about the upcoming public hearing, visit LSAC.ca/Planning.

Cash for Cars
967-2492
R & S TOWING

PARLIAMENT UPDATE – WEEK OF NOVEMBER 19, 2018

Submitted by Jim Eglinski, MP – Yellowhead

The House of Commons debated the following:

- C-75 – An Act to amend the Criminal Code, the Youth Criminal Justice Act (Report Stage)
- C-81 – Accessible Canada Act (Third Reading)
- C-89 – An Act to Provide for the resumption and continuation of postal services (All stages)
- C-405 – An Act to amend the Pension Benefits Standards Act (pension plans) (Second Reading)
- S-240 – An Act to amend the Criminal Code and the Immigration and Refugee Protection Act (trafficking in human organs) (Second Reading)
- M-177 – Supporting flight training schools across Canada. (Second Reading)
- Motion 194 – Instruction to the Standing Committee on Human Resources, Skills and Social Development and the Status of Persons with Disabilities (precarious employment in Canada) (First Reading)
- Motion 189 – Organ and tissue donation
- Motion 190 – Skilled Workers
- CPC Opposition Motion – Finance

On Monday, I had the opportunity to sit on the House of Commons Status of Women Committee (FEWO) where we heard witnesses on the System of Shelters and Transition Houses Serving Women

and Children Affected by Violence Against Women and Intimate Partner Violence.

On Tuesday, I took part in debate on Bill C-75, which includes major reforms to our criminal justice system. You can read all questions, comments and speeches in the House of Commons corresponding day's Hansard at www.ourcommons.ca/en.

On Wednesday, the Minister of Finance delivered the 2018 Fall

Economic Statement. This can be found at: <https://budget.gc.ca/fes-eea/2018/docs/statement-enonce/fes-eea-2018-eng.pdf>

In the Standing Committee on Public Safety and National Security (SECU), we continued the study on Bill C-83, An Act to amend the Corrections and Conditional Release Act which seeks to put an end to solitary confinement in favour of a new program called Structural Intervention Units (SIUs), and on Thursday,

an Emergency Committee meeting briefing was held on the "Use and Misuse of INTERPOL". For more information on these meetings, visit: www.ourcommons.ca/Committees/en/SECU.

This week, I attended 12 meetings, 5 events as well as recorded a radio message. I will fly back to the riding over the weekend to attend local events. Look for my update next Friday on the happenings of Parliament.

VALENTUS

YOUR LOGICAL SOLUTION TO WEIGHT MANAGEMENT

CALL (780) 907-8642 FOR FREE SAMPLE

DARK ROAST COFFEE

SLIMROAST Optimum

Exclusive functional coffee formulated to:

- Crush Cravings
- Increase Energy
- Metabolize fat to Energy
- Help Regulate Blood Sugar
- Improve Mood & Focus
- Boosts Circulation & Oxygen delivery

TO UNLOCK THE SECRET OF WEIGHT MANAGEMENT! PUT THE POWER OF SLIMROAST OPTIMUM IN YOUR CUP!

Thrilled with my results! I lost 9 lbs and an amazing 11 inches off my abdomen! Works wonderfully!

Managed to lose 7 lbs very fast & much more in inches the way my clothes are fitting now! 1 cup a day is all for me!

Down 17 lbs and fitting into clothes that were way to tight before!

No dieting, first month finished. Down 7 ½ lbs 8.5 inches. Awesome product!

www.ValentusTour.com/Ladybug (780) 907-8642

Made You LOOK!

See Advertising works! Place your ad today!



The 32nd Annual
**Sangudo
 Christmas Blitz**

**Friday, November 30, 2018
 4:00PM – 8:30PM**

Over 50 Vendor Tables!

• Fire Hall • Community Hall • Golden Club • Cookhouse on Main

Fireworks to follow @ 8:15PM
Sponsored by FORTIS & UFA

Door Prizes • Horse Drawn Sleigh Rides 4:00 – 7:00PM

Cookhouse on Main:
Gingerbread House Contest

(Cash Prizes Donated by Sangudo Veterinary Clinic)

Entries 4:00 – 6:30PM Judging 7:00 – 7:30PM

Prizes Presented 8:00PM @ Fire Hall

Fire Hall: **Visits With Santa 5:00 – 7:00PM**

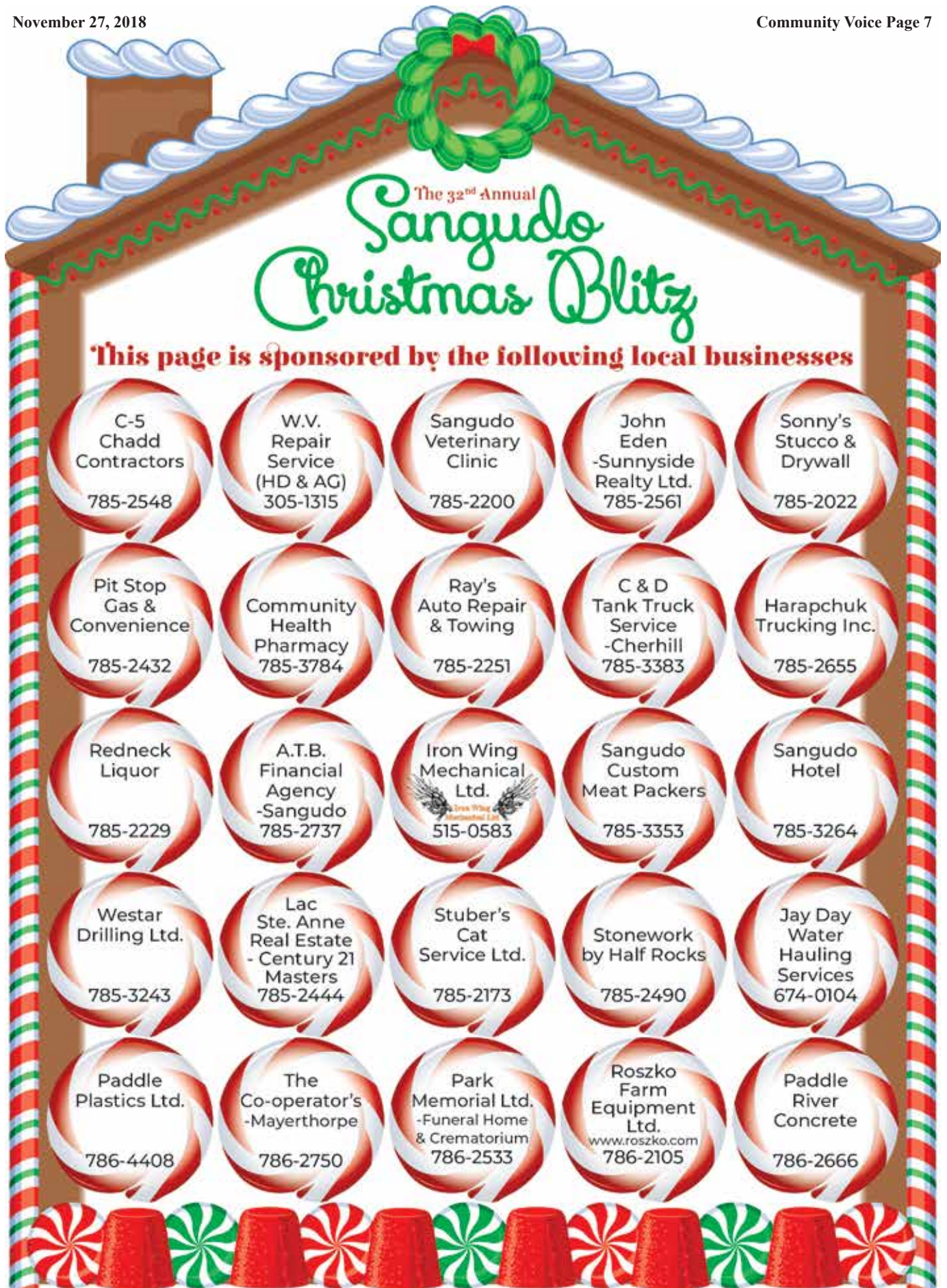
Balloon Artist 4:00 – 7:00PM Blitz Raffle Draws 8:00PM

Face Painting With Jacquie Paul 4:00 – 7:00PM

Free Coffee & Hot Chocolate 5:00 – 8:00PM

(Donated by Lac Ste. Anne County Fire Services)

SPONSORED IN PART BY F.C.S.S.



The 32nd Annual
**Sangudo
 Christmas Blitz**

This page is sponsored by the following local businesses

- | | | | | |
|--|--|---|---|---|
| C-5
Chadd
Contractors
785-2548 | W.V.
Repair
Service
(HD & AG)
305-1315 | Sangudo
Veterinary
Clinic
785-2200 | John
Eden
-Sunnyside
Realty Ltd.
785-2561 | Sonny's
Stucco &
Drywall
785-2022 |
| Pit Stop
Gas &
Convenience
785-2432 | Community
Health
Pharmacy
785-3784 | Ray's
Auto Repair
& Towing
785-2251 | C & D
Tank Truck
Service
-Cherhill
785-3383 | Harapchuk
Trucking Inc.
785-2655 |
| Redneck
Liquor
785-2229 | A.T.B.
Financial
Agency
-Sangudo
785-2737 | Iron Wing
Mechanical
Ltd.
515-0583 | Sangudo
Custom
Meat Packers
785-3353 | Sangudo
Hotel
785-3264 |
| Westar
Drilling Ltd.
785-3243 | Lac
Ste. Anne
Real Estate
- Century 21
Masters
785-2444 | Stuber's
Cat
Service Ltd.
785-2173 | Stonework
by Half Rocks
785-2490 | Jay Day
Water
Hauling
Services
674-0104 |
| Paddle
Plastics Ltd.
786-4408 | The
Co-operator's
-Mayerthorpe
786-2750 | Park
Memorial Ltd.
-Funeral Home
& Crematorium
786-2533 | Roszko
Farm
Equipment
Ltd.
www.roszko.com
786-2105 | Paddle
River
Concrete
786-2666 |



All Precious JEWELLERS

**Draw For Your Discount
5-50% off Until Dec. 24TH
except Bradford Exchange and
Grandfather Clocks**

Authorized Dealers
Bulova, Citizen, Bering,
Caravelle, Accutron

We do Engraving!



780-960-4200
#102 McLeod Ave
(next to Something Else Restaurant),
SPRUCE GROVE

Over 30 Years in the
Jewellery Industry.
Experienced
Goldsmiths on Site



Holiday Hours
Mon - Fri 9:00am - 6:00pm
Thursday Late Night Shopping
Sat 10:00am - 5:00pm
www.allpreciousjewellers.ca



RCMP INVESTIGATE FATAL COLLISION

**Submitted by Stony Plain/
Spruce Grove/Enoch RCMP**

Gunn, Alberta – On November 22, 2018 at approximately 4:00 p.m. Stony Plain RCMP along with Emergency Services responded to a

two vehicle collision on Highway 43 and the intersection of Range Road 32 near the community of Gunn. A silver SUV pulled out onto Hwy 43 from Range Road 32 heading northbound and was struck by a blue car travelling eastbound on Hwy 43.

Tragically, the 61 year old lone male occupant from Edmonton, Alberta, driver of the silver SUV, was pronounced deceased at the scene.

The driver of the blue car, a 19 year old female from the Peace River Regional District of British Co-

lumbia, was transported to hospital by ambulance.

The RCMP Collision Analyst attended the scene. The collision remains under investigation. The name of the deceased male will not be released.

SEPTIC SENSE WORKSHOP COMING TO LAC STE. ANNE COUNTY INFORMATIVE SESSION WILL HELP RURAL PROPERTY OWNERS BETTER UNDERSTAND AND CARE FOR THEIR SEPTIC SYSTEMS.

Submitted by Lorraine Taylor, Conservation Coordinator | Lac Ste. Anne County

Did you know the average person puts 340 litres of sewage through a private sewage system (septic system) every day? For a family of four living in a two-bedroom house, that amounts to 1,360 litres per day and just under half a million litres per year! Improperly managed septic systems have the potential to have a significant negative effect on the Alberta landscape.

Lac Ste. Anne County is hosting an information session on Thursday,

December 6, 2018 at the Darwell Centennial Hall from 6:00-9:00pm. Rural property owners are responsible for ensuring their systems operate properly and safely. If you have a septic system on your rural property, you will benefit from attending this workshop. Presenters will teach you how to understand, assess and properly manage your septic system, enabling you to protect your investment in your property and the valuable natural assets associated with your land.

During the workshop we will cover:

- What a septic system is and how

it works

- Regulations
- Design and installation
- Appropriate use of your septic system
- Maintaining your septic system
- Troubleshooting

Learn what you can do to properly manage and maintain your septic system. Attend the Septic Sense workshop hosted and presented by Lac Ste. Anne County with technical expertise provided by the Alberta Onsite Wastewater Management Association (AOWMA) and program coordination by Land Stewardship Centre (LSC).

The Green Acreages Guide was written for acreage, hobby farm, and recreational property owners, to help them develop and implement stewardship practices that conserve and protect the valuable natural assets associated with their properties. One chapter addresses waste management, including septic systems. Copies of the Green Acreages Guide will be available for purchase at the December 6 session. Pre-registration by December 3rd is preferred. There is no cost to attend and refreshments will be provided. Call the Lac Ste. Anne County office at 1-866-880-5722 or email LTaylor@LSAC.ca

GROVE HEARING CLINIC

960-2960

1-866-960-2960

Hear what
you've been
missing...

Full
Service &
Repair

Full
Hearing
Assessments



HOURS OF OPERATION: 9am – 5pm Weekdays

3rd party billing (AADL, WCB, DVA, FCH) • Personal 0% Financing if Needed

For The Latest Technology In Hearing Aids & Assisted Living Device Stop By & See Dawn

#220-70 McLeod Ave - Westland Market Mall, Spruce Grove

RCMP ARREST THREE IN ROBBERY

**Submitted by Stony Plain/
Spruce Grove/Enoch RCMP**

Spruce Grove, Alberta- On October 27, 2018 at approximately 10:45 pm, Spruce Grove RCMP were called to an aggravated assault against a 16-year-old male.

RCMP learned that the victim was assaulted at a local school ground by two 19-year-old males and a 14-year-old male, who were known to the victim. The victim was robbed, hit with a prohibited firearm and stabbed. The victim was taken to

the Stollery Children's Hospital where he was treated for his injuries and later released.

Vincent WHITFORD, of Edmonton, and Jonathon DIXON, of Alberta Beach, were charged with numerous offences, including:

- Robbery with Prohibited Firearm - Section 344(1)(a) of the Criminal Code
- Aggravated Assault- Section 268 of the Criminal Code
- Uttering Threats- Section 264.1 of the Criminal Code
- Possession of Weapon for a

Dangerous Purpose- Section 88 of the Criminal Code

- Unauthorized Possession of a Firearm- Section 91 of the Criminal Code

WHITFORD and DIXON were released from custody on conditions and will appear in Stony Plain Provincial Court on November 21, 2018.

The 14-year-old male, of Spruce Grove, was charged with numerous offences, including:

- Robbery with Prohibited Firearm - Section 344(1)(a) of the Criminal Code

• Aggravated Assault- Section 268 of the Criminal Code

- Uttering Threats- Section 264.1 of the Criminal Code

• Possession of Weapon for a Dangerous Purpose- Section 88 of the Criminal Code

- Unauthorized Possession of a Firearm- Section 91 of the Criminal Code

He was released from custody on conditions and will appear in Stony Plain Youth Court on November 16, 2018.

FCSS COMMUNITY CHRISTMAS PROGRAMS

**Submitted by Town of
Barrhead | www.barrhead.ca**

Santa's Toy Box

Those less fortunate living in low income households can apply at FCSS to have gifts for their children of all ages given to them for Christmas. Our procedure for families applying involve:

- proof of area residency (must live in Town/County of Barrhead or Fort Assiniboine/Goose Lake areas)
- proof of Alberta residency of all family members (Alberta Health Card)

• clients must also produce their Income Tax Assessment from the previous year & current pay stubs.

- valid contact phone number

Sign up dates: November 1 to December 12

Pick up date for those who qualify: December 19 between 8:00am -1:00pm

Adopt-A-Family

Individuals or groups may choose to "Adopt" one of the FCSS families registered for this Christmas program. This includes purchasing and wrapping gifts for family members as well as providing the Christmas Food Hamper. The identity of

the adopted family is confidential and those adopting a family have a choice as to the number in the family. Using the Toy Box guideline we suggest \$100 per child for toys. Our guideline cost for the Christmas Food Hampers is \$75 - \$125 depending on the size of the family.

Nomination Deadline: December 7

Donation Drop Off Date: December 17

Christmas Hampers

FCSS volunteer staff hand out gift certificates with goodie bags of Christmas Treats rather than pre-packaged hampers. This allows the participant to shop for

items that are more suitable for their family. Gift certificates range from \$25-\$100 depending on family size.

Sign up dates: November 1 to December 12

Pick up date for those who qualify: December 19 between 8:00am -1:00pm

If you know of anyone that could benefit from any of these programs, or if you would like to volunteer or donate, please contact the FCSS Office:

4921-50 Ave, Box 4616

Barrhead, AB T7N 1A5

780-674-3341

fcssbar@telusplanet.net

www.fcspbarrhead.com

GUNN HALL'S NOVEMBER 4TH CRIB TOURNAMENT

**Submitted by Marlaine
Janke, Hall Representative
| Gunn Hall**

We had 48 teams come out to enjoy 12 games of cards at our tournament. We understand that an important part of the tournament for our players is to enjoy a delicious lunch. Our kitchen volunteers strive for this and pleased everyone with their ham and scalloped potatoes meal with all the extras. They did an amazing job and were complimented by many.

Our prize allocations are as follows:

The 1st place team, Phyllis Webster & Anita Samson of Swan Hills received the amount of \$350. 2nd Place for \$250 was won by Terry Ryder & Stephanie Trynchy of Whitecourt. 3rd place for \$150 was won by Dale & Shirley Dunlop of Edson. 4th place for \$75 was won by Gail Hrycak & Gayle Schneider of Barrhead. We paid a \$20 prize to the last place team but choose not to disclose their names. No one wants to know that anyway – haha!!

We paid a \$50 prize to Don Fehr of Onoway who was fortunate to have a 28 point hand –

just one away from the jackpot of 29. We also paid out \$120 to the 12 players that had 24 point hands.

The jackpot was not won this time and will be carried forward to our next tournament. This can be won by getting the highest score possible of a 29 point hand.

Two 50/50 draws were held. The first being \$235 won by Doreen Turnbull of Barrhead and the second being \$240 won by Maxine Bourdon of Whitecourt.

The 19 pot in the first 6 games came to \$34.25 won by Sharon Underhill of Gunn and the after-

noons was around the same but the winner ran so fast with the money we didn't get their name – haha!! Even by winning these small pots, the days entry fee cost is covered.

This was our organizations 6th crib tournament and we all appreciate the support from the surrounding communities. Congratulations to all the winners and we hope your day was enjoyable. Also a special thanks to all the volunteers who contribute to making this event run smoothly.

WHAT POWERS YOUR FAMILY?

1.888.627.4011



**EQUS**
www.equs.ca

DELIVERING
MORE THAN **POWER**



SPRUCE GROVE RESIDENT WINS \$1 MILLION ON LOTTO 6/49!

Submitted by Megan Petricig, Western Canada Lottery Corporation

Christopher Buda is thankful he made it to the store in time to purchase a LOTTO 6/49 ticket. The Spruce Grove resident won \$1 million on the October 10 draw after almost missing the draw's 8:30 pm MT purchase cutoff.

"I slid into the store right be-

fore the cutoff," he said. "I thought I was going to miss this draw, so this is just incredible."

The happy winner said he was surprised when he looked up the winning numbers and saw that they matched his selections.

"I had to check my ticket a few times before it started to sink in," he said. "I checked the website a couple times and scanned my ticket at a couple stores."

"It kind of felt like time had

slowed down," he continued. "Like I was moving in slow motion—I really didn't think it could be real."

Now that the initial shock has started to wear off, Buda said he has one main plan for his windfall—to be debt-free.

"We're going to pay all of our bills and pay off our mortgage," he said. "We're really looking forward to not having a mortgage payment every month."

Buda purchased his winning LOTTO 6/49 ticket at the Shell located at 138-70 McLeod Avenue in Spruce Grove. He won his million-dollar prize on LOTTO 6/49's October 10 Guaranteed Prize draw. His winning selection was 21899417-01.

Wabamun Christmas in the Village Market & Tree Light Up

December 5, 2018
5:00pm - 10:00pm
Wabamun Jubilee Hall
Tree Light Up in Village Square at 5:00pm
Market in Jubilee Hall, 5:00pm to 8:00pm
 Over 28 Vendors this year will be Bigger & Better than ever.

Activities Include:

- **Sleigh Rides** (weather permitting) Sponsored by Wabamun FCSS.
- **Children's Crafts**
- **Cookie Decorating**
- **Concession on site**
- **A visit from Santa** (giving out candy canes)
- **Raffles** throughout the evening with all proceeds going to "Tree of Hope" Light Up Your Life Campaign, Palliative Care.

This event is sponsored by Wabamun & District Chamber of Commerce and Wabamun & Area FCSS.

NOTES FROM THE ONOWAY LEGION

Submitted by Richard Moses | Onoway Royal Canadian Legion

November 30 Dinner
 On Friday, November 30, Grandma Pat & crew will serve a full chicken dinner. It comes with mashed potatoes and chicken gravy, corn, coleslaw, and buns, with strawberry shortcake for dessert.

Countdown to 2019
 Dance to the music of DJ Jeff Mathys at the Onoway Legion's New Year's Celebration! Doors open for cocktails at 7:30 pm. with a buffet at 11 pm and midnight champagne included. Tickets are \$25 (non-refundable), available from Carol at 780-967-0607 before December 27. Get yours now!

Did You Know?
 Early bird memberships for the Onoway Legion are available until the end of November. Contact Cheryl at 780-967-4146.

ANNOUNCING THE WINNER OF MP EGLINSKI'S 2018 CHRISTMAS CARD CONTEST



Submitted by Jim Eglinski, MP – Yellowhead

OTTAWA: Jim Eglinski, Member of Parliament for Yellowhead, is pleased to announce the winner of his 3rd annual Christmas Card Design Contest.

Miss Abigail Mallory, a grade six student from St. Anthony School in Drayton Valley, designed the cover of MP Eglinski's Christmas card this year. Her artwork, entitled Woodland Christmas, depicts a winter scene of animals and a young girl putting a star on top of an evergreen tree.

Usually, Parliamentarian Christmas cards display the family of the Parliamentarian and/or an Ottawa scene. However, given that there are many talented young individuals within the Yellowhead riding, MP Eglinski prefers to take this opportunity to recognize the talent of local artists.

"I really liked this one because the poplar trees and forest animals reminded me of Yellowhead. We have so many talented young artists in our riding! Each year it has become more and more difficult to decide which one to choose," said MP Eglinski.

Miss Mallory's design will also appear on MP Eglinski's Facebook page (www.facebook.com/jimeglinski.mp), website (www.jimeglinski.ca), and in his December householder.

"Thank you to all those who participated! I really enjoyed getting to see the many different ways young constituents in our riding portray the Christmas season in each of their own ways" concluded MP Eglinski.

Congratulations Abigail!



FREE LOCAL CLASSIFIED ADS

Real Estate, Rentals, Vehicles, Pets, Jobs, Service Directory, Buy/Sell/Trade, Lawn & Garden, Garage Sales, Events, Local Places & Much More... Advertise for **FREE** Today!



Follow Us



HOJA ENTERTAINS AT OJSH



Submitted by Wanda Pederson | Onoway Junior Senior High School

On November 15th, OJSH students and staff were entertained by HOJA. HOJA is a Canadian acapella group originally based out of Saskatoon, Sask. The singers of HOJA have entertained over 900,000 students across Canada with music of every genre and from every era from the 1950s to present day. The group uses only their voices as their instruments. They also employ humour and audience participation to involve everyone in the performance. During their performance at OJSH, they got Mechanics and Phys. Ed. teacher Mr. Siemens up to participate in a country and western number!

Each member of the trio sings a variety of different voice parts. These included bass lines, lead vocals, tenor and baritone, and most impressively, instrument sounds such as guitars and trumpets, beatboxing and drum noises. There are no musical instruments and no back up tapes involved in their performances.

These young singers take pride in using their appeal with students as a way to not only entertain them but also to be a powerful positive influence in their lives. At the end of the show, the singers relate personal stories, encouraging students to believe in themselves and showing them how to achieve their dreams.

This group is a member of the Canadian School Presenters organization and their visit to OJSH was generously and graciously sponsored by Lac Ste. Anne County.

Evansburg's
MOONLIGHT MADNESS

Friday, November 30th, 2018
SHOPS OPEN UNTIL 10:00 P.M.

Home Based Business & Craft Fair
4:00P.M. until 10:00P.M.
Hosted by the Evansburg Legion. This year the Legion will welcome crafters, home-based businesses and farmers 'market vendors. Tables are only \$10.00 each, and can be booked by calling Marcy @ 780-727-0007 or the Legion (after 3:00PM) @ 780-727-3879. A concession will be available.

Photos with Santa Claus
6:00P.M. until 8:00P.M.
Angie Miko will be situated on the stage at the Legion. Photos cost \$5 & are printed on the spot!

Luminaria Night
7:30PM - 10:00PM
at Tipple Park Museum
Walk around candle-lit pathways, while Christmas music is playing in the background. Hot chocolate, kid's crafts & concession. We ask that you bring a donation to the food bank or Santa's Anonymous.

Christmas Tree Light-up
7:00P.M. in the corner of the Evansburg Bakery lot.

There are many other events to take in including hot chocolate at the Yellowhead County Fire Fighters Hall, having a free hotdog and pop at the Evansburg Drug store, visiting with the Grouch and Santa. Come on down and participate in all the many events and get some early Christmas shopping done.

CHRISTMAS COLORING CONTEST



AGE GROUPS: 3-4 YRS | 5-6 YRS | 7-9 YRS | 10+ YRS

NAME: _____ AGE: _____

PHONE: _____ TOWN: _____

Entries must be recieved by December 19, 2018.

**Mail to: Santa Clause c/o Community Voice
Box 3595 Spruce Grove, AB T7X 3A8**

NOTE TO PARENTS: Please ensure that your phone number is legible.





NEWS HIGHLIGHTS

Lac Ste. Anne County Box 219, Sangudo Alberta T0E 2A0 1.866.880.5722 www.LSAC.ca facebook.com/LSACounty

WINTER HOURS, CHRISTMAS CLOSURES FOR TRANSFER STATIONS & LANDFILL

Lac Ste. Anne County provides eight waste transfer sites and one regional landfill for usage by County residents. Please be advised that - except for the main landfill - these facilities will switch to winter hours from November 1 until March 31. For the locations and winter operation hours of these waste transfer and landfill sites,

please visit: LSAC.ca/Landfill.

Please note that the County Transfer Stations and regional landfill will be observing holiday hours between December 24 and January 1. Services may be limited or unavailable during this time.

Please be advised that the Regional Landfill will be CLOSED on the following dates:

- December 24th, 25th, 26th, 2018: closed all day
- December 31st, 2018: closed all day
- January 1st, 2019: closed all day

Additionally, please be advised that County Transfer Stations will be CLOSED on the following dates:

- Tuesday, December 25th, 2018: closed all day
- Wednesday, December 26th, 2018: closed all day
- Monday, January 1st, 2019: closed all day

On behalf of County Council, Management and Staff, we wish you a safe and happy holiday season.

COMMUNITY SERVICES IS LOOKING FOR VOLUNTEER SNOW ANGELS

Snow Angels shovel off sidewalks and small driveways

Be a good neighbour and let's help our Seniors and those who need a little extra assistance with

snow removal this winter.

If you are interested in becoming a Snow Angel volunteer or are a client looking for some assistance, please contact us today.

For more information contact us at: Taryn Monteith, Community Services Coordinator 780-785-3411 or 1-866-880-5722

Please note that this program

is dependant on volunteers. If no volunteers are found, services may not be available in all areas.

LAC STE. ANNE FOOD BANK AND TOY DRIVE

DECEMBER 1ST-14TH, 2018

It is that time of year again to help those in need!

We will be collecting non-perishable FOOD BANK DONATIONS from December 1st-14th. This year we will also be collecting NEW TOYS for kids of ALL AGES to help out the local East and West End Santa's Anonymous Groups.

Where can we donate?

- Lac Ste. Anne Administration Office

- Lac Ste. Anne East End Administration/Fire Hall

- Lac Ste. Anne Public Works Shop Boxes will be set up at each location

Top Items Needed By the Food Bank:

- Cereal, Brown Beans, Canned Veggies, Kraft Dinner, Ichiban, Diced Tomatoes, Pasta Sauce, Pasta, Peanut Butter, Juice Boxes, Canned Fruit

BUDGET SURVEY RESULTS

Throughout the month of October, ratepayers were invited to participate in a quick online survey focused on the County's 2019 budget. The survey results have been tabulated and are available for download in PDF format.

Survey Highlights

Of the 48 respondents to the survey, almost 70% were in favour of an increased investment in projects to improve internet and mobile connectivity in rural areas. Road maintenance and infrastructure were chosen by many as priorities for the coming year; and Industry and Agri-

culture were cited as economic drivers on which the County needs to focus. When asked about preferred methods of communication from the County, E-mail was the clear leader, followed closely by the County website and more traditional media like newspapers and mail inserts.

To review the complete 2019 budget survey results visit www.lzac.ca/images/News/Surveys/Budget_Survey_Results_for_website_20181108.pdf. The County thanks all participants for contributing their time and insights to the survey.

COUNTY TO HOLD IDP PUBLIC HEARING

Lac Ste. Anne County is holding a public hearing Wednesday, December 5 regarding implementation of a new Intermunicipal Development Plan (IDP). All interested parties are invited to attend and take part in the discussion.

Bylaw 24-2018

Implementation of an Intermunicipal Development Plan

Lac Ste. Anne County and Parkland County are currently working to implement a new Intermunicipal

Development Plan. This plan is aimed at guiding future growth for both municipalities, and provides a forum for intermunicipal dialogue and collaboration as development occurs in and around their shared border.

The plan boundary includes lands in both Parkland County and Lac Ste. Anne County. To review the draft plan, download IDP maps and learn more about the upcoming public hearing visit www.lzac.ca/

development/inter-municipal-development-plan/idp-public-hearing.

Come Share Your Input

WEDNESDAY, DECEMBER 5TH BEGINNING AT 10:00AM, LAC STE. ANNE COUNTY COUNCIL CHAMBERS (56521 Rge Rd 65)

If you wish to comment on the proposed Bylaw, you'll have an opportunity to do so at the December 5 public hearing. If you are unable to attend the hearing, a written sub-

mission can be made to the County. You will, however, need to ensure that your comments are received by the County prior to the date of the hearing.

Comments can be sent by email to devassistant@lsac.ca, by fax to 780.785.2985, or by mail to Box 219, Sangudo AB, T0E 2A0. All submissions will be public information. For more information, please contact the Planning and Development department at 780.785.3411.

Classified Ads - Call 962-9228

Classified Policy

CLASSIFIED RATES INCLUDE GST. 1st 20 Words: First Insertion = \$6.00; Subsequent insertion = \$3.00 each. Each additional word is 20 cents per word, per insertion. Ads must be paid in advance either by cheque, cash, Visa or Mastercard. No Refunds Allowed on Classified Ads. DEADLINE: is Thurs. 4:00 pm (Wed. 4:00 pm on long weekends). Classified ads may be called in to the COMMUNITY VOICE office at (780) 962-9228, emailed to: classifieds@com-voice.com, dropped off at Onoway Registries, or mailed with your ad and payment to: COMMUNITY VOICE, BAG 3595, SPRUCE GROVE, AB TX 3A8. Ads may also be placed on the web at www.com-voice.com/classified.htm

Hall Rentals

- Alberta Beach Agplex, Susan 780-996-2960.
- Alberta Beach & District Seniors 50+ Club. Air conditioning! Space Available! Jeanne 780-913-4494. Chere Myers 780-924-3242 or cell 780-951-3242 call/text.
- Anseldo Community Hall, Phone 780-786-4280
- Bright Bank Hall, 780-968-6813
- Cherhill Legion, Mary 780-785-3578.
- Cherhill Community Assoc. Hall, Debra 780-785-2907
- Darwell Hall, 780-721-2690
- Darwell Seniors, Phone Debra 780-785-2907
- Goose Lake Hall, Contact Deanna (780) 584-3738
- Gunn Hall (G.A.R.S.) 780-951-9452
- Hathersage Community Centre, Noreen at 786-2946
- Lake Isle Community Hall, PH: 780-892-3121 or Email: lakeislehall@mail.com
- Magnolia Hall, 727-2015
- Manley Goodwill Community Hall, 963-9165 or 916-0146
- Mayerthorpe Diamond Centre, Charlotte at 786-4659
- Mayerthorpe Legion, 786-2470.
- Onoway Community Hall, 967-4749.
- Onoway Heritage Center - Gym/Classrooms, 967-1015
- Onoway Legion, 967-4980
- Park Court Community Hall, 727-4476
- Parkland Village Community Centre, 780-298-9155 @PVCCentre
- Ravine Community Hall, 325-2240
- Rich Valley Community Hall, 967-5710 or 967-3696
- Rosenthal Community Hall, 963-7984

Sandy Beach Rec Hall, 967-2873
 Sangudo Community Hall, 785-2904 or 305-4616
 Stettin Nakumun Comm. Hall, 967-9198

Employment Opportunities

Gun Esso - Now Hiring Part Time. Experienced workers preferred. Please bring resume to store. (6) 27-11

Services

Best-Cistern-Septic-Solutions. Cistern and Septic Inspection, Installation and Repair! New Installs Available. Plastic, metal, fiberglass or concrete. We clean them all! Your cistern will be vacuumed, cleaned and sanitized with our high pressure, hot wash, sanitizing system. Reasonable Rates, Call

780-668-4306 (7) 16-10 OG

Nasty's Tree Removal. Stump Grinding, Pruning & Firewood for sale. Licensed & insured. Roger @ 780-720-2207 (13) 06-11 OG

WANTED: Standing Timber. Are you looking to cut your woodlot before pine beetles or forest fires destroy it? Top dollar paid. Call now! Paul 780-706-1470 (12) 27-11



WHAT IS CBD?

A Health and Beauty Breakthrough!

Cannabidiol, CBD, is one of over 80 active cannabinoid chemicals in the hemp plant. CBD, unlike, THC, does not produce euphoria or intoxication. CBD targets specific receptors in the cells of your brain & body. There are many physical and mental benefits to using CBD products for both treatment and prevention of numerous ailments.



Therapeutic Uses For Pure Hemp CBD

Supports healthy blood sugar levels, promotes healthy energy levels, relieves anxiety, aids in digestion, supports optimal immune function and the regeneration of healthy cells, and promotes a sense of serenity and overall well-being.

KEY BENEFITS

- PAIN RELIEF:** Known to reduce vomiting & nausea; suppress muscle spasms; reduce seizures & convulsions.
- PROMOTES HEALTH:** Helps to promote relaxation and overall health.
- WELL-BEING:** Helps to relieve anxiety, aid in digestion, supports optimal immune function and the regeneration of healthy cells.

Anti-Aging Uses For Pure Hemp CBD

Promotes more youthful skin, provides hydration, enhances radiance, lessens age lines as well as the appearance of dark spots.



CBD PET PRODUCTS

PET CHEW TREATS



KEY BENEFITS
SYNERGISTIC BENEFITS: Can be used in conjunction with regular medications with no side effects.
NO SIDE EFFECTS: Does not damage the liver, kidney or GI Tract like OTC medication.
DIETARY SUPPLEMENT: Can be administered daily as part of your pet's diet.



ORAL SPRAYS & DROPS



KEY BENEFITS
MANAGES PAIN: Helps to treat inflammation, arthritis and joint pain.
TREATS DIGESTIONAL ISSUES: Helps with loss of appetite, nausea, IBS and gastrointestinal swelling.
GENERAL HEALTH: Helps to manage mood, anxiety and general joint pain. For healthy, happy pets.
CONVENIENT: Can be sprayed into pet's mouth or on food.

For more information, Call (780) 907-8642
www.Elaine1.myctfocbd.com

Classified Ads - Call 962-9228

Dog Caretaker

Alberta Beach & Surrounding Areas, thinking of a Summer Getaway? Worried about leaving your dog in a kennel? Don't worry anymore, you can leave your pet with me! There is a wrap around deck in court yard! I will provide tender loving care, with walks every

day. Best of all, I'm cheaper than a kennel! Daily drop in's or overnight stays welcome. If interested call 780-920-4166 (4) 27-11 OG

Computers

FREE COMPUTER REPAIRS for Single Parents - Low Income. Repairs NOT over \$50 for Public. Good Refurbished Laptop \$100.

Leave Message, 780-892-4993 (15) 28-08

Firewood

Poplar Firewood, cut, dry, 4x4x4 stacks \$150 each. Barrels with 1 barrel full of kindling wood, clip and save, near Gunn. 780-967-2779 (2) 27-11

FIREWOOD FOR SALE - Birch, Tamarack & Spruce Pine mix. 4x4x8 cords and 1/2 cords. Quality seasoned wood, Delivery or Pick up. Woodchuck Firewood, 780-288-7247 (28) 30-10 OG

For Sale

Set of 4 Uniroyal Ice and Snow Tires on winter rims, 215/60 R16-95s, Used one winter off a 2014 Chevy Cruze, Like new. \$425. Call 780-289-3232 (2) 27-11

Birch, Spruce/Pine, Tamarack

& Poplar - 4x4x8 cord. Delivery or pick up at wood yard. Call 780-967-5835 (14) 20-11

For Rent

Available Immediately: Large 2 Bedroom in 12 Unit Apartment building in Entwistle. Includes Heat, Water & Parking. Rent \$765/month + DD \$300. Please Call Ivka 780-807-1300 or email: jakovljevicivka@yahoo.ca (4) 13-11 OG

SUITES FOR RENT - Onway 1 and 2 Bedroom Suites. Clean, quiet & secure building. Reasonable rent. Call 780-967-2055 or 780-504-2880. (10) 27-11

3 Bedroom, bathroom and half, two story. No basement. No Smoking, No Pets, Newly Renovated. \$1200, DD same, Utilities included. 11km West of Onway, Call 780-498-0705 (2) 27-11



SERENITY FUNERAL SERVICE

NEW FACILITY
Chapel & Reception Centre

600 Calahoo Road Spruce Grove, AB
780-962-2749 www.serenity.ca

SERENITY FAMILY SERVICE SOCIETY - YOUR NOT-FOR-PROFIT SOCIETY

SUDOKU OF THE WEEK

Fun By The Numbers

Here's How It Works: Sudoku puzzles are formatted as a 9x9 grid, broken down into nine 3x3 boxes. To solve a sudoku, the numbers 1 through 9 must fill each row, column and box. Each number can appear only once in each row, column and box. You can figure out the order in which the numbers will appear by using the numeric clues already provided in the boxes. The more numbers you name, the easier it gets to solve the puzzle!

ANSWER:

2	5	3	4	1	9	7	8	6
6	1	8	3	2	7	4	5	9
7	9	4	5	8	6	2	3	1
9	3	2	6	7	5	1	4	8
5	8	6	1	4	2	3	9	7
4	7	1	8	9	3	5	6	2
3	2	5	7	6	8	9	1	4
1	6	7	9	3	4	8	2	5
8	4	9	2	5	1	6	7	3

			4			7		6
		8	3	2		4		
7		4			6	2		1
9		2	6					
5						3	9	7
4		1			3	5		
3	2	5	7					
1		7	9					5
			2			6		

Like puzzles? Then you'll love sudoku. This mind-bending puzzle will have you hooked from the moment you square off, so sharpen your pencil and put your sudoku savvy to the test!



COMMUNITY EVENTS 2018

If you are a LICENSED, NON-PROFIT ORGANIZATION, you are welcome to submit your announcement FREE of charge, space permitting. You are required to submit your non-profit number. Call (780) 962-9229. Please note that all submitted event listings must be limited to 200 characters or less (including spaces). DEADLINE: 12 noon Friday prior to publication (Thursdays on long weekends).

NOV 30 - 4TH ANNUAL CHRISTMAS BAKE SALE, 10am-2pm at Peace Evangelical Lutheran Church (303 Church Rd, Spruce Grove), Main Level. Come & get your favourite goodies for the Christmas Season!

DEC 1 - SANGUDO COMMUNITY HALL JAMBOREE starts at 7pm. \$12/person (Entertainers free). Late lunch will be served. Everyone is welcome. Info call 785-4105 or 305-5088.

DEC 2 - CHRISTMAS MARKET at the Darwell senior hall, 10am-3pm. Info/tables, please call Deb at 587-785-1175.

DEC 4 - ONOWAY GOLDEN CLUB CHRISTMAS DINNER at the Onoway Community Hall at 5pm. To reserve tickets, please call Elsie at 780-967-2345 by Friday Nov. 30th. Partially funded by FCSS.

FARMERS MARKETS

BARRHEAD: Open Saturdays, May - Dec. 10AM - 1PM. Sherry 780-674-6802

ONOWAY FARMERS' MARKET: Thursdays, 5-8pm at Onoway Community Hall. Starts May 1st. 780-667-6327 or onowayfarmersmarket@gmail.com.

SPRUCE GROVE: at the Elevator, Sat 9:30-1:30PM, tables (780)240-5821

STONY PLAIN: Sat, 9AM-1PM, Downtown, Stony Plain. Nancy 780-962-3993.

WESTLOCK: 11-3PM, Bargain Shop Mall, Dave 780-954-2437

BINGO

BARRHEAD ROYAL CANADIAN LEGION: Doors 5:30pm, games start 7PM. Games: #7, Jack Pot, Mini Jack Pot, Loonie #1 & #2.

CHERRILL BINGO: Tuesdays at Cherrill Community Association. Doors @ 6:30PM, Games @ 7:30PM.

CHERRILL LEGION: First Sunday of Month. Doors Open 12:00PM

MAYERTHORPE ROYAL CANADIAN LEGION: Tues, doors 6:30pm, bingo 7:30PM

RICH VALLEY COMMUNITY HALL BINGO: 7:30PM. Loonie Pots. Next bingos November 28, December 12.

STONY PLAIN SENIOR'S DROP-IN CENTRE, public bingo every Tues, 7PM. All ages welcome. Phone (780) 963-6685

MEAT DRAWS

ALBERTA BEACH MUSEUM: Every Sat 4PM, Alberta Beach Hotel

ALBERTA BEACH: Lac Ste Anne Community Choir & Onoway Minor Hockey Meat Draw - Sundays, 4:00PM at Jungle's Bar & Grill.

BARRHEAD ROYAL CANADIAN LEGION: Fridays 6:00PM. Queen Of Hearts draw & 50/50. **DARWELL:** by Alberta Beach & District Lions Club, 4:00PM bi-weekly, Darwell Lounge & Restaurant

ONOWAY ROYAL CANADIAN LEGION: Fridays, Ph. 780-967-5361

STONY PLAIN ROYAL CANADIAN LEGION BR# 256: Saturdays @ 3:00PM. Meat Draw & 50/50. **WHITECOURT LEGION:** Saturdays 4:00PM. Located downtown behind the CIBC.

MEALS ON WHEELS

ALBERTA BEACH & AREA: Diane 780-924-2348. **DARWELL & AREA:** Tracey, 780-915-2621.

ONOWAY & DIST: Call 967-2338.

JAMBOREES

SANGUDO: Sangudo Community Hall, 1st Sat of month 7PM. 785-4105 or 305-5088. *October - May.

SPRUCE GROVE: at Sandhills Community Hall, 3rd Sunday, 1-5PM. Info Florence 780-962-3104 Margaret 780-962-3051 *September - June.

STONY PLAIN: Stony Plain Seniors Drop In Center, 5018 - 51 Ave. Every 2nd & 4th Thurs of month, 7PM, \$2. PH: 587-989-7214 or 963-7920.

THE ABBOTSFIELD VARIETY MUSIC JAM: at Abbotsfield Rec Centre (3006 119 Ave.

Edmonton) 3rd Friday of month, 7PM. PH: 780-918-8545, Adm: Donations Only.

TOPS (Take Off Pounds Sensibly)

ALBERTA BEACH: Tuesdays, Weigh-in 6:00-6:45PM. Meeting 7:00PM. Alberta Beach Lutheran Church, Hwy 633. 967-5009.

EDMONTON: Thurs 8:30-10AM at Annex of Grace United Church (6215-104 Ave). \$7/month **SANGUDO:** Tues, United Church, 6:00PM. Sharon 785-2095 or Marlene 786-4646.

STONY PLAIN: Thurs evening, Stony Plain United Church. Susan (780) 968-0869 **SPRUCE GROVE:** Wed 8:45AM at Anglican Church, 131 Church Rd. Christiane 960-1109

YOUR COMMUNITY

ALCOHOLICS ANONYMOUS IF Drinking is a Problem, call 780-236-1043

ONOWAY ROYAL CANADIAN LEGION: Open Tuesdays 7:00PM to 10:00PM for "Games" (pool, shuffleboard, darts, cards, etc.) Fridays 3:00 PM - 10:00PM. Friday's Family Friendly Dinner, 5:30PM (open to the public).

PROBLEMS WITH DRUG OR ALCOHOL ADDICTION in a loved one? Contact Drug Rehab Resource free confidential consultation. 1-866-649-1594 or www.drugrehabresource.net.

SPRUCE GROVE ELEVATOR TOURS, Tues-Sat, 9:00-3:00PM. Info 960-4600.

UNITED CHURCH THRIFT SHOP: North end Curling Rink, Onoway. Open Fri & Sat, 10AM-4PM.

VOLUNTEER TUTOR ADULT LITERACY PROGRAM: Need assistance with reading/writing, English language (ESL) or Basic Computer skills? Free 1-on-1 tutoring! Carla Burkell, 780-554-2940, email: literacy@lsac.ca **WATER SAMPLE DROP OFF:** Tues Onoway Aspen Health Services. Drop off 1:00-2:30PM.

SOCIAL EVENTS

ALBERTA BEACH & DISTRICT ACTIVE 50+ CLUB ACTIVITIES: Mon 7PM Darts; Tues 7:30PM Crib; Wed 1PM Bridge. Thurs 7:30PM Euchre; Mon, Wed, Fri 8:30AM Aerobics/Fitness. Everyone Welcome.

BADMINTON: Wed, 7-10PM, Barrhead High School Gym. Jamie (780)674-8974 or (780)674-6974.

COME PLAY CRIB: Fridays, 7:30PM at Darwell Seniors Hall; lite lunch is served. All ages!

COUNTRY QUILTERS in Stony Plain house a "Sew in Tuesday", 2nd Tuesday of every month, from 10-3PM. Drop in \$5/member, \$6/non-members. Contact Cindy 780-963-7170.

JR. SCRAPBOOKING Wed 4-6PM. Pre-register by Tues evg. Mayerthorpe Public Library www.mayerthorpepubliclibrary.ab.ca (780)786-2404

ONOWAY GOLDEN CLUB: Cards Tuesdays, 1PM. 1st Tuesday: Pot Luck Supper. 5023 49 Ave. 780-967-3436.

ONOWAY HAVE FUN & GET FIT! Exercise Class with Video La Blast. Fridays 10:30AM at the Drop in Centre, 5023-49 Ave. PH: 780-967-2056.

PANCAKE/BREAKFAST SOCIAL: 3rd Sunday 9:00-11:30AM, Parkland Village Community

Centre. *except June, July, August

RIVER TALKERS TOAST MASTERS CLUB, Thursdays, 7-9PM. 32 Whitecourt Ave. Hilltop Community Church. Info Lorainne 286-5040.

SANGUDO ART GROUP: Wednesdays 9AM-12PM at Sangudo Community School. Info call 780-785-2112.

SPIRITUAL LIVING STONY PLAIN INSPIRATIONAL CINEMA & DISCUSSIONS at PERC Building (5413-51 St). 2nd Friday of month at 7PM. Popcorn provided, donations appreciated. Contact 780-940-3032

SPIRITUAL LIVING STONY PLAIN GATHERING at PERC Building (5413-51 St). Every 2nd & 4th Sunday of month. Meditation 10AM, inspirational sharing 10:30AM. PH 780-940-3032

WRITERS PROGRAM: Mayerthorpe Library, 1st & 3rd Wednesday at 1PM.

MEETINGS

1ST ONOWAY SCOUTS: Registration, Mondays 6:30-8PM. Beavers 5-7; Cubs 8-11; Scouts 12-14. Kim 967-4339.

299 ROYAL CANADIAN SEA CADETS CORPS MACKENZIE: Stony Plain Comm Center, Wed 6:30PM. Youths 12-18, 963-0843

3053 (LAC STE ANNE) ROYAL CANADIAN ARMY CADET CORPS, Onoway Historical Centre, Wed. 6:45-9:30PM. FREE program for youths 12+. Contact 3053army@cadets.gc.ca or 780-886-1586

526 BARRHEAD AIR CADETS, Wed 6:30-9:30PM, High School. Ages 12-18. 780-305-7233 **755 PARKLAND AIR CADETS** Thurs, 6:30-9:30PM Muir Lake School, ages 12-18. Info call 405-6585 or www.755aircadets.com.

AA - MAYERTHORPE, Kingsmen Hall, Thurs 8PM. (780) 786-2604 or (780) 786-1927

AA - SANGUDO GOLDEN CLUB, Tues 8PM call 786-4402/785-9214/785-3599

AL-ANON: Tues 7PM, Onoway Anglican Church (4809-50 St.) 780-967-3356 or 1-800-4AL-ANON. **AL-ANON** Wednesdays, 8PM. Spruce Grove United Church, 1A Fieldstone Dr. 780-962-5205 **ALBERTA 55 PLUS:** Villeneuve Hall at 10AM. Meetings on 2nd Tues of month. Info: Donna 780-962-5933

ALBERTA BEACH & DIST LIONS CLUB meets every 4th Tues 7:00PM, Alberta Beach Agplex. **ALBERTA BEACH AG SOCIETY** meets on the 4th Thurs of month, 7:00PM, Alberta Beach Agplex.

ALBERTA BEACH MUSEUM meets on the 2nd Wed, 7:00PM at Heritage House 924-3167.

BARRHEAD ROYAL CANADIAN LEGION, meeting every 2nd Thurs, 7PM at the Legion Hall.

CHERRILL COMMUNITY ASSOC. Monthly Meeting 1st Wednesday, 8PM at the Hall. 785-2825 *Except Jan, July, Aug, Sept.

CHERRILL SILVER & GOLD SENIORS CLUB Regular Meetings 1st Tuesday of month, Cherrill Seniors Hall. Call Rosamy 780-785-2625

CHERISHED MEMORIES, PARENTS & TOTS Wed & Fri, 10-12PM, Alberta Beach Agplex. Info call 780-902-4879 or 780-999-7622. *Sept-June.

Citizens Helping In Life's Defence (C.H.I.L.D.)

Join our Pro-Life meetings for the Spruce Grove/Stony Plain area once a month. Call Chris 780-963-6997.

DARWELL & DISTRICT AG SOCIETY MEETINGS, 8:00PM, 1st Monday, Darwell **DDRA MEETING,** 7:00PM, 2nd Mon, Darwell 892-3099. *except Jul/Aug/Dec

GIRL GUIDES, BROWNIES & SPARKS Thurs, 6:30PM, Onoway Heritage Centre. Info Laura, 780-967-1004.

GREENCOURT COMMUNITY ASSOCIATION meet 2nd Tuesday, monthly at 7:30PM at the hall. Info W. Jager (780) 786-4648.

KINETTE CLUB OF MAYERTHORPE, 7:30PM at Kinsmen Hall, 1st Tues of month. Contact: mayerthorpekinettes@gmail.com, Tracy: 780-786-0161.

LAC STE ANNE ARMY CADETS, Thurs, 6:30-9:30PM at Onoway Museum (780) 967-0443

LAC STE. ANNE & LAKE ISLE WATER QUALITY MANAGEMENT SOCIETY: 3rd Fri, 7PM, Alberta Beach Council Chambers.

LAKE ISLE HALL COMMUNITY HALL BOARD MEETINGS: 3rd Wed of each month @ 7:30PM at the Lake Isle Hall (Hwy 633 and RR55) Ph # 780-892-3121

MAYERTHORPE HOSPITAL AUXILIARY ASSOC, every 4th Mon, 5PM in Hospital Basement Education Room.

MEN FOR SOBRIETY: Wednesdays at 7:30PM, FCSS Building (#105, 505 Queen Street, Spruce Grove). Mike (780) 965-9991.

MS SOCIETY PARKLAND COMMUNITY SUPPORT GROUP Are you diagnosed with MS and have questions? Last Tues of month, 7-9PM, Westview Health Centre. Cassy 780-471-3034 *Sept-June

NA MEETING, Tuesdays 7:00PM Poplar Valley Church (780)514-6011

ONOWAY & DIST HERITAGE SOCIETY: 2nd Wed of each month, 7:30PM, Chateau Lac Ste Anne

ONOWAY & DISTRICT HISTORICAL GUILD: 3rd Wed 7PM, Onoway Museum. 967-5263 or 967-2452.

ONOWAY & DISTRICT QUILT GUILD: Every 2nd Thurs, 10AM-4PM, @ the Lac Ste. Anne Chateau Activity Room. Info, Ph Dixie @ 780 967 0528.

ONOWAY ROYAL CANADIAN LEGION General Meetings, 1st Mon, 7PM. *Sept-June

RICH VALLEY AG SOCIETY BOARD MEETINGS: at the Agriplex on the 2nd Wed of the month. 7:00PM.

RIVER TALKERS TOASTMASTERS CLUB Build confidence, speaking, leadership & listening skills. Thursdays 7-9PM at Eagle River Casino. Call Melinda Tarcan, (780)778-1180.

SANGUDO PAINTING GROUP: Every Wed, 9AM-12PM at Sangudo Community School. Info, call 780-785-2112.

SUNDOWNERS TOASTMASTER CLUB: Mon (excl. Holidays) 7:30-9:30PM. St. Matthew's Church, Spruce Grove. Judy 960-5258

WEIGHT WATCHERS Alberta Beach Agriplex - Mondays, weigh in 6:30PM. Meeting at 7PM.

Church Directory

<p>Rich Valley Community Church</p> <p>Sunday School 10:00a.m.</p> <p>Worship Service 11:00a.m.</p>	<p>Catholic Parish of Lac Ste. Anne</p> <p>Sunday 10:00a.m.</p>		<p>Mayerthorpe Baptist Church</p> <p>Worship Service Sunday 10:30a.m.</p> <p>Children's Church 10:30a.m.</p> <p>4606-54 St. Mayerthorpe (780) 786-2677</p>	<p>Alberta Beach Alliance Church</p> <p>Sunday Worship Service & Kid's Church 11:00a.m.</p> <p>Sunday School 10:00a.m.</p> <p>(780) 924-3282</p>	<p>St. John's Anglican Church</p> <p>Onoway</p> <p>Sunday Service 10:00a.m.</p> <p>Everyone Welcome</p>
<p>St. John's Lutheran Church Alberta Beach</p> <p>Sunday Service 11:00a.m.</p> <p>Sunday School</p>	<p>Zion United Church</p> <p>Sunday Service 10:00a.m.</p> <p>Sunday School</p> <p>Serving Alberta Beach, Wabamun, Darricell & Lake Isle, Onoway & Area (780) 924-3351</p>	<p>Sangudo United Church</p> <p>Worship Service 3rd Sunday 11:00a.m.</p> <p>4907-50 Ave. Sangudo, AR</p>	<p>Infuzed Ministries</p> <p>Worship Service Sunday 3:30p.m.</p> <p>in Alexis Community Hall</p> <p>Pastor Daniel Jackson (780) 719-0240</p>	<p>Cherhill Community Church</p> <p>Sunday School 10:00a.m. - 11:00a.m.</p> <p>Worship Service Sunday 11:00a.m.</p>	<p>St. Michael Lutheran Church</p> <p>Sunday Services 1st & 3rd Sunday at 2:00p.m.</p> <p>Pastor Riek Chappell (780) 674-2618</p> <p>Mystery Lake</p>
<p>Trinity Lutheran Church (LC-C) The Church of the Lutheran Hour - Rockyfort Bridge</p> <p>Pastor Dan Hansard Church (780) 778-2035</p> <p>Sunday Worship 9:00a.m.</p> <p>Senior's Service & Cottage Bible Study - Phone for locations</p>	<p>Mayerthorpe Pentecostal Assembly P.A.O.C. Rev. Arnold Lothoiz</p> <p>Sunday 10:30a.m. Morning Service Tuesday 7:30p.m. Ministry Training (780) 786-2141</p>		<p>Onoway Baptist Church</p> <p>Sunday Service 10:30a.m.</p> <p>Pastor Greg Garbutt (780) 967-2266</p>	<p>Roman Catholic Church St. Agnes' Parish, Mayerthorpe</p> <p>Sunday 9:00a.m.</p> <p>St. Elizabeth Parish, Evansburg</p> <p>Saturday 7:00p.m. (780) 786-2032</p>	<p>Calahoo Alliance Church</p> <p>Family Worship Service Sunday 10:00a.m.</p> <p>For Info Call Jerry (780) 974-7734</p>

SERVICE DIRECTORY

Lanman Landscapes

YOUR ONE STOP FOR ALL TYPES OF LANDSCAPING

Dangerous Tree Removal Yard Cleanup Full Landscaping Service

Experienced Bobcat Work

(780) 977-6586

2Bros

Custom Contracting Ltd.

Custom Framing • Concrete Floors • Shingling
Siding Soffit Fascia • Styrofoam Block System

Jeff 780-717-0520

CPR St. Albert
Saving Your Mobile Life™

Cell Phone Repair

We Can Fix That In
90 Minutes

iPhones, iPods, iPads, Tablets, Computers - Apple, Samsung, Blackberry, LG, Sony and MORE

Lifetime Warranty Against Defects In Our Screens
Now over 480 Locations

#13 - 11 Bellerose Drive (Next to Grandis Bakery) 780-460-0277

AC Purewater
Hauling Services LTD

Cell # (780) 914-9002

We fill ... HOT TUBS
POOLS CISTERNS

Health Board Approved (city water)
Serving the counties
West of Edmonton

Community VOICE

THIS SPACE IS
RESERVED FOR YOU!

BRO-BUILT
Homes & Contracting Ltd

"We Pride Ourselves In Turning Handshakes Into Hugs"

www.brobuilthomes.com
Testimonials
Phone 780-940-6415

SERVICE DIRECTORY



THE HAY
TRUCKING & CONSTRUCTION
ONWAY, AB

COR Certified

- Oilfield
- Road Building
- Basements
- Dugouts
- Sand & Gravel

haytrucking@xplomet.ca
www.haytandc.com
Office: 967-5849 Cell: 818-5849



MARK MARTIN PFEIFFER
MASTER BRICKLAYER/MASON

Cell: 780-242-3308
Email: pfeiffer.mark@hotmail.com

- Brickwork • Stonework
- Rockwork • Parging
- Concrete Block Work
- Tile Work (all kinds)



ALL AROUND FENCING RENTALS

Fence Panels • Barricades
Installation by Collin Toilet Rentals



Whitcourt, AB
780.706.7978



Super Sucker
Vacuum Services
Residential & Commercial

Trevor Gardner
Owner/Operator
Septic Pumping Service

RR 1, Site 1, Comp 261 Onway, AB T0E 1Y0
Office: (780) 967-5552
supersucker@telus.net



780-660-3521

Karl's Bobcat Service

Gunn Alberta

R & S TOWING

FREE REMOVAL OF UNWANTED VEHICLES

MasterCard **967-2492** VISA



Tile Setting
Ceramic & Natural Slate

Kitchen & Bath - Backsplash & Surrounds
Fireplace Floors

"Serving Lac Ste. Anne and West Central Alberta Areas for over 25 years"

Thorsen Industries Call Christian @ 403 728-3805

H & E UPHOLSTERY
For all your upholstery needs

Convertible tops for cars and boats, custom car and boat interiors, 5th wheel trailer skirts, boat tarps, ATV seats, furniture, kitchen chairs, heavy equipment seats.



www.h-and-e.ca 4-485 South Ave.
For more information contact: Spruce Grove
info@h-and-e.ca (780) 962-3048

DONALD N. GREENWAY
Chartered Accountant

Suite 205 Sunrise Professional Building
215 McLeod Avenue
Spruce Grove, AB
(Bus.) **962-6366**
(Fax) **962-3990**

ZEE BEST RENOVATIONS
Your Complete Line of Renovation Needs:

- Bathroom
- Basements
- Plumbing
- Tileworks
- Drywall & Taping
- Decks & Fencing
- Roofing
- Siding

FREE ESTIMATES
26 YEARS EXPERIENCE
INSURED | GREAT RATES

JOE LAWRENCE
MANAGER

BUS: 780-967-3898
CELL: 780-915-3348
FAX: 780-967-3798



THE MOST COMPLETE
NUTRITIONAL SPRAYS ON THE PLANET

ORDER TODAY!
(780) 907-8642

www.Elaine1.com



PURE FULL SPECTRUM CBD HEMP OIL

KEY BENEFITS:

- High Absorption Sublingual
- Improves Overall Health
- Helps Relieve Pain
- Delivery System
- Inhibits Cell Growth in Tumors

CTFO
Changing the Future Outcome
FOR PEOPLE & PETS

(780) 907-8642



PEMBINA CONCRETE PRODUCTS LTD.

Manufacturers of
ONE PIECE SEPTIC & HOLDING TANKS

* Water Cisterns * Field Systems * Pumps and Accessories * Sumps



DELIVERED TO YOUR SITE
1-800-661-3047
780-727-2702
PembinaConcrete.com

New Line of Concrete Statues, Fountains and Garden Ornaments.

BOX 123, Entwistle, T0E 0S0

SERVICE DIRECTORY



PaddlePlastics Ltd.
Mayerthorpe, AB

Box 67
Mayerthorpe, AB T0E 1N0

Ph: (780) **786-4408**
Fax: (780) 786-4466



Mo-Bil WASH SERVICES Ltd.

- Steam • Hot & Cold High Pressure Wash • Sewer Thaw & Flush
- Residential • Commercial - Oilfield

24 HOUR SERVICE
Onway Call (780) 991-9466

RESIDENTIAL CLEANING SERVICES



Call Today for your FREE Quote!
(780) 264-7740

SERVING SPRUCE GROVE AND STONY PLAIN ONLY



Blakeman Drilling Ltd.

Waterwell Drilling & Servicing
Pumps & Pressure Systems

SERVING LAC STE. ANNE & WEST PARKLAND FOR OVER 25 YEARS

Joe (780) 924-3024



"We are a family orientated company that pride ourselves on SAFETY and EFFICIENCY"

CHRIS & LISA VANHILL
OWNER/OPERATOR

Site Clearing, Grading, Road Building, Brushing, Acreage Development, Dugouts, etc.

780-619-3236
vanhillcontracting@gmail.com Onway, AB

SANGUDO VETERINARY CLINIC

Box 581, 4916 - 52 Ave. Sangudo, AB. T0E 2A0

Dr. Ralf Sanders DVM

Ph: 780-785-2200
Fax: 780-785-2228
sangudovet@gmail.com

24 HOUR EMERGENCY SERVICE



THIS SPACE IS RESERVED FOR YOU!



- Road Building • Gravel • Sand • Dugouts
- Black Dirt • Clearing

No Job too small. We do them all!

Harvey cell. 780-445-9010 ph. 780-892-3532
Box 145, Darwell, AB. T0E 0L0

Collin Toilet Rentals & Service

Your Portable Toilet Supplier for:

- Construction
- Commercial
- Oilfield
- Special Events



Whitecourt Dispatch 780.778.2448



JAVORSKY DITCHING
Onway, AB

Phone: (780) 967-5486
Cell: (780) 906-7469
Fax: (780) 967-4961

Dennis Javorsky - Owner / Operator

For All Your Excavating Needs
Sand & Gravel Hauling • General Excavating
Septic Tanks & Cisterns • Site Prep & Clean Up
• Install & Repair of Water, Sewer, Power & Telephone Lines

ROY SHERWOOD
Master Electrician

Ph: 780-968-1425
Call: 780-908-2287
Fax: 780-968-2211

Email: suretechroy@gmail.com

2-53220 Rge Rd 21
Parkland County, AB
T7Y 0C5

SURETECH ELECTRIC LTD.

Control & Automation
Commissioning
Solar Sales & Service

Industrial . Commercial . Residential



VILLAGE GLASS & MIRROR LTD.

- AUTO
- RESIDENTIAL
- COMMERCIAL GLASS & MIRROR PRODUCTS



5027 - 50 Avenue • Phone: 967-2127
PO Box 609, Onway, AB T0E 1V0

GROVE MACHINE & WELDING

Office: (780) 962-1772 Cell: (780) 231-5405

You have an idea, we'll design it, build it and test it

- Fasteners • Welding • Fabrication • Repairs
- Mobile Welding • Plasma Cutting • Machining

35 South Avenue Spruce Grove, AB T7X 1B3
E-Mail: jim.reynar@grovemachinewelding.com
sales@grovemachinewelding.com



RAINBOW LIQUIDATORS & AUCTIONS

Farm Sales, Equipment Sales, Estate Sales, Storage War Auctions
BOOK YOUR SALE WITH US TODAY!
Serving the Community for 40 years

Ph: (780) 968-1000
Stony Plain, AB 1-866-968-1001
www.rainbowauctions.ca

SERVICE DIRECTORY

Chico's
Vacuum Service Ltd. 

**SEPTIC SERVICES
RESIDENTIAL & COMMERCIAL**

Dave Dornbusch - Kathleen Fedorek

Box 130 PH: 780-924-2435
Alberta Beach, AB T0E 0A0 1-877-226-5008

Friendly Reliable Service

SMOOLE

- Construction & Septic Installation
- Environmental Wastewater Disposal
- Site Design & Evaluation
- Power, Water & Basement Excavation
- Trackhoe, Backhoe, Bobcat & Dump Truck

For All Your Excavation Needs 

Call Dan 780-991-4484 Reid 780-909-0173

Jack's Auto Body
& 24 HR Towing 

**SPECIALIZING IN COLLISION REPAIR
GUARANTEED WORK • INSURANCE CLAIMS**

CAA  BOX 9 SITE 306 RR3, ONOWAY, AB T0E 1V0 
(780) 967-5850

OUR PLEDGE IS QUALITY

ATB Financial[™]

ALBERTA BEACH AGENCY
4824 - 50 Ave, Alberta Beach
Ph/Fax: (780) 924-2211

Mon to Thurs 10:00AM - 4:00PM
Friday 10:00AM - 5:00PM

Heidi Letendre

**Whole Heart
Massage Therapy**

- Swedish Massage
- Relaxation Massage
- Deep Tissue Massage
- Kinesio Taping

(780) 699-4667
Jennilee Reber
REGISTERED MASSAGE THERAPIST
DIRECT BILLING TO INSURANCE
wholeheartmassage@hotmail.com
54013 Range Road 30 #10
Diamond Country Estates
Lac Ste. Anne County

**CUSTOM CORRAL
CLEANING &
SUPPLIES**
Onoway, AB 

Call Gene 780-405-2355
or Dale 780-717-9004
email: grasslandcorral@live.ca

**SEPTIC FIELD DESIGN
AND INSTALLATION**

CERTIFIED INSTALLER

Installation of Water Cisterns & Sewage Tanks
Trenching Water Gas and Power
Mini Hoe and Full Size Hoes
Basement Excavation 

Call Gene at (780) 405-2355

Community VOICE
Finding You and Your Community's Attention

**THIS SPACE IS
RESERVED
FOR YOU!**

**MASTER
PLUMBER** 

36 YEARS EXPERIENCE
780-655-8402


PLUMBING & HEATING SERVICES
PRICE BY THE JOB NOT THE HOUR!

Furnace and Air Conditioning Rebate Special

 WCB  VISA 

**SUMMERS
DRILLING** ^{INC.}

Water well drilling and service
Family owned Business Serving Alberta since 1917



Tired of hauling water?
We can install a water well with a permanent water supply for as little as \$150/month OAC

Never run out of water again!

5 year workmanship warranty

3 Convenient ways to pay

- Visa
- Mastercard
- We now offer full financing

Stop in at our office 4405 - 50 Street, Stony Plain
780-963-1282
admin@summersdrilling.com

GRANDE TIRE

5115 LAC STE. ANNE TRAIL N. ONOWAY, AB T0E 1V0

**Full Mechanical Services
Tire Sales & Repairs**

**BUS: (780) 967-3432
FAX: (780) 967-4816
contectire@xplomet.com**

 LICENSED

Pm Park Memorial ^{Ltd.}
Funeral Home & Crematorium

Fran Marion
Licensed Funeral Director

Mayerthorpe: 780-786-2533
Whitcourt: 780-779-2533

Serving Mayerthorpe, Whitcourt and area

Edmonton | Lamont | Mayerthorpe | Smoky Lake | Vegreville



TRUIS & **ONOWAY
REGISTRIES**
INSURANCE 

Box 390, Onoway, Alberta T0E 1V0
Tel: 967-5270 Fax: 967-4303

OPEN 9-5 MONDAY - FRIDAY
FIRST & LAST SATURDAY OF EACH
MONTH 9-12* *excluding long weekends
Registries Closed from 12:00 pm - 1:00 pm

ALL GENERAL REGISTRY SERVICES

Home - Auto - Farm
- Life and Business

Very Competitive
Rates & Convenient
Payment Plans.



Clients first...Service Always!

PREVAIL

CELLULAR HOMEOSTASIS FORMULA

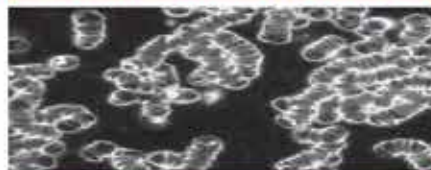
MAX

A NUTRITIONAL BREAKTHROUGH THAT SUPPORTS YOU
...RIGHT DOWN TO THE LAST CELL!

How do you want your
BLOOD to look?



Before PrevailMAX:



- poor circulation
- low energy
- brain fog
- dehydration
- decreased nutrients
- pH imbalance
- poor endurance

After PrevailMAX:



- better circulation
- more vitality
- mental clarity
- cellular movement
- nutrient assimilation
- balanced pH
- optimal endurance

PrevailMAX™ is a nutritional breakthrough that delivers a rapid increase of internal blood cell pressure to speed absorption, enabling the body to take maximum advantage of the nutrients in foods and supplements. The electrolytes are small enough to penetrate your cell membranes, to bind with your cells, and to be carried wherever they are needed in the body.

At the microscopic level of human cells, **PrevailMAX™** supports healthy cell performance – a nutritional breakthrough for your cells.

When you use **PrevailMAX™**, you will feel more energy and an ability to focus like never before. Take a few sprays today and see just how good you can feel!

LIVIN TRIM WITH
VALENTUS

www.ValentusTour.com/Ladybug

(780) 907-8642