

Serving: Onoway, Alberta Beach, Calahoo, Gunn, Glenevis, Darwell, Cherhill, Sangudo, Mayerthorpe, Rich Valley, Barrhead, Whitecourt, Stony Plain and Spruce Grove

April 2, 2019

BREAK AND ENTER TO TELECOMMUNICATIONS SITE

Submitted by Mayerthorpe RCMP

UPDATE ARREST

Sangudo, Alberta - One male has been arrested and charged in relation to an arson that occurred on March 28, 2019.

Trevor James Fagin (35) of No Fixed Address has been charged with:

- Mischief to property under \$5000 (x4)
- Mischief endangering life

• Arson
Fagin remains in custody pending a bail hearing on April 3, 2019 at Stony Plain Provincial Court.

As this matter is now before the courts no additional information will be provided.

BACKGROUND:

On March 28, 2019, at approximately 2:30 a.m., RCMP were dispatched to a telecommunications site in Sangudo where an employee had reported a break

and enter. A male dressed in dark clothing was observed entering the building before departing in a vehicle.

A fire was intentionally set to the building causing minor damage to the structure and extensively damaging equipment inside. No injuries have been reported. Evidence at scene has been seized and the investigation is being assisted by RCMP Forensic Identification Services.

ONOWAY REGIONAL MEDICAL CLINIC WRITES NEW CHAPTER

Submitted by Lac Ste. Anne County | www.LSAC.ca

Facility's growth needs fuel establishment of new County-controlled business entity.

Onoway Regional Medical Clinic (ORMC) is a partnership of six municipalities in the Onoway region: Lac Ste. Anne County; the Town of Onoway; and the Summer Villages of Ross Haven, West Cove, Silver Sands and Val Quentin. Now entering its third year of operation, ORMC has provided these communities with accessible, family-focused medi-

cal care.

Earlier this year, ORMC approached the County seeking support to find a larger space to meet the facility's growing needs. An expansion of the clinic would allow for the recruitment of an additional physician, and would accommodate practitioners including nurses, dietitians, therapists, and other specialists to augment the clinic's service offering.

Seeing considerable value in introducing this additional level of care to our communities, Council has decided to establish a Municipally Controlled Corpo-

ration to provide property development and facility management services in the region. The name of this new entity is Legacy Municipal Land Corporation, or Legacy MLC for short.

Initial Steps Toward Success

For its inaugural project, Legacy MLC will construct a new facility for the new medical offices of Onoway Regional Medical Clinic. Under the funding model for the project, Lac Ste. Anne County will loan funds to Legacy MLC for the construction of the facility.

Continued on Page 5

All Precious JEWELLERS
"Your Spruce Grove Jewellery Store"
Goldsmith on Premises
 • Engraving • Clock & Watch Repairs
 • Jewellery Repairs • Custom Make-ups
 Jewellery Repairs Done On Site.
 Laser Welder Services Available.
 Toll Free: 1-877-962-4367
 PH: 780-960-4200 Fax: 780-960-4201
 Suite 102, 215 McLeod Avenue
 Spruce Grove, AB. T7X 0G2

L & B *Tradition of Quality & Service*
 Water Services Ltd.
 Well & Pump Repairs
 Complete Pressure Systems
 Farm - Residential - Commercial
 Potable Water Cisterns, Water Conditioning
 Financing Available
 PH. 780-963-8134 OR 780-963-7749
 LBWATER@XPLORNET.COM



Oneil Carlier
 Fighting for Lac-St-Anne Parkland
 780-239-7308 **NDP**
 Authorized by the Official Agent of Oneil Carlier
 Join us at: OneilCarlier.AlbertaNDP.ca

View us **ONLINE!**
WWW.COM-VOICE.COM

Community VOICE

Keeping You and Your Community Informed

PUBLISHED WEEKLY (Zone 1 & 2)
AND BIWEEKLY (Zone 3)

E.J. Lewchuck & Associates Ltd.

45C South Ave. | Box 3595
Spruce Grove, AB T7X 3A8

SALES TEAM

Elaine
Ashley
Dani

TELEPHONE:

Classifieds 962-9229
Advertising 962-9228
Fax 962-1021

E-MAIL:

comvoice@telusplanet.net
sales@com-voice.com
news@com-voice.com

FOUR ARRESTED ON OUTSTANDING WARRANTS

Submitted by EAD RCRU and Barrhead RCMP

Barrhead, Alberta - On Thursday March 21, 2019, members of the Barrhead RCMP Detachment and the Eastern Alberta District Rural Crime Reduction Unit (EADRCRU) arrested four individuals who were wanted on outstanding arrest warrants.

Cody Clint Powder (38) of

Barrhead was arrested after a short foot pursuit with police through a residential neighbourhood in Barrhead. Powder was wanted on 16 charges which included impaired operation of a motor vehicle causing bodily harm. Powder is also facing a new charge for resisting arrest. Powder was held for a bail hearing and was remanded into custody. Powder is scheduled to

attend Court on April 9, 2019.

Megan Turgeon (27) of Barrhead was arrested for her outstanding warrants which included possession of property obtained by crime, theft/misuse of credit card and failing to attend court. Turgeon was held for a bail hearing and released by a Justice on a recognizance. Turgeon is scheduled to attend Court on April 9, 2019.

Nicholas George (36) of Barrhead was arrested for his outstanding warrants and for failing to comply with his recognizance. George was held for a bail hearing and was released by a Justice on a recognizance. George is scheduled to attend Court on April 9, 2019.

Savauna Ziehe (26) of Westlock was arrested for her outstanding warrants. Ziehe was released from custody and is scheduled to attend Court on April 10, 2019.

HORIZON STAGE
Performing Arts Centre

2018-19 Season

Trevor Panczak

Friday, April 12
7:30 p.m.
Authentic and honest country music that speaks to your heart.



Ticket Centre: 315 Jespersen Ave.
Theatre: 1001 Calahoo Road
Spruce Grove, AB **780-962-8995** horizonstage.com

JOKE OF THE WEEK

This arrogant young guy has recently started work at a construction site and ever since he started he's been bragging that he could outdo anyone based on his superior strength. He's been making fun of one of the older workmen in particular. Eventually, the older worker has had enough and says, "Tell you what - why don't you put your money where your mouth is? I'll bet you a week's wages that I can take something over to that other building in this wheelbarrow and you won't be able to wheel it back." The young guy laughs confidently, "You're on, old man. Let's see what you've got." So the old guy grabs the wheelbarrow by the handles. Then, he nods to the young man as he says with a smile, "Alright. Get in."

FRIENDS of Helmut Formanski

Your prayers and thoughts are working

Keep it up!
Love, the Family.

LEVEL THE PLAYING FIELD

FAIR COMPETITION HELPS KEEP PRICES LOW



EQUS **STOP POWER DISTRIBUTION MONOPOLY in Alberta**

StopThePowerMonopoly.ca

Authorized by EQUS 32A LTD. | EQUS.ca



Lac Ste. Anne County | Box 219, Sangudo Alberta T0E 2A0 | 1.866.880.5722 | www.LSAC.ca | facebook.com/LSACounty

PUBLIC NOTICE

To the Electors of
LAC STE. ANNE COUNTY
Province of Alberta

Section 251 – The Municipal Government Act

TAKE NOTICE that the Council of Lac Ste. Anne County, in the Province of Alberta, has given first reading to borrowing Bylaw 11-2019 which will, upon final passage and approval, authorize the proper officers of the said Lac Ste. Anne County to borrow monies from the Alberta Capital Finance Authority by way of debenture issue, to pay for the cost of the following municipal purposes(s), namely the construction of a medical office facility for the Onoway Regional Medical Clinic.

The total cost of the aforesaid project amounts to \$1,000,000 which will be the net amount to be borrowed on the credit and security of Lac Ste. Anne County at large by the issue of debentures is \$1,000,000. The debentures are to be repayable to the Alberta Capital Finance Authority in fifty (50) equal consecutive semi-annual installments of combined principal and interest, the annual interest not to exceed the interest rate as fixed from time to time by the Alberta Capital Finance Authority, and not to exceed four and a half (4.5%) percent;

NOW THEREFORE NOTICE is hereby given by the Council of Lac Ste. Anne County that, unless a petition of the electors for a vote on Bylaw 11-2019 is demanded, as provided for by the terms of Section 231 of the Municipal Government Act, the said Council may pass the said borrowing Bylaw.

All persons interested are hereby notified and they are required to govern themselves accordingly.

DATED at Lac Ste. Anne County, in the Province of Alberta, this 25th day of March 2019.

Lac Ste. Anne County
Mike Primeau, MBA, CLGM
Chief Administrative Officer

Information for Electors

Pursuant to Section 1(i) of the Municipal Government Act an “elector” means:

A person who is eligible to vote in the election for a Councillor under the Local Authorities Election Act.

Pursuant to section 47(1) of the Local Authorities Election Act, a person is eligible to vote in an election if the person:

- a. is at least 18 years old,
- b. is a Canadian citizen, and
- c. has resided in Alberta for the 6 consecutive months immediately preceding election day and

is a resident in the area on election day.

A poll may be demanded in Lac Ste. Anne County by electors equal in number to at least 10% of the population of 10,899 (1,090 electors), in accordance with the provisions of section 223 of the Municipal Government Act and in accordance with the provisions of section 251 of the Municipal Government Act.

The petition for a vote must be received by the Chief Administrative Office within 15 days of the last publication of this notice and shall contain on each page “an accurate and identical statement of the purpose of the petition.” (Further requirements of the petition are provided in section 224 of the Municipal Government Act).

DATE of the last publication of this notice is the 15th day of April 2019.

PUBLIC NOTICE

To the Electors of
LAC STE. ANNE COUNTY
Province of Alberta

Section 251 – The Municipal Government Act

TAKE NOTICE that the Council of Lac Ste. Anne County, in the Province of Alberta, has given first reading to loan Bylaw 12-2019 which will, upon final passage and approval, authorize the proper officers of the said Lac Ste. Anne County to authorize a loan up to a maximum of ONE MILLION DOLLARS (\$1,000,000.00) to Legacy Municipal Land Corporation, (hereinafter called “Legacy MLC”), for the purpose of constructing a medical office facility for the Onoway Regional Medical Clinic

The rate of interest on the loan to Legacy MLC shall be that of Alberta Capital Finance Authority or another authorized financial institution on the date of the borrowing is completed by the County, for a twenty-five (25) year debenture, and not to exceed four (4.00%) percent.

The source of money to be loaned shall be a debenture from Alberta Capital Finance Authority or another authorized financial institution. The issuance of the loan shall be provided subject to Legacy MLC and the County executing security documentation satisfactory to the County.

The loan shall be issued in such a manner that the principal is payable by December 31, 2044.

NOW THEREFORE NOTICE is hereby given by the Council of Lac Ste. Anne County that, unless a petition of the electors for a vote on Bylaw 12-2019 is demanded, as provided for by the terms of Section 231 of the Municipal Government Act, the Council may pass the said borrowing bylaw.

All persons interested are hereby notified and they are required to govern themselves accordingly.

DATED at Lac Ste. Anne County in the Province of Alberta, this 25th day of March 2019

Lac Ste. Anne County
Mike Primeau, MBA, CLGM
Chief Administrative Officer

Information for Electors

Pursuant to Section 1(i) of the Municipal Government Act an “elector” means:

A person who is eligible to vote in the election for a Councillor under the Local Authorities Election Act.

Pursuant to section 47(1) of the Local Authorities Election Act, a person is eligible to vote in an election if the person:

- a. is at least 18 years old,
- b. is a Canadian citizen, and
- c. has resided in Alberta for the 6 consecutive months immediately preceding election day and is a resident in the area on election day.

A poll may be demanded in Lac Ste. Anne County by electors equal in number to at least 10% of the population of 10,899 (1,090 electors), in accordance with the provisions of section 223 of the Municipal Government Act and in accordance with the provisions of section 251 of the Municipal Government Act.

The petition for a vote must be received by the Chief Administrative Office within 15 days of the last publication of this notice and shall contain on each page “an accurate and identical statement of the purpose of the petition.” (Further requirements of the petition are provided in section 224 of the Municipal Government Act).

DATE of the last publication of this notice is the 15th day of April 2019.

PARLIAMENT UPDATE – WEEK OF MARCH 18, 2019

Submitted by Jim Eglinski, MP – Yellowhead

The following was debated in the House:

- C-83 – Corrections and Conditional Release Act (Third Reading)
- C-84 – An Act to amend the Criminal Code (bestiality and ani-

- mal fighting) (Report Stage)
- C-92 – An Act respecting First Nations, Inuit and Metis children, youth and families (Second Reading)
- C-95 -- Appropriation Act No. 4, 2018-19 (Royal Assent)
- M-203 – Fraud Activities against Seniors (First hour of First Reading)
- NDP Question of Privilege –

- Government Accountability
 - S-6 – Instructions to FINA
- On Monday, in the Standing Committee on Public Safety and National Security (SECU), we heard from witnesses on Cybersecurity in the Financial Sector as a National Economic Security Issue. Also, on Monday, I attended a briefing ses-

sion for parliamentarians who will be attending, as observers, the presidential election in the Ukraine.

On Tuesday, Budget 2019 was introduced.

On Wednesday, 61 votes were held on the Supplementary Estimates (B), 2018-19 and 68 votes on the Interim Estimates.

On Thursday, an emergency debate was held that evening on the topic of the Prime Minister pressuring the former Attorney General to interfere in the prosecution of SNC-Lavalin.

You can read comments and questions from Debates on the House Publications page at www.ourcommons.ca/en

On Friday, I flew back to the riding as Parliament will be down the week of March 25th.

Please note: During the week of March 25th, I will be in the riding office catching up on emails and phone calls. On Tuesday, I will be meeting with constituents and later attending an event.

On Wednesday, I will be travelling to the Ukraine as part of the Election Observation Mission for their presidential election, on March 31, 2019.

Re-Elect
MARK SMITH
United Conservatives
Alberta Strong & Free

AUTHORIZED BY THE MARK SMITH CAMPAIGN 780-918-4260

LAC STE. ANNE COUNTY

Lac Ste. Anne County | P.O. Box 219 | Sangudo, Alberta | T0E 2A0 | 1.866.880.5722 | www.LSAC.ca

Introduction to Rural Landscape Design \$10/person

Thursday, April 11 at the Sangudo Public Library | 6:30-8:00PM

Have you got a new yard or an established landscape needing some updates? Have you got lots of ideas but are not sure how to choose which ones will work in your yard? Join Lac Ste. Anne County Horticulturist Lorraine Taylor to talk about getting started on a landscape plan. Take home a questionnaire to focus your goals, find out how a Real Property Report can help, and see a photo gallery of clever landscape design ideas collected from 10 years of the County's Rural Beautification Tours.

Pre-registration is preferred for this program: call 780.785.2955 or email sangudolibrary@yrl.ab.ca.

Intermediate Beekeeping \$40/person

Sunday, April 28 | 9:30AM - 4:00PM

Taught by Instructor Patty Milligan, this informative intermediate course will be hosted in Mayerthorpe by the counties of Lac Ste. Anne & Woodlands. Registration deadline is Friday, April 19.

To register or for further information, call 1.866.880.5722 or email LTaylor@LSAC.ca.

STONY PLAIN NURSERY & GARDEN CENTRE

SALE! BEFORE NURSERY CLOSES

Bare Root: April 15 - May 1

Brandon Elm, Mountain Ash, Tree Spade, White & Blue Spruce, Lodgepole Pine, Burn Oak, Brandon Elm, Swedish Columnar Aspen

Garden Centre opens either April 19th or April 26th.

Large Selection of Potted Tree Shrubs & Perennials.
*NOTE: Sorry No Baskets or Bedding Plants

Specializing in Northern Hardy Plants

968-0542

SALE! BEFORE NURSERY CLOSES

ALL PRICES WILL BE AT **DEEP DISCOUNT** TO LAST YEAR!

\$100M IN FUNDING FOR STEEL AND ALUMINUM INDUSTRIES

Submitted by Jim Eglinski, MP – Yellowhead

Jim Eglinski, Member of Parliament for Yellowhead, wishes to inform constituents that the Department of Innovation, Science and Economic Development has announced that Regional Economic Growth through Innovation Steel and Aluminum Initiative, will provide funding of \$100 million in non-repayable contributions to small- and medium-sized enterprises (SMEs) within Canadian steel and aluminum supply chains for investments in innovative projects that will enhance productivity and/or competitiveness.

Canadian (SME) manufacturers that are significant users of steel

and aluminum play an important role in transforming these inputs into finished or semi-finished products for the manufacturing, defence, aerospace, energy, automotive, and construction industries. Escalating commodity prices and increasing financial and competitive pressures have significantly impacted SMEs operating within Canadian steel and aluminum supply chains.

The Regional Economic Growth through Innovation Steel and Aluminum Initiative will:

- Assist firms with high growth potential to scale up and expand;
 - Support technology demonstration and the commercialization of new technologies;
 - Encourage the early adoption or adaptation of leading-edge technologies and processes to improve productivity; and
 - Increase businesses' capacity to grow through market diversification and entry into global markets.
- Contributions will range from \$150,000 to \$1 million, to support up to a maximum of 45 percent of

eligible project costs.

Priority will be given to applications received on or before April 8, 2019.

“As Canada’s steel and aluminum sectors are key contributors to the Canadian economy, I encourage small and medium-sized steel and aluminum industries to apply for this funding,” concluded MP Eglinski.

For more information on how to apply please go to: <https://www.wd-deo.gc.ca/eng/19828.asp>

Onoway Regional Medical Clinic Writes New Chapter

Continued from Page 1

ORMC will then pay lease payments to Legacy MLC that will cover the repayment of the loan from the County. These payments will also provide a modest profit for Legacy MLC. As the project develops over the coming months, additional details will be made available to the public.

As the loan principal and interest will be repaid to the County, no tax dollars will be used by Legacy Municipal MLC. Additionally, proceeds earned from this project will be reinvested into future Legacy MLC projects. In the event that County Council elects to dissolve the Municipally Controlled Corporation, all proceeds and assets would be returned to the County.

More information about Legacy MLC and the Municipally Controlled Corporation process can be found on the County website at LSAC.ca/Legacy. Additional information about Onoway Regional Medical Clinic and its growth plans can be found at OnowayMedical.ca.

VALENTUS

YOUR LOGICAL SOLUTION TO WEIGHT MANAGEMENT

CALL (780) 907-8642 FOR FREE SAMPLE

DARK ROAST COFFEE

SLIMROAST Optimum

Exclusive functional coffee formulated to:

- Crush Cravings
- Increase Energy
- Metabolize fat to Energy
- Help Regulate Blood Sugar
- Improve Mood & Focus
- Boosts Circulation & Oxygen delivery

TO UNLOCK THE SECRET OF WEIGHT MANAGEMENT! PUT THE POWER OF SLIMROAST OPTIMUM IN YOUR CUP!

“ Thrilled with my results! I lost 9 lbs and an amazing 11 inches off my abdomen! Works wonderfully! ”

“ Managed to lose 7 lbs very fast & much more in inches the way my clothes are fitting now! 1 cup a day is all for me! ”

“ Down 17 lbs and fitting into clothes that were way to tight before! ”

“ No dieting, first month finished. Down 7 ½ lbs 8.5 inches. Awesome product! ”

www.ValentusTour.com/Ladybug (780) 907-8642

SPEND A NIGHT CELEBRATING EMERGING MUSICIANS

Submitted by Horizon Stage

Spruce Grove, AB - The first of its kind at Horizon Stage, the Emerging Artist Showcase featuring Nuela Charles on Tuesday, April 9, will allow you to sample the work of four up-and-coming artists alongside a well-established headliner. Audience members will enjoy short performances by indie-folk singer/songwriter Keltie, local alternative rock trio Hack, and Edmon-

ton-based indie-bluesy-rock band Hewson Grey. Intermission will feature live music in the lobby by Metis fiddler Brianna Lizotte and complimentary desserts. After intermission, Edmonton-based contemporary singer songwriter Nuela Charles and her band will play a 45 minute set featuring music from her Juno-nominated albums.

Keltie is a singer/songwriter from Sherwood Park. Her style is unique and can best be described as alternative with crossovers

into folk, roots, & rock. She engages audiences with her authenticity and extraordinary sound. She has won an Edmonton Music Award and was a CBC Searchlight finalist in 2017.

Hack is a small alternative rock band originally out of the Westlock area. They have performed at the Hollywood Jamboree in Jarvie and at Stage North in Slave Lake. For this Emerging Artists Showcase they will share a few upbeat acoustic originals and a couple covers. The mem-


bers of Hack are Koltan Potts (guitar and lead vocals), Matthew Seskus (guitar), and Curtis Paine (drums).

Hewson Grey has a super-cool vibe that is a complex mesh of indie, alternative, bluesy rock, and ambient psych. Rocking the charts and gaining airplay across Western Canada, highlights from their last year include performances at K-Days, the Starlite Room, and the Forge on Whyte, headlining Friday night of East Coulee Springfest (2018), and various other festival appearances around Alberta.

Brianna Lizotte is most recognized for her old time fiddling and from performing with the award-winning Red Deer Royals Marching Show Band. Having only taken up the fiddle seven years ago this young Albertan has performed in Western Canada and Europe and received the Rising Star Award from The Alberta Men and Women of Country Music. Brianna is an artist, teacher, and community leader, and is deeply proud of her Metis heritage.

Nuela Charles is an alternative/soul artist from Edmonton who is known for her expressive vocals and captivating stage presence. Nominated for two Juno Awards (2018 & 2019) Nuela has brought her distinct voice to various stages across North America, headlined at the Edmonton Jazz Festival, and opened for Ziggy Marley. The lead single, "Crumbling Down", from her 2016 album, The Grand Hustle, was on the CBC Radio 2 Top 20 charts for seven weeks. Newer singles, from her 2018 album, Distant Danger, including "Forecast" and "Do It Right", have recently been receiving a lot of air play on CBC Radio One.

Find some musical gems. Spend the night exploring new music and artists at the Emerging Artist's Showcase at Horizon Stage on Tuesday, April 9 at 7:30 p.m. Tickets are an affordable \$15 for all ages and may be purchased at the City Hall Ticket Centre (315 Jespersen Ave), by phone at 780-962-8995 or 1-888-655-9090, and online by visiting and clicking on the 'Tickets' link.



LAC STE. ANNE COUNTY

Lac Ste. Anne County | Box 219, Sangudo Alberta T0E 2A0 | 1.866.880.5722 | www.LSAC.ca | facebook.com/LSACounty

ADMINISTRATION

NOTICE OF PUBLIC HEARING

Of a proposed resolution for the establishment of a Municipally Controlled Corporation Legacy MLC

LOCATION OF HEARING	DATE	TIME
Council Chambers, County Office 56521 Range Road 65	May 1, 2019	10:00 am

Pursuant to the provisions of Section 75.1(2) of the Municipal Government Act, the Council of Lac Ste. Anne County is considering the establishment and participation in a Municipally Controlled Corporation, Legacy MLC.

The purpose of Legacy MLC is to use a wide range of innovative entrepreneurial approaches to commercial and residential real estate development, property management and infrastructure advancement, to achieve outcomes beneficial to the needs and desires of residents.

Written comments on the proposed resolution may be provided prior to 4:30 pm on April 30, 2019, to:

Lac Ste. Anne County
56521 RGE RD 65, Box 219, Sangudo AB T0E 2A0
Attn: Legacy MLC
or emailed to LSAC@LSAC.ca

Interested individuals may attend the Public Hearing to voice their comments.

To schedule an appointment please contact Cindy Suter at 780.785.3411.

The proposed resolution and other public disclosures may be reviewed during regular business hours at the County Office, east of Sangudo, AB located at 56521 Range Road 65, or at www.LegacyMunicipal.ca.

APRIL NEWS FROM THE RICH VALLEY PUBLIC LIBRARY

Submitted by Melanie Fitzgerald, Library Manager | Rich Valley Public Library

Our Make the Connection program hosted 13 community groups and was quite informative. We had 83 people attend and the library hopes to make this an annual event so community members can stay informed of what is available in our great community. We would like to thank the volunteers who made this program run smoothly as well as the community groups who attended.

This month we are offering the following programs:

Yoga is every Tuesday from 10:00-11:15 am. Our next session will run on Tuesday April 9, April 16, April 23, April 30, May 7 and May 14, 2019 from 10:00- 11:15 am. The cost will be \$60.00 for the 6 classes or \$12.00 drop in fee. Please contact the library at (780) 967-3525 to register.

Storytime is every Wednesday from 11:00-11:45 am. Bring your toddlers in on Wednesdays from 11:00 to 11:45 am for stories, activities and crafts. All children ages 0-5 are welcome to join us at this free program. Every third Wednesday of the month we will alternate between Tents and Tunnels, Play Doh Fun and Lego Building. This program is funded by FCSS.

Parents and Tots is every Wednesday from 9:45-10:45 am. Parents, guardians and caregivers are invited to bring your toddlers to play, discover and make friends at this free drop-in program held at the Rich Valley Public Library. All children ages 0-5 are welcome. Snacks, juice and coffee will be provided. This program is funded by FCSS.

Adult Whist is every 2nd & 4th Friday of the month at 7:30 pm. If you like cards join us for a night of fun and laughs. The cost is only \$2.00 per person and is held in the Yellow Room. The last Whist of the season will be on April 26, 2019.

Free Movie Night at the Rich Valley Public Library. The Rich Valley Public Library will be showing "Mary Poppins Returns" (Rated PG) on April 13, 2019. Doors open at 5:00 pm and the

movie will start at 6:00 pm in the Yellow Room. Admission is free. Popcorn, licorice, candy, pop and water plus juice will be available for sale. Please feel free to bring pillows or blankets to sit on.

Tree and Small Fruit Crops For Home Gardens on April 18, 2019 from 2:30-4:00 pm. Join Lac Ste. Anne County Horticulturist Lorraine Taylor at this free program to learn about hardy cultivars, finding the right location to plant and specific growing needs for each crop. Perhaps you have had

success with strawberries and raspberries and now you would like to grow more fruit crops. You might be surprised to see how many kinds do well here such as apple, plum, saskatoon, cranberry, haskap and more. Pre-registration for this program is preferred by contacting the library at (780)967-3525.

We are located in the basement of the Rich Valley Community Hall. We have installed a stairlift in the Yellow Room so all our programs and services are acces-

sible to everyone. If you are in need of the stairlift please press the buzzer at the front door and the library staff will assist you.

Rich Valley Public Library is open Tuesday from 5-8 pm, Wednesday from 10 am-2:30 pm, Thursday from 2-6:30 pm and Friday from 9 am-12 pm. We look forward to seeing you!

Please check out our website at www.richvalleylibrary.ab.ca and Facebook for all our programs and news.

Tri-Municipal EXPO 2019
Business & Home

April 12, 13 & 14, 2019

Eat, Play, Shop!

Friday 5-9PM | Saturday 10-6PM | Sunday 10-4PM
 TransAlta Tri Leisure Centre, Spruce Grove

WEEKEND FEATURES
 Attractions for the home and garden,
 the best of local products and services,
 traditional trade show treats and door prizes!

- Kid's Zone • Bouncy House • Door Prizes • Axe-Throwing
- Face Painting Sat & Sun 11-3PM Balloon Artist Sat 11-3PM | Sun 11-2PM

Admission \$2 | Kids 12 and under FREE
Seniors 65+ get in FREE on Sat & Sun before Noon
 Free Shuttle Saturday 9:30am-6:30pm from Superstore SW corner of parking lot

PLAY STAMP AROUND THE EXPO AND ENTER TO WIN A \$250 PREPAID MASTERCARD!

For more information: 780-963-4545 www.stonyplainchamber.ca

2-FOR-1 ADMISSION

2019EXPOCV1

COMPLIMENTS OF THE
STONY PLAIN & DISTRICT
 CHAMBER OF COMMERCE

BRING THE FAMILY!

DARWELL PUBLIC LIBRARY NEWS

Submitted by Sandra Stepaniuk, Library Manager | Darwell Public Library

Lac Ste. Anne County is conducting a Social Needs Assessment to better understand the social needs of residents in the Lac Ste. Anne County Area (including the towns, villages and summer villages). Paper copies of the assessment are available now at the library. The library is assisting by being a pickup/

drop off location during regular library hours. We would like to encourage all county residents to fill out the questionnaire by considering the needs of all members of your household; it should take about 15 - 20 minutes to complete. Questionnaires should be submitted by April 15, 2019. The assessment is also available on line by visiting the Lac Ste Anne County website @ <https://www.lzac.ca>. Wondering what to do with all those items from your spring cleaning? We con-

tinue our fundraising efforts to complete the library expansion. We are currently doing a Value Village donation drive and are looking for your used clothing, shoes, accessories, books, linens and small household items (small items only no furniture). You can pick up a list of acceptable items at the library or find the complete list on our website or Facebook page. You can drop off your donations at the library expansion during regular library hours until early June 2019. Should these times not work for you please contact the library @ 780-892-3746 to make alternate arrangements.

The colouring club, LEGO and Family Games continue daily, during regular library hours, for patrons of all ages. We encourage you to ask about our passive programming and provide ideas for what you would like to see in the library. We look forward to seeing/hearing from you.

Preschool Story Time for children 0 to 5 years of age continues every Monday morning, except holidays, from 10 - 11

AM. This program will run until May 27, 2019. This is a free drop in program so come join us for stories, activities, crafts and a snack. All children must be accompanied by an adult as this is a program designed for parents/caregivers and children together.

The Book Club will be meeting on Monday, April 1, 2019 at 7:00 p.m. to discuss "The Midnight Rose" by Lucinda Riley. Do you love to read? Do you like to discuss what you have read with others? We are always interested in a new perspective to add to our conversation. If you are interested in participating, you can register and arrange for loan of the current title by calling the library @ 780-892-3746.

Tai Chi practice is every Wednesday morning at the library, except holidays, from 10 - 11 AM until May 29, 2019. The drop-in fee is \$ 10.00. All you need are loose comfortable clothes and flat shoes.

Continued on Page 16



BARRHEAD AUTO PARTS
ESTABLISHED IN 1973

Located 2 miles West of Barrhead on Highway 18.
Site 13 Box 6 RR2
Email: rob@barrheadautoparts.com

780-674-3443
1-888-577-4377

WWW.BARRHEADAUTOPARTS.COM

Quality Used Parts

- Computerized Inventory
- Licensed Mechanics
- Quality Used & Rebuilt Parts For Cars & Trucks
- Competitive Labor Rates
- Buying Scrap Vehicles
- Used Pipe & Assortment of Metal
- Used Vehicles

GROVE HEARING CLINIC

960-2960
1-866-960-2960

Hear what you've been missing...

Senior Discounts



Full Service & Repair

Full Hearing Assessments

HOURS OF OPERATION: 9am - 5pm Weekdays
3rd party billing (AADL, WCB, DVA, FCH) • Personal 0% Financing if Needed
For The Latest Technology In Hearing Aids & Assisted Living Device Stop By & See Dawn
#220-70 McLeod Ave - Westland Market Mall, Spruce Grove



NEWS HIGHLIGHTS

Lac Ste. Anne County | Box 219, Sangudo Alberta T0E 2A0 | 1.866.880.5722 | www.LSAC.ca | facebook.com/LSACounty

SUMMER TRANSFER STATION HOURS

The County provides eight waste transfer sites and one regional landfill for use by County residents. All of these facilities will be switching to summer hours beginning April 1. Summer hours will be in effect until October 31.

Summer hours (**S**) are in effect between April 1 and October 31. Winter hours (**W**) are in effect between November 1 and March 31. Please note that during statutory holidays, the eight Transfer Stations observe regular hours, but the Main Landfill will be closed. For more information, please visit LSAC.ca/Landfill.

TRANSFER STN		MON	TUE	WED	THU	FRI	SAT	SUN	DIRECTIONS
ONOWAY 55177 HWY 77	S W	CLOSED CLOSED	CLOSED CLOSED	CLOSED CLOSED	3:00-7:00 3:00-5:00	10:00-2:00 10:00-2:00	10:00-2:00 10:00-2:00	CLOSED CLOSED	2.4 km N of Onoway on Hwy 777
RICH VALLEY 56503 HWY 33	S W	CLOSED CLOSED	CLOSED CLOSED	CLOSED CLOSED	CLOSED CLOSED	3:00-7:00 3:00-7:00	CLOSED CLOSED	10:00-2:00 10:00-2:00	2.4 KM N of Rich Valley on Hwy 33
HILLCREST 54025 RGE RD 30	S W	10:00-5:00 10:00-5:00	CLOSED CLOSED	CLOSED CLOSED	CLOSED CLOSED	9:00-3:00 9:00-3:00	CLOSED CLOSED	10:00-5:00 10:00-5:00	2.0 km S of HWY 633 on Rge Rd 30
DARWELL 4457 HWY 633	S W	CLOSED CLOSED	CLOSED CLOSED	CLOSED CLOSED	10:00-2:00 10:00-2:00	CLOSED CLOSED	3:00-7:00 3:00-7:00	3:00-7:00 3:00-5:00	1.6 km E of Darwell on Hwy 633
CHERHILL 56021 RGE RD 53A	S W	CLOSED CLOSED	CLOSED CLOSED	CLOSED CLOSED	CLOSED CLOSED	9:00-12:00 9:00-12:00	CLOSED CLOSED	1:30-7:00 1:30-5:30	0.8 km S of Cherhill on Rge Rd 53A
SANGUDO 56504 RGE RD 65	S W	1:30-5:30 1:30-5:30	CLOSED CLOSED	CLOSED CLOSED	CLOSED CLOSED	CLOSED CLOSED	9:00-12:00 9:00-12:00	CLOSED CLOSED	1.6 km E of Sangudo on Hwy 43 + 1.6 km south on Rge Rd 65
ROCHFORD BR. 8018 TWP RD 574	S W	CLOSED CLOSED	CLOSED CLOSED	CLOSED CLOSED	CLOSED CLOSED	1:30-7:00 1:30-5:30	CLOSED CLOSED	9:00-12:00 9:00-12:00	3.2 km N of Rochfort Bridge on Rge Rd 80 + 0.8 km west on Twp Rd 374
MAYERTHORPE 57308 RGE RD 91	S W	9:00-12:00 9:00-12:00	CLOSED CLOSED	CLOSED CLOSED	CLOSED CLOSED	CLOSED CLOSED	1:30-5:30 1:30-5:30	CLOSED CLOSED	4.8 km W of Mayerthorpe on Twp Rd 574 + 1.2 km south on Rge Rd 91
MAIN LANDFILL 55228 RGE RD 35	S W	9:00-5:00 9:00-5:00	9:00-5:00 9:00-5:00	9:00-5:00 9:00-5:00	9:00-5:00 9:00-5:00	9:00-5:00 9:00-5:00	9:00-5:00 9:00-5:00	CLOSED CLOSED	4.8 km W of Gunn on Hwy 43 + 0.4 km south on Rge Rd 35

COUNTY CAREER OPPORTUNITIES

Lac Ste. Anne County is hiring! To review the below County employment opportunities in detail, visit LSAC.ca/Careers.

ASSESSMENT & TAXATION MANAGER

Full-time Permanent (Competition #2019-F02)

This position will be filled with a permanent full-time employee or a contract service provider. The County is seeking a driven individual prepared to grow and adapt with the team. The primary focus will be to manage the Assessment & Taxation Department within Corporate Services including a staff of four full time employees.

The successful candidate will possess a designation from a recognized professional assessment or appraisal organization (AMAA, CAE, AACI) with a membership in good standing, a diploma or degree in property assessment and appraisal or a related field from a recognized post-secondary institution and five years of related work experience.

Salary Range: Competitive salary, commensurate with experience.

Benefits: Full benefit package available including an earned days off program.

PUBLIC WORKS MANAGER

Full-time Permanent Reporting to the Director of Infrastructure, this position is responsible for managing, directing, coordinating and supervising the delivery of operational services for County infrastructure. Services include roadways (gravel, oiled & paved), bridge structures and drainage systems. The ideal candidate will possess a valid Class 5 driver's licence, and has experience and/or certification with road maintenance and heavy equipment. Knowledge and understanding of a unionized environment, plus a demonstrated ability to supervise and manage a diversity of positions including external employees, will be an asset. Excellent written and verbal public relations skills are essential for this role.

HANDYMAN Temporary Seasonal

The Public Works department requires a Handyman. Duties will consist of, but are not limited to: organizing and assisting centerline and approach culvert installations, sign installation, ditching, and brush cutting. Please note that candidates must be willing and able to travel to various locations throughout the County to perform duties as directed by the Director of Infrastructure & Public Works. However, the position will be based out of the Division 4 (Lisburn) yard.

Spring 2019 HomeRENO



The Businesses in the following Guide can be your One Stop Solution to all your Renovation Needs!



EXPLAINING DANGEROUS RADON EXPOSURE

Radon is a colorless, odorless gas that forms naturally when radioactive elements, such as uranium, decay. These radioactive elements can be found in different amounts in soil and rock throughout the world. Though radon is present outdoors and in-

doors, it is often present in such small amounts that it does not pose a threat to human health. However, the American Cancer Society notes that prolonged exposure to high levels of radon can lead to lung cancer. People who work underground, such

as miners, are most likely to be exposed to high levels of radon. People who work in factories where uranium is processed or those who come in contact with phosphate fertilizers are more likely to be exposed to high, and potentially dangerous, levels of

radon. Building materials made from substances that contain radon also can lead to unhealthy levels of radon exposure. However, such substances, which the ACS notes include concrete and wallboard, often give off very low levels of radon.

Bert's TV & Appliances
780-674-3001 bertstv.com
Barrhead Industrial Park, 6121-47 St.

Whirlpool
DEFINE YOUR STYLE
SAVINGS EVENT
SAVE UP TO 20%
APRIL 4 TO MAY 1, 2019

MAKE IT A SUITE!

 \$2199 <small>WHIRLPOOL® 36" FRENCH-DOOR REFRIGERATOR, 25-CU. FT. WRF555SCHV</small>	 \$1749 <small>WHIRLPOOL® GAS RANGE, 8.8 CU. FT. WFG975H0V</small>	 \$849 <small>WHIRLPOOL® 47" 48" STEAMERS STEEL TUB DISHWASHER WDT780SAHV</small>	 \$729 <small>WHIRLPOOL® 30" LOW PROFILE MICROWAVE HOOD COMBINATION, 1.1 CU. FT. YWML7901HV</small>
--	---	--	--

780-963-2062

2002 Stony Plain Small Business of the Year

Assinger Concrete Ltd.

**Transit Mix Concrete
Sand & Gravel**

Box 2303, Stony Plain
T7Z 1X8

B&S

Stucco, Rockwork & Masonry

Interior, exterior, residential, commercial, conventional & acrylic stucco
Plus Concrete and Styrofoam Pargings,
All Stone & Brickwork

Fred & Gerry Breukelman

Phone (780) 674-4502 • Fax (780) 674-4534
Cell (780) 674-7307

Blakeman Drilling Ltd.

**Waterwell Drilling & Servicing
Pumps & Pressure Systems**

Petwa Water Conditioning

(780) 918-1916

joe@blakemandrilling.com

Family Owned & Operated

MAHAR DRILLING LTD

Water Wells
Precision Drilled
with Compressed Air

- Pumps • Servicing

Office: (780) 674-9550

Cell: (780) 674-7871
Fax: (780) 674-9571

Lanman Landscapes

YOUR ONE STOP FOR ALL TYPES OF LANDSCAPING

Dangerous Tree Removal

Experienced Bobcat Work

Yard Cleanup

Fully Insured

Full Landscaping Service

Spring & Summer

(780) 977-6586

levertonniet13@gmail.com



6 WAYS TO MAKE BATHROOMS A SAFER PLACE

Homes should be safe havens. But each year injuries in and around the home contribute to millions of medical visits and many fatalities each year.

Although anywhere in a home can be the scene of an accident, bathrooms tend to be the most dangerous room in the house. Slippery tile, the presence of water, stock-

piled medications, and many sharp and hard edges in a small space pose several different hazards in the bathroom, particularly for young children and people age 65 and up. The Centers for Disease Control and Prevention says falls, which can result in serious injuries like hip fractures and head trauma, are the cause of 80 percent of all bathroom accidents.

Many bathroom accidents are preventable with some easy modifications.

1. Reduce slippery surfaces. Wet tile is a recipe for slick conditions. Bath rugs with rubber backing can provide traction in the bathroom, as can nonslip mats placed on the floor of the bathtub or shower enclosure. Water-resistant flooring made from recycled rubber is another option. It

is softer, less slippery and more forgiving than traditional tile flooring.

2. Install lever-style fixtures. Round knobs in the bathroom can be difficult to grasp, especially for the elderly or those with arthritis. Lever-style fixtures are easier to maneuver and can help alleviate scalding from not being able to adequately adjust the water temperature.

3. Utilize transfer benches and shower seats. A transfer bench can help reduce injuries that occur when trying to climb over a tub wall. Benches are placed outside of the tub and a person sits and then swings his legs over the ledge. Transfer benches also can be used in conjunction with shower seats. This is a chair or bench that allows people to sit while they shower.

GIBBS CONTRACTING

Renovations, Shop Packages, Shed Construction, Decks, Garages, Barns, Sheds, Cement, Concrete, Topsoil, Eavestroughing, Dirt Work

CELL 674-7147

MAYERTHORPE, AB (780) 785-4002

Carpetown Interiors Ltd.

- Carpet • Lino • Hardwood Flooring & Tile
- Wallpaper • Window Blinds & Installation

780-778-4144

5033 - 52 Ave. Whitecourt

Eric Gardener Trucking Ltd. o/a

EGT SAND & GRAVEL

Crushed Gravel - Screened Rock

Sand - Pitrun - Fill Dirt - Trucking and Delivery

PHONE: (780) 721-9669

Pit located 7 km west of Wabamun overpass on Highway 16 - South on RR45

ONOWAY TIMBER MART

- Decks
- Fences
- Treated Lumber
- Spruce Lumber
- Probuilt Alum Railing
- Full House Packages
- Husqvarna Dealer
- Delivery Available
- Plumbing
- Electrical
- Shed Packages
- PPG Paint & Stain
- Garage Packages

"WHERE SERVICE MAKES THE DIFFERENCE"

#2 2104 Hwy 37 Lac Ste Anne, AB PH: 780-967-2274

PADDLE RIVER CONCRETE

Providing you with concrete needs!

Brent • 786-2666 • Mayerthorpe, Alta



6 Ways To Make Bathrooms A Safer Place

4. Discard old medications. Clean out the medicine cabinet of old or expired medications, including both prescription and over-the-counter drugs. This reduces the likelihood of medication confusion, and does not put potentially harmful pills and

syrops into the hands of children. 5. Install grab bars. Properly installed grab bars around the shower and toilet area can provide leverage and stability. AARP says many injuries to seniors occur when they are attempting to sit or get up from the

toilet. Grab bars or an elevated toilet seat can help.

6. Install motion-detecting lights. These lights turn on automatically upon detecting movement, making them beneficial for people who routinely visit the bathroom in the mid-

dle of the night. Adequate illumination also can help reduce fall risk.

Bathroom safety should be made a priority. Various modifications can make bathrooms safer for people of all ages.

BEDARD EXCAVATING 

DESIGN, BUILD, PUMP

General Excavating
Foundations 4-9' walls
Septic Systems



780-967-5116



BUTTERS CONCRETE SERVICES LTD.

Finishing Flat work Quick Curbs

MIKE BUTTERS Site 11 Box 20
Owner R.R. #1 Gunn, AB
Mgbutters@hotmail.com **(780) 990-6148**



Assertive ELECTRIC LTD.

Toll Free 1-855-967-3827 Fax 1-780-967-3847
email: rick@assertive-electric-ltd.ca

Insured & Certified Professional Electrical Services



ECONOMY ASPHALT DRIVEWAYS

- Paving • Asphalt or Concrete • Repairs
- Pararamps • Seal Coating • Crack Filling
- Snow Removal • Sanding • Rock Chip Sales

CHARLES MACDONALD
PH: 780-962-5581 CELL: 780-777-0914
FAX: 780-962-9146 

Family run, local business, we care!

BEST CISTERN SEPTIC SOLUTIONS

Cistern and Septic Inspection, Cleaning and Repair!

Septic planning, design, installation by government certified installer(s)

New Installs Available. Reasonable Rates.

Let Us Handle the Dirty Work

780-668-4306 
best-cistern-septic-solutions.com



MCLEOD Home building centre

Let us load you at the largest Lumber Yard in Parkland County

962-2575
Call Toll Free: 1-800-343-2988
35 South Ave, Spruce Grove

- Renovation & new build experts • Superior quality lumber
- Complete home packages • 3D Estimating Program
- Engineered roofs & floors • Farm Buildings • Garage packages
- Windows & doors • Custom decks & fence packages
- Flooring & kitchens • Bathrooms • Ceramic Tiles
- Concrete & landscaping • Electrical supplies
- Fasteners • Woodstoves

Service • Selection • Advice • Special Orders • Delivery



BENEFITS OF FREESTANDING TUBS

Few home design elements provide the instant wow factor of freestanding tubs. Freestanding tubs have an air of luxury that can help current homeowners relax, and impress buyers when homes go on the market.

Freestanding tubs are typically made of cast iron or porcelain. The home improvement website

HomeAdvisor notes that cast iron is durable and solid and retains heat well, which is great for those who want to spend more than a little time relaxing in a freestanding tub. However, because cast iron is so heavy, installing a cast iron tub may require structural reinforcement of the flooring, which will add

to the overall cost of the project.

According to HomeAdvisor, the average cost to install a tub varies widely depending on the type of tub, the materials it's made of and other factors, including plumbing and piping. For example, the cost to install a freestanding tub will rise considerably if new plumbing and

piping are necessary.

Before purchasing a freestanding tub, homeowners should seek estimates regarding installation, making sure to get them in writing. Contractors will determine if structural reinforcement is necessary and include such costs in their estimates. In addition, make sure to ask contractors to investigate piping and plumbing so no surprises pop up after the tub has been purchased and work has begun.

If estimates from contractors aren't budget busting, homeowners can consider these benefits of freestanding tubs before making their final decisions.

- **Cleaning:** Because they're detached from other bathroom fixtures and not flush against the wall, freestanding tubs tend to be easier to clean than built-in bathtubs. Freestanding tubs are accessible from all sides, making it easy to reach all those nooks and crannies where grime can build up.

- **Return on investment:** In its 2018 "Cost vs. Value" report, Remodeling magazine noted that upscale bathroom remodels recouped 56.2 percent of their cost at resale. That was a better return on investment than an upscale kitchen remodel (53.5 percent) and an upscale master suite addition (48.3 percent). The thought of a sizable return on investment can make relaxing in a freestanding tub that much more enjoyable.

- **Warmth:** Even freestanding tubs made of materials other than cast iron offer great heat retention. Stone resin bathtubs, for example, provide excellent insulation on cold nights. That's ideal for people who want to unwind in the tub without having to exit early because the water has become cold.

Freestanding tubs can transform regular bathrooms into luxurious oases.

The Flooring Store & DIY Center

**FREE ESTIMATES
SPECIAL PRICES FOR SENIORS**

Vinyl Flooring *from* **99¢ Sq Ft.**
 Laminate *from* **\$1.19 Sq Ft.**
 Hardwood *from* **\$2.99 Sq Ft.**
 Carpet *from* **\$2.99 Sq Ft. INSTALLED**
 Double Stainless Steel Kitchen Sink *from* **\$199.00**

Hours:
 Monday to Friday 9:00AM to 5:30PM
 Saturday 9:30AM to 4:00PM
 Closed Sunday

**226 McLeod Ave
 Spruce Grove
 (780) 960-9212
 www.theflooringstore.ca**



THE CHOICE FOR STAYING PUT OR MOVING ON

Many home improvement television series showcase people deciding whether to improve upon their current homes to make them into the houses of their dreams or to put “for sale” signs in their lawns and move on to something new.

The question of whether to move or stay put depends on various factors. Such factors may include emotional attachment to a home, the current economic climate and the cost of real estate. Current data points to a greater propensity for people to invest and improve upon their current properties rather than trading up for something new.

According to information collected by John Burns Real Estate Consulting, the percentage of homeowners moving up to their next home is the lowest in 25 years. Many are opting to

make starter homes permanent by expanding them and repairing homes for the long haul.

The National Association of Realtors said that, between 1987 and 2008, home buyers stayed in their homes an average of six years before selling. Since 2010, however, NAR says the average expected length of time people will stay in their homes before selling is now 15 years.

Part of what’s fueling this permanency is that many home buyers were able to acquire rock-bottom mortgage interest rates shortly after the 2008 recession. As a result, they’re not inclined to walk away from those rates, even if doing so means getting more house. Also, a low inventory of available houses has stymied repeat buying for many people.

Those factors and others have led many homeowners to invest

in renovations instead. The experts at Bankrate say realistic budgeting and comparing renovation project costs against mortgages and interests rates can further help individuals decide whether to remain in their current

homes or move out. Very often a smarter layout and more efficient floor plan can make meaningful differences in spaces. Renovations and redesigns can make sense and often are less expensive and disruptive than moving.

TRI-LAKES SERVICES LTD.
 Serving: • Lac Ste. Anne County • Parkland County • Yellowhead County East

- **Septic Hauling**
 - Holding Tanks (residential, commercial, industrial)
 - Septic Fields
- **Drinking Water Delivery**
 - Cisterns
 - Pools/Hot-Tubs
- **Fresh Water Delivery**
 - Dust Control
- **Portable Washrooms** (rental & servicing)
 - Plastic
 - Trailer mount Extremes (wash sink, toilet, lights heat)
 - Extremes (wash sink, toilet, lights, heat)
- **Steam Truck**
 - In cooperation with your plumber

PH: 1-877-727-3939
www.tri-lakeservices.com
office@trilakes.services

CO-OP North Central

WE'RE HERE FOR YOUR NEXT
HOME & BUILDING PROJECT

NorthCentralCoop.ca

WE FEED.
 WE FUEL.
 WE BUILD.

Locally INVESTED | COMMUNITY MINDED

B.W. EAVESTROUGHING

Specializing in:

- ⇒ Residential 5"
- ⇒ Commercial 6"
- ⇒ Soffit
- ⇒ Gutter Clean System
- ⇒ Free Estimates
- ⇒ Fascia

BRAD (780) 699-1880

LIMB WALKERS TREE CARE LTD.

FULLY INSURED, EXPERT TREE CARE PROVIDERS
 SERVICING BARRHEAD, WESTLOCK, ONOWAY & ALL SURROUNDING AREAS

- Residential & Commercial
- Tree & Shrub Pruning
- Annual Maintenance
- Arborist Consultations & Assessments
- Bucket Truck & Chipper Services
- Professional Climbers
- Tree Removal
- Stump Grinding
- Hedge Trimmers

780-203-4705 | limb.walkers@hotmail.com
 FREE ESTIMATES PROVIDED

APRIL 18 AUCTION FOR: ELBERT BEEKMAN

AUCTION INFORMATION CONTACT: ELBERT BEEKMAN

RESIDENCE: 780-954-3847 CELL: 780-674-1327

Located: (From WESTLOCK INN - 24 mi N on Hwy 44 to RR 272.
Then 1/2 mi N) (From VILLAGE of JARVIE - 2 Mi N on RR 272)

Thursday, April 18th, 2019 at 12:00PM

**FARM IS SOLD. EXCELLENT CHOICE OF EQUIP. MANY
WITH UPGRADES, AUTO STEERING, AND MORE**

TRACTORS AND FIELD EQ.: * JD 8970 w(9023hr), 520/85 R42 Triples * FORD DESIGNATION 6 Versatile 946 w (7675 hr), (200hr om Inframe), Large Capacity Hyd Pump, Auto Steer, 20.8 R42 duals * NH 8770 w(7300hr), Auto Steer. New Super Grip 480/70 R30 FWD and 710/70 R38 Duals * JD 2550 w (7321 hr). Cab, 3pt, JD 146 Loader * 50' McFarlane HDL 1000 Double 80D Harrow Bar * 60' Flexi Coil P30 Harrow Packer Bar * 60' Allied D Harrow Bar * 30' WILRICH Field Cult * 28' JD dt Cult * 24' JD Disc w 19" DISCS * 2005 Flexi Coil 33' Air Seeder w double Chute, 3" Dutch Openers, JD 787 Tank w cameras * 16' dt Cult

QUALITY SPRAY EQ.: * 2011 Spra Coupe 4660 sprayer w (1097 hr), 80ft, Clamp On Duals, Crop Dividers, New Nozzles, Joy Stick, Sonar hright control, Auto Steer * 2 Axle transport trailer * 2 Chem Handler and Pumps * 6 Plastic Water Tanks * 4 of 2" Water Pumps

HARVEST EQ.: * 25' Premier 2952i Swather w MacDon Header, Road/Field Spd, Big Rubber (1643/1021hr) * CIH 7120 AF COMBINE w (1331/1071hr), 2016 P/Up, Auto Tarp, Auto Steer * CIH 2188 AF COMBINE w 1015 P/UP, Roll Tarp, (2148/1766), 20 hrs on 60,000 Volunteer Upgrade * CIH 1680 Combine w 2500 hr, new motor * 25 ft CIH 1010 (P/Up Reel)(St/Cut Reel) Both on Trans

AUGERS / GRAIN VAC / GRAINERY: *2016 SAK-HD 10-59 w 38hp, Self propel * 2015 WF TFX 280--46 w 30hp, Self propel * AUGERS w Swing, PTO (Buhler 10x70)(SAK 10x60) * 45x7 SAK w Honda GX390 * REM 552 Grain Vac * GT 800 Eltc Motor for Grain Fryer * 2 Nice 1650 WR Hopper Bins * 850 and 450 Hopper Feed Bins

TRUCKS: * 2003 Freightliner w 212,000 km, 2010 SWS 22' Metal Box, Tarp, Cat 3126, 10 spd, Green * 1980 Brigadier w 696,000 km, 20'x4' hi Box, HD Hoist, Tarp * 79 Bruin w 675,000 km, 20' SWS Box, Tarp, Detroit, 13 spd R Ranger * Mechanics 96 Ford F350 w 198 kkm, 5 spd, duals, Tool Box, Fel Suply Tank, Dump Deck * 2008 Ford F350 SD w Rebuilt 5.4 L, 4WD, 8' Box * 2006 Ford F350 XLT SF w 260 kkm, diesel, auto, 4WD, Ext Cab

FUEL TANKS / SHOP TOOLS: * 2 Of Dble Wall 1000 gl Tanks w 12 V Pumps, 2 yr * 6 of 300 Fuel Tank * Truck Box- Tool Chests, Fuel Tanks w 12 V * Cases Synthetic Oil * Welders- Miller 211 Auto Set, Lincol 225 * Actylene Unit w Bottles * 40/5 hp Comp * 2 T Engine Lift * 12 spd Drill Press * Hyd Press * CM 10" Table Saw * Farm Tools, Bolt Bins, Parts, Misc

YARD EQ / GOOD 3 POINT / RV: * JD 870 diesel Tractor w (1446 hr), 3 pt * NICE 3 PT (5 Row Spike Harrows)(6' Brush Mower)(8' Cult)(7' Disc) * MK 10' Trailing Land Leveller * Tailing Hyd V Ditcher * 5' Schulte FM pto Snow Blower * New Garden Sheds (16x10)(8x10) * 2 of 390 k BTU Construction Heaters * Good 20' Sea Can * Cone Fire Pit * Honda 250/2WD Quad * BH Trailers(16' Oasis Car Haul)(SA Utility)

NICELY RESTORED: * MH 44 Tractor w new rubber * JD B dd Drill on rubber w gr, ft, rope lift * 12' JD Cult * 74 Ford F350 w (83k km), 390, 4 spd, 14' oh Camper, Self Contained

PARSONS AUCTIONS LTD.

Charles 674-7704 (780-674-3929) Jeff 305-4328

Pictures Available on: parsons-auctions.com

Darwell Public Library News

Continued from Page 8

Join us Thursday April 25, 2019 from 7:00 to 8:30PM as Lorraine Taylor, Horticulturalist, Lac Ste Anne County will be here to talk about Summer Flowering Bulbs. Begonia, dahlia, canna lily, and gladiolus-these are just some of the splendid summer flowering bulbs we can grow. Many have big, beautiful flowers and they bloom for much of the summer. Unlike hardy spring flowering bulbs, the storage roots of these tender perennials must be stored overwinter indoors. This class will look at getting them started and summertime care. Come and find out how you can add these pretty plants to your landscape. There is no charge to attend this session, but we ask you to pre-register by contacting the library @ 780-892-3746.

Join us for Family Movie Night, at the Lake Isle Community Hall on Friday, April 26, 2019. We will be showing the "G" rated title "Ralph Breaks the Internet". The doors will open at 6:30pm and the movie starts at 7:00 pm. Admission is \$ 2.50, and a concession will be available. See you there!

Are you interested in the library and would like to help determine the direction and growth of this valuable community service? The Darwell Public Library will be holding their Annual General Meeting on Monday April 29, 2019 starting at 7PM at the library. The AGM will be followed by the regular meeting around 7:30PM. Light refreshments will be available, and everyone is welcome to attend. See you there!

The Library is open 11:00 am to 4:00 pm on Monday, Tuesday and Thursday and from 5:00 pm to 8:00 pm Wednesday and Friday, closed Saturdays, Sundays and Holidays. You can also find out what is happening at the library by checking our Website www.darwellpubliclibrary.ab.ca or like us on Facebook at www.facebook.com/DarwellPublicLibrary

Classified Ads

Classified Policy

CLASSIFIED RATES INCLUDE GST. 1st 20 Words: First Insertion = \$6.00; Subsequent insertion = \$3.00 each. (Eg: 2 insertions = \$9.00; 3 insertions = \$12.00; 4 insertions = \$15.00; etc) Each additional word is 20 cents per word, per insertion. BOLD/CAPITAL text available for an additional \$1/line. Lost & Found and To Give Away (up to a max. of 25 words) are free of charge. Ads must be paid in advance either by cheque, cash, Visa or Mastercard. No Refunds Allowed on Classified Ads. DEADLINE: is Thurs. 4:00 pm (Wed. 4:00 pm on long weekends). Classified ads may be called in to the COMMUNITY VOICE office at (780) 962-9228, emailed to: classifieds@com-voice.com, dropped off at Onoway Registries, or mailed with your ad and payment to: COMMUNITY VOICE, BAG 3595, SPRUCE GROVE, AB T7X 3A8. Ads may also be placed on the web at www.com-voice.com/classified.htm

Hall Rentals

Alberta Beach Agplex, Susan 780-996-2960.

Alberta Beach & District Seniors 50+ Club. Air conditioning! Space Available! Jeanne 780-913-4494. Chere Myers 780-924-3242 or cell 780-951-3242 call/text.

Anselmo Community Hall, Phone 780-786-4280

Bright Bank Hall, 780-968-6813

Cherhill Legion, Mary 780-785-3578.

Cherhill Community Assoc. Hall, Kevin 780-785-8153

Darwell Hall, 780-721-2690

Darwell Seniors, Phone Debra 780-785-2907

Goose Lake Hall, Contact Deanna (780) 584-3738

Gunn Hall (G.A.R.S.) 780-951-9452

Hathersage Community Centre, Noreen at 786-2946

Lake Isle Community Hall, PH: 780-892-3121 or Email: lakeislehall@mail.com

Magnolia Hall, 727-2015

Manley Goodwill Community Hall, 963-9165 or 916-0146

Mayerthorpe Diamond Centre, Charlotte at 786-4659

Mayerthorpe Legion, 786-2470.

Onoway Community Hall, 967-4749.

Onoway Heritage Center - Gym/Classrooms, 967-1015

Onoway Legion, 967-4980

Park Court Community Hall, 727-4476

Parkland Village Community Centre, 780-298-9155 @ PVCCentre

Ravine Community Hall, 325-2240

Rich Valley Community Hall, 967-5710 or 967-3696

Rosenthal Community Hall, 963-7984

APRIL 20 AUCTION

FOR: DOUG AND CAROL GOERTZ

AUCTION INFORMATION CONTACT: DOUG GOERTZ 780-305-3503

Located: (From Barrhead Ford - 2 mi N. Turn W on Hwy 33 for 1 mi. Turn N on RR 35 for 1/2mi) (From Westlock Inn - Go 24 mi W on Hwy 18 to RR 35, then 1/2 mi N)

Saturday, April 20th at 1:00PM

NICE WELL MAINTAINED EQUIP TRACTORS and FIELD EQ: *Case 4494 Tractor w 6910hr, pto, P/shift, 4 WD, 20.8x34 duals * CASE 1070 Tractor w 1500hr on Engine/Clutch/Pr Plate/Hyd Pump O/Haul, St/Shift, 10ft Dozer Blade * CASE 7 Bottom Plow w/auto spring reset * 25 ft JD 1610 Chisel Plow w 2 ft Ext, extra shanks/shovels/spikes * Chisel Plow w 2 ft Ext * 30ft CIH 4500 VS Cult w Tine Harrows * Inland 70 ft D Harrows * 24 ft (2x12 ft) IHC 6200 DD Drills w grass, fert, R packers, markers, hyd transport * Schulte Hyd Fork Rock Picker * 1977 Dodge 2 Ton w Box, Hoist, Drill Fills

GOOD HARVEST EQUIPMENT: * 2003 JD 9500 Combine w/264/1858 hr * 2003 PREMIER 21 ft 2940 Swather w/1486/1215 hr * FK 60x10 Swing Auger w Full Bin Spout * 37x8 Brant Super Charge pto Auger * 35x7 Brant Auger W ES Motor * 1993 CHEV Kodiak 5500 Truck w/56,226 km, 366 V8, 19ft Metal Box, Stock Racks, Hoist * Kongskild 300 Grain Vac * 3 Grain Testers *

LIVESTOCK and YARD EQUIPMENT: * JD 660 tandem Manure Spreader * Side Discharge Flail Manure Spreader * Calf Puller, Chicken Feeders + Waterers * 32' Bale Elevator * Augers on transport(4x16)(4x14) * Metal Gates (5@12) (2@10) (1@8) * Rolls of Good Barb Wire * 2 Rolls New Page Wire * Cement Mixer * Truck Chassis Bale Wagon w 10 T Hoist * Tanks(600 gl Water)(500+300 Fuel) * 12V Pump * 20 T Press



PARSONS AUCTIONS LTD.

Charles 674-7704 (780-674-3929) Jeff 305-4328
Pictures Available on: parsons-auctions.com



SERENITY FUNERAL SERVICE

NEW FACILITY
Chapel & Reception Centre



600 Calahoo Road Spruce Grove, AB
780-962-2749 www.serenity.ca

SERENITY FAMILY SERVICE SOCIETY - YOUR NOT-FOR-PROFIT SOCIETY

STORY TO TELL?

Know of a good event going on in the community? Ever wanted to write up a local event for the Community Voice?

If you have any good ideas for articles or would like to submit a story for the paper, Email it to news@com-voice.com or just fax it in at (780) 962-1021.

Please call us at (780) 962-9228 for more information.

Stories may be edited for length due to possible space restrictions.

Community VOICE
Raising You and Your Community Informed

Classified Ads - Call 962-9228

Sandy Beach Rec Hall, 967-2873

Sangudo Community Hall, 785-2904 or 305-4616

Stettin Nakumun Comm. Hall, 967-9198

Dog Caretaker

Alberta Beach & Surrounding Areas, thinking of a Summer Getaway? Worried about leaving your dog in a kennel? Don't worry anymore, you can leave your pet with me! There is a wrap around deck in court yard! I will provide tender loving care, with walks every day. Best of all, I'm cheaper than a kennel! Daily drop in's or overnight stays welcome. If interested call 780-920-4166 (4) 02-04 OG

Services

Nasty's Tree Removal. Stump Grinding, Pruning & Firewood

for sale. Licensed & insured. Roger @ 780-720-2207 (13) 19-02 OG

Computers

FREE for ALL computer immediate check up, while you watch. Repairs NOT over \$50. Good refurbished computer for only \$100. See it working. Also, parts, screens, batteries, Save, Erase, Update, Recycle, Trade. Call for appointment 780-892-4993 (14) 12-03

Firewood

FIREWOOD FOR SALE - Birch, Tamarack & Spruce Pine mix. Poplar \$300/cord. 4x4x8 cords and 1/2 cords. Quality seasoned wood, Delivery or Pick up. Woodchuck Firewood, 780-288-7247 (28) 30-10-18 OG

Buy & Sell

I buy Guns/Gun Collections & WW2 Collectables. Please call Jay at 780-686-1350 (24) 19-03

For Rent

Alberta Beach Hotel rooms for rent. Upgraded, very clean & well maintained, shaw cable tv included. \$60.00 per night or \$500.00 per month. Damage deposit is required. Call 780-924-3005 for more information (50) 08-01

2 Bedroom House for Rent in Alberta Beach. Large deck, 2 fireplaces, 1.5 baths, close to lake. \$1200/month + DD same + Utilities, Available May 1st. Call 780-221-8306 (1) 02-04

Cabin for Rent - North of Evansburg on Hwy 22, (15 mins from Evansburg). \$1100/month + DD All inclusive, Utilities & TV. Max. 2 people. 780-239-0553 (4) 02-04

SUDOKU OF THE WEEK

Fun By The Numbers

Here's How It Works: Sudoku puzzles are formatted as a 9x9 grid, broken down into nine 3x3 boxes. To solve a sudoku, the numbers 1 through 9 must fill each row, column and box. Each number can appear only once in each row, column and box. You can figure out the order in which the numbers will appear by using the numeric clues already provided in the boxes. The more numbers you name, the easier it gets to solve the puzzle!

	1	2	9	4	5		3	
	3	5		1	7		4	
					8			7
9	8		1	7		4	5	
		1		6				8
			4		3	6		1
	2					1		
				3		2		4
					4		7	5

ANSWER:

7	1	2	9	4	5	8	3	6
8	3	5	6	1	7	9	4	2
6	9	4	3	2	8	5	1	7
9	8	6	1	7	2	4	5	3
3	4	1	5	6	9	7	2	8
2	5	7	4	8	3	8	9	1
4	2	3	7	5	6	1	8	9
5	7	9	8	3	1	2	6	4
1	6	8	2	9	4	3	7	5

Like puzzles? Then you'll love sudoku. This mind-bending puzzle will have you hooked from the moment you square off, so sharpen your pencil and put your sudoku savvy to the test!



Church Directory

<p>Rich Valley Community Church</p> <p>Sunday School 10:00a.m.</p> <p>Worship Service 11:00a.m.</p>	<p>Catholic Parish of Lac Ste. Anne</p> <p>Sunday 10:00a.m.</p>		<p>Mayerthorpe Baptist Church</p> <p>Worship Service Sunday 10:30a.m.</p> <p>Children's Church 10:30a.m.</p> <p>4606-54 St. Mayerthorpe (780) 786-2677</p>	<p>Alberta Beach Alliance Church</p> <p>Sunday Worship Service & Kid's Church 11:00a.m.</p> <p>Sunday School 10:00a.m.</p> <p>(780) 924-3282</p>	<p>St. John's Anglican Church</p> <p>Onoway</p> <p>Sunday Service 10:00a.m.</p> <p>Everyone Welcome</p>
<p>St. John's Lutheran Church Alberta Beach</p> <p>Sunday Service 11:00a.m.</p> <p>Sunday School</p>	<p>Zion United Church</p> <p>Sunday Service 10:00a.m.</p> <p>Sunday School</p> <p>Serving Alberta Beach, Wabaman, Daricell & Lake Isle, Onoway & Area (780) 924-3351</p>	<p>Sangudo United Church</p> <p>Worship Service 3rd Sunday 11:00a.m.</p> <p>4907-50 Ave. Sangudo, AB</p>	<p>St. Mary's Anglican Church Service</p> <p>Holy Communion 2nd Sunday each month 11:00 a.m. at Sangudo United Church</p> <p>Reverend Barry Rose Officiating</p>	<p>Cherhill Community Church</p> <p>Sunday School 10:00a.m. - 11:00a.m.</p> <p>Worship Service Sunday 11:00a.m.</p>	<p>St. Michael Lutheran Church</p> <p>Sunday Services 1st & 3rd Sunday at 2:00p.m.</p> <p>Pastor Rick Chappell (780) 674-2618 Mystery Lake</p>
<p>Trinity Lutheran Church (LC-C) <i>The Church of the Lutheran Hour - Rockyfort Bridge</i></p> <p>Pastor Dan Hansard Church (780) 778-2035</p> <p>Sunday Worship 9:00a.m.</p> <p>Senior's Service & Cottage Bible Study - Phone for locations</p>	<p>Mayerthorpe Pentecostal Assembly</p> <p>P.A.O.C. Rev. Arnold Lothoiz</p> <p>Sunday 10:30a.m. Morning Service Tuesday 7:30p.m. Ministry Training (780) 786-2141</p>	<p>Infuzed Ministries</p> <p>Worship Service Sunday 3:30p.m. in Alexia Community Hall</p> <p>Pastor Daniel Jackson (780) 719-0240</p>	<p>Onoway Baptist Church</p> <p>Sunday Service 10:30a.m.</p> <p>Pastor Greg Garbutt (780) 967-2266</p>	<p>Roman Catholic Church</p> <p>St. Agnes' Parish, Mayerthorpe Sunday 9:00a.m.</p> <p>St. Elizabeth Parish, Evansburg Saturday 7:00p.m. (780) 786-2032</p>	<p>Calahoo Alliance Church</p> <p>Family Worship Service Sunday 10:00a.m.</p> <p>For Info Call Jerry (780) 974-7734</p>

SERVICE DIRECTORY

Lanman Landscapes
YOUR ONE STOP FOR ALL TYPES OF LANDSCAPING

Dangerous Tree Removal Yard Cleanup Full Landscaping Service

Experienced Bobcat Work

(780) 977-6586

2Bros
Custom Contracting Ltd.

Custom Framing • Concrete Floors • Shingling
Siding Soffit Fascia • Styrofoam Block System

Jeff 780-717-0520

CPR St. Albert
CPR Cell Phone Repair Saving Your Mobile Life™

We Can Fix That In 90 Minutes

iPhones, iPods, iPads, Tablets, Computers - Apple, Samsung, Blackberry, LG, Sony and MORE
Lifetime Warranty Against Defects In Our Screens
Now over 480 Locations

#13 - 11 Bellerose Drive (Next to Grandis Bakery) 780-460-0277

JAVORSKY DITCHING
Onoway, AB

Phone: (780) 967-5486
Cell: (780) 906-7469
Fax: (780) 967-4961

Dennis Javorsky - Owner / Operator

For All Your Excavating Needs
Sand & Gravel Hauling • General Excavating
Septic Tanks & Cisterns • Site Prep & Clean Up
• Install & Repair of Water, Sewer, Power & Telephone Lines

Community VOICE
THIS SPACE IS RESERVED FOR YOU!

BRO-BUILT
Homes & Contracting Ltd

"We Pride Ourselves In Turning Handshakes Into Hugs"

www.brobuilthomes.com
Testimonials
Phone 780-940-6415

SERVICE DIRECTORY



THE HAY
TRUCKING & CONSTRUCTION
ONWAY, AB

COR Certified

- Oilfield
- Road Building
- Basements
- Dugouts
- Sand & Gravel

haytrucking@xplomet.ca
www.haytandc.com
Office: 967-5849 Cell: 818-5849



MARK MARTIN PFEIFFER
MASTER BRICKLAYER/MASON

Cell: 780-242-3308
Email: pfeiffer.mark@hotmail.com

- Brickwork • Stonework
- Rockwork • Parging
- Concrete Block Work
- Tile Work (all kinds)



ALL AROUND FENCING RENTALS

Fence Panels • Barricades
Installation by Collin Toilet Rentals



Whitcourt, AB
780.706.7978



Super Sucker
Vacuum Services
Residential & Commercial

Trevor Gardner
Owner/Operator
Septic Pumping Service

RR 1, Site 1, Comp 261 Onway, AB T0E 1Y0
Office: (780) 967-5552
supersucker@telus.net



Community VOICE

THIS SPACE IS RESERVED FOR YOU!

R & S TOWING

FREE REMOVAL OF UNWANTED VEHICLES

MasterCard **967-2492** VISA



Tile Setting
Ceramic & Natural Slate

Kitchen & Bath - Backsplash & Surrounds
Fireplace Floors

"Serving Lac Ste. Anne and West Central Alberta Areas for over 25 years"

Thorsen Industries Call
Christian @ 403 728-3805



THE MOST COMPLETE NUTRITIONAL SPRAYS ON THE PLANET

ORDER TODAY!
(780) 907-8642
www.Elaine1.com

DONALD N. GREENWAY
Chartered Accountant

Suite 205 Sunrise Professional Building
215 McLeod Avenue
Spruce Grove, AB

(Bus.) **962-6366**
(Fax) **962-3990**

ZEE BEST RENOVATIONS
Your Complete Line of Renovation Needs:

- Bathroom
- Basements
- Plumbing
- Tileworks
- Drywall & Taping
- Decks & Fencing
- Roofing
- Siding

FREE ESTIMATES
26 YEARS EXPERIENCE
INSURED | GREAT RATES

JOE LAWRENCE
MANAGER

BUS: 780-967-3898
CELL: 780-915-3348
FAX: 780-967-3798



Community VOICE

THIS SPACE IS RESERVED FOR YOU!



CROFT LAW

Local office in Darwell
Call us at 780.467.5534

Experienced Legal Services in:
Family Law • Civil Litigation
Corporate Law • Wills & Estates
Plus Notarizing and Commissioning

www.croftlaw.ca



PEMBINA CONCRETE PRODUCTS LTD.

Manufacturers of **ONE PIECE SEPTIC & HOLDING TANKS**

* Water Cisterns * Field Systems * Pumps and Accessories * Sumps



DELIVERED TO YOUR SITE
1-800-661-3047
780-727-2702
PembinaConcrete.com

New Line of Concrete Statues, Fountains and Garden Ornaments.

BOX 123, Entwistle, T0E 0S0

SERVICE DIRECTORY



PaddlePlastics Ltd.
Mayerthorpe, AB


Box 67
Mayerthorpe, AB T0E 1N0
Ph: (780) **786-4408**
Fax: (780) 786-4466



Mo-Bil WASH SERVICES Ltd.

- Steam • Hot & Cold High Pressure Wash • Sewer Thaw & Flush
- Residential • Commercial - Oilfield

24 HOUR SERVICE
Onway Call (780) 991-9466



PREVAIL MAX
CELLULAR HOMEOSTASIS FORMULA

How do you want your **BLOOD** to look?

Before PrevailMAX:	After PrevailMAX:
poor circulation	better circulation
low energy	more vitality
brain fog	mental clarity
dehydration	cellular movement
decreased nutrients	nutrient assimilation
pH imbalance	balanced pH
poor endurance	optimal endurance

(780) 907-8642 **VALENTUS**
www.ValentusTour.com/Ladybug



Blakeman Drilling Ltd.

Waterwell Drilling & Servicing
Pumps & Pressure Systems

SERVING LAC STE. ANNE & WEST PARKLAND FOR OVER 25 YEARS
Joe (780) 924-3024



THIS SPACE IS RESERVED FOR YOU!

SANGUDO VETERINARY CLINIC

Box 581, 4916 - 52 Ave. Sangudo, AB. T0E 2A0

Dr. Ralf Sanders DVM

Ph: 780-785-2200
Fax: 780-785-2228
sangudovet@gmail.com

24 HOUR EMERGENCY SERVICE

GROVE MACHINE & WELDING

Office: (780) 962-1772 Call: (780) 231-5405

You have an idea, we'll design it, build it and test it

- Fasteners • Welding • Fabrication • Repairs
- Mobile Welding • Plasma Cutting • Machining

35 South Avenue Spruce Grove, AB T7X 1B3
E-Mail: jim.reynar@grovemachinewelding.com
sales@grovemachinewelding.com



H&P Kosik CONSTRUCTION Ltd.

- Road Building • Gravel • Sand • Dugouts
- Black Dirt • Clearing

No Job too small We do them all!

Harvey cell. 780-445-9010 ph. 780-892-3532
Box 145, Darwell, AB. T0E 0L0

Collin Toilet Rentals & Service

Your Portable Toilet Supplier for:

- Construction
- Commercial
- Oilfield
- Special Events



Whitecourt Dispatch 780.778.2448



THIS SPACE IS RESERVED FOR YOU!

ROY SHERWOOD
Master Electrician

Ph: 780-968-1425
Call: 780-908-2287
Fax: 780-968-2211

Email: suretechroy@gmail.com

2-53220 Rge Rd 21
Parkland County, AB
T7Y 0C5

SURETECH ELECTRIC LTD.

Control & Automation
Commissioning
Solar Sales & Service

Industrial . Commercial . Residential



VILLAGE GLASS & MIRROR LTD.

- AUTO
- RESIDENTIAL
- COMMERCIAL GLASS & MIRROR PRODUCTS



5027 - 50 Avenue • Phone: 967-2127
PO Box 609, Onway, AB T0E 1V0

ATB Financial

ALBERTA BEACH AGENCY
4824 - 50 Ave, Alberta Beach
Ph/Fax: (780) 924-2211

Mon to Thurs 10:00AM - 4:00PM
Friday 10:00AM - 5:00PM

Heidi Letendre



RAINBOW LIQUIDATORS & AUCTIONS

Farm Sales, Equipment Sales, Estate Sales, Storage War Auctions
BOOK YOUR SALE WITH US TODAY!
Serving the Community for 40 years

Ph: (780) 968-1000
Stony Plain, AB 1-866-968-1001
www.rainbowauctions.ca

SERVICE DIRECTORY

Chico's Vacuum Service Ltd.

SEPTIC SERVICES RESIDENTIAL & COMMERCIAL



Box 130 PH 780-924-2435
 Alberta Beach, AB T0E 0A0 1-877-226-5008

Friendly Reliable Service

SMOOLE

- Construction & Septic Installation
- Environmental Wastewater Disposal
- Site Design & Evaluation
- Power, Water & Basement Excavation
- Trackhoe, Backhoe, Bobcat & Dump Truck



For All Your Excavation Needs

Call Dan 780-991-4484 Reid 780-909-0173

Jack's Auto Body

& 24 HR Towing

**SPECIALIZING IN COLLISION REPAIR
 GUARANTEED WORK • INSURANCE CLAIMS**

CAA BOX 9 SITE 306 RR3, ONWAY, AB T0E 1V0
(780) 967-5850

OUR PLEDGE IS QUALITY

H&E UPHOLSTERY

FOR ALL YOUR UPHOLSTERY NEEDS

Convertible tops for cars and boats, custom car and boat interiors, 5th wheel trailer skirts, boat tarps, ATV seats, furniture, kitchen chairs, heavy equipment seats.




WWW.HANDE.CA 4-485 South Ave.
 For more information contact: Spruce Grove
 kirk@hande.ca (780) 962-3048

Community VOICE

THIS SPACE IS RESERVED FOR YOU!

PURE FULL SPECTRUM CBD HEMP OIL

KEY BENEFITS:

- High Absorption Sublingual
- Improves Overall Health
- Helps Relieve Pain
- Delivery System
- Inhibits Cell Growth in Tumors




CTFO
 Changing the Future Outcome FOR PEOPLE & PETS

(780) 907-8642

Whole Heart Massage Therapy

- Swedish Massage
- Relaxation Massage
- Deep Tissue Massage
- Kinesio Taping

(780) 699-4667
 Jennilee Reber
 REGISTERED MASSAGE THERAPIST
 DIRECT BILLING TO INSURANCE

wholeheartmassage@hotmail.com
 54013 Range Road 30 #10
 Diamond Country Estates
 Lac Ste. Anne County

GRANDE TIRE

5115 LAC STE. ANNE TRAIL N. ONWAY, AB T0E 1V0

**Full Mechanical Services
 Tire Sales & Repairs**

**BUS: (780) 967-3432
 FAX: (780) 967-4816
 contact@xplornet.com**

AMVIC LICENSED

POSTINGFIRST.com

FREE LOCAL CLASSIFIED ADS

Real Estate, Rentals, Vehicles, Pets, Jobs, Service Directory, Buy/Sell/Trade, Lawn & Garden, Garage Sales, Events, Local Places & Much More... Advertise for FREE Today!

Follow Us



SUMMERS DRILLING LTD.

Water well drilling and service
 Family owned Business Serving Alberta since 1917

Never run out of water again!

5 year workmanship warranty

3 Convenient ways to pay

- Visa
- Mastercard
- We now offer full financing

Tired of hauling water?
 We can install a water well with a permanent water supply for as little as \$150/month OAC

Stop in at our office 4405 - 50 Street, Stony Plain
 780-963-1282
 admin@summersdrilling.com

Community VOICE

THIS SPACE IS RESERVED FOR YOU!

Pm Park Memorial Ltd.
 Funeral Home & Crematorium

Fran Marion
 Licensed Funeral Director

Mayerthorpe: 780-786-2533
 Whitecourt: 780-779-2533

Serving Mayerthorpe, Whitecourt and area

Edmonton | Lamont | Mayerthorpe | Smoky Lake | Vegreville



TRUIS & ONWAY REGISTRIES
 INSURANCE

Box 390, Onway, Alberta T0E 1V0
 Tel: 967-5270 Fax: 967-4303

**OPEN 9-5 MONDAY - FRIDAY
 FIRST & LAST SATURDAY OF EACH MONTH 9-12* *excluding long weekends
 Registries Closed from 12:00 pm - 1:00 pm**

ALL GENERAL REGISTRY SERVICES

Home - Auto - Farm - Life and Business

Very Competitive Rates & Convenient Payment Plans.



Clients first...Service Always!

PREVAIL

MAX

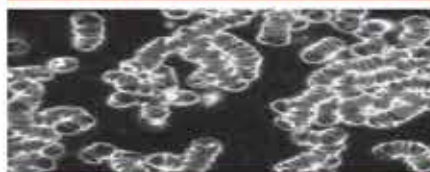
CELLULAR HOMEOSTASIS FORMULA

A NUTRITIONAL BREAKTHROUGH THAT SUPPORTS YOU ...RIGHT DOWN TO THE LAST CELL!

How do you want your **BLOOD** to look?



Before PrevailMAX:



- poor circulation
- low energy
- brain fog
- dehydration
- decreased nutrients
- pH imbalance
- poor endurance

After PrevailMAX:



- better circulation
- more vitality
- mental clarity
- cellular movement
- nutrient assimilation
- balanced pH
- optimal endurance

PrevailMAX™ is a nutritional breakthrough that delivers a rapid increase of internal blood cell pressure to speed absorption, enabling the body to take maximum advantage of the nutrients in foods and supplements. The electrolytes are small enough to penetrate your cell membranes, to bind with your cells, and to be carried wherever they are needed in the body.

At the microscopic level of human cells, **PrevailMAX™** supports healthy cell performance – a nutritional breakthrough for your cells.

When you use **PrevailMAX™**, you will feel more energy and an ability to focus like never before. Take a few sprays today and see just how good you can feel!

LIVIN TRIM WITH
VALENTUS

www.ValentusTour.com/Ladybug

(780) 907-8642