

Serving: Onoway, Alberta Beach, Calahoo, Gunn, Glenevis, Darwell, Cherhill, Sangudo, Mayerthorpe, Rich Valley, Barrhead, Whitecourt, Stony Plain and Spruce Grove

April 9, 2019

JOHN & BARB DONNELLY MEMORIAL DART TOURNAMENT – 2019

Submitted by **Marlaine Janke**

Our annual memorial tournament was held in the Gunn Community Hall on March 23rd this year. We had nice weather for everyone attending and our usual 12 teams being 48 players started filling the hall around 8:30 am for registration. The majority of our players are dedicated and thoroughly enjoy this

game. All players know it is a long day but fun and memorable so they are prepared to participate until somewhere between 6:00 – 6:30 pm by the time prizes are awarded.

John & Barb started our club back in 1988. They had a love for the game that seemed to become contagious amongst many who played with or against them. They were a fun loving & easy going couple who loved



spending time in the community and with friends. They were inseparable and also best friends to each other. After we lost them, other dart players learned John's system and we still have our club today for many to enjoy.

We try keeping them close in our thoughts by having a display table with pictures of them and memorabilia set up for everyone to see and enjoy.

Continued on Page 7

All Precious JEWELLERS
 "Your Spruce Grove Jewellery Store"
Goldsmith on Premises
 • Engraving • Clock & Watch Repairs
 • Jewellery Repairs • Custom Make-ups
 Jewellery Repairs Done On Site.
 Laser Welder Services Available.
 Toll Free: 1-877-962-4367
 PH: 780-960-4200 Fax: 780-960-4201
 Suite 102, 215 McLeod Avenue
 Spruce Grove, AB. T7X 0G2

L & B Tradition of Quality & Service
 Water Services Ltd.
 Well & Pump Repairs
 Complete Pressure Systems
 Farm - Residential - Commercial
 Potable Water Cisterns, Water Conditioning
 Financing Available
 PH. 780-963-8134 OR 780-963-7749
 LBWATER@XPLORNET.COM

EX-RCMP MEMBER FACING ADDITIONAL CHARGES FOR OBSTRUCTION

Submitted by **ASIRT**

On March 28, 2019, former RCMP member Aaron Lee Sayler was charged with two additional counts of obstruction of justice and one count of breach of a recognizance.

Further to an ongoing investigation, it is alleged that between the dates of Feb. 8 and March 5,

2019, Mr. Sayler counselled or instructed the destruction of evidence and interfered with a witness in relation to his previous charges. Mr. Sayler will appear in the Provincial Court of Alberta on April 10, 2019.

On March 28, 2019, Sukhvinder Gill was also charged with two counts of obstruction of justice alleging that she engaged

in the concealment and/or destruction of evidence in relation to Mr. Sayler's charges, and acted to facilitate his planned exit from Canada. Ms. Gill was released on a promise to appear to attend court on May 8, 2019.

As these matters are now before the court, no further information will be released at this time.

Oneil Carlier
 Fighting for Lac-St-Anne Parkland
 780-239-7308 **NDP**
 Authorized by the Official Agent of Oneil Carlier
 Join us at: OneilCarlier.AlbertaNDP.ca

View us **ONLINE!**
WWW.COM-VOICE.COM



Community VOICE

Keeping You and Your Community Informed

PUBLISHED WEEKLY (Zone 1 & 2)
AND BIWEEKLY (Zone 3)

E.J. Lewchuck & Associates Ltd.

45C South Ave. | Box 3595
Spruce Grove, AB T7X 3A8

SALES TEAM
Elaine
Ashley
Dani

TELEPHONE:
Classifieds 962-9229
Advertising 962-9228
Fax 962-1021

E-MAIL:
comvoice@telusplanet.net
sales@com-voice.com
news@com-voice.com

LAC STE. ANNE COUNTY PARENT LINK / EARLY CHILDHOOD DEVELOPMENT INITIATIVE PROGRAMS IN APRIL

Submitted by Lac Ste. Anne County | www.LSAC.ca

STAY & PLAY
Sangudo: Tuesdays, April 9,

16 (Easter Party), 17 & 24 from 11:00 – 12:00 noon in the Sangudo Early Childhood Room (Arena). Drop by with your kids to make new friends, paint, cre-

ate crafts, & play with the awesome toys.

Onoway: Wednesdays & Thursdays, April 10 & 11 from 9:00 – 11:30 am, April 11 from

		
<p>14K White Gold Diamond Ring Brand New, Still in Box, Tags on! Asking \$3,245</p>	<p>14K White Gold Engagement Ring Brand New, Still in Box, Tags on! Asking \$2,800</p>	<p>10K White Gold Diamond ring Brand New, Still in Box, Tags on! Asking \$1,375</p>
<p><i>Call for more information, or to view the ring 780-907-8642</i></p>		

NOW UNDER NEW MANAGEMENT

The benefits and savings provided by Elite conditioned water will make a wonderful difference in your life.



962-6040 962-4060
15A South Ave., SPRUCE GROVE

Quality Water Services West LTD.



"We're recommended the MOST as the company that knows the MOST"

3 Voices 3 Choices
One call can put you in all 3 markets
962-9229



Oneil Carlier
For Lac Ste. Anne - Parkland



Fighting for you

- Fighting for healthcare
- Major investment in seniors' housing
- More jobs and oil & gas processing

780-239-7308 | oneil.carlier@albertandp.ca

Authorized by the Official Agent of Oneil Carlier
Join us at: OneilCarlier.AlbertaNDP.ca



Lac Ste. Anne County Parent Link / Early Childhood Development Initiative Programs In April

12:30 – 3:00 p.m in the Parent Link Room, Onoway Heritage Centre. Drop by and enjoy a coffee and visit, while your kids play with the awesome toys, create crafts, and check out the sensory bins. Indoor shoes are recommended! FREE drop-in programs – no need to pre-register.

EASTER PARTIES

Sangudo: Tuesday, April 16 | 11:00 am – 12:00 noon in the Sangudo Early Childhood Room (Arena) — and — Onoway: Wednesday & Thursday, April 17 & 18 from 9:00 – 11:30 am. Enjoy fun Easter activities, create Easter crafts, and explore Easter themed sensory bins. FREE drop-in programs – no need to pre-register.

EARTH DAY SEED PLANTING

Onoway: Wednesday & Thursday, April 17 & 18 from 12:30 – 3:00 pm in the Parent Link Room, Onoway Heritage Centre. — and — Sangudo: Tuesday, April 29 from 11:00 am –

12:00 noon in the Sangudo Early Childhood Room (Arena). Learn about the environment and some of the other creatures that inhabit Earth, while we plant seeds in containers made from Earth-friendly materials and

learn how plants help our planet. Create Earth Day crafts and check out with animal habitat sensory bins. FREE drop-in programs – no need to pre-register.

Parent/caregiver supervision of children is required. For

more information, please contact Parent Link/Early Childhood Development Coordinator Cathy Steeves: 780.785.3411 / 1.866.880.5722 or email csteeves@LSAC.ca.

Re-Elect
MARK SMITH

United Conservatives
Alberta Strong & Free

AUTHORIZED BY THE MARK SMITH CAMPAIGN 780-918-4260

RICH VALLEY SCHOOL
KINDERGARTEN
— 2019-20 REGISTRATION —

April 17th, 2019 • 7:00 P.M.

If you have a child who will be 5 years old by December 31, 2019 he/she is eligible to register for our 2019-2020 school year.

Come meet the teacher and tour the school.

If you have any questions please contact the office @ 780-967-5754

Sangudo Minor Sports Annual General Meeting

Sunday, April 28th, 2019
7:00 p.m. at Sangudo Arena

By-Law amendments will be considered at the AGM and can be reviewed prior to the meeting on the Sangudo Minor Sports website or contact Rene Werenka at crwerenka@hotmail.com for a copy to be send to you.

JOKE OF THE WEEK

These two blonde carpenters are working on a house. The one who's nailing down the timber keeps reaching into his nail pouch for nails and every time he pulls one out he either throws it over his shoulder or nails it in. The other worker is intrigued by this and eventually asks him, "Why do you keep throwing those nails away?" The first worker replies, "If I pull a nail out of my pouch and it's pointed toward me, then I throw it away because it's defective. If it's pointed toward the house, then I nail it in!" The second blonde is amazed at the other guy's stupidity and yells at him, "You idiot! The nails pointed toward you aren't defective! They're for the other side of the house!"



LAC STE. ANNE-PARKLAND Voting Made Simple

Provincial General Election

Voting will take place to elect a Member of the Legislative Assembly. If you are voting on Election Day, Tuesday, April 16, 2019, you **must** vote at the polling station identified for you in the map. If you prefer to vote in advance, from April 9 to April 13, you may vote at any advance poll location in Alberta.

Advance Voting Days Tuesday, April 9 to Saturday, April 13

ADVANCE POLL LOCATIONS

Before Election Day, you may vote at any advance poll location in Alberta. Advance poll locations nearest your electoral division are specified below. Visit www.elections.ab.ca for additional polling locations throughout the province.

Advance Poll Location	Tuesday, April 9	Wednesday, April 10	Thursday, April 11	Friday, April 12	Saturday, April 13
Lac Ste. Anne-Parkland Returning Office 5112 Lac Ste. Anne Trail S, Onoway	9 AM - 8 PM	9 AM - 8 PM	9 AM - 8 PM	9 AM - 8 PM	9 AM - 8 PM
Parkland Village Community Centre 60, 53222 Range Road 272, Parkland County	9 AM - 8 PM	9 AM - 8 PM	9 AM - 8 PM	9 AM - 8 PM	9 AM - 8 PM
Mayerthorpe Diamond Centre 4814 54 Street, Mayerthorpe	9 AM - 8 PM	9 AM - 8 PM	9 AM - 8 PM		
Evansburg Senior Citizens Heritage House 5009 49 Street, Evansburg				9 AM - 8 PM	9 AM - 8 PM

Barrier-free Access
Polls marked by the symbol have been evaluated for specific accessibility and have passed testing or have been temporarily modified to ensure barrier-free access where possible. If you have questions about specific accessibility or about a specific polling station, please contact the returning officer.

Returning Office
 Returning Officer: Reanne Kronewitt
5112 Lac Ste. Anne Trail South, Onoway, AB T0E 1V0
Telephone: 587.855.1380 | Toll Free: 1.833.841.6767
Email Address: ro.67@elections.ab.ca
Office hours:
Monday to Friday – 9:00 a.m. to 6:00 p.m.
Saturday – 10:00 a.m. to 4:00 p.m.

Results of the official count will be available on Friday, April 26, 2019 at www.elections.ab.ca.

Find out more at www.elections.ab.ca

The Election Finances and Contributions Disclosure Act (section 9.1) requires that Third Party Advertisers must register with Elections Alberta if they spend or plan to spend more than \$1000 for election advertising. Refer to our website.



LAC STE. ANNE-PARKLAND Voting Made Simple

✕ Election Day Tuesday, April 16, 2019

Election Day voting hours are from 9:00 a.m. to 8:00 p.m.

On Election Day, you **must** vote at the polling station specified for your residence.

POLLING PLACE LEGEND: LAC STE. ANNE-PARKLAND

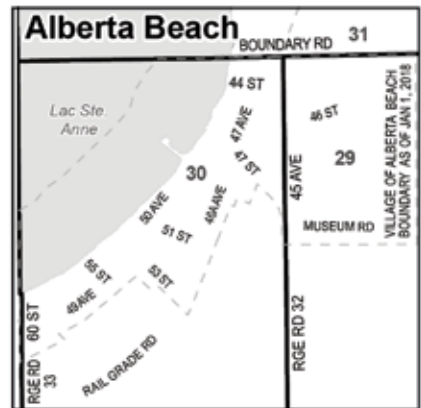
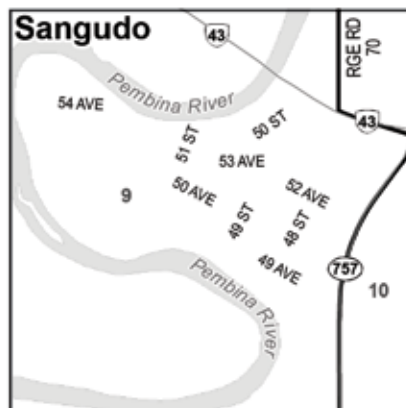
Using the map, find the number representing your current physical address, then match it to the listed polling stations.

- 001**
Greencourt
Community Hall
607 9124 Highway 18
Lac Ste. Anne County
- 002,003,004,005,006**
Mayerthorpe
Diamond Centre
4814 54 Street
Mayerthorpe
- 007,008,011**
Evansburg
Heritage House
5009 49 Street
Evansburg
- 010,009A,009B**
Sangudo Community Hall
4920 50 Street
Sangudo
- 012**
Seba Beach Seniors
Golden Age Club
109 1 Street
Seba Beach
- 013**
Fallis Community Hall
53303 Range Road 52
Parkland County
- 014**
Lake Isle Hall
5 42 Highway 633
Parkland County
- 015**
Royal Canadian
Legion Cherhill
401 Railway Avenue
Cherhill
- 016,031,032**
Gunn Area Hall
110, 55022 Ste. Anne Trail
Gunn

- 018**
Darwell Centennial Hall
54219 Highway 765
Lac Ste. Anne County
- 019,020**
Wabamun Jubilee Hall
5132 53 Avenue
Wabamun
- 022,025,023A,023B**
Carvel Hall
52511 Highway 770
Parkland County
- 024**
Duffield Community Hall
2 1 Street
Duffield
- 026,027,041**
Smithfield
Community Hall
53213 Range Road 34
Parkland County
- 028,029,030A,030B**
Alberta Beach Agriplex
4811 47 Avenue
Alberta Beach
- 033,034**
Rich Valley Agriplex
56216 Highway 33
Lac Ste. Anne County

- 035,037,039,040,
038A,038B,036A,036B**
Onoway Heritage Centre
4708 Lac Ste. Anne Trail N
Onoway
- 042,043A,043B**
Manley Hall
2320 Highway 16
Parkland County
- 044,045,046**
Blueberry
Community Hall
53109 Range Road 15
Parkland County
- 047,048,050,051,072,
049A,049B,071A,071B**
Muir Lake
Community Hall
53422 Highway 779
Parkland County
- 052A,052B,053A,053B**
Calahoo Alliance Church
14, 54500 Range
Road 275
Sturgeon County

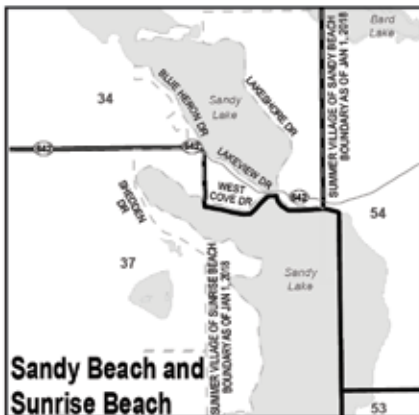
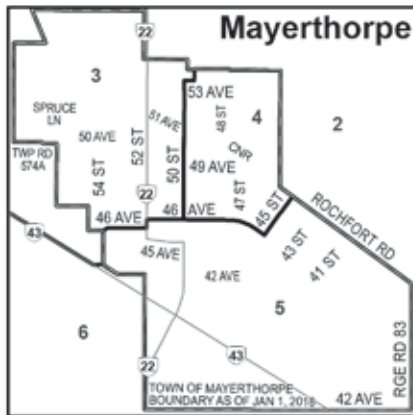
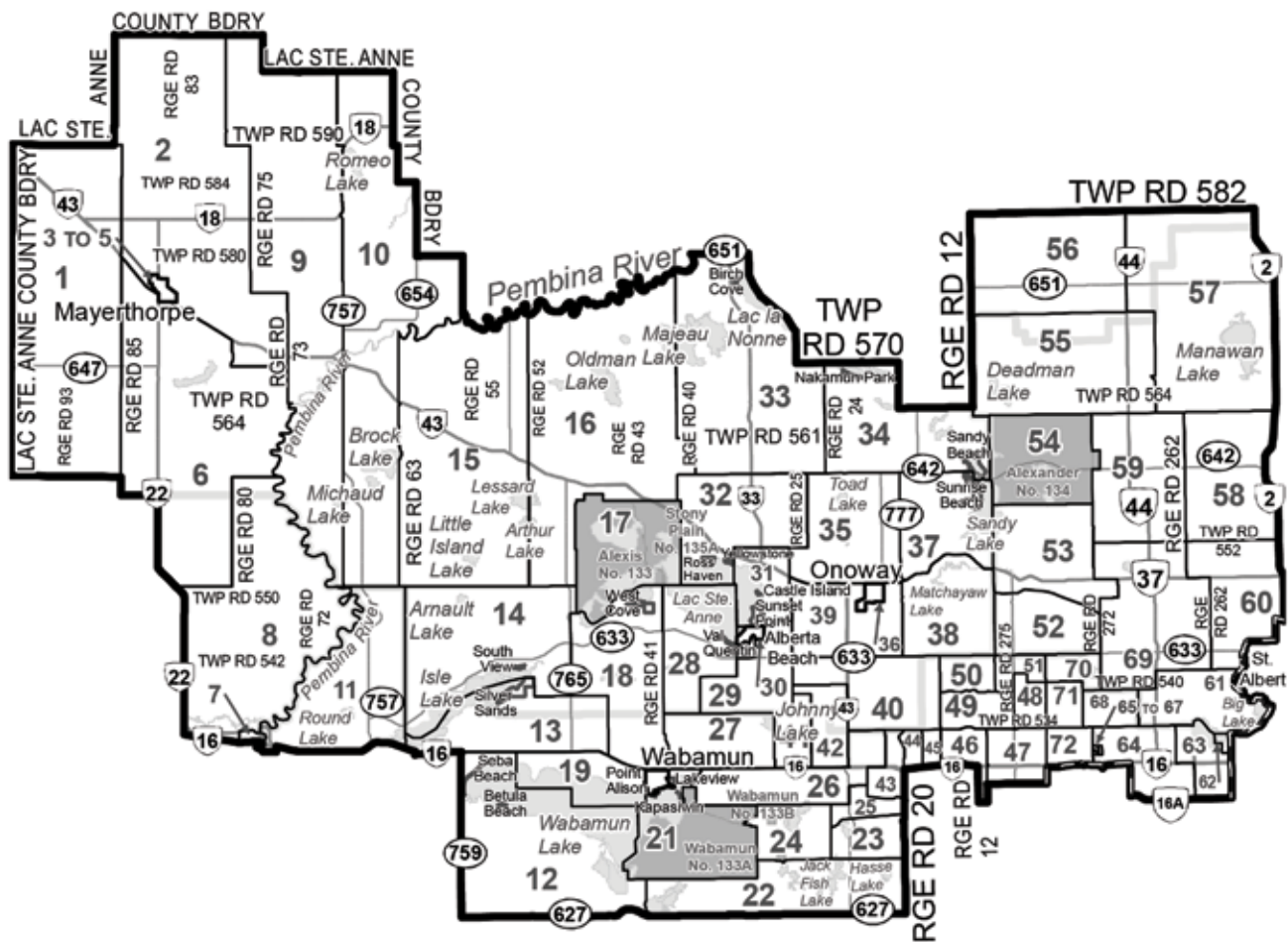
- 055**
Alcomdale Hall
57000 Highway 44
Sturgeon County
- 056,057**
Busby Community Hall
5108 50 Ave
Busby
- 058,059**
Riviere Qui Barre
Recreation Centre
145A 26500 Highway 44
Sturgeon County
- 060,061,062,064,070,
063A,063B,069A,069B**
Villeneuve
Community Hall
61 54200 Range
Road 265
Sturgeon County
- 065,066,067,068**
Parkland Village
Community Hall
60 53222 Range
Road 272
Parkland County





LAC STE. ANNE-PARKLAND Voting Made Simple

Please refer to Polling Place Legend on previous page.



COUNCIL INTRODUCED TO BIG MOLLY

Wayfinder's new proppant facility injects jobs and revenue into County

Submitted by Lac Ste. Anne County | www.LSAC.ca

On Thursday March 7, County Council had an opportunity to tour the new Wayfinder proppant management facility located near Glenevis. Dubbed the Big Molly Project (named after company mascot Molly in the foreground of the photo), this operation is involved in the

mining, drying and transportation of sand vital for hydraulic fracturing operations. Big Molly is anticipated to be fully operational by late May of this year.

About 40 full-time jobs were created during Big Molly's construction phase, and an additional 50 full-time positions will be required once operations begin. In addition to a business

tax contribution, approximately \$125,000 per year in royalty taxes is anticipated.

Wayfinder also supports and works in tandem with local businesses, including restaurants and hotels; fuel & water haulers; earthwork specialists; sand trucking firms; and trades such as welders, millwrights and mechanics.

with the relationship it has begun to forge with this exceptional corporate citizen, and looks forward to the regional job creation that this project will create. Kindly join us in welcoming Wayfinder to the County. More information about Wayfinder can be found at www.wayfindercorp.com.

Council is extremely pleased

Handyman, yard clean up, maintenance and light construction services

- Yard cleanup / spring cleanup
- Clear brush and trees
- Shred trees and brush
- Log splitting
- Rough cut mowing
- Weed eating / weed management
- Broadcast spreading grass seeds etc.
- Rototilling
- Back hoe work, up to 6-foot depth
- Postholes and fencing
- Landscaping; ground leveling / spread gravel, sand etc.
- Light construction, sheds etc.
- Electrical (over 10 yrs. Experience)

Don't see it listed? Contact me.
Call, text or email Dan for more information.
780-909-6487 / dansscorpio2007@gmail.com

Town & Country Funeral Services

Wabamun
780-983-2749

Evansburg
780-727-2791

- † Cemetery Monument Sales & Installation
- † Traditional Burial & Funeral Services
- † Pre-need Funeral Packages
- † Crematorium & Memorial Services



Specializing in Trailer Repairs
Aluminum, Tig, Mig & SMAW Welding
Mobile Welding Units Available
Mechanical Inspections & Repairs
Fabrication & Plasma Table
Skid Steer Services

Sideline Mechanical & Welding Ltd.
55109 Range Road 20
Phone: 780-967-5658
eMail: smwltd@gmail.com

LEVEL THE PLAYING FIELD
FAIR COMPETITION HELPS
KEEP PRICES LOW

ASK YOUR LOCAL CANDIDATE IF THEY WILL SAY "NO!" TO HIGHER POWER BILLS




StopThePowerMonopoly.ca

Authorized by EQUS REA LTD./EQUS.ca

Tri-Municipal **EXPO** 2019 Business & Home

April 12, 13 & 14, 2019

Friday 5-9PM | Saturday 10-6PM | Sunday 10-4PM
TransAlta Tri Leisure Centre, Spruce Grove

**Eat,
Play,
Shop!**

WEEKEND FEATURES

- * Attractions for the home and garden
- * Best of local products and services
- * Door prizes * Bouncy House * Axe-Throwing *Fri open to Sun close*
- * Face Painting *Sat & Sun 11-3PM* * Balloon Artist *Sat 11-3PM | Sun 11-2PM*

Admission \$2 | Kids 12 and under FREE | Seniors 65+ FREE Sat & Sun before noon
Free Shuttle Saturday 9:30am-6:30pm from Superstore SW corner of parking lot

PLAY STAMP AROUND THE EXPO AND ENTER TO WIN A \$250 PREPAID MASTERCARD!

For more information: 780-963-4545 www.stonyplainchamber.ca

TRI MUNICIPAL SPONSORS



BALLOON ARTIST SPONSOR



EXHIBITOR MIXER



COMMUNITY SPONSOR



DOOR PRIZE SPONSORS



EXPO SHOW SPONSOR



VIP RECEPTION SPONSOR



KID'S ZONE & ENTERTAINMENT SPONSOR



MEDIA SPONSORS



2-FOR-1 ADMISSION

2019EXPOCV1

COMPLIMENTS OF THE
**STONY PLAIN
& DISTRICT**
CHAMBER OF COMMERCE



Tri-Municipal **N** **EXPO** **O** **Business** **& Home** **19**



Stony Plain Chamber of Commerce
STONY PLAIN
A DISTRICT
CHAMBER OF COMMERCE
963-4545

THESE PAGES ARE PROUDLY SPONSORED BY THESE LOCAL BUSINESSES

Stony Plain Legion
Br#256
963-9232

Clarico Hearing
968-1011

North Central Co-op
963-2272

Summer's Drilling
963-1282

Leann Knysh - Century 21 Masters
963-2285

Parkland County

968-8888

West Parkland Gas Co-op Ltd.
963-3311

The Barn Owl
591-2276

Stony Plain Denture Clinic
963-2426

Blue Diamond Jewellers
968-0040

Homegrown Foods
BOOTH #40
963-5305

Birdsell Grant LLP
- Stony Plain, Whitecourt, Barrhead
963-8181

Apollo Drug Store
968-0066

Lobay Dental Group
963-6000

Stony Plain Auto
963-6297

Rebecca Pawlechko Counselling Services
405-1597

Transalta Tri-Leisure Centre
960-5080

Urban Sole Shoes
960-2010

Parkland Veterinary Clinic
962-6300

TD Canada Trust - Spruce Grove
962-0404

The Flooring Store
960-9212

Dulux Paints
587-286-0078

Corbiere Cabinets & Design Centre
571-1949

Grove Collision Repairs Ltd.
962-3755

Sobeys - Spruce Grove
962-4121

Tri-Municipal **N** **EXP** **O** **Business** **& Home** **19**



Century
21 Leading
-Spruce Grove

962-9696

THESE PAGES ARE PROUDLY SPONSORED
BY THESE LOCAL BUSINESSES

All
Precious
Jewellers

960-4200

Academy
Mechanical
Services Inc.

962-6025

Grove
Hearing
Clinic

960-2960

H & E
Upholstery

962-3048

McLeod
Home
Building Centre

962-2575

AC
Purewater
Hauling
Services Ltd.
914-9002

Cartridge
Express

960-9413

Serenity
Funeral
Services

962-2749

Best
Cistern Septic
Solutions

987-3005

Royal
LePage
-Noralta

962-4950

B.W.
Eavestroughing

699-1880

NAPA
Auto Parts
-Spruce Grove

962-4421

Estates At
Water's Edge

1-877-
405-1105

Academy
Fabricators

967-3111

Town of
Mayerthorpe

786-2416

Kokanee
Springs
RV Park &
Driving Range
797-3058

Sandy
View Farms Ltd.

962-0067

Canadian
Clean Air Services
(Heating & Air
Conditioning)
569-5201

Aqua Fresh
Water Services

914-8384

Limb
Walkers
Tree Care Ltd.

203-4705

2 Bros
Custom
Contracting Ltd.

717-0520

Metrix
Group LLP
-Chartered
Professional
Accountants

977-3734

Desjardin
Insurance

962-9502

The Bone &
Biscuit Company

960-6688

OK Tire
- Spruce Grove

962-6063



Invites you to Join us
in the Royal Court for a

Medieval Feast & Tournament

May
11
2019



Doors Open at 5:30 p.m.

Dinner 6:00 p.m. ~ Show 8:00 p.m.

Location: Omniplex

Tickets: Dinner & Show \$75 per person

General Admission \$25 - Advance \$20

Children under 10 \$10

Family of 4 \$50

**For more information Contact
Colleen 780-621-4914**

**All proceeds support
the Palliative Care
Renovation Campaign**



GROVE HEARING CLINIC

960-2960

1-866-960-2960

Hear what you've been missing...

Senior Discounts



Full Service & Repair

Full Hearing Assessments

HOURS OF OPERATION: 9am – 5pm Weekdays

3rd party billing (AADL, WCB, DVA, FCH) • Personal 0% Financing if Needed

For The Latest Technology In Hearing Aids & Assisted Living Device Stop By & See Dawn

#220-70 McLeod Ave - Westland Market Mall, Spruce Grove

LAC STE. ANNE COUNTY



Lac Ste. Anne County | P.O. Box 219 | Sangudo, Alberta | T0E 2A0 | 1.866.880.5722 | www.LSAC.ca

PLANNING & DEVELOPMENT

NOTICE OF DEVELOPMENT PERMIT APPROVALS

The following Development Permits have been approved or conditionally approved under the provisions of the Land Use Bylaw. This list does not include Permitted Uses.

Interested parties are encouraged to contact the Planning & Development Department at 1.866.880.5722 or devassistant@LSAC.ca, Monday to Friday from 8:30am until 4:30pm to request additional information on a permit.

PERMIT #	LEGAL LAND DESCRIPTION	DESCRIPTION	APPEAL DATE DEADLINE
19-D0038	NW 20-54-04-W5M	Seacan with setback variance	April 22, 2019

Anyone who claims to be affected and who wishes to lodge an appeal against any of the above developments must do so in writing on the applicable form on or before 4:30pm on the above noted date(s).

Secretary of the Subdivision and Development Appeal Board, c/o Lac Ste. Anne County, Planning & Development Department, Box 219 Sangudo, Alberta T0E 2A0.

PLEASE NOTE: Lac Ste. Anne County requires that a non-refundable fee of \$250.00 be paid for every appeal served on the Subdivision and Development Appeal Board. The fee may be paid by cheque, Visa, MasterCard, Interac or cash.

LAC STE. ANNE COUNTY



Lac Ste. Anne County | P.O. Box 219 | Sangudo, Alberta | T0E 2A0 | 1.866.880.5722 | www.LSAC.ca

CALL FOR PROPOSALS

County seeks to engage realtor of record.

Lac Ste. Anne County occasionally requires the services of a real estate agent to sell properties within the County. The County is currently seeking interested agents or agencies wishing to submit proposals to provide these services on a contract basis. Those who submit a letter of interest outlining their proposal are encouraged to include (at a minimum) the following information:



1. Listing fee (if any)
2. Commission rates
3. Advertising procedures
4. Any incentives or additional information

Lac Ste. Anne County will be selecting only one realtor for a three-year term.

The County requests that proposals be sent electronically to LSAC@LSAC.ca prior to April 26, 2019.

If you have any questions about this request for proposals or require additional information, please contact Robert Osmond at LSAC@LSAC.ca.

John & Barb Donnelly Memorial Dart Tournament – 2019



Continued from Page 1

This brings back fond memories to the ones who really knew them and even though they are not physically with us we still feel their strong presence.

Our club was very pleased to have 3 of Barb's brothers and their wives come out to share in our opening of the tournament. Wayne & Linda LaRocque, Daryl & Irene LaRocque and Keith & Leanne LaRocque. Each of Barb's brothers spoke and shared some of their thoughts as well as letting our club know that they are so grateful and touched by the efforts we put in to keeping both Barb and John's memories alive. Also, that Barb and John had started something that was so enjoyable for the community. They presented our club with a generous combined donation by cheque from each of them as well as from Lori (Barb's daughter). What a great gesture of appreciation. This reassures all of us at the Top Gunn Dart Club that we are carrying on a very worthwhile event. The contribution will be used

to upgrade or purchase things needed for our club and we are very thankful.

After going over a bit of background on the club we start off the day by lighting candles on the display table which are left to burn throughout the entire day in their memory. As we had family present we asked that Irene LaRocque do this honor for us.

The tournament rules are then read, team score sheets are passed out and the games begin. We have the kitchen open the majority of the day with a good variety of food plus the bar opens for those wanting a few socials. Nevada tickets were available plus three 50/50 draws were held.

This years winners were as follows:
1st place with a payout of \$180.00 went to Rick & Sylvia Potter, Zoey Potter & Troy Beauregard. Their names are placed on the Memorial Trophy, donated by Ged Brent & Heike Post and kept in the halls trophy case. Four individual trophies are presented to these players as well to keep and take home.

2nd place with a payout of \$120.00

1ST PLACE

2ND PLACE

3RD PLACE

went to Kyle & Kristina Hoefels and Chris & Maggie Zolmer.

3rd place paying \$84,000 went to Cam Kapler, Moe Dwyer, Andy Lovell and Karen Koroscil.

Congratulations to all the winners and thank you to everyone else who participated. Also, a special thanks to all our dedicated volunteers who offered up their time and enjoy host-

ing this very important celebration of John & Barb's lives. What a great day it was!!!

Even though so many years have slipped by, John and Barb have never been forgotten. This tournament has been held ever since their passing. Barb passed away February 26, 2005 and John not long after on June 6, 2006.

SERENITY FUNERAL SERVICE

NEW FACILITY
Chapel & Reception Centre

600 Calahoo Road Spruce Grove, AB
780-962-2749 www.serenity.ca

SERENITY FAMILY SERVICE SOCIETY - YOUR NOT-FOR-PROFIT SOCIETY

Anneke's Antique Sale

Over 140 tables of central Alberta's finest antiques and collectibles!

April 19-20, 2019
Friday 10:00AM to 5:00PM.
Saturday 10:00AM to 4:00PM.
at Heritage Pavilion

5100-41 Avenue, Stony Plain

\$5.00 Admission. Children free.
Concession by the Stony Plain Legion.

STONY PLAIN NURSERY & GARDEN CENTRE

SALE! BEFORE NURSERY CLOSURES

Bare Root: April 15 - May 1

Brandon Elm, Mountain Ash, Tree Spade, White & Blue Spruce, Lodgepole Pine, Burn Oak, Brandon Elm, Swedish Columnar Aspen

Garden Centre opens either April 19th or April 26th.

Large Selection of Potted Tree Shrubs & Perennials.
*NOTE: Sorry No Baskets or Bedding Plants

Specializing in Northern Hardy Plants

968-0542

SALE! BEFORE NURSERY CLOSURES

ALL PRICES WILL BE AT **DEEP DISCOUNT** TO LAST YEAR!



Lac Ste. Anne County | Box 219, Sangudo Alberta T0E 2A0 | 1.866.880.5722 | www.LSAC.ca | facebook.com/LSACounty

ADMINISTRATION

NOTICE OF PUBLIC HEARING

Of a proposed resolution for the establishment of a Municipally Controlled Corporation Onoway Regional Medical Clinic

LOCATION OF HEARING	DATE	TIME
Council Chambers, County Office, 56521 Range Road 65	May 1, 2019	9:45 am

Pursuant to the provisions of Section 75.1(2) of the *Municipal Government Act*, the Council of Lac Ste. Anne County is considering the establishment of a Municipally Controlled Corporation, Onoway Regional Medical Clinic. The purpose of the Municipally Controlled Corporation is to operate the medical clinic located in Onoway and work to grow the access and variety of medical services available to area residents within Lac Ste. Anne County and the municipalities within its boundaries.

Written comments on the proposed resolution may be provided prior to 4:30 pm on April 30, 2019, to:

Lac Ste. Anne County
 56521 RGE RD 65, Box 219, Sangudo AB T0E 2A0
 Attn: **Onoway Regional Medical Clinic**

or emailed to LSAC@LSAC.ca

Interested individuals may attend the Public Hearing to voice their comments. To schedule an appointment please contact Cindy Suter at 780.785.3411.

The proposed resolution and other public disclosures may be reviewed during regular business hours at the County Office, east of Sangudo, AB located at 56521 Range Road 65, or at www.OnowayMedical.ca.

ADMINISTRATION

NOTICE OF PUBLIC HEARING

Of a proposed resolution for the establishment of a Municipally Controlled Corporation Legacy MLC.

LOCATION OF HEARING	DATE	TIME
Council Chambers, County Office, 56521 Range Road 65	May 1, 2019	10:00 am

Pursuant to the provisions of Section 75.1(2) of the *Municipal Government Act*, the Council of Lac Ste. Anne County is considering the establishment and participation in a Municipally Controlled Corporation, Legacy MLC. The purpose of Legacy MLC is to use a wide range of innovative entrepreneurial approaches to commercial and residential real estate development, property management and infrastructure advancement, to achieve outcomes beneficial to the needs and desires of residents.

Written comments on the proposed resolution may be provided prior to 4:30 pm on April 30, 2019, to:

Lac Ste. Anne County
 56521 RGE RD 65, Box 219, Sangudo AB T0E 2A0
 Attn: **Legacy MLC**

or emailed to LSAC@LSAC.ca

Interested individuals may attend the Public Hearing to voice their comments. To schedule an appointment please contact Cindy Suter at 780.785.3411.

The proposed resolution and other public disclosures may be reviewed during regular business hours at the County Office, east of Sangudo, AB located at 56521 Range Road 65, or at www.LegacyMunicipal.ca.

ART IN EDUCATION AT OJSH

Submitted by Wanda Pederson | Onoway Jr Sr. High School

Art is a popular option class for students at OJSH. Art classes at OJSH don't just mean drawing and painting. Art classes engage students in art history, form and design. There is sculpting, clay work, copper work, and a variety of techniques to be learned. But, beyond that, art classes help students understand other subjects: we live in a multimedia society and art helps equip students with tools that show the process by which media is made. The creating and appreciation of art and the artistic process makes for literate citizens in the wide-ranging and ever-present world of multimedia.

One of OJSH's Art students is Grade 12 student Emily Fyfe. Art has been a passion for Emily all of her life. This year she entered the University of the Arts' (formerly Alberta College of Art and Design) annual Show Off competition. This competition offers grade 10, 11 and 12 students the opportunity to showcase their artwork. If a student's work is chosen by the jury panel, their artwork is included in the annual Show Off! exhibition at AUArts. This year the exhibition was from March 11th to March 23rd. Emily submitted three pieces and not only was one of her pieces selected by the panel, but Emily was awarded second in the whole competition. She received an award of \$1000.00 for herself and a matching award to OJSH Art department. Art teacher Mrs. Walker is planning to use the funds to purchase a slab roller for clay.

Emily's prize winning piece is called Chordae Tendineae (Latin for heart strings). Her artwork was especially meaningful in that Emily plans on a career as a medical illustrator.

The OJSH Art department also has a student teacher this semester, Mrs. Connie McNeice. Mrs. McNeice is from the Rich Valley area and is in her final year at the U of A. Mrs. McNeice is bringing new ideas from her university studies and an infectious enthusiasm for her subject matter and students. Her major project for this semester is planning, organizing and setting up

an art showing for OJSH artists from Grade 8 to Grade 12. This gallery will be at the Onoway Public Library for the month of April. The Grand Opening is 4 pm to 7 pm on Tuesday, April 9th.. Mrs. McNeice has also collaborated with her fellow art teacher colleagues on an on-line submission of post-it note art. The on-line gallery of post-it notes are from student artists at OJSH and are anonymous. All OJSH submissions will be among other school submissions and identified only by the school's name.

Our Art program under the direction of Mrs. Walker is known for



its innovative and often community-minded approach. Last spring Mrs. Walker's students removed graffiti from the underpass bridge and painted mural-like images in their place to positive reactions from the community. Student artists from her classes have had a showing at the Alberta Beach Public Library and art displays have been set up at OJSH concerts and drama produc-



tions. Art at OJSH is another way for students to express themselves, to explore their creative and emotional side, and to understand the complexities of modern media and their effect on us.



VALENTUS

YOUR LOGICAL SOLUTION TO WEIGHT MANAGEMENT

CALL (780) 907-8642 FOR FREE SAMPLE



SLIMROAST Optimum

DARK ROAST COFFEE

Exclusive functional coffee formulated to:

- Crush Cravings
- Help Regulate Blood Sugar
- Increase Energy
- Improve Mood & Focus
- Metabolize fat to Energy
- Boosts Circulation & Oxygen delivery

TO UNLOCK THE SECRET OF WEIGHT MANAGEMENT! PUT THE POWER OF SLIMROAST OPTIMUM IN YOUR CUP!

Thrilled with my results! I lost 9 lbs and an amazing 11 inches off my abdomen! Works wonderfully!

Managed to lose 7 lbs very fast & much more in inches the way my clothes are fitting now! 1 cup a day is all for me!

Down 17 lbs and fitting into clothes that were way to tight before!

No dieting, first month finished. Down 7 1/2 lbs 8.5 inches. Awesome product!

www.ValentusTour.com/Ladybug **(780) 907-8642**

NOTES FROM THE ONOWAY LEGION

Submitted by Richard Moses | Onoway Royal Canadian Legion

Volunteer Treasurer Needed!

The Onoway Legion has a volunteer opening for a Treasurer. Our current treasurer, a key member of the executive team, wants to fulfill some personal objectives in the next few years. To help that happen, we are recruiting for someone to join our Legion team and learn the treasurer's role from the incumbent over the next few months. If you would like the opportunity to be a volunteer in a respected and ac-

tive local non-profit, the Onoway Legion would be pleased to share more detailed information with you. Please contact Larry Villneff at 780-945-0600.

Early Easter Dinner with Music!

On Friday, April 12, Ste. Anne Gas is sponsoring a meal prepared by Glo & crew. Enjoy Zuppa Toscana soup (an Italian sausage soup like Olive Garden serves). The main course is beef brisket with a tangy mop-sauce paired with homemade breadsticks, wedge salad with Gorgonzola dressing, broccoli cauliflower salad, baked potatoes, homemade baked beans, and corn-

bread. Dessert is Rice Krispie Easter egg nests and chocolate parfait.

Stick around after dinner and enjoy some great music from Dale Johnson and Brian Shabada. We'll even make room for dancing, if you like!

Doors open at 3, with the meal served from 5:30 to 7 pm. Adults pay \$15; kids up to 10 years cost \$9 while 5 and under are free. Make sure you have a reservation, so you don't miss out! Text 780-340-0760, or leave a message on the Legion answering machine at 780-967-5361.

With every meal ticket comes

with a chance to win a free meal, plus a chance to buy raffle tickets on a delicious meat package, or the 50:50 draw. Another popular raffle is Chase the President, a progressive jackpot that increases in value each week there's no winner.

No Dinner Easter Weekend

Our volunteers need time for their families – there'll be no dinner on Friday, April 19.

Poker Rally Coming

The Legion is planning to hold a Poker Rally (with a difference) very soon. At this Poker Rally, there will be different stations set up where a specific activity will earn you a card. At the end, the cards you collect will be your poker hand. All proceeds from this will go to renovating the bar at the Legion.

The tentative date is April 14, but that must be confirmed. Keep watching!

VE Day Commemoration Planned

The anniversary of VE (Victory in Europe) Day is May 8, but the legion will be commemorating it on Saturday, May 4.

Did You Know?

The Onoway Legion is the only active service club in Onoway! Along with assisting veterans and their families, the legion also serves the wider community. A staunch supporter of the Lac Ste Anne Cadet Corps and the #Onoway Scouts group, the Legion donates money and rental space to several other youth organizations, seniors' projects, and community groups and projects like the Lac Ste. Anne Food Bank.

When you buy Nevada or raffle tickets at the Legion, you're supporting your community. The Legion donates a portion of gaming proceeds to the community. This year, eight different community groups - both adults and kids - received money this year.

Thursday, June 6 is the 75th Anniversary of D-Day! On that day, around 156,000 troops fought to gain a foothold in Normandy, beginning the push that eventually defeated the Nazis almost a year later.

Only 25% of money raised through raffles and Nevada tickets is kept by the Legion. Half the proceeds are paid out in prize money, and the remaining 25% is donated regularly to local community groups.



FREE LOCAL CLASSIFIED ADS

Real Estate, Rentals, Vehicles, Pets, Jobs, Service Directory, Buy/Sell/Trade, Lawn & Garden, Garage Sales, Events, Local Places & Much More... Advertise for **FREE** Today!



Buy and Sell just about ANYTHING!
FREE Local Classifieds

PostingFirst.com

Follow Us



Spring 2019 HomeRENO



The Businesses in the following Guide can be your One Stop Solution to all your Renovation Needs!



BENEFITS OF FREESTANDING TUBS

Few home design elements provide the instant wow factor of freestanding tubs. Freestanding tubs have an air of luxury that can help current homeowners relax, and impress buyers when homes go on the market.

Freestanding tubs are typically made of cast iron or porcelain. The home improvement website HomeAdvisor notes that cast iron is durable and solid and retains heat well, which is great for those who want to spend more than a little time relaxing in a freestanding tub. However, because cast iron is so heavy, installing a cast iron tub may require structural reinforcement of the flooring, which will add to the overall cost of the project.

According to HomeAdvisor,

the average cost to install a tub varies widely depending on the type of tub, the materials its made of and other factors, including plumbing and piping. For example, the cost to install a freestanding tub will rise considerably if new plumbing and piping are necessary.

Before purchasing a freestanding tub, homeowners should seek estimates regarding installation, making sure to get them in writing. Contractors will determine if structural reinforcement is necessary and include such costs in their estimates. In addition, make sure to ask contractors to investigate piping and plumbing so no surprises pop up after the tub has been purchased and work has begun.

If estimates from contractors aren't budget busting, homeowners can consider these benefits of freestanding tubs before making their final decisions.

- **Cleaning:** Because they're detached from other bathroom fixtures and not flush against the wall, freestanding tubs tend to be easier to clean than built-in bathtubs. Freestanding tubs are accessible from all sides, making it easy to reach all those nooks and crannies where grime can build up.
- **Return on investment:** In its 2018 "Cost vs. Value" report, Remodeling magazine noted that upscale bathroom remodels recouped 56.2 percent of their cost at resale. That was a better return on investment

than an upscale kitchen remodel (53.5 percent) and an upscale master suite addition (48.3 percent). The thought of a sizable return on investment can make relaxing in a freestanding tub that much more enjoyable.

- **Warmth:** Even freestanding tubs made of materials other than cast iron offer great heat retention. Stone resin bathtubs, for example, provide excellent insulation on cold nights. That's ideal for people who want to unwind in the tub without having to exit early because the water has become cold.

Freestanding tubs can transform regular bathrooms into luxurious oases.

Lanman Landscapes
YOUR ONE STOP FOR ALL TYPES OF LANDSCAPING

<p>Dangerous Tree Removal</p> 	<p>Yard Cleanup</p>	<p>Full Landscaping Service</p> 
<p>Experienced Bobcat Work</p>		
<p>Fully Insured</p>		
<p>Spring & Summer</p>		

(780) 977-6586
 levertonniel13@gmail.com

TRI-LAKES SERVICES LTD.
 Serving: • Lac Ste. Anne County • Parkland County • Yellowhead County East

<ul style="list-style-type: none"> • Septic Hauling • Holding Tanks (residential, commercial, industrial) • Septic Fields • Drinking Water Delivery • Cisterns • Pools/Hot-Tubs • Fresh Water Delivery • Dust Control 	<ul style="list-style-type: none"> • Portable Washrooms (rental & servicing) • Plastic • Trailer mount Extremes (wash sink, toilet, lights heat) • Extremes (wash sink, toilet, lights, heat) • Steam Truck • In cooperation with your plumber
--	---

PH: 1-877-727-3939
 www.tri-lakeservices.com
 office@trilakes.services

BEDARD EXCAVATING

DESIGN, BUILD, PUMP

General Excavating
 Foundations 4-9' walls
 Septic Systems



780-967-5116

LIMB WALKERS TREE CARE LTD.

FULLY INSURED, EXPERT TREE CARE PROVIDERS
 SERVICING BARRHEAD, WESTLOCK, ONOWAY & ALL SURROUNDING AREAS

<ul style="list-style-type: none"> • Residential & Commercial • Tree & Shrub Pruning • Annual Maintenance • Arborist Consultations & Assessments • Bucket Truck & Chipper Services • Professional Climbers 	<ul style="list-style-type: none"> • Tree Removal • Stump Grinding • Hedge Trimmers
--	--





780-203-4705 limb.walkers@hotmail.com
 FREE ESTIMATES PROVIDED



PREVENT THE HAZARD OF OVERLOADED ELECTRICAL CIRCUITS

A home is a safe haven for its residents. No matter what's going on at school or the office, many people know they can relax in comfort and safety when they arrive home at the end of a day.

Safety at home is something that can be taken for granted until it's too late. The National Fire Protection Association notes that each year more than 47,000 home fires in the United States are caused by electrical failure or malfunction.

Overloaded electrical circuits are a frequent culprit in residential fires. Fortunately, overloaded circuits are preventable. According to the Electrical Safety Foundation International, the following are some potential indicators that circuits are overloaded.

- Flickering, blinking or dimming lights
- Frequently tripped circuit breakers or blown fuses
- Warm or discolored wall plates
- Cracking, sizzling or buzzing from receptacles
- Burning odor coming from receptacles or wall switches
- Mild shock or tingle from appliances, receptacles or switches.

Learning to recognize the signs of overloaded circuits is an important step in making homes safe, as the NFPA notes that home fires contribute to hundreds of deaths and more than 1,500 injuries each year. Such fires also hit homeowners in their pocketbooks, causing an estimated \$1.4 billion in property damage annually.

Prevention is another key component when safeguarding a home and its residents from fires sparked by electrical failures of malfunctions. The ESFI offers the following tips to prevent electrical overloads.

- Never use extension cords or multi-outlet converters for appliances.

All major appliances should be plugged directly into a wall receptacle outlet. Only one heat-producing appliance should be plugged into a receptacle outlet at any given time.

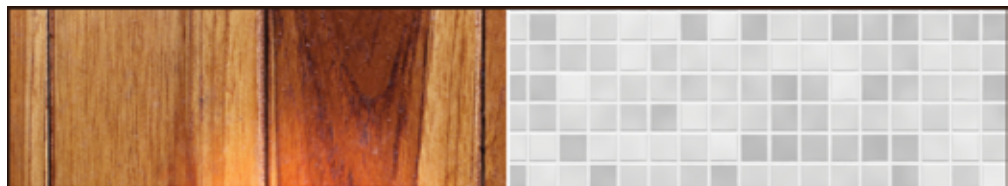
- Consider adding new outlets to your home. Heavy reli-

ance on extension cords indicates that your home does not have enough outlets. Bring in a qualified electrician to inspect your home to determine if more outlets are necessary.

- Recognize that power strips only add additional outlets;

they do not change the amount of power being received from the outlet.

Fires sparked by electrical circuit overload pose a significant threat. Thankfully, such fires are preventable. Learn more at www.esfi.org.



The Flooring Store & DIY Center

FREE ESTIMATES SPECIAL PRICES FOR SENIORS

Vinyl Flooring *from* **99¢ Sq Ft.**

Laminate *from* **\$1.19 Sq Ft.**

Hardwood *from* **\$2.99 Sq Ft.**

Carpet *from* **\$2.99 Sq Ft. INSTALLED**

Double Stainless Steel Kitchen Sink *from* **\$199.00**

Hours:

Monday to Friday 9:00AM to 5:30PM

Saturday 9:30AM to 4:00PM

Closed Sunday

226 McLeod Ave

Spruce Grove

(780) 960-9212

www.theflooringstore.ca



ORGANIZE & DECLUTTER ROOM-BY-ROOM

Clutter can be a major source of stress that affects how individuals feel about their spaces. Psychology Today indicates messy homes and work spaces can contribute to feelings of helplessness, anxiety and overwhelming stress. Clutter bombards the mind with excessive stimuli, makes it more difficult to relax and can constantly signal to the brain that work is never done.

Tackling messes no matter where they are lurking is not a one-time project. Much like losing weight and getting healthy, clearing a home of clutter requires dedication and lifestyle changes. With these organizational tips and tricks, anyone can work through their home room-by-room and conquer clutter.

Find a place for everything
Clutter creeps up as people accumulate possessions over the years. Over time, failure to regularly go through belongings and thin the herd can lead to the accumulation of clutter. But clutter also can accumulate if people fail to find a place to put items. Racks for garages, organizational systems for closets and furniture with storage capacity, such as storage ottomans, are some storage solutions that can help people find a place for their possessions.

Utilize vertical space when possible
Getting items up and off the floor can maximize square footage in a home. Bookshelves, hanging wall shelves, hooks, cabinetry, built-ins, and other

storage solutions that rely on walls and ceilings are simple and effective storage solutions. Unused space behind cabinet or closet doors are some additional places to store belongings. Hang razors or toothbrushes on medicine cabinet walls and curling irons and other hair tools on the interior of cabinet doors in bathrooms.

Create a coding system
Home offices can be some of the more disorganized rooms in a house simply due to the volume of electronics and paperwork within them. HGTV suggests using a color-coded system for important files to keep them organized. Label important items, whether they're paper or digital files, in accordance with your system.

Put it away
When you finish using an item, return it to its storage location. This eliminates piles of belongings strewn around the house - and hunting and pecking for missing things. If you can't put it away immediately, have a few baskets on hand labeled for the different rooms in the house. Pop the items in the requisite baskets and then routinely take each basket around the house to return the items.

Investing in custom cabinetry and organizational systems also can help people organize their belongings. Tackle rooms such as the garage, basements, bedroom closets, and pantries, or those areas that tend to accumulate clutter the fastest.

B.W. EAVESTROUGHING

Specializing in:

- ⇒ Residential 5"
- ⇒ Commercial 6"
- ⇒ Soffit
- ⇒ Gutter Clean System
- ⇒ Free Estimates
- ⇒ Fascia

BRAD (780) 699-1880

Family run, local business, we care!

BEST CISTERN SEPTIC SOLUTIONS

Cistern and Septic Inspection, Cleaning and Repair!

Septic planning, design, installation by government certified installer(s)

New Installs Available. Reasonable Rates.

Let Us Handle the Dirty Work

780-668-4306

best-cistern-septic-solutions.com

ECONOMY ASPHALT DRIVEWAYS

- Paving • Asphalt or Concrete • Repairs
- Pararamps • Seal Coating • Crack Filling
- Snow Removal • Sanding • Rock Chip Sales

CHARLES MACDONALD

PH: 780-962-5581 CELL: 780-777-0914

FAX: 780-962-9146

MCLEOD Home building centre

Let us load you at the largest Lumber Yard in Parkland County

962-2575

Call Toll Free: 1-800-343-2988
35 South Ave, Spruce Grove

- Renovation & new build experts • Superior quality lumber
- Complete home packages • 3D Estimating Program
- Engineered roofs & floors • Farm Buildings • Garage packages
- Windows & doors • Custom decks & fence packages
- Flooring & kitchens • Bathrooms • Ceramic Tiles
- Concrete & landscaping • Electrical supplies
- Fasteners • Woodstoves

Service • Selection • Advice • Special Orders • Delivery



REASONS TO HIRE AN INTERIOR DESIGNER

How many times have you sat on the sofa pouring over a home magazine wishing your rooms could be ripped from its pages? Some people are gifted with a natural talent to impart a space with perfectly balanced colors and schemes that fit with one's lifestyle and design preferences. Others are not as equipped. But that doesn't mean design has to suffer. An interior designer with knowledge and resources who's in your corner can make all the difference.

Many people are hesitant to bring in professional designers because of cost. But contrary to popular belief, working with an interior decorator is not something reserved for the rich and famous. Designers actually can save homeowners money in the long run. A good designer will choose the right amount of high-quality elements that will be durable and

timeless. This means less money will ultimately be spent on replacing cheap materials or redesigning rooms that have gone out of style.

According to the design experts at HomePolish, utilizing a designer to transform a space can create rooms that are more in tune and balanced with homeowners' needs - helping to improve mood and functionality. That can extend to other areas of a person's life and well-being. Putting the task of designing a home's interior in someone else's hands frees up time to focus on other projects as well.

Designers can look at a space with a careful eye and not be influenced by items that have sentimental attachment. He or she can help decide if anything should be repurposed or removed. Plus, an interior designer can help homeowners stay on budget.

Designers also can serve as liai-

sons for clients who have difficulty communicating with builders and architects. Designers are trained to think about things that homeowners tend to overlook, such as placement of lighting, outlets and room flow. He or she also likely

has contacts within the industry that can be utilized, saving even more time and money.

A good designer can be worth the investment. The end results will be an interior that homeowners will be proud to call home.

Renovations, Shop Packages, Shed Construction, Decks, Garages, Barns, Sheds, Cement, Concrete, Topsoil, Eavestroughing, Dirt Work
CELL 674-7147
MAYERTHORPE, AB (780) 785-4002

PADDLE RIVER CONCRETE

Providing you with concrete needs!

Brent • 786-2666 • Mayerthorpe, Alta

- Decks
- Fences
- Treated Lumber
- Spruce Lumber
- Probuilt Alum Railing
- Full House Packages
- Husqvarna Dealer
- Delivery Available
- Plumbing
- Electrical
- Shed Packages
- PPG Paint & Stain
- Garage Packages

"WHERE SERVICE MAKES THE DIFFERENCE"
 #2 2104 Hwy 37
 Lac Ste Anne, AB **PH: 780-967-2274**

Carpetown Interiors Ltd.

- Carpet • Lino • Hardwood Flooring & Tile
- Wallpaper • Window Blinds & Installation

780-778-4144
 5033 - 52 Ave. Whitecourt

Toll Free 1-855-967-3827 Fax 1-780-967-3847
 email: rick@assertive-electric-ltd.ca

Insured & Certified Professional Electrical Services

HomeRENO



SPRING FLOODING EXPECTED TO MAKE WAVES: FLOOD PREPAREDNESS TIPS FOR CANADIANS

Submitted by FirstOnSite Restoration

Sorry to rain on your parade, but with spring well underway, a

downpour is next up on the forecast. As Canada faces April showers, flooding becomes an imminent risk for property owners, residents and businesses.

Each spring, regions across Canada experience the wrath of flooding. Last year alone, snowmelt led to evacuations in B.C., Alberta and New Brunswick, while areas in Ontario declared a state of emergency due to increased sea levels.

To provide insight of the damage ahead, last year alone insured damage from severe weather in Canada reached \$1.9-billion, a majority of that due to flooding. Last fall's GTA flood alone caused over \$80-million in insured damage.

Weather events and rainstorms have elevated the costs of flooding (now the costliest type of property damage) and the stakes for property owners are at an all-time high.

From urban sprawl developments on floodplains to the concrete landscapes of Canada's

developing cities, the loss of absorbent ground is accelerating with ever-increasing amounts of water left with no place to go.

Localized flooding is a top concern for Canadians who are likely wondering – what's next and what can I do?

Water damage, mould and property loss are only some of devastating outcomes when property owners are unprepared, or unsure of how to deal with the after-effects of a flood.

FirstOnSite Restoration has spent the past decade mitigating floods and disasters for businesses and homeowners across Canada.

Here are several ways to protect properties against flood damage, whether commercial or residential.

- Flooding prevention tips
1. Waterproof your base-

ADELMAN
Cabinets and Millwork Ltd



Custom Cabinets and Vanities

Phone / Fax: 674-2522
4710 - 62 Ave., Industrial Park
Barrhead, Alberta

MAHAR DRILLING LTD



Water Wells
Precision Drilled with Compressed Air
• Pumps • Servicing

MATT MAHAR Cell: (780) 674-7871
Office: (780) 674-9550 Fax: (780) 674-9571

Bert's TV & Appliances
780-674-3001 bertstv.com
Barrhead Industrial Park, 6121-47 St.

Whirlpool
DEFINE YOUR STYLE SAVINGS EVENT
SAVE UP TO 20%
APRIL 4 TO MAY 1, 2019

MAKE IT A SUITE!

 \$2199 WHIRLPOOL® 36" FRENCH-DOOR REFRIGERATOR, 23 CU. FT. WRF55552HV	 \$1749 WHIRLPOOL® 30" RANGE, 5.8 CU. FT. WFG8750HV	 \$849 WHIRLPOOL® 47 1/2" STAINLESS STEEL TUB DISHWASHER WDT7600HV	 \$729 WHIRLPOOL® 31" LOW PROFILE MICROWAVE HOOD CONVECTION, 1.1 CU. FT. YWML75011HV
---	---	---	---

Home building centre aeroplan

Barrhead Home Building Centre
YOUR COMPLETE BUILDING SUPPLY CENTRE

780-674-4710
6101 - 48 Street, Barrhead, AB

Rentals
Helping you get the job done!

Home Owners helping homeowners

BBS Stucco, Rockwork & Masonry

Interior, exterior, residential, commercial, conventional & acrylic stucco
Plus Concrete and Styrofoam Pargings, All Stone & Brickwork

Fred & Gerry Breukelman
Phone (780) 674-4502 • Fax (780) 674-4534
Cell (780) 674-7307



Spring Flooding Expected To Make Waves: Flood Preparedness Tips For Canadians

ment, fill any cracks in the foundation, and put weather protection sealant around windows and the base of ground-level doors. Install flood shields or barriers for basement windows and doors.

2. Clear debris from your roof and eavestroughs so that they drain properly during heavy rains. Downspouts should extend at least six feet from the basement wall, well away from your and neighbouring properties.

3. Clear snow from roof. Your roof is designed to handle a certain load, but heavy snowstorms can cause snow to overload its capacity. A snow thaw can lead to roof leaks as water seeps into cracks and damaged vents. Basements can also flood when large amounts of snow and ice melt quickly. *Only a professional should attempt to access or climb a roof in the winter

4. Raise large appliances in the basement onto wood or cement blocks. If possible, raise electrical panels, switches, sockets, wiring and heating systems – otherwise protect them with a floodwall or shield.

5. Anchor furnaces, water heaters, and/or oil tanks to the floor. Unsecured, they may tip over or float in a flood. A ruptured tank may leak fuel, creating a serious fire hazard.

6. Check that all basement flood drains are not blocked or covered. For extra precaution, you can install a water alarm to let you know if water is accumulating.

7. Make sure your sump pump is working and install a battery-operated backup in case of a power failure.

8. Install backflow valves for drains, toilets and other sewer connections in the basement. These valves automatically close if water or sewage backs up from the main sewer.

9. Turn off the electricity in flood-prone areas of the property if a flood is expected in your

area.

10. Talk to your insurance agent about flood insurance. Standard residential insurance may not cover floods caused by water overflowing from lakes, rivers and other bodies of water (called overland

flooding) but may be available separately. For business owners, flood insurance could be available as an add-on coverage to commercial property or to business interruption insurance policies. Commercial sewer backup cover-

age may also be available but usually purchased separately.

11. Stay informed. Follow the latest public weather alerts for your area at https://weather.gc.ca/warnings/index_e.html.

MS 170 | GAS CHAIN SAW
\$199⁹⁵ MSRP \$289.95 with 18" bar
 30.1 cc / 1.3 kW / 9.9 kg (19.6 lb)

MS 141 C-Q | ELECTRIC CHAIN SAW
\$199⁹⁵ MSRP \$239.95 with 18" bar
 120 V / 1.4 kW / 2.9 kg (6.4 lb)

MS 250 | GAS CHAIN SAW
\$399⁹⁵ MSRP \$449.95 with 18" bar
 45.4 cc / 2.3 kW / 4.6 kg (10.1 lb)

MSA 120 C-BQ | BATTERY CHAIN SAW
\$399⁹⁵ MSRP \$429.95 with 18" bar
 36 V Li-Ion 3.8 Ah / 2.5 kg (5.5 lb)

MS 271 | GAS CHAIN SAW
\$499⁹⁵ MSRP \$549.95 with 18" bar
 50.2 cc / 2.6 kW / 5.6 kg (12.3 lb)

MS 261 C-M | GAS CHAIN SAW
\$649⁹⁵ MSRP \$719.95 with 18" bar
 50.2 cc / 3.0 kW / 4.9 kg (10.8 lb)

STIHL DEALER DAYS ON NOW!

STIHL MOTOMIX[®] - THE ULTIMATE PREMIXED FUEL!
 AVAILABLE EXCLUSIVELY AT YOUR LOCAL STIHL DEALER!

SMALL POWER BARRHEAD LTD.
 6105-49th Street
 Barrhead Industrial Park
780-674-4778
www.smallpowerbarrhead.ca
 HOURS: Mon to Fri 8:00A.M. - 5:30P.M.
 Saturday 8:00A.M. - 4:00P.M.



12 WAYS TO MAXIMIZE VERTICAL SPACE

Who hasn't, at one point in their lives, lamented a lack of space and organization at home? A lifetime's worth of items have to be kept somewhere, and without the right organizational strategy, clutter can quickly take over.

The home improvement site Home Therapy says that, when square footage is limited, taping vertical walls is the fastest way to maximize and multiply the space available. Hooks, rods, shelving, built-ins . the sky is the limit when it comes to finding additional storage and adding a bit of personality to tight quarters. Even homes that may have adequate space can benefit from vertical solutions.

Here are some ideas to put ver-

tical and other less-utilized areas to work for you.

1. Hang wire or plastic file organizers on the inside of kitchen cabinets to easily store cookie sheets, trays and cutting boards.
2. Save on counter or cabinet space with hanging spice racks. These can be hung directly on walls or on the inside of cabinet doors.
3. Stack all the stuff you can, including washers and dryers, beds (with storage drawers underneath) and even stacking nesting tables.
4. Choose furniture that is tall rather than wide. This can mean swapping out a dresser in a bedroom for an armoire or vertical chest of drawers.
5. Canvas bags hung on a tow-

el bar on a wall can keep dirty clothes wrangled until it's time to wash them. This also eliminates clothes hampers on the floor.

6. Add a second rod or shelving to the inside of closets to create more space for clothing and other items.
7. Take kitchen cabinets all the way to the ceiling. Store lesser used items on the uppermost shelves and the items you use each on the most accessible shelves.
8. Install a shelf over the entryway to a room to utilize this seldom-used space. Shelves also can be custom cut and placed in oddly shaped areas, such as in attic rooms under the eaves or on slanted walls.

9. Dowels or curtain rods and some fabric can be used to fabricate slings to hold books or magazines.

10. Invest in some magnetic boards that can hold keys or notes by the front door or store knives on a kitchen wall.
 11. Install two towel bars parallel to one another on the wall of a bathroom. These can hold extra toilet tissue or rolled hand towels.
 12. Use rope plant hangers to store potatoes or onions near prep areas. The same plant hangers can wrangle stuffed animals and small toys in kids' rooms.
- Utilizing vertical areas in a home is a great way to increase storage capacity and keep rooms more organized.

CO-OP North Central

WE'RE HERE FOR YOUR NEXT
HOME & BUILDING PROJECT

NorthCentralCoop.ca

WE FEED.
WE FUEL.
WE BUILD.

Locally INVESTED | COMMUNITY MINDED

Ashly-Lane Interiors Ltd.
WINDOW COVERINGS

**Spring Sale* up to 40% Off Selected Items.*

Valances • Sheers • Drapes
Blinds • Fabric • Hardware

Residential • Commercial
40 Years Experience

4900 - 51 Avenue, Stony Plain, AB
780-963-5563

Blakeman Drilling Ltd.

Waterwell Drilling & Servicing
Pumps & Pressure Systems

Petwa Water Conditioning

(780) 918-1916
joe@blakemandrilling.com

Family Owned & Operated

Classified Ads

Classified Policy

CLASSIFIED RATES INCLUDE GST. 1st 20 Words: First Insertion = \$6.00; Subsequent insertion = \$3.00 each. (Eg: 2 insertions = \$9.00; 3 insertions = \$12.00; 4 insertions = \$15.00; etc) Each additional word is 20 cents per word, per insertion. BOLD/CAPITAL text available for an additional \$1/line. Lost & Found and To Give Away (up to a max. of 25 words) are free of charge. Ads must be paid in advance either by cheque, cash, Visa or Mastercard. No Refunds Allowed on Classified Ads. DEADLINE: is Thurs. 4:00 pm (Wed. 4:00 pm on long weekends). Classified ads may be called in to the COMMUNITY VOICE office at (780) 962-9228, emailed to: classifieds@com-voice.com, dropped off at Onway Registries, or mailed with your ad and payment to: COMMUNITY VOICE, BAG 3595, SPRUCE GROVE, AB T7X 3A8.

Ads may also be placed on the web at www.com-voice.com/classified.htm

Services

Nasty's Tree Removal. Stump Grinding, Pruning & Firewood for sale. Licensed & insured. Roger @ 780-720-2207 (13) 19-02 OG

Dog Caretaker

Alberta Beach & Surrounding Areas, thinking of a Summer Getaway? Worried about leaving your dog in a kennel? Don't worry anymore, you can leave your pet with me! There is a wrap around deck in court yard! I will provide tender loving care, with walks every day. Best of all, I'm cheaper than a kennel! Daily drop in's or overnight stays welcome. If interested call 780-920-4166 (4) 02-04 OG

APRIL 25 AUCTION

FOR: KEN CEREZKE 674-3653

Located: (From Barrhead Ford - 17 mi W on Hwy 18 to RR 61 then 1 1/2 N) (From Mayerthorpe - 4 mi N on Hwy 22 then 19 mi E on Hwy 18 to RR 61 then 1 1/2 N)

Thursday, April 25th at 1:00PM

TRACTORS AND HAY EQ: * JD 4440 W 20.8x38 Tires * JD 4240 w 18.4x38 Duals, 10' Leon Snow Blade * Nuffield 1060 w 3 pt * 12' NH 1431 DISC BINE * 12 W Tonutti Rake * JD 530 Baler * 7' Alteen 3 py Mower * 3 pt Bale Fork * RT Wagon * 12'x25' AJAX Stack Mover

LIVESTOCK EQ: * 2014 Jiffy 927 Bale Shredder, mint * 16' Southland Stock BH Trailer * Arts Way Roller Mix Mill * 2 of 4' Hyd Grain Auger * Trailing pto Post Pounder * Quality Cattle Squeeze * 16 Metal Panels + Gates * 5 Sucker Rod Bale Feeders * 2 Eltc Fencers, Barb Wire * Pipe Frame (2 calf sheds 12x30)(2 Salt Sheds)(4 - 30' FS Panels)(4 Bunk Feed Frames) * Page Wire * 69 GMC 3T Grain/Feed Truck * Allied 37x7 Auger 37x7 Auger bu WR Bin * 50 Joints 30ftx2 1/2

FIELD EQ: * 14' Land Roller w 1/2 Steel * Crown Hyd Fork Rock Picker * 12' Alteen Disk * 18' IHC dt Cult * 16' Glenco Cult * 30' Fieldmaster Harrows

SHOP and YARD EQ: * 5' x 9' Hyd Press to 5,000 lb * 98 lb Swedish Anvil * New 8x30 Tow Strap * Air Tools, Gear Pullers, Farm Tools + Misc, Chop Saw, Power Tools * Tire Changer * Red Lion Water Pump + Hoses * Receiver Hitch w Torsion Bars * 10x17 Truck Tarp * 2 - 110 L Plastic Oil Barrels + Pumps * 1/2 T Headache Rack * Good Used Tires * 4 @ 300 Fuel Tanks w pipe stand * WW/ Honda Pres Washer

RECREATION and ANTIQUES: * Honda 2WD Quad * 79 Olympic 340 Ski Doo * Walk In Meat Cooler Panels * 1949 JD R Tractor * 2 FM 1917 Motors * 1 Cyl Motor * Coult's Crusher * Connibear Traps + 10 Others * Wood Tripod Transit * Forestry Compas * 100 ft Survey Chain * 2 Sets Wood Block + Tackle * H/M Wood Stove

SALVAGE EQ: * Universal 650 Tractor w New 18.4x30 Rear Tires * IHC 914 Combine * 12' JD Press Seed Drill

APRIL 27 AUCTION

FOR: GARY & SHELLY NELSON

Located: Enter Village of FORT ASSINBOINE - Take Hwy 661 North for 8 mi to RR 60. Then continue N for 2 mi to TWP 634, Turn E for 1/2 mi.

Saturday, April 27th at 1:00PM

GOOD TRACTORS: * LIKE NEW 2014 McCormick T3 Tractor w(appx 1000hr), 120 hp, Can be turned to 150hp, Cummins Engine, Shuttle Shift, 3 Pt Hitch, 6 hyd, Michelin Tires, 16.9 R28 FWA, Rear 20.8 R38, McCormick Quickie L468 Loader, grapple * CASE 2090 w/ (5634 hr), Standard Trans, 23.1 x 34 Rears, Ezee On 100 Loader * CASE 1070 w power shift problems

HAY & FIELD EQ: * NH BR 780 Rnd Baler in Good Work Order * 2 of 9ft NH 488 Haybine * 6W 3pt V Rake * NH 166 Swath Turner * Parts Balers (MF) (Vemee 605C) * 16' Gleoco VS Cult * 12'/14' DT Cult * 12' Kravac Disc * 8D Harrows

TRUCKS & PARTS: * New KW T800 Bumper * 2 of 100 Barrel Truck Water Tanks * Logging Truck Eq * New Mud Flaps, Oil Filters, Fittings * Wide Load Signs * Ext Load Lights * 96 Ford 1 Ton w 460 V8, flat deck * 79 Ford 1 Ton w 4 spd, duals, box, hoist

LIVESTOCK EQ: * New Maternity Pen w Gate * Crowding Tub * 20 Panels * Lots of 4' to 16' Gates * Head Squeeze * Trim Chute w Head Gate * 2 Pipe Silage Feeder * New 3 Bale O Waste Hay Feeder * 1 Bale O Waste Feeder * Tomb Bale Feeder * Large Plastic Water Stock Tank

SHOP & YARD TOOLS: * 220 V Lincoln Ideal Arc TM 500 Welder, Lots of Cable, Rods * Usual Farm Tools * Good STIHL Eq (Chainsaws - 2 of 38 Mag/360/026) (Weed Wacker w saw, grass) (Leaf Blower) * JD D170 Ride Mower * JD Yard Trailer

RECREATION: * Hobart Meat Band Saw * Meat Hooks * Platform Scale * GENERATORS (10,000W B & S) (10,000 W Camping) * Fish - Tent, Rods, Eq * Foosball * Air Hockey * 1 Adult and 1 Kid Western Saddle * School Bus w Hot Water Tank, Fridge, Freezer.

PARSONS AUCTIONS LTD.

Charles 674-7704 (780-674-3929) Jeff 305-4328
Pictures Available on: parsons-auctions.com

ANOTHER RAINBOW SALE

RAINBOW AUCTIONS

ANNUAL SPRING CONSIGNMENT SALE:

Saturday, May 11, 2019 at 10:00AM

Directions: Rainbow's Stony Plain Consignment Centre | HWY 16A West RR 11. Stony Plain.

CONSIGN NOW FOR PROPER ADVERTISING.

ANOTHER RAINBOW SALE

Watch website daily for new additions to auction lists

Terms and conditions: Cash, Visa, MasterCard, Debit, Interac. Nothing to be removed until paid for. Subject to additions and deletions. A 10% handling fee, plus GST will be charged where applicable. Please be conscious of the handling fees and factor them into your bidding. Owner Rainbow Auctions & Liquidators or it's employees shall not be responsible for accidents.

SALE CONDUCTED BY:

Stony Plain, AB. 780-968-1000
or TOLL FREE 1-866-968-1001

Complete Liquidation and Auction Services Since 1978

www.rainbowauctions.ca

BOOK YOUR SALE WITH US TODAY!

Classified Ads - Call 962-9228

Computers

FREE for ALL computer immediate check up, while you watch. Repairs NOT over \$50. Good refurbished computer for only \$100. See it working. Also, parts, screens, batteries, Save, Erase, Update, Recycle, Trade. Call for appointment 780-892-4993 (14) 12-03

Firewood

FIREWOOD FOR SALE - Birch, Tamarack & Spruce Pine mix. Poplar \$300/cord. 4x4x8 cords and 1/2

Cash for Cars
967-2492
R & S TOWING

cords. Quality seasoned wood, Delivery or Pick up. Woodchuck Firewood, 780-288-7247 (28) 30-10-18 OG

Miscellaneous



Spring Seacan Storage Container Sale: Get your shop, garage, basement back with safe and secure container storage. New 20' \$3800.00; New 20' HC \$4700.00 Used 20' \$3000.00; Used 40' HC \$3900.00; New 40' HC \$6800.00. Used 40' double door HC \$5900.00; 100% Guaranty. Delivery available. We also sell container doors with or without frames. Jason

Robinson 780-604-2276 Premium Container Sales 4905-45 Ave. Entwistle, AB (12) 12-03 Z1-Z2-AW

Buy & Sell

I buy Guns/Gun Collections & WW2 Collectables. Please call Jay at 780-686-1350 (24) 19-03

For Sale



\$254,900.00 - Estate Sale. (980 sq. ft.) 1141-11 Street, West Cove, AB. 2 bedroom, 1 bathroom, kitchen with skylight, living room, dining room, comes with 6 appliances, hardwood throughout - except bath, utility and furnace room, double garage, water well

and 1500 gallon holding tank. To view call Don at 780-892-3364 (4) 09-04

For Rent

Alberta Beach Hotel rooms for rent. Upgraded, very clean & well maintained, shaw cable tv included. \$60.00 per night or \$500.00 per month. Damage deposit is required. Call 780-924-3005 for more information (50) 08-01

Cabin for Rent - North of Evansburg on Hwy 22, (15 mins from Evansburg). \$1100/month + DD All inclusive, Utilities & TV. Max. 2 people. 780-239-0553 (4) 02-04

Available Immediately, Large 2 Bedroom in 12 Unit Apartment Building in Entwistle. Includes Heat, Water & Parking. Rent \$785/month + DD \$300. Please Call Ivka 780-807-1300 or email: jakovljevicivka@yahoo.ca (2) 09-04 OG

SUDOKU OF THE WEEK

Fun By The Numbers

Here's How It Works: Sudoku puzzles are formatted as a 9x9 grid, broken down into nine 3x3 boxes. To solve a sudoku, the numbers 1 through 9 must fill each row, column and box. Each number can appear only once in each row, column and box. You can figure out the order in which the numbers will appear by using the numeric clues already provided in the boxes. The more numbers you name, the easier it gets to solve the puzzle!

1					6	4		8
8			5					3 2
	7			2	4	9		5
2		9		5				
	1	7	2		8	3	9	
4	3	8	9	1	7	5		
							4	
7					2	1		9
			1	3		8		7

ANSWER:

1	2	5	3	9	6	4	7	8
8	9	4	5	7	1	6	3	2
3	7	6	8	2	4	9	1	5
2	8	9	4	5	3	7	8	1
5	1	7	2	6	8	3	9	4
4	3	8	9	1	7	5	2	6
6	5	1	7	8	9	2	4	3
7	8	3	6	4	2	1	5	9
9	4	2	1	3	5	8	6	7

Like puzzles? Then you'll love sudoku. This mind-bending puzzle will have you hooked from the moment you square off, so sharpen your pencil and put your sudoku savvy to the test!

Church Directory

<p>Rich Valley Community Church</p> <p>Sunday School 10:00a.m.</p> <p>Worship Service 11:00a.m.</p>	<p>Catholic Parish of Lac Ste. Anne</p> <p>Sunday 10:00a.m.</p>		<p>Mayerthorpe Baptist Church</p> <p>Worship Service Sunday 10:30a.m.</p> <p>Children's Church 10:30a.m.</p> <p>4606-54 St. Mayerthorpe (780) 786-2677</p>	<p>Alberta Beach Alliance Church</p> <p>Sunday Worship Service & Kid's Church 11:00a.m.</p> <p>Sunday School 10:00a.m.</p> <p>(780) 924-3282</p>	<p>St. John's Anglican Church</p> <p>Onoway</p> <p>Sunday Service 10:00a.m.</p> <p>Everyone Welcome</p>
<p>St. John's Lutheran Church Alberta Beach</p> <p>Sunday Service 11:00a.m.</p> <p>Sunday School</p>	<p>Zion United Church</p> <p>Sunday Service 10:00a.m.</p> <p>Sunday School</p> <p>Serving Alberta Beach, Wabaman, Daricell & Lake Isle, Onoway & Area (780) 924-3351</p>	<p>Sangudo United Church</p> <p>Worship Service 3rd Sunday 11:00a.m.</p> <p>4907-50 Ave. Sangudo, AB</p>	<p>St. Mary's Anglican Church Service</p> <p>Holy Communion 2nd Sunday each month 11:00 a.m. at Sangudo United Church</p> <p>Reverend Barry Rose Officiating</p>	<p>Cherhill Community Church</p> <p>Sunday School 10:00a.m. - 11:00a.m.</p> <p>Worship Service Sunday 11:00a.m.</p>	<p>St. Michael Lutheran Church</p> <p>Sunday Services 1st & 3rd Sunday at 2:00p.m.</p> <p>Pastor Rick Chappell (780) 674-2618 Mystery Lake</p>
<p>Trinity Lutheran Church (LC-C) <i>The Church of the Lutheran Hour - Rockyfort Bridge</i></p> <p>Pastor Dan Hansard Church (780) 778-2035</p> <p>Sunday Worship 9:00a.m.</p> <p>Senior's Service & Cottage Bible Study - Phone for locations</p>	<p>Mayerthorpe Pentecostal Assembly</p> <p>P.A.O.C. Rev. Arnold Lothoiz</p> <p>Sunday 10:30a.m. Morning Service Tuesday 7:30p.m. Ministry Training (780) 786-2141</p>	<p>Infuzed Ministries</p> <p>Worship Service Sunday 3:30p.m. in Alexis Community Hall</p> <p>Pastor Daniel Jackson (780) 719-0240</p>	<p>Onoway Baptist Church</p> <p>Sunday Service 10:30a.m.</p> <p>Pastor Greg Garbutt (780) 967-2266</p>	<p>Roman Catholic Church</p> <p>St. Agnes' Parish, Mayerthorpe Sunday 9:00a.m.</p> <p>St. Elizabeth Parish, Evansburg Saturday 7:00p.m. (780) 786-2032</p>	<p>Calahoo Alliance Church</p> <p>Family Worship Service Sunday 10:00a.m.</p> <p>For Info Call Jerry (780) 974-7734</p>

SERVICE DIRECTORY

Lanman Landscapes
YOUR ONE STOP FOR ALL TYPES OF LANDSCAPING

Dangerous Tree Removal Yard Cleanup Full Landscaping Service

Experienced Bobcat Work

(780) 977-6586

2Bros
Custom Contracting Ltd.

Custom Framing • Concrete Floors • Shingling
Siding Soffit Fascia • Styrofoam Block System

Jeff 780-717-0520

CPR St. Albert
CPR Cell Phone Repair Saving Your Mobile Life™

We Can Fix That In 90 Minutes

iPhones, iPods, iPads, Tablets, Computers - Apple, Samsung, Blackberry, LG, Sony and MORE
Lifetime Warranty Against Defects In Our Screens
Now over 480 Locations

#13 - 11 Bellerose Drive (Next to Grandis Bakery) 780-460-0277

JAVORSKY DITCHING
Onoway, AB

Phone: (780) 967-5486
Cell: (780) 906-7469
Fax: (780) 967-4961

Dennis Javorsky - Owner / Operator

For All Your Excavating Needs
Sand & Gravel Hauling • General Excavating
Septic Tanks & Cisterns • Site Prep & Clean Up
• Install & Repair of Water, Sewer, Power & Telephone Lines

JIM HAY TRUCKING

- Screened Black Dirt
- Beach Sand
- Road Gravel • Fill Dirt
- Bobcat & Backhoe Available

(780) 220-5849

BRO-BUILT
Homes & Contracting Ltd

"We Pride Ourselves In Turning Handshakes Into Hugs"

www.brobuilthomes.com
Testimonials
Phone 780-940-6415

SERVICE DIRECTORY



COR Certified

- Oilfield
- Road Building
- Basements
- Dugouts
- Sand & Gravel

haytrucking@xplomet.ca
www.haytandc.com
Office: 967-5849 Cell: 818-5849



**MARK MARTIN PFEIFFER
MASTER BRICKLAYER/MASON**

Cell: 780-242-3308
Email: pfeiffer.mark@hotmail.com

- Brickwork • Stonework
- Rockwork • Parging
- Concrete Block Work
- Tile Work (all kinds)



**ALL AROUND
FENCING RENTALS**

Fence Panels • Barricades
Installation by Collin Toilet Rentals



Whitcourt, AB
780.706.7978



**Trevor Gardner
Owner/Operator**

Septic Pumping Service
Residential & Commercial

RR 1, Site 1, Comp 261 Onway, AB T0E 1Y0
Office: (780) 967-5552
supersucker@telus.net

CALIBRE DRILLING LTD
Our Experience. Your Benefit.

**SPECIALISTS
IN AIR & MUD
ROTARY DRILLING**

- * Free Estimates
- * Pressure Systems
- * Pump & Well Tests
- * Licensed Drillers
- * Year Round Drilling

**DRILLING DOMESTIC
AND INDUSTRIAL
WATER WELLS**

24 HOUR SERVICE

Quality Workmanship
Five Year Warranty

(780) 960-2992
BOX 4083 SPRUCE GROVE, AB T7X 3B3

**R & S
TOWING**

**FREE REMOVAL OF
UNWANTED VEHICLES**

967-2492



Tile Setting
Ceramic & Natural Slate

Kitchen & Bath - Backsplash & Surrounds
Fireplace Floors

"Serving Lac Ste. Anne and West Central
Alberta Areas for over 25 years"

**Thorsen Industries Call
Christian @ 403 728-3805**



**THIS SPACE IS
RESERVED
FOR YOU!**

DONALD N. GREENWAY
Chartered Accountant

Suite 205 Sunrise Professional Building
215 McLeod Avenue
Spruce Grove, AB

(Bus.) **962-6366**
(Fax) **962-3990**

ZEE BEST RENOVATIONS
Your Complete Line of Renovation Needs:

- Bathroom
- Basements
- Plumbing
- Tileworks
- Drywall & Taping
- Decks & Fencing
- Roofing
- Siding

**FREE ESTIMATES
26 YEARS EXPERIENCE
INSURED | GREAT RATES**

JOE LAWRENCE
MANAGER

BUS: 780-967-3898
CELL: 780-915-3348
FAX: 780-967-3798



**THE MOST
COMPLETE
NUTRITIONAL SPRAYS ON THE
PLANET**

ORDER TODAY!
(780) 907-8642
www.Elaine1.com



Local office
in Darwell
Call us at
780.467.5534

Experienced Legal Services in:
Family Law • Civil Litigation
Corporate Law • Wills & Estates
Plus Notarizing and Commissioning

www.croftlaw.ca



Manufacturers of
**ONE PIECE SEPTIC
& HOLDING TANKS**

* Water Cisterns * Field Systems *
Pumps and Accessories * Sumps



**DELIVERED
TO YOUR SITE**
1-800-661-3047
780-727-2702
PembinaConcrete.com

**New Line of Concrete
Statues, Fountains and
Garden Ornaments.**

BOX 123, Entwistle, T0E 0S0

SERVICE DIRECTORY



PaddlePlastics Ltd.
Mayerthorpe, AB

Box 67
Mayerthorpe, AB T0E 1N0
Ph: (780) **786-4408**
Fax: (780) 786-4466



Mo-Bil WASH SERVICES Ltd.

- Steam • Hot & Cold High Pressure Wash • Sewer Thaw & Flush
- Residential • Commercial - Oilfield

24 HOUR SERVICE
Onway Call (780) 991-9466



PREVAIL MAX
CELLULAR HOMEOSTASIS FORMULA

How do you want your **BLOOD** to look?

Before PrevailMAX:	After PrevailMAX:
poor circulation	better circulation
low energy	more vitality
brain fog	mental clarity
dehydration	cellular movement
decreased nutrients	nutrient assimilation
pH imbalance	balanced pH
poor endurance	optimal endurance

(780) 907-8642 **VALENTUS**
www.ValentusTour.com/Ladybug



Blakeman Drilling Ltd.

Waterwell Drilling & Servicing
Pumps & Pressure Systems

SERVING LAC STE. ANNE & WEST PARKLAND FOR OVER 25 YEARS
Joe (780) 924-3024



THIS SPACE IS RESERVED FOR YOU!

SANGUDO VETERINARY CLINIC

Box 581, 4916 - 52 Ave. Sangudo, AB. T0E 2A0

Dr. Ralf Sanders DVM

Ph: 780-785-2200
Fax: 780-785-2228
sangudovet@gmail.com

24 HOUR EMERGENCY SERVICE

GROVE MACHINE & WELDING

Office: (780) 962-1772 Call: (780) 231-5405

You have an idea, we'll design it, build it and test it

- Fasteners • Welding • Fabrication • Repairs
- Mobile Welding • Plasma Cutting • Machining

35 South Avenue Spruce Grove, AB T7X 1B3
E-Mail: jim.reynar@grovemachinewelding.com
sales@grovemachinewelding.com



H&P Kosik CONSTRUCTION Ltd.

- Road Building • Gravel • Sand • Dugouts
- Black Dirt • Clearing

No Job too small We do them all!

Harvey cell. 780-445-9010 ph. 780-892-3532
Box 145, Darwell, AB. T0E 0L0

Collin Toilet Rentals & Service

Your Portable Toilet Supplier for:

- Construction
- Commercial
- Oilfield
- Special Events



Whitecourt Dispatch 780.778.2448



THIS SPACE IS RESERVED FOR YOU!

ROY SHERWOOD
Master Electrician

Ph: 780-968-1425
Call: 780-908-2287
Fax: 780-968-2211

Email: suretechroy@gmail.com

2-53220 Rge Rd 21
Parkland County, AB
T7Y 0C5

SURETECH ELECTRIC LTD.

Control & Automation
Commissioning
Solar Sales & Service

Industrial . Commercial . Residential



VILLAGE GLASS & MIRROR LTD.

- AUTO
- RESIDENTIAL
- COMMERCIAL GLASS & MIRROR PRODUCTS

5027 - 50 Avenue • Phone: 967-2127
PO Box 609, Onway, AB T0E 1V0

ATB Financial

ALBERTA BEACH AGENCY
4824 - 50 Ave, Alberta Beach
Ph/Fax: (780) 924-2211

Mon to Thurs 10:00AM - 4:00PM
Friday 10:00AM - 5:00PM

Heidi Letendre

ANOTHER RAINBOW SALE

RAINBOW LIQUIDATORS & AUCTIONS



Farm Sales, Equipment Sales, Estate Sales
BOOK YOUR SALE WITH US TODAY!
Serving the Community since 1978

Ph: (780) 968-1000
Stony Plain, AB 1-866-968-1001
www.rainbowauctions.ca

SERVICE DIRECTORY

Chico's Vacuum Service Ltd.

SEPTIC SERVICES RESIDENTIAL & COMMERCIAL



Box 130 PH 780-924-2435
 Alberta Beach, AB T0E 0A0 1-877-226-5008

Friendly Reliable Service

SMOOLE

- Construction & Septic Installation
- Environmental Wastewater Disposal
- Site Design & Evaluation
- Power, Water & Basement Excavation
- Trackhoe, Backhoe, Bobcat & Dump Truck



For All Your Excavation Needs

Call Dan 780-991-4484 Reid 780-909-0173

Jack's Auto Body

& 24 HR Towing

**SPECIALIZING IN COLLISION REPAIR
 GUARANTEED WORK • INSURANCE CLAIMS**

CAA BOX 9 SITE 306 RR3, ONWAY, AB T0E 1V0
(780) 967-5850

OUR PLEDGE IS QUALITY

H&E UPHOLSTERY

FOR ALL YOUR UPHOLSTERY NEEDS

Convertible tops for cars and boats, custom car and boat interiors, 5th wheel trailer skirts, boat tarps, ATV seats, furniture, kitchen chairs, heavy equipment seats.




WWW.HANDE.CA 4-485 South Ave.
 For more information contact: Spruce Grove
 kirk@hande.ca (780) 962-3048

Community VOICE

THIS SPACE IS RESERVED FOR YOU!

PURE FULL SPECTRUM CBD HEMP OIL

KEY BENEFITS:

- High Absorption Sublingual
- Improves Overall Health
- Helps Relieve Pain
- Delivery System
- Inhibits Cell Growth in Tumors




CTFO
 Changing the Future Outcome
FOR PEOPLE & PETS

(780) 907-8642

Whole Heart Massage Therapy

- Swedish Massage
- Relaxation Massage
- Deep Tissue Massage
- Kinesio Taping

(780) 699-4667
 Jennilee Reber
 REGISTERED MASSAGE THERAPIST
 DIRECT BILLING TO INSURANCE
 wholeheartmassage@hotmail.com
 54013 Range Road 30 #10
 Diamond Country Estates
 Lac Ste. Anne County

GRANDE TIRE

5115 LAC STE. ANNE TRAIL N. ONWAY, AB T0E 1V0

**Full Mechanical Services
 Tire Sales & Repairs**

**BUS: (780) 967-3432
 FAX: (780) 967-4816
 contacttire@xplornet.com**



POSTINGFIRST.com

FREE LOCAL CLASSIFIED ADS

Real Estate, Rentals, Vehicles, Pets, Jobs, Service Directory, Buy/Sell/Trade, Lawn & Garden, Garage Sales, Events, Local Places & Much More... Advertise for **FREE** Today!

Follow Us



SUMMERS DRILLING LTD.

Water well drilling and service
 Family owned Business Serving Alberta since 1917

Never run out of water again!

5 year workmanship warranty

3 Convenient ways to pay

- Visa
- Mastercard
- We now offer full financing

Tired of hauling water?
 We can install a water well with a permanent water supply for as little as \$150/month OAC

Stop in at our office 4405 - 50 Street, Stony Plain
 780-963-1282
 admin@summersdrilling.com

Community VOICE

THIS SPACE IS RESERVED FOR YOU!

Park Memorial Ltd.
 Funeral Home & Crematorium

Fran Marion
 Licensed Funeral Director

Mayerthorpe: 780-786-2533
 Whitecourt: 780-779-2533

Serving Mayerthorpe, Whitecourt and area

Edmonton | Lamont | Mayerthorpe | Smoky Lake | Vegreville



TRUIS & ONWAY REGISTRIES
 INSURANCE

Box 390, Onoway, Alberta T0E 1V0
 Tel: 967-5270 Fax: 967-4303

**OPEN 9-5 MONDAY - FRIDAY
 FIRST & LAST SATURDAY OF EACH MONTH 9-12* *excluding long weekends
 Registries Closed from 12:00 pm - 1:00 pm**

ALL GENERAL REGISTRY SERVICES

Home - Auto - Farm - Life and Business

Very Competitive Rates & Convenient Payment Plans.

Clients first...Service Always!



PREVAIL

MAX

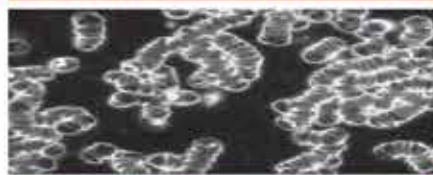
CELLULAR HOMEOSTASIS FORMULA

A NUTRITIONAL BREAKTHROUGH THAT SUPPORTS YOU ...RIGHT DOWN TO THE LAST CELL!

How do you want your **BLOOD** to look?



Before PrevailMAX:



- poor circulation
- low energy
- brain fog
- dehydration
- decreased nutrients
- pH imbalance
- poor endurance

After PrevailMAX:



- better circulation
- more vitality
- mental clarity
- cellular movement
- nutrient assimilation
- balanced pH
- optimal endurance

PrevailMAX™ is a nutritional breakthrough that delivers a rapid increase of internal blood cell pressure to speed absorption, enabling the body to take maximum advantage of the nutrients in foods and supplements. The electrolytes are small enough to penetrate your cell membranes, to bind with your cells, and to be carried wherever they are needed in the body.

At the microscopic level of human cells, **PrevailMAX™** supports healthy cell performance – a nutritional breakthrough for your cells.

When you use **PrevailMAX™**, you will feel more energy and an ability to focus like never before. Take a few sprays today and see just how good you can feel!

LIVIN TRIM WITH
VALENTUS

www.ValentusTour.com/Ladybug

(780) 907-8642