

Serving: Carvel, Darwell, Duffield, Wabamun, Seba Beach, Gainford, Entwistle, Evansburg, Wildwood, Tomahawk, Spruce Grove, Stony Plain & Drayton Valley

May 21, 2019

RCMP INVESTIGATE ATTEMPTED ROBBERY

Submitted by Stony Plain/Spruce Grove/Enoch RCMP

On May 6th, 2019 at 12:14 pm., Stony Plain/Spruce Grove/Enoch RCMP responded to a complaint of an armed robbery in progress.

Two males with hammers attempted to rob the Wabamun Hotel Bar but were chased off by customers. A staff member was injured when he confronted the suspect.

Continued on Page 2



MALE ARRESTED ON OUTSTANDING WARRANT

Submitted by Stony Plain/Spruce Grove/Enoch RCMP

On May 14, 2019 at approximately 6:30 p.m., Stony Plain/Spruce Grove/Enoch RCMP Drug

Section arrested an adult male on an outstanding warrant at the Tri Leisure Centre in Spruce Grove.

At the time of his arrest the adult male was bound by three separate probation orders and one recogni-

zance. Other charges have been laid as a result of him being in possession of 24 grams of crystal methamphetamine, and 2 grams of fentanyl.

Continued on Page 2

EVANSBURG SCAVENGER HUNT AGES 8 – 14 JUNE 1ST

Submitted by Tipple Park Museum

A water tower. A fire hall. A coal tipple. A grain elevator. A

creamery. Does this sound like Evansburg? To some old-timers, it may well indeed! But to others, not so much. A coal tipple? Since when does Evansburg

have a coal mine? A grain elevator? Nobody uses those anymore. A creamery? That's been an abandoned building for years.

Continued on Page 3

All Precious JEWELLERS
"Your Spruce Grove Jewellery Store"
Goldsmith on Premises
 • Engraving • Clock & Watch Repairs
 • Jewellery Repairs • Custom Make-ups
 Jewellery Repairs Done On Site.
 Laser Welder Services Available.
 Toll Free: 1-877-962-4367
 PH: 780-960-4200 Fax: 780-960-4201
 Suite 102, 215 McLeod Avenue
 Spruce Grove, AB. T7X 0G2

L&B Tradition of Quality
 Water Services Ltd. & Service
 Well & Pump Repairs
 Complete Pressure Systems
 Farm - Residential - Commercial
 Potable Water Cisterns, Water Conditioning
 Financing Available
 PH. 780-963-8134 OR 780-963-7749
 LBWATER@XPLORNET.COM

PREVAIL MAX
 CELLULAR HOMEOSTASIS FORMULA
Nutritional Breakthrough For Your Cells
 LIVIN TRIM WITH VALENTUS
 (780) 907-8642
 www.ValentusTour.com/Ladybug

SLIMROAST Optimum
 DARK ROAST COFFEE
 YOUR LOGICAL SOLUTION TO WEIGHT MANAGEMENT
 (780) 907-8642
 www.ValentusTour.com/Ladybug

View us ONLINE!
WWW.COM-VOICE.COM



**Keeping You and Your
Community Informed**

*PUBLISHED WEEKLY (Zone 1 & 2)
AND BIWEEKLY (Zone 3)*

**E.J. Lewchuck &
Associates Ltd.**

45C South Ave. | Box 3595
Spruce Grove, AB T7X 3A8

SALES TEAM

Elaine
Ashley
Dani

TELEPHONE:

Classifieds 962-9229
Advertising 962-9228
Fax 962-1021

E-MAIL:

comvoice@telusplanet.net
sales@com-voice.com
news@com-voice.com

RCMP Investigate Attempted Robbery

Continued from Page 1

Suspect 1 is described as:

- 6'1" to 6'2"
- slim build
- wearing a red hoodie and a black balaclava.

Suspect 2 is described as:

- approximately 5'8"

- heavy build
- wearing a black hoddie and a black balaclava.

Witnesses followed the two suspects who fled in an older model (possible 2001-2007) extended cab black Chevrolet Silverado with an Alberta marker possibly starting with "BTC". Witnesses indicate a

long haired female was driving.

If you have information about this investigation, please call the Stony Plain RCMP at 780-968-7267, or call your local police detachment. If you want to remain anonymous, you can contact Crime Stoppers by at 1-800-222-8477, by internet at www.tipsubmit.com, or by SMS.

Male Arrested on Outstanding Warrant

Continued from Page 1

Further investigation resulted in the seizure of another 6 grams of

crystal methamphetamine inside a locker at the Tri Leisure Centre.

Tyson Niles (31) of Spruce Grove, has been charged with:

- Possession of methamphetamine for the purpose of trafficking
- Possession of fentanyl
- Possession of property obtained by crime
- Fail to comply with a probation order (x6)
- Fail to comply with a recognizance

Niles has been remanded into custody after a judicial hearing and will be appearing in Stony Plain Provincial Court on May 22, 2019. As this matter is now before the courts, no further details will be available.

MARK SMITH


MLA FOR DRAYTON VALLEY-DEVON

YAY

GRADUATES

We're celebrating your hard work and achievement, so give yourself a pat on the back. Congratulations, and may all of your hopes and dreams come true!

TEL: (780) 542-3355 FAX: (780) 542-3331 TOLL FREE: 1-800-542-7307



BUSINESS FOR SALE

Steady Income – Business
doesn't fluctuate with Economy

Includes: -All Clientele
- 5 Tandom Trucks
- 1 Truck & Trailer Unit

**Call 780-797-3844 for more Info.
Al-jo Ann Septic Service**

JOKE OF THE WEEK

A farmer purchased an old, run-down, abandoned farm with plans to turn it into a thriving enterprise. The fields were grown over with weeds, the farmhouse was falling apart, and the fences were broken down. During his first day of work, the town preacher stops by to bless the man's work, saying, "May you and God work together to make this the farm of your dreams!" A few months later, the preacher stops by again to call on the farmer. Lo and behold, it's a completely different place. The farm house is completely rebuilt and in excellent condition, there is plenty of cattle and other livestock happily munching on feed in well-fenced pens, and the fields are filled with crops planted in neat rows. "Amazing!" the preacher says. "Look what God and you have accomplished together!" "Yes, reverend," says the farmer, "but remember what the farm was like when God was working it alone!"

All the Best to All of Our Graduates

It's your day, and we hope you enjoy every moment as you celebrate the culmination of your hard work. May your graduation be the beginning of a bright and beautiful future. We look forward to celebrating your continued success!



JIM

EGLINSKI MP

YELLOWHEAD

Jim.Eglinski.C1@parl.gc.ca
www.jimeglinski.ca • 1-800-268-7117

NEW HORIZONS FOR SENIORS PROGRAM 2019-20 CALL FOR PROPOSALS FOR COMMUNITY-BASED PROJECTS

**Submitted by Jim Eglinski,
MP – Yellowhead**

OTTAWA: Jim Eglinski, Member of Parliament for Yellowhead, wishes to inform constituents that the Department of Seniors has announced the launch of the 2019–20 New Horizons for Seniors Program (NHSP) call for proposals for community-based projects.

The Program's community-based stream supports activities that engage seniors and address one or more of its five objectives: volunteering, mentoring, expanding awareness of elder abuse, social participation and capital assistance.

Organizations are invited to apply for funding under the NHSP's three national priorities:

- preventing elder abuse and fraud,

including measures to reduce crimes and harms against seniors;

- supporting healthy aging in community and addressing dementia, including community supports and intergenerational housing; and

- counteracting ageism in the workplace to promote labour market retention of seniors.

The 2019–20 NHSP community-based call for proposals is open

until June 21, 2019.

"Our seniors have worked hard to support their families, communities and grow our economy. I encourage organizations in the Yellowhead to apply," concluded MP Eglinski.

For information on how to apply, visit <https://www.canada.ca/en/employment-social-development/programs/new-horizons-seniors.html>

Evansburg Scavenger Hunt

Continued from Page 1

Well, it may come as a surprise, but Evansburg has had all of these buildings at one point or another. The water tower can probably be remembered by most of us – it only came down this year. Some of these buildings have been transformed and renovated and passed from owner to owner, yet the old structure still remains. Others have been rebuilt with pride from scratch into shiny new edifices.

Buildings have a special place in our hearts, even if they can seem insignificant to an outside observer. It is fascinating to think about the thousands of people buildings have seen pass through their doors, and the thousands of stories that they have heard. When a building is torn down, somehow these stories and memories are harder to perpetuate as well.

But there's no need to worry! On June 1st, at 3pm, kids can come down to Tipple Park Museum for a scavenger hunt to discover the history of buildings in Evansburg. Follow clues to a present-day building or space, then search for a special box. Inside will be a photograph of an older version of the structure, which you will be able to paste into a book. At the end of the hunt you'll have information and photographs of about twenty old buildings in your own book, so you can remember how Evansburg once looked and think about the stories that have happened here. Also, there will be prizes rewarded finishing the event.

Get your detective on!



VALENTUS

YOUR LOGICAL SOLUTION TO WEIGHT MANAGEMENT

CALL (780) 907-8642 FOR FREE SAMPLE

DARK ROAST COFFEE

SLIMROAST Optimum

Exclusive functional coffee formulated to:

- Crush Cravings
- Increase Energy
- Metabolize fat to Energy
- Help Regulate Blood Sugar
- Improve Mood & Focus
- Boosts Circulation & Oxygen delivery

TO UNLOCK THE SECRET OF WEIGHT MANAGEMENT! PUT THE POWER OF SLIMROAST OPTIMUM IN YOUR CUP!

"Thrilled with my results! I lost 9 lbs and an amazing 11 inches off my abdomen! Works wonderfully!"

"Managed to lose 7 lbs very fast & much more in inches the way my clothes are fitting now! 1 cup a day is all for me!"

"Down 17 lbs and fitting into clothes that were way to tight before!"

"No dieting, first month finished. Down 7 ½ lbs 8.5 inches. Awesome product!"

www.ValentusTour.com/Ladybug (780) 907-8642

Lawn & Garden

HOW TREE SERVICES CAN PROTECT YOUR PROPERTY

Cold weather can take its toll on a property, especially in regions of the world where winters are harsh. Most parts of the landscape are vulnerable to damage from winter storms, but trees may be especially susceptible. By the end of winter, many homeowners wonder if their trees would benefit from some professional TLC.

Tree services provide a host of services. While fall is a popular time to remove trees from a property, doing so in spring is not unheard of, especially if trees were affected by winter storms and now pose a threat to a home and the people who live inside it.

Homeowners considering tree services can explore the following ways that some professional arbor attention can protect them and their homes.

- Tree services can help protect a home's foundation. Old trees that stretch well into the sky can be captivating, but they also can pose a threat to a home's foundation. Such trees may have especially large root zones that may extend beneath walkways and even a home. In the latter instance, foundations may crack as roots try to stake their claim to the ground beneath a home. According to the home improvement resource HomeAdvisor, homeowners pay an average of just over \$4,000 to repair foundation issues, though major problems can cost considerably more than that. A professional tree service can remove aging trees that might be beautiful and awe-inspiring but still pose a threat to a home and the areas surrounding it.

- Tree services can improve vis-

ibility. Trees that have aged a bit since their last trimming might affect the view of a property from inside a home. Overgrown branches can compromise residents' ability to see and experience the natural beauty just outside their windows. The average homeowner may be able to trim short trees on his or her own, but if views from the second floor of a home or higher have been compromised, it's much safer to call a professional tree service. Such services have the right tools and experienced personnel necessary to safely trim high branches on tall trees.

- Tree services can help prevent future damage. Even if trees made it through a recent winter unscathed, that's no guarantee next winter or even the coming seasons of spring, summer and fall won't ultimately

prove their undoing. Travelers Insurance notes that weather-related roof damage, including damage resulting from falling limbs and branches weighed down by snow during the winter months, accounted for more than half of all Travelers property loss claims between 2009 and 2016. According to BNC Insurance and Risk Advisors, homeowners may be liable if a tree they knew posed a threat falls onto a passerby or a neighbor's property and causes damage or injury. Having all trees properly trimmed each year, but especially those that can fall on your home and your neighbors' homes, may prevent future damage and legal issues.

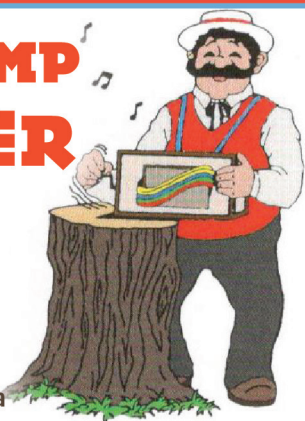
Tree services can ensure trees maintain their awe-inspiring beauty and help homeowners protect their homes and their belongings.

THE STUMP GRINDER

Mechanical
Stump Grinding

Andre

Phone: 780-413-6421
stumpgrinder@shaw.ca



now open! Greenthumb Greenhouse

Hanging Baskets, Bedding Plants,
Tomatoes, Annuals, Perennials, Trees,
Vegetable Plants, Vegetable Seeds

**Mother's Day Draw
for a Hanging Basket**

10:00am-6:00pm - 7 days a week
Evansburg, Alta 727-2824



Let us load you at the largest
Lumber Yard in Parkland County

962-2575

Call Toll Free: 1-800-343-2988
35 South Ave, Spruce Grove

- Renovation & new build experts • Superior quality lumber
- Complete home packages • 3D Estimating Program
- Engineered roofs & floors • Farm Buildings • Garage packages
- Windows & doors • Custom decks & fence packages
- Flooring & kitchens • Bathrooms • Ceramic Tiles
- Concrete & landscaping • Electrical supplies
- Fasteners • Woodstoves

Service • Selection • Advice • Special Orders • Delivery

LIMB WALKERS TREE CARE LTD.

FULLY INSURED, EXPERT TREE CARE PROVIDERS
SERVICING BARRHEAD, WESTLOCK, ONOWAY & ALL SURROUNDING AREAS

- Residential & Commercial
- Tree & Shrub Pruning
- Annual Maintenance
- Arborist Consultations & Assessments
- Bucket Truck & Chipper Services
- Professional Climbers
- Tree Removal
- Stump Grinding
- Hedge Trimmers



780-203-4705

limb.walkers@hotmail.com
FREE ESTIMATES PROVIDED



Lawn & Garden

GET READY: EARLY SPRING LANDSCAPING TIPS

During the cold months of winter, many people stare longingly out of the window dreaming of spring and time spent outdoors. For those with green thumbs, images of tending to the garden and other aspects of their landscapes no doubt dominate such daydreams.

Draw inspiration from those budding crocuses and daffodils pushing through the last remnants of snow and employ these tips to prepare for the upcoming gardening season.

- One of the first steps is to apply a preemergent weed killer to get a head start knocking out weeds that can plague the lawn during the growing season. Killing weeds at the roots early on can mean far fewer has-

sles in spring and summer, and may prevent new generations of weeds from cropping up each year.

- While it may be tempting to take a prematurely warm day as a sign that spring is in full force and purchase a bunch of annuals, it's better to know the last of the possible frost dates (check "The Farmer's Almanac"); otherwise, you may waste time and money planting flowers or vegetables only to have them zapped by another frosty day.

- Amend the soil so that it is the right consistency - just crumbling when lifting it. Soil that is too muddy after spring thaw can harden, making it difficult for plants to flourish later on. Speak with representatives at a local

lawn and garden center about which types of amendments you can add to the soil in your particular area to enrich it.

- Lawn and garden experts at The Home Depot suggest filling in bare patches of lawn now by mixing a few shovelfuls of soil with grass seed. Then apply this patch to the bare areas, water, and continue to care for the area until the spot fills in.

- Spend a day in the garage or shed tending to the lawn mower and other gardening equipment. Clean all tools and ensure that everything works, repairing parts as needed.

- Give outdoor entertaining spaces a good scrubbing, clearing away dirt and grime that may have accumulated over the win-

ter. Use a leaf blower to blow away any leftover leaves.

- Check if the front porch, railings or decking need painting and/or staining. Tackle these projects when the weather is cooler so everything will be ready for those peak spring days.

- Think about any annuals you might want to plant in the landscape this year that will complement any existing shrubbery or perennials. Come up with a theme so that the entire yard is cohesive.

Before homeowners know it, winter is gone and it is time to once again enjoy long days spent outdoors. Get a jump start on spring lawn prep as soon as you can.


Home hardware
 building centre

Drayton Valley
542-4044
 ON US: 1-888-542-9663

Check us out for all your **Gardening Supplies**



4221 - 50 Street Drayton Valley




One L Contracting

780-940-6152

Services

Gravel Products, Fill Dirt, Site Prep, Grading, Drainage, Decorative Rock, Excavating






STONY PLAIN NURSERY & GARDEN CENTRE

SALE! BEFORE NURSERY CLOSES ON JUNE 29TH

Large Variety of Trees!

- Elm, Mountain Ash, Columar, Aspen, Choke Cherry.

FRUIT TREES GOING FAST!

Over 1000 Potted Trees, Shrubs and Perennials all over wintered outside.

**NOTE: Sorry No Baskets or Bedding Plants*

Specializing in Northern Hardy Plants

HOURS: Sunday: CLOSED
 Mon. to Fri.: 12:00PM - 6:00PM
 Saturday: 10:00AM - 6:00PM

968-0542

WE ASK ALL OUR LOYAL CUSTOMERS TO DROP IN AND SAY GOODBYE. NO PURCHASE NECESSARY





May 27, 2019

Drayton Valley Omniplex

Drayton Valley 4-H Beef Show & Sale



Show:9:00 am
Parade of
Champions:6:30 pm
Sale7:00 pm

Order Buyer
Cory Sekura, 780-542-4337



For More Information:

Interclub Chair
 Tyler Calvert (587) 879-4904
 Rylee Rogers (780) 514-4382

Lin-Berry-Buck 4-H Beef Club
 Kathie Jo Hoffarth (780) 234-9252

Lobstick 4-H Beef & Multi Club:
 Brent Laackmann (780) 898-0659

Two Rivers 4-H Beef Club:
 Melanie Calvert (780) 514-4026



Want to Join 4-H?

YOU DON'T HAVE TO LIVE ON A FARM TO JOIN!!

In 4-H, youth run the show. 4-H clubs typically meet once a month as a large group, where youth of all ages take on different leadership roles to make decisions and plan events. Clubs organize fun outings, achievement days and fundraisers, and participate in various activities within their communities.



Come visit us on Facebook at Drayton Valley 4-H Beef Interclub to view a catalogue showcasing top quality beef for sale.

THE FOLLOWING PAGES ARE PROUDLY SPONSORED BY THESE LOCAL BUSINESSES



THE FOLLOWING PAGES ARE PROUDLY SPONSORED BY THESE LOCAL BUSINESSES



4H UPDATE: ANTICIPATION GROWING!!

Submitted by **Wyatt Bahrynowski | Lobstick 4H**

The big day for all 4-H beef members is drawing near, the annual show and sale!! As I previously reported this year was going to be a 2 day event, but after some debate we back to having a one day action packed show and sale. The Lobstick 4-H members would like to invite you out to see their 4-H projects for this year. A lot of hard work has gone into getting our heifers and

steers ready for the show day. The journey started in November when it was time to pick out our projects and weigh them in, over the next 7 months there was daily feedings, halter breaking, grooming and clipping. For those of you that are wondering if this is the only thing we focus on in the 4-H beef club, it's not... being a member of the club you are also required to attend monthly meetings, participate in community service, participate in public speaking and complete a record book.

This record book documents the costs involved with our 4-H animals along with other information.

Our club had a mini show on May 5, it was very successful with all the animals cooperating, fingers crossed that everything runs just as smoothly at the big show and sale. This years event takes place May 27 at the Drayton Valley Omniplex. The show kicks off at 9 am and will run throughout the day. Parade of Champions takes place at 6:30 pm followed by the sale at 7pm. Along

with our club, (Lobstick 4-H) will also be the Lin-Berry-Buck Club and the Two Rivers Club, so there will be a lot of great show animals to view and to purchase.

If you are interested in purchasing some of this tasty quality Alberta 4-H Beef you can contact our beef leader Brent at 780 898 0659 or Corey Sekura at 780 542 4337. All the 4-H Beef members truly appreciate all the support they receive from the community and from the beef buyers.

PRINCIPAL'S MESSAGE

Submitted by **Les Worthington, Principal, Wabamun School**

Blanket Exercise – On Thursday, May 23rd, we will be hosting a Community Blanket Exercise. Please call the school to have your name added to the attendee list. This event is for adults only.

Rainbows Nutrition Program – Each week in Phys. Ed. students have the opportunity to try a different fruit or vegetable. We have tried four different ones to date. See if your child can list them all!

Personal Technologies – Starting

Tuesday, May 21st students will no longer be permitted to have personal devices (cellphones, headphones, etc...) out from the morning bell until the end of the day. This means that during the school days (breaks & recesses included, they are to remain in lockers). At a teacher's request, students may use laptops, and if needed, wired headphones. If students require wired headphones we (the school) can provide them.

Badminton – Congratulations to Mr. Pon and all of the badminton players who have been participating.

Swimming – Swimming for students in Grades 1-5 begins on Fri-

day, May 31!

Bell Times – Next year the bus will arrive at Wabamun School at 7:35. This has resulted in a change to our bell schedule. Our first bell will be at 7:47 and our final dismissal bell will be at 2:35.

WSFA – A huge thanks goes out to the Wabamun School Fundraising Association who awarded 10 lucky students a free laptop! WSFA also hosted a Ham & Tur-key Bingo. The event was very well attended and made for a great night of family fun. In addition, WSFA has sponsored the Grade 3-5 overnight trip to Drumheller! When we return in the fall WSFA will be looking for

volunteers to assist with the casino.

Coffee with the Principal – Approximately once a month I meet with parents and community members for what we like to call "Coffee with the Principal". In a nutshell, it is an informal conversation about whatever is on your mind, all while enjoying a cup of coffee or tea, and sometimes some treats. As a school administrator it is important for me to engage the community, for you are all stakeholders in strengthening our school, which in turn strengthens the community. This month's Coffee with the Principal will be at Gossamer Treasures, on Tuesday, May 21st from 10:30-11:30am.

GROVE HEARING CLINIC

960-2960

1-866-960-2960

**Hear what
you've been
missing...**

**Senior
Discounts**



**Full
Service &
Repair**

**Full
Hearing
Assessments**

HOURS OF OPERATION: 9am – 5pm Weekdays

3rd party billing (AADL, WCB, DVA, FCH) • Personal 0% Financing if Needed

For The Latest Technology In Hearing Aids & Assisted Living Device Stop By & See Dawn

#220-70 McLeod Ave - Westland Market Mall, Spruce Grove

PATHWAY TO PERMANENT RESIDENCE FOR CAREGIVERS CLOSES JUNE 4, 2019

Submitted by Jim Eglinski, MP – Yellowhead

OTTAWA: Jim Eglinski, Member of Parliament for Yellowhead, wishes to inform constituents that Immigration, Refugees and Citizenship Canada (IRCC) is launching two new five-year caregiver immigration pilot programs. This will replace expiring and ineffective pilot programs.

The new pilots will allow caregivers to come to Canada

together with their family and provide a pathway to permanent residence.

Under the new pilots, applicants will be assessed for permanent residence criteria before they begin working in Canada. Once the caregiver has their work permit and 2 years of work experience, they will have access to a direct pathway to become a permanent resident.

These pilot programs will replace the Caring for Children and Caring for People with High

Medical Needs pilots and include:

- Occupation-specific work permits for caregivers, providing the ability to change jobs quickly when necessary.

- Open work permits for spouses/common-law partners and study permits for dependent children, to allow the caregiver's family to accompany them to Canada.

The Interim Pathway for Caregivers, which will be open from March 4, 2019, until June 4,

2019.

The Interim Pathway for Caregivers will provide those caregivers an opportunity to stay in Canada permanently.

"Caregivers provide care to families in Canada needing assistance. I encourage caregivers and all those involved with caregivers in the Yellowhead, whether personally or professionally, to let them know," concluded MP Eglinski.

The Interim Pathway for Caregivers was launched as a three-month program on March 4 as a short-term pathway for caregivers, their spouses and their children for the opportunity to become permanent residents. This pathway was launched to help caregivers who have been working in Canada but who haven't qualified for any other current caregiver program.

To apply, a caregiver needs to have:

- a valid work permit (or have applied to extend their work permit or restore their status)
- one year of Canadian work experience as a home childcare provider or home support worker, or a combination of both jobs since November 2014
- a minimum of Canadian Language Benchmark level 5 in reading, writing, listening and speaking in either English or French
- a Canadian high school diploma or a foreign equivalent

If an applicant can't get the results of a language test or Educational Credential Assessment in time before the deadline, they can submit proof they have scheduled a language test and have submitted a request for an assessment.

"I encourage caregivers and all those involved with caregivers in the Yellowhead, whether personally or professionally, to let them know," concluded MP Eglinski.

For more information please go to: <https://www.canada.ca/en/immigration-refugees-citizenship/services/immigrate-canada/caregivers/interim-pathway.html>



FREE LOCAL CLASSIFIED ADS

Real Estate, Rentals, Vehicles, Pets, Jobs, Service Directory, Buy/Sell/Trade, Lawn & Garden, Garage Sales, Events, Local Places & Much More... Advertise for **FREE** Today!



Follow Us



The Following Businesses Salute The Holy Trinity Academy Graduating Class Of 2019

 Brazeau County <small>www.brazeau.ab.ca</small> 542-7777	 Town of Drayton Valley <small>DRAYTON VALLEY</small> 514-2200	 Ink Pot Press <small>ink pot</small> 542-4630	 Appara Shoes 621-1625	 Bob Dale Oilfield Services Ltd. 542-4834
 Canadian Tire -Drayton Valley (Best of luck!) 514-7670	 Tarpon Energy Services Ltd. 514-7659	 Stetson GM Ltd. 542-5319	 TD Canada Trust -Drayton Valley 542-3773	 Drayton's Shop Automotive (Your Tread Pro Tire Center) 514-5795
 Cornerstone Denture Clinic 542-2882	 D.V. RENTALS INC. 780-542-5845 <small>Drayton Valley, AB</small>	 IGA -Drayton Valley 542-4644	 A.T.B. Financial -Drayton Valley 542-4407	 Poplar Ridge Home Building Center 542-5065
 Foundation Dodge <small>FOUNDATION</small> 542-4488	 Buck Creek Oilfield Services Ltd. 621-1828	 D.V. Home Hardware & Building Center 542-9663	 Chuck Friesen-Re/Max Vision Realty 898-1613	 Dunn-Right Communications Inc. 542-5200
 Country Haven Kennels 621-1631	 Drayton Valley Toyota 1-877-514-3868	 Tri Electric Ltd. 542-4212	 Carol Lapointe Professional Services Ltd. 542-1571	 Fortec Inc. 542-7110

Congratulations

Holy Trinity Academy

GRADUATES OF 2019!



Marron
Almeda



Maryonn
Almeda



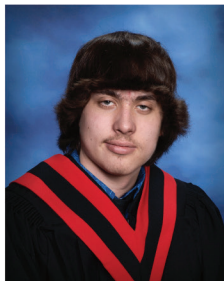
Mikaela
Aquino



Bernadine
Bacolong



Aschly
Baez



Ted
Beisel



Tori
Benoit



Carson
Brooker



Cole
Chopko



Gian
Erazo



Rebecca
Fontana



Madison
Forget



Rachel
Fortin

Wishing you the best of luck in the future.

Congratulations

Holy Trinity Academy

GRADUATES OF 2019!



Conner
Georgeson



Avery
Gramlich



Ashley
Gray



Raphael
Gutierrez



Morgan
Josephson



Mercedes
Kerby



Louis
Kim



Mark
Lafleur



Elizabeth
Lemermeyer



Ben
Pequin



Arick
Schoeninger



Hannah
Smith



Abby
Thronson

Wishing you the best of luck in the future.

The Following Businesses Salute The Holy Trinity Academy Graduating Class Of 2019

 <p>Serenity Funeral Service -Drayton Valley 542-3338</p>	 <p>Dairy Queen Grill & Chill -Drayton Valley 514-2800</p>	 <p>Valley Concrete (2003) Inc. 542-5488</p>	 <p>Scotia Bank -Drayton Valley 542-4454</p>	 <p>The Flower Farm 542-5119</p>
 <p>Apex Monach Inc.  542-7135</p>	 <p>Wayne's Plumbing & Heating 621-6915</p>	 <p>Techmation Electric & Controls Ltd. 542-2723</p>	 <p>Oil Country Taphouse 542-5351</p>	 <p>Foothills Door Ltd. 388-3321</p>
 <p>Hammur Construction 542-1693</p>	 <p>Go West Wireless (2011) Ltd. 515-9090</p>	 <p>Drayton Valley Golf & Country Club 542-3602</p>	 <p>Royal Bank -Drayton Valley 621-5318</p>	 <p>Ted Beath Welding Ltd. 542-5593</p>
 <p>Mr. Mike's Steakhouse - Casual -Drayton Valley 515-8433</p>	 <p>T-Bones Specialty Foods Ltd. 621-1778</p>	 <p>Value Drug Mart -Drayton Valley 542-5366</p>	 <p>Drayton Valley Auto Parts / NAPA 542-6881</p>	 <p>BMO -Bank of Montreal 542-6030</p>
 <p>Karach Welding & Construction  542-6534</p>	 <p>Rexall Drug Store -Drayton Valley 542-4485</p>	 <p>Boston Pizza -Drayton Valley 514-5000</p>	 <p>Servus Credit Union -Drayton Valley 542-2922</p>	 <p>Fountain Tire -Drayton Valley 542-4001</p>

YELLOWHEAD COUNTY 2019 FINAL MUNICIPAL BUDGET, TAX RATE BYLAW ADOPTED

County council adopts 2019 municipal budget with a focus on several notable capital projects.

Submitted by Yellowhead County

On May 14, 2019, Yellowhead County council adopted the 2019 municipal budget and retained the same municipal tax rate from the previous year. As a result, the county's property owners, businesses, and industry will not see an increase in the municipal government tax rate when they receive their tax notice this spring, but will see an increase in the school requisition and seniors requisition rate.

"We have worked hard to bring forward a budget that doesn't require a tax rate increase for our residents and businesses this year," said Yellowhead County Mayor Gerald Soroka. The total municipal budget, which comes in at some \$156 million, includes a \$41.5 million allotment for county operational costs.

The budget continues to reflect council's continued support of development in the region, and includes a significant range of capital projects for many of its departments. Total capital costs will be \$55.9 million with an allotment of \$14.6 million for Parks and Recreation; \$1.5 million for Fire and Protective Services; and \$35.7 million for road connectivity and rehabilitation projects.

"This year, our focus is on a handful of capital projects which we hope will improve the quality of life for our residents," added Mayor Soroka, "We will continue to work towards developing the collaborative Yellowhead County-Edson Recreation complex in a fiscally responsible manner. And as always, road infrastructure remains a priority."

Continued on Page 16

STORY TO TELL?

Know of a good event going on in the community? Ever wanted to write up a local event for the Community Voice?

If you have any good ideas for articles or would like to submit a story for the paper Email it to news@com-voice.com or just fax it in at (780) 962-1021.

Please call us at (780) 962-9228 for more information.

Stories may be edited for length due to possible space restrictions.

Community VOICE

Keeping You and Your Community Informed

MOVING & ESTATE SALE

ANOTHER RAINBOW SALE

WERNER & CHRISTA JAPPSSEN

Sunday, May 26, 2019 at 12:00PM

Viewing 10:00AM - Noon (Day of the sale)

Directions: 5c 51504 Range Road 264
- From Hwy 60 turn west on Twp Rd 515A for 2 km & turn south on Range Rd 264 for 1 km to location.

Under instruction from Christa, we will be selling the chattels used to run this acreage as she is moving to town. Everything must be sold to the highest bidder!

Saddles, Tack & Accessories: • Roping saddles • Pleasure saddles • Bridles, halters & hobbles • Pack saddles, packboxes • Ropes • Assorted harness & accessories • Hunting and trail riding equipment • Western artifacts **Wagon Building Accessories:** • Wagon wheels • 6-heavy wagon axels • 12 wagon reaches • 1 wagon wheel band shrinker • Shelves - horse troughs **Building Materials, Tools & Equipment:** • Roof Trusses • Sidewalk blocks • Bricks • Chain link fence & poles • Drill stem pipe **Shop Tools & Equipment:** • 3500XI power plant (generator) • Coleman power plant • Table saw • Drill press, air compressor • Tools boxes, hand & power tools • Floor jack - wood splitter • Antique anvil **Lawn & Garden** • Patio set (table and chairs) • Wooden decorative bench • Patio swing • Ford lawn mower • Rototiller **Household Furniture** • Antiques & Collectables • Spinning wheel • Collection of crocks • Oil lamps (large selection) • Pottery (large selection) • Cameras • Commercial urns & accessories • Rolling pins • Collectable art • Mounted owls • Assorted hunting rifles and accessories (must have FAC) • Selection of acreage related equipment, mowers, weed eaters, and much more.

UPCOMING SALES

CONSIGN NOW!

Sunday, June 23, 2019 @ 10:00 a.m.

Rainbow Auctions Pre-Summer Consignment Sale
Rainbow's Stony Plain Consignment Centre

****Watch website daily for new additions to auction lists****

Terms and conditions: Cash, Visa, MasterCard, Debit, Interac. Nothing to be removed until paid for. Subject to additions and deletions. A 10% handling fee, plus GST will be charged where applicable. Please be conscious of the handling fees and factor them into your bidding. Owner Rainbow Auctions & Liquidators or it's employees shall not be responsible for accidents.

SALE CONDUCTED BY:



Stony Plain, AB. 780-968-1000
or TOLL FREE 1-866-968-1001
Complete Liquidation and
Auction Services Since 1978
www.rainbowauctions.ca
BOOK YOUR SALE WITH US TODAY!

JUNE 8 AUCTION FOR: ESTATE OF GILBERT AND DORIS SWAREN

LOCATED: From Blue Ridge -1.5 mi W on
TWP 594 to RR 103A, 1/2 m South on RR 103A

Saturday Afternoon, June 8th at 12:00PM

MODERN BAND SAW MILL and WOOD CABINS: * Norwood Super Lumber Mate 2000, Honda 13 hp, Transport wheels * CUSTOM HAND SAWN WOOD CABINS w Vaulted Ceilings, (13' x 26' plus 10' Covered Deck) (12' x 20' plus 6' Covered front Deck)

QUALITY / SHEDDED HORSE BUGGIES, SLEIGHS, TACK: * 4 Wheel 4 Person (2 seat) Wooden Wheel (Rubber trim) Buggy * 4 Wheel 2 Person (1 seat) Wooden Wheel (Rubber trim) Buggy w/ canopy * Single seat, single runner Sleigh * Single seat, single runner, single pole Sleigh * Multiple Sleigh and Buggy Poles & Parts * 2 @ 6' steel Sleigh Runners * 2 sets HD Black Harness (Like New) * 2-3 full Heavy Harness sets * New (Horse Blankets, Breast collars) * Leather Head stalls * 20 some used Collars * Halters, Leads, Bridals & Bits * Western Rawhide (154839) Roping Saddle * Western Roping Saddle (3910) * 4 Saddle stacking stand * Wooden Wheel Covered Horse Wagon * Wooden Wagon Wheels (Mint)

HORSE TIP TABLE and EQ: * Custom Quality Made HD Horse Tip * Motorized Round Pen Horse Walker * 3 Tomb Stone BaleFeeders * 50 + 8' Steel Panels * Steel Gates, assorted sizes * Steel Frame Mineral Feeders * Bale Handler/ Mover on wheels * PTO Post Sharpener

ANTIQUES & COLLECTABLES: * Oxen Yoke, Nice * 2 large 6 Bell Horse harness Bell sets * Cream Cans * Cocks, 12 gal & assorted * Well Buckets * Butter Churns * Wooden Kids (Radio Flyer) Wagon * Picks & grub Hoe Collection * Hay Knives * Coal Shuttle * House hold Antiques, Cans, etc * Milk Bottles w/ Tops * Blue Jars * Red Rose Tea Wooden Box * Wooden Apple boxes * Octagon Copper Boilers * Wooden Laundry Tongs * The Prize 1893 Washer Machine (Tub) * Wooden Barrel Washing Machine * Laurel Wood Cook Stove * 1930's suspension tub Baby Buggy * Platform Scale * Black smith Tongs * Axe & Adz Collection * Ice Saw * Antique pipe wrenches * Wide Aladdin Lamp Shade covers * Sad Irons * Well hand Pumps * Wooden Carpenter Box w/ Saw, Forge tools, etc * Louis Lamour Book Collection * 2 @ 4 roll Fanning mills * Galvanized Bath Tub * Steel Wheel Drill * Steel Wheel Seed Drill * R.A Lister & co. Size J Stationary motor, No. 10250, 5 hp, 450 rpm

TRACTORS / 3 POINT / YARD / SHOP: * Massey 135 Tractor, 3 pt, Allied 350 Loader, 2053 hrs on tach, Runs well, Needs hyd. Work * Cockshutt 570 w/ new idea loader * JD 110 12-14' Disc w transports * JD 6 Btm Plow w trips * 5 wheel spring tooth Hay Rake * JD 6' imatch Brush Mower, Nice * Buhler Farm King 6' Disk, serrated blades, Like New * 3 Pt Bale Fork, Like New * 3 pt 2 Btm Plow * 5' 3 pt Brush Mower * BCS 203 Walk behind Front Brush Sickle Mower, 5 hp * Husqvarnia 970 Front Mount Riding Mower * MTD 21" mower w/ Bagger * Briggs & Stratton Snow Blower * Stihl PS86 weed eater * Small tire Steel frame Trailer * Honda 5 hp Pressure Washer * Horizontal Air compressor * New 2900 watt Dewalt Generator in Box, Never opened * Pea Sheller * Meat Band Saw * HD Pto Log Splitter * 8 Wheel Argo

TRAILER / VEHICLES / SALVAGE: * HD 18' Tandem Car / Equip Hauler, Hi Clearance * Dodge Power Ram 4x4, Cummins Diesel, 5 spd Standard, Body Damage, 5th Wheel hitch * 1980 GMC 2500 w/ hydraulic Bale handler on back * 1976 Chev Custom 30 Flat Deck Truck * 1976 GMC Sierra 25 Truck, 4x4 * Scrap Steel * Circular saw mill frame

PARSONS AUCTIONS LTD.

Charles 674-7704 (780-674-3929) Jeff 305-4328
Pictures Available on: parsons-auctions.com

Yellowhead County 2019 Final Municipal Budget, Tax Rate Bylaw Adopted

Continued from Page 15

For Yellowhead County's Parks and Recreation Department, notable capital projects include the development of the Yellowhead County-Edson recreation complex, the Brule Community Hall, the county-wide trails system, and the paving and lot improvement for the Wildwood Rodeo Grounds and Recreation Complex.

The county's Fire and Protective Services Department will focus on building two new communications towers, a training facility, and will also seek to acquire a new water tanker and sprinkler trailers.

The Infrastructure Services Department will focus on numerous road renovations and builds this year, including the Obed CN Crossing, Robb Lift Station, Swanson Road, Baseline Road, Long Lake Road, and Robb's 53 Ave. A number of overlays will also be constructed, including the Carrot Creek Loop

West, Niton North Road, Wildwood Old HWY, Rochfort Road, and Reno Road. As well, a decorative street lighting project will be underway this year.

The aforementioned projects are only a fraction of what the county has set out to develop this fiscal year—for a detailed budget breakdown, please visit the Yellowhead County website.

At-a-glance, the Yellowhead County 2019 budget is as follows:

- Operations: \$41,511,865
- Contributions to local government: \$12,164,140
- School requisition: \$23,423,074
- Seniors housing requisition: \$4,116,201
- Designated industrial requisition: \$620,457
- Contributions to reserves: \$2,809,526
- Capital projects: \$55,901,372
- Amortization (non-cash items): \$15,408,520
- Total: \$155,955,155



NEW FACILITY
Chapel & Reception Centre

600 Calahoo Road Spruce Grove, AB

780-962-2749 www.serenity.ca

SERENITY FAMILY SERVICE SOCIETY - YOUR NOT-FOR-PROFIT SOCIETY

Family run, local business, we care!

BEST CISTERN SEPTIC SOLUTIONS

**Cistern and Septic Inspection,
Installation and Repair!**

**Septic planning, design, installation
by government certified installer(s)**

New Installs Available. Reasonable Rates.

Let Us Handle the Dirty Work

780-668-4306
best-cistern-septic-solutions.com

KEY MESSAGES FROM GYPSD'S PUBLIC BOARD MEETING

Submitted by Nikki Gilks, Manager, Communications Services | Grande Yellowhead Public School Division

May 8, 2019

• Trustees approved the tender results for the almost \$500,000 heating and ventilation upgrade at Summitview School in Grande Cache, subject to approval from Alberta Infrastructure. This is the final phase of a multi-year project to replace the entire system.

• The board was pleased to provide a letter of support for their continued collaboration with the Jasper Local Immigration Partnership (LIP). LIPs are a community-wide, multi-sector partnership that works to increase collaboration between settlement agencies, and smooths the experience for newcomers at both the school and community levels.

• A detailed summary report from the feedback for the five community engagement sessions on the current Three-Year Plan was summarized by Deputy Superintendent, K. Shipka. Trustees will review the report in more detail at their next Board Retreat, and schools will use the collected input to align their own community engagement sessions in the fall around their school continuous improvement plans.

• Trustees ratified the school bus route contract for the three years from 2018/2019 to 2020/2021 with the Yellowhead Bus Contractors Association. The division has nine school bus contractors currently operating 19 bus routes.

• The Alberta School Boards Association's (ASBA) spring general meeting is from June 3-4, 2019, where trustees will support for the ASBA bylaw amendment proposal to establish that the Rural Caucus of Alberta School Boards (RCASB) be established as Zone 10 of the ASBA. Initially established in 2015 to discuss rural transportation issues, the RCASB expanded their scope in 2016 to include mental health and funding. In 2017, the Rural Caucus of Alberta School Boards was formal-

ized and represents over 40 rural school boards.

• Trustees shared information and highlights from activities around the division including their volunteer events for Education Week, monthly school councils meetings, and a meeting with representatives from the Public School Boards Association of Alberta (PSBAA). In addition,

- Lobstick: Board Chair B. Rosadiuk noted her participation on a recent selection process for

an assistant principal for Grand Trunk High School. The recent fundraiser for Evansview School, the Grouch's Ball, was another successful venture. She also appreciated the meeting with the PSBAA members where the board enjoyed some thoughtful discussions on board advocacy and collaboration strategies.

• Superintendent C. Lewis provided a Superintendent's Update which included key topics of interest from the annual Principals' Retreat in Edmonton. Held over

two days, the retreat focused on strategic planning, instructional leadership and effective instructional walkthroughs, moving forward with literacy practices, budget insights, and the sharing of various learning and curriculum updates. A common report card for K-Grade 12, school community and stakeholder engagement sessions, and a focus on effective assessment practices are some of the upcoming priorities for the 2019/2020 school year.



Deb Gouin

780-497-0531

www.debgouin.com

Century 21 Masters 780-963-2285
#105, 4302 - 33 St., Stony Plain, AB T7Z 2A9

Each office independently owned and operated.



\$629,000

GATED COMMUNITY EXEC. HOME

- 1 acre lot MINUTES TO SPRUCE GROVE
- Soaring Ceilings & Luxury Finishings
- TWO TRIPLE GARAGES + RV PARKING
- E4147138



\$374,900

SPRUCE GROVE 1/2 DUPLEX BUNGALOW

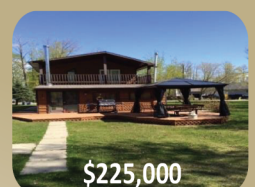
- BEAUTIFUL 2+2 bedrooms, 3 baths
- Open Floor Plan and Main Floor Laundry
- Double Attached Garage **NO CONDO FEES**
- E4154703



\$299,900

ROSS HAVEN FAMILY HOME

- 1500+ sq ft, 3 beds, 2 baths
- Upgraded Inside & Out
- Double O/S Garage, 1/2 Block to Lake
- E4148150



\$225,000

ROSS HAVEN CHARMER

- 1650+ sq. ft. 2 bed + loft, 1 bath, laundry
- LARGE COVERED Upper Deck!
- Backs GREENSPACE, STEPS to Lake & Pier!
- E4148179



\$275,000

LAKE NAKAMUM WATERFRONT

- Next-to-New 1 bed + Loft, 1 Bath
- FULLY SERVICED
- Set Up for 2 RVs with HOOK-UPS!
- E4149606



\$189,000

IMMACULATE MOBILE HOME

- 1215 sf, 3 Beds, 2 Baths
- 1/2 acre OWNED lot, NO PAD FEES!
- Close to Lake & Alberta Beach Area
- E4149608



\$110,000

ALTA. BEACH COZY COTTAGE

- 613 sq. ft., 2 beds, 1 bath
- FULLY SERVICED
- Great Bunkhouse!
- E4150085

**FEATURE
YOUR
PROPERTY
HERE!!**

VIEW FULL LISTING DETAILS AT WWW.DEBGOUIN.CA

Considering selling? Give me a call for a free market evaluation!! With more than 30 years' experience in the real estate industry, I have both local knowledge as well as serious buyers currently looking for property in our area! Put me to work for you.....

FROM SIGN UP TO SIGN DOWN!!



Classified Ads - Call 962-9228

Classified Policy

CLASSIFIED RATES INCLUDE GST. 1st 20 Words: First Insertion = \$6.00; Subsequent insertion = \$3.00 each. Each additional word is 20 cents per word, per insertion. BOLD/CAPITAL text available for an additional \$1/line. Lost & Found and To Give Away (up to a max. of 25 words) are free of charge. Ads must be paid in advance either by cheque, cash, Visa or Mastercard. No

Refunds Allowed on Classified Ads. DEADLINE: is Thurs. 4:00 pm (Wed. 4:00 pm on long weekends). Classified ads may be called in to the COMMUNITY VOICE office at (780) 962-9228, emailed to: classifieds@com-voice.com, dropped off at Onoway Registries, or mailed with your ad and payment to: COMMUNITY VOICE, BAC 3595, SPRUCE GROVE, AB T7X 3A8. Ads may also be placed on the web at www.com-voice.com/classified.htm

Hall Rentals

Bright Bank Hall, 780-968-6813

Camp Encounter, Vincent Mireau - Camp Director. director@campencounter.com. C: 780-504-2012 W: 780-967-2548

Cherhill Community Assoc. Hall, Kevin 780-785-8153

Darwell Hall, 780-721-2690

Darwell Seniors, Phone Debra 780-785-2907

Duffield Hall, 892-2425 or 963-6887

Entwistle Community League Hall Rentals, Call Cheryl at 780-515-1755

Entwistle Senior's Drop In Centre, Barb 727-2108 or Glennis 727-4367 Mon-Fri

Evansburg Senior's Heritage House, Dennis 727-4186

Evansburg Legion, upper hall 250 people, lower hall 80-100 people, 727-3879

Fallis Community Hall, 892-3150

Gunn Hall (G.A.R.S.) 780-951-9452

Keephills Hall, 731-3761

Lake Isle Community Hall, PH: 780-892-3121 or Email: lakeislehall@mail.com

Lake Romeo PeaVine Hall, 785-2700

Magnolia Hall, 727-2015

Manley Goodwill Community Hall, 963-9165 or 916-0146

Mayerthorpe Diamond Centre, 786-4044

Moon Lake Community Hall, Nikki Berg 780-898-1390

Park Court Hall, call or text Karyn 780-712-3918

Parkland Village Community Centre, 780-298-9155 @ PVC Centre

Ravine Community Hall, 325-2391

Rich Valley Community Hall, 967-3696 or 967-5710

Rosenthal Community Hall, 963-7984

Smithfield Community Hall, 892-2390

Tomahawk & District Sports Agra, Bookings: Kathy 780-339-3773.

Wabamun Jubilee Hall, 892-2699.

Wildwood Community Hall, 325-2180 or 780-514-6105

Wildwood Rec Complex 325-2077 or 514-8944

Wildwood Senior's Hall, 325-3787 or 325-2391

PREVAIL

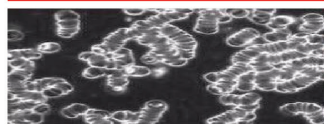
CELLULAR HOMEOSTASIS FORMULA

MAX

A NUTRITIONAL BREAKTHROUGH THAT SUPPORTS YOU
...RIGHT DOWN TO THE LAST CELL!

How do you want your
BLOOD to look?

Before PrevailMAX:



poor circulation

low energy

brain fog

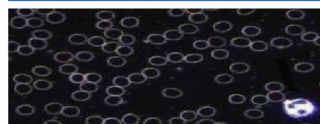
dehydration

decreased nutrients

pH imbalance

poor endurance

After PrevailMAX:



better circulation

more vitality

mental clarity

cellular movement

nutrient assimilation

balanced pH

optimal endurance



LIVIN TRIM WITH
VALENTUS

PrevailMAX™ is a nutritional breakthrough that delivers a rapid increase of internal blood cell pressure to speed absorption, enabling the body to take maximum advantage of the nutrients in foods and supplements. The electrolytes are small enough to penetrate your cell membranes, to bind with your cells, and to be carried wherever they are needed in the body.

At the microscopic level of human cells, **PrevailMAX™** supports healthy cell performance – a nutritional breakthrough for your cells.

When you use **PrevailMAX™**, you will feel more energy and an ability to focus like never before. Take a few sprays today and see just how good you can feel!

www.ValentusTour.com/Ladybug (780) 907-8642

Classified Ads - Call 962-9228

Services

WANTED: Standing Timber. Are you looking to cut your wood lot before pine beetles or forest fires destroy it? Top dollar paid! Call Paul 780-706-1470 (12) 14-05

Personal Care

Reliable Home Care Services in Drayton Valley. Cooking, companionship, cleaning. Daily, weekly, monthly or once. Local references, call Tricia 780-292-5992 (4) 14-05

Cleaning

CEILING & WALL CLEANING - Specializing in cleaning Stipple & California knockdown. Cig. Smoke & Odour removal. Ceramic floor tiles steamed cleaned. Call Nano Cleaning for Discount Prices! 780-914-0323 (5) 30-04

Computers

FREE Computer Checkup. Repairs NOT over \$50. Good refurbished Mini, Regular or Wide Screen solid Laptops or Desktops for all family from only \$100. Also, screens, parts, batteries, Save or Recycle. **FREE Repairs** for Single Parents and donations of any kind of electronics welcome for them or children. Call or leave message at 780-892-4993 (14) 12-03

Lawn & Garden

FOR SALE: Tomatoes 10 varieties, Peppers 7 varieties, Dahlias 80+ variety, **DAILY:** 210 Raleway Avenue, Glenevis, AB. **FRIDAYS:** Big Way Parking Lot. Call 780-289-2346. (3) 21-05

Landscaping & Maintenance

Stump Grinding For Hire - Alberta Beach & Surrounding areas. Call 780-779-3589 (28) 23-04

Buy & Sell

I buy Guns/Gun Collections & WW2 Collectables. Please call Jay at 780-686-1350 (24) 19-03

Pasture For Rent

25 acres cross fenced, dug out for water. Half pasture, half bush. Located in Darwell close to hwy, joins cemetery. 780-892-2413 (3) 07-05

For Rent

Available Immediately, Large 2 Bedroom in 12 Unit Apartment Building in Entwistle. Includes Heat, Water & Parking. Rent \$800/month + DD \$300. Please Call Ivka 780-807-1300 or email: jakovljevicivka@yahoo.ca (2) 21-05 OG

Cabin For Rent North of Evansburg on Hwy 22, (15 mins from Evansburg), \$1100/

month + DD, All inclusive, Utilities & TV, Max. 2 people, 780-239-0553 (4) 21-05

Land For Sale

Lot, very close access to lake through public greenbelt. Treed, partially clear, 50'3" x 120'6", surveyed, comes with shed. In Horne Beach, Lake Isle, 2nd lot from the corner. \$34,500 - PH. 780-660-4092 (4) 14-05



PURE HEMP CBD PRODUCTS
AGING IS INEVITABLE - LOOKING AND FEELING OLD ISN'T!

WHAT IS CBD?

A Health and Beauty Breakthrough!

Cannabidiol, CBD, is one of over 80 active cannabinoid chemicals in the hemp plant. CBD, unlike, THC, does not produce euphoria or intoxication. CBD targets specific receptors in the cells of your brain & body. There are many physical and mental benefits to using CBD products for both treatment and prevention of numerous ailments.



Therapeutic Uses For Pure Hemp CBD

Supports healthy blood sugar levels, promotes healthy energy levels, relieves anxiety, aids in digestion, supports optimal immune function and the regeneration of healthy cells, and promotes a sense of serenity and overall well-being.

Anti-Aging Uses For Pure Hemp CBD

Promotes more youthful skin, provides hydration, enhances radiance, lessens age lines as well as the appearance of dark spots.

KEY BENEFITS

PAIN RELIEF: Known to reduce vomiting & nausea; suppress muscle spasms; reduce seizures & convulsions.

PROMOTES HEALTH: Helps to promote relaxation and overall health.

WELL-BEING: Helps to relieve anxiety, aid in digestion, supports optimal immune function and the regeneration of healthy cells.



CBD PET PRODUCTS

PET CHEW TREATS



KEY BENEFITS

SYNERGISTIC BENEFITS: Can be used in conjunction with regular medications with no side effects.

NO SIDE EFFECTS: Does not damage the liver, kidney or GI Tract like OTC medication.

DIETARY SUPPLEMENT: Can be administered daily as part of your pet's diet.



ORAL SPRAYS & DROPS



KEY BENEFITS

MANAGES PAIN: Helps to treat inflammation, arthritis and joint pain.

TREATS DIGESTIONAL ISSUES: Helps with loss of appetite, nausea, IBS and gastrointestinal swelling.

GENERAL HEALTH: Helps to manage mood, anxiety and general joint pain. For healthy, happy pets.

CONVENIENT: Can be sprayed into pet's mouth or on food.

**For more information,
Call (780) 907-8642
www.Elaine1.myctfocbd.com**



COMMUNITY EVENTS 2019

If you are a LICENSED, NON-PROFIT ORGANIZATION, you are welcome to submit your announcement FREE of charge, space permitting. You are required to submit your non-profit number. Call (780) 962-9228. Please note that all submitted event listings must be limited to 200 characters or less (including spaces). DEADLINE: 12 noon Friday prior to publication (Thursdays on long weekends).

MAY 25 - DARWELL CEMETERY CLEAN - UP DAY; 10:00am to 12:00pm. Please bring your own shovel and rake. If weather not permitting; clean up day Will be the following Saturday

JUN 15 - 10TH ANNUAL PIG ROAST at Duffield Hall. Music by TOUCH OF COUNTRY. Cocktails at 5, supper at 6 dance to follow. \$25/person, For tickets phone 780-892 2425 Or 780 963 9664.

FARMERS MARKETS

DRAYTON VALLEY: Evergreen Farmers' Market, Wednesdays at the Mackenzie Centre of the Omniplex from 10:30AM-1:30PM. *Ends Dec. 19

EVANSBURG: Sat, 10AM-2PM, Tipple Park Museum. Call 727-2240 for tables.

SPRUCE GROVE: at the Elevator, Sat 9:30-1:30PM, tables (780)240-5821

STONY PLAIN: Sat, 9AM-1PM, Downtown, Stony Plain. Phone Nancy 780-962-3993.

BINGO

ENTWISTLE COMM. LEAGUE BINGO: Every Wednesday, Doors Open 6PM.

STONY PLAIN SENIOR'S DROP-IN CENTRE: public bingo every Tues, 7PM. All ages welcome. Phone (780) 963-6685

TOMAHAWK: every Mon at Agra Centre, doors 6pm, Bingo 7:30PM. Info 514-0366 or 339-3747

WILDWOOD: Mon night. 6:30PM, bingo starts 7:30PM, Early Birds & Lucky 7.

MEAT DRAWS

Darwell: Put on by Alberta Beach & District Lions Club, 4:00PM, bi-weekly, Darwell Lounge & Restaurant

Evansburg: Evansburg Legion, Friday 8:10PM & Saturday 3-5PM

Wildwood: Wildwood Legion, Saturday 3-5PM

JAMBOREES

CARVEL: 2nd Sunday of month. \$6 lunch served. Info 780-991-3001

CHIP LAKE: Ravine Comm Hall, 1st Sat 325-2119 or 325-2391

DUFFIELD: 4th Sat, Duffield Community Hall, Supper 6PM. *Sept - May.

DRAYTON VALLEY: Last Sunday of month. Upstairs @ the "55 Rec. Center" Doors at 12PM, Starts at 1PM. 780-542-3768

ENTWISTLE: at Entwistle Community Hall, 3rd Saturday. For more info call Diann at 780-514-0045. *Starting Oct - May.

MAGNOLIA: at Magnolia Hall. Every 2nd Saturday, Supper at 6PM. 727-2015 or www.magnoliacommunityclub.ca. Call to confirm. *October - May

RAVINE COMMUNITY ASSOCIATION: 1st Sat of each month. Info 780-325-2391

*Sept - May.

SEBA BEACH: 2nd Friday 7PM, Seba Seniors Centre, Toni 797-4233

SPRUCE GROVE: at Sandhills Community Hall, 3rd Sunday, 1-5PM. Info Florence 780-962-3104 Margaret 780-962-3051 *Sept - June.

STONY PLAIN: Stony Plain Seniors Drop In Center, 5018 - 51 Ave. Every 2nd & 4th Thurs of month, 7PM, \$2. PH: 587-989-7214 or 963-7920.

TOMAHAWK: Tomahawk Agriplex, 3rd Friday of month. 7PM. PH: 780-339-3755. *Starts Oct 21st.

WILDWOOD: Wildwood Community Hall, 3rd Wed Each Month, 7PM. 325-3749 *Oct - June.

TOPS (Take Off Pounds Sensibly)

ENTWISTLE: Wed 5:15PM weigh-in, 5:30-6:30PM meeting, food bank building, South entrance. 780-932-2695.

STONY PLAIN: Thurs evening, Stony Plain United Church, Susan (780) 968-0869

SPRUCE GROVE: Wed 8:45am at

Anglican Church, 131 Church Rd. Christiane 960-1109

WILDWOOD: Thurs at Wildwood School, 5PM. Connie (780) 325-2420

YOUR COMMUNITY

ALBERTA PARENTING FOR THE FUTURE ASSOC: Call 963-0549 or visit www.apfa.ca to register. All programs are confidential & free.

FREE HOME MEAL DELIVERY PROGRAM, for Wabamun Seniors & Wabamun Lions. Arrange for meal preparation through a local restaurant. Call Darlene, 892-2551.

PEMBINA SKATING CLUB (Evansburg Arena), offers Learn-to-Skate, CanSkate & STARSkate. All ages. Call Lisa 727-2729.

*RUNS Sept-March

PROBLEMS WITH DRUG OR ALCOHOL ADDICTION in a loved one? Contact Drug Rehab Resource for a free confidential consultation. 1-866-649-1594 or www.drugrehabresource.net.

LIBRARY EVENTS

AFTERNOON BOOK CLUB at Keeplinks Library. 2nd Tues of every month, 1:30-3:00PM. Visit www.pclibraries.ca for info.

FAMILY GAMES NIGHT: 3rd Wed of every month, 6-8PM. Located at Entwistle Library, Duffield Library and Tomahawk Library. In partnership with Parkland School Division. Visit www.pclibraries.ca for more info.

HATCHET CITY READERS at Tomahawk Library. 3rd Tues of every month, 10-11AM. For what we're reading next, visit our website, www.pclibraries.ca.

INVENTORS CLUB: 2nd Thurs of every month, 3:30-5:00PM at Entwistle Library. 4th Thurs of every month, 3:30-5:00PM at Tomahawk Library. Ages 8-13. To register: Call the library at 780-339-3935.

SEBA BEACH PUBLIC LIBRARY BOOK CLUB - meets the 4th Tuesday of the month in the library at 10:30AM. For info call 780-797-3940 or E-mail us at sebaeachlibrary@yrl.ab.ca.

EVANSBURG PUBLIC LIBRARY BOOK CLUB: 4th Thurs, 7:00PM Grand Trunk High 727-2030.

SOCIAL EVENTS

50+ YOUNG AT HEART LUNCHEON for Parkland County Seniors. 12PM at Stony Plain United Church Basement, \$8/plate. 3rd Wed of month. Call Barb 780-952-0882. *Sept-June

AEROBICS: Low impact, Mon/Wed, 11AM-12PM, Wildwood Senior's Centre, \$1/session.

BREAKFAST SOCIAL: 9:30AM-NOON, Parkland Village Community Centre - 3rd Sunday. PH: 780.298.9155 Social Media: PVCentre.

COME PLAY CRIB: Fridays, 7:30PM at Darwell Seniors Hall; lite lunch is served. All ages!

COUNTRY QUILTERS in Stony Plain house a "Sew in Tuesday", 2nd Tuesday of every month, from 10-3PM. Drop in \$5/member, \$6/non-members. Contact Cindy 780-963-7170.

EVANSBURG ART CLUB: meet & paint Thurs 1-4PM Rec Plex. 727-4340 or 727-4098

EVANSBURG GUIDES & PATHFINDERS:

Mon 6PM, Camp Evansburg.

EVANSBURG SENIOR'S HERITAGE HOUSE: Floor Curling Mon & Thurs, 1pm. Court Whist Thurs, 7PM.

EVANSBURG TIPPLE PARK HISTORICAL BUILDING TOURS: Wed - Sat, 10:00-5:00PM.

HEALTHY AGING NURSE & FOOT CARE PERSON, Wabamun Seniors Centre, 2nd Thurs of month, 9AM.

OPEN HOUSE for socializing, Crib & card playing at Entwistle Senior Center, Thursdays at 6:45PM. Dan 780-982-0353

PARENT & TOT PLAYTIME: PERC Building Stony Plain Wed 10-11AM; Holborn Community Hall Thurs 9:30-11AM; Parkland Village Tues 9:30-11:30AM.

POT LUCK every Tues 12:00PM, Wabamun Seniors Centre. Come on down!

SEBA BEACH SENIORS CENTER: Yoga, mon, 9:30AM, \$10/session. Bridge thurs, 1pm. Jams every Wed night, 7PM. Thrift Shop every Wed & Sat at 10-3PM.

SEBA BEACH QUILTERS & FIBER ARTS: Wednesdays 9:30AM, Seniors Center.

SENIORS 50+ LUNCHEON: 3rd Wed, 12PM at Stony Plain United Church basement hall. Call Audrey (780) 963-7582

SENIORS WEDNESDAY* AFTERNOON 1-4PM at Parkland Village Community Centre. Games, Crafts & more! Call Sheryl 780.695.7032 *exceptions incl. Weather.

SPIRITUAL LIVING STONY PLAIN INSPIRATIONAL CINEMA & DISCUSSIONS at PERC Building (5413-51 St). 2nd Friday of month at 7PM, Popcorn provided, donations appreciated. Contact 780-940-3032

SPIRITUAL LIVING STONY PLAIN GATHERING at PERC Building (5413-51 St). Every 2nd & 4th Sunday of month. Meditation 10AM, inspirational sharing 10:30AM. PH 780-940-3032

SPRUCE GROVE ELEVATOR TOURS: Tues-Sat, 9-3PM, 960-4600.

STONY PLAIN'S 5TH MERIDIAN GOOD SAMS RV CHAPTER: Ecole Meridian Heights School. 3rd Tues of Month, 7PM. Call Pat at 780-963-6976 or Ruth at 780-288-9829.

MEETINGS

2ND TIMERS: A support & confidential group for Grandparents Parenting. 1st Thurs of month, 6:30PM. Grand Trunk High School (meet in Lobstick Literacy & Learning room). Child care provided at the Evansburg Public Library. *Starts October

299 ROYAL CANADIAN SEA CADETS CORPS MACKENZIE: Stony Plain Comm Center, Wed 6:30PM. Youths 12-18, 963-0843

755 PARKLAND AIR CADETS Thurs, 6:30-9:30PM. Muir Lake School, ages 12-18. Info call 405-6585 or www.aircadet.com/755.

AA: Friday at 8PM, Evansburg. Call 325-2204, 727-2466 or 727-6652.

AL-ANON: Wed 8PM. Spruce Grove United Church, 1A Fieldstone Drive. 962-5205

CHAMBER OF COMMERCE (Evans/Ent): 7:30PM 3rd Thurs, Heritage House.

C.H.I.L.D. (Citizens Helping in Life's Defense) Please join our Pro-Life meetings once a month in Stony Plain. For info call Chris 963-6997.

CITIZENS ON PATROL: The Pembina Community Watch Patrol Meets 2nd Thurs of each month at 7:30PM, at the West Central Forage Association Office 5009 45th Avenue, Entwistle. Contact 780-727-2000

COMMUNITY QUILTERS & CRAFTERS: 3rd Tues. Evansburg, Liz 727-3872 Brenda 727-4476

DARWELL & DISTRICT AG SOCIETY: 8PM, 1st Mon, Community Hall.

DDRA MEETING: 7PM, 2nd Mon, Darwell Community Hall 892-3099. *Except Jul/Aug/Dec

DRAYTON VALLEY BRANCH OF

ALBERTA GENEALOGICAL SOCIETY: meets 7PM at Municipal Library (5120-52 St.) every 3rd Wed of month. Call (780) 542-2787

ENTWISTLE COMMUNITY LEAGUE GENERAL MEETINGS: 2nd Thursday monthly 7:30PM. *Except June, July, August

ENTWISTLE LIONS CLUB: 2nd & 4th Tues, 8PM, Entwistle curling Rink. Jim 727-3573

ENTWISTLE SENIORS 55+ CLUB: Tue & Fri, 1:30-4:00PM at Entwistle Hall

EVANSBURG SENIOR'S 55+ HERITAGE HOUSE: 2nd Wed of Month, 7:00PM. Dennis, 727-4186.

FALLS COMMUNITY ASSOCIATION: 3rd Tuesday, 7:00PM.

GIRL GUIDES OF CANADA: Poplar Hollow District Guides-Pathfinders, Mon 6-8PM. Sparks-Brownies Tues 4-5:30PM. Meet at Camp Evansburg. Brenda 780-727-4476

LAC STE. ANNE & LAKE ISLE WATER QUALITY MANAGEMENT SOCIETY: 3rd Fri, 7PM, Alberta Beach Council Chambers.

LAKE ISLE HALL COMMUNITY HALL BOARD MEETINGS: 3rd Wed of each month @ 7:30PM at the Lake Isle Hall (Hwy 633 and RR55) Ph # 780-892-3121

LAKE ISLE MULTI 4-H GENERAL MEETINGS: 1st Thurs of each month @ 6:30PM @ Lake Isle Hall. Contact 780-242-2486.

LOBSTICK 4-H BEEF & MULTI CLUB: 1st Mon, Evansburg Arena, 7PM, Shannon 727-2358

LOBSTICK GARDEN CLUB: 1st Mon, 7PM at Tipple Park Museum, Clara (780) 399-2205

MAGNOLIA BOARD MEETINGS: 1st Tuesday of month, 7PM at Magnolia Community Hall.

MEN FOR SOBRIETY: Wednesdays at 7:30PM, FCSS Building (#105, 505 Queen Street, Spruce Grove). Mike (780) 965-9991.

MS SOCIETY DRAYTON VALLEY COMMUNITY GROUP meets 1st Tues of month, 6-8PM at Norquest College. Terra Leslie, 1-403-346-0290. *Sept-June

MS SOCIETY PARKLAND COMMUNITY SUPPORT GROUP: Are you diagnosed with MS and have questions? Last Tues of month, 7-9PM, Westview Health Centre. Contact Cassy 780-471-3034

NA MEETING: Tuesdays, 7:00PM. 514-6011

PEMBINA PORCUPINES - JUNIOR FOREST WARDENS: Entwistle Porcupine gathering: 7PM, 1st Tue. Len & Tineke at 727-2020. Porcupines@yellowheadfw.ca

SOLVE: Community Enviro issues discussed at Smithfield Hall (N of Hwy 16 on RR34). 2nd Thursday. Jana 892-0006

STONY PLAIN FISH & GAME ASSOCIATION & WABAMUN GUN CLUB: 2nd Mon, Stony Plain Comm Center, 7:30PM.

SUNDOWNERS TOASTMASTER CLUB: Mon (excl. Holidays) 7:30-9:30PM. St. Matthew's Church, Spruce Grove. Judy 960-5258

TOMAHAWK SENIORS (50+) meets every Thursday from 1-4pm at the Tomahawk Agra.

W.E.E COMMUNITY FOOD BANK: Call (780) 727-4043 for emergency food needs. Monthly Meeting: LAST Monday of month at 7:00PM at the Food Bank (Old fire hall in Entwistle). *Except December

WILDWOOD & DIST AG SOCIETY: 2nd Wed of each month 7:00PM at the Wildwood Complex. Wilma 325-2424.

WILDWOOD & DIST ROD & GUN CLUB: 2nd Thursday, 7:30PM at the range clubhouse, wildwoodrodandgun@gmail.com

WILDWOOD SENIORS: 4th Wednesday at 2:00PM. PH: 325-3787 or 325-2391. *No meeting July/Aug/Dec.

Church Directory

Seba Beach Christian Fellowship

Sunday School 10:00a.m.
Worship Service 11:00a.m.

Weekdays Bible
Study & Prayer

(780) 305-3594

Advent Lutheran Church

Sunday Worship
& Sunday School
11:00a.m.

Evansburg
O: 727-3594

Roman Catholic Church

St. Agnes' Parish, Mayerthorpe
Sunday 9:00a.m.
St. Elizabeth Parish, Evansburg
Saturday 7:00p.m.

(780) 786-2032

St. Joseph's Catholic Church

Sunday Mass
11:30a.m.

Tuesday Mass
7:00p.m.

Wabamun, AB

St. Augustine's - Parkland Anglican Church

131 Church Rd. Spruce Grove

Sunday Service 10:00a.m.
Eucharist with Sunday
School & Nursery
All are Welcome

Office 780-962-5131
www.staugustinesparkland.org

Parkland Baptist Church

Sunday Worship
Service 10:30a.m.
All Welcome

121 Brookwood Drive
(780) 962-4101
www.parklandbaptist.ca

Word Church Apocalyptic Era

Border Paving Athletic Centre,
9 Tri Leisure Way, Spruce Grove
upstairs in the Wild Rose room.

Ph: 780-962-7579

Service starts at
10:00 a.m. every
Sunday morning,
come all & be bless.

Anglican Mission of St. Saviour

Service every
Sunday at 10:00a.m.

Rev. Aaron Parsall-Myler
Contact: 780-962-5131
Unit 3, 5215 - 51 Ave, Wabamun
All are welcome!

Stony Plain United Church

Sunday Service 10:30a.m.
5012-51 Ave. Stony Plain

Mewassin United Church

Sunday Service 9:00a.m.
Rev. Heather Koots
Hwy 627 - Rg Rd 30
Ph: 780-963-4745

Immanuel Lutheran Church of Rosenthal

Traditional Service
Sunday 9:30a.m.

Contemporary Service 10:15a.m.
Christian Counselling Services
Rg Rd 13, Twp Rd 524
Ph: 780-963-4048
www.ilcr.ca email: office@ilcr.ca

Emmaus Lutheran Church

Sunday Worship
Service 11:30a.m.

Rev. Robert Marshall
4604-50th Ave, Drayton Valley
Ph: 780-542-5101
emmauslutheranchurch.wordpress.com

Church of God

Worship Service
Sun. 11:00a.m.

Please contact for activities
5004-49 Street.
Drayton Valley
Ph: 780-542-5091

Calvary Baptist Church

Pastoral Team:
Kenton Penner

Sunday Worship 10:30a.m.
Youth & Ministries Info -
calvbapt@telus.net

4401-50th Ave. Drayton Valley
780-542-4774
www.calvarybaptistdv.ca

Drayton Valley Alliance Church

Pastor John Haazen

Join us for Sunday
Service at 10:30a.m.
5014-56 Ave.
(next to Value Drug Mart)
Programs for all ages
Ph: 542-6501 dvalliance.ca

All Saints' Anglican Church

Sunday Morning
Worship 9 BCP
10:30 BAS with Sunday
School & Nursery

5212-47 Ave. Drayton Valley
(780) 542-5048

St. Anthony Catholic Church

WEEKEND MASS SCHEDULE:
Saturday 5:00p.m.
Sunday 12:00p.m.

4708-50 Ave. Drayton Valley
Parish Office: 542-5254

SERVICE DIRECTORY

2Bros

Custom Contracting Ltd.

Custom Framing • Concrete Floors • Shingling
Siding Soffit Fascia • Styrofoam Block System

Jeff

780-717-0520

BREWSTER BOBCAT SERVICE LTD.

P.O. Box 454, Wildwood, AB T0E 2M0

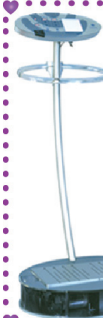
- * Site Preparation
- * Pile Drilling
- * Concrete Work
- * Landscaping
- * Demolition
- * Sand & Gravel Delivery
- * General Contracting



brwcat@gmail.com

Telephone: (780) 325-3743

Bruce Balascak Cell: (780) 621-6960



From Jiggles to Wiggles

10 Minutes To Increase:

- * Muscle Tone
- * Circulation
- * Strength
- * Flexibility

Open From 9:00 A.M. - 4:00 P.M.

(780) 907-8642

45 C South Ave. Spruce Grove

WABAMUN PHARMACY



Box 90, 5120 - 51 Avenue
Wabamun, AB T0E 2K0

Ph: (780) 892-2278 Fax: (780) 892-2488



Community VOICE

Keeping You and Your Community Informed

THIS SPACE IS RESERVED FOR YOU!



JIM HAY TRUCKING

- Screened Black Dirt
- Beach Sand
- Road Gravel • Fill Dirt
- Bobcat & Backhoe Available

(780) 220-5849

SERVICE DIRECTORY




Blakeman Drilling Ltd.
Waterwell Drilling & Servicing
Pumps & Pressure Systems
**SERVING LAC STE. ANNE
& WEST PARKLAND
FOR OVER 25 YEARS**
Joe (780) 924-3024

DONALD N. GREENWAY
Chartered Accountant
Suite 205 Sunrise Professional Building
215 McLeod Avenue
Spruce Grove, AB
(Bus.) **962-6366**
(Fax) **962-3990**



THE MOST COMPLETE
NUTRITIONAL SPRAYS ON THE
PLANET
BRAIN BOOST SHIELD PEAK BLOOD SLEEP
100% GUARANTEE
ORDER TODAY!
(780) 907-8642
www.Elaine1.com

Ernie's Repair & Service

4820 - 47 Avenue, EVANSBURG
(780) 727-4433

ROY SHERWOOD
Master Electrician
Ph: 780-968-1425
Cell: 780-908-2287
Fax: 780-968-2211
Email: suretechroy@gmail.com
2-53220 Rge Rd 21
Parkland County, AB
T7Y 0C5
SURETECH
ELECTRIC LTD.
Control & Automation
Commissioning
Solar Sales & Service
Industrial . Commercial . Residential

MARK MARTIN PFEIFFER
MASTER BRICKLAYER/MASON
Cell: 780-242-3308
Email: pfeiffer.mark@hotmail.com
• Brickwork • Stonework
• Rockwork • Parging
• Concrete Block Work
• Tile Work (all kinds)


**PURE FULL SPECTRUM
CBD HEMP OIL**
KEY BENEFITS:
• High Absorption Sublingual
• Improves Overall Health
• Helps Relieve Pain
• Delivery System
• Inhibits Cell Growth in Tumors

CTFO
Changing The Future Outcome
FOR PEOPLE & PETS
(780) 907-8642

Community VOICE
Keeping You and Your Community Informed
**THIS SPACE IS
RESERVED
FOR YOU!**

CROFT LAW
Local office
in Darwell
Call us at
780.467.5534
Experienced Legal Services in:
Family Law • Civil Litigation
Corporate Law • Wills & Estates
Plus Notarizing and Commissioning
www.croftlaw.ca

PEMBINA CONCRETE PRODUCTS LTD.
Manufacturers of
**ONE PIECE SEPTIC
& HOLDING TANKS**
* Water Cisterns * Field Systems *
Pumps and Accessories * Sumps
DELIVERED TO YOUR SITE
1-800-661-3047
780-727-2702
PembinaConcrete.com
**New Line of Concrete
Statues, Fountains and
Garden Ornaments.**
BOX 123, Entwistle, T0E 0S0

PROFORM GUTTERS
Tyler Kroes
5" & 6" Seamless Eavestrough
Residential & Commercial
780 265 1878
Box 244 Entwistle, AB T0E 0S0
proformgutters@hotmail.com

CALIBRE DRILLING LTD
DRILLING AND SERVICING YOUR WATER WELL.
**SPECIALISTS IN AIR
& MUD ROTARY DRILLING**
* Water Well Drilling * Pump Installations
* Pressure Systems * Well Tests
* Licensed Drillers * Year Round Drilling
* Geotechnical Drilling * Cathodic Protection
* Free Estimates
Quality Workmanship Five Year Warranty
(780) 960-2992
BOX 4083 SPRUCE GROVE, AB T7X 3B3


DELIVERED TO YOUR SITE
1-800-661-3047
780-727-2702
PembinaConcrete.com
**New Line of Concrete
Statues, Fountains and
Garden Ornaments.**
BOX 123, Entwistle, T0E 0S0

**WEIGHTLOSS NEVER TASTED
SO GOOD!**

**NEW!
NEW!
NEW!
NEW!**
(780) 907-8642 **VALENTUS**
www.ValentusTour.com/Ladybug

POSTINGFIRST.com
FREE LOCAL CLASSIFIED ADS
Real Estate, Rentals, Vehicles, Pets, Jobs, Service Directory,
Buy/Sell/Trade, Lawn & Garden, Garage Sales, Events,
Local Places & Much More... Advertise for FREE Today!
Follow Us


SERVICE DIRECTORY

Jack's Auto Body
& 24 HR Towing

**SPECIALIZING IN COLLISION REPAIR
GUARANTEED WORK • INSURANCE CLAIMS**

CAA BOX 9 SITE 306 RR3, ONOWAY, AB T0E 1V0
(780) 967-5850

OUR PLEDGE IS QUALITY

PREVAIL MAX
CELLULAR HOMEOSTASIS FORMULA

A NUTRITIONAL BREAKTHROUGH
THAT SUPPORTS YOU...
RIGHT DOWN TO THE LAST CELL!

LIVIN TRIM WITH
VALENTUS (780) 907-8642

www.ValentusTour.com/Ladybug

H&E
UPHOLSTERY

FOR ALL YOUR UPHOLSTERY NEEDS

Convertible tops for cars and boats,
custom car and boat interiors, 5th
wheel trailer skirts, boat tarps, ATV
seats, furniture, kitchen chairs,
heavy equipment seats.

WWW.HANDE.CA 4-485 South Ave.
For more information contact: Spruce Grove
kirk@hande.ca **(780) 962-3048**

SERVING ENTWISTLE AND AREA FOR OVER 30 YEARS

Entwistle
CONCRETE

PRODUCTS LTD.

SAND & GRAVEL SALES

PH: (780) 727-3525

Dan McCracken Entwistle, AB
www.entwistleconcrete.ca

CONCRETE WORK

- Sidewalks • Steps
- Small Retaining Walls
- Concrete Repairs

Contact Ray
(780) 975-8476

SMOOLE

- Construction & Septic Installation
- Environmental Wastewater Disposal
- Site Design & Evaluation
- Power, Water & Basement Excavation
- Trackhoe, Backhoe, Bobcat & Dump Truck

For All Your Excavation Needs

Call Dan 780-991-4484 Reid 780-909-0173

H&P Kosik
CONSTRUCTION Ltd.

- Road Building • Gravel • Sand • Dugouts
- Black Dirt • Clearing

No Job too small... We do them all!

Harvey cell. 780-445-9010 ph. 780-892-3532
Box 145, Darwell, AB. T0E 0L0

Community VOICE
Keeping You and Your Community Informed

**THIS SPACE IS
RESERVED
FOR YOU!**

SLIMROAST
Optimum

DARK ROAST COFFEE

YOUR LOGICAL SOLUTION TO
WEIGHT MANAGEMENT

(780) 907-8642

www.ValentusTour.com/Ladybug

CCAS
Canadian Clean Air Services Ltd.

**Heating & Air
Conditioning**

Goodman
Air Conditioning & Heating

Licensed and Insured with
over 20 years' experience.
Instant Approval. Financing Available

For service call:
780.569.5201

www.ccasheating.com

SANGUDO
VETERINARY CLINIC

Box 581, 4916 - 52 Ave. Sangudo, AB. T0E 2A0

Dr. Ralf Sanders DVM

Ph: 780-785-2200
Fax: 780-785-2228
sangudovet@gmail.com

24 HOUR EMERGENCY SERVICE

Xtreme LEAN NRG

Advanced Formula helps you:

- Regulates Your Appetite
- Regulates Blood Sugar
- Regulates Fat Absorption
- Improve Energy Levels
- Improve Your Mood
- Increase Mental Focus

"We've unlocked the science of slim!"

(780) 907-8642

SUMMERS
DRILLING LTD.

Water well drilling and service
Family owned Business Serving Alberta since 1917

Never run out
of water again!

5 year workmanship
warranty

3 Convenient
ways to pay

- Visa
- Mastercard
- We now offer full financing

Tired of hauling water?
We can install
a water well with
a permanent water
supply for as little as
\$150/month OAC

Stop in at our office 4405 - 50 Street, Stony Plain
780-963-1282
admin@summersdrilling.com



LAKE BUYERS ARE BACK:



\$549,000
Sundance



\$159,900
Woodland Acres



\$259,000
Betula Beach



\$899,900
Ross Haven



New Listing
Treed and private property with total renovation that is ready for your personal touches. Great lake access.

\$229,900



New Listing
Immaculate home that has everything, 1450 sq ft, fully finished basement, double heated garage and a manicured yard close to beach access.

\$355,000



Move- In Ready
Ready to shed some weight, this Park Model home has everything a much large home has. Features include fenced yard, winterized and close to everything.

\$169,900



New Listing
This unheard of price for a Seba Beach Lake front is hard to find. Bordered by million dollar homes gives you the chance to own part of Alberta's best beach.

\$399,500

We offer Free Evaluations and Buyer Consultations!



RE/MAX
REAL ESTATE



Looking For an Advantage When Buying or Selling Lake Property?

Did you know a large percentage of our listings never hit the market as our VIP Buyers snap them up. Call us for Info on Being a VIP Lake Property Client!



Call for Evaluation Today!
(780) 991-5107

• Find Every Property For Sale! • Free Property Evaluations!

EdmontonLakeProperty.com

