

Serving: Onoway, Alberta Beach, Calahoo, Gunn, Glenevis, Darwell, Cherhill, Sangudo, Mayerthorpe, Rich Valley, Barrhead, Whitecourt, Stony Plain and Spruce Grove

September 3, 2019

ATTENTION INTERESTED YOUTHS

Submitted by 3053 (Lac Ste Anne) RCACC

If you are bored with your video games and want to have some real adventures with like minded teens between the age of 12 and 18, ARMY CADETS may be for you!

If you wish to be a leader later in life and recognize teamwork to achieve goals, ARMY CADETS may be for you!

If you like sports and physical fitness, ARMY CADETS may be for you!

If you like to help your neighbours and recognize community service

as a trait for success later in life, ARMY CADETS may be for you!

If you enjoy camping and learning how to survive in the wilderness, ARMY CADETS may be for you!

If you wish to join a FREE youth group to augment your school studies and activities, ARMY CADETS may be for you!

If you have an interest in the Canadian Armed Forces and a possible career later in your life, ARMY CADETS IS definitely for you!!

It just so happens that the local army cadet unit is offering all those things and more to adventure seeking youths.

3053 (Lac Ste Anne) Royal Canadian Army Cadet Corps is starting the new training year on September 4th at the Onoway Heritage Centre and seeking new recruits. The cadets and staff welcome all interested teens to check out our proud unit and its accomplishments. We train every Wednesday evening from 6:50 to 9:15pm.

All questions will be answered regarding rifle marksmanship, map and compass use, community service, leadership skills, drill and discipline, hiking, camping and bushcraft skills.

We hope to see you there!

ONOWAY'S THRESHING BEE IS COMING TO TOWN!

Submitted by Onoway and District Historical Guild

After more than a decade of threshing bees held on farms around Onoway, this year it will be held on the grounds of the Onoway Museum/Heritage Centre. Saturday, September 21st is the day that bundles will be hauled in from a nearby field and the straw will be flying just north of the Museum.

The Onoway and District Historical Guild is bringing history back to life with the threshing bee but the concept has been broadened to

make this day a Fall Harvest Festival. Admission is by donation at the gate.

Many of the activities that have been part of the annual threshing bee will still be there: horse-drawn wagon rides, blacksmith display, rope-making, spinning, sauerkraut making demo, activities for kids and, of course, home-made pies. Connie Lefebvre will be back with her music.

Once again, owners of antique cars, trucks and tractors are invited to come along and show off their vehicles.

Some new events have been added to the mix. The "Off Beat Vegetable Show" promises to be a winner. People are invited to bring their most unique vegetable – this might be something huge, something with a crazy color or unusual shape. Potatoes, carrots, zucchini, pumpkins, gourds and beets are the vegetables to be judged. Size and uniqueness will be the main criteria. All ages may participate and there's no entry fee!

Continued on Page 2

All Precious JEWELLERS
 "Your Spruce Grove Jewellery Store"
Goldsmith on Premises
 • Engraving • Clock & Watch Repairs
 • Jewellery Repairs • Custom Make-ups
 Jewellery Repairs Done On Site.
 Laser Welder Services Available.
 Toll Free: 1-877-962-4367
 PH: 780-960-4200 Fax: 780-960-4201
 Suite 102, 215 McLeod Avenue
 Spruce Grove, AB. T7X 0G2

SIGHTS AND ARMS Now Open Mon-Sat 10AM-6PM

FALL SALE! New Used & Consigned
 Firearm Safety & Reloading Courses
 Gunsmithing
 WWW.SIGHTSANDARMS.COM
 11 J Raybon Cr. St. Albert, Alberta 825-223-9863

PREVAIL MAX
 CELLULAR HOMEOSTASIS FORMULA
Nutritional Breakthrough For Your Cells
 LIVIN TRIM WITH VALENTUS
 (780) 907-8642
 www.ValentusTour.com/Ladybug

SLIMROAST Optimum
 DARK ROAST COFFEE
 YOUR LOGICAL SOLUTION TO WEIGHT MANAGEMENT
 (780) 907-8642
 www.ValentusTour.com/Ladybug

View us ONLINE!
WWW.COM-VOICE.COM



Onoway's Threshing Bee is Coming to Town!

Keeping You and Your Community Informed

PUBLISHED WEEKLY (Zone 1 & 2)
AND BIWEEKLY (Zone 3)

E.J. Lewchuck & Associates Ltd.

45C South Ave. | Box 3595
Spruce Grove, AB T7X 3A8

SALES TEAM

Elaine
Ashley
Dani

TELEPHONE:

Classifieds 962-9229
Advertising 962-9228
Fax 962-1021

E-MAIL:

comvoice@telusplanet.net
sales@com-voice.com
news@com-voice.com

Continued from Page 1

The action starts at 11:00 but spectators should definitely plan to be on site around 1:00 p.m. when Eden North Skydivers will be dropping by for a visit. Then check out the

market and craft sale which will be held in the Heritage Centre.

The threshing bee tradition of having lunch out on the field will again be part of the in-town threshing bee. Hamburgers, hot dogs and, of course, home-made pies will be

available while enjoying Connie LeFebvre and company's music.

Rain or shine, the Fall Harvest Festival will take place in the Onoway Museum/Heritage Centre and grounds. Bring family and friends to share our fall bounty – and fun!

PRICE REDUCED



14K White Gold Diamond Ring
Brand New, Still in Box, Tags on!
Asking \$2,745



14K White Gold Engagement Ring
Brand New, Still in Box, Tags on!
Asking \$2,300



10K White Gold Diamond ring
Brand New, Still in Box, Tags on!
Asking \$1,375

Call for more information, or to view the ring 780-907-8642

ECO CONTRACTING SERVICES

ecofirst.ca

LANDSCAPING
EARTHWORKS
EROSION CONTROL
SHORELINE RESTORATION

Call or Text
RICHARD DEIB
780.217.3534
richard@ecofirst.ca

Serving The Community Since 1995

REWARD

\$10,000

For information leading to the arrest and conviction of the person or persons responsible for the arson incident on May 10, 2019 at Zion United Church in Paradise Estates near Alberta Beach, AB.

REPORT TIPS TO:

- Your local RCMP detachment
- Parkland RCMP (780) 967-7267
- Crime Stoppers 1 (800) 222-8477

JOKE OF THE WEEK

Miss Hewitt, a kindergarten teacher, was chaperoning recess when Philip came up to her and said that he had found a frog. Miss Hewitt asked if the frog was alive or dead. Philip, aged 6, declared that it was dead. Miss Hewitt enquired as to how he could be so sure that it was dead. Philip replied, 'I pissed in its ear.' Flabbergasted, Miss Hewitt demanded, 'You what, Philip Brown?' Philip added, 'You know, I went to his ear and said, 'PSST!' and it didn't move. So it must be dead.'

COMMUNITY INFORMATION AND REGISTRATION NIGHT

Submitted by Darwell District Recreation Association

The Darwell District Recreation Association (DDRA) is hosting a Community Information and Registration Night on Wednesday, September 11, 5:30 - 7:00 PM at Darwell Community Hall for orga-

nizations in the Darwell and surrounding area. Volunteer, not-for-profit and small organizations, such as Girl Guides, 4-H, Cadets, Jujitsu, Public Library, etc., will be sharing information about their scheduled events for the upcoming fall/winter season.

Come have coffee with us ...

find out what is happening in your neighborhood and register for these fun events or join a new club or organization.

If you participated in last year's event, you will have received an email inviting your organization to participate in this year's Community Information and Registration Night.

If you have not been contacted and would like to participate by having a display table and an opportunity to promote your organization, please contact Maria, Secretary, Darwell District Recreation Association at 780-892-3099. There is no cost to participating in our event.

INTERMUNICIPAL AGREEMENTS

Submitted by Town of Whitecourt

Whitecourt Town Council has served Woodlands County with two years notice to terminate the intermunicipal Water and Wastewater Agreement.

In March 2013, the Town of Whitecourt and Woodlands County entered into the Agreement for Whitecourt to provide water and wastewater services to the County within an agreed upon service area. This master Water and Wastewater Agreement was signed in conjunction with, and philosophically linked, to the amendment to the

Cost Sharing Agreement on March 11, 2013 where the County agreed to annually transfer 10.4% of its total linear revenue to Whitecourt. From a regional planning perspective, the expansion of the water system allowed our municipalities to work together to attract investment, maximize the highest and best use of land, provide investors more options and flexibility for development on an equitable basis, and defer annexation of land.

Woodlands County recently expressed publicly that it will not be allocating a portion of its linear revenue assessment to Whitecourt. The removal of the revenue sharing creates inequities to the service

model, and it is for this reason that Whitecourt Town Council has provided two years notice to terminate the agreement.

"While Whitecourt Town Council recognizes the value and benefits of this agreement to our region, the County's decision to cancel the linear revenue sharing ultimately made continuing the agreement inequitable and unfair to Whitecourt ratepayers," stated Whitecourt Mayor Maryann Chichak. "It was a difficult decision to make, as we know we thrive as a region when we work together, but it was one that had to be made to protect Whitecourt's continued viability and sustainability. If we did not terminate the agreement,

the County would continue to see the benefits of increased assessment and investment at a cost to Whitecourt taxpayers."

Further, the Town of Whitecourt has submitted a request to Woodlands County Council to schedule a meeting of the Intermunicipal Collaboration Committee so that both municipalities can proceed with intermunicipal agreement negotiations for our communities.

For information on the Water and Wastewater Agreement, and other intermunicipal agreements between Whitecourt and Woodlands County, please visit www.whitecourt.ca.

FREE STORAGE WITH PREPAID PACKAGES



- WINTERIZE
- SHRINK-WRAP
- STORAGE
- SPRING RUN-UP

780.924.3255

www.ECKOMARINE.COM ALBERTA BEACH




QUALITY SALES & SERVICE OF:

- DISTILLERS
- CHEMICAL-FREE IRON FILTERS
- SOFTENERS
- PIPE, WIRE & FITTINGS
- CHLORINATION SYSTEMS
- CHLORINE BLEACH, CHEMICALS & SALT
- MOBILE SHOCK CHLORINATION
- MOBILE SERVICE VEHICLE
- SEDIMENT, TASTE & ODOR FILTERS
- POOL & SPA FILTERS & CHEMICALS
- REVERSE OSMOSIS FILTERS (R.O.)

• FREE WATER ANALYSIS •

OUR WORKMANSHIP IS GUARANTEED!

962-6040 962-4060
15A South Ave., SPRUCE GROVE




Quality Water Services West LTD.

Formerly Ivan's Quality Water - UNDER NEW OWNERSHIP

BUSINESS FOR SALE

Steady Income – Business doesn't fluctuate with Economy

Includes: - All Clientele
- 5 Tandem Trucks
- 1 Truck & Trailer Unit

Call 780-797-3844 for more Info.
Al-jo An Septic Service

Lac Ste. Anne County | Box 219, Sangudo Alberta T0E 2A0 | 1.866.880.5722 | www.LSAC.ca | facebook.com/LSACCounty

PLANNING & DEVELOPMENT

NOTICE OF DEVELOPMENT PERMIT APPROVALS

The following Development Permits have been approved or conditionally approved under the provisions of the Land Use Bylaw. This list does not include Permitted Uses.

Interested parties are encouraged to contact the Planning & Development Department at 1.866.880.5722 or devassistant@LSAC.ca, Monday to Friday from 8:30am until 4:30pm to request additional information on a permit.

| PERMIT # | LEGAL LAND DESCRIPTION | DESCRIPTION | APPEAL DATE DEADLINE |
|----------|---|--|----------------------|
| 19-D0091 | 101, 54425 Ste. Anne Trail Lot 2, Block 3, Plan 9023655 Lakeview Estates RL 2126-54-3 W5M | Micro home (log) 18.0' x 24.0' (432.0 sq. ft.) with deck 24.0' x 6.0' (144.0 sq. ft.) on cement piles. | September 23, 2019 |
| 19-D0158 | 9, 53515 RGE RD 45 Lot 9, Plan 7822327 Rolling SW 32-53-4 W5M | 2 recreational vehicles. | September 23, 2019 |

Anyone who claims to be affected and who wishes to lodge an appeal against any of the above developments must do so in writing on the applicable form on or before 4:30pm on the above noted date(s).

Secretary of the Subdivision and Development Appeal Board, c/o Lac Ste. Anne County, Planning & Development Department, Box 219 Sangudo, Alberta T0E 2A0.

PLEASE NOTE: Lac Ste. Anne County requires that a non-refundable fee of \$250.00 be paid for every appeal served on the Subdivision and Development Appeal Board. The fee may be paid by cheque, Visa, MasterCard, Interac or cash.

**IT'S NOT TOO LATE!
ONOWAY PLAYSCHOOL PROGRAM
2019-2020 SCHOOL YEAR**

Spaces remain in our morning classes. Call Community Services today to register! Please note that online registration is now closed.

IMPORTANT INFORMATION

- School year runs Sept. 9, 2019 – May 28, 2020
- Playschool observes all NGPS school closures
- Fees
 - o \$264.00 / 1-day program
 - o \$528.00 / 2-day program
- Parent Helper days are MANDATORY!



OPTIONS STILL AVAILABLE

- 3 year olds: mornings 9:00 am - 11:30 am
 - o 1 day per week (Tues only or Thurs only)
 - o 2 days per week (Mon/Wed OR Tues/Thurs)

Child Care Subsidy

Financial assistance may be available to eligible low-and middle-income families that are registered through an approved program. For general inquiries about child care subsidy, please call the Alberta Supports Contact Centre at 1.877.644.9992 or email css.childsubsidy@gov.ab.ca.

For general inquiries about Playschool, or to register, please contact Donna Kerr (Community Services Manager) or Taryn Monteith (Community Services Coordinator) at 780.785.3411 or toll free at 1.866.880.5722.

**APPLYING FOR
PROPERTY TAX
EXEMPTION**

SEPTEMBER 30 DEADLINE

To apply for a **Property Tax Exemption for the 2020 tax year** in accordance with Section 362(n)(i) to (v) of the *Municipal Government Act* and the *Community Organization Property Tax Regulation A/R 281/98* as amended, applications must be received or post marked no later than **September 30, 2019**, and all of the required documentation must be received or post marked no later than **November 30, 2019**.

For more information about applying please visit our website at LSAC.ca/property-tax or call the County's Assessment and Taxation department.



REEVE'S REPORT

September 2019

The month of August has whipped on by leaving most people asking if summer was ever really here? With the unseasonably low temperatures, and above-average rainfalls our County has been left in a devastating agricultural disaster. Not to mention the damage and devastation that has taken place on our roads and infrastructure. We want all of those that are facing the challenges of this devastating season to know that there are resources available to regional producers, or their loved ones, who may be experiencing undue stress. Reach out and talk to your friends and neighbours, lend an ear or a helping hand if you can. We all need to be aware of the struggles that a lot of our friends are facing.

AERIAL FLOOD SURVEY

On Thursday, August 1, Lac Ste. Anne County chartered a helicopter service to assess the scale of flood damage and better understand its contributing factors. During two flights conducted over five hours, representatives from the County's Agricultural Services and Fire Services departments surveyed affected farmland, lakefront properties and County infrastructure. Additionally, the Sturgeon River, the Pembina River and the Paddle Dam Reservoir and river system were studied.



Of important note to ratepayers and surrounding municipal neighbours: it was determined that neither beaver dams nor the Alberta Environment-managed weir at the mouth of Sturgeon River are contributors as had been speculated. There is simply an overabundance of water due to excessive rainfall, resulting in higher-than-average water table levels and overland flooding events. This is the third consecutive year that the County has experienced an unprecedented amount of rainfall resulting in extensive flooding — including in areas where flooding has not historically been an issue.

We ask the ratepayers can show understanding and patience as our Public Works crews are out working on the damaged roads trying to get them back into shape. There has just been too much moisture to get out and fix all of the issues, but I can assure you that we will have our crews doing whatever they need to do and put in the overtime to get things back in shape, weather permitting.

SCHOOL BUS SAFETY



The end of August also brings along the exciting time of year for our little ones as they return back to school. This means that school buses will be back out on the roads, and we ask for everyone to pay attention and be safe. Know that our Enforcement Officers will be out in full force watching for any traffic violations, and there will be a zero-tolerance approach to anyone passing a school bus when the stop signs are out! Look out for each other, let's do our part to keep everyone safe and sound as the new school year begins.

In closing, Council and Administration would like to take this opportunity to welcome all of the of new faces to our County office! We wish nothing but the best to all of the previous staff that have moved onto new opportunities and welcome those that have filled their positions. We look forward to working with you all.

IT'S WHERE MY STORY BEGINS -IN THE ALBERTA BEACH MUSEUM HISTORY BOOK

Submitted by Alberta Beach Museum

The Alberta Beach Museum is still looking for your story, your family memories, to include in the new history book. If you've been in this area for some time, we want to hear about "where your story begins".

In honour of Alberta Beach's 100th Anniversary, the museum will publish a new history book of the area in early 2020. The stories include both summer visitors and residents living from West Cove to Val Quentin and Alberta Beach, north to include Sunset Point,

Castle Island, Gunn and Ross Haven. Of course, it will also include families farming in the area, and individuals on acreages.

We're looking for the family chronology, but what we really want are stories about the things you remember and value from times past. What organizations and businesses do you remember? What did you do for entertainment, or just plain fun (or not so fun) events? Of course, no history book is complete without pictures, notes, or news articles to accompany the written submissions.

Original photos, clippings or documents will be carefully handled, and

returned as soon as possible. If you're comfortable on a computer, please submit by email, or feel free to mail it. Digital photos should be scanned at 300 dpi resolution or higher, with people in the photo identified.

Submissions can be from individuals, families or groups. If it works better for you, we will visit you to record your stories, travelling anywhere in the metro-Edmonton area. We've prepared a few guidelines to get you started, so contact us to help jumpstart your memories. We reserve the right to edit all submissions.

Submit your stories by email to albertabeachmuseum@gmail.com. On

Facebook Messenger, search Alberta Beach Museum. Drop off your stories at the museum at 5000 - 47 Ave. (the museum is only open July and August from 1 to 6 pm or by appointment, so please call first to ensure someone will be there). You can also mail it to Box 68, Alberta Beach, AB T0E 0A0.

If you'd like to be interviewed, leave a message on the answering machine at 780-924-2140. You can also call Jean at 780-984-5955 to arrange for a convenient time. There's still time to get your story into the book, but with fall's arrival, that's running out quickly.

EDMONTON HAILSTORM CAUSES \$90 MILLION IN INSURED DAMAGES

Submitted by Insurance Bureau of Canada

The hailstorm that took place on August 2, 2019 in the Edmonton area caused an estimated \$90 million in insured damages, according to Catastrophe Indices and Quantification (CatIQ) Inc.

Type of Insurance Coverage - Insured Damages*

- Personal Property: \$39.5 million
 - Commercial Property: \$3.4 million
 - Auto: \$46.9 million
- * initial estimates

The storm began with heavy rain, followed by thunderstorms and heavy winds that reached 91 km/hr. Large

hail damaged house siding and vehicles in west Edmonton, Spruce Grove and Stony Plain. The storm also damaged crops to the northwest of Edmonton.

"Severe weather is causing headaches for homeowners and is costing insurers, governments and Albertans significantly," said Celyeste Power, Vice-President, Western, IBC. "Last year, insured damage from severe weather across Canada reached \$2 billion, the fourth-highest amount of annual losses on record." Unlike the 2013 Calgary floods or the 2016 Fort McMurray wildfire, no single event caused the high amount paid out for 2018's losses. Instead, Canadians and

their insurers experienced significant losses from a host of smaller severe weather events from coast to coast to coast."

As the financial cost of a changing climate has increased, IBC is working closely with governments at all levels to advocate for increased investment to mitigate the future impacts of extreme weather and build resilience to its damaging effects. This includes advocating for investment in new infrastructure to protect communities from floods and fires, improved building codes, better land-use planning and, increasingly, creation of incentives to shift the development of homes and businesses away from areas of highest

risk.

It is not only insurers that foot the bill for severe weather damage, but also taxpayers. That's why all stakeholders should come together to reduce the financial strain caused by flood and other severe weather events. For every dollar paid out in insurance claims for damaged homes and businesses, Canadian governments and their taxpayers pay much more to recover public infrastructure damaged by severe weather.

The amount of insured damage is an estimate provided by CatIQ Inc. (www.catiq.com) under licence to IBC.

WHITECOURT TOWN COUNCIL UPDATE

Submitted by Town of Whitecourt

Preparations and discussions for the 2020 Budget have begun. Town Council encourages you to share your thoughts on projects and plans at the 2020 Budget Public Input Session. The session is scheduled during the September 23 Regular Meeting of Council at 7:00 p.m. If you are unable to attend the input session, please submit your written comments to the following address by 12:00 noon on Wednesday, September 18:

Town of Whitecourt
Box 509, 5004 52 Avenue
Whitecourt AB T7S 1N6
administration@whitecourt.ca

All comments received regarding the 2020 Budget will be considered by Council during budget deliberations.

The 2019-2020 RCMP Annual Performance Plan has been approved, and includes policing priorities for our community. Priorities include: crime reduction, employee health and wellness, community engagement, and traffic safety. This plan is prepared annually, and this fall citizens of Whitecourt and Woodlands County will have the opportunity to provide input on local policing priorities. An online survey will launch in the coming weeks, and results of the survey will help identify community policing priorities for the 2020/2021 plan. Watch for information promoting the survey in September.

Whitecourt's Quarterly Financial Report for the period ending June 30, 2019 is available online for review. The report identifies revenues and expenditures associated with providing municipal services to residents, and highlights areas of importance and success. This report complements the 2019 Project List which was recently updated with project status for over 140 projects underway. Visit www.whitecourt.ca to review both reports.

Whitecourt Town Council has awarded the Public Works Shop Building #1 Roof Replacement Project to Tru-West Company Ltd. in the amount of \$126,336.00 plus GST.

Work will begin in September on construction of a new entrance sign to the community along Highway 32 South. The new sign will have the same aesthetics and provide a consistent look with community entrance signs located along Highway 43.

Whitecourt has awarded \$2,730 in Vitalization Grant funding to United States Real Estate Corporation for a vitalization project located at 5033 - 52 Avenue.

National Coaches Week is September 21-29 and Whitecourt will be honouring local coaches throughout the week. Community members are asked to nominate their favourite coach and let us know why they are so great by messaging Whitecourt through the official @TownofWhitecourt Facebook page or through #thankscoachWCT. The deadline for submissions is Thursday, September 19, and those nominated will be entered into a prize draw.

Councillor Paul Chauvet will serve as Deputy Mayor from September 1 to December 31, 2019.





YOUR LOGICAL SOLUTION TO WEIGHT MANAGEMENT



CALL (780) 907-8642 FOR **FREE** SAMPLE

DARK ROAST COFFEE

SLIMROAST Optimum

Exclusive functional coffee formulated to:

- Crush Cravings
- Increase Energy
- Metabolize fat to Energy
- Help Regulate Blood Sugar
- Improve Mood & Focus
- Boosts Circulation & Oxygen delivery

TO **UNLOCK** THE SECRET OF **WEIGHT MANAGEMENT!** PUT THE **POWER** OF **SLIMROAST OPTIMUM** IN **YOUR CUP!**



Thrilled with my results! I lost 9 lbs and an amazing 11 inches off my abdomen! Works wonderfully!

Managed to lose 7 lbs very fast & much more in inches the way my clothes are fitting now! 1 cup a day is all for me!

Down 17 lbs and fitting into clothes that were way to tight before!

No dieting, first month finished. Down 7 1/2 lbs 8.5 inches. Awesome product!

www.ValentusTour.com/Ladybug (780) 907-8642

ASSESSMENT INSPECTION NOTICES MAILED

Assessors are preparing to visit certain County properties this fall.

Submitted by **Lac Ste. Anne County** | www.LSAC.ca

The County's Assessment and Taxation department recently sent out letters to those properties that will be visited by an Assessor this

fall. This letter meets the requirements of the Province whereby property owners are given advanced notice that an Assessor will be entering on their property.

Assessors routinely visit residents properties for many reasons, some

of the most common reasons being:

- Any recent changes with Alberta Land Titles
- Any development permits or ongoing construction
- Ensuring that the correct assessment information is recorded in our

files

If you have any questions or would like to speak with a member of our Assessment Department, please contact the Administration Office at 780.785.3411 or assessor@LSAC.ca.

CONSERVATIVE ENVIRONMENT PLAN INCLUDES TAX CREDIT FOR GREEN HOME IMPROVEMENTS

Submitted by **Jim Eglinski, MP – Yellowhead**

OTTAWA – Jim Eglinski, Member of Parliament for Yellowhead, wishes to inform constituents that under a new Conservative government led by Andrew Scheer, Canadian homeowners will be eligible for the new Green Homes Tax Credit to make energy efficient home improvements affordable.

“For so many Canadians, making our homes energy efficient is too expensive. This makes it

difficult for Canadians to play a meaningful role in the fight against climate change. Under A Real Plan to Protect Our Environment, Andrew Scheer will make it more affordable for Canadians to lower their emissions by making their homes more energy efficient,” said MP Eglinski.

With the Green Homes Tax Credit (GHTC), Canadians will be eligible to receive a 20% refundable credit on their income tax for green improvements to their homes of over \$1,000 and up to \$20,000. This will allow

Canadians to save up to \$3,800 on their renovations each year.

Green improvements could include:

- installation of high-quality insulation;
- investments in high-efficiency furnaces;
- replacement of doors and windows with more efficient models;
- upgrading of ventilation, heating and cooling systems; and,
- installation of solar panels.

“Green home improvements do not just lower emissions, they can save Canadians money on

bills through lower energy costs. The Green Home Tax Credit will help families install energy-saving products and technologies so that they can realize savings on their bills in the long-term,” concluded MP Eglinski.

A Real Plan to Protect Our Environment focuses on green technology, not taxes as the best way to lower emissions at home.

The Green Homes Tax Credit (GHTC) will be a two-year plan to help Canadians adopt green solutions for their homes.

OFF BEAT VEGETABLE SHOW



Taking place at the Fall Harvest Festival

Enter your largest or most unique potatoes, beets, squash, pumpkins & gourds, or carrots! No entry fee and all ages are welcome to participate. Participants will choose a category upon registration. All entries must be dropped off at the Heritage Centre by 11am on September 21 and picked up by 4 pm the same day. Prizes will be awarded for each category so be sure to enter!

Sept. 21, 2019 11am – 3pm

Onway Heritage Centre, 4708 Lac Ste. Anne Trail N
780.967.1015, admin@onwaymuseum.ca



FALL HARVEST FESTIVAL!

Come and Enjoy all the Activities!

This year, rain or shine, the Onway & District Historical Guild invites you to come and enjoy FALL HARVEST activities at the Onway Heritage Centre. Attractions include: Antique tractors, cars & trucks, **threshing demonstrations**, Kids Activity Center, rope making, musical entertainment, blacksmith displays & demos, horse-drawn wagon rides, craft & market sale, off beat vegetable show, and more!

This program is partially funded by Lac Ste. Anne County FCSS



Save the Date!

Sept. 21, 2019

- THRESHING
- HOMEMADE PIES
- CONCESSION
- FAMILY FUN



ONWAY MUSEUM AND HERITAGE CENTRE

4708 Lac Ste. Anne Trail
Onway, AB, T0E 1V0
780-967-1015
onwaymuseum.ca
admin@onwaymuseum.ca



DONNY LEE KEEPING IT REAL

- Alberta Country Artist Donny Lee, Will Be Kicking Up Some Tunes At The Max In Drayton Valley September 20th!

Submitted by Donny Lee Music

Donny is looking forward to getting up close and personal with the audience in a concert unlike any other, where the vibe of the audience determines the songs of the evening.

“I really enjoy a theatre setting because it gives us an opportunity to breath. It is not just about seeing how many songs we can get in during a performance.”

He said the band will be working off a bit of a guideline for the show but admits that 99 per cent of the time that gets thrown to the wayside and they end up rolling with whatever the crowd is feeling.

“The minute you engage with the crowd and start to get a feel for what is working for them and what is not working for them it is

very easy to just flip the switch, especially when it comes to the cover songs.

“If they are digging old-school traditional country music—George Jones, Johnny Cash, Merle Haggard, Waylon Jennings, then we are going down that road. But if they get a little pep in their step with Alabama, Garth Brooks, Alan Jackson or George Strait then that is where we are going. Wherever I feel the crowd is going we are going to be quick to go there.”

Donny said that his gigs in Nashville have taught him to be versatile and to change at a moments notice. He indicated that playing to suit the crowd mixes things up for, not only the crowd they are performing for, but for them as well.

“I love the art of entertaining people. My agenda by the end

of the show is to make sure that every person in the crowd feels like I notice they are there, share a moment with them and give them an experience they won't forget.

“People remember the moment you left them not the song that you sang.”

The Fort Saskatchewan artist introduced his first release to Canadian Country radio in March with “Country Way Of Life” off of his self-titled album Who I Am, that particular song speaks to a slower pace of life lived by an older generation who worked hard and enjoyed the simple things. He has his 5th release out to Canadian radio and it is charting in the top 100. He has played the music scene in Nashville the for the past five years and has become a very popular performer. He has been nominated the

past two years for the ACMA Male Artist of the year category.

Besides an all around entertainer that obviously has a passion for what he does he and wife Shauna are also strong advocates of giving back to the communities they live and play in.

“Shauna and I have always felt really connected with the food bank, so when we go to these cities or towns we chose the local food bank as the beneficiary of moneys we donate a portion of ticket sales to.

“We use our platform to try and create awareness and help out the local food bank.

This down-home country boy will be bringing joy to the stage and some help to the hungry with his show and promises to ensure everyone has a great night of country music.



Junk in the Trunk
Fall Harvest Sale

During the Fall Harvest Festival at the Onoway Heritage Centre. It's a garage sale right out of the back of your car! \$15 per vehicle. If you'd like to reserve a spot for your trunk call or email the Heritage Centre office.
Ph.# 780.967.1015
Email admin@onowaymuseum.ca



CRAFT & MARKET SALE

At this years Fall Harvest Festival we will be holding a Craft & Market sale. \$15 per table. If you'd like to reserve a table to sell your wares then call or email the Heritage Centre office!
Ph.# 780.967.1015
Email admin@onowaymuseum.ca

Sept 21
2019

Fall Harvest Festival
Onoway Heritage Centre
September 21, 2019

PREVAIL

MAX

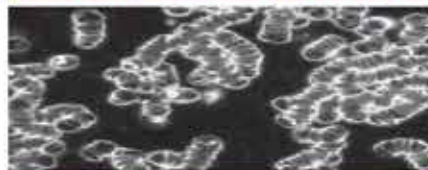
CELLULAR HOMEOSTASIS FORMULA

A NUTRITIONAL BREAKTHROUGH THAT SUPPORTS YOU
...RIGHT DOWN TO THE LAST CELL!

How do you want your
BLOOD to look?



Before PrevailMAX:



- poor circulation
- low energy
- brain fog
- dehydration
- decreased nutrients
- pH imbalance
- poor endurance

After PrevailMAX:



- better circulation
- more vitality
- mental clarity
- cellular movement
- nutrient assimilation
- balanced pH
- optimal endurance

PrevailMAX™ is a nutritional breakthrough that delivers a rapid increase of internal blood cell pressure to speed absorption, enabling the body to take maximum advantage of the nutrients in foods and supplements. The electrolytes are small enough to penetrate your cell membranes, to bind with your cells, and to be carried wherever they are needed in the body.

At the microscopic level of human cells, **PrevailMAX™** supports healthy cell performance – a nutritional breakthrough for your cells.

When you use **PrevailMAX™**, you will feel more energy and an ability to focus like never before. Take a few sprays today and see just how good you can feel!

LIVIN TRIM WITH
VALENTUS

www.ValentusTour.com/Ladybug

(780) 907-8642

— ★ —

13th Annual Fallis

SHOW & SHINE

SEPTEMBER 7, 2019

(NORTH OF HWY. 16 ON RR. 52)

FALLIS COMMUNITY HALL

- 10:00 Registration Open
- 11:00 Show Starts/Concession Opens
- 11:30-1:30 Kid's Model Race Car Clinic
Face Painting by Tobi Kelly
EQUUS Emerging Artist – 1st Set
- 12:00 Crowning of King and Queen
Beer Saloon in the Hall
- 12:30 EQUUS Emerging Artist – 2nd Set
- 1:30-2:00 Kid's Car Races
- 2:00 EQUUS Emerging Artist – 3rd Set
- 3:00 Prizes and 50/50 Awarded
- 3:30 EQUUS Emerging Artist – 4th Set
- 4:30 Beer Saloon Closes

Live Music powered by EQUUS

EQUUS is sponsoring the Emerging Artist Stage featuring:

- Ethan Redmond**
- Mike Hanlon**
- 2 Boots Band and**
- Shantelle Chaytor**



INFO: YVONNE 780-797-3088
OR LAURENCE 780-797-3123

GOLFER'S GUIDE

THESE GOLF TERMS ARE PAR FOR THE COURSE

Golf is a game of sport and skill that can be played at any age. Millions of people in North America participate in golf as a recreational endeavor or a professional pursuit. As of the spring 2016, 25.13 million people in the United States played golf over the previous 12 months, according to Statistica.

People may immediately think Canada's sports-based loyalty favors hockey. However, on the recreational side, golf is king in the country. Canada has the fourth most golf courses of any country in the world, says the National Golf Foundation. Plus, one out of every 10 Canadians

play golf - a participation rate that is more than double that of the United States.

Storied golf history

Although golf can be traced back to the Netherlands during the Middle Ages, many people concur that the modern game of golf - played over 18 holes - is a Scottish invention.

The popularity of the sport began to spread throughout the world from Great Britain. The first permanent golf club in North America was founded in 1873 and was named Canada's Royal Montreal Club. The first 18-hole course in the United States was The Chicago Golf Club.

Golf lingo

Understanding the terminology is key to becoming a full-fledged golf fanatic. While golf lingo is extensive, here is a sampling of some of the more popular terms to get novices started, courtesy of the PGA.

Approach: A shot hit towards the green.

Attack: The relative angle at which the clubhead approaches the ball at impact.

Backswing: The motion that involves the club and every element of the body in taking the club away from the ball.

Birdie: A score of one under par on a hole.

Bogey: A score of one over par on a hole.

Bunker: A hollow comprised of sand or grass that serves as an obstacle.

Carry: The distance a ball will fly in the air.

Chip: A short approach with a low trajectory.

Chunk: A poor shot caused by hitting the turf.

Divot: The turf displaced when the club strikes the ball.

Downswing: The swing forward from the top of the backswing.

Eagle: A score of two under par on a hole.

Golf range: A facility where people can practice golf swings.

Grip: The positioning of hands on the club.

Hole: A round receptacle on the green that the ball is aimed into.

Lie: As it relates to the golf ball, the position when it has come to rest.

Links: Specific term for a course built on linksland, which is land reclaimed from the ocean.

Mulligan: An extra shot taken on a poor first shot.

Par: The score an accomplished player is expected to make on a hole, either a three, four or five.

Putt: A shot on the green.

Stance: The position of the feet.

Golf terms are as varied as the game itself. Knowing commonly used words and phrases makes for a more intimate understanding of the sport.



SILVER SANDS GOLF RESORT

Parkland's hidden gem of a golf course; located 45 minutes west of Edmonton on highway 16. Book your company tournament today - we have special rates for weekdays. Call 780-797-2683. Check silversandsgolfresort.com for weekly specials. Join us for Men's night on Wednesday's and Ladies night on Thursday's both 6:00 pm shotgun start.

RV LOT PRE SALES CALL 780-222-1535

 Silver Sands Village, Lake Isle silversandsgolfresort.com 1-877-797-2683



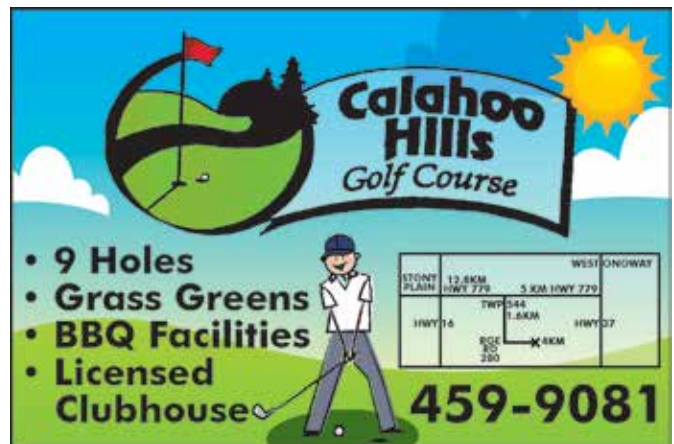
Alberta Beach GOLF RESORT

WEEKDAY SPECIAL

4 Golfers + 2 Carts Great for Weekday Tournaments \$140.00 (\$35 each) Monday, Wednesday and Thursday Only.

18 Holes \$33.00 Weekdays \$48.00 Weekends
9 Holes \$20.00 Weekdays \$37.00 Weekends
Cart Rental \$18.00 9 Holes \$28.00 18 Holes

To Book your Tee Times or Tournaments Call: (780) 924-GOLF (4653)



Calahoo Hills Golf Course

- 9 Holes
- Grass Greens
- BBQ Facilities
- Licensed Clubhouse

459-9081

Map showing location: STONY PLAIN 12.8KM HWY 770, WEST BOWNAY 5.3KM HWY 770, HWY 16, HWY 27, 1.8KM, 4KM, 200, 200.

It's time to fall in love with your home all over again!

fall HOME RENO **GUIDE**

SEPTEMBER 2019



fall HOME RENO GUIDE



WHY HOMEOWNERS SHOULD ADD MORE EXTERIOR LIGHT TO THEIR PROPERTIES

Homeowners are increasingly realizing the benefits of improving the exteriors of their home, which can be just as valuable as improving the interior spaces. As individuals design picturesque garden beds and cultivate lavish lawns or revamp exteriors

with architectural features, they probably want to spotlight these improvements. This is where exterior lighting can be put to great use.

Exterior illumination can cast a glow on various features, but there are many other reasons to

increase lighting around the exterior of a home.

- Safety: Trips and falls can occur at night when trying to traverse walkways and landscapes in the dark, as it can be difficult to see rocks, stairs and uneven pavement. Outdoor

lighting can illuminate pathways, entryways and other areas for safer access for homeowners and their guests.

- Extend outdoor entertaining: Ample lighting can increase the amount of time one can use outdoor spaces and make them the perfect gathering spot. As autumn arrives, days become shorter. However, patios, porches and more can get extended use with lighting.

- Safeguard security: A well-lit home may be less likely to be targeted by burglars than one swathed in darkness and shadows. Lights can remain on all evening or be motion-triggered. Setting lights on timers also ensures that the home is illuminated whether residents are home or not.

- Create drama: Landscape lighting designers can establish focal points around the landscape and highlight the best features of a property. Uplighting in trees, silhouetting techniques to showcase plants and spotlights to show off architectural features are all options for homeowners to consider.

- Add value: The experts at Parker Homescapes, a landscape design service, say that exterior lighting can add roughly 30 percent to the value of a home. They also indicate that 50 percent of all home buyers say that outdoor lighting is important when buying a home. If current residents are thinking about selling, now may be the time to invest in exterior lighting.

Improving a home's exterior may be as simple as adding more lighting to improve functionality and beauty.

The Flooring Store & DIY Center

**FREE ESTIMATES
SPECIAL PRICES FOR SENIORS**

Vinyl Flooring *from* **99¢ Sq Ft.**
 Laminate *from* **\$1.19 Sq Ft.**
 Hardwood *from* **\$2.99 Sq Ft.**
 Carpet *from* **\$2.99 Sq Ft. INSTALLED**

Double Stainless Steel Kitchen Sink *from* **\$199.00**

Hours:
 Monday to Friday 9:00AM to 5:30PM
 Saturday 9:30AM to 4:00PM
 Closed Sunday

**226 McLeod Ave
 Spruce Grove
 (780) 960-9212
 www.theflooringstore.ca**



fall HOME RENO GUIDE



THINGS TO CONSIDER BEFORE WARMING UP NEXT TO YOUR FIRST FIRE THIS WINTER

A warm fire can make even the coldest winter day more enjoyable. Fireplaces may not get much use in spring or summer, but come late fall and throughout the winter, the fireplace can be a great place for families to gather.

Before fireplace season hits full swing, homeowners might want to brush up on a few fireplace facts so they can safely enjoy nights spent sitting by the crackling flames.

The Chimney Safety Institute of America advises homeowners with fireplaces to hire a CSIA-certified chimney sweep to clean their fireplaces. After a lengthy period of non-use, various issues could be affect-

ing the chimney, many of which might not be noticeable to an untrained eye. Professional, certified chimney sweeps have extensive knowledge of fireplaces, making them valuable resources who can let homeowners know if any safety issues developed since fireplaces were last used. The National Protection Agency recommends that chimneys be swept at least once per year.

A full inspection of the chimney might be in order as well. Chimney service technicians will conduct thorough examinations of readily accessible portions of the chimney exterior and interior and accessible portions of the appliance and the chimney connection. The CSIA

recommends that homeowners who plan to use their chimneys as they have in the past request a Level 1 inspection, which will examine the soundness of the

chimney structure and flue as well as the basic appliance installation and connections.

Continued on Page 17



CO-OP
PEMBINA WEST CO-OP
Total Building Solutions
Serving Barrhead, Mayerthorpe, Whitecourt, Westlock & Surrounding Areas
For All Your Building Supplies
(780) 674-2201



Carpetown Interiors Ltd.
 • Carpet • Lino • Hardwood Flooring & Tile
 • Wallpaper • Window Blinds & Installation
780-778-4144
 5033 - 52 Ave. Whitecourt



PADDLE RIVER CONCRETE
 Providing you with concrete needs!
 Brent • 786-2666 • Mayerthorpe, Alta



Blakeman Drilling Ltd.
 Waterwell Drilling & Servicing
 Pumps & Pressure Systems
 Petwa Water Conditioning
(780) 918-1916
 joe@blakemandrilling.com
 Family Owned & Operated



ASSERTIVE ELECTRIC LTD.
 Toll Free 1-855-967-3827 Fax 1-780-967-3847
 email: rick@assertive-electric-ltd.ca
 Insured & Certified Professional Electrical Services

fall HOME RENO GUIDE



PREVENT GROWTH OF MOLD/MILDEW IN COLDER MONTHS

Mold and mildew are not only unsightly, but unhealthy. These fungi grow readily in damp areas and are found in the air breathed both indoors and outside. If left unaddressed, mold and mildew can threaten the health of a home's inhabitants.

Mildew is a type of mold that remains relatively flush with the surface it grows on. Other molds can grow puffy in appearance. Molds serve the purpose of destroying organic materials, but in high amounts, these microorganisms can cause respiratory problems, sinus congestion, throat irritation, headaches, and other issues, particularly when mold grows unchecked indoors, says Better Homes and Gardens. As

a result, it is essential to address mold before it becomes problematic.

According to Polygon, a drying technology and temporary climate solutions company, the wet season in winter is when molds often grow and expand. Mold can break down the integrity and strength of the surfaces where it grows.

Homeowners can employ the following strategies to prevent mold growth.

- Keep all surfaces clean, using proper cleaning products. Diluted bleach solutions are highly effective at killing microscopic fungi, viruses and bacteria.
- Reduce moisture and humidity by ensuring sufficient air circulation in rooms, partic-

ularly bathrooms and kitchens. An exhaust fan will help remove moisture quickly.

- Fabrics covered in mildew that can be laundered should be carefully removed and washed in chlorine bleach and hot water. An oxygen bleach product also can be effective.
- Invest in a dehumidifier that can reduce moisture in the home in problem areas, such as damp basements or garages.
- Fix plumbing leaks as soon as possible.
- Remove damp leaves and snow from areas around the foundation of the home. Ensure that gutters and downspouts are clear of debris and can shuttle water away from the house effective-

- ly.
 - Replace cracked or defective mortar in basements.
 - Make sure all seals on windows and doors are not compromised and are in good working condition.
 - Be sure an HVAC in-line humidifier is adjusted to the right setting and isn't pumping too much moisture into the heated air; otherwise, the added humidity can contribute to mold.
 - If there is a flood or water infiltrates a home in other ways, hire a professional service to help clean and dry the home effectively.
- Mold and mildew are problematic, but with diligence they can be kept at bay.



VISIT US

FOR ALL YOUR HOME RENOVATION NEEDS



North Central

4919 50 AVE - STONY PLAIN, AB

Ashly-Lane Interiors Ltd.
WINDOW COVERINGS

**Spring Sale* up to*
40% Off Selected Items

Valances • Sheers • Drapes
Blinds • Fabric • Hardware

Residential • Commercial
40 Years Experience

4900 - 51 Avenue, Stony Plain, AB
780-963-5563



TOP & DROP
TREE SERVICES

Family owned and operated since 1991

780-924-2014

fall HOME RENO GUIDE



Things To Consider Before Warming Up Next To Your First Fire This Winter

Continued from Page 15

Technicians also will verify if the chimney is free of obstruction and combustible deposits.

Homeowners also should inspect their chimney dampers before lighting their first fires of the season. Dampers should open and close smoothly. If not, a service technician can help fix or replace the damper.

Firewood is another thing homeowners must consider before lighting their first fires of the season. The CSIA says that well-seasoned firewood works best, noting that wood that is not well-seasoned will produce more smoke than heat. In ad-

dition, the home improvement resource This Old House recommends using dense wood that's been split and stored in a high and dry place for at least six months. Oak is an example of dense wood that, when stored properly, can make for an enjoyable fireplace experience. Avoid softwoods like pine. Pine can produce a lot of creosote, which is a byproduct of wood combustion. Creosote is highly flammable, and as it builds up in a chimney, the risk for a chimney fire increases. Choosing the right wood, making sure it's well-seasoned and having a chimney professionally cleaned can reduce the risk of a creosote-related chimney fire. A Level 1

inspection should determine if there are potentially dangerous levels of creosote deposits in the chimney.

Before nestling up to a fire-

place this winter, homeowners should consider a host of factors and safety measures to ensure their fireplaces are safe and ready for the season ahead.



Let us load you at the largest Lumber Yard in Parkland County
962-2575
Call Toll Free: 1-800-343-2988
35 South Ave, Spruce Grove

- Renovation & new build experts • Superior quality lumber
- Complete home packages • 3D Estimating Program
- Engineered roofs & floors • Farm Buildings • Garage packages
- Windows & doors • Custom decks & fence packages
- Flooring & kitchens • Bathrooms • Ceramic Tiles
- Concrete & landscaping • Electrical supplies
- Fasteners • Woodstoves

Service • Selection • Advice • Special Orders • Delivery



Top Quality Flooring Products

- Carpet • Vinyl • Lino
- Hardwoods • Laminates
- Vinyl Tiles • Porcelain
- Floor and Wall Tiles
- Stone Tiles
- Ditra and Kerdi
- Shower Installs

Professional Installers
Free Estimates

Quality You Can See.
Comfort You Can Feel.
Value You Can Appreciate.

Opening Specials

Soft Touch Carpet installed for **\$3.25/sq ft**
in 6 colors with under pad

3Mil Vinyl Planks installed for **\$4.49/sq ft**
with 20 year wear layer water proof 8 colors

White Marble Floor Tiles **50% OFF**
polished 12x24

Pro Finish Flooring Ltd
#6 - 20 McLeod Avenue | Spruce Grove, Alberta T7X 1V4
TEL: 587-286-2626 | pro-finishflooring@hotmail.com
HOURS: Monday to Friday 9:00AM-5:30PM Saturday 9:00AM-4:30PM



ECONOMY

ASPHALT

DRIVEWAYS

- Paving • Asphalt or Concrete • Repairs
- Pararamps • Seal Coating • Crack Filling
- Snow Removal • Sanding • Rock Chip Sales

CHARLES MACDONALD
PH: 780-962-5581 CELL: 780-777-0914
FAX: 780-962-9146

B.W. EAVESTROUGHING

Specializing in:

- ⇒ Residential 5" ⇒ Gutter Clean System
- ⇒ Commerical 6" ⇒ Free Estimates
- ⇒ Soffit ⇒ Fascia

BRAD (780) 699-1880

fall HOME RENO GUIDE



SECRETS TO MAKING YOUR HOME LOOK LIKE YOU HIRED A DESIGN PRO

Photo spreads in home design magazines can be awe-inspiring. Quite often homeowners wish they could lift the looks right off the pages of magazines and transform their own homes into picture-perfect retreats.

It takes an eye for design to pull a room together - even with inspiration - and make it both functional and attractive. While hiring an interior designer is one way to go, homeowners can use some of the tricks and techniques the designers employ to do a remarkably good job of improving the interiors of their homes without such help.

Embrace texture

The colors used in a home can add impact, but designers often

utilize various textures to create aesthetic appeal. A single color scheme can be enhanced by various fabrics. Consider a leather sofa made more cozy with chenille pillows next to a rustic side table. Figure out ways to incorporate a few different textures to add depth to the room.

Be careful with color

Many high-end homes showcase neutral shades that are enhanced by pops of color. If you like a rich, royal purple, leave room for other colors as well. Add touches of purple in vases, throw pillows and other accessories.

Also, many designers work in shades of three for room colors. There may be one main color

for walls, another color for larger accents, such as couches and chairs, and then a third color that pops in accessories such as flowers, pillows and collectibles. These can be any colors, but the most muted tends to be the more abundant shade.

Add a bit of bling

Glittery items and metallics can add a touch of luxury feel to any space. A shiny table lamp, mirrors, a sparkling chandelier, and the like are easy ways to produce a high-end feel. Reflective surfaces also will cast light around the room, giving the illusion of a larger space.

Choose a big statement piece

Many homeowners make the mistake of filling a room with

several small pieces of furniture that only contribute to clutter. Instead, look for a statement piece, which can be a cabinet, armoire or chaise. Mix and match large and small elements for a sense of balance.

Accessorize

Finish the room with accessories and flowers. When placing and hanging knickknacks and wall art, odd-numbered groupings often look the most cohesive and interesting. Experiment with different scales and heights for even more dimension.

When inspiration hits, take some cues from interior design pros to make spaces look like they belong on the pages of your favorite magazines.

standstone
VACUUM SERVICES LTD.

The service you need, from people you trust.

- Septic Services: Residential, Commercial
- Holding Tanks and Field Systems
- Effluent Pumps supplied & Installed
- Portable Toilets: Standard, Wheelchair Accessible, Cabana Cans
- Products: BioClean, Liquid Enzyme, Potty Trea

Proudly Serving
Lac Ste. Anne County
1-877-226-5008
780-924-2435
780-967-2118
www.standstonevac.ca or
visit our facebook page

Great Rates & Reliable Service! Call us today!

ONOWAY
TIMBER MART

- Decks
- Fences
- Treated Lumber
- Spruce Lumber
- Probuilt Alum Railing
- Plumbing
- Electrical
- Shed Packages
- PPG Paint & Stain
- Garage Packages
- Full House Packages
- Husqvarna Dealer
- Delivery Available

"WHERE SERVICE MAKES THE DIFFERENCE"
#2 2104 Hwy 37
Lac Ste Anne, AB **PH: 780-967-2274**

BEDARD
EXCAVATING

DESIGN, BUILD, PUMP

General Excavating
Foundations 4-9' walls
Septic Systems

780-967-5116

Lanman Landscapes

YOUR ONE STOP FOR ALL TYPES OF LANDSCAPING

Dangerous Tree Removal Yard Cleanup Full Landscaping Service

Experienced Bobcat Work Fully Insured Fall & Winter

(780) 977-6586
levertonniel13@gmail.com

fall HOME RENO GUIDE



HOUSE POWERWASHING TIPS

Powerwashing, also known as pressure-washing, utilizes a high-velocity water spray to remove dirt and residue from the exterior surfaces of a home. It is frequently used on vinyl siding, concrete and sometimes wood decks to treat mildew and other growth that accumulates over time.

Powerwashing can be a great way to remove grime without having to scrub by hand. But it requires a delicate touch to get it right. Sometimes it is best to leave the job to professionals. But homeowners willing to give it a go can try powerwashing themselves, as various stores rent power washers.

The home improvement website ImproveNet says that, until very recently, pressure wash-

ers were almost exclusively commercial machines sold to professionals or rented to do-it-yourselfers. Lately manufacturers have targeted homeowners looking to buy with lightweight options. For those who see powerwashing as a routine venture, purchasing a unit may be worth the investment.

It is important to exercise caution when operating a powerwashing machine. The high-velocity spray can tear through skin. It is key to get a feel for the washer, and try less pressure first to get a handle on the magnitude of the tool.

Don safety gear prior to using a pressure washer. Gloves, eye protection and ear protection can be handy. Most units will connect to a standard garden hose.

Choose old clothing and expect to get wet. Never point a powerwasher hose at anyone and do not attempt to rinse feet or hands in the spray.

The renovation resource The Family Handyman suggests starting with a wide-degree nozzle to test out the spray on the surface that needs to be cleaned. A 15- or 25-degree nozzle is usually the wand for general cleaning and paint stripping without damaging the surface of the home. Experiment with an optimal distance of the washer wand to get the desired cleaning effects without causing any damage. Work using a horizontal and slightly downward angle to avoid driving water up under the siding of a home.

Avoid spraying any electric

wires or components on the home. Also, try not to spray upward, and angle the spray away from doors, windows and vents.

Some washers have reservoirs that will hold a detergent solution. Choose the right detergent for the job. Keep in mind that cleansers containing bleach can damage surrounding plants, so they may need to be covered while the washing takes place.

Avoid the use of ladders when operating a powerwasher. The push-back from the wand can cause falls. Instead, opt for an extension wand to address the upper reaches of a home.

Powerwashing a home is an effective way to remove stubborn grime and refresh the look of a home's exterior.

Family run, local business, we care!

BEST CISTERN SEPTIC SOLUTIONS

Cistern and Septic Inspection, Installation and Repair!

Septic planning, design, installation by government certified installer(s)

New Installs Available. Reasonable Rates.

Let Us Handle the Dirty Work

780-668-4306

best-cistern-septic-solutions.com

THE STUMP GRINDER

Mechanical Stump Grinding

Andre

Phone: 780-413-6421
stumpgrinder@shaw.ca

LIMB WALKERS TREE CARE LTD.

FULLY INSURED, EXPERT TREE CARE PROVIDERS
SERVICING BARRHEAD, WESTLOCK, ONOWAY & ALL SURROUNDING AREAS

- Residential & Commercial
- Tree & Shrub Pruning
- Annual Maintenance
- Arborist Consultations & Assessments
- Bucket Truck & Chipper Services
- Tree Removal
- Hedge Trimmers
- Professional Climbers

780-203-4705

limb.walkers@hotmail.com

FREE ESTIMATES PROVIDED

TRI-LAKES SERVICES LTD.

Serving: • Lac Ste. Anne County • Parkland County • Yellowhead County East

- Septic Hauling**
 - Holding Tanks (residential, commercial, industrial)
 - Septic Fields
- Drinking Water Delivery**
 - Cisterns
 - Pools/Hot-Tubs
- Fresh Water Delivery**
 - Dust Control
- Portable Washrooms** (rental & servicing)
 - Plastic
 - Trailer mount Extremes (wash sink, toilet, lights heat)
 - Extremes (wash sink, toilet, lights, heat)
 - Steam Truck
 - In cooperation with your plumber

PH: 1-877-727-3939

www.tri-lakeservices.com

office@trilakes.services

SCREEPY, CRAWLY HALLOWEEN COLORING CONTEST



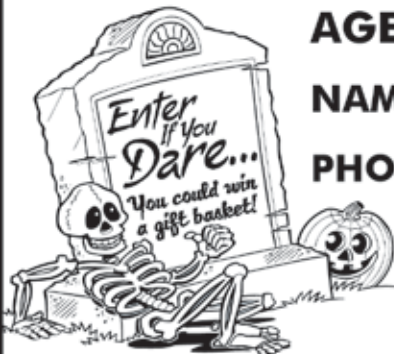
AGE GROUPS: 3-4 YRS | 5-6 YRS | 7-9 YRS | 10+ YRS

NAME: _____ AGE: _____

PHONE: _____ TOWN: _____

Entries must be recieved by October 26, 2019.

**Mail to: Jack O'Lanterns, c/o Community Voice
Box 3595 Spruce Grove, AB T7X 3A8**



ALBERTA RCMP REMIND CITIZENS OF THE GOOD SAMARITAN DRUG OVERDOSE ACT

Submitted by Alberta RCMP

Edmonton – From January 2016 to December 2018, 1,971 deaths in the province of Alberta have been attributed to apparent opioid-related overdoses. Alberta RCMP were dispatched to several of those incidents and determined that, in some cases, it is believed that bystanders, friends or family members were hesitant to call emergency services for assistance due to concerns of potential legal repercussions. Every overdose death is tragic, and many of these potential tragedies can be avoided if people who witness overdose situations seek emergency help promptly.

To encourage people to seek potentially life-saving emergency help in an overdose situation,

the RCMP, in collaboration with Health Canada and the Chief Medical Officer of Health of Alberta, want to remind residents of the Good Samaritan Drug Overdose Act, which provides some legal protections for people who experience or witness an overdose and call 911 or their local emergency number for help.

Legal protection granted by the Act

The Act is meant to encourage people to seek emergency help during an overdose by helping to reduce fear of seeking police or medical assistance. It applies to anyone seeking emergency assistance during an overdose, including the person experiencing an overdose. The Act protects the person who seeks help, whether they stay or leave from the overdose scene, as well as

anyone else who is at the scene when help arrives.

The Act can protect you from:

- Charges for possession of a controlled substance (i.e. drugs) under section 4(1) of the Controlled Drugs and Substances Act

- Consequences of breach of conditions regarding simple possession of controlled substances (i.e. drugs) in: pre-trial release, probation orders, conditional sentences and parole.

It is important to note that the Act does not provide legal protection against more serious offences, such as: production and trafficking of controlled substances, and all other crimes not outlined within the Act.

How to help save a life

Drug overdoses could happen to someone close to you –

a friend, a family member, or someone nearby. Staying at the scene is important to help save the life of the person experiencing an overdose.

Witnesses should call for emergency help and render whatever assistance they can, including administering naloxone – a fast-acting drug that temporarily reverses the effects of opioid overdoses – if it is available, providing first aid, including rescue breathing (CPR) if necessary until help arrives, and staying calm and reassuring the person that help is on the way.

The Good Samaritan Drug Overdose Act is part of the Government of Canada’s comprehensive approach to addressing the opioid crisis.

You can learn more at Canada.ca/Opioids.



Sideline
MECHANICAL & WELDING LTD.

Specializing in Trailer Repairs
Aluminum, Tig, Mig & SMAW Welding
Mobile Welding Units Available
Mechanical Inspections & Repairs
Fabrication & Plasma Table
Skid Steer Services

Sideline Mechanical & Welding Ltd.
55109 Range Road 20
Phone: 780-967-5658
eMail: smw ltd@gmail.com

SEPT 12 AUCTION
FOR: WESTLOCK MOTORS COLLISION CENTRE
LOCATED: 9935 - 107 St Westlock

THURSDAY EVENING, SEPTEMBER 12TH AT 5:00PM

SELLING AT 5 PM: * Private Consignment of Good and New Items - Wrench Straps, Slide In Bumper Hitches, New Auto Parts, Mechanic and Wood Tools, Antique Collection, And More* Ford 8 N Tractor

SELLING AT 6 PM: * QUALITY EQUIP * Very Impressive Vehicle Frame Straightener Including HD Form Holder w/ Corner Anchors, Special Attachments and pullers (Appx \$100,000 New) * 4 Post Car Hoist * Newer HD Shop Air Comp * Older HD Shop Air Comp * Excellent Paint Booth and Accessories * All Officer Eq., Storage Cabinets, Etc * Many New & Used Vehicle Hoods, Windshields, Tires, Rims * PLUS MORE

SELLING AT THIS SALE 3 ESTATE VEHICLES: * 1994 GMC 3500 Dually Truck w/ Duramax AlumService Box, 3500 W Inverter, Ladders on Top, Nice * 4 Good 8' Sections Scaffold * 1997 Lincoln Continental w (269 k km), nice condition, senior owned * 2003 Dodge ½ Ton w/ Service Boc, good condition

PLUS MUCH MORE: * New Agriculture Parts * New Plumbing Items * Store Shelving

PARSONS AUCTIONS LTD.
Charles 674-7704 (780-674-3929) Jeff 305-4328
Pictures Available on: parsons-auctions.com

ANOTHER RAINBOW SALE

SPECIAL TRACTOR/ TRUCK & COLLECTABLES SALE + OUR REGULAR CONSIGNMENT

Sunday, September 8, 2019 at 10:00AM
Rainbow's Stony Plain Consignment Centre – 52529 Range Road 11

Tractors: • McCormick Standard W4 Tractor - c/w PTO and belt drive **Vehicles and Trailers:**
• Industrial Tandem Axle Trailer • 1987 37ft. Elandan Winnebago Motor home • 1994 Ford F350 Service Truck • 1997 Blue Chev Suburban • 2005 White Chev Silverado 4x4 • 1999 GMC Jimmy SUV • Polaris 2x4 Quad • Blade attachment for Quad **Tanks:** • 500 Gallon Fuel Tank with Stand • 250 Gallon Water Tank • Pipeline Tank **Industrial Products:** • Industrial Weigh Scale • Brand New Windows • Air Compressors • Cement Mixer • Portable Work Light • Shop Vacs **Lawn & Garden:** • Fertilizers • Sprayers • Ride-on and Push Lawn Mowers • Weed Eaters • Pressure Washers • Electric Leaf Blower/Vac • Assorted Garden Tools **Large Assortment of Hand and Power Tools** **1 Storage War Unit**

WWI & WWII MEMORABILIA SALE

WWI & WWII Memorabilia Estate Sale for Traffic Air Inc & Les Mroz

Wednesday, September 11, 2019 at 6:00PM

Viewing at 3:00PM *This sale will be a combination of live and silent auction*
Norwood Legion 11150 82 St NW Edmonton, Alberta T5B 2V1

HIGHLIGHTS: • Collectible Art by Robert Bailey and other well known artists inspired from the Pilots of the Second World War. Some paintings signed by the actual pilots!
• Assorted Artifacts from both World Wars • Memorabilia • Soldier Uniforms
• Collector Plates & Books • Medals & Accessories

RETIREMENT SALE FOR ROZ KRUGGEL

Thursday, September 12, 2019 at 6:00PM

Rge Rd 1311, Secondary Highway 37 Onoway, AB T0E 1V0

HIGHLIGHTS: **Tractors/ Farm Equipment:** • 345 John Deere Tractor • White 285 Tractor c/w allied 760 Loader and Live Hydraulics • 250 Gallon Water Tank • 3 Westeel-Rosco Grain Bins on Skids • Cattle or Horse Waterer **Vehicles:** • Pontiac Montana Van • 2000 Ford F350 Superduty 1 Ton Dually (needs some TLC) • 1980 Ford F150 • 1960 International Antique Collector Truck • Motorized Scooter • Yamaha 4 Moto 4WD ATV **Tools/ Shop Equipment:** • Eagle Air Compressor • Assorted Heavy and Industrial Tools • Assorted Power Tools • Tool Boxes • Industrial Delta Shopmaster Drill Press • Welder Helmets
• Metal Files. **Many More Items, too numerous to mention**

UPCOMING SALES

Saturday, September 14, 2019 @12:00 p.m. Wabamun Arena Auction Sale

Saturday, October 12, 2019 @10:00 a.m. Rainbow' Auctions Harvest Consignment Sale

****WATCH WEBSITE DAILY FOR NEW ADDITIONS TO AUCTION LISTS****

Terms and conditions: Cash, Visa, MasterCard, Debit, Interac. Nothing to be removed until paid for. Subject to additions and deletions. A 10% handling fee, plus GST will be charged where applicable. Please be conscious of the handling fees and factor them into your bidding. Owner Rainbow Auctions & Liquidators or it's employees shall not be responsible for accidents.

SALE CONDUCTED BY:

Stony Plain, AB. 780-968-1000
or TOLL FREE 1-866-968-1001

**Complete Liquidation and
Auction Services Since 1978**

www.rainbowauctions.ca

BOOK YOUR SALE WITH US TODAY!



Terms and conditions: Cash, Visa, MasterCard, Debit, Interac. Nothing to be removed until paid for. Subject to additions and deletions. A 10% handling fee, plus GST will be charged where applicable. Please be conscious of the handling fees and factor them into your bidding. Owner Rainbow Auctions & Liquidators or it's employees shall not be responsible for accidents.

NOTES FROM THE ONOWAY LEGION

Submitted by Submitted
by Onoway Royal Canadian
Legion

Family Fare at Dinner

On Friday, September 6, it'll be old-fashioned family fare for dinner – meatloaf, corn, potatoes, coleslaw, pie and ice cream. Take a night off from cooking and enjoy the evening with friends.

Book your reservation by texting 780-340-0760, or leave a message on the Legion answering machine at 780-967-5361. Doors open at 3, with the meal served from 5:30 to 7 pm. Adults pay \$15; kids up to 10 years cost \$9 while 5 and under are free.

As usual, the bar will be open, along with the usual draw for a free meal. You'll have a chance to buy raffle tickets on a delicious meat package, on the 50:50 draw, or the Chase the President raffle, a progressive jackpot that increases in value each week there's no winner.

Ribs are on the Menu Again

On Friday, September 13, Blakeman Drilling is sponsoring another dinner of Bob Clark and Lorne Olsvik's famous ribs. Watch for details.

Cards, Anyone?

There are a couple of card tournaments coming up this month. On Sept 7, it's a Cribbage pairs tournament in Leduc. Then, Sept 14, it's a Euchre tournament in Stony Plain. The Legion is already sending two teams to each tournament, but if you're interested in participating, call the legion at 780-967-5361.

Did You Know?

You don't have to be a legion member to participate in many of the legion activities, and children are welcome at the regular Friday night dinners.

PARKLAND RCMP MAKE ARRESTS FOR BREAK AND ENTER

Submitted by Parkland RCMP

Stony Plain, Alta. - On Aug. 26, 2019 at 12:00 a.m., Parkland RCMP responded to the report of a home invasion that occurred at a rural residence in the area north of Hwy 16 on Range Road 264.

The female home owner heard someone trying to break down the garage door. She contacted her husband who arrived in time to observe several individuals entering a car that was parked in his driveway. When confronted, the car fled the scene. The home owner was following the suspects in his vehicle when one of the car's occupants proceeded to shoot at him. The home owner immediately stopped and called and updated police. No one was injured.

The RCMP located the car. The occupants of the car had

fled the scene on foot. With the assistance of Edmonton Police Services Helicopter Air One and RCMP Police Dog Services (PDS), police were able to locate all five suspects in the bush near the car. The gun safe that was stolen from the residence and a shot gun were located in the car. The car and the license plate were determined to be stolen out of Edmonton. The five suspects were arrested without incident.

RCMP PDS returned in the daylight to the area where the subjects had been apprehended and located the stolen rifles and a quantity of drugs believed to be methamphetamine.

Elliot Steinhauer (21) of Saddle Lake, Chantel Cardinal (24) and Dorian Hunter (18) of Edmonton, and James Auigbelle (25) and Aaron Auigbelle (34) of Morinville are facing 14 charges including:

- Pointing a firearm
 - Carrying a concealed weapon
 - Break and enter with intent – residence
 - Assault with weapon
 - Possession of property obtained for the purpose of trafficking over \$5000
 - Possession of methamphetamine
- Elliot Steinhauer has additional charges of:
- Weapons possession contrary to order and fail to surrender authorization
 - Fail to comply with probation order
- Aaron Auigbelle has additional charges of:
- Weapons possession contrary to order and fail to surrender authorization (x2)

All five were held for justice interim hearings. Dorian Hunter and Chantel Cardinal were released with a recogni-

zance. Their first appearance is on Aug. 28, 2019 at the Stony Plain Provincial Court. Elliot Steinhauer, Aaron Auigbelle and James Auigbelle were remanded into custody and will be appearing via CCTV on Aug. 28, 2019 at the Stony Plain Provincial Court.

The RCMP would like to remind everyone not to put their own safety at risk when providing assistance. Call 911 immediately and try to provide as many details as possible.

If you have any information in relation to this investigation, please contact Parkland RCMP at 780-968-7267. If you wish to remain anonymous, you can contact Crime Stoppers at 1-800-222-8477 (TIPS), online at www.P3Tips.com or by using the "P3 Tips" app available through the Apple App or Google Play Store.

GROVE HEARING CLINIC

960-2960

1-866-960-2960

Hear what you've been missing...

Senior Discounts



Full Service & Repair

Full Hearing Assessments

HOURS OF OPERATION: 9am – 5pm Weekdays

3rd party billing (AADL, WCB, DVA, FCH) • Personal 0% Financing if Needed

For The Latest Technology In Hearing Aids & Assisted Living Device Stop By & See Dawn

#220-70 McLeod Ave - Westland Market Mall, Spruce Grove

Classified Ads - Call 962-9228

Classified Policy

CLASSIFIED RATES INCLUDE GST. 1st 20 Words: First Insertion = \$6.00; Subsequent insertion = \$3.00 each. (Eg: 2 insertions = \$9.00; 3 insertions = \$12.00; 4 insertions = \$15.00; etc) Each additional word is 20 cents per word, per insertion. BOLD/CAPITAL text available for an additional \$1/line. Lost & Found and To Give Away (up

to a max. of 25 words) are free of charge. Ads must be paid in advance either by cheque, cash, Visa or Mastercard. No Refunds Allowed on Classified Ads. DEADLINE: is Thurs. 4:00 pm (Wed. 4:00 pm on long weekends). Classified ads may be called in to the COMMUNITY VOICE office at (780) 962-9228, emailed to: classifieds@communityvoice.com, dropped off at Oneway Registries, or mailed with your ad and payment

to: COMMUNITY VOICE, BAG 3595, SPRUCE GROVE, AB T7X 3A8. Ads may also be placed on the web at www.com-voice.com/classified.htm

Hall Rentals

Alberta Beach Agliplex, Susan 780-996-2960.

Alberta Beach & District Seniors 50+ Club. Air conditioning! Space

Available! Val: 780-690-1655 or Dianne: 780-217-8482

Anselmo Community Hall, Phone 780-786-4280

Bright Bank Hall, 780-968-6813

Cherhill Legion, Mary 780-785-3578.

Cherhill Community Assoc. Hall, Kevin 780-785-8153

Darwell Centennial Hall, 780-721-2690

Darwell Seniors, Phone Debra 780-785-2907

Goose Lake Hall, Contact Deanna (780) 584-3738

Gunn Hall (G.A.R.S.) 780-951-9452

Hathersage Community Centre, Noreen at 786-2946

Lake Isle Community Hall, PH: 780-892-3121 or Email: lakeislehall@mail.com

Magnolia Hall, 727-2015

Manley Goodwill Community Hall, 963-9165 or 916-0146

Mayerthorpe Diamond Centre, Charlotte at 786-4659

Mayerthorpe Legion, 786-2470.

Oneway Community Hall, 967-4749.

Oneway Heritage Center - Cym/Classrooms, 967-1015

Oneway Legion, 967-4980

Park Court Community Hall, 727-4476

Parkland Village Community Centre, 780-298-9155 @ PVCCentre

Ravine Community Hall, 325-2240

Rich Valley Community Hall, 967-5710 or 967-3696

Rosenthal Community Hall, 963-7984

Sandy Beach Rec Hall, 967-2873

Sangudo Community Hall, 785-2904 or 305-4616

Stettin Nakumun Comm. Hall, 967-9198

Deb Gouin
780-497-0531
www.debgouin.ca
Century 21 Masters 780-963-2285
#105, 4302 - 33 St., Stony Plain, AB T7Z 2A9
Each office independently owned and operated.

FEATURED LISTINGS:



\$396,500

GORGEOUS COUNTRY HOME

- 2270 sq ft 3 Bed 3 Bath
- 1/2 Acre Lot - PRIVATE
- Oversized Heated Double Garage
- Many Recent Upgrades
- RV Parking
- Lots of Upgrades
- E4170219



\$269,900

HUGE LOT - TRIPLE GARAGE

- 1/2 Acre Lot
- Back onto Golf Course
- TRIPLE GARAGE
- Many Recent Upgrades
- 3 Bedroom 1 Bath Bungalow
- E4168911



\$629,000

GATED COMMUNITY EXEC. HOME

- 1 acre lot MINUTES TO SPRUCE GROVE
- Soaring Ceilings & Luxury Finishings
- TWO TRIPLE GARAGES + RV PARKING
- E4147138



\$358,800

SPRUCE GROVE 1/2 DUPLEX BUNGALOW

- BEAUTIFUL 2+2 bedrooms, 3 baths
- Open Floor Plan & Main Floor Laundry
- Double Attached Garage
- NO CONDO FEES
- E4154703



\$279,900

ROSS HAVEN FAMILY HOME

- 1500+ sq ft, 3 beds, 2 baths
- Upgraded Inside & Out
- Double O/S Garage, 1/2 Block to Lake
- E4148150



\$225,000

ROSS HAVEN CHARMER

- 1650+ sq. ft. 2 bed + loft, 1 bath, laundry
- LARGE COVERED Upper Deck!
- Backs GREENSPACE, STEPS to Lake & Pier!
- E4148179



\$275,000

LAKE NAKAMUM WATERFRONT

- Next-to-New 1 bed + Loft, 1 Bath
- FULLY SERVICED
- Set Up for 2 RVs with HOOK-UPS!
- E4149606

VIEW FULL LISTING DETAILS AT WWW.DEBGOUIN.CA

LISTINGS NEEDED!! If you're considering selling, I currently have serious buyers looking! Give me a call for a **free market evaluation!!** With more than 30 years' experience in the real estate industry, I have both local knowledge as well as serious buyers currently looking for property in our area! Put me to work for you.....
FROM SIGN UP TO SIGN DOWN!!



Classified Ads - Call 962-9228

Garage Sales

Garage Sale September 7 & 8, 10am-5pm. 4 miles South on RRG 84 off Hwy 16. 5 Gallon glass jars, BMP, Chalet/Alta blown glass, Iris/Herringbone glass, Olympic pins, Copper wall decor, vintage linens, pipes & humidors, block planes, antique wrenches, tool box, washer/dryer, coffee tables, L.H. golf clubs and more! Call 780-325-3787 (1) 03-09

To Give Away

PIANO. Apartment size, full keyboard, with bench. Free with local charitable donation of your choice. 780-459-4764 (1) 03-09

Dog Caretaker

Alberta Beach & Surrounding Areas, thinking of a Summer Getaway? Worried about leaving your dog in a kennel? Don't worry anymore, you can leave your pet with me! There is a wrap around deck in court yard! I will provide tender loving care, with walks every day. Best of all, I'm cheaper than a kennel! Daily drop in's or overnight stays welcome. If interested call 780-920-4166 (4) 20-08 OG

Cleaning

CEILING & WALL CLEANING - Specializing in cleaning Stipple & California knockdown. Cig. Smoke removal & Odour removal. Ceramic floor tiles steamed cleaned. Call Nano Cleaning for Discount Prices! 780-914-0323 (5) 27-08

Computers

FREE Computer Checkup. Repairs **work** or extract Doc or Pictures from Old or Broken PC **NOT** over \$50. No Prepayment - No Charge

if not Repairable. Yes, I have for you a good, clean, refurbished and upgraded laptop or desktop with Legal win 10 for **ONLY \$100**. Call now 780-892-2407 (12) 13-08

Landscaping & Maintenance

Stump Grinding For

Hire - Alberta Beach & Surrounding areas. Call 780-779-3589 (28) 23-04

Firewood

FIREWOOD FOR SALE - Birch, Tamarack & Spruce Pine mix. Poplar. 4x4x8 cords and 1/2 cords. Quality seasoned wood, Delivery or Pick up. Woodchuck

Firewood, 780-288-7247 (28) 28-05 OG

SEASONED FIREWOOD: Birch, Tamarack, Spruce/Pine & Poplar. 4x4x8 cord, Split and delivered or pick up at wood yard, 1/2 cord or full cords available. Call 780-967-5835 or 780-983-1495 (28) 27-08

PURE HEMP CBD PRODUCTS
AGING IS INEVITABLE - LOOKING AND FEELING OLD ISN'T!

WHAT IS CBD?
A Health and Beauty Breakthrough!
Cannabidiol, CBD, is one of over 80 active cannabinoid chemicals in the hemp plant. CBD, unlike, THC, does not produce euphoria or intoxication. CBD targets specific receptors in the cells of your brain & body. There are many physical and mental benefits to using CBD products for both treatment and prevention of numerous ailments.

Therapeutic Uses For Pure Hemp CBD
Supports healthy blood sugar levels, promotes healthy energy levels, relieves anxiety, aids in digestion, supports optimal immune function and the regeneration of healthy cells, and promotes a sense of serenity and overall well-being.

Anti-Aging Uses For Pure Hemp CBD
Promotes more youthful skin, provides hydration, enhances radiance, lessens age lines as well as the appearance of dark spots.

KEY BENEFITS
PAIN RELIEF: Known to reduce vomiting & nausea; suppress muscle spasms; reduce seizures & convulsions.
PROMOTES HEALTH: Helps to promote relaxation and overall health.
WELL-BEING: Helps to relieve anxiety, aid in digestion, supports optimal immune function and the regeneration of healthy cells.

CBD PET PRODUCTS

PET CHEW TREATS
KEY BENEFITS
SYNERGISTIC BENEFITS: Can be used in conjunction with regular medications with no side effects.
NO SIDE EFFECTS: Does not damage the liver, kidney or GI Tract like OTC medication.
DIETARY SUPPLEMENT: Can be administered daily as part of your pet's diet.

ORAL SPRAYS & DROPS
KEY BENEFITS
MANAGES PAIN: Helps to treat inflammation, arthritis and joint pain.
TREATS DIGESTIONAL ISSUES: Helps with loss of appetite, nausea, IBS and gastrointestinal swelling.
GENERAL HEALTH: Helps to manage mood, anxiety and general joint pain. For healthy, happy pets.
CONVENIENT: Can be sprayed into pet's mouth or on food.

For more information, Call (780) 907-8642

Classified Ads - Call 962-9228

Vehicles

2014 Dodge Ram 1500 Sport, Dark Charcoal grey, 4wd Crew Cab, ONLY 47,000kms! c/w half leather half cloth seats, power locks, mirrors & windows, step up bars, command start, big touch

screen with am/fm/sat radio, Aux/usb plugs ins, back up camera, dual climate control, Brand new tires & rims, Truck drives like new, Well taken care of! Asking \$27,900. Call 780-264-7740 (S) OG

Miscellaneous

Top Soil for garden or else, \$20 per skid steer bucket. Burning Barrels \$20/each. River Rocks from my farm field \$25 per barrel, assorted sizes. Call 780-967-2779 (8) 13-08

Free Pasture

3 Acres Free Pasture, Spruce Lane Estates. Call 780-910-7812 (3) 27-08

For Rent

Alberta Beach Hotel rooms for rent. Upgraded, very clean & well maintained, shaw cable tv included. \$60.00 per night or \$500.00 per month + GST. Damage deposit is required. Call 780-924-3005 for more information (50) 08-01

Alberta Beach small duplex, 2 bedroom, washer/dryer/

fridge/stove/dishwasher, fenced yard, shed, \$900/month, small pets ok. Call Cheryl 780-982-6922 (6) 30-07

Completely renovated Motel in Onoway, offering monthly rentals, all utilities FREE, furnished bachelors and furnished 1 bedroom with full kitchen, Starting at \$850/month, please call Cheryl for viewing 780-967-4420 www.onowayinnandsuites.com (4) 20-08 OG

Available Immediately, Large 2 Bedroom in 12 Unit Apartment Building in Entwistle. Includes Heat, Water & Parking. Rent \$795/month + DD \$300. Also, 1 Bedroom Available \$695/month + DD \$300. Please Call Ivka 780-807-1300 or email: jakovljevicivka@yahoo.ca (2) 27-08 OG



SERENITY FUNERAL SERVICE

NEW FACILITY
Chapel & Reception Centre

600 Calahoo Road Spruce Grove, AB
780-962-2749 www.serenity.ca

SERENITY FAMILY SERVICE SOCIETY - YOUR NOT-FOR-PROFIT SOCIETY

SUDOKU OF THE WEEK

Fun By The Numbers

Here's How It Works: Sudoku puzzles are formatted as a 9x9 grid, broken down into nine 3x3 boxes. To solve a sudoku, the numbers 1 through 9 must fill each row, column and box. Each number can appear only once in each row, column and box. You can figure out the order in which the numbers will appear by using the numeric clues already provided in the boxes. The more numbers you name, the easier it gets to solve the puzzle!

ANSWER:

| | | | | | | | | |
|---|---|---|---|---|---|---|---|---|
| 6 | 1 | 4 | 2 | 7 | 9 | 5 | 3 | 8 |
| 2 | 7 | 3 | 8 | 5 | 1 | 4 | 9 | 6 |
| 5 | 8 | 9 | 6 | 3 | 4 | 7 | 1 | 2 |
| 8 | 3 | 5 | 4 | 9 | 2 | 1 | 6 | 7 |
| 4 | 6 | 2 | 3 | 1 | 7 | 9 | 8 | 5 |
| 1 | 9 | 7 | 5 | 6 | 8 | 2 | 4 | 3 |
| 9 | 2 | 1 | 7 | 8 | 6 | 3 | 5 | 4 |
| 7 | 5 | 8 | 9 | 4 | 3 | 6 | 2 | 1 |
| 3 | 4 | 6 | 1 | 2 | 5 | 8 | 7 | 9 |

| | | | | | | | | |
|---|---|---|---|---|---|---|---|---|
| 6 | | 4 | | | | | 3 | 8 |
| 2 | | | 8 | 5 | 1 | 4 | | |
| 5 | 8 | | 6 | | | 7 | | |
| 8 | 3 | | | 9 | | 1 | | |
| | 6 | 2 | 3 | 1 | | | 8 | 5 |
| | 9 | | 5 | 6 | | | | |
| | 2 | 1 | | 8 | 6 | 3 | | |
| | | 8 | 9 | | 3 | | | 1 |
| 3 | | | 1 | | 5 | | 7 | |

Like puzzles? Then you'll love sudoku. This mind-bending puzzle will have you hooked from the moment you square off, so sharpen your pencil and put your sudoku savvy to the test!



COMMUNITY EVENTS 2019

If you are a LICENSED, NON-PROFIT ORGANIZATION, you are welcome to submit your announcement FREE of charge, space permitting. You are required to submit your non-profit number. Call (780) 962-9228. Please note that all submitted event listings must be limited to 200 characters or less (including spaces). DEADLINE: 12 noon Friday prior to publication (Thursdays on long weekends).

SEPT 4 & 11 - FALL REGISTRATION for Lac Ste. Anne Community Choir. All interested singers welcome!

SEPT 10 - PSYCHOLOGICAL HEALTH AND SAFETY MANGEMENT WORKSHOP, 10am-4pm at Community Futures Yellowhead East, Whitecourt. Cost \$40 (lunch included). Register: www.eventbrite.ca OR our website <http://yellowheadeast.albertacf.com/current-events>.

SEPT 14 - COMMUNITY GARAGE SALE at the Heritage Centre Gym, 10:00am - 3:00pm. Contact Michelle 780.905.9704 To book

SEPT 21 - HARVEST FAIR, 10am-2pm at the Spruce Grove Grain Elevator site. Bring your family and enjoy old farm games and competitions.

FARMERS MARKETS

ALBERTA BEACH: Open Every Sunday, May - Oct, 12-3PM. Contact Joanne 780-690-6392
BARRHEAD: Open Saturdays, May - Dec. 10AM - 1PM. Sherry 780-674-6802
ONOWAY FARMERS' MARKET: Thursdays, 5-8pm at Onoway Community Hall. Starts May 1st. 780-667-6327 or onowayfarmersmarket@gmail.com.
SPRUCE GROVE: at the Elevator, Sat 9:30-1:30PM, tables (780)240-5821
STONY PLAIN: Sat, 9AM-1PM, Downtown, Stony Plain. Nancy 780-962-3993.
WESTLOCK: 11-3PM, Bargain Shop Mall, Dave 780-954-2437
WHITECOURT: Legion, Tuesdays from 11AM - 2PM, May - Oct. 779-7002.

BINGO

BARRHEAD ROYAL CANADIAN LEGION: Doors 5:30pm, games start 7PM. Games: #7, Jack Pot, Mini Jack Pot, Looonie #1 & #2.
CHERHILL BINGO: Tuesdays at Cherhill Community Association. Doors @ 6:30PM, Games @ 7:30PM.
CHERHILL LEGION: First Sunday of Month. Doors Open 12:00PM
MAYERTHORPE ROYAL CANADIAN LEGION: Tues, doors 6:30PM, bingo 7:30PM
RICH VALLEY COMMUNITY HALL BINGO: 7:30PM. Looonie Pots. Next bingos Sept 4 & 18, October 2, 6 & 30.
STONY PLAIN SENIOR'S DROP-IN CENTRE, public bingo every Tues, 7PM. All ages welcome. Phone (780) 963-6685

MEAT DRAWS

ALBERTA BEACH MUSEUM: Every Sat 4PM, Alberta Beach Hotel
ALBERTA BEACH: Lac Ste Anne Community Choir & Onoway Minor Hockey Meat Draw - Sundays, 4:00PM at Jungle's Bar & Grill.
BARRHEAD ROYAL CANADIAN LEGION: Fridays 6:00PM. Queen Of Hearts draw & 50/50.
DARWELL: by Alberta Beach & District Lions Club, 4:00PM bi-weekly, Darwell Lounge & Restaurant
ONOWAY ROYAL CANADIAN LEGION: Fridays, Ph. 780-967-5361
STONY PLAIN ROYAL CANADIAN LEGION BR# 256: Saturdays @ 3:00PM. Meat Draw & 50/50.
WHITECOURT LEGION: Saturdays 4:00PM. Located downtown behind the CIBC.

MEALS ON WHEELS

ONOWAY: LSAC Div 1 & 2, East of Hwy 43. Hazel Bourke: 780.967.2338 or hnbourke@icloud.com
WEST END: Sangudo, Mayerthorpe & west end of LSAC. Jill: 780.785.2924 or Donna: 780.785.3118 or email: westendmow@outlook.com

JAMBOREES

CARVEL: 2nd Sunday of month. \$6 lunch served. Info 780-991-3001
SPRUCE GROVE: at Sandhills Community Hall, 3rd Sunday, 1-5PM. Info Florence 780-962-3104, Margaret 780-962-3051 *September - June.
STONY PLAIN: Stony Plain Seniors Drop In Center, 5018 - 51 Ave. Every 2nd & 4th Thurs of month, 7PM, \$2. PH: 587-989-7214 or 963-7920.
THE ABBOTSFIELD VARIETY MUSIC JAM: at Abbotsfield Rec Centre (3006 119

Ave. Edmonton) 3rd Friday of month, 7PM. PH: 780-918-8545, Adm: Donations Only.

TOPS (Take Off Pounds Sensibly)

ALBERTA BEACH: Tuesdays, Weigh-in 6:00-6:45PM. Meeting 7:00PM. Alberta Beach Lutheran Church, Hwy 633. 967-5009.
EDMONTON: Thurs 8:30-10AM at Annex of Grace United Church (6215-104 Ave). \$7/month
SANGUDO: Tues, United Church, 6:00PM. Sharon 785-2095 or Marlene 786-4646.
STONY PLAIN: Thurs evening, Stony Plain United Church. Susan (780) 968-0869
SPRUCE GROVE: Wed 8:45AM at Anglican Church, 131 Church Rd. Christiane 960-1109

YOUR COMMUNITY

ONOWAY ROYAL CANADIAN LEGION: Open Tuesdays 7:00PM to 10:00PM for "Games" (pool, shuffleboard, darts, cards, etc.) Fridays 3:00 PM- 10:00PM. Friday's Family Friendly Dinner, 5:30PM (open to the public).
PROBLEMS WITH DRUG OR ALCOHOL ADDICTION in a loved one? Contact Drug Rehab Resource free confidential consultation. 1-866-649-1594 or www.drugrehabresource.net.
SPRUCE GROVE ELEVATOR TOURS, Tues-Sat, 9:00-3:00PM. Info 960-4600.
UNITED CHURCH THRIFT SHOP: North end Curling Rink, Onoway. Open Fri & Sat, 10AM-4PM.
VOLUNTEER TUTOR ADULT LITERACY PROGRAM: Need assistance with reading/writing, English language (ESL) or Basic Computer skills? Free 1-on-1 tutoring! Carla Burkell, 780-554-2940, email: literacy@lsac.ca
WATER SAMPLE DROP OFF: Tues Onoway Aspen Health Services. Drop off 1:00-2:30PM.

SOCIAL EVENTS

ALBERTA BEACH & DISTRICT ACTIVE 50+ CLUB ACTIVITIES: Mon 7PM Darts; Tues 7:30PM Crib; Wed 1PM Bridge. Thurs 7:30PM Euchre; Mon, Wed, Fri 8:30AM Aerobics/Fitness. Everyone Welcome.
BADMINTON: Wed, 7-10PM, Barrhead High School Gym. Jamie (780)674-8974 or (780)674-6974.
COME PLAY CRIB: Fridays, 7:30PM at Darwell Seniors Hall; lite lunch is served. All ages!
COUNTRY QUILTERS in Stony Plain house a "Sew in Tuesday", 2nd Tuesday of every month, from 10-3PM. Drop in \$5/member, \$6/non-members. Contact Cindy 780-963-7170.
JR. SCRAPBOOKING Wed 4-6PM. Pre-register by Tues evg. Mayerthorpe Public Library www.mayerthorpepubliclibrary.ab.ca (780)786-2404
"ME, YOU, & EVERYBODY" Fun new local program for people of all ages with disabilities. Thursdays @ Alberta Beach Agplex from 10:00-11:00AM starting May. Funded Lac Ste Anne FCCS.
ONOWAY GOLDEN CLUB: Cards Tuesdays, 1PM, 1st Tuesday: Pot Luck Supper. 5023 49 Ave. 780-967-3436.
ONOWAY HAVE FUN & GET FIT! Exercise Class with Video La Blast. Fridays 10:30AM at the Drop in Centre, 5023-49 Ave. PH: 780-967-2056.
PANCAKE/BREAKFAST SOCIAL: 3rd Sunday 9:00-11:30AM, Parkland Village Community Centre. *except June, July, August

RIVER TALKERS TOAST MASTERS CLUB, Thursdays, 7-9PM. 32 Whitecourt Ave. Hilltop Community Church. Info Lorainne 286-5040.

SANGUDO ART GROUP: Wednesdays 9AM-12PM at Sangudo Community School. Info call 780-785-2112.

SPIRITUAL LIVING STONY PLAIN INSPIRATIONAL CINEMA & DISCUSSIONS at PERC Building (5413-51 St). 2nd Friday of month at 7PM. Popcorn provided, donations appreciated. Contact 780-940-3032

SPIRITUAL LIVING STONY PLAIN GATHERING at PERC Building (5413-51 St). Every 2nd & 4th Sunday of month. Meditation 10AM, inspirational sharing 10:30AM. PH 780-940-3032

WRITERS PROGRAM: Mayerthorpe Library, 1st & 3rd Wednesday at 1PM.

MEETINGS

1ST ONOWAY SCOUTS: Registration, Mondays 6:30-8PM. Beavers 5-7; Cubs 8-11; Scouts 12-14. Kim 967-4339.
2716 ROYAL CANADIAN ARMY CADETS, Wednesdays 6:30-9:00PM at Mayerthorpe Legion. Youths 12-18yrs, Call 780-515-1842.
299 ROYAL CANADIAN SEA CADETS CORPS MACKENZIE: Stony Plain Comm Center, Wed 6:30PM. Youths 12-18, 963-0843
3053 (LAC STE ANNE) ROYAL CANADIAN ARMY CADET CORPS, Onoway Historical Centre, Wed. 6:45-9:30PM. FREE program for youths 12+, Contact 3053army@cadets.gc.ca or 780-886-1586
526 BARRHEAD AIR CADETS, Wed 6:30-9:30PM, High School. Ages 12-18. 780-305-7233
755 PARKLAND AIR CADETS Thurs, 6:30-9:30PM Muir Lake School, ages 12-18. Info call 405-6585 or www.755aircadets.com.
AA - MAYERTHORPE, Kingsmen Hall, Thurs 8PM. (780) 786-2604 or (780) 786-1927
AA - SANGUDO GOLDEN CLUB, Tues 8PM call 786-4402/785-9214/785-3599
AL-ANON - ONOWAY: Meetings are at 7:00PM, Tuesday evenings, at the Onoway United Church.
AL-ANON Wednesdays, 8PM. Spruce Grove United Church, 1A Fieldstone Dr. 780-962-5205
ALBERTA 55 PLUS: Villeneuve Hall at 10AM. Meetings on 2nd Tues of month. Info: Donna 780-962-5933
ALBERTA BEACH & DIST LIONS CLUB meets every 4th Tues 7:00PM, Alberta Beach Agplex.
ALBERTA BEACH AG SOCIETY meets on the 4th Thurs of month, 7:00PM, Alberta Beach Agplex.
ALBERTA BEACH MUSEUM meets on the 2nd Wed, 7:00PM at Heritage House 924-3167.
ALCOHOLICS ANONYMOUS: The Journey of Hope Group, Fridays 8PM, (please arrive earlier). Present location in church basement 4805 - 50 St. Onoway
BARRHEAD & AREA CANCER SUPPORT GROUP: 4th Thurs. 6:30-8:00PM at Barrhead United Church.
BARRHEAD ROYAL CANADIAN LEGION, meeting every 2nd Thurs, 7PM at the Legion Hall.
CHERHILL SILVER & GOLD SENIORS CLUB Regular Meetings 1st Tuesday of month, Cherhill Seniors Hall. Call Rosamy 780-785-2625
CHERISHED MEMORIES, PARENTS & TOTS Wed & Fri, 10-12PM, Alberta Beach Agplex. Info call 780-902-4879 or 780-

999-7622. *Sept-June.
Citizens Helping In Life's Defence (C.H.I.L.D) Join our Pro-Life meetings for the Spruce Grove/Stony Plain area once a month. Call Chris 780-963-6997.
DARWELL & DISTRICT AG SOCIETY MEETINGS, 8:00PM, 1st Monday, Darwell
DDRA MEETING, 7:00PM, 2nd Mon, Darwell Centennial Hall 721-2690. *except Jul/Aug/Dec
GIRL GUIDES, BROWNIES & SPARKS Thurs, 6:30PM, Onoway Heritage Centre. Info Laura, 780-967-1004.
GREENCOURT COMMUNITY ASSOCIATION meet 2nd Tuesday, monthly at 7:30PM at the hall. Info W. Jager (780) 786-4648.
KINETTE CLUB OF MAYERTHORPE, 7:30PM at Kinsmen Hall, 1st Tues of month. Contact: mayerthorpekinettes@gmail.com, Tracy: 780-786-0161.
LAC STE ANNE ARMY CADETS, Thurs, 6:30-9:30PM at Onoway Museum (780) 967-0443
LAC STE ANNE COMMUNITY CHOIR, Wednesdays 7PM at the Heritage Centre in Alberta Beach (50+ Club behind the hotel). Further info, call Diane @ 780 924-2348. ** Fall registration - Sept. 4 & 11. All interested singers welcome!
LAC STE. ANNE & LAKE ISLE WATER QUALITY MANAGEMENT SOCIETY: 3rd Fri, 7PM, Alberta Beach Council Chambers.
LAKE ISLE HALL COMMUNITY HALL BOARD MEETINGS: 3rd Wed of each month @ 7:30PM at the Lake Isle Hall (Hwy 633 and RR55) Ph # 780-892-3121
MAYERTHORPE HOSPITAL AUXILIARY ASSOC, every 4th Mon, 5PM in Hospital Basement Education Room.
MEN FOR SOBRIETY: Wednesdays at 7:30PM, FCCS Building (#105, 505 Queen Street, Spruce Grove). Mike (780) 965-9991.
MS SOCIETY PARKLAND COMMUNITY SUPPORT GROUP Are you diagnosed with MS and have questions? Last Tues of month, 7-9PM, Westview Health Centre. Cassy 780-471-3034 *Sept-June
NA MEETING, Tuesdays 7:00PM Poplar Valley Church (780)514-6011
ONOWAY & DIST HERITAGE SOCIETY: 2nd Wed of each month, 7:00PM, Onoway Legion
ONOWAY & DISTRICT HISTORICAL GUILD: 3rd Wed 7PM, Onoway Museum. 967-5263 or 967-2452.
ONOWAY & DISTRICT QUILT GUILD: Every 2nd Thurs, 10AM-4PM, @ the Lac Ste. Anne Chateau Activity Room. Info, Ph Lyla @ 780-967-2629.
ONOWAY ROYAL CANADIAN LEGION General Meetings, 1st Mon, 7PM. *Sept-June
RICH VALLEY AG SOCIETY BOARD MEETINGS: at the Agriplex on the 2nd Wed of the month, 7:00PM.
RIVER TALKERS TOASTMASTERS CLUB Build confidence, speaking, leadership & listening skills. Thursdays 7-9PM at Eagle River Casino. Call Melinda Tarcan, (780)778-1180.
SANGUDO PAINTING GROUP: Every Wed, 9AM-12PM at Sangudo Community School. Info, call 780-785-2112.
SUNDOWNERS TOASTMASTER CLUB: Mon (excl. Holidays) 7:30-9:30PM. St. Matthew's Church, Spruce Grove. Judy 960-5258
WEIGHT WATCHERS Alberta Beach Agriplex - Mondays, weigh in 6:30PM. Meeting at 7PM.
WESTLOCK & AREA CANCER SUPPORT GROUP: 3rd Wed. 6:30-8:00PM at Westlock Library.

Church Directory

| | | | | | |
|---|---|--|--|---|---|
| <p>Rich Valley Community Church</p> <p>Sunday School 10:00a.m.</p> <p>Worship Service 11:00a.m.</p> | <p>Catholic Parish of Lac Ste. Anne</p> <p>Sunday 10:00a.m.</p> | | <p>Mayerthorpe Baptist Church</p> <p>Worship Service Sunday 10:30a.m.</p> <p>Children's Church 10:30a.m.</p> <p>4606-51 St. Mayerthorpe (780) 786-2677</p> | <p>Alberta Beach Alliance Church</p> <p>Sunday Worship Service & Kid's Church 11:00a.m.</p> <p>Sunday School 10:00a.m.</p> <p>(780) 924-3282</p> | <p>St. John's Anglican Church</p> <p>Onoway</p> <p>Sunday Service 10:00a.m.</p> <p>Everyone Welcome</p> |
| <p>St. John's Lutheran Church Alberta Beach</p> <p>Sunday Service 11:00a.m.</p> <p>Sunday School</p> | <p>Zion United Church</p> <p>Sunday Service 10:00a.m.</p> <p>Sunday School</p> <p>Serving Alberta Beach, Wabamun, Darcwell & Lake Isle, Onoway & Area (780) 924-3351</p> | <p>Sangudo United Church</p> <p>Worship Service 3rd Sunday 11:00a.m.</p> <p>4907-50 Ave. Sangudo, AB</p> | <p>St. Mary's Anglican Church Service</p> <p>Holy Communion 2nd Sunday each month 11:00 a.m. at Sangudo United Church</p> <p>Reverend Barry Rose Officiating</p> | <p>Cherhill Community Church</p> <p>Sunday School 10:00a.m. - 11:00a.m.</p> <p>Worship Service Sunday 11:00a.m.</p> | <p>St. Michael Lutheran Church</p> <p>Sunday Services 1st & 3rd Sunday at 2:00p.m.</p> <p>Pastor Rick Chappell (780) 674-2618 Mystery Lake</p> |
| <p>Trinity Lutheran Church (LC-C) <i>The Church of the Lutheran Hour - Rockyfort Bridge</i></p> <p>Pastor Dan Hansard Church (780) 778-2035</p> <p>Sunday Worship 9:00a.m.</p> <p>Senior's Service & Cottage Bible Study - Phone for locations</p> | <p>Mayerthorpe Pentecostal Assembly</p> <p>P.A.O.C. Rev. Arnold Lothoiz</p> <p>Sunday 10:30a.m. Morning Service Tuesday 7:30p.m. Ministry Training (780) 786-2141</p> | <p>Infuzed Ministries</p> <p>Worship Service Sunday 3:30p.m. in Alexia Community Hall</p> <p>Pastor Daniel Jackson (780) 719-0240</p> | <p>Onoway Baptist Church</p> <p>Sunday Service 10:30a.m.</p> <p>Pastor Greg Garbutt (780) 967-2266</p> | <p>Roman Catholic Church</p> <p>St. Agnes' Parish, Mayerthorpe Sunday 9:00a.m.</p> <p>St. Elizabeth Parish, Evansburg Saturday 7:00p.m. (780) 786-2032</p> | <p>Calahoo Alliance Church</p> <p>Family Worship Service Sunday 10:00a.m.</p> <p>For Info Call Jerry (780) 974-7734</p> |

SERVICE DIRECTORY

ATB Financial
ALBERTA BEACH AGENCY
4824 - 50 Ave, Alberta Beach
Ph/Fax: (780) 924-2211
Mon to Thurs 10:00AM - 4:00PM
Friday 10:00AM - 5:00PM
Heidi Letendre

JIM HAY TRUCKING

- Screened Black Dirt
- Beach Sand
- Road Gravel • Fill Dirt
- Bobcat & Backhoe Available

(780) 220-5849

CPR St. Albert
Saving Your Mobile Life™
We Can Fix That In 90 Minutes



iPhones, iPods, iPads, Tablets, Computers - Apple, Samsung, Blackberry, LG, Sony and MORE
Lifetime Warranty Against Defects In Our Screens
Now over 480 Locations
#13 - 11 Bellerose Drive (Next to Grandis Bakery) **780-460-0277**

MARK MARTIN PFEIFFER
MASTER BRICKLAYER/MASON

Cell: 780-242-3308
Email: pfeiffer.mark@hotmail.com

- Brickwork • Stonework
- Rockwork • Parging
- Concrete Block Work
- Tile Work (all kinds)



Scerv Construction Ltd.

- Engineered Screw Piles
- Skidsteer Work
- Snow Removal
- Excavator Services
- Framing
- Insulating
- Drywall
- Taping
- Trenching
- Roofing
- Decks

Menko Helmus Cell: 780-305-3864
Email: m1988_10@hotmail.com
PO Box 4795, Barrhead, AB T7N 1A6

BRO-BUILT
Homes & Contracting Ltd

"We Pride Ourselves In Turning Handshakes Into Hugs"

www.brobuilthomes.com
Testimonials
Phone 780-940-6415

SERVICE DIRECTORY



COR Certified

- Oilfield
- Road Building
- Basements
- Dugouts
- Sand & Gravel

haytrucking@xplomet.ca
www.haytandc.com
Office: 967-5849 Cell: 818-5849



Phone: (780) 967-5486
Cell: (780) 906-7469
Fax: (780) 967-4961

Dennis Javorsky - Owner / Operator

For All Your Excavating Needs
Sand & Gravel Hauling • General Excavating
Septic Tanks & Cisterns • Site Prep & Clean Up
• Install & Repair of Water, Sewer, Power & Telephone Lines

ALL AROUND FENCING RENTALS
Fence Panels • Barricades
Installation by Collin Toilet Rentals



Whitcourt, AB
780.706.7978

CRUMBAUGH CUSTOM CARPENTRY & WOODWORK



DAN CRUMBAUGH
Red Seal Journeyman Carpenter

Box 1083 Onoway, AB T0E 1V0
780-232-6049
dancrumbaugh@yahoo.ca

CALIBRE DRILLING LTD
DRILLING AND SERVICING YOUR WATER WELL.

SPECIALISTS IN AIR & MUD ROTARY DRILLING

- * Water Well Drilling
- * Pressure Systems
- * Licensed Drillers
- * Geotechnical Drilling
- * Free Estimates
- * Pump Installations
- * Well Tests
- * Year Round Drilling
- * Cathodic Protection

Quality Workmanship Five Year Warranty
(780) 960-2992
BOX 4083 SPRUCE GROVE, AB T7X 3B3

R & S TOWING

FREE REMOVAL OF UNWANTED VEHICLES



967-2492



Super Sucker
septic holding tanks
septic field systems
sumps & traps

Super Soaker
cisterns, pools, hottubs, skating rinks
metered water delivery rates
continuous water / top up plans

Trevor Gardner
Phone/Text: 780.967.5552 - supersuckervac@gmail.com
RR1 Site 1 Comp 261, Onoway, AB T0E 1V0

Community VOICE
Finding You and Your Community's Voice!

THIS SPACE IS RESERVED FOR YOU!

DONALD N. GREENWAY
Chartered Accountant

Suite 205 Sunrise Professional Building
215 McLeod Avenue
Spruce Grove, AB
(Bus.) **962-6366**
(Fax) **962-3990**

ZEE BEST RENOVATIONS
Your Complete Line of Renovation Needs:

- Bathroom
- Basements
- Plumbing
- Tileworks
- Drywall & Taping
- Decks & Fencing
- Roofing
- Siding

FREE ESTIMATES
26 YEARS EXPERIENCE
INSURED | GREAT RATES

JOE LAWRENCE
MANAGER

BUS: 780-967-3898
CELL: 780-915-3348
FAX: 780-967-3798

2Bros
Custom Contracting Ltd.

Custom Framing • Concrete Floors • Shingling
Siding Soffit Fascia • Styrofoam Block System

Jeff **780-717-0520**



Local office in Darwell
Call us at **780.467.5534**

Experienced Legal Services in:
Family Law • Civil Litigation
Corporate Law • Wills & Estates
Plus Notarizing and Commissioning

www.croftlaw.ca



Manufacturers of
ONE PIECE SEPTIC & HOLDING TANKS

- * Water Cisterns
- * Field Systems
- * Pumps and Accessories
- * Sumps

DELIVERED TO YOUR SITE
1-800-661-3047
780-727-2702
PembinaConcrete.com

New Line of Concrete Statues, Fountains and Garden Ornaments.
BOX 123, Entwistle, T0E 0S0

SERVICE DIRECTORY



PaddlePlastics Ltd.
Mayerthorpe, AB

Box 67
Mayerthorpe, AB T0E 1N0


Ph: (780) **786-4408**
Fax: (780) 786-4466



Mo-Bil WASH SERVICES Ltd.

- Steam • Hot & Cold High Pressure Wash • Sewer Thaw & Flush
- Residential • Commercial - Oilfield

24 HOUR SERVICE
Onway Call (780) 991-9466



PREVAIL MAX
CELLULAR HOMEOSTASIS FORMULA

How do you want your **BLOOD** to look?

| Before PrevailMAX: | After PrevailMAX: |
|---------------------|-----------------------|
| poor circulation | better circulation |
| low energy | more vitality |
| brain fog | mental clarity |
| dehydration | cellular movement |
| decreased nutrients | nutrient assimilation |
| pH imbalance | balanced pH |
| poor endurance | optimal endurance |

(780) 907-8642 **VALENTUS**
www.ValentusTour.com/Ladybug



Blakeman Drilling Ltd.

Waterwell Drilling & Servicing
Pumps & Pressure Systems

SERVING LAC STE. ANNE & WEST PARKLAND FOR OVER 25 YEARS

Joe (780) 924-3024



THE CORING GUY

- Concrete Coring & Cutting • Concrete Demolition
- Electric or Diesel Slab Sawing • Core Drilling
- Skid Steer / Mini Excavator Operations

Commercial - Residential

Laurence Markwart Cell: (780) 220-6164
LAC STE. ANNE COUNTY Email: ljmarkwart@gmail.com



Tile Setting
Ceramic & Natural Slate

Kitchen & Bath - Backsplash & Surrounds
Fireplace Floors

"Serving Lac Ste. Anne and West Central Alberta Areas for over 25 years"

Thorsen Industries Call
Christian @ 403 728-3805



SANGUDO VETERINARY CLINIC

Box 581, 4916 - 52 Ave. Sangudo, AB. T0E 2A0

Dr. Ralf Sanders DVM

Ph: 780-785-2200
Fax: 780-785-2228
sangudovet@gmail.com

24 HOUR EMERGENCY SERVICE



H&P Kosik CONSTRUCTION Ltd.

- Road Building • Gravel • Sand • Dugouts
- Black Dirt • Clearing

No Job too small We do them all!

Harvey cell. 780-445-9010 ph. 780-892-3532
Box 145, Darwell, AB. T0E 0L0



Collin Toilet Rentals & Service

Your Portable Toilet Supplier for:

- Construction
- Commercial
- Oilfield
- Special Events

Whitecourt Dispatch 780.778.2448



standstone VACUUM SERVICES LTD.



Proudly Serving Lac Ste. Anne County
1-877-226-5008 780-924-2435 780-967-2118
www.standstonevac.ca or visit our facebook page

The service you need, from people you trust.

- Septic Services: Residential, Commercial
- Holding Tanks and Field Systems
- Effluent Pumps supplied & Installed
- Portable Toilets: Standard, Wheelchair Accessible, Cabana Cans
- Products: BioClean, Liquid Enzyme, Potty Treat

Great Rates & Reliable Service! Call us today!



ROY SHERWOOD
Master Electrician

Ph: 780-968-1425
Call: 780-908-2287
Fax: 780-968-2211

Email: suretechroy@gmail.com

2-53220 Rge Rd 21
Parkland County, AB
T7Y 0C5

**Control & Automation
Commissioning
Solar Sales & Service**

Industrial . Commercial . Residential



VILLAGE GLASS & MIRROR LTD.

- AUTO
- RESIDENTIAL
- COMMERCIAL GLASS & MIRROR PRODUCTS

5027 - 50 Avenue • Phone: 967-2127
PO Box 609, Onway, AB T0E 1V0



GROVE MACHINE & WELDING

Office: (780) 952-1772 Call: (780) 231-5405

You have an idea, we'll design it, build it and test it

- Fasteners • Welding • Fabrication • Repairs
- Mobile Welding • Plasma Cutting • Machining

35 South Avenue Spruce Grove, AB T7X 1B3
E-Mail: jim.reynar@grovemachinewelding.com
sales@grovemachinewelding.com

SERVICE DIRECTORY

ANOTHER RAINBOW SALE

RAINBOW LIQUIDATORS & AUCTIONS



Farm Sales, Equipment Sales, Estate Sales
BOOK YOUR SALE WITH US TODAY!
 Serving the Community since 1978

Ph: (780) 968-1000
 Stony Plain, AB 1-866-968-1001
www.rainbowauctions.ca

SMOOLE

- Construction & Septic Installation
- Environmental Wastewater Disposal
- Site Design & Evaluation
- Power, Water & Basement Excavation
- Trackhoe, Backhoe, Bobcat & Dump Truck

For All Your Excavation Needs



Call Dan 780-991-4484 Reid 780-909-0173

Jack's Auto Body

& 24 HR Towing

SPECIALIZING IN COLLISION REPAIR
GUARANTEED WORK • INSURANCE CLAIMS

CAA BOX 9 SITE 306 RR3, ONWAY, AB T0E 1V0
(780) 967-5850

OUR PLEDGE IS QUALITY

H&E UPHOLSTERY

FOR ALL YOUR UPHOLSTERY NEEDS

Convertible tops for cars and boats, custom car and boat interiors, 5th wheel trailer skirts, boat tarps, ATV seats, furniture, kitchen chairs, heavy equipment seats.




WWW.HANDE.CA
 For more information contact: kirk@hande.ca

4-485 South Ave. Spruce Grove
(780) 962-3048

POSTINGFIRST.com

FREE LOCAL CLASSIFIED ADS

Real Estate, Rentals, Vehicles, Pets, Jobs, Service Directory, Buy/Sell/Trade, Lawn & Garden, Garage Sales, Events, Local Places & Much More... Advertise for **FREE** Today!

Follow Us




THE MOST COMPLETE NUTRITIONAL SPRAYS ON THE PLANET



ORDER TODAY!
(780) 907-8642

www.Elaine1.com

Whole Heart Massage Therapy

- Maternity Massage
- Relaxation Massage
- Deep Tissue Massage
- Kinesio Taping

Jennilee Reber (780) 699-4667
 REGISTERED MASSAGE THERAPIST
 DIRECT BILLING TO INSURANCE
wholeheartmassage@hotmail.com
 54013 Range Road 30 #10
 Diamond Country Estates, Lac. Ste. Anne County

ONLINE BOOKING AT:
wholeheartmassagetherapy.clinicsense.com

Community VOICE

THIS SPACE IS RESERVED FOR YOU!

Pm Park Memorial Ltd.

Funeral Home & Crematorium

Fran Marion
 Licensed Funeral Director


Mayerthorpe: 780-786-2533
 Whitecourt: 780-779-2533

Serving Mayerthorpe, Whitecourt and area

Edmonton | Lamont | Mayerthorpe | Smoky Lake | Vegreville

SUMMERS DRILLING LTD.

Water well drilling and service
 Family owned Business Serving Alberta since 1917



Never run out of water again!

5 year workmanship warranty

Tired of hauling water? We can install a water well with a permanent water supply for as little as \$150/month OAC

3 Convenient ways to pay

- Visa
- Mastercard
- We now offer full financing

Stop in at our office 4405 - 50 Street, Stony Plain
 780-963-1282
admin@summersdrilling.com

GRANDE TIRE

5115 LAC STE. ANNE TRAIL N. ONWAY, AB T0E 1V0

Full Mechanical Services
Tire Sales & Repairs

BUS: (780) 967-3432
FAX: (780) 967-4816
contectire@xplomet.com

AMVIC LICENSED

Lanman Landscapes

YOUR ONE STOP FOR ALL TYPES OF LANDSCAPING

- Dangerous Tree Removal
- Yard Cleanup
- Full Landscaping Service

Experienced Bobcat Work

(780) 977-6586

TRUIS & ONWAY REGISTRIES

INSURANCE

Box 390, Onway, Alberta T0E 1V0
 Tel: 967-5270 Fax: 967-4303

OPEN 9-5 MONDAY - FRIDAY
 FIRST & LAST SATURDAY OF EACH MONTH 9-12* *excluding long weekends
 Registries Closed from 12:00 pm - 1:00 pm

ALL GENERAL REGISTRY SERVICES

Home - Auto - Farm - Life and Business

Very Competitive Rates & Convenient Payment Plans.

Clients first...Service Always!



PENDING
Lakefront Bungalow
 Very seldom you find a 1600 sq ft bung with covered patio and full with of house deck, 4 bedrooms, greenhouse, garden area, south exposure lakefront.
\$519,900



NEW!
Ross Haven Lakefront
 South Exposure Lakefront with an incredible lay in the sun front yard overlooking all of Lac Ste Anne – Enjoy the large kitchen with 180 degrees of windows surrounding your dining area. 2600 sq ft, Double Garage, Sauna plus much more.
\$529,900



WELCOME TO WEST COVE
PENDING
 View this year-round rustic two-bedroom bungalow comes on the market, over 1300 sq ft with sunroom. Vaulted ceilings, hardwood floors, oak kitchen, are just a few of the features you will come to enjoy in this home. Add a pie-shaped lot, parking for ten cars and a double garage. Park your boat today!
\$234,900



WATERS EDGE BUNGALOW
View is a Delight to The Eyes
 Sit back and enjoy this 1350 sq ft bung with guest house, double garage. Modernly crafted and perfectly situated. This is a rare opportunity to get this well priced bungalow in this sit and back and enjoy the community.
\$469,900



SOUTHVIEW LAKEFRONT
New Listing
 1600 Sq Ft Bungalow – This South Exposure Lakefront home with 10-foot ceilings, large deck facing Lake so you can enjoy the lake life. Features include a dream kitchen, 22 feet of granite, 3 bedrooms, plus den, large 28 x 32 attached heated garage with 14-foot ceilings. Quick possession is available.
\$374,900



NEW!
Sunset Point Bung
 This 1100 sq ft bungalow is move in ready with features including remodeled living and kitchen, enjoy the jacuzzi tub, double garage, close to the beach. \$30,000 in upgrades. Unheard value in this year-round home.
\$229,900



CASTLE ISLAND ESTATE
Immaculate Lakefront
 Newer 2 Story on Castle Island 2400 sq ft on a 16000 sq ft lakefront lot. The inside of the home delivers on maximizing the lake views from every room in the house. A dream kitchen that every home chef would love. Life is extraordinary behind the gate. Enjoy Castle Island.
\$929,900

We offer Free Evaluations and Buyer Consultations!



“ **News Flash – 1st time offered New Listing**
 3 acres, Town of Wabamun Lakefront, cleared site with 13 potential fully serviced lots with water and sewer for **\$164,900** ”

Call for Evaluation Today!
(780) 991-5107



• Find Every Property For Sale! • Free Property Evaluations!

EdmontonLakeProperty.com