

Serving: Carvel, Darwell, Duffield, Wabamun, Seba Beach, Gainford, Entwistle, Evansburg, Wildwood, Tomahawk, Spruce Grove, Stony Plain & Drayton Valley

September 3, 2019

75TH ANNIVERSARY AS THE ROYAL CANADIAN LEGION WILDWOOD BRANCH 149

Submitted by Charlotte Winters and Ellen Greenwood | Royal Canadian Legion Wildwood Branch 149

The Royal Canadian Legion Wildwood Br 149 was granted a charter by the Canadian Legion of the British Empire Service League on April 11, 1944. The first meetings were held in a small building where the present Rosewood Lodge is located.

Further research gives details

in the location of past Cenotaphs. In the early seventies a park east of the new community hall was developed and the original Cenotaph had the first perpetual gas light of any Legion Cenotaph in a village. Later a new Cenotaph was built and dedicated September 13th, 1975 with the help of a stone mason and Legion volunteers. The perpetual light was installed again, and with sidewalks and a special sign 'Wildwood Memorial Park'

was placed on the gate of the fenced property.

In January 1985 the RCL Wildwood Br 149 held its first meeting in the current building which was the old Paragon theatre. With the new community association building in 1991 the Cenotaph was removed and rebuilt again as the Honor Wall on the outside of the current Legion building.

Continued on Page 4

COMMUNITY INFORMATION AND REGISTRATION NIGHT

Submitted by Darwell District Recreation Association

The Darwell District Recreation Association (DDRA) is hosting a Community Information and Registration Night on Wednesday, September 11, 5:30 - 7:00 PM at Darwell Community Hall for organizations in the Darwell and surrounding area. Volunteer, not-for-profit and

small organizations, such as Girl Guides, 4-H, Cadets, Jujitsu, Public Library, etc., will be sharing information about their scheduled events for the upcoming fall/winter season.

Come have coffee with us ... find out what is happening in your neighborhood and register for these fun events or join a new club or organization.

If you participated in last year's event, you will have received an email inviting your organization to participate in this year's Community Information and Registration Night.

If you have not been contacted and would like to participate by having a display table and an opportunity to promote your organization, please contact Maria, Secretary, Darwell District Recreation Association at 780-892-3099. There is no cost to participating in our event.

All Precious JEWELLERS
"Your Spruce Grove Jewellery Store"
Goldsmith on Premises
 • Engraving • Clock & Watch Repairs
 • Jewellery Repairs • Custom Make-ups
 Jewellery Repairs Done On Site.
 Laser Welder Services Available.
 Toll Free: 1-877-962-4367
 PH: 780-960-4200 Fax: 780-960-4201
 Suite 102, 215 McLeod Avenue
 Spruce Grove, AB. T7X 0G2

SIGHTS AND ARMS
 New Open Mon-Sat 10AM-6PM
FALL SALE!
 New, Used & Consigned
 Firearm Safety & Reloading Courses
 Gunsmithing
 WWW.SIGHTSANDARMS.COM
 11 J Raybon Cr.
 St. Albert, Alberta 825-223-9863

PREVAIL MAX
 CELLULAR HOMEOSTASIS FORMULA
Nutritional Breakthrough For Your Cells
 LIVING TRIM WITH VALENTUS
 (780) 907-8642
 www.ValentusTour.com/Ladybug

SLIMROAST Optimum
 DARK ROAST COFFEE
 YOUR LOGICAL SOLUTION TO WEIGHT MANAGEMENT
 (780) 907-8642
 www.ValentusTour.com/Ladybug

View us ONLINE!
WWW.COM-VOICE.COM

Community VOICE

Keeping You and Your Community Informed

PUBLISHED WEEKLY (Zone 1 & 2)
AND BIWEEKLY (Zone 3)

E.J. Lewchuck & Associates Ltd.

45C South Ave. | Box 3595
Spruce Grove, AB T7X 3A8

SALES TEAM

Elaine
Ashley
Dani

TELEPHONE:

Classifieds 962-9229
Advertising 962-9228
Fax 962-1021

E-MAIL:

comvoice@telusplanet.net
sales@com-voice.com
news@com-voice.com

YELLOWHEAD COUNTY COUNCIL HIGHLIGHTS

Submitted by Yellowhead County

August 27, 2019

Intermunicipal Collaboration Framework Agreement with Edson – The Municipal Government Act (MGA) requires municipalities that have a common boundaries to create an Intermunicipal Collaboration Framework (ICF) within two

years of the coming into force of the section (agreement must be completed and adopted by April 2020). County council moved to approve the ICF agreement with the town of Edson. To view the ICF agreement, please visit our website and click on the CivicWeb tab.

Intermunicipal Collaboration Framework Agreement with Hinton – Council gave first

reading to the ICF agreement with the Town of Hinton. To view this ICF agreement, please visit our website and click on the CivicWeb tab.

The next Council Meeting is September 10, 2019. The next Governance & Priorities Committee Meeting is September 17, 2019. All meetings start at 9:30 a.m. in the Council Chambers.

JUST LISTED!

- 2 Bedroom, 1 bath bungalow
- 1 Block to Lake
- Large Lot

\$169,000!!




Cameron Fisk **ROYAL LEPAGE**
REALTOR®
780-996-9390
Helping you is what we do.
NORALTA REAL ESTATE

Like Us On facebook



FACEBOOK.COM/
COMMUNITY
VOICE
NEWSPAPER

Yellowhead Central
Santas Anonymous

SEPTEMBER 10, 2019
Annual General Meeting at 6:00PM
Regular Meeting to follow at 7:00PM
Evansburg Arena
Everyone Welcome!



ECO
CONTRACTING
SERVICES

ecofirst.ca

LANDSCAPING
EARTHWORKS
EROSION CONTROL
SHORELINE RESTORATION

Call or Text
RICHARD DEIB
780.217.3534
richard@ecofirst.ca

Serving The Community Since 1995

School starts September 3rd!

Back To School



As a friendly reminder, here are some bus tips for parents:

- ~ Remind your children to wait for the bus to come to a complete stop before boarding the bus
- ~ Have your children arrive 3 to 5 minutes prior to their designated bus pick-up location
- ~ Dress your children for the appropriate weather
- ~ Remember to sign-up for bus status updates on our website

GYPSD schools offer world-class public education. Visit gypsd.ca or [facebook.com/gypsd](https://www.facebook.com/gypsd) to learn more.

Grande Yellowhead
Public School Division

DONNY LEE KEEPING IT REAL

Alberta Country Artist Donny Lee, Will Be Kicking Up Some Tunes At The Max In Drayton Valley September 20th!

Submitted by Donny Lee Music

Donny is looking forward to getting up close and personal with the audience in a concert unlike any other, where the vibe of the audience determines the songs of the evening.

"I really enjoy a theatre setting because it gives us an opportunity to breath. It is not just about seeing how many songs we can get in during a performance."

He said the band will be working off a bit of a guideline for the show but admits that 99 per cent of the time that gets thrown to the wayside and they end up rolling with whatever the crowd is feeling.

"The minute you engage with the crowd and start to get a feel for what is working for them and what is not working for them it is very easy to just flip the switch, especially when it comes to the cover songs.

"If they are digging old-school traditional country music—George Jones, Johnny Cash, Merle Haggard, Waylon Jennings, then we are going down that road. But if they get a little pep in their step with Alabama, Garth Brooks, Alan Jackson or George Strait then that is where we are going. Wherever I feel the crowd is going we are going to be quick to go there."

Donny said that his gigs in Nashville have taught him to be versatile and to change at a moments notice. He indicated that playing to suit the crowd mixes things up for, not only the crowd they are performing for, but for them as well.

"I love the art of entertaining people. My agenda by the end of the show is to make sure that every person in the crowd feels like I notice they are there, share a moment with them and give them an experience they won't forget.

"People remember the moment you left them not the song that you sang."

The Fort Saskatchewan artist introduced his first release to Ca-

nadian Country radio in March with "Country Way Of Life" off of his self-titled album *Who I Am*, that particular song speaks to a slower pace of life lived by an older generation who worked hard and enjoyed the simple things. He has his 5th release out to Canadian radio and it is charting in the top 100. He has played the music scene in Nashville the for the past five years and has become a very popular perform-

er. He has been nominated the past two years for the ACMA Male Artist of the year category.

Besides an all around entertainer that obviously has a passion for what he does he and wife Shauna are also strong advocates of giving back to the communities they live and play in.

"Shauna and I have always felt really connected with the food bank, so when we go to these

cities or towns we chose the local food bank as the beneficiary of moneys we donate a portion of ticket sales to.

"We use our platform to try and create awareness and help out the local food bank.

This down-home country boy will be bringing joy to the stage and some help to the hungry with his show and promises to ensure everyone has a great night of country music.

ENTERTAINER, PERFORMER, SHOWMAN, SINGER AND SONGWRITER,
PLUS 2017 & 2018 ALBERTA COUNTRY MUSIC NOMINEE

DONNY LEE

AND HIS NASHVILLE BAND

Hits by Haggard, Cash, Jones and many more!

Nashville comes to Drayton Valley for one night only!

Tickets only \$45!!

Donny Lee comes to Drayton Valley with his popular Nashville band and he's hot off the heels of his new album. He'll be playing the most requested country hits from his Nashville show along with some of his own originals. Don't miss a fun and exciting night of great music with Donny Lee and his band

FRIDAY, SEPT 20 • 7:30 PM
Bar opens at 6:30 pm Show starts at 7:30 pm

The Max Events Centre, Drayton Valley
Tickets on sale at www.ticketpro.ca
Ticketpro 1-888-655-9090

WWW.DONNYLEEMUSIC.COM

75th Anniversary as the Royal Canadian Legion Wildwood Branch 149

Continued from Page 1

In 2012 on the property across the street from the Legion, to the west, Yellowhead County had given this derelict property a 99-year lease to the RCL Wildwood Br 149 to be transformed into the Veterans and Community Park you see today.

This leads us to celebrating our 75th Anniversary this year as the Royal Canadian Legion Wildwood Br 149. On September 13, we will be hosting a BBQ steak supper at

6:00 pm to celebrate receiving our charter, as of April 11, 1944. We invite everyone to come out to help us celebrate.

Another point of interest, the Wildwood Agricultural Society celebrated their 80th Anniversary this year. Also the Wildwood Ladies Aid is celebrating their 90th Anniversary this year. Wildwood Seniors Club had their 50th Anniversary in 2017. Wildwood Community Association 1982, has operated the Community Hall for 37

years. The first community group started in 1923 but has had several name change over the years. All these years add up to over 332 plus years of Volunteerism in Wildwood. We think the achievements of these groups and their contributions to the community over the years are AWESOME. These are only a few of the groups that have contributed volunteer hours.

Presidents Message: Our volunteers made a wonderful float which was well received as we drove

along the parade route. Lots of cheers and claps, thank you Wildwood. Fall, unfortunately is nearing and our fall elections are closing in. As General members we need your support to ensure the Wildwood Legion maintains its memberships.

As a part of our commitment to helping the area communities our RCL Wildwood Br 149 Community Connector bus is an integral part of continuing to provide a service to seniors and other groups. Zenobia Mocarski is the Community Connector bus coordinator. Her phone number is 780-727-2207 and Zenobia welcomes your calls on any and all bookings you may have for the Community Connector bus.

The bottle depot is open Tuesday through Friday 11:00 am to 5:00 pm. and Saturdays 10:00 am to 5:00 pm. We appreciate advance notice for large deposits, like a bottle drive, so we can serve you better.

We are open at 11:00 am for lunch on Thursdays with Elnora Wiebe cooking up different items each week. Crib players are welcome for Thursday afternoon at 1:00 pm for a friendly (or not so friendly) game of crib.

We are open Friday afternoons from 1:00 pm till 5:30 pm or later.

Every Saturday we have a meat draw, basket draw and a 50-50 draw, with ticket sales starting at 2:30 pm. Our meat draws have three meats and as always, bacon and/or sausage with eggs. Everyone is welcome to attend and try their luck. Meat draws have been well attended during the summer. Thank-you!

You do not have to be a member to attend any of our meat draws, suppers or lunches or just drop in for coffee and a visit. We appreciate your support of our Legion.

Next meeting is September 16, 2019 with the Executive meeting at 6:00 pm and the General meeting starting at 7:00 pm. Uniform dress please. First call for elections. Members please come and support your volunteer Executive. Do you want to join the legion, new members are welcome.

NOTICE OF PUBLIC HEARING

In accordance with the requirements of Section 606 of the Municipal Government Act, as amended, the Council of Parkland County has scheduled a Public Hearing regarding the proposed adoption of the following Bylaw:

Bylaw: 2019-09	Date: Sept 24, 2019	Time: 9:30 am	Location: Parkland County Council Chambers 53109A Hwy 779, Parkland County, AB
-----------------------	----------------------------	----------------------	---

Proposed Bylaw 2019-09 Parkland County and Summer Village of Seba Beach Intermunicipal Development Plan

An Intermunicipal Development Plan (IDP) is a statutory document prepared with two (or more) municipalities that share a common border, and where at least one member is not a part of a growth management region. An IDP ensures future development and land use policy are coordinated between municipalities. Parkland County and the Summer Village of Seba Beach, under the direction of Section 631 of the Modernized Municipal Government Act, have agreed to jointly engage in an IDP. This plan has been developed to reduce the possibility of any potential conflicts between the municipalities and to ensure the relationship remains strong, transparent and collaborative in the future.

Hearing Procedure

This is a formal Public Hearing and Council is prepared to hear and receive formal submissions and presentations (verbal or written) from those who wish to speak to the proposed Bylaw. Written submissions or presentations may either be submitted in advance to Planning & Development by **4:00 P.M. on September 13, 2019**, or submitted at the commencement of the Public Hearing on September 24, 2019.

Anyone wishing to make a verbal presentation to Council must notify Planning & Development Services in advance of the Public Hearing by **4:00 P.M., on September 13, 2019**. Verbal presentations at the Public Hearing will be limited to a maximum of 10 minutes. Anyone wishing to make a verbal presentation who has not made prior arrangements may be allocated a time at the commencement of the Public Hearing. Council advises that this is your last opportunity to comment on the proposed Bylaw as Council is unable to receive further submissions after the Public Hearing is closed.

Copies of Proposed Land Use Bylaw Amendment 2019-01

Copies of the proposed IDP are available free of charge during regular business hours (8:30 A.M. to 4:30 P.M., Monday to Friday) from Planning & Development Services at Parkland County Centre. They are also available on the County's website at <https://www.parklandcounty.com/en/county-office/inter-municipal-planning.aspx>. If you have any questions please call 780-968-8888 and dial extension 8393 for Martin Frigo, Manager, Long Range Policy Planning, Planning and Development Services.

The personal information you provide will be used for the purpose of the items described above and is collected under the authority of Section 33 (c) of the Freedom of Information and Protection of Privacy (FOIP) Act. If you have any questions about the collection, use, and disclosure of this information, please contact the FOIP Coordinator at Parkland County, 53109A HWY 779, Parkland County, Alberta T7Z 1R1 (780-968-3229) or email foip@parklandcounty.com

ALBERTA RCMP REMIND CITIZENS OF THE GOOD SAMARITAN DRUG OVERDOSE ACT

Submitted by Alberta RCMP

Edmonton – From January 2016 to December 2018, 1,971 deaths in the province of Alberta have been attributed to apparent opioid-related overdoses. Alberta RCMP were dispatched to several of those incidents and determined that, in some cases, it is believed that bystanders, friends or family members were hesitant to call emergency services for assistance due to concerns of potential legal repercussions. Every overdose death is tragic, and many of these potential tragedies can be avoided if people who witness overdose situations seek emergency help promptly.

To encourage people to seek potentially life-saving emergency help in an overdose situation,

the RCMP, in collaboration with Health Canada and the Chief Medical Officer of Health of Alberta, want to remind residents of the Good Samaritan Drug Overdose Act, which provides some legal protections for people who experience or witness an overdose and call 911 or their local emergency number for help.

Legal protection granted by the Act

The Act is meant to encourage people to seek emergency help during an overdose by helping to reduce fear of seeking police or medical assistance. It applies to anyone seeking emergency assistance during an overdose, including the person experiencing an overdose. The Act protects the person who seeks help, whether they stay or leave from the overdose scene, as well as

anyone else who is at the scene when help arrives.

The Act can protect you from:

- Charges for possession of a controlled substance (i.e. drugs) under section 4(1) of the Controlled Drugs and Substances Act

- Consequences of breach of conditions regarding simple possession of controlled substances (i.e. drugs) in: pre-trial release, probation orders, conditional sentences and parole.

It is important to note that the Act does not provide legal protection against more serious offences, such as: production and trafficking of controlled substances, and all other crimes not outlined within the Act.

How to help save a life

Drug overdoses could happen to someone close to you –

a friend, a family member, or someone nearby. Staying at the scene is important to help save the life of the person experiencing an overdose.

Witnesses should call for emergency help and render whatever assistance they can, including administering naloxone – a fast-acting drug that temporarily reverses the effects of opioid overdoses – if it is available, providing first aid, including rescue breathing (CPR) if necessary until help arrives, and staying calm and reassuring the person that help is on the way.

The Good Samaritan Drug Overdose Act is part of the Government of Canada's comprehensive approach to addressing the opioid crisis.

You can learn more at Canada.ca/Opioids.

FREE STORAGE WITH PREPAID PACKAGES



- WINTERIZE
- SHRINK-WRAP
- STORAGE
- SPRING RUN-UP

780.924.3255

www.ECKOMARINE.COM ALBERTA BEACH




JOKE OF THE WEEK

Miss Hewitt, a kindergarten teacher, was chaperoning recess when Philip came up to her and said that he had found a frog. Miss Hewitt asked if the frog was alive or dead. Philip, aged 6, declared that it was dead. Miss Hewitt enquired as to how he could be so sure that it was dead. Philip replied, 'I pissed in its ear.' Flabbergasted, Miss Hewitt demanded, 'You what, Philip Brown?' Philip added, 'You know, I went to his ear and said, 'PSST!' and it didn't move. So it must be dead.'

Town & Country Funeral Services

Wabamun
780-983-2749

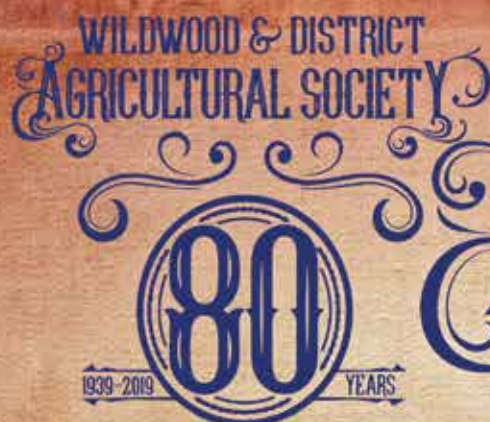
Evansburg
780-727-2791

† Cemetery Monument
Sales & Installation

† Traditional Burial &
Funeral Services

† Pre-need Funeral
Packages

† Crematorium &
Memorial Services



THANK YOU TO THE 80TH ANNIVERSARY & ANNUAL FAIR SPONSORS

Jim Robinson
 Eva Schiller
 Woodland Lumber
 Carl Leakvold
 Schatz Simmentals
 Ohnysty Family
 Lobstick River Resort
 Jennifer & Cory Benson
 Jeff's Plumbing & Heating
 Elm-Car Enterprises
 (E & C Riehl)
 John & Lorna Mochniuk
 Wildwood Senior Citizens
 Caliber Farrier Service
 Patricia Folsy
 Judy Robinson
 Clara Qualizza
 Del Broderson
 Donna Powell
 Wildwood Motor Sports
 Association
 Georgina Caves
 Gwen Broderson
 Eleanor Nero
 Evansburg Family Clothing
 Frank Bahrynowski Trucking
 Wild Ventures Contracting
 Evansburg Pharmacy
 Duke Cattle Company
 Violet Gardens &
 Greenhouse
 Dave Reid Trucking Ltd
 Greenthumb Greenhouse
 Woodland Lumber
 Lobstick Garden Club
 Margaret Ditner
 Lucy Zinyk

Schendel Ranch
 Jennie's Ice Cream Mobile
 Wildwood Ladies Aid
 Wilma Swinkels
 7R Farms (E&C Russell)
 Wildrose Embroidery
 Anna Hutchison
 Claire's V & S
 Swinkels Dairy LTD
 Shelby Rae Anderson
 Wildwood School
 A Special Touch
 Ravine Community Assoc.
 Giezen Logging
 Jane's Hair Care
 Alice Kalinowski
 Lone Pine Ranch B & B & B
 Wildwood Successful
 Kids & Family
 Yellowhead County
 Wildwood Bigway
 All Choice Rentals
 Crisco
 Legacy Petroleum Ltd
 Robin Hood Flour
 Mayerthorpe Farm
 & Ranch Store
 Bernardin of Canada
 Barsi Enterprises Ltd
 UFA (Corporate)
 The Royal Legion Ladies
 Auxiliary #196
 Ivomec
 Lobstick River Foods 2014
 Martin Deerline Mayerthorpe
 P.A.R.S.
 Boe & Dorothy Erickson
 Gina's Sugar Shack

Leather & Lace Welding
 D & L Rehn Contracting LTD
 Spruce Grove Feeds
 Barry & Connie Fahrion
 Animal Damage Control
 Chrysti Riehl
 Edson Vet Clinic
 Wildwood Hotel
 Boot Shop & Saddlery
 (Edson)
 Wildwood Royal Canadian
 Legion #149
 Wild Venture Game Farm
 ATB Financial WW
 Frantic Ventures
 Cecile & Marg Russell
 Lone Pine Ranch
 B & B & B Girls
 SMYL
 Dunbest Elk Ranch
 King Lumber MacKay LTD
 Wildwood Bronc Bustin
 Servus Credit Union
 Denver Hoff
 S.A.S Accounting &
 Consulting
 Mary Kichton
 Shirley (Getson) Vankosky
 E & A Mocarski
 Wildwood Community
 Assoc.
 B & W Farm
 Susan Brabant
 Steinbusch Family
 Ken Carlstrom
 Shirley's Country Clipping
 Brodersen Ranch

Is your community affected by construction?

Find out at TransMountain.com



As construction of the Trans Mountain Expansion Project progresses, we want you to be informed about potential activity in your neighbourhood so you can plan accordingly. On our website, you can view an interactive map of construction areas, sign up for notifications, track what's happening along the route and much more.

As always, safety is our number one priority, every metre of the way.

info@transmountain.com | 1.866.514.6700 | TransMountain.com



Committed to safety since 1953.

13th Annual Fallis SHOW & SHINE

SEPTEMBER 7, 2019

(NORTH OF HWY. 16 ON RR. 52)

FALLIS COMMUNITY HALL

10:00	Registration Open
11:00	Show Starts/Concession Opens
11:30-1:30	Kid's Model Race Car Clinic Face Painting by Tobi Kelly EQUUS Emerging Artist – 1st Set
12:00	Crowning of King and Queen Beer Saloon in the Hall
12:30	EQUUS Emerging Artist – 2nd Set
1:30-2:00	Kid's Car Races
2:00	EQUUS Emerging Artist – 3rd Set
3:00	Prizes and 50/50 Awarded
3:30	EQUUS Emerging Artist – 4th Set
4:30	Beer Saloon Closes

Live Music powered by **EQUUS**

EQUUS is sponsoring the
Emerging Artist Stage
featuring:

Ethan Redmond
Mike Hanlon
2 Boots Band and
Shantelle Chaytor



INFO: YVONNE 780-797-3088
OR LAURENCE 780-797-3123

THESE PAGES ARE PROUDLY SPONSORED BY THE FOLLOWING LOCAL BUSINESSES



Trades
Automotive &
Welding Ltd.
892-4500



Wabamun
Hotel

892-2224



Wabamun
Lakeside Liquor

892-3463



Fallis Country
Store & Liquor
Outlet
892-3150



Wabamun
Lake Inn

892-2424



A.T.B. Financial
-Wabamun Br.

892-7927



Ray's Market

892-2230



Shoreside
Inn & Suites

892-4773



Wabamun IDA
Pharmacy

892-2278



Gossamer
Treasures
Gallery & Gift Shop
892-2169



Wabamun
Marina
& RV Park
892-3008



GMP Ontrack
-Excavation,
Brushing
719-2687



Wabamun
Car Wash &
Laundromat
7 days a week
8am-9pm



Derby's
Lakeview
General Store
797-3838



Kokanee Springs
RV Park &
Driving Range
797-3058



Entwistle
Concrete

727-3525



Beans & Buds
-Flower/Coffee
Shop
727-3996



Metrix
Group LLP
-Chartered Professional
Accountants
727-2017



Pinnacle
Renewable
Energy Inc. 1-877-
737-4344



The
Dog Ranch

727-2652



Tri-Lakes
Services Ltd.
1-877-
727-3939

GYPSPD Kicks Off Another Great Year of Learning!

The Board of Trustees from Grande Yellowhead Public School Division (GYPSPD) hosted the second annual Kick-Off event for over 600 staff in Edson on August 28, 2019. Staff from across the division enjoyed a full day of professional development well as an engaging keynote by motivational speaker, Jody Urquhart. As an important part of the division's employee recognition program, the board also recognized almost 100 employees who have served GYPSPD from five to 40 years of continuous long service commitment to public education.

Board Chair Brenda Rosadiuk shared the importance of bringing all of the division's staff together to welcome back returning and new staff as well as offer meaningful PD to kickoff another year of successful learning. "Our board is committed to teaching and leadership excellence at all levels, thus it is important that we support staff with opportunities to keep them continually and actively engaged in their own learning throughout their career." GYPSPD staff who were willing to share their knowledge and best practices with others led the majority of the workshops.

Superintendent Carolyn Lewis shared her excitement about starting a new school year especially as the division has improved its financial position and division schools' Accountability Pillar results have increased significantly. The Superintendent spoke about the importance of literacy and numeracy as well as hope and purpose.

Kick-Off events center on GYPSPD's theme One Vision, One Team, One Goal: Literacy across the Curriculum. Superintendent of Schools, Carolyn Lewis, shared, "Over the last two years, there has been a strong emphasis on building teacher capacity regarding literacy curriculum which has resulted in significant student growth. Providing educators with innovative tools and supporting them to effectively develop their skills has a direct impact on student achievement. However, these resources and their impact on student achievement is only as effective as the PD provided to the educators using them. There are great things happening in classrooms throughout our division; I applaud our staff in stepping up to share their best practices with each other, and nurture the lifelong learning model of successful educators."

Workshops on new technology tools, transportation updates, and refreshers on various subjects outside of the classroom were also available to address the learning needs of non-school based staff including bus drivers, central division staff, and facility services staff.

The Board of Trustees would like to thank the local dignitaries: MP Jim Egliniski, MLA Martin Long, Deputy Mayor Janet Wilkinson, Mayor Gerald Soroka, Councillor Trevor Bevan and CAO Mike Derricott, for joining GYPSPD for the 2019 Kick-Off event. In addition, special thanks go to Elder Dorothy Courterreille, who began the day of celebration and learning with a blessing.



Grande Yellowhead
Public School Division
Education Services Centre
3656 1st Avenue, Edson AB T7E 1S8
Phone (780) 723.4471 or
Toll Free at 1 (800) 723.2564

Visit us at www.gypsd.ca or like us on [facebook.com/gypsd](https://www.facebook.com/gypsd)

REGISTER ONLINE AT ONE OF
OUR GREAT SCHOOLS!

Evansview School (JK-6), Evansburg
Principal: James Randall.....780.727.3623

Grand Trunk High School (7-12), Evansburg
Principal: Heidi Zadderey.....780.727.3925

Nilon Central School (JK-9), Nilon Junction
Principal: Amanda Gilmore.....780.795.3782

**The Learning Connection (1-12) Outreach, Online,
In-Home, Blended & Home Education Programs**
Principal: Kevin Bissoon.....780.727.2783

Wildwood School (JK-6), Wildwood
Principal: James Randall.....780.325.3858



PARKLAND RCMP MAKE ARRESTS FOR BREAK AND ENTER

Submitted by Parkland RCMP

Stony Plain, Alta. - On Aug. 26, 2019 at 12:00 a.m., Parkland RCMP responded to the report of a home invasion that occurred at a rural residence in the area north of Hwy 16 on Range Road 264.

The female home owner heard someone trying to break down the garage door. She contacted her husband who arrived in time to observe several individuals entering a car that was parked in his driveway. When confronted, the car fled the scene. The home owner was following the suspects in his vehicle when one of the car's occupants proceeded to shoot at him. The home owner immediately stopped and called and updated police. No one was injured.

The RCMP located the car. The occupants of the car had

fled the scene on foot. With the assistance of Edmonton Police Services Helicopter Air One and RCMP Police Dog Services (PDS), police were able to locate all five suspects in the bush near the car. The gun safe that was stolen from the residence and a shot gun were located in the car. The car and the license plate were determined to be stolen out of Edmonton. The five suspects were arrested without incident.

RCMP PDS returned in the daylight to the area where the subjects had been apprehended and located the stolen rifles and a quantity of drugs believed to be methamphetamine.

Elliot Steinhauer (21) of Saddle Lake, Chantel Cardinal (24) and Dorian Hunter (18) of Edmonton, and James Auigbelle (25) and Aaron Auigbelle (34) of Morinville are facing 14 charges including:

- Pointing a firearm

- Carrying a concealed weapon

- Break and enter with intent – residence

- Assault with weapon

- Possession of property obtained for the purpose of trafficking over \$5000

- Possession of methamphetamine

Elliot Steinhauer has additional charges of:

- Weapons possession contrary to order and fail to surrender authorization

- Fail to comply with probation order

Aaron Auigbelle has additional charges of:

- Weapons possession contrary to order and fail to surrender authorization (x2)

All five were held for justice interim hearings. Dorian Hunter and Chantel Cardinal were released with a recognizance. Their first appearance is on Aug.

28, 2019 at the Stony Plain Provincial Court. Elliot Steinhauer, Aaron Auigbelle and James Auigbelle were remanded into custody and will be appearing via CCTV on Aug. 28, 2019 at the Stony Plain Provincial Court.

The RCMP would like to remind everyone not to put their own safety at risk when providing assistance. Call 911 immediately and try to provide as many details as possible.

If you have any information in relation to this investigation, please contact Parkland RCMP at 780-968-7267. If you wish to remain anonymous, you can contact Crime Stoppers at 1-800-222-8477 (TIPS), online at www.P3Tips.com or by using the "P3 Tips" app available through the Apple App or Google Play Store.

GROVE HEARING CLINIC

960-2960

1-866-960-2960

**Hear what
you've been
missing...**

**Senior
Discounts**



**Full
Service &
Repair**

**Full
Hearing
Assessments**

HOURS OF OPERATION: 9am – 5pm Weekdays

3rd party billing (AADL, WCB, DVA, FCH) • Personal 0% Financing if Needed

For The Latest Technology In Hearing Aids & Assisted Living Device Stop By & See Dawn

#220-70 McLeod Ave - Westland Market Mall, Spruce Grove

*It's time to fall in love with
your home all over again!*

fall HOME RENO GUIDE



SEPTEMBER 2019



Fall HOME RENO GUIDE



THINGS TO CONSIDER BEFORE WARMING UP NEXT TO YOUR FIRST FIRE THIS WINTER

A warm fire can make even the coldest winter day more enjoyable. Fireplaces may not get much use in spring or summer, but come late fall and throughout the winter, the fireplace can be a great place for families to gather.

Before fireplace season hits full swing, homeowners might want to brush up on a few fireplace facts so they can safely enjoy nights spent sitting by the crackling flames.

The Chimney Safety Institute of America advises homeowners with fireplaces to hire a CSIA-certified chimney sweep to clean their fireplaces. After a lengthy period of non-use, various issues could be affecting the chimney, many of which might not be noticeable to an untrained eye. Professional, certified chimney sweeps have extensive knowledge of fireplaces,

making them valuable resources who can let homeowners know if any safety issues developed since fireplaces were last used. The National Protection Agency recommends that chimneys be swept at least once per year.

A full inspection of the chimney might be in order as well. Chimney service technicians will conduct thorough examinations of readily accessible portions of the chimney exterior and interior and accessible portions of the appliance and the chimney connection. The CSIA recommends that homeowners who plan to use their chimneys as they have in the past request a Level 1 inspection, which will examine the soundness of the chimney structure and flue as well as the basic appliance installation and connections. Technicians also

will verify if the chimney is free of obstruction and combustible deposits.

Homeowners also should inspect their chimney dampers before lighting their first fires of the season. Dampers should open and close smoothly. If not, a service technician can help fix or replace the damper.

Firewood is another thing homeowners must consider before lighting their first fires of the season. The CSIA says that well-seasoned firewood works best, noting that wood that is not well-seasoned will produce more smoke than heat. In addition, the home improvement resource This Old House recommends using dense wood that's been split and stored in a high and dry place for at least six months. Oak is an example of dense wood

that, when stored properly, can make for an enjoyable fireplace experience. Avoid softwoods like pine. Pine can produce a lot of creosote, which is a byproduct of wood combustion. Creosote is highly flammable, and as it builds up in a chimney, the risk for a chimney fire increases. Choosing the right wood, making sure it's well-seasoned and having a chimney professionally cleaned can reduce the risk of a creosote-related chimney fire. A Level 1 inspection should determine if there are potentially dangerous levels of creosote deposits in the chimney.

Before nestling up to a fireplace this winter, homeowners should consider a host of factors and safety measures to ensure their fireplaces are safe and ready for the season ahead.

B.W. EAVESTROUGHING

Specializing in:

- ⇒ Residential 5"
- ⇒ Commercial 6"
- ⇒ Soffit
- ⇒ Gutter Clean System
- ⇒ Free Estimates
- ⇒ Fascia

BRAD (780) 699-1880

MCLEOD Home building centre

Let us load you at the largest Lumber Yard in Parkland County
962-2575
 Call Toll Free: 1-800-343-2988
 35 South Ave, Spruce Grove

- Renovation & new build experts • Superior quality lumber
- Complete home packages • 3D Estimating Program
- Engineered roofs & floors • Farm Buildings • Garage packages
- Windows & doors • Custom decks & fence packages
- Flooring & kitchens • Bathrooms • Ceramic Tiles
- Concrete & landscaping • Electrical supplies
- Fasteners • Woodstoves

Service • Selection • Advice • Special Orders • Delivery

ECONOMY ASPHALT DRIVEWAYS

- Paving • Asphalt or Concrete • Repairs
- Parapets • Seal Coating • Crack Filling
- Snow Removal • Sanding • Rock Chip Sales

CHARLES MACDONALD
PH: 780-962-5581 CELL: 780-777-0914
FAX: 780-962-9146

BEST CISTERN SEPTIC SOLUTIONS

Family run, local business, we care!

Cistern and Septic Inspection, Installation and Repair!

Septic planning, design, installation by government certified installer(s)

New Installs Available. Reasonable Rates.

Let Us Handle the Dirty Work
780-668-4306
best-cistern-septic-solutions.com



PREVENT GROWTH OF MOLD/MILDEW IN COLDER MONTHS

Mold and mildew are not only unsightly, but unhealthy. These fungi grow readily in damp areas and are found in the air breathed both indoors and outside. If left unaddressed, mold and mildew can threaten the health of a home's inhabitants.

Mildew is a type of mold that remains relatively flush with the surface it grows on. Other molds can grow puffy in appearance. Molds serve the purpose of destroying organic materials, but in high amounts, these microorganisms can cause respiratory problems, sinus congestion, throat irritation, headaches, and other issues, particularly when mold grows unchecked indoors, says Better Homes and Gardens. As a result, it is essential to ad-

dress mold before it becomes problematic.

According to Polygon, a drying technology and temporary climate solutions company, the wet season in winter is when molds often grow and expand. Mold can break down the integrity and strength of the surfaces where it grows.

Homeowners can employ the following strategies to prevent mold growth.

- Keep all surfaces clean, using proper cleaning products. Diluted bleach solutions are highly effective at killing microscopic fungi, viruses and bacteria.

- Reduce moisture and humidity by ensuring sufficient air circulation in rooms, partic-

ularly bathrooms and kitchens. An exhaust fan will help remove moisture quickly.

- Fabrics covered in mildew that can be laundered should be carefully removed and washed in chlorine bleach and hot water. An oxygen bleach product also can be effective.

- Invest in a dehumidifier that can reduce moisture in the home in problem areas, such as damp basements or garages.

- Fix plumbing leaks as soon as possible.

- Remove damp leaves and snow from areas around the foundation of the home. Ensure that gutters and downspouts are clear of debris and can shuttle water away from the house effectively.

- Replace cracked or defective mortar in basements.

- Make sure all seals on windows and doors are not compromised and are in good working condition.

- Be sure an HVAC inline humidifier is adjusted to the right setting and isn't pumping too much moisture into the heated air; otherwise, the added humidity can contribute to mold.

- If there is a flood or water infiltrates a home in other ways, hire a professional service to help clean and dry the home effectively.

Mold and mildew are problematic, but with diligence they can be kept at bay.

Top Quality Flooring Products

- Carpet • Vinyl • Lino
- Hardwoods • Laminates
- Vinyl Tiles • Porcelain
- Floor and Wall Tiles
- Stone Tiles
- Ditra and Kerdi
- Shower Installs

Professional Installers
Free Estimates

Quality You Can See.
Comfort You Can Feel.
Value You Can Appreciate.

Opening Specials

Soft Touch Carpet installed for **\$3.25/sq ft**
in 6 colors with under pad

3Mil Vinyl Planks installed for **\$4.49/sq ft**
with 20 year wear layer water proof 8 colors

White Marble Floor Tiles **50% OFF**
polished 12x24

Pro Finish Flooring Ltd

#6 - 20 McLeod Avenue | Spruce Grove, Alberta T7X 1V4
TEL: 587-286-2626 | pro-finishflooring@hotmail.com

HOURS: Monday to Friday 9:00AM-5:30PM Saturday 9:00AM-4:30PM



TOP & DROP TREE SERVICES

Family owned and operated since 1991

780-924-2014



Blakeman Drilling Ltd.

Waterwell Drilling & Servicing
Pumps & Pressure Systems

Petwa Water Conditioning

(780) 918-1916

joe@blakemandrilling.com

Family Owned & Operated



WHY HOMEOWNERS SHOULD ADD MORE EXTERIOR LIGHT TO THEIR PROPERTIES

Homeowners are increasingly realizing the benefits of improving the exteriors of their home, which can be just as valuable as improving the interior spaces. As individuals design picturesque garden beds and cultivate lavish lawns or revamp exteriors with architectural features, they probably want to spotlight these improvements. This is where exterior lighting can be put to great use.

Exterior illumination can cast a glow on various features, but there are many other reasons to increase lighting around the exterior of a home.

- **Safety:** Trips and falls can occur at night when trying to traverse walkways and landscapes

in the dark, as it can be difficult to see rocks, stairs and uneven pavement. Outdoor lighting can illuminate pathways, entryways and other areas for safer access for homeowners and their guests.

- **Extend outdoor entertaining:** Ample lighting can increase the amount of time one can use outdoor spaces and make them the perfect gathering spot. As autumn arrives, days become shorter. However, patios, porches and more can get extended use with lighting.

- **Safeguard security:** A well-lit home may be less likely to be targeted by burglars than one swathed in darkness and shadows. Lights can remain on all

evening or be motion-triggered. Setting lights on timers also ensures that the home is illuminated whether residents are home or not.

- **Create drama:** Landscape lighting designers can establish focal points around the landscape and highlight the best features of a property. Uplighting in trees, silhouetting techniques to showcase plants and spotlights to show off architectural features are all options for homeowners to consider.

- **Add value:** The experts at Parker Homescape, a landscape design service, say that exterior lighting can add roughly 30 percent to the value of a home. They also indicate that 50 percent of

all home buyers say that outdoor lighting is important when buying a home. If current residents are thinking about selling, now may be the time to invest in exterior lighting.

Improving a home's exterior may be as simple as adding more lighting to improve functionality and beauty.

Start Your Day
Right... with the

**COMMUNITY
VOICE**

780-962-9228

The STUMP GRINDER

Mechanical
Stump Grinding

Andre
Phone: 780-413-6421
stumpgrinder@shaw.ca



TRI-LAKES SERVICES LTD.

Serving: • Lac Ste. Anne County • Parkland County • Yellowhead County East

<ul style="list-style-type: none"> • Septic Hauling <ul style="list-style-type: none"> • Holding Tanks (residential, commercial, industrial) • Septic Fields • Drinking Water Delivery <ul style="list-style-type: none"> • Cisterns • Pools/Hot-Tubs • Fresh Water Delivery <ul style="list-style-type: none"> • Dust Control 	<ul style="list-style-type: none"> • Portable Washrooms (rental & servicing) <ul style="list-style-type: none"> • Plastic • Trailer mount Extremes (wash sink, toilet, lights heat) • Extremes (wash sink, toilet, lights, heat) • Steam Truck <ul style="list-style-type: none"> • In cooperation with your plumber
--	--

PH: 1-877-727-3939
www.tri-lakeservices.com
office@trilakes.services



VISIT US

FOR ALL YOUR HOME
RENOVATION NEEDS



North Central

4919 50 AVE - STONY PLAIN, AB

fall HOME RENO GUIDE



SECRETS TO MAKING YOUR HOME LOOK LIKE YOU HIRED A DESIGN PRO

Photo spreads in home design magazines can be awe-inspiring. Quite often homeowners wish they could lift the looks right off the pages of magazines and transform their own homes into picture-perfect retreats.

It takes an eye for design to pull a room together - even with inspiration - and make it both functional and attractive. While hiring an interior designer is one way to go, homeowners can use some of the tricks and techniques the designers employ to do a remarkably good job of improving the interiors of their homes without such help.

Embrace texture

The colors used in a home can add impact, but designers often

utilize various textures to create aesthetic appeal. A single color scheme can be enhanced by various fabrics. Consider a leather sofa made more cozy with chenille pillows next to a rustic side table. Figure out ways to incorporate a few different textures to add depth to the room.

Be careful with color

Many high-end homes showcase neutral shades that are enhanced by pops of color. If you like a rich, royal purple, leave room for other colors as well. Add touches of purple in vases, throw pillows and other accessories.

Also, many designers work in shades of three for room colors. There may be one main color

for walls, another color for larger accents, such as couches and chairs, and then a third color that pops in accessories such as flowers, pillows and collectibles. These can be any colors, but the most muted tends to be the more abundant shade.

Add a bit of bling

Glittery items and metallics can add a touch of luxury feel to any space. A shiny table lamp, mirrors, a sparkling chandelier, and the like are easy ways to produce a high-end feel. Reflective surfaces also will cast light around the room, giving the illusion of a larger space.

Choose a big statement piece

Many homeowners make the mistake of filling a room with

several small pieces of furniture that only contribute to clutter. Instead, look for a statement piece, which can be a cabinet, armoire or chaise. Mix and match large and small elements for a sense of balance.

Accessorize

Finish the room with accessories and flowers. When placing and hanging knickknacks and wall art, odd-numbered groupings often look the most cohesive and interesting. Experiment with different scales and heights for even more dimension.

When inspiration hits, take some cues from interior design pros to make spaces look like they belong on the pages of your favorite magazines.

Wabamun
Home hardware
See Us
For Your
Renovation Needs
Lumber, Paint, etc.
Wabamun **892-4969**

BANGON
CARPENTRY
Doing it right the first time.
DARREN RAYMOND PH: 780-241-2711
JOURNEYMAN CARPENTER bangoncarpentry@hotmail.com

GMP
ONTRACK
INC.
George Perras
Phone 780-892-4488
Cell. 780-719-2687
Commercial • Farms • Acreages
Brushing
Fence Lines • Right of Ways • Fire Guards • Walkways
Don't Dig & Burn, Mulch & Preserve
General Excavation
Landscape • Site Prep • Clean Up
Snow Clearing/Removal
Light Equipment & General Hauling

SERVING ENTWISTLE AND AREA FOR OVER 30 YEARS
Entwistle
CONCRETE
PRODUCTS LTD.
SAND & GRAVEL SALES
PH: (780) 727-3525
Dan McCracken Entwistle, AB
www.entwistleconcrete.ca

Fall HOME RENO GUIDE



HOUSE POWERWASHING TIPS

Powerwashing, also known as pressure-washing, utilizes a high-velocity water spray to remove dirt and residue from the exterior surfaces of a home. It is frequently used on vinyl siding, concrete and sometimes wood decks to treat mildew and other growth that accumulates over time.

Powerwashing can be a great way to remove grime without having to scrub by hand. But it requires a delicate touch to get it right. Sometimes it is best to leave the job to professionals. But homeowners willing to give it a go can try powerwashing themselves, as various stores rent power washers.

The home improvement website ImproveNet says that, until very recently, pressure wash-

ers were almost exclusively commercial machines sold to professionals or rented to do-it-yourselfers. Lately manufacturers have targeted homeowners looking to buy with lightweight options. For those who see powerwashing as a routine venture, purchasing a unit may be worth the investment.

It is important to exercise caution when operating a powerwashing machine. The high-velocity spray can tear through skin. It is key to get a feel for the washer, and try less pressure first to get a handle on the magnitude of the tool.

Don safety gear prior to using a pressure washer. Gloves, eye protection and ear protection can be handy. Most units will connect to a standard garden hose.

Choose old clothing and expect to get wet. Never point a powerwasher hose at anyone and do not attempt to rinse feet or hands in the spray.

The renovation resource The Family Handyman suggests starting with a wide-degree nozzle to test out the spray on the surface that needs to be cleaned. A 15- or 25-degree nozzle is usually the wand for general cleaning and paint stripping without damaging the surface of the home. Experiment with an optimal distance of the washer wand to get the desired cleaning effects without causing any damage. Work using a horizontal and slightly downward angle to avoid driving water up under the siding of a home.

Avoid spraying any electric

wires or components on the home. Also, try not to spray upward, and angle the spray away from doors, windows and vents.

Some washers have reservoirs that will hold a detergent solution. Choose the right detergent for the job. Keep in mind that cleansers containing bleach can damage surrounding plants, so they may need to be covered while the washing takes place.

Avoid the use of ladders when operating a powerwasher. The push-back from the wand can cause falls. Instead, opt for an extension wand to address the upper reaches of a home.

Powerwashing a home is an effective way to remove stubborn grime and refresh the look of a home's exterior.

Tri-Electric

Serving our community for over 40 years!

Specializing in:

- ⚡ Electrical contracting & maintenance
- ⚡ Electrical materials
- ⚡ Do-it-yourself services

Service is Our Business!

780-542-4212

Home hardware building centre

Drayton Valley

542-4044

ON US: 1-888-542-9663

For ALL your renovation and material needs, SHOP LOCALLY!

4221 - 50 Street Drayton Valley

HAMMUR Construction

For ALL Your Carpentry Needs

~ Residential or Commercial ~

Elvis Murray (780) 542-1693
Owner/Operator fax: (780) 542-7651
Drayton Valley, Alberta email: eb4321@telusplanet.net

"You can COUNT ON US!"

LIMB WALKERS TREE CARE LTD.

FULLY INSURED, EXPERT TREE CARE PROVIDERS

SERVICING BARRHEAD, WESTLOCK, ONOWAY & ALL SURROUNDING AREAS

- Residential & Commercial
- Tree Removal
- Tree & Shrub Pruning
- Hedge Trimmers
- Annual Maintenance
- Professional Climbers
- Arborist Consultations & Assessments
- Bucket Truck & Chipper Services

780-203-4705 limb.walkers@hotmail.com
FREE ESTIMATES PROVIDED

GYPSD WELCOMES NEW 2019/20 SCHOOL ADMINISTRATORS



**Taylor Heaslip, Assistant
Principal, Grand Trunk High
School, Evansburg**



**Kevin Bissoon, Principal, The
Learning Connection Centres**

Submitted by Grande Yellowhead Public School Division

Grande Yellowhead Public School Division welcomes new administrators for the 2019/20 school year.

Taylor Heaslip, Assistant Principal, Grand Trunk High School, Evansburg - Taylor has been with Grande Yellowhead since 2012 at Wildwood School, teaching at the elementary and junior high levels. He also enjoyed his duties as the assistant principal, and is looking forward to deepening his leadership skills at the high school as 'it's a great opportunity to reconnect with former students and collaborate with new colleagues.'

Kevin Bissoon, Principal, The Learning Connection Centres - Kevin had a very busy summer

before he took over the helm of the five outreach centres for GYPSD. After his last week teaching at Vimy Ridge Academy for Edmonton Public School Board (EPSB), he spent the next few weeks teaching summer school in Edmonton, before officially joining Grande Yellowhead. Kevin likes the flexibility and challenge of multiple projects - in his 22 years with EPSB, he has spent time in several high schools as a teacher, department head, assistant principal, and was the program coordinator/developer for the Learn Write/LearnNet program which is similar to GYPSD's outreach program. Kevin believes that 'the journey is the reward' and he is ready to roll up his sleeves and work with the TLC team to build upon the current strengths of the program because 'kids

don't care about what your background is, or what your title is. They care what you do.'

2019/2020 School Administrators

Grand Trunk High School, Evansburg

- Heidi Zadderey, Principal
- Taylor Heaslip, Assistant Principal

Evansview School, Evansburg

- James Randall, Principal
- Lindsay Oslie-Jones, Assistant Principal

Wildwood School, Wildwood

- James Randall, Principal
- Jonie Gerspacher, Assistant Principal

The Learning Connection Centres: Evansburg, Edson, Hinton, Jasper & Grande Cache

- Kevin Bissoon, Principal
- Barb Shepherd, Assistant Principal

PRICE REDUCED



**14K White Gold
Diamond Ring
Brand New, Still
in Box, Tags on!
Asking \$2,745**



**14K White Gold
Engagement Ring
Brand New, Still
in Box, Tags on!
Asking \$2,300**



**10K White Gold
Diamond ring
Brand New, Still
in Box, Tags on!
Asking \$1,375**

Call for more information, or to view the ring 780-907-8642

GOLFER'S GUIDE

THESE GOLF TERMS ARE PAR FOR THE COURSE

Golf is a game of sport and skill that can be played at any age. Millions of people in North America participate in golf as a recreational endeavor or a professional pursuit. As of the spring 2016, 25.13 million people in the United States played golf over the previous 12 months, according to Statistica.

People may immediately think Canada's sports-based loyalty favors hockey. However, on the recreational side, golf is king in the country. Canada has the fourth most golf courses of any country in the world, says the National Golf Foundation. Plus, one out of every 10 Canadians play golf - a participation rate that is more than double that of the United States.

Storied golf history

Although golf can be traced back to the Netherlands during the Middle Ages, many people concur that the modern game of golf - played over 18 holes - is a Scottish invention.

The popularity of the sport began to spread throughout the world from Great Britain. The first permanent golf club in North America was founded in 1873 and was named Canada's Royal Montreal Club. The first 18-hole course in the United States was The Chicago Golf Club.

Golf lingo

Understanding the terminology is key to becoming a full-fledged golf fanatic. While golf lingo is

extensive, here is a sampling of some of the more popular terms to get novices started, courtesy of the PGA.

Approach: A shot hit towards the green.

Attack: The relative angle at which the clubhead approaches the ball at impact.

Backswing: The motion that involves the club and every element of the body in taking the club away from the ball.

Birdie: A score of one under par on a hole.

Bogey: A score of one over par on a hole.

Bunker: A hollow comprised of sand or grass that serves as an

obstacle.

Carry: The distance a ball will fly in the air.

Chip: A short approach with a low trajectory.

Chunk: A poor shot caused by hitting the turf.

Divot: The turf displaced when the club strikes the ball.

Downswing: The swing forward from the top of the backswing.

Eagle: A score of two under par on a hole.

Golf range: A facility where people can practice golf swings.

Grip: The positioning of hands on the club.

Hole: A round receptacle on the

green that the ball is aimed into.

Lie: As it relates to the golf ball, the position when it has come to rest.

Links: Specific term for a course built on linksland, which is land reclaimed from the ocean.

Mulligan: An extra shot taken on a poor first shot.

Par: The score an accomplished player is expected to make on a hole, either a three, four or five.

Putt: A shot on the green.

Stance: The position of the feet.

Golf terms are as varied as the game itself. Knowing commonly used words and phrases makes for a more intimate understanding of the sport.



SILVER SANDS GOLF RESORT

Parkland's hidden gem of a golf course; located 45 minutes west of Edmonton on highway 16.

Book your company tournament today - we have special rates for weekdays. Call 780-797-2683.

Check silversandsgolfresort.com for weekly specials

Join us for Men's night on Wednesday's and Ladies night on Thursday's both 6:00 pm shotgun start

RV LOT PRE SALES

CALL 780-222-1535

 Silver Sands Village, Lake Isle  silversandsgolfresort.com  1-877-797-2683




Alberta Beach GOLF RESORT

WEEKDAY SPECIAL

4 Golfers + 2 Carts Great for Weekday Tournaments
\$140.00 (\$35 each) Monday, Wednesday and Thursday Only.


18 Holes	\$33.00 Weekdays	\$48.00 Weekends
9 Holes	\$20.00 Weekdays	\$37.00 Weekends
Cart Rental	\$18.00 9 Holes	\$28.00 18 Holes

To Book your Tee Times or Tournaments
Call: (780) 924-GOLF (4653)



Calahoo Hills Golf Course

- 9 Holes
- Grass Greens
- BBQ Facilities
- Licensed Clubhouse



STONY PLAIN 12.8KM HWY 229
 HWY 16
 3.5KM HWY 229
 1.6KM
 HWY 227

459-9081

SCREEPY, CRAWLY HALLOWEEN COLORING CONTEST



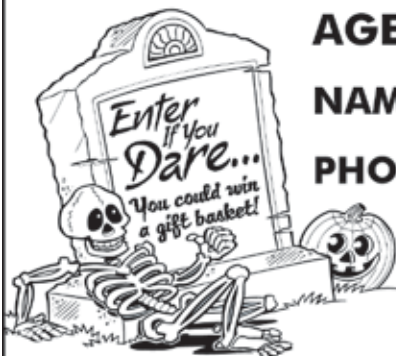
AGE GROUPS: 3-4 YRS | 5-6 YRS | 7-9 YRS | 10+ YRS

NAME: _____ **AGE:** _____

PHONE: _____ **TOWN:** _____

Entries must be recieved by October 26, 2019.

**Mail to: Jack O'Lanterns, c/o Community Voice
Box 3595 Spruce Grove, AB T7X 3A8**



EDMONTON HAILSTORM CAUSES \$90 MILLION IN INSURED DAMAGES

**Submitted by Insurance
Bureau of Canada**

The hailstorm that took place on August 2, 2019 in the Edmonton area caused an estimated \$90 million in insured damages, according to Catastrophe Indices and Quantification (CatIQ) Inc.

Type of Insurance Coverage - Insured Damages*

- Personal Property: \$39.5 million
- Commercial Property: \$3.4 million
- Auto: \$46.9 million
- * initial estimates

The storm began with heavy rain, followed by thunderstorms and heavy winds that reached 91 km/hr. Large hail damaged house siding and vehicles in west Edmonton, Spruce Grove and Stony Plain. The storm also damaged crops to the northwest of Edmonton.

"Severe weather is causing

headaches for homeowners and is costing insurers, governments and Albertans significantly," said Celyeste Power, Vice-President, Western, IBC. "Last year, insured damage from severe weather across Canada reached \$2 billion, the fourth-highest amount of annual losses on record." Unlike the 2013 Calgary floods or the 2016 Fort McMurray wildfire, no single event caused the high amount paid out for 2018's losses. Instead, Canadians and their insurers experienced significant losses from a host of smaller severe weather events from coast to coast to coast."

As the financial cost of a changing climate has increased, IBC is working closely with governments at all levels to advocate for increased investment to mitigate the future impacts of extreme weather and build resilience to its damaging effects.

This includes advocating for investment in new infrastructure to protect communities from floods and fires, improved building codes, better land-use planning and, increasingly, creation of incentives to shift the development of homes and businesses away from areas of highest risk.

It is not only insurers that foot the bill for severe weather damage, but also taxpayers. That's why all stakeholders should come together to reduce the financial strain caused by flood and other severe weather events. For every dollar paid out in insurance claims for damaged homes and businesses, Canadian governments and their taxpayers pay much more to recover public infrastructure damaged by severe weather.

The amount of insured damage is an estimate provided by CatIQ Inc. (www.catiq.com) under licence to IBC.

STORY TO TELL?

Know of a good event going on in the community? Ever wanted to write up a local event for the Community Voice?

If you have any good ideas for articles or would like to submit a story for the paper, Email it to news@com-voice.com or just fax it in at (780) 962-1021.

Please call us at (780) 962-9228 for more information.

Stories may be edited for length due to possible space restrictions.

Community VOICE
Raising You and Your Community's Voice

QUALITY SALES & SERVICE OF:

- DISTILLERS
- SOFTENERS
- CHLORINATION SYSTEMS
- MOBILE SHOCK CHLORINATION
- SEDIMENT, TASTE & ODOR FILTERS
- REVERSE OSMOSIS FILTERS (R.O.'s)
- CHEMICAL-FREE IRON FILTERS
- PIPE, WIRE & FITTINGS
- CHLORINE BLEACH, CHEMICALS & SALT
- MOBILE SERVICE VEHICLE
- POOL & SPA FILTERS & CHEMICALS

• FREE WATER ANALYSIS •

OUR WORKMANSHIP IS GUARANTEED!

962-6040 962-4060
15A South Ave., SPRUCE GROVE

Quality Water Services West LTD.

Formerly Ivan's Quality Water - UNDER NEW OWNERSHIP

BUSINESS FOR SALE

Steady Income – Business doesn't fluctuate with Economy

Includes:

- All Clientele
- 5 Tandem Trucks
- 1 Truck & Trailer Unit

Call 780-797-3844 for more Info.

Al-jo An Septic Service

SEPT 12 AUCTION

FOR: WESTLOCK MOTORS COLLISION CENTRE

LOCATED: 9935 - 107 St Westlock

THURSDAY EVENING, SEPTEMBER 12TH AT 5:00PM

SELLING AT 5 PM: * Private Consignment of Good and New Items - Wrenches Straps, Slide In Bumper Hitches, New Auto Parts, Mechanic and Wood Tools, Antique Collection, And More* Ford 8 N Tractor

SELLING AT 6 PM: * QUALITY EQUIP * Very Impressive Vehicle Frame Straightener Including HD Form Holder w/ Corner Anchors, Special Attachments and pullers (Appx \$100,000 New) * 4 Post Car Hoist * Newer HD Shop Air Comp * Older HD Shop Air Comp * Excellent Paint Booth and Accessories * All Officer Eq., Storage Cabinets, Etc * Many New & Used Vehicle Hoods, Windshields, Tires, Rims * PLUS MORE

SELLING AT THIS SALE 3 ESTATE VEHICLES: * 1994 GMC 3500 Dually Truck w/ Duramax AlumService Box, 3500 W Inverter, Ladders on Top, Nice * 4 Good 8' Sections Scaffold * 1997 Lincoln Continental w (269 k km), nice condition, senior owned * 2003 Dodge ½ Ton w/ Service Boc, good condition

PLUS MUCH MORE: * New Agriculture Parts * New Plumbing Items * Store Shelving

PARSONS AUCTIONS LTD.

Charles 674-7704 (780-674-3929) Jeff 305-4328

Pictures Available on: parsons-auctions.com

ANOTHER
RAINBOW SALE

SPECIAL TRACTOR/ TRUCK & COLLECTABLES SALE + OUR REGULAR CONSIGNMENT

Sunday, September 8, 2019 at 10:00AM
Rainbow's Stony Plain Consignment Centre – 52529 Range Road 11

Tractors: • McCormick Standard W4 Tractor - c/w PTO and belt drive **Vehicles and Trailers:**
• Industrial Tandem Axle Trailer • 1987 37ft. Elandan Winnebago Motor home • 1994 Ford F350 Service Truck • 1997 Blue Chev Suburban • 2005 White Chev Silverado 4x4 • 1999 GMC Jimmy SUV • Polaris 2x4 Quad • Blade attachment for Quad **Tanks:** • 500 Gallon Fuel Tank with Stand • 250 Gallon Water Tank • Pipeline Tank **Industrial Products:** • Industrial Weigh Scale • Brand New Windows • Air Compressors • Cement Mixer • Portable Work Light • Shop Vacs **Lawn & Garden:** • Fertilizers • Sprayers • Ride-on and Push Lawn Mowers • Weed Eaters • Pressure Washers • Electric Leaf Blower/Vac • Assorted Garden Tools **Large Assortment of Hand and Power Tools** **1 Storage War Unit**

WWI & WWII MEMORABILIA SALE

WWI & WWII Memorabilia Estate Sale for Traffic Air Inc & Les Mroz

Wednesday, September 11, 2019 at 6:00PM

Viewing at 3:00PM *This sale will be a combination of live and silent auction*
Norwood Legion 11150 82 St NW Edmonton, Alberta T5B 2V1

HIGHLIGHTS: • Collectible Art by Robert Bailey and other well known artists inspired from the Pilots of the Second World War. Some paintings signed by the actual pilots!
• Assorted Artifacts from both World Wars • Memorabilia • Soldier Uniforms
• Collector Plates & Books • Medals & Accessories

RETIREMENT SALE FOR ROZ KRUGGEL

Thursday, September 12, 2019 at 6:00PM

Rge Rd 1311, Secondary Highway 37 Onoway, AB T0E 1V0

HIGHLIGHTS: **Tractors/ Farm Equipment:** • 345 John Deere Tractor • White 285 Tractor c/w allied 760 Loader and Live Hydraulics • 250 Gallon Water Tank • 3 Westeel-Rosco Grain Bins on Skids • Cattle or Horse Waterer **Vehicles:** • Pontiac Montana Van • 2000 Ford F350 Superduty 1 Ton Dually (needs some TLC) • 1980 Ford F150 • 1960 International Antique Collector Truck • Motorized Scooter • Yamaha 4 Moto 4WD ATV **Tools/ Shop Equipment:** • Eagle Air Compressor • Assorted Heavy and Industrial Tools • Assorted Power Tools • Tool Boxes • Industrial Delta Shopmaster Drill Press • Welder Helmets
• Metal Files. **Many More Items, too numerous to mention**

UPCOMING SALES

Saturday, September 14, 2019 @12:00 p.m. Wabamun Arena Auction Sale

Saturday, October 12, 2019 @10:00 a.m. Rainbow' Auctions Harvest Consignment Sale

****WATCH WEBSITE DAILY FOR NEW ADDITIONS TO AUCTION LISTS****

Terms and conditions: Cash, Visa, MasterCard, Debit, Interac. Nothing to be removed until paid for. Subject to additions and deletions. A 10% handling fee, plus GST will be charged where applicable. Please be conscious of the handling fees and factor them into your bidding. Owner Rainbow Auctions & Liquidators or it's employees shall not be responsible for accidents.

SALE CONDUCTED BY:

Stony Plain, AB. 780-968-1000
or TOLL FREE 1-866-968-1001

**Complete Liquidation and
Auction Services Since 1978**

www.rainbowauctions.ca

BOOK YOUR SALE WITH US TODAY!



Terms and conditions: Cash, Visa, MasterCard, Debit, Interac. Nothing to be removed until paid for. Subject to additions and deletions. A 10% handling fee, plus GST will be charged where applicable. Please be conscious of the handling fees and factor them into your bidding. Owner Rainbow Auctions & Liquidators or it's employees shall not be responsible for accidents.

Classified Ads - Call 962-9228

Classified Policy

CLASSIFIED RATES INCLUDE GST. 1st 20 Words: First Insertion = \$6.00; Subsequent insertion = \$3.00 each. (Eg: 2 insertions = \$9.00; 3 insertions = \$12.00; 4 insertions = \$15.00; etc) Each additional word is 20 cents per word, per insertion. BOLD/CAPITAL text available for an additional \$1/line. Lost & Found and To Give Away (up to a max. of 25 words) are free of charge. Ads must be paid in advance either by cheque, cash, Visa or Mastercard. No Refunds Allowed on Classified Ads. DEADLINE: is Thurs. 4:00 pm (Wed. 4:00 pm on long weekends). Classified ads may be called in to the COMMUNITY VOICE office at (780) 962-9228, emailed to: classifieds@com-voice.com, dropped off at Onoway Registries, or mailed with your ad and payment to: COMMUNITY VOICE, BAG 3595, SPRUCE GROVE, AB T7X 3A8. Ads may also be placed on the web at www.com-voice.com/classified.htm

Hall Rentals

Bright Bank Hall, 780-968-6813

Camp Encounter, Vincent Mireau - Camp Director. director@campencounter.com. C: 780-504-2012 W: 780-967-2548

Cherhill Community Assoc. Hall, Kevin 780-785-8153

Darwell Hall, 780-721-2690

Darwell Seniors, Phone Debra 780-785-2907

Duffield Hall, 892-2425

Entwistle Community League Hall Rentals, Call Cheryl at 780-515-1755

Entwistle Senior's Drop In Centre, Barb 727-2108 or Glennis 727-4367 Mon-Fri

Evansburg Senior's Heritage House, Dennis 727-4186

Evansburg Legion, upper hall 250 people, lower hall 80-100 people, 727-3879

Fallis Community Hall, 892-3150

Gunn Hall (G.A.R.S.) 780-951-9452

PREVAIL

CELLULAR HOMEOSTASIS FORMULA

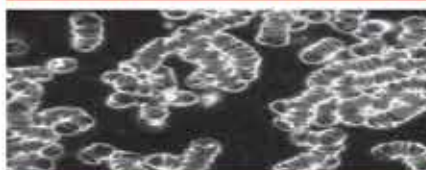
MAX

A NUTRITIONAL BREAKTHROUGH THAT SUPPORTS YOU
...RIGHT DOWN TO THE LAST CELL!

How do you want your
BLOOD to look?



Before PrevailMAX:



poor circulation

low energy

brain fog

dehydration

decreased nutrients

pH imbalance

poor endurance

After PrevailMAX:



better circulation

more vitality

mental clarity

cellular movement

nutrient assimilation

balanced pH

optimal endurance

PrevailMAX™ is a nutritional breakthrough that delivers a rapid increase of internal blood cell pressure to speed absorption, enabling the body to take maximum advantage of the nutrients in foods and supplements. The electrolytes are small enough to penetrate your cell membranes, to bind with your cells, and to be carried wherever they are needed in the body.

At the microscopic level of human cells, **PrevailMAX™** supports healthy cell performance – a nutritional breakthrough for your cells.

When you use **PrevailMAX™**, you will feel more energy and an ability to focus like never before. Take a few sprays today and see just how good you can feel!

LIVIN TRIM WITH
VALENTUS

www.ValentusTour.com/Ladybug

(780) 907-8642



FREE LOCAL CLASSIFIED ADS

Real Estate, Rentals, Vehicles, Pets, Jobs, Service Directory,
Buy/Sell/Trade, Lawn & Garden, Garage Sales, Events,
Local Places & Much More... Advertise for **FREE** Today!



Follow Us



Classified Ads - Call 962-9228

Keephills Hall, 731-3761

Lake Isle Community Hall,
PH: 780-892-3121 or Email:
lakeislehall@mail.com

Lake Romeo PeaVine Hall,
785-2700

Magnolia Hall, 727-2015

Manley Goodwill Community
Hall, 963-9165 or 916-0146

Mayerthorpe Diamond
Centre, 786-4044

Moon Lake Community Hall,
Nikki Berg 780-898-1390

Park Court Hall, call or text
Karyn 780-712-3918

Parkland Village Community
Centre, 780-298-9155 @
PVCCentre

Ravine Community Hall, 325-
2391

Rich Valley Community Hall,
967-3696 or 967-5710

Rosenthal Community Hall,
963-7984

Smithfield Community Hall,
Wanita 780-718-8824.

Tomahawk & District Sports
Agra, Bookings: Kathy 780-
339-3773.

Wabamun Jubilee Hall, 892-
2699.

Wildwood Community Hall,
325-2180 or 780-514-6105

Wildwood Rec Complex 325-
2077 or 514-8944

Wildwood Senior's Hall, 325-
3787 or 325-2391

Garage Sales

Garage Sale September 7 & 8,
10am-5pm. 4 miles South on
RRG 84 off Hwy 16. 5 Gallon
glass jars, BMP, Chalet/Alta
blown glass, Iris/Herringbone
glass, Olympic pins, Copper
wall decor, vintage linens,
pipes & humidors, block
planes, antique wrenches,
tool box, washer/dryer, coffee
tables, L.H. golf clubs and
more! Call 780-325-3787 (1)
03-09

To Give Away

PIANO. Apartment size,
full keyboard, with bench.
Free with local charitable
donation of your choice. 780-
459-4764 (1) 03-09

Cleaning

CEILING & WALL CLEANING

- Specializing in cleaning
Stipple & California
knockdown. Cig. Smoke
removal & Odour removal.
Ceramic floor tiles steamed
cleaned. Call Nano Cleaning
for Discount Prices! 780-914-
0323 (5) 27-08

Computers

FREE Computer Checkup.

Repairs **work** or extract
Doc or Pictures from Old
or Broken PC **NOT** over
\$50. No Prepayment - No
Charge if not Repairable. Yes,
I have for you a good, clean,
refurbished and upgraded
laptop or desktop with Legal
win 10 for **ONLY \$100**. Call
now 780-892-2407 (12) 13-08

Firewood

SEASONED FIREWOOD:

Birch, Tamarack, Spruce/
Pine & Poplar. 4x4x8 cord,
Split and delivered or pick up
at wood yard, 1/2 cord or full
cords available. Call 780-967-
5835 or 780-983-1495 (28) 27-
08

FIREWOOD FOR SALE

- Birch, Tamarack & Spruce
Pine mix. Poplar. 4x4x8
cords and 1/2 cords. Quality
seasoned wood, Delivery
or Pick up. Woodchuck
Firewood, 780-288-7247 (1)
03-09 OG BW



Deb Gouin

780-497-0531

www.debgouin.ca

Century 21 Masters 780-963-2285
#105, 4302 - 33 St., Stony Plain, AB T7Z 2A9
Each office independently owned and operated



FEATURED LISTINGS:



\$396,500

GORGEOUS COUNTRY HOME

- 2270 sq ft 3 Bed 3 Bath
- 1/2 Acre Lot - PRIVATE
- Oversized Heated Double Garage
- Many Recent Upgrades
- RV Parking
- Lots of Upgrades
- **E4170219**



\$269,900

HUGE LOT - TRIPLE GARAGE

- 1/2 Acre Lot
- Back onto Golf Course
- TRIPLE GARAGE
- Many Recent Upgrades
- 3 Bedroom 1 Bath Bungalow
- **E4168911**



\$629,000

GATED COMMUNITY EXEC. HOME

- 1 acre lot MINUTES TO SPRUCE GROVE
- Soaring Ceilings & Luxury Finishings
- **TWO TRIPLE GARAGES** + RV PARKING
- **E4147138**



\$358,800

SPRUCE GROVE 1/2 DUPLEX BUNGALOW

- BEAUTIFUL 2+2 bedrooms, 3 baths
- Open Floor Plan & Main Floor Laundry
- Double Attached Garage
- **NO CONDO FEES**
- **E4154703**



\$279,900

ROSS HAVEN FAMILY HOME

- 1500+ sq ft, 3 beds, 2 baths
- Upgraded Inside & Out
- Double O/S Garage, 1/2 Block to Lake
- **E4148150**



\$225,000

ROSS HAVEN CHARMER

- 1650+ sq ft, 2 bed + loft, 1 bath, laundry
- LARGE COVERED Upper Deck!
- Backs GREENSPACE, STEPS to Lake & Pier!
- **E4148179**



\$275,000

LAKE NAKAMUN WATERFRONT

- Next-to-New 1 bed + Loft, 1 Bath
- FULLY SERVICED
- Set Up for 2 RV's with HOOK-UPS!
- **E4149606**

VIEW FULL LISTING DETAILS AT WWW.DEBGOUIN.CA

LISTINGS NEEDED!! If you're considering selling, I currently have serious buyers looking! Give me a call for a **free market evaluation!!** With more than 30 years' experience in the real estate industry, I have both local knowledge as well as serious buyers currently looking for property in our area! Put me to work for you.....

FROM SIGN UP TO SIGN DOWN!!





PURE HEMP CBD PRODUCTS

AGING IS INEVITABLE - LOOKING AND FEELING OLD ISN'T!

WHAT IS CBD?

A Health and Beauty Breakthrough!

Cannabidiol, CBD, is one of over 80 active cannabinoid chemicals in the hemp plant. CBD, unlike, THC, does not produce euphoria or intoxication. CBD targets specific receptors in the cells of your brain & body. There are many physical and mental benefits to using CBD products for both treatment and prevention of numerous ailments.



Therapeutic Uses For Pure Hemp CBD

Supports healthy blood sugar levels, promotes healthy energy levels, relieves anxiety, aids in digestion, supports optimal immune function and the regeneration of healthy cells, and promotes a sense of serenity and overall well-being.



Anti-Aging Uses For Pure Hemp CBD

Promotes more youthful skin, provides hydration, enhances radiance, lessens age lines as well as the appearance of dark spots.

KEY BENEFITS

PAIN RELIEF: Known to reduce vomiting & nausea; suppress muscle spasms; reduce seizures & convulsions.

PROMOTES HEALTH: Helps to promote relaxation and overall health.

WELL-BEING: Helps to relieve anxiety, aid in digestion, supports optimal immune function and the regeneration of healthy cells.

CBD PET PRODUCTS

PET CHEW TREATS



KEY BENEFITS

SYNERGISTIC BENEFITS: Can be used in conjunction with regular medications with no side effects.

NO SIDE EFFECTS: Does not damage the liver, kidney or GI Tract like OTC medication.

DIETARY SUPPLEMENT: Can be administered daily as part of your pet's diet.



ORAL SPRAYS & DROPS

KEY BENEFITS

MANAGES PAIN: Helps to treat inflammation, arthritis and joint pain.

TREATS DIGESTIONAL ISSUES: Helps with loss of appetite, nausea, IBS and gastrointestinal swelling.

GENERAL HEALTH: Helps to manage mood, anxiety and general joint pain. For healthy, happy pets.

CONVENIENT: Can be sprayed into pet's mouth or on food.

For more information, Call (780) 907-8642

Classified Ads - Call 962-9228

Landscaping & Maintenance

Stump Grinding For Hire - Alberta Beach & Surrounding areas. Call 780-779-3589 (28) 23-04

Free Pasture

3 Acres Free Pasture, Spruce Lane Estates. Call 780-910-7812 (3) 27-08

Vehicles

2014 Dodge Ram 1500 Sport, Dark Charcoal grey, 4wd Crew Cab, ONLY 47,000kms! c/w half leather half cloth seats, power locks, mirrors & windows, step up bars, command start, big touch screen with am/fm/sat radio, Aux/usb plugs ins, back up camera, dual climate control, Brand new tires & rims, Truck drives like new, Well taken

care of! Asking \$27,900. Call 780-264-7740 (S) OG

For Rent

Alberta Beach small duplex, 2 bedroom, washer/dryer/ fridge/stove/dishwasher, fenced yard, shed, \$900/month, small pets ok. Call Cheryl 780-982-6922 (6) 30-07

Completely renovated Motel in Onoway, offering monthly rentals, all utilities FREE, furnished bachelors and furnished 1 bedroom with full kitchen, Starting at \$850/month, please call Cheryl for viewing 780-967-4420 www.onowayinnandsuites.com (4) 20-08 OG

Available Immediately, Large 2 Bedroom in 12 Unit Apartment Building in Entwistle. Includes Heat, Water & Parking. Rent \$795/month + DD \$300. Also, 1 Bedroom Available \$695/

month + DD \$300. Please Call Ivka 780-807-1300 or email: jakovljevicivka@yahoo.ca (2) 27-08 OG

Alberta Beach Inn & Suites offers 1 Bedroom Apartment Suites, FULLY EQUIPPED AND FURNISHED. Daily/Weekly/Monthly rates, Lakefront property. Monthly rent includes digital TV, WiFi, phone, utilities & parking.

Monthly available from Aug 15, special incentives for long term rentals. Please call Kurt 587-763-0351 (3) 27-08 OG

Year Round Cabin For Rent North of Evansburg on Hwy 22 (15 mins from Evansburg). \$1100/month + DD. All inclusive, utilities & TV. Max 2 people. Call 780-239-0553 (4) 03-09



SERENITY FUNERAL SERVICE



NEW FACILITY

Chapel & Reception Centre

600 Calahoo Road Spruce Grove, AB

780-962-2749 www.serenity.ca

SERENITY FAMILY SERVICE SOCIETY - YOUR NOT-FOR-PROFIT SOCIETY

SUDOKU OF THE WEEK

Fun By The Numbers

Here's How It Works: Sudoku puzzles are formatted as a 9x9 grid, broken down into nine 3x3 boxes. To solve a sudoku, the numbers 1 through 9 must fill each row, column and box. Each number can appear only once in each row, column and box. You can figure out the order in which the numbers will appear by using the numeric clues already provided in the boxes. The more numbers you name, the easier it gets to solve the puzzle!

ANSWER:

6	1	4	2	7	9	5	3	8
2	7	3	8	5	1	4	9	6
5	8	9	6	3	4	7	1	2
8	3	5	4	9	2	1	6	7
4	6	2	3	1	7	9	8	5
1	9	7	5	6	8	2	4	3
9	2	1	7	8	6	3	5	4
7	5	8	9	4	3	6	2	1
3	4	6	1	2	5	8	7	9

Like puzzles? Then you'll love sudoku.

This mind-bending puzzle will have you hooked from the moment you square off, so sharpen your pencil and put your sudoku savvy to the test!

6		4					3	8
2			8	5	1	4		
5	8		6			7		
8	3			9		1		
	6	2	3	1			8	5
	9		5	6				
	2	1		8	6	3		
		8	9		3			1
3			1		5		7	



COMMUNITY EVENTS 2019

If you are a LICENSED, NON-PROFIT ORGANIZATION, you are welcome to submit your announcement FREE of charge, space permitting. You are required to submit your non-profit number. Call (780) 962-9228. Please note that all submitted event listings must be limited to 200 characters or less (including spaces). DEADLINE: 12 noon Friday prior to publication (Thursdays on long weekends).

SEPT 7 - STEAK & CHICKEN SUPPER, at Duffield Hall. Cocktails 5pm, Supper 6pm. A Tribute Extravaganza by Jaedyn Pilan... See Elvis-Johnny Cash-Buddy Holly & Others! Tickets \$25. Ph:780-892-2425 or 780-963-9664

SEPT 21 - HARVEST FAIR, 10am-2pm at the Spruce Grove Grain Elevator site. Bring your family and enjoy old farm games and competitions. Hosted by Spruce Grove Ag Society

FARMERS MARKETS

DRAYTON VALLEY: Evergreen Farmers' Market, Wednesdays at the Mackenzie Center of the Omniplex from 10:30AM-1:30PM. *Ends Dec. 19
EVANSBURG: Sat, 10AM-2PM, Tipple Park Museum. Call 727-2240 for tables.
SPRUCE GROVE: at the Elevator, Sat 9:30-1:30PM, tables (780)240-5821
STONY PLAIN: Sat, 9AM-1PM, Downtown, Stony Plain. Phone Nancy 780-962-3993.

BINGO

ENTWISTLE COMM. LEAGUE BINGO: Every Wednesday, Doors Open 6PM.
STONY PLAIN SENIOR'S DROP-IN CENTRE: public bingo every Tues, 7PM. All ages welcome. Phone (780) 963-6685
TOMAHAWK: every Mon at Agra Centre, doors 6pm, Bingo 7:30PM. Info 514-0366 or 339-3747
WILDWOOD: Mon night, 6:30PM, bingo starts 7:30PM, Early Birds & Lucky 7.
WILDWOOD LADIES AID: every 3rd Friday of month, 6:30PM, bingo starts 7:30PM.

MEAT DRAWS

Darwell: Put on by Alberta Beach & District Lions Club, 4:00PM, bi-weekly, Darwell Lounge & Restaurant
Evansburg: Evansburg Legion, Friday 8-10PM & Saturday 3-5PM
Wildwood: Wildwood Legion, Saturday 3-5PM

JAMBOREES

CARVEL: 2nd Sunday of month. \$6 lunch served. Info 780-991-3001
CHIP LAKE: Ravine Comm Hall, 1st Sat 325-2119 or 325-2391
DUFFIELD: 4th Sat, Duffield Community Hall. Supper 6PM. *Sept - May.
DRAYTON VALLEY: Last Sunday of month. Upstairs @ the "55 Rec. Center" Doors at 12PM, Starts at 1PM. 780-542-3768
ENTWISTLE: 3rd Saturday of month, Doors at 5:30PM at Entwistle Community Hall. Contact Verna at 780-716-2304. *October - May
MAGNOLIA: at Magnolia Hall. Every 2nd Saturday, Supper at 6PM. 727-2015 or www.magnoliacomunityclub.ca, Call to confirm. *October - May
RAVINE COMMUNITY ASSOCIATION: 1st Sat of each month. Info 780-325-2391 *Sept - May.
SEBA BEACH: 2nd Friday 7PM, Seba Senior's Centre, Toni 797-4233
SPRUCE GROVE: at Sandhills Community Hall, 3rd Sunday, 1-5PM. Info Florence 780-962-3104 Margaret 780-962-3051 *Sept - June.
STONY PLAIN: Stony Plain Seniors Drop In Center, 5018 - 51 Ave. Every 2nd & 4th Thurs of month, 7PM, \$2. PH: 587-989-7214 or 963-7920.
TOMAHAWK: Tomahawk Agriplex, 3rd Friday of month. 7PM. PH: 780-339-3755.
WILDWOOD: Wildwood Community Hall, 3rd Wed Each Month, 7PM. 325-3749 *Oct - June.
TOPS (Take Off Pounds Sensibly)
ENTWISTLE: Wed 5:15PM weigh-in, 5:30-6:30PM meeting, food bank building, South entrance. 780-932-2695.
STONY PLAIN: Thurs evening, Stony Plain United Church. Susan (780) 968-0869
SPRUCE GROVE: Wed 8:45am at Anglican Church, 131 Church Rd. Christiane 960-1109
WILDWOOD: Thurs at Wildwood Hall,

4:30PM. Connie (780) 325-2420

YOUR COMMUNITY

ALBERTA PARENTING FOR THE FUTURE ASSOC: Call 963-0549 or visit www.apfa.ca to register. All programs are confidential & free.
FREE HOME MEAL DELIVERY PROGRAM, for Wabamun Seniors & Wabamun Lions. Arrange for meal preparation through a local restaurant. Call Darlene, 892-2551.
PEMBINA SKATING CLUB (Evansburg Arena), offers Learn-to-Skate, CanSkate & STARSkate. All ages. Call Lisa 727-2729.
***RUNS Sept-March**
PROBLEMS WITH DRUG OR ALCOHOL ADDICTION in a loved one? Contact Drug Rehab Resource for a free confidential consultation. 1-866-649-1594 or www.drugrehabresource.net.

LIBRARY EVENTS

AFTERNOON BOOK CLUB at Keeplinks Library. 2nd Tues of every month, 1:30-3:00PM. Visit www.pclibraries.ca for info.
FAMILY GAMES NIGHT: 3rd Wed of every month, 6-8PM. Located at Entwistle Library, Duffield Library and Tomahawk Library. In partnership with Parkland School Division. Visit www.pclibraries.ca for more info.
HATCHET CITY READERS at Tomahawk Library. 3rd Tues of every month, 10-11AM. For what we're reading next, visit our website, www.pclibraries.ca.
INVENTORS CLUB: 2nd Thurs of every month, 3:30-5:00PM at Entwistle Library. 4th Thurs of every month, 3:30-5:00PM at Tomahawk Library. Ages 8-13. To register: Call the library at 780-339-3935.
SEBA BEACH PUBLIC LIBRARY BOOK CLUB - meets the 4th Tuesday of the month in the library at 10:30AM. For info call 780-797-3940 or E-mail us at sebaeachlibrary@yrl.ab.ca.
EVANSBURG PUBLIC LIBRARY BOOK CLUB: 4th Thurs, 7:00PM Grand Trunk High 727-2030.

SOCIAL EVENTS

50+ YOUNG AT HEART LUNCHEON for Parkland County Seniors. 12PM at Stony Plain United Church Basement, \$8/plate. 3rd Wed of Month. Call Barb 780-952-0882.
***Sept-June**
AEROBICS: Low impact, Mon/Wed, 11AM-12PM, Wildwood Senior's Centre, \$1/session.
BREAKFAST SOCIAL: 9:30AM-NOON, Parkland Village Community Centre - 3rd Sunday, PH: 780.298.9155 Social Media: P.V.Centre.
COME PLAY CRIB: Fridays, 7:30PM at Darwell Seniors Hall; lite lunch is served. All ages!
COUNTRY QUILTERS in Stony Plain house a "Sew in Tuesday", 2nd Tuesday of every month, from 10-3PM. Drop in \$5/member, \$6/non-members. Contact Cindy 780-963-7170.
DROP-IN ADULT PICKLEBALL: Thursdays, 6-8:30 p.m. Sept.12th-May @ G.T. School, Evansburg. Beginners Welcome. Paddles sponsored by the Evansburg Public Library
EVANSBURG ART CLUB: meet & paint Thurs 1-4PM Rec Plex. 727-4340 or 727-4098
EVANSBURG GUIDES & PATHFINDERS: Mon 6PM, Camp Evansburg.
EVANSBURG SENIOR'S HERITAGE HOUSE: Floor Curling Mon & Thurs, 1pm. Court Whist Thurs, 7PM.
EVANSBURG TIPPLE PARK HISTORICAL BUILDING TOURS: Wed - Sat, 10:00-5:00PM
HEALTHY AGING NURSE & FOOT CARE

PERSON, Wabamun Seniors Centre, 2nd Thurs of month, 9AM.

OPEN HOUSE for socializing, Crib & card playing at Entwistle Senior Center, Thursdays at 6:45PM. Dan 780-982-0353

PARENT & TOT PLAYTIME: PERC Building Stony Plain Wed 10-11AM; Holborn Community Hall Thurs 9:30-11AM; Parkland Village Tues 9:30-11:30AM.

POT LUCK every Tues 12:00PM, Wabamun Seniors Centre. Come on down!

SEBA BEACH SENIORS CENTER: Yoga, mon, 9:30AM, \$10/session. Bridge thurs, 1PM. Jams every Wed night, 7PM. Thrift Shop every Wed & Sat 10-10PM.

SEBA BEACH QUILTERS & FIBER ARTS: Wednesdays 9:30AM, Seniors Center.

SENIORS 50+ LUNCHEON: 3rd Wed, 12PM at Stony Plain United Church basement hall. Call Audrey (780) 963-7582

SENIORS WEDNESDAY* AFTERNOON 1-4PM at Parkland Village Community Centre. Games, Crafts & more! Call Sheryl 780.695.7032 *exceptions incl. Weather.

SPIRITUAL LIVING STONY PLAIN INSPIRATIONAL CINEMA & DISCUSSIONS at PERC Building (5413-51 St). 2nd Friday of month at 7PM. Popcorn provided, donations appreciated. Contact 780-940-3032

SPIRITUAL LIVING STONY PLAIN GATHERING at PERC Building (5413-51 St). Every 2nd & 4th Sunday of month. Meditation 10AM, inspirational sharing 10:30AM. PH 780-940-3032

SPRUCE GROVE ELEVATOR TOURS: Tues-Sat, 9-3PM, 960-4600.

STONY PLAIN'S 5TH MERIDIAN GOOD SAMS RV CHAPTER: Ecole Meridian Heights School. 3rd Tues of Month, 7PM. Call Pat at 780-963-6976 or Ruth at 780-288-9829.

MEETINGS

2ND TIMERS: A support & confidential group for Grandparents Parenting. 1st Thurs of month, 6:30PM. Grand Trunk High School (meet in Lobstick Literacy & Learning room). Child care provided at the Evansburg Public Library.

299 ROYAL CANADIAN SEA CADETS CORPS MACKENZIE: Stony Plain Comm Center, Wed 6:30PM. Youths 12-18, 963-0843

755 PARKLAND AIR CADETS Thurs, 6:30-9:30PM Muir Lake School, ages 12-18. Info call 405-6585 or www.aircadet.com/755.

AA: Friday at 8PM, Evansburg. Call 325-2204, 727-2466 or 727-6652.

AA: Monday night HOPE group at 8PM, Mewassin Free Methodist Church.

AL-ANON: Wed 8PM. Spruce Grove United Church, 1A Fieldstone Drive. 962-5205

CHAMBER OF COMMERCE (Evans/Ent): 7:30PM 3rd Thurs, Heritage House.

C.H.I.L.D. (Citizens Helping In Life's Defence) Please join our Pro-Life meetings once a month in Stony Plain. For info call Chris 963-6997.

CITIZENS ON PATROL: The Pembina Community Watch Patrol Meets 2nd Thurs of each month at 7:30PM, at the Tipple Park Museum (4924-48 St.), Evansburg. Contact 780-898-1465 or 780-727-2686.

COMMUNITY QUILTERS & CRAFTERS: 3rd Tues, Evansburg, Liz 727-3872 Brenda 727-4476

DARWELL & DISTRICT AG SOCIETY: 8PM, 1st Mon, Community Hall.

DDRA MEETING: 7PM, 2nd Mon, Darwell Community Hall 892-3099. *Except Jul/Aug/Dec

DRAYTON VALLEY BRANCH OF ALBERTA GENEALOGICAL SOCIETY: meets 7PM at

Municipal Library (5120-52 St.) every 3rd Wed of month. Call (780) 542-2787

ENTWISTLE COMMUNITY LEAGUE GENERAL MEETINGS: 2nd Thursday monthly 7:30PM. *Except June, July, August

ENTWISTLE LIONS CLUB: 2nd & 4th Tues, 8PM, Entwistle curling rink. Jim 727-3573

ENTWISTLE SENIORS 55+ CLUB: Tue & Fri, 1:30-4:00PM at Entwistle Hall

EVANSBURG SENIOR'S 55+ HERITAGE HOUSE: 2nd Wed of Month, 7:00PM. Dennis, 727-4186.

FALLS COMMUNITY ASSOCIATION: 3rd Tuesday, 7:00PM.

GIRL GUIDES OF CANADA: Poplar Hollow District Guides-Pathfinders, Mon 6-8PM. Sparks-Brownies Tues 4-5:30PM. Meet at Camp Evansburg. Brenda 780-727-4476

LAC STE. ANNE & LAKE ISLE WATER QUALITY MANAGEMENT SOCIETY: 3rd Fri, 7PM, Alberta Beach Council Chambers.

LAKE ISLE HALL COMMUNITY HALL BOARD MEETINGS: 3rd Wed of each month @ 7:30PM at the Lake Isle Hall (Hwy 633 and RR55) Ph # 780-892-3121

LAKE ISLE MULTI 4-H GENERAL MEETINGS: 1st Thurs of each month @ 6:30PM @ Lake Isle Hall. Contact 780-242-2486.

LOBSTICK 4-H BEEF & MULTI CLUB: 1st Mon, Evansburg Arena, 7PM, Shannon 727-2358

LOBSTICK GARDEN CLUB: 1st Mon, 7PM at Tipple Park Museum, Clara (780) 399-2205

MAGNOLIA BOARD MEETINGS: 1st Tuesday of month, 7PM at Magnolia Community Hall.

MEN FOR SOBRIETY: Wednesdays at 7:30PM, FCSS Building (#105, 505 Queen Street, Spruce Grove). Mike (780) 965-9991.

MS SOCIETY DRAYTON VALLEY COMMUNITY GROUP meets 1st Tues of month, 6-8PM at Norquest College. Terra Leslie, 1-403-346-0290. *Sept-June

MS SOCIETY PARKLAND COMMUNITY SUPPORT GROUP: Are you diagnosed with MS and have questions? Last Tues of month, 7-9PM, Westview Health Centre. Contact Cassy 780-471-3034

NA MEETING: Tuesdays, 7:00PM. 514-6011

PEMBINA PORCUPINES - JUNIOR FOREST WARDENS: Entwistle Porcupine gathering: 7PM, 1st Tue. Len & Tineke at 727-2020. Porcupines@yellowheadjfw.ca

SOLVE: Community Enviro issues discussed at Smithfield Hall (N of Hwy 16 on RR34). 2nd Thursday. Jana 892-0006

STONY PLAIN FISH & GAME ASSOCIATION & WABAMUN GUN CLUB: 2nd Mon, Stony Plain Comm Center, 7:30PM.

SUNDOWNERS TOASTMASTER CLUB: Mon (excl. Holidays) 7:30-9:30PM. St. Matthew's Church, Spruce Grove. Judy 960-5258

TOMAHAWK SENIORS (50+) meets every Thursday from 1-4pm at the Tomahawk Agra.

W.E.E COMMUNITY FOOD BANK: Call (780) 727-4043 for emergency food needs. Monthly Meeting: LAST Monday of month at 7:00PM at the Food Bank (Old fire hall in Entwistle). *Except December

WILDWOOD & DIST AG SOCIETY: 2nd Wed of each month 7:00PM at the Wildwood Complex. Wilma 325-2424

WILDWOOD & DIST ROD & GUN CLUB: 2nd Thursday, 7:30PM at the range clubhouse, wildwoodrodandgun@gmail.com

WILDWOOD SENIORS: 4th Wednesday at 2:00PM. PH: 325-3787 or 325-2391. *No meeting July/Aug/Dec.

Church Directory

Seba Beach Christian Fellowship Sunday School 10:00a.m. Worship Service 11:00a.m. Weekdays Bible Study & Prayer (780) 305-3594	Advent Lutheran Church Sunday Worship & Sunday School 11:00a.m. Evansburg O: 727-3594	Roman Catholic Church St. Agnes' Parish, Maynoothorpe Sunday 9:00a.m. St. Elizabeth Parish, Evansburg Saturday 7:00p.m. (780) 786-2032	St. Joseph's Catholic Church Sunday Mass 11:30a.m. Tuesday Mass 7:00p.m. Wabamun, AB	St. Augustine's - Parkland Anglican Church 131 Church Rd. Spruce Grove Sunday Service 10:00a.m. Eucharist with Sunday School & Nursery All are Welcome Office 780-962-5131 www.staugustinesparkland.org
Parkland Baptist Church Sunday Worship Service 10:30a.m. All Welcome 121 Brookwood Drive (780) 962-4101 www.parklandbaptist.ca	Word Church Apocalyptic Era <i>Border Paving Athletic Centre, 9 Tri Leisure Way, Spruce Grove upstairs in the Wild Rose room.</i> Ph: 780-962-7579 Service starts at 10:00 a.m. every Sunday morning, come all & be bless.		Anglican Mission of St. Saviour Service every Sunday at 10:00a.m. Rev. Aaron Parsall-Mylar Contact: 780-962-5131 Unit 3, 5245 - 51 Ave, Wabamun All are welcome!	Stony Plain United Church Sunday Service 10:30a.m. 5012-51 Ave. Stony Plain Mewassin United Church Sunday Service 9:00a.m. Rev. Heather Koots Hwy 627 - Rg Rd 30 Ph: 780-963-4745
Immanuel Lutheran Church of Rosenthal Traditional Service Sunday 9:30a.m. Contemporary Service 10:15a.m. Christian Counselling Services Rg Rd 13, Twp Rd 524 Ph: 780-963-4048 www.lutheran.ca email: office@luc.ca				
Emmaus Lutheran Church Sunday Worship Service 11:30a.m. Rev. Robert Marshall 4004-52nd Ave, Drayton Valley Ph: 780-542-5101 www.emmanuel-lutheran-church.worship.com	Church of God Worship Service Sun. 11:00a.m. Please contact for activities 5004-49 Street, Drayton Valley Ph: 780-542-5094	Calvary Baptist Church Pastoral Team: Keaton Penner Sunday Worship 10:30a.m. Youth & Ministries Info - calvbapt@telus.net 4401-50th Ave, Drayton Valley 780-542-4774 www.calvarybaptistdo.ca	Drayton Valley Alliance Church Pastor John Haazen Join us for Sunday Service at 10:30a.m. 5014-56 Ave. (next to Value Drug Mart) Programs for all ages Ph: 542-6501 dvalliance.ca	All Saints' Anglican Church Sunday Morning Worship 9 BCP 10:30 BAS with Sunday School & Nursery 5212-47 Ave, Drayton Valley (780) 542-5048
St. Anthony Catholic Church WEEKEND MASS SCHEDULE: Saturday 5:00p.m. Sunday 12:00p.m. 4708-50 Ave, Drayton Valley Parish Office: 542-3254				

SERVICE DIRECTORY

2Bros

Custom Contracting Ltd.

Custom Framing • Concrete Floors • Shingling
Siding Soffit Fascia • Styrofoam Block System

Jeff 780-717-0520

BREWSTER BOBCAT SERVICE LTD.

P.O. Box 454, Wildwood, AB T0E 2M0

- * Site Preparation
- * Pile Drilling
- * Concrete Work
- * Landscaping
- * Demolition
- * Sand & Gravel Delivery
- * General Contracting

brwcat@gmail.com
Telephone: (780) 325-3743
Bruce Balascak Cell: (780) 621-6960

Ernie's Repair & Service

SMALL ENGINES

4820 - 47 Avenue, EVANSBURG
(780) 727-4433

WABAMUN PHARMACY

I.D.A.

Box 90, 5120 - 51 Avenue
Wabamun, AB T0E 2K0
Ph: (780) 892-2278 Fax: (780) 892-2488

Community VOICE
Helping You and Your Community Thrive

THIS SPACE IS RESERVED FOR YOU!

JIM HAY TRUCKING

- Screened Black Dirt
- Beach Sand
- Road Gravel • Fill Dirt
- Bobcat & Backhoe Available

(780) 220-5849

SERVICE DIRECTORY

Blakeman Drilling Ltd.
Waterwell Drilling & Servicing
Pumps & Pressure Systems
SERVING LAC STE. ANNE
& WEST PARKLAND
FOR OVER 25 YEARS
Joe (780) 924-3024

DONALD N. GREENWAY
Chartered Accountant
Suite 205 Sunrise Professional Building
215 McLeod Avenue
Spruce Grove, AB
(Bus.) 962-6366
(Fax) 962-3990

THE MOST COMPLETE
NUTRITIONAL SPRAYS ON THE
PLANET
ORDER TODAY!
(780) 907-8642
www.Elaine1.com

CALIBRE DRILLING LTD.
DRILLING AND SERVICING YOUR WATER WELL.
SPECIALISTS IN AIR & MUD ROTARY DRILLING
* Water Well Drilling * Pump Installations
* Pressure Systems * Well Tests
* Licensed Drillers * Year Round Drilling
* Geotechnical Drilling * Cathodic Protection
* Free Estimates
Quality Workmanship Five Year Warranty
(780) 960-2992
BOX 4083 SPRUCE GROVE, AB T7X 3B3

Community VOICE
Keeping You and Your Community Informed
THIS SPACE IS RESERVED FOR YOU!

PROFORM GUTTERS
Tyler Kroes
5" & 6" Seamless Eavestrough
Residential & Commercial
780 265 1878
Box 244 Entwistle, AB T0E 0S0
proformgutters@hotmail.com

ROY SHERWOOD
Master Electrician
Ph: 780-968-1425
Cell: 780-908-2287
Fax: 780-968-2211
Email: suretechroy@gmail.com
2-53220 Rge Rd 21
Parkland County, AB
T7Y 0C5
SURETECH ELECTRIC LTD.
Control & Automation
Commissioning
Solar Sales & Service
Industrial . Commercial . Residential

MARK MARTIN PFEIFFER
MASTER BRICKLAYER/MASON
Cell: 780-242-3308
Email: pfeiffer.mark@hotmail.com
• Brickwork • Stonework
• Rockwork • Parging
• Concrete Block Work
• Tile Work (all kinds)

CROFT LAW
Local office in Darwell
Call us at 780.467.5534
Experienced Legal Services in:
Family Law • Civil Litigation
Corporate Law • Wills & Estates
Plus Notarizing and Commissioning
www.croftlaw.ca

PEMBINA CONCRETE PRODUCTS LTD.
Manufacturers of
ONE PIECE SEPTIC & HOLDING TANKS
* Water Cisterns * Field Systems *
Pumps and Accessories * Sumps
DELIVERED TO YOUR SITE
1-800-661-3047
780-727-2702
PembinaConcrete.com
New Line of Concrete Statues, Fountains and Garden Ornaments.
BOX 123, Entwistle, T0E 0S0

Community VOICE
Keeping You and Your Community Informed
THIS SPACE IS RESERVED FOR YOU!

WEIGHTLOSS NEVER TASTED SO GOOD!
NEW! NEW! NEW! NEW!
(780) 907-8642 VALENTUS
www.ValentusTour.com/Ladybug

POSTINGFIRST.com
BUY and SELL just about ANYTHING!
FREE LOCAL CLASSIFIED ADS
Real Estate, Rentals, Vehicles, Pets, Jobs, Service Directory,
Buy/Sell/Trade, Lawn & Garden, Garage Sales, Events,
Local Places & Much More... Advertise for FREE Today!
Follow Us
Instagram Facebook Pinterest Twitter YouTube

SERVICE DIRECTORY

Jack's Auto Body
& 24 HR Towing

**SPECIALIZING IN COLLISION REPAIR
GUARANTEED WORK • INSURANCE CLAIMS**

CAA BOX 9 SITE 306 RR3, ONOWAY, AB T0E 1V0
(780) 967-5850

OUR PLEDGE IS QUALITY

PREVAIL MAX
CELLULAR HOMEOSTASIS FORMULA

A NUTRITIONAL BREAKTHROUGH
THAT SUPPORTS YOU...
RIGHT DOWN TO THE LAST CELL!

LIVIN TRIM WITH
VALENTUS (780) 907-8642
www.ValentusTour.com/Ladybug

H&E
UPHOLSTERY

FOR ALL YOUR UPHOLSTERY NEEDS

Convertible tops for cars and boats,
custom car and boat interiors, 5th
wheel trailer skirts, boat tarps, ATV
seats, furniture, kitchen chairs,
heavy equipment seats.

WWW.HANDE.CA 4-485 South Ave.
For more information contact: Spruce Grove
kirk@hande.ca **(780) 962-3048**

SERVING ENTWISTLE AND AREA FOR OVER 30 YEARS

Entwistle
CONCRETE

PRODUCTS LTD.

SAND & GRAVEL SALES

PH: (780) 727-3525
Dan McCracken Entwistle, AB
www.entwistleconcrete.ca

CONCRETE WORK

- Sidewalks • Steps
- Small Retaining Walls
- Concrete Repairs

Contact Ray
(780) 975-8476

SMOOLE

- Construction & Septic Installation
- Environmental Wastewater Disposal
- Site Design & Evaluation
- Power, Water & Basement Excavation
- Trackhoe, Backhoe, Bobcat & Dump Truck

For All Your Excavation Needs
Call Dan 780-991-4484 Reid 780-909-0173

H&P Kosik
CONSTRUCTION Ltd.

- Road Building • Gravel • Sand • Dugouts
- Black Dirt • Clearing

No Job too small... We do them all!

Harvey cell. 780-445-9010 ph. 780-892-3532
Box 145, Darwell, AB. T0E 0L0

Community VOICE
Keeping You and Your Community Informed

**THIS SPACE IS
RESERVED
FOR YOU!**

SLIMROAST
Optimum

DARK ROAST COFFEE

YOUR LOGICAL SOLUTION TO
WEIGHT MANAGEMENT

(780) 907-8642
www.ValentusTour.com/Ladybug

CCAS
Canadian Clean Air Services Ltd.

**Heating & Air
Conditioning**

Goodman
Air Conditioning & Heating

Licensed and Insured with
over 20 years' experience.
Instant Approval. Financing Available

VISA

For service call:
780.569.5201
www.ccasheating.com

SANGUDO
VETERINARY CLINIC

Box 581, 4916 - 52 Ave. Sangudo, AB. T0E 2A0

Dr. Ralf Sanders DVM

Ph: 780-785-2200
Fax: 780-785-2228
sangudovet@gmail.com

24 HOUR EMERGENCY SERVICE

Xtreme LEAN NRG

Xtreme LEAN NRG
Advanced Formula helps you:

- Regulates Your Appetite
- Regulates Blood Sugar
- Regulates Fat Absorption
- Improve Energy Levels
- Improve Your Mood
- Increase Mental Focus

"We've unlocked the science of slim!"
(780) 907-8642

SUMMERS
DRILLING LTD.

Water well drilling and service
Family owned Business Serving Alberta since 1917

Never run out
of water again!

5 year workmanship
warranty

3 Convenient
ways to pay

- Visa
- Mastercard
- We now offer full financing

Tired of hauling water?
We can install
a water well with
a permanent water
supply for as little as
\$150/month OAC

Stop in at our office 4405 - 50 Street, Stony Plain
780-963-1282
admin@summersdrilling.com





 <p>REDUCED</p> <p>Lakeview Wabamun This impossible to find 2.5 Acre lot overlooking Lake Wabamun that is wonderfully cleared with well and septic field. Invite your friends with RV's and enjoy the wonders of Wabamun. Has a 1500 sq ft 2 story home as is where is.</p> <p>\$129,900</p>	 <p>KINDA BRAND NEW</p> <p>Seba Beach View Home 3200 sq ft of alluring development in this Seba Beach View property with easy lake access. 3 Floors developed including the walkout basement. New chefs' kitchen, new decks, all new bathrooms and well - Everything New all on 2 lots with a creek running along the perimeter of the property overlooking Lake.</p> <p>\$589,900</p>	 <p>SOUTHVIEW LAKEFRONT</p> <p>REDUCED 1600 Sq Ft Bungalow - This South Exposure Lakefront home with 10-foot ceilings, large deck facing Lake so you can enjoy the lake life. Features include a dream kitchen, 22 feet of granite, 3 bedrooms, plus den, large 28 x 32 attached heated garage with 14-foot ceilings. Bring all offers!</p> <p>\$374,900</p>	
 <p>WABAMUN LAKE VIEW</p> <p>Reduced \$30,000 This original owner home has had years of care put into it. Without question, this 4 Bedroom bi-level with 28 x 24 garage has the town of Wabamun's best location. Lake living with city water and sewer</p> <p>\$369,900</p>	 <p>REDUCED \$150,000</p> <p>Ahh... The Beach Life Very seldom a home of this quality and design comes onto the market. With its 22 foot ceilings, architecturally designed triangle windows overlooking the Lake this home screams quality. 3 Bedrooms, double garage, beautiful deck.</p> <p>\$949,900</p>	 <p>REDUCED</p> <p>Seba Beach Bungalow Very seldom do you find a 7yr old Bungalow that has been modernly crafted with vaulted ceiling wrap around covered deck in this wonderful community. This could be your moment.</p> <p>\$414,500</p>	 <p>NEW!</p> <p>\$40,000 Upgrades Awesome 3 bedroom bung with basement, new windows, kitchen, drywall, lots of counter space, high quality appliances, close to the beach.</p> <p>\$224,900</p>

We offer Free Evaluations and Buyer Consultations!



RE/MAX REAL ESTATE

“News Flash – 1st time offered New Listing
3 acres, Town of Wabamun Lakefront, cleared site with 13 potential fully serviced lots with water and sewer for **\$164,900****”**

Call for Evaluation Today!
(780) 991-5107

• Find Every Property For Sale! • Free Property Evaluations!

EdmontonLakeProperty.com

