



Serving: Carvel, Darwell, Duffield, Wabamun, Seba Beach, Gainford, Entwistle, Evansburg, Wildwood, Tomahawk, Spruce Grove, Stony Plain & Drayton Valley

September 10, 2019

PARKLAND RCMP REQUEST PUBLIC'S ASSISTANCE TO IDENTIFY SUSPECT MALE

Submitted by Parkland RCMP

Stony Plain, Alta. - On Sept. 1, 2019 at 5:20 p.m. Parkland RCMP responded to the report of a theft from a local liquor store. A witness reported the theft and provided police with descriptors of the suspect's truck and license plate. Police checks revealed the license plate was stolen.

The suspect is described as:

- Male
- Caucasian
- Approximately 45-years-old

- Grey hoodie
- The truck is described as:
- Dark colored Ford F150
- Dirty
- Extended cab
- Pedal bike in the box
- Alberta license plate BFF 7902

The RCMP are requesting the public's assistance. If you recognize the male or have any information to assist with the investigation, please contact the Parkland RCMP at 780-968-7267 or your local police detachment.



EVANSBURG MEDIEVALIZED ONCE AGAIN

Submitted by Jakob Kube | Tipple Park Museum

On August 24, the Evansburg Medieval Festival struck again. With some storm clouds of impending doom threatening the start of the event, our brave armoured fighters and reenactors held firm in their will to do what they love best. By some miracle (laudate Dominum), the cloud

split in two and the festival continued on to be a great success.

Many of the activities from last year made their return, including armoured fights, this time accompanied by AC/DC; arrow tag, made more challenging on a slope; and reenactors in camp with more tents, artifacts, and knowledge than ever before!



Continued on Page 2

All Precious JEWELLERS
"Your Spruce Grove Jewellery Store"
Goldsmith on Premises
 • Engraving • Clock & Watch Repairs
 • Jewellery Repairs • Custom Make-ups
 Jewellery Repairs Done On Site.
 Laser Welder Services Available.
 Toll Free: 1-877-962-4367
 PH: 780-960-4200 Fax: 780-960-4201
 Suite 102, 215 McLeod Avenue
 Spruce Grove, AB. T7X 0G2

SIGHTS AND ARMS
 Now Open Mon-Sat 10AM-6PM
FALL SALE!
 New, Used & Consigned
 Firearm Safety & Reloading Courses
 Gunsmithing
 WWW.SIGHTSANDARMS.COM
 11 J Rayborn Cr.
 St. Albert, Alberta 825-223-9863

PREVAIL MAX
 CELLULAR HOMEOSTASIS FORMULA
Nutritional Breakthrough For Your Cells
 LIVIN TRIM WITH VALENTUS
 (780) 907-8642
 www.ValentusTour.com/Ladybug

SLIMROAST Optimum
 DARK ROAST COFFEE
 YOUR LOGICAL SOLUTION TO WEIGHT MANAGEMENT
 (780) 907-8642
 www.ValentusTour.com/Ladybug

View us ONLINE!
WWW.COM-VOICE.COM

Community VOICE

Keeping You and Your Community Informed

PUBLISHED WEEKLY (Zone 1 & 2)
AND BIWEEKLY (Zone 3)

E.J. Lewchuck & Associates Ltd.

45C South Ave. | Box 3595
Spruce Grove, AB T7X 3A8

SALES TEAM

Elaine
Ashley
Dani

TELEPHONE:

Classifieds 962-9229
Advertising 962-9228
Fax 962-1021

E-MAIL:

comvoice@telusplanet.net
sales@com-voice.com
news@com-voice.com

Evansburg Medievalized Once Again

Continued from Page 1

This year Parkland County Libraries and Evansburg Public Library teamed up with the museum. A "pop-up" library was set up, with a collection of medieval/fantasy books and movies. Some new library cards were registered and materials conveniently taken out right at the event.

The Grand Feast, in an effort to be more historically accurate

than last year's pizza, featured the one and only macaroni and cheese. Perhaps those days lacked macaroni noodles, but there are medieval recipes for pasta and cheese! Fresh salad and sage water accompanied the dense and delicious symphony of gluten and dairy, prepared by the President of the Historical Society herself with her trusty Farmers' Market Manager assistant. If you see them, thank them!

Three door prizes were won, one of them being an ornamental sword fit for the halls of a king. The fighters fought till sundown in their love of the sport. A group from a wedding party happened to walk by and some brave souls in that company donned armour and tried their hand at the art of war, steel on steel.

Thank you to all the groups, volunteers, and everyone who attended for making this event such a great time! We'll see you again next year.

JUST LISTED!

- 2 Bedroom, 1 bath bungalow
- 1 Block to Lake
- Large Lot

\$169,000!!

Cameron Fisk **ROYAL LEPAGE**
REALTOR®
780-996-9390

Helping you is what we do.
NORALTA REAL ESTATE

Like Us On facebook



FACEBOOK.COM/
COMMUNITY
VOICE
NEWSPAPER

ECO CONTRACTING SERVICES



ecofirst.ca

LANDSCAPING
EARTHWORKS
EROSION CONTROL
SHORELINE RESTORATION

Call or Text
RICHARD DEIB
780.217.3534
richard@ecofirst.ca

Serving The Community Since 1995

JOKE OF THE WEEK

THESE ARE EXCUSE NOTES FROM PARENTS (WITH THEIR ORIGINAL SPELLING), COLLECTED BY SCHOOLS FROM ALL OVER THE COUNTRY.

- My son is under a doctor's care and should not take P.E. today. Please execute him.
- Please excuse Pam for being absent from skool. She was sick and I had her shot.
- Dear School: Please excuse Cecil being absent on June 28, 29, 30, 31, 32, and also 33.
- Please excuse Gloria from Jim today. She is administrating.
- Please excuse Jennifer for missing school yesterday. We forgot to get the Sunday paper off the porch, and when we found it Monday, we thought it was Sunday.

With school back in session, we need your help in keeping our students safe.



As a friendly reminder, here are some important safety rules for **drivers**:

- ~ When red lights are flashing there is no passing from either direction. It is illegal to pass a school bus from the rear and from the front when red lights are flashing.
- ~ School buses have a maximum speed of 90 km/h; please respect their speed limits.
- ~ Watch your distance behind a school bus, and remember
- ~ School zones have a speed limit of 30 km/h.

GYPSED schools offer world-class public education. Visit gypsd.ca or facebook.com/gypsd to learn more.


Grande Yellowhead
Public School Division

PUBLIC NOTICE

Régie de l'énergie
du CanadaCanada Energy
Regulator

**Trans Mountain Pipeline ULC, as General Partner of Trans Mountain Pipeline L.P.
Trans Mountain Expansion Project
Notice of Proposed Detailed Route
Pursuant to Paragraph 34(1)(b) of the *National Energy Board Act***

IN THE MATTER OF the *National Energy Board Act* and the Regulations made thereunder.

AND IN THE MATTER OF the Certificate of Public Convenience and Necessity OC-065 approving the general route of the Trans Mountain Expansion Project.

AND IN THE MATTER OF an application by Trans Mountain Pipeline ULC, on behalf of Trans Mountain Pipeline L.P., ("Trans Mountain"), respecting the determination and approval of the detailed route for the construction of the Trans Mountain Expansion Project, approximately 1179.9 kilometres in length, commencing at Trans Mountain's Terminal located in Sherwood Park, Alberta to Westridge Marine Terminal located in Burnaby, British Columbia as shown on the adjacent Route Map (Figure 1).

TO: JOYCE ELEANOR VAN VEELAN
("Landowner")

Being the registered owner(s), in so far as they can be ascertained, of the lands required for the detailed route of the Trans Mountain Expansion Project, located at

**MERIDIAN 5 RANGE 3 TOWNSHIP 53
SECTION 9
ALL THAT PORTION OF THE NORTH EAST
QUARTER LYING SOUTH OF THE NORTH
LIMIT OF RIGHT OF WAY PLAN 3626HW.
CONTAINING 32.9 HECTARES (81.22 ACRES)
MORE OR LESS. EXCEPTING THEREOUT
ALL MINES AND MINERALS
Title Number: 802 059 547 (the "Lands")**

Trans Mountain is seeking to locate the Landowner, or heirs of the Landowner, described above in order to provide them with information and this notice concerning the detailed route of the Trans Mountain Expansion Project.

The Individual Ownership Sketch details the route of the Trans Mountain Expansion Project, specific to the portion of the above Lands included within the permanent easement agreement with Trans Mountain (Figure 2).

If you have a legal right to the Lands described above and wish to oppose the proposed detailed route of the Trans Mountain Expansion Project, including the method and timing of construction of the pipeline, you may file a written statement

of opposition with the Canada Energy Regulator ("CER") within thirty (30) days of the publication of this notice. The written statement of opposition must set out the nature of your interest in the proposed detailed route and the grounds for your opposition to that route. In light of the previous detailed route processes that were conducted for the Trans Mountain Expansion Project in 2017 and 2018, the CER will only accept statements of opposition that raise concerns regarding a material change in circumstances from the original detailed route processes. A copy of any written statement of opposition to this detailed route must be sent to the following addresses:

**Canada Energy Regulator
Suite 210, 517 Tenth Avenue SW
Calgary, Alberta T2R 0A8
Attention: Louise George,
Secretary of the Commission of the CER
Phone: 403-292-4800
Toll Free Fax: 1-877-288-8803
Email: TMX.ProcessHelp@cer-rec.gc.ca
Website: www.cer-rec.gc.ca**

And to:

**Trans Mountain Expansion Project
Suite 2700, 300 5th Ave SW,
Calgary Alberta T2P 5J2,
Attention: Alain Parisé, Director, Land
Fax: 403-514-6401
Email: TMPEP_Land@transmountain.com**

The process for considering statements of opposition will be as follows:

- Previous detailed route decisions, including conditions imposed by the National Energy Board, will stand if no statement of opposition is filed in relation to them within thirty (30) days following the publication of this notice. Accordingly, no action on the part of a landowner is required to ensure that Trans Mountain continues to be bound by the conditions in the original detailed route decisions.
- If a written statement of opposition is filed with the CER within thirty (30) days following the publication of this notice, the statement relates to a previous detailed route decision, and the statement raises concerns regarding a material change in circumstances from the original detailed route process, the CER will conduct a review of the previous detailed route decision.

- For detailed route hearings that were in progress on August 30, 2018 and no decision was issued, landowners and Indigenous communities need to register their continued objection by filing a statement of opposition within thirty (30) days following the publication of this notice. The CER will then continue the hearing and may add new process steps, as necessary, to address any valid concerns with respect to changed circumstances.
- Landowners and Indigenous communities that did not file a statement of opposition in the previous detailed route process, whose statement of opposition was rejected or that withdrew their statement of opposition prior to a detailed route hearing, may file a new statement of opposition within thirty (30) days following the publication of this notice. If the statement of opposition raises a material change in circumstances, the CER will hold a hearing to consider those concerns, in relation to any section or part of the pipeline affected by the concerns disclosed in the written statement.

The CER is not required to give any notice, hold any hearing or take any other action with respect to any written statement of opposition filed with the CER and may at any time disregard any such written statement if the person who filed the statement files a notice of withdrawal, or it appears to the CER that the statement is frivolous, vexatious or is not made in good faith. If the CER determines it appropriate to hold a public hearing, the CER will fix a suitable time and place for the hearing and will publish a notice of the hearing in at least one issue of a publication in general circulation within the area in which the lands acquired or proposed to be acquired are situated. The CER will also send a notice of the public hearing to each person who has filed a written statement of opposition with the CER. The public hearing will be conducted within the area in which the lands to which the statement relates are situated. The CER, or a person authorized by the CER, may make such inspection of the lands acquired or proposed to be acquired, or affected by, construction of the Trans Mountain Expansion Project, as deemed necessary by the CER.

If the CER determines a public hearing is required, the CER will permit each person who filed a written statement of opposition that met the requirements to make representations and may allow any other interested person to make representations before

PUBLIC NOTICE

it as the CER deems proper. The CER will take into account all written statements of opposition and all representations made at the public hearing in determining the best possible route of the pipeline, and the most appropriate methods and timing of construction for the Trans Mountain Expansion. The CER may impose in any approval, such terms and conditions as it considers proper. Where the CER has held a public hearing in respect of any section or part of the Trans Mountain Expansion Project, and has approved or refused to approve the plan, profile and book of reference respecting that section or part, it will forward a copy of its decision and reasons to the Minister and each person who made representations to the CER at the public hearing.

The CER may fix such amount as it deems reasonable in respect of the actual costs reasonably incurred by any person who makes representations to the CER at such a public hearing, and the amount so fixed will be paid forthwith to the person by Trans Mountain.

Copies of the plan, profile and book of reference for the detailed route of the Trans Mountain Expansion Project may be obtained by calling 1-866-514-6700 or emailing info@transmountain.com. You may also view it online at <https://www.transmountain.com/detailed-route> or in person at:

Canada Energy Regulator Library
2nd Floor, 517 Tenth Avenue SW
Calgary, Alberta T2R 0A8
Toll Free Telephone: 1-800-899-1265

Information and templates, including a Statement of Opposition form, are also available at www.cer-rec.gc.ca/TransMountainExpansion.

A copy of any such written statement of opposition to this detailed route must be sent to the following addresses:

Canada Energy Regulator
Suite 210, 517 Tenth Avenue SW
Calgary, Alberta T2R 0A8
Attention: Louise George,
Secretary of the Commission of the CER
Toll Free Fax: 1-877-288-8803
Email: TMX.ProcessHelp@cer-rec.gc.ca
Website: www.cer-rec.gc.ca

And to: Trans Mountain Expansion Project
Suite 2700, 300 5th Ave SW
Calgary Alberta T2P 5J2
Attention: Alain Parisé, Director, Land
Fax: 403-514-6401
Email: TMEP_Land@transmountain.com

The CER's Alternative Dispute Resolution (ADR) process will be available and communicated by the CER when it is determined a public hearing will be held for your statement of opposition. An ADR process could take the form of a meeting between you and Trans Mountain, which may be facilitated by trained CER staff or by another neutral third party. The facilitator would assist you and Trans Mountain to develop a process that may help to resolve outstanding issues.

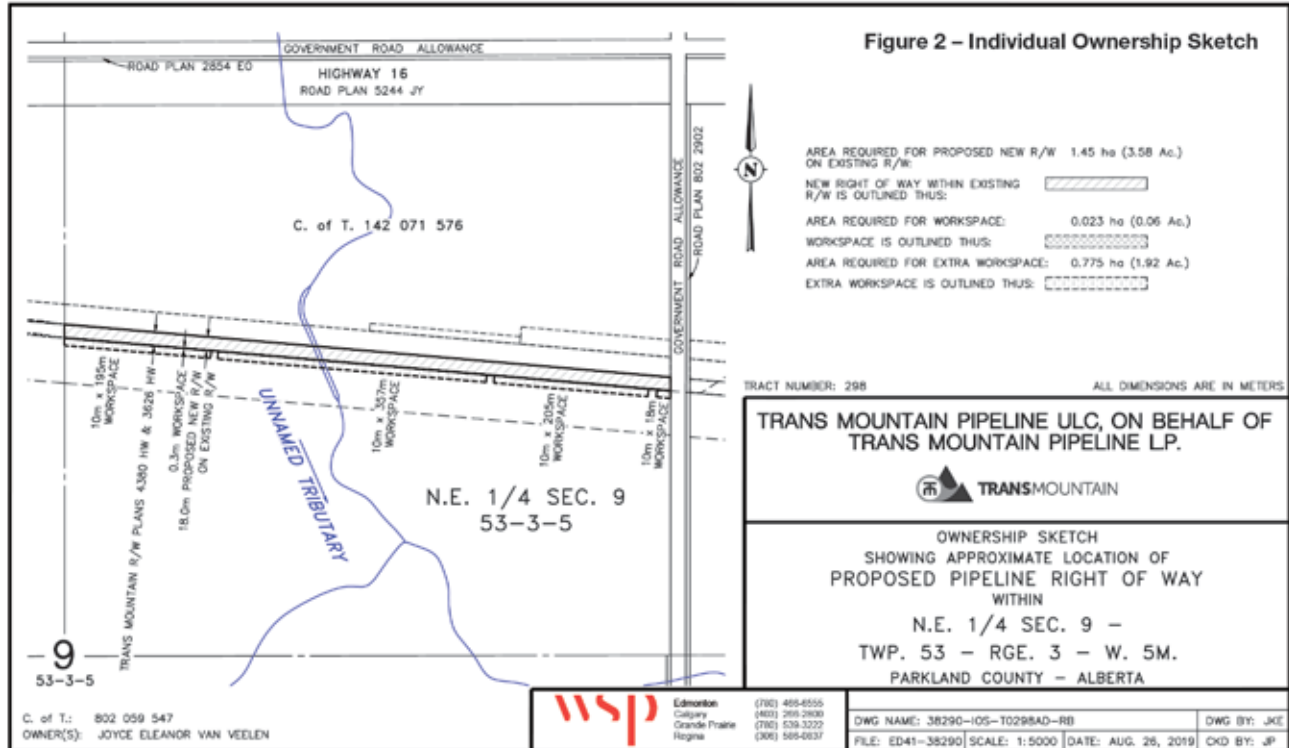
For more information or for any questions, you can contact a CER Process Advisor at 1-800-899-1265 or TMX.ProcessHelp@cer-rec.gc.ca.

Should you have any questions concerning this notice, the proposed detailed route, or the CER's detailed route procedures, please contact Trans Mountain at 1-866-454-4717 or info@transmountain.com and a Trans Mountain representative will return your call.



PUBLIC NOTICE

Canada



Evansburg Art Club

Art classes resume after a summer break.

Saturday September 14, 2019

Hummingbird in coloured pencil
with Susan Casault. 10:00AM-4:00PM
at the Heritage House, Evansburg.

Any one is Welcome classes are \$25.00
for members & \$50.00 for none members.

FOR INFO, CALL 780-723-4119

BUSINESS FOR SALE

Steady Income – Business
doesn't fluctuate with Economy

Includes: - All Clientele
- 5 Tandem Trucks
- 1 Truck & Trailer Unit

Call 780-797-3844 for more Info.
Al-jo An Septic Service

FREE STORAGE WITH PREPAID PACKAGES



- WINTERIZE
- SHRINK-WRAP
- STORAGE
- SPRING RUN-UP

780.924.3255

www.ECKOMARINE.COM ALBERTA BEACH



PUBLIC NOTICE

Régie de l'énergie
du CanadaCanada Energy
Regulator

**Trans Mountain Pipeline ULC, as General Partner of Trans Mountain Pipeline L.P.
Trans Mountain Expansion Project
Notice of Proposed Detailed Route
Pursuant to Paragraph 34(1)(b) of the *National Energy Board Act***

IN THE MATTER OF the *National Energy Board Act* and the Regulations made thereunder.

AND IN THE MATTER OF the Certificate of Public Convenience and Necessity OC-065 approving the general route of the Trans Mountain Expansion Project.

AND IN THE MATTER OF an application by Trans Mountain Pipeline ULC, on behalf of Trans Mountain Pipeline L.P., ("Trans Mountain"), respecting the determination and approval of the detailed route for the construction of the Trans Mountain Expansion Project, approximately 1179.9 kilometres in length, commencing at Trans Mountain's Terminal located in Sherwood Park, Alberta to Westridge Marine Terminal located in Burnaby, British Columbia as shown on the adjacent Route Map (**Figure 1**).

TO: JULIA EWASHKO ("Landowner")

Being the registered owner(s), in so far as they can be ascertained, of the lands required for the detailed route of the Trans Mountain Expansion Project, located at

**MERIDIAN 5 RANGE 5 TOWNSHIP 53
SECTION 14
THE EAST HALF OF THE NORTH WEST
QUARTER CONTAINING 32.4 HECTARES
(80 ACRES) MORE OR LESS EXCEPTING
THEREOUT: 4.17 HECTARES (10.31 ACRES)
MORE OR LESS AS SHOWN ON ROAD
PLAN 8222092 B) MICROWAVE SITE
COMPRISING AREA A CONTAINING 4.17
HECTARES (10.30 ACRES) AREA B,
CONTAINING 0.272 HECTARES (0.67 ACRES)
MORE OR LESS BOTH AS SHOWN ON PLAN
8820443 EXCEPTING THEREOUT ALL MINES
AND MINERALS Title Number: 052 048 712
(the "Lands")**

Trans Mountain is seeking to locate the Landowner, or heirs of the Landowner, described above in order to provide them with information and this notice concerning the detailed route of the Trans Mountain Expansion Project.

The Individual Ownership Sketch details the route of the Trans Mountain Expansion Project, specific to the portion of the above Lands included within the permanent easement agreement with Trans Mountain (**Figure 2**).

If you have a legal right to the Lands described above and wish to oppose the proposed detailed route of the Trans Mountain Expansion Project, including the method and timing of construction of the pipeline, you may file a written statement of opposition with the Canada Energy Regulator ("CER") within thirty (30) days of the publication of this notice. The written statement of opposition must set out the nature of your interest in the proposed detailed route and the grounds for your opposition to that route. In light of the previous detailed route processes that were conducted for the Trans Mountain Expansion Project in 2017 and 2018, the CER will only accept statements of opposition that raise concerns regarding a material change in circumstances from the original detailed route processes. A copy of any written statement of opposition to this detailed route must be sent to the following addresses:

**Canada Energy Regulator
Suite 210, 517 Tenth Avenue SW
Calgary, Alberta T2R 0A8
Attention: Louise George,
Secretary of the Commission of the CER
Phone: 403-292-4800
Toll Free Fax: 1-877-288-8803
Email: TMX.ProcessHelp@cer-rec.gc.ca
Website: www.cer-rec.gc.ca**

And to:

**Trans Mountain Expansion Project
Suite 2700, 300 5th Ave SW,
Calgary Alberta T2P 5J2,
Attention: Alain Parisé, Director, Land
Fax: 403-514-6401
Email: TMPEP_Land@transmountain.com**

The process for considering statements of opposition will be as follows:

- Previous detailed route decisions, including conditions imposed by the National Energy Board, will stand if no statement of opposition is filed in relation to them within thirty (30) days following the publication of this notice. Accordingly, no action on the part of a landowner is required to ensure that Trans Mountain continues to be bound by the conditions in the original detailed route decisions.
- If a written statement of opposition is filed with the CER within thirty (30) days following the publication of this notice, the statement relates

to a previous detailed route decision, and the statement raises concerns regarding a material change in circumstances from the original detailed route process, the CER will conduct a review of the previous detailed route decision.

- For detailed route hearings that were in progress on August 30, 2018 and no decision was issued, landowners and Indigenous communities need to register their continued objection by filing a statement of opposition within thirty (30) days following the publication of this notice. The CER will then continue the hearing and may add new process steps, as necessary, to address any valid concerns with respect to changed circumstances.
- Landowners and Indigenous communities that did not file a statement of opposition in the previous detailed route process, whose statement of opposition was rejected or that withdrew their statement of opposition prior to a detailed route hearing, may file a new statement of opposition within thirty (30) days following the publication of this notice. If the statement of opposition raises a material change in circumstances, the CER will hold a hearing to consider those concerns, in relation to any section or part of the pipeline affected by the concerns disclosed in the written statement.

The CER is not required to give any notice, hold any hearing or take any other action with respect to any written statement of opposition filed with the CER and may at any time disregard any such written statement if the person who filed the statement files a notice of withdrawal, or it appears to the CER that the statement is frivolous, vexatious or is not made in good faith. If the CER determines it appropriate to hold a public hearing, the CER will fix a suitable time and place for the hearing and will publish a notice of the hearing in at least one issue of a publication in general circulation within the area in which the lands acquired or proposed to be acquired are situated. The CER will also send a notice of the public hearing to each person who has filed a written statement of opposition with the CER. The public hearing will be conducted within the area in which the lands to which the statement relates are situated. The CER, or a person authorized by the CER, may make such inspection of the lands acquired or proposed to be acquired, or affected by, construction of the Trans Mountain Expansion Project, as deemed necessary by the CER.

PUBLIC NOTICE

If the CER determines a public hearing is required, the CER will permit each person who filed a written statement of opposition that met the requirements to make representations and may allow any other interested person to make representations before it as the CER deems proper. The CER will take into account all written statements of opposition and all representations made at the public hearing in determining the best possible route of the pipeline, and the most appropriate methods and timing of construction for the Trans Mountain Expansion. The CER may impose in any approval, such terms and conditions as it considers proper. Where the CER has held a public hearing in respect of any section or part of the Trans Mountain Expansion Project, and has approved or refused to approve the plan, profile and book of reference respecting that section or part, it will forward a copy of its decision and reasons to the Minister and each person who made representations to the CER at the public hearing.

The CER may fix such amount as it deems reasonable in respect of the actual costs reasonably incurred by any person who makes representations to the CER at such a public hearing, and the amount so fixed will be paid forthwith to the person by Trans Mountain.

Copies of the plan, profile and book of reference for the detailed route of the Trans Mountain Expansion Project may be obtained by calling 1-866-514-6700 or emailing info@transmountain.com. You may also view it online at <https://www.transmountain.com/detailed-route> or in person at:

Canada Energy Regulator Library
2nd Floor, 517 Tenth Avenue SW
Calgary, Alberta T2R 0A8
Toll Free Telephone: 1-800-899-1265

Information and templates, including a Statement of Opposition form, are also available at www.cer-rec.gc.ca/TransMountainExpansion.

A copy of any such written statement of opposition to this detailed route must be sent to the following addresses:

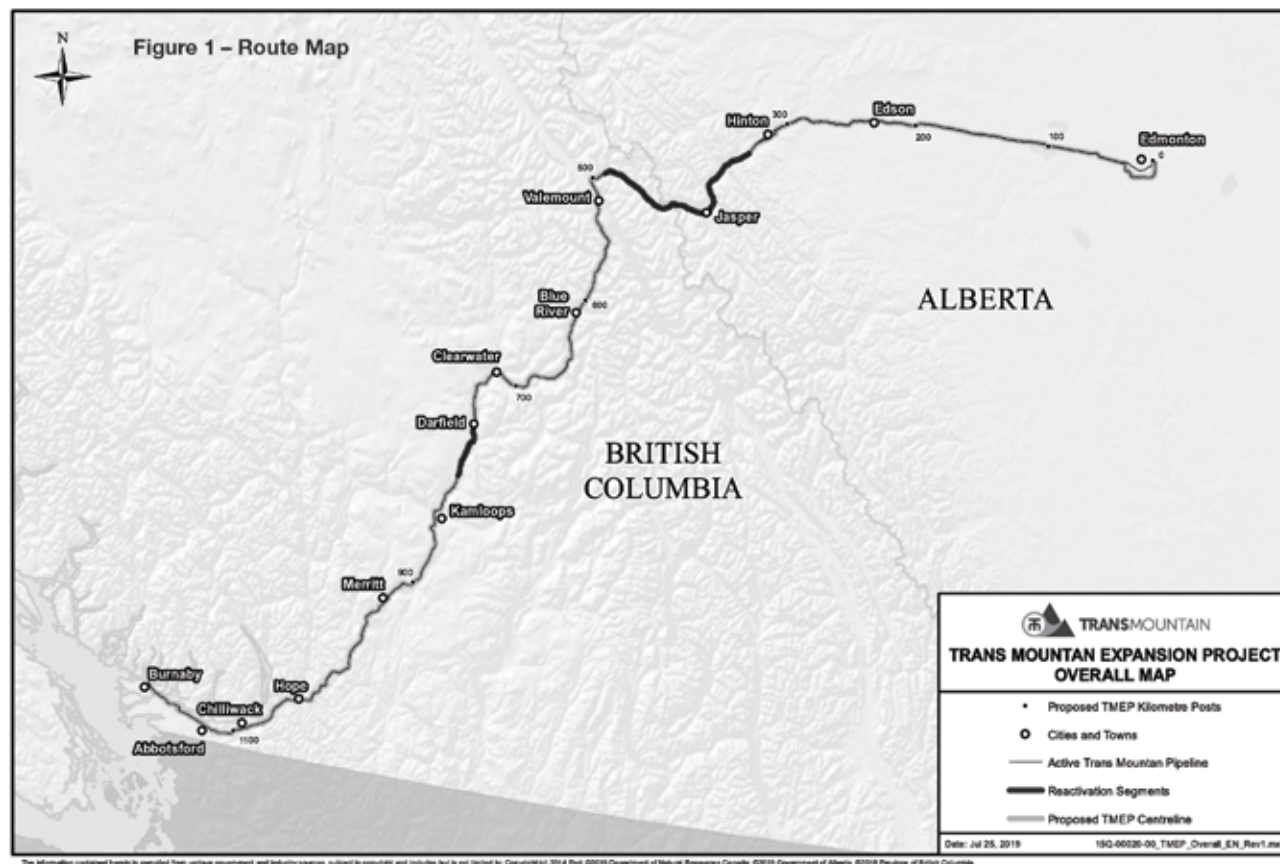
Canada Energy Regulator
Suite 210, 517 Tenth Avenue SW
Calgary, Alberta T2R 0A8
Attention: Louise George,
Secretary of the Commission of the CER
Toll Free Fax: 1-877-288-8803
Email: TMX.ProcessHelp@cer-rec.gc.ca
Website: www.cer-rec.gc.ca

And to: **Trans Mountain Expansion Project**
Suite 2700, 300 5th Ave SW
Calgary Alberta T2P 5J2
Attention: Alain Parisé, Director, Land
Fax: 403-514-6401
Email: TMEP_Land@transmountain.com

The CER's Alternative Dispute Resolution (ADR) process will be available and communicated by the CER when it is determined a public hearing will be held for your statement of opposition. An ADR process could take the form of a meeting between you and Trans Mountain, which may be facilitated by trained CER staff or by another neutral third party. The facilitator would assist you and Trans Mountain to develop a process that may help to resolve outstanding issues.

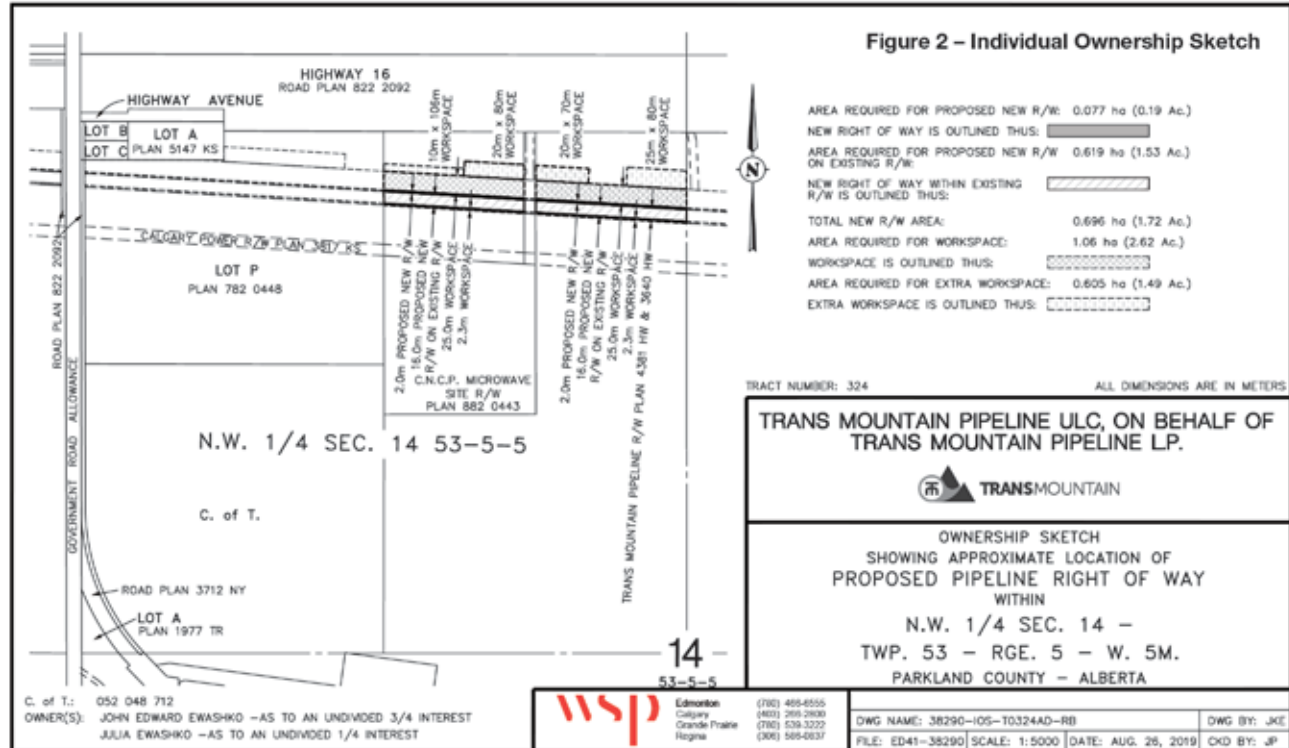
For more information or for any questions, you can contact a CER Process Advisor at 1-800-899-1265 or TMX.ProcessHelp@cer-rec.gc.ca.

Should you have any questions concerning this notice, the proposed detailed route, or the CER's detailed route procedures, please contact Trans Mountain at 1-866-454-4717 or info@transmountain.com and a Trans Mountain representative will return your call.



PUBLIC NOTICE

Canada



SUDOKU OF THE WEEK

Fun By The Numbers

Here's How It Works: Sudoku puzzles are formatted as a 9x9 grid, broken down into nine 3x3 boxes. To solve a sudoku, the numbers 1 through 9 must fill each row, column and box. Each number can appear only once in each row, column and box. You can figure out the order in which the numbers will appear by using the numeric clues already provided in the boxes. The more numbers you name, the easier it gets to solve the puzzle!

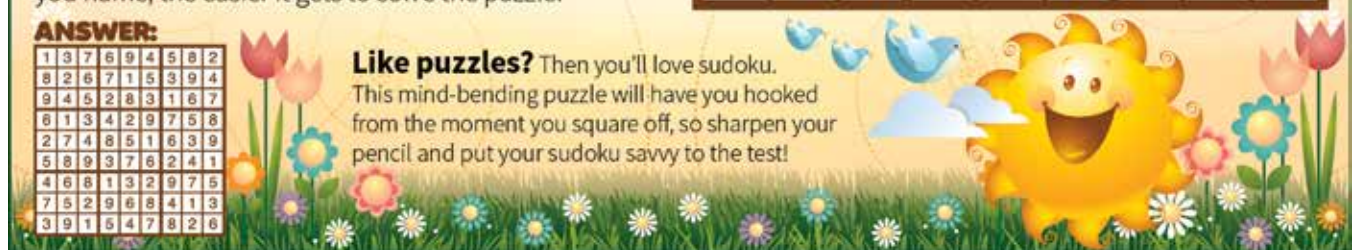
ANSWER:

1	3	7	6	9	4	5	8	2
8	2	6	7	1	5	3	9	4
9	4	5	2	8	3	1	6	7
6	1	3	4	2	9	7	5	8
2	7	4	8	5	1	6	3	9
5	8	9	3	7	6	2	4	1
4	6	8	1	3	2	9	7	5
7	5	2	9	6	8	4	1	3
3	9	1	5	4	7	8	2	6

Like puzzles? Then you'll love sudoku.

This mind-bending puzzle will have you hooked from the moment you square off, so sharpen your pencil and put your sudoku savvy to the test!

	3	7				5	8	2
		6	7	1			9	
		5	2					
6						9	7	
		4		5				9
			3					1
		8		3				
	5	2		6	8	4	1	
3	9	1			7			6



PARKLAND RCMP DETACHMENT OPENS ITS DOORS

Submitted by Parkland
RCMP

Spruce Grove, Alta.—The new Parkland RCMP detachment is officially open for business. To mark the event, City of Spruce Grove Mayor Stuart Houston, Town of Stony Plain Mayor William Choy and Parkland County Mayor Rodney Shaigec were on site for the inaugural flag raising at the detachment.

The new detachment has consolidated employees from the previous Stony Plain and Spruce Grove detachments along with



Traffic Services, formerly located in Edmonton.

Hours of operation for front

desk service is Monday to Friday from 8 a.m. to 5 p.m.

Members of the public will be

invited to a grand opening event in October. More details on that event to come.

WHISTLERS CAMPGROUND WILL REMAIN CLOSED IN 2020

Submitted by Jim Eglinski,
MP – Yellowhead

OTTAWA: Jim Eglinski, Member of Parliament for Yellowhead, is saddened to hear that even though Parks Canada

announced in 2016 the closure of Whistlers Campground in Jasper National Park for the 2019 season, I have learned that the campground will now remain closed until 2021.

“Although other front-country

campsites in 10 campgrounds in Jasper National Park will be open for the 2020 camping season, Whistlers Campground closure is heartbreaking news for all our local businesses who rely on tourism for their livelihood

as well as for students looking for summer jobs at this well sought-after campground,” stated MP Eglinski.

For more information: <https://www.pc.gc.ca/en/pn-np/ab/jasper/visit/carte-FII-map/whistlers>

Urban Sole Shoes

Summer Clearance

SEPTEMBER 14TH, 2019 | 10-5PM

SUMMER INVENTORY!

50% OFF

10% OFF NEW INVENTORY






Ecco • Taos • Aetrex • Romika • Rieker
• Merrell • Keen • Mjus • Clarks

#56, 96 Campsite Road Spruce Grove (Next to Penningtons, Walmart)
780-960-2010

WE WANT TO EARN YOUR BUSINESS! • WE WANT TO EARN YOUR BUSINESS! • WE WANT TO EARN YOUR BUSINESS! • WE WANT TO EARN YOUR BUSINESS! • WE WANT TO EARN YOUR BUSINESS!

• WE WANT TO EARN YOUR BUSINESS! • WE WANT TO EARN YOUR BUSINESS! •

WE WANT TO EARN YOUR BUSINESS! • WE WANT TO EARN YOUR BUSINESS! • WE WANT TO EARN YOUR BUSINESS! • WE WANT TO EARN YOUR BUSINESS! • WE WANT TO EARN YOUR BUSINESS!

FINAL MONTH OF EMPLOYEE PRICING PLUS!
IT ALL ENDS SEPTEMBER 30TH!



EMPLOYEE PRICING **PLUS**
 — FINAL MONTH —



PLUS
 UP TO
\$1500
 MORE VALUE THAN
 OTHER FORD
 DEALERS!

YOU PICK *FREE* Maintenance Package or *FREE* Accessories or
CASH BACK or You Tell Us and Write Yourself a *BETTER DEAL!*

2019 FORD ESCAPE SEL

One of Canada's most popular SUVs, this unit features power lift-gate, remote start, dual zone A/C, Ford Pass Connect and more! The perfect family mover!

MSRP: \$37,199
 Drayton Valley Ford
 EMPLOYEE PRICE
\$32,748

ONLY
\$198
 BI-WEEKLY OAC



**YOU SAVE
 \$4,481**

STK# 19D5P013

2019 FORD F350 LARIAT CREW

On the road or on the job site this 2019 F-350 Lariat Crew features a 6.7L Power Stroke V8 diesel with Torqshift HD tranny and trailer tow package.

MSRP: \$85,409
 Drayton Valley Ford
 EMPLOYEE PRICE
\$77,222

ONLY
\$607
 BI-WEEKLY OAC



**YOU SAVE
 \$8,187**

STK# 19DFT083

YOU PAY WHAT WE PAY
PLUS GET MORE AT DRAYTON VALLEY FORD

WE WORK IN THIS COMMUNITY!
 WE LIVE IN THIS COMMUNITY!
WE ARE LOCAL!

DRAYTON VALLEY
 PR  UD

(780) 542-4438
 1-866-841-3673
 5214 POWER CENTRE BLVD DRAYTON VALLEY, AB

Disclaimer: Drayton Valley Ford is a full disclosure AMVIC dealer. Vehicles illustrated may not be exactly as shown. (19D5P013) 2019 Ford Escape SEL. \$197.75 bi-weekly OAC. 60-month/20-thousand kilometre lease at 2.79% OAC. Guaranteed Future Value: \$11,531.69. (19DFT083) 2019 Ford F350 Lariat Crew Diesel. MSRP: \$85,409.00. Employee Pricing Discount: \$8,186.75. Selling Price: \$77,222.25. GST: \$3861.11. Cost of Borrowing: \$13,628.92. Amount to finance: \$81,083.36. Term: 72-months at 5.29%. Payment: \$607.33 bi-weekly. All payments include \$495 Admin Fee and GST. Please see dealer for more details and information.

• WE WANT TO EARN YOUR BUSINESS! • WE WANT TO EARN YOUR BUSINESS! •

MINISTER OF JUSTICE ON 'TALKING RURAL CRIME' TOUR

Submitted by Government of Alberta

Justice Minister Doug Schweitzer is hitting the open road to meet Albertans to gain their input and discuss their concerns about the rapid increase in rural crime.

"This government is committed to helping keep Albertans safe, secure and protected, wherever they call home. This includes spending time outside the province's big cities to hear directly from people about their experiences with rural crime and their insights into it. That is why I'm hitting the road to meet with Albertans to ensure we have a faster, fairer and more responsive justice system to meet their concerns." - Doug Schweitzer, Minister of Justice and Solicitor General

Throughout September, the minister will meet with individual residents, business owners, rural crime watch groups and local officials to hear first-hand their rural crime concerns. To ensure a broad level of understanding of concerns, the itinerary includes both rural and urban municipalities.

"First-hand conversations with Albertans will help ensure our actions truly reflect where Albertans are today. We recognize the unique vulnerability of Albertans in rural areas. We want to work

with them to ensure our justice system reflects the realities of rural Alberta and has the tools and resources necessary to ensure rural Albertans feel their justice system protects them, their loved ones and their property." - Doug Schweitzer, Minister of Justice and Solicitor General

The minister's tour begins Sept. 5 in Bragg Creek. It will include communities from Fairview in the north to Raymond in the south, with many locations in between. The itinerary is subject to

change.

Tour schedule

Thursday, Sept. 5

- Bragg Creek

- Springbank

Friday, Sept. 6

- Red Deer

Tuesday, Sept. 10

- Lacombe-Ponoka

- Athabasca

Wednesday, Sept. 11

- Slave Lake

- Fairview

Thursday, Sept. 12

- Grande Prairie

- Whitecourt

Monday, Sept. 16

- Cheadle

Tuesday, Sept. 17

- Lethbridge

- Coaldale

Friday, Sept. 20

- Airdrie

- Drumheller

Monday, Sept. 23

- Drayton Valley

Monday, Sept. 30

- Okotoks

- Raymond

- Medicine Hat

NASHVILLE

Entertainer, Performer, Showman,
Singer and Songwriter, plus

2017 & 2018

Alberta Country Music Nominee

Coming to Drayton Valley with
his Nashville band

Playing your Country Favorites plus
songs from Donny's new album!

DONNY LEE

Don't miss his high energy & amazing show!

ONE NIGHT ONLY

FRIDAY,
SEPTEMBER 20 • 7:30PM

Tickets: \$45.00 (incl. GST) at the
MAX EVENTS CENTRE
Drayton Valley

www.ticketpro.ca
Ticketpro 1-888-655-9090

WWW.DONNYLEEMUSIC.COM

**Made
You
LOOK!**



See
**Advertising
works!**
Place your
ad today!

WOP MAY & ROBB SIGN COMMEMORATION:

Residents, dignitaries, and special guests celebrate the 100th Anniversary of the Wop May Coal Branch Manhunt in Robb, AB.

Submitted by Yellowhead County

On Saturday, August 31, 2019, as part of the Wop May Days, approximately forty people including several Edson and area residents, followed in the footsteps of the infamous Coal Branch manhunt for an Edmonton murder suspect that escaped to the Coal Branch 100 years ago.

This manhunt that took place in September of 1919 included the participation of Wilfred 'Wop' May. The famous pilot flew Edmonton City Police detective James Campbell into the area to help apprehend the suspect who had escaped from Edmonton by train into the Coal Branch. The murder suspect was quickly arrested in Mountain Park but escaped shortly after south of Robb. Once seized for a second time, he was taken to Edmonton for trial.

A new historical sign that celebrates the Hamlet of Robb, as

well as Wop May's participation in this chase, was commemorated in Robb with elected officials, special guests, and several dozen Edson and area participants in attendance.

Wop May's son, Denny May and his wife Marg, and Detective James Campbell's grandson, John Campbell and his family, were in attendance, as well as Yellowhead County Mayor Gerald Soroka, and Councillors Lavonne Olson, Shawn Berry and Penny Lowe, MP Jim Eglinski, President of the Edson and District Historical Society Doug Woodhouse, and historian John Chalmers from Canada's Aviation Hall of Fame.

Attendees also took part in the BBQ, and the Robb Community Association opened the multi-plex and provided tea and coffee for the event. The new Robb historical sign is one of many heritage education signs that Yellowhead County has been installing across the County over the last several years.



Ignite the fire in you.

Apply online today to become a paid on call firefighter.

RECRUITMENT ENDS SEPTEMBER 30

- ☒ 18 years of age or older*
- ☒ Live within 8-10 minutes of your nearest Parkland County Fire Station
- ☒ Attend weekly training
- ☒ Valid Alberta Driver's license and satisfactory driving record
- ☒ Current criminal record check with vulnerable sector screening

*Applicants between age 14 and 17 may be considered in a junior program.

Learn more or apply online: careers.parklandcounty.com



PUBLIC NOTICE

Régie de l'énergie
du CanadaCanada Energy
Regulator

**Trans Mountain Pipeline ULC, as General Partner of Trans Mountain Pipeline L.P.
Trans Mountain Expansion Project
Notice of Proposed Detailed Route
Pursuant to Paragraph 34(1)(b) of the *National Energy Board Act***

IN THE MATTER OF the *National Energy Board Act* and the Regulations made thereunder.

AND IN THE MATTER OF the Certificate of Public Convenience and Necessity OC-065 approving the general route of the Trans Mountain Expansion Project.

AND IN THE MATTER OF an application by Trans Mountain Pipeline ULC, on behalf of Trans Mountain Pipeline L.P., ("Trans Mountain"), respecting the determination and approval of the detailed route for the construction of the Trans Mountain Expansion Project, approximately 1179.9 kilometres in length, commencing at Trans Mountain's Terminal located in Sherwood Park, Alberta to Westridge Marine Terminal located in Burnaby, British Columbia as shown on the adjacent Route Map (**Figure 1**).

**TO: ALICE KALINOWSKI ("Landowner")
ALEXANDRA KALINOWSKI ("Landowner")**

Being the registered owner(s), in so far as they can be ascertained, of the lands required for the detailed route of the Trans Mountain Expansion Project, located at

**MERIDIAN 5 RANGE 9 TOWNSHIP 53
SECTION 21
QUARTER NORTH EAST
CONTAINING 64.7 HECTARES (160 ACRES)
MORE OR LESS EXCEPTING THEREOUT
ALL MINES AND MINERALS
Title Number: 072 522 328 +2**

**MERIDIAN 5 RANGE 9 TOWNSHIP 53
SECTION 21
QUARTER NORTH WEST
CONTAINING 64.7 HECTARES (160 ACRES)
MORE OR LESS EXCEPTING THEREOUT
ALL MINES AND MINERALS
Title Number: 072 522 328**

(the "Lands")

Trans Mountain is seeking to locate the Landowner, or heirs of the Landowner, described above in order to provide them with information and this notice concerning the detailed route of the Trans Mountain Expansion Project.

The Individual Ownership Sketch details the route of the Trans Mountain Expansion Project, specific to the portion of the above Lands included within the permanent easement agreement with Trans Mountain (**Figure 2**).

If you have a legal right to the Lands described above and wish to oppose the proposed detailed route of the Trans Mountain Expansion Project, including the method and timing of construction of the pipeline, you may file a written statement of opposition with the Canada Energy Regulator ("CER") within thirty (30) days of the publication of this notice. The written statement of opposition must set out the nature of your interest in the proposed detailed route and the grounds for your opposition to that route. In light of the previous detailed route processes that were conducted for the Trans Mountain Expansion Project in 2017 and 2018, the CER will only accept statements of opposition that raise concerns regarding a material change in circumstances from the original detailed route processes. A copy of any written statement of opposition to this detailed route must be sent to the following addresses:

**Canada Energy Regulator
Suite 210, 517 Tenth Avenue SW
Calgary, Alberta T2R 0A8
Attention: Louise George,
Secretary of the Commission of the CER
Phone: 403-292-4800
Toll Free Fax: 1-877-288-8803
Email: TMX.ProcessHelp@cer-rec.gc.ca
Website: www.cer-rec.gc.ca**

And to:
**Trans Mountain Expansion Project
Suite 2700, 300 5th Ave SW,
Calgary Alberta T2P 5J2,
Attention: Alain Parisé, Director, Land
Fax: 403-514-6401
Email: TMPE_Land@transmountain.com**

The process for considering statements of opposition will be as follows:

- Previous detailed route decisions, including conditions imposed by the National Energy Board, will stand if no statement of opposition is filed in relation to them within thirty (30) days following the publication of this notice. Accordingly, no action on the part of a landowner is required to ensure that Trans Mountain continues to be bound by the conditions in the original detailed route decisions.
- If a written statement of opposition is filed with the CER within thirty (30) days following the publication of this notice, the statement relates

to a previous detailed route decision, and the statement raises concerns regarding a material change in circumstances from the original detailed route process, the CER will conduct a review of the previous detailed route decision.

- For detailed route hearings that were in progress on August 30, 2018 and no decision was issued, landowners and Indigenous communities need to register their continued objection by filing a statement of opposition within thirty (30) days following the publication of this notice. The CER will then continue the hearing and may add new process steps, as necessary, to address any valid concerns with respect to changed circumstances.
- Landowners and Indigenous communities that did not file a statement of opposition in the previous detailed route process, whose statement of opposition was rejected or that withdrew their statement of opposition prior to a detailed route hearing, may file a new statement of opposition within thirty (30) days following the publication of this notice. If the statement of opposition raises a material change in circumstances, the CER will hold a hearing to consider those concerns, in relation to any section or part of the pipeline affected by the concerns disclosed in the written statement.

The CER is not required to give any notice, hold any hearing or take any other action with respect to any written statement of opposition filed with the CER and may at any time disregard any such written statement if the person who filed the statement files a notice of withdrawal, or it appears to the CER that the statement is frivolous, vexatious or is not made in good faith. If the CER determines it appropriate to hold a public hearing, the CER will fix a suitable time and place for the hearing and will publish a notice of the hearing in at least one issue of a publication in general circulation within the area in which the lands acquired or proposed to be acquired are situated. The CER will also send a notice of the public hearing to each person who has filed a written statement of opposition with the CER. The public hearing will be conducted within the area in which the lands to which the statement relates are situated. The CER, or a person authorized by the CER, may make such inspection of the lands acquired or proposed to be acquired, or affected by, construction of the Trans Mountain Expansion Project, as deemed necessary by the CER.

PUBLIC NOTICE

If the CER determines a public hearing is required, the CER will permit each person who filed a written statement of opposition that met the requirements to make representations and may allow any other interested person to make representations before it as the CER deems proper. The CER will take into account all written statements of opposition and all representations made at the public hearing in determining the best possible route of the pipeline, and the most appropriate methods and timing of construction for the Trans Mountain Expansion. The CER may impose in any approval, such terms and conditions as it considers proper. Where the CER has held a public hearing in respect of any section or part of the Trans Mountain Expansion Project, and has approved or refused to approve the plan, profile and book of reference respecting that section or part, it will forward a copy of its decision and reasons to the Minister and each person who made representations to the CER at the public hearing.

The CER may fix such amount as it deems reasonable in respect of the actual costs reasonably incurred by any person who makes representations to the CER at such a public hearing, and the amount so fixed will be paid forthwith to the person by Trans Mountain.

Copies of the plan, profile and book of reference for the detailed route of the Trans Mountain Expansion Project may be obtained by calling 1-866-514-6700 or emailing info@transmountain.com. You may also view it online at <https://www.transmountain.com/detailed-route> or in person at:

Canada Energy Regulator Library
2nd Floor, 517 Tenth Avenue SW
Calgary, Alberta T2R 0A8
Toll Free Telephone: 1-800-899-1265

Information and templates, including a Statement of Opposition form, are also available at www.cer-rec.gc.ca/TransMountainExpansion.

A copy of any such written statement of opposition to this detailed route must be sent to the following addresses:

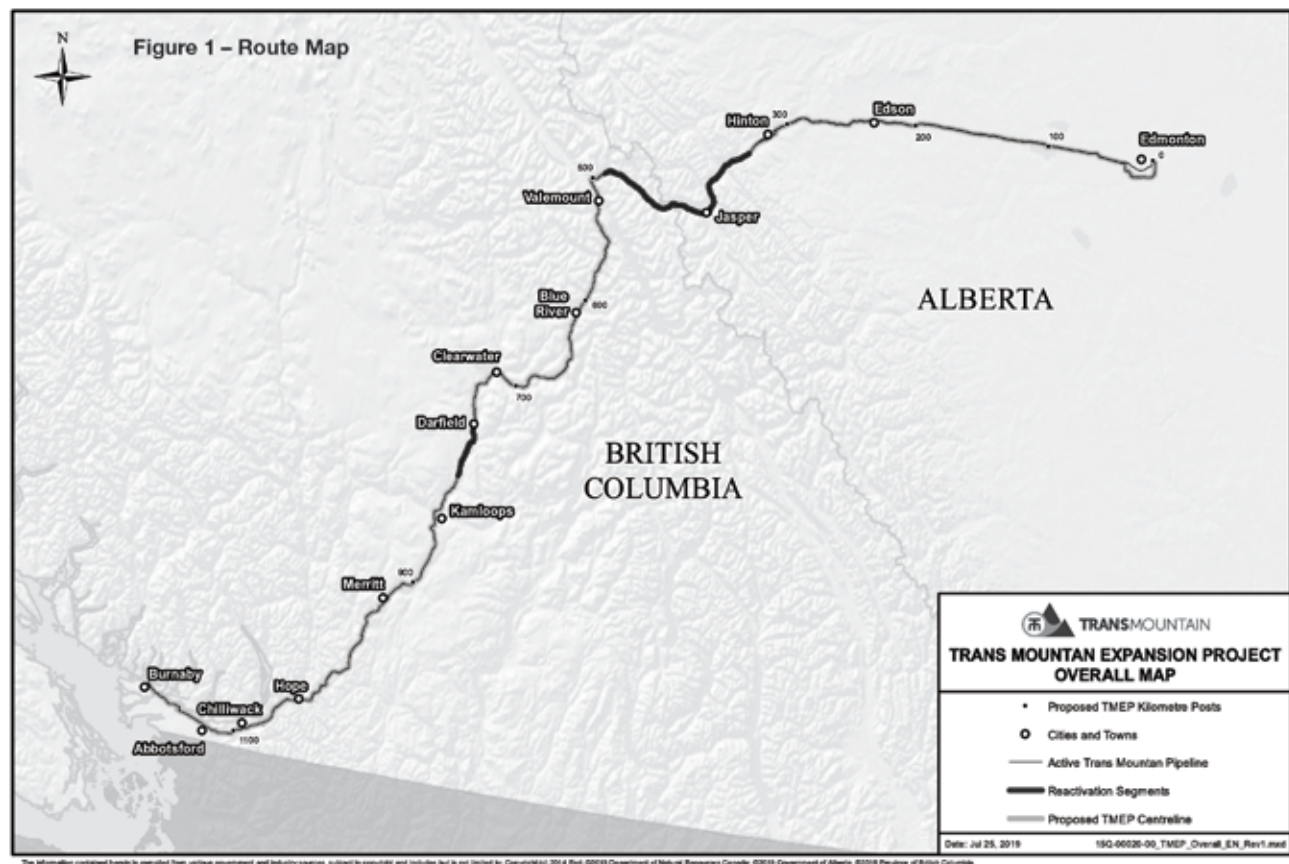
Canada Energy Regulator
Suite 210, 517 Tenth Avenue SW
Calgary, Alberta T2R 0A8
Attention: Louise George,
Secretary of the Commission of the CER
Toll Free Fax: 1-877-288-8803
Email: TMX.ProcessHelp@cer-rec.gc.ca
Website: www.cer-rec.gc.ca

And to: **Trans Mountain Expansion Project**
Suite 2700, 300 5th Ave SW
Calgary Alberta T2P 5J2
Attention: Alain Parisé, Director, Land
Fax: 403-514-6401
Email: TMEP_Land@transmountain.com

The CER's Alternative Dispute Resolution (ADR) process will be available and communicated by the CER when it is determined a public hearing will be held for your statement of opposition. An ADR process could take the form of a meeting between you and Trans Mountain, which may be facilitated by trained CER staff or by another neutral third party. The facilitator would assist you and Trans Mountain to develop a process that may help to resolve outstanding issues.

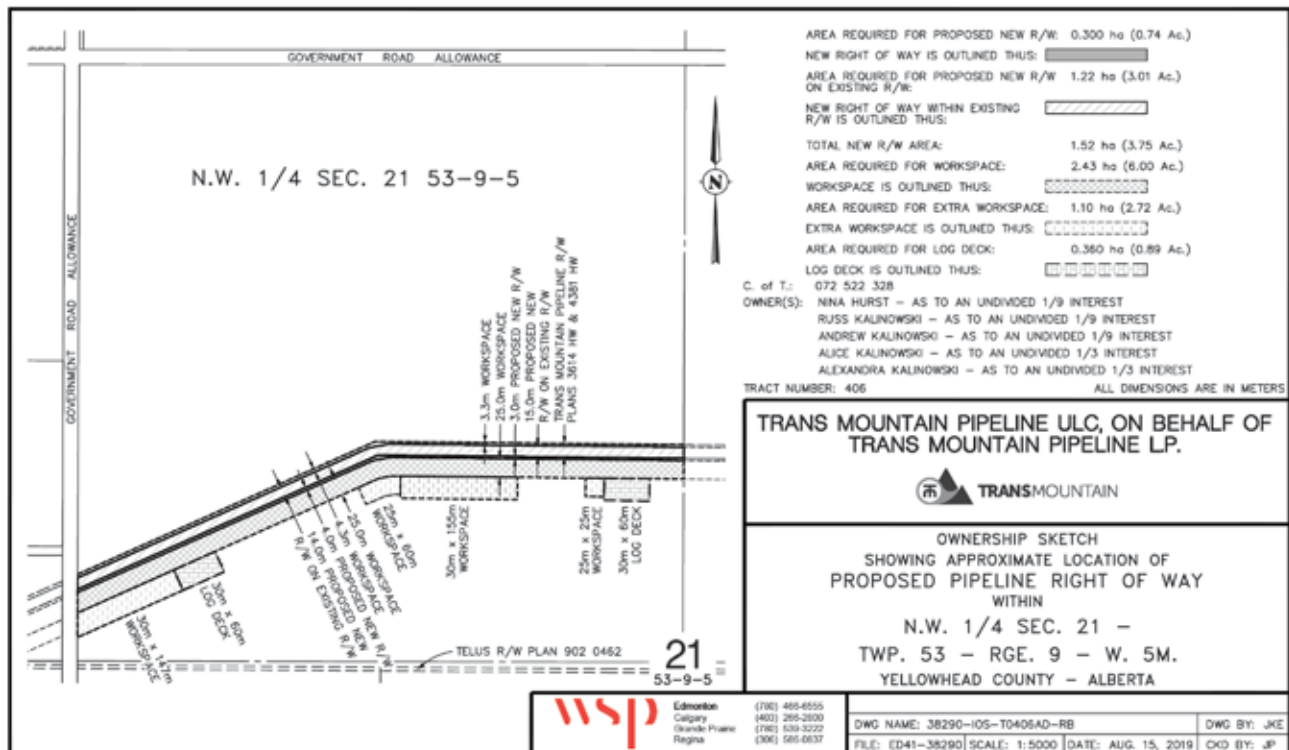
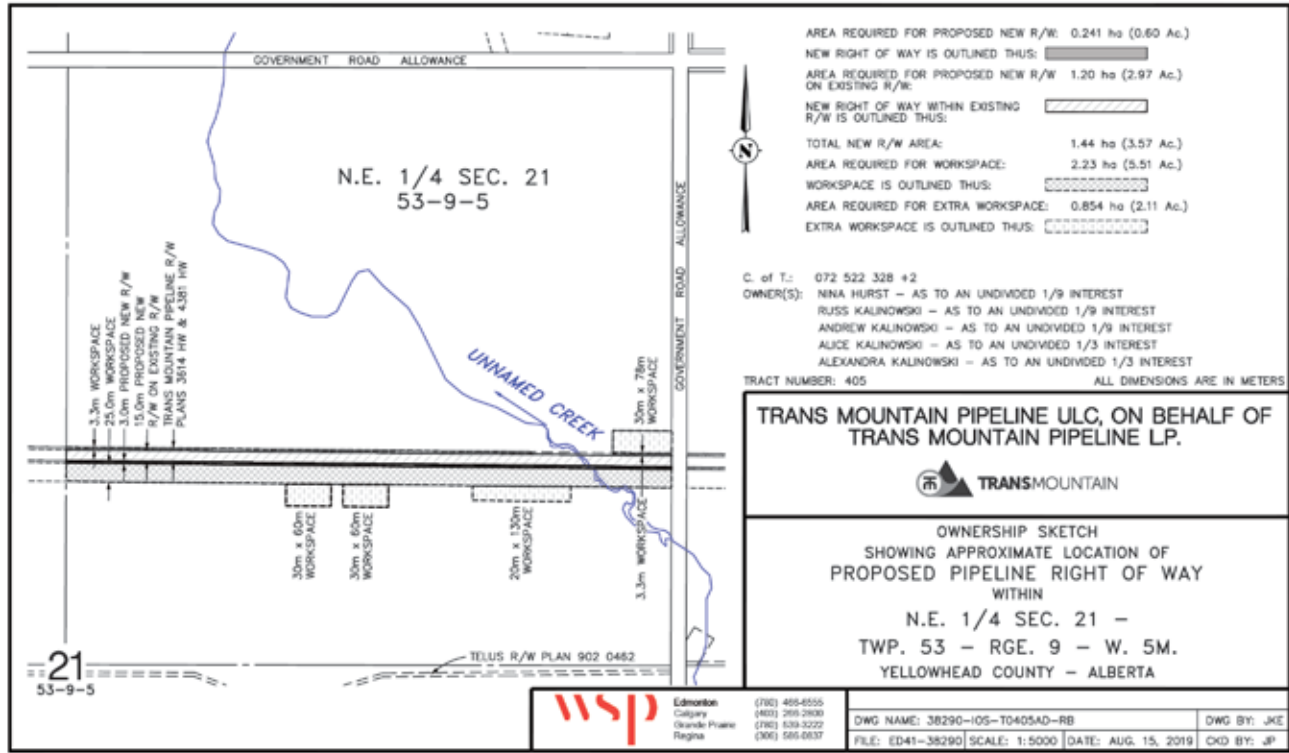
For more information or for any questions, you can contact a CER Process Advisor at 1-800-899-1265 or TMX.ProcessHelp@cer-rec.gc.ca.

Should you have any questions concerning this notice, the proposed detailed route, or the CER's detailed route procedures, please contact Trans Mountain at 1-866-454-4717 or info@transmountain.com and a Trans Mountain representative will return your call.



PUBLIC NOTICE

Figure 2 – Individual Ownership Sketch



ALZHEIMER'S AWARENESS MONTH

Submitted by Alberta Health Services

September marks Alzheimer's Awareness month, a time designated to raise awareness of the effects and signs of Alzheimer's disease in our loved ones and what we can do to support them.

Alzheimer's disease is the most common type of dementia, a syndrome that affects memory, thinking, orientation, judgment and ability to carry out everyday tasks. It is estimated that by 2038, about one in 10 Albertans over the age of 65 and nearly half over the age of 90 will be living

with some form of dementia.

Dementia has certain warning signs. Contact your doctor if you notice a loved one having increased difficulty with any of the following:

- Learning and retaining new information
- Handling complex tasks, like balancing a cheque book
- Knowing what to do when problems come up
- Finding his or her way around familiar places, driving to and from places he or she knows well
- Finding the right

words to say what he or she wants to say

- Understanding and responding to what he or she sees and hears

- Acting more irritable or suspicious than usual, or withdrawing from conversation and activity.

Finally, here are some tips in communicating with anyone who may have dementia:

- First, make sure the person does not have a hearing or vision problem. Sometimes a person may not respond to you because he or she cannot hear you. Not being able to see well

may make the person more confused, agitated, or withdrawn. If you suspect a problem, have a health professional evaluate the person's hearing and vision.

- Don't argue. Offer reassurance, and try to distract the person or focus his or her attention on something else.

- Use short, simple, familiar words and sentences. Present only one idea at a time. And avoid talking about abstract concepts.

- Explain your actions. Break tasks and instructions into clear, simple steps, offered one step at a time.

- Pay attention to your tone of voice. Be calm and supportive. A person with dementia is still aware of emotions and may become upset upon sensing anger or irritation in your voice.

- Maintain eye contact and use touch to reassure and show that you are listening. Touch may be better understood than words. Holding the person's hand or putting an arm around his or her shoulder may get through when nothing else can.

- Pay attention to the person's tone of voice and gestures for clues as to what the person is feeling. Sometimes the emotion is more important than what is said.

- Do not confront the person about his or her denial of the disease. Arguments will not help either of you.

- Continue to treat the person with dignity and respect.

- Allow choices in daily activities. Let the person select his or her clothing, activities, and foods. But too many choices can be overwhelming. Offer a choice of two to three options, not the whole range of possibilities.

In Alberta, services are readily available for both those suffering from any form of dementia and their caregivers. The Alzheimer Society of Alberta and the Northwest Territories provide education and ongoing support.

Albertans can also call Health Link at 811 for advice. Health Link will assess the needs of the person and provide immediate advice for their concerns, 24 hours a day, seven days a week. When needed, callers can be referred to Dementia Advice, which is staffed by specialized dementia nurses.

NOTICE OF PUBLIC HEARING

In accordance with the requirements of Section 606 of the Municipal Government Act, as amended, the Council of Parkland County has scheduled a Public Hearing regarding the proposed adoption of the following Bylaw:

Bylaw: 2019-09	Date: Sept 24, 2019	Time: 9:30 am	Location: Parkland County Council Chambers 53109A Hwy 779, Parkland County, AB
-----------------------	----------------------------	----------------------	---

Proposed Bylaw 2019-09 Parkland County and Summer Village of Seba Beach Intermunicipal Development Plan

An Intermunicipal Development Plan (IDP) is a statutory document prepared with two (or more) municipalities that share a common border, and where at least one member is not a part of a growth management region. An IDP ensures future development and land use policy are coordinated between municipalities. Parkland County and the Summer Village of Seba Beach, under the direction of Section 631 of the Modernized Municipal Government Act, have agreed to jointly engage in an IDP. This plan has been developed to reduce the possibility of any potential conflicts between the municipalities and to ensure the relationship remains strong, transparent and collaborative in the future.

Hearing Procedure

This is a formal Public Hearing and Council is prepared to hear and receive formal submissions and presentations (verbal or written) from those who wish to speak to the proposed Bylaw. Written submissions or presentations may either be submitted in advance to Planning & Development by 4:00 P.M. on September 13, 2019, or submitted at the commencement of the Public Hearing on September 24, 2019.

Anyone wishing to make a verbal presentation to Council must notify Planning & Development Services in advance of the Public Hearing by 4:00 P.M., on September 13, 2019. Verbal presentations at the Public Hearing will be limited to a maximum of 10 minutes. Anyone wishing to make a verbal presentation who has not made prior arrangements may be allocated a time at the commencement of the Public Hearing. Council advises that this is your last opportunity to comment on the proposed Bylaw as Council is unable to receive further submissions after the Public Hearing is closed.

Copies of Proposed Land Use Bylaw Amendment 2019-01

Copies of the proposed IDP are available free of charge during regular business hours (8:30 A.M. to 4:30 P.M., Monday to Friday) from Planning & Development Services at Parkland County Centre. They are also available on the County's website at <https://www.parklandcounty.com/en/county-office/inter-municipal-planning.aspx>. If you have any questions please call 780-968-8888 and dial extension 8393 for Martin Frigo, Manger, Long Range Policy Planning, Planning and Development Services.

The personal information you provide will be used for the purpose of the items described above and is collected under the authority of Section 33 (c) of the Freedom of Information and Protection of Privacy (FOIP) Act. If you have any questions about the collection, use, and disclosure of this information, please contact the FOIP Coordinator at Parkland County, 53109A HWY 779, Parkland County, Alberta T7Z 1R1 (780-968-3229) or email foip@parklandcounty.com

*It's time to fall in love with
your home all over again!*

fall HOME **RENO** **GUIDE**

SEPTEMBER 2019



fall HOME RENO GUIDE



WHAT CAUSES CURLED SHINGLES?

No homeowner wants to look at the exterior of his or her home and see roof damage. Such damage may lead homeowners to think they need a new roof, a po-

tentially costly expense that can quickly throw household budgets into a state of disarray.

According to the HomeAdvisor, the average homeown-

er spends a little more than \$7,600 installing a new roof. Various factors, including the size of a home and the type of roof homeowners prefer, will affect the cost of a roof replacement. In addition, homeowners who see roof damage can rest assured that not all roof problems will necessarily require a replacement roof to be installed.

Curled shingles are a problem many homeowners have encountered. This particular problem is not always indicative that a roof is on its way out. In fact, the home improvement resource This Old House notes that, as asphalt shingles age, their corners

often begin to curl downward or upward. Homeowners who notice this early enough can glue down the curled section of each shingle that's beginning to curl.

Some shingles may be curling because they're defective. Fortified Roofing, a New Jersey-based roofing company that specializes in the repairing and replacing of various roofing configurations, advises homeowners to contact a local roofing professional to diagnose the cause of the curling. Doing so quickly can prevent curled shingles from contributing to more widespread damage.

Moisture and poor venti-

MCLEOD Home building centre

Let us load you at the largest Lumber Yard in Parkland County
962-2575
Call Toll Free: 1-800-343-2988
35 South Ave, Spruce Grove

- Renovation & new build experts • Superior quality lumber
- Complete home packages • 3D Estimating Program
- Engineered roofs & floors • Farm Buildings • Garage packages
- Windows & doors • Custom decks & fence packages
- Flooring & kitchens • Bathrooms • Ceramic Tiles
- Concrete & landscaping • Electrical supplies
- Fasteners • Woodstoves

Service • Selection • Advice • Special Orders • Delivery

ZEE BEST RENOVATIONS
Your Complete Line of Renovation Needs:

- Bathroom • Tileworks • Roofing
- Basements • Drywall & Taping • Siding
- Plumbing • Decks & Fencing

FREE ESTIMATES | 30+ YEARS EXPERIENCE
INSURED | GREAT RATES

JOE LAWRENCE BUS: 780-967-3898 | CELL: 780-915-3348
MANAGER FAX: 780-967-3798

B.W. EAVESTROUGHING

Specializing in:

- ⇒ Residential 5"
- ⇒ Commercial 6"
- ⇒ Soffit
- ⇒ Gutter Clean System
- ⇒ Free Estimates
- ⇒ Fascia

BRAD (780) 699-1880

Family run, local business, we care!

BEST CISTERN SEPTIC SOLUTIONS

Cistern and Septic Inspection, Installation and Repair!

Septic planning, design, installation by government certified installer(s)

New Installs Available. Reasonable Rates.

Let Us Handle the Dirty Work
780-668-4306
best-cistern-septic-solutions.com

LIMB WALKERS TREE CARE LTD.

FULLY INSURED, EXPERT TREE CARE PROVIDERS
SERVICING BARRHEAD, WESTLOCK, ONOWAY & ALL SURROUNDING AREAS

- Residential & Commercial
- Tree Removal
- Tree & Shrub Pruning
- Hedge Trimmers
- Annual Maintenance
- Professional Climbers
- Arborist Consultations & Assessments
- Bucket Truck & Chipper Services

780-203-4705 limb.walkers@hotmail.com
FREE ESTIMATES PROVIDED

fall HOME RENO GUIDE

What Causes Curled Shingles?

lation may be contributing to curled shingles as well. Homeowners with attics in their home may see curled shingles on their roofs because moisture is building up in their poorly ventilated attics. In addition to causing damage such as curled shingles, a poorly ventilated attic allows moisture to build up, potentially contributing to mold growth. Mold presents a host of additional problems, including some that can adversely affect the health of a home's inhabitants.

Improper roof installation also may be the culprit be-

hind curled shingles. When a roof is not installed correctly, shingles may not be aligned or nailed down in the right way. This might be what's causing shingles to curl on recently installed roofs.

Curled shingles are unsightly and can pose a significant threat to a home if not addressed promptly. Homeowners can protect themselves and their roofs by working with skilled roofing professionals, who can diagnose issues like curled shingles and offer the right solutions.



VISIT US

**FOR ALL YOUR HOME
RENOVATION NEEDS**



North Central

4919 50 AVE - STONY PLAIN, AB

Ashly-Lane Interiors Ltd.
WINDOW COVERINGS

***Spring Sale* up to
40% Off Selected Items**

Valances • Sheers • Drapes
Blinds • Fabric • Hardware

Residential • Commercial
40 Years Experience

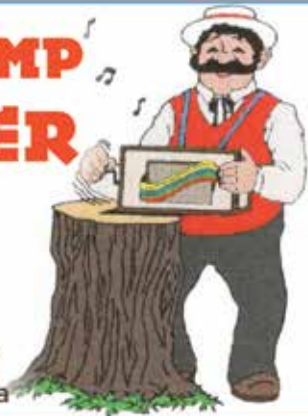
4900 - 51 Avenue, Stony Plain, AB
780-963-5563

**THE STUMP
GRINDER**

Mechanical
Stump Grinding

Andre

Phone: 780-413-6421
stumpgrinder@shaw.ca



**Top Quality
Flooring Products**

- Carpet • Vinyl • Lino
- Hardwoods • Laminates
- Vinyl Tiles • Porcelain
- Floor and Wall Tiles
- Stone Tiles
- Ditra and Kerdi
- Shower Installs

**Professional Installers
Free Estimates**

**Quality You Can See.
Comfort You Can Feel.
Value You Can Appreciate.**

Opening Specials

Soft Touch Carpet installed for \$3.25/sq ft
in 6 colors with under pad

3Mil Vinyl Planks installed for \$4.49/sq ft
with 20 year wear layer water proof 8 colors

White Marble Floor Tiles 50% OFF
polished 12x24

Pro Finish Flooring Ltd

#6 - 20 McLeod Avenue | Spruce Grove, Alberta T7X 1V4
TEL: 587-286-2626 | pro-finishflooring@hotmail.com

HOURS: Monday to Friday 9:00AM-5:30PM Saturday 9:00AM-4:30PM



fall HOME RENO GUIDE



HOW TO LEVEL AN UNEVEN YARD

Many things can cause a yard to be uneven. Drainage problems, leaky pipes beneath the grass and pests can wreak havoc on a yard, resulting in uneven turf that

can be both unsightly and unsafe.

Addressing an uneven yard might be homeowners' ultimate goal, but the home experts at BobVila.com note

that homeowners should first figure out what's causing the problem and make fixing that their first task. Fixing uneven ground above leaky pipes will only be a temporary fix if the leaks themselves are not addressed. Professional contractors might be necessary depending on what's causing the problem. However, once the underlying issue has been addressed, many homeowners can handle the task of leveling an uneven yard on their own.

- Get the right tools and materials. Leveling an uneven yard may require various tools. Thatch will likely need to be removed from the lawn before it can

be leveled out, so homeowners will need a thatch rake or dethatching machine to get this task started. Dethatching machines are generally necessary for especially large lawns, and these can typically be rented from home improvement retailers. A shovel, bow rake and push broom are other tools homeowners will likely need. Materials such as topsoil, compost and sand will be necessary as well, and these are typically sold at local garden centers.

- Fill in areas beneath the grass. Areas beneath the grass can be filled in with a mixture of sand, topsoil and compost. The experts at BobVila.com advise using two



TOP & DROP TREE SERVICES

Family owned and
operated since 1991

780-924-2014

SERVING ENTWISTLE AND AREA FOR OVER 30 YEARS

Entwistle CONCRETE

PRODUCTS LTD.

SAND & GRAVEL SALES

PH: (780) 727-3525

Dan McCracken Entwistle, AB
www.entwistleconcrete.ca



Wabamun Home hardware

See Us
For Your
Renovation Needs
Lumber, Paint, etc.


Wabamun 892-4969

TRI-LAKES SERVICES LTD.

Serving: • Lac Ste. Anne County • Parkland County • Yellowhead County East

- **Septic Hauling**
 - Holding Tanks (residential, commercial, industrial)
 - Septic Fields
- **Drinking Water Delivery**
 - Cisterns
 - Pools/Hot-Tubs
- **Fresh Water Delivery**
 - Dust Control
- **Portable Washrooms** (rental & servicing)
 - Plastic
 - Trailer mount Extremes (wash sink, toilet, lights heat)
 - Extremes (wash sink, toilet, lights, heat)
- **Steam Truck**
 - In cooperation with your plumber

PH: 1-877-727-3939
www.tri-lakeservices.com
office@trilakes.services



ECONOMY ASPHALT DRIVEWAYS

- Paving • Asphalt or Concrete • Repairs
- Pararamps • Seal Coating • Crack Filling
- Snow Removal • Sanding • Rock Chip Sales

CHARLES MACDONALD
PH: 780-962-5581 CELL: 780-777-0914
FAX: 780-962-9146



fall HOME RENO GUIDE



How To Level an Uneven Yard

parts sand, two parts topsoil and one part compost. Each of these components plays its own role in restoring the yard to full health. Sand helps the ground stay level, while the topsoil and compost provide the grass with valuable nutrients. If the low spots are not especially deep, this mixture can be applied without removing the grass. However, before filling in holes when addressing spots that are deeper than two or three inches, remove the grass then place it back in place once the hole has been filled. To dig up the grass, put the blade of the shovel at the outside of the low spot before sliding it under about two or three

inches so you do not upset the grass roots.

- Spread the top dressing. Once the holes have been filled and the grass has been placed back on the ground (if it was removed), spread the top dressing mix with a shovel. The mix should be spread evenly with the back of the bow rake at a depth of no more than half an inch. Make sure the mix is worked into the low spots and that it's not completely covering the grass, as that will suffocate the lawn. If necessary, use the push broom to work the mix into the soil.

- Water the lawn. Finally, water the lawn to help

the top dressing settle into the grass. If necessary, repeat the process of applying top dressing and watering until the lawn is even and has returned to full strength.

An uneven lawn is an eyesore and potentially harmful. But fixing an uneven lawn is simple once homeowners discover and address what's behind the issue.



Doing it right the first time.

DARREN RAYMOND PH: 780-241-2711
JOURNEYMAN CARPENTER bangoncarpentry@hotmail.com



WOODLAND LUMBER

WOODLAND HOME CENTRE

T: 780-727-2964 F: 780-727-2220
53314 Range Road 75A, Evansburg, AB
admin@woodlandlumber.com



GMP ONTRACK INC.

George Perras
Phone 780-892-4488
Cell. 780-719-2687

Commercial • Farms • Acreages
Brushing
Fence Lines • Right of Ways • Fire Guards • Walkways
Don't Dig & Burn, Mulch & Preserve
General Excavation
Landscape • Site Prep • Clean Up
Snow Clearing/Removal
Light Equipment & General Hauling



Blakeman Drilling Ltd.

Waterwell Drilling & Servicing
Pumps & Pressure Systems
Petwa Water Conditioning

(780) 918-1916
joe@blakemandrilling.com
Family Owned & Operated



Home hardware Drayton Valley
building centre **542-4044**
ON US: 1-888-542-9663

For ALL your renovation and material needs, SHOP LOCALLY!

4221 - 50 Street Drayton Valley

AVIS PUBLIC

Régie de l'énergie
du CanadaCanada Energy
Regulator

**Trans Mountain Pipeline ULC, à titre de partenaire général de Trans Mountain Pipeline L.P.
Projet d'expansion de Trans Mountain
Avis relatif au tracé détaillé proposé en vertu
de l'alinéa 34(1)(b) de la Loi sur l'office national de l'énergie**

EN CE QUI CONCERNE la Loi sur l'office national de l'énergie et les règlements afférents.

ET EN CE QUI CONCERNE le Certificat d'utilité publique OC-065 autorisant le tracé général du Projet d'expansion de Trans Mountain.

ET EN CE QUI CONCERNE une demande faite par Trans Mountain Pipeline ULC, au nom de Trans Mountain Pipeline L.P., (« Trans Mountain »), à l'égard de la détermination et de l'approbation du tracé détaillé prévu pour la construction du Projet d'expansion de Trans Mountain, dont la longueur est d'environ 1 179,9 km, et ce à partir du terminal de Trans Mountain situé à Sherwood Park, en Alberta, jusqu'au terminal maritime Westbridge situé à Burnaby, en Colombie-Britannique, comme le montre la carte du tracé ci-jointe (figure 1).

À : JOYCE ELEANOR VAN VEELAN
(« Propriétaire »)

Étant le(s) propriétaire(s) inscrit(s), dans la mesure où ils peuvent être déterminés, des terrains requis pour l'itinéraire détaillé du Projet d'expansion de Trans Mountain, situés à

**MÉRIDIEN 5 RANG 3 CANTON 53
SECTION 9
TOUTE LA PARTIE DU QUARTIER NORD-EST
SITUÉE AU SUD DE LA LIMITE NORD DU
DROIT DE PASSAGE PLAN 3626HW.
CONTENANT ENVIRON 32,9 HECTARES
(81,22 ACRES). À L'EXCEPTION DE TOUTES
LES MINES ET MINÉRAUX
Numéro de titre : 802 059 547 (les « Terrains »)**

Trans Mountain cherche à localiser le propriétaire foncier, ou ses héritiers, décrit ci-dessus afin de lui fournir des renseignements et le présent avis concernant le tracé détaillé du Projet d'expansion de Trans Mountain.

Le croquis du plan de propriété individuelle détaille le tracé du Projet d'expansion de Trans Mountain, propre à la partie des terres susmentionnées incluse dans l'entente de servitude permanente avec Trans Mountain (figure 2).

Si vous avez un droit légal sur les terres décrites ci-dessus et que vous souhaitez vous opposer au tracé détaillé proposé du Projet d'expansion de Trans Mountain, y compris la méthode et le calendrier de construction de l'oléoduc, vous pouvez déposer une déclaration d'opposition écrite auprès de la Régie de l'énergie du Canada (la « REC ») dans les trente (30) jours suivant la publication du présent avis. Dans la déclaration

d'opposition écrite, vous devez préciser la nature de votre intérêt dans le tracé détaillé proposé et les motifs de votre opposition au tracé en question. À la lumière des processus relatifs au tracé détaillé qui ont été suivis pour le projet d'expansion de Trans Mountain en 2017 et en 2018, la REC n'acceptera que les déclarations d'opposition qui soulèvent des préoccupations relativement à des changements importants dans les circonstances par rapport au tracé détaillé original. Une copie de toute déclaration écrite s'opposant à ce tracé détaillé doit être envoyée aux adresses suivantes :

**Régie de l'énergie du Canada
517, 10^e Avenue S.-O., bureau 210
Calgary (Alberta) T2R 0A8
À l'attention de : Louise George,
secrétaire de la Commission de la REC
Téléphone : 403-292-4800
Télécopieur sans frais : 1-877-288-8803
Adresse de courriel : TMX.Aide@cer-rec.gc.ca
Site Web : www.cer-rec.gc.ca**

et :
**Projet d'expansion de Trans Mountain
300, 5^e Avenue S.-O., bureau 2700
Calgary (Alberta) T2P 5J2
À l'attention de : Alain Parisé, directeur, Terrains
Télécopieur : 403-514-6401
Adresse de courriel :
TMEP_Land@transmountain.com**

Le processus d'examen des déclarations d'opposition se déroulera comme suit :

- Les décisions précédentes relatives au tracé détaillé, y compris les conditions imposées par l'Office national de l'énergie, demeureront si aucune déclaration d'opposition n'est déposée relativement à ces décisions dans les trente (30) jours suivant la publication de cet avis. De même, les propriétaires fonciers n'ont aucune mesure particulière à prendre pour que Trans Mountain continue de se plier aux conditions imposées par les décisions relatives au tracé détaillé original.
- Si une déclaration d'opposition écrite est déposée auprès de la REC dans les trente (30) jours suivant la publication de cet avis, que cette déclaration concerne une décision précédente relativement au tracé, et qu'elle soulève des préoccupations au sujet d'un changement important dans les circonstances par rapport au processus du tracé détaillé original, la REC procédera à un examen du précédent tracé détaillé avant de prendre une décision.

• En ce qui concerne les audiences sur le tracé détaillé qui étaient en cours le 30 août 2018 et pour lesquelles aucune décision n'a été rendue, les propriétaires fonciers et les communautés autochtones doivent continuer à manifester leur opposition en déposant une déclaration d'opposition dans les trente (30) jours suivant la publication du présent avis. La REC continuera à tenir des audiences et ajoutera de nouvelles étapes au processus, le cas échéant, pour réagir à toute préoccupation valide concernant les changements de circonstances.

• Les propriétaires fonciers et les communautés autochtones qui n'ont pas déposé de déclaration d'opposition à l'occasion du processus précédent relatif au tracé détaillé, dont la déclaration d'opposition a été refusée ou qui ont retiré leur déclaration d'opposition avant une audience sur le tracé détaillé, peuvent déposer une nouvelle déclaration d'opposition dans les trente (30) jours qui suivent la publication du présent avis. Si la déclaration d'opposition soulève un changement important dans les circonstances, la REC tiendra une audience afin d'étudier ces préoccupations par rapport à toutes les sections ou parties de l'oléoduc concernées par les préoccupations soulevées dans la déclaration d'opposition écrite.

La REC n'est pas tenue de donner d'avis, ni de tenir d'audience, ni d'entreprendre de démarches à l'égard de toute déclaration d'opposition écrite déposée auprès de la REC et se réserve le droit, à tout moment, de rejeter ladite déclaration écrite si la personne ayant déposé la déclaration dépose un avis de retrait ou si la REC juge la déclaration frivole, vexatoire ou faite de mauvaise foi. Si la REC estime qu'il convient de tenir une audience publique, elle fixera une date et un lieu convenables pour l'audience et publiera par la suite un avis d'audience dans au moins un numéro d'une publication à grand tirage dans la région où se trouvent les terrains acquis ou que l'on se propose d'acquérir. La REC fera également parvenir un avis d'audience publique à chacune des personnes qui aura déposé une déclaration d'opposition écrite auprès de la REC. L'audience publique se tiendra dans la région dans laquelle sont situés les terrains auxquels se rapporte la déclaration. La REC, ou une personne autorisée par la REC, se réserve le droit d'effectuer une inspection, comme la REC le juge nécessaire, des terrains acquis ou que l'on se propose d'acquérir ou encore touchés par la construction du Projet d'expansion de Trans Mountain.

Si la REC juge qu'une audience publique est requise, la REC permettra à chacune des personnes qui

AVIS PUBLIC

auront déposé une déclaration d'opposition écrite conforme aux exigences de présenter des observations; la REC se réserve par ailleurs le droit de permettre à toute autre personne intéressée de présenter des observations devant lui, comme la REC le juge indiqué. La REC tiendra compte de l'ensemble des déclarations d'opposition écrites et des observations présentées au cours de l'audience publique afin de déterminer, d'une part, le meilleur tracé possible pour l'oléoduc et, d'autre part, les méthodes et le calendrier les plus propices à la construction du Projet d'expansion de Trans Mountain. La REC peut assortir toute approbation des conditions qu'il juge indiquées. La REC transmettra, motifs à l'appui, une copie de toute décision d'approbation ou de refus d'approbation des plan, profil et livre de renvoi relatifs à une section ou partie du Projet d'expansion de Trans Mountain rendue après l'audience publique au ministre et à chacune des personnes qui lui aura présenté des observations.

La REC peut fixer à la somme qu'il juge raisonnable les frais entraînés par la présentation d'observations au cours d'une pareille audience publique; ce montant sera versé sans délai à la personne par Trans Mountain.

On peut se procurer des copies des plan, profil et livre de renvoi relatifs au tracé détaillé du Projet d'expansion de Trans Mountain en composant le 1-866-514-6700 ou en envoyant un courriel

à l'adresse info@transmountain.com. Il est également possible de les consulter en ligne sur <https://www.transmountain.com/detailed-route> ou en personne à l'adresse suivante :

Bibliothèque de la Régie de l'énergie du Canada
517, Dixième Avenue S.-O., 2^e étage
Calgary (Alberta) T2R 0A8
Téléphone sans frais : 1-800-899-1265

De l'information et des modèles, dont un formulaire de déclaration d'opposition, sont également disponibles sur www.cer-rec.gc.ca/agrandissementTransMountain.

Une copie de toute déclaration d'opposition écrite à ce tracé détaillé doit être envoyée aux adresses suivantes :

Régie de l'énergie du Canada
517, 10^e Avenue S.-O., bureau 210
Calgary (Alberta) T2R 0A8
À l'attention de : Louise George,
secrétaire de la Commission de la REC
Télécopieur sans frais : 1-877-288-8803
Adresse de courriel : TMX.Aide@cer-rec.gc.ca
Site Web : www.cer-rec.gc.ca

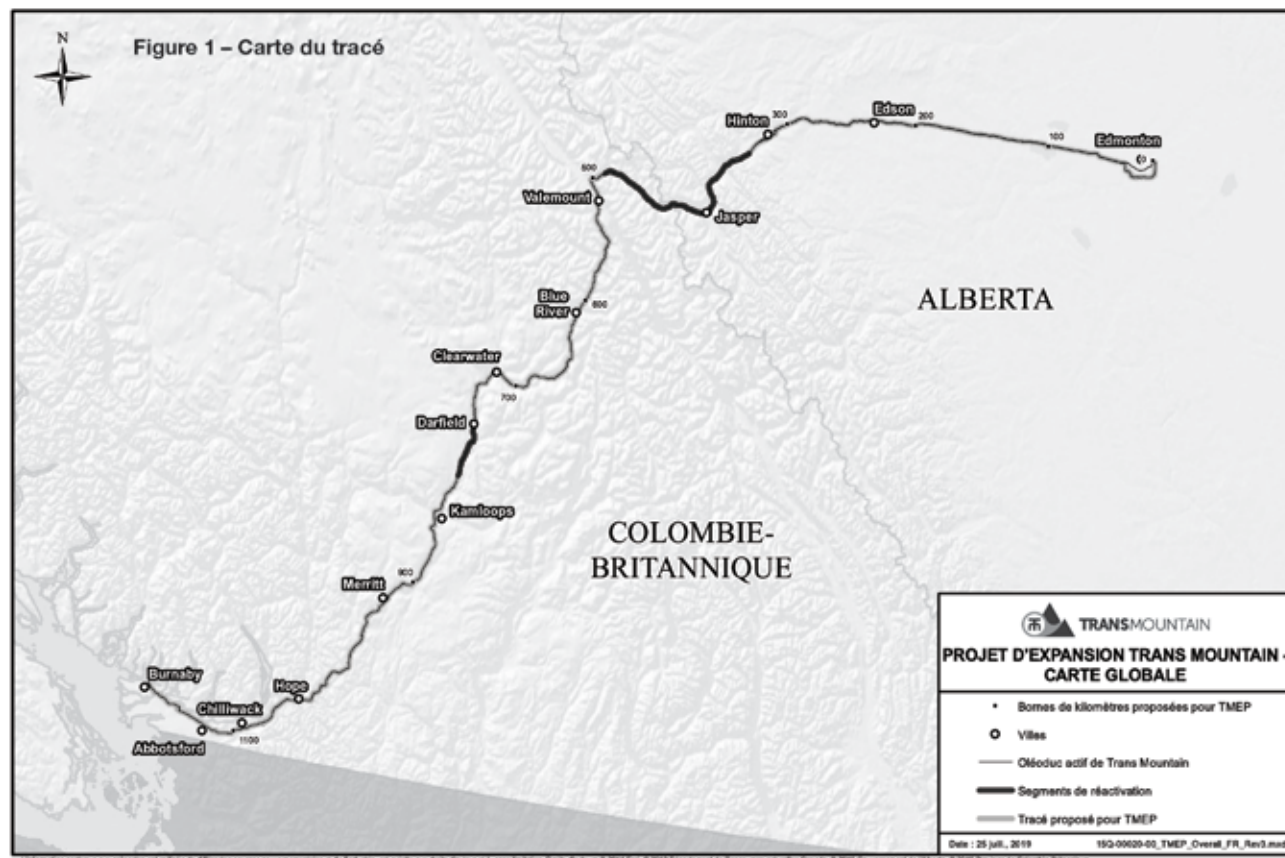
et : **Projet d'expansion de Trans Mountain**
300, 5^e Avenue S.-O., bureau 2700
Calgary (Alberta) T2P 5J2
À l'attention de : Alain Parisé, directeur, Terrains

Télécopieur : 403-514-6401
Adresse de courriel :
TMEP_Land@transmountain.com

Le Mode alternatif de règlement des différends (MRD) de la REC sera offert et communiqué par la REC quand on aura déterminé qu'une audience publique aura lieu pour votre déclaration d'opposition. Le MRD peut prendre la forme d'une réunion entre vous et Trans Mountain, qui pourrait être animée par les membres du personnel de la REC formés en la matière ou encore par une tierce partie impartiale. L'animateur vous aiderait, vous et Trans Mountain, à élaborer un processus qui pourrait permettre de régler les différends en suspens.

Pour obtenir de plus amples renseignements ou si vous avez des questions, vous pouvez communiquer avec un conseiller ou une conseillère sur les processus de la REC en composant le 1-800-899-1265 ou en envoyant un courriel à l'adresse TMX.Aide@cer-rec.gc.ca.

Si vous avez des questions à propos du présent avis, du tracé détaillé ou des démarches mises en place par la REC quant au tracé détaillé, prière de communiquer avec Trans Mountain en composant sans frais le 1-866-454-4717 ou en envoyant un courriel à l'adresse info@transmountain.com; un représentant de Trans Mountain vous rappellera par la suite.



RIDING UPDATE – MONTH OF AUGUST 2019

Submitted by Jim Eglinski, MP – Yellowhead

It's that time again! Summer is winding down; the 2019-2020 school year is starting, and a federal election is on the horizon.

I've been busy during the month of August visiting constituents, answering your letters/emails, attending meetings and participating in events.

As reported in my July update, on July 27th I attended the Yellowhead EDA's 'Meet and Greet' BBQ, followed by an EDA meeting that afternoon and later that day I participated in the 70th Anniversary of Fallis Community Hall.

On August 2nd I was in the Edson office catching up on emails and phone calls. That afternoon, at the Parkland Lodge in Edson, I was proud to present a 100th birthday certificate to Else Folklinga.

On August 3rd I participated in the Peers Gold Dust Daze Parade and Flag Raising. Later

that day I attended an event at Cadomin Legion.

During the week of August 5th, I spent time in the riding office catching up on a few things and on Wednesday, I attended the West Fraser 300 millionth tree planting event at the Gregg Cabin Recreation Area. I was off to the Jasper Rodeo that afternoon where I mingled with constituents.

On Thursday, I left for Ottawa where I met the next morning with the movers to go over the items to be returned to Edson.

On Saturday, I was in the Ottawa office clearing out my desk and getting things ready for the move on Monday.

On Sunday, I attended the third cross Canada PTSD awareness motorcycle event called 'The Rolling Barrage'. This Ottawa event was held to raise awareness and peer support for retired and active military, police, fire and First Responders suffering from PTSD or Operational Stress Injuries.

On Monday, August 12th, the movers were at my apartment and then at my Parliament Hill office for more packing. It was a long, sad day for me. The next morning, I returned to the riding.

On August 15th, I drove back from a meeting I had in Lethbridge on the 14th. On the 16th I attended the Paul First Nation Powwow 2019 Grand Entry.

On Saturday, I was at the Wildwood AG Society Annual Fair breakfast to celebrate their 80th anniversary. Later, I attended the Commemoration of 14 previously unmarked graves of Veterans at the Glenwood Cemetery in Edson.

On August 19th, I was at the Galloway Station Museum in Edson where we had a lively discussion on crime. This was hosted by the 'Edson Citizens on Patrol' and the Town of Edson. The next day I was at the Cold Creek Fire Base Camp with Junior Forest Firefighters who came from all over Alberta for competitions, called 'Bull Of

The Woods'.

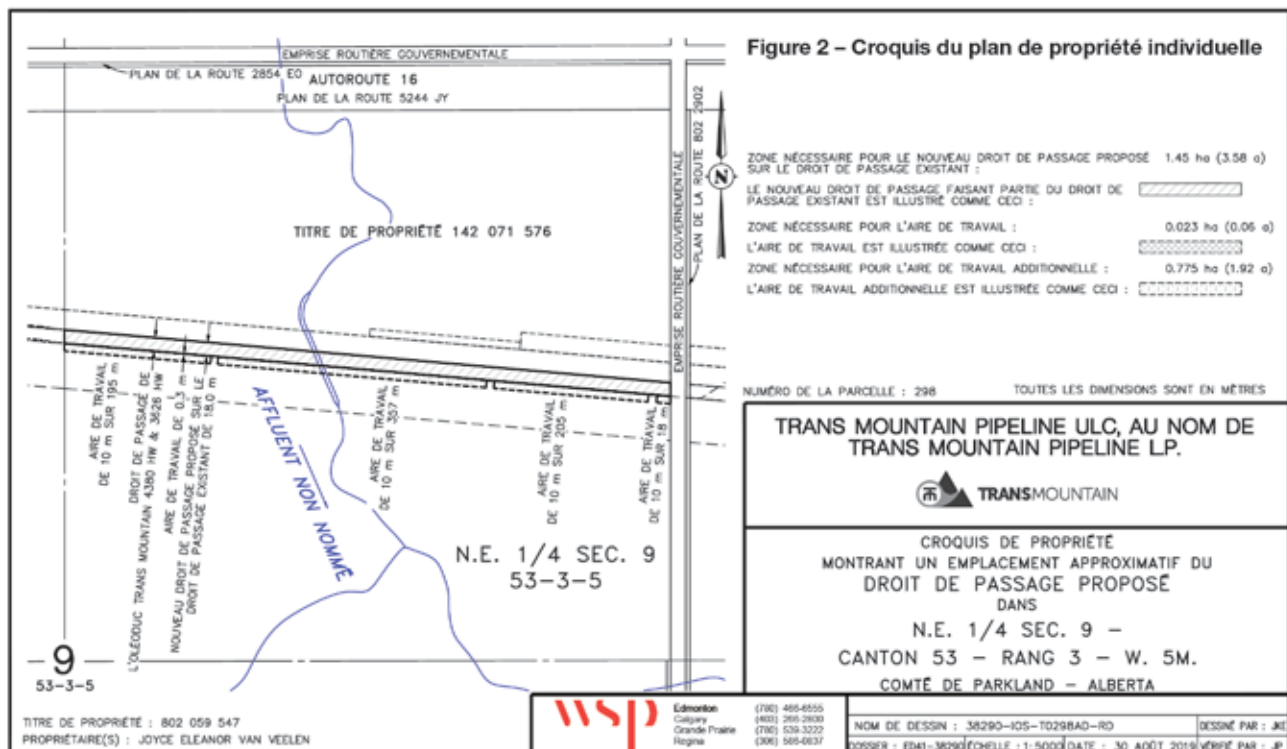
On August 27th I was in the office returning phone calls, emails and meeting with constituents. On Wednesday, I was at Parkland Composite High School for the Grande Yellowhead Public School Division's welcome back breakfast. That afternoon along with MP Richards, I attended a Tourism Roundtable with 'Travel Jasper' in Jasper.

On August 29th and 30th I spent time in the constituency office and on the 31st I drove to Robb, Alberta, to attend the unveiling of a plaque recognizing the history of the Coal Branch region and the historic flight made by Wilfred 'Wop' May. That evening I attended a play at the Red Brick High School in Edson regarding the historic flight he made to apprehend a criminal.

My next update will be for the week of September 2nd, on the happenings in the riding. Stay tuned.

AVIS PUBLIC

Canada



HELMET SAFETY

Submitted by Alberta Health Services – apple-mag.ca

Choose the right helmet
Before buying a new helmet, consider the following:

- Measure around your head at eyebrow level to know what size of helmet to buy
- Decide what kind of helmet you need: a bike helmet, just for biking, or a multi-sport helmet that is approved for biking and other sports such as skateboarding and in-line skating.

• Try different styles and brands to find the one that fits you best

• Check to make sure the helmet is safety approved for cycling and meets safety standards such as CSA, CPSC, Snell or ASTM.

Wearing your helmet

• Make sure the helmet is level from front to back.

• Check that the front edge sits 1 to 2 finger widths above your eyebrows.

• Add or remove sizing pads, or adjust the ring fit system to make the helmet fit snugly.

• Adjust the straps to form a V just below and in front of your earlobes.

• Do up the chinstrap.

• Adjust the chinstrap so there's only one finger-width between your chin and the chin-strap.

• Fit the helmet tight-er if it moves when you nod or shake your head.

• Wear your helmet every time you ride your bike.

KEEPING YOU AND YOUR COMMUNITY INFORMED!



WWI & WWII MEMORABILIA SALE

WWI & WWII Memorabilia Estate Sale for Traffic Air Inc & Les Mroz

Wednesday, September 11, 2019 at 6:00PM

Viewing at 3:00PM *This sale will be a combination of live and silent auction*
Norwood Legion 11150 82 St NW Edmonton, Alberta T5B 2V1

HIGHLIGHTS: • Collectible Art by Robert Bailey and other well known artists inspired from the Pilots of the Second World War. Some paintings signed by the actual pilots!
• Assorted Artifacts from both World Wars • Memorabilia • Soldier Uniforms
• Collector Plates & Books • Medals & Accessories

RETIREMENT SALE FOR ROZ KRUGGEL

Thursday, September 12, 2019 at 6:00PM

Rge Rd 1311, Secondary Highway 37 Onoway, AB T0E 1V0

HIGHLIGHTS: Tractors/ Farm Equipment: • 345 John Deere Tractor • White 285 Tractor c/w allied 760 Loader and Live Hydraulics • 250 Gallon Water Tank • 3 Westeel-Rosco Grain Bins on Skids • Cattle or Horse Waterer **Vehicles:** • Pontiac Montana Van • 2000 Ford F350 Superduty 1 Ton Dually (needs some TLC) • 1980 Ford F150 • 1960 International Antique Collector Truck • Motorized Scooter • Yamaha 4 Moto 4WD ATV **Tools/ Shop Equipment:** • Eagle Air Compressor • Assorted Heavy and Industrial Tools • Assorted Power Tools • Tool Boxes • Industrial Delta Shopmaster Drill Press • Welder Helmets
• Metal Files. **Many More Items, too numerous to mention**

WABAMUN ARENA AUCTION SALE

Saturday, September 14, 2019 at 12:00PM

4820-52nd Avenue Wabamun, AB

HIGHLIGHTS: **Arena:** • Zamboni (1 - Excellent Condition) with blades and lifters
• Ice Edger x2 • Pallet of white ice/line markers • White Ice Mixing pump/tank/hoses
• Score boards c/w controls • Chiller unit • Boards/glass • Arena Lights- 55 LED • Spectator netting • Radiant heaters • Overhead door • Speakers with sound system • Rink dividers
• 1 pallet of absorbent • Foam absorbent socking • Hockey nets and assorted equipment
Equipment: • John Deere Mower F1145 • Generator • Compressor • Assorted Tools
Construction Items: • Asphalt Crack ceiling machine • Asphalt patch Trailer • Packer & misc sprayer attachments • Loader Tires - 17.5 R25 • Sanding Unit • Utility Trailer
Assorted Office furniture • Kitchen/Restaurant Equipment: • Deep Fryer
• Grills & Burners • Range hood exhaust system • Fridges • Freezers • Pepsi Cooler
• Vending Machine • Cappuccino Machine • Many more assorted kitchen equipment

UPCOMING SALES

Saturday, October 12, 2019 @10:00 a.m.

Rainbow' Auctions Harvest Consignment Sale

**CONSIGN
NOW!**

****WATCH WEBSITE DAILY FOR NEW ADDITIONS TO AUCTION LISTS****

Terms and conditions: Cash, Visa, MasterCard, Debit, Interac. Nothing to be removed until paid for. Subject to additions and deletions. A 10% handling fee, plus GST will be charged where applicable. Please be conscious of the handling fees and factor them into your bidding. Owner Rainbow Auctions & Liquidators or it's employees shall not be responsible for accidents.

SALE CONDUCTED BY:

Stony Plain, AB. 780-968-1000
or TOLL FREE 1-866-968-1001

Complete Liquidation and
Auction Services Since 1978

www.rainbowauctions.ca

BOOK YOUR SALE WITH US TODAY!



Terms and conditions: Cash, Visa, MasterCard, Debit, Interac. Nothing to be removed until paid for. Subject to additions and deletions. A 10% handling fee, plus GST will be charged where applicable. Please be conscious of the handling fees and factor them into your bidding. Owner Rainbow Auctions & Liquidators or it's employees shall not be responsible for accidents.

SEPT 21 AUCTION

FOR: HERB & LYDIA KOBERSTEIN

LOCATED: (From Barrhead Ford – 8 mi S on Hwy 33, Turn W on Hwy 654 for 11 mi to Hwy 764 then 4 S to Twp 574 Turn E for 1 ½ mi to 5117 TWP 574) (From CHERHILL on Hwy 43 – Go N on Hwy 764 for 9 mi to Twp 574 then 1 ½ E to 5117 TWP 574)

SATURDAY EVENING, SEPTEMBER 21ST AT 12:00PM

**GOOD / WELL MAINTAINED / SHEDDED EQ / ITEMS
STARTING AT 12 NOON - UNIQUE / ANTIQUE / SPECIAL:**

* Marinoni (Titanium) Race Bike * Quality Mason & Risch Piano * Many Pioneer Collectibles – Black Smith Swedge Block, Post Drill, Buzz Saw, C/S Crusher w Belt, 5gl Crock, 4 of 5 gl Cream Cans, D/L Wood Table, Many Pioneer Items * Granny Rocking Chair * Good Pioneer Household Items * Find ley Wood Heater, Dry Stacked Firewood * RECREATION ITEMS – 22 BASS Rifle, Pellet Gun, ATARI Video Computer Games, Camping & Fishing Eq, Bikes and Parts

FOLLOWED BY: * Very Rare Buckeye Cast Iron Seat * Ford 9N Tractor * 3 pt (Spring Harrows) (3D Harrow Bar) * 1961 Dodge Pioneer 4 Dr Car, Runs * 1978 Ford F150 * 5 New Bee Boxes, Bee eq * Variety of Household, Electronic Eq

SELLING AT 1PM – GOOD/MAINTAINED/SHEDDED EQ:

* CASE 1175 Tractor w (6475 hr), St Trans, 4 New 18.4 * 38 Rear Duals * 10' Degelman Belly Blade presently mounted on Case 1175 * IHC 684 diesel w good tires, IHC 2250 FE Loader * IHC 606 gas w good tires, Plus – DuAll FE Loader, 3 ft Renn Rototiller * Very Nice 10 ft JD H X 10 Brush Mower * 1967 GMC 940 Truck w good rubber, 14' Grain box, hoist * Nice 20' Ezee On Disc w 21" Disks * 20' Wil Rich VS Cult w tine harrows * 12' MF dt Cult w tine harrows * Nice 4x16 Oliver Plow * Clean IHC 10 DD Wheel Drill w gr, ft * Good Calhoun 4 Ton Gran Fert Spreader * 12' Vers 103 Swather w PU Reels, Wisconsin Air Motor * Nice MF 510 WS Combine w 350 Engine * Sakundiak 34x6 pto Auger

HAY EQ/FEED EQ/LIVESTOCK EQ: * MORRIS Hayliner 881 Bale Wagon w RH Hyd Pick Up Arm * Nice Vemeer 605H Rnd Baler * Farmhand 5W RH and 2W LH Rake * SQ BALE – 10 Stooker, 10 Fork, RT Elevator, Good Bear Cat 18" Roller Mix Mill * 700bu Rye Feed * Renn Trailing Hyd Post Pounder * 2 Lewis Cattle Oilers, 12 x 16 Calf Shed, 3 Salt Sheds, 3 Water Stock Tanks, 6 Tote Bags, Cattle Squeeze, 8 and 5 Metal Panels * 20' Chain Pasture Harrows * Eltc & 12V Fencers * Eltc Incubator, Heat Lamps * 50 HD 9' Metal Siding, 50 Nice 2x6x16 Lumber, 20 RR Ties, More

FILLING IN TIME SCHEDULE – OTHER GOOD ITEMS: * Nice JD 8000 W Generator * Country Clipper 23 hp / 52" FM SR355 Mower * Ariens 12hp/32" Mower w bagger * Sno Power 12hp/33" Snow Blower * Troy Bilt 8hp WB Tiller * Quad Sprayer and Tub Trailer * Husq 345 Chain Saw * 12hp, 5hp Gas Motors, Eltc Motors, New Pres Tank, Tidy Tank * Hyd Dirt Auger w 4" & 10" * Red Rolling Tool Box, Gear Pullers, Air Tools, Power Tools, ¾ Socket, Much More * Miller 225 Welder, Cut Torch w 2 Owned Bottles, 220 V C/O Saw, Floor Drill Press, 20T Press w HD Vise Table, Bench Grinder, Floor Jacks * Wood R/Beaver – Table Saw w 5' Run Off, Wood Lathe, HD Joiner, R/Arm Saw * Large Amount of Farm Repair Parts – Hyd Hose, Connections, V Belts, Bearings, Roller Chain, Bolt and Parts Bins * Plus Lot More Sold in Bigger Lots!

PARSONS AUCTIONS LTD.

Charles 674-7704 (780-674-3929) Jeff 305-4328

Pictures Available on: parsons-auctions.com

SEPT 26 AUCTION

FOR: STEVES PAINTING & OTHERS

LOCATED: 6124 – 46 Street, Barrhead Industrial Park. From Grizzly (GMC) Trail Motors – Take 62 Ave 3 blocks E Turn S

THURSDAY EVENING, SEPTEMBER 26TH AT 5:00PM

FIRE ARMS: * REM 30-06 w scope, auto * WIN 308 BA w scope * 303 Rifle * CIL 22 LR auto * CBC 22 LR * Ruko 223 * 177 Pellet Gun * Browning Magnum 12ga Auto w vent * WIN 12 ga Auto w vent rib * Mossberg 12ga Pump w vent * JC Higgins 12ga pump * Double Barrel 20 ga * Mini 410 SS * Selling at 5pm * Seniors 12V Scooter * Medical Bed

COMPLETE BUSINESS SELL OFF FOR STEVES

PAINTING: * 1993 Ford Cube Van w rebuilt diesel, auto trans, 16' box, hyd power ingate, nice * Genie Z-60 Scissor Lift w/ 60' lift, power work stand * 1979 IHC 2T Truck w 4spd/revers, good rubber, cargo boxes, 28' Versalift, 300lb man basket, * GRACO Professional/Commercial Sprayers (Ultra 395 w/smart control) (333 Airless) * SKID STEER (Pallet Forks) (Extra Frame) (Post Puller AH) (6' Hi Flow Rotoiller) * 3 Pt Post Pounder * Roller Conveyer * Lots of Paint Items

FARM EQ: * 14' CS247 DT Cult w 16" Sweeps * Brandt 51x8 pto auger w new gear box, 12V Winch, VG Belts * WF 41 x 7 Auger w 16hp ES Kroler w good flighting, Eltc Winch, VG Belts

SEPT 27 AUCTION

FOR: MEL TURNER

LOCATED: (From Barrhead – 14 mi S on Hwy 33 to 57131 Hwy 33) (From Onoway – Go Westerly on Hwy 43 to Junction Hwy 33 Then 13 mi N to 57131 Hwy 33)

FRIDAY EVENING, SEPTEMBER 27TH AT 5:00PM

EXCELLENT JCB BACKHOE AND SHOP EQ: * Nice One Owner JCB 214 Series 3 Tractor Back Hoe w (3876hr), FWA, Nice Bucket, Extended Back Hoe, Very Nice, Cared For * DeVilBliss 220 Shop Comp * Floor Drill Press * Bench Grinder * HD Vise * Fomey 180 Welder * Cut Torch * Hyd Jacks * ¾ & ½ Air Impact * Hand & Power Tools * Plus – Wood Hobby Tools, Table Saw, R/Arm Saw, Scroll Saw, Nailers, Staplers, Mini Wood Lathe * Fuel Tanks – Tidy, 500, 1000 w stands * Transit * Oils, Solvents, Shop Misc, Beer Fridge

GOOD YARD EQ: * JDX300 Ride Mower w(103 hr) * Hardi Trailing Sprayer * 2W Wheel Barrow * Yard Tools, Trimmers, Ornaments, Patio Set, Tubs, Ext Ladder, Pres Tank, 2 Water Cond, Plastic Pipe

RECREATION: * 2006 GN 26FT Holiday Trailer * New 5th W Hitch * Honda EB 2200 X Generator * 2 Bikes * Camping Items

PARSONS AUCTIONS LTD.

Charles 674-7704 (780-674-3929) Jeff 305-4328

Pictures Available on: parsons-auctions.com

AVIS PUBLIC

Régie de l'énergie
du Canada



Canada Energy
Regulator

Trans Mountain Pipeline ULC, à titre de partenaire général de Trans Mountain Pipeline L.P. Projet d'expansion de Trans Mountain Avis relatif au tracé détaillé proposé en vertu de l'alinéa 34(1)(b) de la Loi sur l'Office national de l'énergie

EN CE QUI CONCERNE la Loi sur l'Office national de l'énergie et les règlements afférents.

ET EN CE QUI CONCERNE le Certificat d'utilité publique OC-065 autorisant le tracé général du Projet d'expansion de Trans Mountain.

ET EN CE QUI CONCERNE une demande faite par Trans Mountain Pipeline ULC, au nom de Trans Mountain Pipeline L.P., (« Trans Mountain »), à l'égard de la détermination et de l'approbation du tracé détaillé prévu pour la construction du Projet d'expansion de Trans Mountain, dont la longueur est d'environ 1 179,9 km, et ce à partir du terminal de Trans Mountain situé à Sherwood Park, en Alberta, jusqu'au terminal maritime Westbridge situé à Burnaby, en Colombie-Britannique, comme le montre la carte du tracé ci-jointe (figure 1).

À : JULIA EWASHKO (« Propriétaire »)

Étant le(s) propriétaire(s) inscrit(s), dans la mesure où ils peuvent être déterminés, des terrains requis pour l'itinéraire détaillé du Projet d'expansion de Trans Mountain, situés à

**MÉRIDIEN 5 RANG 5 CANTON 53
SECTION 14
LA MOITIÉ EST DU QUARTIER NORD-OUEST
CONTENANT ENVIRON 32,4 HECTARES
(80 ACRES) À L'EXCEPTION DE : ENVIRON
4,17 HECTARES (10,31 ACRES) FIGURANT
SUR LE PLAN DE ROUTE 8222092 B) SITE
DE MICRO-ONDES COMPRENANT UNE ZONE
A CONTENANT 4,17 HECTARES (10,30 ACRES)
UNE ZONE B, COMPRENANT ENVIRON 0,272
HECTARE (0,67 ACRE) TOUTS LES DEUX
FIGURANT SUR LE PLAN 8820443 À
L'EXCEPTION DE TOUTES LES MINES ET
MINÉRAUX Numéro de titre : 052 048 712
(les « Terrains »)**

Trans Mountain cherche à localiser le propriétaire foncier, ou ses héritiers, décrit ci-dessus afin de lui fournir des renseignements et le présent avis concernant le tracé détaillé du Projet d'expansion de Trans Mountain.

Le croquis du plan de propriété individuelle détaille le tracé du Projet d'expansion de Trans Mountain, propre à la partie des terres susmentionnées incluse dans l'entente de servitude permanente avec Trans Mountain (figure 2).

Si vous avez un droit légal sur les terres décrites ci-dessus et que vous souhaitez vous opposer au tracé détaillé proposé du Projet d'expansion de Trans Mountain, y compris la méthode et le calendrier de construction de l'oléoduc, vous pouvez déposer une déclaration d'opposition

écrite auprès de la Régie de l'énergie du Canada (la « REC ») dans les trente (30) jours suivant la publication du présent avis. Dans la déclaration d'opposition écrite, vous devez préciser la nature de votre intérêt dans le tracé détaillé proposé et les motifs de votre opposition au tracé en question. À la lumière des processus relatifs au tracé détaillé qui ont été suivis pour le projet d'expansion de Trans Mountain en 2017 et en 2018, la REC n'acceptera que les déclarations d'opposition qui soulèvent des préoccupations relativement à des changements importants dans les circonstances par rapport au tracé détaillé original. Une copie de toute déclaration écrite s'opposant à ce tracé détaillé doit être envoyée aux adresses suivantes :

**Régie de l'énergie du Canada
517, 10^e Avenue S.-O., bureau 210
Calgary (Alberta) T2R 0A8
À l'attention de : Louise George,
secrétaire de la Commission de la REC
Téléphone : 403-292-4800
Télécopieur sans frais : 1-877-288-8803
Adresse de courriel : TMX.Aide@cer-rec.gc.ca
Site Web : www.cer-rec.gc.ca**

et :
**Projet d'expansion de Trans Mountain
300, 5^e Avenue S.-O., bureau 2700
Calgary (Alberta) T2P 5J2
À l'attention de : Alain Parisé, directeur, Terrains
Téléphone : 403-514-6401
Adresse de courriel :
TMEP_Land@transmountain.com**

Le processus d'examen des déclarations d'opposition se déroulera comme suit :

- Les décisions précédentes relatives au tracé détaillé, y compris les conditions imposées par l'Office national de l'énergie, demeureront si aucune déclaration d'opposition n'est déposée relativement à ces décisions dans les trente (30) jours suivant la publication de cet avis. De même, les propriétaires fonciers n'ont aucune mesure particulière à prendre pour que Trans Mountain continue de se plier aux conditions imposées par les décisions relatives au tracé détaillé original.
- Si une déclaration d'opposition écrite est déposée auprès de la REC dans les trente (30) jours suivant la publication de cet avis, que cette déclaration concerne une décision précédente relativement au tracé, et qu'elle soulève des préoccupations au sujet d'un changement important dans les circonstances par rapport au processus du tracé détaillé original, la REC procédera à un examen du précédent tracé détaillé avant de prendre une décision.

- En ce qui concerne les audiences sur le tracé détaillé qui étaient en cours le 30 août 2018 et pour lesquelles aucune décision n'a été rendue, les propriétaires fonciers et les communautés autochtones doivent continuer à manifester leur opposition en déposant une déclaration d'opposition dans les trente (30) jours suivant la publication du présent avis. La REC continuera à tenir des audiences et ajoutera de nouvelles étapes au processus, le cas échéant, pour réagir à toute préoccupation valide concernant les changements de circonstances.
- Les propriétaires fonciers et les communautés autochtones qui n'ont pas déposé de déclaration d'opposition à l'occasion du processus précédent relatif au tracé détaillé, dont la déclaration d'opposition a été refusée ou qui ont retiré leur déclaration d'opposition avant une audience sur le tracé détaillé, peuvent déposer une nouvelle déclaration d'opposition dans les trente (30) jours qui suivent la publication du présent avis. Si la déclaration d'opposition soulève un changement important dans les circonstances, la REC tiendra une audience afin d'étudier ces préoccupations par rapport à toutes les sections ou parties de l'oléoduc concernées par les préoccupations soulevées dans la déclaration d'opposition écrite.

La REC n'est pas tenue de donner d'avis, ni de tenir d'audience, ni d'entreprendre de démarches à l'égard de toute déclaration d'opposition écrite déposée auprès de la REC et se réserve le droit, à tout moment, de rejeter ladite déclaration écrite si la personne ayant déposé la déclaration dépose un avis de retrait ou si la REC juge la déclaration frivole, vexatoire ou faite de mauvaise foi. Si la REC estime qu'il convient de tenir une audience publique, elle fixera une date et un lieu convenables pour l'audience et publiera par la suite un avis d'audience dans au moins un numéro d'une publication à grand tirage dans la région où se trouvent les terrains acquis ou que l'on se propose d'acquérir. La REC fera également parvenir un avis d'audience publique à chacune des personnes qui aura déposé une déclaration d'opposition écrite auprès de la REC. L'audience publique se tiendra dans la région dans laquelle sont situés les terrains auxquels se rapporte la déclaration. La REC, ou une personne autorisée par la REC, se réserve le droit d'effectuer une inspection, comme la REC le juge nécessaire, des terrains acquis ou que l'on se propose d'acquérir ou encore touchés par la construction du Projet d'expansion de Trans Mountain.

Si la REC juge qu'une audience publique est requise, la REC permettra à chacune des personnes qui auront déposé une déclaration d'opposition écrite conforme aux exigences de présenter des

AVIS PUBLIC

observations; la REC se réserve par ailleurs le droit de permettre à toute autre personne intéressée de présenter des observations devant lui, comme la REC le juge indiqué. La REC tiendra compte de l'ensemble des déclarations d'opposition écrites et des observations présentées au cours de l'audience publique afin de déterminer, d'une part, le meilleur tracé possible pour l'oléoduc et, d'autre part, les méthodes et le calendrier les plus propices à la construction du Projet d'expansion de Trans Mountain. La REC peut assortir toute approbation des conditions qu'il juge indiquées. La REC transmettra, motifs à l'appui, une copie de toute décision d'approbation ou de refus d'approbation des plan, profil et livre de renvoi relatifs à une section ou partie du Projet d'expansion de Trans Mountain rendue après l'audience publique au ministre et à chacune des personnes qui lui aura présenté des observations.

La REC peut fixer à la somme qu'il juge raisonnable les frais entraînés par la présentation d'observations au cours d'une pareille audience publique; ce montant sera versé sans délai à la personne par Trans Mountain.

On peut se procurer des copies des plan, profil et livre de renvoi relatifs au tracé détaillé du Projet d'expansion de Trans Mountain en composant le 1-866-514-6700 ou en envoyant un courriel à l'adresse info@transmountain.com. Il est également possible de les consulter en ligne sur <https://www.transmountain.com/detailed-route>

ou en personne à l'adresse suivante :

Bibliothèque de la Régie de l'énergie du Canada
517, Dixième Avenue S.-O., 2^e étage
Calgary (Alberta) T2R 0A8
Téléphone sans frais : 1-800-899-1265

De l'information et des modèles, dont un formulaire de déclaration d'opposition, sont également disponibles sur www.cer-rec.gc.ca/agrandissementTransMountain.

Une copie de toute déclaration d'opposition écrite à ce tracé détaillé doit être envoyée aux adresses suivantes :

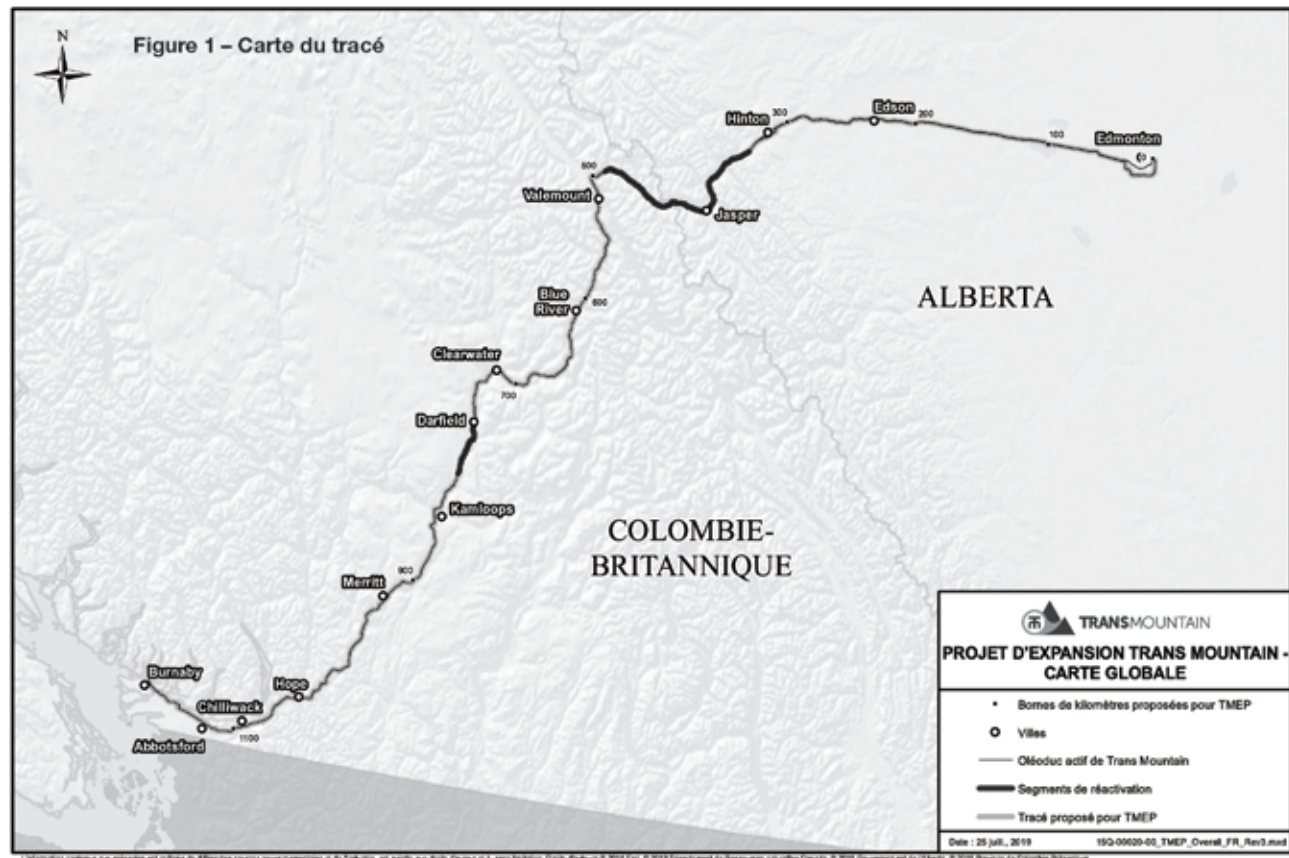
Régie de l'énergie du Canada
517, 10^e Avenue S.-O., bureau 210
Calgary (Alberta) T2R 0A8
À l'attention de : Louise George,
secrétaire de la Commission de la REC
Télécopieur sans frais : 1-877-288-8803
Adresse de courriel : TMX.Aide@cer-rec.gc.ca
Site Web : www.cer-rec.gc.ca

et : **Projet d'expansion de Trans Mountain**
300, 5^e Avenue S.-O., bureau 2700
Calgary (Alberta) T2P 5J2
À l'attention de : Alain Parisé, directeur, Terrains
Télécopieur : 403-514-6401
Adresse de courriel : TMEP_Land@transmountain.com

Le Mode alternatif de règlement des différends (MRD) de la REC sera offert et communiqué par la REC quand on aura déterminé qu'une audience publique aura lieu pour votre déclaration d'opposition. Le MRD peut prendre la forme d'une réunion entre vous et Trans Mountain, qui pourrait être animée par les membres du personnel de la REC formés en la matière ou encore par une tierce partie impartiale. L'animateur vous aiderait, vous et Trans Mountain, à élaborer un processus qui pourrait permettre de régler les différends en suspens.

Pour obtenir de plus amples renseignements ou si vous avez des questions, vous pouvez communiquer avec un conseiller ou une conseillère sur les processus de la REC en composant le 1-800-899-1265 ou en envoyant un courriel à l'adresse TMX.Aide@cer-rec.gc.ca.

Si vous avez des questions à propos du présent avis, du tracé détaillé ou des démarches mises en place par la REC quant au tracé détaillé, prière de communiquer avec Trans Mountain en composant sans frais le 1-866-454-4717 ou en envoyant un courriel à l'adresse info@transmountain.com; un représentant de Trans Mountain vous rappellera par la suite.



UPCOMING SCHOOL PROGRAMS AT TIPPLE PARK MUSEUM

Submitted by Tipple Park Museum

Beauty Program

Tipple Park Museum is hosting a beauty program for children ages eight to sixteen. This program is aimed to teach children how to style their hair, learn tasteful makeup, proper skin-care, and nail techniques. We will be offering free snacks and refreshments for all attendees. Program dates are: Sept. 19th, Oct. 17th, Nov. 21st, from 3:45-5pm each day. Please contact us by email, tippelparkmuseum@gmail.com, or by phone at 780-727-2240 to register.

Basic Cooking Skills

Tipple Park Museum is proud to announce our Basic Cooking Skills workshop. This is a free event! Children that are in grades 4-9 are invited to come to the museum on Sept. 21st from 3-5pm to learn how to make

homemade pasta, meatballs and dessert! Please contact us by email, tippelparkmuseum@gmail.com, or by phone at 780-727-2240 to register.

School Programs

This season Tipple Park Museum is offering a variety of school programs!

First, we have our "All about the Ukraine" program that runs year-round. This session is aimed towards grades 3-6, and the cost is \$4 per student for an all-day program. Students will learn how to make a Pysanky Egg, make delicious potato pancakes, a Ukrainian dance, and go on a Holy Trinity scavenger hunt!

The second program we offer is "Pioneer for a Day." This program runs during the month of June. The cost is \$4 per student for a full day session. This program is suitable for kindergarten to grade 5. Students can

reflect on the pioneer days by making candles, making home made butter & biscuits, washing clothes by hand, and finishing the day off with an old school lesson.

The last field trip is "Science in Motion," that runs from January 20th-27th. Students will participate in crafts, and games, while experiencing outer space

in a planetarium from the Telus World of Science! This two-hour program is \$4 per student and suitable for kindergarten to grade 7.

If you are interested in any of these school programs, please contact us by email, tippelparkmuseum@gmail.com, or by phone at 780-727-2240.



- MLS E4156523 – \$55,000, 40 2nd Ave, Fallis, 0.32 Acre, Vacant Treed Lot, 5m drive to Wabamun Lake Beach & Boat Launch
- MLS E4082264 – \$110,000, 4714 52A Ave, Evansburg, 1040 sqft 3bdrm Bungalow, Large Lot in Cul de Sac, 5m drive to Pembina River Provincial Park
- MLS E4056923 – \$299,999, 6 Bayview Cres, Lake Isle, Gainford, 0.47 Acre, Lake Front, 1615 sqft 3 Bdrm Bungalow, 2 Living Rooms, Triple Garage
- MLS E4072848 – \$599,000, 203 Lakeshore Dr, Buck Lake, 3.48 Acre, Lake Front, 1220 sqft 2 Bdrm w/ Loft, Fully Finished Walk Out Basement



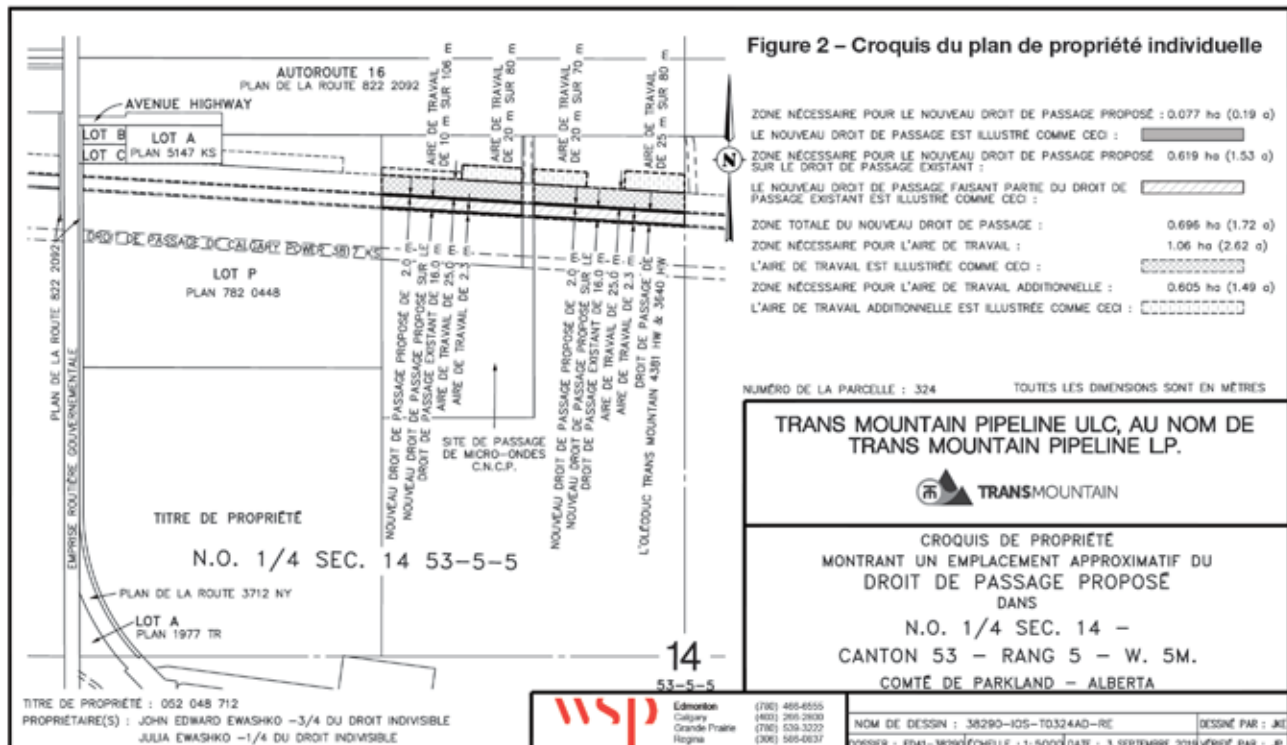
Doreen Noppers
REALTOR®

Cell: 780-885-7398
doreen.noppers@royallepage.ca

ROYAL LEPAGE
Helping you is what we do.
NORALTA REAL ESTATE

AVIS PUBLIC

Canada



REGULAR BOARD MEETING HIGHLIGHTS - SEPTEMBER 3, 2019



Submitted by Parkland School Division

September 3, 2019 - The Board of Trustees is pleased to share with all education stakeholders the highlights of our recent Board meeting held on Tuesday, September 3, 2019. The adopted minutes will be available on our website following the next Regular Board meeting.

Update:

- The Board of Trustees have a new Chair and Vice Chair. As previously determined at the Board's Organizational Meeting in June, the new Chair is Lorraine Stewart. Eric Cameron assumes the role of Vice Chair. Both were acclaimed during proceedings at the end of the last school year.

- The Board received as information the Facilities Services Summer Work Report as presented by Director of Facilities Services, Serge LaBrie.

- The Board received as information the Field Trip & Off-Site Activities Report as presented by Deputy Superintendent, Mark Francis.

- The Board received as information the Human Resources Report as presented by Director of Human Resources, Shae Abba.

- The Board received as information the Student Conduct Report as presented by Deputy Superintendent, Mark Francis.

Next Regular Board meeting will be held on Tuesday, October 8, 2019 at 6:00 p.m., Centre for Education



Deb Gouin

780-497-0531
www.debgouin.ca

Century 21 Masters 780-963-2285
#105, 4302 - 33 St. Stony Plain, AB T7Z 2A9
Each office independently owned and operated



FEATURED LISTINGS:



\$396,500

GORGEOUS COUNTRY HOME

- 2270 sq ft 3 Bed 3 Bath
- 1/2 Acre Lot - PRIVATE
- Oversized Heated Double Garage
- Many Recent Upgrades
- RV Parking
- Lots of Upgrades
- E4170219



\$269,900

HUGE LOT - TRIPLE GARAGE

- 1/2 Acre Lot
- Back onto Golf Course
- TRIPLE GARAGE
- Many Recent Upgrades
- 3 Bedroom 1 Bath Bungalow
- E4168911



\$629,000

GATED COMMUNITY EXEC. HOME

- 1 acre lot MINUTES TO SPRUCE GROVE
- Soaring Ceilings & Luxury Finishes
- TWO TRIPLE GARAGES + RV PARKING
- E4147138



\$358,800

SPRUCE GROVE 1/2 DUPLEX BUNGALOW

- BEAUTIFUL 2+2 bedrooms, 3 baths
- Open Floor Plan & Main Floor Laundry
- Double Attached Garage
- NO CONDO FEES
- E4154703



\$279,900

ROSS HAVEN FAMILY HOME

- 1500+ sq ft, 3 beds, 2 baths
- Upgraded Inside & Out
- Double O/S Garage, 1/2 Block to Lake
- E4148150



\$225,000

ROSS HAVEN CHARMER

- 1650+ sq. ft. 2 bed + loft, 1 bath, laundry
- LARGE COVERED Upper Deck!
- Backs GREENSPACE, STEPS to Lake & Pier!
- E4148179



\$275,000

LAKE NAKAMUM WATERFRONT

- Next-to-New 1 bed + Loft, 1 Bath
- FULLY SERVICED
- Set Up for 2 RVs with HOOK-UPS!
- E4149606

VIEW FULL LISTING DETAILS AT WWW.DEBGOUIN.CA

LISTINGS NEEDED!! If you're considering selling, I currently have serious buyers looking! Give me a call for a **free market evaluation!!** With more than 30 years' experience in the real estate industry, I have both local knowledge as well as serious buyers currently looking for property in our area! Put me to work for you.....
FROM SIGN UP TO SIGN DOWN!!



AVIS PUBLIC

Régie de l'énergie
du Canada



Canada Energy
Regulator

Trans Mountain Pipeline ULC, à titre de partenaire général de Trans Mountain Pipeline L.P. Projet d'expansion de Trans Mountain Avis relatif au tracé détaillé proposé en vertu de l'alinéa 34(1)(b) de la Loi sur l'Office national de l'énergie

EN CE QUI CONCERNE la Loi sur l'Office national de l'énergie et les règlements afférents.

ET EN CE QUI CONCERNE le Certificat d'utilité publique OC-065 autorisant le tracé général du Projet d'expansion de Trans Mountain.

ET EN CE QUI CONCERNE une demande faite par Trans Mountain Pipeline ULC, au nom de Trans Mountain Pipeline L.P., (« Trans Mountain »), à l'égard de la détermination et de l'approbation du tracé détaillé prévu pour la construction du Projet d'expansion de Trans Mountain, dont la longueur est d'environ 1 179,9 km, et ce à partir du terminal de Trans Mountain situé à Sherwood Park, en Alberta, jusqu'au terminal maritime Westbridge situé à Burnaby, en Colombie-Britannique, comme le montre la carte du tracé ci-jointe (figure 1).

À : **ALICE KALINOWSKI** (« Propriétaire »)
ALEXANDRA KALINOWSKI (« Propriétaire »)

Étant le(s) propriétaire(s) inscrit(s), dans la mesure où ils peuvent être déterminés, des terrains requis pour l'itinéraire détaillé du Projet d'expansion de Trans Mountain, situés à

**MÉRIDIEN 5 RANG 9 CANTON 53
SECTION 21
QUART NORD-EST
CONTENANT ENVIRON 64,7 HECTARES
(160 ACRES) À L'EXCEPTION DE TOUTES
LES MINES ET MINÉRAUX
Numéro de titre : 072 522 328 +2
MÉRIDIEN 5 RANG 9 CANTON 53
SECTION 21
QUART NORD-OUEST
CONTENANT ENVIRON 64,7 HECTARES
(160 ACRES) À L'EXCEPTION DE TOUTES
LES MINES ET MINÉRAUX
Numéro de titre : 072 522 328**

(les « Terrains »)

Trans Mountain cherche à localiser le propriétaire foncier, ou ses héritiers, décrit ci-dessus afin de lui fournir des renseignements et le présent avis concernant le tracé détaillé du Projet d'expansion de Trans Mountain.

Le croquis du plan de propriété individuelle détaille le tracé du Projet d'expansion de Trans Mountain, propre à la partie des terres susmentionnées incluse dans l'entente de servitude permanente avec Trans Mountain (figure 2).

Si vous avez un droit légal sur les terres décrites ci-dessus et que vous souhaitez vous opposer au tracé détaillé proposé du Projet d'expansion de Trans Mountain, y compris la méthode et le calendrier de construction de l'oléoduc, vous pouvez déposer une déclaration d'opposition

écrite auprès de la Régie de l'énergie du Canada (la « REC ») dans les trente (30) jours suivant la publication du présent avis. Dans la déclaration d'opposition écrite, vous devez préciser la nature de votre intérêt dans le tracé détaillé proposé et les motifs de votre opposition au tracé en question. À la lumière des processus relatifs au tracé détaillé qui ont été suivis pour le projet d'expansion de Trans Mountain en 2017 et en 2018, la REC n'acceptera que les déclarations d'opposition qui soulèvent des préoccupations relativement à des changements importants dans les circonstances par rapport au tracé détaillé original. Une copie de toute déclaration écrite s'opposant à ce tracé détaillé doit être envoyée aux adresses suivantes :

**Régie de l'énergie du Canada
517, 10^e Avenue S.-O., bureau 210
Calgary (Alberta) T2R 0A8
À l'attention de : Louise George,
secrétaire de la Commission de la REC
Téléphone : 403-292-4800
Télécopieur sans frais : 1-877-288-8803
Adresse de courriel : TMX.Aide@cer-rec.gc.ca
Site Web : www.cer-rec.gc.ca**

et :
**Projet d'expansion de Trans Mountain
300, 5^e Avenue S.-O., bureau 2700
Calgary (Alberta) T2P 5J2
À l'attention de : Alain Parisé, directeur, Terrains
Télécopieur : 403-514-6401
Adresse de courriel :
TMEP_Land@transmountain.com**

Le processus d'examen des déclarations d'opposition se déroulera comme suit :

- Les décisions précédentes relatives au tracé détaillé, y compris les conditions imposées par l'Office national de l'énergie, demeureront si aucune déclaration d'opposition n'est déposée relativement à ces décisions dans les trente (30) jours suivant la publication de cet avis. De même, les propriétaires fonciers n'ont aucune mesure particulière à prendre pour que Trans Mountain continue de se plier aux conditions imposées par les décisions relatives au tracé détaillé original.
- Si une déclaration d'opposition écrite est déposée auprès de la REC dans les trente (30) jours suivant la publication de cet avis, que cette déclaration concerne une décision précédente relativement au tracé, et qu'elle soulève des préoccupations au sujet d'un changement important dans les circonstances par rapport au processus du tracé détaillé original, la REC procédera à un examen du précédent tracé détaillé avant de prendre une décision.

- En ce qui concerne les audiences sur le tracé détaillé qui étaient en cours le 30 août 2018 et pour lesquelles aucune décision n'a été rendue, les propriétaires fonciers et les communautés autochtones doivent continuer à manifester leur opposition en déposant une déclaration d'opposition dans les trente (30) jours suivant la publication du présent avis. La REC continuera à tenir des audiences et ajoutera de nouvelles étapes au processus, le cas échéant, pour réagir à toute préoccupation valide concernant les changements de circonstances.

- Les propriétaires fonciers et les communautés autochtones qui n'ont pas déposé de déclaration d'opposition à l'occasion du processus précédent relatif au tracé détaillé, dont la déclaration d'opposition a été refusée ou qui ont retiré leur déclaration d'opposition avant une audience sur le tracé détaillé, peuvent déposer une nouvelle déclaration d'opposition dans les trente (30) jours qui suivent la publication du présent avis. Si la déclaration d'opposition soulève un changement important dans les circonstances, la REC tiendra une audience afin d'étudier ces préoccupations par rapport à toutes les sections ou parties de l'oléoduc concernées par les préoccupations soulevées dans la déclaration d'opposition écrite.

La REC n'est pas tenue de donner d'avis, ni de tenir d'audience, ni d'entreprendre de démarches à l'égard de toute déclaration d'opposition écrite déposée auprès de la REC et se réserve le droit, à tout moment, de rejeter ladite déclaration écrite si la personne ayant déposé la déclaration dépose un avis de retrait ou si la REC juge la déclaration frivole, vexatoire ou faite de mauvaise foi. Si la REC estime qu'il convient de tenir une audience publique, elle fixera une date et un lieu convenables pour l'audience et publiera par la suite un avis d'audience dans au moins un numéro d'une publication à grand tirage dans la région où se trouvent les terrains acquis ou que l'on se propose d'acquérir. La REC fera également parvenir un avis d'audience publique à chacune des personnes qui aura déposé une déclaration d'opposition écrite auprès de la REC. L'audience publique se tiendra dans la région dans laquelle sont situés les terrains auxquels se rapporte la déclaration. La REC, ou une personne autorisée par la REC, se réserve le droit d'effectuer une inspection, comme la REC le juge nécessaire, des terrains acquis ou que l'on se propose d'acquérir ou encore touchés par la construction du Projet d'expansion de Trans Mountain.

Si la REC juge qu'une audience publique est requise, la REC permettra à chacune des personnes qui auront déposé une déclaration d'opposition écrite conforme aux exigences de présenter des

AVIS PUBLIC

observations; la REC se réserve par ailleurs le droit de permettre à toute autre personne intéressée de présenter des observations devant lui, comme la REC le juge indiqué. La REC tiendra compte de l'ensemble des déclarations d'opposition écrites et des observations présentées au cours de l'audience publique afin de déterminer, d'une part, le meilleur tracé possible pour l'oléoduc et, d'autre part, les méthodes et le calendrier les plus propices à la construction du Projet d'expansion de Trans Mountain. La REC peut assortir toute approbation des conditions qu'il juge indiquées. La REC transmettra, motifs à l'appui, une copie de toute décision d'approbation ou de refus d'approbation des plan, profil et livre de renvoi relatifs à une section ou partie du Projet d'expansion de Trans Mountain rendue après l'audience publique au ministre et à chacune des personnes qui lui aura présenté des observations.

La REC peut fixer à la somme qu'il juge raisonnable les frais entraînés par la présentation d'observations au cours d'une pareille audience publique; ce montant sera versé sans délai à la personne par Trans Mountain.

On peut se procurer des copies des plan, profil et livre de renvoi relatifs au tracé détaillé du Projet d'expansion de Trans Mountain en composant le 1-866-514-6700 ou en envoyant un courriel à l'adresse info@transmountain.com. Il est également possible de les consulter en ligne sur <https://www.transmountain.com/detailed-route>

ou en personne à l'adresse suivante :

Bibliothèque de la Régie de l'énergie du Canada
517, Dixième Avenue S.-O., 2^e étage
Calgary (Alberta) T2R 0A8
Téléphone sans frais : 1-800-899-1265

De l'information et des modèles, dont un formulaire de déclaration d'opposition, sont également disponibles sur www.cer-rec.gc.ca/agrandissementTransMountain.

Une copie de toute déclaration d'opposition écrite à ce tracé détaillé doit être envoyée aux adresses suivantes :

Régie de l'énergie du Canada
517, 10^e Avenue S.-O., bureau 210
Calgary (Alberta) T2R 0A8
À l'attention de : Louise George,
secrétaire de la Commission de la REC
Télécopieur sans frais : 1-877-288-8803
Adresse de courriel : TMX.Aide@cer-rec.gc.ca
Site Web : www.cer-rec.gc.ca

et : **Projet d'expansion de Trans Mountain**
300, 5^e Avenue S.-O., bureau 2700
Calgary (Alberta) T2P 5J2
À l'attention de : Alain Parisé, directeur, Terrains
Télécopieur : 403-514-6401
Adresse de courriel : TMEP_Land@transmountain.com

Le Mode alternatif de règlement des différends (MRD) de la REC sera offert et communiqué par la REC quand on aura déterminé qu'une audience publique aura lieu pour votre déclaration d'opposition. Le MRD peut prendre la forme d'une réunion entre vous et Trans Mountain, qui pourrait être animée par les membres du personnel de la REC formés en la matière ou encore par une tierce partie impartiale. L'animateur vous aiderait, vous et Trans Mountain, à élaborer un processus qui pourrait permettre de régler les différends en suspens.

Pour obtenir de plus amples renseignements ou si vous avez des questions, vous pouvez communiquer avec un conseiller ou une conseillère sur les processus de la REC en composant le 1-800-899-1265 ou en envoyant un courriel à l'adresse TMX.Aide@cer-rec.gc.ca.

Si vous avez des questions à propos du présent avis, du tracé détaillé ou des démarches mises en place par la REC quant au tracé détaillé, prière de communiquer avec Trans Mountain en composant sans frais le 1-866-454-4717 ou en envoyant un courriel à l'adresse info@transmountain.com; un représentant de Trans Mountain vous rappellera par la suite.

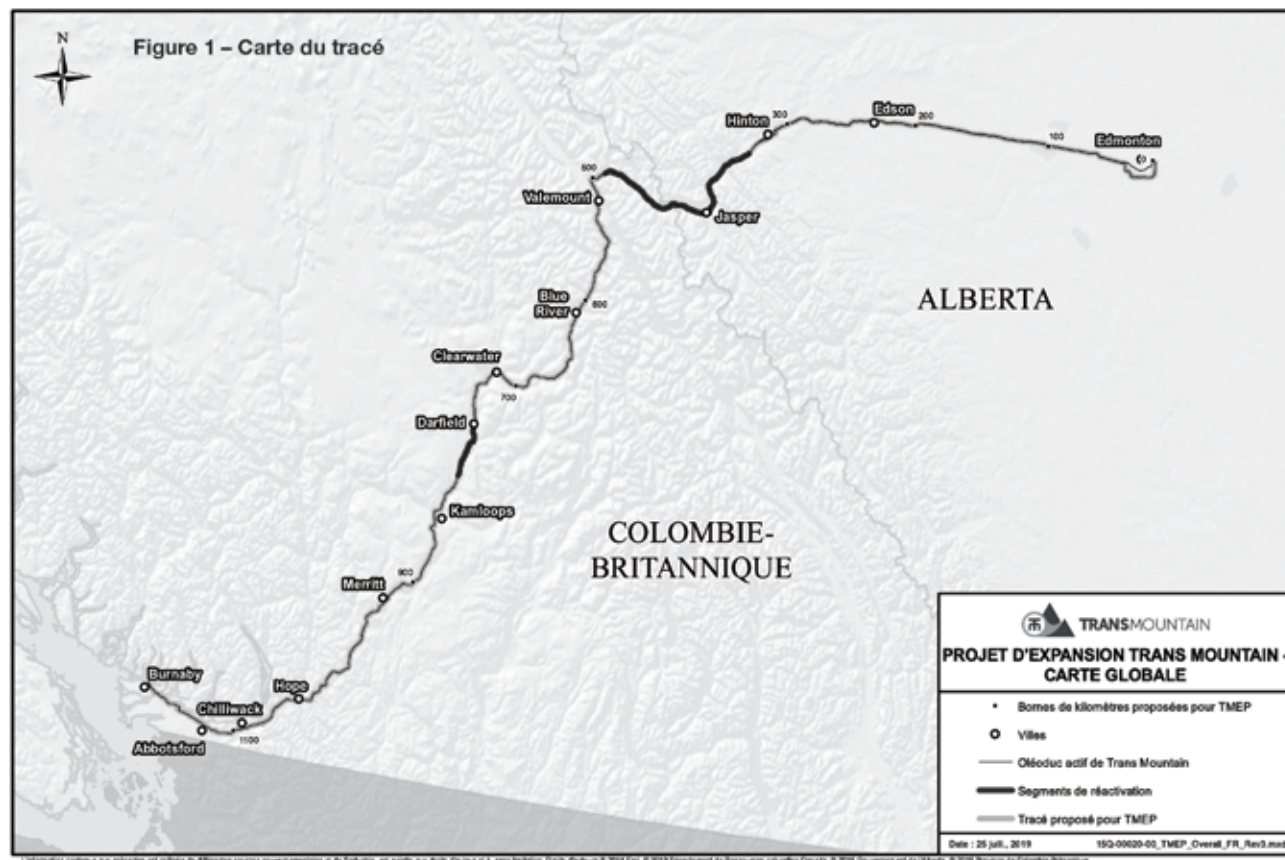
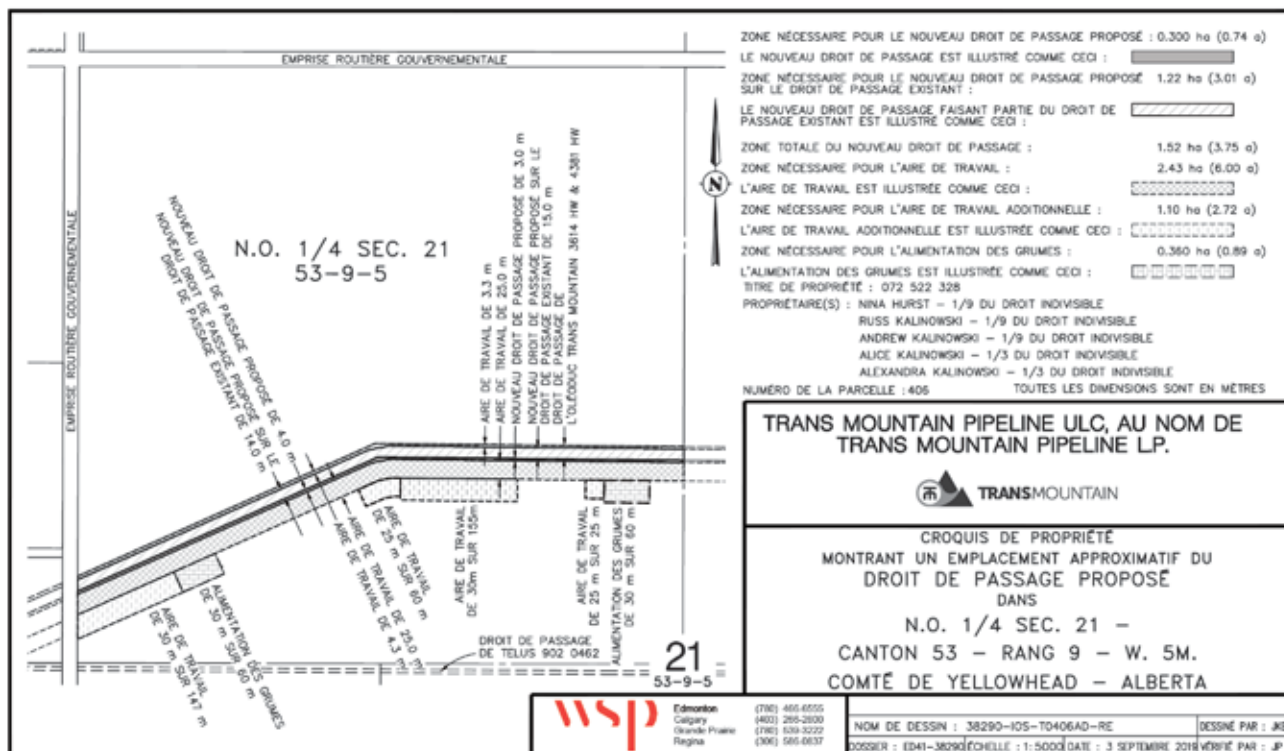
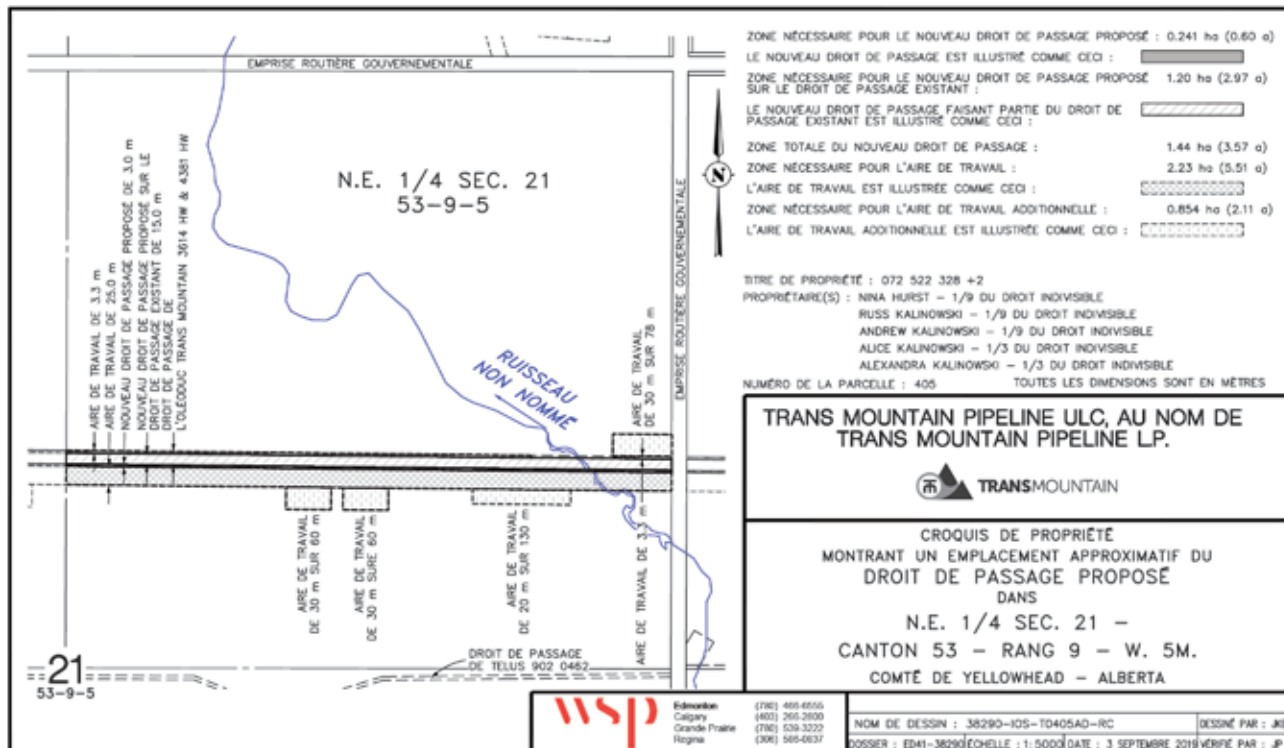


Figure 2 – Croquis du plan de propriété individuelle



Classified Ads - Call 962-9228

Hall Rentals

Bright Bank Hall, 780-968-6813

Camp Encounter, Vincent Mireau - Camp Director, director@campencounter.com, C: 780-504-2012 W: 780-967-2548

Cherhill Community Assoc. Hall, Kevin 780-785-8153

Darwell Hall, 780-721-2690

Darwell Seniors, Phone Debra 780-785-2907

Duffield Hall, 892-2425

Entwistle Community League Hall Rentals, Call Cheryl at 780-515-1755

Entwistle Senior's Drop In Centre, Barb 727-2108 or Glennis 727-4367 Mon-Fri

Evansburg Senior's Heritage House, Dennis 727-4186

Evansburg Legion, upper hall 250 people, lower hall 80-100 people, 727-3879

Fallis Community Hall, 892-3150

Gunn Hall (G.A.R.S.) 780-951-9452

Keephills Hall, 731-3761

Lake Isle Community Hall, PH: 780-892-3121 or Email: lakeislehall@mail.com

Lake Romeo PeaVine Hall, 785-2700

Magnolia Hall, 727-2015

Manley Goodwill Community Hall, 963-9165 or 916-0146

Mayerthorpe Diamond Centre, 786-4044

Moon Lake Community Hall, Nikki Berg 780-898-1390

Park Court Hall, call or text Karyn 780-712-3918

Parkland Village Community Centre, 780-298-9155 @PVCentre

Ravine Community Hall, 325-2391

Rich Valley Community Hall, 967-3696 or 967-5710

Rosenthal Community Hall, 963-7984

Smithfield Community Hall, Wanita 780-718-8824.

Tomahawk & District Sports Agra, Bookings: Kathy 780-339-3773.

Wabamun Jubilee Hall, 892-2699.

Wildwood Community Hall, 325-

2180 or 780-514-6105

Wildwood Rec Complex 325-2077 or 514-8944

Wildwood Senior's Hall, 325-3787 or 325-2391

Auctions

NOW OPEN!! ENTWISTLE AUCTION Junction of Hwy 16 & 22, One Block south of Esso. Sales Start Sept 28th @ 11:00 AM. Regular Sale, Every Saturday. CONSIGN NOW!! 780-727-2724 & 780-727-4062 Sales conducted by Alberta Surplus Auction Inc. Licensed & Bonded Lic # 313301 (3) 10-09

Services

Lawn Spraying, Fall is an excellent time to control weeds for next spring! Standard front lawns starting at \$50. Call 780-982-6589 (3) 10-09




www.serenity.ca

780-542-3338 (24 hours) 5137-50 Avenue Drayton Valley, AB

SERENITY FAMILY SERVICE SOCIETY - YOUR NOT-FOR-PROFIT SOCIETY

6 UNITS LEFT!



OPEN house

SUN. SEPT 29
1:00pm - 3:00pm

4002 47 Street
Drayton Valley

NO MORE SNOW COVERED VEHICLES OR SHOVELLING SNOW!

Call Heather Malin
780-621-8001
heathermalin.com



RE/MAX VISION REALTY

FOR SALE!



CLOSE TO SHOPPING & MEDICAL
FREE Internet & Telus TV - 1 Yr.
NO GST!!!

Condo Fee Inc. Gas, Water, Sewer, Garbage, Heated Parking Stall!

2-3 Brdm Units, Top floor & Corner Units Available, 40+ Living MOVE IN READY! Triple Glaze Windows, A/C, Gas BBQ outlets, Each floor has 8" Concrete Hollow Core Slabs for Sound Proofing, Builder has high standards when it comes to Safety, Sound Proofing & Solid Construction (Steel Studs). Rental Options Available!

Classified Ads - Call 962-9228

Cleaning

CEILING & WALL CLEANING

- Specializing in cleaning Stipple & California knockdown. Cig. Smoke removal & Odour removal. Ceramic floor tiles steamed cleaned. Call Nano Cleaning for Discount Prices! 780-914-0323 (5) 27-08

Computers

FREE Computer Checkup.

Repairs **work** or extract Doc or Pictures from Old or Broken PC **NOT** over \$50. No Prepayment - No Charge if not Repairable. Yes, I have for you a good, clean, refurbished and upgraded laptop or desktop with Legal win 10 for **ONLY \$100**. Call now 780-892-2407 (12) 13-08

Landscaping & Maintenance

Stump Grinding For Hire - Alberta Beach & Surrounding areas. Call 780-779-3589 (28) 23-04

Firewood

SEASONED FIREWOOD:

Birch, Tamarack, Spruce/ Pine & Poplar. 4x4x8 cord, Split and delivered or pick up at wood yard, 1/2 cord or full cords available. Call 780-967-5835 or 780-983-1495 (28) 27-08

Vehicles

1999 FORD 350 Dually 4 x 4 Lariat - 7.3 diesel motor, automatic, air, tilt, cruise, leather seats, c/w box liner and fifth wheel hitch - 379,000 km. Asking \$6,000.00. Call 780 623-8979 (2) 10-09

Buy & Sell

Pepsi-Cola Cooler chest type .10 (cent) coin dispenser, 5 bottle rows, key. Asking \$800, Onoway area, Call 780-983-0753 (2) 10-09

Free Pasture

3 Acres Free Pasture, Spruce Lane Estates. Call 780-910-7812 (3) 27-08

For Rent

Completely renovated Motel in Onoway, offering monthly rentals, all utilities FREE, furnished bachelors and furnished 1 bedroom with full kitchen, Starting at \$850/month, please call Cheryl for viewing 780-967-4420 www.onowayinnandsuites.com (4)

20-08 OG

Alberta Beach Inn & Suites offers 1 Bedroom Apartment Suites, FULLY EQUIPPED AND FURNISHED. Daily/Weekly/Monthly rates, Lakefront property. Monthly rent includes digital TV, WiFi, phone, utilities & parking. Monthly available from Aug 15, special incentives for long term rentals. Please call Kurt 587-763-0351 (3) 27-08 OG

Year Round Cabin For Rent North of Evansburg on Hwy 22 (15 mins from Evansburg). \$1100/month + DD. All

inclusive, utilities & TV. Max 2 people. Call 780-239-0553 (4) 03-09

Onoway 1 & 2 Bedroom Suites for Rent. Clean, quite secure building with reasonable rent. Call 780-967-5857 or 780-920-3652 (4) 10-09

Land For Sale

Choice Acreage, 4.3 acres all treed. Yellowhead Estates, RR25, 2 Miles N of Yellowhead Hwy. \$107,000 - Call 780-435-1907 (2) 10-09

PURE HEMP CBD PRODUCTS
AGING IS INEVITABLE - LOOKING AND FEELING OLD ISN'T!

WHAT IS CBD?
A Health and Beauty Breakthrough!
Cannabidiol, CBD, is one of over 80 active cannabinoid chemicals in the hemp plant. CBD, unlike, THC, does not produce euphoria or intoxication. CBD targets specific receptors in the cells of your brain & body. There are many physical and mental benefits to using CBD products for both treatment and prevention of numerous ailments.

Therapeutic Uses For Pure Hemp CBD
Supports healthy blood sugar levels, promotes healthy energy levels, relieves anxiety, aids in digestion, supports optimal immune function and the regeneration of healthy cells, and promotes a sense of serenity and overall well-being.

Anti-Aging Uses For Pure Hemp CBD
Promotes more youthful skin, provides hydration, enhances radiance, lessens age lines as well as the appearance of dark spots.

KEY BENEFITS
PAIN RELIEF: Known to reduce vomiting & nausea; suppress muscle spasms; reduce seizures & convulsions.
PROMOTES HEALTH: Helps to promote relaxation and overall health.
WELL-BEING: Helps to relieve anxiety, aid in digestion, supports optimal immune function and the regeneration of healthy cells.

CBD PET PRODUCTS
PET CHEW TREATS
KEY BENEFITS
SYNERGISTIC BENEFITS: Can be used in conjunction with regular medications with no side effects.
NO SIDE EFFECTS: Does not damage the liver, kidney or GI Tract like OTC medication.
DIETARY SUPPLEMENT: Can be administered daily as part of your pet's diet.

ORAL SPRAYS & DROPS
KEY BENEFITS
MANAGES PAIN: Helps to treat inflammation, arthritis and joint pain.
TREATS DIGESTIONAL ISSUES: Helps with loss of appetite, nausea, IBS and gastrointestinal swelling.
GENERAL HEALTH: Helps to manage mood, anxiety and general joint pain. For healthy, happy pets.
CONVENIENT: Can be sprayed into pet's mouth or on food.

For more information, Call (780) 907-8642

COMMUNITY EVENTS 2019

If you are a LICENSED, NON-PROFIT ORGANIZATION, you are welcome to submit your announcement FREE of charge, space permitting. You are required to submit your non-profit number. Call (780) 962-9228. Please note that all submitted event listings must be limited to 200 characters or less (including spaces). DEADLINE: 12 noon Friday prior to publication (Thursdays on long weekends).

SEPT 21 - HARVEST FAIR, 10am-2pm at the Spruce Grove Grain Elevator site. Bring your family and enjoy old farm games and competitions. Hosted by Spruce Grove Ag Society

FARMERS MARKETS

DRAYTON VALLEY: Evergreen Farmers' Market, Wednesdays at the Mackenzie Centre of the Omniplex from 10:30AM-1:30PM. *Ends Dec. 19

EVANSBURG: Sat, 10AM-2PM, Tipple Park Museum. Call 727-2240 for tables.

SPRUCE GROVE: at the Elevator, Sat 9:30-1:30PM, tables (780) 240-5821

STONY PLAIN: Sat, 9AM-1PM, Downtown, Stony Plain. Phone Nancy 780-962-3993.

BINGO

ENTWISTLE COMM. LEAGUE BINGO: Every Wednesday, Doors Open 6PM.

STONY PLAIN SENIOR'S DROP-IN CENTRE: public bingo every Tues, 7PM. All ages welcome. Phone (780) 963-6685

TOMAHAWK: every Mon at Agra Centre, doors 6pm, Bingo 7:30PM. Info 514-0366 or 339-3747

WILDWOOD: Mon night, 6:30PM, bingo starts 7:30PM, Early Birds & Lucky 7.

WILDWOOD LADIES AID: every 3rd Friday of month, 6:30PM, bingo starts 7:30PM.

MEAT DRAWS

Darwell: Put on by Alberta Beach & District Lions Club, 4:00PM, bi-weekly, Darwell Lounge & Restaurant

Evansburg: Evansburg Legion, Friday 8:10PM & Saturday 3-5PM

Wildwood: Wildwood Legion, Saturday 3-5PM

JAMBOREES

CARVEL: 2nd Sunday of month. \$6 lunch served. Info 780-991-3001

CHIP LAKE: Ravine Comm Hall, 1st Sat 325-2119 or 325-2391

DUFFIELD: 4th Sat, Duffield Community Hall, Supper 6PM. *Sept - May.

DRAYTON VALLEY: Last Sunday of month. Upstairs @ the "55 Rec. Center". Doors at 12PM, Starts at 1PM. 780-542-3768

ENTWISTLE: 3rd Saturday of month, Doors at 5:30PM at Entwistle Community Hall. Contact Verna at 780-716-2304.

*October - May

MAGNOLIA: at Magnolia Hall. Every 2nd Saturday, Supper at 6PM. 727-2015 or www.magnoliacommunityclub.ca. Call to confirm. *October - May

RAVINE COMMUNITY ASSOCIATION: 1st Sat of each month. Info 780-325-2391

*Sept - May.

SEBA BEACH: 2nd Friday 7PM, Seba Senior's Centre, Toni 797-4233

SPRUCE GROVE: at Sandhills Community Hall, 3rd Sunday, 1-5PM. Info Florence 780-962-3104 Margaret 780-962-3051 *Sept - June.

STONY PLAIN: Stony Plain Seniors Drop In Center, 5018 - 51 Ave. Every 2nd & 4th Thurs of month, 7PM, \$2. PH: 587-989-7214 or 963-7920.

TOMAHAWK: Tomahawk Agriplex, 3rd Friday of month, 7PM. PH: 780-339-3755.

WILDWOOD: Wildwood Community Hall, 3rd Wed Each Month, 7pm. 325-3749

*Oct - June.

TOPS (Take Off Pounds Sensibly)

ENTWISTLE: Wed 5:15PM weigh-in, 5:30-6:30PM meeting, food bank building, South entrance. 780-932-2695.

STONY PLAIN: Thurs evening, Stony Plain United Church, Susan (780) 968-0869

SPRUCE GROVE: Wed 8:45am at Anglican Church, 131 Church Rd. Christiane 960-1109

WILDWOOD: Thurs at Wildwood Hall, 4:30PM. Connie (780) 325-2420

YOUR COMMUNITY

ALBERTA PARENTING FOR THE FUTURE ASSOC: Call 963-0549 or visit www.apfa.ca to register. All programs are confidential & free.

FREE HOME MEAL DELIVERY PROGRAM, for Wabamun Seniors & Wabamun Lions. Arrange for meal preparation through a local restaurant. Call Darlene, 892-2551.

PEMBINA SKATING CLUB (Evansburg Arena), offers Learn-to-Skate, CanSkate & STARSkate. All ages. Call Lisa 727-2729.

*Runs Sept-March

PROBLEMS WITH DRUG OR ALCOHOL ADDICTION in a loved one? Contact Drug Rehab Resource for a free confidential consultation. 1-866-649-1594 or www.drugrehabresource.net.

LIBRARY EVENTS

AFTERNOON BOOK CLUB at Keephills Library. 2nd Tues of every month, 1:30-3:00PM. Visit www.pclibraries.ca for info.

FAMILY GAMES NIGHT: 3rd Wed of every month, 6-8PM. Located at Entwistle Library, Duffield Library and Tomahawk Library. In partnership with Parkland School Division. Visit www.pclibraries.ca for more info.

HATCHET CITY READERS at Tomahawk Library. 3rd Tues of every month, 10-11AM. For what we're reading next, visit our website, www.pclibraries.ca.

INVESTORS CLUB: 2nd Thurs of every month, 3:30-5:00PM at Entwistle Library. 4th Thurs of every month, 3:30-5:00PM at Tomahawk Library. Ages 8-13. To register: Call the library at 780-339-3935.

SEBA BEACH PUBLIC LIBRARY BOOK CLUB - meets the 4th Tuesday of the month in the library at 10:30AM. For info call 780-797-3940 or E-mail us at sebaeachlibrary@yrlab.ca.

EVANSBURG PUBLIC LIBRARY BOOK CLUB: 4th Thurs, 7:00PM Grand Trunk High 727-2030.

SOCIAL EVENTS

50+ YOUNG AT HEART LUNCHEON for Parkland County Seniors. 12PM at Stony Plain United Church Basement, \$8/plate. 3rd Wed of Month. Call Barb 780-952-0882. *Sept-June

AEROBICS: Low impact, Mon/Wed, 11AM-12PM, Wildwood Senior's Centre, \$1/session.

BREAKFAST SOCIAL: 9:30AM-NOON, Parkland Village Community Centre - 3rd Sunday. PH: 780.298.9155 Social Media: PVCCentre.

COME PLAY CRIB: Fridays, 7:30PM at Darwell Seniors Hall; lite lunch is served. All ages!

COUNTRY QUILTERS in Stony Plain house a "Sew in Tuesday", 2nd Tuesday of every month, from 10-3PM. Drop in \$5/member, \$6/non-members. Contact Cindy 780-963-7170.

DROP-IN ADULT PICKLEBALL: Thursdays, 6-8:30 p.m. Sept.12th-May @ G.T. School, Evansburg. Beginners Welcome. Paddles sponsored by the Evansburg Public Library

EVANSBURG ART CLUB: meet & paint Thurs 1-4PM Rec Plex. 727-4340 or 727-4098

EVANSBURG GUIDES & PATHFINDERS: Mon 6PM, Camp Evansburg.

EVANSBURG SENIOR'S HERITAGE HOUSE: Floor Curling Mon & Thurs, 1pm. Court Whist Thurs, 7PM.

EVANSBURG TIPPLE PARK HISTORICAL BUILDING TOURS: Wed - Sat, 10:00-5:00PM.

HEALTHY AGING NURSE & FOOT CARE PERSON, Wabamun Seniors Centre, 2nd

Thurs of month, 9AM.

OPEN HOUSE for socializing, Crib & card playing at Entwistle Senior Center, Thursdays at 6:45PM. Dan 780-982-0353

PARENT & TOT PLAYTIME: PERC Building Stony Plain Wed 10-11AM; Holborn Community Hall Thurs 9:30-11AM; Parkland Village Tues 9:30-11:30AM.

POT LUCK every Tues 12:00PM, Wabamun Seniors Centre. Come on down!

SEBA BEACH SENIORS CENTER: Yoga, mon, 9:30AM, \$10/session. Bridge thurs, 1pm. Jams every Wed night, 7PM. Thrift Shop every Wed & Sat at 10-3PM.

SEBA BEACH QUILTERS & FIBER ARTS: Wednesdays 9:30AM, Seniors Center.

SENIORS 50+ LUNCHEON: 3rd Wed, 12PM at Stony Plain United Church basement hall. Call Audrey (780) 963-7582

SENIORS WEDNESDAY* AFTERNOON 1-4PM at Parkland Village Community Centre. Games, Crafts & more! Call Sheryl 780.695.7032 *exceptions incl. Weather.

SPIRITUAL LIVING STONY PLAIN INSPIRATIONAL CINEMA & DISCUSSIONS at PERC Building (5413-51 St). 2nd Friday of month at 7PM. Popcorn provided, donations appreciated. Contact 780-940-3032

SPIRITUAL LIVING STONY PLAIN GATHERING at PERC Building (5413-51 St). Every 2nd & 4th Sunday of month. Meditation 10AM, inspirational sharing 10:30AM. PH 780-940-3032

SPRUCE GROVE ELEVATOR TOURS: Tues-Sat, 9-3PM. 960-4600.

STONY PLAIN'S 5TH MERIDIAN GOOD SAMS RV CHAPTER: Ecole Meridian Heights School. 3rd Tues of Month, 7PM. Call Pat at 780-963-6976 or Ruth at 780-288-9829.

MEETINGS

2ND TIMERS: A support & confidential group for Grandparents Parenting. 1st Thurs of month, 6:30PM. Grand Trunk High School (meet in Lobstick Literacy & Learning room). Child care provided at the Evansburg Public Library.

299 ROYAL CANADIAN SEA CADETS CORPS MACKENZIE: Stony Plain Comm Centre, Wed 6:30PM. Youths 12-18, 963-0843

755 PARKLAND AIR CADETS Thurs, 6:30-9:30PM Muir Lake School, ages 12-18. Info call 405-6585 or www.aircadet.com/755.

AA: Friday at 8PM, Evansburg. Call 325-2204, 727-2466 or 727-6652.

AA: Monday night HOPE group at 8PM, Mewassin Free Methodist Church.

AL-ANON: Wed 8PM, Spruce Grove United Church, 1A Fieldstone Drive. 962-5205

CHAMBER OF COMMERCE (Evans/Ent): 7:30PM 3rd Thurs, Heritage House.

C.H.I.L.D. (Citizens Helping in Life's Defence) Please join our Pro-Life meetings once a month in Stony Plain. For info call Chris 963-6997.

CITIZENS ON PATROL: The Pembina Community Watch Patrol Meets 2nd Thurs of each month at 7:30PM, at the Tipple Park Museum (4924-48 St.), Evansburg. Contact 780-898-1465 or 780-727-2686.

COMMUNITY QUILTERS & CRAFTERS: 3rd Tues. Evansburg, Liz 727-3872 Brenda 727-4476

DARWELL & DISTRICT AG SOCIETY: 8PM, 1st Mon, Community Hall.

DDRA MEETING: 7PM, 2nd Mon, Darwell Community Hall 892-3099. *Except Jul/Aug/Dec

DRAYTON VALLEY BRANCH OF ALBERTA GENEALOGICAL SOCIETY: meets 7PM at Municipal Library (5120-52 St.) every 3rd Wed of month. Call (780)

542-2787

ENTWISTLE COMMUNITY LEAGUE GENERAL MEETINGS: 2nd Thursday monthly 7:30PM. *Except June, July, August

ENTWISTLE LIONS CLUB: 2nd & 4th Tues, 8PM, Entwistle curling Rink. Jim 727-3573

ENTWISTLE SENIORS 55+ CLUB: Tue & Fri, 1:30-4:00PM at Entwistle Hall

EVANSBURG SENIOR'S 55+ HERITAGE HOUSE: 2nd Wed of Month, 7:00PM. Dennis, 727-4186.

FALLS COMMUNITY ASSOCIATION: 3rd Tuesday, 7:00PM.

GIRL GUIDES OF CANADA: Poplar Hollow District Guides-Pathfinders, Mon 6-8PM. Sparks-Brownies Tues 4-5:30PM. Meet at Camp Evansburg. Brenda 780-727-4476

LAC STE. ANNE & LAKE ISLE WATER QUALITY MANAGEMENT SOCIETY: 3rd Fri, 7PM, Alberta Beach Council Chambers.

LAKE ISLE HALL COMMUNITY HALL BOARD MEETINGS: 3rd Wed of each month @ 7:30PM at the Lake Isle Hall (Hwy 633 and RR55) Ph # 780-892-3121

LAKE ISLE MULTI 4-H GENERAL MEETINGS: 1st Thurs of each month @ 6:30PM @ Lake Isle Hall. Contact 780-242-2486.

LOBSTICK 4-H BEEF & MULTI CLUB: 1st Mon, Evansburg Arena, 7PM, Shannon 727-2358

LOBSTICK GARDEN CLUB: 1st Mon, 7PM at Tipple Park Museum, Clara (780) 399-2205

MAGNOLIA BOARD MEETINGS: 1st Tuesday of month, 7PM at Magnolia Community Hall.

MEN FOR SOBRIETY: Wednesdays at 7:30PM, FCSS Building (#105, 505 Queen Street, Spruce Grove). Mike (780) 965-9991.

MS SOCIETY DRAYTON VALLEY COMMUNITY GROUP meets 1st Tues of month, 6-8PM at Norquest College. Terra Leslie, 1-403-346-0290. *Sept-June

MS SOCIETY PARKLAND COMMUNITY SUPPORT GROUP: Are you diagnosed with MS and have questions? Last Tues of month, 7-9PM, Westview Health Centre. Contact Cassy 780-471-3034

NA MEETING: Tuesdays, 7:00PM. 514-6011

PEMBINA PORCUPINES - JUNIOR FOREST WARDENS: Entwistle Porcupine gathering: 7PM, 1st Tue. Len & Tineke at 727-2020. Porcupines@yellowheadfw.ca

SOLVE: Community Enviro issues discussed at Smithfield Hall (N of Hwy 16 on RR34). 2nd Thursday. Jana 892-0006

STONY PLAIN FISH & GAME ASSOCIATION & WABAMUN GUN CLUB: 2nd Mon, Stony Plain Comm Centre, 7:30PM.

SUNDOWNERS TOASTMASTER CLUB: Mon (excl. Holidays) 7:30-9:30PM. St. Matthew's Church, Spruce Grove. Judy 960-5258

TOMAHAWK SENIORS (50+) meets every Thursday from 1-4pm at the Tomahawk Agra.

W.E.E COMMUNITY FOOD BANK: Call (780) 727-4043 for emergency food needs. Monthly Meeting: LAST Monday of month at 7:00PM at the Food Bank (Old fire hall in Entwistle). *Except December

WILDWOOD & DIST AG SOCIETY: 2nd Wed of each month 7:00PM at the Wildwood Complex. Wilma 325-2424

WILDWOOD & DIST ROD & GUN CLUB: 2nd Thursday, 7:30PM at the range clubhouse, wildwoodrodandgun@gmail.com

WILDWOOD SENIORS: 4th Wednesday at 2:00PM. PH: 325-3787 or 325-2391. *No meeting July/Aug/Dec.

Church Directory

Seba Beach Christian Fellowship Sunday School 10:00a.m. Worship Service 11:00a.m. Weekdays Bible Study & Prayer (780) 305-3594	Advent Lutheran Church Sunday Worship & Sunday School 11:00a.m. Evansburg O: 727-3594	Roman Catholic Church St. Agnes' Parish, Maynoothorpe Sunday 9:00a.m. St. Elizabeth Parish, Evansburg Saturday 7:00p.m. (780) 786-2032	St. Joseph's Catholic Church Sunday Mass 11:30a.m. Tuesday Mass 7:00p.m. Wabamun, AB	St. Augustine's - Parkland Anglican Church 131 Church Rd. Spruce Grove Sunday Service 10:00a.m. Eucharist with Sunday School & Nursery All are Welcome Office 780-962-5131 www.staugustinesparkland.org
Parkland Baptist Church Sunday Worship Service 10:30a.m. All Welcome 121 Brookwood Drive (780) 962-4101 www.parklandbaptist.ca	Word Church Apocalyptic Era Border Paving Athletic Centre, 9 Tri Leisure Way, Spruce Grove upstairs in the Wild Rose room. Ph: 780-962-7579 Service starts at 10:00 a.m. every Sunday morning, come all & be bless.		Anglican Mission of St. Saviour Service every Sunday at 10:00a.m. Rev. Aaron Parsall-Mylar Contact: 780-962-5131 Unit 3, 5245 - 51 Ave, Wabamun All are welcome!	Stony Plain United Church Sunday Service 10:30a.m. 5012-51 Ave. Stony Plain Mewassin United Church Sunday Service 9:00a.m. Rev. Heather Koots Hwy 627 - Rg Rd 30 Ph: 780-963-4745
Immanuel Lutheran Church of Rosenthal Traditional Service Sunday 9:30a.m. Contemporary Service 10:15a.m. Christian Counselling Services Rg Rd 13, Twp Rd 524 Ph: 780-963-4048 www.lutheran.ca email: office@luc.ca				
Emmaus Lutheran Church Sunday Worship Service 11:30a.m. Rev. Robert Marshall 4004-52nd Ave, Drayton Valley Ph: 780-542-5101 www.emmanuelchurch.worship.ca	Church of God Worship Service Sun. 11:00a.m. Please contact for activities 5004-49 Street, Drayton Valley Ph: 780-542-5094	Calvary Baptist Church Pastoral Team: Keaton Penner Sunday Worship 10:30a.m. Youth & Ministries Info - calvbapt@telus.net 4401-50th Ave, Drayton Valley 780-542-4774 www.calvarybaptistdo.ca	Drayton Valley Alliance Church Pastor John Haazen Join us for Sunday Service at 10:30a.m. 5014-56 Ave. (next to Value Drug Mart) Programs for all ages Ph: 542-6501 dvalliance.ca	All Saints' Anglican Church Sunday Morning Worship 9 BCP 10:30 BAS with Sunday School & Nursery 5212-47 Ave, Drayton Valley (780) 542-5048
St. Anthony Catholic Church WEEKEND MASS SCHEDULE: Saturday 5:00p.m. Sunday 12:00p.m. 4708-50 Ave, Drayton Valley Parish Office: 542-3254				

SERVICE DIRECTORY

2Bros

Custom Contracting Ltd.

Custom Framing • Concrete Floors • Shingling
 Siding Soffit Fascia • Styrofoam Block System

Jeff 780-717-0520

BREWSTER BOBCAT SERVICE LTD.

P.O. Box 454, Wildwood, AB T0E 2M0

- * Site Preparation
- * Pile Drilling
- * Concrete Work
- * Landscaping
- * Demolition
- * Sand & Gravel Delivery
- * General Contracting


 brwcat@gmail.com
 Telephone: (780) 325-3743
 Bruce Balascak Cell: (780) 621-6960

Ernie's Repair & Service



4820 - 47 Avenue, EVANSBURG
(780) 727-4433

WABAMUN PHARMACY

I.D.A.

Box 90, 5120 - 51 Avenue
 Wabamun, AB T0E 2K0
 Ph: (780) 892-2278 Fax: (780) 892-2488


THIS SPACE IS RESERVED FOR YOU!

JIM HAY TRUCKING

- Screened Black Dirt
- Beach Sand
- Road Gravel • Fill Dirt
- Bobcat & Backhoe Available

(780) 220-5849

SERVICE DIRECTORY

Blakeman Drilling Ltd.
 Waterwell Drilling & Servicing
 Pumps & Pressure Systems
 SERVING LAC STE. ANNE
 & WEST PARKLAND
 FOR OVER 25 YEARS
 Joe (780) 924-3024

DONALD N. GREENWAY
 Chartered Accountant
 Suite 205 Sunrise Professional Building
 215 McLeod Avenue
 Spruce Grove, AB
 (Bus.) 962-6366
 (Fax) 962-3990

THE MOST COMPLETE
 NUTRITIONAL SPRAYS ON THE
PLANET
 ORDER TODAY!
 (780) 907-8642
 www.Elaine1.com

CALIBRE DRILLING LTD.
 DRILLING AND SERVICING YOUR WATER WELL.
SPECIALISTS IN AIR & MUD ROTARY DRILLING
 • Water Well Drilling • Pump Installations
 • Pressure Systems • Well Tests
 • Licensed Drillers • Year Round Drilling
 • Geotechnical Drilling • Cathodic Protection
 • Free Estimates
Quality Workmanship Five Year Warranty
 (780) 960-2992
 BOX 4083 SPRUCE GROVE, AB T7X 3B3

Community VOICE
 Keeping You and Your Community Informed
THIS SPACE IS RESERVED FOR YOU!

PROFORM GUTTERS
 Tyler Kroes
 5" & 6" Seamless Eavestrough
 Residential & Commercial
 780 265 1878
 Box 244 Entwistle, AB T0E 0S0
 proformgutters@hotmail.com

ROY SHERWOOD
 Master Electrician
 Ph: 780-968-1425
 Cell: 780-908-2287
 Fax: 780-968-2211
 Email: suretechroy@gmail.com
 2-53220 Rge Rd 21
 Parkland County, AB
 T7Y 0C5
SURETECH ELECTRIC LTD.
 Control & Automation
 Commissioning
 Solar Sales & Service
 Industrial . Commercial . Residential

MARK MARTIN PFEIFFER
 MASTER BRICKLAYER/MASON
 Cell: 780-242-3308
 Email: pfeiffer.mark@hotmail.com
 • Brickwork • Stonework
 • Rockwork • Parging
 • Concrete Block Work
 • Tile Work (all kinds)

CROFT LAW
 Local office in Darwell
 Call us at 780.467.5534
Experienced Legal Services in:
 Family Law • Civil Litigation
 Corporate Law • Wills & Estates
 Plus Notarizing and Commissioning
 www.croftlaw.ca

PEMBINA CONCRETE PRODUCTS LTD.
 Manufacturers of
ONE PIECE SEPTIC & HOLDING TANKS
 * Water Cisterns * Field Systems *
 Pumps and Accessories * Sumps
 DELIVERED TO YOUR SITE
 1-800-661-3047
 780-727-2702
 PembinaConcrete.com
New Line of Concrete Statues, Fountains and Garden Ornaments.
 BOX 123, Entwistle, T0E 0S0

Community VOICE
 Keeping You and Your Community Informed
THIS SPACE IS RESERVED FOR YOU!

WEIGHTLOSS NEVER TASTED SO GOOD!
 NEW! NEW! NEW! NEW!
 (780) 907-8642 VALENTUS
 www.ValentusTour.com/Ladybug

POSTINGFIRST.com
BUY and SELL just about ANYTHING!
FREE LOCAL CLASSIFIED ADS
 Real Estate, Rentals, Vehicles, Pets, Jobs, Service Directory,
 Buy/Sell/Trade, Lawn & Garden, Garage Sales, Events,
 Local Places & Much More... Advertise for FREE Today!
 Follow Us
 Instagram Facebook Pinterest Twitter YouTube

SERVICE DIRECTORY

Jack's Auto Body
& 24 HR Towing

**SPECIALIZING IN COLLISION REPAIR
GUARANTEED WORK • INSURANCE CLAIMS**

CAA BOX 9 SITE 306 RR3, ONOWAY, AB T0E 1V0
(780) 967-5850

OUR PLEDGE IS QUALITY

PREVAIL MAX
CELLULAR HOMEOSTASIS FORMULA

A NUTRITIONAL BREAKTHROUGH
THAT SUPPORTS YOU...
RIGHT DOWN TO THE LAST CELL!

LIVIN TRIM WITH
VALENTUS (780) 907-8642
www.ValentusTour.com/Ladybug

H&E
UPHOLSTERY

FOR ALL YOUR UPHOLSTERY NEEDS

Convertible tops for cars and boats,
custom car and boat interiors, 5th
wheel trailer skirts, boat tarps, ATV
seats, furniture, kitchen chairs,
heavy equipment seats.

WWW.HANDE.CA 4-485 South Ave.
For more information contact: Spruce Grove
kirk@hande.ca **(780) 962-3048**

SERVING ENTWISTLE AND AREA FOR OVER 30 YEARS

Entwistle
CONCRETE

PRODUCTS LTD.

SAND & GRAVEL SALES

PH: (780) 727-3525
Dan McCracken Entwistle, AB
www.entwistleconcrete.ca

CONCRETE WORK

- Sidewalks • Steps
- Small Retaining Walls
- Concrete Repairs

Contact Ray
(780) 975-8476

SMOOLE

- Construction & Septic Installation
- Environmental Wastewater Disposal
- Site Design & Evaluation
- Power, Water & Basement Excavation
- Trackhoe, Backhoe, Bobcat & Dump Truck

For All Your Excavation Needs
Call Dan 780-991-4484 Reid 780-909-0173

H&P Kosik
CONSTRUCTION Ltd.

- Road Building • Gravel • Sand • Dugouts
- Black Dirt • Clearing

No Job too small! We do them all!

Harvey cell. 780-445-9010 ph. 780-892-3532
Box 145, Darwell, AB. T0E 0L0

Community VOICE
Keeping You and Your Community Informed

**THIS SPACE IS
RESERVED
FOR YOU!**

SLIMROAST
Optimum

DARK ROAST COFFEE

YOUR LOGICAL SOLUTION TO
WEIGHT MANAGEMENT

(780) 907-8642
www.ValentusTour.com/Ladybug

CCAS
Canadian Clean Air Services Ltd.

**Heating & Air
Conditioning**

Goodman
Air Conditioning & Heating

Licensed and Insured with
over 20 years' experience.
Instant Approval. Financing Available

VISA

For service call:
780.569.5201
www.ccasheating.com

SANGUDO
VETERINARY CLINIC

Box 581, 4916 - 52 Ave. Sangudo, AB. T0E 2A0

Dr. Ralf Sanders DVM

Ph: 780-785-2200
Fax: 780-785-2228
sangudovet@gmail.com

24 HOUR EMERGENCY SERVICE

Xtreme LEAN NRG

Advanced Formula helps you:

- Regulates Your Appetite
- Regulates Blood Sugar
- Regulates Fat Absorption
- Improve Energy Levels
- Improve Your Mood
- Increase Mental Focus

"We've unlocked the science of slim!"
(780) 907-8642

SUMMERS
DRILLING LTD.

Water well drilling and service
Family owned Business Serving Alberta since 1917

Never run out
of water again!

5 year workmanship
warranty

3 Convenient
ways to pay

- Visa
- Mastercard
- We now offer full financing

Tired of hauling water?
We can install
a water well with
a permanent water
supply for as little as
\$150/month OAC

Stop in at our office 4405 - 50 Street, Stony Plain
780-963-1282
admin@summersdrilling.com



TEAM SEITZ
LAKE LIFE
RE/MAX ELITE

Daniel Seitz
780-991-1866

Jordan Seitz
780-203-2198

www.EdmontonLakeHomes.com



YELLOWSTONE BUNGALOW

Year Round Living 2 bdrm 1.5 bath
Supervise kids in park from your deck
& have space to store gear. Decks,
docks & flip-flops! View it today!

\$219,900



LAKEVIEW - ALBERTA BEACH

PRIME Corner building Lot/Summer
Paradise a minute Walk to the Shore.
Sandcastle, Fish/Boat/Swim & Tube
*til your head hits the pillow.

\$147,900



SOLD

No House? No Problem! LOBSTICK
GET YOUR CAMPING ON with a
permanent place to park that trailer
on .93 acres. Tree's Company but
always room for friends.

\$39,900



YELLOWSTONE COZY COTTAGE

Savor the summer in RETRO
2 bedroom bungalow access to Lake.
No pretense, no lofty airs - just pure
summer fun!

\$134,900



REDUCED

NEW DECKS/AC - ASCOT BEACH

Swim, fish, water/jet ski or just
FLOAT in this welcoming Lake
Wabamun water community. Retire
today & Grandparent tomorrow.

\$249,900



SOLD

**VACANT LOT - ASCOT BEACH -
WABAMUN**

0.47 acre lot with NATURAL GAS &
POWER SERVICES at property line.
Half a block to boat launch & dock!

\$74,900



REDUCED

A-FRAME AT YELLOWSTONE

Need that Weekend Getaway?
Enjoy summer & year round living
all on the main floor with guest
space in the loft & bunkette.

\$184,900



LAKE ISLE BUNGALOW

Large country kitchen, dining & living rm.
Open concept feel & 3 bdrms on main.
Week-end hideaway or retire early.
MAKING MEMORIES AT THE LAKE!

\$169,000



LOBSTICK RESORT

Year-round RECREATIONAL DREAM
home straight out of a MAGAZINE. Hour
West of Edmonton, hike, quad, skidoo,
hunt & fish in this recreational paradise!

\$439,000



REDUCED

YEAR ROUND ALBERTA BEACH

Shade for hot summer days &
children looking for the next
adventure. All you need is a day at
the beach to restore the soul.

\$104,900



PEMBINA PROPERTY

Upgrades galore an hour West of
Edmonton. Get that retirement groove on
with a two level DECK. A hike away from
Pembina River Provincial Day Park!!!

\$234,900



SUMMER VIEW HEIGHTS - LAKE ISLE

3 acres of treed privacy w/ space for
RVs & toys! Short walk to Lake Isle &
Kokomoko Day Park. POWER & WELL
along w/ numerous storage sheds.

\$152,900

Time to Transition? Call for your Evaluation TODAY!
SELLERS Advantage - Lake Home Evaluations that look after your interests.

Lake Life BUYERS - CALL and register today!
BUYERS Advantage - Put yourself in a position to pounce, Register Today!
Sharpen your Search & receive ADVANCE INFO on properties coming to market.

Not intended to solicit real estate currently listed for sale. RE/MAX Elite - 8104 160 AV NW, Edmonton, AB T5Z 3J8 (each office independently owned and operated).