

Serving: Onoway, Alberta Beach, Calahoo, Gunn, Glenevis, Darwell, Cherhill, Sangudo, Mayerthorpe, Rich Valley, Barrhead, Whitecourt, Stony Plain and Spruce Grove

September 17, 2019

ALBERTA BEACH SOFTBALL ASSOC DONATES \$3,000 TO GRASMERE SCHOOL!

The funds will go towards food and vet bills for Grasmere School's Facility Dog, Hero!



Submitted by Northern Gateway Public Schools

Alberta Beach and District Amateur Softball Association (ABADASA) and to our community for the generous donation,"

shared Grasmere School Principal Shelley Wyman.

"We are very grateful to the

Continued on Page 2

ALBERTA BEACH LIBRARY IS HOSTING A TRIVIA NIGHT!

Submitted by Alberta Beach Library

to home? Maybe you just really love our library and look for any opportunity to support it?

raise funds for new materials, equipment, and programming.

Do you know a group of people who enjoy trivia, or are you looking for a fun night out close

The Alberta Beach Library is hosting a trivia and pizza fundraising night on October 19 to

Continued on Page 7

All Precious JEWELLERS
 "Your Spruce Grove Jewellery Store"
 Goldsmith on Premises
 • Engraving • Clock & Watch Repairs
 • Jewellery Repairs • Custom Make-ups
 Jewellery Repairs Done On Site.
 Laser Welder Services Available.
 Toll Free: 1-877-962-4367
 PH: 780-960-4200 Fax: 780-960-4201
 Suite 102, 215 McLeod Avenue
 Spruce Grove, AB. T7X 0G2

SIGHTS AND ARMS Now Open Mon-Sat 10AM-6PM
 FALL SALE! New Used & Consigned
 Firearm Safety & Reloading Courses
 Gunsmithing
 WWW.SIGHTSANDARMS.COM
 11 J Raybon Cr. St. Albert, Alberta 825-223-9863

PREVAIL MAX
 CELLULAR HOMEOSTASIS FORMULA
 Nutritional Breakthrough For Your Cells
 LIVIN TRIM WITH VALENTUS
 (780) 907-8642
 www.ValentusTour.com/Ladybug

SLIMROAST Optimum
 DARK ROAST COFFEE
 YOUR LOGICAL SOLUTION TO WEIGHT MANAGEMENT
 (780) 907-8642
 www.ValentusTour.com/Ladybug

View us **ONLINE!**
 WWW.COM-VOICE.COM



Keeping You and Your Community Informed

PUBLISHED WEEKLY (Zone 1 & 2)
AND BIWEEKLY (Zone 3)

E.J. Lewchuck & Associates Ltd.

45C South Ave. | Box 3595
Spruce Grove, AB T7X 3A8

SALES TEAM

Elaine
Ashley
Dani

TELEPHONE:

Classifieds 962-9229
Advertising 962-9228
Fax 962-1021

E-MAIL:

comvoice@telusplanet.net
sales@com-voice.com
news@com-voice.com

Alberta Beach Softball Assoc Donates \$3,000 To Grasmere School!

Continued from Page 1

“The money raised will go towards supporting the food and vet bills for our Facility Dog, Hero.

Every day Hero makes a difference for the students in our building. He listens to them read and is a quiet, supportive audience. If students are feeling anxious or upset Hero will rest

his head on their lap and be a calming presence. By just walking down the hallways or sitting in a classroom, he brings a smile to all our faces. The impact Hero has had on our school is immeasurable and we thank the community for their recognition and support of his services.”

ABADASA raised the money as part of their very popular annual charity golf tournament.

The tournament raised \$6,000 in total. Half of the money is being generously donated to Grasmere School with the other half going to Dogs with Wings, where Hero, and so many other Service Dogs, are trained. ABADASA representatives Wendy Wildman and Joe Blakeman presented the cheque to Grasmere Principal Shelley Wyman in the company of students and Hero.

There are many different ways to support Dogs with Wings including fostering and volunteering! Check them out on social media or at dogswithwings.ca!

JOKE OF THE WEEK

The math teacher saw that Daphne wasn't paying attention in class. She called on her and said, 'Daphne! What are 2 and 4 and 28 and 44?' Daphne quickly replied, 'ABC, CBS, HBO and the Cartoon Network!'

See What's Brewing

Nothing goes better with your morning coffee than your local paper.

ANNUAL GENERAL MEETING
of the Gunn Area Recreation Society
#110 – 55022 Ste. Anne Trail

Monday, September 23, 2019
7:00 P.M. to 8:00 P.M.

Welcoming nominee's for all positions.
For more information, call:
Liane Wenckowski 780-909-4558

TOP GUNN DART CLUB
2019/2020 Season Registration

September 23rd
at Gunn Community Hall
following the 7:00pm AGM

Welcoming new members.

For information prior to registration,
Call Marlaine @ 780-951-9452.

Employment Opportunity

**Sangudo & District Agricultural Society
Arena Maintenance Manager
(Caretaker and Janitorial – Ice Area)**

The Sangudo & District Agricultural Society has an opening for an Arena Maintenance Manager.

Our arena use will typically be two-three nights a week (public skating and hockey practices) along with games scheduled on weekends.

This hourly wage position would include, but not be limited to, supervision of ice arena, installation of the ice, assisting with the day to day operations of the arena, operating the Zamboni, cleaning and flooding of arena ice, general clean-up and maintenance of the arena, and dressing rooms. This individual can be trained in duties by our committee members.

Applicants must be at least 18 years of age, able to work unsupervised and mechanically inclined. Good public relation skills a necessity. Previous experience and CPR/First Aid would be an asset. The successful applicant must be able to pass a Security Clearance and Child Welfare Clearance.

This position will commence in early October 2019, to start preparing the arena for ice use in November, and will continue until March 31st, 2020.

Deadline for applications is September 30th, 2019 at 4:30pm

For more information please contact Darin Kastelic 780-305-1090.

Applications/Resumes can be mailed to:
Sangudo & District Agricultural Society
Box 477 SANGUDO, AB. T0E 2A0
Email: sangudoagsociety@yahoo.ca

WHITECOURT AND WOODLANDS COUNTY RESUME INTERMUNICIPAL COLLABORATION DISCUSSIONS

Submitted by Town of Whitecourt & Woodlands County

The Town of Whitecourt and Woodlands County have resumed intermunicipal collaboration discussions and have committed to several planning sessions through the upcoming months.

The municipalities are working together to negotiate new, long-term service agreements that will represent the needs and interests of constituents throughout the region. The collaborative agreements will be part of an overarching Intermunicipal Collaboration Framework (ICF) that will formalize how the municipalities will manage growth, coordinate service delivery, and optimize resources for their citizens.

Mayor Ron Govenlock commented, "Woodlands County Council and its administration

are pleased to work with the Town's representatives to restore dialogue focused on continuing a partnership which provides mutually beneficial services to the region that ensures fairness, equity and sustainability for all."

"We remain committed to working towards a common goal of reaching a consensus that is fair, equitable and mutually beneficial, and will allow us to continue promoting our region as two municipalities, one future

– planning without borders," stated Whitecourt Mayor Maryann Chichak.

The Town of Whitecourt and Woodlands County will continue to provide updates to the community as discussions progress.

PRICE REDUCED

<p>14K White Gold Diamond Ring Brand New, Still in Box, Tags on! Asking \$2,745</p>	<p>14K White Gold Engagement Ring Brand New, Still in Box, Tags on! Asking \$2,300</p>	<p>10K White Gold Diamond ring Brand New, Still in Box, Tags on! Asking \$1,375</p>
<p style="text-align: center;"><i>Call for more information, or to view the ring 780-907-8642</i></p>		

FREE STORAGE WITH PREPAID PACKAGES



- WINTERIZE
- SHRINK-WRAP
- STORAGE
- SPRING RUN-UP

780.924.3255

www.ECKOMARINE.COM ALBERTA BEACH









Specializing in Trailer Repairs
Aluminum, Tig, Mig & SMAW Welding
Mobile Welding Units Available
Mechanical Inspections & Repairs
Fabrication & Plasma Table
Skid Steer Services

Sideline Mechanical & Welding Ltd.
55109 Range Road 20
Phone: 780-967-5658
eMail: smw ltd@gmail.com

QUALITY SALES & SERVICE OF:

- DISTILLERS
- SOFTENERS
- CHLORINATION SYSTEMS
- MOBILE SHOCK CHLORINATION
- SEDIMENT, TASTE & ODOR FILTERS
- REVERSE OSMOSIS FILTERS (R.O.)
- CHEMICAL-FREE IRON FILTERS
- PIPE, WIRE & FITTINGS
- CHLORINE BLEACH, CHEMICALS & SALT
- MOBILE SERVICE VEHICLE
- POOL & SPA FILTERS & CHEMICALS

• FREE WATER ANALYSIS •
OUR WORKMANSHIP IS GUARANTEED!

962-6040 962-4060
15A South Ave., SPRUCE GROVE

Quality Water Services West LTD.
Formerly Ivan's Quality Water - UNDER NEW OWNERSHIP

WHITECOURT TOWN COUNCIL UPDATE

Submitted by Town of Whitecourt

SEPTEMBER 11, 2019

Whitecourt Town Council will be supporting the Town of Peace River's request to have the Canada Revenue Agency (CRA) reconsider its ruling regarding a recent GST audit on intermunicipal cost sharing agreements. The CRA recently assessed intermunicipal cost sharing agreement items as being subject to Federal Gas Tax (GST) for the Town of Peace River, which could set a precedent for municipalities across the country. If this were to come into effect in Whitecourt it could cause numerous administrative challenges; and, given the inconsistency with which the regulation has been applied in Peace River, it could prove extremely challeng-

ing to determine which services should be considered eligible for federal taxation. In addition, existing service agreements with partners do not include a tax provision, which could create substantial costs to the municipality. Whitecourt Town Council is providing a letter of support for an application to establish a Canadian Rangers troop locally. Canadian Rangers are part of Canada's Reserve Force, and play an important role in assisting the Canadian Armed Forces by providing local expertise, guidance and advice; and providing local assistance to search and rescue activities in support of local authorities.

Whitecourt Town Council scheduled a Special Meeting at 5:00 p.m. on Tuesday, September 10 to discuss Intermunicipal Collaboration.

LAC STE. ANNE COUNTY NEWS HIGHLIGHTS

PLANNING & DEVELOPMENT

NOTICE OF PUBLIC HEARING
Lac Ste. Anne County is proposing to remove the Reserve (R) designation from the following lands:
212 55504 Nikoodi RD
Block R, Plan 13928T, Hamlet of Glenevis within SW 34-55-04 W5M

LOCATION OF HEARING	DATE	TIME
Council Chambers, County Office 56521 Range Road 65	Oct 2 nd , 2019	10:00 am

A public hearing is scheduled in Council Chambers to hear from anyone who wishes to speak on the proposal. Further information can be obtained from:

Mr. Matthew Ferris
Planning & Development Manager
Lac Ste. Anne County

T: 780.785.3411
TF: 1.866.880.5722
E: MFerris@LSAC.ca

LAC STE. ANNE COUNTY NEWS HIGHLIGHTS

Lac Ste. Anne County | Box 219, Sangudo Alberta T0E 2A0 | 1.866.880.5722 | www.LSAC.ca | facebook.com/LSACCounty

PLANNING & DEVELOPMENT

NOTICE OF DEVELOPMENT PERMIT APPROVALS

The following Development Permits have been approved or conditionally approved under the provisions of the Land Use Bylaw. This list does not include Permitted Uses.

Interested parties are encouraged to contact the Planning & Development Department at 1.866.880.5722 or devassistant@LSAC.ca, Monday to Friday from 8:30am until 4:30pm to request additional information on a permit.

PERMIT #	LEGAL LAND DESCRIPTION	DESCRIPTION	APPEAL DATE DEADLINE
19-D0144	37, 56110 RGE RD 13, Lot 37, Block 1, Plan 0623018 Belle Vista Estates within SE 09-56-01 W5M	Detached garage 40.0' X 30.0' (1200.0 sq. ft.)	September 30, 2019
19-D0167	#76, 4418 HWY 633, Lot 3, Block 1, Plan 7622324 Birchwood Estates within NW 20-54-04 W5M	2 Storey stick built home, main floor (1131.0 sq. ft.), 2nd floor (1270.0 sq. ft.), basement (1131.0 sq. ft.) & attached garage (839.0 sq. ft.) with 3.50 m variance request on the east side.	October 07, 2019
19-D0166	5016 Trail of 1898, Lot 3, Block 1, Plan 1025687 within SE 12-55-05 W5M	Change of Use: Existing Greenhouse to single car garage 25.0' x 26.0' (520.0 sq. ft.) on cement pad, and shipping container 20.0' x 8.0' (160.0 sq. ft.) on ground level. Cancel 14-D0247, 15-D0097 and 15-D0209	October 07, 2019

Anyone who claims to be affected and who wishes to lodge an appeal against any of the above developments must do so in writing on the applicable form on or before 4:30pm on the above noted date(s).

Secretary of the Subdivision and Development Appeal Board, c/o Lac Ste. Anne County, Planning & Development Department, Box 219 Sangudo, Alberta T0E 2A0.

PLEASE NOTE: Lac Ste. Anne County requires that a non-refundable fee of \$250.00 be paid for every appeal served on the Subdivision and Development Appeal Board. The fee may be paid by cheque, Visa, MasterCard, Interac or cash.

NOTES FROM THE ONOWAY LEGION

Submitted by Submitted by Onoway Royal Canadian Legion

Bring a Dish and Socialize!

On Friday, September 20, the legion is repeating its successful potluck dinner from last May. Because the main purpose of Friday night dinners is for socializing with new and old friends, everyone is asked to bring something to share.

The bar will be open, with raffle tickets available, as on every Friday night. There is no charge, you're your contribution to the meal is your admission. We still need people to RSVP by texting 780-340-0760 so we know how many to expect.

Support the Onoway Library at an Italian dinner!

On Friday, September 27, the Friends of the Onoway Public library will be serving a family-friendly dinner of rigatoni and meatball pasta bake (all fresh from the garden), Caesar salad, garlic bread, and sundaes. At this fundraiser dinner, you'll have a chance to win a gift in our door prize extravaganza (from those who didn't have a chance to provide items for the silent auction in the spring).

Book your reservation by texting 780-340-0760, or leave a message on the Legion answering machine at 780-967-5361. Doors open at 3, with the meal served from 5:30 to 7 pm. Adults pay \$15; kids up to 10 years cost \$9 while 5 and under are free.

As usual, the bar will be open, along with the usual draw for a free meal. You'll have a chance to buy raffle tickets on a delicious meat package, on the 50:50 draw, or the Chase the President raffle, a progressive jackpot that increases in value each week there's no winner.

First Pool Tournament of the Season

On Saturday September 14, the pool club held a legion member qualifying singles round-robin. It was three games against each other for total points. Area playoffs are in Spruce Grove on September 28. If you intend to play, please email Larry ASAP at ltv336@gmail.com

Drop-in Darts is Back

The regular darts group on

Tuesday evenings is back! It's a drop-in league, and spare darts are available if you want to try it first. Play begins at 7 pm, but please arrive a bit early so you can be included on a team. Cost is just \$3 each week, plus some kind of snack if possible. The bar is always open.

Did You Know?

The Onoway Legion began 85 years ago, on December 10, 1934 with thirteen members. Today, the Onoway Legion boasts around 200 members.


MISSING PERSON

Robert Anthony Howarth

D.O.B.: March 11, 1971

Please contact:

LARRY D. AYERS, Barrister and Solicitor,
#200A, 215 McLeod Avenue,
Spruce Grove, Alberta T7X 0G2



LAC STE. ANNE COUNTY

NEWS HIGHLIGHTS

Lac Ste. Anne County | Box 219, Sangudo Alberta T0E 2A0 | 1.866.880.5722 | www.LSAC.ca | facebook.com/LSACcounty

PLANNING & DEVELOPMENT

NOTICE OF PUBLIC HEARING

Of Bylaw #22-2017-02-19 hereby amending Lac Ste. Anne County Land Use Bylaw 22-2017

LOCATION OF HEARING	DATE OF HEARING	TIME OF HEARING
Council Chambers, County Office 56521 Range Road 65	October 2 nd , 2019	11:00 a.m.


Pursuant to the provisions of Section 692 of the Municipal Government Act, Lac Ste. Anne County Council is considering an application for amendment to Land Use Bylaw 22-2017, by amending the following through proposed Bylaw #22-2017-02-19:

Adding Bed and Breakfast as a Discretionary Accessory Use in the Table 9.12.2 and 9.13.2 of Country Residential Ranch (CRR) and Country Living Residential (CLR) Land use districts.


Written comments on the above Proposed Bylaw may be provided prior to 4:30 pm on September 26, 2019 to:

Lac Ste. Anne County 56521 RGE RD 65, Box 219 Sangudo, AB T0E 2A0	Attn: Fakhrah Nazir Development Officer Or email fnazir@LSAC.ca
--	---


Interested individuals may attend the Public Hearing to voice their comments. To schedule an appointment, please contact Fakhrah Nazir at 780.785.3411. The Proposed Amendment and/or application may be reviewed during regular business hours at the County Office located at 56521 Range Road, 65 or on the County website at www.LSAC.ca.



CLUBROOT



FUSARIUM GRAMINEARUM



GRASSHOPPERS

CROP SURVEILLANCE

Clubroot Inspection Underway

Ag Services is inspecting all canola fields for visible symptoms of clubroot on canola plants, per *Policy 408 – Control of Clubroot Disease*. An approximate calendar indicating where and when inspections will occur County-wide can be viewed at LSAC.ca/Agriculture. Please note that this is an approximation; producers will be notified of any major changes to the inspection schedule.

The **Fusarium Graminearum** and **Grasshopper** surveys have now been completed. Once results of these surveys have been tabulated, Ag Services will share this data via the County's print and digital media channels.

New this year, roughly 10% of cereal fields were surveyed for Fusarium Head Blight. The selection of these fields was at random, and the survey was for informational purposes only.

ALZHEIMER'S AWARENESS MONTH

Submitted by Alberta Health Services

September marks Alzheimer's Awareness month, a time designated to raise awareness of the effects and signs of Alzheimer's disease in our loved ones and what we can do to support them.

Alzheimer's disease is the most common type of dementia, a syndrome that affects memory, thinking, orientation, judgment and ability to carry out everyday tasks. It is estimated that by 2038, about one in 10 Albertans over the

age of 65 and nearly half over the age of 90 will be living with some form of dementia.

Dementia has certain warning signs. Contact your doctor if you notice a loved one having increased difficulty with any of the following:

- Learning and retaining new information
- Handling complex tasks, like balancing a cheque book
- Knowing what to do when problems come up
- Finding his or her way around familiar places, driving to and

from places he or she knows well

- Finding the right words to say what he or she wants to say
- Understanding and responding to what he or she sees and hears
- Acting more irritable or suspicious than usual, or withdrawing from conversation and activity.

Finally, here are some tips in communicating with anyone who may have dementia:

- First, make sure the person does not have a hearing or vision problem. Sometimes a person may not respond to you because he or she cannot hear you. Not

being able to see well may make the person more confused, agitated, or withdrawn. If you suspect a problem, have a health professional evaluate the person's hearing and vision.

- Don't argue. Offer reassurance, and try to distract the person or focus his or her attention on something else.

- Use short, simple, familiar words and sentences. Present only one idea at a time. And avoid talking about abstract concepts.

- Explain your actions. Break tasks and instructions into clear, simple steps, offered one step at a time.

- Pay attention to your tone of voice. Be calm and supportive. A person with dementia is still aware of emotions and may become upset upon sensing anger or irritation in your voice.

- Maintain eye contact and use touch to reassure and show that you are listening. Touch may be better understood than words. Holding the person's hand or putting an arm around his or her shoulder may get through when nothing else can.

- Pay attention to the person's tone of voice and gestures for clues as to what the person is feeling. Sometimes the emotion is more important than what is said.

- Do not confront the person about his or her denial of the disease. Arguments will not help either of you.

- Continue to treat the person with dignity and respect.

- Allow choices in daily activities. Let the person select his or her clothing, activities, and foods. But too many choices can be overwhelming. Offer a choice of two to three options, not the whole range of possibilities.

In Alberta, services are readily available for both those suffering from any form of dementia and their caregivers. The Alzheimer Society of Alberta and the Northwest Territories provide education and ongoing support.

Albertans can also call Health Link at 811 for advice. Health Link will assess the needs of the person and provide immediate advice for their concerns, 24 hours a day, seven days a week. When needed, callers can be referred to Dementia Advice, which is staffed by specialized dementia nurses.

PURE HEMP CBD PRODUCTS
AGING IS INEVITABLE - LOOKING AND FEELING OLD ISN'T!

WHAT IS CBD?

A Health and Beauty Breakthrough!

Cannabidiol, CBD, is one of over 80 active cannabinoid chemicals in the hemp plant. CBD, unlike, THC, does not produce euphoria or intoxication. CBD targets specific receptors in the cells of your brain & body. There are many physical and mental benefits to using CBD products for both treatment and prevention of numerous ailments.

Therapeutic Uses For Pure Hemp CBD

Supports healthy blood sugar levels, promotes healthy energy levels, relieves anxiety, aids in digestion, supports optimal immune function and the regeneration of healthy cells, and promotes a sense of serenity and overall well-being.

Anti-Aging Uses For Pure Hemp CBD

Promotes more youthful skin, provides hydration, enhances radiance, lessens age lines as well as the appearance of dark spots.

KEY BENEFITS

PAIN RELIEF: Known to reduce vomiting & nausea; suppress muscle spasms; reduce seizures & convulsions.

PROMOTES HEALTH: Helps to promote relaxation and overall health.

WELL-BEING: Helps to relieve anxiety, aid in digestion, supports optimal immune function and the regeneration of healthy cells.

CBD PET PRODUCTS

PET CHEW TREATS

KEY BENEFITS

SYNERGISTIC BENEFITS: Can be used in conjunction with regular medications with no side effects.

NO SIDE EFFECTS: Does not damage the liver, kidney or GI Tract like OTC medication.

DIETARY SUPPLEMENT: Can be administered daily as part of your pet's diet.

ORAL SPRAYS & DROPS

KEY BENEFITS

MANAGES PAIN: Helps to treat inflammation, arthritis and joint pain.

TREATS DIGESTIONAL ISSUES: Helps with loss of appetite, nausea, IBS and gastrointestinal swelling.

GENERAL HEALTH: Helps to manage mood, anxiety and general joint pain. For healthy, happy pets.

CONVENIENT: Can be sprayed into pet's mouth or on food.

For more information, Call (780) 907-8642

PARKLAND RCMP REQUEST PUBLIC ASSISTANCE TO IDENTIFY SUSPECT INVOLVED IN THEFT AND FRAUD



Submitted by Parkland RCMP

Spruce Grove, Alta. - On Sept. 10, 2019 Parkland RCMP responded to a complaint of a theft from the Tri-Leisure Centre. An unidentified female entered the locker room at the Tri-Leisure

Centre and proceeded to steal a purse that had been locked in a locker. When the victim returned to the locker room at approximately 5:15 p.m., both her purse and lock were missing. The victim's bank cards were used a short time later at a local convenience store.

Parkland RCMP are requesting the public's assistance to identify the female suspect. If you recognize the suspect or have any information to assist with the investigation, please contact the Parkland RCMP at 825-

220-7267. If you wish to remain anonymous, you can contact Crime Stoppers at 1-800-222-8477, online at www.P3Tips.com or by using the "P3 Tips" app available through the Apple App or Google Play Store.

Alberta Beach Library Is Hosting A Trivia Night!

Continued from Page 1

Tickets can be purchased at the library and are \$25 a person which includes admission and a pizza supper. The evening starts at 6pm with pizza and trivia follows at 7pm. There will also be a 50/50 draw, bucket raffles (with a pair of Oiler tickets up for grabs), and trivia prizes to be won.

It will be a lot of fun so put your best team together and come out to support our local library!

NOTICE TO CREDITORS AND CLAIMANTS

Estate of ORAH LUCILLE HAWKES

who died on November 26, 2018.

If you have a claim against this estate, you must file your claim by October 25, 2019, and provide details of your claim with: LARRY D. AYERS, Barrister and Solicitor, #200A, 215 McLeod Avenue, Spruce Grove, Alberta T7X 0G2. If you do not file by the date above, the Estate property can lawfully be distributed without regard to any claim you may have.

Main Street, Alberta Beach PH: (780) 924-3133

HURRY FINAL DAYS! MUST BE SOLD!

THE HEY LOFT

CLOSING OUT

Sale

FURTHER DISCOUNTS ON SALE ITEMS UP TO 75% OFF!

Final Days, everything MUST GO before September 30th!

- Ladies, Mens & Children's apparel • Shoes • Jewellery
- Gift Wear • Winter Accessories • Novelties

STORE HOURS: Wed to Sun 10:00AM-5:00PM

ALL STORE FIXTURES WILL BE AVAILABLE FOR SALE SEPTEMBER 30TH.

GET READY TO PARTY WITH SOME BRILLIANT AND BADASS COUNTRY LADIES

Nice Horse Kicks off Horizon Stage's New Season with Their Hard-Rocking Country Tunes on September 20

Submitted by **Horizon Stage**

Spruce Grove, AB - Nice Horse is looking forward to blowing off the roof, celebrating girl power, and partying hard at Horizon Stage. When these four bold, brilliant, and badass women perform together they always raise a little hell—and play a little music at the same time. This Alberta-based band is out to turn the tables on the country music world and show the guys that they can rock—and party—just as hard. We're giving them an extra-great reason to party and have fun when they open Horizon Stage's 2019-20 Season on Friday, September 20 at 7:30 p.m.

Sure, there are plenty of strong female country artists in Daisy Dukes out there, but try to name another self-contained unit that plays their own instru-

ments and writes songs as potent as the new feminist anthem "Mansplainin", the roof-raising single "Pony Up", and the super-catchy new single "Good-Life". They've had their share of surprised reactions as well from people unaccustomed to seeing a rockin' all-female country band, but they manage to take those in stride with their infectious humour. It's partly to be expected when you're breaking new ground, and in some ways the women of Nice Horse see themselves following in the platform-heeled footsteps of the Spice Girls by offering their own version of Girl Power, albeit with a rootsy twist.

There's plenty of proof of Nice Horse's talent on their aptly titled full-length debut album, *There Goes The Neighborhood* (emphasis on the neigh!), produced by Jeff Dalziel (The Washboard Union, Brett Kis-

sel), along with the legendary Bob Rock (Metallica, Motley Crue) on a couple of tracks. The band won the 2018 YYC Music Award for Country Recording of the Year, as well as "Group of the Year" and "Video of the Year" (for "Mansplainin'") at the 2019 Alberta Country Music Awards (ACMAs). Always spreading cheer and having fun with fans wherever they go, these ladies are also known for their outgoing presence on social media which led to them being nominated for the Interactive Artist or Group of the Year at the Canadian Country Music Awards in 2018 and 2019

The four members of Nice Horse are Tara McLeod (electric guitar); Brandi Sidoryk (vocals, bass); Katie Rox (vocals, banjo, acoustic guitar); Krista Wodelet (vocals, drums). Their first major tour was as direct support for Canadian icon Tom Cochrane,

and they've since toured with other bands, including Nitty Gritty Dirt Band and The Washboard Union. Just recently they thrilled audiences in Spain, Monaco, and France on their first European tour. Additional career-to-date highlights include major festivals such as Big Valley Jamboree, the Calgary Stampede, and Boots & Hearts – always showcasing their signature high-energy live show.

The bottom line is that if you're looking for a good time, Nice Horse is more than willing to take you along for the ride. Join them at Horizon Stage on Friday, September 20 at 7:30 p.m. Tickets are \$35 for Adults and \$30 for Students and Seniors and may be purchased at the City Hall Ticket Centre (315 Jespersen Ave), by phone at 780-962-8995 or 1-888-655-9090, and online by visiting and clicking on the 'Tickets' link.

GROVE HEARING CLINIC

960-2960

1-866-960-2960

Hear what you've been missing...

Senior Discounts



Full Service & Repair

Full Hearing Assessments

HOURS OF OPERATION: 9am – 5pm Weekdays

3rd party billing (AADL, WCB, DVA, FCH) • Personal 0% Financing if Needed

For The Latest Technology In Hearing Aids & Assisted Living Device Stop By & See Dawn

#220-70 McLeod Ave - Westland Market Mall, Spruce Grove

RIDING UPDATE – WEEK OF SEPTEMBER 2, 2019

Submitted by Jim Eglinski, MP – Yellowhead

Hope you all had a relaxing Labour Day on September 2nd with family and friends.

Did you know Alberta joined Confederation 114 years ago on September 1st?

On Tuesday, I was in the Edson office answering emails/letters and returning phone calls from

many constituents. That afternoon, I attended a Rotary lunch at Galloway Station Museum.

Wednesday, I worked in the riding office catching up on issues, returning phone calls and answering emails.

Thursday, I had the pleasure of visiting Warburg School where I toured the school's latest improvements. That afternoon I met with constituents in the

Breton area.

On Friday, I was in Rocky Mountain House and had the pleasure of visiting with former Mayor, Fred Nash and later than day I met with constituents in the Caroline area.

On Saturday, I will be in Rocky Mountain House attending the 'Aviation Fly-In,' meeting with local constituents and visiting pilots. Later, I will be driving

to Fallis for their '12th Annual Fallis Show and Shine - Classic Car Show' at the Fallis Community Association. I love antique cars. In fact, during retirement I am planning to finish my 1939 Buick Coupe! It has been a ten-year journey. Wish me luck.

Look for my update for the week of September 9th on my travels in the riding.

RIDING UPDATE – WEEK OF SEPTEMBER 9, 2019

Submitted by Jim Eglinski, MP – Yellowhead

On Monday, I was in the riding office answering phone calls, emails and letters.

Tuesday, I was at Warburg High School for their 'Community Awareness Night' where I mingled with constituents as they enrolled their children in

activities and were updated on access to services in the area.

Wednesday, Her Excellency the Governor General, at the recommendation of the Prime Minister, issued a proclamation to dissolve the 42nd Parliament. The 2019 federal election is on! Voting date is October 21st. Even though the election was called, I am still your Member

of Parliament until election day.

Thursday, I was back in the riding office catching up on emails and phone calls.

Friday, I was at Wildwood Legion's 75th Anniversary Steak Dinner.

Saturday, I will be attending an 'Open House' to celebrate, Corrie Halliwell's 90th Birthday Party.

My next update will be for the week of September 16th.

Cash for Cars
967-2492
R & S
TOWING

LEND YOUR VOICE

BUDGET INSIGHTS 2020

Weigh in on the County's spending priorities.

As part of the 2020 budget planning process, County Council is seeking ratepayer feedback on where and how the County should be spending.

Do you have opinions on operating or capital dollars, or how projects, activities and service levels could be modified in the next budget cycle? Share them with the County via the address below and help shape the programs and services that will affect the region for years to come.

To be considered for the 2020 budget, submissions must be received by the County no later than November 30, 2019.

INFRASTRUCTURE AGRICULTURE COMMUNITY OPPORTUNITY

PO BOX 219, SANGUDO ALBERTA T0E 2A0
budget2020@LSAC.ca

LAC STE. ANNE COUNTY

A NEW PROGRAM DESIGNED TO REDUCE FARM-RELATED WILDFIRE RISKS AND PROMOTE SAFER AGRICULTURAL COMMUNITIES.

FARM FIRESMART OPEN HOUSE SERIES

Proven, practical ways to safeguard your farm and family.

MONDAY, SEPTEMBER 23 6:30 TO 8:30 PM
COUNTY ADMINISTRATION OFFICE (56521 Rge Rd 65)

TUESDAY, SEPTEMBER 24 6:30 TO 8:30 PM
STATION 5, DARWELL (4427 Hwy 633)

Farm FireSmart is a new intermunicipal program with a mandate to help reduce the risk of wildfire within agricultural communities. Visit one of the upcoming open houses in September to discover more about this ever-evolving ag-focused archive of fire safety news, knowledge and resources.

Guarding against wildfire threats in agricultural communities is a shared responsibility. Explore some of the practical, proactive measures that can be taken by producers, community leaders, industry and local government to lessen these threats and help farming operations prosper.

**FIRESMART YOUR FARM YARD · VEGETATION MANAGEMENT
GRAIN DRYER SAFETY · ENVIRONMENTAL FARM PLANS
CROP STORAGE & HANDLING · THE 7 FIRESMART DISCIPLINES · BEST BURNING PRACTICES
INSURING YOUR FARM OPERATION
ONLINE NEWS & RESOURCES**

FARMSMART RESOURCES FOR REGIONAL PRODUCERS

Whitecourt LAC STE. ANNE COUNTY FireSmart Canada

It's time to fall in love with your home all over again!

fall HOME RENO GUIDE

SEPTEMBER 2019





CONTROL PROBLEMATIC TERMITES

Few things elicit fear in the minds of homeowners like termites. Termites are voracious and can turn wood to pulp wherever they take up residence. Termites have felled massive trees, but they also can bore through the wood in homes, wreaking havoc as they go.

Ants and termites can look similar, so homeowners who suspect they have a termite infestation should learn to distinguish one from the other. A close look at termites can make it easy to identify them. Unlike ants, termites have no "waist;" their bodies are more rectangular. A termite also has straight, beaded antenna, while an ant's antennae are bent or elbowed.

Termite wings are equal in size, uniform in shape and much longer than their bodies. Ants have a reddish hue, while termites are creamy white.

Prevention is always preferable to having to treat termites after they are established. Termite Web, a site devoted to termite information, states that treating home foundations and surrounding soil with termite spray is often the best course of action to stop subterranean termites from taking hold. If termites are already present, drilling into the floor surrounding the building and using a termiticide may be necessary. Baiting termites outside with wood that is tainted with slow-acting insecticide can eliminate an entire

colony in one to four months.

Termite control methods may need to be repeated. A multi-pronged approach using different chemicals may be necessary to kill existing insects and repel

further infestations. Trial and error can help homeowners rid their spaces of termites so that they can repair damaged wood and ensure structures are sound.



TOP & DROP
TREE SERVICES

Family owned and operated since 1991

780-924-2014



PEMBINA WEST CO-OP
Total Building Solutions

Serving Barrhead, Mayerthorpe, Whitecourt, Westlock & Surrounding Areas

For All Your Building Supplies
(780) 674-2201

BEDARD
EXCAVATING 

DESIGN, BUILD, PUMP

General Excavating
Foundations 4-9' walls
Septic Systems



780-967-5116



Home 
building centre

Barrhead Home Building Centre
YOUR COMPLETE BUILDING SUPPLY CENTRE

780-674-4710 
6101 - 48 Street, Barrhead, AB Helping you get the job done!

Home Owners helping homeowners



Assertive
ELECTRIC LTD.

Toll Free 1-855-967-3827 Fax 1-780-967-3847
email: rick@assertive-electric-ltd.ca

Insured & Certified Professional Electrical Services



ECO CONTRACTING SERVICES
 LANDSCAPING
 EARTHWORKS
 EROSION CONTROL
 SHORELINE RESTORATION

Call or Text
RICHARD DEIB
 780.217.3534
 richard@ecofirst.ca

Serving The Community Since 1995

fall HOME RENO GUIDE

QUICK AND SIMPLE WAYS TO MAKE A FRONT DOOR POP

Visitors' impressions of a home are often dictated by the home's entryway. Must as one may judge a book by its cover, the same can be said about the impression that a front door and entryway can create, regardless of how accurate that impression is.

Making certain changes to an entryway can go a long way toward improving curb appeal. Entryways also can set the scene for a home's interior. Whether one chooses to be classic or bold, modern

or traditional, there are various ways to quickly transform a home's entryway.

- **Bold front door color:** Color can dramatically enhance an entryway. Painting an existing door or replacing it with a more vivid option can do the trick. The DIY Network says certain colors stand out as favorites. These include turquoise, yellow, red, indigo, orange, and black. The door color should complement the other shades of the home, such as those on



MASTER PLUMBER
 36 YEARS EXPERIENCE
780-655-8402
 PLUMBING & HEATING SERVICES
PRICE BY THE JOB NOT THE HOUR!
 Furnace and Air Conditioning Rebate Special

ACCREDITED BUSINESS WCB VISA MasterCard

Top Quality Flooring Products

- Carpet • Vinyl • Lino
- Hardwoods • Laminates
- Vinyl Tiles • Porcelain
- Floor and Wall Tiles
- Stone Tiles
- Ditra and Kerdi
- Shower Installs

**Professional Installers
 Free Estimates**

**Quality You Can See.
 Comfort You Can Feel.
 Value You Can Appreciate.**

Opening Specials
Soft Touch Carpet installed for **\$3.25/sq ft**
 in 6 colors with under pad
3Mil Vinyl Planks installed for **\$4.49/sq ft**
 with 20 year wear layer water proof 8 colors
White Marble Floor Tiles **50% OFF**
 polished 12x24

Pro Finish Flooring Ltd
 #6 - 20 McLeod Avenue | Spruce Grove, Alberta T7X 1V4
 TEL: 587-286-2626 | pro-finishflooring@hotmail.com
HOURS: Monday to Friday 9:00AM-5:30PM Saturday 9:00AM-4:30PM



VISIT US

FOR ALL YOUR HOME RENOVATION NEEDS

CO-OP
 North Central

4919 50 AVE - STONY PLAIN, AB

fall HOME RENO GUIDE



Quick and Simple Ways To Make A Front Door Pop

siding and trim.

- Custom walkway: Guide guests right to the front door with an attractive (and safe) walkway. Stamped concrete or decorative paver blocks may fit the bill. This walkway can extend to the street or to the driveway.
- Contain plants. Landscaping around the entryway should be neat and well-tended. Overgrown plants or shrubbery may give off an air of neglect. Container plants and carefully curated shrubs can create a neat and inviting aura.
- Highlight the address. Make sure the home

can be found easily with bold and decorative house numbers. Consider two different address signs: one illuminated and easily viewed from the curb, and another closer to the front door.

- Utilize high-end materials. The relatively small area of real estate by the front door enables homeowners to splurge on more opulent materials that can really add a feeling of luxury. These can include colorful tiles, ornate planters, decorative wooden doors, or elaborate knobs and lighting fixtures.
- Add architectural

details. Find out which architectural elements will meld with the style of the home and then incorporate them. Moldings, columns, shutters, and trim are areas to consid-

er. The entryway to a home garners a lot of attention. Homeowners can enhance their spaces with entryways that really make a statement.

Renovations, Shop Packages, Shed Construction, Decks, Garages, Barns, Sheds, Cement, Concrete, Topsoil, Eavestroughing, Dirt Work

CELL 674-7147

MAYERTHORPE, AB (780) 785-4002

PADDLE RIVER CONCRETE

Providing you with concrete needs!

Brent • 786-2666 • Mayerthorpe, Alta

Carpetown Interiors Ltd.

- Carpet • Lino • Hardwood Flooring & Tile
- Wallpaper • Window Blinds & Installation

780-778-4144
5033 - 52 Ave. Whitecourt

The service you need, from people you trust.

- Septic Services: Residential, Commercial
- Holding Tanks and Field Systems
- Effluent Pumps supplied & Installed
- Portable Toilets: Standard, Wheelchair Accessible, Cabana Cans
- Products: BioClean, Liquid Enzyme, Potty Trea

Proudly Serving Lac Ste. Anne County
1-877-226-5008
780-924-2435
780-967-2118
www.standstonevac.ca or visit our facebook page

Great Rates & Reliable Service! Call us today!

- Decks
- Fences
- Treated Lumber
- Spruce Lumber
- Probuilt Alum Railing
- Full House Packages
- Husqvarna Dealer
- Delivery Available
- Plumbing
- Electrical
- Shed Packages
- PPG Paint & Stain
- Garage Packages

"WHERE SERVICE MAKES THE DIFFERENCE"
#2 2104 Hwy 37
Lac Ste Anne, AB **PH: 780-967-2274**

fall HOME RENO GUIDE



PREPARE YOUR DECK FOR WINTER

Homeowners often take steps to winterize the interior of their homes in the weeks before winter's arrival, but such efforts should extend to the outside of a home as well.

Decks make for great gathering

places when the weather permits. Decks are where many people spend their free time and eat their meals come spring and summer, when the temperatures climb and the sun sets well into the evening. But as summer turns to fall,

homeowners must take measures to protect their decks from potentially harsh winter weather.

- Inspect the deck for problems. Decks tend to be used more often in summer than any other time of year. That makes fall and early winter an ideal time to inspect for wear and tear and any additional issues that may have cropped up throughout the summer. Damaged boards and loose handrails should be fixed before winter arrives, especially for homeowners who plan to use their decks in winter. Fixing such issues in winter and even into spring may be difficult thanks to harsh conditions, so make good use of the relatively calm autumn weather to fix any issues on the deck.

- Clear the deck of potted plants. Even homeowners who

intend to use their decks in winter should remove potted plants from the deck in the fall. The home improvement experts at HGTV note that moisture can get trapped between deck boards and plastic, wood or ceramic containers in cold weather, and that can contribute to mildew, discoloration or decay.

- Store unnecessary furniture. Homeowners who like to sit on their decks in winter will no doubt want to leave some furniture out over the winter. But those with lots of furniture for entertaining guests can likely move the majority of that furniture into a garage or shed for the winter. HGTV notes that doing so will prevent the potential formation of blemishes on the deck that can result from inconsistent

B.W. EAVESTROUGHING

Specializing in:

- ⇒ Residential 5" ⇒ Gutter Clean System
- ⇒ Commercial 6" ⇒ Free Estimates
- ⇒ Soffit ⇒ Fascia

BRAD (780) 699-1880

LIMB WALKERS TREE CARE LTD.

FULLY INSURED. EXPERT TREE CARE PROVIDERS
SERVICING BARRHEAD, WESTLOCK, ONOWAY & ALL SURROUNDING AREAS

- Residential & Commercial
- Tree Removal
- Tree & Shrub Pruning
- Hedge Trimmers
- Annual Maintenance
- Professional Climbers
- Arborist Consultations & Assessments
- Bucket Truck & Chipper Services

780-203-4705 limb.walkers@hotmail.com
FREE ESTIMATES PROVIDED

MCLEOD Home building centre

Let us load you at the largest Lumber Yard in Parkland County
962-2575
Call Toll Free: 1-800-343-2988
35 South Ave, Spruce Grove

- Renovation & new build experts
- Superior quality lumber
- Complete home packages
- 3D Estimating Program
- Engineered roofs & floors
- Farm Buildings
- Garage packages
- Windows & doors
- Custom decks & fence packages
- Flooring & kitchens
- Bathrooms
- Ceramic Tiles
- Concrete & landscaping
- Electrical supplies
- Fasteners
- Woodstoves

Service • Selection • Advice • Special Orders • Delivery

ECONOMY ASPHALT DRIVEWAYS

- Paving
- Asphalt or Concrete
- Repairs
- Pararamps
- Seal Coating
- Crack Filling
- Snow Removal
- Sanding
- Rock Chip Sales

CHARLES MACDONALD
PH: 780-962-5581 CELL: 780-777-0914
FAX: 780-962-9146

THE STUMP GRINDER

Mechanical Stump Grinding

Andre
Phone: 780-413-6421
stumpgrinder@shaw.ca

fall HOME RENO GUIDE



DID YOU KNOW?

Carpet can add warmth and texture to a room and also provide a little bit of soundproofing. Underfoot, carpeting can be more comfortable than other types of flooring, even though it may require more upkeep. Carpet comes in various forms, but here are the

main material components.

- Nylon: This is one of the most durable and stain-resistant carpet fibers available and a popular choice among many homeowners.

- Polyester: Carpeting can be made from polyester, which is

fashioned to feel and look luxurious.

- Olefin: Olefin is made from polypropylene or polyethylene. It is prized for its strength, resistance to staining and colorfastness. It is often suited well to

loop pile or high, dense cut piles.

- Wool: Wool is durable, albeit less resistant to soiling than some other materials. However, because it is an all-natural material, it is prized by people who want natural beauty.

Prepare Your Deck For Winter

weathering.

- Remove snow, but do so carefully. Prolonged contact with snow and ice can damage a deck. As a result, homeowners should clear snow from their decks when accumulation is significant. HGTV recommends using a snow blower on the deck to avoid scarring. If a shovel must be

used, push snow with the planks to reduce the risk of damaging the deck.

Homeowners who take steps to protect their decks throughout the winter months can ensure these popular areas are ready once entertaining season returns in the spring.

Family run, local business, we care!

BEST CISTERN SEPTIC SOLUTIONS

Cistern and Septic Inspection, Installation and Repair!

Septic planning, design, installation by government certified installer(s)

New Installs Available. Reasonable Rates.

Let Us Handle the Dirty Work

780-668-4306 [best-cistern-septic-solutions.com](http://www.best-cistern-septic-solutions.com)

TRI-LAKES SERVICES LTD.

Serving: • Lac Ste. Anne County • Parkland County • Yellowhead County East

- Septic Hauling
 - Holding Tanks (residential, commercial, industrial)
 - Septic Fields
- Drinking Water Delivery
 - Cisterns
 - Pools/Hot-Tubs
- Fresh Water Delivery
 - Dust Control
- Portable Washrooms (rental & servicing)
 - Plastic
 - Trailer mount Extremes (wash sink, toilet, lights heat)
 - Extremes (wash sink, toilet, lights, heat)
 - Steam Truck
 - In cooperation with your plumber

PH: 1-877-727-3939
www.tri-lakeservices.com
office@trilakes.services

Lanman Landscapes

YOUR ONE STOP FOR ALL TYPES OF LANDSCAPING

Dangerous Tree Removal **Yard Cleanup** **Full Landscaping Service**

Experienced Bobcat Work **Fall & Winter**

Fully Insured

(780) 977-6586
levertonniel13@gmail.com

ZEE BEST RENOVATIONS

Your Complete Line of Renovation Needs:

- Bathroom • Tileworks • Roofing
- Basements • Drywall & Taping • Siding
- Plumbing • Decks & Fencing

FREE ESTIMATES | 30+ YEARS EXPERIENCE
INSURED | GREAT RATES

JOE LAWRENCE BUS: 780-967-3898 | CELL: 780-915-3348
 MANAGER FAX: 780-967-3798

Blakeman Drilling Ltd.

Waterwell Drilling & Servicing
 Pumps & Pressure Systems

Petwa Water Conditioning

(780) 918-1916
joe@blakemandrilling.com

Family Owned & Operated

SCREEPY, CRAWLY HALLOWEEN COLORING CONTEST



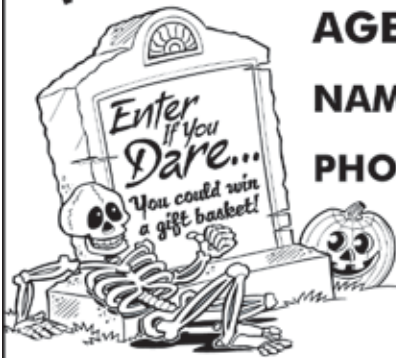
AGE GROUPS: 3-4 YRS | 5-6 YRS | 7-9 YRS | 10+ YRS

NAME: _____ AGE: _____

PHONE: _____ TOWN: _____

Entries must be recieved by October 26, 2019.

**Mail to: Jack O'Lanterns, c/o Community Voice
Box 3595 Spruce Grove, AB T7X 3A8**



Classified Ads - Call 962-9228

Obituaries

Jean Sylvia Morrison, age 85, passed Saturday, August 17, 2019 in the Westview Health Center, Stony Plain, AB. Born near Esterhazy, SK to Ann and John Carluk, she was the second youngest of six children. Jean loved and lived on her farm near Duffield for 47 years. She was an avid antique collector, well known in the local community, as well as an amazing cook and artist. She was predeceased by her parents, husband Duncan, sisters Ruby and Rosie and brother Dennis. She is survived by sister Mable, children Patricia, Deborah and wife Mary Lois, Tammy, Bonnie and fiancé Jeffrey, and grandchildren Carrie, Daniel, Krystyne and Natalie. A memorial will be held at Smithfield Hall 53211 Rng Rd 34, Kapasawin, AB on September 21 between 2:00 and 4:00pm. Her family would like to thank the Staff of the Westview Health Center for their care during the last months of her life. (1) 17-09

Auctions

NOW OPEN!! ENTWISTLE AUCTION Junction of Hwy 16 & 22, One Bock south of Esso. Sales Start Sept 28th @ 11:00 AM. Regular Sale, Every Saturday. CONSIGN NOW!! 780-727-2724 & 780-727-4062 Sales conducted by Alberta Surplus Auction Inc. Licensed & Bonded Lic # 313301 (3) 10-09

Dog Caretaker

Alberta Beach & Surrounding Areas, thinking of a Summer Getaway? Worried about leaving your dog in a kennel? Don't worry anymore, you can leave your pet with me! There is a wrap around deck in court yard! I will provide tender loving care, with walks every day. Best of all, I'm cheaper than a kennel! Daily drop in's or overnight stays welcome. If interested call 780-920-4166 (4) 17-09 OG

Cleaning

CEILING & WALL CLEANING - Specializing in cleaning

Stipple & California knockdown. Cig. Smoke removal & Odour removal. Ceramic floor tiles steamed cleaned. Call Nano Cleaning for Discount Prices! 780-914-0323 (5) 27-08

Computers

FREE Computer Checkup. Repairs **work** or extract Doc or Pictures from Old or Broken PC **NOT** over \$50. No Prepayment - No Charge if not Repairable. Yes, I have for you a good, clean, refurbished and upgraded laptop or desktop with Legal

win 10 for **ONLY \$100.** Call now 780-892-2407 (12) 13-08

Landscaping & Maintenance

Stump Grinding For Hire - Alberta Beach & Surrounding areas. Call 780-779-3589 (28) 23-04

Buy & Sell

Pepsi-Cola Cooler chest type .10 (cent) coin dispenser, 5 bottle rows, key. Asking \$800, Onoway area, Call 780-983-0753 (2) 10-09



SERENITY FUNERAL SERVICE

NEW FACILITY
Chapel & Reception Centre

600 Calahoo Road Spruce Grove, AB
780-962-2749 www.serenity.ca

SERENITY FAMILY SERVICE SOCIETY - YOUR NOT-FOR-PROFIT SOCIETY

SUDOKU OF THE WEEK

Fun By The Numbers

Here's How It Works: Sudoku puzzles are formatted as a 9x9 grid, broken down into nine 3x3 boxes. To solve a sudoku, the numbers 1 through 9 must fill each row, column and box. Each number can appear only once in each row, column and box. You can figure out the order in which the numbers will appear by using the numeric clues already provided in the boxes. The more numbers you name, the easier it gets to solve the puzzle!

ANSWER:

7	5	2	8	9	1	4	3	6
9	8	3	5	6	4	1	7	2
6	4	1	2	7	3	9	5	8
4	1	7	3	2	8	6	9	5
8	2	5	6	1	9	3	4	7
3	9	6	4	5	7	8	2	1
2	3	4	7	8	6	5	1	9
1	7	8	9	3	5	2	6	4
5	6	9	1	4	2	7	8	3

7		2	8	9		4		6
				6	4			2
6	4			7				
4		7	3				9	
		5	6	1				7
3		6						
2		4	7	8		5		
1		8			5			4
			1	2	7			

Like puzzles? Then you'll love sudoku. This mind-bending puzzle will have you hooked from the moment you square off, so sharpen your pencil and put your sudoku savvy to the test!



Classified Ads - Call 962-9228

Firewood

FIREWOOD FOR SALE - Birch, Tamarack & Spruce Pine mix. Poplar. 4x4x8 cords and 1/2 cords. Quality seasoned wood, Delivery or Pick up. Woodchuck Firewood, 780-288-7247 (28) 28-05 OG

SEASONED FIREWOOD: Birch, Tamarack, Spruce/Pine & Poplar. 4x4x8 cord, Split and delivered or pick up at wood yard, 1/2 cord or full cords available. Call 780-967-5835 or 780-983-1495 (28)

27-08 Vehicles

1999 FORD 350 Dually 4x4 Lariat - 7.3 diesel motor, automatic, air, tilt, cruise, leather seats, c/w box liner and fifth wheel hitch - 379,000 km. Asking \$6,000.00. Call 780 623-8979 (2) 10-09

Miscellaneous

Top Soil for garden or else, \$20 per skid steer bucket. Burning

Barrels \$20/each. River Rocks from my farm field \$25 per barrel, assorted sizes. Call 780-967-2779 (8) 13-08

For Rent

Alberta Beach Inn & Suites offers 1 Bedroom Apartment Suites, FULLY EQUIPPED AND FURNISHED. Daily/Weekly/Monthly rates, Lakefront property. Monthly rent includes digital TV, WiFi, phone, utilities & parking. Monthly available from Aug 15, special incentives

for long term rentals. Please call Kurt 587-763-0351 (3) 17-09 OG

Alberta Beach Hotel rooms for rent. Upgraded, very clean & well maintained, shaw cable tv included. \$60.00 per night or \$500.00 per month + GST. Damage deposit is required. Call 780-924-3005 for more information (50) 08-01

Onway 1 & 2 Bedroom Suites for Rent. Clean, quite secure building with reasonable rent. Call 780-967-5857 or 780-920-3652 (4) 10-09

Completely renovated Motel in Onway, offering monthly rentals, all utilities FREE, furnished bachelors and furnished 1 bedroom with full kitchen, please call Cheryl for viewing 780-967-4420 www.onwayinnandsuites.com (4) 17-09 OG

Homer's Hut Cabin Rentals - Daily, weekly, monthly rates, Alberta Beach area, Call Connie 780-913-8024 (15) 17-09

In Alberta Beach, 2 Bedroom Suite in new Adult Living 4plex, \$1200/month + DD same, includes 6 appliances, in floor heating, garage, power & gas, N/S, Call Connie 780-913-8024 (2) 17-09

In Alberta Beach, 3 Bedroom House with 4 appliances, detached garage, N/P, N/S, Available Oct 1. \$1100/month + DD, Call Connie 780-913-8024 (2) 17-09

ALBERTA BEACH - Newer 2 bdrm apartment, downtown, awesome view looking over the lake, 1100sqft, washer/dryer/central vac, 2 baths, stainless steel appl, open concept, please call Cheryl 780-982-6922 (4) 17-09 OG

2 bedroom home on acreage in town limits of Stony Plain! \$1650.00 includes all utilities! Qualified Seniors only! Ph 780-913-2430 Seniors only! (4) 17-09 OG

Deb Gouin
780-497-0531
www.debgouin.ca
Century 21 Masters 780-963-2285
#105, 4302 - 33 St., Stony Plain, AB T7Z 2A9
Each office independently owned and operated

FEATURED LISTINGS:



\$396,500

GORGEOUS COUNTRY HOME

- 2270 sq ft 3 Bed 3 Bath
- 1/2 Acre Lot - PRIVATE
- Oversized Heated Double Garage
- Many Recent Upgrades
- RV Parking
- Lots of Upgrades
- E4170219



\$269,900

HUGE LOT - TRIPLE GARAGE

- 1/2 Acre Lot
- Back onto Golf Course
- TRIPLE GARAGE
- Many Recent Upgrades
- 3 Bedroom 1 Bath Bungalow
- E4160911



\$629,000

GATED COMMUNITY EXEC. HOME

- 1 acre lot MINUTES TO SPRUCE GROVE
- Soaring Ceilings & Luxury Finishes
- TWO TRIPLE GARAGES + RV PARKING
- E4147138



\$358,800

SPRUCE GROVE 1/2 DUPLEX BUNGALOW

- BEAUTIFUL 2+2 bedrooms, 3 baths
- Open Floor Plan & Main Floor Laundry
- Double Attached Garage
- NO CONDO FEES
- E4154703



\$279,900

ROSS HAVEN FAMILY HOME

- 1500+ sq. ft. 3 beds, 2 baths
- Upgraded Inside & Out
- Double O/S Garage, 1/2 Block to Lake
- E4148150



\$225,000

ROSS HAVEN CHARMER

- 1050+ sq. ft. 2 bed + loft, 1 bath, laundry
- LARGE COVERED Upper Deck!
- Backs GREENSPACE, STEPS to Lake & Pier!
- E4148179



\$275,000

LAKE NAKAMUM WATERFRONT

- Next-to-New 1 bed + Loft, 1 Bath
- FULLY SERVICED
- Set Up for 2 RVs with HOOK-UPS!
- E4149606

VIEW FULL LISTING DETAILS AT WWW.DEBGOUIN.CA

LISTINGS NEEDED!! If you're considering selling, I currently have serious buyers looking! Give me a call for a **free market evaluation!!** With more than 30 years' experience in the real estate industry, I have both local knowledge as well as serious buyers currently looking for property in our area! Put me to work for you.....
FROM SIGN UP TO SIGN DOWN!!



Land For Sale

Choice Acreage, 4.3 acres all treed. Yellowhead Estates, RR25, 2 Miles N of Yellowhead Hwy. \$107,000 - Call 780-435-1907

Church Directory

<p>Rich Valley Community Church</p> <p>Sunday School 10:00a.m.</p> <p>Worship Service 11:00a.m.</p>	<p>Catholic Parish of Lac Ste. Anne</p> <p>Sunday 10:00a.m.</p>		<p>Mayerthorpe Baptist Church</p> <p>Worship Service Sunday 10:30a.m.</p> <p>Children's Church 10:30a.m.</p> <p>4606-54 St. Mayerthorpe (780) 786-2677</p>	<p>Alberta Beach Alliance Church</p> <p>Sunday Worship Service & Kid's Church 11:00a.m.</p> <p>Sunday School 10:00a.m.</p> <p>(780) 924-3282</p>	<p>St. John's Anglican Church</p> <p>Onoway</p> <p>Sunday Service 10:00a.m.</p> <p>Everyone Welcome</p>
<p>St. John's Lutheran Church Alberta Beach</p> <p>Sunday Service 11:00a.m.</p> <p>Sunday School</p>	<p>Zion United Church</p> <p>Sunday Service 10:00a.m.</p> <p>Sunday School</p> <p>Serving Alberta Beach, Wabamun, Darcivell & Lake Isle, Onoway & Area (780) 924-3351</p>	<p>Sangudo United Church</p> <p>Worship Service 3rd Sunday 11:00a.m.</p> <p>4907-50 Ave. Sangudo, AB</p>	<p>St. Mary's Anglican Church Service</p> <p>Holy Communion 2nd Sunday each month 11:00 a.m. at Sangudo United Church</p> <p>Reverend Barry Rose Officiating</p>	<p>Cherhill Community Church</p> <p>Sunday School 10:00a.m. - 11:00a.m.</p> <p>Worship Service Sunday 11:00a.m.</p>	<p>St. Michael Lutheran Church</p> <p>Sunday Services 1st & 3rd Sunday at 2:00p.m.</p> <p>Pastor Rick Chappell (780) 674-2618 Mystery Lake</p>
<p>Trinity Lutheran Church (LC-C) <i>The Church of the Lutheran Hour - Rockyfort Bridge</i></p> <p>Pastor Dan Hansard Church (780) 778-2035</p> <p>Sunday Worship 9:00a.m.</p> <p>Senior's Service & Cottage Bible Study - Phone for locations</p>	<p>Mayerthorpe Pentecostal Assembly</p> <p>P.A.O.C. Rev. Arnold Lothoiz</p> <p>Sunday 10:30a.m. Morning Service Tuesday 7:30p.m. Ministry Training (780) 786-2141</p>	<p>Infuzed Ministries</p> <p>Worship Service Sunday 3:30p.m. in Alexia Community Hall</p> <p>Pastor Daniel Jackson (780) 719-0240</p>	<p>Onoway Baptist Church</p> <p>Sunday Service 10:30a.m.</p> <p>Pastor Greg Garbutt (780) 967-2266</p>	<p>Roman Catholic Church St. Agnes' Parish, Mayerthorpe</p> <p>Sunday 9:00a.m. St. Elizabeth Parish, Evansburg Saturday 7:00p.m. (780) 786-2032</p>	<p>Calahoo Alliance Church</p> <p>Family Worship Service Sunday 10:00a.m.</p> <p>For Info Call Jerry (780) 974-7734</p>

SERVICE DIRECTORY

ATB Financial
ALBERTA BEACH AGENCY
4824 - 50 Ave, Alberta Beach
Ph/Fax: (780) 924-2211
Mon to Thurs 10:00AM - 4:00PM
Friday 10:00AM - 5:00PM
Heidi Letendre

Scerv Construction Ltd.

- Engineered Screw Piles
- Skidsteer Work
- Snow Removal
- Excavator Services
- Framing
- Insulating
- Drywall
- Taping
- Trenching
- Roofing
- Decks

Menko Helmus Cell: 780-305-3864
Email: m1988_10@hotmail.com
PO Box 4795, Barrhead, AB T7N 1A6

CPR St. Albert
Saving Your Mobile Life™
We Can Fix That In 90 Minutes

iPhones, iPods, iPads, Tablets, Computers - Apple, Samsung, Blackberry, LG, Sony and MORE
Lifetime Warranty Against Defects In Our Screens
Now over 480 Locations

#13 - 11 Bellerose Drive (Next to Grandis Bakery) 780-460-0277

MARK MARTIN PFEIFFER
MASTER BRICKLAYER/MASON

Cell: 780-242-3308
Email: pfeiffer.mark@hotmail.com

- Brickwork • Stonework
- Rockwork • Parging
- Concrete Block Work
- Tile Work (all kinds)



Community VOICE

THIS SPACE IS RESERVED FOR YOU!

BRO-BUILT
Homes & Contracting Ltd

"We Pride Ourselves In Turning Handshakes Into Hugs"

www.brobuilthomes.com
Testimonials
Phone 780-940-6415

SERVICE DIRECTORY



COR Certified

- Oilfield
- Road Building
- Basements
- Dugouts
- Sand & Gravel

haytrucking@xplomet.ca
www.haytandc.com
Office: 967-5849 Cell: 818-5849



JAVORSKY DITCHING
Onoway, AB
Phone: (780) 967-5486
Cell: (780) 906-7469
Fax: (780) 967-4961

Dennis Javorsky - Owner / Operator

For All Your Excavating Needs
Sand & Gravel Hauling • General Excavating
Septic Tanks & Cisterns • Site Prep & Clean Up
• Install & Repair of Water, Sewer,
Power & Telephone Lines

ALL AROUND FENCING RENTALS
Fence Panels • Barricades
Installation by Collin Toilet Rentals



Whitcourt, AB
780.706.7978

CRUMBAUGH CUSTOM CARPENTRY & WOODWORK



DAN CRUMBAUGH
Red Seal Journeyman Carpenter

Box 1083 Onoway, AB T0E 1V0
780-232-6049
dancrumbaugh@yahoo.ca

CALIBRE DRILLING LTD
DRILLING AND SERVICING YOUR WATER WELL.

SPECIALISTS IN AIR & MUD ROTARY DRILLING

- * Water Well Drilling
- * Pump Installations
- * Pressure Systems
- * Well Tests
- * Licensed Drillers
- * Year Round Drilling
- * Geotechnical Drilling
- * Cathodic Protection
- * Free Estimates

Quality Workmanship Five Year Warranty
(780) 960-2992
BOX 4083 SPRUCE GROVE, AB T7X 3B3

R & S TOWING

FREE REMOVAL OF UNWANTED VEHICLES

967-2492




Water & Vacuum Services

Super Sucker
septic holding tanks
septic field systems
sumps & traps

Super Soaker
cisterns, pools, hottubs, skating rinks
metered water delivery rates
continuous water / top up plans

Trevor Gardner
Phone/Text: 780.967.5552 - supersuckervac@gmail.com
RR1 Site 1 Comp 261, Onoway, AB T0E 1V0

Community VOICE
Framing You and Your Community's Ambition

THIS SPACE IS RESERVED FOR YOU!

DONALD N. GREENWAY
Chartered Accountant

Suite 205 Sunrise Professional Building
215 McLeod Avenue
Spruce Grove, AB
(Bus.) **962-6366**
(Fax) **962-3990**

ZEE BEST RENOVATIONS
Your Complete Line of Renovation Needs:

- Bathroom
- Basements
- Plumbing
- Tileworks
- Drywall & Taping
- Decks & Fencing
- Roofing
- Siding

FREE ESTIMATES
26 YEARS EXPERIENCE
INSURED | GREAT RATES

JOE LAWRENCE
MANAGER

BUS: 780-967-3898
CELL: 780-915-3348
FAX: 780-967-3798

2Bros
Custom Contracting Ltd.

Custom Framing • Concrete Floors • Shingling
Siding Soffit Fascia • Styrofoam Block System

Jeff **780-717-0520**



Local office in Darwell
Call us at **780.467.5534**

Experienced Legal Services in:
Family Law • Civil Litigation
Corporate Law • Wills & Estates
Plus Notarizing and Commissioning

www.croftlaw.ca



Manufacturers of ONE PIECE SEPTIC & HOLDING TANKS

* Water Cisterns * Field Systems * Pumps and Accessories * Sumps



DELIVERED TO YOUR SITE
1-800-661-3047
780-727-2702
PembinaConcrete.com

New Line of Concrete Statues, Fountains and Garden Ornaments.
BOX 123, Entwistle, T0E 0S0

SERVICE DIRECTORY



PaddlePlastics Ltd.
Mayerthorpe, AB

Box 67
Mayerthorpe, AB T0E 1N0


Ph: (780) **786-4408**
Fax: (780) 786-4466



Mo-Bil WASH SERVICES Ltd.

- Steam • Hot & Cold High Pressure Wash • Sewer Thaw & Flush
- Residential • Commercial - Oilfield

24 HOUR SERVICE
Onway Call (780) 991-9466



PREVAIL MAX
CELLULAR HOMEOSTASIS FORMULA

How do you want your **BLOOD** to look?

Before PrevailMAX:	After PrevailMAX:
poor circulation	better circulation
low energy	more vitality
brain fog	mental clarity
dehydration	cellular movement
decreased nutrients	nutrient assimilation
pH imbalance	balanced pH
poor endurance	optimal endurance

(780) 907-8642 **VALENTUS**
www.ValentusTour.com/Ladybug



Blakeman Drilling Ltd.

Waterwell Drilling & Servicing
Pumps & Pressure Systems

SERVING LAC STE. ANNE & WEST PARKLAND FOR OVER 25 YEARS

Joe (780) 924-3024



THE CORING GUY

- Concrete Coring & Cutting • Concrete Demolition
- Electric or Diesel Slab Sawing • Core Drilling
- Skid Steer / Mini Excavator Operations

Commercial - Residential

Laurence Markwart Cell: (780) 220-6164
LAC STE. ANNE COUNTY Email: ljmarkwart@gmail.com



Tile Setting
Ceramic & Natural Slate

Kitchen & Bath - Backsplash & Surrounds
Fireplace Floors

"Serving Lac Ste. Anne and West Central Alberta Areas for over 25 years"

Thorsen Industries Call
Christian @ 403 728-3805



SANGUDO VETERINARY CLINIC

Box 581, 4916 - 52 Ave. Sangudo, AB. T0E 2A0

Dr. Ralf Sanders DVM

Ph: 780-785-2200
Fax: 780-785-2228
sangudovet@gmail.com

24 HOUR EMERGENCY SERVICE



H&P Kosik CONSTRUCTION Ltd.

- Road Building • Gravel • Sand • Dugouts
- Black Dirt

No Job too small We do them all!

Harvey cell. 780-445-9010 ph. 780-892-3532
Box 145, Darwell, AB. T0E 0L0



Collin Toilet Rentals & Service

Your Portable Toilet Supplier for:

- Construction
- Commercial
- Oilfield
- Special Events

Whitecourt Dispatch 780.778.2448



standstone VACUUM SERVICES LTD.



Proudly Serving Lac Ste. Anne County
1-877-226-5008 780-924-2435 780-967-2118
www.standstonevac.ca or visit our facebook page

The service you need, from people you trust.

- Septic Services: Residential, Commercial
- Holding Tanks and Field Systems
- Effluent Pumps supplied & Installed
- Portable Toilets: Standard, Wheelchair Accessible, Cabana Cans
- Products: BioClean, Liquid Enzyme, Potty Treat

Great Rates & Reliable Service! Call us today!



ROY SHERWOOD
Master Electrician

Ph: 780-968-1425
Call: 780-908-2287
Fax: 780-968-2211

Email: suretechroy@gmail.com

2-53220 Rge Rd 21
Parkland County, AB
T7Y 0C5

**Control & Automation
Commissioning
Solar Sales & Service**

Industrial . Commercial . Residential



VILLAGE GLASS & MIRROR LTD.

- AUTO
- RESIDENTIAL
- COMMERCIAL GLASS & MIRROR PRODUCTS

5027 - 50 Avenue • Phone: 967-2127
PO Box 609, Onway, AB T0E 1V0



GROVE MACHINE & WELDING

Office: (780) 952-1772 Call: (780) 231-5405

You have an idea, we'll design it, build it and test it

- Fasteners • Welding • Fabrication • Repairs
- Mobile Welding • Plasma Cutting • Machining

35 South Avenue Spruce Grove, AB T7X 1B3
E-Mail: jim.reynar@grovemachinewelding.com
sales@grovemachinewelding.com

SERVICE DIRECTORY

ANOTHER RAINBOW SALE

RAINBOW LIQUIDATORS & AUCTIONS



Farm Sales, Equipment Sales, Estate Sales
BOOK YOUR SALE WITH US TODAY!
 Serving the Community since 1978

Ph: (780) 968-1000
 Stony Plain, AB 1-866-968-1001
www.rainbowauctions.ca

SMOOLE

- Construction & Septic Installation
- Environmental Wastewater Disposal
- Site Design & Evaluation
- Power, Water & Basement Excavation
- Trackhoe, Backhoe, Bobcat & Dump Truck

For All Your Excavation Needs



Call Dan 780-991-4484 Reid 780-909-0173

Jack's Auto Body

& 24 HR Towing

SPECIALIZING IN COLLISION REPAIR
GUARANTEED WORK • INSURANCE CLAIMS

CAA BOX 9 SITE 306 RR3, ONWAY, AB T0E 1V0
(780) 967-5850

OUR PLEDGE IS QUALITY

H&E UPHOLSTERY

FOR ALL YOUR UPHOLSTERY NEEDS

Convertible tops for cars and boats, custom car and boat interiors, 5th wheel trailer skirts, boat tarps, ATV seats, furniture, kitchen chairs, heavy equipment seats.




WWW.HANDE.CA 4-485 South Ave.
 For more information contact: Spruce Grove
 kirk@hande.ca (780) 962-3048

POSTINGFIRST.com

FREE LOCAL CLASSIFIED ADS

Real Estate, Rentals, Vehicles, Pets, Jobs, Service Directory, Buy/Sell/Trade, Lawn & Garden, Garage Sales, Events, Local Places & Much More... Advertise for **FREE** Today!

Follow Us




THE MOST COMPLETE NUTRITIONAL SPRAYS ON THE PLANET



ORDER TODAY!
(780) 907-8642

www.Elaine1.com

Whole Heart Massage Therapy

- Maternity Massage
- Relaxation Massage
- Deep Tissue Massage
- Kinesio Taping

Jennilee Reber (780) 699-4667
 REGISTERED MASSAGE THERAPIST
 DIRECT BILLING TO INSURANCE
wholeheartmassage@hotmail.com
 54013 Range Road 30 #10
 Diamond Country Estates, Lac. Ste. Anne County

ONLINE BOOKING AT:
wholeheartmassagetherapy.clinicsense.com

Community VOICE

THIS SPACE IS RESERVED FOR YOU!

Pm Park Memorial Ltd.

Funeral Home & Crematorium

Fran Marion
 Licensed Funeral Director


Mayerthorpe: 780-786-2533
 Whitecourt: 780-779-2533

Serving Mayerthorpe, Whitecourt and area

Edmonton | Lamont | Mayerthorpe | Smoky Lake | Vegreville

SUMMERS DRILLING LTD.

Water well drilling and service
 Family owned Business Serving Alberta since 1917



Never run out of water again!

5 year workmanship warranty

Tired of hauling water? We can install a water well with a permanent water supply for as little as \$150/month OAC

3 Convenient ways to pay

- Visa
- Mastercard
- We now offer full financing

Stop in at our office 4405 - 50 Street, Stony Plain
 780-963-1282
admin@summersdrilling.com

GRANDE TIRE

5115 LAC STE. ANNE TRAIL N. ONWAY, AB T0E 1V0

Full Mechanical Services
Tire Sales & Repairs

BUS: (780) 967-3432
FAX: (780) 967-4816
contectire@xplomet.com



TRUIS & ONWAY REGISTRIES

INSURANCE

Box 390, Onway, Alberta T0E 1V0
 Tel: 967-5270 Fax: 967-4303

OPEN 9-5 MONDAY - FRIDAY
 FIRST & LAST SATURDAY OF EACH MONTH 9-12* *excluding long weekends
 Registries Closed from 12:00 pm - 1:00 pm

ALL GENERAL REGISTRY SERVICES

Home - Auto - Farm - Life and Business

Very Competitive Rates & Convenient Payment Plans.

Clients first...Service Always!

Lanman Landscapes

YOUR ONE STOP FOR ALL TYPES OF LANDSCAPING

- Dangerous Tree Removal
- Yard Cleanup
- Full Landscaping Service

Experienced Bobcat Work

(780) 977-6586




PREVAIL

CELLULAR HOMEOSTASIS FORMULA

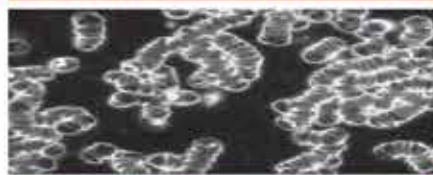
MAX

A NUTRITIONAL BREAKTHROUGH THAT SUPPORTS YOU
...RIGHT DOWN TO THE LAST CELL!

How do you want your
BLOOD to look?



Before PrevailMAX:



- poor circulation
- low energy
- brain fog
- dehydration
- decreased nutrients
- pH imbalance
- poor endurance

After PrevailMAX:



- better circulation
- more vitality
- mental clarity
- cellular movement
- nutrient assimilation
- balanced pH
- optimal endurance

PrevailMAX™ is a nutritional breakthrough that delivers a rapid increase of internal blood cell pressure to speed absorption, enabling the body to take maximum advantage of the nutrients in foods and supplements. The electrolytes are small enough to penetrate your cell membranes, to bind with your cells, and to be carried wherever they are needed in the body.

At the microscopic level of human cells, **PrevailMAX™** supports healthy cell performance – a nutritional breakthrough for your cells.

When you use **PrevailMAX™**, you will feel more energy and an ability to focus like never before. Take a few sprays today and see just how good you can feel!

LIVIN TRIM WITH
VALENTUS

www.ValentusTour.com/Ladybug

(780) 907-8642