



Serving: Carvel, Darwell, Duffield, Wabamun, Seba Beach, Gainford, Entwistle, Evansburg, Wildwood, Tomahawk, Spruce Grove, Stony Plain & Drayton Valley

September 17, 2019

GET READY TO PARTY WITH SOME BRILLIANT AND BADASS COUNTRY LADIES

**Nice Horse Kicks off Horizon Stage's New Season with
Their Hard-Rocking Country Tunes on September 20**

**Submitted by Horizon
Stage**

When these four bold, brilliant, and badass women perform together they always raise a little hell—and play a little music at the same time. This Alberta-based band is out to turn the tables on the country music

world and show the guys that they can rock—and party—just as hard. We're giving them an extra-great reason to party and have fun when they open Horizon Stage's 2019-20 Season on Friday, September 20 at 7:30 p.m.

Sure, there are plenty of strong female country artists in Daisy

Dukes out there, but try to name another self-contained unit that plays their own instruments and writes songs as potent as the new feminist anthem "Mansplainin", the roof-raising single "Pony Up", and the super-catchy new single "Good-Life".

Continued on Page 2

PARKLAND RCMP REQUEST PUBLIC ASSISTANCE TO IDENTIFY SUSPECT INVOLVED IN THEFT AND FRAUD

**Submitted by Parkland
RCMP**

On Sept. 10, 2019 Parkland RCMP responded to a complaint of a theft from the Tri-Leisure Centre. An unidentified female entered the locker room at the Tri-Leisure Centre and proceeded to steal a purse that had been locked in a locker. When the victim returned to the locker room at

approximately 5:15 p.m., both her purse and lock were missing. The victim's bank cards were used a short time later at a local convenience store.

Parkland RCMP are requesting the public's assistance to identify the female suspect. If you recognize the suspect or have any information to assist with the investigation, please contact the Parkland RCMP at 825-220-7267.



All Precious JEWELLERS
"Your Spruce Grove Jewellery Store"
Goldsmith on Premises
• Engraving • Clock & Watch Repairs
• Jewellery Repairs • Custom Make-ups
Jewellery Repairs Done On Site.
Laser Welder Services Available.
Toll Free: 1-877-962-4367
PH: 780-960-4200 Fax: 780-960-4201
Suite 102, 215 McLeod Avenue
Spruce Grove, AB. T7X 0G2

SIGHTS AND ARMS
New Open Mon-Sat
10AM-6PM
FALL SALE!
New, Used & Consigned
Firearm Safety & Reloading Courses
Gunsmithing
WWW.SIGHTSANDARMS.COM
11 J Raybon Cr.
St. Albert, Alberta 825-223-9863

PREVAIL MAX
CELLULAR HOMEOSTASIS FORMULA
**Nutritional Breakthrough
For Your Cells**
LIVIN TRIM WITH
VALENTUS
(780) 907-8642
www.ValentusTour.com/Ladybug

SLIMROAST Optimum
DARK ROAST COFFEE
YOUR LOGICAL SOLUTION TO
WEIGHT MANAGEMENT
(780) 907-8642
www.ValentusTour.com/Ladybug

View us ONLINE!
WWW.COM-VOICE.COM



**Keeping You and Your
Community Informed**

**PUBLISHED WEEKLY (Zone 1 & 2)
AND BIWEEKLY (Zone 3)**

**E.J. Lewchuck &
Associates Ltd.**

45C South Ave. | Box 3595
Spruce Grove, AB T7X 3A8

SALES TEAM

Elaine
Ashley
Dani

TELEPHONE:

Classifieds 962-9229
Advertising 962-9228
Fax 962-1021

E-MAIL:

comvoice@telusplanet.net
sales@com-voice.com
news@com-voice.com

Get Ready To Party With Some Brilliant and Badass Country Ladies



Continued from Page 1

They've had their share of surprised reactions as well from people unaccustomed to seeing a rockin' all-female country band, but they manage to take those in stride with their infectious humour. It's partly to be expected when you're breaking new ground, and in some ways the women of Nice Horse see themselves following in the platform-heeled footsteps of the Spice Girls by offering their own version of Girl Power, albeit with a rootsy

twist.

There's plenty of proof of Nice Horse's talent on their aptly titled full-length debut album, *There Goes The Neighborhood* (emphasis on the neigh!), produced by Jeff Dalziel (The Washboard Union, Brett Kissel), along with the legendary Bob Rock (Metallica, Motley Crue) on a couple of tracks. The band won the 2018 YYC Music Award for Country Recording of the Year, as well as "Group of the Year" and "Video of the Year" (for "Mansplainin'") at the 2019 Alberta

Country Music Awards (ACMAs). Always spreading cheer and having fun with fans wherever they go, these ladies are also known for their outgoing presence on social media which led to them being nominated for the Interactive Artist or Group of the Year at the Canadian Country Music Awards in 2018 and 2019.

The four members of Nice Horse are Tara McLeod (electric guitar); Brandi Sidoryk (vocals, bass); Katie Rox (vocals, banjo, acoustic guitar); Krista Wodelet (vocals, drums). Their first major tour was as direct support for Canadian icon Tom Cochrane, and they've since toured with other bands, including Nitty Gritty Dirt Band and The Washboard Union. Just recently they thrilled audiences in Spain, Monaco, and France on their first European tour. Additional career-to-date highlights include major festivals such as Big Valley Jamboree, the Calgary Stampede, and Boots & Hearts – always showcasing their signature high-energy live show.

Continued on Page 3

**Call or Text
RICHARD DEIB
780.217.3534
richard@ecofirst.ca**

ecofirst.ca
LANDSCAPING
EARTHWORKS
EROSION CONTROL
SHORELINE RESTORATION

Serving The Community Since 1995

JUST LISTED!

- 2 Bedroom, 1 bath bungalow
- 1 Block to Lake
- Large Lot

\$169,000!!

Cameron Fisk **ROYAL LEPAGE**
REALTOR®
780-996-9390

Helping you is what we do.
NORALTA REAL ESTATE

JOKE OF THE WEEK

The math teacher saw that Daphne wasn't paying attention in class. She called on her and said, 'Daphne! What are 2 and 4 and 28 and 44?' Daphne quickly replied, 'ABC, CBS, HBO and the Cartoon Network!'

**Minister of Justice
Talking Rural Crime Tour**

Join Doug Schweitzer, Minister of Justice and Solicitor General, and MLA Mark Smith in an open town hall conversation about concerns with the rapid increase in rural crime in Alberta.

When: Monday Sept 23, 2019
Time: 7 - 9 pm
Where: Clean Energy Technology Center
5400 22 Avenue, Drayton Valley, AB

ANNUAL FALL FEST & VOLUNTEER APPRECIATION EVENT

Submitted by Wabamun & Area FCSS

On October 19th, from 1:00pm – 4:00pm at Wabamun Jubilee Hall (5132 53 Ave) we invite everyone to join us, in honoring the dedicated volunteers we are so fortunate to have; at our annual Fall Fest & Volunteer appreciation event.

The chance to come together in celebration of the hard work completed throughout the year, and also to learn of the amazing clubs and volunteer opportunities within Wabamun. Information tables will be set up, for those wishing to learn more about our clubs and how you could be involved. Great for those new to the area.

Incredible Magician, Chris Gowen <https://www.chrisgowen.ca/>, will begin his one-hour show at 2:00pm.

Kernels™ Popcorn will be gifted to our volunteers, as our way of expressing how we POP with appreciation & BURST with gratitude!

Adult and youth door prizes to be won. Light refreshments of-

fered to all, as you mingle, relax and enjoy the afternoon of good fellowship.

We hope to see both new and familiar faces join us as we celebrate our Community!

Email fcss@wabamun.ca or call 780-892-2699 with any questions. Find the event information on Facebook @WabamunFCSS

Get Ready To Party With Some Brilliant and Badass Country Ladies

Continued from Page 2

The bottom line is that if you're looking for a good time, Nice Horse is more than willing to take you along for the ride. Join them at Horizon Stage on Friday, September 20 at 7:30 p.m. Tickets are \$35 for Adults and \$30 for Students and Seniors and may be purchased at the City Hall Ticket Centre (315 Jespersen Ave), by phone at 780-962-8995 or 1-888-655-9090, and online by visiting and clicking on the 'Tickets' link.

NOTICE TO CREDITORS AND CLAIMANTS

Estate of ORAH LUCILLE HAWKES who died on November 26, 2018.

If you have a claim against this estate, you must file your claim by October 25, 2019, and provide details of your claim with: LARRY D. AYERS, Barrister and Solicitor, #200A, 215 McLeod Avenue, Spruce Grove, Alberta T7X 0G2. If you do not file by the date above, the Estate property can lawfully be distributed without regard to any claim you may have.

NASHVILLE

Entertainer, Performer, Showman,
Singer and Songwriter, plus
2017 & 2018
Alberta Country Music Nominee

Coming to Drayton Valley with
his Nashville band

Playing your Country Favorites plus
songs from Donny's new album!

DONNY LEE

Don't miss his high energy & amazing show!

ONE NIGHT ONLY

FRIDAY,
SEPTEMBER 20 · 7:30PM

Tickets: \$45.00 (incl. GST) at the
MAX EVENTS CENTRE
Drayton Valley

www.ticketpro.ca
Ticketpro 1-888-655-9090

WWW.DONNYLEEMUSIC.COM

CURLING ROCKS WITH LAKESIDE CURLING CLUB

Submitted by Lakeside Curling Club

"Imagine if everyone respected their teammates and opponents in life, shook hands after every confrontation and bought each other a drink. Imagine if we all stood still while others were concentrating on their life's work, offering encouragement, not distraction. Imagine if we celebrated our opponents', as well as our own accomplish-

ments. No, it's not a perfect world, but it could be. And it is – on a sheet of curling ice!"
- Jean Mills

A curling game typically lasts for 2 hours. In this time, each curler is expected to throw 16 rocks, and sweep from 32 to 48 rocks. It is very good exercise.

Bonspiels are a tournament type of event that occurs over one to three days.

Minimum equipment required is a curling brush, a clean pair of

insulated shoes, a warm sweater and a pair of gloves.

Lakeside Curling Club information

Lakeside Curling Club is located in Parkland County and is located just north of Seba Beach at 53202 on Secondary Highway 759 and services the general population in Seba Beach, Duffield, Entwistle, Fallis, Gainford, Kapasiwin, Stony Plain, Tomahawk and Wabamun.

The Club is open to member-

ship of all ages.

Curling Members can curl in the Monday/Tuesday fun league and/or Wednesday/Thursday competitive league. Game times for the 2019 – 2020 season will start at 7:30 p.m. Levels of experience vary in both leagues. The costs to run the Club is mostly covered through several fundraising efforts and from membership (curling) fees. Curling is relatively inexpensive, regular fees being \$250 per season. A season typically includes 20 games per year. The Club is looking at expanding its membership in all age categories.

Of course, new curlers are welcomed with a no cost "Learn to Curl" sessions and ongoing lessons throughout the season.

Lakeside Curling Club also offers a Junior "Learn to Curl" program benefiting local area schools. If your school is interested in the program, kindly contact Ron at 780 983 7949.

Lakeside Curling Club embraces a Juniors program, offering curling at reduced rates (\$125 per season) to area minors, aged 8 to 18. Junior Curling takes place weekly. If you have a child who might be interested in curling, kindly contact Andrea at 780 797 3838.



PROPOSAL CALL FOR SNOW REMOVAL

Grande Yellowhead Public School Division No. 77 invites all interested contractors to submit a proposal for the removal of snow, grading and the sanding of all Division owned parking lots at the following locations:

Grand Trunk High School, & Evansview School in Evansburg, Wildwood School, and Niton Central School.

The successful contractor must demonstrate that all of the areas bid on will be cleaned and sanded within a 12 hour period after any significant snowfall.

The proposal call should therefore include the type and number of pieces of equipment available to clean, grade, sand and remove the snow from all parking lots and the hourly rates charged including travel time. Include WCB clearance letter and proof of liability insurance in proposal.

When submitting a proposal bear in mind the distance between the sites and restrictions on a single operator for a number of sites.

Preference will be given to those contractors that submit their company safety program including safe work practices and up to date equipment maintenance records.

Sealed quotes will be received by Grande Yellowhead Public School Division No. 77 attention:

Director of Facilities 3656 – 1st Avenue Edson, Alberta T7E 1S8

Telephone: (780) 723-4471 Toll Free: 1-800-723-2564 Fax: (780) 723-2414

Closing Date: Friday, September 27, 2019 at 2:00 p.m.

Grande Yellowhead Public School Division No.77 reserves the right to accept or reject any or all applications.

Made You LOOK!

See Advertising works! Place your ad today!

ACCESS DEMENTIA NURSES THROUGH HEALTH LINK BY CALLING 811

Free service offers effective strategies for patients, caregivers and families

Submitted by Alberta Health Services -- Public Service Announcement

Whether you are a person living with dementia, a concerned family member of someone diagnosed with dementia, or a caregiver, you don't have to deal with the stress and strain of managing a dementia diagnosis on your own. There is support available, 24/7.

Dementia advice accessed by calling Health Link can assist in navigating the dementia journey by connecting you with resources, answering questions, offering education and, most importantly, listening to your individual situation.

When you call 811, the Health Link nurse will ask questions about your situation to address any immediate concerns, and

then refer you to a specialized dementia advice nurse who is trained in supporting people living with dementia, as well as their caregivers. The dementia advice nurse will call back within 72 hours of your call to Health Link, and will discuss what type of support you need specific to your situation.

The dementia nurse service responds to the diverse needs of persons diagnosed with dementia, as well as their care partners, and ensures advice, education, information on community resources and emotional support, is easily accessible.

Since 2015, Health Link has made more than 2,500 referrals to the dementia nurse service.

To access the service, please call Health Link, provincially at 811.

Alberta Health Services is

the provincial health authority responsible for planning and delivering health supports and services for more than four million adults and children living in Alberta. Its mission is to provide a patient-focused, quality health system that is accessible and sustainable for all Albertans.



MISSING PERSON

Robert Anthony Howarth
D.O.B.: March 11, 1971

Please contact:

LARRY D. AYERS, Barrister and Solicitor,
#200A, 215 McLeod Avenue,
Spruce Grove, Alberta T7X 0G2



SERENITY
FUNERAL SERVICE



www.serenity.ca

780-542-3338 (24 hours) 5137-50 Avenue
Drayton Valley, AB

SERENITY FAMILY SERVICE SOCIETY - YOUR NOT-FOR-PROFIT SOCIETY

QUALITY SALES & SERVICE OF:

- DISTILLERS
- SOFTENERS
- CHLORINATION SYSTEMS
- MOBILE SHOCK CHLORINATION
- SEDIMENT, TASTE & ODOR FILTERS
- REVERSE OSMOSIS FILTERS (R.O.)
- CHEMICAL-FREE IRON FILTERS
- PIPE, WIRE & FITTINGS
- CHLORINE BLEACH, CHEMICALS & SALT
- MOBILE SERVICE VEHICLE
- POOL & SPA FILTERS & CHEMICALS

• FREE WATER ANALYSIS •
OUR WORKMANSHIP IS GUARANTEED!

962-6040 962-4060
15A South Ave., SPRUCE GROVE

Quality Water Services West LTD.

Formerly Ivan's Quality Water - UNDER NEW OWNERSHIP




FREE STORAGE WITH PREPAID PACKAGES



- WINTERIZE
- SHRINK-WRAP
- STORAGE
- SPRING RUN-UP

780.924.3255

www.ECKOMARINE.COM ALBERTA BEACH



A MESSAGE FROM MLA MARK SMITH: MACKINNON REPORT

Submitted by MLA Mark Smith | Drayton Valley – Devon Constituency

In the spring election the people of Alberta had a choice to make. Instead of re-electing an NDP government that had increased our debt from \$13 Billion to \$60 billion they elected a United Conservative government that campaigned on balancing the budget over the next 4 years and working towards eliminating the debt after that.

In May of 2019 the new Alberta government appointed the Mack-

innon Panel who's Chair, Janice Mackinnon, was a former Minister of Finance from the NDP government in Saskatchewan that had to tackle an even greater economic crisis in Saskatchewan during the 1990's.

The Mackinnon Panel was appointed to ... "conduct a "deep dive" into Alberta's fiscal situation, recommend a path to balance, and propose a realistic plan to start paying down the debt."

The Mackinnon Panel reviewed the Alberta government's finances including:

- Government's fiscal outlook
- Ministry expenditure trends and cost drivers.
- Develop a new fiscal framework that requires future balanced budgets by 2022/23 without raising taxes and a plan to retire the accumulated debt.

The Mackinnon Panel reported back to the Alberta Government on August 15, 2019 and their report was then studied by the government and recently released to the general public. The report's conclusions and recommendations are important and they are not necessarily going

to be easy to pursue. Here are some of the conclusions of the Mackinnon Report:

"Alberta's debt has increased rapidly in the last four years, \$13 billion to \$60 billion, and without a change in course will exceed \$100 billion in just four years."

"Growing deficits and debt mean more and more tax dollars are spent on interest rather than on programs ... the payments to service the debt in 2022/23 could pay for more than 30,000 teachers or 35,000 long-term care beds."

"(Alberta) is spending more per capita than the three other large provinces on most of its programs and services but often getting poorer results. Raising taxes to find more money for the current level of programs and services is not the answer."

"In some key areas, in spite of the higher levels of funding, the results achieved are no better and, in some cases, worse than in other provinces."

Alberta's spending would be \$10.4 Billion less every year if we matched the average spending of Canada's three largest provinces – Ontario, Quebec and British Columbia. Alberta would have a \$3.7 billion surplus instead of a \$6.7 billion deficit.

To balance the Alberta budget in four years, operating expense will need to drop by at least \$600 million by 2022-23, relative to 2018-19 actuals, and \$1.1 billion relative to the 2018-19 budget.

The Mackinnon Report clearly shows that increasing taxes to address our debt and deficits is not the answer. Alberta does not primarily have a revenue problem – rather, as the Mackinnon Report concludes Alberta has a spending and program efficiency problem. We need to ensure that the tax dollars we do collect and the government services we do provide are being used and delivered at least as efficiently as in Ontario, Quebec and British Columbia.

As we move forward into the fall budget the government is going to be reviewing and implementing many of the recommendations of the Mackinnon report. This will not be easy, but it is necessary, if we want to ensure that the people of Alberta continue to be able to have a government that has the financial capacity to deliver the services that all Albertans want and deserve.

NOTICE OF PUBLIC HEARING

In accordance with the requirements of Section 606 of the Municipal Government Act, as amended, the Council of Parkland County has scheduled a Public Hearing regarding the proposed adoption of the following Bylaw:

Bylaw: 2019-09	Date: Sept 24, 2019	Time: 9:30 am	Location: Parkland County Council Chambers 53109A Hwy 779, Parkland County, AB
-----------------------	----------------------------	----------------------	---

Proposed Bylaw 2019-09 Parkland County and Summer Village of Seba Beach Intermunicipal Development Plan

An Intermunicipal Development Plan (IDP) is a statutory document prepared with two (or more) municipalities that share a common border, and where at least one member is not a part of a growth management region. An IDP ensures future development and land use policy are coordinated between municipalities. Parkland County and the Summer Village of Seba Beach, under the direction of Section 631 of the Modernized Municipal Government Act, have agreed to jointly engage in an IDP. This plan has been developed to reduce the possibility of any potential conflicts between the municipalities and to ensure the relationship remains strong, transparent and collaborative in the future.

Hearing Procedure

This is a formal Public Hearing and Council is prepared to hear and receive formal submissions and presentations (verbal or written) from those who wish to speak to the proposed Bylaw. Written submissions or presentations may either be submitted in advance to Planning & Development by **4:00 P.M. on September 13, 2019**, or submitted at the commencement of the Public Hearing on September 24, 2019.

Anyone wishing to make a verbal presentation to Council must notify Planning & Development Services in advance of the Public Hearing by **4:00 P.M., on September 13, 2019**. Verbal presentations at the Public Hearing will be limited to a maximum of 10 minutes. Anyone wishing to make a verbal presentation who has not made prior arrangements may be allocated a time at the commencement of the Public Hearing. Council advises that this is your last opportunity to comment on the proposed Bylaw as Council is unable to receive further submissions after the Public Hearing is closed.

Copies of Proposed Land Use Bylaw Amendment 2019-01

Copies of the proposed IDP are available free of charge during regular business hours (8:30 A.M. to 4:30 P.M., Monday to Friday) from Planning & Development Services at Parkland County Centre. They are also available on the County's website at <https://www.parklandcounty.com/en/county-office/inter-municipal-planning.aspx>. If you have any questions please call 780-968-8888 and dial extension 8393 for Martin Frigo, Manager, Long Range Policy Planning, Planning and Development Services.

The personal information you provide will be used for the purpose of the items described above and is collected under the authority of Section 33 (c) of the Freedom of Information and Protection of Privacy (FOIP) Act. If you have any questions about the collection, use, and disclosure of this information, please contact the FOIP Coordinator at Parkland County, 53109A HWY 779, Parkland County, Alberta T7Z 1R1 (780-968-3229) or email foip@parklandcounty.com

Trans Mountain Expansion Project – CONSTRUCTION NOTIFICATION

Yellowhead | September 2019 – December 2022*

Trans Mountain is beginning the construction of the Trans Mountain Expansion Project between Highway 60, Parkland County and west of Hinton, AB this fall. Construction will commence in a series of phased activities along the pipeline right-of-way through Parkland County, Spruce Grove, Stony Plain, Wabamun, Yellowhead County, Edson and Hinton, AB from September 2019 to December 2022.* The schedule of construction activities and map below provide more information about the communities, timing and construction activities. Detailed explanations of the construction activities follows the map.

**Dates are subject to change and commencement of work is subject to necessary regulatory approvals and permits.*

The public's patience is appreciated as we work to minimize any disruptions or inconvenience associated with Project activities.

WHAT YOU MAY NOTICE

During the course of these activities, the public may notice:

- Construction equipment and vehicles, and workers on-site
- Increased activity and intermittent construction-type noise in proximity to the worksite
- Odours related to approved clearing activities (local burning restrictions will be strictly followed)
- Intermittent, temporary traffic delays in order to move equipment in and out of the worksites
- Signage in locations where Project activities will take place near recreation areas
- Additional directed lighting at the worksite
- Traffic delays or increase in volumes

Trans Mountain's goal is to maintain safe work environments and minimize any impacts of these activities to the public and the environment. When work commences, the following measures will be in place to manage these impacts:

- Hours of work:
 - Typical working hours will be 7 am to 7 pm
 - Activities will follow a six-days-on and one-day-off schedule
 - This will include work on Sundays and some statutory holidays
- Contractors will abide by applicable noise bylaws and in accordance with Trans Mountain's Noise Management Plan, as approved by the Canada Energy Regulator

- Dust from construction traffic will be controlled using best industry practices, including water trucks and street sweepers
- Lighting directed only on areas of work for worker safety
- Tree and vegetation removal work will comply with necessary approvals. Registered professional foresters and certified arborists will be on-site as needed.
- Construction-related traffic will follow site-specific traffic management plans to minimize impacts during peak hours
- Construction vehicles will not occupy off-site public parking spaces
- Work will be monitored by Environmental Inspectors

Trans Mountain conducts all work under its Environmental Protection and Pipeline Protection Programs to ensure compliance with applicable regulations and requirements.

SCHEDULE OF CONSTRUCTION ACTIVITIES

COMMUNITIES	APPROX. DATE RANGE	ACTIVITIES
NORTH GATE EDSON	Aug 2019 – Oct 2019	Stockpile site & construction yard development
ALL	Aug 2019 – March 2020	Preparing the right-of-way
AREA 1 (see map)	Sept 2019 – March 2020	Pipeline construction including: <ul style="list-style-type: none"> • Utility relocation • Pipeline construction • Horizontal directional drilling • Watercourse crossings
GAINFORD	Sept 2019 – Sept 2021	Pump station construction
HINTON	Sept 2019 – March 2021	Pump station construction
WOLF	Oct 2019 – Sept 2021	Pump station construction
EDSON	Oct 2019 – March 2021	Pump station construction
AREA 2 (see map)	June 2020 – Feb 2021	Pipeline construction including: <ul style="list-style-type: none"> • Utility relocation • Pipeline construction • Horizontal directional drilling • Watercourse crossings
ALL	Jan 2020 – March 2021	Hydrostatic testing & valve installation

Trans Mountain Expansion Project – CONSTRUCTION NOTIFICATION

Yellowhead | September 2019 – December 2022*

CONSTRUCTION ACTIVITY DETAILS

Environmental Protection

As part of the Trans Mountain Expansion Project, extensive work has been conducted to determine environmental impacts and mitigation measures to reduce those impacts. Our goal is to protect the environment, have as little impact as possible and, where we do have an impact, ensure we return the land to a similar function.

We completed field studies between 2012 and 2018 along the pipeline corridor studying a wide range of environmental features, including wildlife, fisheries, plants, species at risk or species of special status, soils, heritage resources, traditional land use and air and greenhouse gas emissions. Following the field studies, we conducted extensive analysis to predict the effects associated with the Project, including those that could be caused by construction, operations, decommissioning or abandonment, as well as potential incidents and malfunctions. The information and analysis were used to develop our unique Environmental Protection Plans.

Mitigation strategies for avoiding or reducing potential environmental effects will be employed at all stages of the Project. For more information about environmental mitigation methods and our Environmental Protection Plans, visit transmountain.com/environmental-protection-plans.

Stockpile Sites and Construction Yards

In 2017, Trans Mountain began preparing and activating two sites in Yellowhead to support construction-related activity: (i) Northgate and (ii) Edson.

These sites are being used for:

- Delivery and storage of construction materials and equipment, including stockpiling and staging of pipe
- Installation of temporary office buildings or trailers to support construction crews building the pipeline and associated facilities
- Transportation of materials and equipment to and from the site

Preparing a Right-of-Way

There are a number of steps involved in preparing the right-of-way for the arrival of construction crews and equipment, including clearing, flagging and installing temporary infrastructure. They include:

- Alberta One Call, locating and marking of all buried facilities
- Surveying
- Flagging and staking the right-of-way and any temporary workspace required for construction

- Installation of signage
- Clearing trees and vegetation from pre-approved areas essential for construction
- Disposing or burning of unsalvageable timber, like branches, tree limbs or shrubs left behind from clearing

Throughout these activities, we will implement environmental mitigation measures outlined in our Environmental Protection Plans at transmountain.com/environmental-protection-plans.

Utility Relocation

In some areas, where new right-of-way areas are required, Trans Mountain will work collaboratively with TELUS and/or BC Hydro to relocate utilities. This should not impact your services but you may see work crews in your area.

Pipeline Construction

Once clearing is complete and access to the right-of-way has been established, crews will perform a series of steps within the construction footprint to facilitate installation of pipe in the ground:

- Remove topsoil and grade the surface to prepare for the arrival of bigger equipment and delivery of pipe segments
- Remove pipe from delivery trucks and lay down along right-of-way
- Weld pipe segments together and apply a protective coating
- Perform non-destructive examinations to ensure quality of welds
- Dig a trench and lower in pipe sections
- Backfill the trench to bed and protect the pipe
- Cleanup and restoration activities. These include returning the right-of-way to its original grade, replacing any topsoil and replanting vegetation.

Where the pipeline crosses a body of water, one of three methods of construction will be used. The techniques for each are site-specific:

- Isolated method
 - The stream is temporarily dammed and rerouted through temporary pumps or using piping often referred to as a flume. The pipe is then installed using conventional construction techniques before the dam is removed and the stream returned to its normal flow path. Great care is taken to preserve the environmental features around the stream, such as the wildlife and aquatic habitat provided within the riparian zone.

Trans Mountain Expansion Project – CONSTRUCTION NOTIFICATION

Yellowhead | September 2019 – December 2022*

- Trenchless method
 - This method leaves the bed and banks relatively undisturbed. A horizontal directional drill is used to drill under the watercourse, creating a path to pull the pipe back through. Horizontal directional drilling is only possible in the right geotechnical conditions and requires special environmental measures to be put in place.
- Open-cut method
 - If the other techniques cannot be used for environmental or geotechnical reasons, we will use an open-cut crossing of the watercourse. Open-cut watercourse crossings trench directly through the watercourse following the conventional construction methodology.

Engineering feasibility assessments have been made to determine the most suitable crossing techniques to be used at each water crossing. Regulatory guidelines and standards will apply to all crossing methods, as will appropriate erosion and sediment control measures to ensure the safety of the body of water.

Learn more about pipeline construction and watercourse crossings at transmountain.com/building-a-pipeline.

Horizontal Directional Drilling

There will be horizontal directional drilling (HDD) or direct pipe completed in the following areas:

- Highway 16 & Range Road 40
- Pembina River
- McLeod River
- Wolf Creek
- Highway 16 & CN Railway (direct pipe)
- Sundance Creek
- Hardisty Creek

HDD technique is used where the pipeline crosses roads and railways, for select watercourse crossings, and in places with restricted workspace such as in some urban or residential areas. This technique involves set up of a drill rig on one side of the crossing and equipment along the drill path. The pipe is assembled and welded on the opposite side to the drill setup, with the pipe string connected to the drill assembly and pulled back through the drill path. The direct pipe technique is similar to HDD, except the pipe is assembled and welded on the same side as the drill setup.

For more information on horizontal direction drilling, please visit transmountain.com/building-a-pipeline.

Performing a Hydrostatic Test

Before the pipeline is ready to transport oil, a hydrostatic test is performed. A hydrostatic test is a way pipelines can be tested for strength and leaks. The test involves filling the pipe system with water and increasing pressure of the pipe to the specified test pressure. Should there be any leaks or weaknesses, they can be identified through this test and rectified. Hydrostatic testing is the most common method employed for testing pipes.

Valve Installations

Valves are installed at intermediate locations as required by the pipeline design and the Canadian Standards Association pipeline code. The valves are used once the line is operational to shut off or isolate part of the pipeline. Valve installation will take place along the pipeline route once hydrostatic tests are completed.

Pump Station Construction

Pump stations contain electric motors to drive the pumps that maintain the pressure and flow rate in the pipeline. Eleven new pump stations will be added along the route and one new pump station will be added on the existing pipeline. Ten of the new pump stations will be added at existing pump station facilities.

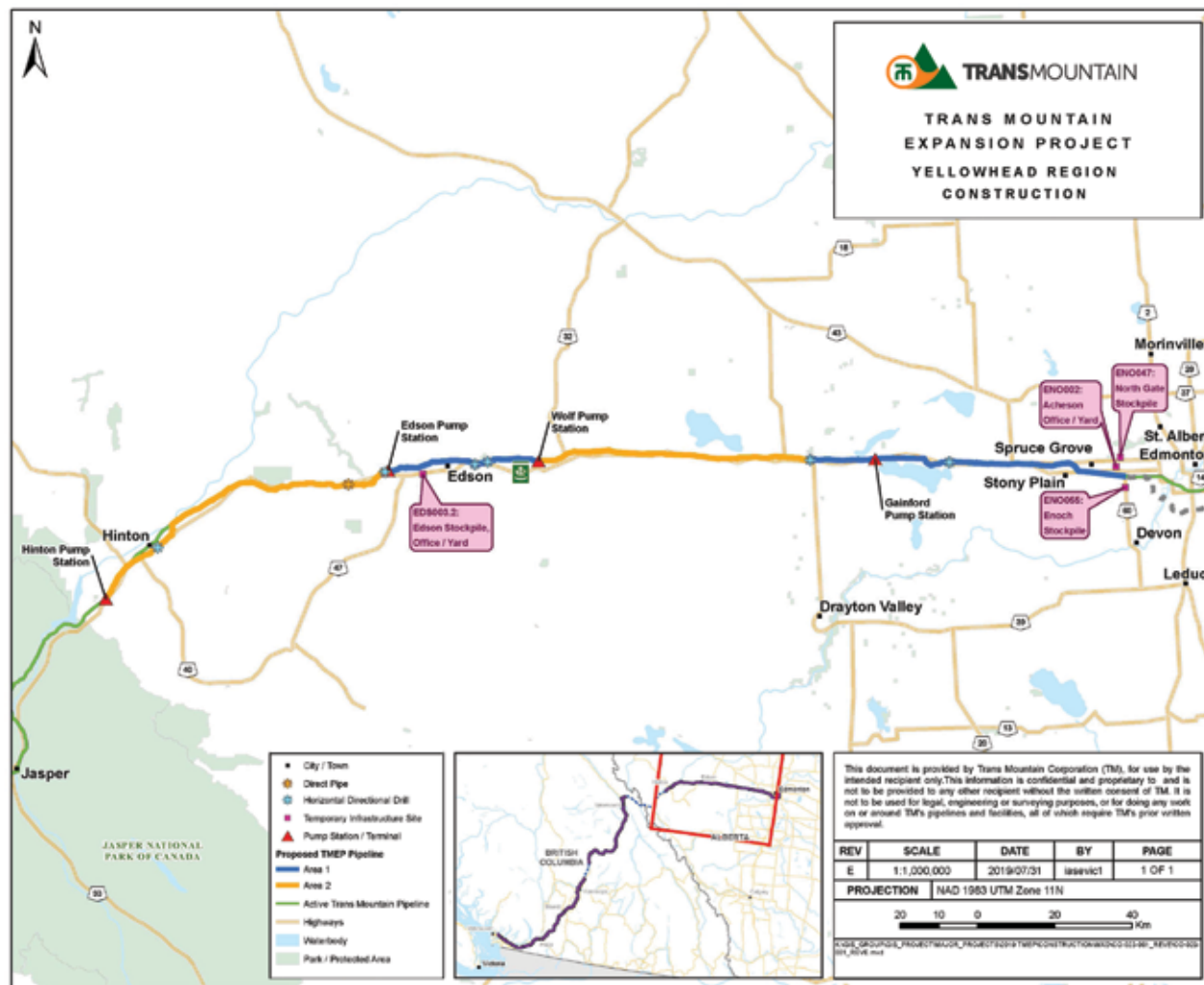
Construction of the pump stations involves the following steps within the pump station footprint:

- Site preparation, including clearing of any vegetation and installing fencing
- Install piles and pour concrete
- Mechanical equipment installation
- Piping and tie-ins (welding)
- Construction of structural steel and buildings
- Electrical installation and instrumentation
- Insulation and pre-commissioning
- Cleanup and restoration activities

Pump station construction activities will take place over an 8 – 10-month period (timing subject to change).

Trans Mountain Expansion Project – CONSTRUCTION NOTIFICATION Yellowhead | September 2019 – December 2022*

CONSTRUCTION AREA



Learn more about
construction in your area
and sign up for updates
at transmountain.com

For more information,
please contact:
info@transmountain.com
1.866.514.6700

In case of a pipeline
emergency or to report
odours? Call 24 hours:
1.888.876.6711

Le présent message contient des renseignements importants.
Si vous avez besoin d'une traduction, veuillez communiquer avec
info@transmountain.com.



VALENTUS

YOUR LOGICAL SOLUTION TO WEIGHT MANAGEMENT

CALL (780) 907-8642 FOR **FREE** SAMPLE

SLIMROAST Optimum

DARK ROAST COFFEE

Exclusive functional coffee formulated to:

- Crush Cravings
- Increase Energy
- Metabolize fat to Energy
- Help Regulate Blood Sugar
- Improve Mood & Focus
- Boosts Circulation & Oxygen delivery

TO UNLOCK THE SECRET OF WEIGHT MANAGEMENT! PUT THE POWER OF SLIMROAST OPTIMUM IN YOUR CUP!

"Thrilled with my results! I lost 9 lbs and an amazing 11 inches off my abdomen! Works wonderfully!"

"Managed to lose 7 lbs very fast & much more in inches the way my clothes are fitting now! 1 cup a day is all for me!"

"Down 17 lbs and fitting into clothes that were way to tight before!"

"No dieting, first month finished. Down 7 ½ lbs 8.5 inches. Awesome product!"

www.ValentusTour.com/Ladybug (780) 907-8642

FEDERAL GENERAL ELECTION UNDERWAY

Submitted by Elections Canada

The 43rd federal general election is currently underway. Electors have many options to vote, including at their assigned polling station on election day (Monday, October 21) or during advance polling days (Friday, October 11 to Monday, October 14). They can also vote at any Elec-

tions Canada office across Canada or by mail (deadlines apply).

Elections Canada offices are now open in each of the 338 federal electoral districts. Electors can visit any Elections Canada office to get information, register, or vote. All Canadian citizens who are at least 18 years old on election day are eligible to vote.

To vote, they must:

- Be registered. Most electors

are already registered. To register online or to check or update their voter registration, electors can visit elections.ca/register. They can also visit an Elections Canada office, or call us at 1-800-463-6868 to request a mail-in registration form. Electors can register at any time between now and October 15. If they miss this deadline, they can register at the polls on election day, just before they vote.

• Show proof of their identity and address. There are many different pieces of identification that can be used to prove identity and address. The full list is available online.

Elections Canada is an independent, non-partisan agency that reports directly to Parliament.

For daily election updates, subscribe to our news service at elections.ca.

THANK YOU TO ALL OUR VOLUNTEERS

Submitted by Wildwood & District Agricultural Society

The Wildwood & District Agricultural Society would like to extend a heartfelt Thank You to all our volunteers than helped out with this years event!

THANK YOU:

Barry & Connie Fahrion
Jean Riehl
Tom Whaling
Dawna Heske
Dianne Benz
Eva Schiller
Harold & Laura Nodeland
Max Schiller
Ken Carlstrom
Wyatt Schiller

Levi Leask
Darius Kruger
Georgina Caves
Brody Tuck
Carol Riehl
Gwen Brodersen
Elmer Riehl
Kyra & Denelle Brodersen
Chrysti Riehl
Shelley Kudera
Paige Riehl
Michelle Burtcher
Dylan Reynolds
Malissa Lea
Mark Steinbusch
Pat Foisy
Gene Campbell & Katie
Paige & Clayton Foisy
Donna Powell

Wilma Swinkels
Owen & Davin Kary
Alison Thomson
Carl Leakvold
Wildwood Fire Department
John Mochniuk
Micheal & Alyssa Schatz
Sylvia Martinetz
Keelin Trippel
Anna Hutchison
Tom Myrholm
Lori Kazlauskas
Mike Pratt
Vernice Myschuk
Willem Swinkels
Annette Bahrynowski
Doug Carr
Vivian Lepine
Dan Hardy

Julie Douglass
Richard Parker
Brenda Russell
Werner krah
Caroline & Wendy Bahrynowski
Erica & Sebastian Lind
Triston Norman
Hannes Meier
Aiden Brown
Jessica Rothen
Saphia Schubert
Melanie Seibold
Jana Heitmann
Annika Lubich

Also, in our sponsors Thank You, we accidently left out CFCW and Mader Worx Ltd (Jeremy & Courtney Apoll). They sponsored our greased pig. Big Thank You to them!

GROVE HEARING CLINIC

Hear what
you've been
missing...

960-2960
1-866-960-2960

Senior
Discounts



Full
Service &
Repair

Full
Hearing
Assessments

HOURS OF OPERATION: 9am – 5pm Weekdays

3rd party billing (AADL, WCB, DVA, FCH) • Personal 0% Financing if Needed

For The Latest Technology In Hearing Aids & Assisted Living Device Stop By & See Dawn

#220-70 McLeod Ave - Westland Market Mall, Spruce Grove

SCREEPY, CRAWLY HALLOWEEN COLORING CONTEST



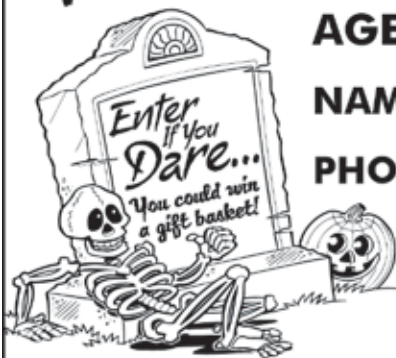
AGE GROUPS: 3-4 YRS | 5-6 YRS | 7-9 YRS | 10+ YRS

NAME: _____ **AGE:** _____

PHONE: _____ **TOWN:** _____

Entries must be recieved by October 26, 2019.

**Mail to: Jack O'Lanterns, c/o Community Voice
Box 3595 Spruce Grove, AB T7X 3A8**



WE WANT TO EARN YOUR BUSINESS! • WE WANT TO EARN YOUR BUSINESS! • WE WANT TO EARN YOUR BUSINESS! • WE WANT TO EARN YOUR BUSINESS! • WE WANT TO EARN YOUR BUSINESS!

• WE WANT TO EARN YOUR BUSINESS! • WE WANT TO EARN YOUR BUSINESS! •

WE WANT TO EARN YOUR BUSINESS! • WE WANT TO EARN YOUR BUSINESS! • WE WANT TO EARN YOUR BUSINESS! • WE WANT TO EARN YOUR BUSINESS! • WE WANT TO EARN YOUR BUSINESS!

FINAL MONTH OF EMPLOYEE PRICING PLUS!
IT ALL ENDS SEPTEMBER 30TH!



HOME OF TIRES4LIFE
 The Ultimate Loyalty Program!

EMPLOYEE PRICING PLUS
 — FINAL MONTH —



PLUS
 UP TO
\$1500
 MORE VALUE THAN
 OTHER FORD
 DEALERS!

YOU PICK FREE Maintenance Package or FREE Accessories or
 CASH BACK or You Tell Us and Write Yourself a **BETTER DEAL!**

2019 FORD ESCAPE SEL

One of Canada's most popular SUVs, this unit features power lift-gate, remote start, dual zone A/C, Ford Pass Connect and more! The perfect family mover!

MSRP: \$37,199
 Drayton Valley Ford
 EMPLOYEE PRICE
\$32,748

ONLY
\$198
 BI-WEEKLY OAC



**YOU SAVE
 \$4,481**

STK# 19DSP013

2019 FORD F350 LARIAT CREW

On the road or on the job site this 2019 F-350 Lariat Crew features a 6.7L Power Stroke V8 diesel with Torqshift HD tranny and trailer tow package.

MSRP: \$85,409
 Drayton Valley Ford
 EMPLOYEE PRICE
\$77,222

ONLY
\$607
 BI-WEEKLY OAC



**YOU SAVE
 \$8,187**

STK# 19DFT083

YOU PAY WHAT WE PAY
PLUS GET MORE AT DRAYTON VALLEY FORD

WE WORK IN THIS COMMUNITY!
 WE LIVE IN THIS COMMUNITY!
WE ARE LOCAL!

DRAYTON VALLEY
 PR UD

(780) 542-4438
 1-866-841-3673
 5214 POWER CENTRE BLVD DRAYTON VALLEY, AB

Disclaimer: Drayton Valley Ford is a full disclosure AMVIC dealer. Vehicles illustrated may not be exactly as shown. (19DSP013) 2019 Ford Escape SEL. \$197.75 bi-weekly OAC. 60-month/20-thousand kilometre lease at 2.79% OAC. Guaranteed Future Value: \$11,531.69. (19DFT083) 2019 Ford F350 Lariat Crew Diesel. MSRP: \$85,409.00. Employee Pricing Discount: \$8,186.75. Selling Price: \$77,222.25. GST: \$3861.11. Cost of Borrowing: \$13,628.92. Amount to finance: \$81,083.36. Term: 72-months at 5.29%. Payment: \$607.33 bi-weekly. All payments include \$495 Admin Fee and GST. Please see dealer for more details and information.

• WE WANT TO EARN YOUR BUSINESS! • WE WANT TO EARN YOUR BUSINESS! •

BACK-TO-SCHOOL SNACKS

Submitted by **Alberta Health Services – ahs.ca**

Your children are starting back to school this month, and you need healthy ideas for lunches and snacks. Remember that some schools don't allow nuts or peanuts because of allergies.

Offer children water when they're thirsty, and vegetables and fruit instead of juice, even if it's 100-percent juice.

Choose these healthy snacks every day:

- Fresh or frozen vegetables
- Fresh or frozen fruit
- Fruit cup in fruit juice or water
- Unsweetened applesauce
- Whole grain bread
- Whole grain crackers
- Whole grain naan, roti or pita
- Whole grain tortilla or wrap
- Whole grain cereal
- Hummus
- Eggs
- Nuts or nut butters (check first to see if allowed at school)
- Meat, chicken or fish
- White milk

- Cheese or cheese string
 - Fortified plain soy beverage
 - Plain yogurt
- Choose these snacks some days:
- Flavoured fortified milk or soy beverage, such as chocolate, strawberry or vanilla
 - Fruit-flavoured yogurt
 - Baked crackers

- Muffin
 - Granola bar
 - Dried fruit and nut mix
- Choose these snacks less often. These snacks are high in sugar, fat and/or salt:
- Candy or fruit gummies
 - Potato chips or fried snacks
 - Instant dried noodles

RIDING UPDATE

Submitted by **Jim Eglinski, MP – Yellowhead**

Week of September 2, 2019

Hope you all had a relaxing Labour Day on September 2nd with family and friends.

Did you know Alberta joined Confederation 114 years ago on September 1st?

On Tuesday, I was in the Edson office answering emails/letters and returning phone calls from many constituents. That afternoon, I attended a Rotary lunch at Galloway Station Museum.

Wednesday, I worked in the riding office catching up on issues, returning phone calls and answering emails.

Thursday, I had the pleasure of visiting Warburg School where I toured the school's latest improvements. That afternoon I met with constituents in the Breton area.

On Friday, I was in Rocky Mountain House and had the pleasure of visiting with former Mayor, Fred Nash and later that day I met with constituents in the Caroline area.

On Saturday, I will be in Rocky Mountain House attending the 'Aviation Fly-In,' meeting with local constituents and visiting pilots. Later, I will be driving to Fallis for their '12th Annual Fallis Show and Shine - Classic Car Show' at the Fallis Community Association. I love antique cars. In fact, during retirement I am planning to finish my 1939 Buick Coupe! It has been a ten-year journey. Wish me luck.

Week of September 9, 2019

On Monday, I was in the riding office answering phone calls, emails and letters.

Tuesday, I was at Warburg High School for their 'Community

Awareness Night' where I mingled with constituents as they enrolled their children in activities and were updated on access to services in the area.

Wednesday, Her Excellency the Governor General, at the recommendation of the Prime Minister, issued a proclamation to dissolve the 42nd Parliament. The 2019 federal election is on! Voting date is October 21st. Even though the election was called, I am still your Member of Parliament until election day.

Thursday, I was back in the riding office catching up on emails and phone calls.

Friday, I was at Wildwood Legion's 75th Anniversary Steak Dinner.

Saturday, I will be attending an 'Open House' to celebrate, Corrie Halliwell's 90th Birthday Party.

My next update will be for the week of September 16th.

Adventures in Aging Conference

Thursday October 10, 2019
Holy Trinity Catholic Church Hall
200 Boundary Road - Spruce Grove
ADVANCED TICKETS ONLY!
 Doors open at 8:30 am



\$25.00
Incl. Lunch
 For more info
 call Stony Plain
 FCSS
 780-963-8583

Tickets Available at:

Stony Plain FCSS
 #107, 4613 52 Ave.
Spruce Grove FCSS
 505 Queen Street
Parkland County Centre
 53109A HWY 779
 OFFICE HOURS 9am to 4pm
 Closed during lunch

PRICE REDUCED



14K White Gold
Diamond Ring
 Brand New, Still
 in Box, Tags on!
Asking \$2,745



14K White Gold
Engagement Ring
 Brand New, Still
 in Box, Tags on!
Asking \$2,300



10K White Gold
Diamond ring
 Brand New, Still
 in Box, Tags on!
Asking \$1,375

Call for more information, or to view the ring 780-907-8642

*It's time to fall in love with
your home all over again!*

fall HOME **RENO** **GUIDE**

SEPTEMBER 2019





Fall HOME RENO GUIDE



FIX WET SPOTS IN THE LANDSCAPE

Grass that is greener than green coupled with perfectly manicured shrubs set the tone for impressive curb appeal. Creating such landscapes requires hard work, and while doing such work, homeowners may find they have to contend with certain issues that are adversely affecting their lawns and gardens.

Wetness in a landscape is one problem many homeowners encounter. Wet areas in a lawn not only become muddy and messy, but they also can cause permanent damage to the grass. Puddles can kill the roots, while wet spots can freeze and damage the lawn. Particularly problematic spots can remain soggy for days, while some people find their yards are seemingly always wet.

Wet spots can be caused by various factors. Compacted soil may prohibit adequate drainage, as can heavy clay or less porous soil mate-

rials. Landscape grading issues may be another concern. Neighbors who have home downspouts that extend into their yards may be pushing roof water into other areas, contributing to puddles and problems. Understanding what is causing the issue makes it easier to treat.

Heavy, compacted soil can be aerated and amended with sand and compost. Tilling the soil and mixing in these soil additions may help prevent further drainage issues.

Homeowners may need to have their property professionally regraded to alleviate wet issues. Otherwise, the installation of a drainage system may be necessary. An underground trench or pipe can redirect water from wet areas to sewers. (Check with local municipalities about the legality of draining water properly.) Another potential solution is to build up low-lying areas that collect

water with soil.

Homeowners who want the path of least resistance may consider embracing the wet spot of their landscape by turning it into a man-made pond. Lining a pond and installing an air pump will help circulate the

water and keep it from becoming a breeding ground for mosquitos.

Water issues in a landscape can be a tough nut to crack. But identifying the problem can help homeowners resolve soggy lawns and landscapes.

MASTER PLUMBER

36 YEARS EXPERIENCE

780-655-8402

PLUMBING & HEATING SERVICES

PRICE BY THE JOB NOT THE HOUR!

Furnace and Air Conditioning Rebate Special



Ashly-Lane Interiors Ltd.
WINDOW COVERINGS

**Fall Sale* up to
40% Off Selected Items*

Valances • Sheers • Drapes
Blinds • Fabric • Hardware

Residential • Commercial
40 Years Experience

4900 - 51 Avenue, Stony Plain, AB
780-963-5563



TOP & DROP TREE SERVICES

Family owned and
operated since 1991

780-924-2014

Home hardware Drayton Valley
building centre **542-4044**
ON US: 1-888-542-9663

**For ALL your
renovation and
material needs,
SHOP LOCALLY!**

4221 - 50 Street Drayton Valley

Family run, local business, we care!
**BEST CISTERN
SEPTIC SOLUTIONS**

**Cistern and Septic Inspection,
Installation and Repair!**

Septic planning, design, installation
by government certified installer(s)

New Installs Available. Reasonable Rates.

Let Us Handle the Dirty Work

780-668-4306

best-cistern-septic-solutions.com





HOME INSPECTIONS 101

The process of buying a home can be unlike any experience prospective buyers have ever had. After finding a home they like and coming to an agreement on a sale price with the seller, buyers can expect to add many items to their to-do list. One of the first things to jot down on that list is scheduling a home inspection.

Home inspections are a vital part of the home buying process. Such inspections can protect buyers as they're on the cusp of making what will likely be the most significant investment of their lives. Understanding the home inspection process can help buyers during an exciting yet potentially nerve-racking time in their lives.

What is a home inspection?

The American Society of Home Inspectors defines a home inspection as an objective visual examination of the physical structure and systems of a house. Inspectors will conduct visual examinations from the roof to the foundation of the home. Additional structures on the property, such as sheds or detached outdoor living areas, are not typically included in the examination.

What do inspectors examine?

The ASHI notes that inspectors will examine the condition of various parts of the home. The heating system, central air conditioning unit, interior plumbing and electrical systems, roof (though inspectors

will not climb onto the roof), attic and insulation will be examined. Inspectors also will examine walls, ceilings, floors, windows, doors, the foundation of the home, basement (or crawl space), and structural components.

Can a home fail inspection?

Homes cannot fail home inspections, which are just assessments of a home's existing condition. Municipal inspections are separate inspections conducted by government agencies to verify that a property is in compliance with local codes. Home inspectors will provide detailed reports describing the condition of a home and indicate if any repairs are in order.

Do I really need a home in-

spection?

A home inspection is a vital component that can help buyers make the most informed decision possible. Forgoing an inspection can leave buyers vulnerable to potentially costly repairs and issues with a home that might have been detected with a proper home inspection. In addition, some lenders insist that buyers have home inspections conducted before they will allow them to borrow money.

Home inspections can protect home buyers as they prepare to make the most significant financial investment of their lives. More information about inspections can be found at www.homeinspector.org.

Wabamun
Home hardware

See Us
For Your
Renovation Needs
Lumber, Paint, etc.

Wabamun **892-4969**

SERVING ENTWISTLE AND AREA FOR OVER 30 YEARS

Entwistle
CONCRETE
PRODUCTS LTD.

SAND & GRAVEL SALES

PH: (780) 727-3525

Dan McCracken Entwistle, AB
www.entwistleconcrete.ca

GMP
ONTRACK
INC.

George Perras
Phone 780-892-4488
Cell. 780-719-2687

Commercial • Farms • Acreages
Brushing
Fence Lines • Right of Ways • Fire Guards • Walkways
Don't Dig & Burn, Mulch & Preserve
General Excavation
Landscape • Site Prep • Clean Up
Snow Clearing/Removal
Light Equipment & General Hauling

WOODLAND
LUMBER

WOODLAND
HOME CENTRE

T: 780-727-2964 F: 780-727-2220
53314 Range Road 75A, Evansburg, AB
admin@woodlandlumber.com



EXTERIOR RENOVATIONS THAT IMPROVE CURB APPEAL

Neglecting a home's exterior can be a disservice to homeowners, particularly those looking to increase the value of their homes. Curb appeal is important, as a home's appearance can greatly affect prospective buyers' perceptions.

Knowing which projects can offer the most bang for their remodeling buck can help homeowners make the right choices when improving the exterior of their homes. The following are some areas where homeowners can direct their focus if their end goal is a great-looking home with added value, as determined by the 2019 "Cost vs. Value Report" from Remodeling

magazine. This report compares the average cost of 22 remodeling projects with the value those projects retain at resale across 136 markets.

- **Garage door replacement:** Homeowners can recoup 97.5 percent of their investment on a new garage door. This remodel tops the list for good looks and value. The average cost of \$3,611 is for replacing an existing two-car garage.

- **Manufactured stone veneer:** Replacing a portion of vinyl siding with stone veneer can greatly improve curb appeal, adding style that can set a home apart. Homeowners can expect to recoup a 94.9 percent return

on their investment.

- **Wood deck addition:** A wooden deck on the rear or side of a home enhances homeowners' ability to enjoy the outdoors year-round. A wood deck addition recoups 75.6 of the cost of homeowners' initial investment.

- **Siding replacement:** Not only does old or weathered siding look unsightly, it can impact the energy efficiency of a home. Even though a siding replacement project is costly - at roughly \$16,000 - it offers a 75 percent return and peace of mind that the home is being well-protected from the elements.

- **New entry door:** Re-

placing an existing door with a 20-gauge steel door complete with clear dual-pane half-glass panel, jambs and an aluminum threshold with composite stop gets homeowners 75 percent of their initial investment back at resale. Improving the door isn't all about good looks, either. A door that isn't well-insulated or secure can be problematic.

In addition to these improvements, homeowners would be wise to focus on some upgraded landscaping, an upgraded roof, new windows, and improved exterior lighting as surefire ways to add curb appeal and potential value to their homes.

Top Quality Flooring Products

- Carpet • Vinyl • Lino
- Hardwoods • Laminates
- Vinyl Tiles • Porcelain
- Floor and Wall Tiles
- Stone Tiles
- Ditra and Kerdi
- Shower Installs

Professional Installers
Free Estimates

Quality You Can See.
Comfort You Can Feel.
Value You Can Appreciate.

Opening Specials

Soft Touch Carpet installed for **\$3.25/sq ft**
in 6 colors with under pad

3Mil Vinyl Planks installed for **\$4.49/sq ft**
with 20 year wear layer water proof 8 colors

White Marble Floor Tiles **50% OFF**
polished 12x24

Pro Finish Flooring Ltd

#6 - 20 McLeod Avenue | Spruce Grove, Alberta T7X 1V4
TEL: 587-286-2626 | pro-finishflooring@hotmail.com

HOURS: Monday to Friday 9:00AM-5:30PM Saturday 9:00AM-4:30PM



DARREN RAYMOND
JOURNEYMAN CARPENTER

PH: 780-241-2711
bangoncarpentry@hotmail.com



ECONOMY

**ASPHALT
DRIVEWAYS**

- Paving • Asphalt or Concrete • Repairs
- Pararamps • Seal Coating • Crack Filling
- Snow Removal • Sanding • Rock Chip Sales

CHARLES MACDONALD

PH: 780-962-5581 CELL: 780-777-0914

FAX: 780-962-9146





ARRANGE FURNITURE, DESIGN ROOMS MORE EASILY

Redesigning a room can involve several steps, from choosing a paint palette to taking down walls to buying new

furniture. When it comes time to put the space back together, finding an appealing furniture arrangement or layout renova-

tion that maximizes space efficiently can be challenging if it requires moving heavy pieces of furniture around. To make such tasks easier, homeowners can rely on a bevy of room-designing apps that enable one to manipulate a room in the digital realm.

Some people have great spatial reasoning and can work out designs in their head or by plotting items on graph paper. But many homeowners may need a little extra help. By figuring out a floor plan, anyone can start laying out their furniture and other design elements.

Room planners come in var-

ious forms, from free downloads available through popular furniture companies to pay-for-use, third-party software. The following are some of the more popular room planners homeowners can utilize.

- **Amikasa:** This app enables users to create room layouts using furniture and more from real brands. It features a walk-through mode so you can take a virtual tour afterwards.

- **Autodesk Homestyler:** Brought to you by the company that produces professional design programs for architects and designers, like

HAMMUR Construction

For ALL Your Carpentry Needs
~ Residential or Commercial ~

Elvis Murray (780) 542-1693
Owner/Operator fax: (780) 542-7651
Drayton Valley, Alberta email: eb4321@telusplanet.net

"You can COUNT ON US!"

THE STUMP GRINDER

Mechanical
Stump Grinding

Andre
Phone: 780-413-6421
stumpgrinder@shaw.ca

B.W. EAVESTROUGHING

Specializing in:

- ⇒ Residential 5"
- ⇒ Commercial 6"
- ⇒ Soffit
- ⇒ Gutter Clean System
- ⇒ Free Estimates
- ⇒ Fascia

BRAD (780) 699-1880



VISIT US

**FOR ALL YOUR HOME
RENOVATION NEEDS**



North Central

4919 50 AVE - STONY PLAIN, AB

fall HOME RENO GUIDE



Arrange Furniture, Design Rooms More Easily

AutoCAD, Autodesk and Revit, this user-friendly technology allows you to create 3D renderings and move around furniture, decorative items, appliances, and other elements right in the app.

- **Floor Plan Creator:** Start with the basics by plotting out precise and accurate floor plans. This app enables you to create multiple floor rooms in 3D and get automatic figures for perimeters, walls and more.

- **Ikea Home Planner Tools:** The free, easy-to-use home planner tool from the popular furniture giant enables you to see how items from the store can look in your space -

before you bring it home. The Kitchen Planner from the company also makes it simple to enter Ikea components and see how much the proposed kitchen design may cost.

- **Magic Plan:** This is another popular feature-filled app for planning designs. The technology even allows you to take a picture of your existing room and create floor plans.

- **Planner 5D:** This is an extensive room-design tool that helps you design rooms down to the smallest architectural details. It also can be taken outdoors for landscaping and pools, utilizing 3D graphics.

- **Room Scan Pro:** This

app draws floor plans simply by having you hold the phone up to a wall. The software will then scan the circumference and plot out the requisite measurements.

These are just a few of the room planners that can make it easier to see what a finished design product may one day look like.

MCLEOD Home building centre

Let us load you at the largest Lumber Yard in Parkland County
962-2575
 Call Toll Free: 1-800-343-2988
 35 South Ave, Spruce Grove

- Renovation & new build experts • Superior quality lumber
- Complete home packages • 3D Estimating Program
- Engineered roofs & floors • Farm Buildings • Garage packages
- Windows & doors • Custom decks & fence packages
- Flooring & kitchens • Bathrooms • Ceramic Tiles
- Concrete & landscaping • Electrical supplies
- Fasteners • Woodstoves

Service • Selection • Advice • Special Orders • Delivery

LIMB WALKERS TREE CARE LTD.

FULLY INSURED, EXPERT TREE CARE PROVIDERS
 SERVICING BARRHEAD, WESTLOCK, ONOWAY & ALL SURROUNDING AREAS

- Residential & Commercial
- Tree & Shrub Pruning
- Annual Maintenance
- Arborist Consultations & Assessments
- Bucket Truck & Chipper Services
- Tree Removal
- Hedge Trimmers
- Professional Climbers

780-203-4705 limb.walkers@hotmail.com
FREE ESTIMATES PROVIDED

ZEE BEST RENOVATIONS

Your Complete Line of Renovation Needs:

- Bathroom
- Basements
- Plumbing
- Tileworks
- Drywall & Taping
- Decks & Fencing
- Roofing
- Siding

FREE ESTIMATES | 30+ YEARS EXPERIENCE
INSURED | GREAT RATES

JOE LAWRENCE
MANAGER

BUS: 780-967-3898 | CELL: 780-915-3348
 FAX: 780-967-3798

TRI-LAKES SERVICES LTD.

Serving: • Lac Ste. Anne County • Parkland County • Yellowhead County East

- Septic Hauling
 - Holding Tanks (residential, commercial, industrial)
 - Septic Fields
- Drinking Water Delivery
 - Cisterns
 - Pools/Hot-Tubs
- Fresh Water Delivery
 - Dust Control
- Portable Washrooms (rental & servicing)
 - Plastic
 - Trailer mount Extremes (wash sink, toilet, lights, heat)
 - Extremes (wash sink, toilet, lights, heat)
- Steam Truck
 - In cooperation with your plumber

PH: 1-877-727-3939
www.tri-lakeservices.com
office@trilakes.services

Classified Ads - Call 962-9228

Classified Policy

CLASSIFIED RATES
 INCLUDE GST. 1st 20 Words: First Insertion = \$6.00; Subsequent insertion = \$3.00 each. (Eg: 2 insertions = \$9.00; 3 insertions = \$12.00; 4 insertions = \$15.00; etc) Each additional word is 20 cents per word, per insertion. Lost & Found and To Give Away (up to a max. of 25 words) are free of charge. Ads must be paid in advance either by cheque, cash, Visa or Mastercard. No Refunds Allowed on Classified Ads. DEADLINE: is Thurs. 4:00 pm (Wed. 4:00 pm on long weekends). Classified ads may be called in to the COMMUNITY VOICE office at (780) 962-9228, emailed

to: classifieds@com-voice.com, dropped off at Oneway Registries, or mailed with your ad and payment to: COMMUNITY VOICE, BAG 3595, SPRUCE GROVE, AB T7X 3A8. Ads may also be placed on the web at www.com-voice.com/classified.htm

Hall Rentals

Bright Bank Hall, 780-968-6813

Camp Encounter, Vincent Mireau - Camp Director. director@campencounter.com. C: 780-504-2012 W: 780-967-2548

Cherhill Community Assoc. Hall, Kevin 780-785-8153

Darwell Hall, 780-721-2690

Darwell Seniors, Phone Debra 780-785-2907

Duffield Hall, 892-2425

Entwistle Community League Hall Rentals, Call Cheryl at 780-515-1755

Entwistle Senior's Drop In Centre, Barb 727-2108 or Glennis 727-4367 Mon-Fri

Evansburg Senior's Heritage House, Dennis 727-4186

Evansburg Legion, upper hall 250 people, lower hall 80-100 people, 727-3879

Fallis Community Hall, 892-3150

Gunn Hall (G.A.R.S.) 780-951-9452

Keephills Hall, 731-3761

Lake Isle Community Hall, PH: 780-892-3121 or Email: lakeislehall@mail.com

Lake Romeo PeaVine Hall, 785-2700

Magnolia Hall, 727-2015

Manley Goodwill Community Hall, 963-9165 or 916-0146

Mayerthorpe Diamond Centre, 786-4044

Moon Lake Community Hall, Nikki Berg 780-898-1390

Park Court Hall, call or text Karyn 780-712-3918

Parkland Village Community Centre, 780-298-9155 @PVCCentre

Ravine Community Hall, 325-2391

Rich Valley Community Hall, 967-3696 or 967-5710

Rosenthal Community Hall, 963-7984

Smithfield Community Hall, Wanita 780-718-8824.

Tomahawk & District Sports



**Specializing in Trailer Repairs
 Aluminum, Tig, Mig & SMAW Welding
 Mobile Welding Units Available
 Mechanical Inspections & Repairs
 Fabrication & Plasma Table
 Skid Steer Services**

Sideline Mechanical & Welding Ltd.
 55109 Range Road 20
 Phone: 780-967-5658
 eMail: smwltd@gmail.com

Got Junk??

Our classified section makes it easy to sell without lifting a finger!

Call Community Voice
962-9229
To place your ad today!



MAKE THE SWITCH



To learn more about switching your electrical services to Canada's largest member-owned utility, visit EQUUS.ca

**\$8.7 MILLION SAVED
BY MEMBERS IN 2018**


EQUUS
310.EQUUS (3787)

**DELIVERING
MORE THAN POWER**

PREVAIL

CELLULAR HOMEOSTASIS FORMULA

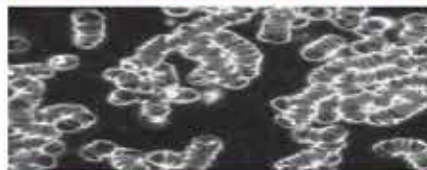
MAX

A NUTRITIONAL BREAKTHROUGH THAT SUPPORTS YOU
...RIGHT DOWN TO THE LAST CELL!

How do you want your
BLOOD to look?



Before PrevailMAX:



poor circulation

low energy

brain fog

dehydration

decreased nutrients

pH imbalance

poor endurance

After PrevailMAX:



better circulation

more vitality

mental clarity

cellular movement

nutrient assimilation

balanced pH

optimal endurance

PrevailMAX™ is a nutritional breakthrough that delivers a rapid increase of internal blood cell pressure to speed absorption, enabling the body to take maximum advantage of the nutrients in foods and supplements. The electrolytes are small enough to penetrate your cell membranes, to bind with your cells, and to be carried wherever they are needed in the body.

At the microscopic level of human cells, **PrevailMAX™** supports healthy cell performance – a nutritional breakthrough for your cells.

When you use **PrevailMAX™**, you will feel more energy and an ability to focus like never before. Take a few sprays today and see just how good you can feel!

LIVIN TRIM WITH
VALENTUS

www.ValentusTour.com/Ladybug

(780) 907-8642

Classified Ads - Call 962-9228

Agra, Bookings: Kathy 780-339-3773.

Wabamun Jubilee Hall, 892-2699.

Wildwood Community Hall, 325-2180 or 780-514-6105

Wildwood Rec Complex 325-2077 or 514-8944

Wildwood Senior's Hall, 325-3787 or 325-2391

Obituaries

Jean Sylvia Morrison, age 85, passed Saturday, August 17, 2019 in the Westview Health Center, Stony Plain, AB. Born near Esterhazy, SK to Ann and John Carluk, she was the second youngest of six children. Jean loved and lived on her farm near Duffield for 47 years. She was an avid antique collector, well known in the local community, as well as an amazing cook and artist. She was predeceased by her parents, husband Duncan, sisters Ruby and Rosie and brother Dennis. She is survived by sister Mable, children Patricia, Deborah and wife Mary Lois, Tammy, Bonnie and fiancé Jeffrey, and grandchildren Carrie, Daniel, Krystyne and Natalie. A memorial will be held at Smithfield Hall 53211 Rng Rd 34, Kapasawin, AB on September 21 between 2:00 and 4:00pm. Her family would like to thank the Staff of the Westview Health Center for their care during the last months of her life. (1) 17-09

Auctions

NOW OPEN!! ENTWISTLE AUCTION Junction of Hwy 16 & 22, One Block south of Esso. Sales Start Sept 28th @ 11:00 AM. Regular Sale, Every Saturday. CONSIGN NOW!! 780-727-2724 & 780-727-4062 Sales conducted by Alberta Surplus Auction Inc. Licensed & Bonded Lic # 313301 (3) 10-09

Services

Lawn Spraying, Fall is an excellent time to control weeds for next spring! Standard front lawns starting at \$50. Call 780-982-6589 (3) 10-09

Cleaning

CEILING & WALL CLEANING
- Specializing in cleaning Stipple & California

knockdown. Cig. Smoke removal & Odour removal. Ceramic floor tiles steamed cleaned. Call Nano Cleaning for Discount Prices! 780-914-0323 (5) 27-08

Computers

FREE Computer Checkup. Repairs **work** or extract Doc or Pictures from Old or Broken PC **NOT** over \$50. No Prepayment - No Charge if not Repairable. Yes,

I have for you a good, clean, refurbished and upgraded laptop or desktop with Legal win 10 for **ONLY \$100**. Call now 780-892-2407 (12) 13-08

Buy & Sell

Pepsi-Cola Cooler chest type .10 (cent) coin dispenser, 5 bottle rows, key. Asking \$800, Onoway area, Call 780-983-0753 (2) 10-09



Deb Gouin

780-497-0531
www.debgouin.ca

Century 21 Masters 780-963-2285
#105, 4302 - 33 St. Stony Plain, AB T7Z 2A9
Each office independently owned and operated



FEATURED LISTINGS:



\$396,500

GORGEOUS COUNTRY HOME

- 2270 sq ft 3 Bed 3 Bath
- 1/2 Acre Lot - PRIVATE
- Oversized Heated Double Garage
- Many Recent Upgrades
- RV Parking
- Lots of Upgrades
- **E4170219**



\$269,900

HUGE LOT - TRIPLE GARAGE

- 1/2 Acre Lot
- Back onto Golf Course
- TRIPLE GARAGE
- Many Recent Upgrades
- 3 Bedroom 1 Bath Bungalow
- **E4168911**



\$629,000

GATED COMMUNITY EXEC. HOME

- 1 acre lot MINUTES TO SPRUCE GROVE
- Soaring Ceilings & Luxury Finishes
- TWO TRIPLE GARAGES + RV PARKING
- **E4147138**



\$358,800

SPRUCE GROVE 1/2 DUPLEX BUNGALOW

- BEAUTIFUL 2+2 bedrooms, 3 baths
- Open Floor Plan & Main Floor Laundry
- Double Attached Garage
- NO CONDO FEES
- **E4154703**



\$279,900

ROSS HAVEN FAMILY HOME

- 1500+ sq ft, 3 beds, 2 baths
- Upgraded Inside & Out
- Double C/S Garage, 1/2 Block to Lake
- **E4148150**



\$225,000

ROSS HAVEN CHARMER

- 1650+ sq ft, 2 bed + loft, 1 bath, laundry
- LARGE COVERED Upper Deck!
- Backs GREENSPACE, STEPS to Lake & Pier!
- **E4148179**



\$275,000

LAKE NAKAMUN WATERFRONT

- Next-to-New 1 bed + Loft, 1 Bath
- FULLY SERVICED
- Set Up for 2 RV's with HOOK-UPS!
- **E4149606**

VIEW FULL LISTING DETAILS AT WWW.DEBGOUIN.CA

LISTINGS NEEDED!! If you're considering selling, I currently have serious buyers looking! Give me a call for a **free market evaluation!!** With more than 30 years' experience in the real estate industry, I have both local knowledge as well as serious buyers currently looking for property in our area! Put me to work for you.....

FROM SIGN UP TO SIGN DOWN!!





PURE HEMP CBD PRODUCTS

AGING IS INEVITABLE - LOOKING AND FEELING OLD ISN'T!

WHAT IS CBD?

A Health and Beauty Breakthrough!

Cannabidiol, CBD, is one of over 80 active cannabinoid chemicals in the hemp plant. CBD, unlike, THC, does not produce euphoria or intoxication. CBD targets specific receptors in the cells of your brain & body. There are many physical and mental benefits to using CBD products for both treatment and prevention of numerous ailments.



Therapeutic Uses For Pure Hemp CBD

Supports healthy blood sugar levels, promotes healthy energy levels, relieves anxiety, aids in digestion, supports optimal immune function and the regeneration of healthy cells, and promotes a sense of serenity and overall well-being.



Anti-Aging Uses For Pure Hemp CBD

Promotes more youthful skin, provides hydration, enhances radiance, lessens age lines as well as the appearance of dark spots.

KEY BENEFITS

PAIN RELIEF: Known to reduce vomiting & nausea; suppress muscle spasms; reduce seizures & convulsions.

PROMOTES HEALTH: Helps to promote relaxation and overall health.

WELL-BEING: Helps to relieve anxiety, aid in digestion, supports optimal immune function and the regeneration of healthy cells.

CBD PET PRODUCTS

PET CHEW TREATS



KEY BENEFITS

SYNERGISTIC BENEFITS: Can be used in conjunction with regular medications with no side effects.

NO SIDE EFFECTS: Does not damage the liver, kidney or GI Tract like OTC medication.

DIETARY SUPPLEMENT: Can be administered daily as part of your pet's diet.



ORAL SPRAYS & DROPS

KEY BENEFITS

MANAGES PAIN: Helps to treat inflammation, arthritis and joint pain.

TREATS DIGESTIONAL ISSUES: Helps with loss of appetite, nausea, IBS and gastrointestinal swelling.

GENERAL HEALTH: Helps to manage mood, anxiety and general joint pain. For healthy, happy pets.

CONVENIENT: Can be sprayed into pet's mouth or on food.

For more information, Call (780) 907-8642

Classified Ads - Call 962-9228

Landscaping & Maintenance

Stump Grinding For Hire - Alberta Beach & Surrounding areas. Call 780-779-3589

Firewood

FIREWOOD FOR SALE - Birch, Tamarack & Spruce Pine mix. Poplar. 4x4x8 cords and 1/2 cords. Quality seasoned wood, Delivery or Pick up. Woodchuck Firewood, 780-288-7247 (1) 17-09 OG BW

SEASONED FIREWOOD: Birch, Tamarack, Spruce/Pine & Poplar. 4x4x8 cord, Split and delivered or pick up at wood yard, 1/2 cord or full cords available. Call 780-967-5835 or 780-983-1495 (28) 27-08

Vehicles

1999 FORD 350 Dually

4 x 4 Lariat - 7.3 diesel motor, automatic, air, tilt, cruise, leather seats, c/w box liner and fifth wheel hitch - 379,000 km. Asking \$6,000.00. Call 780 623-8979 (2) 10-09

For Rent

Year Round Cabin For Rent North of Evansburg on Hwy 22 (15 mins from Evansburg). \$1100/month + DD. All inclusive, utilities & TV. Max 2 people. Call 780-239-0553 (4) 03-09

In Alberta Beach, 2 Bedroom Suite in new Adult Living 4plex, \$1200/month + DD same, includes 6 appliances, in floor heating, garage, power & gas, N/S, Call Connie 780-913-8024 (2) 17-09

Completely renovated Motel in Onoway, offering monthly rentals, all utilities FREE, furnished bachelors and furnished 1 bedroom with full kitchen, please call Cheryl for

viewing 780-967-4420 www.onowayinnandsuites.com (4) 17-09 OG

In Alberta Beach, 3 Bedroom House with 4 appliances, detached garage, N/P, N/S, Available Oct 1. \$1100/month + DD, Call Connie 780-913-8024 (2) 17-09

Onoway 1 & 2 Bedroom Suites for Rent. Clean, quite secure building with reasonable rent. Call 780-967-5857 or 780-920-3652 (4) 10-09

Clean 1 Bedroom Suite available in the JD Read Building in Entwistle. \$500/month includes all utilities, energized parking and free laundry. Call 780-975-5612 (4) 17-09

2 bedroom home on acreage in town limits of Stony Plain! \$1650.00 includes all utilities! Qualified Seniors only! Ph 780-913-2430 Seniors only! (4) 17-09 OG

Homer's Hut Cabin Rentals

- Daily, weekly, monthly rates, Alberta Beach area, Call Connie 780-913-8024 (15) 17-09

Lakefront Rental, fully furnished, winterized, 3 Bedroom, Seba Beach Cottage, Sept - June 2020, \$900/month + Utilities, Call Roxanne 780-655-1710 (2) 17-09

For Lease

Commercial Space for Lease in the JD Read Building in Entwistle. 960 sq ft, heat & water included as well as energized parking, Tenant pays electric. Call 780-975-5612 (4) 17-09

Land For Sale

Choice Acreage, 4.3 acres all treed. Yellowhead Estates, RR25, 2 Miles N of Yellowhead Hwy. \$107,000 - Call 780-435-1907 (2) 10-09

SUDOKU OF THE WEEK

Fun By The Numbers

Here's How It Works: Sudoku puzzles are formatted as a 9x9 grid, broken down into nine 3x3 boxes. To solve a sudoku, the numbers 1 through 9 must fill each row, column and box. Each number can appear only once in each row, column and box. You can figure out the order in which the numbers will appear by using the numeric clues already provided in the boxes. The more numbers you name, the easier it gets to solve the puzzle!

ANSWER:

7	5	2	8	9	1	4	3	6
9	8	3	5	6	4	1	7	2
6	4	1	2	7	3	9	5	8
4	1	7	3	2	8	6	9	5
8	2	5	6	1	9	3	4	7
3	9	6	4	5	7	8	2	1
2	3	4	7	8	6	5	1	9
1	7	8	9	3	5	2	6	4
5	6	9	1	4	2	7	8	3

Like puzzles? Then you'll love sudoku. This mind-bending puzzle will have you hooked from the moment you square off, so sharpen your pencil and put your sudoku savvy to the test!

7		2	8	9		4		6
				6	4			2
6	4			7				
4		7	3				9	
		5	6	1				7
3		6						
2		4	7	8		5		
1		8			5			4
			1		2	7		



COMMUNITY EVENTS 2019

If you are a LICENSED, NON-PROFIT ORGANIZATION, you are welcome to submit your announcement FREE of charge, space permitting. You are required to submit your non-profit number. Call (780) 962-9228. Please note that all submitted event listings must be limited to 200 characters or less (including spaces). DEADLINE: 12 noon Friday prior to publication (Thursdays on long weekends).

SEPT 21 - HARVEST FAIR, 10am-2pm at the Spruce Grove Grain Elevator site. Bring your family and enjoy old farm games and competitions.

SEPT 21 - COUNTRY FAIR at Woodbend Hall, 1pm to 4pm. FREE. Games, Races, Bouncy Castle, Hot Dogs. Call 780-470-0696. 26002-Twp Rd 514 T7Y1A9

OCT 8 - ANNUAL GENERAL MEETING for Lobstick 4-H Beef and Multi Club, 6:30pm at Tipple Park Museum. For more info, Contact Shannon Laackmann 780-727-2358 or roxyrancher@yahoo.ca

FARMERS MARKETS

DRAYTON VALLEY: Evergreen Farmers' Market, Wednesdays at the Mackenzie Center of the Omniplex from 10:30AM-1:30PM. *Ends Dec. 19

EVANSBURG: Sat, 10AM-2PM, Tipple Park Museum. Call 727-2240 for tables.

SPRUCE GROVE: at the Elevator, Sat 9:30-1:30PM, tables (780)240-5821

STONY PLAIN: Sat, 9AM-1PM, Downtown, Stony Plain. Phone Nancy 780-962-3993.

BINGO

ENTWISTLE COMM. LEAGUE BINGO: Every Wednesday, Doors Open 6PM.

STONY PLAIN SENIOR'S DROP-IN CENTRE: public bingo every Tues, 7PM. All ages welcome. Phone (780) 963-6685

WILDWOOD: Mon night, 6:30PM, bingo starts 7:30PM, Early Birds & Lucky 7.

WILDWOOD LADIES AID: every 3rd Friday of month, 6:30PM, bingo starts 7:30PM.

MEAT DRAWS

Darwell: Put on by Alberta Beach & District Lions Club, 4:00PM, bi-weekly, Darwell Lounge & Restaurant

Evansburg: Evansburg Legion, Friday 8-10PM & Saturday 3-5PM

Wildwood: Wildwood Legion, Saturday 3-5PM

JAMBOREES

CARVEL: 2nd Sunday of month. \$6 lunch served. Info 780-991-3001

CHIP LAKE: Ravine Comm Hall, 1st Sat 325-2119 or 325-2391

DUFFIELD: 4th Sat, Duffield Community Hall. Supper 6PM. *Sept - May.

DRAYTON VALLEY: Last Sunday of month. Upstairs @ the "55 Rec. Center" Doors at 12PM, Starts at 1PM. 780-542-3768

ENTWISTLE: 3rd Saturday of month, Doors at 5:30PM at Entwistle Community Hall. Contact Verna at 780-716-2304. *October - May

MAGNOLIA: at Magnolia Hall. Every 2nd Saturday, Supper at 6PM. 727-2015 or www.magnoliacomunityclub.ca, Call to confirm. *October - May

RAVINE COMMUNITY ASSOCIATION: 1st Sat of each month. Info 780-325-2391

*Sept - May.

SEBA BEACH: 2nd Friday 7PM, Seba Senior's Centre, Toni 797-4233

SPRUCE GROVE: at Sandhills Community Hall, 3rd Sunday, 1-5PM. Info Florence 780-962-3104 Margaret 780-962-3051 *Sept - June.

STONY PLAIN: Stony Plain Seniors Drop In Center, 5018 - 51 Ave. Every 2nd & 4th Thurs of month, 7PM, \$2. PH: 587-989-7214 or 963-7920.

TOMAHAWK: Tomahawk Agriplex, 3rd Friday of month, 7PM. PH: 780-339-3755.

WILDWOOD: Wildwood Community Hall, 3rd Wed Each Month, 7PM. 325-3749 *Oct - June.

TOPS (Take Off Pounds Sensibly)

ENTWISTLE: Wed 5:15pm weigh-in, 5:30-6:30PM meeting, food bank building, South entrance, 780-932-2695.

STONY PLAIN: Thurs evening, Stony Plain

United Church. Susan (780) 968-0869

SPRUCE GROVE: Wed 8:45am at Anglican Church, 131 Church Rd. Christiane 960-1109

WILDWOOD: Thurs at Wildwood Hall, 4:30PM. Connie (780) 325-2420

YOUR COMMUNITY

ALBERTA PARENTING FOR THE FUTURE ASSOC: Call 963-0549 or visit www.apfa.ca to register. All programs are confidential & free.

FREE HOME MEAL DELIVERY PROGRAM, for Wabamun Seniors & Wabamun Lions.

Arrange for meal preparation through a local restaurant. Call Darlene, 892-2551.

PEMBINA SKATING CLUB (Evansburg Arena), offers Learn-to-Skate, CanSkate & STARSkate. All ages. Call Lisa 727-2729.

***RUNS Sept-March**

PROBLEMS WITH DRUG OR ALCOHOL ADDICTION in a loved one? Contact Drug Rehab Resource for a free confidential consultation. 1-866-649-1594 or www.drugrehabresource.net.

LIBRARY EVENTS

AFTERNOON BOOK CLUB at Keephills Library. 2nd Tues of every month, 1:30-3:00PM. Visit www.pclibraries.ca for info.

FAMILY GAMES NIGHT: 3rd Wed of every month, 6-8PM. Located at Entwistle Library, Duffield Library and Tomahawk Library. In partnership with Parkland School Division. Visit www.pclibraries.ca for more info.

HATCHET CITY READERS at Tomahawk Library. 3rd Tues of every month, 10-11AM. For what we're reading next, visit our website, www.pclibraries.ca.

INVENTORS CLUB: 2nd Thurs of every month, 3:30-5:00PM at Entwistle Library. 4th Thurs of every month, 3:30-5:00PM at Tomahawk Library. Ages 8-13. To register: Call the library at 780-339-3935.

SEBA BEACH PUBLIC LIBRARY BOOK CLUB meets the 4th Thursday of the month, at the library, at 10:30AM. Call us at 780-797-3940 or email us at sebaeachlibrary@yrl.ab.ca

EVANSBURG PUBLIC LIBRARY BOOK CLUB: 4th Thurs, 7:00PM Grand Trunk High 727-2030.

SOCIAL EVENTS

50+ YOUNG AT HEART LUNCHEON for Parkland County Seniors. 12PM at Stony Plain United Church Basement, \$8/plate. 3rd Wed of Month. Call Barb 780-952-0882.

*Sept-June

AEROBICS: Low impact, Mon/Wed, 11AM-12PM, Wildwood Senior's Centre, \$1/session.

BREAKFAST SOCIAL: 9:30AM-NOON, Parkland Village Community Centre - 3rd Sunday, PH: 780.298.9155 Social Media: PCCentre.

COME PLAY CRIB: Fridays, 7:30PM at Darwell Seniors Hall; lite lunch is served. All ages!

COUNTRY QUILTERS in Stony Plain house a "Sew in Tuesday", 2nd Tuesday of every month, from 10-3PM. Drop in \$5/member, \$6/non-members. Contact Cindy 780-963-7170.

DROP-IN ADULT PICKLEBALL:

Thursdays, 6-8:30 p.m. Sept.12th-May @ G.T. School, Evansburg. Beginners Welcome. Paddles sponsored by the Evansburg Public Library

EVANSBURG ART CLUB: meet & paint Thurs 1-4PM Rec Plex. 727-4340 or 727-4098

EVANSBURG GUIDES & PATHFINDERS: Mon 6PM, Camp Evansburg.

EVANSBURG SENIOR'S HERITAGE HOUSE: Floor Curling Mon & Thurs, 1pm. Court Whist Thurs, 7PM.

EVANSBURG TIPPLE PARK HISTORICAL BUILDING TOURS: Wed - Sat, 10:00-5:00PM.

HEALTHY AGING NURSE & FOOT CARE PERSON, Wabamun Seniors Centre, 2nd Thurs of month, 9AM.

OPEN HOUSE for socializing, Crib & card playing at Entwistle Senior Center, Thursdays at 6:45PM. Dan 780-982-0353

PARENT & TOT PLAYTIME: PERC Building Stony Plain Wed 10-11AM; Holborn Community Hall Thurs 9:30-11AM; Parkland Village Tues 9:30-11:30AM.

POT LUCK every Tues 12:00PM, Wabamun Seniors Centre. Come on down!

SEBA BEACH SENIORS CENTER: Yoga, mon, 9:30AM, \$10/session. Bridge thurs, 1PM. Jams every Wed night, 7PM. Thrift Shop every Wed & Sat at 10-3PM.

SEBA BEACH QUILTERS & FIBER ARTS: Wednesdays 9:30AM, Seniors Center.

SENIORS 50+ LUNCHEON: 3rd Wed, 12PM at Stony Plain United Church basement hall. Call Audrey (780) 963-7582

SENIORS WEDNESDAY* AFTERNOON 1-4PM at Parkland Village Community Centre. Games, Crafts & more! Call Sheryl 780.695.7032 *exceptions incl. Weather.

SPIRITUAL LIVING STONY PLAIN INSPIRATIONAL CINEMA & DISCUSSIONS at PERC Building (5413-51 St). 2nd Friday of month at 7PM. Popcorn provided, donations appreciated. Contact 780-940-3032

SPIRITUAL LIVING STONY PLAIN GATHERING at PERC Building (5413-51 St). Every 2nd & 4th Sunday of month. Meditation 10AM, inspirational sharing 10:30AM. PH 780-940-3032

SPRUCE GROVE ELEVATOR TOURS: Tues-Sat, 9-3PM. 960-4600.

STONY PLAIN'S 5TH MERIDIAN GOOD SAMS RV CHAPTER: Ecole Meridian Heights School. 3rd Tues of Month, 7PM. Call Pat at 780-963-6976 or Ruth at 780-288-9829.

MEETINGS

2ND TIMERS: A support & confidential group for Grandparents Parenting. 1st Thurs of month, 6:30PM. Grand Trunk High School (meet in Lobstick Literacy & Learning room). Child care provided at the Evansburg Public Library.

299 ROYAL CANADIAN SEA CADETS CORPS MACKENZIE: Stony Plain Comm Center, Wed 6:30PM. Youths 12-18, 963-0843

755 PARKLAND AIR CADETS Thurs, 6:30-9:30PM Muir Lake School, ages 12-18. Info call 405-6585 or www.aircadet.com/755.

AA: Friday at 8PM, Evansburg. Call 325-2204; 727-2466 or 727-6652.

AA: Monday night HOPE group at 8PM, Mewassin Free Methodist Church.

AL-ANON: Wed 8PM. Spruce Grove United Church, 1A Fieldstone Drive. 962-5205

CHAMBER OF COMMERCE (Evans/Ent): 7:30PM 3rd Thurs, Heritage House.

C.H.I.L.D. (Citizens Helping in Life's Defence) Please join our Pro-Life meetings once a month in Stony Plain. For info call Chris 963-6997.

CITIZENS ON PATROL: The Pembina Community Watch Patrol Meets 2nd Thurs of each month at 7:30PM, at the Tipple Park Museum (4924-48 St.), Evansburg. Contact 780-898-1465 or 780-727-2686.

COMMUNITY QUILTERS & CRAFTERS: 3rd Tues. Evansburg, Liz 727-3872 Brenda 727-4476

DARWELL & DISTRICT AG SOCIETY: 8PM,

1st Mon, Community Hall.

DDRA MEETING: 7PM, 2nd Mon, Darwell Community Hall 892-3099. *Except Jul/Aug/Dec

DRAYTON VALLEY BRANCH OF ALBERTA GENEALOGICAL SOCIETY: meets 7PM at Municipal Library (5120-52 St.) every 3rd Wed of month. Call (780) 542-2787

ENTWISTLE COMMUNITY LEAGUE GENERAL MEETINGS: 2nd Thurs day monthly 7:30PM. *Except June, July, August

ENTWISTLE LIONS CLUB: 2nd & 4th Tues, 8PM, Entwistle curling Rink. Jim 727-3573

ENTWISTLE SENIORS 55+ CLUB: Tue & Fri, 1:30-4:00PM at Entwistle Hall

EVANSBURG SENIOR'S 55+ HERITAGE HOUSE: 2nd Wed of Month, 7:00PM. Dennis, 727-4186.

FALLIS COMMUNITY ASSOCIATION: 3rd Tuesday, 7:00PM.

GIRL GUIDES OF CANADA: Poplar Hollow District Guides-Pathfinders, Mon 6-8PM. Sparks-Brownies Tues 4-5:30PM. Meet at Camp Evansburg. Brenda 780-727-4476

LAC STE. ANNE & LAKE ISLE WATER QUALITY MANAGEMENT SOCIETY: 3rd Fri, 7PM, Alberta Beach Council Chambers.

LAKE ISLE HALL COMMUNITY HALL BOARD MEETINGS: 3rd Wed of each month @ 7:30PM at the Lake Isle Hall (Hwy 633 and RR55) Ph # 780-892-3121

LAKE ISLE MULTI 4-H GENERAL MEETINGS: 1st Thurs of each month @ 6:30PM @ Lake Isle Hall. Contact 780-242-2486.

LOBSTICK 4-H BEEF & MULTI CLUB: 1st Mon, Evansburg Arena, 7PM, Shannon 727-2358

LOBSTICK GARDEN CLUB: 1st Mon, 7PM at Tipple Park Museum, Clara (780) 399-2205

MAGNOLIA BOARD MEETINGS: 1st Tuesday of month, 7PM at Magnolia Community Hall.

MEN FOR SOBRIETY: Wednesdays at 7:30PM, FCSS Building (#105, 505 Queen Street, Spruce Grove), Mike (780) 965-9991.

MS SOCIETY DRAYTON VALLEY COMMUNITY GROUP meets 1st Tues of month, 6-8PM at Norquest College. Terra Leslie, 1-403-346-0290. *Sept-June

MS SOCIETY PARKLAND COMMUNITY SUPPORT GROUP: Are you diagnosed with MS and have questions? Last Tues of month, 7-9PM, Westview Health Centre. Contact Cassy 780-471-3034

NA MEETING: Tuesdays, 7:00PM. 514-6011

PEMBINA PORCUPINES - JUNIOR FOREST WARDENS: Entwistle Porcupine gathering, 7PM, 1st Tue. Len & Tineke at 727-2020. Porcupines@yellowheadfw.ca

SOLVE: Community Enviro issues discussed at Smithfield Hall (N of Hwy 16 on RR34). 2nd Thursday, Jana 892-0006

STONY PLAIN FISH & GAME ASSOCIATION & WABAMUN GUN CLUB: 2nd Mon, Stony Plain Comm Center, 7:30PM.

SUNDOWNERS TOASTMASTER CLUB: Mon (excl. Holidays) 7:30-9:30PM. St. Matthew's Church, Spruce Grove. Judy 960-5258

TOMAHAWK SENIORS (50+) meets every Thursday from 1-4pm at the Tomahawk Agra.

W.E.E COMMUNITY FOOD BANK: Call (780) 727-4043 for emergency food needs. Monthly Meeting: LAST Monday of month at 7:00PM at the Food Bank (Old fire hall in Entwistle). *Except December

WILDWOOD & DIST AG SOCIETY: 2nd Wed of each month 7:00PM at the Wildwood Complex. Wilma 325-2424

WILDWOOD & DIST ROD & GUN CLUB: 2nd Thursday, 7:30PM at the range clubhouse, wildwoodrodandgun@gmail.com

WILDWOOD SENIORS: 4th Wednesday at 2:00PM. PH: 325-3787 or 325-2391. *No meeting July/Aug/Dec.

Church Directory

Seba Beach Christian Fellowship Sunday School 10:00a.m. Worship Service 11:00a.m. Weekdays Bible Study & Prayer (780) 305-3594	Advent Lutheran Church Sunday Worship & Sunday School 11:00a.m. Evansburg O: 727-3594	Roman Catholic Church St. Agnes' Parish, Mayrthorpe Sunday 9:00a.m. St. Elizabeth Parish, Evansburg Saturday 7:00p.m. (780) 786-2032	St. Joseph's Catholic Church Sunday Mass 11:30a.m. Tuesday Mass 7:00p.m. Wabamun, AB	St. Augustine's - Parkland Anglican Church 131 Church Rd. Spruce Grove Sunday Service 10:00a.m. Eucharist with Sunday School & Nursery All are Welcome Office 780-962-5131 www.staugustinesparkland.org
Parkland Baptist Church Sunday Worship Service 10:30a.m. All Welcome 121 Brookwood Drive (780) 962-4101 www.parklandbaptist.ca	Word Church Apocalyptic Era <i>Border Paving Athletic Centre, 9 Tri Leisure Way, Spruce Grove upstairs in the Wild Rose room.</i> Ph: 780-962-7579 Service starts at 10:00 a.m. every Sunday morning, come all & be bless.		Anglican Mission of St. Saviour Service every Sunday at 10:00a.m. Rev. Aaron Parsall-Myler Contact: 780-962-5131 Unit 3, 5245 - 51 Ave, Wabamun All are welcome!	Stony Plain United Church Sunday Service 10:30a.m. 5012-51 Ave. Stony Plain Mewassin United Church Sunday Service 9:00a.m. Rev. Heather Koots Hwy 627 - Rg Rd 30 Ph: 780-963-4745
Immanuel Lutheran Church of Rosenthal Traditional Service Sunday 9:30a.m. Contemporary Service 10:15a.m. Christian Counselling Services Rg Rd 13, Twp Rd 524 Ph: 780-963-4048 www.lutheran.ca email: office@luc.ca	Emmaus Lutheran Church Sunday Worship Service 11:30a.m. Rev. Robert Marshall 4604-52nd Ave, Drayton Valley Ph: 780-542-5101 www.emmanuel-lutheran-church.worship.com	Church of God Worship Service Sun. 11:00a.m. Please contact for activities 5004-49 Street, Drayton Valley Ph: 780-542-5094	Calvary Baptist Church Pastoral Team: Keaton Penner Sunday Worship 10:30a.m. Youth & Ministries Info - calvbaptist@telus.net 4401-50th Ave, Drayton Valley 780-542-4774 www.calvarybaptistdo.ca	Drayton Valley Alliance Church Pastor John Haazen Join us for Sunday Service at 10:30a.m. 5014-56 Ave. (next to Value Drug Mart) Programs for all ages Ph: 542-6501 dvalliance.ca
All Saints' Anglican Church Sunday Morning Worship 9 BCP 10:30 BAS with Sunday School & Nursery 5212-47 Ave, Drayton Valley (780) 542-5048	St. Anthony Catholic Church WEEKEND MASS SCHEDULE: Saturday 5:00p.m. Sunday 12:00p.m. 4708-50 Ave, Drayton Valley Parish Office: 542-3254			

SERVICE DIRECTORY

2Bros

Custom Contracting Ltd.

Custom Framing • Concrete Floors • Shingling
Siding Soffit Fascia • Styrofoam Block System

Jeff 780-717-0520

BREWSTER BOBCAT SERVICE LTD.

P.O. Box 454, Wildwood, AB T0E 2M0

- * Site Preparation
- * Pile Drilling
- * Concrete Work
- * Landscaping
- * Demolition
- * Sand & Gravel Delivery
- * General Contracting

brwcat@gmail.com
Telephone: (780) 325-3743
Bruce Balascak Cell: (780) 621-6960

Ernie's Repair & Service

SMALL ENGINES

4820 - 47 Avenue, EVANSBURG
(780) 727-4433

WABAMUN PHARMACY

I.D.A.

Box 90, 5120 - 51 Avenue
Wabamun, AB T0E 2K0
Ph: (780) 892-2278 Fax: (780) 892-2488

Community VOICE
Empowering You and Your Community

THIS SPACE IS RESERVED FOR YOU!

WEIGHTLOSS NEVER TASTED SO GOOD!

NEW! NEW! NEW! NEW!


(780) 907-8642 **VALENTUS**
www.ValentusTour.com/Ladybug

SERVICE DIRECTORY

Blakeman Drilling Ltd.
Waterwell Drilling & Servicing
Pumps & Pressure Systems
SERVING LAC STE. ANNE
& WEST PARKLAND
FOR OVER 25 YEARS
Joe (780) 924-3024

DONALD N. GREENWAY
Chartered Accountant
Suite 205 Sunrise Professional Building
215 McLeod Avenue
Spruce Grove, AB
(Bus.) 962-6366
(Fax) 962-3990

WHAT MAKES MYDAILYSPRAYS SO POWERFUL?
HIGH ABSORPTION, SCIENCE & THE INGREDIENTS



(780) 907-8642
www.Elaine1.com

SLIMROAST Optimum
DARK ROAST COFFEE
YOUR LOGICAL SOLUTION TO WEIGHT MANAGEMENT
(780) 907-8642
www.ValentusTour.com/Ladybug

Community VOICE
Keeping You and Your Community Informed
THIS SPACE IS RESERVED FOR YOU!

ROY SHERWOOD
Master Electrician
Ph: 780-968-1425
Cell: 780-908-2287
Fax: 780-968-2211
Email: suretechroy@gmail.com
2-53220 Rge Rd 21
Parkland County, AB
T7Y 0C5
SURETECH ELECTRIC LTD.
Control & Automation
Commissioning
Solar Sales & Service
Industrial . Commercial . Residential

MARK MARTIN PFEIFFER
MASTER BRICKLAYER/MASON
Cell: 780-242-3308
Email: pfeiffer.mark@hotmail.com
• Brickwork • Stonework
• Rockwork • Parging
• Concrete Block Work
• Tile Work (all kinds)

CROFT LAW
Local office in Darwell
Call us at 780.467.5534
Experienced Legal Services in:
Family Law • Civil Litigation
Corporate Law • Wills & Estates
Plus Notarizing and Commissioning
www.croftlaw.ca

PEMBINA CONCRETE PRODUCTS LTD.
Manufacturers of
ONE PIECE SEPTIC & HOLDING TANKS
* Water Cisterns * Field Systems *
Pumps and Accessories * Sumps
DELIVERED TO YOUR SITE
1-800-661-3047
780-727-2702
PembinaConcrete.com
New Line of Concrete Statues, Fountains and Garden Ornaments.
BOX 123, Entwistle, T0E 0S0

Community VOICE
Keeping You and Your Community Informed
THIS SPACE IS RESERVED FOR YOU!

CALIBRE DRILLING LTD
DRILLING AND SERVICING YOUR WATER WELL.
SPECIALISTS IN AIR & MUD ROTARY DRILLING
* Water Well Drilling * Pump Installations
* Pressure Systems * Well Tests
* Licensed Drillers * Year Round Drilling
* Geotechnical Drilling * Cathodic Protection
* Free Estimates
Quality Workmanship Five Year Warranty
(780) 960-2992
BOX 4083 SPRUCE GROVE, AB T7X 3B3

POSTINGFIRST.com
BUY and SELL just about ANYTHING!
FREE LOCAL CLASSIFIED ADS
Real Estate, Rentals, Vehicles, Pets, Jobs, Service Directory,
Buy/Sell/Trade, Lawn & Garden, Garage Sales, Events,
Local Places & Much More... Advertise for **FREE** Today!

Follow Us


SERVICE DIRECTORY

Jack's Auto Body
& 24 HR Towing

**SPECIALIZING IN COLLISION REPAIR
GUARANTEED WORK • INSURANCE CLAIMS**

CAA BOX 9 SITE 306 RR3, ONOWAY, AB T0E 1V0
(780) 967-5850

OUR PLEDGE IS QUALITY

PREVAIL MAX
CELLULAR HOMEOSTASIS FORMULA

**A NUTRITIONAL BREAKTHROUGH
THAT SUPPORTS YOU...
RIGHT DOWN TO THE LAST CELL!**

LIVIN TRIM WITH
VALENTUS (780) 907-8642
www.ValentusTour.com/Ladybug

H&E
UPHOLSTERY

FOR ALL YOUR UPHOLSTERY NEEDS

Convertible tops for cars and boats,
custom car and boat interiors, 5th
wheel trailer skirts, boat tarps, ATV
seats, furniture, kitchen chairs,
heavy equipment seats.

WWW.HANDE.CA 4-485 South Ave.
For more information contact: Spruce Grove
kirk@hande.ca **(780) 962-3048**

SERVING ENTWISTLE AND AREA FOR OVER 30 YEARS

Entwistle
CONCRETE
PRODUCTS LTD.

SAND & GRAVEL SALES

PH: (780) 727-3525
Dan McCracken Entwistle, AB
www.entwistleconcrete.ca

Community VOICE
Keeping You and Your Community Informed

**THIS SPACE IS
RESERVED
FOR YOU!**

SMOOLE

- Construction & Septic Installation
- Environmental Wastewater Disposal
- Site Design & Evaluation
- Power, Water & Basement Excavation
- Trackhoe, Backhoe, Bobcat & Dump Truck

For All Your Excavation Needs
Call Dan 780-991-4484 Reid 780-909-0173

H&P Kosik
CONSTRUCTION Ltd.

- Road Building • Gravel • Sand • Dugouts
- Black Dirt • Clearing

No Job too small! We do them all!

Harvey cell. 780-445-9010 ph. 780-892-3532
Box 145, Darwell, AB. T0E 0L0

CONCRETE WORK

- Sidewalks ▪ Steps
- Small Retaining Walls
- Concrete Repairs

Contact Ray
(780) 975-8476

SANGUDO
VETERINARY CLINIC

Box 581, 4916 - 52 Ave. Sangudo, AB. T0E 2A0

Dr. Ralf Sanders DVM
Ph: 780-785-2200
Fax: 780-785-2228
sangudovet@gmail.com

24 HOUR EMERGENCY SERVICE

CCAS
Canadian Clean Air Services Ltd.

**Heating & Air
Conditioning**

Goodman
Air Conditioning & Heating

**Licensed and Insured with
over 20 years' experience.**
Instant Approval. Financing Available

VISA

For service call:
780.569.5201
www.ccasheating.com

Community VOICE
Keeping You and Your Community Informed

**THIS SPACE IS
RESERVED
FOR YOU!**

Xtreme LEAN NRG

Xtreme LEAN NRG
Advanced Formula helps you:

- Regulates Your Appetite
- Regulates Blood Sugar
- Regulates Fat Absorption
- Improve Energy Levels
- Improve Your Mood
- Increase Mental Focus

"We've unlocked the science of slim!"
(780) 907-8642

SUMMERS
DRILLING LTD.

Water well drilling and service
Family owned Business Serving Alberta since 1917

**Never run out
of water again!**

**5 year workmanship
warranty**

**3 Convenient
ways to pay**

- Visa
- Mastercard
- We now offer full financing

Tired of hauling water?
We can install
a water well with
a permanent water
supply for as little as
\$150/month OAC

Stop in at our office 4405 - 50 Street, Stony Plain
780-963-1282
admin@summersdrilling.com






SOLD!

New Roof
View this year-round rustic two-bedroom bungalow comes on the market, over 1300 sq ft with sunroom. Vaulted ceilings, hardwood floors, oak kitchen, are just a few of the features you will come to enjoy in this home. Add a pie-shaped lot, parking for ten cars and a double garage. Park your boat today!

\$234,900



REDUCED

70 Ft Wabamun Lakefront
Flat site with 1100, sq ft bungalow with Mechanics garage with carriage home over the garage. South facing deck with large backyard. Great Wabamun community.

\$699,900



REDUCED

\$40,000 Upgrades
Awesome 3 bedroom bungalow with basement, new windows, kitchen, drywall, lots of counter space, high quality appliances, close to the beach. Owner says bring an offer!

\$214,900



PENDING

New Listing
1600 Sq Ft Bungalow - This South Exposure Lakefront home with 10-foot ceilings, large deck facing Lake so you can enjoy the lake life. Features include a dream kitchen, 22 feet of granite, 3 bedrooms, plus den, large 28 x 32 attached heated garage with 14-foot ceilings. Quick possession is available.

\$374,900



WABAMUN LAKE VIEW

Reduced \$30,000
This original owner home has had years of care put into it. Without question, this 4 Bedroom bi-level with 28 x 24 garage has the town of Wabamun's best location. Lake living with city water and sewer

\$369,900



REDUCED \$150,000

Ahh... The Beach Life
Very seldom a home of this quality and design comes onto the market. With its 22 foot ceilings, architecturally designed triangle windows overlooking the Lake this home screams quality. 3 Bedrooms, double garage, beautiful deck.

\$949,900



REDUCED

Seba Beach Bungalow
Very seldom do you find a 7yr old Bungalow that has been modernly crafted with vaulted ceiling wrap around covered deck in this wonderful community. This could be your moment.

\$414,500

We offer Free Evaluations and Buyer Consultations!



RE/MAX
REAL ESTATE

“ News Flash – 1st time offered New Listing
3 acres, Town of Wabamun Lakefront, cleared site with 13 potential fully serviced lots with water and sewer for **\$164,900** **”**

Call for Evaluation Today!
(780) 991-5107



• Find Every Property For Sale! • Free Property Evaluations!

EdmontonLakeProperty.com