

Serving: Carvel, Darwell, Duffield, Wabamun, Seba Beach, Gainford, Entwistle, Evansburg, Wildwood, Tomahawk, Spruce Grove, Stony Plain & Drayton Valley

September 24, 2019

## MIN IT TO WINUTE AT TIPPLE PARK MUSEUM

Submitted by Jakob Kubke, Tipple Park Museum

Wait a second. I mean, wait a minute. That title doesn't quite look right. Say it out loud 5 times. Yup, that's how we're avoiding copyright claims from the popular Guy Fieri-hosted TV show. Not really, but I thought it was funny.

No matter! This fall, once a month, come on out to Tipple Park Museum, 4:30 to 5:30pm, for some great minute to win it

fun. Aimed at ages 7-14, prospective winners can come to race against the clock in various challenges. Their skills and minds will be stretched to the limit in activities such as

1. Keeping 3 balloons in the air at once
2. Moving a potato across the room with their nose only
3. Getting an orange inside a hoola hoop using only a banana on a string

These hilarious and often intense challenges will come in

different formats, including attempting to finish in one minute and being the first to finish amongst a number of contestants.

It will appeal to the competitive and non-competitive person alike, and will be sure to draw some serious laughs from even the most serious sportsman!

As the fall continues, watch out for themed games to match the season -- flying on broomsticks, anyone?

Continued on Page 2

## 2ND ANNUAL PUMPKIN FESTIVAL

Submitted by Tipple Park Museum

"Each year, the Great Pumpkin rises out of the pumpkin patch that he thinks is the most sincere. He's gotta pick this one. He's got to. I don't see how a pumpkin patch can be more sincere than this one. You can look around and there's not a sign of hypocrisy. Nothing but sincerity as far as the eye can see." - It's the great pumpkin Charlie Brown

There are a lot of symbolic

things that represent Halloween like ghosts, black cats, candy, Frankenstein, skeletons and most importantly, pumpkins!

This Year Tipple Park Museum is hosting there second annual Pumpkin Festival Friday, October 4 from 5-8pm in Evansburg.

A HUGE thank you to our Sponsors so far including Family Clothing, Servus Credit Union and Wighty's Tire and Mechanical.

We have many activities happening during the festival including a children's pumpkin

carnival, scavenger hunts and an all-time classic film it's a Great Pumpkin Charlie Brown.

We have over a hundred pumpkins for guests to carve and create their design!

Ready for an old fashion hayride? Setzer's Sleigh and Wagon Rides will be providing services for the whole length of the event.

We have an amazing Vendor this year selling homemade Ukraine food. Make sure to bring some cash.

Continued on Page 2

**All Precious JEWELLERS**  
 "Your Spruce Grove Jewellery Store"  
**Goldsmith on Premises**  
 • Engraving • Clock & Watch Repairs  
 • Jewellery Repairs • Custom Make-ups  
 Jewellery Repairs Done On Site.  
 Laser Welder Services Available.  
 Toll Free: 1-877-962-4367  
 PH: 780-960-4200 Fax: 780-960-4201  
 Suite 102, 215 McLeod Avenue  
 Spruce Grove, AB. T7X 0G2

**SIGHTS AND ARMS**  
 Now Open Mon-Sat 10AM-6PM  
**FALL SALE!**  
 New, Used & Consigned  
 Firearm Safety & Reloading Courses  
 Gunsmithing  
 WWW.SIGHTSANDARMS.COM  
 11 J. Raybon Cr. St. Albert, Alberta 825-223-9863

**THE HOTTEST NUTRITIONAL SPRAYS THE INDUSTRY HAS EVER SEEN!**  
 BRAIN #1, BOOST, SHIELD, PEAK, TRIM365, SLEEP  
 www.Elaine1.com (780) 907-9642

**SLIMROAST Optimum**  
 DARK ROAST COFFEE  
 YOUR LOGICAL SOLUTION TO WEIGHT MANAGEMENT  
 (780) 907-8642  
 www.ValentusTour.com/Ladybug

View us **ONLINE!**  
 WWW.COM-VOICE.COM



**Keeping You and Your Community Informed**

*PUBLISHED WEEKLY (Zone 1 & 2)  
AND BIWEEKLY (Zone 3)*

**E.J. Lewchuck & Associates Ltd.**

45C South Ave. | Box 3595  
Spruce Grove, AB T7X 3A8

**SALES TEAM**

Elaine  
Ashley  
Dani

**TELEPHONE:**

Classifieds 962-9229  
Advertising 962-9228  
Fax 962-1021

**E-MAIL:**

comvoice@telusplanet.net  
sales@com-voice.com  
news@com-voice.com

# HARVEST SUPPER

Submitted by **Magnolia Community Club**

A tradition held firm and dear to the Magnolia community is the Harvest supper. The year of the first community harvest supper is firmly lost to time. It may have morphed from informal autumn suppers known to have been held in homes, and attended by homesteader neighbours. More probably it is a continuation of a British event, the Har-

vest Festival.

Regardless of the early history, the supper became a regular early fall event, after the gardens were in and before severe winter. In an organized pot luck manner, residents would bring all manner of foods – root crops, pickles, meat, and cream, cream for whipping for the wonderful, glorious pies.

The event has now grown to require both the Saturday and Sunday. On the Saturday, men

from the community, christened by Denys Ambrose as the Magnolia Peelers, peel the potatoes, carrots, turnips etcetera for ease of cooking on the Sunday. A relatively new feature are door prizes, presented by the community and suppliers, such as SANG.

This year's supper is on September 29, starting at 5 o'clock.

## Min it to Winute at Tipple Park Museum

Continued from Page 1

Dang it. Apparently that's past our budget.

The first day will be September 27. Then it's October 25 and finally November 15.

Don't miss your chance to test

your mettle against your peers, and maybe even discover a hidden talent!

## 2nd Annual Pumpkin Festival

Continued from Page 1

Tipple Park Museum is also offering free family portraits. After your picture, we will need your contact information. All

families will receive a free 5x7 photo.

There will also be pumpkins hiding around both Evansburg and Entwistle. Pick up a clue card from the Museum, then find

the missing pumpkins.

It's going to be loads of festive fun! We are excited to be offering the Pumpkin Festival once again to the community.

See you all October 4!

MLA Smith would like to invite you to participate in a **Grassroots Democratic Initiative**.

*Come and find out how you can help to provide direction to your MLA so he can better represent you.*

Place: **Rm #3, Beehive Support Services Association,**  
5056 50 Ave, Drayton Valley

Time: **Tuesday, October 1st**  
7:00pm to 9:00pm



Draytonvalley.devon@assembly.ab.ca  
1-800-542-7307

## Lobstick 4-H Beef & Multi Club Annual General Meeting

**October 8, 2019 6:30pm**

at the Tipple Park Museum

If you are interested in joining 4-H or have any questions, please contact Shannon Laackmann by phone: 780-727-2358 or by email: roxyrancher@yahoo.ca

## JOKE OF THE WEEK

Mrs Mollard had been giving her second-grade students a lesson in science. She had explained about magnets and showed how they would pick up nails and other bits of iron. Now it was question time, and Mrs Mollard asked, 'My name begins with the letter "M" and I pick up things. What am I?' Tim, a little boy in the front row proudly said, 'You're a mother!'

## BUSINESS FOR SALE

Steady Income – Business doesn't fluctuate with Economy

- Includes: - All Clientele
- 5 Tandom Trucks
- 1 Truck & Trailer Unit

Call 780-797-3844 for more Info.  
**Al-jo An Septic Service**

# YELLOWHEAD COUNTY MAYOR RESIGNS FOR NEW HORIZONS: Mayor Gerald Soroka Steps Down to Prepare for the Federal Election.



**Submitted by Yellowhead County**

Yellowhead County Mayor Gerald Soroka has stepped down from his municipal position in anticipation of running in the upcoming federal election.

Soroka served as mayor from October 2007 for the municipality of Yellowhead County, where he was serving in his fourth term until his resignation this Tuesday. He also served as a municipal councillor, representing Division 1 in Yellowhead County, for one term (2004–2007) before being elected as mayor. Soroka will run for the local member of parliament in the Yellowhead riding as the Conservative Party of Canada candidate.

A Yellowhead County by-election will be held to replace the vacant position this fall. The Council for Yellowhead County will determine the by-election details at the next council meeting, which takes place on September 24, 2019.

ing, which takes place on September 24, 2019.

## RCSD TEAM SCHOOL VISITS

**Submitted by Parkland School Division**

September 11, 2019 - Parkland School Division is working together with our partners in the Parkland, Evergreen and Area Regional Collaborative Services Delivery (PEA RCSD) area to support learning opportunities for students at our schools and in our communities.

Members of the PEA RCSD team will visit our schools during the year. The team includes:

- Speech-Language Pathologist
- Occupational Therapist

The team may also include:

- Family School Liaison Coach / Success Coach
- Addiction and Mental Health Therapist
- Other developmental, social, emotional and behavioural services accessed by the school to support learner needs.

This team will work with our School-Based Teams (teachers, support staff, and administrative staff) to support all children. They may visit classrooms and share ideas with the teacher.

They will contact you as a parent/guardian directly if any follow up is required for your own child.

To learn more about the Regional Collaborative Service Delivery partnership, please visit the Government of Alberta website.

If you have any questions about RCSD visits to your school, please contact your school principal.

# FREE STORAGE WITH PREPAID PACKAGES



- WINTERIZE
- SHRINK-WRAP
- STORAGE
- SPRING RUN-UP

## 780.924.3255

www.ECKOMARINE.COM ALBERTA BEACH



## PRICE REDUCED

 <p><b>14K White Gold Diamond Ring</b> Brand New, Still in Box, Tags on! <b>Asking \$2,745</b></p>	 <p><b>14K White Gold Engagement Ring</b> Brand New, Still in Box, Tags on! <b>Asking \$2,300</b></p>	 <p><b>10K White Gold Diamond ring</b> Brand New, Still in Box, Tags on! <b>Asking \$1,375</b></p>
---	---	---

Call for more information, or to view the ring 780-907-8642

# FAIR NOTICE - VIOLENCE THREAT RISK ASSESSMENT

**Submitted by Parkland School Division**

September 11, 2019 - The goal of Violence/Threat Risk Assessment (VTRA) process is that every incident of youth violence in our communities be addressed. VTRA is early intervention – which is quite possibly prevention.

The process is initiated and managed by school administrators who have received VTRA training from the Canadian Center for Threat Assessment and Trauma Response.

Duty to Report

There is zero tolerance for not responding. Prevention of youth violence is a community responsibility and it is everybody's duty to report. Under-reaction is epidemic and a chief factor of escalation from thought to action.

What is a Threat?

A threat is an expression of intent to do harm or act out violently against someone or something. Threats may be verbal, written, drawn, posted on the internet, or made by gesture. Threats must be taken seriously, investigated, and responded to. In a culture of respon-

sible reporting, students need to believe that they will be believed when they confide; their identity will be kept confidential; their information will be acted upon promptly; and their concern will be investigated thoroughly.

Who is on a Threat Assessment Team?

Each threat assessment team is multi agency. The team may include school staff, psychologist, police, child protection agencies, community mental health workers, hospitals, probation/parole and other professionals.

What is the Main Purpose of a Threat Assessment?

- To ensure the safety of students, staff, parents, and others.
- To ensure a full understanding of the context of the threat.
- To begin to understand the factors that contribute to the threat maker's behaviour.
- To view the student as in need of intervention rather than to be disciplined.
- To be proactive in developing an intervention plan that addresses the emotional and physical safety of the threat maker. It may include disciplinary action but will include appropriate supports to aid the student in developing and using positive strategies.
- To promote the emotional and physical safety of all.
- To ensure all school and agency partners are working together with a common understanding and protocol.

What happens in a Student Threat Assessment?

All threat making behaviour by a student(s) shall be reported to the Principal who will activate the protocol for the initial response.

Once the team has been activated, interviews may be held with students, the threat maker(s), parents and staff to determine the level of risk and develop an appropriate response to the incident.

Intervention plans will be developed and shared with parents, staff, and students as required and as appropriate.

The Partners

Education partners are committed to creating and maintain school environments in which students, staff, parents and others feel safe. Parkland School Division, Evergreen Catholic Separate Regional Division, Living Waters Christian Academy, Mother Earth's Children's Charter School, St. Matthew Lutheran School, and Columbus Academy - Bosco Homes have taken a lead role as there is a direct application to the health and safety of the school environment.

Community Supports

- Aboriginal Parent Link - Native Counselling Services of Alberta
- Alberta Health Services – Children's Mental Health
- Alberta Human Services – Children & Family Services

**THE MOST COMPLETE NUTRITIONAL SPRAYS ON THE PLANET**

✓ RELEASED PERFORMANCE ✓ MORE ENERGY ✓ BETTER NUTRITION

100% SATISFACTION GUARANTEE **ORDER TODAY!**

**WHAT ARE MYDAILYSPRAYS?**

<b>PEAK</b> The highest grade of Deer Antler Velvet with Actinoids from some of the most nutrient rich super fruits in the world.	<b>SHIELD</b> Shield is the only Alkalinity spray in the world that promotes high pH therapy for overall a healthy lifestyle.	<b>BOOST</b> The high absorption delivery system is perfect for people sensitive to coffee or energy drinks.	<b>SLEEP</b> Helps you get to sleep faster, maintain a healthy sleep cycle, and improve the quality of a restful sleep.	<b>TRIM365</b> Weight management formula which utilizes Gamma Carboglyc, born fat faster and support a healthy metabolism.	<b>BRAIN</b> Brain Spray with Cognizin and Senegal, helps regulate mood and combats anxiety. Helps to improve cognitive function and memory.
--	--	---	--	---	---

**WHAT MAKES MYDAILYSPRAYS SO POWERFUL?**

- 98% ABSORBABILITY - FAST AND EFFECTIVE
- ALL NATURAL INGREDIENTS
- JUST 6 SPRAYS UNDER THE TONGUE

**POWERFUL INGREDIENTS. POWERFUL RESULTS.**

**WHOLESALE ACCOUNTS AVAILABLE. DISTRIBUTORS NEEDED.**  
[www.Elaine1.com](http://www.Elaine1.com) (780) 907-8642

# A MESSAGE FROM MLA MARK SMITH: MORE POLICE RESOURCES FOR ALBERTANS

**Submitted by MLA Mark Smith | Drayton Valley – Devon Constituency**

The first duty of government is to protect the safety of law-abiding Albertans. After the NDP sat on their hands for four years as crime rates skyrocketed in many rural communities, Albertans gave the United Conservative Party a historic mandate to keep Albertans safe, secure and protected. Our government is committed to giving law enforcement the tools and resources necessary to ensure there is a sustainable reduction in crime and Albertans have confidence that their justice system will protect them, their loved ones and their property.

To ensure we have a law enforcement system that enhances public safety and emphasizes frontline policing, our government is fulfill-

ing our campaign promise to review how police are funded in Alberta. The current model has resulted in a shortage of policing services. We've been listening to Albertans, municipalities and others and are asking for feedback on a number of models on how police should be funded. To be clear, our goal is more police services. Any new funding model that would collect funds from municipalities would be reinvested in frontline policing, leading to an

overall increase in funding for police services in Alberta. Unlike the carbon tax, this is not a cash grab. We are investing more in policing, not less.

Rural Albertans deserve better. That's why they elected a government that will ensure the justice system reflects the realities of rural Alberta. We are taking action, the Minister of Justice and Solicitor General is conducting the most comprehensive consultation on rural

crime and rural policing in Alberta's history, traveling the province to hear from as many Albertans as possible to help ensure we have safer and more secure communities.

Ensuring Albertans feel – and are – safe and protected goes to the heart of who we are as a government. We want to make sure we fund law enforcement in a way that will enhance public safety for all Albertans and ensure we have more police in our communities.

## Fair Notice - Violence Threat Risk Assessment

- Alberta Parenting for the Future
- Canadian Center for Threat Assessment and Trauma Response
- City of Spruce Grove
- Columbus Academy - Bosco Homes Schools
- Evergreen Catholic Separate Regional School Division No. 2
- Family and Community Support Services – Spruce Grove
- Family and Community Support Services – Stony Plain
- Living Waters Christian Academy
- Mother Earth Children's Charter School
- Parkland County
- Parkland School Division No. 70
- RCMP
- SML Christian Academy
- Spruce Grove Fire Department
- Town of Stony Plain

Additional information is available in the VTRA Fair Notice and Practice Information Brochure, which can be found at [https://www.psd70.ab.ca/documents/general/VTRA\\_Brochure.pdf](https://www.psd70.ab.ca/documents/general/VTRA_Brochure.pdf).



### PROPOSAL CALL FOR SNOW REMOVAL

Grande Yellowhead Public School Division No. 77 invites all interested contractors to submit a proposal for the removal of snow, grading and the sanding of all Division owned parking lots at the following locations:

**Grand Trunk High School, & Evansview School in Evansburg, Wildwood School, and Niton Central School.**

The successful contractor must demonstrate that all of the areas bid on will be cleaned and sanded within a 12 hour period after any significant snowfall.

The proposal call should therefore include the type and number of pieces of equipment available to clean, grade, sand and remove the snow from all parking lots and the hourly rates charged including travel time. Include WCB clearance letter and proof of liability insurance in proposal.

When submitting a proposal bear in mind the distance between the sites and restrictions on a single operator for a number of sites.

Preference will be given to those contractors that submit their company safety program including safe work practices and up to date equipment maintenance records.

Sealed quotes will be received by Grande Yellowhead Public School Division No. 77 attention:

**Director of Facilities** 3656 – 1<sup>st</sup> Avenue Edson, Alberta T7E 1S8

Telephone: (780) 723-4471 Toll Free: 1-800-723-2564 Fax: (780) 723-2414

**Closing Date: Friday, September 27, 2019 at 2:00 p.m.**

*Grande Yellowhead Public School Division No.77 reserves the right to accept or reject any or all applications.*



**YOUR LOGICAL SOLUTION TO WEIGHT MANAGEMENT**



CALL (780) 907-8642 FOR **FREE** SAMPLE

**DARK ROAST COFFEE**

# **SLIMROAST Optimum**

*Exclusive functional coffee formulated to:*

- Crush Cravings
- Increase Energy
- Metabolize fat to Energy
- Help Regulate Blood Sugar
- Improve Mood & Focus
- Boosts Circulation & Oxygen delivery

TO **UNLOCK** THE SECRET OF **WEIGHT MANAGEMENT!** PUT THE **POWER** OF **SLIMROAST OPTIMUM** IN **YOUR CUP!**



Thrilled with my results! I lost 9 lbs and an amazing 11 inches off my abdomen! Works wonderfully!

Managed to lose 7 lbs very fast & much more in inches the way my clothes are fitting now! 1 cup a day is all for me!

Down 17 lbs and fitting into clothes that were way to tight before!

No dieting, first month finished. Down 7 1/2 lbs 8.5 inches. Awesome product!

[www.ValentusTour.com/Ladybug](http://www.ValentusTour.com/Ladybug)

**(780) 907-8642**

# TRUSTEES VISITS IN LOBSTICK ZONE



*Grand Trunk High School*



*Wildwood School*

**Submitted by Grande Yellowhead Public School Division**

Superintendent Lewis led the Board of Trustees through their second round of visits in the division on September 19, 2019, in Niton Junction, Wildwood and Evansburg schools. Deputy Mayor Cherniawsky and school council representatives also joined the Board and Superintendent Lewis for a lunch meeting at the Tipple Park Museum in Evansburg to discuss matters of mutual interest.



*Evansview School*



**Superintendent Lewis engages with students at Niton Central School**

**Duc Nguyen**  
Investment Advisor



**Want to start planning for your ideal tomorrow, today?**

Duc can help you make your financial goals a reality by creating a customized plan based on your unique situation.

Contact Duc today to start a plan to help you reach your financial goals.

Duc Nguyen, CIM®, FCSI  
Investment Advisor  
780.221.0766  
duc.nguyen@servus.ca



Servus Wealth Strategies Ltd. is a subsidiary of Servus Credit Union Ltd. offering financial planning, life insurance and investments.

# KEY MESSAGES FROM GYPSD'S PUBLIC BOARD MEETING

**Submitted by Grande Yellowhead Public School Division**

On September 11, 2019, Grande Yellowhead Public School Division (GYPSD) held their Public Board Meeting. In attendance was Jessie Smeall - Alberta Teachers' Association (ATA), Cassie Kushniruk - The Weekly Anchor, and community members from Niton. Highlights from the Public Board Meeting:

- 2019 Kick Off was held August 28, 2019, at Parkland Composite High School. More than 600 staff across the Division were joined by the Board of Trustees and Superintendent of Schools, Carolyn Lewis. Joining in the festivities were MP Jim Eglinski, MLA Martin Long,

Deputy Mayor Janet Wilkinson, Mayor Gerald Soroka, Councilor Trevor Bevan and CAO Mike Derricott. Elder Dorothy Courteville began the celebrations with a blessing. Jody Urquhart was the keynote speaker to begin a day of professional learning opportunities offered to GYPSD staff. Feedback from GYPSD was exceptional as 95 per cent of staff rated the professional development a success.

- ATA President, Jessica Smeall discussed a letter campaign that will be implemented in the coming weeks asking teachers to write letters to their MLAs, parents and community members discussing class sizes, the composition of classes and instructional time. The purpose is to advocate to the Minister of Ed-

ucation on behalf of students. Superintendent Lewis suggested there be a focus on changing the funding formula for rural schools in Alberta. In addition, Board Chair Rosadiuk noted that GYPSD Trustees are tirelessly advocating for funding for rural schools and there will be more influence with a united front and momentum from the community.

- The Edson and District Recycling Society ran a recycling audit on Ecole Pine Grove Middle School in June 2018 and June 2019, where the results revealed a 90 per cent reduction in waste materials. An audit was also performed at Parkland Composite High School and Wildwood School with similar outcomes. École Pine Grove has been invited by the Recycling Council

of Alberta to present at its annual conference Sea Change: A Waste Production Conference on October 2 – 4, 2019 in Jasper, Alberta. In addition, CBC Radio featured an interview on August 27, 2019 titled "Edson Schools are going waste free with a new recycling program", which highlighted Pine Grove's success with the recycling program.

- Harry Collinge High School hosted their annual Ken Prosk Memorial Pancake Breakfast on Friday September 6, 2019. Trustee Caputo and Trustee Aust were in attendance with Superintendent Lewis. MLA Martin Long and Mayor Marcel Michaels joined the students and GYPSD staff for the annual breakfast.

- A Junior Kindergarten (JK) Information session was hosted at GYPSD Central Office on Monday September 9, 2019. Trustee Zaporosky and Board Chair Rosadiuk were in attendance along with parents and Principals from Westhaven, Niton and Fulham schools. Parents listened to Learning Services Director Kim McConnell present on the JK curriculum as well as had the opportunity to speak with Superintendent Lewis and Board Chair Rosadiuk following the session.

- On August 15, 2019, Adriana LaGrange, Minister of Education, pursuant to Sections 77, 112, 260(10) and 260(10.1) of the Education Act, made the order in the Continuance of the School Divisions and The Board of Trustees name change of Grande Yellowhead Public School Division (No. 77) to The Grande Yellowhead School Division, effective September 1, 2019. This name change will be in effect immediately on all legal documentation moving forward, however, the Division will continue to display GYPSD on existing signage as well continue to use the word Public in the Division name as an identifier of Grande Yellowhead existing as a Public School Division.

- Correspondence from the Minister of Education, Adrianna LaGrange, revealed that the government will maintain funding of 15.5 million for the Alberta School Nutrition Program, matching the grant money from previous years. This initiative provides daily nutrition to more than 35,000 elementary students across the province.



**FREE LOCAL CLASSIFIED ADS**

Real Estate, Rentals, Vehicles, Pets, Jobs, Service Directory, Buy/Sell/Trade, Lawn & Garden, Garage Sales, Events, Local Places & Much More... Advertise for **FREE** Today!



Buy and Sell just about **ANYTHING!**

POSTINGFIRST.com FREE Local Classifieds

*Follow Us*





*It's time to fall in love with your home all over again!*



# *fall* HOME RENO GUIDE

SEPTEMBER 2019







# QUICK AND SIMPLE WAYS TO MAKE A FRONT DOOR POP

Visitors' impressions of a home are often dictated by the home's entryway. Much as one may judge a book by its cover, the same can be said about the impression that a front door and entryway can create, regardless of how accurate that impression is.

Making certain changes to an entryway can go a long way toward improving curb appeal. Entryways also can set the scene for a home's interior. Whether one chooses to be classic or bold, modern or traditional, there are various ways to quickly transform a home's entryway.

- Bold front door col-

or: Color can dramatically enhance an entryway. Painting an existing door or replacing it with a more vivid option can do the trick. The DIY Network says certain colors stand out as favorites. These include turquoise, yellow, red, indigo, orange, and black. The door color should complement the other shades of the home, such as those on siding and trim.

- Custom walkway: Guide guests right to the front door with an attractive (and safe) walkway. Stamped concrete or decorative paver blocks may fit the bill. This walkway can extend to the street or to the driveway.

- Contain plants. Landscaping around the entryway should be neat and well-tended. Overgrown plants or shrubbery may give off an air of neglect. Container plants and carefully curated shrubs can create a neat and inviting aura.

- Highlight the address. Make sure the home can be found easily with bold and decorative house numbers. Consider two different address signs: one illuminated and easily viewed from the curb, and another closer to the front door.

- Utilize high-end materials. The relatively small area of real estate by the front door enables homeowners to splurge

on more opulent materials that can really add a feeling of luxury. These can include colorful tiles, ornate planters, decorative wooden doors, or elaborate knobs and lighting fixtures.

- Add architectural details. Find out which architectural elements will meld with the style of the home and then incorporate them. Moldings, columns, shutters, and trim are areas to consider.

The entryway to a home garners a lot of attention. Homeowners can enhance their spaces with entryways that really make a statement.

**Wabamun Home hardware**

See Us For Your Renovation Needs  
Lumber, Paint, etc.

Wabamun 892-4969

SERVING ENTWISTLE AND AREA FOR OVER 30 YEARS

**Entwistle CONCRETE**

PRODUCTS LTD.

SAND & GRAVEL SALES

PH: (780) 727-3525

Dan McCracken Entwistle, AB  
www.entwistleconcrete.ca

**GMP ONTRACK INC.**

George Perras  
Phone 780-892-4488  
Cell. 780-719-2687

Commercial • Farms • Acreages  
Brushing  
Fence Lines • Right of Ways • Fire Guards • Walkways  
Don't Dig & Burn, Mulch & Preserve  
General Excavation  
Landscape • Site Prep • Clean Up  
Snow Clearing/Removal  
Light Equipment & General Hauling

**TRI-LAKES SERVICES LTD.**

Serving: • Lac Ste. Anne County • Parkland County • Yellowhead County East

<ul style="list-style-type: none"> <li>• <b>Septic Hauling</b> <ul style="list-style-type: none"> <li>• Holding Tanks (residential, commercial, industrial)</li> <li>• Septic Fields</li> </ul> </li> <li>• <b>Drinking Water Delivery</b> <ul style="list-style-type: none"> <li>• Cisterns</li> <li>• Pools/Hot-Tubs</li> </ul> </li> <li>• <b>Fresh Water Delivery</b> <ul style="list-style-type: none"> <li>• Dust Control</li> </ul> </li> </ul>	<ul style="list-style-type: none"> <li>• <b>Portable Washrooms</b> (rental &amp; servicing)                     <ul style="list-style-type: none"> <li>• Plastic</li> <li>• Trailer mount Extremes (wash sink, toilet, lights heat)</li> <li>• Extremes (wash sink, toilet, lights, heat)</li> </ul> </li> <li>• <b>Steam Truck</b> <ul style="list-style-type: none"> <li>• In cooperation with your plumber</li> </ul> </li> </ul>
--	--

PH: 1-877-727-3939  
www.tri-lakeservices.com  
office@trilakes.services



# fall HOME RENO GUIDE

## TACKLE HOME MAINTENANCE PROJECTS TO SAVE MONEY

Much like the upkeep on your car, tackling home maintenance on a regular basis will prevent problems from developing and save

you from larger repair costs down the road. Some projects should be left to the professionals, but there are plenty of weekend jobs that

any homeowner can easily handle, like these:

Inspect your roof and make minor repairs. Winter can be especially hard on a roof. Look for ice, hail or water damage. Replace any cracked or missing shingles and clear any debris.

Clean your gutters. It's not glamorous work, but your home's gutters play an essential role in moving water away from your home and preventing damage. Consider installing gutter guards to ensure your gutters remain functional and free from debris.

Inspect windows and doors and re-caulk where necessary. Because a proper seal is essential in both heating and cooling seasons, this job should be performed twice a year to protect against drafts and

moisture, and to keep insects out. Worn weather stripping should also be replaced.

Check your insulation. Attics should be insulated to R50, which can usually be achieved with an insulation depth of at least 16 inches. Top up with an insulation product that is water repellent and fire resistant, like Roxul Comfortbatt. Don't forget to ensure that your basement headers are insulated properly to prevent overworking your furnace and air conditioner.

Other simple jobs include fixing leaky faucets, repairing and resealing decks, inspecting the foundation and scheduling a check-up for your HVAC system. The key is being honest about what you can handle and, when in doubt, call in the pros.

**Ashly-Lane Interiors Ltd.**  
WINDOW COVERINGS

*\*Fall Sale\* up to 40% Off Selected Items*

Valances • Sheers • Drapes  
Blinds • Fabric • Hardware

Residential • Commercial  
40 Years Experience

4900 - 51 Avenue, Stony Plain, AB  
780-963-5563



VISIT US

FOR ALL YOUR HOME RENOVATION NEEDS



North Central

4919 50 AVE - STONY PLAIN, AB

### Top Quality Flooring Products

- Carpet • Vinyl • Lino
- Hardwoods • Laminates
- Vinyl Tiles • Porcelain
- Floor and Wall Tiles
- Stone Tiles
- Ditra and Kerdi
- Shower Installs

Professional Installers  
Free Estimates



Quality You Can See.  
Comfort You Can Feel.  
Value You Can Appreciate.

#### Opening Specials

**Soft Touch Carpet** installed for \$3.25/sq ft  
in 6 colors with under pad

**3Mil Vinyl Planks** installed for \$4.49/sq ft  
with 20 year wear layer water proof 8 colors

**White Marble Floor Tiles** 50% OFF  
polished 12x24

### Pro Finish Flooring Ltd

#6 - 20 McLeod Avenue | Spruce Grove, Alberta T7X 1V4  
TEL: 587-286-2626 | pro-finishflooring@hotmail.com

HOURS: Monday to Friday 9:00AM-5:30PM Saturday 9:00AM-4:30PM

# fall HOME RENO GUIDE



## CONTROL PROBLEMATIC TERMITES

Few things elicit fear in the minds of homeowners like termites. Termites are voracious and can turn wood to pulp wherever they take up residence. Termites have felled massive trees, but they also can bore through the wood in homes, wreaking havoc as they go.

Ants and termites can look similar, so homeowners who suspect they have a termite infestation should learn to distinguish one from the other. A close look at termites can make it easy to identify them. Unlike ants, termites have no “waist;” their bodies are more rectangular. A termite also has straight, beaded antenna, while an ant’s antennae are bent or elbowed.

Termite wings are equal in size, uniform in shape and much longer than their bodies. Ants have a reddish hue, while termites are creamy white.

Prevention is always preferable to having to treat termites after they are established. Termite Web, a site devoted to termite information, states that treating home foundations and surrounding soil with termite spray is often the best course of action to stop subterranean termites from taking hold. If termites are already present, drilling into the floor surrounding the building and using a termiticide may be necessary. Baiting termites outside with wood that is tainted with slow-acting insecticide can eliminate an entire

colony in one to four months.

Termite control methods may need to be repeated. A multi-pronged approach using different chemicals may be necessary to kill existing insects and repel

further infestations. Trial and error can help homeowners rid their spaces of termites so that they can repair damaged wood and ensure structures are sound.



### TOP & DROP TREE SERVICES

Family owned and operated since 1991

**780-924-2014**



Doing it right .... the first time.

**DARREN RAYMOND** PH: 780-241-2711  
JOURNEYMAN CARPENTER [bangoncarpentry@hotmail.com](mailto:bangoncarpentry@hotmail.com)



### WOODLAND HOME CENTRE

T: 780-727-2964 F: 780-727-2220  
53314 Range Road 75A, Evansburg, AB  
[admin@woodlandlumber.com](mailto:admin@woodlandlumber.com)

## MASTER PLUMBER

36 YEARS EXPERIENCE  
**780-655-8402**

PLUMBING & HEATING SERVICES  
PRICE BY THE JOB NOT THE HOUR!

Furnace and Air Conditioning Rebate Special








## THE STUMP GRINDER

Mechanical Stump Grinding

**Andre**  
Phone: 780-413-6421  
[stumpgrinder@shaw.ca](mailto:stumpgrinder@shaw.ca)



# fall HOME RENO GUIDE



## THIS DESIGN TREND IS COMING BACK

Design trends come and go, but some have a funny way of resurfacing years after they first became popular. Homeowners who may have been considering renovating their home to remove a design element they believe to

be passé might want to see if that feature has experienced a resurgence in popularity. In fact, one of the more derided home decor trends of yesteryear has slowly crept back into style, albeit in moderation.

Wood paneling is back and better than ever, advise many design professionals. It's the formerly ugly duckling that filled homes starting in the 1950s, creating drab dens and faux-wood family rooms.

Paneling had long been an element of choice because it is relatively easy to install and can camouflage problem walls in a home, like those covered in boisterous wallpaper prints.

Wood paneling reach the peak of its popularity in the 1970s, and since then home-

owners have been tearing down these faux offenders for years or masking them in paint to brighten up spaces. However, the experts at Apartment Therapy report that wood paneling in shades of brown are making a comeback in cozy spots such as dens or studies. The warm tones of wood paneling elicit a retro vibe. But unlike their fake predecessors, today's paneling are being outfitted in real wood, making them more eco-friendly and stylish than ever before.

Designers have flocked to reclaimed wood and veneer panelings to incorporate them into design elements. And while wood paneling used to be hung vertically, designers now experiment with hanging paneling.

Many people no longer use

paneling to cover an entire space. Paneling is used sparingly as an accent wall or another feature for character. Wood walls can be stained in a rich mahogany to look upscale or be weathered and rustic.

Homeowners ready to re-embrace wood paneling can choose to enhance one wall in a room. Think about the space above a fireplace or a strip of wall behind a sitting chair and side table. Paneling also can serve as a headboard behind a bed in a master suite. Painted horizontally, paneling can add dimension and texture to walls, even in a bathroom.

Wood paneling is slowly making a comeback, proving that no design trend every truly goes away.

**Like Us On facebook**

FACEBOOK.COM/COMMUNITY VOICE NEWSPAPER

**ECONOMY ASPHALT DRIVEWAYS**

- Paving • Asphalt or Concrete • Repairs
- Pararamps • Seal Coating • Crack Filling
- Snow Removal • Sanding • Rock Chip Sales

**CHARLES MACDONALD**  
 PH: 780-962-5581 CELL: 780-777-0914  
 FAX: 780-962-9146

**B.W. EAVESTROUGHING**

*Specializing in:*

- ⇒ Residential 5"
- ⇒ Commercial 6"
- ⇒ Soffit
- ⇒ Gutter Clean System
- ⇒ Free Estimates
- ⇒ Fascia

**BRAD (780) 699-1880**

Family run, local business, we care!

**BEST CISTERN SEPTIC SOLUTIONS**

**Cistern and Septic Inspection, Installation and Repair!**

Septic planning, design, installation by government certified installer(s)

New Installs Available. Reasonable Rates.

**Let Us Handle the Dirty Work**  
**780-668-4306**  
 best-cistern-septic-solutions.com

**MCLEOD Home building centre**

Let us load you at the largest Lumber Yard in Parkland County  
**962-2575**  
 Call Toll Free: 1-800-343-2988  
 35 South Ave, Spruce Grove

- Renovation & new build experts • Superior quality lumber
- Complete home packages • 3D Estimating Program
- Engineered roofs & floors • Farm Buildings • Garage packages
- Windows & doors • Custom decks & fence packages
- Flooring & kitchens • Bathrooms • Ceramic Tiles
- Concrete & landscaping • Electrical supplies
- Fasteners • Woodstoves

Service • Selection • Advice • Special Orders • Delivery

# fall HOME RENO GUIDE

## EXPECT THE UNEXPECTED WHEN RENOVATING A HOME

Tackling any renovation project is an exercise in patience. Renovations can impede on daily activities and cause a certain level of upheaval in homeowners' lives. Homeowners planning renovations also may find that they must have some wiggle room when it comes to both their budgets and their expectations. Remodeling, particularly with regard to older homes, may unveil unforeseen issues that only arise in the face of the renovation.

So what can homeowners expect during a renovation? The following are a few issues that might arise during home improvement projects.

- **Dirt and noise:** Homeowners can count on dust, debris and noise throughout the renovation process. Dust appears when walls come down or go up, and construction teams typically erect temporary walls or tarps to contain the debris. Air filtering systems also can limit dust particles. Noise is unavoidable. If it becomes troublesome, arrange to be outside of the home when the bulk of the construction is taking place.

- **Delays or schedule changes:** Even the best contractors cannot control every aspect of the job. They rely on subcontractors and vendors to do portions of the work. Materials

may not always arrive on time, or they may fall short of homeowners' expectations. This can push back the project schedule. Homeowners should hope for everything to be done on time, but it can be less stressful if homeowners anticipate delays and be a pleasant surprise if there are no delays.

- **Hidden issues:** Contractors may uncover all sorts of issues that need to be addressed before a project can progress. Examples include the presence of asbestos (common in older homes), plumbing problems, incorrectly wired electrical systems, and leaks or moisture issues. These problems also can

impact the cost of the project, so set aside some money in the budget for unforeseen expenses. Chances are you are going to need some extra money to handle a few surprises during the project.

It's important to expect the unexpected when embarking on home renovations. Budgeting for hidden costs, expecting delays and coping with the upheaval to daily schedules are par for the remodeling course. However, the end result is often well worth the time and effort.

**MARK MARTIN PFEIFFER**  
MASTER BRICKLAYER/MASON

Cell: 780-242-3308  
Email: pfeiffer.mark@hotmail.com

- Brickwork • Stonework
- Rockwork • Parging
- Concrete Block Work
- Tile Work (all kinds)

**HAMMUR**  
Construction

**For ALL Your Carpentry Needs**  
~ Residential or Commercial ~

**Elvis Murray** (780) 542-1693  
Owner/Operator fax: (780) 542-7651  
Drayton Valley, Alberta email: eb4321@telusplanet.net

**"You can COUNT ON US!"**

**Valley Concrete**  
(2003) INC.

"SERVING SURROUNDING AREAS"  
READY MIX CONCRETE

- \* WASHED SAND & ROCK
- \* CONCRETE DYES & HARDENERS
- \* FIBREMESH
- \* PRECAST CONCRETE
- \* ALL COMMERCIAL & DOMESTIC REQUIREMENTS

[www.valcon.ca](http://www.valcon.ca)

5305 34 Ave Drayton Valley, AB, T7A 1S7 Phone: 780-542-5488 Fax: 780-542-5568

**Home hardware** Drayton Valley  
building centre **542-4044**  
ON US: 1-888-542-9663

**For ALL your renovation and material needs, SHOP LOCALLY!**

4221 - 50 Street Drayton Valley

# OCT 5 AUCTION FOR: HOLMES FAMILY

**30+ YR MECHANICAL BACKGROUND FULL DISPERSAL**  
 LOCATED: From Barrhead - 2 mi N, 11 mi W on Hwy 33 towards Fort Assiniboine. Turn Right onto TWP 610A (at curve), 1 mi E

**SATURDAY AFTERNOON, OCTOBER 5<sup>TH</sup> AT 12:00PM**

**SNAP-ON TOOLS / PARTS / MECHANICAL:** \* Snap-on 96 Classic 74" Tool Chest \* Large Supply of Hand Tools including Snap-on (Sockets, Wrenches, Screw drivers, Specialty) \* Quality (Wrench & Socket sets, Cordless Impacts & Drills, Drill Bits, Taps, Pipe Threaders \* Pro Glass Bead 32" Sandblast Cabinet \* CAT 1U5470 Engine Pressure Group Tool \* Miller Wildcat 200 (13.5hrs) \* WELDING (Tools, Supplies, Shields, Oxy Acet w/ cart) \* HD Steel work Bench's \* 3/4" Socket Sets \* Hydraulic Pipe Benders \* HD Jack Stands \* Quality Shop Casters \* New Elec Panels \* 2 Solar Panels \* Transfer Pumps \* Brand New Auto Starters \* Alternators \* Hitches \* Hoses & Repair Supply \* New Coil Nails \* New Contractor Wheel Barrow \* New Hydraulic Picker Truck Winch \* 220 Elec Motor \* Rolls 12 & 8 AWG cable \* Elec fuel inj & ignition \* SS fittings \* Parts bins \* Pallet Jack \* 36" Double Door Paint Cabinet \* HD Metal Steel Shelving \* Full Shop Tools and Supplies \* Makita Chop Saw \* Knaack Job Box \* Dewalt 12" Compound Mitre Saw \* Crates of New Amsoil \* New 8" Irwin + 6" Record Vise \* Blue Tubs \* Boxes of new Tarps \* High door shop door opener \* New Bolts & elec wire rolls \* New shop ceiling fans \* Alum pipe framing \* New HD rope \* New Fuel Hose \* Plus Much More

**BOATS / ATV's / UTV / TRAILERS / GOLF CARTS:** \* 19' North River Trapper Jet Boat, 350 Chev, Stomp Cleanout, Open Bow, Teflon Bottom, Canopy, 5 Seats, Fish Finder, Alum Trailer \* 16' River Alum Canoe, Flat Back \* Husq HUV4420D UTV, Diesel, winch, dump box \* Mint 17 Yamaha Grizzly 700, PwrStr, Winch, Skid Plate, ITP Rubber, 136km \* 09 Kawasaki KRF 750L Side by Side, Exc Rubber \* Honda 680 Quad, winch, vry gd rubber \* TRAILERS (07 27' V-Nose Cargo Trailer, 2 @ 3500, frnt & bck ramp, tie downs \* Aluminum 8'x17' w/1' removable sides, Lrg Ramp, 2 @ 3500lb axles \* 11 Load Trail 5th whl Tri Axle Dump Trailer, 3@7k axles, Nice) \* 2 Club Car Precedent Golf Carts, Elec, Stored Inside, Good

**SKID STEER / VEHICLES / WATER & MECH TRUCKS:** \* Caterpillar 248B Skidsteer 1510 hrs, High flow hyd, Bucket \* Pallet Forks w/guard \* 98 GMC 7500 5 ton Truck, Hiab 6 ton Picker, 16' Steel Deck, Clean, 98k km, New (466 Gas Motor, Transmission, Brakes, PTO, Hyd Pump (Not hooked up)) \* 07 GMC SLE 2500hd, 4dr, 6L, 230k km, 4X4, auto, Alum Rims, Bose Stereo \* 02 Hyundai Tiburon, Drk Blue, Blk Racing Harness Int, V6 5spd, 2 sets rims & tires, Carbon Fibre Hood & Factory Hood \* 78 Mercedes 4 dr Blk w/tan interior, 5 cyl diesel, 300D \* 90 Ford Louisville Water Truck, 3406 Cat, 13 spd, Rebuilt pump, Spray Bar

**YARD / RECREATION:** \* Husq MZ6125 61" Zturn Mower, HD Stil Weld Deck, 201 hrs \* Husq push mower \* Husq & Stihl Chainsaws \* Stihl Dirt Auger \* Weed Eaters \* New 3000psi Honda Pressure Washer \* Garden (Sprayers, Hand Tools \* New Honda 2" & 1" water pumps \* New (Camping supplies, Outfitters Tent, Outfitter Wood Stove, Bunk cots) \* 2 sets New Quad Tires \* Vgood Quad rack Sprayer \* Appliance Dolly \* Wide base step ladder \* General Household & More

**JD TRACTOR's / EQUIP / SEA CANS:** \* JD 7400 w/740 ldr w/ grapple, FWA, 3pt, 100hp, Pshift, 9276hr \* JD 1630 w/145 Ldr, 3 pt Pump & head work \* Muratori 48" Rotovator \* 3 pt Cult \* Harmon Air Seeder Frame - Triple Flex \* 20' Factory Crowfoot Packer Bar \* 20' & 40' Seacan

**PARSONS AUCTIONS LTD.**  
 Charles 674-7704 (780-674-3929) Jeff 305-4328  
 Pictures Available on: parsons-auctions.com

# REMINDERS ON REGISTERING FOR THE FEDERAL ELECTION

## Submitted by Elections Canada

- To vote in the federal election, eligible electors must be registered at their current address.
- Elections Canada will mail a voter information card to all registered electors. The vast majority of electors is already correctly registered and will receive a voter information card in the mail by October 3rd.
- Electors can use Elections Canada's Online Voter Registration Service to register, check their voter registration, or update their address. They can also visit their local Elections Canada office or call 1-800-463-6868 to register or make changes to their voter information.
- Starting this week, Elections Canada agents will reach out to voters in certain areas

such as new residential developments, high-mobility areas and long-term care facilities, to offer voter registration services. These agents will be located at public registration desks, and, in some circumstances, may even visit electors door to door.

"By registering, checking and updating your information, you are making sure that you will get a voter information card. I encourage you to do so as early as possible. With your voter information card in hand, you can be confident that you have accurate voting information directly from Elections Canada," says Chief Electoral Officer Stéphane Perrault.

Elections Canada is an independent, non-partisan agency that reports directly to Parliament.

For election updates, subscribe to our news service at elections.ca.

**STORY TO TELL?**

Know of a good event going on in the community? Ever wanted to write up a local event for the Community Voice?

If you have any good ideas for articles or would like to submit a story for the paper

Email it to [news@com-voice.com](mailto:news@com-voice.com) or just fax it in at (780) 962-1021.

Please call us at (780) 962-9228 for more information.

*Stories may be edited for length due to possible space restrictions.*

**Community VOICE**

Keeping You and Your Community Informed



# SCREEPY, CRAWLY HALLOWEEN COLORING CONTEST



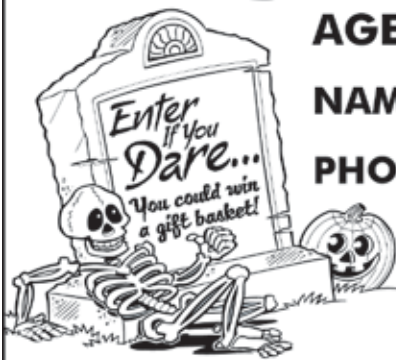
**AGE GROUPS: 3-4 YRS | 5-6 YRS | 7-9 YRS | 10+ YRS**

**NAME: \_\_\_\_\_ AGE: \_\_\_\_\_**

**PHONE: \_\_\_\_\_ TOWN: \_\_\_\_\_**

**Entries must be recieved by October 26, 2019.**

**Mail to: Jack O'Lanterns, c/o Community Voice  
Box 3595 Spruce Grove, AB T7X 3A8**



# Classified Ads - Call 962-9228

## Classified Policy

CLASSIFIED RATES INCLUDE GST. 1st 20 Words: First Insertion = \$6.00; Subsequent insertion = \$3.00 each. (Eg: 2 insertions = \$9.00; 3 insertions = \$12.00; 4 insertions = \$15.00; etc) Each additional word is 20 cents per word, per insertion. BOLD/CAPITAL text available for an additional \$1/line. Lost & Found and To Give Away (up to a max. of 25 words) are free

of charge. Ads must be paid in advance either by cheque, cash, Visa or Mastercard. No Refunds Allowed on Classified Ads. DEADLINE: is Thurs. 4:00 pm (Wed. 4:00 pm on long weekends). Classified ads may be called in to the COMMUNITY VOICE office at (780) 962-9228, emailed to: classifieds@com-voice.com, dropped off at Onoway Registries, or mailed with your ad and payment to: COMMUNITY VOICE, BAG

3595, SPRUCE GROVE, AB T7X 3A8. Ads may also be placed on the web at [www.com-voice.com/classified.htm](http://www.com-voice.com/classified.htm)

## Hall Rentals

Bright Bank Hall, 780-968-6813

Camp Encounter, Vincent Mireau - Camp Director. [director@campencounter.com](mailto:director@campencounter.com). C: 780-504-2012 W: 780-967-2548

Cherhill Community Assoc. Hall, Kevin 780-785-8153

Darwell Hall, 780-721-2690

Darwell Seniors, Phone Debra 780-785-2907

Duffield Hall, 892-2425

Entwistle Community League Hall Rentals, Call Cheryl at 780-515-1755

Entwistle Senior's Drop In Centre, Barb 727-2108 or Glennis 727-4367 Mon-Fri

Evansburg Senior's Heritage House, Dennis 727-4186

Evansburg Legion, upper hall 250 people, lower hall 80-100 people, 727-3879

Fallis Community Hall, 892-3150

Gunn Hall (G.A.R.S.) 780-951-9452

Keephills Hall, 731-3761

Lake Isle Community Hall, PH: 780-892-3121 or Email: [lakeislehall@mail.com](mailto:lakeislehall@mail.com)

Lake Romeo PeaVine Hall, 785-2700



**Deb Gouin**  
**780-497-0531**  
[www.debgouin.ca](http://www.debgouin.ca)

Century 21 Masters 780-963-2285  
 #105, 4302 - 33 St., Stony Plain, AB T7Z 2A9  
 Each office independently owned and operated.



## FEATURED LISTINGS:



**OFFERS! MUST BE SOLD!**

**\$358,800**

### Seller Relocating, MUST BE SOLD!

- **SPRUCE GROVE ADULT 1/2 DUPLEX BUNGALOW**
- 2+2 bedrooms, 3 baths
- Open Floor Plan, Main Floor Laundry
- Double Attached Garage
- NO CONDO FEES!
- **E4154703**






**\$629,000**

- GATED COMMUNITY EXEC. HOME**
- 1 acre lot minutes to Spruce Grove
  - Soaring Ceilings & Luxury Finishings
  - **TWO TRIPLE GARAGES**
  - + RV PARKING
  - **E4147138**



**\$396,500**

- GORGEOUS COUNTRY HOME**
- 2270 sq ft 3 Bed 3 Bath
  - 1/2 Acre Lot - PRIVATE
  - Oversized Heated Double Garage
  - RV Parking, Lots of Upgrades
  - **E4170219**



**\$769,900**

- HUGE LOT - TRIPLE GARAGE**
- 1/2 Acre Lot
  - Back onto Golf Course
  - Many Recent Upgrades
  - 3 Bedroom 1 Bath Bunaglow
  - **E4168911**

**VIEW FULL LISTING DETAILS AT [WWW.DEBGOUIN.CA](http://WWW.DEBGOUIN.CA)**

**LISTINGS NEEDED!!** If you're considering selling, I currently have serious buyers looking! Give me a call for a **free market evaluation!!** With more than 30 years' experience in the real estate industry, I have both local knowledge as well as serious buyers currently looking for property in our area! Put me to work for you.....

**FROM SIGN UP TO SIGN DOWN!!**




**Made You LOOK!**

**See Advertising works! Place your ad today!**

# Classified Ads - Call 962-9228

Magnolia Hall, 727-2015  
 Manley Goodwill Community Hall, 963-9165 or 916-0146  
 Mayerthorpe Diamond Centre, 786-4044  
 Moon Lake Community Hall, Nikki Berg 780-898-1390  
 Park Court Hall, call or text Karyn 780-712-3918

Parkland Village Community Centre, 780-298-9155 @PVCCentre

Ravine Community Hall, 325-2391

Rich Valley Community Hall, 967-3696 or 967-5710

Rosenthal Community Hall, 963-7984

Smithfield Community Hall, Wanita 780-718-8824.

Tomahawk & District Sports Agra, Bookings: Kathy 780-339-3773.

Wabamun Jubilee Hall, 892-2699.

Wildwood Community Hall, 325-2180 or 780-514-6105

Wildwood Rec Complex 325-2077 or 514-8944

Wildwood Senior's Hall, 325-3787 or 325-2391

## Announcement

Hi my name is Will Martin. I am formerly of Cherhill, Alberta. I am a 1990 high school graduate of Sangudo JR SR High School. I am a 1995 Instrumentation Technology graduate of N.A.I.T. in Edmonton, Alberta. I am announcing I am homosexual and I have been homosexual since I was young. (4) 24-09

## Cleaning

**CEILING & WALL CLEANING**  
 - Specializing in cleaning Stipple & California knockdown. Cig. Smoke removal & Odour removal. Ceramic floor tiles steamed cleaned. Call Nano Cleaning for Discount Prices! 780-914-0323 (5) 27-08

## Computers

**FREE Computer Checkup.** Repairs **work** or extract Doc or Pictures from Old or Broken PC **NOT** over \$50. No Prepayment - No Charge if not Repairable. Yes, I have for you a good, clean, refurbished and upgraded

laptop or desktop with Legal win 10 for **ONLY \$100.** Call now 780-892-2407 (12) 13-08

## Services

Lawn Spraying, Fall is an excellent time to control weeds for next spring! Standard front lawns starting at \$50. Call 780-982-6589 (3)

## Landscaping & Maintenance

**Stump Grinding For Hire** - Alberta Beach & Surrounding areas. Call 780-779-3589 (28) 23-04

**PURE HEMP CBD PRODUCTS**  
 AGING IS INEVITABLE - LOOKING AND FEELING OLD ISN'T!

**WHAT IS CBD?**

**A Health and Beauty Breakthrough!**  
 Cannabidiol, CBD, is one of over 80 active cannabinoid chemicals in the hemp plant. CBD, unlike, THC, does not produce euphoria or intoxication. CBD targets specific receptors in the cells of your brain & body. There are many physical and mental benefits to using CBD products for both treatment and prevention of numerous ailments.

**Therapeutic Uses For Pure Hemp CBD**  
 Supports healthy blood sugar levels, promotes healthy energy levels, relieves anxiety, aids in digestion, supports optimal immune function and the regeneration of healthy cells, and promotes a sense of serenity and overall well-being.

**Anti-Aging Uses For Pure Hemp CBD**  
 Promotes more youthful skin, provides hydration, enhances radiance, lessens age lines as well as the appearance of dark spots.

**KEY BENEFITS**  
**PAIN RELIEF:** Known to reduce vomiting & nausea; suppress muscle spasms; reduce seizures & convulsions.  
**PROMOTES HEALTH:** Helps to promote relaxation and overall health.  
**WELL-BEING:** Helps to relieve anxiety, aid in digestion, supports optimal immune function and the regeneration of healthy cells.

**CBD PET PRODUCTS**

**PET CHEW TREATS**

**KEY BENEFITS**  
**SYNERGISTIC BENEFITS:** Can be used in conjunction with regular medications with no side effects.  
**NO SIDE EFFECTS:** Does not damage the liver, kidney or GI Tract like OTC medication.  
**DIETARY SUPPLEMENT:** Can be administered daily as part of your pet's diet.

**ORAL SPRAYS & DROPS**

**KEY BENEFITS**  
**MANAGES PAIN:** Helps to treat inflammation, arthritis and joint pain.  
**TREATS DIGESTIONAL ISSUES:** Helps with loss of appetite, nausea, IBS and gastrointestinal swelling.  
**GENERAL HEALTH:** Helps to manage mood, anxiety and general joint pain. For healthy, happy pets.  
**CONVENIENT:** Can be sprayed into pet's mouth or on food.

**For more information, Call (780) 907-8642**

# Classified Ads - Call 962-9228

## Firewood

**SEASONED FIREWOOD:** Birch, Tamarack, Spruce/ Pine & Poplar. 4x4x8 cord, Split and delivered or pick up at wood yard, 1/2 cord or full cords available. Call 780-967-5835 or 780-983-1495 (28) 27-08

Split Spruce \$150 long box pick up, \$120 short box. Violet Grove area, call 780-621-8499

## Vehicles

(2) 24-09  
2006 Dodge 3500, Quad Cab Short Box, Diesel, Auto, 4x4, 255,000 kms, \$12,000 OBO. Call 780-778-6956 (2) 24-09

## For Rent

Onoway 1 & 2 Bedroom Suites for Rent. Clean, quite secure

building with reasonable rent. Call 780-967-5857 or 780-920-3652 (4) 10-09

Completely renovated Motel in Onoway, offering monthly rentals, all utilities FREE, furnished bachelors and furnished 1 bedroom with full kitchen, please call Cheryl for viewing 780-967-4420 www.onowayinnandsuites.com (4) 17-09 OG

Lakefront Rental, fully furnished, winterized, 3 Bedroom, Seba Beach Cottage, Sept - June 2020, \$900/month + Utilities, Call Carol 780-916-3140 (2) 17-09

**Homer's Hut Cabin Rentals** - Daily, weekly, monthly rates, Alberta Beach area, Call Connie 780-913-8024 (15) 17-09

In Alberta Beach, 2 Bedroom Suite in new Adult Living 4plex, \$1200/month + DD same, includes 6 appliances, in floor heating, garage, power & gas, N/S, Call Connie 780-913-8024 (2) 17-09

In Alberta Beach, 3 Bedroom House with 4 appliances, detached garage, N/P, N/S, Available Oct 1. \$1100/month + DD, Call Connie 780-913-8024 (2) 17-09

2 bedroom home on acreage in town limits of Stony Plain! \$1500 all in. includes all utilities! Opportunity for reduction in rent for handyman services. Qualified Seniors only! Ph 780-913-2430 Seniors only! (4) 17-09 OG

**Seba Beach House For Rent.** Fully furnished 1000 square ft. for rent from October 2019 - May 2020. 3 bedroom w/ laundry, full kitchen and lots more! \$850 per month, plus some utilities. Call Wade, 780-686-9915 (2) 24-09

Year Round Cabin For Rent North of Evansburg on Hwy 22 (15 mins from Evansburg). \$1000/month + DD. All inclusive, utilities & TV. Max 2 people. Call 780-239-0553 (4) 01-10



**SERENITY FUNERAL SERVICE**

[www.serenity.ca](http://www.serenity.ca)

**780-542-3338** (24 hours) 5137-50 Avenue Drayton Valley, AB

SERENITY FAMILY SERVICE SOCIETY - YOUR NOT-FOR-PROFIT SOCIETY

# SUDOKU OF THE WEEK

## Fun By The Numbers

**Here's How It Works:** Sudoku puzzles are formatted as a 9x9 grid, broken down into nine 3x3 boxes. To solve a sudoku, the numbers 1 through 9 must fill each row, column and box. Each number can appear only once in each row, column and box. You can figure out the order in which the numbers will appear by using the numeric clues already provided in the boxes. The more numbers you name, the easier it gets to solve the puzzle!

**ANSWER:**

7	4	3	8	6	5	2	1	9
8	5	2	9	3	1	6	7	4
6	1	9	2	4	7	5	3	8
2	9	7	1	5	4	8	6	3
4	8	6	7	2	3	1	9	5
5	3	1	6	8	9	4	2	7
1	7	8	5	9	2	3	4	6
3	2	5	4	7	6	9	8	1
9	6	4	3	1	8	7	5	2

**Like puzzles?** Then you'll love sudoku. This mind-bending puzzle will have you hooked from the moment you square off, so sharpen your pencil and put your sudoku savvy to the test!

	4	3						1
8		2	9	3		6		
	1	9	2		7			
			1	5	4		6	
	8					1		5
	3			8		4		7
	7	8	5	9	2			
3	2					9	8	
						7		



# Church Directory

<p><b>Seba Beach Christian Fellowship</b></p> <p>Sunday School 10:00a.m. Worship Service 11:00a.m.</p> <p>Weekdays Bible Study &amp; Prayer</p> <p>(780) 305-3594</p>	<p><b>Advent Lutheran Church</b></p> <p>Sunday Worship &amp; Sunday School 11:00a.m.</p> <p>Evansburg O: 727-3594</p>	<p><b>Roman Catholic Church</b></p> <p>St. Agnes' Parish, Maysethorpe Sunday 9:00a.m. St. Elizabeth Parish, Evansburg Saturday 7:00p.m.</p> <p>(780) 786-2032</p>	<p><b>St. Joseph's Catholic Church</b></p> <p>Sunday Mass 11:30a.m. Tuesday Mass 7:00p.m.</p> <p>Wabamun, AB</p>	<p><b>St. Augustine's - Parkland Anglican Church</b></p> <p>231 Church Rd. Spruce Grove</p> <p>Sunday Service 10:00a.m. Eucharist with Sunday School &amp; Nursery All are Welcome</p> <p>Office 780-962-5131 www.staugustinesparkland.org</p>	
<p><b>Parkland Baptist Church</b></p> <p>Sunday Worship Service 10:30a.m. All Welcome</p> <p>121 Brookwood Drive (780) 962-4101 www.parklandbaptist.ca</p>	<p><b>Word Church Apocalyptic Era</b></p> <p>Border Paving Athletic Centre, 9 Tri Leisure Way, Spruce Grove ignitors in the Wild Rose room.</p> <p>Ph: 780-962-7579</p> <p>Service starts at 10:00 a.m. every Sunday morning, <b>come all &amp; be bless.</b></p>	<p><b>Anglican Mission of St. Saviour</b></p> <p>Service every Sunday at 10:00a.m.</p> <p>Rev. Aaron Parsall-Mylet Contact: 780-962-5131 Unit 3, 5245 - 51 Ave, Wabamun All are welcome!</p>	<p><b>Stony Plain United Church</b></p> <p>Sunday Service 10:30a.m. 5012-51 Ave. Stony Plain</p> <p><b>Mewassin United Church</b></p> <p>Sunday Service 9:00a.m. Rev. Heather Koots Hwy 627 - Rg Rd 30 Ph: 780-963-4745</p>	<p><b>Immanuel Lutheran Church of Rosenthal</b></p> <p>Traditional Service Sunday 9:30a.m. Contemporary Service 10:15a.m. Christian Counselling Services Rg Rd 13, Tierp Rd 524 Ph: 780-963-4048 www.luther.ca email: office@luc.ca</p>	
<p><b>Emmaus Lutheran Church</b></p> <p>Sunday Worship Service 11:30a.m.</p> <p>Rev. Robert Marshall 4504-52<sup>nd</sup> Ave, Drayton Valley Ph: 780-542-5101 www.emmanuelchurchknox.org</p>	<p><b>Church of God</b></p> <p>Worship Service Sun. 11:00a.m.</p> <p>Please contact for activities 5004-49 Street, Drayton Valley Ph: 780-542-5091</p>	<p><b>Calvary Baptist Church</b></p> <p>Pastoral Team: Kenton Penner</p> <p>Sunday Worship 10:30a.m. Youth &amp; Ministries Info - calvbapt@telus.net</p> <p>4401-50<sup>th</sup> Ave, Drayton Valley 780-542-4774 www.calvarybaptistdo.ca</p>	<p><b>Drayton Valley Alliance Church</b></p> <p>Pastor John Haazen</p> <p>Join us for Sunday Service at 10:30a.m. 5014-56 Ave. (next to Value Drug Mart) Programs for all ages Ph: 542-6501 dvalliance.ca</p>	<p><b>All Saints' Anglican Church</b></p> <p>Sunday Morning Worship 9 BCP 10:30 BAS with Sunday School &amp; Nursery</p> <p>5212-47 Ave. Drayton Valley (780) 542-5048</p>	<p><b>St. Anthony Catholic Church</b></p> <p>WEEKEND MASS SCHEDULE: Saturday 5:00p.m. Sunday 12:00p.m.</p> <p>4708-50 Ave. Drayton Valley Parish Office: 542-5254</p>

# SERVICE DIRECTORY

**2Bros**  
Custom Contracting Ltd.

Custom Framing • Concrete Floors • Shingling  
Siding Soffit Fascia • Styrofoam Block System

Jeff 780-717-0520

**BREWSTER BOBCAT SERVICE LTD.**  
P.O. Box 454, Wildwood, AB T0E 2M0

- \* Site Preparation
- \* Pile Drilling
- \* Concrete Work
- \* Landscaping
- \* Demolition
- \* Sand & Gravel Delivery
- \* General Contracting

brwcat@gmail.com  
Telephone: (780) 325-3743  
Bruce Balacsak Cell: (780) 621-6960

**Ernie's Repair & Service**

**SMALL ENGINES**

4820 - 47 Avenue, EVANSBURG  
**(780) 727-4433**

**WABAMUN PHARMACY**  
**I.D.A.**

Box 90, 5120 - 51 Avenue  
Wabamun, AB T0E 2K0  
Ph: (780) 892-2278 Fax: (780) 892-2488

Community VOICE  
Helping You and Your Community Thrive!

**THIS SPACE IS RESERVED FOR YOU!**

**WEIGHTLOSS NEVER TASTED SO GOOD!**

**NEW! NEW! NEW! NEW!**

(780) 907-8642 **VALENTUS**  
www.ValentusTour.com/Ladybug


# SERVICE DIRECTORY

**Blakeman Drilling Ltd.**  
 Waterwell Drilling & Servicing  
 Pumps & Pressure Systems  
 SERVING LAC. STE. ANNE & WEST PARKLAND FOR OVER 25 YEARS  
 Joe (780) 924-3024




**DONALD N. GREENWAY**  
 Chartered Accountant  
 Suite 205 Sunrise Professional Building  
 215 McLeod Avenue  
 Spruce Grove, AB  
 (Bus.) 962-6366  
 (Fax) 962-3990

**WHAT MAKES MYDAILYSPRAYS SO POWERFUL?**  
 HIGH ABSORPTION, SCIENCE & THE INGREDIENTS



(780) 907-8642  
 www.Elaine1.com

**SLIMROAST Optimum**  
 DARK ROAST COFFEE  
 YOUR LOGICAL SOLUTION TO WEIGHT MANAGEMENT  
 (780) 907-8642  
 www.ValentusTour.com/Ladybug



Community VOICE  
 THIS SPACE IS RESERVED FOR YOU!

**ROY SHERWOOD**  
 Master Electrician  
 Ph: 780-968-1425  
 Cell: 780-908-2287  
 Fax: 780-968-2211  
 Email: suretechroy@gmail.com  
 2-53220 Rge Rd 21  
 Parkland County, AB  
 T7Y 0C5  
**SURETECH ELECTRIC LTD.**  
 Control & Automation  
 Commissioning  
 Solar Sales & Service  
 Industrial . Commercial . Residential

**MARK MARTIN PFEIFFER**  
 MASTER BRICKLAYER/MASON  
 Cell: 780-242-3308  
 Email: pfeiffer.mark@hotmail.com  
 • Brickwork • Stonework  
 • Rockwork • Parging  
 • Concrete Block Work  
 • Tile Work (all kinds)



**CROFT LAW**  
 Local office in Darwell  
 Call us at 780.467.5534  
 Experienced Legal Services in:  
 Family Law • Civil Litigation  
 Corporate Law • Wills & Estates  
 Plus Notarizing and Commissioning  
 www.croftlaw.ca

**PEMBINA CONCRETE PRODUCTS LTD.**  
 Manufacturers of ONE PIECE SEPTIC & HOLDING TANKS  
 \* Water Cisterns \* Field Systems \* Pumps and Accessories \* Sumps  
 DELIVERED TO YOUR SITE  
 1-800-661-3047  
 780-727-2702  
 PembinaConcrete.com  
 New Line of Concrete Statues, Fountains and Garden Ornaments.  
 BOX 123, Entwistle, T0E 0S0



Community VOICE  
 THIS SPACE IS RESERVED FOR YOU!

**CALIBRE DRILLING LTD**  
 DRILLING AND SERVICING YOUR WATER WELL.  
 SPECIALISTS IN AIR & MUD ROTARY DRILLING  
 \* Water Well Drilling \* Pump Installations  
 \* Pressure Systems \* Well Tests  
 \* Licensed Drillers \* Year Round Drilling  
 \* Geotechnical Drilling \* Cathodic Protection  
 \* Free Estimates  
 Quality Workmanship Five Year Warranty  
 (780) 960-2992  
 BOX 4083 SPRUCE GROVE, AB T7X 3B3

**POSTINGFIRST.com**  
 BUY and SELL just about ANYTHING!  
 FREE LOCAL CLASSIFIED ADS  
 Real Estate, Rentals, Vehicles, Pets, Jobs, Service Directory, Buy/Sell/Trade, Lawn & Garden, Garage Sales, Events, Local Places & Much More... Advertise for FREE Today!  
 Follow Us  




# SERVICE DIRECTORY

**Jack's Auto Body**  
 & 24 HR Towing

SPECIALIZING IN COLLISION REPAIR  
**GUARANTEED WORK • INSURANCE CLAIMS**

**CAA** BOX 9 SITE 306 RR3, ONOWAY, AB T0E 1V0  
**(780) 967-5850**

OUR PLEDGE IS QUALITY

**PREVAIL MAX**  
 CELLULAR HOMEOSTASIS FORMULA

A NUTRITIONAL BREAKTHROUGH THAT SUPPORTS YOU...  
 RIGHT DOWN TO THE LAST CELL!

LIVIN TRIM WITH  
**VALENTUS (780) 907-8642**

[www.ValentusTour.com/Ladybug](http://www.ValentusTour.com/Ladybug)

**H&E UPHOLSTERY**

FOR ALL YOUR UPHOLSTERY NEEDS

Convertible tops for cars and boats, custom car and boat interiors, 5th wheel trailer skirts, boat tarps, ATV seats, furniture, kitchen chairs, heavy equipment seats.

**WWW.HANDE.CA** 4-485 South Ave. Spruce Grove  
 For more information contact: **(780) 962-3048**  
 kirk@hande.ca

SERVING ENTWISLE AND AREA FOR OVER 30 YEARS

**Entwistle CONCRETE PRODUCTS LTD.**

SAND & GRAVEL SALES

**PH: (780) 727-3525**

Dan McCracken Entwistle, AB  
[www.entwistleconcrete.ca](http://www.entwistleconcrete.ca)

Community VOICE  
 Keeping You and Your Community Informed

**THIS SPACE IS RESERVED FOR YOU!**

**SMOOLE**

- Construction & Septic Installation
- Environmental Wastewater Disposal
- Site Design & Evaluation
- Power, Water & Basement Excavation
- Trackhoe, Backhoe, Bobcat & Dump Truck

For All Your Excavation Needs

Call Dan 780-991-4484 Reid 780-909-0173

**H&P Kosik CONSTRUCTION Ltd.**

- Road Building • Gravel • Sand • Dugouts
- Black Dirt • Clearing

No Job too small! We do them all!

Harvey cell. 780-445-9010 ph. 780-892-3532  
 Box 145, Darwell, AB. T0E 0L0

**CONCRETE WORK**

- Sidewalks ▪ Steps
- Small Retaining Walls
- Concrete Repairs

Contact Ray  
**(780) 975-8476**

**SANGUDO VETERINARY CLINIC**

Box 581, 4916 - 52 Ave. Sangudo, AB. T0E 2A0

**Dr. Ralf Sanders DVM**

Ph: 780-785-2200  
 Fax: 780-785-2228  
[sangudovet@gmail.com](mailto:sangudovet@gmail.com)

**24 HOUR EMERGENCY SERVICE**

**CCAS**  
 Canadian Clean Air Services Ltd.

**Heating & Air Conditioning**

**Goodman**  
 Air Conditioning & Heating

Licensed and Insured with over 20 years' experience.  
 Instant Approval. Financing Available

VISA

For service call:  
**780.569.5201**

[www.ccasheating.com](http://www.ccasheating.com)

Community VOICE  
 Keeping You and Your Community Informed

**THIS SPACE IS RESERVED FOR YOU!**

**Xtreme LEAN NRG**

Xtreme LEAN NRG  
 Advanced Formula helps you:

- Regulates Your Appetite
- Regulates Blood Sugar
- Regulates Fat Absorption
- Improve Energy Levels
- Improve Your Mood
- Increase Mental Focus

"We've unlocked the science of slim!"

**(780) 907-8642**

**SUMMERS DRILLING LTD.**

Water well drilling and service  
 Family owned Business Serving Alberta since 1917

Tired of hauling water?  
 We can install a water well with a permanent water supply for as little as \$150/month OAC

- Never run out of water again!
- 5 year workmanship warranty
- 3 Convenient ways to pay
  - Visa
  - Mastercard
- We now offer full financing

Stop in at our office 4405 - 50 Street, Stony Plain  
 780-963-1282  
[admin@summersdrilling.com](mailto:admin@summersdrilling.com)

# PREVAIL

# MAX

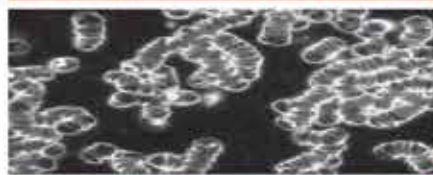
CELLULAR HOMEOSTASIS FORMULA

A NUTRITIONAL BREAKTHROUGH THAT SUPPORTS YOU ...RIGHT DOWN TO THE LAST CELL!

How do you want your **BLOOD** to look?



**Before PrevailMAX:**



- poor circulation
- low energy
- brain fog
- dehydration
- decreased nutrients
- pH imbalance
- poor endurance

**After PrevailMAX:**



- better circulation
- more vitality
- mental clarity
- cellular movement
- nutrient assimilation
- balanced pH
- optimal endurance

**PrevailMAX™** is a nutritional breakthrough that delivers a rapid increase of internal blood cell pressure to speed absorption, enabling the body to take maximum advantage of the nutrients in foods and supplements. The electrolytes are small enough to penetrate your cell membranes, to bind with your cells, and to be carried wherever they are needed in the body.

At the microscopic level of human cells, **PrevailMAX™** supports healthy cell performance – a nutritional breakthrough for your cells.

When you use **PrevailMAX™**, you will feel more energy and an ability to focus like never before. Take a few sprays today and see just how good you can feel!

LIVIN TRIM WITH  
**VALENTUS**

[www.ValentusTour.com/Ladybug](http://www.ValentusTour.com/Ladybug)

**(780) 907-8642**