



COMMUNITY VOICE

YOUR LOCAL NEWSPAPER

Serving: Alberta Beach, Barrhead, Calahoo, Cherhill, Darwell, Glenevis, Gunn, Lac Ste. Anne County, Mayerthorpe, Onoway, Rich Valley, Rochfort Bridge, Sangudo, Whitecourt, Spruce Grove and Stony Plain.

October 15, 2019

LAC STE. ANNE COMMUNITY SUPPORTS AND LOVES IRAQI REFUGEE FAMILY

Submitted by Susan Daniel | Lac Ste. Anne Refugee Partners

Late in the summer of 2018 the Lac Ste Anne Refugee Partners welcomed a refugee family to our community. Yasir, Sarah, and their two children Mallak, and Matti as well as Sarah's father Sami, arrived after more than two years of ef-

fort to get them here. The Iraqi family had fled Iraq to Jordan where they lived as refugees for four years awaiting an opportunity to move somewhere safe and stable; somewhere where they could settle and stay for a long time in safety and in a place with a future.



Continued on Page 6

GLASS SHOP ON WHEELS
780-305-3974
Wes Werkman

- Windshield Replacement & Repair
- Sealed Unit Replacement
- Small Window & Screen Repair
- Excavator Glass

We Come to You!

SIGHTS AND ARMS Now Open Mon-Sat 10AM-6PM

FALL SALE! New Used & Consigned
 Firearm Safety & Reloading Courses
 Gunsmithing

WWW.SIGHTSANDARMS.COM
 11 J Raybon Cr. St. Albert, Alberta 825-223-9863

JOINT MEDIA RELEASE IN RESPONSE TO ALBERTA JUSTICE AND SOLICITOR GENERAL'S DRAFT POLICE FUNDING MODEL

Municipal Leaders Express Collective Concern Over Costs and Effects of Contemplated Change

Submitted by Lac Ste. Anne County

Municipal councils and administrators in Alberta's Lac Ste. Anne region seek to jointly inform ratepayers about the provincial

government's contemplated plan to offload policing costs onto rural areas. Collectively and through its various media channels, the County and its neighbours will continue to engage ratepayers, municipal part-

ners and the Government of Alberta in an ongoing dialogue about this important matter and its potential impacts on rural communities.

Continued on Page 4

PREVAIL MAX
 CELLULAR HOMEOSTASIS FORMULA

Nutritional Breakthrough For Your Cells

LIVIN TRIM WITH VALENTUS
(780) 907-8642
 www.ValentusTour.com/Ladybug

SLIMROAST Optimum
 DARK ROAST COFFEE

YOUR LOGICAL SOLUTION TO WEIGHT MANAGEMENT

(780) 907-8642
 www.ValentusTour.com/Ladybug

View us ONLINE!
WWW.COM-VOICE.COM



COMMUNITYVOICE
—YOUR LOCAL NEWSPAPER—

PUBLISHED WEEKLY (Zone 1 & 2)
AND BIWEEKLY (Zone 3)

E.J. Lewchuck & Associates Ltd.

#6 - 40 South Avenue
Box 3595
Spruce Grove, AB T7X 3A8

SALES TEAM

Elaine
Ashley
Dani

TELEPHONE:

Classifieds 962-9229
Advertising 962-9228
Fax 962-1021

E-MAIL:

comvoice@telusplanet.net
news@com-voice.com

OCTOBER NEWS FROM THE RICH VALLEY PUBLIC LIBRARY

Submitted by Rich Valley Public Library

This month's programs:
Akhanda Yoga is every Tuesday from 10:00-11:30 am. Our first session will run on Tuesday September 24, October 1, October 8, October 15, October 22 and October 29, 2019 from 10:00- 11:30 am. The cost will be \$60.00 for the 6 classes or a \$12.00 drop in fee. Please contact the library at (780)967-3525 to register or drop in on Tuesdays. All levels of yoga experience are welcome.

Storytime is every Wednesday from 11:00-11:45 am. Bring your toddlers in on Wednesdays from 11:00 to 11:45 am for stories, activities and crafts. All children ages 0-5 are welcome to join us at this free program. Every third Wednesday of the month we will alternate between Tents and Tunnels, Play Doh Fun, Literacy Activities and Lego Building. This program is funded by FCSS.

Parents and Tots is every Wednesday from 9:45-10:45 am. Parents, guardians and caregivers are invited to bring your toddlers to play, discover and make friends at this free drop-in program held at the Rich Valley Public Library. All children ages 0-5 are welcome. Snacks, juice and coffee will be provided. This program is funded by FCSS.

Adult Whist is on every 2nd & 4th Friday of the month at 7:30 pm. If you like cards join us for a night of fun and laughs. The cost is only \$2.00 per person and is held in the Yellow Room.

Our annual Pumpkin Carving program is on Saturday October 26, 2019 starting at 10:00 am. Come on down to the library and carve a pumpkin with the family and friends. Children ages 0-6 will be carving from 10:00 am-12:00 pm. Children ages 7 and over will be from 1:00 pm-3:00 pm.

Register by October 24, 2019 so we can make sure we have enough pumpkins by calling us at 780-967-3525 or stop by the library for more details. This program is funded by FCSS.

We are located in the basement of the Rich Valley Community Hall. We have installed a stairlift in the Yellow Room so all our programs and services are accessible to everyone. If you are in need of the stairlift please press the buzzer at the front door and the library staff will assist you.

Rich Valley Public Library is open Tuesday from 5:00-8:00 pm, Wednesday from 10:00 am-2:30 pm, Thursday from 2:00-6:30 pm, and Friday from 9:00 am-12:00 pm. We look forward to seeing you!

Please check out our website at www.richvalleylibrary.ab.ca and Facebook for all our programs and news.

SPOOKTACULAR

Halloween Party

Saturday, October 26, 2019
7:00pm to 2:00am
at the Gunn Community Hall
#110 - 55022 Ste. Anne Trail

Tickets at the Gunn General Store
or call 780-951-9452



JOKE OF THE WEEK

Farmer Smith was driving his tractor along the road with a trailer load of fertilizer. Alex a little boy of nine was playing ball in his yard; he saw the farmer and asked: 'What've you got in your trailer?' 'Manure,' farmer Smith replied. 'What are you going to do with it?' asked Alex. 'Put it on my pumpkins,' answered the farmer. Alex replied, 'You ought to come and eat with us, we put ice-cream on our pumpkin pie.'

Darwell Jr. Ag Society

TRUNK OR TREAT & HAUNTED CARNIVAL

Sunday, October 27th, 2019
1:30 TO 4:30PM at the Darwell Fair Grounds
This is a free Event and Everyone is welcome!!

Bring your kids to a safe and warm place to kick off Halloween!!

HAUNTED CARNIVAL

The Jr. Ag will host a haunted carnival in the Darwell Hall. Games and prizes!



We will park vehicles inside Cow palace in the case of inclement weather. Come and decorate your vehicle and hand out goodies to all the little ghosts and goblins! All surrounding communities are invited to come and participate!

DarwellAG.com
For more info call Deb at (780) 892-2468

DARWELL PUBLIC LIBRARY NEWS

Submitted by Darwell Public Library

Join us for some physical literacy and FUN at Tents & Tunnels on Monday, October 21, 2019 from 2:15 to 3:00 pm for pre-school aged children. Children must be accompanied by an adult as this is a program designed for parents/caregivers and children together. You must pre-register by calling the library.

Registration is now open for the Awaken to Crystal Awareness Workshop on Saturday, November 2, 2019 from 1:00 to 3:00 pm at the library. During this informative session, Sherry Deverill will talk to you about the secrets of crystals and how to use them for meditation, healing, and personal energy. The cost to attend this session is \$ 25.00 per person and includes an information package, refreshments and of course your very own crystal to take home. Please

register by Wednesday, October 30, 2019 by contacting the library.

The next Book Club meeting will be held on Monday, November 4, 2019 at 7:00p.m. to discuss "99 Percent Mine" by Sally Thorne. Do you love to read? Do you like to discuss what you have read with others? We are always interested in a new perspective to add to our conversation. If you are interested in participating, you can register and pick up a copy of the current title by calling the library @ 780-892-3746.

Mark the date of Thursday, November 7, 2019 from 7:00 to 8:30 pm on your calendar... Houseplants are back in style! November is a good time to turn our attention to indoor gardening. Join Lac Ste. Anne County Horticulturist Lorraine Taylor for a look at what you can do to keep your houseplants thriving throughout the winter. We'll talk about basic

care- light, water, nutrition, and what pests to watch for. This is a hands-on session. Do you have an overgrown house plant needing some TLC? Bring it along with a new container and we'll report it. Have a favourite you'd like to share? Bring it too! We'll learn 10 ways to grow many plants from one and everyone takes home some cuttings. If you are that person that can't keep a houseplant alive, this class is for you. If your home is a jungle of happy houseplants- we'd like to see you too, to hear your tips for success. There is no cost to attend this session, but you must pre-register by contacting the library.

Paulette Gillespie of Paulette's Signs & Designs will be here to lead you through another fantastic painted project. The first session, for adults, will be held on Monday November 18, 2019 from 7 to 9 PM at the library. The cost will be \$10.00 each and

you will choose one of 11 patterns for your project. The second session will be held on Wednesday, November 20, 2019 from 3:30 - 5PM and is designed for children. The cost will be \$3.00 per child and you must pre-register no later than November 12, 2019.

The Darwell Public Library Society will be holding their next regular meeting on Monday, October 28, 2019 starting at 7 pm. All meetings are open to the public and everyone is welcome to attend. The Library is open 11:00 am to 4:00 pm on Monday, Tuesday and Thursday and from 5:00 pm to 8:00 pm Wednesday and Friday, closed Saturdays, Sundays and Holidays. You can also find out what is happening at the library by checking our Website www.darwellpubliclibrary.ab.ca or like us on Facebook at www.facebook.com/DarwellPublicLibrary



MORAND INDUSTRIES LTD.

Join Us for Our 33rd year of Customer Appreciation Days

Friday, October 25, 2019 11am-2pm. Bbq Beef on a Bun
Saturday, October 26, 2019, 9am-11am. Pancake Breakfast

CFCW will be joining us for their 29th Year at Morand Industries!



1-800-582-4037
www.morandindustries.com



Located on Hwy 37, and entrance to Onoway AB



ONOWAY JUNIOR/SENIOR HIGH SCHOOL

EMPOWERING LEARNERS



WORLD'S GREATEST
1st PLACE
1st PLACE

ANNUAL VOLUNTEER APPRECIATION & AWARDS NIGHT

Friday, October 18, 2019

7:00 P.M.

Onoway High Gymnasium

Joint Media Release In Response To Alberta Justice And Solicitor General’s Draft Police Funding Model

Continued from Page 1

Province Pitches Radical Fiscal Change in Uncertain Terms

Presently, residents in rural municipalities – and urban municipalities (Town, Villages and Summer Villages) under 5,000 population – do not directly pay for policing through their municipal taxes. Under the new model that the Government of Alberta proposed to municipalities this fall, these communities would begin paying between 15 to 70 percent of policing costs. Charts on page 3 of this release show the resultant financial impact to local municipalities if the proposed model is implemented. At the top end of the model, this would represent a burden of up to \$1.4 million for Lac Ste. Anne County, which equates to an increase of more than \$400 per year to the average taxpayer.

The proposed model can be viewed on the Lac Ste. Anne County website at LSAC.ca/police-funding.

Notably, this proposed cost structure comes with no men-

tion of a corresponding increase in police service.

“Our understanding is that any monies collected under the Province’s new model would be dumped into a black hole rather than invested back into rural policing,” shared Lac Ste. Anne County Reeve Joe Blakeman. “I’m confident our constituents would agree that paying considerably more for the same level of service is a losing proposition. This is why we need to ensure our voice is unified and amplified on this issue.” Revenue from the model was originally earmarked for general reserves, but the Province has since changed its position, announcing in recent weeks that revenue from the cost recovery will instead feed back into policing services and public safety.

Municipal Dissent and Attempts at Dialogue with the Province

Alberta’s Minister of Justice and Solicitor General (JSG) Doug Schweitzer introduced this model to municipalities during a webinar on September 6, 2019. The

content and tone of this webinar suggested to attendees that the proposed costs would come with no expectation of a corresponding increase in police service. A video of the webinar recording, as well as a PDF containing slides from the webinar, can be viewed at LSAC.ca/police-funding.

Following the webinar, Lac Ste. Anne County and its neighbours voiced their concerns to JSG Schweitzer that:

- If implemented, the proposed model would place a considerable financial burden on resource-strapped municipalities
- There is no mention of why the Province wants to change the formula or where the money would end up
- There is ambiguity over what – if any – additional policing resources municipalities could expect to receive
- The Province’s responses to questions from municipal leaders have been noncommittal and ever-shifting

In response to the questions and concerns posed by municipal leaders in the wake of the

September 6 webinar, the Province modified its original position; stating on September 20 that:

• Consultations are ongoing and no decisions have been made yet on a new police-costing model

• Regardless of which model is chosen (if any), any contributions collected will be re-invested into frontline policing, leading to an overall increase in funding for police services in Alberta

• The model has not been finalized and the Province is only at the beginning of the consultation process

Following the September 6 webinar, JSG Schweitzer received requests for in-person meetings with municipal leaders to review questions and concerns related to the proposed model. Instead of granting individual requests, a followup webinar was held on October 4 with no stated mandate. During this hour-long audio-only webinar, a panel of representatives from the Justice and Solicitor General and Alberta Municipal Affairs answered



SERENITY FUNERAL SERVICE

NEW FACILITY
Chapel & Reception Centre

600 Calahoo Road Spruce Grove, AB
780-962-2749 www.serenity.ca

SERENITY FAMILY SERVICE SOCIETY - YOUR NOT-FOR-PROFIT SOCIETY

QUALITY SALES & SERVICE OF:

- DISTILLERS
- SOFTENERS
- CHLORINATION SYSTEMS
- MOBILE SHOCK CHLORINATION
- SEDIMENT, TASTE & ODOR FILTERS
- REVERSE OSMOSIS FILTERS (R.O.™)
- CHEMICAL-FREE IRON FILTERS
- PIPE, WIRE & FITTINGS
- CHLORINE BLEACH, CHEMICALS & SALT
- MOBILE SERVICE VEHICLE
- POOL & SPA FILTERS & CHEMICALS

• FREE WATER ANALYSIS •
OUR WORKMANSHIP IS GUARANTEED!

962-6040 962-4060
15A South Ave., SPRUCE GROVE

Quality Water Services West LTD.

Formerly Ivan's Quality Water - UNDER NEW OWNERSHIP

Family run, local business, we care!

BEST CISTERN SEPTIC SOLUTIONS

Cistern and Septic Inspection, Installation and Repair!

Septic planning, design, installation by government certified installer(s)

New Installs Available. Reasonable Rates.

Let Us Handle the Dirty Work

780-668-4306 best-cistern-septic-solutions.com



BUSINESS FOR SALE

Steady Income – Business doesn't fluctuate with Economy

Includes: - All Clientele
- 5 Tandem Trucks
- 1 Truck & Trailer Unit

Call 780-797-3844 for more Info.
Al-jo An Septic Service

Joint Media Release In Response To Alberta Justice And Solicitor General's Draft Police Funding Model

questions posed via text by municipalities in attendance.

The October 4 JSG webinar contained no new or substantive information. Many of the pointed questions posed by municipal leaders in attendance were deflected with blanket responses such as "we can't speak to the thought process behind this initiative;" "we haven't contemplated your question before;" and "we encourage you to contact your Minister or MLA so we can consider your comments." An explanation from panelists on what happens next was similarly vague. Attendees were told that the police funding model is still in its consultation stage, and that further conversations would occur after October 15 to determine how the model might look if it were to go ahead. When it is made available, a full transcript of this webinar will be posted at LSAC.ca/police-funding.

In addition to the two webinars, the Province has given municipalities until October 15 to complete an online survey and submit written statements

to Minister Schweitzer regarding the proposed costing model. Reeve Blakeman discounts the validity of a survey in which questions are clearly skewed in favour of the JSG's intended direction. "This survey is eerily similar to the Province's originally-voiced intent that this will be a mandatory program, and that it's just the level of funding

that is yet to be determined," shared the Reeve.

Blakeman also noted that, to date, the Province has only sought engagement from the municipal elected, administration and related stakeholders. "We will continue to lobby on behalf of our residents," he continued, "but for this dialogue to be meaningful and reciprocal,

the Province needs to allow all municipal taxpayers in rural and smaller urban centers to have a seat at the table. As municipal officials, we keep being told to voice our concerns to the MLA and Justice Minister. I encourage the ratepayers of rural Alberta to do so as well."

Continued on Page 10

PRICE REDUCED

		
14K White Gold Diamond Ring Brand New, Still in Box, Tags on! Asking \$2,745	14K White Gold Engagement Ring Brand New, Still in Box, Tags on! Asking \$2,300	10K White Gold Diamond ring Brand New, Still in Box, Tags on! Asking \$1,375

Call for more information, or to view the ring 780-907-8642

Gerald SOROKA
YELLOWHEAD

- ✓ Promoting pipelines for prosperity
- ✓ Scrapping the carbon tax
- ✓ Making life more affordable for families

IT'S TIME FOR YOU TO GET AHEAD

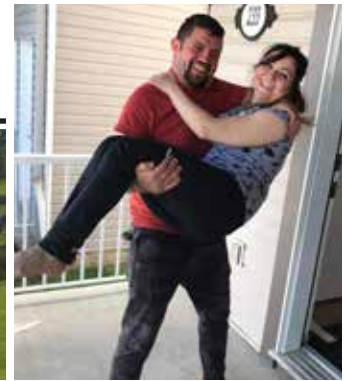
AUTHORIZED BY THE OFFICIAL AGENT FOR GERALD SOROKA

CONSERVATIVE

WWW.GERALDSOROKA.COM • 780-600-0171
GERALDSOROKA4YELLOWHEADRIDING



Lac Ste. Anne Community Supports and Loves Iraqi Refugee Family



Continued from Page 1

Sarah shared that their lives had been about moving from one place to another in search of stability and safety.

The family's time in Jordan was difficult. They were under the wing of Canon Andrew White whom they followed from Bagdad to Jordan. It was a safe haven for them, but had its limitations. During their time in Jordan, they were not allowed to work and provide for themselves. Both Yasir and Sarah were able to volunteer helping other refugees and assisting Canon Andrew on a volunteer basis. They never imagined this would stretch out to a four-year time period. Canon Andrew chose this family for us as the best family he had and we have come to know the blessing this family is.

Arriving in Canada was a time of excitement and a bit of terror as well. The family knew they were now safe in their home at Yellowstone, and understood that our committee was there to support them in all ways for the next year. In spite of that, the family had many challenges to meet head on. To name a few: language, customs, drivers licenses, employment, finances, banking, learning to deal with winter, medical and dental needs, school for the children, ESL for the adults, finding the first home of their own. Finding their way in general took the support and friendship of the community that brought this family here.

The past year saw Yasir getting his Alberta Driver's License in December. This was a painful hurdle to get over. His Iraqi driving record needed verification via a translator and that process took from August to late December! Finally, in December the family was mo-

bile. A car had been donated to the family and at last Yasir was able to work after four and a half years of wanting to work and not being able to. He was like a race horse in the chute and the gate was just opened!

Again, with the help of the committee, a resume was put together and the job search began. January is not the best month of the year to be looking for employment, but provided lots of practice in the process of looking for work, interviews and what it would take. A few places said there would be work in the Spring, but Yasir said he would do anything and he wanted to do it right now!

A job possibility came up through our community network, and Yasir began working in January. Remember January? It was the coldest January (and February) I remember! Yasir worked doing snow removal and chopping firewood most of January, all of February and into March. He was outside working beginning at 4:00 or 5:00 in the morning in the dark. When asked how work was going, he responded, "Good, but my feet are cold!" Yasir worked circles around the entire crew and was quickly recognized as a great asset to the company. This job was a wonderful start for Yasir and his desire to work was astounding.

More than a job, Yasir wanted to begin a career that would carry him and his family forward in life. He wanted to train to become a mechanic. Dale Johnson at Country Automotive, Onoway agreed to hire Yasir as a Service Technician and he has been working there ever since. With every day in the work place, Yasir's English has improved in leaps and bounds. Yasir is hoping he will be able to apprentice as a me-

chanic soon. Yasir also does an amazing job at auto detailing if you are wanting your vehicle done! Yasir appreciates working in the Onoway community and looks forward to his career progressing at Country Automotive.

Yasir and Sarah studied ESL in Stony Plain over the year. Sami has been a great support to the family as he has taken care of the children while Sarah and Yasir studied. Sami, along with Sarah and Yasir also had private tutoring from our committee once or twice a week for much of the year and all of their English has come a long way.

It took Sami until February to get his driver's license. A second vehicle was generously donated for Sami which provided more mobility for the family. Sarah had not driven prior to living Canada. I asked Sarah if she would like to learn to drive, and initially she was uncertain saying that not too many women in Iraq drive. It didn't take long for Sarah to see the benefit of having a driver's license and she decided to try. She got her learners permit last November and is currently working to get her driver's license. Sarah began working a bit, doing some house cleaning and looking for other employment. In May Sarah was hired by Davlyn's Restaurant in Onoway and worked their part time until recently.

The children began school in Rich Valley and made friends there quickly. Both Mallak and Matti have been amazing little sponges over the year. They have enjoyed school, learning to speak English very well and now help their mom, dad and grandpa with their English when needed!

The year has been one of getting caught up on dental needs, exploring recreational areas

such as the Tri Leisure center, parks and lakes in the area, finding shops that sell foods the family are familiar with, exploring the 'foreign' foods of Canada, seeing the Rocky mountains for the first time, trying winter sports, playing in the snow, making new friends and celebrating living in Canada!

At the end of August, the family packed up their possessions and moved one more time. They have spread their wings and are supporting themselves financially. They are currently renting a home in Stony Plain and the children are attending St. John Paul II Catholic School. Sarah is currently looking for employment in Stony Plain.

It has been a year of our community rallying around this family with the intention of supporting them when support was needed, being teachers where they needed teaching, being friends when they needed reassuring, and being family, as their extended family are far away. In our service to them we have received the gift of their acceptance and friendship in return. The Lac Ste. Anne community has been extremely supportive and generous with this family and the family is very grateful for all they have received. It has been fulfilling for us to be a part of their journey over past year. Seeing the confidence grow in each member of the family and seeing their uncertainty and fear turn into smiles, courage, and determination, has filled our hearts! We pray they will always remember us as they will forever have a place in our hearts! Our one-year period of support is over, but our relationship with Yasir, Sarah, Sami, Mallak, and Matti will endure. For this we are truly blessed and grateful!



LAC STE. ANNE COUNTY FIRE SERVICES **Station 5 - DARWELL**

When the alarm sounds, the men and women of our fire departments answer the call without hesitation, saving thousands of lives and homes from devastating fires.

During Fire Prevention Week, we salute these brave men and women, who risk their own lives protecting the lives of others. We recognize that each of us has a responsibility to exercise awareness and caution in preventing fires by putting safety first.

THESE PAGES ARE SPONSORED BY THE FOLLOWING BUSINESSES

 LAC STE ANNE COUNTY Lac Ste Anne County 785-3411	 Darwell & Dist. Ag Society 892-4921	 Darwell Restaurant & Bar 892-2233	
 C & D Tank Truck Service 785-3383	 Khaila Accounting Services 984-1083	 Beyond The Blue Sky 721-2690	 Darwell Storage 238-5579
 Sweet Fate Livestock 1-780-689-6720	 Assertive Electric Ltd. 967-3827	 Jay Day Water Hauling Services 674-0104	

BRING HOME **FIRE SAFETY**

FIRE PREVENTION WEEK IS OCTOBER 6-12, 2019



NEWS HIGHLIGHTS

Lac Ste. Anne County | Box 219, Sangudo Alberta T0E 2A0 | 1.866.880.5722 | www.LSAC.ca | facebook.com/LSACounty

WINTER TRANSFER STATION HOURS

The County provides eight waste transfer sites and one regional landfill for use by County residents. All of these facilities will be switching to winter hours beginning November 1. Winter hours will be in effect until March 31.

Winter hours are in effect between November 1 and March 31. Summer hours are in effect between April 1 and October 31. Please note that during statutory holidays, the eight Transfer Stations observe regular hours, but the Main Landfill will be closed. For more information, or to view both winter and summer hours, visit LSAC.ca/Landfill.

LOCATIONS	MON	TUE	WED	THU	FRI	SAT	SUN	DIRECTIONS
ONOWAY 55177 HWY 77				3:00 PM -5:00 PM	10:00 AM -2:00 PM	10:00 AM -2:00 PM		2.4 km N of Onoway on Hwy 777
RICH VALLEY 56503 HWY 33					3:00 PM -7:00 PM		10:00 AM -2:00 PM	2.4 KM N of Rich Valley on Hwy 33
HILLCREST 54025 RGE RD 30	10:00 AM -5:00 PM				9:00 AM -3:00 PM		10:00 AM -2:00 PM	2.0 km S of HWY 633 on Rge Rd 30
DARWELL 4457 HWY 633				10:00 AM -2:00 PM		3:00 PM -7:00 PM	3:00 PM -5:00 PM	1.6 km E of Darwell on Hwy 633
CHERRILL 56021 RGE RD 53A					9:00 AM -12:00 PM		1:30 PM -5:30 PM	0.8 km S of Cherhill on Rge Rd 53A
SANGUDO 56504 RGE RD 65	1:30 PM -5:30 PM					9:00 AM -12:00 PM		1.6 km E of Sangudo on Hwy 43 + 1.6 km south on Rge Rd 65
ROCHFORD BR. 8018 TWP RD 574					1:30 PM -5:30 PM		9:00 AM -12:00 PM	3.2 km N of Rochford Bridge on Rge Rd 80 + 0.8 km west on Twp Rd 374
MAYERTHORPE 57308 RGE RD 91	9:00 AM -12:00 PM					1:30 PM -5:30 PM		4.8 km W of Mayerthorpe on Twp Rd 574 + 1.2 km south on Rge Rd 91
MAIN LANDFILL 55228 RGE RD 35	9:00 AM -5:00 PM	9:00 AM -5:00 PM	9:00 AM -5:00 PM	9:00 AM -5:00 PM	9:00 AM -5:00 PM	9:00 AM -5:00 PM		4.8 km W of Gunn on Hwy 43 + 0.4 km south on Rge Rd 35

COUNTY EMPLOYMENT OPPORTUNITIES

From permanent roles to seasonal positions, there are a number of different ways to apply your skills at Lac Ste. Anne County. For more details on the employment opportunities below, please visit LSAC.ca/Careers

DEVELOPMENT OFFICER

Full-Time Permanent Position

This role is responsible for reviewing and making decisions on development permit applications, providing interpretations and advice on Land Use Bylaw regulations to both internal and external customers, providing planning and development expertise, advising stakeholders, and assisting with daily branch operations and initiatives.

SCALE OPERATOR 1

Part-Time Position / 1 Day per Week

The Highway 43 East Waste Commission is located approximately 5 km west of Gunn, and is currently seeking a part-time Scale Operator I. This position is for one day per week, eight hours per day, including Saturdays. Applicants must have their own transportation.

PUBLIC WORKS CLERK

Full-Time Permanent Position

The Public Works Clerk is responsible for providing clerical and general administrative support to the Public Works Department. The ideal candidate will possess strong communication skills, both verbal and written, strong organizational skills, and attention to detail. The successful candidate will be an organized self-starter, possessing the ability to work efficiently and professionally with a wide variety of people.



NEWS HIGHLIGHTS

Lac Ste. Anne County | Box 219, Sangudo Alberta T0E 2A0 | 1.866.880.5722 | www.LSAC.ca | facebook.com/LSACounty

PLANNING & DEVELOPMENT

NOTICE OF DEVELOPMENT PERMIT APPROVALS

The following Development Permits have been approved or conditionally approved under the provisions of the Land Use Bylaw. This list does not include Permitted Uses.

Interested parties are encouraged to contact the Planning & Development Department at **1.866.880.5722** or devassistant@LSAC.ca, Monday to Friday from 8:30am until 4:30pm to request additional information on a permit.

PERMIT #	LEGAL LAND DESCRIPTION	DESCRIPTION	APPEAL DATE DEADLINE
19-D0196	16, 4418 HWY 633 Lot 15, Block 3, Plan 7920270 Within NW 20-54-04 W5M	1 Recreational Vehicle 32.0 ft long, and existing shed 14.0' x 16.0' (224.0 sq. ft.) and deck 12.0' x 18.0' (216.0 sq. ft.) with variance request.	October 21, 2019
19-D0195	1, 3224 TWP RD 552 Lot 1, Block, Plan 7922674 Within SW 15-55-03 W5M	Detached garage, 480.0 sq. ft. and 8.0' walls on railway ties on packed gravel.	October 21, 2019
19-D0199	12, 2406 TWP RD 540 Lot 11, Block 2, Plan 7821474 Within SE 05-54-02 W5M	Detached garage 28.0' x 36.0' (1008.0 sq. ft.) Wall height 10.0'.	October 21, 2019
19-D0140	54021 RGE RD 20 SW & NW 06-54-01 W5M and Plan 2170TR, Block A	Amendment to 15-D0247 for Natural Resource Extraction and Processing - Industrial Plant: to bring a portable wash plant on site from time to time for producing washed asphalt aggregates. Plant to be moved around from time to time, based on site conditions; washing may take approx. 2-3 months per operation, up to 2 operation times per year.	November 4, 2019
19-D0183	56322 RGE RD 25 NE 19-56-02 W5M	6 Cold Frame Greenhouses 24.0' x 120.0' (2880.00 sq. ft.) each and 40.0' x 60.0' (2400.0 sq. ft.) Packaging & Storage Quonset with Variance Regulation - 40.0m, Request - 9.0m, Variance 31.0m.	November 4, 2019
19-D0176	13, 54126 RGE RD 52 Lot 7, Block 11, Plan 8220730 Within NE 10-54-05 W5M	Detached Garage 24.0' x 24.0' (576.0 sq. ft.) on thickened slab with variance & Recreational Vehicle.	October 23, 2019
19-D0171	54112 HWY 43 Lot 1, Plan 0120702 within SE 09-54-02 W5M	1998 Mobile Home 72.0' x 16.0' (1152.0 sq. ft.) and Deck 24.0' x 8.0' (192.0 sq. ft.) to replace existing condemned residence.	November 4, 2019

Anyone who claims to be affected and who wishes to lodge an appeal against any of the above developments must do so in writing on the applicable form on or before 4:30 pm on the above noted date(s).

Secretary of the Subdivision and Development Appeal Board, c/o Lac Ste. Anne County, Planning & Development Department, Box 219 Sangudo, Alberta T0E 2A0.

PLEASE NOTE: The County requires that a non-refundable fee of \$250.00 be paid for every appeal served on the Subdivision and Development Appeal Board. The fee may be paid by cheque, Visa, MasterCard, Interac or cash.

OCT 26 AUCTION FOR: 4 RETIRING SENIORS/BUSINESS

LOCATED: IN Barrhead Industrial Park at 6108 - 46 Street

SATURDAY AFTERNOON, OCTOBER 26TH AT 1:00PM

COMPLETE MODERN/QUALITY/FAMILY

RESTAURANT: * STAINLESS STEEL (Hobart Commercial Dishwasher) (Pref Table w 3 Sinks) (Large Over Stove Hood w Dry Chemical Fire Safety) (Large 2 Door Fridge) (Coffee Machine) (Coffee Grinder) (Bezzera Single Group Espresso Machine) (Soup Warmer) (220 V Grill) (2 Rolling Serving Carts) (Chicago Meat Slicer) * Lots of Kitchenware * Sandwich Prep/Cooler Table * Quality Dark Wood Tables and 40 Matching Chairs * And More

COMPLETE SENIORS QUALITY ITEMS: * New 270 Rem 783 Rifle w 3 to 9 x 40mm Scope, Lock, Case * Merlin 22 Micro Grove XT 22 w SS Barrel, Scope, 12 Shot * Alum Quad Deck for Truck * Skandic Skidoo * Rough/Tough 2002 Crew Cab 4 x 4, 8' Box * Ski Doo Helmets * CrossBow * Jiffy Ice Auger * Quad Cab

SENIORS ITEMS: * 12 V House Wheel Chair * Seniors Lift Chair * Tread Mill * Eltc Organ * Antique Items - Butter Churn, Scycle Sharpener, 1 Man River Sleigh Runner * Lots of Furniture, Garage, Yard Items

COMPLETE SENIORS SHOP AND YARD: * Millermatic 172 Challenger Welder * CM Gas Less Wire Feed Welder * Acetylene Uit w Wind Up Hose * HD Shop Table * 2 Rolling 3 Ton Floor Jacks * Shop Scissor Lift * Hyd Press * Drill Pres * CO Saw * Table Mitre Saws * Many Other Tools * NICE (Husq 62 HWT Grass Whip) (Stihl MM 55 Multi Unit - Rototiller, Paddle, Sweep Brush) (CM 21" Snow Blower) (Husq 365 and Stihl 009 L Chain Saw) (3" Water Pump) (Oilfield Straps + Tie Downs)

PLUS 4th SENIOR: * New 120 gal Molasses Lick Tank * 4 Burner N/G Counter Top Cook Stove * Also Full House and Garage Items * 14ft F/G Boat w 75 hp Evinrude

SPECIAL SENIORS: * 2006 Nissan Titan King Cab Silver Truck w (250 k km), nice * 2008 Dodge 8 ft. Truck Box * Ford Quad Cab Truck w/4.6 v8, 4 x 4 * 2012 GN TRAILER w 2 dual wheel axles, 36 ft. deck, hyd tilt beavertail

PARSONS AUCTIONS LTD.

Charles 674-7704 (780-674-3929) Jeff 305-4328
Pictures Available on: parsons-auctions.com

Joint Media Release In Response To Alberta Justice And Solicitor General's Draft Police Funding Model

Continued from Page 5

Municipal Leaders Continue to Advocate for Ratepayers

The process that follows the October 15 deadline has not been made clear, but provincial messaging indicates that: "Feedback will signal to the Government of Alberta what aspects require further consideration. Information gathered from this written feedback will inform the next steps."

A common concern shared by the County and its neighbours is that without any clarity on the scale at which municipalities will be charged, or the resultant effect on policing levels - it is nearly impossible to chart a course or manage ratepayer expectations. "The province's vacillating stance on this important issue does not give us much room to maneuver," con-

tinued Reeve Blakeman. "What we can do, however, is continue our dialogue among regional councillors, administrators and community members; share any information as it becomes available; and make sure our voice is heard loud and clear."

"As this matter progresses, the County and its municipal neighbours will continue to advocate for the needs and priorities of ratepayers. We need to send a clear and consistent message to the Province regarding what appears to be an ill-conceived and poorly-communicated initiative."

News updates and related resources - including contact information for the Minister of Justice and Solicitor General and the MLA for Lac Ste. Anne-Parkland - are available on the Lac Ste. Anne County website at LSAC.ca/police-funding.



**Specializing in Trailer Repairs
Aluminum, Tig, Mig & SMAW Welding
Mobile Welding Units Available
Mechanical Inspections & Repairs
Fabrication & Plasma Table
Skid Steer Services**

Sideline Mechanical & Welding Ltd.
55109 Range Road 20
Phone: 780-967-5658
eMail: smw ltd@gmail.com

ENRICHING the lives of OUR MEMBERS through QUALITY

Call 310.EQUS to learn more about making the switch to
Canada's largest Member-owned utility!



When we were looking for an electricity provider, we knew we had a choice, and choosing EQUS was an easy decision. As Alberta's energy solutions company, their installation costs and monthly rates were very competitive and their staff went the extra mile to ensure that we were satisfied. We are proud to be EQUS Members.

-Kurt & Kyla Belich - Owners, The Track on 2



#PoweredByEQUS



DELIVERING MORE THAN **POWER**



fall...
AUTO TUNE-UP
OCTOBER 2019

**The Businesses in
the following Guide
can be your One Stop
Solution to all your
Automotive Needs!**

Auto TUNE-UP

TIRE MAINTENANCE KEEPS DRIVERS SAFE

Maintaining tires is an important component of safe driving. Tires are some of the hardest working parts on a car or truck and are subjected to wear and tear every time rubber meets the road.

Tires affect many components of driving, including handling, braking and the comfort of the ride. Maintaining tires makes driving safe not only for drivers and their passengers, but also for fellow motorists.

The National Highway Traffic Safety Administration says that, in 2017, 738 fatalities occurred because of tire-related crashes. Many of those crashes were no doubt preventable, and that only highlights the importance of maintaining tires and monitoring their performance.

Poor tire maintenance can lead to premature wear and potentially result in a blow-out. The automotive group AAA notes it is important to visually inspect tires as often as possible. Drivers should look for overall tread wear. Pay special attention to tread wear on one edge of the tires, which could indicate poor alignment. Erratic tread wear may mean tires are out of balance.

Drivers also should pay attention to how their cars drive and sounds. Unusual vibration or thumping noises suggest issues with the tires. A car that pulls in one direction also may be experiencing tire problems.

Vehicle owners should be aware of the routine maintenance steps that can keep

them safe and improve the life expectancy of tires.

- **Tire pressure:** The NHTSA says only 19 percent of consumers properly check and inflate their tires. Keeping tires properly inflated is one of the most important steps to maintaining them. Tires lose around 1 psi per month, and underinflated or overinflated tires can contribute to unusual wear, blowouts and even excessive fuel consumption.

- **Rotation:** Check the owner's manual or recommendations from the tire manufacturer, but know that most mechanics advise having tires rotated every 5,000 to 8,000 miles. Rotation helps distribute wear more evenly on tires.

- **Balancing:** AAA says

balancing also helps minimize uneven wear and tear. Balanced tires are achieved by using small weights attached to the wheels to limit vibration of the tire and wheels as they turn. New tires should be balanced, and tires also should be balanced after one or more is removed to repair a puncture.

- **Alignment:** Vehicles have wheel alignment measurements that pertain to manufacturers' specifications. Alignment that falls outside of the range can impact handling, fuel economy and tread wear. A drift or pull suggests alignment problems and should be addressed.

Vehicle owners should keep tire inspection and maintenance in mind as part of their overall car care plan.



Ray's
AUTO REPAIR

24 HR. TOWING SERVICE
COMPLETE AUTO REPAIR
STIHL CHAIN SAWS

DANNY FRIEND 780-785-2251
(OWNER • MANAGER) BOX 332 SANGUDO, AB. TOE 2A0



BARRHEAD
AUTO PARTS
ESTABLISHED IN 1975

Located 2 miles West of Barrhead on Highway 18.
Site 13 Box 6 RR2
Email: rob@barrheadautoparts.com


780-674-3443
1-888-577-4377

WWW.BARRHEADAUTOPARTS.COM

Quality Used Parts

- Computerized Inventory
- Licensed Mechanics
- Quality Used & Rebuilt Parts For Cars & Trucks
- Competitive Labor Rates
- Buying Scrap Vehicles
- Used Pipe & Assortment of Metal
- Used Vehicles

VANDENBERG
COLLISION LTD.



Joe

Ph: (780) 786-2614 5014 - 51 St.
Fax: (780) 786-2736 Mayerthorpe, AB

W.V. REPAIR SERVICES LTD. 

Agriculture & Heavy Duty Repairs
(NO AUTOMOTIVE REPAIRS)

Air Conditioning - in Shop & Mobile Service
CVIP Inspections, Hydraulic Repair, Hoses Made

 **EXPERIENCED MECHANIC 30+ YEARS**
WALLY 780-305-1315
SHOP IS LOCATED JUST 10 MIN SOUTH OF SANGUDO

Auto TUNE-UP

3 POTENTIAL INDICATORS OF ENGINE TROUBLE

Many drivers have found themselves stranded on the side of the road at one point or another. Whether the culprit is engine trouble, a flat tire or another issue, finding oneself stranded on the side of the road in need of assistance is an often helpless feeling that no one wants to experience twice.

Even drivers whose automotive clubs or insurance companies provide roadside assistance services want to avoid using such services. One way to do just that is to learn about potential indicators of engine trouble.

1. Warning lights

Vehicle warning lights exist for a reason. According to the automotive retailer Pep Boys® a check engine

light typically illuminates when vehicle sensors detect there are issues stemming from a loss of power. This can be dangerous, and Pep Boys® recommends drivers pull over and call for a tow the moment the light comes on. In addition to check engine lights, drivers should heed warning lights referring to oil pressure and oil levels.

2. Poor gas mileage

An easy way for drivers to monitor vehicle performance is to keep gas mileage in mind. If a vehicle suddenly feels like it's not getting as much mileage out of a tank of gas as it used to, this might be indicative of engine troubles. A fuel additive such as a fuel injector cleaner might be helpful be-

cause it can clean clogged fuel injectors that can affect performance and lead to poor acceleration. However, the automotive retailer Advance Auto Parts® notes that such products are not a one-size-fits-all cure. If vehicles continue to suffer from reduced gas mileage, drivers should bring them to a mechanic for a thorough examination.

3. Jerking

Some signs of engine trouble are not as subtle as reduced gas mileage. Vehicles that begin to jerk while they're being driven are likely suffering from some form of engine trouble. Jerking might put a scare in drivers, but it's not necessarily the result of a major problem, even if it is one

that should be addressed immediately. A jerking vehicle that stalls puts drivers, their passengers and other motorists at risk of accident, so bring this issue to the attention of your mechanic immediately. Poorly functioning spark plugs may be the culprit behind jerking, and that's a relatively inexpensive and quick fix. However, other issues can cause jerking as well, so don't delay in speaking with your mechanic.

Vehicles may indicate engine troubles in various ways. Drivers should contact their mechanics immediately whenever they suspect engine trouble is affecting their vehicles.



JACK'S 24 Hour Towing
CARSTAR
Collision & Glass Service



Jack's Auto Body
& 24 HR Towing

Jack's Auto Body is now part of CARSTAR Collision & Glass

- Same great highly trained and certified staff
- Same great owners
- Work with all insurance companies
- Rental cars on site
- Lifetime Nationwide Warranty
- 24 Hour Towing



2517 HIGHWAY 633 ONOWAY, ALBERTA
(780) 967-5850



CERTIFIED BODYSHOP



- * Auto Parts & Accessories
- * Body Shop Supplies
- * Agricultural & Industrial Parts
- * Shop Equipment

120 St. Matthews Ave, Spruce Grove
962-4421 Fax: 962-3464



GROVE

COLLISION REPAIRS LTD.

Specialists in Unibody Repairs

GENESIS COMPUTERIZED
DAMAGE ANALYSIS

The Latest in "Hi Tech" Collision Repair

ACCREDITED REPAIR FACILITY FOR



PEACE HILLS
GENERAL INSURANCE COMPANY



Allstate



the co-operators
Insurance/Financial Services



The Economical
Insurance Group



ZURICH CANADA



WESTERN UNION INSURANCE
ING CANADA

Insurance Claims Welcome



120 South Ave. SPRUCE GROVE
(780) 962-3755



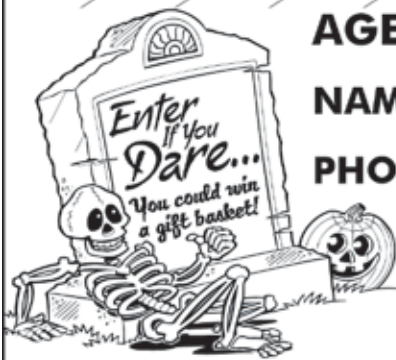
AGE GROUPS: 3-4 YRS | 5-6 YRS | 7-9 YRS | 10+ YRS

NAME: _____ AGE: _____

PHONE: _____ TOWN: _____

Entries must be recieved by October 26, 2019.

**Mail to: Jack O'Lanterns, c/o Community Voice
Box 3595 Spruce Grove, AB T7X 3A8**



Classified Ads - Call 962-9228

Classified Policy

CLASSIFIED RATES
 INCLUDE GST. 1st 20 Words:
 First Insertion = \$6.00;
 Subsequent insertion = \$3.00 each. (Eg: 2 insertions = \$9.00; 3 insertions = \$12.00; 4 insertions = \$15.00; etc)
 Each additional word is 20 cents per word, per insertion.

BOLD/CAPITAL text available for an additional \$1/line. Lost & Found and To Give Away (up to a max. of 25 words) are free of charge. Ads must be paid in advance either by cheque, cash, Visa or Mastercard. No Refunds Allowed on Classified Ads. DEADLINE: is Thurs. 4:00 pm (Wed. 4:00 pm on long weekends). Classified ads may be called

in to the COMMUNITY VOICE office at (780) 962-9228, emailed to: classifieds@communityvoice.com, dropped off at Onoway Registries, or mailed with your ad and payment to: COMMUNITY VOICE, BAG 3595, SPRUCE GROVE, AB T7X 3A8. Ads may also be placed on the web at www.communityvoice.com/classified.htm

Cherhill Community Assoc. Hall, Kevin 780-785-8153

Darwell Centennial Hall, 780-721-2690

Darwell Seniors, Phone Debra 780-785-2907

Goose Lake Hall, Contact Deanna (780) 584-3738

Gunn Hall (C.A.R.S.) 780-951-9452

Hathersage Community Centre, Noreen at 786-2946

Lake Isle Community Hall, PH: 780-892-3121 or Email: lakeislehall@mail.com

Magnolia Hall, 727-2015

Manley Goodwill Community Hall, 963-9165 or 916-0146

Mayerthorpe Diamond Centre, Charlotte at 786-4659

Mayerthorpe Legion, 786-2470.

Onoway Community Hall, 967-4749.

Hall Rentals

Alberta Beach Agliplex, Susan 780-996-2960.

Alberta Beach & District Seniors 50+ Club. Air conditioning! Space Available! Val: 780-690-1655 or Dianne: 780-217-8482

Anselmo Community Hall, Phone 780-786-4280

Bright Bank Hall, 780-968-6813

Cherhill Legion, Mary 780-785-3578.



NEW FACILITY
 Chapel & Reception Centre

600 Calahoo Road Spruce Grove, AB
780-962-2749 www.serenity.ca

SERENITY FAMILY SERVICE SOCIETY - YOUR NOT-FOR-PROFIT SOCIETY

SUDOKU OF THE WEEK

Fun By The Numbers

Here's How It Works: Sudoku puzzles are formatted as a 9x9 grid, broken down into nine 3x3 boxes. To solve a sudoku, the numbers 1 through 9 must fill each row, column and box. Each number can appear only once in each row, column and box. You can figure out the order in which the numbers will appear by using the numeric clues already provided in the boxes. The more numbers you name, the easier it gets to solve the puzzle!

ANSWER:

2	8	6	4	1	3	5	7	9
1	9	5	2	7	6	8	4	3
4	7	3	8	9	5	6	2	1
3	2	4	6	5	9	1	8	7
8	6	1	7	3	2	4	9	5
9	5	7	1	8	4	2	3	6
7	1	9	5	4	8	3	6	2
5	4	2	3	6	7	9	1	8
6	3	8	9	2	1	7	5	4

2				3				9
		5	2	7	6	8	4	3
4			8					
	2	4	6	5		1	8	
8			7					
9			1	8		2		6
7	1						6	2
5				6				
6					1	7	5	

Like puzzles? Then you'll love sudoku. This mind-bending puzzle will have you hooked from the moment you square off, so sharpen your pencil and put your sudoku savvy to the test!



Classified Ads - Call 962-9228

Onway Heritage Center - Gym/Classrooms, 967-1015

Onway Legion , 967-4980

Park Court Community Hall, 727-4476

Parkland Village Community Centre, 780-298-9155 @ PVCCentre

Ravine Community Hall, 325-2240

Rich Valley Community Hall, 967-5710 or 967-3696

Rosenthal Community Hall, 963-7984

Sandy Beach Rec Hall, 967-2873

Sangudo Community Hall, 785-2904 or 305-4616

Stettin Nakumun Comm. Hall, 967-9198

Obituaries



Marion Bremner Featherstone passed away October 3, 2019. Friends and family are invited to a celebration of her life on October 19, 2019 at 1 p.m. at Darwell Hall. If you would like to share a photo for our memory board please bring to the celebration. For additional information please refer to www.townandcountryfuneralservices.com/ listings (1) 15-10

Auctions

EVANSBURG AUCTION!! Our location has changed! Join us at the Evansburg Auction, Main Street Evansburg, next to the Evansburg Hotel on Oct. 19th at 11am. Sales will be held every Sat. at 11am. TAKING CONSIGNMENTS

NOW!! (Tues. to Fri. 11am. to 5pm.) 780-727-2724, Sale Conducted by: Alberta Surplus Auction. Licensed and Bonded. Lic# 313301. (1) 15-10

Dog Caretaker

Alberta Beach & Surrounding Areas, thinking of a Summer Getaway?

Worried about leaving your dog in a kennel? Don't worry anymore, you can leave your pet with me! There is a wrap around deck in court yard! I will provide tender loving care, with walks every day. Best of all, I'm cheaper than a kennel! Daily drop in's or overnight stays welcome. If interested call 780-920-4166 (4) 15-10 OG

Cleaning

CEILING & WALL CLEANING - Specializing in cleaning Stipple & California knockdown. Cig. Smoke removal & Odour removal. Ceramic floor tiles steamed cleaned. Call Nano Cleaning for Discount Prices! 780-914-0323 (4) 08-10



PURE HEMP CBD PRODUCTS

AGING IS INEVITABLE - LOOKING AND FEELING OLD ISN'T!

WHAT IS CBD?

A Health and Beauty Breakthrough!

Cannabidiol, CBD, is one of over 80 active cannabinoid chemicals in the hemp plant. CBD, unlike, THC, does not produce euphoria or intoxication. CBD targets specific receptors in the cells of your brain & body. There are many physical and mental benefits to using CBD products for both treatment and prevention of numerous ailments.



Therapeutic Uses For Pure Hemp CBD

Supports healthy blood sugar levels, promotes healthy energy levels, relieves anxiety, aids in digestion, supports optimal immune function and the regeneration of healthy cells, and promotes a sense of serenity and overall well-being.

Anti-Aging Uses For Pure Hemp CBD

Promotes more youthful skin, provides hydration, enhances radiance, lessens age lines as well as the appearance of dark spots.

KEY BENEFITS

- PAIN RELIEF:** Known to reduce vomiting & nausea; suppress muscle spasms; reduce seizures & convulsions.
- PROMOTES HEALTH:** Helps to promote relaxation and overall health.
- WELL-BEING:** Helps to relieve anxiety, aid in digestion, supports optimal immune function and the regeneration of healthy cells.

CBD PET PRODUCTS

PET CHEW TREATS



KEY BENEFITS
SYNERGISTIC BENEFITS: Can be used in conjunction with regular medications with no side effects.
NO SIDE EFFECTS: Does not damage the liver, kidney or GI Tract like OTC medication.
DIETARY SUPPLEMENT: Can be administered daily as part of your pet's diet.



ORAL SPRAYS & DROPS

KEY BENEFITS
MANAGES PAIN: Helps to treat inflammation, arthritis and joint pain.
TREATS DIGESTIONAL ISSUES: Helps with loss of appetite, nausea, IBS and gastrointestinal swelling.
GENERAL HEALTH: Helps to manage mood, anxiety and general joint pain. For healthy, happy pets.
CONVENIENT: Can be sprayed into pet's mouth or on food.

For more information, Call (780) 907-8642

Classified Ads - Call 962-9228

Computers

FREE Computer Checkup. Repairs **work** or extract Doc or Pictures from Old or Broken PC **NOT** over \$50. No Prepayment - No Charge if not Repairable. Yes, I have for you a good, clean, refurbished and upgraded laptop or desktop with Legal

win 10 for **ONLY \$100.** Call now 780-892-2407 (12) 13-08

Landscaping & Maintenance

Stump Grinding For Hire - Alberta Beach & Surrounding areas. Call 780-779-3589 (28) 23-04

Firewood

FIREWOOD FOR SALE - Birch, Tamarack & Spruce Pine mix. Poplar. 4x4x8 cords and 1/2 cords. Quality seasoned wood, Delivery or Pick up. Woodchuck Firewood, 780-288-7247 (28) 28-05 OG

SEASONED FIREWOOD:

Birch, Tamarack, Spruce/ Pine & Poplar. 4x4x8 cord, Split and delivered or pick up at wood yard, 1/2 cord or full cords available. Call 780-967-5835 or 780-983-1495 (28) 27-08

For Rent

Alberta Beach Hotel rooms for rent. Upgraded, very clean & well maintained, shaw cable tv included. \$60.00 per night or \$500.00 per month + GST. Damage deposit is required. Call 780-924-3005 for more information (50) 08-01

Homer's Hut Cabin Rentals - Daily, weekly, monthly rates, Alberta Beach area, Call Connie 780-913-8024 (15) 17-09

Alberta Beach Inn & Suites offers 1 Bedroom Apartment Suites, FULLY EQUIPPED AND FURNISHED. Daily/Weekly/Monthly rates, Lakefront property. Monthly rent includes digital TV, WiFi, phone, utilities & parking. Monthly available from Aug 15, special incentives for long term rentals. Please call Kurt 587-763-0351 (3) 08-10 OG

Completely renovated Motel in Onaway, offering monthly rentals, all utilities FREE, furnished bachelors and furnished 1 bedroom with full kitchen, please call Cheryl for viewing 780-967-4420 www.onawayinnandsuites.com (4) 15-10 OG

ALBERTA BEACH - Newer 2 bdrm apartment, downtown, awesome view looking over the lake, 1100sqft, washer/dryer/central vac, 2 baths, stainless steel appl, open concept, please call Cheryl 780-982-6922 (4) 15-10 OG

2 bedroom home on acreage in town limits of Stony Plain! \$1500 all in. includes all utilities! Opportunity for reduction in rent for handyman services. Qualified Seniors only! Ph 780-913-2430 Seniors only! (4) 15-10 OG



POSTINGFIRST.com

FREE LOCAL CLASSIFIED ADS

Real Estate, Rentals, Vehicles, Pets, Jobs, Service Directory, Buy/Sell/Trade, Lawn & Garden, Garage Sales, Events, Local Places & Much More... Advertise for **FREE** Today!



Buy and Sell just about ANYTHING!

POSTINGFIRST.com FREE Local Classifieds

Follow Us



Church Directory

<p>Rich Valley Community Church</p> <p>Sunday School 10:00a.m.</p> <p>Worship Service 11:00a.m.</p>	<p>Catholic Parish of Lac Ste. Anne</p> <p>Sunday 10:00a.m.</p>		<p>Mayerthorpe Baptist Church</p> <p>Worship Service Sunday 10:30a.m.</p> <p>Children's Church 10:30a.m.</p> <p>4606-54 St. Mayerthorpe (780) 786-2677</p>	<p>Alberta Beach Alliance Church</p> <p>Sunday Worship Service & Kid's Church 11:00a.m.</p> <p>Sunday School 10:00a.m.</p> <p>(780) 924-3282</p>	<p>St. John's Anglican Church</p> <p>Onoway</p> <p>Sunday Service 10:00a.m.</p> <p>Everyone Welcome</p>
<p>St. John's Lutheran Church Alberta Beach</p> <p>Sunday Service 11:00a.m.</p> <p>Sunday School</p>	<p>Zion United Church</p> <p>Sunday Service 10:00a.m.</p> <p>Sunday School</p> <p>Serving Alberta Beach, Wabamun, Darcwell & Lake Isle, Onoway & Area (780) 924-3351</p>	<p>Sangudo United Church</p> <p>Worship Service 3rd Sunday 11:00a.m.</p> <p>4907-50 Ave. Sangudo, AB</p>	<p>St. Mary's Anglican Church Service</p> <p>Holy Communion 2nd Sunday each month 11:00 a.m. at Sangudo United Church</p> <p>Reverend Barry Rose Officiating</p>	<p>Cherhill Community Church</p> <p>Sunday School 10:00a.m. - 11:00a.m.</p> <p>Worship Service Sunday 11:00a.m.</p>	<p>St. Michael Lutheran Church</p> <p>Sunday Services 1st & 3rd Sunday at 2:00p.m.</p> <p>Pastor Rick Chappell (780) 674-2618 Mystery Lake</p>
<p>Trinity Lutheran Church (LC-C) <i>The Church of the Lutheran Hour - Rockyfort Bridge</i></p> <p>Pastor Dan Hansard Church (780) 778-2035</p> <p>Sunday Worship 9:00a.m.</p> <p>Senior's Service & Cottage Bible Study - Phone for locations</p>	<p>Mayerthorpe Pentecostal Assembly</p> <p>P.A.O.C. Rev. Arnold Lothoiz</p> <p>Sunday 10:30a.m. Morning Service Tuesday 7:30p.m. Ministry Training (780) 786-2141</p>	<p>Infuzed Ministries</p> <p>Worship Service Sunday 3:30p.m. in Alexis Community Hall</p> <p>Pastor Daniel Jackson (780) 719-0240</p>	<p>Onoway Baptist Church</p> <p>Sunday Service 10:30a.m.</p> <p>Pastor Greg Garbutt (780) 967-2266</p>	<p>Roman Catholic Church St. Agnes' Parish, Mayerthorpe</p> <p>Sunday 9:00a.m. St. Elizabeth Parish, Evansburg</p> <p>Saturday 7:00p.m. (780) 786-2032</p>	<p>Calahoo Alliance Church</p> <p>Family Worship Service Sunday 10:00a.m.</p> <p>For Info Call Jerry (780) 974-7734</p>

SERVICE DIRECTORY

ATB Financial
ALBERTA BEACH AGENCY
4824 - 50 Ave, Alberta Beach
Ph/Fax: (780) 924-2211
Mon to Thurs 10:00AM - 4:00PM
Friday 10:00AM - 5:00PM
Heidi Letendre

Scerv Construction Ltd.

- Engineered Screw Piles
- Skidsteer Work
- Snow Removal
- Excavator Services
- Framing
- Insulating
- Drywall
- Taping
- Trenching
- Roofing
- Decks

Menko Helmus Cell: 780-305-3864
Email: m1988_10@hotmail.com
PO Box 4795, Barrhead, AB T7N 1A6

CPR St. Albert
Saving Your Mobile Life™
We Can Fix That In 90 Minutes

iPhones, iPods, iPads, Tablets, Computers - Apple, Samsung, Blackberry, LG, Sony and MORE
Lifetime Warranty Against Defects In Our Screens
Now over 480 Locations

#13 - 11 Bellerose Drive (Next to Grandis Bakery) 780-460-0277

MARK MARTIN PFEIFFER
MASTER BRICKLAYER/MASON

Cell: 780-242-3308
Email: pfeiffer.mark@hotmail.com

- Brickwork • Stonework
- Rockwork • Parging
- Concrete Block Work
- Tile Work (all kinds)



COMMUNITYVOICE
YOUR LOCAL NEWS

THIS SPACE IS RESERVED FOR YOU!

BRO-BUILT
Homes & Contracting Ltd

"We Pride Ourselves In Turning Handshakes Into Hugs"

www.brobuilthomes.com
Testimonials
Phone 780-940-6415

SERVICE DIRECTORY



COR Certified

- Oilfield
- Road Building
- Basements
- Dugouts
- Sand & Gravel

haytrucking@xplomet.ca
www.haytandc.com
Office: 967-5849 Cell: 818-5849



JAVORSKY DITCHING
Onoway, AB
Phone: (780) 967-5486
Cell: (780) 906-7469
Fax: (780) 967-4961

Dennis Javorsky - Owner / Operator

For All Your Excavating Needs
Sand & Gravel Hauling • General Excavating
Septic Tanks & Cisterns • Site Prep & Clean Up
• Install & Repair of Water, Sewer,
Power & Telephone Lines

ALL AROUND FENCING RENTALS
Fence Panels • Barricades
Installation by Collin Toilet Rentals



Whitcourt, AB
780.706.7978

CRUMBAUGH CUSTOM CARPENTRY & WOODWORK



DAN CRUMBAUGH
Red Seal Journeyman Carpenter

Box 1083 Onoway, AB T0E 1V0
780-232-6049
dancrumbaugh@yahoo.ca

CALIBRE DRILLING LTD
DRILLING AND SERVICING YOUR WATER WELL.

SPECIALISTS IN AIR & MUD ROTARY DRILLING

- * Water Well Drilling
- * Pressure Systems
- * Licensed Drillers
- * Geotechnical Drilling
- * Free Estimates
- * Pump Installations
- * Well Tests
- * Year Round Drilling
- * Cathodic Protection

Quality Workmanship Five Year Warranty
(780) 960-2992
BOX 4083 SPRUCE GROVE, AB T7X 3B3

R & S TOWING

FREE REMOVAL OF UNWANTED VEHICLES

967-2492




Water & Vacuum Services

Super Sucker
septic holding tanks
septic field systems
sumps & traps

Super Soaker
cisterns, pools, hottubs, skating rinks
metered water delivery rates
continuous water / top up plans

Trevor Gardner
Phone/Text: 780.967.5552 - supersuckervac@gmail.com
RR1 Site 1 Comp 261, Onoway, AB T0E 1V0



TRI-LAKES SERVICES LTD.

- Septic Hauling
- Drinking Water Delivery
- Portable Washrooms
- Steam Truck

www.trilakeservices.ca / office@trilakeservices.ca
(877) 727-3939 / (844) 967-9176
SERVING: Lac Ste. Anne County • Parkland County • Yellowhead County East

DONALD N. GREENWAY
Chartered Accountant

Suite 205 Sunrise Professional Building
215 McLeod Avenue
Spruce Grove, AB

(Bus.) **962-6366**
(Fax) **962-3990**

ZEE BEST RENOVATIONS
Your Complete Line of Renovation Needs:

- Bathroom
- Basements
- Plumbing
- Tileworks
- Drywall & Taping
- Decks & Fencing
- Roofing
- Siding

FREE ESTIMATES
26 YEARS EXPERIENCE
INSURED | GREAT RATES

JOE LAWRENCE
MANAGER

BUS: 780-967-3898
CELL: 780-915-3348
FAX: 780-967-3798

2Bros
Custom Contracting Ltd.

Custom Framing • Concrete Floors • Shingling
Siding Soffit Fascia • Styrofoam Block System

Jeff **780-717-0520**



CROFT LAW

Local office in Darwell
Call us at **780.467.5534**

Experienced Legal Services in:
Family Law • Civil Litigation
Corporate Law • Wills & Estates
Plus Notarizing and Commissioning

www.croftlaw.ca



Manufacturers of ONE PIECE SEPTIC & HOLDING TANKS

* Water Cisterns * Field Systems * Pumps and Accessories * Sumps



DELIVERED TO YOUR SITE
1-800-661-3047
780-727-2702
PembinaConcrete.com

New Line of Concrete Statues, Fountains and Garden Ornaments.
BOX 123, Entwistle, T0E 0S0

SERVICE DIRECTORY



PaddlePlastics Ltd.
Mayerthorpe, AB

Box 67
Mayerthorpe, AB T0E 1N0


Ph: (780) **786-4408**
Fax: (780) 786-4466



Mo-Bil WASH SERVICES Ltd.

- Steam • Hot & Cold High Pressure Wash • Sewer Thaw & Flush
- Residential • Commercial - Oilfield

24 HOUR SERVICE
Onway Call (780) 991-9466



PREVAIL MAX
CELLULAR HOMEOSTASIS FORMULA

How do you want your **BLOOD** to look?

Before PrevailMAX:	After PrevailMAX:
poor circulation	better circulation
low energy	more vitality
brain fog	mental clarity
dehydration	cellular movement
decreased nutrients	nutrient assimilation
pH imbalance	balanced pH
poor endurance	optimal endurance

(780) 907-8642 **VALENTUS**
www.ValentusTour.com/Ladybug



Blakeman Drilling Ltd.

Waterwell Drilling & Servicing
Pumps & Pressure Systems

SERVING LAC STE. ANNE & WEST PARKLAND FOR OVER 25 YEARS

Joe (780) 924-3024



THE CORING GUY

- Concrete Coring & Cutting • Concrete Demolition
- Electric or Diesel Slab Sawing • Core Drilling
- Skid Steer / Mini Excavator Operations

Commercial - Residential

Laurence Markwart Cell: (780) 220-6164
LAC STE. ANNE COUNTY Email: ljmarkwart@gmail.com



Tile Setting
Ceramic & Natural Slate

Kitchen & Bath - Backsplash & Surrounds
Fireplace Floors

"Serving Lac Ste. Anne and West Central Alberta Areas for over 25 years"

Thorsen Industries Call
Christian @ 403 728-3805



SANGUDO VETERINARY CLINIC

Box 581, 4916 - 52 Ave. Sangudo, AB. T0E 2A0

Dr. Ralf Sanders DVM

Ph: 780-785-2200
Fax: 780-785-2228
sangudovet@gmail.com

24 HOUR EMERGENCY SERVICE



H&P Kosik CONSTRUCTION Ltd.

- Road Building • Gravel • Sand • Dugouts
- Black Dirt • Clearing

No Job too small We do them all!

Harvey cell. 780-445-9010 ph. 780-892-3532
Box 145, Darwell, AB. T0E 0L0



Collin Toilet Rentals & Service

Your Portable Toilet Supplier for:

- Construction
- Commercial
- Oilfield
- Special Events

Whitecourt Dispatch 780.778.2448



standstone VACUUM SERVICES LTD.



Proudly Serving Lac Ste. Anne County
1-877-226-5008 780-924-2435 780-967-2118
www.standstonevac.ca or visit our facebook page

The service you need, from people you trust.

- Septic Services: Residential, Commercial
- Holding Tanks and Field Systems
- Effluent Pumps supplied & Installed
- Portable Toilets: Standard, Wheelchair Accessible, Cabana Cans
- Products: BioClean, Liquid Enzyme, Potty Treat

Great Rates & Reliable Service! Call us today!



ROY SHERWOOD
Master Electrician

Ph: 780-968-1425
Call: 780-908-2287
Fax: 780-968-2211

Email: suretechroy@gmail.com

2-53220 Rge Rd 21
Parkland County, AB
T7Y 0C5

**Control & Automation
Commissioning
Solar Sales & Service**

Industrial . Commercial . Residential



VILLAGE GLASS & MIRROR LTD.

- AUTO
- RESIDENTIAL
- COMMERCIAL GLASS & MIRROR PRODUCTS

5027 - 50 Avenue • Phone: 967-2127
PO Box 609, Onway, AB T0E 1V0



GROVE MACHINE & WELDING

Office: (780) 952-1772 Call: (780) 231-5405

You have an idea, we'll design it, build it and test it

- Fasteners • Welding • Fabrication • Repairs
- Mobile Welding • Plasma Cutting • Machining

35 South Avenue Spruce Grove, AB T7X 1B3
E-Mail: jim.reynar@grovemachinewelding.com
sales@grovemachinewelding.com

SERVICE DIRECTORY

ANOTHER RAINBOW SALE

RAINBOW LIQUIDATORS & AUCTIONS



Farm Sales, Equipment Sales, Estate Sales
BOOK YOUR SALE WITH US TODAY!
 Serving the Community since 1978

Ph: (780) 968-1000
 Stony Plain, AB 1-866-968-1001
www.rainbowauctions.ca

SMOOLE

- Construction & Septic Installation
- Environmental Wastewater Disposal
- Site Design & Evaluation
- Power, Water & Basement Excavation
- Trackhoe, Backhoe, Bobcat & Dump Truck

For All Your Excavation Needs



Call Dan 780-991-4484 Reid 780-909-0173

Jack's Auto Body

& 24 HR Towing

SPECIALIZING IN COLLISION REPAIR
GUARANTEED WORK • INSURANCE CLAIMS

CAA BOX 9 SITE 306 RR3, ONWAY, AB T0E 1V0
(780) 967-5850

OUR PLEDGE IS QUALITY

H&E UPHOLSTERY

FOR ALL YOUR UPHOLSTERY NEEDS

Convertible tops for cars and boats, custom car and boat interiors, 5th wheel trailer skirts, boat tarps, ATV seats, furniture, kitchen chairs, heavy equipment seats.




WWW.HANDE.CA
 For more information contact: kirk@hande.ca

4-485 South Ave. Spruce Grove
(780) 962-3048

POSTINGFIRST.com

FREE LOCAL CLASSIFIED ADS

Real Estate, Rentals, Vehicles, Pets, Jobs, Service Directory, Buy/Sell/Trade, Lawn & Garden, Garage Sales, Events, Local Places & Much More... Advertise for **FREE** Today!

Follow Us




THE MOST COMPLETE NUTRITIONAL SPRAYS ON THE PLANET



ORDER TODAY!
(780) 907-8642

www.Elaine1.com

Whole Heart Massage Therapy

- Maternity Massage
- Relaxation Massage
- Deep Tissue Massage
- Kinesio Taping

Jennilee Reber (780) 699-4667
 REGISTERED MASSAGE THERAPIST
 DIRECT BILLING TO INSURANCE
wholeheartmassage@hotmail.com
 54013 Range Road 30 #10
 Diamond Country Estates, Lac. Ste. Anne County

ONLINE BOOKING AT:
wholeheartmassagetherapy.clinicsense.com

COMMUNITYVOICE

THIS SPACE IS RESERVED FOR YOU!

Pm Park Memorial Ltd.

Funeral Home & Crematorium

Fran Marion
 Licensed Funeral Director


Mayerthorpe: 780-786-2533
 Whitecourt: 780-779-2533

Serving Mayerthorpe, Whitecourt and area

Edmonton | Lamont | Mayerthorpe | Smoky Lake | Vegreville

SUMMERS DRILLING LTD.

Water well drilling and service
 Family owned Business Serving Alberta since 1917



Never run out of water again!

5 year workmanship warranty

Tired of hauling water? We can install a water well with a permanent water supply for as little as \$150/month OAC

3 Convenient ways to pay

- Visa
- Mastercard
- We now offer full financing

Stop in at our office 4405 - 50 Street, Stony Plain
 780-963-1282
admin@summersdrilling.com

GRANDE TIRE

5115 LAC STE. ANNE TRAIL N. ONWAY, AB T0E 1V0

Full Mechanical Services
Tire Sales & Repairs

BUS: (780) 967-3432
FAX: (780) 967-4816
contectire@xplomet.com

AMVIC LICENSED

Lanman Landscapes

YOUR ONE STOP FOR ALL TYPES OF LANDSCAPING

- Dangerous Tree Removal
- Yard Cleanup
- Full Landscaping Service

Experienced Bobcat Work

(780) 977-6586




TRUIS & ONWAY REGISTRIES

INSURANCE

Box 390, Onway, Alberta T0E 1V0
 Tel: 967-5270 Fax: 967-4303

OPEN 9-5 MONDAY - FRIDAY
 FIRST & LAST SATURDAY OF EACH MONTH 9-12* *excluding long weekends
 Registries Closed from 12:00 pm - 1:00 pm

ALL GENERAL REGISTRY SERVICES

Home - Auto - Farm - Life and Business

Very Competitive Rates & Convenient Payment Plans.

Clients first...Service Always!



PREVAIL

CELLULAR HOMEOSTASIS FORMULA

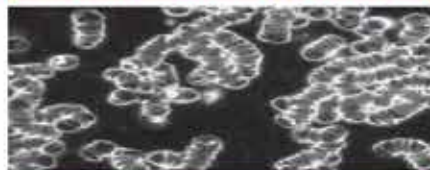
MAX

A NUTRITIONAL BREAKTHROUGH THAT SUPPORTS YOU
...RIGHT DOWN TO THE LAST CELL!

How do you want your
BLOOD to look?



Before PrevailMAX:



- poor circulation
- low energy
- brain fog
- dehydration
- decreased nutrients
- pH imbalance
- poor endurance

After PrevailMAX:



- better circulation
- more vitality
- mental clarity
- cellular movement
- nutrient assimilation
- balanced pH
- optimal endurance

PrevailMAX™ is a nutritional breakthrough that delivers a rapid increase of internal blood cell pressure to speed absorption, enabling the body to take maximum advantage of the nutrients in foods and supplements. The electrolytes are small enough to penetrate your cell membranes, to bind with your cells, and to be carried wherever they are needed in the body.

At the microscopic level of human cells, **PrevailMAX™** supports healthy cell performance – a nutritional breakthrough for your cells.

When you use **PrevailMAX™**, you will feel more energy and an ability to focus like never before. Take a few sprays today and see just how good you can feel!

LIVIN TRIM WITH
VALENTUS

www.ValentusTour.com/Ladybug

(780) 907-8642