



# COMMUNITY VOICE

YOUR LOCAL NEWSPAPER

Serving: Carvel, Darwell, Drayton Valley, Duffield, Entwistle, Evansburg, Fallis, Gainford, Parkland County, Seba Beach, Tomahawk, Wabamun, Wildwood, Spruce Grove and Stony Plain.

## October 22, 2019

### PARKLAND RCMP DETACHMENT GRAND OPENING



**Submitted by Parkland RCMP**

On October 11, communi-

ty leaders and employees of the Parkland RCMP invited members of the public to the grand opening event at

the newly built detachment. "We're ecstatic this day has finally come.

*Continued on Page 3*

### MAN ARRESTED FOR LURING CHILDREN FOR SEXUAL PURPOSE

**Submitted by Parkland RCMP**

On September 17, 2019 the Parkland RCMP became involved in a child exploitation investigation which spanned a period of time between October, 2015 and September, 2019. During this time, a number of youth were victimized to varying degrees.

As a result of the investigation, 39 year old Matthew Kenneth Erickson has been charged with a number of offences which include: four counts of Luring a Child, three counts of Sexual Interference, two counts of Making Child Pornography and one count of Sexual Assault. Erickson was released on a \$3000.00 no-cash Recognizance with a

number of strict conditions that includes no contact with the victims or anyone under 16 years of age. He is set to appear in Stony Plain Provincial Court on October 30, 2019.

If you have any information regarding this matter, please contact the Parkland RCMP Detachment at 825-220-2000 or call your local police detachment.

**All Precious JEWELLERS**  
 "Your Spruce Grove Jewellery Store"  
**Goldsmith on Premises**  
 • Engraving • Clock & Watch Repairs  
 • Jewellery Repairs • Custom Make-ups  
 Jewellery Repairs Done On Site.  
 Laser Welder Services Available.  
 Toll Free: 1-877-962-4367  
 PH: 780-960-4200 Fax: 780-960-4201  
 Suite 102, 215 McLeod Avenue  
 Spruce Grove, AB. T7X 0G2

**SIGHTS AND ARMS** Now Open Mon-Sat 10AM-6PM  
 FALL SALE! New, Used & Consigned  
 Firearm Safety & Reloading Courses  
 Gunsmithing  
 WWW.SIGHTSANDARMS.COM  
 11 J Raybon Cr. St. Albert, Alberta 825-223-9863

**PREVAIL MAX**  
 CELLULAR HOMEOSTASIS FORMULA  
**Nutritional Breakthrough For Your Cells**  
 LIVEN TRIM WITH VALENTUS  
 (780) 907-8642  
 www.ValentusTour.com/Ladybug

**SLIMROAST Optimum**  
 DARK ROAST COFFEE  
 YOUR LOGICAL SOLUTION TO WEIGHT MANAGEMENT  
 (780) 907-8642  
 www.ValentusTour.com/Ladybug

**View us ONLINE!**  
 WWW.COM-VOICE.COM



PUBLISHED WEEKLY (Zone 1 & 2)  
AND BIWEEKLY (Zone 3)

**E.J. Lewchuck & Associates Ltd.**

#6 - 40 South Avenue  
Box 3595  
Spruce Grove, AB T7X 3A8

**SALES TEAM**

Elaine  
Ashley  
Dani

**TELEPHONE:**

Classifieds 962-9229  
Advertising 962-9228  
Fax 962-1021

**E-MAIL:**

comvoice@telusplanet.net  
news@com-voice.com

# COUNTY HOSTING VALUABLE NON-PROFIT BOARD WORKSHOP

Submitted by Yellowhead County

(October 16, 2019 - Edson, AB) Are you on a board, but struggle with all the rules, regulations and paperwork? Are you interested in supporting a non-profit, but hesitant because you don't know what your rights and responsibilities are? Does your board need some clarity on how they are doing things? Then come out to Yellowhead County's Introduction to Board Governance workshop!

Alberta is host to over 25,000 charities and non-profit organizations, and they rely on volunteers like you to set the agenda of the day and make sure things run smoothly. But understanding the roles and responsibilities of board mem-

bers is no small feat.

This workshop, offered by the Government of Alberta Community Development Unit, will outline the rights, responsibilities, and roles of non-profit boards. The workshop will also cover the following topics:

- Understanding your organization's legal landscape and legal responsibilities.
- Concepts of governance and understanding the roles and responsibilities of board members.
- Liability and risk management and the link to policy development.
- Overview of organizational planning and financial responsibilities.
- Building a strong team and effective relationships.
- Effective meetings and making the most of commitments.

• Creating an effective structure to ensure work gets done.

And don't worry—there will be plenty of time allotted for questions and group discussion. To get the most out of this workshop, we recommended that groups of 2 board members register for the workshop.

Details for the workshop are as follows: November 1, 6:30 PM - 9:00 PM and November 2, 8:00 AM - 4:30 PM at the Heritage House in Evansburg. The cost of the workshop is \$15 and includes snacks for both days as well as lunch. Please register for this valuable opportunity by October 25th by calling 780-325-3782. Learn to be an effective board member and support the groups and projects that you value in your community!

## BUSINESS FOR SALE

Steady Income – Business doesn't fluctuate with Economy

Includes: - All Clientele  
- 5 Tandom Trucks  
- 1 Truck & Trailer Unit

Call 780-797-3844 for more Info.  
**Al-jo An Septic Service**

## JOKE OF THE WEEK

Two monsters went to a Halloween party. Suddenly one said to the other, "A lady just rolled her eyes at me. What should I do?"

"Be a gentleman and roll them back to her."

## Darwell Jr. Ag Society TRUNK OR TREAT & HAUNTED CARNIVAL

Sunday, October 27<sup>th</sup>, 2019  
1:30 TO 4:30PM at the Darwell Fair Grounds  
*This is a free Event and Everyone is welcome!!*

Bring your kids to a safe and warm place to kick off Halloween!!

## HAUNTED CARNIVAL

The Jr. Ag will host a haunted carnival in the Darwell Hall. Games and prizes!



We will park vehicles inside Cow palace in the case of inclement weather. Come and decorate your vehicle and hand out goodies to all the little ghosts and goblins! All surrounding communities are invited to come and participate!

**DarwellAG.com**  
For more info call Deb at (780) 892-2468



# Parkland RCMP Detachment Grand Opening

*Continued from Page 1*

One facility allows for operational efficiencies and eliminates duplication of services leading to better policing for the region. What many people don't realise is Stony Plain, Spruce Grove and Enoch have been operating as one detachment in three locations for over 20-years. Unifying the RCMP into one building has been the goal of both municipalities for some time. This will strengthen the RCMP for our region both logistically and fiscally. Making this dream a reality is another example of how working together can have such a positive impact for all of our citizens." - Mayor William Choy, Town of Stony Plain

The detachment, located at 91 Campsite Road, Spruce Grove, Alta. has consolidated employees from the previous Stony Plain and Spruce Grove detachments along with Traffic Services, formerly located

in Edmonton and Evansburg, Alta.

"Building stronger, trusting relationships within the communities we serve, is at the core of the Alberta RCMP. The opening of the new Parkland RCMP detachment is a welcome addition for the communities of Spruce Grove, Stony Plain and Enoch Cree Nation. Having our detachment members co-located in one building adds to the efficiencies of our service." - Deputy Commissioner Curtis Zablocki, "K" Division Commanding Officer

The municipally funded building is 4,665 square metres, will house roughly 160 employees and cost approximately \$22 million to build. The previous Stony Plain RCMP detachment will be disposed of by selling the building to a third party following an environmental assessment and appraisal. The Spruce Grove RCMP detachment is owned by the municipality and will remain with them.

Finally, we will maintain the lease with the Enoch RCMP detachment as an outreach office for the community.

"The new Parkland RCMP detachment is a wonderful example of how municipalities can work together to find innovative and effective ways to best meet the needs of their residents and the surrounding region. We are thrilled with this new facility and are proud of the collaboration that went into making it a reality." - Mayor Stuart Houston, City of Spruce Grove

"The new Parkland detachment has unified RCMP employees and centralized services to better serve and protect the public. This project has been years in the making, and this space will be home for our RCMP employees and partners for many years to come. It's a modern and efficient facility, for a modern and effective police service." - RCMP Commissioner Brenda Lucki

## THE ANNUAL STONY PLAIN NEW & USED TACK SALE

OCTOBER 27, 2019  
10:00AM TO 2:00PM



STONY PLAIN HERITAGE PARK  
5100 - 41 AVE. STONY PLAIN, AB

To information, email  
FunHorseEvents@gmail.com

Follow us on Facebook:  
"Stony Plain Tack Sale"  
"Fun Horse Events"

• MLS E4156523 - \$55,000, 40 2nd Ave, Fallis, 0.32 Acre, Vacant Treed Lot, 5m drive to Wabamun Lake Beach & Boat Launch

**SOLD** • MLS E4082264 - \$110,000, 4714 52A Ave, Evansburg, 1040 sqft 3bdm Bung, Large Lot in Cul de Sac, 5m drive to Pembina River Provincial Park

**SOLD** • MLS E4056923 - \$299,999, 6 Bayview Cres, Lake Isle, Gainford, 0.47 Acre, Lake Front, 1615 sqft 3 Bdrm Bungalow, 2 Living Rooms, Triple Garage

• MLS E4072848 - \$599,000, 203 Lakeshore Dr, Buck Lake, 3.48 Acre, Lake Front, 1220 sqft 2 Bdrm w/ Loft, Fully Finished Walk Out Basement

**Doreen Noppers**  
REALTOR®

**ROYAL LEPAGE**

Cell: 780-885-7398 Helping you is what we do.  
doreen.noppers@royallepage.ca NORALTA REAL ESTATE

**SERENITY FUNERAL SERVICE**

www.serenity.ca

780-542-3338 (24 hours) 5137-50 Avenue Drayton Valley, AB

SERENITY FAMILY SERVICE SOCIETY - YOUR NOT-FOR-PROFIT SOCIETY

Family run, local business, we care!

**BEST CISTERN SEPTIC SOLUTIONS**

**Cistern and Septic Inspection, Installation and Repair!**

Septic planning, design, installation by government certified installer(s)

New Installs Available. Reasonable Rates.

Let Us Handle the Dirty Work

**780-668-4306**

best-cistern-septic-solutions.com

**QUALITY SALES & SERVICE OF:**

- DISTILLERS
- SOFTENERS
- CHLORINATION SYSTEMS
- MOBILE SHOCK CHLORINATION
- SEDIMENT, TASTE & ODOR FILTERS
- REVERSE OSMOSIS FILTERS (R.O.'s)
- CHEMICAL-FREE IRON FILTERS
- PIPE, WIRE & FITTINGS
- CHLORINE BLEACH, CHEMICALS & SALT
- MOBILE SERVICE VEHICLE
- POOL & SPA FILTERS & CHEMICALS

• FREE WATER ANALYSIS •

**OUR WORKMANSHIP IS GUARANTEED!**

**962-6040 962-4060**  
15A South Ave., SPRUCE GROVE

**Quality Water Services West LTD.**

Formerly Ivan's Quality Water - UNDER NEW OWNERSHIP





# IDENTIFICATION MADE ON FOUND HUMAN REMAINS

Submitted by Hinton RCMP

The RCMP Major Crimes Unit is providing an update about the found human remains dating back to May of this year, which were identified as 25-year old Nature Duperron, of Athabasca. Duperron's family report-

ed her missing on April 15, 2019. An RCMP missing person investigation determined that Duperron was last seen in Edmonton in the beginning of April of this year.

An autopsy was conducted at the Office of the Chief Medical Examiner's Office in Edmonton on April 25,

2019, and as of this date a cause of death has not yet been determined.

The RCMP Major Crimes Unit is treating Duperron's death as a homicide.

If you have any information on this investigation, you are asked to call the Hinton RCMP at 780-865-5544.

# GYPSED GOOD NEWS STORY TO SHARE: STUDENT ENROLMENT UP!

Submitted by GYPSED

The Grande Yellowhead Public School Division's Board of Trustees received

welcome news at the Public Board Meeting on October 9, 2019, when they learned that the 2019/2020 student enrolment numbers are up 1.4

percent from last year, and over two percent from spring projections. As of September 30, 2019, 4,567 students registered in GYPSED schools across the jurisdiction. Increases were across elementary, middle and high schools with the largest increase at Ecole Mountain View School in Hinton - up 54 students; Summitview Middle School in Grande Cache - up 23 students; and Grand Trunk High School in Evansburg - an increase of 37 students

from Grade 7 to 12. "Grande Yellowhead is proud to offer a wide variety of educational opportunities for all students to achieve their goals," noted Carolyn Lewis, Superintendent of Schools. "Our targeted priorities over the last couple of years have focused on numeracy and literacy strategies that are reflected in our increased provincial test results and in our student numbers: a solid reflection of our communities' trust in public education."



Summitview Students

## PRICE REDUCED



**14K White Gold Diamond Ring**  
Brand New, Still in Box, Tags on!  
**Asking \$2,745**



**14K White Gold Engagement Ring**  
Brand New, Still in Box, Tags on!  
**Asking \$2,300**



**10K White Gold Diamond ring**  
Brand New, Still in Box, Tags on!  
**Asking \$1,375**

Call for more information, or to view the ring 780-907-8642

# ZION UNITED CHURCH NEWS

**Submitted by Betty Milne for Zion Worship Committee**

The congregation of Zion United Church thanks ev-

eryone who has included us in their prayers following the fire in May and for care and concern shown in many ways. We have decided not to host the annual Fall

Supper and Silent Auction in Nov. We do plan to have our Spring Supper – watch for information in the early new year.

We hope to be back at Zion

on Nov. 17th. If you would like to share this joyous occasion with us the service is at 10:00 a.m. May God Bless All.

## GYPSED GOOD NEWS STORY TO SHARE: PGMS WINS PROVINCIAL RECYCLING AWARD



**Submitted by GYPSED**

On October 3, 2019, the Green Team from Ecole Pine Grove Middle School in Edson was honoured to receive an Award of Excellence from the Recycling

Council of Alberta in recognition of their recycling program. Three Pine Grove students did a presentation to explain how the school's pilot program was rolled out, and the significant impact it has made on the stu-

dents and staff at the council's annual conference at Jasper Park Lodge. The recycling program was initiated through a partnership between the school, and the Edson and District Recycling Society. Now in its sec-

ond year, the Green Team will expand the school's recycling program to include events which further student education around waste, its impact on the environment, and how to reduce and/or reuse items.

# GROVE HEARING CLINIC

## 960-2960

## 1-866-960-2960

Hear what you've been missing...

Senior Discounts



Full Service & Repair

Full Hearing Assessments

**HOURS OF OPERATION: 9am – 5pm Weekdays**

3rd party billing (AADL, WCB, DVA, FCH) • Personal 0% Financing if Needed

For The Latest Technology In Hearing Aids & Assisted Living Device Stop By & See Dawn

**#220-70 McLeod Ave - Westland Market Mall, Spruce Grove**



# ENRICHING the lives of OUR MEMBERS through QUALITY

Call 310.EQUS to learn more about making the switch to  
Canada's largest Member-owned utility!



When we were looking for an electricity provider, we knew we had a choice, and choosing EQUS was an easy decision. As Alberta's energy solutions company, their installation costs and monthly rates were very competitive and their staff went the extra mile to ensure that we were satisfied. We are proud to be EQUS Members.

-Kurt & Kyla Belich - Owners, The Track on 2



#PoweredByEQUS



DELIVERING MORE THAN POWER





**YOUR LOGICAL SOLUTION TO WEIGHT MANAGEMENT**



CALL (780) 907-8642 FOR **FREE** SAMPLE

**DARK ROAST COFFEE**

# SLIMROAST Optimum

**Exclusive functional coffee formulated to:**

- Crush Cravings
- Increase Energy
- Metabolize fat to Energy
- Help Regulate Blood Sugar
- Improve Mood & Focus
- Boosts Circulation & Oxygen delivery

**TO UNLOCK THE SECRET OF WEIGHT MANAGEMENT! PUT THE POWER OF SLIMROAST OPTIMUM IN YOUR CUP!**



Thrilled with my results! I lost 9 lbs and an amazing 11 inches off my abdomen! Works wonderfully!

Managed to lose 7 lbs very fast & much more in inches the way my clothes are fitting now! 1 cup a day is all for me!

Down 17 lbs and fitting into clothes that were way to tight before!

No dieting, first month finished. Down 7 1/2 lbs 8.5 inches. Awesome product!

[www.ValentusTour.com/Ladybug](http://www.ValentusTour.com/Ladybug)

**(780) 907-8642**

# KEY MESSAGES FROM GYPSD'S PUBLIC BOARD MEETING

**Submitted by Grande Yellowhead Public School Division**

October 9, 2019

On October 9, 2019, Grande Yellowhead Public School Division (GYPSD) held their Public Board Meeting. In attendance was Jessie Smeall - Alberta Teachers' Association (ATA), and a community member from Niton.

### School Visits

• The Superintendent of Schools led the Board of Trustees on school visits in Jasper, Grande Cache, and Edson. Trustees met with principals, teachers, educational assistants, school council chairs, and elected officials in all of the zones, formulating connections with staff and community members. The Board enjoyed visiting classrooms

observing literacy instruction in core subjects and meeting with the school principals to discuss enrolment, budgets and Accountability Pillar results.

### 2019 Imagine Conference

• The Board denied a request to provide transportation to and from the 2019 Imagine Conference for students and teachers, as well as \$1,400 towards venue rentals and lunch. Although the Board recognized the value of the conference, the Division is limiting expenditures for initiatives and projects with the funding uncertainty that all school jurisdictions are currently facing from the province.

### Orange Shirt Day

• Schools from across the Division held various events in support of Orange Shirt Day, promoting awareness of the Residen-

tial School System and the impact this system had on Indigenous communities in Canada. Trustee Caputo attended the Orange Shirt Day assemblies held at both Crescent Valley and École Mountain View schools, and highlighted how much she appreciated the dance presentation from the Hinton Friendship Centre.

### Curriculum Update

• Learning Services provided a report to the Board on the current status of the provincial work on curriculum. Recommendations from the provincial advisory panel are expected to be publicly shared in December 2019. The Division implemented working and advisory committees in the 2018/2019 school year, and continues to provide professional development opportunities to support the

implementation of future curriculum.

### Summer School Program

• A significant number of students took advantage of the wide variety of programs offered through summer school at Parkland Composite High School in Edson and The Learning Connection; for example, more than 140 students registered in the Career and Life Management (CALM 20). Other summer school options included: Art, Abnormal Psychology, Aboriginal Studies, Biology, CALM, Chemistry, English, Math, Environment Science, Forensic Science, French, Learning Strategies Math, Personal Psychology, Physical Education, Physics, Science, Social Studies, and Work Experience.

*Continued on Page 14*



**WE HAVE**

# MOVED



**New Location**  
AS OF MONDAY, SEPTEMBER 30

**#6 40 South Ave.**  
**Spruce Grove, AB**  
**T7X 3A9**





## LAC STE. ANNE COUNTY PARENT LINK / EARLY CHILDHOOD DEVELOPMENT INITIATIVE FREE PROGRAMS IN NOVEMBER

### STAY & PLAY ONOWAY

**Nov. 6, 13, 20 & 27 | 9:00 am - 11:30 am** — and  
**Nov. 6 | 12:30 pm - 3:00 pm**  
Parent Link Room, Onoway Heritage Centre

### STAY & PLAY SANGUDO

**Nov. 5, 12, 19 & 26 | 11:00 am - 12:00 noon**  
Sangudo Early Childhood Room (arena)

Drop by to enjoy a coffee, and visit while your kids explore the awesome toys and sensory bins, and create crafts.

**FREE drop-in program – no need to pre-register.**

### TUMBLE TOTS

**Thursdays, Nov. 7, 14, 21 & 28 | 9:30 am - 11:00 pm**  
Alliance Activity Centre (Museum Gym),  
Onoway Heritage Centre

Drop in with your babies, toddlers, and preschoolers for fun non-structured active play. Enjoy stilts, parachute, steppingstones, hula hoops, balls, skipping ropes, hopscotch and much more.

**FREE drop-in program – no need to pre-register.**

### PARENTING MADE FUN® LUNCH & LEARNS

#### LOVE & LOGIC: EARLY CHILDHOOD

**Thursdays Nov. 7-Dec. 5 | 1:00 - 3:00 pm**  
Parent Link Room, Onoway Heritage Centre

This 5-week program gives parents of young children practical and proven tools for raising respectful, responsible and happy kids. Learn simple and easy to learn strategies to lower your family's stress levels, teach responsibility and character, and up the odds that when the teenage years arrive, parenting can remain fun instead of frantic!

*Pre-registration required by November 1. Childcare is available, but **MUST** be requested at time of registration. Lunch provided for registrants and children registered in childcare.*

### TRIPLE P POSITIVE PARENTING PROGRAM® LUNCH & LEARN DEALING WITH DISOBEDIENCE

**Wednesday Nov. 13 | 1:00 pm - 3:00 pm**  
Parent Link Room, Onoway Heritage Centre

We'll discuss some of the reasons children don't do as they're told, and how we can set limits and teach them to do the right thing. Learn positive parenting strategies to help prevent problems, and to handle disobedience if it happens.

*Pre-registration required by November 8. Childcare is available, but **MUST** be requested at time of registration. Lunch provided for registrants and children registered in childcare.*

### TRIPLE P POSITIVE PARENTING PROGRAM® LUNCH & LEARN MANAGING FIGHTING & AGGRESSION

**Wednesday Nov. 20 | 1:00 pm - 3:00 pm**  
Parent Link Room, Onoway Heritage Centre

Learn some reasons why children fight or lose control, get ideas to help you teach your child to play cooperatively, and gain strategies to manage conflict between siblings & problems with fighting or not sharing. Learn to deal with aggressive or destructive behaviour if it happens.

*Pre-registration required by November 15. Childcare is available, but **MUST** be requested at time of registration. Lunch provided for registrants and children registered in childcare.*

### TRIPLE P POSITIVE PARENTING PROGRAM® LUNCH & LEARN DEVELOPING GOOD BEDTIME ROUTINES

**Wednesday Nov. 27 | 1:00 pm - 3:00 pm**  
Parent Link Room, Onoway Heritage Centre

Discover strategies to help develop a good bedtime routine and teach your child to fall asleep in their own bed and stay there til morning. Learn to prevent problems and deal with problems that do happen at bedtime or during the night.

*Pre-registration required by November 22. Childcare is available, but **MUST** be requested at time of registration. Lunch provided for registrants and children registered in childcare.*

**Parent/caregiver supervision of children is required.** For more information, please contact Parent Link/Early Childhood Development Coordinator Cathy Steeves: 780.785.3411 / 1.866.880.5722 or email [csteeves@LSAC.ca](mailto:csteeves@LSAC.ca).







*fall...*  
**AUTO TUNE-UP**  
**OCTOBER 2019**

-----  
**The Businesses in  
the following Guide  
can be your One Stop  
Solution to all your  
Automotive Needs!**  
-----



# Auto **TUNE-UP**

## STANDARD VEHICLE MAINTENANCE INTERVALS YOU MAY WANT TO FOLLOW

According to CarGurus® a free internet-based automotive resource, many manufacturers adhere to the 30-60-90 schedule. That schedule recommends everything from inspections to part replacements when vehicles reach 30,000, 60,000 and 90,000 miles. These recommendations are meant to serve as guidelines, and drivers should know that certain factors can affect how often routine maintenance should occur and when parts must be replaced. For example, harsh driving conditions can lead to excessive wear and tear that causes parts to erode long before owner's manuals suggest they should. As a

result, drivers should always speak with their mechanics during service appointments to determine if their vehicles are aging gracefully or if they need a little extra TLC.

Drivers should always read their manuals for recommended service intervals. The following are some general maintenance guidelines, courtesy of CarGurus® that drivers can keep in mind as the miles pile up on their vehicles' odometers.

- Oil and oil filter: Many new cars now run on synthetic oil, which tends to last between 5,000 and 10,000 miles. Older vehicles using traditional oil may need to adhere to the once-standard oil change

interval of 3,000 miles. Mechanics will typically replace oil filters with the same frequency as they replace oil.

- Air filter: Air filters generally need to be replaced every 15,000 to 30,000 miles. However, CarGurus® notes that drivers who park in dusty environments should err on the side of caution and have their air filters replaced every 15,000 miles.

- Fuel filter: Clogged fuel filters can affect engine performance and even prevent engines from running. Fuel filters may need to be changed at 30,000-mile intervals.

- Battery: A typical car battery tends to last around four or five years.

- Brake pads: Worn out brake pads will make a screeching sound. Brake pads should last around 50,000 miles, though they should be inspected at regular intervals regardless of mileage.

- Brake rotors: Brake rotors can be resurfaced or replaced, and this should be done around 60,000 miles. Resurfacing can only be done once and is less expensive than a full replacement.

- Hoses: Hoses crack over time, but generally do not need to be replaced until they reach the 90,000-mile mark. However, hoses should be inspected routinely, as busted hoses can cause very significant damage.

**W.V. REPAIR SERVICES LTD.** 

**Agriculture & Heavy Duty Repairs**  
*(NO AUTOMOTIVE REPAIRS)*

Air Conditioning - in Shop & Mobile Service  
CVIP Inspections, Hydraulic Repair, Hoses Made

 **EXPERIENCED MECHANIC 30+ YEARS**  
**WALLY 780-305-1315**  
SHOP IS LOCATED JUST 10 MIN SOUTH OF SANGUDO

**NAPA AUTO PARTS**

- Auto Parts & Accessories
- Body Shop Supplies
- Agricultural & Industrial Parts
- Shop Equipment

*We are real Auto Parts People*

120 St. Matthews Ave, Spruce Grove  
962-4421 Fax: 962-3464  

**GROVE**

**COLLISION REPAIRS LTD.**

*Specialists in Unibody Repairs*

**GENESIS COMPUTERIZED DAMAGE ANALYSIS**

The Latest in "Hi Tech" Collision Repair

ACCREDITED REPAIR FACILITY FOR

 PEACE HILLS GENERAL INSURANCE COMPANY **Allstate**

 **the co-operators** Insurance/Financial Services  **The Economical Insurance Group**

 **ZURICH CANADA**  **WESTERN UNION INSURANCE**  
ING CANADA

**Insurance Claims Welcome**

 120 South Ave. SPRUCE GROVE  
**(780) 962-3755**



# Auto TUNE-UP

## EXERCISE CAUTION AROUND BRAKE DUST

As cars age, certain wear and tear is to be expected. One of the realities of frequent driving, particularly for drivers who routinely drive in stop-and-go traffic, is the gradual deterioration of brake pads. Do-it-yourselfers can replace brake pads on their own, but those that do should be aware of a potential hazard when doing so.

The Mesothelioma Center says that brakes sometimes contain asbestos due to that material's heat-resistant qualities. As brakes start to wear down over time, the asbestos can escape. The Occupational Safety and Health Administration (OSHA) says that, while many new automotive components are asbestos-free, asbestos hasn't

been eliminated entirely from the industry. That is why mechanics and do-it-yourselfers need to exercise caution when repairing or replacing brakes.

Brake dust may inadvertently expose individuals to cancer-causing asbestos through inhalation or ingestion. OSHA says that exposure to asbestos, if not properly controlled, can cause mesothelioma, lung cancer and asbestosis. Symptoms may not appear for years or even decades after contact with asbestos fibers.

The Mesothelioma Center estimates that asbestos is present in 30 to 80 percent of brakes and other components. The routine task of "blowing out" brake surfaces, which involves using an air hose to clean the surfaces of

brakes and rotors, is one of the most common ways people are exposed to asbestos through brake dust.

Gray-black brake dust is made up of iron particles formed by the grinding of the brake rotor by the brake pads. However, brake dust also can contain some metallic elements and other components housed in the brake pad - including asbestos.

The automotive resource YourMechanic says that, while brake dust is not indicative of a poor braking system, over time brake dust can corrode the clear coat on a car and may eat into the aluminum alloy surface of the wheel. That is why so many drivers try to clean away brake dust, potentially exposing them to

dangerous materials.

DIYers may be better off visiting professional service centers to have brakes addressed rather than doing the job on their own. OSHA says all automotive brake and clutch repair facilities in the United States must comply with the OSHA asbestos standard. These include using negative pressure enclosure/HEPA vacuum systems and low pressure/wet cleaning methods.

While asbestos is being phased out of many automotive components, it is always best to treat brakes, clutches and more with extra caution in the event that asbestos is present.

**VANDENBERG COLLISION LTD.**

Joe

Ph: (780) 786-2614      5014 - 51 St.  
 Fax: (780)786-2736      Mayerthorpe, AB

**STONY PLAIN AUTO**

17E Granite Drive, Stony Plain

**Servicing All makes & Models**  
**ALL WORK GUARANTEED!**

Tel: (780) 963-6297  
 stonyplainautomotive@gmail.com

**Ray's AUTO REPAIR**

24 HR. TOWING SERVICE  
 COMPLETE AUTO REPAIR  
 STIHL CHAIN SAWS

**DANNY FRIEND 780-785-2251**  
 (OWNER • MANAGER)      BOX 332 SANGUDO, AB. T0E 2A0

**JACK'S CARSTAR** 24 Hour Towing  
 Collision & Glass Service

**Jack's Auto Body**  
 & 24 HR Towing

Jack's Auto Body is now part of CARSTAR Collision & Glass

- Same great highly trained and certified staff
- Same great owners
- Work with all insurance companies
- Rental cars on site
- Lifetime Nationwide Warranty
- 24 Hour Towing

2517 HIGHWAY 633 ONOWAY, ALBERTA  
**(780) 967-5850**



# Auto TUNE-UP

## THE IMPORTANCE OF ROUTINE VEHICLE MAINTENANCE

Owning a car is a big responsibility. Drivers who plan to keep their vehicles for the long haul must emphasize maintenance if they want to keep adding miles to their odometers. In fact, the automotive information site CarAdvice says that routine maintenance may be the most important thing drivers can do for their vehicles.

A vehicle needs consistent care if it is to run efficiently. Maintenance also reduces the risk of roadside breakdowns and costly repairs. Here's a look at some of the benefits of staying on top of maintenance.

- Saves money: Even though maintenance costs money, sticking to a consistent maintenance schedule can save big bucks in the long run. For example, the cost of rotating and aligning tires is considerably less than repairing a car after a major blowout and paying for a tow and tire replacement.

- Improves performance and efficiency: Routine maintenance includes oil changes, filter changes and fluid top-offs. Such tasks keep engines running smoothly. Ignoring this routine maintenance can put engines in jeopardy of breaking down and adversely affect vehicle performance, diminishing fuel

economy and leading to a sluggish ride.

- Identifies safety issues: Routine inspections and work performed by reputable service stations help drivers stay abreast of recalls or issues that can affect the safety of the vehicle.

- Maintains a maintenance record: When the time comes to sell the vehicle, having a log of routine maintenance indicates to potential buyers that the vehicle was well cared for.

- Keeps compliance: Vehicles covered under manufacturer's warranties typically need to be maintained in adherence to factory-recommended maintenance schedules. This ensures that the vehicle is in compliance and will be covered in the event of a warranty claim.

Routine vehicle maintenance is important for a variety of reasons. Drivers can work with a trusted and reliable mechanic to develop a schedule that keeps their cars and trucks on the road.

**WINTER is COMING** **ARE YOU READY?**

We have one of Drayton Valley's **BIGGEST SELECTION** of **WINTER TIRES!**

Winter rims available! Allow 2 business days for shipping

**OUT OF PROVINCE Alberta Inspection Facility!**

**DRAYTON'S SHOP**

TREADPRO 780-514-5795  
5001 63 St, Drayton Valley

Hours of operation: 8:00 am - 5:00 pm

**KEEPING YOU AND YOUR COMMUNITY INFORMED!**

**RADIATOR REPAIR AND RECORE**

MANY UNITS IN STOCK FOR LARGE TRUCKS SAME DAY SERVICE ON MOST RADIATORS. CALL FOR DETAILS AND PRICING.

**We offer services**

- CVIP Inspections
- Hydraulic hose crimping and thousands of adapters in stock.
- A/C Repair
- Espar and Webasto Repair, Installation.
- Engine Repair and Rebuilding.
- Power train/Driveline repair and service.
- Suspension and frame repair.
- Two Fully equipped service trucks for mobile needs.
- Gates Hydraulics, hoses and belts

**WE HAVE FACTORY TRAINED TECHNICIANS FOR T & E PUMPS, CATERPILLAR AND CUMMINS ENGINES, AND SPICER AND MERITOR DRIVELINES.**

**WE STOCK PARTS FOR ALL MAKES AND MODELS OF TRUCKS, DRIVELINE & ENGINES.**

**We repair**

- Truck Transport
- Heavy Equipment
- Automotive
- Industrial

**Nitro Nut Mechanical LTD.**

Shop 780.789.3322 • Fax 780.789.3331  
Toll Free 1.855.789.3322 • www.nitronut.com  
email: nitronutmech@hotmail.com

# OCT 26 AUCTION FOR: 4 RETIRING SENIORS/BUSINESS

LOCATED: IN Barrhead Industrial Park at 6108 - 46 Street

**SATURDAY AFTERNOON, OCTOBER 26<sup>TH</sup> AT 1:00PM**

**COMPLETE MODERN/QUALITY/FAMILY**

**RESTAURANT:** \* STAINLESS STEEL ( Hobart Commercial Dishwasher ) ( Pref Table w 3 Sinks ) ( Large Over Stove Hood w Dry Chemical Fire Safety ) ( Large 2 Door Fridge ) ( Coffee Machine ) ( Coffee Grinder ) ( Bezzera Single Group Espresso Machine ) ( Soup Warmer ) ( 220 V Grill ) ( 2 Rolling Serving Carts ) ( Chicago Meat Slicer ) \* Lots of Kitchenware \* Sandwich Prep/Cooler Table \* Quality Dark Wood Tables and 40 Matching Chairs \* And More

**COMPLETE SENIORS QUALITY ITEMS:** \* New 270 Rem 783 Rifle w 3 to 9 x 40mm Scope, Lock, Case \* Merlin 22 Micro Grove XT 22 w SS Barrel, Scope, 12 Shot \* Alum Quad Deck for Truck \* Skandic Skidoo \* Rough/Tough 2002 Crew Cab 4 x 4, 8' Box \* Ski Doo Helmets \* CrossBow \* Jiffy Ice Auger \* Quad Cab

**SENIORS ITEMS:** \* 12 V House Wheel Chair \* Seniors Lift Chair \* Tread Mill \* Eltc Organ \* Antique Items - Butter Churn, Scycle Sharpener, 1 Man River Sleigh Runner \* Lots of Furniture, Garage, Yard Items

**COMPLETE SENIORS SHOP AND YARD:** \* Millermatic 172 Challenger Welder \* CM Gas Less Wire Feed Welder \* Acetylene Uit w Wind Up Hose \* HD Shop Table \* 2 Rolling 3 Ton Floor Jacks \* Shop Scissor Lift \* Hyd Press \* Drill Pres \* CO Saw \* Table Mitre Saws \* Many Other Tools \* NICE ( Husq 62 HWT Grass Whip ) ( Stihl MM 55 Multi Unit - Rototiller, Paddle, Sweep Brush ) ( CM 21" Snow Blower ) ( Husq 365 and Stihl 009 L Chain Saw ) ( 3" Water Pump ) ( Oilfield Straps + Tie Downs )

**PLUS 4th SENIOR:** \* New 120 gal Molasses Lick Tank \* 4 Burner N/G Counter Top Cook Stove \* Also Full House and Garage Items \* 14ft F/G Boat w 75 hp Evinrude

**SPECIAL SENIORS:** \* 2006 Nissan Titan King Cab Silver Truck w (250 k km ), nice \* 2008 Dodge 8 ft. Truck Box \* Ford Quad Cab Truck w/4.6 v8, 4 x 4 \* 2012 GN TRAILER w 2 dual wheel axles, 36 ft. deck, hyd tilt beavertail

**PARSONS AUCTIONS LTD.**  
Charles 674-7704 (780-674-3929) Jeff 305-4328  
Pictures Available on: parsons-auctions.com

# Key Messages From GYPSD's Public Board Meeting

*Continued from Page 8*

Outdoor experiential learning opportunities were also offered through the Palisades Stewardship Education Centre in Jasper National Park to GYPSD students and students from across the province.

Dual Credit Program

- Parkland Composite High School (PCHS) provided welding dual credit courses during the 2018/2019 school year through the Alberta Dual Credit Framework grant funding. Six students completed the Pre-Employment Welding Program and received applicable credits through PCHS and Grande Prairie Regional College. All students were eligible to challenge the first period Alberta Apprenticeship welding exam.

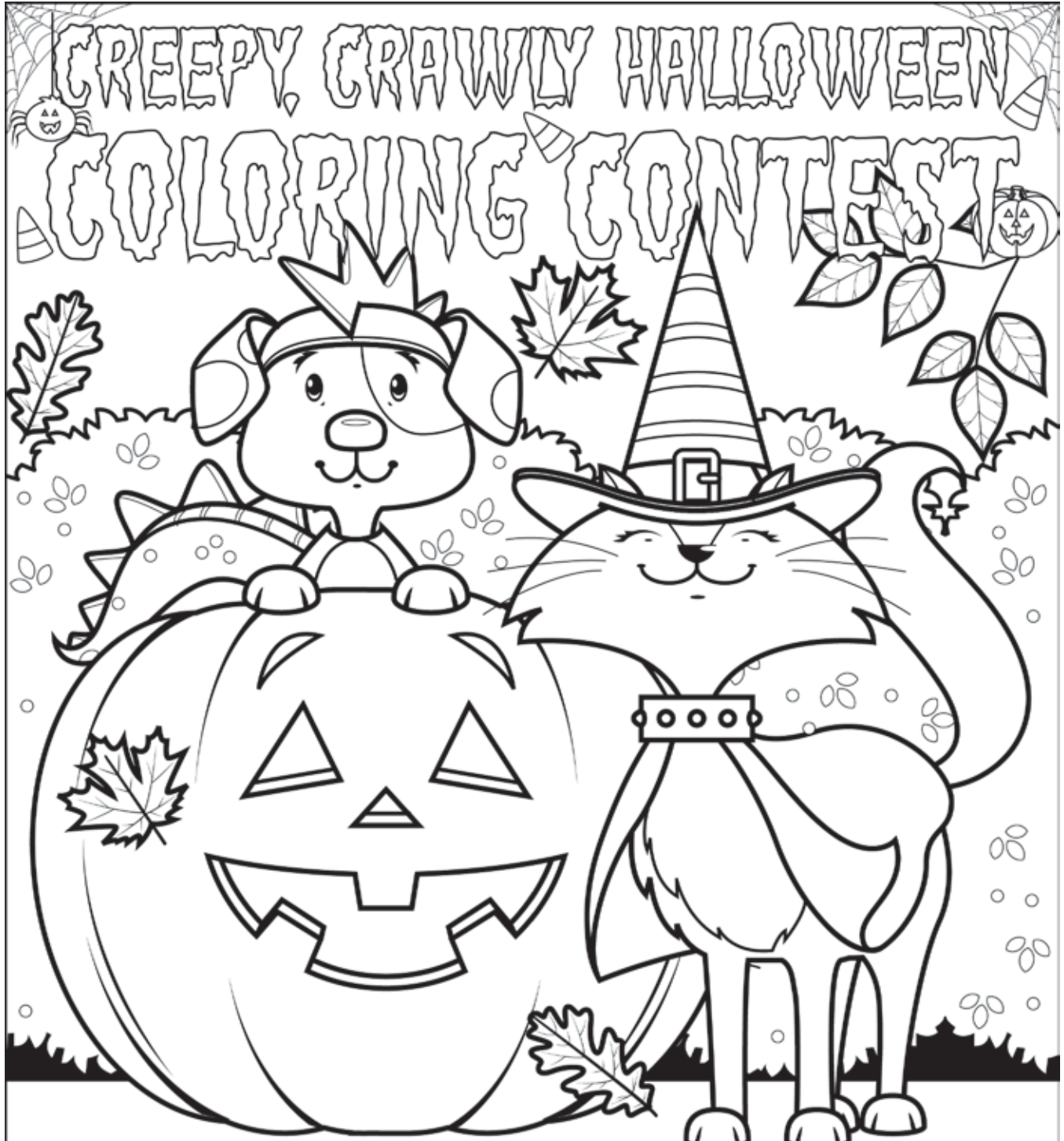
Work Experience Program

- Work experience courses provide off-campus experiential learning activities for students to discover their career interests and aptitudes while applying knowledge and skills from other course work. In the 2018/2019 school year, approximately 200 students from five GYPSD high schools and The Learning Connection participated in the program.

Enrolment

- The Board of Trustees was pleased to receive the 2019/20 student enrolment numbers which are up 1.5 percent from last year, and over two percent from spring projections. As of September 30, 2019, 4,567 students registered in GYPSD schools across the jurisdiction.





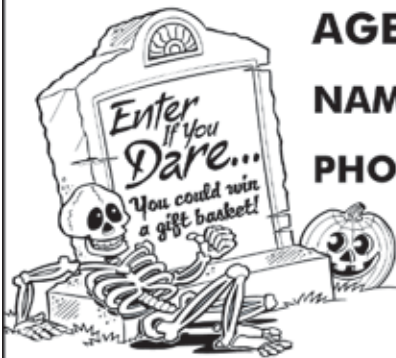
**AGE GROUPS: 3-4 YRS | 5-6 YRS | 7-9 YRS | 10+ YRS**

**NAME: \_\_\_\_\_ AGE: \_\_\_\_\_**

**PHONE: \_\_\_\_\_ TOWN: \_\_\_\_\_**

**Entries must be recieved by October 26, 2019.**

**Mail to: Jack O'Lanterns, c/o Community Voice  
Box 3595 Spruce Grove, AB T7X 3A8**





## FREE LOCAL CLASSIFIED ADS

Real Estate, Rentals, Vehicles, Pets, Jobs, Service Directory, Buy/Sell/Trade, Lawn & Garden, Garage Sales, Events, Local Places & Much More... Advertise for **FREE** Today!



*Follow Us*





# Classified Ads - Call 962-9228

## Classified Policy

CLASSIFIED RATES INCLUDE GST. 1st 20 Words: First Insertion = \$6.00; Subsequent insertion = \$3.00 each. (Eg: 2 insertions = \$9.00; 3 insertions = \$12.00; 4 insertions = \$15.00; etc) Each additional word is 20 cents per word, per insertion. BOLD/CAPITAL text available for an additional \$1/line. Lost & Found and To Give Away (up to a max. of 25 words) are free of charge. Ads must be paid in advance either by cheque, cash, Visa or Mastercard. No Refunds Allowed on Classified Ads. DEADLINE: is Thurs. 4:00 pm (Wed. 4:00 pm on long weekends). Classified ads may be called in to the COMMUNITY VOICE office at (780) 962-9228, emailed to: [classifieds@com-voice.com](mailto:classifieds@com-voice.com), dropped off at Onoway Registries, or mailed with your ad and payment to: COMMUNITY VOICE, BAG 3595, SPRUCE GROVE, AB T7X 3A8. Ads may also be placed on the web at [www.com-voice.com/classified.htm](http://www.com-voice.com/classified.htm)

## Hall Rentals

Bright Bank Hall, 780-968-6813  
Camp Encounter, Vincent Mireau

- Camp Director. [director@campencounter.com](mailto:director@campencounter.com). C: 780-504-2012 W: 780-967-2548

Cherhill Community Assoc. Hall, Kevin 780-785-8153

Darwell Hall, 780-721-2690

Darwell Seniors, Phone Debra 780-785-2907

Duffield Hall, 892-2425

Entwistle Community League Hall Rentals, Call Cheryl at 780-515-1755

Entwistle Senior's Drop In Centre, Barb 727-2108 or Glennis 727-4367 Mon-Fri

Evansburg Senior's Heritage House, Dennis 727-4186

Evansburg Legion, upper hall 250 people, lower hall 80-100 people, 727-3879

Fallis Community Hall, 892-3150

Gunn Hall (G.A.R.S.) 780-951-9452

Keephills Hall, 731-3761

Lake Isle Community Hall, PH: 780-892-3121 or Email: [lakeislehall@mail.com](mailto:lakeislehall@mail.com)

Lake Romeo PeaVine Hall, 785-2700

Magnolia Hall, 727-2015

Manley Goodwill Community Hall, 963-9165 or 916-0146

Mayerthorpe Diamond Centre, 786-4044

Moon Lake Community Hall, Nikki Berg 780-898-1390

Park Court Hall, call or text Karyn 780-712-3918

Parkland Village Community Centre, 780-298-9155 @PVCCentre

Ravine Community Hall, 325-2391

Rich Valley Community Hall, 967-3696 or 967-5710

Rosenthal Community Hall, 963-7984

Smithfield Community Hall, Wanita 780-718-8824.

Tomahawk & District Sports Agra, Bookings: Kathy 780-339-3773.

Wabamun Jubilee Hall, 892-2699.

Wildwood Community Hall, 325-2180 or 780-514-6105

Wildwood Rec Complex 325-2077 or 514-8944

Wildwood Senior's Hall, 325-3787 or 325-2391

## Auctions

Evansburg Auction, main street, Evansburg. Next to the Evansburg Hotel. (5112 50 St.). Regular Sales EVERY SATURDAY @ 11 am. Coins, Jewelry, Groceries, Store Close Outs - Items to numerous to list!! Sales Conducted by Alberta Surplus Auction. Licensed and Bonded, Lic # 313301. Concession Available, 780-727-2724 (3) 22-10

## Services

EDITOR FOR HIRE. Not only can I correct spelling, grammar, and punctuation, but also wrong words, repetition, and paragraphing. As well, I can point out the need for evidence, examples, or definitions. For secondary and post-secondary students. Call Elizabeth Emond, Ph.D. (UBC, 1995) at 780-848-1015. (3) 15-10

# SUDOKU OF THE WEEK


## Fun By The Numbers

**Here's How It Works:** Sudoku puzzles are formatted as a 9x9 grid, broken down into nine 3x3 boxes. To solve a sudoku, the numbers 1 through 9 must fill each row, column and box. Each number can appear only once in each row, column and box. You can figure out the order in which the numbers will appear by using the numeric clues already provided in the boxes. The more numbers you name, the easier it gets to solve the puzzle!

**ANSWER:**

1	7	4	5	9	3	6	8	2
3	2	8	7	1	6	4	9	5
5	6	9	2	4	8	3	7	1
6	8	1	3	5	4	9	2	7
7	5	3	9	2	1	8	6	4
9	4	2	6	8	7	1	5	3
2	3	5	4	6	9	7	1	8
4	1	6	8	7	5	2	3	9
8	9	7	1	3	2	5	4	6

**Like puzzles?** Then you'll love sudoku. This mind-bending puzzle will have you hooked from the moment you square off, so sharpen your pencil and put your sudoku savvy to the test!



1	7				3			
			7				9	5
		9	2	8	3	7		
6			3	4		2		
	5	3			1	8	6	
9		2						
2		5	4					8
	1		8					9
						5		6



# THE MOST COMPLETE NUTRITIONAL SPRAYS ON THE PLANET

✓ INCREASED PERFORMANCE ✓ MORE ENERGY ✓ BETTER NUTRITION



**ORDER TODAY!**

## WHAT ARE MYDAILYSPRAYS?

 <p><b>Peak</b></p> <p>The highest grade of Deer Antler Velvet with Antioxidants from some of the most nutrient rich super fruits in the world.</p>	 <p><b>Shield</b></p> <p>Shield is the only Alkalinity spray in the world that promotes high pH therapy to maintain a healthy lifestyle.</p>	 <p><b>Boost</b></p> <p>The high absorption delivery system is perfect for people sensitive to coffee or energy drinks.</p>	 <p><b>Sleep</b></p> <p>Helps you get to sleep faster, maintain a healthy sleep cycle, and improve the quality of a restful sleep.</p>	 <p><b>Trim365</b></p> <p>Weight management formula which utilizes Garcinia Cambogia, burn fat faster and support a healthy metabolism.</p>	 <p><b>Brain</b></p> <p>Brain Spray with Cognizin and Seasonal. Helps regulate mood and combats anxiety. Helps to improve cognitive function and memory.</p>
---	--	---	--	---	--

## WHAT MAKES MYDAILYSPRAYS SO POWERFUL?

- 98% ABSORBABILITY - FAST AND EFFECTIVE
- ALL NATURAL INGREDIENTS
- JUST 6 SPRAYS UNDER THE TONGUE



**POWERFUL INGREDIENTS. POWERFUL RESULTS.**



**WHOLESALE ACCOUNTS AVAILABLE. DISTRIBUTORS NEEDED.**  
[www.Elaine1.com](http://www.Elaine1.com) (780) 907-8642



# Classified Ads - Call 962-9228

WANTED: Standing Timber - Are you looking to cut your wood lot before pine beetles or forest fires destroy it? Top dollar paid. Call Paul 780-706-1470 (12) 22-10

## Cleaning

**CEILING & WALL CLEANING** - Specializing in cleaning Stipple & California knockdown. Cig. Smoke removal & Odour removal. Ceramic floor tiles steamed cleaned. Call Nano Cleaning for Discount Prices! 780-914-0323 (4) 08-10

## Computers

**FREE Computer Checkup.** Repairs work or extract Doc or Pictures from Old or Broken PC NOT over \$50. No Prepayment - No Charge if not Repairable. Yes, I have for you a good, clean, refurbished and upgraded laptop or desktop with Legal win 10 for **ONLY \$100.** Call now 780-892-2407 (12) 13-08

## Wanted

VEHICLE WANTED: under \$1,500. Prefer raised roof van or ordinary van - would consider 1/2 ton, or others. Senior 86 (clear Class 1 license) requesting vehicle. PH: 780-892-2110, Darwell. (2) 22-10

## Firewood

**SEASONED FIREWOOD:** Birch, Tamarack, Spruce/ Pine & Poplar. 4x4x8 cord, Split and delivered or pick up at wood yard, 1/2 cord or full cords available. Call 780-967-5835 or 780-983-1495 (28) 27-08

## For Rent

**Homer's Hut Cabin Rentals** - Daily, weekly, monthly rates, Alberta Beach area, Call Connie 780-913-8024 (15) 17-09

Year Round Cabin For Rent

North of Evansburg on Hwy 22 (15 mins from Evansburg). \$1000/month + DD. All inclusive, utilities & TV. Max 2 people. Call 780-239-0553 (4) 01-10

Completely renovated Motel in Onaway, offering monthly rentals, all utilities FREE, furnished bachelors and furnished 1 bedroom with full kitchen, please call Cheryl for

viewing 780-967-4420 www.onawayinnsuits.com (4) 15-10 OG

2 bedroom home on acreage in town limits of Stony Plain! \$1500 all in. includes all utilities! Opportunity for reduction in rent for handyman services. Qualified Seniors only! Ph 780-913-2430 Seniors only! (4) 15-10 OG

1 BEDROOM APARTMENT WITH WASHER/DRYER FOR RENT IN EVANSBURG SEPARATE ENTRANCE 630.00 PER MONTH. PH 780-963-1830 (2) 22-10

3 Bedroom House in Alberta Beach, comes with fridge, stove, washer, dryer. \$950/month + DD same. Call 780-219-9673 (2) 22-10



## PURE HEMP CBD PRODUCTS

AGING IS INEVITABLE - LOOKING AND FEELING OLD ISN'T!

### WHAT IS CBD?

#### A Health and Beauty Breakthrough!

Cannabidiol, CBD, is one of over 80 active cannabinoid chemicals in the hemp plant. CBD, unlike, THC, does not produce euphoria or intoxication. CBD targets specific receptors in the cells of your brain & body. There are many physical and mental benefits to using CBD products for both treatment and prevention of numerous ailments.



#### Therapeutic Uses For Pure Hemp CBD

Supports healthy blood sugar levels, promotes healthy energy levels, relieves anxiety, aids in digestion, supports optimal immune function and the regeneration of healthy cells, and promotes a sense of serenity and overall well-being.

#### Anti-Aging Uses For Pure Hemp CBD

Promotes more youthful skin, provides hydration, enhances radiance, lessens age lines as well as the appearance of dark spots.

#### KEY BENEFITS

- PAIN RELIEF:** Known to reduce vomiting & nausea; suppress muscle spasms; reduce seizures & convulsions.
- PROMOTES HEALTH:** Helps to promote relaxation and overall health.
- WELL-BEING:** Helps to relieve anxiety, aid in digestion, supports optimal immune function and the regeneration of healthy cells.

### CBD PET PRODUCTS

#### PET CHEW TREATS



#### KEY BENEFITS

- SYNERGISTIC BENEFITS:** Can be used in conjunction with regular medications with no side effects.
- NO SIDE EFFECTS:** Does not damage the liver, kidney or GI Tract like OTC medication.
- DIETARY SUPPLEMENT:** Can be administered daily as part of your pet's diet.



#### ORAL SPRAYS & DROPS

#### KEY BENEFITS

- MANAGES PAIN:** Helps to treat inflammation, arthritis and joint pain.
- TREATS DIGESTIONAL ISSUES:** Helps with loss of appetite, nausea, IBS and gastrointestinal swelling.
- GENERAL HEALTH:** Helps to manage mood, anxiety and general joint pain. For healthy, happy pets.
- CONVENIENT:** Can be sprayed into pet's mouth or on food.

For more information, Call (780) 907-8642

# COMMUNITY EVENTS 2019

If you are a LICENSED, NON-PROFIT ORGANIZATION, you are welcome to submit your announcement FREE of charge, space permitting. You are required to submit your non-profit number. Call (780) 962-9228. Please note that all submitted event listings must be limited to 200 characters or less (including spaces). DEADLINE: 12 noon Friday prior to publication (Thursdays on long weekends).

**OCT 27 - HARVEST DINNER**, 12:30 - 2 PM at Park Court Hall. Everyone is invited to celebrate the end of another harvest season and join us for a great meal, quilt raffle and 50/50 draw. Please call 780-727-4476 or 780-727-2138 for more information.

**OCT 27 - HARVEST SUPPER**, 5pm at Peace Evangelical Lutheran Church, (303 Church Rd, Spruce Grove). Come and enjoy Christian fellowship at our annual Harvest Supper with pie for dessert.

**NOV 2 - HALLOWEEN DANCE**, 6pm Bar Opens, 7pm Dance. PRIZES for best individual, couple & family costumes. DJ style music. Snacks & late lunch. Tickets: \$10, 12 & under \$5, family of 4 \$25. PH: 780-892-2425 or 780-963-9664

## FARMERS MARKETS

**DRAYTON VALLEY:** Evergreen Farmers' Market, Wednesdays at the Mackenzie Center of the Omnplex from 10:30AM-1:30PM. \*Ends Dec. 19  
**EVANSBURG:** Sat, 10AM-2PM, Tipple Park Museum. Call 727-2240 for tables.  
**SPRUCE GROVE:** at the Elevator, Sat 9:30-1:30PM, tables (780)240-5821  
**STONY PLAIN:** Sat, 9AM-1PM, Downtown, Stony Plain. Phone Nancy 780-962-3993.

## BINGO

**ENTWISTLE COMM. LEAGUE BINGO:** Every Wednesday, Doors Open 6PM.  
**STONY PLAIN SENIOR'S DROP-IN CENTRE:** public bingo every Tues, 7PM. All ages welcome. Phone (780) 963-6685  
**WILDWOOD:** Mon night, 6:30PM, bingo starts 7:30PM, Early Birds & Lucky 7.  
**WILDWOOD LADIES AID:** every 3rd Friday of month, 6:30PM, bingo starts 7:30PM.

## MEAT DRAWS

**Darwell:** Put on by Alberta Beach & District Lions Club, 4:00PM, bi-weekly, Darwell Lounge & Restaurant  
**Evansburg:** Evansburg Legion, Friday 8-10PM & Saturday 3-5PM  
**Wildwood:** Wildwood Legion, Saturday 3-5PM

## JAMBORES

**CARVEL:** 2nd Sunday of month. \$6 lunch served. Info 780-991-3001  
**CHIP LAKE:** Ravine Comm Hall, 1st Sat 325-2119 or 325-2391  
**DUFFIELD:** 4th Sat, Duffield Community Hall. Supper 6PM. \*Sept - May.  
**DRAYTON VALLEY:** Last Sunday of month. Upstairs @ the "55 Rec. Centre" Doors at 12PM, Starts at 1PM. 780-542-3768  
**ENTWISTLE:** 3rd Saturday of month, Doors at 5:30PM at Entwistle Community Hall. Contact Verna at 780-716-2304. \*October - May  
**MAGNOLIA:** at Magnolia Hall. 2nd Saturday of month, New Time is 1:00PM. Call to confirm, 727-2015. \*October - May, NO Dec.  
**RAVINE COMMUNITY ASSOCIATION:** 1st Sat of each month. Info 780-325-2391 \*Sept - May.  
**SEBA BEACH:** 2nd Friday 7PM, Seba Senior's Centre, Toni 797-4233  
**SPRUCE GROVE:** at Sandhills Community Hall, 3rd Sunday, 1-9PM. Info Florence 780-962-3104 Margaret 780-962-3051 \*Sept - June.  
**STONY PLAIN:** Stony Plain Seniors Drop In Center, 5018 - 51 Ave. Every 2nd & 4th Thurs of month, 7PM. \$2. PH: 587-989-7214 or 963-7920.  
**TOMAHAWK:** Tomahawk Agriplex, 3rd Friday of month, 7PM. Supper at 6PM. PH: 780-339-3755.  
**WILDWOOD:** Wildwood Community Hall, 3rd Wed Each Month, 7PM. 325-3749 \*Oct - June.

## TOPS (Take Off Pounds Sensibly)

**ENTWISTLE:** Wed 5:35pm weigh-in, 5:30-6:30PM meeting, food bank building, South entrance. 780-932-2695.  
**STONY PLAIN:** Thurs evening, Stony Plain United Church, Susan (780) 968-0869  
**SPRUCE GROVE:** Wed 8:45am at Anglican Church, 131 Church Rd. Christiane 960-1109  
**WILDWOOD:** Thurs at Wildwood Hall, 4:30PM. Connie (780) 325-2420

## YOUR COMMUNITY

**ALBERTA PARENTING FOR THE FUTURE ASSOC:** Call 963-0549 or visit www.apfa.ca to register. All programs are confidential & free.  
**FREE HOME MEAL DELIVERY PROGRAM,** for Wabamun Seniors & Wabamun Lions. Arrange for meal preparation through a local restaurant. Call Darlene, 892-2551.  
**PEMBINA SKATING CLUB** (Evansburg Arena), offers Learn-to-Skate, CanSkate & STARSkate. All ages. Call Lisa 727-2729. \*RUNS Sept-March  
**PROBLEMS WITH DRUG OR ALCOHOL ADDICTION** in a loved one? Contact Drug Rehab Resource for a free confidential consultation. 1-866-649-1594 or www.drugrehabresource.net.

## LIBRARY EVENTS

**AFTERNOON BOOK CLUB** at Keepliffs Library. 2nd Tues of every month, 1:30-3:00PM. Visit www.pclibraries.ca for info.  
**FAMILY GAMES NIGHT:** 3rd Wed of every month, 6-8PM. Located at Entwistle Library, Duffield Library and Tomahawk Library. In partnership with Parkland School Division. Visit www.pclibraries.ca for more info.  
**HATCHET CITY READERS** at Tomahawk Library. 3rd Tues of every month, 10-11AM. For what we're reading next, visit our website, www.pclibraries.ca.  
**INVENTORS CLUB:** 2nd Thurs of every month, 3:30-5:00PM at Entwistle Library. 4th Thurs of every month, 3:30-5:00PM at Tomahawk Library. Ages 8-13. To register: Call the library at 780-339-3935.  
**SEBA BEACH PUBLIC LIBRARY BOOK CLUB** meets the 4th Thursday of the month, at the library, at 10:30AM. Call us at 780-797-3940 or email us at sebaeachlibrary@vrlab.ca  
**EVANSBURG PUBLIC LIBRARY BOOK CLUB:** 4th Thurs, 7:00PM Grand Trunk High 727-2030.

## SOCIAL EVENTS

**50+ YOUNG AT HEART LUNCHEON** for Parkland County Seniors. 12PM at Stony Plain United Church Basement, \$8/plate. 3rd Wed of Month. Call Barb 780-952-0882. \*Sept-June  
**AEROBICS:** Low impact, Mon/Wed, 11AM-12PM, Wildwood Senior's Centre, \$1/session.  
**BREAKFAST SOCIAL:** 9:30AM-NOON, Parkland Village Community Centre - 3rd Sunday, PH: 780.298.9155 Social Media: PVCentre.  
**COME PLAY CRAIB:** Fridays, 7:30PM at Darwell Seniors Hall; lite lunch is served. All ages!  
**COUNTRY QUILTERS** in Stony Plain house a "Sew in Tuesday", 2nd Tuesday of every month, from 10-3PM. Drop in \$5/member, \$6/hon-members. Contact Cindy 780-963-7170.  
**DROP-IN ADULT PICKLEBALL:** Thursdays, 6-8:30 p.m. Sept.12th-May @ C.T. School, Evansburg, Beginners Welcome. Paddles sponsored by the Evansburg Public Library  
**EVANSBURG ART CLUB:** meet & paint Thurs 1-4PM Rec Plex: 727-4340 or 727-4098  
**EVANSBURG GUIDES & PATHFINDERS:** Mon 6PM, Camp Evansburg  
**EVANSBURG SENIOR'S HERITAGE HOUSE:** Floor Curling Mon & Thurs, 1pm. Court Whist Thurs, 7PM.  
**EVANSBURG TITTLE PARK HISTORICAL BUILDING TOURS:** Wed - Sat, 10:00-5:00PM.  
**HEALTHY AGING NURSE & FOOT CARE PERSON,** Wabamun Seniors Centre, 2nd Thurs of month, 9AM.  
**OPEN HOUSE** for socializing, Crib & card

**NOV 2 - WOMEN'S INSTITUTE COTTAGE CRAFTER'S SALE**, 10am-3pm at Stony Plain United Church. Over 30 tables, door prizes, free coffee, light lunch available. Cost \$2.00

**NOV 6 - CHRISTMAS DECORATION SWAP**, 2-4pm Woodbend Hall. Bring old décor to swap. Max 2 boxes/person. No children under 12. Admission: food bank donation. Appetizers. Door prize. Call 780-470-0696

**NOV 9 - EVANSBURG ART CLUB PRESENTS:** Watercolour with Willy Wong, 10am-4pm at the Wildwood Seniors. Any one is Welcome. For info 780-723-4119

**NOV 16 - GUNN HALL CRIB TOURNAMENT**, Reg. 10:00am Play 11:00am - \$20.00/person.

playing at Entwistle Senior Center, Thursdays at 6:45PM. Dan 780-982-0353

**PARENT & TOT PLAYTIME:** PERC Building Stony Plain Wed 10-11AM; Holborn Community Hall Thurs 9:30-11AM; Parkland Village Tues 9:30-11:30AM.

**POT LUCK** every Tues 12:00PM, Wabamun Seniors Centre. Come on down!

**SEBA BEACH SENIORS CENTER:** Yoga, mon, 9:30AM, \$10/session, Bridge thurs, 1pm. Jams every Wed night, 7PM. Thrift Shop every Wed & Sat at 10-3PM.

**SEBA BEACH QUILTERS & FIBER ARTS:** Wednesdays 9:30AM, Seniors Centre.

**SENIORS 50+ LUNCHEON:** 3rd Wed, 12PM at Stony Plain United Church basement hall. Call Audrey (780) 963-7582

**SENIORS WEDNESDAY\* AFTERNOON** 1-4PM at Parkland Village Community Centre. Games, Crafts & more! Call Sheryl 780.695.7032 \*exceptions incl. Weather.

**SPIRITUAL LIVING STONY PLAIN INSPIRATIONAL CINEMA & DISCUSSIONS** at PERC Building (5413-51 St). 2nd Friday of month at 7PM. Popcorn provided, donations appreciated. Contact 780-940-3032

**SPIRITUAL LIVING STONY PLAIN GATHERING** at PERC Building (5413-51 St). Every 2nd & 4th Sunday of month. Meditation 10AM, inspirational sharing 10:30AM. PH 780-940-3032

**SPRUCE GROVE ELEVATOR TOURS:** Tues-Sat, 9am, 960-4600.

**STONY PLAIN'S 5TH MERIDIAN GOOD SAMS RV CHAPTER:** Ecole Meridian Heights School, 3rd Thurs of Month, 7PM. Call Pat at 780-963-6976 or Ruth at 780-288-9829.

## MEETINGS

**2ND TIMERS:** A support & confidential group for Grandparents Parenting. 1st Thurs of month, 6:30PM. Grand Trunk High School (meet in Lobstick Library & Learning room). Child care provided at the Evansburg Public Library.

**299 ROYAL CANADIAN SEA CADETS CORPS MACKENZIE:** Stony Plain Comm Center, Wed 6:30PM. Youths 12-18, 963-0843

**755 PARKLAND AIR CADETS** Thurs, 6:30-9:30PM Muir Lake School, ages 12-18. Info call 405-6585 or www.aircadet.com/755.

**AA:** Friday at 8PM, Evansburg. Call 325-2204, 727-2466 or 727-6652.

**AA:** Monday night HOPE group at 8PM, Mewassin Free Methodist Church.

**AL-ANON:** Wed 8PM. Spruce Grove United Church, 1A Fieldstone Drive. 962-5205

**CHAMBER OF COMMERCE** (Evans/Ent): 7:30PM 3rd Thurs, Heritage House.

**C.H.I.L.D. (Citizens Helping in Life's Defence)** Please join our Pro-Life meetings once a month in Stony Plain. For info call Chris 963-6997.

**CITIZENS ON PATROL:** The Pembina Community Watch Patrol Meets 2nd Thurs of each month at 7:30PM, at the Tipple Park Museum (4924-48 St.), Evansburg. Contact 780-898-1465 or 780-727-2686.

**COMMUNITY QUILTERS & CRAFTERS:** 3rd Tues, Evansburg, Liz 727-3872 Brenda 727-4476.

**DARWELL & DISTRICT AG SOCIETY:** 8PM, 1st Mon, Community Hall.

**DDRA MEETING:** 7PM, 2nd Mon, Darwell Community Hall 892-3099. \*Except Jul/Aug/Dec

**DRAYTON VALLEY BRANCH OF ALBERTA GENEALOGICAL SOCIETY:** meets 7PM at

Municipal Library (5120-52 St.) every 3rd Wed of month. Call (780) 542-2787

**ENTWISTLE COMMUNITY LEAGUE GENERAL MEETINGS:** 2nd Thursday monthly 7:30PM. \*Except June, July, August

**ENTWISTLE LIONS CLUB:** 2nd & 4th Tues, 8PM, Entwistle curling rink. Jim 727-3573

**ENTWISTLE SENIORS 55+ CLUB:** Tue & Fri, 1:30-4:00PM at Entwistle Hall

**EVANSBURG SENIORS 55+ HERITAGE HOUSE:** 2nd Wed of Month, 7:00PM. Dennis, 727-4186.

**FALLS COMMUNITY ASSOCIATION:** 3rd Tuesday, 7:00PM.

**GIRL GUIDES OF CANADA:** Poplar Hollow District Guides-Pathfinders, Mon 6-8PM, Sparks-Brownies Tues 4-5:30PM. Meet at Camp Evansburg, Brenda 780-727-4476

**LAC STE. ANNE & LAKE ISLE WATER QUALITY MANAGEMENT SOCIETY:** 3rd Fri, 7PM, Alberta Beach Council Chambers.

**LAKE ISLE HALL COMMUNITY HALL BOARD MEETINGS:** 3rd Wed of each month @ 7:30PM at the Lake Isle Hall (Hwy 633 and RR55) Ph # 780-892-3121

**LAKE ISLE MULTI 4-H GENERAL MEETINGS:** 1st Thurs of each month @ 6:30PM @ Lake Isle Hall. Contact 780-242-2486.

**LOBSTOCK 4-H BEEF & MULTI CLUB:** 1st Mon, Evansburg Arena, 7PM, Shannon 727-2358

**LOBSTOCK GARDEN CLUB:** 1st Mon, 7PM at Tipple Park Museum, Clara (780) 399-2205

**MAGNOLIA BOARD MEETINGS:** 1st Tuesday of month, 7PM at Magnolia Community Hall.

**MEN FOR SOBRIETY:** Wednesdays at 7:30PM, FCCS Building (#105, 505 Queen Street, Spruce Grove). Mike (780) 965-9991.

**MS SOCIETY DRAYTON VALLEY COMMUNITY GROUP** meets 1st Tues of month, 6-8PM at Norquest College. Terra Leslie, 1-403-346-0290. \*Sept-June

**MS SOCIETY PARKLAND COMMUNITY SUPPORT GROUP:** Are you diagnosed with MS and have questions? Last Tues of month, 7-9PM, Westview Health Centre. Contact Cassy 780-471-3034

**NA MEETING:** Tuesdays, 7:00PM, 514-6011

**PEMBINA PORCUPINES - JUNIOR FOREST WARDENS:** Entwistle Porcupine gathering: 7PM, 1st Tue. Len & Tineke at 727-2020. Porcupines@yellowheadjfw.ca

**SOLVE:** Community Envo issues discussed at Smithfield Hall (N of Hwy 16 on RR34). 2nd Thursday, Jana 892-0006

**STONY PLAIN FISH & GAME ASSOCIATION & WABAMUN JUN CLUB:** 2nd Mon, Stony Plain Comm Center, 7:30PM

**SUNDOWNERS TOASTMASTER CLUB:** Mon (excl. Holidays) 7:30-9:30PM. St. Matthew's Church, Spruce Grove. Judy 960-5258

**TOMAHAWK SENIORS (50+)** meets every Thursday from 1-4pm at the Tomahawk Agra.

**W.E.E COMMUNITY FOOD BANK:** Call (780) 727-4043 for emergency food needs. Monthly Meeting: LAST Monday of month at 7:00PM at the Food Bank (Old fire hall in Entwistle).

\*Except December  
**WILDWOOD & DIST AG SOCIETY:** 2nd Wed of each month 7:00PM at the Wildwood Complex. Wilma 325-2424

**WILDWOOD & DIST ROD & GUN CLUB:** 2nd Thursday, 7:30PM at the range clubhouse, wildwoodrodandgun@gmail.com

**WILDWOOD SENIORS:** 4th Wednesday at 2:00PM. PH: 325-3787 or 325-2391. \*No meeting July/Aug/Dec.



# Church Directory

<p><b>Seba Beach Christian Fellowship</b></p> <p>Sunday School 10:00a.m. Worship Service 11:00a.m.</p> <p>Weekdays Bible Study &amp; Prayer</p> <p>(780) 305-3594</p>	<p><b>Advent Lutheran Church</b></p> <p>Sunday Worship &amp; Sunday School 11:00a.m.</p> <p>Evansburg O: 727-3594</p>	<p><b>Roman Catholic Church</b></p> <p>St. Agnes' Parish, Maysethorpe Sunday 9:00a.m. St. Elizabeth Parish, Evansburg Saturday 7:00p.m.</p> <p>(780) 786-2032</p>	<p><b>St. Joseph's Catholic Church</b></p> <p>Sunday Mass 11:30a.m. Tuesday Mass 7:00p.m.</p> <p>Wabamun, AB</p>	<p><b>St. Augustine's - Parkland Anglican Church</b></p> <p>231 Church Rd. Spruce Grove</p> <p>Sunday Service 10:00a.m. Eucharist with Sunday School &amp; Nursery All are Welcome</p> <p>Office 780-962-5131 www.staugustinesparkland.org</p>	
<p><b>Parkland Baptist Church</b></p> <p>Sunday Worship Service 10:30a.m. All Welcome</p> <p>121 Brookwood Drive (780) 962-4101 www.parklandbaptist.ca</p>	<p><b>Word Church Apocalyptic Era</b></p> <p>Border Paving Athletic Centre, 9 Tri Leisure Way, Spruce Grove ignites in the Wild Rose room.</p> <p>Ph: 780-962-7579</p> <p>Service starts at 10:00 a.m. every Sunday morning, <b>come all &amp; be bless.</b></p>	<p><b>Stony Plain United Church</b></p> <p>Sunday Service 10:30a.m. 5012-51 Ave. Stony Plain</p> <p><b>Mewassin United Church</b></p> <p>Sunday Service 9:00a.m. Rev. Heather Koots Hwy 627 - Rg Rd 30 Ph: 780-963-4745</p>	<p><b>Immanuel Lutheran Church of Rosenthal</b></p> <p>Traditional Service Sunday 9:30a.m. Contemporary Service 10:15a.m. Christian Counselling Services Rg Rd 13, Twp Rd 524 Ph: 780-963-4048 www.luther.ca email: office@luc.ca</p>		
<p><b>Emmaus Lutheran Church</b></p> <p>Sunday Worship Service 11:30a.m.</p> <p>Rev. Robert Marshall 4504-52<sup>nd</sup> Ave, Drayton Valley Ph: 780-542-5101 www.emmanuelchurchknox.org</p>	<p><b>Church of God</b></p> <p>Worship Service Sun. 11:00a.m.</p> <p>Please contact for activities 5004-49 Street, Drayton Valley Ph: 780-542-5091</p>	<p><b>Calvary Baptist Church</b></p> <p>Pastoral Team: Kenton Penner</p> <p>Sunday Worship 10:30a.m. Youth &amp; Ministries Info - calvbapt@telus.net 4401-50<sup>th</sup> Ave. Drayton Valley 780-542-4774 www.calvarybaptistdo.ca</p>	<p><b>Drayton Valley Alliance Church</b></p> <p>Pastor John Haazen</p> <p>Join us for Sunday Service at 10:30a.m. 5014-56 Ave. (next to Value Drug Mart) Programs for all ages Ph: 542-6501 dvalliance.ca</p>	<p><b>All Saints' Anglican Church</b></p> <p>Sunday Morning Worship of BCP 10:30 BAS with Sunday School &amp; Nursery 5212-47 Ave. Drayton Valley (780) 542-5048</p>	<p><b>St. Anthony Catholic Church</b></p> <p>WEEKEND MASS SCHEDULE: Saturday 5:00p.m. Sunday 12:00p.m.</p> <p>4708-50 Ave. Drayton Valley Parish Office: 542-5254</p>

# SERVICE DIRECTORY

**2Bros**  
Custom Contracting Ltd.

Custom Framing • Concrete Floors • Shingling  
Siding Soffit Fascia • Styrofoam Block System

Jeff 780-717-0520

**BREWSTER BOBCAT SERVICE LTD.**  
P.O. Box 454, Wildwood, AB T0E 2M0

- \* Site Preparation
- \* Pile Drilling
- \* Concrete Work
- \* Landscaping
- \* Demolition
- \* Sand & Gravel Delivery
- \* General Contracting



brwcat@gmail.com  
Telephone: (780) 325-3743  
Bruce Balasak Cell: (780) 621-6960

**Ernie's Repair & Service**



4820 - 47 Avenue, EVANSBURG  
**(780) 727-4433**

**WABAMUN PHARMACY**  
**I.D.A.**

Box 90, 5120 - 51 Avenue  
Wabamun, AB T0E 2K0  
Ph: (780) 892-2278 Fax: (780) 892-2488

  
COMMUNITYVOICE  
YOUR LOCAL NEWSPIRES

**THIS SPACE IS RESERVED FOR YOU!**

**WEIGHTLOSS NEVER TASTED SO GOOD!**



**NEW! NEW! NEW! NEW!**

(780) 907-8642  VALENTUS  
www.ValentusTour.com/Ladybug




# SERVICE DIRECTORY

**Blakeman Drilling Ltd.**  
 Waterwell Drilling & Servicing  
 Pumps & Pressure Systems  
 SERVING LAC. STE. ANNE & WEST PARKLAND FOR OVER 25 YEARS  
 Joe (780) 924-3024




**DONALD N. GREENWAY**  
 Chartered Accountant  
 Suite 205 Sunrise Professional Building  
 215 McLeod Avenue  
 Spruce Grove, AB  
 (Bus.) 962-6366  
 (Fax) 962-3990

**WHAT MAKES MYDAILYSPRAYS SO POWERFUL?**  
 HIGH ABSORPTION, SCIENCE & THE INGREDIENTS



(780) 907-8642  
 www.Elaine1.com

**SLIMROAST Optimum**  
 DARK ROAST COFFEE  
 YOUR LOGICAL SOLUTION TO WEIGHT MANAGEMENT  
 (780) 907-8642  
 www.ValentusTour.com/Ladybug



COMMUNITYVOICE  
 YOUR LOCAL NEWSLETTER  
**THIS SPACE IS RESERVED FOR YOU!**

**ROY SHERWOOD**  
 Master Electrician  
 Ph: 780-968-1425  
 Cell: 780-908-2287  
 Fax: 780-968-2211  
 Email: suretechroy@gmail.com  
 2-53220 Rge Rd 21  
 Parkland County, AB  
 T7Y 0C5  
**SURETECH ELECTRIC LTD.**  
 Control & Automation  
 Commissioning  
 Solar Sales & Service  
 Industrial . Commercial . Residential

**MARK MARTIN PFEIFFER**  
 MASTER BRICKLAYER/MASON  
 Cell: 780-242-3308  
 Email: pfeiffer.mark@hotmail.com

- Brickwork • Stonework
- Rockwork • Parging
- Concrete Block Work
- Tile Work (all kinds)



**CROFT LAW**  
 Local office in Darwell  
 Call us at 780.467.5534  
 Experienced Legal Services in:  
 Family Law • Civil Litigation  
 Corporate Law • Wills & Estates  
 Plus Notarizing and Commissioning  
 www.croftlaw.ca

**PEMBINA CONCRETE PRODUCTS LTD.**  
 Manufacturers of **ONE PIECE SEPTIC & HOLDING TANKS**  
 \* Water Cisterns \* Field Systems \* Pumps and Accessories \* Sumps  
 DELIVERED TO YOUR SITE  
 1-800-661-3047  
 780-727-2702  
 PembinaConcrete.com  
**New Line of Concrete Statues, Fountains and Garden Ornaments.**  
 BOX 123, Entwistle, T0E 0S0



COMMUNITYVOICE  
 YOUR LOCAL NEWSLETTER  
**THIS SPACE IS RESERVED FOR YOU!**

**CALIBRE DRILLING LTD**  
 DRILLING AND SERVICING YOUR WATER WELL.  
**SPECIALISTS IN AIR & MUD ROTARY DRILLING**

- \* Water Well Drilling
- \* Pressure Systems
- \* Licensed Drillers
- \* Geotechnical Drilling
- \* Free Estimates
- \* Pump Installations
- \* Well Tests
- \* Year Round Drilling
- \* Cathodic Protection

Quality Workmanship Five Year Warranty  
 (780) 960-2992  
 BOX 4083 SPRUCE GROVE, AB T7X 3B3

**POSTINGFIRST.com**  
**BUY and SELL just about ANYTHING!**  
**FREE LOCAL CLASSIFIED ADS**  
 Real Estate, Rentals, Vehicles, Pets, Jobs, Service Directory, Buy/Sell/Trade, Lawn & Garden, Garage Sales, Events, Local Places & Much More... Advertise for FREE Today!



Follow Us  




# SERVICE DIRECTORY

**Jack's Auto Body & 24 HR Towing**



**SPECIALIZING IN COLLISION REPAIR  
GUARANTEED WORK • INSURANCE CLAIMS**

**CAA** BOX 9 SITE 306 RR3, ONOWAY, AB T0E 1V0  
**(780) 967-5850**

OUR PLEDGE IS QUALITY

**PREVAIL MAX**

CELLULAR HOMEOSTASIS FORMULA



**A NUTRITIONAL BREAKTHROUGH THAT SUPPORTS YOU...  
RIGHT DOWN TO THE LAST CELL!**

LIVIN TRIM WITH  
**VALENTUS (780) 907-8642**

[www.ValentusTour.com/Ladybug](http://www.ValentusTour.com/Ladybug)

**H&E UPHOLSTERY**

**FOR ALL YOUR UPHOLSTERY NEEDS**

Convertible tops for cars and boats, custom car and boat interiors, 5th wheel trailer skirts, boat tarps, ATV seats, furniture, kitchen chairs, heavy equipment seats.



**WWW.HANDE.CA** 4-485 South Ave.  
For more information contact: Spruce Grove  
kirk@hande.ca **(780) 962-3048**

**SERVING ENTWISLE AND AREA FOR OVER 30 YEARS**

**Entwistle CONCRETE PRODUCTS LTD.**



SAND & GRAVEL SALES

**PH: (780) 727-3525**

Dan McCracken Entwistle, AB  
[www.entwistleconcrete.ca](http://www.entwistleconcrete.ca)

**COMMUNITYVOICE**  
YOUR LOCAL NEWSPAPER

**THIS SPACE IS RESERVED FOR YOU!**

**SMOOLE**

- Construction & Septic Installation
- Environmental Wastewater Disposal
- Site Design & Evaluation
- Power, Water & Basement Excavation
- Trackhoe, Backhoe, Bobcat & Dump Truck



**For All Your Excavation Needs**

Call Dan 780-991-4484 Reid 780-909-0173

**H&P Kosik CONSTRUCTION Ltd.**



- Road Building • Gravel • Sand • Dugouts
- Black Dirt • Clearing

No Job too small! We do them all!

Harvey cell. 780-445-9010 ph. 780-892-3532  
Box 145, Darwell, AB. T0E 0L0

**TRI-LAKES SERVICES LTD.**



- Septic Hauling
- Drinking Water Delivery
- Portable Washrooms
- Steam Truck

[www.trilakeservices.ca](http://www.trilakeservices.ca) / [office@trilakeservices.ca](mailto:office@trilakeservices.ca)  
(877) 727-3939 / (844) 967-9176

SERVING: • Lac Ste. Anne County • Parkland County • Yellowhead County East

**SANGUDO VETERINARY CLINIC**

Box 581, 4916 - 52 Ave. Sangudo, AB. T0E 2A0

**Dr. Ralf Sanders DVM**

Ph: 780-785-2200  
Fax: 780-785-2228  
[sangudovet@gmail.com](mailto:sangudovet@gmail.com)



**24 HOUR EMERGENCY SERVICE**

**CCAS**

Canadian Clean Air Services Ltd.

**Heating & Air Conditioning**

**Goodman**  
Air Conditioning & Heating

Licensed and Insured with over 20 years' experience.  
Instant Approval. Financing Available



For service call:  
**780.569.5201**

[www.ccasheating.com](http://www.ccasheating.com)

**COMMUNITYVOICE**  
YOUR LOCAL NEWSPAPER

**THIS SPACE IS RESERVED FOR YOU!**

**Xtreme LEAN NRG**

**Xtreme LEAN NRG**  
Advanced Formula helps you:

- Regulates Your Appetite
- Regulates Blood Sugar
- Regulates Fat Absorption
- Improve Energy Levels
- Improve Your Mood
- Increase Mental Focus

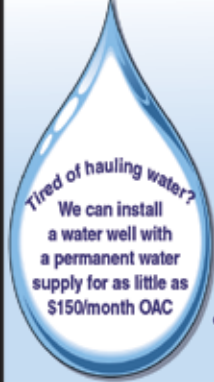
"We've unlocked the science of slim!"

**(780) 907-8642**



**SUMMERS DRILLING LTD.**

Water well drilling and service  
Family owned Business Serving Alberta since 1917



Tired of hauling water?  
We can install a water well with a permanent water supply for as little as \$150/month OAC

- Never run out of water again!
- 5 year workmanship warranty
- 3 Convenient ways to pay
  - Visa
  - Mastercard
- We now offer full financing

Stop in at our office 4405 - 50 Street, Stony Plain  
780-963-1282  
[admin@summersdrilling.com](mailto:admin@summersdrilling.com)



# PREVAIL

# MAX

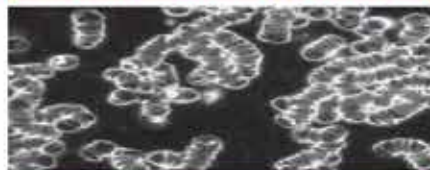
CELLULAR HOMEOSTASIS FORMULA

A NUTRITIONAL BREAKTHROUGH THAT SUPPORTS YOU ...RIGHT DOWN TO THE LAST CELL!

How do you want your **BLOOD** to look?



**Before PrevailMAX:**



- poor circulation
- low energy
- brain fog
- dehydration
- decreased nutrients
- pH imbalance
- poor endurance

**After PrevailMAX:**



- better circulation
- more vitality
- mental clarity
- cellular movement
- nutrient assimilation
- balanced pH
- optimal endurance

**PrevailMAX™** is a nutritional breakthrough that delivers a rapid increase of internal blood cell pressure to speed absorption, enabling the body to take maximum advantage of the nutrients in foods and supplements. The electrolytes are small enough to penetrate your cell membranes, to bind with your cells, and to be carried wherever they are needed in the body.

At the microscopic level of human cells, **PrevailMAX™** supports healthy cell performance – a nutritional breakthrough for your cells.

When you use **PrevailMAX™**, you will feel more energy and an ability to focus like never before. Take a few sprays today and see just how good you can feel!

LIVIN TRIM WITH  
**VALENTUS**

[www.ValentusTour.com/Ladybug](http://www.ValentusTour.com/Ladybug)

**(780) 907-8642**