



FREE

COMMUNITY VOICE

YOUR LOCAL NEWSPAPER

Serving: Carvel, Darwell, Drayton Valley, Duffield, Entwistle, Evansburg, Fallis, Gainford, Parkland County, Seba Beach, Tomahawk, Wabamun, Wildwood, Spruce Grove and Stony Plain.

October 29, 2019

PARS NIGHTMARE ON 52ND AVE SPOOKED THE TOWN OF EVANSBURG ONCE AGAIN!

Submitted by PARS

The Castle of Horror was full of fright and thrills! Over 300 brave folks entered the Haunted Castle, and even a group from GERMANY enjoyed the Frightful Festivities this year!

Sending out a BIG THANK YOU to all who sponsored and volunteered for the annual Haunted house Event!

Plans for next year are already in the works! PS, we are always looking for volunteers, If interested email Evansburgarena@live.ca



KEEP YOUR KIDS SAFE AT HALLOWEEN

Submitted by Alberta Health Services

Halloween is a fun time for children. However when combined with costumes, the weather, and darkness, the excitement of the night can pose danger to little ones.

We can't control the weather or the darkness. But we can do a few things to keep Halloween safe.

- Costumes
- Ensure footwear and costumes fit properly and provide appropriate protection against weather conditions.
 - Ensure costumes aren't a

tripping hazard.

- Add reflective tape to costumes and treat bags. This ensures your child is visible in the dark.

- Choose costumes, beards and wigs labeled "flame-resistant".

Continued on Page 3

All Precious JEWELLERS
"Your Spruce Grove Jewellery Store"
Goldsmith on Premises
 • Engraving • Clock & Watch Repairs
 • Jewellery Repairs • Custom Make-ups
 Jewellery Repairs Done On Site.
 Laser Welder Services Available.
 Toll Free: 1-877-962-4367
 PH: 780-960-4200 Fax: 780-960-4201
 Suite 102, 215 McLeod Avenue
 Spruce Grove, AB. T7X 0G2

SIGHTS AND ARMS *Now Open Mon-Sat 10AM-6PM*

FALL SALE! *New, Used & Consigned*
 Firearm Safety & Reloading Courses
 Gunsmithing
 WWW.SIGHTSANDARMS.COM
 11 J Raybon Cr. St. Albert, Alberta **825-223-9863**

PREVAIL MAX
 CELLULAR HOMEOSTASIS FORMULA
Nutritional Breakthrough For Your Cells
 LIVIN TRIM WITH VALENTUS
(780) 907-8642
www.ValentusTour.com/Ladybug

SLIMROAST Optimum
 DARK ROAST COFFEE
 YOUR LOGICAL SOLUTION TO WEIGHT MANAGEMENT
(780) 907-8642
www.ValentusTour.com/Ladybug

 **View us ONLINE!**
WWW.COM-VOICE.COM

WHERE'S WALDO EXHIBIT

Submitted by Tipple Park Museum

Is he around the corner? Way up high? In the sky? Down in the ground? Is he even around? Where is that

guy that wears a striped shirt and a red and white cap?

Where's Waldo has landed at Tipple Park Museum, and let me tell you it's a fun exhibit that you don't want to miss. There is so much hap-

pening in the exhibit room, including fourteen Where's Waldo panels, hands-on detective activities, mystery book corner, waldo photo-booths, and a detective history section.

Before guests walk into the exhibit room, they have the opportunity to put on a pair of waldo glasses and grab a magnifying glass so they can feel part of the Where's Waldo experience.

The exhibit runs until Mid December. Please check out our Facebook page for pictures and a commercial we are going to be making for the exhibition.

Thank you to everyone who attended our Where's Waldo exhibit party on October 18th. And a huge thank you to Kathleen Hull for designing our vibrant Waldo panels.

Stop by anytime from Wednesday to Saturday 10 - 5pm to be take part in the Waldo experience.




COMMUNITYVOICE
YOUR LOCAL NEWSPAPER

PUBLISHED WEEKLY (Zone 1 & 2)
AND BIWEEKLY (Zone 3)

E.J. Lewchuck & Associates Ltd.
#6 - 40 South Avenue
Box 3595
Spruce Grove, AB T7X 3A8

SALES TEAM
Elaine
Ashley
Dani

TELEPHONE:
Classifieds 962-9229
Advertising 962-9228
Fax 962-1021

E-MAIL:
comvoice@telusplanet.net
news@com-voice.com

Family run, local business, we care!

BEST CISTERN SEPTIC SOLUTIONS

Cistern and Septic Inspection, Installation and Repair!

Septic planning, design, installation by government certified installer(s)

New Installs Available. Reasonable Rates.

Let Us Handle the Dirty Work

780-668-4306 
best-cistern-septic-solutions.com



JOKE OF THE WEEK

Halloween is so confusing. All your life your parents tell you to, "Never take candy from strangers." Then on Halloween Night they dress you up and tell you to go beg for it.

As a kid, I didn't know what to do. I'd knock on people's doors and go, "Trick or treat ... no thank you"



Cherhill Community Association Presents

X-MAS IN NOVEMBER MARKET

Saturday, November 2, 2019
11:00am - 3:00pm

30+ Vendors - Lots of different items.
Shop Early!
Bring a friend - have a coffee.
Concession on Site.

PARKLAND RCMP INVESTIGATE UNFOUNDED BOMB THREAT

Submitted by Parkland RCMP

Spruce Grove, Alta. - On Oct. 17, 2019 at 6:04 p.m. Parkland RCMP responded

to a report of a bomb threat at the Tri-Leisure Centre. The RCMP evacuated the building and secured the surrounding area. Spruce Grove Fire and Emergen-

cy Services were on scene. RCMP searched the building and found nothing suspicious.

The investigation is ongoing.

If you have any information to assist with the investigation, please contact the Parkland RCMP at 825-220-7267 or your local police detachment.

Keep Your Kids Safe At Halloween

Continued from Page 1

- Choose face paint or make-up instead of a mask that can interfere with your child's vision.

- If your child is wearing a mask or a head piece, ensure they can see clearly from the front and both sides, and that it doesn't interfere with their breathing.

- Never allow your child to carry a sharp or dangerous costume prop, such as a knife or sword.

Trick-or-treating

- Children are safest if they trick-or-treat in groups. Don't let them trick-or-treat alone.

- Accompany your child until you feel comfortable that they are old enough to go without parental supervision.

- Remind your child that the same safe road rules apply when trick-or-treating as they do any other night. Always walk on sidewalks, and cross the street at crosswalks or street corners only.

- Teach your child to trick-or-treat in well-lit areas, and to only visit homes that have outside lights turned on.

- Pack a flashlight in your child's trick-or-treat bag.

- Remind your child never to go inside a stranger's home or car.

- Before your child digs into their treat bag, be sure to inspect all goodies.

- Discard all candy that has a loose, broken, or open wrapper.

- Discard home-made candy or baked goods

provided by people you don't know.

- Wash all fruit, and cut it into pieces to inspect

it before eating. Source: ahs.ca

Influenza is serious.
 Immunization works.
 Get Immunized.

Alberta's influenza immunization program is ongoing. Influenza immunization is offered, free of charge, to all Albertans six months of age and older.

Upcoming Immunization Clinics in Your Area

DATE:	TIME:	LOCATION:
Friday, November 8	9 a.m. - 1 p.m.	Wabamun Jubilee Hall 5124 53 Avenue, Wabamun
Tuesday, October 29	12:30 p.m. - 7 p.m.	Entwistle Community Hall 4921 51 Street, Entwistle
Wednesday, October 30	1 p.m. - 7 p.m.	Wildwood Community Centre 4921 51 Avenue, Wildwood
Monday, November 4	12:15 p.m. - 8 p.m.	Spruce Grove Health Centre 505 Queen Street, Spruce Grove
Wednesday, November 6	12:30 p.m. - 7 p.m.	Tomahawk Agra Centre 51122 Secondary Highway 759 Tomahawk
Thursday, November 7	12:30 p.m. - 7 p.m.	Evansburg Royal Canadian Legion 4815 50 Street, Evansburg
Tuesday, November 12	10 a.m. - 2 p.m.	Seba Seniors Centre Melmoth Lounge 109 1 Street South, Seba Beach

Please bring Alberta Health Care Card. Short sleeves recommended.

For additional clinic dates, times and locations visit ahs.ca/influenza or call 811



MLA SHANE GETSON, LAC STE. ANNE-PARKLAND: BUDGET 2019

Submitted by MLA Shane Getson - Lac Ste. Anne-Parkland

October 25, 2019

As the MLA for Lac Ste Anne Parkland, I'm pleased to finally share with everyone the financial plan that we released on October 24th. This outlines how we're going to execute the platform commitments that were made.

It was with great care and consideration that the spending issues that were identified in the Blue Ribbon report were taken into consideration and addressed. The Budget will be under review over the next few weeks, but I wanted to share with you the main themes.

As always, I am very proud to be able to represent you and to do my part to continue to keep Alberta Strong and Free.

Creating jobs and growing the economy:

- Budget 2019 lays the foundation for sustainable economic growth that brings good jobs for Albertans and creates

the right conditions for long-term economic prosperity.

Living Within our Means

- Budget 2019 reflects our commitment to living within our means, ending overspending and eliminating the deficit – while maintaining the critical services on which Albertans rely.

Protecting Public Services

- Budget 2019 significantly reduces unnecessary, inefficient and wasteful spending while maintaining – and even increasing – support for the front lines and core social services.

Keeping our Commitments to Albertans

- Budget 2019 keeps the promises we made to Albertans, including creating jobs and taking a financially sustainable approach to investing in infrastructure and delivery of public services.

Capital Plan

- The Capital Plan in Budget 2019 reflects Alberta's need for long-term financial sustainability and the province's fiscal reality.

- This plan will see continued support of critical ongoing projects and key public services such as health and education.

Here is how we will make the Budget work:

- Budget 2019 delivers on our mandate of creating jobs and growing the economy.

- Enshrines the Job Creation Tax Cut.

- Streamlines government processes and eliminates red tape.

- Provides new funding for innovation.

- Builds investor confidence and improves global competitiveness.

- It protects front-line services and supports for the most vulnerable.

- Protects funding for health and education.

- Increases funding for mental health, additions and social supports.

- It charts a path back to balance through targeted reductions – and thoughtful reallocations away from wasteful,

inefficient and unnecessary spending.

- Reduces spending by 2.8 per cent over four years – that's three cents on the dollar and far from the 20 per cent reduction Albertans saw in the 1990s.

- Balances the budget by 2022/23.

- Addresses a financial situation that already costs us \$5 million a day in interest to big banks and threatens to burden our children.

- Does not rely on overly optimistic revenue projections.

- It delivers on key promises and was built after extensive consultation.

- Implements 24 platform commitments.

- Developed through feedback from Albertans on doorsteps and through a range of meetings and consultations.

- Informed by expert advice from the MacKinnon Panel.

For further information on the budget review, please contact me at my office at 780-967-0760.

GROVE HEARING CLINIC

960-2960

1-866-960-2960

Hear what you've been missing...

Senior Discounts



Full Service & Repair

Full Hearing Assessments

HOURS OF OPERATION: 9am – 5pm Weekdays

3rd party billing (AADL, WCB, DVA, FCH) • Personal 0% Financing if Needed

For The Latest Technology In Hearing Aids & Assisted Living Device Stop By & See Dawn

#220-70 McLeod Ave - Westland Market Mall, Spruce Grove

INTRODUCING THE GREATER PARKLAND REGIONAL CHAMBER OF COMMERCE

Submitted by The Greater Parkland Regional Chamber of Commerce

The Chambers of Stony Plain, Spruce Grove and Wabamun will soon become the unified Greater Parkland Regional Chamber of Commerce. With this comes new opportunities. As a membership driven organization we are focused on en-

suring we provide a great value proposition to all our members and our partners.

Rural businesses form the backbone historically of our business community and continue to play a significant role in our region. The Greater Parkland Regional Chamber of Commerce will represent over 1,200 members making it one of the largest chambers in the Province and we are the

voice of industry to all levels of Government with recommendations for legislation that supports business growth and prosperity.

We invite business people throughout the region to attend an evening of networking and presentations focused on the benefits of chamber membership and a specifically geared 'farming' product offering from Manulife.

THURS. NOV. 7TH at the Jubilee Hall, Wabamun. Doors Open 6pm for a Complimentary Light Supper, 6:30pm Presentation.

CONTACT US
No cost to attend, but reservations are required for meal planning.
Stony Plain Chamber
780-963-4545
info@stonyplainchamber.ca
www.stonyplainchamber.ca

RCMP ARREST DRIVER INVOLVED IN HIT AND RUN

Submitted by Parkland RCMP

On Oct. 21, 2019 at 7:07 a.m., Parkland RCMP received a complaint of a hit and run collision at McLeod Avenue and Nelson Drive, Spruce Grove, Alberta. The collision involved a SUV and a truck. The truck was travelling on McLeod Avenue and collided with the SUV that was in the traffic circle. The SUV flipped on its side and air bags were deployed. The 32-year-old female driver of the SUV and her 8-year-old son were uninjured due to the collision but the driver of the truck failed to stop to offer assistance and fled the scene.

The driver, a 31-year-old female from the Alberta Beach area, was later identified and has charges pending for:

- Dangerous operation of a motor vehicle
- Failure to stop after accident
- Drive uninsured motor vehicle on highway

The driver was released and will appear in Stony Plain Provincial Court on December 4, 2019.

If you have any information to assist with the investigation, please contact the Parkland RCMP at 825-220-7267.



**THE ROYAL CANADIAN LEGION
STONY PLAIN BRANCH #256**

**REMEMBRANCE DAY
CEREMONIES**

Monday November 11, 2019

Service at 10:45 am

PAVILION at Heritage Park

Ceremony of Remembrance / Wreath Laying
All are invited to join us in the Pavilion for refreshments from Freson Bros Fresh Market following the service.



Serving those who served
our great country,
Canada



Introducing Greater Parkland Regional Chamber of Commerce

Spotlight on Rural & Agricultural Business

The Greater Parkland Regional Chamber of Commerce (Wabamun, Stony Plain & Spruce Grove) is proud to present sessions on how we can support & grow YOUR business enterprise

KEYNOTE SPEAKERS

- Greater Parkland Regional Chamber of Commerce: Introducing Ourselves & How We Can Support Your Growth & Your Industry
- Dean Chapman: Benefits of Being a Chamber Member
- Adamitz Financial Solutions Inc: Financial & Lifestyle Protection Planning for Farmers
- Manulife: Farm Ownership Solutions
- The Chamber: Importance of Advocacy
- Key Accounting Solutions

MAKE YOUR OWN DECISIONS

An exciting product is being offered in Alberta for the first time. This product, provided through Manulife Farmland Services Canada & HAIG, offers clients owning farmland a number of different options that have previously not been available.

Since 1990, Hancock Agricultural Investment Group (HAIG) has been helping clients unlock the value of their farmland. A land acquisition by HAIG can provide clients with the funds to scale up operations, acquire more ground, modernize equipment, or invest in things like processing and marketing to grow their business. HAIG also helps pave a smoother transition with retirement planning and succession planning. Additionally, they can turn equity into liquidity.

THURS. NOV. 7TH





Jubilee Hall, Wabamun
Doors Open 6pm for a Complimentary Light Supper
6:30pm Presentation

CONTACT US

No cost to attend, but reservations are required for meal planning.

Stony Plain Chamber
780-963-4545

info@stonyplainchamber.ca
www.stonyplainchamber.ca

-  **ADVOCACY**
-  **BENEFITS**
-  **STRENGTH OF THE NETWORK**
-  **PROGRAMS, RESOURCES & SUPPORT**

Joining the Greater Parkland Regional Chamber Commerce could be a smart business decision for you. Event incentive membership discounted by 25%



Tim Hortons



YOUR LOGICAL SOLUTION TO WEIGHT MANAGEMENT



CALL (780) 907-8642 FOR **FREE** SAMPLE

DARK ROAST COFFEE

SLIMROAST Optimum

Exclusive functional coffee formulated to:

- Crush Cravings
- Increase Energy
- Metabolize fat to Energy
- Help Regulate Blood Sugar
- Improve Mood & Focus
- Boosts Circulation & Oxygen delivery

TO UNLOCK THE SECRET OF WEIGHT MANAGEMENT! PUT THE POWER OF SLIMROAST OPTIMUM IN YOUR CUP!



Thrilled with my results! I lost 9 lbs and an amazing 11 inches off my abdomen! Works wonderfully!

Managed to lose 7 lbs very fast & much more in inches the way my clothes are fitting now! 1 cup a day is all for me!

Down 17 lbs and fitting into clothes that were way to tight before!

No dieting, first month finished. Down 7 1/2 lbs 8.5 inches. Awesome product!

www.ValentusTour.com/Ladybug (780) 907-8642



fall...
AUTO TUNE-UP
OCTOBER 2019

**The Businesses in
the following Guide
can be your One Stop
Solution to all your
Automotive Needs!**

Auto TUNE-UP

THE SAFEST PLACE FOR KIDS IN THE CAR

Riding in a vehicle can be an exciting prospect for children. Such rides provide a chance to see the world outside of the house, and the speed with which scenery is flying by can be exhilarating for young minds.

Children are first introduced to riding in cars as babies, when child safety seats will keep them secure. Although laws vary depending on where people are driving, the American Academy of Pediatrics advises that children remain in a rear-facing car seat until age 2 or older. As they get older and gain weight, children who have outgrown the rear-facing weight or height limit for their seats

should use a forward-facing seat with a harness for as long as possible, up to the highest weight or height allowed by their car seat manufacturer, says the AAP.

When children are old enough to graduate from car seat to booster seat to sitting in the car with only a seat belt, parents may wonder about where their youngsters can sit when riding in a vehicle. One area of the car tends to be safer than others for children. Researchers from the University of Buffalo who studied crash-related fatalities in relation to seat location discovered that the backseat is 59 to 86 percent safer than the front seat. What's more,

the middle seat in the back of the car is 25 percent safer than the window seats.

The science behind the study is that the middle seat offers the most distance from impact during a collision, or what the industry calls "the crumple zone." The outer seats will be more affected, while the middle seat remains more insulated. However, the middle seat is only the safest when used with a full seat belt, rather than just a lap harness; otherwise, children should sit in the back where a full three-point seat belt is available, advises the National Highway Traffic Safety Administration.

In addition, it can be

tempting to cave under pressure and allow tweens to ride in the front of the car when they ask to do so or say that it is embarrassing to ride in back - since all of their friends are riding up front. The organization Safe Ride 4 Kids says studies show the safest place in the car for tweens is the back, until they are at least 13 years of age.

Riding in the middle seat in the back of the car is the safest place for passengers, including children. Parents and caregivers should keep safety in mind when kids are in the car.

W.V. REPAIR SERVICES LTD. 

Agriculture & Heavy Duty Repairs
(NO AUTOMOTIVE REPAIRS)

Air Conditioning - in Shop & Mobile Service
CVIP Inspections, Hydraulic Repair, Hoses Made


 **EXPERIENCED MECHANIC 30+ YEARS**
WALLY 780-305-1315
SHOP IS LOCATED JUST 10 MIN SOUTH OF SANGUDO

STONY PLAIN AUTO 

17E Granite Drive, Stony Plain
Servicing All makes & Models
ALL WORK GUARANTEED!

Tel: (780) 963-6297
stonyplainautomotive@gmail.com

VANDENBERG COLLISION LTD.



Joe
Ph: (780) 786-2614 5014 - 51 St.
Fax: (780)786-2736 Mayerthorpe, AB

JACK'S 24 Hour Towing 
CARSTAR*
Collision & Glass Service

Jack's Auto Body

& 24 HR Towing

Jack's Auto Body is now part of CARSTAR Collision & Glass

- Same great highly trained and certified staff
- Same great owners
- Work with all insurance companies
- Rental cars on site
- Lifetime Nationwide Warranty
- 24 Hour Towing

 2517 HIGHWAY 633 ONOWAY, ALBERTA
(780) 967-5850 

Auto TUNE-UP

SAFE DRIVING IN INCLEMENT WEATHER

Impaired visibility can be a safety hazard while driving. Everything from sun glare to hail can affect a driver's ability to see the road and navigate it effectively. Before drivers get behind the wheel, they should make note of their local forecast and make a plan for what to do if rain, snow or other conditions make it challenging to drive.

The International Association of Traffic and Safety Sciences indicates that, based on an examination of crash test data conducted by the National Oceanic and Atmospheric Administration, the "likelihood of a crash increases during periods of low visibility, despite the tendency for less traffic and for lower speeds to prevail during these times."

Drivers can take several steps to improve their visibility when driving in poor weather conditions.

- Inspect and change windshield wiper blades. Wipers are instrumental in clearing precipitation away from the windshield. If they're not functioning properly, wipers cannot do their jobs. Drivers should replace their wipers at the first indication that they are no longer effective. In some conditions, wipers can freeze or stick. Drivers should then pull over and clean the wipers manually.

- Clear obstructions. Always make sure the windshield is clear before driving. This can include removing ice and snow in the winter and cleaning off mud or bug splat-

ter in the spring and summer. Use the front and rear defrost if condensation fogs up windshields and windows.

- Slow down. Foul weather can reduce drivers' ability to see far into the distance. Drivers should always drive slower in inclement weather in order to improve reaction time.

- Top off fluids. Always keep the windshield washer reservoir full and keep extra fluid in the trunk. In addition, look for a fluid that does not freeze in very cold temperatures.

- Learn how to drive in fog. Each year, more than 38,700 vehicle crashes occur in fog, states the Federal Highway Administration. Travelers Insurance recommends slowing down, stay-

ing focused and using regular headlights and not high beams when driving in fog.

- Go out only if necessary. In snowy or icy conditions, drive only if it's absolutely necessary, as snow and ice can impair visibility and make roads slick, says AAA.

- Avoid driving at dusk and dawn. The human eye can have trouble adjusting to rapidly changing light and darkness conditions, which are common at dusk and dawn. If possible, drivers should make trips during the heart of the day, especially if poor lighting conditions typically make it difficult for them to drive.

Drivers can take steps to improve visibility when inclement weather makes roadways hard to navigate.

GROVE

COLLISION REPAIRS LTD.

Specialists in Unibody Repairs

GENESIS COMPUTERIZED
DAMAGE ANALYSIS

The Latest in "Hi Tech" Collision Repair

ACCREDITED REPAIR FACILITY FOR

Peace Hills
GENERAL INSURANCE COMPANY

the co-operators
Insurance/Financial Services

The Economical
Insurance Group

ZURICH CANADA

WESTERN UNION INSURANCE
ING. CANADA

Insurance Claims Welcome

C of C

120 South Ave. SPRUCE GROVE
(780) 962-3755

Ray's

AUTO REPAIR

24 HR. TOWING SERVICE
COMPLETE AUTO REPAIR
STIHL CHAIN SAWS

DANNY FRIEND 780-785-2251
(OWNER • MANAGER) BOX 332 SANGUDO, AB. T0E 2A0

AUTO PARTS

- Auto Parts & Accessories
- Body Shop Supplies
- Agricultural & Industrial Parts
- Shop Equipment

120 St. Matthews Ave, Spruce Grove
962-4421 Fax: 962-3464

Auto TUNE-UP

IS THERE A "BEST TIME" TO BUY OR SELL A VEHICLE?

The automotive industry is big business. According to the Statista Research Department, roughly 79 million cars and light trucks are expected to be sold worldwide by the end of 2019.

When buying or selling a vehicle, many people wonder if there is a particularly advantageous time to buy or sell. The best time to sell is not necessarily the best time to buy, which can present problems for vehicle owners who need to sell their current cars in order to afford new ones. Industry insiders offer their input on key times to move vehicles.

When to sell
Cars depreciate quite a bit the moment they move off of the lot. Most lose upwards of 20 percent of their value within the first year, according to Edmunds, a leading automotive information company and pricing index. Certain things contribute to depreciation, including mileage, type of driving and whether the car was maintained or not.

Sometimes the best times for a person to sell are when it no longer is financially prudent to keep the vehicle. For some, this may mean when the bumper-to-bumper warranty expires or if mileage starts to tick up, adversely affecting resale value.

The time of year to sell that is most favorable is between the months of March through August, offers U.S. News and World Report. When temperatures start to climb, people begin thinking about warm-weather and getting outdoors. This is a time of year when tax refunds are issued, and it is far enough away from the holidays to make big purchases more affordable.

When to buy
Kelley Blue Book® says that most dealerships do their biggest "wheeling and dealing" toward the end of the calendar year. November and December are some of their most profitable months, and consumers who are able to budget for a new vehicle at this time of year can get great prices. Dealers want to carry over as little inventory as possible into the new year, so some are motivated to negotiate more on the current year models, enabling them to make room for new inventory and meet existing sales projections.

The financial resource Bankrate says the day of the week one chooses to buy also may be something to consider. Monday, Tuesday and Wednesday are slow days at many dealerships, which may make negotiating a deal easier. Shopping holiday sales, such as those on Black Friday or New Year's Eve, also can help consumers earn better deals.

Timing is everything in

the vehicle market. Learn a vehicle and reap the rewards. the best times to buy or sell

WINTER is COMING **ARE YOU READY?**

We have one of Drayton Valley's **BIGGEST SELECTION** of **WINTER TIRES!**

Winter rims available! Allow 2 business days for shipping

OUT OF PROVINCE Alberta Inspection Facility!

DRAYTON'S SHOP

TREADPRO 780-514-5795
5001 63 St, Drayton Valley
Hours of operation: 8:00 am - 5:00 pm

RADIATOR REPAIR AND RECORE
MANY UNITS IN STOCK FOR LARGE TRUCKS SAME DAY SERVICE ON MOST RADIATORS. CALL FOR DETAILS AND PRICING.

We offer services

- CVIP Inspections
- Hydraulic hose crimping and thousands of adapters in stock.
- A/C Repair
- Espar and Webasto Repair, Installation.
- Engine Repair and Rebuilding.
- Power train/Driveline repair and service.
- Suspension and frame repair.
- Two Fully equipped service trucks for mobile needs.
- Gates Hydraulics, hoses and belts

WE HAVE FACTORY TRAINED TECHNICIANS FOR T & E PUMPS, CATERPILLAR AND CUMMINS ENGINES, AND SPICER AND MERITOR DRIVELINES.

WE STOCK PARTS FOR ALL MAKES AND MODELS OF TRUCKS, DRIVELINE & ENGINES.

We repair

- Truck Transport
- Heavy Equipment
- Automotive
- Industrial

Nitro Nut Mechanical LTD.
Shop 780.789.3322 • Fax 780.789.3331
Toll Free 1.855.789.3322 • www.nitronut.com
email: nitronutmech@hotmail.com

MS 170
Gas Chain Saw

Displacement..... 30.1 cc
Power Output..... 1.3 kW
Weight..... 3.9 kg (8.6 lb)*

\$259⁹⁵ MSRP \$289.95 with 16" bar

Fall

SAVINGS

2019

RECEIVE A **FREE** WOOD-PRO™ KIT

with the purchase of any eligible STIHL Chain Saw.**

- Woodsman Carrying Case • STIHL Hat
- OILOMATIC Chain

BATTERIES

CANADA PROOF™
BATTERIES cdnrg.com

EX. 31 SERIES

\$119⁹⁵

price with core refund

\$99⁹⁵

OXYGEN & ACETYLENE SPECIALS

- 244 cu. ft. Oxygen Bottle Complete with Contents
Special **\$494⁹⁵**
- 150 cu. ft. Acetylene Bottle Complete with Contents
Special **\$499⁹⁵**

Based on 3 cu. Mtr bottle

- 122 cu. ft. Acetylene **\$364⁹⁵**
- 75 cu. ft. Acetylene **\$374⁹⁵**

KOHLER AUGER ENGINES

KOHLER engines

Split horizontal or vertical Subaru engine

V-Twin with Anti Icing Features

Anti-Icing Feature prevents Engine Carburetor Icing. Engine is complete with Exhaust, Ignition Switch, Throttle and Choke Controls.

- CH 440-3031 **\$1099**
- CH 750-3054 **\$3324**
- CH 980-3015 **\$4049**

WALLENSTEIN

Splits horizontal or vertical Subaru engine

WALLENSTEIN LOG SPLITTER

WE230

\$2199⁰⁰

SMALL POWER BARRHEAD LTD.

6105-49th Street
Barrhead Industrial Park

780-674-4778

www.smallpowerbarrhead.ca

HOURS: Mon to Fri 8:00A.M. - 5:30P.M.
Saturday 8:00A.M. - 4:00P.M.

HALLOWEEN SPOOKTACULAR SCARING LOCALS FOR A GOOD CAUSE



Submitted by Century 21 Leading

One of the region's most popular Halloween attractions is well underway@ The 6th Annual Century 21 Leading Halloween Spooktacular. This family friendly event features a huge display of Halloween inflatable characters and spooky animatronics. So far over 2500 people have taken it in.

"It's another opportuni-

ty for us to give back to the community who have support us throughout the years," says Kerry Pfannmuller, Century 21 broker-owner. The event is held on Pfannmuller's Parkland County acreage located 5 minutes north of Spruce Grove at 54020 Range Road 275.

The event takes donations in support of the Stony Plain Kinsman Christmas Hamper Program. It is free

of charge and accepting unwrapped children's gifts and monetary donations. The event runs nightly 6 to 9 pm October 24 to October 31.

This year they hope to raise over \$15,000. Over the past 6 years the customer appreciation event has raised over \$25,000 through cash and toy donations.



PRICE REDUCED



14K White Gold Diamond Ring
Brand New, Still in Box, Tags on!
Asking \$2,745



14K White Gold Engagement Ring
Brand New, Still in Box, Tags on!
Asking \$2,300



10K White Gold Diamond ring
Brand New, Still in Box, Tags on!
Asking \$1,375

Call for more information, or to view the ring 780-907-8642

MLA SMITH ON THE 2019/2020 BUDGET

Submitted by MLA Mark Smith | Drayton Valley – Devon Constituency

Oct. 25, 2019 - Today is not just any day and this article is not just an everyday article that can be skimmed and quickly forgotten because as I write this article it is Budget Day!

How is it going to impact our lives? Are taxes going to go up? Will the budget bring deep and serious cuts in spending? Who will be the winners in this year's budget?

All of these questions are asked in light of a new government that has inherited a \$62 Billion dollar debt that could blossom to \$100 Billion over the next 4 years if spending is not curtailed.

Alberta's debt has been growing faster than any other sub-national debt in the world. Alberta has experienced a deficit budget every year since 2008. Alberta could spend approximately \$10.4 Billion dollars less if our per capita spending matched the average of Canada's 3 largest provinces. We spend about \$2,600 dollars

more per person to receive approximately the same level of services.

The budget that the Finance Minister presented to Albertans focused on controlling spending by reducing the budget by about 3 cents for every dollar the government spends. That may not sound like a lot but it speaks to the care that was taken to reduce spending while ensuring that Albertans priorities of Health Care, Education and taking care of the vulnerable would also be reflected in the budget.

The Minister has produced a realistic budget that uses cautious revenue projections. He estimates that there will be .6% real GDP growth this year with growth rates over the next 3 years of 2.7%, 3% and 3%. He has also used a conservative oil price for oil revenue predicting that the WTI price for oil will be \$57.00 this year and that it will likely rise to \$63.00 over the term of the present government. A possibility of a global recession and how successfully we increase our access to tidewater could affect

the predictions of revenue that this budget is built upon.

The budget is built upon prudent budget cuts that look to ensure effective use of tax dollars. With this in mind the government is predicting a 2019/20 budget deficit of \$8.7 Billion dollars while predicting that subsequent budgets will reduce yearly deficits until in the fourth year of the government's mandate there is a projected \$600 million dollar yearly surplus.

Health and Education spending will remain relatively stable with few if any cuts in spending while Advanced Education is looking at about a 5% reduction in overall spending. Municipalities will be facing spending cuts but Community and Social Services will see an approximately 7.6% increase and Seniors and Housing will receive a 1.6% increase and Children's Services will receive a 15% increase. The goal in this budget is to bring Public Sector remuneration in line with other provinces and the budget predicts a 7.7% reduction in the size of the Public Service over

the course of the next 4 years obtained primarily through attrition as individuals retire.

Finally, the budget also focuses on Standing Up for Albertans. In light of the results of the Federal election this budget will follow through with the campaign promise to spend \$30 million on the Canadian Energy Center that will promote and defend Alberta's energy industry. There is also the intent to pursue fiscal fairness within the Canada by addressing the billions of dollars that leave Alberta every year through the equalization payments.

The 2019/20 Budget successfully addresses Albertans priorities of Health Care, Education and the vulnerable while facing up to the fiscal realities that have left the province in financial distress. It addresses fiscal issues responsibly with cautious revenue projections and realistic reductions in government spending while increasing spending in some areas but above all it addresses the priorities that Albertans set in the last election.

STORY TO TELL?

Know of a good event going on in the community? Ever wanted to write up a local event for the Community Voice?

If you have any good ideas for articles or would like to submit a story for the paper

Email it to news@com-voice.com or just fax it in at (780) 962-1021.

Please call us at (780) 962-9228 for more information.

Stories may be edited for length due to possible space restrictions.

COMMUNITYVOICE
YOUR LOCAL NEWSPAPER

Sideline
MECHANICAL & WELDING LTD.

Specializing in Trailer Repairs
Aluminum, Tig, Mig & SMAW Welding
Mobile Welding Units Available
Mechanical Inspections & Repairs
Fabrication & Plasma Table
Skid Steer Services

Sideline Mechanical & Welding Ltd.
55109 Range Road 20
Phone: 780-967-5658
eMail: smw ltd@gmail.com

A MAGICAL MIX OF CLASSICAL MUSIC AND FUN

Christopher Hall and the Comic Quartet Demystify the World of Chamber Music at Horizon Stage on November 9

Submitted by Horizon Stage

Spruce Grove, AB - Comedian and former principal clarinet Christopher Hall is trying to demystify the sometimes formal world of chamber music. With the help of Edmonton's Strathcona String Quartet he strives to answer such existential questions as "What exactly is a musician thinking while he is playing?", and "What's the difference between contemporary music and a migraine?" Laugh along with Christopher's hilarious anecdotes then marvel as he presents 1000 years of music history in 15 minutes. But this concept isn't all comedy, music lovers will marvel at exquisitely performed excerpts from Mozart, Boccherini, Schostakovitch, and Bach while novices will realize just how many of the classics they actually know! You don't need a mink coat or a doctorate in musicology to enjoy Christopher Hall and the Comic Quartet at Horizon Stage on Saturday, November 9 at 7:30 p.m.; but if you own either or both this is still the show for you.

Christopher Hall is the former principal clarinet for the Orchestre Métropolitain in Montréal. He found working in an orchestra far too serious so now, instead of joking around while sitting in the orchestra pit, he performs as a stand-up comedian, and does various television and radio shows in both English and French. Christopher has appeared in such prestigious comedy festivals as Just for Laughs, The Winnipeg Comedy Fest, and the Grand Rire in Québec City. He hosted Whoopi Goldberg's Quebec City show in 2011 and has won two Gêmeaux awards (French Gemini). Christopher is fluent in English, French, German, and Italian but whatever you do, DO NOT take this man seriously!

The Strathcona String Quartet, Edmonton's most outstanding and versatile professional chamber ensemble, have been performing together since 1987. They have released two

highly praised CDs which are frequently heard on radio stations across North America including CBC radio, CKUA, and CJSR. The Strathcona String Quartet is well known for their world premiere performances of works for string quartet by local and international composers. They perform much of the Classical and Romantic repertoire as well as historically informed early music on period instruments. The members of the quartet are Jennifer Bustin (violin), Shannon Johnson

(violin), Sarah Wilbur-Woodman (viola), and Josephine van Lier (cello).

Learn everything you've always wanted to know about classical music, and the musicians who perform it, but were afraid to ask, from Christopher Hall and The Comic Quartet at Horizon Stage on Saturday, November 9 at 7:30 p.m. Tickets are \$35 for Adults and \$30 for Students and Seniors and may be purchased at the City Hall Ticket Centre (315 Jespersen Ave), by phone at 780-962-

8995 or 1-888-655-9090, and online by visiting and clicking on the 'Tickets' link.

"The audience laughed uproariously all evening. And the most surprising thing was at the end of the program Hall played the entire Mozart clarinet concerto like a first-rate soloist!" - La Press

"The clarinetist and comedian Christopher Hall unveiled the inner workings of a symphony orchestra from A to Z, and the audience laughed throughout the evening." - Quebec Hebdo



FREE LOCAL CLASSIFIED ADS

Real Estate, Rentals, Vehicles, Pets, Jobs, Service Directory, Buy/Sell/Trade, Lawn & Garden, Garage Sales, Events, Local Places & Much More... Advertise for **FREE** Today!



Follow Us



Classified Ads - Call 962-9228

Classified Policy

CLASSIFIED RATES INCLUDE GST. 1st 20 Words: First Insertion = \$6.00; Subsequent insertion = \$3.00 each. (Eg: 2 insertions = \$9.00; 3 insertions = \$12.00; 4 insertions = \$15.00; etc) Each additional

word is 20 cents per word, per insertion. BOLD/CAPITAL text available for an additional \$1/line. Lost & Found and To Give Away (up to a max. of 25 words) are free of charge. Ads must be paid in advance either by cheque, cash, Visa or Mastercard. No Refunds Allowed on Classified Ads.

DEADLINE: is Thurs. 4:00 pm (Wed. 4:00 pm on long weekends). Classified ads may be called in to the COMMUNITY VOICE office at (780) 962-9228, emailed to: classifieds@com-voice.com, dropped off at Onoway Registries, or mailed with your ad and payment to: COMMUNITY

VOICE, BAG 3595, SPRUCE GROVE, AB T7X 3A8. Ads may also be placed on the web at www.com-voice.com/classified.htm

Hall Rentals

Bright Bank Hall, 780-968-6813

Camp Encounter, Vincent Mireau - Camp Director. director@campencounter.com. C: 780-504-2012 W: 780-967-2548

Cherhill Community Assoc. Hall, Kevin 780-785-8153

Darwell Hall, 780-721-2690

Darwell Seniors, Phone Debra 780-785-2907

Duffield Hall, 892-2425

Entwistle Community League Hall Rentals, Call Cheryl at 780-515-1755

Entwistle Senior's Drop In Centre, Barb 727-2108 or Glennis 727-4367 Mon-Fri

Evansburg Senior's Heritage House, Dennis 727-4186

Evansburg Legion, upper hall 250 people, lower hall 80-100 people, 727-3879

Fallis Community Hall, 892-3150

Gunn Hall (G.A.R.S.) 780-951-9452

Keephills Hall, 731-3761

Lake Isle Community Hall, PH: 780-892-3121 or Email: lakeislehall@mail.com

Lake Romeo PeaVine Hall, 785-2700

Magnolia Hall, 727-2015

Manley Goodwill Community Hall, 963-9165 or 916-0146

Mayerthorpe Diamond Centre, 786-4044

Moon Lake Community Hall, Nikki Berg 780-898-1390

THE MOST COMPLETE NUTRITIONAL SPRAYS ON THE PLANET

✓ INCREASED PERFORMANCE ✓ MORE ENERGY ✓ BETTER NUTRITION

100% SATISFACTION GUARANTEED ORDER TODAY!

WHAT ARE MYDAILYSPRAYS?

- Peak:** The highest grade of Deer Antler Velvet with Antioxidants from some of the most nutrient rich super foods in the world.
- Shield:** Shield is the only Alkalinity spray in the world that promotes high pH therapy to maintain a healthy lifestyle.
- Boost:** The high absorption delivery system is perfect for people sensitive to coffee or energy drinks.
- Sleep:** Helps you get to sleep faster, maintain a healthy sleep cycle, and improve the quality of a restful sleep.
- Trim365:** Weight management formula which utilizes Garcinia Cambogia, burn fat faster and support a healthy metabolism.
- Brain:** Brain Spray with Cognizin and Snoopell. Helps regulate mood and combats anxiety. Helps to improve cognitive function and memory.

WHAT MAKES MYDAILYSPRAYS SO POWERFUL?

- 98% ABSORBABILITY • FAST AND EFFECTIVE
- ALL NATURAL INGREDIENTS
- JUST 6 SPRAYS UNDER THE TONGUE

POWERFUL INGREDIENTS. POWERFUL RESULTS.

WHOLESALE ACCOUNTS AVAILABLE. DISTRIBUTORS NEEDED.
www.Elaine1.com (780) 907-8642

Classified Ads - Call 962-9228

Park Court Hall, call or text Karyn 780-712-3918

Parkland Village Community Centre, 780-298-9155 @PVCCentre

Ravine Community Hall, 325-2391

Rich Valley Community Hall, 967-3696 or 967-5710

Rosenthal Community Hall, 963-7984

Smithfield Community Hall, Wanita 780-718-8824.

Tomahawk & District Sports Agra, Bookings: Kathy 780-339-3773.

Wabamun Jubilee Hall, 892-2699.

Wildwood Community Hall, 325-2180 or 780-514-6105

Wildwood Rec Complex 325-2077 or 514-8944

Wildwood Senior's Hall,

325-3787 or 325-2391

Auctions

Evansburg Auction, main street, Evansburg. Next to the Evansburg Hotel. (5112 50 St.). Regular Sales EVERY SATURDAY @ 11 am. Coins, Jewelry, Groceries, Store Close Outs - Items to numerous to list!! Sales Conducted by Alberta Surplus Auction. Licensed and Bonded, Lic # 313301. Concession Available, 780-727-2724 (3) 22-10

Wanted

VEHICLE WANTED: under \$1,500. Prefer raised roof van or ordinary van - would consider 1/2 ton, or others. Senior 86 (clear Class 1 license) requesting vehicle. PH: 780-892-2110, Darwell. (2) 22-10

Services

EDITOR FOR HIRE. Not only can I correct spelling, grammar, and punctuation, but also wrong words, repetition, and paraphrasing. As well, I can point out the need for evidence, examples, or definitions. For secondary

and post-secondary students. Call Elizabeth Emond, Ph.D. (UBC, 1995) at 780-848-1015. (3) 15-10

WANTED: Standing Timber - Are you looking to cut your wood lot before pine beetles or forest fires destroy it? Top dollar paid. Call Paul 780-706-1470 (12) 22-10

SERENITY FUNERAL SERVICE

www.serenity.ca

780-542-3338 (24 hours) 5137-50 Avenue Drayton Valley, AB

SERENITY FAMILY SERVICE SOCIETY - YOUR NOT-FOR-PROFIT SOCIETY

SUDOKU OF THE WEEK

Fun By The Numbers

Here's How It Works: Sudoku puzzles are formatted as a 9x9 grid, broken down into nine 3x3 boxes. To solve a sudoku, the numbers 1 through 9 must fill each row, column and box. Each number can appear only once in each row, column and box. You can figure out the order in which the numbers will appear by using the numeric clues already provided in the boxes. The more numbers you name, the easier it gets to solve the puzzle!

2		7		3	5			6
6	4		9		7		5	8
			8			3		4
								1
3	5			8	6	7	4	
4	2		7			5	6	
8						1		
		2	3		9		8	
9		4						5

ANSWER:

2	8	7	4	3	5	9	1	6
6	4	3	9	1	7	2	5	8
5	1	9	8	6	2	3	7	4
7	9	6	5	4	3	8	2	1
3	5	1	2	8	6	7	4	9
4	2	8	7	9	1	5	6	3
8	3	5	6	7	4	1	9	2
1	6	2	3	5	9	4	8	7
9	7	4	1	2	8	6	3	5

Like puzzles? Then you'll love sudoku. This mind-bending puzzle will have you hooked from the moment you square off, so sharpen your pencil and put your sudoku savvy to the test!

HALLOWEEN CONTEST WINNERS



Deja B. Age 3



Aryonna R. Age 6



Jet D. Age 10



Myrah N. Age 11

Thank you for entering. All the colouring was **spooktacular!**

Classified Ads - Call 962-9228

Cleaning

CEILING & WALL CLEANING - Specializing in cleaning Stipple & California knockdown. Cig. Smoke removal & Odour removal. Ceramic floor tiles steamed cleaned. Call Nano Cleaning for Discount Prices! 780-914-0323 (4) 08-10

Computers

FREE Computer Checkup. Repairs **work** or extract Doc or Pictures from Old or Broken PC **NOT** over \$50. No Prepayment - No Charge if not Repairable. Yes, I have for you a good, clean, refurbished and upgraded laptop or desktop with Legal win 10 for **ONLY \$100.** Call now 780-892-2407 (12) 13-08

Firewood

SEASONED FIREWOOD: Birch, Tamarack, Spruce/Pine & Poplar. 4x4x8 cord, Split and delivered or pick up at wood yard, 1/2 cord or full cords available. Call 780-967-5835 or 780-983-1495 (28) 27-08

Buy & Sell

Sacrifice selling of Country Roses dinnerware. Clock. Call 967-4361, Cell 983-0753 (2) 29-10

For sale: John Deere 7600 cast iron pedal tractor. Ertle. Excellent condition. \$400.00. Contact 780-963-6342 or 905-6342. (1) 29-10

For Rent

Homer's Hut Cabin Rentals - Daily, weekly, monthly rates, Alberta Beach area, Call Connie 780-913-8024 (15) 17-09

Completely renovated

Motel in Onoway, offering monthly rentals, all utilities FREE, furnished bachelors and furnished 1 bedroom with full kitchen, please call Cheryl for viewing 780-967-4420 www.onowayinnandsuites.com (4) 15-10 OG

2 bedroom home on acreage in town limits of Stony Plain! \$1500 all in. includes all utilities! Opportunity for reduction in rent for handyman services. Qualified Seniors only! Ph 780-913-2430

Seniors only! (4) 15-10 OG

1 BEDROOM APARTMENT WITH WASHER/DRYER FOR RENT IN EVANSBURG SEPARATE ENTRANCE 630.00 PER MONTH. PH 780-963-1830 (2) 22-10

3 Bedroom House in Alberta Beach, comes with fridge, stove, washer, dryer. \$950/month + DD same, Call 780-217-9673 (3) 22-10

In Alberta Beach, 2 Bdrm Suite in New Adult Living 4plex, \$1200/month + DD same, includes 6 appl, in-

floor heating, garage, power & gas. N/S, Call Connie 780-913-8024 (4) 29-10

In Alberta Beach, 3 Bdrm House with 4 appliances, detached garage, N/P, N/S, Available immediately, \$1100/month + DD. Call 780-913-8024 (4) 29-10

Land For Sale

Choice Acreage, 4.3 acres all treed. Yellowhead Estates, RR25, 2 Miles N of Yellowhead Hwy. \$107,000. Call 780-435-1907 (2) 29-10

PURE HEMP CBD PRODUCTS
AGING IS INEVITABLE - LOOKING AND FEELING OLD ISN'T!

WHAT IS CBD?

A Health and Beauty Breakthrough!
Cannabidiol, CBD, is one of over 80 active cannabinoid chemicals in the hemp plant. CBD, unlike, THC, does not produce euphoria or intoxication. CBD targets specific receptors in the cells of your brain & body. There are many physical and mental benefits to using CBD products for both treatment and prevention of numerous ailments.

Therapeutic Uses For Pure Hemp CBD
Supports healthy blood sugar levels, promotes healthy energy levels, relieves anxiety, aids in digestion, supports optimal immune function and the regeneration of healthy cells, and promotes a sense of serenity and overall well-being.

Anti-Aging Uses For Pure Hemp CBD
Promotes more youthful skin, provides hydration, enhances radiance, lessens age lines as well as the appearance of dark spots.

KEY BENEFITS
PAIN RELIEF: Known to reduce vomiting & nausea; suppress muscle spasms; reduce seizures & convulsions.
PROMOTES HEALTH: Helps to promote relaxation and overall health.
WELL-BEING: Helps to relieve anxiety, aid in digestion, supports optimal immune function and the regeneration of healthy cells.

CBD PET PRODUCTS

PET CHEW TREATS

KEY BENEFITS
SYNERGISTIC BENEFITS: Can be used in conjunction with regular medications with no side effects.
NO SIDE EFFECTS: Does not damage the liver, kidney or GI Tract like OTC medication.
DIETARY SUPPLEMENT: Can be administered daily as part of your pet's diet.

ORAL SPRAYS & DROPS

KEY BENEFITS
MANAGES PAIN: Helps to treat inflammation, arthritis and joint pain.
TREATS DIGESTIONAL ISSUES: Helps with loss of appetite, nausea, IBS and gastrointestinal swelling.
GENERAL HEALTH: Helps to manage mood, anxiety and general joint pain. For healthy, happy pets.
CONVENIENT: Can be sprayed into pet's mouth or on food.

For more information, Call (780) 907-8642

Church Directory

<p>Seba Beach Christian Fellowship</p> <p>Sunday School 10:00a.m. Worship Service 11:00a.m.</p> <p>Weekdays Bible Study & Prayer</p> <p>(780) 305-3594</p>	<p>Advent Lutheran Church</p> <p>Sunday Worship & Sunday School 11:00a.m.</p> <p>Evansburg O: 727-3594</p>	<p>Roman Catholic Church</p> <p>St. Agnes' Parish, Maysethorpe Sunday 9:00a.m. St. Elizabeth Parish, Evansburg Saturday 7:00p.m.</p> <p>(780) 786-2032</p>		<p>St. Joseph's Catholic Church</p> <p>Sunday Mass 11:30a.m. Tuesday Mass 7:00p.m.</p> <p>Wabamun, AB</p>	<p>St. Augustine's - Parkland Anglican Church</p> <p>231 Church Rd. Spruce Grove</p> <p>Sunday Service 10:00a.m. Eucharist with Sunday School & Nursery All are Welcome</p> <p>Office 780-962-5131 www.staugustinesparkland.org</p>
<p>Parkland Baptist Church</p> <p>Sunday Worship Service 10:30a.m. All Welcome</p> <p>121 Brookwood Drive (780) 962-4101 www.parklandbaptist.ca</p>	<p>Word Church Apocalyptic Era</p> <p>Border Paving Athletic Centre, 9 Tri Leisure Way, Spruce Grove ignitors in the Wild Rose room.</p> <p>Ph: 780-962-7579</p> <p>Service starts at 10:00 a.m. every Sunday morning, come all & be bless.</p>	<p>St. Anthony's Ukrainian Orthodox Church</p> <p>6103 172 St. NW, Edmonton</p> <p>Saturday: Vespers 5:00PM Sunday: Divine Liturgy 10:00AM</p> <p>780.487.2167 santhony@telonjlanet.net www.st-anthonys.ca</p>		<p>Stony Plain United Church</p> <p>Sunday Service 10:30a.m. 5012-51 Ave. Stony Plain</p> <p>Mewassin United Church</p> <p>Sunday Service 9:00a.m. Rev. Heather Koots Hwy 627 - Rg Rd 30 Ph: 780-963-4745</p>	<p>Immanuel Lutheran Church of Rosenthal</p> <p>Sunday Worship Service 9:30a.m. Sunday School</p> <p>780-963-4048</p>
<p>Emmaus Lutheran Church</p> <p>Sunday Worship Service 11:30a.m.</p> <p>Rev. Robert Marshall 4504-52nd Ave, Drayton Valley Ph: 780-542-5101 www.emmauslutheran.org</p>	<p>Church of God</p> <p>Worship Service Sun. 11:00a.m.</p> <p>Please contact for activities</p> <p>5004-49 Street, Drayton Valley Ph: 780-542-5091</p>	<p>Calvary Baptist Church</p> <p>Pastoral Team: Kenton Penner</p> <p>Sunday Worship 10:30a.m. Youth & Ministries Info - calbapt@telus.net</p> <p>4401-50th Ave. Drayton Valley 780-542-4774 www.calvarybaptistdo.ca</p>	<p>Drayton Valley Alliance Church</p> <p>Pastor John Haazen</p> <p>Join us for Sunday Service at 10:30a.m. 5014-56 Ave. (next to Value Drug Mart) Programs for all ages</p> <p>Ph: 542-6501 dvalliance.ca</p>	<p>All Saints' Anglican Church</p> <p>Sunday Morning Worship 9 BCP 10:30 BAS with Sunday School & Nursery</p> <p>5212-47 Ave. Drayton Valley (780) 542-5048</p>	<p>St. Anthony Catholic Church</p> <p>WEEKEND MASS SCHEDULE: Saturday 5:00p.m. Sunday 12:00p.m.</p> <p>4708-50 Ave. Drayton Valley Parish Office: 542-5254</p>

SERVICE DIRECTORY

2Bros
Custom Contracting Ltd.

Custom Framing • Concrete Floors • Shingling
Siding Soffit Fascia • Styrofoam Block System

Jeff 780-717-0520

BREWSTER BOBCAT SERVICE LTD.
P.O. Box 454, Wildwood, AB T0E 2M0

- * Site Preparation
- * Pile Drilling
- * Concrete Work
- * Landscaping
- * Demolition
- * Sand & Gravel Delivery
- * General Contracting



brwcat@gmail.com
Telephone: (780) 325-3743
Bruce Balascak Cell: (780) 621-6960

Ernie's Repair & Service



4820 - 47 Avenue, EVANSBURG
(780) 727-4433

WABAMUN PHARMACY
I.D.A.

Box 90, 5120 - 51 Avenue
Wabamun, AB T0E 2K0
Ph: (780) 892-2278 Fax: (780) 892-2488


COMMUNITYVOICE
YOUR LOCAL NEWSPIRES

THIS SPACE IS RESERVED FOR YOU!

WEIGHTLOSS NEVER TASTED SO GOOD!



NEW! NEW! NEW! NEW!

(780) 907-8642  VALENTUS
www.ValentusTour.com/Ladybug


SERVICE DIRECTORY

Blakeman Drilling Ltd.
 Waterwell Drilling & Servicing
 Pumps & Pressure Systems
 SERVING LAC. STE. ANNE & WEST PARKLAND FOR OVER 25 YEARS
 Joe (780) 924-3024




DONALD N. GREENWAY
 Chartered Accountant
 Suite 205 Sunrise Professional Building
 215 McLeod Avenue
 Spruce Grove, AB
 (Bus.) 962-6366
 (Fax) 962-3990

WHAT MAKES MYDAILYSPRAYS SO POWERFUL?
 HIGH ABSORPTION, SCIENCE & THE INGREDIENTS



(780) 907-8642
 www.Elaine1.com

SLIMROAST Optimum
 DARK ROAST COFFEE
 YOUR LOGICAL SOLUTION TO WEIGHT MANAGEMENT
 (780) 907-8642
 www.ValentusTour.com/Ladybug



COMMUNITYVOICE
 YOUR LOCAL NEWSLETTER
THIS SPACE IS RESERVED FOR YOU!

ROY SHERWOOD
 Master Electrician
 Ph: 780-968-1425
 Cell: 780-908-2287
 Fax: 780-968-2211
 Email: suretechroy@gmail.com
 2-53220 Rge Rd 21
 Parkland County, AB
 T7Y 0C5
SURETECH ELECTRIC LTD.
 Control & Automation
 Commissioning
 Solar Sales & Service
 Industrial . Commercial . Residential

MARK MARTIN PFEIFFER
 MASTER BRICKLAYER/MASON
 Cell: 780-242-3308
 Email: pfeiffer.mark@hotmail.com

- Brickwork • Stonework
- Rockwork • Parging
- Concrete Block Work
- Tile Work (all kinds)



CROFT LAW
 Local office in Darwell
 Call us at 780.467.5534
 Experienced Legal Services in:
 Family Law • Civil Litigation
 Corporate Law • Wills & Estates
 Plus Notarizing and Commissioning
 www.croftlaw.ca

PEMBINA CONCRETE PRODUCTS LTD.
 Manufacturers of **ONE PIECE SEPTIC & HOLDING TANKS**
 * Water Cisterns * Field Systems * Pumps and Accessories * Sumps
 DELIVERED TO YOUR SITE
 1-800-661-3047
 780-727-2702
 PembinaConcrete.com
 New Line of Concrete Statues, Fountains and Garden Ornaments.
 BOX 123, Entwistle, T0E 0S0



COMMUNITYVOICE
 YOUR LOCAL NEWSLETTER
THIS SPACE IS RESERVED FOR YOU!

CALIBRE DRILLING LTD
 DRILLING AND SERVICING YOUR WATER WELL.
SPECIALISTS IN AIR & MUD ROTARY DRILLING

- * Water Well Drilling
- * Pressure Systems
- * Licensed Drillers
- * Geotechnical Drilling
- * Free Estimates
- * Pump Installations
- * Well Tests
- * Year Round Drilling
- * Cathodic Protection

Quality Workmanship Five Year Warranty
 (780) 960-2992
 BOX 4083 SPRUCE GROVE, AB T7X 3B3

POSTINGFIRST.com
BUY and SELL just about ANYTHING!
FREE LOCAL CLASSIFIED ADS
 Real Estate, Rentals, Vehicles, Pets, Jobs, Service Directory, Buy/Sell/Trade, Lawn & Garden, Garage Sales, Events, Local Places & Much More... Advertise for FREE Today!



Follow Us



SERVICE DIRECTORY

Jack's Auto Body & 24 HR Towing

SPECIALIZING IN COLLISION REPAIR
GUARANTEED WORK • INSURANCE CLAIMS

CAA BOX 9 SITE 306 RR3, ONOWAY, AB T0E 1V0
(780) 967-5850

OUR PLEDGE IS QUALITY

PREVAIL MAX
 CELLULAR HOMEOSTASIS FORMULA

A NUTRITIONAL BREAKTHROUGH THAT SUPPORTS YOU...
 RIGHT DOWN TO THE LAST CELL!

LIVIN TRIM WITH
VALENTUS (780) 907-8642

www.ValentusTour.com/Ladybug

H&E UPHOLSTERY

FOR ALL YOUR UPHOLSTERY NEEDS

Convertible tops for cars and boats, custom car and boat interiors, 5th wheel trailer skirts, boat tarps, ATV seats, furniture, kitchen chairs, heavy equipment seats.

WWW.HANDE.CA 4-485 South Ave. Spruce Grove
 For more information contact: kirk@hande.ca (780) 962-3048

SERVING ENTWISLE AND AREA FOR OVER 30 YEARS

Entwistle CONCRETE PRODUCTS LTD.

SAND & GRAVEL SALES

PH: (780) 727-3525

Dan McCracken Entwistle, AB
www.entwistleconcrete.ca

COMMUNITYVOICE YOUR LOCAL NEWSPAPER

THIS SPACE IS RESERVED FOR YOU!

SMOOLE

- Construction & Septic Installation
- Environmental Wastewater Disposal
- Site Design & Evaluation
- Power, Water & Basement Excavation
- Trackhoe, Backhoe, Bobcat & Dump Truck

For All Your Excavation Needs
 Call Dan 780-991-4484 Reid 780-909-0173

H&P Kosik CONSTRUCTION Ltd.

- Road Building • Gravel • Sand • Dugouts
- Black Dirt • Clearing

No Job too small! We do them all!

Harvey cell. 780-445-9010 ph. 780-892-3532
 Box 145, Darwell, AB. T0E 0L0

FOR DRINKING WATER USE ONLY

TRI-LAKES SERVICES LTD.

- Septic Hauling
- Drinking Water Delivery
- Portable Washrooms
- Steam Truck

www.trilakeservices.ca / office@trilakeservices.ca
 (877) 727-3939 / (844) 967-9176

SERVING: • Lac Ste. Anne County • Parkland County • Yellowhead County East

SANGUDO VETERINARY CLINIC

Box 581, 4916 - 52 Ave. Sangudo, AB. T0E 2A0

Dr. Ralf Sanders DVM

Ph: 780-785-2200
 Fax: 780-785-2228
sangudovet@gmail.com

24 HOUR EMERGENCY SERVICE

CCAS
 Canadian Clean Air Services Ltd.

Heating & Air Conditioning

Goodman
 Air Conditioning & Heating

Licensed and Insured with over 20 years' experience.
 Instant Approval. Financing Available

VISA

For service call:
780.569.5201

www.ccasheating.com

COMMUNITYVOICE YOUR LOCAL NEWSPAPER

THIS SPACE IS RESERVED FOR YOU!

Xtreme LEAN NRG

Xtreme LEAN NRG
 Advanced Formula helps you:

- Regulates Your Appetite
- Regulates Blood Sugar
- Regulates Fat Absorption
- Improve Energy Levels
- Improve Your Mood
- Increase Mental Focus

"We've unlocked the science of slim!"
(780) 907-8642

SUMMERS DRILLING LTD.

Water well drilling and service
 Family owned Business Serving Alberta since 1917

Never run out of water again!

5 year workmanship warranty

3 Convenient ways to pay

- Visa
- Mastercard
- We now offer full financing

Tired of hauling water?
 We can install a water well with a permanent water supply for as little as \$150/month OAC

Stop in at our office 4405 - 50 Street, Stony Plain
 780-963-1282
admin@summersdrilling.com

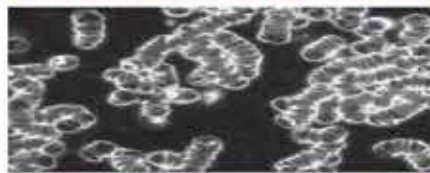
PREVAIL CELLULAR HOMEOSTASIS FORMULA MAX

A NUTRITIONAL BREAKTHROUGH THAT SUPPORTS YOU
...RIGHT DOWN TO THE LAST CELL!

How do you want your
BLOOD to look?



Before PrevailMAX:



- poor circulation
- low energy
- brain fog
- dehydration
- decreased nutrients
- pH imbalance
- poor endurance

After PrevailMAX:



- better circulation
- more vitality
- mental clarity
- cellular movement
- nutrient assimilation
- balanced pH
- optimal endurance

PrevailMAX™ is a nutritional breakthrough that delivers a rapid increase of internal blood cell pressure to speed absorption, enabling the body to take maximum advantage of the nutrients in foods and supplements. The electrolytes are small enough to penetrate your cell membranes, to bind with your cells, and to be carried wherever they are needed in the body.

At the microscopic level of human cells, **PrevailMAX™** supports healthy cell performance – a nutritional breakthrough for your cells.

When you use **PrevailMAX™**, you will feel more energy and an ability to focus like never before. Take a few sprays today and see just how good you can feel!

LIVIN TRIM WITH
VALENTUS

www.ValentusTour.com/Ladybug

(780) 907-8642