



# COMMUNITY VOICE

YOUR LOCAL NEWSPAPER

Serving: Alberta Beach, Barrhead, Calahoo, Cherhill, Darwell, Glenevis, Gunn, Lac Ste. Anne County, Mayerthorpe, Onoway, Rich Valley, Rochfort Bridge, Sangudo, Whitecourt, Spruce Grove and Stony Plain.

## December 3, 2019

### FASHION & FABRICS EXHIBIT AT THE ONOWAY MUSEUM

Submitted by Onoway & District Historical Guild

Does anyone sew their own clothes anymore? Not likely. It's so easy to go to the mall, to the big box outlet, online and find what you want.



Continued on Page 2

By the 1960s the "short" circle skirt was high style. It was worn with nylon stockings with a seam down the back. (The seam had to be straight!)

Note the covered buttons on this elegant velvet and gabardine two-piece outfit with batwing sleeves.

### SANTA'S HELPERS IS BUSY ONCE AGAIN

Submitted by Santa's Helpers

It is that time of year again we are rushing around, preparing for the upcoming Christmas season. In our busy lives we sometimes forget that there are families in our own little community that really struggle at this time of year. That is where Santa's Helpers and the Onoway Food Bank step in to lend a helping hand. These two groups have worked to-

gether for years to provide a holiday meal and gifts for our local families and their children. Ever year our fantastic community comes together to support these two dedicated groups.

There are toy and coin donation boxes throughout our community for those who wish to help us out. The toy donation boxes will be out until Monday, December 16, 2019. That evening we will be doing up our hampers. The coin dona-

tion boxes may out a little bit longer. If you are need of a food hamper or toy hamper or both please contact Carolyn Saumer at (780) 289-3402 to register your name. If you have any questions about the toy hampers please contact Marney (780) 289-3402 or Kerri (780) 967-2658 for further information. Request for hampers must be in before Sunday December 13, 2019.

Continued on Page 2

**All Precious JEWELLERS**  
 "Your Spruce Grove Jewellery Store"  
**Goldsmith on Premises**  
 • Engraving • Clock & Watch Repairs  
 • Jewellery Repairs • Custom Make-ups  
 Jewellery Repairs Done On Site.  
 Laser Welder Services Available.  
 Toll Free: 1-877-962-4367  
 PH: 780-960-4200 Fax: 780-960-4201  
 Suite 102, 215 McLeod Avenue  
 Spruce Grove, AB. T7X 0G2

**SIGHTS AND ARMS** Now Open Mon-Sat 10AM-6PM  
**FALL SALE!** New Used & Consigned  
 Firearm Safety & Reloading Courses  
 Gunsmithing  
 WWW.SIGHTSANDARMS.COM  
 11 J Raybon Cr. St. Albert Alberta 825-223-9863

**PREVAIL MAX**  
 CELLULAR HOMEOSTASIS FORMULA  
**Nutritional Breakthrough For Your Cells**  
 LIVIN TRIM WITH VALENTY  
 (780) 907-8642  
 www.ValentusTour.com/Ladybug

**SLIMROAST Optimum**  
 DARK ROAST COFFEE  
 YOUR LOGICAL SOLUTION TO WEIGHT MANAGEMENT  
 (780) 907-8642  
 www.ValentusTour.com/Ladybug

**View us ONLINE!**  
 WWW.COM-VOICE.COM



**COMMUNITYVOICE**  
YOUR LOCAL NEWSPAPER

**E.J. Lewchuck & Associates Ltd.**

#6 - 40 South Avenue  
Box 3595  
Spruce Grove, AB T7X 3A8

**SALES TEAM**  
Elaine  
Ashley  
Dani

**TELEPHONE:**

**Classifieds** 962-9229  
**Advertising** 962-9228  
**Fax** 962-1021

**E-MAIL:**

comvoice@telusplanet.net  
news@com-voice.com

## Fashion & Fabrics Exhibit at the Onoway Museum

*Continued from Page 1*

Not so 50 years ago. By the 70s, there had been some major changes in the fashion and fabric world. Perhaps the biggest change had come as a result of World War II. Synthetic fabrics had been developed and used in military supplies such as parachutes; then, after the war, polyesters became available and popular. No longer was home-sewn clothing

limited to cotton, wool, linen, silk. And these newer fabrics meant that cheaper clothing could be readily purchased. So ... good bye to the treadle sewing machine and clothes that Mother sewed for all members of the family, for all occasions.

Onoway Museum is showcasing these changes in its current exhibit "Fashion and Fabrics". This is a look at the styles dating back to the early 1900s (when women always wore

long sleeves and high-neck collars) through to the hippy era (when it was cool for men to wear plaid bell-bottomed pants). Find out how fabrics have changed, how sewing has changed. Then take a look at what people around you are wearing today - blue jeans with deliberately torn knees, low-cut dresses - and think about how clothing has evolved. Stop by the Onoway Museum and enjoy looking back.

## Santa's Helpers is Busy Once Again

*Continued from Page 1*

Every year Santa's helpers has provided toys and other gifts for children ages 0-17. We accept donations of new unwrapped items at our local drop off points throughout the town. Some ideas for gifts are books, age appropriate toys, art/craft items, mittens, toques, personal care items

(hair dryers, curling irons, nail kits etc.), toboggans/sleds, watches. etc. In the past we have provided toys and gifts for anywhere from 70-100 Children of our community. Onoway has always amazed us at their generosity. We know you will do it again this!

At this time we would like to extend a heartfelt THANK YOU to our incredibly supportive

local businesses and community members for the past, as well as continued assistance for these essential programs. Without them all, we wouldn't be able to do what we do! Merry Christmas and the Best of New Year to you and yours.

Merry Christmas  
Santa's Elves

**FIREWOOD**  
**ALBERTA BEACH FIREWOOD**  
Spruce & Birch  
**Call 780-719-9473 or 780-904-6440**

**BUSINESS FOR SALE**

Steady Income - Business doesn't fluctuate with Economy

Includes: - All Clientele  
- 5 Tandom Trucks  
- 1 Truck & Trailer Unit

**Call 780-797-3844 for more Info.**  
**Al-jo An Septic Service**

**JOKE OF THE WEEK**

A Bulgarian tourist visiting America was interested in all types of American games. When he returned home, his friends asked him to describe the things he saw. "One interesting game I witnessed", he said, " was one called 'Oh shit', where one fellow calls out things like G4, I9, etc. After a while someone in the audience calls out 'Bingo!' and the croud yells 'Oh shit!!'"

Family run, local business, we care!

**BEST CISTERN SEPTIC SOLUTIONS**

**Cistern and Septic Inspection, Installation and Repair!**

Septic planning, design, installation by government certified installer(s)

New Installs Available. Reasonable Rates.

**Let Us Handle the Dirty Work**  
**780-668-4306**  
best-cistern-septic-solutions.com

# TIME'S RUNNING OUT TO GET YOUR STORY INTO THE ALBERTA BEACH MUSEUM HISTORY BOOK

**Submitted by Alberta Beach Museum**

Time's rapidly running out if you want to get your story, your family memories into the Alberta Beach Museum's new history book. If you've been in the area for twenty years or more, we want to hear "where your story begins". However, we're rapidly closing in on the deadline of January 1 for new stories!

In honour of Alberta Beach's 100th Anniversary, the museum's new history book will include both summer visitors and residents living from West Cove to Val Quentin and Alberta Beach, north to include Sunset Point, Castle Island, Gunn and Ross Haven. Of course, it will also include families farming in the area, and individuals on acreages.

We're looking for the family chronology, but what we really want are stories about the things you remember and value from times past. What organizations and businesses do you remember? What did you do for entertainment, or just plain fun (or not so fun) events? Of course, no history book is complete without pictures, notes, or news articles to accompany the written submissions.

Original photos, clippings or documents will be carefully handled, and returned as soon as possible. If you're comfortable on a computer, please submit by email, or feel free to mail it. Digital photos should be scanned at 300 dpi resolution or higher, with people in the photo identified.

Submissions can be from

individuals, families or groups. If it works better for you, we will visit you to record your stories, travelling anywhere in the metro-Edmonton area. We've prepared a few guidelines to get you started, so contact us to help jump-start your memories. We reserve the right to edit all submissions.

Submit your stories by email to [albertabeachmuseum@gmail.com](mailto:albertabeachmuseum@gmail.com). On Facebook Messenger, search Alberta Beach Museum. Drop off your stories at the museum at 5000 - 47 Ave. (the museum is only open July and August from 1 to 6 pm or by appointment, so please call first to ensure

someone will be there). You can also mail it to Box 68, Alberta Beach, AB T0E 0A0.

If you'd like to be interviewed, leave a message on the answering machine at 780-924-2140. You can also call Jean at 780-984-5955 to arrange for a convenient time.

**Northwest Fire & Rescue - Onoway**

*Candy Cane*  
**CHECK STOP**

*Fill the Boot with Loot*  
**BEING HELD ON**  
**December 23<sup>rd</sup>, 2019**  
From 4:30 - 6:30p.m. at the  
3 way stop in Alberta Beach  
(47th Street and 50th Ave)

**All proceeds will be donated  
to The Alberta Beach & District  
Lions Christmas Hamper Drive.**

# WHITECOURT RCMP CHARGE MAN WANTED IN ROBBERY

Submitted by Whitecourt RCMP

UPDATE #2  
Whitecourt, Alta. – The RCMP can confirm that Adam Duplessie has been located and arrested, without incident. He is no longer wanted and public

assistance is no longer required.

UPDATE #1  
As a result of the assistance from the media and public, Whitecourt RCMP have laid a charge of Robbery and Disguise with Intent against Adam Duplessie (23) of Sangudo, Alberta. “The assistance of the

public in this investigation was invaluable and have led to the recovery of important evidence, including the alleged weapon,” states Cst. Alex Ayres of Whitecourt RCMP.

BACKGROUND  
On Friday, November 15, 2019 at 4:05 AM a lone suspect entered the 7-Eleven

store located on the corner of 50 Ave and 51 Street of Whitecourt with a tire thumper. The suspect demanded money from the clerk, who complied with the demand, at which time the suspect departed on foot.

# FINANCIAL CONSUMER AGENCY OF CANADA (FCAC) LAUNCHES NEW BUDGET PLANNER TOOL

Submitted by Gerald Soroka, MP for Yellowhead

OTTAWA: Gerald Soroka, Member of Parliament for Yellowhead, is pleased to inform constituents that the Consumer Agency of Can-

ada (FCAC) has launched a new budget planner tool aimed at helping Canadians manage their financial goals.

The new budget planner offers customized budget templates, personalized feedback and guidelines to help you prioritize your

spending and take control of your finances. Users can view charts which illustrate where their money is going and compare their budget with those of other Canadians in similar life situations.

For more information on the budget planner tool please go to the web address

below: <https://www.canada.ca/en/financial-consumer-agency/news/2019/11/budgeting-made-easy-with-fcac-new-interactive-budget-planner.html>

The budget planner itself can be found at: <https://itools-ioutils.fcac-acfc.gc.ca/BP-PB/budget-planner>

LAC STE. ANNE COUNTY

Lac Ste. Anne County | Box 218, Sangudo Alberta T0E 2A0 | 1.888.899.5722 | www.LSAC.ca

## EMPLOYMENT OPPORTUNITIES

Please visit [LSAC.ca/Careers](http://LSAC.ca/Careers) to view and apply for these and other Lac Ste. Anne County employment opportunities.

### PLANNING & DEVELOPMENT CLERK

**Full-Time Permanent Position**

Reporting to the Planning & Development Manager, this role is the face of the department. The Clerk is primarily responsible for filing and file maintenance; database entry; clerical tasks; and accepting administrative processing on all permits, compliance requests, subdivision applications, and other applications that are received by the Department. The Clerk will provide phone dispatch for the Department.

These positions will remain open until a suitable candidate is found. The County thanks all applicants in advance for their interest in this position; however, only candidates selected for an interview will be contacted.

## Village Office Christmas Hours

The Village Office will be closed on December 24<sup>th</sup>, 2019 through January 1<sup>st</sup>, 2020. The office will re-open on January 2<sup>nd</sup>, 2020 at 9:00 a.m.

**Solid Waste Pick Up Christmas Schedule**  
Solid Waste pick up is scheduled for December 2<sup>nd</sup>, 9<sup>th</sup>, 16<sup>th</sup>, 23<sup>rd</sup> and 30<sup>th</sup>, 2019.

**Blue Bag Pick Up Christmas Schedule**  
December 11<sup>th</sup> & December 27<sup>th</sup>, 2019. **\*PLEASE NOTE\*** Garbage Pick Up will start at 6 a.m. on December 27<sup>th</sup>, 2019

**Recycling:** Please remember to use our Recycling Depot for cardboard as well as paper products. These bins are located behind the village office. Extra Christmas boxes and Christmas wrap should be recycled. **Please do not put Styrofoam** in the recycling bins.

**19<sup>th</sup> Annual Christmas Light Up Contest**  
Let's light up the Village this year with our 19<sup>th</sup> Annual Christmas Light Up Contest! Judging will take place on December 14<sup>th</sup>, 2019.

**1<sup>st</sup> Place \$100.00**  
**2<sup>nd</sup> Place \$75.00**  
**3<sup>rd</sup> Place \$50.00**

**Best of Luck everyone!**

# NOTES FROM THE ONOWAY LEGION

**Submitted by Richard Moses | Onoway Legion**

Early Christmas Dinner Winds up 2019

On Friday, December 13, it'll be a sponsored early Christmas dinner. There'll be turkey and ham, with all the normal fixings for this

last dinner until January 10. Watch for details.

**Grey Cup Raffle Winners**  
The Grey Cup is over, and the raffle winner for the first quarter was Clive Heeks, half-time was Cathy Chudley, and third quarter was Christine Ballentine. The final winner was Virginia

Krysta. Thanks to everyone who supported the legion by buying tickets for our Grey Cup raffle.

**Pool and Darts Clubs take Christmas Break**

Both the pool and darts clubs will take a break over the holidays, with the week of Dec. 16 the last one for

these popular sports.

**Did You Know?**

The entire community is welcomed to the legion for Friday night dinners. It's family-friendly, and you don't need to be legion members to enjoy the camaraderie.

## ST. ALBERT RCMP SEEK TO IDENTIFY FRAUD SUSPECT

**Submitted by St Albert RCMP**

St. Albert, Alta. - On Monday, October 28, 2019, a 84 year old male resident of St. Albert was approached by a middle aged man at a bank in the Tudor Glen area of St. Albert. The suspect said that the ATM that he was using was not working and he asked the older gentleman to take of \$500.00 for him. He promised to pay him back, but once the older gentleman gave the man \$500 cash, the suspect ran away.

St. Albert RCMP now have video footage of the suspect and are asking for the help of the public in identifying this man.

If you have information about this crime, call St. Albert RCMP at 780-458-7700. If you would like to remain anonymous, contact Crime Stoppers by phone at 1-800-222-TIPS (8477), online at p3tips.com, or with the P3 Tips app. Crime Stoppers does not collect information about your

identity. A tip leading to an arrest may be eligible for a reward of up to \$2,000.



**Bundle Internet + TV + Home Phone for just \$89.97/month!**

**1 Xplornet High-speed Internet with Unlimited Data \$39.99/month<sup>1</sup> First 3 months**

**2 Shaw Direct Satellite TV \$39.99/month<sup>2</sup> First 3 months**

**3 Xplornet Home Phone \$9.99/month<sup>3</sup> First 3 months**

**Shaw) Direct** **XPLORNET**  
Satellite TV Connect to what matters

**INTEGRATED Solutions** **1-855-867-4047**  
Audio | Video | Communications

Mayerthorpe's 23rd Annual  
**CHRISTMAS  
 LITE UP**

Friday December 6, 2019

**PARADE** Floats Judged 6:15PM

STARTS at 6:30PM, Big Truck Parking Lot  
 Theme: Favourite Christmas Story Book.

**FREE PHOTO'S WITH SANTA**

4:00-6:00PM | 7:00-8:30PM, Diamond Centre  
*Photo Pick up: Crockett Automotive on Dec 13*

**CHARACTERS: ELSA & ANNA,  
 MARSHALL & RUBBLE**

6:30 – 8:30PM on Main Street

**FREE FACE PAINTING**

by Jacquie Paul & Friends  
 Diamond Centre 4:30 - 8:30PM

**LIL ORBITS MINI DONUTS**

Main Street 5:00 - 9:00PM

**FREE HAYRIDES** After Parade - 8:30PM

*Pick up on Main Street by the Co-op sign*

**FOUR SEASONS OPEN MARKET**

Diamond Centre 4:00 - 9:00PM

**LITE-UP CASH DRAW**

8:30PM @ Bon Fire, Draw on Main Street

**FREE FLASHING BATONS  
 FOR KIDS** Main Street 6:30PM

**FREE HOT CHOCOLATE**

6:00PM - 8:30PM, Main Street  
 Thyme For Health N Herbs

**4 CHRISTMAS DINNER TURKEYS**

**DRAWS** Draw: 8:30PM @ Bon Fire

Enter only Dec 6<sup>TH</sup>: 10:00AM - 8:15PM

Draw Box at PETALS PLUS

*Enter as often as you wish!*

**BON FIRE & CHRISTMAS MUSIC**

Main Street After Parade - 9:00PM



**THESE PAGES ARE  
SPONSORED BY  
THE FOLLOWING  
LOCAL BUSINESSES**

Rexall  
-Mayerthorpe  
786-2044

Crockett  
House Cafe  
684-2002

Pembina  
West Co-op  
786-2093

Town of  
Mayerthorpe  
786-2416

Little City  
Mrkt. /  
Restaurant  
779-0171

Roszko Farm  
Equipment Ltd.  
www.roszko.com  
786-2105

Doggie  
Style  
786-0171

Mayerthorpe  
Fas Gas  
786-2523

Paddle  
Plastics Ltd.  
786-4408

Crockett  
Automotive  
Repair Ltd.  
786-2216

Mayerthorpe  
Family Dental  
786-2878

Gibbs  
Contracting  
785-4002

The  
Co-operator's  
-Mayerthorpe  
786-2750

Hub Hotel  
-Mayerthorpe  
786-2688

Vandenberg  
Collision Ltd.  
786-2614

Paddle River  
Concrete  
786-2666

BulletProof  
Welding  
786-2345

Pure Style  
Hair Design  
786-2271

Stonework By  
Half Rocks  
305-9746

Suchocki  
Accounting  
786-2131

Park Memorial  
Funeral Home  
& Crematorium  
786-2533

Stuber's Cat  
Service Ltd.  
785-2173

Pit Stop Gas &  
Convenience  
785-2432

Smyl  
Chevrolet Ltd.  
778-2202

C-5 Chadd  
Contractors  
Ltd.  
785-2548

C & D Tank  
Truck Service  
785-3383

LAC STE. ANNE COUNTY



NEWS HIGHLIGHTS

Lac Ste. Anne County | Box 219, Sangudo Alberta T0E 2A0 | 1.866.880.5722 | www.LSAC.ca | facebook.com/LSACCounty

## COUNCIL AND ADMINISTRATION SHED LIGHT ON UNHARVESTED CROP CRISIS

**Recent Council motions seek to generate awareness of the County's agricultural disaster and foster support for regional producers.**



During its November 21 session, Lac Ste. Anne County Council passed several motions in response to the dire situation faced by ranchers and farmers strained by yet another year of poor crop conditions. Heavy, unrelenting spring and summer rainfall has resulted in extensive damage to nearly all crops across the region.

Presently, many fields remain unharvested, and the small inventory of feed that has been harvested has been put up in poor condition with degraded feed value and potential storage issues. Not surprisingly, there is increasing desperation among County producers as they deal with staggering losses and look for ways to weather the storm.

At the request of the Agricultural Services department, the recent Council motions seek to strengthen the lines of communication between the County and Agriculture Financial Services Corporation (AFSC) — the provincial Crown corporation responsible for providing guidance, resources and risk management solutions for Alberta's agricultural sector. One near-term objective is to generate awareness of the **December 12 AFSC Town Hall in Mayerthorpe** dedicated to communicating with — and listening to — area producers about the state of unharvested crops and possible strategies to mitigate related financial impacts. "We are already seeing the hurt within our municipality," stated Agricultural Service Manager Aren Skogstad during the Council session. "Small town Alberta is really hurting right now. This is something that needs to be brought to everyone's attention."

An additional Council motion advocated for the County's inclusion on the provincial Tax Deferral Index as a way to offset hardship in the agricultural sector. Lac Ste. Anne County is not currently listed on the index.

County Council and administration will continue their efforts to draw attention to the critical state of affairs that directly affects the viability of regional farming and ranching operations, and that also has a collateral impact on the financial and social health of Alberta as a whole. Please visit [LSAC.ca/agriculture](http://LSAC.ca/agriculture) for updates on this evolving issue.

## AFSC UNHARVESTED ACRES TOWN HALL

**Thursday, December 12 | 1:00 to 2:30 pm**

**Diamond Centre | 4814, 54 Street, Mayerthorpe**

AFSC recognizes the stress and uncertainty felt by producers waiting for field conditions to improve and harvest to be completed. AFSC representatives will be on hand to work with clients facing financial strain on a case-by-case basis to consider potential solutions. AFSC can also help with loan payment relief through interest only payments, payment re-amortization, and payment deferral.

Requests for interest-only payments or deferrals must be made prior to the payment due date. If the payment due date has passed, payment re-amortization is an available option.



# CHECK OUT THE SELLER BEFORE YOU CHECK OUT

**Submitted by Gerald Soroka, MP for Yellowhead**

OTTAWA: Gerald Soroka, Member of Parliament for Yellowhead, would like to inform constituents on how to recognize third-party sellers in online marketplaces. As more and more retailers switch to using third-party sellers on their websites, it is important to learn how to avoid unwanted surprises.

To identify when a third-party seller is being used, be on the lookout for sections on the retailer's web page that feature a list of "partners" or labels like "marketplace". Another sign to be on the watch for is the use of phrases like "fulfilled by", "sold by", or "shipped by" near the descriptions of

products.

In order to ensure that the retailer is using a trusted third-party remember that if the price of an item looks too good to be true, it prob-

ably is. Another important note to keep in mind is that credible vendors will likely have detailed contact information and return policies. More information can

be found at: <https://www.canada.ca/en/competition-bureau/news/2019/11/check-out-the-seller-before-you-checkout.html>

**PRICE REDUCED**



**14K White Gold Diamond Ring**  
Brand New, Still in Box, Tags on!  
**Asking \$2,745**



**14K White Gold Engagement Ring**  
Brand New, Still in Box, Tags on!  
**Asking \$2,300**



**10K White Gold Diamond ring**  
Brand New, Still in Box, Tags on!  
**Asking \$1,375**

Call for more information, or to view the ring 780-907-8642

LAC STE. ANNE COUNTY



NEWS HIGHLIGHTS

Lac Ste. Anne County | Box 219, Sangudo Alberta T0E 2A0 | 1.866.880.5722 | [www.LSAC.ca](http://www.LSAC.ca) | [facebook.com/LSACounty](https://facebook.com/LSACounty)

**PLANNING & DEVELOPMENT**

## NOTICE OF DEVELOPMENT PERMIT APPROVALS

The following Development Permits have been approved or conditionally approved under the provisions of the Land Use Bylaw. This list does not include Permitted Uses.

Interested parties are encouraged to contact the Planning & Development Department at **1.866.880.5722** or [devassistant@LSAC.ca](mailto:devassistant@LSAC.ca), Monday to Friday from 8:30am until 4:30pm to request additional information on a permit.

PERMIT #	LEGAL LAND DESCRIPTION	DESCRIPTION	APPEAL DATE DEADLINE
19-D0180	55007 Ste. Anne Trail, Lakeview Campground within SE 02-55-03 W5M	Playground set with slides 8.0' X 32.0	December 23, 2019
19-D0182	55007 Ste. Anne Trail, Lakeview Campground within SE 02-55-03 W5M	Existing playground sets and amenities (Playground sets, hockey rink, slip & slide, jumping pillow, mini golf, ball diamond)	December 23, 2019
19-D0218	54410 RGE RD 14 Lot 2, Block 1, Plan 0424142 within SE 29-54-01 W5M	2400.0 sq. ft. Shop with 20.0' walls, standard footings and ICF walls	December 23, 2019

Anyone who claims to be affected and who wishes to lodge an appeal against any of the above developments must do so in writing on the applicable form on or before 4:30 pm on the above noted date(s).

**Secretary of the Subdivision and Development Appeal Board, c/o Lac Ste. Anne County, Planning & Development Department, Box 219 Sangudo, Alberta T0E 2A0.**

**PLEASE NOTE:** The County requires that a non-refundable fee of \$250.00 be paid for every appeal served on the Subdivision and Development Appeal Board. The fee may be paid by cheque, Visa, MasterCard, Interac or cash.

# WHITECOURT TOWN COUNCIL UPDATE

**Submitted by Town of Whitecourt**

NOVEMBER 29, 2019

Whitecourt awarded a FireSmart Vegetation Management Project valued at \$166,295 to Wide Open Slashing. The project, which is fully funded through a grant from the Forest Resource Improvement Association of Alberta, will in-

clude treating 20.7 hectares and retreating 22.7 hectares of Crown land using FireSmart principles and practices in the east valley area.

A Quarterly Financial Report up to September 30, 2019 and the 2019 Project List have been adopted as information by Council. The reports provide supplementary information to

Council on providing municipal services to the community, and highlight areas of importance and successes. The documents can be viewed on our website at [www.whitecourt.ca](http://www.whitecourt.ca).

Whitecourt has invited Woodlands County Council to meet on January 27, 2020 to review Phase 1 of the Regional Business Park Feasibility Study. The Study,

which is a partnership project, will help to determine the current and future demands to remain viable, as well as promote responsible and sustainable industrial development in our region. The project is funded through the Alberta Community Partnership Grant.

## CHARGES LAID IN HOMICIDE INVESTIGATION

**Submitted by RCMP Major Crimes Unit**

UPDATE - The RCMP have laid charges in relation to a homicide investigation which was launched on Nov. 17, 2019 following the discovery of a deceased female on Range Road 274.

Blake Jolicoeur (36), of Spruce Grove, has been

charged with Second Degree Murder in the death of Saladina Vivancos.

A judicial interim release hearing has been held, and Jolicoeur remains in custody. He is scheduled to attend court in Stony Plain on November 27, 2019.

**BACKGROUND**

On Nov. 17, at about 1:30 a.m. the Parkland RCMP re-

sponded to Township Road 532A and Range Road 274, just north of Highway 16, to assist EMS with a complaint of a female in medical distress. On scene, it was determined that the female was deceased.

The RCMP Major Crimes Unit (MCU) responded to investigate with the assistance of Parkland RCMP Se-

rious Crimes Unit, Forensic Identification Section and Police Dog Services.

An autopsy was conducted at the office of the Chief Medical Examiner in Edmonton. The manner of death is deemed to be a homicide. The deceased female has been identified as 33-year-old Saladina Vivancos.

# GROVE HEARING CLINIC

## 960-2960

## 1-866-960-2960

Hear what you've been missing...

Senior Discounts



Full Service & Repair

Full Hearing Assessments

**HOURS OF OPERATION: 9am – 5pm Weekdays**

3rd party billing (AADL, WCB, DVA, FCH) • Personal 0% Financing if Needed

For The Latest Technology In Hearing Aids & Assisted Living Device Stop By & See Dawn

**#220-70 McLeod Ave - Westland Market Mall, Spruce Grove**



# All Precious JEWELLERS

**Draw For Your Discount  
5-50% off Until Dec. 24<sup>TH</sup>  
except Bradford Exchange and  
Grandfather Clocks**

**Authorized Dealers  
Bulova, Citizen, Bering,  
Caravelle, Accutron**

**We do Engraving!**



**THE  
BRADFORD EXCHANGE**

**780-960-4200**  
**#102 McLeod Ave**  
(next to Something Else Restaurant),  
**SPRUCE GROVE**

**Over 30 Years in the  
Jewellery Industry.  
Experienced  
Goldsmiths on Site**



**Holiday Hours** Starting on  
December 8  
**Mon - Fri 9:00am - 7:00pm**  
**Thursday Late Night Shopping**  
**Saturday 10:00am - 5:00pm**  
**Sunday 11:00am - 4:00pm**  
[www.allpreciousjewellers.ca](http://www.allpreciousjewellers.ca)



**BARRHEAD MAINSTREET  
MERCHANTS PRESENTS**

# Santa Claus Parade

**DECEMBER 6, 2019 • 7:00-9:00PM**

*Come out for an evening of fun.*

The parade route will be as follows: The parade will proceed east down 50 Ave then turn North onto 50st (Main St), then turn west onto 52nd Ave (by the Post office), next the parade will turn south onto 52st and finally the parade will turn west onto 50 Ave where it will finish and disperse.

*A fun  
family night!*

**Main Street  
Barrhead, AB**



# THESE PAGES ARE SPONSORED BY THE FOLLOWING BUSINESSES



**Total Relief  
Plumbing &  
Heating**  
674-4713



**KNM**  
SALES & SERVICE  
**KNM Sales  
& Service**  
674-2888



**Barrhead  
Chiropractic  
- Dr. Peter See**  
674-2861



**A&W  
- Barrhead**  
674-7666



**McEwen's  
Fuel & Fertilizers**  
**MC EWEN'S**  
674-2146



**Limb  
Walkers  
Tree Care Ltd.**  
203-4705



**Stephani  
Motors Ltd.**  
674-2211



**Bert's TV &  
Appliances**  
674-3001



**Barrhead  
Home Building  
Centre**  
674-4710



**All Around  
Manufacturing  
& Mechanical Ltd.**  
674-5115



**JS Jewellery**  
674-5055



**Barrhead  
Ford Inc.**  
674-2227



**Fountain Tire  
-Barrhead**  
674-6151



**Stuber's  
Cat Service Ltd.**  
785-2173



**A.T.B.  
Financial  
- Barrhead**  
674-2241



**NAPA  
Auto Parts  
(McLean  
Distributors)**  
674-3381



**Sunshadow**  
674-4868



**Barrhead  
Sound 1982 Ltd.**  
-Audio Video, Unlimited  
674-3903



**Sandermans  
Home Hardware**  
674-2427



**Scotiabank  
-Barrhead**  
674-8407



**Barrhead  
Auto Parts  
& Salvage Ltd.**  
674-3443



**Integ  
Distributors**  
  
674-8977



**Barrhead  
Machine &  
Welding Ltd.**  
674-2924



**Pembina  
West Co-op**  
674-2201



**Barrhead  
One Stop  
Auto Centre Ltd.**  
674-4153

# DECEMBER NEWS FROM THE RICH VALLEY PUBLIC LIBRARY

## Submitted by Rich Valley Public Library

Public Skate at the Rich Valley Arena on Friday December 6, 2019 from 7:15-8:45 pm.

The Rich Valley Public Library is proud to sponsor public skate at the Rich Valley Arena. Join us on Friday December 6, 2019 from 7:15-8:45 pm for hot chocolate, skating and a chance to enter your name into our draw for prizes. This program is funded by the Lac Ste Anne County FCSS.

This month's programs:

Akhanda Yoga is every Tuesday from 10:00-11:30 am. Our second session dates will run on Tuesday November 5,

November 12, November 19, November 26, December 3, December 10 and December 17, 2019 from 10:00- 11:30 am. After a holiday break, a new session will start on January 7, 2020. The cost will be \$60.00 for the 6 classes or a \$12.00 drop in fee. Please contact the library at (780)967-3525 to register or drop in on Tuesdays. All levels of yoga experience are welcome.

Storytime is every Wednesday from 11:00-11:45 am. Bring your toddlers in on Wednesdays from 11:00 to 11:45 am for stories, activities and crafts. All children ages 0-5 are welcome to join us at this free program. Every third Wednesday of the

month we will alternate between Tents and Tunnels, Play Doh Fun, Literacy Activities and Lego Building. Our last Storytime before Christmas will be December 18, 2019 and we will start up again on January 8, 2020. This program is funded by Lac Ste Anne County FCSS.

Parents and Tots is every Wednesday from 9:45-10:45 am. Parents, guardians and caregivers are invited to bring your toddlers to play, discover and make friends at this free drop-in program held at the Rich Valley Public Library. All children ages 0-5 are welcome. Snacks, juice and coffee will be provided. Our last Parents and

Tots before the holidays will be December 18, 2019 and we will resume our regular schedule on January 8, 2020. This program is funded by Lac Ste Anne County FCSS.

Adult Whist is on every 2nd & 4th Friday of the month at 7:30 pm. If you like cards join us for a night of fun and laughs. The cost is only \$2.00 per person and is held in the Yellow Room.

Our January program is Learn to Sharpen Your Own Knives on January 18, 2020 at 1:00 pm. Never struggle with dull knives in your kitchen again! Join us at the Rich Valley Public Library in the Yellow Room to learn how to sharpen your most used and therefore first to dullen kitchen knives. Bring one or two of your own knives and whatever sharpening tools you have at home. We will have someone on hand to show you how to use it effectively. Please contact the library at 780-967-3525 or in person by January 16, 2020 so we can prepare accordingly. This program is funded by Lac Ste Anne County FCSS.

Holiday Closures.

We will be closed for the holidays from December 24, 2019 until January 1, 2020. We will resume normal business hours on January 2, 2020. We want to wish everyone a safe and happy holiday season.

We are located in the basement of the Rich Valley Community Hall. We have installed a stairlift in the Yellow Room so all our programs and services are accessible to everyone. If you are in need of the stairlift please press the buzzer at the front door and the library staff will assist you.

Rich Valley Public Library is open Tuesday from 5:00-8:00 pm, Wednesday from 10:00 am-2:30 pm, Thursday from 2:00-6:30 pm, and Friday from 9:00 am-12:00 pm. We look forward to seeing you!

Please check out our website at [www.richvalleylibrary.ab.ca](http://www.richvalleylibrary.ab.ca) and Facebook for all our programs and news.

**VALENTUS**

**YOUR LOGICAL SOLUTION TO WEIGHT MANAGEMENT**

CALL (780) 907-8642 FOR FREE SAMPLE

**DARK ROAST COFFEE**

**SLIMROAST Optimum**

**Exclusive functional coffee formulated to:**

- Crush Cravings
- Increase Energy
- Metabolize fat to Energy
- Help Regulate Blood Sugar
- Improve Mood & Focus
- Boosts Circulation & Oxygen delivery

**TO UNLOCK THE SECRET OF WEIGHT MANAGEMENT! PUT THE POWER OF SLIMROAST OPTIMUM IN YOUR CUP!**

Thrilled with my results! I lost 9 lbs and an amazing 11 inches off my abdomen! Works wonderfully!

Managed to lose 7 lbs very fast & much more in inches the way my clothes are fitting now! 1 cup a day is all for me!

Down 17 lbs and fitting into clothes that were way to tight before!

No dieting, first month finished. Down 7 ½ lbs 8.5 inches. Awesome product!

[www.ValentusTour.com/Ladybug](http://www.ValentusTour.com/Ladybug) (780) 907-8642

# CHRISTMAS COLORING CONTEST



**AGE GROUPS: 3-4 YRS | 5-6 YRS | 7-9 YRS | 10+ YRS**

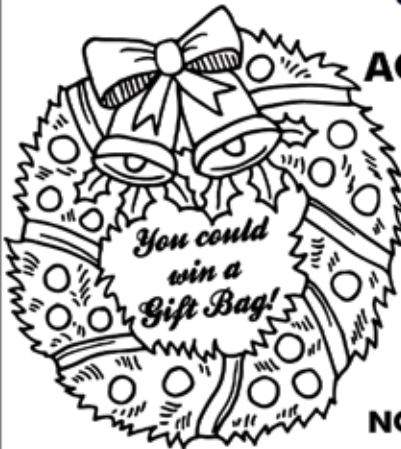
**NAME: \_\_\_\_\_ AGE: \_\_\_\_\_**

**PHONE: \_\_\_\_\_ TOWN: \_\_\_\_\_**

**Entries must be recieved by December 20, 2019.**

**Mail to: Santa Clause c/o Community Voice  
Box 3595 Spruce Grove, AB T7X 3A8**

**NOTE TO PARENTS:** Please ensure that your phone number is legible.



# YOUR LAKEWELL 4-H MULTI CLUB MONTHLY UPDATE

**Submitted by Lakewell 4-H Multi Club**

Our District, Lake Ste Anne, hosted the Northwest Regional Fair on Nov 23 at Mayerthorpe Jr. Sr. High School and running concurrently at the same venue was the Northwest Region's annual Knowledge

College. In amongst the approximate 145 people participating were eight from Lakewell. Three Members and two Cleavers attended the fair where they enjoyed participating in Craft sessions and entered items in the Bench Show. We sent two leaders and a parent to the College portion where

we were able to learn more about 4-H and how to be more effective participants in our club. A big 'shout out' goes to all those wonderful volunteers who put these two terrific opportunities together.

Our Annual Awards night will be held in conjunction with the December General Meeting on Dec 5th at 6:30 in the Lake Isle Hall. This is the time when we celebrate those members who have completed their 4-H year so this year it will be the seven Members and two Cleavers who completed the 2018/2019 year. Please come and join us for at this event and support these young people.

And - a plug for our next event, our Community Service. On Dec 14th, there will be a Christmas dinner at the

Lake Isle Hall. No money is required, just come out and share your family's favorite holiday dish. And perhaps bring along a donation to the food bank. For more information leave a message at 780 892 3121. Lakewell 4-H will be there helping to set up and clean up so come out and enjoy some community fellowship and good food.

January will see us gearing up for our Communications Day where our members will present either a speech or a presentation. It is wonderful to watch the members as they meet this challenge and grow into more confident and well spoken members of the community. Look for more details next month.



**SERENITY FUNERAL SERVICE**

---

**NEW FACILITY**  
Chapel & Reception Centre



600 Calahoo Road Spruce Grove, AB  
780-962-2749 [www.serenity.ca](http://www.serenity.ca)

SERENITY FAMILY SERVICE SOCIETY - YOUR NOT-FOR-PROFIT SOCIETY


# SUDOKU OF THE WEEK

## Fun By The Numbers

**Here's How It Works:** Sudoku puzzles are formatted as a 9x9 grid, broken down into nine 3x3 boxes. To solve a sudoku, the numbers 1 through 9 must fill each row, column and box. Each number can appear only once in each row, column and box. You can figure out the order in which the numbers will appear by using the numeric clues already provided in the boxes. The more numbers you name, the easier it gets to solve the puzzle!

**ANSWER:**

5	1	4	6	8	9	2	3	7
8	7	2	4	3	5	9	1	6
3	6	9	1	7	2	4	5	8
9	8	6	3	5	7	1	2	4
1	2	3	8	4	6	7	9	5
7	4	5	9	2	1	8	3	6
2	3	8	7	1	4	5	6	9
6	5	7	2	9	8	3	4	1
4	9	1	5	6	3	8	7	2



		4	6	8	9			
		2			5		1	
3	6				2			8
9	8		3	5				4
1			8			7		
7				2			8	3
				1		5		9
						3	4	1
4	9	1						

**Like puzzles?** Then you'll love sudoku. This mind-bending puzzle will have you hooked from the moment you square off, so sharpen your pencil and put your sudoku savvy to the test!





# Classified Ads - Call 962-9228

## Classified Policy

CLASSIFIED RATES INCLUDE GST. 1st 20 Words: First Insertion = \$6.00; Subsequent insertion = \$3.00 each. (Eg: 2 insertions = \$9.00; 3 insertions = \$12.00; 4 insertions = \$15.00; etc) Each additional word is 20 cents per word, per insertion. BOLD/CAPITAL text available for an additional \$1/line. Lost & Found and To Give Away (up to a max. of 25 words) are free of charge. Ads must be paid in advance either by cheque, cash, Visa or Mastercard. No Refunds Allowed on Classified Ads. DEADLINE: is Thurs. 4:00 pm (Wed. 4:00 pm on long weekends). Classified ads may be called in to the COMMUNITY VOICE office at (780) 962-9228, emailed to: [classifieds@com-voice.com](mailto:classifieds@com-voice.com), dropped off at Onoway Registries, or mailed with your ad and payment to: COMMUNITY VOICE, BAG 3595, SPRUCE GROVE, AB T7X 3A8. Ads may also be placed on the web at [www.com-voice.com/classified.htm](http://www.com-voice.com/classified.htm)

## Hall Rentals

- Alberta Beach Agliplex, Susan 780-996-2960.
- Alberta Beach & District Seniors 50+ Club. Air conditioning! Space Available! Val: 780-690-1655 or Dianne: 780-217-8482
- Anselmo Community Hall, Phone 780-786-4280
- Bright Bank Hall, 780-968-6813
- Cherhill Legion, Mary 780-785-3578.
- Cherhill Community Assoc. Hall, Kevin 780-785-8153
- Darwell Centennial Hall, 780-721-2690
- Darwell Seniors, Phone Debra 780-785-2907
- Goose Lake Hall, Contact Deanna (780) 584-3738
- Gunn Hall (G.A.R.S.) 780-951-9452
- Hathersage Community Centre, Noreen at 786-2946
- Lake Isle Community Hall, PH: 780-892-3121 or Email: [lakeislehall@mail.com](mailto:lakeislehall@mail.com)
- Magnolia Hall, 727-2015
- Manley Goodwill Community Hall, 963-9165 or 916-0146
- Mayerthorpe Diamond Centre, Charlotte at 786-4659
- Mayerthorpe Legion, 786-2470.

- Onoway Community Hall, 967-4749.
- Onoway Heritage Center - Gym/Classrooms, 967-1015
- Onoway Legion, 967-4980
- Park Court Community Hall, 727-4476
- Parkland Village Community Centre, 780-298-9155 @PVCCentre

- Ravine Community Hall, 325-2240
- Rich Valley Community Hall, 967-5710 or 967-3696
- Rosenthal Community Hall, 963-7984
- Sandy Beach Rec Hall, 967-2873
- Sangudo Community Hall, 785-2904 or 305-4616
- Stettin Nakumun Comm. Hall,

## Services

WANTED: Standing Timber – Are you looking to cut your wood lot before pine beetles or forest fires destroy it? Top dollar paid. Call Paul 780-706-1470 (12) 22-10

**PURE HEMP CBD PRODUCTS**  
AGING IS INEVITABLE - LOOKING AND FEELING OLD ISN'T!

**WHAT IS CBD?**

**A Health and Beauty Breakthrough!**  
Cannabidiol, CBD, is one of over 80 active cannabinoid chemicals in the hemp plant. CBD, unlike, THC, does not produce euphoria or intoxication. CBD targets specific receptors in the cells of your brain & body. There are many physical and mental benefits to using CBD products for both treatment and prevention of numerous ailments.

**Therapeutic Uses For Pure Hemp CBD**  
Supports healthy blood sugar levels, promotes healthy energy levels, relieves anxiety, aids in digestion, supports optimal immune function and the regeneration of healthy cells, and promotes a sense of serenity and overall well-being.

**Anti-Aging Uses For Pure Hemp CBD**  
Promotes more youthful skin, provides hydration, enhances radiance, lessens age lines as well as the appearance of dark spots.

**KEY BENEFITS**  
**PAIN RELIEF:** Known to reduce vomiting & nausea; suppress muscle spasms; reduce seizures & convulsions.  
**PROMOTES HEALTH:** Helps to promote relaxation and overall health.  
**WELL-BEING:** Helps to relieve anxiety, aid in digestion, supports optimal immune function and the regeneration of healthy cells.

**CBD PET PRODUCTS**

**PET CHEW TREATS**

**KEY BENEFITS**  
**SYNERGISTIC BENEFITS:** Can be used in conjunction with regular medications with no side effects.  
**NO SIDE EFFECTS:** Does not damage the liver, kidney or GI Tract like OTC medication.  
**DIETARY SUPPLEMENT:** Can be administered daily as part of your pet's diet.

**ORAL SPRAYS & DROPS**

**KEY BENEFITS**  
**MANAGES PAIN:** Helps to treat inflammation, arthritis and joint pain.  
**TREATS DIGESTIONAL ISSUES:** Helps with loss of appetite, nausea, IBS and gastrointestinal swelling.  
**GENERAL HEALTH:** Helps to manage mood, anxiety and general joint pain. For healthy, happy pets.  
**CONVENIENT:** Can be sprayed into pet's mouth or on food.

**For more information, Call (780) 907-8642**

# Classified Ads - Call 962-9228

## Dog Caretaker

Alberta Beach & Surrounding Areas, thinking of a Winter Getaway? Worried about leaving your dog in a kennel? Don't worry anymore, you can leave your pet with me! There is a wrap around deck and courtyard! I will provide tender loving care, with walks every day. Best of all, I'm cheaper than a kennel! Daily drop in's or

overnight stays welcome. If interested call 780-920-4166 (4) 12-11 OG

## Computers

COMPUTER REPAIRS NOT over \$50. Get a good, clean, refurbished, Upgraded Laptop or Desktop for ONLY \$100. Discount for Single Parents or Seniors. Donate Used Computers/will clear data. Call: 780-892-2407 (12) 05-11

## Firewood

**FIREWOOD FOR SALE** - Birch, Tamarack & Spruce Pine mix. Poplar. 4x4x8 cords and 1/2 cords. Quality seasoned wood, Delivery or Pick up. Woodchuck Firewood, 780-288-7247 (28) 28-05 OG

**SEASONED FIREWOOD:** Birch, Tamarack, Spruce/Pine & Poplar. 4x4x8 cord, Split and delivered or pick up

at wood yard, 1/2 cord or full cords available. Call 780-967-5835 or 780-983-1495 (28) 27-08

**LOCALLY OWNED ALBERTA BEACH FIREWOOD** - Spruce & Birch. Call 780-719-9473 or 780-904-6440 (4) 19-11

## Buy & Sell

I BUY GUN COLLECTIONS and World War 2 Collectables, Please call Jay for a quote 780-686-1350 (30) 19-11

## For Rent

Alberta Beach Hotel rooms for rent. Upgraded, very clean & well maintained, shaw cable tv included. \$60.00 per night or \$500.00 per month + GST. Damage deposit is required. Call 780-924-3005 for more information (50) 08-01

**Homer's Hut Cabin Rentals** - Daily, weekly, monthly rates, Alberta Beach area, Call Connie 780-913-8024 (15) 17-09

Completely renovated Motel in Onoway, AB. offering daily, weekly or monthly rentals. All utilities included, 55 inch tv with Satellite. Double bedrooms, furnished bachelors with full kitchen and furnished 1 bedrooms with full kitchen available. Please call Peggy for viewing at 780-967-4420 or 1-403-742-6467. www.onowayinnandsuites.com (4) 12-11 OG

ALBERTA BEACH - Newer 2 bdrm apartment, downtown, awesome view looking over the lake, 1100sqft, washer/dryer/central vac, 2 baths, stainless steel appl, open concept, please call Cheryl 780-982-6922 (4) 12-11 OG

**Cash for Cars**  
**967-2492**  
**R & S TOWING**

# PREVAIL MAX

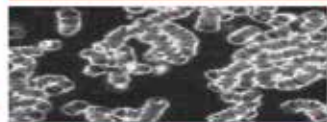
CELLULAR HOMEOSTASIS FORMULA

A NUTRITIONAL BREAKTHROUGH THAT SUPPORTS YOU ...RIGHT DOWN TO THE LAST CELL!

How do you want your **BLOOD** to look?



### Before PrevailMAX:



- poor circulation
- low energy
- brain fog
- dehydration
- decreased nutrients
- pH imbalance
- poor endurance

### After PrevailMAX:



- better circulation
- more vitality
- mental clarity
- cellular movement
- nutrient assimilation
- balanced pH
- optimal endurance

PrevailMAX™ is a nutritional breakthrough that delivers a rapid increase of internal blood cell pressure to speed absorption, enabling the body to take maximum advantage of the nutrients in foods and supplements. The electrolytes are small enough to penetrate your cell membranes, to bind with your cells, and to be carried wherever they are needed in the body.

At the microscopic level of human cells, PrevailMAX™ supports healthy cell performance – a nutritional breakthrough for your cells.

When you use PrevailMAX™, you will feel more energy and an ability to focus like never before. Take a few sprays today and see just how good you can feel!

LIVIN TRIM WITH **VALENTUS**

www.ValentusTour.com/Ladybug (780) 907-8642

# COMMUNITY EVENTS 2019

If you are a LICENSED, NON-PROFIT ORGANIZATION, you are welcome to submit your announcement FREE of charge, space permitting. You are required to submit your non-profit number. Call (780) 962-9228. Please note that all submitted event listings must be limited to 200 characters or less (including spaces). DEADLINE: 12 noon Friday prior to publication (Thursdays on long weekends).

**DEC 6 - THE ANNUAL ROTARY FESTIVAL OF CAROLS,** 7:00 pm at St. Matthew Lutheran Church 5021- 52 Ave. Stony Plain. In support of the Parkland Food Bank.

**DEC 7 - JAMBOREE** at Sangudo Community Hall, starts at 7:00 pm. Late lunch will be served. \$12.00/person (Entertainers free). Everyone is welcome. Info call 780-305-5088 or 780-785-4105.

**DEC 8 - COWBOY CHRISTMAS,** 2pm at Hope Church (2 miles N of Stony Plain on Hwy 779 & Hwy 16). FREE event. Offering for local Kinsmen Christmas hampers and Hope Mission. Info. 780-963-1553

**DEC 8 - ANNUAL CHRISTMAS TURKEY BINGO AND BONANZA,** at Calahoo Community hall. Doors @ 1pm, 1st game starting at 2pm. \$5/cost, All proceeds to St. Catherine's Catholic Church of Calahoo

**DEC 31 - NEW YEARS EVE JAMBOREE** at Sangudo Community Hall, starts at 7:00 pm. Late lunch will be served. \$12.00/person (Entertainers free). Everyone is welcome. Info call 780-305-5088 or 780-785-4105.

**JAN 4 - JAMBOREE** at Sangudo Community Hall, starts at 7:00 pm. Late lunch will be served. \$12.00/person (Entertainers free). Everyone is welcome. Info call 780-305-5088 or 780-785-4105.

## FARMERS MARKETS

**BARRHEAD:** Open Saturdays, May - Dec. 10AM -1PM. Sherry 780-674-6802.  
**ONWAY FARMERS' MARKET:** Thursdays, 5-8pm at Onway Community Hall. Starts May 1st. 780-667-6327 or onwayfarmersmarket@gmail.com.  
**SPRUCE GROVE:** at the Elevator, Sat 9:30-1:30PM, tables (780)240-5821  
**STONY PLAIN:** Sat, 9AM-1PM, Downtown, Stony Plain. Nancy 780-962-3993.  
**WESTLOCK:** 11-3PM, Bargain Shop Mall, Dave 780-954-2437

## BINGO

**BARRHEAD ROYAL CANADIAN LEGION:** Doors 5:30PM, games start 7PM. Games: #7, Jack Pot, Mini Jack Pot, Loonie #1 & #2.  
**CHERRILL BINGO:** Tuesdays at Cherrill Community Association. Doors @ 6:30PM, Games @ 7:30PM.  
**CHERRILL LEGION:** First Sunday of Month. Doors Open 12:00PM  
**MAYERTHORPE ROYAL CANADIAN LEGION:** Tues, doors 6:30PM, bingo 7:30PM  
**RICH VALLEY COMMUNITY HALL BINGO:** 7:30PM. Loonie Pots. Next bingos November 13 & 27, December 11.  
**STONY PLAIN SENIOR'S DROP-IN CENTRE,** public bingo every Tues, 7PM. All ages welcome. Phone (780) 963-6685  
**WHITECOURT SENIORS CIRCLE,** Every Tuesday. Open @ 5PM, 1<sup>st</sup> call @ 6:45PM, Nevada, Concession. 780-778-4950 \*Sept - June

## MEAT DRAWS

**ALBERTA BEACH MUSEUM:** Every Sat 4PM, Alberta Beach Hotel  
**ALBERTA BEACH:** Lac Ste Anne Community Choir & Onway Minor Hockey Meat Draw - Sundays, 4:00PM at Jungle's Bar & Grill.  
**BARRHEAD ROYAL CANADIAN LEGION:** Fridays 6:00PM. Queen Of Hearts draw & 50/50.  
**DARWELL:** by Alberta Beach & District Lions Club, 4:00PM bi-weekly, Darwell Lounge & Restaurant  
**ONWAY ROYAL CANADIAN LEGION:** Fridays, Ph. 780-967-5361  
**STONY PLAIN ROYAL CANADIAN LEGION BR# 256:** Saturdays @ 3:00PM. Meat Draw & 50/50.  
**WHITECOURT LEGION:** Saturdays 4:00PM. Located downtown behind the CIBC.

## MEALS ON WHEELS

**ONWAY:** LSAC Div 1 & 2, East of Hwy 43. Hazel Bourke: 780.967.2338 or bhbourke@icloud.com  
**WEST END:** Sangudo, Mayerthorpe & west end of LSAC. Jill: 780.785.2924 or Donna: 780.785.3118 or email: westendmow@outlook.com

## JAMBOREES

**CARVEL:** 2<sup>nd</sup> Sunday of month. \$6 lunch served. Info 780-991-3001  
**MAGNOLIA:** at Magnolia Hall. 2<sup>nd</sup> Saturday of Month. New Time is 1:00PM. Call to confirm, 727-2015. \*October - May, NO Dec.  
**SANGUDO:** Sangudo Community Hall, 1<sup>st</sup> Sat of month 7pm. 785-4105 or 305-5088. \*October - May.  
**SPRUCE GROVE:** at Sandhills Community Hall, 3<sup>rd</sup> Sunday, 1-5PM. Info Florence 780-962-3104 Margaret 780-962-3051 \*September - June.

**STONY PLAIN:** Stony Plain Seniors Drop In Center, 5018 - 51 Ave. Every 2<sup>nd</sup> & 4<sup>th</sup> Thurs of month, 7PM, \$2. PH: 587-989-7214 or 963-7920.  
**THE ABBOTSFIELD VARIETY MUSIC JAM:** at Abbotsfield Rec Centre (3006 119 Ave. Edmonton) 3<sup>rd</sup> Friday of month, 7PM. PH: 780-918-8545, Adm: Donations Only.  
**WHITECOURT SENIORS CIRCLE:** 2<sup>nd</sup> Sunday of the month 1-5PM, \$5/Adm Door prizes & 50/50 draw. 780-778-4950 \*Nov - June

## TOPS (Take Off Pounds Sensibly)

**ALBERTA BEACH:** Tuesdays, Weigh-in 6:00-6:45PM. Meeting 7:00PM. Alberta Beach Lutheran Church, Hwy 633. 967-5009.  
**EDMONTON:** Thurs 8:30-10AM at Annex of Grace United Church (6215-104 Ave). \$7/month  
**SANGUDO:** Tues, United Church, 6:00PM. Sharon 785-2095 or Marlene 786-4646.  
**STONY PLAIN:** Thurs evening, Stony Plain United Church. Susan (780) 968-0869  
**SPRUCE GROVE:** Wed 8:45AM at Anglican Church, 131 Church Rd. Christiane 960-1109

## YOUR COMMUNITY

**ONWAY ROYAL CANADIAN LEGION:** Open Tuesdays 7:00PM to 10:00PM for "Games" (pool, shuffleboard, darts, cards, etc.) Fridays 3:00 PM- 10:00PM. Friday's Family Friendly Dinner, 5:30PM (open to the public).  
**PROBLEMS WITH DRUG OR ALCOHOL ADDICTION** in a loved one? Contact Drug Rehab Resource free confidential consultation. 1-866-649-1594 or www.drugrehabresource.net.  
**SPRUCE GROVE ELEVATOR TOURS,** Tues-Sat, 9:00-3:00PM, Info 960-4600.  
**UNITED CHURCH THRIFT SHOP:** North end Curling Rink, Onway. Open Fri & Sat, 10AM-4PM.  
**VOLUNTEER TUTOR ADULT LITERACY PROGRAM:** Need assistance with reading/writing, English language (ESL) or Basic Computer skills? Free 1-on-1 tutoring! Carla Burkell, 780-554-2940, email: literacy@lsac.ca  
**WATER SAMPLE DROP OFF:** Tues Onway Aspen Health Services. Drop off 1:00-2:30PM.

## SOCIAL EVENTS

**ALBERTA BEACH & DISTRICT ACTIVE 50+ CLUB ACTIVITIES:** Mon 7PM Darts, Tues 7:30PM Crib; Wed 1PM Bridge, Thurs 7:30PM Euchre; Mon, Wed, Fri 8:30AM Aerobics/Fitness. Everyone Welcome.  
**BADMINTON:** Wed, 7-10PM, Barrhead High School GYM. Jamie (780)674-8974 or (780)674-6974.  
**COME PLAY CRIB:** Fridays, 7:30PM at Darwell Seniors Hall; lite lunch is served. All ages!  
**COUNTRY QUILTERS** in Stony Plain house a "Sew in Tuesday", 2<sup>nd</sup> Tuesday of every month, from 10-3PM. Drop in \$5/member, \$6/non-members. Contact Cindy 780-963-7170.  
**JR. SCRAPBOOKING** Wed 4-6PM. Pre-register by Tues evg. Mayerthorpe Public Library www.mayerthorpelibrary.ab.ca (780)786-2404  
**"ME, YOU, & EVERYBODY"** Fun new local program for people of all ages with disabilities. Thursdays @ Alberta Beach Agliplex from 10:00-11:00AM starting May. Funded Lac Ste Anne FCSS.  
**ONWAY GOLDEN CLUB:** Cards Tuesdays, 1PM, 1<sup>st</sup> Tuesday: Pot Luck Supper. 5023 49 Ave. 780-967-3436.  
**ONWAY HAVE FUN & GET FIT!** Exercise Class with Video La Blast. Fridays 10:30AM at the Drop in Centre, 5023-49 Ave. PH: 780-967-

2056.  
**PANCAKE/BREAKFAST SOCIAL:** 3<sup>rd</sup> Sunday 9:00-11:30AM, Parkland Village Community Centre. \*except June, July, August  
**RIVER TALKERS TOAST MASTERS CLUB,** Thursdays, 7-9PM. 32 Whitecourt Ave. Hilltop Community Church. Info Lorainne 286-5040.  
**SANGUDO ART GROUP:** Wednesdays 9AM-12PM at Sangudo Community School. Info call 780-785-2112.  
**SPIRITUAL LIVING STONY PLAIN INSPIRATIONAL CINEMA & DISCUSSIONS** at PERC Building (5413-51 St). 2<sup>nd</sup> Friday of month at 7PM. Popcorn provided, donations appreciated. Contact 780-940-3032  
**SPIRITUAL LIVING STONY PLAIN CATHEDRAL:** at PERC Building (5413-51 St). Every 2<sup>nd</sup> & 4<sup>th</sup> Sunday of month. Meditation 10AM, inspirational sharing 10:30AM. PH 780-940-3032.  
**WHITECOURT SENIORS CIRCLE DROP IN CRIB** 1<sup>st</sup> & 3<sup>rd</sup> Sundays 1:00PM. 780-778-4950  
**WRITERS PROGRAM:** Mayerthorpe Library, 1<sup>st</sup> & 3<sup>rd</sup> Wednesday at 1PM.

## MEETINGS

**1ST ONWAY SCOUTS:** Registration, Mondays 6:30-8PM, Beavers 5-7; Cubs 8-11; Scouts 12-14. Kim 967-4339.  
**2716 ROYAL CANADIAN ARMY CADETS,** Wednesdays 6:30-9:00PM at Mayerthorpe Legion. Youths 12-18yrs. Call 780-515-1842  
**299 ROYAL CANADIAN SEA CADETS CORPS MACKENZIE:** Stony Plain Comm Center, Wed 6:30PM. Youths 12-18. 963-0843  
**3053 (LAC STE ANNE) ROYAL CANADIAN ARMY CADET CORPS,** Onway Historical Centre, Wed. 6:45-9:30PM. FREE program for youths 12+, Contact 3053army@cadets.gc.ca or 780-886-1586  
**526 BARRHEAD AIR CADETS,** Wed 6:30-9:30PM, High School. Ages 12-18. 780-305-7233  
**755 PARKLAND AIR CADETS** Thurs, 6:30-9:30PM Muir Lake School, ages 12-18. Info call 405-6585 or www.755aircadets.com.  
**AA - MAYERTHORPE,** Kingsmen Hall, Thurs 8PM. (780) 786-2604 or (780) 786-1927  
**AA - SANGUDO GOLDEN CLUB,** Tues 8PM call 786-4402/785-9214/785-3599  
**AL-ANON - ONWAY:** Meetings are at 7:00PM, Tuesday evenings, at the Onway United Church.  
**AL-ANON** Wednesdays, 8PM. Spruce Grove United Church, 1A Fieldstone Dr. 780-962-5205  
**ALBERTA 55 PLUS:** Villenue Hall at 10AM. Meetings on 2<sup>nd</sup> Tues of month. Info: Donna 780-962-5933  
**ALBERTA BEACH & DIST LIONS CLUB** meets every 4<sup>th</sup> Tues 7:00PM, Alberta Beach Agliplex.  
**ALBERTA BEACH AG SOCIETY** meets on the 4<sup>th</sup> Thurs of month, 7:00PM, Alberta Beach Agliplex.  
**ALBERTA BEACH MUSEUM** meets on the 2<sup>nd</sup> Wed, 7:00PM at Heritage House 924-3167.  
**ALCOHOLICS ANONYMOUS:** The Journey of Hope Group, Fridays 8PM, (please arrive earlier). Present location in church basement 4805 - 50 St. Onway  
**BARRHEAD & AREA CANCER SUPPORT GROUP:** 4<sup>th</sup> Thurs. 6:30-8:00PM at Barrhead United Church.  
**BARRHEAD ROYAL CANADIAN LEGION,** meeting every 2<sup>nd</sup> Thurs, 7PM at the Legion Hall.  
**CHERRILL COMMUNITY ASSOC.** Monthly Meeting 1<sup>st</sup> Wednesday, 8PM at the Hall. 785-2825 \*except Jan, July, Aug, Sept.  
**CHERRILL SILVER & GOLD SENIORS CLUB** Regular Meetings 1<sup>st</sup> Tuesday of month, Cherrill Seniors Hall. Call Rosamy 780-785-

2625  
**CHERISHED MEMORIES, PARENTS & TOTS** Wed & Fri, 10-12PM, Alberta Beach Agliplex. Info call 780-902-4879 or 780-999-7622. \*Sept-June.  
**Citizens Helping In Life's Defence (C.H.I.L.D.)** Join our Live meetings for the Spruce Grove/Stony Plain area once a month. Call Chris 780-963-6997.  
**DARWELL & DISTRICT AG SOCIETY MEETINGS,** 8:00PM, 1<sup>st</sup> Monday, Darwell DDRA MEETING, 7:00PM, 2<sup>nd</sup> Mon, Darwell Centennial Hall 721-2690. \*except Jul/Aug/Dec  
**GIRL GUIDES, BROWNIES & SPARKS** Thurs, 6:30PM, Onway Heritage Centre. Info Laura, 780-967-1004.  
**GREENCOURT COMMUNITY ASSOCIATION** meet 2<sup>nd</sup> Tuesday, monthly at 7:30PM at the hall. Info W. Jager (780) 786-4648.  
**KINETTE CLUB OF MAYERTHORPE,** 7:30PM at Kinsmen Hall, 1<sup>st</sup> Tues of month. Contact: mayerthorpekinettes@gmail.com, Tracy: 780-786-0161.  
**LAC STE ANNE ARMY CADETS,** Thurs, 6:30-9:30PM at Onway Museum (780) 967-0443  
**LAC STE ANNE COMMUNITY CHOIR,** Wednesdays 7PM at the Heritage Centre in Alberta Beach (50+ Club behind the hotel). Further info, call Diane @ 780 924-2348. \*\*Registration for Spring session - Jan. 8 & 15 - 6-7 pm.  
**LAC STE ANNE & LAKE ISLE WATER QUALITY MANAGEMENT SOCIETY:** 3<sup>rd</sup> Fri, 7PM, Alberta Beach Council Chambers.  
**LAKE ISLE HALL COMMUNITY HALL BOARD MEETINGS:** 3<sup>rd</sup> Wed of each month @ 7:30PM at the Lake Isle Hall (Hwy 633 and RR55) Ph # 780-892-3121  
**MAYERTHORPE HOSPITAL AUXILIARY ASSOC,** every 4<sup>th</sup> Mon, 5PM in Hospital Basement Education Room.  
**MEN FOR SOBRIETY:** Wednesdays at 7:30PM, FCSS Building #105, 505 Queen Street, Spruce Grove). Mike (780) 965-9991.  
**MS SOCIETY PARKLAND COMMUNITY SUPPORT GROUP** Are you diagnosed with MS and have questions? Last Tues of month, 7-9PM, Westview Health Centre. Cassy 780-471-3034. \*Sept-June  
**NA MEETING,** Tuesdays 7:00PM Poplar Valley Church (780)514-6011  
**ONWAY & DIST HERITAGE SOCIETY:** 2<sup>nd</sup> Wed of each month, 7:00PM, Onway Legion  
**ONWAY & DISTRICT HISTORICAL GUILD:** 3<sup>rd</sup> Wed 7PM, Onway Museum. 967-5263 or 967-2452.  
**ONWAY & DISTRICT QUILT GUILD:** Every 2<sup>nd</sup> Thurs, 10AM-4PM, @ the Lac Ste. Anne Chateau Activity Room. Info, Ph Lyla @ 780-967-2629.  
**ONWAY ROYAL CANADIAN LEGION** General Meetings, 1<sup>st</sup> Mon, 7PM, \*Sept-June  
**RICH VALLEY AG SOCIETY BOARD MEETINGS:** at the Agliplex on the 2<sup>nd</sup> Wed of the month, 7:00PM.  
**RIVER TALKERS TOASTMASTERS CLUB** Build confidence, speaking, leadership & listening skills. Thursdays 7-9PM at Eagle River Casino. Call Melinda Tarcan, (780)778-1180.  
**SANGUDO PAINTING GROUP:** Every Thurs, 9AM-12PM at Sangudo Community School. Info, call 780-785-2112.  
**SUNDOWNERS TOASTMASTER CLUB:** Mon (excl. Holidays) 7:30-9:30PM. St. Matthews' Church, Spruce Grove. Judy 960-5258  
**WEIGHT WATCHERS** Alberta Beach Agliplex - Mondays, weigh in 6:30PM. Meeting at 7PM.  
**WESTLOCK & AREA CANCER SUPPORT GROUP:** 3<sup>rd</sup> Wed. 6:30-8:00PM at Westlock Library.

# Church Directory

<p><b>Rich Valley Community Church</b></p> <p>Sunday School 10:00a.m.</p> <p>Worship Service 11:00a.m.</p>	<p><b>Catholic Parish of Lac Ste. Anne</b></p> <p>Sunday 10:00a.m.</p>		<p><b>Mayerthorpe Baptist Church</b></p> <p>Worship Service Sunday 10:30a.m.</p> <p>Children's Church 10:30a.m.</p> <p>4606-54 St. Mayerthorpe (780) 786-2677</p>	<p><b>Alberta Beach Alliance Church</b></p> <p>Sunday Worship Service &amp; Kid's Church 11:00a.m.</p> <p>Sunday School 10:00a.m.</p> <p>(780) 924-3282</p>	<p><b>St. John's Anglican Church</b></p> <p>Onoway Sunday Service 10:00a.m.</p> <p>Everyone Welcome</p>
<p><b>St. John's Lutheran Church</b> Alberta Beach</p> <p>Sunday Service 11:00a.m.</p> <p>Sunday School</p>	<p><b>Zion United Church</b></p> <p>Sunday Service 10:00a.m.</p> <p>Sunday School</p> <p>Serving Alberta Beach, Wabamun, Darwell &amp; Lake Isle, Onoway &amp; Area (780) 924-3351</p>	<p><b>Sangudo United Church</b></p> <p>Worship Service 3<sup>rd</sup> Sunday 11:00a.m.</p> <p>4907-50 Ave. Sangudo, AB</p>	<p><b>St. Mary's Anglican Church Service</b></p> <p>Holy Communion 2<sup>nd</sup> Sunday each month 11:00 a.m. at Sangudo United Church</p> <p>Reverend Barry Rose Officiating</p>	<p><b>Cherhill Community Church</b></p> <p>Sunday School 10:00a.m. - 11:00a.m.</p> <p>Worship Service Sunday 11:00a.m.</p>	<p><b>St. Michael Lutheran Church</b></p> <p>Sunday Services 1<sup>st</sup> &amp; 3<sup>rd</sup> Sunday at 2:00p.m.</p> <p>Pastor Rick Chappell (780) 674-2618 Mystery Lake</p>
<p><b>Trinity Lutheran Church (LC-C)</b> The Church of the Lutheran Hour - Rockyfort Bridge Pastor Dan Hansard Church (780) 778-2055</p> <p>Sunday Worship 9:00a.m.</p> <p>Senior's Service &amp; Cottage Bible Study - Phone for locations</p>	<p><b>Mayerthorpe Pentecostal Assembly</b></p> <p>P.A.O.C. Rev. Arnold Lothoiz</p> <p>Sunday 10:30a.m. Morning Service Tuesday 7:30p.m. Ministry Training (780) 786-2141</p>		<p><b>Onoway Baptist Church</b></p> <p>Sunday Service 10:30a.m.</p> <p>Pastor Greg Garbutt (780) 967-2266</p>	<p><b>Roman Catholic Church</b></p> <p>St. Agnes' Parish, Mayerthorpe Sunday 9:00a.m.</p> <p>St. Elizabeth Parish, Evansburg Saturday 7:00p.m. (780) 786-2032</p>	<p><b>Calahoo Alliance Church</b></p> <p>Family Worship Service Sunday 10:00a.m.</p> <p>For Info Call Jerry (780) 974-7734</p>

# SERVICE DIRECTORY

**ATB Financial**  
ALBERTA BEACH AGENCY  
4824 - 50 Ave, Alberta Beach  
Ph/Fax: (780) 924-2211  
Mon to Thurs 10:00AM - 4:00PM  
Friday 10:00AM - 5:00PM  
Heidi Letendre

**Scerv Construction Ltd.**

- Engineered Screw Piles
- Skidsteer Work
- Snow Removal
- Excavator Services
- Framing
- Insulating
- Drywall
- Taping
- Trenching
- Roofing
- Decks

**Menko Helmus** Cell: 780-305-3864  
Email: m1988\_10@hotmail.com  
PO Box 4795, Barrhead, AB T7N 1A6

**CPR St. Albert**  
CPR Cell Phone Repair  
Saving Your Mobile Life™  
We Can Fix That In 90 Minutes

iPhones, iPods, iPads, Tablets, Computers - Apple, Samsung, Blackberry, LG, Sony and MORE  
Lifetime Warranty Against Defects In Our Screens  
Now over 480 Locations

#13 - 11 Bellerose Drive (Next to Grandis Bakery) 780-460-0277

**MARK MARTIN PFEIFFER**  
MASTER BRICKLAYER/MASON

Cell: 780-242-3308  
Email: pfeiffer.mark@hotmail.com

- Brickwork • Stonework
- Rockwork • Parging
- Concrete Block Work
- Tile Work (all kinds)



**JAVORSKY DITCHING**  
Onoway, AB  
Phone: (780) 967-5486  
Cell: (780) 906-7469  
Fax: (780) 967-4961

Dennis Javorsky - Owner / Operator

For All Your Excavating Needs  
Sand & Gravel Hauling • General Excavating  
Septic Tanks & Cisterns • Site Prep & Clean Up  
• Install & Repair of Water, Sewer, Power & Telephone Lines



**BRO-BUILT**  
Homes & Contracting Ltd

"We Pride Ourselves In Turning Handshakes Into Hugs"

www.brobuilthomes.com  
Testimonials  
Phone 780-940-6415

# SERVICE DIRECTORY



**COR Certified**

- Oilfield
- Road Building
- Basements
- Dugouts
- Sand & Gravel

haytrucking@xplomet.ca  
www.haytandc.com  
Office: 967-5849 Cell: 818-5849

## MASTER PLUMBER

36 YEARS EXPERIENCE **780-655-8402**

### PLUMBING & HEATING SERVICES

**PRICE BY THE JOB NOT THE HOUR!**

**FURNACE REPLACEMENTS**



## CALIBRE DRILLING LTD

DRILLING AND SERVICING YOUR WATER WELL.

**SPECIALISTS IN AIR & MUD ROTARY DRILLING**

- Water Well Drilling
- Pump Installations
- Pressure Systems
- Well Tests
- Licensed Drillers
- Year Round Drilling
- Geotechnical Drilling
- Cathodic Protection
- Free Estimates

**Quality Workmanship Five Year Warranty**

**(780) 960-2992**

BOX 4083 SPRUCE GROVE, AB T7X 3B3



## TRI-LAKES SERVICES LTD.

- Septic Hauling
- Drinking Water Delivery
- Portable Washrooms
- Steam Truck

[www.trilakeservices.ca](http://www.trilakeservices.ca) / [office@trilakeservices.ca](mailto:office@trilakeservices.ca)  
(877) 727-3939 / (844) 967-9176

SERVING: Lac Ste. Anne County • Parkland County • Yellowhead County East

## R & S TOWING

**FREE REMOVAL OF UNWANTED VEHICLES**

**967-2492**




## Water & Vacuum Services

**Super Sucker**  
septic holding tanks  
septic field systems  
sumps & traps

**Super Soaker**  
cisterns, pools, hottubs, skating rinks  
metered water delivery rates  
continuous water / top up plans

Trevor Gardner [@sswaterandvac](https://www.facebook.com/sswaterandvac)  
Phone/Text: 780.967.5552 - [supersuckervac@gmail.com](mailto:supersuckervac@gmail.com)  
RR1 Site 1 Comp 261, Onoway, AB T0E 1V0

## ALL AROUND FENCING RENTALS

Fence Panels • Barricades  
Installation by Collin Toilet Rentals



Whitecourt, AB  
**780.706.7978**

## DONALD N. GREENWAY

Chartered Accountant

Suite 205 Sunrise Professional Building  
215 McLeod Avenue  
Spruce Grove, AB

(Bus.) **962-6366**  
(Fax) **962-3990**

## ZEE BEST RENOVATIONS

Your Complete Line of Renovation Needs:

- Bathroom
- Basements
- Plumbing
- Tileworks
- Drywall & Taping
- Decks & Fencing
- Roofing
- Siding

## 2Bros Custom Contracting Ltd.

Custom Framing • Concrete Floors • Shingling  
Siding Soffit Fascia • Styrofoam Block System

Jeff **780-717-0520**



## PEMBINA CONCRETE PRODUCTS LTD.

Manufacturers of **ONE PIECE SEPTIC & HOLDING TANKS**

\* Water Cisterns \* Field Systems \* Pumps and Accessories \* Sumps

**FREE ESTIMATES**  
**26 YEARS EXPERIENCE**  
**INSURED | GREAT RATES**

JOE LAWRENCE  
MANAGER

BUS: 780-967-3898  
CELL: 780-915-3348  
FAX: 780-967-3798



**CROFT LAW**

Local office in Darwell  
Call us at **780.467.5534**

**Experienced Legal Services in:**  
Family Law • Civil Litigation  
Corporate Law • Wills & Estates  
Plus Notarizing and Commissioning

[www.croftlaw.ca](http://www.croftlaw.ca)



**DELIVERED TO YOUR SITE**

1-800-661-3047  
780-727-2702

[PembinaConcrete.com](http://PembinaConcrete.com)

**New Line of Concrete Statues, Fountains and Garden Ornaments.**

**BOX 123, Entwistle, T0E 0S0**

# SERVICE DIRECTORY



**PaddlePlastics Ltd.**  
Mayerthorpe, AB

Box 67  
Mayerthorpe, AB T0E 1N0


Ph: (780) **786-4408**  
Fax: (780) 786-4466



**Mo-Bil WASH SERVICES Ltd.**

- Steam • Hot & Cold High Pressure Wash • Sewer Thaw & Flush
- Residential • Commercial • Oilfield

24 HOUR SERVICE  
Onway Call (780) 991-9466



**PREVAIL MAX**  
CELLULAR HOMEOSTASIS FORMULA

How do you want your **BLOOD** to look?

Before PrevailMAX:	After PrevailMAX:
poor circulation	better circulation
low energy	more vitality
brain fog	mental clarity
dehydration	cellular movement
decreased nutrients	nutrient assimilation
pH imbalance	balanced pH
poor endurance	optimal endurance

(780) 907-8642 **VALENTUS**  
www.ValentusTour.com/Ladybug



**Blakeman Drilling Ltd.**

Waterwell Drilling & Servicing  
Pumps & Pressure Systems

SERVING LAC STE. ANNE & WEST PARKLAND FOR OVER 25 YEARS

Joe (780) 924-3024



**THE CORING GUY**

- Concrete Coring & Cutting • Concrete Demolition
- Electric or Diesel Slab Sawing • Core Drilling
- Skid Steer / Mini Excavator Operations

**Commercial - Residential**

Laurence Markwart Cell: (780) 220-6164  
LAC STE. ANNE COUNTY Email: ljmarkwart@gmail.com



**Tile Setting**  
Ceramic & Natural Slate

Kitchen & Bath - Backsplash & Surrounds  
Fireplace Floors

"Serving Lac Ste. Anne and West Central Alberta Areas for over 25 years"

Thorsen Industries Call  
Christian @ 403 728-3805



**SANGUDO VETERINARY CLINIC**

Box 581, 4916 - 52 Ave. Sangudo, AB. T0E 2A0

**Dr. Ralf Sanders DVM**

Ph: 780-785-2200  
Fax: 780-785-2228  
sangudovet@gmail.com

**24 HOUR EMERGENCY SERVICE**



**H&P Kosik CONSTRUCTION Ltd.**

- Road Building • Gravel • Sand • Dugouts
- Black Dirt • Clearing

No Job too small We do them all!

Harvey cell. 780-445-9010 ph. 780-892-3532  
Box 145, Darwell, AB. T0E 0L0



**Collin Toilet Rentals & Service**

Your Portable Toilet Supplier for:

- Construction
- Commercial
- Oilfield
- Special Events

Whitecourt Dispatch 780.778.2448



**standstone VACUUM SERVICES LTD.**



Proudly Serving Lac Ste. Anne County  
1-877-226-5008 780-924-2435 780-967-2118  
www.standstonevac.ca or visit our facebook page

The service you need, from people you trust.

- Septic Services: Residential, Commercial
- Holding Tanks and Field Systems
- Effluent Pumps supplied & Installed
- Portable Toilets: Standard, Wheelchair Accessible, Cabana Cans
- Products: BioClean, Liquid Enzyme, Potty Treat

Great Rates & Reliable Service! Call us today!



**ROY SHERWOOD**  
Master Electrician

Ph: 780-968-1425  
Call: 780-908-2287  
Fax: 780-968-2211

Email: suretechroy@gmail.com

2-53220 Rge Rd 21  
Parkland County, AB  
T7Y 0C5

**Control & Automation  
Commissioning  
Solar Sales & Service**

Industrial . Commercial . Residential



**VILLAGE GLASS & MIRROR LTD.**

- AUTO
- RESIDENTIAL
- COMMERCIAL GLASS & MIRROR PRODUCTS

5027 - 50 Avenue • Phone: 967-2127  
PO Box 609, Onway, AB T0E 1V0



**GROVE MACHINE & WELDING**

Office: (780) 952-1772 Call: (780) 231-5405

You have an idea, we'll design it, build it and test it

- Fasteners • Welding • Fabrication • Repairs
- Mobile Welding • Plasma Cutting • Machining

35 South Avenue Spruce Grove, AB T7X 1B3  
E-Mail: jim.reynar@grovemachinewelding.com  
sales@grovemachinewelding.com

# SERVICE DIRECTORY

ANOTHER RAINBOW SALE

## RAINBOW LIQUIDATORS & AUCTIONS



**Farm Sales, Equipment Sales, Estate Sales**  
**BOOK YOUR SALE WITH US TODAY!**  
 Serving the Community since 1978

**Ph: (780) 968-1000**  
 Stony Plain, AB 1-866-968-1001  
[www.rainbowauctions.ca](http://www.rainbowauctions.ca)

## SMOOLE

- Construction & Septic Installation
- Environmental Wastewater Disposal
- Site Design & Evaluation
- Power, Water & Basement Excavation
- Trackhoe, Backhoe, Bobcat & Dump Truck

**For All Your Excavation Needs**



Call Dan 780-991-4484 Reid 780-909-0173

## Jack's Auto Body

& 24 HR Towing

**SPECIALIZING IN COLLISION REPAIR**  
**GUARANTEED WORK • INSURANCE CLAIMS**

CAA BOX 9 SITE 306 RR3, ONWAY, AB T0E 1V0

**(780) 967-5850**

OUR PLEDGE IS QUALITY

## H&E UPHOLSTERY

FOR ALL YOUR UPHOLSTERY NEEDS

Convertible tops for cars and boats, custom car and boat interiors, 5th wheel trailer skirts, boat tarps, ATV seats, furniture, kitchen chairs, heavy equipment seats.




[WWW.HANDE.CA](http://WWW.HANDE.CA) 4-485 South Ave.  
 For more information contact: Spruce Grove  
 kirk@hande.ca (780) 962-3048

## POSTINGFIRST.com

**FREE LOCAL CLASSIFIED ADS**

Real Estate, Rentals, Vehicles, Pets, Jobs, Service Directory, Buy/Sell/Trade, Lawn & Garden, Garage Sales, Events, Local Places & Much More... Advertise for **FREE** Today!

Follow Us




**THE MOST COMPLETE NUTRITIONAL SPRAYS ON THE PLANET**



ORDER TODAY!  
**(780) 907-8642**

[www.Elaine1.com](http://www.Elaine1.com)

## Whole Heart Massage Therapy

- Maternity Massage
- Relaxation Massage
- Deep Tissue Massage
- Kinesio Taping

Jennilee Reber (780) 699-4667  
 REGISTERED MASSAGE THERAPIST  
 DIRECT BILLING TO INSURANCE  
[wholeheartmassage@hotmail.com](mailto:wholeheartmassage@hotmail.com)  
 54013 Range Road 30 #10  
 Diamond Country Estates, Lac. Ste. Anne County

ONLINE BOOKING AT:  
[wholeheartmassagetherapy.clinicsense.com](http://wholeheartmassagetherapy.clinicsense.com)

COMMUNITYVOICE

**THIS SPACE IS RESERVED FOR YOU!**

## Pm Park Memorial Ltd.

Funeral Home & Crematorium

**Fran Marion**  
 Licensed Funeral Director


Mayerthorpe: 780-786-2533  
 Whitecourt: 780-779-2533

Serving Mayerthorpe, Whitecourt and area

Edmonton | Lamont | Mayerthorpe | Smoky Lake | Vegreville

## SUMMERS DRILLING LTD.

Water well drilling and service  
 Family owned Business Serving Alberta since 1917



Never run out of water again!

5 year workmanship warranty

Tired of hauling water? We can install a water well with a permanent water supply for as little as \$150/month OAC

3 Convenient ways to pay

- Visa
- Mastercard
- We now offer full financing

Stop in at our office 4405 - 50 Street, Stony Plain  
 780-963-1282  
[admin@summersdrilling.com](mailto:admin@summersdrilling.com)

## GRANDE TIRE

5115 LAC STE. ANNE TRAIL N. ONWAY, AB T0E 1V0

**Full Mechanical Services**  
**Tire Sales & Repairs**

**BUS: (780) 967-3432**  
**FAX: (780) 967-4816**  
[contectire@xplomet.com](mailto:contectire@xplomet.com)

AMVIC LICENSED

## Lanman Landscapes

YOUR ONE STOP FOR ALL TYPES OF LANDSCAPING

- Dangerous Tree Removal
- Yard Cleanup
- Full Landscaping Service

Experienced Bobcat Work

**(780) 977-6586**

## TRUIS & ONWAY REGISTRIES

INSURANCE

Box 390, Onway, Alberta T0E 1V0  
 Tel: 967-5270 Fax: 967-4303

OPEN 9-5 MONDAY - FRIDAY  
 FIRST & LAST SATURDAY OF EACH MONTH 9-12\* \*excluding long weekends  
 Registries Closed from 12:00 pm - 1:00 pm

ALL GENERAL REGISTRY SERVICES

Home - Auto - Farm - Life and Business

Very Competitive Rates & Convenient Payment Plans.

**Clients first...Service Always!**

# SAL'S FAMOUS

## BARRHEAD

**WE ACCEPT ALL COMPETITOR COUPONS!**

- 2 - 16" 3 TOPPING PIZZA **\$35**
- 12" 3 TOPPING PIZZA & WINGS **\$22**
- 2 - 12" 3 TOPPING PIZZA **\$25**
- 12" 2 TOPPING PIZZA, 12" GARLIC BREAD, WINGS & CAESER SALAD **\$38**
- 3 CHEESE BURGERS, 3 FRIES, 3 FOUNTAIN POP **\$35**
- 3 CHEESE DONAIRS, 3 FRIES, 3 FOUNTAIN POP **\$35**



**Always Fresh • Made to Order**

## SPECIALS

10 - XL 16" 2 topping pizzas **ONLY \$17.5!**

10 - L 12" 2 topping pizzas **ONLY \$12.5!**



**We do Christmas party catering. Call for a quote!**

**DRIVE-THRU NOW OPEN! (780) 674-2050**  
**TAKE-OUT, DINE-IN**  
 Monday to Saturday: 10am-10pm  
 Sunday & Holidays 11am-8pm