



COMMUNITY VOICE

YOUR LOCAL NEWSPAPER

FREE

Serving: Carvel, Darwell, Drayton Valley, Duffield, Entwistle, Evansburg, Fallis, Gainford, Parkland County, Seba Beach, Tomahawk, Wabamun, Wildwood, Spruce Grove and Stony Plain.

December 3, 2019

HOLIDAY TRAIN FOOD BANK FUNDRAISER

Submitted by Tipple Park Museum

It's that time of year to give back, especially to residents that need the extra cheer throughout the Holiday Season.

This year Tipple Park Museum will be hosting a Holiday Train Fundraiser for the Community Food Bank in Entwistle.

Continued on Page 2



All Precious JEWELLERS
"Your Spruce Grove Jewellery Store"
Goldsmith on Premises
 • Engraving • Clock & Watch Repairs
 • Jewellery Repairs • Custom Make-ups
 Jewellery Repairs Done On Site.
 Laser Welder Services Available.
 Toll Free: 1-877-962-4367
 PH: 780-960-4200 Fax: 780-960-4201
 Suite 102, 215 McLeod Avenue
 Spruce Grove, AB. T7X 0G2

SIGHTS AND ARMS *New Open Mon-Sat 10AM-6PM*

FALL SALE! *New, Used & Consigned*
 Firearm Safety & Reloading Courses
 Gunsmithing
 WWW.SIGHTSANDARMS.COM
 11 J. Rayboon Cr. St. Albert, Alberta 825-223-9863

FINANCIAL CONSUMER AGENCY OF CANADA (FCAC) LAUNCHES NEW BUDGET PLANNER TOOL

Submitted by Gerald Soroka, MP for Yellowhead

Gerald Soroka, Member of Parliament for Yellowhead, is pleased to inform constituents that the Consumer Agency of Canada (FCAC) has launched a new budget planner tool aimed at helping Canadians manage their financial goals.

The new budget planner

offers customized budget templates, personalized feedback and guidelines to help you prioritize your spending and take control of your finances. Users can view charts which illustrate where their money is going and compare their budget with those of other Canadians in similar life situations.

For more information on the budget planner tool

please go to the web address below: <https://www.canada.ca/en/financial-consumer-agency/news/2019/11/budgeting-made-easy-with-fcacs-new-interactive-budget-planner.html>

The budget planner itself can be found at: <https://itools-ioutils.fcac-acfc.gc.ca/BP-PB/budget-planner>

PREVAIL MAX
 CELLULAR HOMEOSTASIS FORMULA
Nutritional Breakthrough For Your Cells
 LIVIN TRIM WITH VALENTUS
(780) 907-8642
www.ValentusTour.com/Ladybug

SLIMROAST Optimum
 DARK ROAST COFFEE
 YOUR LOGICAL SOLUTION TO WEIGHT MANAGEMENT
(780) 907-8642
www.ValentusTour.com/Ladybug

View us ONLINE!
WWW.COM-VOICE.COM





COMMUNITYVOICE
—YOUR LOCAL NEWSPAPER—
PUBLISHED WEEKLY (Zone 1 & 2)
AND BIWEEKLY (Zone 3)

E.J. Lewchuck & Associates Ltd.
#6 - 40 South Avenue
Box 3595
Spruce Grove, AB T7X 3A8

SALES TEAM
Elaine
Ashley
Dani

TELEPHONE:
Classifieds 962-9229
Advertising 962-9228
Fax 962-1021

E-MAIL:
comvoice@telusplanet.net
news@com-voice.com

Holiday Train Food Bank Fundraiser

Continued from Page 1

The goal this holiday season is to fill our Historic Carboose floor with non-perishable items. Every time

a person donates, they will receive a holiday train ticket with a picture of the coal mine that once operated in Evansburg.

Our donation hours are

from Wednesday to Saturday from 10 – 5 pm. The fundraiser will end on December 19th.

Merry Christmas.

CHARGES LAID IN HOMICIDE INVESTIGATION

Submitted by RCMP Major Crimes Unit

UPDATE
Spruce Grove, Alta. – The RCMP have laid charges in relation to a homicide investigation which was launched on Nov. 17, 2019 following the discovery of a deceased female on Range Road 274.

Blake Jolicoeur (36), of Spruce Grove, has been charged with Second Degree Murder in the death of Saladina Vivancos.

A judicial interim release hearing has been held, and Jolicoeur remains in custody. He is scheduled to attend court in Stony Plain on November 27, 2019.

BACKGROUND

On Nov. 17, at about 1:30 a.m. the Parkland RCMP responded to Township Road 532A and Range Road 274, just north of Highway 16, to assist EMS with a complaint of a female in medical distress. On scene, it was determined that the female was deceased.

The RCMP Major Crimes Unit (MCU) responded to investigate with the assistance of Parkland RCMP Serious Crimes Unit, Forensic Identification Section and Police Dog Services.

An autopsy was conducted at the office of the Chief Medical Examiner in Edmonton. The manner of death is deemed to be a homicide. The deceased female has been identified as 33-year-old Saladina Vivancos.

JOKE OF THE WEEK

A Bulgarian tourist visiting America was interested in all types of American games. When he returned home, his friends asked him to describe the things he saw. "One interesting game I witnessed", he said, " was one called 'Oh shit', where one fellow calls out things like G4, I9, etc. After a while someone in the audience calls out 'Bingo!' and the crowd yells 'Oh shit!!'"

BUSINESS FOR SALE

Steady Income – Business doesn't fluctuate with Economy

Includes: - All Clientele
- 5 Tandom Trucks
- 1 Truck & Trailer Unit

Call 780-797-3844 for more Info.
Al-jo An Septic Service

Town & Country Funeral Services

Wabamun
780-983-2749

Evansburg
780-727-2791

- † Cemetery Monument Sales & Installation
- † Traditional Burial & Funeral Services
- † Pre-need Funeral Packages
- † Crematorium & Memorial Services

Family run, local business, we care!

BEST CISTERN SEPTIC SOLUTIONS

Cistern and Septic Inspection, Installation and Repair!

Septic planning, design, installation by government certified installer(s)

New Installs Available. Reasonable Rates.

Let Us Handle the Dirty Work
780-668-4306
best-cistern-septic-solutions.com



ALBERTA RCMP REMIND ALL ALBERTANS TO ALWAYS REPORT SUSPICIOUS ACTIVITY

Submitted by Alberta RCMP

Edmonton - Alberta RCMP are pleased to report that the third quarter results for 2019 continue to show an overall steady decrease in property-related crime in Alberta since 2017 (<http://www.rcmp.gc.ca/ab/data-and-innovation-donnees-et-innovation/3-alberta-eng.htm>).

This could not have been accomplished without the continued efforts of Albertans in securing their personal property and informing their local police of suspicious activity and criminal offences.

In the past, we've heard that people say they've noticed an increase in crime,

but that they aren't reporting the incidents. We rely on the data and intelligence you provide in your reports to know where we are needed most.

Reports of crime or suspicious activity helps us allocate our resources: your reports tell us where to look, who to look for, and where to patrol in the future.

"Your calls for service to the RCMP matter. Being led by intelligence, like where and when crime is happening, is key to the crime reduction strategy for the Alberta RCMP. This intelligence weaves the different components of our crime reduction strategy into a shared goal of community safety: from finding the criminals that cause

the most harm, finding the victims that need the most support, and collaborating with the right partners to keep Albertans safe." - Superintendent Peter Tewfik, Officer-in-Charge of "K" Division Crime Reduction Unit

Quick Facts:

- A report to the police is all information we can analyze and use. Times of the day, locations, and types of vehicles observed are all helpful to us.

- We share this information with our community groups, such as Rural Crime Watch and Alberta Citizens on Patrol Associations, to help identify hotspots and vehicle we are searching for.

STORY TO TELL?
 Know of a good event going on in the community? Ever wanted to write up a local event for the Community Voice?
 If you have any good ideas for articles or would like to submit a story for the paper, Email it to news@com-voice.com or just fax it in at (780) 962-1021.
 Please call us at (780) 962-9228 for more information.
 Stories may be edited for length due to possible space restrictions.

COMMUNITYVOICE
 YOUR LOCAL NEWSPAPER

Evansburg Christmas Markets
 December 7, 2019
 from 10:00am - 2:00pm
 Tipple Park Museum

If you're looking for a perfect gift or stocking stuffer, here are some suggestions: natural beauty products, jewelry, wood carving items, knitted mitts and hats, scarfs, jam, clock, stained glass ornaments, cards and so much more.

QUALITY SALES & SERVICE OF:

- DISTILLERS
- SOFTENERS
- CHLORINATION SYSTEMS
- MOBILE SHOCK CHLORINATION
- SEDIMENT, TASTE & ODOUR FILTERS
- REVERSE OSMOSIS FILTERS (R.O.)
- CHEMICAL-FREE IRON FILTERS
- PIPE, WIRE & FITTINGS
- CHLORINE BLEACH, CHEMICALS & SALT
- MOBILE SERVICE VEHICLE
- POOL & SPA FILTERS & CHEMICALS

• FREE WATER ANALYSIS •
OUR WORKMANSHIP IS GUARANTEED!

962-6040 962-4060
 15A South Ave., SPRUCE GROVE

Quality Water Services West LTD.
 Formerly Ivan's Quality Water - UNDER NEW OWNERSHIP

26th Annual Sale

15% TO 50% OFF

Leduc Goldsmiths

4705 50 Avenue (main street)
 780-986-8535

YELLOWHEAD COUNTY COUNCIL HIGHLIGHTS

Submitted by Yellowhead County

November 26, 2019

Intermunicipal Collaboration Framework Agreement (ICF) with Brazeau County – Council gave first reading to Bylaw 18.19, regarding an ICF with Brazeau County. The Municipal Government Act requires neighboring municipalities to jointly draft such agreements. For

more details, visit the Yellowhead County website and click the CivicWeb link.

Family Resource Network Expression of Interest – In recent weeks, Yellowhead County services and programs such as Parent Link, County Kids Preschool, Kids in the Hall, and other youth and outreach services have seen their contract cancelled by the Alberta government. These

programs are delivered by the county's Family and Community Support Services (FCSS). The Alberta government has detailed a new funding model for such services, which requires that the county and partners apply for funding under the Family Resource Network Expression of Interest process, which council has directed staff to do (in collaboration with the

county's regional partners).

Swanson Road Clearing and Other Works Tender Award – Council rejected all six tenders for this project. The clearing on the Swanson Road will be included in the road reconstruction tender early in 2020.

Bylaw for the Purpose of Regulating Animals – Council gave first reading to the Animal Control Bylaw 19.19, which aims to repeal and replace the current animal control bylaw. Highlights include wording changes, including definition changes; clarity on which animals residents can possess (including type and amount, and landmass basis); the addition of offences related to animal defecation; and modest penalty increases. To read more on this bylaw, please visit the Yellowhead County website and click the CivicWeb link.

Woodland County/ Yellowhead County Intermunicipal Development Plan – Council gave first reading to Bylaw 20.19, adopting the Woodland County/ Yellowhead County Intermunicipal Development Plan dated November 2019. A Public Hearing will be held on January 14, 2020.

The next Council Meeting is December 10, 2019. The next Governance & Priorities Committee Meeting is December 17, 2019. All meetings start at 9:30 a.m. in the Council Chambers.

Bundle Internet + TV + Home Phone for just \$89.97/month!

<p>Xplornet High-speed Internet with Unlimited Data</p> <p>\$39.99/month¹ <small>First 3 months</small></p>	 <p style="text-align: center; font-size: 2em; border: 2px solid white; border-radius: 50%; width: 40px; height: 40px; display: flex; align-items: center; justify-content: center; margin: 0 auto;">1</p>
	<p>Shaw Direct Satellite TV</p> <p>\$39.99/month² <small>First 3 months</small></p>
<p>Xplornet Home Phone</p> <p>\$9.99/month³ <small>First 3 months</small></p>	 <p style="text-align: center; font-size: 2em; border: 2px solid white; border-radius: 50%; width: 40px; height: 40px; display: flex; align-items: center; justify-content: center; margin: 0 auto;">3</p>



Shaw) Direct
Satellite TV

INTEGRATED Solutions
Audio | Video | Communications



1-855-867-4047



See What's Brewing

Nothing goes better with your morning coffee than your local paper.



All Precious JEWELLERS

**Draw For Your Discount
5-50% off Until Dec. 24TH
except Bradford Exchange and
Grandfather Clocks**

**Authorized Dealers
Bulova, Citizen, Bering,
Caravelle, Accutron**

We do Engraving!



**THE
BRADFORD EXCHANGE**

780-960-4200
#102 McLeod Ave
(next to Something Else Restaurant),
SPRUCE GROVE

**Over 30 Years in the
Jewellery Industry.
Experienced
Goldsmiths on Site**



Holiday Hours Starting on
December 8
Mon - Fri 9:00am - 7:00pm
Thursday Late Night Shopping
Saturday 10:00am - 5:00pm
Sunday 11:00am - 4:00pm
www.allpreciousjewellers.ca



CHECK OUT THE SELLER BEFORE YOU CHECK OUT

Submitted by Gerald Soroka, MP for Yellowhead

Gerald Soroka, Member of Parliament for Yellowhead, would like to inform constituents on how to recognize third-party sellers in online marketplaces. As more and more retailers switch to using third-party

sellers on their websites, it is important to learn how to avoid unwanted surprises.

To identify when a third-party seller is being used, be on the lookout for sections on the retailer's web page that feature a list of "partners" or labels like "marketplace". Another sign to be on the watch for is the

use of phrases like "fulfilled by", "sold by", or "shipped by" near the descriptions of products.

In order to ensure that the retailer is using a trusted third-party remember that if the price of an item looks too good to be true, it probably is. Another important note to keep in mind is that

credible vendors will likely have detailed contact information and return policies.

More information can be found at: <https://www.canada.ca/en/competition-bureau/news/2019/11/check-out-the-seller-before-you-checkout.html>

BE A GOOD NEIGHBOUR SNOW SHOVELLING PROGRAM

Clearing snow can be difficult for seniors and people with physical disabilities. Luckily, we've got a helpful neighbour in you!

Submitted by Yellowhead County

Clearing snow from steps, sidewalks and driveways can be difficult or impossible for older residents and those with physical disabilities.

That's why Yellowhead County's Family and Community Support Services (FCSS) is calling on all school-aged kids, youth clubs and groups,

and cadets to grab a shovel and bring the fight to a neighbour's driveway this winter! Don't kid yourself—adults are welcome to be good neighbours too!

Volunteer shovelers aren't just making others' lives more convenient, they're looking out for their community. Uncleared snow can endanger the safety of homeowners and passersby. Keeping these areas clear is also

important for emergency responders and anyone helping housebound individuals.

Volunteers will receive the satisfaction of knowing that they have made a difference in the life of someone in their community, and may also be recognized as good neighbours and entered into a draw to win some great prizes.

Homeowners/renters who would like to recognize their good neighbour may submit

a nomination form and receive a "I Have a Good Neighbour" sign for their property. Names are placed into a draw for prizes on April 2, 2020.

The application/nomination forms and signs can be picked up from any county library or the Yellowhead County Edson and Wildwood offices. The program runs from November to March of 2020.

DID YOU KNOW? FACTS ABOUT GYPSD'S EARLY LEARNING PROGRAMS

Submitted by GYPSD

Grande Yellowhead Public School Division (GYPSD) has expanded its early learning programs to include junior kindergarten in the majority of elementary schools across the jurisdiction. Families have a variety of choices for their child to get a great start in their education - here are some facts of interest to help narrow down the search! (Attached is a poster version of the Fact Sheet). Want to learn more? Please contact the local GYPSD elementary school in your community for the best options for your child - let's get ready to learn together!

Did you know? Facts About GYPSD's PUF, Junior and Kin-

dergarten Programs

Junior Kindergarten

- Junior Kindergarten (JK) classes are taught by childcare workers who have Level 2 Certification.

- The junior program is either 2 or 3 half days per week for 3 and 4 years old.

- Junior Kindergarten is not provincially funded: fees are charged to families to recover costs.

- JK students have access to school facilities and programs such as the library, gymnasium, school-based assemblies, buddy reading programs, field trips, and cultural events.

- JK programs follow Flight: the Alberta Early Learning and Child Care Curriculum Framework. The focus is on

how children learn and experience their world through play activities.

- JK is designed to increase communication skills, socialization, and learning readiness for successful entry into kindergarten.

Kindergarten

- Kindergarten and combined junior kindergarten/ kindergarten classes are taught by Alberta Teachers Association certificated teachers.

- Kindergarten is a full-day program.

- Alberta Education currently provides funding for half-day kindergarten; GYPSD's Board supplements the balance to offer enhanced, full-day programs for students to

get a great start in their learning.

- Kindergarten programs follow Alberta Education's Curriculum and Program of Studies.

- Kindergarten students learn through play opportunities that support their emotional, social, physical, intellectual and creative development.

Program Unit Funding

- Program Unit Funding (PUF) is provided to school authorities for children with severe disabilities/delays who require additional supports, and who are at least 2 years 8 months of age, and less than 6 years of age by September 1 (for a maximum of 3 years).

CHRISTMAS COLORING CONTEST



AGE GROUPS: 3-4 YRS | 5-6 YRS | 7-9 YRS | 10+ YRS

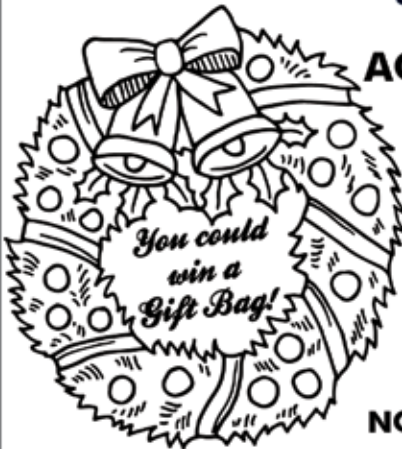
NAME: _____ **AGE:** _____

PHONE: _____ **TOWN:** _____

Entries must be recieved by December 20, 2019.

**Mail to: Santa Clause c/o Community Voice
Box 3595 Spruce Grove, AB T7X 3A8**

NOTE TO PARENTS: Please ensure that your phone number is legible.



PLEASE STAY OFF OUR (WET) CROPS!

Submitted by Yellowhead County

Many crops around Yellowhead County have not yet been harvested due to excessive moisture and snow conditions.

For this reason, producers are asking recreational users and hunters to be aware that driving over un-

harvested crops will hamper harvesting efforts and cause undue grief. Driving over sensitive crops like canola will cause shelling losses and driving on cereals will make it difficult to combine harvest.

Agricultural Services is also reminding producers that with wet field conditions, stored grain should be

monitored more frequently. We also ask that producers get a nutritional test done in grain and or forage crops damaged by the wet weather. Feed can vary greatly in nutritional value. If there are signs of mold, bacteria, or fungus growth, further tests are likely needed.

Information on Feed & Grain Testing labs can be

found on the Alberta Agriculture website at www.agric.gov.ab.ca.

For more information contact Agricultural Services at Yellowhead County's Wildwood Office at 1-800-814-3935 or 780-325-3782, or contact the West Central Forage Association at 780-727-4447.

ENBRIDGE LINE 3 UPDATE: MINISTER SAVAGE

Submitted by Government of Alberta

Energy Minister Sonya Savage issued the following statement regarding the Canadian segment of Enbridge's Line 3 replacement project coming into service on Dec. 1:

"This is an important milestone for our province. Along with other enhancements to the Enbridge

Mainline system, Line 3 will increase Alberta's takeaway capacity by about 100,000 barrels per day.

"This pipeline replacement checks a lot of boxes: it enhances safety, has created thousands of jobs on both sides of the border, and will continue to provide critical tax revenues over its lifespan in both Canada and the U.S. But we still need more – much more.

"We will continue to fight for market access; but in the meantime, we need to find ways to maximize and optimize our existing pipelines.

"These kinds of capacity increases are extremely important as they will deliver more of Alberta's energy to market while major projects – such as Trans Mountain, Keystone XL and the remainder of Line 3 in the United States – are still in

development.

"The world demand for energy will continue to increase in the coming decades and we believe that this demand should be met with Alberta energy. We will continue to unapologetically defend our energy industry, our workers and our high environmental, social and governance standards."

GROVE HEARING CLINIC

960-2960

1-866-960-2960

Hear what you've been missing...

Senior Discounts



Full Service & Repair

Full Hearing Assessments

HOURS OF OPERATION: 9am – 5pm Weekdays

3rd party billing (AADL, WCB, DVA, FCH) • Personal 0% Financing if Needed

For The Latest Technology In Hearing Aids & Assisted Living Device Stop By & See Dawn

#220-70 McLeod Ave - Westland Market Mall, Spruce Grove

Mayerthorpe's 23rd Annual
**CHRISTMAS
 LITE UP**

Friday December 6, 2019

PARADE Floats Judged 6:15PM

STARTS at 6:30PM, Big Truck Parking Lot
 Theme: Favourite Christmas Story Book.

FREE PHOTO'S WITH SANTA

4:00-6:00PM | 7:00-8:30PM, Diamond Centre
Photo Pick up: Crockett Automotive on Dec 13

**CHARACTERS: ELSA & ANNA,
 MARSHALL & RUBBLE**

6:30 – 8:30PM on Main Street

FREE FACE PAINTING

by Jacquie Paul & Friends
 Diamond Centre 4:30 - 8:30PM

LIL ORBITS MINI DONUTS

Main Street 5:00 - 9:00PM

FREE HAYRIDES After Parade - 8:30PM

Pick up on Main Street by the Co-op sign

FOUR SEASONS OPEN MARKET

Diamond Centre 4:00 - 9:00PM

LITE-UP CASH DRAW

8:30PM @ Bon Fire, Draw on Main Street

**FREE FLASHING BATONS
 FOR KIDS** Main Street 6:30PM

FREE HOT CHOCOLATE

6:00PM - 8:30PM, Main Street
 Thyme For Health N Herbs

**4 CHRISTMAS DINNER TURKEYS
 DRAWS** Draw: 8:30PM @ Bon Fire

Enter only Dec 6TH: 10:00AM - 8:15PM

Draw Box at PETALS PLUS

Enter as often as you wish!

BON FIRE & CHRISTMAS MUSIC

Main Street After Parade - 9:00PM



UP FOR A LITTLE HOLIDAY FUN? THIS CABARET IS FULL OF STORIES, JOKES, AND CHRISTMAS CAROLS

Submitted by Horizon Stage

Spruce Grove, AB - The holidays are a wonderful, joyful, and delightful time of year. They can also be a bit hectic, stressful, and nerve-wracking. A Night of Strictly Business...

Christmas Business is the perfect way to relax, let yourself unwind, and have some kooky fun this December. A Strictly Business Christmas cabaret features musical theatre, Christmas tunes, and storytelling in a relaxed and entertaining atmosphere. Kayla Nickel and

Kelsey Visscher charm their audiences with wit, musicality, and a whole lot of humour. And, with their catchphrase, "come laugh with us or at us," these ladies promise that you'll have a good time with them at Horizon Stage in Spruce Grove on Saturday, December 14.

Strictly Business Theatre is an Edmonton-based theatre company producing and performing both hilariously entertaining and heartwarming cabarets. They've sold out their annual Christmas shows in Edmonton for the past four years and are looking forward to visiting other communities in Alberta this year and spreading holiday happiness.

Singer and actor Kelsey Visscher is a graduate of Grant MacEwan's Theatre Arts Program. She has spent the last five years continuing her training in musical theatre performance both locally and in New York City. Kelsey is very proud to have recently completed her grade 8 Royal Conservatory of Music theory exam and is excited to continue learning more about music.

Kayla Nickel is a quadruple threat - actor, singer, dancer, and musician. Recent theatre credits include the charming musical Bright Star at Rosebud Theatre and the Leonard Cohen-inspired Chelsea Hotel. Kayla has studied voice in Edmonton and New York, and was awarded the top prize in Musical Theatre from the National Music Festival of Canada. She is a graduate of MacEwan University's Theatre Arts program and an accomplished cellist with her grade 8 Royal Conservatory of Music certificate in performance.

Take a break from the hustle and bustle, give yourself a present, and have some Christmas fun at A Night of Strictly Business... Christmas Business at Horizon Stage on Saturday, December 14 at 7:30 p.m. Tickets are \$35 for Adults and \$30 for Students and Seniors and may be purchased at the City Hall Ticket Centre (315 Jespersen Ave), by phone at 780-962-8995 or 1-888-655-9090, and online by visiting horizonstage.com and clicking on the 'Tickets' link.

PURE HEMP CBD PRODUCTS
AGING IS INEVITABLE - LOOKING AND FEELING OLD ISN'T!

WHAT IS CBD?

A Health and Beauty Breakthrough!
Cannabidiol, CBD, is one of over 80 active cannabinoid chemicals in the hemp plant. CBD, unlike, THC, does not produce euphoria or intoxication. CBD targets specific receptors in the cells of your brain & body. There are many physical and mental benefits to using CBD products for both treatment and prevention of numerous ailments.

Therapeutic Uses For Pure Hemp CBD
Supports healthy blood sugar levels, promotes healthy energy levels, relieves anxiety, aids in digestion, supports optimal immune function and the regeneration of healthy cells, and promotes a sense of serenity and overall well-being.

Anti-Aging Uses For Pure Hemp CBD
Promotes more youthful skin, provides hydration, enhances radiance, lessens age lines as well as the appearance of dark spots.

KEY BENEFITS
PAIN RELIEF: Known to reduce vomiting & nausea; suppress muscle spasms; reduce seizures & convulsions.
PROMOTES HEALTH: Helps to promote relaxation and overall health.
WELL-BEING: Helps to relieve anxiety, aid in digestion, supports optimal immune function and the regeneration of healthy cells.

CBD PET PRODUCTS

PET CHEW TREATS

KEY BENEFITS
SYNERGISTIC BENEFITS: Can be used in conjunction with regular medications with no side effects.
NO SIDE EFFECTS: Does not damage the liver, kidney or GI Tract like OTC medication.
DIETARY SUPPLEMENT: Can be administered daily as part of your pet's diet.

ORAL SPRAYS & DROPS

KEY BENEFITS
MANAGES PAIN: Helps to treat inflammation, arthritis and joint pain.
TREATS DIGESTIONAL ISSUES: Helps with loss of appetite, nausea, IBS and gastrointestinal swelling.
GENERAL HEALTH: Helps to manage mood, anxiety and general joint pain. For healthy, happy pets.
CONVENIENT: Can be sprayed into pet's mouth or on food.

For more information, Call (780) 907-8642

Classified Ads - Call 962-9228

Classified Policy

CLASSIFIED RATES INCLUDE GST. 1st 20 Words: First Insertion = \$6.00; Subsequent insertion = \$3.00 each. (Eg: 2 insertions = \$9.00; 3 insertions = \$12.00; 4 insertions = \$15.00; etc) Each additional word is 20 cents per word, per insertion. BOLD/CAPITAL text available for an additional \$1/line. Lost & Found and To Give Away (up to a max. of 25 words) are free of charge. Ads must be paid in advance either by cheque, cash, Visa or Mastercard. No Refunds Allowed on Classified Ads. DEADLINE: is Thurs. 4:00 pm (Wed. 4:00 pm on long weekends). Classified ads may be called in to the COMMUNITY VOICE office at (780) 962-9228, emailed to: classifieds@com-voice.com, dropped off at Onoway Registries, or mailed with your ad and payment to: COMMUNITY VOICE, BAG 3595, SPRUCE GROVE, AB T7X 3A8. Ads may also be placed on the web at www.com-voice.com/classified.htm

Services

WANTED: Standing Timber – Are you looking to cut your wood lot before pine beetles or forest fires destroy it? Top dollar paid. Call Paul 780-706-1470 (12) 22-10

Computers

COMPUTER REPAIRS NOT over \$50. Get a good, clean, refurbished, Upgraded **Laptop or Desktop for ONLY \$100.** Discount for **Single Parents or Seniors.** Donate Used Computers/will clear data. Call: 780-892-2407 (12) 05-11

Firewood

SEASONED FIREWOOD: Birch, Tamarack, Spruce/Pine & Poplar. 4x4x8 cord, Split and delivered or pick up at wood yard, 1/2 cord or full cords available. Call 780-967-5835 or 780-983-1495 (28) 27-08

FIREWOOD FOR SALE - Birch, Tamarack & Spruce Pine mix. Poplar. 4x4x8 cords and 1/2 cords. Quality seasoned wood, Delivery or Pick up. Woodchuck Firewood, 780-288-7247 (3) 26-11 OG BW

For Rent

Completely renovated Motel in Onoway, AB. offering daily, weekly or monthly rentals. All utilities included, 55 inch tv with Satellite. Double bedrooms, furnished bachelors with full kitchen and furnished 1 bedrooms with full kitchen available. Please call Peggy for viewing at 780-967-4420 or 1-403-742-6467. www.onowayinnandsuites.com (4) 12-11 OG

Small 3 Bedroom House with shop on acreage in Magnolia. Call 780-773-7491 for more info. (4) 03-12

Homer's Hut Cabin Rentals - Daily, weekly, monthly rates, Alberta Beach area, Call Connie 780-913-8024 (15) 17-09

Buy & Sell

I BUY GUN COLLECTIONS and World War 2 Collectables, Please call Jay for a quote 780-686-1350 (30) 19-11



SERENITY FUNERAL SERVICE

www.serenity.ca

780-542-3338 (24 hours) 5137-50 Avenue Drayton Valley, AB

SERENITY FAMILY SERVICE SOCIETY - YOUR NOT-FOR-PROFIT SOCIETY

SUDOKU OF THE WEEK

Fun By The Numbers

Here's How It Works: Sudoku puzzles are formatted as a 9x9 grid, broken down into nine 3x3 boxes. To solve a sudoku, the numbers 1 through 9 must fill each row, column and box. Each number can appear only once in each row, column and box. You can figure out the order in which the numbers will appear by using the numeric clues already provided in the boxes. The more numbers you name, the easier it gets to solve the puzzle!

ANSWER:

5	1	4	6	8	9	2	3	7
8	7	2	4	3	5	9	1	6
3	6	9	1	7	2	4	5	8
9	8	6	3	5	7	1	2	4
1	2	3	8	4	6	7	9	5
7	4	5	9	2	1	8	3	6
2	3	8	7	1	4	5	6	9
6	5	7	2	9	8	3	4	1
4	9	1	5	6	3	8	7	2

		4	6	8	9			
		2			5		1	
3	6				2			8
9	8		3	5				4
1			8			7		
7				2			8	3
				1		5		9
						3	4	1
4	9	1						

Like puzzles? Then you'll love sudoku. This mind-bending puzzle will have you hooked from the moment you square off, so sharpen your pencil and put your sudoku savvy to the test!



Church Directory

<p>Seba Beach Christian Fellowship</p> <p>Sunday School 10:00a.m. Worship Service 11:00a.m.</p> <p>Weekdays Bible Study & Prayer</p> <p>(780) 305-3594</p>	<p>Advent Lutheran Church</p> <p>Sunday Worship & Sunday School 11:00a.m.</p> <p>Evansburg O: 727-3594</p>	<p>Roman Catholic Church</p> <p>St. Agnes' Parish, Maysethorpe Sunday 9:00a.m. St. Elizabeth Parish, Evansburg Saturday 7:00p.m.</p> <p>(780) 786-2032</p>		<p>St. Joseph's Catholic Church</p> <p>Sunday Mass 11:30a.m. Tuesday Mass 7:00p.m.</p> <p>Wabamun, AB</p>	<p>St. Augustine's - Parkland Anglican Church 131 Church Rd. Spruce Grove</p> <p>Sunday Service 10:00a.m. Eucharist with Sunday School & Nursery All are Welcome</p> <p>Office 780-962-5131 www.staugustinesparkland.org</p>
<p>Parkland Baptist Church</p> <p>Sunday Worship Service 10:30a.m. All Welcome</p> <p>121 Brookwood Drive (780) 962-4101 www.parklandbaptist.ca</p>	<p>Word Church Apocalyptic Era</p> <p>Border Paving Athletic Centre, 9 Tri Leisure Way, Spruce Grove ignites in the Wild Rose room.</p> <p>Ph: 780-962-7579</p> <p>Service starts at 10:00 a.m. every Sunday morning, come all & be bless.</p>	<p>St. Anthony's Ukrainian Orthodox Church 6103 172 St. NW, Edmonton</p> <p>Saturday: Vespers 5:00PM Sunday: Divine Liturgy 10:00AM</p> <p>780.487.2167 santhony@telonjaneet.net www.st-anthonys.ca</p>		<p>Stony Plain United Church</p> <p>Sunday Service 10:30a.m. 5012-51 Ave. Stony Plain</p> <p>Mewassin United Church</p> <p>Sunday Service 9:00a.m. Rev. Heather Koots Hwy 627 - Rg Rd 30 Ph: 780-963-4745</p>	<p>Immanuel Lutheran Church of Rosenthal</p> <p>Sunday Worship Service 9:30a.m. Sunday School</p> <p>780-963-4048</p>
<p>Emmaus Lutheran Church</p> <p>Sunday Worship Service 11:30a.m.</p> <p>Rev. Robert Marshall 4504-52nd Ave, Drayton Valley Ph: 780-542-5101 www.emmauslutheranchurch.org</p>	<p>Church of God</p> <p>Worship Service Sun. 11:00a.m.</p> <p>Please contact for activities 5004-49 Street, Drayton Valley Ph: 780-542-5091</p>	<p>Calvary Baptist Church</p> <p>Pastoral Team: Kenton Penner</p> <p>Sunday Worship 10:30a.m. Youth & Ministries Info - calbapt@telus.net</p> <p>4401-50th Ave. Drayton Valley 780-542-4774 www.calvarybaptistdo.ca</p>	<p>Drayton Valley Alliance Church</p> <p>Pastor John Haazen</p> <p>Join us for Sunday Service at 10:30a.m. 5014-56 Ave. (next to Value Drug Mart) Programs for all ages</p> <p>Ph: 542-6501 dvalliance.ca</p>	<p>All Saints' Anglican Church</p> <p>Sunday Morning Worship 9 BCP 10:30 BAS with Sunday School & Nursery</p> <p>5212-47 Ave. Drayton Valley (780) 542-5048</p>	<p>St. Anthony Catholic Church</p> <p>WEEKEND MASS SCHEDULE: Saturday 5:00p.m. Sunday 12:00p.m.</p> <p>4708-50 Ave. Drayton Valley Parish Office: 542-5254</p>

SERVICE DIRECTORY

2Bros
Custom Contracting Ltd.

Custom Framing • Concrete Floors • Shingling
Siding Soffit Fascia • Styrofoam Block System

Jeff 780-717-0520

BREWSTER BOBCAT SERVICE LTD.
P.O. Box 454, Wildwood, AB T0E 2M0

- * Site Preparation
- * Pile Drilling
- * Concrete Work
- * Landscaping
- * Demolition
- * Sand & Gravel Delivery
- * General Contracting



brwcat@gmail.com
Telephone: (780) 325-3743
Bruce Balascak Cell: (780) 621-6960

Ernie's Repair & Service



4820 - 47 Avenue, EVANSBURG
(780) 727-4433

WABAMUN PHARMACY
I.D.A.

Box 90, 5120 - 51 Avenue
Wabamun, AB T0E 2K0
Ph: (780) 892-2278 Fax: (780) 892-2488


COMMUNITYVOICE
YOUR LOCAL NEWSPIRES

THIS SPACE IS RESERVED FOR YOU!

WEIGHTLOSS NEVER TASTED SO GOOD!



NEW! NEW! NEW! NEW!

(780) 907-8642  VALENTUS
www.ValentusTour.com/Ladybug


SERVICE DIRECTORY

Blakeman Drilling Ltd.
 Waterwell Drilling & Servicing
 Pumps & Pressure Systems
 SERVING LAC. STE. ANNE & WEST PARKLAND FOR OVER 25 YEARS
 Joe (780) 924-3024




DONALD N. GREENWAY
 Chartered Accountant
 Suite 205 Sunrise Professional Building
 215 McLeod Avenue
 Spruce Grove, AB
 (Bus.) 962-6366
 (Fax) 962-3990

WHAT MAKES MYDAILYSPRAYS SO POWERFUL?
 HIGH ABSORPTION, SCIENCE & THE INGREDIENTS



(780) 907-8642
 www.Elaine1.com

SLIMROAST Optimum
 DARK ROAST COFFEE
 YOUR LOGICAL SOLUTION TO WEIGHT MANAGEMENT
 (780) 907-8642
 www.ValentusTour.com/Ladybug



COMMUNITYVOICE
 YOUR LOCAL NEWSLETTER
THIS SPACE IS RESERVED FOR YOU!

ROY SHERWOOD
 Master Electrician
 Ph: 780-968-1425
 Cell: 780-908-2287
 Fax: 780-968-2211
 Email: suretechroy@gmail.com
 2-53220 Rge Rd 21
 Parkland County, AB
 T7Y 0C5
SURETECH ELECTRIC LTD.
 Control & Automation
 Commissioning
 Solar Sales & Service
 Industrial . Commercial . Residential

MARK MARTIN PFEIFFER
 MASTER BRICKLAYER/MASON
 Cell: 780-242-3308
 Email: pfeiffer.mark@hotmail.com
 • Brickwork • Stonework
 • Rockwork • Parging
 • Concrete Block Work
 • Tile Work (all kinds)



CROFT LAW
 Local office in Darwell
 Call us at 780.467.5534
 Experienced Legal Services in:
 Family Law • Civil Litigation
 Corporate Law • Wills & Estates
 Plus Notarizing and Commissioning
 www.croftlaw.ca

PEMBINA CONCRETE PRODUCTS LTD.
 Manufacturers of **ONE PIECE SEPTIC & HOLDING TANKS**
 * Water Cisterns * Field Systems * Pumps and Accessories * Sumps
 DELIVERED TO YOUR SITE
 1-800-661-3047
 780-727-2702
 PembinaConcrete.com
 New Line of Concrete Statues, Fountains and Garden Ornaments.
 BOX 123, Entwistle, T0E 0S0



COMMUNITYVOICE
 YOUR LOCAL NEWSLETTER
THIS SPACE IS RESERVED FOR YOU!

CALIBRE DRILLING LTD
 DRILLING AND SERVICING YOUR WATER WELL.
SPECIALISTS IN AIR & MUD ROTARY DRILLING
 * Water Well Drilling * Pump Installations
 * Pressure Systems * Well Tests
 * Licensed Drillers * Year Round Drilling
 * Geotechnical Drilling * Cathodic Protection
 * Free Estimates
 Quality Workmanship Five Year Warranty
 (780) 960-2992
 BOX 4083 SPRUCE GROVE, AB T7X 3B3

POSTINGFIRST.com
BUY and SELL just about ANYTHING!
FREE LOCAL CLASSIFIED ADS
 Real Estate, Rentals, Vehicles, Pets, Jobs, Service Directory, Buy/Sell/Trade, Lawn & Garden, Garage Sales, Events, Local Places & Much More... Advertise for FREE Today!
 Follow Us




SERVICE DIRECTORY

Jack's Auto Body & 24 HR Towing



**SPECIALIZING IN COLLISION REPAIR
GUARANTEED WORK • INSURANCE CLAIMS**

CAA BOX 9 SITE 306 RR3, ONOWAY, AB T0E 1V0 **ACCREDITED**
(780) 967-5850

OUR PLEDGE IS QUALITY

PREVAIL MAX

CELLULAR HOMEOSTASIS FORMULA



A NUTRITIONAL BREAKTHROUGH THAT SUPPORTS YOU...
RIGHT DOWN TO THE LAST CELL!

LIVIN TRIM WITH
VALENTUS (780) 907-8642

www.ValentusTour.com/Ladybug

H&E UPHOLSTERY

FOR ALL YOUR UPHOLSTERY NEEDS

Convertible tops for cars and boats, custom car and boat interiors, 5th wheel trailer skirts, boat tarps, ATV seats, furniture, kitchen chairs, heavy equipment seats.



WWW.HANDE.CA 4-485 South Ave.
For more information contact: Spruce Grove
kirk@hande.ca **(780) 962-3048**

SERVING ENTWISLE AND AREA FOR OVER 30 YEARS

Entwistle CONCRETE PRODUCTS LTD.



SAND & GRAVEL SALES

PH: (780) 727-3525

Dan McCracken Entwistle, AB
www.entwistleconcrete.ca

COMMUNITYVOICE YOUR LOCAL NEWSPAPER

THIS SPACE IS RESERVED FOR YOU!

SMOOLE

- Construction & Septic Installation
- Environmental Wastewater Disposal
- Site Design & Evaluation
- Power, Water & Basement Excavation
- Trackhoe, Backhoe, Bobcat & Dump Truck



For All Your Excavation Needs

Call Dan 780-991-4484 Reid 780-909-0173

H&P Kosik CONSTRUCTION Ltd.



- Road Building • Gravel • Sand • Dugouts
- Black Dirt • Clearing

No Job too small! We do them all!

Harvey cell. 780-445-9010 ph. 780-892-3532
Box 145, Darwell, AB. T0E 0L0

FOR DRINKING WATER USE ONLY



TRI-LAKES SERVICES LTD.

- Septic Hauling
- Drinking Water Delivery
- Portable Washrooms
- Steam Truck

www.trilakeservices.ca / office@trilakeservices.ca
(877) 727-3939 / (844) 967-9176

SERVING: • Lac Ste. Anne County • Parkland County • Yellowhead County East

SANGUDO VETERINARY CLINIC

Box 581, 4916 - 52 Ave. Sangudo, AB. T0E 2A0

Dr. Ralf Sanders DVM

Ph: 780-785-2200
Fax: 780-785-2228
sangudovet@gmail.com



24 HOUR EMERGENCY SERVICE

CCAS

Canadian Clean Air Services Ltd.

Heating & Air Conditioning

Goodman
Air Conditioning & Heating

Licensed and Insured with over 20 years' experience.
Instant Approval. Financing Available



For service call:
780.569.5201

www.ccasheating.com

COMMUNITYVOICE YOUR LOCAL NEWSPAPER

THIS SPACE IS RESERVED FOR YOU!

Xtreme LEAN NRG

Xtreme LEAN NRG
Advanced Formula helps you:

- Regulates Your Appetite
- Regulates Blood Sugar
- Regulates Fat Absorption
- Improve Energy Levels
- Improve Your Mood
- Increase Mental Focus

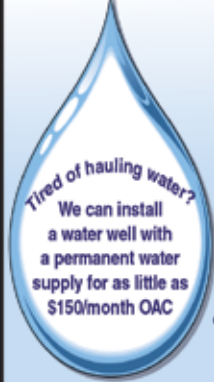


"We've unlocked the science of slim!"

(780) 907-8642

SUMMERS DRILLING LTD.

Water well drilling and service
Family owned Business Serving Alberta since 1917



Tired of hauling water?
We can install a water well with a permanent water supply for as little as \$150/month OAC

- Never run out of water again!
- 5 year workmanship warranty
- 3 Convenient ways to pay
 - Visa
 - Mastercard
- We now offer full financing

Stop in at our office 4405 - 50 Street, Stony Plain
780-963-1282
admin@summersdrilling.com

PREVAIL

MAX

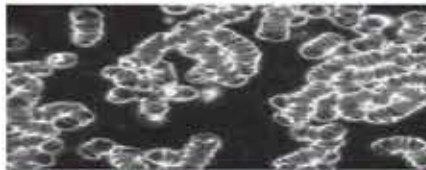
CELLULAR HOMEOSTASIS FORMULA

A NUTRITIONAL BREAKTHROUGH THAT SUPPORTS YOU
...RIGHT DOWN TO THE LAST CELL!



How do you want your **BLOOD** to look?

Before PrevailMAX:



- poor circulation
- low energy
- brain fog
- dehydration
- decreased nutrients
- pH imbalance
- poor endurance

After PrevailMAX:



- better circulation
- more vitality
- mental clarity
- cellular movement
- nutrient assimilation
- balanced pH
- optimal endurance

PrevailMAX™ is a nutritional breakthrough that delivers a rapid increase of internal blood cell pressure to speed absorption, enabling the body to take maximum advantage of the nutrients in foods and supplements. The electrolytes are small enough to penetrate your cell membranes, to bind with your cells, and to be carried wherever they are needed in the body.

At the microscopic level of human cells, **PrevailMAX™** supports healthy cell performance – a nutritional breakthrough for your cells.

When you use **PrevailMAX™**, you will feel more energy and an ability to focus like never before. Take a few sprays today and see just how good you can feel!

LIVIN TRIM WITH
VALENTUS

www.ValentusTour.com/Ladybug

(780) 907-8642