



# COMMUNITY VOICE

YOUR LOCAL NEWSPAPER

Serving: Carvel, Darwell, Drayton Valley, Duffield, Entwistle, Evansburg, Fallis, Gainford, Parkland County, Seba Beach, Tomahawk, Wabamun, Wildwood, Spruce Grove and Stony Plain.

## January 21, 2020

### PUBLIC ONLINE CONSULTATIONS ON MEDICAL ASSISTED DYING LAUNCHED

Submitted by **Gerald Soroka, MP for Yellowhead**

Gerald Soroka, Member of Parliament for Yellowhead, would like to inform constituents that the Federal government is asking Canadians to provide their views on medically assisted dying.

This consultation comes in response to a Quebec Superior Court ruling that it is unconstitutional to limit access to medical assistance in dying to people nearing the end of life.

This consultation closes on January 27th, 2020, at 11:59 p.m. (PST). More information on medical assistance in dying

can be found at <https://www.justice.gc.ca/eng/cons/ad-am/index.html>

The consultation questionnaire is available at <https://justice.survey-sondage.ca/f/s.aspx?s=6E6210A5-E100-4201-A55D-CFB52AD-A1C0C>

### SPACE NIGHT AT TIPPLE PARK MUSEUM JANUARY 24TH

Submitted by **Melissa Killick, Museum Manger | Tipple Park Museum**

Have you ever wondered what is up in the sky above us? Or are you just interested in Astrology? either way, we have a great educational experience coming to Tipple Park Museum. We are thrilled to announce our Family Night at the Planetarium Friday, January 24th from 6-8 pm. Admission is \$2.00/person for those over 5 years of age. Listen to stories and learn about constellations with hands-on crafts and storytelling. This event is fun for the whole family.

Staff are going to take people on an outer space journey describing the stars and planets, seeing satellite images, three-dimensional shapes and so much more in the mobile planetarium. Showtime for the planetarium will be at 6:30 pm.

There are going to be various craft tables set up in the Museum hosting various age group activities for everyone to take part in along with temporary space tattoos.

Guests will also have the chance to get their picture taken with an Astronaut impersonator and watch a documentary about Neil Armstrong underneath glowing stars in

our exhibit room.

Educational experiences are always the best especially when you can share them with family and the community! Not only are you going to be learning about outer space, but you're also going to meet new people, share your experience with others and get away from the cold!

It's not every day a Planetarium comes to Evansburg, so we might as well make the most of it. I have to admit I'm pretty excited myself. Hope to see everyone there.

And as our good buddy Spock would say "Live long and prosper".

**MAYERTHORPE PHARMACY**  
 4821 50<sup>th</sup> Street, Unit 1, Mayerthorpe, AB  
 Phone: 780-786-0185 Fax: 780-786-0186

Enjoy Senior's Day Discount EVERYDAY!!

**Hours of Operation:**  
 MON to FRI: 9:00AM to 6:00PM  
 SAT: 10:00AM to 2:00PM  
 Sundays & Holidays: Closed

Please visit us and sign up for our Loyalty Program.

**THE HOTTEST NUTRITIONAL SPRAYS**  
 THE INDUSTRY HAS EVER SEEN!

BRAIN #1, BOOST, SHIELD, PEAK, TRIM365, SLEEP

[www.Elaine1.com](http://www.Elaine1.com) (780) 907-8642

**PREVAIL MAX**  
 CELLULAR HOMEOSTASIS FORMULA

Nutritional Breakthrough For Your Cells

LIVIN TRIM WITH VALENTUS

(780) 907-8642

[www.ValentusTour.com/Ladybug](http://www.ValentusTour.com/Ladybug)

**SLIMROAST Optimum**  
 DARK ROAST COFFEE

YOUR LOGICAL SOLUTION TO WEIGHT MANAGEMENT

(780) 907-8642

[www.ValentusTour.com/Ladybug](http://www.ValentusTour.com/Ladybug)

View us **ONLINE!**  
[WWW.COM-VOICE.COM](http://WWW.COM-VOICE.COM)

# LAKEWELL 4-H MULTI CLUB DECEMBER NEWS

## Submitted by Lakewell 4-H Multi Club

Early December was a pretty busy month for our little club. We held our December meeting on the 5th and combined it with the Awards night. As I mentioned last month, Awards night is when we present

the previous year's member's who completed all the requirements set by 4-H with a completion gift. It is also the time to recognise those members who have accumulated enough Diary points to qualify to receive a Bronze, Silver, Gold or Platinum Medallion. We didn't award any Medallions this year but we have two members closing in on one for next year.

On December 14th, as our Community Service, the Club joined the Lake Isle Hall members to help set-up, decorate and cleanup the hall for their annual Christmas Dinner. It was

a wonderful night and the evening was topped off by a visit from the man of the hour - Santa! - who had a gift for each of the children there. The Hall Committee is planning a Fund-raising Dinner, complete with entertainment, on Feb 15th and the club will once again be on hand to provide whatever help we can. Entertainment will be provided by the Hypnotist, Shane Lystang. Doors open at 5:30 for dinner and drinks and the show will start at 7pm. Tickets are \$40 and can be purchased by calling 780 267 1660. Come and enjoy an evening out and show

your support for our local community.

We will be sending several members to the Regional Winter Weekend camp held at Camp Nakamun over Jan 25/26th. All the members that have attended 4-H camps, either the winter or summer version, in the past report that it was an amazing experience and we are certain that this year will be just as successful. One more reason to think about joining 4-H!

As a club, the members and the adult leaders, volunteers and parents wish you and yours all the best in 2020.



**COMMUNITYVOICE**  
YOUR LOCAL NEWSPAPER

PUBLISHED WEEKLY (Zone 1 & 2)  
AND BIWEEKLY (Zone 3)

**E.J. Lewchuck & Associates Ltd.**

#6 - 40 South Avenue  
Box 3595  
Spruce Grove, AB T7X 3A8

---

**SALES TEAM**

Elaine  
Ashley  
Dani


---

**TELEPHONE:**

Classifieds 962-9229  
Advertising 962-9228  
Fax 962-1021

**E-MAIL:**


comvoice@telusplanet.net  
news@com-voice.com



## Seba Beach School Closure PUBLIC MEETING

The Board will review the impact of a potential closure of Seba Beach School and stakeholders will have an opportunity to reserve a 10-minute window to directly interact with a Board member and a member of Parkland School Division's Executive Leadership Team regarding specific concerns or questions.

**Date:** Tuesday, Feb. 4, 2020  
**Time:** 6:30-8:30pm  
**Location:** Seba Beach School  
162-2 Avenue, Seba Beach



[psd70.ab.ca](http://psd70.ab.ca)

## JOKE OF THE WEEK

A man goes to the doctor, concerned about his wife's hearing. The doctor says, "Stand behind her and say something and tell me how close you are when she hears you." The man goes home, sees his wife in the kitchen, cutting carrots on the countertop. About 15 feet away he says, "Honey, what's for dinner?" Nothing. He gets halfway to her and repeats the same question. Nothing. Very concerned, he gets right behind her and asks again "What's for dinner?" She turns around and says "For the THIRD time, beef stew!"

## BUSINESS FOR SALE

Steady Income - Business doesn't fluctuate with Economy

Includes: - All Clientele  
- 5 Tandom Trucks  
- 1 Truck & Trailer Unit

Call 780-797-3844 for more Info.  
**Al-jo An Septic Service**

# YELLOWHEAD COUNTY COUNCIL HIGHLIGHTS

## Submitted by Yellowhead County

January 14, 2020

Intermunicipal Development Plan Exemptions - Intermunicipal Development Plans (IDPs) are statutory land use plans developed by neighbouring municipalities to collaboratively regulate development in areas of joint interest. Yellowhead County council moved to refuse the development of IDPs with Woodland County, Lac Ste. Anne County, and Jasper National Park. These counties agreed to do the same. In these cases, the IDPs are unnecessary as these counties share mostly crown-land borders with Yellowhead County. As well, the enforcement of these IDPs would be a needless loss of resources and potentially stifle development.

Edson Landfill Funding Agreement Renewal - Yellowhead County has had an agreement with the Town of Edson to share the cost of the use and operation (as well as capital expenses) of the Edson Landfill. County council moved to enter into a renewed capital and operating agreement for the landfill with the Town of Edson until December 31, 2029. The county is responsible for 35% of capital, reclamation, and operating costs. Some \$410,000 has been budgeted for these costs.

Provincial Police Funding Model - The province announced a new police funding model meant to recover some of the costs of front line policing. Although the funding model has been presented to council (in the model's first year, the county will be billed \$534,094.00), the allocation of policing manpower has not. County council elected to send a letter, which will seek clarity on the alloca-

tion model, to MLA Martin Long. Council aims to get a fair distribution of new officers to address rural crime in the area.

Council Letter of Support - Yellowhead County council moved to provide a letter of support for the West Central Forage Association. The letter will be issued to the provincial government and is meant to reinforce the value of the West Cen-

tral Forage Association, and to encourage the province to fund the association as done in previous years.

Fire Engine Replacement - Yellowhead County Fire Engine YCF-27 was hit from behind by an approaching semi while working at a motor vehicle collision scene, leading to the engine's destruction. As such, Yellowhead County has undertaken to replace the

damaged vehicle. County council awarded the replacement engine build for YCF-27 to Rosenbauer/Rocky Mountain Phoenix at a price of \$892,611.00 CAN dollars.

The next Council Meeting is January 28, 2020. The next Governance & Priorities Committee Meeting is January 21, 2020. All meetings start at 9:30 a.m. in the Council Chambers.

## EVANSBURG PHARMACY

Your health and wellness is our priority. Come to the pharmacy you know and trust.



### FREE HOME DELIVERY UPON REQUEST

to Evansburg, Entwistle, Wildwood, Gainford and surrounding areas.

### OUR SERVICES INCLUDE:

- Prescribing Pharmacist On Site
- Prescription Extension and Adaptation
- Blister Packaging Medications
- Medication Synchronization
- Medication Reviews and Guidance by Your Personal Pharmacist
- Compounding
- Free Flu Vaccination
- Smoking Cessation and Diabetic Supplies
- Travel and Shingles Vaccine and Much More

### YOUR LOCAL COMMUNITY PHARMACY

Less wait time. Quick and easy fills and refills. Senior discounts!

### ONLY AT EVANSBURG PHARMACY

PHONE 780.727.2732 | FAX 780.727.2766  
ADDRESS 5107, 50TH STREET, EVANSBURG, AB T0E 0T0  
WE DONT HAVE ANY OTHER LOCATION ANYWHERE

### NEW HOURS

9:30AM-6:00PM  
Monday to Friday



# All Precious JEWELLERS

**25% OFF** until  
the end of January  
except Bradford Exchange  
and Bradford Order Ins

Authorized Dealers  
Bulova, Bering, Caravelle



**We do Engraving!**

**780-960-4200**

**#102 McLeod Ave**

(next to Something Else Restaurant),

**SPRUCE GROVE**

Over 30 Years in the Jewellery Industry.

Experienced Goldsmiths  
on Site



## Hours of Operation

Mon - Fri 9:00am - 6:00pm

Thursday 9:00am - 7:00pm

Saturday 10:00am - 5:00pm

[www.allpreciousjewellers.ca](http://www.allpreciousjewellers.ca)



# YCFD RESPONDS TO MUTUAL AID CALL

Submitted by Yellowhead County

On Monday, December 9, at approximately 3:50 AM, some 20 YCFD members (along with 10 pieces of apparatus) responded to a blaze at Edson's Chrysler Dodge Jeep dealership. The dealership's office and showroom area were consumed by a significantly-sized fire and crews battled with the blaze for hours to gain control of the situation.

Yellowhead County's council and administrative staff proudly thank the volunteer fire fighters that make up the bulk of YCFD. With their valiant effort, quick response, and team oriented mentality, YCFD remains a confident force that is willing and able to protect local assets.

Moreover, Yellowhead County is proud of the work demonstrated by the joint response of YCFD and the Edson Fire Department. Yellowhead County is committed to assisting its neighbours, especially during difficult times that require emergency mutual aid.

Yellowhead County looks forward to collaborating with neighbouring municipalities, and is always keen to lend a hand when an emergency call for it. Thank you to all who risked their lives to ensure the safety of our communities.

If you or someone you know is eager to serve the local community—don't hesitate, reach out to your local fire department today! We're always hiring, and our communities rely on committed individuals for protection against the unforeseen.

# GROVE HEARING CLINIC

## 960-2960

## 1-866-960-2960

Hear what you've been missing...

Senior Discounts



Full Service & Repair

Full Hearing Assessments

**HOURS OF OPERATION: 9am – 5pm Weekdays**

3rd party billing (AADL, WCB, DVA, FCH) • Personal 0% Financing if Needed

For The Latest Technology In Hearing Aids & Assisted Living Device Stop By & See Dawn

**#220-70 McLeod Ave - Westland Market Mall, Spruce Grove**

# LAKEWELL 4-H GEARING-UP FOR COMMUNICATIONS DAY

**Submitted by Lakewell 4-H Multi Club**

Here it is already January already and the 4-H year is almost half over! Where does the time go? At the General Meeting on Jan 2nd, it was decided to have the club's formal Communications Day on Feb 2nd. This is the event whose aim is to give our members an

opportunity to speak in front of an audience which gives them the opportunity to learn and practice public speaking skills; one of the many things that 4-H helps develop in our young people. They have the option of giving a speech or delivering a presentation and will be judged on their efforts. In order to provide some guidance on creating their

work, a workshop was held on January 9th conducted by our senior members. Communications Day will be held at the Lake Isle Hall starting at 10am and we invite all the members' families and friends as well the general public to come and listen and join us in a light luncheon.

Just a reminder that our host hall - Lake Isle - is

holding a supper and show on Feb 15th with the show provided by hypnotist Shayne Lystang. Tickets are available by calling 780 267 1660 at a cost of \$40. We are looking forward to seeing lots of supporters of both the Hall and of 4-H at this fundraiser.

# RCMP REQUEST ASSISTANCE TO LOCATE MISSING FEMALE YOUTH



**Submitted by Parkland RCMP**

Spruce Grove, Alta. - Parkland RCMP are seeking the public's assistance to locate 14-year-old Wynne Vaughan. Wynne was last seen at the Spruce Grove Tri-Leisure Centre on Jan. 16, 2020 at 5:15 p.m.

Wynne Vaughan is described as:

- 5'3"
- 120 lbs
- Slim build
- Brown hair (long)
- Brown eyes
- Black hat
- Oversized black and grey plaid jacket
- Black pants
- Black and white Van shoes

If anyone has any information regarding the

whereabouts of Wynne VAUGHAN, they are asked to contact the Parkland RCMP at 825-220-7267 or their local police agency. If you wish to remain anonymous, you can contact Crime Stoppers at 1-800-222-8477 (TIPS), online at [www.P3Tips.com](http://www.P3Tips.com) or by using the "P3 Tips" app available through the Apple App or Google Play Store.

## PRICE REDUCED



**14K White Gold Diamond Ring**  
Brand New, Still in Box, Tags on!  
**Asking \$2,745**



**14K White Gold Engagement Ring**  
Brand New, Still in Box, Tags on!  
**Asking \$2,300**



**10K White Gold Diamond ring**  
Brand New, Still in Box, Tags on!  
**Asking \$1,375**

**Call for more information, or to view the ring 780-907-8642**


# GYPSD GOOD NEWS STORY TO SHARE: COLLABORATION IS KEY

Submitted by GYPSD

The Board of Trustees began the new year on January 14, 2020, with hosting two back-to-back meetings with the Division's municipal and government stakeholders to discuss matters of mutual interest. Mayor Kevin Zahara, accompanied by the council from the Town of Edson, received information about the Board's three priorities of student learning, teaching and leadership excellence, and community engagement. Mayor Zahara discussed some local initiatives and shared the council's willingness to support GYPSD on various educational opportunities, which in turn will help to foster successful growth in the local community.

Shane Getson, MLA for Lac Ste. Anne-Parkland, and Martin Long, MLA for West Yellowhead, met with the Board later that evening to learn about GYPSD's world-class program offerings, provincial and national award-winning staff, and the Board's strategic financial work and its advocacy for rural communities and their unique challenges. Great engagement and great collaboration between partners in public education seeking success for all kids.





**UNITED  
CONSERVATIVE  
PARTY**

**LAC STE ANNE - PARKLAND  
UNITED CONSERVATIVE PARTY  
CONSTITUENCY ASSOCIATION**

**NOTICE OF ANNUAL GENERAL MEETING**

You are invited to attend the Annual General Meeting of the Lac Ste Anne-Parkland United Conservative Party Constituency Association, to be held on:

**Date: Saturday, February 1, 2020**  
**Dinner: 5:00pm\***  
**AGM Call to Order: 7:00pm**  
**Location: Onway Legion, 4808 50 Street, Onoway**

This Annual General Meeting will elect the Board for the Constituency Association, including a President, Secretary, CFO, and up to 27 additional directors. If you wish to let your name stand for a position on the Board, please indicate which position and submit your name to Justin at [j.yeoman@gmail.com](mailto:j.yeoman@gmail.com).

You must be an active member of the UCP at least 21 days prior to the meeting in order to vote.

Additionally, please bring a piece of government-issued photo ID and a document that proves your residency in the Lac Ste Anne-Parkland constituency. A driver's license which has your current address will fulfill both these requirements.

Following the AGM there will be a meeting of the newly elected Board of Directors.

**WE HOPE TO SEE YOU THERE!**

\*If you wish to join us for dinner, please contact Justin at [j.yeoman@gmail.com](mailto:j.yeoman@gmail.com), or register through Eventbrite (link below), to reserve your ticket.

[https://www.eventbrite.com/e/lac-ste-anne-parkland-ucp-annual-general-meeting-tickets-89845152269?aff=utm\\_source%3Ddeb\\_email%26utm\\_medium%3Demail%26utm\\_campaign%3Dnew\\_event\\_email&utm\\_term=eventurl\\_text](https://www.eventbrite.com/e/lac-ste-anne-parkland-ucp-annual-general-meeting-tickets-89845152269?aff=utm_source%3Ddeb_email%26utm_medium%3Demail%26utm_campaign%3Dnew_event_email&utm_term=eventurl_text)

Additional details regarding this event will be available on the CA Facebook page:  
<https://www.facebook.com/lacsteanepkld/>

# YELLOWHEAD COUNTY DISCONNECT BOX INITIATIVE GOES LIVE

## Yellowhead County's FCSS is encouraging families to pull away from their devices with their new Disconnect Box initiative.

Submitted by Yellowhead County

Technology has a huge impact on our lives and creates so many new opportunities to connect, stay informed, and create.

However, you can have too much of a good thing, and if you are thinking that your family is spending too much time online then it may be time to disconnect.

That's why Yellowhead County's Family and Com-

munity Support Services (FCSS) has developed the Disconnect Box initiative. These physical boxes can hold a number of devices, and are a practical way to get your family together for some quality time—and

we're giving them away for free.

FCSS challenges you and your family to decide when you are going to disconnect (during meals, evenings, or even at sporting events) and box up your devices to better reconnect with your family and community!

Over the next several months you will see the Disconnect Boxes showcased at several different Community Services events. You can help yourself to a box at one of these events or you can contact the Yellowhead County office (Edson: 780-723-4800, Wildwood: 780-325-3782) to get a box.

There will also be several opportunities for children, youth, and families to receive more information on the benefits of disconnecting!

Thank you to Family Community Support Services in the City of Lloydminster for piloting this project in their community and sharing the project with other FCSS programs.

**VALENTUS**

**YOUR LOGICAL SOLUTION TO WEIGHT MANAGEMENT**

CALL (780) 907-8642 FOR FREE SAMPLE

**DARK ROAST COFFEE**

# SLIMROAST Optimum

**Exclusive functional coffee formulated to:**

- Crush Cravings
- Increase Energy
- Metabolize fat to Energy
- Help Regulate Blood Sugar
- Improve Mood & Focus
- Boosts Circulation & Oxygen delivery

**TO UNLOCK THE SECRET OF WEIGHT MANAGEMENT! PUT THE POWER OF SLIMROAST OPTIMUM IN YOUR CUP!**

Thrilled with my results! I lost 9 lbs and an amazing 11 inches off my abdomen! Works wonderfully!

Managed to lose 7 lbs very fast & much more in inches the way my clothes are fitting now! 1 cup a day is all for me!

Down 17 lbs and fitting into clothes that were way to tight before!

No dieting, first month finished. Down 7 ½ lbs 8.5 inches. Awesome product!

[www.ValentusTour.com/Ladybug](http://www.ValentusTour.com/Ladybug) (780) 907-8642





# Classified Ads - Call 962-9228

## Hall Rentals

Bright Bank Hall, 780-968-6813

Camp Encounter, Vincent Mireau - Camp Director. director@campencounter.com. C: 780-504-2012 W: 780-967-2548

Cherhill Community Assoc. Hall, Kevin 780-785-8153

Darwell Centennial Hall, 780-892-3099

Darwell Seniors, Phone Debra 780-785-2907

Duffield Hall, 892-2425

Entwistle Community League Hall Rentals, Call Cheryl at 780-515-1755

Entwistle Senior's Drop In Centre, Barb 727-2108 or Glennis 727-4367 Mon-Fri

Evansburg Senior's Heritage House, Dennis 727-4186

Evansburg Legion, upper hall 250 people, lower hall 80-100 people, 727-3879

Fallis Community Hall, 892-3150

Gunn Hall (G.A.R.S.) 780-951-9452

Keephills Hall, 731-3761

Lake Isle Community Hall, PH: 780-892-3121 or Email: lakeislehall@mail.com

Lake Romeo PeaVine Hall, 785-2700

Magnolia Hall, 727-2015

Manley Goodwill Community Hall, 963-9165 or 916-0146

Mayerthorpe Diamond Centre, 786-4044

Moon Lake Community Hall, Diane 780-514-4694

Park Court Hall, call or text Karyn 780-712-3918

Parkland Village Community Centre, 780-298-9155 @ PVCCentre

Ravine Community Hall, 325-2391

Rich Valley Community Hall, 967-3696 or 967-5710

Rosenthal Community Hall, 963-7984

Smithfield Community Hall, Wanita 780-718-8824.

Tomahawk & District Sports Agra, Bookings: Kathy 780-339-3773.

Wabamun Jubilee Hall, 892-2699.

Wildwood Community Hall,

325-2180 or 780-514-6105

Wildwood Rec Complex 325-2077 or 514-8944

Wildwood Senior's Hall, 325-3787 or 325-2391

## Employment Opportunities

Camp Yowochas in Fallis is currently seeking COOKS

to prepare meals during summer camp. Maintaining a clean and friendly work area and light lifting required. Part-time and full-time positions available with flexible shift options including weekends or weekday only. Please contact Terry Konyi at 780-892-2660 ext. 23 or by email at t.konyi@ywcaedm.org to apply. (2) 14-01



## PURE HEMP CBD PRODUCTS

AGING IS INEVITABLE - LOOKING AND FEELING OLD ISN'T!

### WHAT IS CBD?

#### A Health and Beauty Breakthrough!

Cannabidiol, CBD, is one of over 80 active cannabinoid chemicals in the hemp plant. CBD, unlike, THC, does not produce euphoria or intoxication. CBD targets specific receptors in the cells of your brain & body. There are many physical and mental benefits to using CBD products for both treatment and prevention of numerous ailments.



#### Therapeutic Uses For Pure Hemp CBD

Supports healthy blood sugar levels, promotes healthy energy levels, relieves anxiety, aids in digestion, supports optimal immune function and the regeneration of healthy cells, and promotes a sense of serenity and overall well-being.

#### Anti-Aging Uses For Pure Hemp CBD

Promotes more youthful skin, provides hydration, enhances radiance, lessens age lines as well as the appearance of dark spots.

#### KEY BENEFITS

- PAIN RELIEF:** Known to reduce vomiting & nausea; suppress muscle spasms; reduce seizures & convulsions.
- PROMOTES HEALTH:** Helps to promote relaxation and overall health.
- WELL-BEING:** Helps to relieve anxiety, aid in digestion, supports optimal immune function and the regeneration of healthy cells.

### CBD PET PRODUCTS

#### PET CHEW TREATS



**KEY BENEFITS**  
**SYNERGISTIC BENEFITS:** Can be used in conjunction with regular medications with no side effects.  
**NO SIDE EFFECTS:** Does not damage the liver, kidney or GI Tract like OTC medication.  
**DIETARY SUPPLEMENT:** Can be administered daily as part of your pet's diet.



#### ORAL SPRAYS & DROPS

**KEY BENEFITS**  
**MANAGES PAIN:** Helps to treat inflammation, arthritis and joint pain.  
**TREATS DIGESTIONAL ISSUES:** Helps with loss of appetite, nausea, IBS and gastrointestinal swelling.  
**GENERAL HEALTH:** Helps to manage mood, anxiety and general joint pain. For healthy, happy pets.  
**CONVENIENT:** Can be sprayed into pet's mouth or on food.

**For more information, Call (780) 907-8642**

# Valentine's Day COLLOURING CONTEST



**AGE GROUPS: 3-4 YRS | 5-6 YRS | 7-9 YRS | 10+ YRS**

**YOU COULD  
WIN A  
GIFT BAG**

**NAME:** \_\_\_\_\_ **AGE:** \_\_\_\_\_

**PHONE:** \_\_\_\_\_ **TOWN:** \_\_\_\_\_

**Entries must be recieved by February 13, 2020.**

**Mail to: Cupid c/o Community Voice  
Box 3595 Spruce Grove, AB T7X 3A8**

**NOTE TO PARENTS:** Please ensure that your phone number is legible.

# Classified Ads - Call 962-9228

## Services

High School Math Tutor, Call Amber at 780-887-6212 (17) 07-01

WANTED: Standing Timber – Are you looking to cut your wood lot before pine beetles or forest fires destroy it? Top dollar paid. Call Paul 780-706-1470 (12) 22-10-19

## Computers

**COMPUTER REPAIRS NOT over \$50.** Get a good, clean, refurbished, Upgraded **Laptop or Desktop for ONLY \$100.** Discount for **Single Parents or Seniors.** Donate Used Computers/will clear data. Call: 780-892-2407 (12) 05-11-19

## Firewood

**SEASONED FIREWOOD:** Birch, Tamarack, Spruce/

Pine & Poplar. 4x4x8 cord, Split and delivered or pick up at wood yard, 1/2 cord or full cords available. Call 780-967-5835 or 780-983-1495 (28) 27-08-19

**FIREWOOD FOR SALE** - Birch, Tamarack & Spruce Pine mix. Poplar. 4x4x8 cords and 1/2 cords. Quality seasoned wood, Delivery or Pick up. Woodchuck Firewood, 780-288-7247 (1) 21-01 OG BW

## Buy & Sell

I BUY GUN COLLECTIONS and World War 2 Collectables, Please call Jay for a quote 780-686-1350 (30) 19-11-19

## For Rent

1 Bedroom Apartment in Evansburg, \$630/month includes washer, dryer, heat, water, fridge, stove. No Smokers. Call 780-963-1830

(6) 10-12-19  
Available immediately, Large 2 Bedroom in 12 Unit Apartment Building in Entwistle. Includes heat, water & parking. Rent \$795/month + DD \$300. Please call Ivka 780-807-1300 or email jakovljevicivka@yahoo.ca (2) 21-01 OG  
Completely renovated

Motel in Onoway, AB, offering daily, weekly or monthly rentals. All utilities included, 55 inch tv with Satellite. Double bedrooms, furnished bachelors with full kitchen and furnished 1 bedrooms with full kitchen available. Please call Peggy for viewing at 780-967-4420 or 1-403-742-6467. www.onowayinnandsuites.co

**SERENITY FUNERAL SERVICE**

[www.serenity.ca](http://www.serenity.ca)

**780-542-3338** (24 hours) 5137-50 Avenue Drayton Valley, AB

**SERENITY FAMILY SERVICE SOCIETY - YOUR NOT-FOR-PROFIT SOCIETY**

# SUDOKU OF THE WEEK

## Fun By The Numbers

**Here's How It Works:** Sudoku puzzles are formatted as a 9x9 grid, broken down into nine 3x3 boxes. To solve a sudoku, the numbers 1 through 9 must fill each row, column and box. Each number can appear only once in each row, column and box. You can figure out the order in which the numbers will appear by using the numeric clues already provided in the boxes. The more numbers you name, the easier it gets to solve the puzzle!

**ANSWER:**

9	8	3	6	5	7	4	2	1
7	4	5	2	9	1	3	8	6
2	6	1	8	4	3	5	9	7
1	5	2	3	7	8	6	4	9
6	7	8	9	2	4	1	3	5
4	3	9	5	1	6	8	7	2
8	2	6	1	3	9	7	5	4
3	9	4	7	6	5	2	1	8
5	1	7	4	8	2	9	6	3

			6		7	4		1
		5	2	9		3	8	6
	6	1	8	4			9	
1	5		3					9
6	7	8				1	3	
	3	9				8		2
					9	7		
	9	4	7				1	8
5		7	4	8	2			3

**Like puzzles?** Then you'll love sudoku. This mind-bending puzzle will have you hooked from the moment you square off, so sharpen your pencil and put your sudoku savvy to the test!



# COMMUNITY EVENTS 2020

If you are a LICENSED, NON-PROFIT ORGANIZATION, you are welcome to submit your announcement FREE of charge, space permitting. You are required to submit your non-profit number. Call (780) 962-9228. Please note that all submitted event listings must be limited to 200 characters or less (including spaces). DEADLINE: 12 noon Friday prior to publication (Thursdays on long weekends).

**FEB 15 – THE HYPNOTIST: Shane Lystang** at Lake Isle Community Hall, RR55 & Hwy 633. Doors open @ 5:30pm Dinner & Drinks, Show @ 7pm. Tickets \$40, Call to purchase 780-267-1660.

### FARMERS MARKETS

**DRAYTON VALLEY: Evergreen Farmers' Market**, Wednesdays at the Mackenzie Centre of the Omniplex from 10:30AM-1:30PM. **\*Ends Dec. 19**  
**EVANSBURG:** Sat, 10AM-2PM, Tipple Park Museum. Call 727-2240 for tables.  
**SPRUCE GROVE:** at the Elevator, Sat 9:30-1:30PM, tables (780)240-5821  
**STONY PLAIN:** Sat, 9AM-1PM, Downtown, Stony Plain. Phone Nancy 780-962-3993.

### BINGO

**ENTWISTLE COMM. LEAGUE BINGO:** Every Wednesday, Doors Open 6PM.  
**STONY PLAIN SENIORS' DROP-IN CENTRE:** public bingo every Tues, 7PM. All ages welcome. Phone (780) 963-6685  
**WILDWOOD:** Mon night, 6:30PM, bingo starts 7:30PM, Early Birds & Lucky 7.  
**WILDWOOD LADIES AID:** every 3rd Friday of month, 6:30PM, bingo starts 7:30PM.

### MEAT DRAWS

**Evansburg:** Evansburg Legion, Friday 8-10PM & Saturday 3-5PM  
**Wildwood:** Wildwood Legion, Saturday 3-5PM

### JAMBOREES

**CARVEL:** 2nd Sunday of month. \$6 lunch served. Info 780-991-3001  
**CHIP LAKE:** Ravine Comm Hall, 1st Sat 325-2119 or 325-2391  
**DUFFIELD:** 4th Sat, Duffield Community Hall. Supper 6PM. **\*Sept - May.**  
**DRAYTON VALLEY:** Last Sunday of month. Upstairs @ the "55 Rec. Center" Doors at 12PM, Starts at 1PM. 780-542-3768  
**ENTWISTLE:** 3rd Saturday of month, Doors at 5:30PM at Entwistle Community Hall. Contact Verna at 780-716-2304. **\*October - May**  
**MAGNOLIA:** at Magnolia Hall. 2nd Saturday of Month, New Time is 1:00PM. Call to confirm, 727-2015. **\*October - May, NO Dec.**  
**RAVINE COMMUNITY ASSOCIATION:** 1st Sat of each month. Info 780-325-2391 **\*Sept - May.**  
**SEBA BEACH:** 2nd Friday 7PM, Seba Senior's Centre, Toni 797-4233  
**SPRUCE GROVE:** at Sandhills Community Hall, 3rd Sunday, 1-5PM. Info Florence 780-962-3104 Margaret 780-962-3051 **\*Sept - June.**  
**STONY PLAIN:** Stony Plain Seniors Drop In Center, 5018 - 51 Ave. Every 2nd & 4th Thurs of month, 7PM, \$2.  
**TOMAHAWK:** Tomahawk Agriplex, 3rd Friday of month. 7PM. Supper at 6PM. PH: 780-339-3755.  
**WILDWOOD:** Wildwood Community Hall, 3rd Wed Each Month, 7PM. 325-3749 **\*Oct - June.**

### TOPS (Take Off Pounds Sensibly)

**ENTWISTLE:** Wed 5:15PM weigh-in, 5:30-6:30PM meeting, food bank building, South entrance. 780-932-2695.  
**STONY PLAIN:** Thurs evening, Stony Plain United Church. Susan (780) 968-0869  
**SPRUCE GROVE:** Wed 8:45am at Anglican Church, 131 Church Rd. Christiane 960-1109  
**WILDWOOD:** Thurs at Wildwood Hall, 4:30PM. Connie (780) 325-2420

### YOUR COMMUNITY

ALBERTA PARENTING FOR THE

**FUTURE ASSOC:** Call 963-0549 or visit www.apfa.ca to register. All programs are confidential & free.  
**FREE HOME MEAL DELIVERY PROGRAM,** for Wabamun Seniors & Wabamun Lions. Arrange for meal preparation through a local restaurant. Call Darlene, 892-2551.  
**PEMBINA SKATING CLUB** (Evansburg Arena), offers Learn-to-Skate, CanSkate & STARSkate. All ages. Call Lisa 727-2729. **\*RUNS Sept-March**  
**PROBLEMS WITH DRUG OR ALCOHOL ADDICTION** in a loved one? Contact Drug Rehab Resource for a free confidential consultation. 1-866-649-1594 or www.drugrehabresource.net.

### LIBRARY EVENTS

**AFTERNOON BOOK CLUB** at Keeplinks Library. 2nd Tues of every month, 1:30-3:00PM. Visit www.pclibraries.ca for info.  
**FAMILY GAMES NIGHT:** 3rd Wed of every month, 6-8PM. Located at Entwistle Library, Duffield Library and Tomahawk Library. In partnership with Parkland School Division. Visit www.pclibraries.ca for more info.  
**HATCHET CITY READERS** at Tomahawk Library. 3rd Tues of every month, 10-11AM. For what we're reading next, visit our website, www.pclibraries.ca.  
**INVENTORS CLUB:** 2nd Thurs of every month, 3:30-5:00PM at Entwistle Library. 4th Thurs of every month, 3:30-5:00PM at Tomahawk Library. Ages 8-13. To register: Call the library at 780-339-3935.  
**SEBA BEACH PUBLIC LIBRARY BOOK CLUB** meets the 4th Thursday of the month, at the library, at 10:30AM. Call us at 780-797-3940 or email us at sebaeachlibrary@yri.ab.ca  
**EVANSBURG PUBLIC LIBRARY BOOK CLUB:** 4th Thurs, 7:00PM Grand Trunk High 727-2030.

### SOCIAL EVENTS

**50+ YOUNG AT HEART LUNCHEON** for Parkland County Seniors. 12PM at Stony Plain United Church Basement, \$8/plate. 3rd Wed of Month. Call Barb 780-952-0882. **\*Sept-June**  
**AEROBICS:** Low impact, Mon/Wed, 11AM-12PM, Wildwood Senior's Centre, \$1/session.  
**BALLROOM, LATIN, COUNTRY DANCE SOCIAL:** 1st Saturday of every month. Doors open 8PM at Central Lions Recreation Center, 11113 113 St., Edmonton AB. Cost \$15 paid at the doors. Hosted by Everyone's Ballroom Dance Assoc. More info: www.ebda.ca 780-893-6828  
**BREAKFAST SOCIAL:** 9:30AM-NOON, Parkland Village Community Centre - 3rd Sunday. PH: 780.298.9155 Social Media: PCCentre.  
**COME PLAY CRIB:** Fridays, 7:30PM at Darwell Seniors Hall; lite lunch is served. All ages!  
**COUNTRY QUILTERS** in Stony Plain house a "Sew in Tuesday", 2nd Tuesday of every month, from 10-3PM. Drop in \$5/member, \$6/non-members. Contact Cindy 780-963-7170.  
**DROP-IN ADULT PICKLEBALL:** Thursdays, 6-8:30 p.m. Sept.12th-May @ G.T. School, Evansburg. Beginners Welcome. Paddles sponsored by the Evansburg Public Library  
**EVANSBURG ART CLUB:** meet & paint Thurs 1-4PM Rec Plex. 727-4340 or 727-4098  
**EVANSBURG GUIDES & PATHFINDERS:** Mon 6PM, Camp Evansburg.  
**EVANSBURG SENIOR'S HERITAGE**

**HOUSE:** Floor Curling Mon & Thurs, 1pm. Court Whist Thurs, 7PM.  
**EVANSBURG TIPPLE PARK HISTORICAL BUILDING TOURS:** Wed - Sat, 10:00-5:00PM.  
**HEALTHY AGING NURSE & FOOT CARE PERSON,** Wabamun Seniors Centre, 2nd Thurs of month, 9AM.  
**OPEN HOUSE** for socializing, Crib & card playing at Entwistle Senior Center, Thursdays at 6:45PM. Dan 780-982-0353  
**PARENT & TOT PLAYTIME:** PERC Building Stony Plain Wed 10-11AM; Holborn Community Hall Thurs 9:30-11AM; Parkland Village Tues 9:30-11:30AM.  
**POTLUCK** every Tues 12:00PM, Wabamun Seniors Centre. Come on down!  
**SEBA BEACH SENIORS CENTER:** Yoga, mon, 9:30AM, \$10/session. Bridge thurs, 1PM. Jams every Wed night, 7PM. Thrift Shop every Wed & Sat at 10-3PM.  
**SEBA BEACH QUILTERS & FIBER ARTS:** Wednesdays 9:30AM, Seniors Center.  
**SENIORS 50+ LUNCHEON:** 3rd Wed, 12PM at Stony Plain United Church basement hall. Call Audrey (780) 963-7582  
**SENIORS WEDNESDAY\* AFTERNOON** 1-4PM at Parkland Village Community Centre. Games, Crafts & more! Call Sheryl 780.695.7032 **\*exceptions incl. Weather.**  
**SPIRITUAL LIVING STONY PLAIN INSPIRATIONAL CINEMA & DISCUSSIONS** at PERC Building (5413-51 St). 2nd Friday of month at 7PM. Popcorn provided, donations appreciated. Contact 780-940-3032  
**SPIRITUAL LIVING STONY PLAIN GATHERING** at PERC Building (5413-51 St). Every 2nd & 4th Sunday of month. Meditation 10AM, inspirational sharing 10:30AM. PH 780-940-3032  
**SPRUCE GROVE ELEVATOR TOURS:** Thurs-Sat, 9-3PM. 960-4600.  
**STONY PLAIN'S 5TH MERIDIAN GOOD SAMS RV CHAPTER:** Ecole Meridian Heights School. 3rd Tues of Month, 7PM. Call Pat at 780-963-6976 or Ruth at 780-288-9829.

### MEETINGS

**2nd TIMERS:** A support & confidential group for Grandparents Parenting. 1st Thurs of month, 6:30PM. Grand Trunk High School (meet in Lobstick Literacy & Learning room). Child care provided at the Evansburg Public Library.  
**299 ROYAL CANADIAN SEA CADETS CORPS MACKENZIE:** Stony Plain Comm Centre, Wed 6:30PM. Youths 12-18, 963-0843  
**755 PARKLAND AIR CADETS** Thurs, 6:30-9:30PM Muir Lake School, ages 12-18. Info call 405-6585 or www.aircadet.com/755.  
**AA:** Friday at 8PM, Evansburg. Call 325-2204, 727-2466 or 727-6652.  
**AA MEETING:** Every Monday night at 8PM, Duffield Mewassin Free Methodist Church, (13km South of Duffield Turnoff at Shell Gas Station on Hwy 16).  
**AL-ANON:** Wed 8PM, Spruce Grove United Church, 1A Fieldstone Drive. 962-5205  
**CHAMBER OF COMMERCE** (Evans/Ent): 7:30PM 3rd Thurs, Heritage House.  
**C.H.I.L.D. (Citizens Helping in Life's Defence)** Please join our Pro-Life meetings once a month in Stony Plain. For info call Chris 963-6997.  
**CITIZENS ON PATROL:** The Pembina Community Watch Patrol Meets 2nd Thurs of each month at 7:30PM, at the Tipple Park Museum (4924-48 St.), Evansburg, Contact 780-898-1465 or 780-727-2686.  
**COMMUNITY QUILTERS & CRAFTERS:** 3rd Tues. Evansburg, Liz 727-3872 Brenda 727-4476  
**DARWELL & DISTRICT AG SOCIETY:** 8PM, 1st Mon, Community Hall.  
**DDRA MEETING:** 7PM, 2nd Mon, Darwell Community Hall 892-3099. **\*Except Jul/Aug/Dec**

**DRAYTON VALLEY BRANCH OF ALBERTA GENEALOGICAL SOCIETY:** meets 7PM at Municipal Library (5120-52 St.) every 3rd Wed of month. Call (780) 542-2787  
**ENTWISTLE COMMUNITY LEAGUE GENERAL MEETINGS:** 2nd Thursday monthly 7:30PM. **\*Except June, July, August**  
**ENTWISTLE LIONS CLUB:** 2nd & 4th Tues, 8PM, Entwistle curling Rink, Jim 727-3573  
**ENTWISTLE SENIORS 55+ CLUB:** Tue & Fri, 1:30-4:00PM at Entwistle Hall  
**EVANSBURG SENIOR'S 55+ HERITAGE HOUSE:** 2nd Wed of Month, 7:00PM. Dennis, 727-4186.  
**FALLIS COMMUNITY ASSOCIATION:** 3rd Tuesday, 7:00PM.  
**GIRL GUIDES OF CANADA:** Poplar Hollow District Guides-Pathfinders, Mon 6-8PM. Sparks-Brownies Tues 4-5:30PM. Meet at Camp Evansburg. Brenda 780-727-4476  
**LAC STE. ANNE & LAKE ISLE WATER QUALITY MANAGEMENT SOCIETY:** 3rd Fri, 7PM, Alberta Beach Council Chambers.  
**LAKE ISLE HALL COMMUNITY HALL BOARD MEETINGS:** 3rd Wed of each month @ 7:30PM at the Lake Isle Hall (Hwy 633 and RRS5) Ph # 780-892-3121  
**LAKE ISLE MULTI 4-H GENERAL MEETINGS:** 1st Thurs of each month @ 6:30PM @ Lake Isle Hall. Contact 780-242-2486.  
**LOBSTICK 4-H BEEF & MULTI CLUB:** 1st Mon, Evansburg Arena, 7PM, Shannon 727-2358  
**LOBSTICK GARDEN CLUB:** 1st Mon, 7PM at Tipple Park Museum, Clara (780) 399-2205  
**MAGNOLIA BOARD MEETINGS:** 1st Tuesday of month, 7PM at Magnolia Community Hall.  
**MEN FOR SOBRIETY:** Wednesdays at 7:30PM, FCCS Building (#105, 505 Queen Street, Spruce Grove). Mike (780) 965-9991.  
**MS SOCIETY DRAYTON VALLEY COMMUNITY GROUP** meets 1st Tues of month, 6-8PM at Norquest College. Terra Leslie, 1-403-346-0290. **\*Sept-June**  
**MS SOCIETY PARKLAND COMMUNITY SUPPORT GROUP:** Are you diagnosed with MS and have questions? Last Tues of month, 7-9PM, Westview Health Centre. Contact Cassy 780-471-3034  
**NA MEETING:** Tuesdays, 7:00PM. 514-6011  
**PEMBINA PORCUPINES - JUNIOR FOREST WARDENS:** Entwistle Porcupine gathering. 7PM, 1st Tue. Len & Tineke at 727-2020. Porcupines@yellowheadfw.ca  
**SOLVE:** Community Enviro issues discussed at Smithfield Hall (N of Hwy 16 on RR34). 2nd Thursday. Jana 892-0006  
**STONY PLAIN FISH & GAME ASSOCIATION & WABAMUN GUN CLUB:** 2nd Mon, Stony Plain Comm Centre, 7:30PM.  
**SUNDOWNERS TOASTMASTER CLUB:** Mon (excl. Holidays) 7:30-9:30PM, St. Matthew's Church, Spruce Grove. Judy 960-5258  
**TOMAHAWK SENIORS (50+)** meets every Thursday from 1-4pm at the Tomahawk Agra.  
**W.E.E COMMUNITY FOOD BANK:** Call (780) 727-4043 for emergency food needs. Monthly Meeting: LAST Monday of month at 7:00PM at the Food Bank (Old fire hall in Entwistle). **\*Except December**  
**WILDWOOD & DIST AG SOCIETY:** 2nd Wed of each month 7:00PM at the Wildwood Complex, Wilma 325-2424  
**WILDWOOD & DIST ROD & GUN CLUB:** 2nd Thursday, 7:30PM at the range clubhouse, wildwoodrodandgun@gmail.com  
**WILDWOOD SENIORS:** 4th Wednesday at 2:00PM. PH: 325-3787 or 325-2391. **\*No meeting July/Aug/Dec.**

# Church Directory

<p><b>Seba Beach Christian Fellowship</b></p> <p>Sunday School 10:00a.m. Worship Service 11:00a.m.</p> <p>Weekdays Bible Study &amp; Prayer</p> <p>(780) 305-3594</p>	<p><b>Advent Lutheran Church</b></p> <p>Sunday Worship &amp; Sunday School 11:00a.m.</p> <p>Evansburg O: 727-3594</p>	<p><b>Roman Catholic Church</b></p> <p>St. Agnes' Parish, Maysethorpe Sunday 9:00a.m. St. Elizabeth Parish, Evansburg Saturday 7:00p.m.</p> <p>(780) 786-2032</p>		<p><b>St. Joseph's Catholic Church</b></p> <p>Sunday Mass 11:30a.m. Tuesday Mass 7:00p.m.</p> <p>Wabamun, AB</p>	<p><b>St. Augustine's - Parkland Anglican Church</b></p> <p>231 Church Rd. Spruce Grove</p> <p>Sunday Service 10:00a.m. Eucharist with Sunday School &amp; Nursery All are Welcome</p> <p>Office 780-962-5131 www.staugustinesparkland.org</p>
<p><b>Parkland Baptist Church</b></p> <p>Sunday Worship Service 10:30a.m. All Welcome</p> <p>121 Brookwood Drive (780) 962-4101 www.parklandbaptist.ca</p>	<p><b>Word Church Apocalyptic Era</b></p> <p>Border Paving Athletic Centre, 9 Tri Leisure Way, Spruce Grove ignitors in the Wild Rose room.</p> <p>Ph: 780-962-7579</p> <p>Service starts at 10:00 a.m. every Sunday morning, <b>come all &amp; be bless.</b></p>	<p><b>St. Anthony's Ukrainian Orthodox Church</b></p> <p>6103 172 St. NW, Edmonton</p> <p>Saturday: Vespers 5:00PM Sunday: Divine Liturgy 10:00AM</p> <p>780.487.2167 santhony@teloplaneet.net www.st-anthonys.ca</p>		<p><b>Stony Plain United Church</b></p> <p>Sunday Service 10:30a.m. 5012-51 Ave. Stony Plain</p> <p><b>Mewassin United Church</b></p> <p>Sunday Service 9:00a.m. Rev. Heather Koots Hwy 627 - Rg Rd 30 Ph: 780-963-4745</p>	<p><b>Immanuel Lutheran Church of Rosenthal</b></p> <p>Sunday Worship Service 9:30a.m. Sunday School</p> <p>780-963-4048</p>
<p><b>Emmaus Lutheran Church</b></p> <p>Sunday Worship Service 11:30a.m.</p> <p>Rev. Robert Marshall 4504-52<sup>nd</sup> Ave, Drayton Valley Ph: 780-542-5101 www.emmauslutheran.org</p>	<p><b>Church of God</b></p> <p>Worship Service Sun. 11:00a.m.</p> <p>Please contact for activities</p> <p>5004-49 Street, Drayton Valley Ph: 780-542-5091</p>	<p><b>Calvary Baptist Church</b></p> <p>Pastoral Team: Keaton Penner</p> <p>Sunday Worship 10:30a.m. Youth &amp; Ministries Info - calbapt@telus.net</p> <p>4401-50<sup>th</sup> Ave. Drayton Valley 780-542-4774 www.calvarybaptistdo.ca</p>	<p><b>Drayton Valley Alliance Church</b></p> <p>Pastor John Haazen</p> <p>Join us for Sunday Service at 10:30a.m. 5014-56 Ave. (next to Value Drug Mart) Programs for all ages</p> <p>Ph: 542-6501 dvalliance.ca</p>	<p><b>All Saints' Anglican Church</b></p> <p>Sunday Morning Worship 9 BCP 10:30 BAS with Sunday School &amp; Nursery</p> <p>5212-47 Ave. Drayton Valley (780) 542-5048</p>	<p><b>St. Anthony Catholic Church</b></p> <p>WEEKEND MASS SCHEDULE: Saturday 5:00p.m. Sunday 12:00p.m.</p> <p>4708-50 Ave. Drayton Valley Parish Office: 542-5254</p>

# SERVICE DIRECTORY

**2Bros**  
Custom Contracting Ltd.

Custom Framing • Concrete Floors • Shingling  
Siding Soffit Fascia • Styrofoam Block System

Jeff 780-717-0520

**H&P Kosik CONSTRUCTION Ltd.**

• Road Building • Gravel • Sand • Dugouts  
• Black Dirt

No Job too small. We do them all!

Harvey cell. 780-445-9010 ph. 780-892-3532  
Box 145, Darwell, AB. T0E 0L0

**Ernie's Repair & Service**

**SMALL ENGINES**

4820 - 47 Avenue, EVANSBURG  
(780) 727-4433 C:514-0272

**WABAMUN PHARMACY**  
**I.D.A.**

Box 90, 5120 - 51 Avenue  
Wabamun, AB T0E 2K0  
Ph: (780) 892-2278 Fax: (780) 892-2488

COMMUNITYVOICE  
YOUR LOCAL NEWSPIRES

**THIS SPACE IS RESERVED FOR YOU!**

**WEIGHTLOSS NEVER TASTED SO GOOD!**

**NEW! NEW! NEW! NEW!**

(780) 907-8642 **VALENTUS**  
www.ValentusTour.com/Ladybug


# SERVICE DIRECTORY

**Blakeman Drilling Ltd.**  
 Waterwell Drilling & Servicing  
 Pumps & Pressure Systems  
 SERVING LAC STE. ANNE & WEST PARKLAND FOR OVER 25 YEARS  
 Joe (780) 924-3024




**DONALD N. GREENWAY**  
 Chartered Accountant  
 Suite 205 Sunrise Professional Building  
 215 McLeod Avenue  
 Spruce Grove, AB  
 (Bus.) 962-6366  
 (Fax) 962-3990

**WHAT MAKES MYDAILYSPRAYS SO POWERFUL?**  
 HIGH ABSORPTION, SCIENCE & THE INGREDIENTS



(780) 907-8642  
 www.Elaine1.com

**SLIMROAST Optimum**  
 DARK ROAST COFFEE  
 YOUR LOGICAL SOLUTION TO WEIGHT MANAGEMENT  
 (780) 907-8642  
 www.ValentusTour.com/Ladybug



COMMUNITYVOICE  
 YOUR LOCAL NEWSPAPER  
**THIS SPACE IS RESERVED FOR YOU!**

COMMUNITYVOICE  
 YOUR LOCAL NEWSPAPER  
**THIS SPACE IS RESERVED FOR YOU!**

**MARK MARTIN PFEIFFER**  
 MASTER BRICKLAYER/MASON  
 Cell: 780-242-3308  
 Email: pfeiffer.mark@hotmail.com

- Brickwork • Stonework
- Rockwork • Parging
- Concrete Block Work
- Tile Work (all kinds)



COMMUNITYVOICE  
 YOUR LOCAL NEWSPAPER  
**THIS SPACE IS RESERVED FOR YOU!**

**PEMBINA CONCRETE PRODUCTS LTD.**  
 Manufacturers of **ONE PIECE SEPTIC & HOLDING TANKS**  
 \* Water Cisterns \* Field Systems \* Pumps and Accessories \* Sumps

**DELIVERED TO YOUR SITE**  
 1-800-661-3047  
 780-727-2702  
 PembinaConcrete.com

**New Line of Concrete Statues, Fountains and Garden Ornaments.**  
 BOX 123, Entwistle, T0E 0S0




**ROY SHERWOOD**  
 Master Electrician  
 Ph: 780-968-1425  
 Call: 780-908-2287  
 Fax: 780-968-2211  
 Email: suretechroy@gmail.com  
 2-53220 Rge Rd 21  
 Parkland County, AB T7Y 0C5

**SURETECH ELECTRIC LTD.**  
 Control & Automation  
 Commissioning  
 Solar Sales & Service  
 Industrial . Commercial . Residential

**PREVAIL MAX**  
 CELLULAR HOMEOSTASIS FORMULA  
 How do you want your **BLOOD** to look?

Before PrevailMAX:	After PrevailMAX:
poor circulation	better circulation
low energy	more vitality
brain fog	mental clarity
dehydration	cellular movement
decreased nutrients	nutrient assimilation
pH imbalance	balanced pH
poor endurance	optimal endurance

LIVIN TRIM WITH  
 (780) 907-8642 VALENTUS  
 www.ValentusTour.com/Ladybug



**CALIBRE DRILLING LTD**  
 DRILLING AND SERVICING YOUR WATER WELL.

**SPECIALISTS IN AIR & MUD ROTARY DRILLING**

- \* Water Well Drilling
- \* Pressure Systems
- \* Licensed Drillers
- \* Geotechnical Drilling
- \* Free Estimates
- \* Pump Installations
- \* Well Tests
- \* Year Round Drilling
- \* Cathodic Protection

**Quality Workmanship Five Year Warranty**  
 (780) 960-2992  
 BOX 4083 SPRUCE GROVE, AB T7X 3B3

# SERVICE DIRECTORY

**Jack's Auto Body**  
 & 24 HR Towing

SPECIALIZING IN COLLISION REPAIR  
**GUARANTEED WORK • INSURANCE CLAIMS**

CAA BOX 9 SITE 306 RR3, ONOWAY, AB T0E 1V0  
**(780) 967-5850**

OUR PLEDGE IS QUALITY

**BACK COUNTRY PIPEFITTING LTD.**  
 Plumbing & Heating

**Lee Hicks** 780-898-1062  
 Journeyman Plumber

Residential and Commercial Plumbing and Heating.  
 SERVING: YELLOWHEAD, PARKLAND, LAC STE. ANNE & BRAZEAU COUNTIES.

**H&E**  
 UPHOLSTERY

FOR ALL YOUR UPHOLSTERY NEEDS

Convertible tops for cars and boats, custom car and boat interiors, 5th wheel trailer skirts, boat tarps, ATV seats, furniture, kitchen chairs, heavy equipment seats.

WWW.HANDE.CA 4-485 South Ave. Spruce Grove  
 For more information contact: kirk@hande.ca (780) 962-3048

SERVING ENTWISLE AND AREA FOR OVER 30 YEARS

**Entwistle CONCRETE**  
 PRODUCTS LTD.

SAND & GRAVEL SALES

**PH: (780) 727-3525**  
 Dan McCracken Entwistle, AB  
 www.entwistleconcrete.ca

COMMUNITYVOICE  
 YOUR LOCAL NEWSPIPER

**THIS SPACE IS RESERVED FOR YOU!**

**SMOOLE**

- Construction & Septic Installation
- Environmental Wastewater Disposal
- Site Design & Evaluation
- Power, Water & Basement Excavation
- Trackhoe, Backhoe, Bobcat & Dump Truck

For All Your Excavation Needs  
 Call Dan 780-991-4484 Reid 780-909-0173

COMMUNITYVOICE  
 YOUR LOCAL NEWSPIPER

**THIS SPACE IS RESERVED FOR YOU!**

**SANGUDO VETERINARY CLINIC**

Box 581, 4916 - 52 Ave. Sangudo, AB. T0E 2A0  
**Dr. Ralf Sanders DVM**  
 Ph: 780-785-2200  
 Fax: 780-785-2228  
 sangudovet@gmail.com

**24 HOUR EMERGENCY SERVICE**

COMMUNITYVOICE  
 YOUR LOCAL NEWSPIPER

**THIS SPACE IS RESERVED FOR YOU!**

**POSTINGFIRST.com**

**BUY and SELL just about ANYTHING!**

**FREE LOCAL CLASSIFIED ADS**

Real Estate, Rentals, Vehicles, Pets, Jobs, Service Directory, Buy/Sell/Trade, Lawn & Garden, Garage Sales, Events, Local Places & Much More... Advertise for **FREE** Today!

Follow Us

Instagram, Facebook, Pinterest, YouTube, Twitter

**TRI-LAKES SERVICES LTD.**

- Septic Hauling
- Drinking Water Delivery
- Portable Washrooms
- Steam Truck

www.trilakeservices.ca / office@trilakes.services  
 (877) 727-3939 / (844) 967-9176

SERVING: Lac Ste. Anne County • Parkland County • Yellowhead County Area

**Xtreme LEAN NRG**

**Xtreme LEAN NRG**  
 Advanced Formula helps you:

- Regulates Your Appetite
- Regulates Blood Sugar
- Regulates Fat Absorption
- Improve Energy Levels
- Improve Your Mood
- Increase Mental Focus

"We've unlocked the science of slim!"  
**(780) 907-8642**

**SUMMERS DRILLING LTD.**

Water well drilling and service  
 Family owned Business Serving Alberta since 1917

Never run out of water again!

5 year workmanship warranty

3 Convenient ways to pay

- Visa
- Mastercard
- We now offer full financing

Tired of hauling water?  
 We can install a water well with a permanent water supply for as little as \$150/month OAC

Stop in at our office 4405 - 50 Street, Stony Plain  
 780-963-1282  
 admin@summersdrilling.com

# PREVAIL

## CELLULAR HOMEOSTASIS FORMULA

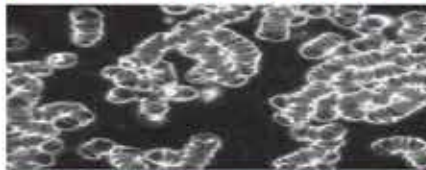
# MAX

A NUTRITIONAL BREAKTHROUGH THAT SUPPORTS YOU  
...RIGHT DOWN TO THE LAST CELL!



How do you want your  
**BLOOD** to look?

**Before PrevailMAX:**



- poor circulation
- low energy
- brain fog
- dehydration
- decreased nutrients
- pH imbalance
- poor endurance

**After PrevailMAX:**



- better circulation
- more vitality
- mental clarity
- cellular movement
- nutrient assimilation
- balanced pH
- optimal endurance

**PrevailMAX™** is a nutritional breakthrough that delivers a rapid increase of internal blood cell pressure to speed absorption, enabling the body to take maximum advantage of the nutrients in foods and supplements. The electrolytes are small enough to penetrate your cell membranes, to bind with your cells, and to be carried wherever they are needed in the body.

At the microscopic level of human cells, **PrevailMAX™** supports healthy cell performance – a nutritional breakthrough for your cells.

When you use **PrevailMAX™**, you will feel more energy and an ability to focus like never before. Take a few sprays today and see just how good you can feel!

LIVIN TRIM WITH  
**VALENTUS**

[www.ValentusTour.com/Ladybug](http://www.ValentusTour.com/Ladybug)

**(780) 907-8642**