



# COMMUNITY VOICE

YOUR LOCAL NEWSPAPER

Serving: Carvel, Darwell, Drayton Valley, Duffield, Entwistle, Evansburg, Fallis, Gainford, Parkland County, Seba Beach, Tomahawk, Wabamun, Wildwood, Spruce Grove and Stony Plain.

## February 4, 2020

### EVANSBURG FAMILY DAY 2020

Submitted by Tipple Park Museum

Family Day is on Monday, February 17th, 2020, hosted by Tipple Park Museum, and we promise to make it a memorable one!

Festivities start at 9am

until 11am with a free pancake breakfast put on by Entwistle Church and located at the Legion Hall.

Tipple Park Museum is hosting all other events starting at 11am until 1pm, including Jeff's wood working hosted by Jeff's Plumbing and Heating, a coloring

contest and games, lumberjack saw challenge & snow candy, tobogganing in the park, ice statues in the park with Brie Adkins, and a bonfire & hot dogs in the park. ALL EVENTS ARE FREE. We can't wait to see you and your family!

### CANADA SUMMER JOBS PROGRAM (CSJ) 2020

Submitted by Gerald Soroka, MP for Yellowhead

OTTAWA: Gerald Soroka, Member of Parliament for Yellowhead, is pleased to inform constituents that the CSJ 2020 application period for employers has opened and will be running until February 24, 2020. The Canada Summer Jobs initiative helps employers create summer job opportunities for those between the ages of 15 and 30.

"I encourage Yellowhead

not-for-profit organizations, public-sector employers and small businesses to apply for funding through the Canada Summer Jobs program," stated MP Soroka.

To support employers, the CSJ 2020 Applicant Guide is available at

<https://www.canada.ca/en/employment-social-development/services/funding/canada-summer-jobs.html>

Service Canada will automatically post all positions funded by CSJ to JobBank.

gc.ca and on the mobile app to help employers fill CSJ-funded positions with qualified youth looking for work in their communities.

For more information on local priorities, including the local priorities that have been established for each constituency, consult the Canada Summer Jobs website at the link below:

<https://www.canada.ca/en/employment-social-development/services/funding/canada-summer-jobs/local-priorities.html>

**MAYERTHORPE PHARMACY**  
4821 50<sup>th</sup> Street, Unit 1, Mayerthorpe, AB  
Phone: 780-786-0185 Fax: 780-786-0186

**Enjoy Senior's Day Discount EVERYDAY!!**

**Hours of Operation:**  
MON to FRI: 9:00AM to 6:00PM  
SAT: 10:00AM to 2:00PM  
Sundays & Holidays: Closed

**Please visit us and sign up for our Loyalty Program.**

**SIGHTS AND ARMS** Now Open Mon-Sat 10AM-6PM

**FALL SALE!** New, Used & Consigned  
Firearm Safety & Reloading Courses  
Gunsmithing

[WWW.SIGHTSANDARMS.COM](http://WWW.SIGHTSANDARMS.COM)  
11 J. Raybon Cr. St. Albert, Alberta 825-223-9863

**PREVAIL MAX**  
CELLULAR HOMEOSTASIS FORMULA

**Nutritional Breakthrough For Your Cells**

LIVIN TRIM WITH VALENTUS  
**(780) 907-8642**  
[www.ValentusTour.com/Ladybug](http://www.ValentusTour.com/Ladybug)

**SLIMROAST Optimum**  
DARK ROAST COFFEE

YOUR LOGICAL SOLUTION TO WEIGHT MANAGEMENT

**(780) 907-8642**  
[www.ValentusTour.com/Ladybug](http://www.ValentusTour.com/Ladybug)

**View us ONLINE!**  
[WWW.COM-VOICE.COM](http://WWW.COM-VOICE.COM)

# GYPSD GOOD NEWS STORY TO SHARE: TRAINING FOR COUNSELING STAFF



PUBLISHED WEEKLY (Zone 1 & 2) AND BIWEEKLY (Zone 3)

**E.J. Lewchuck & Associates Ltd.**

#6 - 40 South Avenue  
Box 3595  
Spruce Grove, AB T7X 3A8

### SALES TEAM

Elaine  
Ashley  
Dani

### TELEPHONE:

Classifieds 962-9229  
Advertising 962-9228  
Fax 962-1021

### E-MAIL:

comvoice@telusplanet.net  
news@com-voice.com



Submitted by GYPSD

GYPSD recently hosted a Life Space Crisis Intervention (LCSI) 4-day training workshop in Hinton for the Family School Liaison Counselors from across the Division. LSCI is an internationally recognized, professional training and certification program for

supporting young people who exhibit challenging behaviours. The program provides educators, counselors, social workers, psychologists, child and youth care workers, and other caring adults with a systematic, 6-stage process to move from stress and conflict to insight and long-term behavioral change. Over the

past decade, Grande Yellowhead has offered this extensive and valuable training for Family School Liaison Counselors to provide students and families with additional resources and support, and this year, welcomed a couple of Learning Support Teachers to join them.

**All Precious JEWELLERS**

Phone: 780-960-4200  
 Fax: 780-960-4201  
 Toll Free: 1-877-962-4367  
 Suite 102, 215 McLeod Ave. Spruce Grove, AB. T7X 0G2

*Think of your Sweetheart on Valentines Day*

Goldsmith on Premises

- Engraving • Custom Make-ups • Clock & Watch Repairs
- Jewellery Repairs | Jewellery repairs done on site.

*"Your Spruce Grove Jewellery Store"*

# GYPSED GOOD NEWS STORY TO SHARE: NATIONAL BRAVO! AWARD WINNER

Submitted by GYPSD

Grande Yellowhead Public School Division (GYPSD) congratulates Nikki Gilks, Manager of Communications/ Special Projects, on winning a national BRAVO! award from the Canadian Association of Communi-

cators in Education (CACE) at their annual conference held in Winnipeg, Manitoba this year. CACE recognizes and honours work in all aspects of school public relations, communications, marketing, and engagement efforts through their national BRAVO! Awards

Program.

This is Gilks' fourth national BRAVO! award: this year's recognition was for a single communication piece, the 2018/2019 GYPSD Fact Sheet. Gilks previously won BRAVO!s for her development of the Division's Health and Wellness

section on the website, the annual print calendar, and the 2017 Kindergarten Marketing Campaign.

She has been a proud CACE member since 2007 and has been a member of the national executive since 2018.

# TRAFFIC STOP IN OLDS RESULTS IN SEIZURE OF FRAUDULENT DOCUMENTS & DRUGS

Submitted by Alberta RCMP

On Tuesday, January 21st, 2020, at approximately 9:40 PM, the Olds RCMP responded to a complaint of a possible impaired driver in the town of Olds. A short time later, an officer located the vehicle and determined that the male driver was wanted on outstanding warrants. The male was arrested and an initial search of the vehicle revealed what appeared to be several fraudulent documents including falsified identification cards and licences. Through the course of the investigation a female passenger disclosed to police that she had been assaulted by the driver.

A search warrant was obtained to further search the vehicle which resulted in a seizure of various drugs, including what is suspected to be heroine and fentanyl.

Evan Mitchell Balchen (31) of Spruce Grove has been charged with eleven offences, including:

- Unlawful possession of identity documents
- Trafficking of a controlled substance
- Possession of a controlled substance
- Assault
- Utter threats

Balchen was held in custody on his warrants and is scheduled to attend Didsbury Provincial Court on February 24th, 2020.

## PUBLIC NOTICE

### Proposed 32m Self Support Telecommunications Facility

#### TYPICAL FACILITY PROFILE

**SUBJECT: AB003035 - Wabamun**

- 32m Self-Support Tower
- Location: Plan 3682AJ; Block 1; Lot 1 to 3  
Lat: 53.557850° N  
Long: -114.468075° W
- The proposed tower will be located on a parcel located at **5103 – 50th Street, Wabamun, AB.**

Among the factors considered during the site selection process are expected usage patterns of wireless service, local terrain, interaction with existing radio base stations, and line of sight requirements for high quality communication. Each site that is investigated must go through an internal review by radio frequency, transmission and civil engineering groups in order to qualify.

#### SITE LOCATION MAP

With respect to this matter, the public is invited to provide written comments by **March 5, 2020** to the contact information shown below. Please include a return address.

**Telus Communications Inc.**  
**c/o LandSolutions LP**  
 Lena Fulton  
 Site Acquisition & Municipal Affairs  
 600, 322 – 11 Avenue SW  
 Calgary, AB. T2R 0C5  
 p. (403) 290-0008  
 e. [comments@landsolutions.ca](mailto:comments@landsolutions.ca)

# TECK MINE PROJECT

**Submitted by Gerald Soroka, MP for Yellowhead**

OTTAWA: Gerald Soroka, Member of Parliament for Yellowhead and Deputy Shadow Minister for Natural Resources (Forestry and Mining), rose in the House

of Commons to ask the government to stop dividing the country and approve the Teck mine project.

MP Soroka stated, "Canada's Environmental Assessment Agency recommended this mine be approved. The project has signed agree-

ments with all Indigenous groups who live near it."

He continued, "since the Liberals were first elected, over \$100 billion in energy projects have been lost, thousands of jobs are gone, and national unity is damaged. The failure to approve

the Teck Mine would make this problem even worse."

In response, the Parliamentary Secretary to the Minister of Economic Development and Official Languages said: "...we'll have a decision at the end of February 2020, Thank you."

# COUNCIL APPROVES 2020 INTERIM BUDGET

**Submitted by Parkland County**

Council has approved the 2020 interim operational and capital budgets.

"With careful consideration, Council has adopted a budget that recognizes cost reductions across all our departments, while ensuring our ability to continue to recover from the economic downturn," said Mayor Rod Shaigec. "Council respects the impacts tax-

ation has on the lives of our residents and businesses and has strived to ensure property tax increases were as low as possible."

"Administration has put together a budget that sees significant adjustments to our current operations to ensure tax increases for the 2020 year are respectful of the current economic environment for both residents and businesses within the County," said Mike Heck, Chief Administrative Offi-

cer. "This budget resets the cost structure of the county to the reality of the revenue stream and supports the strategic direction set out by Council. I am encouraged by the extensive work by Council and Administration to ensure the needs of our community are met."

The overall municipal tax increase is 2.10%. The average increase for a residential property owner is \$41 per year or 2.01%. The average non-residential owner

will see an increase of 1.99% or \$832 per year.

The 2020 interim municipal operating budget includes \$105,994,000 in expenditures (including amortization and other levies), \$23,991,000 in revenues (other than taxation); and a municipal tax requirement of \$62,192,000.

The 2020 interim municipal capital budget includes \$26,138,000 in expenditures, \$25,408,000 in revenues (other than taxation);

**Town & Country Funeral Services**

Wabamun  
780-983-2749

Evansburg  
780-727-2791

- † Cemetery Monument Sales & Installation
- † Traditional Burial & Funeral Services
- † Pre-need Funeral Packages
- † Crematorium & Memorial Services

## JOKE OF THE WEEK

**A Police officer stops a driver:**  
"Your tail light is broken, your tires must be exchanged and your bumper hangs halfway down. That will be 300 dollars."

**Driver:** Alright, go ahead. They want twice as much as that at the garage.

# BINGO!

Wildwood Community Association invites you to shake off those winter blues! Come on out for an evening of fun and friends

## MONDAY EVENINGS

Wildwood Community Hall

# BINGO!

Doors Open at 6:00 P.M.  
Program Starts at 7:30 P.M.

- LOONIE POTS
- EXTRA GAMES • NEVADAS
- NEW SOUND SYSTEM

# KEY MESSAGES FROM GYPSD'S PUBLIC BOARD MEETING

Submitted by GYPSD

December 4, 2019  
Financial News

The Board of Trustees received a letter from the Minister of Education offering school jurisdictions the opportunity to re-purpose the operating portion of the Infrastructure Maintenance and Renewal (IMR) grant funding to support school-based certificated and non-certificated staffing costs for this year only. GYPSD will explore this opportunity to ensure there is no disruption to our front-line workers.

Board Annual Work Plan

Trustees went over the scheduled events planned over the next quarter, which include local attendance at upcoming school band and Christmas concerts

Trustee Reports:

• Discussed attendance at some school council meet-

ings and items of interest included school budget updates, a presentation on vaping concerns in Hinton, and explanations of the current practice of instructional classroom visits to facilitate professional growth opportunities. Trustees also heard that families use social media to keep apprised of local school and jurisdictional news and information.

• Edson Trustees Zaporosky and Fowler are looking forward to their participation on Parkland Composite High School's float for the Edson Santa Parade on Friday, December 6, 2019.

• Jasper Trustee Karpluk attended a local immigration council meeting. A recent Jasper Elementary school council meeting reminded families to complete the provincial Choice in Education Survey.



Wayfinder is an Alberta based privately-held company that supplies the Western Canadian market with premium-quality natural and resin-coated proppants for use in the production of oil and gas.

Wayfinder will be hiring qualified candidates at our Sand Processing Facility near Glenevis, Alberta for the following positions. Please forward resume to [hrbigmolly@wayfindercorp.com](mailto:hrbigmolly@wayfindercorp.com); Current Driver Abstract required, Drug & alcohol testing. Quality control experience considered an asset. Must be proficient in basic computer applications and Microsoft Office. Shift Rotations Day / Night shift including weekends; on call may be required.

- Control Room Technician
- Heavy Equipment Operators (minimum 3 years experience in aggregate industry)
- General Maintenance and Support
- Junior Mining Engineer (minimum 3 years experience)
- Materials Coordinator
- Pump Technician (minimum 3 years experience)

## PRICE REDUCED



**14K White Gold  
Diamond Ring**  
Brand New, Still  
in Box, Tags on!  
**Asking \$2,745**



**14K White Gold  
Engagement Ring**  
Brand New, Still  
in Box, Tags on!  
**Asking \$2,300**



**10K White Gold  
Diamond ring**  
Brand New, Still  
in Box, Tags on!  
**Asking \$1,375**

Call for more information, or to view the ring 780-907-8642

# COMMUNITY HUB IS ROLLING ALONG

Submitted by Jakob Kubke, Entwistle Public Library

In the deep and dark throes of winter, what do you long for most? For some kids in the area, I would argue it's a plunge in an outdoor pool on a summer day.

Lucky for them, the Entwistle Community Hub will be finished this summer, so this dream can be realized.

Being a truly community-centred hub, the public library will also make its home inside. I've been told that high-

ups in the library world are discussing whether to have blast fans at the entrance to the library to make sure no books get wet from pool water. I'm not sure I believe that, however!

Featuring more square feet than the former library; a staff workroom; and a large adjacent multipurpose room, this library is surely a step up for the public, staff, and programming!

It will feature an in-the-wall fireplace, self-checkout (and no, it's not just a mirror), and fancy curvy shelving. This

shelving is inspired by in-depth research about book borrowers' brains. It aims to reduce the intimidation of endless long rows, and it gives more books a chance at getting some love.

Complete with a kids, teen, and adult area, as well as a quiet room, people from all walks of life will be satisfied. No matter your goal, whether that be ranking up in Roblox or writing a final exam, it can all be done at the same time!

Delayed by our miserable summer, workers are going full steam ahead, even in the cold

weather. In January, concrete was poured, and a steel frame put up.

The plot of land has been a community space for many decades. According to the local history books, in the fall of 1923 the first Entwistle skating rink was built here. Eventually it was replaced by a curling rink and outdoor pool.

The library has had quite the history as well. It began in 1968, setting up in an old vacant post office. Next, when that was too small, it moved to a structure known in 1971 as the Hoople Hardware Building, which also housed the credit union and post office. The bank and library were in the same room, with just a few partitions. Bank and Library patrons would chat over top of these. The saying was that you could borrow a book and money at the same time! Already by 1972 problems arose with this space. The building was so cold in the winter that volunteers worked while wearing their outdoor clothing. Oddly enough, the staff at Entwistle school can testify that I was doing the very same thing during the January deep freeze!

In 1973 the J. D. Read Memorial Building was finished. The library moved in, along with the post office and bank. Less than 24 hours before the opening, not a single book was moved. However, in just a few hours, fourteen students from the Entwistle Grade 8 class transported the entire collection.

In 2005 the library moved into Entwistle school and we are very thankful for their cooperation over the years.

Whenever it snowed on that first rink, skaters would pitch in with shovels and scrapers to clear it off. Thanks to the pitching in of Parkland County and Yellowhead County, and I'm sure too many names to count, our community hub will be finished before we know it. And who knows? Maybe the library will enlist any willing individuals to pitch in with moving our collection of 8,000 items. I'm looking at you, Gr. 8 class!

Stay tuned for more information on our social media as the building gets closer and closer to being finished.



## TOMAHAWK SCHOOL KINDERGARTEN & EARLY EDUCATION OPEN HOUSE

★ ★ NEW FOR THE 2020-2021 SCHOOL YEAR:  
Kindergarteners must be 5 years old by Dec. 31, 2020.

### DATE

Wednesday, February 12, 2020

### TIME

6-7pm

### LOCATION

Tomahawk School  
6119 Township Road 512

### Questions?

Please call 780-339-3935

Families welcome and activities  
for children will be provided.



[tomahawk.psd70.ab.ca](http://tomahawk.psd70.ab.ca)

Online registration for the 2020-2021 school year must be completed for every child across the division (Pre-K to Grade 12).

[psd70.ab.ca](http://psd70.ab.ca)

REGISTRATION OPENS  
February 3, 2020

REGISTRATION DEADLINE  
March 20, 2020 at 4:30 p.m.

# FEBRUARY

## 15<sup>TH</sup> TO 17<sup>TH</sup>, 2020



# SnoMo Days

## SATURDAY ALBERTA BEACH

- Breakfast
- Snowmobile Poker Rally
- Skate Park
- Snow Sculptures
- Horse Drawn Wagon Rides
- NEW!** • Ice Car Racing
- Snowmobile Parade
- Bonfire
- Roast Beef Dinner
- Fireworks
- Ice Breaker Party

BAR WILL BE OPEN FROM 1-5PM  
PARTY STARTS AT 5:30PM

## SUNDAY

- Breakfast
- Snowmobile Drag Race
- Ice Park & Kidz Zone
- OHV Novelty Challenge
- 5 km Walk/Run
- Skate Park
- Snow Dig
- Broomball Tournament
- Vintage Snowmobile Show and Shine

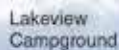
## MONDAY

- Breakfast
- Family Fishing Day
- ATV Poker Rally
- Skate Park

**ON ICE EVENTS**

**SATURDAY:**  
\$5/person

**SUNDAY:**  
\$10/person  
(10 and under, are FREE!)



# WWW.SNOMODAYS.COM

# HISTORIC INVESTMENT IN RURAL POLICING

Alberta is adding more than 500 RCMP positions in rural communities across the province and fostering new public safety partnership with municipalities.

**Submitted by Government of Alberta**

The Government of Alberta's new police funding model will inject more than \$286 million over five years into frontline law enforcement for these additional RCMP officer and civilian positions. This new cost-sharing partnership will see small and rural communities begin to pay a portion of frontline policing costs, bringing them into line with larger communities

and cities. Under the cost-sharing terms in the Provincial Police Service Agreement (PPSA), Alberta pays 70 per cent of policing costs and the federal government covers the remaining 30 per cent. With the additional investment from municipalities, the federal share of the PPSA will increase as well. This partnership will constitute a total increase in rural police funding of more than \$286 million over five years with every dollar of the additional funds

invested in frontline policing. The province is creating a new Alberta Police Advisory Board, where municipal leadership will have a seat at the table, working in collaboration with law enforcement to ensure local needs are heard and implemented. This new governance mechanism will ensure that policing is in line with the priorities of those they are protecting. "Ensuring Albertans are safe, secure, and protected in their communities goes to the heart

of who we are as a government. We want to ensure we fund law enforcement in an equitable and sustainable way that will ensure we have more police in our communities. With this new police funding model, we are making the single largest investment in rural policing since the March West and delivering on our promise to enhance public safety." - Doug Schweitzer, Minister of Justice and Solicitor General

"Crime affects many in my own rural community, and it is an issue that is incredibly personal to me. All Albertans deserve to feel safe in their own homes and confident that they will not fall victim to violent or property crime. This new police funding model will provide increased security and certainty for rural Albertans, and value for taxpayer dollars." - Jason Nixon, Minister of Environment and Parks

"The Government of Alberta has made an unprecedented investment in their police service, and we are ready to deliver on that commitment. The funding model announced will allow the Alberta RCMP to put additional resources where they are needed most immediately - on the frontline in your backyards and your farmyards, pushing back crime in a sophisticated and focused manner." - Curtis Zabolki, Deputy Commissioner, RCMP

"Rural Municipalities of Alberta appreciates the Government of Alberta's willingness to consult on this issue, and as a result of input from RMA and rural municipalities, implement a phased-in police costing model. Rural crime has been an ongoing issue in Alberta in recent years, and rural municipalities recognize they need to share in the costs of the solutions to support safer communities. Absorbing additional policing costs will be a significant challenge for rural municipalities given the current economic environment and RMA continues to be concerned about the use of equalized assessment in the calculations of amounts paid, however a reduction in the weighting of equalized assessment based on consultation

**X♥X♥**  
**LOVE COLLECTION**

YOUR CHOICE OF  
**Stackable Rings**  
IN WHITE, YELLOW OR ROSE GOLD

1. DD2686 5.100 Rose & Gold 2. DD0057 5.100 3. DD2770 5.170 Rose 4. DD0055 5.200 5. DX607 5.200 Rose 6. DD0047 5.1.000 Rose Gold  
7. DD0049 5.340 Rose Gold 8. DD0048 5.100 Rose Gold

**FOR THOSE WHO DEMAND THE HIGHEST QUALITY IN CUSTOM DESIGN.**  
**GOLDSMITHS ON SITE EVERY DAY.**

**(780) 968-0040**  
5015 50 Street, Stony Plain, AB

- On Site Jewellery Repairs • Custom Design
- Clock & Watch Repair • Loose Gemstones
- WE BUY GOLD & STONES
- FREE JEWELLERY CLEANINGS

info@bluediamondjewellers.com  
www.bluediamondjewellers.com

**Blue Diamond Jewellers**

ct. weight refers to the total weight of diamonds. All jewellery is enlarged to show detail. All prices subject to change. All product is 10 Kt gold unless otherwise stated. Our Canadian Diamonds are mined in Canada and cut & polished elsewhere. Jeweller is not responsible for any typographical errors. © Copyright Corona Jewellery Company Ltd. December 2015



# Historic Investment In Rural Policing

is appreciated. RMA is looking forward to participating on the Alberta Police Advisory Board to inform how additional funding will be reinvested to improve service standards to the rural and remote municipalities and how municipalities can have increased local input into monitoring the service deliverables as compared to cost increases.” - Al Kemmere, president, Rural Municipalities of Alberta

“AUMA has long advocated for a more equitable police-funding model to address RCMP vacancies and the rising costs of policing while improving community safety. We’re pleased to see action on this critical priority by the provincial government, as safe and healthy municipalities build strong communities and a stronger Alberta. Further consultation is critical to supporting local governments with the policing resources they need, and we look forward to actively contributing to the Alberta Police Advisory Board.” - Barry Morishita, president, Alberta Urban Municipalities Association

This partnership places priority on adding uniformed patrol officers in rural RCMP detachments, increasing the total number from under 1,600 to about 1,900, and will also add members to specialized RCMP units that dismantle organized crime and drug trafficking and investigate auto and scrap metal theft.

Furthermore, the new civilian positions will assist with administrative tasks and investigative support to increase response times and help ensure officers have the support network they need to protect Albertans by spending more time on roads and in communities.

**Quick facts**

- Small and rural communities, with some exceptions, will begin contributing a portion of their frontline policing costs in 2020. To give communities time to adjust, the new funding model is being phased in: communities will contribute 10 per cent of policing costs in 2020, followed by 15 per cent in 2021, 20 per cent in 2022 and 30 per cent in 2023.

- Policing costs for each community will be determined by municipal tax base (as measured by equalized assessment)

and population to calculate a base cost. Communities will also be eligible for other subsidies that consider other factors that may affect local policing costs.

- Current annual PPSA amount, 2019-20 (prior to new police funding partnership): \$374.8 million
- Government of Alberta contribution: \$262.4 million
- Government of Canada contribution: \$112.4 million
- Additional investments to current PPSA to April 1, 2024 will be: \$286,605,021
  - o Government of Alberta con-

- tribution: \$200,623,515
  - o Government of Canada contribution: \$85,981,506

- All additional investments will go towards more frontline resources.



*Justice Minister and Solicitor General Doug Schweitzer shakes hands with an RCMP officer in Leduc County.*

## Constituency Assistant

*Constituent Assistants play a key role in the democratic process in the province of Alberta, as they are the first point of contact for constituents. The Constituency Assistant acts as a bridge between the citizen and the elected representative.*

*As an extension of the Legislative Assembly Office, we offer challenging work, dynamic environment and a rich history.*

The constituency office of Lac Ste. Anne-Parkland is looking for a mid-to-senior level full-time Constituency Assistant. In this unique role, the ideal candidate will possess exceptional organizational skills along with strong attention to detail as they support and coordinate the needs of constituents and carry out the functions of the office. Experience with supervision would be an asset.

The Constituency Assistant is responsible for maintaining strong communication networks within the constituency, coordinating operational and administrative functions in the office, providing outreach and liaison in the community and overseeing constituent’s casework. In this role, you may provide supervision and direction to staff while ensuring issues and functions of the office are carried out in a timely and professional manner.

The ideal candidate would possess a related post-secondary degree along with 3-5 years of experience in an office setting. Strong communication and relationship building skills are necessary in order to effectively assist constituents and community members with various inquiries. The ideal candidate will be able to efficiently manage multiple demands while projecting a calm and professional presence. Experience with supervision and task delegation would be an asset.

**Salary range** for this position is \$43,824 – \$72,888 dependent on qualifications in addition to a comprehensive benefit package.

If you believe this job is right for you, please send your complete application package, including resume and cover letter, to:

**MLA Shane Getson  
4708 Lac Ste. Anne Trail, N  
P.O. Box 248, Onoway PO  
Onoway, AB T0E 1V0**

**Or email to:  
LacSte.Anne-Parkland@assembly.ab.ca**

**The deadline to apply is February 21, 2020.**

**We thank all applicants for their interest; however, only candidates under further consideration will be contacted. Final candidates will undergo pre-employment checks.**

# DARWELL PUBLIC LIBRARY NEWS

**Submitted by Darwell Public Library**

We are busy planning our programming schedule for the Winter/Spring session and have a few things happening should you stop by the library. The Colouring Club, Family Games and LEGO run daily, during regular library hours, for patrons of all ages. These passive programs are self-directed activities; we supply the materials you supply the inspiration and fun. We encourage you to ask about our passive programming and provide ideas for what you would like to see in the library. We look forward to hearing from you.

The next Book Club meeting will be held on Monday, March 2, 2020 at 2:00p.m. to review "Eleanor Oliphant is Completely Fine" by Gail Honeyman. Do you love to read? Do you like to discuss what you have read with others? We are always interested in a new

perspective to add to our conversation. If you are interested in participating, you can register and make arrangement for loan of the current title by calling the library @ 780-892-3746.

Preschool Story Time/Play Time for children 0 to 5 years of age will start on Monday, February 10, 2020 with Valentine Fun Day and run once a month until May 11, 2020 from 1 PM to 2PM at the library. We are making changes to this program and will require you to register if you wish to attend No Drop Ins. All children must be accompanied by an adult as this is a program designed for parents/caregivers and children together. This is an interactive early literacy program so come join us for stories, activities, crafts and a snack.

Registration is now open for Beginner Tai Chi & Practice starting Friday, February 14, 2020 from 10 to 11 AM at the Darwell Centennial Hall and

will run every Tuesday and Friday from 10 to 11 AM until May 29, 2020. Due to the unexpected beginner registration we have had to make some changes to the program by increasing the number of sessions to twice a week so that they will learn the 108 moves by the end of May 2020. All you need is loose comfortable clothes and flat comfortable shoes. The cost is \$ 80.00 per person and the drop-in rate will be

\$ 10.00 per person, per session. You must pre-register no later than February 12, 2020 by contacting the library.

Family Movie Night, at the Lake Isle Community Hall, will be held on Friday, February 28, 2020. We will be showing the "G" rated title "Toy Story 4". The doors will open at 6:30pm and the movie starts at 7:00 pm. Admission is \$ 2.50, and a concession will be available. See you there!

Are you interested in the library and looking for a way to

contribute? Have you thought about joining the Darwell Public Library Society or the Darwell Library Friends Society? The Darwell Library Friends Society will be holding their Annual General Meeting Thursday, February 20, 2020 starting at 7PM followed by the regular meeting. Everyone is welcome to attend, and light refreshments will be available.

The Darwell Public Library Society will be holding their next regular meeting on Monday, February 24, 2020 starting at 7 pm. All meetings are open to the public and everyone is welcome to attend. The Library is open 11:00 am to 4:00 pm on Monday, Tuesday and Thursday and from 5:00 pm to 8:00 pm Wednesday and Friday, closed Saturdays, Sundays and Holidays. You can also find out what is happening at the library by checking our Website [www.darwellpubliclibrary.ab.ca](http://www.darwellpubliclibrary.ab.ca) or follow us on Facebook at [www.facebook.com/DarwellPublicLibrary](http://www.facebook.com/DarwellPublicLibrary)

**GROVE HEARING CLINIC**

**960-2960**  
**1-866-960-2960**

Hear what you've been missing...

Senior Discounts



Full Service & Repair

Full Hearing Assessments

**HOURS OF OPERATION: 9am – 5pm Weekdays**  
3rd party billing (AADL, WCB, DVA, FCH) • Personal 0% Financing if Needed  
For The Latest Technology In Hearing Aids & Assisted Living Device Stop By & See Dawn  
**#220-70 McLeod Ave - Westland Market Mall, Spruce Grove**

# *Bridal Guide*

February 2020



## *Your* Guide to Planning Your Big Day

Filled with helpful planning advice, savvy how-to tips and the latest wedding trends, as well as a host of local wedding vendors here to help you plan the perfect day!

# Bridal Guide

## GUIDE TO A SUCCESSFUL DESTINATION WEDDING

Imagine reciting vows along the Mediterranean coast or amid pastel-hued homes and swaying palm trees. For the travel-inclined, destination weddings present the perfect opportunity to meld wedding and honeymoon all into one — with family and friends around to enjoy the magic.

The Knot Real Weddings Study, the largest survey of its kind, surveys thousands of American brides and grooms to determine the latest wedding trends. In its 2017 report, the Knot revealed 25 percent of weddings that took place that year were destination weddings. Couples are increasingly leaning on entertainment and personalization to create memorable experiences for their guests, and destination weddings are great ways to create those unique experiences.

While planning a wedding inevitably involves some obstacles and even some stress, planning a destination wedding presents a unique set of obstacles. Before couples commit to a destination wedding, it's important to first consider a few factors to ensure knots get tied without a hitch.

- **Pick a meaningful location (but one that works for guests, too).** Exchanging vows at a favorite hiking spot can give guests an inside view into what makes you tick as a couple, but the location of the ceremony should not come at the expense of practicality. Choose a locale that speaks to you but will also offer the convenience and amenities that work for the guests who will be traveling.
- **See the place in person.** If budget allows, book a trip to the intended destination to see the facilities and location,



advise the experts at Brides magazine. Working with vendors in person also can simplify sorting out certain details.

- **Send save-the-date cards promptly.** Unlike traditional weddings in which reminders can be sent roughly six months before the wedding, save-the-date cards for destination weddings should be mailed at least nine months to a year in advance of the big day.
- **Hire a professional.** Professional wed-

ding planners may prove invaluable when it comes to destination weddings. Rather than organizing everything on your own, you can hire a wedding planner to take care of itineraries, obtain information about necessary travel documents, coordinate with local vendors, and much more.

• **Consider tourist seasons.** Weather tends to be best during tourist seasons. Therefore, make sure to reserve hotel

*Eternal Love*

**All Precious JEWELLERS**  
 Toll Free: 1-877-962-4367  
 Phone: 780-960-4200 Fax: 780-960-4201  
 Suite 102, 215 McLeod Avenue  
 Spruce Grove, AB. T7X 0G2

*"Your Spruce Grove Jewellery Store"*  
 Goldsmith on Premises Jewellery repairs done on site.  
 • Engraving • Custom Make-ups • Jewellery Repairs • Clock & Watch Repairs

**WABAMUN JUBILEE HALL**

Weddings, Banquets, Meetings

Accommodates up to 300 for large functions, room divider for carpet or hardwood, full kitchen facilities, handicap accessible.

Rentals start at \$175.00

To book the hall, call 892-2699

**LIQUOR COTTAGE**

Alberta Beach, AB • 924-3385

**Wabamun LAKESIDE LIQUOR**

Wabamun, AB • 892-3463

**Liquor on McLEOD**

300-700 McLeod Ave.  
 Spruce Grove, AB  
 962-2337

CONGRATULATIONS

# Bridal Guide



## Guide to a Successful Destination Wedding

room blocks and venues promptly. Slightly before or after peak season may still be fine, but ensure that vendors will be available and look into weather trends carefully before choosing a date.

- **Research the legality.** According to The Knot, many countries have residency requirements, which means you must live in that country for a certain period of time before the ceremony. Factor this into budget and availability.
- **Scale back on DIY.** Handling many of the details while getting married close to home can be challenging, but doing so for a destination wedding can be difficult to organize. Scale back on DIY, leaving many of the details to the professionals.

Destination weddings require extra planning, but they can be memorable ways for couples to start their new life together.

## Popular destination wedding locales

Couples are increasingly tying the knot in exotic locales. According to The Knot 2017 Real Weddings Study, a survey of nearly 13,000 U.S. brides and grooms who married in 2017, 25 percent of weddings were destination weddings. While the survey did not ask participants who opted for destination weddings where they got hitched, The Knot notes that the following locales are some stunning places for couples to say their "I dos."

**Dominican Republic:** Home to 800 miles of sandy beaches, the Dominican Republic features a host of all-inclusive resorts, many of which offer wedding packages. Couples who want to tie the knot under the warm sun need look no further than the Dominican Republic, which boasts average temperatures in the 70s and 80s year-round.

**Costa Rica:** A popular honeymoon destination, Costa Rica also makes a great place to host a tropical wedding. Couples can take advantage of stunning mountaintop views or enjoy their weddings on any of Costa Rica's many white sand beaches. Dense rain forests, numerous nature preserves and national parks make Costa Rica a great place for guests to explore, especially during the dry season between December and April (rain falls throughout the year on the Caribbean coast of Costa Rica).

**Maine:** Couples who want waterfront weddings with a little something different may want to consider Maine. Lighthouses might provide the perfect backdrop for couples' nuptials, and guests can indulge in fresh lobster and various outdoor activities. Maine's tourist season is July and August, but Maine's famous fall foliage can be used to create a beautiful look for couples who tie the knot in September.

**Jackson Hole, Wyoming:** Another destination that won't require couples or their guests to dust off their passports, Jackson Hole is nestled in the awe-inspiring Teton mountain range. Summer and early fall are the best times to tie the knot in Jackson Hole, which is home to numerous rustic ranches that can make for ideal wedding settings.

**Ireland:** Couples who don't mind a rain shower here or there may want to tie the knot in Ireland, where weather is usually most welcoming between May and September. Idyllic seaside villages dot the Irish landscape, as do rolling green hills and towering cliffs that can make for beautiful backdrops for wedding ceremonies. Castles can be found throughout Ireland, giving couples unique spaces to host their weddings and receptions.

**ONOWAY REGISTRIES TRIUS INSURANCE**

Box 390, Onoway, AB T0E 1V0 Tel: 967-5270 Fax: 967-4303

See us for Marriage Licenses & all your registry needs

OPEN 9-5 MONDAY - FRIDAY  
FIRST & LAST SATURDAY OF EACH MONTH 9-12\* \*excluding long weekends

*Clients first...Service Always!*

**MERLE NORMAN**  
Cosmetic Studio & Full Service Spa

TRY BEFORE YOU BUY

- Waxing, Sugaring, Threading
- Pedicures and Manicures
- Nails
- Lash Extensions
- Spray Tans AND MORE!

4909-51<sup>st</sup> Ave., Whitecourt 780.778.3288  
www.merlenormanstudio.ca/ab/whitecourt

**Celebrations**  
YOUR ONE-STOP FLOWER SHOP

- Fresh Flowers • Balloons
- Gifts • Wedding Supplies
- Plants

Mon - Fri 9AM-5PM • Thurs - Fri 9AM-6PM  
Sat 10AM-4PM • Closed Sundays & Holidays

Phone: (780) 778-6700  
5012-50<sup>th</sup> Ave. Whitecourt, AB

**PINE PLAZA LIQUOR STORE**

Great Selection for any Celebration.  
Special Discounts

780-778-5260  
#2, 3732 Kepler St. Whitecourt

# Bridal Guide



## TIPS FOR CHOOSING A WEDDING RECEPTION MENU

Weddings are memorable for a host of reasons. While couples remember their weddings because they mark the day they officially tied the knot, guests may remember weddings for other reasons, including the food served at the reception.

Some wedding venues are known for their stunning landscapes, while others build their reputations on unique interiors that provide unforgettable ambiance. But regardless of where weddings take place, guests are liable to discuss the food served at the reception. Guests might rave about the escargot or complain that the fish was flaky, but couples who choose reception menus wisely can go a long way toward ensuring there are more compliments than complaints once the dinner bell rings.

• Don't zero in on specialties. According to The Knot 2017 Real Weddings Study, a survey of nearly 13,000 brides and grooms who tied the knot in 2017, the average wedding hosted 136 guests. While couples might be

tempted by specialty dishes when choosing their wedding menus, couples who are hosting dozens, if not hundreds, of guests should keep things simple.

• Consider potential allergies. In regard to entrées, make sure guests with food allergies can choose something that won't make them sick. According to Food Allergy Research & Education®, an organization devoted to improving the quality of life of individuals with food allergies, some common foods cause the majority of allergic reactions. Peanuts, soy, sesame, and shellfish are among the most common food allergies, according to FARE®. FARE also notes that allergies to wheat, milk and eggs are common in children. While such foods can still be served at wedding receptions, make sure to also include foods that are unlikely to trigger allergic reactions. Couples can even ask guests to inform them of any food allergies.

• Don't hesitate to offer a favorite food. While specialty entrées might

not be a great choice, especially at large receptions where lots of mouths must be fed, a couple who has a favorite food that's symbolic of their relationship should not hesitate to offer it during the cocktail hour. For example, a couple who met in Thailand may want to offer a favorite Thai dish.

• Offer an elaborate dessert. The last bite guests will take is dessert, so couples who want their guests to go home raving about the food may want to offer something special after the entrées have been taken away. Some guests may not indulge, but those who do might end their nights thinking about the delicious dessert they enjoyed as the festivities drew to a close. If the dessert is especially unique, offer something more traditional alongside it for more hesitant guests.

Choosing a wedding menu should be fun. Menus should reflect not only couples' tastes but also include some popular foods so no one goes home hungry.





**HOURS:**  
 Mon-Wed 9-6  
 Thur 9-7  
 Fri 9-6  
 Sat 10-5

**Repairs Done On Site**  
**Custom Designed Jewellery**

- Citizen • Bulova • Pulsar • Timex
- Seiko • Q-Ray • Harley Davidson Gifts
- Engraving • We Buy Gold & Diamonds

**Blue Diamond Jewellers**  
**P: 780-968-0040 • F: 780-968-4434**  
 info@bluediamondjewellers.com  
 www.bluediamondjewellers.com

5015 - 50th Street,  
 Box 3125  
 Stony Plain, AB  
 T7Z 1Y4





## Wedding Invitations

Announce your Special Day,  
 with Wedding Stationery  
 that captures the Joy you feel!

Our Album has a wide selection of  
 Designer-Inspired Invitations!

- SAVE THE DATE CARDS
- THANK YOU CARDS
- ATTENDANT GIFTS
- CONFETTI CARDS
- BOOK MARKS
- NAPKINS
- FAVORS



**INK POT PRESS**  
 5021-51 AVE. DRAYTON VALLEY, AB  
 PHONE: 780-542-4630



# Valentine's Day

## COLOURING CONTEST



**AGE GROUPS: 3-4 YRS | 5-6 YRS | 7-9 YRS | 10+ YRS**



**NAME:** \_\_\_\_\_ **AGE:** \_\_\_\_\_

**PHONE:** \_\_\_\_\_ **TOWN:** \_\_\_\_\_

*Entries must be recieved by February 13, 2020.*

**Mail to: Cupid c/o Community Voice  
Box 3595 Spruce Grove, AB T7X 3A8**

**NOTE TO PARENTS:** Please ensure that your phone number is legible.

# YELLOWHEAD COUNTY COUNCIL HIGHLIGHTS

## Submitted by Yellowhead County

Evansburg Heritage House – Previously, a representative of the Evansburg Seniors Society requested that Yellowhead County council consider assuming ownership and operation of the Evansburg Heritage House. Council recognized that the building (constructed in 1974) is facing issues and is reaching its end of life. Council has further discussed some other facilities in the hamlet that are facing similar issues, and concluded that a community facility review may be required in the near future to develop a long range plan for a replacement facility that would meet the needs of many user groups and the community at large. Council moved to notify the Evansburg Seniors Society that it will not be taking over the building as funds are not included in the 2020 budget for

such an initiative.

Jasper National Park ICF – The Municipal Government Act requires municipalities that have a common boundary to create an Inter-municipal Collaboration Framework Agreement (ICF). Improvement District 12 (Jasper National Park) is a rural neighbour to Yellowhead County. Council provided three readings to bylaw 04.20, approving the ICF agreement with Jasper National Park. In essence the agreement states that the municipalities have not identified any shared services, and should some initiatives come forward in the future, one side would provide the other 90 days notification to engage in discussion and resolution of the initiative. The agreement also contains a dispute resolution process as required by legislation.

Mountain Pine Beetle Grant Funding – In early December, administration received a let-

ter from Alberta Agriculture and Forestry stating that grant funding for combating Mountain Pine Beetle (of \$332,000) would be denied and that the province was instead using all allocated Pine Beetle funds on crown land. Administration has since drafted a letter to Honourable Seamus O' Regan, Minister of Natural Resources, asking for federal funding to assist in the eradication efforts in Alberta for Mountain Pine Beetle. Administration will also forward a letter to the provincial government in regards to this issue. Council approved said letters.

FCSS Funding – With the new provincial government, the funding model for Family and Community Support Services (FCSS) has changed. For the county, this means a loss of funding of \$123,975 specific to some children's programming. Following council direction, administration, in consultation with the FCSS Board, has realigned the children's program to provide a reduced but functional level within these new budgetary constraints. For example, administration will seek to transition the County Kids Preschool program in Marlboro to a non-profit community based group that will be eligible for Preschool Grant funding to a maximum of \$10,000 per school year. As well, administration will provide a scaled down version of summer programming without seasonal summer staff positions (making use exclusively of permanent staff). This still leaves a shortfall of \$31,750, which administration will reallocate from the Parks and Recreation department's grant budget. Council moved to accept the realigned children's program service delivery model as described.

CN Crossing Upgrades – The county has received a Funded Crossing Warning System Modification Agreement from CN to add constant warning devices and gates to the crossings at Rosevear Road and

Range Road 170 near Edson. The county, as the road authority, is responsible for the funding of upgrades to the crossing as deemed necessary by CN. At these crossings, the county is responsible for 12.5% of the costs of the work, amounting to \$41,506.75 for Rosevear Road and \$51,745.75 for the crossing of Range Road 170 near Edson. Council approved this agreement, allowing CN to move forward with the proposed upgrades.

Animal Regulation Bylaw 19.19 – Council approved second and third reading of Animal Control Bylaw 19.19. This bylaw adds clarity to what animals residents can possess, as well as types and amounts of animals, and limitations based on land size. In addition: Owners of dogs declared vicious may now appeal the decision to council; offences related to dog and cat defecation have been added; some specified penalties have been increased modestly to fall in line with other offences; and the Prohibited Animal Bylaw has been incorporated into this new bylaw.

Woodland County Joint IDP – Last December, Bill 25 (Red Tape Reduction Implementation Act) was approved by the province giving municipalities the option of not completing an Intermunicipal Development Plan (IDP) if both are in agreement. Administration has been in contact with Woodlands County's administration who are in agreement of not completing an IDP. On January 7, Woodland County Council defeated their Bylaw to adopt the IDP. Likewise, Yellowhead County council defeated second reading of Bylaw 20.19 to adopt the Woodland County/ Yellowhead County IDP, halting its adoption process.

The next Council Meeting is February 11, 2020. The next Governance & Priorities Committee Meeting is February 18, 2020. All meetings start at 9:30 a.m. in the Council Chambers.



**FREE LOCAL CLASSIFIED ADS**

Real Estate, Rentals, Vehicles, Pets, Jobs, Service Directory,  
Buy/Sell/Trade, Lawn & Garden, Garage Sales, Events,  
Local Places & Much More... Advertise for **FREE** Today!



Buy and Sell just about **ANYTHING!**  
FREE Local Classifieds

*Follow Us*







**YOUR LOGICAL SOLUTION TO WEIGHT MANAGEMENT**



CALL (780) 907-8642 FOR **FREE** SAMPLE

**DARK ROAST COFFEE**

# SLIMROAST Optimum

**Exclusive functional coffee formulated to:**

- Crush Cravings
- Increase Energy
- Metabolize fat to Energy
- Help Regulate Blood Sugar
- Improve Mood & Focus
- Boosts Circulation & Oxygen delivery

**TO UNLOCK THE SECRET OF WEIGHT MANAGEMENT! PUT THE POWER OF SLIMROAST OPTIMUM IN YOUR CUP!**



Thrilled with my results! I lost 9 lbs and an amazing 11 inches off my abdomen! Works wonderfully!

Managed to lose 7 lbs very fast & much more in inches the way my clothes are fitting now! 1 cup a day is all for me!

Down 17 lbs and fitting into clothes that were way to tight before!

No dieting, first month finished. Down 7 1/2 lbs 8.5 inches. Awesome product!

[www.ValentusTour.com/Ladybug](http://www.ValentusTour.com/Ladybug)

**(780) 907-8642**

# Classified Ads - Call 962-9228

## Classified Policy

CLASSIFIED RATES INCLUDE GST. 1st 20 Words: First Insertion = \$6.00; Subsequent insertion = \$3.00 each. (Eg: 2 insertions = \$9.00; 3 insertions = \$12.00; 4 insertions = \$15.00; etc) Each additional word is 20 cents per word, per insertion. BOLD/CAPITAL text available for an additional \$1/line. Lost & Found and To Give Away (up to a max. of 25 words) are free of charge. Ads must be paid in advance either by cheque, cash, Visa or Mastercard. No Refunds Allowed on

Classified Ads. DEADLINE: is Thurs. 4:00 pm (Wed. 4:00 pm on long weekends). Classified ads may be called in to the COMMUNITY VOICE office at (780) 962-9228, emailed to: [classifieds@com-voice.com](mailto:classifieds@com-voice.com), dropped off at Onoway Registries, or mailed with your ad and payment to: COMMUNITY VOICE, BAG 3595, SPRUCE GROVE, AB T7X 3A8. Ads may also be placed on the web at [www.com-voice.com/classified.htm](http://www.com-voice.com/classified.htm)

## Hall Rentals

- Bright Bank Hall, 780-968-6813
- Camp Encounter, Vincent Mireau - Camp Director. [director@campencounter.com](mailto:director@campencounter.com). C: 780-504-2012 W: 780-967-2548
- Cherhill Community Assoc. Hall, Kevin 780-785-8153
- Darwell Centennial Hall, 780-892-3099
- Darwell Seniors, Phone Debra 780-785-2907
- Duffield Hall, 892-2425
- Entwistle Community League Hall Rentals, Call Cheryl at 780-515-1755
- Entwistle Senior's Drop In Centre, Barb 727-2108 or Glennis 727-4367 Mon-Fri
- Evansburg Senior's Heritage House, Dennis 727-4186
- Evansburg Legion, upper hall 250 people, lower hall 80-100 people, 727-3879
- Fallis Community Hall, 892-3150
- Gunn Hall (G.A.R.S.) 780-951-9452
- Keephills Hall, 731-3761
- Lake Isle Community Hall, PH: 780-892-3121 or Email: [lakeislehall@mail.com](mailto:lakeislehall@mail.com)
- Lake Romeo PeaVine Hall, 785-2700
- Magnolia Hall, 727-2015
- Manley Goodwill Community Hall, 963-9165 or 916-0146

- Mayerthorpe Diamond Centre, 786-4044
- Moon Lake Community Hall, Diane 780-514-4694
- Park Court Hall, call or text Karyn 780-712-3918
- Parkland Village Community Centre, 780-298-9155 @PVCCentre
- Ravine Community Hall, 325-2391
- Rich Valley Community Hall, 967-3696 or 967-5710
- Rosenthal Community Hall, 963-7984
- Smithfield Community Hall, Wanita 780-718-8824.
- Tomahawk & District Sports Agra, Bookings: Kathy 780-339-3773.
- Wabamun Jubilee Hall, 892-2699.
- Wildwood Community Hall, 325-2180 or 780-514-6105
- Wildwood Rec Complex 325-2077 or 514-8944
- Wildwood Senior's Hall, 325-3787 or 325-2391

## Services

High School Math Tutor, Call Amber at 780-887-6212 (17) 07-01



**SERENITY FUNERAL SERVICE**

[www.serenity.ca](http://www.serenity.ca)

**780-542-3338** (24 hours) 5137-50 Avenue Drayton Valley, AB

SERENITY FAMILY SERVICE SOCIETY - YOUR NOT-FOR-PROFIT SOCIETY

# SUDOKU OF THE WEEK

## Fun By The Numbers

**Here's How It Works:** Sudoku puzzles are formatted as a 9x9 grid, broken down into nine 3x3 boxes. To solve a sudoku, the numbers 1 through 9 must fill each row, column and box. Each number can appear only once in each row, column and box. You can figure out the order in which the numbers will appear by using the numeric clues already provided in the boxes. The more numbers you name, the easier it gets to solve the puzzle!

**ANSWER:**

1	7	2	4	5	9	3	8	6
4	3	6	8	2	7	5	9	1
9	5	8	3	1	6	7	4	2
2	1	4	7	3	5	8	6	9
7	9	3	6	8	1	2	5	4
8	6	5	2	9	4	1	7	3
6	2	1	5	4	8	9	3	7
5	4	9	1	7	3	6	2	8
3	8	7	9	6	2	4	1	5

		2						
4	3			2			9	1
9						7		2
	1		7				6	
	9			8				4
8		5			4		7	3
6	2			4			3	
5			1		3			8
3			9				1	

**Like puzzles?** Then you'll love sudoku. This mind-bending puzzle will have you hooked from the moment you square off, so sharpen your pencil and put your sudoku savvy to the test!



# Classified Ads - Call 962-9228

## Computers

**Computer Repairs NOT over \$50.** Get a good, clean, refurbished, upgraded **Laptop** or a **Desktop** with games, world pictures, music, videos and more for **ONLY \$100.** FREE repairs for single parents. Donate used computers, tablets, etc. Will fix, clear to donate or use for parts. Call: 780-892-2407 (14) 28-01

## Firewood

**SEASONED FIREWOOD:** Birch, Tamarack, Spruce/Pine & Poplar. 4x4x8 cord, Split and delivered or pick up at wood yard, 1/2 cord or full cords available. Call 780-967-5835 or 780-983-1495 (28) 27-08-19

**FIREWOOD FOR SALE** - Birch, Tamarack & Spruce Pine mix. Poplar. 4x4x8 cords and 1/2 cords. Quality seasoned wood, Delivery or Pick up. Woodchuck Firewood, 780-288-7247 (1) 04-02 OG BW

## Buy & Sell

I BUY GUN COLLECTIONS and World War 2 Collectables, Please call Jay for a quote 780-686-1350 (30) 19-11-19

## Wanted

WANTED... Bicycle or two, if wheels the same size. If not the same OK, I'll try to match it up. This is for a grocery buggy project to haul from parking lot to seniors living unit. Packing groceries at 80 yrs + something, not fun anymore. Reasonable price much appreciated, 780-892-2110 (2) 04-02

WANTED... Bright Driving Lights to eventually install on my vehicle. 780-892-2110 (2) 04-02

WANTED... Van under \$2500. Prefer raised roof van, camperized or not OK.. OR just ordinary van in fair shape. My vehicle is being

worked on in a school project and may be gone for a while. A senior with clear Class 1 license, request. 780-892-2110 (2) 04-02

## For Rent

Completely renovated Motel in Onoway, AB. offering daily, weekly or monthly rentals. All utilities included, 55 inch tv with Satellite. Double bedrooms, furnished bachelors with

full kitchen and furnished 1 bedrooms with full kitchen available. Please call Peggy for viewing at 780-967-4420 or 1-403-742-6467. www.onowayinnandsuites.com (4) 21-01 OG

In Alberta Beach, 3 bedroom house with 4 appliances, detached garage, n/p, n/s, Available immediately, \$1100/month + DD. Call Connie 780-913-8024 (4) 04-02

Year Round Cabin For Rent

North of Evansburg on Hwy 22 (15 mins from Evansburg), \$1100/month + DD. All inclusive, utilities & TV, max 2 people. Call 780-239-0553 (8) 04-02

Available immediately, Large 2 Bedroom in 12 Unit Apartment Building in Entwistle. Includes heat, water & parking. Rent \$795/month + DD \$300. Please call Ivka 780-807-1300 or email jakovljevicvka@yahoo.ca (2) 04-02 OG

**PURE HEMP CBD PRODUCTS**  
AGING IS INEVITABLE - LOOKING AND FEELING OLD ISN'T!

**WHAT IS CBD?**

**A Health and Beauty Breakthrough!**  
Cannabidiol, CBD, is one of over 80 active cannabinoid chemicals in the hemp plant. CBD, unlike, THC, does not produce euphoria or intoxication. CBD targets specific receptors in the cells of your brain & body. There are many physical and mental benefits to using CBD products for both treatment and prevention of numerous ailments.

**Therapeutic Uses For Pure Hemp CBD**  
Supports healthy blood sugar levels, promotes healthy energy levels, relieves anxiety, aids in digestion, supports optimal immune function and the regeneration of healthy cells, and promotes a sense of serenity and overall well-being.

**Anti-Aging Uses For Pure Hemp CBD**  
Promotes more youthful skin, provides hydration, enhances radiance, lessens age lines as well as the appearance of dark spots.

**KEY BENEFITS**  
**PAIN RELIEF:** Known to reduce vomiting & nausea; suppress muscle spasms; reduce seizures & convulsions.  
**PROMOTES HEALTH:** Helps to promote relaxation and overall health.  
**WELL-BEING:** Helps to relieve anxiety, aid in digestion, supports optimal immune function and the regeneration of healthy cells.

**CBD PET PRODUCTS**

**PET CHEW TREATS**  
**KEY BENEFITS**  
**SYNERGISTIC BENEFITS:** Can be used in conjunction with regular medications with no side effects.  
**NO SIDE EFFECTS:** Does not damage the liver, kidney or GI Tract like OTC medication.  
**DIETARY SUPPLEMENT:** Can be administered daily as part of your pet's diet.

**ORAL SPRAYS & DROPS**  
**KEY BENEFITS**  
**MANAGES PAIN:** Helps to treat inflammation, arthritis and joint pain.  
**TREATS DIGESTIONAL ISSUES:** Helps with loss of appetite, nausea, IBS and gastrointestinal swelling.  
**GENERAL HEALTH:** Helps to manage mood, anxiety and general joint pain. For healthy, happy pets.  
**CONVENIENT:** Can be sprayed into pet's mouth or on food.

**For more information, Call (780) 907-8642**

# COMMUNITY EVENTS 2020

If you are a LICENSED, NON-PROFIT ORGANIZATION, you are welcome to submit your announcement FREE of charge, space permitting. You are required to submit your non-profit number. Call (780) 962-9228. Please note that all submitted event listings must be limited to 200 characters or less (including spaces). DEADLINE: 12 noon Friday prior to publication (Thursdays on long weekends).

**FEB 8 & 9 - EVANSBURG ART CLUB PRESENTS: OIL PAINTING with Tammy Taylor**, 10am- 4pm at the Wildwood Seniors. Any one is Welcome, For info 780-723-4119.

**FEB 11 - INTERLAKE GOLDEN AGE CLUB, DARWELL SENIORS: ANNUAL GENERAL MEETING** at 2:30pm in the Darwell Seniors hall. Lite lunch will be served, All 55 plus persons welcome. Come and check out the "Darwell seniors"

## FARMERS MARKETS

**DRAYTON VALLEY: Evergreen Farmers' Market**, Wednesdays at the Mackenzie Center of the Omnplex from 10:30AM-1:30PM. \*Ends Dec. 19

**EVANSBURG:** Sat, 10AM-2PM, Tipple Park Museum Call 727-2240 for tables.

**SPRUCE GROVE:** at the Elevator, Sat 9:30-1:30PM, tables (780)240-5821

**STONY PLAIN:** Sat, 9AM-1PM, Downtown, Stony Plain. Phone Nancy 780-962-3993.

## BINGO

**ENTWISTLE COMM. LEAGUE BINGO:** Every Wednesday, Doors Open 6PM.

**STONY PLAIN SENIOR'S DROP-IN CENTRE:** public bingo every Tues, 7PM. All ages welcome. Phone (780) 963-6685

**WILDWOOD:** Mon night, 6:30PM, bingo starts 7:30PM, Early Birds & Lucky 7.

**WILDWOOD LADIES AID:** every 3rd Friday of month, 6:30PM, bingo starts 7:30PM.

## MEAT DRAWS

**Evansburg:** Evansburg Legion, Friday 8-10PM & Saturday 3-5PM

**Wildwood:** Wildwood Legion, Saturday 3-5PM

## JAMBOREES

**CARVEL:** 2nd Sunday of month. \$6 lunch served. Info 780-991-3001

**CHIP LAKE:** Ravine Comm Hall, 1st Sat 325-2119 or 325-2391

**DUFFIELD:** 4th Sat, Duffield Community Hall. Supper 6PM. \*Sept - May.

**DRAYTON VALLEY:** Last Sunday of month. Upstairs @ the "55 Rec. Center" Doors at 12PM, Starts at 1PM. 780-542-3768

**ENTWISTLE:** 3rd Saturday of month, Doors at 5:30PM at Entwistle Community Hall. Contact Verna at 780-716-2304. \*October - May

**MAGNOLIA:** at Magnolia Hall. 2nd Saturday of month, New Time is 1:00PM. Call to confirm, 727-2015. \*October - May, NO Dec.

**RAVINE COMMUNITY ASSOCIATION:** 1st Sat of each month. Info 780-325-2391 \*Sept - May.

**SEBA BEACH:** 2nd Friday 7PM, Seba Senior's Centre, Toni 797-4233

**SPRUCE GROVE:** at Sandhills Community Hall, 3rd Sunday, 1-5PM. Info Florence 780-962-3104 Margaret 780-962-3051 \*Sept - June.

**STONY PLAIN:** Stony Plain Seniors Drop In Center, 5018 - 51 Ave. Every 2nd & 4th Thurs of month, 7PM, \$2.

**TOMAHAWK:** Tomahawk Agriplex, 3rd Friday of month, 7PM. Supper at 6PM. PH: 780-339-3755.

**WILDWOOD:** Wildwood Community Hall, 3rd Wed Each Month, 7PM. 325-3749 \*Oct - June.

## TOPS (Take Off Pounds Sensibly)

**ENTWISTLE:** Wed 5:15PM weigh-in, 5:30-6:30PM meeting, food bank building, South entrance. 780-932-2695.

**STONY PLAIN:** Thurs evening, Stony Plain United Church. Susan (780) 968-0869

**SPRUCE GROVE:** Wed 8:45am at Anglican Church, 131 Church Rd. Christiane 960-1109

**WILDWOOD:** Thurs at Wildwood Hall, 4:30PM. Connie (780) 325-2420

## YOUR COMMUNITY

**ALBERTA PARENTING FOR THE FUTURE ASSOC:** Call 963-0549 or visit www.apfa.ca to

register. All programs are confidential & free. **FREE HOME MEAL DELIVERY PROGRAM**, for Wabamun Seniors & Wabamun Lions. Arrange for meal preparation through a local restaurant. Call Darlene, 892-2551.

**PEMBINA SKATING CLUB** (Evansburg Arena), offers Learn-to-Skate, CanSkate & STARSkate. All ages. Call Lisa 727-2729.

**\*RUNS Sept-March**

**PROBLEMS WITH DRUG OR ALCOHOL ADDICTION** in a loved one? Contact Drug Rehab Resource for a free confidential consultation. 1-866-649-1594 or www.drugrehabresource.net.

## LIBRARY EVENTS

**AFTERNOON BOOK CLUB** at Keephills Library. 2nd Tues of every month, 1:30-3:00PM. Visit www.pclibraries.ca for info.

**FAMILY GAMES NIGHT:** 3rd Wed of every month, 6-8PM. Located at Entwistle Library, Duffield Library and Tomahawk Library. In partnership with Parkland School Division. Visit www.pclibraries.ca for more info.

**HATCHET CITY READERS** at Tomahawk Library. 3rd Tues of every month, 10-11AM. For what we're reading next, visit our website, www.pclibraries.ca.

**INVENTORS CLUB:** 2nd Thurs of every month, 3:30-5:00PM at Entwistle Library. 4th Thurs of every month, 3:30-5:00PM at Tomahawk Library. Ages 8-13. To register: Call the library at 780-339-3935.

**SEBA BEACH PUBLIC LIBRARY BOOK CLUB** meets the 4th Thursday of the month, at the library, at 10:30AM. Call us at 780-797-3940 or email us at sebaeachlibrary@vrl.ab.ca

**EVANSBURG PUBLIC LIBRARY BOOK CLUB:** 4th Thurs, 7:00PM Grand Trunk High 727-2030.

**SOCIAL EVENTS**

**50+ YOUNG AT HEART LUNCHEON** for Parkland County Seniors. 12PM at Stony Plain United Church Basement, \$8/plate. 3rd Wed of Month. Call Barb 780-952-0882.

**\*Sept-June**

**AEROBICS:** Low impact, Mon/Wed, 11AM-12PM, Wildwood Senior's Centre, \$1/session.

**BALLROOM, LATIN, COUNTRY DANCE SOCIAL:** 1st Saturday of every month. Doors open 8PM at Central Lions Recreation Center, 1113 113 St., Edmonton AB. Cost \$15 paid at the doors. Hosted by Everyone's Ballroom Dance Assoc. More info: www.ebdb.ca 780-893-6828

**BREAKFAST SOCIAL:** 9:30AM-NOON, Parkland Village Community Centre - 3rd Sunday, PH: 780.298.9155 Social Media: PVCCentre.

**COME PLAY CRIB:** Fridays, 7:30PM at Darwell Seniors Hall; lite lunch is served. All ages!

**COUNTRY QUILTERS** in Stony Plain house a "Sew in Tuesday", 2nd Tuesday of every month, from 10-3PM. Drop in \$5/member, \$6/non-members. Contact Cindy 780-963-7170.

**DROP-IN ADULT PICKLEBALL:** Thursdays, 6-8:30 p.m. Sept.12th-May @ G.T. School, Evansburg. Beginners Welcome. Paddles sponsored by the Evansburg Public Library

**EVANSBURG ART CLUB:** meet & paint Thurs 1-4PM Rec Plex. 727-4340 or 727-4098

**EVANSBURG GUIDES & PATHFINDERS:** Mon 6PM, Camp Evansburg.

**EVANSBURG SENIORS' HERITAGE HOUSE:** Floor Curling Mon & Thurs, 1pm. Court Whist Thurs, 7PM.

**EVANSBURG TIPPLE PARK HISTORICAL BUILDING TOURS:** Wed - Sat, 10:00-5:00PM.

**HEALTHY AGING NURSE & FOOT CARE PERSON,** Wabamun Seniors Centre, 2nd Thurs of month, 9AM.

**OPEN HOUSE** for socializing, Crib & card playing at Entwistle Senior Centre, Thursdays at 6:45PM. Dan 780-982-0353

**PARENT & TOT PLAYTIME:** PERC Building Stony Plain Wed 10-11AM; Holborn Community Hall Thurs 9:30-11AM; Parkland Village Tues 9:30-11:30AM.

**POT LUCK** every Tues 12:00PM, Wabamun Seniors Centre. Come on down!

**SEBA BEACH SENIORS CENTER:** Yoga, mon, 9:30AM, \$10/session Bridge thurs, 1PM. Jams every Wed night, 7PM. Thrift Shop every Wed & Sat at 10:3PM.

**SEBA BEACH QUILTERS & FIBER ARTS:** Wednesdays 9:30AM, Seniors Centre.

**SENIORS 50+ LUNCHEON:** 3rd Wed, 12PM at Stony Plain United Church basement hall. Call Audrey (780) 963-7582

**SENIORS WEDNESDAY\* AFTERNOON** 1-4PM at Parkland Village Community Centre. Games, Crafts & more! Call Sheryl 780.695.7032 \*exceptions incl. Weather.

**SPIRITUAL LIVING STONY PLAIN INSPIRATIONAL CINEMA & DISCUSSIONS** at PERC Building (5413-51 St). 2nd Friday of month at 7PM. Popcorn provided, donations appreciated. Contact 780-940-3032

**SPIRITUAL LIVING STONY PLAIN GATHERING** at PERC Building (5413-51 St). Every 2nd & 4th Sunday of month. Meditation 10AM, inspirational sharing 10:30AM. PH 780-940-3032

**SPRUCE GROVE ELEVATOR TOURS:** Tues-Sat, 9-3PM, 960-4600.

**STONY PLAIN'S 5TH MERIDIAN GOOD SAMS RV CHAPTER:** Ecole Meridian Heights School, 3rd Tues of month, 7PM. Call Pat at 780-963-6976 or Ruth at 780-288-9829.

**MEETINGS**

**2ND TIMERS:** A support & confidential group for Grandparents Parenting. 1st Thurs of month, 6:30PM. Grand Trunk High School (meet in Lobstick Literacy & Learning room). Child care provided at the Evansburg Public Library.

**299 ROYAL CANADIAN SEA CADETS CORPS MACKENZIE:** Stony Plain Comm Center, Wed 6:30PM. Youths 12-18, 963-0843

**755 PARKLAND AIR CADETS** Thurs, 6:30-9:30PM Muir Lake School, ages 12-18. Info call 405-6585 or www.aircadet.com/755.

**AA:** Friday at 8PM, Evansburg. Call 325-2204, 727-2466 or 727-6652.

**AA MEETING:** Every Monday night at 8PM, Duffield Mewassin Free Methodist Church, (13km South of Duffield Turnoff at Shell Gas Station on Hwy 16).

**AL-ANON:** Wed 8PM, Spruce Grove United Church, 1A Fieldstone Drive. 962-5205

**CHAMBER OF COMMERCE (Evans/Ent):** 7:30PM 3rd Thurs, Heritage House.

**C.H.I.L.D. (Citizens Helping in Life's Defence)** Please join our Pro-Life meetings once a month in Stony Plain. For info call Chris 963-6997.

**CITIZENS ON PATROL:** The Pembina Community Watch Patrol Meets 2nd Thurs of each month at 7:30PM, at the Tipple Park Museum (4924-48 St.), Evansburg. Contact 780-898-1465 or 780-727-2686.

**COMMUNITY QUILTERS & CRAFTERS:** 3rd Tues, Evansburg, Liz 727-3872 Brenda 727-4476

**DARWELL & DISTRICT AG SOCIETY:** 8PM, 1st Mon, Community Hall.

**DDRA MEETING:** 7:00PM, 2nd Mon, Darwell Centennial Hall 780-892-3099. \*except Jul/Aug/Dec

**DRAYTON VALLEY BRANCH OF ALBERTA GENEALOGICAL SOCIETY:** meets 7PM at Municipal Library (5120-52 St.) every 3rd Wed of month. Call (780) 542-2787

**ENTWISTLE COMMUNITY LEAGUE GENERAL MEETINGS:** 2nd Thursday monthly 7:30PM. \*Except June, July, August

**ENTWISTLE LIONS CLUB:** 2nd & 4th Tues, 8PM, Entwistle curling rink. Jim 727-3573

**ENTWISTLE SENIORS 55+ CLUB:** Tue & Fri, 1:30-4:00PM at Entwistle Hall

**EVANSBURG SENIORS' 55+ HERITAGE HOUSE:** 2nd Wed of Month, 7:00PM. Dennis, 727-4186.

**FALLIS COMMUNITY ASSOCIATION:** 3rd Tuesday, 7:00PM.

**GIRL GUIDES OF CANADA:** Poplar Hollow District Guides-Pathfinders, Mon 6-8PM. Sparks-Brownies Tues 4-5:30PM. Meet at Camp Evansburg, Brenda 780-727-4476

**LAC STE. ANNE & LAKE ISLE WATER QUALITY MANAGEMENT SOCIETY:** 3rd Fri, 7PM, Alberta Beach Council Chambers.

**LAKE ISLE HALL COMMUNITY HALL BOARD MEETINGS:** 3rd Wed of each month @ 7:30PM at the Lake Isle Hall (Hwy 633 and RR55) Ph # 780-892-3121

**LAKE ISLE MULTI 4-H GENERAL MEETINGS:** 1st Thurs of each month @ 6:30PM @ Lake Isle Hall. Contact 780-242-2486.

**LOBSTICK 4-H BEEF & MULTI CLUB:** 1st Mon, Evansburg Arena, 7PM, Shannon 727-2358

**LOBSTICK GARDEN CLUB:** 1st Mon, 7PM at Tipple Park Museum, Clara (780) 399-2205

**MAGNOLIA BOARD MEETINGS:** 1st Tuesday of month, 7PM at Magnolia Community Hall.

**MEN FOR SOBRIETY:** Wednesdays at 7:30PM, FCCS Building (#105, 505 Queen Street, Spruce Grove). Mike (780) 965-9991.

**MS SOCIETY DRAYTON VALLEY COMMUNITY GROUP** meets 1st Tues of month, 6-8PM at Norquest College. Terra Leslie, 1-403-346-0290. \*Sept-June

**MS SOCIETY PARKLAND COMMUNITY SUPPORT GROUP:** Are you diagnosed with MS and have questions? Last Tues of month, 7-9PM, Westview Health Centre. Contact Cassy 780-471-3034

**NA MEETING:** Tuesdays, 7:00PM, 514-6011

**PEMBINA PORCUPINES - JUNIOR FOREST WARDENS:** Entwistle Porcupine gathering: 7PM, 1st Tue. Len & Tineke at 727-2020. Porcupines@yellowheadfiv.ca

**SOLVE:** Community Enviro issues discussed at Smithfield Hall (N of Hwy 16 on RR34). 2nd Thursday, Jana 892-0006

**STONY PLAIN FISH & GAME ASSOCIATION & WABAMUN GUN CLUB:** 2nd Mon, Stony Plain Comm Center, 7:30PM.

**SUNDOWNERS TOASTMASTER CLUB:** Mon (excl. Holidays) 7:30-9:30PM. St. Matthew's Church, Spruce Grove, Judy 960-5258

**TOMAHAWK SENIORS (50+)** meets every Thursday from 1-4pm at the Tomahawk Agra.

**W.E.E COMMUNITY FOOD BANK:** Call (780) 727-4043 for emergency food needs. Monthly Meeting: LAST Monday of month at 7:00PM at the Food Bank (Old fire hall in Entwistle). \*Except December

**WILDWOOD & DIST AG SOCIETY:** 2nd Wed of each month 7:00PM at the Wildwood Complex, Wilma 325-2424

**WILDWOOD & DIST ROD & GUN CLUB:** 2nd Thursday, 7:30PM at the range clubhouse, wildwoodrodandgun@gmail.com

**WILDWOOD SENIORS:** 4th Wednesday at 2:00PM. PH: 325-3787 or 325-2391. \*No meeting July/Aug/Dec.

# Church Directory

<p><b>Seba Beach Christian Fellowship</b>                  Sunday School 10:00a.m.                  Worship Service 11:00a.m.                  Weekdays Bible Study &amp; Prayer                  (780) 305-3594</p>	<p><b>Advent Lutheran Church</b>                  Sunday Worship &amp; Sunday School 11:00a.m.                  Evansburg                  O: 727-3594</p>	<p><b>Roman Catholic Church</b>                  St. Agnes' Parish, Maysville                  Sunday 9:00a.m.                  St. Elizabeth Parish, Evansburg                  Saturday 7:00p.m.                  (780) 786-2032</p>	<p><b>St. Joseph's Catholic Church</b>                  Sunday Mass 11:30a.m.                  Tuesday Mass 7:00p.m.                  Wabamun, AB</p>	<p><b>St. Augustine's - Parkland Anglican Church</b>                  131 Church Rd. Spruce Grove                  Sunday Service 10:00a.m.                  Eucharist with Sunday School &amp; Nursery                  All are Welcome                  Office 780-962-5131                  www.staugustinesparkland.org</p>
<p><b>Parkland Baptist Church</b>                  Sunday Worship Service 10:30a.m.                  All Welcome                  121 Brookwood Drive                  (780) 962-4101                  www.parklandbaptist.ca</p>	<p><b>Word Church Apocalyptic Era</b>                  Border Paving Athletic Centre, 9 Tri Leisure Way, Spruce Grove                  ignitors in the Wild Rose room.                  Ph: 780-962-7579                  Service starts at 10:00 a.m. every Sunday morning,  <b>come all &amp; be bless.</b></p>	<p><b>St. Anthony's Ukrainian Orthodox Church</b>                  6103 172 St. NW, Edmonton                  Saturday:                  Vespers 5:00PM                  Sunday: Divine Liturgy 10:00AM                  780.487.2167                  santhony@telonjaneet.net                  www.st-anthonys.ca</p>	<p><b>Stony Plain United Church</b>                  Sunday Service 10:30a.m.                  5012-51 Ave. Stony Plain  <b>Mewassin United Church</b>                  Sunday Service 9:00a.m.                  Rev. Heather Koots                  Hwy 627 - Rg Rd 30                  Ph: 780-963-4745</p>	<p><b>Immanuel Lutheran Church of Rosenthal</b>                  Sunday Worship Service 9:30a.m.                  Sunday School                  780-963-4048</p>
<p><b>Emmaus Lutheran Church</b>                  Sunday Worship Service 11:30a.m.                  Rev. Robert Marshall                  4504-52<sup>nd</sup> Ave, Drayton Valley                  Ph: 780-542-5101                  www.emmauslutheran.org</p>	<p><b>Church of God</b>                  Worship Service Sun. 11:00a.m.                  Please contact for activities                  5004-49 Street, Drayton Valley                  Ph: 780-542-5091</p>	<p><b>Calvary Baptist Church</b>                  Pastoral Team: Kenton Penner                  Sunday Worship 10:30a.m.                  Youth &amp; Ministries Info - calbapt@telus.net                  4401-50<sup>th</sup> Ave. Drayton Valley                  780-542-4774                  www.calvarybaptistdo.ca</p>	<p><b>Drayton Valley Alliance Church</b>                  Pastor John Haazen                  Join us for Sunday Service at 10:30a.m.                  5014-56 Ave.                  (next to Value Drug Mart)                  Programs for all ages                  Ph: 542-6501 dvalliance.ca</p>	<p><b>All Saints' Anglican Church</b>                  Sunday Morning Worship @ BCP                  10:30 BAS with Sunday School &amp; Nursery                  5212-47 Ave. Drayton Valley                  (780) 542-5048</p>
<p><b>St. Anthony Catholic Church</b>                  WEEKEND MASS SCHEDULE:                  Saturday 5:00p.m.                  Sunday 12:00p.m.                  4708-50 Ave. Drayton Valley                  Parish Office: 542-5254</p>				

# SERVICE DIRECTORY

**2Bros**  
**Custom Contracting Ltd.**  
 Custom Framing • Concrete Floors • Shingling  
 Siding Soffit Fascia • Styrofoam Block System  
 Jeff 780-717-0520

**H&P Kosik CONSTRUCTION Ltd.**  
 • Road Building • Gravel • Sand • Dugouts  
 • Black Dirt  
 No Job too small. We do them all!  
 Harvey cell. 780-445-9010 ph. 780-892-3532  
 Box 145, Darwell, AB. T0E 0L0

**Ernie's Repair & Service**  
  
 4820 - 47 Avenue, EVANSBURG  
 (780) 727-4433 C:514-0272

**WABAMUN PHARMACY**  
**I.D.A.**  
 Box 90, 5120 - 51 Avenue  
 Wabamun, AB T0E 2K0  
 Ph: (780) 892-2278 Fax: (780) 892-2488

**COMMUNITYVOICE**  
 YOUR LOCAL NEWSPIRES  
**THIS SPACE IS RESERVED FOR YOU!**

**WEIGHTLOSS NEVER TASTED SO GOOD!**  
  
**NEW! NEW! NEW! NEW!**  
 (780) 907-8642 **VALENTUS**  
 www.ValentusTour.com/Ladybug


# SERVICE DIRECTORY

**Blakeman Drilling Ltd.**  
 Waterwell Drilling & Servicing  
 Pumps & Pressure Systems  
 SERVING LAC STE. ANNE & WEST PARKLAND FOR OVER 25 YEARS  
 Joe (780) 924-3024




**DONALD N. GREENWAY**  
 Chartered Accountant  
 Suite 205 Sunrise Professional Building  
 215 McLeod Avenue  
 Spruce Grove, AB  
 (Bus.) 962-6366  
 (Fax) 962-3990

**WHAT MAKES MYDAILYSPRAYS SO POWERFUL?**  
 HIGH ABSORPTION, SCIENCE & THE INGREDIENTS



(780) 907-8642  
 www.Elaine1.com

**SLIMROAST Optimum**  
 DARK ROAST COFFEE  
 YOUR LOGICAL SOLUTION TO WEIGHT MANAGEMENT  
 (780) 907-8642  
 www.ValentusTour.com/Ladybug



COMMUNITYVOICE  
 YOUR LOCAL NEWSPAPER  
**THIS SPACE IS RESERVED FOR YOU!**

COMMUNITYVOICE  
 YOUR LOCAL NEWSPAPER  
**THIS SPACE IS RESERVED FOR YOU!**

**MARK MARTIN PFEIFFER**  
 MASTER BRICKLAYER/MASON  
 Cell: 780-242-3308  
 Email: pfeiffer.mark@hotmail.com

- Brickwork • Stonework
- Rockwork • Parging
- Concrete Block Work
- Tile Work (all kinds)



COMMUNITYVOICE  
 YOUR LOCAL NEWSPAPER  
**THIS SPACE IS RESERVED FOR YOU!**

**PEMBINA CONCRETE PRODUCTS LTD.**  
 Manufacturers of **ONE PIECE SEPTIC & HOLDING TANKS**  
 \* Water Cisterns \* Field Systems \* Pumps and Accessories \* Sumps  
 DELIVERED TO YOUR SITE  
 1-800-661-3047  
 780-727-2702  
 PembinaConcrete.com  
**New Line of Concrete Statues, Fountains and Garden Ornaments.**  
 BOX 123, Entwistle, T0E 0S0




**ROY SHERWOOD**  
 Master Electrician  
 Ph: 780-968-1425  
 Call: 780-908-2287  
 Fax: 780-968-2211  
 Email: suretechroy@gmail.com  
 2-53220 Rge Rd 21  
 Parkland County, AB T7Y 0C5

**SURETECH ELECTRIC LTD.**  
 Control & Automation  
 Commissioning  
 Solar Sales & Service  
 Industrial . Commercial . Residential

**PREVAIL MAX**  
 CELLULAR HOMEOSTASIS FORMULA  
 How do you want your **BLOOD** to look?

Before PrevailMAX:	After PrevailMAX:
poor circulation	better circulation
low energy	more vitality
brain fog	mental clarity
dehydration	cellular movement
decreased nutrients	nutrient assimilation
pH imbalance	balanced pH
poor endurance	optimal endurance

LIVIN TRIM WITH  
 (780) 907-8642 VALENTUS  
 www.ValentusTour.com/Ladybug



**CALIBRE DRILLING LTD**  
 DRILLING AND SERVICING YOUR WATER WELL.  
**SPECIALISTS IN AIR & MUD ROTARY DRILLING**

- \* Water Well Drilling
- \* Pressure Systems
- \* Licensed Drillers
- \* Geotechnical Drilling
- \* Free Estimates
- \* Pump Installations
- \* Well Tests
- \* Year Round Drilling
- \* Cathodic Protection

Quality Workmanship Five Year Warranty  
 (780) 960-2992  
 BOX 4083 SPRUCE GROVE, AB T7X 3B3

# SERVICE DIRECTORY

**Jack's Auto Body**  
 & 24 HR Towing

SPECIALIZING IN COLLISION REPAIR  
**GUARANTEED WORK • INSURANCE CLAIMS**

CAA BOX 9 SITE 306 RR3, ONOWAY, AB T0E 1V0  
**(780) 967-5850**

OUR PLEDGE IS QUALITY

**BACK COUNTRY PIPEFITTING LTD.**  
 Plumbing & Heating

**Lee Hicks** 780-898-1062  
 Journeyman Plumber

Residential and Commercial Plumbing and Heating.  
 SERVING: YELLOWHEAD, PARKLAND, LAC STE. ANNE & BRAZEAU COUNTIES.

**H&E**  
 UPHOLSTERY

FOR ALL YOUR UPHOLSTERY NEEDS

Convertible tops for cars and boats, custom car and boat interiors, 5th wheel trailer skirts, boat tarps, ATV seats, furniture, kitchen chairs, heavy equipment seats.

WWW.HANDE.CA 4-485 South Ave. Spruce Grove  
 For more information contact: kirk@hande.ca (780) 962-3048

SERVING ENTWISLE AND AREA FOR OVER 30 YEARS

**Entwistle CONCRETE**  
 PRODUCTS LTD.

SAND & GRAVEL SALES

**PH: (780) 727-3525**  
 Dan McCracken Entwistle, AB  
 www.entwistleconcrete.ca

COMMUNITYVOICE  
 YOUR LOCAL NEWSPIPER

**THIS SPACE IS RESERVED FOR YOU!**

**SMOOLE**

- Construction & Septic Installation
- Environmental Wastewater Disposal
- Site Design & Evaluation
- Power, Water & Basement Excavation
- Trackhoe, Backhoe, Bobcat & Dump Truck

For All Your Excavation Needs  
 Call Dan 780-991-4484 Reid 780-909-0173

COMMUNITYVOICE  
 YOUR LOCAL NEWSPIPER

**THIS SPACE IS RESERVED FOR YOU!**

**SANGUDO VETERINARY CLINIC**

Box 581, 4916 - 52 Ave. Sangudo, AB. T0E 2A0  
**Dr. Ralf Sanders DVM**  
 Ph: 780-785-2200  
 Fax: 780-785-2228  
 sangudovet@gmail.com

**24 HOUR EMERGENCY SERVICE**

COMMUNITYVOICE  
 YOUR LOCAL NEWSPIPER

**THIS SPACE IS RESERVED FOR YOU!**

**POSTINGFIRST.com**

**BUY and SELL just about ANYTHING!**

**FREE LOCAL CLASSIFIED ADS**

Real Estate, Rentals, Vehicles, Pets, Jobs, Service Directory, Buy/Sell/Trade, Lawn & Garden, Garage Sales, Events, Local Places & Much More... Advertise for **FREE** Today!

Follow Us

Instagram, Facebook, Pinterest, YouTube, Twitter

**TRI-LAKES SERVICES LTD.**

- Septic Hauling
- Drinking Water Delivery
- Portable Washrooms
- Steam Truck

www.trilakeservices.ca / office@trilakes.services  
 (877) 727-3939 / (844) 967-9176

SERVING: Lac Ste. Anne County • Parkland County • Yellowhead County Area

**Xtreme LEAN NRG**

Advanced Formula helps you:

- Regulates Your Appetite
- Regulates Blood Sugar
- Regulates Fat Absorption
- Improve Energy Levels
- Improve Your Mood
- Increase Mental Focus

"We've unlocked the science of slim!"  
**(780) 907-8642**

**SUMMERS DRILLING LTD.**

Water well drilling and service  
 Family owned Business Serving Alberta since 1917

Never run out of water again!

5 year workmanship warranty

3 Convenient ways to pay

- Visa
- Mastercard
- We now offer full financing

Tired of hauling water?  
 We can install a water well with a permanent water supply for as little as \$150/month OAC

Stop in at our office 4405 - 50 Street, Stony Plain  
 780-963-1282  
 admin@summersdrilling.com

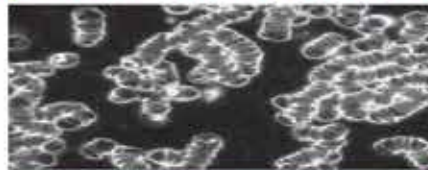
# PREVAIL CELLULAR HOMEOSTASIS FORMULA MAX

A NUTRITIONAL BREAKTHROUGH THAT SUPPORTS YOU  
...RIGHT DOWN TO THE LAST CELL!



How do you want your  
**BLOOD** to look?

**Before PrevailMAX:**



- poor circulation
- low energy
- brain fog
- dehydration
- decreased nutrients
- pH imbalance
- poor endurance

**After PrevailMAX:**



- better circulation
- more vitality
- mental clarity
- cellular movement
- nutrient assimilation
- balanced pH
- optimal endurance

**PrevailMAX™** is a nutritional breakthrough that delivers a rapid increase of internal blood cell pressure to speed absorption, enabling the body to take maximum advantage of the nutrients in foods and supplements. The electrolytes are small enough to penetrate your cell membranes, to bind with your cells, and to be carried wherever they are needed in the body.

At the microscopic level of human cells, **PrevailMAX™** supports healthy cell performance – a nutritional breakthrough for your cells.

When you use **PrevailMAX™**, you will feel more energy and an ability to focus like never before. Take a few sprays today and see just how good you can feel!

LIVIN TRIM WITH  
**VALENTUS**

[www.ValentusTour.com/Ladybug](http://www.ValentusTour.com/Ladybug)

**(780) 907-8642**