



# COMMUNITYVOICE

— YOUR LOCAL NEWSPAPER —

Serving: Alberta Beach, Barrhead, Calahoo, Cherhill, Darwell, Glenevis, Gunn, Lac Ste. Anne County, Mayerthorpe, Onoway, Rich Valley, Rochfort Bridge, Sangudo, Whitecourt, Spruce Grove and Stony Plain.

## February 18, 2020

### LAC STE. ANNE COUNTY NEWS HIGHLIGHTS

**Submitted by Lac Ste. Anne County**

#### COUNCIL MEETINGS

• February 27, 2020: County Council Meeting

Council meetings are held the second and fourth Thursdays of each month unless otherwise noted.

Meetings begin at 9:30am. Visit [LSAC.ca/agendas](http://LSAC.ca/agendas) for meeting agendas. To address Council, appointments must be booked at least 8 working days prior.

**PUBLIC WORKS DEPT SEEKS SEASONAL LABOURERS**

Five seasonal County posi-

tions are open for applicants

Lac Ste. Anne County's Public Works department requires Seasonal Labourers for road maintenance activities between the months of May and August 2020. A total of five positions are available.

*Continued on Page 3*

**MAYERTHORPE PHARMACY**  
4821-50th Street, Unit 1, Mayerthorpe, AB  
Phone: 780-786-0185 Fax: 780-786-0186

**Enjoy Senior's Day Discount EVERYDAY!!**

**Hours of Operation:**  
MON to FRI: 9:00AM to 6:00PM  
SAT: 10:00AM to 2:00PM  
Sundays & Holidays: Closed

Please visit us and sign up for our Loyalty Program.

**All Precious JEWELLERS**  
"Your Spruce Grove Jewellery Store"

**Goldsmith on Premises**  
• Engraving • Clock & Watch Repairs  
• Jewellery Repairs • Custom Make-ups  
Jewellery Repairs Done On Site.  
Laser Welder Services Available.

Toll Free: 1-877-962-4367  
PH: 780-960-4200 Fax: 780-960-4201  
Suite 102, 215 McLeod Avenue  
Spruce Grove, AB. T7X 0G2

### LOSS PREVENTION OFFICER AIDS IN ARREST

**Submitted by St. Albert RCMP**

On December 11, 2019, at approximately 4:30 p.m. St. Albert RCMP received a call from London Drugs Loss Prevention Officer who stated they recognized an individual who was presently in the store, who had an outstanding warrant from a previous theft on October 23, 2019, where 6 Garmin Watches valued over \$2700 were stolen from the store.

Police attended London Drugs, identified the individual in question and arrested Chad ROSTAD (44) for Theft

Under \$5000. It was determined the ROSTAD had outstanding warrants from Saskatchewan as well thus St. Albert RCMP liaised with Regina Police Service and were able to get the Saskatchewan warrants extended to Alberta.

ROSTAD plead guilty to the Theft Under \$5000 from St. Albert London Drugs and he will be returned to Saskatchewan jurisdiction to appear in court on unrelated matters.

During the course of this investigation St. Albert RCMP located a vehicle associated to ROSTAD, which was seized at the time of his arrest. Ap-

proximately \$8000 of new merchandise, believed to be stolen, was located inside the vehicle. St. Albert RCMP continue to investigate this matter and charges are pending.

Inspector Pam Robinson states, "Everyone has a role to play in keeping our communities safe. This successful apprehension of this traveling offender, resulted from successful community partnerships. A connected community is a safe community."

If anyone has information regarding any crime, they are asked to contact the St. Albert RCMP Detachment at 780-458-7700.

**PREVAIL MAX**  
CELLULAR HOMEOSTASIS FORMULA

**Nutritional Breakthrough For Your Cells**

LIVIN TRIM WITH VALENTUS  
**(780) 907-8642**  
[www.ValentusTour.com/Ladybug](http://www.ValentusTour.com/Ladybug)

**SLIMROAST Optimum**  
DARK ROAST COFFEE

YOUR LOGICAL SOLUTION TO WEIGHT MANAGEMENT  
**(780) 907-8642**  
[www.ValentusTour.com/Ladybug](http://www.ValentusTour.com/Ladybug)

 **View us ONLINE!**  
**WWW.COM-VOICE.COM**



**COMMUNITYVOICE**  
—YOUR LOCAL NEWSPAPER—

PUBLISHED WEEKLY (Zone 1 & 2)  
AND BIWEEKLY (Zone 3)

**E.J. Lewchuck & Associates Ltd.**

#6 - 40 South Avenue  
Box 3595  
Spruce Grove, AB T7X 3A8

**SALES TEAM**  
Elaine  
Ashley  
Dani

**TELEPHONE:**  
Classifieds 962-9229  
Advertising 962-9228  
Fax 962-1021

**E-MAIL:**  
comvoice@telusplanet.net  
news@com-voice.com

# NOTES FROM THE ONOWAY LEGION

Submitted by Richard Moses

Attention all Onoway Legion Members

At the next general meeting, March 2, there will be a motion to amend the by-laws about frequency of meetings. All members are urged to attend.

Pulled Pork Dinner

On Friday, February 21, Linda and Chris Stewart are serving pulled pork with the help of their volunteers. The meat will be accompanied by roasted baby potatoes, and coleslaw. Dessert is the always-popular brownies and ice cream.

Don't forget to book your reservation by text or phone to 780-340-0760, or leave a message on the Legion answering machine at 780-967-5361. Doors open at 3, with the meal served from 6

to 7 pm. Adults pay \$15; kids up to 10 years cost \$9, while 5 and under are free.

As usual, the bar will be open, along with the usual draw for a free meal. You'll have a chance to buy raffle tickets on a delicious meat package, on the 50:50 draw, or the Chase the President raffle, a progressive jackpot that increases in value each week there's no winner.

St. Paddy's Day Raffle

Tickets are now available for the St. Paddy's Day raffle of a \$400 liquor basket. Tickets cost \$10 each, are available at the Legion bar. The proceeds will go toward getting Ste. Anne Gas to replace our 30-year-old furnace.

Singles "Fun" 8-ball pool

On Sat. Feb. 29, enjoy a fun pool tournament. Registration is from 8:30 - 9:15 a.m. before play begins at 9:30. The entry fee \$15/person,

and 70% of the registration will be given away in prizes. You can also register in advance emailing your name, telephone number and email address to ltv336@gmail.com. Fees will be accepted upon registration at the Onoway Legion, Branch 132, between 8:30 am and 9:15 am on tournament day. Contact Larry Villneff at 780-945-0600 or by email if you have questions.

Did You Know?

The Royal Canadian Legion is Canada's largest veteran support and community service organization. It is a democratic, non-partisan, member-based organization. We endeavour to make a difference in the lives of veterans, including military, RCMP members and other emergency responders and their families, while supporting our communities and our country.



**BARRHEAD AUTO PARTS**  
ESTABLISHED IN 1975

Located 2 miles West of Barrhead on Highway 18.  
Site 13 Box 6 RR2  
Email: rob@barrheadautoparts.com

**780-674-3443**  
**1-888-577-4377**

**WWW.BARRHEADAUTOPARTS.COM**

**Quality Used Parts**

- Computerized Inventory
- Licensed Mechanics
- Quality Used & Rebuilt Parts For Cars & Trucks
- Competitive Labor Rates
- Buying Scrap Vehicles
- Used Pipe & Assortment of Metal
- Used Vehicles

**JOKE OF THE WEEK**

A girl asks a boy:  
"Peter, how much do you love me?"

The boy looks her in the eyes, "Look up at the stars, that's how much I love you."

The girl is confused,  
"But it's morning, there are no stars?"

Boy nods, "Exactly!"

**EDMONTON - Capital Region**

# GUN SHOW

**SATURDAY & SUNDAY**  
**March 7 & 8, 2020**

Located at "The Pavilion at Heritage Park"  
5100 -41 Avenue, Stony Plain, AB

VIEW~BUY~SELL~TRADE  
ANTIQU~MODERN~MILITARY

RIFLES, SHOTGUNS, PISTOLS, CARTRIDGES, KNIVES,  
MILITARY ITEMS, PIONEER ITEMS, BOOKS, ECT.

PUBLIC WELCOME - FREE PARKING ADMISSION: \$8.00

**SATURDAY 10:00AM-5:00PM**  
**SUNDAY 9:30AM-3:00PM**

**SET-UP TIME FOR EXHIBITORS:**  
FRIDAY: 3:00PM-8:00PM; SATURDAY: 7:30AM-9:30AM  
TABLE RENT: \$50 PER 6' TABLE

Concession provided by the Stony Plain Canadian Legion

**FOR MORE INFORMATION CALL:**  
[ BOTH LOCAL EDMONTON ]  
Darren (780) 473-3032 ; John (780) 455-5036  
EMAIL: edmgunshow@hotmail.com

**UPCOMING 2020 EDMONTON GUN SHOWS DATES:**  
October 24 & 25, 2020 December 5 & 6, 2020.





# Lac Ste. Anne County News Highlights

*Continued from Page 1*

## ALUS OPEN HOUSE

Thursday, February 20 at the County administration office from 5:00pm – 8:00pm.

Take in the upcoming Alternative Land Use Services (ALUS) open house and learn more about creating, managing and benefiting from environmental projects on your land. For info contact ALUS Coordinator Megan Casey at 780.785.3411 or alus@lsac.ca.

## COUNTY TO PROVIDE TAX PREPARATION ASSISTANCE

You may qualify for assistance filing your income tax & benefits Lac Ste. Anne County Community Services is pleased to offer its annual Community Volunteer Income Tax Program (CVITP) to eligible citizens. Specific details like pickup/dropoff services, in-office

appointments and eligibility requirements will be announced by February 28 via regular County media channels.

This program is a partnership between the Canada Revenue Agency and community organizations which host tax preparation clinics and arrange for volunteers to prepare income tax and benefit returns for eligible individuals.

## AFCA LAUNCHES CLEVER CARBON MONOXIDE AWARENESS CAMPAIGN

Humorous approach employed to deliver serious safety message

A province-wide campaign launched recently by the Alberta Fire Chiefs Association (AFCA) seeks to encourage Albertans to test their carbon monoxide alarms every month.

More than 70 per cent of Albertans have at least one carbon monoxide alarm in their home, according to the AFCA's research. However, although Albertans should be testing their

alarms monthly, less than half of Albertans said they were "very likely" to on even an annual basis. Furthermore, only 29 per cent of respondents said they were concerned about carbon monoxide poisoning.

The AFCA's campaign will be promoted through social media, advertising on television and in select Cineplex theatres, as well as direct mail, posters, and online at CarbonMonoxide-Alberta.ca.

*Continued on Page 4*

## TOWN OF ONOWAY EMPLOYMENT OPPORTUNITY

### Chief Finance Officer



The Town of Onoway is seeking a qualified and energetic individual to fill a vital role in our administration office. Reporting to the CAO, the CFO is responsible for providing oversight and management of the day to day finance functions of the municipality.

The duties of this position will include, but not necessarily be limited to:

- Responsible for the finances and investments for the Town Of Onoway
- Oversees and develops all financial and accounting functions which includes but is not limited to tax roll, a/p, a/r, fixed assets, assessment
- Working with Muniware software system
- Provides necessary reports and advice to the CAO and Public Works Manager on all matters of a financial and accounting nature
- Develops the annual Operating and Capital Budgets for Council's approval in accordance with Provincial Government requirements that results in accurate operating and capital investments
- Develop and maintain the 3 year Operating and 5 year Capital Plan for Council's approval
- Balances the assessment role and prepares the annual tax rate bylaw based on the approved budget
- Other duties as required.

We are looking for a self-motivated Team Player who desires the challenges and rewards of municipal administration. Preference will be given to applicants with a CPA designation or equivalent, post-secondary certification/diploma/degree in accounting, finance or related area. Strong Microsoft office and excel spreadsheet and accounting software skills are essential. Experience in municipal accounting and financial administration is a preference. Proven interpersonal, supervisory and team leadership skills is an asset. The successful candidate must have a positive attitude and willingness to learn new roles.

The Town has a competitive salary range and strong benefit package. A job description for this position can be found on the Town's website.

Resumes, including cover letter stating experience, qualifications and references, will be accepted until 12:00 p.m. noon, Wednesday, March 4<sup>th</sup>, 2020 and submitted to:

**Wendy Wildman, Chief Administration Officer**  
Town of Onoway  
4812 – 51 Street, Box 540 Onoway, AB T0E 1V0  
cao@onoway.ca

*This position will remain open until a suitable candidate is found. The Town of Onoway wishes to extend their thanks to everyone in advance for their applications, however only those chosen for an interview will be contacted.*

**STORY TO TELL?**

Know of a good event going on in the community? Ever wanted to write up a local event for the Community Voice?

If you have any good ideas for articles or would like to submit a story for the paper, Email it to [news@com-voice.com](mailto:news@com-voice.com) or just fax it in at (780) 962-1021.

**Please call us at (780) 962-9228 for more information.**

Stories may be edited for length due to possible space restrictions.

**COMMUNITYVOICE**  
YOUR LOCAL NEWSPAPER

# Lac Ste. Anne County News Highlights

*Continued from Page 3*

## EXPLORE LOCAL WEBINAR SERIES UNDERWAY

Topics range from local trends and food safety to alternative market channels

Explore Local is an Alberta Agriculture and Forestry webinar series that helps producers and others build on – and cap-

ture – growth opportunities in the local food market.

The 2020 Explore Local series is already underway, but this great educational content runs until late April. Upcoming webinar topics include Local Food and Beverage Sales Trends and Opportunities, Alberta Food Regulation for Farmers' Market Manag-

ers and Vendors, and Finance Options for Small-Scale Food Businesses. Registration for these webinars is fast, easy, and free!

Visit [LSAC.ca/Agriculture](https://lsac.ca/Agriculture) for a complete rundown of Explore Local webinar topics, scheduled times and registration details.

Webinars provided courtesy of Alberta Agriculture and Forestry.

## CLUBROOT STATUS CHECK

View the 2019 clubroot map To confirm the clubroot status of your field, visit [LSAC.ca/Clubroot](https://lsac.ca/Clubroot) or grab a copy of the 2019 clubroot map from the County administration office. Alternately, please call 780.785.411 or email [AgServices@LSAC.ca](mailto:AgServices@LSAC.ca).

## SAVE THE DATE: RIPARIAN STEWARDSHIP 2.0 WORKSHOP

Cherhill | Thursday, March 26 from 12 Noon to 4:00pm

Interested in taking on a riparian project or just want to learn more about good land management practices? This workshop is for you! Details will be posted on [LSAC.ca/Agriculture](https://lsac.ca/Agriculture) closer to the workshop date.

## COUNTY UNVEILS REGIONAL BUSINESS DIRECTORY

Great new marketing resources for registered local businesses.

On February 15, Lac Ste. Anne County and the Town of Onoway launched a business portal called Shop the County – the latest milestone in its three-year economic development road map. Local businesses registered with the Town or County can now make use of free marketing tools including a customizable business directory. Visit [shopthecounty.ca](https://shopthecounty.ca) to learn more.



**FIREWOOD**  
**ALBERTA**  
**BEACH**  
**FIREWOOD**  
 Spruce & Birch  
**Call 780-719-9473**  
**or 780-289-9184**

Visit [LSAC.ca](https://lsac.ca) to explore the latest Lac Ste. Anne County news and events in greater detail.



LAC STE. ANNE COUNTY



56521 RGE RD 65, BOX 219, SANGUDO AB T0E 2A0

OFFICE HOURS: 8:30AM TO 4:30PM MONDAY THROUGH FRIDAY

phone 780.785.3411 toll-free 1.866.880.5722 [lsac@lsac.ca](mailto:lsac@lsac.ca)

## PLANNING & DEVELOPMENT

### NOTICE OF DEVELOPMENT PERMIT APPROVALS

The following Development Permits have been approved or conditionally approved under the provisions of the Land Use Bylaw. This list does not include Permitted Uses. Interested parties are encouraged to contact the Planning and Development department at 1-866-880-5722 or [devassistant@lsac.ca](mailto:devassistant@lsac.ca), Monday to Friday 8:30am to 4:30pm to request additional information on a permit.

PERMIT #	LEGAL LAND DESCRIPTION	DESCRIPTION	APPEAL DEADLINE
20-D0005	54218 RGE RD 33 NE 16-54-03 W5M	32.3m Self-Support telecommunication installation, Fenced in area of 6.0m x 5.0m (30 sq. meters), 1.5m x 1.6m (2.4 sq. meter) Equipment shelter.	March 9, 2020
20-D0008	55109 RGE RD 20 Lot 3, Block 1, Plan 1220509 within SW 07-55-01 W5M	Converting a home based mechanical welding shop into a directional drilling company operation within the existing 3500 sq. ft. Mechanical & welding shop Home Occupation.	March 9, 2020
20-D0010	54514 RGE RD 13 SE 33-54-01 W5M	2000 Mobile Home 70.0' x 15.0' (1050 sq. ft.), Addition 12.0' x 22.0' (264 sq. ft.), Deck 12.0' x 26.0' (312 sq. ft.).	March 9, 2020

Anyone who claims to be affected and who wishes to lodge an appeal against any of the above developments must do so in writing on the applicable form on or before 4:30pm on the above noted date(s). Secretary of the Subdivision and Development Appeal Board, c/o Lac Ste. Anne County, Planning and Development department, Box 219, Sangudo, Alberta, T0E 2A0.

**PLEASE NOTE:** Lac Ste. Anne County requires that a non-refundable fee of \$250.00 be paid for every appeal served on the Subdivision and Development Appeal Board. The fee may be paid by Cheque, Visa, MasterCard, Interac or Cash.



# WORLD DAY OF PRAYER

**March 6th 7:00pm at St Rose of Lima Catholic Church, Onoway**

**Submitted by Mu Lavin**

The invitation is out for everyone - men, women and children of all ages - to join the 2020 World Day of Prayer as we celebrate the theme: Rise! Take Your Mat and Walk. Zimbabwe, one of the more southern countries in Africa, has prepared the service this year. We are encouraged to reflect on the challenges this republic has encountered during independence steps over the last sixty years. The writing team has shared the injustice obstacles that the women of Zimbabwe have met, and the hopes they have for the future. These experiences unite us all in prayer and solidarity.

World Day of Prayer is an international, inter-church event that began 98 years ago bridging social, geographic and political barriers

in over 170 countries. The weekend of prayer begins in Samoa and prayer in native languages travels throughout the world --- through Asia, Africa, the Middle East, Europe, Australia and the Americas. Together we pursue justice, peace and reconciliation by standing together in prayer and action.

The preparation for the day is vast. An international committee is based in New York and there are national committees and organizations in each participating country. In Canada, the World Day of Prayer (WDP) is coordinated by the Women's Inter-Church Council of Canada (WICC), one of the original founders of this prayer movement.

Offerings received through the World Day of Prayer transform our prayers into action in the form of project

grants empowering women and children in our own country and throughout the world. All regions share in the grants, with consideration given to greatest need. Through WDP offerings, WICC has distributed over 2.5 million dollars in the past 35 years. The vision is to restore hope to women and children touched by injustice.

The Women's Inter-Church Council of Canada (WICC) invites you, your friends and family to join a service in over 1,150 Canadian communities on or near Friday March 6, 2020.

For more information contact Mu Lavin 780 967 3079 or [lavinmu@xplornet.com](mailto:lavinmu@xplornet.com)



Honouring memories.  
*Celebrating lives.*

Funerals | Cremation | Cemetery Service

**100%**  
**SERVICE**  
**GUARANTEE**

**The Dignity™ Difference**

- Advance Funeral Planning
- Veterans Benefits
- 24 Hour Grief Support
- National Transferability

*Rose Garden Chapel*

5326 48th Street, Barrhead  
780.674.4644 or 1.800.563.6029



**www.RoseGardenChapel.com**

A Division of Service Corporation International (Canada) ULC

Darwell & District Agricultural Society  
Would Like To Invite You To

**FAMILY DANCE**

**FRIDAY, FEBRUARY 21, 2020**

7 PM - 11 PM | Darwell Centennial Hall

\$5/person, 2 & under Free

Door Prizes, Face Painting  
Free Snacks & Late Lunch

Music by Kapers

\* All children under 18 years must  
be accompanied by an adult guardian.



**SUNDAY, FEBRUARY 23, 2020**

**WINTER  
CARNIVAL**

hosted by the  
**Junior Ag Society**  
from 1:00PM- 3:00PM  
@ the Darwell  
Fair grounds

**Skating, games and more!**

# CN POLICE WANT YOU TO STAY SAFE THIS WINTER

Submitted by CN Police

No matter where you live, chances are you will face some challenging driving conditions in the months ahead. Freezing rain, snow, sleet and whiteouts can make winter driving downright dangerous.

In fact, according to the Transportation Safety Board, there's a spike in railway crossing incidents during the winter months. This is due to many factors, including:

- Ice and snow making it harder for drivers to stop and manoeuvre their vehicles;
- Snowy roads that hide pavement markings;
- Blowing snow, fog, and sleet that reduce visibility;
- Snowbanks and snow in trees reducing sight lines;
- Reducing the likelihood of being in a serious car ac-

cident in winter starts with proper planning and knowing your rail-safety basics.

Following these simple tips can help keep you safe when you encounter train tracks this winter:

Plan ahead and check the weather forecast before travelling—not only for your current location, but also for your final destination. If conditions deteriorate while you're on the road, stop at the nearest town or rest area and wait until it's safe to continue driving.

Reduce your speed when road conditions are poor, it takes longer to stop. Always slow down well in advance of a railway crossing. The more time you have to react, the better chance you have of avoiding a collision.

Avoid distractions when approaching railway cross-



ings turn off your radio and heating fans so you can listen for trains. Reduced visibility and sounds from a storm can make it more difficult to see and hear if a train is coming. Roll down your window—especially if it's frosty or foggy—and look both ways before crossing the tracks.

Look for railway warning signs and signals snow may cover train tracks at a crossing, making them look like the road. Look for warning signs and other indications that there is a railway crossing ahead so you can prepare to stop, especially when driving at night.

Use winter tires they have treads designed to grip ice

and snow, so you will be less likely to slide on the road or into the side of a train. All-season tires can begin to lose their traction when the temperature drops below 7°C.

Don't drive impaired alcohol and drugs such as marijuana reduce your ability to pay attention, react quickly and make safe driving choices.

Remember “any time is train time”. Be rail-smart this winter: Look. Listen. Live.

For CN Police related concerns 1-800-465-9239

For CN Public Inquiry concerns/complaints 1-888-888-5909 or contact@cn.ca



Wayfinder is an Alberta based privately-held company that supplies the Western Canadian market with premium-quality natural and resin-coated proppants for use in the production of oil and gas.

Wayfinder will be hiring qualified candidates at our Sand Processing Facility near Glenevis, Alberta for the following positions. Please forward resume to [hribgmolly@wayfindercorp.com](mailto:hribgmolly@wayfindercorp.com); Current Driver Abstract required, Drug & alcohol testing. Quality control experience considered an asset. Must be proficient in basic computer applications and Microsoft Office. Shift Rotations Day / Night shift including weekends; on call may be required.

- Control Room Technician
- Heavy Equipment Operators (minimum 3 years experience in aggregate industry)
- General Maintenance and Support
- Junior Mining Engineer (minimum 3 years experience)
- Materials Coordinator
- Pump Technician (minimum 3 years experience)

## Top Quality Flooring Products

- Carpet • Vinyl • Lino
- Hardwoods • Laminates
- Vinyl Tiles • Porcelain
- Floor and Wall Tiles
- Stone Tiles
- Ditra and Kerdi
- Shower Installs

Fully Experienced Professional Installers

**Quality You Can See.  
Comfort You Can Feel.  
Value You Can Appreciate.**

**3MM Vinyl Planks** installed for \$3.59/sq ft

**10MM Laminate Wood** installed for \$3.59/sq ft with Rubber Pad

**Plush Carpets** installed for \$2.99/sq ft with 8 LB under cushion

**NOW THAT'S A BARGAIN!**  
PHONE 587-286-2626 FOR FREE ESTIMATES

## Pro Finish Flooring Ltd

#6 - 20 McLeod Avenue | Spruce Grove, Alberta T7X 1V4  
TEL: 587-286-2626 | [pro-finishflooring@hotmail.com](mailto:pro-finishflooring@hotmail.com)

HOURS: Monday to Friday 9:00AM-5:00PM Saturday 9:00AM-4:00PM



# Cupid's Choice

We loved every entry but these  
are the 2020 Valentine's Day  
Colouring Contest winners



Elizabeth L. Age 3



Ryder M. Age 5



Natalie P. Age 8



Makayla Age 11



# PARKLAND RCMP ARREST KNOWN OFFENDER FOR FLIGHT FROM POLICE AND OUTSTANDING WARRANTS

**Submitted by Parkland RCMP**

On Feb. 2, 2020 at approximately 11:45 a.m. Parkland RCMP were on patrol on Range Road 35 near Duffield, Alta. when they observed a male with out-

standing warrants driving a motor vehicle. Rudy Bird had a warrant for being unlawfully at large as he failed to report to the Fort Saskatchewan Correctional Centre for an intermittent sentence.

RCMP attempted to initi-

ate a vehicle stop however, Bird fled from police at a high rate of speed. RCMP had other means to locate Bird and disengaged from trying to stop him due to the risk to public safety.

On Feb. 12, 2020 at approximately 4:00 a.m. in

the area of Paul Band First Nation, RCMP were conducting pro-active vehicle checks and located Bird as the backseat passenger in a vehicle. Bird was arrested without incident.

Rudy Bird (37) of Duffield, Paul First Nation, Alta. is charged with:

- Being unlawfully at large
- Fail to attend court
- Flight from peace officer

Rudy Bird was held for a justice interim release hearing and was remanded into custody. He will appear via CCTV on Feb.13, 2020 in Mayerthorpe Provincial Court.



**VALENTUS**

**YOUR LOGICAL SOLUTION TO WEIGHT MANAGEMENT**

CALL (780) 907-8642 FOR FREE SAMPLE

**SLIMROAST Optimum**

**DARK ROAST COFFEE**

**Exclusive functional coffee formulated to:**

- Crush Cravings
- Increase Energy
- Metabolize fat to Energy
- Help Regulate Blood Sugar
- Improve Mood & Focus
- Boosts Circulation & Oxygen delivery

**TO UNLOCK THE SECRET OF WEIGHT MANAGEMENT! PUT THE POWER OF SLIMROAST OPTIMUM IN YOUR CUP!**

Thrilled with my results! I lost 9 lbs and an amazing 11 inches off my abdomen! Works wonderfully!

Managed to lose 7 lbs very fast & much more in inches the way my clothes are fitting now! 1 cup a day is all for me!

Down 17 lbs and fitting into clothes that were way to tight before!

No dieting, first month finished. Down 7 ½ lbs 8.5 inches. Awesome product!

[www.ValentusTour.com/Ladybug](http://www.ValentusTour.com/Ladybug) (780) 907-8642



**Made You LOOK!**

See Advertising works! Place your ad today!



# SUPPORTING A FRIEND WITH MENTAL HEALTH ISSUES

**Submitted by Alberta Health Services, my-health.alberta.ca**

Do you have a friend who just doesn't seem to be their usual self? Something about them has changed, and you're wondering what's going on?

Friends can be the first ones to notice changes in a friend. It may be a change in mood, certain behaviours, or in activities they used to enjoy. You may notice that your friend seems to be tired all the time or is easily annoyed. Maybe they've stopped hanging out and are spending more time alone. Sometimes it's hard to pinpoint what's different about them, but you just have a sense that something's wrong. Maybe they've told you that they're having struggles.

Many people turn to their friends for help if they're having a problem. Knowing how to support someone is an important part of being a friend.

Signs a friend may need

some support:

- They don't seem to enjoy activities as much anymore.
- They seem distracted or are having trouble staying focused.
- They are unusually worried about things that don't seem to be a big deal to you or others.
- Their eating habits have changed—they avoid hanging out at lunchtime or make excuses as to why they're not eating.
- They're always tired or complain they aren't sleeping well.
- They're missing more and more time from school or work.
- They're drinking more alcohol or using other drugs more.
- They're sad much of the time and find it hard to see any positives in their life.
- They are spending more time alone—they don't want to hang out with friends or do any of their usual activities.

If you've noticed changes in a friend that have been going

on for a while or seem to be getting worse, it's time to do something. Speak up! Start by sharing with your friend what you have noticed and why it concerns you. Have this conversation in a comfortable but private place, where the two of you can talk without being interrupted. Let them know that you care about them and you're worried about them.

• Build confidence. Identify your friend's abilities and strengths, build on them, and encourage your friend to do their best.

• Give compliments. Compliments help us to remember the positives in our lives, especially when times get tough.

• Give and accept support

• Manage stress. Help your friend to learn what stresses them and how they can manage it in healthy ways before it overwhelms them.

• Deal with moods. Support your friend to find safe and constructive ways to talk about negative feelings, such

as anger or sadness. Sports, writing (keeping a journal), painting, dancing, making crafts, are all good ways to help deal with difficult emotions.

• Encourage your friend to do things they're good at and to have the courage to step outside their comfort zone and try something new.

• Share humour. Have fun together. Take some time to laugh with your friend.

• Be accepting of different types of people, and include others even if they are different than you. Focus on what you like about who they are as people.

Helping others to acknowledge their strengths and feel good about themselves can also help you recognize your own strengths and ways you can support your own mental wellness.

If you or if your friend needs more help, call Health Link at 811 or the Mental Health Help Line at 1-877-303-2642, available 24 hours a day, 7 days a week.

## PRICE REDUCED



**14K White Gold Diamond Ring**  
Brand New, Still in Box, Tags on!  
**Asking \$2,745**



**14K White Gold Engagement Ring**  
Brand New, Still in Box, Tags on!  
**Asking \$2,300**



**10K White Gold Diamond ring**  
Brand New, Still in Box, Tags on!  
**Asking \$1,375**

**Call for more information, or to view the ring 780-907-8642**

# *Bridal Guide*

February 2020

## *Your* Guide to Planning Your Big Day

Filled with helpful planning advice, savvy how-to tips and the latest wedding trends, as well as a host of local wedding vendors here to help you plan the perfect day!



# Bridal Guide



## A GUIDE TO HOSTING A DAYTIME WEDDING

Weddings dot the social calendars of millions of people across the globe. The Association for Wedding Professionals International says every year an average of 2.4 million weddings are performed in the United States and approximately 150,000 per year are performed in Canada. Evenings are the most common time of the day to host a wedding, but that does not mean a daytime wedding cannot be a beautiful event and make for a party to remember.

Couples are increasingly customizing their weddings to be a reflection of their personal styles. One of the ways couples are customizing their festivities is by moving the wedding to various hours of the day that meet the couple's needs. A wedding that takes place in the late morning

or afternoon may be the perfect fit for some couples. Here's how to navigate the specifics of a daytime wedding.

- Secure accommodations. An early wedding means guests may have to travel from afar the evening before to be able to attend the festivities. Daytime weddings can be complemented by working with a hotel or bed and breakfast to ensure guests will have a place to stay and get ready to arrive at the early wedding in time.

- Don't be afraid to negotiate prices. The wedding resource Bridal Guide says that vendors are typically more amenable to price discounts or offering greater value for daytime weddings. That's because demand for their services is reduced during the day. Similarly, venues may have

more availability during the day than at night, and, as a result, they're more flexible on prices, especially since brunch foods generally cost less than dinner entrees.

- Hire the right photographer. Be sure to contract with a photographer who is a pro at handling photos in daylight and natural light. While many photographers are skilled in any light, many are used to shooting in churches and venues with low lighting. Be sure to see picture samples taken during the daytime to gauge a photographer's daytime experience and skill level.

- Employ color to add dimension. During evening weddings, lighting or candles help set the mood. Those same elements will be ineffective in daylight. Choose

bright colors for your decor and flowers to brighten up spaces.

- Choose alternative entertainment. Chances are guests are not going to feel as comfortable dancing during daylight hours. Consider other entertainment, such as lawn games, karaoke, or a comedian. A guitarist or pianist may be a nice musical touch.

- Plan food accordingly. Just because the wedding is early does not mean the food should be. Guests still will need to eat. If you are only opting for light appetizers and cocktails, be sure to mention this on the invitation so guests can plan ahead and won't go hungry.

Daytime weddings can be successful with a little tweaking of traditional evening wedding planning.

### ONOWAY REGISTRIES

Box 390, Onoway, AB T0E 1V0 Tel: 967-5270 Fax: 967-4303

TRIUS  
INSURANCE

**See us for Marriage Licenses  
& all your registry needs**

**OPEN 9-5 MONDAY - FRIDAY  
FIRST & LAST SATURDAY OF EACH  
MONTH 9-12\* \*excluding long weekends**

*Clients first...Service Always!*

LIQUOR  
COTTAGE

Alberta Beach, AB • 924-3385

Wabamun  
LAKESIDE  
LIQUOR

Wabamun, AB • 892-3463

Liquor ON  
McLEOD

300-700 McLeod Ave.  
Spruce Grove, AB  
962-2337

**CONGRATULATIONS**

## Eternal Love

### All Precious JEWELLERS

Toll Free: 1-877-962-4367  
Phone: 780-960-4200 Fax: 780-960-4201  
Suite 102, 215 McLeod Avenue  
Spruce Grove, AB. T7X 0G2

*"Your Spruce Grove Jewellery Store"*

Goldsmith on Premises Jewellery repairs done on site.  
• Engraving • Custom Make-ups • Jewellery Repairs • Clock & Watch Repairs

# Bridal Guide



## MAKE CANDLES AN ILLUMINATING PART OF THE CEREMONY

The warm, undulating light cast off by a candle adds an unmatched ambience to a space. Multiply that candle by many and it can create a truly awe-inspiring atmosphere.

Candlelight is a must at any evening wedding and can be a key to a successful party as guests tend to loosen their inhibitions in a dimly lit room. While candlelight can add a warming glow to post-wedding festivities, it can play a significant role during the ceremony itself.

Flickering flames within a dimly

lit chapel or alternative ceremony site can establish an intimate setting in which a couple exchanges vows. Candles can even become a focal point of the ceremony. For example, some couples may opt to light a unity candle during their ceremonies. The unity candle symbolizes the joining of the families and merging of two individuals into one blended family. Representatives from both families, typically the parents of the couple, come up and light a candle for each side of the family. Then the bride and groom will

light a center candle from these two candles. The center candle then represents the unity of the new family and their commitment to each other.

Apart from the unity candle, there may be other ways candles play a role in the ceremony. They can be religious and secular. Candles can symbolize different things, including:

- casting away darkness and showing how love can brighten life,
- candles can provide direction and draw couples together,

• a candle can represent the love that lights up the couple's world, and

• the warmth of a relationship mirrored in the warmth of the candle. Apart from symbolism and ambience, there is an added benefit to including candles in a wedding ceremony. Brides magazine says that the amber light given off can make for beautiful photos as well. Speak with a photographer about the best ways to arrange candles to fully take advantage of their photographic potential.

## LIVE WEDDING MUSIC

Booking a live band for a wedding or another special event can be a great idea. The atmosphere live musicians can provide is unmatched. Live musicians offer a level of excitement that may

not be met by other musical options. But some couples may find the prospect of booking live entertainment a bit challenging, especially if they've never hired musicians for an event before.

Here are some tips to make the process go smoothly.

**Get recommendations.** Just like you might before booking other vendors, seek advice from friends or family members who have recently gotten hitched or had live performers at their events. They may have wonderful things to say about particular bands or performers. Individuals also can consider a resource such as HireLiveMusicians.com, a global musician database that can help couples narrow down their options.

**Decide on when the musicians play.** Live musicians can entertain guests throughout the ceremony and reception, but the longer musicians play, the more they're likely to cost. Work with musicians to develop a schedule that suits your budget.

**Discuss the theme.** Make sure musicians understand the type of atmosphere you're hoping to create. A band that customarily plays swing or big-band era songs may not fit in at weddings with more modern themes.

**Understand the fees.** Musicians may have fees related to their agents, cartage (extra given to musicians who carry large equipment), mileage costs, travel time, lighting, and other factors that affect the overall price. Discuss these fees before signing any agreements.

**Be sure the venue fits.** Live musicians are great but not if the space is too small. Otherwise, the music can be too loud and overpowering, or the band will not have adequate space to set up. Consider these factors before making any decisions.



# Bridal Guide



## MORE COUPLES ARE EMBRACING EDGY, ADVENTUROUS WEDDINGS

Brides and grooms once felt compelled to conform to the trappings of traditional weddings. From uber-romantic vows to pastel colors to the penultimate white tiered cake, various wedding components were long considered must-haves. But modern couples are increasingly expressing their individuality, and even embracing more edgy and adventurous elements, when planning their weddings.

According to The Knot, a leading bridal resource and information site, today's weddings are not what they were just a few years ago. Bold colors, exotic cakes and nontraditional foliage, are just some of the elements modern couples are

embracing to set their weddings apart.

### ADVENTUROUS LOCALES

Vineyards and catering halls can be great places to tie the knot, but couples who like to push the envelope are looking to more adventurous locales to impart their unique spin on their weddings. Sharing vows atop a mountain crest at the end of a favorite hiking trail or on a roller coaster at a theme park that harkens back to a first date are some adventurous places to tie the knot.

### OUTSIDE-THE-BOX MENUS

Couples may want to break with tradition by offering a wide selection of foods at their receptions. These foods can include

items that fit with their specific ethnic cuisines, gourmet comfort foods (think cocktail franks wellington), or foods that fit with their dietary choices, such as organic or vegan options. Work with a caterer to provide a variety of tasty choices.

### BOLD WARDROBE CHOICES

Brides can put new spins on their gowns by adding color and texture. Sequins, bold embroidery, shorter hemlines, and whatever adventurous fashion style you want to impart can be considered. If white isn't your thing, that's okay, too. Yellow and slate gray look great together. Gentlemen can choose to wear a black suit or any combination of color and style

they want to make a dramatic impression.

### FULL OF FLAVOR

Cakes don't have to be white with white buttercream. In fact, couples can make things even more tasty by incorporating favorite flavor combinations into their cakes. For example, a chocolate and caramel filling reminiscent of a candy bar might be something to consider.

Modern couples are embracing bold, unique and edgy components when planning their weddings. Putting an individualized spin on the ceremony and reception can make couples even more excited to tie the knot.

### WABAMUN JUBILEE HALL

Weddings, Banquets,  
Meetings

Accommodates up to 300  
for large functions, room  
divider for carpet or  
hardwood, full kitchen  
facilities, handicap accessible.



Rentals start at \$175.00

To book the hall, call 892-2699

### PINE PLAZA LIQUOR STORE

Great Selection for any Celebration.  
Special Discounts



780-778-5260  
#2, 3732 Kepler St. Whitecourt



**HOURS:**  
Mon-Wed 9-6  
Thur 9-7  
Fri 9-6  
Sat 10-5

**Repairs Done On Site**  
**Custom Designed Jewellery**

- Citizen • Bulova • Pulsar • Timex
- Seiko • Q-Ray • Harley Davidson Gifts
- Engraving • We Buy Gold & Diamonds

**Blue Diamond Jewellers**  
P: 780-968-0040 • F: 780-968-4434  
info@bluediamondjewellers.com  
www.bluediamondjewellers.com

5015 - 50th Street,  
Box 3125  
Stony Plain, AB  
T7Z 1Y4



# PARKLAND RCMP ARREST SUSPECT FOR FLIGHT FROM POLICE

## Submitted by Parkland RCMP

Stony Plain, Alta. – During the early morning hours of Feb. 5, 2020, Parkland RCMP were patrolling and located a vehicle being driven by a well known offender. The offender was on 24-hour house arrest

stemming from numerous charges including criminal flight. RCMP attempted to stop the vehicle however the driver, Alexandre Carriere, sped off at a high rate of speed. Carriere is known to flee from police and due to potential danger to the public, RCMP discontinued trying to stop him.

On Feb. 9, 2020, RCMP located and arrested Alexandre Carriere. While arresting Carriere, he was found to be in possession of methamphetamine. He is charged with:

- Flight from peace officer
- Fail to comply with release order condition (x3)
- Drive while unauthorized

(Traffic Safety Act)

- Possession of Methamphetamine

Carriere was held for a judicial interim release hearing. He was remanded into custody. His first appearance is scheduled for Feb. 12, 2020 at Stony Plain Provincial Court.

Carriere has numerous outstanding charges from a similar incident that occurred Sept. 21, 2019. These charges include, impaired operation, operation while prohibited, dangerous operation, flight from peace officer, mischief over \$5000 and drive uninsured motor vehicle on highway (Traffic Safety Act). He has a subsequent appearance for these charges on Feb. 26, 2020 at Stony Plain Provincial Court.

If you have any information regarding this investigation, you are asked to contact Parkland RCMP at 825-220-7267 or your local police. If you wish to remain anonymous, you can contact Crime Stoppers at 1-800-222-8477 (TIPS), online at [www.P3Tips.com](http://www.P3Tips.com) (<http://www.p3tips.com>) or by using the "P3 Tips" app available through the Apple App or Google Play Store.



## FREE LOCAL CLASSIFIED ADS

Real Estate, Rentals, Vehicles, Pets, Jobs, Service Directory, Buy/Sell/Trade, Lawn & Garden, Garage Sales, Events, Local Places & Much More... Advertise for **FREE** Today!



*Follow Us*



Like Us On  
**facebook**



FACEBOOK.COM/  
**COMMUNITY  
VOICE  
NEWSPAPER**



# ALBERTA RCMP REMIND ALBERTANS TO PLAN THEIR OWN GETAWAYS, NOT A CRIMINAL'S

**Submitted by Alberta RCMP**

Edmonton – It's the time of year for planning vacations to escape the winter. While you're away, making sure your property is secure is just as important as remembering to bring your luggage.

In January 2019 there were over 430 break and enters to residences in Alberta RCMP jurisdiction and from January-November 2019 there were over 4,850.

Crime Prevention Through Environmental Design (CPTED) is a great way to make your property less appealing to criminals.

- Install timers on lights
- Disconnect power to garage door
- Invest in a home security system
- Lock all windows and doors
- Have someone shovel your driveway
- Don't make boxes from expensive gifts obvious in your recycling

It's also important not to post pictures on social media. If you post your upcoming plans, or selfies during vacation, people will know that your house is empty.

Ask someone you trust to check your mail or use

a hold mail service while you're gone. In 2018, mail theft was high in January, second only to December.

For the month of January, follow #TravelTips for more safety tips and follow our social media accounts on Facebook (@RCMPinAl-

berta), Twitter (@RCMPAlberta) and YouTube (RCMP-GRC Alberta).

RCMP encourage the public to report any criminal or suspicious activity to police. Reports tell us where to look, who to look for, and where to patrol in the

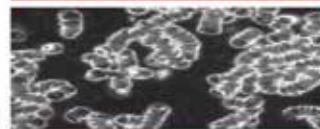
future. If you see a crime in progress, dial 911. If you wish to remain anonymous, contact Crime Stoppers at 1-800-222-8477 (TIPS), online at [www.P3Tips.com](http://www.P3Tips.com) or by using the "P3 Tips" app available through the Apple App or Google Play Store.

## PREVAIL CELLULAR HOMEOSTASIS FORMULA MAX

**A NUTRITIONAL BREAKTHROUGH THAT SUPPORTS YOU  
...RIGHT DOWN TO THE LAST CELL!**

**How do you want your  
BLOOD to look?**

**Before PrevailMAX:**



**poor circulation**

**low energy**

**brain fog**

**dehydration**

**decreased nutrients**

**pH imbalance**

**poor endurance**

**After PrevailMAX:**



**better circulation**

**more vitality**

**mental clarity**

**cellular movement**

**nutrient assimilation**

**balanced pH**

**optimal endurance**



**LIVIN TRIM WITH  
VALENTUS**

**PrevailMAX™** is a nutritional breakthrough that delivers a rapid increase of internal blood cell pressure to speed absorption, enabling the body to take maximum advantage of the nutrients in foods and supplements. The electrolytes are small enough to penetrate your cell membranes, to bind with your cells, and to be carried wherever they are needed in the body.

At the microscopic level of human cells, **PrevailMAX™** supports healthy cell performance – a nutritional breakthrough for your cells.

When you use **PrevailMAX™**, you will feel more energy and an ability to focus like never before. Take a few sprays today and see just how good you can feel!

**KEEPING YOU  
AND YOUR  
COMMUNITY  
INFORMED!**



[www.ValentusTour.com/Ladybug](http://www.ValentusTour.com/Ladybug)

**(780) 907-8642**

# WHITCOURT TOWN COUNCIL UPDATE

## Submitted by Town of Whitecourt

The Whitecourt Youth Advisory Committee will be hosting a Student Unity – Interschool Games Event on Thursday, February 27 at the JR's Pressure Service Fieldhouse located in the Allan & Jean Millar Centre from 10:30 a.m. to 12:00

p.m. This event gives students from both school divisions in grades 6 and 7 an opportunity to participate in interschool games where teams are not determined by school, but through chance placement.

Town Council reviewed information on the Whitecourt FireSmart program at the February 10 Regular

Meeting, and it was noted that Whitecourt is a recognized leader of FireSmart in the province.

Town Council supported an Expression of Interest Application to the Forest Resource Improvement Association of Alberta (FRIAA) for financial support in hosting an interagency training tabletop exercise in

Whitecourt. It is anticipated that this mock event would include emergency representatives from the Whitecourt region.

Town Council has approved a street closure request for the Canada Day Parade. This year's parade will be held on Wednesday, July 1 starting at 11:00 a.m. in downtown Whitecourt.

# PARKLAND RCMP ARREST MALE WITH 14 OUTSTANDING WARRANTS

## Submitted by Parkland RCMP

On Feb. 10, 2020 at 6:40 p.m. Parkland RCMP attended a residence in Duffield to attempt to locate Royce Michel on his outstanding warrants. Michel was observed inside the residence and was subsequently arrested for his warrants out of Edmonton and the Parkland Detachment area.

Royce Michel (20) of Edmonton was charged with the following:

- Possession of property obtained by crime (x2)
- Fail to comply/appear court
- Fail to attend court (x6)
- Resist or obstruct lawful execution process
- Resist/obstruct peace officer

- Failure to comply with condition of undertaking (x2)
- Identity fraud

Royce Michel was held for a Justice Interim Hearing and was remanded into custody. He appeared before the justice on Feb. 11, 2020 via CCTV.

**Cash for Cars**  
**967-2492**  
**R & S**  
**TOWING**

# GROVE HEARING CLINIC

**960-2960**  
**1-866-960-2960**

**Hear what  
you've been  
missing...**

**Senior  
Discounts**



**Full  
Service &  
Repair**

**Full  
Hearing  
Assessments**

**HOURS OF OPERATION: 9am – 5pm Weekdays**

*3rd party billing (AADL, WCB, DVA, FCH) • Personal 0% Financing if Needed*

*For The Latest Technology In Hearing Aids & Assisted Living Device Stop By & See Dawn*

**#220-70 McLeod Ave - Westland Market Mall, Spruce Grove**



# Classified Ads - Call 962-9228

## Classified Policy

CLASSIFIED RATES INCLUDE GST. 1st 20 Words: First Insertion = \$6.00; Subsequent insertion = \$3.00 each. (Eg: 2 insertions = \$9.00; 3 insertions = \$12.00; 4 insertions = \$15.00; etc) Each additional word is 20 cents per word, per insertion. BOLD/CAPITAL text available for an additional \$1/line. Lost & Found and To Give Away (up to a max. of 25 words) are free of charge. Ads must be paid in advance either by cheque, cash, Visa or Mastercard. No Refunds Allowed on Classified Ads. DEADLINE: is Thurs. 4:00 pm (Wed. 4:00 pm on long weekends). Classified ads may be called in to the COMMUNITY VOICE office at (780) 962-9228, emailed to: [classifieds@com-voice.com](mailto:classifieds@com-voice.com), dropped off at Onway Registries, or mailed with your ad and payment to: COMMUNITY VOICE, BAC 3595, SPRUCE GROVE, AB T7X 3A8. Ads may also be placed on the web at [www.com-voice.com/classified.htm](http://www.com-voice.com/classified.htm)

## Hall Rentals

Alberta Beach Agliplex, Susan 780-996-2960.

Alberta Beach & District Seniors 50+ Club. Air conditioning! Space Available! Val: 780-690-1655 or Dianne: 780-217-8482

Anselmo Community Hall, Phone 780-786-4280

Bright Bank Hall, 780-968-6813

Cherhill Legion, Mary 780-785-3578.

Cherhill Community Assoc. Hall, Kevin 780-785-8153

Darwell Centennial Hall, 780-892-3099

Darwell Seniors, Phone Debra 780-785-2907

Goose Lake Hall, Contact Deanna (780) 584-3738

Gunn Hall (G.A.R.S.) 780-951-9452

Hathersage Community Centre, Noreen at 786-2946

Lake Isle Community Hall, PH: 780-892-3121 or Email: [lakeislehall@mail.com](mailto:lakeislehall@mail.com)

Magnolia Hall, 727-2015

Manley Goodwill Community Hall, 963-9165 or 916-0146

Mayerthorpe Diamond Centre, Charlotte at 786-4659

Mayerthorpe Legion, 786-2470.

Onway Community Hall, 967-4749.

Onway Heritage Center - Gym/Classrooms, 967-1015

Onway Legion, 967-4980

Park Court Community Hall, 727-4476

Parkland Village Community Centre, 780-298-9155 @PVCCentre

Ravine Community Hall, 325-2240

Rich Valley Community Hall, 967-5710 or 967-3696

Rosenthal Community Hall, 963-7984

Sandy Beach Rec Hall, 967-2873

Sangudo Community Hall, 785-2904 or 305-4616

Stettin Nakumun Comm. Hall, 967-9198



## SERENITY FUNERAL SERVICE

### NEW FACILITY

Chapel & Reception Centre

600 Calahoo Road Spruce Grove, AB

**780-962-2749** [www.serenity.ca](http://www.serenity.ca)

SERENITY FAMILY SERVICE SOCIETY - YOUR NOT-FOR-PROFIT SOCIETY

# SUDOKU OF THE WEEK

## Fun By The Numbers

**Here's How It Works:** Sudoku puzzles are formatted as a 9x9 grid, broken down into nine 3x3 boxes. To solve a sudoku, the numbers 1 through 9 must fill each row, column and box. Each number can appear only once in each row, column and box. You can figure out the order in which the numbers will appear by using the numeric clues already provided in the boxes. The more numbers you name, the easier it gets to solve the puzzle!

### ANSWER:

7	6	1	9	5	8	3	4	2
8	2	4	7	3	6	1	9	5
5	3	9	1	4	2	6	8	7
3	9	5	6	2	4	7	1	8
2	1	6	8	7	5	4	3	9
4	8	7	3	1	9	2	5	6
6	5	3	2	9	1	8	7	4
1	4	8	5	6	7	9	2	3
9	7	2	4	8	3	5	6	1

		1	9			3	4	
					6		9	5
5			1	4				
		5		2	4	7	1	
2		6			5			
	8		3	1		2		
6		3	2		1		7	
	4				7			
	7			8			6	

**Like puzzles?** Then you'll love sudoku. This mind-bending puzzle will have you hooked from the moment you square off, so sharpen your pencil and put your sudoku savvy to the test!



# Classified Ads - Call 962-9228

## Dog Caretaker

**Alberta Beach & Surrounding Areas, thinking of a Winter Getaway? Worried about leaving your dog in a kennel?** Don't worry anymore, you can leave your pet with me! There is a wrap around deck and courtyard! I will provide tender loving care, with walks every day. Best of all, I'm cheaper than a kennel! Daily drop in's or overnight stays welcome. If

interested call 780-920-4166 (4) 18-02 OG

## Computers

**Computer Repairs NOT over \$50.** Get a good, clean, refurbished, upgraded **Laptop** or a **Desktop** with games, world pictures, music, videos and more for **ONLY \$100.** FREE repairs for single parents. Donate used computers, tablets, etc. Will fix, clear to donate or use for

parts. Call: 780-892-2407 (14) 28-01

## Firewood

**SEASONED FIREWOOD:** Birch, Tamarack, Spruce/ Pine & Poplar. 4x4x8 cord, Split and delivered or pick up at wood yard, 1/2 cord or full cords available. Call 780-967-5835 or 780-983-1495 (28) 27-08-19

**FIREWOOD FOR SALE** - Birch, Tamarack & Spruce

Pine mix. Poplar. 4x4x8 cords and 1/2 cords. Quality seasoned wood, Delivery or Pick up. Woodchuck Firewood, 780-288-7247 (28) 10-12-19 OG

## Buy & Sell

I BUY GUN COLLECTIONS and World War 2 Collectables, Please call Jay for a quote 780-686-1350 (30) 19-11-19

## For Rent

In Alberta Beach, 3 bedroom house with 4 appliances, detached garage, n/p, n/s, Available immediately, \$1100/ month + DD. Call Connie 780-913-8024 (4) 04-02

Available immediately, Large 2 Bedroom in 12 Unit Apartment Building in Entwistle. Includes heat, water & parking. Rent \$795/ month + DD \$300. Please call Ivka 780-807-1300 or email jakovljevicivka@yahoo.ca (2) 18-02 OG

Completely renovated Motel in Onaway, AB. offering daily, weekly or monthly rentals. All utilities included, 55 inch tv with Satellite. Double bedrooms, furnished bachelors with full kitchen and furnished 1 bedrooms with full kitchen available. Please call Peggy for viewing at 780-967-4420 or 1-403-742-6467. www.onawayinnandsuites.com (4) 18-02 OG

ALBERTA BEACH - Newer 2 bdrm apartment, downtown, awesome view looking over the lake, 1100sqft, washer/ dryer/central vac, 2 baths, stainless steel appl, open concept, please call Cheryl 780-982-6922 (4) 18-02 OG

Available February 1st. 1 Bedroom in 12 unit apartment building in Entwistle. Includes heat, water & parking. \$685/ month + DD \$300. Please call Ivka 780-807-1300 or email jakovljevicivka@yahoo.ca (2) 18-02



### PURE HEMP CBD PRODUCTS

AGING IS INEVITABLE - LOOKING AND FEELING OLD ISN'T!

#### WHAT IS CBD?

**A Health and Beauty Breakthrough!**  
Cannabidiol, CBD, is one of over 80 active cannabinoid chemicals in the hemp plant. CBD, unlike, THC, does not produce euphoria or intoxication. CBD targets specific receptors in the cells of your brain & body. There are many physical and mental benefits to using CBD products for both treatment and prevention of numerous ailments.



#### Therapeutic Uses For Pure Hemp CBD

Supports healthy blood sugar levels, promotes healthy energy levels, relieves anxiety, aids in digestion, supports optimal immune function and the regeneration of healthy cells, and promotes a sense of serenity and overall well-being.

#### Anti-Aging Uses For Pure Hemp CBD

Promotes more youthful skin, provides hydration, enhances radiance, lessens age lines as well as the appearance of dark spots.

#### KEY BENEFITS

**PAIN RELIEF:** Known to reduce vomiting & nausea; suppress muscle spasms; reduce seizures & convulsions.

**PROMOTES HEALTH:** Helps to promote relaxation and overall health.

**WELL-BEING:** Helps to relieve anxiety, aid in digestion, supports optimal immune function and the regeneration of healthy cells.

#### CBD PET PRODUCTS

##### PET CHEW TREATS

###### KEY BENEFITS

**SYNERGISTIC BENEFITS:** Can be used in conjunction with regular medications with no side effects.

**NO SIDE EFFECTS:** Does not damage the liver, kidney or GI Tract like OTC medication.

**DIETARY SUPPLEMENT:** Can be administered daily as part of your pet's diet.



##### ORAL SPRAYS & DROPS

###### KEY BENEFITS

**MANAGES PAIN:** Helps to treat inflammation, arthritis and joint pain.

**TREATS DIGESTIONAL ISSUES:** Helps with loss of appetite, nausea, IBS and gastrointestinal swelling.

**GENERAL HEALTH:** Helps to manage mood, anxiety and general joint pain. For healthy, happy pets.

**CONVENIENT:** Can be sprayed into pet's mouth or on food.

### For more information, Call (780) 907-8642



# COMMUNITY EVENTS 2020

If you are a LICENSED, NON-PROFIT ORGANIZATION, you are welcome to submit your announcement FREE of charge, space permitting. You are required to submit your non-profit number. Call (780) 962-9228. Please note that all submitted event listings must be limited to 200 characters or less (including spaces). DEADLINE: 12 noon Friday prior to publication (Thursdays on long weekends).

**FEB 24 - SANGUDO HORTICULTURAL CLUB PRESENTS: Ashleigh Munro** a representative of Kiwi Nursery. 7pm at the Sangudo Golden Age club. Public welcome. \$5 drop in fee.

**FEB 25 - SHROVE TUESDAY PANCAKE SUPPER**, 5:00 p.m. – 6:30 p.m. at Peace Evangelical Lutheran Church (303 Church Rd, Spruce Grove).

**FEB 25 - GRIEF SHARE WEEKLY GRIEF SUPPORT GROUP** held on Tuesdays 6:30 - 8:30 pm, starting Feb 25 at Crossroads Community Church, 4719 44 Ave, Mayerthorpe. 13-weeks for just \$25. Call 780-786-2695 to register.

## FARMERS MARKETS

**BARRHEAD:** Open Saturdays, May - Dec. 10AM - 1PM. Sherry 780-674-6802

**ONOWAY FARMERS' MARKET:** Thursdays, 5-8pm at Onoway Community Hall. Starts May 1<sup>st</sup>. 780-667-6327 or onowayfarmersmarket@gmail.com.

**SPRUCE GROVE:** at the Elevator, Sat 9:30-1:30PM, tables (780)240-5821

**STONY PLAIN:** Sat, 9AM-1PM, Downtown, Stony Plain. Nancy 780-962-3993.

**WESTLOCK:** 11-3PM, Bargain Shop Mall, Dave 780-954-2437

## BINGO

**BARRHEAD ROYAL CANADIAN LEGION:** Doors 5:30pm, games start 7pm. Games: #7, Jack Pot, Mini Jack Pot, Loonie #1 & #2.

**CHERRILL BINGO:** Tuesdays at Cherrill Community Association. Doors @ 6:30PM, Games @ 7:30PM.

**CHERRILL LEGION:** First Sunday of Month. Doors Open 12:00PM

**RICH VALLEY COMMUNITY HALL BINGO:** 7:30PM. Loonie Pots. Next bingos February 19.

**STONY PLAIN SENIOR'S DROP-IN CENTRE,** public bingo every Tues, 7pm. All ages welcome. Phone (780) 963-6685

**WHITECOURT SENIORS CIRCLE,** Every Tuesday. Open @ 5PM, 1<sup>st</sup> call @ 6:45PM, Nevadas, Concession. 780-778-4950 \*Sept - June

## MEAT DRAWS

**ALBERTA BEACH MUSEUM:** Every Sat 4PM, Alberta Beach Hotel

**ALBERTA BEACH:** Lac Ste Anne Community Choir & Onoway Minor Hockey Meat Draw - Sundays, 4:00PM at Jungle's Bar & Grill.

**BARRHEAD ROYAL CANADIAN LEGION:** Fridays 6:00PM. Queen Of Hearts draw & 50/50.

**ONOWAY ROYAL CANADIAN LEGION:** Fridays, Ph. 780-967-5361

**STONY PLAIN ROYAL CANADIAN LEGION BR# 256:** Saturdays @ 3:00PM. Meat Draw & 50/50.

**WHITECOURT LEGION:** Saturdays 4:00PM. Located downtown behind the CIBC.

## MEALS ON WHEELS

**ONOWAY:** LSAC Div 1 & 2, East of Hwy 43. Hazel Bourke: 780.967.2338 or hbourke@icloud.com

**WEST END:** Sangudo, Mayerthorpe & west end of LSAC. Jill: 780.785.2924 or Donna: 780.785.3118 or email: westendmow@outlook.com

## JAMBOREES

**CARVEL:** 2<sup>nd</sup> Sunday of month. \$6 lunch served. Info 780-991-3001

**MAGNOLIA:** at Magnolia Hall. 2<sup>nd</sup> Saturday of Month. New Time is 1:00PM. Call to confirm, 727-2015. \*October - May, NO Dec.

**SANGUDO:** Sangudo Community Hall, 1<sup>st</sup> Sat of month 7pm. 785-4105 or 305-5088. \*October - May.

**SPRUCE GROVE:** at Sandhills Community Hall, 3<sup>rd</sup> Sunday, 1-5PM. Info Florence 780-962-3104 Margaret 780-962-3051 \*September - June.

**STONY PLAIN:** Stony Plain Seniors Drop In Center, 5018 - 51 Ave. Every 2<sup>nd</sup> & 4<sup>th</sup> Thurs of month, 7pm, \$2.

**THE ABBOTSFIELD VARIETY MUSIC JAM:** at Abbotsfield Rec Centre (3006 119 Ave. Edmonton) 3<sup>rd</sup> Friday of month, 7PM. PH: 780-918-8545, Adam: Donations Only.

**WHITECOURT SENIORS CIRCLE:** 2<sup>nd</sup> Sunday of the month 1-5PM, \$5/Adm Door prizes & 50/50 draw. 780-778-4950 \*Nov - June

## TOPS (Take Off Pounds Sensibly)

**ALBERTA BEACH:** Tuesdays, Weigh-in 6:00-6:45PM. Meeting 7:00PM. Alberta Beach Lutheran Church, Hwy 633, 967-5009.

**EDMONTON:** Thurs 8:30-10AM at Annex of Grace United Church (6215-104 Ave). \$7/month

**SANGUDO:** Tues, United Church, 6:00PM. Sharon 785-2095 or Marlene 786-4646.

**STONY PLAIN:** Thurs evening, Stony Plain United Church. Susan (780) 968-0869

**SPRUCE GROVE:** Wed 8:45AM at Anglican Church, 131 Church Rd. Christiane 960-1109

## YOUR COMMUNITY

**MAYERTHORPE LEGION BR. #126:** Seniors' Floor Curling - Thurs @ 1PM. Fun Darts - Thurs @ 7PM. Wings Night - Every Wed 5-8PM. Steak & Fish Night - 1<sup>st</sup> Friday of month 5-8PM. Everyone welcome. For more info please call 780-786-2470.

**ONOWAY ROYAL CANADIAN LEGION:** Open Tuesdays 7pm to 10pm for "Games" (pool, shuffleboard, darts, cards, etc.) Fridays 3pm-10pm. Friday's Family Friendly Dinner, 5:30PM (open to the public).

**PROBLEMS WITH DRUG OR ALCOHOL ADDICTION** in a loved one? Contact Drug Rehab Resource free confidential consultation: 1-866-649-1594 or www.drugrehabresource.net. **SPRUCE GROVE ELEVATOR TOURS,** Tues-Sat, 9:00-3:00PM. Info 960-4600.

**UNITED CHURCH THRIFT SHOP:** North end Curling Rink, Onoway, Open Fri & Sat, 10AM-4PM. **VOLUNTEER TUTOR ADULT LITERACY PROGRAM:** Need assistance with reading/writing, English language (ESL) or Basic Computer skills? Free 1-on-1 tutoring! Carla Burkell, 780-554-2940, email: literacy@lsac.ca

**WATER SAMPLE DROP OFF:** Tues Onoway Aspen Health Services. Drop off 1:00-2:30PM.

## SOCIAL EVENTS

**ALBERTA BEACH & DISTRICT ACTIVE 50+ CLUB ACTIVITIES:** Mon 7PM Darts, Tues 7:30PM Crib, Wed 1PM Bridge, Thurs 7:30PM Euchre, Mon, Wed, Fri 8:30AM Aerobics/Fitness. Everyone Welcome.

**BADMINTON:** Wed, 7-10PM, Barrhead High School Gym. Jamie (780)674-8974 or (780)674-6974.

**BALLROOM, LATIN, COUNTRY DANCE SOCIAL:** 1<sup>st</sup> Saturday of every month. Doors open 8PM at Central Lions Recreation Center, 1113 113 St., Edmonton AB. Cost \$15 paid at the doors. Hosted by Everyone's Ballroom Dance Assoc. More info: www.ebdb.ca 780-893-6828

**COME PLAY CRIB:** Fridays, 7:30PM at Darwell Seniors Hall; lite lunch is served. All ages!

**COUNTRY QUILTERS** in Stony Plain house a "Sew in Tuesday", 2<sup>nd</sup> Tuesday of every month, from 10-3PM. Drop in \$5/member, \$6/non-members. Contact Cindy 780-963-7170.

**JR. SCRAPBOOKING** Wed 4-6PM. Pre-register by Tues evg. Mayerthorpe Public Library www.mayerthorpepubliclibrary.ab.ca (780)786-2404

**"ME, YOU, & EVERYBODY"** Fun new local program for people of all ages with disabilities. Thursdays @ Alberta Beach Agriplex from 10:00-11:00AM starting May. Funded Lac Ste Anne FCSS.

**ONOWAY GOLDEN CLUB:** Cards Tuesdays, 1PM. 1<sup>st</sup> Tuesday: Pot Luck Supper. 5023 49 Ave. 780-967-3436.

**ONOWAY HAVE FUN & GET FIT!** Exercise Class with Video La Blast. Fridays 10:30AM at the Drop In Center, 5023-49 Ave. PH: 780-967-2056.

**PANCAKE/BREAKFAST SOCIAL:** 3<sup>rd</sup> Sunday 9:00-11:30AM, Parkland Village Community

**MAR 7 - SANGUDO COMMUNITY HALL JAMBOREE** starts at 7pm, doors open at 6pm. Late lunch at 9:30pm. \$12/person (Entertainers free). Everybody is welcome. Info call 305-5088 or 785-4105.

**MAR 14 - CRIB TOURNAMENT** at Rich Valley Community Hall. Doors open at 10am, Play at 11am. Admission \$20/person, lunch served.

**MAR 29 - ST. CATHERINE'S CATHOLIC CHURCH OF CALAHOO: ANNUAL EASTER HAM BINGO & BONANZA** at Calahoo Community hall. Doors open at 1pm with the 1st game starts at 2pm. \$5/cost at door with hotdogs, popcorn and pop available for purchase.

Centre. \*except June, July, August

**RIVER TALKERS TOAST MASTERS CLUB,** Thursdays, 7-9PM. 32 Whitecourt Ave. Hilltop Community Church. Info Loraine 286-5040.

**SANGUDO ART GROUP:** Wednesdays 9AM-12PM at Sangudo Community School. Info call 780-785-2112.

**SPIRITUAL LIVING STONY PLAIN INSPIRATIONAL CINEMA & DISCUSSIONS** at PERC Building (5413-51 St). 2<sup>nd</sup> Friday of month at 7PM. Popcorn provided, donations appreciated. Contact 780-940-3032

**SPIRITUAL LIVING STONY PLAIN GATHERING** at PERC Building (5413-51 St). Every 2<sup>nd</sup> & 4<sup>th</sup> Sunday of month. Meditation 10AM, inspirational sharing 10:30AM. PH 780-940-3032

**WHITECOURT SENIORS CIRCLE DROP IN** CRIB 1st & 3rd Sundays 10:00PM, 780-778-4950

**WRITERS PROGRAM:** Mayerthorpe Library, 1<sup>st</sup> & 3<sup>rd</sup> Wednesday at 1PM.

## MEETINGS

**1ST ONOWAY SCOUTS:** Registration, Mondays 6:30-8PM, Beavers 5-7; Cubs 8-11; Scouts 12-14. Kim 967-4339.

**2716 ROYAL CANADIAN ARMY CADETS,** Wednesdays 6:30-9:00PM at Mayerthorpe Legion. Youths 12-18yrs. Call 780-515-1842

**299 ROYAL CANADIAN SEA CADETS CORPS MACKENZIE:** Stony Plain Comm Center, Wed 6:30PM. Youths 12-18, 963-0843

**3053 (LAC STE ANNE) ROYAL CANADIAN ARMY CADET CORPS,** Onoway Historical Center, Wed. 6:45-9:30PM. FREE program for youths 12+, Contact 3053army@cadets.gc.ca or 780-886-1586

**526 BARRHEAD AIR CADETS,** Wed 6:30-9:30PM, High School. Ages 12-18. 780-305-7233

**755 PARKLAND AIR CADETS** Thurs, 6:30-9:30PM Muir Lake School, ages 12-18. Info call 405-6585 or www.755aircadets.com.

**AA - MAYERTHORPE,** Kingsmen Hall, Thurs 8PM. (780) 786-2604 or (780) 786-1927

**AA - SANGUDO GOLDEN CLUB,** Tues 8PM call 786-4402/785-9214/785-3599

**AL-ANON - ONOWAY:** Meetings are at 7:00PM, Tuesday evenings, at the Onoway United Church. \*Meetings suspended till May 5, 2020

**AL-ANON** Wednesdays, 8PM. Spruce Grove United Church, 1A Fieldstone Dr. 780-962-5205

**ALBERTA 55 PLUS:** Villeneuve Hall at 10AM. Meetings on 2<sup>nd</sup> Tues of month. Info: Donna 780-962-5933

**ALBERTA BEACH & DIST LIONS CLUB** meets every 4<sup>th</sup> Tues 7:00PM, Alberta Beach Agriplex.

**ALBERTA BEACH AG SOCIETY** meets on the 4<sup>th</sup> Thurs of month, 7:00PM, Alberta Beach Agriplex.

**ALBERTA BEACH MUSEUM** meets on the 2<sup>nd</sup> Wed, 7:00PM at Heritage House 924-3167.

**ALCOHOLICS ANONYMOUS:** The Journey of Hope Group, Fridays 8PM, (please arrive earlier). Present location in church basement 4805 - 50 St. Onoway

**BARRHEAD & AREA CANCER SUPPORT GROUP:** 4<sup>th</sup> Thurs. 6:30-8:00PM at Barrhead United Church.

**BARRHEAD ROYAL CANADIAN LEGION,** meeting every 2<sup>nd</sup> Thurs, 7PM at the Legion Hall.

**CHERRILL COMMUNITY ASSOC.** Monthly Meeting 1<sup>st</sup> Wednesday, 8PM at the Hall. 785-2825 \*Except Jan, July, Aug, Sept.

**CHERRILL SILVER & GOLD SENIORS CLUB** Regular Meetings 1<sup>st</sup> Tuesday of month, Cherrill Seniors Hall. Call Rosamy 780-785-2625

**CHERISHED MEMORIES, PARENTS & TOTS** Wed & Fri, 10-12PM, Alberta Beach Agriplex. Info call 780-902-4879 or 780-999-7622. \*Sept-June.

**Citizens Helping In Life's Defence (C.H.I.L.D)** Join our Pro-Life meetings for the Spruce Grove/Stony Plain area once a month. Call Chris

780-963-6997.

**DARWELL & DISTRICT AG SOCIETY MEETINGS,** 8:00PM, 1<sup>st</sup> Monday, Darwell

**DDRA MEETING,** 7:00PM, 2<sup>nd</sup> Mon, Darwell Centennial Hall 780-892-3099. \*except Jul/Aug/Dec

**GIRL GUIDES, BROWNIES & SPARKS** Thurs, 6:30PM, Onoway Heritage Centre. Info Laura, 780-967-1004.

**GREENCOURT COMMUNITY ASSOCIATION** meet 2<sup>nd</sup> Tuesday, monthly at 7:30PM at the hall. Info W. Jager (780) 786-4648.

**GriefShare: WEEKLY GRIEF SUPPORT GROUP** held on Tuesdays 6:30 - 8:30 pm, starting Feb 25 at Crossroads Community Church, 4719 44 Ave, Mayerthorpe. 13-weeks for just \$25. Call 780-786-2695 to register.

**KINETTE CLUB OF MAYERTHORPE,** 7:30PM at Kinsmen Hall, 1<sup>st</sup> Tues of month. Contact: mayerthorpekinettes@gmail.com, Tracy: 780-786-0161.

**LAC STE ANNE ARMY CADETS,** Thurs, 6:30-9:30PM at Onoway Museum (780) 967-0443

**LAC STE ANNE COMMUNITY CHOIR,** Wednesdays 7PM at the Heritage Centre in Alberta Beach (50+ Club behind the hotel). Further info, call Diane @ 780 924-2348.

**LAC STE ANNE & LAKE ISLE WATER QUALITY MANAGEMENT SOCIETY:** 3<sup>rd</sup> Fri, 7PM, Alberta Beach Council Chambers.

**LAKE ISLE HALL COMMUNITY HALL BOARD MEETINGS:** 3<sup>rd</sup> Wed of each month @ 7:30PM at the Lake Isle Hall (Hwy 633 and RR55) Ph # 780-892-3121

**MAYERTHORPE HOSPITAL AUXILIARY ASSOC,** every 4<sup>th</sup> Mon, 5PM in Hospital Basement Education Room.

**MAYERTHORPE LEGION BR. #126:** Meetings 2<sup>nd</sup> Mon of month at 7:30PM. For more info please call 780-786-2470.

**MEN FOR SOBRIETY:** Wednesdays at 7:30PM, FCS Building (#105, 505 Queen Street, Spruce Grove), Mike (780) 965-9991.

**MS SOCIETY PARKLAND COMMUNITY SUPPORT GROUP** Are you diagnosed with MS and have questions? Last Tues of month, 7-9PM, Westview Health Centre. Cassy 780-471-3034

**\*Sept-June**

**NA MEETING,** Tuesdays 7:00PM Poplar Valley Church (780)514-6011

**ONOWAY & DIST HERITAGE SOCIETY:** 2<sup>nd</sup> Wed of each month, 7:00PM, Onoway Legion

**ONOWAY & DISTRICT HISTORICAL GUILD:** 3<sup>rd</sup> Wed 7PM, Onoway Museum. 967-5263 or 967-2452.

**ONOWAY & DISTRICT QUILT GUILD:** Every 2<sup>nd</sup> Thurs, 10AM-4PM, @ the Lac Ste. Anne Chateau Activity Room. Info, Ph Lyla @ 780-967-2629.

**ONOWAY ROYAL CANADIAN LEGION General Meetings,** 1<sup>st</sup> Mon, 7PM. \*Sept-June

**RICH VALLEY AG SOCIETY BOARD MEETINGS:** at the Agriplex on the 2<sup>nd</sup> Wed of the month. 7:00PM.

**RIVER TALKERS TOASTMASTERS CLUB** Build confidence, speaking, leadership & listening skills. Thursdays 7-9PM at Eagle River Casino. Call Melinda Tarcen, (780)778-1180.

**SANGUDO PAINTING GROUP:** Every Thurs, 9AM-12PM at Sangudo Community School. Info, call 780-785-2112.

**SUNDOWNERS TOASTMASTER CLUB:** Mon (excl. Holidays) 7:30-9:30PM. St. Matthew's Church, Spruce Grove. Judy 960-5258

**WEIGHT WATCHERS** Alberta Beach Agriplex - Mondays, weigh in 6:30PM. Meeting at 7PM.

**WESTLOCK & AREA CANCER SUPPORT GROUP:** 3<sup>rd</sup> Wed. 6:30-8:00PM at Westlock Library.

# Church Directory

<b>Rich Valley Community Church</b> Sunday School 10:00a.m. Worship Service 11:00a.m.	<b>Catholic Parish of Lac Ste. Anne</b> Sunday 10:00a.m.		<b>Mayerthorpe Baptist Church</b> Worship Service Sunday 10:30a.m. Children's Church 10:30a.m. 4606-54 St. Mayerthorpe (780) 786-2677	<b>Alberta Beach Alliance Church</b> Sunday Worship Service & Kid's Church 11:00a.m. Sunday School 10:00a.m. (780) 924-3282	<b>St. John's Anglican Church</b> <i>Onoway</i> Sunday Service 10:00a.m. <b>Everyone Welcome</b>
<b>St. John's Lutheran Church</b> <i>Alberta Beach</i> Sunday Service 11:00a.m. Sunday School	<b>Zion United Church</b> Sunday Service 10:00a.m. Sunday School <i>Serving Alberta Beach, Wabamun, Darricell &amp; Lake Isle, Onoway &amp; Area</i> (780) 924-3351	<b>Sangudo United Church</b> <b>Christmas Eve Service 6:00p.m.</b> Worship Service 3 <sup>rd</sup> Sunday 11:00a.m. 4907-50 Ave. Sangudo, AB	<b>St. Mary's Anglican Church Service</b> Holy Communion 2 <sup>nd</sup> Sunday each month 11:00 a.m. at Sangudo United Church Reverend Barry Rose Officiating	<b>Cherhill Community Church</b> Sunday School 10:00a.m. - 11:00a.m. Worship Service Sunday 11:00a.m.	<b>St. Michael Lutheran Church</b> Sunday Services 1 <sup>st</sup> & 3 <sup>rd</sup> Sunday at 2:00p.m. Pastor Rick Chappell (780) 674-2618 <i>Mystery Lake</i>
<b>Trinity Lutheran Church (LC-C)</b> <i>The Church of the Lutheran Hour - Rockyfort Bridge</i> Pastor Dan Hansard Church (780) 778-2035 Sunday Worship 9:00a.m. Senior's Service & Cottage Bible Study - Phone for locations	<b>Crossroads Community Church</b> <b>P.A.O.C.</b> Rev. Arnold Lothoiz Sunday Service 10:30a.m. (780) 786-2424		<b>Onoway Baptist Church</b> Sunday Service 10:30a.m. Pastor Greg Garbutt (780) 967-2266	<b>Roman Catholic Church</b> St. Agnes' Parish, Mayerthorpe Sunday 9:00a.m. St. Elizabeth Parish, Evansburg Saturday 7:00p.m. (780) 786-2032	<b>Calahoo Alliance Church</b> Family Worship Service Sunday 10:00a.m. For Info Call Jerry (780) 974-7734

## SERVICE DIRECTORY

**ATB Financial™**  
**ALBERTA BEACH AGENCY**  
 4824 - 50 Ave, Alberta Beach  
 Ph/Fax: (780) 924-2211  
 Mon to Thurs 10:00AM - 4:00PM  
 Friday 10:00AM - 5:00PM  
**Heidi Letendre**

**JAVORSKY DITCHING**  
 Onoway, AB  
 Phone: (780) 967-5486  
 Cell: (780) 906-7469  
 Fax: (780) 967-4961  
*Dennis Javorsky - Owner / Operator*  
**For All Your Excavating Needs**  
 Sand & Gravel Hauling • General Excavating  
 Septic Tanks & Cisterns • Site Prep & Clean Up  
 • Install & Repair of Water, Sewer, Power & Telephone Lines

**CPR St. Albert**  
**Cell Phone Repair**  
 Saving Your Mobile Life™  
**We Can Fix That In 90 Minutes**  
 iPhones, iPods, iPads, Tablets, Computers - Apple, Samsung, Blackberry, LG, Sony and MORE  
**Lifetime Warranty Against Defects In Our Screens**  
 Now over 480 Locations  
 #13 - 11 Bellerose Drive (Next to Grandis Bakery) **780-460-0277**

**MARK MARTIN PFEIFFER**  
 MASTER BRICKLAYER/MASON  
 Cell: 780-242-3308  
 Email: pfeiffer.mark@hotmail.com  
 • Brickwork • Stonework  
 • Rockwork • Parging  
 • Concrete Block Work  
 • Tile Work (all kinds)

**COMMUNITYVOICE**  
**THIS SPACE IS RESERVED FOR YOU!**

**BRO-BUILT**  
 Homes & Contracting Ltd  
 "We Pride Ourselves In Turning Handshakes Into Hugs"  
 www.brobuilthomes.com  
 Testimonials  
 Phone 780-940-6415



# SERVICE DIRECTORY

**Scerv Construction Ltd.**

- Engineered Screw Piles • Framing • Trenching
- Skidsteer Work • Insulating • Roofing
- Snow Removal • Drywall • Decks
- Excavator Services • Taping

**Menko Helmus** Cell: 780-305-3864  
Email: m1988\_10@hotmail.com  
PO Box 4795, Barrhead, AB T7N 1A6

**MASTER PLUMBER**  
36 YEARS EXPERIENCE 780-655-8402  
**PLUMBING & HEATING SERVICES**  
PRICE BY THE JOB NOT THE HOUR!  
**FURNACE REPLACEMENTS**

ACCREDITED BUSINESS WCB WORKERS' COMPENSATION BOARD

VISA MasterCard

**CALIBRE DRILLING LTD.**  
DRILLING AND SERVICING YOUR WATER WELL.

**SPECIALISTS IN AIR & MUD ROTARY DRILLING**

- Water Well Drilling • Pump Installations
- Pressure Systems • Well Tests
- Licensed Drillers • Year Round Drilling
- Geotechnical Drilling • Cathodic Protection
- Free Estimates

**Quality Workmanship Five Year Warranty**  
**(780) 960-2992**  
BOX 4083 SPRUCE GROVE, AB T7X 3B3

**TRI-LAKES SERVICES LTD.**

- Septic Hauling • Drinking Water Delivery
- Portable Washrooms • Steam Truck

www.trilakeservices.ca / office@trilakeservices.ca  
(877) 727-3939 / (844) 967-9176  
SERVING: • Lac Ste. Anne County • Parkland County • Yellowhead County East

**R & S TOWING**

**FREE REMOVAL OF UNWANTED VEHICLES**

MasterCard **967-2492** VISA

**HAY TRUCKING & CONSTRUCTION**  
ON-DUTY, AB

**COR Certified**

- Oilfield
- Road Building
- Basements
- Dugouts
- Sand & Gravel

haytrucking@xplomet.ca  
www.hayandc.com  
Office: 967-5849 Cell: 818-5849

**COMMUNITYVOICE**  
FOUR LOCAL NEWSHOPS

**THIS SPACE IS RESERVED FOR YOU!**

**DONALD N. GREENWAY**  
Chartered Accountant

Suite 205 Sunrise Professional Building  
215 McLeod Avenue  
Spruce Grove, AB  
(Bus.) **962-6366**  
(Fax) **962-3990**

**ZEE BEST RENOVATIONS**  
Your Complete Line of Renovation Needs:

- Bathroom
- Basements
- Plumbing
- Tileworks
- Drywall & Taping
- Decks & Fencing
- Roofing
- Siding

**FREE ESTIMATES**  
**26 YEARS EXPERIENCE**  
**INSURED | GREAT RATES**

**JOE LAWRENCE**  
MANAGER

BUS: 780-967-3898  
CELL: 780-915-3348  
FAX: 780-967-3798

**2Bros**  
Custom Contracting Ltd.

Custom Framing • Concrete Floors • Shingling  
Siding Soffit Fascia • Styrofoam Block System

**Jeff 780-717-0520**

**ALL AROUND FENCING RENTALS**  
Fence Panels • Barricades  
Installation by Collin Toilet Rentals

Whitecourt, AB  
**780.706.7978**

**PEMBINA CONCRETE PRODUCTS LTD.**

**Manufacturers of ONE PIECE SEPTIC & HOLDING TANKS**

- \* Water Cisterns • Field Systems • Pumps and Accessories • Sumps

**DELIVERED TO YOUR SITE**  
1-800-661-3047  
780-727-2702  
PembinaConcrete.com

**New Line of Concrete Statues, Fountains and Garden Ornaments.**  
BOX 123, Entwistle, T0E 0S0



# SERVICE DIRECTORY



**PaddlePlastics Ltd.**  
Mayerthorpe, AB

Box 67  
Mayerthorpe, AB T0E 1N0

Ph: (780) **786-4408**  
Fax: (780) 786-4466



**Mo-Bil WASH SERVICES Ltd.**

- Steam • Hot & Cold High Pressure Wash • Sewer Thaw & Flush
- Residential • Commercial • Oilfield

24 HOUR SERVICE  
Onway Call (780) 991-9466



**BACK COUNTRY PIPEFITTING LTD.**  
Plumbing & Heating

**Lee Hicks** 780-898-1062  
Journeyman Plumber

Residential and Commercial Plumbing and Heating.  
SERVING: YELLOWHEAD, PARKLAND, LAC STE. ANNE & BRAZEAU COUNTIES.



**Blakeman Drilling Ltd.**

Waterwell Drilling & Servicing  
Pumps & Pressure Systems

SERVING LAC STE. ANNE & WEST PARKLAND FOR OVER 25 YEARS

Joe (780) 924-3024



**THE CORING GUY**

- Concrete Coring & Cutting • Concrete Demolition
- Electric or Diesel Slab Sawing • Core Drilling
- Skid Steer / Mini Excavator Operations

**Commercial - Residential**

Laurence Markwart Cell: (780) 220-6164  
LAC STE. ANNE COUNTY Email: lmarkwart@gmail.com



**PREVAIL MAX**  
CELLULAR HOMEOSTASIS FORMULA

A NUTRITIONAL BREAKTHROUGH THAT SUPPORTS YOU... RIGHT DOWN TO THE LAST CELL!

LIVIN TRIM WITH  
**VALENTUS** (780) 907-8642  
[www.ValentusTour.com/Ladybug](http://www.ValentusTour.com/Ladybug)



**Tile Setting**  
Ceramic & Natural Slate

Kitchen & Bath - Backsplash & Surrounds  
Fireplace Floors

"Serving Lac Ste. Anne and West Central Alberta Areas for over 25 years"

Thorsen Industries Call  
Christian @ 403-896-8170



**COMMUNITYVOICE**  
YOUR LOCAL NEWS SOURCE

**THIS SPACE IS RESERVED FOR YOU!**



**H&P Kosik CONSTRUCTION Ltd.**

- Road Building • Gravel • Sand • Dugouts
- Black Dirt

No Job too small! We do them all!

Harvey cell. 780-445-9010 ph. 780-892-3532  
Box 145, Darwell, AB. T0E 0L0



**Collin Toilet Rentals & Service**

Your Portable Toilet Supplier for:

- Construction
- Commercial
- Oilfield
- Special Events

Whitecourt Dispatch 780.778.2448



**standstone VACUUM SERVICES LTD.**



Proudly Serving Lac Ste. Anne County  
1-877-226-5008 780-924-2435 780-967-2118  
[www.standstonevac.ca](http://www.standstonevac.ca) or visit our facebook page

The service you need, from people you trust.

- Septic Services: Residential, Commercial
- Holding Tanks and Field Systems
- Effluent Pumps supplied & Installed
- Portable Toilets: Standard, Wheelchair Accessible, Cabana Cans
- Products: BioClean, Liquid Enzyme, Potty Treat

Great Rates & Reliable Service! Call us today!



**ROY SHERWOOD**  
Master Electrician

Ph: 780-968-1425  
Cell: 780-908-2287  
Fax: 780-968-2211

Email: suretechroy@gmail.com

2-53220 Rge Rd 21  
Parkland County, AB  
T7Y 0C5

**SURE TECH ELECTRIC LTD.**

Control & Automation  
Commissioning  
Solar Sales & Service

Industrial . Commercial . Residential



**VILLAGE GLASS & MIRROR LTD.**

- AUTO
- RESIDENTIAL
- COMMERCIAL GLASS & MIRROR PRODUCTS

5027 - 50 Avenue • Phone: 967-2127  
PO Box 609, Onway, AB T0E 1V0



**SANGUDO VETERINARY CLINIC**

Box 581, 4916 - 52 Ave. Sangudo, AB. T0E 2A0

**Dr. Ralf Sanders DVM**

Ph: 780-785-2200  
Fax: 780-785-2228  
[sangudovet@gmail.com](mailto:sangudovet@gmail.com)

**24 HOUR EMERGENCY SERVICE**



# SERVICE DIRECTORY

**RAINBOW LIQUIDATORS & AUCTIONS**

ANOTHER RAINBOW SALE

**Farm Sales, Equipment Sales, Estate Sales**  
**BOOK YOUR SALE WITH US TODAY!**  
 Serving the Community since 1978

**Ph: (780) 968-1000**  
 Stony Plain, AB 1-866-968-1001  
[www.rainbowauctions.ca](http://www.rainbowauctions.ca)

**SMOOLE**

- Construction & Septic Installation
- Environmental Wastewater Disposal
- Site Design & Evaluation
- Power, Water & Basement Excavation
- Trackhoe, Backhoe, Bobcat & Dump Truck

**For All Your Excavation Needs**

Call Dan 780-991-4484 Reid 780-909-0173

**Jack's Auto Body**  
 & 24 HR Towing

**SPECIALIZING IN COLLISION REPAIR**  
**GUARANTEED WORK • INSURANCE CLAIMS**

CAA BOX 9 SITE 306 RR3, ONOWAY, AB T0E 1V0  
**(780) 967-5850**

**OUR PLEDGE IS QUALITY**

**H&E UPHOLSTERY**

**FOR ALL YOUR UPHOLSTERY NEEDS**

Convertible tops for cars and boats, custom car and boat interiors, 5th wheel trailer skirts, boat tarps, ATV seats, furniture, kitchen chairs, heavy equipment seats.

[WWW.HANDE.CA](http://WWW.HANDE.CA)  
 For more information contact:  
 kirk@hande.ca

4-485 South Ave.  
 Spruce Grove  
**(780) 962-3049**

**POSTINGFIRST.com**

**FREE LOCAL CLASSIFIED ADS**

Real Estate, Rentals, Vehicles, Pets, Jobs, Service Directory, Buy/Sell/Trade, Lawn & Garden, Garage Sales, Events, Local Places & Much More... Advertise for **FREE** Today!

Follow Us

Instagram, Google+, Facebook, Pinterest, YouTube, Twitter

**THE MOST COMPLETE NUTRITIONAL SPRAYS ON THE PLANET**

**ORDER TODAY!**

**(780) 907-8642**

[www.Elaine1.com](http://www.Elaine1.com)

**Whole Heart Massage Therapy**

- Maternity Massage
- Relaxation Massage
- Deep Tissue Massage
- Kinesio Taping

Jennilee Reber **(780) 699-4567**  
 REGISTERED MASSAGE THERAPIST  
 DIRECT BILLING TO INSURANCE  
[wholeheartmassage@hotmail.com](mailto:wholeheartmassage@hotmail.com)  
 54013 Range Road 30 #10  
 Diamond Country Estates, Lac Ste. Anne County

**ONLINE BOOKING AT:**  
[wholeheartmassagetherapy.clinicsense.com](http://wholeheartmassagetherapy.clinicsense.com)

**COMMUNITYVOICE**  
 YOUR LOCAL NEWS SOURCE

**THIS SPACE IS RESERVED FOR YOU!**

**Pm Park Memorial Ltd.**  
 Funeral Home & Crematorium

**Fran Marion**  
 Licensed Funeral Director

Mayerthorpe: 780-786-2533  
 Whitecourt: 780-779-2533

Serving Mayerthorpe, Whitecourt and area

Edmonton | Lamont | Mayerthorpe | Smoky Lake | Vegreville

**SUMMERS DRILLING LTD.**

Water well drilling and service  
 Family owned Business Serving Alberta since 1917

Never run out of water again!

5 year workmanship warranty

Tired of hauling water?  
 We can install a water well with a permanent water supply for as little as \$150/month OAC

3 Convenient ways to pay  
 • Visa  
 • Mastercard  
 • We now offer full financing

Stop in at our office 4405 - 50 Street, Stony Plain  
 780-963-1282  
[admin@summersdrilling.com](mailto:admin@summersdrilling.com)

**GRANDE TIRE**

5115 LAC STE. ANNE TRAIL N. ONOWAY, AB T0E 1V0

**Full Mechanical Services**  
**Tire Sales & Repairs**

**BUS: (780) 967-3432**  
**FAX: (780) 967-4816**  
[contectire@xplornet.com](mailto:contectire@xplornet.com)

AMVIC LICENSED

**Lanman Landscapes**

**YOUR ONE STOP FOR ALL TYPES OF LANDSCAPING**

Dangerous Tree Removal | Yard Cleanup | Full Landscaping Service

Experienced Bobcat Work

**(780) 977-6586**

**TRUIS & ONOWAY REGISTRIES**  
 INSURANCE

Box 390, Onoway, Alberta T0E 1V0  
 Tel: 967-5270 Fax: 967-4303

**OPEN 9-5 MONDAY - FRIDAY**  
**FIRST & LAST SATURDAY OF EACH MONTH 9-12\*** \*excluding long weekends  
 Registries Closed from 12:00 pm - 1:00 pm

**ALL GENERAL REGISTRY SERVICES**

Home - Auto - Farm - Life and Business

Very Competitive Rates & Convenient Payment Plans.

**Clients first...Service Always!**



# **SAL'S** **FAMOUS** • **BARRHEAD** •

## **BREAKFAST SPECIAL**

2 large eggs,  
hashbrowns, toast,  
bacon or ham

**\$7**

**BREAKFAST SERVED ALL DAY**  
COFFEE IS ALWAYS FREE



# **2 FOR 1 PIZZA**

**DRIVE-THRU NOW OPEN!**  
**TAKE-OUT, DINE-IN**

**(780) 674-2050**

Monday to Saturday: 10am-10pm  
Sunday & Holidays 11am-8pm