



COMMUNITY VOICE

YOUR LOCAL NEWSPAPER

Serving: Carvel, Darwell, Drayton Valley, Duffield, Entwistle, Evansburg, Fallis, Gainford, Parkland County, Seba Beach, Tomahawk, Wabamun, Wildwood, Spruce Grove and Stony Plain.

February 18, 2020

FCSS PROGRAMMING CHANGE UPDATE

There are a lot of changes happening at Yellowhead County Family and Community Support Services (FCSS) and we hope you can join us on the journey.

Submitted by Yellowhead County

Yellowhead County council has approved funding for FCSS programming to continue after the cancellation of a provincial funding contract. There are some chang-

es, however, that might affect families and children in county communities.

These changes may be beneficial because they allow for increased direct programming time with children during and after school. This also means a

decrease in summer programming and moving the County Kids Preschool at the Marlboro hall to a community based non-profit group. This would make it similar to other programs supported in the county.

Continued on Page 3

KNOWN OFFENDER ARRESTED FOR FLIGHT FROM POLICE AND OUTSTANDING WARRANTS

Submitted by Parkland RCMP

Duffield, Alta. - On Feb. 2, 2020 at approximately 11:45 a.m. Parkland RCMP were

on patrol on Range Road 35 near Duffield, Alta. when they observed a male with outstanding warrants driving a motor vehicle. Rudy Bird had a warrant for be-

ing unlawfully at large as he failed to report to the Fort Saskatchewan Correctional Centre for an intermittent sentence.

Continued on Page 2

SUSPECT ARRESTED FOR FLIGHT FROM POLICE

Submitted by Parkland RCMP

Stony Plain, Alta. - During the early morning hours

of Feb. 5, 2020, Parkland RCMP were patrolling and located a vehicle being driven by a well known offender. The offender was

on 24-hour house arrest stemming from numerous charges including criminal flight.

Continued on Page 3

MAYERTHORPE PHARMACY
 4821 50th Street, Unit 1, Mayerthorpe, AB
 Phone: 780-786-0185 Fax: 780-786-0186

Enjoy Senior's Day Discount EVERYDAY!!

Hours of Operation:
 MON to FRI: 9:00AM to 6:00PM
 SAT: 10:00AM to 2:00PM
 Sundays & Holidays: Closed

Please visit us and sign up for our Loyalty Program.

All Precious JEWELLERS
 "Your Spruce Grove Jewellery Store"

Goldsmith on Premises

- Engraving • Clock & Watch Repairs
- Jewellery Repairs • Custom Make-ups

Jewellery Repairs Done On Site.
 Laser Welder Services Available.

Toll Free: 1-877-962-4367
 PH: 780-960-4200 Fax: 780-960-4201
 Suite 102, 215 McLeod Avenue
 Spruce Grove, AB. T7X 0G2

PURE HEMP CBD PRODUCTS
WITH 100% PURE HEMP OIL - GENUINE AND FULLY LEGAL

KEY BENEFITS:

- Inhibits Cell Growth in Tumors
- Relieves Pain
- Promotes Health
- Relieves Anxiety
- Neuroprotective

(780) 907-8642

SLIMROAST Optimum
 DARK ROAST COFFEE

YOUR LOGICAL SOLUTION TO WEIGHT MANAGEMENT

(780) 907-8642
www.ValentusTour.com/Ladybug

View us ONLINE!
WWW.COM-VOICE.COM



PUBLISHED WEEKLY (Zone 1 & 2)
AND BIWEEKLY (Zone 3)

E.J. Lewchuck & Associates Ltd.

#6 - 40 South Avenue
Box 3595
Spruce Grove, AB T7X 3A8

SALES TEAM

Elaine
Ashley
Dani

TELEPHONE:

Classifieds 962-9229
Advertising 962-9228
Fax 962-1021

E-MAIL:

comvoice@telusplanet.net
news@com-voice.com

RCMP ARREST MALE WITH 14 OUTSTANDING WARRANTS

Submitted by Parkland RCMP

On Feb. 10, 2020 at 6:40 p.m. Parkland RCMP attended a residence in Duffield to attempt to locate Royce Michel on his outstanding warrants. Michel was observed inside the residence and was subsequently arrested for his warrants out

of Edmonton and the Parkland Detachment area.

Royce Michel (20) of Edmonton was charged with the following:

- Possession of property obtained by crime (x2)
- Fail to comply/appear court
- Fail to attend court (x6)
- Resist or obstruct lawful execution process

• Resist/obstruct peace officer

• Failure to comply with condition of undertaking (x2)

• Identity fraud
Royce Michel was held for a Justice Interim Hearing and was remanded into custody. He appeared before the justice on Feb. 11, 2020 via CCTV.

Known Offender Arrested For Flight From Police and Outstanding Warrants

Continued from Page 1

RCMP attempted to initiate a vehicle stop however, Bird fled from police at a high rate of speed. RCMP had other means to locate Bird and disengaged from trying to stop him due to the risk to public safety.

On Feb. 12, 2020 at ap-

proximately 4:00 a.m. in the area of Paul Band First Nation, RCMP were conducting pro-active vehicle checks and located Bird as the backseat passenger in a vehicle. Bird was arrested without incident.

Rudy Bird (37) of Duffield, Paul First Nation, Alta. is charged with:

- Being unlawfully at large
- Fail to attend court
- Flight from peace officer
Rudy Bird was held for a justice interim release hearing and was remanded into custody. He will appear via CCTV on Feb.13, 2020 in Mayerthorpe Provincial Court.

BUSINESS FOR SALE

Steady Income – Business doesn't fluctuate with Economy

- Includes:
- All Clientele
 - 5 Tandom Trucks
 - 1 Truck & Trailer Unit

Call 780-797-3844 for more Info.
Al-jo An Septic Service

JOKE OF THE WEEK

A girl asks a boy:
"Peter, how much do you love me?"

The boy looks her in the eyes, "Look up at the stars, that's how much I love you."

The girl is confused,
"But it's morning, there are no stars?"

Boy nods, "Exactly!"

EDMONTON – Capital Region

GUN SHOW

SATURDAY & SUNDAY
March 7 & 8, 2020

Located at "The Pavilion at Heritage Park"
5100 -41 Avenue, Stony Plain, AB



VIEW~BUY~SELL~TRADE
ANTIQU~MODERN~MILITARY

RIFLES, SHOTGUNS, PISTOLS, CARTRIDGES, KNIVES,
MILITARY ITEMS, PIONEER ITEMS, BOOKS, ECT.

PUBLIC WELCOME - FREE PARKING ADMISSION: \$8.00

SATURDAY 10:00AM-5:00PM
SUNDAY 9:30AM-3:00PM

SET-UP TIME FOR EXHIBITORS:

FRIDAY: 3:00PM-8:00PM; SATURDAY: 7:30AM-9:30AM

TABLE RENT: \$50 PER 6' TABLE

Concession provided by the Stony Plain Canadian Legion

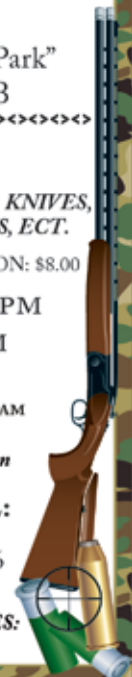
FOR MORE INFORMATION CALL:

{ BOTH LOCAL EDMONTON }

Darren (780) 473-3032 ; John (780) 455-5036

EMAIL: edmgunshow@hotmail.com

UPCOMING 2020 EDMONTON GUN SHOWS DATES:
October 24 & 25, 2020 December 5 & 6, 2020.



FCSS Programming Change Update

Continued from Page 1

FCSS Supervisor Wendy Robinson offered her thoughts on the changes: "We are very pleased that children will still be able to access a variety of our programs, in school and after hours, like Kids in the Hall, Roots of Empathy, Beyond the Hurt, and other programs like Babysitters Safety. With the changes to the preschool we are committed to working with interested people (parents, com-

munity members, etc.) to help them continue the preschool program. As a non-profit, this group of volunteers will be eligible for a preschool grant from us."

The preschool program will continue to run under Yellowhead County until the end of the school year (May 2020). Meanwhile, FCSS will be looking for interested members of the community who are willing to continue the program as a non-profit. Yellowhead County FCSS will be on hand

to provide organizational, financial and program support to this group.

The other significant change coming forward from this new funding is decreasing summer programming from 12 weeks (4 program days per week in 2 separate communities) to 6 weeks. With the increase in other organizations providing summer programming such as museums, libraries and sports clubs, there are still many opportunities for children in the summer.

If you are interested in supporting the continuation of the preschool in Marlboro Hall, or have other ideas or opportunities for programming for children in the county, please don't hesitate to contact the FCSS staff at the county's Wildwood office at 780-325-3782. Family and Community Support Services is a Provincial Municipal partnership with a mandate to provide prevention focused social programs in Yellowhead County.

Suspect Arrested For Flight From Police

Continued from Page 1

RCMP attempted to stop the vehicle however the driver, Alexandre Carriere, sped off at a high rate of speed. Carriere is known to flee from police and due to potential danger to the public, RCMP discontinued trying to stop him.

On Feb. 9, 2020, RCMP lo-

cated and arrested Alexandre Carriere. While arresting Carriere, he was found to be in possession of methamphetamine. He is charged with:

- Flight from peace officer
- Fail to comply with release order condition (x3)
- Drive while unauthorized (Traffic Safety Act)
- Possession of Metham-

phetamine

Carriere was held for a judicial interim release hearing. He was remanded into custody. His first appearance is scheduled for Feb. 12, 2020 at Stony Plain Provincial Court.

Carriere has numerous outstanding charges from a similar incident that occurred Sept. 21, 2019. These charges

include, impaired operation, operation while prohibited, dangerous operation, flight from peace officer, mischief over \$5000 and drive uninsured motor vehicle on highway (Traffic Safety Act). He has a subsequent appearance for these charges on Feb. 26, 2020 at Stony Plain Provincial Court.

*Darwell & District Agricultural Society
Would Like To Invite You To*

FAMILY DANCE

FRIDAY, FEBRUARY 21, 2020

7 PM - 11 PM | Darwell Centennial Hall

\$5/person, 2 & under Free

Door Prizes, Face Painting
Free Snacks & Late Lunch

Music by Kapers

** All children under 18 years must be accompanied by an adult guardian.*



SUNDAY, FEBRUARY 23, 2020

hosted by the
Junior Ag Society
from 1:00PM- 3:00PM
@ the Darwell
Fair grounds

WINTER CARNIVAL

Skating, games and more!

Top Quality Flooring Products

- Carpet • Vinyl • Lino
- Hardwoods • Laminates
- Vinyl Tiles • Porcelain
- Floor and Wall Tiles
- Stone Tiles
- Ditra and Kerdi
- Shower Installs

Fully Experienced Professional Installers



Quality You Can See. Comfort You Can Feel. Value You Can Appreciate.

3MM Vinyl Planks installed for **\$3.59/sq ft**

10MM Laminate Wood installed for **\$3.59/sq ft** with Rubber Pad

Plush Carpets installed for **\$2.99/sq ft** with 8 LB under cushion

NOW THAT'S A BARGAIN!
PHONE 587-286-2626 FOR FREE ESTIMATES

Pro Finish Flooring Ltd

#6 - 20 McLeod Avenue | Spruce Grove, Alberta T7X 1V4
TEL: 587-286-2626 | pro-finishflooring@hotmail.com
HOURS: Monday to Friday 9:00AM-5:00PM Saturday 9:00AM-4:00PM

GYPSED GOOD NEWS STORY TO SHARE: ESC CENTRAL OFFICE STAFF



Wayfinder is an Alberta based privately-held company that supplies the Western Canadian market with premium-quality natural and resin-coated proppants for use in the production of oil and gas.

Wayfinder will be hiring qualified candidates at our Sand Processing Facility near Glenevis, Alberta for the following positions. Please forward resume to hbigmolly@wayfindercorp.com; Current Driver Abstract required, Drug & alcohol testing. Quality control experience considered an asset. Must be proficient in basic computer applications and Microsoft Office. Shift Rotations Day / Night shift including weekends; on call may be required.

- Control Room Technician
- Heavy Equipment Operators (minimum 3 years experience in aggregate industry)
- General Maintenance and Support
- Junior Mining Engineer (minimum 3 years experience)
- Materials Coordinator
- Pump Technician (minimum 3 years experience)



Submitted by GYPSED

Grande Yellowhead Public School Division has 17 schools and five off-campus learning centres which serve over 4,600 students from junior kindergarten to Grade 12 but did you ever wonder about the fabulous men and women who work behind-the-scenes who keep the lights working, the buses running, and the staff paid? GYPSED has two central office facilities located in Edson and Hinton that are home to about 50 staff: superintendent of schools, communications, facilities/ maintenance, transportation, human resources/ payroll, business/

financial services, technology, and learning services. The Division's main building in Edson, the Education Services Centre (ESC), is also the central location for regular Public Board meetings, mechanical shop, and in-house training and workshops. Although many central office staff don't have the ability to regularly visit school campuses, each and every one of them take pride in their part to ensure students are able to succeed in their learning goals. A heartfelt thank you to the families who entrust their children's education under the umbrella of Grande Yellowhead Public School Division!

PRICE REDUCED



14K White Gold Diamond Ring
Brand New, Still in Box, Tags on!
Asking \$2,745



14K White Gold Engagement Ring
Brand New, Still in Box, Tags on!
Asking \$2,300



10K White Gold Diamond ring
Brand New, Still in Box, Tags on!
Asking \$1,375

Call for more information, or to view the ring 780-907-8642

Cupid's Choice

We loved every entry but these are the 2020 Valentine's Day Colouring Contest winners



Elizabeth L. Age 3



Ryder M. Age 5



Natalie P. Age 8



Makayla Age 11

RCMP TRAFFIC SERVICES SIGNIFICANT SEIZURES TAKE OVER 233,000 AVERAGE DRUG DOSAGES OFF ALBERTA ROADS

Submitted by Alberta RCMP Traffic Services

Edmonton – Traffic stops on Alberta’s highways can lead to significant seizures of illicit drugs, firearms, stolen goods and other contraband materials.

From July to November 2019, Alberta RCMP made nine significant drug and cash seizures near Banff, Canmore, Lake Louise and Stony Plain. RCMP members stopped vehicles for various offences and not-

ed numerous indicators of drug trafficking.

The subsequent vehicle searches resulted in the combined seizures of 11 kg of cocaine, 1.675 kg of fentanyl, 30 g of meth, 2 kg of MDMA, 90.5 lb. of illegal cannabis, 250 l of GHB, over \$37,500 in Canadian currency and one .32 caliber pistol.

The drugs seized in the stops roughly equate to 33,000 average cocaine dosages, 16,800 average fentanyl dosages, 300 av-

erage methamphetamine dosages, 10,000 average MDMA dosages, 50,000 average GHB dosages and over 123,300 average-sized joints.

“These drug seizures are evidence that traffickers can be caught – our officers are skilled, professional members trained in the detection of illicit commodities which includes drug trafficking,” said Supt. Gary Graham, Alberta RCMP Traffic Services. “The increased presence of illicit synthetic opi-

oids poses a grave threat to Albertans. Traffic enforcement, because of its very nature, plays a key role in identifying and disrupting organized criminal groups fueling this public health epidemic.”

The RCMP will continue to work very closely with our law enforcement and safety partners to keep traveling criminals and illegal activities off Alberta roads and to further reduce crime in Alberta.

PREVAIL MAX
CELLULAR HOMEOSTASIS FORMULA

PrevailMAX™ is a nutritional breakthrough that supports you...
Right down to the last cell!
How do you want your **BLOOD** to look?

Before PrevailMAX: **After PrevailMAX:**

www.ValentusTour.com/Ladybug (780) 907-8642

GROVE HEARING CLINIC

960-2960
1-866-960-2960

Hear what you've been missing...

Senior Discounts

Full Service & Repair

Full Hearing Assessments

HOURS OF OPERATION: 9am – 5pm Weekdays
3rd party billing (AADL, WCB, DVA, FCH) • Personal 0% Financing if Needed
For The Latest Technology In Hearing Aids & Assisted Living Device Stop By & See Dawn
#220-70 McLeod Ave - Westland Market Mall, Spruce Grove

Bridal Guide

February 2020



Your Guide to Planning Your Big Day

Filled with helpful planning advice, savvy how-to tips and the latest wedding trends, as well as a host of local wedding vendors here to help you plan the perfect day!

Bridal Guide



A GUIDE TO HOSTING A DAYTIME WEDDING

Weddings dot the social calendars of millions of people across the globe. The Association for Wedding Professionals International says every year an average of 2.4 million weddings are performed in the United States and approximately 150,000 per year are performed in Canada. Evenings are the most common time of the day to host a wedding, but that does not mean a daytime wedding cannot be a beautiful event and make for a party to remember.

Couples are increasingly customizing their weddings to be a reflection of their personal styles. One of the ways couples are customizing their festivities is by moving the wedding to various hours of the day that meet the couple's needs. A wedding that takes place in the late morning

or afternoon may be the perfect fit for some couples. Here's how to navigate the specifics of a daytime wedding.

- Secure accommodations. An early wedding means guests may have to travel from afar the evening before to be able to attend the festivities. Daytime weddings can be complemented by working with a hotel or bed and breakfast to ensure guests will have a place to stay and get ready to arrive at the early wedding in time.

- Don't be afraid to negotiate prices. The wedding resource Bridal Guide says that vendors are typically more amenable to price discounts or offering greater value for daytime weddings. That's because demand for their services is reduced during the day. Similarly, venues may have

more availability during the day than at night, and, as a result, they're more flexible on prices, especially since brunch foods generally cost less than dinner entrees.

- Hire the right photographer. Be sure to contract with a photographer who is a pro at handling photos in daylight and natural light. While many photographers are skilled in any light, many are used to shooting in churches and venues with low lighting. Be sure to see picture samples taken during the daytime to gauge a photographer's daytime experience and skill level.

- Employ color to add dimension. During evening weddings, lighting or candles help set the mood. Those same elements will be ineffective in daylight. Choose

bright colors for your decor and flowers to brighten up spaces.

- Choose alternative entertainment. Chances are guests are not going to feel as comfortable dancing during daylight hours. Consider other entertainment, such as lawn games, karaoke, or a comedian. A guitarist or pianist may be a nice musical touch.

- Plan food accordingly. Just because the wedding is early does not mean the food should be. Guests still will need to eat. If you are only opting for light appetizers and cocktails, be sure to mention this on the invitation so guests can plan ahead and won't go hungry.

Daytime weddings can be successful with a little tweaking of traditional evening wedding planning.

Eternal Love

All Precious JEWELLERS
 Toll Free: 1-877-962-4367
 Phone: 780-960-4200 Fax: 780-960-4201
 Suite 102, 215 McLeod Avenue
 Spruce Grove, AB. T7X 0G2

"Your Spruce Grove Jewellery Store"
 Goldsmith on Premises Jewellery repairs done on site.
 • Engraving • Custom Make-ups • Jewellery Repairs • Clock & Watch Repairs

ONOWAY REGISTRIES TRIUS INSURANCE
 Box 390, Onoway, AB T0E 1V0 Tel: 967-5270 Fax: 967-4303

See us for Marriage Licenses & all your registry needs

OPEN 9-5 MONDAY - FRIDAY
 FIRST & LAST SATURDAY OF EACH MONTH 9-12* *excluding long weekends

Clients first...Service Always!

Hall Rentals Available for **Wedding Banquets**

Newly Renovated Hall/Kitchen
 Ample Parking & Camping
 Certified Kitchen - In House Catering
 2 Ball Diamonds Available For Rent
 Weddings/Reunions/Meetings - Small or Large

Cherhill Community Hall
 INFO, Dorothy 674-1411 Approx 90km Northwest of Edmonton on Hwy 43

Bridal Guide



A PUSH FOR PRIVATE VOWS

Weddings are very special occasions for two people who are in love. That's why many couples want close family and friends nearby when they tie the knot. But even the happiest couples may express some nervousness about one particular part of traditional wedding ceremonies.

Wedding vows are a way for couples to profess their love for each other. However, many couples who want to write their own vows are hesitant to say them aloud in front of an audience. If couples are intimidated by a heartfelt recital of their vows in front of a crowd, then exchanging vows in private may be for them.

Wedding planners and industry experts say that private vows have become very popular. While the vows do not replace the public exchange that seals the marriage from a legal standpoint, they can be words shared in a

private moment before the actual ceremony itself. A quiet moment alone allows couples to shed private tears and share a special moment before they make haste for the altar.

The Knot, a premier wedding planning resource, notes that there are many reasons to share private vows.

- You do not like being in the spotlight or become shy in front of crowds.
- There are words you would like to share with your future spouse that are deeply private, and you don't want to express those feelings to every person at the wedding.
- You do not want to censor your thoughts or words.
- You desire an intimately private and personal moment together before all of the fanfare and rush of the wedding.

- You'd like to recite loving words in a native language that some guests may not understand.
- You desire the potential for some very great candid photos if you invite the photographer to be there at a distance.
- You want to create a lasting

memory that is only yours as a couple to share.

The popularity of private vows exchanged before a wedding ceremony is growing. This growing trend provides yet another way for couples to personalize their weddings.

WABAMUN JUBILEE HALL

Weddings, Banquets,
Meetings

Accommodates up to 300
for large functions, room
divider for carpet or
hardwood, full kitchen
facilities, handicap accessible.

Rentals start at \$175.00

To book the hall, call 892-2699

MERLE NORMAN

Cosmetic Studio & Full Service Spa

TRY BEFORE YOU BUY

- Waxing, Sugaring, Threading
- Pedicures and Manicures
- Nails
- Lash Extensions
- Spray Tans
- AND MORE!

4909-51st Ave., Whitecourt 780.778.3288
www.merlenormanstudio.ca/ab/whitecourt

Celebrations

YOUR ONE-STOP FLOWER SHOP

- Fresh Flowers • Balloons
- Gifts • Wedding Supplies
- Plants

Mon - Fri 9AM-5PM • Thurs - Fri 9AM-6PM
 Sat 10AM-4PM • Closed Sundays & Holidays

Phone: (780) 778-6700
 5012-50th Ave. Whitecourt, AB

HOURS:
 Mon-Wed 9-6
 Thur 9-7
 Fri 9-6
 Sat 10-5

Repairs Done On Site
Custom Designed Jewellery

- Citizen • Bulova • Pulsar • Timex
- Seiko • Q-Ray • Harley Davidson Gifts
- Engraving • We Buy Gold & Diamonds

Blue Diamond Jewellers
 P: 780-968-0040 • F: 780-968-4434
 info@bluediamondjewellers.com
 www.bluediamondjewellers.com

5015 - 50th Street,
 Box 3125
 Stony Plain, AB
 T7Z 1Y4

Classified Ads - Call 962-9228

Hall Rentals

Bright Bank Hall, 780-968-6813

Camp Encounter, Vincent Mireau - Camp Director, director@campencounter.com. C: 780-504-2012 W: 780-967-2548

Cherhill Community Assoc. Hall, Kevin 780-785-8153

Darwell Centennial Hall, 780-892-3099

Darwell Seniors, Phone Debra 780-785-2907

Duffield Hall, 892-2425

Entwistle Community League Hall Rentals, Call Cheryl at 780-515-1755

Entwistle Senior's Drop In Centre, Barb 727-2108 or Glennis 727-4367 Mon-Fri

Evansburg Senior's Heritage House, Dennis 727-4186

Evansburg Legion, upper hall 250 people, lower hall 80-100 people, 727-3879

Fallis Community Hall, 892-3150

Gunn Hall (G.A.R.S.) 780-951-9452

Keephills Hall, 731-3761

Lake Isle Community Hall, PH: 780-

892-3121 or Email: lakeislehall@mail.com

Lake Romeo PeaVine Hall, 785-2700

Magnolia Hall, 727-2015

Manley Goodwill Community Hall, 963-9165 or 916-0146

Mayerthorpe Diamond Centre, 786-4044

Moon Lake Community Hall, Diane 780-514-4694

Park Court Hall, call or text Karyn 780-712-3918

Parkland Village Community Centre, 780-298-9155 @PVCCentre

Ravine Community Hall, 325-2391

Rich Valley Community Hall, 967-3696 or 967-5710

Rosenthal Community Hall, 963-7984

Smithfield Community Hall, Wanita 780-718-8824.

Tomahawk & District Sports Agra, Bookings: Kathy 780-339-3773.

Wabamun Jubilee Hall, 892-2699.

Wildwood Community Hall, 325-2180 or 780-514-6105

Wildwood Rec Complex 325-2077 or 514-8944

Wildwood Senior's Hall, 325-3787 or 325-2391

Services

High School Math Tutor, Call Amber at 780-887-6212 (17) 07-01

Computers

Computer Repairs NOT over \$50. Get a good, clean, refurbished, upgraded **Laptop** or a **Desktop** with games, world pictures, music, videos and more for **ONLY \$100.** FREE repairs for single parents. Donate used computers, tablets, etc. Will fix, clear to donate or use for parts. Call: 780-892-2407 (14) 28-01

Buy & Sell

I BUY GUN COLLECTIONS and World War 2 Collectables, Please call Jay for a quote 780-686-1350 (30) 19-11-19

Firewood

SEASONED FIREWOOD: Birch, Tamarack, Spruce/Pine & Poplar. 4x4x8 cord, Split and delivered or pick up at wood yard, 1/2 cord or full cords available. Call 780-967-5835 or 780-983-1495 (28) 27-08-19

FIREWOOD FOR SALE - Birch, Tamarack & Spruce Pine mix. Poplar. 4x4x8 cords and 1/2 cords. Quality seasoned wood, Delivery or Pick up. Woodchuck Firewood, 780-288-7247 (1) 18-02 OG BW



PURE HEMP CBD PRODUCTS

AGING IS INEVITABLE - LOOKING AND FEELING OLD ISN'T!

WHAT IS CBD?

A Health and Beauty Breakthrough!

Cannabidiol, CBD, is one of over 80 active cannabinoid chemicals in the hemp plant. CBD, unlike, THC, does not produce euphoria or intoxication. CBD targets specific receptors in the cells of your brain & body. There are many physical and mental benefits to using CBD products for both treatment and prevention of numerous ailments.



Therapeutic Uses For Pure Hemp CBD

Supports healthy blood sugar levels, promotes healthy energy levels, relieves anxiety, aids in digestion, supports optimal immune function and the regeneration of healthy cells, and promotes a sense of serenity and overall well-being.

Anti-Aging Uses For Pure Hemp CBD

Promotes more youthful skin, provides hydration, enhances radiance, lessens age lines as well as the appearance of dark spots.

KEY BENEFITS

PAIN RELIEF: Known to reduce vomiting & nausea; suppress muscle spasms; reduce seizures & convulsions.

PROMOTES HEALTH: Helps to promote relaxation and overall health.

WELL-BEING: Helps to relieve anxiety, aid in digestion, supports optimal immune function and the regeneration of healthy cells.

CBD PET PRODUCTS

PET CHEW TREATS

KEY BENEFITS

SYNERGISTIC BENEFITS: Can be used in conjunction with regular medications with no side effects.

NO SIDE EFFECTS: Does not damage the liver, kidney or GI Tract like OTC medication.

DIETARY SUPPLEMENT: Can be administered daily as part of your pet's diet.



ORAL SPRAYS & DROPS

KEY BENEFITS

MANAGES PAIN: Helps to treat inflammation, arthritis and joint pain.

TREATS DIGESTIONAL ISSUES: Helps with loss of appetite, nausea, IBS and gastrointestinal swelling.

GENERAL HEALTH: Helps to manage mood, anxiety and general joint pain. For healthy, happy pets.

CONVENIENT: Can be sprayed into pet's mouth or on food.

For more information, Call (780) 907-8642

Classified Ads - Call 962-9228

Obituaries



MORTENSEN, Kenneth "Ken"
 Kenneth "Ken" Mortensen, beloved husband of 42 years to Adele, passed away on February 8, 2020 at the age of 67 years. Ken is also survived by his beloved pet, Zoey; Adele's siblings, Ron (Shirley) and Diana (Manny), and Joan; one brother, John (Viv); two brothers-in-law, Stan and Harvey; 13 nieces and nephews; 18 great-nieces and nephews; one great-great-nephew; and numerous dear friends and relatives. Predeceased by his parents, Royce and Lillian; mother-in-law, Lena; and three sisters,

Irene, Mary and Agnes. Adele is grateful to all who have reached out during this time, and all gestures large and small are truly appreciated. Prayer Service was held February 12 at Sts. Constantine and Elena Romanian Orthodox Church, 9005-132 Avenue, Edmonton. Funeral Service was held February 13 at Sts. Constantine and Elena Romanian Orthodox Church. Interment was in St. Mary's Romanian Orthodox Church Cemetery in Boian, Alberta. Photos, memories and condolences may be shared through www.parkmemorial.com. **Park Memorial, Edmonton 780-426-0050. Family Owned Funeral Home, Crematorium, Reception Centre (1) 18-02**

For Rent

In Alberta Beach, 3 bedroom house with 4 appliances, detached garage, n/p, n/s, Available immediately, \$1100/month + DD. Call Connie 780-913-8024 (4) 04-02

Year Round Cabin For Rent North of Evansburg on Hwy

22 (15 mins from Evansburg), \$1100/month + DD. All inclusive, utilities & TV, max 2 people. Call 780-239-0553 (8) 04-02

Available immediately, Large 2 Bedroom in 12 Unit Apartment Building in Entwistle. Includes heat, water & parking. Rent \$795/month + DD \$300. Please call Ivka 780-807-1300 or email jakovljevicivka@yahoo.ca (2) 18-02 OG

Completely renovated Motel in Onaway, AB. offering daily, weekly or monthly rentals. All utilities

included, 55 inch tv with Satellite. Double bedrooms, furnished bachelors with full kitchen and furnished 1 bedrooms with full kitchen available. Please call Peggy for viewing at 780-967-4420 or 1-403-742-6467. www.onawayinnsuits.com (4) 18-02 OG

Available February 1st. 1 Bedroom in 12 unit apartment building in Entwistle. Includes heat, water & parking. \$685/month + DD \$300. Please call Ivka 780-807-1300 or email jakovljevicivka@yahoo.ca

SERENITY FUNERAL SERVICE

www.serenity.ca

780-542-3338 (24 hours) 5137-50 Avenue Drayton Valley, AB

SERENITY FAMILY SERVICE SOCIETY - YOUR NOT-FOR-PROFIT SOCIETY

SUDOKU OF THE WEEK

Fun By The Numbers

Here's How It Works: Sudoku puzzles are formatted as a 9x9 grid, broken down into nine 3x3 boxes. To solve a sudoku, the numbers 1 through 9 must fill each row, column and box. Each number can appear only once in each row, column and box. You can figure out the order in which the numbers will appear by using the numeric clues already provided in the boxes. The more numbers you name, the easier it gets to solve the puzzle!

ANSWER:

| | | | | | | | | |
|---|---|---|---|---|---|---|---|---|
| 7 | 6 | 1 | 9 | 5 | 8 | 3 | 4 | 2 |
| 8 | 2 | 4 | 7 | 3 | 6 | 1 | 9 | 5 |
| 5 | 3 | 9 | 1 | 4 | 2 | 6 | 8 | 7 |
| 3 | 9 | 5 | 6 | 2 | 4 | 7 | 1 | 8 |
| 2 | 1 | 6 | 8 | 7 | 5 | 4 | 3 | 9 |
| 4 | 8 | 7 | 3 | 1 | 9 | 2 | 5 | 6 |
| 6 | 5 | 3 | 2 | 9 | 1 | 8 | 7 | 4 |
| 1 | 4 | 8 | 5 | 6 | 7 | 9 | 2 | 3 |
| 9 | 7 | 2 | 4 | 8 | 3 | 5 | 6 | 1 |

| | | | | | | | | |
|---|---|---|---|---|---|---|---|---|
| | | 1 | 9 | | | 3 | 4 | |
| | | | | | 6 | | 9 | 5 |
| 5 | | | 1 | 4 | | | | |
| | | 5 | | 2 | 4 | 7 | 1 | |
| 2 | | 6 | | | 5 | | | |
| | 8 | | 3 | 1 | | 2 | | |
| 6 | | 3 | 2 | | 1 | | 7 | |
| | 4 | | | | 7 | | | |
| | 7 | | | 8 | | | 6 | |

Like puzzles? Then you'll love sudoku. This mind-bending puzzle will have you hooked from the moment you square off, so sharpen your pencil and put your sudoku savvy to the test!



COMMUNITY EVENTS 2020

If you are a LICENSED, NON-PROFIT ORGANIZATION, you are welcome to submit your announcement FREE of charge, space permitting. You are required to submit your non-profit number. Call (780) 962-9228. Please note that all submitted event listings must be limited to 200 characters or less (including spaces). DEADLINE: 12 noon Friday prior to publication (Thursdays on long weekends).

FEB 25 - SHROVE TUESDAY PANCAKE SUPPER, 5:00 p.m. – 6:30 p.m. at Peace Evangelical Lutheran Church (303 Church Rd, Spruce Grove).

FEB 29 - CHILI COOK-OFF at Woodbend Hall. Bring your chili for judging! Doors 5:30pm Judging/Dinner 6pm. \$7/person or \$25/family. \$5 refund if bring chili. Fun for all ages! 780-470-0574 to register

FARMERS MARKETS

DRAYTON VALLEY: Evergreen Farmers' Market, Wednesdays at the Mackenzie Centre on the Omnplex from 10:30AM-1:30PM. *Ends Dec. 19
EVANSBURG: Sat, 10AM-2PM, Tipple Park Museum. Call 727-2240 for tables.
SPRUCE GROVE: at the Elevator, Sat 9:30-1:30PM, tables (780)240-5821
STONY PLAIN: Sat, 9AM-1PM, Downtown, Stony Plain. Phone Nancy 780-962-3993.

BINGO

ENTWISTLE COMM. LEAGUE BINGO: Every Wednesday, Doors Open 6PM.
STONY PLAIN SENIOR'S DROP-IN CENTRE: public bingo every Tues, 7PM. All ages welcome. Phone (780) 963-6685
WILDWOOD: Mon night, 6:30PM, bingo starts 7:30PM, Early Birds & Lucky 7.
WILDWOOD LADIES AID: every 3rd Friday of month, 6:30PM, bingo starts 7:30PM.

MEAT DRAWS

Evansburg: Evansburg Legion, Friday 8-10PM & Saturday 3-5PM
Wildwood: Wildwood Legion, Saturday 3-5PM

JAMBOREES

CARVEL: 2nd Sunday of month. \$6 lunch served. Info 780-991-3001
CHIP LAKE: Ravine Comm Hall, 1st Sat 325-2119 or 325-2391
DUFFIELD: 4th Sat, Duffield Community Hall. Supper 6PM. *Sept - May.
DRAYTON VALLEY: Last Sunday of month. Upstairs @ the "55 Rec. Center" Doors at 12PM, Starts at 1PM. 780-542-3768
ENTWISTLE: 3rd Saturday of month, Doors at 5:30PM at Entwistle Community Hall. Contact Verna at 780-716-2304. *October - May
MAGNOLIA: at Magnolia Hall. 2nd Saturday of Month, New Time is 1:00PM. Call to confirm, 727-2015. *October - May, No Dec.
RAVINE COMMUNITY ASSOCIATION: 1st Sat of each month. Info 780-325-2391 *Sept - May.
SEBA BEACH: 2nd Friday 7PM, Seba Senior's Centre, Toni 797-4233
SPRUCE GROVE: at Sandhills Community Hall, 3rd Sunday, 1-5PM. Info Florence 780-962-3104 Margaret 780-962-3051 *Sept - June.
STONY PLAIN: Stony Plain Seniors Drop In Center, 5018 - 51 Ave. Every 2nd & 4th Thurs of month, 7PM, \$2.
TOMAHAWK: Tomahawk Agriplex, 3rd Friday of month, 7PM. Supper at 6PM. PH: 780-339-3755.
WILDWOOD: Wildwood Community Hall, 3rd Wed Each Month, 7PM. 325-3749 *Oct - June.

TOPS (Take Off Pounds Sensibly)

ENTWISTLE: Wed 5:15pm weigh-in, 5:30-6:30PM meeting, food bank building, South entrance. 780-932-2695.
STONY PLAIN: Thurs evening, Stony Plain United Church. Susan (780) 968-0869
SPRUCE GROVE: Wed 8:45am at Anglican Church, 131 Church Rd. Christiane 960-1109
WILDWOOD: Thurs at Wildwood Hall, 4:30PM. Connie (780) 325-2420

YOUR COMMUNITY

ALBERTA PARENTING FOR THE FUTURE ASSOC: Call 963-0549 or visit www.apfa.ca to register. All programs are confidential & free.

FREE HOME MEAL DELIVERY PROGRAM, for Wabamun Seniors & Wabamun Lions. Arrange for meal preparation through a local restaurant. Call Darlene, 892-2551.
PEMBINA SKATING CLUB (Evansburg Arena), offers Learn-to-Skate, CanSkate & STARSkate. All ages. Call Lisa 727-2729.
***RUNS Sept-March**
PROBLEMS WITH DRUG OR ALCOHOL ADDICTION in a loved one? Contact Drug Rehab Resource for a free confidential consultation. 1-866-649-1594 or www.drugrehabresource.net.

LIBRARY EVENTS

AFTERNOON BOOK CLUB at Keepliffs Library. 2nd Tues of every month, 1:30-3:00PM. Visit www.pclibraries.ca for info.
FAMILY GAMES NIGHT: 3rd Wed of every month, 6-8PM. Located at Entwistle Library, Duffield Library and Tomahawk Library. In partnership with Parkland School Division. Visit www.pclibraries.ca for more info.
HATCHET CITY READERS at Tomahawk Library. 3rd Tues of every month, 10-11AM. For what we're reading next, visit our website: www.pclibraries.ca.
INVENTORS CLUB: 2nd Thurs of every month, 3:30-5:00PM at Entwistle Library. 4th Thurs of every month, 3:30-5:00PM at Tomahawk Library. Ages 8-13. To register: Call the library at 780-339-3935.
SEBA BEACH PUBLIC LIBRARY BOOK CLUB meets the 4th Thursday of the month, at the library, at 10:30AM. Call us at 780-797-3940 or email us at seabeachlibrary@yrl.ab.ca
EVANSBURG PUBLIC LIBRARY BOOK CLUB: 4th Thurs, 7:00PM Grand Trunk High 727-2030.

SOCIAL EVENTS

50+ YOUNG AT HEART LUNCHEON for Parkland County Seniors. 12PM at Stony Plain United Church Basement, \$8/plate. 3rd Wed of Month. Call Barb 780-952-0882.
***Sept-June**
AEROBICS: Low impact, Mon/Wed, 11AM-12PM, Wildwood Senior's Centre, \$1/session.
BALLROOM, LATIN, COUNTRY DANCE SOCIAL: 1st Saturday of every month. Doors open 8PM at Central Lions Recreation Center, 11113 113 St., Edmonton AB. Cost \$15 paid at the doors. Hosted by Everyone's Ballroom Dance Assoc. More info: www.ebda.ca 780-893-6828
BREAKFAST SOCIAL: 9:30AM-NOON, Parkland Village Community Centre - 3rd Sunday. PH: 780.298.9155 Social Media: PVCentre.
COME PLAY CRIB: Fridays, 7:30PM at Darwell Seniors Hall; lite lunch is served. All ages!
COUNTRY QUILTERS in Stony Plain house a "Sew in Tuesday", 2nd Tuesday of every month, from 10-3PM. Drop in \$5/member, \$6/non-members. Contact Cindy 780-963-7170.
DROP-IN ADULT PICKLEBALL: Thursdays, 6-8:30 p.m. Sept.12th-May @ G.T. School, Evansburg. Beginners Welcome. Paddles sponsored by the Evansburg Public Library
EVANSBURG ART CLUB: meet & paint Thurs 1-4PM Rec Plex. 727-4340 or 727-4098
EVANSBURG GUIDES & PATHFINDERS: Mon 6PM, Camp Evansburg.
EVANSBURG SENIOR'S HERITAGE HOUSE: Floor Curling Mon & Thurs, 1pm. Court Whist Thurs, 7PM.
EVANSBURG TIPPLE PARK HISTORICAL BUILDING TOURS: Wed - Sat, 10:00-5:00PM.

HEALTHY AGING NURSE & FOOT CARE PERSON, Wabamun Seniors Centre, 2nd Thurs of month, 9AM.

OPEN HOUSE for socializing, Crib & card playing at Entwistle Senior Center, Thursdays at 6:45PM. Dan 780-982-0353
PARENT & TOT PLAYTIME: PERC Building Stony Plain Wed 10-11AM; Holborn Community Hall Thurs 9:30-11AM; Parkland Village Tues 9:30-11:30AM.
POT LUCK every Tues 12:00PM, Wabamun Seniors Centre. Come on down!

SEBA BEACH SENIORS CENTER: Yoga, mon, 9:30AM, \$10/session. Bridge thurs, 1pm. Jams every Wed night, 7PM. Thrift Shop every Wed & Sat at 10-3PM.
SEBA BEACH QUILTERS & FIBER ARTS: Wednesdays 9:30AM, Seniors Center.

SENIORS 50+ LUNCHEON: 3rd Wed, 12PM at Stony Plain United Church basement hall. Call Audrey (780) 963-7582
SENIORS WEDNESDAY* AFTERNOON 1-4PM at Parkland Village Community Centre. Games, Crafts & more! Call Sheryl 780.695.7032 *exceptions incl. Weather.

SPIRITUAL LIVING STONY PLAIN INSPIRATIONAL CINEMA & DISCUSSIONS at PERC Building (5413-51 St). 2nd Friday of month at 7PM. Popcorn provided, donations appreciated. Contact 780-940-3032
SPIRITUAL LIVING STONY PLAIN GATHERING at PERC Building (5413-51 St). Every 2nd & 4th Sunday of month. Meditation 10AM, inspirational sharing 10:30AM. PH 780-940-3032
SPRUCE GROVE ELEVATOR TOURS: Tues-Sat, 9-3PM. 960-4600.

STONY PLAIN'S 5TH MERIDIAN GOOD SAMS RV CHAPTER: Ecole Meridian Heights School. 3rd Tues of Month, 7PM. Call Pat at 780-963-6976 or Ruth at 780-288-9829.

MEETINGS
2nd TIMERS: A support & confidential group for Grandparents Parenting. 1st Thurs of month, 6:30PM. Grand Trunk High School (meet in Lobstick Literacy & Learning room). Child care provided at the Evansburg Public Library.

29th ROYAL CANADIAN SEA CADETS CORPS MACKENZIE: Stony Plain Comm Center, Wed 6:30PM. Youths 12-18, 963-0843
755 PARKLAND AIR CADETS Thurs, 6:30-9:30PM Muir Lake School, ages 12-18. Info call 405-6585 or www.aircadet.com/755.
AA: Friday at 8PM, Evansburg. Call 325-2204, 727-2466 or 727-6652.
AA MEETING: Every Monday night at 8PM, Duffield Mewassin Free Methodist Church, (13km South of Duffield Turnoff at Shell Gas Station on Hwy 16)

AL-ANON: Wed 8PM. Spruce Grove United Church, 1A Fieldstone Drive. 962-5205
CHAMBER OF COMMERCE (Evans/Ent): 7:30PM 3rd Thurs, Heritage House.
C.H.I.L.D. (Citizens Helping in Life's Defence) Please join our Pro-Life meetings once a month in Stony Plain. For info call Chris 963-6997.

CITIZENS ON PATROL: The Pembina Community Watch Patrol Meets 2nd Thurs of each month at 7:30PM, at the Tipple Park Museum (4924-48 St.), Evansburg. Contact 780-898-1465 or 780-727-2686.
COMMUNITY QUILTERS & CRAFTERS: 3rd Tues, Evansburg, Liz 727-3872 Brenda 727-4476

DARWELL & DISTRICT AG SOCIETY: 8PM, 1st Mon, Community Hall.
DRA MEETING: 7:00PM, 2nd Mon, Darwell Centennial Hall 780-892-3099. *except Jul/Aug/Dec
DRAYTON VALLEY BRANCH OF

ALBERTA GENEALOGICAL SOCIETY: meets 7PM at Municipal Library (5120-52 St.) every 3rd Wed of month. Call (780) 542-2787

ENTWISTLE COMMUNITY LEAGUE GENERAL MEETINGS: 2nd Thursday monthly 7:30PM. *Except June, July, August

ENTWISTLE LIONS CLUB: 2nd & 4th Tues, 8PM, Entwistle curling rink. Jim 727-3573
ENTWISTLE SENIORS 55+ CLUB: Tue & Fri, 1:30-4:00PM at Entwistle Hall
EVANSBURG SENIOR'S 55+ HERITAGE HOUSE: 2nd Wed of Month, 7:00PM. Dennis, 727-4186.

FALLS COMMUNITY ASSOCIATION: 3rd Tuesday, 7:00PM.

GIRL GUIDES OF CANADA: Poplar Hollow District Guides-Pathfinders, Mon 6-8PM. Sparks-Brownies Tues 4-5:30PM. Meet at Camp Evansburg. Brenda 780-727-4476

LAC STE. ANNE & LAKE ISLE WATER QUALITY MANAGEMENT SOCIETY: 3rd Fri, 7PM, Alberta Beach Council Chambers.

LAKE ISLE HALL COMMUNITY HALL BOARD MEETINGS: 3rd Wed of each month @ 7:30PM at the Lake Isle Hall (Hwy 633 and RR55) Ph # 780-892-3121
LAKE ISLE MULTI 4-H GENERAL MEETINGS: 1st Thurs of each month @ 6:30PM @ Lake Isle Hall. Contact 780-242-2486.

LOBSTICK 4-H BEEF & MULTI CLUB: 1st Mon, Evansburg Arena, 7PM, Shannon 727-2358

LOBSTICK GARDEN CLUB: 1st Mon, 7PM at Tipple Park Museum, Clara (780) 399-2205
MAGNOLIA BOARD MEETINGS: 1st Tuesday of month, 7PM at Magnolia Community Hall.

MEN FOR SOBRIETY: Wednesdays at 7:30PM, FCSS Building (#105, 505 Queen Street, Spruce Grove), Mike (780) 965-9991.
MS SOCIETY DRAYTON VALLEY COMMUNITY GROUP meets 1st Tues of month, 6-8PM at Norquest College. Terra Leslie, 1-403-346-0290. *Sept-June

MS SOCIETY PARKLAND COMMUNITY SUPPORT GROUP: Are you diagnosed with MS and have questions? Last Tues of month, 7-9PM, Westview Health Centre. Contact Cassy 780-471-3034

NA MEETING: Tuesdays, 7:00PM. 514-6011
PEMBINA PORCUPINES - JUNIOR FOREST WARDENS: Entwistle Porcupine gathering: 7PM, 1st Tue. Len & Tineke at 727-2020. Porcupines@yellowheadjfw.ca

SOLVE: Community Enviro issues discussed at Smithfield Hall (N of Hwy 16 on RR34). 2nd Thursdays. Jana 892-0006

STONY PLAIN FISH & GAME ASSOCIATION & WABAMUN GUN CLUB: 2nd Mon, Stony Plain Comm Center, 7:30PM.

SUNDOWNERS TOASTMASTER CLUB: Mon (excl. Holidays) 7:30-9:30PM. St. Matthew's Church, Spruce Grove. Judy 960-5258

TOMAHAWK SENIORS (50+) meets every Thursday from 1-4pm at the Tomahawk Agra.

W.E.E COMMUNITY FOOD BANK: Call (780) 727-4043 for emergency food needs. Monthly Meeting: LAST Monday of month at 7:00PM at the Food Bank (Old fire hall in Entwistle). *Except December

WILDWOOD & DIST AG SOCIETY: 2nd Wed of each month 7:00PM at the Wildwood Complex. Wilma 325-2424

WILDWOOD & DIST RUG & GUN CLUB: 2nd Thursday, 7:30PM at the range clubhouse, wildwoodrangedand@gmail.com

WILDWOOD SENIORS: 4th Wednesday at 2:00PM. PH: 325-3787 or 325-2391. *No meeting July/Aug/Dec.

Church Directory

| | | | | | |
|--|---|--|---|---|--|
| <p>Seba Beach Christian Fellowship Sunday School 10:00a.m. Worship Service 11:00a.m. Weekdays Bible Study & Prayer (780) 305-3594</p> | <p>Advent Lutheran Church Sunday Worship & Sunday School 11:00a.m. Evansburg O: 727-3594</p> | <p>Roman Catholic Church St. Agnes' Parish, Maysethorpe Sunday 9:00a.m. St. Elizabeth Parish, Evansburg Saturday 7:00p.m. (780) 786-2032</p> | <p>St. Joseph's Catholic Church Sunday Mass 11:30a.m. Tuesday Mass 7:00p.m. Wabamun, AB</p> | <p>St. Augustine's - Parkland Anglican Church 131 Church Rd. Spruce Grove Sunday Service 10:00a.m. Eucharist with Sunday School & Nursery All are Welcome Office 780-962-5131 www.staugustinesparkland.org</p> | |
| <p>Parkland Baptist Church Sunday Worship Service 10:30a.m. All Welcome 121 Brookwood Drive (780) 962-4101 www.parklandbaptist.ca</p> | <p>Word Church Apocalyptic Era Border Paving Athletic Centre, 9 Tri Leisure Way, Spruce Grove ignitors in the Wild Rose room. Ph: 780-962-7579 Service starts at 10:00 a.m. every Sunday morning, come all & be bless.</p> | <p>St. Anthony's Ukrainian Orthodox Church 6103 172 St. NW, Edmonton Saturday: Vespers 5:00PM Sunday: Divine Liturgy 10:00AM 780.487.2167 santhony@telonjaneet.net www.st-anthonys.ca</p> | <p>Stony Plain United Church Sunday Service 10:30a.m. 5012-51 Ave. Stony Plain Mewassin United Church Sunday Service 9:00a.m. Rev. Heather Koots Hwy 627 - Rg Rd 30 Ph: 780-963-4745</p> | <p>Immanuel Lutheran Church of Rosenthal Sunday Worship Service 9:30a.m. Sunday School 780-963-4048</p> | |
| <p>Emmaus Lutheran Church Sunday Worship Service 11:30a.m. Rev. Robert Marshall 4504-52nd Ave, Drayton Valley Ph: 780-542-5101 www.emmauslutheran.org</p> | <p>Church of God Worship Service Sun. 11:00a.m. Please contact for activities 5004-49 Street, Drayton Valley Ph: 780-542-5091</p> | <p>Calvary Baptist Church Pastoral Team: Kenton Penner Sunday Worship 10:30a.m. Youth & Ministries Info - calbapt@telus.net 4401-50th Ave. Drayton Valley 780-542-4774 www.calvarybaptistdo.ca</p> | <p>Drayton Valley Alliance Church Pastor John Haazen Join us for Sunday Service at 10:30a.m. 5014-56 Ave. (next to Value Drug Mart) Programs for all ages Ph: 542-6501 dvalliance.ca</p> | <p>All Saints' Anglican Church Sunday Morning Worship of BCP 10:30 BAS with Sunday School & Nursery 5212-47 Ave. Drayton Valley (780) 542-5048</p> | <p>St. Anthony Catholic Church WEEKEND MASS SCHEDULE: Saturday 5:00p.m. Sunday 12:00p.m. 4708-50 Ave. Drayton Valley Parish Office: 542-5254</p> |

SERVICE DIRECTORY

2Bros
Custom Contracting Ltd.
 Custom Framing • Concrete Floors • Shingling
 Siding Soffit Fascia • Styrofoam Block System
Jeff 780-717-0520

H&P Kosik CONSTRUCTION Ltd.
 • Road Building • Gravel • Sand • Dugouts
 • Black Dirt
 No Job too small. We do them all!
 Harvey cell. 780-445-9010 ph. 780-892-3532
 Box 145, Darwell, AB. T0E 0L0

Ernie's Repair & Service

SMALL ENGINES
 4820 - 47 Avenue, EVANSBURG
 (780) 727-4433 C:514-0272

WABAMUN PHARMACY
I.D.A.
 Box 90, 5120 - 51 Avenue
 Wabamun, AB T0E 2K0
 Ph: (780) 892-2278 Fax: (780) 892-2488

COMMUNITYVOICE
 YOUR LOCAL NEWSPIRES
THIS SPACE IS RESERVED FOR YOU!

WEIGHTLOSS NEVER TASTED SO GOOD!

NEW! NEW! NEW! NEW!
 (780) 907-8642 **VALENTUS**
 www.ValentusTour.com/Ladybug


SERVICE DIRECTORY

Blakeman Drilling Ltd.
 Waterwell Drilling & Servicing
 Pumps & Pressure Systems
 SERVING LAC STE. ANNE & WEST PARKLAND FOR OVER 25 YEARS
 Joe (780) 924-3024



DONALD N. GREENWAY
 Chartered Accountant
 Suite 205 Sunrise Professional Building
 215 McLeod Avenue
 Spruce Grove, AB
 (Bus.) 962-6366
 (Fax) 962-3990

WHAT MAKES MYDAILYSPRAYS SO POWERFUL?
 HIGH ABSORPTION, SCIENCE & THE INGREDIENTS



(780) 907-8642
 www.Elaine1.com

SLIMROAST Optimum
 DARK ROAST COFFEE
 YOUR LOGICAL SOLUTION TO WEIGHT MANAGEMENT
 (780) 907-8642
 www.ValentusTour.com/Ladybug



COMMUNITYVOICE
 YOUR LOCAL NEWSPAPER
THIS SPACE IS RESERVED FOR YOU!

COMMUNITYVOICE
 YOUR LOCAL NEWSPAPER
THIS SPACE IS RESERVED FOR YOU!

MARK MARTIN PFEIFFER
 MASTER BRICKLAYER/MASON
 Cell: 780-242-3308
 Email: pfeiffer.mark@hotmail.com

- Brickwork • Stonework
- Rockwork • Parging
- Concrete Block Work
- Tile Work (all kinds)



COMMUNITYVOICE
 YOUR LOCAL NEWSPAPER
THIS SPACE IS RESERVED FOR YOU!

PEMBINA CONCRETE PRODUCTS LTD.
 Manufacturers of **ONE PIECE SEPTIC & HOLDING TANKS**
 * Water Cisterns * Field Systems * Pumps and Accessories * Sumps

DELIVERED TO YOUR SITE
 1-800-661-3047
 780-727-2702
 PembinaConcrete.com

New Line of Concrete Statues, Fountains and Garden Ornaments.
 BOX 123, Entwistle, T0E 0S0




ROY SHERWOOD
 Master Electrician
 Ph: 780-968-1425
 Call: 780-908-2287
 Fax: 780-968-2211
 Email: suretechroy@gmail.com
 2-53220 Rge Rd 21
 Parkland County, AB T7Y 0C5

SURETECH ELECTRIC LTD.
 Control & Automation
 Commissioning
 Solar Sales & Service
 Industrial . Commercial . Residential

PREVAIL MAX
 CELLULAR HOMEOSTASIS FORMULA
 How do you want your **BLOOD** to look?

| Before PrevailMAX: | After PrevailMAX: |
|---------------------|-----------------------|
| poor circulation | better circulation |
| low energy | more vitality |
| brain fog | mental clarity |
| dehydration | cellular movement |
| decreased nutrients | nutrient assimilation |
| pH imbalance | balanced pH |
| poor endurance | optimal endurance |

LIVIN TRIM WITH
 (780) 907-8642 VALENTUS
 www.ValentusTour.com/Ladybug



CALIBRE DRILLING LTD
 DRILLING AND SERVICING YOUR WATER WELL.

SPECIALISTS IN AIR & MUD ROTARY DRILLING

- * Water Well Drilling
- * Pressure Systems
- * Licensed Drillers
- * Geotechnical Drilling
- * Free Estimates
- * Pump Installations
- * Well Tests
- * Year Round Drilling
- * Cathodic Protection

Quality Workmanship Five Year Warranty
 (780) 960-2992
 BOX 4083 SPRUCE GROVE, AB T7X 3B3

SERVICE DIRECTORY

Jack's Auto Body
 & 24 HR Towing

SPECIALIZING IN COLLISION REPAIR
GUARANTEED WORK • INSURANCE CLAIMS

CAA BOX 9 SITE 306 RR3, ONOWAY, AB T0E 1V0
(780) 967-5850

OUR PLEDGE IS QUALITY

BACK COUNTRY PIPEFITTING LTD.
 Plumbing & Heating

Lee Hicks 780-898-1062
 Journeyman Plumber

Residential and Commercial Plumbing and Heating.
 SERVING: YELLOWHEAD, PARKLAND, LAC STE. ANNE & BRAZEAU COUNTIES.

H&E
 UPHOLSTERY

FOR ALL YOUR UPHOLSTERY NEEDS

Convertible tops for cars and boats, custom car and boat interiors, 5th wheel trailer skirts, boat tarps, ATV seats, furniture, kitchen chairs, heavy equipment seats.

WWW.HANDE.CA 4-485 South Ave. Spruce Grove
 For more information contact: kirk@hande.ca (780) 962-3048

SERVING ENTWISLE AND AREA FOR OVER 30 YEARS

Entwistle CONCRETE
 PRODUCTS LTD.

SAND & GRAVEL SALES

PH: (780) 727-3525
 Dan McCracken Entwistle, AB
 www.entwistleconcrete.ca

COMMUNITYVOICE
 YOUR LOCAL NEWSPIPER

THIS SPACE IS RESERVED FOR YOU!

SMOOLE

- Construction & Septic Installation
- Environmental Wastewater Disposal
- Site Design & Evaluation
- Power, Water & Basement Excavation
- Trackhoe, Backhoe, Bobcat & Dump Truck

For All Your Excavation Needs
 Call Dan 780-991-4484 Reid 780-909-0173

COMMUNITYVOICE
 YOUR LOCAL NEWSPIPER

THIS SPACE IS RESERVED FOR YOU!

SANGUDO VETERINARY CLINIC

Box 581, 4916 - 52 Ave. Sangudo, AB. T0E 2A0
Dr. Ralf Sanders DVM
 Ph: 780-785-2200
 Fax: 780-785-2228
 sangudovet@gmail.com

24 HOUR EMERGENCY SERVICE

COMMUNITYVOICE
 YOUR LOCAL NEWSPIPER

THIS SPACE IS RESERVED FOR YOU!

POSTINGFIRST.com

BUY and SELL just about ANYTHING!

FREE LOCAL CLASSIFIED ADS

Real Estate, Rentals, Vehicles, Pets, Jobs, Service Directory, Buy/Sell/Trade, Lawn & Garden, Garage Sales, Events, Local Places & Much More... Advertise for **FREE** Today!

Follow Us

Instagram, Facebook, Pinterest, YouTube, Twitter

TRI-LAKES SERVICES LTD.

- Septic Hauling
- Drinking Water Delivery
- Portable Washrooms
- Steam Truck

www.trilakeservices.ca / office@trilakes.services
 (877) 727-3939 / (844) 967-9176

SERVING: Lac Ste. Anne County • Parkland County • Yellowhead County Area

Xtreme LEAN NRG

Xtreme LEAN NRG
 Advanced Formula helps you:

- Regulates Your Appetite
- Regulates Blood Sugar
- Regulates Fat Absorption
- Improve Energy Levels
- Improve Your Mood
- Increase Mental Focus

"We've unlocked the science of slim!"
(780) 907-8642

SUMMERS DRILLING LTD.

Water well drilling and service
 Family owned Business Serving Alberta since 1917

Never run out of water again!

5 year workmanship warranty

3 Convenient ways to pay

- Visa
- Mastercard
- We now offer full financing

Tired of hauling water?
 We can install a water well with a permanent water supply for as little as \$150/month OAC

Stop in at our office 4405 - 50 Street, Stony Plain
 780-963-1282
 admin@summersdrilling.com

PREVAIL

CELLULAR HOMEOSTASIS FORMULA

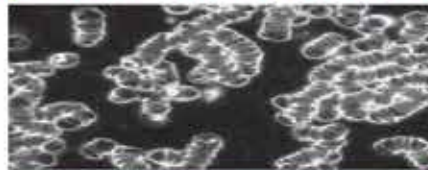
MAX

A NUTRITIONAL BREAKTHROUGH THAT SUPPORTS YOU
...RIGHT DOWN TO THE LAST CELL!



How do you want your
BLOOD to look?

Before PrevailMAX:



- poor circulation
- low energy
- brain fog
- dehydration
- decreased nutrients
- pH imbalance
- poor endurance

After PrevailMAX:



- better circulation
- more vitality
- mental clarity
- cellular movement
- nutrient assimilation
- balanced pH
- optimal endurance

PrevailMAX™ is a nutritional breakthrough that delivers a rapid increase of internal blood cell pressure to speed absorption, enabling the body to take maximum advantage of the nutrients in foods and supplements. The electrolytes are small enough to penetrate your cell membranes, to bind with your cells, and to be carried wherever they are needed in the body.

At the microscopic level of human cells, **PrevailMAX™** supports healthy cell performance – a nutritional breakthrough for your cells.

When you use **PrevailMAX™**, you will feel more energy and an ability to focus like never before. Take a few sprays today and see just how good you can feel!

LIVIN TRIM WITH
VALENTUS

www.ValentusTour.com/Ladybug

(780) 907-8642