



# COMMUNITY VOICE

YOUR LOCAL NEWSPAPER

Serving: Carvel, Darwell, Drayton Valley, Duffield, Entwistle, Evansburg, Fallis, Gainford, Parkland County, Seba Beach, Tomahawk, Wabamun, Wildwood, Spruce Grove and Stony Plain.

## March 3, 2020

### ENTWISTLE EXHIBIT 2020

Submitted by Jakob Kubke, Tipple Park Museum

Our first-ever exhibit on the community of Entwistle is in full swing (as much as an exhibit can swing, that is). But now that I think of it, a multiplicity of photos are hanging from the ceiling

for a cool effect, and those swing quite well when kids try to wack them!

In addition to this, two amazing models replicate the 1910 train trestle bridge as well as the old single-lane low level traffic bridge. Kids can search for deer and one fox in the latter model.

An original survey of Old Entwistle shows a long lost plan for the town east of where it is today, and an optimistic advertisement with a surveyed area of the actual Entwistle promises that it will become a thriving city.

Continued on Page 2

### NATIONAL WOMEN'S DAY CANCELLED AT TIPPLE PARK MUSEUM

Submitted by Tipple Park Museum

First off, thank you to all the ladies that did sign up for National Women's Day,

along with our speakers and crafters that were going to take part in the event.

Unfortunately, due to low registration, National Women's Day will be can-

celled for this year.

Please check out our Facebook page Tipple Park Museum for future programming.

Thanks again!

### WILDFIRE SEASON BEGINS MARCH 1

Submitted by Government of Alberta

Wildfire season begins one month earlier in Alberta than in other jurisdictions and runs until Oct. 31. Research shows that wildfires are starting ear-

lier and lasting longer. Alberta's early fire season means our firefighters are trained and positioned throughout the province sooner.

Almost all spring wildfires are caused by human activity and are completely prevent-

able.

Human-caused wildfires are generally accidental in nature - often started by an out-of-control campfire or spark from an off-highway vehicle.

Continued on Page 5

**All Precious JEWELLERS**  
 "Your Spruce Grove Jewellery Store"  
**Goldsmith on Premises**  
 • Engraving • Clock & Watch Repairs  
 • Jewellery Repairs • Custom Make-ups  
 Jewellery Repairs Done On Site.  
 Laser Welder Services Available.  
 Toll Free: 1-877-962-4367  
 PH: 780-960-4200 Fax: 780-960-4201  
 Suite 102, 215 McLeod Avenue  
 Spruce Grove, AB. T7X 0G2

**ISLE LAKE Feed Supply**  
**780.387.0890**

- CATTLE
- EQUINE
- LIVESTOCK
- PET
- POULTRY
- HAY SEED

Monday-Friday 9am - 8pm  
 Saturday 9am - 4pm

53405 Range Road 60, Parkland County  
[WWW.ISLELAKEFEEDSUPPLY.CA](http://WWW.ISLELAKEFEEDSUPPLY.CA)

**PREVAIL MAX**  
 CELLULAR HOMEOSTASIS FORMULA

**Nutritional Breakthrough For Your Cells**

LIVIN TRIM WITH VALENTUS  
**(780) 907-8642**  
[www.ValentusTour.com/Ladybug](http://www.ValentusTour.com/Ladybug)

**SLIMROAST Optimum**  
 DARK ROAST COFFEE

YOUR LOGICAL SOLUTION TO WEIGHT MANAGEMENT

**(780) 907-8642**  
[www.ValentusTour.com/Ladybug](http://www.ValentusTour.com/Ladybug)

**View us ONLINE!**  
[WWW.COM-VOICE.COM](http://WWW.COM-VOICE.COM)



**COMMUNITYVOICE**  
YOUR LOCAL NEWSPAPER

PUBLISHED WEEKLY (Zone 1 & 2)  
AND BIWEEKLY (Zone 3)

**E.J. Lewchuck & Associates Ltd.**

#6 - 40 South Avenue  
Box 3595  
Spruce Grove, AB T7X 3A8

**SALES TEAM**

Elaine  
Ashley  
Dani

**TELEPHONE:**

Classifieds 962-9229  
Advertising 962-9228  
Fax 962-1021

**E-MAIL:**

comvoice@telusplanet.net  
news@com-voice.com

# Entwistle Exhibit 2020

*Continued from Page 1*

Brie Adkin's art is on display, a wonderful panorama of the river valley. Soon enough the mural will be on the J.D. Read memorial building in Entwistle.

Detailed information pan-

els bring to light shocking stories about this community - plagues, train crashes, a rafting accident - but also heartfelt tales of community spirit, including that of two young milk delivery boys with their goat and sled.

Though making exhibits is hard work, it was a blast to put together and we hope you enjoy it.

Family Day already saw over fifty people through the door, and there will be many more to come!

**WORKING TOGETHER**  
**for Safety in Agriculture**

You can help build a stronger farm, family, and community, and be part of an AgSafe Canada, by developing a Farm Safety Plan and talking with your family and anyone who visits your farm about safety.

**Searle Turton**  
MLA for Spruce Grove-Stony Plain Constituency

60-210 McLeod Ave. Spruce Grove, AB T7X 2K5  
PH: 780.962.6606 Fax: 780.962.1568  
SpruceGrove.StonyPlain@assembly.ab.ca

## A safe farm is a strong farm, and a strong farm is a successful one.

This Canadian Agricultural Safety Week,  
we celebrate Safe and Strong Farms.

For more information on  
Growing an AgSafe Canada  
visit [agsafetyweek.ca](http://agsafetyweek.ca).



[geraldsoroka.c1@parl.gc.ca](mailto:geraldsoroka.c1@parl.gc.ca)  
**780-723-6068** [geraldsoroka.com](http://geraldsoroka.com)

**GERALD**   
**SOROKA MP**  
YELLOWHEAD

# A MESSAGE FROM MLA MARK SMITH: BALANCING THE BUDGET

**Submitted by MLA Mark Smith | Drayton Valley – Devon Constituency**

Last year, in Budget 2019, we introduced a balanced, prudent and thoughtful four-year plan to eliminate the largest deficit in Alberta's history while maintaining essential services and supporting the most vulnerable Albertans.

Budget 2020 continues this plan, and we are on track to balance Alberta's budget by fiscal year 2022-23. In fact, the projected deficit has decreased even faster than we initially planned. This year's deficit will be \$1.2 billion dollars less than we had projected in Budget 2019. Our government spends about \$2 billion every year just to service our debt. This works out to nearly \$5 and a half million a day! That's enough money to buy 30 ambulances every day, build a new school every week, or pave the QEII from Calgary

to Red Deer every month. Getting back to balance is the first step towards paying down our debt and redirecting this money towards the front-line services that Albertans rely on. Our plan involves reducing government's operating spending by 2.8 per cent, less than three cents on the dollar, over the four-year fiscal plan. This is both responsible and fair.

Budget 2020 is also about creating jobs. The Alberta 2020 budget changes will make Alberta more competitive than other jurisdictions, encouraging sustainable diversification, and while rewarding innovation. We are attracting private investment to Alberta with the Job Creation Tax Cut. This will reduce Alberta's corporate income tax rate to 8 per cent by 2022. And we are already seeing results from this initiative:

For example, CNRL, Mainstreet Equity and others have made big investments here in

part because of our lower tax regime and Capital Cost Allowance.

In addition, our commitment to reducing red tape by one third by the end of 2023 is removing major obstacles and creating opportunities for business to expand and hire Albertans. This will allow businesses to focus on their bottom line, improve their revenues, and hire Albertans instead of wasting time navigating burdensome regulatory hoops.

Budget 2020 also underlines our commitment to Albertans to get the best value for their tax dollars and to maintain funding for health care, social services and education. We've kept that promise. There have not been any funding cuts to health or education. In fact, we will be funding Health and Education at record levels:

Health Care has a slight increase to its budget coming out at \$20.6 billion.

Education has a small increase to its budget at \$8.3 billion.

Community and Social Services \$3.9 billion and Children's Services at \$1.6 billion.

We are also re-focusing how dollars are spent to ensure that funding is sent straight to the front line and are supporting Albertans who need it most. The new funding formula in education is designed to give school boards predictability in their budgets and ensure that education dollars are going to the classroom where they are needed most.

We will reduce overall expenses and are making prudent investments that will pay off this year, and in years to come. Budget 2020 takes the steps we need to take to rebuild the ground we lost during the past 5 years. The fiscal plan that started in 2019 is still strong, still in place, and already proving successful. We are on track.

**EDMONTON – Capital Region**  
**GUN SHOW**  
**March 7 & 8, 2020**  
 Located at "The Pavilion at Heritage Park"  
 5100-41 Avenue, Stony Plain, AB

---

PUBLIC WELCOME - FREE PARKING ADMISSION: \$8.00  
**SATURDAY 10:00AM-5:00PM**  
**SUNDAY 9:30AM-3:00PM**

**Town & Country Funeral Services**

**Wabamun**  
780-983-2749

**Evansburg**  
780-727-2791

- † Cemetery Monument Sales & Installation
- † Traditional Burial & Funeral Services
- † Pre-need Funeral Packages
- † Crematorium & Memorial Services

**INVITATION TO TENDER**

Wildwood Ladies Aid Society is seeking a maintenance person for the maintenance of two (2) cemetery's totaling approximately 6.75 acres.

Responsibilities are:

- Cutting and trimming all grass on site
- Cut and trim trees and shrubs as required
- Keep records of work performed and hours worked
- Perform other duties as assigned by supervisor
- Must have own equipment, mower, weed eater, grass blower, etc.
- Must have liability insurance and WCB coverage

Contract starts May 15, 2020 ending September 15, 2020.

Mail all applications by March 31, 2020 to:  
 Marjorie Russell Box 580 Wildwood, Alberta T0E 2M0

**JOKE OF THE WEEK**

Man to his wife: "Do you know what our 6 year old son wants to be once he's big?"  
 Wife: "No."  
 Man: "A garbage man. And you know why?"  
 Wife: "No, why?"  
 Man: "Because he thinks they only work on Tuesdays."

# MAYERTHORPE RCMP MARK 15-YEAR ANNIVERSARY OF FOUR OFFICERS DYING IN THE LINE OF DUTY

**Submitted by Mayerthorpe RCMP**

March 3, 2020, marks the 15-year anniversary of the four RCMP officers who died in the line of duty. Constables Leonide Johnston, Anthony Gor-

don, Brock Myrol and Peter Schiemann were ambushed and killed on March 3, 2005, while investigating a marijuana grow operation and vehicle chop shop outside of Mayerthorpe, Alta.

A memorial service hosted

by the Fallen Four Society will be held at the Fallen Four Memorial Park in Mayerthorpe. This is an opportunity for family, friends, peace officers and members of the public to come together to remember those we have lost in the line of duty.

When: March 3, 2020, at 6:30 p.m.

Where: 4602-52 Street, Mayerthorpe

Corporal Deanna Fontaine, Media Relations Officer, will be available to the media in attendance.

# YELLOWHEAD COUNTY COUNCIL HIGHLIGHTS

**Submitted by Yellowhead County**

February 25, 2020

Woodlands County/Yellowhead County ICF - The Municipal Government Act requires municipalities that have a common boundary to create an Intermunicipal Collaboration Framework Agreement (ICF). Council passed three readings of the ICF with Woodlands County, which is a rural neighbour to the north. In essence, this ICF maintains an agreement towards existing services (chiefly mutual fire).

Edson Golf Club Contribution Request - At a previous governance and priorities meeting, representatives of the Edson Golf Club, Jacob Ban-

ack, Vice-President, and Keith Linford, Treasurer gave a presentation on the history, membership and use, and general status of the club. Notably, the club is planning to build a clubhouse and has asked council for a 20% (\$90,000) contribution to a projected build cost of \$450,000. Council moved to deliberate the possibility of a financial contribution during the 2021 budget dialogue.

Evansburg Legion Hall Ownership Request - Council moved to advise the Evansburg Legion that Yellowhead County is not interested in assuming ownership of the Evansburg Legion Hall facility at this time. However, council has reviewed this topic at its governance and priorities meeting and con-

cluded that a community-wide facility review may be required in the near future to develop a long range plan for a community facility (or facilities) that would meet the needs of many user groups and the community at large for the long term.

West of Edson Gravel Contract - The Tender for the 2020, 2021 and 2022 West of Edson Gravel Supply contract (multiple year) was closed on February 6. The tender requires the supply of 19,000 tonnes of 25 mm gravel for each year in the 2020, 2021, and 2022 summer gravel and maintenance programs. One tender was received. Council awarded the 2020, 2021 and 2022 West of Edson Gravel Supply contract to McLeod Valley Sand and

Gravel Ltd. in the amount of \$869,250.

Wolf Lake & Elk River Supply and Place Contract - The Tender for the 2020, 2021 and 2022 Wolf Lake & Elk River Supply and Place contract (multiple year) was closed on February 6. The tender requires the supply of 36,000 tonnes of 25 mm gravel for each year in the 2020, 2021, and 2022 summer gravel programs and 4,000 tonnes of 25 mm gravel each year for maintenance use. Two tenders were received. Council awarded the contract to contract to Jones Trucking and Backhoe Services Ltd. in the amount of \$2,573,200.00.

*Continued on Page 8*

## PRICE REDUCED



**14K White Gold Diamond Ring**  
Brand New, Still in Box, Tags on!  
**Asking \$2,745**



**14K White Gold Engagement Ring**  
Brand New, Still in Box, Tags on!  
**Asking \$2,300**



**10K White Gold Diamond ring**  
Brand New, Still in Box, Tags on!  
**Asking \$1,375**

**Call for more information, or to view the ring 780-907-8642**

# Wildfire Season Begins March 1

*Continued from Page 1*

Dead and dry grass, twigs, leaves and branches provide fuel for fast-moving grassfires. Whether started by accident or arson, wildfires can cause major environmental damage. While arson is a criminal offence, any unsafe fire-related behaviours can lead to hefty fines or charges for the person involved.

“Most wildfires are preventable. More than 70 per cent of Alberta wildfires last year were caused by humans – and the McMillan wildfire near Slave Lake was started by arson. We will continue to promote prevention, provide adequate funding and improvements to forest management.” - Devin Dreeshen, Minister of Agriculture and Forestry

During wildfire season, fire permits are required for any burning except campfires in the Forest Protection Area of

Alberta. Fire permits let firefighters know exactly where planned burning is being done. Permits also help prevent false calls, which ensures firefighters are available for real wildfire response. Fire permits are free and can be requested from any Agriculture and Forestry office.

**Quick facts**

- Last fire season, 989 wildfires burned more than 883,411 hectares in Alberta.
- Seventy-one per cent of the wildfires were human-caused.
- If you see a wildfire burning in the forest, report it toll-free at 310-FIRE (3473).



**MARK SMITH**  
MLA FOR DRAYTON VALLEY-DEVON

**FARM Safety Week**

KEEPING YOU AND YOUR FAMILY SAFE

TEL: (780) 542-3355 FAX: (780) 542-3331 TOLL FREE: 1-800-542-7307

**SHANE GETSON**  
MLA for LAC STE. ANNE-PARKLAND

**FARM Safety Week**

Keep your farming community healthy and safe.

LacSteAnne.Parkland@assembly.ab.ca  
#18, 4708 Lac Ste Anne Trail, N. (Box 248)  
Onoway, AB T0E 1V0 780-967-0760

**parkland county**

**NATIONAL AGRICULTURAL SAFETY WEEK**

Parkland County takes pride in its agricultural heritage, recognizing that agriculture is more than a way of life - it is an integral component of our business sector and of the sustainability of Parkland County.

Thank you to all who contribute to our quality of life by providing access to locally-grown foods, whether directly to consumers, or by sale to local businesses. Our future is growing because of you.

[www.parklandcounty.com](http://www.parklandcounty.com)

# Farm Safety & Health Week

March 15-21

Teach small children the rudiments of safety, such as which areas are off-limits. As they grow older, explain why certain things are dangerous. When they start helping with the work, make sure they are properly trained, keeping their limited strength and experience in mind. The safe way to do things is not always obvious to a child, so always explain and enforce the safety aspects of the job.

## The following businesses are proud sponsors of Farm Safety & Health Week



**Evansburg Pharmacy**  
 "Your Health & Wellness is our Priority"  
 727-2732



**Tipple Park AG Foods**  
 727-3740



**Bang On Carpentry**  
  
 241-2711



**Pinnacle Renewable Energy Inc.**  
 1-877-737-4344



**Evansburg Inn**  
 727-3621



**Evansburg Family Foods**  
 727-4118



**Evansburg Family Clothing**  
 727-3526



**Pembina Esso Centre**  
 727-2974



**Woodland Lumber**  
 727-2964



**The Dog Ranch**  
 727-2652



**Entwistle Concrete**  
 727-3525



**Entwistle Food Market**  
 727-3686



**Wighty's Tire & Mechanical**  
  
 727-4442



**Tri-Lakes Services Ltd.**  
 1-877-727-3939



**Roszko Farm Equipment Ltd.**  
[www.roszko.com](http://www.roszko.com)  
 786-2105

# ENRICHING the lives of OUR MEMBERS through QUALITY

Call 310.EQUS to learn more about making the switch to  
Canada's largest Member-owned utility!



When we were looking for an electricity provider, we knew we had a choice, and choosing EQUS was an easy decision. As Alberta's energy solutions company, their installation costs and monthly rates were very competitive and their staff went the extra mile to ensure that we were satisfied. We are proud to be EQUS Members.

-Kurt & Kyla Belich - Owners, The Track on 2



#PoweredByEQUS



DELIVERING MORE THAN **POWER**

# Yellowhead County Council Highlights

*Continued from Page 4*

Blackburn Gravel Contract – The Tender for the 2020, 2021, and 2022 Blackburn Gravel Supply contract (multiple year) was closed on February 6. The tender requires the supply of 18,850 tonnes of 25 mm gravel for each year in the 2020, 2021, and 2022 summer gravel programs and maintenance use, respectively. Two tenders were received. Council awarded the contract to A. Gering Ranching Ltd. in the amount of \$706,875.00.

Long Lake Road Extension and Other Work Contract – Council awarded the tender for the paving of 7.22 km of the Long Lake Road Extension from North of Long Lake to the Tom Hill Tower Road and paving of the Wildwood Seniors Centre Parking Lot to Central City Asphalt Ltd in the amount of \$4,722,459.00. This option will facilitate completion in 2020.

Hamlet of Robb Area Structure Plan – Council gave first reading to Bylaw 07.20 adopting the Hamlet of Robb Area Structure Plan dated February 2020. A public hearing will be held on

March 24. The ASP provides a framework for future re-zoning, subdivision and development of lands located within the Hamlet of Robb. It also establishes the types of land uses proposed for the area, address servicing, environmental issues, recreation, housing etc.

Renewal of Assessment Exemption Status – Yellowhead County currently has eleven non-profit organizations that have previously been granted an exemption for a portion, or all of, their assessment under Section 362(n) of the Municipal Government Act. These non-profit

organization are effectively exempt from the property tax levy on the applicable portion of their assessment. Council granted a property assessment exemption for a three year period to these eleven non-profit groups: Hinton Fish & Game Association, Niton Memorial Historical Society, Pembina Golf Course, Rangeton Recreation Society, Rosevear Pioneer Community Association, Rosevear Social Athletic Association, Surprise Lake Society, West Central Airshed Society, Wildwood & District Agricultural Society, and the Wildwood District Rod & Gun Club.

Broadband on County Cell Towers – Yellowhead County is committed to increasing the cellular and broadband coverage for residents throughout the county. The county has built numerous communications towers to that end, and has begun working with cell and broadband providers to improve service throughout the county. Currently, the county is working with TELUS to provide coverage, however, the county feels that the pricing model set out by TELUS is unfair. County council moved that administration return to TELUS to request a fair pricing model. Council has also asked administration to engage with the MLAs and MPs of the region to bring light to the difficulties municipalities have in improving cellular and broadband coverage.

Joint YCE Rec Facility Location Choice – The joint Town of Edson and Yellowhead County Recreation Complex Steering Committee has deliberated the best location for the proposed recreation complex. The key criteria for the project are: Staying within the \$70 million budget; minimizing the disruption of existing programming; driving new recreational opportunities; and avoiding community disturbance during the construction process. Three sites were considered: Griffiths Park, Repsol Place, and most recently, Hillendale. Yellowhead County council, upon contractor, administration, and steering committee recommendation, voted in favor of the Hillendale site selection.

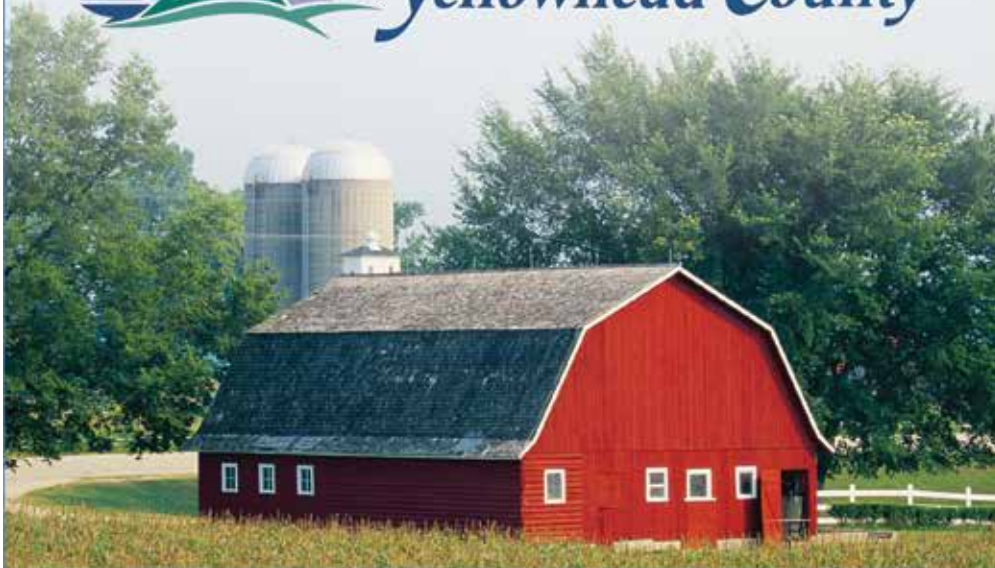
The next Council Meeting is on March 10, 2020. The next Governance & Priorities Committee Meeting is on April 21, 2020.

## Yellowhead County Agricultural Services Department **FARM SAFETY TIPS**

- Never adjust machinery when it's powered.
- Don't wear loose fitting clothing around moving machinery parts.
- Obtain proper training for the machinery you are using – and know its limitations.
- Go over basic farm safety knowledge with your kids regularly.

Remember, Yellowhead County offers farming related workshops throughout the year.

**Don't forget about the Ag Recycling Project for plastics.**  
Go to [www.yellowheadcounty.ab.ca](http://www.yellowheadcounty.ab.ca) for more information.





# DARWELL PUBLIC LIBRARY NEWS

## Submitted by Darwell Public Library

Here is what is happening at the library in March. The Colouring Club, Family Games and LEGO run daily, during regular library hours, for patrons of all ages. We supply the materials you supply the inspiration & fun.

Do you love to read? Do you like to discuss what you have read with others? We are always interested in a new perspective to add to our conversation. If you are interested in participating, you can register and make arrangement for loan of the current title by calling the library @ 780-892-3746.

Beginner Tai Chi & Practice continues Tuesday and Friday mornings at the Darwell Centennial Hall from 10:00 to 11:00 AM. All you need is loose comfortable clothes and flat comfortable shoes. The drop-in rate is \$10.00 per person, per session.

Preschool Story/Play Time for children 0 to 5 years of age will be Monday, March 9, 2020 starting at 1:00 p.m. The theme for this session is Let's Celebrate Spring. If you would like

to attend, please pre-register by calling the library as we are no longer running this as a drop-in program. All children must be accompanied by an adult as this is an interactive early literacy program including stories, activities, crafts and a snack.

Join us on Wednesday, March 18, 2020 between 3:30 and 5:00 p.m. as we will be doing a painted rock craft for children ages 6 - 13. Paulette Gillespie of Paulette's Signs & Designs will lead the children through this cute project. The cost will be \$ 3.00 per child and you must pre-register no later than March 13, 2020. (Samples are available for viewing at the library and on our website and Facebook page).

The planning is complete, and the program has been tested and we are ready to do our first Escape Room at the library. Join us on Saturday, March 21, 2020 between 12:00 pm and 3:00 p.m. and help us find Captain Blake Gibson and his sailboat before the approaching storm arrives. We have 4 sessions scheduled and due to space limitations, each group will be limited to 4 people. Admission will be by do-

nation and you will have 45 minutes to find the Captain and his boat. This program is designed for everyone, but we ask that children be at least 8 years old to attend the program. Please contact the library to register & let us know what time slot you would like 12:00, 1:00, 2:00 or 3:00.

Join us Thursday March 26, 2020 from 7:00 to 8:30PM as Lorraine Taylor, Horticulturalist, Lac Ste Anne County will be here to talk about Tomatoes Galore! Gardeners consistently rate tomatoes as their favourite vegetable. 2019 was a tough year for gardens and for many, the tomato crop was disappointing. This session puts the focus on growing your best tomatoes ever. Lorraine has talked with the tomato experts and gathered tips from our local great growers. Soil, water, heat, fertility- find out what tomatoes need to thrive. Heirlooms and hybrids; from grape to paste, to beefsteaks-learn what cultivars consistently succeed here. Bring your own best advice to share. Everyone seeds some pots to grow on at home. Take on the Darwell Fair challenge and join us again in

October to share your success stories. There is no charge to attend this session, but we ask you to pre-register by contacting the library @ 780-892-3746.

Family Movie Night, at the Lake Isle Community Hall, will be held on Friday, March 27, 2020. We will be showing the "G" rated title "Frozen 2". The doors will open at 6:30pm and the movie starts at 7:00 pm. Admission is \$ 2.50, and a concession will be available. See you there!

Are you interested in the library and looking for a way to contribute? Have you thought about joining the Darwell Public Library Society or the Darwell Library Friends Society? The Darwell Public Library Society will be holding their Annual General Meeting Monday, April 27, 2020 starting at 7PM followed by the regular meeting. Everyone is welcome to attend, and light refreshments will be available.

The Darwell Public Library Society will be holding their next regular meeting on Monday, March 23, 2020 starting at 7 pm. All meetings are open to the public and everyone is welcome to attend.

# GROVE HEARING CLINIC

## 960-2960

## 1-866-960-2960

Hear what you've been missing...

Senior Discounts



Full Service & Repair

Full Hearing Assessments

**HOURS OF OPERATION: 9am - 5pm Weekdays**

3rd party billing (AADL, WCB, DVA, FCH) • Personal 0% Financing if Needed

For The Latest Technology In Hearing Aids & Assisted Living Device Stop By & See Dawn

**#220-70 McLeod Ave - Westland Market Mall, Spruce Grove**

# FARM SAFETY & HEALTH WEEK

MARCH 15-21, 2020

## Farm Safety Tips

When farming please follow these precautions in order to keep yourself, your family and your workers safe:

- Decrease your risk of being crushed by using lockout procedures before beginning any maintenance or repair work. Lockout means to physically neutralize all energies in a piece of equipment. Machines, devices or power transmission lines can be de-energized by applying blocks to all parts under tension or pressure, bleeding the hydraulic pressure from the lines or by releasing pressure from a coil or spring.
- Provide a safe, fenced play area for all children and supervise closely. The working area of the farm is not a playground any more than a construction site or other industrial area would be a play area. Review the safety rules on your farm with your family often. Fence off all manure, retaining ponds and dugouts, and lock buildings containing hazardous goods.

The following businesses are proud sponsors of Farm Safety & Health Week

<b>Sun Gro Horticulture</b> 797-3019	<b>Derby's Lakeview General Store</b> 797-3838	<b>Kokanee Springs RV Park &amp; Driving Range</b> 797-3058	<b>Tri-Lakes Services Ltd.</b> 1-877-727-3939
<b>Buckskin Construction Ltd.</b> 797-3980	<b>Aljo-An Vacuum Service (1995) Ltd.</b> 797-3844	<b>Pineridge Golf Resort</b> 1-877-321-SEBA	
<b>Tomahawk Liquor</b> 898-0756	<b>Tomahawk Race Trac Gas</b> 339-2575	<b>Tomahawk General Store</b> 339-3930	<b>Bourke's Farm Equipment</b> 339-3939



# FARM SAFETY WEEK

## Preventing Crushes

- From rolling machinery to falling front-end loaders there are countless crush hazards on a farm. While farm operators and workers can't prevent every hazard on a farm, they should prevent every hazard they can by taking simple preventative measures while working.

- Failure to block-up equipment safely can result in a fatal crushing injury. A jack may slip, a hose or overhead support may break, or the equipment may roll. Always take the precaution of placing support blocks under the equipment prior to working with raised machinery for any reason.

Wildwood  
Bigway  
325-3870

Wildwood  
Ag Society  
325-2424

Forestland  
Construction  
325-2634

Wildwood Legion  
Br # 149  
325-2015

Jane's  
Hair Care  
325-3749

Murd's Plumbing  
& Heating Ltd.  
712-3630

U.F.A.  
-Wildwood  
325-3866

D & L Rehn  
Contracting Ltd.  
325-2013

Violet Gardens  
& Greenhouse  
621-4774

Wildwood  
Ladie's Aid  
325-2180

Roszko Farm  
Equipment Ltd.  
www.roszko.com  
786-2105

Wildwood  
2 for 1 Pizza  
325-2330



# FARM SAFETY TIPS

- Hire right - hire the right person and pay them fairly rather than hire an unqualified person for less money then pay for their liability and errors.
- Get a check-up - make sure every worker is checked up on at least every two hours
- Know the code - the Code of Practices for Farm Safety (PEI) has set the industry standard for agriculture
- Train for safety

**The following businesses are proud sponsors of Farm Safety & Health Week March 15 - 21, 2020**

Trades  
Automotive  
& Welding  
Ltd.  
892-4500



Ray's  
Market  
892-2230



Wabamun  
Hotel  
892-2224



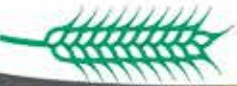
Wabamun  
Home  
Hardware  
892-4969



Wabamun  
Lake Inn  
  
892-2424



Wabamun  
IDA  
Pharmacy  
892-2278



Behind  
The Scenes  
Hair & More  
892-4546




A.T.B.  
Financial  
-Wabamun  
892-7927




Shoreside  
Inn & Suites  
892-4773



Wabamun  
Marina & RV  
Park  
892-3008

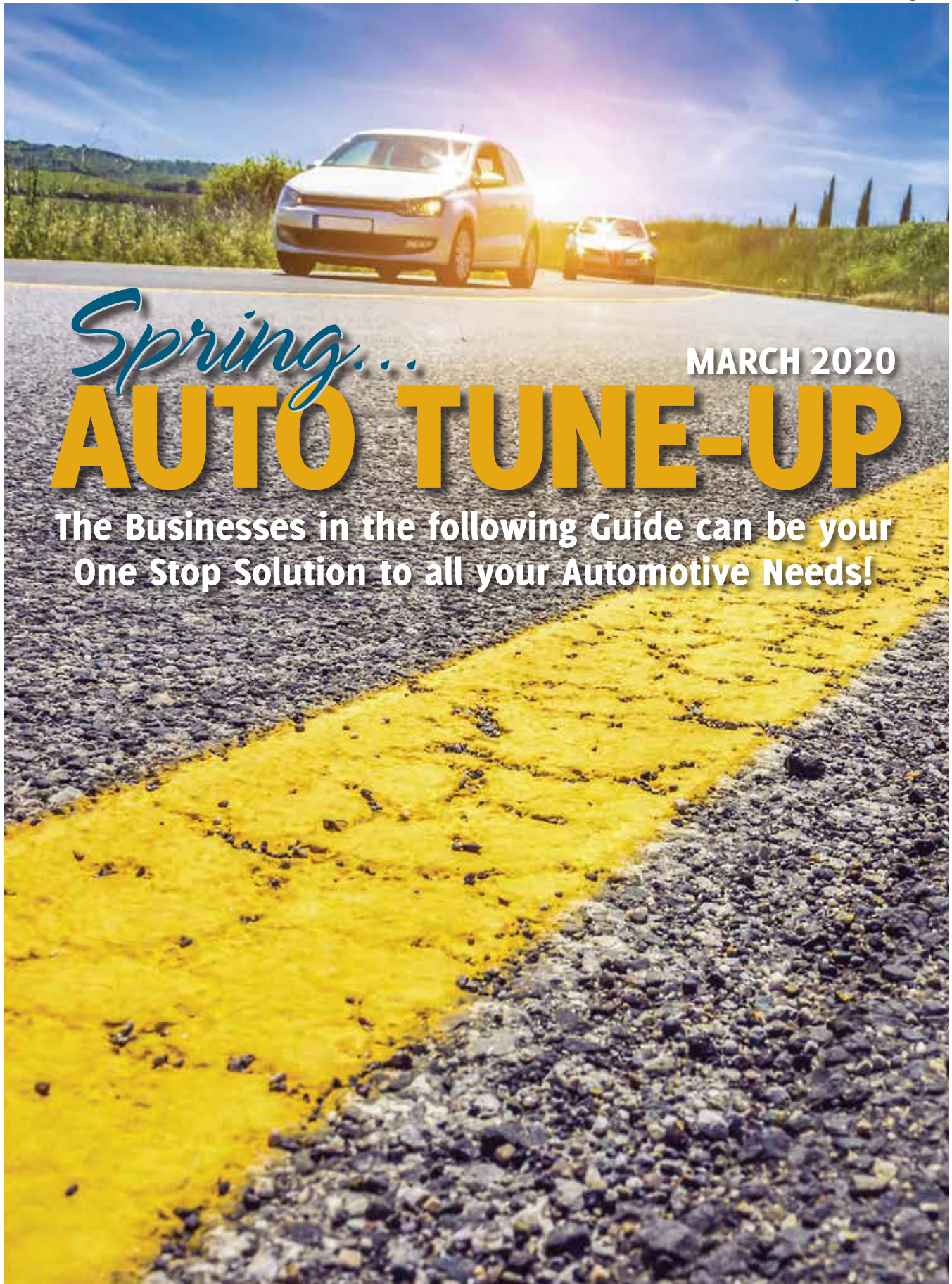


Village of  
Wabamun  
892-2699



GMP Ontrack  
- Excavation,  
Brushing  
719-2687





*Spring...* **MARCH 2020**  
**AUTO TUNE-UP**

**The Businesses in the following Guide can be your  
One Stop Solution to all your Automotive Needs!**



# auto TUNE-UP

## WHAT NOISY BRAKES MAY BE TELLING YOU

The only noises many drivers ever want to hear coming from their vehicles are the sounds of their favorite songs blasting from their car stereos. But cars sometimes make noises that aren't nearly as inviting as music.

Noises that seem to pop up when applying the brakes can be especially scary for motorists. No one wants to drive a vehicle with faltering or suspect brakes, so learning to distinguish between the two most common brake noises can be a wise move for drivers.

Grinding brakes  
The automotive retailer Pep Boys® notes that grinding noises indicate a serious problem with the

braking system. According to CarsDirect.com, there are two major causes behind the grinding noise made by brakes. If the grinding sound is audible when pressing on the brake pedal, this likely because the rotor disc is coming into contact with part of the caliper. This typically occurs because the brake pads or rotors are extremely worn down, causing the steel backing of the worn out pad to grind against the rotor. In such instances, Pep Boys® recommends replacing the brake pads immediately.

If the grinding noise is audible while the vehicle is in motion, debris might be stuck inside the brakes. Drivers might be able to

dislodge this debris by repeatedly moving their cars forward and backward in a safe place, such as a driveway. If that does not work, have the brakes serviced by a qualified mechanic.

Squealing  
Many drivers are familiar with the high-pitched squealing sound that comes from their vehicles or those of fellow motorists. That squeal, while certainly not music to the ears, might be a good thing. That's because Pep Boys® notes that some brake pads are equipped with small steel clips that serve as wear indicators. When brake pads have worn down, these devices produce a squealing sound to let drivers know it's time to get new brake

pads.  
But squealing can be indicative of other things as well. Squealing noises are sometimes heard immediately after brake pads or rotors have been replaced. In such instances, the noise typically subsides within a day or two once the pads have been broken in.  
Glazed pads also can create a squealing sound. When calipers stick, the brakes stay partially applied, producing excessive friction or heat. The heat causes the brake pads to glaze.  
No one wants to hear noises coming from their brakes. However, such noises are often a car's way of telling drivers that brakes need to be serviced.


**W.V. REPAIR SERVICES LTD.** 

**Agriculture & Heavy Duty Repairs**  
(NO AUTOMOTIVE REPAIRS)

Air Conditioning - in Shop & Mobile Service  
CVIP Inspections, Hydraulic Repair, Hoses Made

 **EXPERIENCED MECHANIC 30+ YEARS**  
**WALLY 780-305-1315**  
SHOP IS LOCATED JUST 10 MIN SOUTH OF SANGUDO

**VANDENBERG COLLISION LTD.**



Joe  
Ph: (780) 786-2614      5014 - 51 St.  
Fax: (780) 786-2736      Mayerthorpe, AB

**JACK'S** 24 Hour Towing  
**CARSTAR** Collision & Glass Service

**Jack's Auto Body** & 24 HR Towing

Jack's Auto Body is now part of CARSTAR Collision & Glass

- Same great highly trained and certified staff
- Same great owners
- Work with all insurance companies
- Rental cars on site
- Lifetime Nationwide Warranty
- 24 Hour Towing

 2517 HIGHWAY 633 ONOWAY, ALBERTA  
**(780) 967-5850** 

 **Ray's AUTO REPAIR**

 **24 HR. TOWING SERVICE**  
**COMPLETE AUTO REPAIR**  
**STIHL CHAIN SAWS**

**DANNY FRIEND 780-785-2251**  
(OWNER • MANAGER)      BOX 332 SANGUDO, AB. T0E 2A0



## SIGNS TRANSMISSION FLUID IS LOW

Vehicles require all sorts of maintenance to operate safely and efficiently. Contrary to popular belief, motorists need not be amateur mechanics to keep their vehicles running strong.

Major vehicle repairs are best left to the professionals, but drivers can learn to identify the causes of relatively minor issues that, if left untreated, can cause significant damage. For example, vehicles may exhibit certain signs of that indicate their transmission fluid needs replenishing. In many of the following instances, drivers may only need to top off the transmission fluid in their vehicles. However, if issues persist, schedule an appointment with a mechanic.

- Overheated transmission: Smoke billowing from a car is a sight no driver wants to see. But as bad as it may look, smoke coming from a car may only indicate the transmission is overheating due to lack of fluid. Smoke also can be indicative of a host of other problems, so if transmission fluid levels are not low, consult a mechanic. Loss of power and a burning smell also may indicate low transmission fluid levels
- Erratic shifting: Drivers can notice how their vehicles shift whether the cars or trucks have automatic or manual transmissions. Transmission fluid may be low if shifts appear to be delayed or faster than normal

- Slipping transmission: Vehicles that are not staying in gear also may be in need of transmission fluid. However, a slipping transmission also may indicate significant damage to the transmission has already occurred, so this issue should be brought to the attention of a mechanic.
- Low transmission fluid levels can contribute to various symptoms. Keeping an eye on fluid levels and recognizing low fluid symptoms can keep cars running smoothly.
- Pausing when engaging gears: A two- to three-second pause when shifting into drive and reverse is another indicator that transmission fluid levels are low. The automotive experts at Firestone note that manual transmissions require fluid to keep gears lubricated, while automatic transmissions rely on fluid to create the hydraulic pressure necessary to power movement within the transmission.

When fluid levels are low, shifting from park to drive or reverse can take longer than it should.

When fluid levels are low, shifting from park to drive or reverse can take longer than it should.

When fluid levels are low, shifting from park to drive or reverse can take longer than it should.

Sunnybrook, AB

**RADIATOR REPAIR AND RECORE**

MANY UNITS IN STOCK FOR LARGE TRUCKS. SAME DAY SERVICE ON MOST RADIATORS. CALL FOR DETAILS AND PRICING.

**WE STOCK PARTS FOR ALL MAKES AND MODELS OF TRUCKS, DRIVELINE & ENGINES.**

**WE HAVE FACTORY TRAINED TECHNICIANS FOR T & E PUMPS, CATERPILLAR AND CUMMINS ENGINES, AND SPICER AND MERITOR DRIVELINES.**

**We offer these services**

- CVIP Inspections
- Hydraulic hose crimping and thousands of adapters in stock.
- A/C Repair
- Espar and Webasto Repair, Installation.
- Engine Repair and Rebuilding.
- Power train/Driveline repair and service.
- Suspension and frame repair.
- Two Fully equipped service trucks for mobile needs.
- Gates Hydraulics, hoses and belts

**We repair**

- Truck Transport
- Heavy Equipment
- Automotive
- Industrial

**NOW SELLING "GATES" BRAND HOSE & FITTINGS**

**Nitro Nut Mechanical**

Shop 780.789.3322 • Fax 780.789.3331  
Toll Free 1.855.789.3322 • www.nitronut.com  
email: nitronutmech@hotmail.com

**Bluenose Racing Ltd**

**Oil Changes  
Custom Vehicles  
Automotive Repair  
Automotive Repair & Tune Ups**

Unit 132 485 South Ave. Spruce Grove  
**780-962-6665**

**NAPA AUTO PARTS**

- Auto Parts & Accessories
- Body Shop Supplies
- Agricultural & Industrial Parts
- Shop Equipment

*We are real Auto Parts People*

**120 St. Matthews Ave, Spruce Grove**  
**962-4421 Fax: 962-3464**

# Classified Ads - Call 962-9228

## Hall Rentals

Bright Bank Hall, 780-968-6813

Camp Encounter, Vincent Mireau - Camp Director. director@campencounter.com. C: 780-504-2012 W: 780-967-2548

Cherhill Community Assoc. Hall, Kevin 780-785-8153

Darwell Centennial Hall, 780-892-3099

Darwell Seniors, Phone Debra 780-785-2907

Duffield Hall, 892-2425

Entwistle Community League Hall Rentals, Call Cheryl at 780-515-1755

Entwistle Senior's Drop In Centre, Barb 727-2108 or Glennis 727-4367 Mon-Fri

Evansburg Senior's Heritage House, Dennis 727-4186

Evansburg Legion, upper hall 250 people, lower hall 80-100 people, 727-3879

Fallis Community Hall, 892-3150

Gunn Hall (G.A.R.S.) 780-951-9452

Keephills Hall, 731-3761

Lake Isle Community Hall, PH: 780-892-3121 or Email: lakeislehall@mail.com

Lake Romeo PeaVine Hall, 785-2700

Magnolia Hall, 727-2015

Manley Goodwill Community Hall, 963-9165 or 916-0146

Mayerthorpe Diamond Centre, 786-4044

Moon Lake Community Hall, Diane 780-514-4694

Park Court Hall, call or text Karyn 780-712-3918

Parkland Village Community Centre, 780-298-9155 @ PVCentre

Ravine Community Hall, 325-2391

Rich Valley Community Hall, 967-3696 or 967-5710

Rosenthal Community Hall, 963-7984

Smithfield Community Hall, Wanita 780-718-8824.

Tomahawk & District Sports Agra, Bookings: Kathy 780-339-3773.

Wabamun Jubilee Hall, 892-2699.

Wildwood Community Hall, 325-2180 or 780-514-6105

Wildwood Rec Complex 325-2077 or 514-8944

Wildwood Senior's Hall, 325-3787 or 325-2391

## Services

High School Math Tutor, Call Amber at 780-887-6212 (17) 07-01

WANTED! Standing Timber. Are you looking to cut your wood lot before pine beetles or forest fires destroy it? Top dollar paid. Call Paul 780-706-1470 (12) 25-02

## Lessons

Piano Lessons offered in Wabamun on Thursdays. Ages 6 and up, beginner-advanced. Contact Monika 780-916-1317, youvegotrhythm@gmail.com (7) 03-03



**NEW FACILITY**  
Chapel & Reception Centre



600 Calahoo Road Spruce Grove, AB  
**780-962-2749** [www.serenity.ca](http://www.serenity.ca)

SERENITY FAMILY SERVICE SOCIETY - YOUR NOT-FOR-PROFIT SOCIETY

# SUDOKU OF THE WEEK

## Fun By The Numbers

**Here's How It Works:** Sudoku puzzles are formatted as a 9x9 grid, broken down into nine 3x3 boxes. To solve a sudoku, the numbers 1 through 9 must fill each row, column and box. Each number can appear only once in each row, column and box. You can figure out the order in which the numbers will appear by using the numeric clues already provided in the boxes. The more numbers you name, the easier it gets to solve the puzzle!

**ANSWER:**

8	5	9	7	1	4	2	6	3
6	1	2	5	9	3	8	4	7
7	4	3	2	8	6	1	9	5
4	2	8	6	3	5	7	1	9
5	9	6	8	7	1	4	3	2
3	7	1	9	4	2	5	8	6
2	8	5	4	6	9	3	7	1
1	6	7	3	2	8	9	5	4
9	3	4	1	5	7	6	2	8

**Like puzzles?** Then you'll love sudoku. This mind-bending puzzle will have you hooked from the moment you square off, so sharpen your pencil and put your sudoku savvy to the test!

		9	7		4		6	
		2	5					
	4				6	1		
			6					
		6		7	1		3	2
3	7		9				8	
2		5	4		9	3	7	
	6			2		9	5	4
			1		7	6		8





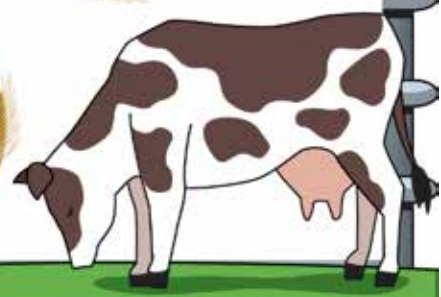
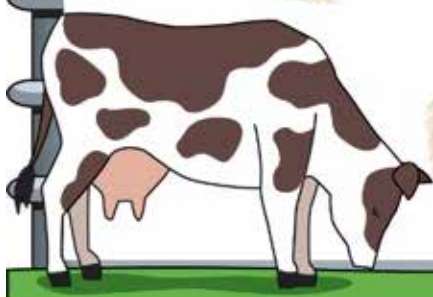
# FARM SAFETY WEEK

is a great opportunity to stress the importance of keeping our farm families safe and healthy. The agriculture industry is unique in that so many of its members live, work and play at the worksite. This often increases the level to which farmers and their families are exposed to dangerous chemicals, machinery and livestock. Because of this potentially hazardous environment, it's essential that each and every person on the farm is experienced and knowledgeable in the area of farm safety.

- Handle cattle with respect and awareness. They have the strength and speed to cause serious injury.
  - Never operate machinery when you are fatigued, stressed or highly medicated.
  - Always read and follow owner's manuals and safety decals on all equipment.
  - Outfit all farm buildings with smoke detectors and fire extinguishers.

**This page is proudly sponsored by the following businesses**

 <p>Parkland Veterinary Clinic 962-6300</p>	<p>NAPA Auto Parts -Spruce Grove 962-4421</p>	<p>Serenity Funeral Services -Spruce Grove 962-2749</p>	<p>Sobeys -Spruce Grove 962-4121</p>	<p>Grove Hearing Clinic 962-2960</p>
<p>McLeod Home Building Centre 962-2575</p>	<p>B.W. Eavestrouthing 699-1880</p>	<p>Sandy View Farms Ltd. 962-0067</p>	<p>OK Tire -Spruce Grove 962-6063</p>	<p>H &amp; E Upholstery 962-3048</p>
<p>Grove Collision Repairs Ltd. 962-3755</p>	<p>Royal LePage -Noralta 962-4950</p>	<p>TD Canada Trust -Spruce Grove 962-0404</p>	<p>All Precious Jewellers 960-4200</p>	
	<p>H &amp; R Block -Spruce Grove 962-8884</p>	<p>Cartridge Express - now mobile 960-9413</p>		



# Farm Safety Week

March 15<sup>th</sup>-21<sup>st</sup>

## Entanglements

° The average farm is full of machinery and device that can grab, cut, smash and entangle fingers, hands, toes, and feet causing injury to the extremities and even death. The sad truth is that most of these injuries can be avoided.

°Some of the key entanglement prevention measures to implement when working with or near machinery are:

- Before operating any machine or equipment, ensure that all guards are in place and in good condition.
- Wear tight fitting clothing, such as overalls. Avoid wearing any items that could become entangled, such as long coats or scarves.
- Never step over a PTO shaft or conveyer belt while it is still running.

°Ensure that anyone working with augers, PTOs, and other extremely hazardous machinery receives appropriate safety instruction and adequate supervision.

°Keep young children out of the farm or ranch work site, especially areas where there is moving machinery.



Parkland County  
  
 968-8888



Blue Diamond Jewellers  
 968-0040



Stony Plain Royal Canadian Legion  
 Br# 256  
 963-9232



Summer's Drilling  
 963-1282



Stony Plain Denture Clinic  
 963-2426



West Parkland Gas Co-op Ltd.  
  
 963-3311



The Barn Owl  
 591-2276



Parkland Farm Equipment  
 963-7411



  
**North Central Home Centre**  
 (We have a number of commodities)  
 963-2272



Drayden Insurance -Stony Plain  
 963-2000

# Classified Ads - Call 962-9228

## Computers

**Computer Repairs NOT over \$50.** Get a good, clean, refurbished, upgraded **Laptop** or a **Desktop** with games, world pictures, music, videos and more for **ONLY \$100.** FREE repairs for single parents. Donate used computers, tablets, etc. Will fix, clear to donate or use for parts. Call: 780-892-2407 (14) 28-01

## Firewood

**SEASONED FIREWOOD:** Birch, Tamarack, Spruce/Pine & Poplar. 4x4x8 cord, Split and delivered or pick up at wood yard, 1/2 cord or full cords available. Call 780-967-5835 or 780-983-1495 (28) 27-08-19

## Buy & Sell

I BUY GUN COLLECTIONS and World War 2 Collectables, Please call Jay for a quote 780-686-1350 (30) 19-11-19

## For Rent

Year Round Cabin For Rent North of Evansburg on Hwy 22 (15 mins from Evansburg), \$1100/month + DD. All inclusive, utilities & TV, max 2 people. Call 780-239-0553 (8) 04-02

Completely renovated Motel in Onoway, AB. offering daily, weekly or monthly rentals. All utilities included, 55 inch tv with Satellite. Double bedrooms, furnished bachelors with full kitchen and furnished 1 bedrooms with full kitchen available. Please call Peggy

for viewing at 780-967-4420 or 1-403-742-6467. www.onowayinnandsuites.com (4) 18-02 OG

Available Immediately in 12 Unit Apartment Building in Entwistle. Large 2 Bedroom, Rent \$795/month + DD \$300. 1 Bedroom, \$685/month + DD \$300. Includes heat, water & parking. Please call Ivka 780-807-1300 or email jakovljevicivka@yahoo.ca (2) 03-03

## For Lease

Restaurant For Lease: Fully equipped restaurant for lease,

Restaurant is 1300 Sqft, with seating capacity of 42 seats. Located 1hr outside of Edmonton. Ideal for family run Chinese or Homestyle restaurant. Living accommodations included with lease. For inquires contact Dan at 587-990-4455. (5) 03-03

## Real Estate

HOUSE/ACREAGE FOR SALE. 3 bedroom, 2 bathroom on approx. 3.66 acres, bordering a wildlife reserve, paved subdivision roads, in Parkland County. \$383,000 Call 780-968-9266 for inquiries. (4) 03-03



## PURE HEMP CBD PRODUCTS

AGING IS INEVITABLE - LOOKING AND FEELING OLD ISN'T!

### WHAT IS CBD?

#### A Health and Beauty Breakthrough!

Cannabidiol, CBD, is one of over 80 active cannabinoid chemicals in the hemp plant. CBD, unlike, THC, does not produce euphoria or intoxication. CBD targets specific receptors in the cells of your brain & body. There are many physical and mental benefits to using CBD products for both treatment and prevention of numerous ailments.



#### Therapeutic Uses For Pure Hemp CBD

Supports healthy blood sugar levels, promotes healthy energy levels, relieves anxiety, aids in digestion, supports optimal immune function and the regeneration of healthy cells, and promotes a sense of serenity and overall well-being.

#### Anti-Aging Uses For Pure Hemp CBD

Promotes more youthful skin, provides hydration, enhances radiance, lessens age lines as well as the appearance of dark spots.

#### KEY BENEFITS

**PAIN RELIEF:** Known to reduce vomiting & nausea; suppress muscle spasms; reduce seizures & convulsions.

**PROMOTES HEALTH:** Helps to promote relaxation and overall health.

**WELL-BEING:** Helps to relieve anxiety, aid in digestion, supports optimal immune function and the regeneration of healthy cells.

### CBD PET PRODUCTS

#### PET CHEW TREATS

##### KEY BENEFITS

**SYNERGISTIC BENEFITS:** Can be used in conjunction with regular medications with no side effects.

**NO SIDE EFFECTS:** Does not damage the liver, kidney or GI Tract like OTC medication.

**DIETARY SUPPLEMENT:** Can be administered daily as part of your pet's diet.



#### ORAL SPRAYS & DROPS

##### KEY BENEFITS

**MANAGES PAIN:** Helps to treat inflammation, arthritis and joint pain.

**TREATS DIGESTIONAL ISSUES:** Helps with loss of appetite, nausea, IBS and gastrointestinal swelling.

**GENERAL HEALTH:** Helps to manage mood, anxiety and general joint pain. For healthy, happy pets.

**CONVENIENT:** Can be sprayed into pet's mouth or on food.

# FOR RENT

## One Suite in Alberta Beach



Comes with appliances, large garage, two bdms, 2 baths, AC and lift. For adults 55 years of age and over.

To View, call Angie at 780-863-5621

For more information, Call (780) 907-8642

# COMMUNITY EVENTS 2020

If you are a LICENSED, NON-PROFIT ORGANIZATION, you are welcome to submit your announcement FREE of charge, space permitting. You are required to submit your non-profit number. Call (780) 962-9228. Please note that all submitted event listings must be limited to 200 characters or less (including spaces). DEADLINE: 12 noon Friday prior to publication (Thursdays on long weekends).

**MAR 14 - JIGGS DINNER AND DANCE** at Duffield Hall. Dance demo by BLUE NORTHERN DANCERS, MUSIC by David Juke Box Leigh. For Tickets \$25/person PH: 780-892-3745 or 780-963-9664

**APR 11 - PANCAKE BREAKFAST**, 9am to 11am at Woodbend Hall. \$6/person. Free for children 4 and under. Easter egg hunt. Call 780-470-0071.

**APR 25 - COMMUNITY GARAGE SALE**, 10am to 3pm at Woodbend Hall. Multiple vendors and great deals! Call 780-470-0071.

## BINGO

**ENTWISTLE COMM. LEAGUE BINGO:** Every Wednesday, Doors Open 6PM.

**STONY PLAIN SENIOR'S DROP-IN CENTRE:** public bingo every Tues, 7PM. All ages welcome. Phone (780) 963-6685

**WILDWOOD:** Mon night, 6:30PM, bingo starts 7:30PM, Early Birds & Lucky 7.  
**WILDWOOD LADIES AID:** every 3<sup>rd</sup> Friday of month, 6:30PM, bingo starts 7:30PM.

## MEAT DRAWS

**Evansburg:** Evansburg Legion, Friday 8-10PM & Saturday 3-5PM

**Wildwood:** Wildwood Legion, Saturday 3-5PM

## JAMBOREES

**CARVEL:** 2<sup>nd</sup> Sunday of month. \$6 lunch served. Info 780-991-3001

**CHIP LAKE:** Ravine Comm Hall, 1<sup>st</sup> Sat 325-2119 or 325-2391

**DUFFIELD:** 4<sup>th</sup> Sat, Duffield Community Hall. Supper 6PM. \*Sept - May.

**DRAYTON VALLEY:** Last Sunday of month. Upstairs @ the "55 Rec. Center" Doors at 12PM, Starts at 1PM. 780-542-3768

**ENTWISTLE:** 3<sup>rd</sup> Saturday of month, Doors at 5:30PM at Entwistle Community Hall. Contact Verna at 780-716-2304. \*October - May

**MAGNOLIA:** at Magnolia Hall. 2<sup>nd</sup> Saturday of Month, New Time is 1:00PM. Call to confirm, 727-2015. \*October - May, NO Dec.

**RAVINE COMMUNITY ASSOCIATION:** 1<sup>st</sup> Sat of each month. Info 780-325-2391 \*Sept - May.

**SEBA BEACH:** 2<sup>nd</sup> Friday 7PM, Seba Senior's Centre, Toni 797-4233

**SPRUCE GROVE:** at Sandhills Community Hall, 3<sup>rd</sup> Sunday, 1-5PM. Info Florence 780-962-3104 Margaret 780-962-3051 \*Sept - June.

**STONY PLAIN:** Stony Plain Seniors Drop In Center, 5018 - 51 Ave. Every 2<sup>nd</sup> & 4<sup>th</sup> Thurs of month, 7PM, \$2.

**TOMAHAWK:** Tomahawk Agriplex, 3<sup>rd</sup> Friday of month, 7PM. Supper at 6PM. PH: 780-339-3755.

**WILDWOOD:** Wildwood Community Hall, 3<sup>rd</sup> Wed Each Month, 7PM. 325-3749 \*Oct - June.

**TOPS (Take Off Pounds Sensibly)**

**ENTWISTLE:** Wed 5:15PM weigh-in, 5:30-6:30PM meeting, food bank building, South entrance. 780-932-2695.

**STONY PLAIN:** Thurs evening, Stony Plain United Church. Susan (780) 968-0869

**SPRUCE GROVE:** Wed 8:45am at Anglican Church, 131 Church Rd. Christiane 960-1109

**WILDWOOD:** Thurs at Wildwood Hall, 4:30PM. Connie (780) 325-2420

## ALBERTA PARENTING FOR THE FUTURE ASSOC:

Call 963-0549 or visit [www.apfa.ca](http://www.apfa.ca) to register. All programs are confidential & free.

**FREE HOME MEAL DELIVERY PROGRAM,** for Wabamun Seniors & Wabamun Lions. Arrange for meal preparation through a local restaurant. Call Darlene, 892-2551.

**PEMBINA SKATING CLUB** (Evansburg Arena), offers Learn-to-Skate, CanSkate & STARSkate. All ages. Call Lisa 727-2729. \*RUNS Sept-March

**PROBLEMS WITH DRUG OR ALCOHOL ADDICTION** in a loved one? Contact Drug Rehab Resource for a free confidential consultation. 1-866-649-1594 or [www.drugrehabresource.net](http://www.drugrehabresource.net).

## LIBRARY EVENTS

**AFTERNOON BOOK CLUB** at Keephills Library. 2<sup>nd</sup> Tues of every month, 1:30-3:00PM. Visit [www.pclibraries.ca](http://www.pclibraries.ca) for info.

**FAMILY GAMES NIGHT:** 3<sup>rd</sup> Wed of every month, 6-8PM. Located at Entwistle Library, Duffield Library and Tomahawk Library. In partnership with Parkland School Division. Visit [www.pclibraries.ca](http://www.pclibraries.ca) for more info.

**HATCHET CITY READERS** at Tomahawk Library. 4<sup>th</sup> Tues of every month, 10-11AM. For what we're reading next, visit our website, [www.pclibraries.ca](http://www.pclibraries.ca).

**INVENTORS CLUB:** 2<sup>nd</sup> Thurs of every month, 3:30-5:00PM at Entwistle Library. 4<sup>th</sup> Thurs of every month, 3:30-5:00PM at Tomahawk Library. Ages 8-13. To register: Call the library at 780-339-3935.

**SEBA BEACH PUBLIC LIBRARY BOOK CLUB** meets the 4<sup>th</sup> Thursday of the month, at the library, at 10:30AM. Call us at 780-797-3940 or email us at [sebaeachlibrary@yrl.ab.ca](mailto:sebaeachlibrary@yrl.ab.ca)

**EVANSBURG PUBLIC LIBRARY BOOK CLUB:** 4<sup>th</sup> Thurs, 7:00PM Grand Trunk High 727-2030.

## SOCIAL EVENTS

**50+ YOUNG AT HEART LUNCHEON** for Parkland County Seniors. 12PM at Stony Plain United Church Basement, \$8/plate. 3<sup>rd</sup> Wed of Month. Call Barb 780-952-0882. \*Sept-June

**AEROBICS:** Low impact, Mon/Wed, 11AM-12PM, Wildwood Senior's Centre, \$1/session.

**BALLROOM, LATIN, COUNTRY DANCE SOCIAL:** 1<sup>st</sup> Saturday of every month. Doors open 8PM at Central Lions Recreation Center, 1113 113 St., Edmonton AB. Cost \$15 paid at the doors. Hosted by Everyone's Ballroom Dance Assoc. More info: [www.ebda.ca](http://www.ebda.ca) 780-893-6828

**BREAKFAST SOCIAL:** 9:30AM-NOON, Parkland Village Community Centre - 3<sup>rd</sup> Sunday. PH: 780.298.9155 Social Media: PVC Centre.

**COME PLAY CRIB:** Fridays, 7:30PM at Darwell Seniors Hall; lite lunch is served. All ages!

**COUNTRY QUILTERS** in Stony Plain house a "Sew in Tuesday", 2<sup>nd</sup> Tuesday of every month, from 10-3PM. Drop in \$5/member, \$6/non-members. Contact Cindy 780-963-7170.

**DROP-IN ADULT PICKLEBALL:** Thursdays, 6-8:30 p.m. Sept.12th-May @ G.T. School, Evansburg. Beginners Welcome. Paddles sponsored by the

Evansburg Public Library

**EVANSBURG ART CLUB:** meet & paint Thurs 1-4PM Rec Plex. 727-4340 or 727-4098

**EVANSBURG SENIOR'S HERITAGE HOUSE:** Floor Curling Mon & Thurs, 1pm. Court Whist Thurs, 7PM.

**EVANSBURG TIPPLE PARK HISTORICAL BUILDING TOURS:** Wed - Sat, 10:00-5:00PM.

**HEALTHY AGING NURSE & FOOT CARE PERSON,** Wabamun Seniors Centre, 2<sup>nd</sup> Thurs of month, 9AM.

**OPEN HOUSE** for socializing, Crib & card playing at Entwistle Senior Center, Thursdays at 6:45PM. Dan 780-982-0353

**PARENT & TOT PLAYTIME:** PERC Building Stony Plain Wed 10-11AM; Holborn Community Hall Thurs 9:30-11AM; Parkland Village Tues 9:30-11:30AM.

**POT LUCK** every Tues 12:00PM, Wabamun Seniors Centre. Come on down!

**SEBA BEACH SENIORS CENTER:** Yoga, mon, 9:30AM, \$10/session. Bridge thurs, 1PM. Jams every Wed night, 7PM. Thrift Shop every Wed & Sat at 10-3PM.

**SEBA BEACH QUILTERS & FIBER ARTS:** Wednesdays 9:30AM, Seniors Center.

**SENIORS 50+ LUNCHEON:** 3<sup>rd</sup> Wed, 12PM at Stony Plain United Church basement hall. Call Audrey (780) 963-7582

**SENIORS WEDNESDAY\* AFTERNOON** 1-4PM at Parkland Village Community Centre. Games, Crafts & more! Call Sheryl 780.695.7032 \*exceptions incl. Weather.

**SPIRITUAL LIVING STONY PLAIN INSPIRATIONAL CINEMA & DISCUSSIONS** at PERC Building (5413-51 St), 2<sup>nd</sup> Friday of month at 7PM. Popcorn provided, donations appreciated. Contact 780-940-3032

**SPIRITUAL LIVING STONY PLAIN GATHERING** at PERC Building (5413-51 St). Every 2<sup>nd</sup> & 4<sup>th</sup> Sunday of month. Meditation 10AM, inspirational sharing 10:30AM. PH 780-940-3032

**SPRUCE GROVE ELEVATOR TOURS:** Tues-Sat, 9-3PM. 960-4600.

**STONY PLAIN'S 5TH MERIDIAN GOOD SAMS RV CHAPTER:** Ecole Meridian Heights School. 3<sup>rd</sup> Tues of Month, 7PM. Call Pat at 780-963-6976 or Ruth at 780-288-9829.

**MEETINGS**

**2<sup>nd</sup> TIMERS:** A support & confidential group for Grandparents Parenting, 1<sup>st</sup> Thurs of month, 6:30PM. Grand Trunk High School (meet in Lobstick Literacy & Learning room). Child care provided at the Evansburg Public Library.

**299 ROYAL CANADIAN SEA CADETS CORPS MACKENZIE:** Stony Plain Comm Center, Wed 6:30PM. Youths 12-18, 963-0843

**755 PARKLAND AIR CADETS** Thurs, 6:30-9:30PM Muir Lake School, ages 12-18. Info call 405-6585 or [www.aircadet.com/755](http://www.aircadet.com/755).

**AA:** Friday at 8PM, Evansburg. Call 325-2204, 727-2466 or 727-6652.

**AA MEETING:** Every Monday night at 8PM, Duffield Mewassin Free Methodist Church, (13km South of Duffield Turnoff at Shell Gas Station on Hwy 16).

**AL-ANON:** Wed 8PM. Spruce Grove United Church, 1A Fieldstone Drive. 962-5205

**CHAMBER OF COMMERCE** (Evans/Ent): 7:30PM 3<sup>rd</sup> Thurs, Heritage House.

**C.H.I.L.D. (Citizens Helping in Life's Defense)** Please join our Pro-Life meetings once a month in Stony Plain. For info call Chris 963-6997.

**CITIZENS ON PATROL:** The Pembina Community Watch Patrol Meets 2<sup>nd</sup> Thurs of each month at 7:30PM, at the Tipple Park Museum (4924-48 St.), Evansburg. Contact 780-898-1465 or 780-727-2686.

**DARWELL & DISTRICT AG SOCIETY:** 8PM, 1<sup>st</sup> Mon, Community Hall.

**DDRA MEETING,** 7:00PM, 2<sup>nd</sup> Mon, Darwell Centennial Hall 780-892-3099. \*except Jul/Aug/Dec

**DRAYTON VALLEY BRANCH OF ALBERTA GENEALOGICAL SOCIETY:** meets 7PM at Municipal Library (5120-52 St.) every 3<sup>rd</sup> Wed of month. Call (780) 542-2787

**ENTWISTLE COMMUNITY LEAGUE GENERAL MEETINGS:** 2<sup>nd</sup> Thursday monthly 7:30PM. \*Except June, July, August

**ENTWISTLE LIONS CLUB:** 2<sup>nd</sup> & 4<sup>th</sup> Tues, 8PM, Entwistle curling rink. Jim 727-3573

**ENTWISTLE SENIORS 55+ CLUB:** Tue & Fri, 1:30-4:00PM at Entwistle Hall

**EVANSBURG SENIOR'S 55+ HERITAGE HOUSE:** 2<sup>nd</sup> Wed of Month, 7:00PM. Dennis, 727-4186.

**FALLS COMMUNITY ASSOCIATION:** 3<sup>rd</sup> Tuesday, 7:00PM.

**LAC STE. ANNE & LAKE ISLE WATER QUALITY MANAGEMENT SOCIETY:** 3<sup>rd</sup> Fri, 7PM, Alberta Beach Council Chambers.

**LAKE ISLE HALL COMMUNITY HALL BOARD MEETINGS:** 3<sup>rd</sup> Wed of each month @ 7:30PM at the Lake Isle Hall (Hwy 633 and RR55) Ph # 780-892-3121

**LAKE ISLE MULTI 4-H GENERAL MEETINGS:** 1<sup>st</sup> Thurs of each month @ 6:30PM @ Lake Isle Hall. Contact 780-242-2486.

**LOBSTICK 4-H BEEF & MULTI CLUB:** 1<sup>st</sup> Mon, Evansburg Arena, 7PM, Shannon 727-2358

**LOBSTICK GARDEN CLUB:** 1<sup>st</sup> Mon, 7PM at Tipple Park Museum, Clara (780) 399-2205

**MAGNOLIA BOARD MEETINGS:** 1<sup>st</sup> Tuesday of month, 7PM at Magnolia Community Hall.

**MEN FOR SOBRIETY:** Wednesdays at 7:30PM, FCCS Building (#105, 505 Queen Street, Spruce Grove). Mike (780) 965-9991.

**MS SOCIETY DRAYTON VALLEY COMMUNITY GROUP** meets 1<sup>st</sup> Tues of month, 6-8PM at Norquest College. Terra Leslie, 1-403-346-0290. \*Sept-June

**MS SOCIETY PARKLAND COMMUNITY SUPPORT GROUP:** Are you diagnosed with MS and have questions? Last Tues of month, 7-9PM, Westview Health Centre. Contact Cassy 780-471-3034

**NA MEETING:** Tuesdays, 7:00PM. 514-6011

**PEMBINA PORCUPINES - JUNIOR FOREST WARDENS:** Entwistle Porcupine gathering: 7PM, 1<sup>st</sup> Tue. Len & Tineke at 727-2020. Porcupines@yellowheadjfw.ca

**SOLVE:** Community Enviro issues discussed at Smithfield Hall (N of Hwy 16 on RR34), 2<sup>nd</sup> Thursday. Jana 892-0006

**STONY PLAIN FISH & GAME ASSOCIATION & WABAMUN GUN CLUB:** 2<sup>nd</sup> Mon, Stony Plain Comm Center, 7:30PM.

**SUNDOWNERS TOASTMASTER CLUB:** Mon (excl. Holidays) 7:30-9:30PM. St. Matthew's Church, Spruce Grove. Judy 960-5258

**TOMAHAWK SENIORS (50+)** meets every Thursday from 1-4pm at the Tomahawk Agra.

**W.E.E COMMUNITY FOOD BANK:** Call (780) 727-4043 for emergency food needs. Monthly Meeting: LAST Monday of month at 7:00PM at the Food Bank (Old fire hall in Entwistle). \*Except December

**WILDWOOD & DIST AG SOCIETY:** 2<sup>nd</sup> Wed of each month 7:00PM at the Wildwood Complex. Wilma 325-2424

**WILDWOOD & DIST ROD & GUN CLUB:** 2<sup>nd</sup> Thursday, 7:30PM at the range clubhouse, wildwoodrodandgun@gmail.com

**WILDWOOD SENIORS:** 4<sup>th</sup> Wednesday at 2:00PM. PH: 325-3787 or 325-2391. \*No meeting July/Aug/Dec.

**DDRA MEETING,** 7:00PM, 2<sup>nd</sup> Mon, Darwell Centennial Hall 780-892-3099. \*except Jul/Aug/Dec

**DRAYTON VALLEY BRANCH OF ALBERTA GENEALOGICAL SOCIETY:** meets 7PM at Municipal Library (5120-52 St.) every 3<sup>rd</sup> Wed of month. Call (780) 542-2787

**ENTWISTLE COMMUNITY LEAGUE GENERAL MEETINGS:** 2<sup>nd</sup> Thursday monthly 7:30PM. \*Except June, July, August

**ENTWISTLE LIONS CLUB:** 2<sup>nd</sup> & 4<sup>th</sup> Tues, 8PM, Entwistle curling rink. Jim 727-3573

**ENTWISTLE SENIORS 55+ CLUB:** Tue & Fri, 1:30-4:00PM at Entwistle Hall

**EVANSBURG SENIOR'S 55+ HERITAGE HOUSE:** 2<sup>nd</sup> Wed of Month, 7:00PM. Dennis, 727-4186.

**FALLS COMMUNITY ASSOCIATION:** 3<sup>rd</sup> Tuesday, 7:00PM.

**LAC STE. ANNE & LAKE ISLE WATER QUALITY MANAGEMENT SOCIETY:** 3<sup>rd</sup> Fri, 7PM, Alberta Beach Council Chambers.

**LAKE ISLE HALL COMMUNITY HALL BOARD MEETINGS:** 3<sup>rd</sup> Wed of each month @ 7:30PM at the Lake Isle Hall (Hwy 633 and RR55) Ph # 780-892-3121

**LAKE ISLE MULTI 4-H GENERAL MEETINGS:** 1<sup>st</sup> Thurs of each month @ 6:30PM @ Lake Isle Hall. Contact 780-242-2486.

**LOBSTICK 4-H BEEF & MULTI CLUB:** 1<sup>st</sup> Mon, Evansburg Arena, 7PM, Shannon 727-2358

**LOBSTICK GARDEN CLUB:** 1<sup>st</sup> Mon, 7PM at Tipple Park Museum, Clara (780) 399-2205

**MAGNOLIA BOARD MEETINGS:** 1<sup>st</sup> Tuesday of month, 7PM at Magnolia Community Hall.

**MEN FOR SOBRIETY:** Wednesdays at 7:30PM, FCCS Building (#105, 505 Queen Street, Spruce Grove). Mike (780) 965-9991.

**MS SOCIETY DRAYTON VALLEY COMMUNITY GROUP** meets 1<sup>st</sup> Tues of month, 6-8PM at Norquest College. Terra Leslie, 1-403-346-0290. \*Sept-June

**MS SOCIETY PARKLAND COMMUNITY SUPPORT GROUP:** Are you diagnosed with MS and have questions? Last Tues of month, 7-9PM, Westview Health Centre. Contact Cassy 780-471-3034

**NA MEETING:** Tuesdays, 7:00PM. 514-6011

**PEMBINA PORCUPINES - JUNIOR FOREST WARDENS:** Entwistle Porcupine gathering: 7PM, 1<sup>st</sup> Tue. Len & Tineke at 727-2020. Porcupines@yellowheadjfw.ca

**SOLVE:** Community Enviro issues discussed at Smithfield Hall (N of Hwy 16 on RR34), 2<sup>nd</sup> Thursday. Jana 892-0006

**STONY PLAIN FISH & GAME ASSOCIATION & WABAMUN GUN CLUB:** 2<sup>nd</sup> Mon, Stony Plain Comm Center, 7:30PM.

**SUNDOWNERS TOASTMASTER CLUB:** Mon (excl. Holidays) 7:30-9:30PM. St. Matthew's Church, Spruce Grove. Judy 960-5258

**TOMAHAWK SENIORS (50+)** meets every Thursday from 1-4pm at the Tomahawk Agra.

**W.E.E COMMUNITY FOOD BANK:** Call (780) 727-4043 for emergency food needs. Monthly Meeting: LAST Monday of month at 7:00PM at the Food Bank (Old fire hall in Entwistle). \*Except December

**WILDWOOD & DIST AG SOCIETY:** 2<sup>nd</sup> Wed of each month 7:00PM at the Wildwood Complex. Wilma 325-2424

**WILDWOOD & DIST ROD & GUN CLUB:** 2<sup>nd</sup> Thursday, 7:30PM at the range clubhouse, wildwoodrodandgun@gmail.com

**WILDWOOD SENIORS:** 4<sup>th</sup> Wednesday at 2:00PM. PH: 325-3787 or 325-2391. \*No meeting July/Aug/Dec.

# Church Directory

<p><b>Seba Beach Christian Fellowship</b></p> <p>Sunday School 10:00a.m. Worship Service 11:00a.m.</p> <p>Weekdays Bible Study &amp; Prayer</p> <p>(780) 305-3594</p>	<p><b>Advent Lutheran Church</b></p> <p>Sunday Worship &amp; Sunday School 11:00a.m.</p> <p>Evansburg O: 727-3594</p>	<p><b>Roman Catholic Church</b></p> <p>St. Agnes' Parish, Maysethorpe Sunday 9:00a.m. St. Elizabeth Parish, Evansburg Saturday 7:00p.m.</p> <p>(780) 786-2032</p>		<p><b>St. Joseph's Catholic Church</b></p> <p>Sunday Mass 11:30a.m. Tuesday Mass 7:00p.m.</p> <p>Wabamun, AB</p>	<p><b>St. Augustine's - Parkland Anglican Church</b></p> <p>231 Church Rd. Spruce Grove</p> <p>Sunday Service 10:00a.m. Eucharist with Sunday School &amp; Nursery All are Welcome</p> <p>Office 780-962-5131 www.staugustinesparkland.org</p>
<p><b>Parkland Baptist Church</b></p> <p>Sunday Worship Service 10:30a.m. All Welcome</p> <p>121 Brookwood Drive (780) 962-4101 www.parklandbaptist.ca</p>	<p><b>Word Church Apocalyptic Era</b></p> <p>Border Paving Athletic Centre, 9 Tri Leisure Way, Spruce Grove ignites in the Wild Rose room.</p> <p>Ph: 780-962-7579</p> <p>Service starts at 10:00 a.m. every Sunday morning, <b>come all &amp; be bless.</b></p>	<p><b>St. Anthony's Ukrainian Orthodox Church</b></p> <p>6103 172 St. NW, Edmonton</p> <p>Saturday: Vespers 5:00PM Sunday: Divine Liturgy 10:00AM</p> <p>780.487.2167 santhony@telonjaneet.net www.st-anthonys.ca</p>		<p><b>Stony Plain United Church</b></p> <p>Sunday Service 10:30a.m. 5012-51 Ave. Stony Plain</p> <p><b>Mewassin United Church</b></p> <p>Sunday Service 9:00a.m. Rev. Heather Koots Hwy 627 - Rg Rd 30 Ph: 780-963-4745</p>	<p><b>Immanuel Lutheran Church of Rosenthal</b></p> <p>Sunday Worship Service 9:30a.m. Sunday School</p> <p>780-963-4048</p>
<p><b>Emmaus Lutheran Church</b></p> <p>Sunday Worship Service 11:30a.m.</p> <p>Rev. Robert Marshall 4504-52<sup>nd</sup> Ave, Drayton Valley Ph: 780-542-5101 www.emmauslutheran.org</p>	<p><b>Church of God</b></p> <p>Worship Service Sun. 11:00a.m.</p> <p>Please contact for activities</p> <p>5004-49 Street, Drayton Valley Ph: 780-542-5091</p>	<p><b>Calvary Baptist Church</b></p> <p>Pastoral Team: Keaton Penner</p> <p>Sunday Worship 10:30a.m. Youth &amp; Ministries Info - calbapt@telus.net</p> <p>4401-50<sup>th</sup> Ave. Drayton Valley 780-542-4774 www.calvarybaptistdo.ca</p>	<p><b>Drayton Valley Alliance Church</b></p> <p>Pastor John Haazen</p> <p>Join us for Sunday Service at 10:30a.m. 5014-56 Ave. (next to Value Drug Mart) Programs for all ages</p> <p>Ph: 542-6501 dvalliance.ca</p>	<p><b>All Saints' Anglican Church</b></p> <p>Sunday Morning Worship 9 BCP 10:30 BAS with Sunday School &amp; Nursery</p> <p>5212-47 Ave. Drayton Valley (780) 542-5048</p>	<p><b>St. Anthony Catholic Church</b></p> <p>WEEKEND MASS SCHEDULE: Saturday 5:00p.m. Sunday 12:00p.m.</p> <p>4708-50 Ave. Drayton Valley Parish Office: 542-5254</p>

# SERVICE DIRECTORY

**2Bros**  
Custom Contracting Ltd.

Custom Framing • Concrete Floors • Shingling  
Siding Soffit Fascia • Styrofoam Block System

Jeff 780-717-0520

**H&P Kosik CONSTRUCTION Ltd.**

• Road Building • Gravel • Sand • Dugouts  
• Black Dirt

No Job too small. We do them all!

Harvey cell. 780-445-9010 ph. 780-892-3532  
Box 145, Darwell, AB. T0E 0L0

**Ernie's Repair & Service**

**SMALL ENGINES**

4820 - 47 Avenue, EVANSBURG  
(780) 727-4433 C:514-0272

**WABAMUN PHARMACY**  
**I.D.A.**

Box 90, 5120 - 51 Avenue  
Wabamun, AB T0E 2K0  
Ph: (780) 892-2278 Fax: (780) 892-2488

COMMUNITYVOICE  
YOUR LOCAL NEWSPIRES

**THIS SPACE IS RESERVED FOR YOU!**

**WEIGHTLOSS NEVER TASTED SO GOOD!**

**NEW! NEW! NEW! NEW!**

(780) 907-8642 **VALENTUS**  
www.ValentusTour.com/Ladybug


# SERVICE DIRECTORY

**Blakeman Drilling Ltd.**  
 Waterwell Drilling & Servicing  
 Pumps & Pressure Systems  
 SERVING LAC. STE. ANNE & WEST PARKLAND FOR OVER 25 YEARS  
 Joe (780) 924-3024




**DONALD N. GREENWAY**  
 Chartered Accountant  
 Suite 205 Sunrise Professional Building  
 215 McLeod Avenue  
 Spruce Grove, AB  
 (Bus.) 962-6366  
 (Fax) 962-3990

**WHAT MAKES MYDAILYSPRAYS SO POWERFUL?**  
 HIGH ABSORPTION, SCIENCE & THE INGREDIENTS



(780) 907-8642  
 www.Elaine1.com

**SLIMROAST Optimum**  
 DARK ROAST COFFEE  
 YOUR LOGICAL SOLUTION TO WEIGHT MANAGEMENT  
 (780) 907-8642  
 www.ValentusTour.com/Ladybug



COMMUNITYVOICE  
 YOUR LOCAL NEWSPIRES  
**THIS SPACE IS RESERVED FOR YOU!**

**ROY SHERWOOD**  
 Master Electrician  
 Ph: 780-968-1425  
 Cell: 780-908-2287  
 Fax: 780-968-2211  
 Email: suretechroy@gmail.com  
 2-53220 Rge Rd 21  
 Parkland County, AB  
 T7Y 0C5  
**SURETECH ELECTRIC LTD.**  
 Control & Automation  
 Commissioning  
 Solar Sales & Service  
 Industrial . Commercial . Residential

**MARK MARTIN PFEIFFER**  
 MASTER BRICKLAYER/MASON  
 Cell: 780-242-3308  
 Email: pfeiffer.mark@hotmail.com  
 • Brickwork • Stonework  
 • Rockwork • Parging  
 • Concrete Block Work  
 • Tile Work (all kinds)



**Mobile Welding & Repairs, Big or Small**  
 Murowchuk & Son Contracting Ltd.  
 "I won't burn a hole in your pockets"  
**Ren Murowchuk / CWB Certified Red Seal Welder**  
 renmurowchuk@yahoo.ca  
 Box 1322, Onoway Alberta T0E 1V0  
**Call 780-499-1835**

**PEMBINA CONCRETE PRODUCTS LTD.**  
 Manufacturers of **ONE PIECE SEPTIC & HOLDING TANKS**  
 \* Water Cisterns \* Field Systems \* Pumps and Accessories \* Sumps  
**DELIVERED TO YOUR SITE**  
 1-800-661-3047  
 780-727-2702  
 PembinaConcrete.com  
**New Line of Concrete Statues, Fountains and Garden Ornaments.**  
 BOX 123, Entwistle, T0E 0S0



COMMUNITYVOICE  
 YOUR LOCAL NEWSPIRES  
**THIS SPACE IS RESERVED FOR YOU!**

**CALIBRE DRILLING LTD**  
 DRILLING AND SERVICING YOUR WATER WELL.  
**SPECIALISTS IN AIR & MUD ROTARY DRILLING**  
 \* Water Well Drilling \* Pump Installations  
 \* Pressure Systems \* Well Tests  
 \* Licensed Drillers \* Year Round Drilling  
 \* Geotechnical Drilling \* Cathodic Protection  
 \* Free Estimates  
**Quality Workmanship Five Year Warranty**  
**(780) 960-2992**  
 BOX 4083 SPRUCE GROVE, AB T7X 3B3

**PREVAIL MAX**  
 CELLULAR HOMEOSTASIS FORMULA  
 How do you want your **BLOOD** to look?

Before PrevailMAX:	After PrevailMAX:
poor circulation	better circulation
low energy	more vitality
brain fog	mental clarity
dehydration	cellular movement
decreased nutrients	nutrient assimilation
pH imbalance	balanced pH
poor endurance	optimal endurance

LIVIN TRIM WITH  
**(780) 907-8642 VALENTUS**  
 www.ValentusTour.com/Ladybug



# SERVICE DIRECTORY

**Jack's Auto Body**  
 & 24 HR Towing

SPECIALIZING IN COLLISION REPAIR  
**GUARANTEED WORK • INSURANCE CLAIMS**

CAA BOX 9 SITE 306 RR3, ONOWAY, AB T0E 1V0  
**(780) 967-5850**

OUR PLEDGE IS QUALITY

**BACK COUNTRY PIPEFITTING LTD.**  
 Plumbing & Heating

**Lee Hicks** 780-898-1062  
 Journeyman Plumber

Residential and Commercial Plumbing and Heating.  
 SERVING: YELLOWHEAD, PARKLAND, LAC STE. ANNE & BRAZEAU COUNTIES.

**H&E**  
 UPHOLSTERY

FOR ALL YOUR UPHOLSTERY NEEDS

Convertible tops for cars and boats, custom car and boat interiors, 5th wheel trailer skirts, boat tarps, ATV seats, furniture, kitchen chairs, heavy equipment seats.

WWW.HANDE.CA 4-485 South Ave. Spruce Grove  
 For more information contact: kirk@hande.ca (780) 962-3048

SERVING ENTWISLE AND AREA FOR OVER 30 YEARS

**Entwistle CONCRETE**  
 PRODUCTS LTD.

SAND & GRAVEL SALES

**PH: (780) 727-3525**  
 Dan McCracken Entwistle, AB  
 www.entwistleconcrete.ca

COMMUNITYVOICE  
 YOUR LOCAL NEWSPIPER

**THIS SPACE IS RESERVED FOR YOU!**

**SMOOLE**

- Construction & Septic Installation
- Environmental Wastewater Disposal
- Site Design & Evaluation
- Power, Water & Basement Excavation
- Trackhoe, Backhoe, Bobcat & Dump Truck

For All Your Excavation Needs  
 Call Dan 780-991-4484 Reid 780-909-0173

COMMUNITYVOICE  
 YOUR LOCAL NEWSPIPER

**THIS SPACE IS RESERVED FOR YOU!**

**SANGUDO VETERINARY CLINIC**

Box 581, 4916 - 52 Ave. Sangudo, AB. T0E 2A0  
**Dr. Ralf Sanders DVM**  
 Ph: 780-785-2200  
 Fax: 780-785-2228  
 sangudovet@gmail.com

**24 HOUR EMERGENCY SERVICE**

COMMUNITYVOICE  
 YOUR LOCAL NEWSPIPER

**THIS SPACE IS RESERVED FOR YOU!**

**POSTINGFIRST.com**

**BUY and SELL just about ANYTHING!**

**FREE LOCAL CLASSIFIED ADS**

Real Estate, Rentals, Vehicles, Pets, Jobs, Service Directory, Buy/Sell/Trade, Lawn & Garden, Garage Sales, Events, Local Places & Much More... Advertise for **FREE** Today!

Follow Us

Instagram, Facebook, Pinterest, YouTube, Twitter

**TRI-LAKES SERVICES LTD.**

- Septic Hauling
- Drinking Water Delivery
- Portable Washrooms
- Steam Truck

www.trilakeservices.ca / office@trilakes.services  
 (877) 727-3939 / (844) 967-9176

SERVING: Lac Ste. Anne County • Parkland County • Yellowhead County Area

**Xtreme LEAN NRG**

Advanced Formula helps you:

- Regulates Your Appetite
- Regulates Blood Sugar
- Regulates Fat Absorption
- Improve Energy Levels
- Improve Your Mood
- Increase Mental Focus

"We've unlocked the science of slim!"  
**(780) 907-8642**

**SUMMERS DRILLING LTD.**

Water well drilling and service  
 Family owned Business Serving Alberta since 1917

Never run out of water again!

5 year workmanship warranty

3 Convenient ways to pay

- Visa
- Mastercard
- We now offer full financing

Tired of hauling water?  
 We can install a water well with a permanent water supply for as little as \$150/month OAC

Stop in at our office 4405 - 50 Street, Stony Plain  
 780-963-1282  
 admin@summersdrilling.com

WE WANT TO EARN YOUR BUSINESS! • WE WANT TO EARN YOUR BUSINESS! • WE WANT TO EARN YOUR BUSINESS! • WE WANT TO EARN YOUR BUSINESS! • WE WANT TO EARN YOUR BUSINESS!

# CERTIFIED PRE-OWNED!



WWW.DRAYTONVALLEYFORD.COM

## CPO

- ▶ Extended Manufacturer Warranty
- ▶ Special Finance Rates
- ▶ Extensive In-Depth Inspection
- ▶ Clean Vehicle History & Car Proof

AND AMAZING PRICES!!!

### 2018 FORD FOCUS TITANIUM

Economical and fun to drive, this 2018 Focus Titanium 4-door Hatchback in Hot Pepper Red has it all. Exceptionally clean and well-maintained.



**\$161**  
BI-WEEKLY OAC  
OR **\$19,802**

STK# OP4047

### 2017 FORD FOCUS SE

This 2017 Focus SE in Shadow Black boasts exceptionally low mileage with great features, fuel economy and dependable performance.



**\$124**  
BI-WEEKLY OAC  
OR **\$16,900**

STK# OP112



### 2017 FORD ESCAPE SE AWD

If you're in the market for an SUV that's roomy, affordable, and looks great, this is it! This 2017 Ford Escape SE in gorgeous White Gold is a fantastic vehicle!



**\$132**  
BI-WEEKLY OAC  
OR **\$19,500**

STK# 19D5P011A

### 2016 FORD EDGE SEL AWD

This 2016 Ford Edge SEL is all-wheel-drive so you get outstanding performance in all road conditions. Room, comfort and advanced safety features.



**\$189**  
BI-WEEKLY OAC  
OR **\$25,800**

STK# OP113

CHECK OUT OUR EXTENSIVE INVENTORY ONLINE.

WE WORK IN THIS COMMUNITY!  
WE LIVE IN THIS COMMUNITY!  
**WE ARE LOCAL!**



(780) 542-4438  
1-866-841-3673

5214 POWER CENTRE BLVD DRAYTON VALLEY, AB

Disclaimer: 2018 Ford Focus Titanium (OP4047) Sale Price: \$19,802 plus GST. \$0 Down. \$160.79 bi-weekly financed over 72-months at 2.9% OAC. Cost of borrowing \$2072.73. Actual amount financed is \$23010.15. 2017 Ford Focus SE (OP112) Sale Price: \$16,900 plus GST. \$1500 Down. \$299 bi-weekly financed over 72-months at 2.9% OAC. Cost of borrowing \$1582.24. Actual amount financed is \$17,301.56. 2017 Ford Escape SE AWD (19D5P011A) Sale Price: \$19,500 plus GST. \$1000 Down. \$132.13 bi-weekly financed over 72-months at 1.9% OAC. Cost of borrowing \$1137.28. Actual amount financed is \$19,475.00. 2016 Edge SEL AWD (OP113) Sale Price: \$25,800 plus GST. \$1500 Down. \$189.48 bi-weekly financed over 72-months at 4.9% OAC. Cost of borrowing \$3968.88. Actual amount financed is \$25,590.00. All payments include \$495 Admin Fee, \$6.25 AMVIC fee and GST. Bank fees dependent upon the financial institution. Drayton Valley Ford is an AMVIC licensed dealership. See us for more details and information.

WE WANT TO EARN YOUR BUSINESS! • WE WANT TO EARN YOUR BUSINESS! • WE WANT TO EARN YOUR BUSINESS! • WE WANT TO EARN YOUR BUSINESS! • WE WANT TO EARN YOUR BUSINESS!