



COMMUNITY VOICE

YOUR LOCAL NEWSPAPER

Serving: Carvel, Darwell, Drayton Valley, Duffield, Entwistle, Evansburg, Fallis, Gainford, Parkland County, Seba Beach, Tomahawk, Wabamun, Wildwood, Spruce Grove and Stony Plain.

April 21, 2020

PARKLAND COUNTY COUNCIL DEFERS TAX PENALTY DEADLINE AND MUNICIPAL UTILITY BILLS TO REDUCE ECONOMIC IMPACT OF COVID-19

Submitted by Parkland County

On March 31, 2020 Parkland County Council voted to defer the property tax penalty deadline to August 31, 2020 and allow for a 90

day deferral on all municipal utility bills.

“As we continue to navigate these unprecedented circumstances, our residents’ safety and wellbeing is our top priority,” said Mayor Rod Shaigec. “We’re

looking at different options to reduce the financial strain on our residents while ensuring we can still deliver the services our residents need.”

Continued on Page 2

TO HELP LIMIT THE SPREAD OF COVID-19, PARKS CANADA SUSPENDS CAMPING, GROUP ACTIVITIES, AND EVENTS UNTIL AT LEAST MAY 31, 2020

Submitted by Parks Canada

Parks Canada is committed to protecting the health and safety of Canadians, visitors, and its employ-

ees. The Agency is calling on Canadians to stay home and help limit the spread of COVID-19. Camping, group activities and events at all national parks, national historic sites, heritage ca-

nals and national marine conservation areas are suspended until at least May 31, 2020.

Continued on Page 3

ISLE LAKE
Feed Supply
780.387.0890

- CATTLE
- EQUINE
- LIVESTOCK
- PET
- POULTRY
- HAY SEED

Monday-Friday
9am - 8pm
Saturday
9am - 4pm

53405 Range Road 60, Parkland County
WWW.ISLELAKEFEEDSUPPLY.CA

High-Performance Lifestyle Products

100% MONEY BACK

Call Today! (780) 907-8642
www.bepic.com/elaine1

PREVAIL MAX
 CELLULAR HOMEOSTASIS FORMULA

Nutritional Breakthrough For Your Cells

LIVIN TRIM WITH VALENTUS
 (780) 907-8642
www.ValentusTour.com/Ladybug

SLIMROAST Optimum
 DARK ROAST COFFEE

YOUR LOGICAL SOLUTION TO WEIGHT MANAGEMENT

(780) 907-8642
www.ValentusTour.com/Ladybug

View us **ONLINE!**
WWW.COM-VOICE.COM

Council Defers Tax Penalty Deadline And Municipal Utility Bills To Reduce Economic Impact Of COVID-19 On Residents And Businesses



COMMUNITYVOICE
—YOUR LOCAL NEWSPAPER—

PUBLISHED WEEKLY (Zone 1 & 2)
AND BIWEEKLY (Zone 3)

E.J. Lewchuck & Associates Ltd.

#6 - 40 South Avenue
Box 3595
Spruce Grove, AB T7X 3A8

SALES TEAM

Elaine
Ashley
Dani

TELEPHONE:

Classifieds 962-9229
Advertising 962-9228
Fax 962-1021

E-MAIL:

comvoice@telusplanet.net
news@com-voice.com

JOKE OF THE WEEK

My dentistry patients are called and reminded the day before their scheduled appointments. During an office visit, one man was in an especially good humor and explained why. "My staff kids me about the high opinion I have of myself," he said. "Yesterday your receptionist left a message that had them in stitches." He related the memo his secretary had handed him: "Your crown is ready."

Continued from Page 1

Ratepayers experiencing financial hardship can pay their property taxes any time before August 31, 2020 and not face any penalties. After August 31, all regular tax penalties will apply which include a 5% penalty on September 1. Property tax notices will be mailed out in May.

If you are able to meet the regular June 30 tax deadline, you are encouraged to do so.

Municipal utility bills including water, bulk water, wastewater, and/or curbside waste collection (in Entwistle) can be deferred without penalty for up to 90 days through to June.

For more information on how the utility bill deferral works, view our 90-day Utility Deferral info sheet.

For more information on taxes, visit our Taxes and Assessment webpage.

BUSINESS FOR SALE

Steady Income – Business doesn't fluctuate with Economy

Includes: - All Clientele
- 5 Tandem Trucks
- 1 Truck & Trailer Unit

Call 780-797-3844 for more Info.
Al-jo An Septic Service

PRICE REDUCED



14K White Gold Diamond Ring
Brand New, Still in Box, Tags on!
Asking \$2,745



14K White Gold Engagement Ring
Brand New, Still in Box, Tags on!
Asking \$2,300



10K White Gold Diamond ring
Brand New, Still in Box, Tags on!
Asking \$1,375

Call for more information, or to view the ring 780-907-8642

To Help Limit The Spread Of COVID-19, Parks Canada Suspends Camping, Group Activities, and Events Until At Least May 31, 2020

Continued from Page 1

The current suspension of visitor services and vehicle access by visitors, as well as the temporary closure of visitor facilities, will remain in place until further notice.

This means:

- All visitor services, including reception, information, lockage and mooring are suspended until further notice;

- All visitor facilities, including parking lots, washrooms, day use areas and visitor centres are closed until further notice;

- All camping facilities including backcountry camping, oTENTiks, and other roofed accommodations remain closed until further notice;

- All events, group and interpretive activities are cancelled until at least May 31, 2020;

- Parks Canada will not be taking new reservations until at least June 1, 2020. All existing reservations set to take place prior to May 31, 2020, will be automatically cancelled and refunded in full.

“The Government of Canada is asking Canadians to stay home and help limit the spread of COVID-19. Parks Canada is taking these additional measures to help keep people safe. Like all Canadians, I love our national parks and historic sites, but at this time we must all continue to do our part to flatten the curve, look out for one another,

and make choices that will help reduce the pressure on our health care system.”

- The Honourable Jonathan Wilkinson, Minister of Environment and Climate Change and Minister responsible for Parks Canada

These measures are necessary to support the national effort to limit the spread of COVID-19 and reduce health and safety risks

to all Canadians. While the Agency looks forward to resuming services, anyone planning a visit should be aware that these measures may extend beyond May 2020 and any resumption of services will take time or be incremental in nature.

Parks Canada will continue to deliver services critical for Canadians, including highway maintenance, fire

response, dam operations and water management on historic waterways, avalanche control, among others.

Detailed information on Parks Canada places and the measures the Agency is taking to limit the spread of COVID-19 can be found at pc.gc.ca. Please check regularly for updates.

VALENTUS

YOUR LOGICAL SOLUTION TO WEIGHT MANAGEMENT

CALL (780) 907-8642 FOR FREE SAMPLE

SlimROAST OPTIMUM

DARK ROAST COFFEE

SLIMROAST Optimum

Exclusive functional coffee formulated to:

- Crush Cravings
- Increase Energy
- Metabolize fat to Energy
- Help Regulate Blood Sugar
- Improve Mood & Focus
- Boosts Circulation & Oxygen delivery

TO UNLOCK THE SECRET OF WEIGHT MANAGEMENT! PUT THE POWER OF SLIMROAST OPTIMUM IN YOUR CUP!

Thrilled with my results! I lost 9 lbs and an amazing 11 inches off my abdomen! Works wonderfully!

Managed to lose 7 lbs very fast & much more in inches the way my clothes are fitting now! 1 cup a day is all for me!

Down 17 lbs and fitting into clothes that were way to tight before!

No dieting, first month finished. Down 7 ½ lbs 8.5 inches. Awesome product!

www.ValentusTour.com/Ladybug (780) 907-8642

KEEPING YOU AND YOUR COMMUNITY INFORMED!

ALBERTA AGRICULTURE AND FORESTRY EXPEDITE GRANT PROCESSING FOR ALBERTA AGRICULTURAL SOCIETIES

(Grant funding allocations will be processed as soon as possible)

Submitted by Alberta Association of Agricultural Societies

April 9, 2020
Edmonton, Alberta – Alberta Agriculture and For-

estry will be instituting an expedited grant funding process to the Alberta Agricultural Societies membership as soon as possible.

This was confirmed this week in an email to Tim

Carson, CEO of the Alberta Association of Agricultural Societies (AAAS) from Deputy Minister Andre Tremblay of Alberta Agriculture and Forestry.

The Deputy Minister's re-

sponse is to a letter that was sent to the Agriculture and Forestry office of Minister Dreeshan last week and plus media release stating the significant financial revenue challenges that the Alberta Ag Societies are facing with the situation of Covid 19.

In a joint statement this morning, AAAS President Rick McCarthy and AAAS CEO Tim Carson stated “on behalf of the AAAS Board of Directors and the AAAS membership, we appreciate the immediate action of Alberta Agriculture and Forestry of our request to advance the grant processing for our Ag Societies. Instead of receiving the grant monies in early summer, the Ag Societies will receive their funding as early as May now. This advancement of funding can primarily assist in expenses to maintain facilities in this time of shutdown. We will continue to work with the Alberta Agriculture and Forestry to further alleviate any additional situations that may arise during this time of crisis.”

High-Performance Lifestyle Products
Take Your Life to the Next Level with B-Epic!
 Call Today! (780) 907-8642

ELEV8
 Your Mind & Body
The Most Advanced Natural Performance Product Around the World

ACCELER8
 Your Weight Loss
Fast-acting, Synergistic Natural Weight Management and Sleep Combo

GR8 KIDS
 Boost Your Nutrition
Flavor-packed Nutritional Power Sticks: Great for Kids and Adults

HYDR8
 with Alkalized Water
Natural Coral Mineral Supplement: Great-tasting Alkalized Water

“ I am super excited! Down 4 lbs / 6.5 inches in 8 days. Feeling GREAT! Awesome product! - Donna **”**

“ I had given up on losing weight but 11 days in I dropped enough lbs to fit into a favorite pair of jeans hanging in my closet for the last 5 years – and they are loose, Yeah! – Kayla M. **”**

Begin your epic journey at www.bepic.com/elaine1

Like Us On facebook

FACEBOOK.COM/COMMUNITY VOICE NEWSPAPER

EMERGENCY DEPARTMENT AT DEVON GENERAL HOSPITAL TO TEMPORARILY CLOSE DURING COVID-19 PANDEMIC

Emergency patients to be diverted to other Edmonton Zone hospitals

Submitted by Alberta Health Services

EDMONTON – Effective 7 a.m., Monday, April 20, 2020, the Emergency Department at the Devon General Hospital will be closed and no longer accepting patients.

This temporary closure will help protect the 14 long-term-care residents at the DGH, who are at height-

ened risk for severe illness if exposed to COVID-19. As well, 10 additional acute care beds at the DGH will be converted to long-term care beds at this time, providing additional temporary long-term care capacity within the Edmonton Zone.

The ED closure and bed conversion will remain in place for the duration of the COVID-19 pandemic.

Individuals who would

normally seek emergency care at the DGH are advised to instead visit the Leduc Community Hospital, West-View Health Centre in Stony Plain, or the Misericordia Community Hospital in west Edmonton.

As always, all patients requiring immediate medical care should phone 911.

Individuals requiring non-emergency medical care continue to be en-

couraged to call their family physician. To speak to a nurse and receive telephone advice and health information, families can also contact Health Link 24/7 by dialing 811

For more information on the COVID-19 pandemic in Alberta, visit www.ahs.ca/covid or www.alberta.ca/covid19.

COVID-19 INFORMATION

HELP PREVENT THE SPREAD



Self-isolate if sick



Wash hands frequently



Practice social distancing



Cover coughs and sneezes



Keep surfaces clean

alberta.ca/covid19



MESSAGE TO MY CONSTITUENTS

Submitted by **Gerald Soroka, MP for Yellow-head**

I would like to thank you for continuing to do your part in the fight against

COVID-19. I realize that as this goes on, some people will be tempted to ignore so-

cial distancing, but it is very important that we don't let up until the time is right.

I understand that there is confusion around some of the programs being implemented to support Canadians. With new measures and changes being announced frequently, it can be difficult to keep up with. My team and I are here to help. We have been getting a lot of questions on the Canada Emergency Response Benefit (CERB), so I have some info on that.

This week, the government announced new changes to the CERB. Workers earning less than \$1,000 a month, or who have seasonal employment and can't find a job due to COVID-19, as well as those who are running out of employment insurance, are now eligible to apply for the CERB.

If you applied for the CERB last week, just a reminder that you must reapply for subsequent periods if you continue to qualify.

That said, if you were transferred from Employment Insurance to the CERB, you will still need to do bi-weekly reports for EI as you did in the past to remain on the CERB but will not need to reapply monthly like those who apply directly for the CERB must do. If you have any questions, please don't hesitate to reach out to my constituency office in Edson. As always, keep well stay safe and healthy.

Do you need assistance with getting groceries? Did you know some stores are offering pick-up or delivery services? Please check to see if your local grocery stores are offering these services. You can order your groceries from home and pick them up when you get to the store or have them delivered to your residence.

Canada
Emergency
Response
Benefit
(CERB)
UPDATE

New eligibility:

- ✦ workers earning \$1,000 or less per month
- ✦ seasonal workers with no job to return to
- ✦ workers who recently exhausted their regular EI benefits

Find out more at canada.ca/en/department-finance/economic-response-plan

28

CANADA
SUMMER JOBS
UPDATE

Program changes this year:

- wage subsidy increase to 100%
- extending employment end date to Feb 28, 2021
- businesses can adapt their projects to support essential services
- employers can hire part-time staff

Even if employers didn't apply, you may still qualify!
Contact my office to learn more.

The Flooring Store & Design Center

FREE ESTIMATES SPECIAL PRICES FOR SENIORS

- Huge Selection of Vinyl Flooring - *Clic or Glue*
- Complete Bathroom Renovations • Cabinet & Paint
- ALL Types of Counter Tops and Back Splashes

WE ARE AN INSURANCE DEALER
IN STORE SPECIALS!!

Hours:
Monday to Friday 9:00AM to 5:30PM
Saturday 9:30AM to 4:00PM
Closed Sunday

226 McLeod Ave
Spruce Grove
(780) 960-9212
www.theflooringstore.ca



LEARN ABOUT DIY HOME SECURITY

Homes are a safe haven and comfortable retreat for individuals and families. Home invasions can compromise that feeling of safety and security, making people feel uncomfortable and unsafe in their own homes.

Although the FBI Uniform Crime Reporting Statistics indicate property crime rates have seen a significant decline in the last few years, there are still roughly 2.5 million burglaries a year, 66 percent of which involve home break-ins. Break-ins are 6 percent more likely to occur between 6 a.m. and 6 p.m., when people are out at work or running errands than at other times of day. Homes without a security system are 300 percent

more likely to be burglarized, according to the National Council for Home Safety and Security.

Installing a security system may be the goal of homeowners looking to protect themselves and their belongings. Thanks to availability of new, user-friendly products, do-it-yourselfers can, in many instances, install their own home security systems.

Safety.com says smart home integration, mobile apps and wireless connectivity are hallmarks of modern DIY home security systems. Many have the same components as traditional home security systems, but do not require professional installation or monitoring, even though such options

are available.

When shopping for home security systems, people can look for the following features to compare offerings.

- **Sensors:** Sensors will detect motion and activity in the house. Sensors also may be attached to doors and windows to determine if either are open. Some systems are designed to send alerts to a phone when triggered.

- **Cameras:** Working in conjunction with sensors, cameras can provide an eye on activity in and outside of a home, adding another layer of protection.

- **Smart features:** With smart home connectivity, security systems can be engaged and turned off

from remote locations.

Many DIY versions of home security systems work wirelessly and can be set up in a relatively short period of time. While wired systems use existing electric and telephone lines to connect security components, wireless systems connect components to a main panel via radio frequency. One of the benefits of wireless tech is that it enables DIYers to add components and replace them as needed without major hassle. In addition, wireless security systems do not require construction during the installation process.

More and more homeowners are embracing DIY home security systems to keep their homes safe.

Wabamun Home Hardware

See Us For Your Renovation Needs
Lumber, Paint, etc.

Wabamun 892-4969

SERVING ENTWISTLE AND AREA FOR OVER 30 YEARS

Entwistle CONCRETE

PRODUCTS LTD.

SAND & GRAVEL SALES

PH: (780) 727-3525

Dan McCracken Entwistle, AB
www.entwistleconcrete.ca

FOR DRINKING WATER USE ONLY

TRI-LAKES SERVICES LTD.

- **Septic Hauling**
 - Holding Tanks (residential, commercial, industrial)
 - Septic Fields
- **Drinking Water Delivery**
 - Cisterns
 - Pools/Hot-Tubs
- **Fresh Water Delivery**
 - Dust Control
- **Portable Washrooms** (rental & servicing)
 - Plastic
 - Trailer mount Extremes (wash sink, toilet, lights, heat)
 - Extremes (wash sink, toilet, lights, heat)
 - **Steam Truck**
 - In cooperation with your plumber

www.trilakeservices.ca / office@trilakeservices.ca
(877) 727-3939 / (844) 967-9176

SERVING: • Lac Ste. Anne County • Parkland County • Yellowhead County East

Your Complete Line of Renovation Needs:

ZEE BEST RENOVATIONS
Local Home Renovations Contractor

- Bathroom • Basements • Plumbing
- Tileworks • Drywall & Taping
- Decks & Fencing • Roofing • Siding

FREE ESTIMATES | 30+ YEARS EXPERIENCE | INSURED | GREAT RATES

JOE LAWRENCE BUS: 780-967-3898 | CELL: 780-915-3348
MANAGER FAX: 780-967-3798



7 THINGS TO CONSIDER WHEN BUYING A SHED

Backyard sheds can be useful assets. Sheds can create storage space in the garage, basement or other areas of the house that have become gathering spots for gear typically used

outdoors. Sheds are ideal for housing mowers, tools and even pool-care equipment. But they can be put to other uses as well, such as being key spots to engage in hobbies or even as a child's clubhouse.

Various factors should be considered before building or buying a shed. A storage shed can be a significant investment. Once placed, sheds may remain in their dedicated spots for years to come. That

means careful thought should go into the planning process.

1. Check your local building codes first. Before you accumulate building materials or order a shed, be sure to know the ins and outs of shed codes. The codes may impact the shed's placement, construction, the materials used, size, and numerous other factors. It's much easier to amend plans beforehand than to face the hassle and expense

WOODLAND LUMBER

WOODLAND HOME CENTRE

T: 780-727-2964 F: 780-727-2220
53314 Range Road 75A, Evansburg, AB
admin@woodlandlumber.com

ECONOMY ASPHALT DRIVEWAYS

- Paving • Asphalt or Concrete • Repairs
- Pararamps • Seal Coating • Crack Filling
- Snow Removal • Sanding • Rock Chip Sales

CHARLES MACDONALD
PH: 780-962-5581 CELL: 780-777-0914
FAX: 780-962-9146

MCLEOD Home building centre

Let us load you at the largest Lumber Yard in Parkland County
962-2575
Call Toll Free: 1-800-343-2988
35 South Ave, Spruce Grove

- Renovation & new build experts • Superior quality lumber
- Complete home packages • 3D Estimating Program
- Engineered roofs & floors • Farm Buildings • Garage packages
- Windows & doors • Custom decks & fence packages
- Flooring & kitchens • Bathrooms • Ceramic Tiles
- Concrete & landscaping • Electrical supplies
- Fasteners • Woodstoves

Service • Selection • Advice • Special Orders • Delivery

YOUR LOCAL ROOFING EXPERTS FOR 10+ YEARS

Do you need help?

FREE ESTIMATE

BUCKSKIN CONSTRUCTION LTD.

- :: Re-Roofs
- :: New Roofs
- :: Roof Repairs
- :: Insurance Claims
- :: Skylights and Flashing

Cell: 780-231-6981 :: Phone: 780-797-3980



7 Things To Consider When Buying A Shed

after learning you did things incorrectly.

2. Choose placement wisely. Spend several days assessing the yard and thinking about the uses for the shed. If you plan to store pool floats and chemicals inside of the shed, it should be located close enough to the pool to be convenient. Look at the lay of the land. If there is a soggy patch of land that can turn swampy under the shed's foundation, that is a poor location choice. If you need access to electricity, plac-

ing it far away from the house could necessitate running expensive wiring.

3. Consider the design. Just because a shed is for storage doesn't mean aesthetics should be overlooked. Choose a shed style that complements your home. You may also want to match certain architectural features, like arched doorways or dormers. Design also may relate to practicality. For instance, storing a riding mower inside may necessitate dual doors

that open widely.

4. Invest in quality materials. Spending a little more and using quality materials can ensure it lasts long enough to be cost-effective. The right materials will be resistant to splitting, cracking, decay, and insect damage.

5. Prepare the site well. A proper foundation for the shed is almost as important as the shed itself. You cannot just drop the shed on the lawn and leave it, as the shed can sink or structural issues may arise

if it is placed on a weak base.

6. Blend into the environment. Surround the shed with shrubs or plants so that it blends into the yard and complements the space.

7. Deck out the interior. Use every storage tool at your disposal to maximize floor, wall and even rafter space for storage. Plan where items will be kept and customize the storage options around those locations.

Sheds can be an asset and improve storage capability in the backyard.

DARREN RAYMOND PH: 780-241-2711
 JOURNEYMAN CARPENTER bangoncarpentry@hotmail.com

Doing it right the first time.

B.W. EAVSTROUGHING

Specializing in:

- ⇒ Residential 5"
- ⇒ Commercial 6"
- ⇒ Soffit
- ⇒ Gutter Clean System
- ⇒ Free Estimates
- ⇒ Fascia

BRAD (780) 699-1880



VISIT US

FOR ALL YOUR HOME RENOVATION NEEDS

CO-OP

North Central

4919 50 AVE - STONY PLAIN, AB



HOW TO DESIGN YOUR DREAM CUSTOM-BUILT HOME

(MS) - There are many advantages to designing your own home. Gone are the builder-basic styles, layouts that don't work for your family and exteriors you can't tell apart from your neighbors'. To help with your planning, check out these tips.

Find the right property. There are no limits to what you can create with a custom-built home, but the size and quality of your lot do impose restrictions. While you don't need to have everything decided when you purchase the property, make sure you have a general idea of what you need - your architect can help with this. Also,

double check zoning laws, so you don't wind up not being able to build your dream three-story home on a residential street that only allows bungalows.

Consider your lifestyle. What kind of lifestyle do you want to live? What's important to you? From bigger elements like smart home automation and sustainability to smaller considerations like storage and organization, think of these things when designing the layout and built-in elements. For example, if you hate shoveling, now is the opportunity to make sure you have the shortest drive-way possible.

Build for the future. Your

needs and wants right now are at the top of your mind, but a custom home is a significant investment in time, money and energy. It's also likely you want this to be your forever home, so it's a smart idea to build for tomorrow. Think about how your family will evolve and what your future needs will be. Consider building materials that are designed to stand the test of time, like insulated concrete forms (ICFs) from Nudura. This alternative to wood framing is a greener option and offers disaster resilience against high winds and fire. The superior insulation also means more comfortable, uniform indoor tempera-

tures and less money spent on heating and cooling your home.

Avoid the fantasy trap. This is your dream home, so it's okay to indulge on that outdoor fireplace or luxury bathroom tiles that you've been envisioning. But to keep your budget in check, focus on the priorities and items that will give you the best value for your dollar. Invest in features that will improve your everyday living and boost your property value, like energy-efficient construction or a finished basement.

Find more information about designing your new home with insulated concrete forms at nudura.com.

GMP ONTRACK INC.
George Perras
Phone 780-892-4488
Cell. 780-719-2687

Commercial • Farms • Acreages
Brushing
Fence Lines • Right of Ways • Fire Guards • Walkways
Don't Dig & Burn, Mulch & Preserve
General Excavation
Landscape • Site Prep • Clean Up
Snow Clearing/Removal
Light Equipment & General Hauling

Home Hardware building centre Drayton Valley
542-4044
ON US: 1-888-542-9663

For ALL your renovation and material needs, SHOP LOCALLY!

4221 - 50 Street Drayton Valley

LIMB WALKERS TREE CARE LTD.
FULLY INSURED, EXPERT TREE CARE PROVIDERS
SERVICING BARRHEAD, WESTLOCK, ONOWAY & ALL SURROUNDING AREAS

- Residential & Commercial
- Tree Removal
- Tree & Shrub Pruning
- Hedge Trimmers
- Annual Maintenance
- Professional Climbers
- Arborist Consultations & Assessments
- Bucket Truck & Chipper Services

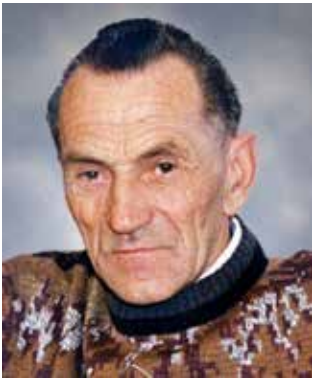
780-203-4705 limb.walkers@hotmail.com
FREE ESTIMATES PROVIDED

Blakeman Drilling Ltd.
Waterwell Drilling & Servicing
Pumps & Pressure Systems
Petwa Water Conditioning

(780) 918-1916
joe@blakemandrilling.com
Family Owned & Operated

Classified Ads - Call 962-9228

Obituaries



DIECKMAN, Fritz Bruno
It is with sadness that we announce the peaceful passing of Fritz Bruno Willy Dieckman(n) of Evansburg, AB, formerly of Peers, AB, at the age of 83 years old in his home on April 7, 2020, surrounded by family. Fritz was predeceased by his mother and father; Martha Bertha Schebitz (Dieckman) and Willy August Adolf

Dieckmann; and his wife, Shirley Ann Dieckman. He had four siblings, seven children, thirteen grandchildren, nineteen great grandchildren, many nieces, nephews, dear friends and will be missed by many. Due to the Covid-19 pandemic, no service will be held. If you would like to honor Fritz or the family, donations may be made in his name to a charity of one's choice. **Photos, memories, and condolences may be shared through www.parkmemorial.com.**

Park Memorial Edmonton 780-426-0050, Family Owned Funeral Home Crematorium, Reception Centre (1) 21-04

Services

WANTED! Standing Timber. Are you looking to cut your wood lot before pine beetles or forest fires destroy it? Top dollar paid. Call Paul 780-

706-1470 (12) 25-02

High School Math Tutor, Call Amber at 780-887-6212 (17) 07-01

Looking For

Widow 60's, Rural Alberta, If you are a MAN of faith, integrity, hardworking, 62-72, good mental, physical health, Respond: Box 1432 MAIN,

Grande Prairie, AB T8V 4Z2. (2) 21-04

Help Wanted

Wanted: Mature/Retired Gentleman for tasks/light ranch work, ex: Fence, spring cleanup etc. Trail Contract about 20hrs week/ 6 weeks OR condensed. Commencing soon. Room available. Call 780-512-5120 (2) 21-04

SERENITY FUNERAL SERVICE

NEW FACILITY
Chapel & Reception Centre

600 Calahoo Road Spruce Grove, AB
780-962-2749 www.serenity.ca

SERENITY FAMILY SERVICE SOCIETY - YOUR NOT-FOR-PROFIT SOCIETY

SUDOKU of the week

Here's How It Works: Sudoku puzzles are formatted as a 9x9 grid, broken down into nine 3x3 boxes. To solve a sudoku, the numbers 1 through 9 must fill each row, column and box. Each number can appear only once in each row, column and box. You can figure out the order in which the numbers will appear by using the numeric clues already provided in the boxes. The more numbers you name, the easier it gets to solve the puzzle!

Like puzzles? Then you'll love sudoku. This mind-bending puzzle will have you hooked from the moment you square off, so sharpen your pencil and put your sudoku savvy to the test!

ANSWER:

5	7	4	3	1	9	8	2	6
8	6	2	5	4	7	1	9	3
1	3	9	2	8	6	7	4	5
2	8	7	4	5	1	3	6	9
4	9	5	8	6	3	2	7	1
6	1	3	9	7	2	4	5	8
3	5	1	6	2	4	9	8	7
7	4	8	1	9	5	6	3	2
9	2	6	7	3	8	5	1	4

	7	4	3	1			2	
				4				3
1			2			7	4	
2		7		5			6	
4	9					2		
6			9			4	5	
	5	1				9	8	
7		8	1					
9	2		7	3				1 4

WEEKLY PUZZLE SPONSORED BY:

As your community newspaper, we are committed to delivering the latest and most accurate COVID-19 news and local updates. We also remain dedicated to serving our local advertisers, as they struggle to overcome unprecedented economic challenges resulting from the pandemic.

ADVERTISERS, call 780.962.9228 to learn how we can help you.

In uncertain and troubled times like today, the importance of local news and community connection is more evident than ever. You can help support businesses in our community by purchasing gift cards for later use, frequenting restaurants that are open for takeout or checking to see if your favorite businesses have opened online stores. You can also support the future of local news and reporting by reserving your ad space today and letting our readers know how they can help you!

Together, we are all stronger.



COMMUNITYVOICE local community • local economy • local news
In Print & Online | 780.962.9228 | www.com-voice.com

Classified Ads - Call 962-9228

Lessons

Piano Lessons offered in Wabamun on Thursdays. Ages 6 and up, beginner-advanced. Contact Monika 780-916-1317, youvegotrhythm@gmail.com (8) 03-03

Computers

Computer Repairs NOT over \$50. Get a good, clean,

refurbished, upgraded **Laptop** or a **Desktop** with games, world pictures, music, videos and more for **ONLY \$100.** FREE repairs for single parents. Donate used computers, tablets, etc. Will fix, clear to donate or use for parts. Call: 780-892-2407 (14) 28-01

Feed & Seed

Seed Oats & Barley - Fusarium tested, 80% & 88% germ.

No wild oats. Can deliver, jamesbeniuk@gmail.com or 780-621-2229 (8) 21-04

Firewood

SEASONED FIREWOOD: Birch, Tamarack, Spruce/ Pine & Poplar. 4x4x8 cord, Split and delivered or pick up at wood yard, 1/2 cord or full cords available. Call 780-967-5835 or 780-983-1495 (28) 31-03

Buy & Sell

I BUY GUN COLLECTIONS and World War 2 Collectables, Please call Jay for a quote 780-686-1350 (30) 19-11-19

Pasture Wanted

Looking for grazing Pasture for cows to rent for summer months. Please call Travis 780-721-0602 leave message. (12) 17-03

For Rent

Year Round Cabin For Rent North of Evansburg on Hwy 22 (15 mins from Evansburg), \$1000/month + DD. All inclusive, utilities & TV, max 2 people. Call 780-239-0553 (6) 31-03

Completely renovated Motel in Onoway, AB. offering daily, weekly or monthly rentals. All utilities included, 55 inch tv with Satellite. Double bedrooms, furnished bachelors with full kitchen and furnished 1 bedrooms with full kitchen available. \$950 + tax. Please call for viewing, 780-967-4420 or 1-403-742-6467. www.onowayinnandsuites.com (4) 14-04 OG

AVAILABLE IMMEDIATELY: Large 2 Bedroom in 12 Unit Apartment Building in Entwistle. Includes heat, water & parking. Rent \$795/month + DD \$300. Please call Ivka 780-807-1300 or email jakovljevicivka@yahoo.ca (2) 14-04 OG

2 HOMES FOR RENT. Seniors only in town limits of Stony Plain. Mobile home on Acreage fenced and secure & safe! \$1200 per month includes utilities. Prefer handy kind of guy to help maintain property gives opportunity for reduced rent. Also 2 bedroom older home in good shape (Seniors only), \$1200 per month includes utilities. PH Gord 780-913-2430 (2) 21-04 OG



PURE HEMP CBD PRODUCTS

AGING IS INEVITABLE - LOOKING AND FEELING OLD ISN'T!

WHAT IS CBD?

A Health and Beauty Breakthrough!
Cannabidiol, CBD, is one of over 80 active cannabinoid chemicals in the hemp plant. CBD, unlike, THC, does not produce euphoria or intoxication. CBD targets specific receptors in the cells of your brain & body. There are many physical and mental benefits to using CBD products for both treatment and prevention of numerous ailments.



Therapeutic Uses For Pure Hemp CBD

Supports healthy blood sugar levels, promotes healthy energy levels, relieves anxiety, aids in digestion, supports optimal immune function and the regeneration of healthy cells, and promotes a sense of serenity and overall well-being.

Anti-Aging Uses For Pure Hemp CBD

Promotes more youthful skin, provides hydration, enhances radiance, lessens age lines as well as the appearance of dark spots.

KEY BENEFITS

- PAIN RELIEF:** Known to reduce vomiting & nausea; suppress muscle spasms; reduce seizures & convulsions.
- PROMOTES HEALTH:** Helps to promote relaxation and overall health.
- WELL-BEING:** Helps to relieve anxiety, aid in digestion, supports optimal immune function and the regeneration of healthy cells.

CBD PET PRODUCTS

PET CHEW TREATS

KEY BENEFITS
SYNERGISTIC BENEFITS: Can be used in conjunction with regular medications with no side effects.
NO SIDE EFFECTS: Does not damage the liver, kidney or GI Tract like OTC medication.
DIETARY SUPPLEMENT: Can be administered daily as part of your pet's diet.



ORAL SPRAYS & DROPS

KEY BENEFITS
MANAGES PAIN: Helps to treat inflammation, arthritis and joint pain.
TREATS DIGESTIONAL ISSUES: Helps with loss of appetite, nausea, IBS and gastrointestinal swelling.
GENERAL HEALTH: Helps to manage mood, anxiety and general joint pain. For healthy, happy pets.
CONVENIENT: Can be sprayed into pet's mouth or on food.

For more information, Call (780) 907-8642

Church Directory

<p>Seba Beach Christian Fellowship</p> <p>Sunday School 10:00a.m. Worship Service 11:00a.m.</p> <p>Weekdays Bible Study & Prayer</p> <p>(780) 305-3594</p>	<p>Advent Lutheran Church</p> <p>Sunday Worship & Sunday School 11:00a.m.</p> <p>Evansburg O: 727-3594</p>	<p>Roman Catholic Church</p> <p>St. Agnes' Parish, Maysethorpe Sunday 9:00a.m. St. Elizabeth Parish, Evansburg Saturday 7:00p.m.</p> <p>(780) 786-2032</p>		<p>St. Joseph's Catholic Church</p> <p>Sunday Mass 11:30a.m. Tuesday Mass 7:00p.m.</p> <p>Wabamun, AB</p>	<p>St. Augustine's - Parkland Anglican Church</p> <p>231 Church Rd. Spruce Grove</p> <p>Sunday Service 10:00a.m. Eucharist with Sunday School & Nursery All are Welcome</p> <p>Office 780-962-5131 www.staugustinesparkland.org</p>
<p>Parkland Baptist Church</p> <p>Sunday Worship Service 10:30a.m. All Welcome</p> <p>121 Brookwood Drive (780) 962-4101 www.parklandbaptist.ca</p>	<p>Word Church Apocalyptic Era</p> <p>Border Paving Athletic Centre, 9 Tri Leisure Way, Spruce Grove ignitors in the Wild Rose room.</p> <p>Ph: 780-962-7579</p> <p>Service starts at 10:00 a.m. every Sunday morning, come all & be bless.</p>	<p>St. Anthony's Ukrainian Orthodox Church</p> <p>6103 172 St. NW, Edmonton</p> <p>Saturday: Vespers 5:00PM Sunday: Divine Liturgy 10:00AM</p> <p>780.487.2167 santhony@teloplaneet.net www.st-anthonys.ca</p>		<p>Stony Plain United Church</p> <p>Sunday Service 10:30a.m. 5012-51 Ave. Stony Plain</p> <p>Mewassin United Church</p> <p>Sunday Service 9:00a.m. Rev. Heather Koots Hwy 627 - Rg Rd 30 Ph: 780-963-4745</p>	<p>Immanuel Lutheran Church of Rosenthal</p> <p>Sunday Worship Service 9:30a.m. Sunday School</p> <p>780-963-4048</p>
<p>Emmaus Lutheran Church</p> <p>Sunday Worship Service 11:30a.m.</p> <p>Rev. Robert Marshall 4504-52nd Ave, Drayton Valley Ph: 780-542-5101 www.emmauslutheran.org</p>	<p>Church of God</p> <p>Worship Service Sun. 11:00a.m.</p> <p>Please contact for activities</p> <p>5004-49 Street, Drayton Valley Ph: 780-542-5091</p>	<p>Calvary Baptist Church</p> <p>Pastoral Team: Keaton Penner</p> <p>Sunday Worship 10:30a.m. Youth & Ministries Info - calbapt@telus.net</p> <p>4401-50th Ave. Drayton Valley 780-542-4774 www.calvarybaptistdo.ca</p>	<p>Drayton Valley Alliance Church</p> <p>Pastor John Haazen</p> <p>Join us for Sunday Service at 10:30a.m. 5014-56 Ave. (next to Value Drug Mart) Programs for all ages</p> <p>Ph: 542-6501 dvalliance.ca</p>	<p>All Saints' Anglican Church</p> <p>Sunday Morning Worship 9 BCP 10:30 BAS with Sunday School & Nursery</p> <p>5212-47 Ave. Drayton Valley (780) 542-5048</p>	<p>St. Anthony Catholic Church</p> <p>WEEKEND MASS SCHEDULE: Saturday 5:00p.m. Sunday 12:00p.m.</p> <p>4708-50 Ave. Drayton Valley Parish Office: 542-5254</p>

SERVICE DIRECTORY

2Bros
Custom Contracting Ltd.

Custom Framing • Concrete Floors • Shingling
Siding Soffit Fascia • Styrofoam Block System

Jeff 780-717-0520

H&P Kosik CONSTRUCTION Ltd.

• Road Building • Gravel • Sand • Dugouts
• Black Dirt

No Job too small. We do them all!

Harvey cell. 780-445-9010 ph. 780-892-3532
Box 145, Darwell, AB. T0E 0L0

Ernie's Repair & Service

SMALL ENGINES

4820 - 47 Avenue, EVANSBURG
(780) 727-4433 C:514-0272

WABAMUN PHARMACY
I.D.A.

Box 90, 5120 - 51 Avenue
Wabamun, AB T0E 2K0
Ph: (780) 892-2278 Fax: (780) 892-2488

COMMUNITYVOICE
YOUR LOCAL NEWSPIRES

THIS SPACE IS RESERVED FOR YOU!

WEIGHTLOSS NEVER TASTED SO GOOD!

NEW! NEW! NEW! NEW!

(780) 907-8642 **VALENTUS**
www.ValentusTour.com/Ladybug

SERVICE DIRECTORY

Blakeman Drilling Ltd.
 Waterwell Drilling & Servicing
 Pumps & Pressure Systems
 SERVING LAC. STE. ANNE & WEST PARKLAND FOR OVER 25 YEARS
 Joe (780) 924-3024




DONALD N. GREENWAY
 Chartered Accountant
 Suite 205 Sunrise Professional Building
 215 McLeod Avenue
 Spruce Grove, AB
 (Bus.) 962-6366
 (Fax) 962-3990

WHAT MAKES MYDAILYSPRAYS SO POWERFUL?
 HIGH ABSORPTION, SCIENCE & THE INGREDIENTS



(780) 907-8642
www.Elaine1.com

SLIMROAST Optimum
 DARK ROAST COFFEE
 YOUR LOGICAL SOLUTION TO WEIGHT MANAGEMENT
 (780) 907-8642
www.ValentusTour.com/Ladybug



COMMUNITYVOICE
 YOUR LOCAL NEWSPIRES
THIS SPACE IS RESERVED FOR YOU!

ROY SHERWOOD
 Master Electrician
 Ph: 780-968-1425
 Cell: 780-908-2287
 Fax: 780-968-2211
 Email: suretechroy@gmail.com
 2-53220 Rge Rd 21
 Parkland County, AB
 T7Y 0C5
SURETECH ELECTRIC LTD.
 Control & Automation
 Commissioning
 Solar Sales & Service
 Industrial . Commercial . Residential

MARK MARTIN PFEIFFER
 MASTER BRICKLAYER/MASON
 Cell: 780-242-3308
 Email: pfeiffer.mark@hotmail.com
 • Brickwork • Stonework
 • Rockwork • Parging
 • Concrete Block Work
 • Tile Work (all kinds)



Mobile Welding & Repairs, Big or Small
 Murowchuk & Son Contracting Ltd.
 "I won't burn a hole in your pockets"
Ren Murowchuk / CWB Certified Red Seal Welder
 renmurowchuk@yahoo.ca
 Box 1322, Onoway Alberta T0E 1V0
Call 780-499-1835

PEMBINA CONCRETE PRODUCTS LTD.
 Manufacturers of **ONE PIECE SEPTIC & HOLDING TANKS**
 * Water Cisterns * Field Systems * Pumps and Accessories * Sumps
DELIVERED TO YOUR SITE
 1-800-661-3047
 780-727-2702
PembinaConcrete.com
New Line of Concrete Statues, Fountains and Garden Ornaments.
 BOX 123, Entwistle, T0E 0S0




COMMUNITYVOICE
 YOUR LOCAL NEWSPIRES
THIS SPACE IS RESERVED FOR YOU!

CALIBRE DRILLING LTD
 DRILLING AND SERVICING YOUR WATER WELL.
SPECIALISTS IN AIR & MUD ROTARY DRILLING
 * Water Well Drilling * Pump Installations
 * Pressure Systems * Well Tests
 * Licensed Drillers * Year Round Drilling
 * Geotechnical Drilling * Cathodic Protection
 * Free Estimates
Quality Workmanship Five Year Warranty
(780) 960-2992
 BOX 4083 SPRUCE GROVE, AB T7X 3B3

PREVAIL MAX
 CELLULAR HOMEOSTASIS FORMULA
 How do you want your **BLOOD** to look?

Before PrevailMAX:	After PrevailMAX:
poor circulation	better circulation
low energy	more vitality
brain fog	mental clarity
dehydration	cellular movement
decreased nutrients	nutrient assimilation
pH imbalance	balanced pH
poor endurance	optimal endurance

LIVIN TRIM WITH VALENTUS
(780) 907-8642
www.ValentusTour.com/Ladybug



SERVICE DIRECTORY

Jack's Auto Body
 & 24 HR Towing

SPECIALIZING IN COLLISION REPAIR
GUARANTEED WORK • INSURANCE CLAIMS

CAA BOX 9 SITE 306 RR3, ONOWAY, AB T0E 1V0
(780) 967-5850

OUR PLEDGE IS QUALITY

BACK COUNTRY PIPEFITTING LTD.
 Plumbing & Heating

Lee Hicks 780-898-1062
 Journeyman Plumber

Residential and Commercial Plumbing and Heating.
 SERVING: YELLOWHEAD, PARKLAND, LAC STE. ANNE & BRAZEAU COUNTIES.

H&E
 UPHOLSTERY

FOR ALL YOUR UPHOLSTERY NEEDS

Convertible tops for cars and boats, custom car and boat interiors, 5th wheel trailer skirts, boat tarps, ATV seats, furniture, kitchen chairs, heavy equipment seats.

WWW.HANDE.CA 4-485 South Ave. Spruce Grove
 For more information contact: kirk@hande.ca (780) 962-3048

SERVING ENTWISLE AND AREA FOR OVER 30 YEARS

Entwistle CONCRETE
 PRODUCTS LTD.

SAND & GRAVEL SALES

PH: (780) 727-3525
 Dan McCracken Entwistle, AB
 www.entwistleconcrete.ca

COMMUNITYVOICE
 YOUR LOCAL NEWSPEP

THIS SPACE IS RESERVED FOR YOU!

SMOOLE

- Construction & Septic Installation
- Environmental Wastewater Disposal
- Site Design & Evaluation
- Power, Water & Basement Excavation
- Trackhoe, Backhoe, Bobcat & Dump Truck

For All Your Excavation Needs
 Call Dan 780-991-4484 Reid 780-909-0173

COMMUNITYVOICE
 YOUR LOCAL NEWSPEP

THIS SPACE IS RESERVED FOR YOU!

SANGUDO VETERINARY CLINIC

Box 581, 4916 - 52 Ave. Sangudo, AB. T0E 2A0
Dr. Ralf Sanders DVM
 Ph: 780-785-2200
 Fax: 780-785-2228
 sangudovet@gmail.com

24 HOUR EMERGENCY SERVICE

COMMUNITYVOICE
 YOUR LOCAL NEWSPEP

THIS SPACE IS RESERVED FOR YOU!

POSTINGFIRST.com

BUY and SELL just about ANYTHING!

FREE LOCAL CLASSIFIED ADS

Real Estate, Rentals, Vehicles, Pets, Jobs, Service Directory, Buy/Sell/Trade, Lawn & Garden, Garage Sales, Events, Local Places & Much More... Advertise for **FREE** Today!

Follow Us

Instagram, Facebook, Pinterest, YouTube, Twitter

TRI-LAKES SERVICES LTD.

- Septic Hauling
- Drinking Water Delivery
- Portable Washrooms
- Steam Truck

www.trilakeservices.ca / office@trilakes.services
 (877) 727-3939 / (844) 967-9176

SERVING: Lac Ste. Anne County • Parkland County • Yellowhead County Area

Xtreme LEAN NRG

Xtreme LEAN NRG
 Advanced Formula helps you:

- Regulates Your Appetite
- Regulates Blood Sugar
- Regulates Fat Absorption
- Improve Energy Levels
- Improve Your Mood
- Increase Mental Focus

"We've unlocked the science of slim!"
(780) 907-8642

SUMMERS DRILLING LTD.

Water well drilling and service
 Family owned Business Serving Alberta since 1917

Never run out of water again!

5 year workmanship warranty

3 Convenient ways to pay

- Visa
- Mastercard
- We now offer full financing

Tired of hauling water?
 We can install a water well with a permanent water supply for as little as \$150/month OAC

Stop in at our office 4405 - 50 Street, Stony Plain
 780-963-1282
 admin@summersdrilling.com



TEAM
SEITZ
LAKE LIFE



Daniel SEITZ
780-991-1866

Jordan SEITZ
780-203-2198



Too early for that first round of golf?
Not too early to list your lake home!

COMING SOON



**LAKEFRONT - WABAMUN
WALKOUT BUNGALOW**
call for details



Background photo courtesy of Pineridge Golf Course, Seba Beach, AB.

FREE EVALUATIONS - FIND EVERY LAKE HOME



Great VALLEY Views
1529 Sq Ft Bungalow

\$299,900

EVANSBURG



3 Acres **\$152,800**
Peaceful Picturesque
Perfection
Summer View Heights

LAKE ISLE



Super Shop-Campfires-Hottub
You will love all 12.8 Acres

\$444,900

WILDWOOD

EdmontonLakeHomes.com



NOT INTENDED TO SOLICIT REAL ESTATE CURRENTLY LISTED FOR SALE.