



COMMUNITY VOICE

YOUR LOCAL NEWSPAPER

Serving: Alberta Beach, Barrhead, Calahoo, Cherhill, Darwell, Glenevis, Gunn, Lac Ste. Anne County, Mayerthorpe, Onoway, Rich Valley, Rochfort Bridge, Sangudo, Whitecourt, Spruce Grove and Stony Plain.

July 28, 2020

REGIONAL LEADERS REVIEW DUAL CALL-OUT FIRE SERVICES MODEL

MLA Getson applauds strengthened collaboration between Lac Ste. Anne County Fire Services and Onoway Regional Fire Services.

Submitted by Lac Ste. Anne County

Sangudo, AB, July 20, 2020 – Lac Ste. Anne County recently met with adjacent municipal officials to review the integrated fire services model that exists between Lac Ste. Anne County Fire

Services and Onoway Regional Fire Services operated by Northwest Fire Rescue. This unique model leverages the infrastructure and capacity of these public and private-sector contingents to provide comprehensive, collaborative and timely fire services to the

greater Lac Ste. Anne region. Lac Ste. Anne-Parkland MLA Shane Getson was in attendance for the review, and expressed interest in sharing the ongoing successes of the County's hybrid support model with other regions in the province.

Continued on Page 3

PARKLAND RCMP INVESTIGATE FATAL COLLISION ON HIGHWAY 43

Submitted by Parkland RCMP

On July 25, 2020 at approximately 2 a.m., Parkland RCMP along with Emergency Services responded to a single vehicle roll over on Highway 43 and Range Road 34.

A SUV was located but did not have any occupant(s) inside. A search was con-

ducted in the area but no one was found.

Further investigation revealed that the vehicle was driven by a lone adult male occupant who had not been in contact with family since the collision occurred. An additional search utilizing RCMP Air Services and RCMP Police Dog Services was conducted. This morning search and rescue was

activated. Tragically, the missing 33-year-old male from Sangudo, Alta., was located deceased near Range Road 35. An autopsy will be conducted this week at the Office of the Chief Medical Examiner in Edmonton.

The name of deceased will not be released and no further updates are anticipated.

Shoe CraftsMen 

SHOE REPAIR
60 yrs experience

Owner: Rouben
110C McLeod Ave.
Spruce Grove T7X 2H8

780-862-1431

GRIEFSHARE weekly grief support group held Tuesdays 6:30-8:30pm, starting Sept 15 at Crossroads Community Church in Mayerthorpe. 13-weekly sessions for \$25. Pre-registration is required. Call 780-786-2695 to join us at GriefShare.

PREVAIL MAX
CELLULAR HOMEOSTASIS FORMULA

Nutritional Breakthrough For Your Cells

LIVIN TRIM WITH VALENTUS
(780) 907-8642
www.ValentusTour.com/Ladybug

High-Performance Lifestyle Products



Call Today! (780) 907-8642
www.bepic.com/elaine1

 **View us ONLINE!**
WWW.COM-VOICE.COM



COMMUNITYVOICE
YOUR LOCAL NEWSPAPER

PUBLISHED WEEKLY (Zone 1 & 2)
AND BIWEEKLY (Zone 3)

E.J. Lewchuck & Associates Ltd.

#6 - 40 South Avenue
Box 3595
Spruce Grove, AB T7X 3A8

SALES TEAM

Elaine
Ashley
Dani

TELEPHONE:

Classifieds 962-9229
Advertising 962-9228
Fax 962-1021

E-MAIL:
comvoice@telusplanet.net
news@com-voice.com

THE JUNE CLUB REPORT FOR THE CHERHILL 4-H MULTI CLUB

Submitted by **Anthony Bouius, Cherhill 4-H Multi Club**

...From The Covid-19 Pandemic, Self Isolation, Social Distancing, Quarantine Now Routine, The New Normal...

Covid-19 threw the 4-H year right upside down, but the members, parents, and leaders pushed through, and made a complete and successful year.

The year was all smooth sailing then the covid hit, everything was at a stand still. Then after about a week of mass confusion we managed to set up virtual meets. In those virtual meets our main topic was to get everyone's project finished and

the year over with.

Our life skills member had to send in photos of their displays and a powerpoint will be posted to our club facebook page when it gets done Our pheasants will be released on a later date.

The 4-H market steers were shown and sold online, everyone is thankful for VJV Westlock letting us use their facilities, and we would like to thank Team Auctions for hosting the sale for free. All of our members would like to thank bidders and buyers. Thank you for standing behind the changes we had to do this year!

Some of the members had an opportunity to go to a mini show at

Mayerthorpe, and take

videos of their female livestock for the virtual shows.

All of our market lambs were sold private, and the members would like to thank all of their buyers.

After June 22 we were able to do some 4-H activities with health safety measures in place. We had signed up to do garbage picking for 3 of the county landfills.

We have tentatively set our first meeting for next year on Sept. 18 We Cross our fingers that we can meet in person.

We would like to thank all of the leaders for helping us push for a successful year.

This is my last report of this 4-H season, hope everyone has a great summer.



INCREASE YOUR INTERNET SPEEDS
on Telus Smart Hub with an external antenna

STARVIEW COMMUNICATIONS

starview.ca/antennas
780.999.3109



LILSA AGM

ZOOM TELECONFERENCE
Saturday, August 15, 9:30 am

To register see LILSA Website www.lisawaterquality.com
Agenda: elect one Director, financials, flowering rush update
Guest Speaker: Petra Rowell, Sturgeon Watershed Alliance
Annual Membership - \$20 per family - to purchase e-transfer to lilswaterquality@gmail.com

Please e-mail your name, phone number, address and e-mail address to the above e-mail address to confirm your membership payment.

JOKE of the week

Pete and Harry were talking one day.
"My wife asked me to buy ORGANIC vegetables from the market garden," said Pete.
"So were you able to find some?" Harry asked.
"Well when I got to the market, I asked the gardener, 'These vegetables are for my wife. Have they been sprayed with any poisonous chemicals?'"
"The gardener answered:
"No, you'll have to do that yourself."

Campground Manager Contract Opportunity

Alberta Beach is currently accepting resumes for the Campground Managers Contract for the Alberta Beach Family RV Park & Campground for the 2021 season. The contractor will be required to live on site for the term of the contract being May 1st to September 30th, 2021. Refer to the Alberta Beach website at www.albertabeach.com for further details. Please forward resume and references on or before August 14, 2020 to:

Village of Alberta Beach
Attention: C.A.O.
Box 278 Alberta Beach, AB TOE OAO
Phone: (780)924-3181
Fax: (780) 924-3313
Email: aboffice@albertabeach.com



Regional Leaders Review Dual Call-Out Fire Services Model

Continued from Page 1

He suggested that the model that could fill the gap in areas where industry has the ability to augment services and support.

"We're lucky in our area to have a hybrid model of service and coverage when it comes to fire fighting and rescue services," stated MLA Getson. "I was pleased to be part of a coordination meeting recently to review the coverage and interface between the two groups, and the representatives from the communities they serve."

"After a little over a year with a new dispatch and coverage procedure I was also pleased to see now that there is enough information to perform a lessons learned review, and to tweak the system as required to continue to improve on efficiencies, and to maintain or improve services because of it."

During the review, MLA Getson commended the municipal leaders on their progress, stating: "we need you, and our community is better off be-

cause of the work that you are performing and the cooperation you are showing to develop this innovative model."

The dual call-out agreement between Lac Ste. Anne County Fire Services and Northwest Fire Rescue (the Town of Onoway's private-sector contractor) is a derivative of a standard mutual aid model. Under this agreement, both departments are simultaneously notified when a critical event occurs; resources are then coordinated based upon the crews and apparatus closest to the scene. By contrast, under a standard mutual aid agreement, the decision to engage outside resources would be the purview of the host municipality's fire department.

Collective Approval of Collaborative Model

"Intermunicipal collaboration can be tricky at the best of times," shared Lac Ste. Anne County Reeve Joe Blakeman. "We have had challenges and rough patches along the way. However, thanks to the perseverance, cooperation and respect of all involved, we've

created a viable, resourceful fire services model that distributes resources in ways that meet the demands of a wider segment of the Lac Ste. Anne County region – both today and years into the future."

Judy Tracy, Mayor of the Town of Onoway, expressed pride in the continued collaborative work of Onoway Regional Fire and Lac Ste. Anne County Fire Services. "The highways in the region have become safer to travel since the establishment of a dual call out system," shared Mayor Tracy. "The Fire Chiefs from both departments have overcome much in order to establish a cohesive working environment for all highways calls. While the system may still need some tweaking, it is working and that is good news for all who travel on the highways."

Other municipal leaders present at the review echoed the sentiments of Reeve Blakeman and Mayor Tracy. Bernie Poulin, Mayor of Silver Sands and representative of the the Summer Villages Lac

Ste. Anne County East (SVL-SACE), applauded the County's approval on dual call-outs on the region's highways. "Our residents now have superior response times helping ensure their future quality of life," he stated.

"Alberta Beach is very proud to be working in collaboration with our municipal neighbours on this very important issue," added Alberta Beach Mayor Jim Benedict. "The dual call out system has improved response times, saving lives and delivering cost-sharing efficiencies. We would like to Thank the County for having faith in our fire service, and taking the huge step of entering into this dual call-out agreement."

The County looks forward to building upon the successes of this unified framework, and continuing to strengthen the collaborative potential between Lac Ste. Anne County Fire Services and Onoway Regional Fire Rescue with the shared goal of servicing and safeguarding the community at large.

GROVE HEARING CLINIC

960-2960

1-866-960-2960

Hear what
you've been
missing...

Full
Service &
Repair

Full
Hearing
Assessments



HOURS OF OPERATION: 9am – 5pm Weekdays

3rd party billing (AADL, WCB, DVA, FCH) • Personal 0% Financing if Needed

For The Latest Technology In Hearing Aids & Assisted Living Device Stop By & See Dawn

#220-70 McLeod Ave - Westland Market Mall, Spruce Grove

STUDENTS RETURNING TO SCHOOL FOR 2020-21 SCHOOL YEAR

Submitted by Government of Alberta

Schools will be ready to welcome students under scenario 1, which is near-normal daily operations with health measures.

Alberta's government has developed a re-entry tool kit to prepare parents and students for what to expect in the new school year. The tool kit includes videos for students explaining some of the health measures, a guide for parents, frequently asked questions, school posters, a self-screening questionnaire in multiple languages, and links to health guidelines.

"Alberta continues moving ahead with our recovery and relaunch plan. I'm proud of our

comprehensive plan that supports the safe return to daily in-school learning. The return of more than 750,000 students to near-normal learning in the new school year is indicative of Alberta's continued recovery as we work to relaunch our economy and return to our regular everyday lives." - Jason Kenney, Premier

"We are determined to do everything that we can to safely return our students, teachers and staff to school. I appreciate the input and support of school authorities across the province, as well as our education partners, in developing and refining our school re-entry plan. We are providing clear and detailed guidelines and a re-entry tool kit so everyone can do their part and prepare for a safe

return to school." - Adriana LaGrange, Minister of Education

"We are committed to doing everything possible to protect the health and safety of students, staff and families during the upcoming school year. There is no risk-free approach to COVID-19 but there are also risks to children's overall health from school closures. We are continually refining our public health advice for schools based on best available evidence. We also have plans in place to respond quickly when cases are identified. Limiting the spread of the virus in schools will require the dedication and support of all Albertans when the school year begins this fall." - Dr. Deena Hinshaw, chief medical officer of health

Under scenario 1, schools will implement a number of public health measures, which include frequent cleaning of surfaces, placing hand sanitizers at school entrances and classrooms, grouping students in cohorts, and planning the school day to allow for physical distancing, which could include staggering start times for classes, recesses and lunches. Additional public health measures may be established prior to September on the advice of the chief medical officer of health in consultation with the education system.

In addition, students, staff,

parents and school visitors will be expected to use a self-screening questionnaire daily to determine whether they can enter the school.

"The Alberta School Boards Association is pleased that this plan was released earlier than expected as it provides more time for finalizing school board plans. We appreciate the various experts, parents and community members that helped inform a plan that prioritizes the health and safety of students and staff. ASBA and all school boards will work diligently to implement this plan and look forward to continuing to work with the Minister of Education throughout the upcoming school year." - Lorrie Jess, president, Alberta School Boards Association

"The College of Alberta School Superintendents appreciates the opportunity to work alongside government and education partners to develop a detailed re-entry plan. The CASS board of directors strongly believes that the re-entry plan offers the appropriate balance of guidance from the chief medical officer of health and the government while providing for the authority and autonomy for individual school divisions to assure their students, parents and staff that a successful return to school will be safe." - Bevan Daverne, president, College of Alberta School Superintendents

"We value the government's efforts to actively work with the education system, including independent schools, as they finalized details for the 2020-21 school year. Re-entry under scenario 1 gives us the information and confidence we need to prepare our schools for reopening. We appreciate the requirements set out by the government to ensure that student and staff safety remains the priority as we navigate through these times to safely move closer towards a sense of normalcy." - Simon Williams, president, Association of Independent Schools & Colleges in Alberta

TO VIEW THE PROPERTIES

CALL OR TEXT **TARAS CHMIL**

587 983 2916

64x24 SHOP & kitchen/offc/bathrm
Waterfront BOAT HSE w/roof deck
110ft LAKE front DOUBLE LOT
Walk out STONE bung & double GARAGE
Bsmt with KITCHEN in law suite
Lake Wabamum Seba Beach

8.37 Acres
Large Workshop
Quonset
Not in a subdivision
Bung with total of 4 bedrooms
ACREAGE by Seba Beach

Canada Emergency Wage Subsidy (CEWS)

Extended to December

The new changes to the CEWS would also:

- Make the subsidy accessible to a broader range of employers by including employers with a revenue decline of less than 30% and providing a gradually decreasing base subsidy to all qualifying employers. This would help many struggling employers with less than a 30% revenue loss get support to keep and bring back workers, while also ensuring those who have previously benefited could still qualify, even if their revenues recover and no longer meet the 30% revenue decline threshold.
- Introduce a top-up subsidy of up to an additional 25% for employers that have been most adversely affected by the pandemic. This would be particularly helpful to employers in industries that are recovering more slowly.
- Provide certainty to employers that have already made business decisions for July and August by ensuring they would not receive a subsidy rate lower than they would have had under the previous rules.

Gerald Soroka, MP

Yellowhead

GERALD.SOROKA.c1@PARL.GC.CA -- (780) 723-6068

Continued on Page 8



Bus Contractors Needed

We are currently accepting applications to provide bus service for a one-year contract agreement, ending June 28, 2021 for the following routes:

Onoway Area

Route 02, rural route, 184 days per year. Approx. 105.4 km; a 72-passenger bus is required. Contract amount is approximately \$50,305.00 per year excluding GST.

Route 29, rural route, 184 days per year. Approx. 63.5 km; a 66-passenger bus is required. Contract amount is approximately \$42,583.00 per year excluding GST.

Route 34, rural route, 184 days per year. Approx. 154.0 km; a 48-passenger bus is required. Contract amount is approximately \$56,232.00 per year excluding GST.

Alberta Beach Area

Route 18, rural route, 184 days per year. Approx. 95.8 km; a 48-passenger bus is required. Contract amount is approximately \$46,160.00 per year excluding GST.

Route 28, rural route, 184 days per year. Approx. 90.0 km; a 48-passenger bus is required. Contract amount is approximately \$45,157.00 per year excluding GST.

Sangudo Area

Route 37, rural route, 184 days per year. Approx. 154.4 km; a 36-passenger bus is required. Contract amount is approximately \$55,235.00 per year excluding GST.

Mayerthorpe Area

Route 51, rural route, 184 days per year. Approx. 157.7 km; a 48-passenger bus is required. Contract amount is approximately \$56,837.00 per year excluding GST.

Route 53, rural route, 184 days per year. Approx. 116.1 km; a 54-passenger bus is required. Contract amount is approximately \$50,740.00 per year excluding GST.

Route 54, rural route, 184 days per year. Approx. 182.9 km; a 54-passenger bus is required. Contract amount is approximately \$62,300.00 per year excluding GST.

Whitecourt Area

22 urban and rural routes, 184 days per year. 24, 48, 66 and 72-passenger buses (one requiring wheelchair lift). Route kilometres and contract amounts vary from \$37,079.00 - \$63,458.00 per year excluding GST.

For complete information on this position please visit our website at ngps.ca/careers/current-opportunities or contact Rhett Czaban at 1-800-785-3396 or 780-524-8331.

Applications will be accepted until noon on Friday, July 31, 2020; with service to commence Monday, August 31, 2020.

Applications can be emailed to: rhett.czaban@ngps.ca

Evansburg RCMP issue Public Safety Advisory – TUBING ON THE PEMBINA RIVER

Submitted by Evansburg RCMP

With the coming of fantastic weather and the August long weekend, the Evansburg RCMP are issuing a public safety warning about tubing on the Pembina River. **DISEMBARK AT THE PROVINCIAL PARK!**

This past weekend saw the Evansburg Detachment respond to a couple of calls to service about overdue tu-

bers who missed exiting the river at the Provincial Park. A response by the RCMP to save stranded tubers ties up resources that may be needed for a high priority call elsewhere.

The river does not run in a circle or loop back. If you're planning on tubing on the river, do not enter at the Provincial Park Campgrounds. The Park is where you **MUST** exit the river. If you float past the park, you

will be stranded. You will not be able to exit until approximately reaching Sangudo, which is an 8-hour float.

Visitors and residents of the area who are wishing to tube the Pembina River are reminded to take extra steps and be prepared for their journey as follows:

- Wear a life jacket
- Know the area, review maps and plan for the length of your journey
- Notify a responsible per-

son where you are going, who you are with, and the route you plan on taking

- Dress appropriately for the weather, including the use of a wet suit when necessary. Remember sunscreen, water supplies and bug spray
- Do not consume alcohol prior to, or during tubing
- Bring a charged cell phone and store it properly

We encourage people to enjoy the river, but ask that they do so responsibly.

PLANNING & DEVELOPMENT

NOTICE OF DEVELOPMENT PERMIT APPROVALS

The following Development Permits have been approved or conditionally approved under the provisions of the Land Use Bylaw. This list does not include Permitted Uses. Interested parties are encouraged to contact the Planning and Development department at 1-866-880-5722 or devassistant@LSAC.ca, Monday to Friday 8:30am to 4:30pm to request additional information on a permit.

PERMIT #	LEGAL LAND DESCRIPTION	DESCRIPTION	APPEAL DEADLINE
20-D0098	Lot 19, Block 1 Plan 939MC, Chrystyna Beach, 36,3215 TWP RD 574	Stick Built Dwelling (1510.0 sq. ft.), Deck 16.0' x 60.0' (960.0 sq. ft.), Garage 24.0' x 32.0' (762.0 sq. ft.), Side Yard Variance of 1.86m requested. Variance of 69%	August 10, 2020
20-D0096	Lot 19, Block 8, Plan 7821036, Four Oakes, 4, 56514 RGE RD 21	1 Recreational Vehicle-2007 25'	August 10, 2020
20-D0097	Lot 19, Block 8, Plan 7821036, Four Oakes, 4, 56514 RGE RD 21	1-20' shipping container	August 10, 2020
20-D0104	Lot 12, Block 1 Plan 7922883, Woodland Bay Estates, 42, 6231 Highway 633	Stick built shed on skids, Main 12.0' x 20.0' (240.0 sq. ft.) Side Yard Variance Request for proposed development - Required: 6.0 m, Requested: 3.0 m, Variance: 3.0 m	August 10, 2020
20-D0105	Lot 3B, Block 1, Plan 0740260 within SW 02-55-01 W5M 55003 RGE RD 12	Detached garage 40.0' x 30.0' (1200.0 sq. ft.) 14' walls on 12" x 12" thickened slab, 6" in middle	August 17, 2020
20-D0094	Lot 24, Block 4, Plan 7920270 Birchwood Estates within NW 20-54-04 W5M 5, 4418 HWY 633	Existing sheds with a variance on one shed, Shed 1 14.0' x 16.0' (224.0' sq. ft.), Shed 2 10.0' x 12.0' (120.0 sq. ft.), Shed 1 Side Variance request Regulation: 6.0m Request: 3.2m Variance: 2.8m	August 17, 2020
20-D0074	NW 25-56-05 W5M 56417 RGE RD 51	Minor Home Based Business, vegetable and strawberry upick, and use existing 200.0 sq. ft. steel shack for farm store and a shack for a bathroom	August 17, 2020
20-D0088	Lot 5, Block 1, Plan 5145KS Hofmann Beach within SW 08-54-05 W5M 29, 5427 HWY 633	Stick built on 6.0' concrete crawlspace with deck, Main 30.0' x 33.33' (1000 sq. ft.), Second floor (256 sq. ft.) with Front Variance Request Regulation: 10.0m Requested: 8.0m Variance: 2.0m; Side Variance Request Regulation: 6.0m Requested: 2.43m Variance: 3.57m	August 17, 2020

Anyone who claims to be affected and who wishes to lodge an appeal against any of the above developments must do so in writing on the applicable form on or before 4:30pm on the above noted date(s). Secretary of the Subdivision and Development Appeal Board, c/o Lac Ste. Anne County, Planning & Development department, Box 219, Sangudo, Alberta, T0E 2A0.

PLEASE NOTE: Lac Ste. Anne County requires that a non-refundable fee of \$250.00 be paid for every appeal served on the Subdivision and Development Appeal Board. Fees may be paid by Cheque, Visa, MasterCard, Interac or Cash.

EDMONTON AREA AIR TOUR

JOIN US AUGUST 8, 2020 TO WATCH A DIVERSE GROUP OF EDMONTON BASED PRIVATE & INDUSTRY AIRCRAFT FLY OVER EIGHT DIFFERENT AIRPORTS TO CELEBRATE THE LOCAL AVIATION COMMUNITY!

VILLENEUVE - DRAYTON VALLEY - WETASKIWIN - JOSEPHBURG
WESTLOCK - CAMROSE - FORESTBURG - MAYERTHORPE/BARRHEAD



STARTING AT 8AM FROM VILLENEUVE AIRPORT, A GROUP OF AIR RACERS, HELICOPTERS, FLOAT PLANES, AND MANY OTHER UNIQUE AIRCRAFT WILL TOUR EIGHT DIFFERENT LOCATIONS IN THE AREA.

LED BY INTERNATIONALLY RENOWNED AIR RACER, SCOTT HOLMES IN HIS KITFOX, COME OUT TO WATCH THE BRIGHT SPOTS OF ALBERTA'S AVIATION COMMUNITY CELEBRATE OUR LOVE OF AVIATION.

- 0800 MASS BRIEF FOR PARTICIPATING PILOTS & CREWS ON MAIN APRON
- 0830 FLY VILLENEUVE TO DRAYTON VALLEY
- 0915 DRAYON VALLEY AIRPORT TOUR
- 0945 FLY DRAYTON VALLEY TO WETASKIWIN (TOUCH & GO OR LOW APPROACH ONLY)
- 1030 FLY WETASKIWIN TO CAMROSE
- 1045 CAMROSE AIRPORT TOUR
- 1115 FLY CAMROSE TO JOSEPHBURG
- 1200 JOSEPHBURG AIRPORT TOUR
- 1230 FLY JOSEPHBURG TO WESTLOCK
- 1315 WESTLOCK AIRPORT TOUR
- 1345 FLY WESTLOCK TO MAYERTHORPE
- 1430 MAYERTHORPE/BARRHEAD AIRPORT TOUR
- 1500 FLY MAYERTHORPE/BARRHEAD TO VILLENEUVE
- 1600 MASS DEBRIEF
- 1545 - 1800+ SHOW & SHINE AT VILLENEUVE



PRESENTED BY
OUTLAW AIR RACING
780.235.1088
SCOTT@OUTLAWAIRRACING.COM

PROUDLY SUPPORTED BY

- Elevate Aviation
- Aircraft Canada
- MLA Shane Getson
- PropWorks Propeller Systems
- Energy Efficient Homes
- Deadstick Radio

PLEASE PRACTICE
YOUR LOCAL COVID-
19 PROTOCOL

Students Returning To School For 2020-21 School Year

Continued from Page 4

“The health of students and staff is the priority. In our recent survey on re-entry, 86 per cent of parents that participated indicated they were in favour of a return to school plan for K-12 students. Community efforts are essential to ensure a safe learning environment for our children.” - Brandi Rai, president, Alberta School Councils' Association

“The Association of Alberta Public Charter Schools is

pleased the government invested the time to engage with the education system as they pragmatically developed the 2020-21 school re-entry plan. This announcement provides Alberta's public charter schools with the confidence and responsiveness they need to ensure a safe and successful return for the upcoming school year.” - Ron Koper, chair, The Association of Alberta Public Charter Schools

SUCCESSFUL TRANSITION TO SUMMER SCHOOL

AND CHILD CARE: Alberta's school re-entry plan works, and already has mitigated risks to students and teachers. Throughout the summer, the Calgary Catholic Separate School Division ran in-person summer school programming in accordance to the guidelines developed and issued by the province. These comprehensive guidelines have mitigated risk, resulting in no COVID-19 outbreaks among teachers or students participating in summer school.

Additionally, Alberta has seen a successful reopening of child care centres across the province. Children and staff have safely returned to these centres with no outbreaks occurring.

SCHOOL AUTHORITY FUNDING: School authorities have returned to full funding levels as of July 1, and every school authority in Alberta is receiving a funding increase for the 2020-21 school year - roughly \$120 million across the province. A list of funding for every school authority is available here.

In addition, the Minister of Education has approved the use of school board reserves, if needed, to help cover local COVID-19-related costs. The total amount of money sitting in school board reserves is \$363 million.

ACCELERATED CAPITAL SCHOOL FUNDING: The province has also provided school boards an additional \$250 million to support accelerated capital maintenance and renewal projects, as part of the more than \$10 billion infrastructure spending announced in the Alberta Recovery Plan.

This funding supports infrastructure enhancements that will help in a COVID-19 learning environment. Seventy-nine school projects totalling \$15 million are moving forward with this primary purpose, including upgrades for enhanced hygiene such as hands-free sinks, automatic flush toilets, touchless soap and paper towel dispensers, automatic doors and water bottle filling stations to replace water fountains.

NEW ONLINE STUDENT LEARNING HUB: A new Student Learning Hub on new.learnalberta.ca is available for parents, students, and teachers to more easily access educational materials to support development of student literacy and numeracy, and provide health and wellness information.

The online hub is another resource to support Alberta's school re-entry plan, with recognition that more online learning resources may be needed during the upcoming school year. Additional resources will also be added throughout the school year.

High-Performance Lifestyle Products
Take Your Life to the Next Level with B-Epic!

Call Today! (780) 907-8642

ELEV8
 Your Mind & Body
The Most Advanced Natural Performance Product Around the World

ACCELER8
 Your Weight Loss
Fast-acting, Synergistic Natural Weight Management and Sleep Combo

GR8 KIDS
 Boost Your Nutrition
Flavor-packed Nutritional Power Sticks: Great for Kids and Adults

HYDR8
 with Alkalized Water
Natural Coral Mineral Supplement: Great-tasting Alkalized Water

“ I am super excited!
 Down 4 lbs / 6.5 inches
 in 8 days. Feeling GREAT!
 Awesome product!
 - Donna **”**

“ I had given up on losing weight but 11 days in I dropped enough lbs to fit into a favorite pair of jeans hanging in my closet for the last 5 years - and they are loose, Yeah! - Kayla M. **”**

Begin your epic journey at www.bepic.com/elaine1

Continued on Page 10

Unreserved Live Auction Sale Frank & Helen Grund

Saturday, August 1, 2020

Duffield, Alberta - Time: 11:00 a.m.

Directions: From Duffield, Alberta Travel South on Rge Rd 32 for 0.8 Kms to Twp Rd 524A, East for 3.2 Kms to Rge Rd 30. Turn South for 1.9 Kms. East Side of the Road. Green Sign 52305 Rge Rd 30

Internet Bidding will NOT Be Offered on this Sale.

TRUCK & ATV



2015 Dodge 1/2 Ton 4x4 4dr Short Box Truck
w/ Only 1,521 Kms, Fully Loaded, Leather, Laramie Pkg, 5.7 Ltr Hemi & Auto



2019 JD XUV 560E 4x4 Side by Side Gator w/ Only 4 Hrs

SHOP TOOLS & SUPPLIES

New Table Saw, Stihl MS180C Chain Saw, Stihl 038 Chain Saw, Tool Boxes, Delta Scroll Saw, Power Tools, Sanders & Jig Saw, Ladders, Wheel Barrows, Large Assorted Tools

Terms & Conditions:

Cash, Cheque or Debit Card, 3% Administration Fee Will Be Charges on Credit Cards. G.S.T. Will Apply On All Items, All Items Must Be Paid For On Sale Day. As this is a live auction - **NO Buyers Premium** will be charged. *If you will not be able to attend in person, you may contact our office to make an absentee/phone bid by calling 403-843-2747 or 1-855-783-0556*

MACHINERY



Kubota L3901 FWA Tractor w/ Only 30 Hrs, Hydrostatic, Kubota LA525 FEL & 3 pth Kubota RTA1266 3 pth Rototiller



Like New JD D155 Lawn Tractor w/ Only 15 Hr & 48" Mower
JD D170 Lawn Tractor w/ 54" Mower Deck & 130 Hrs

MISCELLANEOUS

New BBQ, Stihl MM55C Tiller, Stihl FS38 Weed Eater, Electric Weed Eater, Leaf Blower, Lawn Boy 6.5 Hp Lawn Mower, Garden Tools, 12 Volt Plug in Cooler, Live Animal Trap, Mole Traps, Pet Carrier, Wooden Barrels

HOUSEHOLD

Black Leather Recliner Couch
Brown Leather Love Seat
2 - Round End Tables
TV Stand/Cabinet
Solid Black Walnut Table w/ 8 Chairs (No Leaf)
Oak Table w/ 2 Leafs & 4 Charis Folding Table
2 - Oak Bar Chairs
5 - Drawer Wooden Cabinet
Wooden Multi-Drawer Cabinet
2 - Small Filing Cabinets & Wooden Desk
Queen Sized Bedroom Suite w/ 2 Night Stands, Mirror & Dresser
Upright Deep Freezer
Lifespan TR1200 Tread Mill
Gourd Crafting Supplies
Deck Furniture & Lawn Chairs
Assorted Bedding & Linen,
Household Décor, Small Appliances & Supplies



Lunch Will Be Available
We ask that both our Customers & Staff abide by the guidelines set forth by Alberta Health Services.

Viewing by Appointment Only - Contact Helen at (780) 945-1865 or (780) 963-1215

Allen B. Olson Auction Service Ltd.

Rimbey, Alberta
License No. 165690

Email: abolson@telusplanet.net
Homepage: allenolsonauction.com

(403) 843-2747
1-855-783-0556

PARKLAND RCMP ATTEMPT TO LOCATE OWNER OF RECOVERED PROPERTY

Submitted by Parkland RCMP

On July 15, 2020, an Alberta Beach resident located a large, dark grey Lincoln

welder in the ditch near his property.

Parkland RCMP are asking anyone with information in relation to this item, or if they can identify the owner,

to please contact the Parkland RCMP at 825-220-7267 or your local police.

If you wish to remain anonymous, you can contact Crime Stoppers at

1-800-222-8477 (TIPS), online at www.P3Tips.com or by using the "P3 Tips" app available through the Apple App or Google Play Store."

Students Returning To School For 2020-21 School Year

Continued from Page 8

EXPANDING DIPLOMA EXAMS: Diploma exams will be offered in every subject in the November and April exam sessions. Expanding the offerings of the diploma exams will support school authorities who are shifting high school programming to a four-semester system as part of their COVID-19 re-entry plan. This shift allows for better cohorting by limiting the number of classes a student is in during a term without affecting total learning time

over the course of a year.

PERSONAL PROTECTIVE EQUIPMENT: Students and staff may wear a mask if they choose to. However, practices such as physical distancing, cohorting, frequent handwashing, staying home when sick and increased cleaning of surfaces will continue to be the priority public health measures.

COVID-19 CASES AT SCHOOL: If a student or staff tests positive for COVID-19, a public health team will investigate to determine when symptoms developed and support the

school to minimize transmission.

While each case will be addressed based on its unique circumstances, it is anticipated that in most cases only the group of students and staff who came in close contact will likely be required to stay home for 14 days, and not the entire school population.

Parents will be notified if a case of COVID-19 is confirmed at school and public health officials will contact those who were in close contact with that person.

TRANSITIONING TO SCENARIO 2 OR SCENAR-

IO 3: If there is an outbreak of COVID-19 in a community or school, health officials will work with Alberta Education and impacted school authorities to make any decision to potentially transition to partial in-class learning or at-home learning. Decisions will be based on multiple factors including the number of cases in a community or school and the risk of ongoing transmission.

The health guidance for scenario 2 has been updated to allow for a maximum of 20 students per class.

ANOTHER RAINBOW SALE

INDUSTRIAL ACREAGE AUCTION

Friday, August 14, 2020 Parkland County.

ANOTHER RAINBOW SALE

Shop Equipment: • 12000 lb 2 post truck and auto hoist (to be removed at customers expense) • Miller spectrum 25 Welder • Lincoln 125 Suitcase Welder (unused) • Industrial Power Team 100 ton Press • Star drill Press • Cratex Dust collector • King Industrial Planer • Bosch Router Table • Ridged 10" table saw on wheels • Query 7.5 HP - 80 gal -2 stage compressor • Modu industrial sand blaster

Sea Cans, Trucks, Industrial Trailers and Equipment: • 1-,20' Sea can as new • 1-,20' sea can (used) • Storm Guard Fisher 72" Snow Plow • Approx. 6 pallets of paving stones • 26' PJ Industrial trailer with flip up ramps • 2000 Ford F350 4x4 c/w air bags (out of province) • JD 960A John Deere -O-Turn mower • Pull type 20 gal weed sprayer • 624 E Snow Blower • Sierra Classic 1 Ton Project Mudder Truck • 8" suspension lift kit • 4x4 Danas 60 front end c/w lots of parts to complete this project

And many more tools and equipment included in this sale.

**ALL UPCOMING AUCTION SALES ARE ONLINE ONLY
FOR ALL THOSE NON COMPUTER INDIVIDUALS
-ABSENTEE BIDS ARE AVAILABLE !!**

****Watch website daily for new additions to auction lists****

Terms and conditions: Cash, Visa, MasterCard, Debit, Interac. Nothing to be removed until paid for. Subject to additions and deletions. A 10% handling fee, plus GST will be charged where applicable. Please be conscious of the handling fees and factor them into your bidding. Owner Rainbow Auctions & Liquidators or it's employees shall not be responsible for accidents.

SALE CONDUCTED BY:

**Stony Plain, AB. 780-968-1000
or TOLL FREE 1-866-968-1001**

**Complete Liquidation and
Auction Services Since 1978**

www.rainbowauctions.ca

BOOK YOUR SALE WITH US TODAY!

SERENITY FUNERAL SERVICE

NEW FACILITY

Chapel & Reception Centre

600 Calahoo Road Spruce Grove, AB

780-962-2749 www.serenity.ca

SERENITY FAMILY SERVICE SOCIETY - YOUR NOT-FOR-PROFIT SOCIETY

BARRHEAD
AUTO PARTS
ESTABLISHED IN 1975

Located 2 miles West of Barrhead on Highway 18.
Site 13 Box 6 RR2
Email: rob@barrheadautoparts.com

780-674-3443
1-888-577-4377

WWW.BARRHEADAUTOPARTS.COM

Quality
Used Parts

- Computerized Inventory
- Licensed Mechanics
- Quality Used & Rebuilt Parts For Cars & Trucks
- Competitive Labor Rates
- Buying Scrap Vehicles
- Used Pipe & Assortment of Metal
- Used Vehicles

Classified Ads - Call 962-9228

Dog Caretaker

Alberta Beach & Surrounding Areas, thinking of a Summer Getaway? Worried about leaving your dog in a kennel? Don't worry anymore, you can leave your pet with me! There is a wrap around deck and courtyard! I will provide tender loving care, with walks every day. Best of all, I'm cheaper than a kennel! Daily drop in's or overnight stays welcome. If interested call 780-920-4166 (4) 07-07 00

Computers

FREE Computers Checkup, Repairs NOT over \$50. You can have today good clean refurbished upgraded Laptop with Games, Pictures, Music, Videos for ONLY \$125. Call 780-892-2407 (12) 12-05

Antiques

HUGE ANTIQUES & COLLECTIBLES SALE, July 31 & Aug 1, Aug 14 & 15, 10am-5pm, Featuring Tea cups collections, Carnival glass, Antique Plows and more! 2224 Township Rd 545 in Onoway - Watch for the signs. (2) 28-07

EVER AFTER ANTIQUES & COLLECTIBLES 4823 - 50 Ave., Alberta Beach. Phone 780-237-3528. OPEN: Thurs, Fri, Sat and some Sun, noon to 5 pm. Other times by chance or appointment. We buy and sell antiques and unique collectibles! (11) 16-06

Landscaping & Maintenance

Stump Grinder For Hire - Alberta Beach & Surround areas. Call 780-779-3589 (28) 05-05

Firewood

SEASONED FIREWOOD: Birch, Tamarack, Spruce/ Pine & Poplar. 4x4x8 cord, Split and delivered or pick up at wood yard, 1/2 cord or full cords available. Call 780-967-5835 or 780-983-1495 (28) 31-03

For Rent

Completely renovated Motel in Onoway, AB. offering daily, weekly or monthly rentals. All utilities included, 55 inch tv with Satellite. Double bedrooms, furnished bachelors with full kitchen and furnished 1 bedrooms with full

kitchen available. Starting at \$950 + tax. Please call for viewing, 780-967-4420 or 780-945-1723. www.onowayinnandsuites.com

Furnished Basement Suite For Rent, 1 Bdm, Appliances, Utilities, Netflix all included. Avail Aug 1, N/S, Dogs considered. \$800/mth \$800 DD, Please 780-674-7431



PURE HEMP PRODUCTS

AGING IS INEVITABLE - LOOKING AND FEELING OLD ISN'T!

A Health and Beauty Breakthrough!

Cannabidiol, is one of over 80 active cannabinoid chemicals in the hemp plant. Unlike, THC, it does not produce euphoria or intoxication. It targets specific receptors in the cells of your brain & body. There are many physical and mental benefits to using these products for both treatment and prevention of numerous ailments.



Therapeutic Uses For Pure Hemp

Supports healthy blood sugar levels, promotes healthy energy levels, relieves anxiety, aids in digestion, supports optimal immune function and the regeneration of healthy cells, and promotes a sense of serenity and overall well-being.

Anti-Aging Uses For Pure Hemp

Promotes more youthful skin, provides hydration, enhances radiance, lessens age lines as well as the appearance of dark spots.

KEY BENEFITS

- PAIN RELIEF:** Known to reduce vomiting & nausea; suppress muscle spasms; reduce seizures & convulsions.
- PROMOTES HEALTH:** Helps to promote relaxation and overall health.
- WELL-BEING:** Helps to relieve anxiety, aid in digestion, supports optimal immune function and the regeneration of healthy cells.

PET PRODUCTS

PET CHEW TREATS

KEY BENEFITS

- SYNERGISTIC BENEFITS:** Can be used in conjunction with regular medications with no side effects.
- NO SIDE EFFECTS:** Does not damage the liver, kidney or GI Tract like OTC medication.
- DIETARY SUPPLEMENT:** Can be administered daily as part of your pet's diet.



ORAL SPRAYS & DROPS

KEY BENEFITS

- MANAGES PAIN:** Helps to treat inflammation, arthritis and joint pain.
- TREATS DIGESTIONAL ISSUES:** Helps with loss of appetite, nausea, IBS and gastrointestinal swelling.
- GENERAL HEALTH:** Helps to manage mood, anxiety and general joint pain. For healthy, happy pets.
- CONVENIENT:** Can be sprayed into pet's mouth or on food.

For more information, Call (780) 907-8642

SUDOKU

of the week

Here's How It Works: Sudoku puzzles are formatted as a 9x9 grid, broken down into nine 3x3 boxes. To solve a sudoku, the numbers 1 through 9 must fill each row, column and box. Each number can appear only once in each row, column and box. You can figure out the order in which the numbers will appear by using the numeric clues already provided in the boxes. The more numbers you name, the easier it gets to solve the puzzle!

		8	4		5	6	1	
4			2			7		
9	3	1			8	4	5	
3	5	7		4				
	4		8	3	1			6
					2		3	
5				1	2		3	
	7		3				4	5
8				6			9	7

ANSWER:

7	2	8	4	9	5	6	1	3
4	6	5	2	1	3	7	8	9
9	3	1	6	7	8	4	5	2
3	5	7	9	4	6	8	2	1
2	4	9	8	3	1	5	7	6
1	8	6	7	5	2	9	3	4
5	9	4	1	2	7	3	6	8
6	7	2	3	8	9	1	4	5
8	1	3	5	6	4	2	9	7

WEEKLY PUZZLE SPONSORED BY:



As your community newspaper, we are committed to delivering the latest and most accurate COVID-19 news and local updates. We also remain dedicated to serving our local advertisers, as they struggle to overcome unprecedented economic challenges resulting from the pandemic.

ADVERTISERS, call 780.962.9228 to learn how we can help you.

In uncertain and troubled times like today, the importance of local news and community connection is more evident than ever. You can help support businesses in our community by purchasing gift cards for later use, frequenting restaurants that are open for takeout or checking to see if your favorite businesses have opened online stores. You can also support the future of local news and reporting by reserving your ad space today and letting our readers know how they can help you!

Together, we are all stronger.



COMMUNITYVOICE local community • local economy • local news
In Print & Online | 780.962.9228 | www.com-voice.com

SERVICE DIRECTORY

ATB Financial
ALBERTA BEACH AGENCY
4824 - 50 Ave, Alberta Beach
DUE TO COVID-19:
Banking by appointment *Only*
CALL 780-924-2211
UNTIL FURTHER NOTICE

JAVORSKY DITCHING
Onoway, AB
Phone: (780) 967-5486
Cell: (780) 906-7469
Fax: (780) 967-4961
Dennis Javorsky - Owner / Operator
For All Your Excavating Needs
Sand & Gravel Hauling • General Excavating
Septic Tanks & Cisterns • Site Prep & Clean Up
• Install & Repair of Water, Sewer,
Power & Telephone Lines

Mobile Welding & Repairs, Big or Small
Murowchuk & Son Contracting Ltd.
"I won't burn a hole in your pockets"
Ren Murowchuk / CWB Certified Red Seal Welder
renmurowchuk@yahoo.ca
Box 1322, Onoway Alberta T0E 1V0
Cell 780-499-1835

MARK MARTIN PFEIFFER
MASTER BRICKLAYER/MASON
Cell: 780-242-3308
Email: pfeiffer.mark@hotmail.com
• Brickwork • Stonework
• Rockwork • Parging
• Concrete Block Work
• Tile Work (all kinds)

COMMUNITYVOICE
THIS SPACE IS RESERVED FOR YOU!

BRO-BUILT
Homes & Contracting Ltd
"We Pride Ourselves In Turning Handshakes Into Hugs"
www.brobuilthomes.com
Testimonials
Phone 780-940-6415

SERVICE DIRECTORY

Scerv Construction Ltd.

- Engineered Screw Piles • Framing • Trenching
- Skidsteer Work • Insulating • Roofing
- Snow Removal • Drywall • Decks
- Excavator Services • Taping

Menko Helmus Cell: **780-305-3864**
 Email: **m1988_10@hotmail.com**
 PO Box 4795, Barrhead, AB T7N 1A6

AFFORDABLE SOLUTIONS
 PLUMBING, HEATING & BACKHOE SERVICES INC.



FULL SERVICE PLUMBING & HEATING
 SEPTIC TANK & FIELD REPAIR & REPLACEMENT
 FULLY INSURED & BONDED
 COMMERCIAL & RESIDENTIAL
 WARRANTY ON ALL WORK

780-655-5683
LOVE AT FIRST SERVICE CALL!
SPEAK DIRECTLY TO A SERVICEMAN

MASTER PLUMBER



36 YEARS EXPERIENCE
780-655-8402

PLUMBING & HEATING SERVICES
PRICE BY THE JOB NOT THE HOUR!
FURNACE REPLACEMENTS

MasterCard WCB VISA

CALIBRE DRILLING LTD
 DRILLING AND SERVICING YOUR WATER WELL.

SPECIALISTS IN AIR & MUD ROTARY DRILLING

- Water Well Drilling • Pump Installations
- Pressure Systems • Well Tests
- Licensed Drillers • Year Round Drilling
- Geotechnical Drilling • Cathodic Protection
- Free Estimates

Quality Workmanship Five Year Warranty
(780) 960-2992
 BOX 4083 SPRUCE GROVE, AB T7X 3B3

TRI-LAKES SERVICES LTD.



• Septic Hauling • Drinking Water Delivery
 • Portable Washrooms • Steam Truck

www.trilakeservices.ca / office@trilakeservices.ca
 (877) 727-3939 / (844) 967-9176

SERVING: Lac Ste. Anne County • Parkland County • Yellowhead County East

R & S TOWING

FREE REMOVAL OF UNWANTED VEHICLES

MasterCard **967-2492** VISA

THE HAY TRUCKING & CONSTRUCTION
 ONDWAY, AB

COR Certified

- Oilfield
- Road Building
- Basements
- Dugouts
- Sand & Gravel

haytrucking@xplomet.ca
 www.hayandc.com
 Office: 967-5849 Cell: 818-5849

COMMUNITYVOICE

THIS SPACE IS RESERVED FOR YOU!

DONALD N. GREENWAY
 Chartered Accountant

Suite 205 Sunrise Professional Building
 215 McLeod Avenue
 Spruce Grove, AB

(Bus.) **962-6366**
 (Fax) **962-3990**

ZEE BEST RENOVATIONS
 Your Complete Line of Renovation Needs:

- Bathroom
- Basements
- Plumbing
- Tileworks
- Drywall & Taping
- Decks & Fencing
- Roofing
- Siding

FREE ESTIMATES
26 YEARS EXPERIENCE
INSURED | GREAT RATES

JOE LAWRENCE
 MANAGER

BUS: 780-967-3898
 CELL: 780-915-3348
 FAX: 780-967-3798

2Bros
 Custom Contracting Ltd.

Custom Framing • Concrete Floors • Shingling
 Siding Soffit Fascia • Styrofoam Block System

Jeff 780-717-0520

ALL AROUND FENCING RENTALS

Fence Panels • Barricades
 Installation by Collin Toilet Rentals

Whitecourt, AB
780.706.7978



PEMBINA CONCRETE PRODUCTS LTD.

Manufacturers of
ONE PIECE SEPTIC & HOLDING TANKS

* Water Cisterns * Field Systems *
 Pumps and Accessories * Sumps

DELIVERED TO YOUR SITE
 1-800-661-3047
 780-727-2702
 PembinaConcrete.com

New Line of Concrete Statues, Fountains and Garden Ornaments.
 BOX 123, Entwistle, T0E 0S0



SERVICE DIRECTORY



PaddlePlastics Ltd.
Mayerthorpe, AB

Box 67
Mayerthorpe, AB T0E 1N0

Ph: (780) **786-4408**
Fax: (780) 786-4466



Mo-Bil WASH SERVICES Ltd.

- Steam • Hot & Cold High Pressure Wash • Sewer Thaw & Flush
- Residential • Commercial - Oilfield

24 HOUR SERVICE
Onway Call (780) 991-9466



- Screened Black Dirt
- Beach Sand
- Road Gravel • Fill Dirt
- Bobcat & Backhoe Available

(780) 220-5849



Blakeman Drilling Ltd.

Waterwell Drilling & Servicing
Pumps & Pressure Systems

SERVING LAC STE. ANNE & WEST PARKLAND FOR OVER 25 YEARS

Joe (780) 924-3024



BACK COUNTRY PIPEFITTING LTD.
Plumbing & Heating

Lee Hicks 780-898-1062
Journeyman Plumber

Residential and Commercial Plumbing and Heating.
SERVING: YELLOWHEAD, PARKLAND, LAC STE. ANNE & BRAZEAU COUNTIES.



PREVAIL MAX
CELLULAR HOMEOSTASIS FORMULA

A NUTRITIONAL BREAKTHROUGH THAT SUPPORTS YOU... RIGHT DOWN TO THE LAST CELL!

LIVIN TRIM WITH
VALENTUS (780) 907-8642
www.ValentusTour.com/Ladybug



Tile Setting
Ceramic & Natural Slate

Kitchen & Bath - Backsplash & Surrounds
Fireplace Floors

"Serving Lac Ste. Anne and West Central Alberta Areas for over 25 years"

OFFERING DISCOUNTS DURING THESE TROUBLING TIMES

Thorsen Industries Call
Christian @ 403-896-8170



COMMUNITYVOICE

THIS SPACE IS RESERVED FOR YOU!



H&P Kosik CONSTRUCTION Ltd.

- Road Building • Gravel • Sand • Dugouts
- Black Dirt

No Job too small. We do them all!

Harvey cell. 780-445-9010 ph. 780-892-3532
Box 145, Darwell, AB. T0E 0L0



Collin Toilet Rentals & Service

Your Portable Toilet Supplier for:

- Construction
- Commercial
- Oilfield
- Special Events

Whitecourt Dispatch 780.778.2448



standstone VACUUM SERVICES LTD.



Proudly Serving Lac Ste. Anne County
1-877-226-5008 780-924-2435 780-967-2118
www.standstonevac.ca or visit our facebook page



ROY SHERWOOD
Master Electrician

Ph: 780-968-1425
Call: 780-908-2287
Fax: 780-968-2211

Email: suretechroy@gmail.com

2-53220 Rge Rd 21
Parkland County, AB
T7Y 0C5

**Control & Automation
Commissioning
Solar Sales & Service**

Industrial . Commercial . Residential



VILLAGE GLASS & MIRROR LTD.

- AUTO
- RESIDENTIAL
- COMMERCIAL GLASS & MIRROR PRODUCTS

5027 - 50 Avenue • Phone: 967-2127
PO Box 609, Onway, AB T0E 1V0

The service you need, from people you trust.

- Septic Services: Residential, Commercial
- Holding Tanks and Field Systems
- Effluent Pumps supplied & Installed
- Portable Toilets: Standard, Wheelchair Accessible
- Products: BioClean, Liquid Enzyme, Potty Treat
- Potable Water

Great Rates & Reliable Service! Call us today!



SANGUDO VETERINARY CLINIC

Box 581, 4916 - 52 Ave. Sangudo, AB. T0E 2A0

Dr. Ralf Sanders DVM

Ph: 780-785-2200
Fax: 780-785-2228
sangudovet@gmail.com

24 HOUR EMERGENCY SERVICE

SERVICE DIRECTORY

ANOTHER RAINBOW SALE

RAINBOW LIQUIDATORS & AUCTIONS

Farm Sales, Equipment Sales, Estate Sales
BOOK YOUR SALE WITH US TODAY!
 Serving the Community since 1978

Ph: (780) 968-1000
 Stony Plain, AB 1-866-968-1001
www.rainbowauctions.ca

SMOOLE

- Construction & Septic Installation
- Environmental Wastewater Disposal
- Site Design & Evaluation
- Power, Water & Basement Excavation
- Trackhoe, Backhoe, Bobcat & Dump Truck

For All Your Excavation Needs

Call Dan 780-991-4484 Reid 780-909-0173

Jack's Auto Body

& 24 HR Towing

SPECIALIZING IN COLLISION REPAIR
GUARANTEED WORK • INSURANCE CLAIMS

CAA BOX 9 SITE 306 RR3, ONWAY, AB T0E 1V0
(780) 967-5850

OUR PLEDGE IS QUALITY

H&E UPHOLSTERY

FOR ALL YOUR UPHOLSTERY NEEDS

Convertible tops for cars and boats, custom car and boat interiors, 5th wheel trailer skirts, boat tarps, ATV seats, furniture, kitchen chairs, heavy equipment seats.

WWW.HANDE.CA 4-485 South Ave.
 For more information contact: Spruce Grove
 kirk@hande.ca (780) 962-3048

POSTINGFIRST.com

FREE LOCAL CLASSIFIED ADS

Real Estate, Rentals, Vehicles, Pets, Jobs, Service Directory, Buy/Sell/Trade, Lawn & Garden, Garage Sales, Events, Local Places & Much More... Advertise for **FREE** Today!

Follow Us

THE MOST COMPLETE NUTRITIONAL SPRAYS ON THE PLANET

ORDER TODAY!
(780) 907-8642

www.Elaine1.com

THE CORING GUY

- Concrete Coring & Cutting • Concrete Demolition
- Electric or Diesel Slab Sawing • Core Drilling
- Skid Steer / Mini Excavator Operations

Commercial - Residential

Laurence Markwart Cell: (780) 220-6164
 LAC STE. ANNE COUNTY Email: lmarkwart@gmail.com

COMMUNITYVOICE YOUR LOCAL NEIGHBOUR

THIS SPACE IS RESERVED FOR YOU!

Pm Park Memorial Ltd.

Funeral Home & Crematorium

Fran Marion
 Licensed Funeral Director

Mayerthorpe: 780-786-2533
 Whitecourt: 780-779-2533

Serving Mayerthorpe, Whitecourt and area

Edmonton | Lamont | Mayerthorpe | Smoky Lake | Vegreville

SUMMERS DRILLING LTD.

Water well drilling and service
 Family owned Business Serving Alberta since 1917

Never run out of water again!

5 year workmanship warranty

Tired of hauling water? We can install a water well with a permanent water supply for as little as \$150/month OAC

3 Convenient ways to pay

- Visa
- Mastercard
- We now offer full financing

Stop in at our office 4405 - 50 Street, Stony Plain
 780-963-1282
admin@summersdrilling.com

GRANDE TIRE

5115 LAC STE. ANNE TRAIL N. ONWAY, AB T0E 1V0

Full Mechanical Services
Tire Sales & Repairs

BUS: (780) 967-3432
FAX: (780) 967-4816
contectire@xplomet.com

PURE HEMP PRODUCTS

AGING IS INEVITABLE - LOOKING AND FEELING OLD ISN'T

KEY BENEFITS:

- Inhibits Cell Growth in Tumors
- Relieves Pain
- Promotes Health
- Relieves Anxiety
- Neuroprotective

(780) 907-8642

TRUIS & ONWAY REGISTRIES

INSURANCE

Box 390, Onway, Alberta T0E 1V0
 Tel: 967-5270 Fax: 967-4303

OPEN 9-5 MONDAY - FRIDAY
FIRST & LAST SATURDAY OF EACH MONTH 9-12* *excluding long weekends
 Registries Closed from 12:00 pm - 1:00 pm

ALL GENERAL REGISTRY SERVICES

Home - Auto - Farm - Life and Business

Very Competitive Rates & Convenient Payment Plans.

Clients first...Service Always!

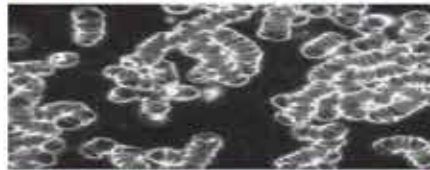
PREVAIL CELLULAR HOMEOSTASIS FORMULA MAX

A NUTRITIONAL BREAKTHROUGH THAT SUPPORTS YOU
...RIGHT DOWN TO THE LAST CELL!

How do you want your
BLOOD to look?



Before PrevailMAX:



- poor circulation
- low energy
- brain fog
- dehydration
- decreased nutrients
- pH imbalance
- poor endurance

After PrevailMAX:



- better circulation
- more vitality
- mental clarity
- cellular movement
- nutrient assimilation
- balanced pH
- optimal endurance

PrevailMAX™ is a nutritional breakthrough that delivers a rapid increase of internal blood cell pressure to speed absorption, enabling the body to take maximum advantage of the nutrients in foods and supplements. The electrolytes are small enough to penetrate your cell membranes, to bind with your cells, and to be carried wherever they are needed in the body.

At the microscopic level of human cells, **PrevailMAX™** supports healthy cell performance – a nutritional breakthrough for your cells.

When you use **PrevailMAX™**, you will feel more energy and an ability to focus like never before. Take a few sprays today and see just how good you can feel!

LIVIN TRIM WITH
VALENTUS

www.ValentusTour.com/Ladybug

(780) 907-8642