



COMMUNITY VOICE

YOUR LOCAL NEWSPAPER

Serving: Alsike, Brazeau County, Breton, Calmar, Devon
Drayton Valley, Leduc, Sunnybrook, Thorsby and Warburg.

July 28, 2020

LEDUC COUNTY DECLARES MUNICIPAL STATE OF AGRICULTURAL DISASTER

Submitted by Leduc County

Leduc County council declared a Local State of Agricultural Disaster at its special council meeting this morning, in response to ex-

cessive moisture and weather conditions negatively impacting local producers.

Continued on Page 6

GOVERNMENT SUPPORTS JOBS & SAFE OPERATIONS OF JUNIOR MINING EXPLORATION

Submitted by Gerald Soroka, MP for Yellowhead

Gerald Soroka, Member of Parliament for Yellowhead, and Deputy Shadow Minister for Natural Resources (Forestry and Mining), is pleased to inform constituents that the government is taking measures to support junior mining exploration

companies facing significant challenges as a result of COVID-19, including voluntary shutdowns or difficulty accessing the field.

Continued on Page 6

EMERGENCY FUNDING FOR COVID-19 SAFETY MEASURES IN FOREST OPERATIONS

Submitted by Gerald Soroka, MP for Yellowhead

Gerald Soroka, Member of Parliament for Yellowhead, and Deputy Shadow Minister for Natural Resources (Forestry and Mining) is pleased to inform constituents that the government will be providing \$30 million to offset the additional costs associated with COVID-19 safety measures

for small and medium sized enterprises in the forest sector, including tree planting operations.

Continued on Page 6

Shoe CraftsMen 

SHOE REPAIR
60 yrs experience

Owner: Rouben
110C McLeod Ave.
Spruce Grove T7X 2H8

780-862-1431

PREVAIL MAX
CELLULAR HOMEOSTASIS FORMULA

Nutritional Breakthrough For Your Cells

LIVIN TRIM WITH
VALENTUS
(780) 907-8642
www.ValentusFour.com/Ladybug

PURE HEMP PRODUCTS
All-in-One Hemp Leaf, Flower, and Refine Oil Extract

 **KEY BENEFITS:**
Inhibits Cell Growth in Tumors
Relieves Pain
Promotes Health
Relieves Anxiety
Neuroprotective

(780) 907-8642

High-Performance Lifestyle Products



100% MONEY BACK

Call Today! **(780) 907-8642**
www.bepic.com/elaine1

 **View us ONLINE!**
WWW.COM-VOICE.COM



COMMUNITYVOICE
—YOUR LOCAL NEWSPAPER—

PUBLISHED WEEKLY (Zone 1 & 2)
AND BIWEEKLY (Zone 3)

E.J. Lewchuck & Associates Ltd.
#6 - 40 South Avenue
Box 3595
Spruce Grove, AB T7X 3A8

SALES TEAM
Elaine
Ashley
Dani

TELEPHONE:
Classifieds 962-9229
Advertising 962-9228
Fax 962-1021

E-MAIL:
comvoice@telusplanet.net
news@com-voice.com

LEDUC COUNTY RECEIVES FEDERAL FUNDING TO EXPLORE BUSINESS SUPPORT FACILITY

Submitted by Leduc County

Leduc County has received \$70,000 in funding from Western Economic Diversification Canada (WD) to conduct a feasibility study on re-purposing the former Nisku Recreation Centre (NRC) into a business retention and expansion facility.

The study, which will be completed by September, will include visioning, modeling and operational design to transform the space into a business development hub for local businesses, entrepreneurs and start-up companies.

“Now – more than ever – new and existing businesses need support. With the investment by Western Economic Diversification Canada, we have the opportunity to explore new ways to provide the best possible support to our business community. This will help cultivate an environment that promotes innovation, creates jobs, attracts new investment and grows the local economy.” - Mayor Tanni Doblanko

The study will incorporate consultation with business community stakeholders and inform a possible path forward for the NRC facility, which closed at the end of last year. Administration has been exploring and reviewing other options and alternatives for the building.

“The Nisku Region holds tremendous economic potential in manufacturing, agriculture and more, and the federal government is committed to playing its part and helping grow the local economy and create jobs. Now, with the support of Western Economic Diversification Canada, the

local government will be able to identify important programs or services that will support economic recovery in communities across Leduc County.” - The Honourable Mélanie Joly, MP for Ahuntsic-Cartierville, and Minister of Economic Development and Official Languages and Minister responsible for Western Economic Diversification Canada

WD funding for this project is being provided as part of the Government of Canada’s Canada Coal Transition Initiative (CCTI). This initiative supports skills development and economic diversification activities to help workers and communities adapt to Canada’s transition from coal mining and coal-fired power generation to a clean growth economy with reduced greenhouse gas emissions.

TO VIEW THE PROPERTIES

MaxWell CALL OR TEXT **TARAS CHMIL**
POLARIS **587 983 2916**



<p>64x24 SHOP & kitchen/offc/bathrm Waterfront BOAT HSE w/roof deck 110ft LAKE front DOUBLE LOT Walk out STONE bung & double GARAGE Bsmr with KITCHEN in law suite Lake Wabamum Seba Beach</p>	<p>8.37 Acres Large Workshop Quonset Not in a subdivision Bung with total of 4 bedrooms ACREAGE by Seba Beach</p>
--	---



SERENITY FUNERAL SERVICE

NEW FACILITY
Chapel & Reception Centre



600 Calahoo Road Spruce Grove, AB
780-962-2749 www.serenity.ca
SERENITY FAMILY SERVICE SOCIETY - YOUR NOT-FOR-PROFIT SOCIETY

JOKE of the week

Pete and Harry were talking one day.
"My wife asked me to buy ORGANIC vegetables from the market garden," said Pete.
"So were you able to find some?" Harry asked.
"Well when I got to the market, I asked the gardener, 'These vegetables are for my wife. Have they been sprayed with any poisonous chemicals?'"
"The gardener answered:
"No, you'll have to do that yourself."

MAKE YARD WORK DISAPPEAR



YARD SERVICES JUNK REMOVAL

- > TREE REMOVAL
- > RENOVATION DEBRIS
- > GENERAL YARD CLEAN UP
- > LANDSCAPING MATERIAL
- > WILL HAUL ANY MATERIAL REQUIRED FOR YOUR NEEDS. *FITS IN MY TRAILER I CAN HAUL IT.

SERVING LEDUC & PARKLAND COUNTIES
CALL / TEXT BEN 780.919.7538

UTILITY BILL ASSISTANCE FUND AVAILABLE BY DIALING 211

Submitted by Direct Energy

Strongly committed to Alberta, Direct Energy and Direct Energy Regulated Services is proud to continue its partnership with the United Way of Calgary and Area, and to begin a new partnership with the United Way Alberta Northwest to help Albertans experiencing financial crisis pay their utility bills.

The impact of COVID-19, compounded by the challenges faced by Alberta's energy sector, has put significant financial stress on families across the province. United Way's Direct Energy Emergency Fund provides a helping hand for hundreds of Alberta families and reduces the risk of

debt due to utility bills in arrears or disconnection notices. Since it began in 2017, Direct Energy has committed more than \$575,000 to the Fund.

This announcement follows the province-wide end of the 90-Day Utility Payment Deferral Program, through which Albertans were able to defer bill payments until June 18, 2020. Knowing that many families continue to face financial challenges, Direct Energy is providing program participants with a 10-month repayment plan, in addition to ensuring the Fund is in place for families in need of assistance. Effective July 2020, any Albertan living in the Calgary or Grand Prairie area may contact 211 to speak with a case worker to determine eligibility.

"With almost one million customers, we understand the financial challenges many Albertans are facing. We want to help those who need it most," said Tanis Kozak, Vice President and General Manager, Canada, Direct Energy. "Since the fund kicked off in 2017, the Direct Energy Emergency Fund has delivered much-needed financial relief for over 900 individuals and families struggling with basic needs, including natural gas and electricity bills."

"With our current economic reality, and the onset of COVID-19, we've seen a big spike in the number of Calgarians struggling to pay for basic needs, including utilities," said Karen Young, President and CEO of United Way of Calgary and Area. "We are grateful for our

renewed partnership with Direct Energy, which will allow Albertans who face financial challenges to access emergency funds that prevent them from slipping into further debt."

Direct Energy's 2020 funding commitment of \$75,000 will be available to Albertans served by the United Way of Calgary and Area and the Grand Prairie Region.

Disconnected or pending disconnected utilities are not a specific requirement.

All requests for individual assessment and assistance should be directed to 211 or www.ab.211.ca.

For further details about the Fund, please visit www.directenergy.com/alberta/emergencyfund.

GROVE HEARING CLINIC

960-2960

1-866-960-2960

Hear what you've been missing...

Full Service & Repair

Full Hearing Assessments



HOURS OF OPERATION: 9am – 5pm Weekdays

3rd party billing (AADL, WCB, DVA, FCH) • Personal 0% Financing if Needed

For The Latest Technology In Hearing Aids & Assisted Living Device Stop By & See Dawn

#220-70 McLeod Ave - Westland Market Mall, Spruce Grove

ALBERTA RCMP MAJOR CRIMES UNIT INVESTIGATING SUSPICIOUS DEATH

Submitted by Alberta RCMP

July 8, 2020 - UPDATE #1
Leduc County, Alta - The RCMP Major Crimes Unit continues to investigate the death of a male which occurred on June 18, 2020 in Leduc County at a house party. The RCMP is looking for assistance from the people present to identify the

subjects responsible. The death of 19-year-old Jacob Michael Chitze of Edmonton has been ruled a homicide. There was no known connection between Jacob and his assailants. There were approximately 100 party-goers and it is very likely that people took video of the incident leading to Jacob's death. The RCMP is asking that

anyone who was at the party who either has information to provide, or has video, to please contact the Leduc RCMP at 780-980-7267. If you wish to remain anonymous, you can contact Crime Stoppers at 1-800-222-8477 (TIPS), online at www.P3Tips.com or by using the "P3 Tips" app available through the Apple App or Google Play Store.



Photo of Jacob Michael Chitze

RCMP WARN PUBLIC OF HIGH RISK OFFENDER

Submitted by Alberta RCMP

Edmonton - In the interest of public safety, Alber-

ta RCMP are issuing the following information and warning in regard to the release of Kyle Dennis Johnny (37) on July 17, 2020, having served 10 years and 9 months for aggravated assault and robbery. Johnny, who will be residing in Saddle Lake, Alta., is described as:
• Indigenous male
• 180cm (5'11)
• 100kg (220lbs)
• Brown hair and brown eyes
Johnny has been convicted of multiple offences in-



cluding: manslaughter, assault causing bodily harm, robbery and aggravated assault. The Alberta RCMP is issuing this information and warning after careful deliberation and consideration of all related issues, including privacy concerns, in the belief that it is clearly in the public interest to inform the members of the community of Johnny's release. The RCMP believes that there is a risk of significant harm to the health and safety of the public. The intent of this process is to enable members of the public to take suitable precautionary measures and not to embark on any form of vigilante action. Anyone believing that a crime has been or is about to be committed is encouraged to call police. If the matter is felt to be of an urgent nature, please call 911 to report the location and circumstances.




MLS E4200600 \$276,421
300 1 Ave W - Buck Lake


- Log Home Hand Crafted, Picturesque 0.65 Acres, Metal Roof
- 2 Bdrm, 3pc Bath, Eat In Kitchen, Living Rm w/ Wood Stove
- 2016 New Plumbing, In Floor Heat Whole Home, Hot H2O Tank, Septic Tank, Drilled Well, Bthrm Ready For Stacking Washer/Dryer
- 27x10ft Covered Veranda w/ Swing, FirePit, PlayStructure, SeaCan
- Minutes to Scenic Lake, Public Boat Launch (3 options), Great Fishing, Boating, Skiing, Bird Watching, Short Walk to Amenities

Doreen Noppers REALTOR®
Cell: 780-885-7398
doreen.noppers@royalpage.ca

ROYAL LEPAGE
Helping you is what we do.
NORALTA REAL ESTATE



Warburg Nurse Practitioner-Led Clinic now open!
Currently accepting new patients who do not have a family doctor or would like a provider closer to home.



Nurse Practitioners (NPs), like family doctors, can:

- Examine patients
- Diagnose health conditions
- Order and interpret screening & diagnostic tests
- Treat and manage acute and chronic illness
- Prescribe medications/medication review
- Refer to specialists & other health care providers

Operating out of the Village of Warburg office. All services by appointment only; walk-ins and house calls cannot be accommodated. For more information or to make an appointment, call 825-320-3000.

STUDENTS RETURNING TO SCHOOL FOR 2020-21 SCHOOL YEAR

Submitted by Government of Alberta

Schools will be ready to welcome students under scenario 1, which is near-normal daily operations with health measures.

Alberta's government has developed a re-entry tool kit to prepare parents and students for what to expect in the new school year. The tool kit includes videos for students explaining some of the health measures, a guide for parents, frequently asked questions, school posters, a self-screening questionnaire in multiple languages, and links to health guidelines.

"Alberta continues moving ahead with our recovery and relaunch plan. I'm proud of our comprehensive plan that supports the safe return to daily in-school learning. The return of more than 750,000 students to near-normal learning in the new school year is indicative of Alberta's continued recovery as we work to relaunch our economy and return to our regular everyday lives." - Jason Kenney, Premier

"We are determined to do everything that we can to safely return our students, teachers and staff to school. I appreciate the input and support of school authorities across the province, as well as our education partners, in developing and refining our school re-entry plan. We are providing clear and detailed guidelines and a re-entry tool kit so everyone can do their part and prepare for a safe return to school." - Adriana LaGrange, Minister of Education

"We are committed to do-

ing everything possible to protect the health and safety of students, staff and families during the upcoming school year. There is no risk-free approach to COVID-19 but there are also risks to children's overall health from school closures. We are continually refining our public health advice for schools based on best available evidence. We also have plans in place to respond quickly when cases are identified. Limiting the spread of the virus in schools will require the dedication and support of all Albertans when the school year begins this fall." - Dr. Deena Hinshaw, chief medical officer of health

Under scenario 1, schools will implement a number of public health measures, which include frequent cleaning of surfaces, placing hand sanitizers at school entrances and classrooms, grouping students in cohorts, and planning the

school day to allow for physical distancing, which could include staggering start times for classes, recesses and lunches. Additional public health measures may be established prior to September on the advice of the chief medical officer of health in consultation with the education system.

In addition, students, staff, parents and school visitors will be expected to use a self-screening questionnaire daily to determine whether they can enter the school.

"The Alberta School Boards Association is pleased that this plan was released earlier than expected as it provides more time for finalizing school board plans. We appreciate the various experts, parents and community members that helped inform a plan that prioritizes the health and safety of students and staff. ASBA and all school boards will work diligently to implement


this plan and look forward to continuing to work with the Minister of Education throughout the upcoming school year." - Lorrie Jess, president, Alberta School Boards Association

"The College of Alberta School Superintendents appreciates the opportunity to work alongside government and education partners to develop a detailed re-entry plan. The CASS board of directors strongly believes that the re-entry plan offers the appropriate balance of guidance from the chief medical officer of health and the government while providing for the authority and autonomy for individual school divisions to assure their students, parents and staff that a successful return to school will be safe."

- Bevan Daverne, president, College of Alberta School Superintendents


Continued on Page 11

Canada Emergency Wage Subsidy (CEWS)



Gerald Soroka, MP
Yellowhead

GERALD.SOROKA.c1@PARL.GC.CA -- (780) 723-6068



Extended to December

The new changes to the CEWS would also:

- Make the subsidy accessible to a broader range of employers by including employers with a revenue decline of less than 30% and providing a gradually decreasing base subsidy to all qualifying employers. This would help many struggling employers with less than a 30% revenue loss get support to keep and bring back workers, while also ensuring those who have previously benefited could still qualify, even if their revenues recover and no longer meet the 30% revenue decline threshold.
- Introduce a top-up subsidy of up to an additional 25% for employers that have been most adversely affected by the pandemic. This would be particularly helpful to employers in industries that are recovering more slowly.
- Provide certainty to employers that have already made business decisions for July and August by ensuring they would not receive a subsidy rate lower than they would have had under the previous rules.

WE WANT YOUR QUALITY TRADE. WE WANT TO EARN YOUR BUSINESS.

**ALL-WHEEL-DRIVE
SUVS**



STARTING AT
\$157
BI-WEEKLY
OAC



(780) 542-4438
1-866-841-3673

5214 POWER CENTRE BLVD DRAYTON VALLEY, AB

LOCAL PROJECTS TO CREATE JOBS AND IMPROVE CORE INFRASTRUCTURE

Submitted by UCP Government Caucus of Alberta

Drayton Valley-Devon, Alberta: As part of Alberta's Recovery Plan the Drayton Valley-Devon region was awarded funding for several Strategic Transportation Infrastructure Program (STIP) projects to create jobs and support core infrastructure in the community.

Alberta's government has announced approximately \$50 million in additional STIP funding across the

province to support approximately 70 new projects and over 475 jobs, boosting economic recovery and getting Albertans back to work.

The County of Leduc received \$289,000 to do bridge repairs. Parkland County was given over \$1.3 million for bridge replacements.

"These vital projects create jobs for hard-working people. Thanks to Alberta's Recovery Plan, core municipal infrastructure projects are being recognized. I'm thankful Alberta's gov-

ernment is making these important investments in our communities." - Mark Smith, MLA for Drayton Valley-Devon

In the County of Brazeau, 13 jobs will be created as a result of a \$2,556,000 provincial grant for wastewater treatment upgrades.

Alberta's government has invested about \$150 million to support 55 water and wastewater improvement projects creating approximately 1,300 jobs, boosting economic recovery and getting Albertans back to work.

Alberta's Recovery Plan

is a bold, ambitious long-term strategy to build, diversify, and create tens of thousands of jobs now. By building schools, roads and other core infrastructure we are benefitting our communities. By diversifying our economy and attracting investment with Canada's most competitive tax environment, we are putting Alberta on a path for a generation of growth. Alberta came together to save lives by flattening the curve and now we must do the same to save livelihoods, grow and thrive.

Leduc County Declares Municipal State of Agricultural Disaster

Continued from Page 1

"As a council, we recognize the extreme conditions our farmers are facing. The amount of precipitation we received in May alone is more than double the long-term average, and parts of our county have broken a 55-year record for spring precipitation. This has led to more than 220 quarter sections not being seeded and many crops in distress. It's our hope that making

this declaration will bring awareness to the issue and encourage other levels of government to provide support where possible." - Tanni Doblanko, mayor of Leduc County

From May 1 to July 9, precipitation recorded at four weather stations within Leduc County indicated at least 100 mm more rain than the long-term average for that time period.

"Producers are rightfully concerned. Even with crops

that are doing well right now, such as hay crops, farmers aren't able to get onto their fields to cut or bale because the ground is too saturated for heavy equipment. If this wet weather continues, many of the crops that are in fair condition will degrade in quality as well." - Aaron Van Beers, manager of Agricultural Services

As of July 9, approximately 65 per cent of barley crops, 50 per cent of canola crops and 35 per cent of

wheat crops were estimated to be in poor condition in Leduc County. Poor crop conditions are defined as fields with less than 60 per cent of healthy plants.

An Agricultural State of Disaster can bring awareness to residents, industry, and provincial and federal governments, and facilitate collaboration with impacted groups.

Leduc County last declared a State of Agricultural Disaster in September 2019.

Government Supports Jobs & Safe Operations of Junior Mining Exploration

Continued from Page 1

The government is proposing to protect jobs and safe operations of junior mining exploration and

other flow-through share issuers, by extending the timelines for spending the capital they raise via flow-through shares by 12 months.

This proposal would mean that companies with operations that are impacted by COVID-19 would be allowed additional time to incur eligible expenses and

avoid costs from not meeting original flow-through share timelines.

Emergency Funding for COVID-19 Safety Measures in Forest Operations

Continued from Page 1

This money will cover extra costs such as sanitizing

stations, additional accommodations and/or transportation, facilities and services to maintain social

distancing, and personal protective equipment.

The government intends to work with the provinc-

es and territories to deliver this funding, which will preserve jobs for forest sector workers.

EDMONTON AREA AIR TOUR

JOIN US AUGUST 8, 2020 TO WATCH A DIVERSE GROUP OF EDMONTON BASED PRIVATE & INDUSTRY AIRCRAFT FLY OVER EIGHT DIFFERENT AIRPORTS TO CELEBRATE THE LOCAL AVIATION COMMUNITY!

VILLENEUVE - DRAYTON VALLEY - WETASKIWIN - JOSEPHBURG
WESTLOCK - CAMROSE - FORESTBURG - MAYERTHORPE/BARRHEAD



STARTING AT 8AM FROM VILLENEUVE AIRPORT, A GROUP OF AIR RACERS, HELICOPTERS, FLOAT PLANES, AND MANY OTHER UNIQUE AIRCRAFT WILL TOUR EIGHT DIFFERENT LOCATIONS IN THE AREA.

LED BY INTERNATIONALLY RENOWNED AIR RACER, SCOTT HOLMES IN HIS KITFOX, COME OUT TO WATCH THE BRIGHT SPOTS OF ALBERTA'S AVIATION COMMUNITY CELEBRATE OUR LOVE OF AVIATION.

- 0800 MASS BRIEF FOR PARTICIPATING PILOTS & CREWS ON MAIN APRON
- 0830 FLY VILLENEUVE TO DRAYTON VALLEY
- 0915 DRAYON VALLEY AIRPORT TOUR
- 0945 FLY DRAYTON VALLEY TO WETASKIWIN (TOUCH & GO OR LOW APPROACH ONLY)
- 1030 FLY WETASKIWIN TO CAMROSE
- 1045 CAMROSE AIRPORT TOUR
- 1115 FLY CAMROSE TO JOSEPHBURG
- 1200 JOSEPHBURG AIRPORT TOUR
- 1230 FLY JOSEPHBURG TO WESTLOCK
- 1315 WESTLOCK AIRPORT TOUR
- 1345 FLY WESTLOCK TO MAYERTHORPE
- 1430 MAYERTHORPE/BARRHEAD AIRPORT TOUR
- 1500 FLY MAYERTHORPE/BARRHEAD TO VILLENEUVE
- 1600 MASS DEBRIEF
- 1545 - 1800+ SHOW & SHINE AT VILLENEUVE



PRESENTED BY
OUTLAW AIR RACING
780.235.1088
SCOTT@OUTLAWAIRRACING.COM

PROUDLY SUPPORTED BY

Elevate Aviation
Aircraft Canada
MLA Shane Getson

PropWorks Propeller Systems
Energy Efficient Homes
Deadstick Radio

PLEASE PRACTICE
YOUR LOCAL COVID-
19 PROTOCOL

A MESSAGE FROM MLA MARK SMITH

Submitted by MLA Mark Smith | Drayton Valley – Devon Constituency

Weekly Summary for July 21: This last week we received some great news! Edmonton has been chosen as one of the main NHL hub cities! This is a testament to our consistent progress forward as we combat Covid-19 and our world class infrastructure. As our province continues reopening, our government will ensure support is in place to help struggling Albertans and

create good jobs. The overwhelming majority of Albertans are following instructions from public health officials and taking precautions to protect the most at-risk among us. The world is witnessing our success and there is no doubt this factored into the decision to make Edmonton an NHL hub city.

I am pleased to share that our Economic Recovery Plan includes \$25 million to support the construction of five life-changing recovery communities for the holistic treat-

ment of mental health and addiction.

This will add 400 treatment beds to Alberta – a 30 per cent increase in capacity. Approximately 400 people will be employed during the construction of the five recovery communities, that will each employ 35-50 people once operational.

Our evidence-based approach to substance use recovery is already used in more than 65 countries around the world, including the highly regarded Portuguese model. These recovery communities

will serve Albertans who require long-term stay to support their recovery from addiction.

Our government is also working to enhance financial literacy in classrooms through grant partnerships with Enriched Academy and Junior Achievement chapters in Alberta. Beginning in the 2020-21 school year, Enriched Academy will pilot an online financial education program for up to 4,000 students in grades 10-12. In the same school year, Junior Achievement's Southern and Northern Alberta chapters will collaborate on providing 4,500 students with hands-on, experiential financial literacy, work readiness and entrepreneurship education. Financial literacy is critical to the success of our children, the partnerships our government has established give school authorities and teachers more program options this fall to choose from to ensure students achieve essential learning outcomes.

First Nations must be a part of Alberta's economic recovery from the COVID recession, that's why our government is taking action to ensure Indigenous companies and communities benefit from participation in our \$1 billion Site Rehabilitation Program (SRP).

This includes appointing an Indigenous liaison to help facilitate Indigenous participation in the program, and establishing an ongoing working group with Indigenous communities and companies. Through the first round of the SRP, Backwoods Energy, owned by the Alexis Nakota Sioux Nation, has been approved to conduct closure work on 55 sites on Enoch Cree Nation. Another Indigenous company, Western Petroleum Management, was approved to conduct work on 257 sites across the province.

The response we are hearing from Indigenous communities to this program is overwhelmingly positive and we are looking forward to providing the tools they need to become the economic powerhouses we all know they can be.

High-Performance Lifestyle Products
Take Your Life to the Next Level with B-Epic!
 Call Today! (780) 907-8642

ELEV8
Your Mind & Body
The Most Advanced Natural Performance Product Around the World

ACCELER8
Your Weight Loss
Fast-acting, Synergistic Natural Weight Management and Sleep Combo

GR8 KIDS
Boost Your Nutrition
Flavor-packed Nutritional Power Sticks: Great for Kids and Adults

HYDR8
with Alkalized Water
Natural Coral Mineral Supplement: Great-tasting Alkalized Water

“ I am super excited! Down 4 lbs / 6.5 inches in 8 days. Feeling GREAT! Awesome product! - Donna ”

“ I had given up on losing weight but 11 days in I dropped enough lbs to fit into a favorite pair of jeans hanging in my closet for the last 5 years – and they are loose, Yeah! – Kayla M. ”

Begin your epic journey at www.bepic.com/elaine1!

Unreserved Live Auction Sale Frank & Helen Grund

Saturday, August 1, 2020

Duffield, Alberta - Time: 11:00 a.m.

Directions: From Duffield, Alberta Travel South on Rge Rd 32 for 0.8 Kms to Twp Rd 524A, East for 3.2 Kms to Rge Rd 30. Turn South for 1.9 Kms. East Side of the Road. Green Sign 52305 Rge Rd 30

Internet Bidding will NOT Be Offered on this Sale.

TRUCK & ATV



2015 Dodge 1/2 Ton 4x4 4dr Short Box Truck
w/ Only 1,521 Kms, Fully Loaded, Leather, Laramie Pkg, 5.7 Ltr Hemi & Auto



2019 JD XUV 560E 4x4 Side by Side Gator w/ Only 4 Hrs

SHOP TOOLS & SUPPLIES

New Table Saw, Stihl MS180C Chain Saw, Stihl 038 Chain Saw, Tool Boxes, Delta Scroll Saw, Power Tools, Sanders & Jig Saw, Ladders, Wheel Barrows, Large Assorted Tools

Terms & Conditions:

Cash, Cheque or Debit Card, 3% Administration Fee Will Be Charges on Credit Cards. G.S.T. Will Apply On All Items, All Items Must Be Paid For On Sale Day. As this is a live auction - **NO Buyers Premium** will be charged. *If you will not be able to attend in person, you may contact our office to make an absentee/phone bid by calling 403-843-2747 or 1-855-783-0556*

MACHINERY



Kubota L3901 FWA Tractor w/ Only 30 Hrs, Hydrostatic, Kubota LA525 FEL & 3 pth Kubota RTA1266 3 pth Rototiller



Like New JD D155 Lawn Tractor w/ Only 15 Hr & 48" Mower
JD D170 Lawn Tractor w/ 54" Mower Deck & 130 Hrs

MISCELLANEOUS

New BBQ, Stihl MM55C Tiller, Stihl FS38 Weed Eater, Electric Weed Eater, Leaf Blower, Lawn Boy 6.5 Hp Lawn Mower, Garden Tools, 12 Volt Plug in Cooler, Live Animal Trap, Mole Traps, Pet Carrier, Wooden Barrels

HOUSEHOLD

Black Leather Recliner Couch
Brown Leather Love Seat
2 - Round End Tables
TV Stand/Cabinet
Solid Black Walnut Table w/ 8 Chairs (No Leaf)
Oak Table w/ 2 Leafs & 4 Charis Folding Table
2 - Oak Bar Chairs
5 - Drawer Wooden Cabinet
Wooden Multi-Drawer Cabinet
2 - Small Filing Cabinets & Wooden Desk
Queen Sized Bedroom Suite w/ 2 Night Stands, Mirror & Dresser
Upright Deep Freezer
Lifespan TR1200 Tread Mill
Gourd Crafting Supplies
Deck Furniture & Lawn Chairs
Assorted Bedding & Linen,
Household Décor, Small Appliances & Supplies



Lunch Will Be Available
We ask that both our Customers & Staff abide by the guidelines set forth by Alberta Health Services.

Viewing by Appointment Only - Contact Helen at (780) 945-1865 or (780) 963-1215

Allen B. Olson Auction Service Ltd.

Rimbey, Alberta
License No. 165690

Email: abolson@telusplanet.net
Homepage: allenolsonauction.com

(403) 843-2747
1-855-783-0556

GOLFER'S GUIDE

9 WAYS TO IMPROVE YOUR GOLF GAME

Warmer weather sends scores of golfers to their favorite courses each and every day. Golf is a challenging pastime, but a few pointers can help golfers hone their short games, long games and everything in between.

- Choose the right clubs. There is more to selecting clubs than pulling any old iron out of your golf bag and whacking away. Wind, hazards and obstructions in landing areas should influence your

decision of which club to use. Novice golfers may want to rely on their caddies to make club recommendations, and as they become more confident in their abilities they can start to make their own choices.

- Anchor your feet. Anchor your foot behind the ball to drive the ball further. Right-handed players will keep the right foot anchored, and lefties will do the opposite. Do not lift your foot prematurely; otherwise, you can

lose power and distance.

- Identify your weaknesses. As with any hobby, identifying those areas that need the most work can help you become a better golfer. Keep track of each shot you take, and then look at the results to see which areas of your game need the most work.

- Fix your alignment. Align your shots by assessing the target from behind the ball. Then set the clubface behind the golf ball and align it with

the target before you enter your stance.

- Use your torso for power. The torso is essential to a solid swing. Practice rotating from your core to control your backswing and then maintain the same spine angle and posture on the downswing.

- Use the wind. Not every golf game will be played in perfect weather. A good player knows how to make adjustments for the wind depending on the shot. Use the wind to your advantage when you can, and adjust your swing when hitting into the wind.

- Become a better chipper. Many players put so much emphasis on their backswings and putt shots that they fail to devote any practice to chips. All shots are important for golfers trying to shed strokes off of their scores.

- Keep fit. Maintaining or improving your physical strength and overall health can help your golf game. Exercise and eat right, and you will have more endurance on the links.



SILVER SANDS GOLF RESORT

Parkland's hidden gem of a golf course; located 45 minutes west of Edmonton on highway 16. Book your company tournament today - we have special rates for weekdays. Call 780-797-2683. Check silversandsgolfresort.com for weekly specials. Join us for Men's night on Wednesday's and Ladies night on Thursday's both 6:00 pm shotgun start

RV LOTS FOR SALE CALL 780-222-1535


 Silver Sands Village, Lake Isle  silversandsgolfresort.com  1-877-797-2683



Calahoo Hills Golf Course

- 9 Holes
- Grass Greens
- BBQ Facilities
- Licensed Clubhouse

459-9081





Alberta Beach GOLF RESORT

WEEKDAY SPECIAL

4 Golfers + 2 Carts Great for Weekday Tournaments **\$140.00** (\$35 each) Monday, Wednesday and Thursday Only.

18 Holes	\$33.00 Weekdays	\$48.00 Weekends
9 Holes	\$20.00 Weekdays	\$37.00 Weekends
Cart Rental	\$18.00 9 Holes	\$28.00 18 Holes

To Book your Tee Times or Tournaments Call: (780) 924-GOLF (4653)

Students Returning to School for 2020-21 School Year

Continued from Page 5

“We value the government’s efforts to actively work with the education system, including independent schools, as they finalized details for the 2020-21 school year. Re-entry under scenario 1 gives us the information and confidence we need to prepare our schools for reopening. We appreciate the requirements set out by the government to ensure that student and staff safety remains the priority as we navigate through these times to safely move closer towards a sense of normalcy.” - Simon Williams, president, Association of Independent Schools & Colleges in Alberta

“The health of students and staff is the priority. In our recent survey on re-entry, 86 per cent of parents that participated indicated they were in favour of a return

to school plan for K-12 students. Community efforts are essential to ensure a safe learning environment for our children.” - Brandi Rai, president, Alberta School Councils’ Association

“The Association of Alberta Public Charter Schools is pleased the government invested the time to engage with the education system as they pragmatically developed the 2020-21 school re-entry plan. This announcement provides Alberta’s public charter schools with the confidence and responsiveness they need to ensure a safe and successful return for the upcoming school year.” - Ron Koper, chair, The Association of Alberta Public Charter Schools

SUCCESSFUL TRANSITION TO SUMMER SCHOOL AND CHILD CARE
 Alberta’s school re-entry plan works, and already has

mitigated risks to students and teachers. Throughout the summer, the Calgary Catholic Separate School Division ran in-person summer school programming in accordance to the guidelines developed and issued by the province. These comprehensive guidelines have mitigated risk, resulting in no COVID-19 outbreaks among teachers or students participating in summer school.

Additionally, Alberta has seen a successful reopening of child care centres across the province. Children and staff have safely returned to these centres with no outbreaks occurring.

SCHOOL AUTHORITY FUNDING

School authorities have returned to full funding levels as of July 1, and every school authority in Alberta is receiving a funding increase for the 2020-21

school year – roughly \$120 million across the province. A list of funding for every school authority is available here.

In addition, the Minister of Education has approved the use of school board reserves, if needed, to help cover local COVID-19-related costs. The total amount of money sitting in school board reserves is \$363 million.

ACCELERATED CAPITAL SCHOOL FUNDING

The province has also provided school boards an additional \$250 million to support accelerated capital maintenance and renewal projects, as part of the more than \$10 billion infrastructure spending announced in the Alberta Recovery Plan.

This funding supports infrastructure enhancements that will help in a COVID-19 learning environment.

Continued on Page 12

SUDOKU

of the week

Here's How It Works: Sudoku puzzles are formatted as a 9x9 grid, broken down into nine 3x3 boxes. To solve a sudoku, the numbers 1 through 9 must fill each row, column and box. Each number can appear only once in each row, column and box. You can figure out the order in which the numbers will appear by using the numeric clues already provided in the boxes. The more numbers you name, the easier it gets to solve the puzzle!

Like puzzles? Then you'll love sudoku. This mind-bending puzzle will have you hooked from the moment you square off, so sharpen your pencil and put your sudoku savvy to the test!

ANSWER:

7	2	8	4	9	5	6	1	3
4	6	5	2	1	3	7	8	9
9	3	1	6	7	8	4	5	2
3	5	7	9	4	6	8	2	1
2	4	9	8	3	1	5	7	6
1	8	6	7	5	2	9	3	4
5	9	4	1	2	7	3	6	8
6	7	2	3	8	9	1	4	5
8	1	3	5	6	4	2	9	7

		8	4		5	6	1	
4			2			7		
9	3	1			8	4	5	
3	5	7		4				
	4		8	3	1			6
					2		3	
5			1	2		3		
	7		3				4	5
8				6			9	7

WEEKLY PUZZLE SPONSORED BY:

As your community newspaper, we are committed to delivering the latest and most accurate COVID-19 news and local updates. We also remain dedicated to serving our local advertisers, as they struggle to overcome unprecedented economic challenges resulting from the pandemic.

ADVERTISERS, call 780.962.9228 to learn how we can help you.

In uncertain and troubled times like today, the importance of local news and community connection is more evident than ever. You can help support businesses in our community by purchasing gift cards for later use, frequenting restaurants that are open for takeout or checking to see if your favorite businesses have opened online stores. You can also support the future of local news and reporting by reserving your ad space today and letting our readers know how they can help you!

Together, we are all stronger.

COMMUNITYVOICE local community • local economy • local news
 In Print & Online | 780.962.9228 | www.com-voice.com

Students Returning to School for 2020-21 School Year

Continued from Page 11

Seventy-nine school projects totalling \$15 million are moving forward with this primary purpose, including upgrades for enhanced hygiene such as hands-free sinks, automatic flush toilets, touchless soap and paper towel dispensers, automatic doors and water bottle filling stations to replace water fountains.

NEW ONLINE STUDENT LEARNING HUB

A new Student Learning Hub on new.learnalberta.ca is available for parents, students, and teachers to more easily access educational materials to support development of student literacy and numeracy, and provide health and wellness information.

The online hub is another resource to support Alberta's school re-entry plan, with

recognition that more online learning resources may be needed during the upcoming school year. Additional resources will also be added throughout the school year.

EXPANDING DIPLOMA EXAMS

Diploma exams will be offered in every subject in the November and April exam sessions. Expanding the offerings of the diploma exams will support school author-

ities who are shifting high school programming to a four-semester system as part of their COVID-19 re-entry plan. This shift allows for better cohorting by limiting the number of classes a student is in during a term without affecting total learning time over the course of a year.

PERSONAL PROTECTIVE EQUIPMENT

Students and staff may wear a mask if they choose to. However, practices such as physical distancing, cohorting, frequent handwashing, staying home when sick and increased cleaning of surfaces will continue to be the priority public health measures.

COVID-19 CASES AT SCHOOL

If a student or staff tests positive for COVID-19, a public health team will investigate to determine when symptoms developed and support the school to minimize transmission.

While each case will be addressed based on its unique circumstances, it is anticipated that in most cases only the group of students and staff who came in close contact will likely be required to stay home for 14 days, and not the entire school population.

Parents will be notified if a case of COVID-19 is confirmed at school and public health officials will contact those who were in close contact with that person.

TRANSITIONING TO SCENARIO 2 OR SCENARIO 3

If there is an outbreak of COVID-19 in a community or school, health officials will work with Alberta Education and impacted school authorities to make any decision to potentially transition to partial in-class learning or at-home learning. Decisions will be based on multiple factors including the number of cases in a community or school and the risk of ongoing transmission.

The health guidance for scenario 2 has been updated to allow for a maximum of 20 students per class.

VALENTUS

YOUR LOGICAL SOLUTION TO WEIGHT MANAGEMENT

SLIMROAST Optimum

DARK ROAST COFFEE

Exclusive functional coffee formulated to:

- Crush Cravings
- Increase Energy
- Metabolize fat to Energy
- Help Regulate Blood Sugar
- Improve Mood & Focus
- Boosts Circulation & Oxygen delivery

TO UNLOCK THE SECRET OF WEIGHT MANAGEMENT! PUT THE POWER OF SLIMROAST OPTIMUM IN YOUR CUP!

Thrilled with my results! I lost 9 lbs and an amazing 11 inches off my abdomen! Works wonderfully!

Managed to lose 7 lbs very fast & much more in inches the way my clothes are fitting now! 1 cup a day is all for me!

Down 17 lbs and fitting into clothes that were way to tight before!

No dieting, first month finished. Down 7 ½ lbs 8.5 inches. Awesome product!

CALL (780) 907-8642 FOR YOUR FREE SAMPLE!

A MESSAGE FROM MLA MARK SMITH: WEEKLY SUMMARY FOR JULY 14, 2020

Submitted by MLA Mark Smith | Drayton Valley – Devon Constituency

I hope that everyone in our community is doing well and staying safe. As our economy reopens, our government is putting the interest of Albertans first and proposing new legislation that restores balance and confidence in businesses across the province. New rules to reduce red tape and barriers, combined with the creation of an estimated 50,000 new jobs, will create immediate investments in projects across Alberta.

I am pleased to share that our government is introducing new measures that support economic recovery, restore workplace balance and get Albertans back to work. Bill 32, or the Restoring Balance in Alberta's Workplaces Act, proposes changes by reducing red tape for job creators to keep Albertans employed, and supports worker choice. If passed, this bill could save job creators up to \$100 million each year by making daily operations more streamlined. Other measures in the bill would prevent union leaders from using union dues to fund political causes unless the member has opted in. As we begin the long road to economic recovery in our province, it is essential to reduce the costs of doing business and keep our province working.

I am happy to share that after years of delays, Albertans are getting back to work putting the Keystone XL pipeline in the ground. Our province's \$1.5-billion investment in this project will create approximately 2,000 Alberta-based construction jobs over the next two years, spurring thousands of additional jobs and increased economic activity in trades, retail, and hospitality services along the construction route. Once completed, this pipeline will contribute \$30-billion in tax and royalty revenues for Alberta, ensuring that public services like edu-

cation and healthcare continue to have strong funding. Our government has been committed since day one to supporting our oil and gas industry and the hardworking men and women supporting this sector.

As our province begins to recover from many recent shocks, our government has also introduced legislation to create jobs and drive high-impact investment to our province. If passed, the

Alberta Investment Attraction Act will create the Invest Alberta Corporation. This is an arms-length agency that will help promote Alberta as a prime investment location for businesses across Canada and around the world. The Invest Alberta Corporation would promote confidence in investors and promote opportunities in our province internationally. With initiatives like the Job Creation Tax Cut and

the Alberta Investment Attraction Act, our provincial government is sending the message that Alberta is the best place to do business.

As we work on reopening and recovering from this pandemic, it is critical that we continue to take steps that protect ourselves and others from spreading COVID-19. For the latest information and resources on COVID-19, I encourage you to visit alberta.ca/covid19.

PURE HEMP PRODUCTS
AGING IS INEVITABLE - LOOKING AND FEELING OLD ISN'T!

A Health and Beauty Breakthrough!
Cannabidiol, is one of over 80 active cannabinoid chemicals in the hemp plant. Unlike, THC, it does not produce euphoria or intoxication. It targets specific receptors in the cells of your brain & body. There are many physical and mental benefits to using these products for both treatment and prevention of numerous ailments.

Therapeutic Uses For Pure Hemp
Supports healthy blood sugar levels, promotes healthy energy levels, relieves anxiety, aids in digestion, supports optimal immune function and the regeneration of healthy cells, and promotes a sense of serenity and overall well-being.

Anti-Aging Uses For Pure Hemp
Promotes more youthful skin, provides hydration, enhances radiance, lessens age lines as well as the appearance of dark spots.

KEY BENEFITS
PAIN RELIEF: Known to reduce vomiting & nausea; suppress muscle spasms; reduce seizures & convulsions.
PROMOTES HEALTH: Helps to promote relaxation and overall health.
WELL-BEING: Helps to relieve anxiety, aid in digestion, supports optimal immune function and the regeneration of healthy cells.

PET PRODUCTS

PET CHEW TREATS
KEY BENEFITS
SYNERGISTIC BENEFITS: Can be used in conjunction with regular medications with no side effects.
NO SIDE EFFECTS: Does not damage the liver, kidney or GI Tract like OTC medication.
DIETARY SUPPLEMENT: Can be administered daily as part of your pet's diet.

ORAL SPRAYS & DROPS
KEY BENEFITS
MANAGES PAIN: Helps to treat inflammation, arthritis and joint pain.
TREATS DIGESTIONAL ISSUES: Helps with loss of appetite, nausea, IBS and gastrointestinal swelling.
GENERAL HEALTH: Helps to manage mood, anxiety and general joint pain. For healthy, happy pets.
CONVENIENT: Can be sprayed into pet's mouth or on food.

For more information, Call (780) 907-8642

Classified Ads - Call 962-9228

Antiques

HUGE ANTIQUES & COLLECTIBLES SALE, July 31 & Aug 1, Aug 14 & 15, 10am-5pm, Featuring Tea cups collections, Carnival glass, Antique Plows and more! 2224 Township Rd 545 in Onoway - Watch for the signs. (2) 28-07

EVER AFTER ANTIQUES & COLLECTIBLES 4823 - 50 Ave., Alberta Beach. Phone 780-237-3528. OPEN: Thurs, Fri, Sat and

some Sun, noon to 5 pm. Other times by chance or appointment. We buy and sell antiques and unique collectibles! (6) 16-06

Computers

FREE Computers Checkup, Repairs NOT over \$50. You can have today good clean refurbished upgraded Laptop with Games, Pictures, Music, Videos for ONLY \$125. Call 780-892-2407 (6) 19-05

Vehicles

2008 Buick Lucerne, \$3000. Also 2013 Chev Malibu \$8500. Call 780-778-6956 (2) 30-06

Buy & Sell

I BUY GUN COLLECTIONS and World War 2 Collectables, Please call Jay for a quote 780-686-1350 (15) 19-11-19

For Rent

House for Rent in Winfield, \$825/month, Security deposit required. Washer, dryer, fridge & stove all included. Call Maria 403-606-6977 (4) 02-06

Air Conditioned Office Space - 1500 Sq. Feet, Suitable for any business, located in Calmar. Good location right on Main Street. Call Ken 780-566-5340 (2) 30-06




M MARTIN DEELINE

Giving you our best is the least we can do!

WARBURG www.martineq.com **848-7777**

JOHN DEERE **JOHN DEERE**

Church Directory

<p>Calmar Community Baptist Church Pastor Keith Froese Pre-service coffee time 9:45 a.m. to 10:15 a.m. Sunday Services 10:30 a.m. Wednesday Night Bible Study & Prayer 7:00 p.m. 5402-50 St. (College Elementary School) Cell Phone (780) 721-2171</p>	<p>Victory Lutheran Church Service Sunday 11:00 a.m. Communion 1st & 3rd Sundays 6 Columbia Ave. Devon (780) 987-4257 devonvictorylutheranchurch.com</p>	<p>Church of God Worship Service Sun. 11:00 a.m. Please contact for activities 5004-49 Street, Drayton Valley Ph: 780-542-5091</p>	<p>Devon United Church Rev. Dirk Jessen Sundays 10:00 a.m. Children's Sunday School 10:00 a.m. 2 St. Clair St., Devon (780) 987-3714 devonunitedchurch.org devonunited@telus.net</p>	<p>St. George's Anglican Church Sunday 10:00 a.m. Holy Eucharist, Sunday School 1 St. Clair St., Devon (780) 987-2464</p>
<p>Devon Alliance Church Morning Worship 11:00 a.m. Our Pastors: Clayton Nordstrom, Terry Stoad & Josh Jacobs 201 Miquelon Ave W, Devon (780) 987-3100 devonalliancechurch.ca</p>	<p>St. Maria Goretti Catholic Parish St. Maria Goretti - 8 St. Clair St. Devon Saturday 5:00 p.m. Our Lady of Victory Parish, Thursday Sunday 9:00 a.m. St. Margaret Mary Parish, May 30, Calmar Sunday 10:15 a.m. St. Maria Goretti - 8 St. Clair St. Devon Sunday 11:30 a.m. 780-987-2858 Rev. James Bama Bodula, S.M. B.A.</p>	<p>Grace Lutheran Church (GNADENTHAL) Sunday Worship 10:30 a.m. Sunday School Pastor Marvin Krieb 5 miles W of Leduc, 1 mile S 780-986-7883 (Church)</p>	<p>Leduc Alliance Church Sunday Worship 10:00 a.m. Community Groups Weekly 5503 Black Gold Dr. Leduc (780) 986-1055 leducalliance.org office@leducalliance.org</p>	<p>PEACE EV. LUTHERAN CHURCH Pastor Matt Lyseng Sunday Worship 10:00 a.m. 4606 - 48 St. Leduc, AB (780) 986-2688 peaceleduc.webs.com</p>
<p>ST. PETER'S LUTHERAN CHURCH (LCC) Early Worship 8:15 a.m. Contemporary Worship 9:45 a.m. Children Sunday School 9:45 a.m. Project Tuesday (7:00) 10:00 a.m. Adult Bible Studies 9:45 & 11 a.m. Divine Service 11:00 a.m. 5012 - 51 Ave. Leduc (780) 986-2038 www.stpetersleduc.ca</p>	<p>St. Paul's ANGLICAN CHURCH 10:00 a.m. Sunday Worship Sunday School & Nursery 4416 - 50 St., Leduc 780-986-3447 stpaulsanglican.webs.com</p>	<p>St. Michael's Catholic Church Saturday Evening at 5:00 p.m. Sunday Morning at 9:00 a.m. & 11:00 a.m. 5105 - 45 A St. Leduc (780) 986-3253 stmichaelsleduc.com</p>	<p>ST. DAVID'S UNITED CHURCH Sunday Service 10:30 a.m. 4614 - 48 Street, Leduc (780) 986-2085 stdavidsleduc.com</p>	<p>Fellowship Church Join us Sunday Morning at 10:30 a.m. Coffee's on us... 4401 Kollyview Rd. Leduc (780) 986-9299 leducfellowship.ca</p>

SERVICE DIRECTORY



PEMBINA CONCRETE PRODUCTS LTD.

Manufacturers of
ONE PIECE SEPTIC & HOLDING TANKS

* Water Cisterns * Field Systems * Pumps and Accessories * Sumps



DELIVERED TO YOUR SITE
 1-800-661-3047
 780-727-2702
 PembinaConcrete.com

New Line of Concrete Statues, Fountains and Garden Ornaments.

BOX 123, Entwistle, T0E 0S0



Buck Lake Hardware

From Hydraulic Hose To Panty Hose!

PH: (780) 388-2450 | FAX: (780) 388-3962
 812 Lakeshore Dr. West
 Box 7 Buck Lake, AB T0C 0T0



THE MOST COMPLETE NUTRITIONAL SPRAYS ON THE PLANET

ORDER TODAY!
(780) 907-8642

www.Elaine1.com



THIS SPACE IS RESERVED FOR YOU!

Darren Scott

ACCOUNTING SERVICES

- * CORPORATE & INDIVIDUAL TAX RETURNS
- * BOOKKEEPING

4827 - 50 Ave. Breton, AB
1-866-787-5973
 696-3800 Fax: 696-3946



THIS SPACE IS RESERVED FOR YOU!

SMOOLE

- Construction & Septic Installation
- Environmental Wastewater Disposal
- Site Design & Evaluation
- Power, Water & Basement Excavation
- Trackhoe, Backhoe, Bobcat & Dump Truck

For All Your Excavation Needs

Call Dan 780-991-4484 Reid 780-909-0173




THIS SPACE IS RESERVED FOR YOU!

POSTINGFIRST.com

BUY and SELL just about ANYTHING!

FREE LOCAL CLASSIFIED ADS

Real Estate, Rentals, Vehicles, Pets, Jobs, Service Directory, Buy/Sell/Trade, Lawn & Garden, Garage Sales, Events, Local Places & Much More... Advertise for **FREE** Today!



Follow Us




THIS SPACE IS RESERVED FOR YOU!

SLIMROAST Optimum

DARK ROAST COFFEE

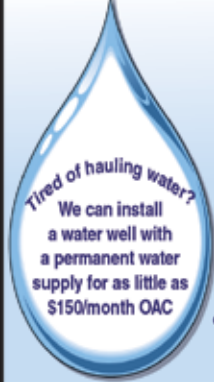
YOUR LOGICAL SOLUTION TO WEIGHT MANAGEMENT

(780) 907-8642




SUMMERS DRILLING LTD.

Water well drilling and service
 Family owned Business Serving Alberta since 1917



Tired of hauling water?
 We can install a water well with a permanent water supply for as little as \$150/month OAC

- Never run out of water again!
- 5 year workmanship warranty
- 3 Convenient ways to pay
 - Visa
 - Mastercard
- We now offer full financing

Stop in at our office 4405 - 50 Street, Stony Plain
 780-963-1282
admin@summersdrilling.com

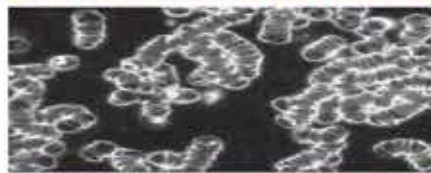
PREVAIL CELLULAR HOMEOSTASIS FORMULA MAX

A NUTRITIONAL BREAKTHROUGH THAT SUPPORTS YOU
...RIGHT DOWN TO THE LAST CELL!

How do you want your **BLOOD** to look?



Before PrevailMAX:



poor circulation

low energy

brain fog

dehydration

decreased nutrients

pH imbalance

poor endurance

After PrevailMAX:



better circulation

more vitality

mental clarity

cellular movement

nutrient assimilation

balanced pH

optimal endurance

PrevailMAX™ is a nutritional breakthrough that delivers a rapid increase of internal blood cell pressure to speed absorption, enabling the body to take maximum advantage of the nutrients in foods and supplements. The electrolytes are small enough to penetrate your cell membranes, to bind with your cells, and to be carried wherever they are needed in the body.

At the microscopic level of human cells, **PrevailMAX™** supports healthy cell performance – a nutritional breakthrough for your cells.

When you use **PrevailMAX™**, you will feel more energy and an ability to focus like never before. Take a few sprays today and see just how good you can feel!

LIVIN TRIM WITH
VALENTUS

www.ValentusTour.com/Ladybug

(780) 907-8642