



COMMUNITY VOICE

YOUR LOCAL NEWSPAPER

Serving: Alberta Beach, Barrhead, Calahoo, Cherhill, Darwell, Glenevis, Gunn, Lac Ste. Anne County, Mayerthorpe, Onoway, Rich Valley, Rochfort Bridge, Sangudo, Whitecourt, Spruce Grove and Stony Plain.

August 11, 2020

COUNTY COUNCIL VOICES GRAVE CONCERN OVER PROVINCE'S ASSESSMENT MODEL REVIEW

Municipal leaders oppose secretive UCP plan to compensate energy sector giants at considerable and lasting ratepayer expense.

Submitted by **Lac Ste. Anne County**

Sangudo, Alberta, Friday, July 31, 2020 – In a Special Meeting of Council on Thursday, July 30, 2020, Lac Ste. Anne County Council ratified its plan of action in response to the Government of Alberta's recently-published review of the

assessment model for oil and gas properties. The purported intent of this review is to “modernize” the assessment model for oil and gas properties and thus enhance industry competitiveness while ensuring municipal viability.

It is the County's position that the Province will achieve neither of these

outcomes with its ill-conceived, industry-biased model. Rather, this model would strike a crippling blow to rural Albertans already struggling under the weight of a fiscal downturn; a global pandemic; and the Province's recent rural policing cost download.

Continued on Page 3

EXPANDING THE CANADA INFRASTRUCTURE PROGRAM

Submitted by **Gerald Soroka, MP for Yellowhead**

Gerald Soroka, Member of Parliament for Yellowhead, would like to inform constituents that the Government of Canada will be adjusting the Investing in Canada Infrastructure Program. The new steps to the program will now include a new stream designed to

deliver more infrastructure projects by:

- increasing the types of eligible projects and
- accelerating project approvals

Under a new COVID-19 Resilience funding stream worth up to \$3.3B, provincial projects will be eligible for a significantly larger federal cost share for public infrastructure projects up

to 80%. A simplified funding application process will ensure that projects can get underway as soon as possible.

More details can be found at: <https://www.canada.ca/en/office-infrastructure/news/2020/08/infrastructure-program-expands-to-support-covid-19-community-resilience.html>

Shoe CraftsMen 

SHOE REPAIR
60 yrs experience

Owner: **Rouben**
110C McLeod Ave.
Spruce Grove T7X 2H8

780-862-1431



GRIEFSHARE weekly grief support group
held Tuesdays 6:30-8:30pm, starting Sept 15 at Crossroads Community Church in Mayerthorpe. 13-weekly sessions for \$25. **Pre-registration is required. Call 780-786-2695 to join us at GriefShare.**

PURE HEMP PRODUCTS
Active in Brain, Heart, Lungs, and Intestines; 100% Natural

KEY BENEFITS:
Inhibits Cell Growth in Tumors
Relieves Pain
Promotes Health
Relieves Anxiety
Neuroprotective

(780) 907-8642




High-Performance Lifestyle Products

ELIVE **ELIVE-KIDS** **ELIVE-ACCURATE** **ELIVE-100**

Call Today! (780) 907-8642
www.bepic.com/elaine1



 **View us ONLINE!**
WWW.COM-VOICE.COM



COMMUNITYVOICE
YOUR LOCAL NEWSPAPER

PUBLISHED WEEKLY (Zone 1 & 2)
AND BIWEEKLY (Zone 3)

E.J. Lewchuck & Associates Ltd.

#6 - 40 South Avenue
Box 3595
Spruce Grove, AB T7X 3A8

SALES TEAM

Elaine
Ashley
Dani

TELEPHONE:

Classifieds 962-9229
Advertising 962-9228
Fax 962-1021

E-MAIL:
comvoice@telusplanet.net
news@com-voice.com

MASKS FOR SCHOOLS PROCUREMENT: MINISTER LAGRANGE

Submitted by Government of Alberta

Minister of Education Adriana LaGrange issued the following statement on the procurement of reusable masks for students and staff for the 2020-21 school year: "Some have recently questioned the ability of Alberta's government to purchase the requisite 1.6 million reusable masks in time for the start of K-12 classes this fall. Orders totalling 1.7 million masks have been placed - one to IFR, an Alberta-based company, and the other to Old Navy. The total value of the mask contracts is \$4.2 million. "When the school re-entry plan was announced on June 10 and a decision on how students would return to school was announced on July 21, it was indicated that the decision on masks in schools was still pending, as Chief Medical Officer of Health Dr. Deena Hinshaw was still considering emerging scientific evidence

from other jurisdictions. Despite this pending decision, Alberta Education, in conjunction with the Provincial Operations Centre (POC), began preparing for the contingency should Dr. Hinshaw decide to recommend masking in schools. "Given the expediency required, the POC has directly approached experienced, established vendors to fulfil personal protective equipment (PPE) needs for school reopenings. Government of Alberta contracting policies allow for this expedited process in urgent situations, as a standard request for proposal tendering process would not allow the government to fulfil our schools' needs in the timely manner required. "Alberta has excelled at the urgent need to purchase PPE. Since the beginning of the COVID-19 pandemic, the POC has successfully procured more than six million masks, and the Pandemic Response Planning Team has also procured more than

six million masks. This does not include the 185 million clinical masks purchased directly by Alberta Health Services. Forty million masks were also distributed directly to Albertans. "Both Alberta Education and the POC are confident that masks, sanitizer, thermometers and face shields will be distributed to school divisions prior to the resumption of classes. Students, schools and staff will receive their PPE for the beginning of the school year. "We understand the eagerness of some local businesses to help with the effort. Often, these are businesses that manufactured non-PPE products prior to the pandemic and/or have more limited production capacity. We sincerely appreciate the enthusiasm of those wanting to help. That said, our primary objective is ensuring the large volume of reusable masks can be obtained and distributed in time for the start of the school year."

Campground Manager Contract Opportunity

Alberta Beach is currently accepting resumes for the Campground Managers Contract for the Alberta Beach Family RV Park & Campground for the 2021 season. The contractor will be required to live on site for the term of the contract being May 1st to September 30th, 2021. Refer to the Alberta Beach website at www.albertabeach.com for further details. Please forward resume and references on or before August 14, 2020 to:

Village of Alberta Beach
Attention: C.A.O.
Box 278 Alberta Beach, AB T0E 0A0
Phone: (780)924-3181
Fax: (780) 924-3313
Email: aboffice@albertabeach.com



JOKE of the week

Man to florist: 'I'd like a bunch of flowers, please.'

Florist: 'Certainly, sir. What flowers would you like?'

Man: 'Er.. I'm not sure...Ummm..'

Florist: 'Let me help you, sir - what exactly have you done?'

TRL

Gas CO-OP Ltd.

48TH ANNUAL MEETING

Wednesday, August 26, 2020

TRL Whitecourt Shop
at 3349-34 Ave

Join us for a Free Burger
Starting at 6:00 p.m.
Provided by Parking Lot Party
Meeting To Follow.

- Financial Statements
- Election of Officers

3 Door Prizes of \$100.00 Credit on Member's Gas Account

All TRL Members are invited and encouraged to attend.
Only voting member will be invited to the meeting with health measures in place.

County Council Voices Grave Concern Over Province's Assessment Model Review

Continued from Page 1

The Government has released four scenarios to adjust the way in which oil and gas properties are assessed – all of which result in a dramatic reduction in the County's non-residential assessment base.

Depending on the scenario, these changes will reduce the overall assessed value of oil and gas properties in rural Alberta by between \$8.9 billion and \$26.7 billion, resulting in rural municipalities losing a combined total of between \$108.7 million and \$291.2 million in property tax revenue in the first year in which the changes are implemented.

The impacts of shifting the tax burden from industry to residential will vary widely in different regions of the province. For some municipalities, such a considerable loss in revenue may go as far as impacting their ongoing viability. Impacts are expected to worsen following the first year of implementation, but the Province has to date declined to provide access to the data required to conduct a multi-year impact assessment. Initial impact scenarios based on current available data can be reviewed on the County website at LSAC.ca/review.

"I honestly can't fathom what the Province is thinking," shares Joe Blakeman, Reeve of Lac Ste. Anne County. "The whole concept of manipulating our assessment model to support a handful of multinational oil & gas players is bizarre and fiscally irresponsible to say the least. These companies have holdings around the world. It is highly unlikely that any resultant savings from the new assessment model would be channeled back to Alberta."

"Regardless of the Province's motives behind their perplexing scheme to further burden ratepayers, we cannot let it happen. We have a battle on our hands, and Thursday's Special Meeting of Council was to establish our plan of attack."

No Consultation; no Meaningful Advocacy at the Table

Characteristically, the Province notified municipal leaders of its latest plan just one day before it was disclosed to the public. There was no prior consultation with municipal lead-

ers; the Province had placed a communications embargo on these discussions that prevented the County's only advocacy body at the table – Rural Municipalities of Alberta (RMA) – from disclosing any details prior to Friday, July 24.

"How did we get into this situation without prior consultation?" asks Reeve Blakeman. "Our representatives at RMA let us down, plain and simple. They never should have accepted the terms of the gag order; they should have walked out of these bad-faith back room discussions. The complete lack of advocacy for rural Alberta is appalling."

Local Context for Proposed Assessment Model

The County is using available data sources to provide early models of how the Province's proposed assessment model changes would affect Lac Ste. Anne County ratepayers. This information will be posted to LSAC.ca/review as it becomes available. It should also be noted that, should this assessment model be adopted, a tax increase is not the County's sole means of shouldering the burden.

Reeve Blakeman predicts that the small towns in Rural Alberta will be the first to suffer under the Province's austere model. "The County has never been that reliant on linear assessment," he states, "but of course a tax increase would be a likely outcome of this model. We are examining a number of possible

scenarios in addition to taxation that run the gamut from trimming soft services and severing intermunicipal partnerships to handing the keys back and dissolving into the Province. Everything is on the table because everything is at stake."

County Aggressively Lobbies for Ratepayers

If implemented, the Province's assessment model changes will severely and irreparably harm many rural municipalities, including Lac Ste. Anne County. Accordingly, the County's first line of defense is to use the means at its disposal to persuade the Government of Alberta not to support industry on the backs of ratepayers. This UCP scheme to bankroll big oil is unfair, ineffective, and unsustainable.

"After their download of policing costs onto ratepayers last

year, I didn't think it was possible for the UCP to drive a bigger wedge between themselves and rural Albertans," shares Blakeman. "In this regard they have surpassed my expectations."

The Province has given municipalities an advocacy period of just 30 days. During this time, the County plans to aggressively lobby its local MLAs and Ministers, and to add a clear and resounding voice of dissent to those of other rural municipalities across Alberta. The County encourages all concerned ratepayers to do the same. Contact details for Shane Getson, MLA for Lac Ste. Anne-Parkland, and Kaycee Madu, Alberta's Minister of Municipal Affairs are listed below.

As this matter continues to develop, updates will be posted on the County website at LSAC.ca/review.

**Town & Country
Funeral Services**


Wabamun
780-983-2749

Evansburg
780-727-2791



- † Cemetery Monument Sales & Installation
- † Traditional Burial & Funeral Services
- † Pre-need Funeral Packages
- † Crematorium & Memorial Services

PLANNING & DEVELOPMENT

NOTICE OF DEVELOPMENT PERMIT APPROVALS

The following Development Permits have been approved or conditionally approved under the provisions of the Land Use Bylaw. This list does not include Permitted Uses. Interested parties are encouraged to contact the Planning and Development department at 1-866-880-5722 or devassistant@LSAC.ca, Monday to Friday 8:30am to 4:30pm to request additional information on a permit.

PERMIT #	LEGAL LAND DESCRIPTION	DESCRIPTION	APPEAL DEADLINE
20-D0124	Lot 5A, Block 6, Plan 012 3828140, 54425 Ste. Anne Trail	Shipping Container (8'-0" x 40'-0")	August 24, 2020

Anyone who claims to be affected and who wishes to lodge an appeal against any of the above developments must do so in writing on the applicable form on or before 4:30pm on the above noted date(s). Secretary of the Subdivision and Development Appeal Board, c/o Lac Ste. Anne County, Planning & Development department, Box 219, Sangudo, Alberta, T0E 2A0.

PLEASE NOTE: Lac Ste. Anne County requires that a non-refundable fee of \$250.00 be paid for every appeal served on the Subdivision and Development Appeal Board. Fees may be paid by Cheque, Visa, MasterCard, Interac or Cash.

RMA AND RURAL MUNICIPALITIES CONCERNED ABOUT POSSIBLE CHANGES TO OIL AND GAS PROPERTY ASSESSMENT

Submitted by Rural Municipalities of Alberta

Nisku, AB, August 10, 2020 – The Rural Municipalities of Alberta (RMA) is extremely concerned with the changes to the assessment model for oil and gas properties that are currently being considered by the Government of Alberta. If implemented, the changes would abruptly alter how oil and gas properties are assessed for the purposes of property taxation, with potentially devastating impacts on rural Alberta.

Following a short confidential consultation process with municipal and industry stakeholders, government is currently considering four different scenarios, all of which would drastically reduce the assessed value of oil and gas property. The changes are intended to lower operating costs for companies by reducing the assessment value of wells and pipelines, which form the basis for municipal

property taxes. The scenarios are being considered despite opposition from RMA throughout the review process.

“RMA participated in the assessment model review process by explaining the impacts that the changes being proposed by government, and supported by industry, would have on the ability of municipalities to maintain infrastructure, provide services, and in some cases, remain viable. Despite RMA’s input, the changes proposed became steadily more detrimental to municipalities as the process continued.” – Al Kemmere, RMA President.

All scenarios being considered would have major impacts on rural municipalities. Under the scenario favoured by industry stakeholders, an average rural municipality would lose 12.4% of their revenues in the first year of implementation, with 11 RMA members losing over 20%. Collectively, rural municipalities would lose over \$480 million in 2021 alone under the indus-

try-supported scenario.

“The proposed changes prioritize reducing industry costs with little focus on municipal impacts,” Kemmere explained. “Some in industry and government view municipal taxes as a barrier to economic development. In reality, municipalities manage the roads and bridges that allow access to resources and provide the services that oil and gas companies and their employees rely on. This review has not considered how municipalities will be impacted by the changes, how they are expected to adapt with the limited revenue tools they have available, or the domino effects the changes will have on entire regions. What the review does show is that the province and industry do not understand the important role municipalities play in Alberta’s economy.”

RMA’s analysis also questions the extent that the changes will enhance the competitiveness of Alberta’s oil and gas industry.


Based on confidential company data shared with RMA during the consultation, the proposed changes will disproportionately benefit Alberta’s largest oil and gas companies. Under some scenarios, up to 54% of Alberta’s small oil and gas companies (assessed assets less than \$100 million) would actually face an increase in their assessment. In contrast, large international companies would see the greatest cost reductions, with no requirement to reinvest any savings into Alberta.


Kemmere stated, “The province has repeatedly emphasized industry competitiveness as the driver for this review, which is clear when looking at how badly municipalities would be impacted. However, RMA is also concerned that any benefits will go to large companies, while many small companies that would reinvest savings locally would face assessment increases.

Continued on Page 7




Canada Revenue Agency Update



- The CRA is extending the payment deadline and applying relief to interest on existing debt.
- The payment deadline has been pushed back from September 1, 2020, to September 30, 2020.
- The CRA will not impose late-filing penalties provided your return is filed by September 30, 2020.
- These measures provide immediate relief to impacted taxpayers.



Gerald Soroka, MP
Yellowhead 

For additional questions please visit my website or contact my constituency office using the contact information below

 GeraldSoroka.ca
 GeraldSoroka.c1@parl.gc.ca
 780-723-6068

 @GeraldSoroka
 @geraldsoroka

TO VIEW THE PROPERTIES

 CALL OR TEXT **TARAS CHMIL**
587 983 2916





64x24 SHOP & kitchen/offc/bathrm
Waterfront BOAT HSE w/roof deck
110ft LAKE front DOUBLE LOT
Walk out STONE bung & double GARAGE
Bsmt with KITCHEN in law suite
Lake Wabamum Seba Beach



8.37 Acres
Large Workshop
Quonset
Not in a subdivision
Bung with total of 4 bedrooms
ACREAGE by Seba Beach



BARRHEAD AUTO PARTS

ESTABLISHED IN 1975

Located 2 miles West of Barrhead on Highway 18.
Site 13 Box 6 RR2
Email: rob@barrheadautoparts.com

780-674-3443
1-888-577-4377

WWW.BARRHEADAUTOPARTS.COM

Quality Used Parts

- Computerized Inventory
- Licensed Mechanics
- Quality Used & Rebuilt Parts For Cars & Trucks
- Competitive Labor Rates
- Buying Scrap Vehicles
- Used Pipe & Assortment of Metal
- Used Vehicles

LILSA AGM



ZOOM TELECONFERENCE

Saturday, August 15, 9:30 am

To register see LILSA Website www.lsawaterquality.com
Agenda: elect one Director, financials, flowering rush update
Guest Speaker: Petra Rowell, Sturgeon Watershed Alliance
Annual Membership - \$20 per family - to purchase e-transfer to lilsawaterquality@gmail.com

Please e-mail your name, phone number, address and e-mail address to the above e-mail address to confirm your membership payment.

SCHOOL HEALTH MEASURES NOW INCLUDE MANDATORY MASKS

Submitted by Government of Alberta

As part of a number of new school safety measures to combat COVID-19, mask use for Grade 4 to 12 students, and all school staff, will be mandatory when school returns for the 2020-21 year.

While mandatory mask use is for students in Grades 4 to 12 and all staff, all students and staff in public, separate, Francophone, charter and independent schools will receive two reusable masks from Alberta's government. More than 1.6 million masks will be distributed to 740,000 students and 90,000 staff. Additional single-use masks will be available at schools, if required.

Mask use will be mandatory for staff and teachers in all settings where physical distancing cannot be maintained. Students will be required to wear them in all shared and common areas such as hallways and on buses. Exemptions will be made for students and staff who are unable to wear a mask due to medical or other needs.

Mask use for kindergarten to Grade 3 students will continue to be optional. Mask use for younger children is a challenge due to difficulties with proper fit and compliance. In addition, evidence shows that children under 10 may be less likely than older children or adults to transmit COVID-19.

"The safety of our staff and students continues to be my number 1 priority. Since cancelling in-person classes in March and developing our school re-entry plan, we have been clear that we would continue to adapt our guidelines as necessary based on current medical advice. These new safety measures will help prevent the spread of COVID-19 in our schools, and we will continue to work with our school authorities to ensure they are equipped for a successful start to the school year." - Adriana La-Grange, Minister of Education

"After reviewing the emerging evidence, it is clear that masks can play an important role in limiting the spread of COVID-19. I am not making this updated recommendation lightly, but acting on the best current evidence available. While masks are important, I want to stress that they are only one of the many public

health measures in place to limit the spread of COVID-19 and protect the health of students, staff and families." - Dr. Deena Hinshaw, Chief Medical Officer of Health for Alberta

"CASS' board of directors appreciates the government's commitment to adapting Alberta's health guidelines as new medical information becomes available and for ensuring school divisions are receiving the protective equipment they need

for a successful transition back to school. This announcement clearly demonstrates Alberta Education's willingness to take the necessary steps to support the safety of staff and students. We appreciate their continued collaboration and support as we approach the beginning of a new school year." - Bevan Daverne, president, College of Alberta School Superintendents

Alberta's government remains committed to adjusting the

school re-entry guidelines based on current medical advice. The chief medical officer of health has been studying the evidence around masking in schools, and this decision is a direct result of evolving medical advice.

Face shields

School staff will receive one reusable face shield for their use in the schools. Shield use is at the discretion of the individual staff member.

Continued on Page 6

High-Performance Lifestyle Products
Take Your Life to the Next Level with B-Epic!
 Call Today! (780) 907-8642

ELEV8
Your Mind & Body
The Most Advanced Natural Performance Product Around the World

ACCELER8
Your Weight Loss
Fat-busting, Synergistic Natural Weight Management and Sleep Combo

GR8 KIDS
Boost Your Nutrition
Flour-packed Nutritional Power Sticks: Great for Kids and Adults

HYDR8
with Alkalized Water
Natural Coral Mineral Supplement: Great-tasting Alkalized Water

“ I am super excited! Down 4 lbs / 6.5 inches in 8 days. Feeling GREAT! Awesome product! - Donna **”**

“ I had given up on losing weight but 11 days in I dropped enough lbs to fit into a favorite pair of jeans hanging in my closet for the last 5 years – and they are loose, Yeah! – Kayla M. **”**

Begin your epic journey at www.bepic.com/elaine1!

LAC STE ANNE COMMUNITY CHOIR UPDATE

LAC STE ANNE COMMUNITY CHOIR will not be commencing this fall due

to COVID-19 restrictions. When we are able to reconvene safely, we will post a

notice & hope to see all our past members & many new faces join us in song! In the

meantime, stay safe & keep singing!

School Health Measures Now Include Mandatory Masks

Continued from Page 5

Plastic face shields can help reduce exposure but are not equivalent to masks. A mask must still be worn while wearing a face shield.

Hand sanitizer

About 466,000 litres of hand sanitizer will be distributed between all school authorities. The specific volume provided to an individual school authority will be based on student population.

Thermometers

Each school will receive two contactless thermometers to assist with managing student and staff health. Thermometer use will be at the discretion of the school authority.

Staff testing

Alberta Health and Alberta Health Services are working hard to expand testing capacity and reduce turnaround times for testing, including in-school staff, teachers and students, so that anyone with symptoms or close contacts of cases can be rapidly tested and receive test results promptly.

All supplies will be distributed to school authorities by the beginning of the 2020-21 school year. Authorities will then distribute to individual schools, staff and/or students based on the needs of their

own communities.

Provincial health guidance for a safe return to school will continue to evolve as necessary to reflect the latest evidence on the nature of the COVID-19 pandemic.

Individual school authorities are developing return-to-school plans that meet the needs of their own communities. These plans are based on direction provided under the provincial school re-entry plan, and supporting health guidance documents.

Alberta's Recovery Plan is a bold, ambitious long-term strategy to build, diversify, and create tens of thousands of jobs now. By building schools, roads and other core infrastructure we are benefiting our communities. By diversifying our economy and

attracting investment with Canada's most competitive tax environment, we are putting Alberta on a path for a generation of growth. Alberta came together to save lives by flattening the curve and now we must do the same to save livelihoods, grow and thrive.

Quick facts

- Alberta's government announced students and staff would return to school under scenario 1 - near-normal daily operations with health measures - on July 21.

- School authorities are required to be prepared to move between the three scenarios outlined in the provincial school re-entry plan. Changes to scenarios will be determined by Alberta Education.

Cash for Cars
967-2492
R & S TOWING

GROVE HEARING CLINIC
960-2960
1-866-960-2960

Hear what you've been missing...

Senior Discounts



Full Service & Repair

Full Hearing Assessments

HOURS OF OPERATION: 9am – 5pm Weekdays
 3rd party billing (AADL, WCB, DVA, FCH) • Personal 0% Financing if Needed
 For The Latest Technology In Hearing Aids & Assisted Living Device Stop By & See Dawn
#220-70 McLeod Ave - Westland Market Mall, Spruce Grove

RMA and Rural Municipalities Concerned About Possible Changes to Oil and Gas Property Assessment

Continued from Page 4

These changes simply don't work from a municipal viability or an industry competitiveness perspective."

RMA is also concerned that the province has not considered the impacts that the changes will have on Alberta's villages, towns, and cities. Firstly, Alberta municipalities are requisitioned or invoiced from the Government of Alberta for costs related to education, seniors housing, and policing. The amount each municipality pays is determined in part by the assessed value of the properties within their boundaries. If rural assessment values drop significantly, urban municipalities will see their contribution costs to provincial services increase. Secondly, municipalities across Alberta have worked for several years on developing intermunicipal collaboration

frameworks (ICFs) with their municipal neighbours. ICFs support neighbouring municipalities in developing approaches to the shared delivery of services that can be more efficiently delivered on a regional basis. Many ICFs are in the final stages of development or have been completed within the last year, but many will be impacted by reductions in rural assessment, as many rural municipalities will simply lose the financial capacity to contribute to regional service delivery at a level agreed upon in ICFs.

"Although rural municipalities will be more directly impacted by the proposed assessment model changes than their urban neighbours, the impacts of abrupt reductions in assessment spill across municipal borders and will have implications for entire regions," said Kemmere.

Continued on Page 9

AUG 22 AUCTION
FOR: SENIORS RETIRING
 LOCATED: Barrhead Rodeo Grounds

Saturday, August 22nd at 1:00PM

PREMIUM FOR AGE ITEMS: * MF 550
 Combine in extra special condition.
 Impressive and Ready To Work * Attractive
 1978 JD 302 A Industrial Tractor w 50 hp.
 FE Loader, New (paint) (calcium Rear
 Tires) (Radiator), Great Work Tractor *
 1986 Kerr 26 ft x 8.5 ft Tilt Deck, Goose
 Neck Trailer w HD Winch * 16 ft Vers 400
 Swather w P/U Reel * Other Farm Misc,
 Tools, Etc Sell at 2 PM

ESTATE SALE STARTS AT 1 PM: * A 45
 ft VAN Full of Antiques and Collectables *
 Plus other Household and Yard Items

PARSONS AUCTIONS LTD.
 Charles 674-7704 (780-674-3929) Jeff 305-4328
 Pictures Available on: parsons-auctions.com

ANOTHER RAINBOW SALE **INDUSTRIAL ACREAGE AUCTION** **ANOTHER RAINBOW SALE**

Viewing will be August 12-13 from 10:00am - 5:00pm
 and August 14 from 10:00am - 2:00pm.
Closes August 14 @ 2:00PM

Shop Equipment: • 12000 lb 2 post truck and auto hoist (to be removed at customers expense) • Miller spectrum 25 Welder • Lincoln 125 Suitcase Welder (unused) • Industrial Power Team 100 ton Press • Star drill Press • Cratex Dust collector • King Industrial Planer • Bosch Router Table • Ridged 10" table saw on wheels • Query 7.5 HP - 80 gal -2 stage compressor • Modu industrial sand blaster **Sea Cans, Trucks, Industrial Trailers and Equipment:** • 1-,20' Sea can as new • 1-,20' sea can (used) • Storm Guard Fisher 72" Snow Plow • Approx. 6 pallets of paving stones • 26' PJ Industrial trailer with flip up ramps • 2000 Ford F350 4x4 c/w air bags (out of province) • JD 960A John Deere -O-Turn mower • Pull type 20 gal weed sprayer • 624 E Snow Blower • Sierra Classic 1 Ton Project Mudder Truck • 8" suspension lift kit • 4x4 Danas 60 front end c/w lots of parts to complete this project. **PLUS many more tools and equipment included in this sale.**

This sale will be online internet bidding only. Keep checking website for our online auction catalogue and further information.

Load out & payment August 15-19 from 10:00am - 5:00pm
 All merchandise to be picked up from acreage location (123 52212 RR 274, Spruce Grove). Directions: South on Range Road 274 to Garden Grove Estates and proceed to Lot 123.

ALL UPCOMING AUCTION SALES ARE ONLINE ONLY
FOR ALL THOSE NON COMPUTER INDIVIDUALS
-ABSENTEE BIDS ARE AVAILABLE !!

UPCOMING SALES **CONSIGN NOW!**

September 6, 2020 - Annual Labour Day Consignment Sale
 October 10, 2020 - Annual Thanksgiving & Harvest Consignment Sale

These sales will be online internet bidding only. Keep checking website for our online auction catalogue & further information.

****Watch website daily for new additions to auction lists****

Terms and conditions: Cash, Visa, MasterCard, Debit, Interac. Nothing to be removed until paid for. Subject to additions and deletions. A 10% handling fee, plus GST will be charged where applicable. Please be conscious of the handling fees and factor them into your bidding. Owner Rainbow Auctions & Liquidators or it's employees shall not be responsible for accidents.

SALE CONDUCTED BY:

RAINBOW LIQUIDATORS & AUCTIONS
 Stony Plain, AB. 780-968-1000
 or TOLL FREE 1-866-968-1001
 Complete Liquidation and Auction Services Since 1978
www.rainbowauctions.ca
BOOK YOUR SALE WITH US TODAY!

COVID-19 UPDATE FOR WHITECOURT

Submitted by Town of Whitecourt

AUGUST 7, 2020

The Town of Whitecourt continues to monitor the COVID-19 health emergency across Alberta, and has adjusted operations accordingly through a phased in re-opening approach.

Whitecourt Town Office Operations

The office has been open to the public over the last several weeks by appointment; however, as of Monday, August 10, 2020, the Whitecourt Town

Office will open to the public on a drop-in basis.

Although the Town Office is open, public members are encouraged to utilize online and telephone service options for bill payments, permits and general inquiries. As the property tax deadline of August 31, 2020 approaches, property owners are reminded that payments can be made:

- Using online banking or at your financial institution.

- Using Virtual City Hall available at www.whitecourt.ca which provides 24-hour access and the ability to pay

online anywhere, anytime.

- By cheque using the drop box at the front entrance of the Town Office from Monday to Friday between 8:30 a.m. and 4:30 p.m., or by mail post-marked as of August 31, 2020.

- In person at the Town Office - Due to COVID-19, you may experience longer wait times than usual if paying in person.

For community members that choose to access the facility, the following health measures will be implemented:

- All those entering the building will be asked to pre-screen

themselves for symptoms, and are asked to stay home if feeling unwell, are a close contact of someone with COVID-19, or have recently travelled internationally in the last 14 days (Albertans are legally required to isolate for 14 days if they returned to or entered Alberta from outside Canada or are a close contact of someone with COVID-19). Hand sanitizer will be provided upon entering the facility, and directional signs and markers will be in place that public members are asked to follow. All services and appointments will take place at a front desk, and public members are asked to follow social distancing protocols.

- Occupancy into the building will be limited; public members are advised that wait times may be longer than normal for in-person services. Should you require an appointment with a specific staff member, you are encouraged to book an appointment as those with appointments will receive first priority.

- The Office will be open normal hours of operation: 8:30 a.m. to 12:00 p.m. and 12:30 to 4:30 p.m. Monday through Friday.

Government of Alberta Guidance Document for Sport, Physical Activity and Recreation

As many community members are preparing to register for organized sports and extracurricular programs starting this fall, the Town of Whitecourt encourages you to reference the Government of Alberta's guidance document for sport, physical activity and recreation. The document was recently updated and includes the following highlights:

- Teams in different mini-leagues should not play each other.

- Athletes should not belong to multiple sports mini-leagues.

- Athletes should select one sports cohort for the duration of Stage 2.

For a copy of the guidance document visit:

- www.alberta.ca/assets/documents/covid-19-re-launch-sports-physical-activity-and-recreation.pdf

CO-OP
North Central

**BULK
PROPANE
DELIVERY**
780.456.3529
northcentralcoop.crs

PROANE CO-OP

FUEL TEAM

FUEL • LUBRICANTS • PROPANE

RMA and Rural Municipalities Concerned About Possible Changes to Oil and Gas Property Assessment

Continued from Page 7

“The province has emphasized the importance of regional collaboration in recent years, yet these changes will undermine the hard work that municipalities have undertaken to build relationships with one another and determine how to serve their residents effectively. It is yet another example of a lack of consideration of the secondary impacts of manipulating the assessment model on the part of the province.”

Since the review concluded and confidentiality requirements were lifted, many RMA members have informed their local MLAs and ratepayers of how concerning the proposed changes are for rural Alberta. RMA appreciate the efforts of our members and hopes to build on this local advocacy success by meeting with the Premier and other government decision-makers to inform them of the province-wide rural impacts and to dispel the assumption that the changes will have industry-wide benefits. This is especially important given indications that industry stakeholders have received attention from government on this issue despite representing only a small portion of the companies impacted by the changes.

Rural Alberta recognizes the importance of the oil and gas industry in contributing to Alberta’s economy, and strives to work collaboratively to support industry activities. The assessment system in Alberta is not perfect, and likely does need to be reviewed, but this should be done through an open, collaborative, and transparent process involving direct engagement with municipalities; the level of government that will be most impacted. The changes being proposed will devastate municipalities, as well as rural residents and businesses that will face reduced services or

increased taxes to off-set the tax break being provided to the oil and gas industry.

“RMA needs to meet with government on this issue not only to advocate for their member municipalities, but to advocate for rural businesses and residents, all of whom will see negative impacts from these proposed changes, which are laser-foc-

used on cutting costs for one industry. This government has called for Alberta to receive a fair deal from Ottawa. However, going through with these changes to the assessment model will result in rural Albertans wondering if they will receive a fair deal from the provincial government,” Kemmere said.

The Rural Municipalities

of Alberta (RMA) is an independent association comprising Alberta’s 69 counties and municipal districts. Since 1909, the RMA has helped rural municipalities achieve strong, effective local government. The RMA provides Advocacy and Business Services (including RMA Trade, RMA Fuel and RMA Insurance).

PURE HEMP PRODUCTS
AGING IS INEVITABLE - LOOKING AND FEELING OLD ISN'T!

A Health and Beauty Breakthrough!
Cannabidiol, is one of over 80 active cannabinoid chemicals in the hemp plant. Unlike, THC, it does not produce euphoria or intoxication. It targets specific receptors in the cells of your brain & body. There are many physical and mental benefits to using these products for both treatment and prevention of numerous ailments.

Therapeutic Uses For Pure Hemp
Supports healthy blood sugar levels, promotes healthy energy levels, relieves anxiety, aids in digestion, supports optimal immune function and the regeneration of healthy cells, and promotes a sense of serenity and overall well-being.

Anti-Aging Uses For Pure Hemp
Promotes more youthful skin, provides hydration, enhances radiance, lessens age lines as well as the appearance of dark spots.

KEY BENEFITS
PAIN RELIEF: Known to reduce vomiting & nausea; suppress muscle spasms; reduce seizures & convulsions.
PROMOTES HEALTH: Helps to promote relaxation and overall health.
WELL-BEING: Helps to relieve anxiety, aid in digestion, supports optimal immune function and the regeneration of healthy cells.

PET PRODUCTS

PET CHEW TREATS
KEY BENEFITS
SYNERGISTIC BENEFITS: Can be used in conjunction with regular medications with no side effects.
NO SIDE EFFECTS: Does not damage the liver, kidney or GI Tract like OTC medication.
DIETARY SUPPLEMENT: Can be administered daily as part of your pet's diet.

ORAL SPRAYS & DROPS
KEY BENEFITS
MANAGES PAIN: Helps to treat inflammation, arthritis and joint pain.
TREATS DIGESTIONAL ISSUES: Helps with loss of appetite, nausea, IBS and gastrointestinal swelling.
GENERAL HEALTH: Helps to manage mood, anxiety and general joint pain. For healthy, happy pets.
CONVENIENT: Can be sprayed into pet's mouth or on food.

For more information, Call (780) 907-8642

Classified Ads - Call 962-9228

Obituaries



Delbert McConnell
June 10, 1940 - July 20, 2020 (age 80).

It is with great shock, sadness and love that we announce the passing of Charles Delbert McConnell on Monday July 20, 2020. He leave to mourn his wife Sharon of 58 years; three daughters, Deidre, Daphne, Dayna (Chris) and one son Dwayne; seven grandchildren Kaitlin and Andy, Jory and Toni, Shoniece and Cam, Callan, Dylan, Dalton and Jager; five great grandchildren Naya and Walker, Odin and Ophelia and Zoey. Also left to mourn; his brother Doug; brother-in-law George Rahier, Aubrey Callan; sisters-in-law Arlene and Ken, Sandra and Harold as well as many nieces, nephews, cousins, friends and co-workers. He was predeceased by

his sister Eva and sister-in-law Sophie. Delbert spent 48 years working the oil patch from Saskatchewan, Alberta, B.C., Quebec and the arctic, it was there he made many lifelong friendships. He retired from that to take over the farming operation where he loved working with his cows and that was where he passed away doing what he loved and surrounded by his cows. Due to Covid-19 there will be no service at this time. In lieu of flowers donations may be made to the Heart and Stroke Foundation or to the charity of ones choice would be greatly appreciated. THANK YOU! I would like to take this opportunity to extend our deepest gratitude to the Police,

EMTS and the Fire Department for attending to the sudden death of Delbert at our farm. It was deeply appreciated. I would also like to extended my deepest thank you to Constable Malcom who was first on the scene and the last to leave. He was very kind, professional, considerate and above all compassionate. It helped me considerable. THANK YOU. - Sharon McConnell and Families. Life should not be a journey to the grave with the intention of arriving safely in an attractive and well preserved body but rather to skid in sideways, beer in one hand, body thoroughly used up, totally worn out and screaming " Woo-Hoo~ What a Ride!!!" (1) 11-08

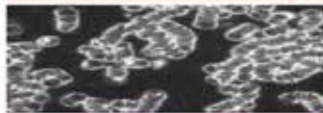
PREVAIL MAX

CELLULAR HOMEOSTASIS FORMULA

A NUTRITIONAL BREAKTHROUGH THAT SUPPORTS YOU ...RIGHT DOWN TO THE LAST CELL!

How do you want your **BLOOD** to look?

Before PrevailMAX:



- poor circulation
- low energy
- brain fog
- dehydration
- decreased nutrients
- pH imbalance
- poor endurance

After PrevailMAX:



- better circulation
- more vitality
- mental clarity
- cellular movement
- nutrient assimilation
- balanced pH
- optimal endurance



PrevailMAX™ is a nutritional breakthrough that delivers a rapid increase of internal blood cell pressure to speed absorption, enabling the body to take maximum advantage of the nutrients in foods and supplements. The electrolytes are small enough to penetrate your cell membranes, to bind with your cells, and to be carried wherever they are needed in the body.

At the microscopic level of human cells, PrevailMAX™ supports healthy cell performance – a nutritional breakthrough for your cells.

When you use PrevailMAX™, you will feel more energy and an ability to focus like never before. Take a few sprays today and see just how good you can feel!

LIVIN TRIM WITH VALENTUS

www.ValentusTour.com/Ladybug (780) 907-8642

Lost & Found



ANGEL MISSING

Since July 6
Seba Beach, Wabamun
Contact us with ANY
INFORMATION about
her whereabouts
780-476-1617

Services

WANTED: Standing Timber. Are you looking to cut your woodlot before pine beetles or forest fires destroy it? Top dollar paid. Call Paul 780-706-1470 (12) 04-08

Computers

Computer Repairs ONLY \$50. FREE REPAIRS for Single Parents and low income Seniors. For Sale good laptop refurbished with games, world pictures, select music and more for ONLY \$125. DONATE used Laptops, Tablets, Cells for parts or repairs. Call 780-892-2407 (12) 04-08

Classified Ads - Call 962-9228

Dog Caretaker

Alberta Beach & Surrounding Areas, thinking of a Summer Getaway? Worried about leaving your dog in a kennel? Don't worry anymore, you can leave your pet with me! There is a wrap around deck and courtyard! I will provide tender loving care, with walks every day. Best of all, I'm cheaper than a kennel! Daily drop in's or overnight stays welcome. If interested call 780-920-4166 (4) 04-08 OG

Landscaping & Maintenance

Stump Grinder For Hire - Alberta Beach & Surround areas. Call 780-779-3589 (28) 05-05

Firewood

SEASONED FIREWOOD: Birch, Tamarack, Spruce/Pine & Poplar. 4x4x8 cord, Split and delivered or pick up at wood yard, 1/2 cord or full cords available. Call 780-967-

5835 or 780-983-1495 (28) 31-03

Antiques

HUGE ANTIQUES & COLLECTIBLES SALE, July 31 & Aug 1, Aug 14 & 15, 10am-5pm, Featuring Tea cups collections, Carnival glass, Antique Plows and more! 2224 Township Rd 545 in Onoway - Watch for the signs. (2) 28-07

EVER AFTER ANTIQUES & COLLECTIBLES 4823 - 50 Ave., Alberta Beach. Phone 780-237-3528. OPEN: Thurs, Fri, Sat and some Sun, noon to 5 pm. Other times by chance or appointment. We buy and sell antiques and unique collectibles! (11) 16-06

Wanted

WANTED BY SENIOR - 2 Bicycles with same size wheels (older bikes OK) to build cart for grocery transport from residence parking lot to suite. Will pay \$\$\$. Phone 780-892-2110, Darwell AB. (2) 04-08

HUNTING RIFLE wanted by Senior. To be locked in motorhome. A 30-30 preferred, will consider 30-60 or 30-08 = or 300 Savage. F.A. Acquisition #AB-95-1088-338. Phone 780-892-2110, Darwell AB. (2) 04-08

WANTED: Tank for Oil Furnace, Not leaking or rusted bottom. Call 780-892-2407. (2) 04-08

For Rent

Completely renovated Motel in Onoway, AB. offering daily, weekly or monthly rentals. All utilities included, 55 inch tv with Satellite. Double bedrooms, furnished bachelors with full kitchen and furnished 1 bedrooms with full kitchen available. Starting at \$950 + tax. Please call for viewing, 780-967-4420 or 780-945-1723. www.onowayinnandsuites.com (4) 04-08 OG

NEW FACILITY
Chapel & Reception Centre

600 Calahoo Road Spruce Grove, AB
780-962-2749 www.serenity.ca

SERENITY FAMILY SERVICE SOCIETY - YOUR NOT-FOR-PROFIT SOCIETY

SUDOKU of the week

Here's How It Works: Sudoku puzzles are formatted as a 9x9 grid, broken down into nine 3x3 boxes. To solve a sudoku, the numbers 1 through 9 must fill each row, column and box. Each number can appear only once in each row, column and box. You can figure out the order in which the numbers will appear by using the numeric clues already provided in the boxes. The more numbers you name, the easier it gets to solve the puzzle!

Like puzzles? Then you'll love sudoku. This mind-bending puzzle will have you hooked from the moment you square off, so sharpen your pencil and put your sudoku savvy to the test!

ANSWER:

5	1	8	6	3	2	4	9	7
6	9	2	7	4	5	3	1	8
7	3	4	1	8	9	2	5	6
4	8	7	5	9	6	1	2	3
9	5	3	2	1	8	7	6	4
2	6	1	3	7	4	5	8	9
3	4	8	8	2	1	9	7	5
1	7	5	9	6	3	8	4	2
8	2	9	4	5	7	6	3	1

WEEKLY PUZZLE SPONSORED BY:

Thanks to Our Team & Community!

As our community newspaper, we are committed to delivering the latest and most accurate COVID-19 news and local updates. We also remain dedicated to serving our local advertisers, as they struggle to overcome unprecedented economic challenges resulting from the pandemic.

ADVERTISERS, call 780.962.9228 to learn how we can help you.

In uncertain and troubled times like today, the importance of local news and community connection is more evident than ever. You can help support businesses in our community by purchasing gift cards for later use, frequenting restaurants that are open for takeout or checking to see if your favorite businesses have opened online stores. You can also support the future of local news and reporting by reserving your ad space today and letting our readers know how they can help you!

Together, we are all stronger.

Church Directory

<p>Rich Valley Community Church</p> <p>Sunday School 10:00a.m.</p> <p>Worship Service 11:00a.m.</p>	<p>Catholic Parish of Lac Ste. Anne</p> <p>Sunday 10:00a.m.</p>		<p>Mayerthorpe Baptist Church</p> <p>Worship Service Sunday 10:30a.m.</p> <p>Children's Church 10:30a.m.</p> <p>4606-54 St. Mayerthorpe (780) 786-2677</p>	<p>Alberta Beach Alliance Church</p> <p>Sunday Worship Service & Kid's Church 11:00a.m.</p> <p>Sunday School 10:00a.m.</p> <p>(780) 924-3282</p>	<p>St. John's Anglican Church</p> <p>Onoway Sunday Service 10:00a.m.</p> <p>Everyone Welcome</p>
<p>St. John's Lutheran Church Alberta Beach</p> <p>Sunday Service 11:00a.m.</p> <p>Sunday School</p>	<p>Zion United Church</p> <p>Sunday Service 10:00a.m.</p> <p>Sunday School</p> <p>Serving Alberta Beach, Wabamun, Daricell & Lake Isle, Onoway & Area (780) 924-3351</p>	<p>Sangudo United Church</p> <p>Christmas Eve Service 6:00p.m.</p> <p>Worship Service 3rd Sunday 11:00a.m.</p> <p>4907-50 Ave. Sangudo, AB</p>	<p>St. Mary's Anglican Church Service</p> <p>Holy Communion 2nd Sunday each month 11:00 a.m. at Sangudo United Church</p> <p>Reverend Barry Rose Officiating</p>	<p>Cherhill Community Church</p> <p>Sunday School 10:00a.m. - 11:00a.m.</p> <p>Worship Service Sunday 11:00a.m.</p>	<p>St. Michael Lutheran Church</p> <p>Sunday Services 1st & 3rd Sunday at 2:00p.m.</p> <p>Pastor Riek Chappell (780) 674-2618 Mystery Lake</p>
<p>Trinity Lutheran Church (LC-C) The Church of the Lutheran Hour - Rockyford Bridge</p> <p>Pastor Dan Hansard Church (780) 778-2035</p> <p>Sunday Worship 9:00a.m.</p> <p>Senior's Service & Cottage Bible Study - Phone for locations</p>	<p>Crossroads Community Church P.A.O.C.</p> <p>Rev. Arnold Lothoiz</p> <p>Sunday Service 10:30a.m.</p> <p>(780) 786-2424</p>		<p>Onoway Baptist Church</p> <p>Sunday Service 10:30a.m.</p> <p>Pastor Greg Garbutt (780) 967-2266</p>	<p>Roman Catholic Church</p> <p>St. Agnes' Parish, Mayerthorpe Sunday 9:00a.m.</p> <p>St. Elizabeth Parish, Evansburg Saturday 7:00p.m.</p> <p>(780) 786-2032</p>	<p>Calahoo Alliance Church</p> <p>Family Worship Service Sunday 10:00a.m.</p> <p>For Info Call Jerry (780) 974-7734</p>

SERVICE DIRECTORY

ATB Financial
ALBERTA BEACH AGENCY
4824 - 50 Ave, Alberta Beach

DUE TO COVID-19:
Banking by appointment *Only*

**CALL 780-924-2211
UNTIL FURTHER NOTICE**

JAVORSKY DITCHING
Onoway, AB

Phone: (780) 967-5486
Cell: (780) 906-7469
Fax: (780) 967-4961

Dennis Javorsky - Owner / Operator

For All Your Excavating Needs
Sand & Gravel Hauling • General Excavating
Septic Tanks & Cisterns • Site Prep & Clean Up
• Install & Repair of Water, Sewer,
Power & Telephone Lines

POSTINGFIRST.com

FREE LOCAL CLASSIFIED ADS
Real Estate, Rentals, Vehicles, Pets, Jobs, Service Directory,
Buy/Sell/Trade, Lawn & Garden, Garage Sales, Events,
Local Places & Much More... Advertise for **FREE** Today!

Follow Us

Instagram, Facebook, YouTube, Twitter, LinkedIn

MARK MARTIN PFEIFFER
MASTER BRICKLAYER/MASON

Cell: 780-242-3308
Email: pfeiffer.mark@hotmail.com

- Brickwork • Stonework
- Rockwork • Parging
- Concrete Block Work
- Tile Work (all kinds)

Master Mason Hamburg

COMMUNITYVOICE
YOUR LOCAL NEWS

THIS SPACE IS RESERVED FOR YOU!

BRO-BUILT
Homes & Contracting Ltd

"We Pride Ourselves In Turning Handshakes Into Hugs"

www.brobuilthomes.com
Testimonials
Phone 780-940-6415

SERVICE DIRECTORY

Scerv Construction Ltd.

- Engineered Screw Piles • Framing • Trenching
- Skidsteer Work • Insulating • Roofing
- Snow Removal • Drywall • Decks
- Excavator Services • Taping

Menko Helmus Cell: **780-305-3864**
 Email: m1988_10@hotmail.com
 PO Box 4795, Barrhead, AB T7N 1A6

AFFORDABLE SOLUTIONS
 PLUMBING, HEATING & BACKHOE SERVICES INC.



FULL SERVICE PLUMBING & HEATING
 SEPTIC TANK & FIELD REPAIR & REPLACEMENT
 FULLY INSURED & BONDED
 COMMERCIAL & RESIDENTIAL
 WARRANTY ON ALL WORK

780-655-5683
LOVE AT FIRST SERVICE CALL!
SPEAK DIRECTLY TO A SERVICEMAN

MASTER PLUMBER



36 YEARS EXPERIENCE
780-655-8402

PLUMBING & HEATING SERVICES
PRICE BY THE JOB NOT THE HOUR!
FURNACE REPLACEMENTS

MasterCard WCB VISA

CALIBRE DRILLING LTD
 DRILLING AND SERVICING YOUR WATER WELL.

SPECIALISTS IN AIR & MUD ROTARY DRILLING

- Water Well Drilling • Pump Installations
- Pressure Systems • Well Tests
- Licensed Drillers • Year Round Drilling
- Geotechnical Drilling • Cathodic Protection
- Free Estimates

Quality Workmanship Five Year Warranty
(780) 960-2992
 BOX 4083 SPRUCE GROVE, AB T7X 3B3

COMMUNITYVOICE
 YOUR LOCAL NEWSMAGAZINE

THIS SPACE IS RESERVED FOR YOU!

R & S TOWING

FREE REMOVAL OF UNWANTED VEHICLES

967-2492

MasterCard VISA



TRI-LAKES SERVICES LTD.

- Septic Hauling • Drinking Water Delivery
- Portable Washrooms • Steam Truck

www.trilakeservices.ca / office@trilakeservices.ca
 (877) 727-3939 / (844) 967-9176

SERVING: • Lac Ste. Anne County • Parkland County • Yellowhead County East

2Bros
 Custom Contracting Ltd.

Custom Framing • Concrete Floors • Shingling
 Siding Soffit Fascia • Styrofoam Block System

Jeff 780-717-0520

ALL AROUND FENCING RENTALS

Fence Panels • Barricades
 Installation by Collin Toilet Rentals

Whitcourt, AB
780.706.7978

ZEE BEST RENOVATIONS
 Your Complete Line of Renovation Needs:

- Bathroom
- Basements
- Plumbing
- Tileworks
- Drywall & Taping
- Decks & Fencing
- Roofing
- Siding

FREE ESTIMATES
26 YEARS EXPERIENCE
INSURED | GREAT RATES

JOE LAWRENCE BUS: 780-967-3898
 MANAGER CELL: 780-915-3348
 FAX: 780-967-3798

COMMUNITYVOICE
 YOUR LOCAL NEWSMAGAZINE

THIS SPACE IS RESERVED FOR YOU!

DONALD N. GREENWAY
 Chartered Accountant

Suite 205 Sunrise Professional Building
 215 McLeod Avenue
 Spruce Grove, AB

(Bus.) 962-6366
(Fax) 962-3990

PEMBINA CONCRETE PRODUCTS LTD.

Manufacturers of
ONE PIECE SEPTIC & HOLDING TANKS

* Water Cisterns * Field Systems *
 Pumps and Accessories * Sumps

DELIVERED TO YOUR SITE
 1-800-661-3047
 780-727-2702
 PembinaConcrete.com



New Line of Concrete Statues, Fountains and Garden Ornaments.
 BOX 123, Entwistle, T0E 0S0

SERVICE DIRECTORY



PaddlePlastics Ltd.
Mayerthorpe, AB

Box 67
Mayerthorpe, AB T0E 1N0

Ph: (780) **786-4408**
Fax: (780) 786-4466



Mo-Bil WASH SERVICES Ltd.

- Steam • Hot & Cold High Pressure Wash • Sewer Thaw & Flush
- Residential • Commercial - Oilfield

24 HOUR SERVICE
Onway Call (780) 991-9466



- Screened Black Dirt
- Beach Sand
- Road Gravel • Fill Dirt
- Bobcat & Backhoe Available

(780) 220-5849



Blakeman Drilling Ltd.

Waterwell Drilling & Servicing
Pumps & Pressure Systems

SERVING LAC STE. ANNE & WEST PARKLAND FOR OVER 25 YEARS

Joe (780) 924-3024



BACK COUNTRY PIPEFITTING LTD.
Plumbing & Heating

Lee Hicks 780-898-1062
Journeyman Plumber

Residential and Commercial Plumbing and Heating.
SERVING: YELLOWHEAD, PARKLAND, LAC STE. ANNE & BRAZEAU COUNTIES.



PREVAIL MAX
CELLULAR HOMEOSTASIS FORMULA

A NUTRITIONAL BREAKTHROUGH THAT SUPPORTS YOU... RIGHT DOWN TO THE LAST CELL!

LIVIN TRIM WITH
VALENTUS (780) 907-8642
www.ValentusTour.com/Ladybug



Tile Setting
Ceramic & Natural Slate

Kitchen & Bath - Backsplash & Surrounds
Fireplace Floors

"Serving Lac Ste. Anne and West Central Alberta Areas for over 25 years"

OFFERING DISCOUNTS DURING THESE TROUBLING TIMES

Thorsen Industries Call
Christian @ 403-896-8170



COMMUNITYVOICE

THIS SPACE IS RESERVED FOR YOU!



H&P Kosik CONSTRUCTION Ltd.

- Road Building • Gravel • Sand • Dugouts
- Black Dirt

No Job too small. We do them all!

Harvey cell. 780-445-9010 ph. 780-892-3532
Box 145, Darwell, AB. T0E 0L0



Collin Toilet Rentals & Service

Your Portable Toilet Supplier for:

- Construction
- Commercial
- Oilfield
- Special Events

Whitecourt Dispatch 780.778.2448



standstone VACUUM SERVICES LTD.



Proudly Serving Lac Ste. Anne County
1-877-226-5008 780-924-2435 780-967-2118
www.standstonevac.ca or visit our facebook page



ROY SHERWOOD
Master Electrician

Ph: 780-968-1425
Call: 780-908-2287
Fax: 780-968-2211

Email: suretechroy@gmail.com

2-53220 Rge Rd 21
Parkland County, AB
T7Y 0C5

**Control & Automation
Commissioning
Solar Sales & Service**

Industrial . Commercial . Residential



VILLAGE GLASS & MIRROR LTD.

- AUTO
- RESIDENTIAL
- COMMERCIAL GLASS & MIRROR PRODUCTS

5027 - 50 Avenue • Phone: 967-2127
PO Box 609, Onway, AB T0E 1V0

The service you need, from people you trust.

- Septic Services: Residential, Commercial
- Holding Tanks and Field Systems
- Effluent Pumps supplied & Installed
- Portable Toilets: Standard, Wheelchair Accessible
- Products: BioClean, Liquid Enzyme, Potty Treat
- Potable Water

Great Rates & Reliable Service! Call us today!



SANGUDO VETERINARY CLINIC

Box 581, 4916 - 52 Ave. Sangudo, AB. T0E 2A0

Dr. Ralf Sanders DVM

Ph: 780-785-2200
Fax: 780-785-2228
sangudovet@gmail.com

24 HOUR EMERGENCY SERVICE

SERVICE DIRECTORY

ANOTHER RAINBOW SALE

RAINBOW LIQUIDATORS & AUCTIONS



Farm Sales, Equipment Sales, Estate Sales
BOOK YOUR SALE WITH US TODAY!
 Serving the Community since 1978

Ph: (780) 968-1000
 Stony Plain, AB 1-866-968-1001
www.rainbowauctions.ca

SMOOLE

- Construction & Septic Installation
- Environmental Wastewater Disposal
- Site Design & Evaluation
- Power, Water & Basement Excavation
- Trackhoe, Backhoe, Bobcat & Dump Truck

For All Your Excavation Needs



Call Dan 780-991-4484 Reid 780-909-0173

Jack's Auto Body

& 24 HR Towing

SPECIALIZING IN COLLISION REPAIR
GUARANTEED WORK • INSURANCE CLAIMS

CAA BOX 9 SITE 306 RR3, ONWAY, AB T0E 1V0
(780) 967-5850

OUR PLEDGE IS QUALITY

H&E UPHOLSTERY

FOR ALL YOUR UPHOLSTERY NEEDS

Convertible tops for cars and boats, custom car and boat interiors, 5th wheel trailer skirts, boat tarps, ATV seats, furniture, kitchen chairs, heavy equipment seats.




WWW.HANDE.CA 4-485 South Ave.
 For more information contact: Spruce Grove
 kirk@hande.ca (780) 962-3048

COMMUNITYVOICE YOUR LOCAL NEWSMAGAZINE

THIS SPACE IS RESERVED FOR YOU!

THE MOST COMPLETE NUTRITIONAL SPRAYS ON THE PLANET



BOOSTER SHIELD PEAK SLEEP

ORDER TODAY!
(780) 907-8642

www.Elaine1.com

THE CORING GUY

- Concrete Coring & Cutting • Concrete Demolition
- Electric or Diesel Slab Sawing • Core Drilling
- Skid Steer / Mini Excavator Operations

Commercial - Residential

Laurence Markwart Cell: (780) 220-6164
 LAC STE. ANNE COUNTY Email: lmarkwart@gmail.com

GRANDE TIRE

5115 LAC STE. ANNE TRAIL N. ONWAY, AB T0E 1V0

Full Mechanical Services
Tire Sales & Repairs

BUS: (780) 967-3432
FAX: (780) 967-4816
contectire@xplornet.com



Park Memorial Ltd.

Funeral Home & Crematorium

Fran Marion
 Licensed Funeral Director


Mayerthorpe: 780-786-2533
 Whitecourt: 780-779-2533

Serving Mayerthorpe, Whitecourt and area

Edmonton | Lamont | Mayerthorpe | Smoky Lake | Vegreville

SUMMERS DRILLING LTD.

Water well drilling and service
 Family owned Business Serving Alberta since 1917



Never run out of water again!

5 year workmanship warranty

Tired of hauling water? We can install a water well with a permanent water supply for as little as \$150/month OAC

3 Convenient ways to pay

- Visa
- Mastercard
- We now offer full financing

Stop in at our office 4405 - 50 Street, Stony Plain
 780-963-1282
admin@summersdrilling.com

COMMUNITYVOICE YOUR LOCAL NEWSMAGAZINE

THIS SPACE IS RESERVED FOR YOU!



PURE HEMP PRODUCTS

AGING IS INEVITABLE - LOOKING AND FEELING OLD ISN'T

KEY BENEFITS:

- Inhibits Cell Growth in Tumors
- Relieves Pain
- Promotes Health
- Relieves Anxiety
- Neuroprotective

(780) 907-8642

TRUIS & ONWAY REGISTRIES

INSURANCE

Box 390, Onway, Alberta T0E 1V0
 Tel: 967-5270 Fax: 967-4303

OPEN 9-5 MONDAY - FRIDAY
 FIRST & LAST SATURDAY OF EACH MONTH 9-12* *excluding long weekends
 Registries Closed from 12:00 pm - 1:00 pm

ALL GENERAL REGISTRY SERVICES

Home - Auto - Farm - Life and Business

Very Competitive Rates & Convenient Payment Plans.

Clients first...Service Always!





TEAM SEITZ LAKE LIFE



Daniel SEITZ
780-991-1866

Jordan SEITZ
780-203-2198



NEW

Make Memories at the Lake!
Yellowstone Bungalow
\$184,900

FREE EVALUATIONS - FIND EVERY LAKE HOME



Lake front Cedar Log Home
5 Car Garage w/ RV bay
\$724,900

LAKE LESSARD



Cottage comforts in
Yellowstone
\$118,000

LAC STE. ANNE



SOLD

LAKEFRONT LUXURIES
ROSS HAVEN
\$529,900

LAC STE. ANNE



Log Home w/ Lake Views
Yellowstone
\$244,900

LAC STE. ANNE



Affordable RECREATIONAL
or Year Round Lake Home
\$124,900

LAC STE. ANNE



NEW

Relax in Yellowstone!
Lake Access
\$194,900

LAC STE. ANNE

EdmontonLakeHomes.com

RE/MAX
REAL ESTATE

NOT INTENDED TO SOLICIT REAL ESTATE CURRENTLY LISTED FOR SALE.