



**FREE**

# COMMUNITY VOICE

— YOUR LOCAL NEWSPAPER —

Serving: Carvel, Darwell, Drayton Valley, Duffield, Entwistle, Evansburg, Fallis, Gainford, Parkland County, Seba Beach, Tomahawk, Wabamun, Wildwood, Spruce Grove and Stony Plain.

**April 20, 2021**

## AIR CANADA TO OFFER REFUNDS FOR FLIGHTS AFFECTED BY COVID-19 SINCE FEBRUARY 1, 2020

Submitted by Gerald Soroka, MP for Yellowhead

Gerald Soroka, Member of Parliament for Yellow-

head is pleased to advise constituents that Air Canada customers whose fares were non-refundable and cancelled due to COVID-19

since February 2020, are able to submit a refund request.

*Continued on Page 2*

## WILDWOOD AND DISTRICT AGRICULTURAL SOCIETY DONATES TO FOOD BANK

Submitted by Carol Riehl

Hello Everyone. I truly hope you are finding this lovely weather refreshing and encouraging as the latest COVID news is

not. Hang in there and stay healthy. The WEE Food bank is struggling to meet the growing need in our communities. The Wildwood and District Agricultural Society was in the

position to recently donate \$500.00 to the WEE food bank to assist in purchasing some much needed fresh food for their clients.

*Continued on Page 2*

## LILSA LAKE WATER QUALITY SURVEY

Submitted by Lake Isle and Lake Ste. Anne (LILSA)

Lake Isle and Lake Ste. Anne (LILSA) is interested in hearing the viewpoints

on lake water quality from residents & general users at Lake Isle & Lac Ste Anne Lake. Our primary goal from this survey is to find out the current knowledge

base around the water quality, overall lake health, and your major concerns surrounding it.

*Continued on Page 2*

**ISLE LAKE**  
**Feed Supply**  
**780.387.0890**

- CATTLE
- EQUINE
- LIVESTOCK
- PET
- POULTRY
- HAY SEED

Monday-Friday 9am - 8pm  
Saturday 9am - 4pm

53405 Range Road 60, Parkland County  
[WWW.ISLELAKEFEEDSUPPLY.CA](http://WWW.ISLELAKEFEEDSUPPLY.CA)

**WHITE CABS**  
**Spruce Grove Taxi Service**  
**780-203-8000**

FLAT RATE IN SPRUCE	\$10
FLAT RATE SPRUCE TO AIRPORT	\$70
FLAT RATE SPRUCE TO STONY	\$15
FLAT RATE STONY TO AIRPORT	\$80

We Handle Corporate Accounts  
**Flat Rate Service**

**PURE HEMP PRODUCTS**  
HEALTHY, SUSTAINABLE, EASY TO USE, AND TASTY

**KEY BENEFITS:**

- Inhibits Cell Growth in Tumors
- Relieves Pain
- Promotes Health
- Relieves Anxiety
- Neuroprotective

**(780) 907-8642**

**SLIMROAST**  
**Optimum**  
**DARK ROAST COFFEE**

YOUR LOGICAL SOLUTION TO WEIGHT MANAGEMENT

**(780) 907-8642**

**View us ONLINE!**  
**WWW.COM-VOICE.COM**

## Air Canada to Offer Refunds for Flights Affected by COVID-19 Since February 1, 2020

*Continued from Page 1*

As of April 13, 2021, customers who purchase non-refundable fares

whose future flights are cancelled or rescheduled by more than three hours will have the option of a refund. The airline will not recall

commissions for refunded tickets that travel agency partners process.

Customers can request a refund through their travel

agent or online at: [www.aircanada.com/refund](http://www.aircanada.com/refund) until June 12, 2021.

More details can be found at: Refund (Eng) (003).pdf

## Wildwood and District Agricultural Society Donates to Food Bank

*Continued from Page 1*

With that thought in mind, perhaps if you have a few extra feet in your garden, you could plant a few extra potato hills or a few feet of carrots to donate to the food bank. To produce those products for your neighbor-in-need would be such a rewarding feeling and be such a blessing.

Thank you in advance for considering any kind of donation you may be able to make for your friends in need. Remember strangers are only friends you haven't met yet!. Caption to be included with picture Presentation of \$500.00 donation check to the WEE food bank by Wildwood and District Agricultural Society President Wilma Swinkles.



## LILSA Lake Water Quality Survey

*Continued from Page 1*

This survey is completely anonymous, however if you would like any further information or would be willing to take any additional follow up surveys, you can leave your contact information at the end of the survey. Providing us with

your contact information also gets you entered into a draw for a gift card to a local business. This survey is available until June 15, 2021

LILSA, a non-profit society, is committed to promoting the preservation of Lake Isle and Lac Ste Anne Lake, located 40 minutes west of Edmonton, Alberta.

Our goal is to maintain and improve the quality of the water. Our society is run entirely by volunteers.

Please go to the LILSA website <https://www.lsawaterquality.com/> and click on 'Take Survey Now' which is located on our homepage.

  
**COMMUNITYVOICE**  
 —YOUR LOCAL NEWSPAPER—  
 PUBLISHED WEEKLY (Zone 1 & 2)  
 AND BIWEEKLY (Zone 3)

**E.J. Lewchuck & Associates Ltd.**

Box 3595  
 Spruce Grove, AB  
 T7X 3A8

**SALES TEAM**

Elaine  
 Ashley

**TELEPHONE:**  
 Advertising 962-9228  
 Fax 962-1021

**E-MAIL:**  
[comvoice@telusplanet.net](mailto:comvoice@telusplanet.net)  
[news@com-voice.com](mailto:news@com-voice.com)

*Celebrating* **OUR VOLUNTEERS**

**National Volunteer Week April 18-24**

Building confidence,  
 competence, connections,  
 and community!

**Thank You Volunteers!**

**GERALD SOROKA MP**  
 YELLOWHEAD

780-723-6068  
[GERALD.SOROKA.C1@PARL.GC.CA](mailto:GERALD.SOROKA.C1@PARL.GC.CA)  
[GERALDSOROKAMP.CA](mailto:GERALDSOROKAMP.CA)





# HIGHER LEVEL OF SENIORS CARE COMING TO DRAYTON VALLEY, PONOKA

*Supportive living changes reflect growing needs in both communities*

**Submitted by Alberta Health Services**

A total of 36 supportive living beds in Drayton Valley and Ponoka will offer a higher level of care starting next month to better meet the needs of residents in those communities.

Currently, these beds at Seasons Retirement Communities provide care for individuals who are medically and physically stable, able to move independently or with the assistance of one other person, and may be experiencing increased healthcare needs that cannot be scheduled. This level of care is known as SL3.

As of May 1, these SL3 beds will be converted to SL4, a level of care previously unavailable in the two communities. SL4 care is for individuals with more complex medical needs, including chronic disease management and assistance with daily activities, such as meal assistance (including tube feeds), mechanical lift or two-person transfers, medication assistance or administration.

"The Alberta Government is working to ensure the healthcare needs of all Albertans are met, and the introduction of this level of care in Drayton Valley ensures residents who need this higher level of continu-

ing care can get it here in the community," says Mark Smith, MLA for Drayton Valley-Devon.

"This is welcome news," adds Ron Orr, MLA for Lacombe-Ponoka. "Ponoka residents should be reassured that if they or their loved ones need this high level of supportive living care, it's now available in town and near their families."

The decision to offer this higher level of care was made following a thorough review, and consideration of current and future needs of both communities. All current services and care will continue uninterrupted, and these changes will not impact any current residents.

"This is just one of many ways AHS is working to increase choices and options for seniors," says Lori Sparrow, AHS Executive Director, Seniors Health, Central Zone. "This decision brings a level of enhanced continuing care to these communities that will help meet the needs of residents and their families now and into the future."

Supportive living promotes residents' independence and aging in place through the provision of services such as 24-hour monitoring, emergency response, security, meals, housekeeping and social-enrichment activities. This decision will affect all 16

SL3 beds at Seasons Retirement Communities in Drayton Valley, and all 20 SL3 beds at the facility in Ponoka.

"Seasons is very pleased to be able to offer this enhanced care option at Seasons Drayton Valley and Seasons Ponoka," says Nicole Almost, Senior Regional Director, Resident and Guest Services, Seasons Retirement Communities.

"I want to thank AHS for their continued support and partnership. Our ongoing collaboration greatly benefits our residents, staff and local seniors. The SL4 designation will also allow us to hire more team members, which is good for the local economy and our retirement communities."

Established in 2009, Seasons is a Canadian company that operates 13 retirement residences in Ontario and

nine residences in Alberta, with more under development. Its management team has extensive experience in the senior housing sector and has developed a culture dedicated to providing residents with superior customer service. Seasons wants residents to feel proud to call them home and to know they are surrounded by people who genuinely care. Connect. Care. Change. For more information, please visit [www.seasonsretirement.com](http://www.seasonsretirement.com).

Alberta Health Services is the provincial health authority responsible for planning and delivering health supports and services for more than four million adults and children living in Alberta. Its mission is to provide a patient-focused, quality health system that is accessible and sustainable for all Albertans.

## WANTED!!

**Paying Cash for**  
vacant lot to build on, maximum 1hr drive  
to West Edmonton, Size between 3 & 20  
acres but preferable 5 acre parcel.

**Only condition: out of subdivision,  
fully treed, dry, power on property line.**

**CALL 587-983-4836**



**SERENITY**  
FUNERAL SERVICE

**NEW FACILITY**  
Chapel & Reception Centre



**600 Calahoo Road Spruce Grove, AB**  
**780-962-2749** [www.serenity.ca](http://www.serenity.ca)

SERENITY FAMILY SERVICE SOCIETY - YOUR NOT-FOR-PROFIT SOCIETY

## JOKE of the week

A mother mouse and a baby mouse are walking along when suddenly a cat attacks them. The mother mouse shouts "BARK!" and the cat runs away. "See?" the mother mouse says to her baby. "Now do you see why it's important to learn a foreign language?"

# A MESSAGE FROM MLA MARK SMITH: CURRICULUM

**Submitted by MLA Mark Smith | Drayton Valley – Devon Constituency**

Alberta has produced some of the best curriculum anywhere in the world. The new K-6 draft curriculum has just been released and Albertans are carefully combing through it to see how it is going to impact their children's education.

The new K-6 curriculum draft:

- was produced and vetted by a Curriculum Advisory Panel made up of experts.

- 8,500 Albertans provided feedback through public consultations.

- 102 experienced elementary teachers provided feedback as well

- The Association of Alberta Deans of Education and over 30 Faculty of Educa-

tion deans and professors.

As is always the case Albertans have spoken up both in praise and criticism of the new curriculum. Many educators believe that the new curriculum's re-emphasis on traditional math logarithms and the de-emphasizing of Discovery Math is going to help Alberta students reverse the trend in declining international math scores.

There are also some who are questioning one or more aspects of the curriculum. Some elementary teachers have reached out to me worried about the amount of material or age appropriateness of the material in Social Studies. As I scanned the K-6 Social Studies curriculum I saw many positives.

- I like the way it is organized with an: Organizing

Idea, Guiding Question and Knowledge, Understanding and Skills objectives.

- It is clearly divided into the traditional components of History, Civics, Geography, Economics and has a new component added in called Financial Literacy.

- I like the chronological progression through the grades from First Nations, Ancient and Medieval Societies, Canadian history, settling of Alberta and the North West, the Great Migration and Canada/USA.

- I see the many touchstones that will help our students understand the world that they live in today from: various faiths, to First Nations, European, French Canadian cultures etc.

Yet there are still challenges ahead for us. Expecting teachers to implement all of

the disciplines of learning in one year is going to be a difficult task. I look forward to the feedback from the validating teachers, especially as they address the issue of content and age appropriateness in Social Studies. There is still much work to be done in developing age appropriate resources and assessment pieces. Perhaps some of these concerns can be addressed by engaging and articulating a clear role for the Alberta Regional Professional Development Center moving forward.

Over all I believe the new K-6 draft Program of Studies is a step forward over the previous draft curriculum inherited by the government and will with some more work produce a world class curriculum for our students.

## GROVE HEARING CLINIC

**960-2960**  
**1-866-960-2960**

**Hear what  
you've been  
missing...**

**Senior  
Discounts**



**Full  
Service &  
Repair**

**Full  
Hearing  
Assessments**

**HOURS OF OPERATION: 9am – 5pm Weekdays**

**3rd party billing (AADL, WCB, DVA, FCH) • Personal 0% Financing if Needed**

**For The Latest Technology In Hearing Aids & Assisted Living Device Stop By & See Dawn**

**#220-70 McLeod Ave - Westland Market Mall, Spruce Grove**



# TEACHERS CALL FOR STOP TO CURRICULUM IMPLEMENTATION

**Submitted by The Alberta Teachers' Association**

The Alberta Teachers' Association is calling for the Government of Alberta to stop all work on the piloting and implementation of the draft curriculum until an independent, open and full review and rewrite can occur.

The Association is publishing full-page ads in daily newspapers across Alberta tomorrow to issue the call for a moratorium and to show support for school boards and teachers that decide not to participate in piloting.

"Alberta's students and teachers require an appropriate and workable curriculum. The government is being told loudly and clearly that this curriculum is unacceptable. We

now need the government to announce a stop to their implementation plans and to spell out a new way forward."

—Jason Schilling, ATA president

ATA president Jason Schilling says the Association supports school boards that have decided not to pilot this draft curriculum, and he calls on all school authorities to refrain from directing their teachers to participate in piloting.

"Teachers who believe this curriculum is unsound and potentially damaging to student learning have the professional responsibility and moral right to refuse to participate in voluntary piloting. The government and school boards must respect the decision of individual teachers to not participate in piloting."

—Jason Schilling, ATA

president

Although the teaching profession is frustrated by being left out of the curriculum development process, Schilling says teachers are more than willing to assist the government with a rewrite that reflects their extensive expertise and knowledge.

"We are committed to supporting the development of a high-quality curriculum, and the ATA is prepared to work constructively in partnership with the Government of Alberta toward that end. It is the only workable path forward. We just need to be invited."

—Jason Schilling, ATA president

The call follows the release of preliminary survey results showing that 91 per cent of teachers and school administrators are unhappy with the draft curriculum,

with three in four teachers stating that they are "very unhappy." The survey also showed that 90 per cent of elementary school teachers feel uncomfortable about teaching the new K-6 curriculum, and 95 per cent of principals feel uncomfortable about supporting the curriculum in their school and community.

The ATA is directing parents and the public who are concerned about the draft curriculum to pledge support for the moratorium and review by visiting [curriculum.thelearningteam.ca](http://curriculum.thelearningteam.ca).

The Alberta Teachers' Association, as the professional organization of teachers, promotes and advances public education, safeguards standards of professional practice and serves as the advocate for its 46,000 members.

## CAMPUS GYPSD provides freedom, flexibility, personalization, and outstanding support for learners:

- **Learning@Home** - Independent, self-paced programming supported by a GYPSD teacher, available online, paper product, or a mix of both. Register through your local school.
- **Hybrid Learning** - A blend of online and in school options and courses. Register through your local school.
- **Home Education** - Parent designed and led learning with options for enrichment in your local school. Email [carrasch@gypsd.ca](mailto:carrasch@gypsd.ca) for information on registration.
- **Traditional Schooling** - Visit the school website nearest you to see the unique, world-class, school based programs available for your child!

**DON'T WAIT TO LEARN - WE ARE READY FOR YOU!**

For more information on CAMPUS GYPSD options:  
Carra Aschenmeier, Managing Director of Learning Services  
[carrasch@gypsd.ca](mailto:carrasch@gypsd.ca) 780.723.4471



**Grande Yellowhead**  
Public School Division

[www.gypsd.ca](http://www.gypsd.ca) [facebook.com/gypsd](https://facebook.com/gypsd)

# High-Performance Lifestyle Products

*Take Your Life to the Next Level with B-Epic!*

*Call Today! (780) 907-8642*



"I am super excited! Down 4 lbs / 6.5 inches in 8 days. Feeling GREAT! Awesome product!" - Donna



"I had given up on losing weight but 11 days in I dropped enough lbs to fit into a favorite pair of jeans hanging in my closet for the last 5 years – and they are loose, Yeah!" – Kayla M.



**ELEV8**  
Your Mind & Body  
*The Most Advanced Natural Performance Product Around the World*



**GR8 KIDS**  
Boost Your Nutrition  
*Flavor-packed Nutritional Power Sticks: Great for Kids and Adults*



**ACCELER8**  
Your Weight Loss  
*Fast-acting, Synergistic Natural Weight Management and Sleep Combo*



**HYDR8**  
with Alkalized Water  
*Natural Coral Mineral Supplement: Great-tasting Alkalized Water*

**Begin your epic journey at [www.bepic.com/elaine1](http://www.bepic.com/elaine1)**



# LIVE FARM SALE FOR THE ESTATE OF ALVIN BREITKREUTZ

## Saturday, May 1st @ 10:00 AM

**Directions:** West of Wildwood on Hwy 16 (Yellowhead Hwy) 8 km to RR 101, South 2 km (Rural Address 53322 RR 101)

**Terms:** Cash/Approved Cheque/Debit/Visa/Mastercard/Etransfer GST will apply where applicable Lunch Available



### SELLING

**TRACTORS:** Deutz Allis 9150 FWA Tractor - 150 hp, Cab, Triple Hydraulics, 1000 PTO, 18.4x38 Duals, 2454 hrs \* Deutz Allis 9130 FWA Tractor - 135 hp, Cab, Triple Hydraulics, 1000 PTO, 20.8x38 Tires, 5192 hrs \* Deutz Allis 7085 FWA Tractor - 85 hp, Cab, 18.4x38 Tires, 7473 hrs c/w DA 465 Loader/Bucket \* Deutz Allis DX 6.50 Tractor - 135 hp, 18.4x38 Tires c/w Loader \* IHC 5488 Tractor - 185 hp, Cab, Triple Hydraulics, Big 1000 PTO, 3pth, 520/85R 38 LIKE NEW Duals, 5490 hrs \* Universal 640 DTC FWA Tractor - 62 hp, 3pth, 16.9x30 Tires c/w EzeOn 70 Loader \* Massey Ferguson 150 Tractor - 45 hp, 3pth, 4 Cyl Gas c/w Allied Loader \* John Deere 540 Skidder \* John Deere 410 Backhoe \* Allis Chalmers HD 16 Cat - 4300 hrs

**MACHINERY:** 1977 Versatile 400 Hydrostatic 15' Swather - Cab \* Gleaner L2 Combine - Cab \* John Deere 567 Silage Round Baler - 14975 Bales \* John Deere Moco 946 Hydroswing Discbine \* Big G 18' Disc c/w Mounted Harrows \* John Deere 6 Bottom Plow \* Tonutti 10 Wheel V-Rake \* RR400 Hay Tedder \* Sitrex 3pth 3 Wheel Hay Rake \* Case 770 14' Offset Single Disc \* Morris 18' Press Hoe Drill c/w Mounted Harrows \* Wil-Rich 20' Vibrashank c/w Mounted Harrows \* John Deere #100 16' Chisel Plow c/w Mounted Harrows \* John Deere Trail Mount 6' Mower \* 3pth Root Rake \* Massey Ferguson 13' 26 Run Seed Drill \* IHC 575 T/A Manure Spreader \* Vermeer (JD) Bale Buster \* Grey Post Pounder \* Homemade PTO Post Peeler \* 25' P/T Tandem Axle Hay Wagon \* Farmking 60' Harrow Cart \* Tram 14' Pasture Harrows \* Homemade Wood Splitter \* Brandt 21' 340 Litre 3pth Boom Sprayer \* Flamin PTO Driven 3pth Grass Seeder \* John Deere 830 Swather - Parts \* Versatile 400 Hydrostatic Swather - Cab, Parts

**TRAILERS:** 1996 Sundowner Rancher 20' Gooseneck Stock Trailer \* Shopbuilt 8'x25' Gooseneck Triple Axle Flat Deck Trailer

**BIG TRUCKS:** 1976 Ford Louisville 750 Grain Truck - 78000 Miles, Gas, 5&2 c/w 16' Steel Box & Hoist & Rollover Tarp \* 1973 Chev C60 3 Ton Grain Truck - 350 Gas, 5&2 c/w 15' Steel Box & Hoist \* 1970's GMC 7000 Cab & Chassis - V8, Parts

**GRAINERIES, AUGERS & MISC:** 2 - Westeel Rosco Hopper Bottom Graineries \* 2 - Butler 1250 Bushel Graineries \* Brandt 740 Grain Auger \* Older Grain Augers on Transport \* Electric HD 110 volt Fanning Mill \* Pulltype PTO 12" Grain Roller \* Hydraulic Electric Drill Fill

**BUILDINGS:** 12'x16' Wooden Grainery \* 2 - 9'x15' Wooden Grainery

**SHOP SUPPLIES & MISC:** 2014 Magnum 4000 Series Pressure Washer \* HD Tire Changer \* Mastercraft Shop Drill Press (Floor Model) \* Decca Primus AC-DC Welder \* Craftsman Air Compressor \* Yard Machine Rototiller \* Misc Shop Tools

**VEHICLES:** 2006 Dodge Ram 3500 Truck - 4x4, Cummins Turbo Diesel, Quad Cab, Std, 430 000 km but Only 30 000 km on New Engine, Clutch & Injectors \* 1991 Dodge 3/4 Ton Truck - 4x4, Reg Cab, Std \* 2006 Pontiac G6 Car - Auto, 4 dr, 195 770 km \* 1978 Ford F150 Truck - 4x4, Ext Cab, Auto, Parts

**RECREATION:** 1996 Glendale Golden Falcon 5th Wheel Holiday Trailer - Tour Edition, One Slide \* Yamaha Big Bear 350 4x4 Quad

LIST IS SUBJECT TO ADDITIONS AND/OR DELETIONS

For full listing & pictures, please visit our website: [WWW.TIMBERLINDAUCTIONS.COM](http://WWW.TIMBERLINDAUCTIONS.COM)

## Online Timed Land Sale for the Estate of Alvin BREITKREUTZ

Thurs, May 6th to Sun, May 9th

Section 23 - 53 - 10 West of the 5th Meridian

This is a great opportunity to purchase a full section of land (both Deeded & Assignment of Lease) c/w a House, Shop and Fully Fenced.

For viewing of the property, please contact Nick Leshar (Re/Max Real Estate Central Alberta) @ 403-318-2930.

Register for the Sale at: [www.timberlindauctions.hibid.com](http://www.timberlindauctions.hibid.com)



# TIMBERLIND AUCTIONS

Box 100 Buck Creek, Alberta T0C 0S0

Ph. (780)542-7323

Auctioneer: ROBERT LIND License #312993

Visit our online website at [www.timberlindauctions.hibid.com](http://www.timberlindauctions.hibid.com)



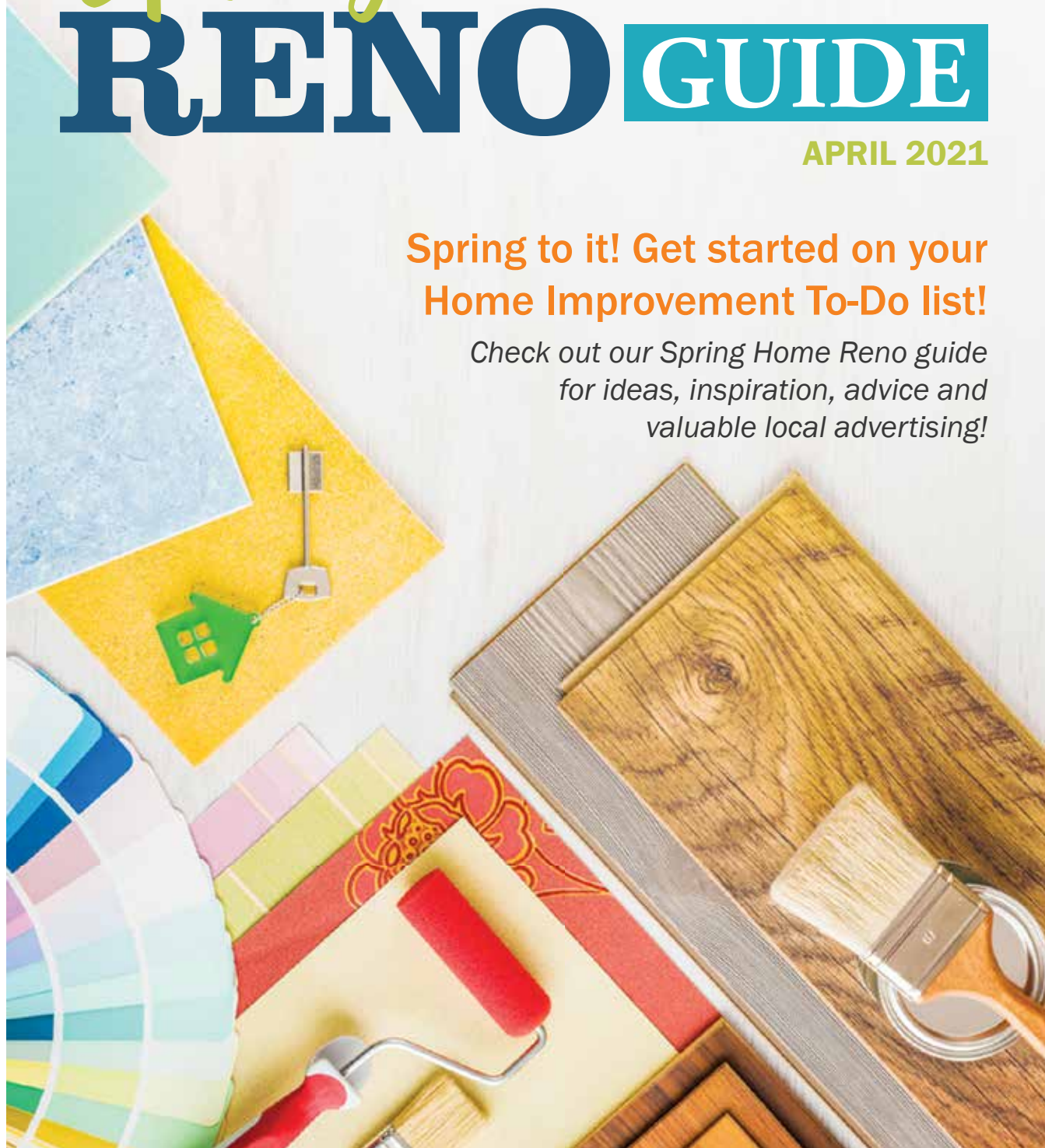
# Spring HOME RENO GUIDE



APRIL 2021

**Spring to it! Get started on your  
Home Improvement To-Do list!**

*Check out our Spring Home Reno guide  
for ideas, inspiration, advice and  
valuable local advertising!*







## LAUNDRY ROOM RENOVATIONS YOU'LL LOVE

Does it seem like your hamper is always full and the washing machine is running constantly? You may not be imagining it. Laundry Butler for You, a wash, dry and fold service, says the average household washes 50 pounds of laundry a week and 6,000 articles of clothing every year. Families with children at home are doing laundry most often, and those with pets may find there is ample laundry to wash as well.

With so much laundry being generated, homeowners may want to consider paying extra attention to the space in the house where their clothing is being cleansed. Laundry room renovations may not top homeowners' priority lists, but it may be time to give these rooms another look.

Assess your equipment

If your appliances are aging, a laundry room renovation can start with an investment in new appliances. New models have large capacity loads, tend to be energy-efficient and could have innovative features that help fit with your laundry lifestyle. Purchasing front-loading models also can free up design space, as you can install a counter directly above the units, saving room for other items like drying racks.

Figure out your room needs

A laundry room need not be limited to laundry only. Many homeowners make large laundry rooms catch-all spaces that can serve as utility or mud rooms, pantry overflows, or off-season storage areas. Consider the functions you want the room to serve and include those ideas in your designs.

Add some natural light

If possible, include a window in your laundry room. Natural light can help make the room more enjoyable.

It also can help you identify stains on clothes that need to be addressed and make it easier to fold matching items like socks.

Think about a utility sink

Many washing machines drain out directly to waste pipes in the floor or wall, but you also can opt to have them empty into a utility

sink. This sink also provides a convenient place to hand-wash items, clean tools or paintbrushes, or store items that perhaps you do not want to bring into a bathroom or kitchen sink.

Include some flair

This utilitarian space need not be boring or bereft of design elements. Mirror your

home's style in the laundry room, and include wall hangings, plants, accent items, and even task lighting. Play up certain features with a bold floor tile or brightly colored walls.

Updating laundry rooms can be a great way to make doing laundry more enjoyable and efficient.

**The Flooring Store  
& Design Center**

**FREE ESTIMATES  
CASH N CARRY PRICING**

- Huge Selection of Flooring, Carpet, Vinyl, Hardwood • Cabinets
- ALL Types of Counter Tops and Back Splashes

**IN STORE SPECIALS!!**

**Hours:**  
Monday to Friday 9:00AM to 5:30PM  
Saturday 9:30AM to 4:00PM  
Closed Sunday

**226 McLeod Ave  
Spruce Grove  
(780) 960-9212  
www.theflooringstore.ca**



# Spring HOME RENO GUIDE

## OPTIONS ABOUT WHEN SHOPPING FOR HOME SIDING

Home improvement projects run the gamut from minor repairs to complete overhauls. Replacing exterior siding is one of the most significant home improvement projects homeowners can undertake. Such a project can give homes a completely new look, which is why choice of siding is such an important decision.

Homeowners have many siding options to choose from, and the following guide can help them make the best choice for their homes.

### Vinyl siding

Vinyl siding is easily maintained and among the more budget-friendly siding options. According to the home improvement resource HomeAdvisor, vinyl siding is made from a PVC plastic that does not rot or flake. Siding professionals note that the technology used to create vinyl siding has changed consid-

erably in recent years, making this option more diverse than traditional vinyl siding. So homeowners turned off by the potentially plastic look of vinyl siding might be surprised at how different modern vinyl siding looks compared to the vinyl siding of yesteryear.

### Fiber-cement siding

The home improvement television network HGTV notes that fiber-cement siding has grown in popularity among homeowners in recent years. This material does not require much maintenance and it's non-flammable and resistant to termites. HomeAdvisor notes that fiber-cement siding can create the look of wood, stucco or masonry, making it a versatile option capable of creating various looks. In addition, fiber-cement siding is known for its durability, with some products coming with warranties lasting as long as 50

years.

### Wood siding

Homeowners have many choices if they prefer wood siding on their homes. Cedar, cypress, fir, pine, and spruce are just a handful of the many wood siding options homeowners can choose from. HomeAdvisor notes that cedar shingle siding offers a natural look that blends well in wooded and waterfront landscapes. Wood clapboard siding is another popular option, though it tends to require more maintenance than cedar shingle siding. Homeowners who want wood siding should discuss their options with an experienced siding professional, as many factors, including the choice of wood, must be considered before making a final decision.

### Stone and stone-veneer siding

Many homeowners fall in love with the natural appeal of stone, but the price tag, which

tends to be costly, may not be as awe-inspiring. HGTV notes that stone can be difficult to add to an existing home, and doing so may drive the price up even further. Stone siding is durable, and there are many options, including solid stone and natural stone cladding, that make this an option capable of providing an array of looks. Stone-veneer siding is less expensive than natural stone and also comes in an array of styles. As is the case with wood, stone siding options are so extensive that homeowners are urged to discuss each one with a siding professional before making their decisions.

These are just a handful of the many siding options homeowners can choose from. Siding can give homes a completely new look, making choice of siding a significant decision worthy of careful consideration.



**Wabamun Home Hardware**

See Us For Your Renovation Needs  
Lumber, Paint, etc.

Wabamun 892-4969



**BANGON CARPENTRY**

Doing it right .... the first time.

**DARREN RAYMOND** PH: 780-241-2711  
JOURNEYMAN CARPENTER bangoncarpentry@hotmail.com



**SERVING ENTWISTLE AND AREA FOR OVER 30 YEARS**

**Entwistle CONCRETE**  
PRODUCTS LTD.

**SAND & GRAVEL SALES**

**PH: (780) 727-3525**

**Dan McCracken Entwistle, AB**  
[www.entwistleconcrete.ca](http://www.entwistleconcrete.ca)



**FOR DRINKING WATER USE ONLY**

**TRI-LAKES SERVICES LTD.**

- **Septic Hauling**
  - Holding Tanks (residential, commercial, industrial)
  - Septic Fields
- **Drinking Water Delivery**
  - Cisterns
  - Pools/Hot-Tubs
- **Fresh Water Delivery**
  - Dust Control
- **Portable Washrooms** (rental & servicing)
  - Plastic
  - Trailer mount Extremes (wash sink, toilet, lights heat)
  - Extremes (wash sink, toilet, lights, heat)
  - **Steam Truck**
    - In cooperation with your plumber

[www.trilakeservices.ca](http://www.trilakeservices.ca) / [office@trilakeservices.ca](mailto:office@trilakeservices.ca)  
(877) 727-3939 / (844) 967-9176

**SERVING: • Lac Ste. Anne County • Parkland County • Yellowhead County East**





# Spring HOME RENO GUIDE

## TOOLS THAT CAN KEEP PEOPLE SAFE AT HOME

Promptly addressing maintenance issues around the house can reduce the risk of accident or injury. In addition, various items can alert homeowners to problems they may not otherwise recognize before issues jeopardize residents' health or take a turn for the costly.

### AUTO SHUT-OFF FEATURES

Who hasn't left the house only to worry an hour or so later about whether the coffee pot was turned off or the straightening iron was unplugged? When shopping for personal care items or appliances, seek out models that have automatic shut-off features. This safety feature will power down the unit after a certain amount of time, which can reduce the risk of overheated products and house fires.

### FLOOD AND LEAK DETECTOR

The financial information and wellness resource Canstar says leakages, burst pipes and other water-related issues in a home are one of the more common home emergencies. Water dam-

age can cost between hundreds and thousands of dollars depending on how invasive the water problem is. Catching a leak or flood in a home early on is essential.

Water leak detectors are designed to detect a potential flood or leak at an early stage so homeowners can take action. Sensors may sound an alarm or be connected to a WiFi system to send an alert to a mobile device.

### CARBON MONOXIDE AND GAS DETECTION

It is vital that homeowners install carbon monoxide detectors in their homes. Carbon monoxide is odorless and colorless, and can cause poisoning that slowly suffocates a person. It also is combustible.

Carbon monoxide devices cannot detect a gas leak, but gas detectors can. They are a wise addition for people who have a significant number of natural gas appliances, or those who have older, gas-powered appli-

ances.

### SUMP PUMP ALARM

A sump pump can mean the difference between a flooded basement and a dry floor. Homeowners may not recognize a sump pump malfunction during a power outage, and clogs also may not be detectable

until the basement floods. Sump pump alarms incorporated into the system alert homeowners that something is amiss.

Homeowners can rely on devices and other tools to prevent their homes from being damaged and themselves and their families safe.

## DAVIS CONCRETE FINISHING LTD.

Residential ~ Commercial

- Sidewalks
- Garage Pads
- Shop Floors
- Driveways
- Basements
- Patios
- Steps
- Curbs
- Decks

**780-868-2228**



**5 Home Ideas**  
for flipping or forever

# HOME RENOVATIONS SALE

**CO-OP North Central**  
4919 - 50 Ave, Stony Plain, AB | (780) 963-2272



**Anderson SOLUTIONS & SERVICES INC.**  
andersonsolutions inc@outlook.com  
**780-206-0053**

- Septic System Services & Repairs
- A.O.W.M.A. Certified Designer, Installer, Contractor & Maintenance Provider
- Pump out, Mound, Field, Advanced Treatment Systems, Tank or pump replacement & troubleshooting
- Trenching & Site Cleanup

**ANDERSONSOLUTIONSINC.COM**



## Rockhead Electric Ltd.

Got a problem, give us a call.

Cliff Cameron 780 982-0292  
Shawn Tetz 780 728-7572

Residential Commercial Industrial Maintenance



## TYPES OF HOME INSULATION AND WHERE TO INSTALL THEM

A home insulation project certainly doesn't offer the wow factor of a kitchen remodel, but insulation serves a vital function in the house that helps keep people comfortable and reduces energy consumption. Insulation is typically placed in areas where air escapes, such as between the stud cavities inside the walls and in the attic, and serves to slow and reduce heat transfer.

The U.S. Department of Energy says between 50 and 70 percent of the energy used in homes is for heating and cooling. By improving home insulation, homeowners can make their homes more comfortable, consistent and efficient. In

fact, the ENERGY STAR program overseen by the U.S. Environmental Protection Agency says homeowners stand to save an average of 15 percent on heating and cooling costs by adding proper insulation. To do so, homeowners can take a crash course in home insulation and find the products that fit their needs.

Blanket batts and rolls - Blanket batts and rolls typically are constructed with fiberglass, so proper safety gear, such as a mask and gloves, is needed when handling them. Installing this type of insulation is relatively easy since the materials are designed to fit the standard width between studs,

rafters and floor joists.

Loose fill - Loose fill is usually made of fiberglass or cellulose (recycled paper fiber). It is blown or sprayed into place with pneumatic equipment, according to The Home Depot. Loose fill can be ideal for hard-to-reach areas in attics or inside wall cavities. It's good for adding insulation to irregularly shaped areas. Since it requires special equipment, this is a job best left to professionals.

Sprayed foam - Sprayed foam is just as the name implies, a foam made from polyurethane, polyisocyanurate, cementitious, or other materials that are applied by a spray container. DIYers

who need only small applications can use canned products. Large quantities are pressure-sprayed by professionals.

Foam board/rigid foam panels - Ideal for unfinished walls, such as basement or foundation walls, floors and ceilings, these are boards of polyurethane or polystyrene. Foam boards tend to reduce energy consumption more effectively than other types of insulation.

Homeowners considering upgrading their insulation or amending existing insulation should do their homework on the type of insulation that will be most effective for their homes.

Let us load you at the largest Lumber Yard in Parkland County  
**962-2575**  
 Call Toll Free: 1-800-343-2988  
 35 South Ave, Spruce Grove

- Renovation & new build experts • Superior quality lumber
- Complete home packages • 3D Estimating Program
- Engineered roofs & floors • Farm Buildings • Garage packages
- Windows & doors • Custom decks & fence packages
- Flooring & kitchens • Bathrooms • Ceramic Tiles
- Concrete & landscaping • Electrical supplies
- Fasteners • Woodstoves

Service • Selection • Advice • Special Orders • Delivery

Your Complete Line of Renovation Needs:

**ZEE BEST RENOVATIONS**  
*Local Home Renovations Contractor*

- Bathroom • Basements • Plumbing
- Tileworks • Drywall & Taping
- Decks & Fencing • Roofing • Siding

FREE ESTIMATES | 30+ YEARS EXPERIENCE | INSURED | GREAT RATES

**JOE LAWRENCE** BUS: 780-967-3898 | CELL: 780-915-3348  
 MANAGER FAX: 780-967-3798

**ECONOMY ASPHALT DRIVEWAYS**

- Paving • Asphalt or Concrete • Repairs
- Pararamps • Seal Coating • Crack Filling
- Snow Removal • Sanding • Rock Chip Sales

**CHARLES MACDONALD**  
 PH: 780-962-5581 CELL: 780-777-0914  
 FAX: 780-962-9146

**B.W. EAVESTROUGHING**

*Specializing in:*

- ⇒ Residential 5"
- ⇒ Commercial 6"
- ⇒ Soffit
- ⇒ Leaf Guard System
- ⇒ Free Estimates
- ⇒ Fascia

**BRAD** (780) 699-1880





# Spring HOME RENO GUIDE

## HOW TO ADD SHADE TO A DECK OR PATIO

Homeowners eagerly await the arrival of the warm weather so they can cast off the remnants of cabin fever and bask in the sunshine. However, as summer nears its dog days, the same sun homeowners once coveted can contribute to uncomfortable conditions in outdoor entertaining spaces.

Meteorologists at WHAS11 in Kentucky took to their neighborhoods in July 2020 to test just how hot surfaces can get in the sun during peak daytime temperatures. Concrete sitting in the sun almost all day reached a temperature of 134.7 F, while the same concrete in the shade clocked in at just under 80 F. When air temperatures are around 90 F, unshaded concrete and asphalt can

be 125 F and 140 F, respectively. While wood decking may not be as hot as asphalt and concrete, it still can get steamy underfoot.

Homeowners who want to be able to enjoy their outdoor spaces in an array of temperatures can think about investing in shade solutions. Sun-blocking ideas like awnings, shade trees and large umbrellas can help people enjoy their yards all day long.

· Canopy: A patio canopy is typically a freestanding unit that can be installed over a patio or a deck. Some people prefer to bolt it down so it will not be knocked over in windy conditions. The fabric on the canopy can be removed during the off-season, helping to improve its longevity.

· Awning: Awnings may be stationary or retractable. Many are installed directly onto a home and can cast shade on specific areas of outdoor entertaining spaces.

· Shade sail: Similar to an awning but a bit less structurally rigid, shade sails are large pieces of triangular fabric installed over areas of a patio, pool or landscape, according to The Family Handyman. Shade sails are light and airy and can be customized.

· Trees: A natural way to increase shade in a yard is to plant more shade trees. If sun glare is an issue all year long, and it's not just the heat of the sun that is troublesome, think about planting evergreen trees. Deciduous cousins will drop their leaves

in fall and only be effective during the warm weather.

· Patio umbrellas: Many umbrellas start at around \$25. Umbrellas can be paired with patio tables, while stationary cantilever umbrellas sit out of the way on their own heavy-duty stands. A cantilever umbrella tends to provide more shade than patio table umbrellas.

· Curtains: Homeowners can block sunlight outdoors the way they do inside, offers MSN. Hang curtains from the sides of canopies or between posts on a deck to provide shade and cozy spaces.

Shade is in high demand when the sun is hot. Options abound for making outdoor areas more comfortable.



**DRAYTON VALLEY'S OVERHEAD DOOR SPECIALISTS SINCE 1982**  
Monday - Friday: 8:00AM - 5:00PM  
24-Hour emergency service available.  
Service Area: Drayton Valley • Edson • Calmar • Rocky Mountain House • Surrounding areas



**No Job Is Too Big or Too Small**

**465045A HIGHWAY 22 DRAYTON VALLEY, AB T7A 1R7** **PH: 780-388-3321**  
**FAX: 780-388-3372**



**Drayton Valley**  
**542-4044**  
ON US: 1-888-542-9663

**For ALL your renovation and material needs, SHOP LOCALLY!**

**4221 - 50 Street Drayton Valley**



**For ALL Your Carpentry Needs**  
~ Residential or Commercial ~

**Elvis Murray** (780) 542-1693  
Owner/Operator fax: (780) 542-7651  
Drayton Valley, Alberta email: eb4321@telusplanet.net

**"You can COUNT ON US!"**



*Serving our community for over 40 years!*

**Specializing in:**

- ⚡ Electrical contracting & maintenance
- ⚡ Electrical materials
- ⚡ Do-it-yourself services

*Service is Our Business!*  
**780-542-4212**





# PREVAIL

## CELLULAR HOMEOSTASIS FORMULA

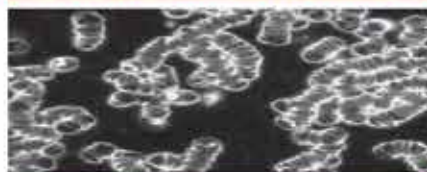
# MAX

A NUTRITIONAL BREAKTHROUGH THAT SUPPORTS YOU  
...RIGHT DOWN TO THE LAST CELL!

How do you want your  
**BLOOD** to look?



### Before PrevailMAX:



poor circulation

low energy

brain fog

dehydration

decreased nutrients

pH imbalance

poor endurance

### After PrevailMAX:



better circulation

more vitality

mental clarity

cellular movement

nutrient assimilation

balanced pH

optimal endurance

**PrevailMAX™** is a nutritional breakthrough that delivers a rapid increase of internal blood cell pressure to speed absorption, enabling the body to take maximum advantage of the nutrients in foods and supplements. The electrolytes are small enough to penetrate your cell membranes, to bind with your cells, and to be carried wherever they are needed in the body.

At the microscopic level of human cells, **PrevailMAX™** supports healthy cell performance – a nutritional breakthrough for your cells.

When you use **PrevailMAX™**, you will feel more energy and an ability to focus like never before. Take a few sprays today and see just how good you can feel!

LIVIN TRIM WITH  
**VALENTUS**

[www.ValentusTour.com/Ladybug](http://www.ValentusTour.com/Ladybug)

**(780) 907-8642**



# Mother's Day

## COLOURING CONTEST

Mother's  
Day...

is on its way!



**AGE GROUPS:** 3-4 YRS | 5-6 YRS | 7-9 YRS | 10+ YRS

**NAME:** \_\_\_\_\_ **AGE:** \_\_\_\_\_

**PHONE:** \_\_\_\_\_ **TOWN:** \_\_\_\_\_

*Entries must be recieved by May 7, 2021.*

**Mail to: Community Voice**  
**Box 3595 Spruce Grove, AB T7X 3A8**



# FUNDING FOR INDIGENOUS-OWNED HOUSING PROJECTS

## Submitted by Government of Alberta

The four projects include two in Alberta's big cities, Edmonton and Calgary, and two in rural locations, Lac Ste. Anne and Victor Lake near Grande Cache. In northwest Edmonton, the project involves the purchase of a 34-unit building for affordable housing. The funding in Calgary, Lac Ste. Anne and Victor Lake will go to create 12 seniors housing units in each location.

The projects will create about 100 jobs.

Minister of Families, Children and Social Development and Minister responsible for Canada Mortgage and Housing Corporation (CMHC) Ahmed Hussen, and Seniors and Housing Minister Josephine Pon announced the governments of Alberta and Canada provided \$13.1 million for the four projects.

In Alberta, the funding is provided through the Indigenous Housing Capital Program (IHCP), which supports Indigenous governments and communities to build affordable off-reserve, off-settlement and on-settlement housing. The program ensures a flexible, autonomous approach, and encourages public and private developers to partner with Indigenous governments and organizations.

Federal funding for the IHCP is provided through the 10-year bilateral housing

agreement between the Government of Canada and the Government of Alberta, announced in spring 2019, and will help provide the 70 affordable housing units for this project.

"Improving Indigenous housing must be a priority for the Government of Canada. Elders have contributed so much to their communities, making sure that they have safe and affordable housing is one way to give back to them. With our partners at the Government of Alberta, the Tribal Chiefs Ventures Inc., Victor Lake Cooperative, Evergreens Foundation, Aboriginal Friendship Centre of Calgary, and Lac Ste. Anne Métis Community Association, we are building a generation of new housing that we can all be proud of." - Marc Miller, Minister of Indigenous Services

"Everyone deserves a safe, affordable and accessible home, and this important project will provide good homes to those who need them. Indigenous people are over-represented among the houseless, and having access to affordable homes keeps a roof over the head of more Indigenous people and offers a safe place for people to build their lives and heal. This project is a good example of what we can accomplish when different orders of governments and Indigenous governments and organizations work together." - Rick Wilson, Minis-

ter of Indigenous Relations

"This long outstanding item for affordable housing for our Tribal Chiefs Ventures Inc. members has finally come to fruition. This collective effort is a step forward and great start in addressing housing shortages for all our Tribal Chiefs Ventures Inc. First Nations members. We would like to acknowledge the Creator, our Elders, Chiefs and all working groups to help make this a reality." - Okimaw Vernon Watchmaker, chair, Tribal Chiefs Ventures Inc.

"This funding creates an incredible opportunity to provide our Elders with stable, safe, affordable housing located in our home community of Lac Ste. Anne. This independent living development, to be operated in its early stages through a collaboration with the Communitas Group, fulfils a critically important short-term goal for our community." - Ray Daniels, board member, Lac Ste. Anne Métis Community Association

IHCP applications are accepted on a continuous basis and are now available at [alberta.ca/ihcp](http://alberta.ca/ihcp). The next quarterly deadline is March 31.

### Quick facts

- In addition to these four IHCP construction projects, two others have been approved for funding, with construction underway:

- As announced in September 2020, the Métis Capital Housing Corporation will re-

ceive up to \$7 million in capital funding to repurpose 10 single-family homes in Edmonton into 23 family housing units.

- As announced in August 2020, the Elizabeth Metis Settlement, near Cold Lake, will receive up to \$3 million in capital funding to build 10 new four-bedroom homes. The housing will serve Métis families living on-settlement.

- Announced in 2019, the 10-year bilateral agreement between the governments of Canada and Alberta, under the National Housing Strategy (NHS), will invest \$678 million to protect, renew and expand social and community housing, and support Alberta's priorities related to housing repair, construction and affordability.

- Canada's National Housing Strategy (NHS) is a 10-year \$70-plus billion plan that will give more Canadians a place to call home - this includes more than \$12 billion committed through the 2020 Fall Economic Statement.

- The 2020 Fall Economic Statement proposes to increase the lending capacity of the existing National Housing Strategy's Rental Construction Financing Initiative by an additional \$12 billion over seven years. This new funding will enable CMHC to support the construction of an additional 28,500 purpose-built rental housing units across Canada.

**Town & Country  
Funeral Services**

*Wabamun*  
780-983-2749

*Evansburg*  
780-727-2791

† Cemetery Monument  
Sales & Installation

† Traditional Burial &  
Funeral Services

† Pre-need Funeral  
Packages

† Crematorium &  
Memorial Services

**W.V. REPAIR  
SERVICES LTD.**

**Agriculture & Heavy Duty Repairs**  
(NO AUTOMOTIVE REPAIRS)

Air Conditioning - in Shop & Mobile Service  
CVIP Inspections, Hydraulic Repair, Hoses Made

**EXPERIENCED MECHANIC 30+ YEARS**

**WALLY 780-305-1315**

SHOP IS LOCATED JUST 10 MIN SOUTH OF SANGUDO



# YELLOWHEAD COUNTY COUNCIL HIGHLIGHTS

## Submitted by Yellowhead County

**2021 Budget & Tax Rate** – Council passed the 2021 Budget with no increase to the municipal portion of the mill rate. The \$133.5 million budget includes the county's operations costs (\$45.5 million) and capital project costs (\$30.2 million), contributions to county reserves (\$3.4 million), and Yellowhead County's revenue-sharing and cost-sharing contributions to local governments (\$8.9 million). The budget also includes the Seniors Requisition (\$4.25 million) and the School Requisition (\$24.3 million). A 2021 Final Budget Summary is available online.

**Municipal Campground Fees** – Council approved an increase to overnight campground fees for Yellowhead County municipal campgrounds. The new fee is \$20 per night per site (previously \$15-\$17/night). The new fees will be implemented for the 2021 camping season.

**Proposed Municipal Parks Bylaw Update** – Changes to the Municipal Parks Bylaw for rules regarding cannabis consumption at municipal parks and campgrounds in Yellowhead County were brought forward to Council. The proposed changes also reflect the closure of Riverside Park Campground. The bylaw will be brought back to Council for a final vote at a future date.

**RD to CR Bylaw Amendment** – A bylaw amendment was adopted by Council that will change a property northeast of Edson from a Rural District (RD) to a Country Residential (CR) district. The redistricting of this property will allow the property owner to apply for the property to be further subdivided to allow for an additional lot on the property.

**Property Tax Agreements**

– A new bylaw has been passed that allows for a penalty to be imposed on non-residential property tax agreements. This bylaw allows Council to impose a reduced penalty of 3% on any non-residential property tax agreement. Non-residential property tax agreements are not granted automatically and

each company wishing to enter into an agreement will be required to submit a formal request and a decision will be made by Council on a case-by-case basis.

**2020 Audited Financial Statement** – Council received a presentation from the auditors for the 2020 Audited Financial Statement. The statement will

be available on the County website and printed copies will be available for review at the Yellowhead County Administration buildings in Edson and Wildwood.

The next regular Council Meeting is April 27, 2021 at 9:30 AM. The next Governance and Priorities meeting is April 20, 2021 at 9:30 AM.

**THORSBY 4H BEEF SALE**

**25 MARKET STEERS**

FEATURING THORSBY 4H BEEF CLUB

**APRIL 30 - MAY 2, 2021**

**TIMED AUCTION**

[WWW.TEAMAUCTIONS.COM](http://WWW.TEAMAUCTIONS.COM)

**Register to Bid on Website, Bidding Starts at 2 pm Friday April 30, 2021 Ends 3 pm Sunday May 2, 2021**

**(Support local, Support Beef)**

**Contact: Julian Borys 780-940-0420**

The Charity steer is auctioned off and proceeds to support the Alzheimer Society

**Learn To Do By Doing**

# AN IMPORTANT MESSAGE FROM ALBERTA'S TEACHERS

*Alberta's teachers do not have confidence in the content and design of the Draft K-6 Curriculum.*

## Submitted by The Alberta Teachers' Association

The curriculum consultation and development processes used after the suspension of a partnership agreement with the Alberta Teachers' Association have

been deeply flawed and have lacked transparency.

The ATA supports key elements of The Guiding Framework for the Design and Development of Kindergarten to Grade 12 Provincial Curriculum published by Alberta Education

in December 2020, but this curriculum fails to meet the criteria set out in the government's own framework. We expect that any programs of study proposed for adoption will meet the criteria previously determined by government.

We support the decision of school boards to not pilot this draft curriculum and, furthermore, we call on all school authorities to refrain from participating in or directing their teachers to participate in the curriculum pilot.

Teachers who believe this curriculum is unsound and potentially damaging to student learning have the professional responsibility and moral right to refuse to participate in voluntary piloting. The government and school boards must respect the decision of individual teachers to not participate in piloting.

Given the extensive concerns identified by many, the ATA is calling on the Government of Alberta to immediately stop work on the piloting and implementation of the Draft K-6 Curriculum until an independent, full and open review and rewrite can occur.

The independent review must meaningfully involve a broad cross-section of certificated Alberta teachers and faculty members from Alberta faculties of education and must be properly inclusive of francophone, First Nations, Métis and Inuit perspectives. Before piloting is to resume, rewritten curriculum must be developmentally, structurally and pedagogically sound, and should enjoy the broad support of Albertans.

Alberta's students and teachers require an appropriate, inclusive and workable curriculum. We are committed to supporting the development of such, and the ATA is prepared to work constructively in partnership with the Government of Alberta toward that end.

We just need to be invited. Pledge your support for a rewrite at [curriculum.the-learningteam.ca](http://curriculum.the-learningteam.ca)

**VALENTUS**

**YOUR LOGICAL SOLUTION TO WEIGHT MANAGEMENT**

**SLIMROAST Optimum**

**DARK ROAST COFFEE**

**Exclusive functional coffee formulated to:**

- Crush Cravings
- Increase Energy
- Metabolize fat to Energy
- Help Regulate Blood Sugar
- Improve Mood & Focus
- Boosts Circulation & Oxygen delivery

**TO UNLOCK THE SECRET OF WEIGHT MANAGEMENT! PUT THE POWER OF SLIMROAST OPTIMUM IN YOUR CUP!**

Thrilled with my results! I lost 9 lbs and an amazing 11 inches off my abdomen! Works wonderfully!

Managed to lose 7 lbs very fast & much more in inches the way my clothes are fitting now! 1 cup a day is all for me!

Down 17 lbs and fitting into clothes that were way to tight before!

No dieting, first month finished. Down 7 ½ lbs 8.5 inches. Awesome product!

**CALL (780) 907-8642 FOR YOUR FREE SAMPLE!**



# Classified Ads - Call 962-9228

## Classified Policy

**CLASSIFIED RATES**  
INCLUDE GST. 1st 20 Words:  
First Insertion = \$6.00;  
Subsequent insertion =  
\$3.00 each. (Eg: 2 insertions  
= \$9.00; 3 insertions = \$12.00;  
4 insertions = \$15.00; etc)  
Each additional word is 20  
cents per word, per insertion.  
BOLD/CAPITAL text available  
for an additional \$1/line. Lost  
& Found and To Give Away (up  
to a max. of 25 words) are free  
of charge. Ads must be paid  
in advance either by cheque,  
cash, Visa or Mastercard.  
No Refunds Allowed on  
Classified Ads. DEADLINE: is  
Thurs. 4:00 pm (Wed. 4:00  
pm on long weekends).  
Classified ads may be called  
in to the COMMUNITY VOICE  
office at (780) 962-9228,  
emailed to: classifieds@com-  
voice.com, dropped off at  
Onoway Registries, or mailed  
with your ad and payment to:  
COMMUNITY VOICE, BAG  
3595, SPRUCE GROVE, AB  
T7X 3A8. Ads may also be  
placed on the web at [www.com-voice.com/classified.htm](http://www.com-voice.com/classified.htm)

## Hall Rentals

Bright Bank Hall, 780-968-6813

Camp Encounter, Vincent  
Mireau - Camp Director.  
[director@campencounter.com](mailto:director@campencounter.com). C: 780-504-2012 W: 780-967-2548

Cherhill Community Assoc.  
Hall, Kevin 780-785-8153

Darwell Centennial Hall, 780-892-3099

Darwell Seniors, Phone  
Debra 780-785-2907

Duffield Hall, 892-2425

Entwistle Community  
League Hall Rentals, Call  
Cheryl at 780-515-1755

Entwistle Senior's Drop In  
Centre, Barb 727-2108 or  
Glenns 727-4367 Mon-Fri

Evansburg Senior's Heritage  
House, Dennis 727-4186

Evansburg Legion, upper hall  
250 people, 727-3879

Fallis Community Hall, 892-3150

Gunn Hall (C.A.R.S.) 780-951-9452

Keephills Hall, 731-3761

Lake Isle Community Hall,  
PH: 780-892-3121 or Email:  
[lakeislehall@mail.com](mailto:lakeislehall@mail.com)

Lake Romeo PeaVine Hall,

785-2700

Magnolia Hall, 727-2015

Manley Goodwill Community  
Hall, 963-9165 or 916-0146

Mayerthorpe Diamond  
Centre, 786-4044

Moon Lake Community Hall,  
Diane 780-514-4694

Park Court Hall, call or text  
Karyn 780-712-3918

Parkland Village Community  
Centre, 780-298-9155 @  
PVC Centre

Ravine Community Hall, 325-2391

Rich Valley Community Hall,  
967-3696 or 967-5710

Rosenthal Community Hall,  
963-7984

Smithfield Community Hall,  
Wanita 780-718-8824.



## PURE HEMP PRODUCTS

AGING IS INEVITABLE - LOOKING AND FEELING OLD ISN'T!

### A Health and Beauty Breakthrough!

Cannabidiol, is one of over 80 active cannabinoid chemicals in the hemp plant. Unlike, THC, it does not produce euphoria or intoxication. It targets specific receptors in the cells of your brain & body. There are many physical and mental benefits to using these products for both treatment and prevention of numerous ailments.



#### Therapeutic Uses For Pure Hemp

Supports healthy blood sugar levels, promotes healthy energy levels, relieves anxiety, aids in digestion, supports optimal immune function and the regeneration of healthy cells, and promotes a sense of serenity and overall well-being.

#### Anti-Aging Uses For Pure Hemp

Promotes more youthful skin, provides hydration, enhances radiance, lessens age lines as well as the appearance of dark spots.

#### KEY BENEFITS

**PAIN RELIEF:** Known to reduce vomiting & nausea; suppress muscle spasms; reduce seizures & convulsions.

**PROMOTES HEALTH:** Helps to promote relaxation and overall health.

**WELL-BEING:** Helps to relieve anxiety, aid in digestion, supports optimal immune function and the regeneration of healthy cells.

## PET PRODUCTS

### PET CHEW TREATS

#### KEY BENEFITS

**SYNERGISTIC BENEFITS:** Can be used in conjunction with regular medications with no side effects.

**NO SIDE EFFECTS:** Does not damage the liver, kidney or GI Tract like OTC medication.

**DIETARY SUPPLEMENT:** Can be administered daily as part of your pet's diet.



### ORAL SPRAYS & DROPS

#### KEY BENEFITS

**MANAGES PAIN:** Helps to treat inflammation, arthritis and joint pain.

**TREATS DIGESTIONAL ISSUES:** Helps with loss of appetite, nausea, IBS and gastrointestinal swelling.

**GENERAL HEALTH:** Helps to manage mood, anxiety and general joint pain. For healthy, happy pets.

**CONVENIENT:** Can be sprayed into pet's mouth or on food.

## For more information, Call (780) 907-8642

# Classified Ads - Call 962-9228

Tomahawk & District Sports  
Agra, Bookings: Kathy 780-  
339-3773.

Wabamun Jubilee Hall, 892-  
2699.

Wildwood Community Hall,  
325-2180 or 780-514-6105

Wildwood Rec Complex 325-  
2077 or 514-8944

Wildwood Senior's Hall, 325-  
3787 or 325-2391

## Services

**Stump Grinding For Hire** -  
Alberta Beach & Surrounding  
Areas. Call 780-779-3589 (30)  
13-04

## Computers

FREE COMPUTER CHECK  
UP - Repairs NOT over \$50.  
Get today good clean laptop  
for ONLY \$150. FREE repairs  
for single parents and NO  
income. Upgrades, Screens,

Batteries, Parts. Save photos,  
documents from old  
computers. WANTED: old,  
used, broken computers -  
Will clear ALL data. Call 780-  
892-2407 (21) 23-02

## Firewood

Outlaw Firewood Sales -  
Wood starting at \$150 per  
cord, dry split firewood, Pine,  
Tamarack and Birch. Small  
and bulk volumes available,  
full logging truck loads,  
delivery available, no fee if  
within 80km of yard. TEXT  
780-621-7200 (26) 05-01

## Vehicles

2008 BMW 335i For Sale,  
157,000 kms, Black on black,  
auto, Brand new tires &  
rims, Brand new serpentine  
belt(have receipts), Brand  
new spark plugs & ignition  
coils, Power steering &  
coolant flushed, No rips on

seats (MINT), Car sits on  
coilovers, Downpipes, Tail  
Q blow off valve, K&N cone  
air filters, Dinan MHD stage  
1+ tune installed, Also a set  
of winter tires ready to go,  
Only ever used premium fuel,  
Car is in amazing condition  
for the year! \$ 10,900. No  
trades, no lowballers, serious  
inquiries only, Not in a rush  
to sell the vehicle, can only  
be viewed on week days after  
4pm & weekends anytime, if  
u have any questions text or  
call 780-908-6659 (S) OG

## Buy & Sell

Office & House Furniture - 2  
large desks with hutches, 2  
regular desks with hutches,  
2 dressers, sofa, curio,  
entertainment centre, all  
good condition. Call Lynn  
780-892-2408 (2) 13-04

I Buy Gun Collections, World  
War 2 collectibles, Call Jay  
Love for a quote 780-686-

1350 Stony Plain (28) 03-11-20

## For Rent

Available, 2 Bdrm (\$825) in  
Entwistle Bldg. at 4932-50A  
Avenue, DD \$300. Tenant  
pays power, Smoke Free  
Bldg. Please call/text Ivanka  
780-807-1300 (4) 13-04 OG

Completely renovated Motel  
in Onoway, AB. offering  
daily, weekly or monthly  
rentals. All utilities included,  
55 inch tv with Satellite.  
Double bedrooms, furnished  
bachelors with full kitchen  
and furnished 1 bedrooms  
with full kitchen available.  
Starting at \$950 + tax. Please  
call for viewing, 780-967-  
4420 or 780-945-1723. www.  
onowayinnandsuites.com (4)  
20-04 OG

Onoway 1 & 2 Bedroom Suites  
for Rent. Clean, quiet, secure  
building with reasonable  
rent, 780-967-5857, 780-920-  
3652 (4) 20-04



## LAC STE ANNE REAL ESTATE

**ONOWAY 780-967-3335**  
**SANGUDO 780-785-2444**

**DAVID LOWE**

Direct: 780-699-3814  
Toll Free: 866-685-2444  
E-Mail: davidlowe@live.com

\*Each office is independently owned and operated\*



CENTURY 21

Masters



**3 LEVEL SPLIT with WALKOUT BASEMENT  
LAKE FRONT @ ISLE LAKE** 2 Bdrm with loft area.  
3 baths. Lg primary bdrm has a jetted tub & steam shower  
ensuite + walk-in closet. Nice 2<sup>nd</sup> floor, south facing deck.  
Dbl attached garage. Treed perimeter offers privacy.  
**MLS# E4235406 \$448,900**



**ISLE LAKE BUNGALOW @ SILVER SANDS**  
2 Bedroom, 1 bathroom home on 0.17 acres near Isle Lake  
waterfront park & Silver Sands Golf Course. Remodeled  
kitchen has newer appliances. Gorgeous wood heater in  
living room. Nicely manicured & fenced front yard.  
**MLS# E4236345 \$169,900**



**LAKEFRONT 12 ACRES @ BROCK LAKE**  
Nearly 3/8 mile of north shoreline with a great  
view of Brock Lake. New biffy & cantilevered  
dock on site. Secluded & secure location.  
Great lake view building site!  
**MLS# E4226289 \$159,900**



**1.58 ACRES @ LESSARD LANDING**  
**BRAND NEW LAKESIDE HOME @ LESSARD LAKE**  
703 sq. ft., 1 bed, 1 bath beautiful log home.  
Gaily style kitchen & cozy living room.  
Bedroom has sliding doors to the back deck.  
**MLS# E4195129 \$248,900**



**SOLD**

**RICH VALLEY MODULAR on 9.19 ACRES**  
1380 Sq. ft., 3 bed, 2 bath home. A great private  
setting with lots of trees! Extensive 2017 reno's,  
septic pump (2020). Full unfinished basement  
has a wood heater. Not in a subdivision.  
**MLS# E4234221 \$289,900**



**ALBERTA BEACH DOUBLE LOT**  
1/3 acre site! Level & cleared, ready for development.  
Fully serviced - well, power & natural gas already on  
site. Build your new dream home and live at the lake!  
Close to the public boat launch, school & shopping.  
**MLS# E4202862 \$119,900**



# SUDOKU

*of the week*

**Here's How It Works:** Sudoku puzzles are formatted as a 9x9 grid, broken down into nine 3x3 boxes. To solve a sudoku, the numbers 1 through 9 must fill each row, column and box. Each number can appear only once in each row, column and box. You can figure out the order in which the numbers will appear by using the numeric clues already provided in the boxes. The more numbers you name, the easier it gets to solve the puzzle!

**Like puzzles?** Then you'll love sudoku. This mind-bending puzzle will have you hooked from the moment you square off, so sharpen your pencil and put your sudoku savvy to the test!

## ANSWER:

8	7	1	6	4	3	9	5	2
3	2	9	1	8	5	4	7	6
5	6	4	7	9	2	1	8	3
2	1	5	9	7	8	3	6	4
4	9	3	2	5	6	7	1	8
6	8	7	3	1	4	2	9	5
1	5	2	4	6	7	8	3	9
9	3	6	8	2	1	5	4	7
7	4	8	5	3	9	6	2	1

8			6	4			5	
	2	9			5	4	7	
5				9			8	3
		5	9	7				
4	9		2		6		1	
				1				5
		2				8		9
				2		5		7
		8	5		9	6		1

# Church Directory

## Seba Beach Christian Fellowship

Sunday School 10:00a.m.  
Worship Service 11:00a.m.

Weekdays Bible  
Study & Prayer

(780) 305-3594

## Advent Lutheran Church

Sunday Worship  
& Sunday School  
11:00a.m.

Evansburg  
O: 747-3594

## Roman Catholic Church

St. Agnes' Parish, Mayerthorpe  
Sunday 9:00a.m.  
St. Elizabeth Parish, Evansburg  
Saturday 7:00p.m.

(780) 786-2032

## St. Joseph's Catholic Church

Sunday Mass  
11:30a.m.  
Tuesday Mass  
7:00p.m.

Wabamun, AB

## St. Augustine's - Parkland Anglican Church

131 Church Rd. Spruce Grove

Sunday Service 10:00a.m.

Eucharist with Sunday  
School & Nursery  
All are Welcome

Office 780-962-5131  
www.staugustinesparkland.org

## Parkland Baptist Church

Sunday Worship  
Service 10:30a.m.  
All Welcome

121 Brookwood Drive  
(780) 962-4101  
www.parklandbaptist.ca

## Word Church Apocalyptic Era

Border Place Athletic Centre,  
9 Tri Leisure Way, Spruce Grove  
upstairs in the Wild Rose room.

Ph: 780-962-7579

Service starts at  
10:00 a.m. every  
Sunday morning,  
come all & be bless.

## St. Anthony's Ukrainian Orthodox Church

6103 172 St. NW, Edmonton

Saturday:

Vespers 5:00PM

Sunday: Divine

Liturgy 10:00AM

780.487.2167

santhony@telusplanet.net

www.st-anthonys.ca

## Stony Plain United Church

Sunday Service 10:30a.m.

5012-51 Ave. Stony Plain

Mewassin

United Church

Sunday Service 9:00a.m.

Rev. Heather Koots

Hwy 627 - Rg Rd 30

Ph: 780-963-4745

## Immanuel Lutheran Church of Rosenthal

Sunday Worship

Service 9:30a.m.

Sunday School

780-963-4048

## Emmaus Lutheran Church

Sunday Worship  
Service 11:30a.m.

Rev. Robert Marshall  
4604-56th Ave, Drayton Valley  
Ph: 780-542-5101  
emmauslutheran@telusplanet.net

## Church of God

Worship Service  
Sun. 11:00a.m.

Please contact for activities

5004-49 Street,

Drayton Valley  
Ph: 780-542-5091

## Calvary Baptist Church

Pastoral Team:  
Kenton Penner

Sunday Worship 10:30a.m.

Youth & Ministries Info -

calvbapt@telus.net

4401-50th Ave. Drayton Valley

780-542-4774

www.calvarybaptistdu.ca

## Drayton Valley Alliance Church

Pastor John Haazen

Join us for Sunday

Service at 10:30a.m.

5014-56 Ave.

(next to Value Drug Mart)

Programs for all ages

Ph: 542-6501 dvalliance.ca

## All Saints' Anglican Church

Sunday Morning

Worship 9 BCP

10:30 BAS with Sunday

School & Nursery

5212-47 Ave. Drayton Valley

(780) 542-5048

## St. Anthony Catholic Church

WEEKEND MASS

SCHEDULE:

Saturday 5:00p.m.

Sunday 12:00p.m.

4708-50 Ave. Drayton Valley

Parish Office: 542-5254



# SERVICE DIRECTORY

**Blakeman Drilling Ltd.**  
Waterwell Drilling & Servicing  
Pumps & Pressure Systems  
SERVING LAC STE. ANNE  
& WEST PARKLAND  
FOR OVER 25 YEARS  
Joe (780) 924-3024

**DONALD N. GREENWAY**  
Chartered Accountant  
Suite 205 Sunrise Professional Building  
215 McLeod Avenue  
Spruce Grove, AB  
(Bus.) 962-6366  
(Fax) 962-3990

**Ernie's Repair & Service**  
  
4820 - 47 Avenue, EVANSBURG  
(780) 727-4433 C:514-0272

**SLIMROAST Optimum**  
DARK ROAST COFFEE  
YOUR LOGICAL SOLUTION TO  
WEIGHT MANAGEMENT  
(780) 907-8642

**WABAMUN PHARMACY**  
**I.D.A.**  
Box 90, 5120 - 51 Avenue  
Wabamun, AB T0E 2K0  
Ph: (780) 892-2278 Fax: (780) 892-2488

**THE MOST COMPLETE**  
NUTRITIONAL SPRAYS ON THE  
**PLANET**  
ORDER TODAY!  
(780) 907-8642  
[www.Elaine1.com](http://www.Elaine1.com)

**ROY SHERWOOD**  
Master Electrician  
Ph: 780-968-1425  
Cell: 780-908-2287  
Fax: 780-968-2211  
Email: suretechroy@gmail.com  
2-53220 Rge Rd 21  
Parkland County, AB  
T7Y 0C5  
**SURETECH ELECTRIC LTD.**  
Control & Automation  
Commissioning  
Solar Sales & Service  
Industrial . Commercial . Residential

**PURE HEMP PRODUCTS**  
AGING IS INEVITABLE - LOOKING AND FEELING OLD SMIT!  
**KEY BENEFITS:**  
• Inhibits Cell Growth in Tumors  
• Relieves Pain  
• Promotes Health  
• Relieves Anxiety  
• Neuroprotective  
(780) 907-8642

**RR mobile SHARPENING**  
Restaurants Surgical Tools  
Hair Salons Household Tools  
**Bill Repka** bill@grindit.net  
780.966.2846 www.grindit.net  
PO Box 1 Wabamun, Alberta T0E 2K0  
facebook.com/sharpeningonwheels

**PEMBINA CONCRETE PRODUCTS LTD.**  
Manufacturers of  
**ONE PIECE SEPTIC & HOLDING TANKS**  
\* Water Cisterns \* Field Systems \*  
Pumps and Accessories \* Sumps  
DELIVERED TO YOUR SITE  
1-800-661-3047  
780-727-2702  
PembinaConcrete.com  
**New Line of Concrete Statues, Fountains and Garden Ornaments.**  
BOX 123, Entwistle, T0E 0S0

**ALTOGETHER SHREDDING SERVICES**  
Mobile Document Shredder  
Locally Owned and Operated  
780-778-0873  
AltogetherShredding.com  
**TRI-LAKES SERVICES LTD.**  
• Septic Hauling • Drinking Water Delivery  
• Portable Washrooms • Steam Truck  
[www.trilakeservices.ca](http://www.trilakeservices.ca) / [office@trilakeservices.ca](mailto:office@trilakeservices.ca)  
(877) 727-3939 / (844) 967-9176  
SERVING: • Lac Ste. Anne County • Parkland County • Yellowhead County East

**PREVAIL MAX**  
CELLULAR HOMEOSTASIS FORMULA  
How do you want your **BLOOD** to look?  
Before PrevailMAX: After PrevailMAX:  
poor circulation better circulation  
low energy more vitality  
brain fog mental clarity  
dehydration cellular movement  
decreased nutrients nutrient assimilation  
pH imbalance balanced pH  
poor endurance optimal endurance  
LIVIN TRIM WITH  
(780) 907-8642 **VALENTUS**  
[www.ValentusTour.com/Ladybug](http://www.ValentusTour.com/Ladybug)



# SERVICE DIRECTORY

**Jack's Auto Body**  
& 24 HR Towing

**SPECIALIZING IN COLLISION REPAIR  
GUARANTEED WORK • INSURANCE CLAIMS**

CAA BOX 9 SITE 306 RR3, ONOWAY, AB T0E 1V0  
**(780) 967-5850**

OUR PLEDGE IS QUALITY

**BACK COUNTRY PIPEFITTING LTD.**  
Plumbing & Heating

**Lee Hicks** 780-898-1062  
Journeyman Plumber

Residential and Commercial Plumbing and Heating.  
SERVING: YELLOWHEAD, PARKLAND, LAC STE. ANNE & BRAZEAU COUNTIES.

**H&E**  
UPHOLSTERY

FOR ALL YOUR UPHOLSTERY NEEDS

Convertible tops for cars and boats, custom car and boat interiors, 5th wheel trailer skirts, boat tarps, ATV seats, furniture, kitchen chairs, heavy equipment seats.

**WWW.HANDE.CA** 4-485 South Ave. Spruce Grove  
For more information contact: **(780) 962-3048**  
kirk@hande.ca

SERVING ENTWISTLE AND AREA FOR OVER 30 YEARS

**Entwistle CONCRETE**  
PRODUCTS LTD.

SAND & GRAVEL SALES

**PH: (780) 727-3525**  
Dan McCracken Entwistle, AB  
[www.entwistleconcrete.ca](http://www.entwistleconcrete.ca)

COMMUNITYVOICE  
YOUR LOCAL NEWSPAPER

**THIS SPACE IS  
RESERVED  
FOR YOU!**

**SMOOLE**

- Construction & Septic Installation
- Environmental Wastewater Disposal
- Site Design & Evaluation
- Power, Water & Basement Excavation
- Trackhoe, Backhoe, Bobcat & Dump Truck

For All Your Excavation Needs  
Call Ione 780-305-7077 Reid 780-909-0173

**CALIBRE DRILLING LTD**  
DRILLING AND SERVICING YOUR WATER WELL.

**SPECIALISTS IN AIR  
& MUD ROTARY DRILLING**

- \* Water Well Drilling
- \* Pump Installations
- \* Pressure Systems
- \* Well Tests
- \* Licensed Drillers
- \* Year Round Drilling
- \* Geotechnical Drilling
- \* Cathodic Protection
- \* Free Estimates

Quality Workmanship Five Year Warranty  
**(780) 960-2992**  
BOX 4083 SPRUCE GROVE, AB T7X 3B3

High-Performance  
*Lifestyle Products*

100% MONEY BACK

Call Today! (780) 907-8642  
[www.bepic.com/elaine1](http://www.bepic.com/elaine1)

**SANGUDO VETERINARY CLINIC**

Box 581, 4916 - 52 Ave. Sangudo, AB. T0E 2A0

**Dr. Ralf Sanders DVM**  
Ph: 780-785-2200  
Fax: 780-785-2228  
[sangudovet@gmail.com](mailto:sangudovet@gmail.com)

**24 HOUR EMERGENCY SERVICE**

**WEIGHTLOSS NEVER TASTED SO GOOD!**

**NEW!  
NEW!  
NEW!  
NEW!**

**(780) 907-8642** VALENTUS  
[www.ValentusTour.com/Ladybug](http://www.ValentusTour.com/Ladybug)

**2Bros**  
Custom Contracting Ltd.

Custom Framing • Concrete Floors • Shingling  
Siding Soffit Fascia • Styrofoam Block System

**Jeff** 780-717-0520

**SUMMERS DRILLING LTD.**

Water well drilling and service  
Family owned Business Serving Alberta since 1917

Never run out of water again!

5 year workmanship warranty

3 Convenient ways to pay

- Visa
- Mastercard
- We now offer full financing

Tired of hauling water?  
We can install a water well with a permanent water supply for as little as \$150/month OAC

Stop in at our office 4405 - 50 Street, Stony Plain  
780-963-1282  
[admin@summersdrilling.com](mailto:admin@summersdrilling.com)

**POSTINGFIRST.com**

**FREE LOCAL CLASSIFIED ADS**  
Real Estate, Rentals, Vehicles, Pets, Jobs, Service Directory, Buy/Sell/Trade, Lawn & Garden, Garage Sales, Events, Local Places & Much More... Advertise for FREE Today!

Follow Us

YouTube

**H&P Kosik CONSTRUCTION Ltd.**

- Road Building • Gravel • Sand • Dugouts
- Black Dirt • Clearing

No Job too small... We do them all!

Harvey cell. 780-445-9010 ph. 780-892-3532  
Box 145, Darwell, AB. T0E 0L0









**Daniel SEITZ**  
 780-991-1866

**Jordan SEITZ**  
 780-203-2198

## Time to do the yard clean-up? Time to List your Lake Home!

Check out our Lake Life website featuring  
**LAKE HOMES** an hour West of Edmonton!

Sell your Lake Home this summer! Get started today!  
Contact us to complete your market evaluation.



**SOLD**

Peaceful paradise & lake  
views on Eureka Beach  
**\$479,900**

**LAKE ISLE**



**EXCLUSIVE**

Bungalow on 1.03 Acres  
w/ Dble Detached Garage  
**\$399,900**

**LAKE WABAMUN**



200 ft of South Panoramic  
Lake Views - Skyland Gardens  
**\$1,195,000**

**LAKE WABAMUN**



Ever Changing Views  
Lake Wabamun Woods  
**\$1,495,000**

**LAKE WABAMUN**



Custom Log Home  
Whitewood Sands  
**\$649,900**

**LAKE WABAMUN**



Live on one side & build on  
the other! Summer View  
Heights **\$224,900**

**LAKE ISLE**

**[www.EdmontonLakeHomes.com](http://www.EdmontonLakeHomes.com)**



NOT INTENDED TO SOLICIT REAL ESTATE CURRENTLY LISTED FOR SALE.