



FREE

COMMUNITYVOICE

— YOUR LOCAL NEWSPAPER —

Serving: Carvel, Darwell, Drayton Valley, Duffield, Entwistle, Evansburg, Fallis, Gainford, Parkland County, Seba Beach, Tomahawk, Wabamun, Wildwood, Spruce Grove and Stony Plain.

August 31, 2021

TOURISM RELIEF FUND

Submitted by Gerald Soroka, MP for Yellowhead

Gerald Soroka, Member of Parliament for Yellowhead, wishes to advise that \$500 million in funding over two years (2021-2022 and 2022-2023) has been launched for the new Tourism Relief Fund. Eligible organizations can now submit applications to support the tourism sector prepare to welcome back domestic travelers

and reposition Canada as a world-class destination.

Canada's Regional Development Agencies (RDAs) will deliver \$485 million directly to businesses and organizations to help them adapt their operations to meet public health requirements while investing in products and services to facilitate future growth. Under the Fund, \$50 million will specifically support Indigenous tourism initia-

tives.

In addition, \$15 million, delivered by Innovation, Science and Economic Development Canada, will support destination development, seasonal and local attractions, and human resources and skills development.

Further information can be found at: <https://www.wd-deo.gc.ca/eng/20180.asp#activities>

TOWN OPENS NOMINATIONS FOR AMBASSADOR OF ACTION BUSINESS AWARD AND AWARD OF CREATIVE EXCELLENCE

Submitted by Town of Stony Plain

Town Opens Nominations for Ambassador of Action Business Award and Award of Creative Excellence

Nominations are now open for this year's Amba-

sador of Action Business Award and the Award of Creative Excellence. Each year, the Town recognizes leaders within the community by selecting local businesses, organizations, and individuals who exemplify the award criteria.

The annual Ambassador of Action Business Award is presented to a local business that has demonstrated notable growth and is actively supporting the community. Eligible nominees are required to hold a valid.

Continued on Page 3

ISLE LAKE
Feed Supply
780.387.0890

- CATTLE
- EQUINE
- LIVESTOCK
- PET
- POULTRY
- HAY SEED

Monday-Friday 9am - 8pm
Saturday 9am - 4pm

53405 Range Road 60, Parkland County
WWW.ISLELAKEFEEDSUPPLY.CA

PREVAIL MAX
CELLULAR HOMEOSTASIS FORMULA

Nutritional Breakthrough For Your Cells

LIVIN TRIM WITH
VALENTUS
(780) 907-8642
www.ValentusTour.com/Ladybug

PURE HEMP PRODUCTS
HEALTHY • SUSTAINABLE • ECOLOGICAL • NON-GMO

KEY BENEFITS:
Inhibits Cell Growth in Tumors
Relieves Pain
Promotes Health
Relieves Anxiety
Neuroprotective

(780) 907-8642

SLIMROAST Optimum
DARK ROAST COFFEE

YOUR LOGICAL SOLUTION TO WEIGHT MANAGEMENT

(780) 907-8642

View us ONLINE!
WWW.COM-VOICE.COM



PUBLISHED WEEKLY (Zone 1 & 2)
AND BIWEEKLY (Zone 3)

**E.J. Lewchuck &
Associates Ltd.**

Box 3595
Spruce Grove, AB
T7X 3A8

SALES TEAM

Elaine
Ashley

TELEPHONE:

Advertising 962-9228

Fax 962-1021

E-MAIL:

comvoice@telusplanet.net
news@com-voice.com

NEW STAFFING ANNOUNCEMENT -LEARNING SERVICES CONSULTANT

Submitted by GYPSD

Immediate Release: July 07, 2021 - Grande Yellowhead Public School Division (GYPSD) is pleased to announce that Ms. Jennifer Albrecht has accepted the position of Learning Services Consultant beginning the 2021/2022 school year.

This year marks Ms. Albrecht's 27th year of continuous service with the Division. Ms. Albrecht was raised in the area attending Peers Elementary School, Jubilee Junior High School, and Parkland Composite High School. She returned to Edson to begin her teaching career. Ms. Albrecht and her family call Edson and Yellowhead County home and feel blessed to live in such a vibrant, rural community.

Ms. Albrecht began her teaching career as a substitute with the Division in 1994. From 1995

to 2007, she taught at Parkland Composite High School. She then was seconded as a Development Coordinator to Pembina Hills Regional Division for the next two years. Ms. Albrecht taught at The Learning Connection, Edson, from 2009 to 2020. This 2020/2021 school year was dedicated to serving Edson and area families who chose the Virtual Learning program.

Ms. Albrecht completed her Bachelor of Education Degree from the University of Alberta in 1994. She earned the Certified Coach Practitioner (2018) and Certified Master Coach Practitioner (2020) designations from the Certified Coaches Federation. In 2020, Ms. Albrecht became a published author with iUniverse. This spring, she earned the Cognitive Behavioral Therapy (CBT) Essentials, Level 2 accreditation

from the Association for Psychological Therapies. Ms. Albrecht is currently completing the Indigenous Canada certificate at the University of Alberta and pursuing graduate studies in school leadership with a rural focus, also at the University of Alberta.

Ms. Albrecht is a champion of the rural education experience and strives to create learning environments that cultivate a sense of belonging. "I believe that a true sense of belonging is possible when school communities are inclusive, welcoming, safe spaces where students, staff and community members see themselves represented, accepted and celebrated." She is excited to step into the Learning Services Consultant role serving the Division's teachers, school staff, students, families, and communities.



SERENITY
FUNERAL SERVICE

NEW FACILITY
Chapel & Reception Centre

600 Calahoo Road Spruce Grove, AB
780-962-2749 www.serenity.ca

SERENITY FAMILY SERVICE SOCIETY - YOUR NOT-FOR-PROFIT SOCIETY

JOKE of the week

One day three women walked into a bar. The bartender said that if they looked into the mirror and told the truth they would get \$10,000.00. But if they told a lie, they would disappear forever.

The first girl went up and said, "I think I'm the prettiest one in the bar." She got \$10,000.00.

The next girl went up and said, "I think I'm the smartest one in the bar." She got \$10,000.00 too.

The last girl went up and said, "I think..." and POOF, she was gone.

EDMONTON - Capital Region
GUN SHOW
SATURDAY & SUNDAY
September 18 & 19, 2021

Located at "The Pavilion at Heritage Park"
5100 -41 Avenue, Stony Plain, AB

~~~~~  
**VIEW~BUY~SELL~TRADE**  
**ANTIQU~MODERN~MILITARY**  
**RIFLES, SHOTGUNS, PISTOLS, CARTRIDGES, KNIVES,**  
**MILITARY ITEMS, PIONEER ITEMS, BOOKS, ECT.**  
**PUBLIC WELCOME - FREE PARKING ADMISSION: \$8.00**

**SATURDAY 10:00AM-5:00PM**  
**SUNDAY 9:30AM-3:00PM**  
**SET-UP TIME FOR EXHIBITORS - starts Sept 17:**  
**FRIDAY: 3:00PM-8:00PM; SATURDAY: 7:30AM-9:30AM**  
**TABLE RENT: \$50 PER 6' TABLE**

*Concession provided by the Stony Plain Canadian Legion*  
**\*COVID NOTE: ANY/ALL ALBERTA HEALTH REQUIREMENTS**  
**WILL BE ADHERED TO**  
**(EG. MASKS AVAILABLE AT ENTRY IF REQUIRED)**

**FOR MORE INFORMATION CALL:**  
**{ BOTH LOCAL EDMONTON }**  
**Darren (780) 473-3032 ; John (780) 455-5036**  
**EMAIL: [edmgunshow@hotmail.com](mailto:edmgunshow@hotmail.com)**  
**UPCOMING 2021 EDMONTON GUN SHOWS DATES:**  
**Dec 4&5, 2021**





# Town Opens Nominations For Ambassador Of Action Business Award And Award Of Creative Excellence

*Continued on Page 1*

Town of Stony Plain business license and have made an investment in their facility, created new jobs, or offered new or enhanced products or services in the last year.

"Local businesses drive Stony Plain. We are incredibly proud of the passion and determination our local business owners demonstrate – even in the face of a global health pandemic," says Economic Development Officer Shawn McCauley. "Nominating a local business for the Ambassador of Action Business Award is an opportunity for residents to recognize the businesses that continue to shape Stony Plain."

The Town celebrates creative leaders with the Award of Creative Excellence. The annual award recognizes businesses, organizations, non-profits, or individuals that demonstrate a commitment to elevating Stony Plain's creative community and growing culture and tourism. Eligible nominees should provide opportunities for public engagement, encourage an inclusive environment for public participation in the arts, contribute to growing local tourism, promote economic stability for the creative industry, and demonstrate excellence in their field.

"The Award of Creative Excellence showcases the incredible creative talent we have here in town. Not only does it celebrate our local creators, but it also provides an opportunity for creative leaders to gain exposure within the community," says Culture and

Tourism Development Officer Chantelle Laberge.

"Stony Plain is home to such a rich pool of creative talent and entrepreneurs and local business and creativity are at the heart of our community. The annual awards are a chance for

Stony Plain to recognize and celebrate local leaders who have shown incredible dedication to their craft and our community," says Mayor William Choy.

For a complete list of eligibility criteria and to access online nomination forms,

please click [here](#). Nominations will close at 2PM on Monday, September 13. Awards will be presented at the 2021 Business Awards of Distinction on October 21 (dependent on public health restrictions).

## High-Performance Lifestyle Products

*Take Your Life to the Next Level with B-Epic!*

*Call Today! (780) 907-8642*

6/5/20 13/5/20 20/5/20

Day 1 30 60

5/4/20 5/22/20

**WHERE'D MY STOMACH GO?**

"I am super excited! Down 4 lbs / 6.5 inches in 8 days. Feeling GREAT! Awesome product!" - Donna

"I had given up on losing weight but 11 days in I dropped enough lbs to fit into a favorite pair of jeans hanging in my closet for the last 5 years – and they are loose, Yeah!" - Kayla M.

**ELEVB8**  
Your Mind & Body  
*The Most Advanced Natural Performance Product Around the World*

**GR8 KIDS**  
Boost Your Nutrition  
*Flavor-packed Nutritional (Power) Sticks: Great for Kids and Adults*

**ACCELER8**  
Your Weight Loss  
*Fast-acting, Synergistic Natural Weight Management and Sleep Combo*

**HYDR8**  
with Alkalized Water  
*Natural Coral Mineral Supplement: Great-tasting Alkalized Water*

**Begin your epic journey at [www.bepic.com/elaine1](http://www.bepic.com/elaine1)!**



# Alberta Beach is very excited to be celebrating our 100<sup>th</sup> Anniversary

Saturday & Sunday September 4&5, 2021

## Saturday, September 4, 2021 47st Entrance to Alberta Beach Sign

**11:00A.M.** Ribbon Cutting & Unveiling of commemorative sign  
Local dignitaries on sight  
Pictures and Memorial Gifts for Attendees

## Gazebo Park Downtown Alberta Beach

**12:00NOON** Bouncy Castle  
Old Fashioned Games  
Photo Booth  
**4:00P.M.** Our Main Talent Man -Trace Jordan and his deep rhythm band

## 4935-50 Avenue In Front of Village Office

**2:00P.M.** Complimentary Hot Dogs, Beverages & Chips

## Word Find Adventure All Weekend

Begins at sign unveiling at 11:00am on Saturday Septmeber 4th,2021. Prizes will be awarded on Sunday September 5th, 2021, 1:00pm after cake at the Village Office. Must be at the Village Office to win. Look for words on the windows or signs throughout Alberta Beach and connect the corresponding word, with a line, to the correct number listed.

|            |   |
|------------|---|
| SUMMER     | 1 |
| BEACH      | 2 |
| PLAYGROUND | 3 |
| HISTORY    | 4 |
| 100 YEARS  | 5 |
| HORSES     | 6 |
| WAGON      | 7 |



SPELL YOUR NAME ON THIS LINE \_\_\_\_\_





# Alberta Beach is very excited to be celebrating our 100<sup>th</sup> Anniversary

## Sunday, September 5, 2021

4935-50 Avenue In Front of Village Office

**1:00 P.M.** Gifts of Cake, Cold Beverages, T-Shirts  
Commemorative Pins and Goodie Bags

### Gazebo Park

**2:00 P.M.** Historical Wagon Tour Rides  
Artist Presentations  
Bouncy Castle  
History Book Viewing



Thanks to all the Volunteers, Sponsors and  
Donation Contributors. Your gracious  
giving of yourselves and businesses are  
truly appreciated.



**Be a leader in your community.**  
**Become a member of Yellowhead County Council.**



## NOTICE OF NOMINATION DAY

### Local Authorities Election Act (Section 26)

LOCAL JURISDICTION: YELLOWHEAD COUNTY, Province of Alberta

Notice is hereby given that the Nomination Day is September 20, 2021 and that nominations for the election of candidates for the following offices will be received at the location of the local jurisdiction offices set out below within the period beginning on January 1, 2021 and ending at 12:00 Noon on Nomination Day.

| Office(s)  | Number of Vacancies | Ward or Electoral Division Number (If Applicable) |
|------------|---------------------|---------------------------------------------------|
| Mayor      | 1                   | N/A                                               |
| Councillor | 1                   | 1                                                 |
| Councillor | 1                   | 2                                                 |
| Councillor | 1                   | 3                                                 |
| Councillor | 1                   | 4                                                 |
| Councillor | 1                   | 5                                                 |
| Councillor | 1                   | 6                                                 |
| Councillor | 1                   | 7                                                 |
| Councillor | 1                   | 8                                                 |

Location (Address) of Local Jurisdiction Offices:

Yellowhead County Edson Office:  
 2716 - 1st Avenue  
 Edson, Alberta

For inquiries, please call (780) 325-3785

Dated at the Hamlet of Wildwood in the Province of Alberta this 20 day of August, 2021  
 Tracy Parker, Returning Officer

LGSO752 Rev. 2019-03



**Yellowhead County**

www.yhcounty.ca | 1-800-665-6030

www.YCVOTES.ca

## EDSON RCMP RESPONDED TO SINGLE VEHICLE FATAL COLLISION

Submitted by Edson RCMP  
 Edson, Alta. –northbound on Hwy. 32 near Township Road 570 in Yellowhead County when the driver lost control of the vehicle, entered the ditch and rolled. An officer with the Edson Traffic Unit was nearby and arrived on scene right away. The 51 year old male driver from Rocky Mountain House, Alta., and sole occupant of the vehicle was pronounced dead at the scene.

An RCMP collision analyst attended the scene. The cause of the collision remains under investigation.

No further updates are anticipated



## OCTOBER 18, 2021, SCHOOL BOARD ELECTIONS

### ***Notice of Nomination Day***

become a  
**school  
trustee**

*Section 26(1) of the Local Authorities Election Act  
Local Jurisdiction Office:  
Grande Yellowhead Public School Division, Province of Alberta*

Notice is hereby given that **Nomination Day** is **September 20<sup>th</sup>, 2021**, and that nominations for the election of candidates for the following offices will be received at the location of the local jurisdiction office set out below within the period beginning on January 4, 2021, and ending at **12:00 noon** on **Nomination Day**.

**Location of Local Jurisdiction Office:**

***Education Services Centre, 3656 1 Avenue, Edson***

| Offices | Number of Vacancies | Ward or Electoral Division Number<br>(if Applicable) |
|---------|---------------------|------------------------------------------------------|
| Trustee | 1                   | Jasper                                               |
| Trustee | 1                   | Grande Cache                                         |
| Trustee | 2                   | Sub Div #1, Hinton                                   |
| Trustee | 2                   | Sub Div #2, Edson                                    |
| Trustee | 1                   | Sub Div #3, Lobstick                                 |

*Grande Yellowhead Public School Division  
3656 1st Avenue, Edson, AB T7E 1S8*

*Dated in the Town of Edson in the Province of Alberta,  
this 24 day of August, 2021.*

*Sean Nicholson  
Returning Officer and Secretary-Treasurer*



**For more information, please go to [www.gypsd.ca](http://www.gypsd.ca)**



*It's time to fall in love with  
your home all over again!*

# **fall HOME RENO GUIDE**

AUGUST 2020







## HOW TO CLEAN AND MAINTAIN STAINLESS STEEL

No matter the style of a homeowner's kitchen, be it modern, traditional or farmhouse, stainless steel appliances can add a pop of shine and a touch of class. Proponents of stainless steel appliances note their easy maintenance, stylish look and durability. Plus, the neutral tone of stainless steel helps it blend in with just about any color palette.

Stainless steel is lauded for its strength and resistance to corrosion and rust. These attributes make it a popular choice in kitchens, where moisture is an issue. Although they are certainly durable choices, stainless steel appli-

ances require maintenance to keep them looking and performing at their best. Considering that stainless steel also costs more than other finish options, taking the time to learn proper care can help protect homeowners' investments.

- Avoid chlorine bleach or other products containing chloride. Although stainless steel is highly resistant to corrosion, it is not completely impervious. Chlorine products can damage the surface of stainless steel appliances and stain them if the chlorine is left to sit.

- Do not use metal scourers or coarse abrasives on

the stainless steel because such products may scratch the steel. Steel wool pads can leave behind a residue of small metal particles that may eventually rust.

- Baking soda mixed with a little dish soap can be used to remove some tough dirt and stains. Rinse well and towel dry to avoid streaking.

- Clean and wipe the steel in the direction of the "grain." Usually this means working from the top of the appliance and moving down toward the floor.

- Consult with the owner's manual before undertaking any maintenance or cleaning. The appliance may have

a special coating over the stainless steel to help protect it, and it's best to know what you're dealing with before getting your hands dirty.

- If you will be trying a cleaning product or scouring method, always test it first in an inconspicuous spot to see if it is effective or harmful.

- Julien, a leader in commercial kitchen equipment, recommends applying cleansers with a soft cloth or sponge. Then wipe dry with a soft, clean cloth or allow to air dry.

Stainless steel remains a popular material in kitchens for sinks and appliances. With care, stainless steel can look like new for years to come.



## HOW TO IMPROVE INDOOR AIR QUALITY IN WINTER

Plants can improve indoor air quality by helping to remove harmful irritants from the air.

Homes tend to be stuffier in autumn and winter. As temperatures outside dip, windows are closed and air quality inside homes can suffer.

Poor indoor air quality can not only be uncomfortable, causing residents to experience headaches, dry eyes and nasal congestion, but also can be unhealthy. According to the American Lung Association,

poor indoor air quality can cause or contribute to the development of infections, lung cancer and chronic lung diseases, such as asthma.

Though it's not feasible or healthy to open windows when temperatures outside dip to near or below freezing, there are steps everyone can take to improve the indoor air quality in their homes.

Add to your décor with plants. Plants provide both aesthetic and practical appeal to a home's

interior. Houseplants can clean and purify the air in a home, helping to remove formaldehyde, benzene and other toxins that can make indoor air unhealthy to breathe. Benzene is an irritant that can cause dizziness, headache, nausea, and blurred vision, among other side effects. Formaldehyde, which is often found in homes thanks to its widespread use in a range of products, can cause watery eyes, nausea and wheezing.

Watch what you are

lighting up. Many homeowners know that smoking indoors drastically reduces indoor air quality, putting even non-smokers at heightened risk of developing various respiratory ailments. Homeowners concerned about the indoor air quality in their homes should ban smoking inside, no matter how low temperatures dip outside. In addition, homeowners with wood-burning stoves and fireplaces should be especially diligent maintaining these

 Your Complete Line of Renovation Needs:

**ZEE BEST RENOVATIONS**  
*Local Home Renovations Contractor*

- Bathroom • Basements • Plumbing
- Tileworks • Drywall & Taping
- Decks & Fencing • Roofing • Siding

FREE ESTIMATES | 30+ YEARS EXPERIENCE | INSURED | GREAT RATES

**JOE LAWRENCE** BUS: 780-967-3898 | CELL: 780-915-3348  
MANAGER FAX: 780-967-3798

 **Home hardware** Drayton Valley  
building centre **542-4044**  
ON US: 1-888-542-9663

**For ALL your renovation and material needs, SHOP LOCALLY!**


4221 - 50 Street Drayton Valley

**B.W. EAVESTROUGHING**

*Specializing in:*

- ⇒ Residential 5"
- ⇒ Commercial 6"
- ⇒ Soffit
- ⇒ Leaf Guard System
- ⇒ Free Estimates
- ⇒ Fascia

**BRAD (780) 699-1880**

 **ECONOMY ASPHALT DRIVEWAYS**

- Paving • Asphalt or Concrete • Repairs
- Pararamps • Seal Coating • Crack Filling
- Snow Removal • Sanding • Rock Chip Sales

**CHARLES MACDONALD**  
PH: 780-962-5581 CELL: 780-777-0914  
FAX: 780-962-9146





## How To Improve Indoor Air Quality in Winter

features, as they can release harmful soot and smoke if they are not taken care of. Some people may also be allergic to incense and scented candles, so keep a watchful eye on residents and guests whenever you light candles or sticks of incense. If any symptoms of allergies appear, avoid lighting any more candles or incense, waiting until you can open the windows if you want to light any again.

- Purchase an air pu-

rier. Air purifiers are beneficial year-round, helping to remove allergens and particles from a home. High-efficiency particulate air filters, known as HEPA filters, are extremely effective at removing airborne particulates from the air inside your home.

- Pay attention to pets. Like their owners, pets tend to spend more time indoors during the winter. That means more fur and pet dander, the skin flakes in an animal's fur or hair that

can trigger allergic reactions, is likely in your home during the winter than in the summer. To combat this, bathe your pets regularly in the winter, making sure to wash the animal's bedding in hot water on a weekly basis as well.

- Open the windows when possible. Winter does not typically provide many opportunities to open the windows, but you might get a few chances to let some fresh air in through the windows during winter.

Make the most of these opportunities, and when possible crack the windows when you're cleaning so dust and other particles that kick up have a path outside of your home.

Clean interior air should be a year-round priority, but homeowners may have to go the extra mile to keep their homes' interior air clean when winter arrives.

**LIMB WALKERS TREE CARE LTD.**

FULLY INSURED, EXPERT TREE CARE PROVIDERS  
SERVICING BARRHEAD, WESTLOCK, ONOWAY & ALL SURROUNDING AREAS

- Residential & Commercial
- Tree Removal
- Tree & Shrub Pruning
- Hedge Trimmers
- Annual Maintenance
- Professional Climbers
- Arborist Consultations & Assessments
- Bucket Truck & Chipper Services

**780-203-4705** [limb.walkers@hotmail.com](mailto:limb.walkers@hotmail.com)  
FREE ESTIMATES PROVIDED

**HAMMUR Construction**

For ALL Your Carpentry Needs  
~ Residential or Commercial ~

**Elvis Murray** (780) 542-1693  
Owner/Operator fax: (780) 542-7651  
Drayton Valley, Alberta email: [eb4321@telusplanet.net](mailto:eb4321@telusplanet.net)

**"You can COUNT ON US!"**

**5 Home Ideas**  
for flipping or forever

**HOME RENOVATIONS SALE**

**co-op North Central**  
4919 - 50 Ave, Stony Plain, AB | (780) 963-2272





**JOIN OUR  
LOCAL Seniors &  
Student  
Pen Pal  
Program!**

Interact with young people in a meaningful way and connect to the "future of our community".

Students of all county schools are participating, and are writing letters to older adults, who are invited to sign up and write back!

Handwritten letters are a great way to share memories and create new friendships! Join us to build more social connections for both the older adults and students.

**Sign up today:**  
Call 1.800.814.3935 or 780.325.3782!  
Or email [kschatz@yhccounty.ca](mailto:kschatz@yhccounty.ca)



# MADE IN ALBERTA, BY ALBERTANS

Submitted by Government of Alberta

Alberta's government is supporting our province's economic recovery by helping farmers sell and market their products.

Agriculture and Forestry Minister Devin Dreeshen introduces the new Made in Alberta, by Albertans label at the Millarville Farmers' Market.

Agriculture and Forestry has developed a new Made in Alberta, by Albertans label that farmers and processors can use on their products. The label will help shoppers quickly identify food made in our province when choosing an item at their local farmers' market or grocery store. Watch for the Made in Alberta, by

Albertans label on Alberta products in the future.

"Alberta is known as a place that produces safe, high-quality food. These days, people want to know where their food comes from, and this will make it a lot easier for them to choose food from Alberta. When you buy Alberta food, you are supporting another Alberta family. It keeps money in your community and in our province." Devin Dreeshen, Minister of Agriculture and Forestry

Consultations with farmers, processors and consumers will be held this summer to finalize the proposed label and prepare rules for its use on different types of food products.

Quick facts

*Continued on Page 13*



**Yellowhead County**



**Canadian Firearms  
Safety Course**  
(non-restricted)

**AGES 12+  
TIME 9 AM - 6 PM**

**Saturday October 2**  
**PEERS**

Course will take place at  
the Peers Multiplex


**COST: \$140.00 per class**  
Please Bring:

1. Two Pieces of ID
2. Address Verification
3. Possession Only License (if you have one)
4. Lunch

**REGISTER BEFORE September 24**  
780.723.4800

# Alzheimer

support group



Caregiving can be stressful and difficult—but you're not alone.


If you are a caregiver for someone who has Alzheimer's disease or dementia, this is a valuable opportunity to meet with others that are experiencing the same challenges and stresses as you.

The group meets in a safe and confidential environment once a month.

**September 8, October 20,  
November 17, January 19,  
February 16, March 16, April 20,  
May 18, & June 15**

**Location:** Tipple Park Museum  
**Time:** 4:00 PM - 5:30 PM  
**Free, drop-in basis.**

For more info call 1-800-814-3935.





# Made In Alberta, By Albertans

*Continued from Page 12*

- Food and beverage processing is one of the largest employers in our province's manufacturing sector, with about 28,000 workers and record food manufacturing sales of \$15.5 billion last year.

- In Alberta, local food sales in direct-to-consumer channels (farmers' markets and farm retail) have more than doubled since 2008 and exceeded \$1.2 billion last year.

- In 2020-21, Agriculture and Forestry is supporting Open Farm Days through a \$100,000 grant to the Alberta Association of Agricultural Societies to manage the event.

- In 2020-21, the Alberta Farm Fresh Producers received an \$81,000

Canadian Agricultural Partnership grant to support an online local food directory.



**Got Junk??**

Our classified section makes it easy to sell without lifting a finger!

**Call the Community Voice at 780-962-9229 To place your ad today!**

## NOTICE OF PUBLIC HEARING

PROPOSED BYLAWS NO. 9.21 and 10.21 and 11.21 and 12.21 BEING A DRAFT LAND USE BYLAW, MUNICIPAL DEVELOPMENT PLAN AMENDMENT, HINTON EAST BOUNDARY JOINT AREA STRUCTURE PLAN RESCINDMENT and STONEWATER RANCH AREA STRUCTURE PLAN RESCINDMENT

PURSUANT TO SECTION 692 OF THE MUNICIPAL GOVERNMENT ACT, BEING CHAPTER M 26 R.S.A. 2000 AND AMENDMENTS THERETO:

Notice is hereby given that a public hearing will be held on September 14th 2021 at 09:30 a.m. in Yellowhead County Council Chambers at 2716-1st Avenue, Edson, Alberta. The purpose of this hearing is to allow persons to make known their views with respect to the draft Land Use Bylaw, the amendment of the Municipal Development Plan and the rescinding of the Hinton East Boundary Joint Area Structure Plan and the Stonewater Ranch Area Structure Plan.

The draft Land Use Bylaw 09.21 will replace the existing Land Use Bylaw 16.13.

All written submissions will become public information upon receipt by the Yellowhead County Council. Copies of Bylaw Nos. 9.21 and 10.21 and 11.21 and 12.21 are available for public inspection during regular office hours from 8:00 to 4:30 p.m. Monday through Friday at the Yellowhead County office located at 2716 1st Avenue, Edson, Alberta. Further information may be obtained by contacting the office at 723-4800.



**JOIN -THE- TEAM**

**We're looking for adults (and Students) to join the Yellowhead County Fire Department!**

**BECOME A YELLOWHEAD COUNTY VOLUNTEER FIRE FIGHTER OR YCFD STUDENT CADET**

**Evansburg ~ Niton ~ Wildwood ~ Robb**

**Peers ~ Brule ~ Edson Area**

**& Highschool Cadet Program (16+)**

**Fall Recruitment - September 9 Deadline**

**www.yhcounty.ca**

## Hydrant Flushing

Peers, Brule, Evansburg, & Wildwood



**September 7 - 17**

If you have discoloured water, run your cold taps for a few minutes until the water clears. Prior to using water for laundry purposes, run the water for a few minutes to ensure it's clear.

If you have any questions please contact our office at (780) 723-4800 or 1-800-665-6030.



# INTRODUCING THE SHOP HARD IN STONY PLAIN CAMPAIGN TO SUPPORT LOCAL BUSINESSES

Submitted by Town of Stony Plain

On Monday, August 23, the Town will launch the Shop Hard in Stony Plain campaign, which will run for three months. The campaign intends to help get area residents back into Stony Plain businesses and keep supporting local top of mind by offering prizes, increasing online exposure, and offering a way for businesses to reconnect with customers.

Stony Plain businesses of any size or nature are welcome and encouraged to participate in the campaign. Starting today, businesses can pick up the campaign supplies required to participate at the Town or Chamber Offices. The supplies include a poster and window sticker to show your customers that you're participating in the campaign and that your business is a location where

they can win big! Additionally, you'll want to ensure you grab the special sticker with the QR code to stick at your point of sale. This special sticker will allow people to scan the QR code with their phone camera, which will bring them to the Town's website where they can enter to win a prize package each month. No purchase is necessary for entry. Please ensure you download the campaign guide in the highlighted section below for complete contest details.

Another important component of the campaign will take place on social media and requires your help! Businesses are encouraged to promote the campaign to their social media audiences by creating videos that inform customers of your services and remind people why it's important to support local. Be sure you use the hashtag #ShopStony so the

Town can share your posts and help provide your business extra exposure!

We know Stony Plain's businesses already have their full plates, so we've created resources to make it as easy as possible for you to participate. Please click here to view a general campaign guide, which includes more details about the campaign, the prizes up for grabs, and the ways for your business to participate online. Additionally, starting Monday, you can download the campaign toolkit by clicking here, which includes campaign graphics, social post templates, and everything else you might need.

The Town will also be doing several social media giveaways to help get people excited about the campaign! The Town has gift cards from the following businesses that we'll be contesting through social me-

dia: Butter Chicken Hut, Classic Replay, Village Fashions, Plains Wine Beers + Spirits, Gypsy Chicks, Blue Diamond Jewellers, The Barn Owl, Perks Coffee House, Dara's Luxury Decor and Coffee Bar, One Man's Treasure, Twilite Frames + Gifts, Kountry Korner Gifts, Pet Foods Etc, Stony Plain Eye Centre, Spring Lake Naturals, Sole Works, and Shear Magic. If your business is mentioned, we'll tag you when your business's gift card is being contested so you can help promote! If your business wasn't listed and you want to provide a gift card for a social media giveaway or if you're unable to pick up the campaign supplies at the Town or Chamber Offices, please email [ecdev@stonyplain.com](mailto:ecdev@stonyplain.com).

Good luck, have fun, and #ShopStony!

## ALBERTA RCMP PROVIDES FRAUD PREVENTION TIPS TO COUNTER COVID-19 RELATED FRAUDS

Submitted by Alberta RCMP

Edmonton - The pandemic has led to new COVID-19 related fraud in Alberta. From March 2020 to February 2021, there were over 10,700 reports of fraud in Alberta RCMP jurisdictions.

Impersonation- and identity-related incidents accounted for 19.4 per cent of all reported frauds for that same period. The top ten frauds in Alberta RCMP jurisdiction are as follows:

1. Fraud (money/property/security) less than or equal to \$5000
2. Identity fraud
3. Fraud (money/property/security) greater than \$5000

4. Identity theft
5. Theft, forgery, misuse of credit card
6. Use/traffic/possess a forged document
7. Illegal possession or trafficking in government documents
8. Obtain food/lodging by fraud
9. Fraud, obtaining transportation
10. Unauthorized use of computer

Here are some tips to protect yourself by learning how to recognize and prevent fraud:

- Does this transaction make sense? If it sounds too good to be true, it probably is
- Ignore communication from unknown contacts
- Don't leave personal

identification cards in your vehicle

- Purchase items from reputable organizations
- Research organizations via the Better Business Bureau
- Regularly monitor credit card statements for unknown or suspicious charges
- Never send money on a dating site

This month, follow #kNow-fraud for fraud prevention tips on our social media accounts on Twitter (@RCMPAlberta), Facebook (@RCMPinAlberta).

If you have been the victim of a fraud, report it to your local police service and to the Canadian Anti-Fraud Centre online at: [www.antifraudcenter.ca](http://www.antifraudcenter.ca) or by calling: 1-888-495-8501.

You should also contact your bank and credit card company if you believe your personal or financial information has been compromised.

RCMP encourage the public to report any criminal or suspicious activity to police. Reports tell us where to look, who to look for, and where to patrol in the future. If you see a crime in progress, dial 911. If you wish to remain anonymous, contact Crime Stoppers at 1-800-222-8477 (TIPS), online at [www.P3Tips.com](http://www.P3Tips.com) or by using the "P3 Tips" app available through the Apple App or Google Play Store.





# Golfer's GUIDE

## DRIVE HOME A WINNING GOLF TOURNAMENT

The arrival of warmer weather has many Canadians dreaming of the hitting the local golf course. It is also the time that many companies, organizations, charities and other groups start planning their golf tournaments.

Hosting a golf tournament is a great way to entertain customers, thank employees or raise funds for your group. While there are many details to arrange, organizing such an event doesn't have to be distressing.

Experts recommend that you cover the basics first. Picking the right date and a course that is suitable for your group is the first priority. The earlier you do this the better as you will get a wider selection of dates and courses.

Ensuring your guests are well fed and hydrated out on the course should be another priority. In the heat of summer, a good supply food and non-alcoholic beverages will ensure your participants enjoy a healthy

and safe round.

What about prizes? The excitement of winning something is always a big draw, so hit up local businesses, suppliers, business partners and friends for prize donations.

To take your tournament to the next level, you could offer hole-in-one prizes such as a car, boat, trips or cash. "Adding big prizes to your golf tournament

doesn't have to be an expensive or worrisome endeavour," says Andrea Martin, Senior Underwriting Manager, Wayfarer Insurance. "You can get insurance coverage that will pay for the prize in the event that a golfer hits an ace."

One of the biggest tips is speak to the professionals at the golf course where you book your tournament. Often courses will have staff

to assist you, or at least literature that will help you plan a successful event.

[www.newscanada.com](http://www.newscanada.com)

### SILVER SANDS GOLF RESORT

Parkland's hidden gem of a golf course; located 45 minutes west of Edmonton on highway 16.  
Book your company tournament today.  
Checkout our Weekday Specials!  
Join us for Men's night on Wednesday's 6:00pm & Ladies league on Monday mornings, both shotgun start. Call 780-797-2683.

## RV LOTS FOR SALE CALL 780-222-1535

Silver Sands Village, Lake Isle [silversandsgolfresort.com](http://silversandsgolfresort.com)

## CALAHOO HILLS GOLF COURSE

**780.459.9081**  
[info@calahoohillsgolfcourse.ca](mailto:info@calahoohillsgolfcourse.ca)  
[calahoohillsgolfcourse.ca](http://calahoohillsgolfcourse.ca) |

## Alberta Beach GOLF RESORT

### WEEKDAY SPECIAL

4 Golfers + 2 Carts Great for Weekday Tournaments  
**\$160.00 (\$40 each) Monday, Wednesday and Thursday Only.**

|             |                  |                  |
|-------------|------------------|------------------|
| 18 Holes    | \$33.00 Weekdays | \$48.00 Weekends |
| 9 Holes     | \$20.00 Weekdays | \$37.00 Weekends |
| Cart Rental | \$18.00 9 Holes  | \$28.00 18 Holes |

To Book your Tee Times or Tournaments  
**Call: (780) 924-GOLF (4653)**

# SCREEPY, CRAWLY HALLOWEEN COLORING CONTEST



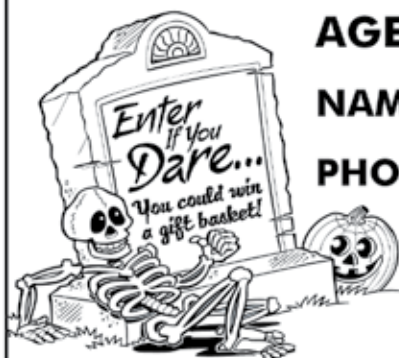
**AGE GROUPS:** 3-4 YRS | 5-6 YRS | 7-9 YRS | 10+ YRS

**NAME:** \_\_\_\_\_ **AGE:** \_\_\_\_\_

**PHONE:** \_\_\_\_\_ **TOWN:** \_\_\_\_\_

*Entries must be recieved by October 29, 2021.*

**Mail to: Jack O'Lanterns, c/o Community Voice  
Box 3595 Spruce Grove, AB T7X 3A8**





# Classified Ads - Call 962-9228

## Classified Policy

**CLASSIFIED RATES**  
 INCLUDE GST. 1st 20 Words:  
 First Insertion = \$6.00;  
 Subsequent insertion =  
 \$3.00 each. (Eg: 2 insertions  
 = \$9.00; 3 insertions = \$12.00;  
 4 insertions = \$15.00; etc)  
 Each additional word is 20  
 cents per word, per insertion.  
**BOLD/CAPITAL** text available  
 for an additional \$1/line. Lost  
 & Found and To Give Away (up  
 to a max. of 25 words) are free  
 of charge. Ads must be paid  
 in advance either by cheque,  
 cash, Visa or Mastercard.  
 No Refunds Allowed on  
 Classified Ads. **DEADLINE:** is  
 Thurs. 4:00 pm (Wed. 4:00  
 pm on long weekends).  
 Classified ads may be called  
 in to the COMMUNITY VOICE  
 office at (780) 962-9228,  
 emailed to: classifieds@com-  
 voice.com, dropped off at  
 Onway Registries, or mailed  
 with your ad and payment to:  
 COMMUNITY VOICE, BAG  
 3595, SPRUCE GROVE, AB  
 T7X 3A8. Ads may also be  
 placed on the web at [www.com-voice.com/classified.htm](http://www.com-voice.com/classified.htm)

## Hall Rentals

Bright Bank Hall, 780-968-6813

Camp Encounter, Vincent Mireau - Camp Director. [director@campencounter.com](mailto:director@campencounter.com). C: 780-504-2012 W: 780-967-2548

Cherhill Community Assoc. Hall, Kevin 780-785-8153

Darwell Centennial Hall, 780-892-3099

Darwell Seniors, Phone Debra 780-785-2907

Duffield Hall, 892-2425

Entwistle Community League Hall Rentals, Call Cheryl at 780-515-1755

Entwistle Senior's Drop In Centre, Barb 727-2108 or Glennis 727-4367 Mon-Fri

Evansburg Senior's Heritage House, Dennis 727-4186

Evansburg Legion, upper hall 250 people, 727-3879

Fallis Community Hall, Laurence 797-3123

Gunn Hall (C.A.R.S.) 780-951-9452

Keephills Hall, 731-3761

Lake Isle Community Hall, PH: 780-892-3121 or Email: [lakeislehall@mail.com](mailto:lakeislehall@mail.com)

Lake Romeo PeaVine Hall, 785-2700

Magnolia Hall, 727-2015

Manley Goodwill Community Hall, 963-9165 or 916-0146

Mayerthorpe Diamond Centre, 786-4044

Moon Lake Community Hall, Diane 780-514-4694

Park Court Hall, call or text

Karyn 780-712-3918

Parkland Village Community Centre, 780-298-9155 @ PVCentre

Ravine Community Hall, 325-2391

Rich Valley Community Hall, 967-3696 or 967-5710

Rosenthal Community Hall, 963-7984

# PREVAIL

## CELLULAR HOMEOSTASIS FORMULA

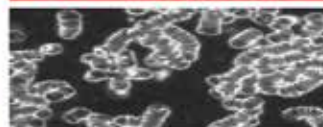
# MAX

A NUTRITIONAL BREAKTHROUGH THAT SUPPORTS YOU  
 ...RIGHT DOWN TO THE LAST CELL!

How do you want your  
**BLOOD** to look?



### Before PrevailMAX:



poor circulation

low energy

brain fog

dehydration

decreased nutrients

pH imbalance

poor endurance

### After PrevailMAX:



better circulation

more vitality

mental clarity

cellular movement

nutrient assimilation

balanced pH

optimal endurance

**PrevailMAX™** is a nutritional breakthrough that delivers a rapid increase of internal blood cell pressure to speed absorption, enabling the body to take maximum advantage of the nutrients in foods and supplements. The electrolytes are small enough to penetrate your cell membranes, to bind with your cells, and to be carried wherever they are needed in the body.

At the microscopic level of human cells, **PrevailMAX™** supports healthy cell performance – a nutritional breakthrough for your cells.

When you use **PrevailMAX™**, you will feel more energy and an ability to focus like never before. Take a few sprays today and see just how good you can feel!

LIVIN TRIM WITH  
**VALENTUS**

[www.ValentusTour.com/Ladybug](http://www.ValentusTour.com/Ladybug)

**(780) 907-8642**

# Classified Ads - Call 962-9228

Smithfield Community Hall,  
Wanita 780-718-8824.

Tomahawk & District Sports  
Agra, Bookings: Kathy 780-  
339-3773.

Wabamun Jubilee Hall, 892-  
2699.

Wildwood Community Hall,  
325-2180 or 780-514-6105

Wildwood Rec Complex 325-

2077 or 514-8944

Wildwood Senior's Hall, 325-  
3787 or 325-2391

## Services

**Stump Grinding For Hire** -  
Alberta Beach & Surrounding  
Areas. Call 780-779-3589 (30)  
02-11

## Computers

FREE COMPUTER CHECK UP  
- Repairs NOT over \$50 or will  
SAVE photos and documents  
from your old or broken  
computers. WANTED: Old  
used broken laptops, tablets  
or cell phones to clear ALL  
content, fix and donate FREE  
to single parents and lonely

seniors. Call or leave message  
780-892-2407 (24) 21-12

## U-Pick

U-Pick It OPEN 1-6 p.m.  
Tuesday to Sunday until  
August 25th. Closed  
Mondays. Located at 53520  
Range Road 75 (2.5 KM North  
of Evansburg). Call 780-727-  
4344 for messages.

## Firewood

Outlaw Firewood Sales -  
Wood starting at \$150 per  
cord, dry split firewood, pine.,  
Tamarack and Birch., small  
and bulk volumes available,  
no fee if within 80km of yard.  
Text 780-621-7200 17-08 (26)

## For Sale

Hot Top, works great, \$1500!  
Galvanized metal 16ft, \$25.00  
a sheet. Located in Evansburg  
780-239-0553 (2) 07-09

## For Rent

Completely renovated Motel  
in Onoway, AB. offering  
daily, weekly or monthly  
rentals. All utilities included,  
55 inch tv with Satellite.  
Double bedrooms, furnished  
bachelors with full kitchen  
and furnished 1 bedrooms  
with full kitchen available.  
Starting at \$950 + tax. Please  
call for viewing, 780-967-  
4420 or 780-945-1723. www.  
onowayinnandsuites.com (4)  
31-08 OG

HOUSE FOR RENT in Seba  
Beach, Available from  
Sept.25 to Apr.30, 2022.  
Furnished 1,000 sqft, 3 Bdrm,  
Laundry. Rent is \$925/mth  
with first month's rent and  
damage deposit due to start.  
Includes free satellite TV  
and water. Renter pays for  
heat, electricity and sewage  
disposal. Call Wade 780-686-



## PURE HEMP PRODUCTS

AGING IS INEVITABLE - LOOKING AND FEELING OLD ISN'T!

### A Health and Beauty Breakthrough!

Cannabidiol, is one of over 80 active cannabinoid chemicals in the hemp plant. Unlike, THC, it does not produce euphoria or intoxication. It targets specific receptors in the cells of your brain & body. There are many physical and mental benefits to using these products for both treatment and prevention of numerous ailments.



### Therapeutic Uses For Pure Hemp

Supports healthy blood sugar levels, promotes healthy energy levels, relieves anxiety, aids in digestion, supports optimal immune function and the regeneration of healthy cells, and promotes a sense of serenity and overall well-being.

### KEY BENEFITS

**PAIN RELIEF:** Known to reduce vomiting & nausea; suppress muscle spasms; reduce seizures & convulsions.

**PROMOTES HEALTH:** Helps to promote relaxation and overall health.

**WELL-BEING:** Helps to relieve anxiety, aid in digestion, supports optimal immune function and the regeneration of healthy cells.



### Anti-Aging Uses For Pure Hemp

Promotes more youthful skin, provides hydration, enhances radiance, lessens age lines as well as the appearance of dark spots.

### ORAL SPRAYS & DROPS

#### KEY BENEFITS

**MANAGES PAIN:** Helps to treat inflammation, arthritis and joint pain.

**TREATS DIGESTIONAL ISSUES:** Helps with loss of appetite, nausea, IBS and gastrointestinal swelling.

**GENERAL HEALTH:** Helps to manage mood, anxiety and general joint pain. For healthy, happy pets.

**CONVENIENT:** Can be sprayed into pet's mouth or on food.

### PET CHEW TREATS

#### KEY BENEFITS

**SYNERGISTIC BENEFITS:** Can be used in conjunction with regular medications with no side effects.

**NO SIDE EFFECTS:** Does not damage the liver, kidney or GI Tract like OTC medication.

**DIETARY SUPPLEMENT:** Can be administered daily as part of your pet's diet.



**For more information, Call (780) 907-8642**



# Classified Ads - Call 962-9228

9915 (2) 07-09

Available, 2 Bdrm (\$850) in Entwistle building at 4932 50a avenue. DD \$300. Tenant pays power, Smoke Free Bldg. Please call/text Ivanka 780-807-1300 (4) 09-2



**See What's Brewing**

Nothing goes better with your morning coffee than your local paper.



## UNRESERVED TIMED ONLINE AUCTION September SUPER CONSIGNMENT

Bidding Opens: Friday, Sept 17 at 9 AM

Bids Start Closing: Thursday, Sept 23 at 10 AM

Located: 4811-52 Ave Barrhead, AB &amp; Off-Site Locations

Onsite Viewing: Friday Sept 17 &amp; Saturday Sept 18 from 10 am to 5 pm



Field Ready Harvest Case IH 1680 Combine, 25' MF 9430 High Clearance Windrower, Groupings of Good Farm Equip from Multiple Retiree's, Excellent Low Hour John Deere 1023 Yard Tractor, Rotovator & Accessories, Fully Restored Oliver 77 & Ford 5000 Tractors, Quads, Ski Doo's, Tools, Household, Recreation, Many Retiring Misc & much more.

Full Details &amp; Many More Upcoming Auctions &amp; Items available at

www.parsons-auctions.com

## PARSONS AUCTIONS LTD

CHARLES  
780-674-7704

780-674-5999

JEFF  
780-305-4328

## LAC STE ANNE REAL ESTATE

ONOWAY 780-967-3335

SANGUDO 780-785-2444

DAVID LOWE

Direct: 780-699-3814

Toll Free: 866-685-2444

E-Mail: davidlowe@live.com

\*Each office is independently owned and operated\*



CENTURY 21

Masters



### EXECUTIVE 2 STOREY in EVANSBURG

3 Bdrm + Den (could be 4th Bdrm) Gas Fireplace & Gorgeous Spiral Staircase. 5 Appliances. 1-4pc Bath. 1-2pc Bath. 2499 Sq. Ft. Home. Dbl. Att. Heated Garage. 1.1 Acre Lot Near the Pembina Prov. Park.

MLS# E4193416 \$399,900



### MAYERTHORPE 1 & 1/2 STOREY

1 bedroom home with a large loft area that could be used as a 2nd bedroom. Home has newer roof, siding, vinyl windows, furnace & HWT. Large, fenced back yard. Great starter home! Close to main street amenities

MLS# E4240491 \$89,900



### LOT 44, ISLAND VIEW HARBOUR

3 Bed, 2 Bath, 1270 Sq. Ft. brand new home. Main floor primary bedrm & laundry area. Construction is at the drywall stage \*Pick your own finishes & colours. \$75/Mo. condo fee includes waste water, garbage & snow removals as well as general maintenance.

MLS# E4219543 \$289,900



### 5 ACRES NEAR SANGUDO

5 Acres just north of Sangudo. Nicely treed and manicured. Oversized Single garage perfect for parking. Partly complete guesthouse. Basement development includes bedroom, bathroom, family room, but needs finishing. Large south facing sun room overlooks walkout basement. Great views.

MLS# E4253716 \$285,000



### LOT 42 ISLAND VIEW HARBOUR

796 Sq. Ft., 2 Bedrooms, 1 bathroom. Construction @ final phase. Personalize your finishes! Solar panels are optional. \$75 Monthly Fee includes snow, garbage & waste-water removal & general maintenance. Isle Lake's newest lakefront community!

MLS# 4219548 \$249,900



### EVANSBURG BUNGALOW

Large economical starter home or revenue property. Brand new carpeting, never been lived on. Large, fully fenced yard backing onto green space. Needs some TLC (roofing, paint) but quite liveable as is. Huge bedrooms, master has 1/2 bath.

MLS# E4350264 \$109,900

# COMMUNITY EVENTS 2021

If you are a LICENSED, NON-PROFIT ORGANIZATION, you are welcome to submit your announcement FREE of charge, space permitting. You are required to submit your non-profit number. Call (780) 962-9228. Please note that all submitted event listings must be limited to 200 characters or less (including spaces). DEADLINE: 12 noon Friday prior to publication (Thursdays on long weekends).

## Spet 5, 2021 LABOUR DAY CAR SHOW

Registration 9-11 Show 11-4 Stony Plain All Proceeds to Stony Plain Youth Centre Registration \$20 Contact 780 914 8869

**NOTE: Please inquire first as COVID-19 restrictions may still apply.**

## FARMERS MARKETS

**DRAYTON VALLEY: Evergreen Farmers' Market,** Wednesdays from 4PM-7PM. Outdoors May 20-Aug 26 at 5115 50 Ave. Indoors Sept-Dec at the Mackenzie Centre.

**EVANSBURG:** Sat, 10AM-2PM, Tipple Park Museum. Call 727-2240 for tables. \*May-Sept.

**SPRUCE GROVE:** at the Elevator, Sat 10:00-1:00PM, Info (780)288-6174 \*April - Dec.

**STONY PLAIN:** Saturdays, 9AM-1PM, Community Centre Downtown, Stony Plain. Nancy 780-962-3993. \*April - Dec.

## BINGO

**ENTWISTLE COMM. LEAGUE BINGO:** Every Wednesday, Doors Open 6PM.

**STONY PLAIN SENIOR'S DROP-IN CENTRE:** public bingo every Tues, 7PM. All ages welcome. Phone (780) 963-6685

**WILDWOOD:** Mon night. 6:30PM, bingo starts 7:30PM, Early Birds & Lucky 7.

**WILDWOOD LADIES AID:** every 3rd Friday of month, 6:30PM, bingo starts 7:30PM.

## MEAT DRAWS

**Evansburg:** Evansburg Legion, Friday 8-10PM & Saturday 3-5PM

**Wildwood:** Wildwood Legion, Saturday 3-5PM

## JAMBOREES

**CARVEL:** 2nd Sunday of month. \$6 lunch served. Info 780-991-3001

**CHIP LAKE:** Ravine Comm Hall, 1st Sat 325-2119 or 325-2391

**DUFFIELD:** 4th Sat, Duffield Community Hall. Supper 6PM. \*Sept - May.

**DRAYTON VALLEY:** Last Sunday of month. Upstairs @ the "55 Rec. Center" Doors at 12PM, Starts at 1PM. 780-542-4378

**ENTWISTLE:** 3rd Saturday of month, Doors at 5:30PM at Entwistle Community Hall. Contact Verna at 780-716-2304.

## \*October - May

**RAVINE COMMUNITY ASSOCIATION:** 1st Sat of each month. Info 780-325-2391

## \*Sept - May

**Edmonton Northwest Senior's Center:** 12963 - 120st NW, Every Wed From 1-3:30pm Aug & Sept Admin: \$5 non members \$2 members Yearly membership \$30

**SPRUCE GROVE:** at Sandhills Community Hall, 3rd Sunday, 1-5PM. Info Florence 780-962-3104 Margaret 780-962-3051 \*Sept - June.

**STONY PLAIN:** Stony Plain Seniors Drop In Center, 5018 - 51 Ave. Every 2nd & 4th Thurs of month, 7PM, \$2.

**TOMAHAWK:** Tomahawk Agriplex, 3rd Friday of month. 7PM. Supper at 6PM. PH: 780-339-3755.

**WILDWOOD:** Wildwood Community Hall, 3rd Wed Each Month, 7PM. 325-3749 \*Oct - June.

## TOPS (Take Off Pounds Sensibly)

**ENTWISTLE:** Wed 5:15PM weigh-in, 5:30-6:30PM meeting, food bank building, South entrance. 780-932-2695.

**STONY PLAIN:** Thurs evening at 5:30PM,

Stony Plain Library Susan (780) 968-0869

**SPRUCE GROVE:** Mon at 5PM at Anglican Church, 131 Church Rd. Betty (780) 962-3857

**SPRUCE GROVE:** Tues at 6:15PM at Anglican Church, 131 Church Rd. Sharron (780) 962-2722

**SPRUCE GROVE:** Wed at 8:45am at Anglican Church, 131 Church Rd. Christianne

**WILDWOOD:** Thurs at Wildwood Hall, 4:30PM. Connie (780) 325-2420

## YOUR COMMUNITY

**ALBERTA PARENTING FOR THE FUTURE ASSOC:** Call 963-0549 or visit [www.apfa.ca](http://www.apfa.ca) to register. All programs are confidential & free.

**FREE HOME MEAL DELIVERY PROGRAM,** for Wabamun Seniors & Wabamun Lions. Arrange for meal preparation through a local restaurant. Call Darlene, 892-2551.

**PEMBINA SKATING CLUB** (Evansburg Arena), offers Learn-to-Skate, CanSkate & STARSkate. All ages. Call Lisa 727-2729.

## \*RUNS Sept-March

**PROBLEMS WITH DRUG OR ALCOHOL ADDICTION** in a loved one? Contact Drug Rehab Resource for a free confidential consultation. 1-866-649-1594 or [www.drugrehabresource.net](http://www.drugrehabresource.net).

## LIBRARY EVENTS

**AFTERNOON BOOK CLUB** at Keephills Library. 2nd Tues of every month, 1:30-3:00PM. Visit [www.pclibraries.ca](http://www.pclibraries.ca) for info.

**FAMILY GAMES NIGHT:** 3rd Wed of every month, 6-8PM. Located at Entwistle Library, Duffield Library and Tomahawk Library. In partnership with Parkland School Division. Visit [www.pclibraries.ca](http://www.pclibraries.ca) for more info.

**HATCHET CITY READERS** at Tomahawk Library. 3rd Tues of every month, 10-11AM. For what we're reading next, visit our website, [www.pclibraries.ca](http://www.pclibraries.ca).

**INVENTORS CLUB:** 2nd Thurs of every month, 3:30-5:00PM at Entwistle Library. 4th Thurs of every month, 3:30-5:00PM at Tomahawk Library. Ages 8-13. To register: Call the library at 780-339-3935.

**SEBA BEACH THE BOOK CLUB WILL START IN SEPTEMBER** Meetings will be the 4th Thursday of the month, at 10:30 AM. Call us at 780-797-3940 or email us at [sebabeachlibrary@yrl.ab.ca](mailto:sebabeachlibrary@yrl.ab.ca) or follow us on FB Summer Village of Seba Beach Public Library or Instagram and Twitter at Seba Beach Public Library.

**EVANSBURG PUBLIC LIBRARY BOOK CLUB:** 4th Thurs, 7:00PM Grand Trunk High 727-2030.

## SOCIAL EVENTS

**50+ YOUNG AT HEART LUNCHEON** for Parkland County Seniors. 12PM at Stony Plain United Church Basement, \$8/plate. 3rd Wed of Month. Call Barb 780-952-0882. \*Sept-June

**AEROBICS:** Low impact, Mon/Wed, 11AM-12PM, Wildwood Senior's Centre, \$1/session.

**BREAKFAST SOCIAL:** 9:30AM-NOON, Parkland Village Community Centre - 3rd Sunday. PH: 780.298.9155 Social Media: PVC Centre.

**COME PLAY CRIB:** Fridays, 7:30PM at Darwell Seniors Hall; lite lunch is served. All ages!

**COUNTRY QUILTERS** in Stony Plain house a "Sew in Tuesday", 2nd Tuesday of every month, from 10-3PM. Drop in \$5/member, \$6/non-members. Contact Cindy 780-963-7170.

**DROP-IN ADULT PICKLEBALL:** Thursdays, 6-8:30 p.m. Sept.12th-May @ G.T. School, Evansburg. Beginners Welcome. Paddles sponsored by the Evansburg Public Library

**EVANSBURG ART CLUB:** meet & paint Thurs 1-4PM Rec Plex. 727-4340 or 727-

4098

**EVANSBURG SENIOR'S HERITAGE HOUSE:** Floor Curling Mon & Thurs, 1pm. Court Whist Thurs, 7PM.

**EVANSBURG TIPPLE PARK HISTORICAL BUILDING TOURS:** Wed - Sat, 10:00-5:00PM.

**HEALTHY AGING NURSE & FOOT CARE PERSON,** Wabamun Seniors Centre, 2nd Thurs of month, 9AM.

**OPEN HOUSE** for socializing, Crib & card playing at Entwistle Senior Center, Thursdays at 6:45PM. Dan 780-982-0353

**PARENT & TOT PLAYTIME:** PERC Building Stony Plain Wed 10-11AM; Holborn Community Hall Thurs 9:30-11AM; Parkland Village Tues 9:30-11:30AM.

**POT LUCK** every Tues 12:00PM, Wabamun Seniors Centre. Come on down!

**SEBA BEACH SENIORS CENTER:** Yoga, mon, 9:30AM, \$10/session. Bridge thurs, 1pm. Jams every Wed night, 7PM. Thrift Shop every Wed & Sat at 10-3PM.

**SEBA BEACH QUILTERS & FIBER ARTS:** Wednesdays 9:30AM, Seniors Center.

**SENIORS 50+ LUNCHEON:** 3rd Wed, 12PM at Stony Plain United Church basement hall. Call Audrey (780) 963-7582

**SENIORS WEDNESDAY\* AFTERNOON** 1-4PM at Parkland Village Community Centre. Games, Crafts & more! Call Sheryl 780.695.7032 \*exceptions incl. Weather.

**SPIRITUAL LIVING STONY PLAIN INSPIRATIONAL CINEMA & DISCUSSIONS** at PERC Building (5413-51 St). 2nd Friday of month at 7PM. Popcorn provided, donations appreciated.

Contact 780-940-3032

**SPIRITUAL LIVING STONY PLAIN GATHERING** at PERC Building (5413-51 St). Every 2nd & 4th Sunday of month. Meditation 10AM, inspirational sharing 10:30AM. PH 780-940-3032

**SPRUCE GROVE ELEVATOR TOURS:** Tues-Sat, 9-3PM, 960-4600.

**STONY PLAIN'S 5TH MERIDIAN GOOD SAMVS RV CHAPTER:** Ecole Meridian Heights School. 3rd Tues of Month, 7PM. Call Pat at 780-963-6976 or Ruth at 780-288-9829.

## MEETINGS

**2ND TIMERS:** A support & confidential group for Grandparents Parenting. 1st Thurs of month, 6:30PM. Grand Trunk High School (meet in Lobstick Literacy & Learning room). Child care provided at the Evansburg Public Library.

**299 ROYAL CANADIAN SEA CADETS CORPS MACKENZIE:** Stony Plain Comm Center, Wed 6:30PM. Youths 12-18, 963-0843

**755 PARKLAND AIR CADETS** Thurs, 6:30-9:30PM Muir Lake School, ages 12-18. Info call 405-6585 or [www.aircadet.com/755](http://www.aircadet.com/755).

**AA:** Friday at 8PM, Evansburg. Call 325-2204, 727-2466 or 727-6652.

**AA MEETING:** Every Monday night at 8PM, Duffield Mewassin Free Methodist Church, (13km South of Duffield Turnoff at Shell Gas Station on Hwy 16).

**AL-ANON:** Wed 8PM. Spruce Grove United Church, 1A Fieldstone Drive. 962-5205

**CHAMBER OF COMMERCE (Evans/Ent):** 7:30PM 3rd Thurs, Heritage House.

**C.H.I.L.D. (Citizens Helping in Life's Defence)** Please join our Pro-Life meetings once a month in Stony Plain. For info call Chris 963-6997.

**CITIZENS ON PATROL:** The Pembina Community Watch Patrol Meets 2nd Thurs of each month at 7:30PM, at the Tipple Park Museum (4924-48 St.), Evansburg. Contact 780-898-1465 or 780-727-2686.

**DARWELL & DISTRICT AG SOCIETY:** 8PM, 1st Mon, Community Hall.

**DDRA MEETING:** 7:00PM, 2nd Mon, Darwell Centennial Hall 780-892-3099.

\*except Jul/Aug/Dec

**DRAYTON VALLEY BRANCH OF**

**ALBERTA GENEALOGICAL SOCIETY:** meets 7PM at Municipal Library (5120-52 St.) every 3rd Wed of month. Call (780) 542-2787

**ENTWISTLE COMMUNITY LEAGUE GENERAL MEETINGS:** 2nd Thursday monthly 7:30PM. \*Except June, July, August

**ENTWISTLE LIONS CLUB:** 2nd & 4th Tues, 8PM, Entwistle curling Rink. Jim 727-3573

**ENTWISTLE SENIORS 55+ CLUB:** Tue & Fri, 1:30-4:00PM at Entwistle Hall

**EVANSBURG SENIOR'S 55+ HERITAGE HOUSE:** 2nd Wed of Month, 7:00PM. Dennis, 727-4186.

**FALLIS COMMUNITY ASSOCIATION:** 3rd Tuesday, 7:00PM.

**GriefShare:** Weekly grief support group held on Tuesdays 6:30 - 8:30 pm, starting Sept 14 at Crossroads Community Church, 4419 44 Ave, Mayerthorpe. \$25 for 12 sessions. Pre-registration required. Call 780-786-2695 today.

**LAC STE. ANNE & LAKE ISLE WATER QUALITY MANAGEMENT SOCIETY:** 3rd Fri, 7PM, Alberta Beach Council Chambers.

**LAKE ISLE HALL COMMUNITY HALL BOARD MEETINGS:** 3rd Wed of each month @ 7:30PM at the Lake Isle Hall (Hwy 633 and RR55) Ph # 780-892-3121

**LAKE ISLE MULTI 4-H GENERAL MEETINGS:** 1st Thurs of each month @ 6:30PM @ Lake Isle Hall. Contact 780-242-2486.

**LOBSTICK 4-H BEEF & MULTI CLUB:** 1st Mon, Evansburg Arena, 7PM, Shannon 727-2358

**LOBSTICK GARDEN CLUB:** 1st Mon, 7PM at Tipple Park Museum, Clara (780) 399-2205

**MAGNOLIA BOARD MEETINGS:** 1st Tuesday of month, 7PM at Magnolia Community Hall.

**MEN FOR SOBRIETY:** Wednesdays at 7:30PM, FCSS Building (#105, 505 Queen Street, Spruce Grove). Mike (780) 965-9991.

**MS SOCIETY DRAYTON VALLEY COMMUNITY GROUP** meets 1st Tues of month, 6-8PM at Norquest College, Terra Leslie, 1-403-346-0290. \*Sept-June

**MS SOCIETY PARKLAND COMMUNITY SUPPORT GROUP:** Are you diagnosed with MS and have questions? Last Tues of month, 7-9PM, Westview Health Centre. Contact Cassy 780-471-3034

**NA MEETING:** Tuesdays, 7:00PM. 514-6011

**PEMBINA PORCUPINES - JUNIOR FOREST WARDENS:** Entwistle Porcupine gathering: 7PM, 1st Tue. Len & Tineke at 727-2020. Porcupines@yellowheadjfw.ca

**SOLVE:** Community Enviro issues discussed at Smithfield Hall (N of Hwy 16 on RR34). 2nd Thursday. Jana 892-0006

**STONY PLAIN FISH & GAME ASSOCIATION & WABAMUN GUN CLUB:** 2nd Mon, Stony Plain Comm Center, 7:30PM.

**SUNDOWNERS TOASTMASTER CLUB:** Mon (excl. Holidays) 7:30-9:30PM. St. Matthew's Church, Spruce Grove. Judy 960-5258

**TOMAHAWK SENIORS (50+)** meets every Thursday from 1-4pm at the Tomahawk Agra.

**W.E.E COMMUNITY FOOD BANK:** Call (780) 727-4043 for emergency food needs. Monthly Meeting: LAST Monday of month at 7:00PM at the Food Bank (Old fire hall in Entwistle). \*Except December

**WILDWOOD & DIST AG SOCIETY:** 2nd Wed of each month 7:00PM at the Wildwood Complex. Wilma 325-2424

**WILDWOOD & DIST ROD & GUN CLUB:** 2nd Thursday, 7:30PM at the range clubhouse, wildwoodrodandgun@gmail.com

**WILDWOOD SENIORS:** 4th Wednesday at 2:00PM. PH: 325-3787 or 325-2391. \*No meeting July/Aug/Dec.



# SUDOKU

*of the week*

**Here's How It Works:** Sudoku puzzles are formatted as a 9x9 grid, broken down into nine 3x3 boxes. To solve a sudoku, the numbers 1 through 9 must fill each row, column and box. Each number can appear only once in each row, column and box. You can figure out the order in which the numbers will appear by using the numeric clues already provided in the boxes. The more numbers you name, the easier it gets to solve the puzzle!

**Like puzzles?** Then you'll love sudoku. This mind-bending puzzle will have you hooked from the moment you square off, so sharpen your pencil and put your sudoku savvy to the test!

## ANSWER:

|   |   |   |   |   |   |   |   |   |
|---|---|---|---|---|---|---|---|---|
| 2 | 3 | 7 | 1 | 6 | 4 | 5 | 8 | 9 |
| 6 | 4 | 5 | 8 | 3 | 9 | 1 | 2 | 7 |
| 9 | 8 | 1 | 2 | 5 | 7 | 6 | 4 | 3 |
| 1 | 6 | 3 | 4 | 2 | 8 | 9 | 7 | 5 |
| 7 | 2 | 4 | 3 | 9 | 5 | 8 | 1 | 6 |
| 5 | 9 | 8 | 7 | 1 | 6 | 4 | 3 | 2 |
| 8 | 1 | 6 | 5 | 7 | 3 | 2 | 9 | 4 |
| 4 | 7 | 9 | 6 | 8 | 2 | 3 | 5 | 1 |
| 3 | 5 | 2 | 9 | 4 | 1 | 7 | 6 | 8 |

|   |   |   |   |   |   |   |   |   |
|---|---|---|---|---|---|---|---|---|
|   | 3 |   |   | 6 |   | 5 | 8 |   |
|   |   | 5 | 8 |   |   |   |   |   |
|   | 8 | 1 | 2 |   | 7 |   |   |   |
| 1 |   |   |   |   | 8 | 9 |   | 5 |
|   |   |   | 3 | 9 |   |   | 1 |   |
|   | 9 | 8 | 7 | 1 |   | 4 | 3 |   |
| 8 |   | 6 |   | 7 | 3 |   |   | 4 |
|   | 7 | 9 | 6 |   |   | 3 |   |   |
|   | 5 | 2 |   | 4 |   | 7 |   |   |

# Church Directory

## Seba Beach Christian Fellowship

Sunday School 10:00a.m.  
Worship Service 11:00a.m.

Weekdays Bible Study & Prayer

(780) 305-3594

## Advent Lutheran Church

Sunday Worship & Sunday School 11:00a.m.

Evansburg  
O: 747-3594

## Roman Catholic Church

St. Agnes' Parish, Mayerthorpe  
Sunday 9:00a.m.  
St. Elizabeth Parish, Evansburg  
Saturday 7:00p.m.

(780) 786-2032

## St. Joseph's Catholic Church

Sunday Mass 11:30a.m.

Tuesday Mass 7:00p.m.

Wabamun, AB

## St. Augustine's - Parkland Anglican Church

131 Church Rd. Spruce Grove

Sunday Service 10:00a.m.  
Eucharist with Sunday School & Nursery All are Welcome

Office 780-962-5131  
www.staugustinesparkland.org

## Parkland Baptist Church

Sunday Worship Service 10:30a.m.  
All Welcome

121 Brookwood Drive  
(780) 962-4101  
www.parklandbaptist.ca

## Word Church Apocalyptic Era

Border Place Athletic Centre, 9 Tri Leisure Way, Spruce Grove upstairs in the Wild Rose room.

Ph: 780-962-7579

Service starts at 10:00 a.m. every Sunday morning, come all & be bless.

## St. Anthony's Ukrainian Orthodox Church

6103 172 St. NW, Edmonton

Saturday: Vespers 5:00PM

Sunday: Divine Liturgy 10:00AM

780.487.2167  
santhony@telusplanet.net  
www.st-anthonys.ca

## Stony Plain United Church

Sunday Service 10:30a.m.

5012-51 Ave. Stony Plain

Mewassin United Church

Sunday Service 9:00a.m.  
Rev. Heather Koots  
Hwy 627 - Rg Rd 30  
Ph: 780-963-4745

## Immanuel Lutheran Church of Rosenthal

Sunday Worship Service 9:30a.m.

Sunday School

780-963-4048

## Emmaus Lutheran Church

Sunday Worship Service 11:30a.m.

Rev. Robert Marshall  
4604-56th Ave, Drayton Valley  
Ph: 780-542-5101  
emmauslutheran@telus.net

## Church of God

Worship Service Sun. 11:00a.m.

Please contact for activities  
3004-49 Street,  
Drayton Valley  
Ph: 780-542-5091

## Calvary Baptist Church

Pastoral Team: Kenton Penner

Sunday Worship 10:30a.m.  
Youth & Ministries Info - calvbapt@telus.net  
4401-50th Ave. Drayton Valley  
780-542-4774  
www.calvarybaptistdu.ca

## Drayton Valley Alliance Church

Pastor John Haazen

Join us for Sunday Service at 10:30a.m.  
5014-56 Ave.  
(next to Value Drug Mart)  
Programs for all ages  
Ph: 542-6501 dvalliance.ca

## All Saints' Anglican Church

10:30a.m. Sunday Worship

5212 47 Ave.  
Drayton Valley  
(780) 542-5048  
www.all saintsdraytonvalley.ca

## St. Anthony Catholic Church

WEEKEND MASS SCHEDULE:

Saturday 5:00p.m.  
Sunday 12:00p.m.  
4708-50 Ave. Drayton Valley  
Parish Office: 542-5254



# SERVICE DIRECTORY

**Blakeman Drilling Ltd.**  
Waterwell Drilling & Servicing  
Pumps & Pressure Systems  
SERVING LAC STE. ANNE  
& WEST PARKLAND  
FOR OVER 25 YEARS  
Joe (780) 924-3024

**DONALD N. GREENWAY**  
Chartered Accountant  
Suite 205 Sunrise Professional Building  
215 McLeod Avenue  
Spruce Grove, AB  
(Bus.) 962-6366  
(Fax) 962-3990

**Ernie's Repair & Service**  
  
4820 - 47 Avenue, EVANSBURG  
(780) 727-4433 C:514-0272

**SLIMROAST Optimum**  
DARK ROAST COFFEE  
YOUR LOGICAL SOLUTION TO WEIGHT MANAGEMENT  
(780) 907-8642

**WABAMUN PHARMACY**  
**I.D.A.**  
Box 90, 5120 - 51 Avenue  
Wabamun, AB T0E 2K0  
Ph: (780) 892-2278 Fax: (780) 892-2488

**ANDERSON SOLUTIONS & SERVICES INC.**  
andersonsolutions inc@outlook.com  
780-206-0053  
• Septic System Services & Repairs  
• A.O.W.M.A. Certified Designer, Installer, Contractor & Maintenance Provider  
• Pump out, Mound, Field, Advanced Treatment Systems, Tank or pump replacement & troubleshooting  
• Trenching & Site Cleanup  
**ANDERSONSOLUTIONSINC.COM**

**ROY SHERWOOD**  
Master Electrician  
Ph: 780-968-1425  
Cell: 780-908-2287  
Fax: 780-968-2211  
Email: suretechroy@gmail.com  
2-53220 Rge Rd 21  
Parkland County, AB  
T7Y 0C5  
**SURETECH ELECTRIC LTD.**  
Control & Automation  
Commissioning  
Solar Sales & Service  
Industrial . Commercial . Residential


**COMMUNITYVOICE**  
YOUR LOCAL NEWSRATES  
**THIS SPACE IS RESERVED FOR YOU!**

**PURE HEMP PRODUCTS**  
AGING IS INEVITABLE - LOOKING AND FEELING OLD ISN'T!  
**KEY BENEFITS:**  
• Inhibits Cell Growth in Tumors  
• Relieves Pain  
• Promotes Health  
• Relieves Anxiety  
• Neuroprotective  
(780) 907-8642

**PEMBINA CONCRETE PRODUCTS LTD.**  
Manufacturers of  
**ONE PIECE SEPTIC & HOLDING TANKS**  
\* Water Cisterns \* Field Systems \* Pumps and Accessories \* Sumps  
DELIVERED TO YOUR SITE  
1-800-661-3047  
780-727-2702  
PembinaConcrete.com  
**New Line of Concrete Statues, Fountains and Garden Ornaments.**  
BOX 123, Entwistle, T0E 0S0

High-Performance  
*Lifestyle Products*  
  
Call Today! (780) 907-8642  
www.bepic.com/elaine1

**TRI-LAKES SERVICES LTD.**  
• Septic Hauling • Drinking Water Delivery  
• Portable Washrooms • Steam Truck  
www.trilakeservices.ca / office@trilakeservices.ca  
(877) 727-3939 / (844) 967-9176  
SERVING: • Lac Ste. Anne County • Parkland County • Yellowhead County East

**PREVAIL MAX**  
CELLULAR HOMEOSTASIS FORMULA  
How do you want your **BLOOD** to look?  
**Before PrevailMAX:**  
poor circulation  
low energy  
brain fog  
dehydration  
decreased nutrients  
pH imbalance  
poor endurance  
**After PrevailMAX:**  
better circulation  
more vitality  
mental clarity  
cellular movement  
nutrient assimilation  
balanced pH  
optimal endurance  
  
LIVIN TRIM WITH  
(780) 907-8642 **VALENTUS**  
www.ValentusTour.com/Ladybug



# SERVICE DIRECTORY

**Jack's Auto Body**  
& 24 HR Towing

**SPECIALIZING IN COLLISION REPAIR  
GUARANTEED WORK • INSURANCE CLAIMS**

CAA BOX 9 SITE 306 RR3, ONOWAY, AB T0E 1V0  
**(780) 967-5850**

OUR PLEDGE IS QUALITY

**BACK COUNTRY PIPEFITTING LTD.**  
Plumbing & Heating

**Lee Hicks** 780-898-1062  
Journeyman Plumber

Residential and Commercial Plumbing and Heating.  
SERVING: YELLOWHEAD, PARKLAND, LAC STE. ANNE & BRAZEAU COUNTIES.

**H&E**  
UPHOLSTERY

FOR ALL YOUR UPHOLSTERY NEEDS

Convertible tops for cars and boats, custom car and boat interiors, 5th wheel trailer skirts, boat tarps, ATV seats, furniture, kitchen chairs, heavy equipment seats.

**WWW.HANDE.CA** 4-485 South Ave. Spruce Grove  
For more information contact: kirk@hande.ca **(780) 962-3048**

SERVING ENTWISTLE AND AREA FOR OVER 30 YEARS

**Entwistle CONCRETE**  
PRODUCTS LTD.

SAND & GRAVEL SALES

**PH: (780) 727-3525**  
Dan McCracken Entwistle, AB  
[www.entwistleconcrete.ca](http://www.entwistleconcrete.ca)

**TR**  
Tomahawk Rocks Inc.

**Lawrence Strocher**  
Owner / Operator  
Tomahawk, AB

Main# 780-234-4042  
Cell# 780-202-5700  
Email lawli@telus.net

**SMOOLE**

- Construction & Septic Installation
- Environmental Wastewater Disposal
- Site Design & Evaluation
- Power, Water & Basement Excavation
- Trackhoe, Backhoe, Bobcat & Dump Truck

For All Your Excavation Needs  
Call Ione 780-305-7077 Reid 780-909-0173

**CALIBRE DRILLING LTD**  
DRILLING AND SERVICING YOUR WATER WELL.

**SPECIALISTS IN AIR & MUD ROTARY DRILLING**

- \* Water Well Drilling
- \* Pump Installations
- \* Pressure Systems
- \* Well Tests
- \* Licensed Drillers
- \* Year Round Drilling
- \* Geotechnical Drilling
- \* Cathodic Protection
- \* Free Estimates

Quality Workmanship Five Year Warranty  
**(780) 960-2992**  
BOX 4083 SPRUCE GROVE, AB T7X 3B3

COMMUNITYVOICE  
YOUR LOCAL NEWSPIRE

**THIS SPACE IS RESERVED FOR YOU!**

**SANGUDO VETERINARY CLINIC**

Box 581, 4916 - 52 Ave. Sangudo, AB. T0E 2A0

**Dr. Ralf Sanders DVM**  
Ph: 780-785-2200  
Fax: 780-785-2228  
[sangudovet@gmail.com](mailto:sangudovet@gmail.com)

**24 HOUR EMERGENCY SERVICE**

**WEIGHTLOSS NEVER TASTED SO GOOD!**

**NEW! NEW! NEW! NEW!**

**(780) 907-8642** VALENTUS  
[www.ValentusTour.com/Ladybug](http://www.ValentusTour.com/Ladybug)

**2Bros**  
Custom Contracting Ltd.

Custom Framing • Concrete Floors • Shingling  
Siding Soffit Fascia • Styrofoam Block System

**Jeff** 780-717-0520

**SUMMERS DRILLING LTD.**

Water well drilling and service  
Family owned Business Serving Alberta since 1917

Never run out of water again!

5 year workmanship warranty

3 Convenient ways to pay

- Visa
- Mastercard
- We now offer full financing

Tired of hauling water?  
We can install a water well with a permanent water supply for as little as \$150/month OAC

Stop in at our office 4405 - 50 Street, Stony Plain  
780-963-1282  
[admin@summersdrilling.com](mailto:admin@summersdrilling.com)

**POSTINGFIRST.com**

**FREE LOCAL CLASSIFIED ADS**  
Real Estate, Rentals, Vehicles, Pets, Jobs, Service Directory, Buy/Sell/Trade, Lawn & Garden, Garage Sales, Events, Local Places & Much More... Advertise for FREE Today!

Follow Us

Instagram Facebook YouTube Twitter

**H&P Kosik CONSTRUCTION Ltd.**

- Road Building
- Gravel
- Sand
- Dugouts
- Black Dirt
- Clearing

No Job too small... We do them all!

**Harvey** cell. 780-445-9010 ph. 780-892-3532  
Box 145, Darwell, AB. T0E 0L0









**Daniel SEITZ**  
 780-991-1866

**Jordan SEITZ**  
 780-203-2198

**LAST SUMMER AT THE LAKE?  
TIME TO SELL YOUR LAKE HOME?  
Get a proven Lake Life Realtor in your corner!**



|                                                                                                                                                                                                                                                                                                                                                                                                                                                  |                                                                                                                                                                                                                                                                                                             |                                                                                                                                                                                                                                                                                                                           |
|--------------------------------------------------------------------------------------------------------------------------------------------------------------------------------------------------------------------------------------------------------------------------------------------------------------------------------------------------------------------------------------------------------------------------------------------------|-------------------------------------------------------------------------------------------------------------------------------------------------------------------------------------------------------------------------------------------------------------------------------------------------------------|---------------------------------------------------------------------------------------------------------------------------------------------------------------------------------------------------------------------------------------------------------------------------------------------------------------------------|
| <div style="background-color: #008080; color: white; padding: 2px; font-weight: bold;">NEW</div>  <p>158 Acres of private rolling ranch land with a 4 level split, livestock shelter and more<br/> <b>Tomahawk (Parkland) \$559,900</b></p> <div style="background-color: #008080; color: white; text-align: center; padding: 5px;"><b>LAKE WABAMUN</b></div> |  <p>Prime Waterfront in Wabamun's GATED Betula Beach community<br/> <b>Betula Beach \$714,900</b></p> <div style="background-color: #008080; color: white; text-align: center; padding: 5px;"><b>LAKE WABAMUN</b></div> |  <p><b>WATERFRONT</b> lake lot property with extended green space &amp; a garage Rizzie Beach <b>\$634,900</b></p> <div style="background-color: #008080; color: white; text-align: center; padding: 5px;"><b>LAKE WABAMUN</b></div> |
| <div style="background-color: #ff0000; color: white; padding: 2px; font-weight: bold;">REDUCED</div>  <p>Year round lakeside retreat just steps from the beach<br/> <b>Seba Beach \$424,900</b></p> <div style="background-color: #008080; color: white; text-align: center; padding: 5px;"><b>LAKE WABAMUN</b></div>                                         |  <p>Re-NEUED construction 2 storey with Lake Wabamun Views (Phillips) <b>\$789,900</b></p> <div style="background-color: #008080; color: white; text-align: center; padding: 5px;"><b>LAKE WABAMUN</b></div>            |  <p>One Level living 1600sqft at Lessard Lake Estates <b>\$414,900</b></p> <div style="background-color: #008080; color: white; text-align: center; padding: 5px;"><b>LAC STE. ANNE</b></div>                                        |

**[www.EdmontonLakeHomes.com](http://www.EdmontonLakeHomes.com)**



NOT INTENDED TO SOLICIT REAL ESTATE CURRENTLY LISTED FOR SALE.