



# COMMUNITY VOICE

YOUR LOCAL NEWSPAPER

Serving: Alberta Beach, Barrhead, Calahoo, Cherhill, Darwell, Glenevis, Gunn, Lac Ste. Anne County, Mayerthorpe, Onoway, Rich Valley, Rochfort Bridge, Sangudo, Whitecourt, Spruce Grove and Stony Plain.

**April 12, 2022**

## LAC STE ANNE EAST FOOD BANK

Submitted by Lac Ste. Anne East

As Spring is upon us, we find that our shelves are becoming bare and we are in need of donations.

Our greatest needs at this time are; Kraft dinner, pasta and pasta sauce, canned fruit, vegetables and brown beans, as well as cereal boxes both large for families

and small for singles, shelf packaged milk and soup crackers.

Though we are grateful for any and all donations from our generous and caring community, we currently have an abundance of soup, salmon and tuna at this time.

As always, PLEASE check the dates on all food donations, as we cannot give

food with expired dates.

Food donations can be dropped off at the Food Bank between 8am & 10 am Wednesday mornings and also at the ATB in Onoway. Monetary donations can be dropped off at the Food Bank during Wednesday mornings, they can be mailed to Box 300 Onoway, AB T0E 1V0, ....

*Continued on Page 2*

## CROCHET CLASSES AT THE ALBERTA BEACH LIBRARY



Submitted by Alberta Beach Library

Crochet classes have be-

gun at the Alberta Beach Library. At the end of the four weekly classes, each crocheter will have made a toque for themselves or someone else. We are impressed by the interest shown by students from Grasmere School. Such great kids! Thank you to Linda, Mary, and Max for helping this terrific group to learn a new skill - we love to hear the enthusiasm

and sharing that is happening. And, as always, we are grateful to FCSS (Alberta Beach, Sunset Point, Val Quentin, Castle Island, Yellowstone, and Lac Ste. Anne County) for providing funds to offer these and many other programs to our communities.

For all of you who already crochet or knit, you are welcome to ....

*Continued on Page 2*



**Affinity**  
Funeral Service

DRAYTON VALLEY 780.542.3338 WHITECOURT 780.778.3330

[www.affinityfuneralservice.ca](http://www.affinityfuneralservice.ca)

**Ceiling & Wall Cleaning**  
Refresh your home or business

**Nano**  
Kills Germs, odors & disinfects.  
We clean Stipple and California Knock Down  
"Don't Paint"  
Ceramic tiles steam cleaned.  
Seniors Discount  
Call Nano Clean today  
780-914-0323 (Stony Plain)



**PURE HEMP PRODUCTS**  
HEALTHY • EASY TO USE • NO OILS • NO PESTICIDES

**KEY BENEFITS:**  
Inhibits Cell Growth in Tumors  
Relieves Pain  
Promotes Health  
Relieves Anxiety  
Neuroprotective

**(780) 907-8642**

**SLIMROAST**  
*Optimum*

**DARK ROAST COFFEE**

YOUR LOGICAL SOLUTION TO WEIGHT MANAGEMENT

**(780) 907-8642**



**View us ONLINE!**  
[WWW.COM-VOICE.COM](http://WWW.COM-VOICE.COM)



PUBLISHED WEEKLY (Zone 1 & 2)  
AND BIWEEKLY (Zone 3)

**E.J. Lewchuck & Associates Ltd.**  
Box 3595  
Spruce Grove, AB  
T7X 3A8

**SALES TEAM**  
Elaine  
Ashley

**TELEPHONE:**  
Advertising 962-9228  
Fax 962-1021

**E-MAIL:**  
comvoice@telusplanet.net

## Lac Ste Anne East Food Bank

*Continued from Page 1*

... or e-transfers are accepted at lacsteanneeast-foodbank@gmail.com. Please include your name and mailing address so that

we can issue a tax receipt.

Thank you in advance and remember it takes an entire community to make a food bank successful.

If you are in need of some assistance from the food

bank please call (780) 271 3131. Hamper requests need to be made by noon on Tuesdays and then get picked up Wednesday mornings.

## Crochet Classes At The Alberta Beach Library

*Continued from Page 1*

.... join us at the Alberta Beach Library on Tuesdays at 1:00 pm (until end

of June; start up again in September) to meet other wool enthusiasts, work on your projects, have a tea and goodie, and a visit. It's great to hear the swapping of ideas and teaching of new stitches that is happening at these sessions. For more information please e-mail ablibrary@yrl.ab.ca, call 780-924-3491, or check our website albertabeachli-

brary.ca. Be sure to follow us on facebook to keep up to date about all of our programs.



## Important Notice Dangerous Ice Conditions

### Hasse Lake

NE-14-052-02-W5M;  
West of Stony Plain

### Muir Lake

NW-32-053-27-W4M;  
North of Stony Plain

### Peanut Lake

NE-15-058-03-W5M;  
South of Barrhead

### Spring Lake

NE-30-052-01-W5M;  
West of Stony Plain

Lake aerators create hazardous thin ice and open water. For your safety, observe these posted warnings at all times:

### Lake Aeration in Progress Danger-Thin Ice and Open Water

Take these extra measures while on an aerated lake:

- Use at your own risk.
- Don't go beyond danger signs or approach the open water.

For inquiries or to report a problem, please call:  
780-410-1999.



toll free: 1-877-969-9091 • ab-conservation.com

### Town & Country Funeral Services



Wabamun  
780-983-2749

Evansburg  
780-727-2791



† Cemetery Monument  
Sales & Installation

† Traditional Burial &  
Funeral Services

† Pre-need Funeral  
Packages

† Crematorium &  
Memorial Services

## JOKE of the week

"Sarcasm doesn't get you  
anywhere."

Me: "Well it got me to the finals of  
the Sarcasm World Championships  
in Peru in '98."

"Really?"

Me: "No!"



# RELIEF FROM HIGH INFLATION FOR CONTINUING CARE RESIDENTS

Submitted by Government of Alberta

Alberta's government will reduce the impact of high inflation on continuing care residents by paying the first three months of this year's annual increase in accommodation charges for them.

The government will provide \$10.4 million to continuing care operators, on behalf of residents, to offset one-quarter of this year's increase in accommodation charges for Albertans in long-term care and designated supportive living.

Operators are permit-

ted by legislation to raise accommodation rates each July 1 by the rate of inflation over the pre-

vious year. This year's increase will be 5.5 per cent. The government will pay operators di-

rectly for the increase for July 1 to Sept. 30.

## AMMOLITE FENCING SERVICES




**780-953-6602**

[ammolitefencing@outlook.com](mailto:ammolitefencing@outlook.com)

**Who We Are**  
We are a family run fencing business running out of Lac Ste Anne County. We strive for excellence in all that we do. Our crew is experienced and strive to offer the best. We have competitive pricing and help you find what works for you.

**What We Do**  
Barbed wire fence  
Post pounding  
Page wire fence  
Gates  
Rail fence  
Plank Fence

**How You Contact Us**  
Phone: 780-953-6602  
Email: [ammolitefencing@outlook.com](mailto:ammolitefencing@outlook.com)



### Summer Employment Opportunity Public Works Labourers May through August

Alberta Beach is currently accepting applications for seasonal summer employment within the public works department. These positions will assist in performing a variety of tasks (mowing, trimming, parks maintenance, garbage collection, and various other general duties as required). The successful candidate must be willing to work in various weather conditions.

The successful candidate must have:

- Valid Class 5 Driver's License (driver's abstract may be required)
- CSA approved steel-toed boots

**Application Deadline is April 22, 2022, by 4:00p.m.**

Please submit resume with work experience and cover letter to:

In-person: Alberta Beach Village Office  
4935 - 50 Avenue, Alberta Beach

Mailing Address: Box 278 Alberta Beach, AB T0E 0A0

Via Email: [aboffice@albertabeach.com](mailto:aboffice@albertabeach.com)

Alberta Beach thanks all applicants, however only those selected for an interview will be contacted.



## RICH VALLEY SCHOOL KINDERGARTEN

### — 2022-23 REGISTRATION —

If your child is 5 yrs old by Dec. 31, 2022, he or she is eligible to register for Kindergarten. We will be holding a pre-registration meeting on Apr. 21 @ 6:00 pm for the 2022-2023 school term. This will be an in-person meeting and you will be able to meet the teacher and check out the classroom.

If you would like to skip the meeting but still register your child for Kindergarten at Rich Valley School, then please go to our website [richvalleyschool.ca](http://richvalleyschool.ca) for registration forms. You can email the registrations to [wendy.gerhardt@ngps.ca](mailto:wendy.gerhardt@ngps.ca), drop them off in the school mailbox outside, or mail them to the school. (R.R.1 Gunn, AB T0E 1A0).

**If you have any questions please contact the office @ (780) 967-5754.**



## PLANNING &amp; DEVELOPMENT

**LAC STE. ANNE COUNTY: NOTICE OF DEVELOPMENT PERMIT APPROVALS**

The following Development Permits have been approved or conditionally approved under the provisions of the Land Use Bylaw. This list does not include Permitted Uses.

Interested parties are encouraged to contact the Planning and Development department at **1-866-880-5722** or [devassistant@lsac.ca](mailto:devassistant@lsac.ca), Monday to Friday 8:30 am to 4:30 pm to request additional information on a permit.

PERMIT #	LEGAL LAND DESCRIPTION	DESCRIPTION	APPEAL DEADLINE
22-D0055	Lot 8, Block 5, Plan 7821036, Four Oakes within SE 35-56-02 W5M 15, 56514 RGE RD 21	2014 Mobile Home 76.0' x 22.0' (1676.0 sq. ft.) and Deck 14.0' x 32.0' (448.0 sq. ft.)	May 2, 2022
22-D0020	Lot 17, Block 1, Plan 0623018 Belle Vista Estates within SE 09-56-01W5M 17, 56110 RGE RD 13	Detached Garage 30.0' x 70.0' (2100 sq. ft.) 18.0' walls, post frame construction on concrete piles	May 2, 2022

*Anyone who claims to be affected, and who wishes to lodge an appeal against any of the above developments, must do so in writing on the applicable form on or before 4:30 pm on the above noted date(s). Secretary of the Subdivision and Development Appeal Board, c/o Lac Ste. Anne County, Planning & Development department, Box 219, Sangudo AB T0E 2A0.*

**PLEASE NOTE:** Lac Ste. Anne County requires that a non-refundable fee of \$250 be paid for every appeal served on the Subdivision and Development Appeal Board. The fee may be paid by Cheque, Visa, MasterCard, Interac or Cash.

**SUMMER CHILDCARE**

Looking for childcare for your Kindergarten through Grade 6 aged child(ren) this summer? Do your kids (and you!) want every day to be a fun adventure for them? Lac Ste. Anne County has an amazing option for you! Our Onoway Out-of-School Care (OSC) program offers a bright spacious room, large outdoor space and a full-sized gymnasium, and we are within walking distance to nature and playgrounds!

Caring and engaged staff lead enriching programming ranging from adventures, playtime, crafts, sports, educational activities like science experiments, and so much more.

Our OSC will be available from 6:30 am – 6:30 pm all summer, and we are excited to offer an amazing weekly (Monday – Friday) rate of only \$150.00 per child! Basically, pay for three days and get the fourth and fifth for no additional charge!

For usage of only one or two days per week, simply pay the regular \$50.00 per child per day rate. Full-time, part-time and casual are all available!

**Did you know** that our OSC program is available for families from any local community? You do not need to be an Onoway area family. Live in Darwell but work in Spruce Grove – drop the kids off on the way through! Live in Sangudo but want to head to Edmonton for a day of shopping without dragging the kids along – drop them off on the way past Onoway! Live outside the area but work in the Lac Ste. Anne area – bring the kids with you and drop them off for an amazing day while you work!

**Did you know** that children starting Kindergarten in September 2022 qualify, so long as the student is registered with the school?

**Did you know** that provincial subsidy may be available, if your family income is under \$90,000 annually? Check out Child care subsidy at [Alberta.ca/child-care-subsidy.aspx](http://Alberta.ca/child-care-subsidy.aspx) for all the details, and to apply online!

Our OSC program required pre-registration – sorry, no drop ins. Please call Vivian McDonald, Childcare Programs Supervisor to schedule your child's care today! Space is limited.

Make this summer one your child will remember, because of all the fun they had!

**COMMUNITY VOLUNTEER INCOME TAX PROGRAM (CVITP)****Get help preparing and filing your taxes for FREE!**

Please note that there is a delay in CPP and OAS income tax slips being mailed from Service Canada. Please connect with us once you have received those documents. Under the CVITP, volunteers assist qualified candidates in preparing and filing their Income Tax Returns.

The returns are then completed between March 1 and April 15 of each year. To schedule an appointment, or for more information, please contact County's Community Services Coordinator Taryn Monteith at 780.785.3411 or email [TMonteith@LSAC.ca](mailto:TMonteith@LSAC.ca)

**Community Services programs - FREE programs for children up to 5 years old**

Join us for an Earth Day Celebration on April 22 from 9:30 a.m. - 11:00 a.m. at the Onoway Heritage Centre.

Sensory Play is also scheduled for Fridays: April 29, May 6 & May 13 from 9:30 a.m. - 11:00 a.m., also at the Onoway Heritage Centre.

REGISTRATION is required (first-come, first-serve). Please contact Vivian McDonald at 780-284-9399. Please note that children must be accompanied by a parent or guardian.



# WILDFIRE INFORMATION AT YOUR FINGERTIPS

Submitted by Government of Alberta

Two new web applications will make it easier for Albertans to access important wildfire information.

A wildfire dashboard and fire permit portal join the Alberta Wildfire app as key technologies that put critical wildfire management and prevention information directly into the hands of Albertans.

"Albertans want to be in the know during wildfire season and do their part to prevent human-caused wildfires. Last year, 67 per cent of wildfires were caused by humans. These new tools will empower residents and visitors with the information they need to make smart decisions during wildfire season." Nate Horner, Minister of Agriculture, Forestry and Rural Economic Development

## Wildfire dashboard

The new wildfire dashboard provides up-to-date wildfire information at the click of a button. This interactive tool displays important statistics on the number of active wildfires in the province, sizes, locations, suspected causes and more.

The dashboard builds on the former wildfire status map by displaying the most frequently accessed information in one convenient location.

## Fire permit portal

Albertans living or recreating in the Forest Protection Area of the province can request a free fire permit using the new, con-

venient online fire permit portal.

Permits are required for burning activities other than campfires during wildfire season and help focus firefighting resources where they are needed most. Fire permits help ensure that when smoke or fire is reported, wildfire officials can determine


whether this is a wildfire or a permitted burn.

Each permit is unique and outlines the restrictions and conditions for your burn, including location, wind speed, time and date of burn and any suppression tools required. Permits may be suspended or cancelled in the event of a fire advisory,

restriction or ban.

Fire permits can still be requested over the phone by calling your local forest area office.

Anyone living outside of the Forest Protection Area should contact their local municipality for more information about fire permits in their area.


Visit [LSAC.ca](https://lsac.ca) to explore the latest County news and events in greater detail.

**PUBLIC WORKS**

## ROAD BAN NOTICE

This Road Ban Notice applies to all Lac Ste. Anne County road surfaces, and supersedes the County's standing weight restrictions on certain chip seal coat roadways.

PURSUANT TO THE AUTHORITY granted under the provisions of Section 18(1) of the Municipal Government Act, the Vehicle Axle Weight Restrictions are effective Wednesday, March 23, 2022. This Road Ban will remain in place until June 1<sup>st</sup> or as determined by the County.

The following allowable weight will be permitted on all local roads in Lac Ste. Anne County:

Description	Percentage-Axle Weights
All Gravel Surfaced	75%
Cold Mix Surfaced (unless otherwise posted)	75%
Hot Mix Surfaced	75%
Residential Subdivisions	75%
RR 33 from Twp Rd 535 to Hwy 633	50%
RR 13 Hwy 37 North to Hwy 642	50%
Twp Rd 552 between Hwy 43 to RR 40	50%
Twp Rd 544 from RR 11 to RR 21	50%
RR 30 from Parkland County North	50%

## Managing and Mitigating Infrastructure Strain

Lac Ste. Anne County is responsible for the preservation and maintenance of all municipal roads, highways and bridges within Lac Ste. Anne County which are under the direction, control and management of the County. A very important part of this responsibility is the protection of roadways during the spring thaw. This time of year can create serious structural damage to roads and bridges if appropriate measures are not taken.

When a road ban occurs, signs indicating the allowed axle percentages are posted on some oiled surfaces and subdivisions. Road ban signage is not posted on gravel roads; however, all roads will be monitored and road bans enforced by Lac Ste. Anne County Enforcement Services to ensure compliance.

# LITTLE ART SHOW



Submitted by Alberta Beach Library

The Alberta Beach Library invites you and your family to join our Little Art Show. During April, stop in at the library to pick up your supplies (small canvas, paint, brushes). We are asking each participant to make a donation to our Friends of the Library Fundraising group. Take the supplies home and paint something. You can add other things to the canvas to make them

more personal (fabric, buttons, glitter) – it doesn't need to be professional – just have some fun creating. Bring the canvas back to the library by the end of April so we can enter your creation into our Art Show which will run through May. You DO NOT need to be an artist for this and it is open to all ages. We are just trying to have some fun and to raise some much needed funds to help with all the activi-

ties that we provide at our library. If art just isn't your thing, you could show your appreciation for our library with a donation. We accept cash and debit in person at the library and we accept e-transfers at [ablibrary@yrl.ab.ca](mailto:ablibrary@yrl.ab.ca) if you aren't able to make it in. We can't wait to see what you come up with and look forward to seeing you soon.

## Hunt for GOLD ...in the Classifieds

**HAPPY Easter**

**GERALD SOROKA MP**  
 YELLOWHEAD  
[GERALD.SOROKA@PARL.CC.CA](mailto:GERALD.SOROKA@PARL.CC.CA)  
[GERALDSOROKAMP.CA • 780-723-6068](tel:780-723-6068)

**SERENITY FUNERAL SERVICE**

**NEW FACILITY**  
 Chapel & Reception Centre

600 Calahoo Road Spruce Grove, AB  
**780-962-2749** [www.serenity.ca](http://www.serenity.ca)  
 SERENITY FAMILY SERVICE SOCIETY - YOUR NOT-FOR-PROFIT SOCIETY

**CELEBRATE THE PLATINUM JUBILEE**  
 with the Legislative Assembly of Alberta

The Platinum Jubilee of Her Majesty Queen Elizabeth II marks the 70th anniversary of her service to the United Kingdom and the Commonwealth.

Join the celebrations by sharing congratulatory messages or personal stories and photos of your favourite memories related to the Royal Family.

Post your submission at [assembly.ab.ca](http://assembly.ab.ca) or share on your social media [f](#) [t](#) [y](#) [i](#) and use #ABlegJubilee.

[Learn More](#)



# We are EQUS

## SAVINGS FOR RURAL ALBERTANS

Sustainability is top-of-mind these days for all of us. Rural Albertans especially, know that saving on essential services IS sustainability for their homes, businesses, farms, and more. As a co-operative, EQUS operates on an at-cost basis, meaning you pay what we pay.

Our focus is on doing what is best for our members. That means providing a high-quality service, at rates that are fair and competitive. EQUS was founded by rural Albertans, to serve rural Albertans. There are no profits, and no shareholders. Simply put, we are accountable to our members.

If you're looking for an alternative to your current electrical distribution service provider, our friendly team would be happy to provide you more information on the benefits of co-operative electricity distribution. Experience the advantage of co-operative power.

To learn more about powering up your home, farm, or business with EQUS, call 310-EQUS. Scan the QR code below with your phone or visit [equs.ca/servicearea](https://equs.ca/servicearea) to learn if you have a choice in your distribution services.

[equs.ca](https://equs.ca) | 310-EQUS



@poweredbyEQUS



## Silver Top Dairy

MD of Willow Creek  
EQUS Member Since 2007



*Last year, EQUS  
members saved  
over **\$13.6 million**  
on their electrical  
distribution  
services!*

**EQUS**

DELIVERING  
MORE THAN **POWER**

# WHAT MATTERS TO YOU

Submitted by MLA Shane Getson

A month ago, I had a mix up in my calendar and ended up at the right place, right time, for the wrong meeting, but as it would turn out for the right reasons. The initial meeting was to talk to a group about grass root politics, how I got involved originally, how a regular person can get involved and to help make a difference at a local level.

The meeting was to take place at a church, it was in the evening, the person who I had for a contact wasn't picking up her phone when I was confirming, but people began arriving, so I went in and started talking with folks. I had asked a few of the attendees if they knew the lady who was my contact, and they said they hadn't seen her at the meeting for a few weeks, but that she could be there tonight.

Over my career, and especially in politics, you just have to learn to adapt, roll with the punches sometimes and go with the flow, so that's what I did.

The room that was being used was in the basement of the church, tables were set in a boardroom style in a rectangle, with a large opening in the centre. Candles were lit at each seated position at the tables, and some laminated literature at each position. There were additional chairs along the walls of the room as overflow in the event there were not enough places at the table. I took a seat at the table and started making small talk with people before the meeting got underway and had offered my seat to another person as they seemed to know several others in the room, but they kindly declined and suggested I was in a good spot, and the meeting was then shortly called to order.

I glanced at some of the literature, briefly that was at my position, and when the chairperson called out some numbers, the people at the table were to read the information with the corresponding number in front of them, I was number 2. I read my piece and was having suspicions that I may be at the wrong meeting. When the introductions around the table started, and it came to my time, I had full confirmation that I was indeed at the wrong meeting but would leave it up to the group if they wanted for me to stay.

I introduced myself and advised the group that I didn't have a drug addiction, however when I was in high school, I did attend a course with a number of other kids from the yellowhead school division that went to the Henwood Treatment facility and spent a week there with people who were recovering from addictions. I was at a Narcotics Anonymous meeting. The people at the meeting thanked me and encouraged me to stay. I was able to hear a number of their stories, their journeys, all of them on different stages of obtaining and maintain sobriety. The thing that was most prevalent to me that evening, as it was as a teenager, is that addictions know no bounds, barriers, social conventions, religion, race, or economic status. With the conversations I had with folks at the break, and after the meeting was that the recovery middle of treatment, and the treatment Centre that will be opening in Gunn was needed.

Speaking with the folks at the meeting reaffirmed that there needs to be a place that focuses on the person, on their journey, but also needs to be part of a community. The challenges will always be there, but on the path to recovery the cycle of addiction needs to be disrupted, and that includes giving folks an opportunity to get away

from the culture. When I asked a few of how they thought the harm reduction addictions models were going in downtown Edmonton, and how the new "Safe Supply" model was working they rolled their eyes or had more direct commentary of how it was a massive failure. When I spoke about the recovery model that we were bringing forward, the facility at Gunn, and how there were discussions about community engagement, tying back into employment opportunities, training, there was unanimous words of encouragement and hope, as there is a gap in the system.

I had been having a bit of a tough day in the corporate media that week, the opposition again had been taking a run at me and twisting my words and actions around covid restrictions, as well as interactions with Albertans who drove in the Edmonton Convoy. The same day however, we did have an announcement regarding the facility at Gunn being reopened as part of a provincial plan for recovery.

I believe as it turned out, I was at the right place, at the right time, and needed to be there to meet the folks who would give me unvarnished feedback, and in that safe place share their own stories of addictions. It gave me strength to carry on, knowing that despite what may be cast at me in the media, or by the opposition that there will be meaningful change, and that we can play a major part in helping folks return to the best part of their lives. I am very happy that our little piece of the province will be playing a larger role in the healing and recovery that is needed by so many. So, if you find yourself at the wrong meeting, before you pick up and leave, give it a second thought, perhaps you are at the right place after all, you never know what lesson, or connection you are supposed takeaway that day.

ANOTHER RAINBOW SALE

## RAINBOW LIQUIDATORS & AUCTIONS

CONSIGN NOW!

ANOTHER RAINBOW SALE

**Rainbow's Consignment Centre**  
 Hwy 16 A West and Range Road 11  
 Stony Plain, Alberta, Canada

### Upcoming Online Spring Sales

**April 24<sup>th</sup> - Closing April 29<sup>th</sup>**  
**May 15<sup>th</sup> - Closing May 26<sup>th</sup>**  
**June 20<sup>th</sup> - Closing June 24<sup>th</sup>**

**CONSIGN NOW FOR PROPER ADVERTISING**  
 contact 780-968-1000  
 email - [rainbowauctions1@gmail.com](mailto:rainbowauctions1@gmail.com)

\*\*Watch website daily for new additions to auction lists\*\*

Terms and conditions: Cash, Visa, MasterCard, Debit, Interac. Nothing to be removed until paid for. Subject to additions and deletions. A 10% handling fee, plus GST will be charged where applicable. Please be conscious of the handling fees and factor them into your bidding. Owner Rainbow Auctions & Liquidators or it's employees shall not be responsible for accidents.

**SALE CONDUCTED BY:**



**Stony Plain, AB. 780-968-1000**  
**or TOLL FREE 1-866-968-1001**  
**Complete Liquidation and**  
**Auction Services Since 1978**  
[www.rainbowauctions.ca](http://www.rainbowauctions.ca)  
**BOOK YOUR SALE WITH US TODAY!**



The image is a cover for a 'Spring Home Reno Guide'. It features a collage of home improvement items: a paint roller, wooden planks, a paintbrush, a color palette, and a small house icon. The title 'Spring HOME RENO GUIDE' is prominently displayed in a mix of green, blue, and white fonts. A date 'MARCH 2022' is at the bottom right. A call to action in orange text encourages readers to get started on their home improvement to-do list, and a sub-headline in grey text offers ideas, inspiration, advice, and local advertising.

# Spring HOME RENO GUIDE

MARCH 2022

**Spring to it! Get started on your Home Improvement To-Do list!**

*Check out our Spring Home Reno guide for ideas, inspiration, advice and valuable local advertising!*



## CREATE A SAFE AND ENJOYABLE BACKYARD PLAY AREA

Homeowners often aspire to have attractive backyards that look like they belong in a magazine. While these can be picturesque and functional for adults, they may not be entirely practical for homeowners who have young children, especially when the majority of the yard is covered with paving stones or concrete.

When young children are part of a household, homeowners may benefit by designing yards that are both functional and

fun. Incorporating safe play areas for kids is one way to unlock the potential of both big and small backyards.

As children run off to enjoy a playground, safety is the last thing on their minds. Kids are most interested in scaling ladders to treehouses or coasting down slides. That's why adults must take it upon themselves to keep injury prevention in mind.

Safest Playground.com indicates that playground-related injuries

routinely result in severe fractures, internal injuries, concussions, and dislocations. In the majority of playground injuries to children younger than age 5, the head and face are affected. Children between the ages of 5 and 9 experience more leg and arm injuries than younger kids. The Consumer Product Safety Commission states 70 percent of children's injuries occur on home playgrounds. More than 28,000 children are injured each year on play-

grounds across Canada, according to Parachute, a national injury prevention organization.

When considering playground equipment for the yard, parents need to make safety a priority. The Canada Safety Society advises parents to follow the "5 S's of Playground Safety": Surface, structures, site, supervision, and safety.

*Continued on Page 11*

**B.W. EAVESTROUGHING**

*Specializing in:*

- ⇒ Residential 5"
- ⇒ Commercial 6"
- ⇒ Soffit
- ⇒ Leaf Guard System
- ⇒ Free Estimates
- ⇒ Fascia

**BRAD (780) 699-1880**

**ASSERTIVE ELECTRIC LTD.**

Toll Free 1-855-967-3827 Fax 1-780-967-3847  
email: rick@assertive-electric-ltd.ca

**Insured & Certified Professional Electrical Services**

**ECONOMY ASPHALT DRIVEWAYS**

- Paving • Asphalt or Concrete • Repairs
- Parapets • Seal Coating • Crack Filling
- Snow Removal • Sanding • Rock Chip Sales

**CHARLES MACDONALD**  
PH: 780-962-5581 CELL: 780-777-0914  
FAX: 780-962-9146

**LIMB WALKERS TREE CARE LTD.**

**FULLY INSURED, EXPERT TREE CARE PROVIDERS**  
SERVICING BARRHEAD, WESTLOCK, ONOWAY & ALL SURROUNDING AREAS

- Residential & Commercial
- Tree & Shrub Pruning
- Annual Maintenance
- Arborist Consultations & Assessments
- Bucket Truck & Chipper Services
- Tree Removal
- Hedge Trimmers
- Professional Climbers

**780-203-4705** [limb.walkers@hotmail.com](mailto:limb.walkers@hotmail.com)  
**FREE ESTIMATES PROVIDED**





## Create A Safe And Enjoyable Backyard Play Area

*Continued from Page 10*

- **Surface:** Parents should assume that children will fall. To lessen the blow of falls, choose playground equipment with a perimeter of six feet of a softer surface, such as sand, pea gravel, rubber pieces or wood chips. This material should be between six and 12 inches deep.

- **Structure:** The structure of the play equipment should be built from sturdy materials.

Pressure-treated lumber was once the standard, but it's not advisable for kids' playgrounds, as the chemicals used in the lumber can leach and young children may actually bite or pick at the wood. Use cedar or another wood that resists decay. Once the structure is built, inspect it frequently for damage.

- **Site:** Look around the landscape for an ideal place to locate the playset. There should be no obstacles that children can hit while sliding or swing-

ing. Avoid overhanging branches and do not place equipment too close to trees or fencing. Try to keep the set out of direct sunlight, which can make components heat up and scald young bodies.

- **Supervision:** Do not leave children alone while they are playing. Prevent children from using the playset in an incorrect manner.

- **Safety:** Follow the directions for installation. Make sure all posts are anchored into the ground

securely. Railings should be spaced so that children cannot get stuck between them. Check that metal components have not rusted and that there is no additional excessive wear. Be sure that no tools or other dangerous items are left around the yard.

Backyard playgrounds should be built with safety in mind. Learn the rules of play equipment and yard safety.

- Decks
- Fences
- Treated Lumber
- Spruce Lumber
- Probuilt Alum Railing

- Plumbing
- Electrical
- Shed Packages
- PPG Paint & Stain
- Garage Packages

**Full House Packages**  
**Husqvarna Dealer**  
**Delivery Available**

**"WHERE SERVICE MAKES THE DIFFERENCE"**  
#2 2104 Hwy 37  
Lac Ste Anne, AB **PH: 780-967-2274**

Your Complete Line of Renovation Needs:

**ZEE BEST RENOVATIONS**  
*Local Home Renovations Contractor*

- Bathroom • Basements • Plumbing
- Tileworks • Drywall & Taping
- Decks & Fencing • Roofing • Siding

FREE ESTIMATES | 30+ YEARS EXPERIENCE | INSURED | GREAT RATES

**JOE LAWRENCE** BUS: 780-967-3898 | CELL: 780-915-3348  
MANAGER FAX: 780-967-3798

**BEDARD**  
EXCAVATING

DESIGN, BUILD, PUMP

General Excavating  
Foundations 4-9' walls  
Septic Systems

**780-967-5116**

**standstone**  
WASTE & WATER  
SERVICES LTD.

*The service you need, from people you trust.*

- Septic Services: Residential, Commercial
- Holding Tanks and Field Systems
- Effluent Pumps Supplied & Installed
- Portable Toilets: Standard, Wheelchair Accessible
- Products: BioClean, Liquid Enzyme, Potty Treat
- Potable Water

**Proudly Serving  
Lac Ste. Anne County**  
1-877-226-5008  
780-924-2435  
780-967-2118  
[www.standstonevac.ca](http://www.standstonevac.ca) or  
visit our facebook page

**Great Rates & Reliable Service! Call us today!**



## SPRING CLEANING PROJECTS YOU DON'T WANT TO FORGET

Spring cleaning is an annual tradition in many households. After a winter spent cooped up indoors, spring cleaning can rejuvenate a household and provide a great chance to rid a home of a season's worth of clutter.

Donating old clothes and cleaning out the garage are popular spring cleaning projects, but there are a host of additional tasks homeowners can tackle to freshen up their homes this spring.

Floors

Simply vacuuming or sweeping the floors might not be enough to banish some of winter's most uninvited guests. Dust has a way of settling into a home over the course of a typical winter, and it's easy for a home's inhabitants to track dirt and debris inside as well. After vacuuming or sweeping floors, go over them with a mop. Doing so can remove any lingering dust, dirt, debris, and allergens the vacuum or broom failed to pick up. Apply wood cleaner

and polish to wood floors to make them look even cleaner.

Baseboards

Though baseboards might not seem all that dirty, upon closer inspection homeowners might notice substantial accumulations of dirt and dust. Such dirt and dust may not be removed so easily, so homeowners might need to use hot water and a sponge to remove any debris that is clinging.

Curtains

Curtains also may have

absorbed substantial amounts of dust, dirt and debris over the winter. This might be more visible near the end of winter when more sunlight begins to shine through. Clean the curtains in adherence to the manufacturer instructions before you open windows for the season so any wind that blows in does not spread debris onto nearby furniture. Once the curtains have been washed, ...

*Continued on Page 13*

**B&S** Stucco, Rockwork & Masonry

Interior, exterior, residential, commercial, conventional & acrylic stucco  
Plus Concrete and Styrofoam Pargings, All Stone & Brickwork

**Fred & Gerry Breukelman**  
Phone (780) 674-4502 • Fax (780) 674-4534  
Cell (780) 674-7307

**CO-OP**

**PEMBINA WEST CO-OP**  
*Total Building Solutions*  
Serving Barrhead, Mayerthorpe, Whitecourt, Westlock & Surrounding Areas

**For All Your Building Supplies**  
**(780) 674-2201**

**Bert's TV & Appliances** 780-674-3001 bertstv.com  
Barrhead Industrial Park, 6121-47 St.

**Whirlpool**  
APRIL 1 - 28, 2021

WHIRLPOOL 4 DOOR FRIDGE 19.4 CU. FT. WQA55CNKZ Regular \$2399 **\$2399**

WHIRLPOOL 470BA DISHWASHER WDTA50SAKZ Regular \$1149 **\$949**

WHIRLPOOL LOW-PROFILE MICROWAVE HOOD 11 CU. FT. YWML5501HS Regular \$709 **\$599**

WHIRLPOOL ELECTRIC FREESTANDING RANGE 3.4 CU. FT. YWFE74SHFS Regular \$1599 **\$1299**

**TOP & DROP**  
**TREE SERVICES**

Family owned and operated since 1991

**780-924-2014**





## Spring Cleaning Projects You Don't Want To Forget

*Continued from Page 12*

...opening windows may help them dry more quickly.

### Bathrooms

Bathrooms also tend to bear the brunt of winter weather, as mold and grime can accumulate throughout a season in which it's too cold to open bathroom windows to let fresh air in after bathing. Inspect ceilings, tubs, shower stalls, and floors for any signs of mold growth or grime. Mold

growth in a home can lead to respiratory problems and exacerbate existing conditions such as asthma, so it's best to inspect bathrooms for any signs of mold growth throughout winter. If you have let that slip, prioritize such inspections come spring cleaning time.

### Furniture

It's easy to overlook furniture when tackling spring cleaning, but dust and dirt can quickly accumulate on couches and chairs over the course

of winter. When possible, vacuum furniture to remove any debris that might have accumulated while windows and doors were kept shut, and shampoo any cushions or seat covers that don't pass the smell test.

Spring cleaning encompasses a host of tasks, and homeowners who want a truly clean house should not overlook smaller tasks that can produce big results.

# Sonny's Stucco & Drywall



Sangudo,  
Alberta

785-2022 OR  
CELL 674-1405

**GIBBS CONTRACTING**

Renovations, Shop Packages, Shed Construction,  
Decks, Garages, Barns, Sheds, Cement,  
Concrete, Topsoil, Eavestroughing, Dirt Work  
**CELL 674-7147**  
**MAYERTHORPE, AB (780) 785-4002**

*Carpetown Interiors Ltd.*

- Carpet • Lino • Hardwood Flooring & Tile
- Wallpaper • Window Blinds & Installation

**780-778-4144**  
5033 - 52 Ave. Whitecourt

**CAN - DO SHINGLING**

**Glen Kelly 780-305-4837**  
**Cheyenne 780-266-9767**

**PADDLE RIVER CONCRETE**

Providing you with concrete needs!

**786-2666 • Mayerthorpe, Alta**



## HOW TO MAKE SURE YOUR NEW HOME IS BUILT FASTER

If you're in the market for a newly built home, you probably have a long list of requirements for your builder. Everyone's list is different, but one common element is

that your new home needs to be ready quickly, or at the very least, on time. Yet we've all heard the horror stories of construction delays and families having to move out

of their old homes before their new ones are ready. Fortunately, there's a way you can help ensure your home is built faster - ask your builder to use insulated

concrete forms.

The compact ICFs are delivered to the construction site, where each form interlocks with the next to quickly assemble one strong monolithic wall.

ICFs also do more than get you into your new home quicker - they maximize energy efficiency, reduce drafts and cold spots, form an effective barrier to unwanted outside noise, and make your home less prone to mold. In addition, homes built with insulated concrete wall systems are more environmentally friendly and disaster-resilient.

"Our advanced design combines two panels of thick (EPS) foam with the structural strength and thermal mass of concrete," Rector explains. "The resulting envelope immediately gives your house hurricane wind-resistance up to 250 miles per hour. Concrete walls also deliver an energy efficiency rating as high as R-50 (compared to an average R-20 in wood structures), saving you up to 70 percent on utility bills. With the concrete option, countless trees remain untouched and with lowered energy consumption and less tapping of natural resources every day, imagine how much your house will contribute to recapturing a sustainable environment over the years."

If you want your builder to use ICFs, be sure to discuss it early in the plans. Find more information online at [nudura.com](http://nudura.com).

**The Flooring Store  
& Design Center**

**FREE ESTIMATES  
CASH N CARRY PRICING**

- Huge Selection of Flooring, Carpet, Vinyl, Hardwood • Cabinets
- ALL Types of Counter Tops and Back Splashes

**IN STORE SPECIALS!!**

**Hours:**  
Monday to Friday 9:00AM to 5:30PM  
Saturday 9:30AM to 4:00PM  
Closed Sunday

**226 McLeod Ave  
Spruce Grove  
(780) 960-9212  
[www.theflooringstore.ca](http://www.theflooringstore.ca)**



# MAJOR CHANGE TO ADVANCE PAYMENTS PROGRAM, AGRICULTURAL PRODUCERS CAN NOW RECEIVE THEIR ENTIRE FARMCASH ADVANCE UPFRONT

Submitted by Government of Canada

April 6, 2022 (Calgary, Alberta) – The Government of Canada announced another temporary change to the Advance Payments Program (APP) that provides additional support for western Canadian agricultural producers experiencing cash flow difficulties in the wake of record-high input prices and last year's drought conditions. Today's announcement unveils that producers are now eligible to receive the entirety of their advance upfront upon the approval of their application. In pre-

vious program years, crop and honey producers received 60 per cent of their requested advance upfront and the additional 40 per cent upon the submission of additional reporting that verified seeded acreage or production.

This latest change to the APP program, combined with last week's announcement of increased advance rates, allows producers to access substantial cash flow and use their increased purchasing power to help maximize profitability on commodities experiencing all-time high market prices.

For producers that have

already applied to FarmCash and received partial funds, the remainder of their advances will be issued within twenty-four hours of the APP announcement.

"We are committed to helping producers improve their profitability, and we could not be more supportive of the announcement made by the Government of Canada and Agriculture and Agri-Food Canada," said chief operating officer of FarmCash, Syeda Khurram. "FarmCash is proud to provide producers with a convenient and efficient cash advance option to overcome current and fu-

ture challenges in the industry."

Under the administration of FarmCash, producers in Western Canada of over 50 agricultural commodities from cattle to canola can apply via an easy online application for a cash advance of up to \$1 million and receive their first \$100,000 interest free and the remainder at TD prime minus 0.75 per cent. The use of the program is not limited to the purchasing of inputs, but can also be used to mitigate risk in the growing season, make timely investments, or even improve farmland value.

**Top Quality Flooring Products**

- Carpet • Vinyl • Lino
- Hardwoods • Laminates
- Vinyl Tiles • Porcelain
- Floor and Wall Tiles
- Stone Tiles
- Ditra and Kerdi
- Shower Installs

**Professional Installers**  
**Free Estimates**



**Quality You Can See.**  
**Comfort You Can Feel.**  
**Value You Can Appreciate.**

**Soft Touch Carpet** \$3.25/sq ft  
in 6 colors with under pad installed

**5Mil Vinyl Planks Installed** \$4.75/sq ft  
with 20 year wear layer water proof 8 colors

**White Marble Floor Tiles** \$2.69/sq ft  
polished 12x24

**Pro Finish Flooring Ltd**  
#6 - 20 McLeod Avenue | Spruce Grove, Alberta T7X 1V4  
TEL: 587-286-2626 | pro-finishflooring@hotmail.com  
**HOURS: Monday to Friday 9:00AM-5:00PM Saturday 9:00AM-4:00PM**


**STORY TO TELL?**


Know of a good event going on in the community? Ever wanted to write up a local event for the Community Voice?

If you have any good ideas for articles or would like to submit a story for the paper Email it to [news@com-voice.com](mailto:news@com-voice.com) or just fax it in at (780) 962-1021.

Please call us at (780) 962-9228 for more information.

Stories may be edited for length due to possible space restrictions.





**COMMUNITYVOICE**  
YOUR LOCAL NEWSPAPER

# Classified Ads - Call 962-9228

## Hall Rentals

Alberta Beach Agliplex,  
Susan 780-996-2960.

Alberta Beach & District  
Seniors 50+ Club. Air  
conditioning! Space  
Available! Val: 780-690-1655  
or Dianne: 780-217-8482

Anselmo Community Hall,

Phone 780-786-4280

Bright Bank Hall, 780-968-6813

Cherhill Legion, Mary 780-785-3578.

Cherhill Community Assoc.  
Hall, Kevin 780-785-8153

Darwell Centennial Hall, 780-892-3099

Darwell Seniors, Phone  
Debra 780-785-2907

Goose Lake Hall, Contact  
Deanna (780) 584-3738

Gunn Hall (G.A.R.S.) 780-951-9452

Hathersage Community  
Centre, Noreen at 786-2946

Lake Isle Community Hall,  
PH: 780-892-3121 or Email:

lakeislehall@mail.com

Magnolia Hall, 727-2015

Manley Goodwill Community  
Hall, 780-920-3217

Mayerthorpe Diamond  
Centre, Charlotte at 786-4659

Mayerthorpe Legion, 786-2470.

Onoway Community Hall,  
967-4749.

Onoway Heritage Center -  
Gym/Classrooms, 967-1015

Onoway Legion, 967-4980

Park Court Community Hall,  
727-4476

Parkland Village Community  
Centre, 780-298-9155 @  
PVCCentre

Ravine Community Hall,  
Dawna @ 325-2460

Rich Valley Community Hall,  
967-5710 or 967-3696

Rosenthal Community Hall,  
963-7984

Sandy Beach Rec Hall, 967-2873

Sangudo Community Hall,  
780-785-3221 or 780-785-2259

Stettin Nakumun Comm.  
Hall, 967-9198

## Dog Caretaker

**Alberta Beach & Surrounding Areas, thinking of a Seasonal Getaway? Worried about leaving your dog in a kennel?** Don't worry anymore, you can leave your pet with me! There is a wrap around deck and courtyard! I will provide tender loving care, with walks every day. Best of all, I'm cheaper than a kennel! Daily drop in's or overnight stays welcome. If interested call 780-920-4166 (4) 05-030G

## Services

**Computer Free Checkup** or Repairs only \$50. For sale like new, good clean refurbished

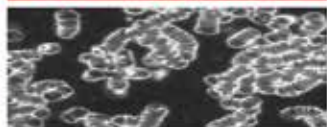
# PREVAIL MAX

## CELLULAR HOMEOSTASIS FORMULA

A NUTRITIONAL BREAKTHROUGH THAT SUPPORTS YOU  
...RIGHT DOWN TO THE LAST CELL!

How do you want your  
**BLOOD** to look?

**Before PrevailMAX:**



poor circulation

low energy

brain fog

dehydration

decreased nutrients

pH imbalance

poor endurance

**After PrevailMAX:**



better circulation

more vitality

mental clarity

cellular movement

nutrient assimilation

balanced pH

optimal endurance

**PrevailMAX™** is a nutritional breakthrough that delivers a rapid increase of internal blood cell pressure to speed absorption, enabling the body to take maximum advantage of the nutrients in foods and supplements. The electrolytes are small enough to penetrate your cell membranes, to bind with your cells, and to be carried wherever they are needed in the body.

At the microscopic level of human cells, **PrevailMAX™** supports healthy cell performance – a nutritional breakthrough for your cells.

When you use **PrevailMAX™**, you will feel more energy and an ability to focus like never before. Take a few sprays today and see just how good you can feel!

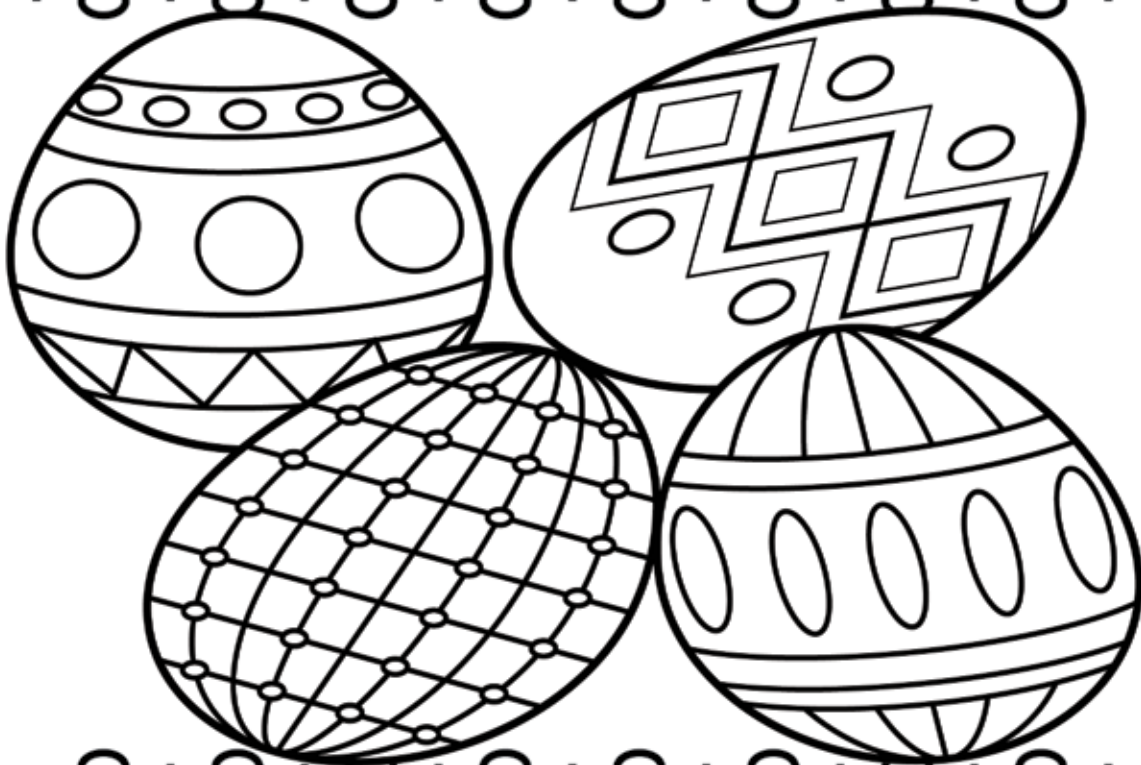


LIVIN TRIM WITH  
**VALENTUS**

[www.ValentusTour.com/Ladybug](http://www.ValentusTour.com/Ladybug) (780) 907-8642



# EASTER COLORING CONTEST



*We're on the hunt for EGGCELLENT artists*



**AGE GROUPS: 3-4 YRS | 5-6 YRS | 7-9 YRS | 10+ YRS**

**NAME:** \_\_\_\_\_ **AGE:** \_\_\_\_\_

**PHONE:** \_\_\_\_\_ **TOWN:** \_\_\_\_\_

**Entries must be received by April 14, 2022.**

**Mail to: Easter Bunny c/o Community Voice  
Box 3595 Spruce Grove, AB T7X 3A8**

# Classified Ads - Call 962-9228

laptop or desktop for ONLY \$150. Wanted any old used broken computers, tablets, chargers for parts. Will clear or save your data to fix refurbish and give FREE to single parents. Call/ LM 780-892-2407 (6) 04-12

## For Sale

**Beautiful Landscaping, Shelterbelt, Trees for sale 8 - 12 ft , spruce, pine, some Swedish aspen.** 36 " cage root ball. \$175.00 picked up , \$250.00 planted 10 plus. Call 780-984-8744. rcl1957@live.ca (8) 04-26

Acreage for sale 3 bdrm, 2 bathroom on over 3.6 acres of land, bordering more than

160 acres of wildlife reserve. Paved to hwy, quiet location, beautiful landscape, 15 min west of Stony Plain. \$363,000 for inquiries call 780-968-9266. (3) 04-12

Beautiful Landscaping , Shelterbelt, Trees for sale, 8 - 12ft, spruce, pine, some Swedish aspen. 36" cage root ball. \$175.00 picked up,

\$250.00 planted 10 plus. Call 780-984-8744. rcl1957@live.ca (8) 05-17

## For Rent

Completely renovated Motel in Onoway, AB. offering daily, weekly or monthly rentals. All utilities included, 55 inch tv with Satellite. Double bedrooms, furnished bachelors with full kitchen and furnished 1 bedrooms with full kitchen available. Starting at \$975 + tax. Please call for viewing, 780-967-4420 or 780-945-1723. www.onowayinnandsuites.com (4) 05-030G

Alberta Beach, 2 beds, 2 baths, garage, lift, appliances, window coverings. For Adult living. Guardian Pharmacy on bottom level. To view, call 780-863-5621 (2) 04-12

Onoway renovated 1&2 bdrm suites. \$795 -\$895 receive up to \$500 move in bonus for qualified tenants. 780-782-6706 (4) 04-12

## Moving Sale

Moving out household sale month of April. 5 miles East of Onoway on hwy 37. Signs 780-967-4361. (2) 04-12

## Feed & Seed

Feed & Seed; Red clover seed for sale Phone 780-727-4275 (3) 04-12

## Personals

Ladies clothing, causal/ dressy; Winter boots size 12, new and used. Brands (Sorel , Pajar, Trotters), toe warmers. Sheep skin boots & jackets. Nunavut parka. Men's lined wrangler jacket , size M. Thick wool lined parka size M. Call 780-968-4828 (1) 04-12



## PURE HEMP PRODUCTS

AGING IS INEVITABLE - LOOKING AND FEELING OLD ISN'T!

### A Health and Beauty Breakthrough!

Cannabidiol, is one of over 80 active cannabinoid chemicals in the hemp plant. Unlike, THC, it does not produce euphoria or intoxication. It targets specific receptors in the cells of your brain & body. There are many physical and mental benefits to using these products for both treatment and prevention of numerous ailments.



### Therapeutic Uses For Pure Hemp

Supports healthy blood sugar levels, promotes healthy energy levels, relieves anxiety, aids in digestion, supports optimal immune function and the regeneration of healthy cells, and promotes a sense of serenity and overall well-being.

### KEY BENEFITS

**PAIN RELIEF:** Known to reduce vomiting & nausea; suppress muscle spasms; reduce seizures & convulsions.

**PROMOTES HEALTH:** Helps to promote relaxation and overall health.

**WELL-BEING:** Helps to relieve anxiety, aid in digestion, supports optimal immune function and the regeneration of healthy cells.

### Anti-Aging Uses For Pure Hemp

Promotes more youthful skin, provides hydration, enhances radiance, lessens age lines as well as the appearance of dark spots.



## PET PRODUCTS

### PET CHEW TREATS

#### KEY BENEFITS

**SYNERGISTIC BENEFITS:** Can be used in conjunction with regular medications with no side effects.

**NO SIDE EFFECTS:** Does not damage the liver, kidney or GI Tract like OTC medication.

**DIETARY SUPPLEMENT:** Can be administered daily as part of your pet's diet.



### ORAL SPRAYS & DROPS

#### KEY BENEFITS

**MANAGES PAIN:** Helps to treat inflammation, arthritis and joint pain.

**TREATS DIGESTIONAL ISSUES:** Helps with loss of appetite, nausea, IBS and gastrointestinal swelling.

**GENERAL HEALTH:** Helps to manage mood, anxiety and general joint pain. For healthy, happy pets.

**CONVENIENT:** Can be sprayed into pet's mouth or on food.

**For more information, Call (780) 907-8642**



# COMMUNITY EVENTS

If you are a LICENSED, NON-PROFIT ORGANIZATION, you are welcome to submit your announcement FREE of charge, space permitting. You are required to submit your non-profit number. Call (780) 962-9228. Please note that all submitted event listings must be limited to 200 characters or less (including spaces). DEADLINE: 12 noon Friday prior to publication (Thursdays on long weekends).

**NOTE: Please inquire first as COVID-19 restrictions may still apply.**

## FARMERS MARKETS

**ALBERTA BEACH:** Sundays, 11:30 - 3pm. Contact Hali 780-666-1604 \*May - September  
**BARRHEAD:** Saturdays, 10AM-1PM at Barrhead Agrena. Sherry 780-674-6802 \*May - Dec.  
**ONOWAY:** Thursdays, 5-8PM at Onoway Community Hall, 780-667-6327 or onowayfarmersmarket@gmail.com. \*Starts May 1st.  
**SPRUCE GROVE:** at the Elevator, Sat 10:00-1:00PM, Info (780)288-6174 \*April - Dec.  
**STONY PLAIN:** Saturdays, 9AM-1PM, Community Centre Downtown, Stony Plain. Nancy 780-962-3993. \*April - Dec.  
**WHITECOURT:** Tuesdays 11AM-2PM, Whitecourt Legion Hall, 779-7002. \*May - Oct.

## BINGO

**CHERRILL BINGO:** Tuesdays at Cherrill Community Association. Doors @ 6:30PM, Games @ 7:30PM.  
**CHERRILL LEGION:** First Sunday of Month. Doors Open 12:00PM  
**RICH VALLEY COMMUNITY HALL BINGO:** on April 13, & April 27 at 7:30PM  
**STONY PLAIN SENIORS' DROP-IN CENTRE,** public bingo every Tues, 7PM. All ages welcome. Phone (780) 963-6685  
**WHITECOURT SENIORS CIRCLE,** Every Tuesday. Open @ 5PM, 1st call @ 6:45PM, Nevada's Concession. 780-778-4950 \*Sept - June

## MEAT DRAWS

**ALBERTA BEACH:** Lac Ste Anne Community Choir & Museum Meat Draw/Prizes - Every Sundays, 4:00PM at Jungle's Bar & Grill.  
**BARRHEAD ROYAL CANADIAN LEGION:** Fridays 6:00PM. Queen Of Hearts draw & 50/50.  
**ONOWAY ROYAL CANADIAN LEGION:** Fridays, Ph. 780-967-5361  
**STONY PLAIN ROYAL CANADIAN LEGION BR# 256:** Saturdays @ 3:00PM. Meat Draw & 50/50.  
**WHITECOURT LEGION:** Saturdays 4:00PM. Located downtown behind the CIBC.

## MEALS ON WHEELS

**ONOWAY:** LSAC Div 1 & 2, East of Hwy 43. Hazel Bourke: 780.967.2338 or hnbourke@icloud.com  
**WEST END:** Sangudo, Mayerthorpe & west end of LSAC. Jill: 780.785.2924 or Donna: 780.785.3118 or email: westendmow@outlook.com

## JAMBOREES

**CARVEL:** 2nd Sunday of month. \$6 lunch served. Info 780-991-3001  
**SANGUDO:** Sangudo Community Hall Jamborees are on hold until further notice 780-785-4105.  
**SPRUCE GROVE:** at Sandhills Community Hall, 3rd Sunday, 1-5PM. Info Florence 780-962-3104 Margaret 780-962-3051 \*September - June.  
**Edmonton Northwest Senior's Center:** 12963 - 120st NW, Every Wed From 1-3:30pm Aug & Sept Admin: \$5 non members \$2 members Yearly membership \$30  
**STONY PLAIN:** Stony Plain Seniors Drop In Center, 5018 - 51 Ave. Every 2nd & 4th Thurs of month, 7PM, \$2.  
**WHITECOURT SENIORS CIRCLE:** 2nd Sunday of the month 1-5PM, \$5/Adm Door prizes & 50/50 draw. 780-778-4950 \*Nov - June

## TOPS (Take Off Pounds Sensibly)

**SANGUDO:** Tues, United Church,

6:00PM. Toni (780)-786-4612 or Sandy (780)-305-9669  
**STONY PLAIN:** Thurs evening at 5:30PM, Stony Plain Library. Susan (780) 968-0869  
**SPRUCE GROVE:** Mon at 5pm at Anglican Church, 131 Church Rd. Betty (780)-962-3857  
**SPRUCE GROVE:** Tues at 6:15pm at Anglican Church, 131 Church Rd. Sharren (780)-962-2722  
**SPRUCE GROVE:** Wed at 8:45am at Anglican Church, 131 Church Rd. Christianne

## YOUR COMMUNITY

**THE LAC STE ANNE COMMUNITY CHOIR** Meets every Wednesday at 7:00 pm in the Heritage Centre in Alberta Beach & welcomes new members who are fully vaccinated. Please wear a mask & abide by Covid rules.  
**MAYERTHORPE LEGION BR. #126:** Seniors' Floor Curling - Thurs @ 1PM. Fun Darts - Thurs @ 7PM. Wings Night - Every Wed 5-8PM. Steak & Fish Night - 1st Friday of month 5-8PM. Everyone welcome. For more info please call 780-786-2470.

**ONOWAY ROYAL CANADIAN LEGION:** Open Tuesdays 7PM to 10PM for "Games" (pool, shuffleboard, darts, cards, etc.) Fridays 3PM-10PM. Friday's Family Friendly Dinner, 5:30PM (open to the public).

**PROBLEMS WITH DRUG OR ALCOHOL ADDICTION** in a loved one? Contact Drug Rehab Resource free confidential consultation. 1-866-649-1594 or www.drugrehabresource.net.  
**SPRUCE GROVE ELEVATOR TOURS,** Tues-Sat, 9:00-3:00PM. Info 960-4600.  
**UNITED CHURCH THRIFT SHOP:** North end Curling Rink, Onoway. Open Fri & Sat, 10AM-4PM.  
**FREE TUTORING FOR ADULTS:** Need help with reading, writing, math, English language (ESL) or basic digital skills? Free 1-on-1 and small group tutoring! Odette Lloyd 780-220-6460. calp@norquest.ca  
**WATER SAMPLE DROP OFF:** Tues Onoway Aspen Health Services. Drop off 1:00-2:30PM.

## SOCIAL EVENTS

**ALBERTA BEACH & DISTRICT ACTIVE 50+ CLUB ACTIVITIES:** Mon 7PM Darts; Tues 7:30PM Crib; Wed 1PM Bridge; Thurs 7:30PM Euchre; Mon, Wed, Fri 8:30AM Aerobics/Fitness. Everyone Welcome.  
**BADMINTON:** Wed, 7-10PM, Barrhead High School Gym. Jamie (780)674-8974 or (780)674-6974.  
**COME PLAY CRIB:** Fridays, 7:00PM at Darwell Seniors Hall; lite lunch is served. All ages!  
**COUNTRY QUILTERS** in Stony Plain house a "Sew in Tuesday", 2nd Tuesday of every month, from 10-3PM. Drop in \$5/member, \$6/non-members. Contact Cindy 780-963-7170.  
**JR. SCRAPBOOKING** Wed 4-6PM. Pre-register by Tues evg. Mayerthorpe Public Library www.mayerthorpepubliclibrary.ab.ca (780)786-2404  
**"ME, YOU, & EVERYBODY"** Fun new local program for people of all ages with disabilities. Thursdays @ Alberta Beach Aglilex from 10:00-11:00AM starting May. Funded Lac Ste Anne FCSS.

**ONOWAY GOLDEN CLUB:** Cards Tuesdays, 1pm. 1st Tuesday: Pot Luck Supper. 5023 49 Ave. 780-967-3436.  
**ONOWAY HAVE FUN & GET FIT!** Exercise Class with Video La Blast. Fridays 10:30AM at the Drop in Centre, 5023-49 Ave. PH: 780-967-2056.  
**PANCAKE/BREAKFAST SOCIAL:** 3rd Sunday 9:00-11:30AM, Parkland Village Community Centre. \*except June, July, August  
**RIVER TALKERS TOAST MASTERS CLUB,** Thursdays, 7-9PM. 32 Whitecourt Ave. Hilltop Community Church. Info

Lorraine 286-5040.  
**SANGUDO ART CLUB** meets every Thursday morning at 9AM at the Sangudo Community School. New members welcome. For further information call Brenda at 780-785-2402.

**SPIRITUAL LIVING STONY PLAIN INSPIRATIONAL CINEMA & DISCUSSIONS** at PERC Building (5413-51 St). 2nd Friday of month at 7PM. Popcorn provided, donations appreciated. Contact 780-940-3032  
**SPIRITUAL LIVING STONY PLAIN GATHERING** at PERC Building (5413-51 St). Every 2nd & 4th Sunday of month. Meditation 10AM, inspirational sharing 10:30AM. Ph 780-940-3032

**THE ALBERTA WILDLIFE CARVING ASSOCIATION** Images of Nature Show, Featuring wildlife carvings, Whitecroft Hall, 314 52313 RR252, Sherwood Park, Saturday Apr.30 2:00 - 5:00 pm, Sunday May 1, 10:00 am - 2:30pm, See beautiful hand carved wildlife sculptures  
**WHITECOURT SENIORS CIRCLE DROP IN CRIB** 1st & 3rd Sundays 1:00PM. 780-778-4950  
**WRITERS PROGRAM:** Mayerthorpe Library, 1st & 3rd Wednesday at 1PM.

## MEETINGS

**1ST ONOWAY SCOUTS:** Registration, Mondays 6:30-8PM. Beavers 5-7; Cubs 8-11; Scouts 12-14. Kim 967-4339.

**2716 ROYAL CANADIAN ARMY CADETS,** Wednesdays 6:30-9:00PM at Mayerthorpe Legion. Youths 12-18yrs, Call 780-515-1842

**299 ROYAL CANADIAN SEA CADETS CORPS MACKENZIE:** Stony Plain Comm Centre, Wed 6:30PM. Youths 12-18, 963-0843

**3053 (LAC STE ANNE) ROYAL CANADIAN ARMY CADET CORPS,** Onoway Historical Centre, Wed. 6:45-9:30PM. FREE program for youths 12+, Contact 3053army@cadets.gc.ca or 780-886-1586

**526 BARRHEAD AIR CADETS,** Wed 6:30-9:30PM, High School. Ages 12-18. 780-305-7233

**755 PARKLAND AIR CADETS** Thurs, 6:30-9:30PM Muir Lake School, ages 12-18. Info call 405-6585 or www.755aircadets.com.

**AA - MAYERTHORPE,** Kingsmen Hall, Thurs 8PM. (780) 786-2604 or (780) 786-1927

**AA - SANGUDO GOLDEN CLUB,** Tues 8PM call 786-4402/785-9214/785-3599

**AL-ANON** Wednesdays, 8PM. Spruce Grove United Church, 1A Fieldstone Dr. 780-962-5205

**ALBERTA 55 PLUS:** Villeneuve Hall at 10AM. Meetings on 2nd Tues of month. Info: Donna 780-962-5933

**ALBERTA BEACH & DIST LIONS CLUB** meets every 4th Tues 7:00PM, Alberta Beach Aglilex.

**ALBERTA BEACH AG SOCIETY** meets on the 4th Thurs of month, 7:00PM, Alberta Beach Aglilex.

**ALBERTA BEACH MUSEUM** meets on the 2nd Wed, 7:00PM at Heritage House 924-3167.

**ALCOHOLICS ANONYMOUS:** The Journey of Hope Group, Fridays 8PM, (please arrive earlier). Present location in church basement 4805 - 50 St. Onoway

**BARRHEAD & AREA CANCER SUPPORT GROUP:** 4th Thurs. 6:30-8:00PM at Barrhead United Church.

**BARRHEAD ROYAL CANADIAN LEGION,** meeting every 2nd Thurs, 7PM at the Legion Hall.

**CHERRILL COMMUNITY ASSOC.** Monthly Meeting 1st Wednesday, 8PM at the Hall. 785-2825 \*Except Jan, July, Aug, Sept.

**CHERRILL SILVER & GOLD SENIORS CLUB** Regular Meetings 1st Tuesday of month, Cherrill Seniors Hall. Call Rosamy 780-785-2625

**CHERISHED MEMORIES, PARENTS & TOTS** Wed & Fri, 10-12PM, Alberta Beach Aglilex. Info call 780-902-4879 or 780-999-7622. \*Sept-June.

**Citizens Helping In Life's Defence (C.H.I.L.D.)** Join our Pro-Life meetings for the Spruce Grove/Stony Plain area once a month. Call Chris 780-963-6997.  
**DARWELL & DISTRICT AG SOCIETY MEETINGS,** 7:00PM, 1st Monday, Darwell  
**DARWELL DISTRICT RECREATION ASSOCIATION,** Mon. Jan 10, 2022 7:30pm info contact Maria 892-3099  
**DDRA MEETING,** 7:00PM, 2nd Mon, Darwell Centennial Hall 780-892-3099. \*except Jul/Aug/Dec

**GriefShare:** Weekly grief support group held on Tuesdays 6:30 - 8:30 pm, starting Sept 14 at Crossroads Community Church, 4419 44 Ave, Mayerthorpe. \$25 for 12 sessions. Pre-registration required. Call 780-786-2695 today.

**GIRL GUIDES, BROWNIES & SPARKS** Thurs, 6:30PM, Onoway Heritage Centre. Info Laura, 780-967-1004.

**GREENCOURT COMMUNITY ASSOCIATION** meet 2nd Tuesday, monthly at 7:30PM at the hall. Info W. Jager (780) 786-4648.

**KINETTE CLUB OF MAYERTHORPE,** 7:30PM at Kinsmen Hall, 1st Tues of month. Contact: mayerthorpekinettes@gmail.com, Tracy: 780-786-0161.

**LAC STE ANNE ARMY CADETS,** Thurs, 6:30-9:30PM at Onoway Museum (780) 967-0443

**LAC STE ANNE COMMUNITY CHOIR,** Wednesdays 7PM at the Heritage Centre in Alberta Beach (50+ Club behind the hotel). Further info, call Diane @ 780 924-2348.

**LAC STE. ANNE & LAKE ISLE WATER QUALITY MANAGEMENT SOCIETY:** 3rd Fri, 7PM, Alberta Beach Council Chambers.

**LAKE ISLE HALL COMMUNITY HALL BOARD MEETINGS:** 3rd Wed of each month @ 7:30PM at the Lake Isle Hall (Hwy 633 and RR55) Ph # 780-892-3121

**MAYERTHORPE HOSPITAL AUXILIARY ASSOC,** every 4th Mon, 5PM in Hospital Basement Education Room.

**MAYERTHORPE LEGION BR. #126:** Meetings 2nd Mon of month at 7:30PM. For more info please call 780-786-2470.

**MEN FOR SOBRIETY:** Wednesdays at 7:30PM, FCSS Building (#105, 505 Queen Street, Spruce Grove). Mike (780) 965-9991.

**MS SOCIETY PARKLAND COMMUNITY SUPPORT GROUP** Are you diagnosed with MS and have questions? Last Tues of month, 7-9PM, Westview Health Centre. Cassy 780-471-3034 \*Sept-June

**NA MEETING,** Tuesdays 7:00PM Poplar Valley Church (780)514-6011

**ONOWAY & DIST HERITAGE SOCIETY:** 2nd Wed of each month, 7:00PM, Onoway Legion

**ONOWAY & DISTRICT HISTORICAL GUILD:** 3rd Wed 7PM, Onoway Museum. 967-5263 or 967-2452.

**ONOWAY & DISTRICT QUILT GUILD:** Every 2nd Thurs, 10AM-4PM, @ the Lac Ste. Anne Chateau Activity Room. Info, Ph Lyla @ 780-967-2629.

**ONOWAY ROYAL CANADIAN LEGION** General Meetings, 1st Mon, 7PM. \*Sept-June

**RICH VALLEY AG SOCIETY BOARD MEETINGS:** at the Agriplex on the 2nd Wed of the month. 7:00PM.

**RIVER TALKERS TOASTMASTERS CLUB** Build confidence, speaking, leadership & listening skills. Thursdays 7-9PM at Eagle River Casino. Call Melinda Tarcan, (780)778-1180.

**SANGUDO PAINTING GROUP:** Every Thurs, 9AM-12PM at Sangudo Community School. Info, call 780-785-2112.

**SUNDOWNERS TOASTMASTER CLUB:** Mon (excl. Holidays) 7:30-9:30PM. St. Matthew's Church, Spruce Grove. Judy 960-5258

**WESTLOCK & AREA CANCER SUPPORT GROUP:** 3rd Wed. 6:30-8:00PM at Westlock Library.

# SUDOKU

of the week

**Here's How It Works:** Sudoku puzzles are formatted as a 9x9 grid, broken down into nine 3x3 boxes. To solve a sudoku, the numbers 1 through 9 must fill each row, column and box. Each number can appear only once in each row, column and box. You can figure out the order in which the numbers will appear by using the numeric clues already provided in the boxes. The more numbers you name, the easier it gets to solve the puzzle!

**Like puzzles?** Then you'll love sudoku. This mind-bending puzzle will have you hooked from the moment you square off, so sharpen your pencil and put your sudoku savvy to the test!

**ANSWER:**

9	6	4	8	5	2	3	7	1
3	1	8	9	7	4	6	5	2
5	2	7	1	6	3	9	8	4
6	5	9	2	3	1	8	4	7
2	4	1	6	8	7	5	9	3
7	8	3	5	4	9	2	1	6
1	7	5	3	9	6	4	2	8
4	9	6	7	2	8	1	3	5
8	3	2	4	1	5	7	6	9

9		4				3		
		8	9				5	
	2	7					8	
	5				1		4	
2	4		6	8			9	
				4	9	2	1	6
1		5	3		6	4		8
4		6			8		3	5
8	3	2			5		6	

## Church Directory

### Rich Valley Community Church

Sunday School  
10:00 a.m.  
Worship Service  
11:00 a.m.

### Catholic Parish of Lac Ste. Anne

Sunday  
10:00 a.m.

### Mayerthorpe Baptist Church

Worship Service  
Sunday 10:30 a.m.  
Children's Church  
10:30 a.m.  
4606-54 St. Mayerthorpe  
(780) 786-2677

### Alberta Beach Alliance Church

Sunday Worship  
Service & Kid's  
Church 11:00 a.m.  
Sunday School  
10:00 a.m.  
(780) 924-3282

### St. John's Anglican Church

Onoway  
Sunday Service  
10:00 a.m.  
**Everyone Welcome**

### St. John's Lutheran Church

Alberta Beach  
Sunday Service  
11:00 a.m.  
Sunday School

### Zion United Church

Sunday Service  
10:00 a.m.  
Sunday School  
Serving Alberta Beach,  
Wabaman, Darwell &  
Lake Isle, Onoway & Area  
(780) 924-3351

### Sangudo United Church

**Christmas Eve Service 6:00 p.m.**  
Worship Service  
3<sup>rd</sup> Sunday 11:00 a.m.  
4907-50 Ave. Sangudo, AB

### St. Mary's Anglican Church Service

Holy Communion  
2<sup>nd</sup> Sunday each  
month 11:00 a.m.  
at Sangudo United Church  
Reverend Barry  
Rose Officiating

### Cherhill Community Church

Sunday School  
10:00 a.m. - 11:00 a.m.  
Worship Service  
Sunday 11:00 a.m.

### St. Michael Lutheran Church

Sunday Services 1<sup>st</sup> &  
3<sup>rd</sup> Sunday at 2:00 p.m.  
Pastor Rick Chappell  
(780) 282-0183  
Mystery Lake

### Trinity Lutheran Church (LC-C)

"The Church of the Lutheran Hour" - Rockfort Bridge  
Pastor Dan Hansard  
Church (780) 778-2035  
Sunday Worship  
9:00 a.m.  
Senior's Service & Cottage Bible Study - Phone for locations

### Crossroads Community Church

P.A.O.C.  
Rev. Arnold Lotholz  
Sunday Service  
10:30 a.m.  
(780) 786-2424

### Onoway Baptist Church

Sunday Service  
10:30 a.m.  
(780) 967-2266

### Roman Catholic Church

St. Agnes' Parish, Mayerthorpe  
Sunday 9:00 a.m.  
St. Elizabeth Parish,  
Evansburg  
Saturday 7:00 p.m.  
(780) 786-2032

### Calahoo Alliance Church

Family Worship  
Service Sunday  
10:00 a.m.  
For Info Call Jerry  
(780) 974-7734



# SERVICE DIRECTORY

**Scerv Construction Ltd.**

- Engineered Screw Piles • Framing • Trenching
- Skidsteer Work • Insulating • Roofing
- Snow Removal • Drywall • Decks
- Excavator Services • Taping

**Menko Helmus** Cell: **780-305-3864**  
 Email: [scerv2013@hotmail.com](mailto:scerv2013@hotmail.com)  
 PO Box 4795, Barrhead, AB T7N 1A6

**JAVORSKY DITCHING**  
 Onoway, AB  
 Phone: (780) 967-5486  
 Cell: (780) 906-7469  
 Fax: (780) 967-4961

*Dennis Javorsky - Owner / Operator*

**For All Your Excavating Needs**  
 Sand & Gravel Hauling • General Excavating  
 Septic Tanks & Cisterns • Site Prep & Clean Up  
 • Install & Repair of Water, Sewer, Power & Telephone Lines

**2Bros**  
 Custom Contracting Ltd.

Custom Framing • Concrete Floors • Shingling  
 Siding Soffit Fascia • Styrofoam Block System

**Jeff** **780-717-0520**

**CALIBRE DRILLING LTD**  
 DRILLING AND SERVICING YOUR WATER WELL.

**SPECIALISTS IN AIR & MUD ROTARY DRILLING**

- Water Well Drilling • Pump Installations
- Pressure Systems • Well Tests
- Licensed Drillers • Year Round Drilling
- Geotechnical Drilling • Cathodic Protection
- Free Estimates

**Quality Workmanship Five Year Warranty**  
**(780) 960-2992**  
 BOX 4083 SPRUCE GROVE, AB T7X 3B3

**ATB Financial**  
 ALBERTA BEACH  
**INVESTMENTS LOANS**  
 4824 - 50 Ave, Alberta Beach  
 Mon to Thurs 10:00AM - 4:00PM  
 Friday 10:00AM - 5:00PM  
**CALL 780-924-2211**

**R & S TOWING**

**FREE REMOVAL OF UNWANTED VEHICLES**

**967-2492** 

**TRI-LAKES SERVICES LTD.**

- Septic Hauling • Drinking Water Delivery
- Portable Washrooms • Steam Truck

[www.trilakeservices.ca](http://www.trilakeservices.ca) / [office@trilakeservices.ca](mailto:office@trilakeservices.ca)  
 (877) 727-3939 / (844) 967-9176

SERVING: • Lac Ste. Anne County • Parkland County • Yellowhead County East

**Pam Fennig Professional Corporation**  
 Chartered Professional Accountant

**Pam Fennig, CPA, CGA**

780-893-3421 Office address:  
 pam@fennigaccounting.ca 200, 72 Boulder Blvd  
 Stony Plain, AB T7Z 1V7

**COMMUNITYVOICE**  
 YOUR LOCAL NEWSSTATION

**THIS SPACE IS RESERVED FOR YOU!**

**ZEE BEST RENOVATIONS**  
 Your Complete Line of Renovation Needs:

- Bathroom
- Basements
- Plumbing
- Tileworks
- Drywall & Taping
- Decks & Fencing
- Roofing
- Siding

**FREE ESTIMATES**  
**26 YEARS EXPERIENCE**  
**INSURED | GREAT RATES**

**JOE LAWRENCE** BUS: 780-967-3898  
 MANAGER CELL: 780-915-3348  
 FAX: 780-967-3798

**COMMUNITYVOICE**  
 YOUR LOCAL NEWSSTATION

**THIS SPACE IS RESERVED FOR YOU!**

**DONALD N. GREENWAY**  
 Chartered Accountant

Suite 205 Sunrise Professional Building  
 215 McLeod Avenue  
 Spruce Grove, AB  
**(Bus.) 962-6366**  
**(Fax) 962-3990**

**PEMBINA CONCRETE PRODUCTS LTD.**

**Manufacturers of ONE PIECE SEPTIC & HOLDING TANKS**

\* Water Cisterns \* Field Systems \* Pumps and Accessories \* Sumps

**DELIVERED TO YOUR SITE**  
 1-800-661-3047  
 780-727-2702  
[PembinaConcrete.com](http://PembinaConcrete.com)

**New Line of Concrete Statues, Fountains and Garden Ornaments.**  
 BOX 123, Entwistle, T0E 0S0



# SERVICE DIRECTORY



**PaddlePlastics Ltd.**  
Mayerthorpe, AB

Box 67  
Mayerthorpe, AB T0E 1N0

Ph: (780) **786-4408**  
Fax: (780) 786-4466



**Mo-Bil WASH SERVICES Ltd.**

- Steam • Hot & Cold High Pressure Wash • Sewer Thaw & Flush
- Residential • Commercial - Oilfield

24 HOUR SERVICE  
Onway Call (780) 991-9466



**BACK COUNTRY PIPEFITTING LTD.**  
Plumbing & Heating

**Lee Hicks** 780-898-1062  
Journeyman Plumber

Residential and Commercial Plumbing and Heating.  
SERVING: YELLOWHEAD, PARKLAND, LAC STE. ANNE & BRAZEAU COUNTIES.



**Blakeman Drilling Ltd.**

Waterwell Drilling & Servicing  
Pumps & Pressure Systems

SERVING LAC STE. ANNE & WEST PARKLAND FOR OVER 25 YEARS

Joe (780) 924-3024



**BRO-BUILT**  
Homes & Contracting Ltd

"We Pride Ourselves In Turning Handshakes Into Hugs"

www.brobuilthomes.com  
Testimonials  
Phone 780-940-6415



**PREVAIL MAX**  
CELLULAR HOMEOSTASIS FORMULA

A NUTRITIONAL BREAKTHROUGH THAT SUPPORTS YOU... RIGHT DOWN TO THE LAST CELL!

LIVIN TRIM WITH  
**VALENTUS** (780) 907-8642  
www.ValentusTour.com/Ladybug



**SLIMROAST Optimum**  
DARK ROAST COFFEE

YOUR LOGICAL SOLUTION TO WEIGHT MANAGEMENT

(780) 907-8642



**COMMUNITYVOICE**  
YOUR LOCAL NEWS

**THIS SPACE IS RESERVED FOR YOU!**



**H&P Kosik CONSTRUCTION Ltd.**

- Road Building • Gravel • Sand • Dugouts • Black Dirt • Clearing

No Job too small. We do them all!

Harvey cell. 780-445-9010 ph. 780-892-3532  
Box 145, Darwell, AB. T0E 0L0



**COMMUNITYVOICE**  
YOUR LOCAL NEWS

**THIS SPACE IS RESERVED FOR YOU!**



**SANGUDO VETERINARY CLINIC**

Box 581, 4916 - 52 Ave. Sangudo, AB. T0E 2A0

**Dr. Ralf Sanders DVM**

Ph: 780-785-2200  
Fax: 780-785-2228  
sangudovet@gmail.com

24 HOUR EMERGENCY SERVICE



**standstone WASTE & WATER SERVICES LTD.**



**Proudly Serving Lac Ste. Anne County**  
1-877-226-5008 780-924-2435 780-967-2118  
www.standstonevac.ca or visit our facebook page

*The service you need, from people you trust.*

- Septic Services: Residential, Commercial
- Holding Tanks and Field Systems
- Effluent Pumps Supplied & Installed
- Portable Toilets: Standard, Wheelchair Accessible
- Products: BioClean, Liquid Enzyme, Potty Treat
- Potable Water

*Great Rates & Reliable Service! Call us today!*



**VILLAGE GLASS & MIRROR LTD.**

- AUTO
- RESIDENTIAL
- COMMERCIAL GLASS & MIRROR PRODUCTS

5027 - 50 Avenue • Phone: 967-2127  
PO Box 609, Onway, AB T0E 1V0



**ROY SHERWOOD**  
Master Electrician

Ph: 780-968-1425  
Cell: 780-908-2287  
Fax: 780-968-2211

Email: suretechroy@gmail.com

2-53220 Rge Rd 21  
Parkland County, AB T7Y 0C5

**SURETECH ELECTRIC LTD.**

Control & Automation  
Commissioning  
Solar Sales & Service

Industrial . Commercial . Residential



# SERVICE DIRECTORY

**RAINBOW LIQUIDATORS & AUCTIONS**

ANOTHER RAINBOW SALE

Farm Sales, Equipment Sales, Estate Sales  
**BOOK YOUR SALE WITH US TODAY!**  
Serving the Community since 1978

**Ph: (780) 968-1000**  
Stony Plain, AB 1-866-968-1001  
[www.rainbowauctions.ca](http://www.rainbowauctions.ca)

**SMOOLE**

- Construction & Septic Installation
- Environmental Wastewater Disposal
- Site Design & Evaluation
- Power, Water & Basement Excavation
- Trackhoe, Backhoe, Bobcat & Dump Truck

**For All Your Excavation Needs**

Call Ione 780-305-7077 Reid 780-909-0173

**Jack's Auto Body** **JACK'S CARSTAR** 24 Hour Towing  
Collision & Glass Service

**SPECIALIZING IN COLLISION REPAIR**  
**GUARANTEED WORK • INSURANCE CLAIMS**

CAA BOX 9 SITE 306 RR3, ONOWAY, AB T0E 1V0  
**(780) 967-5850**

**H&E UPHOLSTERY**

FOR ALL YOUR UPHOLSTERY NEEDS

Convertible tops for cars and boats, custom car and boat interiors, 5th wheel trailer skirts, boat tarps, ATV seats, furniture, kitchen chairs, heavy equipment seats.

[WWW.HANDE.CA](http://WWW.HANDE.CA) 4-485 South Ave. Spruce Grove  
For more information contact: **(780) 962-3049**  
kirk@hande.ca

**GRANDE TIRE**

5115 LAC STE. ANNE TRAIL N. ONOWAY, AB T0E 1V0

**Full Mechanical Services**  
**Tire Sales & Repairs**

**BUS: (780) 967-3432**  
**FAX: (780) 967-4816**  
[contacttire@xplornet.com](mailto:contacttire@xplornet.com)

**COMMUNITYVOICE**  
YOUR LOCAL NEWSPAPER

**THIS SPACE IS RESERVED FOR YOU!**

**THE CORING GUY**

- Concrete Coring & Cutting • Concrete Demolition
- Core Drilling • Skid Steer
- Coring fireplace & Dryer Vents

**Commercial - Residential**

**Laurence Markwart** Cell: **(780) 220-6164**  
LAC STE. ANNE COUNTY Email: [ljmarkwart@gmail.com](mailto:ljmarkwart@gmail.com)

**COMMUNITYVOICE**  
YOUR LOCAL NEWSPAPER

**THIS SPACE IS RESERVED FOR YOU!**

**Pm Park Memorial Ltd.**  
Funeral Home & Crematorium

**Fran Marion**  
Licensed Funeral Director

Mayerthorpe: 780-786-2533  
Whitecourt: 780-779-2533

Serving Mayerthorpe, Whitecourt and area

Edmonton • Lamont • Mayerthorpe • Smoky Lake • Vegreville

**SUMMERS DRILLING LTD.**

Water well drilling and service  
Family owned Business Serving Alberta since 1917

**Never run out of water again!**

**5 year workmanship warranty**

**3 Convenient ways to pay**

- Visa
- Mastercard
- We now offer full financing

**Tired of hauling water?**  
We can install a water well with a permanent water supply for as little as \$150/month OAC

Stop in at our office 4405 - 50 Street, Stony Plain  
780-963-1282  
[admin@summersdrilling.com](mailto:admin@summersdrilling.com)

**High-Performance Lifestyle Products**

**Call Today! (780) 907-8642**  
[www.bepic.com/elaine1](http://www.bepic.com/elaine1)

**PURE HEMP PRODUCTS**  
AGING IS INEVITABLE - LOOKING AND FEELING OLDER ISN'T

**KEY BENEFITS:**

- Inhibits Cell Growth in Tumors
- Relieves Pain
- Promotes Health
- Relieves Anxiety
- Neuroprotective

**(780) 907-8642**

**TRUIS & ONOWAY REGISTRIES**  
INSURANCE

Box 390, Onoway, Alberta T0E 1V0  
Tel: 967-5270 Fax: 967-4303

**OPEN 9-5 MONDAY - FRIDAY**  
Registries Closed from 12:00 pm - 1:00 pm

**ALL GENERAL REGISTRY SERVICES**

Home - Auto - Farm  
Life and Business

**Very Competitive Rates & Convenient Payment Plans.**

**Clients first...Service Always!**





**TEAM SEITZ LAKE LIFE**

**Daniel SEITZ**  
780-991-1866

**Jordan SEITZ**  
780-203-2198

## TOO EARLY TO GET YOUR BOAT ON THE LAKE?

Not too Early to list your Lake home!

Check out our Lake Life website featuring  
LAKE HOMES an hour West of Edmonton!

Sell your Lake Home this summer! Get started today!  
Contact us to complete your market evaluation.



Live your luxurious life on 3.25 acres of  
land w/ 390 ft of RIVER front privacy  
**Lobstick Resort \$1,338,800**

**LOBSTICK RIVER**



Re-NEWED construction 2 storey  
with Lake Wabamun Views (Phillips)  
**Lake Wabamun \$789,900**

**LAKE WABAMUN**



2.79 Acres walking distance to  
Devil's Lake & Bilby Natural Area  
**Bilby Heights \$129,900**

**DEVIL'S LAKE**



4 season cottage just steps from walking trails,  
grassed beaches, and common dock  
**Ross Haven \$354,900**

**LAC STE ANNE**



**SOLD**  
Turnkey cottage with 2 lake front  
lots and 106ft of waterfront  
**Sunset Beach \$394,800**

**ISLE LAKE**



**SOLD**  
1 acre private lake camp located  
near green space and boat launch!  
**Lessard Lake Estates \$119,900**

**LAKE LESSARD**

[www.EdmontonLakeHomes.com](http://www.EdmontonLakeHomes.com)



NOT INTENDED TO SOLICIT REAL ESTATE CURRENTLY LISTED FOR SALE.