



COMMUNITY VOICE

YOUR LOCAL NEWSPAPER

Serving: Carvel, Darwell, Drayton Valley, Duffield, Entwistle, Evansburg, Fallis, Gainford, Parkland County, Seba Beach, Tomahawk, Wabamun, Wildwood, Spruce Grove and Stony Plain.

July 19, 2022

PARKLAND INVESTIGATES DROWNING ON WABAMUN LAKE

Submitted by Parkland RCMP

On July 16, 2022, Parkland RCMP received a report of a capsized boat in Wabamun Lake. Upon arrival, the Wa-

bamun fire department had retrieved one individual from the water. Unfortunately, the victim who was identified as a 56-year-old male from Parkland County was deceased. It is believed

that the victim was participating in a training exercise with a local volunteer group. Although the RCMP are still investigating, they do not believe that the death is suspicious.

Affinity
Funeral Service

DRAYTON VALLEY 780.542.3338
WHITECOURT 780.778.3330

www.affinityfuneralservice.ca

AQUATIC INVASIVE SPECIES INSPECTION DEMONSTRATION

Submitted by Wabamun Watershed Management Council

On Saturday, July 23, 2022, the Wabamun Watershed Management Council

(WWMC), Alberta Environment and Parks and Parkland County will host an Aquatic Invasive Species (AIS) Demonstration Day at the Hamlet of Wabamun boat launch. The demon-

stration will feature a "Pop Up" watercraft inspection station, complete with the entire AEP inspection team and their sniffer dogs.

Continued on Page 2

Metalnecks Salvage Ltd.

Drayton Valley
587-464-0123
5302 - 34 Avenue

Camrose
780-781-0087

email: metalnecksdv@gmail.com
Website: Metalnecks.ca

NEW HIGHWAY SIGN AT WILDWOOD



Submitted by Wildwood and District Agricultural Society

The Wildwood And District Agricultural Society

has new highway signs. Thank you, Greg Myholm, for your time welding and your property for us to put up a permanent sign...

Continued on Page 2

PURE HEMP PRODUCTS

KEY BENEFITS:
- Inhibits Cell Growth in Tumors
- Relieves Pain
- Promotes Health
- Relieves Anxiety
- Neuroprotective

(780) 907-8642

Ceiling & Wall Cleaning

Refresh your home or business

Nano

Kills Germs, odors & disinfects.
We clean Stipple and California Knock Down

"Don't Paint"

Ceramic tiles steam cleaned.
Seniors Discount
Call Nano Clean today
780-914-0323 (Stony Plain)

View us ONLINE!

WWW.COM-VOICE.COM



COMMUNITYVOICE
YOUR LOCAL NEWSPAPER

PUBLISHED WEEKLY (Zone 1 & 2)
AND BIWEEKLY (Zone 3)

E.J. Lewchuck & Associates Ltd.

Box 3595
Spruce Grove, AB
T7X 3A8

TELEPHONE:

Advertising 962-9228
Fax 962-1021

E-MAIL:

comvoice@telusplanet.net
news@com-voice.com

Aquatic Invasive Species Inspection Demonstration

Continued from Page 1

The inspection will run from 7:30 a.m. to about noon. A news media availability session is scheduled for 9:00 to 10:30 a.m. when local municipal mayors, councillors, AIS inspectors, and representatives of Parkland County, the Wabamun Watershed Management Council and the North Saskatchewan Watershed Alliance will be available for interviews.

We will be inspecting all watercraft entering the lake at that location. We see this

as an excellent educational opportunity for recreational boat users of Wabamun and the surrounding lakes to learn about the risks associated with AIS, in particular Quagga and Zebra Mussels. A similar demonstration will be held at Pigeon Lake on Sunday, July 24.

The Wabamun Watershed Management Council (www.wwmc.ca) is a not-for-profit society that represents a cross-section of Wabamun Lake stakeholders who are committed to

maintaining and improving the health of the lake and its watershed. The council works with governments, organizations, businesses and individuals to inform and educate stakeholders about the biology of the lake and the issues affecting the watershed and lake. It sponsors and coordinates programs and activities that gather information about the biology and use of the watershed and that improve the health and viability of the lake.

New Highway Sign at Wildwood

Continued from Page 1

...on the highway on the west end of Wildwood. The Ag Society has received

many compliments on this beautiful sign. We have one for the east side of town as well. They are very eye-catching. Thank you to

the other society members who had a big part in this project. It is because of people like you that our society flourishes.

SERENITY FUNERAL SERVICE

NEW FACILITY
Chapel & Reception Centre

600 Calahoo Road Spruce Grove, AB
780-962-2749 www.serenity.ca

SERENITY FAMILY SERVICE SOCIETY - YOUR NOT-FOR-PROFIT SOCIETY

JOKE of the week

I once asked my grandfather how he'd lived so long.

He smiled and said; "I sprinkle a little gunpowder on my cereal every morning."

I always thought that was a little weird but he did live a long life and left a great legacy; a thriving career, loving wife, seven children, sixteen grandchildren, two great-grandchildren, and a massive hole in the crematorium wall.

2022 YELLOWHEAD CENTRAL SANTA'S ANONYMOUS ANNUAL GENERAL MEETING

28 JULY AT TIPPLE PARK MUSEUM IN EVANSBURG, AB

6:00PM MEET AND GREET WITH REFRESHMENTS
7:00PM MEETING AND ELECTION

COME FIND OUT WHAT WE ARE ALL ABOUT

- NO COMMITMENT NECESSARY
- SHARE IDEAS, MAKE SUGGESTIONS, GIVE BACK TO YOUR COMMUNITY, SPREAD JOY, AND LEARN ABOUT EVERYTHING WE DO AND OFFER

CHECK US OUT ON FACEBOOK
[@YELLOWHEADCENTRALSANTASANONYMOUS](https://www.facebook.com/YELLOWHEADCENTRALSANTASANONYMOUS)

Yellowhead Central Santa's Anonymous

ALBERTA'S TRAFFIC SERVICES IN ST. PAUL AND VERMILLION ADVISE THAT TRAFFIC SAFETY FOCUS FOR THE MONTH OF JULY IS IMPAIRED DRIVING

Submitted by Alberta RCMP

Summer has arrived and many people are making the most of the warm weather to socialize with others. However, people should also think ahead to how they will get home safely. Collisions involving impaired drivers tend to happen more often during the summer months than the rest of the year. Impaired driving is preventable when drivers plan for a safe ride home.

Facts about impaired driving:

In 2019, about one in eight drivers involved in

a fatal collision was legally impaired at the time of the crash.

Impaired driving collisions most commonly occur at night. Between 2015 and 2019, about half (49.8%) of impaired driving casualty collisions occurred between 7:00 pm and 3:00 am.

On average over the last five years, over 4,500 people were convicted of impaired driving in Alberta each year.

Research shows cannabis use can reduce many cognitive and motor skills required to drive safely, such as tracking, reaction

time, visual function, concentration, short-term memory, and divided attention. Combining cannabis with alcohol further intensifies the effects on driving skills, even if the doses of either substance are low.

The effects of consuming cannabis edibles take longer to kick in and last much longer than inhaling the drug. It may take up to two hours to feel effects, which can last 12 hours or longer.

According to Health Canada's 2021 Canadian Cannabis Survey, 21% of people who had used can-

nabis in the past 12 months reported they had driven within two hours of using cannabis, and 35% of those respondents did so within the past 30 days.

RCMP Alberta Traffic is committed to enhancing public safety by reducing harm and hazardous behaviours on Alberta roadways through strategic partnerships, enforcement, education and crime reduction initiatives," says Cpl. Trevor Schmidt of the Alberta RCMP St. Paul/Vermillion Traffic Services Unit.

3 Voices 3 Choices
 One call can put you in all 3 markets
962-9229

LOCAL ESTABLISHED BUSINESS FOR SALE:

Heavy Duty & AG Mechanic Business
 Vehicle Inspection Facility
 All Shop Tools Included
 Air Conditioning Tools
 Vehicle Inspection Tools
 Inventory Included
 Shop Supplies Included
 LONG TERM LEASE AVAILABLE ON A 5600SQ FT Building
 Business \$200,000

Serious Inquiries Call 780-305-1315 (Evenings)

MLA Shane Getson is now seeking nominations for the Queen's Platinum Jubilee Medal!

In celebration of Queen Elizabeth the II's Platinum Jubilee, Alberta's government is recognizing people who have helped make Alberta one of the best places to live through volunteerism, public service and community leadership. We need your help to recognize the exceptional individuals in our constituency who are deserving of this honor.

Please include in your nomination:

- First and last name of nominee
- The community in which they live(d)
- A few sentences as to why you think the nominee would be the ideal candidate for this award.

Nominees must:

- Live or lived in the Lac Ste. Anne - Parkland constituency
- Have been alive on or before February 6, 2022

Please submit your nominations via email to:
lacsteanne.parkland@assembly.ab.ca
 OR by mail to P.O. Box 248, Onoway, AB T0E 1V0

All nominations must be submitted between **July 11 - November 30, 2022**

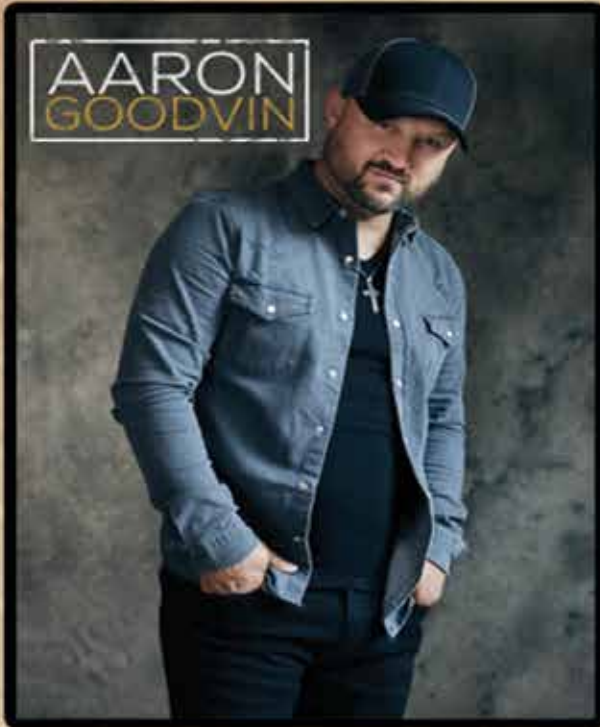
Awards will be presented by **December 31, 2022.**

The Queen's Platinum Jubilee

15th Annual Outdoor Concert

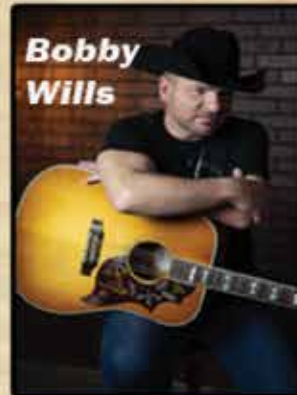
Darwell & District Agricultural Society presents...

BARNBURNER MUSIC FEST August 12th, 2022



AARON
GOODVIN

Special guests



Bobby
Wills



Hayley
Goodrich



CHRIS BRIEN

Darwell Fair Grounds Gates 6pm-Show 7pm

Advance \$45 / Door \$55 5 and under free

Tickets at: www.Darwellag.simpletix.ca

Concession, Beer Gardens & Camping Available

Bring your own lawn chair / rain or shine

Ag Drag August 13 & 14 - \$20 at the gate



scan for tickets



www.darwellag.com



POLACK Bros.
Competition & Darwell Ag Society
 CHEVROLET
 present the 26th Annual

Darwell Ag Drag

Modified Truck and Tractor pull

Saturday, August 13th - 5:00pm, Gates open 4:00pm

Sunday, August 14th - 1:00pm, Gates open 12:00pm

Carstar Onoway (Jack's Auto Body)
 Over the Rainbow Pet Cremations Services
 SANG

Blakemen Drilling
 Dave's Diesel Repair
 Grande Tire
 H & P Kosik
 Morand Industries
 MD Truck Repair
 Sandstone Waste and Water Services Ltd.

EQUUS
 GSM Inspections
 Patricia Halder, Century 21
 R.P.T.L. (Ron Prokipchuk Trucking Ltd.)

Big West Country
 Border Paving Ltd.
 CFCW
 CISN Country - 103.9
 Community Voice
 Herc Rentals
 Martin Deerline
 Silver Sands Golf Resort
 The Lac Ste. Anne Bulletin
 Tractor Ranch/Envoy Rentals
 XM105 FM Whitecourt

Beer Gardens



Concession



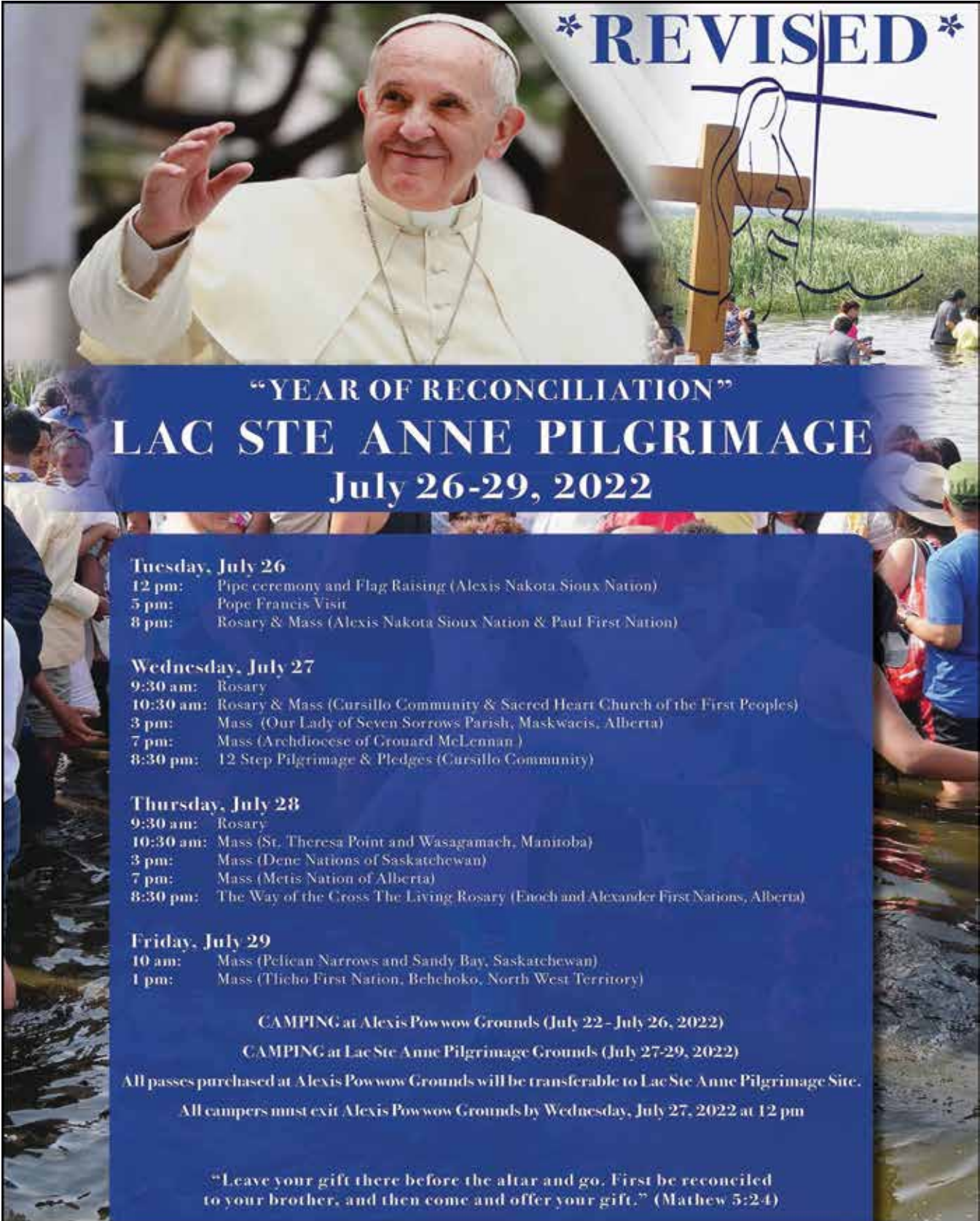
50/50 draw



Tractor Pull
 Admission.... \$20.00
 5 and under.... Free

www.darwellag.com





REVISED

**“YEAR OF RECONCILIATION”
LAC STE ANNE PILGRIMAGE
July 26-29, 2022**

Tuesday, July 26

- 12 pm: Pipe ceremony and Flag Raising (Alexis Nakota Sioux Nation)
- 5 pm: Pope Francis Visit
- 8 pm: Rosary & Mass (Alexis Nakota Sioux Nation & Paul First Nation)

Wednesday, July 27

- 9:30 am: Rosary
- 10:30 am: Rosary & Mass (Cursillo Community & Sacred Heart Church of the First Peoples)
- 3 pm: Mass (Our Lady of Seven Sorrows Parish, Maskwacis, Alberta)
- 7 pm: Mass (Archdiocese of Crouard McLennan)
- 8:30 pm: 12 Step Pilgrimage & Pledges (Cursillo Community)

Thursday, July 28

- 9:30 am: Rosary
- 10:30 am: Mass (St. Theresa Point and Wasagamach, Manitoba)
- 3 pm: Mass (Dene Nations of Saskatchewan)
- 7 pm: Mass (Metis Nation of Alberta)
- 8:30 pm: The Way of the Cross The Living Rosary (Enoch and Alexander First Nations, Alberta)

Friday, July 29

- 10 am: Mass (Pelican Narrows and Sandy Bay, Saskatchewan)
- 1 pm: Mass (Tlicho First Nation, Behchoko, North West Territory)

CAMPING at Alexis Powwow Grounds (July 22 - July 26, 2022)

CAMPING at Lac Ste Anne Pilgrimage Grounds (July 27-29, 2022)

All passes purchased at Alexis Powwow Grounds will be transferable to Lac Ste Anne Pilgrimage Site.

All campers must exit Alexis Powwow Grounds by Wednesday, July 27, 2022 at 12 pm

“Leave your gift there before the altar and go. First be reconciled to your brother, and then come and offer your gift.” (Mathew 5:24)



**The Catholic
Archdiocese
of Edmonton**

www.lacsteannepilgrimage.ca

Disclaimer: Alexis Nakota Sioux Nation / Lac Ste. Anne Pilgrimage Company / Catholic Archdiocese of Edmonton will not be held responsible for any loss, damages, injuries and/or death during this event. Enter at your own risk.

Camping Information: Lisa Alexis at 780-905-5907

For more information: lsap@caedm.ca

Phone: 780-224-1037



**Yellowhead County's
VIRTUAL
COUNTY PRIDE CONTEST**

Voting will take place on Facebook
@yellowheadcounty from July 25 - August 5!

Yellowhead County is hosting its **19th** annual
County Pride Contest
and we're looking for **YOUR** photo submissions!

So get out your camera and get snapping pictures of your beautiful yards! The public will get a chance to vote on which yard is their favourite in order to determine the winners for the 18th Annual County Pride Contest & Tour - Virtual Edition!

You could win a gift card to your favourite local greenhouse!
1st - \$100 gift card 2nd - \$75 gift card 3rd - \$50 gift card

Contest Submission Rules:

1. Submissions are accepted from July 12 - July 20.
2. Open to County residents only.
3. Maximum 4 photos can be submitted.
4. Photos must be of your own yard.
5. Submit your entry via email to communications@yellowheadcounty.ab.ca

Visit www.YHCounty.ca or our Facebook page for more details!

Emails must include your **full name, phone number**, and the **legal land description or physical address** of your property. This information will only be used by County staff to verify that you are a County resident.

We also ask that you please include a couple of sentences to tell us about why you're proud of your yard, or what you love about gardening or living in Yellowhead County.

If you need assistance emailing photos or do not have access to the internet or email please call 1-800-814-3935 and we will assist you.

PLEASE NOTE: When taking photos, choose an overview of your entire yard, along with the things which you like best (flower beds, water features, vegetable gardens, etc.). Do not feature any photos that identify your valuables or any individuals.

Get your submissions in before July 20 at 4:30 PM!

**Municipal offices CLOSED
on Monday, August 1st.**



The Yellowhead County offices in Edson and Wildwood will be closed for Heritage Day.




Accepting applications until August 2

**Register Now for
FALL RECRUITMENT!**

Join the Yellowhead County Fire Department in your community!

Accepting applications until August 2.

Training starts September 23.

Evansburg ~ Wildwood ~ Niton ~ Robb
Peers ~ Brule ~ Edson Area

Volunteer incentives & opportunities for advancement.

Highschool students are welcome as part of the YCFD Cadet Program. (16+). Earn extra credits!

**JOIN
-THE-
TEAM**



www.yhcounty.ca



LIVE EVENING AUCTION**Urs and Penny Schnider**

(780-785-2519)(403-831-2519)

Wednesday Evening August 3 at 5pm

Located: (From Sangudo - Go 1 mi W on Hwy 43. Turn N on Hwy 757 for 3 1/2mi to TWP RD 574. Then 1 1/2mi E to 6426 TWP 574) (From Barrhead - Go 11mi W on Hwy 18. Turn S and W on Hwy 18 for 15mi to Sangudo Turnoff. Take Hwy 757 S for 4mi to TWP RD 574. Then 1 1/2mi E to 6426 TWP 574.)

Good Tractors and Equip: *Case 930 Tractor w (6775hr), cab, duals, Ezee. On loader, bucket, fork *JD 2010 Tractor w pto, good condition *Ford 9N Tractor w 3pt, 6 Volt, good, plus Parts Tractor included when required *Good CLAAS Rollant 62 Rnd Baler w soft core *JD 896A sd Rake *NH 1002 Sq Bale Stack Liner *7ft IHC Trail Scycle Mower *12ft Krause Disc, good *MH steel wheel Seed Drill *Like New F/300 3pto Grass Seeder *10ft IHC dt Cult *2D Harrows

Horse/Sheep/Livestock EQ: *Wilee 2 Horse BH Trailer, good, some rust *Acreage Kilberry pto Manure Spreader *Sheep - 4X8 Crate, 4 of 5X10 Metal Pens, Hay Feeder, 50 Plus Wood Posts Barb Wire, Building Material *2 Water Solar Panels *Live Traps + Cages *5 Metal Panels

Yard Eq and 3 Point: *JD 145 Ride Mower *Swisher 44in/12.5hp Rough Cut Trail Mower *Red Tidy Tank w Filter, hand pump *4000 W Generator *5X5.5 ft Yard Trailer *Wheel Barrow *CM WP Rototiller *Air Hockey Game *Kids Trampoline *Kids Bikes *3 Point (6ft Buhler Blade)(Spring T Cult)(Ford 42" Rototiller)

Shop Items: *Beaver (Table Saw)(Jointer) *12 Spd Drill Press *Iron Horse Shop Air Comp *6" Vise on Stand *6" Bench Grinder on stand *Rockwell Band Saw *Milwaukee Router + Power Tools *C/O Saw, Tile Cutter, Paint Stripper, More Tools *Pipe Vise, Bolt Bins + Contents *Chains, Jack All, More *Good Air Flooding Gun *Craftsman Tools

Older Parked: *1998 GMC SLE 1500 w Ext Cab, 300,000km *4 of 265/70 R 17 Tires *2009 Tomgo 29ft BHS Pacific Coach RV Trailer for Hunting or Storage

LIVE EVENING AUCTION**Mickey Yachimic**

349-1497

Friday Evening August 5 at 5pm

Located: (From Westlock Inn - 9mi W on Hwy 18 to Hwy 777. Go 6mi S on Hwy 777 to Hwy 654. Turn W 1mi to RR 14. Turn S for 2 3/4mi to 58313-RR14) (From Barrhead Ford - 4mi S on Hwy 33. Take Hwy 654 E for 12mi to RR 14. Turn S for 2 3/4mi to 58313-RR14)

TRACTORS: *81 IHC 3288 Tractor w (7030hr) cab, New 18.4X38 Rear, New Rad, Ezee On Loader, Good *79MF 2675 Tractor w cab, 20.8X38, Leon 700 FE Loader, bucket, bale fork, 2000hr on motor, clutch, trans, good *Case 730 diesel Tractor w (1000hr on motor, clutch, rear tires) runs good.

FIELD EQ: *Good 15ft Ezee On Disc *16ft Ezee On Disc w many need some bearings *16ft JD 100 DT Cult *20ft Morris L-160 VS Cult w tine harrows *54ft FlexiCoil Trail Sprayer w 2400L, Mix Tank *12ft IHC 10 DD Wheel Drill w gr, ft, D Harrow Bar *As Is IHC 2@12 ft DD Packer Drill w gr, ft *13 D Harrow Bar

GOOD HAY EQ: *9ft IHC 8330 Hay Bine *NH 660 Auto Wrap *8 W 3pt V Rake *Plus Older (SD Rake) (8 W Trail V Rake As Is)

HARVEST EQ: *Good 15ft Vers 400 Swather w cab, shedded *PArts Vers 400 w good motor, PU Reel *JD 4400 SP Combine *FK 46X7 pto Auger *Grain Bins (3 Ring Butlar w hopper, air fan)(5 Ring WR on Wood)(2 Old Wood on Skids)

LIVESTOCK EQ: *2021 - 12 Hay + 9 Straw Bales *Vet Eq, Calf Catcher, Eltc Fencer, Gates, Panels, 2 Rolls Barb Wire, Staples *Cattle Squeeze *6of 16 ft good grey gates *Pipe 3 Bale Feeder *3 of 1 Bale Feeder *Head Gate

YARD & SHOP: *1250gl Plastic Tank *3 of 12ft Culverts *JD GT 242 Ride Mower *Chain Saw *Fold Up Ramps *Farm and Shop Items *300 Fuel Tank *79 GMC OneTon w 12'X4' Hi Box, Hoist *61 Fargo Cab, Motor, Axles *Older Yard Sheds

RETIRED CEMENT EQ: *64 GMC Gravel Truck that runs w pull start *Bull Floats, Tamper w newer 5.5 Honda, Power Trowel needs carb clean *F/A Furnace, Propane Heater *Truck Box Trailers, H/A Rack, Tires *Metal Siding, 14 Sidewalk Blocks *Lots of Plywood Forms, Flat Bar, Corner Bars, More Good Salvage

Full Details & Many More Upcoming Auctions & Items available at

www.parsons-auctions.com

PARSONS AUCTIONS LTD

CHARLES
780-674-7704

780-674-5999

JEFF
780-305-4328

SUPPORTING THE PAPAL VISIT TO ALBERTA

Submitted by Government of Alberta

The Government of Alberta is providing support for Pope Francis' visit to Alberta July 24-27.

Pope Francis will arrive in Edmonton on July 24 and take part in events in Edmonton, Maskwacis and Lac Ste. Anne.

The Government of Alberta supports the papal visit and all efforts on the journey toward truth and reconciliation. The government is providing logistical support and is working with partners to ensure the visit is successful.

While the government is working to minimize disruptions for travelers on Alberta highways along the papal motorcade routes, motorists can expect delays due to rolling road closures and should use alternate routes where possible. Delays can also be expected on area highways due to increased traffic generated by the events.

Road closures

July 24 – Pope Francis arrives

- The public should expect highway closures and limited access to the Queen Elizabeth II (QEII) Highway when the Pope travels from the Edmonton International Airport to his destination in Edmonton.

July 25 – Maskwacis

- Restricted access to the QEII Highway and Highways 611 and 2A should be expected in the vicinity of Ponoka, Maskwacis and Wetaskiwin.

July 26 – Lac Ste. Anne pilgrimage

- Expect highway

closures and limited access along Highways 16, 43 and 633 when the Pope travels between Edmonton and Lac Ste. Anne.

July 27 – Pope Francis departs

- Expect highway closures and limited access to the QEII Highway when the Pope travels from Edmonton to the Edmonton

International Airport.

Quick facts

- More than 120,000 visitors are expected to attend the papal events:

- o 15,000 at Maskwacis

- o 775 at Sacred Heart Church in Edmonton

- o 80,000 at Commonwealth Stadium in Ed-

monton

- o 25,000 at Lac Ste. Anne

Reconciliation is a priority for Alberta's government. As partners in reconciliation, we are listening to and working with Indigenous Peoples in Alberta to determine the best ways forward to a better future.

LIVE AUCTION

Howard & Donna Ringstad

R 780-349-5128

Saturday August 6 at 1pm

Located: From Westlock Inn - Go W on Hwy 18 for 5mi to RR273. Then 1 1/4mi N to 60019 RR 273.

Starting at 1pm Farm and Yard MISC:

*Honda Four Trax Quad w (515hr), Orange *Quad Yard Trailer 45"X72" *Honda Four Trax Quad w (527hr), Eltc Shift *Quad Sprayer w 10ft wings *Rolling Welding Table w No6 Vise *Propane Oxy/Acetylene Tanks w Torch *16 spd Drill Press *Air Line on Reels *Battery Chg/Boost *Red Roll Tool Box *Lots of Tools *DeWalt 12in Mitre Saw *Rolling 14" Band Saw *16" Scroll Saw *Makita C/O Saw *Delta 10" Table Saw AirComp, HD Chain Hoist, Scaffolding, Screw Jacks

Selling At Exactly 2pm Quality EG:

*CAT 246 B Skid Steer w (2825hr), Dirt Bucket, Works Well *2 Extra Buckets *Very Good to New Attachments (Dirt Trax Post or Tree Clamp/Puller)(Lowe G-72 HD Grapple Fork, Industrial)(HD Gravel w Hyd Dump Bucket within a bucket)(78in Snow Blade)(Pallet Forks) Plus Extra-Dirt Bucket, Pallet Fork, 2 Tree Spoons, HD Angle Blade/Dozer, Pallet Fork Balde *Very Good Trailers (22ft PJ Trailer w 18ft Tilt, winch, 2 HD 7000 axles, BH)(Precesion 10ftX3ft HI Dump Trailer w 2@3500 axles, roll tarp, BH) (Berg Horse Trailer w 23ft Total 16ft Floor, 2 Divider Gates, GN, Good) *2003 Chev 2500 HD Silverado Truck w (157,000km), 6L V8, auto, 4WD, 8ft box , Hidden Ball Hitch for GN, White *1967 Chev 30 OneTon Truck w 9ft Deck *1984 Ford 3 Ton w Propane motor, Wajax hyd man bucket unit, Older Unit runs and works for personal use *Excellent (Bobcat GT 225 diesel Yard Tractor w(240hr), FWA, 7TL FE Loader, bucket, 3pt) Like New Bobcat 3pt (5ft Brush Mower)(#12 HD Hyd Post Auger w 4/10/14 inch Augers, Extensions)(6ft Rear Blade) *Ford 650 Tractor w gas, 5 spd, 3pt, 6Volt, Mint *64 in Muratori MB 165 #pt Rototiller *2 of 8ft 3pt Cult *Very Nice Ford One Ton w New Blue Cab, duals, V8, 4spd, 12ftX3ft hi White Wood Box, hyd lift *Very Nice MM 4 Star Tractor w good running, 3pt *3pt HD Gyro 60 Brush Mower/Shegger *3pt (Bale Fork)(8ft D Harrows) *10 New 9.5ft Metal Construction Fence Panels

Plus Selling Before & After:

*Hart Emerson Grain Kicker/Cleaner, working antique *New Acme 36in/110V Green house Fan *120V Yamaha EF 2800 Geo Set *Propane Heater, 24 to 44 Ext Ladder, Variety of Animal Live Traps, Mag Pie Trap, HD 2X4X8 Lumber, Chicken & Turkey Crates, Eltc Fencing, Feeders, Livestock Gates & Items

Full Details & Many More Upcoming Auctions & Items available at

www.parsons-auctions.com

CHARLES
780-674-7704

780-674-5999

JEFF
780-305-4328

TOWN OF EDSON & YELLOWHEAD COUNTY RECREATION MULTI-USE FACILITY UPDATE

Submitted by Yellowhead County

Work continues by the Town of Edson and Yellowhead County towards the construction of a Multi-Use Facility for the region.

Unfortunately, due to inflationary pressures in the construction industry, the Request for Proposals for the Hillendale site came back substantially over

budget. The project team was tasked with looking at alternatives which can achieve similar results, but within the approved \$70 million budget.

In June, six high-quality proposals were received from consultants to evaluate the possibility of re-vamping the existing Edson and District Leisure Centre to see how it could be upgraded and worked

into the community needs and program requirements. It would also need to fit into the scope previously approved for federal funding.

The successful consultant will conduct a condition assessment for major building components and complete a conceptual design and cost estimate. The updated plan is expected to be complete by December

2022 and will be submitted to the funding agency for approval at that time.

Both municipal Councils, as well as the Project Steering Committee, are continuing to meet and remain committed to ensuring a facility is developed for the community that meets the region's needs now and into the future.

TRANSFERS TO ALBERTA TO SUPPORT HEALTH CARE AND TRANSIT

Submitted by MP Gerald Soroka

Gerald Soroka, Member of Parliament for Yellowhead wishes to advise that the federal government has transferred an additional \$324,811,000 to the province of Alberta for the Canada Health Transfer (CHT) Top-up, Transit Funding, and Safe Return to Class Fund as follows:

- CHT Top-Up - \$232,332,000
- Transit Funding - \$79,496,000
- Safe Return to Class Fund - \$12,983,000

SILVER SANDS GOLF RESORT

Parkland's hidden gem of a golf course; located 45 minutes west of Edmonton on highway 16.
 Book your company tournament today.
 Checkout our Weekday Specials!
 Join us for Men's night on Wednesday's 6:00pm & Ladies league on Monday mornings, both shotgun start. Call 780-797-2683.

**RV LOTS FOR SALE
 CALL 780-222-1535**

Silver Sands Village, Lake Isle | silversandsgolfresort.com

Alberta Beach GOLF RESORT

WEEKDAY SPECIAL

4 Golfers + 2 Carts *Great for Weekday Tournaments*
\$170.00 *Monday, Wednesday and Thursday Only.*

18 Holes	\$36.00 Weekdays	\$50.00 Weekends
9 Holes	\$25.00 Weekdays	\$39.00 Weekends
Cart Rental	\$18.00 9 Holes	\$28.00 18 Holes

*To Book your Tee Times or Tournaments
 Call: (780) 924-GOLF (4653)*

CALAHOO HILLS GOLF COURSE

780.459.9081
 info@calahoohillsgolfcourse.ca
 calahoohillsgolfcourse.ca | f

Classified Ads - Call 962-9228

For Rent

Completely renovated Motel in Onoway, AB. offering daily, weekly or monthly rentals. All utilities included, 55 inch tv with Satellite. Double bedrooms, furnished bachelors with full kitchen and furnished 1 bedrooms with full kitchen available. Starting at \$950 + tax. Please call for viewing, 780-967-4420 or 780-945-1723. www.onowayinnandsuites.com (4) 07-260G

New 2 bdrm apt on the water in Alberta Beach. New Appliances, renter incentive. Available immediately! \$1250. Text only 780-667-3304 (1) 07-19

Farm Equipment

New Holland, 1024 sq bale wagon, picker stacker, 1000 or best offer.. 780-967-2104. (4)07-19

Computers

FREE CHECKUP SAME DAY. REPAIRS ONLY \$50 - NO Prepayment. NO CHARGE - If is not worth repairing. FOR SALE: Refurbished, Clean, Good Computer for \$150. TRADE-IN OR DONATE: Old, Used, Broken Laptops, Tablets etc. for parts. Will SAVE your pictures or Documents. Call: 780-892-2407 (10) 12

Wanted

Experienced qualified LAMINATE FLOOR INSTALLER We supply materials for installation You supply labour expertise and trade tools Call 780-892-2407 (1) 07-12

Services

Stump Grinding For Hire - Alberta Beach & surrounding areas. Call 780- 779-3589 (24) 10-11

Obituaries



David Arthur Walter Decoux David Decoux passed away on July 5, 2022 in Evansburg, AB. David is survived by his wife Edith, son Kerry (Karen) and grandson James of Calgary; daughter Karen of Whitecourt and son Kelly of Vancouver. A very special thank you to the doctor and staff of the Good Samaritan Society in Evansburg for their excellent care of Dave while he was with them. There

will be a Celebration of his Life at the farm on July 23, 2022 at 4:00 p.m. (South of Evansburg on Reno Road to township 530, west to Range Road 81, North into the yard.)



PURE HEMP PRODUCTS

AGING IS INEVITABLE - LOOKING AND FEELING OLD ISN'T!

A Health and Beauty Breakthrough!

Cannabidiol, is one of over 80 active cannabinoid chemicals in the hemp plant. Unlike, THC, it does not produce euphoria or intoxication. It targets specific receptors in the cells of your brain & body. There are many physical and mental benefits to using these products for both treatment and prevention of numerous ailments.



Therapeutic Uses For Pure Hemp

Supports healthy blood sugar levels, promotes healthy energy levels, relieves anxiety, aids in digestion, supports optimal immune function and the regeneration of healthy cells, and promotes a sense of serenity and overall well-being.

Anti-Aging Uses For Pure Hemp

Promotes more youthful skin, provides hydration, enhances radiance, lessens age lines as well as the appearance of dark spots.

KEY BENEFITS

- PAIN RELIEF:** Known to reduce vomiting & nausea; suppress muscle spasms; reduce seizures & convulsions.
- PROMOTES HEALTH:** Helps to promote relaxation and overall health.
- WELL-BEING:** Helps to relieve anxiety, aid in digestion, supports optimal immune function and the regeneration of healthy cells.

PET PRODUCTS

PET CHEW TREATS

KEY BENEFITS

- SYNERGISTIC BENEFITS:** Can be used in conjunction with regular medications with no side effects.
- NO SIDE EFFECTS:** Does not damage the liver, kidney or GI Tract like OTC medication.
- DIETARY SUPPLEMENT:** Can be administered daily as part of your pet's diet.



ORAL SPRAYS & DROPS

KEY BENEFITS

- MANAGES PAIN:** Helps to treat inflammation, arthritis and joint pain.
- TREATS DIGESTIONAL ISSUES:** Helps with loss of appetite, nausea, IBS and gastrointestinal swelling.
- GENERAL HEALTH:** Helps to manage mood, anxiety and general joint pain. For healthy, happy pets.
- CONVENIENT:** Can be sprayed into pet's mouth or on food.

For more information, Call (780) 907-8642

SUDOKU



of the week

Here's How It Works: Sudoku puzzles are formatted as a 9x9 grid, broken down into nine 3x3 boxes. To solve a sudoku, the numbers 1 through 9 must fill each row, column and box. Each number can appear only once in each row, column and box. You can figure out the order in which the numbers will appear by using the numeric clues already provided in the boxes. The more numbers you name, the easier it gets to solve the puzzle!

Like puzzles? Then you'll love sudoku. This mind-bending puzzle will have you hooked from the moment you square off, so sharpen your pencil and put your sudoku savvy to the test!

ANSWER:

6	3	8	1	4	7	5	9	2
4	9	5	2	3	8	6	1	7
1	2	7	6	5	9	4	8	3
7	6	3	9	8	2	1	5	4
5	1	9	3	7	4	8	2	6
8	4	2	5	1	6	7	3	9
2	8	1	4	6	3	9	7	5
9	5	4	7	2	1	3	6	8
3	7	6	8	9	5	2	4	1

		8		4		5		2
	9			3				
1		7			9		8	
	6		9			1		
		9	3		4	8	2	
8		2	5			7		9
	8	1		6		9		
				2	1			
3		6				2	4	

Church Directory

Seba Beach Christian Fellowship

Sunday School 10:00a.m.
Worship Service 11:00a.m.

Weekdays Bible Study & Prayer

(780) 305-3594

Advent Lutheran Church

Sunday Worship & Sunday School 11:00a.m.

Evansburg
O: 747-3594

Roman Catholic Church

St. Agnes' Parish, Mayerthorpe
Sunday 9:00a.m.
St. Elizabeth Parish, Evansburg
Saturday 7:00p.m.

(780) 786-2032

St. Joseph's Catholic Church

Sunday Mass 11:30a.m.
Tuesday Mass 7:00p.m.

Wabamun, AB

St. Augustine's - Parkland Anglican Church

131 Church Rd., Spruce Grove
Sunday Service 10:00a.m.
Eucharist with Sunday School & Nursery
All are Welcome

Office 780-962-5131
www.staugustinesparkland.org

Parkland Baptist Church

Sunday Worship Service 10:30a.m.
All Welcome

121 Brookwood Drive
(780) 962-4101
www.parklandbaptist.ca

Word Church Apocalyptic Era

Border Paving Athletic Centre, 9 Tri Leisure Way, Spruce Grove (stairs in the Wild Rose room).
Ph: 780-962-7579

Service starts at 10:00 a.m. every Sunday morning, come all & be bless.

St. Anthony's Ukrainian Orthodox Church

6103 172 St. NW, Edmonton
Saturday:
Vespers 5:00PM
Sunday: Divine Liturgy 10:00AM
780.487.2167
santhonys@telusplanet.net
www.st-anthonys.ca

Stony Plain United Church

Sunday Service 10:30a.m.
5012-51 Ave. Stony Plain
Mewassin United Church
Sunday Service 9:00a.m.
Rev. Heather Koots
 Hwy 627 - Rg Rd 30
Ph: 780-963-4745

Immanuel Lutheran Church of Rosenthal

Sunday Worship Service 9:30a.m.
Sunday School

780-963-4048

Emmaus Lutheran Church

Sunday Worship Service 11:30a.m.

Rev. Robert Marshall
4604-56th Ave, Drayton Valley
Ph: 780-542-5101
www.emmauslutheran.ca

Church of God

Worship Service Sun. 11:00a.m.
Please contact for activities
5004-49 Street, Drayton Valley
Ph: 780-542-5091

Calvary Baptist Church

Pastoral Team: Kenton Penner

Sunday Worship 10:30a.m.
Youth & Ministries Info - calvbapt@telus.net
4401-50th Ave. Drayton Valley
780-542-4774
www.calvarybaptist.ca

Drayton Valley Alliance Church

Pastor John Haazen
Join us for Sunday Service at 10:30a.m. 5014-56 Ave. (next to Value Drug Mart) Programs for all ages
Ph: 542-6501 dvalliance.ca

All Saints' Anglican Church

10:30a.m. Sunday Worship
5212 47 Ave. Drayton Valley
(780) 542-5048
www.allsaintsdraytonvalley.ca

St. Anthony Catholic Church

WEEKEND MASS SCHEDULE:
Saturday 5:00p.m.
Sunday 12:00p.m.
4708-50 Ave. Drayton Valley
Parish Office: 542-5254

SERVICE DIRECTORY

Blakeman Drilling Ltd.
 Waterwell Drilling & Servicing
 Pumps & Pressure Systems
 SERVING LAC. STE. ANNE & WEST PARKLAND FOR OVER 25 YEARS
 Joe (780) 924-3024




DONALD N. GREENWAY
 Chartered Accountant
 Suite 205 Sunrise Professional Building
 215 McLeod Avenue
 Spruce Grove, AB
 (Bus.) 962-6366
 (Fax) 962-3990

Ernie's Repair & Service
 SMALL ENGINES
 4820 - 47 Avenue, EVANSBURG
 (780) 727-4433 C:514-0272



SLIMROAST Optimum
 DARK ROAST COFFEE
 YOUR LOGICAL SOLUTION TO WEIGHT MANAGEMENT
 (780) 907-8642



WABAMUN PHARMACY
 I.D.A.
 Box 90, 5120 - 51 Avenue
 Wabamun, AB T0E 2K0
 Ph: (780) 892-2278 Fax: (780) 892-2488

COMMUNITYVOICE
 YOUR LOCAL NEWSPAPER
THIS SPACE IS RESERVED FOR YOU!

ROY SHERWOOD
 Master Electrician
 Ph: 780-968-1425
 Cell: 780-908-2287
 Fax: 780-968-2211
 Email: suretechroy@gmail.com
 2-53220 Rge Rd 21
 Parkland County, AB
 T7Y 0C5
**Control & Automation
 Commissioning
 Solar Sales & Service**
 Industrial . Commercial . Residential



Pam Fennig Professional Corporation
 Chartered Professional Accountant
 Pam Fennig, CPA, CGA
 780-893-3421
 pam@fennigaccounting.ca
 Office address:
 200, 72 Boulder Blvd
 Stony Plain, AB T7Z 1V7

PURE HEMP PRODUCTS
 AGING IS INEVITABLE - LOOKING AND FEELING OLD ISN'T!
KEY BENEFITS:
 • Inhibits Cell Growth in Tumors
 • Relieves Pain
 • Promotes Health
 • Relieves Anxiety
 • Neuroprotective
 (780) 907-8642




PEMBINA CONCRETE PRODUCTS LTD.
 Manufacturers of
ONE PIECE SEPTIC & HOLDING TANKS
 * Water Cisterns * Field Systems * Pumps and Accessories * Sumps
 DELIVERED TO YOUR SITE
 1-800-661-3047
 780-727-2702
 PembinaConcrete.com
Concrete Statues, Fountains and Garden Ornaments.
 BOX 123, Entwistle, T0E 0S0



High-Performance Lifestyle Products
 100% MONEY BACK
 Call Today! (780) 907-8642
 www.bepic.com/elaine1
TRI-LAKES SERVICES LTD.
 • Septic Hauling • Drinking Water Delivery
 • Portable Washrooms • Steam Truck
 www.trilakeservices.ca / office@trilakes.services
 (877) 727-3939 / (844) 967-9176
 SERVING: • Lac Ste. Anne County • Parkland County • Yellowhead County East



PREVAIL MAX
 CELLULAR HOMEOSTASIS FORMULA
 How do you want your BLOOD to look?
 Before PrevailMAX: poor circulation, low energy, brain fog, dehydration, decreased nutrients, pH imbalance, poor endurance
 After PrevailMAX: better circulation, more vitality, mental clarity, cellular movement, nutrient assimilation, balanced pH, optimal endurance
 LIVING TRIM WITH VALENTUS
 (780) 907-8642
 www.ValentusTour.com/Ladybug



SERVICE DIRECTORY

Jack's Auto Body & 24 HR Towing **JACK'S CARSTAR** 24 Hour Towing
Collision & Glass Service

**SPECIALIZING IN COLLISION REPAIR
GUARANTEED WORK • INSURANCE CLAIMS**

CAA BOX 9 SITE 306 RR3, ONOWAY, AB T0E 1V0
(780) 967-5850

BACK COUNTRY PIPEFITTING LTD.
Plumbing & Heating

Lee Hicks 780-898-1062
Journeyman Plumber

Residential and Commercial Plumbing and Heating.
SERVING: YELLOWHEAD, PARKLAND, LAC STE. ANNE & BRAZEAU COUNTIES.

H&E UPHOLSTERY

FOR ALL YOUR UPHOLSTERY NEEDS

Convertible tops for cars and boats, custom car and boat interiors, 5th wheel trailer skirts, boat tarps, ATV seats, furniture, kitchen chairs, heavy equipment seats.

WWW.HANDE.CA 4-485 South Ave. Spruce Grove
For more information contact: **(780) 962-3048**
kirk@hande.ca

SERVING ENTWISTLE AND AREA FOR OVER 30 YEARS

Entwistle CONCRETE PRODUCTS LTD.

SAND & GRAVEL SALES

PH: (780) 727-3525
Dan McCracken Entwistle, AB
www.entwistleconcrete.ca

COMMUNITYVOICE YOUR LOCAL NEWSPAPER

THIS SPACE IS RESERVED FOR YOU!

SMOOLE

- Construction & Septic Installation
- Environmental Wastewater Disposal
- Site Design & Evaluation
- Power, Water & Basement Excavation
- Trackhoe, Backhoe, Bobcat & Dump Truck

For All Your Excavation Needs

Call Ione 780-305-7077 Reid 780-909-0173

CALIBRE DRILLING LTD
DRILLING AND SERVICING YOUR WATER WELL.

SPECIALISTS IN AIR & MUD ROTARY DRILLING

- Water Well Drilling
- Pump Installations
- Pressure Systems
- Well Tests
- Licensed Drillers
- Year Round Drilling
- Geotechnical Drilling
- Cathodic Protection
- Free Estimates

Quality Workmanship Five Year Warranty

(780) 960-2992
BOX 4083 SPRUCE GROVE, AB T7X 3B3

COMMUNITYVOICE YOUR LOCAL NEWSPAPER

THIS SPACE IS RESERVED FOR YOU!

SANGUDO VETERINARY CLINIC

Box 581, 4916 - 52 Ave. Sangudo, AB. T0E 2A0

Dr. Ralf Sanders DVM

Ph: 780-785-2200
Fax: 780-785-2228
sangudovet@gmail.com

24 HOUR EMERGENCY SERVICE

WEIGHTLOSS NEVER TASTED SO GOOD!

NEW! NEW! NEW! NEW!

(780) 907-8642 **VALENTUS**
www.ValentusTour.com/Ladybug

2Bros Custom Contracting Ltd.

Custom Framing • Concrete Floors • Shingling
Siding Soffit Fascia • Styrofoam Block System

Jeff 780-717-0520

SUMMERS DRILLING LTD.

Water well drilling and service
Family owned Business Serving Alberta since 1917

Never run out of water again!

5 year workmanship warranty

3 Convenient ways to pay

- Visa
- Mastercard
- We now offer full financing

Tired of hauling water?
We can install a water well with a permanent water supply for as little as \$150/month OAC

Stop in at our office 4405 - 50 Street, Stony Plain
780-963-1282
admin@summersdrilling.com

POSTINGFIRST.com

FREE LOCAL CLASSIFIED ADS
Real Estate, Rentals, Vehicles, Pets, Jobs, Service Directory, Buy/Sell/Trade, Lawn & Garden, Garage Sales, Events, Local Places & Much More... Advertise for FREE Today!

Follow Us

YouTube, Facebook, Instagram, Twitter, LinkedIn

H&P Kosik CONSTRUCTION Ltd.

- Road Building
- Gravel
- Sand
- Dugouts
- Black Dirt
- Clearing

No Job too small... We do them all!

Harvey cell. 780-445-9010 ph. 780-892-3532
Box 145, Darwell, AB. T0E 0L0

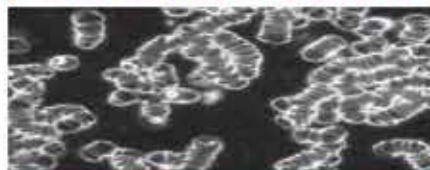
PREVAIL CELLULAR HOMEOSTASIS FORMULA MAX

A NUTRITIONAL BREAKTHROUGH THAT SUPPORTS YOU
...RIGHT DOWN TO THE LAST CELL!

How do you want your
BLOOD to look?



Before PrevailMAX:



- poor circulation
- low energy
- brain fog
- dehydration
- decreased nutrients
- pH imbalance
- poor endurance

After PrevailMAX:



- better circulation
- more vitality
- mental clarity
- cellular movement
- nutrient assimilation
- balanced pH
- optimal endurance

PrevailMAX™ is a nutritional breakthrough that delivers a rapid increase of internal blood cell pressure to speed absorption, enabling the body to take maximum advantage of the nutrients in foods and supplements. The electrolytes are small enough to penetrate your cell membranes, to bind with your cells, and to be carried wherever they are needed in the body.

At the microscopic level of human cells, **PrevailMAX™** supports healthy cell performance – a nutritional breakthrough for your cells.

When you use **PrevailMAX™**, you will feel more energy and an ability to focus like never before. Take a few sprays today and see just how good you can feel!

LIVIN TRIM WITH
VALENTUS

www.ValentusTour.com/Ladybug

(780) 907-8642