



# COMMUNITY VOICE

YOUR LOCAL NEWSPAPER



Serving: Alsike, Brazeau County, Breton, Calmar, Devon  
Drayton Valley, Leduc, Sunnybrook, Thorsby and Warburg.

## October 18, 2022

### LEDUC RCMP ARREST 33 PEOPLE DURING WARRANT ROUNDUP

Submitted by Leduc RCMP

Leduc RCMP Crime Reduction Unit (LCRU) with the assistance of officers from Leduc RCMP General Duty, conducted a two-week crime reduction initiative that targeted

offenders with outstanding arrest warrants in the Leduc RCMP Detachment area.

Officers proactively attended multiple residences and arrested offenders on outstanding warrants for a range of Criminal Code offences and Traffic

Safety Act offences. In total, there were 33 individuals arrested resulting in the execution of 82 warrants with a total of 146 charges.

The Leduc RCMP implement crime reductive initiatives to target

*Continued on Page 2*

### WE CONSERVATIVES WILL CUT TAXES ON GROCERIES, GAS, AND HEAT

Submitted by MLA Gerald Soroka

Not only are our seniors suffering financially. Our young families, single parents and all of our society are feeling the financial burden bestowed upon them by this Liberal government.

Our Conservative party has been asking the Trudeau Liberal government to halt planned tax hikes due to the rising cost-of -living. Let's look at what is happening to our seniors. The Liberals say they are helping seniors by increasing their OAS

by 10% for those aged 75+. With inflation rising, what about seniors aged 65 to 74? How will they cope with the drastic cost-of-living increases especially when the Liberals are willing to TRIPLE the carbon tax, making it more expensive to refuel,

feed and heat homes. Seniors look forward to their retirement and now they worry about making ends meet when their savings are quickly disappearing as they try to keep up with inflation.

*Continued on Page 2*

#### Wenham Valley Pet Cremation

Offers a places for your animal companion to be cremated



Urns, Clay Paw Prints, Necklaces

Located south of Warburg  
(780) 621-3531

#### INJURY LAWYERS

IGINLA & COMPANY

#### INJURED IN AN ACCIDENT?

- car accidents
- motorcycle accidents
- brain injury
- slip & fall accidents
- dog bites
- long-term disability

**(780) 423-1234**

call us for a free consultation

**Serving Leduc  
& surrounding areas**

check us out online [www.iginla.com](http://www.iginla.com)

#### TIMBER FRAMES



**780.686.3980**

**BIGWOODTIMBERCRAFT.COM**

#### Integrity WATER INC.

Water Treatment Sales & Service  
Free Estimates

- U.V. Lights
- Reverse Osmosis
- Water Softener
- Iron Filters
- Pressure Tanks
- Chlorination system
- Commerical Residential

Chris23dufault@gmail.com

780-909-7597

IntegrityWaterinc.ca



PUBLISHED WEEKLY (Zone 1 & 2)  
AND BIWEEKLY (Zone 3)

**E.J. Lewchuck &  
Associates Ltd.**

Box 3595  
Spruce Grove, AB  
T7X 3A8

#### TELEPHONE:

Advertising 962-9228

Fax 962-1021

#### E-MAIL:

comvoice@telusplanet.net  
news@com-voice.com

## Leduc RCMP Arrest 33 People During Warrant Roundup

*Continued from Page 1*

known offenders and address the root cause of crime in the area. Efforts are being made to target their criminal activities, and hold them accountable before the courts.

"This warrant round-up is a successful example of the targeted crime reduction initiatives Leduc RCMP use," says Sgt. Thomas Dimopoulos, LCRU NCO. "Between our warrant round-ups, crime hot spot patrols, targeting

prolific offenders and the crime reports we receive from community members, our goal is to reduce crime and in turn the impact of crime on our community."

## We Conservatives Will Cut Taxes On Groceries, Gas, And Heat

*Continued from Page 1*

I have received many emails and phone calls from those on a fixed income not able to keep up with expenses. In fact, inflation levels are the highest since January 1983.

I have risen in the House questioning and taking part in debates about the

difficulties our seniors are having with the rising cost-of-living. And the addition of a carbon tax only makes things worse for everyone. The NDP-Liberal government is raising not one tax hike, not two tax hikes, but three tax hikes in the next few months.

Our Conservative motion

in the House of Commons was voted down. It read:

"That, in the opinion of the House, given that the government's tax increases on gas, home heating and, indirectly, groceries will fuel inflation, and that the Parliamentary Budget Officer reported the carbon

*Continued on Page 3*



**SERENITY**  
FUNERAL SERVICE

**NEW FACILITY**  
Chapel & Reception Centre

600 Calahoo Road Spruce Grove, AB  
**780-962-2749** [www.serenity.ca](http://www.serenity.ca)

SERENITY FAMILY SERVICE SOCIETY - YOUR NOT-FOR-PROFIT SOCIETY

**FOOTHILLS Door Ltd.**

**DRAYTON VALLEY'S OVERHEAD DOOR SPECIALISTS SINCE 1982**

Monday - Friday: 8:00am - 5:00pm  
24-Hour emergency service available.  
Service Area: Drayton Valley • Edson • Camar  
• Rocky Mountain House • Surrounding areas

**No Job Is Too Big or Too Small**

**465045A HIGHWAY 22 PH: 780-388-3321**  
**DRAYTON VALLEY, AB T7A 1R7 FAX: 780-388-3372**

**JOKE** of the week

Apparently I was supposed to wait until October 31st to dress up like a ghost.

Guess I spook too soon.

**Valley Concrete**  
(2003) INC.

"SERVING SURROUNDING AREAS"  
**READY MIX CONCRETE**

- \* WASHED SAND & ROCK
- \* CONCRETE DYES & HARDENERS
- \* FIBREMESH
- \* PRECAST CONCRETE
- \* ALL COMMERCIAL & DOMESTIC REQUIREMENTS

[www.valcon.ca](http://www.valcon.ca)

5305 34 Ave  
Drayton Valley, AB, T7A 1S7

Phone: 780-542-5488  
Fax: 780-542-5568

# We Conservatives Will Cut Taxes On Groceries, Gas, And Heat

*Continued from Page 2*

tax costs 60% of households more than they get back, the government must eliminate its plan to triple the carbon tax."

What happened? The Liberals, NDP and Bloc all vot-

ed against our motion.

An Angus Reid Institute poll found that 88% of Canadians now say they've had to cut back on spending in one form or another to deal with inflation. Nearly half of Canadians say they are worse off financially

than they were a year ago.

Since the House returned in January of this year, I have put forward, along with my Conservative colleagues, our concerns about the difficulties our seniors are facing as they try to make ends meet.

We Conservatives will continue to press this Liberal government. Enough with the taxes. Don't they realize that everyone in Canada is suffering financially?

## RECRUITMENT EFFORTS UNDERWAY FOR CITY BOARDS AND COMMITTEES

Submitted by City of Leduc

Volunteer to help influence municipal programs

Until Nov. 1, 2022, the City of Leduc is actively recruiting to fill 27 positions on six city-supported boards and committees, which include:

- Assessment Review Board (1 position)
- Leduc Environmental Ad-

visory Board (6 positions)

- Leduc Library Board (2 positions)

- Leduc Parks, Recreation and Culture Board (3 positions plus 1 Leduc County citizen)

- Subdivision and Development Appeal Board (1 position)

- Youth Council (13 positions)

Duration terms for each board vary from one to three years. Most positions are volunteer, except for quasi-judicial boards, like SDAB and ARB where the members are compensated.

Individuals are encouraged to apply with a cover letter and resume before 4 p.m. on Nov. 1



## GROVE HEARING CLINIC

**960-2960**

**1-866-960-2960**

**Hear what you've been missing...**

**Senior Discounts**



**Full Service & Repair**

**Full Hearing Assessments**

**HOURS OF OPERATION: 9am – 5pm Weekdays**

**3rd party billing (AADL, WCB, DVA, FCH) • Personal 0% Financing if Needed**

**For The Latest Technology In Hearing Aids & Assisted Living Device Stop By & See Dawn**

**#220-70 McLeod Ave - Westland Market Mall, Spruce Grove**

# ARTICLE BY MLA SMITH

Submitted by MLA Mark Smith

Alberta is once again a lighthouse for all those seeking freedom, opportunity, and prosperity.

According to Statistics Canada, Alberta saw a net gain of approximately 10,000 people in the second quarter of 2022. This makes four consecutive quarters of positive net migration to our province.

Whether it's affordable homes, low taxes, good jobs, or world-class quality of life – families and businesses from across Canada are choosing to come to our province and participate in the new Alberta Advantage.

The real numbers are very exciting. From January to June 2022, we welcomed 15,208 people from other provinces. Over the past

four quarters, we welcomed 23,132 people. But these latest second quarter numbers are the highest provincial migration numbers we've seen since the second quarter of 2014 and serve as a strong signal that Alberta is truly back on the right track.

Contrast this with the grim reality we witnessed under Rachel Notley and the NDP. Back then, Alberta experienced 13 consecutive quarters of negative net migration, all while we lost hundreds of thousands of jobs and billions of dollars of investment. When the NDP was in government, people spoke with their feet and left. Today, people are coming back.

Jobs and investment are also pouring back into Alberta, as we lead the nation in economic growth. By

cutting taxes and red tape, and by launching initiatives like Alberta Jobs Now and Alberta at Work, our United Conservative government is continuing to do all it can to make Alberta the best place in the world to live, work, play, start a business, and raise a family.

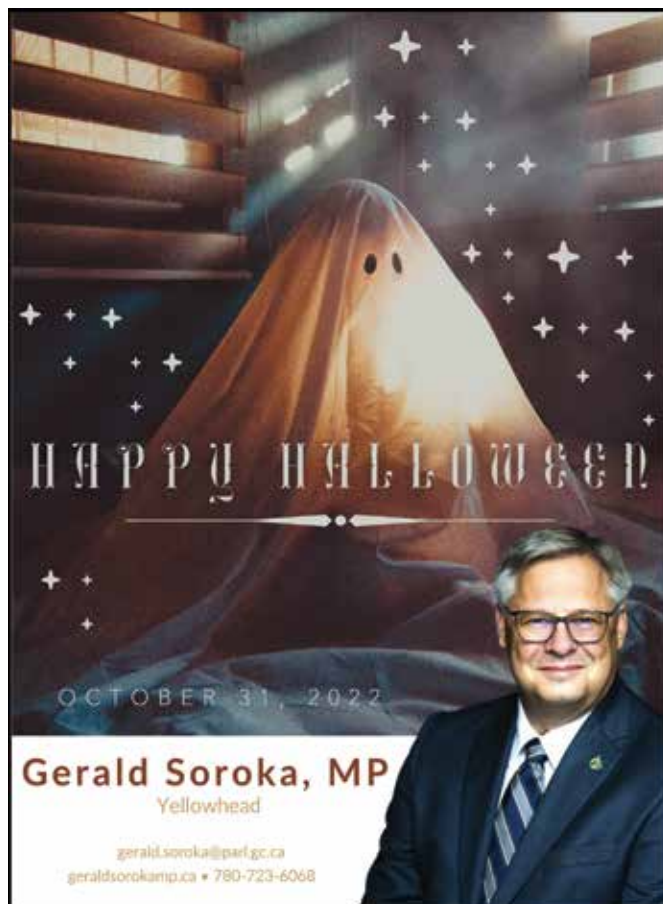
As more jobs are created, however, more skilled workers are needed to fill them, which is why these positive net migration numbers are so welcome. Right now, Alberta is estimated to have more than 100,000 job openings. To help address these labour challenges, our government launched a new advertising campaign called Alberta is Calling to highlight all the benefits of living and working in Alberta as opposed to egregiously expensive cities like Toronto and Vancouver.

Clearly, the message is getting through.

More than just a destination for business, Alberta is once again a place where everyday people see hope and opportunity for the future. People are choosing Alberta again, and this is good news for all of us.

For generations, Canadians came to Alberta in search of better lives and better futures. Now, a new generation is following in their footsteps and heading west to participate in the promise of Alberta.

Our entire United Conservative government welcomes these new Albertans and wishes them nothing but success and happiness in our great province, now and for generations to come.



**HAPPY HALLOWEEN**

OCTOBER 31, 2022

**Gerald Soroka, MP**  
Yellowhead

gerald.soroka@parl.gc.ca  
geraldsorokamp.ca • 780-723-6068



**EDMONTON – Capital Region**

# GUN SHOW

**SATURDAY & SUNDAY**  
**October 22 & 23 2022**

Located at "The Pavilion at Heritage Park"  
5100 -41 Avenue, Stony Plain, AB

**VIEW~BUY~SELL~TRADE**  
**ANTIQU~MODERN~MILITARY**

**RIFLES, SHOTGUNS, PISTOLS, CARTRIDGES, KNIVES, MILITARY ITEMS, PIONEER ITEMS, BOOKS, ECT.**

**PUBLIC WELCOME - FREE PARKING ADMISSION: \$10**

**SATURDAY 10:00AM-5:00PM**  
**SUNDAY 9:30AM-3:00PM**

**SET-UP TIME FOR EXHIBITORS - starts Oct 21:**  
**FRIDAY: 3:00PM-8:00PM; SATURDAY: 7:30AM-9:30AM**

**TABLE RENT: \$60 PER 6' TABLE**

**ALBERTA HEALTH REQUIREMENTS WILL BE ADHERED**

**CONCESSION PROVIDED BY THE STONY PLAIN CANADIAN LEGION**

**FOR MORE INFORMATION CALL:**  
Darren (780) 473-3032  
EMAIL: [edmgunshow@hotmail.com](mailto:edmgunshow@hotmail.com)

**UPCOMING 2022 EDMONTON GUN SHOWS DATES**  
Dec 3 & 4 2022

# LEDUC INTRODUCES PARKING BANS THIS SNOW REMOVAL SEASON

Submitted by City of Leduc

Temporary parking bans will be introduced in the City of Leduc this winter to allow for safer and more efficient snow removal on arterial, collector and residential roads. This change to the City's snow removal program was approved on Monday, Sept. 26, as part of a series of amendments to the City's Traffic Bylaw.

Vehicles parked on the impacted roads when a temporary parking ban is in effect may be tagged and towed; vehicle owners will face a fine of up to \$250 with towing expenses included. The ban ends once the road has been cleared.

Residents can anticipate two types of parking bans:

Seasonal parking ban

- Will impact arterial and collector roads. Motorists will be given 24 hours' notice to move their vehicles before the parking ban is in effect. Signage will be installed in the coming months to identify which roads will be impacted.

Residential snow removal parking ban

- Will impact residential roads. Signage will be placed at the entrance to neighbourhoods giving

motorists 48 hours' notice to move their vehicles before the parking ban is in effect. Residential parking bans will rotate as crews move through residential neighbourhoods in the City.

"Our hardworking City crews do a great job clearing snow every winter," says City of Leduc Mayor Bob Young. "The parking bans will help them to remove snow faster and provide us with cleaner and safer roads to travel on."



**Home hardware building centre** Drayton Valley  
**542-4044**  
 ON US: 1-888-542-9663

**For ALL your renovation and material needs, SHOP LOCALLY!**

4221 - 50 Street Drayton Valley

**JADE**  
 Plumbing & Heating Ltd.

- ◆ Gasfitting ◆ Plumbing
- ◆ Hot Water Heating
- ◆ Furnace Repairs ◆ Maintenance
- ◆ Residential ◆ Commercial

**24-Hour Emergency Service**

Box 5050 Call JUSTIN  
 Devon, AB T9G 1X8 **987-4950**

WORLD DAY FOR  
**POVERTY ERADICATION**

OCTOBER 17, 2022

**Gerald Soroka, MP**  
 Yellowhead

gerald.soroka@parl.gc.ca  
 gerald.sorokamp.ca • 780-723-6068

# MP SOROKA'S STATEMENT ON AFFORDABILITY

Submitted by MP Gerald Soroka

Gerald Soroka, Member of Parliament for Yellowhead, gave the following statement in the House.

"Mr. Speaker, our new Conservative leader will put people's pay-cheques, homes, retirement and country first. Canadians have lost hope in this government due to the af-

fordability crisis and service levels. By choosing to retain and increase the carbon tax, this government has failed to secure a brighter future for Canadians, much less remedy the ongoing affordability crisis. This gross mismanagement has resulted in long lineups at airports and passport offices, delays in processing immigration and firearms'

applications, and the list goes on.

The Liberals have managed to hike the cost of everything, while offering nothing to serve Canadians' needs. Limiting farmers' fertilizer use and imposing the carbon tax will mean less food production and higher costs for Canadians who are already struggling to afford groceries. Why is the

government choosing to decrease the availability of food altogether?

This government can deflect, deny and blame all they want, but the facts remain – they have insufficiently addressed the cost-of-living crisis: too little, too late."

## CONSERVATIVES ARE ON YOUR SIDE

Submitted by MP Gerald Soroka

As the Official Opposition, we Conservatives tabled the following motion in the House:

"That, in the opinion of the House, given that the government's tax increases

on gas, home heating and, indirectly, groceries, will fuel inflation, and that the Parliamentary Budget Officer reported the carbon tax costs 60% of

households more than they get back, the government must eliminate its plan to triple the carbon tax."

The Trudeau Liberal Government plans to raise the carbon tax from the current level of \$50 a tonne to \$170 a tonne by 2030, with increases each and every year even though in 2019 the Liberals promised the plan would not increase the price (carbon tax) post-2022. The Supreme Court

of Canada has confirmed that the federal government can impose its own carbon tax as a backstop. This is a problem. Higher gas prices harm household budgets, it also increases transportation costs and in turn raises prices on groceries and other consumer goods – all increasing inflation.

Earlier this year the Bank of Canada stated: "if the charge (carbon tax) were to be removed from the three main fuel com-

ponents of the consumer price index (gasoline, natural gas and fuel oil) it would reduce the inflation rate by 0.4 percentage points. In other words, if that policy had come into effect at the start of the year, January's inflation rate would have been 4.7% instead of 5.1%."

As the Official Opposition we are calling on this Trudeau Liberal government to stop its planned tripling of the carbon tax.

## GOVERNMENT OF CANADA ANNOUNCES NEW FRAMEWORK FOR DIABETES IN CANADA

Submitted by MP Gerald Soroka

Gerald Soroka, Member of Parliament for Yellowhead, wishes to advise that the Government of Canada has announced \$35 million over five years for research, surveillance and prevention, and to work towards the development of a national framework

for diabetes. The Framework outlines common policy direction to align efforts to improve prevention and treatment for all types of diabetes and to ensure better health outcomes.





# *fall...* **AUTO TUNE-UP**

The Businesses in  
the following Guide  
can be your One Stop  
Solution to all your  
Automotive Needs!

# AutoTUNE-UP

## HOW TO PROTECT YOUR CAR'S RESALE VALUE

Few drivers start thinking about resale value when driving a new car off of the dealership lot for the first time. Still enamored with that new car smell, drivers can be excused for not thinking of resale value as they put the pedal to the metal and speed off in their brand new ride.

But it's never too early to start protecting a vehicle's resale value, especially if you hope to recoup as much of your vehicle investment as possible when the time comes to sell your car or trade it in for a new-

er model. The following are some ways motorists can protect the resale value of their vehicles from the moment the dealer tosses them the keys.

- Keep all maintenance records. New cars typically do not require much maintenance. But drivers should keep records of all work and maintenance done on their vehicles, even if that work does not extend beyond routine tuneups or oil changes. Keeping maintenance records shows prospective buyers you priori-

tized taking care of the vehicle over the years, and that makes the car or truck more attractive to preowned vehicle buyers who want to avoid buying a lemon or a car that has not been taken care of.

- Don't overlook looks. Looks can be deceiving, but new car buyers who eventually plan to sell their vehicles should do all they can to keep the car looking as new as it did the day it was first driven off the dealership lot. Much like homeowners benefit when selling a home with curb

appeal, a car that looks good gives buyers the impression that it was well taken care of. But a dirty car or one with lots of dings and dents is a red flag to preowned car buyers.

- Keep a clean interior. New car owners typically maintain some strict rules with regard to food and beverages in their vehicles. After all, no one wants their brand new car to succumb to stains or spills. But the longer drivers have a car the more lax they tend to become with regard

*Continued on Page 9*



**NITRO NUT Mechanical**

We now carry Manuli! They are a European manufacturer and they engineer it all in Europe. All of their product is produced in their own factory, no outsource. Adding this in we have been able to gain access to many of the European fittings that have become much more common in North America.

**BSPP, Metric Din, Metic cone, JIS.**

These fittings are clear across all brands John Deere, Case, New Holland, JCB, Fendt, Massey Ferguson. Many of the implements that have been sold in the last few years have also used these predominantly European fittings.

**We offer these services**

- CVIP Inspections
- Hydraulic hose crimping and thousands of adapters in stock.
- A/C Repair
- Espar and Webasto Repair, Installation.
- Engine Repair and Rebuilding.
- Power train/Driveline repair and service.
- Suspension and frame repair.
- Two Fully equipped service trucks for mobile needs.

**WE STOCK PARTS FOR ALL MAKES AND MODELS OF TRUCKS, DRIVELINE & ENGINES.**

**We repair**

- Truck Transport
- Heavy Equipment
- Automotive
- Industrial
- School Bus
- Agriculture

**Nitro Nut Mechanical**

Shop 780.789.3322 • Fax 780.789.3331  
Toll Free 1.855.789.3322 • [www.nitronut.com](http://www.nitronut.com)  
email: [nitronutmech@hotmail.com](mailto:nitronutmech@hotmail.com)

**49019 RANGE ROAD 22 SUNNYBROOK, AB**



**WINTER is COMING**

**ARE YOU READY?**

We have one of Drayton Valley's **BIGGEST SELECTION** of **WINTER TIRES!**

**NEW FACILITY**

**OUT OF PROVINCE CVIP**

**TREAD PRO**

Tire Centres

**DRAYTON'S SHOP AUTOMOTIVE SERVICES & TIRES 780-514-5795**

**HOURS OF OPERATION:**  
BY APPOINTMENT ONLY

**LICENSED DEALER**

**7329 TWP. RD. 505 Drayton Valley**

# AutoTUNE-UP

## How To Protect Your Car's Resale Value

*Continued from Page 8*

to allowing food and drinks into their cars, and that can ultimately hurt the resale value of the vehicle. Maintain a clean interior whether you just bought the car or have driven it for a few years. Much like an impressive exterior leaves a lasting impression, a clean interior that has not succumb to coffee stains or muddy boots is more likely to impress buyers than a car with an interior that has seen better, cleaner days.

- Drive defensively. It's not just what you do to a car but how you drive the car that can affect its resale value. Driving defensively reduces your risk of accident, and an accident-free preowned vehicle is a top priority for potential buyers. But driving defensively also reduces wear and tear on your vehicle, as over time constant stop-and-go, aggressive driving takes its toll on vehicle engines and other components.
- Periodically examine

the vehicle history report. Today's preowned car buyers know to ask for a vehicle history report before buying a car. If your vehicle history report contains any suspicious or inaccurate information, you may be forced to sell the car for less than it's worth or delay selling until you can have any issues corrected. That won't necessarily happen overnight, but you can avoid dealing with a host of issues all at once by periodically examining the vehicle

history report. Any discrepancies on the report can be brought to the attention of your insurance company, who can then work with you to correct the issues and restore your vehicle's reputation.

Resale value may not be foremost on the minds of new car owners, but the earlier buyers begin to factor resale value into their car-care routines, the more they will benefit down the road.

**LONE WOLF MECHANICAL**  
HEAVY DUTY SERVICE & REPAIR  
CVIP Inspections  
**587.643.WOLF (9653)**  
lonewolfmechanic@hotmail.com  
www.lonewolfmechanic.com  
4813 - 50 Ave Thorsby

**Merv's Truck Parts Ltd.**  
WARBURG, AB  
THERE IS A DIFFERENCE  
**Tel: 780-848-7667**  
**Toll free: 1-800-806-3707**

**NAPA AUTO PARTS**  
• Auto Parts & Accessories  
• Body Shop Supplies  
• Agricultural & Industrial Parts  
• Shop Equipment  
*We are real Auto Parts People*  
**120 St. Matthews Ave, Spruce Grove**  
**962-4421 Fax: 962-3464**  
MasterCard VISA

**W.V. REPAIR SERVICES LTD.**  
Agriculture & Heavy Duty Repairs  
(NO AUTOMOTIVE REPAIRS)  
Air Conditioning - in Shop & Mobile Service  
CVIP Inspections, Hydraulic Repair, Hoses Made  
**EXPERIENCED MECHANIC 30+ YEARS**  
**WALLY 780-305-1315**  
SHOP IS LOCATED JUST 10 MIN SOUTH OF SANGUDO

# LEDUC RCMP NOTICE AN INCREASE IN MOTOR VEHICLE THEFT

Submitted by Leduc RCMP

With colder weather approaching, Leduc RCMP are reminding citizens to ensure they don't leave their vehicles running or unattended for any period of time.

The police understand the desire to warm up vehicles in the cold weather, but it takes a short time for your vehicle to be stolen. When comparing Jan - Sept. 20, 2021 to Jan - Sept. 20, 2022 there was a 78%

increase in theft of motor vehicles with the most frequently stolen vehicle being trucks, which accounted for 62% of thefts in 2022. From Jan. - Sept. 20, 2022, 27% reported having left keys in their vehicle.

"This intelligence based information tells us that some stolen vehicles are additionally used in the commission of other crimes including break and enters, dangerous driving and flight from police" says Constable Cheri-Lee Smith. "If ev-

eryone can take steps to reduce the number of vehicle thefts by following some crime prevention strategies, motor vehicle thefts will be greatly reduced."

In an effort to prevent any further theft of vehicles, the RCMP are reminding the public of the following vehicle safety tips:

- Park in a secure well-lit location
- Never leave an idling vehicle unoccupied, even when it is locked

- Use a remote starter and keep your vehicle locked

- Use a steering wheel lock to deter thieves

- Never leave children in an unattended running vehicle

- Never leave spare keys or garage door openers in or around your vehicle

- Always lock the door leading from the garage to your vehicle

- If your keys are lost or stolen, change your locks immediately

# ALBERTA RCMP INTEGRATED BORDER ENFORCEMENT TEAM LAY CHARGES FOR IMPORTING PROHIBITED DEVICE

Submitted by Alberta RCMP

An investigation launched by the Alberta RCMP Federal Policing Integrated Border Enforcement Team (IBET) has resulted in charges laid against a man for importing prohibited devices, which included 5 pistol selector switches to convert a Glock handgun from semi-automatic to fully auto-

matic.

On August 17, 2022, Yuriy Bilonog, 43, a resident of Spruce Grove, Alta., was charged with the following offences:

- Importation of Prohibited Device under section 104(1)(A) of the Criminal Code;
- Possession of Prohibited Device under section 91(2) of the Criminal Code; and
- Smuggling a Pro-

hibited Device under section 159(1) of the Customs Act.

Bilonog is scheduled to appear in court on Oct. 5, 2022, at the Stony Plain Provincial Court.

IBET is an integrated federal policing unit based out of Calgary and Edmonton that contributes to maintaining Canada's safety and security including the land and air bor-

der domains in Alberta. Their mandate is to enhance border integrity and security along the shared border, between designated ports of entry, by identifying, investigating and interdicting persons, organizations and goods that are involved in criminal activities. The unit is comprised of members of the Alberta RCMP, CBSA and Calgary Police Service.

## SUDOKU

*of the week*

**Here's How It Works:** Sudoku puzzles are formatted as a 9x9 grid, broken down into nine 3x3 boxes. To solve a sudoku, the numbers 1 through 9 must fill each row, column and box. Each number can appear only once in each row, column and box. You can figure out the order in which the numbers will appear by using the numeric clues already provided in the boxes. The more numbers you name, the easier it gets to solve the puzzle!

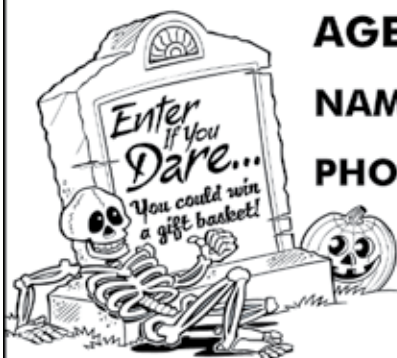
**Like puzzles?** Then you'll love sudoku. This mind-bending puzzle will have you hooked from the moment you square off, so sharpen your pencil and put your sudoku savvy to the test!

	1				3		7
		7	1		4		8
8			4		7		6
		5	7		8	1	3
6	8		2		9		
					2		
					6		7
			9		1	8	
7		2	8		4		

**ANSWER:**

5	1	4	6	8	2	3	9	7
3	6	7	1	9	5	4	2	8
8	2	9	4	3	7	5	6	1
2	4	5	7	6	8	1	3	9
6	8	3	2	1	9	7	4	5
9	7	1	5	4	3	2	8	6
1	5	8	3	2	6	9	7	4
4	3	6	9	7	1	8	5	2
7	9	2	6	5	4	6	1	3

# CREEPY, CRAWLY HALLOWEEN COLORING CONTEST



**AGE GROUPS: 3-4 YRS | 5-6 YRS | 7-9 YRS | 10+ YRS**

**NAME:** \_\_\_\_\_ **AGE:** \_\_\_\_\_

**PHONE:** \_\_\_\_\_ **TOWN:** \_\_\_\_\_

**Entries must be recieved by October 27, 2022.**

**Mail to: Jack O'Lanterns, c/o Community Voice  
 Box 3595 Spruce Grove, AB T7X 3A8**

# GOVERNMENT OF CANADA TO REMOVE COVID-19 BORDER AND TRAVEL MEASURES

Submitted by Government of Canada

Since the beginning of the pandemic, the Government of Canada has taken a layered approach to border management to protect the health and safety of Canadians. As the pandemic situation has continued to evolve, adjustments to border measures have been informed by the latest evidence, available data, operational considerations, and the epidemiological situation, both in Canada and internationally. Today the Government of Canada announced the removal of all COVID-19 entry restrictions, as well as testing, quarantine, and isolation requirements for anyone entering Canada.

The removal of border measures has been facilitated by a number of factors, including modelling that indicates that Canada has largely passed the peak of the Omicron BA.4 and

BA.5 fuelled wave, Canada's high vaccination rates, lower hospitalization and death rates, as well as the availability and use of vaccine boosters (including new bivalent formulation), rapid tests, and treatments for COVID-19.

Effective October 1, 2022, all travellers, regardless of citizenship, will no longer have to:

- submit public health information through the ArriveCAN app or website;
- provide proof of vaccination;
- undergo pre- or on-arrival testing;
- carry out COVID-19-related quarantine or isolation;
- monitor and report if they develop signs or symptoms of COVID-19 upon arriving to Canada.

Transport Canada is also removing existing travel requirements. As of October 1, 2022, travellers will no longer be required to:

- undergo health checks for

travel on air and rail; or

- wear masks on planes and trains.

Although the masking requirement is being lifted, all travellers are strongly recommended to wear high quality and well-fitted masks during their journeys.

Cruise measures are also being lifted, and travellers will no longer be required to have pre-board tests, be vaccinated, or use ArriveCAN. A set of guidelines will remain to protect passengers and crew, which will align with the approach used in the United States.

Individuals are reminded that they should not travel if they have symptoms of COVID-19. If travellers become sick while travelling, and are still sick when they arrive in Canada, they should inform a flight attendant, cruise staff, or a border services officer upon arrival. They may then be referred to a quarantine officer who will decide whether

the traveller needs further medical assessment as COVID-19 remains one of many communicable diseases listed in the Quarantine Act.

The Government of Canada also reminds travellers to make informed decisions when considering travel outside of Canada to protect their health and safety. They are encouraged to review the travel health notices at <https://travel.gc.ca/travelling/advisories> for more information on safe travel.

Canadians can continue to do their part to protect themselves and others, and reduce the spread of COVID-19, by getting vaccinated and boosted, using high quality and well-fitted masks where appropriate, self-isolating if they have symptoms and self-testing if they can.

## Leduc Floor Covering & Upholstery Ltd.

SERVING LEDUC & AREA SINCE 1976



\* Carpet \* Lino \* Luxury Vinyl Plank & Tile  
\* VC & Ceramic Tiles \* Hardwood \* Laminate  
\* Full Upholstery Shop \* Fabrics & Supplies

*Let us carpet your castle!*

#9, 4407 - 66 Ave  
Leduc, AB T9E 7E2

**(780) 986-4159**  
[www.leducfloorcovering.ca](http://www.leducfloorcovering.ca)

## BAUMANN'S HOE & BOBCAT LTD.

R.R.#1, THORSBY, ALBERTA T0C 2P0  
PHONE: (780) 789-3843 FAX: (780) 789-2242  
EMAIL: [bsusi@xplornet.com](mailto:bsusi@xplornet.com)

**780-986-1295** 6051-47 Street, Leduc, AB  
[www.leducoverheaddoor.com](http://www.leducoverheaddoor.com)

## G&N CONTRACTING

**CONTRACTING PH: (780) 789-2210**

Email: [GNcontr@gmail.com](mailto:GNcontr@gmail.com)  
4915 Hankin St. Thorsby, AB T0C 2P0

# Classified Ads - Call 962-9228

## Classified Policy

**CLASSIFIED RATES**  
 INCLUDE GST. 1st 20 Words:  
 First Insertion = \$6.00;  
 Subsequent insertion =  
 \$3.00 each. (Eg: 2 insertions  
 = \$9.00; 3 insertions =  
 \$12.00; 4 insertions =  
 \$15.00; etc) Each additional  
 word is 20 cents per word,  
 per insertion. **BOLD/**  
**CAPITAL** text available for  
 an additional \$1/line. Ads  
 must be paid in advance.  
 No Refunds Allowed on  
 Classified Ads. **DEADLINE:**  
 is Thurs. 4:00 pm. Classified  
 ads may be called in to the  
 COMMUNITY VOICE office  
 at (780) 962-9228, emailed  
 to: comvoice@telusplanet.  
 net Ads may also be placed  
 on the web at [www.com-voice.com/classified.htm](http://www.com-voice.com/classified.htm)

## Hall Rentals

Lodgepole Community Hall  
 - (780) 894-2277

Manley Goodwill  
 Community Hall, 780-920-  
 3217

## Firewood

Outlaw Firewood Sales -  
 Wood starting at \$150 per  
 cord, dry split firewood,  
 pine., Tamarack and Birch.,  
 small and bulk volumes  
 available, no fee if within  
 80km of yard. Text 780-621-  
 7200

## For Rent

## Services

**CEILING & WALL  
 CLEANING** Refresh your  
 home or business Nano.  
 kills germs, odours, &  
 disinfects! We clean any  
 type ceiling. "Don't Paint"

Seniors discount!, Call  
 Nano Clean 780-914-0323,  
 Edmonton (2) 10-18



## PURE HEMP PRODUCTS

AGING IS INEVITABLE - LOOKING AND FEELING OLD ISN'T!

**A Health and Beauty Breakthrough!**  
 Cannabidiol, is one of over 80 active cannabinoid chemicals in the hemp plant. Unlike, THC, it does not produce euphoria or intoxication. It targets specific receptors in the cells of your brain & body. There are many physical and mental benefits to using these products for both treatment and prevention of numerous ailments.

**Therapeutic Uses For Pure Hemp**  
 Supports healthy blood sugar levels, promotes healthy energy levels, relieves anxiety, aids in digestion, supports optimal immune function and the regeneration of healthy cells, and promotes a sense of serenity and overall well-being.

**Anti-Aging Uses For Pure Hemp**  
 Promotes more youthful skin, provides hydration, enhances radiance, lessens age lines as well as the appearance of dark spots.

**KEY BENEFITS**  
**PAIN RELIEF:** Known to reduce vomiting & nausea; suppress muscle spasms; reduce seizures & convulsions.  
**PROMOTES HEALTH:** Helps to promote relaxation and overall health.  
**WELL-BEING:** Helps to relieve anxiety, aid in digestion, supports optimal immune function and the regeneration of healthy cells.

## PET PRODUCTS

### PET CHEW TREATS

**KEY BENEFITS**  
**SYNERGISTIC BENEFITS:** Can be used in conjunction with regular medications with no side effects.  
**NO SIDE EFFECTS:** Does not damage the liver, kidney or GI Tract like OTC medication.  
**DIETARY SUPPLEMENT:** Can be administered daily as part of your pet's diet.

### ORAL SPRAYS & DROPS

**KEY BENEFITS**  
**MANAGES PAIN:** Helps to treat inflammation, arthritis and joint pain.  
**TREATS DIGESTIONAL ISSUES:** Helps with loss of appetite, nausea, IBS and gastrointestinal swelling.  
**GENERAL HEALTH:** Helps to manage mood, anxiety and general joint pain. For healthy, happy pets.  
**CONVENIENT:** Can be sprayed into pet's mouth or on food.

**For more information, Call (780) 907-8642**

# COMMUNITY EVENTS

If you are a LICENSED, NON-PROFIT ORGANIZATION, you are welcome to submit your announcement FREE of charge, space permitting. You are required to submit your non-profit number. Call (780) 962-9228. Please note that all submitted event listings must be limited to 200 characters or less (including spaces). DEADLINE: 12 noon Friday prior to publication (Thursdays on long weekends).

MISTLETOE CRAFT AND BAKE SALE AT THE LEDUC AND DISTRICT SENIOR CENTRE, TELFORD HOUSE DECEMBER 3&4, 4907-46 ST LEDUC

## FARMERS MARKETS

**DRAYTON VALLEY:** Evergreen Farmers' Market, Wednesdays at the Mackenzie Center of the Omniplex from 10:30AM-1:30PM. [www.dvergreenfarmersmarket.ca](http://www.dvergreenfarmersmarket.ca)

**EVANSBURD FARMERS MARKET:** Every Saturday 10am - 2pm located right beside Evansburg Tipple Museum 780-505-0905

**May-Sept Leduc Public Market:** Every Thursday 10-2 @ City Center Mall. 5201 50 st. Leduc Betty 780-916-1845

## BINGO

**CALMAR:** Every Wednesday night, 7:00PM at the Calmar Legion.

## JAMBOREE

**DRAYTON VALLEY:** Last Sunday of month. Upstairs @ the "55 Rec. Center" Doors at 12PM, Starts at 1PM. 780-542-4378

**Edmonton Northwest Senior's Center:** 12963 - 120st NW, Every Wed From 1-3:30pm Aug & Sept Admin: \$5 non members \$2 members Yearly membership \$30

## TOPS (Take Off Pounds Sensibly)

**DEVON:** Wed. at 9:30AM at Riverside Baptist Church, 2 Saskatchewan Dr., Devon. Contact Brenda at 987-9113 for info.

**EDMONTON:** Thurs 8:30-10AM at Annex of Grace United Church (6215-104 Ave). \$7/month

**LEDUC:** Tuesday Nights at Peace Lutheran Church, 4606 - 48 St. Leduc. Weigh-ins: 5:45-6:30PM, Meeting 7:00-7:30PM.

Call Marie at 780-986-6477.

**THORSBY:** meeting every Monday morning 9:00AM at Thorsby Fire Hall. Call 780-621-3461.

## SOCIAL EVENTS

**50+ YOUNG AT HEART LUNCHEON** for Parkland County Seniors. 12PM at Stony Plain United Church Basement, \$7 per plate. 3<sup>rd</sup> Wed of Each Month, Sept - June. For reservations call Audrey 780-963-1782.

**CALMAR SENIORS BUS:** to West Edmonton Mall - 1<sup>st</sup> Wed. 9:30AM; Seniors' Birthday Party - every 3<sup>rd</sup> Wed. 1:30PM; Meetings - every 2<sup>nd</sup> Wed of every month. 1:30PM. (780) 985-3117.

**DEVON RECREATION:** Volleyball, Mondays 8-10PM, \$2, John Maland High School. Badminton, Fridays 7-9PM, Robina Baker School, \$2. Hockey (Arena), Tues & Thurs, noon (children under 15 must be accompanied by an adult).

**INDOOR PLAYGROUND:** Mondays, 10AM-12PM, Alder Flats Community Centre. Info (780) 388-3333 No fee. Please bring a snack for your child.

**JAM DANCE & CARDS:** 1<sup>st</sup> Fri, 7PM, Buck Creek. (780) 514-3781

**"KIDS OWN WORSHIP"** an hour after-school, 1<sup>st</sup> and 3<sup>rd</sup> Thursdays each month. Songs, Crafts, Snacks and FUN! No charge. Call All Saints' Anglican Church. (780) 542-5048

**MUSICAL JAM SESSIONS:** 4<sup>th</sup> Tues, 1:00PM at Calmar Seniors Centre. Bring your own instruments and have fun.

**MUSIC JAMBOREE:** Last Sunday of each month. Upstairs @ the "55 Rec. Center" Doors open at 12PM, Starts at 1PM. 780-542-3768

**MUSICAL PROGRAM:** every 4<sup>th</sup> Saturday at the Cloverleaf Manor, 2:30PM. Everyone welcome.

**ST. DAVIDS JR. CHOIR** is seeking singers ages 7-13. Boys and girls are welcomed. Rehearsals

in Leduc Tuesdays 3:45- 5PM. Contact 780-432-7805.

**WARBURG ARENA HOSTS FREE SHINNY HOCKEY,** Sun 2:30 - 3:45PM & Mon /Wed 4-5:45PM, arena closures & cancellations can be heard on recorded messages, call Arena 780-848-7581

**WARBURG ARENA HOSTS FREE PUBLIC SKATING,** Sundays 1-2:30PM & Fridays 4-5:45PM, call arena for closure dates

## MEETINGS

**AHS:** Addiction Services provides assessment and counseling for alcohol, other drugs, tobacco and gambling in Breton on court day Wednesdays. To make an appointment, please call 780-542-3140.

Do you have a problem with alcohol & are you looking for an **AA MEETING** or someone to talk to? Call Toll Free 1-877-404-8100. **Drinking a Problem?** There is a Solution, call AA 780-491-1043

**ALDER FLATS AG SOCIETY:** 3<sup>rd</sup> Wed, 7PM, Community Centre. Call (780) 388-3318 for more info.

**BRETON COUNCIL MEETINGS:** 2<sup>nd</sup> Tuesday of each month at 7PM at the Council Chambers, Carolyn Strand Civic Centre. 780-696-3636.

**BRETON & DISTRICT AG SOCIETY** Regular Meeting 2<sup>nd</sup> Thurs. at 7:30PM at Hall.

**CITIZENS ON PATROL:** 2<sup>nd</sup> Thurs of each mo, 7:30PM in Entwistle Seniors Bldg

**DEVON TOASTMASTERS,** Thurs. 7PM at St. Georges Anglican Church (2 St. Clair, Devon). Learn and practice the skills required to effectively speak in public - we help conquer your fear.

More info: Marc 780-729-4932

**DRAYTON VALLEY BRANCH OF ALBERTA GENEALOGICAL SOCIETY:** meets 7PM at Drayton Valley Municipal Library every 3<sup>rd</sup> Wed of the month. For more information call (780) 542-2787

**LEDUC MS SOCIETY**

**COMMUNITY SUPPORT GROUP** Are you diagnosed with MS and have questions? This group is for you! Meetings TBD. Contact the Edmonton Chapter, 780-471-3034

**MS SOCIETY DRAYTON VALLEY COMMUNITY GROUP** meets every 1<sup>st</sup> Tuesday of the month, Sept-June from 6-8PM at Norquest College, dates TBA. Info, Terra Leslie at 1-403-346-0290.

**Winfield Legion Branch 236:** Meetings every 2<sup>nd</sup> Tues. Contact Secretary Treasurer Shelly Oulton 696-3600 or Alfred Farmer 696-2006

## YOUR COMMUNITY

**Dental Health:** Visit the dental hygienist with your toddler. Children 15-24 mos of age are encouraged to have this Free Toddler Mouth Check. For info, contact the Thorsby Health Centre at 789-4800.

**Derrick Toastmasters:** Serving Drayton Valley and area since 1990 Build Communication, Leadership & Public Speaking Skills Meets 2<sup>nd</sup> & 4<sup>th</sup> Wednesday, 7-9pm, Zoom Contact [derricktm6538.secretary@gmail.com](mailto:derricktm6538.secretary@gmail.com) for information.

**Come join GIRL GUIDES OF CANADA,** 1<sup>st</sup> Pipestone Sparks/Brownies/Guides Rainbow Unit. For more info call Jenny 387-3544 (anytime) or Teresa 901-3817 (evenings)

**LEDUC AND DISTRICT SENIOR CENTRE :** Provides programs and activities to enhance seniors' lives. Drop by for a tour, meet new friends, and see what we have to offer! 780-986-6160 [www.leducseniors.ca](http://www.leducseniors.ca)

**Meals on Wheels:** Call Deanne Young, Director FCSS 696-3636

**Thorsby Well Child & Immunization Clinic,** every 1<sup>st</sup> & 3<sup>rd</sup> Thurs. of the month. Contact Thorsby Public Health Center for appointment. 789-4800.

**Warburg Well Baby & Immunization Clinic,** by appointment only, 2<sup>nd</sup> Wed of month, Cloverleaf Manor. Thorsby Health Unit 789-4800.



JOHN DEERE



Giving you our best is the least we can do!

WARBURG

[www.martineq.com](http://www.martineq.com)

848-7777



JOHN DEERE

# SERVICE DIRECTORY



**PURE HEMP PRODUCTS**  
AGING IS INEVITABLE - LOOKING AND FEELING OLD ISN'T!

**KEY BENEFITS:**

- Inhibits Cell Growth in Tumors
- Relieves Pain
- Promotes Health
- Relieves Anxiety
- Neuroprotective

**(780) 907-8642**



**Buck Lake Hardware**

**From Hydraulic Hose To Panty Hose!**

PH: (780) 388-2450 | FAX: (780) 388-3962  
812 Lakeshore Dr. West  
Box 7 Buck Lake, AB T0C 0T0



**THE MOST COMPLETE NUTRITIONAL SPRAYS ON THE PLANET**

**ORDER TODAY!**  
**(780) 907-8642**  
[www.Elaine1.com](http://www.Elaine1.com)



**SMOOLE**

- Construction & Septic Installation
- Environmental Wastewater Disposal
- Site Design & Evaluation
- Power, Water & Basement Excavation
- Trackhoe, Backhoe, Bobcat & Dump Truck

**For All Your Excavation Needs**  
Call Ione 780-305-7077 Reid 780-909-0173



**THIS SPACE IS RESERVED FOR YOU!**

**Darren Scott**  
**ACCOUNTING SERVICES**

- \* CORPORATE & INDIVIDUAL TAX RETURNS
- \* BOOKKEEPING

4827 - 50 Ave. Breton, AB **1-866-787-5973**  
696-3800 Fax: 696-3946



**THIS SPACE IS RESERVED FOR YOU!**

**High-Performance Lifestyle Products**



**Call Today! (780) 907-8642**  
[www.bepic.com/elaine1](http://www.bepic.com/elaine1)



**THIS SPACE IS RESERVED FOR YOU!**



**PEMBINA CONCRETE PRODUCTS LTD.**

**Manufacturers of ONE PIECE SEPTIC & HOLDING TANKS**

\* Water Cisterns \* Field Systems \* Pumps and Accessories \* Sumps



**DELIVERED TO YOUR SITE**  
**1-800-661-3047**  
**780-727-2702**  
[PembinaConcrete.com](http://PembinaConcrete.com)

**Concrete Statues, Fountains and Garden Ornaments.**  
**BOX 123, Entwistle, T0E 0S0**



**THIS SPACE IS RESERVED FOR YOU!**


**SLIMROAST Optimum**

**DARK ROAST COFFEE**




**YOUR LOGICAL SOLUTION TO WEIGHT MANAGEMENT**

**(780) 907-8642**



**SUMMERS DRILLING LTD.**

Water well drilling and service  
Family owned Business Serving Alberta since 1917



**Never run out of water again!**

**5 year workmanship warranty**

**3 Convenient ways to pay**

- Visa
- Mastercard
- We now offer full financing

**Stop in at our office 4405 - 50 Street, Stony Plain**  
**780-963-1282**  
[admin@summersdrilling.com](mailto:admin@summersdrilling.com)

# PREVAIL

## CELLULAR HOMEOSTASIS FORMULA

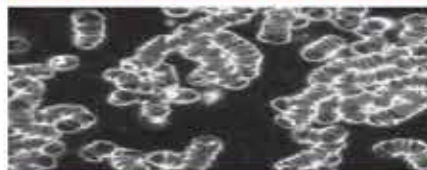
# MAX

A NUTRITIONAL BREAKTHROUGH THAT SUPPORTS YOU  
...RIGHT DOWN TO THE LAST CELL!

How do you want your  
**BLOOD** to look?



### Before PrevailMAX:



poor circulation

low energy

brain fog

dehydration

decreased nutrients

pH imbalance

poor endurance

### After PrevailMAX:



better circulation

more vitality

mental clarity

cellular movement

nutrient assimilation

balanced pH

optimal endurance

**PrevailMAX™** is a nutritional breakthrough that delivers a rapid increase of internal blood cell pressure to speed absorption, enabling the body to take maximum advantage of the nutrients in foods and supplements. The electrolytes are small enough to penetrate your cell membranes, to bind with your cells, and to be carried wherever they are needed in the body.

At the microscopic level of human cells, **PrevailMAX™** supports healthy cell performance – a nutritional breakthrough for your cells.

When you use **PrevailMAX™**, you will feel more energy and an ability to focus like never before. Take a few sprays today and see just how good you can feel!

LIVIN TRIM WITH  
**VALENTUS**

[www.ValentusTour.com/Ladybug](http://www.ValentusTour.com/Ladybug)

**(780) 907-8642**